

Net community production in the northwestern Mediterranean Sea from glider and buoy measurements

Michael P. Hemming¹, Jan Kaiser², Jacqueline Boutin³, Liliane Merlivat³, Karen J. Heywood², Dorothee C. E. Bakker², Gareth A. Lee², Marcos Cobas García², David Antoine^{4,5}, and Kiminori Shitashima⁶

¹Coastal and Regional Oceanography Lab, Centre for Marine Science and Innovation, UNSW Sydney, Sydney, Australia

²Centre for Ocean and Atmospheric Sciences, School of Environmental Sciences, University of East Anglia, Norwich, United Kingdom

³Laboratoire d'Océanographie et du Climat, Sorbonne Université, Paris, France

⁴Remote Sensing and Satellite Research Group, School of Earth and Planetary Sciences, Curtin University, Perth, Australia

⁵Laboratoire d'Océanographie de Villefranche, Villefranche-sur-Mer, France

⁶Tokyo University of Marine Science and Technology, Tokyo, Japan

Correspondence: Michael Hemming (m.hemming@unsw.edu.au)

Abstract. The Mediterranean Sea comprises just 0.8 % of the global oceanic surface, yet considering its size, it is regarded as a disproportionately large sink for anthropogenic carbon due to its physical and biogeochemical characteristics. An underwater glider mission was carried out in March–April 2016 close to the BOUSSOLE and DyFAMed time series moorings in the northwestern Mediterranean Sea. The glider deployment served as a test of a prototype ion-sensitive field-effect transistor pH sensor. Dissolved oxygen (O₂) concentrations and optical backscatter were also observed by the glider and increased between 19 March and 1 April, along with pH. These changes indicated the start of a phytoplankton spring bloom, following a period of intense mixing. Concurrent measurements of CO₂ fugacity and O₂ concentrations at the BOUSSOLE mooring buoy showed fluctuations, in qualitative agreement with the pattern of glider measurements. Mean net community production rates (*N*) were estimated from glider and buoy measurements of dissolved O₂ and inorganic carbon (DIC) concentrations, based on their mass budgets. Glider and buoy DIC concentrations were derived from a salinity-based total alkalinity parameterisation, glider pH, and buoy CO₂ fugacity. The spatial coverage of glider data allowed the calculation of advective O₂ and DIC fluxes. Mean *N* estimates for the euphotic zone between 10 March and 3 April were (-17 ± 36) for glider O₂, (44 ± 94) for glider DIC, (17 ± 37) for buoy O₂ and (49 ± 86) mmol m⁻² d⁻¹ for buoy DIC, all indicating net metabolic balance over these 25 days. However, these 25 days were actually split into a period of net DIC increase and O₂ decrease between 10 and 19 March and a period of net DIC decrease and O₂ increase between 19 March and 3 April. The latter period is interpreted as the onset of the spring bloom. The regression coefficients between O₂ and DIC-based *N* estimates were 0.25 ± 0.08 for the glider data and 0.54 ± 0.06 for the buoy, significantly lower than the canonical metabolic quotient of 1.45 ± 0.15 . This study shows the added value of co-locating a profiling glider with moored time series buoys, but also demonstrates the difficulty in estimating *N*, and the limitations in achievable precision.

20 1 Introduction

Around a quarter of anthropogenic carbon dioxide (CO₂) emitted between 2011 and 2020 was absorbed by the oceans (Friedlingstein et al., 2021). On timescales of less than a day to many months, CO₂ in the ocean is influenced by biological (photosynthesis, respiration) and physical processes (air-sea gas exchange, mixing and advection) (Hood and Merlivat, 2001; Takahashi et al., 2002; Copin-Montégut et al., 2004; Hall et al., 2004; Alkire et al., 2014). Understanding the processes affecting export of carbon from the surface to the interior ocean is key for quantifying the effects of a future warmer climate (Bauer et al., 2013). Whether a location is predominantly autotrophic (dominated by photosynthesis) or heterotrophic (dominated by respiration) determines the sign of net community production, which is defined as gross primary production (by phytoplankton) minus total respiration (by phytoplankton, zooplankton, and bacteria) (Alkire et al., 2012).

The surface of the Mediterranean Sea (2.5×10^6 km²) represents just 0.8 % of oceans globally, but relative to its size, it is regarded as an important sink for anthropogenic carbon dioxide emissions due to higher levels of anthropogenic carbon than in the Atlantic or Pacific Oceans (Lee et al., 2011; Schneider et al., 2010). This is due to a low Revelle factor (Broecker et al., 1979) related to relatively warm, salty, and high alkalinity waters, encouraging a net flux of carbon dioxide from the atmosphere to the ocean. Carbon dioxide dissolved in water (CO₂(aq) and H₂CO₃) dissociates to bicarbonate (HCO₃⁻), and carbonate (CO₃²⁻), releasing H⁺ ions (Zeebe and Wolf-Gladrow, 2001). CO₂(aq), H₂CO₃, HCO₃⁻ and CO₃²⁻ make up total dissolved inorganic carbon (DIC), with HCO₃⁻ accounting for 90 % of DIC. Carbon dioxide absorbed by the ocean is thought to reach the interior via deep water formation and biological processes (Álvarez et al., 2014; Arrigo et al., 2008).

The northwestern Mediterranean Sea displays strong seasonal variability. At the surface, temperatures remain at around 13 to 14 °C during winter, increasing to maxima of 26 to 28 °C during summer. Wind-driven vertical mixing occurs during autumn and winter, whilst surface stratification is common during summer as a result of solar heating (Copin-Montégut et al., 2004; D'Ortenzio et al., 2008). Vertical mixing can transport nutrients from greater depths to oligotrophic surface waters (Marty and Chiavérini, 2002; de Fommervault et al., 2015). A combination of nutrient availability and increased stability driven by surface warming of 0.2 °C can trigger phytoplankton blooms (Yao et al., 2016; Copin-Montégut et al., 2004). The onset of the spring bloom in the northwestern Mediterranean Sea varies from March to April, as observed between 2013 and 2015 at the BOUSSOLE buoy (Bouée pour l'acquisition de Séries Optiques à Long Terme, <http://www.obs-vlfr.fr/Boussole/>) close to the DyFAMed (Dynamique des Flux Atmospheriques en Mediterranée) site in the Ligurian-Provençal basin (Merlivat et al., 2018). Significant increases of particulate and dissolved organic carbon (POC and DOC) concentrations have been observed during bloom events (e.g. Carlson et al. (1998)). POC and DOC export from the ocean surface constitute the 'biological carbon pump' (Carlson et al., 1998; Van Der Loeff et al., 1997; Alkire et al., 2014).

Quantifying these processes in detail requires sufficient data coverage in space and time. Few DIC time series have been maintained continuously, among them the DyFAMed mooring, which is complemented by monthly ship hydrocasts (Copin-Montégut et al., 2004; Antoine et al., 2008; Taillandier et al., 2012). The DyFAMed site is considered an open ocean location as it is roughly 52 km from the coast in > 2000 m deep water. The mooring is useful for studying processes occurring at specific depth levels at one location (Merlivat et al., 2018; Copin-Montégut et al., 2004; Hood and Merlivat, 2001), but a lack

of vertical and horizontal spatial information is a limiting factor when quantifying mass and energy budgets. Autonomous
55 underwater gliders have been used to survey the northwestern Mediterranean Sea since 2005 (Niewiadomska et al., 2008; Cyr
et al., 2017). They are useful platforms for a range of physical and biogeochemical sensors and can operate autonomously
for many months in up to 1000 m deep water using battery power (Eriksen et al., 2001; Piterberg et al., 2014; Queste et al.,
2012). The deployment of autonomous platforms, such as underwater gliders, complements fixed-depth time series by enabling
60 observations of biogeochemical and physical horizontal and vertical gradients. This paper aims to estimate net community
production (N) at the DyFAMed site using in situ continuous measurements from a mooring and an underwater glider deployed
in March–April 2016. The additional glider data help overcome limitations of the single-depth mooring data both in terms of
vertical data coverage and the contribution of horizontal advection. Furthermore, the glider mission served as a test for a
prototype ion-sensitive field-effect transistor (ISFET) pH sensor, which complemented the standard temperature, salinity, and
 $c(\text{O}_2)$ sensors, to provide both O_2 - and DIC-based net community production.

65 2 Data collection and quality

2.1 Ship measurements

Ship CTD and water sample profiles were collected by RV *Téthys II* on 7 March and 16 April 2016 at the DyFAMed site (Fig. 1).
Ship hydrocast profiles of temperature and salinity (Sea-Bird Scientific SBE 9 CTD), and $c(\text{O}_2)$ (Sea-Bird Scientific SBE 43
70 sensor), were supplemented by discrete Niskin bottle samples for $c(\text{O}_2)$, $c(\text{DIC})$, total alkalinity (A_T), and concentrations of
total oxidised nitrogen (NO_x^- , i.e., the total of NO_3^- and NO_2^-), silicate ($\text{Si}(\text{OH})_4$), and phosphate (PO_4^{3-}), see Appendix A
for details. Implausible outliers in the CTD profiles ($< 1\%$ of values) were flagged and excluded from further analysis.

2.2 BOUSSOLE and meteorological buoy measurements

At BOUSSOLE, CO_2 fugacity $f(\text{CO}_2)$ (Wanninkhof and Thoning, 1993) at 10 m depth was measured spectrophotometrically
via a CARIOCA sensor using thymol blue pH indicator. Inside an exchanger cell, dissolved CO_2 equilibrates with the pH
75 indicator across a silicon membrane. The change in the optical absorbance of the pH indicator is converted to hourly readings
of $f(\text{CO}_2)$ (Hood and Merlivat, 2001), with an accuracy of $3 \mu\text{atm}$ (Copin-Montégut et al., 2004). The CARIOCA sensor is
replaced roughly every 6 months with a newly calibrated instrument (Merlivat et al., 2018). To remove temperature effects, we
show $f_{13}(\text{CO}_2)$, normalised to a temperature of 13°C (Takahashi et al., 1993).

Temperature and salinity were measured hourly using two Sea-Bird Scientific SBE 37-SM MicroCAT sensors at 3 and 10
80 m depth. The 10 m-MicroCAT failed on 15 March 2016. Up to that point, the mean temperature difference between 10 m
and 3 m was $(-0.01 \pm 0.03)^\circ\text{C}$. The corresponding mean practical salinity $S(\text{PSS-78})$ difference was -0.069 ± 0.004 . The
10 m-MicroCAT had the same salinity offset to the ship CTD cast on 7 March. The 3 m-MicroCAT agreed to within 0.007°C
with temperature and to within 0.006 with salinity of the ship CTD cast on 7 March. Three days before the ship CTD cast on

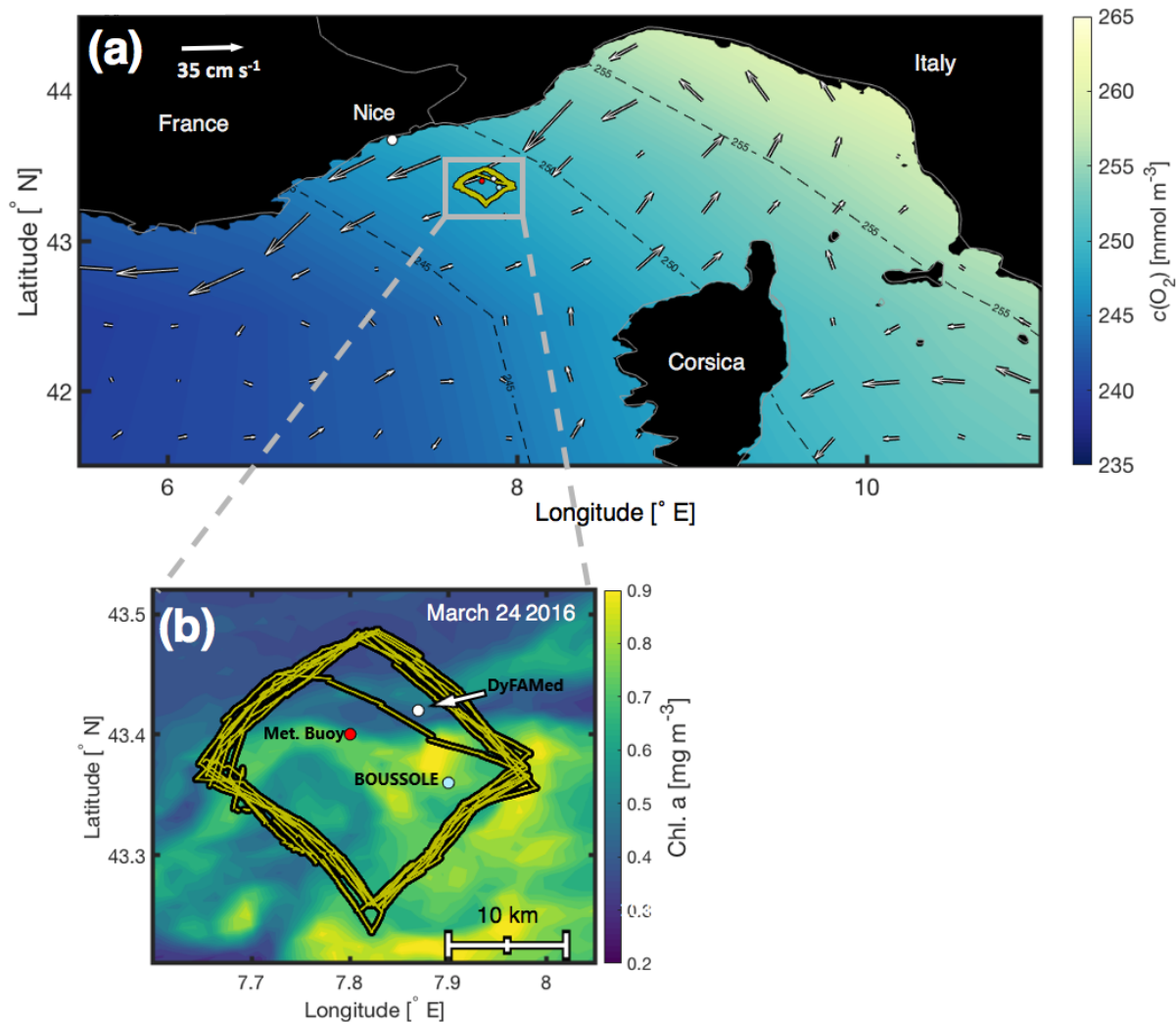


Figure 1. (a) The northwestern Mediterranean Sea and glider deployment area (small grey box) superimposed on the World Ocean Atlas 2013 surface $c(\text{O}_2)$ March climatology (<https://www.nodc.noaa.gov/OC5/woa13/woa13data.htm>), with accompanying AVISO satellite absolute mean surface currents (cm s^{-1} , white arrows) for 6 March–6 April 2016 (<http://marine.copernicus.eu/services-portfolio/access-to-products>). (b) A close-up of the deployment area at the DyFAMed/BOUSSOLE site. The position of each glider data point (yellow), the DyFAMed mooring (7.90° E , 43.36° N) (white), the BOUSSOLE buoy (7.87° E , 43.42° N), and the meteorological buoy ‘Côte D’Azur’ (7.83° E , 43.38° N) are superimposed on surface chlorophyll a concentrations (<https://oceancolor.gsfc.nasa.gov/products>) on 24 March 2016 (Hu et al., 2012). The bathymetry is flat and greater than 2000 m depth.

16 April, the 3 m-MicroCAT also failed. However, its final salinity reading was within 0.01 of the ship value. We therefore
85 used the 3 m-MicroCAT temperature and salinity readings for calculating buoy-related results.

$c(\text{O}_2)$ was measured at BOUSSOLE using Aanderaa oxygen optodes at 3 and 10 m. Only nighttime optode measurements
were used because the daytime readings were affected by light-induced spikes (Binetti et al., 2020). Winkler titration samples
taken during the ship visits on 7 March and 16 April were used to calibrate optode $c(\text{O}_2)$ (Coppola et al., 2018).

The meteorological buoy ‘Côte D’Azur’ maintained by Météo-France is located close to the BOUSSOLE buoy (Fig. 1). This
90 meteorological buoy measures wind speed at 3.8 m height above sea level (which is extrapolated to 10 m by adding 10 % of the
value), wind direction, air temperature, atmospheric pressure, relative humidity, precipitation and sea surface salinity. Data are
archived in the database ‘Service de DONnées de l’OMP (SEDOO) Mistral’ (<http://mistral.sedoo.fr/Data-Download>). Wind
speed and sea level pressure were used in this study.

2.3 Glider measurements

95 An iRobot Seaglider model 1KA (sg537; named ‘Fin’) with an ogive fairing was deployed close to the DyFAMed mooring
site. A total of 147 dives (294 profiles) were completed by the glider between 7 March and 5 April 2016 covering a diamond-
shaped pattern at 7.64–8.00° E, 43.22–43.50° N (Fig. 1). The glider completed 7 circumnavigations of the survey pattern, each
in approximately 4 days, with each of the four sides of the pattern taking approximately 1 day to complete. The glider was
equipped with a non-pumped SBE model CTD sensor, an Aanderaa model 4330F oxygen optode sensor, a WET Labs Eco
100 Puck sensor measuring optical backscatter at two wavelengths (470 nm and 700 nm), and two paired prototype ISFET pH and
 $p(\text{CO}_2)$ sensors (Shitashima et al., 2013; Hemming et al., 2017).

Conductivity, temperature, and pressure were used to derive potential temperature (θ) and practical salinity (S). Glider $c(\text{O}_2)$
was calibrated against ship-based $c(\text{O}_2)$ profiles (Fig. 2a, Appendix B1). Outliers (< 1% of values) outside specified standard
deviation ranges (3.5 standard deviations for depths > 400 m; 10 standard deviations for depths < 400 m) were flagged and
105 discarded from further analysis.

The deployment offered a second opportunity to trial prototype ISFET sensors, previously tested on a glider during the
REP14–MED experiment in the Sardinian Sea (Hemming et al., 2017; Onken et al., 2018). ISFET pH was corrected (Fig. 2b)
for drift and pressure effects, similar to the steps undertaken by Hemming et al. (2017). The drift- and pressure-corrected
ISFET pH was calibrated by linear regression against ship pH on 7 March and 16 April 2016 (Appendix B2).

110 3 Development of a spring bloom

The spring bloom at the DyFAMed site is characterised by a decrease of surface $f_{13}(\text{CO}_2)$ due to photosynthesis. Its onset
varies from year to year (e.g., April 2013, March 2014), and usually occurs after a period of deep mixing (Merlivat et al., 2018).
The glider deployment in March–April 2016 provided horizontal and vertical context to the fixed-depth near-surface mooring
sensors when the spring bloom was expected to occur.

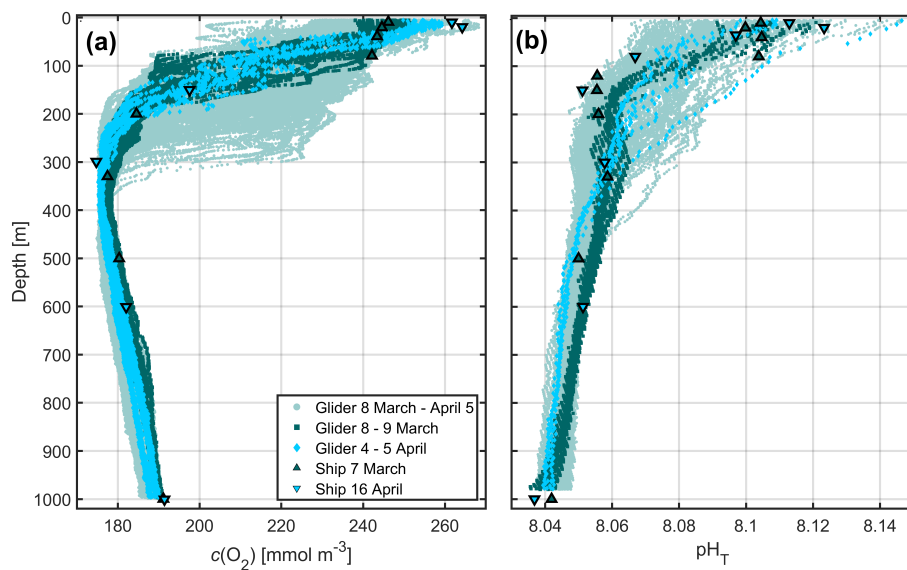


Figure 2. Calibrated glider (a) $c(\text{O}_2)$ and (b) ISFET pH_T over the whole deployment (pale green), 7–8 March (dark green), 4–5 April (pink), and the ship Winkler samples collected on 7 March (dark green circles), and on 16 April (pink circles).

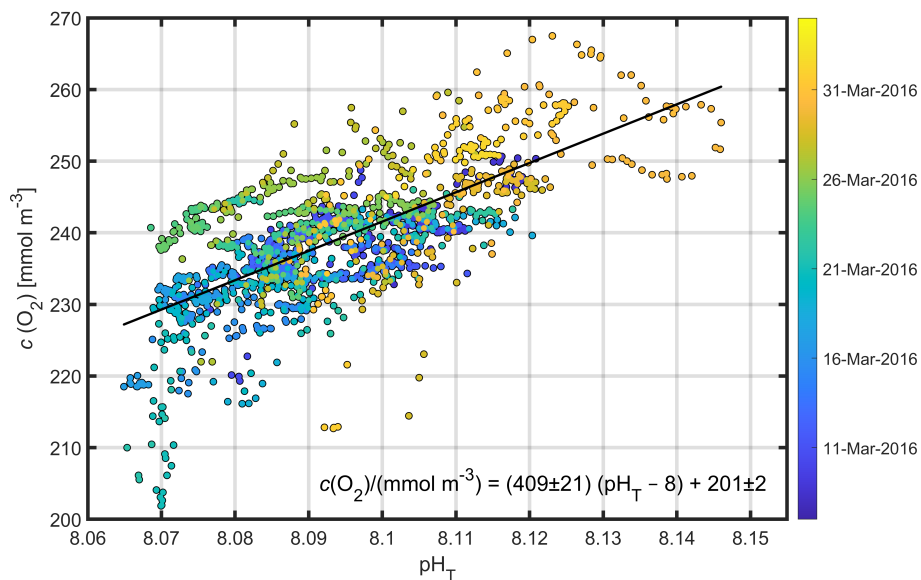


Figure 3. Glider pH_T against glider $c(\text{O}_2)$, and coloured by time for all points within the mean euphotic layer (top 46 m). The linear fit and corresponding equation between $c(\text{O}_2)$ and $\text{pH}_T - 8$ is also shown.

115 Sea surface temperature (SST) remained relatively stable below 13.5 °C between 7 March and 19 March whilst surface
 $f_{13}(\text{CO}_2)$ increased by 40 μatm (Fig. 4a), and surface salinity increased by 0.13 (Fig. 4b). The higher $f_{13}(\text{CO}_2)$, higher
 salinity waters were likely the results of wind-induced deep mixing and increased convection (Fig. 4a). These waters originate
 from 50–150 m depth where high salinity (Fig. 5b), high $f_{13}(\text{CO}_2)$, low $c(\text{O}_2)$ (Fig. 5c) Levantine Intermediate Water (LIW)
 exists (Knoll et al., 2017). SST increased by up to 0.6 °C between 19 and 20 March, and continued to increase intermittently
 120 to a maximum of 14.3 °C on 5 April (total increase of 1 °C over the deployment period).

Whilst SST increased between 19 March and 1 April, $f_{13}(\text{CO}_2)$ decreased by 85 μatm . This was the start of the spring bloom,
 associated with increased surface $c(\text{O}_2)$, pH_T , and optical backscatter (Fig. 4b, Fig. 5c,d,e). O_2 is produced by photosynthesis.
 The pH_T increase reflects biological CO_2 uptake altering the carbonate equilibria (Cornwall et al., 2013; Copin-Montégut
 and Bégovic, 2002), and increases in temperature. Optical backscatter relates to predominantly POC (Stramski et al., 2004),
 125 with minor contributions from mineral particles and gas bubbles at this site. Therefore, all of these observations suggested an
 increase in biological production.

A clear relationship between potential temperature (θ), $c(\text{O}_2)$, and pH_T existed within the euphotic layer (mean depth:
 $z_{\text{eu}} = 46 \pm 7$ m) (Figs. 3, 5a,c,e), with higher potential temperature associated with higher pH_T and $c(\text{O}_2)$. The stronger surface
 stratification resulting from calmer meteorological conditions, (e.g. reduced wind speed after 19 March, Fig. 4a), enhancing
 130 light supply and stability, causing productivity to increase (Sverdrup, 1953; Pingree et al., 1977). As a result of increased
 photosynthesis, surface waters became O_2 -supersaturated by 27 March (Fig. 4b, Fig. 5c).

Nutrient concentrations obtained by ship hydrocasts for depths of 10–90 m on 7 March were generally highest at 90 m
 where there is increased remineralisation, and lowest at the surface where there is increased usage by phytoplankton (Fig. 6a).
 Clear differences can be seen in nutrient samples obtained before and after the spring bloom (Fig. 6b). NO_x^- concentrations
 135 decreased by 7 mmol m^{-3} , $\text{Si}(\text{OH})_4$ by 2.5 mmol m^{-3} and PO_4^{3-} by 0.22 mmol m^{-3} at 30 m depth, associated with bio-
 logical production during the spring bloom period. A deep chlorophyll a maximum is often found around this depth (Estrada,
 1996) later in the season but was not apparent in our data. At 70 m and 90 m depth, nutrient concentrations did not vary much
 between March and April, while there was a significant decrease in $c(\text{O}_2)$ and a small change in potential temperature (Fig. 6c).
 This corresponded to increased stratification with a stronger potential temperature gradient within the top 70 m.

140 4 Estimating net community production from O_2 and DIC mass budgets

Net community production N is estimated based on mass budgets using the method described by (Alkire et al., 2014):

$$\int_0^{z_{\text{lim}}} \left(\frac{\partial c}{\partial t} + u \frac{\partial c}{\partial x} + v \frac{\partial c}{\partial y} \right) dz = -F_{\text{ase}} + N(\text{O}_2) + F_e + F_v \quad (1)$$

This equation applies to $N(\text{O}_2)$. For DIC, the $N(\text{O}_2)$ term is replaced with $-N(\text{DIC})$ because during photosynthesis, DIC
 is consumed and O_2 is produced, and vice versa for respiration.

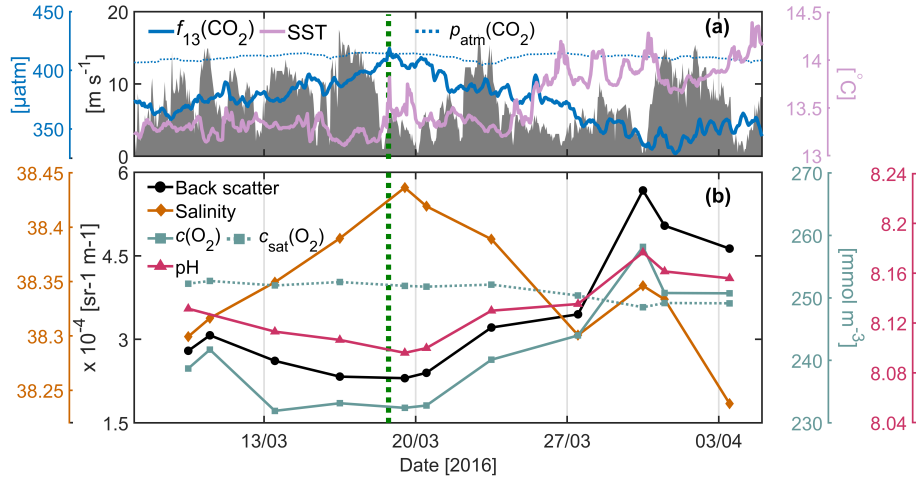


Figure 4. (a) Wind speed at 10 m above sea level at the meteorological buoy (dark grey shading), sea surface temperature (red), and CO₂ fugacity normalised to 13 °C (blue) at 10 m depth at the BOUSSOLE buoy. The partial pressure of atmospheric CO₂ in March 2016 (dotted blue) at Lampedusa, Italy, is shown. The onset of the spring bloom (dashed green), determined using buoy $f(\text{CO}_2)$ measurements, is plotted for comparison. (b) Glider measurements of salinity (orange), optical backscatter at 700 nm (black), dissolved oxygen concentrations ($c(\text{O}_2)$) (turquoise), and calibrated pH_T (pink) binned at 10 m. The oxygen concentration at saturation (dashed turquoise; parameterisation of García and Gordon (1992) based on Benson and Krause (1984)) is plotted for comparison.

145 The following diagnostic equations are therefore used to calculate N based on O₂ and DIC mass budgets:

$$N(\text{O}_2) = \frac{\Delta I(\text{O}_2)}{\Delta t} + F_{\text{ase}}(\text{O}_2) + F_{\text{adv}}(\text{O}_2) - F_e(\text{O}_2) - F_v(\text{O}_2) \quad (2)$$

$$N(\text{DIC}) = -\frac{\Delta I(\text{DIC})}{\Delta t} - F_{\text{ase}}(\text{DIC}) - F_{\text{adv}}(\text{DIC}) + F_e(\text{DIC}) + F_v(\text{DIC}) \quad (3)$$

150 $\frac{\Delta I}{\Delta t}$ is the integrated column inventory change over time, F_{adv} is horizontal advection, F_{ase} is the air-sea flux (positive for the direction ocean to atmosphere), F_e is the entrainment flux due to mixed layer deepening, and F_v is the diapycnal eddy diffusion flux. The time period chosen to derive the fluxes required to calculate N spanned 25 days between 10 March and 3 April, and included 285 individual profiles (glider dives 10 to 147) spanning the entire survey domain. The first nine dives were omitted because they were used for glider flight trimming. Mean values over the 25 day-period are shown in Table 2. Table 1 gives the uncertainties considered for each budget term.

4.1 Inventory change $\frac{\Delta I}{\Delta t}$

155 Daily mean column inventories were integrated between surface and z_{lim} for all glider profiles within a 4-day moving window centred on each date. As integration depth z_{lim} , we used the mean euphotic depth of 46 m, derived from satellite measurements

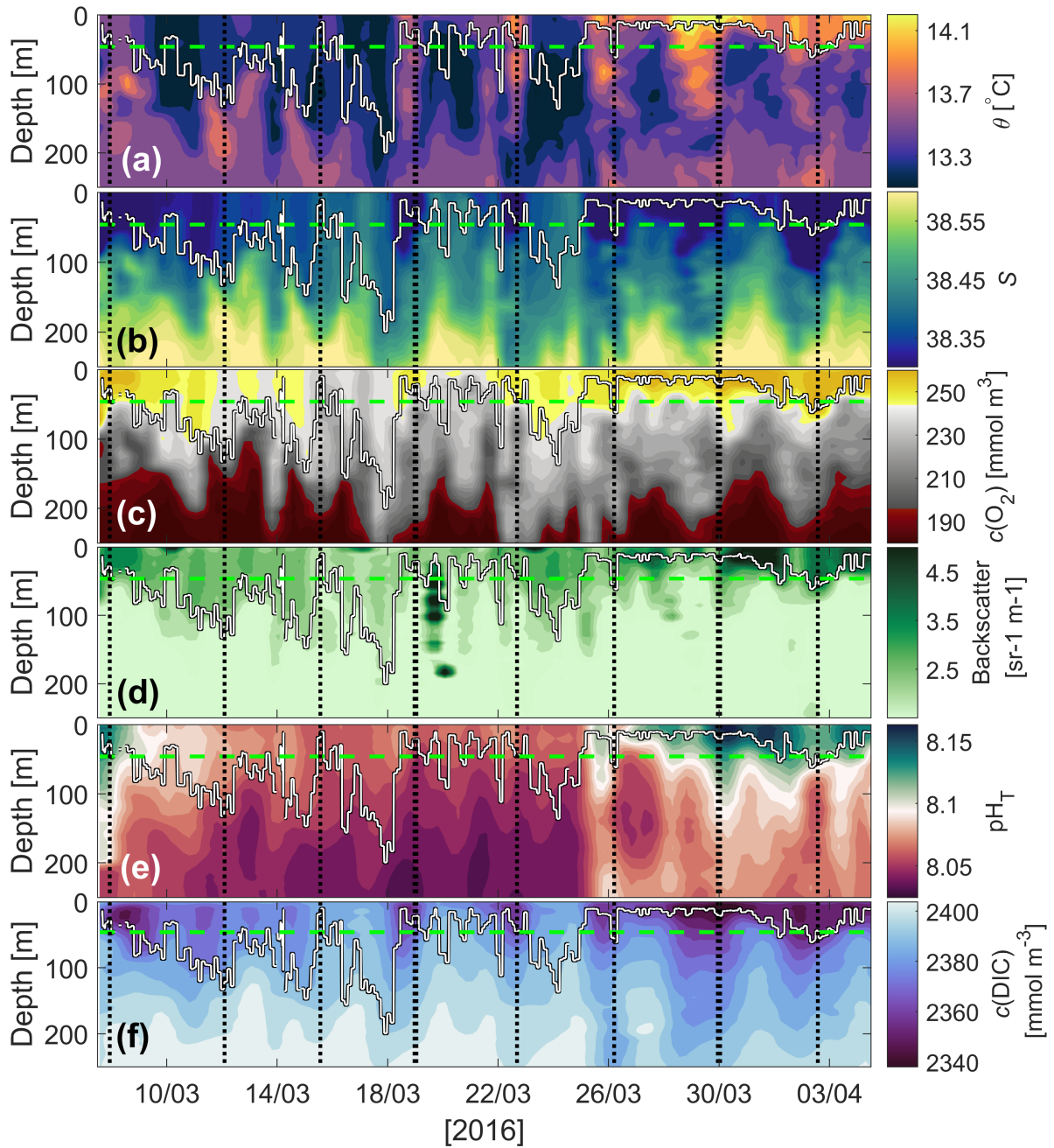


Figure 5. Glider (a) potential temperature (θ), (b) salinity, (c) dissolved oxygen concentration ($c(\text{O}_2)$), (d) optical backscatter, (e) pH_T , and (f) dissolved inorganic carbon concentration ($c(\text{DIC})$). The mean euphotic depth used for calculating N (green dashed line, $z_{\text{lim}} = 46$ m) and mixed layer depth (white line; derived using the potential density criteria of the hybrid scheme of Holte and Talley (2009)) are superimposed. The vertical dashed black lines represent the glider reaching the most northerly point of its transects.

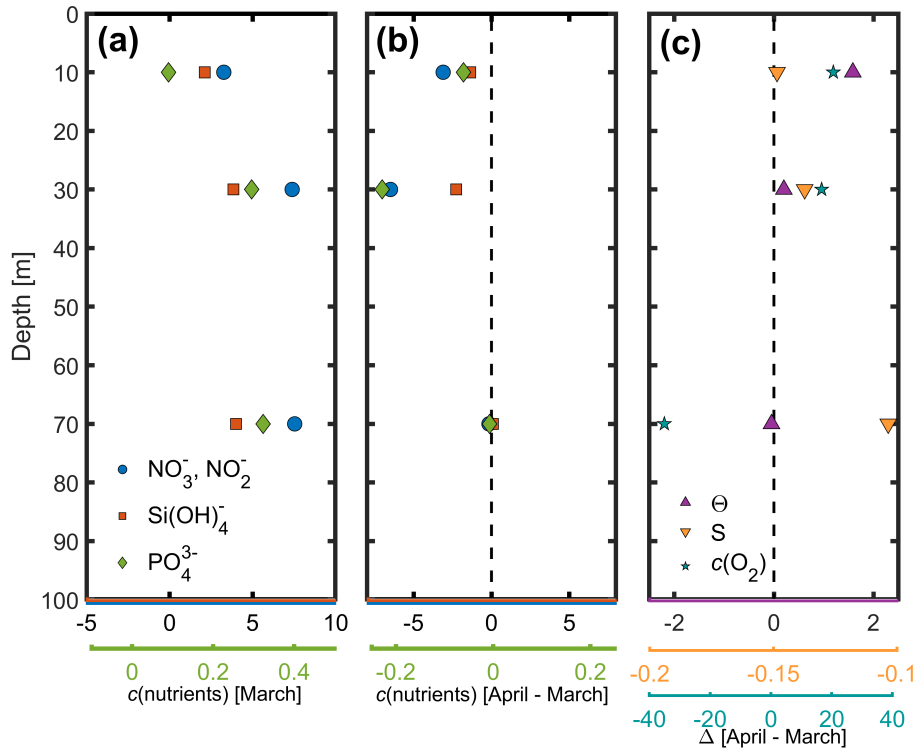


Figure 6. (a) Nutrient concentrations (mmol m^{-3}) in March 2016, (b) change in nutrient concentrations between March and April 2016, and (c) changes in potential temperature (θ), practical salinity (S), and $c(\text{O}_2)$ (mmol m^{-3}) between March and April 2016.

using the method described by Lee et al. (2007). Inventory changes ($\frac{\Delta I}{\Delta t}$) were calculated from the day-to-day inventory differences:

$$\frac{\Delta I}{\Delta t} = \frac{\int_0^{z_{\text{lim}}} c_{t+1\text{d}}(z)dz - \int_0^{z_{\text{lim}}} c_t(z)dz}{1\text{d}} \quad (4)$$

160 4.2 Advection F_{adv}

The glider measured within an Eulerian framework, sampling geographic locations over time. In contrast to a Lagrangian framework, estimates of F_{adv} are needed to close the budget. Advection was calculated following Alkire et al. (2014) using zonal and meridional mean horizontal concentration gradients and current velocities within z_{lim} using a moving time window of 8 days. This longer time window of 8 days was chosen to reduce the error in the mean gradients (Fig. 7). Mean horizontal concentration gradients $A_c(z)$ and $B_c(z)$ were calculated for each 5 m depth bin using robust plane-fits of all concentration measurements in the 8-day time window:

$$c_{\text{fit}}(z) = A_c(z)x + B_c(z)y + d_c(z) \quad (5)$$

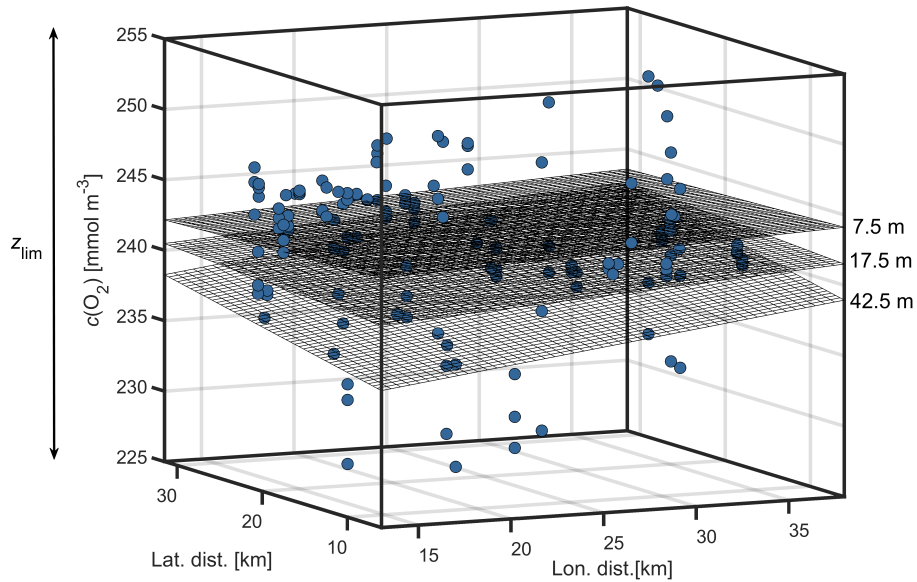


Figure 7. Plane-fits of dissolved oxygen concentrations ($c(\text{O}_2)$) at 7.5 m, 17.5 m and 42.5 m depth within z_{lim} for 25 March 2016.

where $d_c(z)$ is a constant (not used), and x and y are Cartesian coordinates calculated using zonal and meridional distances, respectively. Bisquare weights were applied when determining the fit coefficients (Gross, 1977) to limit the effect of outliers.

170 The zonal (east-west) concentration gradients were small for both O_2 and DIC (Fig. 8). Opposing meridional (north-south) gradients for O_2 and DIC indicate biological patchiness. However, interestingly the positive gradient for O_2 (corresponding to higher concentrations in the north) is opposite to the pattern seen in the satellite-derived ocean colour (1b), which shows lower chlorophyll a concentrations in the north (implying that the bloom propagates from south to north). This highlights that primary production and net community production are not always directly correlated.

175 To estimate the absolute geostrophic currents within the survey domain the dynamic height anomaly (Ψ) was calculated relative to the surface using glider salinity, temperature and pressure (Roquet et al., 2015), and planes were fitted for a moving time window of 8-days:

$$\Psi_{\text{fit}}(z) = A_{\Psi}(z)x + B_{\Psi}(z)y + d_{\Psi}(z) \quad (6)$$

Using these plane-fits, the meridional and zonal components of geostrophic shear were derived and referenced to the 8-day
 180 running means of the meridional and zonal components of OSCAR velocities (Bonjean and Lagerloef, 2002). Referencing the geostrophic shear with glider dive-averaged currents (DACs) was initially explored, but when compared with satellite data products (Fig. 8c,d) it was clear that the meridional velocities (v) were unrealistic (cf. section 7).

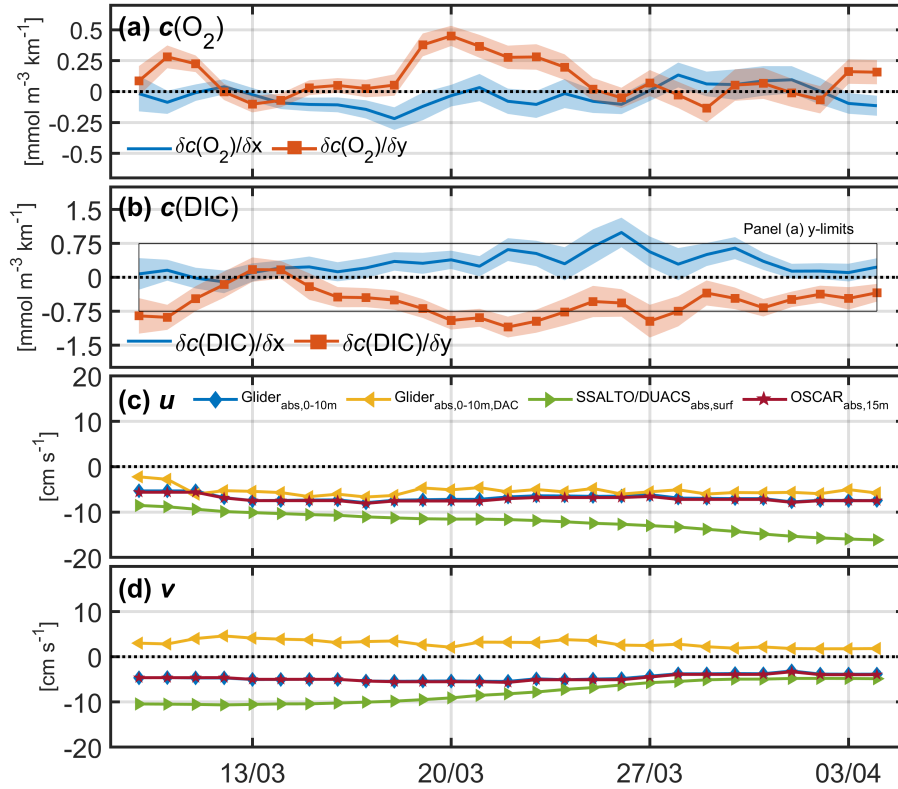


Figure 8. Zonal and meridional mean horizontal concentration gradients for (a) $c(\text{O}_2)$ and (b) $c(\text{DIC})$ estimated using robust plane-fits. The black box in panel (b) highlights the y-limits for panel (a) for reference. (c) Absolute mean u velocity, and (d) v velocity, using glider measurements in the top 10 m referenced to OSCAR velocities (blue), and referenced to dive-averaged currents (DACs, red), absolute surface mean currents from satellite products SSALTO/DUACS (yellow) and OSCAR (purple).

Table 1. The uncertainties considered for each flux term when estimating total propagated error. The mean errors for N using glider (N_g) and buoy (N_b) measurements are listed for both $c(\text{O}_2)$ and $c(\text{DIC})$ in $\text{mmol m}^{-2} \text{ d}^{-1}$.

Term	Uncertainties considered	$N_g(\text{O}_2)$	$N_b(\text{O}_2)$	$N_g(\text{DIC})$	$N_b(\text{DIC})$
$\frac{\Delta I}{\Delta t}$	Standard error of profiles (glider) or concentrations over time (buoy); root mean square error of the calibration fits (glider)	14	9	38	8
F_{adv}	10 % absolute velocity; concentration and velocity plane-fit errors	29	29	85	85
F_{ase}	Root mean square error of the calibration fits (O_2); 20 % uncertainty of the gas transfer velocity (Wanninkhof, 2014); standard deviations of temperature and salinity when calculating c_{sat}	15	14	2	2
F_e	Standard error of inventory	0.3	0.3	0.6	0.6
F_v	Standard error of F_v over 4-day moving window	0.2	0.2	0.1	0.1

The advection flux (F_{adv}) was calculated from the horizontal concentration gradients and the absolute geostrophic velocities:

$$F_{\text{adv}}(z) = A_c(z)u(z) + B_c(z)v(z) \quad (7)$$

185 The mean gradients using measurements binned every 5 m between the surface and z_{lim} were averaged at each time step and used for estimating advection (Fig. 8a,b).

4.3 Air-sea gas exchange F_{ase}

Air-sea gas exchange (negative for fluxes from atmosphere to ocean) was estimated for O_2 and CO_2/DIC using:

$$F_{\text{ase}}(\text{O}_2) = k(\text{O}_2) [c_{\text{surf}}(\text{O}_2) - (1 + \Delta_{\text{bubble}}) c_{\text{sat}}(\text{O}_2)] \frac{\min(z_{\text{lim}}, z_{\text{mix}})}{z_{\text{mix}}} \quad (8)$$

190 with the equilibrium bubble correction $\Delta_{\text{bubble}} = 0.01[w_{10}/(9 \text{ m s}^{-2})]^2$ (Woolf and Thorpe, 1991), and

$$F_{\text{ase}}(\text{CO}_2) = k(\text{CO}_2) [c_{\text{surf}}(\text{CO}_2) - c_{\text{sat}}(\text{CO}_2)] \frac{\min(z_{\text{lim}}, z_{\text{mix}})}{z_{\text{mix}}} \quad (9)$$

The gas transfer velocity k is calculated according to Wanninkhof (2014). c_{surf} is the mean concentration in the top 10 m over a moving 4-day time window. The mixed layer depth z_{mix} was estimated using the potential density criteria of the algorithm, of Holte and Talley (2009), with a threshold of 0.03 kg m^{-3} and gradient of $0.0005 \text{ kg m}^{-3} \text{ dbar}^{-1}$. These criteria are sensitive
 195 enough to detect the actual mixing layer-depth relevant for gas exchange fluxes (Brainerd and Gregg, 1995). $c_{\text{sat}}(\text{O}_2)$ is the O_2 air-saturation concentration of García and Gordon (1992), corrected to actual sea-level pressure, p_{baro} . $c_{\text{sat}}(\text{CO}_2) = \chi(\text{CO}_2)p_{\text{baro}}F(\text{CO}_2)$ is the CO_2 air-saturation concentration, calculated using the dry mole fraction of atmospheric CO_2 , $\chi(\text{CO}_2)$, at the nearest NOAA Carbon Cycle network station Lampedusa, Italy, in March 2016 (ftp://aftp.cmdl.noaa.gov/data/trace_gases/co2/flask/surface, site code: LMP, Dlugokencky et al. (2021)). $F(\text{CO}_2)$ is the CO_2 solubility function in
 200 $\text{mol dm}^{-3} \text{ atm}^{-1}$ (Weiss and Price, 1980). The last term of the equations is a scaling factor that apportions the air-sea exchange flux to the depth layer of interest ($z_{\text{lim}} = 46 \text{ m}$) when z_{mix} is deeper than z_{lim} .

4.4 Entrainment F_e

When the mixed layer deepens to depths greater than z_{lim} , water from below with different concentrations mix with water within the layer. As a result, there is either a reduction or an increase in mean concentration within z_{lim} depending on the
 205 vertical concentration distribution. To account for this, F_e was estimated following Binetti et al. (2020):

$$F_e = \frac{I_1(z_{\text{mix}}(t_2)) \frac{z_{\text{lim}}}{z_{\text{mix}}(t_2)} - I_1(z_{\text{lim}})}{t_2 - t_1} \quad (10)$$

where $I_1(z_{\text{mix}}(t_2))$ is the inventory at time t_2 within the mixed layer depth z_{mix} at time t_2 ; $I_1(z_{\text{lim}})$ is the inventory at t_1 within z_{lim} ; $t_2 - t_1$ represents the time difference. Mean values of z_{mix} and c averaged over a 4 day moving time window were used.

The mean $F_e(\text{O}_2)$ was $(-65 \pm 1) \text{ mmol m}^{-2} \text{ d}^{-1}$ and the mean $F_e(\text{DIC})$ was $(-74 \pm 1) \text{ mmol m}^{-2} \text{ d}^{-1}$ for the 7 days in
 210 the 25 day-period when entrainment (mixed-layer deepening) occurred and $z_{\text{mix}} > z_{\text{lim}}$.

4.5 Vertical diapycnal eddy diffusion F_v

Vertical diapycnal eddy diffusion across the base of z_{lim} was estimated using the measured concentration–density gradients (Copin-Montégut, 2000) and an estimate of the turbulence energy dissipation rate ϵ :

$$F_v = \frac{0.25\epsilon\rho}{g} \frac{\partial c}{\partial \rho} \quad (11)$$

215 where the concentration gradient was evaluated using centred finite differences at $z_{\text{lim}} \pm 5 \text{ m}$. $\epsilon = 1.5 \times 10^{-9} \text{ m}^2 \text{ s}^{-3}$ was taken from measurements in the Mediterranean bottom pycnoline (Cuypers et al., 2012). Copin-Montégut (2000) guessed a 33 times higher value of $5 \times 10^{-8} \text{ m}^2 \text{ s}^{-3}$ in her study of net community production at DYFAMED, but this value was probably an overestimate because even in the presence of eddies, Cuypers et al. (2012) estimates ϵ to be only $8.5 \times 10^{-9} \text{ m}^2 \text{ s}^{-3}$. Concentration gradients were calculated for each profile within a 4-day moving window and then averaged to get one gradient
 220 per time step.

The mean $F_v(\text{O}_2)$ was $(-0.8 \pm 0.2) \text{ mmol m}^{-2} \text{ d}^{-1}$ and the mean $F_v(\text{DIC})$ was $(-0.1 \pm 0.1) \text{ mmol m}^{-2} \text{ d}^{-1}$ over the 25 day-period. With the higher ϵ value of $8.5 \times 10^{-9} \text{ m}^2 \text{ s}^{-3}$ found in eddies, these fluxes would be 5.7 times higher, but still negligible with respect to the other four terms in the mass budget.

4.6 Buoy measurements

225 We calculate N from $c(\text{O}_2)$ and $c(\text{DIC})$ at the BOUSSOLE buoy (N_b) for comparison with N_g estimates. N_b was estimated similarly to N_g , in that we follow the budget approach defined in Sect. 4, and equations defined thereafter. Inventory changes were calculated from surface observations multiplied by z_{lim} because depth-profiles are not measured at the buoy. When $z_{\text{mix}} < z_{\text{lim}}$, this most likely results in an overestimate of the actual inventory change because N decreases with depth. Also, F_{ase} was scaled in the same way as the glider-based estimates when $z_{\text{mix}} > z_{\text{lim}}$. Finally, F_{adv} , F_e , and F_v could not be derived
 230 from the single-depth measurements at BOUSSOLE. Instead, the glider-derived fluxes were also used to compute N_b .

5 Net community production N

Prior to 21 March, N_g and N_b were negative or close to zero most of the time. This could be a sign of local net heterotrophic conditions, but could also be due to underestimated entrainment (F_e) or vertical eddy diffusion fluxes (F_v). This observation cannot be explained by physical undersaturation driven by recent cooling because temperatures decreased by only 0.2°C
 235 between 1 and 21 March, explaining at most 0.4% undersaturation. After 21 March, N exceeds zero until the end of the

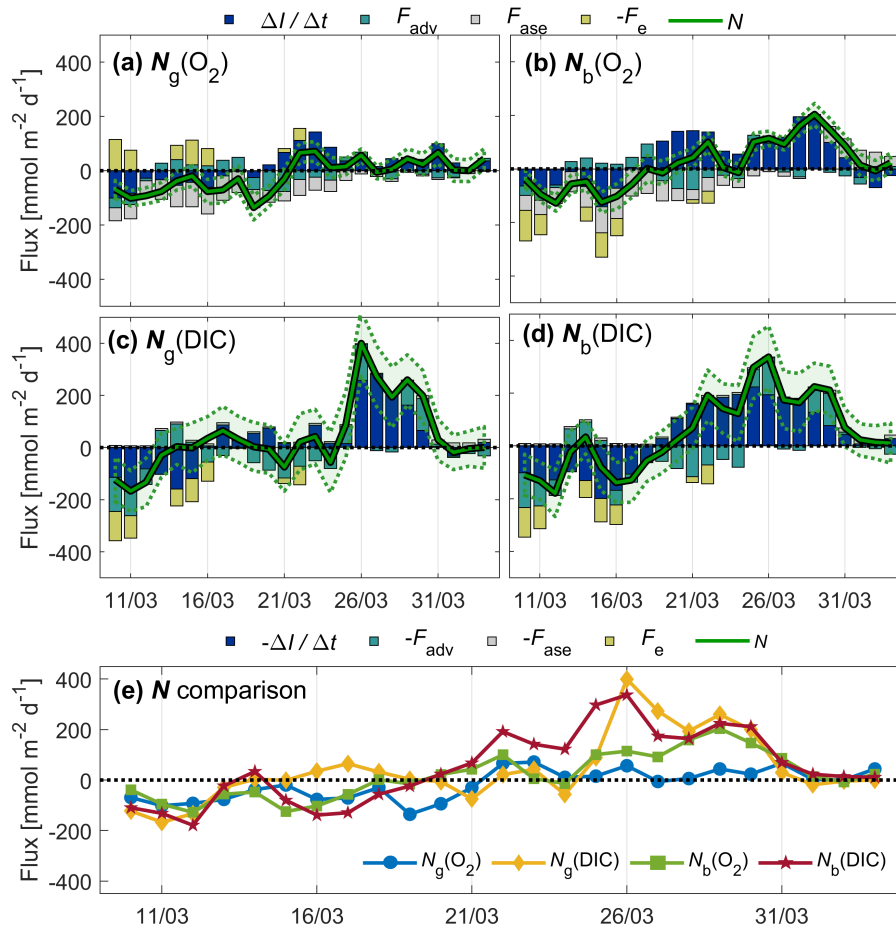


Figure 9. Inventory change ($\Delta I/\Delta t$), advection (F_{adv}), air-sea exchange (F_{ase}), entrainment (F_e) fluxes and net community production (N) of O_2 (a,b; top legend) and DIC (c,d; bottom legend) related to glider (a,c) and buoy (b,d) measurements. Uncertainty intervals are shown as dotted lines. All N estimates are compared in panel (e).

deployment period. The approximate start of the spring bloom was 19 March as evidenced by the buoy $c(\text{DIC})$ (Fig. 4), which is also the time when $N_b(\text{DIC})$ becomes positive, lasting until the end of the deployment period.

$N_g(O_2)$ peaks on 22–23 and 31 March at around $70 \text{ mmol m}^{-2} \text{ d}^{-1}$, matching periods of high $c(O_2)$ (Fig. 5c). In contrast, $N_b(O_2)$ is highest between 25 and 31 March at $\geq 80 \text{ mmol m}^{-2} \text{ d}^{-1}$. The total range of $N(\text{DIC})$ is larger than for $N(O_2)$. $N_g(\text{DIC})$ and $N_b(\text{DIC})$ reach similar peak values on 26 and 29–30 March.

The contributions of F_{adv} and F_e are significant at times. $F_e(O_2) < -80 \text{ mmol m}^{-2} \text{ d}^{-1}$ on days when wind is high and the surface mixed layer is deepening (Fig. 9), and there are periods when absolute $F_{adv}(O_2) > 50 \text{ mmol m}^{-2} \text{ d}^{-1}$. Absolute $F_{adv}(\text{DIC})$ is on average $34 \text{ mmol m}^{-2} \text{ d}^{-1}$ higher than $F_{adv}(O_2)$, and on some days absolute $F_{adv}(\text{DIC}) > 100 \text{ mmol m}^{-2} \text{ d}^{-1}$. $F_e(\text{DIC})$ is generally of absolute $F_e(O_2)$. Surface waters are undersaturated with O_2 prior to 29 March

Table 2. Comparison of $\Delta I/\Delta t$, F_{adv} , F_{ase} , F_v and N estimates using $c(\text{O}_2)$ and $c(\text{DIC})$, and the corresponding flux terms used in this study with others in the literature. The N estimates of Copin-Montégut (2000) are based on $\Delta I/\Delta t$, F_{ase} , and F_v (calculated with a turbulence energy dissipation rate of $\epsilon = 5.0 \times 10^{-8} \text{ m}^2 \text{ s}^{-3}$).

Time period	Variable	$\Delta I/\Delta t$	$\text{mmol m}^{-2} \text{ d}^{-1}$			
			F_{adv}	F_{ase}	F_v	N
10 March – 3 April 2016	O ₂ glider	15 ± 14	-9 ± 29	-42 ± 15	-1 ± 0	-17 ± 36
	O ₂ buoy	37 ± 9	-9 ± 29	-30 ± 14	-1 ± 0	17 ± 37
	DIC glider	-24 ± 38	12 ± 85	-10 ± 2	1 ± 0	44 ± 94
	DIC buoy	-32 ± 8	12 ± 85	-9 ± 2	1 ± 0	49 ± 86
19 March – 3 April 2016	O ₂ glider	49 ± 15	-21 ± 31	-24 ± 9	-1 ± 0	9 ± 36
	O ₂ buoy	85 ± 11	-21 ± 31	-2 ± 7	-1 ± 0	67 ± 35
	DIC glider	-77 ± 41	7 ± 89	-9 ± 2	1 ± 0	85 ± 98
	DIC buoy	-120 ± 7	7 ± 89	-9 ± 2	1 ± 0	128 ± 90
Coppola et al. (2018)						
1994 – 2014 average	O ₂ ship	18 ± 5	—	7 ± 5	—	25 ± 7
1994 – 2014 March average	O ₂ ship	11 ± 12	—	-4 ± 5	—	7 ± 13
1994 – 2014 April average	O ₂ ship	20 ± 13	—	15 ± 3	—	35 ± 13
Copin-Montégut (2000)						
4–8 May 1995 (0–30 m)	O ₂ ship	-3 ± 14	—	20 ± 6	-26 ± 10	43 ± 19
4–8 May 1995 (0–38 m)	DIC ship	-28 ± 13	—	-1 ± 0	39 ± 4	68 ± 13
19–23 May 1995 (0–46 m)	O ₂ ship	56 ± 18	—	14 ± 4	-45 ± 10	115 ± 23
19–23 May 1995 (0–46 m)	DIC ship	-36 ± 18	—	-2 ± 1	31 ± 4	69 ± 19

245 (negative F_{ase}), and then oversaturated until the end of the deployment period (positive F_{ase} ; Fig. 4.) Surface waters are undersaturated in CO₂ throughout the deployment period (negative F_{ase}).

Between 10 March and 3 April we estimate an average N of between (-17 ± 35) and $(49 \pm 86) \text{ mmol m}^{-2} \text{ d}^{-1}$, depending on the variable used (Table 2). Between 19 March and 3 April, N was positive most of the time, and on average ranged between (9 ± 36) and $(128 \pm 90) \text{ mmol m}^{-2} \text{ d}^{-1}$.

250 6 Stoichiometric relationship

Dividing $N(\text{O}_2)$ by $N(\text{DIC})$ provides the photosynthetic quotient Q_P , previously estimated as 1.45 ± 0.15 (Laws, 1991; Anderson and Sarmiento, 1995; Anderson, 1995). The average Q_P in this study using $N_g(\text{O}_2)$ and $N_g(\text{DIC})$ between 10 March and 3 April was 0.14 ± 0.81 , excluding periods when $N_g(\text{DIC}) < 30 \text{ mmol m}^{-2} \text{ d}^{-1}$ (i.e., close to zero within its uncertainty).

When using $N_b(\text{O}_2)$ and $N_b(\text{DIC})$ over the same time period, average Q_P was 0.49 ± 0.60 . Using linear regression of $N(\text{O}_2)$ against $N(\text{DIC})$ provides another way to derive Q_P . The resulting slopes are 0.25 ± 0.06 for the glider and 0.54 ± 0.06 for the buoy N estimates. These Q_P values therefore do not match the canonical values of 1.45 ± 0.15 , but similarly low values of 0.63 ± 0.30 were observed by Copin-Montégut (2000) in early May 1995 at the same site (Table 2).

The change of nutrient concentrations provides an alternative to estimating net community production. Assuming the observed NO_x^- drawdown of 7 mmol m^{-3} and the PO_4^{3-} drawdown of 0.22 mmol m^{-3} occurred over a period of 15 to 25 days (with 15 days corresponding to the period 19 March to 3 April; the exact period is not known because we only have observations on 7 March and 16 April), extends over the same depth horizon (46 m) as used for the O_2 - and DIC-based N calculations, and neglecting any additional contribution to NCP fuelled by diapycnal mixing, this corresponds to rates of 13 to 21 $\text{mmol mmol m}^{-2} \text{ d}^{-1}$ for nitrogen and 0.4 to 0.7 $\text{mmol mmol m}^{-2} \text{ d}^{-1}$ for phosphorus. Assuming a Redfield C:N:P stoichiometric ratio of 106:16:1 (Redfield et al., 1963), this corresponds to carbon fluxes of 85 to 142 $\text{mmol m}^{-2} \text{ d}^{-1}$ (based on nitrogen) and 43 to 72 $\text{mmol m}^{-2} \text{ d}^{-1}$ (based on phosphorus). The values are in reasonable agreement with the $N(\text{DIC})$ values derived for the bloom period between 19 March and 3 April of (85 ± 98) to (128 ± 90) $\text{mmol m}^{-2} \text{ d}^{-1}$, indicating nutrient consumption in line with the assumed stoichiometric ratio.

The discrepancy between Redfield and observed stoichiometry is larger for the O_2 -based net community production, especially for the glider-based values. Non-Redfield ratios have been documented before, including at the same site. For example, Copin-Montégut (2000) found non-Redfield ratios for O_2 and DIC-derived N at DyFAMed. Hull et al. (2021) found non-Redfield ratios for O_2 - and nitrate-derived N in the North Sea. We do not have a physiological explanation for such large deviations from the canonical stoichiometric values. It is unlikely to be due to a calibration error in the O_2 concentration because it would have to be of the order of 20 mmol m^{-3} and our observations at depths $> 400 \text{ m}$ agree to within 3 mmol m^{-3} with the record of historic measurements.

275 7 Discussion

Quantifying net community production helps us to understand the role of biological production and consumption on carbon export from the surface to deep waters. If the rate of carbon export is known, the rate of atmospheric CO_2 drawdown into the ocean can be better quantified, and the accuracy of future climate projections might improve. Using underwater gliders as tools to observe the water column on timescales of less than a month over a wider area allow us to estimate physical processes (e.g. mixing, advection) that affect biogeochemical tracer concentrations and estimates of net community production derived therefrom.

During the spring bloom (19 March to 3 April) we estimate N between (9 ± 36) and (128 ± 90) $\text{mmol m}^{-2} \text{ d}^{-1}$ on average, with maxima $> 300 \text{ mmol m}^{-2} \text{ d}^{-1}$ at times. Few studies have estimated N at the DyFAMed site, and there are currently no N estimates that incorporate F_{adv} using concentrations over a larger area surrounding DyFAMed.

285 Another study at this site estimated an annual mean $N(\text{O}_2)$ of (25 ± 7) $\text{mmol m}^{-2} \text{ d}^{-1}$ (equivalent to $9.2 \text{ mol m}^{-2} \text{ a}^{-1}$), and monthly mean O_2 production of (7 ± 13) $\text{mmol m}^{-2} \text{ d}^{-1}$ and (35 ± 13) $\text{mmol m}^{-2} \text{ d}^{-1}$ in March and April, respectively,

using excess O_2 above 100 % saturation over a period of 20 years (Coppola et al., 2018). Furthermore, Copin-Montégut (2000) estimated $N(O_2)$ as (43 ± 19) $\text{mmol m}^{-2} \text{d}^{-1}$ in the top 30 m during 4–8 May 1995, and as (115 ± 23) $\text{mmol m}^{-2} \text{d}^{-1}$ in the top 46 m during 19–23 May 1995. A direct comparison is not possible between this study, Coppola et al. (2018), and
290 Copin-Montégut (2000) because each study is based on different timescales (from years to days), different vertical integration horizons and different seasons. Keeping this in mind, our range of N estimates are similar to those of Coppola et al. (2018) and Copin-Montégut (2000).

We can compare our study with other studies elsewhere that estimate N using glider measurements. Alkire et al. (2014) estimated mean $N(O_2)$ as (65 ± 25) $\text{mmol m}^{-2} \text{d}^{-1}$ over a 23 day period in June 2008 in the North Atlantic. Like our study,
295 they estimated $N(O_2)$ incorporating F_{adv} derived using horizontal gradients measured by a glider. Further, Hull et al. (2021) estimated $N(O_2)$ as (154 ± 2) $\text{mmol m}^{-2} \text{d}^{-1}$ in the North Sea in April 2019.

Uncertainties for $N(\text{DIC})$ are generally higher than those for $N(O_2)$, and the highest uncertainties are associated with F_{adv} . F_{adv} uncertainties are high because the uncertainties associated with the concentration plane-fits are high due to $c(\text{DIC})$ variability within the time-centred window. For example, $c(\text{DIC})$ within z_{lim} varied over 33 mmol m^{-3} for the time-centred
300 window on 16 March leading to low standard errors (Fig. 8b), while $c(\text{DIC})$ varied over 40 mmol m^{-3} for the time-centred window on 26 March leading to high standard errors. For this latter window centred on 26 March, the decrease in $c(\text{DIC})$ over time between 25 and 30 March caused this high uncertainty. We use an 8-day time-centred moving window to reduce the potential effect of biologically-related concentrations on the mean gradients, typically seen on short time scales. However, as demonstrated here, a trade-off is the higher uncertainty. Additional gliders deployed in future missions could potentially
305 decrease the uncertainty associated with F_{adv} by combination of alternative sampling strategies, leading to more measurements in horizontal space and thus improve the robustness of the plane-fits.

We initially explored using the glider DACs to reference geostrophic shear, required to estimate F_{adv} . However, DAC v velocities were positive throughout most of the deployment period in an area where negative v velocity is expected, as seen in satellite data products (Fig. 8). We think the erroneous DAC v velocities relate to the glider's roll during flight, which was
310 consistently $> 100^\circ$ starboard. The disadvantage of using OSCAR velocities to derive velocity profiles relates to resolution; OSCAR velocities are derived every 8 days on a grid with 0.25° resolution.

The N_b estimates incorporate measurements at a depth of approximately 10 m that we extrapolate over the average euphotic depth ($z_{\text{lim}} = 46$ m), while N_g estimates account for the vertical variability between the surface and z_{lim} . This means that the glider-based N estimates should in principle be more accurate. It also explains why the buoy-based inventory changes are
315 larger than for the glider, due to concentrations varying more near the surface than at depth.

We chose $z_{\text{lim}} = 46$ m as the integration depth for estimating N . We investigated the sensitivity of the integration depth to N estimates by estimating N over the top 36 m and top 56 m of the water column. We found that N estimates are not very sensitive to the integration depth, e.g., using $z_{\text{lim}} = 36$ m, we obtain N values between (11 ± 28) and (113 ± 75) $\text{mmol m}^{-2} \text{d}^{-1}$ for the period 19 March to 3 April. Using $z_{\text{lim}} = 56$ m, we obtain N values between (3 ± 44) and (147 ± 109) $\text{mmol m}^{-2} \text{d}^{-1}$.

320 8 Conclusions

The spring bloom started in this area of the northwestern Mediterranean Sea around 19 March 2016. We identified the spring bloom through a decrease in the DIC concentration (inferred from a pH increase) and an increase in the oxygen concentration. The spring bloom followed a period of high winds and a well-mixed higher nutrient water column. The glider also detected increased optical backscatter with spikes on 19 and 20 March, an indication of increased particle concentrations. The spring bloom start date fell into the time frame of phytoplankton blooms in previous years according to buoy-based sensors. However, this was the first time that high-resolution glider profiles were available providing insights into the biogeochemical and physical processes at depth and in waters horizontally surrounding the DyFaMed mooring.

This study demonstrates the potential of using autonomous glider measurements for estimating net community production (N). It is the first study of this kind in the northwestern Mediterranean Sea. Both oxygen and dissolved inorganic carbon concentrations were used to derive mass budgets, taking into account N , air-sea gas exchange, horizontal advection, vertical entrainment and diapycnal eddy diffusion. Estimating N using different data sets was challenging, which is reflected in the range of N estimates and their uncertainties presented here. We found that day-to-day variations in derived N estimates were dominated by net inventory changes, air-sea exchange and horizontal advection. Entrainment only came into play on 7 out of 25 days, i.e., during periods when the mixed-layer depth deepened beyond the integration limit of the mean euphotic zone depth of 46 m. Diapycnal eddy diffusion was negligible at all times. Over the duration of the deployment from 10 March to 3 April, we estimate N over the mean euphotic zone depth to be (-17 ± 36) mmol m⁻² d⁻¹ based on glider O₂, (44 ± 94) mmol m⁻² d⁻¹ based on glider DIC, (-17 ± 37) mmol m⁻² d⁻¹ based on buoy O₂, and (49 ± 86) mmol m⁻² d⁻¹ based on buoy DIC. Within their uncertainties these values agree and show net metabolic balance. Unlike previous studies in this region of the northwestern Mediterranean Sea, our results and their uncertainties explicitly consider the role of horizontal advection.

We showed that advection can potentially be significant in the area of our study, bearing in mind that the associated uncertainty was high. Daily mean N estimated from point measurements typical of fixed moorings were affected by advection on some days. Advection may also be relevant on time-scales longer than one month, but the current study was too short to explore this. However, when the advection flux was averaged over the 25-day period, there was less of an effect on N , suggesting that at least in this region, its importance might diminish for longer integration periods. To better resolve the influence of advection on shorter time-scales and reduce its uncertainty, similar future studies should increase the number of gliders circumnavigating the central mooring so that averaging intervals can be reduced and the time-resolution enhanced.

This was the second test deployment of the prototype ISFET sensors on gliders, following our first test in 2014 (Hemming et al., 2017). There were still considerable problems with drift and a need for calibration. Since then, Saba et al. (2018) and Takeshita et al. (2021) had more success with a Sea-bird Scientific ISFET sensor and a Deep-Sea-DuraFET sensor, respectively. However, these sensors are not yet commercially available for gliders.

Data availability.

BOUSSOLE buoy data: <http://www.obs-vlfr.fr/Boussole/>

Meteorological buoy data: Data are archived in the database 'SErvice de DONnées de l'OMP (SEDOO) Mistrals' (<http://mistrals.sedoo.fr/Data-Download>)

355 All glider data will be archived at the British Oceanographic Data Centre (BODC, https://www.bodc.ac.uk/data/bodc_database/gliders/) prior to article acceptance.

Appendix A: Discrete Water Samples

Water samples used to measure $c(\text{O}_2)$ were collected at the DyFAMed site on 7 March ($n = 10$) and 16 April 2016 ($n = 8$) using 12 L Niskin bottles (General Oceanics 1010X) from the top 1000 m of the water column; four samples each were from
360 the top 100 m (Fig. B1b). Reagents needed for the fixation of oxygen were added to the samples at the time of water sample collection onboard the ship. An automated Winkler titration method with endpoint detection was used after each cruise in the laboratory at the Observatoire Océanologique de Villefranche sur Mer, France, to determine $c(\text{O}_2)$. Replicates were obtained to determine precision. $c(\text{O}_2)$ measured by the rosette-mounted SBE43 sensor within the top 150 m were 15 mmol m^{-3} higher
365 than the Winkler measurements (Fig. B1b). SBE 43 sensor $c(\text{O}_2)$ was corrected by regressing against the Winkler $c(\text{O}_2)$ values. The resulting regression coefficients were 0.892 ± 0.009 for slope and $(18.7 \pm 2.0) \text{ mmol m}^{-3}$ for intercept on 7 March ($r^2 = 0.9993$; $\sigma = 0.9 \text{ mmol m}^{-3}$). The corresponding values on 16 April were 0.920 ± 0.008 and $(11.8 \pm 1.6) \text{ mmol m}^{-3}$ ($r^2 = 0.9997$; $\sigma = 0.7 \text{ mmol m}^{-3}$).

A Marianda Versatile INSTRument for the Determination of Titration Alkalinity (VINDTA 3C; <https://www.marianda.com>) was used to measure $c(\text{DIC})$ and A_T at ten depth levels. 19 bottles of certified reference material (CRM) supplied by Scripps
370 Institution of Oceanography (San Diego, California, USA) were run to calibrate the instrument. Coulometry following standard operating procedure SOP 2 was used to measure $c(\text{DIC})$ (Dickson et al., 2007; Johnson et al., 1985), and potentiometric titration following SOP 3b was used to measure A_T (Dickson et al., 2007).

Nutrients at DyFAMed were measured using water collected in the same Niskin bottles as those used for $c(\text{O}_2)$, $c(\text{DIC})$, and A_T . Samples were analysed via a standard automated colorimetry system (Seal Analytical continuous flow AutoAnalyser III)
375 at Observatoire Océanologique de Villefranche-sur-Mer for NO_x^- (nitrate NO_3^- and nitrite NO_2^- combined) (Bendschneider and Robinson, 1952), $\text{Si}(\text{OH})_4$ (Murphy and Riley, 1962) and PO_4^{3-} (Strickland and Parsons, 1972), with detection limits of 0.01, 0.02, and 0.02 mmol m^{-3} , respectively (de Fommervault et al., 2015).

Appendix B: Glider calibrations

B1 O_2 Measurements

380 Glider $c(\text{O}_2)$ were calibrated to take into account the response time (τ) of the sensor, which is dependent on the thickness, and usage of the sensor foil (McNeil and D'Asaro, 2014), as well as temperature, and to account for the difference between the glider measurements and $c(\text{O}_2)$ obtained by the ship (Fig. B1b) (Binetti et al., 2020; Hemming et al., 2017). To correct $c(\text{O}_2)$

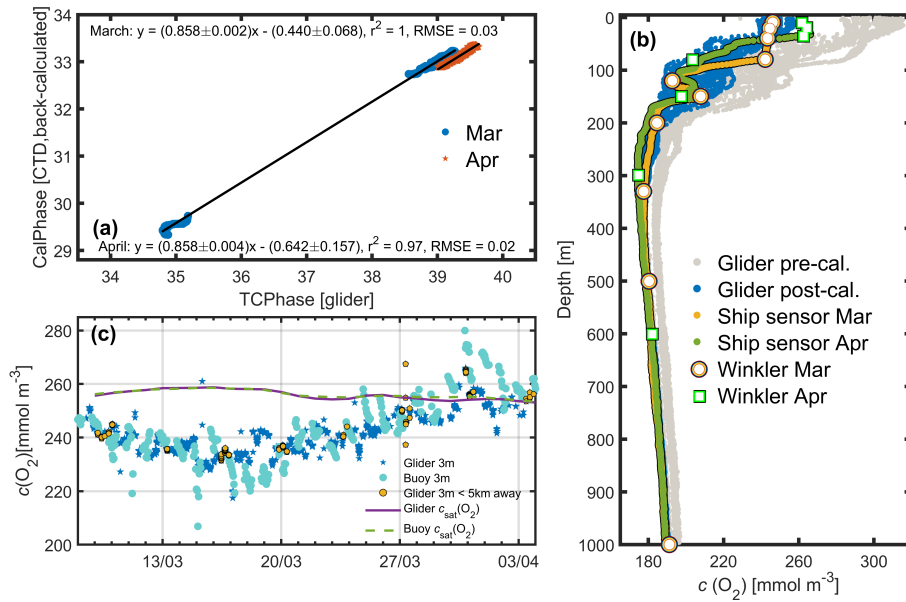


Figure B1. Calibration of the glider dissolved oxygen concentration ($c(O_2)$) sensor. (a) The linear regression fit using back-calculated ship pseudo-CalPhase and glider TCPPhase for 7 March (blue) and 16 April (orange), along with the corresponding linear equations, r^2 and root mean squared errors (RMSE). The 95% confidence bounds are also shown. (b) Glider $c(O_2)$ measured on 8–9 March 8-9 and on 3–4 April before (grey), and after (blue) calibration, the ship sensor $c(O_2)$ on 7 March (yellow) and on 16 April (green), and the $c(O_2)$ Winkler samples on 7 March (white with red border) and on 16 April (white with green border). (c) All glider sensor $c(O_2)$ at 3 m depth (blue spots), < 5 km away from the BOUSSOLE buoy only (orange spots), and glider c_{sat} (purple line) are compared with the BOUSSOLE buoy sensor $c(O_2)$ measurements (orange spots) at 3 m depth, and buoy c_{sat} (green line).

measured by the glider sensor, the sensor-related oxygen engineering parameters TCPPhase and CalPhase were used. A mean τ of 8 seconds was applied to correct measurements for the sensor time lag. This mean τ value was determined from the lowest root mean square difference between descending and ascending TCPPhase profiles shifted in time by values of τ ranging from 0 to 50 seconds. After lag-correction of the glider TCPPhase, the relationship between the ship sensor pseudo-CalPhase measured on 7 March and on 16 April, and the glider TCPPhase measured on 8 March, and on 4 April was determined (Fig. B1a). The ship sensor pseudo-CalPhase was calculated from the calibrated ship sensor $c(O_2)$ by inverting the set of equations normally used to obtain $c(O_2)$ from glider optode TCPPhase and CalPhase. The slope and offset coefficients obtained from the relationship between the glider TCPPhase over the entire deployment time period and ship sensor pseudo-CalPhase on 7 March and 16 April (Fig. B1a) were linearly interpolated over the duration of the deployment. The interpolated coefficients were matched with glider measurements in time, and used to correct all glider CalPhase profiles obtained during the deployment, allowing a calibration of glider $c(O_2)$ (Fig. B1b). After calibration, the glider $c(O_2)$ agreed with buoy $c(O_2)$ (Fig. B1c), as would be expected because the same Winkler samples were used to calibrate ship and buoy oxygen sensors.

The deployment offered a second opportunity to trial two prototype ISFET $\text{pH}-p(\text{CO}_2)$ sensor pairs, previously tested on an underwater glider in the Sardinian Sea during the REP14–MED experiment (Hemming et al., 2017; Onken et al., 2018). The sensors are custom-built non-commercially by Kiminori Shitashima’s group at Tokyo University of Marine Science and Technology, Japan. ISFET sensors measure pH using the interface potential between a reference chlorine electrode (Cl-ISE) and a semiconducting ion sensing transistor (Hemming et al., 2017).

One $\text{pH}-p(\text{CO}_2)$ sensor pair was stand-alone, meaning measurements were logged and stored by the sensor and retrieved after the deployment. Another sensor pair was integrated into the glider electronics allowing measurements to be sent remotely by satellite in near-realtime. Both the stand-alone and integrated sensors were positioned on the underside of the glider to limit the effect of sunlight on measurements, and backup batteries were provided to supply power in between sampling (Hemming et al., 2017). Unfortunately, the stand-alone sensor ceased operating after less than 3 days around 0700 CET on 10 March because of an issue with its power supply. For this reason, pH_T obtained by the stand-alone sensor was not used. The sensors were placed in a bucket of locally-collected coastal surface seawater for a period of 10 hours before deployment. Several weeks of pre-deployment conditioning have been recommended (Bresnahan et al., 2014; Takeshita et al., 2014), but this was not possible due to time constraints.

A comparison of sensor measurements with pH_T calculated from discrete $c(\text{DIC})$ and A_T measurements both during the deployment and with archived data from between 1998 and 2013 at the DyFAMed site (<http://mistrals.sedoo.fr/Data-Download>), indicated problems in accuracy and stability (Fig. B2). The pH_T of the integrated sensor drifted by 0.8 over the course of the 29 day deployment, with a depth-dependent range in pH_T of 1.

pH_T measurements were corrected for drift using the mean difference (offset) between dive 10 pH_T measured between 350 and 950 m and pH_T measured at the same depths during each subsequent dive. This method assumes that pH_T variations over the 29 day deployment between 350 and 950 m are negligible with respect to the sensor precision. The offsets were added to the full-depth glider pH_T profiles, and the range of pH_T was reduced threefold to approximately 0.3 (Fig. B2).

After correcting pH_T for drift, pH_T was corrected for pressure using a pressure coefficient of $+5.6 \times 10^{-5} \text{ dbar}^{-1}$. After adding this correction term, the range of pH_T was reduced to approximately 0.2 (Fig. B2).

Finally, integrated ISFET pH_T were corrected relative to ‘true’ discrete pH_T . Regression coefficients calculated using glider drift- and pressure-corrected pH_T and ship pH_T collected on 7 March and on 16 April were used to correct glider pH_T . The range of glider pH_T was now matched that of historical discrete samples (Fig. B2).

Appendix C: Deriving parameters using CO2SYS

The CO2SYS software package (Van Heuven et al., 2011; Orr et al., 2015) was used to derive discrete pH_T for correcting glider ISFET pH_T , using discrete measurements of $c(\text{DIC})$, A_T , in situ temperature, salinity, pressure, and $\text{Si}(\text{OH})_4$ and PO_4^{3-} concentrations. Equilibrium constants (Mehrbach et al., 1973; Dickson and Millero, 1987), sulfate acid dissociation constant (Dickson, 1990) and total borate concentration (Uppström, 1974) were used, as recommended by previous Mediterranean-

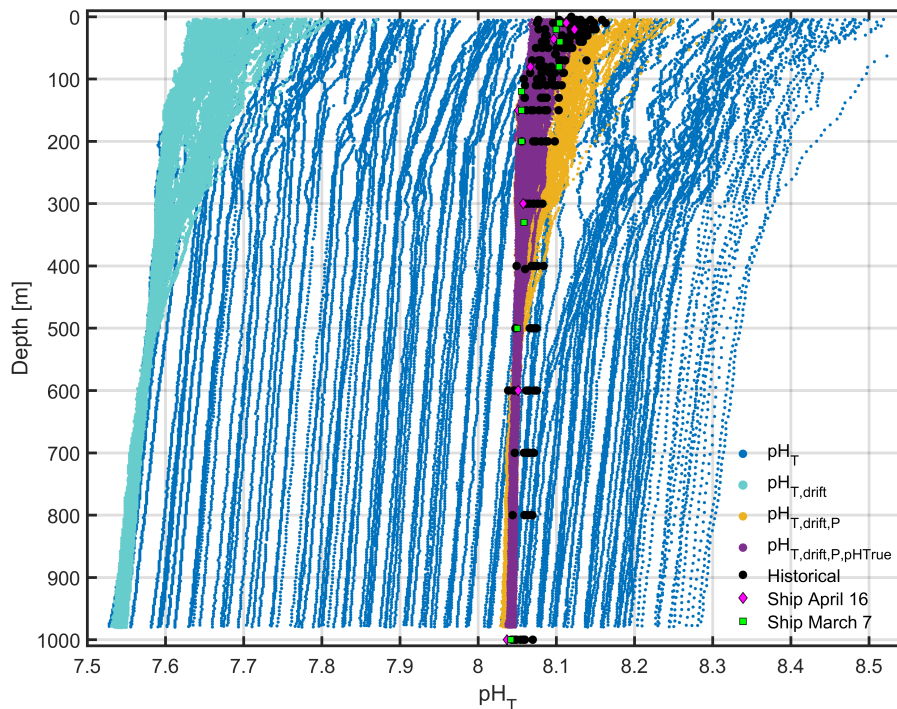


Figure B2. A comparison of glider pH_T after various corrections have been applied. Raw pH_T (blue) is corrected for drift (orange), and subsequently for pressure effects (yellow). Finally pH_T is compared with ‘true’ ship pH_T and corrected. Historical pH_T anomalies (black) collected in March and April between 1998 and 2013 are shown for comparison, alongside the ship pH_T on 7 March and 16 April 2016.

based studies (Álvarez et al., 2014; Key et al., 2010). $c(\text{DIC})$ and A_T had an uncertainty of $3.5 \mu\text{mol kg}^{-1}$ and $3.2 \mu\text{mol kg}^{-1}$, respectively, determined from CRM measurements, representing a combined uncertainty of 0.008 in derived pH_T .

430 The $A_T - S$ relationship was determined using A_T and salinity measurements from discrete ship samples collected in spring 2016 above the salinity maximum ($n = 20$). This parameterisation, $A_T/\mu\text{mol kg}^{-1} = (80.72 \pm 10)(S - 38) + 2551 \pm 4$ ($r^2 = 0.88$; $\sigma = 5.7 \mu\text{mol kg}^{-1}$), was used to obtain A_T from glider and buoy salinity.

Calibrated glider pH_T , and A_T were used to derive glider $f(\text{CO}_2)$ and $c(\text{DIC})$ using CO2SYS. The mean uncertainties of derived $f(\text{CO}_2)$ and $c(\text{DIC})$ were $5.3 \mu\text{atm}$ and $4.1 \mu\text{mol kg}^{-1}$, respectively, calculated as the mean of the absolute differences
 435 of $f(\text{CO}_2)$, and $c(\text{DIC})$ derived using single values of A_T and pH (including the margin of error associated with the $A_T - S$ relationship, and the pH_T pressure correction, respectively).

To obtain buoy $c(\text{DIC})$, observed $f(\text{CO}_2)$ at 10 m was used with A_T calculated from S . The uncertainty of derived buoy $c(\text{DIC})$ was $6.6 \mu\text{mol kg}^{-1}$, calculated as the absolute difference between the ship $c(\text{DIC})$ sample collected on 7 March at 10 m depth and average $c(\text{DIC})$ measured by the buoy on the same day.

440 *Author contributions.* This work resulted from MPH's PhD project at the University of East Anglia under the supervision of JK, KJH, DB and JB. GAL, MCG and KS implemented the ISFET sensors on the glider, and deployed it. JK led the UEA piloting team. DA acquired funding for the Bio-optics and Carbon Experiment (BIOCAREX) that supports the CO₂ measurements at BOUSSOLE, and led ship operations and ancillary data collection. The data were analysed by MPH and JK, who also wrote the manuscript. All other authors contributed to further editing and writing.

445 *Competing interests.* The authors declare that they have no competing interests.

Acknowledgements. We thank V. Vellucci, E. Diamond, and M. Golbol for monthly sampling at the BOUSSOLE mooring, and for aid in planning the 2016 glider deployment. Michael Hemming's PhD project was funded by the UK Defence Science and Technology Laboratory (DSTL), in cooperation with Direction Générale de l'Armement (DGA, France), with oversight provided by Tim Clarke and Carole Nahum. This work was partially funded by the UK National Environment Research Council (NERC; grant numbers NE/K002473/1, NE/N018699/1).

450 BOUSSOLE is funded by the European Space Agency (ESA / ESRIN contracts 4000102992/11/I-NB and 4000111801/14/I-NB), the Centre National d'Etudes Spatiales (CNES), and this particular study through a grant from the Agence Nationale de la Recherche (ANR, Paris) to the Bio-optics and Carbon Experiment (BIOCAREX). Ship time on R/V Téthys II is provided by the Institut National des Sciences de l'Univers (INSU).

References

- 455 Alkire, M. B., D'Asaro, E., Lee, C., Perry, M. J., Gray, A., Cetinić, I., Briggs, N., Rehm, E., Kallin, E., Kaiser, J., and González-Posada, A.: Estimates of net community production and export using high-resolution, Lagrangian measurements of O₂, NO₃⁻, and POC through the evolution of a spring diatom bloom in the North Atlantic, *Deep Sea Research Part I: Oceanographic Research Papers*, 64, 157–174, 2012.
- Alkire, M. B., Lee, C., D'Asaro, E., Perry, M. J., Briggs, N., Cetinić, I., and Gray, A.: Net community production and export from Seaglider measurements in the North Atlantic after the spring bloom, *Journal of Geophysical Research: Oceans*, 119, 6121–6139, 2014.
- 460 Álvarez, M., Sanleón-Bartolomé, H., Tanhua, T., Mintrop, L., Luchetta, A., Cantoni, C., Schroeder, K., and Civitarese, G.: The CO₂ system in the Mediterranean Sea: a basin wide perspective, *Ocean Science*, 10, 69–92, 2014.
- Anderson, L. A.: On the hydrogen and oxygen content of marine phytoplankton, *Deep sea research part I: Oceanographic research papers*, 42, 1675–1680, 1995.
- Anderson, L. A. and Sarmiento, J. L.: Global ocean phosphate and oxygen simulations, *Global Biogeochemical Cycles*, 9, 621–636, 1995.
- 465 Antoine, D., d'Ortenzio, F., Hooker, S. B., Bécu, G., Gentili, B., Tailliez, D., and Scott, A. J.: Assessment of uncertainty in the ocean reflectance determined by three satellite ocean color sensors (MERIS, SeaWiFS and MODIS-A) at an offshore site in the Mediterranean Sea (BOUSSOLE project), *Journal of Geophysical Research: Oceans*, 113, 2008.
- Arrigo, K. R., van Dijken, G. L., and Bushinsky, S.: Primary production in the Southern Ocean, 1997–2006, *Journal of Geophysical Research: Oceans*, 113, 2008.
- 470 Bauer, J. E., Cai, W.-J., Raymond, P. A., Bianchi, T. S., Hopkinson, C. S., and Regnier, P. A.: The changing carbon cycle of the coastal ocean, *Nature*, 504, 61–70, 2013.
- Bendschneider, K. and Robinson, R. J.: A new spectrophotometric method for the determination of nitrite in sea water, *Journal of Marine Research*, 1952.
- Binetti, U., Kaiser, J., Damerell, G., Rumyantseva, A., Martin, A., Henson, S., and Heywood, K.: Net community oxygen production derived
475 from Seaglider deployments at the Porcupine Abyssal Plain site (PAP; northeast Atlantic) in 2012–13, *Progress in Oceanography*, 183, 102 293, 2020.
- Bonjean, F. and Lagerloef, G. S.: Diagnostic model and analysis of the surface currents in the tropical Pacific Ocean, *Journal of Physical Oceanography*, 32, 2938–2954, 2002.
- Brainerd, K. E. and Gregg, M. C.: Surface mixed and mixing layer depths, *Deep Sea Research Part I: Oceanographic Research Papers*, 42,
480 1521–1543, [https://doi.org/10.1016/0967-0637\(95\)00068-H](https://doi.org/10.1016/0967-0637(95)00068-H), 1995.
- Bresnahan, P. J., Martz, T. R., Takeshita, Y., Johnson, K. S., and LaShomb, M.: Best practices for autonomous measurement of seawater pH with the Honeywell Durafet, *Methods in Oceanography*, 9, 44–60, 2014.
- Broecker, W. S., Takahashi, T., Simpson, H., and Peng, T.-H.: Fate of fossil fuel carbon dioxide and the global carbon budget, *Science*, 206, 409–418, 1979.
- 485 Carlson, C. A., Ducklow, H. W., Hansell, D. A., and Smith, W. O.: Organic carbon partitioning during spring phytoplankton blooms in the Ross Sea polynya and the Sargasso Sea, *Limnology and Oceanography*, 43, 375–386, 1998.
- Copin-Montégut, C.: Consumption and production on scales of a few days of inorganic carbon, nitrate and oxygen by the planktonic community: results of continuous measurements at the Dyfamed Station in the northwestern Mediterranean Sea (May 1995), *Deep Sea Research Part I: Oceanographic Research Papers*, 47, 447–477, 2000.

- 490 Copin-Montégut, C. and Bégovic, M.: Distributions of carbonate properties and oxygen along the water column (0–2000m) in the central part of the NW Mediterranean Sea (Dyfamed site): influence of winter vertical mixing on air–sea CO₂ and O₂ exchanges, *Deep Sea Research Part II: Topical Studies in Oceanography*, 49, 2049–2066, 2002.
- Copin-Montégut, C., Bégovic, M., and Merlivat, L.: Variability of the partial pressure of CO₂ on diel to annual time scales in the Northwestern Mediterranean Sea, *Marine Chemistry*, 85, 169–189, 2004.
- 495 Coppola, L., Legendre, L., Lefevre, D., Prieur, L., Taillandier, V., and Riquier, E. D.: Seasonal and inter–annual variations of dissolved oxygen in the northwestern Mediterranean Sea (DYFAMED site), *Progress in Oceanography*, 2018.
- Cornwall, C. E., Hepburn, C. D., McGraw, C. M., Currie, K. I., Pilditch, C. A., Hunter, K. A., Boyd, P. W., and Hurd, C. L.: Diurnal fluctuations in seawater pH influence the response of a calcifying macroalga to ocean acidification, *Proceedings of the Royal Society of London B: Biological Sciences*, 280, 20132 201, 2013.
- 500 Cuypers, Y., Bouruet-Aubertot, P., Marec, C., and Fuda, J. L.: Characterization of turbulence from a fine-scale parameterization and microstructure measurements in the Mediterranean Sea during the BOUM experiment, *Biogeosciences*, 9, 3131–3149, <https://doi.org/10.5194/bg-9-3131-2012>, 2012.
- Cyr, F., Tedetti, M., Besson, F., Beguery, L., Doglioli, A. M., Petrenko, A. A., and Goutx, M.: A new glider-compatible optical sensor for dissolved organic matter measurements: test case from the NW Mediterranean Sea, *Frontiers in Marine Science*, 4, 89, 2017.
- 505 de Fommervault, O. P., Migon, C., d’Alcalà, M. R., Coppola, L., et al.: Temporal variability of nutrient concentrations in the northwestern Mediterranean sea (DYFAMED time-series station), *Deep Sea Research Part I: Oceanographic Research Papers*, 100, 1–12, 2015.
- Dickson, A. and Millero, F. J.: A comparison of the equilibrium constants for the dissociation of carbonic acid in seawater media, *Deep Sea Research Part A. Oceanographic Research Papers*, 34, 1733–1743, 1987.
- Dickson, A. G.: Thermodynamics of the dissociation of boric acid in synthetic seawater from 273.15 to 318.15 K, *Deep Sea Research Part A. Oceanographic Research Papers*, 37, 755–766, 1990.
- 510 Dickson, A. G., Sabine, C. L., Christian, J. R., et al.: Guide to best practices for ocean CO₂ measurements, *North Pacific Marine Science Organization*, 2007.
- Dlugokencky, E. J., Mund, J. W., Croftwell, A. M., Croftwell, M. J., and Thoning, K. W.: Atmospheric carbon dioxide dry air mole fractions from the NOAA GML carbon cycle cooperative global air sampling network, 1968–2020, Version: 2021-07-30, <https://doi.org/10.15138/wkgj-f215>, 2021.
- 515 D’Ortenzio, F., Antoine, D., and Marullo, S.: Satellite-driven modeling of the upper ocean mixed layer and air–sea CO₂ flux in the Mediterranean Sea, *Deep Sea Research Part I: Oceanographic Research Papers*, 55, 405–434, 2008.
- Eriksen, C. C., Osse, T. J., Light, R. D., Wen, T., Lehman, T. W., Sabin, P. L., Ballard, J. W., and Chiodi, A. M.: Seaglider: A long-range autonomous underwater vehicle for oceanographic research, *Oceanic Engineering, IEEE Journal of*, 26, 424–436, 2001.
- 520 Estrada, M.: Primary production in the northwestern Mediterranean, *Scientia Marina*, 60, 55–64, 1996.
- Friedlingstein, P., Jones, M. W., O’Sullivan, M., Andrew, R. M., Bakker, D. C. E., Hauck, J., Le Quéré, C., Peters, G. P., Peters, W., Pongratz, J., Sitch, S., Canadell, J. G., Ciais, P., Jackson, R. B., Alin, S. R., Anthoni, P., Bates, N. R., Becker, M., Bellouin, N., Bopp, L., Chau, T. T., Chevallier, F., Chini, L. P., Cronin, M., Currie, K. I., Decharme, B., Djeutchouang, L., Dou, X., Evans, W., Feely, R. A., Feng, L., Gasser, T., Gilfillan, D., Gkritzalis, T., Grassi, G., Gregor, L., Gruber, N., Gürses, Ö., Harris, I., Houghton, R. A., Hurtt, G. C., Iida, Y., Ilyina, T., Lujikx, I. T., Jain, A. K., Jones, S. D., Kato, E., Kennedy, D., Klein Goldewijk, K., Knauer, J., Korsbakken, J. I., Körtzinger, A., Landschützer, P., Lauvset, S. K., Lefèvre, N., Lienert, S., Liu, J., Marland, G., McGuire, P. C., Melton, J. R., Munro, D. R., Nabel, J. E. M. S., Nakaoka, S. I., Niwa, Y., Ono, T., Pierrot, D., Poulter, B., Rehder, G., Resplandy, L., Robertson, E., Rödenbeck, C., Rosan, T. M.,

- Schwinger, J., Schwingshackl, C., Séférian, R., Sutton, A. J., Sweeney, C., Tanhua, T., Tans, P. P., Tian, H., Tilbrook, B., Tubiello, F., van der Werf, G., Vuichard, N., Wada, C., Wanninkhof, R., Watson, A., Willis, D., Wiltshire, A. J., Yuan, W., Yue, C., Yue, X., Zaehle, S., and Zeng, J.: Global Carbon Budget 2021, *Earth Syst. Sci. Data Discuss.*, 2021, 1–191, <https://doi.org/10.5194/essd-2021-386>, eSSDD, 2021.
- García, H. E. and Gordon, L. I.: Oxygen solubility in seawater: Better fitting equations, *Limnology and oceanography*, 37, 1307–1312, 1992.
- Gross, A. M.: Confidence intervals for bisquare regression estimates, *Journal of the American Statistical Association*, 72, 341–354, 1977.
- Hall, T. M., Waugh, D. W., Haine, T. W., Robbins, P. E., and Khatiwala, S.: Estimates of anthropogenic carbon in the Indian Ocean with allowance for mixing and time-varying air-sea CO₂ disequilibrium, *Global Biogeochemical Cycles*, 18, 2004.
- Hemming, M. P., Kaiser, J., Heywood, K. J., Bakker, D. C., Boutin, J., Shitashima, K., Lee, G., Legge, O., and Onken, R.: Measuring pH variability using an experimental sensor on an underwater glider, *Ocean Science*, 13, 427–442, 2017.
- Holte, J. and Talley, L.: A new algorithm for finding mixed layer depths with applications to Argo data and subantarctic mode water formation, *Journal of Atmospheric and Oceanic Technology*, 26, 1920–1939, 2009.
- Hood, E. and Merlivat, L.: Annual to interannual variations of *f*CO₂ in the northwestern Mediterranean Sea: Results from hourly measurements made by CARIOCA buoys, 1995–1997, *Journal of Marine Research*, 59, 113–131, 2001.
- Hu, C., Lee, Z., and Franz, B.: Chlorophyll *a* algorithms for oligotrophic oceans: A novel approach based on three-band reflectance difference, *Journal of Geophysical Research: Oceans*, 117, 2012.
- Hull, T., Greenwood, N., Birchill, A., Beaton, A., Palmer, M., and Kaiser, J.: Simultaneous assessment of oxygen-and nitrate-based net community production in a temperate shelf sea from a single ocean glider, *Biogeosciences*, 18, 6167–6180, 2021.
- Johnson, K. M., King, A. E., and Sieburth, J. M.: Coulometric TCO₂ analyses for marine studies; an introduction, *Marine Chemistry*, 16, 61–82, 1985.
- Key, R. M., Tanhua, T., Olsen, A., Hoppema, M., Jutterström, S., Schirnack, C., Van Heuven, S., Lin, X., Wallace, D. W., and Mintrop, L.: The CARINA data synthesis project: introduction and overview, *Earth System Science Data*, 2, 105–121, 2010.
- Knoll, M., Borrione, I., Fiekas, H.-V., Funk, A., Hemming, M. P., Kaiser, J., Onken, R., Queste, B., and Russo, A.: Hydrography and circulation west of Sardinia in June 2014, *Ocean Science*, 13, 889–904, 2017.
- Laws, E. A.: Photosynthetic quotients, new production and net community production in the open ocean, *Deep Sea Research Part A. Oceanographic Research Papers*, 38, 143–167, 1991.
- Lee, K., Sabine, C. L., Tanhua, T., Kim, T.-W., Feely, R. A., and Kim, H.-C.: Roles of marginal seas in absorbing and storing fossil fuel CO₂, *Energy & Environmental Science*, 4, 1133–1146, 2011.
- Lee, Z., Weidemann, A., Kindle, J., Arnone, R., Carder, K. L., and Davis, C.: Euphotic zone depth: Its derivation and implication to ocean-color remote sensing, *Journal of Geophysical Research: Oceans*, 112, 2007.
- Marty, J.-C. and Chiavérini, J.: Seasonal and interannual variations in phytoplankton production at DYFAMED time-series station, northwestern Mediterranean Sea, *Deep Sea Research Part II: Topical Studies in Oceanography*, 49, 2017–2030, 2002.
- McNeil, C. L. and D’Asaro, E. A.: A calibration equation for oxygen optodes based on physical properties of the sensing foil, *Limnol. Oceanogr.: Methods*, 12, 139–154, 2014.
- Mehrbach, C., Culbertson, C., Hawley, J., and Pytkowics, R.: Measurement of the apparent dissociation constants of carbonic acid in seawater at atmospheric pressure, *Limnology and Oceanography*, 18, 1973.
- Merlivat, L., Boutin, J., Antoine, D., Beaumont, L., Golbol, M., and Vellucci, V.: Increase of dissolved inorganic carbon and decrease in pH in near-surface waters in the Mediterranean Sea during the past two decades, *Biogeosciences*, 15, 5653–5662, 2018.

- Murphy, J. and Riley, J. P.: A modified single solution method for the determination of phosphate in natural waters, *Analytica chimica acta*, 27, 31–36, 1962.
- Niewiadomska, K., Claustre, H., Prieur, L., and d’Ortenzio, F.: Submesoscale physical-biogeochemical coupling across the Ligurian current (northwestern Mediterranean) using a bio-optical glider, *Limnology and Oceanography*, 53, 2210–2225, 2008.
- 570 Onken, R., Fiekas, H.-V., Beguery, L., Borrione, I., Funk, A., Hemming, M., Hernandez-Lasheras, J., Heywood, K. J., Kaiser, J., Knoll, M., et al.: High-resolution observations in the western Mediterranean Sea: the REP14-MED experiment, *Ocean Science*, 14, 321–335, 2018.
- Orr, J., Epitalon, J.-M., and Gattuso, J.-P.: Comparison of ten packages that compute ocean carbonate chemistry, *Biogeosciences*, 12, 1483–1510, 2015.
- Pingree, R., Maddock, L., and Butler, E.: The influence of biological activity and physical stability in determining the chemical distributions
575 of inorganic phosphate, silicate and nitrate, *Journal of the Marine Biological Association of the United Kingdom*, 57, 1065–1073, 1977.
- Piterbarg, L., Taillandier, V., and Griffa, A.: Investigating frontal variability from repeated glider transects in the Ligurian Current (North West Mediterranean Sea), *Journal of Marine Systems*, 129, 381–395, 2014.
- Queste, B. Y., Heywood, K. J., Kaiser, J., Lee, G., Matthews, A., Schmidtko, S., Walker-Brown, C., Woodward, S. W., et al.: Deployments in extreme conditions: Pushing the boundaries of Seaglider capabilities, in: *Autonomous Underwater Vehicles (AUV)*, 2012 IEEE/OES,
580 pp. 1–7, IEEE, 2012.
- Redfield, A., Ketchum, B., Richards, F., et al.: The influence of organisms on the composition of seawater, *The sea*, 2, 26–77, 1963.
- Roquet, F., Madec, G., McDougall, T. J., and Barker, P. M.: Accurate polynomial expressions for the density and specific volume of seawater using the TEOS-10 standard, *Ocean Modelling*, 90, 29–43, 2015.
- Saba, G. K., Wright-Fairbanks, E., Miles, T. N., Chen, B., Cai, W.-J., Wang, K., Barnard, A. H., Branham, C. W., and Jones, C. P.: Developing
585 a profiling glider pH sensor for high resolution coastal ocean acidification monitoring, in: *OCEANS 2018 MTS/IEEE Charleston*, pp. 1–8, IEEE, 2018.
- Schneider, A., Tanhua, T., Körtzinger, A., and Wallace, D. W.: High anthropogenic carbon content in the eastern Mediterranean, *Journal of Geophysical Research: Oceans*, 115, 2010.
- Shitashima, K., Maeda, Y., and Ohsumi, T.: Development of detection and monitoring techniques of CO₂ leakage from seafloor in sub-seabed
590 CO₂ storage, *Applied geochemistry*, 30, 114–124, 2013.
- Stramski, D., Boss, E., Bogucki, D., and Voss, K. J.: The role of seawater constituents in light backscattering in the ocean, *Progress in Oceanography*, 61, 27–56, 2004.
- Strickland, J. D. and Parsons, T. R.: *A practical handbook of seawater analysis*, Fisheries Research Board of Canada, 1972.
- Sverdrup, H.: On vernal blooming of phytoplankton, *J. Conseil Exp. Mer*, 18, 287–295, 1953.
- 595 Taillandier, V., D’Ortenzio, F., and Antoine, D.: Carbon fluxes in the mixed layer of the Mediterranean Sea in the 1980s and the 2000s, *Deep Sea Research Part I: Oceanographic Research Papers*, 65, 73–84, <https://doi.org/10.1016/j.dsr.2012.03.004>, 2012.
- Takahashi, T., Olafsson, J., Goddard, J. G., Chipman, D. W., and Sutherland, S.: Seasonal variation of CO₂ and nutrients in the high-latitude surface oceans: A comparative study, *Global Biogeochemical Cycles*, 7, 843–878, 1993.
- Takahashi, T., Sutherland, S. C., Sweeney, C., Poisson, A., Metz, N., Tilbrook, B., Bates, N., Wanninkhof, R., Feely, R. A., Sabine, C., et al.:
600 Global sea–air CO₂ flux based on climatological surface ocean pCO₂, and seasonal biological and temperature effects, *Deep Sea Research Part II: Topical Studies in Oceanography*, 49, 1601–1622, 2002.
- Takeshita, Y., Martz, T. R., Johnson, K. S., and Dickson, A. G.: Characterization of an ion sensitive field effect transistor and chloride ion selective electrodes for pH measurements in seawater, *Analytical chemistry*, 86, 11 189–11 195, 2014.

- Takeshita, Y., Jones, B. D., Johnson, K. S., Chavez, F. P., Rudnick, D. L., Blum, M., Conner, K., Jensen, S., Long, J. S., Maughan, T., Mertz, K. L., Sherman, J. T., and Warren, J. K.: Accurate pH and O₂ measurements from spray underwater gliders, *Journal of Atmospheric and Oceanic Technology*, 38, 181–195, 2021.
- 605
- Uppström, L. R.: The boron/chlorinity ratio of deep-sea water from the Pacific Ocean, *Deep Sea Research and Oceanographic Abstracts*, 21, 161–162, 1974.
- Van Der Loeff, M. M. R., Friedrich, J., and Bathmann, U. V.: Carbon export during the spring bloom at the Antarctic Polar Front, determined with the natural tracer ²³⁴Th, *Deep Sea Research Part II: Topical Studies in Oceanography*, 44, 457–478, 1997.
- 610
- Van Heuven, S., Pierrot, D., Rae, J., Lewis, E., and Wallace, D.: MATLAB program developed for CO₂ system calculations, ORNL/CDIAC-105b, Carbon Dioxide Inf. Anal. Cent., Oak Ridge Natl. Lab., US DOE, Oak Ridge, Tennessee, 2011.
- Wanninkhof, R.: Relationship between wind speed and gas exchange over the ocean revisited, *Limnology and Oceanography: Methods*, 12, 351–362, 2014.
- 615
- Wanninkhof, R. and Thoning, K.: Measurement of fugacity of CO₂ in surface water using continuous and discrete sampling methods, *Marine Chemistry*, 44, 189–204, 1993.
- Weiss, R. and Price, B.: Nitrous oxide solubility in water and seawater, *Marine chemistry*, 8, 347–359, 1980.
- Wolf, D. K. and Thorpe, S.: Bubbles and the air-sea exchange of gases in near-saturation conditions, *Journal of Marine Research*, 49, 435–466, 1991.
- 620
- Yao, K. M., Marcou, O., Goyet, C., Guglielmi, V., Touratier, F., and Savy, J.-P.: Time variability of the north-western Mediterranean Sea pH over 1995–2011, *Marine environmental research*, 116, 51–60, 2016.
- Zeebe, R. E. and Wolf-Gladrow, D. A.: CO₂ in seawater: equilibrium, kinetics, isotopes, Gulf Professional Publishing, 2001.