

The ~~role~~ influence of tides ~~and sea ice~~ on the marine carbonate chemistry ~~in-of~~ a coastal polynya in the south-eastern Weddell Sea

Elise S. Droste¹, Mario Hoppema², Melchor González-Dávila³, Juana Magdalena Santana-Casiano³, Bastien Y. Queste^{1,4}, Giorgio Dall’Olmo^{5,10}, Hugh J. Venables⁶, Gerd Rohardt², Sharyn Ossebaar⁷, Daniel Schuller⁸, Sunke Trace-Kleeberg^{2,9}, and Dorothee C. E. Bakker¹

¹School of Environmental Sciences, University of East Anglia, Norwich Research Park, NR4 7TJ Norwich, United Kingdom

²Alfred Wegener Institute Helmholtz Centre for Polar and Marine Research, Postfach 120161, 27515 Bremerhaven, Germany

³Instituto de Oceanografía y Cambio Global, IOCAG, Universidad de Las Palmas de Gran Canaria, ULPGC, 35017 Las Palmas de Gran Canaria, Spain

⁴Department of Marine Sciences, University of Gothenburg, Carl Skottsbergs Gata 22B, SE-413 19 Gothenburg, Sweden

⁵Plymouth Marine Laboratory, Prospect Place, PL1 3DH Plymouth, United Kingdom

⁶British Antarctic Survey, High Cross, Madingley Road, CB3 0ET Cambridge, United Kingdom

⁷Royal Netherlands Institute for Sea Research (NIOZ), Department of Ocean Systems, P.O. Box 59, 1790 AB, Den Burg, Texel, The Netherlands

⁸Scripps Institution of Oceanography, UC San Diego, 8622 Kennel Way, La Jolla, CA 92037, United States

⁹School of Ocean and Earth Science, National Oceanography Centre, University of Southampton, SO14 3ZH Southampton, United Kingdom

¹⁰Istituto Nazionale di Oceanografia e di Geofisica Sperimentale, Borgo Grotta Gigante 42/c, 34010 Sgonico, Trieste, Italy

Correspondence: Elise Droste (e.droste@uea.ac.uk)

Abstract.

Tides significantly affect polar coastlines by modulating ice shelf melt and modifying shelf water properties through transport and mixing. However, the effect of tides on the marine carbonate chemistry in such regions, especially around Antarctica, remains largely unexplored. We address this topic with two case studies in a coastal polynya in the south-eastern Weddell Sea, neighbouring the Ekström Ice Shelf. The case studies were conducted in January 2015 (PS89) and January 2019 (PS117), capturing semi-diurnal oscillations in the water column. These are pronounced in both physical and biogeochemical variables for PS89. During rising tide, advection of sea ice ~~melt-water~~ meltwater from the north-east created a fresher, warmer, more deeply mixed water column with lower dissolved inorganic carbon (DIC) and total alkalinity (TA) content. During ebbing tide, water from underneath the ice shelf decreased the polynya’s temperature, increased the DIC and TA content, and created a more stratified water column. The variability during the PS117 case study was much smaller, as it had less sea ice ~~melt-water~~ meltwater input during rising tide and was better mixed with sub-ice shelf water. The contrasts in the variability between the two case studies could be wind and sea ice driven, and underline the complexity and highly dynamic nature of the system.

The variability in the polynya induced by the tides results in an air-sea CO₂ flux that can range between a strong sink (~~-20-~~ -24 mmol m⁻² day⁻¹) and a small source (~~73~~ 9867 mmol m⁻² day⁻¹) on a semi-diurnal time scale. If the variability induced by tides is not taken into account, there is a potential risk of overestimating the polynya’s CO₂ uptake by ~~9867~~ 10873 % (~~mistaking it for a source instead of a variable sink~~), compared to the average flux determined over several days. Depending on the timing of limited sampling, the polynya may appear to be a source or a sink of CO₂. Given

the disproportionate influence of polynyas on heat and carbon exchange in polar oceans, we recommend ~~that~~ future studies around the Antarctic and Arctic coastlines to consider the timing of tidal currents in their sampling strategies and analyses.

20 This will help constrain variability in oceanographic measurements and avoid potential biases in our understanding of these highly complex systems.

Copyright statement.

1 Introduction

~~Coastal regions are subject to tidal forces, which modify the water column through enhanced mixing (Padman et al., 2009).~~

25 Tides in polar regions have recently gained increasing attention in investigations focusing on understanding the physical interaction between the ocean and sea ice (e.g., Dmitrenko et al., 2012; Kirillov et al., 2013; Skogseth et al., 2013) and how they affect ice shelf melt (~~e.g., Makinson et al., 2011; Mueller et al., 2018; Padman et al., 2018; Huot et al., 2021~~)(e.g., Padman et al., 2009; Makinson

Tidal effects on the biogeochemistry along polar coastlines, however, have not yet received similar attention, even though tides have been shown to affect the chemical properties and the fugacity of seawater CO₂ ($f\text{CO}_2$) in other regions (Rogachev et al.,

30 2001; Andersson and MacKenzie, 2012; Sims et al., 2022).

~~Areas of open water in the middle of an otherwise sea ice covered region, also known as polynyas, are common features along polar coastlines. They are well known for their contribution to sea ice formation (Renfrew, 2002) and both heat and carbon exchange with the atmosphere (Hoppema and Anderson, 2007). They have been described as “windows” between the ocean and the atmosphere (Barber and Massom, 2007), enabling strong interaction between these two spheres.~~

35 The tides in the Weddell Sea are the largest in the Southern Ocean (Padman et al., 2018). Here, relatively warm, carbon-rich Warm Deep Water (WDW) upwells in the east and is physically and chemically altered along its route towards the western Weddell Sea, a hotspot for Antarctic Bottom Water (AABW) formation and carbon sequestration (Fahrbach et al., 1994; Anderson et al., 1991; Huhn et al., 2013). Water on the eastern shelf also has the potential to be exported to the deep ocean by northward transport into the Upper Circumpolar Deep Water (uCDW) (Orsi et al., 2002), along with any modifications to the dissolved inorganic carbon (DIC)

40 content on the continental shelf. Studying processes that modify the physical and chemical properties of these water masses on the shelf, such as tides, will enable a better understanding of the transport of carbon to the deep ocean.

A common feature along the Antarctic coastline are coastal polynyas, described as areas of open water where sea ice cover is expected. Absence of sea ice enables strong direct interaction between the ocean and the atmosphere in regions and at times of the year when sea ice cover would otherwise restrict it.

45 Polynyas are therefore thought to have a disproportionally large impact on the polar oceans considering their relatively small surface area (Barber and Massom, 2007). The

~~prolonged ice-free conditions allow direct gas exchange to occur, a longer time window for equilibration~~ direct exposure of the ocean to the atmosphere has an impact on the marine carbonate system, altering the seawater $f\text{CO}_2$ and thus the capacity for ocean CO₂ uptake. Whether the polynya is a source or a sink of CO₂ with the

atmosphere, as well as prolonged biological productivity (Hoppema and Anderson, 2007). Substantial biological activity is
50 observed in coastal polynyas around the Antarctic continent (Arrigo and van Dijken, 2003). This makes them important with
regard to air-sea strongly depends on the interplay between processes that increase the seawater $f\text{CO}_2$ flux estimates, beyond
the atmospheric $f\text{CO}_2$, and those that decrease it. For example, polynyas can have an enhancing role in sea ice production as
they can release heat directly to the atmosphere (Renfrew, 2002). In this process, brine, including DIC, is rejected from the sea
ice matrix into the ocean (Rysgaard et al., 2011; Skogseth et al., 2013). In the summer, dilution by sea ice melt and calcium
55 carbonate (CaCO_3) dissolution draws down CO_2 (Rysgaard et al., 2011). Additionally, enhanced light availability supports
biological productivity (Arrigo and van Dijken, 2003), which consumes CO_2 that can thereby typically generate a strong CO_2
sink (Yager et al., 1995; Arrigo et al., 2008). The prolonged ice-free conditions also potentially allow enough time for the
polynya to take up as much CO_2 as is necessary to reach equilibrium with the atmosphere (Hoppema and Anderson, 2007).
However, biological productivity is found to be variable among Antarctic coastal polynyas (Arrigo et al., 2015), and in some
60 cases is not sufficient to keep a polynya from outgassing CO_2 (Arroyo et al., 2019). Tides can displace water on short timescales
(Skogseth et al., 2013; Llanillo et al., 2019) and modify the water column structure through enhanced mixing (Padman et al., 2009).
On the one hand, tidal mixing in coastal polynyas can replenish nutrients at the surface (Tremblay et al., 2002), stimulate
biological production, and thereby enhance CO_2 drawdown. On the other hand, mixing with CO_2 -rich deep water can increase
surface water $f\text{CO}_2$ (Rogachev et al., 2001), or in some cases erode a stable mixed layer necessary to support phytoplankton
65 growth (Arrigo and van Dijken, 2003).

In shallow and coastal regions, tides can have an important role in modulating the physical and biogeochemical properties
of the polynya's water column, especially along its margins. In particular, the effect ~~The effects~~ of tides on the marine car-
bonate chemistry ~~remains of these biogeochemically impactful regions along the Antarctic coastline remain~~ largely unex-
plored. Understanding the tidal influence may help us to quantify some of the variability observed ~~in biological productivity~~
70 ~~around Antarctica~~ (Arrigo et al., 2015) and ~~among Antarctic polynyas, such as the variability in the biological productivity~~
(Arrigo et al., 2015) as well as the capacity of coastal polynyas to absorb ~~or release atmospheric~~ CO_2 (Arroyo et al., 2019).
Practically, ~~understanding the role of tides~~ ~~this improved understanding~~ can help develop more reliable sampling activities that
consider the timing and strength of tidal currents, thereby obtaining representative data of a highly dynamic system.

The tides in the Weddell Sea are the largest in the Southern Ocean (Padman et al., 2018). Here, relatively warm, carbon-rich
75 Warm Deep Water (WDW) upwells in the east and is physically and chemically altered along its route towards the western
Weddell Sea, a hotspot for Antarctic Bottom Water (AABW) formation and natural carbon sequestration (Fahrbach et al., 1994; Anderson et al., 2002).
Water on the eastern shelf is modified through ventilation with the atmosphere and also has the potential to be exported to the
deep ocean by northward transport into the Upper Circumpolar Deep Water (uCDW) (Orsi et al., 2002), along with any CO_2
that has been exchanged with the atmosphere at the continental shelf. Studying processes that modify the physical and chemical
80 properties of these deep water masses, such as tides, will enable a better understanding of the transport of anthropogenic carbon
to the deep ocean.

In this work, we illustrate the effect of tides on the ~~seawater carbonate chemistry~~ ~~marine carbonate system~~ with two case stud-
ies in a coastal polynya in the south-eastern Weddell Sea ~~that neighbours the Ekström Ice Shelf~~ (Fig. 1). ~~This coastal polynya~~

regularly forms in the summer months (Boebel, 2019; Arrigo and van Dijken, 2003; Arrigo et al., 2015). Coastal polynyas in this region are typically formed by katabatic winds from the continent that advect the newly produced sea ice away from the coastline in the spring and summer (Eicken and Lange, 1989; Renfrew, 2002). At the Ekström Ice Shelf, a number of grounded ice bergs to the east can also create a sea-ice free lee downstream from the westward-flowing coastal current (Boebel, 2019). We will present biogeochemical observations for two separate and independent tidal sampling campaigns in the austral summer: one in January 2015 and the other in January 2019. To the best of our knowledge, this is the first time that tidal influences on the seawater carbonate chemistry are studied in a coastal Antarctic polynya. We discuss the variability induced by tidal forces and explore the differences between the two tidal observations in terms of their physical and biogeochemical characteristics, and what it means for ocean CO₂ uptake.

2 Methods

2.1 Sample collection and measurements Sampling location

The data were collected during two repeat hydrographic expeditions in the Weddell Sea with the German icebreaker *R/V. Polarstern*: expedition PS89 (2 December 2014 - 31 January 2015; Cape Town - Cape Town; (Boebel, 2015)) and expedition PS117 (12 December 2018 - 7 February 2019; Cape Town - Punta Arenas; (Boebel, 2019)). During both expeditions, the tidal cycle was recorded by means of repeat CTD casts at the same location at a frequency that was high enough to constrain the tidal oscillation in the water column. These recordings will hereafter be referred to as *tidal observations*. The tidal observations were performed at the same site in a coastal polynya, 56 km west of Atka Seaport, directly at the edge of the Ekström Ice Shelf (Fig. 1), the geometry of which is thought to be representative of most ice shelves of Dronning Maud Land (Smith et al., 2020a).

The polynya is bordered by the Ekström Ice Shelf along its southern edge, and by sea ice along the rest of its perimeter. It regularly forms in the summer months (Boebel, 2019; Arrigo and van Dijken, 2003; Arrigo et al., 2015). Coastal polynyas in the eastern Weddell Sea have an average area of $7.75 \times 10^3 \text{ km}^2$ in the summer and $1.12 \times 10^3 \text{ km}^2$ in winter (coastal polynyas numbers 12-17 in Arrigo and van Dijken (2003)). this region are typically formed by katabatic winds from the continent that advect the newly produced sea ice away from the coastline in the spring and summer (Eicken and Lange, 1989; Renfrew, 2002). At the Ekström Ice Shelf, a number of grounded ice bergs to the east can also create a sea-ice free lee downstream from the westward-flowing coastal current (Boebel, 2019).

The size and shape of the polynyas at the Ekström Ice Shelf are highly variable, depending on the wind direction and speed. For the PS89 tidal observations, the average width (between the ice shelf and sea ice) of the Ekström polynya is about 0.8 km, estimated from Synthetic Aperture Radar (SAR) images (Fig. A1). The length was approximately 12 km. During the PS117 tidal observation, the polynya was substantially larger, having an approximate average width of 3 km and a length of about 40 km (Fig. A3). Generally Given that the average area of coastal polynyas in the eastern Weddell Sea in summer is $7.75 \times 10^3 \text{ km}^2$ (coastal polynyas numbers 12-17 in Arrigo and van Dijken (2003)), the polynya during both tidal observations at this location is considered to be relatively small.

Information about the tidal observations is shown in Table 1. Sources of supporting data used in this study can be found in the Supplementary Materials (Table B1). Both tidal observations were made at the same time of year (i.e. mid-January). The sampling during PS89 (75 hours) lasted ~3 times longer than during PS117 (22 hours). The exact location of the hydrographic stations differed slightly between the two expeditions due to shifting of the Ekström Ice Shelf extent between 2015 and 2019. The sampling sites for PS117 were chosen in such a way that the distance to the ice shelf was approximately the same as during PS89. Due to other ongoing scientific activities on board during the PS117 tidal observation, the exact location of sampling within the coastal polynya varied slightly per CTD cast, but the casts remained within a maximum distance of 300 m from each other. ~~The polynya is bordered by the Ekström Ice Shelf along its southern edge, and by sea ice along the rest of its perimeter.~~

125 2.2 Hydrographic and biogeochemical observations

In addition to a SBE911plus CTD sensor, each rosette sampler (SBE32, 24 x 12 L bottles) was equipped with a fluorometer (EcoFLR, Wetlabs), an oxygen optode (SBE43, Seabird Electronics), and an Acoustic Doppler Current Profiler (ADCP) system (2x 300 kHz RDI Workhorse ADCPs) (Table C1). The oxygen measurements were calibrated using discrete oxygen samples from deep CTD casts only, analysed with the Winkler method (Boebel, 2015, 2019; Rohardt and Tuppenhauer, 2020). ~~The oxygen optode sensor was malfunctioning on every other cast during~~ During the PS117 tidal observation period, two different CTD rosettes with their own set of sensors were used in alternation. On one of these two CTD rosettes, the oxygen optode sensor malfunctioned and thus its data had to be excluded from further analysis. The fluorescence data for this particular rosette is also not available. The minor implication of this is addressed in Section 3.3.

Dissolved inorganic carbon (DIC) and total alkalinity (TA) samples were collected following Dickson et al. (2007). DIC and TA samples were analysed on a VINDTA 3C system (Mintrop, 2016), which uses coulometry for DIC and potentiometric titration for TA determination. TA was calculated according to Dickson et al. (2007) for PS89 and using the Python package Calkulate (Humphreys and Matthews, 2022) for PS117. On PS89, dissolved phosphate (PO_4^{3-}), silicate (SiO_4), and nitrate (NO_3^-) analyses performed by UV-Vis spectrophotometric methods were carried out on board with a SEAL Analytical continuous-flow AutoAnalyzer (Boebel, 2015). During PS117, nutrient samples were analysed simultaneously for PO_4^{3-} , SiO_4 , nitrite (NO_2^-), and the combination of $\text{NO}_3^- + \text{NO}_2^-$ on board on a continuous gas-segmented flow TRAACS 800 AutoAnalyzer (Technicon, a.k.a. SEAL Analytical) within 4-5 hours after sampling (Boebel, 2019). Samples were calibrated with standards diluted in low nutrient ~~sea-water~~ seawater within the salinity range of the Southern Ocean. Analytical uncertainties can be found in Tables C2 and C3 .

To complement the ADCP data, a tidal model (Model CATS2008) was used to determine the times of high (rising) and low (ebbing) tide during the tidal experiments. This model has been optimised for the Antarctic seas, using available measurements and including ice shelf cavities to improve performance (Padman et al., 2002). All tidal constituents, which represent each mode of the tidal oscillation on a different time-scale, are used (e.g. M2, S2, K1). The modelled currents are averaged over the entire water column for tidal currents only, i.e. they are not total currents. Total currents (measured by the ADCP) include contributions from, for example, mean flow along the continental shelf.

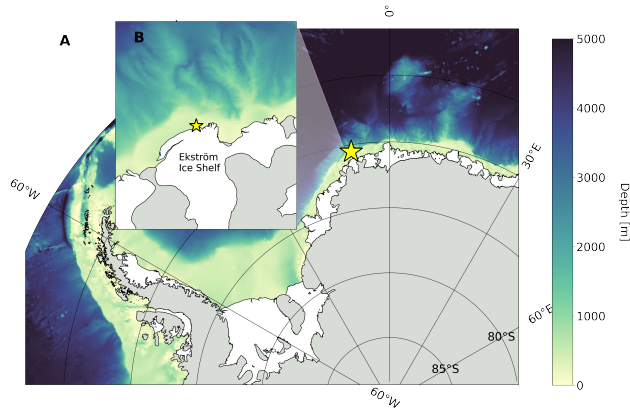


Figure 1. Map of study site: A) Weddell Sea with bathymetry: [IBSCO Version 1.0 \(Arndt et al., 2013\)](#). Grey regions represent the Antarctic continent and land-fast ice, white regions represent ice shelves. B) Enlarged map of coastal study site along the Ekström Ice Shelf. Yellow star shows location of tidal measurements. See Table 1 for coordinates.

Table 1. Details of the tidal observations ~~made-with~~ [based on](#) repeat CTD casts and discrete seawater sampling during the two hydrographic expeditions: PS89 and PS117. [For both observation periods, casts were lowered into the water during times of ebbing and rising tide. Depth of the polynya was around 165 m and 200 m during PS89 and PS117, respectively.](#)

	PS89	PS117
Start observations [UTC]	21:09 9 Jan. 2015 ^a	14:27 11 Jan. 2019
End observations [UTC]	01:00 11 Jan. 2015	11:57 12 Jan. 2019
Location latitude	70° 31' 24" S	70° 31' 19.56" S
Location longitude	8° 45' 34.2" W	8° 46' 6.76" W
Deepest depth of CTD cast [m]	160 m	190.5 - 201.5 m
No. of CTD casts	40	8
No. DIC/TA bottle samples	260	67
Mean (min. - max.) wind speed [m s⁻¹]	10.7 (4-16)	6.6 (3-10)

^aTwo casts done on the 8th of January have not been included into this case study, as they were too disconnected from the rest of the time series. However, the CO₂ flux based on any discrete measurements available from these casts has been included in Fig. 8. ADCP measurements started on the 7th of January. The underway *f*CO₂ measurements started on the 7th of January at 23:00 (Fig. D1).

150 2.3 [The marine carbonate system and CO₂ flux calculations](#)

The air-sea CO₂ flux was calculated according to:

$$F = kK_0(fCO_{2sw} - fCO_{2atm}) \quad (1)$$

F is the CO_2 flux in $\text{mol m}^{-2} \text{ hr}^{-1}$, k is the gas transfer velocity, K_0 is the CO_2 solubility at *in situ* temperature and salinity, and $f\text{CO}_2$ is the fugacity of CO_2 in seawater (*sw*) and in the atmosphere (*atm*). The gas transfer velocity is calculated according to the parameterisation of Wanninkhof (2014). Minimum, maximum, and average wind speed for the duration of the tidal observation period, as measured on board and reported at 10 m above sea level, were used as input to this parameterisation (Table 1). For the Schmidt number, i.e. the parameter that relates the gas transfer velocity of different gases, we use Wanninkhof (2014), which gives a refitted polynomial updated from Wanninkhof (1992) to cover a temperature range of -2 to 40 °C and is virtually the same as the parameterisation by Ho et al. (2006). The CO_2 solubility is calculated according to Weiss (1974). The fugacity of CO_2 is numerically similar to the partial pressure of CO_2 ($p\text{CO}_2$), but accounts for the non-ideal behaviour of the gas. The $f\text{CO}_{2\text{atm}}$ is calculated using the virial- and cross-virial coefficients from Weiss (1974) in the equation to convert the atmospheric CO_2 mole fraction to $f\text{CO}_2$ by Weiss and Price (1980). It requires the dry air mole fraction of CO_2 ($x\text{CO}_2$), for which we use discrete air sample measurements from Syowa Station at 69° 0' 16''S, 39° 34' 54''E (Dlugokencky et al., 2019), and the water vapour pressure, which is derived from *in situ* seawater temperature and salinity in the parameterisation of Weiss and Price (1980). We use the average $x\text{CO}_2$ of January 2015 and 2019 for the PS89 and PS117 experiment, respectively, and shipboard atmospheric pressure reported at sea level.

The $f\text{CO}_2$ of surface seawater ($f\text{CO}_{2\text{sw}}$) is determined from the DIC and TA concentrations, TA, nitrate, and phosphate content, as well as the temperature and salinity, of the shallowest discrete seawater values samples (typically between 15 and 5 m deep), using PyCO2SYS (Version 1.3) (Humphreys et al., 2022), based on the original work of Lewis and Wallace (1998). Parameterisations by Lueker et al. (2000) were used for the carbonic acid equilibrium constants, by Dickson (1990) for the bisulfate ion dissociation constants, by Uppström (1974) for the boron: salinity relationship, and by Dickson and Riley (1979) for the hydrogen fluoride dissociation constants. Additionally, continuous surface water $f\text{CO}_2$ was measured at the ship's seawater supply with an intake at 11 m depth by a General Oceanics $p\text{CO}_2$ analyser on board, for the PS89 tidal observation only. The discrete surface seawater samples were collected at the same depth as the underway water intake depth (~11 m) or shallower (~5 m). The measured and calculated $f\text{CO}_2$ values are comparable for the periods where they overlap (Fig. D1). Small discrepancies between the measured and calculated values are likely due to the difference in depth and spatial and temporal variability. As is shown in Section 4.2, these discrepancies are not large enough to affect the agreement between the CO_2 flux estimates based on these two sets of $f\text{CO}_2$ data. Alongside $f\text{CO}_2$, the PyCO2SYS package simultaneously resolves other carbonate system parameters with DIC, TA, and auxiliary data (listed above) as input parameters (Zeebe and Wolf-Gladrow, 2001; Humphreys and M. These include the saturation state for calcite and aragonite (polymorphous forms of calcium carbonate) and pH.

3 Results

3.1 Tidal current

The u (east-west) and v (north-south) components of the current velocity measured by the ADCP are significantly positively correlated to each other (Fig. F1). They synchronously alternate sign roughly twice a day throughout the water column (Padman et al., 2002), resulting in a barotropic (depth-averaged) component of the flow that matches the modelled tidal velocity (Fig.

2). The semi-diurnal tidal currents are thus a dominant component of the total current velocity at this sampling location. The vertical grey areas in Fig. 2 (and in other figures) indicate the time and duration of ebbing tide, here defined as the time when both the u and v components of the modelled current velocity are positive, i.e. the direction of the current is towards the north-east. When both components are negative, the direction is towards the south-west and here considered to be rising tide. Note
190 that the white vertical areas in the figures include the rising tide as well as times when either the modelled u or v component is negative.

The velocity profiles are generally homogeneous during ebbing tide. More vertical structure is seen in both velocity components after peak velocities are reached during rising tide during PS89. These baroclinic (depth-dependent) flows induce short-lived vertical shear between the surface and subsurface layers before velocity profiles homogenise again towards the
195 north-east (ebb). The range of current velocities is slightly larger during the PS89 tidal observation than during PS117 (Fig. F1), which is mainly due to the higher velocities in the morning of 10 January 2015. The modelled tidal current at this time is not particularly stronger than at any other time point in the observation period, including PS117. The stronger current in the first half of 10 January 2015 is thus likely the result of other enhancing factors, such as wind speed and direction.

Both the PS89 and PS117 discrete tidal observations were made five days after spring tide, although the spring tide prior
200 to the PS89 observations was at full moon (5 January 2015) and the spring tide prior to the PS117 observations was at new moon (6 January 2019; dates obtained from https://tidesandcurrents.noaa.gov/historic_tide_tables.html). The tidal observations of both case studies are thus set at a similar time in the spring-neap tidal cycle. Peak-to-peak tidal heights in this region are around 2 m, but may increase by a factor of two during spring tides (Padman et al., 2002, 2018). Our datasets only capture a small fraction of time, and we cannot judge the relative strength of the tide beyond its time limits. However, considering that
205 the dominant constituent of tidal oscillations in the Weddell Sea is the semi-diurnal constituent (Padman et al., 2002) and that the modelled velocities are similar between both tidal observations, we regard the two case studies as comparable in terms of tidal influence on the system.

3.2 Physical variability

A clear semi-diurnal tidal cycle is observed in the physical properties of the water column during the PS89 tidal observation
210 period in January 2015 (Fig. 3). Over the depth horizons, salinity increases and temperature decreases throughout the water column during ebbing tide. Isopycnals rise to the surface, resulting in a shallow stratification. A mixed layer forms at the surface during ebbing tide with relatively uniform properties and an average depth of ~ 20 m. The mixed layer depth (MLD) is determined by a 0.020.03 kg m^{-3} density difference with the average of the top 10 m. During rising tide, the MLD tends to either deepen or the mixed layer breaks down altogether as the density decreases. When a steep density gradient is absent,
215 which typically occurred during rising tide, the water column is considered to be relatively well mixed. The isolines for salinity and temperature deepen as the surface water becomes fresher and warmer. These semi-diurnal fluctuations occur throughout the water column, down to the bottom at almost 200 m depth.

While a similar tidal pattern is also recorded in the salinity and temperature profiles of the shorter PS117 tidal observation, the amplitude of variability for salinity is strikingly-much smaller compared to PS89. The salinity values for PS117 range only

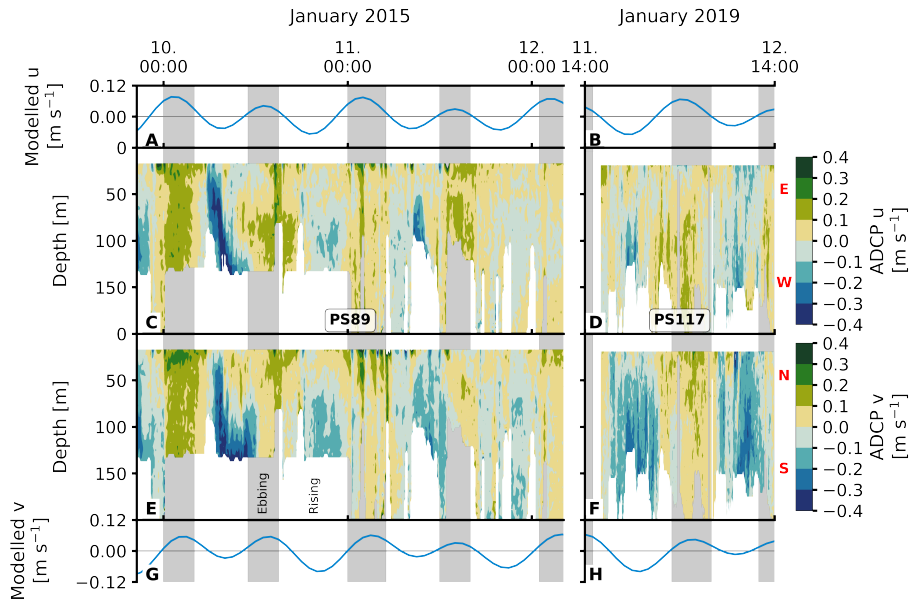


Figure 2. Current velocity for PS89 (A, C, E, G) and PS117 (B, D, F, H). Modelled u component of the tidal currents is shown in panels A and B. The modelled v component is shown in G and H. Modelled tidal velocities are averaged over the full water column. The u component of the ADCP profile data is shown in C and D. The v component of the ADCP data is shown in E and F. Vertical grey-shaded areas indicate times of ebbing tide, here identified as times when the u and v components in the modelled tidal current are both positive, i.e. the direction of the current is north-east. Directions associated to the positive and negative values of the u and v components are indicated by the red letters next to the colour bars: N (north), S (south), E (east), W (west).

220 between 34.13 and 34.29, while they range between 34.03 and 34.34 for PS89. With values between -1.58°C (at the surface) and near freezing -1.89°C (at the bottom), the temperatures measured during PS117 have a smaller range and are generally lower than those measured for PS89 (-1.42 to -1.85°C). In contrast to PS89, no mixed layer was identified at any point during the PS117 tidal period, as a steep density gradient was absent and the entire water column was better mixed.

3.3 Biogeochemical variability

225 Despite the lower vertical resolution [compared to the continuous sensor measurements](#), the discrete bottle measurements capture the variability in the water column well, as shown by comparing the discrete bottle and continuous profile measurements for density (Fig. E1). We are therefore confident that the discrete biogeochemical measurements are also representative of the variability in the water column at the time of sampling.

The DIC and TA content mimic the tidal signature as seen for salinity (Fig. 4): their content decreases throughout the water column when the tide comes in, and increases as the tide goes out. The variability is, again, much lower during PS117 than during PS89. For the PS89 tidal observation, the DIC (TA) varied between 2174.3 and $2217.9 \mu\text{mol kg}^{-1}$ (2307.3 and $2327.1 \mu\text{mol kg}^{-1}$) at the surface ($<50 \text{ m}$) and between 2186.8 and $2222.7 \mu\text{mol kg}^{-1}$ (2312.3 and $2328.7 \mu\text{mol kg}^{-1}$) at

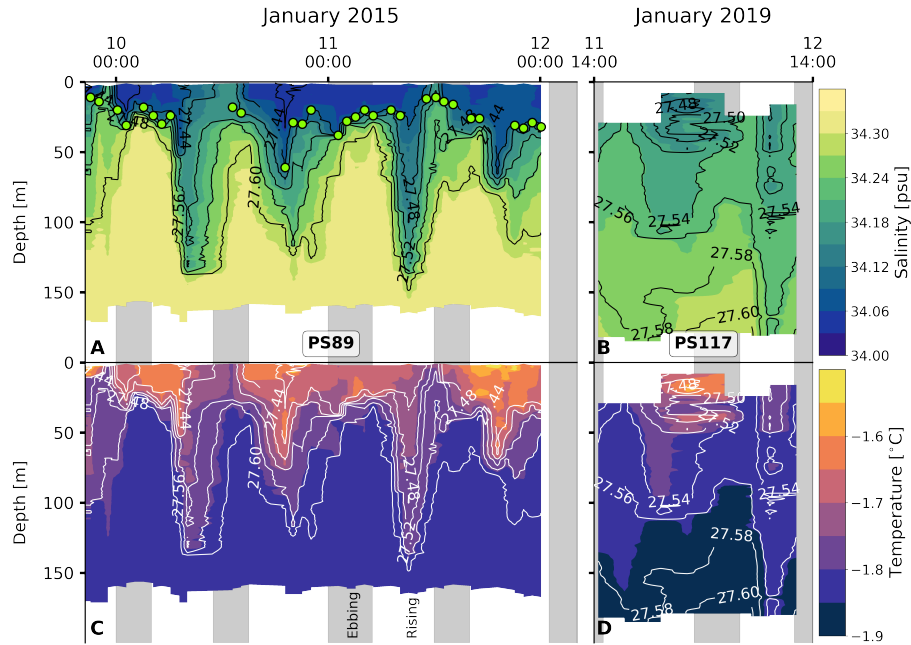


Figure 3. A and B Salinity show the salinity for PS89 and PS117, respectively. Green markers in A indicate the mixed layer depth (MLD) for casts where a mixed layer could clearly be identified according to a strong density gradient. MLD is identified as the depth at which the density difference with the average density values in of the top 10 m is $0.020.03 \text{ kg m}^{-3}$. Temperature profiles are shown in C (PS89) and D (PS117). White contour lines represent isopycnals in kg m^{-3} . Vertical grey-coloured-grey shaded areas indicate times of ebbing tide.

greater depths ($>50 \text{ m}$). During PS117, DIC and TA content overall ranged between from 2202.6 to $2220.1 \mu\text{mol kg}^{-1}$ and 2311.5 to $2322.3 \mu\text{mol kg}^{-1}$, respectively. Salinity-normalised DIC (In the ocean, changes to salinity are driven by oceanographic processes, such as dilution, ice formation, and mixing. These physical processes also impact DIC and TA, which is why DIC and TA are often strongly correlated to salinity (Middelburg et al., 2020). This is also the case in our dataset. However, DIC and TA content are additionally a function of biological (e.g. photosynthesis, respiration, and remineralisation) and chemical (e.g. CaCO_3 dissolution and precipitation) processes (Zeebe and Wolf-Gladrow, 2001). To be able to study the role of biogeochemical processes on DIC and TA content, it is useful to separate the effect of physical processes, such as dilution and mixing of different water masses, from the rest. This can be done by normalising the DIC and TA values to the salinity, which we have done here according to methods by Friis et al. (2003). The salinity-normalised DIC (nDIC) and TA (nTA) profiles (according to Friis et al., 2003) lose much of the semi-diurnal variability seen in the profiles of the non-salinity-normalised values, suggesting that physical processes, such as advection and mixing, are the dominant drivers of the observed variability in DIC and TA (Fig. G1). PS117 nDIC values are markedly higher than those for most PS89 samples (Fig. 5). A part of this increase in nDIC over time could be result of the increase in atmospheric CO_2 , assuming at least partial equilibration with the atmosphere. The atmospheric $f\text{CO}_2$ increase ($10 \mu\text{atm}$) alone could contribute $\sim 6 \mu\text{mol kg}^{-1}$ to the surface DIC content if

all other variables remained the same. This upper-bound estimate is based on average values of the top 10 m during PS89 and assumes equilibration of the surface water with the atmosphere.

PS117 nitrate ($28.9 - 30.1 \mu\text{mol kg}^{-1}$), phosphate ($2.0 - 2.1 \mu\text{mol kg}^{-1}$), and dissolved oxygen ($322.0 - 333.2 \mu\text{mol kg}^{-1}$) concentrations throughout the water column have similar values as those at the bottom of the water column during PS89 (Fig. 6, G2, G4). ~~Fluorescence was barely detected during~~ This is not the case for silicate, for which its PS117 (Fig. 6). Silicate has an offset between both case studies (Fig. ??). The silicate concentration is also relatively uniform in the water column during PS117 ($58.3 - 59.8 \mu\text{mol kg}^{-1}$; Fig. G2). ~~Instead of values close to the upper part of the PS89 silicate range (as is the case for nitrate and phosphate), the PS117 silicate values lie around the mean silicate values measured for PS89 ($60.0 \pm 1.1 \mu\text{mol kg}^{-1}$; Fig. G2, G4).~~ Whereas the This observation illustrates that silicate behaves differently from phosphate and nitrate, as its content is affected by other processes, i.e. by diatom growth and remineralisation at depth or in the sediment rather than by photosynthesis and biological respiration (Sarmiento, 2013). Similarly to nDIC and nTA, the nutrients were salinity-normalised ~~concentrations for nitrate and phosphate during PS117 have an average that is significantly higher (29.7 (following Friis et al. (2003)).~~ Consistent to nDIC and nTA, no obvious deviations from the mean salinity-normalised values are observed that could indicate a dominant biological influence (Fig. G5). It supports the observation made above that the dominant driver of the variability observed within each tidal case study is mostly physical. For the salinity-normalised silicate content, the averages of both tidal observations are similar to each other ($59.5 \pm 0.10.5 \mu\text{mol kg}^{-1}$ and $2.0 \pm 0.01 \mu\text{mol kg}^{-1}$, respectively) ~~than those for PS89 (28.1 and $59.2 \pm 0.30.2 \mu\text{mol kg}^{-1}$ and $1.9 \pm 0.04 \mu\text{mol kg}^{-1}$), the for PS117; Fig. G5), indicating that processes affecting silicate content did not differ much between the two case studies.~~ However, a consistent offset between the case studies is observed for the salinity-normalised ~~silicate averages are similar (59.5 ± 0.5 values for nitrate and phosphate, where PS117 values are on average higher by $1.6 \mu\text{mol kg}^{-1}$ for PS89 and 59.2 ± 0.2 and $0.1 \mu\text{mol kg}^{-1}$ for, respectively.~~ Even though biogeochemical processes might not be able to explain the variability within each tidal observation, these results suggest that the polynya may have had a higher input and/or a lower loss of nitrate and phosphate during January 2019 compared to January 2015. Fluorescence is here used as a proxy for the presence of photosynthetic cells. While the rising tide increased fluorescence in the water column during PS89, it was barely detected during PS117 ~~;(Fig. G5).~~ (Fig. 6). In the absence of active photosynthetic cells, remineralisation enhancing the nitrate and phosphate content may have been an important process in the water observed during PS117.

Due to complications with the data for dissolved oxygen and fluorescence on four of the CTD casts of the PS117 tidal observation, these data were excluded from analysis. The implication of this reduced temporal resolution is that we risk losing representation of water column variability in our dataset for these two variables. However, the low water column variability over time for the physical and other biogeochemical variables (for which we do have data from every cast) strongly suggest that there likely is not a lot of variability in the dissolved oxygen or fluorescence content that we are missing out on due to missing profiles (Fig. 6).

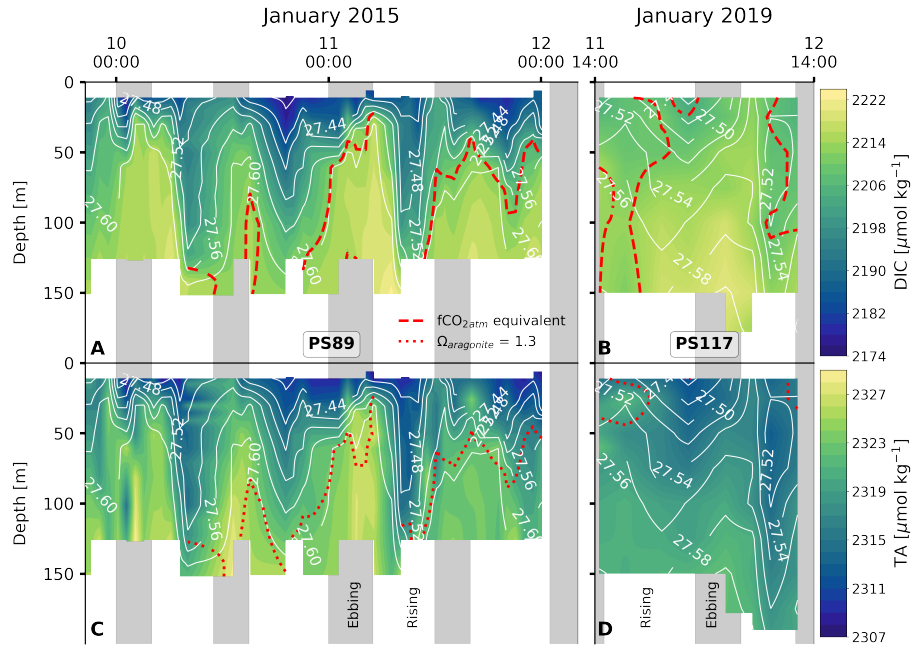


Figure 4. DIC content at the sampling site during the PS89 (A) and PS117 (B) tidal observations. TA content for the PS89 (C) and PS117 (D) observations. White contour lines indicate sigma-t in kg m^{-3} . Vertical grey shaded areas indicate periods of ebbing tide, as defined in the text. Red dashed line in A and B represents the depth at which the seawater $f\text{CO}_2$ is equal to the atmospheric $f\text{CO}_2$, which is $377 \mu\text{atm}$ in January 2015 and $387 \mu\text{atm}$ in January 2019. Seawater shallower than this depth is undersaturated in $f\text{CO}_2$ compared to the atmosphere. For PS117 (B), the seawater is mostly oversaturated in $f\text{CO}_2$ compared to the atmosphere. The red dotted line in C and D represents the depth at which the seawater $\text{pH}-\Omega_{ar} = 8.051.3.\Omega_{ar}$ is lower at depths below this line. The value 1.3 is arbitrary to illustrate the vertical variability in the water column. Ω_{ar} ranges between 1.22-1.52 and 1.21-1.34 for PS89 and PS117, respectively.

4 Discussion

280 4.1 Water masses and biogeochemistry

Hydrographically, the water measured during both tidal observations is identified as Eastern Shelf Water (ESW), which is found south of the Antarctic Slope Front (ASF) where pycnoclines slope downwards towards the south at the edge of the narrow continental shelf of the Dronning Maud Land coastline (Heywood et al., 1998). ESW is characterised by salinities between 34.28 and 34.4 and temperatures close to freezing point (Carmack, 1974). ESW itself is a mixture of the following

285 (Fahrbach et al., 1994):

- Winter Water (WW, winter surface water capped by a warmer summer stratification; characterised by a subsurface temperature minimum (Nicholls et al., 2009))

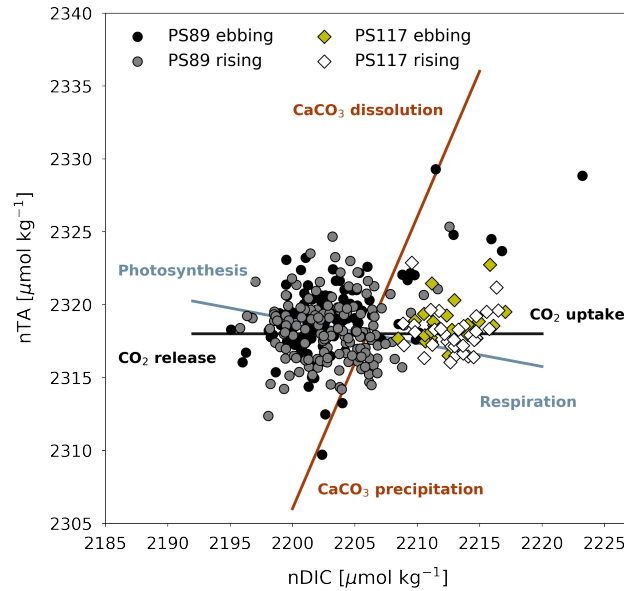


Figure 5. Salinity-normalised TA (nTA) and DIC (nDIC) plotted against each other for PS89 (circles) and PS117 (diamonds) tidal data. Samples collected during ~~or~~ ebbing (black circles and yellow diamonds) or rising tide (grey circles and white diamonds) are differentiated by different marker colours. Theoretical process lines are drawn for CaCO_3 dissolution/precipitation, photosynthesis/respiration, and CO_2 uptake/release ([Zeebe and Wolf-Gladrow, 2001](#)).

- Antarctic Surface Water (AASW, derived from WW that has been freshened by sea ice melt and heated by solar radiation in the spring and summer)
- modified Warm Deep Water (mWDW, which is the result of mixing between WW and WDW along the ASF (Ryan et al., 2020))
- glacial ~~melt-water~~ meltwater (GMW, formed by melting of glaciers, and of ice shelves induced by intrusions of warmer water, such as mWDW and AASW, underneath the ice shelf (Fahrbach et al., 1994; Zhou et al., 2014)).

However, the oscillations in the physical and biogeochemical properties induced by the incoming and outgoing tide suggests
 295 that the tide is enabling movement and possibly mixing of water masses, which is especially pronounced in the PS89 dataset (Fig. 3). While water in the Ekström polynya can broadly be categorised as one water mass (i.e. ESW) according to the physical properties, we will here explore the deepening and shoaling of the isopycnals, as well as the changing water physico-chemical properties.

At rising tides during PS89, the tide brings in water from the north-east that is fresher and warmer compared to the water
 300 present at the sampling location during ~~low~~ ebbing tide (Fig. 3 A, C). A well-defined mixed layer with relatively uniform properties is seen at the surface during ebbing tide (~ 20 m depth), which tends to disappear or deepen when the tide comes in and the water column density decreases. Similar observations ~~in~~ of tide-driven shoaling and deepening of isopycnals have been made in

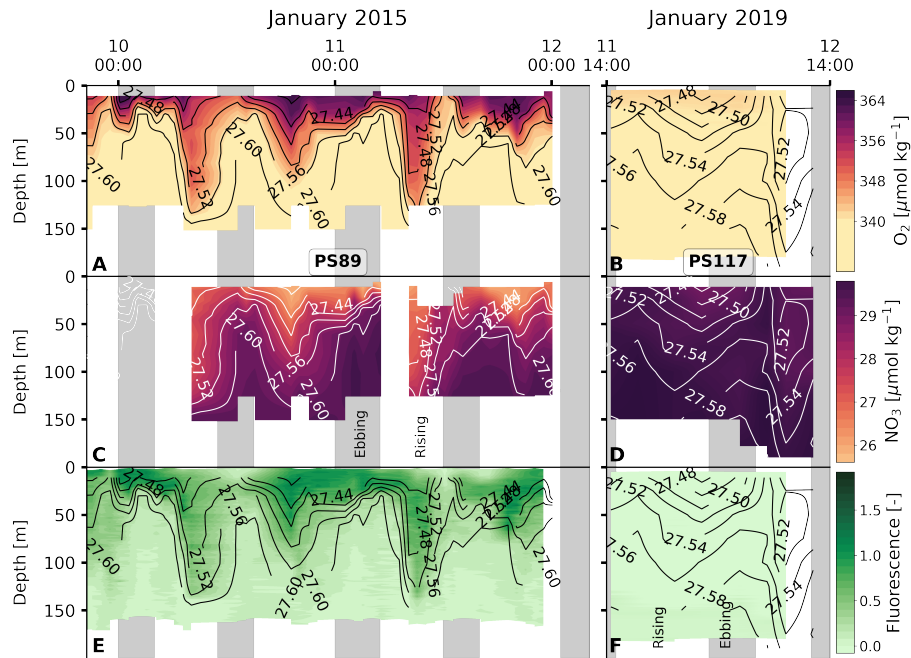


Figure 6. Same as Fig. 43, but for dissolved O_2 (A and B), NO_3^- (C and D), and fluorescence (E and F). Fluorescence during PS117 varied at values < 0.09 .

other Antarctic coastal systems, although in lower wind conditions (Llanillo et al., 2019, $< 4 \text{ m s}^{-1}$) (Llanillo et al., 2019, $< 4 \text{ m s}^{-1}$, see T

A destabilising (stabilising) water column has previously been associated with the rising (ebbing) tide observed in coastal polynyas in the Arctic (Skogseth et al., 2013). In the latter study, the tidal variability was characterised by a cold-salinity front that moved back and forth with the tide. This "salinity front" is characterised by lower and higher salinities in the water column on either side of a sharp horizontal salinity gradient. A salinity front of this description might have been moving back and forth with the tide over the sampling site in the Ekström polynya, which from a Eulerian perspective resulted in the properties of the water column changing as shown in Fig. 3 and 4.

In our case study, the input of fresher water with lower DIC and TA content is likely advection of AASW from the north-east of the on the north-eastern side of the salinity front (and sampling site) is likely advection of AASW, influenced by the summer sea ice melt. Based on the fluorescence increase during rising tide for PS89 (Fig. 6E), the water on this side of the front seems to be richer in phytoplankton cells compared to the south-western side of the front. In addition to a dilution effect, the accompanying increased fluorescence signal during rising tide on PS89 suggests that photosynthesis in this water has likely contributed to its lower DIC, TA, and nutrient content (Fig. 4, 6), which is sustained by solar radiation. The advection of fresher, lower DIC and TA sea-water seawater from the north-east during rising tide is likely enhanced by high winds ($4 - 16 \text{ m s}^{-1}$) that consistently came from the north-east during - and in the week prior to - the PS89 tidal observation (Fig. H1A and H2A).

In comparison to PS89, the sampling site during PS117 has less pronounced freshening of the surface water during rising tide, thereby highlighting the interannual variability of the system. Instead, the entire water column is much more uniform with very few vertical gradients during the observation period. Differences in shape and size of the polynya between the two case studies may have affected the proximity of a salinity front to the sampling site. Even though the average sea ice concentration in the immediate vicinity of the sampling site was highly variable in the two months leading up to both PS89 and PS117 (not shown), the polynya was at least three times larger and more well-defined during PS117 than during PS89 (Section 2.1, Fig. A1 and A3). If a salinity front existed during PS117, it ~~may~~could have been located further away from the ~~sampling site and closer to the sea ice edge of the polynya~~ice shelf edge, and the sharp horizontal salinity gradient might therefore not have passed directly over the sampling site during PS117 as it did during PS89. Moreover, winds during PS117 may not have had the same enhancing effect on the advection of fresher, diluted water during rising tide compared to PS89. Whereas high winds during PS89 consistently came from the north-east, the wind speeds during PS117 were lower ($3 - 10 \text{ m s}^{-1}$) and their direction was more variable, mainly coming from the ice shelf ~~side~~in the south-east (Fig. H1B and H2B). Modulating effects of winds on tidally-induced changes in physical water column properties, whether enhancing or counter-balancing, have also been observed in coastal systems at the Antarctic Peninsula (Llanillo et al., 2019).

The other side of the salinity front (i.e from the south-west) brings in higher salinity and lower temperatures into the polynya during ebbing tide. This water ~~seems is~~is less ventilated than AASW and shares physical properties with ice shelf water. Ice shelf water is characterised by potential temperatures of $< -1.8^\circ\text{C}$ and salinity > 34.6 (Carmack, 1974). However, recent work by Smith et al. (2020a) has shown that the temperature and salinity from a number of CTD profile measurements underneath the Ekström Ice Shelf in the same summer season as PS117 (2018/2019) ranged from -2.08 to -1.83°C and 34.21 to 34.38 , respectively (Fig. 7). These values overlap with the temperature and salinity ~~at~~measured within $\sim 10 \text{ m}$ of the bottom of the sampling site during both tidal observations, especially when the tide goes out. ~~In terms of biogeochemical properties, the sub-ice shelf water is expected to be less ventilated compared to the AASW and to have relatively higher nutrient and DIC content, and lower dissolved oxygen content, as a result of net remineralisation (Fig. 4, 6).~~

It is possible that the ebbing tide draws out water from underneath the ice shelf which is expected to be colder. Indeed, ~~the study by Smith et al. (2020a) attributed variability in two repeat profiles~~this possibility is supported by findings in Smith et al. (2020a), which includes a repeat profile of the Ekström Ice Shelf's cavity water at one of the drill sites measurement stations on the ice shelf (EIS-4); Fig. 7). The two repeat profiles at EIS-4 were taken 11 hours apart. The small difference observed in the vertical salinity and temperature profile between these two casts was attributed to tidal influences extending underneath the ice shelf (Smith et al., 2020a). As well as some vertical displacement of the ice shelf by the tidal force (Legrésy et al., 2004), horizontal displacement also occurs underneath the ice shelf. Another study found 12-hourly and 14-day fluctuations in a temperature time series 70 m underneath the Ekström Ice Shelf (June 2012 to February 2013), ranging between -1.94 and -1.6°C (Hoppmann et al., 2015). It also described effects of the tide on the glacial ~~melt water~~meltwater outflow, which could be seen in the orientation and growth of platelet ice crystals in Atka Bay (Hoppmann et al., 2015), adjacent to the Ekström Ice Shelf and east of the sampling site in the current study. In terms of biogeochemical properties, the sub-ice shelf water is expected to be less ventilated compared to the AASW and to have relatively high nutrient and DIC content, and lower

dissolved oxygen content, as a result of net remineralisation and lack of exchange with the atmosphere. Due to the lack of exposure to the atmosphere, phytoplankton cells (for which we use fluorescence as a proxy) are expected to be mostly absent. This description of water properties is consistent for the properties observed during ebbing tide (Fig. 4, 6). It therefore seems feasible that less ventilated, colder water from underneath the ice shelf with lower oxygen and higher nutrient and DIC content can extend to the edge of the ice shelf during ebbing tide and into the polynya.

Even though mWDW is a source for eastern shelf water (Nicholls et al., 2009), we do not see a direct signal of mWDW in our dataset. The bathymetry of the cavity underneath the Ekström Ice Shelf slopes from about 450 m depth at the ice shelf edge to a maximum depth of 1100 m southwards towards the grounding-line (Smith et al., 2020a). Although troughs sculpted into the cavity's bathymetry (Smith et al., 2020a) potentially allow WDW (or its modified form) to enter it (Fahrbach et al., 1994) (a process that may be enhanced by tides), the warmer water is usually restricted to the north of the continental shelf in this region by prevailing easterly winds (Heywood et al., 1998; Thompson et al., 2018). The cavity is instead likely influenced by ESW that enters through Ekman transport (Zhou et al., 2014) of which a thin layer along the base of the ice shelf is colder and more buoyant, indicating outflows of ice shelf melt water (Smith et al., 2020a) (Fig. 7). Influence from ice shelf water seems to dominate the water properties in front of the ice shelf during PS117, despite the tides, which may be explained by the variable wind direction from the south-east (Fig. H2B) and potentially a large distance between a salinity front and the sampling site. In contrast, winds from the north-east enhance the influence of fresher, more ventilated ESW during PS89, and the sea ice conditions may have led to a salinity front that is closer to the sampling site.

The As explained in Section 3.3, the salinity normalisation removes the impact of physical processes from the DIC and TA data. Therefore, any variability that remains in the nDIC and nTA results indicate that most of the variability observed in this short time series is due to the physical movement of water masses by the tidal current, rather than biogeochemical processes happening *in situ* (Fig. G1). Net transport away from the ice shelf could create a tidally-driven horizontal DIC pump, whereby the sub-ice shelf water is a source of DIC that is transported away from the ice shelf into surface waters where it is exposed to the sea ice and the atmosphere. These conditions are supportive of biomass production, which will decrease the DIC content only if the biological carbon uptake is more efficient than the advection of higher DIC waters. However, when we calculate the trajectory of a water parcel using the ship's position as a starting point and the average current velocity of the water column, the net transport is south needs to be explained according to other processes. These processes are represented in Fig. 5 by theoretical lines that indicate how nTA and nDIC would change relative to each other as a result of photosynthesis/south-east, i. e. towards the ice shelf (not shown). This implies that the surface waters could be modifying the water underneath the ice shelf over time. The advection of lower DIC and salinity water might dilute the DIC content, but respiration of organic material might increase it over longer time periods. However, the total DIC content in the water column does not show a trend over time in this dataset and the net change in DIC content over six-hour periods (including ebbing and rising tide) is zero (Fig. G3 for PS89). Our observations are a snapshot of a highly dynamic system and consequently we cannot analyse such modifications of the water physico-chemical properties with this dataset.

Variability in the salinity-normalised DIC and TA content could be the result of respiration, CaCO_3 dissolution/precipitation, and CO_2 uptake/release (Zeebe and Wolf-Gladrow, 2001). For example, factors that could be relevant to net photosynthesis

are variable sea ice cover affecting ~~photosynthesis by modified light availability~~ light availability, nutrient replenishment during ebbing tide, and mixing of phytoplankton cells into deeper water during rising tide (Gleitz et al., 1994), ~~CaCO₃ dissolution (Fig. 5), temperature changes affecting CO₂ solubility, and possible nutrient replenishment during ebbing tide.~~ Yet, none of these processes seem particularly dominant ~~or persistent in the nTA:nDIC ratio in changing the nTA and nDIC content within each tidal observation~~ (Fig. 5). The results in Fig. 5 show a legacy of processes that may have occurred in the ~~past~~ weeks to months prior to sampling, as the ~~carbonate chemistry system~~ marine carbonate system's equilibration time with the atmosphere is slow, especially in sea ice covered regions. Additionally, ~~this data~~ the data during rising tide might also reflect processes that happened in the sea ice, which will have affected the carbonate chemistry of the sea ice ~~melt water~~ meltwater and thus the properties of the AASW. While we here consider the tides to transport a salinity front back and forth across the sampling site, we must also recognise that the sampled mass of water on each side of the front is not exactly the same during each tidal phase, ~~which~~. This contributes to the variability ~~seen in the data~~ observed in the dataset. Finally, ~~even though there is good agreement between the high vertical resolution sensor data and the discrete bottle data for salinity and temperature (exemplified with density in Fig. E1), biogeochemical processes could imprint additional variability in the DIC and TA profiles that are not reflected in salinity and temperature measurements. We must therefore consider that the discrete seawater samples might not have captured the full scale of the variability in the polynya, limiting our interpretation of relevant biogeochemical processes.~~

Coastal polynyas have been described as ~~"~~the most productive waters in the Southern Ocean" (Arrigo et al., 2015). Their chlorophyll *a* levels are found to peak in January, roughly coinciding with the peak of coastal polynyas' area of open water (Arrigo et al., 2015). In polynyas around Antarctica, iron supplied by basal melting of ice shelves is a major contributing factor to the variability in phytoplankton biomass (Arrigo et al., 2015). Considering that the observations in the current study were made in a coastal polynya of variable size directly adjacent to the Ekström Ice Shelf with an estimated basal melt rate of 4.2 Gt year⁻¹ (Rignot et al., 2013), the lack of observable *in situ* nutrient and inorganic carbon uptake by primary productivity at the surface is perhaps unexpected. This also applies to times at rising tide in the PS89 observation period when the fluorescence signal increases in the water column, suggesting advection of phytoplankton cells into the polynya. Tidal mixing that replenishes nutrients at the surface has been described to drive phytoplankton productivity in other tidal regions (Rogachev et al., 2001). However, primary productivity and its peak in the summer ~~has~~ have been shown to be highly variable among Antarctic coastal polynyas, and ~~the most likely important~~ drivers of low primary productivity are ~~increased MLD, light stability, deep MLD~~ and grazing pressure (Arrigo and van Dijken, 2003). These are likely highly relevant factors in our case study. High phytoplankton growth rates require water column stability that lasts several weeks (Gleitz et al., 1994), which is absent during the case studies presented here. Even during ebbing tide, when the water column stratifies at a ~~shallower~~ shallow depth during PS89, the duration of stratification is too short to support substantial *in situ* DIC and nutrient uptake by growth and primary production.

In a study in the Amundsen Sea, stations close to the Pine Island Glacier were characterised by a deep MLD and low phytoplankton biomass and Chl *a* despite high dissolved Fe availability (Alderkamp et al., 2012), suggesting that upwelling of Fe-rich basal meltwater mixed the water at the ice shelf's edge (Alderkamp et al., 2012; Gerringa et al., 2012). ~~Outflow and mixing of ice shelf melt water might have been stronger during PS117 than PS89. The water~~ A colder, more buoyant

layer along the base of the Ekström Ice Shelf similarly indicates outflows of ice shelf meltwater (Smith et al., 2020a). The temperature and salinity at the bottom of the ~~profile profiles~~ during PS117 ~~indeed has a temperature and salinity that is more~~ ~~similar to the temperature and salinity compare to those~~ measured near the base of the ice shelf (mean of top 350 m of the ice shelf CTD casts EIS4-8 (Smith et al., 2020a)). The ~~water underneath the shelf is directly affected by basal melt. During PS89,~~ ~~the~~ bottom water temperature and salinity values ~~resembled for PS89 resemble~~ more closely those deeper in the cavity (e.g. the mean of the water deeper than 350 m of the ice shelf CTD casts EIS4-8; Fig. 7). ~~Earlier, we noted that southerly winds during PS117 may have counter-acted some of the advection of fresher, more ventilated water from the north-east during rising tide. The comparisons to the work by Smith et al. (2020a) support the idea that - in addition to less sea ice meltwater input from the north-east - outflow and mixing of ice shelf meltwater might have been stronger during PS117 than PS89, dominating the polynya water properties. Along with a more mixed water column, this difference in connectivity to the ice shelf cavity is consistent with the less ventilated water of the polynya during PS117, and can be responsible for the higher nDIC (and salinity-normalised nitrate and phosphate) content, compared to PS89.~~

From an ecological perspective, it is relevant to consider the effect of the carbonate system variability on the diversity, structure, and production of pelagic-benthic organism communities. Calcifying organisms, such as pteropods, foraminifera, and coccolithophores, depend on the seawater calcium carbonate saturation state to form their shells and skeletons, which are made from CaCO_3 (Orr et al., 2005). The pH in the Ekström polynya varied between 8.02-8.12 and 8.02-8.06 for PS89 and PS117, respectively (see Fig. G1 for vertical variability). The saturation state of aragonite (Ω_{ar} ; the less stable polymorph compared to the other common CaCO_3 polymorph: calcite) concurrently varied between 1.22-1.52 and 1.21-1.34, respectively. A contour in Fig. 4C and D at an arbitrary value of 1.3 for Ω_{ar} gives a sense of the vertical variability driven by tides. Even at the lowest pH values recorded here, the Ω_{ar} does not fall under 1, which means that the marine chemical environment does not thermodynamically promote CaCO_3 dissolution. The dynamic nature of the polynya might foster a resilience among the pelagic and benthic organism communities to rapid (semi-diurnal) changes of Ω_{ar} . However, even at a carbonate saturation level > 1 , the rate of biogenic calcification has been shown to be affected by the CaCO_3 saturation state (Feely et al., 2004). The Southern Ocean is especially vulnerable to ocean acidification driven by marine anthropogenic CO_2 uptake (Orr et al., 2005; Negrete-García et al., 2019). Tidally induced variability may increase the sensitivity of high-latitude coastal systems to shoaling aragonite and calcite saturation state horizons. Alongside ecological impacts of tides along the Antarctic coastline, future studies can look into the tidal impacts on long-term changes of the vulnerability of pelagic-benthic organism communities.

In this study, we have argued that the DIC variability in the coastal polynya is driven by back-and-forth movement of water under the force of tidal currents across the sampling site located in a region where there is a horizontal gradient in DIC content: lower DIC content to the north-east, influenced by summer sea ice melt, and higher DIC content to the south-west, influenced by unventilated ice shelf cavity water. This led us to investigate whether there is evidence in our dataset for a tidally-driven horizontal DIC pump. For example, net transport away from the ice shelf could transport DIC and nutrients (and perhaps even iron) from the ice shelf towards surface waters on the continental shelf that are exposed to sea ice and the atmosphere. Subsequent biological carbon uptake will then remove DIC. However, when we calculate the trajectory of a water parcel (using the ship's position as a starting point and the average current velocity of the water column) the net transport is south/south-east,

i.e. towards the ice shelf (Fig. F2). This implies that surface waters would be modifying the properties of the water underneath the ice shelf over time (instead of the other way around), for example by dilution. If this is the case, we would expect to see a trend in the DIC content of the polynya during ebbing tide. However, this is not the case and the net change in DIC content over six hour periods (including ebbing and rising tide) is zero (Fig. G3 for PS89). Our observations are a snapshot of a highly dynamic system and consequently they do not provide enough data to analyse such modifications and trends of the seawater physico-chemical properties. Nevertheless, they can be the beginning of future studies into this topic.

While a tidal movement of a salinity front or gradient across the sampling site is a possible and realistic explanation for the oscillations observed in the water column, validating it would require physico-chemical profiles between the Ekström Ice Shelf and the edge of the continental shelf. Without them, other relevant physical processes, such as regional circulation, tidal straining, or mixing, cannot be excluded. For the same reason, the distance from the ice shelf at which the tidally-driven deepening and shoaling of the isolines (most clearly seen for PS89) can be observed remains uncertain. The distance will depend on the strength of the tidal current and would have to be investigated with repeat transects from the ice shelf towards the open ocean at various points in the tidal cycle. Other mediating factors, such as winds and internal tidal waves generated by uneven bathymetry, would have to be additionally considered (Llanillo et al., 2019). Moreover, tidal mixing may erode fronts and modify water masses (such as at the ice shelf edge or of the ESW) over time, adding a temporal dimension to the effect of the tide on the shelf waters in this region.

Despite the unknowns outlined above, the case studies presented in this work show that strong tidal influences on the physical structure and biogeochemical properties of the water column can be expected along the Weddell Sea coastline (and other polar regions subject to strong tides), especially in close proximity to ice shelves and regions of sea ice melt. They also show that local winds and ice shelf meltwater outflows can increase the complexity of the tidal impact within a region such as a coastal polynya. In addition to studies on the physical role of tides on (for example) basal ice shelf melt, ecological, biogeochemical, and air-sea gas exchange studies can benefit from a better understanding of tidal impacts on the water column.

4.2 Air-sea CO₂ exchange

The tidally-induced variability in the water column implies that the timing of sampling matters when estimating the relative contribution of coastal regions to the total CO₂ flux of the Weddell Sea. We first present the variability in the CO₂ flux during the tidal observation periods. We then illustrate that bias can be introduced in our understanding of the relative importance of coastal regions along the Weddell Sea if sampling strategies do not take tidal influences into account.

The difference in the $f\text{CO}_2$ of the seawater and the atmosphere is what drives a positive or negative CO₂ flux at the air-sea interface. For the flux calculations, we used the average wind speed recorded during the PS89 and PS117 tidal observation periods: 10.7 and 6.6 m s⁻¹, respectively (Table 1). This choice implies that the computed variability in the flux results is ~~solely-mainly~~ driven by the air-sea gradient of $f\text{CO}_2$. During the PS89 tidal observation period in January 2015, the surface water at the Ekström Ice Shelf was undersaturated in $f\text{CO}_2$ relative to the atmosphere (Fig. 4), creating a CO₂ sink (Fig. 8). However, the depth at which the $f\text{CO}_2$ of the seawater is equal to that of the atmosphere (marked by a dashed line in Fig. 4A) fluctuates ~~between the bottom (incoming tide) and the surface (outgoing tide)~~ from near the bottom of the water column during

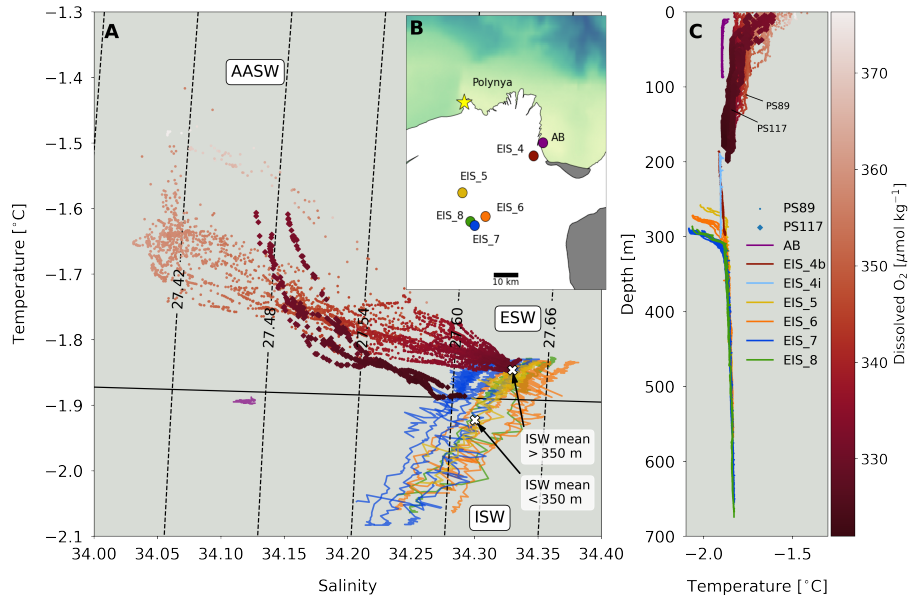


Figure 7. A) Temperature-salinity diagram for PS89 (circles) and PS117 (diamonds) tidal observation periods, which are coloured according to dissolved oxygen concentrations, and the hot water drill CTD profiles through of the ice shelf from the cavity water were collected and made available by Smith et al. (2020a) (coloured lines). Colours for the cavity CTD profiles were taken by hot water drill profiles correspond to drilling through the coloured marker ice at various locations on the ice shelf, which are shown on the map in (B) in corresponding colours to the profiles in (A). AASW = Antarctic Surface Water, ESW = Eastern Shelf Water, ISW = Ice Shelf Water. The average temperature and salinity of water deeper and shallower than 350 m underneath the ice shelf are plotted as single purple markers white crosses. Contour lines indicate sigma-t in kg m⁻³. Black line indicates freezing point at mean atmospheric pressure. B) Map of measurement locations of the Ekström Ice Shelf cavity CTD profiles by Smith et al. (2020a) denoted by "EIS ", a measurement location in Atka Bay by Smith et al. (2020a) denoted with "AB", and the sampling location of the tidal observations indicated by the yellow star. C) Temperature profiles for PS89 (circles) and PS117 (diamonds) tidal observation periods, coloured according to oxygen concentrations, and for the hot water drill CTD profiles underneath the ice shelf from Smith et al. (2020a).

incoming tide to near-surface during outgoing tide. Direct $f\text{CO}_2$ measurements were made using the vessel's underway system (at 11 m depth) during (as well as 2.5 days prior to the start of) the discrete seawater sampling, i.e. the start of the PS89 tidal observation period (Fig. D1). $f\text{CO}_2$ correlates very well with the salinity, again indicating that physical movement of water is the dominant driver of the variability. CO₂ fluxes determined from the underway measurements a) compare well with the fluxes calculated from the discrete seawater carbonate chemistry results where they overlap in time, and b) show an even more drastic-stronger fluctuation on the 7th and 8th of January 2015, when the flux status of the sampling site swung between a sink (rising tide) and a source (ebbing tide) of CO₂ twice within 24 hours (Fig. 8). This suggests that water with higher DIC content reached the surface during ebbing tide. The CO₂ sink during PS89 is as large as -19.9-23.6 mmol m⁻² day⁻¹, while the largest CO₂ source reaches 6.93.1 mmol m⁻² day⁻¹ (Fig. 8).

During PS117, the ~~entire water column has a higher seawater $f\text{CO}_2$ than also dips below~~ the atmospheric value ~~except for a patch between 50 and 20 m depth at~~ at times of rising tide. However, the $f\text{CO}_2$ gradient and the ~~start and end of the tidal observation period~~ wind speed are much lower compared to PS89 (Fig. 4B), ~~resulting in a low CO_2 flux (Fig. 8)~~. Even though not all PS117 CTD cast measurements started as shallow as those from PS89, the few casts that did have
505 measurements starting <20 m showed a lack of a strong gradient in the DIC and TA content at the surface. The shallowest discrete carbonate chemistry water samples are therefore considered to be representative enough of the water properties at the surface. Accordingly, the site is likely to have ~~been a small source of~~ had a relatively neutral CO_2 flux at this time in January 2019. Using the $f\text{CO}_2$ results based on the discrete water sampling, the average CO_2 uptake during the PS89 tidal observation period is ~~-8.0 – 11.7 ± 3.7 mmol $\text{m}^{-2} \text{day}^{-1}$ ($\pm 1\sigma$)~~. For PS117, the average CO_2 release to the atmosphere is
510 ~~$+4.0$ – 0.1 ± 0.7 – 0.9 mmol $\text{m}^{-2} \text{day}^{-1}$~~ . Even though the size of the coastal polynya was variable, the sampling site was free of sea ice during the tidal observations and it is assumed to have been ice free for the entire summer. We therefore have not scaled the gas transfer velocity with the fraction of open water area. At times during the summer when the site does get covered by sea ice, the amplitude of the CO_2 flux would be subdued.

The importance of strategic seawater sampling for the purpose of obtaining reliable air-sea gas exchange values in regions
515 ~~such as the Ekström coastal polynya~~ is illustrated by the following. Assuming the scenario we know for the PS89 tidal observation period, if discrete water samples had unknowingly only been collected during ebbing tide (higher seawater $f\text{CO}_2$), the calculated CO_2 flux (~~0.6 – 3.1 mmol $\text{m}^{-2} \text{day}^{-1}$~~) would have underestimated the strength of the CO_2 uptake by the polynya by up to ~~108 – 73 %~~, compared to the average uptake (~~-8.0 – 11.7 mmol $\text{m}^{-2} \text{day}^{-1}$~~), ~~i. e. actually mistaking it for a small source rather than a sink of CO_2~~ . However, if samples had only been collected during times of rising tide (lower seawater $f\text{CO}_2$),
520 the capacity of the polynya to take up CO_2 (~~$+15.9$ – 19.6 mmol $\text{m}^{-2} \text{day}^{-1}$~~) would have been overestimated by up to ~~98 – 67 %~~, compared to the average uptake value. Since the variability of the CO_2 flux during PS117 was much lower (a CO_2 release ranging between ~~0.2 – 2.2 – 1.2 and 0.8 mmol $\text{m}^{-2} \text{day}^{-1}$~~), samples collected at any time during this 24 hour period would have been relatively representative of this tidal observation period, but not necessarily of the month or the entire summer season.

We emphasise the potential misrepresentation of the role of coastal polynyas in the Weddell Sea CO_2 uptake if tidal influ-
525 ences are not accounted for ~~using~~. For this, we again use the two extreme scenarios ~~from the hypothetical case where samples are collected only during rising or ebbing tide of the~~ based on the PS89 tidal observation: ~~samples are only taken at either observations that were also used above to illustrate the maximum potential over- and underestimation of the CO_2 uptake. I.e., we use the hypothetical cases where surface seawater samples are either collected at peak rising tide or (overestimation of CO_2 uptake) or at peak ebbing tide, which lead to an overestimation or underestimation of the (underestimation of CO_2 flux, respectively (see above)–uptake)~~. We constrain results and comparisons to the summertime, assume that all coastal polynyas in the south-eastern Weddell Sea are influenced by the same water masses present in the Ekström polynya during the PS89 tidal observation, and assume the same wind speed to highlight the role of the seawater $f\text{CO}_2$ variability. Using the total area of polynyas along the south-eastern Weddell Sea coastline in the summer of $49 \times 10^3 \text{ km}^2$ (as estimated by Arrigo and van Dijken (2003)), the total net CO_2 flux–uptake for all polynyas along the south-eastern coastline
530

would be $-0.78\text{--}0.97 \times 10^9 \text{ mol day}^{-1}$ (~~net CO₂ uptake~~), if data had only been collected during rising tide. It would have been $0.03\text{--}0.15 \times 10^9 \text{ mol day}^{-1}$ (~~net CO₂ release~~), if data had only been collected during ebbing tide.

Brown et al. (2015) estimated a summer marine uptake of CO₂ for the entire Weddell Sea of -0.044 to $-0.058 \pm 0.010 \text{ Pg C yr}^{-1}$, based on a summertime ocean inversion. In our hypothetical, biased upscaling case of collecting carbonate chemistry samples during ebbing tide, we would determine that the contribution of eastern shelf polynyas to Brown et al.'s upper summer CO₂ uptake estimate is $0.21\text{--}2\%$ (using the same area for the Weddell Sea: $6.2 \times 10^{12} \text{ m}^2$ and scaling the daily flux up to the whole year). If seawater samples had only been collected during rising tide, the contribution of the eastern shelf polynyas would have been estimated at $5.97\text{--}3\%$ to the total summer CO₂ uptake of the Weddell Sea. This is quite substantial considering that the area used here for the south-eastern coastal polynyas is less than 0.8% of the total Weddell Sea area (including regions covered and not covered by sea ice). If the average CO₂ flux of PS89 had been used in this simplistic upscaling exercise instead of the extreme high- and low-end scenarios, then the total CO₂ flux of all Weddell Sea coastal polynyas would be $-0.4\text{--}0.58 \pm 0.18 \times 10^9 \text{ mol day}^{-1}$ ($3.04\text{--}4\%$ of Weddell Sea flux) for January 2015. ~~There is an order of magnitude difference if Results are two orders of magnitude lower when~~ the same upscaling exercise is done with the average flux for the PS117 experiment: $0.07\text{ case study: } 0.003 \pm 0.034 \times 10^9 \text{ mol day}^{-1}$ ($0.50\text{--}0.2\%$ of Weddell Sea flux).

The ~~purpose of the~~ above exercise is ~~simply to~~ highlight the variability in these coastal systems. Given both the scarcity of data in these regions and the challenges in reaching them, tides may be an important aspect to consider to explain some of the variability seen in previous and future oceanographic data. Although the Weddell Sea is considered to be an - albeit small - annual net CO₂ sink (Hoppema et al., 1999; Bakker et al., 2008; Brown et al., 2015), its CO₂ uptake is sensitive to the balance of physical, chemical, and biological processes, such as sea ice growth/melt, regional wind strength/patterns, circulation, and biological CO₂ drawdown (Brown et al., 2015). The coastal marine regions and the processes that govern their water properties may be equally sensitive and their changes on time-scales of hours to weeks or months may be mediated by the tides.

5 Conclusions

We present the significant semi-diurnal influence of tides on the water properties and carbonate chemistry at the margins of a coastal polynya hugging the Ekström Ice Shelf in the south-eastern Weddell Sea. Advection of lower DIC and TA waters from the north-east during rising tide influenced by sea ice melt, decreases the salinity and $f\text{CO}_2$ at the sampling site and results in CO₂ draw-down from the atmosphere. As the sampling site is located directly next to the ice shelf, it sees the extension of the water underneath the ice shelf, which is drawn out from underneath during ebbing tide. This water is less ventilated and has a higher DIC and TA content (and ~~therefore a higher~~ $f\text{CO}_2$) compared to the water to the north-east, which decreases the strength of the CO₂ sink and can even reverse ~~it~~ the direction of the CO₂ air-sea flux on a semi-diurnal time scale.

Differences in the variability between the two tidal observations between January 2015 and January 2019 ~~suggests~~ suggest a complex interaction between timing of the tide, local and regional sea ice melt, polynya area, basal melt, and local forces, such as wind speed and direction. The datasets of the two short case studies presented here are too small to ~~explore the~~

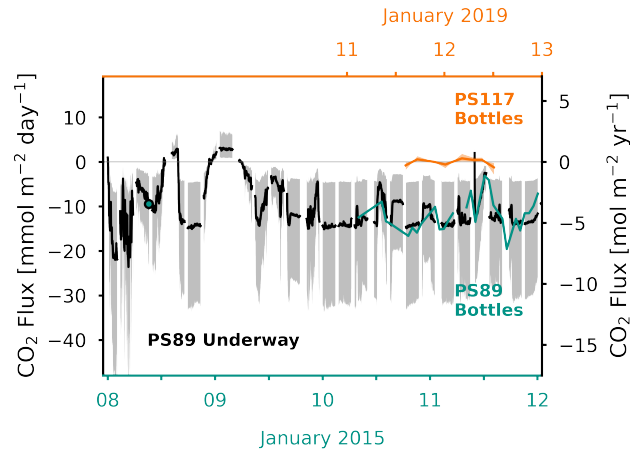


Figure 8. Air-sea CO₂ flux (in mmol m⁻² day⁻¹ on the left y-axis and in mol m⁻² year⁻¹ on the right y-axis) determined from the discrete surface seawater sample measurements and average wind speed for the PS89 (green, bottom x-axis) and PS117 (orange, top x-axis) tidal observation periods, and from the PS89 underway *f*CO₂ measurements (black, bottom x-axis), which started on the 7th of January 2015. Dotted lines use The CO₂ flux based on a discrete surface seawater sample collected on the parameterisation by Sweeney et al. (2007), which was used in calculations by Brown et al. (2015) 7th of January 2015 is also shown with a green marker. The filled shading indicates the range of the flux calculated using the minimum and maximum wind speed measured during PS89 and PS117, respectively (Table 1). Negative flux represents CO₂ uptake by the ocean.

mediating fully explore the modulating effects of these processes. ~~Longer tidal observations and repeats are required, along with measurements of micro-nutrients, carbonate chemistry, on the water column variability.~~ To be able to do so, longer tidal observations are required that cover different parts of the spring-neap tidal cycle, and at different times of the year to capture varying wind and ice melt/growth conditions. Alongside carbonate system state variables, an array of co-collected measurements, such as micro-nutrients, biological productivity, and oxygen isotopes, ~~to be able to stable isotopes,~~ can help to constrain interacting processes. ~~A better~~ An understanding of the carbonate chemistry of the cavity water underneath the ice shelf - although challenging to obtain - would help understand the influence of this water on the polynya during ebbing tide.

The observations presented here were obtained from a stationary sampling site. Without knowing the hydrological conditions in the surrounding area at various time points in the tidal cycle, we must consider that our conclusions only apply to a very local area, the margins of polynyas, or the edges of ice shelves. Hydrographic transects between the ice shelf and ~~out towards the edge of the continental shelf (across the polynya and underneath the sea ice)~~ well into the sea ice cover at ebbing and rising tide can help identify the extent to which the tidal oscillation, as seen in the case studies, is relevant further away from the coastline and from the polynya's margins. It may also help identify the formation and characteristics of ~~what is described here as a salinity~~ a horizontal coastal salinity gradient – here referred to as a "salinity front" – that moves back and forth with the tide.

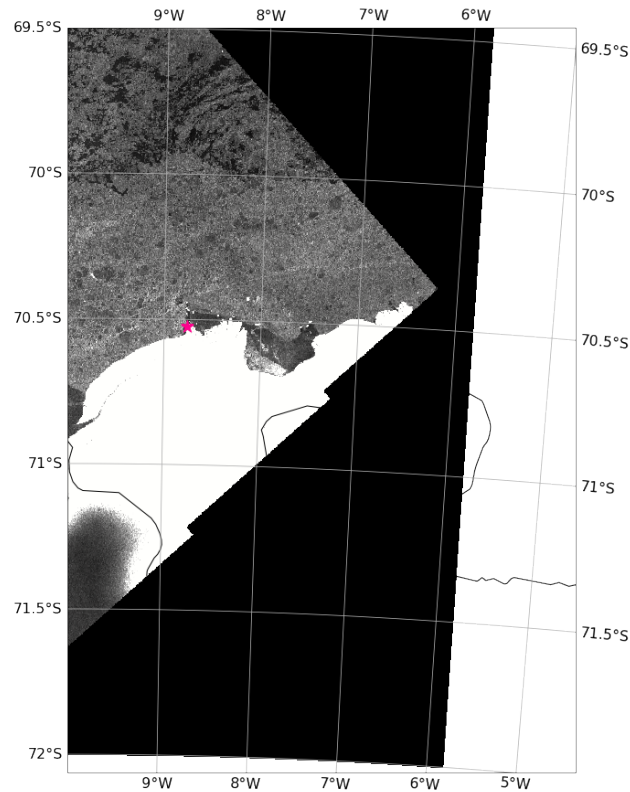


Figure A1. Sentinel-1 SAR image of the Ekström Ice Shelf and polynya on 12.01.2015 (PS89) (ESA, 2021). [The pink star indicates the sampling location for the PS89 tidal observation.](#)

This case study has shown that tides can swing the status of coastal polynyas on the south-eastern continental shelf of the Weddell Sea from a strong sink to a source of CO₂ on a semi-diurnal time-scale. Seawater CO₂ uptake can be underestimated
 585 by ~~108~~⁷³ % and overestimated by ~~98~~⁶⁷ %, if these tidal changes are ignored. Awareness of the tidal impacts is required to implement strategic sampling techniques to obtain representative data in these extremely variable - and rarely accessible - systems that play a role in the sensitive balance of the Weddell Sea's net air-sea CO₂ exchange.

Data availability. Data are available on Pangea: <https://doi.org/10.1594/PANGAEA.946363>.

Appendix A: Sentinel images of Ekström polynya

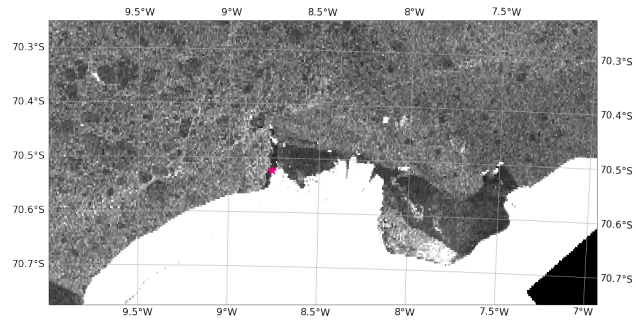


Figure A2. Sentinel-1 SAR image of the Ekström Ice Shelf and polynya on 12.01.2015 (PS89), zoomed in (ESA, 2021). [The pink star indicates the sampling location for the PS89 tidal observation.](#)

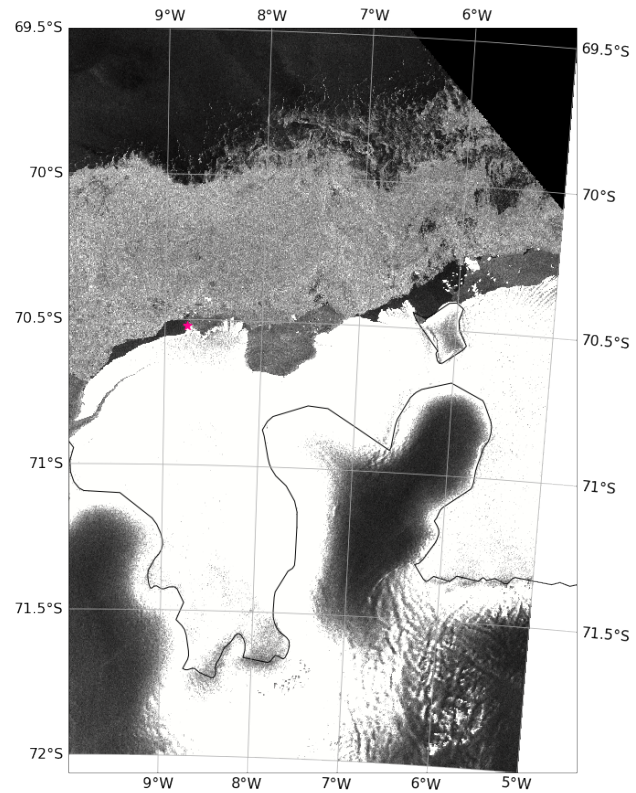


Figure A3. Sentinel-1 SAR image of the Ekström Ice Shelf and polynya on 10.01.2019 (PS117) (ESA, 2021). [The pink star indicates the sampling location for the PS117 tidal observation.](#)

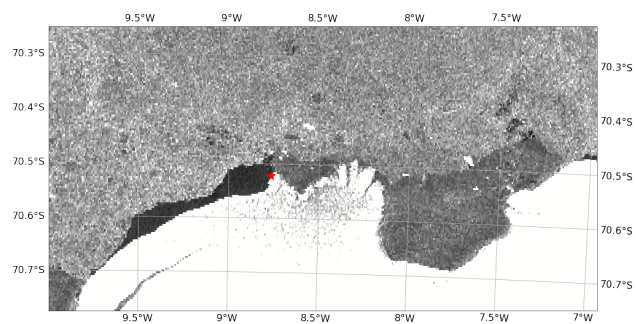


Figure A4. Sentinel-1 SAR image of the Ekström Ice Shelf and polynya on 10.01.2019 (PS117), zoomed in (ESA, 2021). [The pink star indicates the sampling location for the PS117 tidal observation.](#)

Table B1. References to all supporting data and data sources used in this work.

Data Type	Data Source	Reference
PS89 and PS117 DIC/TA data	Pangaea	(González-Dávila et al., 2022)
PS89 physical oceanographic data AWI CTD (continuous)	Pangaea	(Rohardt and Boebel, 2015a)
PS117 physical oceanographic data AWI CTD (continuous)	Pangaea	(Rohardt and Boebel, 2020)
PS89 CTD bottle data, incl. nutrient data (discrete)	Pangaea	(Rohardt and Boebel, 2015b)
PS117 CTD bottle data, incl. nutrient data (discrete)	Pangaea	(Rohardt et al., 2020)
PS89 ADCP	Pangaea	(Witte and Boebel, 2018)
PS117 ADCP	Pangaea	(Boebel and Tippenhauer, 2019)
PS89 wind speed	Pangaea	(König-Langlo, 2015)
PS117 wind speed	Pangaea	(Schmithüsen, 2020)
<i>x</i> CO ₂ Syowa	ESRL NOAA	(Dlugokencky et al., 2019)
Antarctica boundaries	SCAR ADD	(Gerrish et al., 2020)
Ekström CTD data	Pangaea	(Smith et al., 2020b)
Sentinel 1 - SAR	European Space Agency	(ESA, 2021)
Southern Ocean Bathymetry	IBSCO Version 1.0, Pangaea	(Arndt et al., 2013)

Table C1. CTD sensor precisions.

Variable	Sensor or method	Expedition	Precision	Reference
Conductivity	SBE4c	PS89, manufacturer specification	0.003 mSc m ⁻¹ ^a	(Driemel et al., 2017)
Salinity	SBE4c	PS117	0.0004 ^b	(Rohardt and Tippenhauer, 2020)
Temperature	SBE3plus	PS89, manufacturer specification	0.001 °C ^a	(Driemel et al., 2017)
Temperature	SBE3plus	PS117	0.00000 °C ^a	(Rohardt and Tippenhauer, 2020)
Pressure	Digiquartz with TC	PS89, manufacturer specification	0.015 % full scale	(Driemel et al., 2017)
Fluorescence	Wetlabs EcoFLR	PS89 and PS117	-	(Rohardt and Tippenhauer, 2020)
Dissolved O ₂	SBE43	PS89	0.43 ^c ml L ⁻¹	(Boebel, 2015)
Dissolved O ₂	SBE43	PS117	0.42 ^d ml L ⁻¹	(Rohardt and Tippenhauer, 2020)

^a Average of the residual of post-calibration by Sea-Bird Scientific. ^b Standard deviation of the residual of the difference between the sensor measurements and the Optimate Precision Salinometer samples analysed on board. ^c Standard deviation of the difference in dissolved oxygen Winkler samples analysed on a potentiometric detection system and on a photometric end-point system on board. ^d Standard deviation of the residual of the difference between the sensor measurements and Winkler titration samples.

Table C2. Analytical uncertainty of the DIC and TA analyses using the variability of the CRM measurements per CRM batch. n refers to the number of CRMs that were run to obtain the measured values. Values listed for CRMs are certified values by Prof. Andrew Dickson's laboratory at the Scripps Institution of Oceanography of the University of California, San Diego (https://www.ncei.noaa.gov/access/ocean-carbon-acidification-data-system/oceans/Dickson_CRM/batches.html). Net coulometer counts were calibrated against the certified DIC values of the reference material, which was run before and after the sample runs per analysis day. This gave a value for counts per μmol for each CRM run. These were averaged and used (along with density and volume) to obtain the concentration of DIC per sample in $\mu\text{mol kg}^{-1}$.

Dataset	CRM Batch No.	n	DIC [$\mu\text{mol kg}^{-1}$]		TA [$\mu\text{mol kg}^{-1}$]	
			CRM	Measured	CRM	Measured
PS89	137	25	2031.90 \pm 0.62	2031.90 \pm 1.22	2231.59 \pm 0.32	2231.71 \pm 1.09
PS117	176	133	2024.22 \pm 0.82	2024.22 \pm 3.32	2226.38 \pm 0.53	2226.30 \pm 3.18
PS117	185	17	2029.88 \pm 0.62	2029.88 \pm 2.88	2220.67 \pm 0.58	2221.09 \pm 0.85

Appendix C: Sampling at study site

Table C3. Analytical precisions for nutrient concentrations.

Dataset	NO_3^- [$\mu\text{mol kg}^{-1}$]	PO_4^{3-} [$\mu\text{mol kg}^{-1}$]	SiO_4 [$\mu\text{mol kg}^{-1}$]
PS89 ^a	0.15	0.02	1.0
PS117 ^b	0.041	0.008	0.057

^a $\pm 1 \sigma$ of replicate samples for PS89. ^b $\pm 1 \sigma$ of repeat measurements of working standard at similar concentrations as average values for the tidal observation period of PS117: 30, 2, 60 $\mu\text{mol kg}^{-1}$ for NO_3^- , PO_4^{3-} , and SiO_4 , respectively.

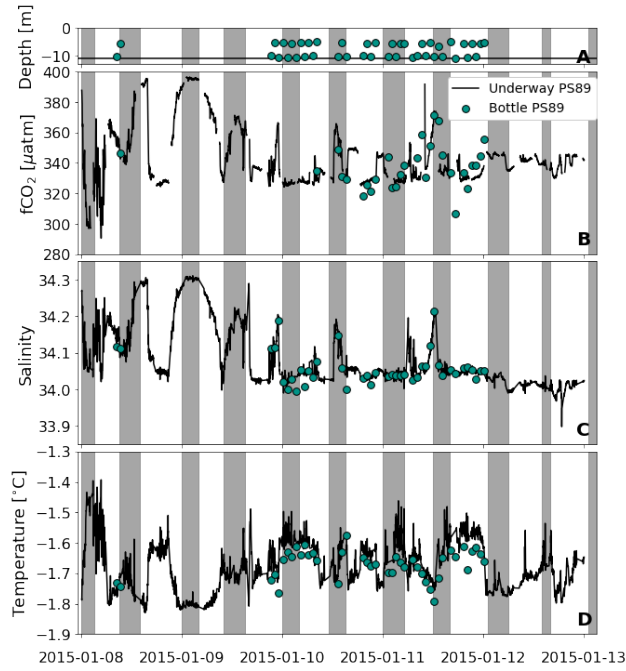


Figure D1. A comparison of measurements between the continuous measurements from the on-board underway system and the discrete samples of the surface seawater for PS89. A) Depth at which the surface discrete samples were collected during the tidal observation. The horizontal black line indicates depth at 11 m, which is the depth of the intake for the continuous $f\text{CO}_2$ measurements. B) The $f\text{CO}_2$ continuous measurements from the on-board underway system (black line) and the calculated $f\text{CO}_2$ from the discrete surface samples (circles). C) Same as B), but for temperaturesalinity. D) Same as B), but for salinitytemperature. The grey areas indicate periods of ebbing tide (where the u and v components of the modelled tidal currents are both positive).

Appendix D: Underway measurements

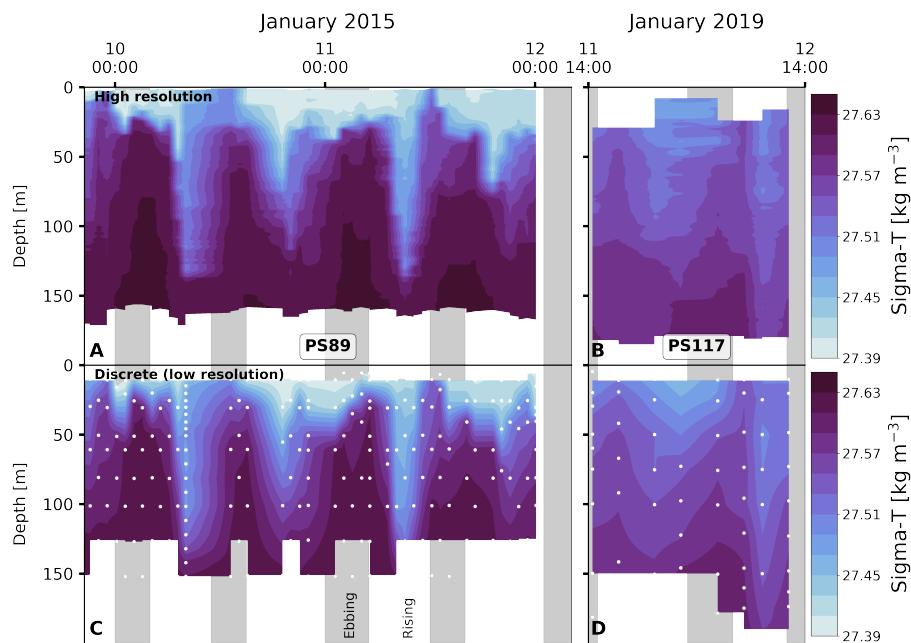


Figure E1. A) High vertical resolution profile of sigma-t measurements for PS89. B) High vertical resolution profile of sigma-t measurements for PS117. C) Discrete (low vertical resolution) profile measurements at bottle sampling depth for PS89. D) Discrete (low vertical resolution) profile measurements at bottle sampling depth for PS117. Sampling depths are shown in white markers in C and D.

Appendix E: Continuous profile vs. discrete bottle density measurements

To study the tidal cycle, profile measurements from the CTD casts are interpolated over time and depth. The high vertical resolution profile measurements for salinity and temperature are collected at a 1 dbar resolution on the down-cast, which is higher than the resolution of the discrete bottle samples and measurements that are collected on the up-cast. Difference in resolution and natural variability in the water column result in a slight difference between the high vertical resolution profile (down-cast) and discrete (low vertical resolution) bottle measurements (up-cast) at equal depth. To ensure that the bottle data with the lower vertical resolution is sufficiently representative, we compare the time and depth-interpolated bottle data to the high vertical profile measurements interpolated over time for the physical variables. As an example, we show the comparison for density (Fig. E1). It shows that the resolution of the bottle data sufficiently captures the same features in the water column as seen in the high resolution profile data. The bottle measurements are therefore reliable for interpretation of the chemical variables. As the higher vertical resolution profile measurements capture more detail of the features in the water column, these are used for the time series interpolations wherever applicable.

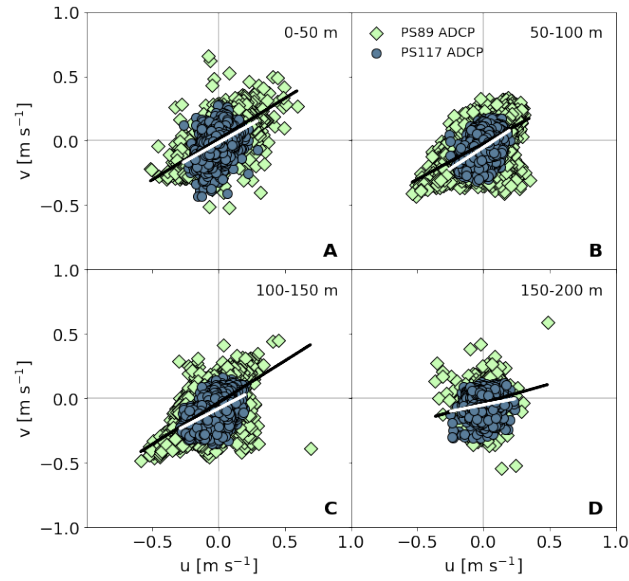


Figure F1. Correlations of the u and v components of the ADCP data for the tidal observations during PS89 (green diamonds) and PS117 (blue circles) between 0 - 50 m (A), 50 - 100 m (B), 100 - 150 m (C), and 150 - 200 m (D). All correlations are significant (p -value < 0.05) and positive, as shown with the black (PS89) and white (PS117) linear regression lines. A) $v = 0.63 \times u + 0.014$ (PS89); $v = 0.58 \times u - 0.01$ (PS117). B) $v = 0.56 \times u - 0.02$ (PS89); $v = 0.66 \times u - 0.05$ (PS117). C) $v = 0.65 \times u - 0.03$ (PS89); $v = 0.54 \times u - 0.08$ (PS117). D) $v = 0.29 \times u - 0.034$ (PS89); $v = 0.20 \times u - 0.05$ (PS117).

605 Appendix F: Currents

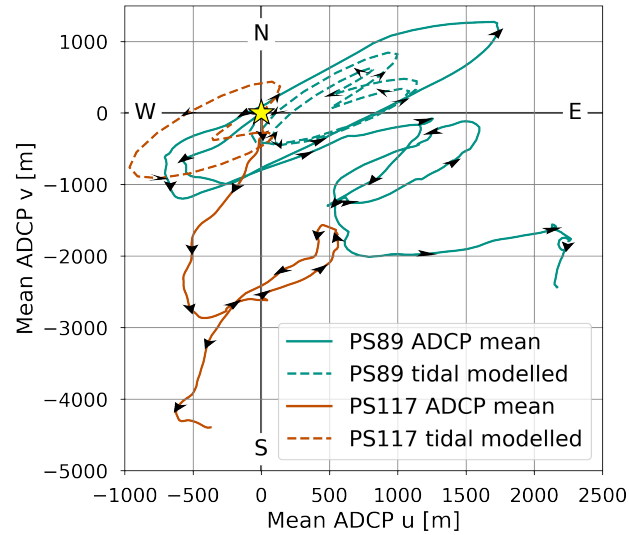


Figure F2. The hypothetical distance that a water parcel could have travelled relative to a starting point at the ship's position (indicated by the yellow star) at the starting time of sampling during the PS89 (green) and PS117 (orange) tidal observations. Full lines show the distance travelled using the water column mean ADCP current data. Dashed values show the distance travelled using the modelled water column mean tidal current data. Black arrows indicate the direction of the currents. These calculations assume that the mean currents apply to the larger shelf and polynya region, disregards topographic influences, and ignores the presence of the ice shelf, which is located directly south of the sampling site.

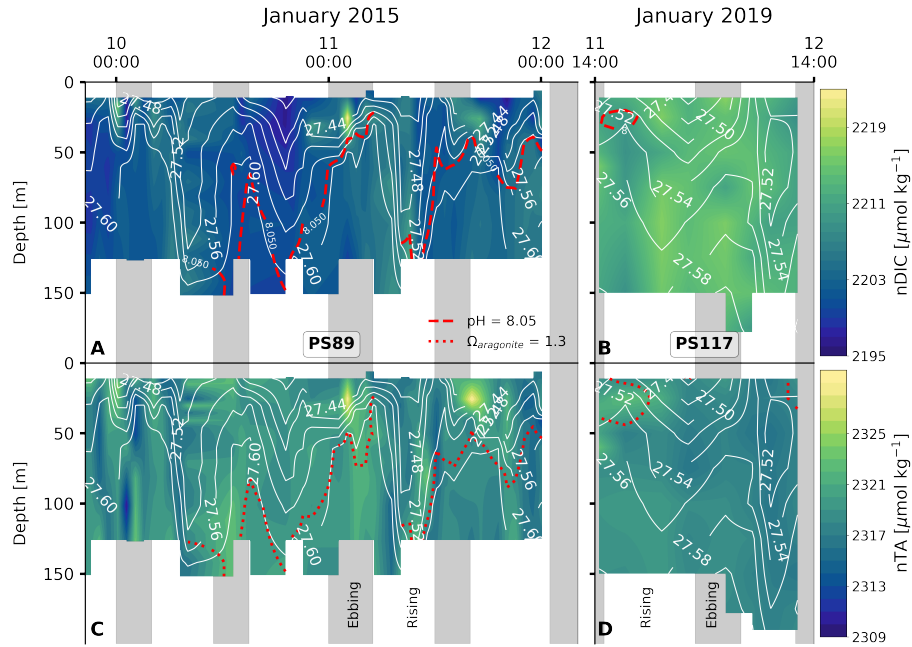


Figure G1. Salinity-normalised DIC content at the sampling site during the PS89 (A) and PS117 (B) tidal observations, as well as salinity-normalised TA content for the PS89 (C) and PS117 (D) observations. White contour lines indicate sigma-t in kg m^{-3} . Vertical grey shaded areas indicate periods of ebbing tide, as defined in the text. Dashed red lines in A and B indicate the depth at which the $\text{pH} = 8.05$. Dotted red lines in C and D indicate the depth at which the aragonite-calcite saturation state (Ω_{ca}) = 1.32.05. These are arbitrary values, used to illustrate the variability in the water column. pH ranged between 8.02-8.12 and 8.02-8.06 for PS89 and PS117, respectively. Ω_{ca} ranged between 1.95-2.43 and 1.92-2.13 for PS89 and PS117, respectively.

Appendix G: Tidal variability

~~Phosphate (red) and silicate (blue) concentrations plotted against nitrate concentrations for the PS89 (circles) and PS117 (diamonds) tidal observations.~~

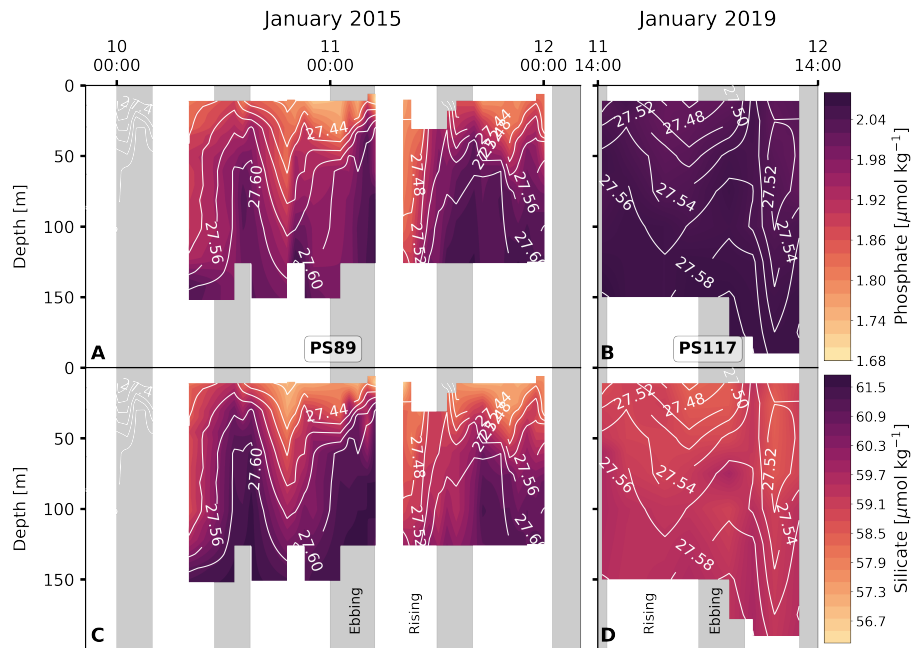


Figure G2. As for Fig. G1, but instead for phosphate and silicate (excluding content and not including the pH and calcite saturation contours that are shown in Fig. G1.

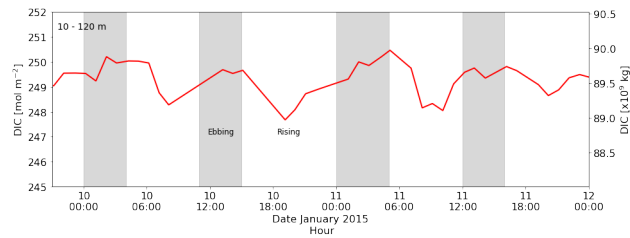


Figure G3. Left y axis: total water column DIC content between 10 and 120 m during the PS89 tidal observation. Right y axis: total DIC content between 10 and 120 m for the entire PS89 polynya, using the estimated dimensions in the text and assuming an ellipsoidal area.

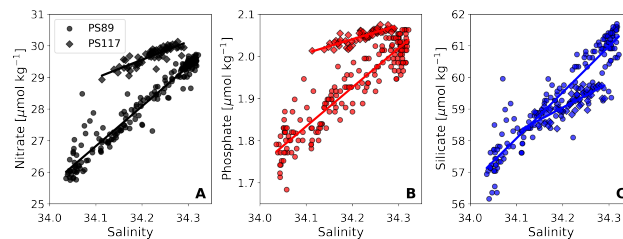


Figure G4. Nitrate (A, black), phosphate (B, red), and silicate (C, blue) content plotted against salinity for the PS89 (circles) and PS117 (diamonds) tidal observations, including linear regression lines.

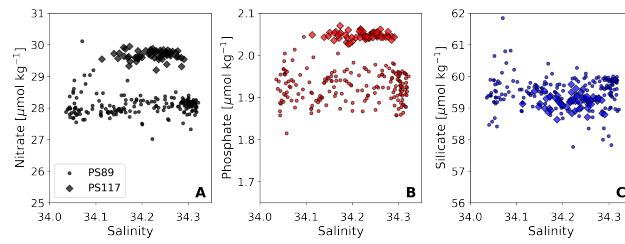


Figure G5. Salinity-normalised (following Friis et al. (2003)) nitrate (A, black), phosphate (B, red), and silicate (C, blue) content plotted against salinity for the PS89 (circles) and PS117 (diamonds) tidal observations.

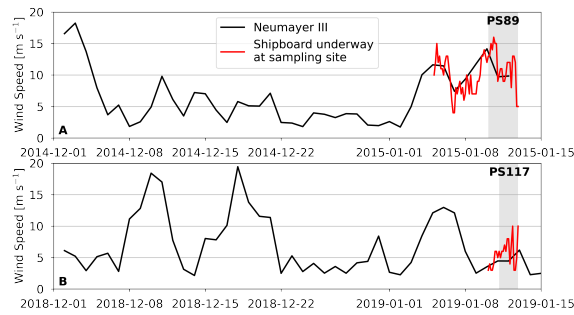


Figure H1. A) Wind speed measured at Neumayer III Research Station (black) in the time prior and during the PS89 tidal observation, as well as the ship-board wind speed measurements during the PS89 tidal observation (red). B) Wind speed measured at Neumayer III Research Station in the time prior and during the PS117 tidal observation (black), as well as the ship-board wind speed measurements during the PS117 tidal observation (red). Grey areas indicate the duration of the tidal observations.

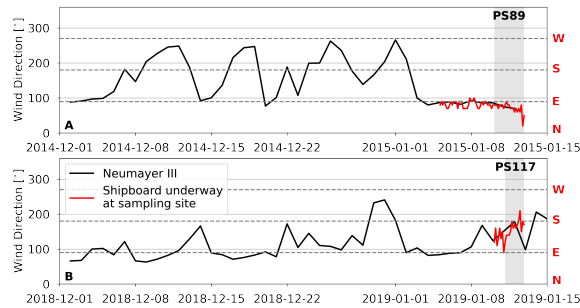


Figure H2. A) Wind direction measured at Neumayer III Research Station in the time prior and during the PS89 tidal observation (black), as well as the ship-board wind direction measurements during the PS89 tidal observation (red). B) Wind direction measured at Neumayer III Research Station in the time prior and during the PS117 tidal observation (black), as well as the ship-board wind direction measurements during the PS117 tidal observation (red). Grey areas indicate the duration of the tidal observations. Horizontal dashed lines indicate 90°, 180°, and 270°. North, East, South, and West directions are indicated by the red initials at the right side of the plots.

Appendix H: Wind

610 *Author contributions.* ESD developed the concept for this manuscript, led the writing process, and collected/analysed/processed the PS117 DIC and TA samples. DCEB, MH, GDO, BQ, HJV, MGD, and JMSC provided valuable input and guidance for the development of this work. MGD and JMSC independently collected/analysed/processed the PS89 DIC and TA samples. BQ processed the PS117 ADCP data. DS and SO collected/analysed/processed the PS89 and PS117 nutrient data, respectively. GR ran the tidal model. STK collected and analysed the Winkler O₂ samples for the calibration of the dissolved O₂ sensors on PS117. All authors contributed to the manuscript.

615 *Competing interests.* The authors declare that they have no conflict of interest.

Acknowledgements. ESD's work is supported by the Natural Environment Research Council (NERC) through the EnvEast Doctoral Training Partnership (NE/L002582/1). Work done by ESD and DCEB for the PS117 expedition was supported by funding from the NERC for the PICCOLO project (NE/P021395/1). Partial support to JMSC and MGD was received from EU FP7 project CARBOCHANGE (Grant agreement No. 264879) for the participation in the PS89 ANT-XXX/2 cruise. MH was partly funded by the European Union's Horizon
620 2020 Research and Innovation Program under grant agreement N821001 (SO-CHIC). We would like to thank the crew and captains of *R. V. Polarstern* and the scientists for the PS89 and PS117 expeditions for the cooperation on board and the unforgettable experiences. A big
thanks to Dr. Janin Schaffer, whose initial description of the tidal influences on the temperature and salinity profiles for the PS117 tidal
observation in the PS117 cruise report massively helped the beginning of this work. A special thank you goes out to Salar Karam and Dr.
Kirstin Schulz for their patient discussions and valuable insights on physical oceanography of the study site. Finally, we would like to thank
625 our three anonymous reviewers for their valuable comments, which greatly improved the quality of this manuscript.

References

- Alderkamp, A. C., Mills, M. M., van Dijken, G. L., Laan, P., Thuróczy, C. E., Gerringa, L. J., de Baar, H. J., Payne, C. D., Visser, R. J., Buma, A. G., and Arrigo, K. R.: Iron from melting glaciers fuels phytoplankton blooms in the Amundsen Sea (Southern Ocean): Phytoplankton characteristics and productivity, *Deep-Sea Research Part II: Topical Studies in Oceanography*, 71-76, 32–48, <https://doi.org/10.1016/j.dsr2.2012.03.005>, 2012.
- Anderson, L. G., Holby, O., Lindegren, R., and Ohlson, M.: The transport of anthropogenic carbon dioxide into the Weddell Sea, *Journal of Geophysical Research*, 96, <https://doi.org/10.1029/91jc01785>, 1991.
- Andersson, A. J. and MacKenzie, F. T.: Revisiting four scientific debates in ocean acidification research, *Biogeosciences*, 9, 893–905, <https://doi.org/10.5194/bg-9-893-2012>, 2012.
- Arndt, J. E., Schenke, H. W., Jakobsson, M., Nitsche, F.-O., Buys, G., Goleby, B., Rebescio, M., Bohoyo, F., Hong, J. K., Black, J., Greku, R. K., Udintsev, G. B., Barrios, F., Reynoso-Peralta, W., Taisei, M., and Wigley, R.: The International Bathymetric Chart of the Southern Ocean (IBCSO) Version 1.0, <https://doi.org/10.1594/PANGAEA.805736>, supplement to: Arndt, JE et al. (2013): The International Bathymetric Chart of the Southern Ocean Version 1.0 – A new bathymetric compilation covering circum-Antarctic waters. *Geophysical Research Letters*, 40(9), 1-7, <https://doi.org/10.1002/grl.50413>, 2013.
- Arrigo, K. R. and van Dijken, G. L.: Phytoplankton dynamics within 37 Antarctic coastal polynya systems, *Journal of Geophysical Research: Oceans*, 108, <https://doi.org/10.1029/2002jc001739>, 2003.
- Arrigo, K. R., van Dijken, G., and Long, M.: Coastal Southern Ocean: A strong anthropogenic CO₂ sink, *Geophysical Research Letters*, 35, 1–6, <https://doi.org/10.1029/2008GL035624>, 2008.
- Arrigo, K. R., van Dijken, G. L., and Strong, A. L.: Environmental controls of marine productivity hot spots around Antarctica, *Journal of Geophysical Research: Oceans*, 120, 5545–5565, <https://doi.org/10.1002/2015JC010888>, 2015.
- Arroyo, M. C., Shadwick, E. H., and Tilbrook, B.: Summer carbonate chemistry in the Dalton Polynya, East Antarctica, *Journal of Geophysical Research: Oceans*, 124, 5634–5653, <https://doi.org/10.1029/2018JC014882>, 2019.
- Bakker, D. C., Hoppema, M., Schröder, M., Geibert, W., and De Baar, H. J.: A rapid transition from ice covered CO₂-rich waters to a biologically mediated CO₂ sink in the eastern Weddell Gyre, *Biogeosciences*, 5, 1373–1386, <https://doi.org/10.5194/bg-5-1373-2008>, 2008.
- Barber, D. G. and Massom, R. A.: Chapter 1 The Role of Sea Ice in Arctic and Antarctic Polynyas, in: *Elsevier Oceanography Series*, vol. 74, chap. 1, pp. 1–54, [https://doi.org/10.1016/S0422-9894\(06\)74001-6](https://doi.org/10.1016/S0422-9894(06)74001-6), 2007.
- Boebel, O.: The expedition PS89 of the research vessel POLARSTERN to the Weddell Sea in 2014/2015, *Berichte zur Polar-und Meeresforschung= Reports on polar and marine research*, 689, https://doi.org/10.2312/BzPM_0689_2015, 2015.
- Boebel, O.: The Expedition PS117 of the Research Vessel POLARSTERN to the Weddell Sea in 2018/2019, *Berichte zur Polar-und Meeresforschung= Reports on polar and marine research*, 732, https://doi.org/10.2312/BzPM_0732_2019, 2019.
- Boebel, O. and Tippenhauer, S.: Raw data of continuous VM-ADCP (vessel-mounted Acoustic Doppler Current Profiler) profile during POLARSTERN cruise PS117, <https://doi.org/10.1594/PANGAEA.902725>, 2019.
- Brown, P. J., Jullion, L., Landschützer, P., Bakker, D. C., Naveira Garabato, A. C., Meredith, M. P., Torres-Valdés, S., Watson, A. J., Hoppema, M., Loose, B., Jones, E. M., Telszewski, M., Jones, S. D., and Wanninkhof, R.: Carbon dynamics of the Weddell Gyre, Southern Ocean, *Global Biogeochemical Cycles*, 29, 288–306, <https://doi.org/10.1002/2014GB005006>, 2015.

- Carmack, E. C.: A quantitative characterization of water masses in the Weddell sea during summer, *Deep-Sea Research and Oceanographic Abstracts*, 21, 431–443, [https://doi.org/10.1016/0011-7471\(74\)90092-8](https://doi.org/10.1016/0011-7471(74)90092-8), 1974.
- Dickson, A. and Riley, J.: The estimation of acid dissociation constants in sea-water media from potentiometric titrations with strong base, 7, 101–109, [https://doi.org/10.1016/0304-4203\(79\)90002-1](https://doi.org/10.1016/0304-4203(79)90002-1), 1979.
- Dickson, A. G.: Standard potential of the reaction: $\text{AgCl(s)} + \frac{1}{2}\text{H}_2\text{(g)} = \text{Ag(s)} + \text{HCl(aq)}$, and the standard acidity constant of the ion HSO_4^- in synthetic sea water from 273.15 to 318.15 K, *The Journal of Chemical Thermodynamics*, 22, 113–127, [https://doi.org/10.1016/0021-9614\(90\)90074-Z](https://doi.org/10.1016/0021-9614(90)90074-Z), 1990.
- Dickson, A. G., Sabine, C. L., and Christian, J. R.: Guide to Best Practices for Ocean CO_2 Measurements, North Pacific Marine Science Organization, www.pices.int, 2007.
- Dlugokencky, E., Mund, J., Crotwell, A., Crotwell, M., and Thoning, K.: Atmospheric Carbon Dioxide Dry Air Mole Fractions from the NOAA ESRL Carbon Cycle Cooperative Global Air Sampling Network, 1968–2018, <https://doi.org/https://doi.org/10.15138/wkgj-f215>, version: 2019–07, 2019.
- Dmitrenko, I. A., Kirillov, S. A., Bloshkina, E., and Lenn, Y. D.: Tide-induced vertical mixing in the Laptev Sea coastal polynya, *Journal of Geophysical Research: Oceans*, 117, 1–19, <https://doi.org/10.1029/2011JC006966>, 2012.
- Driemel, A., Fahrbach, E., Rohardt, G., Beszczynska-Möller, A., Boetius, A., Budéus, G., Cisewski, B., Engbrodt, R., Gauger, S., Geibert, W., Geprägs, P., Gerdes, D., Gersonde, R., Gordon, A. L., Grobe, H., Hellmer, H. H., Isla, E., Jacobs, S. S., Janout, M., Jokat, W., Klages, M., Kuhn, G., Meincke, J., Ober, S., Østerhus, S., Peterson, R. G., Rabe, B., Rudels, B., Schauer, U., Schröder, M., Schumacher, S., Sieger, R., Sildam, J., Soltwedel, T., Stangeew, E., Stein, M., Strass, V. H., Thiede, J., Tippenhauer, S., Veth, C., Von Appen, W. J., Weirig, M. F., Wisotzki, A., Wolf-Gladrow, D. A., and Kanzow, T.: From pole to pole: 33 years of physical oceanography onboard R/V Polarstern, *Earth System Science Data*, 9, 211–220, <https://doi.org/10.5194/essd-9-211-2017>, 2017.
- Eicken, H. and Lange, M. A.: Development and properties of sea ice in the coastal regime of the southeastern Weddell Sea, *Journal of Geophysical Research: Oceans*, 94, 8193–8206, <https://doi.org/10.1029/JC094iC06p08193>, 1989.
- ESA: Sentinel 1 SAR Dataset, european Space Agency. Data retrieved from Copernicus Open Access Hub: <https://scihub.copernicus.eu/>, 2021.
- Fahrbach, E., Peterson, R. G., Rohardt, G., Schlosser, P., and Bayer, R.: Suppression of bottom water formation in the southeastern Weddell sea, *Deep-Sea Research Part I*, 41, 389–411, [https://doi.org/10.1016/0967-0637\(94\)90010-8](https://doi.org/10.1016/0967-0637(94)90010-8), 1994.
- Feely, R. A., Sabine, C. L., Lee, K., Berelson, W., Kleypas, J., Fabry, V. J., and Millero, F. J.: Impact of anthropogenic CO_2 on the CaCO_3 system in the oceans, *Science*, 305, 362–366, <https://doi.org/10.2134/jae1985.0003>, 2004.
- Friis, K., Körtzinger, A., and Wallace, D. W.: The salinity normalization of marine inorganic carbon chemistry data, *Geophysical Research Letters*, 30, 1–4, <https://doi.org/10.1029/2002GL015898>, 2003.
- Gerringa, L. J., Alderkamp, A. C., Laan, P., Thuróczy, C. E., De Baar, H. J., Mills, M. M., van Dijken, G. L., van Haren, H., and Arrigo, K. R.: Iron from melting glaciers fuels the phytoplankton blooms in Amundsen Sea (Southern Ocean): Iron biogeochemistry, *Deep-Sea Research Part II: Topical Studies in Oceanography*, 71–76, 16–31, <https://doi.org/10.1016/j.dsr2.2012.03.007>, 2012.
- Gerrish, L., Fretwell, P., and Cooper, P.: High resolution vector polygons of the Antarctic coastline (7.3) [Data set]., <https://doi.org/10.5285/0a6d85d7-fc9c-4d68-a58d-e792f68ae9f4>, 2020.
- Gleitz, M., Bathmann, U. V., and Lochte, K.: Build-up and decline of summer phytoplankton biomass in the eastern Weddell Sea, Antarctica, *Polar Biology*, 14, 413–422, <https://doi.org/10.1007/BF00240262>, 1994.

- González-Dávila, M., Droste, E. S., Santana-Casiano, J. M., Schuller, D., Ossebaard and Mario Hoppema, S., and Bakker, D. C. E.: Dissolved inorganic carbon and total alkalinity of seawater samples from a Weddell Sea coastal polynya during two tidal observation case studies for RV POLARSTERN expeditions PS89 and PS117, <https://doi.org/10.1594/PANGAEA.946363>, 2022.
- Heywood, K. J., Locarnini, R. A., Frew, R. D., Dennis, P. F., and King, B. A.: Transport and water masses of the Antarctic slope front system in the eastern Weddell Sea, Ocean, ice, and atmosphere: Interactions at the Antarctic continental margin, *Antarctic Research Series*, 75, 203–214, 1998.
- Ho, D. T., Law, C. S., Smith, M. J., Schlosser, P., Harvey, M., and Hill, P.: Measurements of air-sea gas exchange at high wind speeds in the Southern Ocean: Implications for global parameterizations, *Geophysical Research Letters*, 33, L16611, <https://doi.org/10.1029/2006GL026817>, 2006.
- Hoppema, M. and Anderson, L. G.: Chapter 6 Biogeochemistry of Polynyas and Their Role in Sequestration of Anthropogenic Constituents, in: *Elsevier Oceanography Series*, vol. 74, chap. 6, pp. 193–221, [https://doi.org/10.1016/S0422-9894\(06\)74006-5](https://doi.org/10.1016/S0422-9894(06)74006-5), 2007.
- Hoppema, M., Fahrbach, E., Stoll, M. H., and De Baar, H. J.: Annual uptake of atmospheric CO₂ by the Weddell sea derived from a surface layer balance, including estimations of entrainment and new production, *Journal of Marine Systems*, 19, 219–233, [https://doi.org/10.1016/S0924-7963\(98\)00091-8](https://doi.org/10.1016/S0924-7963(98)00091-8), 1999.
- Hoppmann, M., Nicolaus, M., Paul, S., Hunkeler, P. A., Heinemann, G., Willmes, S., Timmermann, R., Boebel, O., Schmidt, T., Kühnel, M., König-Langlo, G., and Gerdes, R.: Ice platelets below Weddell Sea landfast sea ice, *Annals of Glaciology*, 56, 175–190, <https://doi.org/10.3189/2015AoG69A678>, 2015.
- Huhn, O., Rhein, M., Hoppema, M., and van Heuven, S.: Decline of deep and bottom water ventilation and slowing down of anthropogenic carbon storage in the Weddell Sea, 1984–2011, *Deep-Sea Research Part I: Oceanographic Research Papers*, 76, 66–84, <https://doi.org/10.1016/j.dsr.2013.01.005>, 2013.
- Humphreys, M. P. and Matthews, R. S.: Calculate: total alkalinity from titration data in Python, <https://doi.org/10.5281/zenodo.2634304>, documentation: <https://mphumphreys.wordpress.com/projects/software/calculate/>, 2022.
- Humphreys, M. P., Lewis, E. R., Sharp, J. D., and Pierrot, D.: PyCO₂SYN v1.8: Marine carbonate system calculations in Python, *Geoscientific Model Development*, 15, 15–43, <https://doi.org/10.5194/gmd-15-15-2022>, 2022.
- Huot, P. V., Fichet, T., Jourdain, N. C., Mathiot, P., Rousset, C., Kittel, C., and Fettweis, X.: Influence of ocean tides and ice shelves on ocean–ice interactions and dense shelf water formation in the D’Urville Sea, Antarctica, *Ocean Modelling*, 162, 101794, <https://doi.org/10.1016/j.ocemod.2021.101794>, 2021.
- Kirillov, S. A., Dmitrenko, I. A., Hölemann, J. A., Kassens, H., and Bloshkina, E.: The penetrative mixing in the Laptev Sea coastal polynya pycnocline layer, *Continental Shelf Research*, 63, 34–42, <https://doi.org/10.1016/j.csr.2013.04.040>, 2013.
- König-Langlo, G.: Meteorological observations during POLARSTERN cruise PS89 (ANT-XXX/2), <https://doi.org/10.1594/PANGAEA.844571>, 2015.
- Legrésy, B., Wendt, A., Tabacco, I., Rémy, F., and Dietrich, R.: Influence of tides and tidal current on Mertz Glacier, Antarctica, *Journal of Glaciology*, 50, 427–435, <https://doi.org/10.3189/172756504781829828>, 2004.
- Lewis, E. and Wallace, D.: Program Developed for CO₂ System Calculations, Carbon Dioxide Information Analysis Center, 1998.
- Llanillo, P. J., Aiken, C. M., Cordero, R. R., Damiani, A., Sepúlveda, E., and Fernández-Gómez, B.: Oceanographic Variability induced by Tides, the Intraseasonal Cycle and Warm Subsurface Water intrusions in Maxwell Bay, King George Island (West-Antarctica), *Scientific Reports*, 9, 1–17, <https://doi.org/10.1038/s41598-019-54875-8>, 2019.

- Lueker, T. J., Dickson, A. G., and Keeling, C. D.: Ocean pCO₂ calculated from dissolved inorganic carbon, alkalinity, and equations for K₁ and K₂: Validation based on laboratory measurements of CO₂ in gas and seawater at equilibrium, *Marine Chemistry*, 70, 105–119, [https://doi.org/10.1016/S0304-4203\(00\)00022-0](https://doi.org/10.1016/S0304-4203(00)00022-0), 2000.
- Makinson, K., Holland, P. R., Jenkins, A., Nicholls, K. W., and Holland, D. M.: Influence of tides on melting and freezing beneath Filchner-Ronne Ice Shelf, Antarctica, *Geophysical Research Letters*, 38, 4–9, <https://doi.org/10.1029/2010GL046462>, 2011.
- Middelburg, J. J., Soetaert, K., and Hagens, M.: Ocean alkalinity, buffering and biogeochemical processes, *Reviews of Geophysics*, 58, 1–28, <https://doi.org/10.1029/2019RG000681>, 2020.
- Mintrop, L.: VINDTA 3C Manual, <https://www.marianda.com/>, manual downloaded from <https://www.marianda.com/>, 2016.
- Mueller, R. D., Hattermann, T., Howard, S. L., and Padman, L.: Tidal influences on a future evolution of the Filchner-Ronne Ice Shelf cavity in the Weddell Sea, Antarctica, *Cryosphere*, 12, 453–476, <https://doi.org/10.5194/tc-12-453-2018>, 2018.
- Negrete-García, G., Lovenduski, N. S., Hauri, C., Krumhardt, K. M., and Lauvset, S. K.: Sudden emergence of a shallow aragonite saturation horizon in the Southern Ocean, *Nature Climate Change*, 9, 313–317, <https://doi.org/10.1038/s41558-019-0418-8>, 2019.
- Nicholls, K. W., Østerhus, S., Makinson, K., Gammelsrød, T., and Fahrbach, E.: Ice-ocean processes over the continental shelf of the Southern Weddell Sea, Antarctica: A review, *Reviews of Geophysics*, 47, 1–23, <https://doi.org/10.1029/2007RG000250>, 2009.
- Orr, J. C., Fabry, V. J., Aumont, O., Bopp, L., Doney, S. C., Feely, R. A., Gnanadesikan, A., Gruber, N., Ishida, A., Joos, F., Key, R. M., Lindsay, K., Maier-Reimer, E., Matear, R., Monfray, P., Mouchet, A., Najjar, R. G., Plattner, G. K., Rodgers, K. B., Sabine, C. L., Sarmiento, J. L., Schlitzer, R., Slater, R. D., Totterdell, I. J., Weirig, M. F., Yamanaka, Y., and Yool, A.: Anthropogenic ocean acidification over the twenty-first century and its impact on calcifying organisms, *Nature*, 437, 681–686, <https://doi.org/10.1038/nature04095>, 2005.
- Orsi, A. H., Smethie, W. M., and Bullister, J. L.: On the total input of Antarctic waters to the deep ocean: A preliminary estimate from chlorofluorocarbon measurements, *Journal of Geophysical Research: Oceans*, 107, <https://doi.org/10.1029/2001jc000976>, 2002.
- Padman, L., Fricker, H. A., Coleman, R., Howard, S., and Erofeeva, L.: A new tide model for the Antarctic ice shelves and seas, *Annals of Glaciology*, 34, 247–254, <https://doi.org/10.3189/172756402781817752>, 2002.
- Padman, L., Howard, S. L., Orsi, A. H., and Muench, R. D.: Tides of the northwestern Ross Sea and their impact on dense outflows of Antarctic Bottom Water, *Deep-Sea Research Part II: Topical Studies in Oceanography*, 56, 818–834, <https://doi.org/10.1016/j.dsr2.2008.10.026>, 2009.
- Padman, L., Siegfried, M. R., and Fricker, H. A.: Ocean Tide Influences on the Antarctic and Greenland Ice Sheets, *Reviews of Geophysics*, 56, 142–184, <https://doi.org/10.1002/2016RG000546>, 2018.
- Renfrew, I. A.: Coastal polynyas in the southern Weddell Sea: Variability of the surface energy budget, *Journal of Geophysical Research*, 107, <https://doi.org/10.1029/2000jc000720>, 2002.
- Rignot, E., Jacobs, S., Mouginot, J., and Scheuchl, B.: Ice-shelf melting around Antarctica, *Science*, 341, 266–270, <https://doi.org/10.1126/science.1235798>, 2013.
- Rogachev, K. A., Carmack, E. C., Salomatin, A. S., and Alexanina, M. G.: Lunar fortnightly modulation of tidal mixing near Kashevarov Bank, Sea of Okhotsk, and its impacts on biota and sea ice, *Progress in Oceanography*, 49, 373–390, [https://doi.org/10.1016/S0079-6611\(01\)00031-3](https://doi.org/10.1016/S0079-6611(01)00031-3), 2001.
- Rohardt, G. and Boebel, O.: Physical oceanography during POLARSTERN cruise PS89 (ANT-XXX/2), <https://doi.org/10.1594/PANGAEA.846701>, 2015a.
- Rohardt, G. and Boebel, O.: Physical oceanography measured on water bottle samples during POLARSTERN cruise PS89 (ANT-XXX/2), <https://doi.org/10.1594/PANGAEA.846773>, 2015b.

- Rohardt, G. and Boebel, O.: Physical oceanography during POLARSTERN cruise PS117, <https://doi.org/10.1594/PANGAEA.910663>, 2020.
- 775 Rohardt, G. and Tippenhauer, S.: CTD Data Processing Report RV POLARSTERN Cruise PS117, <https://doi.org/10.1594/PANGAEA.910663>, 2020.
- Rohardt, G., Middag, R., Boebel, O., Trace-Kleeberg, S., and Ossebaar, S.: Physical oceanography measured on water bottle samples during POLARSTERN cruise PS117, <https://doi.org/10.1594/PANGAEA.910673>, 2020.
- Ryan, S., Hellmer, H. H., Janout, M., Darelius, E., Vignes, L., and Schröder, M.: Exceptionally Warm and Prolonged Flow of Warm Deep
- 780 Water Toward the Filchner-Ronne Ice Shelf in 2017, *Geophysical Research Letters*, 47, <https://doi.org/10.1029/2020GL088119>, 2020.
- Rysgaard, S., Bendtsen, J., Delille, B., Dieckmann, G. S., Glud, R. N., Kennedy, H., Mortensen, J., Papadimitriou, S., Thomas, D. N., and Tison, J. L.: Sea ice contribution to the air-sea CO₂ exchange in the Arctic and Southern Oceans, *Tellus, Series B: Chemical and Physical Meteorology*, 63, 823–830, <https://doi.org/10.1111/j.1600-0889.2011.00571.x>, 2011.
- Sarmiento, J. L.: *Ocean Biogeochemical Dynamics*, Princeton University Press, <https://doi.org/doi:10.1515/9781400849079>, 2013.
- 785 Schmithüsen, H.: Meteorological observations during POLARSTERN cruise PS117, <https://doi.org/10.1594/PANGAEA.913632>, 2020.
- Sims, R. P., Bedington, M., Schuster, U., Watson, A., Kitidis, V., Torres, R., Findlay, H., Fishwick, J., Brown, I., and Bell, T.: Tidal mixing of estuarine and coastal waters in the Western English Channel controls spatial and temporal variability in seawater CO₂, *Biogeosciences Discussions*, 19, 1657–1674, <https://doi.org/10.5194/bg-19-1657-2022>, 2022.
- Skogseth, R., McPhee, M. G., Nilsen, F., and Smedsrud, L. H.: Creation and tidal advection of a cold salinity front in Storfjorden: 1. Polynya
- 790 dynamics, *Journal of Geophysical Research: Oceans*, 118, 3278–3291, <https://doi.org/10.1002/jgrc.20231>, 2013.
- Smith, E. C., Hattermann, T., Kuhn, G., Gaedicke, C., Berger, S., Drews, R., Ehlers, T. A., Franke, D., Gromig, R., Hofstede, C., Lambrecht, A., Läufer, A., Mayer, C., Tiedemann, R., Wilhelms, F., and Eisen, O.: Detailed Seismic Bathymetry Beneath Ekström Ice Shelf, Antarctica: Implications for Glacial History and Ice-Ocean Interaction, *Geophysical Research Letters*, 47, <https://doi.org/10.1029/2019GL086187>, 2020a.
- 795 Smith, E. C., Hattermann, T., Kuhn, G., Gaedicke, C., Berger, S., Gromig, R., Haas, C., Läufer, A. L., Tell, J., Tiedemann, R., Tison, J.-L., Wilhelms, F., and Eisen, O.: CTD profiles from beneath Ekstroem Ice Shelf and Atka Bay, <https://doi.org/10.1594/PANGAEA.914478>, 2020b.
- Sweeney, C., Gloor, E., Jacobson, A. R., Key, R. M., McKinley, G., Sarmiento, J. L., and Wanninkhof, R.: Constraining global air-sea gas exchange for CO₂ with recent bomb 14C measurements, *Global Biogeochemical Cycles*, 21, 1–10, <https://doi.org/10.1029/2006GB002784>,
- 800 2007.
- Thompson, A. F., Stewart, A. L., Spence, P., and Heywood, K. J.: The Antarctic Slope Current in a Changing Climate, *Reviews of Geophysics*, 56, 741–770, <https://doi.org/10.1029/2018RG000624>, 2018.
- Tremblay, J. E., Gratton, Y., Fauchot, J., and Price, N. M.: Climatic and oceanic forcing of new, net, and diatom production in the North Water, *Deep-Sea Research Part II: Topical Studies in Oceanography*, 49, 4927–4946, [https://doi.org/10.1016/S0967-0645\(02\)00171-6](https://doi.org/10.1016/S0967-0645(02)00171-6),
- 805 2002.
- Uppström, L. R.: The boron/chlorinity ratio of deep-sea water from the Pacific Ocean, *Deep-Sea Research and Oceanographic Abstracts*, 21, 161–162, [https://doi.org/10.1016/0011-7471\(74\)90074-6](https://doi.org/10.1016/0011-7471(74)90074-6), 1974.
- Wanninkhof, R.: Relationship between wind speed and gas exchange over the ocean, *Journal of Geophysical Research*, 97, 7373–7382, <https://doi.org/10.1029/92JC00188>, 1992.
- 810 Wanninkhof, R.: Relationship between wind speed and gas exchange over the ocean revisited, *Limnology and Oceanography: Methods*, 12, 351–362, <https://doi.org/10.4319/lom.2014.12.351>, 2014.

- Weiss, R. F.: Carbon dioxide in water and seawater: The solubility of a non-ideal gas, *Marine Chemistry*, 2, 203–215, 1974.
- Weiss, R. F. and Price, B. A.: Nitrous oxide solubility in water and seawater, *Marine Chemistry*, 8, 347–359, 1980.
- Witte, H. and Boebel, O.: Processed 2 minutes-averaged continuous VM-ADCP (vessel-mounted Acoustic Doppler Current Profiler) profiles
815 during POLARSTERN cruise PS89, <https://doi.org/10.1594/PANGAEA.885934>, 2018.
- Yager, P. L., Wallace, D. W., Johnson, K. M., Smith, W. O., Minnett, P. J., and Deming, J. W.: The Northeast Water Polynya as an atmospheric
CO₂ sink: a seasonal rectification hypothesis, *Journal of Geophysical Research*, 100, 4389–4398, <https://doi.org/10.1029/94JC01962>,
1995.
- Zeebe, R. E. and Wolf-Gladrow, D.: CO₂ in seawater: equilibrium, kinetics, isotopes, Elsevier Oceanography Series 65, Elsevier B.V, 2001.
- 820 Zhou, Q., Hattermann, T., Nost, O., Biuw, M., Kovacs, K. M., and Lydersen, C.: Wind-driven spreading of fresh sur-
face water beneath ice shelves in the eastern Weddell Sea, *Journal of Geophysical Research: Oceans*, 119, 3818–3833,
<https://doi.org/10.1002/2013JC009556>.Received, 2014.