

Hydrography~~and~~, circulation, and response to atmospheric forcing in the vicinity of the central Getz Ice Shelf: ~~two years of mooring observations~~, Amundsen Sea, Antarctica

Vår Dundas¹, Elin Darelius¹, Kjersti Daae¹, Nadine Steiger¹, Yoshihiro Nakayama², and Tae-Wan Kim³

¹Geophysical Institute, University of Bergen and the Bjerknes Centre for Climate Research, Norway

²Institute of Low Temperature Science, Hokkaido University, Sapporo, Japan

³Korea Polar Research Institute, Incheon, South Korea

Correspondence: Vår Dundas (var.dundas@uib.no)

Abstract.

Ice shelves in the Amundsen Sea are thinning rapidly as ocean currents bring warm water into the cavities beneath the floating ice. While the reported melt rates for the Getz ice shelf are comparatively low for the region, its size makes it one of the largest freshwater sources around Antarctica, with potential consequences for e.g. bottom water formation downstream.

5 Here, we use a two year long ~~mooring records~~ novel mooring record (2016 – 2018) and 16 year long regional model simulations to describe, for the first time, the hydrography and circulation in the vicinity of the ice front between Siple and Carney Island. We find that, throughout the mooring record, temperatures in the trough remain below 0.15°C, more than 1°C lower than in the neighboring Siple and Dotson Trough, and we observe a mean current (0.03 m s⁻¹) directed towards the ice shelf front. The variability in the heat transport towards the ice ~~front~~ shelf appears to be governed by ~~wind~~ non-local ocean surface stress over

10 the Amundsen Sea Polynya region, ~~potentially through interactions with the coastal current, although this hypothesis could not be confirmed by the numerical model.~~ and northwards to the continental shelf break, where strengthened westward ocean surface stress leads to increased southward flow at the mooring site. The model simulations suggest that the heat content in the trough during the observed period was lower than normal, due to anomalously low summertime sea ice concentration and weak winds.

15 *Copyright statement.* TEXT

1 Introduction

Getz Ice Shelf (GIS) in the western Amundsen Sea is among Antarctica's primary sources of meltwater (Rignot et al., 2013) and one of the main contributors of ice shelf volume loss (Paolo et al., 2015), with basal melt rates approaching 5 m yr⁻¹ (Rignot et al., 2013). Despite the stabilizing buttressing effect of islands that separate its ice fronts (Fig. 1a, e.g. Heywood

20 et al., 2016; Shepherd et al., 2018; Jacobs et al., 2013; Dupont and Alley, 2005), the GIS grounding line is retreating (Shepherd

et al., 2018), potentially influencing the stability of GIS. The high melt rates enhance the meltwater fraction transported from GIS and westward to the Ross Sea (Nakayama et al., 2014a, 2020), connecting changes in the GIS region to the global climate: More meltwater in the Ross Sea is suggested to affect the Antarctic Bottom Water production and the global thermohaline circulation, and consequently the global ocean overturning (Nakayama et al., 2014a, b). Despite this connection between the
25 ocean-driven melt of GIS and the global climate, the area is severely undersampled.

The presence of warm and dense Circumpolar Deep Water (CDW, core temperature of 2°C, Heywood et al. 2016) and its slightly colder modified version (mCDW) on the continental shelf is the main cause of the high basal melt rates in the Amundsen Sea (Rignot et al., 2019). CDW is found just off-shelf of the continental shelf break, a characteristic specific to West Antarctica (e.g. Holland et al., 2020). However, the Getz region's regional differences are large (Jacobs et al., 2013).
30 GIS spans roughly 650 km along the coast (Jacobs et al., 2013) and is sectioned into several ice shelf fronts by six islands (Assmann et al., 2019). The differences in local bathymetry, ~~together with~~ variations in the regional wind field, the Antarctic Slope Front (ASF), an along-slope undercurrent, and the depth of the thermocline relative to the ice shelf grounding lines cause ~~large differences~~ spatially inhomogeneous in ice thickness change within the Amundsen Sea (Paolo et al., 2015; Shepherd et al., 2018). Together, these aspects influence whether the CDW from the deep ocean is allowed onto the continental shelf and
35 whether it reaches the ice shelf bases to the south. Different combinations of the mechanisms that admit on-shelf heat transport dominate at different locations, and consequently, each GIS frontal region needs to be studied separately.

In this paper, we present the first mooring record, GC_6 (Getz Central, 650 m, 2016-2018, Fig. 1a), near the GIS front between Siple and Carney Islands. This trough (referred to as the GC_6 -Trough hereafter) has until now been overlooked, compared to the neighboring Siple Trough in the west, and the Dotson-Getz Trough in the east, which have recently received attention
40 (Assmann et al., 2019; Wåhlin et al., 2020; Steiger et al., 2021; Wåhlin et al., 2010, 2013; Kalén et al., 2016). Historically, few observations exist from the GC_6 -Trough, and consequently, our new mooring observations enable a first detailed description of the oceanography in the trough, beyond previous descriptions based on snapshot CTDs (Jacobs et al., 2013).

The surface winds drive a wide range of processes that affect on-shelf heat transport, such as Ekman pumping at the shelf break (Assmann et al., 2019), on-shelf current variability (Wåhlin et al., 2013), and the on-shelf flow of CDW (Thoma et al.,
45 2008). The winds are predominantly westward along the coast and eastward north of the shelf break. The latitude where these zonal winds shift direction, the "zero-contour", generally migrates northward in summer and southward in winter (Assmann et al., 2013). While the eastern part of the Amundsen Sea shelf break experiences a seasonal shift in zonal winds, the western part is usually affected by ~~easterlies~~ westward winds year-round due to its higher latitude.

Variations in the ASF, the associated Antarctic Slope Current (ASC), and its undercurrent are related to these wind patterns
50 (Dotto et al., 2019). The ASF is a wind-driven frontal system at the continental shelf break (Jacobs, 1991). Its associated sharp thermocline and downward-sloping isotherms from north to south impede the flow of CDW across the shelf break (e.g., Thompson et al., 2018), and consequently regulate the amount of heat on the continental shelf. ~~Easterlies~~ Westward winds sharpen the ASF through downward Ekman pumping (e.g., Thompson et al., 2018), while surface stratification dampens this effect and relaxes the ASF (Daae et al., 2017). The eastward undercurrent is maintained by the horizontal density gradients
55 across the ASF (e.g. Smedsrud et al., 2006; Chavanne et al., 2010). When the isopycnals of the ASF are steep enough to sustain

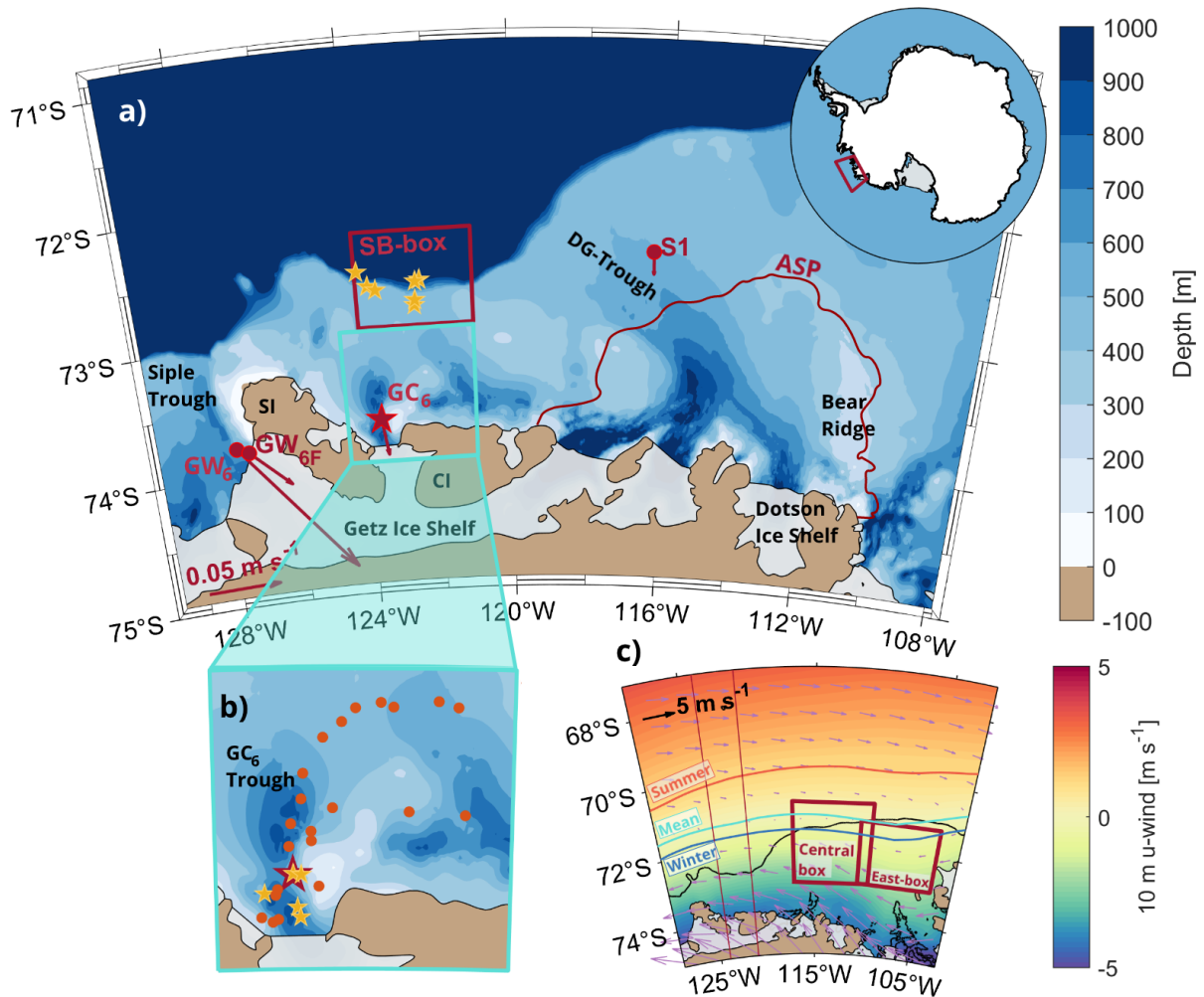


Figure 1. a) Map of the Amundsen Sea with bathymetry (color scale) (IBCSO, Arndt et al. 2013) and ice shelf (grey) (Bedmap2, Fretwell et al. 2013). The location of the study region within Antarctica is indicated by a red box in the inset. The moorings GC₆ (red star), GW₆, GW_{6F}, and S1 (red dots) are marked, with arrows denoting mean current averaged over depth and time. The velocity scale is given in the lower left corner. Abbreviations are SI: Siple Island, CI: Carney Island, ASP: Amundsen Sea Polynya, and DG-Trough: Dotson-Getz Trough. The outline of the ASP is based on data from January 2011 (Yager et al., 2012). b) Detailed map of the GC₆-trough. CTD-stations from ship-borne surveys (yellow stars) are shown in a) and b). CTD stations from an instrumented seal are marked with orange dots. c) The mean wind field from 2001 to 2018 (ERA 5, color scale and purple arrows, see black arrow for scale) with mean zero-contours during the 17 year period (cyan), summer (red), and winter (blue). The thin meridional red lines indicate the meridional band used for estimating the latitude of the zero-contour north of GC₆. The black contour is the 900 m isobaths. The red SB- (a), ASP, and East-boxes (c) indicate regions used for averaging ocean surface stress. The SB-box is also used for estimating cumulative Ekman pumping anomalies.

the undercurrent and relaxed enough to admit water below the thermocline over the trough sills, this undercurrent brings warm water directly into troughs (Walker et al., 2013; Assmann et al., 2013).

While the adjacent Siple and Dotson-Getz Troughs cross-cut the continental shelf (Fig. 1a), the GC₆-Trough does not reach the shelf break, although it is ~ 1000 m deep at the ice front (Fig. 2c). In addition, the shallow sill-region north of GC₆ is likely

60 ~~accompanied by a relatively deep thermocline (Jacobs et al., 2012). The warm along-slope undercurrent therefore often crosses~~
~~(Walker et al., 2013; Assmann et al., 2013; Dotto et al., 2019) may therefore cross~~ the deep Siple and ~~Dotson-Getz-Dotson~~
~~Getz Trough sills (~ 570 and ~ 500 m deep), but not the shallower GC₆-Trough’s sill (~ 460 m deep). However, although~~
~~the shallow sill-region north of GC₆ is also likely accompanied by a relatively deep thermocline (Jacobs et al., 2012), water~~
~~roughly 2~~~~However, unmodified CDW is present directly north of the GC₆-Trough sill (Fig. 3b), and water roughly 2°C above~~
65 freezing was observed in the GC₆-Trough by a snapshot CTD in 2007 (Jacobs et al., 2013). ~~Unmodified CDW is also present~~
~~directly north of the shelf break (Fig. 3b).~~

We describe the observed hydrography and currents at GC₆ based on the mooring records and compare the observations to those from neighboring troughs (Siple and Dotson-Getz). We discuss their variability and possible drivers, with a specific focus on forcing by ocean surface stress (τ). To set the two years of mooring observations in a broader temporal and spatial
70 perspective and compensate for the sparse observational data coverage, we investigate output from a high-resolution regional model run (Nakayama et al., 2018) and include historical CTD data from the trough.

2 Data and methods

2.1 Observational data

The mooring GC₆ was deployed during the Amundsen Sea Expedition 2015 – 2016 (ANA06B) and collected data from 30
75 January 2016 to 31 January 2018. It was located at 648 m depth on the eastern slope of the GC₆-Trough (123.6W, 73.7S), about 30 km north of one of GIS’s ice fronts (Fig. 1a,b). GC₆ recorded temperature, salinity, pressure (SBE56 and SBE37 from Seabird Electronics), and current velocity (RDI ADCP, 150kHz, for instrument levels see Fig. 2b). The data are corrected for magnetic declination, outliers are removed, and the ADCP data are processed with the RDI software following standard procedures. We use hourly and daily averaged data of all variables. We follow TEOS-10 (IOC et al., 2010) and present the
80 hydrographic data as absolute salinity (S_A) and conservative temperature (Θ) with δS_A taken from version 3.6 of McDougall et al. (2012) database.

We rotate the coordinate system to follow the mean flow direction ($\sim 174^\circ$) at GC₆ (Fig. 2c,d), which roughly corresponds to the along-trough direction. A positive along-trough current (AT in Fig. 2c) is directed toward the ice shelf (south-southeast). Correspondingly, we define a positive cross-trough direction toward east-northeast (CT in Fig. 2c). We approximate heat
85 content at GC₆ as a weighted sum of each level of temperature measurements, using density $\rho = 1028 \text{ kg m}^{-3}$ (Dotto et al., 2019) and specific heat $cp = 3985 \text{ J Kg}^{-1} \text{ K}^{-1}$. We approximate heat transport as the heat flowing past the mooring. For both approximations, we use the temperature relative to in situ freezing temperature. These estimations give an upper limit of the heat available to potentially melt ice, assuming that all the water containing this heat reaches the ice shelf base unaltered. Since measurements are only available along one axis, the heat content and the heat transport we present have units J m^{-2} and W
90 m^{-1} .

In addition to the new observations from GC₆, we use mooring records from the neighboring Siple Trough (GW₆ and GW_{6F} from 2016-2018, Assmann et al., 2019) and the Dotson-Getz Trough (S1 from 2010-2014, Wählín et al., 2013; Kalén et al.,

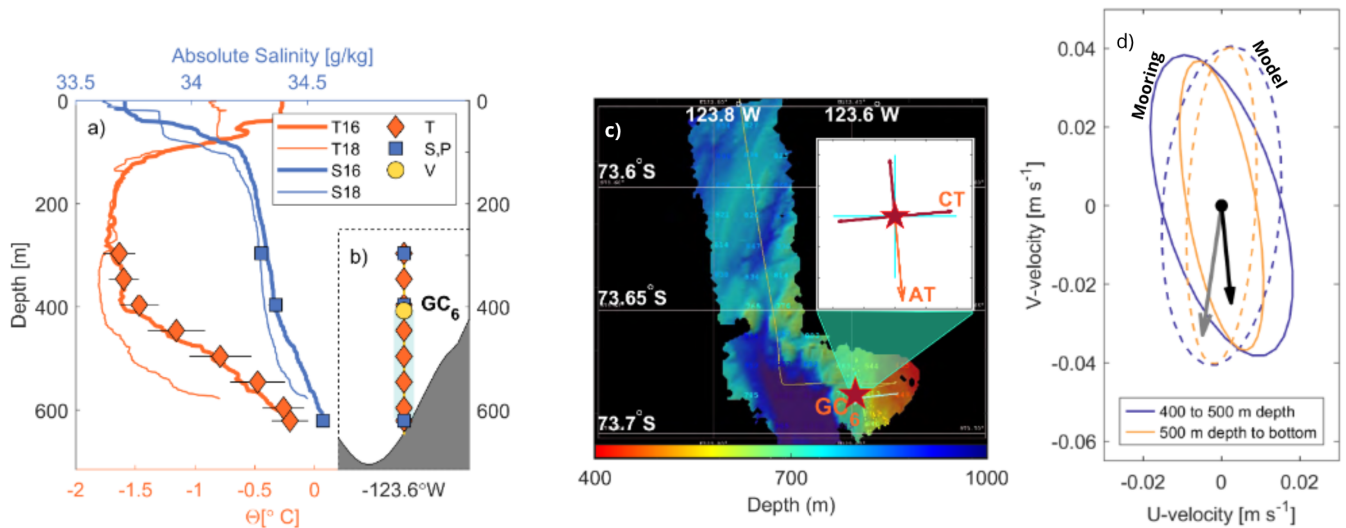


Figure 2. a) Profiles of conservative temperature (orange) and absolute salinity (blue) obtained from CTD casts at deployment (thick lines) and recovery (thin lines) of mooring GC₆. Mean temperature (orange diamonds) and salinity (blue squares) recorded by each instrument on GC₆ with standard deviation (black lines) is marked. The standard deviation for salinity is too small to be seen outside the blue boxes. b) Instrument levels for temperature, salinity, pressure, and velocity (with the range in light blue) on GC₆. The grey patch shows approximate bathymetry (based on IBCSO). c) Bathymetry in the trough from multibeam recordings (adapted from Lee 2016) with the location of GC₆ marked by the red star. The rotation of the coordinate system at GC₆ from cartesian coordinates (cyan lines) to coordinates based on the mean current direction (red lines) is indicated in the inset. The orange arrow shows the mean current direction (AT: along-trough), while CT denotes the cross-trough direction. d) Velocity variance ellipses from 407 m (ADCP instrument depth) to 500 m depth (blue) and below 500 m depth (orange). Solid lines for the mooring and dashed lines for the regional model's daily output. The total mean velocities for observations and model are indicated by black and grey dots with arrows, respectively.

2016; Arneborg et al., 2012). We include all existing CTD-profiles (12 in total) between the GC₆-region and the shelf break, which were obtained during cruises with *N.B. Palmer* (1994, 2000, 2007) and *Araon* (2016, 2018) (Fig. 1a.). One instrumented
 95 seal (the MEOP project, McIntyre et al., 2017) visited the mooring site and provided 23 CTD profiles ~~between 12 and 16 in~~
 March 2014. For bathymetry, we use the International Bathymetric Chart of the Southern Ocean Version 1.0 (IBCSO, Arndt
 et al. 2013). Multibeam recordings taken under deployment of GC₆ (Lee, 2016) reveal inaccuracies in the bathymetry presented
 in the IBCSO dataset in the GC₆ region – the bathymetry is rougher and steeper than the IBCSO bathymetry indicates (Fig. 1b
 and 2c).

100 2.2 Regional model data

To complement the observational data, we use results from a regional model run (Nakayama et al., 2018, 2019) using the Amundsen and Bellingshausen Sea configuration of MITgcm. The model has a nominal horizontal grid spacing of about $1/12^\circ$, and the lateral boundary conditions are the ECCO LLC270 optimization. Its atmospheric forcing is from the ERA-Interim reanalysis (Dee et al., 2011). The model bathymetry is based on IBCSO.

105 Comparing the observed and modeled daily temperature and current at the GC₆ mooring site (Appendix A) we draw two main conclusions: i) The variability in the depth of the -1°C isotherm compares relatively well ($r = 0.31$, bandpass filter from 8 days to 10 months, Fig. A1b and A1c). However, the average depth of isotherms is shallower in the model (368 ± 27 m depth, during the period that overlaps with the mooring period) than in the observations (461 ± 28 m). ii) The modeled average velocities agree well with observations (Fig. 2d), but the current variability at GC₆ is not captured by the model (Fig. A1e).
110 The model has proved reliable in simulating the undercurrent, the flow of warm water across the shelf break into the cross-cutting troughs, and general conditions in the Eastern Amundsen Sea (Nakayama et al., 2018, 2019). Therefore, we rely on its large-scale currents and temperature variability. We note that trough openings are generally deeper in the regional model's bathymetry, which is based on IBCSO, than in the IBCSO bathymetry itself. This might explain differences between model results and observations, such as the overestimated thickness of the warm deep layer at GC₆.

115 We use daily (available Jan. 2016 to Sept. 2017) and monthly (available Jan. 2001 to Sept. 2017) means of temperature and current velocity of from the model output. The model was initially run for another project, and consequently, the run ends five months earlier than the GC₆ record. We use the monthly model output to look into low-frequency processes, and the daily output to look further into results based on the GC₆ mooring observations. We select a location GC_{6_mod} (Fig. 8a) representative of GC₆'s depth and location relative to the trough's bathymetry.

120 2.3 Atmospheric reanalysis data

We use reanalysis output of 10 m wind and sea ice concentration (SIC) from ERA 5 (Hersbach et al., 2020), and the Polar Pathfinder Daily 25 km EASE-Grid Sea Ice Motion Vectors, Version 4 (Tschudi et al., 2019) to estimate τ following Dotto et al. (2018) (referred to as τ_{D18} hereafter, Eq. B2a). This estimation assumes a motionless ocean and ~~constant drag coefficient a drag coefficient weighted by SIC. The sea ice motion dataset is incomplete near the coast. Since the highest correlation between the~~
125 ocean surface stress and the currents and hydrography at GC6 is away from the coast, we assume that the lack of data is not crucial for our analysis. ~~Values are missing along the coast in the NSIDC data set, but since the sea ice movement is expected to be small along the coast in winter, we assume little loss of information.~~ We use SIC from ERA 5 for consistency with the wind velocities. The cumulative Ekman pumping anomaly (wEK) is calculated as described in Appendix B. The monthly mean meridional location of the zero contour is estimated over a meridional band over the GC₆ mooring location (meridional red
130 lines in Fig. 1c). For analysis involving model output, we use daily instantaneous surface wind stress reanalysis output from ERA-Interim (referred to as τ_{ERA-I} hereafter) since this is used to force the regional model. Based on SIC we define summer (Dec-Apr) and winter (May-Nov).

2.4 Statistical methods

To estimate the temporal evolution of correlation, we use a 100-day moving window with 10 days overlap. All correlation values
135 are significant on the 95% level, with significance calculated following Sciremammano (1979). We allow a maximum lag of 7 days for correlation analyses ~~involving currents, and 30 days for correlation involving temperature and isotherm variability, which encompasses,~~ encompassing rapid barotropic responses but ~~leaves leaving~~ out slow advective signals. The mooring

record length and low velocities in the GC₆-Trough yield too few degrees of freedom to allow for a lag on the order of the advection timescale of roughly ~~3~~three months from the shelf break to GC₆~~Seiremammano (1979)~~.

140 To remove diurnal and seasonal signals from the mooring observations and model output in our correlation analysis and when stated specifically (e.g. in Fig. 7), we use two Butterworth filters. For the observations, we apply a bandpass filter from 8 days to 10 months (BP_{8D-10M}) ~~-which removes the seasonal cycle. Seasonal differences in variability on higher frequencies are, however, maintained.~~ For the model output, we remove estimated seasonal cycles based on the 16-year long monthly time-series and lowpass filter at 8 days (LP_{8D}).

145 In sect. 3.3.4 we use the following procedure to produce correlation maps between the zonal ocean surface stress, $\tau_{\text{ERA-I}}$, and the modeled currents on the continental shelf: The currents are separated into deep currents (depth-averaged below the 0°C-isotherm) and surface currents (depth-averaged above 100 m). In each grid cell, the coordinate system is aligned with the vector-averaged current direction. The component of the current aligned with the (spatially varying) mean current direction is then correlated with zonal $\tau_{\text{ERA-I}}$ averaged over a fixed region.

150 3 Results

We present hydrography, currents, heat content, and heat transport based on the mooring observations from the GC₆-Trough and investigate how these variables are influenced by regional atmospheric forcing primarily through correlation analysis. To set the mooring period in a larger temporal and spatial perspective, we assess the variability in surface forcing from 2001 to 2017 and use the regional model output to further investigate the connection between atmospheric forcing and isotherm depth
155 and the currents at GC₆.

3.1 Observations from mooring GC₆: 2016-2018

3.1.1 Hydrography and currents

A bottom layer of relatively warm modified Circumpolar Deep Water (mCDW), a mixture between Winter Water (WW, -1.8°C) and CDW is present at GC₆ throughout the mooring period (Fig. 3c and 4a). This layer is overlain by WW which
160 ventilates down to ~ 450 m depth in ~~October 2016 and October/November 2017~~late winter (Fig. 4a). The depth-averaged temperature and salinity at GC₆ are -0.95°C and 34.41 g/kg, respectively. The maximum recorded temperature at GC₆ is 0.13°C - more than two degrees above freezing, but almost 1.5°C lower than the maximum temperatures at GW₆ and S1 (Fig. 3). ~~The temperature records show~~

The temperature record shows interannual differences in the mCDW and WW layers, but there is no apparent seasonal signal
165 in the thickness or properties of the mCDW layer. The highest temperatures ($\Theta > 0^\circ\text{C}$) are observed at the end of 2016 when the thickness of the mCDW layer is at its maximum, followed by a gradual thinning of the mCDW layer (Fig. 4a).

~~Several sudden~~There is also a strong variability on shorter time scales, for example, several abrupt cooling events in 2016
~~at GC₆ that~~ correspond to cold events found at GW_{6F} (Steiger et al. 2021, Fig. 4a,b,d, green diamonds)~~which were triggered~~

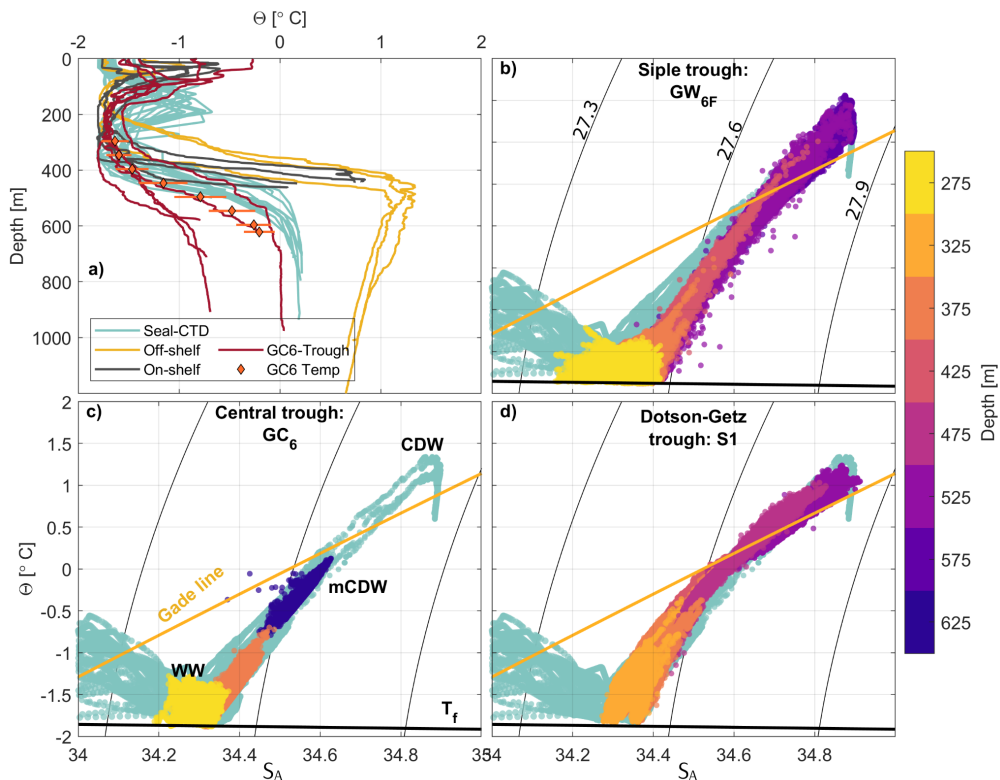


Figure 3. a) Temperature profiles taken by ship (red, black, yellow) and seal (turquoise, see Fig. 1a,b for locations). Orange diamonds and lines show the mean temperature and standard deviation recorded by each instrument on GC6. ΘS_A -diagrams for b) GW_{6F} in the Siple trough, c) GC_6 in the GC_6 -Trough between Siple and Carney Islands, and d) S1 in the Dotson-Getz Trough (see Fig. 1a for locations), color-coded by the depth of moored instruments, and with the CTD-stations and seal dives from Fig. 1a marked in turquoise in the background. Four outliers are removed from S1. The σ density contours (thin, black lines), the Gade-line (yellow), surface freezing temperature T_f (thick, black line), and characteristic water masses are labeled (WW: Winter Water, mCDW: modified Circumpolar Deep Water, and CDW: circumpolar deep water).

remotely by strong easterly winds that induced coastal Ekman downwelling, pushing the WW to the bottom (Steiger et al., 2021)
 170 Although the signal fades with distance from the ice shelf front (Steiger et al., 2021), the events are registered at GC_6 , which
 was 30 km from the ice front. In 2017 the events are weaker and the signal less prominent in the colder bottom temperatures at
 GC_6 , similarly to at GW_{6F} , explained by wind-driven coastal trapped waves.

When a watermass is in contact with and melts glacial ice, its ΘS_A -properties will evolve along the “Gade-line” in ΘS_A -space (Gade, 1979) when a
 175 watermass mixes with glacial meltwater. Such alignment is observed in the Dotson-Getz Trough at mooring S1 (Fig. 3d, at
 $\Theta = 0.1$, $S_A = 34.6$) but is not observed neither in the Siple- nor the GW_{6F} -Troughs, including the GC_6 mooring, the CTD
 casts, and seal dives (Fig. 3b,c, Fig. 1a for CTD-locations).

3.1.2 Currents

The current’s magnitude and variability are highest in the along-trough direction (Fig. 2d, solid lines) with an average velocity
 180 and standard deviation of $3 \pm 5 \text{ cm s}^{-1}$. It is directed toward the ice shelf (Fig. 1a and 4d) and is nearly depth-independent
 (barotropic) over the observed depth (407 – 615 m). There is a tendency for a stronger current away from the ice front (negative

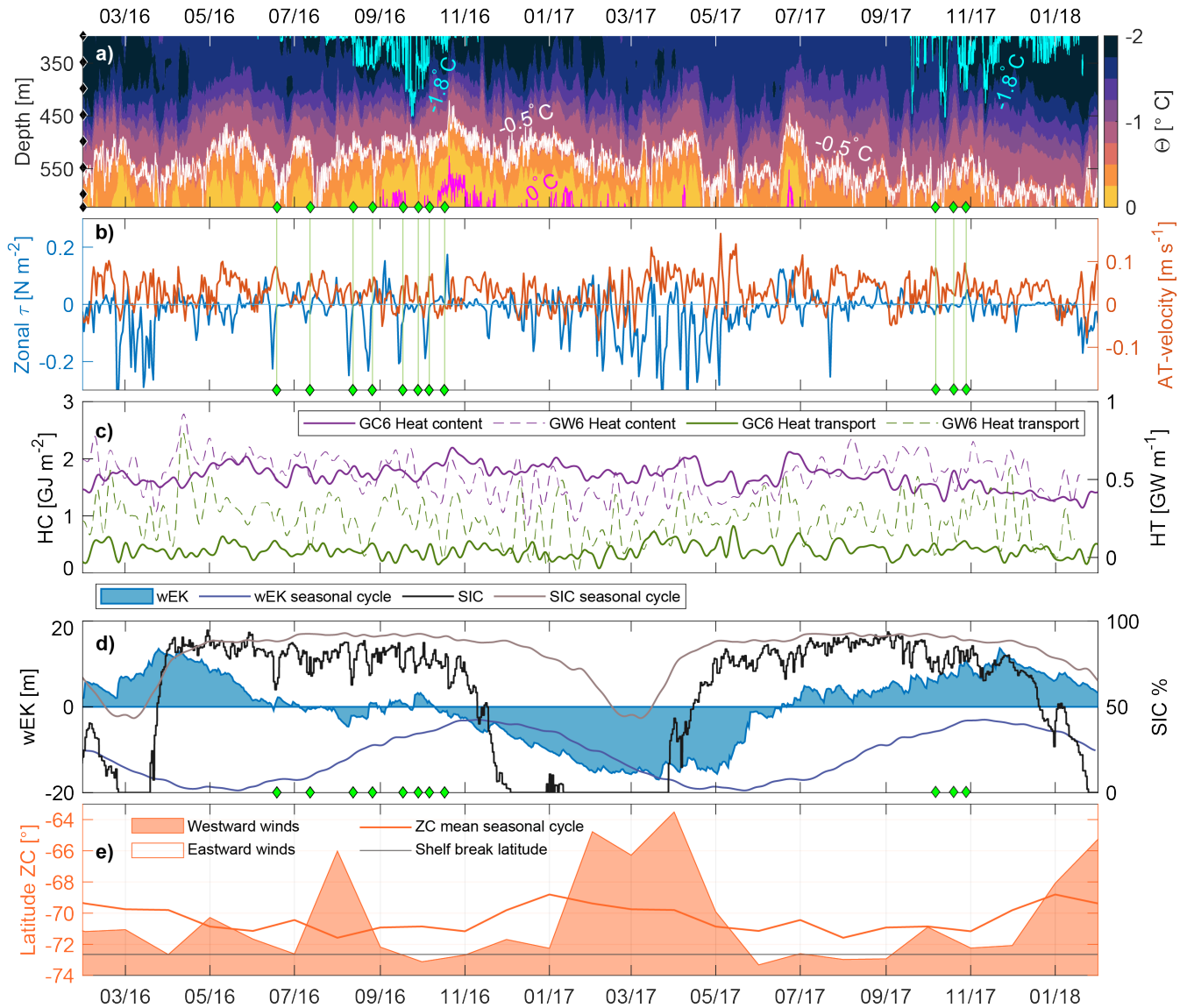


Figure 4. Daily mean records from GC₆ showing a) conservative temperature, and b) depth-averaged along-trough (AT) velocity at GC₆ (red) and zonal τ_{D18} averaged over the SB-box (blue). Positive values denote flow toward the ice shelf and eastward stress, respectively. The -1.8°C (cyan), -0.5°C (white), and 0°C (magenta) contours are highlighted in a), and the measurement depths are shown (black diamonds) in a). c) Heat content (HC) at GC₆ (purple) and GW₆ (dashed purple), and heat transport (HT) at GC₆ (green) and GW₆ (dashed green), all LP_{8D}. d) Cumulative Ekman pumping anomaly in the SB-box (filled blue) and SIC over GC₆ (black), with their mean seasonal cycles (2001-2018) in dark blue and grey, respectively. e) Estimated monthly mean location of the zero-contour in a meridional band spanning the zonal extent of the SB-box. The filled orange area indicates westward winds and white indicates eastward winds. The thin orange and grey lines indicate the mean monthly position of the zero-contour from 2001 to 2018, and the latitude of the shelf-break north of GC₆, respectively. Time is given as MM/YY. The green diamonds (a,b,d) and lines (d) mark the strong cooling events observed at GW_{6F} (Steiger et al., 2021).

values in Fig. 4b) during summer 2017. The variability in the depth-averaged along-trough velocity and the depth-averaged temperature from the four bottom sensors (referred to as the mCDW-temperature hereafter) are negatively correlated for most of 2016 ($r = -0.50$, lag = -2.5 days, temperature leading), and positively correlated for most of 2017 ($r = 0.52$, lag = 2 days) when applying BP_{8D-TOM} (not shown). Consequently, in 2016, periods of high temperatures coincide with strong currents away from the ice shelf, while in 2017 periods of high temperatures coincide with strong currents toward the ice shelf.

3.1.2 Heat content and heat transport

The average heat content relative to the in situ freezing point at GC_6 is $1.7 \pm 0.2 \text{ GJ m}^{-2}$. This value is lower than the GW_6 -mooring in the Siple-Trough even though GC_6 was moored at a greater depth (650 m vs. 600 m), where the water is typically warmer. The heat content at GC_6 is generally higher in 2016 than in 2017, with a maximum in October 2016 (2.4 GJ m^{-2}) and the minimum in January 2018 (1 GJ m^{-2}). This corresponds well with the variability of the mCWD layer which is also thickest in October 2016 (230 m, based on the -0.5°C isotherm) and thinnest at the end of the mooring time-series when the entire water column is colder than -0.5°C at several occasions (Fig. 4a).

The ~~variability in heat transport is dominated by current variability. The current~~ current past GC_6 , and hence the heat transport, is directed toward the ice shelf 78% of the time (daily means), on average bringing $45 \pm 64 \text{ MW m}^{-1}$ toward the shelf. The variability in heat transport is dominated by current variability. We, therefore, focus our following analysis on the along-trough current and temperature variability separately rather than heat transport.

3.2 Atmospheric forcing

The wind field, wEK, and SIC exhibit large differences between 2016 and 2017 (Fig. 4d,e). First, the broad eastern Amundsen Sea shelf break region was dominated by westerlies eastward winds during two consecutive years (2015 and 2016) since the zero-contours during summers 2015 (not shown) and 2016 were shifted anomalously far south both north of the GC_6 -Trough (Fig. 4e) and over the Amundsen Sea continental shelf as a whole (not shown). Consequently, the usual ~~interruption of persistent summertime easterlies~~ period with persistent summertime westward winds did not occur. Second, wEK deviates from its typical seasonal cycle (Fig. 4d), and values are positive throughout most of mid-2015 through 2016 (Fig. 7a). Lastly, summertime SIC is lower than the 2001-2018 mean over the GC_6 -Trough in both 2016 and 2017 (Fig. 4d and 7a,b), and 2017 stands out with four ice-free months. Both the surface winds and the SIC influence τ and consequently the variability of the ocean currents and temperature.

3.2.1 Ocean surface stress-driven variability of the along-trough current and bottom temperature at GC_6

τ is an essential driver of heat content variability near several ice fronts in the Amundsen Sea. However, while τ in the continental shelf break region specifically determine heat content and heat ~~fluxes~~ transport in the vicinity of the ice front where cross-cutting troughs connect the sill to the ice front (Assmann et al., 2019; Dotto et al., 2019), the heat content and transport in the GC_6 -trough ~~particularly~~ respond to τ ~~on~~ over the continental shelf.

Correlation between ocean surface stress and:

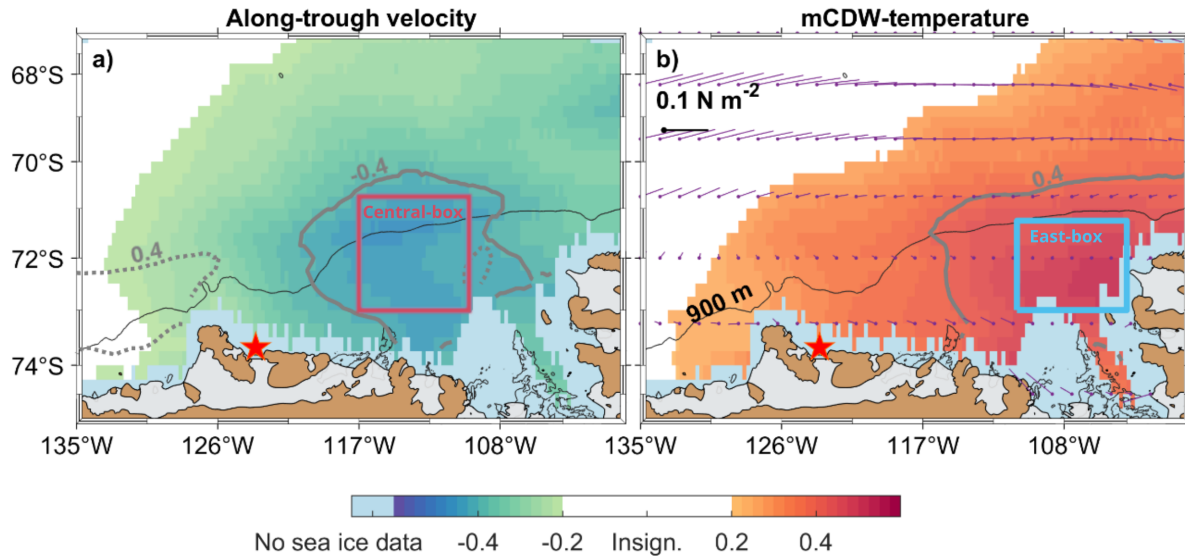


Figure 5. Spatial distribution of significant correlation during winter (colors) between zonal τ_{D18} and a) depth-averaged along-trough velocity at GC₆, and b) mCDW-temperature at GC₆. The correlation calculations are based on BP_{8D-10M}-filtered time-series averaged to daily values. Light blue regions along the coast indicate missing data on sea ice movement and white indicates insignificant correlation. Grey contours indicate a correlation of ± 0.4 for winter (solid) and summer (dashed). ~~Cyan~~ ~~The a) red and b) cyan~~ boxes mark the areas used for average τ_{D18} in Fig. 6. The red star and black contour mark GC₆ and the 900 m isobaths, respectively. In b), the purple lines with dots at their origin indicate mean τ_{D18} (scale in black). Values over land are removed.

The strongest correlation between the along-trough current at GC₆ and zonal τ_{D18} ~~is found~~ occurs during winter over a region that roughly ~~extends from~~ overlaps with the Amundsen Sea Polynya (ASP, Fig. 1a) and extends northward to the shelf
 215 break (~~ASP-box: cyan box in~~ Central-box, Fig. 5a, $r = -0.49$, lag = 0 days, BP_{8D-10M}). The negative sign indicates that strong westward τ_{D18} enhances the along-trough current toward the ice front. ~~During summer, the overall correlation becomes positive~~ , and the high-correlation region shifts west of Siple Island ($r = 0.45$, lag = 0 days, grey dashed contour Fig. 5a). Only shorter periods of positive correlation, most notably during summer 2017, interrupt this pattern (Fig. 6b). The occurrence of periods with positive correlation is independent of the parameterization of τ (Appendix B).

220 For mCDW-temperature, the maximum correlation with τ_{D18} is also found during winter, but in an area further east, ~~just south of the shelf break~~ (~~East-box: cyan box in~~ East-box, Fig. 5b, $r = 0.52$, lag = 4 days, BP_{8D-10M}). The positive sign indicates that strong eastward τ correlates with higher mCDW-temperatures at GC₆ ~~and holds for most of the mooring period (Fig. 6a).~~ During summer, the correlation is mostly insignificant.

225 ~~The temporal evolution of correlation between the mCDW-temperature and τ_{D18} averaged over the East-box shows that the correlation is significant for a large part of the mooring period and solely positive (mean or periods of significant correlation: $r = 0.56$, lag = 3.7 days, BP_{8D-10M}, Fig. 6a).~~ The along-trough current's temporal evolution of correlation with the zonal τ_{D18} averaged over the ASP-box is also significant through most of the mooring period (Fig. 6b). The correlation is predominantly

230 negative (mean-of-negative-periods: -0.54 , lag = 1.8 days, BP_{8D-10M}), but shorter periods of positive correlation occur (mean-of-positive-periods: 0.49 , lag = 0.7 days, BP_{8D-10M}), most notably during summer 2017. The occurrence of periods with positive correlation is independent of the parameterization of τ (Appendix B):

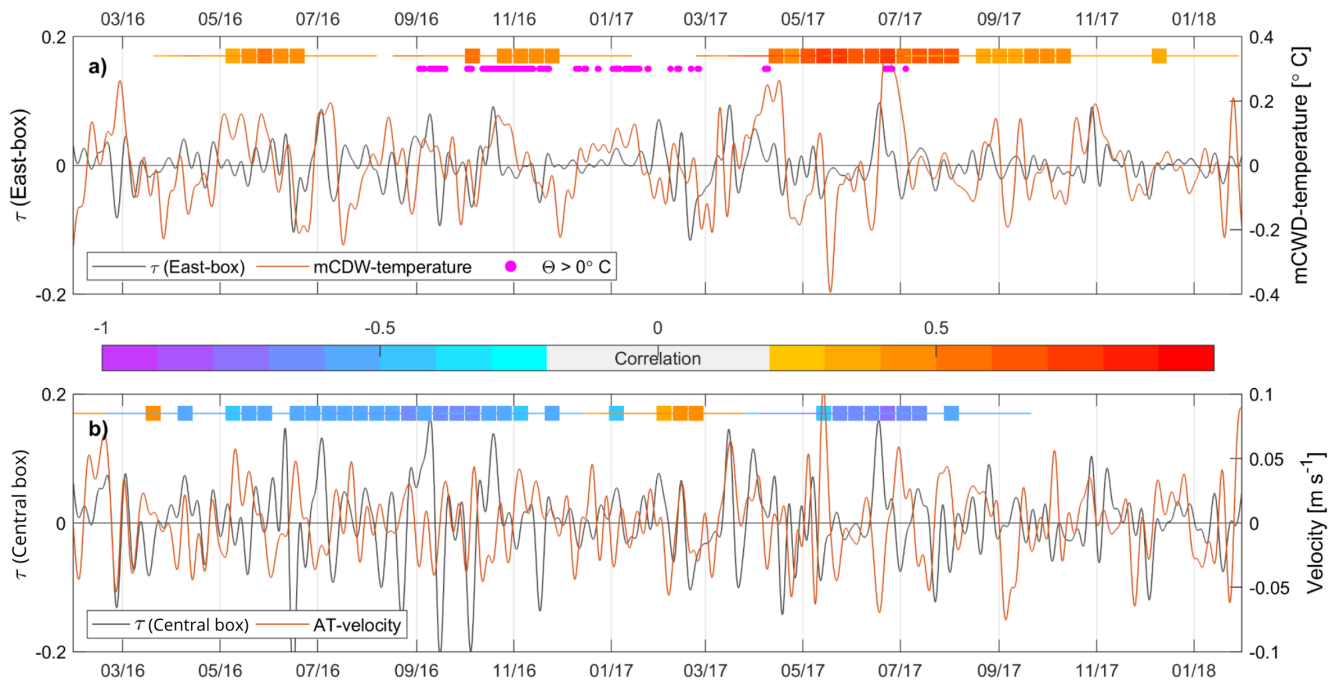


Figure 6. a) τ_{D18} (black line) averaged over the East-box and mCDW-temperature at the mooring site (red line). The correlation between the time-series is indicated by boxes and lines: Each colored box is the center of a 100-day window (lines) with significant correlation of magnitude given by the colorbar. The magenta dots show when temperatures above 0°C are present. b) is analogous to a), but for τ averaged over the ASP-box Central-box and along-trough (AT) velocity instead of temperature. All time-series are filtered with BP_{8D-10M} .

3.3 The regional model

235 We From the observations, we found that the GC₆-Trough is relatively cold compared to its neighboring troughs (Fig. 3), but that temperatures higher than 0°C are present occasionally (Fig. 4a). Variability in the along-trough current and the mCDW-temperature are both driven by τ . However, while strong currents towards the ice shelf are generally driven by westward τ over a region stretching from the ASP to the shelf break (Fig. 5a), high mCDW-temperatures are generally driven by eastward stress further east on the continental shelf (Fig. 5b). We use output from the regional model to further investigate the connections between the mCDW-temperature, the along-trough current, and τ using the regional model, with particular attention to how the GC₆-location is connected to other areas in the Amundsen Sea. First, we briefly describe hydrography and circulation in the model at the mooring site and the long-term atmospheric variability. We then look at large-scale variability of on-shelf

240 central temperature, and finally at the overall current and temperature's relation to τ_{ERA-I} .

3.3.1 The long term state of the GC₆ region

The temperature output at GC_{6_mod} from the model over the period 2001-2017 indicates that GC₆ was deployed during a relatively cold period (i.e., deep -1°C isotherm, Fig. 7ed). This ~~fits relatively well~~ agrees with the temperature indications from the available CTD profiles ~~from 2000 and 2007 (Fig. 3a, Jacobs et al., 2013), and from 2016 and 2018: 2007 had a shallow~~
245 ~~-1°C isotherm, in 2000 and 2018 it was deep, and in 2016 at medium depth (not shown taken from ships (Fig. 3a vs. Fig. 7d).~~
The match between the modeled and ~~observed temperatures~~ seal-borne temperature observations in 2014 ~~is~~ are weaker: the seal-borne profiles show high bottom temperatures (Fig. 3a) and ~~just a slightly deeper a shallow~~ -1°C isotherm ~~than in 2007 (not shown)~~, contrary to the model which shows a strongly depressed -1°C isotherm ~~in 2014~~. On average, the modelled -1°C isotherm at GC_{6_mod} is found at 342 ± 48 m depth (2001-2017). ~~The~~ ~~,~~ ~~with roughly 200 m~~ difference between its shallowest
250 and deepest periods ~~is roughly 200 m and the amplitude of the low-frequency variability is larger than the variability of higher frequencies.~~ (Fig. 7c). The average depth-mean rotated velocity at GC_{6_mod} at depths corresponding to the observed depths is 3.7 ± 4 cm s⁻¹ toward the ice shelf, similar to the observed average current.

The SIC over the GC₆-Trough, the wind field, and the wEK in the SB-box display large year-to-year variability (Fig. 7a)a-c), ~~with implications for the GC₆ region.~~ The wintertime SIC is always high, ~~whereas it is~~ but highly variable between summers,
255 ranging from $\sim 80\%$ to ice-free (Fig. 7a). ~~The winds over the shelf break north of GC₆ are generally easterly in summer, as indicated by the zero-contour (Fig. 1e).~~ There is no trend in the ~~direction or strength in the average winds~~ average wind velocity during 2001-2017, but the mooring period is within a period of relatively weak τ over the shelf break north of GC₆ (not shown). ~~In some seasons, e.g., summer 2016 (winter 2011), Occasionally,~~ the zero-contour does not migrate north (south) ~~(as expected during summer (winter))~~ (Fig. 7ac). wEK is generally highest at the end of winter, and lowest at the end of summer, but shows
260 strong positive anomalies ~~during 2001-2003 and 2015-2017, which includes~~ ~~,~~ ~~including during~~ the mooring period (Fig. 7a,b).

3.3.2 Long-term variability in isotherm depth

The variability in isotherm depth is important both at the shelf break for admitting warm water onto the continental shelf and on the continental shelf for the warm water's access to the base of the ice shelf. The evolution of the modeled isotherm depth anomalies (seasonal cycle removed and LP_{8D}) follows the main flow patterns on the continental shelf, as shown in the video
265 in the supplementary material. Anomalies of deep and shallow isotherms in the GC₆-Trough seem primarily to originate from two regions: the trough northeast of GC₆ which is connected to the warm waters north of the shelf break, and along the coast from regions east of Carney Island. Some anomalies travel from the eastern Amundsen Sea around Bear Ridge and continue westward along the coast (sketched arrows in Fig. 8d).

We select two locations in the regional model based on these pathways, one in the northeastern trough (V_{NE}) and one just
270 north of Carney Island (V_{CN} , Fig. 8a), in order to better understand the pathways and time scales of isotherm depth anomalies traveling toward GC₆. By comparing the -1°C and 0°C isotherm depths at V_{NE} and V_{CN} with GC_{6_mod} from 2001-2017, we note three relations: First, the isotherm depth at all three locations co-vary (Fig. 7e), ~~with a stronger relationship between GC_{6_mod} and V_{CN} (thin lines,~~ ~~,~~ ~~both on monthly and interannual timescales~~ (Fig. 7e). ~~Peaks that occur at all three locations~~

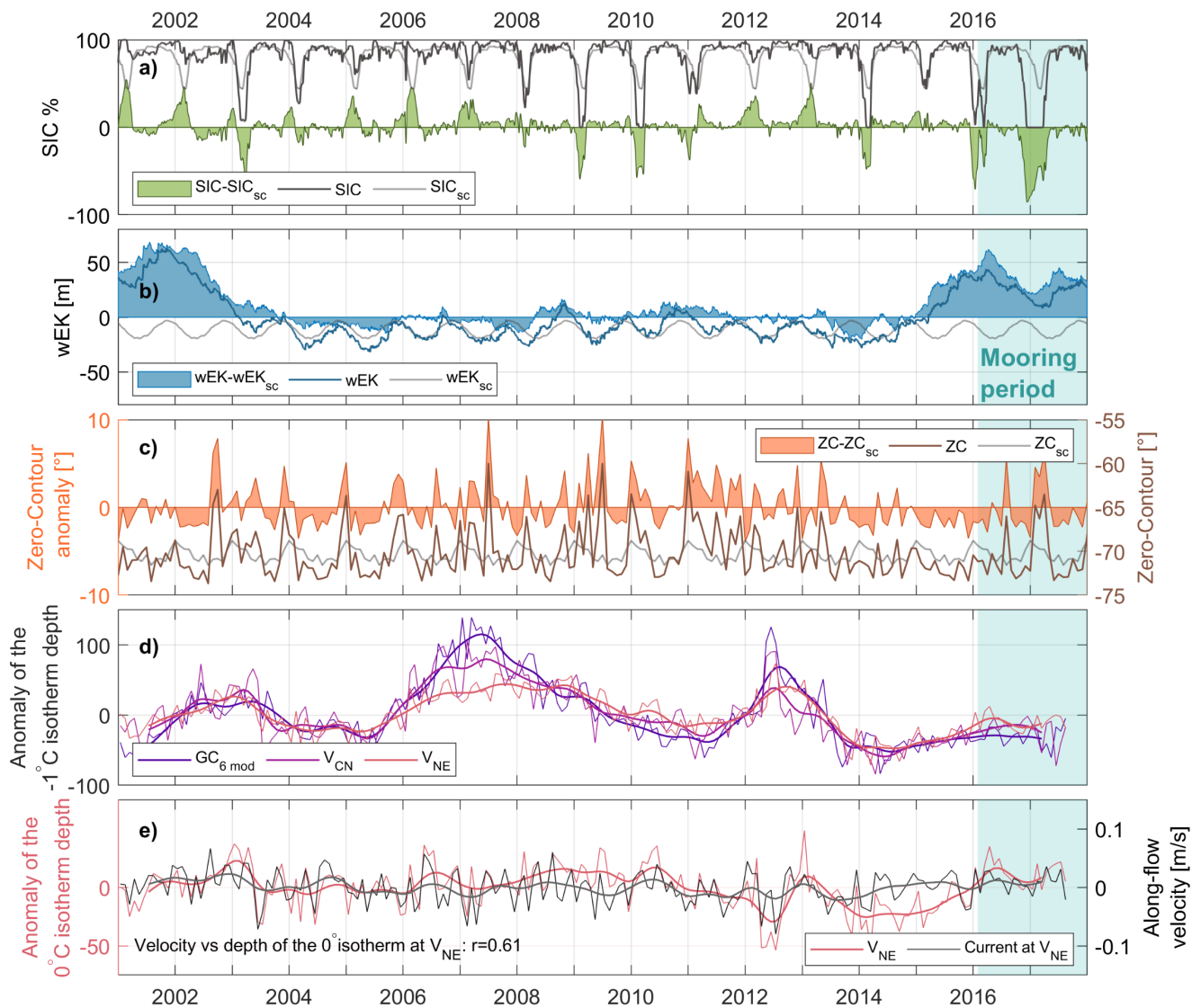


Figure 7. Time-series of de-seasoned a) SIC at GC₆ (filled green), b) cumulative Ekman pumping anomaly, wEK, (ERA 5, filled blue) averaged over the SB-box (Fig. 1a), and c) the estimated monthly mean meridional position of the zero-contour (filled orange). The subscript ‘SC’ denotes the seasonal cycle. Light grey lines in a-c) are the estimated seasonal cycles, and dark grey, dark blue and dark orange in a-c) are the corresponding time-series (not de-seasoned). d) De-seasoned modelled depth of the -1°C isotherms at GC_{6,mod} (purple), V_{CN} (light purple), and V_{NE} (pink). e) De-seasoned modeled depth of the 0°C isotherm (pink) and the along-flow (southeast) velocity at V_{NE} (black). In c,d) thin lines are monthly means and thick lines are 12-month moving averages. In all panels, the time period with mooring measurements is marked by turquoise background.

(e.g., in 2003) tend to first occur at V_{NE} , then at V_{CN} , and finally at GC_6 , and have a lag of 1-3 months, which is comparable to the ~ 3 months advection timescale from the shelf break north of GC_6 to GC_6 . Second, the low-frequency variability of the isotherm depths (12-month moving averages, Fig. 7c) responds to variations in SIC and wEK. High SIC and positive wEK are favorable for a thick warm layer the following winter through weak convection and lifted isotherms. Correspondingly, low SIC and negative wEK favor a thin warm layer. The thermocline depth at GC_{6_mod} appears to be particularly sensitive to these fluctuations compared to V_{NE} and V_{CN} since the low-frequency variability of the -1°C isotherm depth has the largest amplitude at GC_{6_mod} (Fig. 7ed). The response time to variations in SIC and wEK is up to a year due to the slow deepening of the mixed layer after a summer of low SIC followed by sea ice formation (Fig. 7). This response time agrees with the observed time lag from the end of the main sea ice formation period in fall to the time when the -1.8° isotherm reaches its deepest point at GC_6 (Fig. 4a,d). Third, at V_{NE} the current strength and the thickness of the warm layer are correlated ($r = 0.61$, Fig. 7ee), with a strong southeastward current corresponding to a thick warm layer.

3.3.3 Regional isotherm variability

The depth of the modeled 0°C isotherm averaged over 2016-2017 increases from about 200 m at the shelf break to 400 m depth in the GC_6 -Trough. There is a similar increase, and similarly from east to west (Fig. 8a), consistent with previous observations (Jacobs et al., 2012) and with Ekman downwelling along the coast and previous observations (Jacobs et al., 2012), respectively. The main warm period in the observational records from GC_6 ($\Theta > 0^\circ\text{C}$: Sept. to Dec. 2016, Fig. 4a) lags a shallow 0°C isotherm over the overall on the continental shelf by several months (Fig. 8b). Comparing summers 2016 and 2017, preceding the warm and cold winter at GC_6 respectively, the isotherms in both the north-eastern trough and the Dotson-Getz Trough were shallower in 2016 than in 2017 (Fig. 8d). This delay between a generally shallow isotherm coherent changes on the continental shelf and warm temperatures at GC_6 supports suggests that advective processes (~ 3 months) contribute to bringing bring heat to the mooring region.

The propagation time scales of the anomalies, however, varies, likely scale of the isotherm depth anomalies vary, possibly impacted by the complex interactions of anomalies from the north and east that meet north of Carney Island. An anomaly that entered the northeastern trough in December 2016, for example, reached the GC_6 -Trough already in January, while an anomaly in April 2017 arrived at the trough in June. The isotherm depth anomalies also reveal that eddies occasionally get “trapped” in the GC_6 -trough, e.g., in June 2017, possibly helping sustain the warm peak contribution to sustain warm peaks (Fig. 4a). Occasionally, anomalies appear to travel as waves westwards along the coast, visualized by the snapshot in Fig. 8c.

3.3.4 Spatial correlation of ocean surface stress with ocean currents and temperature

To further study the observed relationship between

From the observations, we identified that the currents at GC_6 correlate best with τ_{D18} , the along-trough current, and over the Central-box, while the mCDW-temperature we investigate how at GC_6 correlate best with $\tau_{ERA-ID18}$ over the ASP-box and the East-box correlates with the daily modeled currents and the temperatures Eastern box. Here, we study the correlation of τ_{ERA-I} over these two areas with the modelled currents and temperatures in the surrounding areas on the continental shelf ;

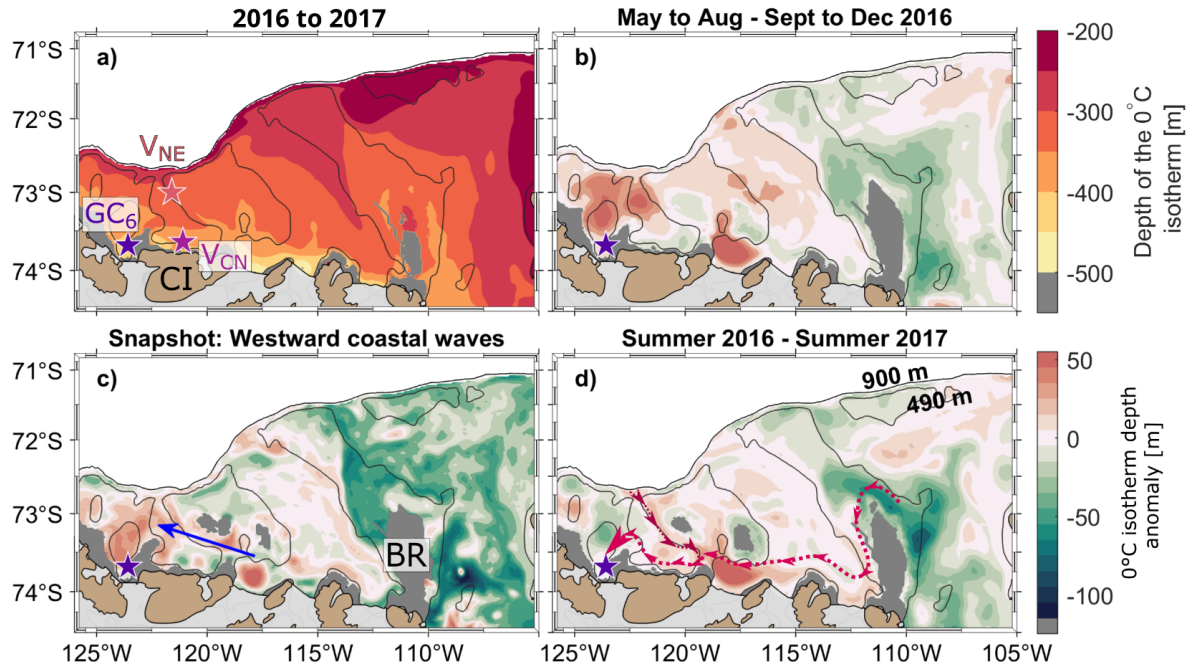


Figure 8. a) The mean depth of the 0°C isotherm during 2016-2017. Carney Island (CI), Bear Ridge (BR), the virtual mooring locations V_{NE} (pink star) and V_{CN} (light purple star), and GC_6 (dark purple) are marked in colors corresponding to Fig. 7b. b) The difference between May to August 2016 and September to December 2016. c) A snapshot from 8th of June 2016 showing an example of wave features along the northern coast of Carney Island (seasonal cycle removed and filtered with LP_{8D}). The blue arrow indicates the propagation direction. d) The difference between summer 2016 and summer 2017. The red dashed arrow indicates the suggested pathways of anomalies in isotherm depth. In all panels, the black contours indicate the 900 m and 490 m isobaths. The grey regions indicate that the deep 0°C isotherm is not present.

respectively (Fig. 9). We separate between the deep (below the 0° isotherm) and the shallow (above 100 m depth) layers to distinguish between the deep-reaching and shallow effect of τ on currents and temperature. The overall correlation between τ and currents and temperature is strongest during winter, in agreement with results from GC_6 (Fig. 5), and we, therefore, focus this section on winter conditions. Comparing the two years of observations, the model generally shows more significant and stronger correlation in 2016 than in 2017 (not shown), making 2016 similar to the winter average as suggested by the observations.

Regions of strong currents generally have significant correlation with the ASP-stress τ over the Central-box (Fig. 9c,d). Three regions stand particularly out with positive correlation in the deep currents: the northeastern trough, the The deep currents have strong positive correlation over the eastern flanks of the Dotson-Getz Trough, and and the northeastern Troughs, and along the shelf break region stretching eastward to towards the entrance of the Dotson-Getz Trough. Positive correlation indicates that a positive (eastward) This means that eastward (positive) ASP-stress anomaly leads to a positive current anomaly τ enhances the currents towards the ice shelf and eastward along the continental shelf break, i.e., enhanced current in the mean flow direction (positive current anomaly). At the GC_6 -location, the positive correlation of ASP-stress τ over the Central-box

320 with modeled currents disagrees with the negative correlation with the observed current. As the model's representation of the current's short-term variability at GC₆ is unreliable and its local bathymetry is inaccurate, this is not surprising.

~~Above 100 m the correlation is negative along the coast north of Carney Island, i.e., westward (negative) τ_{ERA-I} enhances the westward current. Similar to below the 0°C isotherm, the correlation~~ The shallow currents (above 100 m) also have positive correlation along the shelf break north of GC₆ and partly into the ~~GD-Trough, Dotson-Getz Trough, comparable~~ to the deep currents but slightly weaker (Fig. 9d). This indicates that eastward τ_{ERA-I} induces ~~an eastward anomaly a positive anomaly in the mean current direction~~ throughout the water column in these regions, ~~except for the coast north of Carney Island. There, a negative correlation indicates that westward (negative) τ_{ERA-I} enhances the westward current (positive, due to the local rotation of the coordinate system with the mean current direction).~~ In the regions of high correlation, the lag between τ_{ERA-I} and the surface currents and deep currents is 0-1 days and 1-2 days, respectively.

330 ~~The correlation between~~ Similar to the correlation of the deep currents with τ_{ERA-I} and, the 0°C isotherm depth (Fig. 9e) ~~has one main similarity to the correlation with the deep currents: the correlation has strong positive correlation with τ_{ERA-I} within the northeastern trough is positive and relatively strong. (Fig. 9e).~~ Eastward τ_{ERA-I} consequently induces both a shoaling of the 0°C isotherm depth and a strengthened southeastward current there. This indicates that the long-term result of correlation between current and isotherm variability from V_{NE} holds for the entire northeastern trough. At GC₆ the correlation is also positive, in agreement with observations. As expected, above 100 m depth the correlation with temperature is mostly insignificant, which emphasizes that τ_{ERA-I} influence the ocean temperature mostly through deep-reaching dynamic processes.

~~We finally note that the overall correlation between τ and currents and temperature is strongest~~ Based on the correlation maps from the model output, we suggest that the wind stress over the Central box induces variability in the continental shelf break regions of strong currents during winter, ~~in agreement with results from GCi.e., within the troughs leading to the ice shelves, but that the correlation at the GC₆ (Fig.5).2016 is also characterized by larger areas of significant and stronger positive correlation than 2017 (not shown), making 2016 similar to the winter average~~ mooring is not well captured by the model. The impact of the wind stress on temperature is largest for the deep isotherm depth with less impact on the temperatures of the upper water column.

4 Discussion

345 4.1 Differences from the Siple and Dotson-Getz Troughs

The hydrographic conditions at GC₆ highlight the importance of bathymetry: despite the geographic proximity to the Siple and Dotson-Getz Troughs, the hydrography differs greatly (Fig. 3 and Assmann et al. 2019; Wählín et al. 2013). The variability has been observed in snapshot CTD profiles reported in Jacobs et al. (2013). There are three fundamental hydrographic differences: i) The maximum temperature observed in the GC₆-Trough is lower (0.19°C, 2014, seal-borne CTD, Fig. 3a) than in the adjacent troughs, i.e., pure CDW is absent. ~~The western GIS is the only region where the ice shelf base is potentially in contact with pure CDW, which crosses the ~570 m deep Siple Trough sill, and is regularly present at its ice front (Fig. 3, Assmann et al. 2019 their Fig. 2). The majority of this warm water is, however, likely too deep to interact directly with the~~

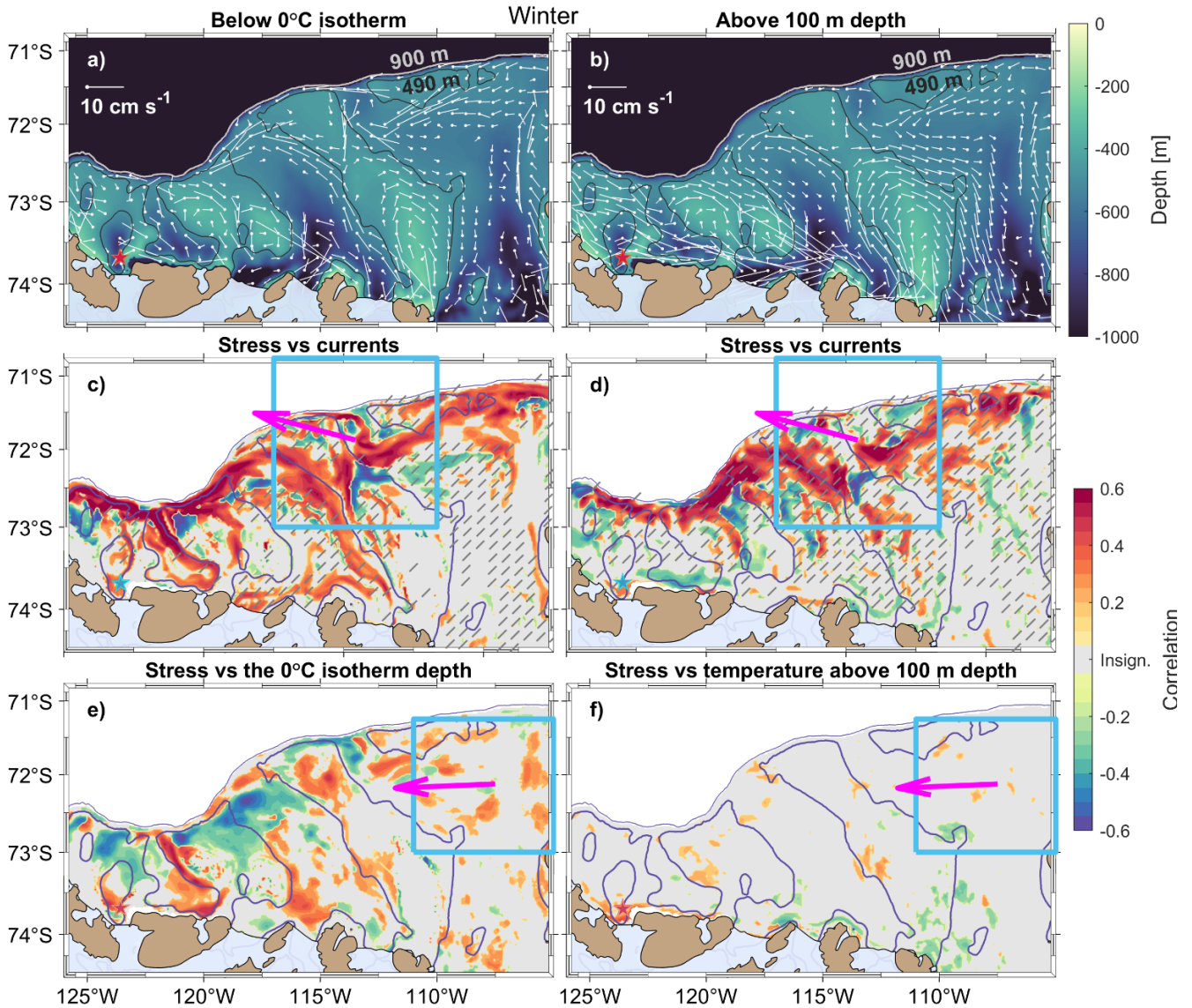


Figure 9. a,b) Bathymetry (color) and mean modeled currents (white sticks, 2016 to mid-2017) at every 7th regional model grid point during winter a) below the 0°C isotherm, and b) above 100 m depth. The current scale is indicated in the top left corner, and the current is directed from the white circle indicating the grid cell center. Currents weaker than 1 cm s⁻¹ are omitted. The red star indicates GC₆. c,d) Maps of correlation between modelled currents and the zonal τ_{ERA-I} averaged over the ASP-box Central-box (cyan) c) below the 0°C isotherm and d) above 100 m depth. Grey regions have insignificant correlation, and the white region is outside the on-shelf study domain. Hatched regions have mean currents less than 1 cm s⁻¹. e,f) Are analog to panels c,d), but show correlation between the zonal τ_{ERA-I} averaged over the East-box (cyan) and e) the depth of the 0°C isotherm, and f) temperature above 100 m depth. The contours shown are the 900 m (thin blue line) and 490 m (thick, blue line) isobaths. The magenta arrow shows the direction of the mean τ_{ERA-I} over the boxes. In c,d,e,f) all time-series are de-seasoned and LP_{8D} is applied, and the color of the star shows the correlation between τ_{ERA-5} and the along-trough current (c,d) and mCDW-temperature (e,f) from Fig. 5.

ice-shelf base (Assmann et al., 2019). Since GC₆ records temperatures above 0°C and is moored on the slope of the trough, unmodified CDW could be present, but unobserved, in the deepest regions parts of the trough. However, the historical profiles record weak temperature gradients below the thermocline (Fig. 3a) —so the mooring is likely representative for temperatures at depth. ii) mCDW influenced by meltwater is unobserved-not observed in the GC₆- and Siple Troughs, but is registered in the Dotson-Getz Trough (Wåhlin et al., 2010). While the Dotson-Getz Trough sill depth is ~ 70 m shallower than the Siple Trough sill, the shallower isotherms north and east on the continental shelf enable basal melt. We note that although meltwater is unobserved in the GC₆-Trough, the heat available could still induce basal melt without this being detected. The available data is insufficient to assess whether meltwater, e.g., exits at shallow depths or through pathways underneath the ice shelf. iii) Seasonality in deep currents and isotherms is absent in the GC₆- and Siple Troughs in 2016-2018, but is present in the Dotson-Getz Trough (Wåhlin et al., 2013). Further south in the Dotson-Getz Trough the seasonality disappears (Jacobs et al., 2012), possibly due to mixing by internal waves and basin-scale eddies (Wåhlin et al., 2013).

The mean current at GC₆ brings an estimated $45 \pm 64 \text{ MW m}^{-1}$ available heat toward the GIS front south in the GC₆-Trough, about one fifth of the values observed in the Siple Trough (GW₆). The heat transport at GC₆ might nonetheless be important for the central GIS: The current in the Dotson-Getz Trough is even weaker, and the heat transport conveyed toward the Dotson Ice Shelf is roughly half the value observed at GC₆ (Wåhlin et al., 2013), and still, meltwater is observed here (Wåhlin et al., 2010). Estimates of heat transport based on single moorings, however, come with uncertainties related to capturing the width of the current and depend depends on the position of the core of the warm inflow relative to the mooring location. Estimates based on mooring arrays across the troughs would yield more reliable comparisons.

4.2 Correlation between the along-trough current and τ

The heat transport at GC₆ is dominated by the variability in the along-trough current, as previously observed in the Dotson-Getz Trough (Wåhlin et al., 2013) and further east in the trough at 113°W (Assmann et al., 2013). The along-trough current's dominant response to τ , however, where strong westward τ over the ASP-region-continental shelf between the ASP and the shelf break corresponds to a strong current toward the ice shelf (BP_{8D-10M}, Fig. 5a and 9b), differs from results from troughs both west (not shown) and east of the GC₆-trough. There, the strongest currents toward the ice front are driven by eastward τ just north of the shelf break (Wåhlin et al., 2013; Assmann et al., 2013). This suggests that τ directly adjusts the barotropic component of the along-shelf currents, and consequently the direct flow of the undercurrent into these adjacent, deep troughs, while the relation between the variability a different mechanism is responsible for the co-variability at GC₆ and τ is more complex. The lag of 0-2 days between τ and the along-trough current —at GC₆ is, however, close to results from similar correlation analysis from other regions (Darelius et al., 2016; Wåhlin et al., 2013).

The location of the highest correlation between τ and the along-trough current (Fig. 5a) indicates that the wintertime link between τ and the along-trough current is related to ASP-specific features, such as the low wintertime SIC, the consistently strong winds that facilitate rapid momentum transfer from the atmosphere to the ocean, and its location over the coastal current. Without this polynya region of reduced SIC, which occasionally extends northward towards the shelf break, and the disturbance of potential fast-ice, the wintertime relation between wind and current would possibly be much reduced. This

suggests that current variability at GC₆ is connected to τ -induced variability propagating with the coastal current. We speculate that the response might be largely barotropic. Westward winds increase the along-shore sea level and enhance the westward barotropic current along the coast, affecting the variability at GC₆. This process would induce a negative correlation between the ocean surface stress and current at GC₆, which is what we observe in winter. The non-significant correlation between $\tau_{\text{ERA-I}}$ and the coastal current (Fig. 9c), which contradicts this hypothesis, might result from the complex coastal geometry and bathymetry, large cyclonic systems, changes in the density structure which affects the balance between the barotropic and baroclinic components (Núñez-Riboni and Fahrbach, 2009; Kim et al., 2016), varying propagation speed of anomalies, irregular wave patterns along the coast, and trapped warm and cold anomalies. The variability in transport within the coastal current is also connected to the amount of meltwater produced from basal melt in ice shelf cavities (Nakayama et al., 2014a; Jourdain et al., 2017). We also note that the error in the estimation of τ introduced by assuming a motionless ocean might influence ~~this result~~ results in this region where the surface currents are strong.

In summer, the relationship between τ and the current at GC₆ shifts: the correlation turns positive, ~~and~~ and the region of highest correlation shifts west of Siple Island, ~~and the northward component of the along-trough current increases. The increased northward component of the along-trough current during summer 2017 (Fig. 4c) reflects that the strong westward τ enhances the transport away from the ice shelf.~~ The temporal and spatial changes in correlation are unlikely explained by momentum transfer from sea ice, given the insensitivity of the correlation results to the different sea ice parameterizations for τ (Appendix B). However, the indirect effect of sea ice on the dynamics through, e.g., stratification, might be of importance.

4.3 Variability in heat content

Periods of increased temperatures at GC₆ are likely the result of at least two mechanisms. ~~A local response: One is a short-term response where~~ eastward τ is associated with short-term Ekman upwelling and local lifting of the thermocline, ~~and. The second is~~ a long-term response ~~: where~~ positive cumulative Ekman pumping anomaly (wEK), high summertime SIC, and remote input of heat from the eastern Amundsen Sea and the deep ocean north of GC₆, ~~superimposed on the local response, and adjusting the adjust the~~ isotherms by up to 200 m (Fig. 7b). The ~~local and long-term two~~ responses are distinguished by causing short (less than 3 weeks) and long (several months) periods of increased heat content, ~~respectively at GC₆.~~

The positive correlation between mCDW-temperature and τ_{D18} over the eastern shelf in winter (BP_{8D-10M}, Fig. 65b) is associated with the ~~local short-term~~ response, similar to observations in the Siple Trough, but different from the Dotson-Getz Trough where the high bottom temperatures are ~~unrelated less related~~ to the average wind over the shelf break (Wählin et al., 2013). This indicates that the bottom temperatures in the western Amundsen Sea are more sensitive to changing wind forcing than the eastern Amundsen Sea, which is supported by a higher standard deviation in isotherm depth west of the northeastern trough in the regional model (not shown). The time scale of the short-term response is similar to under the Pine Island Ice Shelf (Davis et al., 2018).

During summer, ~~τ has overall little influence on~~ the correlation is mostly insignificant, but shows signs of anti-correlation (Fig. 6a). We speculate that the insignificance is due to this shift from positive to negative correlation but that the shift happens too gradually for our moving windows to capture periods of significant negative correlation. We further suggest

that the shift depends on the position of the zero-contour, as we observe that a northward shifted zero-contour coincides with periods of anti-correlation between the zonal stress and the mCDW-temperature at GC₆, possibly a consequence of dominating westward winds, a general depression of the thermocline at the shelf break, and increased stratification. Dominating westward winds, a general depression of the thermocline at the shelf break, and increased stratification also likely weaken the relationship between τ and the deep temperatures. A relation like the local response between eastward winds and increased on-shelf heat content has been shown in regions where the sill and troughs are deeper, such as in the Dotson-Getz Trough (e.g. Dotto et al., 2019), and the time scale of the local response is similar to under the Pine Island Ice Shelf (Davis et al., 2018).

The cooling events at GC₆ that compare with, which are similar to those observed at GW_{6F} (Steiger et al., 2021) during the same period (Steiger et al., 2021), might be triggered by strong winds over a region of low SIC east of Carney Island. The distance-The estimated propagation speed of a coastal trapped wave from this region to GC₆ is ~ 150 km, and the reduced temperatures occur roughly 3–5 days after the increase in winds. The resulting propagation speed ($0.4 - 0.7 \text{ m s}^{-1}$) matches the propagation speed from north of Siple Island to of the coastal trapped wave observed at GW_{6F} (Steiger et al., 2021), but the-. The effect of the events on the heat content at GC₆ is less than at GW_{6F}, possibly explained by the larger distance of GC₆ from the ice shelf front. However, this implies that the signal is stronger at the ice shelf front than at GC₆. Consequently, the effect of this wind-induced coastal wave is likely substantial at the ice shelf front in the GC₆-Trough.

The difference in heat content between 2016 and 2017 and the multi-yearly variability indicated by the model emphasizes the importance of the different atmospheric forcing between 2016 and 2017 specifically and the influence of the long-term response in general. The two consecutive years (2015 and 2016) of southward shifted zero-contours might have induced the large positive wEK anomaly in 2016, possibly leading to shallower isotherms during summer 2016 than 2017 in both the coastal region and the northeastern trough (Fig. 8d). In 2017, the reduced wEK and strong thermohaline convection during freeze-up following the exceptionally low SIC might have caused the prolonged presence of WW below 300 m depth and deepening deep isotherms relative to 2016 (Fig. 4a). According-However, according to the long-term model results, however, both 2016 and 2017 were relatively cold, despite the strong positive anomaly in wEK (Fig. 7a). Since-The absence of an evident relation between wEK and heat content such as observed in the Siple Trough (Assmann et al., 2019) is absent, indicates that this indicates that the low summertime SIC and relatively weak τ during the mooring period, as well as other large-scale atmospheric forcing mechanisms not assessed here, might be is more central for heat content variability at GC₆ than wEK.

Several additional processes beyond the scope of this study govern shelf break regions. Passing coastally trapped waves (Chavanne et al., 2010) and the surface water thickness and composition (Daae et al., 2017) might affect the undercurrent's strength and depth. The undercurrent can further induce vortex systems and Rossby waves along the shelf break, bringing heat into troughs (St-Laurent et al., 2013). In the regional model, waves appear in the 0°C isotherm along most of the Amundsen Sea shelf break but dissolve in the region north of GC₆, suggesting a minor influence on the heat content variability at GC₆. We also note that the connection between increased basal melt from ice shelf cavities and the transport of the coastal current (Jourdain et al., 2017) might contribute to the variability we observe in the GC₆-Trough, and that strong anomalies in heat loss in upstream polynyas, such as the ASP, can cause reduced heat content for several years (St-Laurent et al., 2015).

455 4.4 Large scale climate variability

Jacobs et al. (2013) suggested that the Amundsen Sea responds to large-scale changes as a unit, and consequently, the long-term variability at GC₆ could be influenced by far-field drivers such as the El Niño southern oscillation (ENSO) and anomalies in the Southern Annular Mode (SAM) (Dutrieux et al., 2014; Thompson et al., 2018; Spence et al., 2014). The future changes in ENSO are disputed (e.g. Perry et al., 2020), however, the SAM-index has a positive trend (a southward shifting zero-contour) due to CO₂ emissions and ozone depletion (e.g. Swart and Fyfe, 2012; Thompson and Solomon, 2002; McLandress et al., 2011). This might lead to reduced Ekman transport toward the coast, a relaxed ASF, and a combination of westward stress on the continental shelf and eastward stress along the shelf break, favoring increased heat transport toward the ice front at GC₆ and increased mCDW-layer thickness, respectively. While a clear relationship between the SAM-index and wEK and isotherm depth is absent on monthly time scales (not shown), the long-term trend might drive a slow change in the region. SIC also tends to be high during the positive mode of SAM (Lefebvre and Goosse, 2005), and indications of this occur over GC₆. The future state of SIC might be particularly important for the GC₆-Trough since isotherm deepening due to sea ice growth seems to have a larger impact here than elsewhere in the Amundsen Sea (Fig. 7c).

In the long term, the expected positive trend in SAM might influence the heat content at GC₆ due to the link to atmospheric forcing. A permanently relaxed ASF would likely weaken the undercurrent and possibly enhance the relative importance of the wind-driven heat input from the east. However, the short-term relationship between τ and the bottom temperatures could be reduced by increased surface stratification due to increased sea ice melt. Still, the impact of future changes in SIC is uncertain given its contradicting response to positive SAM (Lefebvre and Goosse, 2005) and a warmer atmosphere. The shift in τ associated with the trend in SAM would not affect the katabatic winds, and thus the relation between τ and heat transport at GC₆ might be unchanged.

475 5 Summary and conclusions

This study provides a first detailed description of the hydrography ~~-, the ocean circulation -, and its response to atmospheric forcing and ocean circulation~~ close to the front of Getz Ice Shelf (GIS) between Siple and Carney Islands and its response to atmospheric forcing using new mooring observations (GC₆) combined with output from a regional model (Nakayama et al., 2018, 2019) and historical CTD-profiles. The mooring data show temperatures over -1°C throughout the mooring period and reoccurring periods with temperatures over 0°C (Fig. 4a). The average heat transport is directed toward the ice shelf (Fig. 2d), but contrary to adjacent fronts (Assmann et al., 2019; Wählin et al., 2013), ~~unmodified~~ Circumpolar Deep Water (CDW) is absent (Fig. 3c). The data show no modification of CDW at depth by basal melt in the GC₆-Trough (Fig. 3c) as observed in the neighboring Dotson-Getz Trough (Wählin et al., 2010).

We analyzed the atmospheric drivers of the mesoscale (8 days to 10 months) variability in the deep, warm temperatures and circulation at GC₆ and found a link to ocean surface stress (τ) ~~on medium time scales (8 days to 10 months)~~, Fig. 5 and 6). In winter, strong eastward τ over the eastern shelf break increases mCDW-temperatures, while strong westward τ over the Amundsen Sea Polynya ~~(ASP)-region~~ region and northward to the continental shelf break (Central-box) strengthens

the along-trough current. These relations agree with i) short-term relaxing of the Antarctic Slope Front (ASF), lifting of the thermocline and an accelerated undercurrent, and ii) piling up of water along the coast and a strong westward barotropic current, ~~respectively~~. Barotropic responses along the path of the coastal current may thus partly explain the high correlation and short lag between τ over the ASP-region-Central box and the along-trough current at GC₆, ~~although this is not confirmed by~~. ~~However~~, the analyzed model fields ~~-The temperature do not confirm this. The opposite sign of correlation of τ with the current and mCDW-temperature emphasize that advection of heat by the southward current is not the primary driver of temperature variability at the mooring on these time scales. The temperature~~ response to τ is similar in the GC₆- and Siple Troughs, while the response of the currents differs between the GC₆-Trough and the Siple- and Dotson-Getz Troughs, emphasizing the importance of bathymetry. The link between heat content, heat transport, and τ changes in summer – there is a shift in the dynamics induced by τ that is likely connected to stronger stratification and higher baroclinicity.

Winter conditions appear to favor wind-driven enhanced heat content near the ice front (Fig. 6a). In winter, the wind field's zero-contour generally shifts southward, which we find to facilitate a warm GC₆-Trough. The positive wEK is also generally strongest in winter (Fig. 7b), in agreement with a suggested weakened ASF in mid-winter (Pauthenet et al., 2021). Uncharacteristic atmospheric forcing during the mooring period (Fig. 7a,b) likely explains the lack of seasonality in the GC₆ mooring record. Mixing by internal waves and basin-scale eddies might contribute, such as south in the Dotson-Getz trough (Wählin et al., 2013). The warm 2016 was characterized by winter-like forcing, while the colder 2017 tended toward forcing more typical for summer (Fig. 4d,e). According-Compared to the long-term model results, however, the winter-like 2016 was not particularly warm (Fig. 7c). This emphasizes the complex interactions of forcing mechanisms, and strong positive wEK and a southward shifted zero-contour can be hindered from causing anomalously shallow isotherms on the continental shelf by counteracting forcing mechanisms such as low summertime SIC.

We conclude that although the entrance to the GC₆-Trough is sheltered from warm water inflow by bathymetry, it is connected to atmospheric forcing and conditions elsewhere on the continental shelf. This makes the ice front neighboring-GC₆, ~~just like the other ice fronts of GIS, in the GC₆-Trough~~ vulnerable to future changes in the wind field, SIC, and thermocline characteristics. ~~Detailed measurements of basal melt are needed to quantify the relative importance of this entrance, just like the other ice fronts of GIS.~~ Sensitivity studies with a numerical model as well as improved bathymetry data at the fronts and under the ice shelf could provide further knowledge on how higher temperatures and a shallower thermocline at GC₆ might affect meltwater production and the stability of GIS. This would help assess its contribution to future freshwater input toward the Ross Sea and how this could affect large-scale aspects such as the thermohaline circulation.

Data availability. Data from moorings GC₆, GW₆ and GW_{6F} are available through the NMDC data centre. Data from the S1 mooring are available at <https://www.ncei.noaa.gov/access/metadata/landing-page/bin/iso?id=gov.noaa.nodc:0211128>. The CTD data from tagged seals are available at <https://www.meop.net/>, and the ship-based CTD data taken onboard *N.B. Palmer* are available through the World Ocean Data Base and data from *Araon* in Lee (2016). The daily model output is available at https://ecco.jpl.nasa.gov/drive/files/ECCO2/LLC1080_REG_

520 AMS/1080_run260_Elin, and the monthly model output at https://ecco.jpl.nasa.gov/drive/files/ECCO2/LLC1080_REG_AMS/run260/. New users must register for an Earthdata account at <https://urs.earthdata.nasa.gov/users/new> to access these files.

Video supplement. Movie S1

Appendix A: Model validation

For the virtual mooring $GC_{6\text{ mod}}$, we choose a location on the model grid slightly southwest of the actual mooring site as
525 the depth at this location is more similar to the mooring depth. Trough openings are generally deeper and less restricted in the regional model bathymetry than in the IBCSO dataset. The entrance to the trough at the shelf break northeast of GC_6 is shallower than 490 m depth in IBCSO, closing off the connection to the open ocean, while the sill is deeper in the model bathymetry (Fig. A1a). IBCSO is expected to perform well in shelf break regions, and such features may thus help explain differences between model and observations.

530 Like similar models, such as the MITgcm setup used by Assmann et al. (2013), this regional model reports bottom temperatures that are too high and a warm layer that is too thick. In agreement with observations, however, CDW is not present at GC_6 . Also, seasonality is imposed on the thinning (summer) and thickening (winter) of the warm layer that is not detected by GC_6 . As the warm layer extends higher up in the water column in the model (about 100 m difference), the interaction between cool surface waters through deep ventilation and the warm layer seems to be more important in the model than in observations.
535 Applying BP_{8D-10M} to the -1°C isotherm, however, yield relatively good agreement between the model and observations ($r = 0.31$, Fig. A1b). Although the model does not resolve observed sudden changes in temperature as we observe in, e.g., May 2017, and imposes a few artificial peaks (Fig. A1b), the Fourier spectra support the conclusion that the magnitude of variability is relatively good both in the upper and lower layers of mooring extent (Fig. A1c).

Velocity variance ellipses from observations and model at the mooring location are similar in both magnitude and variability,
540 and in variation with depth (Fig. 2d). This is true both for the model period as a whole and during most of the period when separated into monthly mean variance ellipsis. This indicates good agreement on the overall background state. The main difference is in the magnitude of the zonal component which tends to be of opposite sign, but as this is the minor component in both the model and observations, it is largely disregarded through rotation of the coordinate system along the direction of the mean flow (Fig. A1e). This slight difference in direction might be explained by differences in model and true bathymetry
545 (Fig. A1a). Frequency spectra of velocity also indicate that the relative importance of variability on various time scales agrees well (not shown), and the depth profiles of decomposed principal components through EOF analysis are similar, though the model overemphasizes PC1. The variability explained by the main components, PC1, and PC2, varies with time and co-vary for model and observations. These aspects all yield credibility to the use of the regional model to describe the average situation in the GC_6 -Trough region on longer time scales.

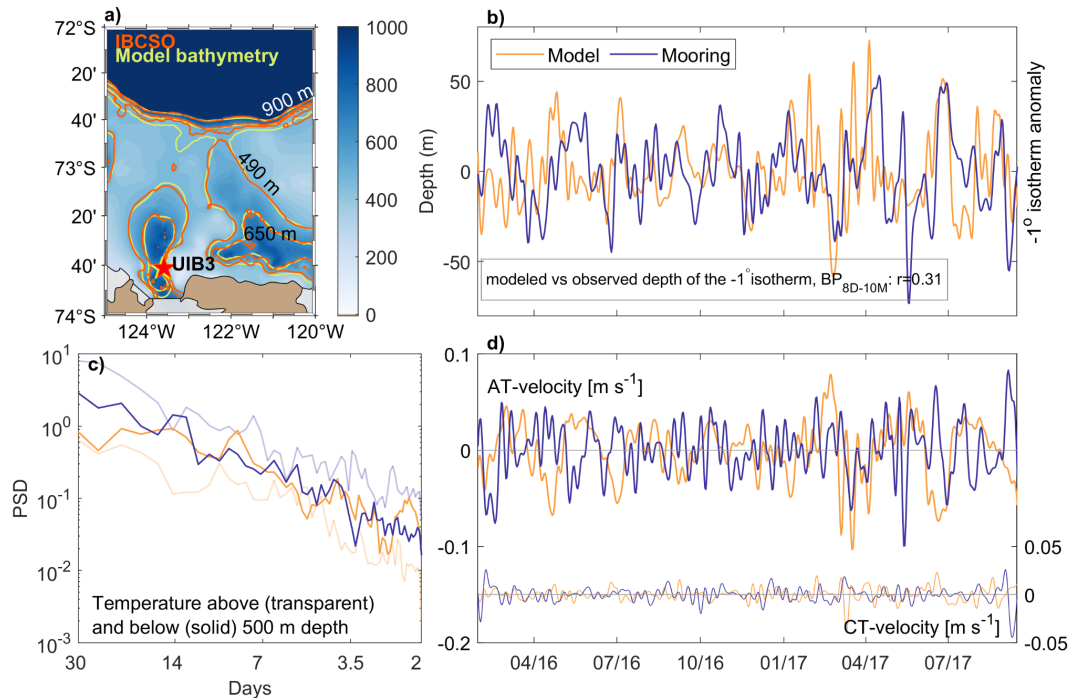


Figure A1. Comparison between a) selected isobaths from IBCSO (orange) and the model's bathymetry (yellow) (GC₆'s location: red star). 650 m is the mooring depth and at 490 m the model bathymetry indicates that the trough northeast of GC₆ is open, while it is closed in the IBCSO data. b) The anomaly of the -1°C isotherm depth, c) the Fourier spectra of mean temperature above (transparent) and below (solid) 500 m depth, and the d) rotated along-trough current (AT-velocity, left axis) and cross-trough current (CT-velocity, right axis) at the mooring GC₆ (blue) and at the mooring location in the model (orange). Isotherm depth anomalies and rotated velocities are filtered with BP_{8D-10M}.

550 There is, however, less agreement in velocity on shorter time scales (Fig. A1e). The velocity is represented well during specific periods (e.g., February-April 2017) and nearly opposite during other periods (e.g., November and December 2016). Due to this, we do not rely on the short-term variability of the modeled velocity at the mooring site.

Just like in the daily model record, the monthly mean time-series (2001-2017) exhibit strong seasonality in temperature and salinity. The warm and saline layer at the bottom is thinner in summer than in winter – in summer the previous winter's deep
 555 ventilation pushes the deep layer of mCDW downwards. However, although ventilation of cool surface waters appears to affect and interact with the deep warm layer (Sect. 3.3.2), the model appears to underestimate the extent of the deep ventilation. WW is never present below 200 m depth (the depth comparable to 300 m in the observations). In contrast, the mooring captures water below -1.8°C down to 450m depth. Low salinity levels compared to the observations throughout the model period indicate that the brine release due to sea ice formation in fall is under-estimated in the model. This would explain the shallow
 560 extent of deep ventilation. The slope of the mixing line between WW and CDW in yearly mean TS-diagrams does however increase (decrease) in league with decreasing (increasing) SIC (not shown). Extensive freeze-up after periods of low SIC means deep ventilation of more saline waters, shifting the slope in the TS diagrams.

The depth of the modeled 0°C isotherm averaged over 2016-2017 increases from about 200 m at the shelf break to 400 m north of GC₆. There is a similar increase from east to west (Fig. 8a), which agrees with observations from Jacobs et al. (2012).
 565 In the troughs, the isotherm stays shallow further onto the continental shelf.

Appendix B: Calculations of ocean surface stress

For calculations that include τ , we select three spatial boxes: one at the shelf break just north of GC₆, the “SB-box”, one over the Amundsen Sea Polynya and north to the shelf break, the “ASP-box Central-box” (see colored rectangles in Fig. 1a), and one on the continental shelf further east, the “East-box”. The first was chosen to explore if the shelf break processes are
 570 equally important at GC₆ as at GW_{6.7} further west (Assmann et al., 2019), and for estimations of wEK and the meridional position of the zero-contour. The ASP-box Central-box was chosen since we find the highest correlation between τ_{D18} and the along-trough current at GC₆ ~~is~~ over the ASP region and northward to the shelf break (see Sect. 3.2). The East-box was chosen based on the region of highest correlation between τ_{D18} and the mCDW-temperature at GC₆. We define the cumulative Ekman pumping anomaly (wEK) as the de-trended integral of w_{EK} in time. dt is the time between observations and

$$575 \quad w_{EK} = -\frac{1}{\rho} \frac{1}{f} \frac{\Delta \tau^x}{\Delta y} \approx -\frac{1}{\rho} \left[\frac{\tau^x \Delta f^{-1}}{\Delta y} + \frac{1}{f} \frac{\Delta \tau^x}{\Delta y} \right] \approx -\frac{1}{\rho} \frac{\partial}{\partial y} \left(\frac{\tau^x}{f} \right) \approx \frac{1}{\rho} \left[\frac{\partial}{\partial x} \left(\frac{\tau^y}{f} \right) - \frac{\partial}{\partial y} \left(\frac{\tau^x}{f} \right) \right]. \quad (\text{B1})$$

In this approximation, the dependency on $\frac{\partial \tau^y}{\partial x}$ is neglected as the main gradients in τ are in the meridional direction, and $\frac{\Delta f^{-1}}{\Delta y}$ is neglected since f is constant in longitude.

We include SIC and sea ice movement in the approximation of $\vec{\tau}$ to account for the drag of ice on the ocean following Dotto et al. (2018):

$$580 \quad \vec{\tau} = \alpha \vec{\tau}_{ice-water} + (1 - \alpha) \vec{\tau}_{air-water} \quad (\text{B2a})$$

$$\vec{\tau}_{ice-water} = \rho C_{iw} |\vec{U}_{ice}| \vec{U}_{ice} \quad (\text{B2b})$$

$$\vec{\tau}_{air-water} = \rho_{air} C_d |\vec{U}_{air}| \vec{U}_{air}, \quad (\text{B2c})$$

where α is SIC, $C_{iw} = 5.50 \times 10^{-3}$ is the drag coefficient between ice and water, \vec{U}_{ice} is the velocity of the ice, $\rho_{air} = 1.25 \text{ kg m}^{-3}$ is the density of air, $C_d = 1.25 \times 10^{-3}$ is the drag coefficient between air and water, and \vec{U}_{air} is the 10 m wind.
 585 Comparison of four different estimates of τ using i) output from ERA 5, ii) Eq. B2a (Dotto et al., 2018), iii) Eq. B2c with C_d parameterized using SIC (Andreas et al., 2010), and iv) Eq. B2c (only wind stress) shows that inclusion of sea ice reduces the magnitude, but the variability is similar between all four estimations (Fig. B1). We do, however, assume a motionless ocean and a spatially and temporally constant C_d , although it would be more accurate to use the relative velocities between air, sea ice, and ocean, and C_d as a function of variables such as ridgedness, seasons, and geometry (Brenner et al., 2021). We choose to
 590 use Eq. B2a because previous studies have shown that the inclusion of sea ice and sea ice movement is important for a realistic

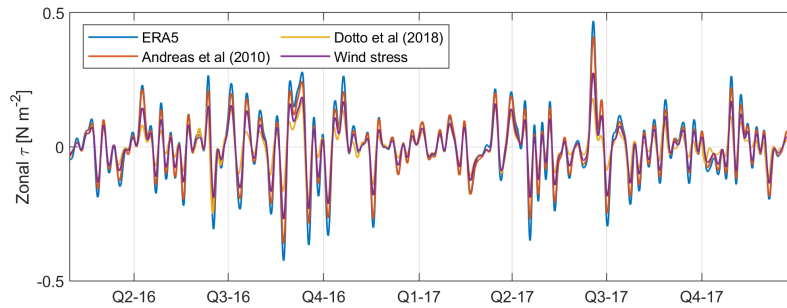


Figure B1. Different estimations of τ using the output from ERA 5 (blue), and explicit calculations using the parameterization of C_d from Andreas et al. (2010) (red), parameterization of C_d from Dotto et al. (2018) (yellow), and the wind stress without accounting for sea ice (purple). All timeseries are filtered with BP_{8D-10M} .

estimate of momentum transfer into the ocean (Dotto et al., 2018), and do not have daily data on surface currents available for the full study period.

τ over the ASP-region appears to be particularly influential on the currents, compared to the rest of the Amundsen Sea area: High correlation occurs in a region similar to the ASP on a correlation map between spatially varying τ and the current at a fixed location at the shelf break where the correlation is high in Fig. 9c. The temporal evolution of correlation between heat transport and τ_{D18} is similar for stress averaged over the ASP and shelf break regions (SB-box), indicating that the large-scale wind field induces the dominant current-variability at GC₆. Similarly, the four different parameterizations of sea ice for τ (Fig. B1) give similar temporal and spatial variability, but the magnitude of correlation increases with parameterizations including sea ice concentration and drift.

600 *Author contributions.* V.D. wrote the first draft, conducted analysis, and prepared the figures. E.D. processed the data. E.D., K.D., and N.S. improved the manuscript. Y.N. provided output from the regional model. E.D. and T.W.K. contributed to the field work. All authors read and commented on the paper.

Competing interests. The authors declare no competing interests.

605 *Acknowledgements.* This work is supported by the Norwegian Research Council through project 267660 (TOBACO) and through the Korea Polar Research Institute, grant PE22110. The authors would like to thank Ilker Fer from the Geophysical Institute, University of Bergen, for comments on the manuscript and for lending instrumentation for CG₆.

References

- Andreas, E. L., Horst, T. W., Grachev, A. A., Persson, P. O. G., Fairall, C. W., Guest, P. S., and Jordan, R. E.: Parametrizing turbulent exchange over summer sea ice and the marginal ice zone, *Quarterly Journal of the Royal Meteorological Society*, 136, 927–943, <https://doi.org/10.1002/qj.618>, 2010.
- 610 Arndt, J. E., Schenke, H. W., Jakobsson, M., Nitsche, F. O., Buys, G., Goleby, B., Rebescio, M., Bohoyo, F., Hong, J., Black, J., Greku, R., Udintsev, G., Barrios, F., Reynoso-Peralta, W., Taisei, M., and Wigley, R.: The International Bathymetric Chart of the Southern Ocean (IBCSO) Version 1 . 0 — A new bathymetric compilation covering circum- Antarctic waters, *Geophysical Research Letters*, 40, 3111–3117, <https://doi.org/10.1002/grl.50413>, 2013.
- 615 Arneborg, L., Wåhlin, A. K., Björk, G., Liljebladh, B., and Orsi, A. H.: Persistent inflow of warm water onto the central Amundsen shelf, *Nature Geoscience*, 5, 876–880, <https://doi.org/10.1038/ngeo1644>, 2012.
- Assmann, K. M., Jenkins, A., Shoosmith, D. R., Walker, D. P., Jacobs, S. S., and Nicholls, K. W.: Variability of Circumpolar Deep Water transport onto the Amundsen Sea continental shelf through a shelf break trough, *Journal of Geophysical Research: Oceans*, 118, 6603–6620, <https://doi.org/10.1002/2013JC008871>, 2013.
- 620 Assmann, K. M., Darelius, E., Wåhlin, A. K., Kim, T. W., and Lee, S. H.: Warm Circumpolar Deep Water at the Western Getz Ice Shelf Front, Antarctica, *Geophysical Research Letters*, 46, 870–878, <https://doi.org/10.1029/2018GL081354>, 2019.
- Brenner, S., Rainville, L., Thomson, J., Cole, S., and Lee, C.: Comparing Observations and Parameterizations of Ice-Ocean Drag Through an Annual Cycle Across the Beaufort Sea, *Journal of Geophysical Research: Oceans*, 126, <https://doi.org/10.1029/2020JC016977>, 2021.
- Chavanne, C. P., Heywood, K. J., Nicholls, K. W., and Fer, I.: Observations of the Antarctic Slope undercurrent in the Southeastern Weddell Sea, *Geophysical Research Letters*, 37, 3–7, <https://doi.org/10.1029/2010GL043603>, 2010.
- 625 Daae, K., Hattermann, T., Darelius, E., and Fer, I.: On the effect of topography and wind on warm water inflow—An idealized study of the southern Weddell Sea continental shelf system, *Journal of Geophysical Research: Oceans*, 122, 2622–2641, <https://doi.org/10.1002/2013JC009262>.Received, 2017.
- Darelius, E., Fer, I., and Nicholls, K. W.: Observed vulnerability of Filchner-Ronne Ice Shelf to wind-driven inflow of warm deep water, *Nature Publishing Group*, pp. 1–7, <https://doi.org/10.1038/ncomms12300>, 2016.
- 630 Davis, P. E., Jenkins, A., Nicholls, K. W., Brennan, P. V., Abrahamsen, E. P., Heywood, K. J., Dutrieux, P., Cho, K. H., and Kim, T. W.: Variability in Basal Melting Beneath Pine Island Ice Shelf on Weekly to Monthly Timescales, *Journal of Geophysical Research: Oceans*, 123, 8655–8669, <https://doi.org/10.1029/2018JC014464>, 2018.
- Dee, D. P., Uppala, S. M., Simmons, A. J., Berrisford, P., Poli, P., Kobayashi, S., Andrae, U., Balmaseda, M. A., Balsamo, G., Bauer, P., Bechtold, P., Beljaars, A. C., van de Berg, L., Bidlot, J., Bormann, N., Delsol, C., Dragani, R., Fuentes, M., Geer, A. J., Haimberger, L., Healy, S. B., Hersbach, H., Hólm, E. V., Isaksen, L., Kållberg, P., Köhler, M., Matricardi, M., McNally, A. P., Monge-Sanz, B. M., Morcrette, J. J., Park, B. K., Peubey, C., de Rosnay, P., Tavolato, C., Thépaut, J. N., and Vitart, F.: The ERA-Interim reanalysis: Configuration and performance of the data assimilation system, *Quarterly Journal of the Royal Meteorological Society*, 137, 553–597, <https://doi.org/10.1002/qj.828>, 2011.
- 635 Dotto, T. S., Naveira Garabato, A., Bacon, S., Tsamados, M., Holland, P. R., Hooley, J., Frajka-Williams, E., Ridout, A., and Meredith, M. P.: Variability of the Ross Gyre, Southern Ocean: Drivers and Responses Revealed by Satellite Altimetry, *Geophysical Research Letters*, 45, 6195–6204, <https://doi.org/10.1029/2018GL078607>, 2018.

- Dotto, T. S., Naveira Garabato, A. C., Bacon, S., Holland, P. R., Kimura, S., Firing, Y. L., Tsamados, M., Wåhlin, A. K., and Jenkins, A.: Wind-driven processes controlling oceanic heat delivery to the Amundsen Sea, Antarctica, *Journal of Physical Oceanography*, <https://doi.org/10.1175/jpo-d-19-0064.1>, 2019.
- 645
- Dupont, T. K. and Alley, R. B.: Assessment of the importance of ice-shelf buttressing to ice-sheet flow, *Geophysical Research Letters*, 32, 1–4, <https://doi.org/10.1029/2004GL020224>, 2005.
- Dutrieux, P., De Rydt, J., Jenkins, A., Holland, P. R., Ha, H. K., Lee, S. H., Steig, E. J., Ding, Q., Abrahamsen, E. P., and Schröder, M.: Strong sensitivity of pine Island ice-shelf melting to climatic variability, *Science*, 343, 174–178, <https://doi.org/10.1126/science.1244341>,
- 650 2014.
- Fretwell, P., Pritchard, H. D., Vaughan, D. G., Bamber, J. L., Barrand, N. E., Bell, R., Bianchi, C., Bingham, R. G., Blankenship, D. D., Casassa, G., Catania, G., Callens, D., Conway, H., Cook, A. J., Corr, H. F., Damaske, D., Damm, V., Ferraccioli, F., Forsberg, R., Fujita, S., Gim, Y., Gogineni, P., Griggs, J. A., Hindmarsh, R. C., Holmlund, P., Holt, J. W., Jacobel, R. W., Jenkins, A., Jokat, W., Jordan, T., King, E. C., Kohler, J., Krabill, W., Riger-Kusk, M., Langley, K. A., Leitchenkov, G., Leuschen, C., Luyendyk, B. P., Matsuoka, K., Mouginot, J.,
- 655 Nitsche, F. O., Nogi, Y., Nost, O. A., Popov, S. V., Rignot, E., Rippin, D. M., Rivera, A., Roberts, J., Ross, N., Siegert, M. J., Smith, A. M., Steinhage, D., Studinger, M., Sun, B., Tinto, B. K., Welch, B. C., Wilson, D., Young, D. A., Xiangbin, C., and Zirizzotti, A.: Bedmap2: Improved ice bed, surface and thickness datasets for Antarctica, *Cryosphere*, 7, 375–393, <https://doi.org/10.5194/tc-7-375-2013>, 2013.
- Gade, H. G.: Melting of Ice Sea Water: A Primitive Model with Application to the Antarctic Ice Shelf and Icebergs, *Journal of Physical Oceanography*, pp. 189–198, [https://doi.org/https://doi.org/10.1175/1520-0485\(1979\)009<0189:MOISW>2.0.CO;2](https://doi.org/https://doi.org/10.1175/1520-0485(1979)009<0189:MOISW>2.0.CO;2), 1979.
- 660
- Hersbach, H., Bell, B., Berrisford, P., Hirahara, S., Horányi, A., Muñoz-Sabater, J., Nicolas, J., Peubey, C., Radu, R., Schepers, D., Simmons, A., Soci, C., Abdalla, S., Abellan, X., Balsamo, G., Bechtold, P., Biavati, G., Bidlot, J., Bonavita, M., De Chiara, G., Dahlgren, P., Dee, D., Diamantakis, M., Dragani, R., Flemming, J., Forbes, R., Fuentes, M., Geer, A., Haimberger, L., Healy, S., Hogan, R. J., Hólm, E., Janisková, M., Keeley, S., Laloyaux, P., Lopez, P., Lupu, C., Radnoti, G., de Rosnay, P., Rozum, I., Vamborg, F., Villaume, S., and Thépaut, J. N.: The ERA5 global reanalysis, *Quarterly Journal of the Royal Meteorological Society*, 146, 1999–2049,
- 665 <https://doi.org/10.1002/qj.3803>, 2020.
- Heywood, K. J., Biddle, L., Boehme, L., Dutrieux, P., Fedak, M., Jenkins, A., Jones, R., Kaiser, J., Mallett, H., Naveira Garabato, A., Renfrew, I., Stevens, D., and Webber, B.: Between the Devil and the Deep Blue Sea: The Role of the Amundsen Sea Continental Shelf in Exchanges Between Ocean and Ice Shelves, *Oceanography*, 29, 118–129, <https://doi.org/10.5670/oceanog.2016.104>, 2016.
- Holland, D., Nicholls, K. W., and Basinski, A.: The Southern Ocean and its interaction with the Antarctic Ice Sheet, *Science*, 367, 1326–1330,
- 670 2020.
- IOC, SCOR, and IAPSO: The international thermodynamic equation of seawater – 2010: Calculation and use of thermodynamic properties. Intergovernmental Oceanographic Commission, Manuals and Guides No. 56, UNESCO (English), 196 pp., <http://www.teos-10.org/>, 2010.
- Jacobs, S., Giulivi, C., Dutrieux, P., Rignot, E., Nitsche, F. O., and Mouginot, J.: Getz Ice Shelf melting response to changes in ocean forcing, *Journal of Geophysical Research: Oceans*, 118, 4152–4168, <https://doi.org/10.1002/jgrc.20298>, 2013.
- 675
- Jacobs, S. S.: On the nature and significance of the Antarctic Slope Front, *Marine Chemistry*, 35, 9–24, [https://doi.org/10.1016/S0304-4203\(09\)90005-6](https://doi.org/10.1016/S0304-4203(09)90005-6), [http://dx.doi.org/10.1016/S0304-4203\(09\)90005-6](http://dx.doi.org/10.1016/S0304-4203(09)90005-6), 1991.
- Jacobs, S. S., Jenkins, A., Hellmer, H. H., Giulivi, C. F., Nitsche, F. O., Huber, B., and Guerrero, R.: The Amundsen Sea and the Antarctic Ice Sheet, *Oceanography*, 25, 154–163, <https://doi.org/10.5670/oceanog.2012.90>, 2012.
- Jourdain, N. C., Mathiot, P., Merino, N., Le Sommer, J., Durand, G., Spence, P., Dutrieux, P., and Madec, G.: *Journal of geophysical research*, *Journal of Geophysical Research: Oceans*, 122, 2550–2573, <https://doi.org/10.1038/175238c0>, 2017.
- 680

- Kalén, O., Assmann, K. M., Wåhlin, A. K., Ha, H. K., Kim, T. W., and Lee, S. H.: Is the oceanic heat flux on the central Amundsen sea shelf caused by barotropic or baroclinic currents?, *Deep-Sea Research Part II: Topical Studies in Oceanography*, 123, 7–15, <https://doi.org/10.1016/j.dsr2.2015.07.014>, 2016.
- Kim, C. S., Kim, T. W., Cho, K. H., Ha, H. K., Lee, S. H., Kim, H. C., and Lee, J. H.: Variability of the Antarctic Coastal Current in the Amundsen Sea, *Estuarine, Coastal and Shelf Science*, 181, 123–133, <https://doi.org/10.1016/j.ecss.2016.08.004>, <http://dx.doi.org/10.1016/j.ecss.2016.08.004>, 2016.
- Lee, S.: The Amundsen Sea Expedition 2015 – 2016, Tech. Rep. February, 2016.
- Lefebvre, W. and Goosse, H.: Influence of the Southern Annular Mode on the sea ice-ocean system: The role of the thermal and mechanical forcing, *Ocean Science*, 1, 145–157, <https://doi.org/10.5194/os-1-145-2005>, 2005.
- 685 Mcintyre, T., McMahon, C. R., Muelbert, M. M. C., Nicholls, K. W., Picard, B., and Reverdin, G.: Marine Mammals Exploring the Oceans Pole to Pole A Review of the MEOP Consortium, *Oceanography*, 30, 132–138, 2017.
- McLantern, C., Shepherd, T. G., Scinocca, J. F., Plummer, D. A., Sigmond, M., Jonsson, A. I., and Reader, M. C.: Separating the dynamical effects of climate change and ozone depletion. Part II: Southern Hemisphere troposphere, *Journal of Climate*, 24, 1850–1868, <https://doi.org/10.1175/2010JCLI3958.1>, 2011.
- 695 Nakayama, Y., Timmermann, R., Rodehacke, C. B., Schröder, M., and Hellmer, H. H.: Modeling the spreading of glacial meltwater from the Amundsen and Bellingshausen Seas, *Geophysical Research Letters*, 41, 7942–7949, <https://doi.org/10.1002/2014GL061600>, 2014a.
- Nakayama, Y., Timmermann, R., Schröder, M., and Hellmer, H. H.: On the difficulty of modeling Circumpolar Deep Water intrusions onto the Amundsen Sea continental shelf, *OCEAN MODELLING*, 84, 26–34, <https://doi.org/10.1016/j.ocemod.2014.09.007>, <http://dx.doi.org/10.1016/j.ocemod.2014.09.007>, 2014b.
- 700 Nakayama, Y., Menemenlis, D., Zhang, H., Schodlok, M., and Rignot, E.: Origin of Circumpolar Deep Water intruding onto the Amundsen and Bellingshausen Sea continental shelves, *Nature Communications*, 9, 1–9, <https://doi.org/10.1038/s41467-018-05813-1>, <http://dx.doi.org/10.1038/s41467-018-05813-1>, 2018.
- Nakayama, Y., Manucharyan, G., Zhang, H., Dutrieux, P., Torres, H. S., Klein, P., Seroussi, H., Schodlok, M., Rignot, E., and Menemenlis, D.: Pathways of ocean heat towards Pine Island and Thwaites grounding lines, *Scientific Reports*, 9, 1–9, <https://doi.org/10.1038/s41598-019-53190-6>, 2019.
- 705 Nakayama, Y., Timmermann, R., and Hellmer, H. H.: Impact of West Antarctic ice shelf melting on Southern Ocean hydrography, *Cryosphere*, 14, 2205–2216, <https://doi.org/10.5194/tc-14-2205-2020>, 2020.
- Núñez-Riboni, I. and Fahrbach, E.: Seasonal variability of the Antarctic Coastal Current and its driving mechanisms in the Weddell Sea, *Deep-Sea Research Part I: Oceanographic Research Papers*, 56, 1927–1941, <https://doi.org/10.1016/j.dsr.2009.06.005>, 2009.
- 710 Paolo, F. S., Fricker, H. A., and Padman, L.: Volume loss from Antarctic ice shelves is accelerating, *Science*, 348, 327–331, <https://doi.org/10.1126/science.aaa0940>, 2015.
- Pauthenet, E., Sallée, J.-B., Schmidtko, S., and Nerini, D.: Seasonal variation of the Antarctic Slope Front occurrence and position estimated from an interpolated hydrographic climatology, *Journal of Physical Oceanography*, <https://doi.org/10.1175/jpo-d-20-0186.1>, 2021.
- Perry, S. J., McGregor, S., Sen Gupta, A., England, M. H., and Maher, N.: Projected late 21st century changes to the regional impacts of the El Niño-Southern Oscillation, *Climate Dynamics*, 54, 395–412, <https://doi.org/10.1007/s00382-019-05006-6>, <https://doi.org/10.1007/s00382-019-05006-6>, 2020.
- 715 Rignot, E., Jacobs, S. S., Mouginot, J., and Scheuchl, B.: Ice-shelf melting around Antarctica, *Science*, 341, 266–270, 2013.

- Rignot, E., Mouginot, J., Scheuchl, B., Van Den Broeke, M., Van Wessel, M. J., and Morlighem, M.: Four decades of Antarctic ice sheet mass balance from 1979–2017, *Proceedings of the National Academy of Sciences of the United States of America*, 116, 1095–1103, <https://doi.org/10.1073/pnas.1812883116>, 2019.
- Sciremammano, F.: A suggestion for the presentation of correlations and their significance levels, *Notes and correspondence, American Meteorological Society*, pp. 1273–1276, 1979.
- Shepherd, A., Fricker, H. A., and Farrell, S. L.: Trends and connections across the Antarctic cryosphere, *Nature*, 558, 223–232, <https://doi.org/10.1038/s41586-018-0171-6>, 2018.
- 725 Smedsrud, L. H., Jenkins, A., Holland, D., and Nøst, O. A.: Modeling ocean processes below Fimbulisen, *Antarctica, Journal of Geophysical Research*, 111, 1–13, <https://doi.org/10.1029/2005JC002915>, 2006.
- Spence, P., Griffies, S. M., England, M., McC. Hogg, A., Saenko, O. A., and Jourdain, N. C.: Rapid subsurface warming and circulation changes of Antarctic coastal waters by poleward shifting winds, *Geophysical Research Letters*, 41, 4601–4610, <https://doi.org/10.1002/2014GL060613>. Received, 2014.
- 730 St-Laurent, P., Klinck, J. M., and Dinniman, M. S.: On the role of coastal troughs in the circulation of warm circumpolar deep water on Antarctic shelves, *Journal of Physical Oceanography*, 43, 51–64, <https://doi.org/10.1175/JPO-D-11-0237.1>, 2013.
- St-Laurent, P., Klinck, J. M., and Dinniman, M. S.: Impact of local winter cooling on the melt of Pine Island Glacier, *Antarctica*, 2015.
- Steiger, N., Darelius, E., Wählin, A. K., and Assmann, K. M.: Intermittent reduction in ocean heat transport into the Getz Ice Shelf cavity during strong wind events, *Geophysical Research Letters*, pp. 1–11, <https://doi.org/10.1029/2021gl093599>, 2021.
- 735 Swart, N. C. and Fyfe, J. C.: Observed and simulated changes in the Southern Hemisphere surface westerly wind-stress, *Geophysical Research Letters*, 39, 6–11, <https://doi.org/10.1029/2012GL052810>, 2012.
- Thoma, M., Jenkins, A., Holland, D., and Jacobs, S.: Modelling Circumpolar Deep Water intrusions on the Amundsen Sea continental shelf, *Antarctica, Geophysical Research Letters*, 35, L18 602, <https://doi.org/10.1029/2008GL034939>, <https://agupubs.onlinelibrary.wiley.com/doi/abs/10.1029/2008GL034939>, 2008.
- 740 Thompson, A. F., Stewart, A. L., Spence, P., and Heywood, K. J.: The Antarctic Slope Current in a Changing Climate, *Reviews of Geophysics*, 56, 741–770, <https://doi.org/10.1029/2018RG000624>, 2018.
- Thompson, D. W. and Solomon, S.: Interpretation of recent Southern Hemisphere climate change, *Science*, 296, 895–899, <https://doi.org/10.1126/science.1069270>, 2002.
- Tschudi, M. A., Meier, W. N., and Stewart, J. S.: An enhancement to sea ice motion and age products, *The Cryosphere Discussions*, pp. 1–29, <https://doi.org/10.5194/tc-2019-40>, 2019.
- 745 Wählin, A. K., Yuan, X., Bjork, G., and Nohr, C.: Inflow of Warm Circumpolar Deep Water in the Central Amundsen Shelf, *Journal of Physical Oceanography*, 40, 1427–1434, <https://doi.org/10.1175/2010JPO4431.1>, 2010.
- Wählin, A. K., Kalén, O., Arneborg, L., Bjork, G., Carvajal, G. K., Ha, H. K., Kim, T. W., Lee, S. H., Lee, J. H., and Stranne, C.: Variability of Warm Deep Water Inflow in a Submarine Trough on the Amundsen Sea Shelf, *Journal of Physical Oceanography*, 43, 2054–2070, <https://doi.org/10.1175/JPO-D-12-0157.1>, 2013.
- 750 Wählin, A. K., Steiger, N., Darelius, E., Assmann, K. M., Glessmer, M. S., Ha, H. K., Herraiz-Borreguero, L., Heuzé, C., Jenkins, A., Kim, T. W., Mazur, A. K., Sommeria, J., and Viboud, S.: Ice front blocking of ocean heat transport to an Antarctic ice shelf, *Nature*, 578, 568–571, <https://doi.org/10.1038/s41586-020-2014-5>, 2020.
- Walker, D. P., Jenkins, A., Assmann, K. M., Shoosmith, D. R., and Brandon, M. A.: Oceanographic observations at the shelf break of the Amundsen Sea, *Antarctica, Journal of Geophysical Research: Oceans*, 118, 2906–2918, <https://doi.org/10.1002/jgrc.20212>, 2013.
- 755

Yager, P. L., Sherrell, R. M., Stammerjohn, S. E., Alderkamp, A. C., Schofield, O., Abrahamsen, E. P., Arrigo, K. R., Bertilsson, S., Garay, D. L., Guerrero, R., Lowry, K. E., Moksnes, P. O., Ndungu, K., Post, A. F., Randall-Goodwin, E., Riemann, L., Severmann, S., Thatje, S., van Dijken, G. L., and Wilson, S.: ASPIRE: The Amundsen sea Polynya international research expedition, *Oceanography*, 25, 40–53, <https://doi.org/10.5670/oceanog.2012.73>, 2012.