

A newly reconciled data set for identifying sea level rise and variability in Dublin Bay

Amin Shoari Nejad^{1,2}, Andrew C Parnell^{1,2}, Alice Greene², Peter Thorne², Brian P Kelleher³, Robert J.N. Devoy⁴, and Gerard McCarthy²

¹Hamilton Institute, Insight Centre for Data Analytics, Maynooth University, Kildare, Ireland

²ICARUS, Department of Geography, Maynooth University, Maynooth, Ireland

³School of Chemical Sciences, Dublin City University, Dublin 9, Ireland

⁴Department of Geography, University College Cork, Cork, Ireland

Correspondence: Amin Shoari Nejad (amin.shoarinejad.2020@mumail.ie)

Abstract. We provide an updated sea level dataset for Dublin for the period 1938 to 2016 at yearly resolution. Using a newly collated sea level record for Dublin Port, as well as two nearby tide gauges at Arklow and Howth Harbour, we perform data quality checks and calibration of the Dublin Port record by adjusting the biased high water level measurements that affect the overall calculation of mean sea level (MSL). To correct these MSL values, we use a novel Bayesian linear regression that includes the Mean Low Water values as a predictor in the model. We validate the re-created MSL dataset and show its consistency with other nearby tide gauge datasets. Using our new corrected dataset, we estimate a rate of ~~1.08~~ 1.1 mm/yr sea level rise ~~at Dublin Port~~ during 1953-2016 (95% ~~CI from 0.62 to 1.55~~ credible interval from 0.6 to 1.6 mm/yr), and a rate of ~~6.48~~ 7 mm/yr during 1997-2016 (95% ~~CI 4.22 to 8.80~~ credible interval from 5 to 8.8 mm/yr). Overall sea level rise is in line with expected trends but large multidecadal variability has led to higher rates of rise in recent years.

1 Introduction

Global mean sea level is rising due to anthropogenic climate change (Devoy, 2015; Masson-Delmotte et al., 2021). Understanding regional sea level trends is crucial for local and regional adaptation and the development of effective climate action plans. In Ireland, Dublin is the largest city with a population of approximately 1.42 million (CSO, 2019) and is situated at the mouth of the river Liffey on the Irish Sea coast. Dublin also has the Republic of Ireland's longest tide gauge record data from Dublin Port (also called Dublin North Wall) publicly available from 1938 onwards. Understanding changes in mean sea level in Dublin is key for the protection of Ireland's largest city and, from a national perspective, in understanding long-term sea level rise (SLR) in Ireland (DCC, 2005).

Sea level around Ireland rose rapidly after the last glacial maximum 20,000 years ago, cutting Ireland off as an island 16,000 years ago (Edwards and Craven, 2017). Regionally, sea levels in Ireland had stabilised by the 20th century after which sea levels began to ~~increase~~ rise again due to anthropogenic-induced warming (Masson-Delmotte et al., 2021). The importance of climate warming and SLR in Ireland has been ~~emphasized~~ emphasised by a number of authors: Devoy (2008) discussed the risks of extreme climatic events and the ways in which Ireland should be prepared for them, ~~Camaro-Garcia et al. (2021)~~

~~states while Camaro Garcia et al. (2021) state~~ that satellite observations, which are associated with the open ocean rate, show sea levels rising around Ireland at a rate of 2–3 mm/yr, in line with global averages for the early 21st century. However, the raw tide gauge record at Dublin Port shows a rate of 0.3 mm/yr in sea level from 1938 to 2000 (DCC, 2005), much lower than the global average.

A number of authors have investigated trends in the Dublin Port tide gauge prior to the year 2000, finding similarly low rates of change. Carter (1982) investigated the Dublin Port record using tide gauge measurements and reported a rising trend of 0.6 mm/yr before 1961 and a falling trend of -0.3 mm/yr from then until 1980. Woodworth et al. (1991, 1999) estimated trends of 0.17 mm/yr (± 0.35) from 1938–1988, and 0.23 mm/yr from 1938–1996.

In stark contrast to these low rates of SLR, the recently published climate change action plan for 2019–2024 by Dublin City Council (DCC, 2017), reports 6-7 mm/yr SLR between the years 2000 and 2016. This rate is approximately double that of global mean sea level rise (Nerem et al., 2018) and particularly surprising given that the earlier rates of rise in Dublin were much lower than global mean sea level rise over similar periods (Dangendorf et al., 2017).

The goal of this paper is to further investigate the sea level trend in Dublin Port through careful assembly and quality control of the available data and by comparing sea level records collected from nearby tide gauges. We find that the datums of Dublin's available sea level measurements are not aligned with those of nearby tide gauges and thus need further ~~processing.~~ In-particular consideration. In addition, we find problems with the mean high water measurements which indicate a drift over time. ~~After adjustment~~ We use a Bayesian multivariate linear regression to adjust for the drift and ~~for other after removing~~ atmospheric factors, we find that the sea level record, at least for the 21st century, matches other local tide gauges to a far higher degree. This allows us to estimate more reliable measurements of sea level rise for the urban area of Dublin Port.

The rest of this paper is organised as follows. Section 2 explains how the sea level dataset for Dublin Port is reconciled from various sources. Section 3 discusses the quality check and calibration procedures done on the reconciled dataset. Section 4 discusses SLR rates at Dublin Port. Some issues and suggestions pertaining to SLR analysis at Dublin Port are discussed in section 5. Finally, the important findings of this study are summarised in section 6.

2 Data collation for Dublin Port

We compiled mean high and low water, mean tide level and, where available, mean sea level for Dublin Port from 1938 to 2018 from the following sources:

1. Annual high and low water from ~~Woodworth et al. (1991)~~ Woodworth et al. (1991); PSMSL (2020) for the period 1938 to ~~1988-2001~~ from annual tabulations made by the Dublin Port Authority (hereafter the Port Authority Annual Dataset). Mean tide level (MTL) was calculated by averaging mean high and low waters. Data from 1938-77 are relative to Port Datum, which is 0.436 m above the Ordnance Survey Datum Dublin (Poolbeg Datum) and data from ~~1978-1988-1978~~ are relative to the Lowest Astronomical Tide (LAT) which is 20 cm above Poolbeg Datum.

2. Monthly values of mean high water (MHW) and mean low water (MLW) for the period of 1987–2001 (hereafter the Port Authority Monthly Dataset), which were ~~digitized~~digitised as part of this study. Quality control measures for the digitisation included automatic comparison and checking of the calculated and recorded mean levels. ~~Overlapping years with the Port Authority Annual Dataset were used to evaluate agreement with the older dataset. There was approximately~~ Comparison of the Port Authority datasets showed a mean difference of ≤ 1 mm difference between high water values. Low water values agreed to within millimetric accuracy. mm in the overlapping 15 years (1987–2001). Data are reported relative to LAT.
3. High frequency (10 minute) data supplied by the Permanent Service for Mean Sea Level (PSMSL, 2020; Holgate et al., 2013) for the period ~~2001–2009~~2002–2009. These data were provided to PSMSL by the Harbour Master in Dublin Port following a change in responsible authority in 2001 (hereafter the Harbourmaster Dataset). Data have a low vertical resolution of 0.1 m. Data are reported relative to LAT.
4. High frequency (5 minute) data for the period ~~2006~~2007–2017–2018 from the Irish National Tide Gauge Network (NTGN), which is maintained by the Irish Marine Institute (hereafter the NTGN dataset)(IMI, 2019). Data are available relative to Ordnance Datum Malin (ODM) and LAT. All NTGN data are ~~taken~~defined relative to ODM ~~in this study~~and LAT.
5. High water levels for the period 1968–~~2013–2015~~. These were digitised as part of an unpublished MSc thesis of A. Greene (hereafter the Greene dataset) and are published here for the first time. The Greene dataset for the period 1968–1982 was transcribed from photographs of tidal charts from which the high water values can be read. During 1983–2003 the data were in the format of hard copy tidal charts. The hard copies consisted of 3 large A3 books. The remaining data from 2003–2013 existed in digital format from which high waters could be derived.

With particular ~~respect~~reference to the Greene dataset, prior to the availability of digital data in 2003, the high water values for each day were extracted from the tidal charts. This was completed by the generation of tables for each year, with two available cells for each day, ~~these~~. These values were read off and ~~inputted~~input into the designated cell. The data from the period 1968–1976 was converted from feet and inches to ~~meters~~. ~~Data post 1998 were already digitised at 15 minute time intervals, post 2004 this data's frequency increased to 1 minute intervals.~~ metres. To locate the two high tides, each month was split into days, sorted with the highest value being extracted for high tide 1. The second-high tide occurred between 12 and 13 hours after the first high tide, therefore by using the time component within the dataset, this value was extracted. In the case where the time window went into the next calendar day, only a single high tide was recorded for that day. A summary of the datasets is shown in Table 1.

Difficulties in merging the Dublin Port datasets arose from differing datum definitions. For both Port Authority datasets the tabulated annual and monthly data are relative to the same datum. These data have the same source and therefore agreement is expected. ~~Four~~Three years of overlap exist between the Harbourmaster dataset and the NTGN dataset from ~~2006–2007~~ to 2009. The Harbourmaster dataset is relative to LAT datum; NTGN data are relative to ODM, with a value of 2.599 m between

Table 1. Details of the datasets collated to form a complete sea level record for Dublin Port

Dataset name	Duration	Sampling frequency	Variables	Datum	Provider
Port Authority	1938-1977 1938-2001	Annual	MLW-MTL-MHW	LAT	Woodworth et al. (1991), PSMSL
Port Authority	1978-1988 1987-2001	Monthly	MLW-MTL-MHW	LAT	Woodworth et al. (1991), PSMSL
Harbourmaster	2002-2009	10-minute	All calculable	LAT	PSMSL
NTGN	2006-2019 2007-2018	5-minute	All calculable	ODM and LAT	Marine Institute
Greene	1968-2013 1968-2015	Twice daily	MHW	LAT	This study

these datums. There is [found to be](#) a systematic underestimation of 0.044 m in MHW and MLW values in the Harbourmaster dataset [presumably](#) due to its lower vertical resolution of 0.1 m, determined from the overlap with the NTGN data.

While no overlaps exist between the Harbourmaster dataset and the Port Authority dataset, the Greene dataset overlaps
90 the Port Authority, Harbourmaster, and NTGN datasets. Figure 1 shows [monthly](#) MHW from the ~~monthly~~ Port Authority, Harbourmaster, NTGN, and Greene datasets, [each expressed with respect to LAT \(note that our monthly data are limited to 1968 onward\)](#). There is ~~good~~ [a high level of](#) agreement between the data indicative of consistent datums. We find a residual 0.008m difference between the Greene dataset and the Port Authority Monthly dataset and the NTGN Dataset. We thus add 8 mm to the Greene dataset as the final datum adjustment.

95 **3 Reconciliation of Dublin Port against nearby tide gauges**

We now use our newly merged dataset (hereafter the merged Dublin Port dataset) including monthly MLW, MTL, MSL and MHW measurements~~between 1938 and 2019. Due to the systematic underestimation of MHW in the Harbourmaster dataset, we supplement the monthly averages of the high waters from the Greene dataset for the period 2002 to 2006 and calculate mean low waters by combining this mean high water with the mean tide level. Full tidal data are not available prior to 2003 and only tabulated MTL is available. Based on calculations from the NTGN dataset, an adjustment of 0.049 m is added to MTL for conversion to MSL, in line with the results of Woodworth (2017) regarding the difference between MTL and MSL.~~
100

~~.~~ In order to check the reliability of the merged Dublin Port dataset, we compare with two different nearby tide gauges (maximum distance 60 km) at Howth Harbour and Arklow, and two other tide gauges at Newlyn in the UK and Brest in France. [The Arklow and Howth Harbour data sets are derived from bubbler gauges. The Newlyn and Brest data are gauges with a long history of use in sea level studies \(Bradshaw et al. \(2016\); Wöppelmann et al. \(2006\)\).](#) Figure 2 shows the locations
105 of the tide gauges. ~~The recordings, when taken together, have different time spans and different sampling frequencies.~~ Table 2 provides the details of the datasets.

For the Arklow and Howth Harbour datasets, we first aggregate the values up to daily and monthly level for MLW, MSL and MHW. [During our pre-processing we compared MLW, MSL, and MHW at Dublin Port with that of Arklow and Howth Harbour. We noticed that these other sites exhibited low levels of agreement with Dublin Port after 2017 so we restricted our analysis to use only data up to the end of 2016.](#)
110

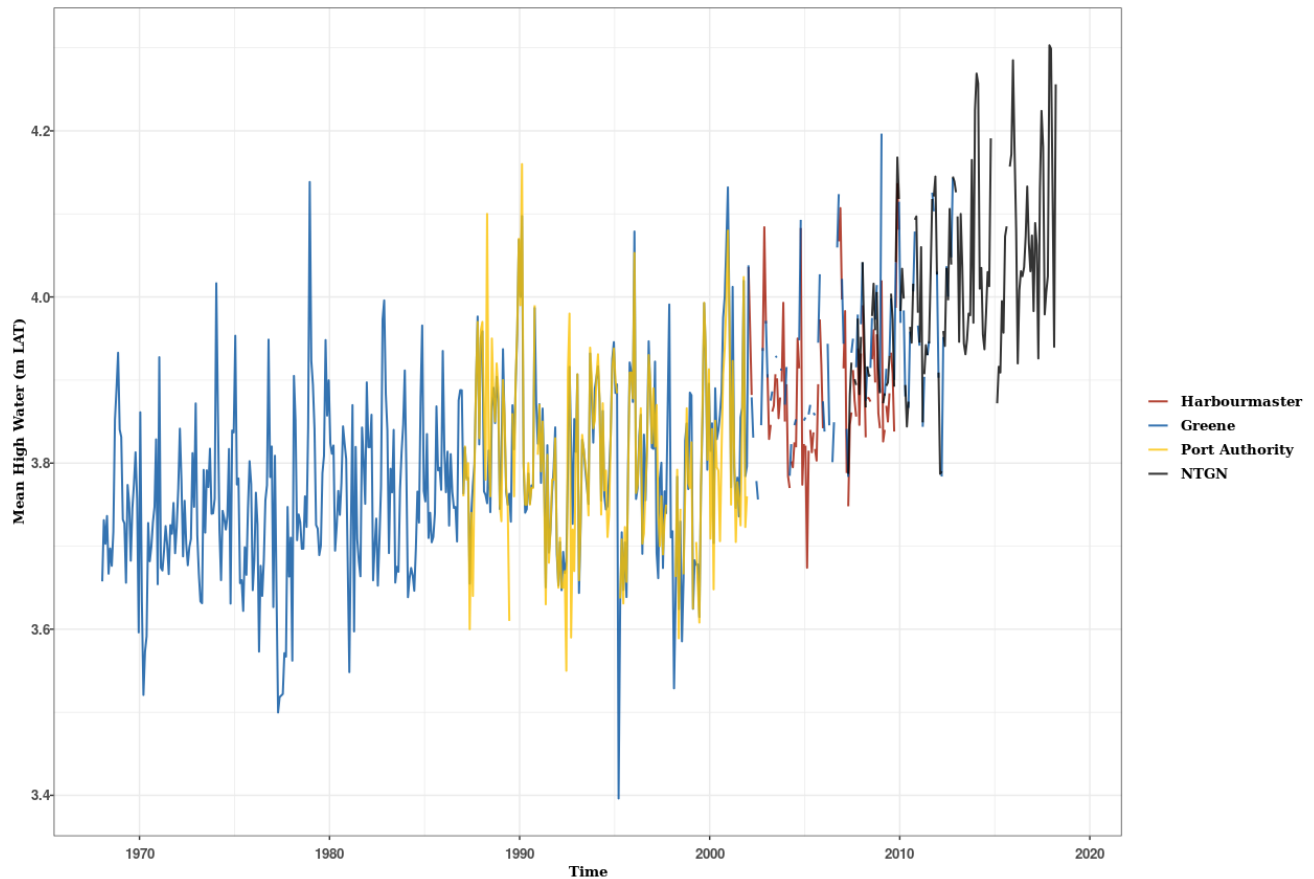


Figure 1. Monthly MHW in Dublin from the Port Authority, Greene, Harbourmaster, and NTGN datasets. ~~Good~~ A high level of agreement is found between the records indicating consistent datum definition, with only a small adjustment of 0.008 m to the Greene dataset for complete reconciliation.

Table 2. Details of the four datasets used ~~to compare~~ for comparison with Dublin Port

Dataset	Duration	Sampling frequency	Provider
Arklow	2003-2019 <u>2003-2018</u>	15-minute	Office of Public Works
Howth harbour	2007-2019 <u>2007-2018</u>	6-minute	Marine Institute
Brest	1938-2016	Annual	PSMSL
Newlyn	1938-2016	Annual	PSMSL

PSMSL provides both Monthly and Annual data. We use only annual data that matches our data resolution.

Figure 3 and Table 3 demonstrate that rates of SLR in MSL and MHW are significantly higher in Dublin Port than in Arklow or Howth Harbour. A possible cause ~~of the issue~~ is the malfunction of the Dublin Port tide gauge in measuring the high water

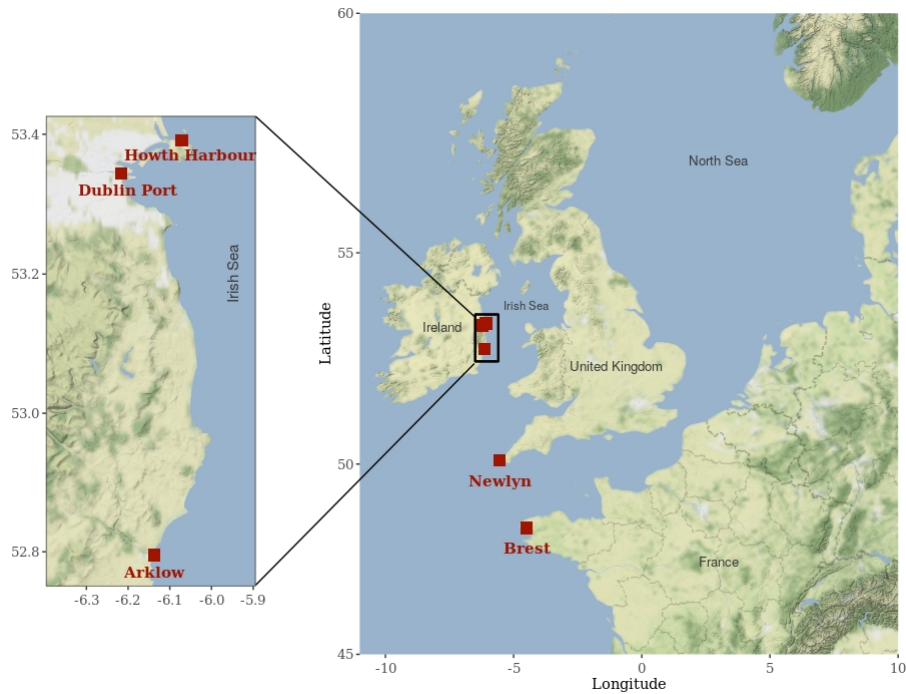


Figure 2. Locations referred to in this study: Dublin Port, Howth Harbour, Arklow, Brest and Newlyn.

Table 3. Differences between rates in MLW, MSL and MHW for Dublin Port compared to Arklow and Howth Harbour. Large values with small standard errors indicate a significantly higher rate at Dublin Port.

Locations	MLW (mm/yr)	MSL (mm/yr)	MHW (mm/yr)
Dublin Port - Arklow	0.6 ($\pm 2.76 \pm 2.8$)	6.94 ($\pm 2.636.9 (\pm 2.6)$)	13.99 ($\pm 2.7414 (\pm 2.7)$)
Dublin Port - Howth Harbour	1.51 ($\pm 4.031.5 (\pm 4.0)$)	3.85 ($\pm 3.913.8 (\pm 3.9)$)	5.8 ($\pm 4.25 \pm 4.2$)

levels due to drift. A Druck pressure transducer was ~~utilised~~ used at Dublin Port (Murphy et al., 2003) and has the potential to exhibit drift proportional to the height of the water column. ~~Starting with the~~ Accuracies of pressure sensors are reported proportional to full water column depth. While drift need not necessarily be proportional to full water column depth, this is a possibility that is supported by further analysis (see next section). Table 4 provides the details of the tide gauges installed at Dublin Port from 1938 to the present.

From Figure 3 we can see that the MLW values at Dublin Port, ~~which compare better with~~ port are highly similar to those in nearby gauges, ~~we construct so we use these as~~ a baseline to correct the MSL values. To do this, we create a regression model that estimates MSL given MLW from older Dublin Port measurements. We then use the predictions from this model to estimate MSL at Dublin Port for the more recent period.

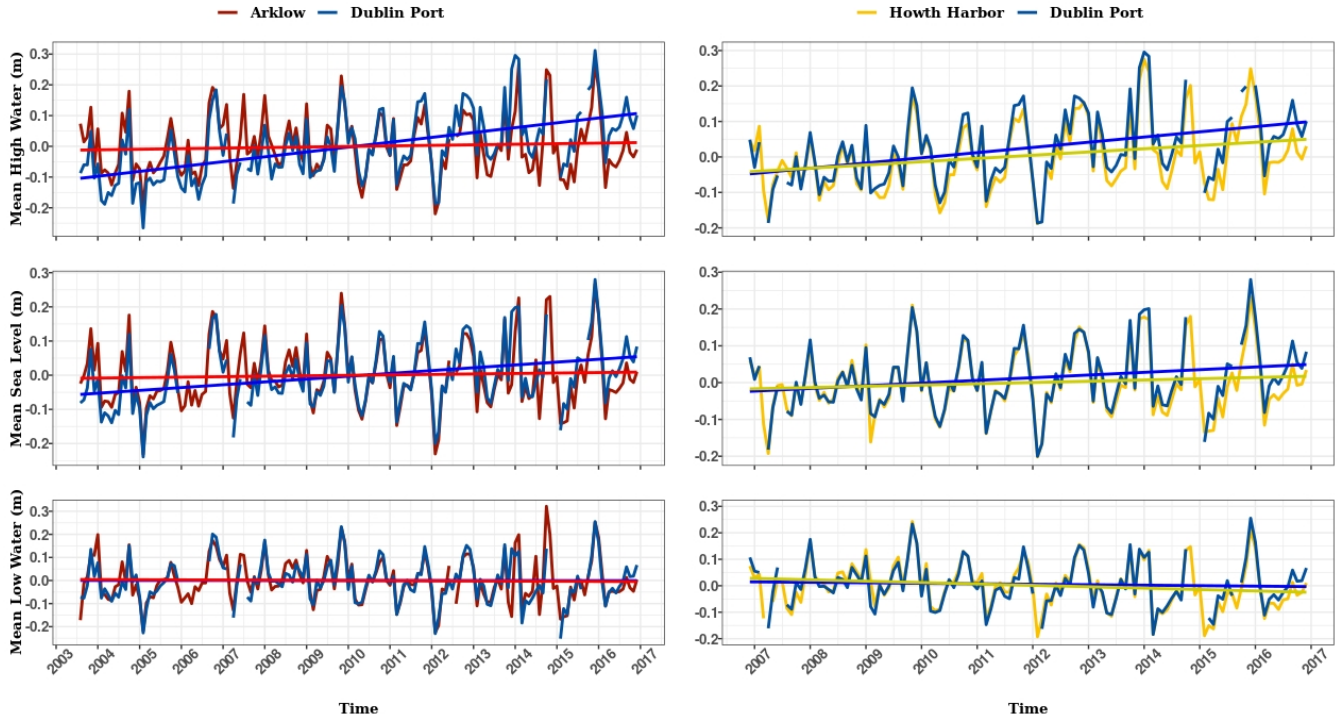


Figure 3. MHW, MSL and MLW monthly values of Dublin Port against Arklow (left panels) and Howth Harbour (right panels) with linear trends for each. The MLW linear trends between Dublin Port and Arklow and between Dublin Port and Howth Harbour are in good agreement. However this is not the case with the linear trends for MSL and MHW when comparing Dublin Port to the two other locations.

Table 4. Details of the Tide gauges installed at Dublin Port.

<u>Gauge type</u>	<u>Start</u>	<u>End</u>	<u>Reference</u>
<u>Float gauge</u>	<u>1938</u>	<u>2001</u>	<u>Original chart supplied by Dublin City Council indicate float gauge in operation.</u>
<u>Druck Pressure Transducer</u>	<u>2001</u>	<u>2016</u>	<u>This sensor began to malfunction in 2017 and was replaced in 2018.</u>
<u>OTT Bubbler</u>	<u>2018</u>	<u>~</u>	<u>New sensor installed in 2018. Data not used in this study.</u>

To find the period of time over which to train the regression model, we use a change point model (Carlin et al., 1992) that takes the absolute difference between MSL values of Dublin Port and Newlyn in the UK as the inputs. Details of the change point model are discussed in the Appendix. According to the model years 1938–1976 are chosen as training data.

The model suggests that there is a change point in the agreement between Dublin and Newlyn in 1976. Furthermore, Figure 4 shows the comparison of ~~Dublin Port MSL data~~ MSL data from Dublin Port (not yet corrected for the bias demonstrated in Figure 3) with that of Newlyn and Brest in France. These two are selected due to the relative completeness and integrity of their record and their proximity to Dublin. According to the figure, there is strong agreement between stations for MSL in the period 1938 to 1976. After 1976 the level of agreement deteriorates which is consistent with the change point model result. Note that this does not necessarily mean that less agreement post-1976 is related to data quality. However, based on these observations we do not have any evidence supporting the quality of data from 1976 onwards and so we limited our modelling approach to data from the preceding period.

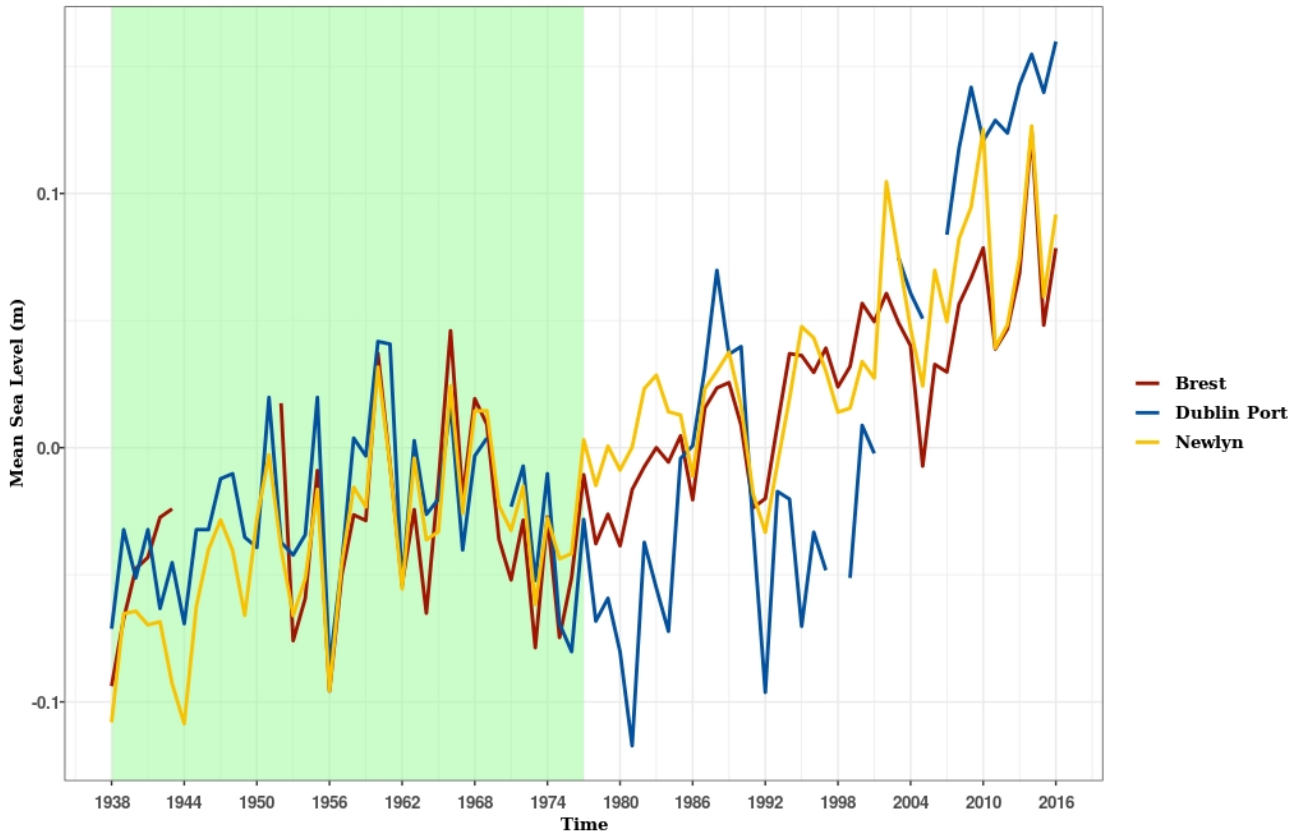


Figure 4. Yearly MSL values for Dublin Port, Newlyn and Brest. The green area shows our chosen time period during which there is good agreement between Dublin Port and the other sites.

We ~~estimate the yearly MSL using~~ correct the bias in the MSL values at Dublin Port using a Bayesian multivariate linear regression. Our model consists of an intercept, a term proportional to annual MLW, a fixed effect on annual MLWs, and a harmonic function with a period of 18.6 years to model the lunar nodal cycle, and a period of 4.4 years to account for the 8.85

year cycle of lunar perigee (~~Haigh et al., 2011~~). ~~The~~ (Haigh et al., 2011; Woodworth, 2012). The two latter terms will primarily contribute to the astronomical tidal component of MLW. The model formulation is as follows:

$$(MSL)_t \sim \text{Normal}(\mu_t, \sigma^2)$$

$$\mu_t = \beta_0 + \beta_1(MLW)_t + \beta_2 \cos(\omega_1 t) + \beta_3 \sin(\omega_1 t) + \beta_4 \cos(\omega_2 t) + \beta_5 \sin(\omega_2 t)$$

$$\text{with } \omega_1 = \frac{2\pi}{18.61}, \omega_2 = \frac{2\pi}{4.4}$$

where $(MSL)_t$ is MSL in year t , μ_t is the mean process, σ^2 is the residual variance, β_0 is the intercept, β_1 is the MLW coefficient, β_2 and β_3 are the amplitudes of the cosine and sine functions of the 18.6-year lunar nodal modulation respectively, and β_4 and β_5 are the amplitudes of the cosine and sine functions of the 4.4-year modulation respectively.

We fitted the model using the JAGS software (Plummer et al., 2003) and R (R Core Team, 2022) and used 3 Markov Chain Monte Carlo chains, 2000 iterations per chain with 1000 as burn-in and a thinning value of 1. Convergence was assessed using the R-hat diagnostic (Brooks and Gelman, 1998; Gelman and Rubin, 1992). All R-hat values associated with β and σ were close to 1 so the model was assumed to be sampling from the posterior distribution. The new predicted-estimated MSL and the old raw-MSL-original values, together with the yearly MSL values of Arklow and Howth Harbour, are shown in Figure 5. This figure demonstrates that the newly modelled Dublin Port yearly MSL data are changed only slightly between 1938 and 2001. After 2001 we can see a clear gap between the old (red) and new (blue) versions with the new corrected data exhibiting superior agreement with the Arklow and Howth Harbour records. We note again here that these adjacent records were not used in the creation of the new Dublin Port data so are an independent validation on our approach. A further justification of our adjustment approach can be seen in that the period 1978 to 2001 was not included in our calibration dataset, but provides a relatively small adjustment to MSL seems to support the discrepancies shown in Figure 3 for the higher water levels and provides further justification for our change point calibration approach.

4 Sea Rates of sea level rise at Dublin Port and nearby gauges

We now use the Dublin Port-corrected data-corrected data from Dublin Port to calculate rates of sea level rise. We use the yearly MSL data from Brest and Newlyn for comparison. The MSL data from Brest is missing between 1944 to 1952, so we decided to limit our SLR rate estimations to 1953-2016 during which the data for all three sites were complete. We first removed the atmospheric effects following Diabaté et al. (2021) and Frederikse et al. (2017) inverse barometer and wind effects on sea level at each site following Frederikse et al. (2017) and Diabaté et al. (2021) (we omitted this step in the previous section due to lack of atmospheric data during 1938-1948). Atmospheric data are accessed via the RNCEP package (Kemp et al., 2012) in the R programming language which accesses the National Centers for Environmental Prediction (NCEP)/National Center for Atmospheric Research (NCAR) and Department of Energy Reanalysis I & II datasets (Kalnay et al., 1996; Kanamitsu et al., 2002). Figure 6 shows the atmospherically corrected MSL data of from Dublin Port, Brest and Newlyn superimposed for comparison.

To calculate the SLR-rates-rates of SLR, as before, we use a Bayesian multivariate linear regression including an intercept, and a linear trend, and a harmonic function with periods of 18.6 years and 4.4 years. The model is fitted in JAGS with the same

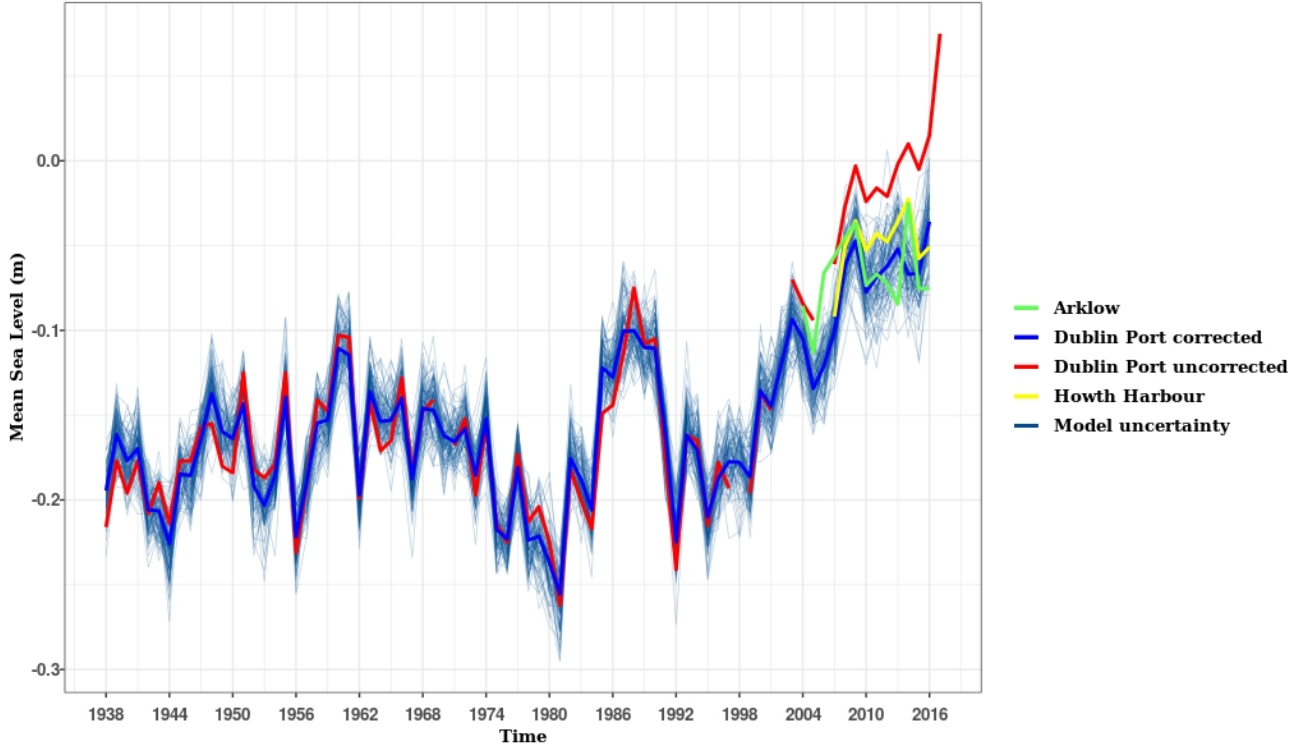


Figure 5. The uncorrected and corrected yearly MSL values of Dublin Port, with yearly MSL values of Arklow and Howth Harbour for comparison. The newly corrected Dublin Port MSL values lie much closer to the neighbouring tide gauges. The faded lines in the background show posterior samples from the model and an indication of model uncertainty.

settings and convergence requirements as previously described. We write the model as:

$$(MSL)_t \sim \text{Normal}(\mu_t, \sigma_t'^2 + \sigma^2)$$

$$\mu_t = \beta_0 + \beta_1 t + \beta_2 \cos(\omega_1 t) + \beta_3 \sin(\omega_1 t) + \beta_4 \cos(\omega_2 t) + \beta_5 \sin(\omega_2 t)$$

165

$$\text{with } \omega_1 = \frac{2\pi}{18.61}, \omega_2 = \frac{2\pi}{4.4}$$

170

where $(MSL)_t$ is MSL at time t , μ_t is the mean process, $\sigma_t'^2$ is the fixed variance at time t extracted from the posterior distribution of the calibration model to account for the uncertainty in modelling the MSL introduced in the previous section, σ^2 is the residual variance, β_0 is the intercept, β_1 is the rate in mm/yr, β_2 and β_3 are the amplitudes of the cosine and sine functions of the 18.6-year lunar nodal modulation respectively, and β_4 and β_5 are the amplitudes of the cosine and sine functions of the 4.4-year modulation respectively. We use the same approach (but without the fixed measurement error) for estimating the rates of rise at Brest and Newlyn.

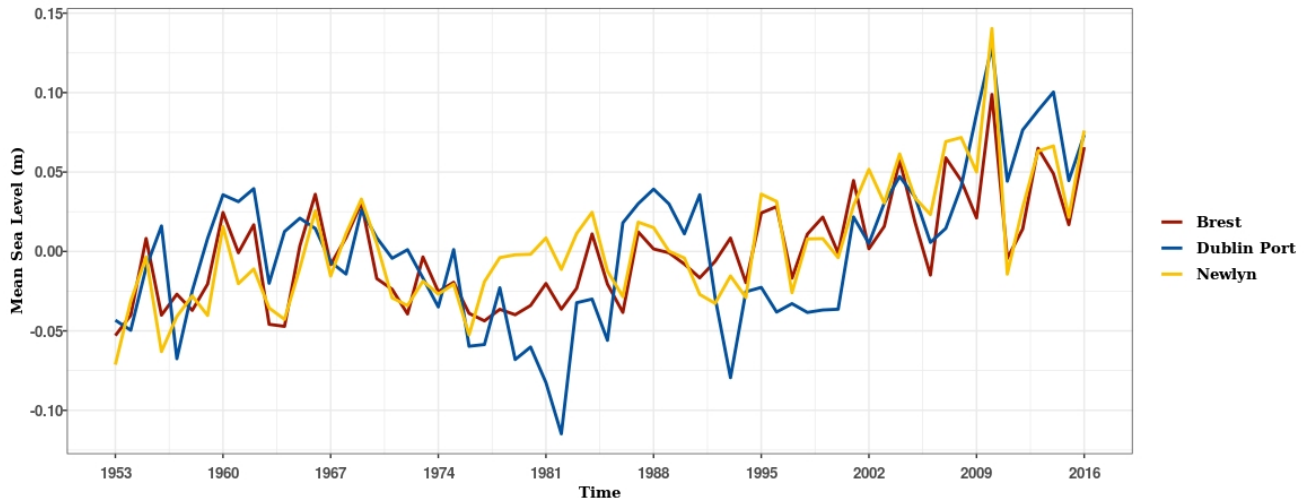


Figure 6. New yearly MSL values of Dublin Port and yearly MSL values of Brest and Newlyn, with atmospheric effects removed, between 1953 and 2016.

The estimated rates with their associated 95% posterior credible intervals are given in Table 5 which shows that, between 1953 and 2016, the rate of SLR at Dublin Port has a mean estimate of $+1.08$ – 1.1 mm/yr, consistent with the estimated rate of $+1.06$ – 0.9 mm/yr at Brest and that of $+1.4$ – 1.3 mm/yr at Newlyn. However in more recent years, specifically between 1997 and 2016, Dublin Port has experienced a greater SLR of 6.48 – 7 mm/yr, larger than that of 2.59 – 2.3 mm/yr at Brest, and 3.69 – 3.1 mm/yr at Newlyn. Figure 6 also suggests that sea level in Dublin Port has experienced larger decadal fluctuations and is not as secular as the sea level at the two other locations.

Table 5. Estimated rates of SLR at Dublin Port, Newlyn and Brest, with 95% credible intervals for time periods of interest.

Location	1953-2016 (mm/yr)	1975-1985 (mm/yr)	1986-1996 (mm/yr)	1997-2016 (mm/yr)
Dublin Port	$+1.08$ (0.62, 1.55) 1.1 (0.6, 1.6)	3.41 (-2.32, 9.16) 2.9 (-9, 2.9)	-9.8 (-15.7, -4) 8.6 (-13.4, -3.7)	6.48 (4.227, 8.8) 5.0
Newlyn	$+1.40$ (1.09, 1.71) 1.3 (1.0, 1.6)	4.06 (0.91, 7.24) 3.9 (0.7, 6.9)	1.57 (-4.23, 7.24) 1.6 (-3.4, 6.8)	3.69 (0.28, 7.07) 3.1 (0.7, 5.5)
Brest	$+1.06$ (0.76, 1.36) 0.9 (0.6, 1.2)	2.55 (0.14, 5.2) 5 (0.0, 5.0)	2.94 (-0.27, 6.33) 3.1 (-0.2, 6.4)	2.59 (-0.31, 5.56) 2.3 (0.3, 4.3)

5 Discussion and conclusions

Taken over the full time period of observations, 1953 to 2016, the estimated sea level rise of $+1.08$ – 1.1 mm/yr in Dublin is consistent with that of Brest and Newlyn, both located at the western European coastline. The rates of rise for earlier periods (i.e. pre-1953) are less than $+1.08$ – 1.1 mm/yr (Carter, 1982; Woodworth et al., 1991) and are consistent with the findings here and were lower due to the decades of larger sea level rise and variability (1980s, 2000s) not being included in the trend estimation.

Elsewhere in Ireland Orford et al. (2006) investigated tide gauge records in Malin Head (1958 - 1998) and Belfast harbour
185 (1918 - 2002) where they reported substantial annual variation for both sites with overall negative trends of -0.2 mm/yr for
Belfast and -0.16 mm/yr for Malin Head. Both Belfast and Malin Head, being in the north of the country, are in regions of
~~Glacial Isostatic Uplift, which will reduce uplift due to Glacial Isostatic Adjustment (GIA) which reduces~~ relative sea level
rise there(Bradley et al., 2014). However, Dublin is in a region of neutral Glacial Isostatic Uplift so these long term effects of
post-glacial land motion should be negligible and hence greater consistency of the local sea level rise rates with the global
190 figure is ~~expected and ultimately found to be expected~~ (Bradley et al., 2011).

More surprising is the large decadal variability revealed. This study has found a rate of sea level rise for Dublin of ~~3.41-2.9~~
mm/yr for the period 1975–1985 followed by ~~a another~~ negative sea level trend in the next decade (~~-9.8-8.6~~ mm/yr during 1986-
1996) and ~~again~~ a rise of ~~6.48-7~~ mm/yr for the period 1997-2016. ~~Ireland sits on the edge of the Atlantic, greatly influenced by~~
~~decadal patterns of climate such as Atlantic Multidecadal Oscillation (AMO) (McCarthy et al., 2015) and decadal variations~~
195 ~~in the strength of the North Atlantic Oscillation (McCarthy et al., 2018)~~. Similar patterns of decadal variability in sea level to
Dublin were noted in Belfast by Orford et al. (2015) and linked to decadal variation of the North Atlantic Oscillation. This
would seem a likely explanation for similar patterns in Dublin. However, a full investigation of the causes of decadal variability
in Dublin sea level remains for future investigation.

Comparisons of MLW, MSL and MHW recordings at Dublin Port suggest a possible issue with the observation of high water
200 levels. Our model recreated the MSL and showed that there is good agreement between the observed MSL and the modelled
MSL for the period 1938-2001. However after 2001 there is considerable divergence. Our analysis shows that the modelled
MSL is more consistent with the data collected by the nearby tide gauges and also at the farther sites in Newlyn and Brest.
This suggests that the malfunction probably started during or after the year 2002. We would consider the Howth Harbour sea
level record, alongside the modelled MSL data created in our study, as the more reliable dataset for future analysis of sea level
205 in Dublin Bay compared to ~~Dublin Port's dataset~~the data collected at Dublin Port.

Dublin City Council have recently increased the coastal defences in Dublin, allowing for between 40 and 65 cm of mean sea
level rise (O'Connell, 2019). Projections of sea level rise for Dublin, based on UKCP18 (Fung et al., 2018), depend heavily on
greenhouse gas emissions trajectories. By 2100, Dublin mean sea level is projected to rise by 0.6 m at the 50th percentile (1.0
m at the 95th percentile) under an RCP8.5 scenario and 0.3 m at the 50th percentile level (0.6 m at the 95th percentile level)
210 under an RCP2.6 scenario. These projections do not simulate the decadal scale variability reported here, similar to many other
decadal climate phenomena. Understanding the origin and duration of the decadal fluctuations of mean sea level in Dublin is
crucial for preparation and defence of Ireland's capital city in the coming decades.

~~We~~To sum up, we have collated multiple sources of tide gauge data for Dublin Port, and subsequently corrected them for
bias in the MHW level. We have then shown that these corrected MSL measurements agree with both Howth Harbour and
215 Arklow to a far higher degree than the raw data. A longer term comparison with Brest and Newlyn also indicates overall
agreement. There remains a difference between the data during the 1970s and 1980s where a large cyclic disparity in Dublin
contrasts with the other two records. Our final adjusted dataset estimated the rate of SLR ~~to be 1.08 at Dublin Port to be 1.1~~
mm/yr between 1953 and 2016, and ~~6.48-7~~ mm/yr between 1997 and ~~2016 at Dublin Port.~~2016.

The work we present here is part of a broader aim to improve sea level records in Ireland through the multi-centre Aigéin, Aeráid, agus athrú Atlantaigh (A4) project. A recent example is that of the now corrected tide gauge record in Cork City (Pugh et al., 2021). [A deeper focus on the coastal environs of Dublin is also under way through Science Foundation Ireland funded Predict Project.](#) We hope to report elsewhere on further records which may provide a fuller picture of SLR in Ireland.

Appendix A

To identify the period of data to use in calibrating the Dublin Port MSL and MLW values (see Figure 4), we use a linear regression change point model (Carlin et al., 1992). The model we use can be formulated as follows

$$y_t \sim \text{Normal}(\mu_t, \sigma^2)$$

$$\mu_t = \alpha_1 + \alpha_2 \times u(t - t_c)$$

where y_t is the absolute difference between the measured mean sea level at Dublin Port and Newlyn at time-in year t ($t = 1, 2, \dots, T$). We assume y_t to be normally distributed with mean μ_t and variance σ^2 . The mean is set to α_1 if $t < t_c$ and $\alpha_1 + \alpha_2$ otherwise, and t_c is the time of the change point. The function $u(t)$ is the unit step function. We used vague prior distributions for all parameters:

$$\alpha_1 \sim \text{Normal}(0, 100)$$

$$\alpha_2 \sim \text{Normal}(0, 100)$$

$$t_c \sim \text{Uniform}(1938, 2016)$$

$$\sigma^2 \sim \text{Uniform}(0, 100)$$

The model output is shown in figure A1. Figure A1 shows the absolute difference between MSL of Dublin Port and Newlyn. The vertical red line indicates the year of the change point and so marks the end of the calibration period as described in Section 3. The posterior mean of the change-point estimate t_c .

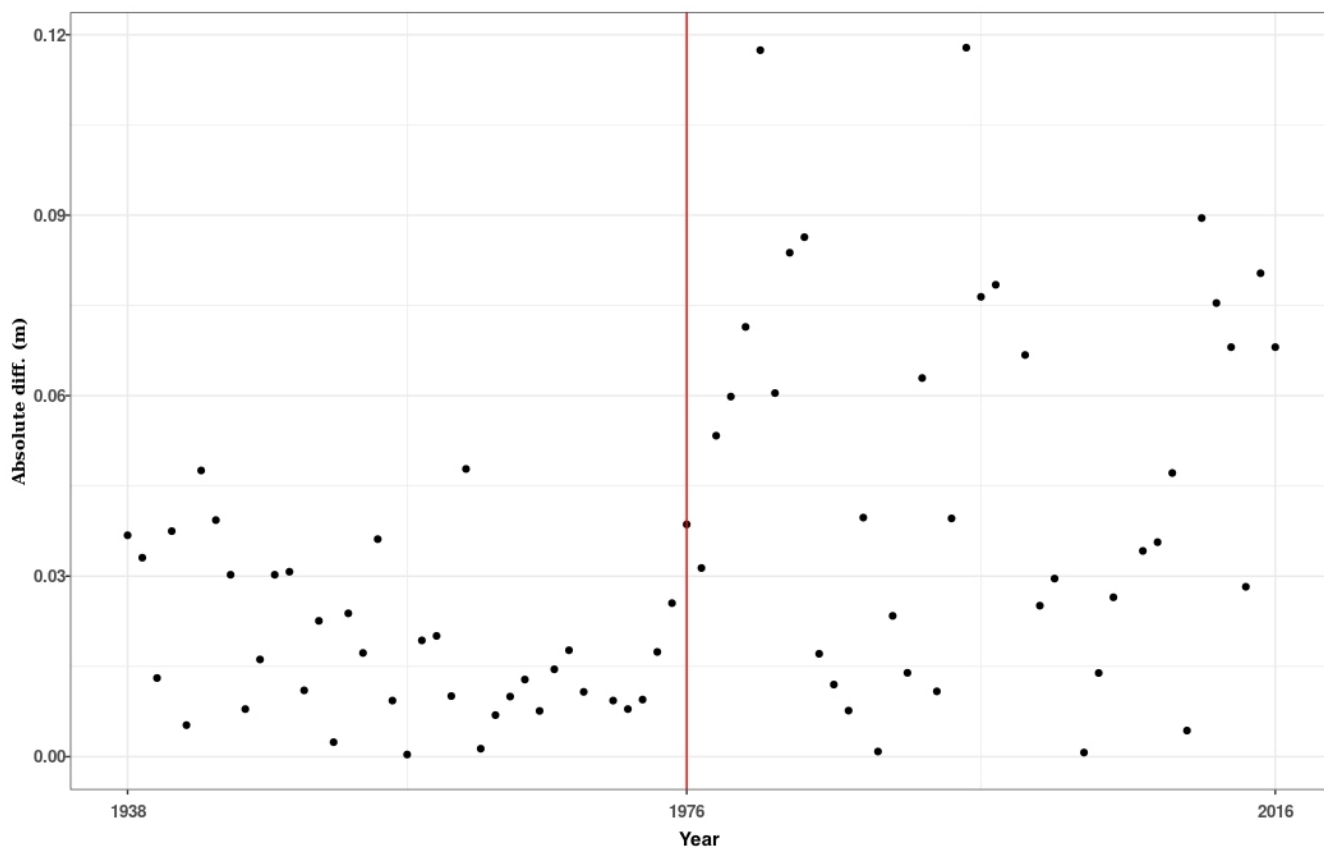


Figure A1. The absolute difference between Dublin Port and Newlyn from 1938 to 2016. The mean posterior estimated change point time given by the model is indicated by the vertical red line at year 1976.

Code availability. The codes used in this study are available on Github (<https://github.com/Aminsn/Dublin-Bay-SLR>)

235 *Data availability.* Dublin Port annual mean sea level data (corrected as a result of this study for measurement bias) from 1938 to 2016 plus historical datasets described in Table 1 are available in CSV format from here: <https://zenodo.org/record/6338475>. Data from the Irish National Tide Gauge Network, maintained by the OPW (Arklow) and the Marine Institute (Dublin Port, Howth), are available from <https://waterlevel.ie/> and <http://www.irishtides.ie>, respectively.

Competing interests. The authors declare that they have no conflict of interest.

Acknowledgements. Amin Shoari Nejad^{1,2}'s work was supported by a Science Foundation Ireland Investigator Award grant 16/IA/4520. 240 Andrew Parnell's work was supported by a Science Foundation Ireland Career Development Award (17/CDA/4695), a research centre award (12/RC/2289-P2), and an investigator award (16/IA/4520), ~~and a Marine Research Programme funded by the Irish Government, co-financed by the European Regional Development Fund (Grant-Aid Agreement No. PBA/CC/18/01).~~ Gerard McCarthy is supported, Gerard McCarthy and Andrew Parnell were supported by the Marine Institute and the Marine Research Programme 2014-2020 through the A4 project (Grant-Aid Agreement No. PBA/18/CC/01) ~~is carried out with the support of the Marine Institute and the Marine Research Programme 2014-2020, co-financed under the European Regional Development Fund. For the purpose of Open Access, the~~. The author has applied a CC BY public 245 copyright licence to any Author Accepted Manuscript version arising from this submission.

References

- Bradley, S., Milne, G., Shennan, I., and Edwards, R.: An improved glacial isostatic adjustment model for the British Isles, *Journal of Quaternary Science*, 26, 541–552, 2011.
- 250 Bradshaw, E., Woodworth, P., Hibbert, A., Bradley, L., Pugh, D., Fane, C., and Bingley, R.: A century of sea level measurements at Newlyn, Southwest England, *Marine Geodesy*, 39, 115–140, 2016.
- Brooks, S. and Gelman, A.: General methods for monitoring convergence of iterative simulations, *Journal of Computational and Graphical Statistics*, 7, 434–455, 1998.
- Camaro Garcia, W., Dwyer, N., Barrett, F., Berry, A., Cronin, M., Cusack, C., Gallagher, S., Gault, J., Gill, M., Gleeson, E., Hanley, J.,
255 Kane, P., Lambkin, K., Lawlor, R., Lydon, K., Lyons, K., Martin, D., McCarthy, G., McGovern, E., Murphy, C., Nolan, G., Nugent, C., O'Dwyer, B., Ovadnevaite, J., Quinlan, C., Saunders, M., Silke, J., Smith, G., Thomas, R., Walsh, S., Westbrook, G., Eoin, W., and Wilkes, R.: Climate Status Report for Ireland, Tech. rep., EPA, 2021.
- Carlin, B. P., Gelfand, A. E., and Smith, A. F.: Hierarchical Bayesian analysis of changepoint problems, *Journal of the Royal Statistical Society: series C (applied statistics)*, 41, 389–405, 1992.
- 260 Carter, R.: Sea-level changes in Northern Ireland, *Proceedings of the Geologists' Association*, 93, 7–23, 1982.
- CSO: Central Statistics Office: Population and Migration Estimates April 2020, <https://www.cso.ie/en/csolatestnews/pressreleases/2020pressreleases/pressstatementpopulationandmigrationestimatesapril2020/>, 2019.
- Dangendorf, S., Marcos, M., Wöppelmann, G., Conrad, C., Frederikse, T., and Riva, R.: Reassessment of 20th century global mean sea level rise, *Proceedings of the National Academy of Sciences*, 114, 5946–5951, 2017.
- 265 DCC: Dublin City Council: Dublin Coastal Flooding Protection Project, Report No. 9M2793., Tech. rep., 2005.
- DCC: Dublin city council: Climate change action plan, <https://www.dublincity.ie/sites/default/files/content/WaterWasteEnvironment/Waste/Documents/2019DCCClimateChangeActionPlan.pdf>., 2017.
- Devoy, R.: Coastal vulnerability and the implications of sea-level rise for Ireland, *Journal of Coastal Research*, 24, 325–341, 2008.
- Devoy, R. J.: Sea-level rise: causes, impacts, and scenarios for change, in: *Coastal and Marine Hazards, Risks, and Disasters*, pp. 197–241,
270 Elsevier, 2015.
- Diabaté, S. T., Swingedouw, D., Hirschi, J. J. M., Duchez, A., Leadbitter, P. J., Haigh, I. D., and McCarthy, G. D.: Western boundary circulation and coastal sea-level variability in northern hemisphere oceans, *Ocean Science Discussions*, pp. 1–34, 2021.
- Edwards, R. and Craven, K.: Relative Sea-Level Change Around the Irish Coast, in: *Advances in Irish Quaternary Studies*, 2017.
- Frederikse, T., Simon, K., Katsman, C. A., and Riva, R.: The sea-level budget along the Northwest Atlantic coast: GIA, mass changes, and
275 large-scale ocean dynamics, *Journal of Geophysical Research: Oceans*, 122, 5486–5501, 2017.
- Fung, F., Palmer, M., Howard, T., Lowe, J., Maisey, P., and Mitchell, J.: UKCP18 Factsheet: Sea Level Rise and Storm Surge, Tech. rep., Met Office Hadley Centre, Exeter, 2018.
- Gelman, A. and Rubin, D.: Inference from iterative simulation using multiple sequences, *Statistical Science*, 7, 457–472, 1992.
- Haigh, I. D., Eliot, M., and Pattiaratchi, C.: Global influences of the 18.61 year nodal cycle and 8.85 year cycle of lunar perigee on high tidal
280 levels, *Journal of Geophysical Research: Oceans*, 116, 2011.
- Holgate, S., Matthews, A., Woodworth, P., Rickards, L., Tamisiea, M., Bradshaw, E., Foden, P., Gordon, K., Jevrejeva, S., and Pugh, J.: New Data Systems and Products at the Permanent Service for Mean Sea Level, *Journal of Coastal Research*, 29, 493 – 504, 2013.
- IMI: Irish Marine Institute website, <https://erddap.marine.ie/erddap/tabledap/IrishNationalTideGaugeNetwork.html>, 2019.

- Kalnay, E., Kanamitsu, M., Kistler, R., Collins, W., Deaven, D., Gandin, L., Iredell, M., Saha, S., White, G., Woollen, J., Zhu, Y., Leetmaa, A., Reynolds, R., Chelliah, M., Ebisuzaki, W., Higgins, W., Janowiak, J., Mo, K., Ropelewski, C., Wang, J., Jenne, R., and Joseph, D.: The NCEP/NCAR 40-year reanalysis project, *Bulletin of the American Meteorological Society*, 77, 437–471, 1996.
- Kanamitsu, M., Ebisuzaki, W., Woollen, J., Yang, S.-K., Hnilo, J., Fiorino, M., and Potter, G.: NCEP–DOE AMIP-II Reanalysis (R-2), *Bulletin of the American Meteorological Society*, 83, 1631–1643, 2002.
- Kemp, M. U., Emiel van Loon, E., Shamoun-Baranes, J., and Bouten, W.: RNCEP: global weather and climate data at your fingertips, *Methods in Ecology and Evolution*, pp. 65–70, 2012.
- Masson-Delmotte, V., Zhai, P., Pirani, A., Connors, S. L., Péan, C., Berger, S., Caud, N., Chen, Y., Goldfarb, L., Gomis, M. I., Huang, M., Leitzell, K., Lonnoy, E., Matthews, J., Maycock, T. K., Waterfield, T., Yelekçi, O., Yu, R., and (eds.), B. Z.: IPCC, 2021: Summary for Policymakers. In: *Climate Change 2021: The Physical Science Basis. Contribution of Working Group I to the Sixth Assessment Report of the Intergovernmental Panel on Climate Change*, Tech. rep., Cambridge University Press, 2021.
- McCarthy, G., Gleeson, E., and Walsh, S.: The influence of ocean variations on the climate of Ireland, *Weather*, 70, 242–245, 2015.
- McCarthy, G., Joyce, T., and Josey, S.: Stream variability in the context of quasi decadal and multi decadal Atlantic climate variability, *Geophysical Research Letters*, 45, 11–257, 2018.
- Murphy, J., Sutton, G., O’Mahony, C., and Woodworth, P.: Scoping Study to Assess the Status of Irelands Tide Gauge Infrastructure and Outline Current and Future Requirements, Tech. rep., 2003.
- Nerem, R., Beckley, B., Fasullo, J., Hamlington, B., Masters, D., and Mitchum, G.: Climate change driven accelerated sea level rise detected in the altimeter era, *Proceedings of the National Academy of Sciences*, 115, 2022–2025, 2018.
- Orford, J., Murdy, J., and Freil, R.: Developing constraints on the relative sea-level curve for the northeast of Ireland from the mid-Holocene to the present day, *Philosophical Transactions of the Royal Society A: Mathematical, Physical and Engineering Sciences*, 364, 857–866, 2006.
- Orford, J., , and Murdy, J.: Presence and possible cause of periodicities in 20th-century extreme coastal surge: Belfast Harbour, Northern Ireland, *Global and Planetary Change*, 133, 254–262, 2015.
- O’Connell, G.: Interview on Pat Kenny Newstalk: Is Catastrophic Dublin flooding inevitable?, <https://www.newstalk.com/podcasts/highlights-from-the-pat-kenny-show/catastrophic-dublin-flooding-inevitable>, 2019.
- Plummer, M. et al.: JAGS: A program for analysis of Bayesian graphical models using Gibbs sampling, in: *Proceedings of the 3rd international workshop on distributed statistical computing*, vol. 124, pp. 1–10, Vienna, Austria., 2003.
- PSMSL: Permanent Service for Mean Sea Level (PSMSL), Tide Gauge Data, Retrieved: 22 March, <http://www.psmsl.org/data/obtaining>, 2020.
- Pugh, D. T., Bridge, E., Edwards, R., Hogarth, P., Westbrook, G., Woodworth, P. L., and McCarthy, G. D.: Mean Sea Level and Tidal Change in Ireland since 1842: A case study of Cork, *Ocean Science Discussions*, pp. 1–26, 2021.
- R Core Team: R: A language and environment for statistical computing. R Foundation for Statistical Computing., Tech. rep., Vienna, Austria, <https://www.R-project.org/>, 2022.
- Woodworth, P.: Differences between mean tide level and mean sea level, *Journal of Geodesy*, 91, 69–90, 2017.
- Woodworth, P., Shaw, S., and Blackman, D.: Secular trends in mean tidal range around the British Isles and along the adjacent European coastline, *Geophysical Journal International*, 104, 593–609, 1991.
- Woodworth, P., Tsimplis, M., Flather, R., and Shennan, I.: A review of the trends observed in British Isles mean sea level data measured by tide gauges, *Geophysical Journal International*, 136, 651–670, 1999.

Woodworth, P. L.: A note on the nodal tide in sea level records, *Journal of Coastal Research*, 28, 316–323, 2012.

Wöppelmann, G., Pouvreau, N., and Simon, B.: Brest sea level record: a time series construction back to the early eighteenth century, *Ocean Dynamics*, 56, 487–497, 2006.