

Table 1- Details of the Tide gauges installed at Dublin port.

Gauge type	Start	End	Reference
Float Gauge	1938	2001	Original charts supplied by Dublin City Council indicate float gauge in operation from records beginning to 2003.
Druck Pressure Transducer	2001	2016	Stated sensor type in Murphy et al., 2003. This sensor began to malfunction in 2017 and was replaced in 2018.
OTT Bubbler	2018	-	New sensor installed in 2018. Data not used in this study.

Table 2- Details of the datasets collated to form a complete sea level record for Dublin Port.

Dataset name	Duration	Sampling frequency	Provider
Port Authority	1938-2001	Annual	Woodworth et al. (1991), PSMSL
Port Authority	1978-2001	Monthly	Woodworth et al. (1991), PSMSL
Harbourmaster	2002-2009	10-minute	PSMSL
NTGN	2006-2019	5-minute	Marine Institute
Greene	1968-2013	Twice daily	This study

Table 3- Dublin's SLR rate during different periods with and without Perigean.

1953-2016 (with perigean)	1953-2016 (without perigean)	1997-2016 (with perigean)	1997-2016 (without perigean)
1.08 (95% CI: 0.62 – 1.55)	1.1 (95% CI: 0.57 –1.57)	6.48 (95% CI: 4.22 – 8.8)	7.07 (95% CI: 5.15 –8.93)

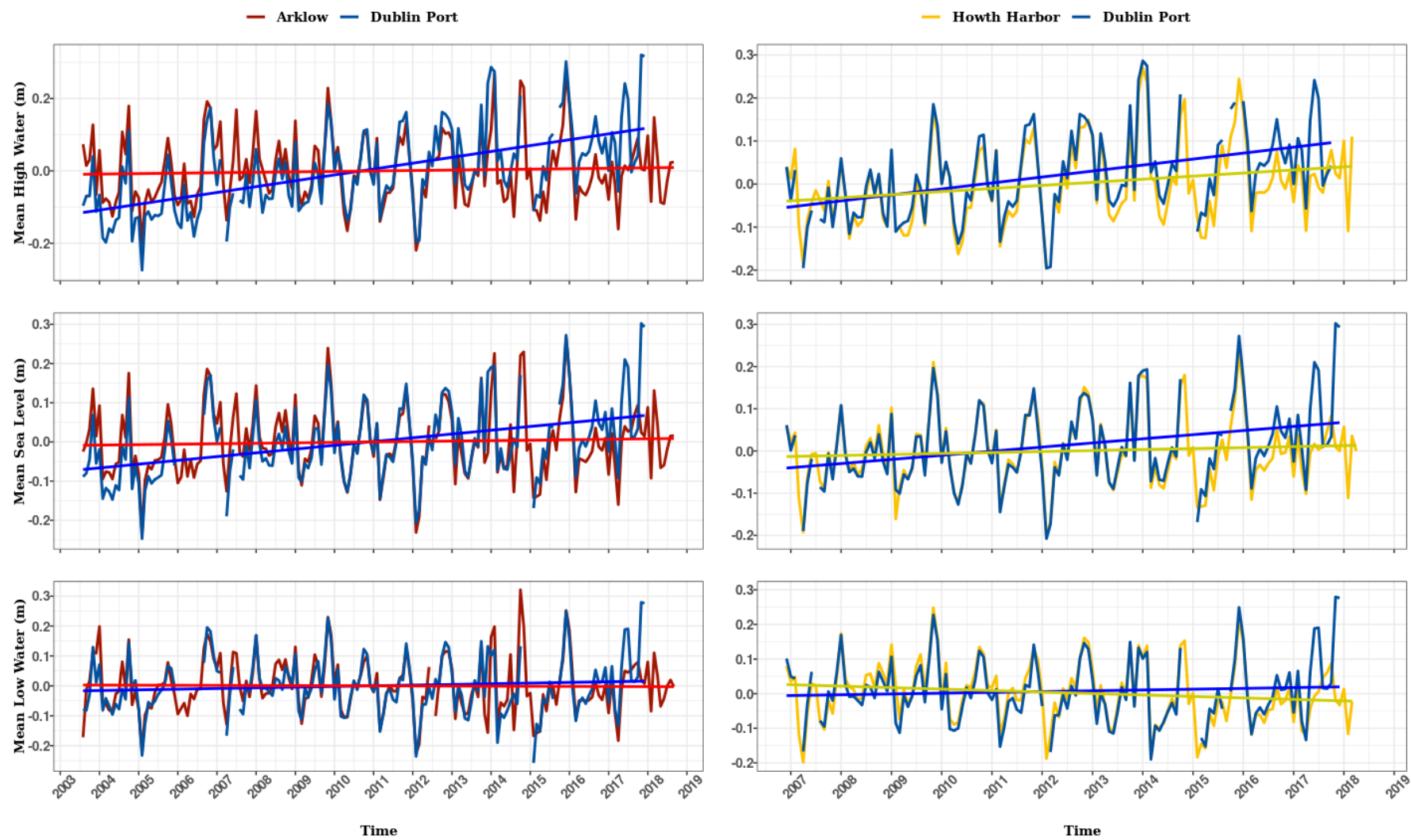


Figure 1. MHW, MSL and MLW monthly values of Dublin Port against Arklow (left panels) and Howth Harbour (right panels)