

Global distribution and variability of subsurface chlorophyll a concentrations

Sayaka Yasunaka¹, Tsuneo Ono², Kosei Sasaoka¹, Kanako Sato¹

¹Japan Agency for Marine-Earth Science and Technology, Yokosuka, 237-0061, Japan

5 ²Japan Fisheries Research and Education Agency, Yokohama, 236-8648, Japan

Correspondence to: Sayaka Yasunaka (yasunaka@jamstec.go.jp)

Abstract. Chlorophyll a (Chl-a) often exhibits a maximum concentration in the subsurface layer rather than at the surface. The depth of the Chl-a maximum primarily depends on the balance between light penetration from the surface and the nutrient supply from the deep ocean. However, a global map of subsurface Chl-a concentrations based on observations has not been presented yet. In this study, we integrate Chl-a concentration data from recent biogeochemical floats as well as from historical ship-based and other observations, and present global maps of subsurface Chl-a concentrations with related variables. The subsurface Chl-a maximum was observed globally throughout the oceans; at depths greater than 80m in the subtropics and tropics (30°S to 30°N), in the 40–80 m depth range in the tropics, in the Southern Ocean (south of 40°S), and in the mid-latitudes (30–40°N/S) in the North Pacific, and at depths of less than 40m in the northern subarctic (north of 15 40°N). The observed maxima all lie below the mixed layer depth for the entire year in the subtropics and tropics, and during summer in the mid-latitudes and the northern subarctic. The depths of the subsurface Chl-a maxima are greater than those of the photosynthetically active layer in the subtropics but shallower in the tropics and midlatitudes. In the subtropics, a seasonal increase in oxygen below the mixed layer implies substantial new biological production, which corresponds to 10% of the net primary production in that region. During El Niño, subsurface Chl-a concentrations are higher in the middle and 20 eastern equatorial Pacific but lower to the west in comparison with La Niña, a pattern which is opposite to that on the surface. The spatiotemporal variability of the Chl-a concentrations described here has implications to not only for the biogeochemical cycling in the ocean but also for understanding the thermal structure and dynamics of the ocean via absorption of shortwave radiation.

25 1 Introduction

Chlorophyll a (Chl-a) concentrations in the ocean often exhibit a maximum value not at the surface, but rather in the subsurface layer. The subsurface Chl-a maximum is a widespread and common feature in various oceans in the tropics, subtropics, and subarctic (Anderson, 1969; Saijo et al., 1969; Furuya, 1990; Bhattathiri et al., 1996; Mann and Lazier, 1996). The same finding was also recently reported in the Arctic Ocean and the Southern Ocean (Ardyna et al., 2013; Baldry et al., 30 2020). Substantial primary production is also observed in the subsurface, although the relationship between Chl-a concentrations, biological biomass, and primary production is not simple, and the subsurface Chl-a maximum often

represents a photoacclimation response in phytoplankton (Kitchen and Zaneveld, 1990; Campbell and Vaultot, 1993; Goldman, 1988; Fennel and Boss, 2003; Matsumoto and Furuya, 2011; Cornec et al., 2021). The depth of the Chl-a maximum primarily depends on the balance between light penetration from the surface and nutrient supply from the deep ocean (Cullen, 2015), but also partially depends on light-dependent grazing by zooplankton near the surface (Moeller et al., 2019).

Chl-a concentrations have physical effects in the ocean because Chl-a absorbs shortwave radiation, which leads to ocean warming followed by a modified thermal structure and ocean dynamics (Lewis et al., 1990; Siegel et al., 1995). Modeling studies have indicated that the interannual variation in subsurface Chl-a concentrations is an important parameter for accurate El Niño simulations (Jochum et al., 2010; Kang et al. 2017).

Using satellite-retrieved ocean-surface Chl-a concentrations, many studies have described the basin-scale spatial distribution and temporal variation of surface Chl-a (e.g. Dunstan et al., 2018; Lin et al., 2014; Sasaoka et al., 2011); however, those features have not been described in detail for subsurface Chl-a. Although several studies have parameterized the vertical profile of Chl-a concentrations and reproduced subsurface Chl-a maxima (Ardyna et al., 2013; Uitz et al., 2006), their main purpose was to estimate depth-integrated Chl-a and primary production. Recently, Biogeochemical Argo floats with Chl-a sensors have revealed occurrence of the subsurface Chl-a maxima and their relationship to phytoplankton biomass across the world's oceans (Cornec et al., 2021). However, subsurface Chl-a data derived from a single data source does not have sufficient coverage to illustrate the wider picture; therefore a global map of observed subsurface Chl-a concentration is still needed. Global maps of subsurface Chl-a maxima have thus far been based on statistical estimates or numerical models (Mignot et al., 2014; Masuda et al., 2021), and only surface Chl-a concentration have been used to validate numerical models (e.g. Séférian et al. 2020).

Here, we synthesize data on Chl-a concentrations data from recent biogeochemical floats as well as from historical ship-based and other observations, and present global maps of subsurface Chl-a concentrations. We then present seasonal and interannual variability of the subsurface Chl-a concentrations in relation to other variables in the world's oceans.

55 **2 Data**

Chl-a measurements were extracted from the World Ocean Database 2018 (WOD2018; Boyer et al., 2018; https://www.nodc.noaa.gov/OC5/WOD/pr_wod.html) and the Global Ocean Data Analysis Project version 2.2019 Release (GLODAPv2.2019; Olsen et al., 2019; <https://www.glodap.info/>). These measurements were taken from bottle samples, CTD fluorescence, underway CTD fluorescence, profiling floats, gliders, and drifting buoys. Data from the Biogeochemical Argo floats are included in WOD2018 under the category of measurements from profiling floats. The total number of Chl-a measurements is 114,107,161 from 737,469 profiles measured between 1932 and 2020 in the upper 300 m (Table 1). The data are globally distributed across the oceans (Figure 1). Most of the data for in the open ocean are from bottle samples, CTD fluorescence, and profiling floats (Figure S1).

Chl-a data often include several high values ($>3 \text{ mg/m}^3$) that represent erroneous data or data that reflect in short-term and small-scale extreme conditions (Figure S2a). We conducted quality control efforts to reduce the effect of such data, as they might otherwise detract from our purpose of determining large-scale distribution patterns in the open ocean. Although different types of data errors are present among the different data sources, statistical quality control measures using a limited number of data did not work effectively, so we instead uniformly treated the data from all data sources. The quality control measures used are as follows:

1. We binned the Chl-a measurements from each profile into depths of 5 m (0–5 m), 10 m (5–15 m), 20 m (15–25 m), 30 m (25–40 m), 50 m (40–62.5 m), 75 m (62.5–87.5 m), 100 m (87.5–112.5 m), 125 m (112.5–137.5 m), 150 m (137.5–175 m), and 200 m (175–250 m).
2. We calculated the long-term mean and its standard deviation within ranges of $\pm 5^\circ$ latitude, $\pm 10^\circ$ longitude, and ± 1 month (regardless of the year) for each $1^\circ \times 1^\circ \times 1$ -month grid cell at each depth.
3. We flagged data that differed by more than three standard deviations from the long-term mean in each grid cell at each depth.
4. We eliminated profiles in which more than half of all data had been flagged in Step 3.
5. We eliminated profiles in which more than half of all profiles within $\pm 10^\circ$ of the latitude and longitude, and ± 1 month had been eliminated in Step 4.

This procedure identified approximately 1% of the measurements as belonging to erroneous or extreme profiles (Table 1). Data with high values were extensively eliminated, and 85% of the eliminated data have values of $> 3 \text{ mg/m}^3$ (Figure S2b). The eliminated data were mostly located in coastal regions and partly scattered in the open oceans (not shown here). The ratio of eliminated data is slightly larger in data from underway CTD fluorescence and bottle samples likely because they included more uncalibrated and historical data (Table 1).

For the remaining data after quality control, we calculated monthly means of Chl-a concentrations in $1^\circ \times 1^\circ$ grid cells at each depth. We also calculated the depth of the Chl-a maximum in each individual profile that included data from more than five different depths, and then binned them into $1^\circ \times 1^\circ \times 1$ -month grid cells. The average sampling depth interval around the Chl-a maximum is 7 m (3 m in CTD fluorescence and profiling floats, and 16 m in bottle samples).

Satellite-derived surface Chl-a concentrations, euphotic layer depths (1% light level; Z_{eu}), and surface values of photosynthetically available radiation (PAR) with a $1^\circ \times 1^\circ$ monthly resolution since September 1997 were obtained from the GlobColour project website (GlobColour_R2018; <http://hermes.acri.fr/index.php>; Frouin et al., 2003; Maritorena et al., 2010; Morel et al., 2007). We estimated the PAR within the water column using the empirical relationship between Z_{eu} and the surface PAR as Ito et al. (2015) did. The PAR at a depth of z was calculated as

$$\text{PAR}(z) = 0.98 \times \text{PAR}(0) \times \exp(-kz), \quad (1)$$

where k is the light attenuation coefficient within the water column derived from

$$k = -\log(0.01)/Z_{eu}. \quad (2)$$

The coefficient 0.98 in (1) is the transmission rate into the ocean used by Boss and Behrenfeld (2010). We then defined photosynthetically active layer as having $> 0.415 \text{ einstein/m}^2/\text{day}$ of PAR as per Boss and Behrenfeld (2010).

100 Monthly fields of net primary production (NPP) were obtained from the Ocean Productivity website (<http://www.science.oregonstate.edu/ocean.productivity/index.php>) with a spatial resolution of $1/6^\circ \times 1/6^\circ$, which were calculated using the vertically generalized production model of Behrenfeld and Falkowski (1997). We used climatological means of oxygen concentrations, oxygen saturation ratios, and nitrate concentrations in the World Ocean Atlas 2018 (WOA2018; <https://www.nodc.noaa.gov/OC5/woa18/>; Garcia et al., 2018a, 2018b). We also used climatological means of mixed layer depths (the depth at which sigma- θ changes by 0.125 compared to that at the surface) produced by JAMSTEC
105 (MILA_GPv; http://www.jamstec.go.jp/ARGO/argo_web/argo/?page_id=223&lang=en; Hosoda et al. 2010; missing data were interpolated using data from the surrounding grids). Using a mixed layer depth defined by a sigma- θ change of 0.03 produced very similar results. We show the results using the mixed layer depth with a change from the surface sigma- θ of 0.125 here.

We calculated the Niño 3.4 index (sea surface temperatures over 5°N to 5°S , $170^\circ\text{--}120^\circ\text{W}$) as an indicator of El Niño and
110 La Niña using the Hadley Centre Sea Ice and Sea Surface Temperature data set (HadISST; <https://www.metoffice.gov.uk/hadobs/hadisst/>; Rayner et al., 2003). El Niño or La Niña were originally defined by periods when the Niño 3.4 index exceeds $\pm 0.4^\circ\text{C}$ for 6 months or longer (Trenberth, 1997). Here, El Niño or La Niña is taken to refer to all positive or negative Niño 3.4 indices, respectively, because the amount of subsurface Chl-a data would otherwise be limited.

115 **3 Results**

3.1 Climatological mean state

Figures 2a and 3 show the depths of the Chl-a maxima and cross-sections of Chl-a concentrations from the quality-controlled data, respectively. We selected the central latitudinal and longitudinal bands of the subtropics, the tropics, the Indian Ocean, the Pacific Ocean, and the Atlantic Ocean in Figure 3. The Chl-a concentrations exhibit subsurface maxima across the
120 world's oceans, at depths below 80 m in the subtropics, at 40–80 m depth in the tropics, the Southern Ocean, and the mid-latitudes in the North Pacific, and at depths above 40 m in the northern subarctic. The subsurface maximum is deeper than 120 m in the central subtropics and reaches 150 m at approximately 25°S , 100°W in the South Pacific. The subsurface maxima in the subtropics and the tropics were deeper than the mixed layer (Figures 4a and 5). In the Southern Ocean and the northern North Atlantic, several patches of subsurface maxima were observed at depths greater than 80 m, while these depths
125 are generally shallower than the mixed layer depth (Figures 2a, 4a, and 5d–f). The ranges of Chl-a concentration at the subsurface maxima are $0.1\text{--}0.2 \text{ mg/m}^3$ in the subtropics, $0.2\text{--}0.5 \text{ mg/m}^3$ in the tropics, and $>0.5 \text{ mg/m}^3$ in the subarctic (Figures 3 and 6a).

The long-term mean of the photosynthetically active layer depth is greater than 80 m in the subtropics, and deeper than 40 m in other regions (Figure 2b). It is also greater than the mixed layer depth in the subtropics, the Arctic Ocean, and the tropics but shallower in the northern subarctic and the Southern Ocean (Figures 2b and 5). The PAR values at the subsurface Chl-a maxima are generally stronger than 1 einstein/m²/day in the subarctic and in the tropics (Figures 6b). The spatial distribution of the photosynthetically active layer depth is similar to that of the subsurface Chl-a maximum depth (Figures 2a and 2b), but substantial differences were observed (Figure 4b). For example, the subsurface Chl-a maximum is deeper than the photosynthetically active layer in the subtropics and at 40–60°S in the Indian sector, but is shallower than the photosynthetically active layer depth in other regions.

Nitrate concentrations in the surface layer were less than 1 μmol/kg in places with a deep subsurface Chl-a maximum (Figures 2c and 5). In these areas, the nitrate concentrations at the depth of the subsurface Chl-a maximum were also low, while nitrate concentrations are greater than 5 μmol/kg in the subarctic and eastern tropics but less than 1 μmol/kg in the subtropics and the Arctic Ocean (Figure 6c).

The subtropics are oversaturated with oxygen down to depths of at least 40 m and deeper than 80m in some places (Figures 2d and 5). The lower limit of oxygen oversaturation in the subtropics mostly occurs below the mixed layer and above the subsurface Chl-a maximum (Figures 2d and 4c).

3.2 Seasonal variation

The subsurface Chl-a maximum in the subtropics was observed to occur below the mixed layer in both winter and summer (Figures 7a and 8). The photosynthetically active layer is deeper than the mixed layer during both seasons between 20°N and 30°S in the Indian Ocean and the western Pacific, and between 20°N and 20°S in the Atlantic Ocean and the eastern Pacific, and in the whole summer hemisphere except for 40–60°S (Figures 7b and 8). The photosynthetically active layer is deeper in summer than in winter in nearly all areas except for the North Atlantic (Figure 7e). This summer deepening is more than 15 m in the 20–40° latitudinal bands in both hemispheres (Figures 7e and 8f). The seasonal differences in the Chl-a maximum depths exhibit the same tendencies as the photosynthetically active layer (Figure 7d). Below the mixed layer, oxygen is oversaturated north of 10°N and at 10–45°S in summer (Figures 7c, 8b, 8d, and 8e). The subsurface oxygen concentrations are higher in summer than in winter at latitudes of approximately 15–40° (Figures 7f, 8c, and 8f).

The subsurface Chl-a maximum deeper than the mixed layer was observed to be stable in the subtropics and tropics (30°S to 30°N), was seen only in summer at midlatitudes (30° to 40°), and occurred rarely at 45–60°S in the Southern Ocean and in the northern North Atlantic (north of 45°N) (Figures 9a and 10). The percentage of months with a deeper photosynthetically active layer than the mixed layer has a similar pattern to the percentage of months deeper the subsurface Chl-a maximum than the mixed layer, except in the northern North Atlantic (Figure 9b). At the midlatitudes, the Chl-a concentrations were high (>0.3 mg/m³) throughout the entire mixed layer during winter, and remained high at the subsurface but became low on the surface in summer, when the mixed layer becomes shallow (Figure 10c). At 45–60°S in the Southern Ocean and the northern North Atlantic, the Chl-a concentrations in the mixed layer were high in summer and low in winter, while the

subsurface Chl-a maximum occurred around the mixed layer depth in summer and within the mixed layer in winter (Figures 10h and 10i). In the subarctic North Pacific, the seasonal cycle of the Chl-a concentrations is similar to that in the subarctic North Atlantic, although the surface Chl-a concentrations is relatively low and the subsurface Chl-a maximum appears at a depth below the mixed layer in midsummer (Figure 10g).

165 **3.3 El Niño–Southern Oscillation (ENSO)-related variation**

A subsurface Chl-a maximum along the equator can be seen in the photosynthetically active layer during El Niño and La Niña (Figures 11a and 11b). Below 40 m which is approximately the mixed layer depth in that area, the Chl-a concentration is lower west of 160°E during El Niño but higher east of 170°W (Figure 11c). Although the difference in the Chl-a concentrations between El Niño and La Niña is noisy above 40 m, most of the significant difference is negative east of 170 150°E (Figure 11c). Satellite-derived surface Chl-a concentrations show lower values during El Niño than those during La Niña east of 150°E (Figure 12a). Surface PAR is lower (higher) to the east (west) of 150°E during El Niño (Figure 12b), while the photosynthetically active layer deepens by several meters during El Niño east of 150°E (Figure 12c). The lower and higher subsurface Chl-a concentrations to the west and east of 160°E during El Niño occurs mainly at the depths of 60–120 m, which corresponds well with the base of the photosynthetically active layer (Figures 11c and 12c).

175 **4 Discussion**

The spatial distribution of the subsurface Chl-a maximum in the subtropics seen in this study (Figures 2a and 3) corresponds to the bowl-shaped thermocline structure of the subtropical gyre (Pedlosky, 1990). The deep thermocline in the central subtropics inhibits nutrient supply to the surface, causing low nutrient levels and Chl-a concentrations there.

Uitz et al. (2006) explained that a deeper subsurface Chl-a maximum corresponds to lower surface Chl-a concentrations because light proceeds downward until it is absorbed by chlorophyll. Our study demonstrates that the depth of the subsurface Chl-a maximum is roughly consistent with the depth of the photosynthetically active layer throughout the world's oceans (Figures 2a and 2b). However, Chl-a concentrations in the central subtropics exhibit a maximum below the photosynthetically active layer (Figures 4b and 5) because of the very low nutrient concentrations at the surface and dispersal of light down to a layer in which nutrients are available (Beckmann and Hense, 2007). Photoacclimation also often allows 185 Chl-a to increase in the low PAR layer (Cornec et al. 2021; Masuda et al. 2021). When nutrients are available at shallow depths, Chl-a displays maximum concentrations above the base of the photosynthetically active layer, as in the tropics and subarctic (Figures 4 and 5). Note that the Chl-a concentrations are still significant below the maximum, including those below the photosynthetically active layer in the tropics and subarctic (Figure 3).

The subsurface Chl-a maxima in the global oceans can be categorized into three types depending on their seasonal cycles: 190 (A) a stable maximum below the mixed layer all year round in the subtropics and tropics (30°S to 30°N); (B) a maximum below the mixed layer in summer and within the mixed layer during winter in the midlatitudes (30° to 40°); and (C) a maximum within the mixed layer at 45–60°S in the Southern Ocean and the northern North Atlantic (north of 45°N) (Figures

9 and 10). These categories also correspond to the seasonal cycle of surface Chl-a, which is subject to nutrient limitations and is low in all seasons in region A (Figures 10a, 10b, and 10d–f). In region B, nutrients are supplied by winter mixing, and winter blooms occur in the mixed layer; in contrast, surface nutrients get depleted, and the main body of Chl-a retains in the subsurface during summer (Figure 10c). In region C, Chl-a concentrations in the mixed layer increase after shallowing of the mixed layer when there is sufficient light in summer (Figures 10h and 10i). These features are consistent with regional studies reported in the literature (e.g., Baldry et al., 2020; Fujiki et al., 2020; Mignot et al. 2014; Sverdrup, 1953). The latitudinal dependence of the subsurface Chl-a maxima occurrence was also noted by Cornec et al. (2021). The low surface Chl-a concentrations and subsurface Chl-a maximum below the mixed layer in midsummer in the subarctic North Pacific (Figure 10g) are due to summer iron limitation at the surface (Martin and Fitzwater, 1988; Nishioka and Obata, 2017; Nishioka et al., 2020). South of 60°S in the western Indian sector of the Southern Ocean, the subsurface Chl-a maximum is deeper than the mixed layer (Figure 4a), which is consistent with the subsurface Chl-a maximum following sea ice retreat reported by Gomi et al. (2007).

Data on subsurface fluorescence maxima have been sometimes reported without subsurface Chl-a maxima (Falkowski and Kolber, 1995; Biermann et al., 2015). Especially data from profiling floats are potentially suffered from fluorescence quenching at surface (Xing et al., 2012). To investigate subsurface fluorescence maximum, we examined the subsurface Chl-a maximum from each data source. The area-averaged Chl-a concentrations and the subsurface Chl-a maximum show similar seasonal cycles in data from both bottle samples and from profiling floats (Figures S3 and S4). In the Southern Ocean, the subarctic North Atlantic, and the subarctic North Pacific, the subsurface Chl-a maximum within the mixed layer in winter can be detected in the bottle samples, although the depth of the Chl-a maximum tends to slightly shallower in data from bottle samples than in those from profiling floats (Figures S3g–i and S4g–i). Therefore, a subsurface maximum within the mixed layer is not necessarily just the fluorescence maximum but the substantial Chl-a maximum. This indicates that the subsurface Chl-a maximum is a general feature of the ocean, even in areas with a deep mixed layer in winter. In fact, a sporadic stratification and the Chl-a maximum just below the sporadic mixed layer have been found in the mid-latitudes and the subarctic in winter (Chiswell 2011; Ito et al. 2015; Matsumoto et al. 2021).

In the subtropics, nitrate concentrations were quite low even at the Chl-a maximum depths (Figure 6c). Nitrate concentration is not necessarily an appropriate index of available nutrients for phytoplankton. Nitrate is used as soon as it is available in the subtropics (Lewis et al., 1986). Furthermore, biological production does not always require nitrate, and ammonium assimilation is more important in the subtropics than in the subarctic (Eppley and Peterson, 1979). Nitrogen fixation also contributes to biological production in the subtropics (Deutsch et al., 2007; Karl et al., 1997). Meanwhile, nitrate concentrations are high at the depths of the Chl-a maximum in the subarctic North Pacific and in the eastern tropical Pacific because the limiting nutrient for biological production is iron rather than nitrate (Landry et al., 1997; Martin and Fitzwater, 1988; Martin et al., 1990).

Oxygen oversaturation in the subtropics occurs below the mixed layer depth and above the subsurface Chl-a maximum (Figures 2d, 4c, and 5). Biological production per unit Chl-a is generally more effective under high light levels (Yoder,

1979). Oxygen generated in deeper layers would be removed by the remineralisation of sinking particles (Martin et al., 1987). In any case, substantial new production occurs in the subtropics. Seasonal oxygen production in the subtropical subsurface layer from winter to summer sometimes yields approximately 5–10 $\mu\text{mol/kg}$ of oxygen (Figures 7f, 8c, and 8f). When the seasonal oxygen production is integrated over the 50–150-m depth range, the value becomes 500–1000 $\text{mmolO/m}^2/6$ months. Assuming a Redfield ratio of 276O:106C, this is the equivalent of 200–400 $\text{mmolC/m}^2/6$ months. This is consistent with the net community production values of $1.6 \pm 0.2 \text{ molC/m}^2/\text{yr}$ and $0.9 \pm 0.4 \text{ molC/m}^2/\text{yr}$ reported by Riser and Johnson (2008) in the subtropical North and South Pacific, half of which occurred in the surface layer. The satellite-derived NPP in the subtropics is approximately 20 $\text{mmol/m}^2/\text{day}$ and 3600 $\text{mmolC/m}^2/6$ months (not shown here). Consequently, new production derived from subsurface oxygen production in the subtropics is estimated at approximately 10% of the NPP. This is consistent with a f-ratio of 15% reported at station ALOHA (23°N 158°W; Karl et al., 1996), considering a small but nonzero seasonal dissolved inorganic carbon drawdown reported in the subtropical surface layer (Yasunaka et al., 2013, 2021). It should be noted that oxygen production is not always associated an increase in biomass at shallow depths in the subtropics (Fujiki et al., 2020).

A seasonal reduction in nitrate along with oxygen production in the subsurface layers cannot be inferred (not shown here), because the number and quality of nitrate observations are likely insufficient to detect such a relationship. Another possibility is that nitrogen fixation substantially contributes to biological production (Deutsch et al. 2007; Karl et al., 1997). Lower Chl-a concentrations at the surface during El Niño (Figure 12a) result from reduced upwelling of nutrient-rich subsurface water to the surface (Chavez et al., 1999). Although Matsumoto and Furuya (2011) showed that no substantial changes in the average subsurface Chl-a concentrations in the western Pacific warm pool region were associated with ENSO, subsurface Chl-a concentrations at the fixed grids were observed here to decrease during El Niño west of 160°E (Figure 11c). The inverse correlation of the surface and subsurface Chl-a concentrations in the central and eastern tropical Pacific associated with ENSO (Figures 11c and 12a) may result from a decrease in surface Chl-a concentrations that increases light penetration to the subsurface (Figures 12a and 12c). This then increases the subsurface Chl-a concentrations, as postulated by Uitz et al. (2006). In Uitz et al. (2006), the Chl-a profile in stratified water is parameterized to increase the subsurface Chl-a concentrations with decreasing surface Chl-a concentrations. An inverse correlation associated with ENSO has been presented in previous model results (Lee et al., 2014; Kang et al., 2017). However, the subsurface signals in those models are much weaker than the surface signals, unlike those in this study (see Figure 4 in Uitz et al., 2006, and Figure 11 in Lee et al., 2014). Thus, the subsurface response to this process may have been underestimated.

255 **5 Conclusion**

This study presents the first view of the global maps of subsurface Chl-a maxima and their seasonal variation and interannual variation associated with ENSO. Using in situ Chl-a concentration data, we found dynamic variability in subsurface Chl-a concentrations in time and space. A subsurface Chl-a maximum was observed across the world's oceans, including a stable maximum at depths greater than 80 m all year round in the subtropics and tropics, a maximum below the mixed layer during

260 summer and within the mixed layer during winter in the midlatitudes, and a maximum within the mixed layer at 45–60°S in
the Southern Ocean and the northern North Atlantic. It extends deeper than the base of the photosynthetically active layer in
the subtropics but is shallower in the tropics and midlatitudes. At 20–40° latitudinal bands, the subsurface Chl-a maxima
tend to deepen in summer with the seasonal deepening of the photosynthetically active layer. The seasonal oxygen increase
below the mixed layer in the subtropics implies substantial new biological production. During El Niño, the subsurface Chl-a
265 concentrations in the equatorial Pacific are higher in the middle and to the east and lower in the west than during La Niña,
which is opposite to the patterns that occur at the surface.

Chl-a concentrations vary dynamically in time and space on the ocean surface as well as in the subsurface. The maps
presented in this study can be used to help validate ocean biogeochemical and Earth system models and should facilitate
development of models. Chl-a concentrations are also related to the absorption of shortwave radiation, and the vertical
270 distribution of shortwave radiation affects the thermal structure and dynamics of the ocean (Lewis et al., 1990; Siegel et al.,
1995). Therefore, continuous measurements and archiving Chl-a data are desirable. An increase in the coverage of
biogeochemical floats with Chl-a sensors is a promising way to generate more subsurface Chl-a data (Chai et al., 2020). This
would help reveal the direct relationship in the subsurface layer of the world's oceans between Chl-a concentrations and
absolute light intensity, rather than the estimated light intensity described here, and between Chl-a concentration and
275 biomass.

Data availability

All data used in this paper are available on the website referred to in the text. Data on the depth of the subsurface Chl-a
maxima presented in Figure 2a of this paper is available online (<http://caos.sakura.ne.jp/sao/scm/>).

Author contributions

280 SY designed the study, conducted the analysis, and wrote the manuscript. TO conceived the study and modified the
manuscript. KS provided advice on the analysis and the manuscript. KS helped with data management.

Competing interests

The authors declare that they have no conflict of interest.

Acknowledgments

285 The authors thank the two anonymous reviewers for their fruitful comments, and E. Siswanto for his assistance to calculate
subsurface PAR. This work was financially supported by JSPS KAKENHI (Grant Number JP18H04129).

References

- Anderson, O. R.: An interdisciplinary theory of behavior. *Journal of Research in Science Teaching*, 6, 265–273, doi:10.1002/tea.3660060311, 1969.
- 290 Ardyna, M., Babin, M., Gosselin, M., Devred, E., Bélanger, S., Matsuoka, A., and Tremblay, J. -É.: Parameterization of vertical chlorophyll a in the Arctic Ocean: Impact of the subsurface chlorophyll maximum on regional, seasonal, and annual primary production estimates, *Biogeosciences*, 10, 4383–4404, doi:10.5194/bg-10-4383-2013, 2013.
- Baldry K., Strutton, P. G., Hill, N. A., and Boyd, P. W.: Subsurface chlorophyll-a maxima in the Southern Ocean, *Frontiers in Marine Science*, 7, 671, doi:10.3389/fmars.2020.00671, 2020.
- 295 Beckmann, A. and Hense, I.: Beneath the surface: Characteristics of oceanic ecosystems under weak mixing conditions—a theoretical investigation, *Progress in Oceanography*, 75, 771–796, doi:10.1016/j.pocean.2007.09.002, 2007.
- Behrenfeld, M. J. and Falkowski, P. G.: Photosynthetic rates derived from satellite-based chlorophyll concentration, *Limnology and Oceanography*, 42, 1–20, doi:10.4319/lo.1997.42.1.0001, 1997.
- Bhattathiri, P. M. A., Pant, A., Sawant, S. S., Gauns, M., Matondkar, S. G. P., and Mohanraju, R.: Phytoplankton production and chlorophyll distribution in the eastern and central Arabian Sea in 1994-1995, *Current Science*, 71, 857–862, <http://drs.nio.org/drs/handle/2264/2149>, 1996
- 300 Biermann, L., Guinet, C., Bester, M., Brierley, A., and Boehme, L.: An alternative method for correcting fluorescence quenching, *Ocean Science*, 11, 83–91, doi:10.5194/os-11-83-2015, 2015.
- Boss, E., and Behrenfeld, M.: In situ evaluation of the initiation of the North Atlantic phytoplankton bloom. *Geophys. Res. Lett.* 37, L18603. <http://dx.doi.org/10.1029/2010GL044174>, 2010.
- 305 Boyer, T. P., Baranova, O. K., Coleman, C., Garcia, H. E., Grodsky, A., Locarnini, R. A., Mishonov, A. V., Paver, C. R., Reagan, J. R., Seidov, D., Smolyar, I. V., Weathers, K., and Zweng, M. M.: *World Ocean Database 2018*, A.V. Mishonov, Technical Ed.; NOAA Atlas NESDIS 87, 2018.
- Campbell, L. and Vault, D.: Photosynthetic picoplankton community structure in the subtropical North Pacific Ocean near Hawaii (station ALOHA), *Deep Sea Research Part I*, 40, 2043–2060, doi:10.1016/0967-0637(93)90044-4, 1993.
- 310 Chai, F., Johnson, K.S., Claustre, H., Xing, X., Wang, Y., Boss, E., Riser, S., Fennel, K., Schofield, O., and Sutton, A.: Monitoring ocean biogeochemistry with autonomous platforms, *Nature Reviews Earth and Environment*, 1, 315–326. doi:10.1038/s43017-020-0053-y, 2020.
- Chavez, F. P., Strutton, P. G., Friederich, G. E., Feely, R. A., Feldman, G. C., Foley, D. G., and McPhaden, M.J.: Biological and chemical response of the equatorial Pacific Ocean to the 1997-98 El Niño, *Science*, 286, 2126–2131. doi:10.1126/science.286.5447.2126, 1999.
- 315 Chiswell, S. M.: Annual cycles and spring blooms in phytoplankton: don't abandon Sverdrup completely, *Mar. Ecol. Prog. Ser.*, 443, 39– 50, doi:10.3354/meps09453, 2011.

- 320 Cornec, M, Claustre, H., Mignot, A., Guidi, L., Lacour, L., Poteau, A., D'Ortenzio, F., Gentili, B., and Schmechtig, C.: Deep Chlorophyll Maxima in the Global Ocean: Occurrences, Drivers and Characteristics, *Global Biogeochemical Cycles*, 35, e2020GB006759, doi:10.1029/2020GB006759, 2021.
- Cullen, J. J.: Subsurface chlorophyll maximum layers: Enduring enigma or mystery solved? *Annual Review of Marine Science*, 7, 207–239, doi:10.1146/annurev-marine-010213-135111, 2015.
- 325 Deutsch, C., Sarmiento, J. L., Sigman, D. M., Gruber, N., and Dunne, J. P.: Spatial coupling of nitrogen inputs and losses in the ocean, *Nature*, 445, 163–167, doi:10.1038/nature05392, 2007.
- Dunstan, P.K., Foster, S.D., King, E., Risbey, J., O'Kane, T. J., Monselesan, D., Hobday, A. J., Hartog J. R. and Thompson, P. A.: Global patterns of change and variation in sea surface temperature and chlorophyll a, *Scientific Reports*, 8, 14624. doi:10.1038/s41598-018-33057-y, 2018.
- Eppley, R.W. and Peterson, B.J.: Particulate organic matter flux and planktonic new production in the deep ocean, *Nature*, 330 282, 677–680. doi:10.1038/282677a0, 1979.
- Falkowski, P.G. and Kolber, Z.: Variations in chlorophyll fluorescence yields in phytoplankton in the world oceans, *Functional Plant Biology*, 22, 341–355. doi:10.1071/PP9950341, 1995.
- Fennel, K. and Boss, E.: Subsurface maxima of phytoplankton and chlorophyll: Steady-state solutions from a simple model, *Limnology and Oceanography*, 48, 1521–1534. doi:10.4319/lo.2003.48.4.1521, 2003.
- 335 Frouin, R., Franz, B. and Werdell, P.: The SeaWiFS PAR product, Algorithm updates for the fourth SeaWiFS data reprocessing, 22, 46–50, 2003.
- Fujiki, T., Inoue, R., Honda, M. C., Wakita, M., Mino, Y., Sukigara, C., and Abe, O.: Time-series observations of photosynthetic oxygen production in the subtropical western North Pacific by an underwater profiling buoy system, *Limnology and Oceanography*, 65, 1072–1084. doi:10.1002/lno.11372, 2020.
- 340 Furuya, K.: Subsurface chlorophyll maximum in the tropical and subtropical western Pacific Ocean: Vertical profiles of phytoplankton biomass and its relationship with chlorophyll a and particulate organic carbon, *Marine Biology*, 107, 529–539. doi:10.1007/BF01313438, 1990.
- Garcia, H. E., Weathers, K., Paver, C. R., Smolyar, I., Boyer, T. P., Locarnini, R. A., Zweng, M. M., Mishonov, A. V., Baranova, O. K., Seidov, D., and Reagan, J. R.: *World Ocean Atlas 2018, Volume 3: Dissolved Oxygen, Apparent*
- 345 *Oxygen Utilization, and Oxygen Saturation*, A. Mishonov Technical Ed.; NOAA Atlas NESDIS 83, 38pp, 2018.
- Garcia, H. E., Weathers, K., Paver, C. R., Smolyar, I., Boyer, T. P., Locarnini, R. A., Zweng, M. M., Mishonov, A. V., Baranova, O. K., Seidov, D., and Reagan, J. R.: *World Ocean Atlas 2018, Volume 4: Dissolved Inorganic Nutrients (phosphate, nitrate and nitrate+nitrite, silicate)*, A. Mishonov Technical Ed.; NOAA Atlas NESDIS 84, 35pp, 2018.
- 350 Goldman, J.C.: Spatial and temporal discontinuities of biological processes in pelagic surface waters, In: Rothschild B.J. (eds) *Toward a theory on biological-physical interactions in the world ocean*. NATO ASI Series (Series C: Mathematical and Physical Sciences), 239. Springer, Dordrecht. doi:10.1007/978-94-009-3023-0_15, 1988.

- Gomi, Y., Taniguchi, A., and Fukuchi, M.: Temporal and spatial variation of the phytoplankton assemblage in the eastern Indian sector of the Southern Ocean in summer 2001/2002, *Polar Biology*, 30, 817–827. doi:10.1007/s00300-006-0242-2, 2007.
- 355 Hosoda, S., Ohira, T., Sato, K., and Suga, T.: Improved description of global mixed-layer depth using Argo profiling floats. *J Oceanogr* 66, 773–787. <https://doi.org/10.1007/s10872-010-0063-3>, 2010.
- Itoh, S., Yasuda, I., Saito, H., Tsuda, A., and Komatsu, K.: Mixed layer depth and chlorophyll a: Profiling float observations in the Kuroshio-Oyashio Extension region, *Journal of Marine Systems*, 151, 1–14. doi:10.1016/j.jmarsys.2015.06.004, 2015
- 360 Jochum, M., Yeager, S., Lindsay, K., Moore, K., and R. Murtugudde, R.: Quantification of the Feedback between Phytoplankton and ENSO in the Community Climate System Model, *Journal of Climate*, 23, 2916–2925, doi:10.1175/2010JCLI3254.1, 2010.
- Kang, X., Zhang, R. H., Gao, C., and Zhu, J.: An improved ENSO simulation by representing chlorophyll-induced climate feedback in the NCAR Community Earth System Model, *Scientific Reports*, 7, 17123. doi.org:10.1038/s41598-017-365 17390-2, 2017.
- Karl, D. M., Christian, J. R., Dore, J. E., Hebel, D. V., Letelier, R. M., Tupas, L. M., and Winn, C. D.: Seasonal and interannual variability in primary production and particle flux at Station ALOHA, *Deep Sea Research Part II*, 43, 539–568. doi:10.1016/0967-0645(96)00002-1, 1996.
- Karl, D., Letelier, R., Tupas, L., Dore, J., Christian, J., and Hebel, D.: The role of nitrogen fixation in biogeochemical 370 cycling in the subtropical North Pacific Ocean, *Nature*, 388, 533–538. doi:10.1038/41474, 1997.
- Kitchen, J. C., and Zaneveld, J. R. V.: On the noncorrelation of the vertical structure of light scattering and chlorophyll a in case 1 waters, *Journal of Geophysical Research: Oceans*, 95, 20237–20246. <https://doi.org/10.1029/JC095iC11p20237>, 1990.
- Landry, M. R., Barber, R. T., Bidigare, R. R., Chai, F., Coale, K. H., Dam, H. G., Lewis, M. R., Lindley, S. T., McCarthy, J. 375 J., Roman, M. R., Stoecker, D. K., Verity, P. G., and White, J. R.: Iron and grazing constraints on primary production in the central equatorial Pacific: An EqPac synthesis, *Limnology and Oceanography*, 42, 405–418. doi:10.4319/lo.1997.42.3.0405, 1997.
- Lee, K. W., Yeh, S. W., Kug, J. S., and Park, J. Y.: Ocean chlorophyll response to two types of El Niño events in an ocean-biogeochemical coupled model, *Journal of Geophysical Research: Oceans*, 119, 933–952. doi:10.1002/2013JC009050, 380 2014.
- Letelier, R. M., Karl, D. M., Abbott, M. R. and Bidigare, R.R.: Light driven seasonal patterns of chlorophyll and nitrate in the lower euphotic zone of the North Pacific Subtropical Gyre, *Limnology and Oceanography*, 49, 508–519. doi:10.4319/lo.2004.49.2.0508, 2004.
- Lewis, M. R., Hebert, D., Harrison, W. G., Platt, T. and Oakey, N. S.: Vertical nitrate fluxes in the oligotrophic ocean, 385 *Science*, 234, 870–873. doi:10.1126/science.234.4778.870, 1986.

- Lewis, M. R., Carr, M. -E., Feldman, G. C., Esaias, W., and McClain, C. R.: Influence of penetrating solar radiation on the heat budget of the equatorial Pacific Ocean, *Nature*, 347, 543–545. doi:10.1038/347543a0, 1990.
- Lin, P., Chai, F., Xue, H., and Xiu, P.: Modulation of decadal oscillation on surface chlorophyll in the Kuroshio Extension, *Journal of Geophysical Research: Oceans*, 119, 187–199. doi:10.1002/2013JC009359, 2014.
- 390 Mann, K. H. and Lazier, J. R.: *Dynamics of marine ecosystems: Biological-physical interactions in the ocean*, 2nd ed., Blackwell Sci., Mal-den, Mass. doi:10.1017/S0025315400072003, 1996.
- Maritorea, S., d'Andon, O.F., Mangin, A., and Siegel, D.: Merged satellite ocean color data products using a bio-optical model: Characteristics, benefits and issues, *Remote Sensing of Environment*, 114, 1791–1804. doi:10.1016/j.rse.2010.04.002, 2010.
- 395 Martin, J., and Fitzwater, S.: Iron deficiency limits phytoplankton growth in the north-east Pacific subarctic. *Nature*, 331, 341–343. doi:10.1038/331341a0, 1988.
- Martin, J., Knauer, G., Karl, D., and Broenkow, W.: VERTEX: Carbon cycling in the northeast Pacific, *Deep Sea Research*, 34, 267–285. doi:10.1016/0198-0149(87)90086-0, 1987.
- Martin, J., Gordon, R. and Fitzwater, S.: Iron in Antarctic waters, *Nature*, 345, 156–158. doi:10.1038/345156a0, 1990.
- 400 Masuda, Y., Yamanaka, Y., Smith, S.L., Hirata, T., Nakano, H., Oka, A., and Sumata, H.: Photoacclimation by phytoplankton determines the distribution of global subsurface chlorophyll maxima in the ocean, *Communications Earth and Environment*, B, 128. doi:10.1038/s43247-021-00201-y, 2021.
- Matsumoto K. and Furuya, K.: Variations in phytoplankton dynamics and primary production associated with ENSO cycle in the western and central equatorial Pacific during 1994-2003, *Journal of Geophysical Research*, 116, C12042. doi:10.1029/2010JC006845, 2011.
- 405 Matsumoto, K., Sasai, Y., Sasaoka, K., Siswanto, E., and Honda, M.C.: The formation of subtropical phytoplankton blooms is dictated by water column stability during winter and spring in the oligotrophic northwestern North Pacific, *Journal of Geophysical Research*, 126, e2020JC016864, <https://doi.org/10.1029/2020JC016864>, 2021.
- Mignot, A., Claustre, H., Uitz, J., Poteau, A., D'Ortenzio, F., and Xing, X.: Understanding the seasonal dynamics of phytoplankton biomass and the deep chlorophyll maximum in oligotrophic environments: A Bio-Argo float investigation, *Global Biogeochemical Cycles*, 28, doi:10.1002/2013GB004781, 2014.
- 410 Moeller, H. V., Laufkötter, C., Sweeney, E. M., and Johnson, M. D.: Light-dependent grazing can drive formation and deepening of deep chlorophyll maxima, *Nature Communications*, 10, 1978, doi:10.1038/s41467-019-09591-2, 2019.
- Morel, A., Huot, Y., Gentili, B., Werdell, P., J., Hooker, S., B., Franz, B., A.: Examining the consistency of products derived from various ocean color sensors in open ocean (Case 1) waters in the perspective of a multi-sensor approach, *Remote Sensing of Environment*, 111, 69-88, doi:10.1016/j.rse.2007.03.012, 2007.
- 415 Nishioka, J. and Obata, H.: Dissolved iron distribution in the western and central subarctic Pacific: HNLC water formation and biogeochemical processes, *Limnology and Oceanography*, 62, 2004–2022, 2017.

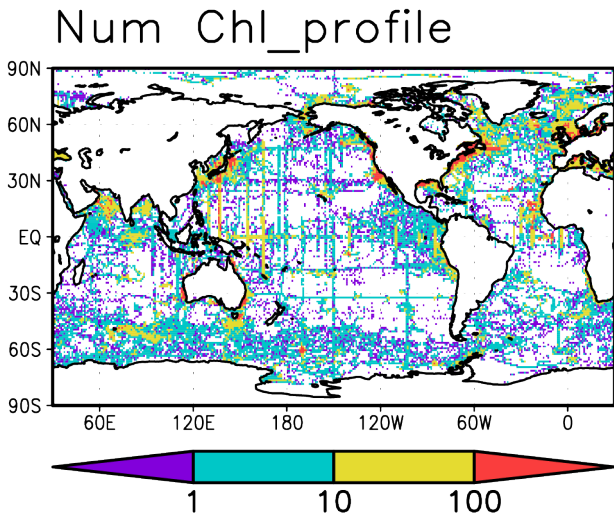
- Nishioka, J., Obata, H., Ogawa, H., Ono, K., Yamashita, Y., Lee, K., Takeda, S., Yasuda, I.: Subpolar marginal seas fuel the
420 North Pacific through the intermediate water at the termination of the global ocean circulation, *Proceedings of the
National Academy of Sciences of the United States of America*, 117, 12665–12673, doi:10.1073/pnas.2000658117, 2020.
- Olsen, A., Lange, N., Key, R. M., Tanhua, T., Álvarez, M., Becker, S., Bittig, H. C., Carter, B. R., Cotrim da Cunha, L.,
Feely, R. A., van Heuven, S., Hoppema, M., Ishii, M., Jeansson, E., Jones, S. D., Jutterström, S., Karlsen, M. K., Kozyr,
A., Lauvset, S. K., Lo Monaco, C., Murata, A., Pérez, F. F., Pfeil, B., Schirnack, C., Steinfeldt, R., Suzuki, T., Telszewski,
425 M., Tilbrook, B., Velo, A., and Wanninkhof, R.: GLODAPv2.2019—An update of GLODAPv2. *Earth System Science
Data*, 11, 1437–1461. doi:10.5194/essd-11-1437-2019, 2019.
- Pedlosky J.: The dynamics of the oceanic subtropical gyres, *Science*, 248, 316–322. doi:10.1126/science.248.4953.316, 1990.
- Rayner, N. A. A., Parker, D. E., Horton, E. B., Folland, C. K., Alexander, L. V., Rowell, D. P., Kent, E. C., and Kaplan, A.:
Global analyses of sea surface temperature, sea ice, and night marine air temperature since the late nineteenth century.
430 *Journal of Geophysical Research*, 108, 4407, doi:10.1029/2002JD002670, 2003.
- Riser, S.C. and Johnson, K.S.: Net production of oxygen in the subtropical ocean, *Nature*, 451, 323–325.
doi:10.1038/nature06441, 2008.
- Saijo, Y., Iizuka, S., and Asaoka, O.: Chlorophyll maxima in Kuroshio and adjacent area, *Marine Biology*, 4, 190–196.
doi:10.1007/BF00393892, 1969.
- 435 Sasaoka, K., Chiba, S., and Saino, T.: Climatic forcing and phytoplankton phenology over the subarctic North Pacific from
1998 to 2006, as observed from ocean color data. *Geophysical Research Letters*, 38, L15609. doi:10.1029/2011GL048299,
2011.
- Séférian, R., Berthet, S., Yool, A. et al.: Tracking Improvement in Simulated Marine Biogeochemistry Between CMIP5 and
CMIP6, *Current Climate Change Reports*, 6, 95–119, doi:10.1007/s40641-020-00160-0, 2020.
- 440 Siegel, D.A., Ohlmann, J.C., Washburn, L., Bidigare, R.R., Nosse, C.T., Fields, E., and Zhou, Y.: Solar radiation,
phytoplankton pigments and the radiant heating of the equatorial Pacific warm pool, *Journal of Geophysical Research*, 100,
4885–4891. doi:10.1029/94JC03128, 1995.
- Sverdrup, H. U.: On conditions for the vernal blooming of phytoplankton, *ICES Journal of Marine Science*, 18, 287–295.
doi:10.1093/icesjms/18.3.287, 1953.
- 445 Trenberth, K. E.: The definition of El Niño, *Bulletin of the American Meteorological Society*, 78, 2771–2778.
doi:10.1175/1520-0477(1997)078<2771:TDOENO>2.0.CO;2, 1997.
- Uitz, J., Claustre, H., Morel, A., and Hooker, S. B.: Vertical distribution of phytoplankton communities in open ocean: An
assessment based on surface chlorophyll, *Journal of Geophysical Research*, 111, 1–23.
<http://doi.org/10.1029/2005jc003207>, 2006.
- 450 Yasunaka, S., Nojiri, Y., Nakaoka, S., Ono, T., Mukai, H., and Usui, N.: Monthly maps of sea surface dissolved inorganic
carbon in the 695 North Pacific: Basin-wide distribution and seasonal variation, *Journal of Geophysical Research: Oceans*,
118, 3843–3850. <http://doi.org/10.1002/jgrc.20279>, 2013.

- Yasunaka, S., Mitsudera, H., Whitney, F., and Nakaoka, S.: Nutrient and dissolved inorganic carbon variability in the North Pacific. *Journal of Oceanography*, 77, 3–16. doi:10.1007/s10872-020-00561-7, 2021.
- 455 Yoder, J. A.: Effect of temperature on light-limited growth and chemical composition of *Skeletonema costatum* (Bacillariophyceae), *Journal of Phycology*, 15, 362–370. doi:10.1111/j.1529-8817.1979.tb00706.x, 1979.

Table 1. Number of Chlorophyll *a* (Chl-*a*) measurements and profiles from each data source with percentages eliminated by quality control.

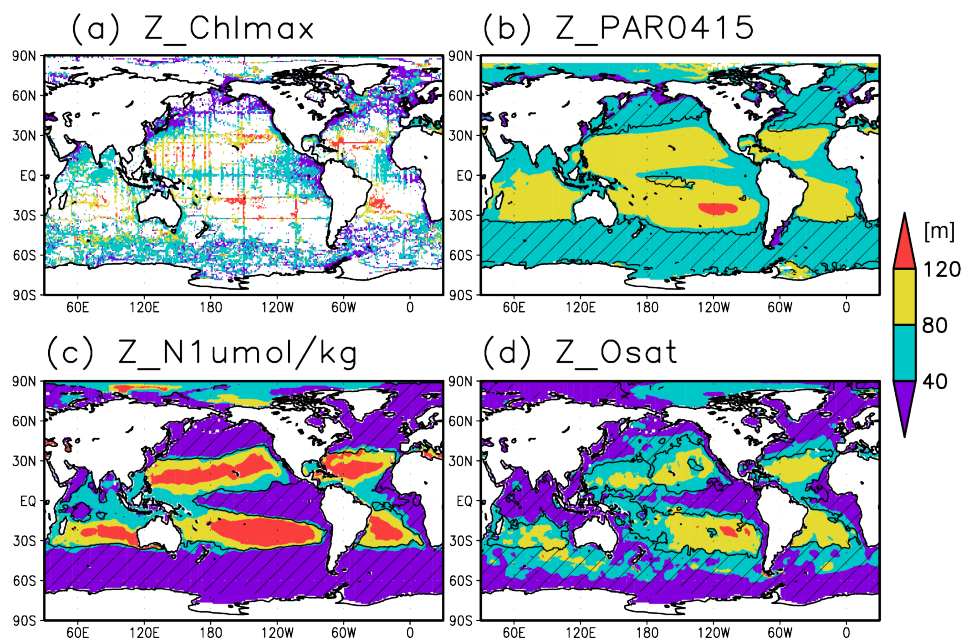
460

Platform	Num. of measurements	Num. of profiles	Eliminated %
Bottle sample	1,292,565	179,277	2.2%
CTD fluorescence	23,824,711	89,541	0.9%
UCTD fluorescence	1,086,359	19,251	3.0%
Profiling float	11,383,247	67,903	0.3%
Glider	75,724,059	375,421	0.3%
Drifting buoy	796,220	6,076	0.3%
Total	114,107,161	737,469	1.1%

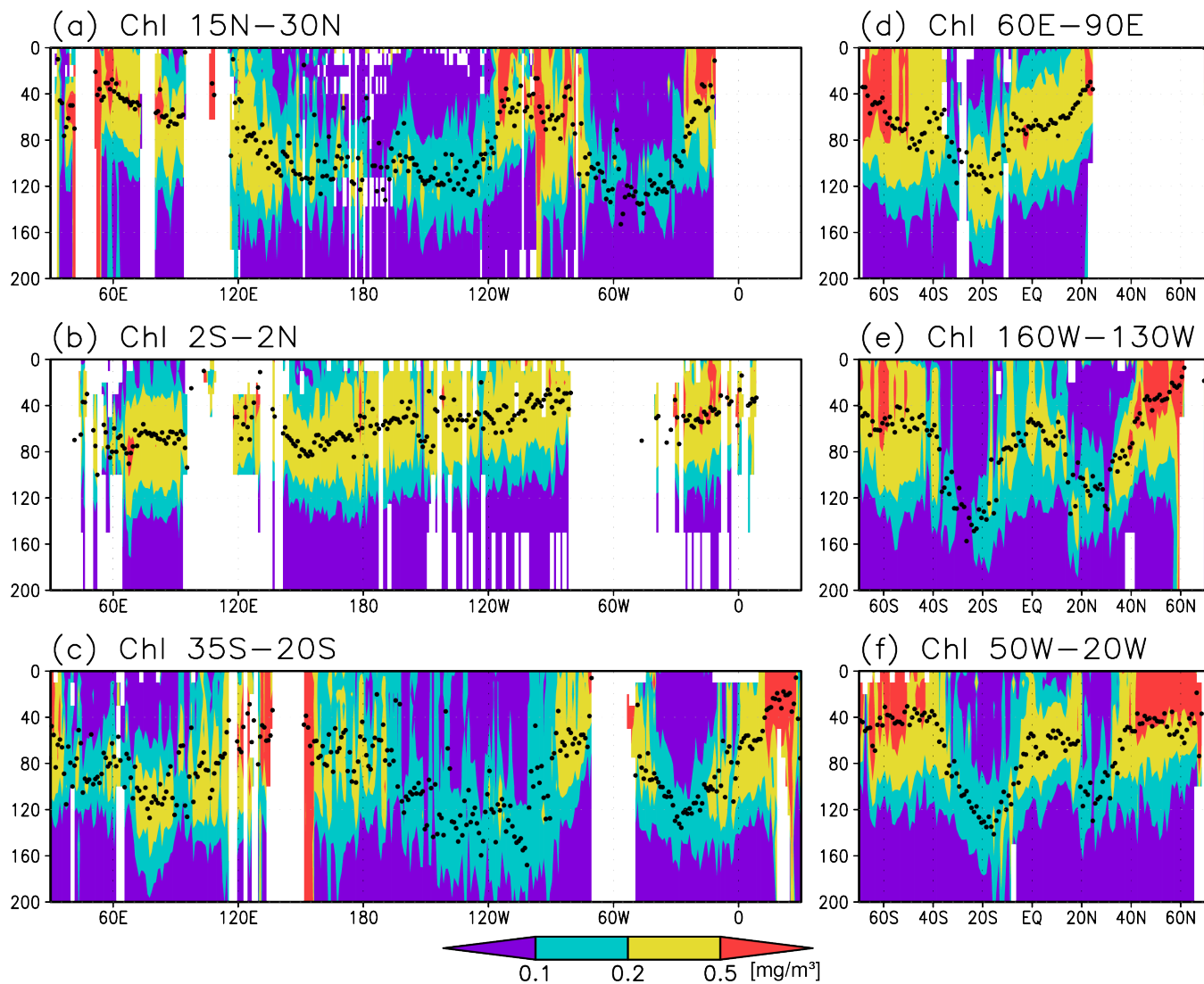


465

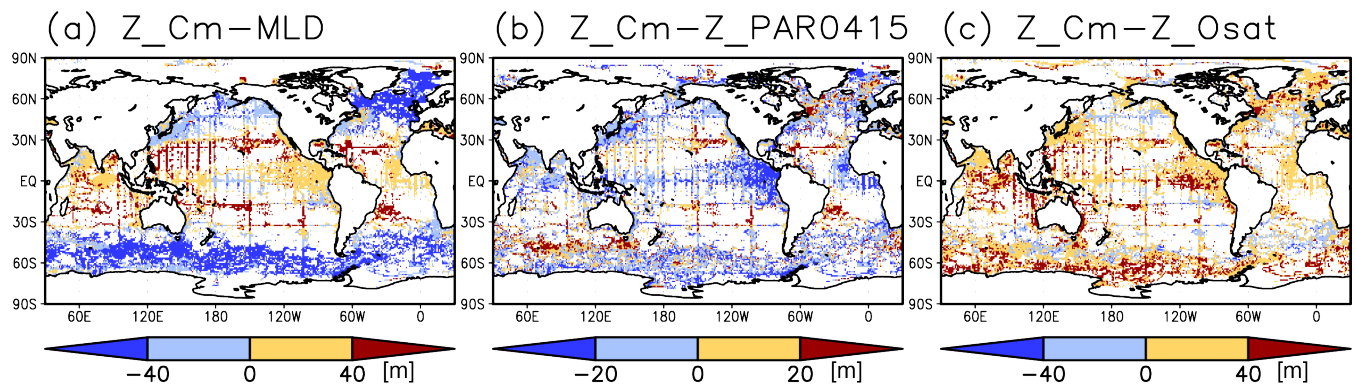
Figure 1. Numbers of Chl-*a* concentration profiles.



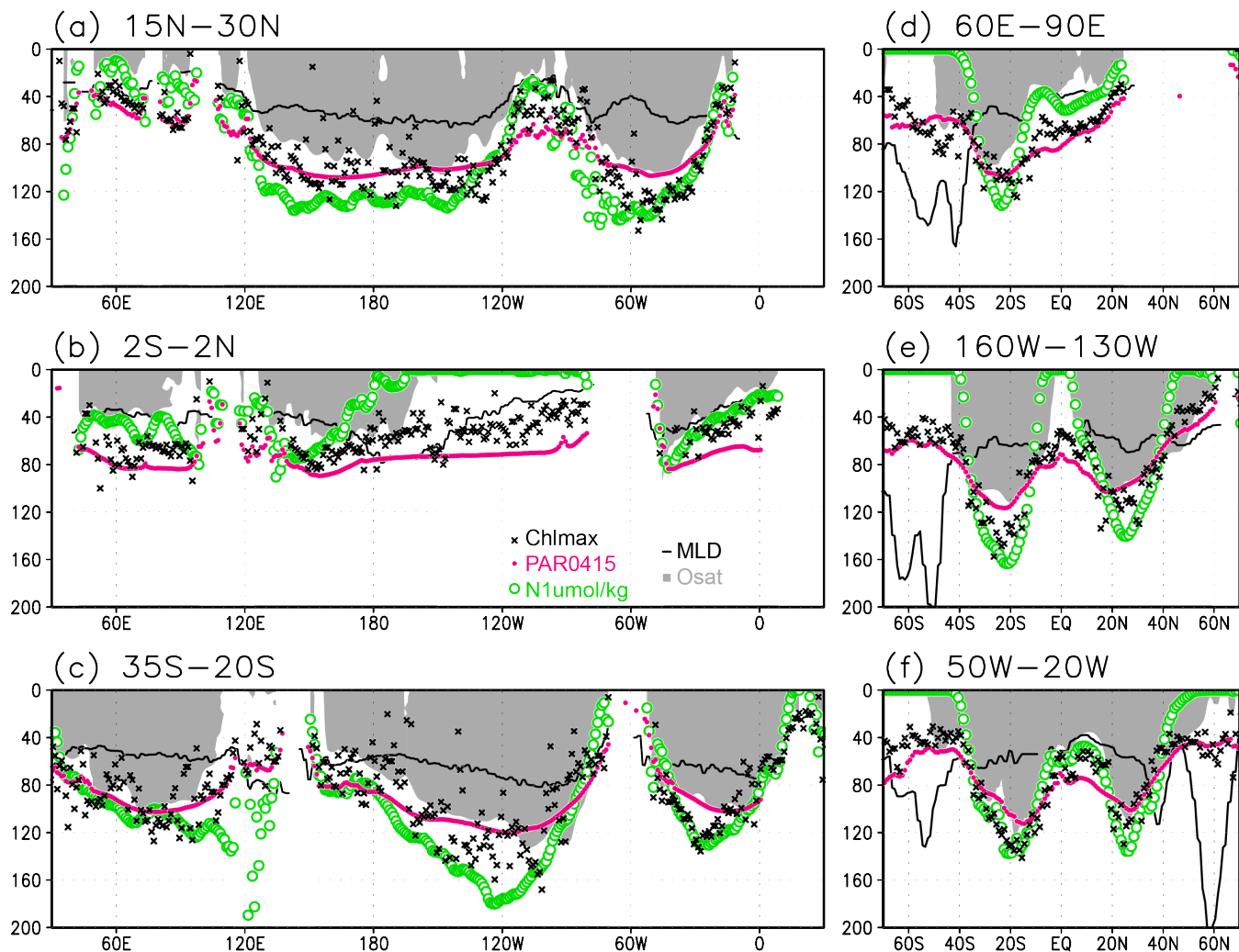
470 **Figure 2: Depths of (a) the chlorophyll a (Chl-a) maximum, (b) the photosynthetically active layer (>0.415 einstein/m²/day of photosynthetically available radiation), (c) the nitrate depleted layer (<1 $\mu\text{mol/kg}$ of nitrate), and (d) the oxygen-oversaturated layer. The hatched areas show regions in which the mixed layer is deeper than the photosynthetically active layer in panel (b), nitrate-depleted layer in panel (c), and the oxygen saturation layer in panel (d).**



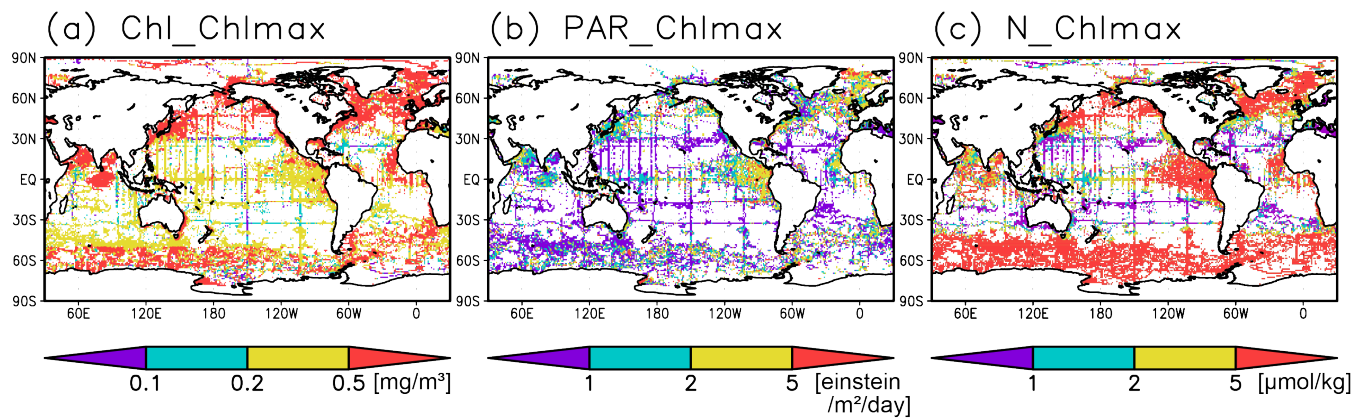
475 **Figure 3.** Cross-sections of chlorophyll a (Chl-a) concentrations at (a) 15–30°N (northern subtropics), (b) 2°S to 2°N (tropics), (c) 35–20°S (southern subtropics), (d) 60–90°E (the Indian Ocean), (e) 160–130°W (the Pacific Ocean), and (f) 50–20°W (the Atlantic Ocean). The black dots indicate the depth of the Chl-a maximum.



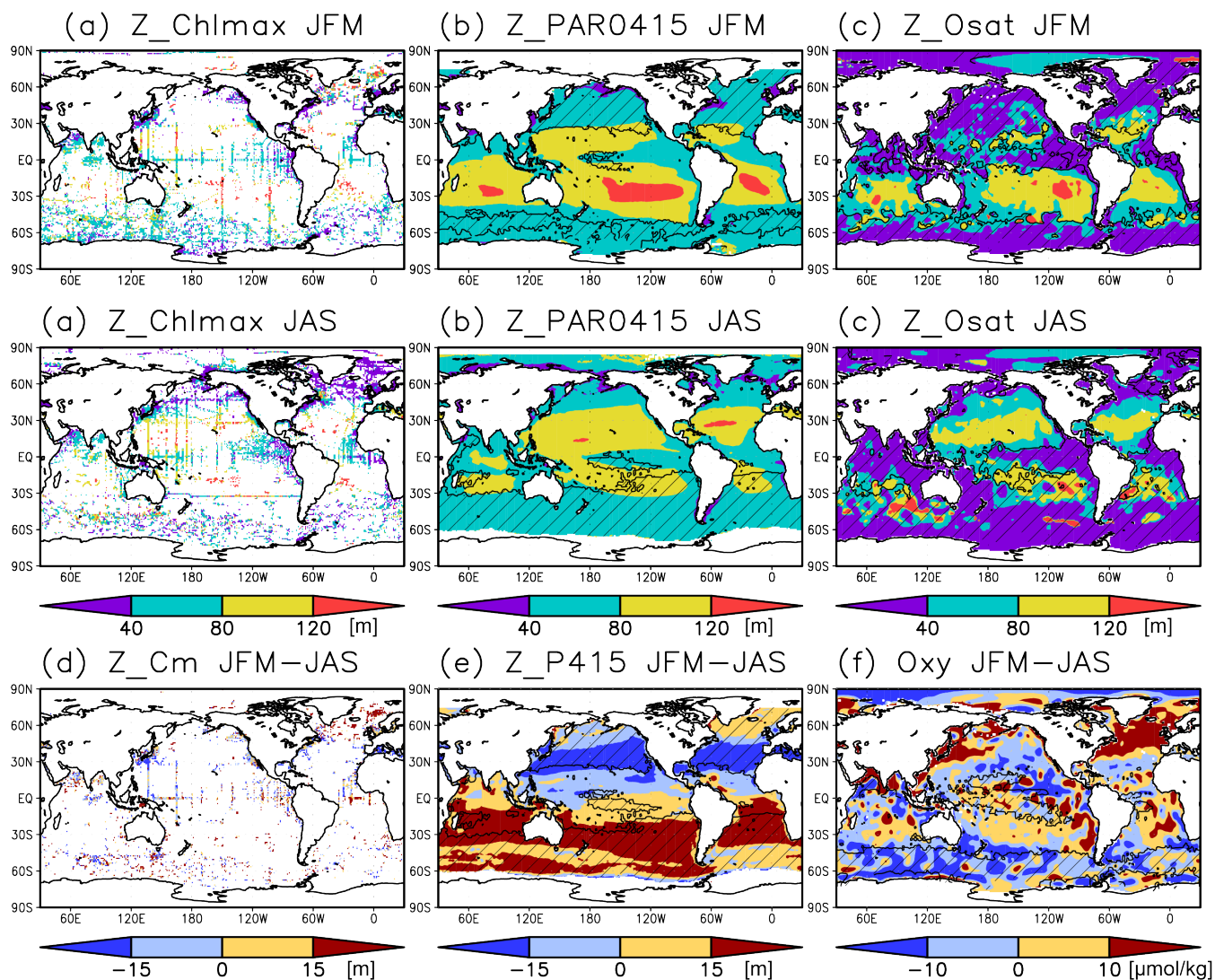
480 **Figure 4.** Depth differences between the chlorophyll a (Chl-a) maximum and (a) the mixed layer, (b) the photosynthetically active layer (>0.415 einstein/m²/day of photosynthetically available radiation), and (c) the oxygen-oversaturated layer.



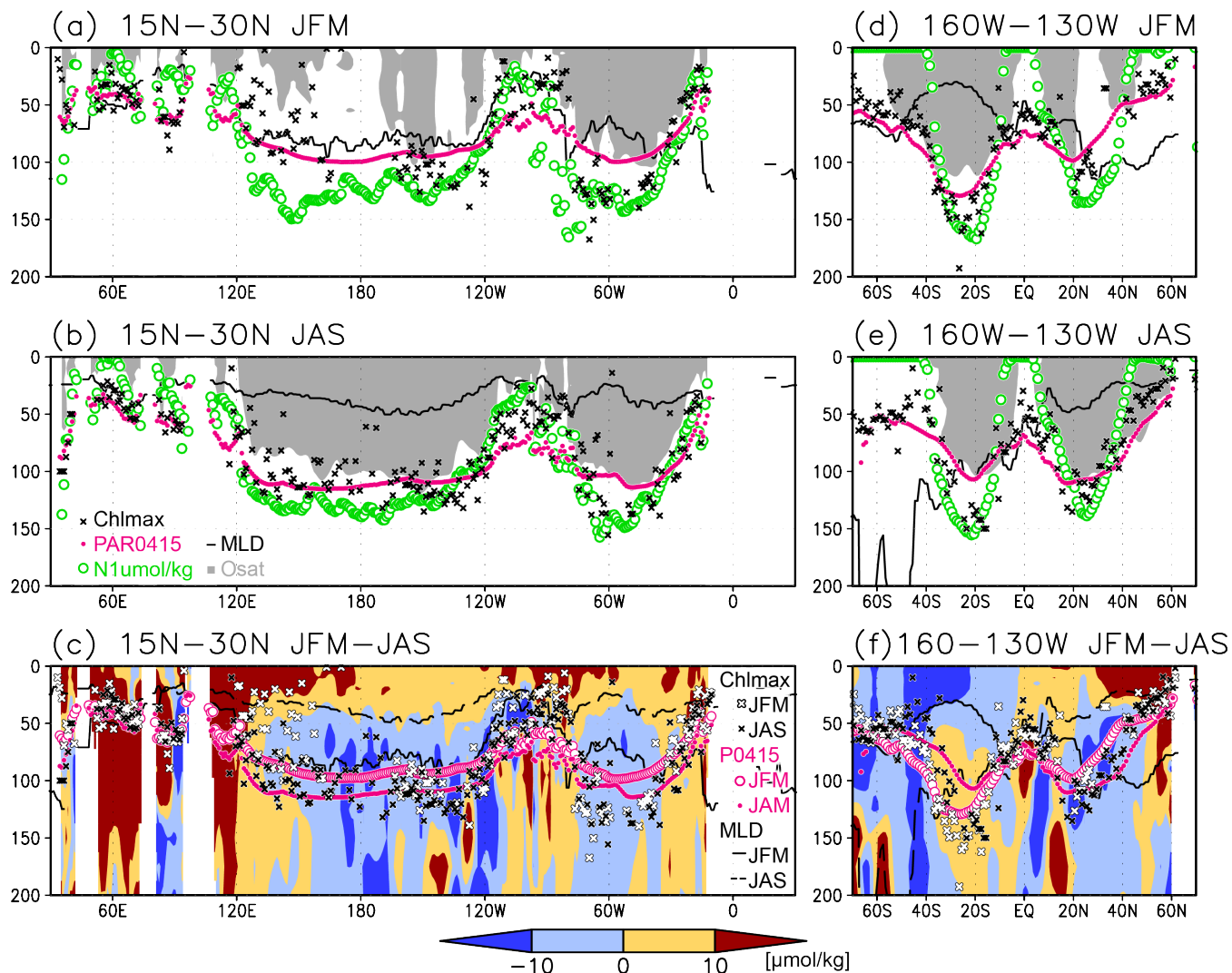
485 **Figure 5.** Depths of the chlorophyll a (Chl-a) maximum (black crosses), photosynthetically active layer (>0.415 einstein/m²/day of photosynthetically available radiation; magenta dots), nitrate depleted layer (<1 $\mu\text{mol/kg}$ of nitrate; green open circles), mixed layer (black line), and oxygen-oversaturated layer (gray shading) at (a) 15–30°N (northern subtropics), (b) 2°S to 2°N (tropics), (c) 35–20°S (southern subtropics), (d) 60–90°E (Indian Ocean), (e) 160–130°W (Pacific Ocean), and (f) 50–20°W (Atlantic Ocean).



490 **Figure 6: (a) Chlorophyll a (Chl-a) concentrations, (b) photosynthetically available radiation, and (c) nitrate concentrations at the Chl-a maximum depth.**

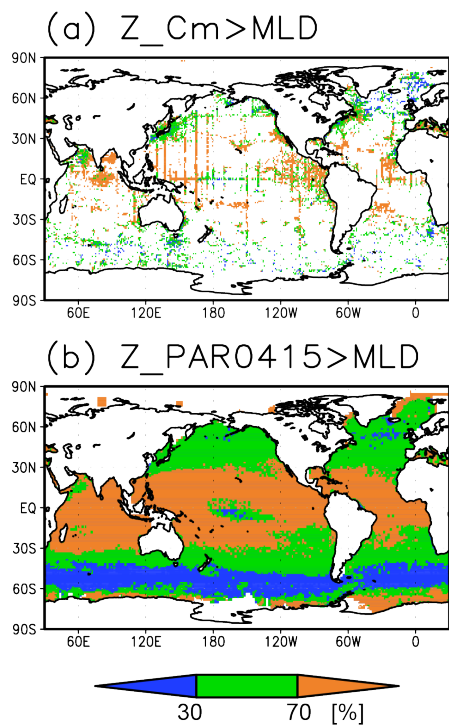


495 **Figure 7.** (a–c) Depths of the chlorophyll a (Chl-a) maximum, photosynthetically active layer (>0.415 einstein/m²/day of photosynthetically available radiation), and oxygen-oversaturated layer in January–March (JFM) (top) and July–September (JAS) (middle), respectively. (d–f) Differences between the Chl-a maximum depth, photosynthetically active layer depth, and dissolved oxygen concentrations at 50–150 m during JFM compared to those in JAS. The hatched areas indicate a mixed layer deeper than the photosynthetically active layer in panel (b), the oxygen saturation layer in panel (c), the photosynthetically active layer in winter in panel (e), and 50 m in summer in panel (f).

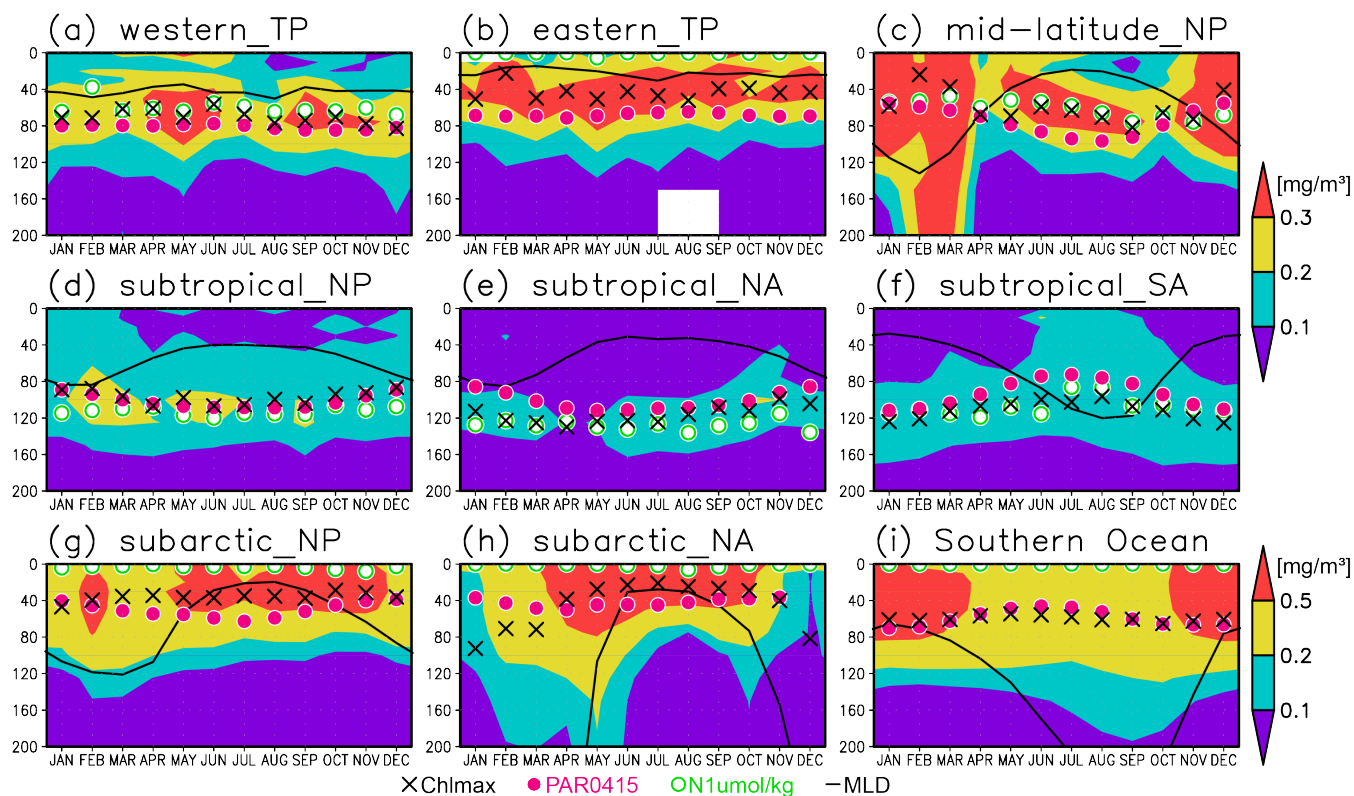


500 Figure 8. (a, b) Depths of the chlorophyll a (Chl-a) maximum (black crosses), photosynthetically active layer (>0.415 einstein/m²/day of photosynthetically available radiation; magenta dots), nitrate depleted layer (<1 μmol/kg of nitrate; green open circles), mixed layer (black line), and oxygen oversaturated layer (gray shading) at 15–30°N (northern subtropics) in (a) January–March (JFM) and (b) July–September (JAS). (c) Difference between dissolved oxygen concentrations during JFM and JAS (color scale), and depths of the Chl-a maximum, photosynthetically active layer, and mixed layer in JFM and JAS (white and black crosses, magenta open and solid dots, and solid and dashed black lines, respectively) at 15–30°N. (d–f) Same as (a–c), but at 160–130°W (Pacific Ocean).

505



510 **Figure 9. Percentage of months when (a) the chlorophyll a (Chl-a) maximum and (b) the photosynthetically active layer (>0.415 einstein/m²/day of photosynthetically available radiation) were deeper than the mixed layer. Data in grids with only one datum were omitted**



515 **Figure 10.** Seasonal evolution of chlorophyll a (Chl-a) concentrations with the Chl-a maximum (black crosses), 0.415
 einstein/m²/day of photosynthetically available radiation (magenta dots), 1 µmol/kg of nitrate (green open circles), and mixed
 layer (black solid line) at (a) 2°S to 2°N, 120–170°E (western tropical Pacific), (b) 2°S to 2°N, 120–90°W (eastern tropical Pacific),
 (c) 30–40°N, 150–130°W (midlatitude North Pacific), (d) 10–30°N, 120°E to 120°W (subtropical North Pacific), (e) 15–30°N, 70–
 30°W (subtropical North Atlantic), (f) 30–10°S, 50–0°W (subtropical South Atlantic), (g) 40–55°N, 160°E to 155°W (subarctic
 North Pacific), (h) 50–70°N, 30–0°W (subarctic North Atlantic), and (i) 60–45°S (Southern Ocean).

520

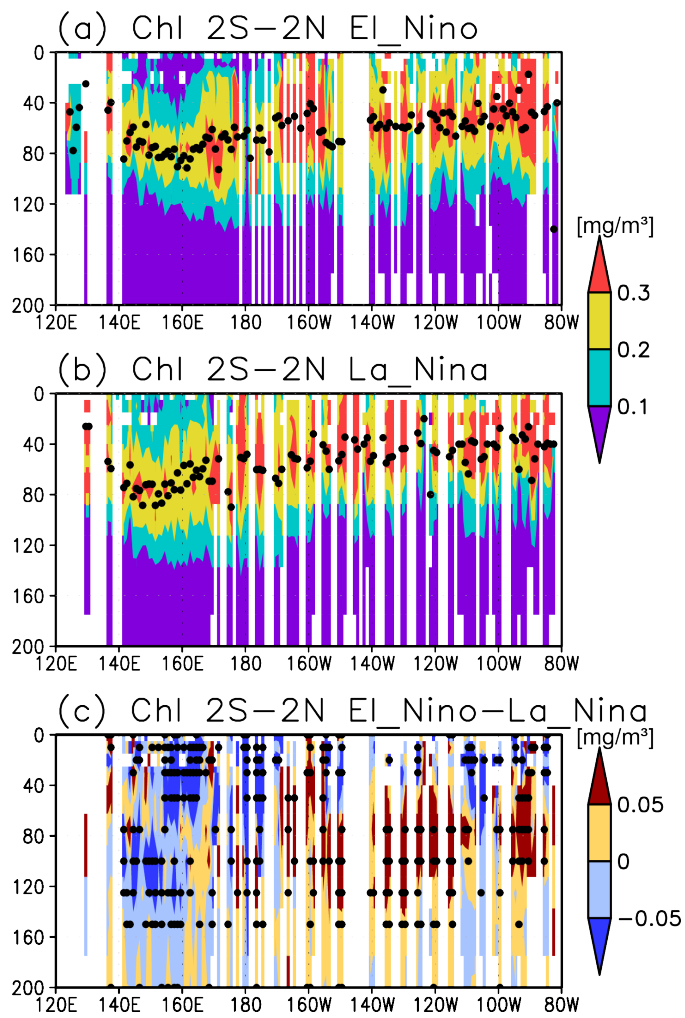
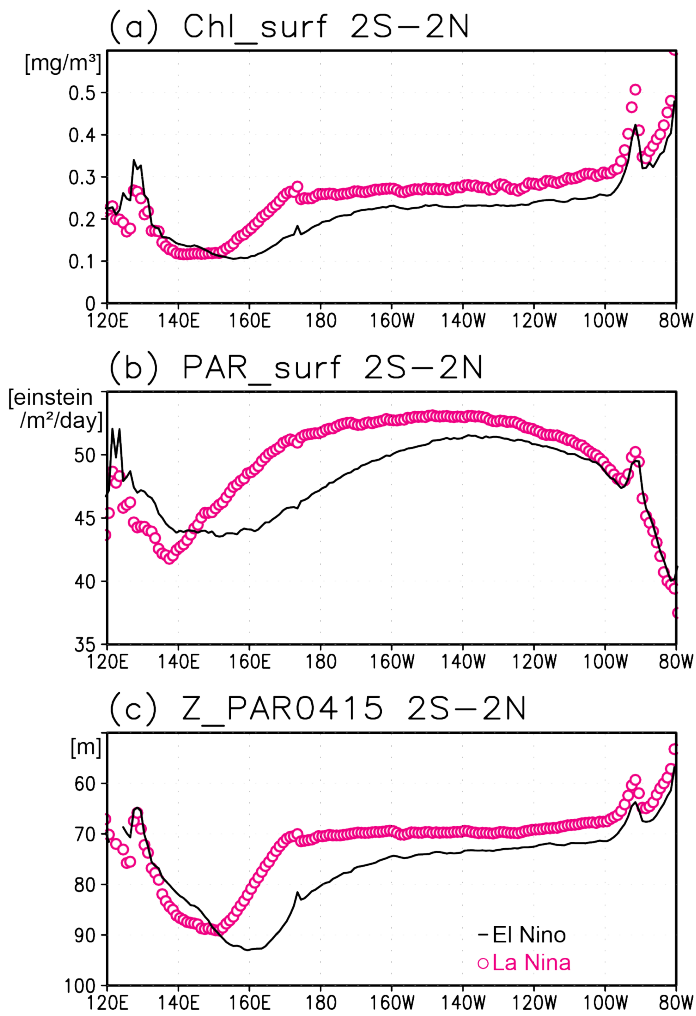


Figure 11. (a-c) Cross-sections of the chlorophyll a (Chl-a) concentrations in the equatorial Pacific (2°S to 2°N) during El Niño and La Niña, and the difference between them. The black dots denote the depth of the Chl-a maximum in panels (a) and (b), and the significant difference at 5% in panel (c).



530 **Figure 12. (a) Satellite-derived surface chlorophyll a concentrations, (b) surface photosynthetically available radiation (PAR), and (c) photosynthetically active layer (>0.415 einstein/m²/day of PAR) along the equatorial Pacific during El Niño (black solid lines) and La Niña (magenta open circles).**