

~~Nutrient transport pathways in~~ Winter observations alter the seasonal perspectives of the nutrient transport pathways into the Lower St. Lawrence Estuary : ~~new seasonal perspectives from winter observations~~

Cynthia E. Bluteau¹, Peter S. Galbraith², Daniel Bourgault¹, Vincent Villeneuve³, and Jean-Éric Tremblay³

¹Institut des sciences de la mer, Université du Québec à Rimouski, Rimouski, Canada

²Institut Maurice-Lamontagne, Fisheries and Oceans Canada, Mont-Joli, Canada

³Département de biologie, Université Laval, Québec, Canada

Correspondence: Cynthia E. Bluteau (cynthia.bluteau@uqar.ca)

Abstract. The St. Lawrence Estuary connects the Great Lakes with the Atlantic Ocean. The accepted view, based on summer conditions, is that the Estuary's surface layer receives its nutrient supply from vertical mixing processes. This mixing is caused by the estuarine circulation and ~~tidal-upwelling tides interacting with the topography~~ at the Head of the Laurentian Channel (**HLC**). During winter when ice forms, historical process-based studies have been limited in scope. Winter monitoring has been typically confined to vertical profiles of salinity and temperature and near-surface water samples collected from a helicopter for nutrient analysis. In 2018, however, the Canadian Coast Guard approved a science team to sample in tandem with its icebreaking and ship escorting operations. This opportunistic sampling provided the first winter turbulence observations, which covered the largest spatial extent ever measured during any season within the St. Lawrence Estuary and Gulf. The nitrate enrichment from tidal mixing resulted in an upward nitrate flux of about $30 \text{ nmol m}^{-2} \text{ s}^{-1}$, comparable to summer values obtained at the same tidal phase. Further downstream, deep nutrient-rich water from the Gulf was mixed into the subsurface nutrient-poor layer at a rate more than an order of magnitude smaller than at the **HLC**head. These fluxes were compared to the nutrient load of the upstream St. Lawrence River. Contrary to previous assumptions, fluvial nitrate inputs are the most significant source of nitrate in the Estuary. Nitrate loads from vertical mixing processes would only exceed those from fluvial sources at the end of summer when fluvial inputs reach their annual minimum.

15 1 Introduction

Oceans ~~and coastal seas at high latitudes~~, coastal seas and estuaries at high latitudes are relatively under-sampled due to their isolation and inhospitable weather. Ambitious multidisciplinary campaigns have been undertaken in the Canadian Arctic aboard the icebreaker CCGS *Amundsen*, such as CASES (Fortier et al., 2008), CFL (Barber et al., 2010) and ~~the IPY Ceireumpolar Flaw Lead and Arctic SOLAS Experiments~~ Arctic SOLAS (Papakyriakou and Stern, 2011-2012), but few scientific campaigns

20 ~~have hsave~~ been carried out in the St. Lawrence Estuary and Gulf during the sea-ice season (Figure 1). ~~During this season, the CCGS Amundsen carries out icebreaking and ship escorting operations. In 2018, the Quebec Maritime Network initiated the Odyssee winter field program with the Canadian Coast Guard. This collaboration allowed a science team to sample~~ Estuaries are productive ecosystems where freshwater from the land meets water from the ocean. The St. Lawrence, for example, connects the Great Lakes to the Atlantic Ocean and represents an essential resource for Canada's economy (Archambault et al., 2017)

25 ~~. Here, we present winter measurements collected alongside the Coast Guard's normal icebreaker operations. These new observations were temporally limited but provided the first winter turbulence measurements. These turbulence measurements covered the largest spatial extent of the St-Lawrence and Gulf during any season. Previous turbulence sampling were limited to a few specific sites at the head of the Laurentian Channel (HLC, Cyr et al., 2015), downstream near Rimouski in the Lower St. Lawrence Estuary (LSLE, Cyr et al., 2011; Bourgault et al., 2012; Cyr et al., 2015), and upstream of the HLC in~~

30 ~~the Upper St. Lawrence Estuary (USLE, Bourgault et al., 2008; Richards et al., 2013). The new winter measurements were partly motivated by difficulties in modeling the physical characteristics of the water column (e.g., Smith et al., 2006b), which in turn affect biogeochemical predictions given the reliance on properties such as water temperature and turbulent diffusivity (Mei et al., 2010; Sibert et al., 2011; Taucher and Oeschlies, 2011).~~

We were unsure what to expect from our winter mixing measurements, but the low nutrient ~~consumption uptake through~~

35 photosynthesis provided a better representation of the nutrient transport mechanisms than possible from summer observations.

The accepted view is that nutrients in the surface layer of the Lower St-Lawrence Estuary originate from ~~an upwelling at the HLC tidal-induced upwelling and internal waves at the head of the channel~~ (Ingram, 1975, 1983; Cyr et al., 2015) and/or entrainment of deep nutrient-rich water from the estuarine circulation as fluvial waters from the USLE Upper Estuary flows to sea (e.g., Steven, 1971). The magnitude and impact of ~~nutrient transport caused by upwelling relative to entrainment these two~~

40 vertical mixing processes on primary production across the whole LSLE Lower Estuary and Gulf system ~~is debated. Another source of nutrients is the~~ are debated amongst observational and modelling studies (e.g., Cyr et al., 2015; Savenkoff et al., 2001; Jutras et al.

. Published observations for the St. Lawrence have typically focused on the nutrient transport from vertical mixing dynamics within the Lower Estuary instead of the fluvial loads. These loads are caused by the horizontal advection of fluvial waters that drain the Great Lakes between Canada and the USA – notably the urbanised catchment upstream of Quebec City (Hudon et al.,

45 2017).

~~Published field observations have typically focused on the nutrient transport from vertical mixing dynamics within the LSLE, as opposed to fluvial nutrient loads from upstream. Cyr et al. (2015) quantified with direct turbulence measurements~~ Using field observations, Cyr et al. (2015) quantified the nitrate supply at the HLC by tidal upwelling head of the channel

50 from vertical mixing processes in late summer with direct turbulence measurements. Their measured nitrate vertical fluxes ranged between 0.2 and 3.5 $\mu\text{mol m}^{-2}\text{s}^{-1}$ (95% bootstrapped confidence intervals). These estimates represent the world highest reported vertical fluxes ~~since they are an~~ (see Table 1 of Cyr et al., 2015). Their estimates are also large compared to the global distribution of fluxes obtained by an ocean model (Figure 5 of Mouriño-Carballido et al., 2021). The map by Mouriño-Carballido et al. (2021) also illustrates the lack of vertical nitrate flux measurements worldwide, and the high fluxes obtained in the Lower Estuary during summer. The Lower Estuary's fluxes are an order of magnitude higher than those reported for the Mauritanian upwelling region ~~– renown for being one of the most biologically productive in the world~~ (Schafstall et al., 2010). Cyr et al. (2015) also estimated the nitrate enrichment elsewhere in the ~~LSLE Lower Estuary~~ from shear-induced mixing at the base of the nitricline ~~via the estuarine circulation. They estimated a total of~~. By combining this estimate with those at the head, they estimated that a total between 33 and 400 mol s^{-1} of nitrate was being transported into the ~~LSLE Lower Estuary's~~ surface layer by ~~these two~~ vertical mixing processes ~~in late summer~~. These summer estimates were not compared to fluvial nutrient inputs from upstream. Previous moored observations have shown that internal ~~tides-waves and tidal mixing processes~~ are still present at the ~~HLC head of the channel~~ during winter (Smith et al., 2006a). Thermosalinograph observations show that these mixing processes generates warmer waters during winter and cooler water during summer (see Figure 10 of Galbraith et al., 2019). However, the mixing and vertical nitrate fluxes ~~associated with internal waves and tidal-upwelling processes~~ have not been measured anywhere in the estuary during winter.

65 Biogeochemical box-models have been used to evaluate the importance of vertical mixing processes in supplying nutrients into the ~~LSLE Lower Estuary's~~ surface (e.g., Savenkoff et al., 2001; Jutras et al., 2020). These box-models consider the fluvial nutrients advected into the ~~LSLE and Lower Estuary~~. These steady-state models also assume that the estuarine circulation of the ~~LSLE Lower Estuary~~ can be idealized using a few homogeneous layers ~~in a steady-state~~. Savenkoff et al. (2001) created an inverse box-model using four layers that also separated the entire ~~LSLE Lower Estuary~~ and Gulf region into eight different zones. Vertical mixing processes brought 685 mol s^{-1} near the surface of the ~~LSLE Lower Estuary~~ — more than 5 times than fluvial waters (Figures 6 and 10 of Savenkoff et al., 2001). Jutras et al. (2020) revisited the nutrient loads with a three-layer model representative of the ~~LSLE Lower Estuary's~~ summer conditions. Their vertical flux of dissolved nitrogen in the surface (1050 mol s^{-1}) was three times larger than the contributions from fluvial sources. Both box-modelling studies estimated vertical fluxes of nitrogen (nitrate) that were much larger than those obtained directly by Cyr et al. (2015) in the field. Neither
75 considered winter conditions.

Below, we quantify the nutrient transport from diverse pathways, such as fluvial advection and vertical mixing in the Estuary. We evaluate their relative importance for creating a nutrient inventory in the upper water column during winter, which ~~sets up~~ sets up the subsequent spring bloom. We also extend the analysis to other seasons and revisit the importance of fluvial inputs for supplying nutrients into the St-Lawrence Estuary throughout the year. Our analysis ignores nutrient cycling within the system
80 or any export through advective processes. The goal is to compare the fluvial nitrate loads with those entering the box from vertical mixing processes.

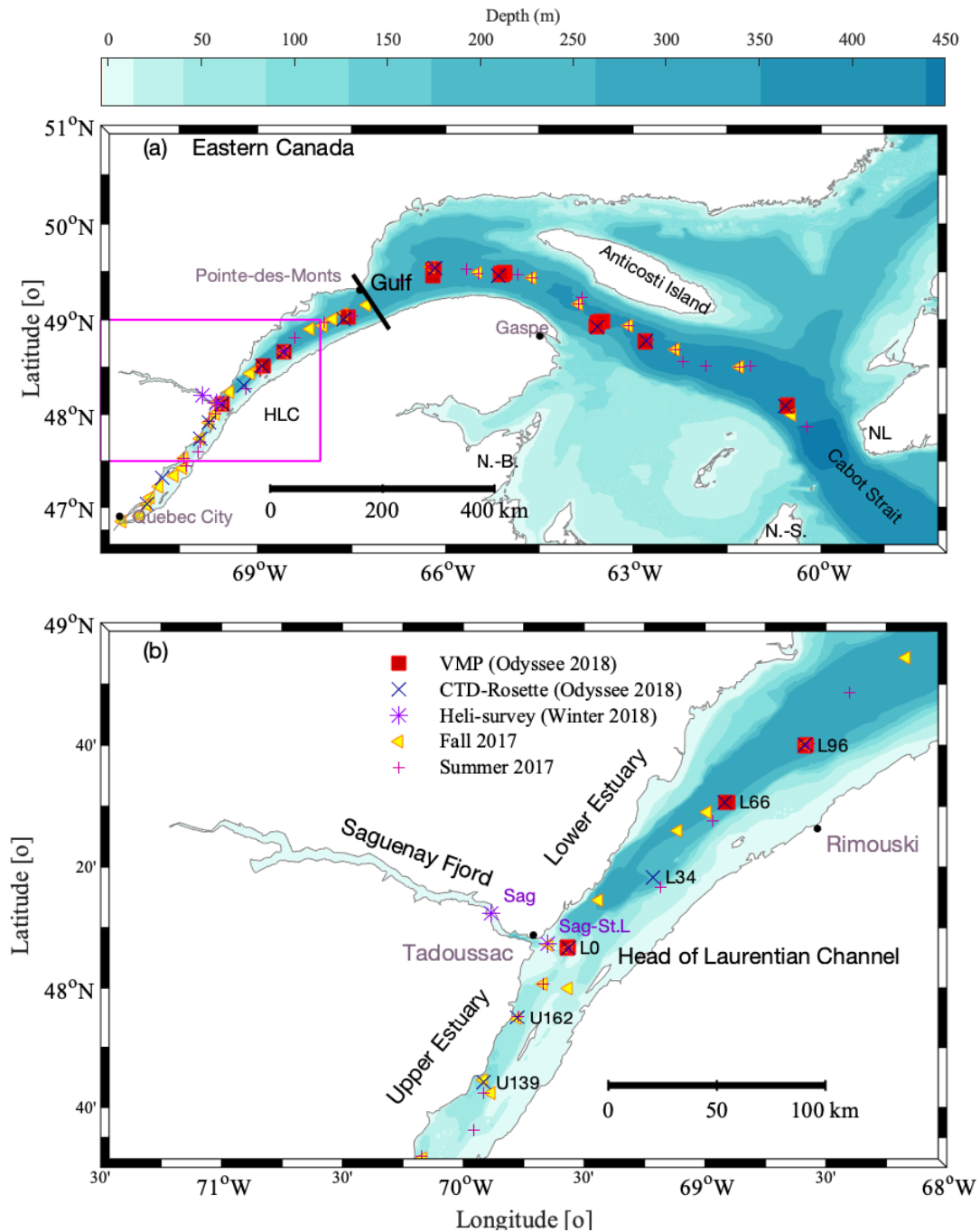


Figure 1. (a) Map of the Estuary and Gulf of St. Lawrence along with the stations visited with VMP profiles indicated by red squares and CTD profiles with black \times . Station L96 coincides with a long-term monitoring station of Fisheries and Oceans Canada’s Atlantic Zone Monitoring Program (AZMP), Rimouski station. (b) Enlargement of the magenta inset in (a) to illustrate the HLC head of the channel region and two Saguenay stations surveyed by helicopter in March 2018.

2 Study site and observations

2.1 Site description

The St. Lawrence seaway connects the Great Lakes to the Atlantic Ocean, with the extensive Saguenay - St. Lawrence Marine Park at the Head of the Laurentian Channel (HLC). The ~400 m deep Laurentian Channel rises sharply at the HLC (Figure 1b) ~~and~~. The head denotes the upstream extent of the LSLE-Lower Estuary where the shallow USLE-Upper Estuary ends. At the HLC, the strong barotropic tide (up to 5 m amplitude) interacts with the \approx 80-m sill and generates intense tidal upwelling. This interaction generates internal waves at tidal and higher frequencies, breaking lee waves, Kelvin-Helmholtz instabilities, and internal hydraulic jumps (Saucier and Chassé, 2000). The HLC-head of the channel was first hypothesized by Ingram (1975, 1983) to be a turbulent mixing hot spot that supplies nutrients for primary production in the LSLE-Lower Estuary. Others considered the importance of the estuarine circulation in entraining nitrate-rich waters below the mixed surface layer into the surface layer (Steven, 1971, 1974; Sinclair et al., 1976). Throughout most of the year, the LSLE-Lower Estuary's circulation is characterized by a surface layer outflowing above a milder-weaker inflow in the intermediate layer, and even weaker inflow in the deep waters below about 150-m (see Figure 2 of Sinclair et al., 1976). The surface outflow, therefore, becomes saltier ~~The magnitude and impact of this nutrient transport process on primary production across the whole LSLE and Gulf system is debated~~ as it moves seawards.

~~Seawards, the LSLE~~ The Lower Estuary progressively widens until reaching the Gulf that begins at Pointe-des-Monts (Figure 1a). At the most seaward, eastern extent of the St-Lawrence system, Cabot Strait is where warmer and saliter-saltier waters from the Atlantic enter near the bottom. These waters are-formed-form by the warm subtropical waters transported north by the Gulf stream, which mix offshore with cold water transported south by Labrador Current (e.g., Lauzier and Trites, 1958; Gilbert et al., 2005). These deep waters move slowly upstream because of the estuarine circulation. ~~It~~ Water at Cabot Strait takes about 3 to 4 years ~~for water at Cabot Strait~~ to reach the HLC (Gilbert, 2004).

2.2 Field measurements

The paper focuses on the field observations collected during the Odyssée winter program launched in 2018. To ~~put these measurements into~~ contextualise these measurements within the annual cycle ~~context~~, we also present observations from existing monitoring surveys (Table 1). Namely, Fisheries and Oceans Canada monitor the biogeochemical and physical conditions in the St. Lawrence Estuary and Gulf through their Atlantic Zone Monitoring Program (AZMP). Another monitoring program, the St. Lawrence Ecosystem Health Research and Observation Network, provided additional nitrate observations for fall 2017 in the USLE-Upper Estuary.

2.2.1 Odyssée winter campaign of 2018

We visited 15 stations during the inaugural Odyssée program (Figure 1), which spanned from February 8 to 23 2018. We named the stations using prefixes U, L and G to designate those in the USLE-LSLE-Upper Estuary, Lower Estuary, and Gulf.

Table 1. Overview of measurement campaigns. All campaigns included CTD profiling with pumped Seabird instruments (SBE9 and/or SBE19plus V2). Bottles provided in-situ nutrients concentrations, in particular nitrate. We present phosphate and silicate only during winter. The accuracy of the SBE19's temperature and conductivity, were 0.005 °C and 0.0005 S/m. For the SBE9 and SBE-3F/SBE4-C on-board the VMP, the accuracy of temperature and conductivity were 0.001°C and 0.0003 S/m. The accuracy of the pressure sensors were 0.015% of the full-scale for the SBE9, 0.1% for the SBE19 and VMP.

Field program	Dates	Spatial coverage	Presented data
Summer 2017			
AZMP	18-19 June (<u>USLE Upper Estuary</u>), 12-23 Aug	USLE, LSLE, and Gulf <u>Gulf, Upper and Lower Estuary</u>	Bottles and salinity
Fall 2017			
AZMP	5-22 Nov 2017, 10 Oct 2017 (L96)	LSLE <u>Lower Estuary</u> and Gulf	Bottles and salinity
Ecosystem Health Network	1-3 Nov 2017	<u>USLE Upper Estuary</u>	Bottles and salinity
Winter 2018			
AZMP heli-survey [†]	13 Mar 2018	Saguenay Fjord and HLC	SBE19 and surface bottles
Odyssee [‡]	9-22 Feb 2018	USLE, LSLE, and Gulf <u>Gulf, Upper and Lower Estuary</u>	SBE19, SBE9, VMP, and bottles

[†] Surface bottles collected water at a depth of ~ 1m. [‡] The Vertical Microstructure Profiler (VMP) carries its own Seabird CT sensors (3F/4C).

115 These prefixes were each followed by the number of kilometres downstream from Quebec City, Tadoussac, and Pointe-des-Monts. Several sampling operations were undertaken at each station. We focus, however, on the physical observations from the conductivity, temperature, and depth profiler (CTD), nutrient concentrations derived from in-situ water samples. We also collected turbulence microstructure profiles in the LSLE Lower Estuary and the Gulf since the USLE Upper Estuary was too shallow for turbulence sampling (Figure 1).

120 At each station, a SBE9 CTD profiler (Seabird Electronics) was mounted to a rosette that was operated through the ship's moon-pool. Another pumped CTD (SBE19plus, Seabird Electronics) was regularly deployed from the vessel's side shortly after the SBE9. The SBE19-CTD's purpose was mainly to measure Photosynthetically Active Radiation (PAR) in the upper 16-m of the water column. We generally collected in-situ water samples at 10 m (i.e., 2 m beneath the ship's haul), 25 m, 50 m, 100, 150 m, 250 m and bottom, water depth permitting. These sampling depths were adjusted at shallower stations within the USLE and LSLE Upper and Lower Estuary. At the station closest to Quebec City (U37) in 18 m depth, a single water sample was collected at 14 m depth with the rosette. Salinity was calculated from the temperature and conductivity sensors, which we present in practical salinity units (psu) herein.

130 All water samples obtained from the CTD-Rosette were filtered through a 0.7 µm GF/F filter using acid-washed syringes and Swinnex. The samples were analyzed immediately on board the vessel to derive nutrient concentrations. Concentrations of NO₃-NO₂⁻ (nitrate), +NO₂⁻, NO₂⁻, PO₄⁻ NO₂⁻, NO₂⁻ (nitrite), PO₄³⁻ (phosphate) and Si(OH)₄⁴⁻ (silicate) were determined using a colorimetric method adapted from Hansen and Koroleff (2007) with a Bran and Luebbe Autoanalyzer III. We calculated NO₃-NO₂⁻ concentrations by differencing NO₂⁻ from the NO₃-NO₂⁻ from the NO₃⁻ and +NO₂⁻ readings-NO₂⁻ readings.

Working standards were prepared at each station and were checked against reference standard material (KANSO CRM, lot.CH, high-Atlantic) only for the marine stations with the highest salinities. The detection limits were 0.03, 0.02, 0.03 and 0.05 $\mu\text{mol L}^{-1}$ for ~~NO₃⁻~~ ~~NO₃⁻~~ + ~~NO₂⁻~~ ~~NO₂⁻~~ ~~PO₄⁻~~ ~~NO₂⁻~~ ~~NO₂⁻~~ ~~PO₄³⁻~~ and ~~Si(OH)₄⁻~~, respectively. The precision of the triplicates over the observed range of concentrations was the same as or better than these detection limits. The samples yielded nitrate, nitrite, phosphate and silicate concentrations at different depths for each station visited.

At nine of the stations located between the Saguenay Fjord and Cabot Strait (Figure 1), we collected temperature, conductivity (salinity), and turbulence profiles with a VMP-500 manufactured by Rockland Scientific Ltd. We operated the Vertical Microstructure Profiler (VMP) from the ship's front deck. The VMP was fitted with two airfoil shear probes, two fast-response thermistors (FP07, GE Thermometrics), one micro-conductivity sensor and pressure and it sampled at 512 Hz. Only data from the shear probes (5% accuracy) and the pressure sensor are presented herein. The VMP was also equipped with a high-accuracy temperature (SBE-3F) and conductivity (SBE-4C) sensors from Seabird Electronics, which sampled at 64 Hz. These measurements enabled calculating the vertical salinity and density gradients using the pressure sensor on board the VMP.

Because of the Coast Guard's operations, the VMP and CTD-Rosette sampling occurred at different phases of the tides (Figure 2). With the VMP, we were unable to cover a complete semi-diurnal tidal cycle at any station. We obtained the best temporal coverage of the tidal cycle at station G163. Fourteen VMP profiles were collected during flood tide (Figure 2). We attempted to cover another tidal cycle at station G294 on 19 February, but an ice-breaking request at the Magdalen Islands halted sampling after collecting seven profiles during ebb tide. This station was revisited on 21 February 2018 during the ebbing tides. For all other stations, the VMP collected two to three consecutive profiles (Figure 2).

2.2.2 Historical monitoring surveys

Fisheries and Oceans Canada run the Atlantic Zone Monitoring Program (AZMP) multiple times each year (Therriault et al., 1998; Blais et al., 2019; Galbraith et al., 2019). Their monitoring consists of surveys in March, June, August, and November, which cover the Gulf and the ~~LSLE~~ Lower Estuary (Figure 1a). Here, we present nitrate and salinities measured in summer and fall preceding our boreal winter campaign (Table 1). For completeness, we also present nitrate and salinity observations from the fall monitoring survey of the St. Lawrence Ecosystem Health Research and Observation Network. These nitrate samples were analysed using the same procedures and equipment as those collected during the Odyssee 2018 winter field campaign.

The AZMP's ship-based fall and summer surveys provided standard CTD profiles, along with nutrient concentrations at similar depths to our winter campaign, in addition to samples closer to the surface at 2.5 and 5 m depth. The summer nitrate measurements were collected from two different AZMP cruises (Table 1). The first cruise, during June, collected profiles in the downstream reaches of the USLE and near the HLC. The second cruise was in August and focused on the LSLE and the Gulf. Similarly to the Odyssee winter cruise, the nitrate concentrations were derived using colorimetric methods. The AZMP uses CSK standards from the Sagami Research Center, Japan and participates in inter-calibration exercises through the International Council for the Exploration of the Sea (Mitchell et al., 2002). From the CSK standards, the AZMP's nitrate concentrations have an accuracy (rms) of 3.1, 1.7 and 1.8 % at concentrations of 5, 10 and 30 $\mu\text{mol L}^{-1}$, respectively. The reported values represent the triplicates' average. Their coefficient of variations were on average less than 1.2%. The majority (95%) of the 136 sets of

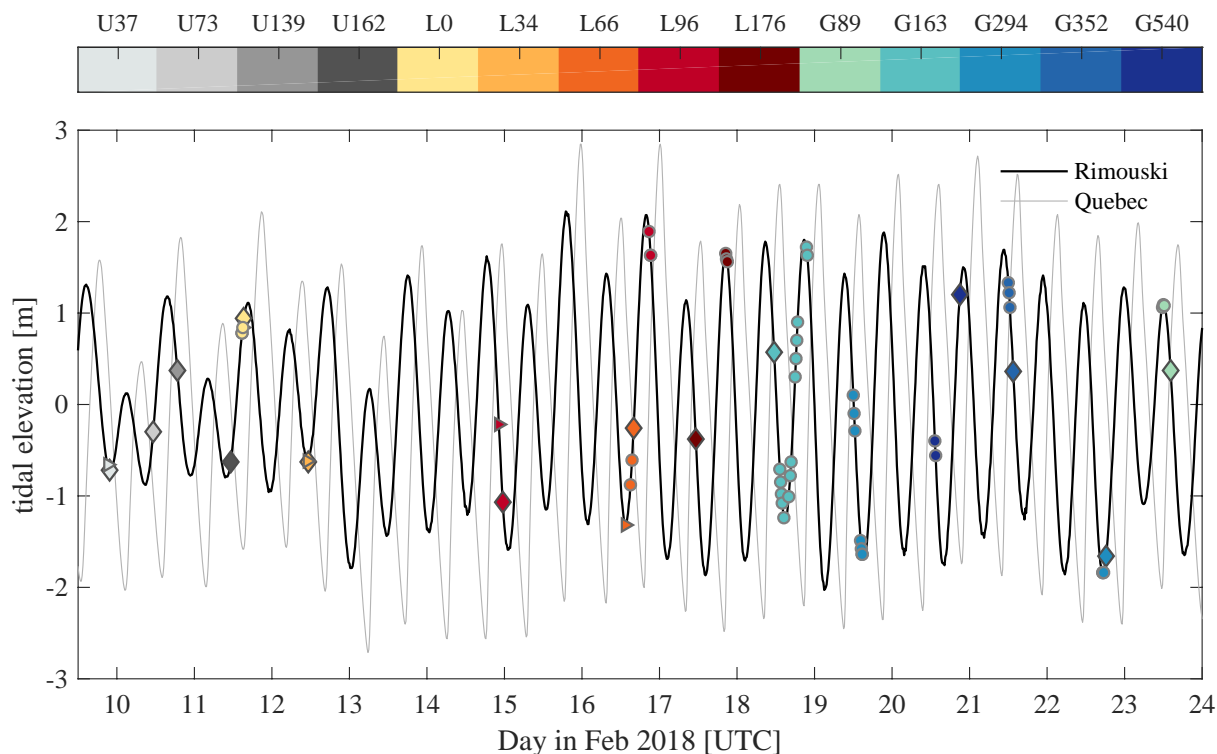


Figure 2. Observed tidal amplitudes at Rimouski (station #2985) and Quebec City (station #3248) maintained by Fisheries and Oceans Canada. The circles (◦) and diamonds (◊) denote, respectively, when the VMP and CTD-Rosette profiled at each station designated with the colorbar. The smaller triangle (▷) denote the SBE19-CTD, which provides near-surface measurements given the rosette was deployed from the moon-pool. Tidal levels near station G163 (Grande-Vallée) precede those at Rimouski by about 15 min, while those recorded at Tadoussac (station L0) lag Rimouski by another 30 min.

165 triplicates had coefficient of variations below 3%. The summer measurements are provided to contrast with our winter nutrient observations. We use the fall measurements to estimate the nitrate inventory generated between the fall monitoring survey and our winter observations within the LSLE.

We also present observations from the winter heli-survey conducted in mid-March 2018, a few weeks after our winter program in February 2018 (Table 1). Like most years, the 2018 AZMP's winter survey was conducted by helicopter. Therefore, 170 sampling was limited to CTD profiles (pumped Sea-Bird Scientific SBE 19plus V2). Surface water samples were also filtered, frozen, and analyzed later for nutrient concentrations. This campaign surveyed stations within the Saguenay Fjord in addition to the St. Lawrence in mid-March (Figure 1b).

3 Data analysis

Our paper focuses on establishing the main transport pathways for nutrients in the LSLE Lower Estuary. In this region, nitrate concentrations are generally lower than silicate and, therefore, more likely to limit primary production (Tremblay et al., 1997; Jutras et al., 2020). Our subsequent analysis thus focuses on tracking nitrate inputs into the LSLE Lower Estuary's surface layer. We treat the upper-75 m of the LSLE Lower Estuary as a box. The box receives fluvial (horizontal) inputs of nitrate from the USLE Upper Estuary and vertical inputs entering its base through mixing processes (Figure 3a). These mixing processes include the intense tidal-upwelling at the HLC and shear-induced mixing ~~processes~~ elsewhere in the LSLE Lower Estuary. Only mixing at the base of the box is considered, extending across the upper 75-m of the water column since mixing within the box redistribute the fluvial nitrate entering from the ~~USLE. This shear-induced mixing at the base of the box is associated mainly with the estuarine circulation and~~ Upper Estuary. Mixing at the box's base occurs at the interface between the different layers of water. The vertical mixing caused by the estuarine circulation is more persistent than tidal-dependent ~~upwelling~~ mixing at the ~~HLC. head of the channel.~~ The vertical nitrate fluxes will be quantified using the techniques described in §3.2, and applied to the respective surface areas of the HLC and the LSLE Lower Estuary. These vertical nitrate loads will then be compared to the horizontal fluvial inputs described in § 4.3.1. ~~Our analysis obviously ignores consumption of nutrients within the system, or any export. Our goal, however, is to compare the fluvial nitrate loads with those entering the box from vertical mixing processes.~~

3.1 Fluvial nitrate loads

We estimated the advected (horizontal) fluvial contributions of nitrate into the LSLE Lower Estuary using nitrate concentrations and flow rates at Quebec City. The nitrate loads were thus calculated at the ~~upstream-downstream~~ extent of the USLE Upper Estuary, where water is fresh. We assume that the fluvial loads in the LSLE Lower Estuary are representative of those at Quebec City, or alternatively, that our box includes the USLE Upper Estuary. The fluvial nitrate loads, expressed in mols^{-1} , in the St. Lawrence River is calculated from:

$$M_{\mathcal{N}} = \frac{Q\mathcal{N}}{1000} \quad (1)$$

using the flow rate Q (m^3s^{-1}) and the nitrate concentration \mathcal{N} (mmolm^{-3}) at Quebec City. These flow rates were calculated on a daily basis using the inverse modelling techniques recently developed by Bourgault and Matte (2020a, b). The approximate error on these daily and monthly flow rates are $0.25 \times 10^4 \text{ m}^3\text{s}^{-1}$ and $0.16 \times 10^4 \text{ m}^3\text{s}^{-1}$, respectively (Bourgault and Matte, 2020a). This method of estimating flows replaces the older and less accurate method of Bourgault and Koutitonsky (1999), which is currently issued on a monthly basis by the Government of Canada.

The historical dissolved ~~nitrate-nitrate-nitrite~~ concentrations at Quebec City were digitized from published sources (Figure 4 of Hudon et al., 2017). ~~These~~ During our winter campaign, nitrite concentrations were two to three orders of magnitude less than nitrate concentrations. Our nitrate concentrations were thus representative of the sum of nitrate-nitrite concentrations presented by Hudon et al. (2017). Their measurements were collected every month and sometimes weekly from 1995 to 2011. We also

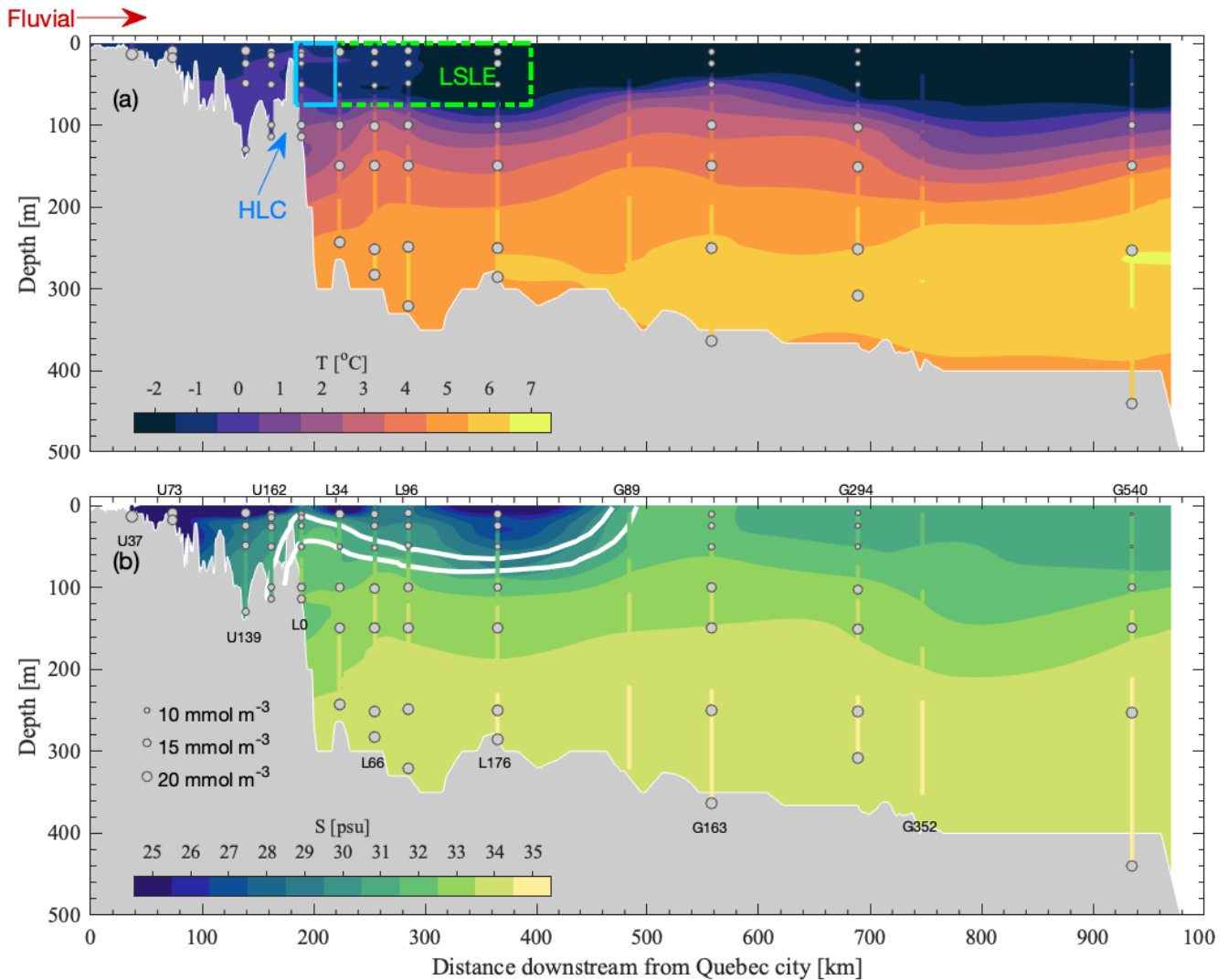


Figure 3. (a) Temperature and (b) salinity measured along the St. Lawrence during the [winter](#) field campaign. The grey circles are scaled with the nitrate concentrations of the rosette water samples in Figure 4a. The extent of the HLC and the [Lower St-Lawrence Estuary \(LSLE\)](#) are denoted in (a) by the cyan and green boxes, respectively. [Tidal-upwelling processes are confined to the HLC. Elsewhere in the LSLE, vertical mixing at the base is caused by the estuarine mixing.](#) The thick white lines in (b) delineate the salinity limits of 31.2 and 31.9 psu used for developing the nitrate-salinity relationships (equation 4). Water above the upper line ($S = 31.2$ psu) originated from the [USLE Upper Estuary](#). Water below the lower line ($S = 32-31.9$ psu) originated from the Gulf. [The contours were obtained using a Data Interpolating Variational Analysis \(DIVA\) technique \(Troupin et al., 2012\).](#)

205 estimated the fluvial nitrate loads during our winter campaign. The nitrate concentrations \mathcal{N} nearest to Quebec City (station U37) were used in (1). The sampled water was almost fresh with salinities below 0.5 psu and dissolved nitrate concentrations

of $26.43 \text{ mmol m}^{-3}$. The application of equation 1 to the historical measurements provided long-term statistics on the fluvial nitrate loads entering the [USLEUpper Estuary](#), which are presented in section 4.3.1.

3.2 Turbulent vertical nitrate fluxes

210 We combined the VMP's turbulence profiles with the nutrients measurements to obtain vertical fluxes along the St. Lawrence during winter via:

$$F_N(z) = -K(z) \frac{\partial N(z)}{\partial z}, \quad (2)$$

where z is the height above the free surface. The mixing rates K were derived from the VMP's measurements (§3.2.1), while the vertical background concentration gradients $\partial N/\partial z$ were derived for nitrate from the VMP profiles via a nitrate-salinity
215 relationship developed by analysing the rosette's water samples (§3.2.2).

3.2.1 Diapycnal mixing rates K

The most commonly-used model for estimating K was proposed by Osborn (1980) for shear-induced mixing:

$$K = \Gamma \frac{\epsilon}{N^2} \quad (3)$$

and requires estimating the rate of dissipation of turbulent kinetic energy ϵ and the background buoyancy frequency $N =$
220 $\sqrt{(-g/\rho)(\partial\rho/\partial z)}$. [This last quantity depends on the vertical gradients of potential density \$\rho\$.](#) A constant mixing efficiency $\Gamma = 0.2$ is often assumed, despite mounting evidence that it varies (e.g., Monismith et al., 2018). Several parametric models have been proposed (e.g., Ivey et al., 2018), and debated (e.g., Gregg et al., 2018), to relate Γ with external parameters.

During the winter field program, the temperature gradients were generally gravitationally unstable, i.e., cold water overlaying warmer water. These unstable temperature gradients were stabilized by the salinity gradients. In these situations, double-
225 diffusive convection (DDC) is possible. However, our observations lacked the presence of distinctive large (\sim several meters high) steps that are typically suggestive of DDC. Even when DDC dominates in weakly sheared flows, equation 3 can be used to estimate K by increasing $\Gamma \sim 1$ (see Hieronymus and Carpenter, 2016; Polyakov et al., 2019). In these situations, buoyancy is the main source of mixing. Our turbulence levels were much higher than those reported by Polyakov et al. (2019) and the strong tides are more conducive to shear-induced mixing than quiescent DDC mixing. We thus assume the custom value of
230 $\Gamma = 0.2$ for shear-induced mixing. Our chosen Γ is consistent with field observations at low $\epsilon/(\nu N^2)$ (e.g., Holleman et al., 2016; Monismith et al., 2018). Here, ν represents the kinematic viscosity of seawater, while the ratio $\epsilon/(\nu N^2)$ is proportional to ratio of largest and smallest turbulent overturns in a stratified fluid. During our field campaign, $\epsilon/(\nu N^2)$ were 95% of the time less than 500.

To obtain the mixing rate K , we estimated ϵ using the methods described by Bluteau et al. (2016). Each profile was split
235 into 4096 samples (8 s) that overlapped by 50% before computing the velocity gradient spectra. The VMP's profiling speed was derived from its pressure sensor to convert the spectra between the frequency and wavenumber domain. We applied the multivariate technique of Goodman et al. (2006) to remove motion-induced contamination from these spectra, which were

then integrated over the viscous subranges to obtain ϵ . The VMP typically profiled at around 0.65 m s^{-1} , thus providing turbulence estimates at a resolution of about 2.5 m given the 50% overlap when splitting the cast. Turbulence estimates near the end and the beginning of a cast were discarded because of the VMP's deceleration and acceleration, respectively. We also discarded estimates within 25 m of the surface because of the turbulence induced by the ship. To derive the ~~density gradients~~ $\partial\rho/\partial z$ potential density gradients, we relied on the high-accuracy temperature and conductivity sensors (SBE-3F and SBE-4C) aboard the VMP. We first low-pass filtered these signals with a Butterworth filter using a cutoff period of 8 s. We then centred-differenced these smoothed profiles before averaging them over the same segments used for getting ϵ — yielding the mean vertical gradients necessary for using equations 2 and 3.

3.2.2 Proxy nitrate concentrations for estimating $\partial\mathcal{N}/\partial z$

Proxy nitrate concentrations are required to derive vertical nitrate gradients from the VMP's measurements (equation 2). This proxy made use of the winter dependency between nitrate and salinity. When limited amounts of nutrients are being consumed (or generated), mixing and advection processes govern the spatial distribution of nutrients. Their concentrations vary linearly with salinity, as reflected by our winter observations in Figure 4f. A concave nitrate-salinity curve, such as observed during summer and fall 2017, ~~indicates nitrate was being consumed along the USLE~~ (grey indicated that biogeochemical processes caused a net loss of nitrate in the Upper Estuary (grey points in Figure 4d,e)). These trends in the nitrate-salinity diagrams are supported by incubation experiments that quantify the nitrate ~~consumption uptake~~ (Villeneuve, 2020). Nitrate ~~consumption uptake~~ in the lower reaches of the USLE-Upper Estuary and in the ~~LSLE was more than Lower Estuary was almost~~ an order of magnitude higher in summer than during winter. ~~Nitrate consumption~~ Nitrate uptake downstream of Quebec City was less than $0.50 \text{ nmol m}^{-3} \text{ s}^{-1}$ and about half as much in the LSLE-Lower Estuary (Figure 16 of Villeneuve, 2020). Hence, a nitrate-salinity relationship is thus justified to estimate nitrate from the VMP profiler's salinity measurements during winter.

Nitrate concentrations in winter depended on salinity but also on the location in the St. Lawrence (Figure 4). The nitrate variations are associated with the water masses in the region. The temperature-salinity diagram suggests two, possibly three, significant water masses across the region (Figure 4a). The first water mass is nutrient-rich waters from the USLE-Upper Estuary that mix in the LSLE-Lower Estuary before eventually mixing with nutrient-poor surface water downstream in the Gulf (Figure 4d). This mixing resulted in nitrate \mathcal{N} concentrations decreasing with salinity for $S < 31.2$ psu. For higher salinities, $S > 31.9$ psu, which includes samples deeper than 50-m in the LSLE-Lower Estuary and almost all samples in the Gulf, nitrates increased proportionally with salinity (Figure 4f). This vertical nutrient distribution resembles the expected waters exposed to the open ocean, which we associate with the region's second water mass. Evidence of a third water mass is featured between 31.2 and ~~32~~ 31.9 psu for nitrate, phosphate, silicate, and in particular, the temperature-salinity diagram of LSLE-Lower Estuary stations (Figure 4). The salinity of 31.2 psu corresponds to a local subsurface maximum in water temperatures at station L0, where Saguenay Fjord enters the St.-Lawrence, and downstream at L34. The heli-survey a month later confirms that the Saguenay Fjord discharged fresher water near this station (Figure 4a). The surface water samples at the head of the Fjord had much lower phosphate ($\sim 0.2 \text{ mmol m}^{-3}$) and nitrate ($\sim 10 \text{ mmol m}^{-3}$), than water with comparable salinity in the USLE-Upper Estuary (Figure 4). This third water mass created a more rapid decrease in nitrate between the 31.2

to ~~32-31.9~~ psu salinity range before increasing again due to mixing with Gulf waters within the ~~LSLE-Lower Estuary~~ (Figure 4f).

From the observed water masses in winter, we created three separate nitrate-salinity relationships to obtain proxy nutrient concentrations the VMP's salinity measurements:

$$\mathcal{N} [\text{mmol m}^{-3}] = \begin{cases} -0.70S + 34.9 & \text{for } S \leq 31.2 \text{ psu,} \\ -4.37S^2 + 272.3S - 4230 & \text{for } 31.2 < S \leq 31.9 \text{ psu,} \\ 4.84S - 144.2 & \text{for } S > 31.9 \text{ psu or in the Gulf.} \end{cases} \quad (4)$$

The first relationship, applicable for $S < 31.2$ psu, reflects the nutrient-rich water in the ~~USLE-Upper Estuary~~ mingling with saltier water downstream. The third relationship included all samples with $S > 31.9$ psu. It was applied to turbulence profiles within the Gulf except for the deep data near Cabot Strait (station G540, $\gtrsim 250\text{m}$). This data corresponds to a fourth water mass, which we exclude from our vertical nitrate fluxes analysis. The second relationship links the other two using a quadratic fit to the samples outside of the Gulf within the range $31.2 < S \leq 31.9$. This relation reflects contributions from the Saguenay Fjord, which was applied solely to turbulence profiles collected in the ~~LSLE-Lower Estuary~~. Outside of the $31.2 < S \leq 31.9$ range, we applied the first or third relationship over their applicable salinity ranges. Typically, the first relationship was applied to surface waters in the ~~LSLE-Lower Estuary~~ that originated from the nutrient-rich ~~USLE-Upper Estuary~~ upstream. In contrast, the third relationship was used for deeper waters entering from the Gulf. A mean relative error of 5.5% was obtained for the predicted \mathcal{N} after applying equation 4 to all the 64 samples in Figure 4f. The poorest agreement is with the low surface nitrate concentrations measured in the Gulf, particularly the furthest downstream near Cabot Strait (station G540 in Figure 4f). The proxy nitrate concentrations calculated from (4) were then used to estimate the vertical nitrate gradients ~~necessary~~ for obtaining vertical fluxes from equation 2.

290 3.2.3 Vertical mixing contributions of nitrate

To convert the vertical nitrate fluxes into mass loadings, we rely on the same techniques as Cyr et al. (2015) to determine the tidal-upwelling zone. ~~This mixing process-The intense mixing~~ creates a surface signature of cooler water during summer (see Figure 13 of Cyr et al., 2015), and likely coincides with the winter polynia observed during regular monitoring (see Figure 10 of Galbraith et al., 2019) and our winter cruise (Figure 4a). Their estimated surface area was approximately 100 to 200 km². For our box-analysis, we require the surface area at the 75-m isobath rather than at the air-sea interface. At this isobath, the entire ~~LSLE-Lower Estuary~~ covers about 6000 km², whereas the ~~HLC-head of the channel~~ is about 200 km² (Figure 3a). ~~This area is larger than the 100 km² used by Cyr et al. (2015).~~ We thus exaggerate the impact of the HLC's ~~tidal-upwelling~~ on transporting nitrate into the surface layer by using the area upper bound ~~of 200 km²~~. For the remaining 97% of the ~~LSLE-Lower Estuary~~'s area, we apply the average vertical nitrate fluxes obtained outside of the HLC to the base of our box.

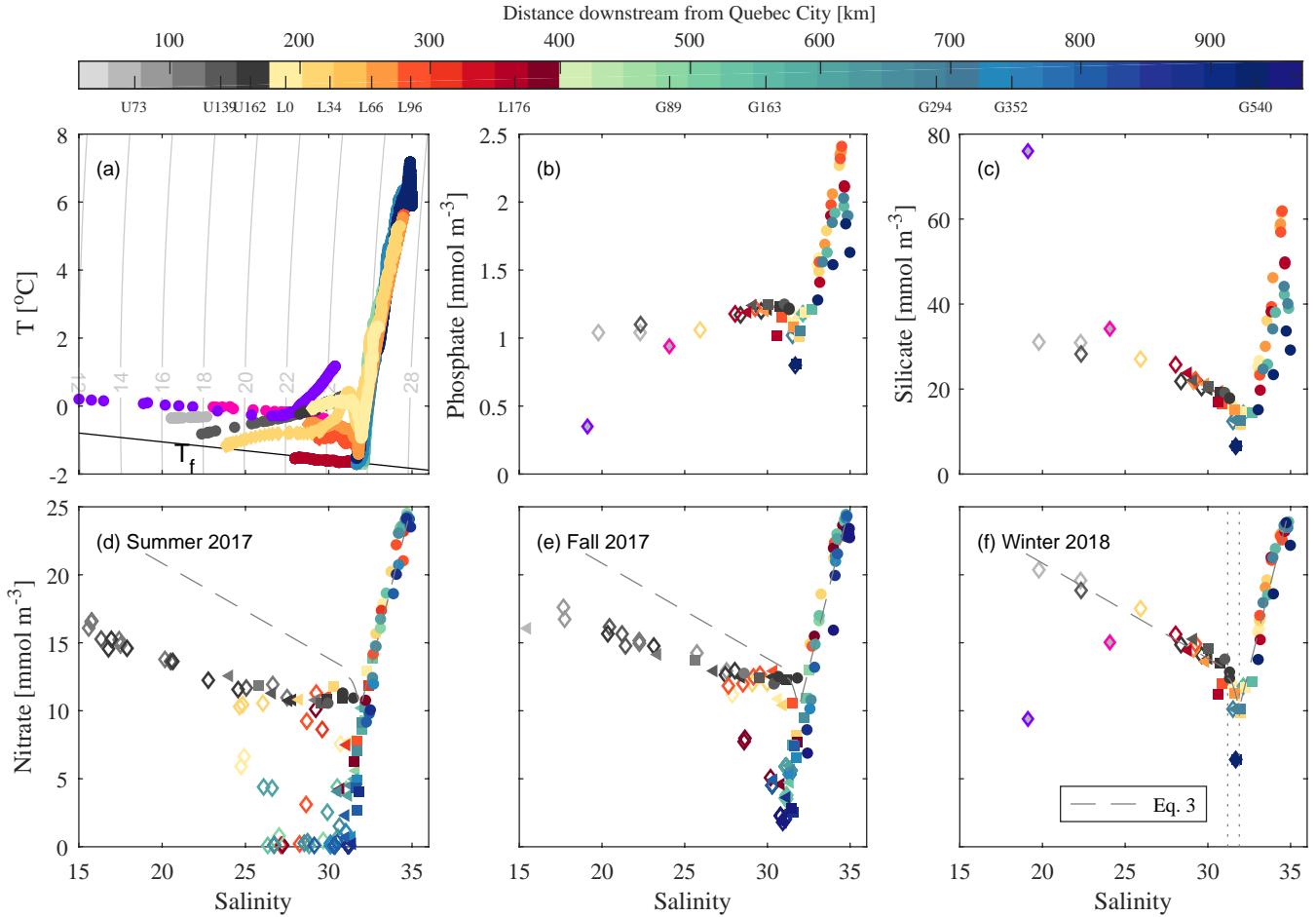


Figure 4. Winter 2018 observations of (a) Potential temperature (at atmospheric pressure), (b) phosphate, and (c) silicate illustrated against salinity. The nitrate concentrations for (d) the summer 2017, (e) fall 2017, and (f) winter 2018 are also shown. The symbols in panels b-f indicate the sample's depth. The open diamonds are near the surface (depth<20-m), while the closed triangles and squares are samples at 25 m and 50 m, respectively. The closed circles represent deeper samples at or below 100 m. [The two vertical dotted lines in \(f\) denote salinities of 31.2 and 31.9 psu, respectively.](#) Density contours in σ_T [kg m^{-3}] (a) were computed at atmospheric pressure. Concentrations measured from the most upstream station U37 were $26.43 \text{ mmol m}^{-3}$ for nitrate, 0.53 mmol m^{-3} for phosphate, and 39.8 mmol m^{-3} for silicate. This bottle at 10-m depth corresponded to salinity of ≈ 0.5 psu. T_f is the freezing temperature of seawater in (a).

4.1 Winter conditions

~~The salinity transect highlight that we visited the HLC~~ We visited the head of the channel during an upwelling event (Figure 3b). The salinity was relatively homogeneous across the depth when we sampled at L0 during the flooding tide (Figure 2). The water was nonetheless 2 psu more saline than near-surface waters (i.e., 15 m) measured at stations both upstream and
 305 downstream from the ~~HLC~~ head of the channel (Figure 3b). The higher salinities at the ~~HLC~~ head of the channel, station L0, cannot be attributed to inputs from the Saguenay Fjord. This waterway provides a freshwater source, confirmed by the AZMP's annual helicopter survey a few weeks later (Figure 4ba). We attribute the relatively high salinities ~~near-around~~ near-around the HLC to tidal upwelling and mixing that characterize this region throughout the year (Ingram, 1983; Galbraith, 2006; Cyr et al., 2015). At the HLC, nitrate concentrations in the upper 50-m were also lower than water both upstream and downstream at comparable
 310 depths (Figure 3a). This ~~presence-of~~ presence-of low nitrate and high salinity water, especially in the upper 50-m, further ~~supports-support~~ supports-support that water was ~~being tidally-upwelled-tidally upwelled.~~ being tidally-upwelled-tidally upwelled.

The transects illustrate ~~more clearly, than the nitrate-salinity diagrams, the~~ the presence of a sub-surface nitrate minimum in the ~~LSLE Lower Estuary~~ LSLE Lower Estuary (Figure 5b). During winter, nitrate concentrations were relatively high near the surface ~~but,~~ Concentrations decreased to reach a subsurface minimum at the 50-m deep sample. These subsurface samples were near or
 315 slightly more saline than 31.2 psu, the corresponding break between nutrient-rich fluvial waters and the relatively nutrient-poor water downstream seen in the nitrate-salinity diagram (Figure 4af). In the ~~LSLE Lower Estuary~~ LSLE Lower Estuary, a nitrate-poor subsurface layer is overlaid by fresher and nitrate-rich surface waters.

4.2 Seasonal nitrate variations

We observed this ~~subsurface~~ subsurface nitrate-poor subsurface layer during other seasons (Figure 5b-d). Climatological averages show
 320 that a sub-surface nitrate minimum is typical of the ~~LSLE Lower Estuary's~~ LSLE Lower Estuary's lower reaches during the ice-free months (see Figure 3 of Cyr et al., 2015). Above this layer, near-surface nitrate concentrations are higher, especially during winter (e.g., ~ 350 km in Figure 5b). These high nitrate concentrations were associated with low salinities (e.g., station L34 and L176 in Figure 4), reflecting the input of nutrient-rich fluvial water from the ~~USLE Upper Estuary~~ USLE Upper Estuary. During winter, these fluvial waters likely extended downstream to 400-km from Quebec City (station L176; Figure 5b), but extended less far in the fall (300 km, Figure
 325 5c). The subsurface nitrate minimum ~~that the input of fluvial waters creates~~ created by the fluvial waters in the Lower Estuary was more evident ~~in the~~ during winter and fall than in summer ~~given the higher consumption~~ because of the higher biological uptake during summer (200-300 km, Figure 5d). However, the nitrate-salinity diagrams show that ~~the~~ the fluvial waters may be perceptible just as far downstream into the ~~LSLE Lower Estuary~~ LSLE Lower Estuary during summer than in fall (Figure 4d-e). Upstream in the ~~USLE Upper Estuary~~ USLE Upper Estuary, nitrate concentrations were highest in winter, followed by the fall and summer (Figure 5b-d). Overall,
 330 the ~~USLE Upper Estuary~~ USLE Upper Estuary supplied nitrate-rich fluvial waters into the surface layer of the ~~LSLE Lower Estuary~~ LSLE Lower Estuary.

The nutrient inventory created in the upper 75-m of the ~~LSLE Lower Estuary~~ LSLE Lower Estuary during the fall and winter measurements is illustrated in Figure 5a. The inventory is obtained by depth-integrating the difference between the fall and winter measurements

(Figure 5b and c). This analysis assumes no nitrate ~~consumption-uptake~~ between these two seasons, i.e., no sink term. For completeness, we also added the inventory created between winter and summer, which is about 25% larger than the nitrate accumulated between winter and fall. Hence, most of the nitrate ~~accumulates-accumulated~~ in the surface layer between fall and winter because of the ~~lower consumption rates during these two seasons compared to~~ high nitrate uptake during summer (Figure 16 of Villeneuve, 2020). ~~The LSLE~~The Lower Estuary's inventory includes mainly contributions from the nitrate-rich and fresher water originating from the ~~USLE-Upper Estuary~~ (i.e., $S < 31.2$ psu in Figure 4). The high values at 420 km reflect the nitrate-rich and fresher water from ~~USLE during wintersince the~~ the Upper Estuary during winter. The near-surface nitrate is relatively depleted during fall at this location (Figure 5a-b). The spatially-averaged inventory ~~between these two seasons~~ for the Lower Estuary between fall and winter was 280 mmol m^{-2} , which translates to an equivalent vertical flux of $32 \text{ nmol m}^{-2} \text{ s}^{-1}$ given the 100 days between ~~the fall and winter~~ these measurements. Hence, ~~the minimum nitrate load required to fill~~ during this period, nitrate in the upper 75-m of the ~~LSLE (assuming no consumption or export) was~~ Lower Estuary increased by about 195 mol s^{-1} . Repeating a similar calculation for the period between summer and fall yields a nitrate accumulation
345 rate of roughly 95 mol s^{-1} , about half as much as the period between fall and winter.

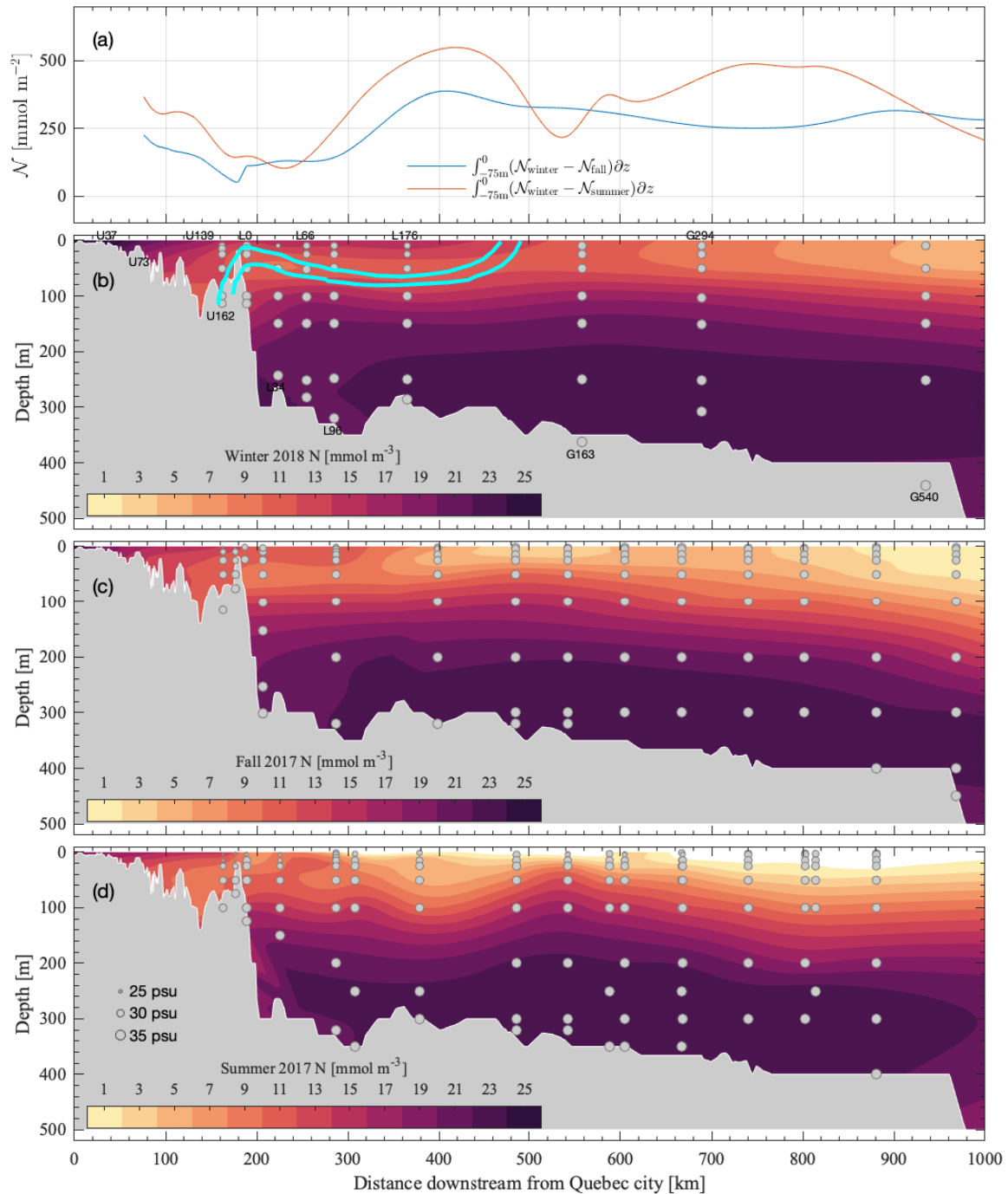


Figure 5. (a) Nutrient inventory generated in the upper 75-m of the [LSLE Lower Estuary](#)'s water column. (b) Nitrate concentrations during our winter field campaign, (c) fall 2017 and (d) summer 2017 monitoring surveys. The thick cyan lines in (b) denote the same water masses as in Figure 3. Water in between these two lines coincides with the subsurface nitrate minimum at station L0 and downstream. The grey circles are scaled with the salinity of the water samples as shown in Figure 4. [The contours were obtained using a Data Interpolating Variational Analysis \(DIVA\) technique \(Troupin et al., 2012\).](#)

4.3 Nitrate transport pathways

We now present the annual cycle of fluvial nitrate loads ~~, so they can be~~ compared with the vertical loads entering the ~~LSLE~~ Lower Estuary from vertical mixing processes.

4.3.1 Fluvial nitrate loads

350 The fluvial nitrate loads vary seasonally, reflecting the changes in dissolved nitrate concentrations and flow rates at Quebec City. The 17-year long statistical records show that nitrate concentrations reach their annual minimum of $\sim 14 \text{ mmol m}^{-3}$ at the end of summer (Aug and Sept, Figure 6a). Nitrate concentrations progressively increase during fall and remain relatively steady between December and March. Nitrate ~~consumption uptake~~ is weakest during the winter months (Villeneuve, 2020). In spring, nitrate concentrations ~~increases, which peak~~ increase, which peaks at $\sim 32 \text{ mmol m}^{-3}$ in May before steadily decreasing
355 throughout the summer period. Flow rates follow a similar pattern, albeit the snowmelt generates a more pronounced increase during spring. Flows peak in April with the average exceeding $16 \times 10^3 \text{ m}^3 \text{ s}^{-1}$, whereas they reach minimum annual values in late summer with average flow rates below $10 \times 10^3 \text{ m}^3 \text{ s}^{-1}$ (Figure 6a). During our 2018 winter campaign, the flow rates were relatively large compared to the long-term historical averages for February. However, our measured nitrate concentrations were similar to the February average.

360 Our observed flows and nitrate concentrations in February 2018 translate into a fluvial nitrate input of $350 \pm 65 \text{ mol s}^{-1}$ at Quebec City. This value is slightly higher than the 17-year average for February and also higher than the historical average of $300 \pm 20 \text{ mol s}^{-1}$ for the winter months of November through to February (Figure 6b). The fluvial nitrate loads peaked in April when the historical averages ~~reach~~ reached 500 mol s^{-1} before decreasing to their annual minimum in August and September. During these late summer months, nitrate loads are below 150 mol s^{-1} (Figure 6b). These low nitrate loads coincide with the
365 period when biological ~~consumption uptake~~ is greatest upstream of Quebec City (Hudon et al., 2017) and flow rates are at their lowest. The fluvial inputs during the field experiment of Cyr et al. (2015) were about 90 mol s^{-1} , much lower than historical averages (Figure 6b). Their fluvial nitrate loads were more than three times less than those during our winter campaign.

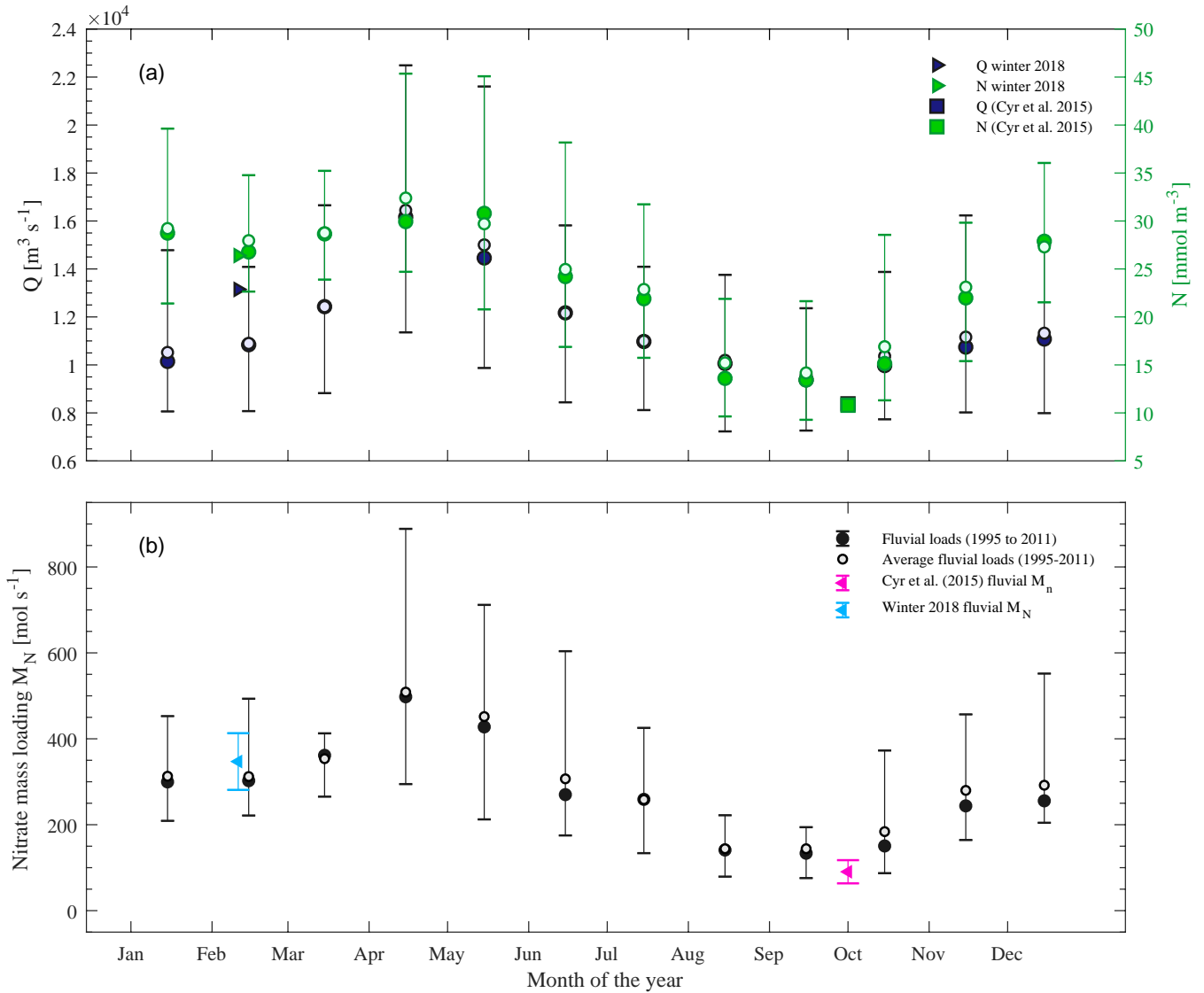


Figure 6. a) Monthly statistics of the freshwater flow rates at Quebec city from 1995 to 2011 using the inverse modelling techniques described by Bourgault and Matte (2020a). The secondary green axis is the monthly statistics of nitrate concentrations measured at Quebec city during this same period (Hudon et al., 2017). (b) Monthly statistics of the mass nitrate fluvial loads estimated from (1). The bars extend in both panels extend from the 5th and 95th percentile for each month’s data and are centred around the median (dark circles). The open circles denote the monthly averages. The error bars on the instantaneous nitrate loads for our winter 2018 campaign and Cyr et al. (2015) late summer observations are the errors propagated from the flow estimates. The nitrate concentrations for Cyr et al. (2015) were interpolated from the temporal time series of Hudon et al. (2017) at Quebec City.

4.3.2 Turbulence observations and vertical nitrate fluxes

The vertical nitrate fluxes were determined from the direct turbulence measurements along the Lower St. Lawrence Estuary and Gulf (Figure 7). The turbulence observations were most energetic in the upwelling-driven polynya near the ~~HLC~~head of the channel. At station L0, at the sill near the ~~HLC~~head, dissipation ϵ exceeded 10^{-7} W kg $^{-1}$ near the bottom and the surface (Figure 7a), while the mixing rates K exceeded 10^{-4} m 2 s $^{-1}$ throughout most of the water column (below 60 m and above 30 m depth, Figure 7b). The other stations were relatively quiescent with ϵ of the order 10^{-9} W kg $^{-1}$. Elevated diapycnal mixing rates were also found in the surface mixed layer (depth <50 m), especially in the Gulf. ~~These high rates are~~ presumably due to winter convective mixing processes reaching the deeper pycnocline (Figure 7d). Elsewhere in the water column, outside of the energetic HLC, mixing rates were more typical of the ocean interior ($\mathcal{O}(10^{-5})$ m 2 s $^{-1}$; Waterhouse et al., 2014). Near the HLC, our winter “hot-spot”, diapycnal mixing estimates were within the ranges observed during the summer months (e.g., Figure 11 of Cyr et al., 2015). ~~They~~Our winter fluxes would have likely been higher if collected later at high tide ~~given~~, as shown with the late summer observations of Cyr et al. (2015). They measured $K \approx 10^{-2}$ m 2 s $^{-1}$ at high tide between depths of 25 and 50 m, compared to $K \approx 10^{-4}$ – 10^{-3} m 2 s $^{-1}$ about 2 hours earlier. ~~Elevated~~High mixing occurred at the HLC and at the base of the surface layer elsewhere in the system.

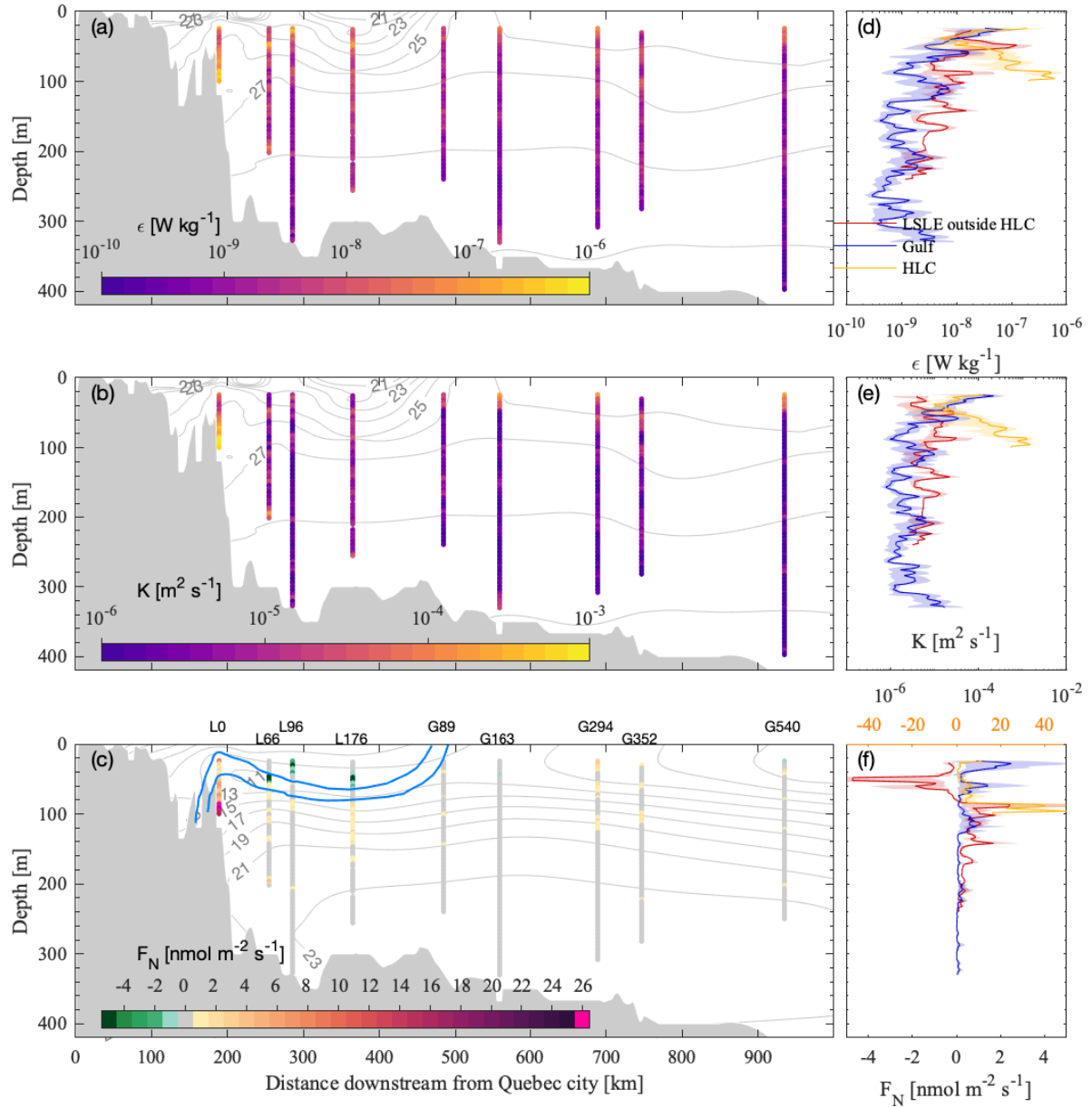


Figure 7. (a) ϵ , (b) K , and (c) F_N after time-averaging the repeated VMP profiles at each station. We present the average profiles for the [LSLE-Lower Estuary](#) (outside of the HLC) and in the Gulf for (d) ϵ , (e) K and (f) F_N . The error bands represent 95% confidence intervals obtained through bootstrap analysis on the averages within each region. The HLC's vertical fluxes in (f) are shown on a separate axis. The gray contour lines in (a) and (b) represent isopycnals (in σ_T , kg m⁻³), whereas those in (c) are the nutrient contours (in mmol m⁻³) shown in Figure 5b. Positive values in (c) indicate an upward flux of nutrients. The thick cyan lines in (c) are the same as in Figure 3 – the 31.2 and 31.9 psu isohalines that delineate water originating from the [USLE-Upper Estuary](#) ($S < 31.2$ psu) and from the Gulf ($S > 31.9$ psu). [The contour lines were obtained using a Data Interpolating Variational Analysis \(DIVA\) technique \(Troupin et al., 2012\).](#)

We obtained the largest vertical fluxes of nitrate near the HLC head of the channel, where mixing was highest. Nitrate fluxes F_N were particularly elevated in the deeper part of the water column where they exceeded $30 \text{ nmol m}^{-2} \text{ s}^{-1}$ below 80 m (Figure 7c). This flux converts into a vertical supply of nitrate of about 6 mol s^{-1} into the LSLE's surface layer with surface layer over the exaggerated surface area of 200 km^2 for the HLC (§3.2.3). Further downstream in the LSLE Lower Estuary, nitrate fluxes were lower than at the HLC head of the channel. Vertical nitrate fluxes were generally higher at the interface, separating the sub-surface nitrate minimum They with water below it. The fluxes dropped in magnitude further downstream in the LSLE Lower Estuary (station L66 vs L176 at 60-m depth, Figure 7c). Vertical fluxes of nitrate nitrate fluxes were much weaker in the Gulf than in the LSLE Lower Estuary, with weak upward fluxes at the surface layer's base. Occasional storms would increase surface mixing, but its effects would unlikely be felt below 75-m in the LSLE Lower Estuary given the stratification imparted by the fluvial waters. Storms, instead, would tend to mix down the nutrient-rich surface water of fluvial origin into the relatively nutrient-poor water beneath it.

In the LSLE Lower Estuary, nutrients were transported by turbulence mixing processes both upwards and downwards into the subsurface minima. On average, the nitrate-rich surface waters from the USLE Upper Estuary were mixed downwards at $4.8 \text{ nmol m}^{-2} \text{ s}^{-1}$ into this nitrate-poor subsurface layer in the LSLE Lower Estuary (50 m depth, Figure 7f). The nutrient-rich water, originating from the Gulf, was mixed upwards into this subsurface layer at a lower rate of $2.4 \text{ nmol m}^{-2} \text{ s}^{-1}$ ($\approx 80 \text{ m}$ depth, Figure 7f). These elevated upward fluxes at this depth coincide with the nitricline beneath the subsurface nitrate minima. The nitricline sits at the 26.5 kg m^{-3} isopycnal, which is $80 \pm 5 \text{ m}$ deep at the stations downstream of the head in the Lower Estuary (Figure 7b,c). Only the vertical nitrate fluxes from below the sub-surface layer contribute to the LSLE Lower Estuary's surface layer's overall supply. When converted into a vertical nitrate load, the relatively weak vertical fluxes outside of HLC supplied 14 mol s^{-1} into the LSLE Lower Estuary's surface layer. If we add the contributions at the HLC, the total vertical nitrate load into this layer was of the order of 20 mol s^{-1} during our winter campaign.

We now explore the possibility that our vertical winter loads of nitrate may under-estimate nitrate loads measured during winter may underestimate the actual nitrate contributions given the tidal variability tidal variability of the mixing at the HLC head of the channel. For this analysis, we rely on the tidally-resolved summer measurements of Cyr et al. (2015), reproduced in Figure 8 with our winter vertical fluxes. Our winter flux estimate at the HLC head was consistent with theirs collected at the same tidal phase, i.e., 2 hours before high tide (Figure 8a). However, their summer mixing and vertical nitrate fluxes increased by almost three orders of magnitude during the semi-diurnal tidal cycle, with fluxes peaking at high tide. We converted their vertical fluxes into nitrate loads supplied across the HLC head's area in Figure 8b. Their averaged value of $\sim 1 \text{ } \mu\text{mol m}^{-2} \text{ s}^{-1}$ results in a vertical nitrate load of about 210 mol s^{-1} . This estimate likely over-exaggerates the vertical contributions from tidal upwelling and mixing processes mixing processes at the head since removing the highest estimate reduces the average nitrate flux by 50%, yielding an equivalent vertical load of 100 mol s^{-1} . Their median estimate is even lower than this average, reducing the vertical nitrate load to 25 mol s^{-1} for the HLC head of the channel (Figure 8b). All these estimates of the vertical nitrate loads are still lower than the fluvial loads of 350 mol s^{-1} entering the LSLE Lower Estuary during winter.

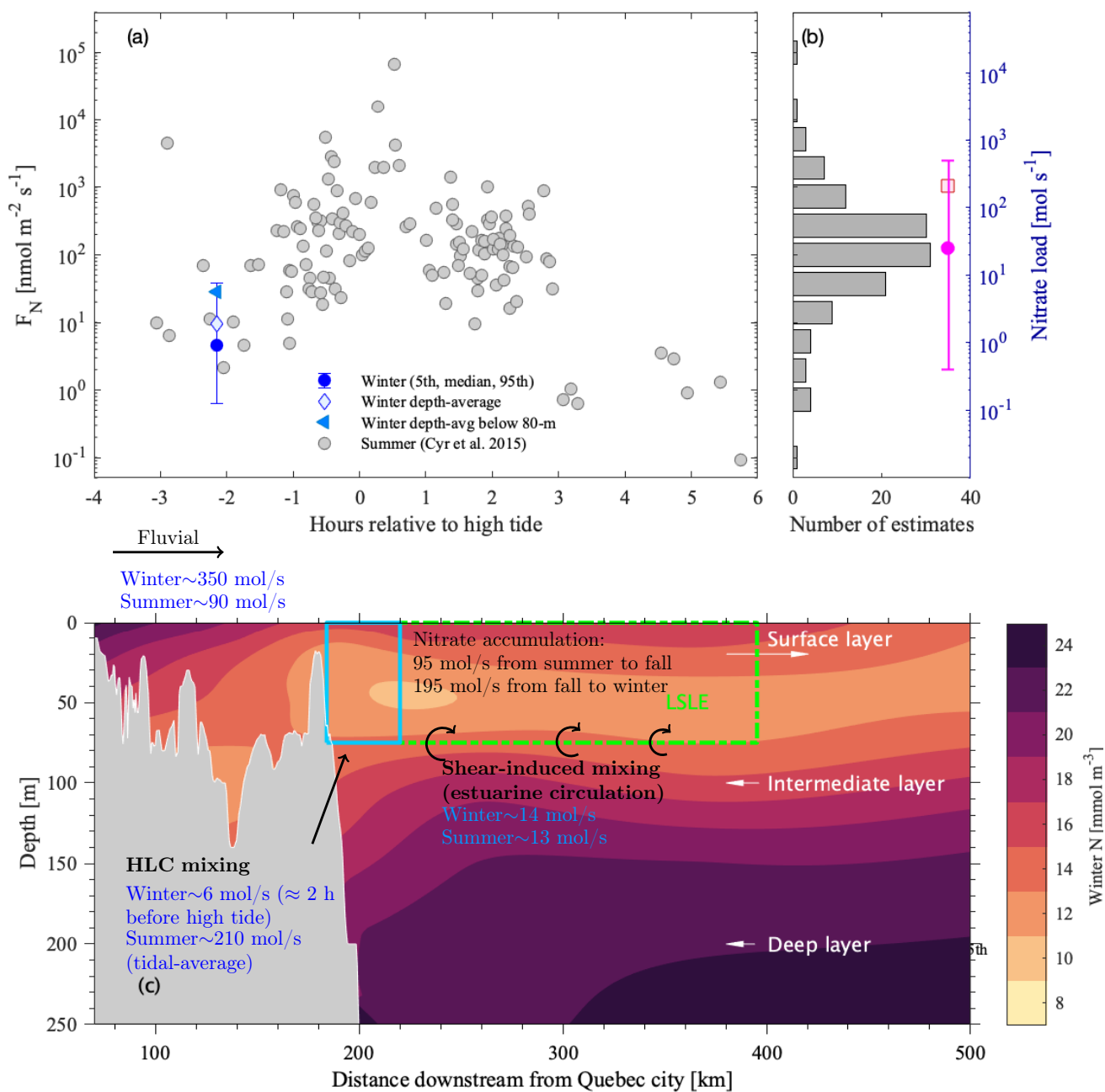


Figure 8. (a) Nitrate fluxes at the HLC as a function of the tidal phase for winter and summer. The summer estimates from Cyr et al. (2015) are re-illustrated in (b) as a histogram. The error bar shows the 5 and 95th percentile of the observations and is centred around the median F_N (blue is winter and magenta is summer). (c) Close-up of Fig 5b with the estimated nitrate loads from vertical mixing and fluvial contributions. The cyan and green box denotes the extent of the HLC and **LSLE** Lower Estuary, respectively. The secondary y-axis in (b) is the vertical nitrate load after multiplying F_N by the surface area of 200 km². [The contours were obtained using a Data Interpolating Variational Analysis \(DIVA\) technique \(Troupin et al., 2012\).](#)

We revisit the notion of ~~tidal-upwelling and~~ mixing processes, especially ~~at the HLC~~ tidal-induced mixing at the head of the channel, acting as the *nutrient pump* for the LSLE Lower Estuary. The low ~~consumption during winter provides a better representation of uptake during winter better represents~~ the physical mechanisms transporting nitrate into the LSLE Lower Estuary than in summer. Summer observations invariably track both physical and biogeochemical biological processes. Studies
 420 have reached variable conclusions about the importance of ~~tidal-upwelling and mixing~~ tidal-mixing at the HLC in supplying nutrients to the LSLE Lower Estuary, and ultimately the Gulf (see section 1). All of these studies concluded that vertical mixing processes dominate the supply of nutrients in the LSLE Lower Estuary (e.g., Steven, 1974; Sinclair et al., 1976; Savenkoff et al., 2001; Cyr et al., 2015; Jutras et al., 2020; Greisman and Ingram, 1977). The biogeochemical box-model of Jutras et al. (2020) predicted vertical nitrate loads of 1050 mol s^{-1} for the entire LSLE Lower Estuary, while that of Savenkoff et al. (2001)
 425 predicted 685 mol s^{-1} . To reach these high values, the turbulent nitrate fluxes at the HLC would need to be two to four times larger than the summer values observed by Cyr et al. (2015), yet their summer fluxes were some of the highest reported in the world (~~see Table 1 of Cyr et al., 2015~~). ~~(Figure 5 of Mouriño-Carballido et al., 2021).~~

These biogeochemical studies contrast with our winter observations since the fluvial nitrate loads dominated the supply of nutrients into the LSLE Lower Estuary (Figure 8c). Our conclusion remains true even if the winter vertical nitrate fluxes
 430 at the HLC reached values as high as those measured during summer upwelling. During winter, the LSLE Lower Estuary's intermediate layer coincides with our observed nitrate subsurface minima. So the estuarine circulation entrains nitrate-rich fluvial waters into the nitrate-poor subsurface layer (Figure 8c). Our direct turbulence observations indicate that the estuarine circulation in the LSLE Lower Estuary causes relatively weak entrainment of deep bottom waters into the intermediate layer. The vertical nitrate load caused by this entrainment were about 14 mol s^{-1} — the same magnitude as those obtained by
 435 Cyr et al. (2015) during late summer (Figure 8c). The nitrate-salinity diagram (Figure 4a) and their transects (Figure 5) also highlight that a large portion of the nitrate in the LSLE Lower Estuary originates from fluvial sources entering from the USLE Upper Estuary.

Our results indicate that the fluvial loads are a much significant input of nutrients into the LSLE Lower Estuary than turbulence mixing processes and are transported far into the LSLE Lower Estuary. Previous studies have been biased by the
 440 dynamics at the end of summer, or may have been too limited in spatial coverage to track the fluvial nitrate-rich waters into the LSLE Lower Estuary. For example, Cyr et al. (2015) focused on the importance of vertical mixing on supplying nutrients into the LSLE Lower Estuary's euphotic zone. ~~Their fluxes, although~~ Although some of the ~~largest fluxes in the world, exceed fluvial loads only during the period they measured~~ world's largest, their vertical nitrate fluxes exceed fluvial inputs only during their measurement period – late summer/early fall. ~~Our analysis shows that this~~ This period is when the fluvial nitrate loads reach
 445 their annual minimum (Figure 6b). In fact, they collected their measurements of vertical fluxes when fluvial loads reached historical lows (Figure 6b). Their average vertical load of nitrate (210 mol s^{-1}), for which we exaggerated the area of influence of tidal-mixing processes at the HLC, exceeds fluvial loads only during summer from August to October inclusively (Figure 6b). Thus, vertical mixing processes become an important source of nitrate into the euphotic zone of the Lower Estuary, mainly

during summer. This observation is typical for temperate coastal and shelf waters during summer when the surface layer's temperature-stratification is strongest (e.g., Bendtsen and Richardson, 2018; Mouriño-Carballido et al., 2021).

Future field campaigns should focus on documenting the physical processes responsible for upwelling nitrate into the euphotic zone at the ~~HL~~ Head of the channel. Specifically, estimating the magnitude of the vertical nitrate fluxes during an entire semi-diurnal tidal cycle for both neap and spring tides. Peak tides could pump nitrate into the surface layer at a much higher rate, as shown by Cyr et al. (2015). Differences in magnitude could exist between neap and spring tides (e.g., Sharples et al., 2007; Green et al., 2019). The goal of these additional measurements would be to remedy the the short portion of the tidal cycle resolved during winter. Our winter observations were nonetheless consistent with the tidally-resolved measurements of Cyr et al. (2015) during summer.

6 Conclusions

The inaugural Odysée campaign aboard the CCGS *Amundsen* icebreaker provided the first winter turbulence measurements in the St. Lawrence Estuary and Gulf. We collected these ~~opportunistic~~ measurements in tandem with the vessel's icebreaking and ship escorting operations. These mixing measurements covered the most considerable spatial extent of the Estuary and Gulf during any season. Our analysis shows that ~~tidal-upwelling~~ tidal-induced mixing appears to be a less effective mechanism for supplying nutrients ~~into the euphotic zone during winter~~ in the euphotic winter zone than in summer. In fact, for most of the year, we expect higher nitrate loads from fluvial sources than from ~~tidal-upwelling~~ vertical mixing processes. In particular, during freshet as the snowpack melts. At this time of the year, both nitrate concentrations and flow rates are highest (Figure 6). The fluvial nutrients loads during winter, ~~a time when biological consumption~~ when biological uptake is low, likely preconditions the phytoplankton spring bloom far into the ~~LSLE~~ Lower Estuary and adjacent Gulf. Throughout most of the year, the fluvial contributions from the urbanized catchment upstream of Quebec City are a vital nutrient supply to the St-Lawrence Estuary.

Data availability. The presented Odysée observations are available in the following repository <http://doi.org/10.5281/zenodo.3840552>. The Canadian government monitoring survey observations can be requested through the St. Lawrence Global Observatory: <https://catalogue.ogsl.ca/organization>

Code and data availability. The code and computed flow rates are also publicly available at the codeocean repository (Bourgault and Matte, 2020b). The CTD data were interpolated using Data-Interpolating Variational Analysis (DIVA) algorithm embedded in the Ocean Data View software by Schlitzer, Reiner, Ocean Data View, <https://odv.awi.de>, 2021.

Author contributions. Conceptualisation of winter field campaign by CB, DB and PG. CB collected and processed the winter turbulence data observations, in addition to the formal analysis and data visualisation for the manuscript. VV collected and curated the nutrient observations

(Winter 2018 and Fall 2017 from the St. Lawrence Ecosystem Health Research and Observation Network). DB provided the software and hydrological data. PG collected, curated and analysed the AZMP monitoring data. CB prepared the manuscript with contributions from PG and DB, who critically reviewed the manuscript's scientific content. Resources and funding were provided JET, DB, and PG.

480 *Competing interests.* The authors declare that they have no competing interests.

Acknowledgements. This research was funded by the Odyssee Saint-Laurent Program of the Réseau Québec Maritime network, the National Sciences and Engineering Research Council of Canada (NSERC), and the Canada Foundation for Innovation. The work contributes to the scientific program of Quebec-Ocean. CEB thanks NSERC for funding a fellowship to carry out the work and acknowledges that the research contributes to the project “Quantifying and parameterising ocean mixing” funded by the Australian Research Council (DP180101736). We
485 thank Pascal Guillot from Quebec-Ocean who quality-controlled the CTD aboard the rosette during the Odyssee cruise. We thank the Captain and crew of the CCGS *Amundsen*, and the staff from UQAR, Université Laval, who aided in the collection of data.

References

- Archambault, P., Schloss, I. R., Grant, C., and Plante, S., eds.: *Les hydrocarbures dans le golfe du Saint-Laurent: Enjeux sociaux, économiques et environnementaux*, Notre Golfe, Rimouski, Québec, Canada, 2017.
- 490 Barber, D. G., Asplin, M. G., Gratton, Y., Lukovich, J., Galley, R. J., Raddatz, R. L., and Leitch, D.: The International Polar Year (IPY) Circumpolar Flaw Lead (CFL) System Study: Overview and the physical system, *Atmos.-Ocean*, 48, 225–243, <https://doi.org/10.3137/OC317.2010>, 2010.
- Bendtsen, J. and Richardson, K.: Turbulence measurements suggest high rates of new production over the shelf edge in the northeastern North Sea during summer, *Biogeosciences*, 15, 7315–7332, <https://doi.org/10.5194/bg-15-7315-2018>, 2018.
- 495 Blais, M., Galbraith, P. S., Plourde, S., Scarratt, M., Devine, L., and Lehoux, C.: Chemical and biological oceanographic conditions in the Estuary and Gulf of St. Lawrence during 2018, Research document, DFO Canadian Science Advisory Secretariat, iv + 64 pp, 2019.
- Bluteau, C. E., Jones, N. L., and Ivey, G. N.: Estimating turbulent dissipation from microstructure shear measurements using maximum likelihood spectral fitting over the inertial and viscous subranges, *J. Atmos. Oceanic Technol.*, 116, 2016.
- Bourgault, D. and Koutitonsky, V. G.: Real-time monitoring of the freshwater discharge at the head of the St. Lawrence Estuary, *Atmos. Ocean*, 37, 203–220, 1999.
- 500 Bourgault, D. and Matte, P.: A physically based method for real-time monitoring of tidal river discharges from water level observations, with an application to the St. Lawrence River, *J. Geophys. Res.*, 125, e2019JC015992, <https://doi.org/10.1029/2019JC015992>, 2020a.
- Bourgault, D. and Matte, P.: Qmec : a Matlab code to compute tidal river discharge from water level [Source Code], <https://doi.org/https://doi.org/10.24433/CO.7299598.v1>, 2020b.
- 505 Bourgault, D., Kelley, D. E., and Galbraith, P. S.: Turbulence and boluses on an internal beach, *J. Mar. Res.*, 66, 563–588, <https://doi.org/10.1357/002224008787536835>, 2008.
- Bourgault, D., Cyr, F., Galbraith, P. S., and Pelletier, E.: Relative importance of pelagic and sediment respiration in causing hypoxia in a deep estuary, *J. Geophys. Res.*, 117, C08033, <https://doi.org/10.1029/2012JC007902>, 2012.
- Cyr, F., Bourgault, D., and Galbraith, P. S.: Interior versus boundary mixing of a cold intermediate layer, *J. Geophys. Res.*, 116, <https://doi.org/10.1029/2011JC007359>, 2011.
- 510 Cyr, F., Bourgault, D., Galbraith, P. S., and Gosselin, M.: Turbulent nitrate fluxes in the Lower St. Lawrence Estuary, Canada, *J. Geophys. Res. Oceans*, 120, 2308–2330, <https://doi.org/10.1002/2014JC010272>, 2015.
- Fortier, L., Barber, D., and Michaud, J., eds.: *On thin ice: a synthesis of the Canadian Arctic Shelf Exchange Study (CASES)*, Aboriginal Issues Press, Winnipeg, MB, Canada, 2008.
- 515 Galbraith, P., Chassé, J., Caverhill, C., Nicot, P., Gilbert, D., Lefavre, D., and Lafleur, C.: Physical Oceanographic Conditions in the Gulf of St. Lawrence during 2018, Research document, DFO Canadian Science Advisory Secretariat, iv + 79 p., 2019.
- Galbraith, P. S.: Winter water masses in the Gulf of St. Lawrence, *J. Geophys. Res.*, C06022, <https://doi.org/doi:10.1029/2005JC003159>, 2006.
- Gilbert, D.: Propagation of temperature signals from the northwest Atlantic continental shelf edge into the Laurentian Channel, *ICES CM*, 520 2004.
- Gilbert, D., Sundby, B., Gobeil, C., Mucci, A., and Tremblay, G.-H.: A seventy-two-year record of diminishing deep-water oxygen in the St. Lawrence estuary: The northwest Atlantic connection, *Limnol. Oceanogr.*, 50, 1654–1666, <https://doi.org/https://doi.org/10.4319/lo.2005.50.5.1654>, 2005.

- Goodman, L., Levine, E. R., and Lueck, R. G.: On Measuring the Terms of the Turbulent Kinetic Energy Budget from an AUV, *J. Atmos. Oceanic Technol.*, 23, 977–990, <https://doi.org/10.1175/JTECH1889.1>, 2006.
- 525 Green, R. H., Jones, N. L., Rayson, M. D., Lowe, R. J., Bluteau, C. E., and Ivey, G. N.: Nutrient fluxes into an isolated coral reef atoll by tidally driven internal bores, *Limnol. Oceanogr.*, 64, 461–473, <https://doi.org/10.1002/lno.11051>, <https://aslopubs.onlinelibrary.wiley.com/doi/abs/10.1002/lno.11051>, 2019.
- Gregg, M., D’Asaro, E., Riley, J., and Kunze, E.: Mixing Efficiency in the Ocean, *Annu. Rev. Mar. Sci.*, 10, 443–473, <https://doi.org/10.1146/annurev-marine-121916-063643>, <https://doi.org/10.1146/annurev-marine-121916-063643>, PMID: 28934598, 2018.
- 530 Greisman, P. and Ingram, R. G.: Nutrient distribution in the St. Lawrence Estuary, *J. Fish. Res. Board Can.*, 34, 2117–2123, 1977.
- Hansen, H. P. and Koroleff, F.: *Methods of Seawater Analysis*, chap. Determination of nutrients, pp. 159–228, Wiley-VCH Verlag GmbH, 3rd edn., <https://doi.org/10.1002/9783527613984>, 2007.
- 535 Hieronymus, M. and Carpenter, J. R.: Energy and Variance Budgets of a Diffusive Staircase with Implications for Heat Flux Scaling, *J. Phys. Oceanogr.*, 46, 2553–2569, <https://doi.org/10.1175/JPO-D-15-0155.1>, 2016.
- Holleman, R. C., Geyer, W. R., and Ralston, D. K.: Stratified Turbulence and Mixing Efficiency in a Salt Wedge Estuary, *J. Phys. Oceanogr.*, 46, 1769–1783, <https://doi.org/10.1175/JPO-D-15-0193.1>, 2016.
- Hudon, C., Gagnon, P., Rondeau, M., Hébert, S., Gilbert, D., Hill, B., Patoine, M., and Starr, M.: Hydrological and biological processes modulate carbon, nitrogen and phosphorus flux from the St. Lawrence River to its estuary (Quebec, Canada), *Biogeochemistry*, 135, 251–276, <https://doi.org/10.1007/s10533-017-0371-4>, 2017.
- 540 Ingram, R. G.: Influence of tidally-induced vertical mixing on primary productivity in the St. Lawrence Estuary, *Mém. Soc. Royale Sci. Lièges*, VII, 59–74, 1975.
- Ingram, R. G.: Vertical mixing at the head of the Laurentian Channel, *Estuar. Coast. Shelf Sci.*, 16, 332–338, [https://doi.org/10.1016/0272-7714\(83\)90150-6](https://doi.org/10.1016/0272-7714(83)90150-6), 1983.
- 545 Ivey, G. N., Bluteau, C. E., and Jones, N. L.: Quantifying Diapycnal Mixing in an Energetic Ocean, *J. Geophys. Res.*, 123, 346–357, <https://doi.org/10.1002/2017JC013242>, <https://agupubs.onlinelibrary.wiley.com/doi/abs/10.1002/2017JC013242>, 2018.
- Jutras, M., Mucci, A., Sundby, B., Gratton, Y., and Katsev, S.: Nutrient cycling in the Lower St. Lawrence Estuary: Response to environmental perturbations, *Estuarine Coastal Shelf Sci.*, 239, 106715, <https://doi.org/https://doi.org/10.1016/j.ecss.2020.106715>, <http://www.sciencedirect.com/science/article/pii/S0272771419307279>, 2020.
- 550 Lauzier, L. M. and Trites, R. W.: The Deep Waters in the Laurentian Channel, *J. Fish. Res. Board Can.*, 15, 1247–1257, <https://doi.org/10.1139/f58-068>, <https://doi.org/10.1139/f58-068>, 1958.
- Mei, Z.-P., Saucier, F. J., Fouest, V. L., Zakardjian, B., Sennville, S., Xie, H., and Starr, M.: Modeling the timing of spring phytoplankton bloom and biological production of the Gulf of St. Lawrence (Canada): Effects of colored dissolved organic matter and temperature, *Cont. Shelf Res.*, 30, 2027–2042, <https://doi.org/10.1016/j.csr.2010.10.003>, 2010.
- 555 Mitchell, M., Harrison, G., Pauley, K., Gagné, A., Maillet, G., and Strain, P.: Atlantic Zonal Monitoring Program Sampling Protocol, techreport 223, Government of Canada, *Can. Tech. Rep. Hydrogr. Ocean Sci.*, iv +23 pp, 2002.
- Monismith, S. G., Koseff, J. R., and White, B. L.: Mixing Efficiency in the Presence of Stratification: When Is It Constant?, *Geophys. Res. Lett.*, 45, 5627–5634, <https://doi.org/10.1029/2018GL077229>, 2018.

- 560 Mouriño-Carballido, B., Otero Ferrer, J. L., Fernández Castro, B., Marañón, E., Blazquez Maseda, M., Aguiar-González, B., Chouciño, P., Graña, R., Moreira-Coello, V., and Villamana, M.: Magnitude of nitrate turbulent diffusion in contrasting marine environments, *Sci. Rep.*, 11, 18 804, <https://doi.org/10.1038/s41598-021-97731-4>, 2021.
- Osborn, T. R.: Estimates of the local rate of vertical diffusion from dissipation measurements, *J. Phys. Oceanogr.*, 10, 83–89, [https://doi.org/10.1175/1520-0485\(1980\)010<0083:EOTLRO>2.0.CO;2](https://doi.org/10.1175/1520-0485(1980)010<0083:EOTLRO>2.0.CO;2), 1980.
- 565 Papakyriakou, T. and Stern, G.: The IPY Circumpolar Flaw Lead and Arctic SOLAS Experiments: Oceanography, Geophysics, and Biogeochemistry of the Amundsen Gulf and Southern Beaufort Sea during a year of unprecedented sea ice minima, *J. Geophys. Res.*, 116-117, 2011-2012.
- Polyakov, I. V., Padman, L., Lenn, Y.-D., Pnyushkov, A., Rember, R., and Ivanov, V. V.: Eastern Arctic Ocean Diapycnal Heat Fluxes through Large Double-Diffusive Steps, *J. Phys. Oceanogr.*, 49, 227–246, <https://doi.org/10.1175/JPO-D-18-0080.1>, 2019.
- 570 Richards, C., Bourgault, D., Galbraith, P. S., Hay, A., and Kelley, D. E.: Measurements of shoaling internal waves and turbulence in an estuary, *J. Geophys. Res.*, 118, 273–286, <https://doi.org/10.1029/2012JC008154>, 2013.
- Saucier, F. J. and Chassé, J.: Tidal circulation and buoyancy effects in the St. Lawrence Estuary, *Atmosphere-Ocean*, 38, 1–52, <https://doi.org/10.1080/07055900.2000.9649658>, 2000.
- Savenkoff, C., Vézina, A. F., Smith, P. C., and Han, G.: Summer transports of nutrients in the Gulf of St. Lawrence estimated by inverse modeling, *Estuarine, Coastal and Shelf Science*, 52, 565–587, <https://doi.org/10.1006/ecss.2001.0774>, 2001.
- 575 Schafstall, J., Dengler, M., Brandt, P., and Bange, H.: Tidal-induced mixing and diapycnal nutrient fluxes in the Mauritanian upwelling region, *J. Geophys. Res.*, 115, C10014, <https://doi.org/10.1029/2009JC005940>, 2010.
- Sharples, J., Tweddle, J. F., Green, J. A. M., Palmer, M. R., Kim, Y.-N., Hickman, A. E., Holligan, P. M., Moore, C. M., Rippeth, T. P., Simpson, J. H., and Krivtsov, V.: Spring-neap modulation of internal tide mixing and vertical nitrate fluxes at a shelf edge in summer, *Limnology and Oceanography*, 52, 1735–1747, <https://doi.org/10.4319/lo.2007.52.5.1735>, 2007.
- 580 Sibert, V., Zakardjian, B., Gosselin, M., Starr, M., Senneville, S., and LeClainche, Y.: 3D bio-physical model of the sympagic and planktonic productions in the Hudson Bay system, *Journal of Marine Systems*, 88, 410–422, <https://doi.org/10.1016/j.jmarsys.2011.03.014>, 2011.
- Sinclair, M., El-Sabh, M., and Brindle, J.-R.: Seaward nutrient transport in the lower St. Lawrence Estuary, *Journal of the Fisheries Research Board of Canada*, 33, 1271–1277, <https://doi.org/10.1139/f76-163>, 1976.
- 585 Smith, C. G., Saucier, F. J., and Straub, D.: Response of the Lower St. Lawrence Estuary to external forcing in winter, *J. Phys. Oceanogr.*, 36, 1485–1501, <https://doi.org/10.1175/JPO2927.1>, 2006a.
- Smith, C. G., Saucier, F. J., and Straub, D.: Formation and circulation of the cold intermediate layer in the Gulf of Saint-Lawrence, *J. Geophys. Res.*, C06011, <https://doi.org/10.1029/2005JC003017>, 2006b.
- Steven, D. M.: International biological program study of the Gulf of St. Lawrence, in: *Proceedings of the 2nd Gulf of St. Lawrence workshop*, edited by Hassan, E. M., pp. 146–159, Bedford Institute of Oceanography, Dartmouth, Nova Scotia, Canada, 1971.
- 590 Steven, D. M.: Primary and secondary production in the Gulf of St. Lawrence, *Tech. Rep. Manuscript report No. 26*, McGill University, Montréal, Québec, 1974.
- Taucher, J. and Oschlies, A.: Can we predict the direction of marine primary production change under global warming?, *Geophys. Res. Lett.*, 38, L02 603, <https://doi.org/10.1029/2010GL045934>, 2011.
- 595 Therriault, J.-C., Petrie, B., Pepin, P., Gagnon, J., Gregory, D., Helbig, J., Herman, A., Lefaiivre, D., Mitchell, M., Pelchat, B., and nd D. Sameoto, J. R.: Proposal for a northwest Atlantic zonal monitoring program, *Can.Tech. Rep. Hydrogr. Ocean Sci.* 194, Fisheries and Oceans Canada, 57 pp, 1998.

- Tremblay, J.-E., Legendre, L., and Therriault, J.-C.: Size-differential Effects of Vertical Stability on the Biomass and Production of Phytoplankton in a Large Estuarine System, *Estuarine Coastal Shelf Sci.*, 45, 415 – 431, <https://doi.org/10.1006/ecss.1996.0223>, 1997.
- 600 Troupin, C., Barth, A., Sirjacobs, D., Ouberdous, M., Brankart, J.-M., Brasseur, P., Rixen, M., Alvera-Azcárate, A., Belounis, M., Capet, A., Lenartz, F., Toussaint, M.-E., and Beckers, J.-M.: Generation of analysis and consistent error fields using the Data Interpolating Variational Analysis (Diva), *Ocean Modell.*, 52-53, 90–101, <https://doi.org/10.1016/j.ocemod.2012.05.002>, 2012.
- Villeneuve, V.: Caractérisation des variations saisonnière et spatiale des éléments nutritifs et de la prise de l'azote dissous dans l'estuaire du fleuve Saint-Laurent, MSc thesis, Université Laval, <https://corpus.ulaval.ca/jspui/bitstream/20.500.11794/66815/1/36437.pdf>, 2020.
- 605 Waterhouse, A. F., MacKinnon, J. A., Nash, J. D., Alford, M. H., Kunze, E., Polzin, H. L. S. K. L., Sun, L. C. S. L. O. M., Pinkel, R., Talley, L. D., Whalen, C. B., Huussen, T. N., Carter, G. S., Fer, I., Waterman, S., Garabato, A. C. N., Sanford, T. B., and Lee, C. M.: Global patterns of diapycnal mixing from measurements of the turbulent dissipation rate, *J. Geophys. Res.*, 44, 1854–1872, <https://doi.org/10.1175/JPO-D-13-0104.1>, 2014.