

Regional Imprints of Changes in the Atlantic Meridional Overturning Circulation in the Eddy-rich Ocean Model VIKING20X

Arne Biastoch^{1,2}, Franziska U. Schwarzkopf¹, Klaus Getzlaff¹, Siren Rühls¹, Torge Martin¹, Markus Scheinert¹, Tobias Schulzki¹, Patricia Handmann¹, Rebecca Hummels¹, and Claus W. Böning^{1,2}

¹GEOMAR Helmholtz Centre for Ocean Research Kiel, Kiel, Germany

²Christian-Albrechts Universität zu Kiel, Kiel, Germany

Correspondence: Arne Biastoch (abiastoch@geomar.de)

Abstract. A hierarchy of global $1/4^\circ$ (ORCA025) and Atlantic Ocean $1/20^\circ$ nested (VIKING20X) ocean/sea-ice models is described. It is shown that the eddy-rich configurations performed in hindcasts of the past 50-60 years under CORE and JRA55-do atmospheric forcings realistically simulate the large-scale horizontal circulation, the distribution of the mesoscale, overflow and convective processes, and the representation of regional current systems in the North and South Atlantic. The representation of the Atlantic Meridional Overturning Circulation (AMOC), and in particular the long-term temporal evolution, strongly depends on numerical choices for the application of freshwater fluxes. The interannual variability of the AMOC instead is highly correlated among the model experiments and also with observations, including the 2010 minimum observed by RAPID at 26.5°N . This points to a dominant role of the wind forcing. The ability of the model to represent regional observations in western boundary current systems at 53°N , 26.5°N and 11°S is explored. The question is investigated of whether WBC systems are able to represent the AMOC, and in particular whether these WBC systems exhibit similar temporal evolution to that of the zonally integrated AMOC. Apart from the basin-scale measurements at 26.5°N , it is shown that in particular the outflow of North Atlantic Deepwater at 53°N is a good indicator of the subpolar AMOC trend during the recent decades, once provided in density coordinates. The good reproduction of observed AMOC and WBC trends in the most reasonable simulations indicate that the eddy-rich VIKING20X is capable in representing realistic forcing-related and ocean-intrinsic trends.

15 1 Introduction

The Atlantic Meridional Overturning Circulation (AMOC) is one of the most iconic quantities in large-scale oceanography and climate sciences (Srokosz et al., 2020; Frajka-Williams et al., 2019). As an integral calculation it summarises individual current systems and local velocities into a basin-scale latitude-depth representation. Owing to the combination of warm northward surface and cold southward deep flows, the AMOC is responsible for a net meridional heat transport from low to high latitudes (Biastoch et al., 2008a; Msadek et al., 2013). It is therefore key for understanding the impact of the ocean on climate and the evolution of climate change. Projections performed within the ‘Climate Model Intercomparison Project’ (CMIP, Eyring

et al., 2016) foremost evaluate the future evolution of the AMOC strength (e.g. Weijer et al., 2020). Despite its importance, the AMOC and its past evolution is most difficult to obtain and to quantify.

Several observational projects monitor the AMOC at specific latitudes. The RAPID array at 26.5°N is the longest and most complete array, that continuously monitors boundary currents and interior geostrophy to combine with Ekman transports to a full AMOC time series since 2004 (Moat et al., 2020). Others concentrate on individual currents where the AMOC manifests in individual surface or deep components, such as the western boundary current (WBC) array in the Labrador Sea at 53°N (Handmann et al., 2018; Zantopp et al., 2017), the Line W off the U.S. coast (Toole et al., 2017), the MOVE array at 16°N (Send et al., 2011) or the TRACOS array at 11°S (Hummels et al., 2015; Herrford et al., 2021). As a basin-wide counterpart to RAPID, the SAMOC array aims to estimate the AMOC at 34.5°S (Garzoli and Matano, 2011; Meinen et al., 2018), but is available only for shorter time periods and less complete because of the vigorous eastern and western boundary currents at this latitude. Owing to the importance of processes in the subpolar-subarctic North Atlantic, in particular for the decadal variations of the AMOC, most recent activities concentrate on a basin-wide array crossing the subpolar North Atlantic from both sides towards the southern tip of Greenland, covered through the international activity ‘Overturning in the Subpolar North Atlantic Program’ (OSNAP, Lozier et al., 2017). This includes the array at 53°N. Common to all observational attempts is the limited spatial and temporal coverage, that allows to focus only on individual components and/or limited time periods of up to a maximum of 24 years.

Numerical models help to expand the limited view from observations and guide the interpretation of the physical causes for the evolution of the AMOC. It has been shown that ocean general circulation models (OGCM) performed under past observed forcing, so-called ‘hindcasts’, simulate a robust and realistic interannual variability because of the direct impact of wind as a driving force (Danabasoglu et al., 2016; Biastoch et al., 2008a). However, in particular the simulated decadal variability differs among individual model realisations because of the importance of deep water formation and spreading, processes that are very sensitive to choices of the numerics, resolution and parameterizations (Hewitt et al., 2020). Two specific aspects can be seen as instrumental for a proper simulation of the spatio-temporal evolution of the AMOC: an adequate ocean-grid resolution and a well-balanced atmospheric forcing.

Owing to the dominance of the mesoscale in the ocean, eddies play an important role, leading to the strong and fast changes of the AMOC seen on monthly and even daily time scales (Frajka-Williams et al., 2019). According to Hallberg (2013), a horizontal grid resolution of at least 1/10°, better 1/20°, is required to resolve the mesoscale in the subtropical and subpolar North Atlantic. An increased resolution of frontal and WBC structures also contributes to the correct simulation of pathways (Bower et al., 2019). As a specific aspect pertinent to simulations of the AMOC, it was also shown that the outflow of the densest component of the North Atlantic Deep Water (NADW) through the Denmark Strait and the Faroe Bank Channel from the Nordic Seas. This also affects the entrainment of ambient water masses in the downslope flow regimes south of the sill, which is strongly dependent on resolution and numerics (Legg et al., 2006).

For about 20 years basin-scale and global configurations exist at 1/10° or higher resolution. While early experiments aimed at realistically simulating WBC dynamics such as the separation of the Gulf Stream and eddy-mean flow interactions (Maltrud et al., 1998; Smith et al., 2000; Eden and Böning, 2002), later studies concentrated on more challenging processes impacting

the AMOC such as the convection and overflow (Treguier et al., 2005; Xu et al., 2010). The success of high-resolution models enabled detailed comparisons with the real ocean and improved the design and interpretation of ocean observations (Handmann et al., 2018; Breckenfelder et al., 2017). Multi-decadal hindcasts can now be routinely performed by a number of groups (Hirschi et al., 2020), also allowing to study the impact of external impacts such as enhanced melting from Greenland's glaciers (Böning et al., 2016).

Besides horizontal resolution, another important ingredient is a realistic atmospheric forcing. In contrast to coupled ocean-atmosphere models, which simulate intrinsic variability of the ocean circulation not necessarily in phase with observations, ocean hindcasts require a full set of atmospheric variables and are thereby linked to observed variability at the surface. The representation of the wind-driven and thermohaline circulation depends on realistic representations of these surface boundary conditions. An additional constraint to the availability of the specific data is a well-balanced set of variables for the heat and freshwater budgets. The atmospheric forcing data specifically created by Large and Yeager (2009) for the 'Coordinated Ocean Reference Experiments' (CORE, Griffies et al., 2009) was such a standard for the past decade. In recent years it was replaced by the new JRA55-do dataset, which is continuously updated to the present and available at higher spatial and temporal resolution (Tsujino et al., 2020). Forcing products for ocean models are limited by the lacking feedback between the ocean and the planetary boundary layer in the atmosphere, e.g. through the inclusion of sea surface temperatures (SST) for the calculations of sensible heat flux and evaporation using Bulk formulae. However, in this formulation the atmospheric temperature needs to be prescribed and it cannot respond to changes in the SST, thereby attenuating an important negative feedback mechanism that in the real, coupled ocean-atmosphere system effectively acts to stabilise the AMOC (Rahmstorf and Willebrand, 1995). In consequence, the AMOC in these models can become more strongly influenced by the positive feedback involved in the meridional freshwater transport, rendering them excessively sensitive to the freshwater forcing, e.g., to changes or errors in the prescribed precipitation and continental runoff (Griffies et al., 2009).

In this study, we describe an OGCM (VIKING20X) aiming at hindcast simulations of Atlantic Ocean circulation variability on monthly to multi-decadal time scales and with a spatial resolution sufficient to capture mesoscale processes well into subarctic latitudes. VIKING20X is an expanded and updated version of the original VIKING20 model configuration (Behrens, 2013; Böning et al., 2016), now covering the Atlantic from the Nordic Seas towards the southern tip of Africa with a $1/20^\circ$ grid, nested into a global ocean/sea-ice model at $1/4^\circ$ resolution. We demonstrate that both the 'eddy-rich' coverage and the new atmospheric forcing provide a configuration that realistically simulates various key aspects of wind-driven and thermohaline ocean dynamics. But we will also show that beyond resolution some numerical choices remain of critical importance, particularly for the evolution of the AMOC on inter-decadal and longer time scales. We will explore the AMOC sensitivity on such parameters aided by a set of experiments differing in choices of the forcing (i.e., based on CORE and JRA55-do), initial conditions, and some aspects of the formulation of the freshwater fluxes. A particular emphasis of the study is on the AMOC variability and trends and its imprint in WBC systems. Using the different evolution of the experiments with respect to the long-term evolution of the AMOC, we ask if the regional observations are able to capture changes in the AMOC.

This manuscript is organised as follows: After a comprehensive description of the model configurations and experiments and their atmospheric forcing (Section 2), we describe the basin-wide horizontal circulation and the AMOC (Section 3). Section 4

examines the regional representations of key components for the AMOC, from north to south. Section 5 discusses the results and summarises the manuscript.

2 Model configurations and atmospheric forcing

95 This study utilises output from the eddy-present global model ORCA025 and the eddy-rich nested configuration VIKING20X, both performed under atmospheric forcings of the past decades, to simulate the Atlantic Ocean circulation. VIKING20X is an updated and expanded version of VIKING20. Originally developed by Behrens (2013) to study the impact of Greenland's melting glaciers on the North Atlantic (Böning et al., 2016), it represents the Atlantic Ocean from 32°N to 85°N at high resolution. VIKING20 has been shown to improve a series of key features in the subtropical-subpolar North Atlantic compared
100 to older and coarser-resolved models: the correct separation of the Gulf Stream and the subsequent path of the North Atlantic Current (Mertens et al., 2014; Breckenfelder et al., 2017; Schubert et al., 2018), the path of the Denmark Strait overflow into and around the subpolar gyre (Behrens et al., 2017; Handmann et al., 2018; Fischer et al., 2015), and the impact of the West Greenland Current eddies on the convection in the Labrador Sea (Böning et al., 2016). The successful representation of the physical circulation enabled the use of VIKING20 also for a series of interdisciplinary applications such as the studies on the
105 impact of ocean currents on the spreading of juvenile eels (Baltazar-Soares et al., 2014), the connectivity of deep-sea mussel populations (Breusing et al., 2016; Gary et al., 2020) and on the distribution of methanotrophic bacteria off Svalbard (Steinle et al., 2015). The ongoing use of VIKING20X for physical and biophysical studies motivates a complete model description and a thorough verification of the large-scale circulation.

VIKING20X has already been used by Rieck et al. (2019) to study mesoscale eddies in the Labrador Sea and their impact
110 on the deepwater formation. They confirmed the ability of VIKING20X to simulate the generation of Irminger Rings (Brandt et al., 2004), convective eddies (Marshall and Schott, 1999) and boundary current eddies (Chanut et al., 2008) and their impacts, e.g., on the stratification of the Labrador Sea. In a model intercomparison study Hirschi et al. (2020) found VIKING20X to be comparable with other eddy-rich models in respect to the representation of the AMOC. Rühls et al. (2021) demonstrated a good representation of the amount and timing for deepwater formed in the Labrador Sea and showed that the model is capable
115 in also simulating deepwater in the Irminger Sea.

2.1 ORCA025 and VIKING20X

The model simulations described and analysed in this study are based on the 'Nucleus for European Modelling of the Ocean' (NEMO, Madec, 2016) code version 3.6, also involving the 'Louvain la Neuve Ice Model' (LIM2, Fichefet and Morales Maqueda, 1997). The primitive equations describing the dynamic-thermodynamic state of the ocean are discretised on a stag-
120 gered Arakawa C-type grid while the two-layer sea-ice model simulating one ice class with a viscous-plastic rheology is solved on a B-type grid. A global configuration (ORCA025) is used as an 'eddy-present' stand-alone configuration as well as host for the eddy-rich configuration VIKING20X where 'Adaptive Grid Refinement In Fortran' (AGRIF, Debreu et al., 2008) allows to regionally increase the resolution by embedding a so-called nest, here covering the Atlantic Ocean.

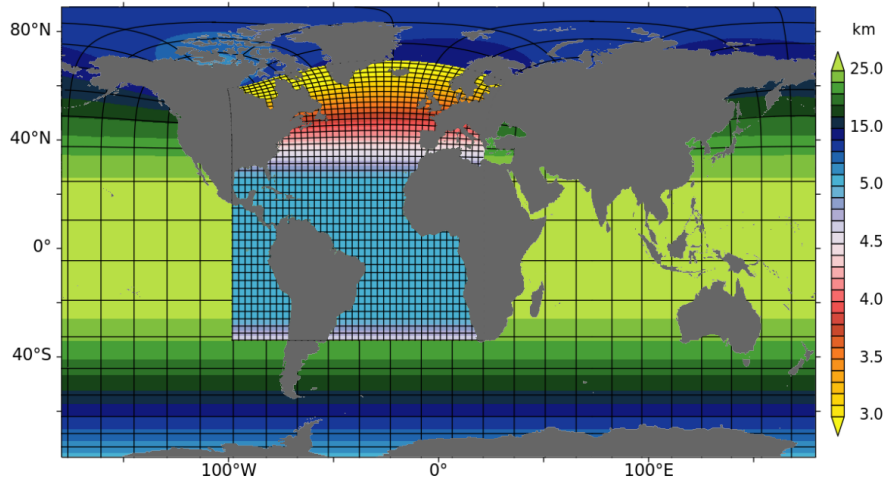


Figure 1. Domain and resolution (in km) of the VIKING20X configuration. The nest area is marked by increased resolution ranging from 5 to 3 km embedded into a global ORCA025 host grid (for both grids every 60th grid line is shown in x and y direction).

The global ORCA025 (Barnier et al., 2006) is described by orthogonal curvilinear, quasi-isotropic, tripolar coordinates yielding at a finer horizontal resolution with higher latitudes at a nominal grid size of $1/4^\circ$. The vertical grid is given by 46 geopotential z-levels with layer thicknesses from 6 m at the surface gradually increasing to ~ 250 m in the deepest layers. Bottom topography is represented by partially filled cells with a minimum layer thickness of 25 m allowing for an improved representation of the bathymetry (Barnier et al., 2006) and to adequately represent flow over the dynamically relevant f/H contours (f being the Coriolis Parameter and H the water depth). Together with a momentum advection scheme in vector form with applied Hollingsworth correction (Hollingsworth et al., 1983), conserving both energy and enstrophy (EEN, Arakawa and Hsu, 1990), this leads to a good representation of the large-scale, horizontal flow field (Barnier et al., 2006). For tracer advection, a 2-step flux corrected transport, total variance dissipation scheme (TVD, Zalesak, 1979) is used, ensuring positive-definite values. Momentum diffusion is given along geopotential surfaces in a bi-Laplacian form with a viscosity of $15 \times 10^{10} \text{ m}^4 \text{ s}^{-1}$. Tracer diffusion is along iso-neutral surfaces in Laplacian form with an eddy diffusivity of $300 \text{ m}^2 \text{ s}^{-1}$. Fast external gravity waves are damped by applying a filtered free surface formulation (Roullet and Madec, 2000) in a linearised form to ensure a volume conservative ocean. Horizontal sidewall boundary conditions are formulated as free-slip, which was demonstrated as an optimal choice in ORCA025 to benefit from the energy-enstrophy conserving momentum advection scheme in combination with partial cells (Penduff et al., 2007). Sensitivity tests during the development of VIKING20X confirmed that free-slip is also the preferred option at higher resolution. In contrast, the generation of West Greenland Current eddies were shown to work best with no-slip conditions (in the nest) which motivated its use in a region around Cape Desolation (Rieck et al., 2019). A quadratic bottom friction term is applied as vertical boundary condition. In the upper ocean, a turbulent kinetic energy (TKE) mixed layer model (Blanke and Delecluse, 1993) diagnoses the depth of the mixed layer and increases vertical mixing for unstable water columns. This includes the representation of deep convection in formation regions of deep and bottom waters.

VIKING20X consists of a global ORCA025 host grid and a nest covering the Atlantic Ocean from 33.5°S to ~65°N (Owing
145 to the tripolar grid, the northernmost latitude varies, with a maximum of 69.3°N and a mean of 65.1°N) at a nominal horizontal
resolution of 1/20°. Both grids are connected through a two-way nesting capability, using AGRIF with a grid refinement factor
of 5 (Fig. 1). Due to its need to cover a rectangle of the host grid, the nest reaches into the Pacific Ocean to 100°W and cuts
through the Mediterranean at ~22°E. (Note that the eastern boundary ranges from 20°E in the south to 32°E in the north.)
Both grids share the same vertical axis. The bottom topography in the nest is generated by interpolating ETOPO1 (Amante and
150 Eakins, 2009) to the model grid and connected to the host via a transition zone along the nest boundaries. Not only bathymetry
but also coast lines are thereby better resolved. To guarantee that all ocean grid cells in the nest are embedded into ‘wet’ cells on
the host grid, the coast lines on the host grid within the nested area are adjusted accordingly; an updated bathymetry is applied
for the host. To meet the Courant-Friedrichs-Lewy (CFL) criterion, the time step for the integration on the nest grid is reduced
by a factor of 3 compared the host grid. The two-way nature of the nesting not only provides boundary conditions from the host
155 to the nest but also communicates back the effect of resolving smaller scale processes in the nested area to the global ocean.
This is achieved by an exchange along the nest boundaries in both directions at every common time step of the host and nest
integration (here, every third nest time step). Furthermore, the solution on the host grid is updated with the three-dimensional
ocean state on the nest grid, usually every third host grid time step (for the freshwater budget corrected experiments, see below,
this is done at every host grid time step).

160 Diffusion parameters are adjusted for the nest grid to meet the increased resolution. The Laplacian parameter for tracers is
 $60 \text{ m}^2 \text{ s}^{-1}$ and the bi-Laplacian parameter for momentum is $6 \times 10^9 \text{ m}^4 \text{ s}^{-1}$. To allow for a smooth transition between the host
and the nest grids, a sponge layer is applied as a second-order Laplacian operator with a damping scale of $600 \text{ m}^2 \text{ s}^{-1}$.

2.2 Atmospheric forcing

For the simulations used here, we employ two different atmospheric forcing sets developed for the use in ocean models, CORE
165 (version 2) (Large and Yeager, 2009; Griffies et al., 2009) and JRA55-do (Tsujino et al., 2020).

The CORE dataset is a merged product on a regular 2° grid covering the period 1948 to 2009. It builds on the NCEP/NCAR
reanalysis which is corrected with observations and climatologies. Provided are zonal and meridional winds as well as air
temperature and humidity 10 m above sea level, available as interannually varying fields at 6-hourly resolution throughout
the entire forcing period. For the earlier phase, precipitation (at monthly resolution) and radiation (at daily resolution) are
170 provided as climatology whereas for the later decades CORE incorporates precipitation (since 1979) and radiation (since
1984) as interannually varying fields from satellite-based measurements. Atmospheric fluxes are globally balanced on the
basis of observed sea surface temperature and salinity data. A set of Bulk formulations also provided by Large and Yeager
(2009) connects the atmospheric forcing fields with the ocean model. The surface wind stress is formulated as relative winds,
by using the difference between wind and ocean velocities for the calculation of the Bulk formulae. CORE was used for a
175 series of ocean model intercomparisons (OMIP) (e.g., Griffies et al., 2009; Danabasoglu et al., 2014) and builds the basis for
the official OMIP under CMIP6 (Griffies et al., 2016). For the simulation forced with the CORE dataset, we employ a monthly

climatological field representing 99 of the major rivers and coastal runoff (Bourdallé-Badie and Treguier, 2006) to simulate freshwater input from land to the ocean.

The CORE dataset is no longer maintained and the forcing period therefore ends with the year 2009. As a successor,
180 JRA55-do (used here is version 1.4) is meant to replace CORE as a common forcing product for ocean hindcasts and for
model inter-comparison studies (Tsujino et al., 2018). JRA55-do (with ‘do’ for ‘driving the ocean’) builds on the Japanese
reanalysis product JRA-55 with improvements through the implementation of satellite and several other reanalyses products.
All atmospheric forcing fields are available on a $1/2^\circ$ horizontal grid at 3-hourly temporal resolution covering the period 1958
to 2019. JRA55-do will be continuously extended into the present at least until 2023 (Hiroyuki Tsujino, pers. comm.). In the
185 simulations presented here, the same Bulk formulations as used in CORE are applied.

Along with the atmospheric fields, JRA55-do also provides an interannually varying daily river runoff field at $1/4^\circ$ horizontal
resolution, which includes freshwater fluxes from ice sheets. For Greenland, this even includes the enhanced observed melting
of the past decades (Bamber et al., 2018). This runoff field needs to be remapped from the JRA55-do to the ocean model
grid. Here, the challenge is in the discrete placement of runoff along the different coastlines. The JRA55-do runoff covers a
190 broader band along the coast while fjords and bays are represented differently on the two ocean model grids. The discontinuous
nature of the runoff field prohibits a simple interpolation scheme. We thus created a remapping tool to reassign runoff to the
model coastline preserving the spatial fine-scale heterogeneity of the forcing field. The runoff of each source grid node is
conservatively redistributed within a radius of 55 km (80 km for VIKING20X-JRA-OMIP and ORCA025-JRA-OMIP, see
next section and Table 1 for experiments) onto ocean nodes on the global (host) grid using a distance-weighted (D^{-3}) scheme
195 to reduce spatial smoothing of the freshwater flux. A few forcing field nodes are located farther than 55 km from the model
coastline, for instance far inside fjords not represented in the model’s topography. We account for this error by proportional
upscaling of the remapped global runoff field at each time instance. The rather exact remapping yields some high-runoff
locations, such as the Amazon river mouth with a long term average discharge of $0.28 \text{ kg m}^{-2} \text{ s}^{-1}$. Runoff in VIKING20X-
JRA-short and in VIKING20X-JRA-long before 1980 was applied including these locally very confined and high values,
200 leading to some rare and only short lived instabilities. To overcome these, we apply a simple river plume scheme, i.e. a
spreading of the runoff within a radius of 100 km, again applying distance-based (D^{-1}) weights to keep the focus on the actual
river mouth for grid cells with at least $0.005 \text{ kg m}^{-2} \text{ s}^{-1}$ runoff, representing the 27 largest rivers in VIKING20X-JRA-long
from 1980 onwards and in all other JRA55-do forced experiments. Compared to the previous runoff field used in conjunction
with the CORE forcing these river plumes are considerably smaller. Runoff in the VIKING20X nest is then based on the runoff
205 field on the host grid and interpolated onto the nest following the same procedure (Lemarié, 2006) as for all other initialisation
fields. Inherent to this procedure is a spatial smoothing over 5×5 grid cells depending on the nesting scheme: runoff in the nest
is supposed to enter the ocean in the same geographic area as it does on the underlying host grid, which has a five times coarser
resolution. Note, the interpolation scheme erroneously assigns runoff to land grid cells, which we corrected by redistributing
the runoff to ocean nodes within the associated 5×5 grid boxes.

210 2.3 Experiments

A series of simulations is used in this study (Table 1). VIKING20X-CORE is an experiment forced by the CORE dataset for the period 1958 to 2009, already used and described by Rieck et al. (2019) and Hirschi et al. (2020). It is based on a spin-up integration under the interannually-varying CORE forcing for the period 1980 to 2009 that originally started at rest from hydrographic conditions as provided by the World Ocean Atlas 1998 (Levitus et al., 1998) with corrections for the polar regions (PHC2.1, Steele et al., 2001). The sea-ice fields for the spin-up are initialised from a pre-spun state of a former simulation in ORCA025 to allow for a smooth start of the spin-up integration avoiding strong shocks to the fresh water budget.

Three hindcasts in VIKING20X are forced by the JRA55-do forcing: VIKING20X-JRA-short is a short hindcast integration, branched off VIKING20X-CORE at the end of 1979 and performed from 1980 to 2019 (also used in Hirschi et al. (2020)). VIKING20X-JRA-long is based on the spinup for VIKING20X-CORE and performed over the whole forcing period 1958 to 2019. VIKING20X-JRA-OMIP instead follows the OMIP-2 protocol (Griffies et al., 2016) and started from rest and an initialisation of temperature and salinities of the World Ocean Atlas 2013 (WOA13, Locarnini et al., 2013; Zweng et al., 2013). It also differs in respect to the sea surface salinity (SSS) restoring and the balance of the freshwater budget (see below). For comparison, the two long-term experiments were accompanied by experiments in ORCA025: ORCA025-JRA and ORCA025-JRA-strong following VIKING20X-JRA-long, and ORCA025-JRA-OMIP following VIKING20X-JRA-OMIP.

To reduce model drifts due to missing feedbacks from the atmosphere, a SSS restoring towards the initial climatological field is applied in most VIKING20X experiments with a piston velocity of 50 m over 4.1 years (12.2 m yr^{-1}). This leads to a restoring timescale of 183 days for the uppermost 6-m grid cell. In sea-ice covered areas as well as where runoff enters the ocean, restoring is not applied. Furthermore, at the river mouths vertical mixing in the upper 10 m of the water column is enhanced. ORCA025-JRA-strong, ORCA025-JRA-OMIP and VIKING20X-JRA-OMIP instead used a stronger piston velocity of 50 m yr^{-1} (timescale of 44 days) and a freshwater budget correction that globally balances the freshwater fluxes to zero at any host timestep. In all experiments under JRA55-do forcing restoring is also not applied in an 80 km wide band around Greenland to allow for a free spread of the enhanced fresh water input to the ocean from melting ice-sheets.

For comparison, in particular to assess potential restrictions due to the location of the southern boundary in VIKING20X, a nested configuration where the refinement from $1/4^\circ$ to $1/20^\circ$ applies to the South Atlantic and western Indian Ocean, is used: INALT20-JRA-long, also performed under JRA55-do forcing similar to VIKING20X-JRA-long. A full description of INALT20 is provided by Schwarzkopf et al. (2019). In contrast to VIKING20X-JRA-long, the SSS restoring in INALT20-JRA-long is stronger (50 m yr^{-1}), and the restoring also applies around Greenland. INALT20-JRA-long is initialized with the ocean state of a spin-up integration in INALT20 under CORE forcing from 1980-2009. The lateral boundary condition in INALT20-JRA-long is no-slip in the nest and free-slip on the host grid without any special treatment at Cape Desolation. Furthermore, INALT20-JRA-long includes the simulation of tides. Owing to the differences in the numerical setting, we limit the comparison to the influence of the Agulhas Current system and the Malvinas confluence region on the mesoscale and interannual variability. Both are represented in VIKING20X only on the coarser host grid but are part of the nested high-resolution region in INALT20.

Table 1. Experiments with forcing and integration period. Also provided are internal names used to identify the specific experiments. For the initialisation, ‘Spinup’ refers to an experiment covering the period 1980 to 2009 under CORE forcing, ‘Rest’ to an initialisation with temperatures and salinities of WOA13 and velocities at rest. VIKING20X-JRA-short was restarted from the end state of year 1979 of VIKING20X-CORE. SSSR is the sea surface salinity restoring timescale in m yr^{-1} , FWB is a potentially used freshwater budget correction. Experiments are grouped according to their initialisation and application of freshwater fluxes.

Short name	Long/internal name	Forcing	Period	Initialisation	SSSR	FWB
VIKING20X-CORE	VIKING20X.L46-KKG36013H	CORE v2	1958-2009	Spinup	12.2	-
VIKING20X-JRA-short	VIKING20X.L46-KKG36107B	JRA v1.4	1980-2019	Year 1979	12.2	-
VIKING20X-JRA-long	VIKING20X.L46-KFS001	JRA v1.4	1958-2019	Spinup	12.2	-
ORCA025-JRA	ORCA025.L46-KFS001-V	JRA v1.4	1958-2019	Spinup	12.2	-
ORCA025-JRA-strong	ORCA025.L46-KFS006	JRA v1.4	1958-2019	Spinup	50.0	×
VIKING20X-JRA-OMIP	VIKING20X.L46-KFS003	JRA v1.4	1958-2019	Rest	50.0	×
ORCA025-JRA-OMIP (2 cycles)	ORCA025.L46-KFS003-V (-2nd)	JRA v1.4	1958-2019	Rest	50.0	×
INALT20-JRA-long	INALT20.L464-KFS10X	JRA v1.4	1958-2019	Spinup	50.0	-

It is important to acknowledge that the integration history of eddy-rich models is often less systematic as one would like to have for a consistent evaluation, often aiming at the ‘best’ experiment under demanding computational costs. The use of accompanying experiments with ORCA025 helps to isolate individual choices, such as the SSS restoring parameter by comparing ORCA025-JRA and ORCA025-JRA-strong. The latest experiment (VIKING20X-JRA-OMIP), also differing in the initialisation, is following Tsujino et al. (2020) and was completed during the writing of this manuscript. ORCA025-JRA-OMIP was already performed over a subsequently following second cycle through the JRA55-do forcing.

3 Basin-wide Circulation

We start the analyses with an evaluation of the basin-scale circulation. In contrast to the horizontal circulation, for which satellite altimetry provides a good estimate, there is no ground-truth for the general structure of the AMOC. Utilising the longest available observational time series by the RAPID Programme for an evaluation of the AMOC strength and evolution, we compare the different evolution of the experiments.

The broad patterns of the mean sea surface height (SSH) are similar in all experiments (Fig. A1), reflecting a robust representation of the upper-layer circulation in the subtropical and subpolar gyres, the equatorial circulation, and the South Atlantic-Indian Ocean supergyre. For the path of the North Atlantic Current and the separation of the subtropical and subpolar gyres, VIKING20X shows a major improvement compared to ORCA025. The impact of resolution becomes even more apparent in the patterns of the SSH variability (Fig. 2). Gauged by the observational account provided by AVISO, the VIKING20X experiments show a much improved solution compared to ORCA025, applying both to the magnitude and to the horizontal patterns

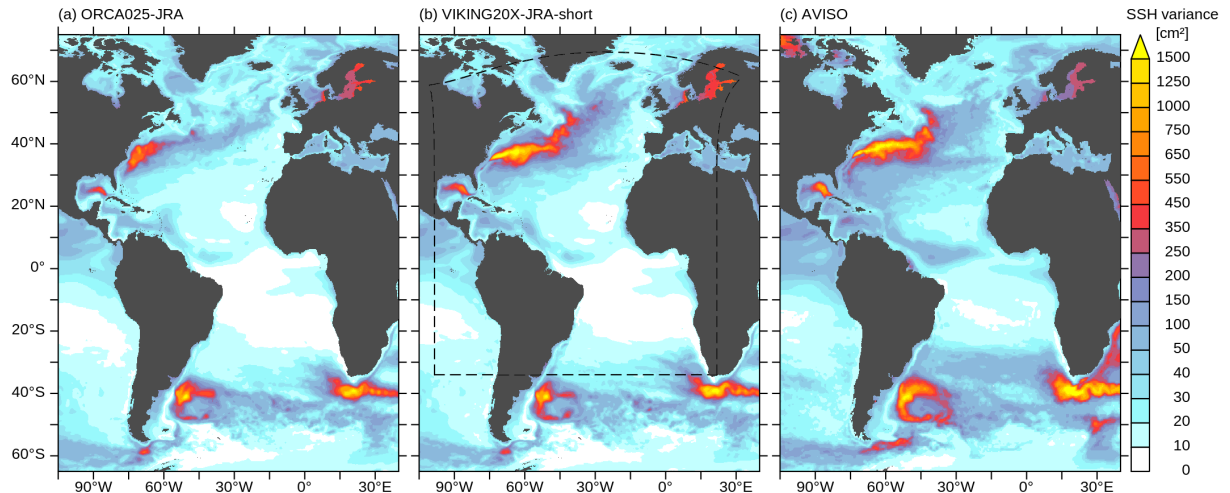


Figure 2. Variance of sea surface height (in cm^2) in (a) ORCA025-JRA, (b) VIKING20X-JRA-short and (c) satellite altimetry, calculated based on 5-day averages over the period 1993-2019.

260 of the mesoscale variability at the western boundary and along open-ocean currents such as the Azores Current around 35°N . Prominent differences particularly concern the more realistic separation of the Gulf Stream near Cape Hatteras and the course of the North Atlantic Current in its northward turn into the Northwest Corner in VIKING20X compared to ORCA025. The latter represents an improvement also to its precursor version (VIKING20) that simulated a Northwest Corner extending too far north into the southern Labrador Sea (Breckenfelder et al., 2017).

265 The horizontal circulation is largely determined by the grid resolution and the wind field. In contrast, the vertical overturning circulation does not only depend on the atmospheric forcing but also on details of its application such as SSS restoring and its impact on the freshwater budget at higher latitudes (Behrens et al., 2013). The AMOC, represented by the streamfunction derived from zonally and vertically integrated meridional velocities (Figure 3), reflects these influences in an integral way. While the general structure, with the North Atlantic Deep Water (NADW) and Antarctic Bottom Water (AABW) cells, is
 270 broadly similar in all experiments, differences are apparent in both the strength and the vertical extensions of the NADW cells. The strength of the NADW cell in ORCA025 is quite different from that in VIKING20X, with 1990-2009 average values at 26.5°N ranging from 10.9 Sv to 20.4 (Table 2). In the observational period (2004-2018), the JRA55-do-based experiments yield lower estimates, while VIKING20X-CORE (note the joint coverage of just 5 years) appears higher compared to observations at 26.5°N . Nevertheless, both VIKING20X-JRA-short and VIKING20X-JRA-OMIP fall well within the range of the observed
 275 interannual standard deviations. There is a clear resolution effect with $\sim 1\text{-}3$ Sv higher transport in the $1/20^\circ$ simulations depending on the exact comparison (VIKING20X-JRA-long vs. ORCA025-JRA or VIKING20X-JRA-OMIP vs. ORCA025-JRA-OMIP) and time period. The NADW cell is also deeper at high resolution, indicating a better representation of the lower component of the NADW constituted by overflow across the Greenland-Scotland Ridge and the corresponding entrainment of

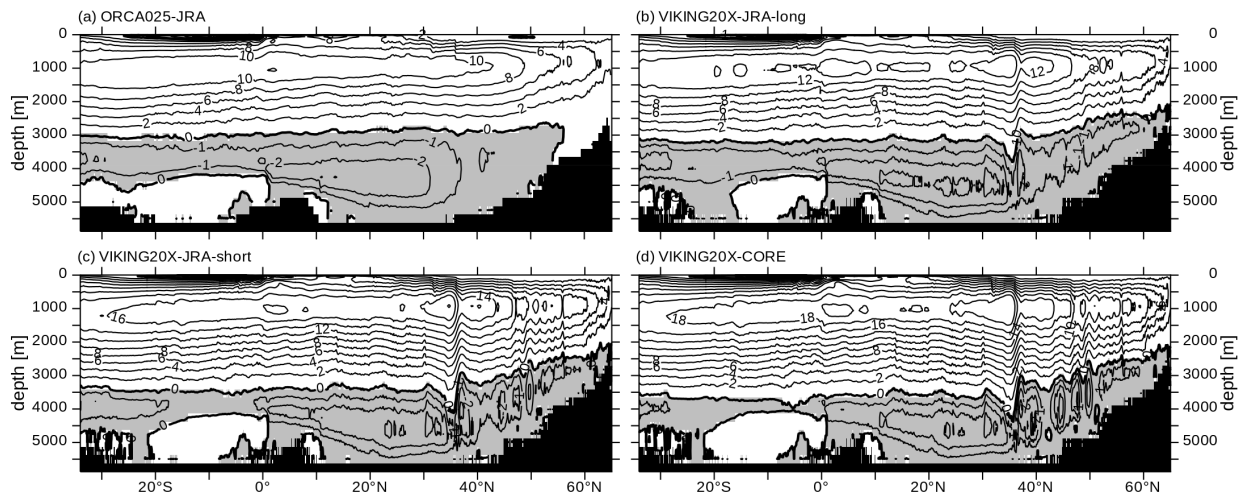


Figure 3. Mean AMOC streamfunction (1990-2009, in Sv) in (a) ORCA025-JRA, (b) VIKING20X-JRA-long, (c) VIKING20X-JRA-short and (d) VIKING20X-CORE. Positive (clock-wise) contour intervals are 2 Sv, negative (counter clock-wise; grey shaded) contour intervals are 1 Sv.

Table 2. Mean and standard deviation based on monthly averaged as well as interannually filtered (using a 23-months Hanning filter) data of the AMOC transport (given by the strength of the NADW cell) at 26.5°N. *Denote a shorter averaging period 2004-2009 due to the limited length of the CORE forcing and RAPID data sets.

Experiment	Mean [Sv]		Std. dev. (2004-2018) [Sv]	
	1990-2009	2004-2018	monthly	interannual
VIKING20X-CORE	20.4	19.3*	2.7*	0.5*
VIKING20X-JRA-short	18.0	15.3	3.0	1.1
VIKING20X-JRA-long	14.2	12.5	3.0	1.0
ORCA025-JRA	10.9	9.2	2.8	1.0
ORCA025-JRA-strong	13.4	12.6	2.7	0.7
VIKING20X-JRA-OMIP	18.3	15.9	2.9	1.1
ORCA025-JRA-OMIP	15.9	14.8	2.7	0.7
ORCA025-JRA-OMIP-2nd	14.2	13.4	2.7	0.8
Observations (RAPID)	18.6*	17.7	3.4	1.5

280 ambient water (discussed in Section 4.1). Finally, there is dependency of the mean AMOC on initial conditions, as illustrated by the different strength of ORCA025-JRA-strong and ORCA025-JRA-OMIP and its subsequent second cycle. Experiments with a longer history tend to simulate a weaker AMOC, pointing to a spin-down effect (see below). This in particular applies

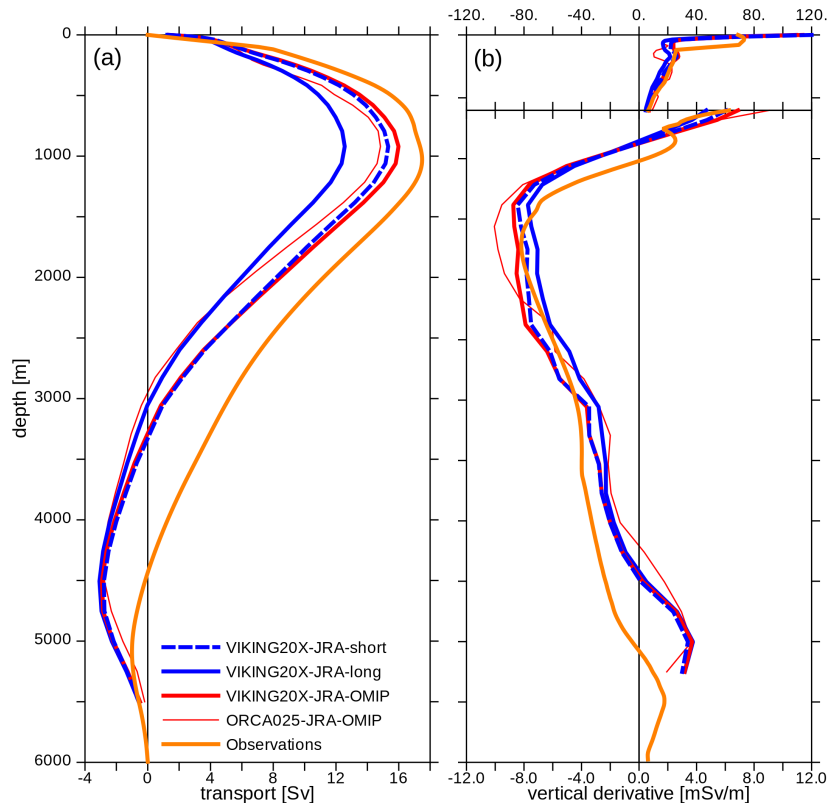


Figure 4. Profiles of the (a) AMOC (in Sv) and (b) its vertical derivative (in mSv m^{-1}) at 26.5°N (note the different ranges above and below 600 m depth) for experiments and RAPID observations (orange), all averaged from 2004 to 2018.

to VIKING20X-JRA-short that starts from a relatively high level of VIKING20X-CORE, thus simulates (over the same time period) a 3-4 Sv higher AMOC compared to VIKING20X-JRA-long under the same numerical conditions.

The RAPID data allow a more detailed evaluation of the depth structure. Figure 4a shows vertical profiles of the AMOC at 26.5°N ; its vertical derivative represents the meridional transport per unit depth, thus providing a direct account of the northward and southward branches of the AMOC (Fig. 4b). Regarding the total strength of the NADW cell, all model results are lower than the observations (see also Table 2). Closer inspection shows that the differences mostly concern the representation of the deepest portion of the southward flow, i.e., the transport of lower NADW below ~ 3200 m, whereas the upper part (1000-3000 m) appears reasonably well represented. The deficit in the range of lower NADW has been recognised as a longstanding, persistent issue in ocean and climate models (Fox-Kemper et al., 2019), and can largely be attributed to a loss of the high-density source waters from the Nordic Seas, e.g., by spurious mixing in the outflows across the Greenland-Scotland ridge system (Legg et al., 2006). The deficit is most pronounced in ORCA025; the representation is improved in VIKING20X, but

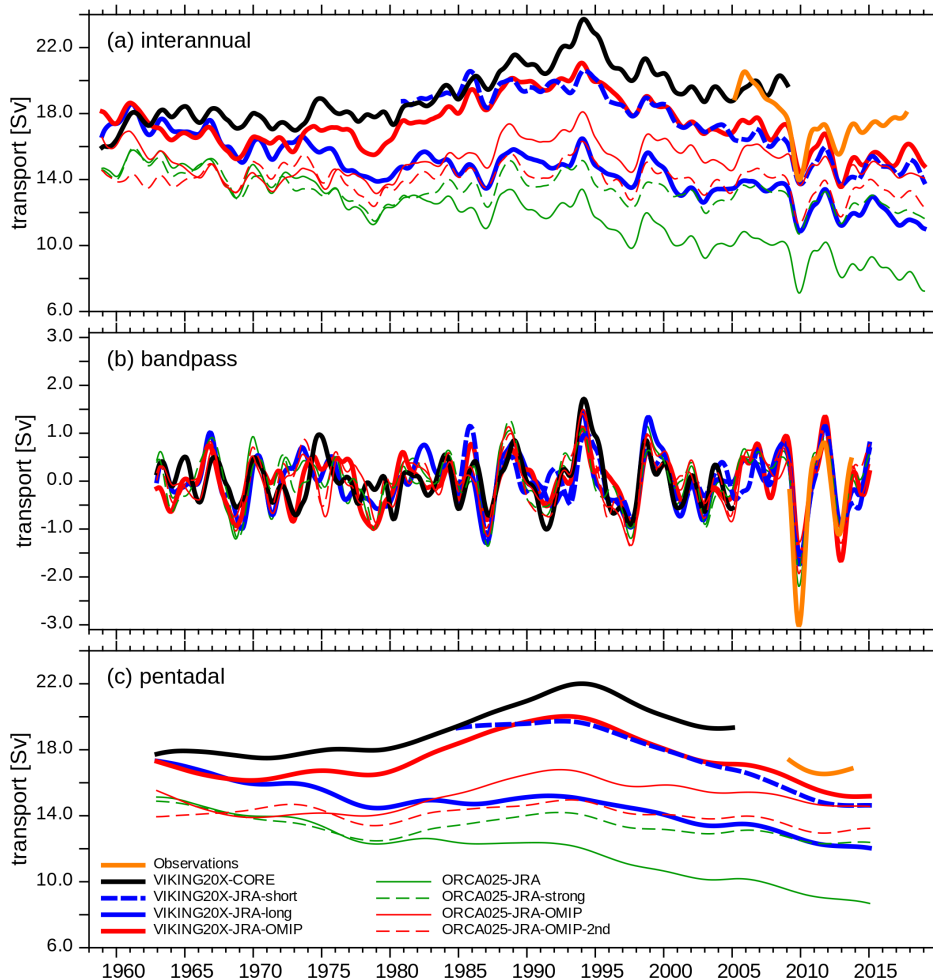


Figure 5. AMOC evolution, provided by the strength of the NADW cell at 26.5°N : (a) full interannual, (b) 1-5-year band-pass and (c) pentadally filtered time series.

there is still a gap by about 500 m in the reversal from southward NADW to northward AABW flow (Figure 4b). It remains unclear if this is a result of a too weak representation of the densest NADW, e.g. through spurious entrainment into the overflow, or by a too strong modelled AABW cell. It could also be influenced by the choice of the reference level used for the RAPID array (Sinha et al., 2018), noting that the representation of AABW is not its major aim.

Figure 5a shows that the AMOC in the various experiments differs not only in mean strength but also exhibits pronounced differences in its temporal evolution over multi-decadal time scales. The CORE-based experiment (VIKING20X-CORE) produces an increasing AMOC with a maximum in the mid-1990s, and a decline and stabilisation thereafter. This maximum

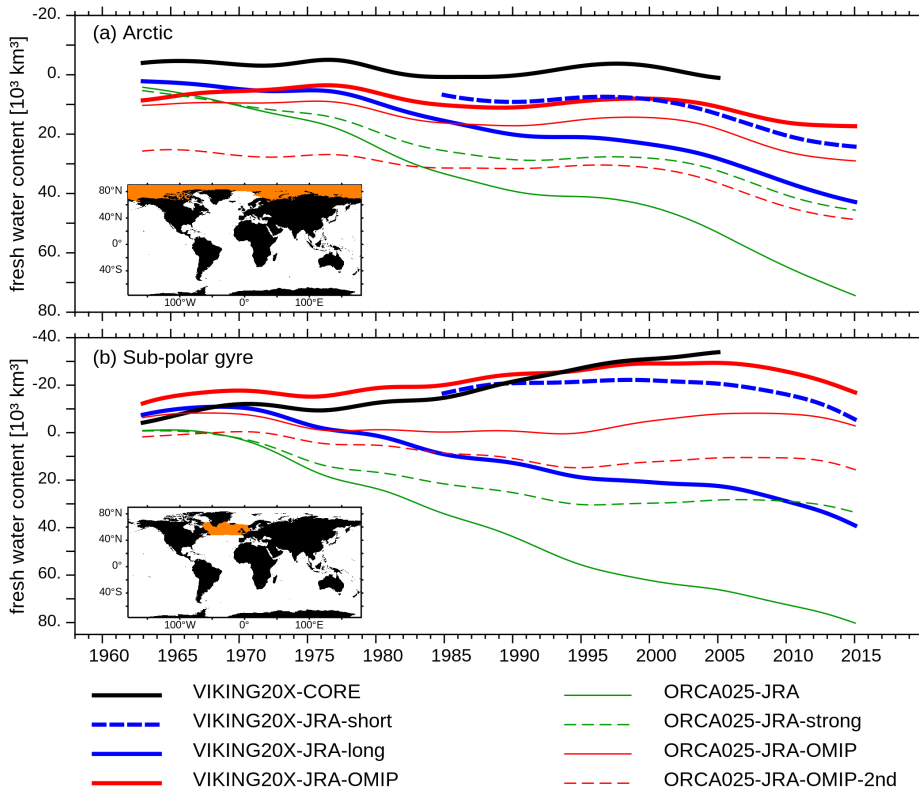


Figure 6. Pentadally filtered (a) Arctic and (b) subpolar Freshwater Content (computed from seawater alone, hence excluding sea-ice and snow volume, using a reference salinity of $S_{ref} = 34.7$, in 10^3 km^3). Note the inverted y-axis. Regions for the integration are shown as inlets.

300 corresponds well to the reported phase of strong convection in the Labrador Sea from observations (e.g. Yashayaev, 2007). While VIKING20X-JRA-long exhibits a long-term decline, VIKING20X-JRA-OMIP also simulates the maximum in the mid-1990s, however in contrast to VIKING20X-CORE continues to decline in the 2000s and beyond. The observational period of RAPID is only fully covered by the JRA55-do-based experiments. If we consider VIKING20X-JRA-OMIP and VIKING20X-JRA-short showing the ‘best’ evolution, we note a weaker AMOC at the beginning of the observational time series, but a good
 305 representation of the 2010 minimum which was described as a wind-related response in a negative NAO winter (e.g., McCarthy et al., 2012). There is a tendency towards a recovery thereafter, though with a stabilisation at a weaker level, compared to the observations, towards the end of the time series.

The interannual AMOC variability is remarkably robust among the range of experiments and compares well to the observations (Figure 5b). The interannual correlations between VIKING20X-JRA-long, ORCA025-JRA and ORCA025-JRA-strong
 310 range around $r = 0.8 - 0.9$ (1980-2009). VIKING20X-JRA-long correlates weaker with VIKING20X-CORE ($r = 0.6 - 0.7$), probably because of the different wind forcing. Within the overlapping period, all experiments show a good correlation with

RAPID observations ($r = 0.73 - 0.86$). This underlines the importance of the wind forcing as a major driver for the interannual variability of the AMOC strength (Danabasoglu et al., 2016). It is interesting to note that the observed monthly variability (indicated by the standard deviation in Table 2) is underestimated by 10-20% with only little resolution dependency. However, the interannual variability of VIKING20X is higher than that of ORCA025, pointing to the importance of mesoscale variability for the interannual timescale. However, VIKING20X still underestimates the observations by more than 30%. We also notice that the high variability of the latter may include errors from measurements and the processing of the different AMOC components from RAPID data.

An important aspect for the long-term evolution of the AMOC is freshwater fluxes provided by the atmospheric forcings and the numerical details of its application. This is demonstrated by also considering the ORCA025 sensitivity experiments: ORCA025-JRA-strong (dashed green lines in Fig. 5a,c) with stronger SSS restoring and applied freshwater budget correction shows a weaker trend in AMOC strength (at least post-1980s) compared to ORCA025-JRA (solid green lines). This is also indicated by VIKING20X-JRA-long and VIKING20X-JRA-OMIP (thick solid blue and red lines in Fig. 5a,c), although an initialisation effect with one experiment starting from a restart, the other from rest, could also play an additional role here.

The long-term evolution, stable and upward in VIKING20X-CORE and downward in the JRA55-do-based experiments (Fig. 5c), can be understood through the inspection of the evolution of the freshwater content (FWC). Arctic FWC over the last couple of decades is stable in VIKING20X-CORE and VIKING20X-JRA-OMIP, and increasing in the other JRA55-do forced experiments (Fig. 6a — note the reversed y-axis to match to Fig. 5c). The trend has its origin in an increased precipitation within the Arctic and sub-Arctic regions, which also causes a slight increase in the river runoff. Values of ~ 820 , 990 and $440 \text{ km}^3 \text{ year}^{-1}$ (VIKING20X-JRA-short, VIKING20X-JRA-long, VIKING20X-JRA-OMIP) fit into the range of observed increase of $600 \pm 300 \text{ km}^3 \text{ year}^{-1}$ between 1992 and 2012 found by Rabe et al. (2014).

In contrast to the Arctic, the subpolar North Atlantic shows a different evolution in the JRA55-do based experiments, depending on the application of the freshwater fluxes, and in consequence less of the forcing data itself (Fig. 6b). This effect is isolated by the two ORCA025 experiments: While ORCA025-JRA shows strong increases in FWC, the experiments with a stronger SSS restoring and freshwater budget correction, ORCA025-JRA-strong and ORCA025-JRA-OMIP, stabilise after 1980. As a result of the inability of Bulk formulae to properly feedback to the (largely prescribed) atmosphere, Griffies et al. (2009) have described a positive feedback between AMOC strength and freshwater forcing, with additional freshwater in the subpolar North Atlantic limiting deepwater formation. The corresponding reduction of the AMOC would cause less salt transported northward, in consequence leading to a further freshening of the subpolar North Atlantic (Behrens et al., 2013). Both VIKING20X-JRA-OMIP and ORCA025-JRA-OMIP seem to minimise the positive feedback between subpolar North Atlantic FWC and AMOC through stronger SSS restoring and a global FWC correction, obviously lowering the FWC trend in the subpolar gyre.

While a clear attribution of the AMOC trends to either physical drivers (i.e., atmospheric forcing and runoff) or spurious model drift is not possible at this stage, we can use the range of solutions with their diverging trends to assess their manifestation in regional current systems, and thereby explore if and how regional observational arrays may be capable of depicting the long-term evolution and variability of the AMOC. An important part of the analysis is the formation and spreading of deepwater

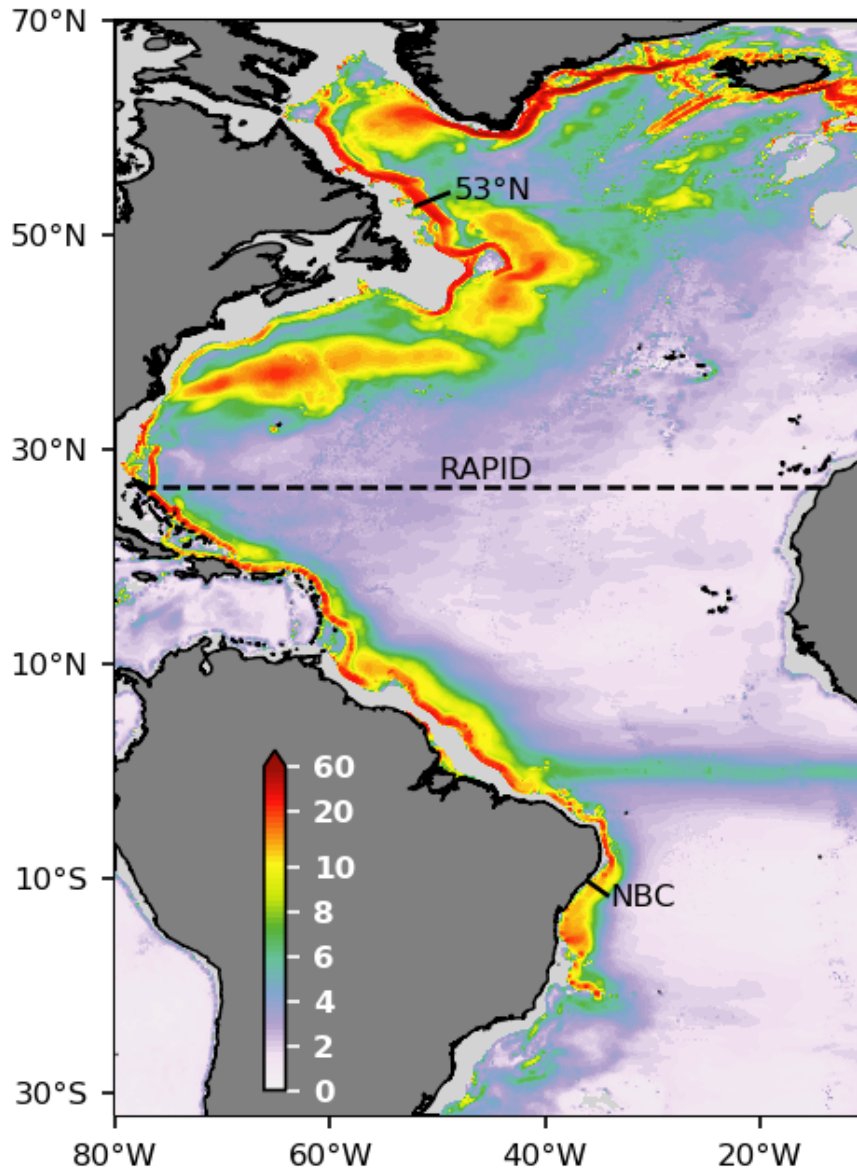


Figure 7. Mean speed (1990-2009, in cm s^{-1}), averaged between $\sigma_0 = 27.65 - 27.95$ in VIKING20X-JRA-short. Regional sections are indicated by black lines.

masses. From a number of observational and modelling studies, Lozier (2010) concluded that NADW only partly follows a coherent Deep Western Boundary Current (DWBC) as explained by classical theory (Stommel, 1958). In several parts of the

Atlantic Ocean deviations into the interior, recirculations and disruptions by deep mesoscale eddies play an important role in
350 the spreading.

Figure 7 illustrates the circulation in NADW layer, indicating the spreading from the Nordic Sea through the Denmark Strait
and through the Faroe Bank Channel, the latter flowing around and crossing through gaps of the Reykjanes Ridge (Zou et al.,
2017). The coherent path around Greenland is broken into mesoscale eddies in the northern Labrador Sea, reaching even down
into this density range (Rieck et al., 2019), and reconfines again at the Canadian side. The export of NADW from the subpolar
355 into the subtropical North Atlantic and further into the South Atlantic is subject to many studies (e.g. Bower et al., 2009).
General consensus, indicated by models and observations is that a large part of NADW is deviated on a broad path towards
the mid-Atlantic ridge (Lozier et al., 2013; Gary et al., 2011; Biló and Johns, 2019; Le Bras et al., 2017), with only a narrow
portion of the DWBC flowing around Flemish Cap and through Flemish Pass. Only at around 30°N, the flow towards the south
is seen again as a coherent DWBC, but also subject to local recirculations (Schulzki et al., 2021). In the South Atlantic, the
360 DWBC again breaks up into mesoscale eddies (Dengler et al., 2004), and then fades out at around 20°S. A zonal band of
slightly elevated speed between 20° S and 25° S indicates the flow of NADW water described by Van Sebille et al. (2012)
which could also be identified in our simulations by Lagrangian experiments (not shown here).

From the evaluation in this section, we conclude that the VIKING20X configuration successfully represents the basin-wide
horizontal circulation. The strength of the overturning circulation is sensitive to the atmospheric forcing and numerical choices.
365 VIKING20X-CORE, VIKING20X-JRA-OMIP and VIKING20X-JRA-short all simulate a realistic AMOC strength (the latter
two JRA55-do-based simulations include more recent years). In the following section we will explore how different AMOC
evolutions are reflected in regional current systems.

4 Regional Imprints of AMOC Changes

4.1 Subpolar North Atlantic

370 The subpolar North Atlantic is a key region for the AMOC (Schott and Brandt, 2007). It receives surface water masses from
the subtropics and overflow water from the Nordic Seas. Here, the different components of the NADW are formed through
exchange with the atmosphere and mixing processes (Marshall and Schott, 1999). They directly maintain the strength of the
AMOC and modulate its variability (Böning et al., 2006).

The densest component of the NADW is formed in the Nordic Seas: through heat loss to the atmosphere and sea-ice for-
375 mation, dense water is formed and, by convection, builds a large reservoir at depth between Greenland, Iceland and Norway
(Dickson and Brown, 1994; Blindheim and Osterhus, 2005). It then spills over the Greenland-Scotland Ridge into the subpolar
North Atlantic. Two narrow passages, the Denmark Strait between Greenland and Iceland with a sill depth of 650 m and the
Faroe Bank Channel between the Faroe Islands and Scotland with a sill depth of 850 m, funnel this exchange. Figure 8 and
Table 3 show density and transport through both passages. With transports of around 3 Sv and little variability through the
380 Denmark Strait, the mean transport in VIKING20X fits to the observational estimates (3.1 Sv by Jochumsen et al. (2017) and
3.5 Sv by Harden et al. (2016)). Transports through the Faroe Bank Channel are around 1.4 Sv, thus smaller than the reported

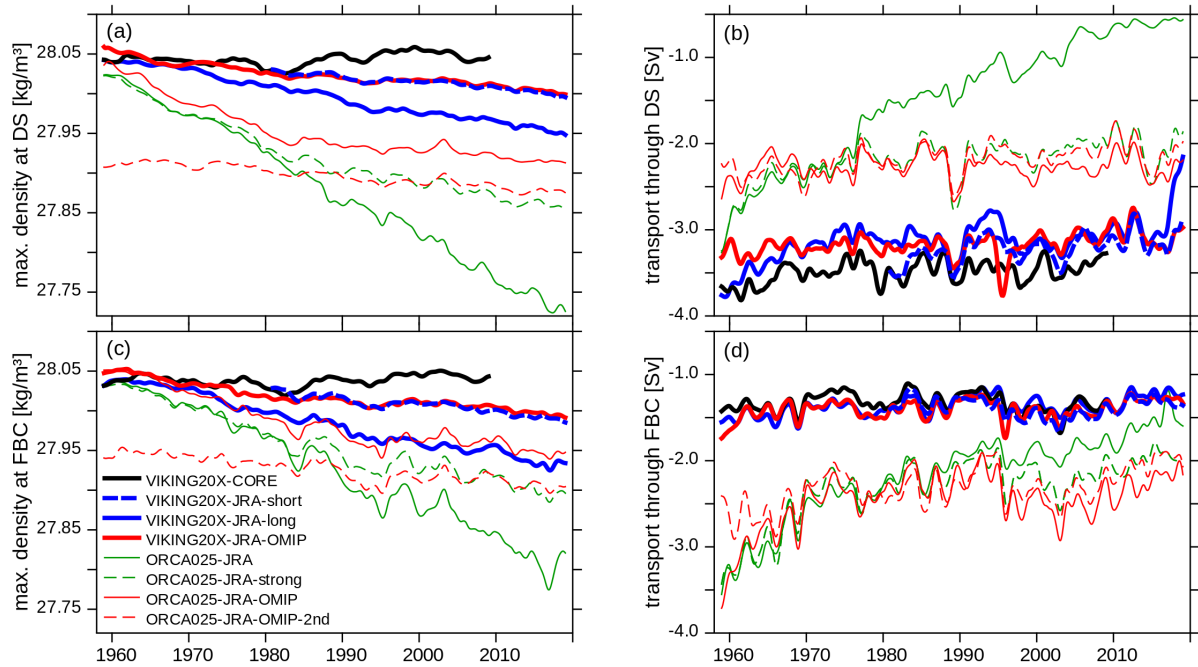


Figure 8. Evolution of maximum overflow density and the overflow transport in the (a and b) Denmark Strait and the (c and d) Faroe-Bank Channel respectively. Overflow transport estimates are based on southward transport of waters with density larger than 27.70 kg m^{-3} below 270 m.

2.2 Sv (Hansen et al., 2016; Østerhus et al., 2019; Rossby et al., 2018) to 2.7 Sv (Berx et al., 2013). ORCA025 instead simulates an enhanced transport which (in parts) can be attributed to the 40% larger cross section at $1/4^\circ$ resolution compared to $1/20^\circ$. The simulated maximum density is typically smaller than the reported $\sigma_0=28.05\text{-}28.07$ (Harden et al., 2016; Hansen et al., 2016), which can also be due to the limited vertical resolution not resolving the bottom boundary layer.

Except for a strong weakening trend in ORCA025-JRA and a spindown in the first decades of ORCA025-JRA-OMIP, transports do not show a long-term trend, and are quite stable. This is probably a result of the continuous supply of dense water north of the sills and hydraulic control limiting the transport to its given value (Käse et al., 2003). More important than the transport itself is the density of the overflow water. Previous studies described a direct link between overflow density and AMOC strength (Behrens et al., 2013; Latif et al., 2006), although the exact reason for this is still unclear and debated. For example, Danabasoglu et al. (2014) do not find such a link in the variety of CORE-based experiments. Here we do see a similar behaviour of both overflow density and AMOC, with stable densities in VIKING20X-CORE and (different) weakening trends in VIKING20X-JRA-long, VIKING20X-JRA-short and VIKING20X-JRA-OMIP. ORCA025-JRA shows a decline in overflow densities, stronger than anticipated from the AMOC trend (Fig. 5). However, similar to the AMOC, ORCA025-JRA-

Table 3. Maximum density and overflow transports provided as mean and monthly standard deviation for the period 1990-2009 at Denmark Strait sill and Faroe Bank Channel. Overflow transports are based on southward transport of waters with density larger than 27.70 kg m^{-3} below 270 m.

	max density σ_0 [kg m^{-3}]		overflow transport [Sv]	
	Denmark Strait	Faroe Bank Channel	Denmark Strait	Faroe Bank Channel
VIKING20X-CORE	28.05	28.04	3.4 ± 0.5	1.4 ± 0.2
VIKING20X-JRA-short	28.01	28.01	3.2 ± 0.5	1.4 ± 0.2
VIKING20X-JRA-long	27.98	27.96	3.1 ± 0.4	1.3 ± 0.2
ORCA025-JRA	27.82	27.88	1.0 ± 0.3	1.9 ± 0.2
ORCA025-JRA-strong	27.89	27.93	2.1 ± 0.5	2.2 ± 0.4
VIKING20X-JRA-OMIP	28.02	28.01	3.2 ± 0.5	1.4 ± 0.3
ORCA025-JRA-OMIP	27.93	27.96	2.3 ± 0.5	2.4 ± 0.6
ORCA025-JRA-OMIP-2nd	27.89	27.91	2.1 ± 0.5	2.3 ± 0.5

395 strong shows a weaker declining trend compared to ORCA025-JRA after 1980. In ORCA025-JRA this is also reflected in the overflow transport. It is interesting to note that the first cycle in ORCA025-JRA-OMIP shows a similar stabilisation in overflow density after about 25 years. The second cycle is subject to a lighter density which is also reflected in a weaker AMOC (Fig. 5). In contrast, VIKING20X-JRA-OMIP does not show such a spin-down in overflow density nor AMOC strength.

In the subpolar North Atlantic, further deepwater is generated and added to the NADW. Owing to strong wintertime heat 400 loss, in particular through strong and cold winds, the Labrador and Irminger Seas are regions of deepwater formation. Deep convection provides a lighter, upper component to the NADW (in contrast to the overflows forming lower NADW).

The distribution of long-term mean annual maximum mixed layer depth (MLD_a , Fig. 9a-c) shows that the spatial patterns of deep convection are influenced by both the ocean model resolution and the atmospheric forcing. In VIKING20X simulations the centre of deep convection in the Labrador Sea, here indicated by the light red line encompassing the area where long-term 405 mean MLD_a exceeds 1000 m, is limited in the north through the impact of travelling Irminger Rings visible through a tongue of elevated EKE (Fig. 9a-b, note that the pattern for VIKING20X-JRA-short and VIKING20X-JRA-OMIP are not shown but are very similar to VIKING20X-CORE) as thoroughly described by Rieck et al. (2019). As Irminger Rings are not properly represented in ORCA025, the centre of deep convection here extends further to the northwest (Fig. 9c). Moreover, in all model simulations, the potential deep convection region, here indicated by the light grey line encompassing the area where long-term 410 maximum MLD_a exceeds 1000 m, extends into the Irminger Sea. However, the area covered by the centre of deep convection as well as by the potential deep convection region vary among the different model simulations, with no clear relation to the model resolution. While there are little differences between VIKING20X-CORE, VIKING20X-JRA-short and VIKING20X-JRA-OMIP (not shown), VIKING20X-JRA-long and ORCA025-JRA feature overall smaller areas and ORCA025-JRA-OMIP (not shown) larger areas than the first three mentioned experiments.

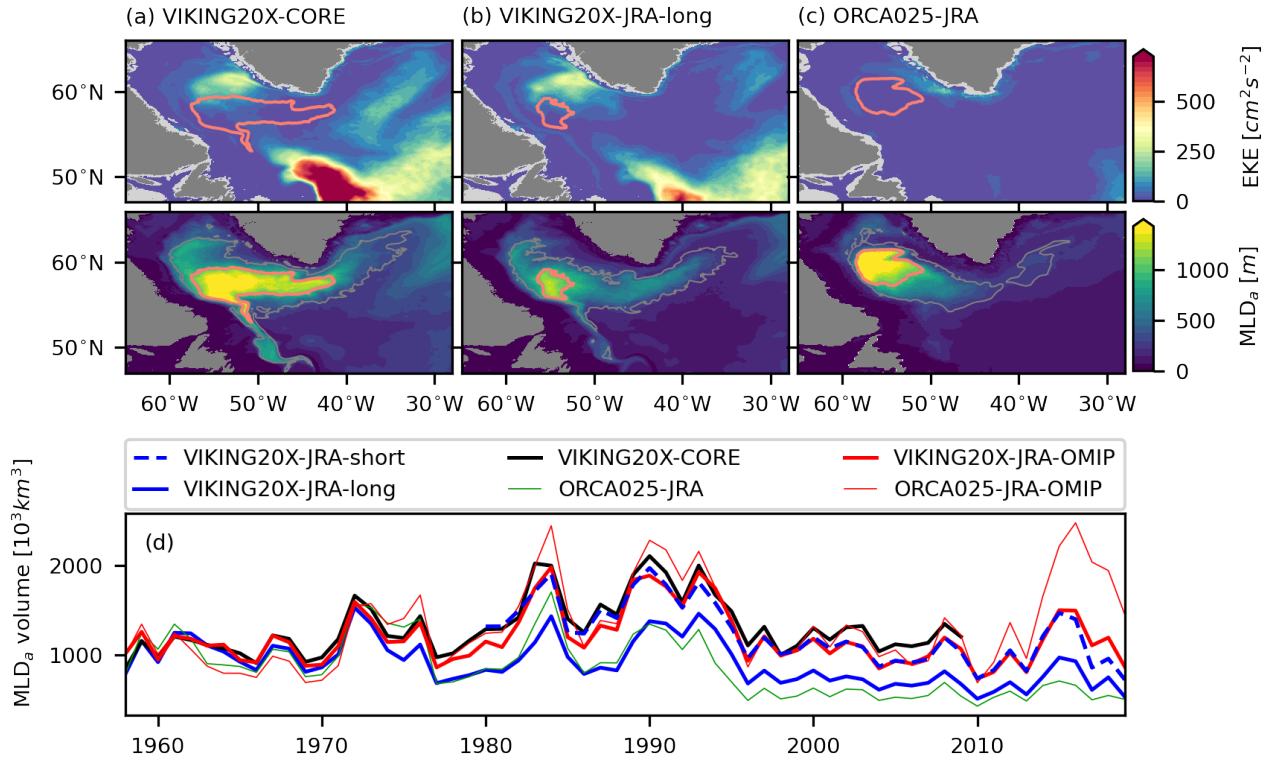


Figure 9. Spatial pattern and temporal variability of MLD (i.e. the depth that exceeds density at 10 m depth by 0.01 kg m^{-3}) in the subpolar North Atlantic: Long-term (1980-2009) mean EKE at 112 m depth and annual maximum MLD (MLD_a) in (a) VIKING20X-CORE, (b) VIKING20X-JRA-long and (c) ORCA025-JRA, light red contours highlight long-term mean $\text{MLD}_a > 1000 \text{ m}$ and grey contours the long-term maximum $\text{MLD}_a > 1000 \text{ m}$; (d) interannual variability of spatially integrated MLD_a , resulting in a volume.

415 While the resolution seems to determine the general spatial structure, the forcing and other model specific settings impact
the intensity and temporal variability of deep convection. During the first 15 years, i.e., until the mid 1970s, the MLD_a volume
in the depicted domain (Fig. 9d) shows nearly the same magnitude and temporal variability for all simulations (notably, the
overall mixed layer volume in the ORCA025 simulations is not systematically larger than in the VIKING20X simulations).
Afterwards, MLD_a volume and variability in VIKING20X-JRA-long and ORCA025-JRA decrease compared to the other
420 simulations. The smaller MLD_a volume is a result of shallower MLD_a over the whole domain, including reduced convection
intensity in the central deep convection areas. A causal relation between MLD_a and AMOC is subject to discussion in the light
of the recent observational findings by Lozier et al. (2019) and a topic not thoroughly addressed here, but one deserving of
further study. Here we note that in VIKING20X-JRA-long and ORCA025-JRA the decrease of MLD_a volume sets in after

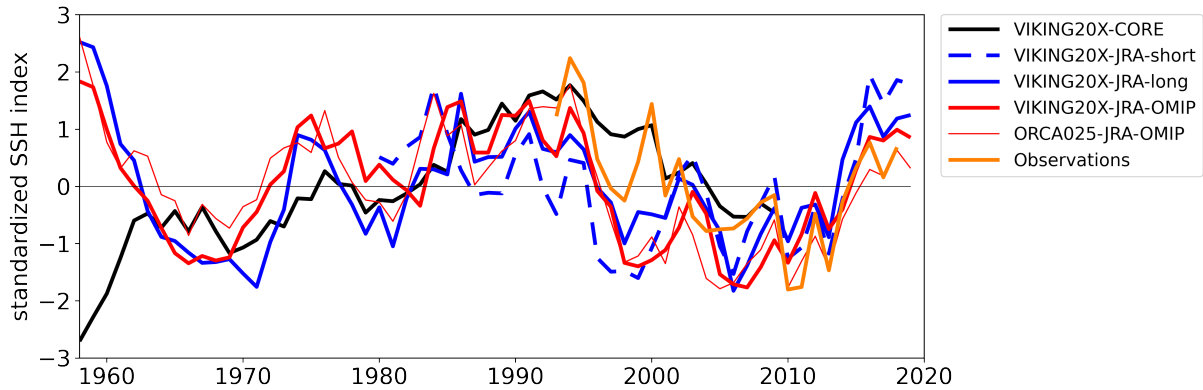


Figure 10. Time series of the annual mean subpolar gyre index in the experiments and based on observations (orange). Here, the index is defined as the second PC of an EOF-analysis for non-detrended SSH in the North Atlantic between 20 and 70°N.

Table 4. Correlations of the annual mean gyre index with observations for the period 1993-2009. Correlations are significant at 99%, except the one for VIKING20X-JRA-short (80%).

Experiment	Correlation
VIKING20X-CORE	0.85
VIKING20X-JRA-short	0.34
VIKING20X-JRA-long	0.76
VIKING20X-JRA-OMIP	0.71
ORCA025-JRA-OMIP	0.86

the simulated AMOC decline described above. At least parts of the diagnosed negative MLD_a volume trends in VIKING20X-
425 JRA-long and ORCA025-JRA can be attributed to spurious model drifts..

In comparison to observations the MLD_a patterns in the VIKING20X simulations (including the occasionally large MLDs
in the Irminger Sea) seem more realistic than that of other model simulations at lower or comparable resolution. Moreover, the
temporal evolution of the mixed layer volume in VIKING20X-CORE, VIKING20X-JRA-short, and VIKING20X-JRA-OMIP
agrees very well with the reported history of deep convection in the subpolar North Atlantic (while VIKING20X-JRA-long
430 and ORCA025-JRA seem to miss a clear maximum of mixed layer volume and deep convection intensity in the 1990s, and
ORCA025-JRA-OMIP experiences a too strong intensification of deep convection in recent years). A more detailed evaluation
and interpretation is done elsewhere (Rühs et al., 2021).

The circulation in the subpolar North Atlantic can be characterised by an index based on sea surface height. Following Koul
et al. (2020), the subpolar gyre index is defined as 2nd principle component of EOF analysis with non-detrended data. It is
435 highly correlated with steric changes in the gyre, e.g., upper ocean density in the centre of the gyre, which are largely connected
to changes in the NAO index, and impact the upper ocean salinity in the eastern subpolar North Atlantic. A density increase in

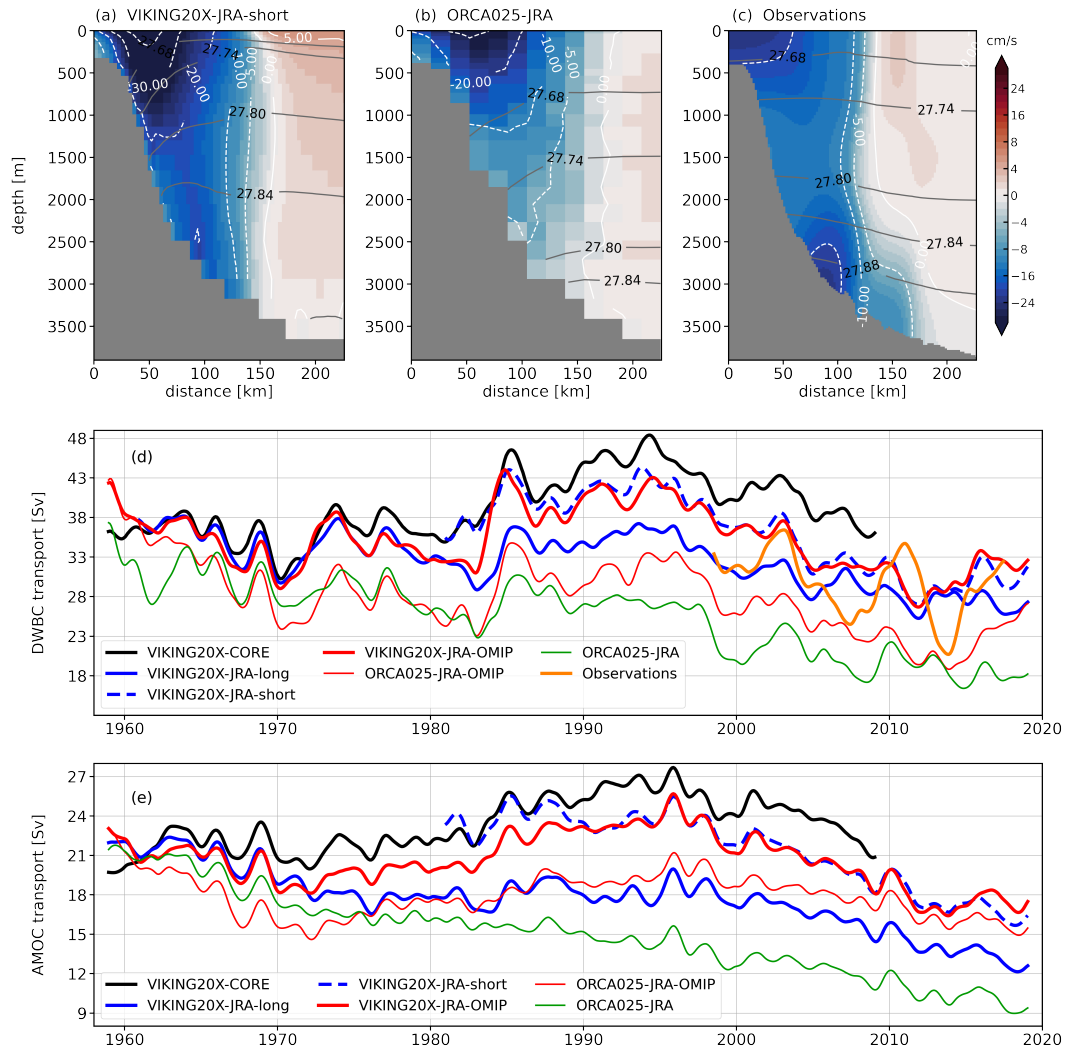


Figure 11. Mean sections (upper panel) of velocity and σ_0 isolines (1997-2009) at 53°N in (a) VIKING20X-JRA-short, (b) ORCA025-JRA and (c) observations (non-linear colour map is used with intervals given of 1 Sv between -8 and 8 Sv, and 2 Sv beyond that range). Time series of (d) the DWBC export across 53°N characterised by the NADW defined by σ_2 criteria (Table 5), following the analysis of Handmann et al. (2018) and (e) the AMOC transport in σ_2 density coordinates at 53°N .

the centre intensifies the gyre through geostrophic balance (both, stronger and larger gyre, index > 0), reduces the throughput of subtropical waters, and hence leads to a freshening of the eastern subpolar North Atlantic.

Figure 10 shows that the annual mean subpolar gyre index of most experiments is correlated with observations (Table 4). The experiments seem also robust on longer, decadal timescales, with a strong subpolar gyre in the 1990s, a weakening thereafter and a recovery in the mid 2010s. Both maxima are reflected in the convection strength (the second one at least in VIKING20X-JRA-short, VIKING20X-JRA-OMIP, and ORCA025-JRA-OMIP see Fig. 9).

Table 5. DWBC export (mean and std.dev.) across 53°N for different periods, characterised by the NADW defined by σ_2 criteria (ORCA025-JRA > 36.52, ORCA025-JRA-strong > 36.63, VIKING20X-JRA-long > 36.59, VIKING20X-JRA-short > 36.68, VIKING20X-CORE > 36.72, ORCA025-JRA-OMIP > 36.73 and VIKING20X-JRA-OMIP > 36.69), and 20-year trends.

Experiment	Transport (1998-2009)	Transport (2000-2017)	Trend (1998-2017)
VIKING20X-CORE	39.7 ± 5.7 Sv	39.6 ± 5.1 Sv*	-0.48 Sv/yr*
VIKING20X-JRA-short	34.6 ± 4.7 Sv	32.0 ± 4.9 Sv	-0.50 Sv/yr
VIKING20X-JRA-long	30.4 ± 4.0 Sv	28.9 ± 3.9 Sv	-0.30 Sv/yr
ORCA025-JRA	20.8 ± 4.0 Sv	19.9 ± 3.9 Sv	-0.23 Sv/yr
ORCA025-JRA-strong	23.9 ± 4.1 Sv	22.5 ± 4.1 Sv	-0.31 Sv/yr
VIKING20X-JRA-OMIP	34.2 ± 4.5 Sv	32.2 ± 4.6 Sv	-0.38 Sv/yr
ORCA025-JRA-OMIP	25.5 ± 4.3 Sv	23.6 ± 4.4 Sv	-0.36 Sv/yr
Observations	30.6 ± 3.8 Sv	29.6 ± 4.4 Sv	-0.27 Sv/yr

*(2000-2009)

*(1998-2009)

One important key location picking up the different constituents and timescales of subpolar gyre variability and deepwater formation is the observational array off Labrador at 53°N (Zantopp et al., 2017). The DWBC at this location is seen as an index for the subpolar AMOC and for the overall AMOC on decadal and longer timescales due to the increasing meridional coherence (Böning et al., 2006; Bingham et al., 2007; Wunsch and Heimbach, 2013; Buckley and Marshall, 2016, see also discussion). Since 1997 this mooring array has recorded all three constituents of the NADW exiting the Labrador Sea via the DWBC (Zantopp et al., 2017; Fischer et al., 2004). The observations revealed a 100-150 km wide well-defined cyclonic (southward) boundary current, featuring a strong barotropic component with significant baroclinic flow in the shallow velocity maximum of the Labrador Current and the deep velocity maximum (typically 0.25 m s^{-1} , reaching up to 0.4 m s^{-1}) associated with the lower NADW, and an anticyclonic recirculation in the interior Labrador Sea (Fischer et al., 2004; Lavender et al., 2000). Figure 11a-c show that the general structure of the narrow boundary current system is visible especially in VIKING20X. Similarly to experiments with the predecessor VIKING20, they produce a stronger surface maximum, a weaker deep velocity maximum and a stronger recirculation than in observations (Handmann et al., 2018). In the ORCA025 experiments the boundary current appears too wide with a split surface maximum and no deep boundary current core, the latter pointing to a too strong erosion of lower NADW on its way around the Irminger and Labrador Seas. Both, the ORCA025-JRA and the VIKING20X-JRA-short are more barotropic than found in observations. Though, one finds a clear improvement of the representation of the spatial scales and location of the DWBC at 53°N in the VIKING20X-JRA-short. The density structures (grey lines in Fig. 11a-c) reveal a discrepancy between the models and observations. VIKING20X compares better to the observations than ORCA025, which is the effect of a combination of a denser overflow (Table 3) and a better representation of the downslope flow and its associated entrainment of ambient water masses. For the comparison of NADW transports at 53°N the water mass boundary between the upper AMOC component and the NADW was adjusted for each individual model using the mean density of the

AMOC maximum at the OSNAP section over the full model integration (Handmann et al., 2018). Owing to the improved representation of lower NADW, the VIKING20X experiments simulate NADW transports that fall into the observed standard deviation (Table 5). In respect to the longer-term temporal variability (Fig. 11d), it is apparent that the observations feature stronger multi-annual variability than the model experiments. There is no significant correlation between the simulations and the observed transports on interannual timescales (here not shown). However, both observations and model experiments show a significant downward trend that is usually stronger in most of the simulations (Table 5). The general temporal evolution, though subject to much less variability on multi-annual timescales, reflects that of the AMOC (Fig. 11e). It is important to note that the AMOC in depth coordinates is of little use in the subpolar North Atlantic. In contrast to the lower latitudes, the ‘overturning’ is not given by an upper/warm and deeper/cold contrast but rather a strong east-west gradient responsible for the transport across density surfaces (Danabasoglu et al., 2014; Biastoch et al., 2008a)

4.2 Subtropical North Atlantic

Current structures associated with the export of deep water masses from the subpolar into the subtropical North Atlantic follow interior pathways and only a specific narrow DWBC (Fig. 7). This is in particular visible around Flemish Cap and through Flemish Pass (Fig. 12). While completely absent in ORCA025, VIKING20X shows a continuous path around Flemish Cap, followed by a narrow and weak current along the American shelf. Solodoch et al. (2020) noticed the strong fluctuations in the DWBC at Flemish Cap due to steep bathymetric variations. This is not necessarily an eddying signal but could also be caused by topographic Rossby waves related to Gulf Stream rings and meanders (Peña-Molino et al., 2012). Details of the deep pathways seem to be connected to the overlying flowing Gulf Stream, so that its correct separation at Cape Hatteras and path into the Northwest Corner might play an important role. Horizontal resolution is also of relevance here: Chassignet and Xu (2017) noticed a much more realistic separation and path of the Gulf Stream if simulated at $1/25^\circ$ compared to $1/12^\circ$. However, they also noted that $1/50^\circ$ is required to fully represent the Gulf Stream penetration and the associated recirculation gyres at depth. Nevertheless, Figure 12 shows that the separation of the Gulf Stream and the swing into a Northwest Corner is already well reproduced in VIKING20X as indicated by the sea surface temperature (SST) distribution. In contrast, ORCA025-JRA features the too zonal path of the North Atlantic Current common for lower resolution models. This is a typical behaviour even at $1/12^\circ$ resolution as demonstrated by Chassignet and Xu (2017).

In the subtropical North Atlantic, the southward flow of NADW is again concentrated along the western boundary (Fig. 7). It aligns with the northward flowing surface branch of the Antilles Current (Fig. 13), which is complemented by the flow through the Florida Strait. The characteristics of the AMOC introduced in the subpolar and subarctic regions, but also details of the bathymetry south of it, have an imprint in the current structure at the western boundary. In ORCA025 the flow of NADW clearly lacks the denser part of the NADW because of the inability to maintain the overflow at this resolution, while in VIKING20X the DWBC reaches much deeper. This is also reflected in the integral measures of the AMOC (Figs. 3 and 4). The surface branch instead depends on the representation of the Bahamas Islands and the Bahamas Bank. In VIKING20X the Antilles Current is variable, eddies are crossing the section at 26.5°N northwestward, providing a prolonged maximum of eddy kinetic

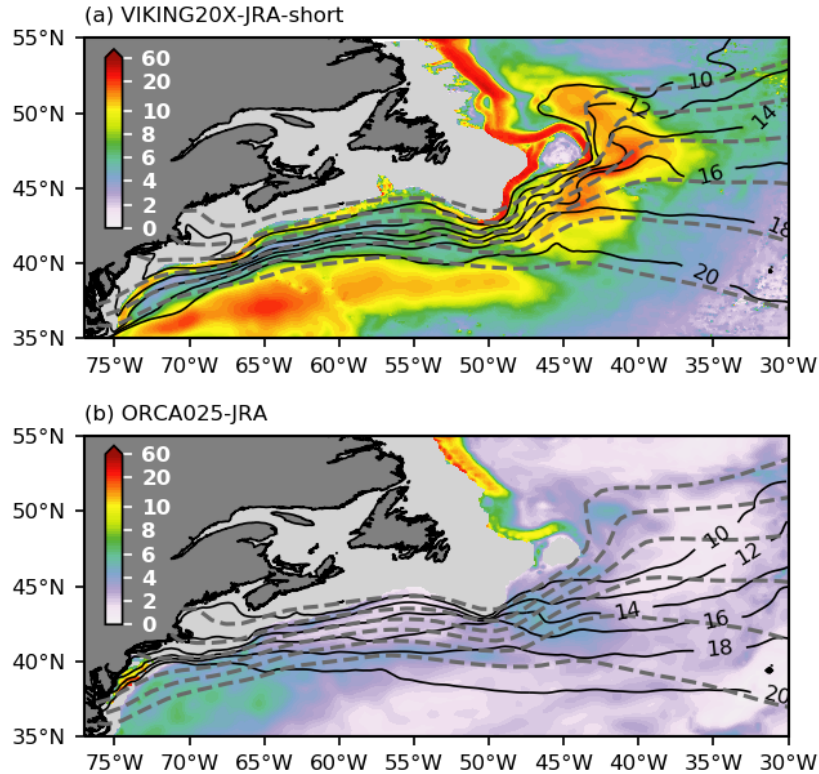


Figure 12. Path of the DWBC (speed on density range, see Fig. 7) and SST in degrees Celsius (solid contours) for (a) VIKING20X-JRA-short and (b) ORCA025-JRA. SST from the HadiSST dataset (Rayner et al., 2003) is shown by dashed contours.

energy (EKE) (Fig. 13a). ORCA025 has a much weaker and stable surface transport, with even southward transport directly at the surface.

An important component of the RAPID observational array (and motivation for the choice of its particular latitude) is the long-term measurements of the transport through the Florida Strait obtained from voltage differences with telephone cables (e.g., Meinen et al., 2010) as shown in Figure 14. Table 6 demonstrates that Florida Current transports agrees well with the observations within 1-2.6 Sv for VIKING20X-CORE, VIKING20X-JRA-short and VIKING20X-JRA-OMIP. The transport is weaker in VIKING20X-JRA-long, which could correspond to the lower AMOC. Since wind forcing is similar in VIKING20X-JRA-short and VIKING20X-JRA-long, this difference can be attributed to the thermohaline part of the Florida Current. Variability of the Florida Current transport in all model simulations is underrepresented at monthly timescales, but comparable to

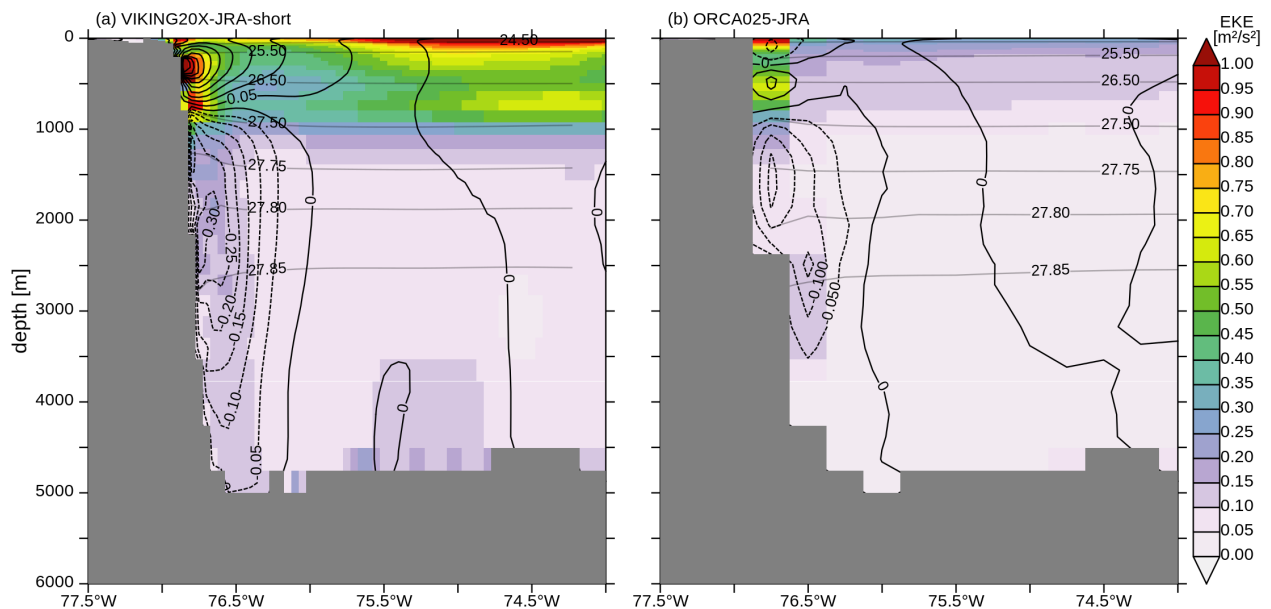


Figure 13. Mean (1990-2009) EKE in $\text{m}^2 \text{s}^{-2}$ (shaded) and meridional velocity (black contours) section at 26.5°N for (a) VIKING20X-JRA-short and (b) ORCA025-JRA with σ_0 isolines (grey).

Table 6. Mean and standard deviation based on monthly averaged as well as interannually filtered data of the transport through Florida Strait for the period 1990-2009. In this period, data coverage from cable measurements is 82%.

Experiment	Mean 1990-2009	Std.dev (mon)	Std.dev (ia)
VIKING20X-CORE	32.1	1.94	0.98
VIKING20X-JRA-short	29.5	1.95	1.17
VIKING20X-JRA-long	27.0	1.55	0.67
ORCA025-JRA	28.9	2.03	1.12
ORCA025-JRA-strong	31.0	1.79	0.73
VIKING20X-JRA-OMIP	29.7	1.91	1.27
ORCA025-JRA-OMIP	32.6	1.92	0.75
ORCA025-JRA-OMIP-2nd	31.4	1.93	0.92
Observations	31.9	2.52	0.95

505 observations at interannual timescales. In contrast to the pure metric (Table 6), we find a wide range of temporal variability. Some of the JRA55-do experiments are correlated on interannual timescales, but none of the experiments is correlated with the observations (Fig. 14). Also, some experiments (e.g. VIKING20X-CORE and VIKING20X-JRA-OMIP) showed a correlation

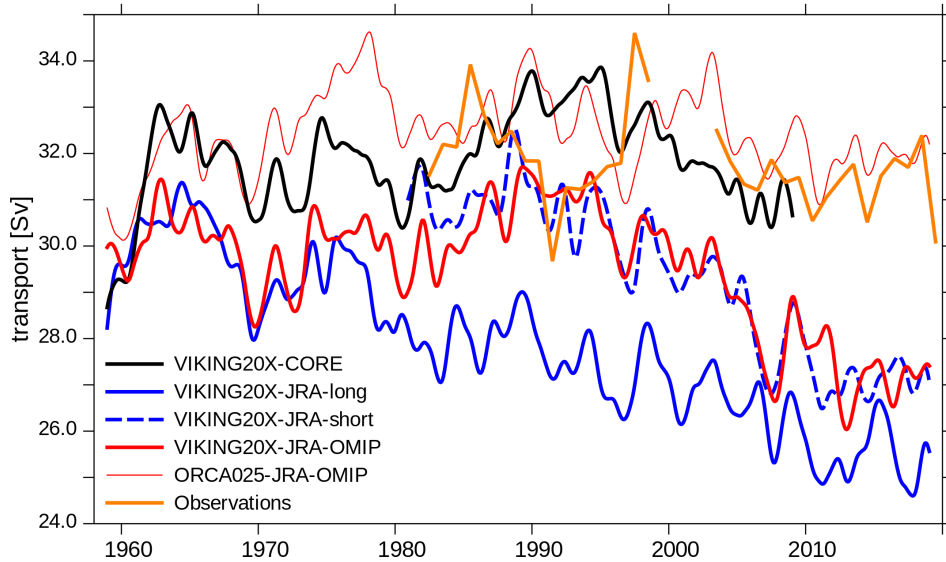


Figure 14. Time series of the transport through Florida Strait from experiments (interannually filtered) and from cable measurements (orange) given as yearly averages for years with data coverage $> 70\%$.

of ~ 0.75 between the Florida Current and the AMOC, while others (in particular VIKING20X-JRA-long, but also the experiments in ORCA025) did not. This demonstrates that the Florida Current is not just a WBC closure in form of net (wind-related) Sverdrup changes from the interior but is rather regionally influenced from the flow through the Caribbean Sea and through regional atmospheric forcing (Lee and Williams, 1988; DiNezio et al., 2009; Hirschi et al., 2019).

Surprisingly, all VIKING20X experiments (including VIKING20X-CORE) show a declining trend that starts in the 1990s which is not reflected in the latter part of the observations. The VIKING20X experiments forced by JRA55-do simulated a decline of the Florida Current of ~ 0.1 Sv per year over the RAPID period 2004-2018, which is about 27-43% of the AMOC in the same period (here not shown).

4.3 Tropical Atlantic

From the subtropical North Atlantic towards the tropics, the NADW transport is concentrated along the western boundary (Fig. 7). Between 10°N and 10°S , offshore recirculation patterns appear more prominently than at other latitudes which is indicated by broader WBC patterns. Figure 15 (similar to Fig. 7 but here as a snapshot) indicates a connection with North Brazil Current rings (Kirchner et al., 2009) that are spun off from the reflection of the North Brazil Undercurrent (NBUC) and drift northwestward, as suggested by eddy kinetic energy (EKE) much better represented in VIKING20X-JRA-short than ORCA025-JRA. Schulzki et al. (2021) describe that recirculation pattern and instabilities in the DWBC can be related to incoming Rossby waves and mesoscale eddies. Further south, at around $6\text{-}8^\circ\text{S}$, the DWBC splits into eddies transporting the

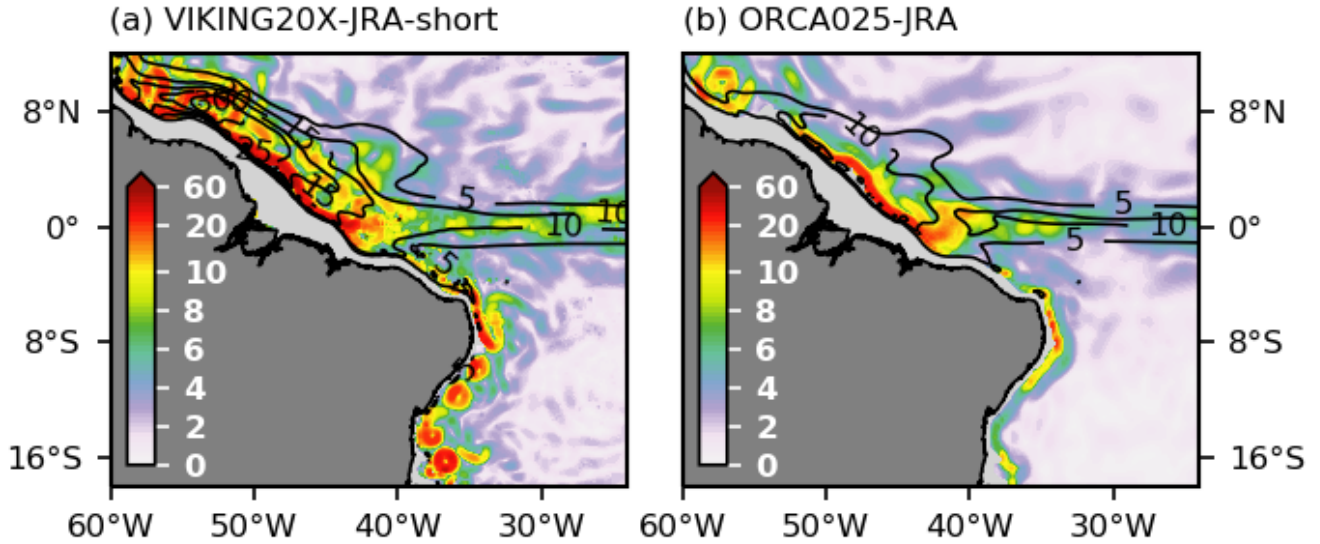


Figure 15. Snapshot of the path of the DWBC speed (5-day mean at date 22-02-1990, density range as in Fig. 7) and upper-ocean EKE (contours, in J m^{-3} , mean between 1990-2009 for the upper 1000 m) for (a) VIKING20X-JRA-short and (b) ORCA025-JRA.

deep water in their cores to the south, consistent with observations (Dengler et al., 2004). Due to the coherent pathways, the
 525 time-mean field (Fig. 7) shows a continuous path, but also displays the enhanced values of the offshore recirculations described
 above. The eddy pathway merges again as a DWBC, then fades out at the Vitória-Trindade Seamount Chain at around 20°S .

Measurements and long-term monitoring of the WBC system off Brazil have been motivated by the concentration of the
 the northward upper-ocean flow in the NBUC (Hummels et al., 2015). They are part of the ‘Tropical Atlantic Circulation and
 Overturning at 11°S ’ (TRACOS) array (Herrford et al., 2021), which consists of bottom pressure observations at 300 m and
 530 500 m depth since 2013 on both sides of the basin in order to obtain an AMOC estimate, the mentioned long-term western
 boundary array (since 2000, but with a gap between 2004 and 2013) and current observations at the eastern boundary off
 Angola since 2013. Rühls et al. (2015) show that the NBUC transport can be used as an indicator for the upper branch of
 the AMOC if the horizontal wind-driven circulation is also accounted for. In addition to the northward return flow associated
 with the AMOC, the NBUC also carries most of the equatorward flow related to the South Atlantic Subtropical Cell (Schott
 535 et al., 2004). Figure 16 shows that the general structure of the WBC system is visible in all experiments. The NBUC with its
 subsurface maximum and the DWBC below already exist in ORCA025-JRA. The eddy-rich configurations better represent
 the elongated subsurface core of the NBUC and the wider, eddying (cf. Fig. 15a) DWBC, merging with a recirculation pattern
 offshore of the (deeper part of the) NBUC. The representation of the water masses (here indicated by the density lines) appears

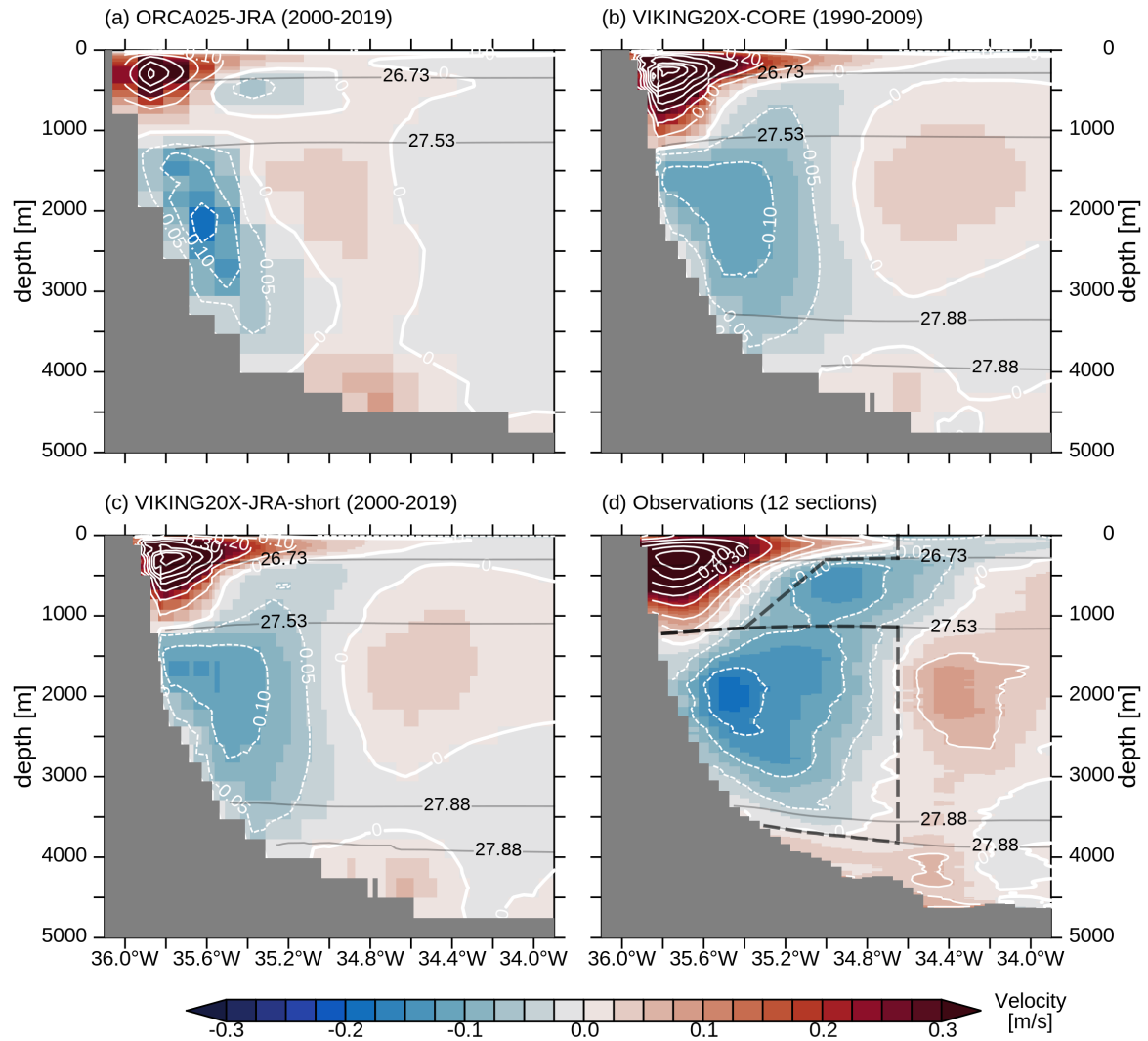


Figure 16. Mean along-shore velocity (m s⁻¹) section at 11°S for (a) ORCA025-JRA, (b) VIKING20X-CORE, (c) VIKING20X-JRA-short and (d) from 12 observational ship sections in the periods 2000-2004 and 2013-2019 with σ_0 isolines. Dashed boxes in (d) indicate the area taken into account for NBUC and DWBC transport calculations.

quite well. Model transports are usually within the standard deviations of the observational estimates based on the moorings, but are generally too weak at low resolution and by 1/3 (NBUC) and 2/3 (DWBC) too strong for VIKING20X-CORE (Table 7).

Table 7. Mean and monthly std. dev. of NBUC and DWBC transports across 11°S from 12 observational sections, mooring measurements and experiments for the period 2000 to 2019 (for VIKING20X-CORE 2000-2009) and sampled from monthly data according to the ship based observational coverage. The transport calculation is modified from Hummels et al. (2015) by changing from γ_n to almost equivalent σ_0 criteria. For observations, transports based on γ_n criteria are given as reference. (NBUC transport is calculated by integration of positive velocities in three boxes: west of 35.4°W above $\sigma_0 = 27.53$, between 35.0 and 34.65°W above $\sigma_0 = 26.73$, between 35.4 and 35°W above the line connecting $\sigma_0 = 27.53$ at 34.5° and $\sigma_0 = 26.73$ at 34.65°W; DWBC transport is calculated by integration of negative velocities west of 34.65°W between $\sigma_0 27.53$ and second crossing of 27.88; all σ_0 criteria are based on temporally varying fields; the latter condition cannot always be fulfilled, if this second crossing does not exist, the integration is down to the bottom; these boxes are outlined in Figure 16d.)

Experiment	NBUC+		DWBC-	
	(2000-2019)	(obs)	(2000-2019)	(obs)
VIKING20X-CORE	33.5 ± 5.7		33.6 ± 15.2	
VIKING20X-JRA-short	27.8 ± 4.1	28.7	31.1 ± 12.6	33.7
VIKING20X-JRA-long	23.6 ± 3.8	23.4	25.6 ± 10.4	31.6
ORCA025-JRA	18.8 ± 3.8	19.3	21.7 ± 5.7	22.6
ORCA025-JRA-strong	21.4 ± 3.6	22.0	24.8 ± 6.0	27.4
VIKING20X-JRA-OMIP	29.4 ± 4.3	30.5	32.0 ± 12.6	38.1
ORCA025-JRA-OMIP	24.8 ± 4.0	25.1	28.1 ± 6.1	30.4
ORCA025-JRA-OMIP-2nd	22.5 ± 3.8	23.7	26.6 ± 6.0	29.5
Moorings (γ_n)*	25.9 ± 4.5		20.0 ± 9.2	
Ship sections (γ_n)		25.5		30.4
Ship sections (σ_0)		25.4		30.4

*(interrupted from 2005-2012)

It is interesting to note and a guidance for future model-observation comparisons that even for a (with 12 ship-based observations) well-covered section a detailed temporal selection of model output can be important depending on the variability of the system in question (Schwarzkopf, 2016). While the values deducted from the moorings show a good agreement with the ship sections for the NBUC, those for the DWBC are off by more than 10 Sv (Table 7, Fig. 17d, e). This is due to the fact that the ship-based estimate is biased by intra-seasonal variability (Hummels et al., 2015), with ship sections often conducted during times of maximum southward flow that often only last for a few days (Fig. 17e, especially during 2000-2004). It is important to emphasise that the simulations capture the strong variability and confirm the apparent discrepancy between the long-term and the subsampled values.

Figure 17a shows the temporal evolution of the AMOC at 11°S. In contrast to the one at 26.5°N (Fig. 5a), it shows a minimum in the late 1960s which is in particular the case in VIKING20X-JRA-OMIP that started one decade earlier from rest. In the following decades, the experiments (apart from VIKING20X-JRA-long) simulate an increase into the 1990s with a decline thereafter.

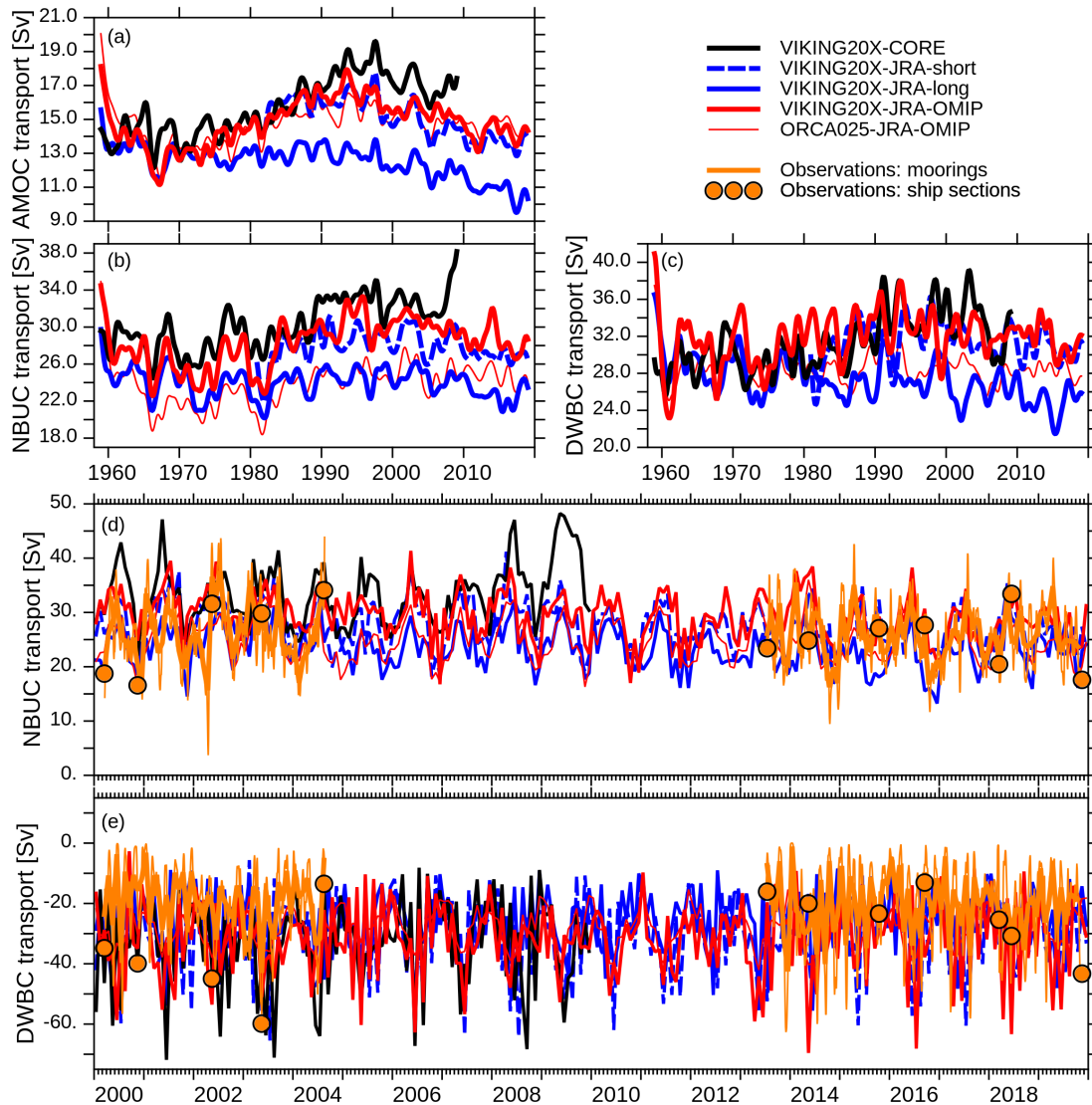


Figure 17. Time series of interannually filtered (a) AMOC, (b) NBUC and (c) DWBC transports at 11°S; monthly averages of positive (NNE-ward) NBUC and negative (SSW-ward) DWBC transports (see Table 7 for details of the definitions) are given in (d) and (e) together with mooring based (orange curves; thick monthly, thin 2.5-day averages) and ship based observations (orange dots)

555 Transports of the NBUC and DWBC (Fig. 17b, c) are less robust among the experiments and show no clear or consistent multi-decadal evolution. In consequence, trends over limited periods are less consistent. Apart from the trends, both AMOC and NBUC are significantly correlated between individual experiments on interannual timescales with r values of up to 0.85. In contrast, DWBC transports are rarely correlated.

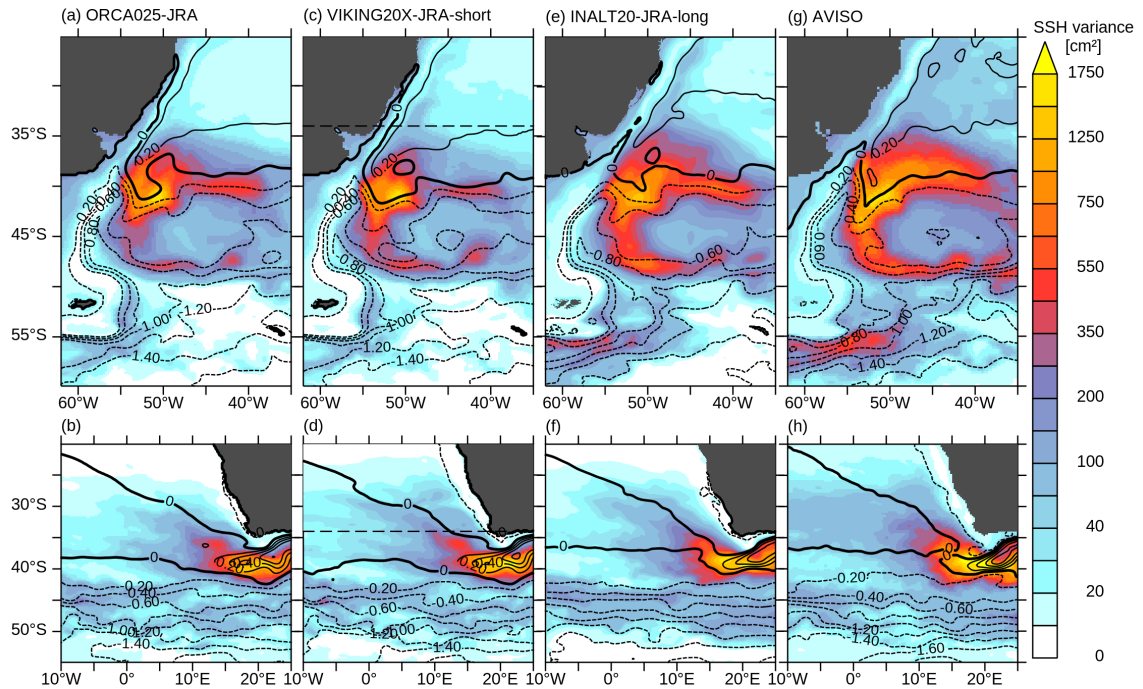


Figure 18. Sea surface height in the Brazil-Malvinas Confluence zone (upper row) and west Agulhas region (lower): 1990-2009 mean (contours, in m) and variance (shaded) in (a,b) ORCA025-JRA, (c,d) VIKING20X-JRA-short, (e,f) INALT20-JRA-long and (g,h) from satellite altimetry. Dashed lines in (c,d) mark the southern boundary of the nested region in VIKING20X.

Within individual experiments, there is no robust co-variability of the AMOC with NBUC (or DWBC) transports. Some (e.g. VIKING20X-JRA-OMIP) show significant correlations while others (e.g. VIKING20X-JRA-long) do not (here not shown).

560 4.4 Subtropical South Atlantic

Entering the subtropical South Atlantic brings us closer to the southern boundary of VIKING20X's high-resolution nest. In the following we explore the ability of the nested configuration to simulate the mesoscale circulation in the Agulhas Current system and the Brazil-Malvinas confluence and if the host model is capable in correctly simulating the transports at the SAMOC observations which are placed just outside the nested area. For comparison we use INALT20 (Schwarzkopf et al., 2019),
 565 a configuration that is in large parts (in particular resolution and atmospheric forcing) similar to VIKING20X, but with an eddy-rich nest reaching into the Southern Ocean and into the western Indian Ocean.

Figure 18 confirms the general ability of VIKING20X to simulate parts of the mesoscale in the vicinity of the southern nest boundary. It is logical that the variability in the Brazil-Malvinas confluence in VIKING20X-JRA-short is lower and rather comparable to ORCA025-JRA (Fig. 18a and b), given the fact that these latitudes are only represented on the host grid at
 570 $1/4^\circ$ resolution. In addition to the mesoscale signal, Schwarzkopf et al. (2019) demonstrated that the correct representation of

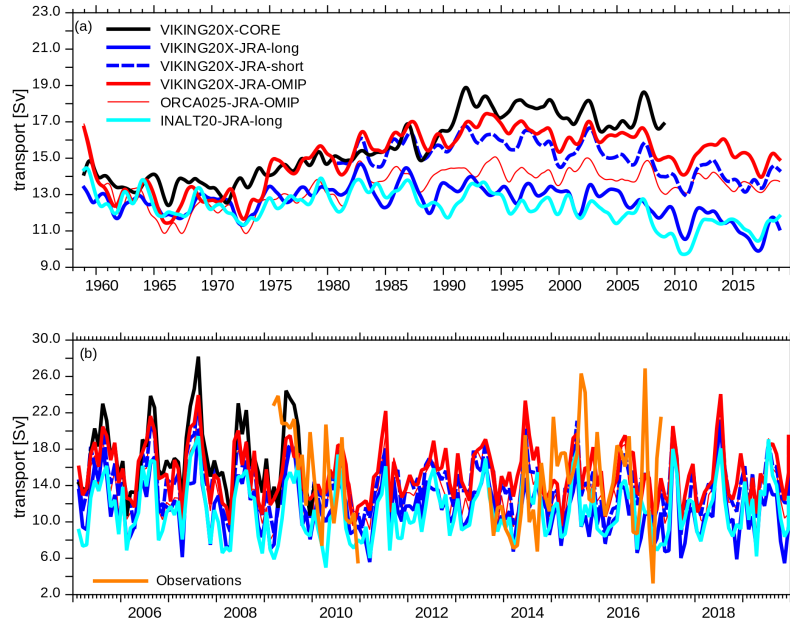


Figure 19. Time series of the AMOC strength at 34.5°S (a) interannually filtered and (b) monthly averages for the most recent 15 years with observations from Meinen et al. (2018) (orange).

the confluence region has consequences for the structure and transport of the Malvinas Current. The picture is similar for the path of Agulhas rings. Here, the formation process in the retroflection of the Agulhas Current south of Africa is outside the VIKING20X nest. Since Agulhas rings are generally represented in ORCA025 (Schwarzkopf et al., 2019), they also enter the nest. The difference compared to a configuration fully resolving the Agulhas Current dynamics (and observations) is that

575 ORCA025 simulates too regular Agulhas rings. This is seen in more confined SSH pattern in Cape Basin (Fig. 18b and d) as an indicator of a too regular pathway into the South Atlantic.

The AMOC at 34.5°S shows the same evolution as the one in the North Atlantic, with a maximum in 1990s (in some experiments relative and generally less pronounced) and a weakening thereafter if performed under JRA55-do forcing (Fig. 19a). Even though the representation of the mesoscale is different as discussed above, the mean, interannual variability and

580 long-term trend in INALT20-JRA-long and VIKING20X-JRA-long are remarkably comparable. By comparing the transports in VIKING20X-JRA-long with those in ORCA025-JRA, and VIKING20X-JRA-OMIP with ORCA025-JRA-OMIP we notice a similar resolution effect as seen in the North Atlantic (Table 8). Compared to the (temporally limited) observations by Meinen et al. (2018), most experiments underestimate the mean AMOC transport through the section. However, all VIKING20X experiments are in the range of the standard deviations in respect to the monthly variability. The representation of Agulhas

585 rings even in the eddy-present ORCA025 resolution could be an important prerequisite for the realistic AMOC variability.

Table 8. Mean and standard deviation based on monthly data of the AMOC transport at 34.5°S for the period 1990-2009 (for VIKING20X-CORE only the overlapping year 2009 is used. *The observational period covers the years 2009/2010 and 2013-2017).

Experiment	1990-2009	obs*
VIKING20X-CORE	17.5 ± 3.6	17.2 ± 5.2
VIKING20X-JRA-short	15.5 ± 3.3	13.6 ± 2.9
VIKING20X-JRA-long	13.0 ± 3.2	11.1 ± 2.5
ORCA025-JRA	10.7 ± 3.2	8.6 ± 2.7
ORCA025-JRA-strong	11.7 ± 3.2	10.5 ± 2.7
VIKING20X-JRA-OMIP	16.3 ± 3.1	15.0 ± 2.8
ORCA025-JRA-OMIP	14.2 ± 3.2	13.3 ± 2.8
ORCA025-JRA-OMIP-2nd	12.3 ± 3.2	11.0 ± 2.9
INALT20-JRA-long	12.3 ± 3.2	10.8 ± 3.0
Observations		14.7 ± 5.4

The interannual variability is correlated among experiments, with r -values of, e.g., 0.8 between VIKING20X-JRA-long and VIKING20X-JRA-OMIP, similar to the other latitudes (here not shown). Interestingly, this is also the case when mesoscale variability is better resolved. INALT20-JRA-long interannually correlates with VIKING20X-JRA-OMIP at $r=0.81$. Given the fact that the generation of Agulhas rings is a highly stochastic process (Biaostoch et al., 2009), this shows that the interannual variability of the AMOC at 34.5°S has a significant deterministic component by the atmospheric forcing.

5 Discussion and conclusions

Our results show that a ‘realistically’ configured ocean hindcast configuration like VIKING20X is well suited for simulating the large-scale circulation dynamics in the Atlantic Ocean. Once the mesoscale is resolved by an adequate resolution over the full model domain and the model is driven by a realistic and balanced atmospheric forcing, many aspects of the simulated wind-driven and thermohaline circulation compare very well with observations. These include the large-scale structure of the mean flow, the distribution and strength of mesoscale eddies, WBC structures and individual current systems. There is good agreement between model and observations in terms of velocity structures and integral transports, even of their temporal variability and trends. Because of the strong impact of the wind forcing, the role of the atmospheric forcing data set cannot be underestimated for such an ocean-only model. The shift of the ocean model community from CORE forcing (Large and Yeager, 2009) to the higher resolved and updated JRA55-do forcing (Tsujino et al., 2018) is an important change. CORE was known to enhance individual wind systems such as the equatorial trades or the Southern Hemisphere westerlies (Large and Yeager, 2009; Brodeau et al., 2010) which can be the cause for generally higher WBC transports in VIKING20X-CORE. Together with a different subpolar/subarctic freshwater budget, e.g. by the precipitation components and river input, this leads to a stronger and more stable AMOC, which is reflected in regional components.

605 Even though WBC transports and AMOC strength are generally enhanced at eddy-rich resolution, other aspects are remarkably independent. One example is the decadal transport variability of the subpolar gyre. It is important to note that our configurations do not allow to isolate the effect of eddies. We acknowledge that the eddy-present ORCA025 does not use any eddy-parameterisation, it explicitly simulates ‘some’ (the larger-scale) part of the mesoscale spectrum, while neglecting others. This dilemma is similar to many modern eddy-present configurations performed for CMIP6 (Hewitt et al., 2020). And yet, 610 although the level of mesoscale variability significantly increases from $1/4^\circ$ to $1/20^\circ$, the interannual variability of the AMOC appears quite robust. Features like the 2010 minimum can be simulated well at eddy-present resolution, pointing to an ability of the CMIP6 suite to simulate an important part of the mesoscale contribution to the AMOC. On decadal timescales differences between the two resolutions are more evident as a result of the better ability of VIKING20X to simulate key aspects of the thermohaline component such as overflow, entrainment and convection.

615 More caution is required with respect to the thermohaline driven part of the circulation. Although we see an improvement in the features of deep convection regions in the Labrador and Irminger Seas from $1/4^\circ$ to $1/20^\circ$, the amount of potentially produced upper NADW (here quantified in terms of the MLD volume) appears remarkably robust. In contrast, for the backbone of the AMOC, the overflow across the Greenland-Scotland Ridge is clearly improved with enhanced horizontal resolution. And still, the underestimation of the lower NADW at 53°N confirms that the entrainment of ambient water masses into the 620 overflow along its downward descent while circling the subpolar gyre even simulated at high resolution is subject to spurious mixing. The simulations cannot maintain the observed high densities to yield the correct transports in the densest levels. The underrepresentation of the lower NADW throughout the whole Atlantic still remains an important challenge in z-coordinate models (Legg et al., 2006), even though an eddy-rich resolution is an important improvement. As a cautionary note, we point to the study by Colombo et al. (2020) who showed that a higher vertical resolution does not automatically enhance the spreading 625 of dense overflows and sometimes even leads to the contrary effect.

For the estimation of the decadal variability and any long-term trend of the AMOC, realistically distributed components of the freshwater budget are crucial because of the enhanced sensitivity of ocean-only models to freshwater fluxes, in particular their corresponding subpolar freshwater budget (Griffies et al., 2009; Behrens et al., 2013). Because of this sensitivity, AMOC trends from internal variability and external forcing are usually difficult to quantify against model-related drifts. The modelled 630 trends depend on artificial choices of the prescribed freshwater fluxes, such as the required strength of the SSS restoring or (as in our case) a global balance of the freshwater budget. Since these parameter or forcing choices are not well constrained and may even interfere with each other, the quantification of the AMOC evolution over the past decades from hindcast simulations remains a challenge. Any quantification of global warming related trends induced by the atmospheric forcing is compromised by the underlying model drift.

635 Beyond the description and verification of the VIKING20X set of experiments, our main objective is to test whether changes in the zonally integrated AMOC are also evident at the more local scale of regional current systems. In the remaining discussion, we address this task by answering three questions: (1) How coherent are AMOC changes across latitudes throughout the Atlantic Ocean? (2) Are AMOC trends detectable in regional current systems? And if so, (3) can regional observations help to verify and confirm modelled AMOC trends?

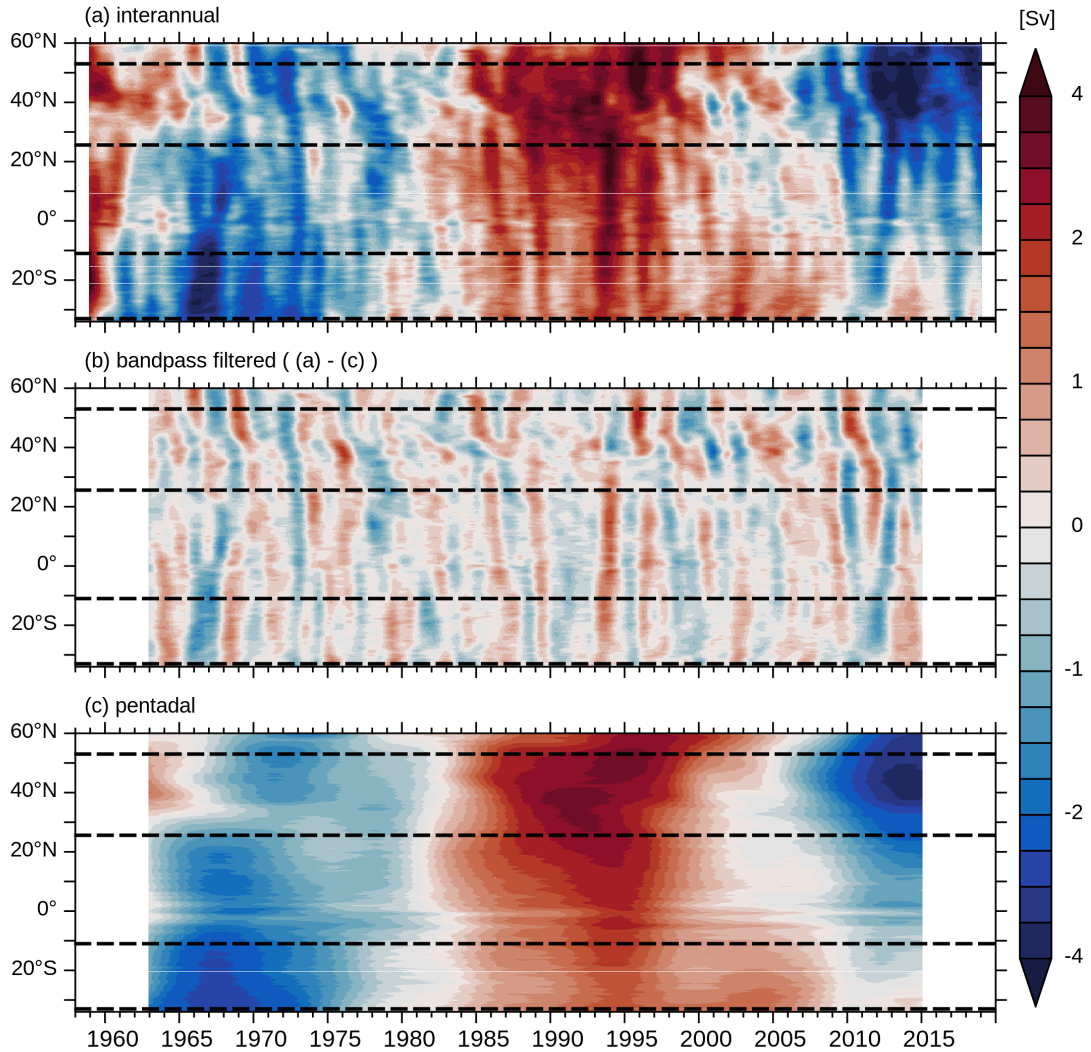


Figure 20. Hovmoeller diagrams of AMOC anomalies in density coordinates given as (a) interannually (b) bandpass and (c) pentadally filtered time series of the maximum strength between $\sigma_2=36$ and 37 from VIKING20X-JRA-OMIP. Lines indicate latitudes considered in this study.

640 (1) *How coherent are AMOC changes across latitudes throughout the Atlantic Ocean?*

Most VIKING20X experiments (apart from VIKING20X-JRA-long showing a continuous decline of the AMOC throughout the whole hindcast period) show a similar evolution of the AMOC, with an increase towards the mid-1980s and 1990s and a

Table 9. Linear trends (Sv per decade, all based on monthly averaged data) in AMOC strength (in depth or density coordinates) and western boundary current transports at different latitudes for the period 2000-2019 from the three experiments in VIKING20X under JRA55-do forcing. Observational estimates cover different periods, as indicated.

	53°N		26.5°N		11°S		34.5°S	
Experiment	AMOC(σ_2)	DWBC	AMOC(z)	FC	AMOC(z)	NBUC	DWBC	AMOC(z)
VIKING20X-JRA-short	-3.6	-3.8	-2.0	-1.6	-1.2	-1.6	-1.0	-0.9
VIKING20X-JRA-long	-3.0	-2.6	-1.3	-1.0	-1.4	-1.4	-0.7	-1.3
VIKING20X-JRA-OMIP	-2.9	-2.6	-1.5	-1.6	-1.1	-2.1	-1.1	-0.7
Observations		-2.5	-1.3	-0.3		-0.1	+0.8	-
		(2000-2017)	(2004-2018)			(2000-2004 & 2013-2019)		

decline thereafter. This is exemplary provided for VIKING20X-JRA-OMIP (Fig. 20). The Hovmoeller diagram (here given in density coordinates to correctly address the subpolar North Atlantic) shows the evolution and the spreading of AMOC anomalies throughout the Atlantic Ocean. Consistent with earlier findings, the strongest anomalies arise in the subpolar gyre as a response to a decadal varying heat and freshwater forcing (Bjastoch et al., 2008a; Yeager and Danabasoglu, 2014). On decadal timescales, this signal is evident at all latitudes, but with decreasing amplitudes towards the south (cf. Figs. 20a and c, but also Figs. 5a, 17a, and 19a). Other signals such as the minimum in the late 1960s or the maximum in the 2000s seem to be of southern origin and remain restricted until $\sim 20^\circ\text{N}$. AMOC anomalies appearing on shorter timescales add interannual ‘noise’ to this decadal evolution. We identify both latitudinally restricted changes of interannual variability, but also anomalies propagating from the north or the south throughout the full Atlantic Ocean. These anomalies are either caused by local wind changes inside the high-resolution nest itself or provided from the eddy-present host grid outside of the nested domain, which rapidly propagate north- and southward via topographic and shelf waves along both sides of the Atlantic Ocean (Getzlaff et al., 2006; Bjastoch et al., 2008b). In the Hovmoeller diagram the associated patterns are only slightly slanted, indicating the fast wave propagation. Besides the typical equatorial discontinuity, anomaly propagation is significantly delayed at the transition between the subpolar and the subtropical North Atlantic because of the complex exchange between the gyres $\sim 40\text{-}50^\circ\text{N}$ (Zou et al., 2019).

If we now focus on the ‘trend’ of the AMOC over the recent two decades (Fig. 21), which itself is part of a multi-decadal evolution, VIKING20X-JRA-OMIP shows a coherent spin-down of the NADW cell. The general evolution of the other experiments is similar but differs in the strength of the decline (Fig. A2). Since all experiments are based on the same atmospheric forcing, differences in the decline are due to choices of the freshwater application and the initialisation. Changes in the over-flow and subpolar deepwater formation provide the main origin for the AMOC evolution, and consequently the decline (once provided in density coordinates to correctly address the subpolar North Atlantic, Fig. 21b) is strongest north of $\sim 40\text{-}45^\circ\text{N}$. Quantitatively, the AMOC decline peaks at $\sim 60^\circ\text{N}$, the latitude close to the southern tip of Greenland until which the over-

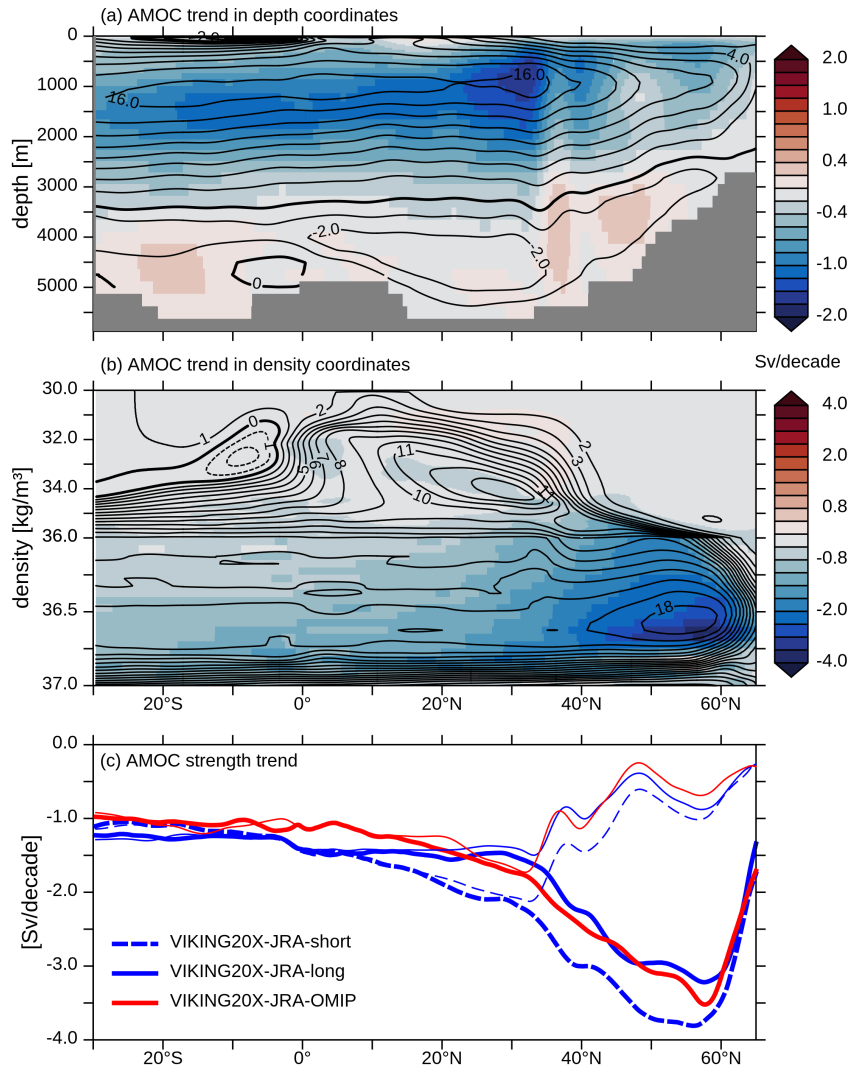


Figure 21. Mean (contours) and linear trend (shading) in the AMOC for the period 2000 to 2019 in VIKING20X-JRA-OMIP (a) in depth and (b) density (σ_2) coordinates. (c) shows the linear trend of the vertical maximum in the AMOC in depth coordinates below 400 m (thin) and in density coordinates below $\sigma_2 = 36$ (thick). All fields are meridionally smoothed with a Hanning filter of 10° window size.

665 flow has entrained most of its ambient water masses (Fig. 21c). South of the transition towards the subtropical North Atlantic, at around 35°N , the decline in VIKING20X-JRA-long and VIKING20X-JRA-OMIP is consistent 1-1.5 Sv per decade, even though their mean AMOC strength differs by more than 4 Sv. (Fig. 21c, see also Table 2). VIKING20X-JRA-short features a stronger decline since it starts from a relatively high value as a result of the preceding CORE forcing and obviously experiences

a spindown from the high level of the CORE forcing. Owing to the general spindown of the NADW cells we conclude that
670 decadal and longer-term AMOC trends could, be estimated throughout all latitudes of the North and South Atlantic but with
different strengths.

(2) Are AMOC trends detectable in regional current systems?

Apart from the basin-wide estimate at 26.5°N, regional observations exist and contribute long-term observations of key
components of the AMOC. In this analysis we have focused on three time series: the WBC array at 53°N monitoring DWBC
675 transports at the exit of the Labrador Sea, the transport through the Florida Strait as an important part of the upper branch of the
AMOC, and the WBC array at 11°S in which both the upper and the deep branch of the AMOC are assumed to be concentrated
along the western boundary.

It is intriguing that the DWBC trend at 53°N is able to capture the of the AMOC trend calculated in density coordinates
within 10-15% (Table 9). This correspondence even holds for the stronger trends in VIKING20X-JRA-short. This agreement
680 confirms the high potential of WBC measurements at 53 °N (Fischer et al., 2004; Zantopp et al., 2017; Handmann et al., 2018)
to truly monitor changes of the AMOC in the subpolar North Atlantic (Böning et al., 2006).

For the transport through the Florida Strait and its agreement with AMOC changes at 26.5°N, we get a different picture: In
VIKING20X-JRA-short and VIKING20X-JRA-long, the decline of the Florida Current is about 75-80% of the decline of the
AMOC; in contrast to VIKING20X-JRA-OMIP where it is stronger. This may indicate that the Florida Current could act as a
685 general precursor of the AMOC trend, but is unable to exactly quantify it. This is confirmed by the observations itself, where
the Florida Current decline represents just 15% of the AMOC decline. It is obvious that the Florida Current is not just a simple
closure of Sverdrup dynamics but rather shielded by the shallow bathymetry west of the Bahamas and fed through the Gulf
of Mexico, with upstream anomalies determining its transport (Hirschi et al., 2019). This may also explain the disagreement
between modelled and observed trends of the Florida Current, even though both show comparable mean transports (Table 6).

690 At 11°S, AMOC changes cannot be indicated by changes in the WBC system alone, but also require the consideration of
interior (Ekman) and eastern components (Rühs et al., 2015; Herrford et al., 2021). Although the experiments show a robust
AMOC decline of about 15%, their NBUC changes are much less consistent and do not necessarily reflect the AMOC: for
VIKING20X-JRA-long the NBUC trend is equal to the AMOC trend, while for VIKING20X-JRA-OMIP the NBUC trend
is almost twice as large as the AMOC trend. For the DWBC instead, trends in VIKING20X-JRA-short and VIKING20X-
695 JRA-OMIP fit to that of the AMOC, whereby VIKING20X-JRA-long simulates a 50% weaker trend than for the AMOC.
While the signs of NBUC and DWBC trends still point towards a spin-down of the AMOC cell, an exact quantification of
the reduction remains challenging. Apart from changes in the interior, not represented by the boundary current measurements,
the disagreement can also be attributed to the overlying wind-driven subtropical cell (viz. counter-clockwise circulation in the
upper few 100 meters in Fig. 3 and in Fig. 21b), at this latitude requiring the addition of the wind-induced gyre circulation for
700 the interpretation of AMOC changes (Rühs et al., 2015). We also have to acknowledge that the large variability of transports
associated with mesoscale structures and the large gaps in the observational record between 2005 and 2012 adds another line
of complication and requires longer time series to draw consistent conclusions. At 34°S, we note a disagreement of AMOC

trends in the different experiments. As shown by Fig. 20, AMOC anomalies are entering from the south and interfere with the anomalies arriving from the north. These may have an impact on the calculation of longer trends.

705 (3) *Can regional observations help to verify modelled AMOC trends?*

Together with the AMOC measurements at 26.5°N, the WBC array at 53°N provides the longest observational time series. As shown above, the latter has (according to the model) a good potential to provide trends of the basin-scale AMOC. The observational AMOC estimate at 26.5°N indicates a decline that is in the range of all three experiments (Table 9), again with a stronger trend in VIKING20X-JRA-short. We note that the observational AMOC trend has to be taken with caution since
710 the evolution of the AMOC measured at RAPID does not show a continuous decline but rather a strong minimum around 2010 and a stabilisation thereafter (Fig. 5a)(Moat et al., 2020). A strong argument for a realistic AMOC trend in the past two decades emerges from the comparison at 53°N. Both VIKING20X-JRA-long and VIKING20X-JRA-OMIP are within 0.1 Sv of the observed reduction of the DWBC transport of 2.5 Sv per decade (Table 9), hence seem to realistically simulate the decline of the subpolar AMOC. For the subtropical North Atlantic at 26.5°N this reduces to 1.3 Sv per decade, again with
715 VIKING20X-JRA-long and VIKING20X-JRA-OMIP realistically representing the AMOC as derived from RAPID.

Apart from the observation-model comparison, additional insight comes from the Ocean Model Intercomparison Project 2 (OMIP-2), in which models performed six subsequent cycles under JRA55-do forcing. According to Tsujino et al. (2020), the ensemble average of 11 models, performed with different numerical code bases and mainly configured at eddy-parameterising (few at eddy-present) resolutions, show a linear trend of -1.19 Sv per decade over the time frame 2000-2018 at 26.5°N, which
720 is weaker than RAPID. We cannot conclude if the stronger decline simulated by VIKING20X-JRA-OMIP and VIKING20X-JRA-long is caused by the better representation of mesoscale eddies, as indicated by the resolution dependence throughout this study, or by the details of the freshwater flux application. An important factor could be the sixth cycling of the simulations through the forcing period done for OMIP-2. While six cycles are not yet achievable at such high resolution, the comparison of the 1st and the 2nd cycle of ORCA025-JRA-OMIP already suggests that this may play a role. The trend in ORCA025-JRA-
725 OMIP reduces from -0.88 Sv per decade in the 1st cycle to -0.67 in the 2nd cycle. On the other hand, it is quite foreseeable that the overall strength of the AMOC and the related water masses may also drift away from the observations causing a general reduction of the AMOC strength and its key components (Fig. 8).

Even though we find good agreement with estimates at 26.5°N and 53°N, we can not conclusively assess how much of the trends simulated by the different experiments are still related to the model settings. We can also not be entirely sure whether
730 the trends provided by the JRA55-do forcing are realistic. If we consider VIKING20X-JRA-OMIP as the most promising simulation given good agreement of mean transports, it is clear that the AMOC is subject to multi-decadal variability with a stable evolution in the 1960s and 1970s, an increase towards the mid-1990s and a decline thereafter. For the past two decades our experiments suggest that the AMOC (in density coordinates) in the subpolar North Atlantic was subject to a decline of up to 3 Sv. For the subtropical North Atlantic and further south this reduces to about 1.5 Sv and less. This is generally in line with
735 a compilation of proxy observations presented by Caesar et al. (2021). On a longer timescale, it also fits the 4-Sv decline from the 1950s/1960s towards the recent decade indicated by an SST-based proxy (Caesar et al., 2018).

What is needed to better quantify trends in future experiments and limit the influence of model drift? Apart from further improvements of ocean model configurations, it is clear that multi-decadal hindcasts would directly benefit from a better closure of the heat and freshwater budget. This can only be achieved up to a certain degree since the fluxes are by construction
740 less variable due to the prescribed atmospheric state. Further relaxation of the Bulk formulae or a move towards coupled atmosphere-ocean models may help. While the latter are now routinely available, even at basin-scale mesoscale resolution (Matthes et al., 2020), additional ‘constraints’ such as the ‘partial coupling’ approach described by Thoma et al. (2015), could be a potential solution to re-introduce the interannual to multi-decadal hindcast ‘timing’ into coupled experiments.

In this study concentrate on a limited set of long-term observations. In addition, a number of historic ocean observations
745 exist, from individual measurements dating back to the 19th century, repeated ship sections during the WOCE era in the 1990s, to a drastic increase through satellite measurements and autonomous instruments such as ARGO in the 2000s. Ocean modellers usually make use of those for model initialisation or verification. More systematic approaches to combine model and data through assimilation are powerful, but also fail in terms of their ability to exactly quantify the required trends (Karspeck et al., 2015; Jackson et al., 2019). A novel route in this respect that has only been started to be explored, are data science
750 approaches. These have demonstrated to push the limits of the interpretation of big data and provide insight not only to pattern and distributions but also the interpretation (and ultimately the understanding) of dynamics (Sonnewald et al., 2019; Aksamit et al., 2020; Reichstein et al., 2019). Nevertheless, our results demonstrate the value and importance of thoroughly and carefully adjusting forcing, grid resolution and settings of ‘classic’ ocean models to the tasks of simulating the AMOC and filling observational gaps for the benefit of an improved understanding of the ocean.

755 *Code and data availability.* The NEMO code is available at <https://www.nemo-ocean.eu>. For reproducibility of all results, the scripts as well as all data required to produce the figures are made available through GEOMAR (<https://hdl.handle.net/20.500.12085/a8f98a1a-473f-11ea-a036-c81f66eb46c3>). Additional model output is provided on request.

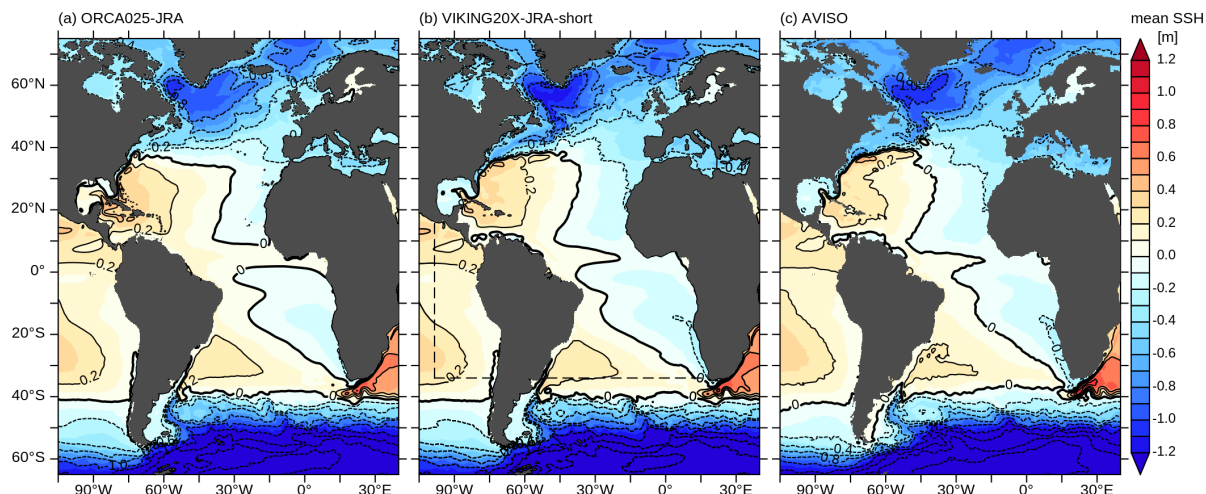


Figure A1. Mean (1993-2019) sea surface height in (a) ORCA025-JRA, (b) VIKING20X-JRA-short and (c) satellite altimetry

Author contributions. AB and CB defined and guided the overall research problem and methodology; FUS and KG developed and performed the ocean model simulations. FUS, KG, SR, TM, MS, TS, PH and RH contributed analyses and figures for the individual parts. All coauthors
760 discussed the analyses and contributed to the text.

Competing interests. The authors declare that they have no conflict of interest.

Acknowledgements. The ocean model simulation was performed at the North-German Supercomputing Alliance (HLRN) and on the Earth System Modelling Project (ESM) partition of the supercomputer JUWELS at the Jülich Supercomputing Centre (JSC). We thank the NEMO system team for support. This research has been supported by the German Federal Ministry of Education and Research (grants SPACES-
765 CASISAC (03F0796A) and RACE-Regional Atlantic Circulation and Global Change (03F0729C)). It has also received funding from the Initiative and Networking Fund of the Helmholtz Association through the project 'Advanced Earth System Modelling Capacity (ESM)' and the European Union's Horizon 2020 research and innovation programmes under grant agreements No 818123 (iAtlantic) and No 817578 (TRIATLAS). The Florida Current cable and section data are made freely available on the Atlantic Oceanographic and Meteorological Labo-

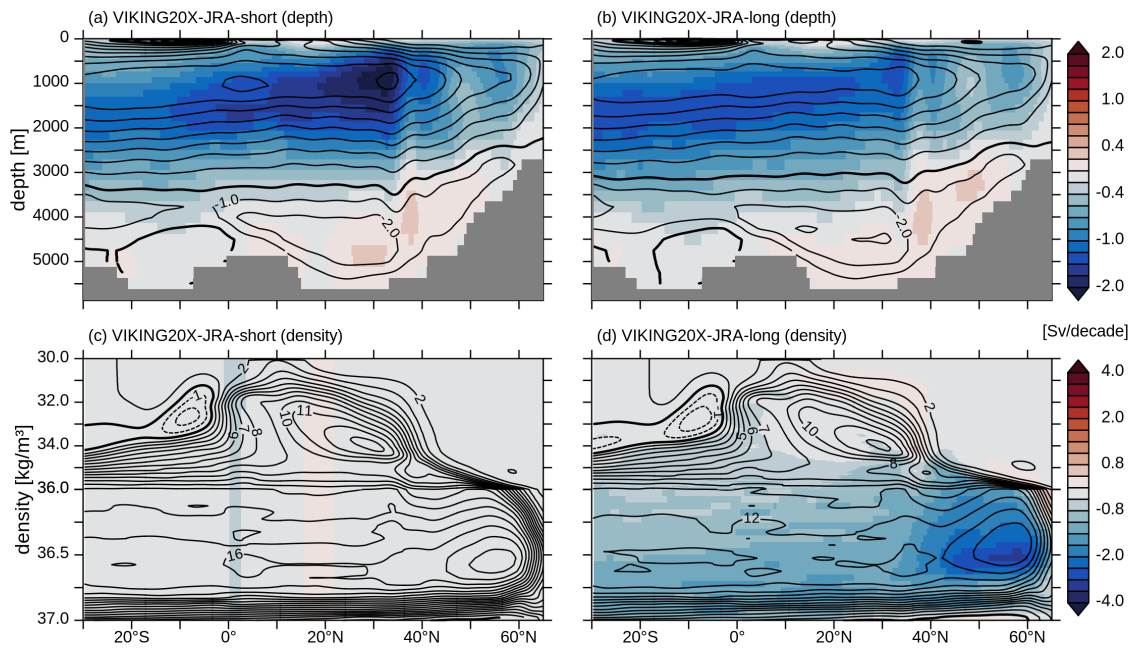


Figure A2. Mean (contours) and linear trend (shading) in the AMOC in (a and b) depth and (c and d) density (σ_2) coordinates for the period 2000 to 2019 for VIKING20X-JRA-short and VIKING20X-JRA-long. All fields are meridionally smoothed with a Hanning filter of 10° window size.

770 ratory web page (www.aoml.noaa.gov/phod/floridacurrent/) and are funded by the DOC-NOAA Climate Program Office - Ocean Observing and Monitoring Division.

References

- Aksamit, N. O., Sapsis, T., and Haller, G.: Machine-Learning Mesoscale and Submesoscale Surface Dynamics from Lagrangian Ocean Drifter Trajectories, *J. Phys. Oceanogr.*, 50, 1179–1196, <https://doi.org/10.1175/JPO-D-19-0238.1>, <https://journals.ametsoc.org/jpo/article/50/5/1179/345381/MachineLearning-Mesoscale-and-Submesoscale-Surface>, 2020.
- 775 Amante, C. and Eakins, B.: ETOPO1 1 Arc-Minute Global Relief Model: Procedures, Data Sources and Analysis, NOAA Tech. Memo. NESDIS NGDC-24, p. 19, <https://doi.org/10.1594/PANGAEA.769615>, <http://www.ngdc.noaa.gov/mgg/global/global.html>, 2009.
- Arakawa, A. and Hsu, Y.-J. G.: Energy Conserving and Potential-Enstrophy Dissipating Schemes for the Shallow Water Equations, *Mon. Weather Rev.*, 118, 1990.
- Baltazar-Soares, M., Biastoch, A., Harrod, C., Hanel, R., Marohn, L., Prigge, E., Evans, D., Bodles, K., Behrens, E., Böning, C. W., and
800 Eizaguirre, C.: Recruitment collapse and population structure of the european eel shaped by local ocean current dynamics, *Curr. Biol.*, 24, 104–108, <https://doi.org/10.1016/j.cub.2013.11.031>, <http://www.sciencedirect.com/science/article/pii/S0960982213014504>, 2014.
- Bamber, J. L., Tedstone, A. J., King, M. D., Howat, I. M., Enderlin, E. M., van den Broeke, M. R., and Noel, B.: Land Ice Freshwater Budget of the Arctic and North Atlantic Oceans: 1. Data, Methods, and Results, *J. Geophys. Res. Ocean.*, 123, 1827–1837, <https://doi.org/10.1002/2017JC013605>, 2018.
- 785 Barnier, B., Madec, G., Penduff, T., Molines, J.-M., Treguier, A.-M., Le Sommer, J., Beckmann, A., Biastoch, A., Böning, C., Dengg, J., Derval, C., Durand, E., Gulev, S., Remy, E., Talandier, C., Theetten, S., Maltrud, M., McClean, J., and De Cuevas, B.: Impact of partial steps and momentum advection schemes in a global ocean circulation model at eddy-permitting resolution, *Ocean Dynamics*, 59, 2006.
- Behrens, E.: The oceanic response to Greenland melting: the effect of increasing model resolution, Phd thesis, Christian-Albrechts-Universität Kiel, <https://doi.org/urn:nbn:de:gbv:8-diss-136843>, 2013.
- 790 Behrens, E., Biastoch, A., and Böning, C. W.: Spurious AMOC trends in global ocean sea-ice models related to subarctic freshwater forcing, *Ocean Model.*, 69, 39–49, <https://doi.org/10.1016/j.ocemod.2013.05.004>, 2013.
- Behrens, E., Våge, K., Harden, B., Biastoch, A., and Böning, C. W.: Composition and variability of the Denmark Strait Overflow Water in a high-resolution numerical model hindcast simulation, *J. Geophys. Res. Ocean.*, 122, 2830–2846, <https://doi.org/10.1002/2016JC012158>, 2017.
- 795 Berx, B., Hansen, B., Østerhus, S., Larsen, K., Sherwin, T., and Jochumsen, K.: Combining in-situ measurements and altimetry to estimate volume, heat and salt transport variability through the Faroe Shetland Channel, *Ocean Science Discussions*, 10, 153–195, doi:10.5194/os-9-639-2013, 2013.
- Biastoch, A., Böning, C. W., Getzlaff, J., Molines, J.-M., and Madec, G.: Causes of interannual-decadal variability in the meridional overturning circulation of the mid-latitude North Atlantic Ocean, *J. Clim.*, 21, 6599–6615, <https://doi.org/10.1175/2008JCLI2404.1>,
800 <http://ams.allenpress.com/perlserv/?request=get-abstract{&}doi=10.1175{ }2F2008JCLI2404.1>, 2008a.
- Biastoch, A., Böning, C. W., and Lutjeharms, J. R.: Agulhas leakage dynamics affects decadal variability in Atlantic overturning circulation, *Nature*, 456, 489–492, <https://doi.org/10.1038/nature07426>, 2008b.
- Biastoch, A., Böning, C. W., Schwarzkopf, F. U., and Lutjeharms, J. R. E.: Increase in Agulhas leakage due to poleward shift of Southern Hemisphere westerlies., *Nature*, 462, 495–498, <https://doi.org/10.1038/nature08519>, 2009.
- 805 Biló, T. C. and Johns, W. E.: Interior Pathways of Labrador Sea Water in the North Atlantic From the Argo Perspective, *Geophys. Res. Lett.*, 46, 3340–3348, <https://doi.org/10.1029/2018GL081439>, <https://onlinelibrary.wiley.com/doi/abs/10.1029/2018GL081439>, 2019.

- Bingham, R. J., Hughes, C. W., Roussenov, V., and Williams, R. G.: Meridional coherence of the North Atlantic meridional overturning circulation, *Geophys. Res. Lett.*, 34, n/a–n/a, <https://doi.org/10.1029/2007GL031731>, <http://doi.wiley.com/10.1029/2007GL031731>, 2007.
- 810 Blanke, B. and Delecluse, P.: Variability of the Tropical Atlantic Ocean Simulated by a General Circulation Model with Two Different Mixed-Layer Physics, *J. Phys. Oceanogr.*, 23, 1993.
- Blindheim, J. and Osterhus, S.: The Nordic Seas, main oceanographic features, *Geophysical Monograph-American Geophysical Union*, 158, 11, 2005.
- Böning, C. W., Scheinert, M., Dengg, J., Biastoch, a., and Funk, a.: Decadal variability of subpolar gyre transport and its reverberation in the North Atlantic overturning, *Geophys. Res. Lett.*, 33, doi: 2006GL026 906RR, <https://doi.org/10.1029/2006GL026906>, 2006.
- 815 Böning, C. W., Behrens, E., Biastoch, A., Getzlaff, K., and Bamber, J. L.: Emerging impact of Greenland meltwater on deepwater formation in the North Atlantic Ocean, *Nat. Geosci.*, 9, 523–527, <https://doi.org/10.1038/ngeo2740>, <http://www.nature.com/doi/10.1038/ngeo2740>, 2016.
- Bourdallé-Badie, R. and Treguier, A.: A climatology of runoff for the global ocean-ice model ORCA025, Mercator-Ocean reference M00-RP-425-365-MER, 2006.
- 820 Bower, A., Lozier, S., Biastoch, A., Drouin, K., Foukal, N., Furey, H., Lankhorst, M., Rühls, S., and Zou, S.: Lagrangian Views of the Pathways of the Atlantic Meridional Overturning Circulation, *J. Geophys. Res. Ocean.*, 124, 5313–5335, <https://doi.org/10.1029/2019JC015014>, <https://onlinelibrary.wiley.com/doi/abs/10.1029/2019JC015014>, 2019.
- Bower, A. S., Lozier, M. S., Gary, S. F., and Böning, C. W.: Interior pathways of the North Atlantic meridional overturning circulation., *Nature*, 459, 243–247, <https://doi.org/10.1038/nature07979>, <http://dx.doi.org/10.1038/nature07979>, 2009.
- 825 Brandt, P., Schott, F. A., Funk, A., and Martins, C. S.: Seasonal to interannual variability of the eddy field in the Labrador Sea from satellite altimetry, *J. Geophys. Res.*, 109, C02 028, 2004.
- Breckenfelder, T., Rhein, M., Roessler, A., Böning, C. W., Biastoch, A., Behrens, E., and Mertens, C.: Flow paths and variability of the North Atlantic Current: A comparison of observations and a high-resolution model, *J. Geophys. Res. Ocean.*, 122, 2686–2708, <https://doi.org/10.1002/2016JC012444>, 2017.
- 830 Breusing, C., Biastoch, A., Drews, A., Metaxas, A., Jollivet, D., Vrijenhoek, R. C., Bayer, T., Melzner, F., Sayavedra, L., Petersen, J. M., Dubilier, N., Schilhabel, M. B., Rosenstiel, P., and Reusch, T. B. H.: Biophysical and Population Genetic Models Predict the Presence of ???Phantom??? Stepping Stones Connecting Mid-Atlantic Ridge Vent Ecosystems, *Curr. Biol.*, 26, 2257–2267, <https://doi.org/10.1016/j.cub.2016.06.062>, <http://linkinghub.elsevier.com/retrieve/pii/S0960982216307035>, 2016.
- Brodeau, L., Barnier, B., Treguier, A. M., Penduff, T., and Gulev, S.: An ERA40-based atmospheric forcing for global ocean circulation models, *Ocean Model.*, 31, 88–104, <https://doi.org/10.1016/j.ocemod.2009.10.005>, 2010.
- 835 Buckley, M. W. and Marshall, J.: Observations, inferences, and mechanisms of the Atlantic Meridional Overturning Circulation: A review, *Rev. Geophys.*, 54, 5–63, <https://doi.org/10.1002/2015RG000493>, 2016.
- Caesar, L., Rahmstorf, S., Robinson, A., Feulner, G., and Saba, V.: Observed fingerprint of a weakening Atlantic Ocean overturning circulation, *Nature*, 556, 191–196, <https://doi.org/10.1038/s41586-018-0006-5>, 2018.
- 840 Caesar, L., McCarthy, G. D., Thornalley, D. J. R., Cahill, N., and Rahmstorf, S.: Current Atlantic Meridional Overturning Circulation weakest in last millennium, *Nat. Geosci.*, pp. 1–3, <https://doi.org/10.1038/s41561-021-00699-z>, <http://www.nature.com/articles/s41561-021-00699-z>, 2021.
- Chanut, J., Barnier, B., Large, W., Debreu, L., Penduff, T., Molines, J. M., and Mathiot, P.: Mesoscale eddies in the Labrador Sea and their contribution to convection and restratification, *J. Phys. Oceanogr.*, 38, 1617–1643, <https://doi.org/10.1175/2008JPO3485.1>, 2008.

- 845 Chassignet, E. P. and Xu, X.: Impact of horizontal resolution ($1/12^\circ$ to $1/50^\circ$) on Gulf Stream separation, penetration, and variability, *J. Phys. Oceanogr.*, 47, 1999–2021, <https://doi.org/10.1175/JPO-D-17-0031.1>, <http://journals.ametsoc.org/doi/10.1175/JPO-D-17-0031.1>, 2017.
- Colombo, P., Barnier, B., Penduff, T., Chanut, J., Deshayes, J., Molines, J. M., Le Sommer, J., Verezemskaya, P., Gulev, S., and Treguier, A. M.: Representation of the Denmark Strait overflow in a z-coordinate eddy configuration of the NEMO (v3.6) ocean model: Resolution and parameter impacts, *Geosci. Model Dev.*, 13, 3347–3371, <https://doi.org/10.5194/gmd-13-3347-2020>, <https://gmd.copernicus.org/articles/13/3347/2020/>, 2020.
- 850 Danabasoglu, G., Yeager, S. G., Bailey, D., Behrens, E., Bentsen, M., Bi, D., Biastoch, A., Böning, C., Bozec, A., Canuto, V. M., Cassou, C., Chassignet, E., Coward, A. C., Danilov, S., Diansky, N., Drange, H., Farneti, R., Fernandez, E., Fogli, P. G., Forget, G., Fujii, Y., Griffies, S. M., Gusev, A., Heimbach, P., Howard, A., Jung, T., Kelley, M., Large, W. G., Leboissetier, A., Lu, J., Madec, G., Marsland, S. J., Masina, S., Navarra, A., George Nurser, A. J., Pirani, A., y Méliá, D. S., Samuels, B. L., Scheinert, M., Sidorenko, D., Treguier, A. M., Tsujino, H., Uotila, P., Valcke, S., Voltaire, A., and Wang, Q.: North Atlantic simulations in Coordinated Ocean-ice Reference Experiments phase II (CORE-II). Part I: Mean states, *Ocean Model.*, 73, 76–107, <https://doi.org/10.1016/j.ocemod.2013.10.005>, 2014.
- 855 Danabasoglu, G., Yeager, S. G., Kim, W. M., Behrens, E., Bentsen, M., Bi, D., Biastoch, A., Bleck, R., Böning, C., Bozec, A., Canuto, V. M., Cassou, C., Chassignet, E., Coward, A. C., Danilov, S., Diansky, N., Drange, H., Farneti, R., Fernandez, E., Fogli, P. G., Forget, G., Fujii, Y., Griffies, S. M., Gusev, A., Heimbach, P., Howard, A., Ilıcak, M., Jung, T., Karspeck, A. R., Kelley, M., Large, W. G., Leboissetier, A., Lu, J., Madec, G., Marsland, S. J., Masina, S., Navarra, A., Nurser, A. J., Pirani, A., Romanou, A., y Méliá David, S., Samuels, B. L., Scheinert, M., Sidorenko, D., Sun, S., Treguier, A. M., Tsujino, H., Uotila, P., Valcke, S., Voltaire, A., Wang, Q., and Yashayaev, I.: North Atlantic simulations in Coordinated Ocean-ice Reference Experiments phase II (CORE-II). Part II: Inter-annual to decadal variability, *Ocean Model.*, 97, 65–90, <https://doi.org/10.1016/j.ocemod.2015.11.007>, 2016.
- 860 Debreu, L., Vouland, C., and Blayo, E.: AGRIF: Adaptive grid refinement in Fortran, *Computers & Geosciences*, 34, 8–13, <https://doi.org/10.1016/j.cageo.2007.01.009>, 2008.
- Dengler, M., Schott, F. A., Eden, C., Brandt, P., Fischer, J., and Zantopp, R. J.: Break-up of the Atlantic deep western boundary current into eddies at 8° S, *Nature*, 432, 1018–1020, <https://doi.org/10.1038/nature03134>, 2004.
- Dickson, R. R. and Brown, J.: The production of North Atlantic Deep Water: sources, rates, and pathways, *J. Geophys. Res.*, 99, 12319–12341, <https://doi.org/10.1029/94jc00530>, 1994.
- 870 DiNezio, P. N., Gramer, L. J., Johns, W. E., Meinen, C. S., and Baringer, M. O.: Observed interannual variability of the Florida current: Wind forcing and the North Atlantic Oscillation, *J. Phys. Oceanogr.*, 39, 721–736, <https://doi.org/10.1175/2008JPO4001.1>, 2009.
- Eden, C. and Böning, C.: Sources of eddy kinetic energy in the Labrador Sea, *J. Phys. Oceanogr.*, 32, 3346–3363, [https://doi.org/10.1175/1520-0485\(2002\)032<3346:SOEKEI>2.0.CO;2](https://doi.org/10.1175/1520-0485(2002)032<3346:SOEKEI>2.0.CO;2), 2002.
- Eyring, V., Bony, S., Meehl, G. A., Senior, C. A., Stevens, B., Stouffer, R. J., and Taylor, K. E.: Overview of the Coupled Model Intercomparison Project Phase 6 (CMIP6) experimental design and organization, *Geosci. Model Dev.*, 9, 1937–1958, <https://doi.org/10.5194/gmd-9-1937-2016>, 2016.
- 875 Fichet, T. and Morales Maqueda, M. A.: Sensitivity of a global sea ice model to the treatment of ice thermodynamic and dynamics, *J. Geophys. Res.*, 102, 12609–12646, <https://doi.org/10.1029/97JC00480>, 1997.
- Fischer, J., Schott, F. A., and Dengler, M.: Boundary circulation at the exit of the Labrador Sea, *J. Phys. Oceanogr.*, 34, 1548–1570, [https://doi.org/10.1175/1520-0485\(2004\)034<1548:BCATEO>2.0.CO;2](https://doi.org/10.1175/1520-0485(2004)034<1548:BCATEO>2.0.CO;2), 2004.
- 880

- Fischer, J., Karstensen, J., Zantopp, R., Visbeck, M., Biastoch, A., Behrens, E., Böning, C. W., Quadfasel, D., Jochumsen, K., Valdimarsson, H., Jónsson, S., Bacon, S., Holliday, N. P., Dye, S., Rhein, M., and Mertens, C.: Intra-seasonal variability of the DWBC in the western subpolar North Atlantic, *Prog. Oceanogr.*, 132, 233–249, <https://doi.org/10.1016/j.pocean.2014.04.002>, 2015.
- 885 Fox-Kemper, B., Adcroft, A., Böning, C. W., Chassignet, E. P., Curchitser, E., Danabasoglu, G., Eden, C., England, M. H., Gerdes, R., Greatbatch, R. J., Griffies, S. M., Hallberg, R. W., Hanert, E., Heimbach, P., Hewitt, H. T., Hill, C. N., Komuro, Y., Legg, S., Sommer, J. L., Masina, S., Marsland, S. J., Penny, S. G., Qiao, F., Ringler, T. D., Treguier, A. M., Tsujino, H., Uotila, P., and Yeager, S. G.: Challenges and prospects in ocean circulation models, <https://doi.org/10.3389/fmars.2019.00065>, 2019.
- 890 Frajka-Williams, E., Ansorge, I. J., Baehr, J., Bryden, H. L., Chidichimo, M. P., Cunningham, S. A., Danabasoglu, G., Dong, S., Donohue, K. A., Elipot, S., Heimbach, P., Holliday, N. P., Hummels, R., Jackson, L. C., Karstensen, J., Lankhorst, M., Le Bras, I. A., Lozier, M. S., McDonagh, E. L., Meinen, C. S., Mercier, H., Moat, B. I., Perez, R. C., Piecuch, C. G., Rhein, M., Srokosz, M. A., Trenberth, K. E., Bacon, S., Forget, G., Goni, G., Kieke, D., Koelling, J., Lamont, T., McCarthy, G. D., Mertens, C., Send, U., Smeed, D. A., Speich, S., van den Berg, M., Volkov, D., and Wilson, C.: Atlantic Meridional Overturning Circulation: Observed Transport and Variability, *Front. Mar. Sci.*, 6, 260, <https://doi.org/10.3389/fmars.2019.00260>, <https://www.frontiersin.org/article/10.3389/fmars.2019.00260/full>, 2019.
- 895 Gary, S. F., Lozier, M., Böning, C. W., and Biastoch, A.: Deciphering the pathways for the deep limb of the Meridional Overturning Circulation, *Deep. Res. Part II Top. Stud. Oceanogr.*, 58, 1781–1797, <https://doi.org/10.1016/j.dsr2.2010.10.059>, 2011.
- Gary, S. F., Fox, A. D., Biastoch, A., Roberts, J. M., and Cunningham, S. A.: Larval behaviour, dispersal and population connectivity in the deep sea, *Sci. Rep.*, 10, <https://doi.org/10.1038/s41598-020-67503-7>, 2020.
- 900 Garzoli, S. L. and Matano, R.: The South Atlantic and the Atlantic Meridional Overturning Circulation, *Deep. Res. Part II Top. Stud. Oceanogr.*, 58, 1837–1847, <https://doi.org/10.1016/j.dsr2.2010.10.063>, <http://linkinghub.elsevier.com/retrieve/pii/S0967064511000464>, 2011.
- Getzlaff, K., Böning, C. W., and Dengg, J.: Lagrangian perspectives of deep water export from the subpolar North Atlantic, *Geophys. Res. Lett.*, 33, doi:10.1029/2006GL026470, <https://doi.org/10.1029/2006GL026470>, 2006.
- 905 Griffies, S. M., Biastoch, A., Böning, C., Bryan, F., Danabasoglu, G., Chassignet, E. P., England, M. H., Gerdes, R., Haak, H., Hallberg, R. W., Hazeleger, W., Jungclaus, J., Large, W. G., Madec, G., Pirani, A., Samuels, B. L., Scheinert, M., Gupta, A. S., Severijns, C. a., Simmons, H. L., Treguier, A. M., Winton, M., Yeager, S., and Yin, J.: Coordinated Ocean-ice Reference Experiments (COREs), *Ocean Model.*, 26, 1–46, <https://doi.org/10.1016/j.ocemod.2008.08.007>, 2009.
- 910 Griffies, S. M., Danabasoglu, G., Durack, P. J., Adcroft, A. J., Balaji, V., Böning, C. W., Chassignet, E. P., Curchitser, E., Deshayes, J., Drange, H., Fox-Kemper, B., Gleckler, P. J., Gregory, J. M., Haak, H., Hallberg, R. W., Heimbach, P., Hewitt, H. T., Holland, D. M., Ilyina, T., Jungclaus, J. H., Komuro, Y., Krasting, J. P., Large, W. G., Marsland, S. J., Masina, S., McDougall, T. J., George Nurser, A. J., Orr, J. C., Pirani, A., Qiao, F., Stouffer, R. J., Taylor, K. E., Treguier, A. M., Tsujino, H., Uotila, P., Valdivieso, M., Wang, Q., Winton, M., and Yeager, S. G.: OMIP contribution to CMIP6: Experimental and diagnostic protocol for the physical component of the Ocean Model Intercomparison Project, *Geosci. Model Dev.*, 9, 3231–3296, <https://doi.org/10.5194/gmd-9-3231-2016>, <https://gmd.copernicus.org/articles/9/3231/2016/>, 2016.
- Hallberg, R.: Using a resolution function to regulate parameterizations of oceanic mesoscale eddy effects, *Ocean Model.*, 72, 92–103, <http://www.sciencedirect.com/science/article/pii/S1463500313001601>, 2013.
- Handmann, P., Fischer, J., Visbeck, M., Karstensen, J., Biastoch, A., Böning, C., and Patara, L.: The Deep Western Boundary Current in the Labrador Sea From Observations and a High-Resolution Model, *J. Geophys. Res. Ocean.*, 123, 2829–2850, <https://doi.org/10.1002/2017JC013702>, 2018.

- Hansen, B., Húsgarð Larsen, K. M., Hátún, H., and Østerhus, S.: A stable Faroe Bank Channel overflow 1995–2015, *Ocean Sci.*, 12, 1205–1220, <https://doi.org/10.5194/os-12-1205-2016>, <https://os.copernicus.org/articles/12/1205/2016/>, 2016.
- Harden, B. E., Pickart, R. S., Valdimarsson, H., Våge, K., de Steur, L., Richards, C., Bahr, F., Torres, D., Børve, E., Jónsson, S., Macrander, A., Østerhus, S., Håvik, L., and Hattermann, T.: Upstream sources of the Denmark Strait Overflow: Observations from a high-resolution mooring array, *Deep. Res. Part I Oceanogr. Res. Pap.*, 112, 94–112, <https://doi.org/10.1016/j.dsr.2016.02.007>, <https://www.sciencedirect.com/science/article/pii/S0967063715301266?via%3Dihub>, 2016.
- Herrford, J., Brandt, P., Kanzow, T., Hummels, R., Araujo, M., and Durgadoo, J. V.: Seasonal variability of the Atlantic Meridional Overturning Circulation at 11° S inferred from bottom pressure measurements, *Ocean Sci.*, 17, 265–284, <https://doi.org/10.5194/os-17-265-2021>, <https://os.copernicus.org/articles/17/265/2021/>, 2021.
- Hewitt, H. T., Roberts, M., Mathiot, P., Biastoch, A., Blockley, E., Chassignet, E. P., Fox-Kemper, B., Hyder, P., Marshall, D. P., Popova, E., Treguier, A. M., Zanna, L., Yool, A., Yu, Y., Beadling, R., Bell, M., Kuhlbrodt, T., Arsouze, T., Bellucci, A., Castruccio, F., Gan, B., Putrasahan, D., Roberts, C. D., Van Roekel, L., and Zhang, Q.: Resolving and Parameterising the Ocean Mesoscale in Earth System Models, *Curr. Clim. Chang. Reports*, 6, 137–152, <https://doi.org/10.1007/s40641-020-00164-w>, 2020.
- Hirschi, J. J., Frajka-Williams, E., Blaker, A. T., Sinha, B., Coward, A., Hyder, P., Biastoch, A., Böning, C., Barnier, B., Penduff, T., Garcia, I., Fransner, F., and Madec, G.: Loop current variability as trigger of coherent gulf stream transport anomalies, *J. Phys. Oceanogr.*, 49, 2115–2132, <https://doi.org/10.1175/JPO-D-18-0236.1>, 2019.
- Hirschi, J. J., Barnier, B., Böning, C., Biastoch, A., Blaker, A. T., Coward, A., Danilov, S., Drijfhout, S., Getzlaff, K., Griffies, S. M., Hasumi, H., Hewitt, H., Iovino, D., Kawasaki, T., Kiss, A. E., Koldunov, N., Marzocchi, A., Mecking, J. V., Moat, B., Molines, J. M., Myers, P. G., Penduff, T., Roberts, M., Treguier, A. M., Sein, D. V., Sidorenko, D., Small, J., Spence, P., Thompson, L. A., Weijer, W., and Xu, X.: The Atlantic Meridional Overturning Circulation in High-Resolution Models, *J. Geophys. Res. Ocean.*, 125, e2019JC015522, <https://doi.org/10.1029/2019JC015522>, 2020.
- Hollingsworth, A., Kållberg, P., Renner, V., and Burridge, D. M.: An internal symmetric computational instability, *Quarterly Journal of the Royal Meteorological Society*, 109, 1983.
- Hummels, R., Brandt, P., Dengler, M., Fischer, J., Araujo, M., Veleda, D., and Durgadoo, J. V.: Interannual to decadal changes in the western boundary circulation in the Atlantic at 11°S, *Geophys. Res. Lett.*, 42, 7615–7622, <https://doi.org/10.1002/2015GL065254>, 2015.
- Jackson, L. C., Dubois, C., Forget, G., Haines, K., Harrison, M., Iovino, D., Köhl, A., Mignac, D., Masina, S., Peterson, K. A., Piecuch, C. G., Roberts, C. D., Robson, J., Storto, A., Toyoda, T., Valdivieso, M., Wilson, C., Wang, Y., and Zuo, H.: The Mean State and Variability of the North Atlantic Circulation: A Perspective From Ocean Reanalyses, *Journal of Geophysical Research: Oceans*, 124, 9141–9170, <https://doi.org/https://doi.org/10.1029/2019JC015210>, 2019.
- Jochumsen, K., Moritz, M., Nunes, N., Quadfasel, D., Larsen, K. M. H., Hansen, B., Valdimarsson, H., and Jonsson, S.: Revised transport estimates of the Denmark Strait overflow, *J. Geophys. Res. Ocean.*, 122, 3434–3450, <https://doi.org/10.1002/2017JC012803>, <http://doi.wiley.com/10.1002/2017JC012803>, 2017.
- Karspeck, A. R., Stammer, D., Köhl, A., Danabasoglu, G., Balmaseda, M., Smith, D. M., Fujii, Y., Zhang, S., Giese, B., Tsujino, H., and Rosati, A.: Comparison of the Atlantic meridional overturning circulation between 1960 and 2007 in six ocean reanalysis products, *Climate Dynamics*, pp. 1–26, <https://doi.org/10.1007/s00382-015-2787-7>, <http://dx.doi.org/10.1007/s00382-015-2787-7>, 2015.
- Käse, R. H., Girton, J. B., and Sanford, T. B.: Structure and variability of the Denmark Strait Overflow: Model and observations, *J. Geophys. Res. Ocean.*, 108, 3181, <https://doi.org/10.1029/2002jc001548>, <http://doi.wiley.com/10.1029/2002JC001548>, 2003.

- Kirchner, K., Rhein, M., Hüttl-Kabus, S., and Böning, C. W.: On the spreading of South Atlantic Water into the Northern Hemisphere, *J. Geophys. Res. Ocean.*, 114, C05 019, <https://doi.org/10.1029/2008JC005165>, <http://www.agu.org/pubs/crossref/2009/2008JC005165.shtml>, 2009.
- 960 Koul, V., Tesdal, J.-E., Bersch, M., Hátún, H., Brune, S., Borchert, L., Haak, H., Schrum, C., and Baehr, J.: Unraveling the choice of the north Atlantic subpolar gyre index, *Scientific Reports*, 10, 2045–2322, <https://doi.org/10.1038/s41598-020-57790-5>, <https://doi.org/10.1038/s41598-020-57790-5>, 2020.
- Large, W. G. and Yeager, S.: The global climatology of an interannually varying air-sea flux data set, *Clim. Dyn.*, 33, 341–364, 2009.
- Latif, M., Böning, C., Willebrand, J., Biastoch, A., Dengg, J., Keenlyside, N., Schwecjendiek, U., and Madec, G.: Is the thermohaline circulation changing?, *Journal of Climate*, 19, 4631–4637, <https://doi.org/10.1175/JCLI3876.1>, 2006.
- 965 Lavender, K. L., Davis, R. E., and Owens, W. B.: Mid-depth recirculation observed in the interior Labrador and Irminger seas by direct velocity measurements, *Nature*, 407, 66–69, <https://doi.org/10.1038/35024048>, 2000.
- Le Bras, I. A., Yashayaev, I., and Toole, J. M.: Tracking Labrador Sea Water property signals along the Deep Western Boundary Current, *J. Geophys. Res. Ocean.*, 122, 5348–5366, <https://doi.org/10.1002/2017JC012921>, <https://onlinelibrary.wiley.com/doi/abs/10.1002/2017JC012921>, 2017.
- 970 Lee, T. N. and Williams, E.: Wind-Forced Transport Fluctuations of the Florida Current, *J. Phys. Oceanogr.*, 18, 937–946, [https://doi.org/10.1175/1520-0485\(1988\)018<0937:wftot>2.0.co;2](https://doi.org/10.1175/1520-0485(1988)018<0937:wftot>2.0.co;2), 1988.
- Legg, S., Hallberg, R. W., and Girton, J. B.: Comparison of entrainment in overflows simulated by z-coordinate, isopycnal and non-hydrostatic models, *Ocean Model.*, 11, 69–97, <https://doi.org/10.1016/j.ocemod.2004.11.006>, 2006.
- Lemarié, F.: NEMO/AGRIF Nesting tools, User’s Guide (30 January 2006), http://www.atmos.ucla.edu/~florian/NEMO_AGRIF/, 2006.
- 975 Levitus, S., Boyer, T. P., Conkright, M. E., Brien, T. O., Antonov, J., Stephens, C., Stathoplos, L., Johnson, D., and Gelfeld, R.: NOAA Atlas NESDIS 18, World Ocean Database 1998: Volume 1: Introduction, U.S. Gov. Printing Office, Wash., D.C., 1998.
- Locarnini, R. A., Mishonov, A. V., Antonov, J. I., Boyer, T. P., Garcia, H. E., Baranova, O. K., Zweng, M. M., Paver, C. R., Reagan, J. R., Johnson, D. R., Hamilton, M., Seidov 1948-, D., and Levitus, S.: World ocean atlas 2013. Volume 1, Temperature, <https://doi.org/http://doi.org/10.7289/V55X26VD>, <https://repository.library.noaa.gov/view/noaa/14847>, 2013.
- 980 Lozier, M. S.: Deconstructing the conveyor belt., *Science (80-.)*, 328, 1507–1511, <https://doi.org/10.1126/science.1189250>, <http://www.sciencemag.org/content/328/5985/1507.full>, 2010.
- Lozier, M. S., Gary, S. F., and Bower, A. S.: Simulated pathways of the overflow waters in the North Atlantic: Subpolar to subtropical export, *Deep. Res. Part II Top. Stud. Oceanogr.*, 85, 147–153, <https://doi.org/10.1016/j.dsr2.2012.07.037>, <https://www.sciencedirect.com/science/article/pii/S0967064512001233>, 2013.
- 985 Lozier, M. S., Bacon, S., Bower, A. S., Cunningham, S. A., De Jong, M. F., De Steur, L., De Young, B., Fischer, J., Gary, S. F., Greenan, B. J., Heimbach, P., Holliday, N. P., Houpert, L., Inall, M. E., Johns, W. E., Johnson, H. L., Karstensen, J., Li, F., Lin, X., Mackay, N., Marshall, D. P., Mercier, H., Myers, P. G., Pickart, R. S., Pillar, H. R., Straneo, F., Thierry, V., Weller, R. A., Williams, R. G., Wilson, C., Yang, J., Zhao, J., and Zika, J. D.: Overturning in the Subpolar north Atlantic program: A new international ocean observing system, *Bull. Am. Meteorol. Soc.*, 98, 737–752, <https://doi.org/10.1175/BAMS-D-16-0057.1>, 2017.
- 990 Lozier, M. S., Li, F., Bacon, S., Bahr, F., Bower, A. S., Cunningham, S. A., De Jong, M. F., De Steur, L., DeYoung, B., Fischer, J., Gary, S. F., Greenan, B. J., Holliday, N. P., Houk, A., Houpert, L., Inall, M. E., Johns, W. E., Johnson, H. L., Johnson, C., Karstensen, J., Koman, G., Le Bras, I. A., Lin, X., Mackay, N., Marshall, D. P., Mercier, H., Olmanns, M., Pickart, R. S., Ramsey, A. L., Rayner, D., Straneo, F.,

- Thierry, V., Torres, D. J., Williams, R. G., Wilson, C., Yang, J., Yashayaev, I., and Zhao, J.: A sea change in our view of overturning in the subpolar North Atlantic, *Science* (80-.), 363, 516–521, <https://doi.org/10.1126/science.aau6592>, 2019.
- 995 Madec, G.: NEMO ocean engine, Note du Pôle modélisation, Inst. Pierre-Simon Laplace, p. 406, 2016.
- Maltrud, M. E., Smith, R. D., Semtner, A. J., and Malone, R. C.: Global eddy-resolving ocean simulations driven by 1985–1995 atmospheric winds, *J. Geophys. Res. Ocean.*, 103, 30 825–30 853, <https://doi.org/10.1029/1998jc900013>, 1998.
- Marshall, J. and Schott, F.: Open ocean deep convection: Observations, models and theory, *Rev. Geophys.*, 37, 1–64, 1999.
- Matthes, K., Biastoch, A., Wahl, S., Harlaß, J., Martin, T., Brücher, T., Drews, A., Ehlert, D., Getzlaff, K., Krüger, F., Rath, W., Scheinert, M.,
1000 U. Schwarzkopf, F., Bayr, T., Schmidt, H., and Park, W.: The Flexible Ocean and Climate Infrastructure version 1 (FOCI1): Mean state and variability, *Geosci. Model Dev.*, 13, 2533–2568, <https://doi.org/10.5194/gmd-13-2533-2020>, <https://gmd.copernicus.org/articles/13/2533/2020/>, 2020.
- McCarthy, G., Frajka-Williams, E., Johns, W. E., Baringer, M. O., Meinen, C. S., Bryden, H. L., Rayner, D., Ducez, A., Roberts, C., and Cunningham, S. A.: Observed interannual variability of the Atlantic meridional overturning circulation at 26.5°N, *Geophys. Res. Lett.*,
1005 39, L19 609, <https://doi.org/10.1029/2012GL052933>, <http://www.agu.org/pubs/crossref/2012/2012GL052933.shtml>, 2012.
- Meinen, C. S., Baringer, M. O., and Garcia, R. F.: Florida Current transport variability: An analysis of annual and longer-period signals, *Deep Sea Research Part I: Oceanographic Research Papers*, 57, 835–846, 2010.
- Meinen, C. S., Speich, S., Piola, A. R., Ansgore, I., Campos, E., Kersalé, M., Terre, T., Chidichimo, M. P., Lamont, T., Sato, O. T., Perez, R. C., Valla, D., van den Berg, M., Le Hénaff, M., Dong, S., and Garzoli, S. L.: Meridional Overturning Circulation Transport Variability
1010 at 34.5°S During 2009–2017: Baroclinic and Barotropic Flows and the Dueling Influence of the Boundaries, *Geophys. Res. Lett.*, 45, 4180–4188, <https://doi.org/10.1029/2018GL077408>, <http://doi.wiley.com/10.1029/2018GL077408>, 2018.
- Mertens, C., Rhein, M., Walter, M., Böning, C. W., Behrens, E., Kieke, D., Steinfeldt, R., and Stöber, U.: Circulation and transports in the Newfoundland Basin, western subpolar North Atlantic, *J. Geophys. Res. Ocean.*, 119, 7772–7793, <https://doi.org/10.1002/2014JC010019>,
<http://doi.wiley.com/10.1002/2014JC010019>, 2014.
- 1015 Moat, B. I., Smeed, D. A., Frajka-Williams, E., Desbruyères, D. G., Beaulieu, C., Johns, W. E., Rayner, D., Sanchez-Franks, A., Baringer, M. O., Volkov, D., Jackson, L. C., and Bryden, H. L.: Pending recovery in the strength of the meridional overturning circulation at 26° N, *Ocean Sci.*, 16, 863–874, <https://doi.org/10.5194/os-16-863-2020>, <https://os.copernicus.org/articles/16/863/2020/>, 2020.
- Msadek, R., Johns, W. E., Yeager, S. G., Danabasoglu, G., Delworth, T. L., and Rosati, A.: The Atlantic meridional heat transport at 26.5°N and its relationship with the MOC in the RAPID array and the GFDL and NCAR coupled models, *J. Clim.*, 26, 4335–4356,
1020 <https://doi.org/10.1175/JCLI-D-12-00081.1>, 2013.
- Østerhus, S., Woodgate, R., Valdimarsson, H., Turrell, B., De Steur, L., Quadfasel, D., Olsen, S. M., Moritz, M., Lee, C. M., Larsen, K. M. H., Jónsson, S., Johnson, C., Jochumsen, K., Hansen, B., Curry, B., Cunningham, S., and Berx, B.: Arctic Mediterranean exchanges: A consistent volume budget and trends in transports from two decades of observations, *Ocean Sci.*, 15, 379–399, <https://doi.org/10.5194/os-15-379-2019>, <https://os.copernicus.org/articles/15/379/2019/>, 2019.
- 1025 Peña-Molino, B., Joyce, T. M., and Toole, J. M.: Variability in the Deep Western boundary current: Local versus remote forcing, *J. Geophys. Res. Ocean.*, 117, n/a–n/a, <https://doi.org/10.1029/2012JC008369>, <http://doi.wiley.com/10.1029/2012JC008369>, 2012.
- Penduff, T., Le Sommer, J., Barnier, B., Treguier, A. M., Molines, J. M., and Madec, G.: Influence of numerical schemes on current-topography interactions in 1/4° global ocean simulations, *Ocean Sci.*, 3, 509–524, <https://doi.org/10.5194/os-3-509-2007>, 2007.
- Rabe, B., Karcher, M., Kauker, F., Schauer, U., Toole, J. M., Krishfield, R. A., Pisarev, S., Kikuchi, T., and Su, J.: Arctic Ocean basin liquid
1030 freshwater storage trend 1992–2012, *Geophys. Res. Lett.*, 41, 961–968, <https://doi.org/10.1002/2013GL058121>, 2014.

- Rahmstorf, S. and Willebrand, J.: The role of temperature feedback in stabilizing the thermohaline circulation, *Journal of Physical Oceanography*, 25, 787–805, 1995.
- Rayner, N. A., Parker, D. E., Horton, E. B., Folland, C. K., Alexander, L. V., Rowell, D. P., Kent, E. C., and Kaplan, A.: Global analyses of sea surface temperature, sea ice, and night marine air temperature since the late nineteenth century, *J. Geophys. Res. Atmos.*, 108, 4407, <https://doi.org/10.1029/2002jd002670>, <http://doi.wiley.com/10.1029/2002JD002670>, 2003.
- 1035 Reichstein, M., Camps-Valls, G., Stevens, B., Jung, M., Denzler, J., Carvalhais, N., and Prabhat: Deep learning and process understanding for data-driven Earth system science, *Nature*, 566, 195–204, <https://doi.org/10.1038/s41586-019-0912-1>, 2019.
- Rieck, J. K., Böning, C. W., and Getzlaff, K.: The nature of eddy kinetic energy in the Labrador sea: Different types of mesoscale eddies, their temporal variability, and impact on deep convection, *J. Phys. Oceanogr.*, 49, 2075–2094, <https://doi.org/10.1175/JPO-D-18-0243.1>, <http://journals.ametsoc.org/doi/10.1175/JPO-D-18-0243.1>, 2019.
- 1040 Rossby, T., Flagg, C., Chafik, L., Harden, B., and Sjøiland, H.: A Direct Estimate of Volume, Heat, and Freshwater Exchange Across the Greenland-Iceland-Faroe-Scotland Ridge, *Journal of Geophysical Research: Oceans*, 123, 7139–7153, 2018.
- Roulet, G. and Madec, G.: Salt conservation, free surface and varying levels: a new formulation for ocean general circulation models, *J. Geophys. Res.*, 105, 2000.
- 1045 Rühls, S., Getzlaff, K., Durgadoo, J. V., Biastoch, A., and Böning, C. W.: On the suitability of North Brazil Current transport estimates for monitoring basin-scale AMOC changes, *Geophysical Research Letters*, 42, 8072–8080, <https://doi.org/10.1002/2015GL065695>, <http://doi.wiley.com/10.1002/2015GL065695>, 2015.
- Rühls, S., Oliver, E. C. J., Biastoch, A., Böning, C. W., Dowd, M., Getzlaff, K., Martin, T., and Myers, P. G.: Changing spatial patterns of deep convection in the subpolar North Atlantic, *J. Geophys. Res. Ocean.*, 126, e2021JC017245, <https://doi.org/10.1029/2021jc017245>, <https://onlinelibrary.wiley.com/doi/10.1029/2021JC017245>, 2021.
- 1050 Schott, F. and Brandt, P.: Circulation and deep water export of the subpolar North Atlantic during the 1990's, in: *Ocean Circulation: Mechanisms and Impacts*, edited by Schmittner, A., Chiang, J. C. H., and Hemming, S. R., vol. 173 of *Geophysical Monograph Series*, pp. 91–118, [ARRAY\(0xf9c5fa4\)](https://doi.org/10.1029/1029-147GM15), Washington, DC, <http://oceanrep.geomar.de/7803/>, 2007.
- Schott, F. A., McCreary Jr., J. P., and Johnson, G. C.: Shallow Overturning Circulations of the Tropical-Subtropical Oceans, pp. 261–304, American Geophysical Union (AGU), <https://doi.org/10.1029/147GM15>, <https://agupubs.onlinelibrary.wiley.com/doi/abs/10.1029/147GM15>, 2004.
- 1055 Schubert, R., Biastoch, A., Cronin, M. F., and Greatbatch, R. J.: Instability-driven benthic storms below the separated gulf stream and the North Atlantic current in a high-resolution ocean model, *J. Phys. Oceanogr.*, 48, 2283–2303, <https://doi.org/10.1175/JPO-D-17-0261.1>, <http://journals.ametsoc.org/doi/10.1175/JPO-D-17-0261.1>, 2018.
- 1060 Schulzki, T., Getzlaff, K., and Biastoch, A.: On the Variability of the DWBC Transport Between 26.5° N and 16° N in an Eddy-Rich Ocean Model, *J. Geophys. Res. Ocean.*, 126, e2021JC017372, <https://doi.org/10.1029/2021jc017372>, <https://onlinelibrary.wiley.com/doi/10.1029/2021JC017372>, 2021.
- Schwarzkopf, F. U.: Ventilation pathways in the tropical Atlantic and Pacific Oceans with a focus on the Oxygen Minimum Zones : development and application of a nested high-resolution global model system, Phd/ doctoral thesis, Christian-Albrechts-Universität Kiel, <http://oceanrep.geomar.de/34702/>, 2016.
- 1065 Schwarzkopf, F. U., Biastoch, A., Böning, C. W., Chanut, J., Durgadoo, J. V., Getzlaff, K., Harlaß, J., Rieck, J. K., Roth, C., Scheinert, M. M., and Schubert, R.: The INALT family - A set of high-resolution nests for the Agulhas Current system within global NEMO ocean/sea-ice configurations, *Geosci. Model Dev.*, 12, 3329–3355, <https://doi.org/10.5194/gmd-12-3329-2019>, 2019.

- Send, U., Lankhorst, M., and Kanzow, T.: Observation of decadal change in the Atlantic meridional overturning circulation using 10 years
1070 of continuous transport data, *Geophysical Research Letters*, 38, <https://doi.org/10.1029/2011GL049801>, 2011.
- Sinha, B., Smeed, D. A., McCarthy, G., Moat, B. I., Josey, S. A., Hirschi, J. J., Frajka-Williams, E., Blaker, A. T., Rayner, D., and Madec,
G.: The accuracy of estimates of the overturning circulation from basin-wide mooring arrays, *Progress in Oceanography*, 160, 101–123,
<https://doi.org/10.1016/j.pocean.2017.12.001>, <https://www.sciencedirect.com/science/article/pii/S0079661116302439>, 2018.
- Smith, R. D., Maltrud, M. E., Bryan, F. O., and Hecht, M. W.: Numerical simulation of the North Atlantic Ocean at 1/10°, *J. Phys. Oceanogr.*,
1075 30, 1532–1561, [https://doi.org/10.1175/1520-0485\(2000\)030<1532:NSOTNA>2.0.CO;2](https://doi.org/10.1175/1520-0485(2000)030<1532:NSOTNA>2.0.CO;2), 2000.
- Solodoch, A., McWilliams, J. C., Stewart, A. L., Gula, J., and Renault, L.: Why does the deep western boundary current “leak” around
flemish cap?, *J. Phys. Oceanogr.*, 50, 1989–2016, <https://doi.org/10.1175/JPO-D-19-0247.1>, <https://journals.ametsoc.org/jpo/article/50/7/1989/347277/Why-Does-the-Deep-Western-Boundary-Current-Leak>, 2020.
- Sonnewald, M., Wunsch, C., and Heimbach, P.: Unsupervised Learning Reveals Geography of Global Ocean Dynamical Regions, *Earth Sp.*
1080 *Sci.*, 6, 784–794, <https://doi.org/10.1029/2018EA000519>, <https://onlinelibrary.wiley.com/doi/abs/10.1029/2018EA000519>, 2019.
- Srokosz, M., Danabasoglu, G., and Patterson, M.: Atlantic Meridional Overturning Circulation: Reviews of Observational and Modeling
Advances – an Introduction, *J. Geophys. Res. Ocean.*, <https://doi.org/10.1029/2020jc016745>, <https://onlinelibrary.wiley.com/doi/10.1029/2020JC016745>, 2020.
- Steele, M., Morley, R., and Ermold, W.: PHC: A global ocean hydrography with a high quality Arctic Ocean, *Journal of Climate*, 14,
1085 2079–2087, 2001.
- Steinle, L., Graves, C. A., Treude, T., Ferré, B., Biastoch, A., Bussmann, I., Berndt, C., Krastel, S., James, R. H., Behrens, E., Böning, C. W.,
Greiner, J., Sapart, C. J., Scheinert, M., Sommer, S., Lehmann, M. F., and Niemann, H.: Water column methanotrophy controlled by a
rapid oceanographic switch, *Nat. Geosci.*, 8, 378–382, <https://doi.org/10.1038/ngeo2420>, 2015.
- Stommel, H.: The abyssal circulation, *Deep Sea Res.*, 5, 80–82, [https://doi.org/10.1016/S0146-6291\(58\)80014-4](https://doi.org/10.1016/S0146-6291(58)80014-4), <https://www.sciencedirect.com/science/article/pii/S0146629158800144?via%3Dihub>, 1958.
- Thoma, M., Gerdes, R., Greatbatch, R. J., and Ding, H.: Partially coupled spin-up of the MPI-ESM: implementation and first results, *Geosci.*
Model Dev., 8, 51–68, <https://doi.org/10.5194/gmd-8-51-2015>, <https://www.geosci-model-dev.net/8/51/2015/>, 2015.
- Toole, J. M., Andres, M., Le Bras, I. A., Joyce, T. M., and McCartney, M. S.: Moored observations of the Deep Western Boundary Current
in the NW Atlantic: 2004–2014, *Journal of Geophysical Research: Oceans*, 122, 7488–7505, <https://doi.org/10.1002/2017JC012984>,
1095 <http://doi.wiley.com/10.1002/2017JC012984>, 2017.
- Treguier, A. M., Theetten, S., Chassignet, E. P., Penduff, T., Smith, R., Talley, L., Beismann, J. O., and Böning, C.: The North Atlantic
subpolar gyre in four high-resolution models, *J. Phys. Oceanogr.*, 35, 757–774, <https://doi.org/10.1175/JPO2720.1>, 2005.
- Tsujino, H., Urakawa, S., Nakano, H., Small, R. J., Kim, W. M., Yeager, S. G., Danabasoglu, G., Suzuki, T., Bamber, J. L., Bentsen,
M., Böning, C. W., Bozec, A., Chassignet, E. P., Curchitser, E., Boeira Dias, F., Durack, P. J., Griffies, S. M., Harada, Y., Ilicak,
1100 M., Josey, S. A., Kobayashi, C., Kobayashi, S., Komuro, Y., Large, W. G., Le Sommer, J., Marsland, S. J., Masina, S., Scheinert,
M., Tomita, H., Valdivieso, M., and Yamazaki, D.: JRA-55 based surface dataset for driving ocean–sea-ice models (JRA55-
do), *Ocean Modelling*, 130, 79–139, <https://doi.org/10.1016/j.ocemod.2018.07.002>, <https://www.sciencedirect.com/science/article/pii/S146350031830235X?via%3Dihub>, 2018.
- Tsujino, H., Urakawa, L. S., Griffies, S., Danabasoglu, G., Adcroft, A., Amaral, A., Arsouze, T., Bentsen, M., Bernardello, R., Böning, C.,
1105 Bozec, A., Chassignet, E., Danilov, S., Dussin, R., Exarchou, E., Fogli, P. G., Fox-Kemper, B., Guo, C., Ilicak, M., Iovino, D., Kim, W.,
Koldunov, N., Lapin, V., Li, Y., Lin, P., Lindsay, K., Liu, H., Long, M., Komuro, Y., Marsland, S., Masina, S., Nummelin, A., Rieck, J. K.,

- Ruprich-Robert, Y., Scheinert, M., Sicardi, V., Sidorenko, D., Suzuki, T., Tatebe, H., Wang, Q., Yeager, S., and Yu, Z.: Evaluation of global ocean–sea-ice model simulations based on the experimental protocols of the Ocean Model Intercomparison Project phase 2 (OMIP-2), *Geosci. Model Dev. Discuss.*, 2020, 1–86, <https://doi.org/10.5194/gmd-2019-363>, 2020.
- 1110 Van Sebille, E., Johns, W. E., and Beal, L. M.: Does the vorticity flux from Agulhas rings control the zonal pathway of NADW across the South Atlantic?, *J. Geophys. Res. Ocean.*, 117, C05 037, <https://doi.org/10.1029/2011JC007684>, <http://doi.wiley.com/10.1029/2011JC007684>, 2012.
- Weijer, W., Cheng, W., Garuba, O. A., Hu, A., and Nadiga, B. T.: CMIP6 Models Predict Significant 21st Century Decline of the Atlantic Meridional Overturning Circulation, *Geophys. Res. Lett.*, 47, <https://doi.org/10.1029/2019GL086075>, 2020.
- 1115 Wunsch, C. and Heimbach, P.: Two decades of the atlantic meridional overturning circulation: Anatomy, variations, extremes, prediction, and overcoming its limitations, *J. Clim.*, 26, 7167–7186, <https://doi.org/10.1175/JCLI-D-12-00478.1>, 2013.
- Xu, X., Schmitz, W. J., Hurlburt, H. E., Hogan, P. J., and Chassignet, E. P.: Transport of Nordic Seas overflow water into and within the Irminger Sea: An eddy-resolving simulation and observations, *J. Geophys. Res. Ocean.*, 115, C12 048, <https://doi.org/10.1029/2010JC006351>, <http://doi.wiley.com/10.1029/2010JC006351>, 2010.
- 1120 Yashayaev, I.: Hydrographic changes in the Labrador Sea, 1960–2005, *Prog. Oceanogr.*, 73, 242–276, <https://doi.org/10.1016/j.pocean.2007.04.015>, <https://www.sciencedirect.com/science/article/abs/pii/S0079661107000857?via%3Dihub>, 2007.
- Yeager, S. and Danabasoglu, G.: The origins of late-twentieth-century variations in the large-scale North Atlantic circulation, *J. Clim.*, 27, 3222–3247, <https://doi.org/10.1175/JCLI-D-13-00125.1>, 2014.
- 1125 Zalesak, S. T.: Fully multidimensional flux-corrected transport algorithms for fluids, *Journal of Computational Physics*, 31, 1979.
- Zantopp, R., Fischer, J., Visbeck, M., and Karstensen, J.: From interannual to decadal: 17 years of boundary current transports at the exit of the Labrador Sea, *J. Geophys. Res. Ocean.*, 122, 1724–1748, <https://doi.org/10.1002/2016JC012271>, 2017.
- Zou, S., Lozier, S., Zenk, W., Bower, A., and Johns, W.: Observed and modeled pathways of the Iceland Scotland Overflow Water in the eastern North Atlantic, *Prog. Oceanogr.*, 159, 211–222, <https://doi.org/10.1016/j.pocean.2017.10.003>, <https://www.sciencedirect.com/science/article/pii/S0079661117301404>, 2017.
- 1130 Zou, S., Lozier, M. S., and Buckley, M.: How Is Meridional Coherence Maintained in the Lower Limb of the Atlantic Meridional Overturning Circulation?, *Geophys. Res. Lett.*, 46, 244–252, <https://doi.org/10.1029/2018GL080958>, <https://onlinelibrary.wiley.com/doi/abs/10.1029/2018GL080958>, 2019.
- Zweng, M. M., Reagan, J. R., Antonov, J. I., Locarnini, R. A., Mishonov, A. V., Boyer, T. P., Garcia, H. E., Baranova, O. K., Johnson, D. R., Seidov 1948-, D., Biddle, M. M., and Levitus, S.: World ocean atlas 2013. Volume 2, Salinity, <https://doi.org/http://doi.org/10.7289/V5251G4D>, <https://repository.library.noaa.gov/view/noaa/14848>, 2013.