

# Ocean bubbles under high wind conditions. Part 1: Bubble distribution and development

Helen Czerski<sup>1</sup>, Ian M. Brooks<sup>2</sup>, Steve Gunn<sup>3</sup>, Robin Pascal<sup>4</sup>, Adrian Matei<sup>1</sup>, Byron Blomquist<sup>5,6</sup>

<sup>1</sup>Department of Mechanical Engineering, University College London, London, WC1E 7BT, UK

<sup>2</sup>School of Earth and Environment, University of Leeds, Leeds, LS2 9JT, UK

<sup>3</sup>Department of Electronics and Computer Science, University of Southampton, SO17 1BJ, UK

<sup>4</sup>National Oceanography Centre, Southampton, SO14 3ZH, UK

<sup>5</sup>Cooperative Institute for Research in Environmental Sciences, University of Colorado, Boulder, CO, USA

<sup>6</sup>NOAA Physical Sciences Laboratory, Boulder, Colorado, USA

*Correspondence to:* Helen Czerski (h.czerski@ucl.ac.uk)

**Abstract.** The bubbles generated by breaking waves are of considerable scientific interest due to their influence on air-sea gas transfer, aerosol production, and upper ocean optics and acoustics. However, a detailed understanding of the processes creating deeper bubble plumes (extending 2-10 metres below the ocean surface) and their significance for air-sea gas exchange is still lacking. Here, we present bubble measurements from the HiWinGS expedition in the North Atlantic in 2013, collected during several storms with wind speeds of 10-27 m s<sup>-1</sup>. A suite of instruments was used to measure bubbles from a self-orienting free-floating spar buoy: a specialised bubble camera, acoustical resonators, and an upward-pointing sonar. The focus in this paper is on bubble void fractions and plume structure. The results are consistent with the presence of a heterogeneous shallow bubble layer occupying the top 1-2 m of the ocean which is regularly replenished by breaking waves, and deeper plumes which are only formed from the shallow layer at the convergence zones of Langmuir circulation. These advection events are not directly connected to surface breaking. The void fraction distributions at 2 m depth show a sharp cut-off at a void fraction of 10<sup>-4.5</sup> even in the highest winds, implying the existence of mechanisms limiting the void fractions close to the surface. Below wind speeds of 16 m s<sup>-1</sup> or a wind-wave Reynolds number of  $R_{tw} = 2 \times 10^6$ , the probability distribution of void fraction at 2 m depth is very similar in all conditions, but increases significantly above either threshold. Void fractions are significantly different during periods of rising and falling winds, but there is no distinction with wave age. There is a complex near-surface flow structure due to Langmuir circulation, Stokes drift, and wind-induced current shear which influences the spatial distribution of bubbles within the top few metres. We do not see evidence for slow bubble dissolution as bubbles are carried downwards, implying that collapse is the more likely termination process. We conclude that the shallow and deeper bubble layers need to be studied simultaneously to link them to the 3D flow patterns in the top few metres of the ocean. Many open questions remain about the extent to which deep bubble plumes contribute to air-sea gas transfer. A companion paper (Czerski, in review, 2021) addresses the observed bubble size distributions and the processes responsible for them.

## 1 Introduction

35 The bubbles generated by breaking waves are an important feature of the ocean surface. They have a significant influence on  
air-sea gas transfer (Farmer et al., 1993; Wanninkhof and Triñanes, 2017; Goddijn-Murphy et al., 2016; Deike and Melville,  
2018), sea salt aerosol production (Salter et al., 2014; Lewis and Schwartz, 2013; Gantt and Meskhidze, 2013; Norris et al.,  
2012), and the acoustical (Deane and Stokes, 2010; Deane, 2016; Ainslie, 2005) and optical properties (Terrill et al., 2001;  
Salisbury et al., 2013) of the upper ocean. Bubbles are thought to contribute to surfactant scavenging and the formation of the  
40 sea-surface microlayer (Wurl et al., 2011). There have also been suggestions that bubble adsorption of surface-active  
carbohydrates may be important for the formation of transparent exopolymer particles (Zhou et al., 1998), and bubble processes  
are thought to influence turbulence and energy dissipation close to the ocean surface (Gemrich and D.M.Farmer, 2004; Deike  
et al., 2016). However, these conclusions have mostly been drawn from the strong correlations between bubble presence and  
these processes in nature and in the laboratory, and the mechanistic details remain an active area of study. The links between  
45 the immediate near-surface bubbles formed as a wave breaks and the deeper plumes observed over longer time periods are  
particularly unclear. It has been suggested that the deeper plumes are formed by advection of smaller bubbles downwards  
rather than being the direct consequence of a breaking waves (Zedel and Farmer, 1991; Thorpe et al., 2003), but there has been  
little in situ data available to explore those processes. This question is very relevant to the uptake of less soluble gases like  
oxygen, as well as for acoustical and optical studies. In addition, there is no clear picture connecting bubble formation  
50 processes, advection, and the process and location of bubble termination. This is the first of two papers describing detailed  
bubble studies from the 2013 High Wind Speed Gas Exchange Study (HiWinGS) which aim to clarify some of these  
outstanding issues. This paper will consider bubble presence and movement tracked using bubble void fractions, and the second  
paper (Czerski, in review, 2021) will address the mechanisms generating the observed structure of these plumes by considering  
bubble size distributions.

55 It is worth noting some fundamental points that sometimes cause confusion in discussions of this topic. The first is that the  
scientific need is usually to understand bubble *flux*: the rates at which bubbles are formed, changed, and destroyed. However,  
almost all open-ocean measurements to date are of bubble *presence*. Without information about lifetimes and the processes  
changing the bubble population, it is not possible to link bubble presence by itself to gas flux or particle production. A focus  
on the balance between bubble sources and sinks, rather than presence alone, is essential for progress. The second point is that  
60 the highly heterogeneous distribution of near-surface bubbles is often described in terms of plumes (and indeed, we follow this  
convention here). However, a “plume” is a poorly constrained entity. The measured edges often depend on sonar settings or  
arbitrary thresholds, chosen for practical expediency rather than being based on clearly defined, physically meaningful criteria.  
Deane (Deane, 2016) distinguishes between “plumes” and “clouds” - the immediate high void fraction region just after a wave  
breaks and the remnants after several seconds - but this is not standard nomenclature. As the data presented here shows, there  
65 is a heterogeneous bubble field with robust statistical properties, and so while we use the word “plume”, we note its limitations.

### 1.1 Background

Wave breaking and bubble production generally begin when the wind speed rises above 5-10 m s<sup>-1</sup> (Banner and Peregrine, 1993; Gemrich and D.M.Farmer, 1999), although they can appear at wind speeds as low as 3 m s<sup>-1</sup> (Asher and Wanninkhof, 70 1998). A universal description of wave breaking and bubble production in the open ocean is still lacking. The primary motivation for further research is the need to improve parametrizations of air-sea gas transfer, particularly for carbon dioxide (Wanninkhof, 2014), but also oxygen (Chiba and Baschek, 2010; Atamanchuk et al., 2020), and aerosol production (De Leeuw et al., 2011) for use in weather and climate models. The sensitivity of model outputs to the details of the subsurface bubble physics is still a matter of debate. However, many authors have identified a more complete knowledge of bubble presence and 75 subsurface bubble physics as a necessary step in order to refine the current generation of models (Goddijn-Murphy et al., 2016; Blomquist et al., 2017; Gantt and Meskhidze, 2013).

There is a range of proven methods for detecting subsurface bubbles in the open ocean, although there is no universal technique that can cover the full range of observed bubble sizes, spatial patterns and timescales. Bubbles are highly compressible and so the most commonly-used methods are acoustical, either using sonar and acoustical backscatter (Thorpe, 1982; Trevorrow, 80 2003; Wang et al., 2011), or acoustical resonators (Farmer et al., 1998a; Czerski et al., 2011; Farmer et al., 1998b), or passive acoustics (Deane, 2012). In general, active acoustical methods are limited to smaller bubble sizes (below 1 mm radius) and lower void fractions (below 10<sup>-4</sup>). For larger bubbles and higher void fractions, specialised bubble cameras have been developed (Stokes and Deane, 1999; Leifer et al., 2003; Al-Lashi et al., 2018a). Other systems have also been trialled, including holographic detection (Talapatra et al., 2012) and optical scattering techniques (Randolph et al., 2014).

85 The current evidence suggests that [the](#) highest void fractions (> 10<sup>-3</sup>), which are associated with an actively breaking wave, are only found within a few tens of centimetres of the surface (Deane, 2016) or approximately match the scale of significant wave height  $H_s$  (Anguelova and Huq, 2012; Callaghan et al., 2016), although there is limited direct evidence for this at sea in very high wind conditions. Once wave-breaking and the consequent turbulence have formed the initial bubble population, the 90 bubble size distribution evolves rapidly under the influences of buoyancy and probably also dissolution (Deane and Stokes, 2002) but no new bubbles are formed. The largest bubbles will rise to the surface within a few seconds, forming visible whitecaps or bursting. Smaller bubbles remain in the water column, are advected by turbulent water flow, convection or Langmuir circulation (Trevorrow, 2003; Thorpe et al., 2003) and may either dissolve completely or eventually rise back to the surface. There is no consensus on how much of the initial population returns to the surface, and how the subsurface residence 95 time probability distribution varies with bubble size. For practical reasons, studies either focus on processes very close to the surface (usually laboratory studies), or the deeper plumes observed at sea using upward-looking sonar, but rarely both at the same time.

## 1.2 Previous void fraction observations

100 Many studies have shown that small bubbles can form long-lasting plumes many metres in depth and with void fractions from 10<sup>-8</sup>–10<sup>-5</sup>. Goddijn-Murphy et al. (Goddijn-Murphy et al., 2016) noted that the bubble size contributing most to the void fraction

during active breaking is bigger than a millimetre, and Graham et al. (Graham et al., 2004) found that the bubble radius contributing most to void fraction in the deeper plumes is 100  $\mu\text{m}$ .

105 Observations of these plumes have been made in a range of open ocean conditions (Vagle et al., 2010; Graham et al., 2004; Wang et al., 2011; Trevorrow, 2003), mostly using sonar data to record backscatter intensity. This technique gives good spatial information but cannot provide void fractions without additional information on bubble size distributions. Comparisons of these data sets can be difficult because the definition of the bubble plume “edge” depends on the sonar frequency and the thresholding techniques used, which are not always clearly stated. However, the measured plume depths have been found to vary with wind speed.

110

Bubble plumes are commonly described using two parameters: bubble penetration depth and an exponential decay constant that quantifies the decrease in bubble presence with distance from the surface (usually the only available measure is acoustical backscatter, so the decay constant actually refers to the decrease in scattering strength with depth). Reported plume depths vary from 5-25 metres. Wang *et al* (Wang et al., 2011) made measurements in the most extreme conditions in the literature, with wind speeds up to 50  $\text{m s}^{-1}$ . They observed that the bubble plume depth increased linearly for wind speeds up to 35  $\text{m s}^{-1}$  (where the depth had reached 20 m) but increased more slowly after that, reaching approximately 25 m at 50  $\text{m s}^{-1}$ . The exponential decay constant was found to be 0.8 m by Thorpe (Thorpe, 1982), 0.7-1.5 by Crawford & Farmer (Crawford and Farmer, 1987), and 0.5–3 m and strongly related to the plume depth by Trevorrow (2003). Graham et al. (Graham et al., 2004) observed that e-folding depth for acoustical backscatter was related to wind speed, varying from 0.2 m for very low winds (6  $\text{m s}^{-1}$ ) to 1 metre for higher winds (12  $\text{m s}^{-1}$ ) in 10 metre deep water. To our knowledge, the studies by Vagle et al. (Vagle et al., 2012; Vagle et al., 2010) are the only ones to use bubble size distribution measurements instead of backscatter as a basis for a parametrisation, producing bubble size distribution dependent estimates of bubble-mediated fluxes of  $\text{O}_2$  and  $\text{N}_2$ . There is a huge amount of detail in many of these papers, but the difficulties in adequately describing all relevant parameters and in making backscatter comparisons mean that no universally-applicable description of these deep bubble plumes is agreed on. A full review of deep bubble plume measurements is beyond the scope of this paper, but an excellent review of the literature on this topic before 2004 can be found in Graham *et al* (Graham et al., 2004). Two important conclusions are that the penetration depth is most strongly related to wind speed, and that most bubbles come from shorter and steeper waves. A notable recent modelling study by Liang et al (Liang et al., 2012) suggests that the e-folding depth scales with friction velocity, and that wave age has a significant effect on plume behaviour.

125

130

### 1.3 Bubble disappearance

135 Considerable attention has been paid to bubble source functions, but there are far fewer studies on bubble sinks. Although  
bubble dissolution is routinely and accurately modelled for bubbles coated with surfactant monolayers in the lab environment  
(Azmin et al., 2012; Lozano and Longo, 2009), bubble dissolution in the ocean is significantly more challenging. This is  
because bubbles are stabilised by a complex mixture of surfactants (Frew et al., 1990; Wurl et al., 2011; Zhou et al., 1998) and  
are likely to be stabilised still further by particulates and gel-like materials on their surface. In one of the very few explicit  
140 studies on this topic, Johnson and Wangersky (Johnson and Wangersky, 1987) showed that bubbles stabilized by a combination  
of surfactant and particulates would maintain their size for many hours, although a relatively small pressure increase could  
cause them to collapse very rapidly. It has generally been assumed that bubbles in the ocean dissolve gradually, but we are not  
aware of any direct evidence for this. Characterising the mechanism of bubble disappearance in the ocean is a necessary step  
towards understanding fluxes, and a considerable gap in current knowledge.

145

#### 1.4 Influence of other parameters

The surface ocean is a complex environment with many features that are expected to have a second order influence on bubble  
production and their path through the water column. Some of these are the environmental conditions that affect breaking: the  
presence of swell, relative orientation of wind and waves, whether winds are rising or falling, and the surface heat flux.

150 Relevant water parameters such as temperature and surfactant presence must also be considered.

It is widely accepted that the existence of either soluble or insoluble natural surfactants in ocean water is likely to influence  
bubble production, bubble residence time, and the contribution of bubbles to air-sea gas transfer and aerosol production.  
Laboratory studies have made some progress on these questions (Callaghan et al., 2013; Callaghan et al., 2017; Anguelova  
155 and Huq, 2012), but are hampered by the difficulty of conducting experiments with realistic natural surfactants. Characterising  
surfactants in the natural environment is a significant challenge.

Water temperature is expected to influence bubble processes at sea, but as yet there is no clear consensus on how. Studies by  
Salter et al (Salter et al., 2014), [and Slauenwhite and Johnson](#) (Slauenwhite and Johnson, 1999) observed a significant increase  
160 in bubble production at lower temperatures in laboratory experiments, and Salisbury et al (Salisbury et al., 2013) saw whitecap  
fraction decrease slightly as temperature increased in ocean satellite data. However, Callaghan (Callaghan et al., 2014) saw a  
6% increase in air entrainment in wave tank experiments as water temperature was raised from 5°C to 30°C.

**Deleted:** (Salter et al., 2014; Slauenwhite and Johnson, 1999)

Other parameters reported to affect bubble formation, movement, and lifetime include phytoplankton presence (Kuhnenn-  
165 Dauben et al., 2008), surface heat flux, upper ocean stratification (Vagle et al., 2012), whether winds are rising or falling  
(Hwang et al., 2016), and wind-wave Reynolds number (Salisbury et al., 2013; Toba et al., 2006; Scanlon and Ward, 2016;  
Brumer et al., 2017a).

170 This wide range of potential influences and lack of field data complicates the current efforts to improve parameterizations of ocean processes, a necessary step for improving weather and climate models, and to predict the biogeochemical consequences of our changing climate (Talley et al., 2016). For example, carbon and oxygen uptake in the North Atlantic have been found to be highly variable (Watson et al., 2009; Woosley et al., 2016) but the complexities are not yet understood. Improved parameterizations of carbon dioxide and oxygen flux across the ocean surface are needed to forecast the future uptake of these  
175 gases by the ocean. Bubble-mediated transfer is known to make a significant but poorly parameterized contribution in both cases (Goddijn-Murphy et al., 2016; Atamanchuk et al., 2020) and a better mechanistic understanding has been identified as critical for future improvements.

Deleted: s

Deleted: s

180 All the data presented here were collected during the HiWinGS expedition in 2013. This paper will give an overview of HiWinGS and the measurement methods used, describe the observed bubble void fractions during stormy conditions, and present evidence on the mechanisms of deep bubble plume formation. We will not address air-sea gas transfer directly, but instead focus on bubble processes. The companion paper (Czerski, in review, 2021) will present a separate analysis of the observed bubble size distributions and the implications for bubble advection and destruction processes, along with a summary of mechanistic understanding.

## 185 2. Methods

### 2.1 HiWINGS expedition

The overall aim of HiWinGS was to improve understanding of turbulent air-sea gas exchange processes in high wind conditions by making direct measurements of the fluxes of trace gases and physical parameters, combined with sea state, wave, and  
190 bubble physics (Brumer et al., 2017b; Kim et al., 2017; Blomquist et al., 2017; Yang et al., 2014).

The HiWinGS cruise took place between 9 October and 14 November 2013 on the R/V *Knorr* in the North Atlantic Ocean to the south of Greenland, a region known as a significant sink for CO<sub>2</sub> and a period chosen to maximise the number and severity of the storms encountered. An overview of the expedition and the instruments deployed can be found in Blomquist *et al* (Blomquist et al., 2017) along with the major gas transfer results. Figure 1 shows the time series of the wind measurements  
195 over the whole expedition, with periods when the buoy carrying bubble sensors was in the water highlighted.

The bubble measurements used here were made during four buoy deployments: 18-21 October (station 3), 24-27 October (station 4), 1-4 November (station 6), and 7-10 November (station 7). The station numbers correspond to those in the Blomquist (Blomquist et al., 2017) paper. A summary of the conditions during each deployment is given in Table 1.

### 200 2.2 Measurements

The bubble instruments were all mounted on an 11-m long free-floating spar buoy. This was deployed in advance of each storm, left to drift freely, and recovered after the storm. The buoy carried a bubble camera, acoustical resonators, an upward

looking sonar, wave wires, a downward-looking foam camera, inertial motion measurement unit, and an acoustic Doppler velocimeter (ADV). Figure 2 shows the position of the instruments on the buoy. A description of the buoy and its performance can be found in (Pascal et al., 2011).

210 The two most significant characteristics of the buoy design relate to its buoyancy and its ability to orient into the wind. The buoy is split into two main sections: the main hull, a cylinder 25 cm in diameter and 6 m long which remained fully submerged at all times, and the top section, a cylinder 10 cm wide and 4 m long, which protruded through the sea surface. Above the top section, a watertight dome carried the inertial measurement unit, additional small cameras, and a specialised foam camera. The base is formed of two hexagonal damping plates which carried four 24V Deepsea Light & Power batteries with a combined  
215 weight of 80kg, providing significant additional stability and reducing the natural vertical oscillation frequency of the buoy to a period of approximately 8 s. Small waves pass by without causing significant vertical motion, while the buoy rides over the larger swell. A lead ballast weight was suspended off-centre from the buoy base, forcing the buoy to sit in the water at an angle of approximately 8 degrees to the vertical. Previous tests have shown that the hanging ballast has the effect of orienting the buoy into the wind (with the ballast on the downwind side), tracking the wind direction to within a few degrees (Pascal et al.,  
220 2011). The buoy was designed to keep the wave wires on the upwind side of the buoy, and all instruments except the ADV were also mounted on the upwind side. The ADV data shows that the wind forcing on the dome pushed the buoy downwind at a speed comparable to the near-surface Stokes drift, producing a complex flow profile relative to the buoy. A full description is given in Appendix A. At the depths of the camera and resonator, the most likely situation is that both instruments were measuring in water which had flowed around the buoy from the downwind direction. However, given the constant vertical  
225 motion of the buoy and the turbulence in the surrounding water, we are confident that both instruments were making measurements that were representative of the bulk water around them.

### 2.2.1 Bubble camera & analysis methods

The bubble camera was custom-built for this expedition; a detailed overview of its technical specifications and capabilities are  
230 given in Al-Lashi *et al* (Al-Lashi et al., 2018a). The sample volume is defined by a light sheet, a concept developed successfully by Stokes & Deane (Stokes and Deane, 1999). The camera sat in a T-shaped housing with a circular window that faced into the oncoming waves. Strobe light sheets were projected forwards on four sides of the camera lens and were then deflected using 45° mirrors to form a light sheet 5 mm thick and positioned a few centimetres in front of the camera lens. The duration of the strobe pulses was less than 5  $\mu$ s, flashing at 15 Hz continuously throughout each recording period. A CCD camera with  
235 a telecentric lens was synchronised to each flash, and images were recorded at a resolution of 2048 x 2048 pixels with a square field of view 4 cm across. The minimum detectable bubble size was considered to be one dark pixel surrounded by 4-8 lighter ones (on a 3x3 grid), and tests demonstrated that the camera could reliably detect bubbles between 20  $\mu$ m and 10 mm in radius. Tests showed that the chosen design did not significantly interfere with the water flow in a way that would bias the

measurements, and analysis of the final data showed that the void fractions and bubble sizes observed were well below the  
240 thresholds where this would be a concern.

The camera was mounted as close to the surface as possible, which was 2 m below the waterline since the upper thin section  
of the spar could not support a heavy instrument. The total acquisition time available for each deployment was 9 hours. In  
245 order to follow the bubble plumes produced over 2-3 days as a storm passed overhead, acquisition was split into periods of 45  
minutes which started every three or four hours, depending on the expected storm duration. Approximately 850,000 individual  
images were collected during the deployments described here, and an efficient algorithm for image processing was developed  
for automated analysis (Al-Lashi et al., 2016).

### 2.2.2 Acoustical Resonator

250 Bubbles are very responsive to incident sound waves, with a natural frequency strongly dependent on bubble radius. Acoustical  
resonators are robust devices which use active acoustics to detect detailed size distributions of small bubbles (5-500  $\mu\text{m}$  in  
radius) with void fractions from  $10^{-8}$  to  $10^{-4}$ . These resonators measure the acoustical attenuation of water, and in the absence  
of other scatterers, broadband acoustical attenuation can be translated directly into bubble size distributions (Breitz and  
Medwin, 1989; Farmer et al., 1998b; Farmer et al., 2005; Czerski, 2012; Czerski et al., 2011). The resonators used here  
255 consisted of a pair of flat circular transducers with a diameter of 22 cm that face each other with a gap of 19 cm between them.  
The sample volume is the entire space between the plates, providing a bulk measure of acoustical properties. One transducer  
transmits white noise with a frequency range from 3 kHz - 1 MHz for 0.25 seconds and is then switched off for 0.75 s to allow  
for data storage, producing one measurement every second. The other transducer records the data. The sharp peaks of the  
resonant frequencies are very clear in the Fourier transform of the output (Czerski et al., 2011), and are significantly attenuated  
260 by the presence of bubbles. A straightforward inversion algorithm can be used to convert the attenuation data into bubble size  
distributions (Czerski, 2012).

A pair of acoustical resonators was attached to the buoy, with nominal depths of 4 m and 6 m. Due to hardware issues, all the  
data presented here is from the device at 4 m. Measurement periods were set to coincide with the camera acquisition, and total  
measurement time was limited by the battery to approximately 35 hours. A 4096 point FT spectrum was used and the effective  
265 measurement range for the data presented here was 6–173  $\mu\text{m}$  radius. The measurements show that bubbles present at 4 m  
depth were highly unlikely to approach the upper limit of this range (Czerski, in review, 2021).

### 2.2.3 Sonar

To provide context for the camera and resonator measurements, an upward-pointing Imagenex model 837A Delta T sonar,  
270 operating at 260 kHz, was deployed at the base of the buoy, eight metres below the waterline. The sonar was positioned so  
that one edge of the measurement arc touched the buoy hull, and the arc stretched outward from the buoy hull to scan a vertical  
slice through the water on the upwind side of the buoy, as shown in Fig. 2. The device ran directly from a PC installed in a



waterproof housing at the base of the buoy. Measurements were made continuously from deployment until the battery ran out, which varied from 26-36 hours. The sonar recorded six complete scans per second, which were averaged before analysis to form 1s images.

Bubble plumes were clearly visible on the sonar images, and the position of the camera and resonators within bubble plumes could be monitored. The unique benefit of combining the sonar with camera and resonator measurements is the possibility of acquiring detailed bubble size distributions within a sonar-measured plume, providing a direct link between the bubble size distributions and the spatial extent of the plume within which they sit. We note that the sonar frequency of 260 kHz would cause a resonant acoustical response in bubbles of 12.5 microns in radius, and is therefore particularly sensitive to bubbles of that size. There is some evidence that during periods when bubble plumes were visible on the sonar but not on either camera or resonator, the number of bubbles between 11 and 14  $\mu\text{m}$  was higher than in other periods, suggesting that at least some of the deep bubble plumes seen in sonar images both in this experiment and in previous experiments were due to small numbers of resonant bubbles (void fraction  $O(10^{-9})$ , rather than a significant total void fraction.

#### 2.2.4 Auxiliary data streams

A Nortek Vector acoustic Doppler velocimeter (ADV) was attached to the buoy hull to provide 3D measurements of relative flow velocity. Care is needed in interpreting these measurements because the ADV was positioned very close to the side of the hull ( $90^\circ$  from the wind direction), but they allow a measure of the relative movement of the buoy through the water around it.

Three sets of wave wires (Pascal et al., 2011) ran parallel to the thin section of the spar buoy hull, passing through the waterline. The total measurement length was four metres, and the buoy was ballasted with the wave wire halfway point at the waterline. Coupled with measurements of spar motion from the IMU, these provided detailed 1D wave data at the buoy itself, and allow the variability in the depth of bubble measurements below the wave surface to be made. Instantaneous depth data was found to fit a normal distribution during each deployment. The standard deviation in depth was a linear function of the 10m wind speed:  $\sigma_{\text{depth}} = 0.16 + 0.028U_{10}$ , where  $\sigma_{\text{depth}}$  is in metres and  $U_{10}$  in  $\text{m s}^{-1}$ . At the highest wind speeds (above  $20 \text{ m s}^{-1}$ ), the standard deviation is  $\sim 0.8 \text{ m}$ , implying that the bubble camera, at a mean depth of 2 m, was within 1 m of the surface approximately 10% of the time, and within 0.5 m of the surface approximately 2.5% of the time. There were also small variations in mean hull depth, of order 10 cm, due to adjustments to the buoyancy between deployments.

A Waverider buoy (Datawell DWR-4G Waverider buoy, 0.4 m diameter) was deployed for the duration of each storm, providing 2D wave spectra. This buoy drifted freely, so measurements were not perfectly co-located with the spar buoy, but the maximum separation after a large storm was only a few kilometres. This data was used to characterise the 2D wave field. 43 CTD casts were made during the cruise, with at least one each day except for the four days when the ship was in transit to the Gulf Stream (4–7 November). The CTD also carried a dissolved oxygen sensor. A WET Labs Chlorophyll WETSar fluorometer continuously sampled the ship's saltwater intake from five metres below the waterline. An overview of the

Deleted: .

Formatted: Subscript

Deleted: etres

extensive set of wider environmental parameters measured from the ship is provided in Blomquist *et al* (Blomquist et al.,  
310 2017).

### 3. Results

#### 3.1 Overview

The simplest measure of bubble presence at a single point is void fraction, the ratio of air to water volume. Figure 3 shows the  
315 void fraction measured simultaneously by bubble camera and resonator, and compared with sonar backscatter for a 45-minute  
period on 2 November, during wind speeds of  $18 \text{ m s}^{-1}$ . The patterns in time match very well, and provide confidence that all  
systems were working as intended. Measured void fractions from the camera and resonator are shown on both linear and  
logarithmic scales to emphasise the point that a measurable bubble void fraction was present at 2 m depth at all times, even  
though the linear plots show distinct peaks. At 4 m, the void fraction is below the detection limit ( $10^{-8}$ ) of the resonator almost  
320 all the time. This suggests that the sonar used may also have had a detection limit of approximately  $10^{-8}$ , or possibly that  
bubbles were entirely absent at 4 m between the distinct plumes. We note that the bubble size ranges sampled by the resonator  
and camera are very different (radii of 6–173  $\mu\text{m}$  and 20 $\mu\text{m}$  - 10 mm respectively). Extrapolating the observed bubble size  
distribution to 1  $\mu\text{m}$  in radius suggests that the maximum possible contribution to the total volume from bubbles below 20  $\mu\text{m}$   
is extremely small (significantly less than 1%), while the small number of bubbles larger than  $\sim 100 \mu\text{m}$  reaching the depth of  
325 the resonator make a negligible contribution to the total void fraction; a direct comparison between the two instruments is thus  
appropriate.

We observe that although the major features on all three timelines match, plumes are visible on the sonar at times when there  
are very low void fractions at 2 m and 4 m depth. This is a consistent feature and shows the limitations of sonar data in isolation.  
Significant backscatter can be caused by small resonant bubbles, but this does not necessarily indicate an equally significant  
330 void fraction in those plumes. We note that the linear scale on the y-axis exacerbates this effect on this plot, but it highlights  
the care needed not to over-interpret bubble plumes observed by sonar alone. [The observed profile of sonar backscatter is  
comparable with that seen by \(Vagle et al., 2010\) when the different backscatter thresholds of their data are taken into account.](#)  
It is also difficult to make a direct quantitative comparison between the sonar backscatter at 2 m and the measured camera void  
fraction. The plume patterns agree well, but the regions of highest void fraction (the centres of big plumes) may be acoustically  
335 shielded (Deane, 2016) by the smaller bubbles around them, producing a low sonar backscatter signal for some high void  
fraction regions.

Figure 4 shows 1-minute averages of void fraction [at 2 m and 4 m](#) for station 6 (1–4 November) [for periods when the value at  
4 m was above the noise level.](#) For most intervals there is no strong correlation between bubble presence at 2 m and at 4 m.  
Some of this may be due to plume shearing (see Sect. 3.3), [but this does not explain all of the observed variation.](#) We note that  
340 this seems to be a general feature and that although large identifiable plume structures exist that are connected vertically, they  
are overlaid on a significant general background level of bubbles which is highly heterogeneous and shows no strong vertical

Deleted: -4000

Deleted: .

Deleted: .

345 connection. Where the void fractions are correlated at both depths, [the ratio implies](#) an e-folding distance of 0.5 m (see Sect. 3.3.3 for further analysis of e-folding depths).

Deleted: the fitted line has a slope of 2, implying

### 3.1.1 Buoy movement: Horizontal advection

350 The spar buoy was not stationary within its local water mass and the relative flow is highly depth-dependent. The water motion is due to a combination of Stokes drift, wind forcing on the exposed top of the buoy and wind-driven surface currents. As discussed in Appendix A, the downwind drift of the buoy dominated the surface-driven currents at all times at 4 m, and is likely to have dominated at 2 m. At the ADV depth the range of relative speeds between the buoy and surrounding water was 0.02–0.15 m s<sup>-1</sup> for wind speeds between 7 and 28 m s<sup>-1</sup>, as the buoy drifted downwind. At a typical relative speed of 0.11 m s<sup>-1</sup>, a single plume with a horizontal extent of 4 m perpendicular to the breaking crest would be crossed by the buoy in 36 s. 355 Previous authors (Trevorrow, 2003) have reported that plumes may last for 20-90 s. The advection complicates data interpretation, since we cannot distinguish between changes in observed bubble parameters due to evolution over time from those caused by spatial variation within the plumes.

### 360 3.2 Breaking Waves and deeper plumes

The buoy dome carried a foam camera [at 2 m height which recorded](#) [the upwind ocean surface, and was designed to observe the details of waves breaking directly in front of the buoy](#) (Al-Lashi et al., 2018b) [for comparison with subsurface measurements](#). [Although it had a fisheye lens, the effective field of view \(3-4 m upwind of the buoy\) was insufficient to collect breaking wave statistics. It was positioned to look for direct correlation between surface breaking waves and the bubbles immediately beneath them.](#) 365 Very few (<10) active breaking waves were seen in its field of view during the measurement periods, partly because data was only captured during daylight hours, but also because the short duration of active breaking limits the probability of an event falling within the field of view. None of the observed breaking waves were directly correlated with bubble presence at 4 m depth, which is consistent with deep plume formation being independent of wave breaking. Figure 5 shows one example where an active whitecap was observed by the foam camera and appeared to precede the formation of a deeper bubble plume. 370

Deleted: recording

Deleted:

375 Figure 5 shows that the observed breaking event generated a shallow plume of bubbles within the top 2 m. After about 40 s, during which time a few waves have passed, this shallow plume appears to join or form a deeper plume. The buoy was drifting downwind throughout this period. Our interpretation is that the buoy and the shallow plume drifted into a convergence region between two Langmuir cells, where bubbles have already accumulated, and so intercepted an existing deep plume. Figure 6 shows the corresponding water velocity data from the ADV at 3.8m. The dashed box represents the time period covered by Fig. 5, with a few minutes either side shown for context. There is a pronounced sideways flow feature as the deeper plume

385 appears, followed by a period of flow in the opposite direction, which would be consistent with Langmuir cells at an angle to the wind. The vertical flow is almost all downward throughout this period, indicating a convergence zone. It seems likely that the breaking wave was independent of the Langmuir cell. The foam patch at the surface was observed to move slowly downwind relative to the buoy. Small long-lasting bubbles from this breaking wave are likely to have remained in the convergence zone, contributing to the persistent plume there. The combination of the ADV and sonar data provide convincing evidence that the deep plumes are due to the convergence of Langmuir cells, and are not directly connected to the breaking process. [We also note that Figure 6 also shows a 2-3 minute period of sustained downward flow around 18:30, which can be compared to the features in Figure 3 at the same time. There is an increased void fraction at both 2 m and 4 m at 18:30, although it is an order of magnitude lower at 2 m than the period between 18:10 and 18:15. It seems likely that the relative lack of bubbles during the downward flow at 18:30 is due to a lack of bubbles in the surface layer, demonstrating that the bubble distribution in the surface layer is highly heterogeneous.](#)

Deleted:

### 3.3 Void Fraction

395 Void fraction data lacks the detail of bubble size distributions, but provides a straightforward measure to follow plume evolution over time, and to analyse overall patterns of bubble presence and absence. At 2 m depth, bubble presence fell below measurable levels (a void fraction of  $10^{-8}$ ) for only 4% of the total data acquisition time. As shown in Fig. 3, structure is visible on the log scale at all times at the camera depth and consequently categorising individual plumes is a difficult task and labels implying plume presence or absence should be treated with care.

400 All the bubble camera data discussed below is an amalgamation from all four deployments, just over 23 hours of data. The resonator data covers a longer period (52 hours over three deployments) but the void fraction at 4 m only rose above the resonator noise level of  $10^{-8}$  in 9% of all resonator measurements.

#### 3.3.1 Void fraction probability distributions with wind speed and $R_{Hw}$

The wind-wave Reynolds number  $R_{Hw} = u_* H_s / \nu_w$  is a dimensionless number introduced by Zhao & Toba (2001) which combines a measure of the sea state (significant wave height  $H_s$ ) with friction velocity ( $u_*$ ) and water kinematic viscosity ( $\nu_w$ ).

410 It has been successfully used to parametrise  $\text{CO}_2$  gas transfer (Brumer et al., 2017a) and is better than wind speed alone at explaining the variability of sea-spray aerosol flux (Norris et al., 2012; Yang et al., 2019). Here we directly evaluate the relationship between  $R_{Hw}$  and deeper bubble plumes, and investigate whether knowledge of surface processes alone is sufficient to predict subsurface bubble behaviour.

Figure 7(a) and 7(b) show the probability distributions for void fraction at 2 m split by wind-wave Reynolds number (using the wind sea component of the significant wave height  $H_s$ ); Figs. 7(c) and 7(d) show the same data split by wind speed. The probability distributions separated by wind speed have slightly broader peaks than those partitioned by  $R_{Hw}$ , with a peak void fraction that generally increases with wind speed. The lowest Reynolds number groups all show sharp peaks centred on a consistent void fraction of  $10^{-7.1}$ , with similar distributions. Above  $R_{Hw} = 2 \times 10^6$  the peak moves to significantly higher void fractions and the distribution becomes much broader. The distributions separated by wind speed show a steadier increase in the peak void fraction as wind speed increases, although the distributions below  $16 \text{ m s}^{-1}$  are very similar. The peak position for  $0\text{-}8 \text{ m s}^{-1}$  is slightly higher than that for  $8\text{-}12 \text{ m s}^{-1}$ , but we note that this distribution is based on far fewer data points (44 minutes of data versus 498 minutes). The notable feature of Fig. 7 is that below wind speeds of  $16 \text{ m s}^{-1}$  or  $R_{Hw} = 2 \times 10^6$ , the probability distribution of void fraction is very similar in all conditions. Above either threshold, bubble presence at 2 m depth increases significantly.

Figures 7(b) and 7(d) show a sharp cut-off in the distributions above a void fraction of  $10^{-4.5}$ , even at the highest wind speeds. This suggests that there is a strong limitation on the void fraction at this depth. [We are confident that this is not due to camera limitations, since the camera was designed to detect far higher void fractions and there is no evidence of instrument saturation \(the bubble size distributions at these high void fractions are discussed in the companion paper\).](#) Over the four deployments, there are only 116 one second measurements of void fractions between  $10^{-4.5}$  and  $10^{-4}$  (all in clusters covering a few seconds each), and six one-second measurements between  $10^{-4}$  and  $10^{-3.5}$ . As discussed above, the instantaneous camera depth varied with buoy movement, so these measurements could represent shallower depths than 2 m. Even if void fractions greater than  $10^{-4.5}$  can briefly exist at 2 m depth, it seems clear that they cannot be sustained.

The available void fraction probability distributions for the resonator data cover a narrower range of conditions. The instrument noise level (measured in void fraction) was  $1 \times 10^{-8}$  for station 3,  $3 \times 10^{-8}$  for station 6, and  $1.7 \times 10^{-7}$  for station 7; the fraction of data that rose above the noise for these deployments was 14%, 10% and 3%. Figure 8 shows the distribution of measured void fractions for one Reynolds number range (which included 85% of all above-noise resonator measurements: 13119 data points). The normalisation uses the total measurement time for those data, including the 90% of time during which the resonator data fell below the noise level (not shown). The void fraction at 4 m very rarely rises above  $1 \times 10^{-7}$  in wind speeds up to  $19 \text{ m s}^{-1}$ . The peak void fraction at 2 m is  $10^{-6.92}$  and at 4 m it is  $10^{-7.06}$ , well above the noise threshold. The increase in pressure with depth is expected to reduce a void fraction of  $10^{-6.92}$  at 2 m to  $10^{-7.00}$  at 4 m if there is no loss of gas. This only accounts for half of the peak offset although caution is required when interpreting the resonator peak, partly because of its irregular shape and partly because the data shown here came mostly from one period of a few hours. However, there seems to be no substantial change in peak void fraction with depth if the times when the void fraction is below the noise level are excluded. The similarity of the peak positions implies that bubbles are carried downwards in water packets that do not significantly mix with surrounding water before the bubbles are destroyed, and that the bubbles do not change their size due to slow dissolution before

Deleted:

destruction (in both these cases, a significant tail at the lowest void fractions would be expected, and this is not seen). This suggests that there is a relatively short (perhaps of the order of ten minutes) lifetime for small coated bubbles. If they could last for long periods (an hour or more) they would be expected to mix into the water column stochastically and produce regions with lower void fractions as the bubbles spread out in space.

455

### 3.3.2 Rising and Falling Winds

There has been sustained interest in the idea that the physical processes controlling gas flux and aerosol production depend on whether wind speeds are rising or falling (Liang et al., 2017; Dahl, 2003). Liang et al. (2017) estimated that the difference between air-sea gas fluxes at the same wind speed during rising and falling winds could be up to a factor of two. Differences in gas transfer and bubble production between developing and fully developed seas have also been investigated (Blomquist et al., 2017; Scanlon and Ward, 2016; Clarke and Van Gorder, 2018). The distinction is important when making decisions between different possible parametrizations for these processes.

460

465

Figure 9(a) shows void fraction distributions separated by the trend in wind speed. If the hourly averaged wind speed was lower or higher than the mean of the previous two hours by  $0.5 \text{ m s}^{-1}$ , the data from that hour were labelled “falling”, or “rising” respectively. Approximately one quarter of the data fell into each of those two categories. Otherwise data points were considered ambiguous and are excluded. The included one-second void fractions from 2 m depth in each category were sorted into  $2 \text{ m s}^{-1}$  wind speed bins, and the median value of the void fraction in each bin has been plotted. Median void fraction generally increases with wind speed, but the trends are different for rising and falling winds. For wind speeds below  $11 \text{ m s}^{-1}$  and above  $21 \text{ m s}^{-1}$ , more bubbles were present during periods when the wind speed was rising. Between  $11 \text{ m s}^{-1}$  and  $21 \text{ m s}^{-1}$ , more bubbles were observed during periods of falling wind speed. The difference in void fraction is significant: of the order of a factor of  $10^{0.5}$  in the range  $11\text{-}21 \text{ m s}^{-1}$ . Separation into “rising” and “falling” in the highest wind speed range should be treated with caution, because the wind was fluctuating within the top range for 8-9 hours, but mostly stayed within the  $22\text{-}25$

470

475

$\text{m s}^{-1}$  range. At the extremes of the scale, there is also a bias in the recent wind history: the lowest rising wind speeds must follow a period where winds were flat or falling, and the highest falling wind speeds must follow a period which was flat or rising. For example, if the gas saturation state of the water increases during higher wind speeds, the average void fraction in the  $15 \text{ m s}^{-1}$  bin is a mean of the bubble presence at that wind speed in both higher and lower saturation states (following both falling and rising winds), but the void fraction in the highest wind speed bin can never include the effects of a saturation state from an even higher wind speed, and so will be biased low. [There are other possible explanations: that the time lag for waves to equilibrate with the wind means that the breaking waves during falling wind speeds are more representative of earlier wind speeds, or that stronger Langmuir turbulence during falling winds enhances the bubble population at the measurement depths. Our data cannot distinguish between these hypotheses.](#) Figure 9(c) shows the equivalent data from 4 m depth, this shows a similar but less pronounced pattern.

480

Deleted:

Deleted:

Deleted: ,

Deleted: and

Three factors are expected to dominate bubble presence data: bubble production rate, bubble lifetime, and advection mechanisms that determine whether or not bubbles reached the sensors. These effects cannot be clearly separated for our data. Whitecap coverage (the best proxy for bubble production in the absence of detailed bubble measurements at the surface) can be parametrized using wind and sea state (Brumer et al., 2017b), and the literature contains conflicting data on whether it changes with rising/falling winds (Callaghan et al., 2008; Goddijn-Murphy et al., 2011). Langmuir circulation patterns are thought to respond to the wind on timescales of a few minutes (Kukulka et al., 2010; Smith, 1992), so it seems unlikely that changes in advection could be responsible for the asymmetry between bubble presence during rising and falling winds over several hours. The most likely mechanism is therefore that bubbles can persist for significant periods after formation, and that they last longer after periods of higher wind. An increase in local gas saturation levels following higher winds would explain this, if bubble destruction mechanisms are strongly dependent on gas saturation state.

Figure 9(b) shows the void fractions split by inverse wave age (calculated as  $u_w/c_p$ , where  $c_p$  is calculated using the whole sea state rather than wind sea alone). It is notable that the same pattern is not apparent here, and that the void fractions for low and high inverse wave ages are very similar. The void fraction variation appears to be dominated by whether wind speeds have recently been higher or lower, rather than whether or not the wave field is fully developed with respect to the current wind speed. Inverse wave age alone is therefore a limited proxy for bubble presence in the water column.

### 3.3.3 E-folding depths

As noted above, the observed plumes are highly inhomogeneous and so averaging over time can hide considerable complexity. A common metric found in the literature is e-folding depth, the vertical distance over which the backscatter strength (or void fraction, depending on the dataset) decreases by a factor of  $e$ . We have the opportunity here to make this measurement for individual plumes, rather than from temporal and spatial averages. 20 plumes with void fraction pattern features that matched in time on both camera and resonator were analysed. These were the only unambiguous matching features in the 21 hours of simultaneous camera and resonator data, and many of these plumes were visible in the data for several minutes. Calculation of the e-folding depth based on two points only (2-m and 4-m measurements) produced values of 0.3–0.6 m for all but one case; the only exception had a value of 0.94 m. There was no correlation between e-folding depth and the void fraction at 2 m. These values are on the lower end of measurements in the literature, and cover wind speeds of 12–17 m s<sup>-1</sup>. No relationship was observed between e-folding depth and wind speed, although the relatively narrow wind speed range limits this comparison.

The e-folding depths were also calculated using 10 minute averages of the sonar backscatter at 2 m and 4 m depth, over the same wind speed range and the whole dataset. The vast majority were also tightly clustered between 0.3 and 0.6, suggesting that the averaged values of e-folding depth also hold for individual plumes.

### 3.4 Horizontal Structure

525 There are a total of 8 hours when both the camera and resonator data were of high quality and measuring simultaneously,  
during wind speeds between  $14 \text{ m s}^{-1}$  and  $21 \text{ m s}^{-1}$ . In that time, there were 30 identifiable plume-like features measured at 4  
m (several were close to the noise level, so the exact number is very sensitive to the threshold chosen), lasting between 30  
seconds and 6 minutes. 20 of these matched up directly with plumes at 2 m, i.e. they were closely related in time and had the  
same shape. It is striking that the peaks at 4 m consistently lag those at 2 m by between 0 and 66 seconds (equivalent to a 0–9  
530 m horizontal offset, given the buoy drift speed). Figure 10 shows an example of a typical event and the measured offset. The  
void fraction pattern is not symmetric in time — there is a sharp incoming rise and a slow tail-off at both depths.

All of the measured offsets bar one were positive (so bubbles were observed at 2m before 4m as the buoy drifted downwind),  
which suggests either that the plume shapes were consistently tilted towards the wind during the period of these measurements,  
535 or that plumes always become narrower with depth.

In general, the plumes seen in the sonar data are not symmetrical, and are often highly irregular in shape. Apart from the  
offsets, there is no consistent discernible skew in plume shapes. Symmetrical triangular plumes are suggested by Zedel and  
Farmer (Zedel and Farmer, 1991), but they process their data using the assumption that the plume is symmetric.  
540

Figure 10(c) compares the horizontal offset with the ratio between the void fractions at 2 m and 4 m. It is notable that there are  
no cases with both a very high void fraction ratio and a high horizontal offset. There are two possible interpretations of the  
void fraction ratio between the two depths. The first is that when bubbles are advected downwards to form a plume, the initial  
545 ratio is 1:1, and then bubbles are destroyed more quickly at depth. In this case, older plumes would have a higher ratio and the  
ratio is driven by mechanisms acting at 4 m. The second is that only a small proportion of bubbles are ever advected  
downwards, and that therefore high ratios are driven by intense bubble plumes near the surface which dissipate over time. In  
this case, the ratio will decrease as the plume ages. Our observations are that the void fractions at 4 m only ever cover a narrow  
range (as shown in Fig. 8), which points towards the second case. With this interpretation, Fig. 10(c) shows that the plumes  
550 with the largest horizontal offsets seem to be older.

Figure 10(d) shows the wind speed at the time each horizontal offset was measured. The largest offsets were seen during  
periods of the highest winds. This leads to one possible explanation: that the size of the Langmuir cells increases with wind  
speed, and the offset is due to advection patterns that scale with the cell.  
555



The offsets could also result from the shear associated with Stokes drift or other near-surface currents. The orbital motion associated with a passing wave is almost circular, but also includes a small forward drift which is highest at the surface and decreases with depth. However, to explain the direction of the consistent offset, this drift would have to be dominated by the swell moving in the upwind direction rather than wind sea and wind-driven currents in the downwind direction. It is not possible to be sure about the surface flows in this case, however it is thought that the Stokes drift from wind sea will dominate that from an opposing swell at the surface but not at depth (Webb and Fox-Kemper, 2015). Figure 10(d) is hard to reconcile with Stokes drift in the upwind direction due to opposing swell. There is no discernible pattern between the swell significant wave height and the horizontal offset (not shown), although there were two major swells present at that time, as discussed in Appendix A. We lack the data to provide a clear explanation for the consistent plume offset, given the uncertainty about the current profile in the top few metres in these conditions. The offset matches what might be expected if the Stokes drift from swell at this depth dominated the wind sea Stokes drift during this period, but the best available flow profile estimates from the literature suggest that this is unlikely. However, the offsets were consistent and require further investigation.

A better understanding of the horizontal flow profiles could lead to a method for estimating the time since a plume formed. An assumption about the shape of the plume at its moment of “formation” would be needed, the simplest being that the plume is vertically aligned. If an estimate of the shear caused by near-surface currents was available, it would be possible to calculate the time needed for the observed horizontal separation to be generated, and therefore the “age” of the deep plume. As discussed further below, this is not likely to be the time since the formation of the individual bubbles, but the time since the collection of bubbles was advected downward from the shallow bubble layer to form a deep plume. There is considerable uncertainty associated with applying this method here, but estimates using our data imply plume ages of the order of ten minutes. We note that bubble plumes were observed to shear by Crawford and Farmer (Crawford and Farmer, 1987), who also suggested that the shape of a sheared plume might give an indication of age but did not attempt age estimates.

Sideways shear over long time periods may also explain the existence of plumes at 4 m that are not obviously connected to 2 m plumes. As the wind direction and speed change, the spatial distribution of plumes will constantly change as the local horizontal flow profile moves bubble plumes around. Changes to Langmuir circulation patterns have been observed to occur over tens of minutes (Smith, 1992; Farmer and Li, 1994).

585

#### **4. Discussion**

##### **4.1 Plume evolution**

The model of plume development which is consistent with our data is as follows:

- 590
1. Breaking waves cause the formation of shallow bubble plumes, confined to the upper metre or so of the water column. The continual injection of bubbles into this layer produces a near-permanent bubble population with a probability distribution that depends on wind conditions and a structure that depends on both Langmuir circulation and near-surface shear currents. The maximum void fraction of approximately  $10^{4.5}$  observed at 2 m depth can be explained if there are mechanisms acting in the shallow layer that limit the bubble population which can survive beyond the first minute or so after a breaking wave. However, this continuous layer appears not to extend to 4 m depth.
  - 595 2. This shallow layer is advected sideways across the top of Langmuir circulation cells, or pushed across the cells by Stokes drift or wind-driven surface currents.
  3. At the convergent limb of a Langmuir cell, water is advected downwards and if this contains bubbles from the shallow layer, a deep plume is formed. These bubbles may already have existed for many tens of seconds before the “deep plume” formation event. At the downward speed shown in Fig. 6, bubbles could move from 2 m to 4 m depth in approximately one minute. However, this only happens at the locations that coincide with downward advection, which would explain why we did not observe bubbles at 4 m depth for 90% of the time and why, when they were present, the void fractions matched the 2 m measurements. The plume shape has several drivers, but it is likely to be sheared by Stokes drift and wind-induced current shear.
  - 600 4. Bubbles below depths of 4 m have a modest lifetime, which is consistent with the lack of a persistent background bubble presence at this depth. This model suggests that the deep plumes are continually fed from the shallow bubble layer and that the bubbles may be destroyed relatively quickly once they are advected downwards.
  - 605

This picture explains the lack of any clear correlation between breaking waves observed at the surface and bubbles at 4 m. The shallow plumes are commonly observed in the sonar data under high winds and are superimposed on a persistent low and heterogeneous background population at 2 m. These results are consistent with observations made by D. Farmer and his collaborators over many years (Zedel and Farmer, 1991; Thorpe et al., 2003; Farmer and Li, 1994) which imply that there are two stages to deep plume formation.

610

The most likely explanation for the advection generating deep plumes is Langmuir circulation. This is consistent with Farmer & Li (Farmer and Li, 1994) who estimated that surface bubbles could be of order 100 s old before they reached 2 m depth in the downward flow of Langmuir circulations (at wind speeds of 10-15 m s<sup>-1</sup>). Thus, bubble populations have significant time to evolve before the deep plumes are formed.

615

#### 4.2 Dependence on forcing conditions

620

The bubbles present at 2 m depth show a clear dependence on the surface forcing, with void fraction increasing with wind-wave Reynolds number above a threshold of  $R_{HW} = 2 \times 10^6$  or a wind speed of 16 m s<sup>-1</sup>. It is interesting that the Reynolds

number threshold corresponds to that at which wind speed parameterizations of the CO<sub>2</sub> transfer velocity diverge (Brumer et al., 2017a), implying a change to bubble-mediated gas exchange. The void fractions in 2 m plumes are also higher during  
625 falling winds than rising, with some evidence for a similar pattern at 4 m.

The most likely explanation for the wind speed hysteresis appears to be changes to bubble destruction mechanisms during rising and falling winds. It is likely that periods of increased wave breaking at higher wind speeds create surface waters with a higher concentration of oxygen and nitrogen. If the wind falls more quickly than the saturation state can adjust, bubbles  
630 produced during falling winds may last longer than those during rising winds because they are in water with higher gas saturation. A period of falling winds at high wind speeds implies that the recent winds were even higher, and the data support the idea that plumes of small bubbles last longer during these periods of (presumably) higher gas saturation.

Dahl (Dahl, 2003) saw increased acoustical scattering (assumed to be due to bubbles) when winds were falling compared to periods when they were rising, although these data were taken at low wind speeds (2–10 m s<sup>-1</sup>). Liang (Liang et al., 2017) suggested that the transfer of oxygen and nitrogen into the ocean was greater when winds were rising rather than falling, and at 19 m s<sup>-1</sup> the flux of those two gases was almost doubled in the rising case compared with the falling case. They observe that breaking waves are fewer in number but larger in size in developing seas, suggesting that this may cause bubbles to be entrained to a greater depth, favouring gas transfer. This may leave a longer-lasting population once winds start to fall. It is also possible  
640 that bubbles dissolve faster in rising seas, leaving fewer to be detected. This underlines the point that bubble presence may not necessarily be directly related to gas flux in a simple way, since the presence of bubbles merely indicates that they have formed, been advected to the measurement point, and have not yet been destroyed.

It is hard to separate out the effect of potential changes in bubble production and changes due to subsurface processes. Whitecap observations may provide a first order proxy for bubble production. Whitecap fractions during HiWinGS were observed to decrease as wave age increased (Brumer et al., 2017b), but Fig. 9 here shows no difference in observed void fraction at 2 m at high and low wave ages. Callaghan (Callaghan et al., 2008) observed significantly higher whitecap coverage during periods of falling winds compared with rising winds, for wind speeds between 10 and 24 m s<sup>-1</sup>. However, the same separation was not seen in satellite data during a later study (Goddijn-Murphy et al., 2011). These studies and our data do not provide a conclusive  
650 2-m depth clearly is. However, the reversal of the pattern of void fraction with wind speed at the highest and lowest winds (when there is a bias due to the most recent likely conditions) suggests that bubble lifetime is likely to be a more significant influence than bubble formation on the shift in bubble presence during rising and falling winds.

655 In order to build a more complete picture of plume evolution, the two bubble layers (the shallow plumes in the top metre and the deeper plumes which have been advected downwards) need to be studied simultaneously. Although the processes in both

cases are ultimately driven by similar phenomena – high winds causing breaking waves and contributing momentum to the subsurface flow – the critical mechanisms for the two layers are likely to differ. This may explain why no simple links have been found between deep bubble plumes and surface forcing conditions: very few measurements have been made in the top 660 metre to track the upper bubble field, and the deeper measurements have rarely had the auxiliary data needed to explain the processes forming them. It is clear that data from different depths within both the shallow plumes and the deeper plumes, correlated with flow and gas saturation data, is needed to follow the mechanisms driving our observations.

We have no direct measurements of the surfactant activity during HiWinGS. Chlorophyll was measured; levels were highest 665 during the first buoy deployment (approximately  $1.5 \mu\text{g l}^{-1}$ ) and generally decreased as the winter approached, reaching a low of  $0.3 \mu\text{g/l}$  in the last deployment (Table 1). However, recent studies (Sabbaghzadeh et al., 2017) suggest that there is no universal relationship between chlorophyll levels and surfactant activity.

## 5 Conclusions

670 Direct measurements of bubbles in high wind conditions are relatively rare. HiWinGS offered an opportunity to combine several types of bubble measurement at wind speeds from  $10\text{-}27 \text{ m s}^{-1}$ . The results are consistent with a two-stage formation mechanism for deep bubble plumes. Breaking waves form shallow bubble plumes which exist for tens of seconds but which remain in the top 1–2 m of the ocean. The continued action of breaking waves generated a continual bubble presence (with a void fraction greater than  $10^{-8}$ ) at 2 m depth with a probability distribution function that varied with wind speed. The probability 675 distributions were observed to be very similar below wind speeds of  $16 \text{ m s}^{-1}$  or  $R_{\text{Hw}} = 2 \times 10^6$ , but changed significantly above those thresholds. The void fraction distribution at 2 m has a sharp cut-off at  $10^{4.5}$  in all conditions, implying that this is the maximum sustainable void fraction in the near-surface shallow bubble layer once the initial population has evolved through fragmentation and buoyancy.

680 If a shallow plume reaches a region where coherent advection patterns – assumed to be Langmuir circulation – have a downward limb, they are pulled down several metres on timescales of the order of a minute to form “deep” plumes. There are thus two bubble layers: the near surface layer directly fed by breaking waves, and deeper plumes fed by coherent circulations. The processes generating the two layers are essentially independent, although both ultimately driven by wind stress. This two- 685 stage process explains why breaking events on the surface (and the subsequent whitecaps) were not observed to correlate directly with deep bubble plumes.

The spatial distribution of bubbles within the top few metres is complex, and is dependent on several advection processes in addition to turbulence: Langmuir circulation, Stokes drift, and wind-driven near-surface shear currents. The 3D flow geometry 690 could vary significantly with wind and wave conditions, and requires further study. Void fraction at 4 m only rose above the

noise level for approximately 10% of the total measurement time. This implies a very limited lifetime for bubbles at this depth, perhaps of the order of a few minutes. For most wind speeds, more bubbles were present during falling than rising winds, and no distinction is seen when the distributions are split by wave age. This suggests that wave age is limited as a proxy for bubble presence at depth, and trends in wind speed may be needed for parametrization.

695

Our data suggests that it is not straightforward to split the near-surface water into regions which either contain or do not contain bubbles. The void fraction probability distributions are smooth, although there are distinctive regions of high void fraction which do correlate with deeper bubbles and which we identify as locations of deep plumes. We suggest that the void fraction distributions presented here are more useful than the number and frequency of plumes that cross a threshold intensity.

700

We found a horizontal offset and an asymmetry in bubble presence at 2 m and 4 m, with the plume edge consistently tilted towards the wind. We cannot offer a clear explanation for this observation, since there is considerable uncertainty in the likely horizontal current profile during those events. It is possible that this offset could be used to estimate the elapsed time since deep plume formation, although robust calculations would only be possible with high resolution measurements of the near-surface flow profile and a better understanding of the mechanisms operating as the plume structures are created and destroyed. We note that what were likely to be the oldest plumes were seen at the higher wind speeds, suggesting that bubbles may last longer in these conditions.

705

A critical question for future studies is the evolution and fate of the small bubbles in the shallow plumes which are not advected downwards. If they last for long periods, a high proportion may eventually dissolve completely into the ocean. In this case, the limiting step for oxygen uptake would be the formation process for these small bubbles. But if there are mechanisms within the shallow layer to bring them back to the surface so that they return gas to the atmosphere, the limiting step is the downward advection to form deep plumes, which ensures that their contents must be taken up by the water.

710

For a more complete understanding of the processes involved, the results presented here should be combined with the detailed observations of bubble size distributions. These are addressed in a companion paper (Czerski, in review, 2021).

715

#### **Appendix A**

The buoy was designed to keep the wave wires on the upwind side of the hull, to minimise the influence of the buoy itself on wave measurements. All bubble measurement instruments were also placed on the upwind side in the expectation that the dominant relative water flow would follow the wind. However, the water velocity data from the ADV show that this was not the case. A full analysis is beyond the scope of this paper, partly because the experimental data is limited and partly because there is a lack of detailed knowledge concerning the response of the top few metres of the ocean to complex sea states. We

720

725 discuss here our current understanding of our ADV data, the justification for the assumptions made in this paper, and  
recommendations for similar deployments in the future.

Figure A1(a) shows the ADV measurements of the relative water flow speeds past the buoy for different wind speeds. As  
shown in Fig. A1(b), water flow relative to the buoy was always in the upwind direction with an offset of 0-20°, which suggests  
that the buoy was being pushed downwind by the wind. The response of the buoy to a given wind speed can vary considerably,  
730 but a linear fit to the data gives this relationship:

$$v_{ADV} = 0.0044u_{10} + 0.037 \quad , \quad (1)$$

where  $v_{ADV}$  is the horizontal speed at which water is flowing past the buoy at the ADV depth in  $\text{m s}^{-1}$ .

An order-of-magnitude calculation shows that the observed speeds are consistent with the likely wind forcing on the buoy  
735 dome. A simple momentum equation estimate of the force on the cross-sectional area of the dome can be equated to the drag  
force on the hull from water flowing around it, as shown in equation 2.

$$\rho_{air}A_{dome}u^2 = \frac{1}{2} C_D \rho_{water}A_{hull}v_{drift}^2 \quad , \quad (2)$$

where  $u$  is the wind speed at the dome height,  $\rho_{air}$  and  $\rho_{water}$  are the densities of air and water respectively,  $C_D$  is the drag  
coefficient for the hull (taken to be 1),  $A_{dome}$  and  $A_{hull}$  are the cross-sectional areas of the dome and the hull, and  $v_{drift}$  is  
740 the drift speed of the buoy relative to the water at its base. Using representative values for this buoy and taking the wind at 2  
m using a logarithmic wind profile, this suggests  $v_{drift} \sim 0.0085u_{10}$ .

We conclude that the buoy was moving downwind due to the wind forcing on the dome. However, observations from the foam  
camera clearly showed foam patches at the surface moving towards the buoy, and none were observed moving upwind relative  
745 to the buoy. The resolution of this apparent conflict lies in the details of the wind-driven surface flows. These have been  
described in various ways in the literature (Wu, 1983; Breivik et al., 2014; Laxague et al., 2018), but a recent paper (Van Der  
Mheen et al., 2020) sets out three components: i) A surface layer several millimetres thick, which is dominated by viscous  
effects, ii) a middle region a few metres thick, where the horizontal speed varies logarithmically with depth and iii) the Ekman  
layer. During the HiWINGS experiment, a typical Ekman depth was 150 m, and the calculated Ekman speeds varied very  
750 little in the top 10 metres. Consequently we neglect it here although it will matter for the overall buoy drift speed, and we also  
neglect the very thin viscous layer. There are two mechanisms driving the middle layer: the Stokes drift (caused by wave  
motion) and wind-induced current shear.

Studies of the combined Stokes drift and wind-induced current shear have not yet provided a consensus on the surface flows  
755 that are expected in different conditions, particularly when there are swells present which may have very different orientations

to the wind (Breivik et al., 2014; Morey et al., 2018; Clarke and Van Gorder, 2018). There is a consensus that wind causes a downwind surface flow (wind-induced shear current), with a directional offset of  $\pm 10^\circ$  (Clarke and Van Gorder, 2018) and a speed that decreases exponentially with depth with an e-folding depth of a few metres. The literature does not always distinguish the Stokes drift and the wind-induced shear current, and we treat them as a combined phenomenon here. Webb & Fox-Kemper (Webb and Fox-Kemper, 2015) demonstrate that using the assumption of a unidirectional sea (and therefore ignoring wave-spreading and multidirectional waves) results in a significant overestimation (up to 70%) of the Stokes drift. Their analysis also shows that higher frequency wind waves are likely to dominate close to the surface, and that lower frequency swell is likely to dominate further down, and they make the point that a full spectral model is needed to analyse each individual situation.

A wide range of wind and swell combinations were seen during the HiWINGS expedition. Figure A2 shows the angular offset between wind and the dominant swell, overlaid with the periods when plumes were observed on both camera and resonator. For the HiWINGS data, the issue of multidirectional waves is particularly relevant, because there was a significant swell at  $180^\circ$  to the wind during the November 1<sup>st</sup>-3<sup>rd</sup> deployment. Webb & Fox-Kemper (Webb and Fox-Kemper, 2015) analysed a similar case in their data and found that their more complete (although not comprehensive) model showed that the opposing swell reduced the surface current by around 90%, with a counter-intuitive flow profile in which the surface speed was around half the value at 9 m depth. Figure A2 shows a notable shift of  $180^\circ$  in the relative swell direction at approximately 13:30 on November 2nd. Figure A3 shows the full 2D wave measurements at that time. During this period, there is a jump in the dominant swell identified, and it can be seen that a significant opposing swell was present throughout that period. We expect that this will have substantially reduced the downwind surface current flow (Breivik et al., 2014; Webb and Fox-Kemper, 2015).

A full analysis of the likely flows relative to the buoy is beyond the scope of this paper, but we present a model which shows the features relevant during HiWINGS. Clarke & Van Gorder (Clarke and Van Gorder, 2018) propose a simplified model (equation 23 in that paper) for the Stokes drift in a realistic sea state which includes a factor to compensate for the overestimation seen by (Webb and Fox-Kemper, 2015). We apply it here using their estimate for e-folding depth for a representative case:  $15 \text{ m s}^{-1}$  winds, while ignoring the possible effects of swell. Figure A4 shows the combined effect of the wind-driven buoy drift (estimated as given above:  $v_{drift} \sim 0.0085u_{10}$ ) and the Stokes drift profile calculated from (Clarke and Van Gorder, 2018). This produces a profile which has the major features we observed: a constant upwind flow relative to the buoy at depth combined with a surface flow that can overtake the buoy.

The critical parameter for our experiment is the depth at which the net horizontal water flow relative to the buoy in the upwind-downwind direction is zero. Varying the parameters in this simple model to cover the range of our experiment suggests that

790 the depth at which the relative flow shifts from downwind to upwind gets deeper as the wind speed increases and reaches  
nearly 2 m at 25 m s<sup>-1</sup>. We therefore carried out our analysis on the assumption that both the bubble camera and the resonator  
were measuring bubbles which had travelled around the buoy from the downwind side at all times during HiWINGS. As  
shown in Fig. 3 and as discussed in the main text, during the 1<sup>st</sup> – 3<sup>rd</sup> November deployment, the bubble plumes at 2 m and 4  
795 m were highly correlated, which is consistent with this assumption. The bubbles therefore had to travel around the buoy to  
reach the sample volume, but given the dynamic flow situation caused by the surface currents, turbulence and the buoy motion,  
and the long lifetime of the plumes, it seems likely that sampling bubbles in water disturbed by the buoy will not have affected  
the measurements significantly.

We also note that the calculated flow profile cannot be responsible for the consistent offsets in plume position shown in Fig  
800 10, because it shears in the opposite direction. However, we cannot rule out the possibility that at the highest winds the bubble  
camera was detecting bubbles coming from the upwind direction while the resonator was detecting bubbles from the downwind  
direction. Since there is no resonator data in the highest winds, we cannot make this comparison.

The only times during this expedition when we collected high quality bubble data from both 2 m and 4 m were all during  
805 periods with opposing swell, as shown in Fig. A2. Figure A1(c) shows the buoy drift speed only for periods when the wind  
was aligned with or opposite to the swell. At the lowest wind speeds, the drift speed is significantly lower when the swell was  
opposed to the wind although no clear separation is seen here at high wind speeds. We note that this plot takes no account of  
the magnitude of the swell, only its direction, and that the periods with the highest winds did not have large opposing swells  
so we have no data for that condition.

810

Although the present analysis suggests that a situation similar to that shown in Fig. A4 is the most likely scenario for the  
HiWINGS data, significant uncertainty about the details remains. This is particularly the case given the consistent plume  
offsets shown in Fig. 10, which could not be caused by the situation in Fig. A4, and which are currently unexplained. We have  
815 also neglected the possibility that the orientation of Stokes drift or of the plumes created by Langmuir circulation could produce  
a much more complicated geometry.

Two major recommendations arise for future measurement campaigns of this type. The first is to minimise the cross-sectional  
area of structures above the water surface and reduce the downwind drift of the buoy, unless that is a chosen design feature.  
820 The second is to collect data on the water flow profile relative to the buoy in detail, especially at the instrument depths and at  
the deepest point of the platform.

#### Data Availability



Our data are archived with the British Oceanographic Data Centre (BODC, <https://www.bodc.ac.uk/>), the bubble data are available at DOI: 10.5285/c972e316-2b93-1b4e-e053-6c86abc02285 and the wave data can be found at doi: 10.5285/c9ae04d6-32d2-73f1-e053-6c86abc0c833. Other HiWinGS cruise data, including the near-surface meteorology used here are available from: ftp1.esrl.noaa.gov/psd3/cruises/HiWINGS\_2013/Collective\_Archive.

#### Author Contribution

830 HC and IMB designed the bubble and wave state section of the HiWINGS project and operated all sensors at sea. BB was the Chief Scientist of HiWINGS, and oversaw all operations. RP built the buoy and was responsible for buoy operations at sea. SG designed and built the bubble camera and analysis software. AM helped with deployment at sea and carried out the sonar analysis. HC was responsible for the bubble sensor deployment and carried out analysis of all bubble data except the sonar. IMB performed the 2D wave analysis. HC and IMB prepared the manuscript.

835

#### Competing Interests

The authors declare that they have no conflict of interest.

#### Acknowledgements

840 This work was funded by the Natural Environment Research Council under grants NE/J022373/1 (HC) and NE/J020893/1 (IMB), NE/J020540/1 (NOC) and HC's fellowship NE/H016856/1. Funding for ship time was provided under US National Science Foundation grant AGS 1036062. We are grateful to the captain and crew of the R/V *Knorr* for their invaluable assistance at sea. We gratefully acknowledge the contribution of Nick Hall-Patch & Svein Vagle for their work on the construction and operation of the acoustical resonators used.

#### 845 References

- Ainslie, M. A.: Effect of wind-generated bubbles on fixed range acoustic attenuation in shallow water at 1–4kHz, *The Journal of the Acoustical Society of America*, 118, 3513-3523, 10.1121/1.2114527, 2005.
- 850 Al-Lashi, R. S., Gunn, S. R., and Czernski, H.: Automated Processing of Oceanic Bubble Images for Measuring Bubble Size Distributions underneath Breaking Waves, *Journal of Atmospheric and Oceanic Technology*, 33, 1701-1714, 10.1175/jtech-d-15-0222.1, 2016.
- Al-Lashi, R. S., Gunn, S. R., Webb, E. G., and Czernski, H.: A Novel High-Resolution Optical Instrument for Imaging Oceanic Bubbles, *IEEE Journal of Oceanic Engineering*, 43, 72-82, 10.1109/joe.2017.2660099, 2018a.
- 855 Al-Lashi, R. S., Webster, M., Gunn, S. R., and Czernski, H.: Toward omnidirectional and automated imaging system for measuring oceanic whitecap coverage, *J Opt Soc Am A Opt Image Sci Vis*, 35, 515-521, 10.1364/JOSAA.35.000515, 2018b.

Anguelova, M. D. and Huq, P.: Characteristics of bubble clouds at various wind speeds, *Journal of Geophysical Research: Oceans*, 117, n/a-n/a, 10.1029/2011jc007442, 2012.

860 Asher, W. and Wanninkhof, R.: The effect of bubble-mediated gas transfer on purposeful dual-gaseous tracer experiments, *Journal of Geophysical Research*, 103, 1998.

Atamanchuk, D., Koelling, J., Send, U., and Wallace, D. W. R.: Rapid transfer of oxygen to the deep ocean mediated by bubbles, *Nature Geoscience*, 13, 232-237, 10.1038/s41561-020-0532-2, 2020.

865 Azmin, M., Mohamedi, G., Edirisinghe, M., and Stride, E. P.: Dissolution of coated microbubbles: The effect of nanoparticles and surfactant concentration, *Materials Science and Engineering: C*, 32, 2654-2658, 10.1016/j.msec.2012.06.019, 2012.

Banner, M. L. and Peregrine, D. H.: Wave breaking in deep water, *Annuals Reviews of Fluid Mechanics*, 25, 1993.

Blomquist, B. W., Brumer, S. E., Fairall, C. W., Huebert, B. J., Zappa, C. J., Brooks, I. M., Yang, M., Bariteau, L., Prytherch, J., Hare, J. E., Czerski, H., Matei, A., and Pascal, R. W.: Wind Speed and Sea State Dependencies of Air-Sea Gas Transfer: Results From the High Wind Speed Gas Exchange Study (HiWinGS), *Journal of Geophysical*

870 *Research: Oceans*, 122, 8034-8062, 10.1002/2017jc013181, 2017.

Breitz, N. and Medwin, H.: Instrumentation for in situ acoustical measurement of bubble spectra under breaking waves, *Journal of the Acoustical Society of America*, 86, 1989.

Breivik, Ø., Janssen, P. A. E. M., and Bidlot, J.-R.: Approximate Stokes Drift Profiles in Deep Water, *Journal of Physical Oceanography*, 44, 2433-2445, 10.1175/jpo-d-14-0020.1, 2014.

875 Brumer, S. E., Zappa, C. J., Blomquist, B. W., Fairall, C. W., Cifuentes-Lorenzen, A., Edson, J. B., Brooks, I. M., and Huebert, B. J.: Wave-Related Reynolds Number Parameterizations of CO<sub>2</sub> and DMS Transfer Velocities, *Geophysical Research Letters*, 44, 9865-9875, 10.1002/2017gl074979, 2017a.

Brumer, S. E., Zappa, C. J., Brooks, I. M., Tamura, H., Brown, S. M., Blomquist, B. W., Fairall, C. W., and Cifuentes-Lorenzen, A.: Whitecap Coverage Dependence on Wind and Wave Statistics as Observed during SO GasEx and

880 HiWinGS, *Journal of Physical Oceanography*, 47, 2211-2235, 10.1175/jpo-d-17-0005.1, 2017b.

Callaghan, A., de Leeuw, G., Cohen, L., and O'Dowd, C. D.: Relationship of oceanic whitecap coverage to wind speed and wind history, *Geophysical Research Letters*, 35, 10.1029/2008gl036165, 2008.

Callaghan, A. H., Deane, G. B., and Stokes, M. D.: Two Regimes of Laboratory Whitecap Foam Decay: Bubble-Plume Controlled and Surfactant Stabilized, *Journal of Physical Oceanography*, 43, 1114-1126, 10.1175/jpo-d-12-

885 0148.1, 2013.

Callaghan, A. H., Deane, G. B., and Stokes, M. D.: Laboratory air-entraining breaking waves: Imaging visible foam signatures to estimate energy dissipation, *Geophysical Research Letters*, 43, 11,320-311,328, 10.1002/2016gl071226, 2016.

890 Callaghan, A. H., Deane, G. B., and Stokes, M. D.: On the imprint of surfactant-driven stabilization of laboratory breaking wave foam with comparison to oceanic whitecaps, *Journal of Geophysical Research: Oceans*, 122, 6110-6128, 10.1002/2017jc012809, 2017.

Callaghan, A. H., Stokes, M. D., and Deane, G. B.: The effect of water temperature on air entrainment, bubble plumes, and surface foam in a laboratory breaking-wave analog, *Journal of Geophysical Research: Oceans*, 119, 7463-7482, 10.1002/2014jc010351, 2014.

895 Chiba, D. and Baschek, B.: Effect of Langmuir cells on bubble dissolution and air-sea gas exchange, *Journal of Geophysical Research*, 115, 10.1029/2010jc006203, 2010.

Clarke, A. J. and Van Gorder, S.: The Relationship of Near-Surface Flow, Stokes Drift and the Wind Stress, *Journal of Geophysical Research: Oceans*, 123, 4680-4692, 10.1029/2018jc014102, 2018.

Crawford, G. B. and Farmer, D. M.: On the spatial distribution of ocean bubbles, *Journal of Geophysical Research*, 92, 10.1029/JC092iC08p08231, 1987.

900 Czerski, H.: An Inversion of Acoustical Attenuation Measurements to Deduce Bubble Populations, *Journal of Atmospheric and Oceanic Technology*, 29, 1139-1148, 10.1175/jtech-d-11-00170.1, 2012.

Czerski, H., Vagle, S., Farmer, D. M., and Hall-Patch, N.: Improvements to the methods used to measure bubble attenuation using an underwater acoustical resonator, *J Acoust Soc Am*, 130, 3421-3430, 10.1121/1.3569723, 905 2011.

Czerski, H. B., I.M.; Gunn, S. ; Matei, A. , Pascal, RI, Blomquist, B.: Ocean bubbles under high wind conditions. Part 2: Bubble size distributions and implications for models of bubble dynamics, *Ocean Sci. Discuss.* [preprint], <https://doi.org/10.5194/os-2021-104>, in review, 2021.

Dahl, P. H.: The contribution of bubbles to high-frequency sea surface backscatter: a 24-h time series of field measurements, *J Acoust Soc Am*, 113, 769-780, 10.1121/1.1532029, 2003.

910 de Leeuw, G., Andreas, E. L., Anguelova, M. D., Fairall, C. W., Lewis, E. R., O'Dowd, C., Schulz, M., and Schwartz, S. E.: Production flux of sea spray aerosol, *Reviews of Geophysics*, 49, 10.1029/2010rg000349, 2011.

Deane, G. B.: Surface tension effects in breaking wave noise, *J Acoust Soc Am*, 132, 700-708, 10.1121/1.4730887, 2012.

915 Deane, G. B.: The Performance of High-Frequency Doppler Sonars in Actively Breaking Wave Crests, *IEEE Journal of Oceanic Engineering*, 41, 1028-1034, 10.1109/joe.2016.2521247, 2016.

Deane, G. B. and Stokes, D. M.: Scale dependence of bubble creation mechanisms in breaking waves, *Nature*, 418, 2002.

Deane, G. B. and Stokes, M. D.: Model calculations of the underwater noise of breaking waves and comparison with experiment, *J Acoust Soc Am*, 127, 3394-3410, 10.1121/1.3419774, 2010.

920 Deike, L. and Melville, W. K.: Gas Transfer by Breaking Waves, *Geophysical Research Letters*, 45, 10,482-410,492, 10.1029/2018gl078758, 2018.

Deike, L., Melville, W. K., and Popinet, S.: Air entrainment and bubble statistics in breaking waves, *Journal of Fluid Mechanics*, 801, 91-129, 10.1017/jfm.2016.372, 2016.

925 Farmer, D. M. and Li, M.: Patterns of Bubble Clouds Organised by Langmuir Circulation, *Journal of Physical Oceanography*, 25, 1994.

Farmer, D. M., McNeil, C. L., and Johnson, B. D.: Evidence for the importance of bubbles in increasing gas flux, *Nature* 361, 620-623, 1993.

Farmer, D. M., Vagle, S., and Booth, A. D.: A free-flooding acoustical resonator for measurement of bubble size distributions, *Journal of Atmospheric and Oceanic Technology*, 15, 1998a.

930 Farmer, D. M., Vagle, S., and Booth, A. D.: A Free-Flooding Acoustical Resonator for Measurement of Bubble Size Distributions, *Journal of Atmospheric and Oceanic Technology*, 15, 1998b.

Farmer, D. M., Vagle, S., and Booth, D.: Reverberation effects in acoustical resonators used for bubble measurements, *The Journal of the Acoustical Society of America*, 118, 2954-2960, 10.1121/1.2047148, 2005.

935 Frew, N., Goldman, J. C., Dennett, M. R., and Johnson, A. S.: Impact of Phytoplankton-Generate Surfactants on Air-Sea Gas Exchange, *Journal of Geophysical Research*, 95, 1990.

Gantt, B. and Meskhidze, N.: The physical and chemical characteristics of marine primary organic aerosol: a review, *Atmospheric Chemistry and Physics*, 13, 3979-3996, 10.5194/acp-13-3979-2013, 2013.

940 Gemmrich, J. R. and D.M.Farmer: Observations of the Scale and Occurrence of Breaking Surface Waves, *Journal of Physical Oceanography*, 29, 1999.

- Gemmrich, J. R. and D.M.Farmer: Near-surface turbulence in the presence of breaking waves, *Journal of Physical Oceanography*, 34, 2004.
- 945 Goddijn-Murphy, L., Woolf, D. K., and Callaghan, A. H.: Parameterizations and Algorithms for Oceanic Whitecap Coverage, *Journal of Physical Oceanography*, 41, 742-756, 10.1175/2010jpo4533.1, 2011.
- Goddijn-Murphy, L., Woolf, D. K., Callaghan, A. H., Nightingale, P. D., and Shutler, J. D.: A reconciliation of empirical and mechanistic models of the air-sea gas transfer velocity, *Journal of Geophysical Research: Oceans*, 121, 818-835, 10.1002/2015jc011096, 2016.
- 950 Graham, A., Woolf, D. K., and Hall, A. J.: Aeration Due to Breaking Waves. Part I: Bubble Populations, *Journal of Physical Oceanography*, 34, 989-1007, 2004.
- Hwang, P. A., Savelyev, I. B., and Anguelova, M. D.: Breaking waves and near-surface sea spray aerosol dependence on changing winds: Wave breaking efficiency and bubble-related air-sea interaction processes, *IOP Conference Series: Earth and Environmental Science*, 35, 10.1088/1755-1315/35/1/012004, 2016.
- 955 Johnson, B. D. and Wangersky, P. J.: Microbubbles: Stabilization by Monolayers of Adsorbed Particles, *Journal of Geophysical Research*, 92, 1987.
- Kim, M. J., Novak, G. A., Zoerb, M. C., Yang, M., Blomquist, B. W., Huebert, B. J., Cappa, C. D., and Bertram, T. H.: Air-Sea exchange of biogenic volatile organic compounds and the impact on aerosol particle size distributions, *Geophysical Research Letters*, 44, 3887-3896, 10.1002/2017gl072975, 2017.
- 960 Kuhnenn-Dauben, V., Purdie, D. A., Knispel, U., Voss, H., and Horstmann, U.: Effect of phytoplankton growth on air bubble residence time in seawater, *Journal of Geophysical Research*, 113, 10.1029/2007jc004232, 2008.
- Kukulka, T., Plueddemann, A. J., Trowbridge, J. H., and Sullivan, P. P.: Rapid Mixed Layer Deepening by the Combination of Langmuir and Shear Instabilities: A Case Study, *Journal of Physical Oceanography*, 40, 2381-2400, 10.1175/2010jpo4403.1, 2010.
- 965 Laxague, N. J. M., Özgökmen, T. M., Haus, B. K., Novelli, G., Shcherbina, A., Sutherland, P., Guigand, C. M., Lund, B., Mehta, S., Alday, M., and Molemaker, J.: Observations of Near-Surface Current Shear Help Describe Oceanic Oil and Plastic Transport, *Geophysical Research Letters*, 45, 245-249, 10.1002/2017gl075891, 2018.
- Leifer, I., Leeuw, G. d., and Cohen, L. H.: Optical measurement of bubbles: system design and application, *Journal of Atmospheric and Oceanic Technology*, 20, 2003.
- 970 Lewis, E. R. and Schwartz, S. E.: Sea salt aerosol production mechanisms, methods, measurements and models : a critical review, *American Geophysical Union [dataset]*, 2013.
- Liang, J.-H., McWilliams, J. C., Sullivan, P. P., and Baschek, B.: Large eddy simulation of the bubbly ocean: New insights on subsurface bubble distribution and bubble-mediated gas transfer, *Journal of Geophysical Research: Oceans*, 117, n/a-n/a, 10.1029/2011jc007766, 2012.
- 975 Liang, J.-H., Emerson, S. R., D'Asaro, E. A., McNeil, C. L., Harcourt, R. R., Sullivan, P. P., Yang, B., and Cronin, M. F.: On the role of sea-state in bubble-mediated air-sea gas flux during a winter storm, *Journal of Geophysical Research: Oceans*, 122, 2671-2685, 10.1002/2016jc012408, 2017.
- Lozano, M. and Longo, M.: Microbubbles Coated with Disaturated Lipids and DSPE-PEG2000: Phase Behavior, Collapse Transitions, and Permeability, *Langmuir*, 25, 2009.
- 980 Morey, S., Wienders, N., Dukhovskoy, D., and Bourassa, M.: Measurement Characteristics of Near-Surface Currents from Ultra-Thin Drifters, Drogued Drifters, and HF Radar, *Remote Sensing*, 10, 10.3390/rs10101633, 2018.
- Norris, S. J., Brooks, I. M., Moat, B. I., Yelland, M. J., de Leeuw, G., Pascal, R. W., and Brooks, B.: Field Measurements of aerosol production from whitecaps in the open ocean, *Ocean Sciences*, 9, 10.5194/osd-9-3359-2012, 2012.

- 985 Pascal, R., Yelland, M., Srokosz, M., Moat, B. I., Waugh, E., Comben, D., Coles, D. G. H., Chang Hsueh, P., and Leighton, T. G.: A Spar Buoy for High-Frequency Wave Measurements and Detection of Wave Breaking in the Open Ocean, *Journal of Atmospheric and Oceanic Technology*, 28, 590-605, 10.1175/2010jtecho764.1, 2011.
- Randolph, K., Dierssen, H. M., Twardowski, M., Cifuentes-Lorenzen, A., and Zappa, C. J.: Optical measurements of small deeply penetrating bubble populations generated by breaking waves in the Southern Ocean, *Journal of Geophysical Research: Oceans*, 119, 757-776, 10.1002/2013jc009227, 2014.
- 990 Sabbaghzadeh, B., Upstill-Goddard, R. C., Beale, R., Pereira, R., and Nightingale, P. D.: The Atlantic Ocean surface microlayer from 50°N to 50°S is ubiquitously enriched in surfactants at wind speeds up to 13 m s<sup>-1</sup>, *Geophysical Research Letters*, 44, 2852-2858, 10.1002/2017gl072988, 2017.
- Salisbury, D. J., Anguelova, M. D., and Brooks, I. M.: On the variability of whitecap fraction using satellite-based observations, *Journal of Geophysical Research: Oceans*, 118, 6201-6222, 10.1002/2013jc008797, 2013.
- 995 Salter, M. E., Nilsson, E. D., Butcher, A., and Bilde, M.: On the seawater temperature dependence of the sea spray aerosol generated by a continuous plunging jet, *Journal of Geophysical Research: Atmospheres*, 119, 9052-9072, 10.1002/2013jd021376, 2014.
- Scanlon, B. and Ward, B.: The influence of environmental parameters on active and maturing oceanic whitecaps, *Journal of Geophysical Research: Oceans*, 121, 3325-3336, 10.1002/2015jc011230, 2016.
- 1000 Slaunwhite, D. and Johnson, B. D.: Bubble shattering: Differences in bubble formation in freshwater and seawater, *Journal of Geophysical Research*, 104, 1999.
- Smith, J. A.: Observed growth of Langmuir circulation, *Journal of Geophysical Research*, 97, 10.1029/91jc03118, 1992.
- 1005 Stokes, M. D. and Deane, G. B.: A new optical instrument for the study of bubbles at high void fractions within breaking waves, *IEEE Journal of Oceanic Engineering*, 24, 1999.
- Talapatra, S., Sullivan, J., Katz, J., Twardowski, M., Czerski, H., Donaghay, P., Hong, J., Rines, J., McFarland, M., Nayak, A. R., and Zhang, C.: Application of in-situ digital holography in the study of particles, organisms and bubbles within their natural environment, *Ocean Sensing and Monitoring IV*, 10.1117/12.920570, 2012.
- 1010 Talley, L. D., Feely, R. A., Sloyan, B. M., Wanninkhof, R., Baringer, M. O., Bullister, J. L., Carlson, C. A., Doney, S. C., Fine, R. A., Firing, E., Gruber, N., Hansell, D. A., Ishii, M., Johnson, G. C., Katsumata, K., Key, R. M., Kramp, M., Langdon, C., Macdonald, A. M., Mathis, J. T., McDonagh, E. L., Mecking, S., Millero, F. J., Mordy, C. W., Nakano, T., Sabine, C. L., Smethie, W. M., Swift, J. H., Tanhua, T., Thurnherr, A. M., Warner, M. J., and Zhang, J. Z.: Changes in Ocean Heat, Carbon Content, and Ventilation: A Review of the First Decade of GO-SHIP Global Repeat Hydrography, *Ann Rev Mar Sci*, 8, 185-215, 10.1146/annurev-marine-052915-100829, 2016.
- 1015 Terrill, E. J., Melville, K., and Stramski, D.: Bubble entrainment by breaking waves and their influence on optical scattering in the upper ocean, *Journal of Geophysical Research*, 106, 16,815-816,823, 2001.
- Thorpe, S. A.: On the clouds of bubbles formed by breaking wind-waves in deep water and their role in air-sea gas transfer, *Philosophical Transactions of the Royal Society of London*, 304, 155-210, 1982.
- 1020 Thorpe, S. A., Osborn, T. R., Farmer, D. M., and Vagle, S.: Bubble clouds and Langmuir Circulation: Observations and Models, *Journal of Physical Oceanography*, 33, 2003.
- Toba, Y., Komori, S., Suzuki, Y., and Zhao, D.: Similarity and dissimilarity in air-sea momentum and CO<sub>2</sub> transfers: the nondimensional transfer coefficients in light of the windsea Reynolds number, in: *Atmosphere-Ocean Interactions*, WIT Transactions on State of the Art in Science and Engineering, 53-82, 10.2495/978-1-85312-929-2/03, 2006.
- 1025 Trevorrow, M. V.: Measurements of near-surface bubble plumes in the open ocean with implications for high-frequency sonar performance, *J Acoust Soc Am*, 114, 2672-2684, 10.1121/1.1621008, 2003.

Vagle, S., Gemmrich, J., and Czerski, H.: Reduced upper ocean turbulence and changes to bubble size distributions during large downward heat flux events, *Journal of Geophysical Research: Oceans*, 117, n/a-n/a, 10.1029/2011jc007308, 2012.

1030 Vagle, S., McNeil, C., and Steiner, N.: Upper ocean bubble measurements from the NE Pacific and estimates of their role in air-sea gas transfer of the weakly soluble gases nitrogen and oxygen, *Journal of Geophysical Research*, 115, 10.1029/2009jc005990, 2010.

van der Mheen, M., Pattiaratchi, C., Cosoli, S., and Wandres, M.: Depth-Dependent Correction for Wind-Driven Drift Current in Particle Tracking Applications, *Frontiers in Marine Science*, 7, 10.3389/fmars.2020.00305, 2020.

1035 Wang, D. W., Wijesekera, H. W., Teague, W. J., Rogers, W. E., and Jarosz, E.: Bubble cloud depth under a hurricane, *Geophysical Research Letters*, 38, n/a-n/a, 10.1029/2011gl047966, 2011.

Wanninkhof, R.: Relationship between wind speed and gas exchange over the ocean revisited, *Limnology and Oceanography: Methods*, 12, 351-362, 10.4319/lom.2014.12.351, 2014.

1040 Wanninkhof, R. and Triñanes, J.: The impact of changing wind speeds on gas transfer and its effect on global air-sea CO<sub>2</sub> fluxes, *Global Biogeochemical Cycles*, 31, 961-974, 10.1002/2016gb005592, 2017.

Watson, A., Schuster, U., Bakker, D., Bates, N., A.Corbiere, Gonzales-Davila, M., Wallace, D., and Wanninkhof, R.: Tracking the Variable North Atlantic Sink for Atmospheric CO<sub>2</sub>, *Science*, 326, 2009.

1045 Webb, A. and Fox-Kemper, B.: Impacts of wave spreading and multidirectional waves on estimating Stokes drift, *Ocean Modelling*, 96, 49-64, 10.1016/j.ocemod.2014.12.007, 2015.

Woosley, R. J., Millero, F. J., and Wanninkhof, R.: Rapid anthropogenic changes in CO<sub>2</sub> and pH in the Atlantic Ocean: 2003-2014, *Global Biogeochemical Cycles*, 30, 70-90, 10.1002/2015gb005248, 2016.

1050 Wu: Sea-Surface Drift Currents Induced by Wind and Waves, *Journal of Physical Oceanography*, 13, 1441-1451, 1983.

Wurl, O., Wurl, E., Miller, L., Johnson, K., and Vagle, S.: Formation and global distribution of sea-surface microlayers, *Biogeosciences*, 8, 121-135, 10.5194/bg-8-121-2011, 2011.

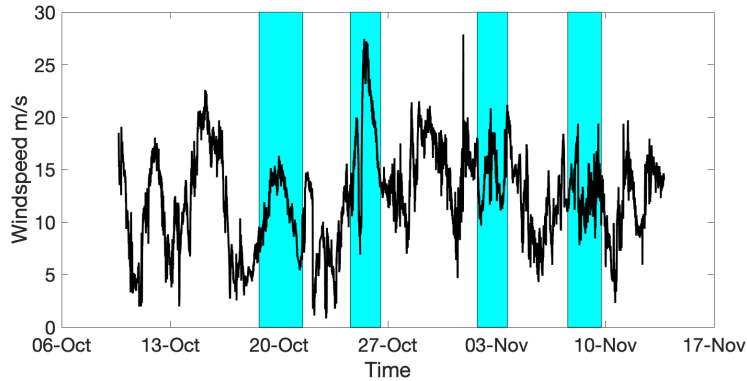
Yang, M., Blomquist, B. W., and Nightingale, P. D.: Air-sea exchange of methanol and acetone during HiWinGS: Estimation of air phase, water phase gas transfer velocities, *Journal of Geophysical Research: Oceans*, 119, 7308-7323, 10.1002/2014jc010227, 2014.

1055 Yang, M., Norris, S. J., Bell, T. G., and Brooks, I. M.: Sea spray fluxes from the southwest coast of the United Kingdom – dependence on wind speed and wave height, *Atmospheric Chemistry and Physics*, 19, 15271-15284, 10.5194/acp-19-15271-2019, 2019.

Zedel, L. and Farmer, D.: Organized structures in subsurface bubble clouds: Langmuir circulation in the open ocean, *Journal of Geophysical Research*, 96, 10.1029/91jc00189, 1991.

1060 Zhou, J., Mopper, K., and Passow, U.: The role of surface-active carbohydrates in the formation of transparent exopolymer particles by bubble absorption of seawater *American Society of Limnology and Oceanography*, 43, 1998.

1065



**Figure 1:** Wind speed over the entire HiWINGS expedition. Shaded areas show the times of the four buoy deployments discussed in this paper.

	Station 3	Station 4	Station 6	Station 7
Period of measurement	18-Oct-2013 17:00-21-Oct-2013 12:30	24-Oct-2013 14:00:00 - 26-Oct-2013 13:00:00	01-Nov-2013 18:00:00 - 03-Nov-2013 17:00:00	07-Nov-2013 14:00:00 - 09-Nov-2013 18:00:00
Total measurement time	Camera: 3.75h Resonator: 6h Sonar: 35h (cont)	Camera: 8.25 h Resonator: - Sonar: 26 h (cont)	Camera: 9h Resonator: 35 h (cont) Sonar: 36 h (cont)	Camera: 8.25 h Resonator: 11 h (cont) Sonar: 38 h (cont)
Sea surface temp.	8.7 C	10.2 C	8.7 C	20 C
Wind speed range	5.9 - 15.3 m/s	7.7 - 26.6 m/s	10.5 - 18.7 m/s	9.5 - 18.0 m/s
Sig. Wave height range	1.7 - 5.3 m	3.0 - 11.0 m	3.0 - 5.0 m	2.2 - 5.0 m
Start position	54.1 N 46 W	53.5 N 45.4 W	52.0 N 50.0 W	41.45 N 64.0 W
Mixed layer Depth	30 - 50 m	50 - 70 m	60 - 75 m	30 - 70 m
Mean ADV depth	3.47 +/- 0.19 m	4.13 +/- 0.39 m	3.96 +/- 0.21 m	3.90 +/- 0.19 m
Chlorophyll	1.2 - 1.7 $\mu\text{g/l}$	0.6 - 1.2 $\mu\text{g/l}$	0.5 - 0.9 $\mu\text{g/l}$	0.3 - 0.8 $\mu\text{g/l}$

5

**Table 2:** Wind speed over the entire HiWINGS expedition. Shaded areas show the times of the four buoy deployments discussed in this paper.

Deleted: 1

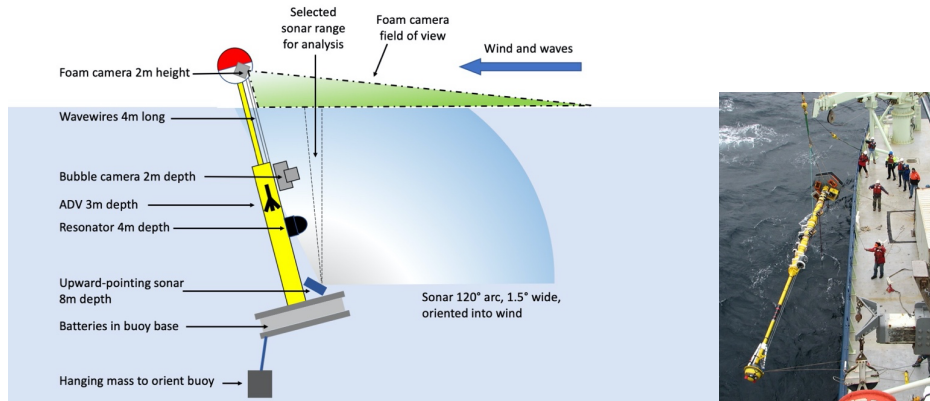
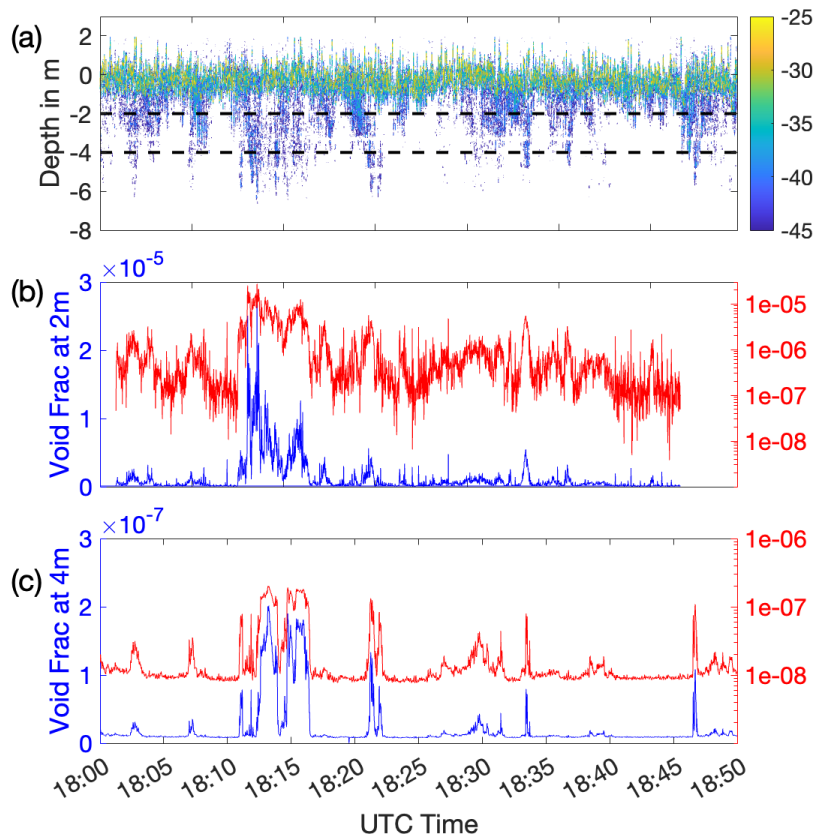
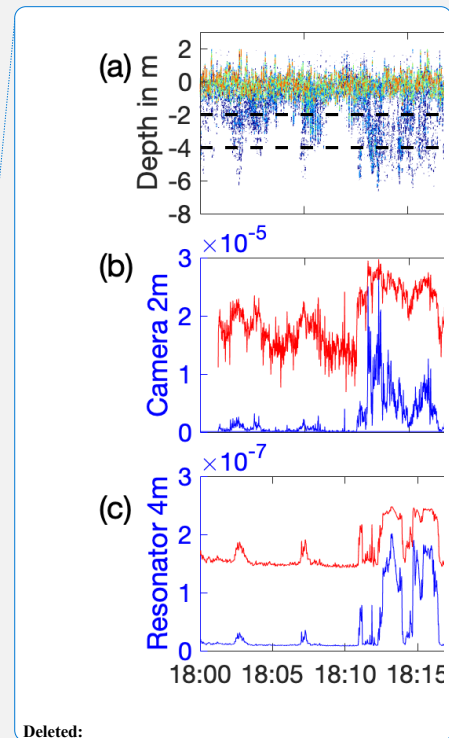


Figure 2: (a) Schematic diagram of the 11-m long spar buoy. The top 2 m protruded above the water level, and the hanging mass caused a slight backwards lean which oriented the buoy into the wind. All instruments were positioned on the upwind side except the ADV which was 90 degrees further round the hull. The sonar data presented here is a subset of the full sonar arc, a 10° vertical section shown between the dotted lines and treated as a vertical profile through the water. (b) Buoy being deployed.





20 **Figure 3:** Comparison of simultaneous measurements from (a) the upward-looking sonar, (b) the bubble camera at 2 m depth, and  
 25 (c) the resonator at 4 m depth. These plots cover one 45-minute measurement period of the bubble camera, on November 2<sup>nd</sup> from 1805-1850h. The wind speed was  $18 \text{ ms}^{-1}$ . (a) shows backscatter cross-section per unit volume in dB from a vertical  $10^\circ$  section of the arc; the dotted lines show the vertical position of the camera and resonator. To make the comparison between instruments clear, the sonar data is shown relative to the equilibrium water surface position on the buoy, not adjusted to instantaneous depth as waves pass. (b) and (c) show void fraction for camera and resonator respectively, on a linear scale on left, and a log scale on right. Note that the y-axis scales for camera and resonator differ by two orders of magnitude. There is good agreement in the features observed between all three instruments.



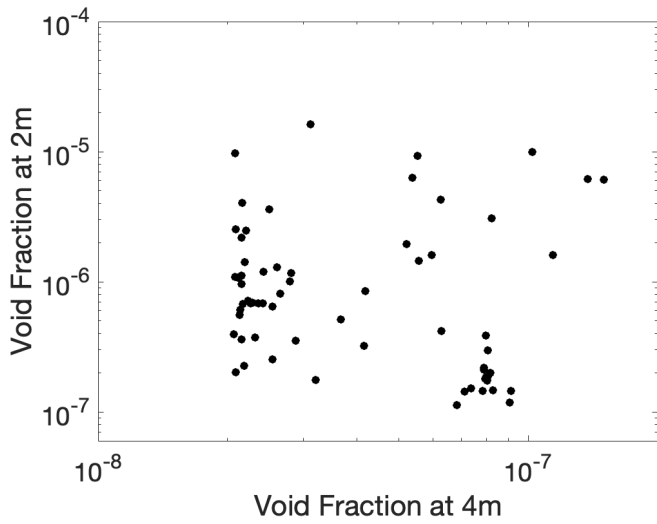
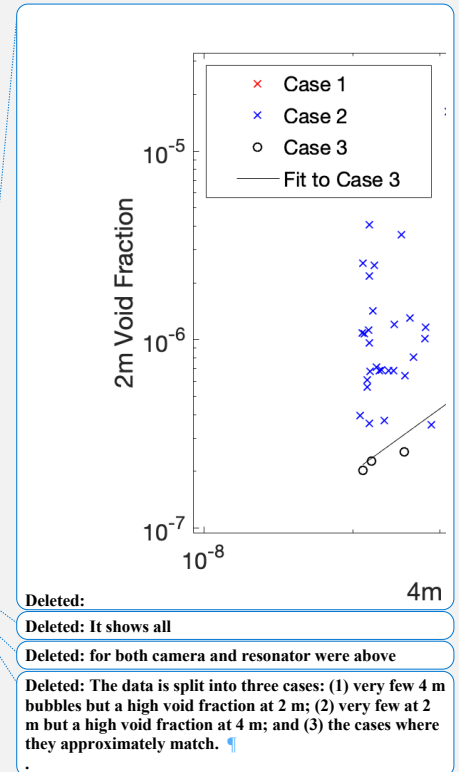
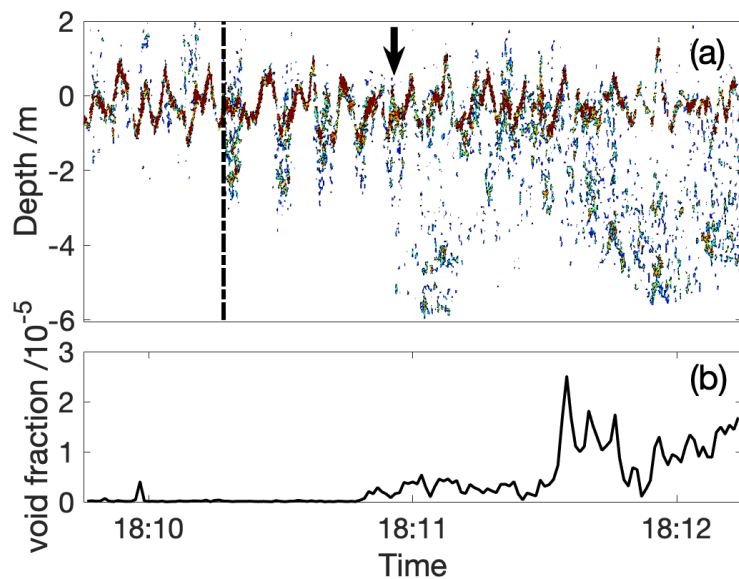


Figure 4: Scatter plot comparing one minute average void fractions at 2 m and 4 m during station 6 (1–4 November). [All](#) periods when the data [at 4 m were above the noise level are shown.](#)

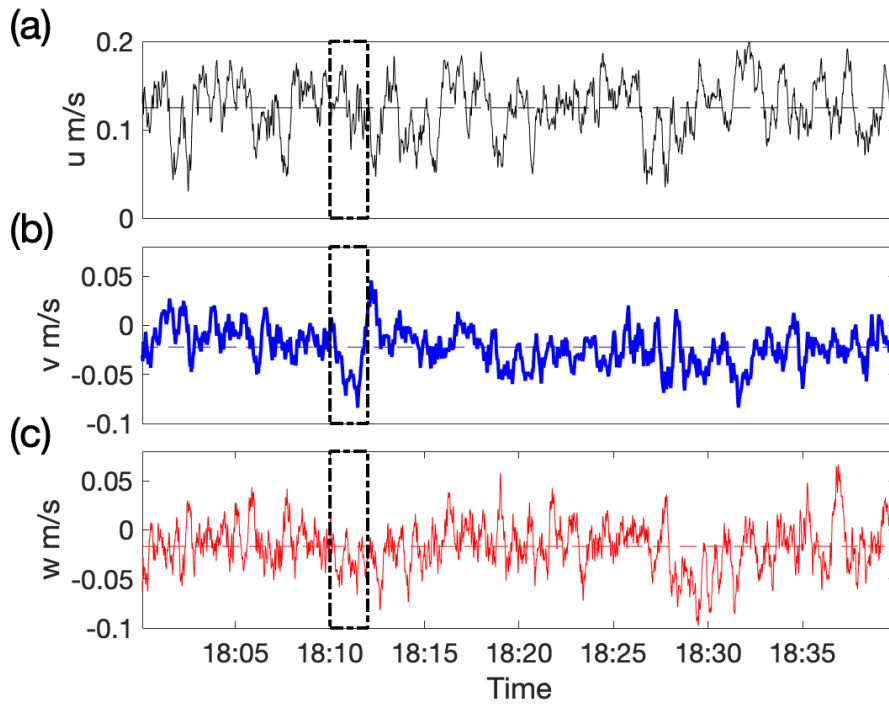




45

Figure 5: Figure (a) shows a contour plot of sonar backscatter during a 150s period on November 2<sup>nd</sup> from 18:10h – 18:12h. The red colour indicates the strong reflections from the instantaneous sea surface, showing the passing waves. The vertical dotted line shows the time that the whitecap was observed in the foam camera images which coincides with the appearance of a shallow bubble plume. The bold arrow is aligned with the rapid deepening of the bubble plume approximately 40 seconds later. (b) shows the void fraction observed by the submerged bubble camera (at 2 m) during the same period.

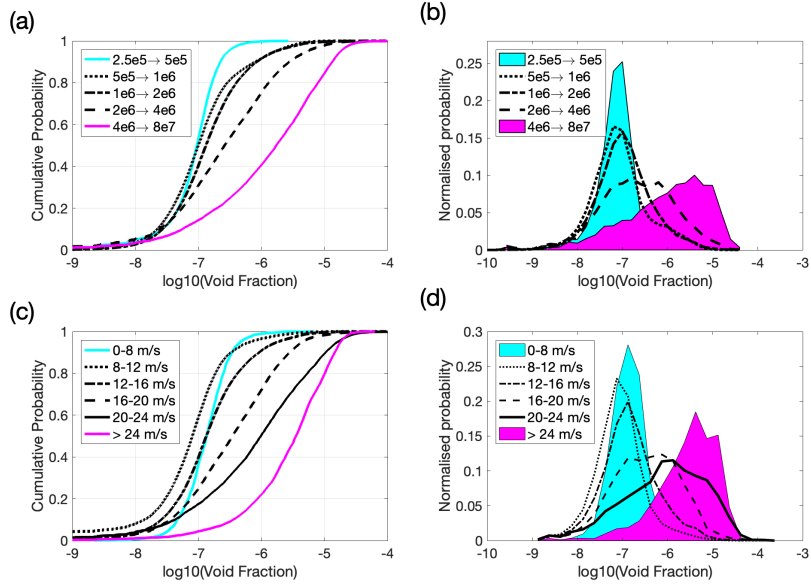
50



55 Figure 6: Running average flow speeds at 3.8 m depth (averaged over 16 seconds, which is two periods of natural vertical oscillation for the buoy) in (a) x, (b) y and (c) z directions. The box indicates the time segment which corresponds with the sonar data in figure 5. 'u' indicates the direction into the wind, v is the sideways axis to the port side and w is the vertical direction, all in the buoy frame of reference. The dotted lines show the average of flow speed over this period (which are non-zero because of Stokes drift in the u direction and the buoy lean in the w direction). There is a notable sideways flow feature as the plume forms, and the vertical velocity at that time is generally downward, possibly indicating surface convergence in a Langmuir circulation flow pattern.

60

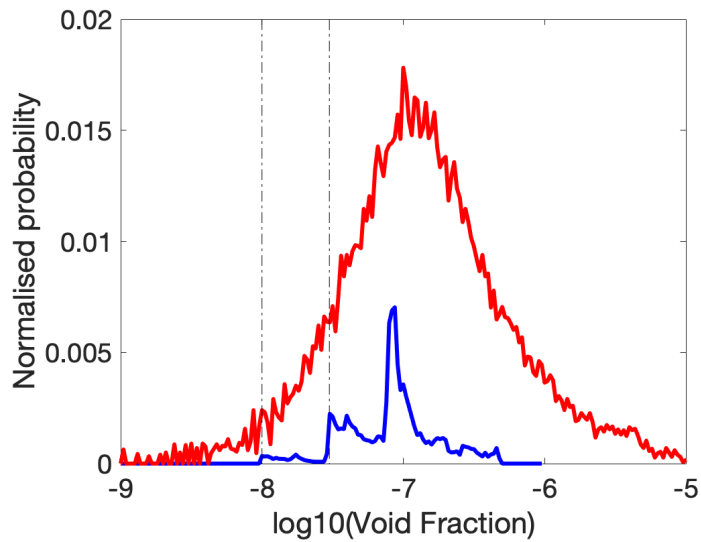
Deleted: m



65

Figure 7: 1-second averaged void fraction probability distributions at 2 m depth, split by wind speed (bottom row) and wind-wave Reynolds number (top row). All the data collected by the bubble camera during all deployments is included in these plots. (a) and (c) show cumulative distributions and (b) and (d) show the same data as normalised distributions. For (b) and (d), the shaded regions show the lowest and highest values of the range. Wind speed and Reynolds number are calculated for ten minute periods, using the 10-minute mean for  $U_{10}$  and the interpolated windsea-only significant wave height. We note that although there are data for windspeeds of 0-8  $\text{m s}^{-1}$ , these are all calm periods just after much higher winds.

70



75

Figure 8: Normalised void fraction probabilities at 4 m depth (blue) compared with the equivalent normalised probabilities at 2 m depth (red). The dotted lines are the noise levels for station 3 ( $1 \times 10^{-8}$ ) and station 6 ( $3 \times 10^{-8}$ ). The final deployment is not included because it yielded so little data. This plot only shows data collected while the wind-wave Reynolds number was between  $10^6$  and  $2 \times 10^6$ , and narrow bins are used to enable examination of the peak positions. The resonator data has been normalised to include the 90% of the time that the measured void fraction did not rise above the noise (and the data below the noise level is not represented here).

80

85

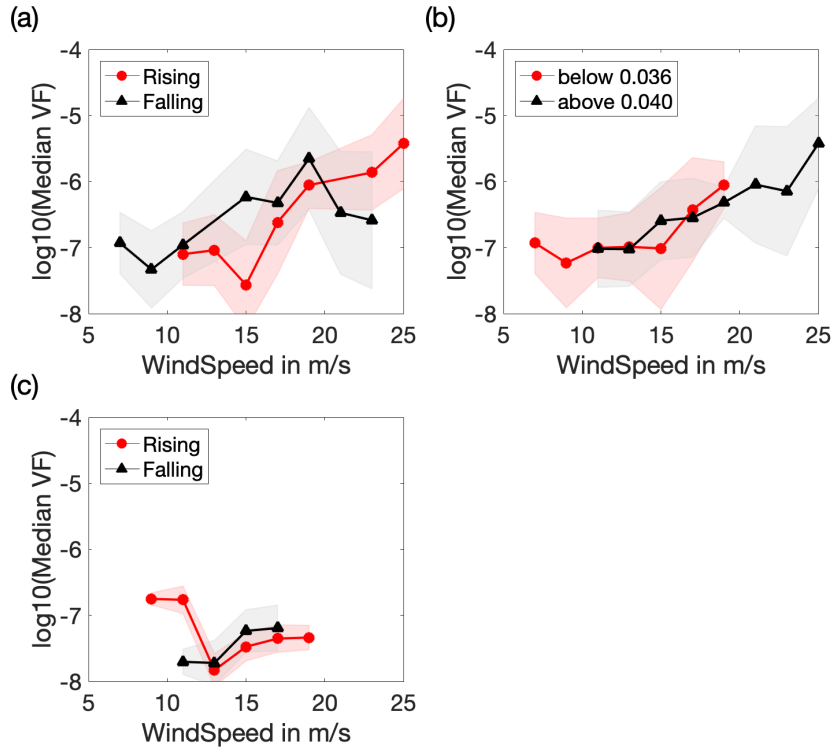
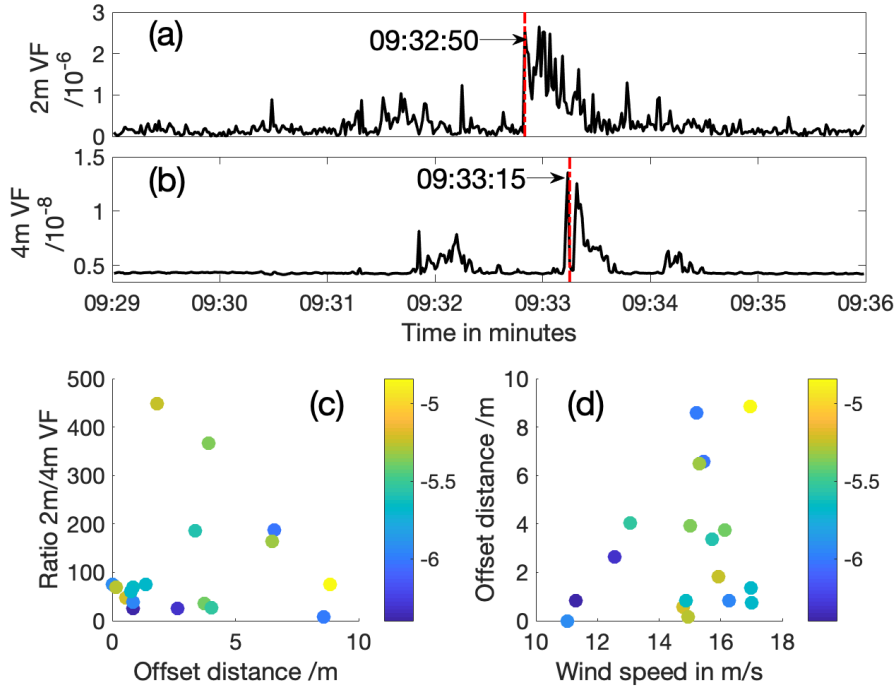


Figure 9: Median void fraction in each  $2 \text{ m s}^{-1}$  wind speed bin for all deployments. In (a), Data from 2 m depth, split into periods of rising and falling winds (separated using hourly averages as described in the main text). In (b) the same data from 2 m depth, split by inverse wave age, representing developing ( $>0.04$ ), and mature seas ( $<0.036$ ). Shading represents the standard deviation at each wind speed. There were no bubble camera data for mature seas when the wind speed was greater than  $19 \text{ m s}^{-1}$ . (c) shows the resonator data (from 4 m depth) separated by wind speed. There is insufficient resonator data for a comparison with inverse wave age.

Deleted: these  
 Deleted: bins are  
 Deleted: is

90

95

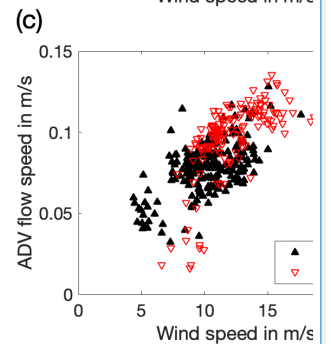
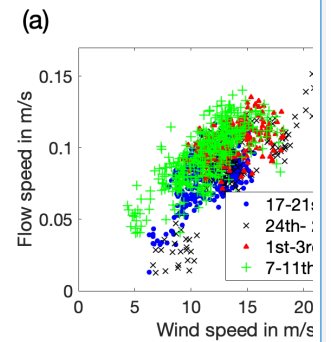
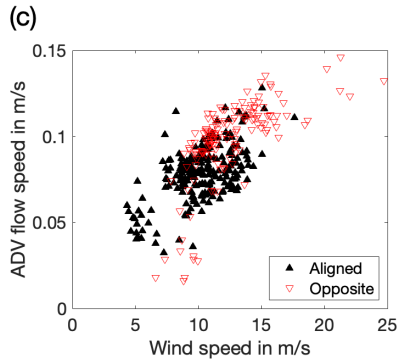
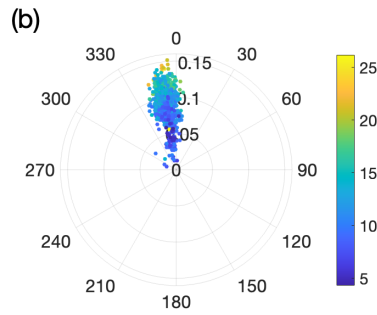
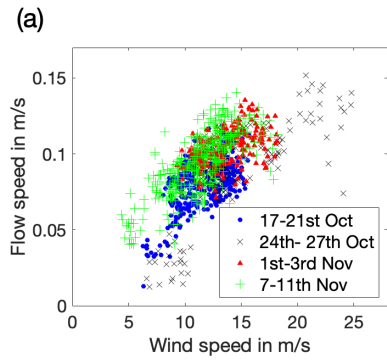


[100] Figure 30: A typical offset between void fraction peaks at depths of 2m (a) and 4m (b). The plume structure is very similar, although the void fractions in the two cases differ by two orders of magnitude and there is a clear offset of 25 seconds. (c) shows the offset distance in metres for compared to the ratio between the peak void fraction and 2m and 4m. Marker colour shows  $\log_{10}$ (peak void fraction) of the camera measurement for each pair. All measured pairs are shown with the exception of two which had offsets of -4.8m and 27m. (d) Windspeed at the time the offset was measured. Marker colour is the same as (c).

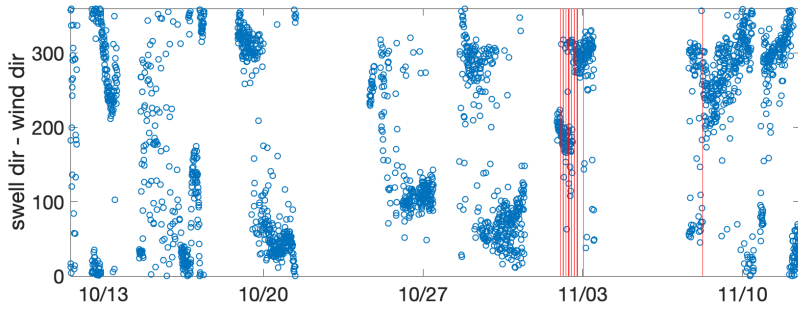
Deleted: 1

105 .



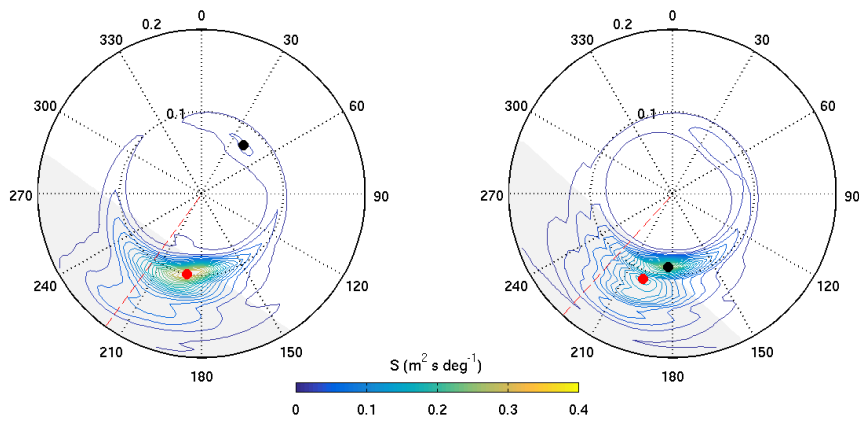


Deleted:  
**Figure A1: Ten minute averages of ADV data showing water flow relative to the buoy at 3.8m depth. (a) Horizontal flow speed. (b) The direction of the measured water velocity relative to the buoy (0° is the upwind direction). The radial parameter is the total measured flow speed in  $\text{m.s}^{-1}$ , and markers are colour-coded by wind speed in  $\text{m.s}^{-1}$ . (c) Selected data from periods when the swell direction was within  $\pm 45^\circ$  of the wind (“aligned”) and within  $\pm 45^\circ$  against the wind (“opposite”).**

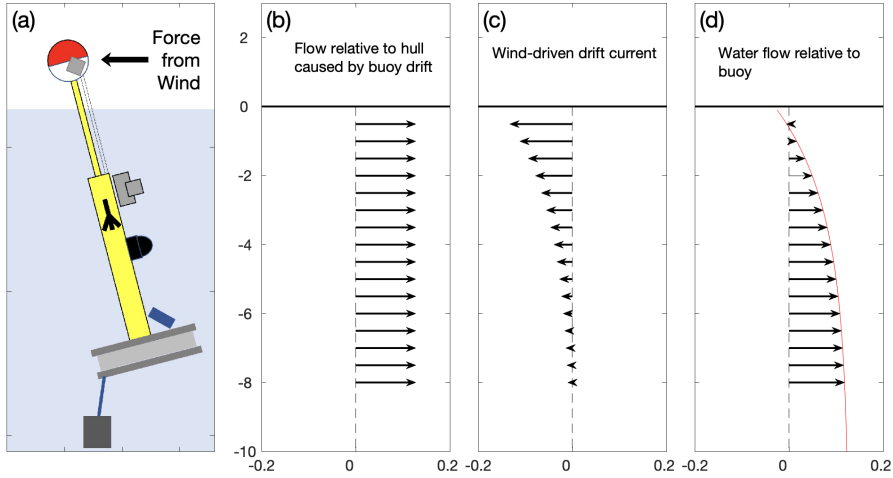


125 **Figure A2:** The angular difference between ten minute averages of the wind direction and the direction of the dominant swell. The red lines show the times when measurements of the time difference between plume appearance at 2 m and 4 m were taken. No offset measurements were possible for the deployment between the 24<sup>th</sup>-27<sup>th</sup> of October because no resonator data is available.

130



135 **Figure A3:** Observed 2D directional wave spectra measured by the WaveRider at (a) 12:45 and (b) 13:15 on November 2<sup>nd</sup>. The radial parameter is frequency (Hz), 0 degrees is north, and the contour lines show spectral intensity. Red circles show the main wind sea peak identified by the algorithm and black circles show the identified dominant swell. At 12:45,  $H_{swell} = 1.25$  m and  $H_{windsea} = 4.26$  m.



140 **Figure A4: The combination of influences contributing to the water flow profile in the frame of reference of the buoy. (a) shows the buoy oriented into the wind, with the dome acting as an obstacle to the wind and transferring horizontal force to the submerged hull. (b) shows the effect of flow speed relative to the buoy caused by the buoy moving through the water in response to a  $15 \text{ m s}^{-1}$  wind. Arrow length represents water flow speed and the magnitude is shown on the x-axis in  $\text{m s}^{-1}$ . (c) shows the current due to Stokes drift, calculated as described in the main text. (d) shows the combination of (b) and (c) relative to the buoy hull. The red line shows the complete profile.**

145