

Supplement to Wefing et al.

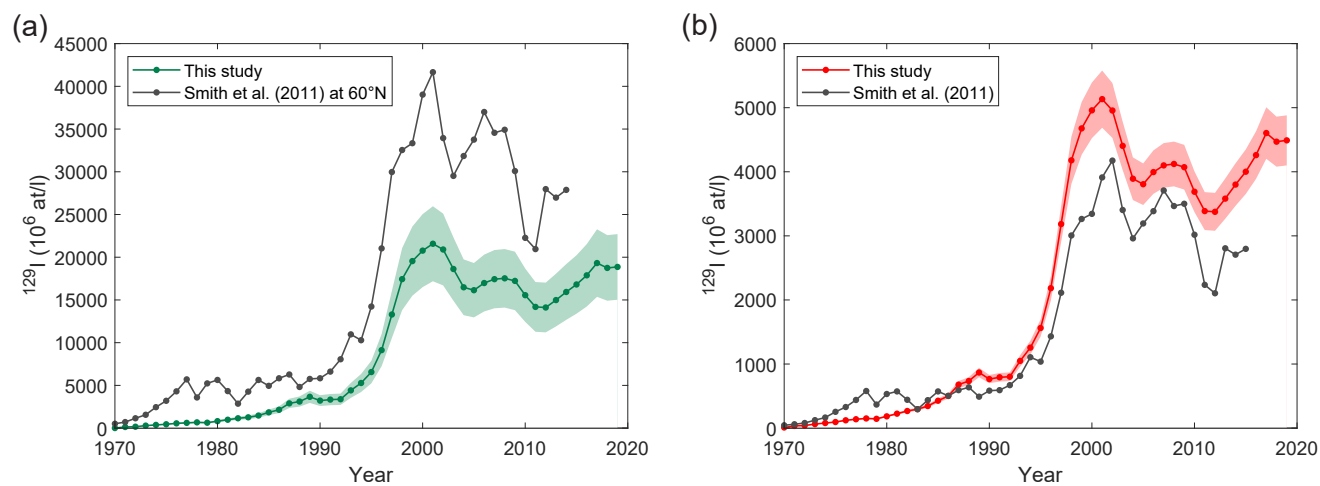


Figure S1. Comparison of ^{129}I input functions used in this study for the surface (a) and the Atlantic layer (b) to Smith et al. (2011).

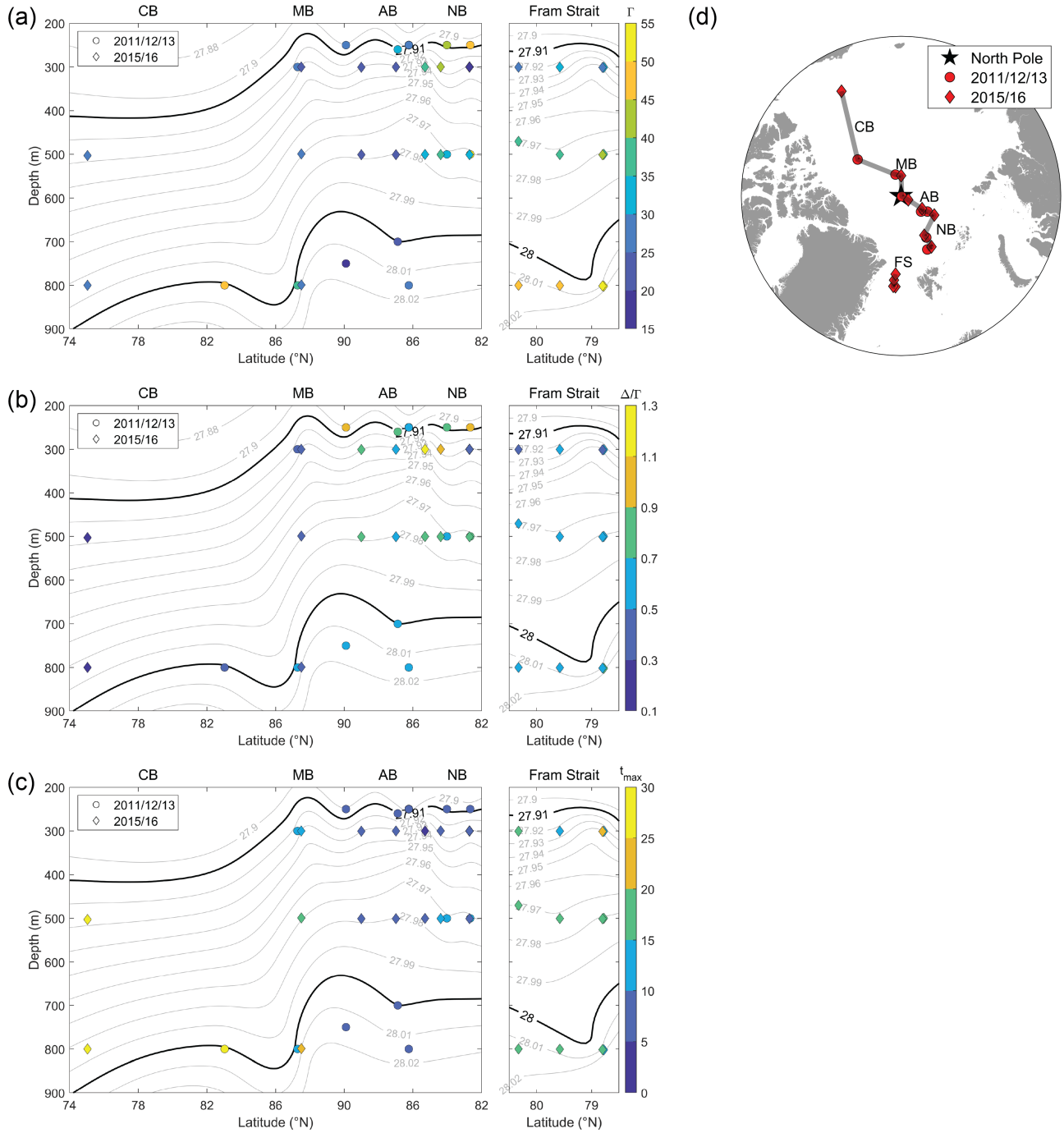


Figure S2. Mean ages Γ (a), Δ/Γ ratios (b) and mode ages t_{\max} (c) in a section across the North Pole, including samples from 250-800m from all expeditions. The section map is shown in (d). Contours are isopycnals, black contours correspond to core FSBW ($\sigma_{\theta} = 27.91$, about 200-300 m depth) and BSBW ($\sigma_{\theta} = 28$, about 700-800 m depth).