

Accuracy assessment of global internal tide models using satellite altimetry

Loren Carrere¹, Brian K. Arbic², Brian Dushaw³, Gary Egbert⁴, Svetlana Erofeeva⁴, Florent Lyard⁵,
Richard D. Ray⁶, Clément Ubelmann⁷, Edward Zaron⁸, Zhongxiang Zhao⁹, Jay F. Shriver¹⁰, Maarten
5 Cornelis Buijsman¹¹, Nicolas Picot¹²

¹CLS, Ramonville-Saint-Agne, 31450, France

²University of Michigan, Ann Arbor, MI, USA

³no affiliation, Girona, 17004, Spain

10 ⁴Department Geology and Geophysics, Oregon State University, Corvallis, OR 97331-5503, USA

⁵LEGOS-OMP laboratory, Toulouse, 31401, France

⁶NASA Goddard Space Flight Center, Greenbelt, MD 20771, USA

⁷Ocean Next, La Terrasse, 38660, France

⁸Department of Civil and Environmental Engineering, Portland State University, Portland, OR 97207-0751, USA

15 ⁹Applied Physics Laboratory, University of Washington, Seattle, WA, USA

¹⁰Naval Research Laboratory, Stennis Space Center, MS, USA

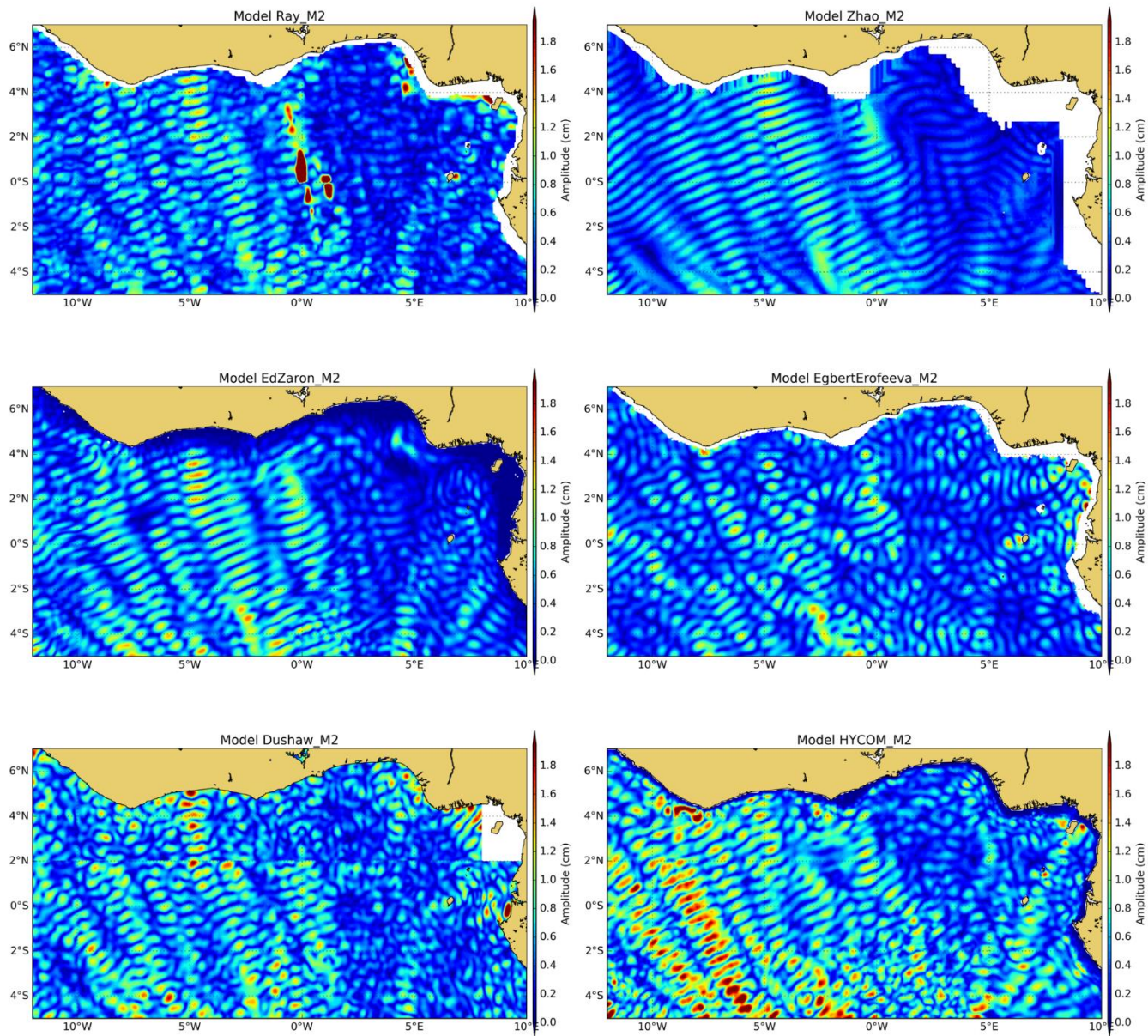
¹¹Division of Marine Science, University of Southern Mississippi, Stennis Space Center, MS 39529, USA

¹²CNES, Toulouse, 31400, France

20 *Correspondence to:* L. Carrere (lcarrere@groupcls.com)

Supplementary materials

The plots of the amplitude of the M2 internal tide on the IT regions defined in Figure 1 are provided below.



25

Figure S1: amplitude of the IT models for M2 tide component on Gulf Of Guinea region

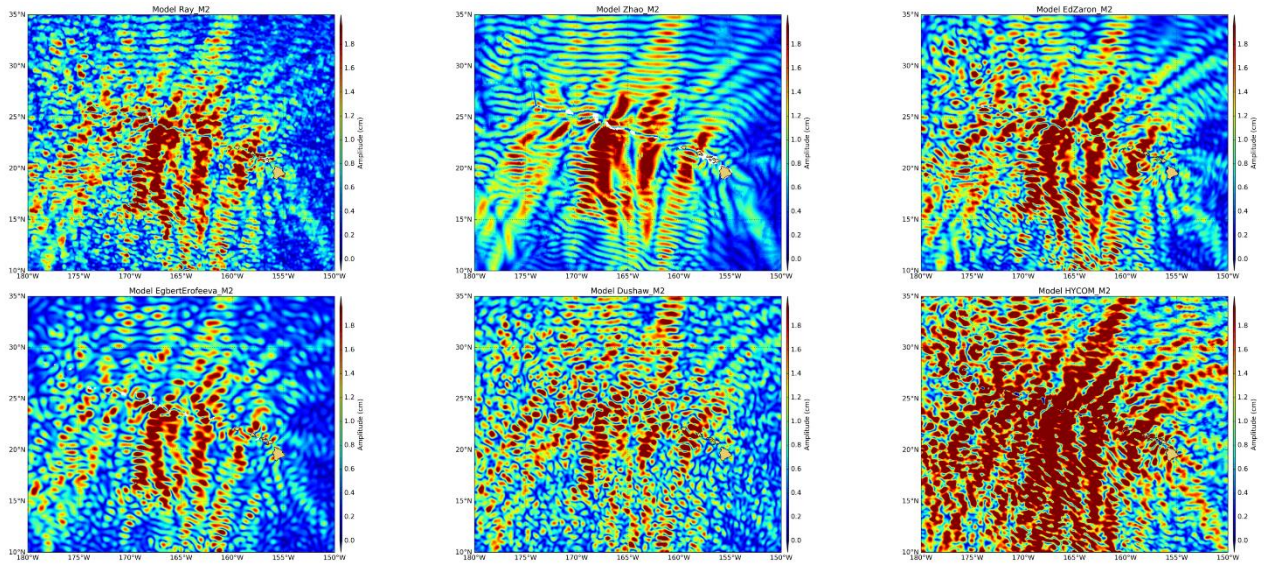


Figure S2: amplitude of the IT models for M2 tide component on Hawaii region

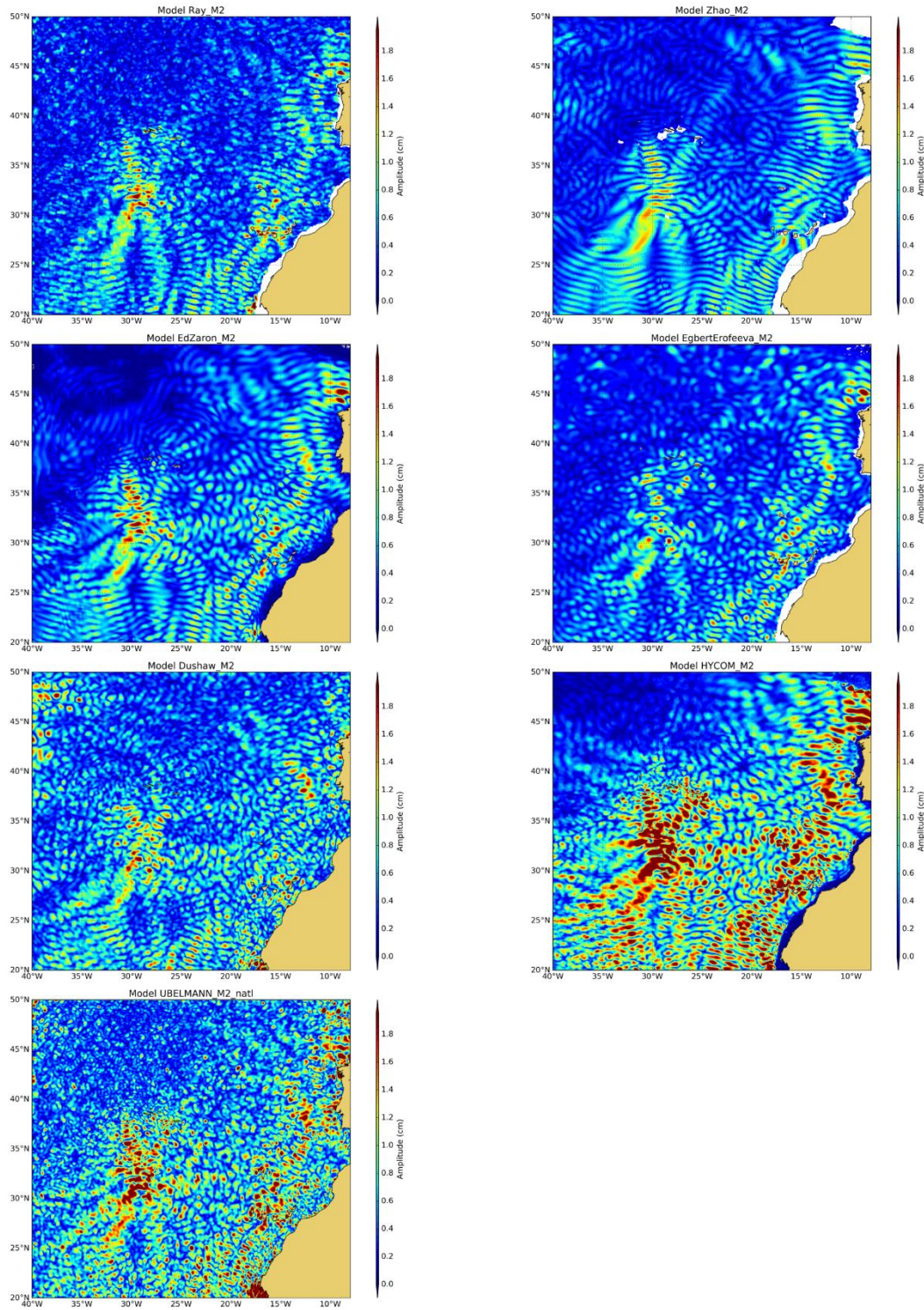


Figure S3: amplitude of the IT models for M2 tide component on NPAC region

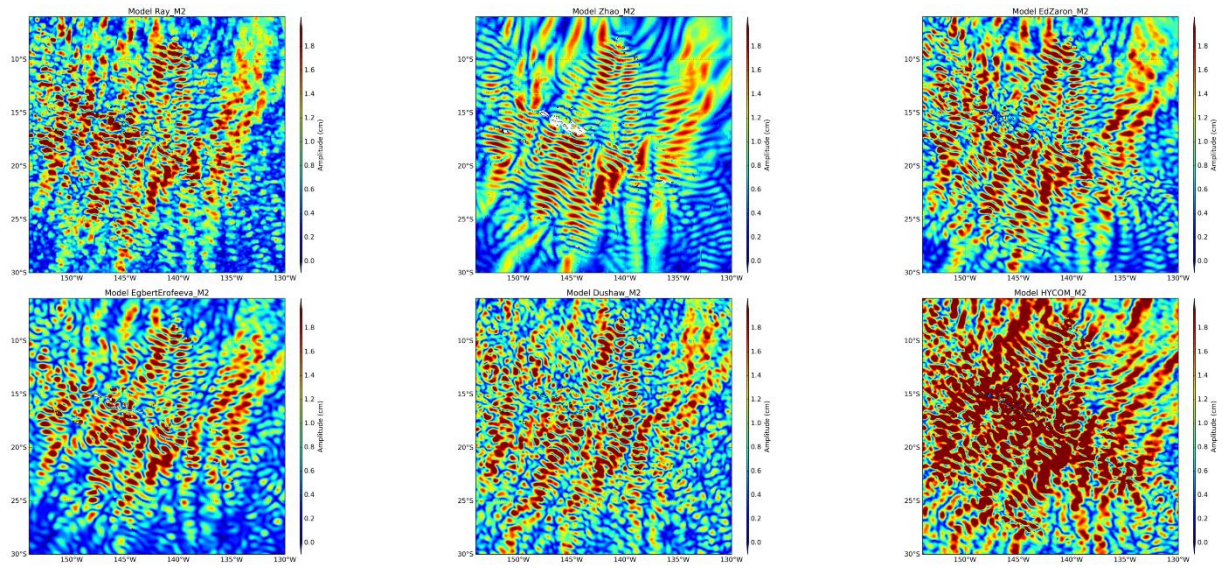


Figure S4: amplitude of the IT models for M2 tide component on Tahiti region

35

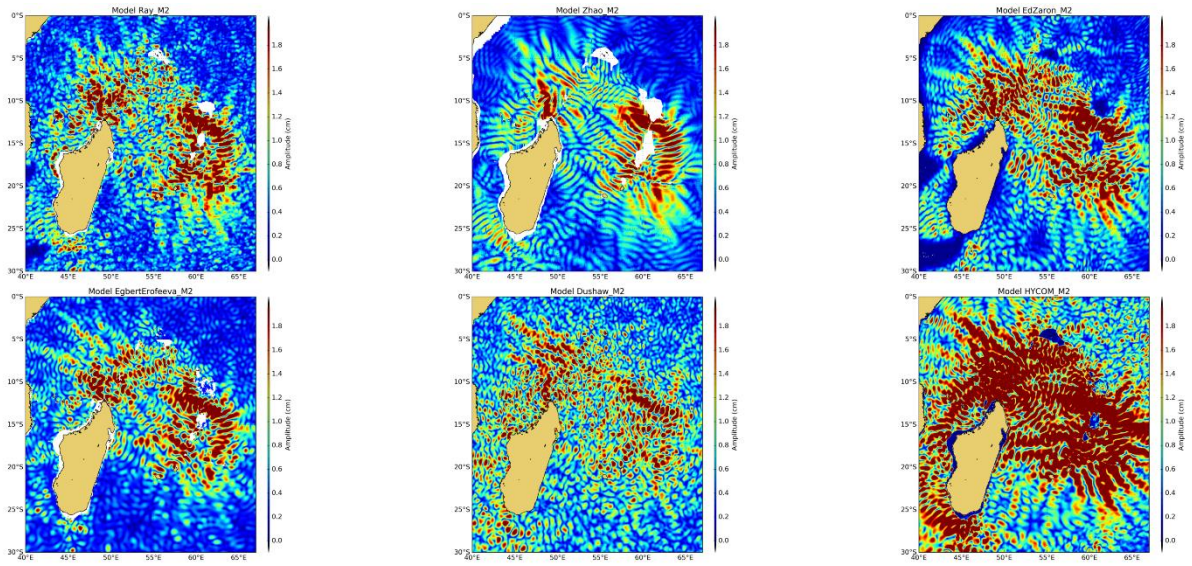


Figure S5: amplitude of the IT models for M2 tide component on Madagascar region