

# The Zone of Influence: Matching sea level variability from coastal altimetry and tide gauges for vertical land motion estimation

Julius Oelsmann<sup>1</sup>, Marcello Passaro<sup>1</sup>, Denise Dettmering<sup>1</sup>, Christian Schwatke<sup>1</sup>, Laura Sanchez<sup>1</sup>, and Florian Seitz<sup>1</sup>

<sup>1</sup>Deutsches Geodätisches Forschungsinstitut der Technischen Universität München, Arcisstraße 21, 80333 Munich, Germany

**Correspondence:** Julius Oelsmann (julius.oelsmann@tum.de)

## Abstract.

Vertical land motion (VLM) at the coast is a substantial contributor to relative sea level change. In this work, we present a refined method for its determination, which is based on the combination of absolute satellite altimetry (SAT) sea level measurements and relative sea level changes recorded by tide gauges (TG). These measurements complement VLM estimates from GNSS (Global Navigation Satellite System) by increasing their spatial coverage. Trend estimates from SAT and TG combination are particularly sensitive to the quality and resolution of applied altimetry data as well as to the coupling procedure of altimetry and tide gauges. Hence, a multi-mission, dedicated coastal along-track altimetry dataset is coupled with high-frequency tide gauge measurements at 58 stations. To improve the coupling-procedure, a so-called 'Zone of Influence' (ZOI) is defined, which confines coherent zones of sea level variability on the basis of relative levels of comparability between tide gauge and altimetry observations. Selecting 20% of the most representative absolute sea level observations in a 300 km radius around the tide gauges results in the best VLM-estimates in terms of accuracy and uncertainty. At this threshold,  $VLM_{SAT-TG}$  estimates have median formal uncertainties of 0.58 mm/year. Validation against GNSS VLM estimates yields a root-mean-square ( $RMS_{\Delta VLM}$ ) of  $VLM_{SAT-TG}$  and  $VLM_{GNSS}$  differences of 1.28 mm/year, demonstrating the level of accuracy of our approach. Compared to a reference 250 km radius selection, the 300 km Zone of Influence improves trend accuracies by 15% and uncertainties by 35%. With increasing record lengths, the spatial scales of the coherency in coastal sea level trends increase. Therefore the relevance of the ZOI for improving  $VLM_{SAT-TG}$  accuracy decreases. Further individual Zone of Influence adaptations offer the prospect of bringing the accuracy of the estimates below 1 mm/year.

## 1 Introduction

Coastal vertical land motion (VLM) significantly contributes to relative sea level change (SLC). VLM is in many places of the same order of magnitude (1-10 mm/year) as the sea level rise signal itself and displays significant spatial variations (Santamaría-Gómez et al., 2012). Consequently, VLM affects coastal impacts of climate-sensitive processes and can regionally account for large fractions of the observed and projected coastal SLC signal (Wöppelmann and Marcos, 2016; Slangen et al., 2014). Thus, the accurate estimation of VLM is vital, not only to disentangle climatic and geodynamic SLC signatures, but also to obtain more robust estimates of past and future relative SLC and its associated uncertainty (Church et al., 2013; Santamaría-Gómez

et al., 2017). In this work, we present a novel approach of VLM estimation using coastal satellite altimetry, tide gauges and the Global Navigation Satellite System (GNSS).

VLM is caused by the superimposition of natural processes and anthropogenic influences in the Earth System and operate on manifold spatial and temporal scales (Pugh and Woodworth, 2014). Mechanisms such as the Glacial Isostatic Adjustment (GIA), the postglacial rebound of the Earth to changing ice and water load, cause distinct large-scale VLM, which can be assumed to be uniform on centennial timescales (Peltier, 2004). Recent acceleration of land ice mass loss was shown to additionally enhance deformation rates, posing new challenges for sea-level studies due to its time-varying signal (Riva et al., 2017). Surface mass changes are also caused by terrestrial freshwater storage changes and can have small-scale effects on VLM. Groundwater pumping for instance, contributes not only to local small-scale VLM and gravity changes, but also modifies sea level rise in distant areas (e.g. Wada et al. (2012); Veit and Conrad (2016)). Other small-scale VLM effects such as erosion or tectonic movements can be locally confined to several kilometers with more subtle, not necessarily linear temporal behaviour (Brooks et al., 2007; Kolker et al., 2011; Poitevin et al., 2019). These and other non-linear processes at very short time scales are particularly challenging in the estimation of a linear rate of long-term VLM from TGs, since they would appear as instabilities in the record (similarly to a change in datum).

In response to the substantial impact on relative sea level and the large spectrum of VLM sources, several strategies have been developed to estimate VLM. The ability to capture the diversity of VLM processes, however, strongly depends on the method and geodetic technique used in the VLM estimation. Furthermore, the coverage and associated accuracy of VLM estimates differ across the methods. Given that global absolute sea level trends during the altimeter era is in the order of 3 mm/year ( $3.1 \pm 0.1$  mm/year from 1995 to 2018 as reported in (Cazenave et al., 2018)), one prerequisite for VLM estimation is that the associated trend uncertainty should be at least one order of magnitude lower than those subtle signals (Wöppelmann and Marcos, 2016). Hence, dense and accurate VLM estimates are required to complement modelled or measured rates of absolute sea level rates, which is ultimately crucial for coastal planning. Improving the reliability of VLM estimates and their associated uncertainties is thus one major concern of this study. In the following, we briefly contrast the three major approaches of deriving coastal VLM globally.

### 1.1 Estimating Coastal Vertical Land Motions

The majority of global sea-level-studies utilized geodynamic GIA-models to correct, for example, tide gauge records for secular land motion trends or to extrapolate future relative SLC based on climate-projections (e.g. Church and White (2011); Hay et al. (1990); Carson et al. (2016)). GIA still represents the only long-term geological process for which VLM can be modeled on a global scale. However, one caveat is that GIA-VLM models were shown to be still biased by imperfect assumptions of ice history and the Earth's structure (King et al., 2012) and are thus model-dependent (Jevrejeva et al., 2014). Another foreseeable disadvantage is that the sole application of GIA-models neglects other sources of VLM (e.g. tectonics, erosion or anthropogenic impacts, Wöppelmann and Marcos (2016)). This led, for instance, to discrepancies in estimated rates of historical global mean sea level (GMSL) change, when comparing model-based solutions against those using measurements from GNSS (Hamlington et al., 2016).

For more than a decade, these direct geodetic estimates (GNSS, such as GPS, GLONASS or GALILEO) have been exploited to determine vertical velocities (Wöppelmann et al., 2007; Snay et al., 2007; Mazzotti et al., 2008). GNSS measurements denote the most precise source of VLM detection and are well established in local to global scale studies (e.g. Bouin and Wöppelmann (2010); Fenoglio et al. (2012); Santamaría-Gómez et al. (2017)). Wöppelmann and Marcos (2016) identified comparably low formal errors of GNSS-VLM rates (0.21 mm/year) when auto-correlation was taken into account. Santamaría-Gómez et al. (2012) estimated an accuracy of 0.6 mm/year of GNSS-based VLM (from at least three years of continuous data), by comparing 36 globally distributed co-located GNSS velocity estimates. Thus, because of its considerable accuracy, vertical GNSS velocities frequently served as benchmark estimates for many sea-level applications, e.g. for GIA-model evaluation or local VLM-corrections of TG records (Sánchez L., 2009; Sanli and Blewitt, 2001).

For the latter use a necessary working hypothesis is that GNSS-VLM represents the same movements as experienced at the tide gauge (Wöppelmann and Marcos, 2016). Because VLM is shown to potentially possess high spatial variability even on small scales (tens of kilometers), GNSS-stations should be ideally very close to the tide gauge. This requirement, however, reduces the number of available co-located stations (130 GNSS stations within a 1 km range of GLOSS (Global Sea Level Observing System) tide gauges, Wöppelmann et al. (2019)) and thus confine the global coastal coverage to mostly Europe, Japan and North America.

To extend the number of VLM estimates, several studies advanced the application of combining satellite altimetry (SAT) and tide gauge (TG) observations (Cazenave et al., 1999; Nerem and Mitchum, 2003; Kuo et al., 2004; Pfeffer and Allemand, 2016; Wöppelmann and Marcos, 2016; Kleinherenbrink et al., 2018). The principle of this approach is to subtract the absolute SLC gathered by the altimeter from relative SLC observations at the tide gauge. Ideally, the differenced time series (SAT minus TG) yields the vertical displacement of the tide gauge with respect to the reference of the altimeter. The accuracy of this technique is, among numerous other factors, strongly dependent on the stability of the altimeter measurement system. Major systematic errors stem from limitations in the realization of the reference frame, as well as from limitations in the long-term stability of altimeter instruments and corrections (e.g. Couhert et al. (2015); Wöppelmann and Marcos (2016); Watson et al. (2015)). Altimetry records can be affected by regionally varying drifts, which were found to be most pronounced on TOPEX altimeter side-A. The calibration of altimetry with tide gauges is influenced by the applied VLM correction (Watson et al., 2015). Conversely, SAT-TG VLM estimates are affected by the altimeter drift. Due to the availability of global and continuous absolute sea level measurements, this method not only provides a complementary source to GNSS measurements, but also improves the geographical distribution of the data, as virtually every valid TG is usable.

While all of these three sources of information, GIA-models, GNSS and 'satellite altimetry minus tide gauge' (SAT-TG) techniques have individual merits, their combined use is valuable to further substantiate VLM estimates. GNSS-observations are necessary to validate both GIA-models and the SAT-TG approach (Santamaría-Gómez et al., 2012; Wöppelmann and Marcos, 2016; Kleinherenbrink et al., 2018). Recent studies combined all three approaches to reconstruct GMSL (Dangendorf et al., 2017), or to densify the estimation of contemporary rates of vertical land motions (Pfeffer et al., 2017) or relative sea level change (Hawkins et al., 2019). Any advancement in these individual approaches, therefore, supports developments of the others and improves the global assessment of coastal VLM estimates.

In this study, we focus on enhancing the application of SAT-TG difference for VLM detection. Our investigations not only further develop the latest progress of the method, but also gain a new perspective on sea level trend and uncertainty characterization and quantification in coastal zones. The next section recapitulates the latest state of  $VLM_{SAT-TG}$  estimation on which we base our innovations.

## 1.2 Progress in VLM estimation by satellite altimetry and tide gauge difference

The combination of SAT and TG observations for VLM determination was steadily improved over the last two decades and is elaborated in the latest review by Wöppelmann and Marcos (2016), hereinafter WM16. WM16 investigated performances of different gridded and along-track altimetry products (e.g. AVISO (Archiving, Validation, and Interpretation of Satellite Oceanographic data) and GSFC (Goddard Space Flight Center). They combined sea-level anomalies (SLAs) as  $1^\circ$ -radius averages with monthly-mean tide gauge records from PSMSL (Permanent Service for Mean Sea Level). Among all datasets, the gridded AVISO product revealed the best correlations and residuals between altimetry and tide gauge records. Using this dataset, WM16 also obtained the most precise VLM estimates were achieved, with median formal uncertainties of 0.8 mm/year. Validation against GNSS-based trends from ULR5 (Université de La Rochelle, Institut Géographique National analysis) at 113 colocated stations resulted in an  $RMS_{\Delta VLM}$  of 1.47 mm/year of  $VLM_{SAT-TG}$  and  $VLM_{GNSS}$  trend differences, providing the highest accuracies among the datasets.

Notwithstanding the weaker performance of the along-track product (from GSFC) achieved in WM16, Kleinherenbrink et al. (2018) made great progress in using along-track altimetry (Topex, Jason1 and 2, from the Radar Altimeter Database, RADS (Scharroo et al., 2012)) to estimate VLM. Their approach aimed to overcome the spatial downsampling and associated loss of information in gridded products such as AVISO. They also advanced the procedure of combining altimetry and tide gauge data. Instead of taking  $1^\circ$ -averages around the tide gauges, they selected altimetry data according to different absolute correlation thresholds and implemented correlation-weighting of time series. Generally, the thresholding strategy functioned as a filter to remove stations of low comparability: With varying correlations between 0.0 and 0.7, they obtained  $RMS_{\Delta VLM}$  errors from 2.1 to 1.20 mm/year (at 155 stations), which significantly improved WM16's results. For a consistent set of stations, they found a slight sensitivity of the  $RMS_{\Delta VLM}$  to variations of the prescribed minimum correlation, however, they reported insignificant improvements of a few percent. Because they derived GNSS vertical velocities from the Nevada Geodetic Laboratory (NGL) database by taking the median of available estimates within a 50 km range to the tide gauge, they increased the number at which  $VLM_{SAT-TG}$ -trends could be validated to 155.

Based on Kleinherenbrink et al. (2018) and WM16, we identify two essential factors which are vital for the quality of trend estimation by SAT-TG difference. Advancements with respect to both factors not only potentially led to improved VLM estimates in Kleinherenbrink et al. (2018), but also motivate for further innovations:

- 1 **Data quality:** In coastal regions accuracy of altimetry measurements is affected by the local departure of the radar signal from the known ocean response (due to inhomogeneities of the illuminated area) and by the inaccuracy of the standard routinely applied corrections and tidal models. Developments for the solution of both issues led to rapid improvements

in the recent years by e.g. application of coastal-retracking and advanced geophysical corrections (e.g. Cipollini et al. (2017); Passaro et al. (2014); Fernandes et al. (2015)). Dedicated coastal altimetry datasets (e.g. COASTALT, ALES, PISTACH) might thus outperform previously applied products (e.g. AVISO), which do not yet benefit from these implementations.

**2 Data selection:** Next to issues concerning data quality, the second factor defining trend uncertainty is the sensitivity of  $VLM_{SAT-TG}$  estimates to the spatial selection of altimeter data in the vicinity of the tide gauge. WM16 showed, that averaging SLA in a radius of  $1^\circ$  around the tide gauge resulted in higher correlations than using the best correlated or the closest grid point to the tide gauge. Kleinherenbrink et al. (2018) found a small influence of variations of absolute correlation thresholds on the trend estimates. Therefore, considering the diversity of processes which drive coastal sea level variability, such as waves, winds or coastal and bathymetric properties, an advanced adaptation of the choice of altimetry SLA might improve representation of the signal captured by the tide gauge.

These reasons motivate for further improvements of both components, quality of the data and practise of combining altimetry and tide gauge data. We aim to understand how dedicated along-track coastal altimetry can outperform standard-gridded products. We also seek to generalize an optimal selection of SLA's, underpinned by the local dynamical features of measured sea level variability.

In this work, we present a new approach of combining SAT and TG observations to improve VLM estimates. In contrast to previous attempts, we exploit TG and SAT data at the highest available temporal and spatial scale for globally distributed stations. We couple advanced coastal altimetry data with high frequency tide gauge records from the Global Extreme Sea Level Analysis (GESLA). Implementation of these high frequency tide gauge records constitutes a further innovation for VLM estimation. So far such data has only been applied in local studies (Idžanović et al., 2019) and monthly tide gauge data were commonly exploited in this regard. We show that precision and accuracy of the trend estimates can be optimized, when using refined spatial selection criteria of altimetry sea level anomalies. With this approach we identify coherent zones of sea level variability, which best represent the coastal in situ measurements. Our method is generally transferable to analysis of coastal sea level trend determination.

Sections 2 and 3 describe the individual datasets, applied processing steps and the optimization of combining altimetry and tide gauge data. Section 4 presents performance of trend estimates, i.e. estimated uncertainties and validation against GNSS data (in this study all GNSS data are based on the Global Positioning System (GPS)). Finally, we contrast our results and methods with previous work and discuss the impact of the interconnection of time and space-scales on the evolution of coherency of sea level in coastal regions (section 5).

## 2 Data

We use different altimetry products, in order to assess the impact of special coastal products on associated  $VLM_{SAT-TG}$  trend estimates. We compare the coast-dedicated retracker ALES (Adaptive Leading Edge Subwaveform retracker, Passaro et al.

**Table 1.** Applied models and geophysical corrections for estimating sea level anomalies.

Parameter	Model	reference
Range and Sea State Bias	ALES	(Passaro et al., 2014)
Inverse barometer	DAC-ERA	(Carrère et al., 2016)
Wet troposphere	GPD+	(Fernandes et al., 2015)
Dry troposphere	VMF3	(Landskron and Böhm, 2018)
Ionosphere	NIC09	(Scharroo and Smith, 2010)
Ocean and Load tide	FES2014	(Carrère et al., 2015)
Solid Earth and Pole tide	IERS 2010	(Petit and Luzum, 2010)
Mean Sea surface	DTU18MSS	(Andersen et al., 2018)

(2014)) along-track product against the interpolated AVISO dataset (sections 2.1 and 2.2). Altimetry data are combined with  
160 tide gauge observations from the monthly mean PSMSL and the high frequency GESLA data base, which are described in  
sections 2.3 and 2.4. We develop a new coupling strategy of high-rate altimetry and tide gauge records in section 3.2.

### 2.1 Coastal along-track altimetry - ALES

The coastal altimetry product is constructed from 1-Hz multi-mission altimetry measurements processed by DGFI-TUM  
(OpenADB, <https://openadb.dgfi.tum.de>). We combine data from the missions ERS-2, Envisat, Saral, Jason1-Jason3 and their  
165 extended missions, which provide continuous altimetry time series of 23 years (1995-2018). For all missions, satellite orbits  
in ITRF2008 are used, mostly processed by CNES (GDR-E). For ERS-2, GFZ VER11 orbits are applied. The SGDR data  
are re-processed with the ALES retracker (Passaro et al., 2014) and an improved sea state bias correction scheme (Passaro  
et al., 2018). The geophysical corrections are summarized in Table 1. They are consistent with those incorporated in the latest  
development of the empirical ocean tide model (EOT19p) by Piccioni et al. (2019). If available, the Dynamic Atmospheric  
170 Correction consists of the ECMWF ERA-Interim reanalysis (DAC-ERA, Carrère et al. (2016)). This product especially re-  
duces along-track sea level errors in the earlier missions (in this study ERS-2). Because this product is unavailable for the very  
recent missions, we implement the DAC (Carrère and Lyard, 2003) based on ECMWF for the last cycles of Jason-2 (and its  
extended mission) and the full Jason-3 and Saral missions. To reduce radial errors in the different missions, the tailored coastal  
altimetry product is cross-calibrated using the global multi-mission crossover analysis (MMXO) (Bosch and Savcenko, 2007;  
175 Bosch et al., 2014). The MMXO minimizes a large set of globally distributed single- and dual sea surface height crossover  
differences by least-squares adjustment. The estimated radial errors are used to correct each individual sea surface height mea-  
surement. In this way, we not only reduce orbit inconsistencies, but also those originating from the range and from applied  
corrections. Since we estimate a radial correction for each observation, we minimize intermission drift differences as well as  
regionally correlated errors. Note that this approach is a relative calibration and provides range bias corrections with respect to  
180 NASA/CNES reference missions. Any remaining absolute drift of these reference missions (with respect to TGs) still influence  
the drift of the whole altimeter solution.

We map all altimetry records on 1-Hz nominal tracks consistent with the CTOH nominal paths (Center for Topographic studies of the Ocean and Hydrosphere, [www.ctoh.legos.obs-mip.fr](http://www.ctoh.legos.obs-mip.fr)) of the individual missions, using nearest-neighbour interpolation. Then, we scan the data for outliers along the tracks, to hinder spurious extreme values to propagate in time series.

185 This scheme features:

- Absolute thresholds: Any absolute SLA exceeding 2 m is excluded.
- Running median test: If the absolute difference of the data and its running median (centered, over 20 points) is greater than 12 cm, data are excluded.
- Consecutive difference test: Outliers are detected when the difference of consecutive points exceeds 8 cm. The test identifies the outliers according to the differences of the other neighbouring values

190

The absolute thresholds (12 cm, 8 cm) correspond to  $2\text{-}\sigma$  of the median running variability and  $2\text{-}\sigma$  of absolute consecutive differences based on the analysis of different tracks of Jason-2 and ERS-2.

SLAs along the same track and cycle are then averaged over predefined areas as described in sections 2.5 and 2.6. We built a time series by considering all averaged SLAs from the along-track multi-mission dataset for the study period. To check for outliers in each SLA time series, we exclude values exceeding absolute values of  $3\text{-}\sigma$  of the data. This cleaned 1 Hz coastal altimeter dataset is hereinafter called ALES and used for the combination with the TG-datasets described in section 3.1.

195

## 2.2 Gridded altimetry data - AVISO

The gridded Ssalto/Duacs altimeter product was produced and distributed by the Copernicus Marine Environment Monitoring Service (CMEMS, <http://marine.copernicus.eu>) and is hereinafter called AVISO as it was previously distributed by CNES AVISO+. We use monthly sea level anomalies, which are resolved on a  $0.25^\circ$  Cartesian grid and cover the period from 1992-2019. The product already includes the DAC (Carrère and Lyard, 2003) comprising the dynamical barotropic ocean response to atmospheric forcing (modelled with MOG2D-G), as well as the inverse barometer (IB) response. Consistent with the along-track dataset ALES, FES2014 (Carrère et al., 2015) is implemented to correct for tidal signals. Other corrections and pre-processing steps are documented by CMEMS.

200

## 205 2.3 Monthly tide gauge data - PSMSL

We use monthly mean tide gauge data from the datum controlled PSMSL (Holgate et al., 2013) database. The PSMSL constitutes the primary source of tide gauge data for most sea-level research, or for the assessment of long-term trends of VLM based on SAT and TGs. The service undertakes quality control of the data including checks for consistency of the annual cycle, outlier detection or intercomparisons with neighbouring stations, which enhances the reliability of the data. Among all available stations, we select those which contain at least 180 months (15 years) of valid measurements during the altimetric era (1993 - present), resulting in a total number of 627 stations. We apply the same monthly-averaged DAC-correction as used

210

for the AVISO data (Carrère and Lyard, 2003). To match the DAC-correction with the tide gauge records, we select among the 9-closest grid-points of the solution, the one which results in the highest variance reduction.

## 2.4 High frequency tide gauge data - GESLA

215 In addition to monthly-mean PSMSL TG-data, we exploit the GESLA dataset (Woodworth et al., 2016), which contains a large global collection of high-frequency TG records with sampling rates ranging from hours down to 6 minutes. The latest version GESLA 2 contains in total 1355 station records and was assembled from a variety of international and national databanks (e.g. UHSLC (University of Hawaii Sea Level Center) and GLOSS) or independent sources. It thus also shares many stations with the monthly PSMSL database, the preferred dataset for  $VLM_{SAT-TG}$  computation. Unfortunately, at this time, GESLA holds  
220 only data until 2015. Therefore, we also restrict the considered period for all dataset combinations (see section 3.1) to before 2015. As for the PSMSL data, we select stations with at least 180 months of valid data.

In contrast to PSMSL data used in WM16, GESLA tide gauges feature no rigorous outlier rejection by default in except that of the primary data providers (Woodworth et al., 2016). Extreme values from strong signals like tsunamis or station shifts and other irregularities are still present in the data. Some of those issues are addressed on the GESLA-webpage, however,  
225 for the sake of long-term trend evaluation, we perform a further global outlier analysis. Therefore, we check all tide gauge time series manually for irregularities: Station shifts from seasonal to interannual timescales are either handled by dismissing certain sections of the time series or completely excluding the tide gauge from the analysis. Single extreme events from hourly to monthly timescales are only excluded, when they deviate from the measurements by several meters, because we want to maintain as much data as possible. If such events are present, we flag any values beyond the upper/lower 0.999 quantiles of a  
230 fitted normal distribution of the data. Occasionally we apply this quantile-outlier exclusion recursively.

To obtain a uniform temporal resolution, we resample this outlier-free tide gauge set to hourly records by cubic interpolation. The records are then corrected for the tidal signal as well as for the ocean response to atmospheric wind and pressure forcing. The tidal variability is suppressed by using a 40-h loess (locally estimated scatterplot smoothing) filter (Cleveland and Devlin, 1988) as in Saraceno et al. (2008). This filtering approach most effectively reduces tidal variance at periods lower than 2 days  
235 (e.g. reduction by more than two orders of magnitudes at daily periods). However, tidal variability at periods larger than 2 days is not significantly attenuated by the filter. Therefore, one caveat of this approach is that there remains residual tidal variance at longer periods between TGs and altimetry, given that the latter features a model-based adjustment for longer tides. We do, however, not apply the same tidal model to the TGs, due to known issues related to decreased model performance in shallow water (Piccioni et al., 2018). In accordance with PSMSL-tide gauge data, we implement the same Dynamic Atmospheric  
240 Correction (Carrère and Lyard, 2003). This solution features a 6h sampling frequency, which is therefore down-sampled to hourly anomalies by cubic interpolation. For the global dataset, we obtain a mean variance reduction of 37.8% and a mean correlation of 0.6. As in WM16 and Ponte (2006), we find a distinct latitude dependence of correlations and variance reduction, with decreasing performance nearer to the equator. We note, that the total variance reduction, which we apply on the high-rate tide gauge data is naturally less than in WM16, who corrected monthly mean, detrended and deseasoned data.



**3.1 Dataset combinations**

To understand the sensitivity of the VLM estimations on (1) quality and resolution of the data and (2) the selection procedure, we analyse the performances of four different dataset combinations: ALES-PSMSL-250km, ALES-GESLA-250km, AVISO-PSMSL-250km and ALES-GESLA-ZOI.

250 The first three combinations are constructed to compare the performances of the along-track (ALES) against the gridded altimetry product (AVISO) combined with monthly tide gauge observations. With ALES-GESLA-250km we also investigate the possible advantage of using the GESLA high rate tide gauge product. For all these experimental sets, SLA time series are merged or averaged within a 250 km radius around the tide gauges, which is thus a selection procedure independent of the actual comparability of SLAs.

255 To produce the ALES-GESLA-250km dataset, we derive differences of the merged, non-uniformly sampled SLAs and the hourly-sampled GESLA tide gauge records, by cubic interpolation of the latter and a maximum allowed time-lag of 3 hours between the measurements. We down-sample these high-rate differenced time series to monthly means. For ALES-PSMSL-250km on the other hand, we first compute monthly-means from SLAs and subsequently subtract these monthly SLAs from the monthly-sampled relative SLAs from PSMSL. Finally, we directly compute the differenced SAT-TG time series from the  
260 averaged monthly AVISO and the PSMSL data, which yields the AVISO-PSMSL-250km dataset.

Using these combinations, we investigate the mere changes from differences formed using along-track data at high or at low frequency (ALES-GESLA-250km and ALES-PSMSL-250km), or using monthly gridded data (AVISO-PSMSL-250km). Here, 'high-frequency' refers to daily time scales of variability and 'low-frequency' to monthly time scales. The dataset ALES-GESLA-ZOI incorporates further SLA-selection-schemes, which are explained in the following section.

265 **3.2 The Zone of Influence**

We aim to develop a new SLA-selection scheme, which accounts for the observed coherency of sea level variability. However, due to the diversity of the underlying physical mechanisms and their complex interplay with the coast, the spatial coherency of sea level dynamics is highly variable in coastal regions (Woodworth et al., 2019). Coastally trapped waves, for instance, were argued to establish long-range correlations along the continental slopes (Hughes and Meredith, 2006) and to mediate  
270 the influence of the open ocean (Hughes et al., 2019) on the coast. While some signals, such as interannual modes of climate variability, generate high spatial coherence, other local features, such as the presence of a coastal current, can significantly modify the sea level variability within few kms of the coast, as shown in the case of the seasonal signal of the Norwegian Coastal Current in Passaro et al. (2015). Accordingly, the capability of compare TG-based sea level variability with altimetry utterly depends on which time and length scales are resolved by the data.

275 The key concept of our approach is to capture the extent to which coastal altimetry measurements are similar to the in situ tide gauge observations. To do so, we extend the methodology proposed by Santamaría-Gómez et al. (2014), who looked for the altimetry grid point mostly correlated with the tide gauge, and Kleinherenbrink et al. (2018), who considered a larger set

of points based on absolute thresholds of correlation. In contrast to these previous studies, we assess the influence of using relative thresholds of comparability on both the accuracy and the uncertainty of the trends.

280 We exploit combinations of along-track ALES data and high frequency GESLA records, to identify regions of sea level variability that show maximum coherency with tide gauge observations, which we hereinafter call the Zone of Influence (ZOI). With this approach, our objective is to decrease noise of the differenced, high frequency  $VLM_{SAT-TG}$  time series using the ZOI to hone trends and uncertainty estimates.

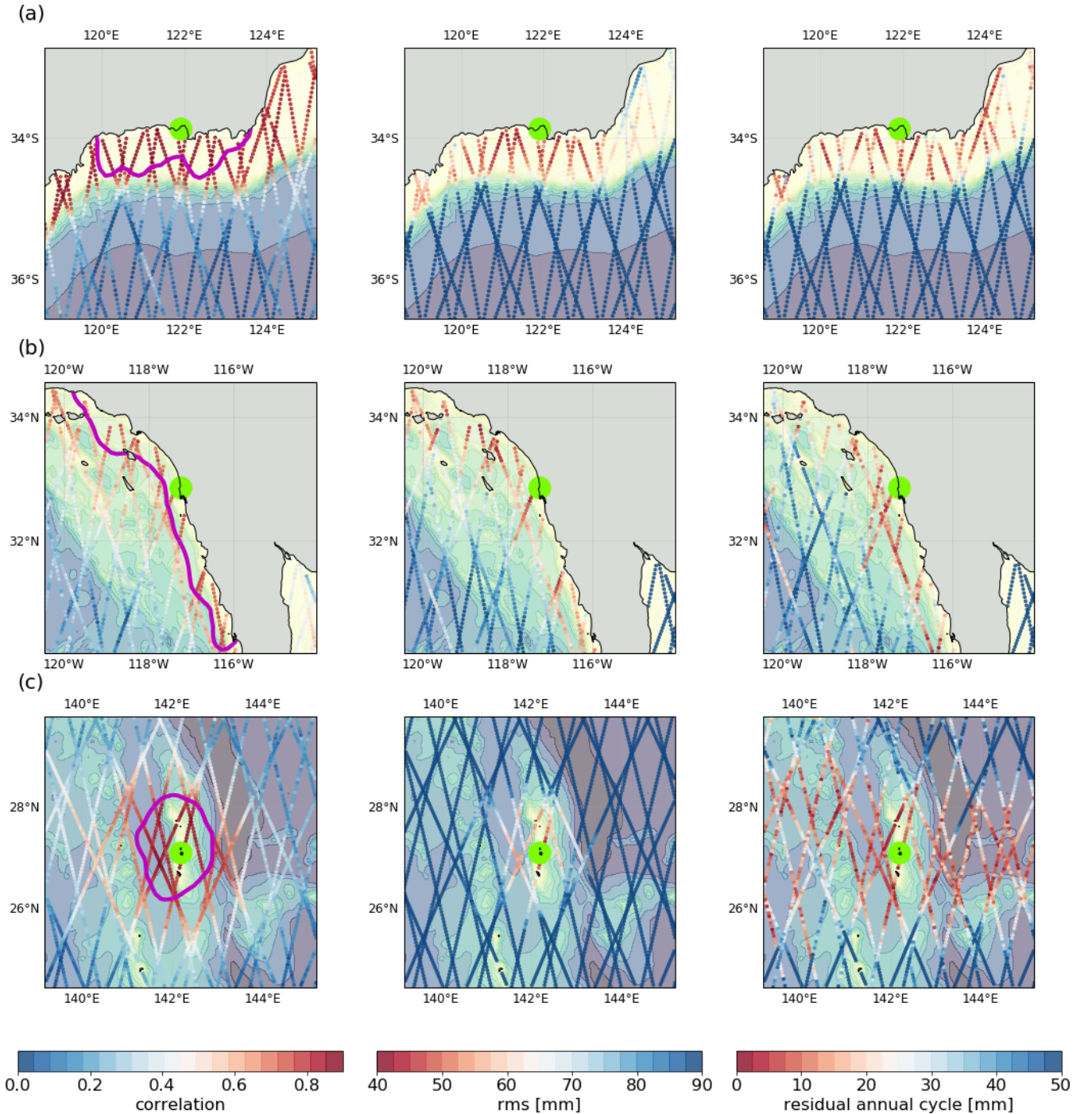
To define the ZOI, we investigate different statistical criteria  $S$ , which provide a measure of similarity of sea level variability 285 between TG and SAT observations. Here, we use the Pearson correlation coefficient, the  $RMS_{SAT-TG}$  as well as the amplitude of the residual annual cycle between both TG and SAT records. We compute each of those measures for every point of the 1 Hz along-track data (ALES) in combination with the TG records from GESLA. As for ALES-GESLA-250km, tide gauge data are interpolated onto the time step of the altimetry records. Correlations and  $RMS_{SAT-TG}$  are computed from the detrended TG and SAT time series. The amplitude of the residual annual cycle is obtained from the remaining seasonal signal of the difference 290 of the time series (SAT-TG). We acquire a dataset, holding information of the performance of multi-mission along-track data in the vicinity of every GESLA TG. The statistics are based on de-trended data. Thus, all the metrics may be influenced by the similarity of the annual cycle. However, by repeating this analysis using de-trended and de-seasoned data (not shown), no significant differences are identified.

To confine the ZOI, we select sub-sets of the data containing the best-performing statistics (i.e. highest correlation, lowest 295  $RMS_{SAT-TG}$  or residual annual cycle) above the  $Xth$ -percentile according to the distribution of the statistic  $S$  in a 300 km radius around the tide gauges. Every sub-set  $(X, S)$  represents an individual ZOI, in which we average SLAs in accordance with the steps involved in the aforementioned 250 km-radius-selection (ALES-GESLA-250km, section 3.1). The high-rate SLA time series (ALES) are then again subtracted from GESLA, providing the ALES-GESLA-ZOI dataset for VLM estimation (section 3.3).

300 Note that in contrast to the 250 km selection, we extend the range in which SLAs are taken into account to 300 km to define the ZOI. The previous 250 km selection is, as in Kleinherenbrink et al. (2018), based on the space auto-correlation scales of SLAs, which reflect characteristic eddy length scales (Stammer and Böning, 1992; Ducet et al., 2000). These scales decrease towards higher latitudes (i.e. towards the poles) with changing internal Rossby radius. However, several studies found much larger correlation length scales of SLAs, in particular along shorelines (Calafat et al., 2018; Hughes and Meredith, 2006). 305 Other mechanisms than mesoscale eddy activity were investigated to account for these coherent changes. One example is given by Calafat et al. (2018), who analysed the driving factors of sea-level variability at the south-eastern coast of the US. Using altimetry and three different ocean-models, they found coherent changes of the annual amplitude of SLAs over length scales of thousands of kilometers along the coast from the Yucatan Peninsula to Cape Hatteras. While the annual cycle signal itself was dominated by steric changes, with likewise large-scale correlations at the continental slope, changes of the annual amplitude 310 were argued to be dominated by boundary waves exerted by incident Rossby waves. Because we similarly find correlations beyond the 250 km length-scale, in particular along elongated coastal regions (Figure 1 a and b), we justify the larger 300 km radius.

We identify coherent zones of sea-level variability represented by different selection-criteria in Figure 1. The statistics  $S$  are computed based on individual along-track SLA time series (ALES) and GESLA tide gauges. We show different maps of these  
315 along-track statistics for (a) the Australian Coast, (b) Californian Coast and (c) Chichijima island (Japan). The contour in the first column exemplifies the extend of a ZOIs, which represents a sub-set of 20% of the best correlated data.

The obtained coherent structures reveal notable dependencies on the local bathymetric and coastal properties. Figure 1 (a), for instance, shows far-reaching alongshore correlations, which is supported by all of the analysed selection criteria. In this example, the separation of the region of the coastal shelf-sea dynamics from region of offshore variability is in good  
320 agreement with the underlying bathymetric gradients. Kurapov et al. (2016) found similarly pronounced SLA coherency along for the Californian coast, as shown in Figure 1b). Based on model data and tide gauge observations, they explained the large-scale along-shore correlation pattern in part with the propagation of coastal trapped waves. In other locations such as in Chichijima island (see Figure 1c), coastal and bathymetric control of SL is reduced and different structures of coherency evolve. Consequently, the ZOI can strongly vary in shape depending on the local coastal features and drivers of coastal variability.

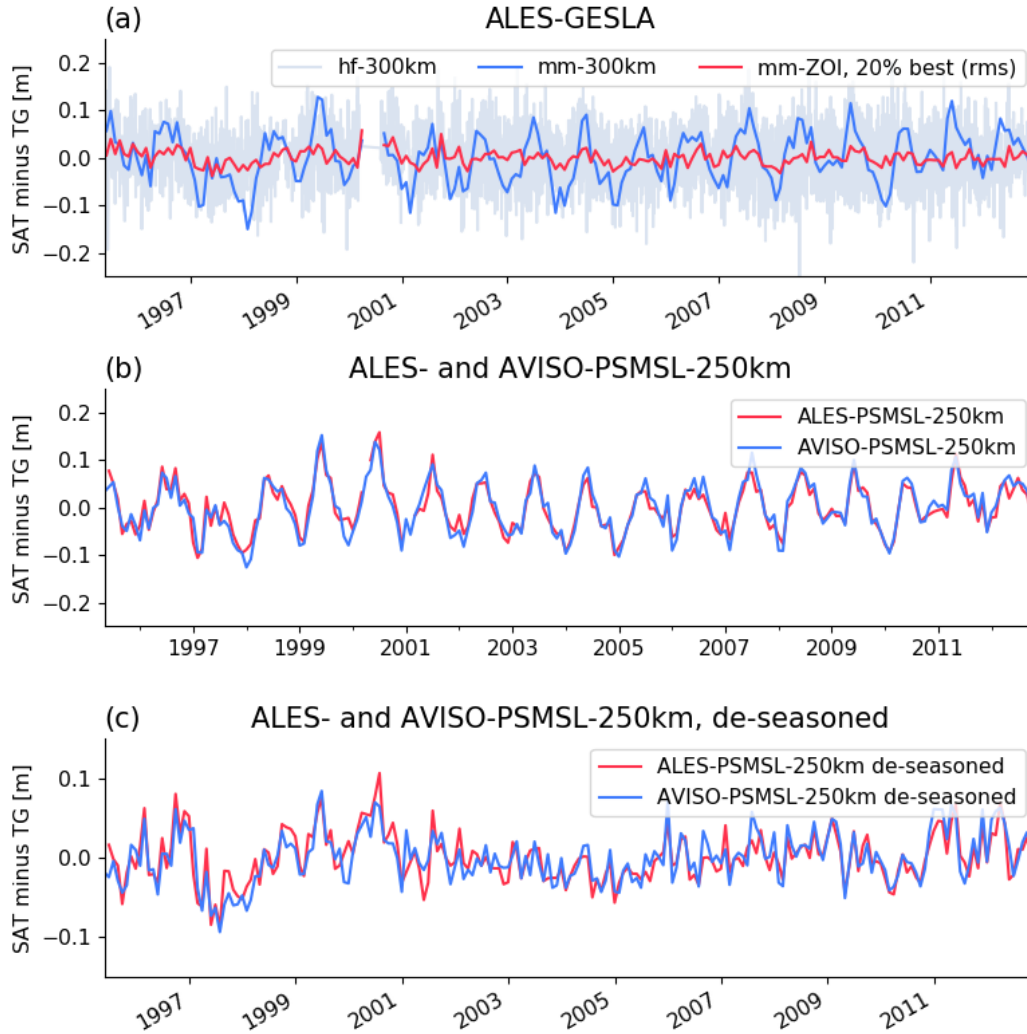


**Figure 1.** Zone of Influence: Different coherent zones of sea level variability are identified by different statistical criteria  $S$ . The columns show correlations,  $RMS_{SAT-TG}$  and the residual annual cycle from left to right. The metrics are computed on every point of the 1 Hz along-track product, comparing the performance of altimetry measurements with the tide gauges, highlighted in green (center). (a) shows the South-Coast of Western Australia, (b) the western coast of North America (tide gauge in San Diego) and (c) Chichijima island (Japan). The 'color' contour in the first column indicates a Zone of Influence built from 20% of the best-correlated SLAs within a 300 km radius. The underlying contours denote the underlying bathymetry.

325 Comparing these three examples, we also observe that absolute values of the statistics differ from site to site. Correlations of along-track data near the Australian coastline, for instance, outperform the ones in example Figure 1b. The same holds for  $\text{RMS}_{\text{SAT-TG}}$  values. These differences not only indicate different degrees of coherency, but can also stem from regional deviations in the quality of data, i.e. quality of tide gauge records or error sources in the altimetric product, such as tidal adjustments or coastal corrections. Differences can also be caused by coastal properties, e.g. when the tide gauges are located  
330 in sheltered areas, which separates the in situ variability from the one measured at distant altimeter tracks. We analyse therefore the use of relative thresholds, to select the SLAs, since setting absolute thresholds as in Kleinherenbrink et al. (2018) might not be applicable in all cases. Figure 1c) also shows that different statistics can determine different extents of the ZOI, considering that rather poorly correlated areas are partially characterised by low residual annual cycle amplitudes.

A correct choice of the ZOI based on a sub-set of high performance SLAs can significantly reduce the SAT-TG residuals  
335 as are exemplified in Figure 2. Here, we show three time series of SAT-TG differences for the Australian site (see Figure 1a). The first series (Figure 2a) indicates much lower residual noise, when the time series is constructed from the 20% best SLAs (according to the  $\text{RMS}_{\text{SAT-TG}}$ ). Here, the ALES-GESLA-ZOI residuals outperform those of the other combinations ALES-PSMSL-250km and AVISO-PSMSL-250km, which are still affected by a pronounced annual cycle not related to VLM.

While using relative thresholds can reduce the noise of  $\text{VLM}_{\text{SAT-TG}}$  time series for individual stations, we seek to identify a  
340 globally optimal ZOI definition and associated criteria and thresholds, which lead to largest improvements of uncertainty and accuracy of  $\text{VLM}_{\text{SAT-TG}}$ . Therefore, we vary the relative thresholds  $X$  between 0.0 and 0.975 (with a stepsize of 0.025), which refers to using 100% and 2.5% of the best performing SLAs according to each criteria. For each threshold and criterion we derive an individual global  $\text{VLM}_{\text{SAT-TG}}$  trend and uncertainty dataset. We validate the performance of the trend estimates for a specific ZOI definition in accordance with section 3.4. Optimal parameter  $X, S$  are then suggested for the global application  
345 (section 4.2).



**Figure 2.** Shown are 'SAT minus TG' time series for different datasets and configurations for the TG in Figure 1a). (a) Monthly mean (mm) time series for ALES-GESLA, when all SLAs are averaged in a 300 km radius (blue) and when SLAs are comprised of the 20% most representative anomalies based on the  $RMS_{SAT-TG}$  between altimetry and TG (red). The grey line denotes the underlying high-frequency time series. (b) Monthly mean differenced time series for ALES-PSMSL and AVISO-PSMSL, which are based on a 250km-radius selection of SLAs. (c) Same as (b) but with the annual and semi-annual signals removed.

### 3.3 Statistical analysis: Trend and uncertainty estimation

We fit the differenced time series to a combination of a deterministic model and stochastic noise models with the Maximum Likelihood Estimation (MLE) method. Parameters of the deterministic model are comprised of a constant offset  $A$  and a linear trend  $B$ . The annual and semi-annual signals are expressed by harmonic functions with the annual and semi-annual frequencies

350  $\omega_{1,2}$  and amplitudes  $C_{1,2}$  and  $D_{1,2}$ .

$$y(t) = A + Bt + \sum_{i=1}^2 C_i \cos 2\pi t \omega_i + D_i \sin 2\pi t \omega_i \quad (1)$$

When combining altimetry and tide gauges for VLM estimation, several sources can contaminate the differenced time series and inflate the actual 'red'-noise (low-frequency) content in the residuals, which generates auto-correlated signals in the data. The SLA computation is affected by the instrumental errors of the range estimation and of each of the geophysical corrections

355 (Ablain et al., 2009). Such errors, as well as the measurement error of the TG itself, show up as residuals in the differenced time series. Moreover, sea level dynamics that do not reflect the variability observed at the tide gauge locations also contribute to the SAT-TG differences. Therefore, to avoid underestimation of the uncertainty of the parameters, we take into account auto-correlation in the residuals of the detrended and deseasoned time series. We describe the power spectral density of the noise with a combination of a power-law and a white noise model (using the Hector software (Bos and Fernandes, 2019)).

360 The power-law process assumes that time-correlated noise power is proportional to  $f^\kappa$ , which for negative spectral indices  $\kappa$  describes increasing power at lower frequencies  $f$  and a white-noise process when  $\kappa = 0$  (Agnew, 1992). Santamaría-Gómez et al. (2011) showed that this combination (of power-law and white noise model) represents the best approximation of the noise content for 275 GNSS station position time series. This combination was also implemented in studies concerned with VLM<sub>SAT-TG</sub> estimation (WM16, Kleinherenbrink et al. (2018); Ballu et al. (2019)). In particular, the spectral index  $\kappa$  can

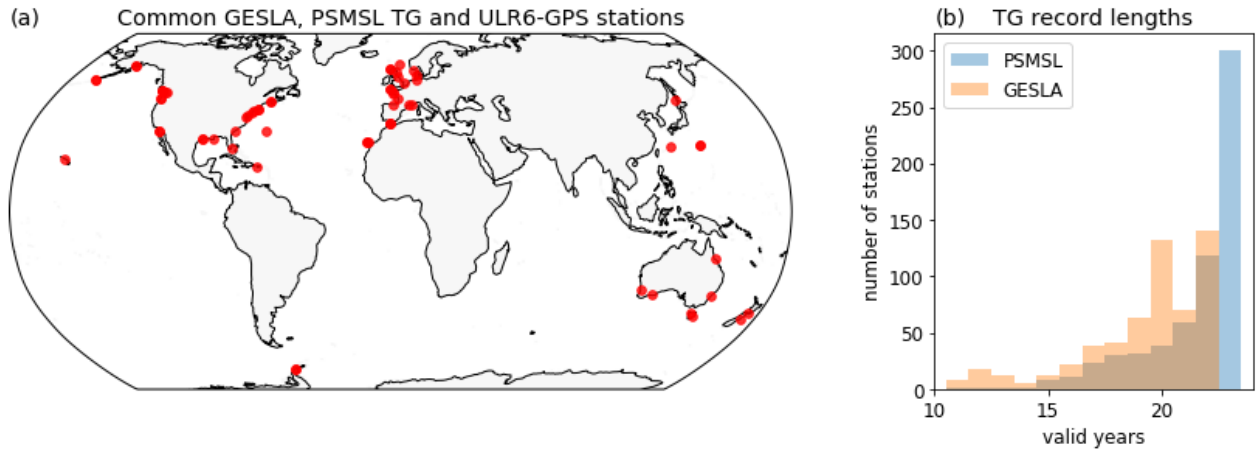
365 contribute to detect the intrusion of low-frequency signals in the differenced time series. Next to the spectral index  $\kappa$  we estimate the individual fractions of the power-law and white noise models, as well as the total variance  $\sigma^2$  which scales the amplitude of the noise. We emphasize that for individual regions other noise models could be more appropriate than the implemented PL+WN model and would thus yield more realistic uncertainty estimates. An advanced regional spectral analysis to identify the most suitable models is however beyond the scope of this study.

### 370 3.4 Validation of VLM<sub>SAT-TG</sub> with VLM<sub>GNSS</sub> trends

To validate SAT-TG-based trend estimates, we use the ULR6a GPS solution provided by the GNSS data assembly centre SONEL (Système d'Observation du Niveau des Eaux Littorales, <http://www.sonel.org>). The reanalysis covers 19 years of GNSS data from 1995 to 2014, which are processed within the ITRF2008, consistent with the reference frame of altimetry orbits. The primary coordinates provided by GNSS are geocentric Cartesian coordinates ( $X, Y, Z, V_x, V_y, V_z$ ). For the com-

375 parison with vertical trends inferred from other techniques, they are converted to ellipsoidal coordinates (latitude  $\phi$ , longitude  $\lambda$  and ellipsoidal height  $h$ , and  $V_\phi, V_\lambda, V_h$ ). Thus, we compare GNSS ellipsoidal height trends ( $V_h$ ) with SAT-TG trends.

It should be mentioned that, while the altimetry trends refer to the so-called TOPEX/Poseidon ellipsoid, the GNSS vertical trends refer to the GRS80 (Geodetic Reference System, 1980; Moritz (2000)) ellipsoid. Although there is difference of 70 cm between the semi-major axes of both ellipsoids, the GNSS and SAT vertical trends can be compared without degradation of precision, as both ellipsoids are geocentric and have the same orientation with respect to the Earth's body (e.g., the ellipsoid minor axes coincide with the mean Earth's rotation axis, and the major axes are on the Earth's equatorial plane). We take into account GNSS stations which are closer than 1 km to a tide gauge. With this constraint we aim to avoid potential differential vertical motions between the tide gauge and the GNSS-antenna (WM16).



**Figure 3.** a) Global Distribution of 52 common GESLA, PSMSL and ULR6-GNSS stations, which meet the described requirements. b) Number of all TG stations sorted by the amount of months which contain valid data (here shown in valid years) in the period 1993-2015.

The tide gauge locations and record lengths differ among the presented experimental datasets (section 3.1). Therefore, we define several requirements for the validation of those experimental-datasets, to obtain a consistent set of TG and GNSS validation pairs. In contrast to PSMSL records GESLA-TG observations only last until 2015. Even when PSMSL TG records are limited to before 2015, they still contain more months of valid data than GESLA (see Figure 3b). Hence, we align the time period covered by the PSMSL-TGs to the corresponding GESLA-TGs for all following experimental datasets. Generally, we only take into account SAT-TG time series, when they cover at least 120 months of valid data. Note, that the outlier analysis (section 2.4) or coupling of high frequency TG data in the ZOI can reduce the length of the SAT-TG time series for GESLA TGs. Taking into account all these requirements, we obtain 52 common GESLA and PSMSL TGs, which provide a neighbouring GNSS station within 1 km distance. These pairs are validated for ALES-PSMSL-250km, ALES-GESLA-250km and AVISO-PSMSL-250km. The ALES-GESLA-ZOI combination includes six more stations. The resulting validation pairs are shown in Figure 3a), where a higher coverage in northerly and midlatitude regions is evident.



395 We compute the  $RMS_{\Delta VLM}$  and the median of the differences ( $\Delta VLM$ ) of  $VLM_{SAT-TG}$  and  $VLM_{GNSS}$  for a given dataset combination. To take into account the derived formal errors ( $U$ ) of the estimate we compute the weighted  $RMS_w$  as follows:

$$RMS_w = \sqrt{\sum_{i=1}^n (w_i (VLM_{GNSS_i} - VLM_{SAT-TG_i})^2)} \quad (2)$$

with weights

$$w_i = \frac{\sqrt{(U_{GNSS_i}^2 + U_{SAT-TG_i}^2)^{-1}}}{\sum_{i=1}^n (\sqrt{(U_{GNSS_i}^2 + U_{SAT-TG_i}^2)^{-1}})} \quad (3)$$

400 We analyse also the median of the absolute value of differences ( $|\Delta VLM|$ ). This metric is less prone to extreme deviations and can thus consolidate the evaluation of the dataset performances. We generally assume that GNSS provides a more accurate estimation of the linear component of the VLM with a smaller error than  $VLM_{SAT-TG}$ , despite shorter time span of measurements. Hence, for the purposes of this paper and as done in all studies concerning  $VLM_{SAT-TG}$  estimation, we define as measures of accuracy the  $RMS_{\Delta VLM}$  and additionally the median of  $|\Delta VLM|$ . We include the spectral index  $\kappa$  (see section 3.3)

405 as it helps to understand the level of auto-correlation of the time series. All statistics other than the  $RMS_{\Delta VLM}$  denote median values (of all  $VLM_{SAT-TG}$  estimates) for a specific dataset configuration.

## 4 Results

### 4.1 Comparison of different datasets configurations based on a 250 km average selection

We compare performances of the three datasets which are constructed from 250 km radius SLA averages in Table 2. Validation

410 against GNSS vertical velocities reveals that the gridded combination AVISO-PSMSL-250km slightly outperforms ALES-PSMSL-250km in terms of accuracy. Both the  $RMS_{\Delta VLM}$  and the median of absolute trend differences are 9% lower for AVISO-PSMSL-250km. This confirms that, if all the available altimetry data within a wide region are compared against monthly values of TGs, the use of a gridded product outperforms the along-track performances (WM16). Kleinherenbrink et al. (2018) similarly compared an along-track combination of 250 km-SLA averages (from RADS) and PSMSL tide gauge

415 data with the AVISO-PSMSL combination from WM16. They found a small  $RMS_{\Delta VLM}$  reduction of 0.1 mm/year when using the along-track product without any correlation thresholds applied. WM16's trends were however based on  $1^\circ$  radius-averages of SLAs (in contrast to the 250 km selection), and record lengths were not equalized as in this study.

For both combinations the median of the VLM differences (ALES-PSMSL-250km: -0.87 mm/year; AVISO-PSMSL-250km: 0.56 mm/year) deviates from values shown in previous studies [WM16: -0.25 mm/year and, Kleinherenbrink et al. (2018): -

420 0.06 mm/year]. In contrast to these previous estimates, we use different spatial selection scales of SLAs, smaller numbers of TG-GNSS pairs and deviating record lengths, which impedes a direct comparison. Moreover, the altimetry datasets might be

affected by instrumental drifts. In this respect, differences among the datasets may be caused not only by different techniques applied to reduce intermission biases (e.g., the MMXO approach for ALES), but also by different missions incorporated in the records. Note that in contrast to ALES, AVISO contains TOPEX, which has also been shown to be affected by a strong drift (Watson et al., 2015). Still, the observed  $\text{RMS}_{\Delta\text{VLM}}$  of AVISO-PSMSL-250km (1.50 mm/year) is comparable to WM16 result (1.47 mm/year). In contrast to trend accuracies, the uncertainties are 5% lower for ALES-PSMSL-250km than for AVISO-PSMSL-250km. As in WM16, the spectral index  $\kappa$  of the interpolated gridded product is lower than for the along-track data. Both  $\kappa$  indices (-0.56 and -0.39) also match well those found by WM16 for AVISO (-0.5) and the along-track product (-0.4, GSFC). The larger spectral index (-0.39) is associated with reduced power of the noise at low frequencies and thus indicates reduced contamination of the SLA signal by sea-level variations that do not represent those measured at the tide gauge. This enhanced comparability is also reflected in the lower trend uncertainties of ALES-PSMSL-250km (0.69 mm/year) compared to AVISO-PSMSL-250km (0.73 mm/year). The differences between the characteristics of the residuals of the datasets can partially be explained by the resolution of the data: Due to the spatial filtering of the data, the gridded solution AVISO incorporates information of SLAs beyond the 250 km radius and thus contains time-correlated SL-signals with stronger deviations from the TG records.

**Table 2.** Statistics of different SAT-TG combinations.  $\Delta\text{VLM}$  refers to the differences of  $\text{VLM}_{\text{SAT-TG}}$  and  $\text{VLM}_{\text{GNSS}}$  trends.  $X$  denotes the relative level of comparability above which data is included.

X	$\text{RMS}_{\Delta\text{VLM}}$ mm/year	weighted $\text{RMS}_{\Delta\text{VLM}}$ mm/year	med. $ \Delta\text{VLM} $ mm/year	med. $\Delta\text{VLM}$ mm/year	med. uncertainty	spectral index $\kappa$
<b>ALES-PSMSL-250km (52 stations)</b>						
	1.68	1.57	1.28	-0.87	0.69	-0.39
<b>AVISO-PSMSL-250km (52 stations)</b>						
	1.50	1.48	1.12	0.56	0.73	-0.56
<b>ALES-GESLA-250km (52 stations)</b>						
	1.51	1.47	1.14	-0.39	0.79	-0.39
<b>ALES-GESLA-ZOI (best <math>\text{RMS}_{\text{SAT-TG}}</math>, 58 stations)</b>						
0	1.54	1.45	0.98	-0.46	0.86	-0.45
0.1	1.39	1.36	0.9	-0.27	0.86	-0.44
0.2	1.34	1.33	0.88	-0.36	0.83	-0.47
0.3	1.32	1.36	0.83	-0.44	0.78	-0.46
0.4	1.3	1.38	0.87	-0.37	0.76	-0.45
0.5	1.29	1.4	0.86	-0.26	0.73	-0.47
0.6	1.3	1.43	0.87	-0.31	0.71	-0.47
0.7	1.28	1.39	0.82	-0.41	0.66	-0.48
0.8	1.28	1.37	0.86	-0.41	0.58	-0.43
0.9	1.53	1.58	0.97	-0.43	0.61	-0.46

In comparison with the low-frequency datasets (ALES-PSMSL-250km and AVISO-PSMSL-250km), the high-rate set-up ALES-GESLA-250km improves the  $\text{RMS}_{\Delta\text{VLM}}$ . The absolute bias of trend differences decreases more substantially to 0.39 mm/year (compared to -0.87 mm/year). Compared to ALES-PSMSL-250km, we find increased trend uncertainties for ALES-GESLA-250km, which can be partially explained by higher power-law variance of this GESLA-based configuration. Although trend uncertainties are higher for the ALES-GESLA-250km configuration, we choose this set-up to investigate the impact of the ZOI. This dataset provides better results concerning trend accuracy (weighted or unweighted RMS) and has a lower median bias. Moreover, using the high-frequency data, we are able to couple SAT and TG observations at much higher temporal resolution than it would be the case when using monthly PSMSL data. Therefore the ALES-GESLA coupling is further developed based on a better definition of the ZOI in the next section.

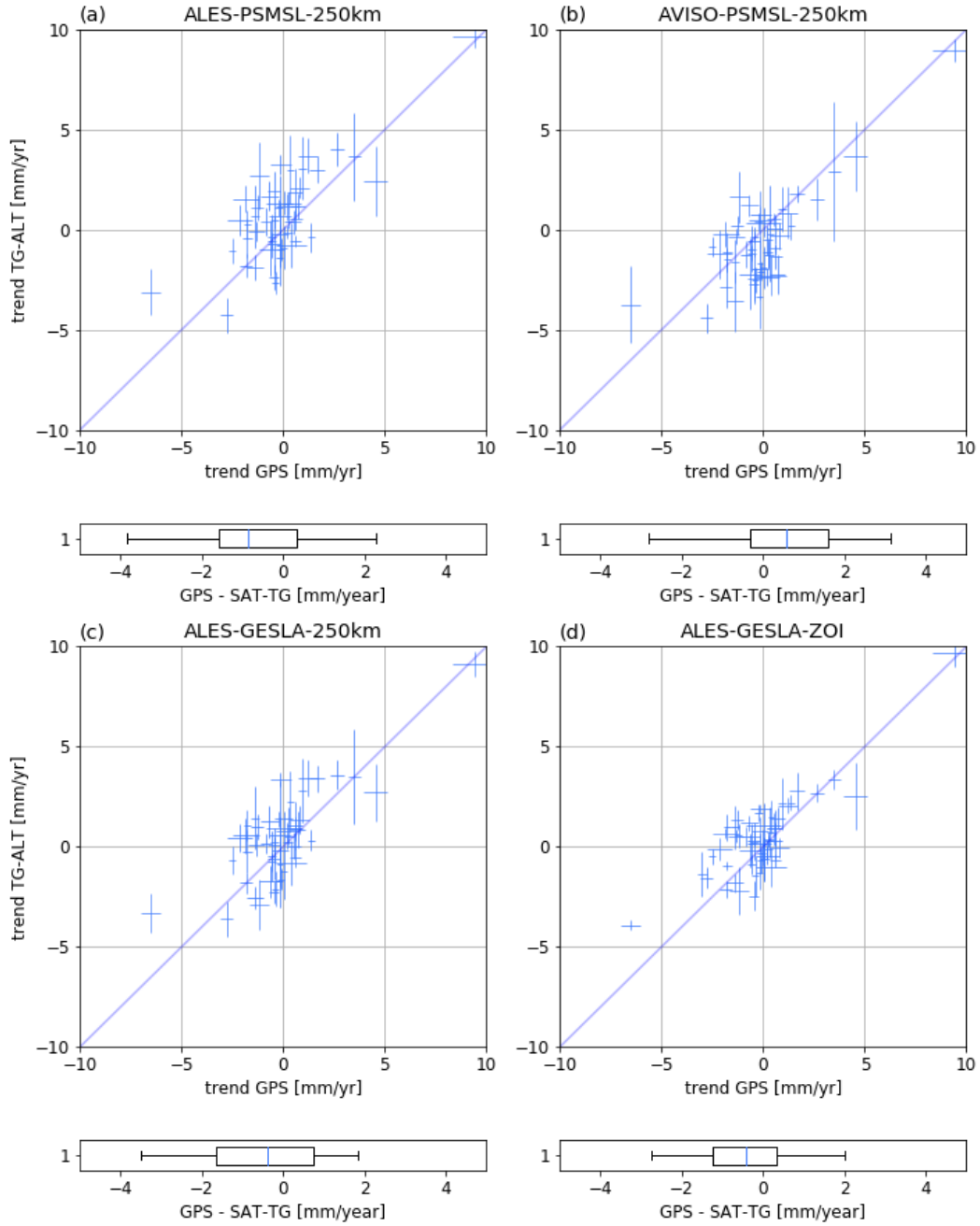
## 4.2 The Zone of influence improves VLM estimates

We investigate how the ZOI selection of SLAs fosters quality of SAT-TG VLM estimates. As addressed in section 3.2, we build the ZOI upon different criteria of comparability:  $\text{RMS}_{\text{SAT-TG}}$ , correlation and the residual annual cycle. First, we focus on the results of using the  $\text{RMS}_{\text{SAT-TG}}$  of the detrended differenced time series (Table 2 and Figure 4, ALES-GESLA-ZOI). We observe that the  $\text{RMS}_{\Delta\text{VLM}}$ , the median of absolute and total differences, as well as trend uncertainties decrease towards higher relative thresholds. The statistics converge to a minimum when the ZOI is restricted to the 30-20% best data. To compare ALES-GESLA-ZOI with the other dataset combinations, we compute the statistics for the same 52 tide gauges used in these configurations (because the shown statistic in Table 2 refer to a larger set of 58 stations). At the 20% thresholds, we obtain similar performances with a  $\text{RMS}_{\Delta\text{VLM}}$  of 1.29 mm/year, median uncertainty of 0.51 mm/year and a median of absolute differences ( $|\Delta\text{VLM}|$ ) of 0.86 mm/year. Thus, the improvements of  $\text{RMS}_{\Delta\text{VLM}}$  compared to the plain 250 km-radius selection (ALES-GESLA-250km) is 15% and 35% for uncertainties. Hence, we find more substantial, nearly linear reductions of trend uncertainty with increasing relative thresholds compared to trend accuracy ( $\text{RMS}_{\Delta\text{VLM}}$ , Table 2, ALES-GESLA-ZOI). As demonstrated for different time series in Figure 2, selecting e.g. highly correlated SLAs efficiently reduces the noise of the residuals. Correspondingly, at higher levels of comparability, the variance, which scales the amplitudes of the considered noise models, decreases (not shown).

Because the spectral index (for ALES-GESLA-ZOI) is slightly lower (-0.43 at 20% level) than for ALES-GESLA-250km (-0.39) it cannot account for the uncertainty improvements. Here, the lower  $\kappa$  index reveals an relative increase of power at low frequency (i.e. time scales longer than months). Thus the bulk of improvements we see in uncertainty (comparing ALES-GESLA-ZOI and ALES-GESLA-250km) stems from the reduction of the power law and white noise amplitudes in the residuals. This is in turn caused by improvements of the comparability of tide gauge and altimetry measurements at high-frequency (i.e. days). We argue that extending the maximal radius selection from 250 km to 300 km to construct the ZOI (as done for ALES-GESLA-ZOI) increases the low-frequency noise (indicated by  $\kappa$ ). However, with this selection we capture more altimetry tracks with similar highly correlated high-frequency signals (see Figure 1), which again contribute to sampling density and reduced white noise. This further substantiates our choice to select SLA within a larger 300 km radius, which is also supported by observed larger-scale coherency of coastal sea level trends (see section 3.2).

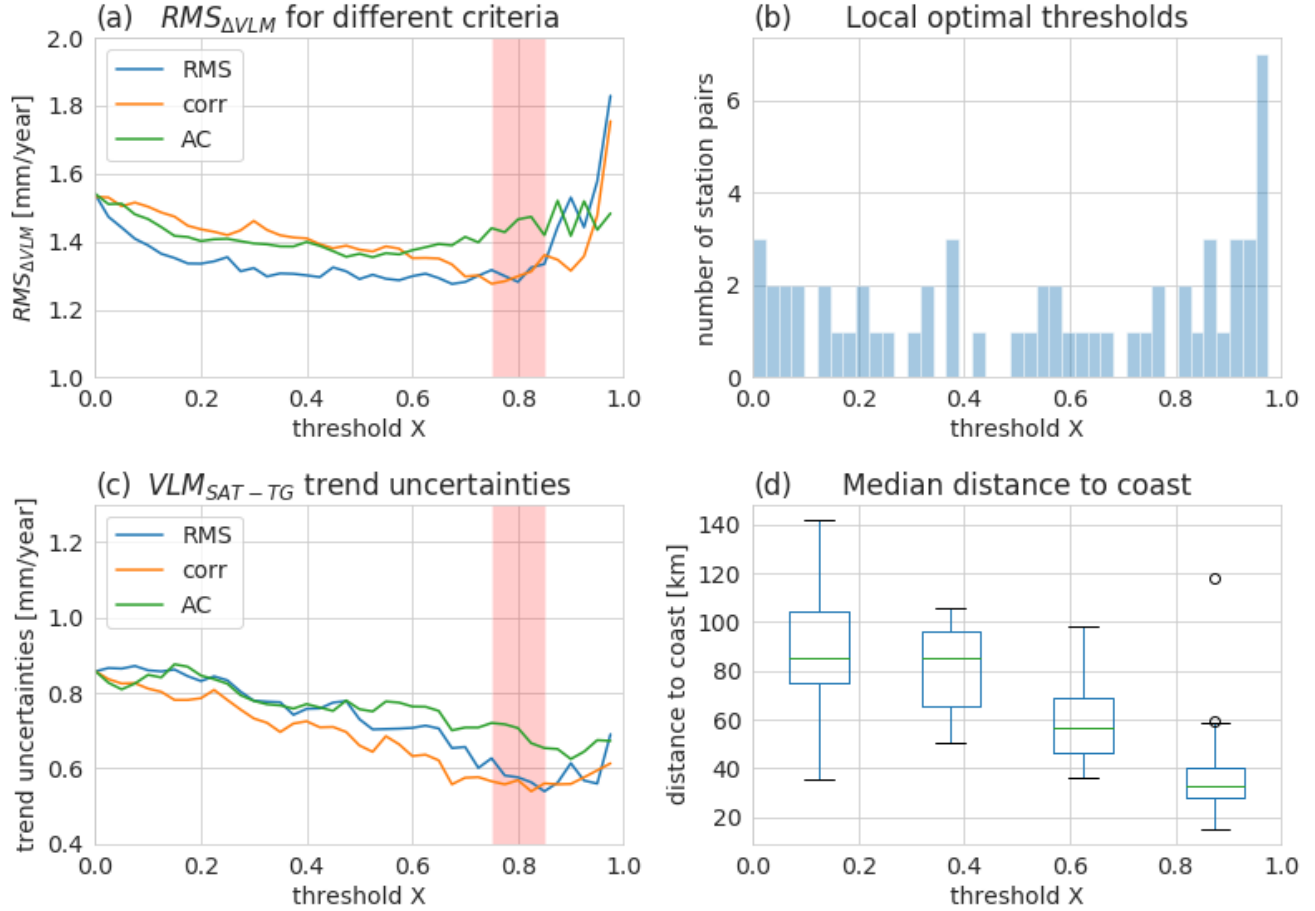
470  $\text{RMS}_{\Delta\text{VLM}}$  and trend uncertainty level off at very high thresholds and ultimately increase when only 5% of the data is used (Figure 5a and 5c). We argue that this is mainly related to a decrease in sampling-density of the time series included in the selection: At the 95th percentile, the median sample size (i.e. number of monthly averages in a time series) is 20% smaller than the sample size at the 80th percentile. Robust trend estimates require a minimum of samples, hence, using a reduced number of along-track data time series, even when they show a maximum degree of comparability, yields on a global average decreased trend accuracy ( $\text{RMS}_{\Delta\text{VLM}}$ ). We thus argue that the optimum threshold identified at about the 80th percentile (of the data sorted by RMS) represents a compromise between data-comparability, as well as sampling-density of altimetry data. We emphasize that there are numerous factors, other than the time period covered, which may contribute to a lack of comparability of SAT-TG and GNSS trends. We further elaborate those in the subsequent discussion section 5.

480 When setting this optimal threshold to 20%, the ALES-GESLA-ZOI set-up outperforms the other investigated configurations. Figure 4 compares the scatter of estimated  $\text{VLM}_{\text{SAT-TG}}$  against GNSS trends of all datasets. For ALES-GESLA-ZOI, we find lower  $\text{VLM}_{\text{SAT-TG}}$  trend uncertainties and reduced spread of the estimates with respect to the 1:1 line (Figure 4). These results underpin that a refined selection procedure (ZOI) represents the dominant advancement, as this approach outstrips the improvements (in terms of trend accuracy and uncertainty) which are obtained from using different altimeter or tide gauge data combinations.



**Figure 4.** Scatter and boxplots compare estimated SAT-TG trends and GNSS trends, as in WM16 Figure 14. a) ALES-PSMSL-250km b) AVISO-PSMSL-250km c) ALES-GESLA-250km d) ALES-GESLA-ZOI (at 20% threshold based on RMS-criterion). Error bars denote the 1 sigma trend uncertainties of the individual estimates.

485     Figures 5a and 5c illustrate the influence of applying different criteria on the performance of estimated trends. Generally, in-  
 creasing relative  $\text{RMS}_{\text{SAT-TG}}$  or correlation thresholds yields similar optimal ranges ( $\sim 20\%$ ) for both  $\text{RMS}_{\Delta\text{VLM}}$  or uncertainty  
 of  $\text{VLM}_{\text{SAT-TG}}$  trends and can thus be interchangeably used. At lower relative threshold levels (20-60%), however, application  
 of the RMS-criterion yields slightly reduced  $\text{RMS}_{\Delta\text{VLM}}$  values compared to correlations. Hence, for this set of tide gauges a  
 SLA-selection based on the minimum  $\text{RMS}_{\text{SAT-TG}}$  generally provides more accurate trend estimates (in terms of  $\text{RMS}_{\Delta\text{VLM}}$ ).  
 490     The residual annual cycle criterion only weakly reproduces the improvements provided by the other criteria and is less suited  
 to confine the ZOI. This observation emphasizes the need of matching the data according to the high-frequency comparability  
 (RMS, correlation), because selecting the data based on the residual annual cycle (i.e. low frequency comparability), limits the  
 performance of the estimates (Figure 5c). Considering improvements in the bias of trend differences, we find no significant dif-  
 ferences in using different thresholds. In contrast to the improvements in accuracy (as shown in Figure 5), the median  $\Delta\text{VLM}$   
 495     does not converge to a global optimum. Therefore, we discuss the contribution of other factors affecting the comparability of  
 SAT and GNSS in section 5.2.



**Figure 5.** Performance of  $VLM_{SAT-TG}$  trend estimates for ALES-GESLA-ZOI. a)  $RMS_{\Delta VLM}$  for different relative thresholds (step size 2.5%) and different selection criteria:  $RMS_{SAT-TG}$  (blue), correlation (red) and residual annual cycle (AC, green); c) same as (a) but for median uncertainty. b) Distribution of best performing relative thresholds for individual stations. The local optimal threshold is defined at the minimum of the absolute difference of  $VLM_{SAT-TG}$  and GNSS trends. d) Boxplot shows the distribution of the mean distances to coast for the individual optimum ZOI's as denoted in b). The distances refer to the distributions within the 0-25%, 25-50%, etc. levels, respectively.

## 5 Discussion

The integration of the ZOI primarily reduces the uncertainty of  $VLM_{SAT-TG}$  trend estimates. Over a considerable range of thresholds (80 - 20% of best performing data) trend accuracies do not improve as strongly as the uncertainties decrease. This is in line with Kleinherenbrink et al. (2018), who showed that for a highly correlated sub-set of TGs, increasing absolute correlation thresholds would not significantly reduce the  $RMS_{\Delta VLM}$ . We thus strive to understand better why trend estimates do not always improve when selecting highly comparable (w.r.t. tide gauge) or closely located absolute SLA measurements. This question ultimately leads to the discussion of the importance of identifying the small-scale dynamical components of local sea-level variability, given that long-term absolute sea level trends are large-scale signals.

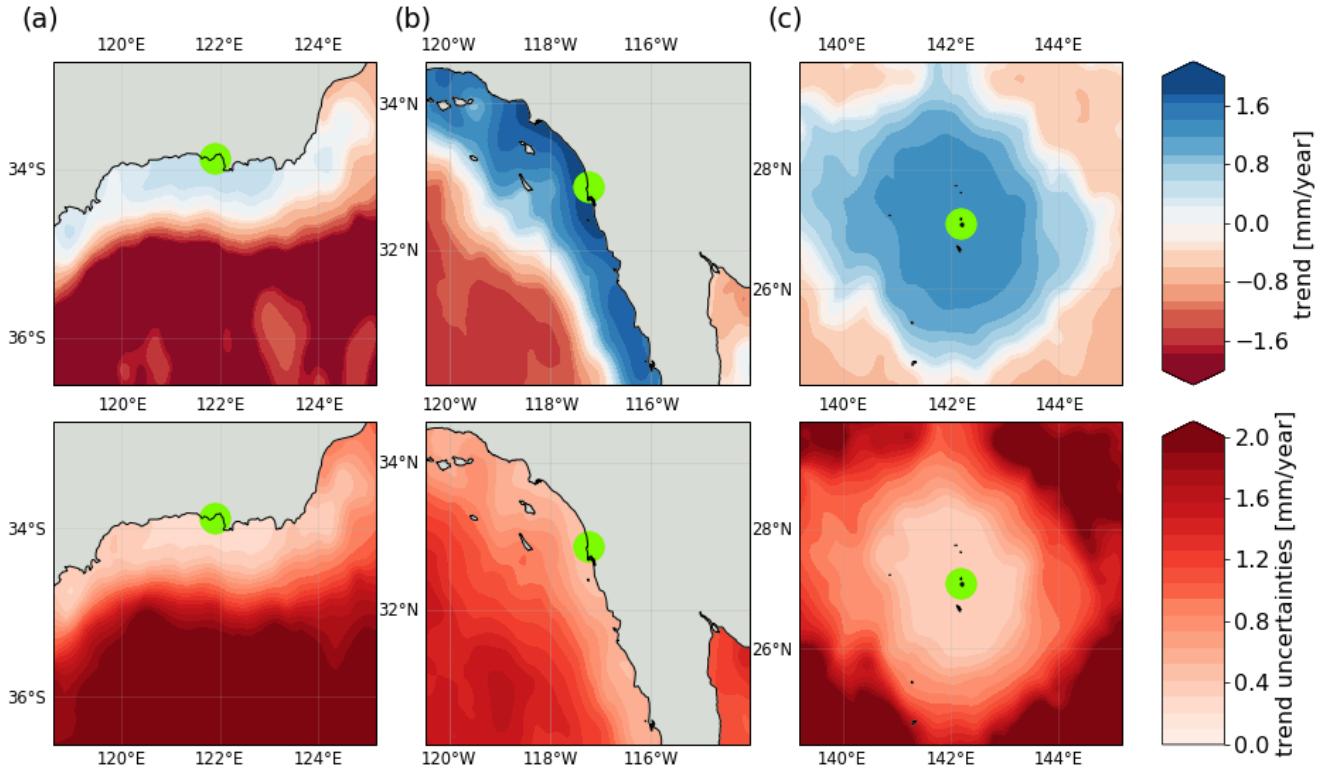
### 5.1 Space and time dependencies of coastal sea level trends

The results presented in Figure 5 and Table 2 denote metrics and performances derived from the global TG-GNSS dataset for ALES-GESLA-ZOI and support an optimal threshold at 20%. It remains to be investigated, whether the described optimum global threshold also reflects the best choice at every coastal site considered. Therefore, we investigate at which relative levels individual  $VLM_{SAT-TG}$  and  $VLM_{GNSS}$  trends estimates yield the smallest absolute deviations. Postulating that the actual VLM at the TG location is linear and perfectly detected by the GNSS station, these thresholds denote the 'local' optimal levels. With this analysis, we aim to better understand the spread of individual optimal ZOIs and what would be the best theoretically achievable  $RMS_{\Delta VLM}$ . This analysis also provides a basis to motivate future investigations, in particular to identify systematic factors, which may lead to local different extents of the ZOI and to improve the accuracy of trend estimates.

Figure 5b displays the distribution of local optimal thresholds for TG-GNSS stations for the ALES-GESLA-ZOI dataset. Note that these estimates are not independent as they are based on prior knowledge of the ground truth VLM from GNSS. Overall, the optimal levels  $X$  are broadly distributed from 0 to 0.975. We find highest concentrations between 0.8-0.975, which slightly exceeds the range of the global optimum. At the global optimum itself (0.8, based on correlations), the median distance to coast (of all SLA measurements in a ZOI) is 39.4 km. 25 % of the altimeter observations are within a range of 20 km to the coast, i.e. the region with the most pronounced coastal advancements of the along-track dataset (Passaro et al., 2015).

In contrast to these examples, we find very low local optima for some stations (Figure 5b). Here, local  $VLM_{SAT-TG}$  and GNSS trend differences do not converge to a minimum when increasing the comparability of SAT and TG observations. Accordingly, in these cases, vertical land motion estimates do not necessarily benefit from high coastal resolution of the data, because a low relative threshold is simultaneously linked to a larger-scale selection of SLAs (Figure 5d). At the lower level ranges, for instance at 0-0.2, SLAs have an average distance of 95 km to the coast. Supposing that the sources of these larger scales of coherency of coastal SL trends would be known, a more advanced adaption to these additional factors would further increase accuracy of VLM estimates. An associated ideal selection of trends, based on optimal individual levels shown in Figure 5d would largely reduce to  $RMS_{\Delta VLM}$  to 0.89 mm/year. We emphasize that this constitutes the best RMS, which could theoretically be achieved with our dataset combination, if all of the local optimal levels could be systematically explained. This demonstrates that, albeit there might be room for minor improvements, there is still a strong limitation remaining in bringing the RMS below 1 mm/year.





**Figure 6.**  $VLM_{SAT-TG}$  trends (first row) and uncertainties (second row) mapped onto relative correlation levels. The mapping and interpolation method is further elucidated in the Appendix A. We show the same stations (a,b,c) as in Figure 1.

530 To further shed light on the relationships between dynamical-sea-level-based SLA selection and spacial coherence of trends and uncertainties, we show trend and uncertainty maps (Figure 6) in accordance with those in Figure 1 (displaying maps of statistical criteria). Here, we map linear trends and uncertainties onto observed levels of comparability defined by the correlation-criterion. We thus compute these  $VLM_{SAT-TG}$  trends over different coastal regions (see further details in the Appendix A). As a result, we observe sharp trend gradients consistent with the degree of comparability: Figure 6a for instance, shows high small-scale variability of trends, because trends off the slope-current-region are detached from the trends in the along-shore continental shelf region. Trends in Figure 6a and 6b project onto the far-reaching along-shore correlations as observed in Figure 1 showing consistent signals over several hundreds of kilometers along the coast. Uncertainty maps further pronounce the importance of the application of highly resolved coastal altimetry data (Figure 6 lower row). These examples show, that at individual locations the use of less comparable SLAs can increase the uncertainty by a factor of three to four.

540 Therefore, for the majority of cases, these results promote using high relative levels of comparability to define the ZOI for trend estimation. However, we also observe that the coherency of trends (highlighted by the strength of absolute trend gradients) can be differently expressed at different coastal regions.

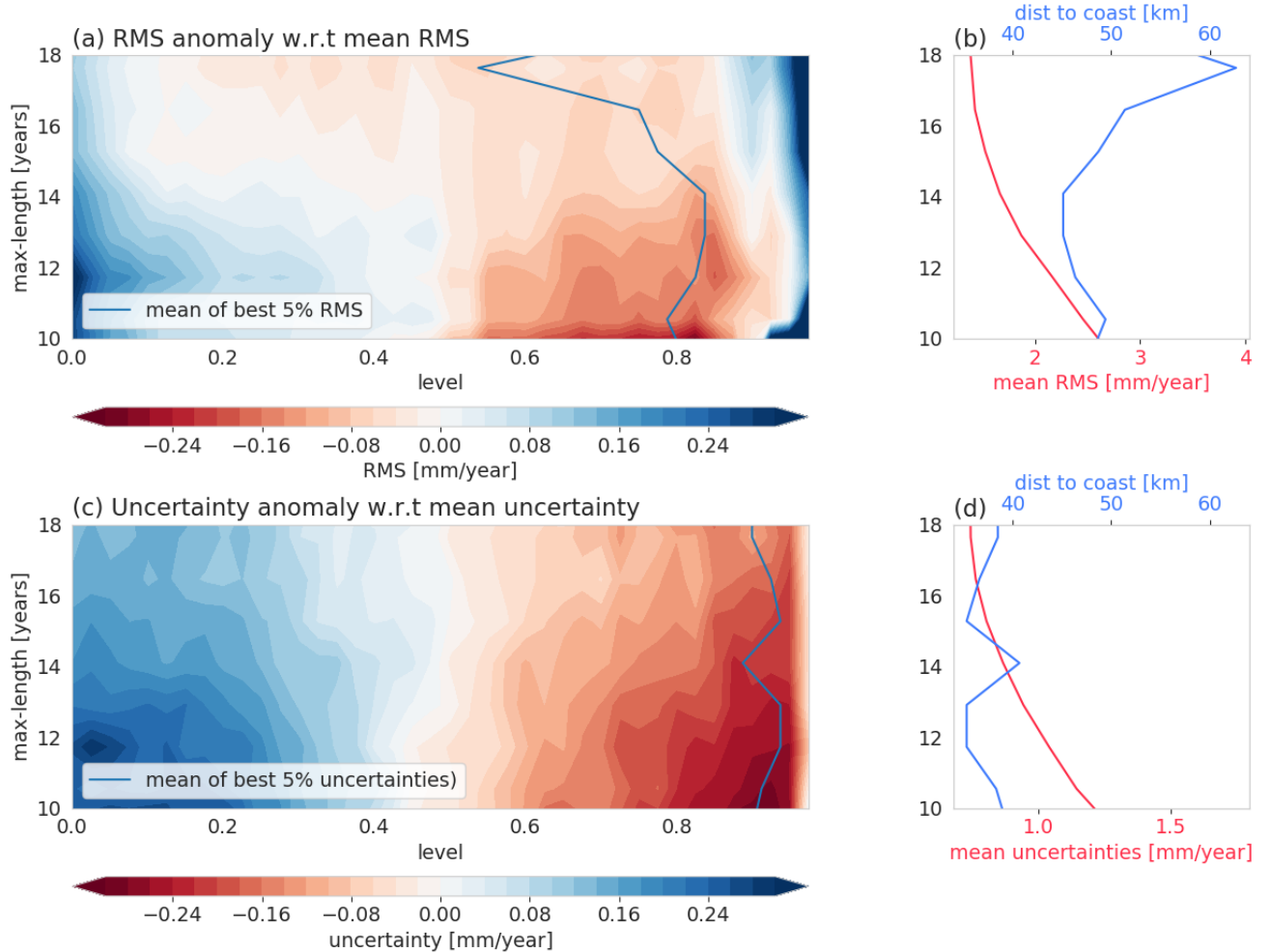
Bathymetric and coastal properties can cause large discrepancies in responses of coastal sea level variability as they modify the character of the impact of large-scale atmospheric forcing or remote variability from the deeper ocean (Woodworth et al., 2019). Hence, an advanced analysis of SL coherency and the role of bathymetry might facilitate further enhancements of trend accuracy based on SAT and TG. We note that physical origins might, however, not necessarily cause the spread of individual optimal thresholds (Figure 5b). If our assumption, that GNSS-trend estimates perfectly represent the linear trend over the time span of the altimetry/tide gauge records was not met, the shown individual thresholds would erroneously reflect local optima. Ruling out these sources of error is thus a prerequisite to further study physical explanations for different extents of the ZOI.

Next to site-dependent physical factors, the spatial-scales of trend coherency might also depend on the time span of the observations themselves. Global maps of sea level trends, for example, even when derived from two decades of observations, still show distinct pattern of natural/forced variability and thus shade signals of ocean mass or steric contributions (e.g. Stammer et al. (2013)). Similarly, coastal sea level trends that are computed in the ZOI are affected by local interannual sea level variability on top of the secular trend. Therefore, the importance to adopt the concept of the ZOI for improving trend accuracy might also be influenced by the actual time span covered by the record.

To investigate this time-scale-dependency, we truncate the  $VLM_{SAT-TG}$  time series such that we obtain different experimental ALES-GESLA-ZOI sets with maximum record lengths from 10 to 18 years. We repeat the same validation analysis against GNSS trends as in section 4. Figure 7a) encompasses anomalies of the  $RMS_{\Delta VLM}$  with respect to the mean  $RMS_{\Delta VLM}$  for a dataset of a specific time scale which is given in Figure 7b (red). The same evolution is shown for trend uncertainties in Figure 7c).

Mean  $RMS_{\Delta VLM}$  as well as mean uncertainties (which are averaged over all relative thresholds for a specific maximum record length) substantially decrease with increasing record length (Figures 7a and 7c). Both statistics approximately follow the theoretical proportionality of uncertainty and sample size  $n$  of  $1/\sqrt{n}$  (assuming no serial correlation). The evolution of the  $RMS_{\Delta VLM}$  anomaly shows that selecting SLAs in a ZOI at high relative thresholds more substantially reduces the  $RMS_{\Delta VLM}$  on shorter time scales (e.g. 10 years) than on longer time scales (Figure 7a, e.g. at 18 years). At long time scales, the  $RMS_{\Delta VLM}$  anomalies do not significantly improve between the 80% and 20% thresholds, which we also observe in the previous analysis in Figure 5a. We argue that the transition time scale where the improvements of  $RMS_{\Delta VLM}$  flatten (14-16 years), marks when the high frequency coastal sea level dynamical variability is superseded by dynamics producing large-scale sea level trends. In other words, this is the time scale in which coastal sea level trends start to merge with the offshore trends. The tendency of increasing spatial scales with time is also reflected by the increasing distances to coast of the measurements for an optimal ZOI at a specific time scale (Figure 7b). The time-scale-dependency could explain the mismatch of trend accuracy and uncertainty improvements when using higher levels of comparability. This is also supported by Kleinherenbrink et al. (2018), who showed little sensitivity for SAT-TG combinations which had minimum lengths of 15 years.

The same evaluation for the dependency of uncertainty on time and level of comparability  $X$  demonstrates that using the ZOI nearly constantly improves trend uncertainties at any time scale. Hence, even though spatial scales of trend coherency might increase with time, an ideal match of altimetry and tide gauges should be based on a ZOI.



**Figure 7.** Time and space dependencies of trend uncertainty and accuracies: a) Evolution of the  $\text{RMS}_{\Delta\text{VLM}}$  anomaly (SAT-TG vs. GNSS trend) for subsets of ALES-GESLA-ZOI, depending on a relative threshold  $X$  (x-axis) and a maximum record length (y-axis).  $\text{RMS}_{\Delta\text{VLM}}$  anomaly is defined as the departure from the mean  $\text{RMS}_{\Delta\text{VLM}}$  (shown in b) averaged over all thresholds  $X$  for a specific maximum record length. In b) we also show in blue the mean distance to coast of the measurements, associated with the average of the best 5% ZOI-levels per time scale, shown in a). c,d) Same as a,b) but for uncertainties.

## 5.2 Systematic errors

VLM estimates from different datasets (e.g. AVISO-PSMSL-250km and ALES-GESLA-ZOI) are biased compared to trends inferred from GNSS observations. Based on Monte-Carlo simulations (see appendix Figure B1) we argue that these biases are significant for most of the dataset combinations (ALES-PSMSL-250km and AVISO-PSMSL-250km, ALES-GESLA-ZOI). In the following, potential sources for these biases will be discussed.

Next to the record-length (see section 5.1), systematic errors critically affect the accuracy of the SAT-TG technique and can have strong systematic effects on the trend differences. Limiting factors for VLM determination from both SAT-TG and GNSS observations are the accuracy and uncertainty of origin and scale of the reference frame (see WM16, Collilieux and Woppelmann (2009); Santamaría-Gómez et al. (2012)), which cannot be realized yet at the required accuracy level (Bloßfeld et al., 2019; Seitz et al., submitted).

Moreover, as mentioned before, the intermission calibration applied for ALES (MMXO) reduces intermission biases, but does not feature a calibration against TG. The median bias identified for ALES-GESLA-ZOI could be affected by a drift of the mission used as reference. In contrast, the AVISO dataset does not include time-dependent intermission biases and might therefore be additionally influenced by systematic effects of e.g. Envisat or Sentinel-3a (Dettmering and Schwatke, 2019).

Next to to altimeter bias drift, nonlinear VLM from contemporary mass redistribution (CMR) changes were shown to cause differences between  $VLM_{SAT-TG}$  and  $VLM_{GPS}$ , due to the different time periods covered (e.g. Kleinherenbrink et al. (2018)). Using GRACE (Gravity Recovery and Climate Experiment) observations Frederikse et al. (2019) demonstrated that associated deformations can cause VLM trend on the order of 1 mm/year. Therefore, they introduced a new method to reduce  $VLM_{GPS}$  by GIA and CMR signals to minimize their associated induced extrapolation biases. Kleinherenbrink et al. (2018) incorporated nonlinear VLM from CMR to assess the corresponding trend differences between  $VLM_{SAT-TG}$  and  $VLM_{GPS}$ . They expose that  $VLM_{SAT-TG}$  estimates are lower than  $VLM_{GPS}$  in many parts of North America and Europe and higher in subtropical/tropical regions as well as Australia and New Zealand (refer to Figure 9 in Kleinherenbrink et al. (2018)). Because northerly regions, for instance, are affected by stronger recent uplift, GNSS observations which cover shorter and more recent time spans than satellite altimetry detect more positive trends. For a set of 155 TG-GNSS pairs, integration of these signals slightly reduced the median bias from -0.14 mm/year to -0.07 mm/year, but had no significant effect on RMS. Given that most of the TG-GNSS stations used in this study are located in Europe, North America and Australia, CMR might as well alleviate the negative trend bias of ALES-GESLA-ZOI. Therefore, extending the validation platform, not only by using other homogeneous GNSS observations, but also GRACE and GIA estimates would strongly support identification and mitigation of such systematic errors.

### 5.3 Comparison with previous results

Based on optimal relative thresholds, we estimated an  $RMS_{\Delta VLM}$  between SAT-TG and GNSS trends of 1.28 mm/year and a median uncertainty of 0.58 mm/year at 58 sites. Our approach of combining along-track altimetry, high frequency tide gauge data and a refined SLA selection-scheme improves the performance of VLM estimation compared to using gridded altimetry products and constant spatial SLA averages (WM16:  $RMS_{\Delta VLM}$ : 1.47 mm/year; uncertainty 0.80 mm/year). Other studies further emphasized the importance of spatial resolution in coastal zones, considering the decreasing temporal and spatial scales of sea level variability in such areas. With the focus on coastal sea level trends, Cipollini et al. (2017) demonstrated that the along-track X-TRACK product contained much more valid data close to the coast than AVISO, not only due to the spatial down-sampling in AVISO, but also to less adapted coastal processing. Here, we tackle both issues by implementing an advanced coastal along-track altimetry product. Because we find that much of the observed high-performing altimetry data has

a close vicinity to the coast, our results underpin that along-track data is the best choice for coastal sea level trend estimation, and substantiate the results of Kleinherenbrink et al. (2018).

Accuracies of estimated  $VLM_{SAT-TG}$  expressed by  $RMS_{\Delta VLM}$  are in the order of Kleinherenbrink et al. (2018)'s result of 1.20 mm/year. These results can, however, not unequivocally compared due to different validation settings. We extend their  
620 analysis by investigating a variety of other criteria of comparability and find that the  $RMS_{SAT-TG}$  of the differenced  $VLM_{SAT-TG}$  time series provides the most robust estimates compared to correlations or residual annual cycle. Our results also propose that increasing the radius of selection denotes another improvement for VLM estimates. Practically, the approach of using absolute thresholds, which was put forward by Kleinherenbrink et al. (2018) almost halved the number of considered stations from 294 to 155, when setting an absolute correlation threshold to 0.7. Applying relative thresholds, facilitates the estimation of trends at  
625 lower correlated stations, which would be rejected otherwise. This is crucial, because it was frequently shown, that correlations between altimetry and tide gauges are highly variable across the globe (WM16). Hence, we maintain the main advantage of using tide gauges for VLM estimation: The large global distribution compared to continuous GNSS-measurements.

## 6 Conclusions

We investigate potential improvements of combining altimetry and tide gauges for coastal vertical land motion estimation.  
630 The innovations of our approach are twofold: (1) For the first time, we exploit a global network of high frequency tide gauge data (GESLA) and dedicated coastal altimetry (ALES) to determine VLM at a variety of co-located GNSS stations. Secondly (2) we define a Zone of influence, to identify coherent zones of coastal SL variability which optimizes the combination of altimetry and tide gauges. We rate improvements of both innovations against various SAT-TG datasets, which are comprised of along-track and gridded altimetry, as well as high (daily) and low-frequency (monthly) tide gauge combinations.

635 Combining high frequency tide gauge with coastal altimetry data (ALES-GESLA-250km) yields modest improvements of trend accuracies, compared to a monthly gridded or monthly along-track combination, when averaging SLAs in a radius of 250 km. The high spatio-temporal resolution of the data, however, provides the foundation to identify coherent zones of sea level variability. We confine a Zone of Influence by using relative thresholds of comparability based on  $RMS_{SAT-TG}$ , correlation and residual annual cycle of the altimetry and tide gauge timeseries. We identify a global optimal threshold, when selecting 20%  
640 of the data with the lowest  $RMS_{SAT-TG}$ . At this threshold, validation against GNSS velocity estimates (at 58 stations) yields a  $RMS_{\Delta VLM}$  of  $VLM_{SAT-TG}$  and  $VLM_{GNSS}$  differences of 1.28 mm/year with a median formal uncertainty of  $VLM_{SAT-TG}$  trends of 0.58 mm/year. This refined selection method improves trend accuracy by 15% and uncertainty by 35% compared to the 250 km-average selection. The smaller degree of improvements of trend accuracy compared to uncertainty is explained by the increasing space-scales of sea-level trend components with progressing time scales. We show that in many cases, capturing  
645 small scale features of coastal sea level variability within few tens of kilometers from the coast is vital for  $VLM_{SAT-TG}$  estimation and constantly reduces trend uncertainty of the estimates. We thus promote using relative levels of comparability and dedicated coastal altimetry matched with high-frequency tide gauges to confine ZOIs and increase the number of VLM estimations along the global coastline with improved uncertainty.

*Data availability.* ULR6a GNSS trend estimates are obtained from the data assembly centre SONEL (Système d’Observation du Niveau des Eaux Littorales, <https://www.sonel.org/-Vertical-land-movement-estimate-.html?lang=en>, Santamaría-Gómez et al. (2016)). GESLA tide gauge data are available at <http://www.gesla.org> (Woodworth et al., 2016) and PSMSL data at <https://www.psmsl.org/data/obtaining/> (Holgate et al., 2013). ALES along-track data are processed at DGFI-TUM (<https://www.dgfi.tum.de/en/>) with OpenADB (<https://openadb.dgfi.tum.de>). Averaged DT-MSLA AVISO gridded altimetry data are obtained from <https://www.aviso.altimetry.fr>.

## Appendix A: Methods

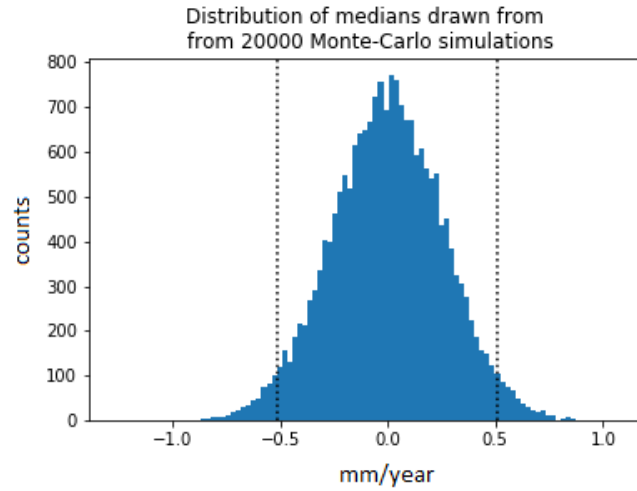
In Figure 6 we map linear  $VLM_{SAT-TG}$  trends and uncertainties onto observed levels of comparability set by the correlation-criterion. First, we group observed SLA time series in 0-20th, 20-40th, 40-60th etc. percentile-ranges, sorted by their correlations with the TG time series. Then, we merge the altimetry time series for each group and calculate their associated  $VLM_{SAT-TG}$  trends. The resulting  $VLM_{SAT-TG}$  trends are hereinafter defined on the altimetry tracks, categorized by the aforementioned groups of comparability. To better illustrate the different zones of coherency the trends are interpolated onto a regular grid (100x100 nodes i.e. 6 km resolution) and thus smoothed as seen in Figure 6. We use linear radial basis functions to interpolate the data.

## Appendix B: Significance of median biases

To gain a better understanding of when the  $VLM_{SAT-TG}$  and  $VLM_{GNSS}$  difference distributions are significantly biased we create a Monte-Carlo experiment to check the  $H_0$  hypothesis: ‘the median of the distribution is not significantly different from zero’ (with  $\alpha=0.025$ ). Therefore, we generated a bootstrapped distribution of random medians, which are derived from 20000 individual sub-sets of size 52 (the number of TG of our dataset), which are randomly drawn from normally distributed values with a standard deviation of 1.5 mm/year (according to the RMS of AVISO-PSMSL-250km) and zero mean.

Figure B1 shows that the biases of the datasets ALES-PSMSL-250km and AVISO-PSMSL-250km exceed the 2.5 and 97.5 percentiles of the sampled distribution (average of absolute bounds: 0.512 mm/year). This means that in less than 5 out of 100 cases, we would obtain such biases by chance, which supports the significance of these biases. We highlight that this is a purely statistical analysis, which cannot account for any of the errors from corrections, adjustments, drifts etc. introduced in the altimeter and GNSS.

*Author contributions.* J.O. and M.P. conceptualized and designed the study. J.O. wrote the manuscript and is the author of the full software code used in this study. M.P. is the author of the ALES retracking algorithm and mentored the work of J.O.; C.S. and D.D. are responsible for the altimetry database organisation and the data structure. L.S. provided assistance in the use of GNSS data. F.S. provided the basic resources making the study possible and coordinates the activities of the institute. All authors read and commented on the final manuscript.



**Figure B1.** Histogram of median values of randomly sampled sub-sets. The sub-sets consists of 52 samples (according to the number of TGs in AVISO-PSMSL-250km) and are randomly drawn from normally distributed values with zero mean and a standard-deviation of 1.5 mm/year (according to the RMS of AVISO-PSMSL-250km). Dashed lines mark the 2.5 and 97.5 percentiles of the distribution.

*Competing interests.* The authors declare that they have no conflict of interest.

*Acknowledgements.* This work was funded by the Deutsche Forschungsgemeinschaft (DFG) (grand agreement 411072120) and the Technical University of Munich (TUM) in the framework of the Open Access Publishing Program. We thank the data-providers GESLA, PSMSL, SONEL and AVISO for the opportunity to use their products. We thank Sergiy Rudenko, Ashwita Chouksey and Michael Hart-Davis for their help and comments. We are very grateful for the comments of the reviewers Alvaro Santamaría Gómez and Christopher Watson, which strongly improved the manuscript.

## References

- Ablain, M., Cazenave, A., Valladeau, G., and Guinehut, S.: A new assessment of the error budget of global mean sea level rate estimated by satellite altimetry over 1993–2008, *Ocean Science*, 5, 193–201, <https://doi.org/10.5194/os-5-193-2009>, <https://os.copernicus.org/articles/5/193/2009/>, 2009.
- Agnew, D. C.: The time-domain behavior of power-law noises, *Geophysical Research Letters*, 19, 333–336, <https://doi.org/10.1029/91GL02832>, <https://agupubs.onlinelibrary.wiley.com/doi/abs/10.1029/91GL02832>, 1992.
- Andersen, O. B., Nielsen, K., Knudsen, P., Hughes, C. W., Fenoglio-marc, L., Gravelle, M., Kern, M., Fenoglio-marc, L., Gravelle, M., Kern, M., and Polo, S. P.: Improving the Coastal Mean Dynamic Topography by Geodetic Combination of Tide Gauge and Satellite Altimetry Improving the Coastal Mean Dynamic Topography by Geodetic Combination of Tide Gauge and Satellite Altimetry, *Marine Geodesy*, 0, 1–29, <https://doi.org/10.1080/01490419.2018.1530320>, <https://doi.org/10.1080/01490419.2018.1530320>, 2018.
- Ballu, V., Gravelle, M., Wöppelmann, G., de Viron, O., Rebischung, P., Becker, M., and Sakic, P.: Vertical land motion in the Southwest and Central Pacific from available GNSS solutions and implications for relative sea levels, *Geophysical Journal International*, 218, 1537–1551, <https://doi.org/10.1093/gji/ggz247>, <https://doi.org/10.1093/gji/ggz247>, 2019.
- Bloßfeld, M., Angermann, D., and Seitz, M.: DGFI-TUM Analysis and Scale Investigations of the Latest Terrestrial Reference Frame Realizations, in: *International Symposium on Advancing Geodesy in a Changing World*, edited by Freymueller, J. T. and Sánchez, L., pp. 3–9, Springer International Publishing, Cham, 2019.
- Bos, M. and Fernandes, R.: Hector user manual, pp. 1–43, 2019.
- Bosch, W. and Savcenko, R.: Satellite altimetry: Multi-mission cross calibration, in: *International Association of Geodesy Symposia*, [https://doi.org/10.1007/978-3-540-49350-1\\_8](https://doi.org/10.1007/978-3-540-49350-1_8), 2007.
- Bosch, W., Dettmering, D., and Schwatke, C.: Multi-mission cross-calibration of satellite altimeters: Constructing a long-term data record for global and regional sea level change studies, *Remote Sensing*, <https://doi.org/10.3390/rs6032255>, 2014.
- Bouin, M. N. and Wöppelmann, G.: Land motion estimates from GPS at tide gauges: a geophysical evaluation, *Geophysical Journal International*, 180, 193–209, <https://doi.org/10.1111/j.1365-246X.2009.04411.x>, <https://doi.org/10.1111/j.1365-246X.2009.04411.x>, 2010.
- Brooks, B. A., Merrifield, M. A., Foster, J., Werner, C. L., Gomez, F., Bevis, M., and Gill, S.: Space geodetic determination of spatial variability in relative sea level change, Los Angeles basin, *Geophysical Research Letters*, 34, <https://doi.org/10.1029/2006GL028171>, <https://agupubs.onlinelibrary.wiley.com/doi/abs/10.1029/2006GL028171>, 2007.
- Calafat, F. M., Wahl, T., Lindsten, F., Williams, J., and Frajka-Williams, E.: Coherent modulation of the sea-level annual cycle in the United States by Atlantic Rossby waves, *Nature Communications*, 9, <https://doi.org/10.1038/s41467-018-04898-y>, 2018.
- Carrère, L. and Lyard, F.: Modeling the barotropic response of the global ocean to atmospheric wind and pressure forcing - comparisons with observations, *Geophysical Research Letters*, 30, <https://doi.org/10.1029/2002GL016473>, <https://agupubs.onlinelibrary.wiley.com/doi/abs/10.1029/2002GL016473>, 2003.
- Carrère, L., Lyard, F., Cancet, M., and Guillot, A.: FES 2014, a new tidal model on the global ocean with enhanced accuracy in shallow seas and in the Arctic region, in: *EGU General Assembly Conference Abstracts*, *EGU General Assembly Conference Abstracts*, p. 5481, 2015.
- Carrère, L., Faugère, Y., and Ablain, M.: Major improvement of altimetry sea level estimations using pressure-derived corrections based on ERA-Interim atmospheric reanalysis, *Ocean Science*, 12, 825–842, <https://doi.org/10.5194/os-12-825-2016>, <https://os.copernicus.org/articles/12/825/2016/>, 2016.



Carson, M., Köhl, A., Stammer, D., Slangen, A., Katsman, C., Wal, R., Church, J., and White, N.: Coastal Sea Level Changes, Observed and  
720 Projected during the 20th and 21st Century, *Climatic Change*, 134, 269–281, <https://doi.org/10.1007/s10584-015-1520-1>, 2016.

Cazenave, A., Dominh, K., Ponchaut, F., Soudarin, L., Cretaux, J. F., and Le Provost, C.: Sea level changes from Topex-Poseidon altimetry  
and tide gauges, and vertical crustal motions from DORIS, *Geophysical Research Letters*, <https://doi.org/10.1029/1999GL900472>, 1999.

Cazenave, A., Palanisamy, H., and Ablain, M.: Contemporary sea level changes from satellite altimetry: What have we learned? What  
are the new challenges?, *Advances in Space Research*, 62, 1639 – 1653, <https://doi.org/https://doi.org/10.1016/j.asr.2018.07.017>, <http://www.sciencedirect.com/science/article/pii/S0273117718305799>, 2018.

Church, J. and White, N.: Sea-Level Rise from the Late 19th to the Early 21st Century, *Surveys in Geophysics*, 32, 585–602,  
<https://doi.org/10.1007/s10712-011-9119-1>, 2011.

Church, J. A., Clark, P., Cazenave, A., Gregory, J., Jevrejeva, S., Levermann, A., Merrifield, M., Milne, G., Nerem, R., Nunn, P., Payne,  
A., Pfeffer, W., Stammer, D., and Unnikrishnan, A.: 2013: Sea level change, *Climate Change 2013: The Physical Science Basis. Con-*  
730 *tribution of Working Group I to the Fifth Assessment Report of the Intergovernmental Panel on Climate Change*, pp. 1137–1216,  
<https://doi.org/10.1017/CB09781107415315.026>, 2013.

Cipollini, P., Calafat, F. M., Jevrejeva, S., Melet, A., and Prandi, P.: Monitoring Sea Level in the Coastal Zone with Satellite Altimetry and  
Tide Gauges, <https://doi.org/10.1007/s10712-016-9392-0>, 2017.

Cleveland, W. S. and Devlin, S. J.: Locally Weighted Regression: An Approach to Regression Analysis by Local Fitting, *Journal of the*  
735 *American Statistical Association*, 83, 596–610, <http://www.jstor.org/stable/2289282>, 1988.

Collilieux, X. and Wöppelmann, G.: Global sea-level rise and its relation to the terrestrial reference frame, *Journal of Geodesy*, 85, 9–22,  
<https://doi.org/10.1007/s00190-010-0412-4>, 2009.

Couhert, A., Cerri, L., Legeais, J.-F., Michaël, A., Zelensky, N., Haines, B., Lemoine, F., Bertiger, W., Desai, S., and Otten, M.: Towards  
the 1 mm/y stability of the radial orbit error at regional scales, *Advances in Space Research*, 55, <https://doi.org/10.1016/j.asr.2014.06.041>,  
740 2015.

Dangendorf, S., Marcos, M., Wöppelmann, G., Conrad, C. P., Frederikse, T., and Riva, R.: Reassessment of 20th century global mean sea  
level rise, *Proceedings of the National Academy of Sciences*, <https://doi.org/10.1073/pnas.1616007114>, [https://www.pnas.org/content/](https://www.pnas.org/content/early/2017/05/16/1616007114)  
<https://doi.org/10.1073/pnas.1616007114>, 2017.

Dettmering, D. and Schwatke, C.: Multi-Mission Cross-Calibration of Satellite Altimeters: Systematic Differences Between Sentinel-3A and  
Jason-3, *International Association of Geodesy Symposia*, [https://doi.org/10.1007/1345\\_2019\\_58](https://doi.org/10.1007/1345_2019_58), 2019.

Ducet, N., Le Traon, P. Y., and Reverdin, G.: Global high-resolution mapping of ocean circulation from TOPEX/Poseidon and ERS-1 and  
-2, *Journal of Geophysical Research: Oceans*, 105, 19 477–19 498, <https://doi.org/10.1029/2000JC900063>, [https://agupubs.onlinelibrary.](https://agupubs.onlinelibrary.wiley.com/doi/abs/10.1029/2000JC900063)  
[wiley.com/doi/abs/10.1029/2000JC900063](https://doi.org/10.1029/2000JC900063), 2000.

Fenoglio, L., Schöne, T., Illigner, J., Becker, M., Manurung, P., and Khafid: Sea Level Change and Vertical Motion from Satellite Altimetry,  
750 Tide Gauges and GPS in the Indonesian Region, *Marine Geodesy*, 35, <https://doi.org/10.1080/01490419.2012.718682>, 2012.

Fernandes, M. J., Lázaro, C., Ablain, M., and Pires, N.: Remote Sensing of Environment Improved wet path delays for all ESA and reference  
altimetric missions, *Remote Sensing of Environment*, 169, 50–74, <https://doi.org/10.1016/j.rse.2015.07.023>, [http://dx.doi.org/10.1016/j.](http://dx.doi.org/10.1016/j.rse.2015.07.023)  
[rse.2015.07.023](https://doi.org/10.1016/j.rse.2015.07.023), 2015.

Frederikse, T., Landerer, F. W., and Caron, L.: The imprints of contemporary mass redistribution on local sea level and vertical land mo-  
755 tion observations, *Solid Earth*, 10, 1971–1987, <https://doi.org/10.5194/se-10-1971-2019>, <https://se.copernicus.org/articles/10/1971/2019/>,  
2019.

- Hamlington, B. D., Thompson, P., Hammond, W. C., Blewitt, G., and Ray, R. D.: Assessing the impact of vertical land motion on twentieth century global mean sea level estimates, *Journal of Geophysical Research: Oceans*, <https://doi.org/10.1002/2016JC011747>, 2016.
- Hawkins, R., Husson, L., Choblet, G., Bodin, T., and Pfeffer, J.: Virtual Tide Gauges for Predicting Relative Sea Level Rise, *Journal of Geophysical Research: Solid Earth*, 124, 13 367–13 391, <https://doi.org/10.1029/2019JB017943>, <https://agupubs.onlinelibrary.wiley.com/doi/abs/10.1029/2019JB017943>, 2019.
- Hay, C. C., Morrow, E., Kopp, R. E., and Mitrovica, J. X.: Probabilistic reanalysis of twentieth-century sea-level rise, *Nature*, <https://doi.org/10.1038/nature14093>, 1990.
- Holgate, S. J., Matthews, A., Woodworth, P. L., Rickards, L. J., Tamisiea, M. E., Bradshaw, E., Foden, P. R., Gordon, K. M., Jevrejeva, S., and Pugh, J.: New Data Systems and Products at the Permanent Service for Mean Sea Level, *Journal of Coastal Research*, pp. 493–504, <https://doi.org/10.2112/JCOASTRES-D-12-00175.1>, <https://doi.org/10.2112/JCOASTRES-D-12-00175.1>, 2013.
- Hughes, C. and Meredith, M.: Coherent sea-level fluctuations along the global continental slope, *Philosophical transactions. Series A, Mathematical, physical, and engineering sciences*, 364, 885–901, <https://doi.org/10.1098/rsta.2006.1744>, 2006.
- Hughes, C. W., Fukumori, I., Griffies, S. M., and Huthnance, J. M.: Sea Level and the Role of Coastal Trapped Waves in Mediating the Influence of the Open Ocean on the Coast, *Surveys in Geophysics*, 40, 1467–1492, <https://doi.org/10.1007/s10712-019-09535-x>, <https://doi.org/10.1007/s10712-019-09535-x>, 2019.
- Idžanović, M., Gerlach, C., Breili, K., and Andersen, O.: An Attempt to Observe Vertical Land Motion along the Norwegian Coast by CryoSat-2 and Tide Gauges, *Remote Sensing*, 11, 744, <https://doi.org/10.3390/rs11070744>, 2019.
- Jevrejeva, S., Moore, J. C., Grinsted, A., Matthews, A. P., and Spada, G.: Trends and acceleration in global and regional sea levels since 1807, *Global and Planetary Change*, <https://doi.org/10.1016/j.gloplacha.2013.12.004>, 2014.
- King, M. A., Keshin, M., Whitehouse, P. L., Thomas, I. D., Milne, G., and Riva, R. E. M.: Regional biases in absolute sea-level estimates from tide gauge data due to residual unmodeled vertical land movement, *Geophysical Research Letters*, 39, <https://doi.org/10.1029/2012GL052348>, <https://agupubs.onlinelibrary.wiley.com/doi/abs/10.1029/2012GL052348>, 2012.
- Kleinherenbrink, M., Riva, R., and Frederikse, T.: A comparison of methods to estimate vertical land motion trends from GNSS and altimetry at tide gauge stations, *Ocean Science*, 14, 187–204, <https://doi.org/10.5194/os-14-187-2018>, <https://os.copernicus.org/articles/14/187/2018/>, 2018.
- Kolker, A. S., Allison, M. A., and Hameed, S.: An evaluation of subsidence rates and sea-level variability in the northern Gulf of Mexico, *Geophysical Research Letters*, 38, <https://doi.org/10.1029/2011GL049458>, <https://agupubs.onlinelibrary.wiley.com/doi/abs/10.1029/2011GL049458>, 2011.
- Kuo, C. Y., Shum, C. K., Braun, A., and Mitrovica, J. X.: Vertical crustal motion determined by satellite altimetry and tide gauge data in Fennoscandia, *Geophysical Research Letters*, 31, <https://doi.org/10.1029/2003GL019106>, <https://agupubs.onlinelibrary.wiley.com/doi/abs/10.1029/2003GL019106>, 2004.
- Kurapov, A., Erofeeva, S., and Myers, E.: Coastal sea level variability in the US West Coast Ocean Forecast System (WCOFS), *Ocean Dynamics*, 67, <https://doi.org/10.1007/s10236-016-1013-4>, 2016.
- Landskron, D. and Böhm, J.: Refined discrete and empirical horizontal gradients in VLBI analysis, *Journal of Geodesy*, 92, 1387–1399, <https://doi.org/10.1007/s00190-018-1127-1>, <https://doi.org/10.1007/s00190-018-1127-1>, 2018.
- Mazzotti, S., Jones, C., and Thomson, R. E.: Relative and absolute sea level rise in western Canada and northwestern United States from a combined tide gauge-GPS analysis, *Journal of Geophysical Research: Oceans*, 113, <https://doi.org/10.1029/2008JC004835>, <https://agupubs.onlinelibrary.wiley.com/doi/abs/10.1029/2008JC004835>, 2008.

- 795 Moritz, H.: Geodetic Reference System 1980, *Journal of Geodesy*, 74, 128–133, <https://doi.org/10.1007/s001900050278>, 2000.
- Nerem, R. S. and Mitchum, G. T.: Estimates of vertical crustal motion derived from differences of TOPEX/POSEIDON and tide gauge sea level measurements, *Geophysical Research Letters*, <https://doi.org/10.1029/2002gl015037>, 2003.
- Passaro, M., Cipollini, P., Vignudelli, S., Quartly, G. D., and Snaith, H. M.: ALES: A multi-mission adaptive subwaveform retracker for coastal and open ocean altimetry, *Remote Sensing of Environment*, 145, 173–189, <https://doi.org/10.1016/j.rse.2014.02.008>, <http://dx.doi.org/10.1016/j.rse.2014.02.008>, 2014.
- 800 Passaro, M., Cipollini, P., and Benveniste, J.: Annual sea level variability of the coastal ocean: The Baltic Sea-North Sea transition zone, *Journal of Geophysical Research: Oceans*, 120, 3061–3078, <https://doi.org/10.1002/2014JC010510>, 2015.
- Passaro, M., Müller, F. L., and Dettmering, D.: Lead detection using Cryosat-2 delay-doppler processing and Sentinel-1 SAR images, *Advances in Space Research*, 62, 1610–1625, <https://doi.org/10.1016/j.asr.2017.07.011>, 2018.
- 805 Peltier, W.: GLOBAL GLACIAL ISOSTASY AND THE SURFACE OF THE ICE-AGE EARTH: The ICE-5G (VM2) Model and GRACE, *Annual Review of Earth and Planetary Sciences*, 32, 111–149, <https://doi.org/10.1146/annurev.earth.32.082503.144359>, <https://doi.org/10.1146/annurev.earth.32.082503.144359>, 2004.
- Petit, G. and Luzum, B.: IERS Conventions, Verlag des Bundesamts für Kartographie und Geodäsie, Frankfurt, Germany, 2010.
- Pfeffer, J. and Allemand, P.: The key role of vertical land motions in coastal sea level variations: A global synthesis of multisatellite altimetry, tide gauge data and GPS measurements, *Earth and Planetary Science Letters*, 439, 39–47, <https://doi.org/10.1016/j.epsl.2016.01.027>, <http://dx.doi.org/10.1016/j.epsl.2016.01.027>, 2016.
- 810 Pfeffer, J., Spada, G., Mémin, A., Boy, J.-P., and Allemand, P.: Decoding the origins of vertical land motions observed today at coasts, *Geophysical Journal International*, 210, 148–165, <https://doi.org/10.1093/gji/ggx142>, <https://doi.org/10.1093/gji/ggx142>, 2017.
- Piccioni, G., Dettmering, D., Passaro, M., Schwatke, C., Bosch, W., and Seitz, F.: Coastal Improvements for Tide Models: The Impact of ALES Retracker, *Remote Sensing*, 10, 700, <https://doi.org/10.3390/rs10050700>, 2018.
- 815 Piccioni, G., Dettmering, D., Schwatke, C., Passaro, M., and Seitz, F.: Design and regional assessment of an empirical tidal model based on FES2014 and coastal altimetry, *Advances in Space Research*, <https://doi.org/10.1016/j.asr.2019.08.030>, <http://www.sciencedirect.com/science/article/pii/S0273117719306131>, 2019.
- Poitevin, C., Wöppelmann, G., Raucoules, D., Cozannet, G. L., Marcos, M., and Testut, L.: Vertical land motion and relative sea level changes along the coastline of Brest (France) from combined space-borne geodetic methods, *Remote Sensing of Environment*, 222, 275–285, <https://doi.org/10.1016/j.rse.2018.12.035>, <http://www.sciencedirect.com/science/article/pii/S0034425718305960>, 2019.
- 820 Ponte, R. M.: Low-Frequency Sea Level Variability and the Inverted Barometer Effect, *Journal of Atmospheric and Oceanic Technology*, 23, 619–629, <https://doi.org/10.1175/JTECH1864.1>, <https://doi.org/10.1175/JTECH1864.1>, 2006.
- Pugh, D. and Woodworth, P.: *Sea-Level Science: Understanding Tides, Surges, Tsunamis and Mean Sea-Level Changes*, Cambridge University Press, <https://doi.org/10.1017/CBO9781139235778>, 2014.
- 825 Riva, R., Frederikse, T., King, M., Marzeion, B., and Van den Broeke, M.: Brief communication: The global signature of post-1900 land ice wastage on vertical land motion, *The Cryosphere*, 11, 1327–1332, <https://doi.org/10.5194/tc-11-1327-2017>, 2017.
- Sanli, D. and Blewitt, G.: Geocentric sea level trend using GPS and >100-year tide gauge record on a postglacial rebound nodal line, *Journal of Geophysical Research*, 106, 713–720, <https://doi.org/10.1029/2000JB900348>, 2001.
- 830 Santamaría-Gómez, A., Gravelle, M., and Wöppelmann, G.: Long-term vertical land motion from double-differenced tide gauge and satellite altimetry data, *Journal of Geodesy*, 88, 207–222, <https://doi.org/10.1007/s00190-013-0677-5>, 2014.

- Santamaría-Gómez, A., Gravelle, M., Dangendorf, S., Marcos, M., Spada, G., and Wöppelmann, G.: Uncertainty of the 20th century sea-level rise due to vertical land motion errors, *Earth and Planetary Science Letters*, 473, 24–32, <https://doi.org/10.1016/j.epsl.2017.05.038>, <http://dx.doi.org/10.1016/j.epsl.2017.05.038>, 2017.
- 835 Santamaría-Gómez, A., Bouin, M.-N., Collilieux, X., and Wöppelmann, G.: Correlated errors in GPS position time series: Implications for velocity estimates, *Journal of Geophysical Research: Solid Earth*, 116, <https://doi.org/10.1029/2010JB007701>, <https://agupubs.onlinelibrary.wiley.com/doi/abs/10.1029/2010JB007701>, 2011.
- Santamaría-Gómez, A., Gravelle, M., Collilieux, X., Guichard, M., Míguez, B. M., Tiphaneau, P., and Wöppelmann, G.: Mitigating the effects of vertical land motion in tide gauge records using a state-of-the-art GPS velocity field, *Global and Planetary Change*, 98-99, 6 – 17, <https://doi.org/https://doi.org/10.1016/j.gloplacha.2012.07.007>, <http://www.sciencedirect.com/science/article/pii/S0921818112001476>, 2012.
- 840 Santamaría-Gómez, A., Gravelle, M., and Wöppelmann, G.: GPS Solution ULR6, SONEL Data Center, [https://doi.org/10.26166/sonel\\_ulr6a](https://doi.org/10.26166/sonel_ulr6a), <https://www.sonel.org/-Vertical-land-movement-estimate-.html?lang=en>, 2016.
- Saraceno, M., Strub, P. T., and Kosro, P. M.: Estimates of sea surface height and near-surface alongshore coastal currents from combinations of altimeters and tide gauges, *Journal of Geophysical Research: Oceans*, <https://doi.org/10.1029/2008JC004756>, 2008.
- 845 Scharroo, R. and Smith, W. H. F.: A global positioning system–based climatology for the total electron content in the ionosphere, *Journal of Geophysical Research: Space Physics*, 115, <https://doi.org/10.1029/2009JA014719>, <https://agupubs.onlinelibrary.wiley.com/doi/abs/10.1029/2009JA014719>, 2010.
- Scharroo, R., Leuliette, E., Lillibridge, J., Byrne, D., Naeije, M., and Mitchum, G.: RADS: Consistent multi-mission products, in: *Proceedings of Symposium on 20 Years of Progress in Radar Altimetry*, vol. 20, p. 59–60, 2012.
- 850 Seitz, M., Bloßfeld, M., Angermann, D., and Gerstl, M.: DTRF2014: The first secular ITRS realization considering non-tidal station loading., *Journal of Geodesy*, submitted.
- Slangen, A. B. A., Carson, M., Katsman, C. A., van de Wal, R. S. W., Köhl, A., Vermeersen, L. L. A., and Stammer, D.: Projecting twenty-first century regional sea-level changes, *Climatic Change*, 124, 317–332, <https://doi.org/10.1007/s10584-014-1080-9>, <https://doi.org/10.1007/s10584-014-1080-9>, 2014.
- 855 Snay, R., Cline, M., Dillinger, W., Foote, R., Hilla, S., Kass, W., Ray, J., Rohde, J., Sella, G., and Soler, T.: Using global positioning system-derived crustal velocities to estimate rates of absolute sea level change from North American tide gauge records, *Journal of Geophysical Research: Solid Earth*, 112, <https://doi.org/10.1029/2006JB004606>, <https://agupubs.onlinelibrary.wiley.com/doi/abs/10.1029/2006JB004606>, 2007.
- 860 Stammer, D. and Böning, C. W.: Mesoscale Variability in the Atlantic Ocean from Geosat Altimetry and WOCE High-Resolution Numerical Modeling, *Journal of Physical Oceanography*, 22, 732–752, [https://doi.org/10.1175/1520-0485\(1992\)022<0732:MVITAO>2.0.CO;2](https://doi.org/10.1175/1520-0485(1992)022<0732:MVITAO>2.0.CO;2), [https://doi.org/10.1175/1520-0485\(1992\)022{%}3C0732:MVITAO{%}3E2.0.COhttp://0.0.0.2](https://doi.org/10.1175/1520-0485(1992)022{%}3C0732:MVITAO{%}3E2.0.COhttp://0.0.0.2), 1992.
- Stammer, D., Cazenave, A., Ponte, R. M., and Tamisiea, M. E.: Causes for Contemporary Regional Sea Level Changes, *Annual Review of Marine Science*, 5, 21–46, <https://doi.org/10.1146/annurev-marine-121211-172406>, <https://doi.org/10.1146/annurev-marine-121211-172406>, pMID: 22809188, 2013.
- 865 Sánchez L., B. W.: The role of the TIGA project in the unification of classical height systems, In: Drewes H. (Ed.): *Geodetic Reference Frames*, IAG Symposia 134: 285-290, Springer, [https://doi.org/10.1007/978-3-642-00860-3\\_44](https://doi.org/10.1007/978-3-642-00860-3_44), 2009.

- Veit, E. and Conrad, C. P.: The impact of groundwater depletion on spatial variations in sea level change during the past century, *Geophysical Research Letters*, 43, 3351–3359, <https://doi.org/10.1002/2016GL068118>, <https://agupubs.onlinelibrary.wiley.com/doi/abs/10.1002/2016GL068118>, 2016.
- Wada, Y., van Beek, L. P. H., Sperna Weiland, F. C., Chao, B. F., Wu, Y.-H., and Bierkens, M. F. P.: Past and future contribution of global groundwater depletion to sea-level rise, *Geophysical Research Letters*, 39, <https://doi.org/10.1029/2012GL051230>, <https://agupubs.onlinelibrary.wiley.com/doi/abs/10.1029/2012GL051230>, 2012.
- Watson, C., White, N., Church, J., King, M., Burgette, R., and Legresy, B.: Unabated global mean sea-level rise over the satellite altimetry era, *Nature Climate Change*, 5, <https://doi.org/10.1038/nclimate2635>, 2015.
- Woodworth, P. L., Hunter, J. R., Marcos, M., Caldwell, P., Menéndez, M., and Haigh, I.: Towards a global higher-frequency sea level dataset, *Geoscience Data Journal*, <https://doi.org/10.1002/gdj3.42>, 2016.
- Woodworth, P. L., Melet, A., Marcos, M., Ray, R. D., Wöppelmann, G., Sasaki, Y. N., Cirano, M., Hibbert, A., Huthnance, J. M., Monserrat, S., and Merrifield, M. A.: Forcing factors affecting sea level changes at the coast, *Surveys in Geophysics*, 40, 1351–1397, <http://nora.nerc.ac.uk/id/eprint/523283/>, 2019.
- Wöppelmann, G., Martin Miguez, B., Bouin, M.-N., and Altamimi, Z.: Geocentric sea-level trend estimates from GPS analyses at relevant tide gauges world-wide, *Global and Planetary Change*, 57, 396–406, <https://doi.org/10.1016/j.gloplacha.2007.02.002>, 2007.
- Wöppelmann, G. and Marcos, M.: Vertical land motion as a key to understanding sea level change and variability, *Reviews of Geophysics*, 54, 64–92, <https://doi.org/10.1002/2015RG000502>, <https://agupubs.onlinelibrary.wiley.com/doi/abs/10.1002/2015RG000502>, 2016.
- Wöppelmann, G., Gravelle, M., Guichard, M., and Prouteau, E.: Fourth Progress Report on the GNSS at Tide Gauge Activities: SONEl Data Holdings & Tools to access the data, presented at the XVth GLOSS group of experts meeting, hosted by the Korean Hydrographic and Oceanographic Agency, Busan (Republic of Korea), 11-13 April 2019. Online version available at: [https://www.sonel.org/IMG/pdf/ge16\\_gnssattg\\_activities\\_sonel\\_report\\_v2.pdf](https://www.sonel.org/IMG/pdf/ge16_gnssattg_activities_sonel_report_v2.pdf), 2019.