

Supplementary figures

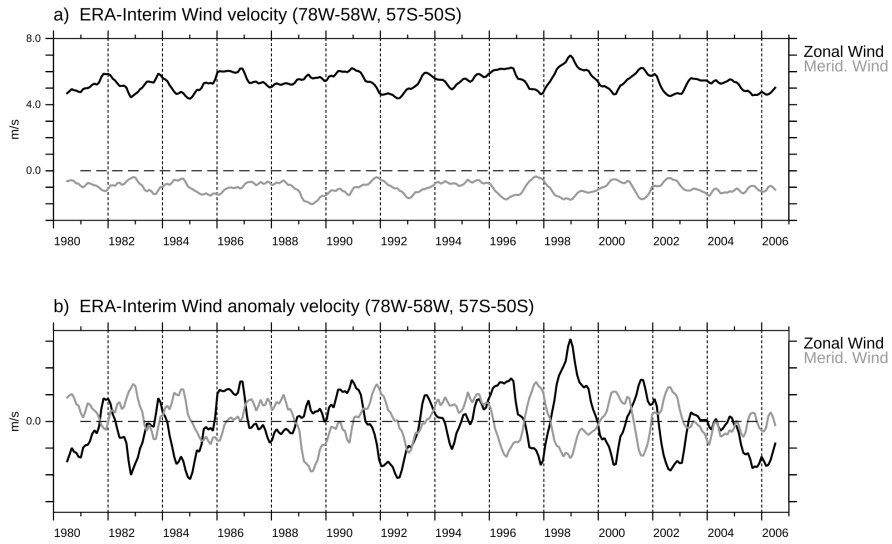


Figure 1 – Area averaged ($78 - 58^{\circ}\text{W}$, $57 - 50^{\circ}\text{S}$) Era-Interim wind velocity. Wind velocity (panel a) and wind velocity anomalies (panel b). A 12-month running mean is applied to the data to filter the seasonal signal.

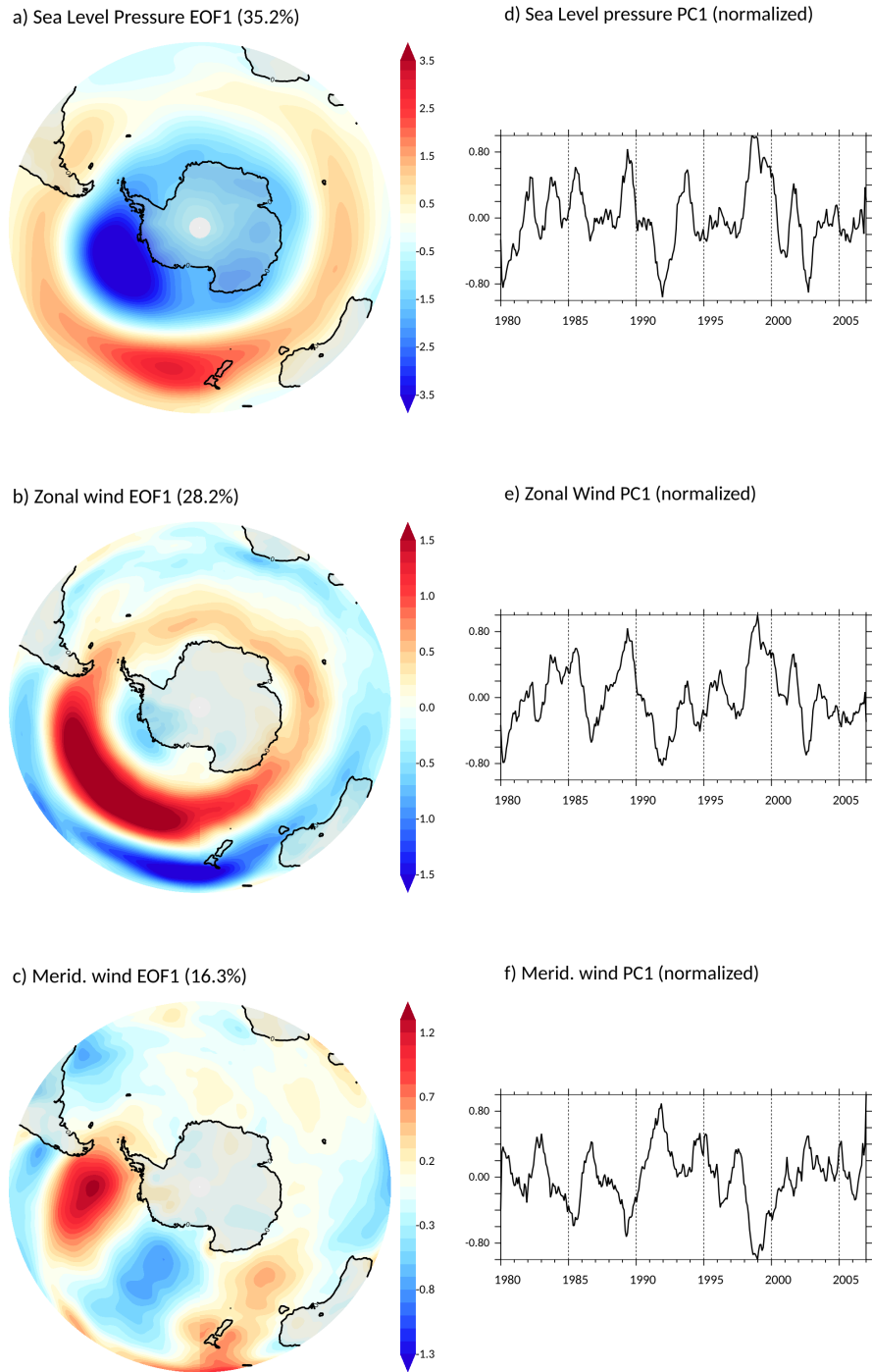


Figure 2 – First EOF mode of sea-level pressure (a), zonal (b) and meridional (c) wind anomalies and annual means of first EOF mode of sea-level pressure (d), zonal (e) and meridional (f) wind anomalies, south of 20° based on the ERA-Interim reanalysis data during the period 1980-2006. A 12-month running mean is applied to the data to filter the seasonal signal.