

Response to reviewer comments on “Tracking the spread of a passive tracer through Southern Ocean water masses”.

Anonymous Referee #1

In 2009, as part of the Diapycnal and Isopycnal Mixing Experiment in the Southern Ocean (DIMES), a passive tracer was released near 1500 m depth upstream of Drake Passage. Subsequent cruises measured tracer concentrations across the Antarctic Circumpolar Current to document the gradual tracer spreading due to mixing and advection. The tracer data has been analyzed in density space and geographical space to derive integral constraints on levels of irreversible mixing and lateral stirring (Watson et al. 2013, Tulloch et al. 2014). Here, the authors use an original approach: they analyze tracer spreading along isopycnals but across isohalines. The use of salinity as the lateral coordinate yields new insights about Southern Ocean stirring and mixing processes. The analysis is carefully exposed and the results well presented. Nonetheless, the manuscript could improve with a more pedagogical explanation of the rationale and of the hypotheses discussed. I detail this concern below.

[We thank the reviewer for these encouraging comments.](#)

Main comments:

1. The important distinction between reversible (lateral) stirring and irreversible (isotropic) mixing is not clearly explained and is only discussed in two sentences in the discussion (lines 284-286). I think this point deserves more space throughout the manuscript. Few readers will be as familiar as the authors with this distinction.

You make the point in the introduction that spreading across isohalines implies irreversible mixing. Then you move on to analyze tracer spreading in isopycnal salinity coordinates in terms of lateral diffusivities, leaving out isotropic (small-scale) diffusivities (until lines 284-286). By focusing on lateral diffusivities, you make the implicit assumption that they play the most important role in shaping the ultimate irreversible mixing. Yet irreversible mixing depends on the interaction of lateral stirring (which produces gradients) with isotropic mixing (which consumes gradients); it is not obvious which of the two processes should be the dominant cause of variations in spreading rate.

[Indeed. We have added an important paragraph to the introduction on lines 29-39 with regard to the above points.](#)

Actually, to me, the 20-fold increase in isotropic mixing from west to east of Drake Passage (Watson et al. 2013) would be the most natural ‘default’ hypothesis for the inferred increase in spreading rate in your isopycnal salinity coordinate system. Could you discuss why you expect along-stream changes in lateral stirring rate to be more important?

[We have further clarified why we have given more weight to the Garrett 1983 model on lines 293-294. The main point here is that even in the absence of changes in stirring or small scale mixing, we would expect an uptick in the rate of irreversible mixing simple due to the expected time evolution of the tracer patch.](#)

More generally, could you make clear upfront that isopycnal stirring alone cannot mix the tracer across isohalines? Is it possible to place constraints on both reversible stirring and irreversible mixing via your analysis? Could the difference between the isopycnal diffusivities you infer and previous estimates (Tulloch et al. 2014, LaCasce et al. 2013) relate to the influence of isotropic diffusivities on spreading within your frame- work?

We have added this statement on lines 58-59. We are unable to delve much further into the differences in reversible versus irreversible stirring, mostly because, as Garrett argued, the rate of stirring and the rate of irreversible mixing will converge over a year or two.

2. Lines 123-125 you state that the reference salinity varies from section to section “to account for the migration of the peak due to gradual along-isopycnal transport”. This explanation is unclear to me. Do you mean that the peak slowly erodes due to small- scale isotropic mixing? Could meaningful information about isotropic mixing be hidden in this variation of the peak salinity? Should the reference salinity also vary with density within each section?

We have reworded those two paragraphs (lines 131-139) which we hope clarifies the matter. Unfortunately the signal isn't sufficiently clear to discern anything robust.

3. It would really help to have Figure 7a at the beginning of the manuscript. The salinity ridge is key to the overall analysis.

We agree and have included this panel in Figure 1 instead.

4. Why do you choose salinity rather than temperature as your cross-stream variable?

We now point out on lines 56-58 that they are in fact both equivalent.

5. Does isopycnal mixing in the longitudinal direction matter for your analysis?

It could. We have added a caveat regarding this to the discussion on lines 303-307.

Specific comments:

Line 39: “a water parcel in the interior”

Changed

Figure 3: Mention changes in vertical scale between panels in legend.

Done

Line 149: delete “the” at end of line.

Deleted

Lines 173: “if it did not mix irreversibly”, it would not undergo the decrease in salinity observed along $y_0(x)$.

Some observations of salinities between the range 34.645 g kg^{-1} and 34.65 g kg^{-1} are observed all the way along the path.

Legend of figure 7: last sentence does not seem to be correct.

Thank you. Yes, we had that back to front.

Legend of figure 8: “between those latitudes”: I think you mean “between those longitudes”.

Thank you again.

Lines 244-246: I don't understand this point: please clarify.

[We have deleted this sentence as ultimately it was not relevant.](#)

Anonymous Referee #2

Overview

This paper estimates meridional mixing of a passive tracer released in the Southern ocean, and tracked over ~3 years. Previous analyses from the same experiment measured mixing via conventional x-y (longitude-latitude) distance coordinates. The present work utilizes salinity variations and large-scale salinity gradients on isopycnals to infer irreversible mixing rates of the tracer in salinity space, and then relates this back to physical space spreading via climatological salinity gradients in the region. Results are roughly consistent with previous published results based on traditional second-moment diffusivity calculations, as well as diffusivities inferred from floats.

General Comments

The authors present an interesting approach for inferring irreversible mixing on isopycnals, arguing that analysis in salinity space along isopycnals provides a measure of irreversible mixing as the tracer advects through varying meridional salinity gradients. The rationale for the present analysis is that as the meridional gradient of salinity changes along the path of mean tracer advection due to meridional convergences and divergences, which in physical space cause the tracer to widen, then narrow, then widen again as it is transported zonally. The authors liken the analysis in salinity space along isopycnals to analysis in density space when measuring diapycnal mixing, the advantage of the latter being that it enables the separation of spreading by isopycnal straining from that caused by irreversible diapycnal mixing.

While the approach will readily make sense to those familiar with this type of tracer analysis, I share the other reviewer's sentiment that there are a number of aspects of the method that could benefit from further discussion. First, when comparing the salinity coordinate approach to the isopycnal coordinate approach used to measure diapycnal mixing, the latter is used to account for spatio-temporal trends in stratification as well as high frequency variations from one profile to the next caused by internal waves. While the salinity method certainly addresses larger-scale trends in the meridional salinity gradient, it is not clear whether there are also smaller-scale variations, e.g., due to smaller-scale frontal meanders within the ACC or any of its smaller fronts? If so, this would be useful to point out as one of the distinctions between the salinity-space derived estimate of K_h and other estimates.

[Yes this is an important distinction. We have discussed this more deeply on lines 29-39.](#)

Also regarding the larger spatio-temporal trends, it would appear that the salinity-space approach is directly analogous to accounting for the convergence and then divergence of the flow as it traverses the Drake passage. This then can be likened to the strain-diffusion balance that is often used to estimate small-scale diffusivity either from the streaking phase of large-scale tracer experiments, or for smaller shorter-time scale fluorescent dye experiments. Effectively, diffusivity estimated in stream-wise coordinates, allowing for converging and diverging strain, should yield similar results.

Yes this is a good point. In this case we are fortunate to have temperature and salinity measured at the same bottles as the tracer. Unfortunately, we do not have estimates of streamline positions relevant to the particular depth/isopycnal of the tracer.

Finally, another difference between the present salinity coordinate analysis and isopycnal coordinate analysis is that the latter typically is converted back to physical space coordinates using the mean density-depth relation computed from the same data. The use here of climatological salinity data presumes that the salinity gradient during DIMES was similar to the climatological gradient computed from all previous records. While this may be a reasonable (even if necessary) assumption, and any differences likely to be small, a sentence mentioning this as another source of error is warranted.

Indeed, we have added this statement to lines 172-174.

A second aspect of the results that could benefit from further discussion are some of the nuances of the difference between this salinity space estimate of K_h and other physical space estimates, particular as relates to the difference between mixing and stirring. The authors argue that the present analysis measures “irreversible mixing”. By this, they strictly mean mixing that crosses isohalines. However, in practice, by virtue of its random nature, stirring by mesoscale eddies is also irreversible. Beyond semantics, one can consider the phases of stirring and mixing described by Garrett (1983) and cited in the paper. During the early stirring phase, eddies re-distribute the tracer and increase its variance in x-y space, but do little to it in salinity space (e.g., per Section 3, line 111 of the paper). The salinity space “diffusion” occurs due to small-scale diffusive processes that rectify the stirring motions by smoothing out the wisps and streaks across what are then also wisps and streaks in salinity. Once the tracer has begun to fill in across many eddy stirring events, the large-scale variance approaches its linear eddy diffusivity growth regime, and absent spatio-temporal changes in the large-scale salinity gradient, this result should be similar to a physical space analysis of diffusivity. However, before the tracer has filled in between the streaks, wouldn't the salinity space vs. physical space dispersion estimates be expected to differ significantly?

Yes indeed. Although we have not adequately communicated so, this is our principle explanation for the behaviour of the tracer. We have improved the discussion of stirring versus mixing in the introduction including further reference to Garrett (lines 29-39) and tried to make our explanation more clear in the discussion section (lines 292-294).

What new information about stirring vs. mixing can be gleaned from this? Some clarification would help the reader understand what the salinity space analysis is telling us for these early vs. late times in the tracer evolution.

Basically our main conclusions are that if you are looking for a tracer in the ocean the best place to look is at the density and salinity and temperature you released it at. And secondly that Garrett was probably right. We would like to say more quantitative things but these data alone will not allow it.

Specific Comments (Relating to above General Comments)

Line 30: But isn't rearrangement by mesoscale flows, if they are random and/or in practice do not reverse, what we consider mesoscale eddy stirring, which is its own form of mixing?

We agree this was unclear and have reworded.

Lines 101-102: This is not a problem if one knows the meridional convergence or strain rate. If this is known, the changing width of the patch in spite of this strain can be computed, which is presumably what the analysis in salinity space will facilitate.

Yes, but we do not have accurate strain data flowing the tracer.

Lines 111-112: “. . . preserve their temperature and salinity values” . . . Except for mixing along mixing lines in T-S space?

We still think this statement holds as we are making the point that filaments are largely adiabatic and feel that mentioning T-S lines would be a distraction. We have added the term ‘largely’.

Lines 126-128: “. . . in density versus salinity anomaly coordinate the tracer spreads out more monotonically.” . . . As it must, since there is no way to mix to different salinities except along mixing lines.

While this is strictly true if we observed the entire tracer, but since we are only observing individual sections we would prefer to leave this as an observation rather than a statement of fact.

Lines 213-214: Is there a way to assess whether increased diffusive flux is due to greater diffusivity or larger tracer gradient caused by flow convergence?

In a qualitative sense we have done this by showing how the diffusivity estimates change with different salinity vs distance profiles but we are not comfortable saying too much more.

Review Summary and Rating

Overall I find this paper interesting and worthy of publication in Ocean Science. I have noted above a few points that the authors might consider adding to the Discussion of the paper – among these are some things that would help clarify the analogies between the present approach and previous ones, and also things that might help readers better understand the differences between the present diffusivity estimates and more traditional physical space estimates.

Thank you for these helpful suggestions and encouragement.

Tracking the spread of a passive tracer through Southern Ocean water masses

Jan D. Zika¹, Jean-Baptiste Sallée², Andrew Meijers³, Alberto Naveira-Garabato⁴, Andrew J. Watson⁵, Marie-Jose Messias⁵, and Brian King⁶

¹School of Mathematics and Statistics. University of New South Wales, Sydney, Australia

²Sorbonne Université, CNRS, LOCEAN Laboratory, Paris, France

³British Antarctic Survey, Cambridge, UK

⁴University of Southampton, National Oceanography Centre, UK

⁵University of Exeter, UK

⁶National Oceanography Centre, Southampton, UK

Correspondence: Jan D. Zika (J.Zika@unsw.edu.au)

Abstract. A dynamically passive inert tracer was released in the interior South Pacific Ocean at latitudes of the Antarctic Circumpolar Current. Observational cross sections of the tracer were taken over four consecutive years as it drifted through Drake Passage and into the Atlantic Ocean. The tracer was released within a region of high salinity relative to surrounding waters at the same density. In the absence of irreversible mixing a tracer remains at constant salinity and temperature on an isopycnal surface. To investigate the process of irreversible mixing we analysed the tracer in potential density versus salinity-anomaly coordinates. Observations of high tracer concentration tended to be collocated with isopycnal salinity anomalies. With time an initially narrow peak in tracer concentration as a function of salinity at constant density, broadened with the tracer being found at ever fresher salinities, consistent with diffusion-like behaviour in that coordinate system. The second moment of the tracer as a function of salinity suggested an initial period of slow spreading for approximately 2 years in the Pacific, followed by more rapid spreading as the tracer entered Drake Passage and the Scotia Sea. Analysis of isopycnal salinity gradients based on the Argo programme suggests that part of this apparent change can be explained by changes in background salinity gradients while part of the change may be explained by geographical changes in background mixing.

1 Introduction

Isopycnal mixing is a key controller of the transport of carbon (Sallée et al., 2012; Gnanadesikan et al., 2015) and heat (Gregory, 2000) into the deep sea, and of the stability of the long-term climate system (Sijp et al., 2006). The influence of isopycnal mixing is nowhere more prevalent than in the Southern Ocean, where steeply sloping isopycnals form a connection between the atmosphere and the deep ocean (Marshall and Speer, 2012). Strong gradients of temperature and salinity along isopycnals imply a necessary balance between advection of relatively warm-saline Circumpolar Deep Water and its freshening by isopycnal and diapycnal mixing (Zika et al., 2009b; Naveira Garabato et al., 2016). Here we explore how a passive tracer released as part of the Diapycnal and Isopycnal Mixing Experiment in the Southern Ocean (DIMES; dimes.ucsd.edu) project mixes through this background salinity and temperature gradient.

Previous tracer release experiments have found that tracers closely followed the release isopycnal surface, spreading slowly across isopycnal surfaces (i.e. across vertically stacked density layers, Ledwell et al., 1993; Morris et al., 2001; Ledwell et al., 2011; Watson et al., 2013). Tracer profiles in these studies were typically averaged over sections as a function of density and then transformed into depth coordinates through a reference density vs depth profile. The motivation for averaging at constant density is that the tracer can move to different depth levels through adiabatic reversible motions. Moving to different density values in the ocean interior (i.e. away from sources and sinks of heat and salt) requires irreversible mixing, which either directly mixes the tracer across isopycnals or causes diapycnal advection (e.g. Toole and McDougall, 2001).

Just as vertical displacements of the tracer can occur without diapycnal mixing, lateral spreading of the tracer can occur without any irreversible mixing. The tracer can be spread out or contract geographically due to diverging or converging ocean currents, respectively. If such dynamics are reversible, as would be expected from laminar changes in the ACC along its path or broad wave like fluctuations in frontal positions, the concentration of the tracer at constant density and salinity should not change. The exception to this is when the flow ‘stirs’ the tracer.

Typically a distinction is made between ‘stirring’ which is associated with mesoscale and ~~through-rearrangement-by-mesoscale flows. This motivates the use of coordinates which preserve~~ sub-mesoscale motions creating long filaments and sharp gradients and ‘mixing’ which relates to the resultant irreversible mixing once filaments have become sufficiently sharp that small scale turbulent mixing is sufficient to mix water masses irreversibly (Smith and Ferrari, 2009). The two are linked since stirring enables mixing. Garrett (1983) showed that with background small scale mixing held constant, the rate of growth of the area of an ensemble of tracer patches (a measure of the rate of stirring) approaches the rate of growth of the area of a single tracer patch (a measure of irreversible mixing) after some initial lag time of the order of years.

Because of the density of observations we will consider, we can not estimate the area of our tracer patch accurately so we will project the data into a coordinate system which preserves adiabatic horizontal/isopycnal motions just as isopycnal coordinates preserve adiabatic vertical motions.

Various cross-stream coordinates have been proposed, such as sea surface height (Sokolov and Rintoul, 2009; Meijers et al., 2011), dynamic height (Naveira Garabato et al., 2011) and density on pressure surfaces (Zika et al., 2013). However, these are not necessarily conserved following the tracer path and implicitly assume that the flow is ‘equivalent-barotropic’ throughout the entire water column (Killworth, 1992). Any subtle spiralling of the velocity vector with depth can accumulate to create a mismatch between the flow direction on a particular isopycnal and the tangent lines of SSH or dynamic height contours at the surface.

It has long been understood that, in the absence of irreversible mixing, a water parcel in the ocean interior will remain at constant salinity and temperature (Iselin, 1939). Since the mixing of water parcels with the same density is thought to dominate over mixing at different densities, a variable known as ‘spice’ is often used to track along-isopycnal motion. Under the assumption of a linear equation of state, spice describes the density-compensated variations in temperature and salinity along a constant density surface, and is orthogonal to density in the temperature - salinity plane (Veronis, 1972). The spice variable has been exploited by a number of authors (e.g. Rudnick and Martin, 2002).

Here we simply use salinity at constant density as our coordinate which is equivalent locally to a typical definition of ‘spice’. Since density is locally a function of conservative temperature and salinity, a line of constant salinity on an isopycnal is also a line of constant temperature (Zika et al., 2009a). So our analysis would be the same whether we consider temperature or salinity as our horizontal coordinate. In either case, there is no way a tracer in the ocean interior, which is released on such a contour, can move away from that contour without irreversible mixing.

Here, we ~~We~~ have analysed tracer data collected during DIMES using an isopycnal-salinity coordinate with the aim of helping to understand isopycnal dispersion and ~~complimenting~~ complementing previous studies that have used more conventional approaches to estimate isopycnal mixing rates. Using these data Tulloch et al. (2014) estimated the isopycnal diffusion coefficient to be $710 \pm 260 \text{ m}^2 \text{ s}^{-1}$ along the Antarctic Circumpolar Current (ACC) in the South Pacific Ocean near the release depth of 1500 m. Those authors applied the ensemble tracer patch area approach (Garrett, 1983). In a parallel study, LaCasce et al. (2013) analyzed data from sub-surface Lagrangian drifters released during the DIMES campaign. They estimated the isopycnal diffusivity to be $800 \pm 200 \text{ m}^2 \text{ s}^{-1}$ using the Lagrangian dispersion method (Garrett, 1983).

We show, in Section 2, that the tracer released in the interior South Pacific spreads geographically in an inhomogeneous way as it follows the ACC and is stirred by eddies. In Section 3, we show that some of this inhomogeneity is reduced when the tracer is projected into salinity coordinates. In Section 4, we project the spreading of the tracer in salinity coordinates into equivalent geographical coordinates. We then attempt to reconcile the growth of its second moments in equivalent geographical coordinates in terms of diffusion coefficients in Section 5, and we discuss these results in terms of existing theories in Section 6. Concluding remarks are given in Section 7.

2 Tracer data

In February 2009, 76 kg of the inert tracer trifluoromethyl sulphur pentafluoride (CF_3SF_5) were released at the potential density (referenced to 1000 m) of 32.325 kg m^{-3} (neutral density $\approx 27.9 \text{ kg m}^{-3}$; depth $\approx 1500 \text{ m}$) near 58°S , 253°E . The tracer was chosen as it has a very low background atmospheric concentration and nearly negligible interior ocean concentration, is non-toxic and is chemically inert in the environment and is detectable at extreme dilution (Ho et al., 2008). The tracer was released in a cross pattern approximately 20 km wide, between the Subantarctic and Polar fronts and at the density of Upper Circumpolar Deep Water. The initial tracer distribution, determined by sampling within two weeks of the release, was found to be centered about 4 meters below the target density surface. The rms spread of the tracer in density was documented as approximately 0.0015 kg m^{-3} , corresponding to a vertical rms spread of 5.5 m. For details of the release method and measurement technique, see Ledwell et al. (2011).

Several subsequent surveys were undertaken: in February 2010 in the region 57°S to 62°S and 255°E to 275°E (Fig. 1a); in December 2010 (Fig. 1b), April 2011 (Fig. 1c) and August 2011 (Fig. 1d) in the regions west of and at Drake Passage; and along the western and northern margins of the Scotia Sea in 2012 (February-March, Fig. 1e) and 2013 (March-April, Fig. 1f) to measure the change in distribution of the tracer with time. Tracer sampling and shipboard chemical analysis are described in Ledwell et al. (2011) and in Watson et al. (2013).

We have analysed 11 sections taken at 5 locations, here named: South Pacific (actually a regional survey), South-East Pacific
90 (along 282°E), Drake Entry (near 293°E), Drake Exit (along the section commonly termed SR1b near 303°E), and North
Scotia (along the North Scotia Ridge). These locations are indicated in Fig. 1.

Year-on-year, the tracer was found increasingly toward the east and in lower concentrations (Fig.2; Watson et al., 2013). The
tracer closely followed the release isopycnal surface, spreading slowly across isopycnal surfaces (i.e. across vertically stacked
density layers). Tracer profiles averaged over sections as a function of density and then transformed into depth coordinates
95 through a reference density/depth profile were approximately Gaussian. The spread of these Gaussian profiles with time and/or
with distance to the east, yielded diapycnal diffusivities of $O(2 \times 10^{-5}) \text{ m}^2 \text{ s}^{-1}$ in the South Pacific (Ledwell et al., 2011;
Watson et al., 2013), and $O(3 \times 10^{-4}) \text{ m}^2 \text{ s}^{-1}$ in the Scotia Sea, where the ACC flows over comparatively shallow and complex
topography (Watson et al., 2013).

The tracer was not always delimited at the northern and southern ends of the transects or surveys due to compromises
100 dictated by ship time limitations. Sampling was planned with information on the locations of the Polar Front to the south and
the Subantarctic Front (west of Drake Passage) or of the continental slope (east of Drake Passage) to the north. The tracer had
been released midway between the two fronts, and so when compromises in sampling were needed, sampling was curtailed
beyond the fronts, especially north of the Subantarctic front in the Pacific, guided by the notion that the fronts are barriers to
cross-ACC transport (e.g. Naveira Garabato et al., 2016) and also by an altimetry-based prediction of tracer patch spreading. It
105 turned out that little tracer was detected south of the Polar Front when time allowed for sampling there. However, sections in the
Pacific often found high concentrations in the northernmost (although still south of the Sub Antarctic Front) stations, suggesting
that there was tracer to the north of the sampled area. In fact, the evidence is that not very much of the tracer spread to the
north of the Subantarctic Front. The DIMES float trajectories, shown in Fig. 3 of LaCasce et al. (2013), illustrate that virtually
none of the floats went far enough north to avoid transiting through Drake Passage. The ensemble of numerical simulations
110 for realistic conditions, calibrated with the available tracer observations, shown in Fig. 1 of Tulloch et al. (2014) also suggest
that relatively little tracer was missed to the north or south of the sampled regions. Hence, we argue that tracer sampling was
sufficiently representative to support our main conclusions, though the shortfall of sampling adds to the uncertainty of our
quantitative analysis.

The tracer was apparently distributed over a smaller meridional range at the Drake Passage Exit section than in the South-East
115 Pacific. This could be due to a decrease in meridional spread as the tracer moves downstream associated with the contraction of
the ACC as it flows through Drake Passage or due to sampling issues. In either case it poses a problem to conventional analysis
of cross-ACC dispersion in terms of a Fickian eddy diffusivity since the second moment in geographical space decreases with
time. We shall see shortly that analysis of the along-isopycnal spreading of the tracer into waters with different salinities helps
to circumvent this problem.

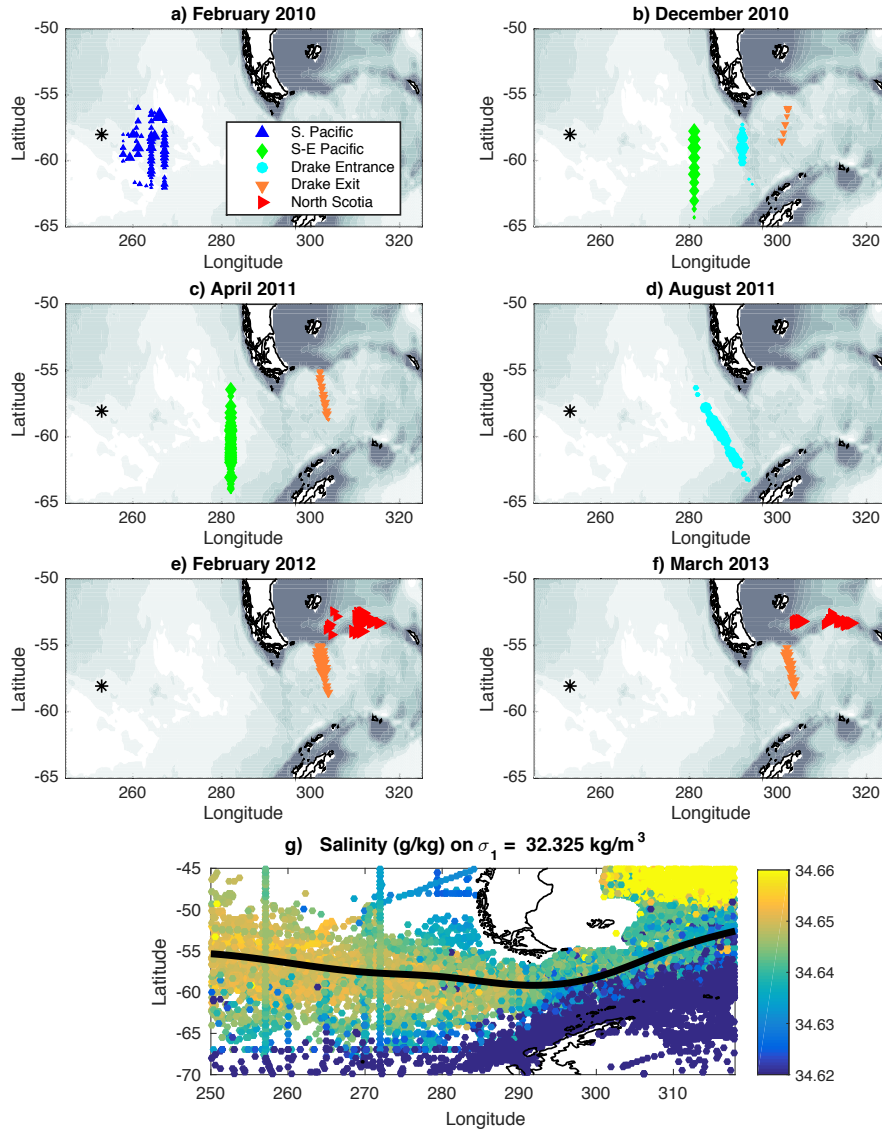


Figure 1. [a-f](#): Cast locations for each summer voyage in which tracer measurements were taken. The size of each marker corresponds to the peak tracer concentration for that cast. Marker sizes are scaled relative to the largest measured tracer concentration for that time period (i.e. markers corresponding to the cast where the largest concentration was measured have the same size between all six figures; see Fig.2 for maximum concentrations for each section). The star indicates the release location, upward triangles the South Pacific region (US Voyage 2), diamonds the South-East Pacific section (along 282°E), circles the Drake Entry section (along Phoenix Ridge), downward triangles Drake Exit section (otherwise known as SR1b) and right triangles the North Scotia section. [g](#): [Salinity observations interpolated onto the release isopycnal surface \(circles\)](#). A spline fit of the mean latitude of salinities between 34.645 g kg⁻¹ and 34.65 g kg⁻¹ is shown with a black line.

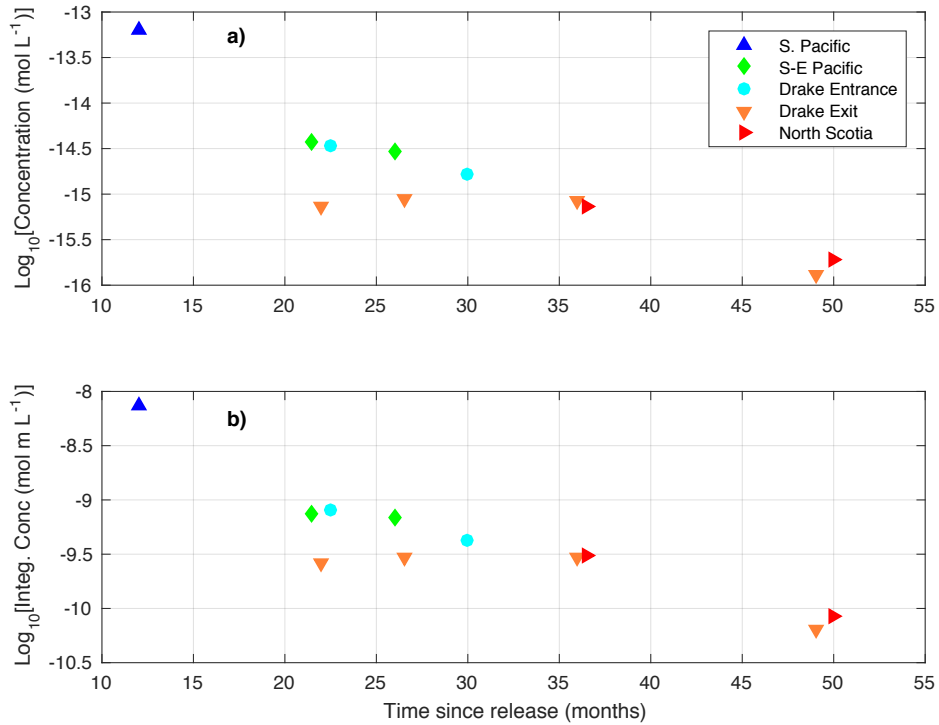


Figure 2. a) The peak concentration measured ($\log_{10} \text{ mol L}^{-1}$) at each section as a function of time since release (months). b) Peak depth-integrated concentration ($\log_{10} \text{ mol m L}^{-1}$). Although higher concentrations could be inhomogeneously distributed either side of the sections at a given time, the time series suggests that the concentration peak is closer to the eastern South Pacific before 30 months, and closer to or beyond the North Scotia Ridge by the last transect near 50 months

120 3 Tracer dispersion in density versus salinity-anomaly coordinates

The tracer was found to spread inhomogeneously in the horizontal. Figure 3 shows the distribution of the tracer as a function of latitude and depth (panels a-c) and latitude and density (d-f) and in temperature and salinity coordinates (g-i) for the South Pacific section in February 2010 (a,d and g), South-East Pacific section in December 2010 (b, e and h) and the Drake Exit section in March 2011 (c, f and i).

125 The tracer spread isopycnally and formed multiple peaks in concentration, suggesting that the patch had been teased into filaments. When the tracer distribution is projected onto temperature versus salinity coordinates, these individual maxima are not seen, suggesting that filaments largely preserve their temperature and salinity values. To investigate this effect further, we show both the salinity and tracer concentration on the release isopycnal (Fig.3 j-l). These two variables are also plotted against one another as a scatter plot (Fig.3 m-o). Two to three years into the experiment (i.e. during the late 2010 and 2011 voyages),
 130 higher tracer concentrations are found where the highest salinities are measured on the isopycnal. The core of the tracer is apparently moving with or close to the salinity maximum on the isopycnal.

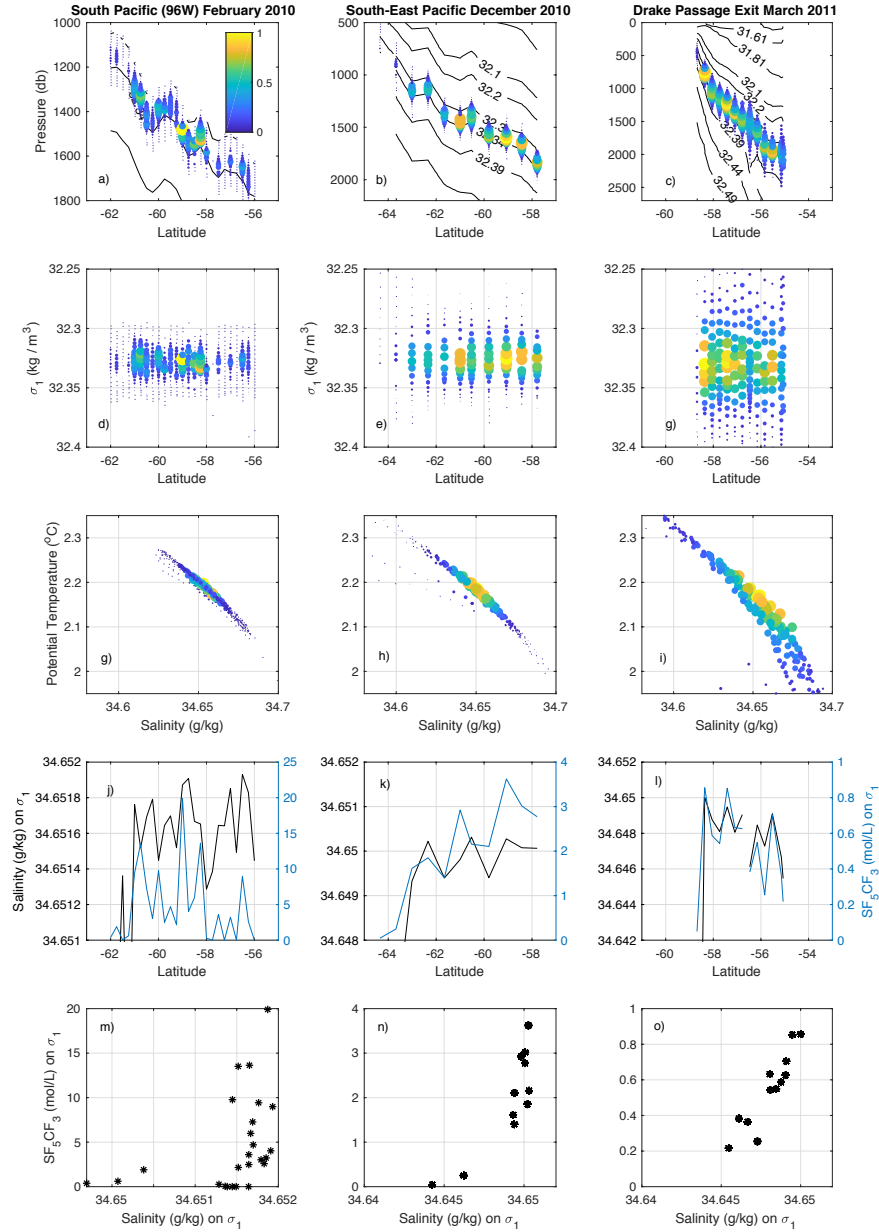


Figure 3. a-c) Depth and latitude of tracer measurements, with contours of potential density referenced to 1000m (σ_0 ; not evenly spaced). The Polar Front and the Subantarctic Front, respectively, are where the slope of the density surfaces is large, near the southern and northern ends of these sections. d-f) Potential density and latitude of tracer measurements. g-i) Potential temperature and salinity. j-l) Salinity and tracer on the $\sigma_1=32.325 \text{ kg m}^{-3}$ surface. m-o) Scatter plot of salinity and tracer concentration on the $\sigma_1=32.325 \text{ kg m}^{-3}$ surface (note the changing y-axis range). For panels a-i, colour represents tracer concentration relative to the peak measured for that section. Panels a, d and g are from the South Pacific cruise of February 2010; b, e and h the South-East Pacific section of December 2010; c, f and i the Drake Exit section of March 2011.

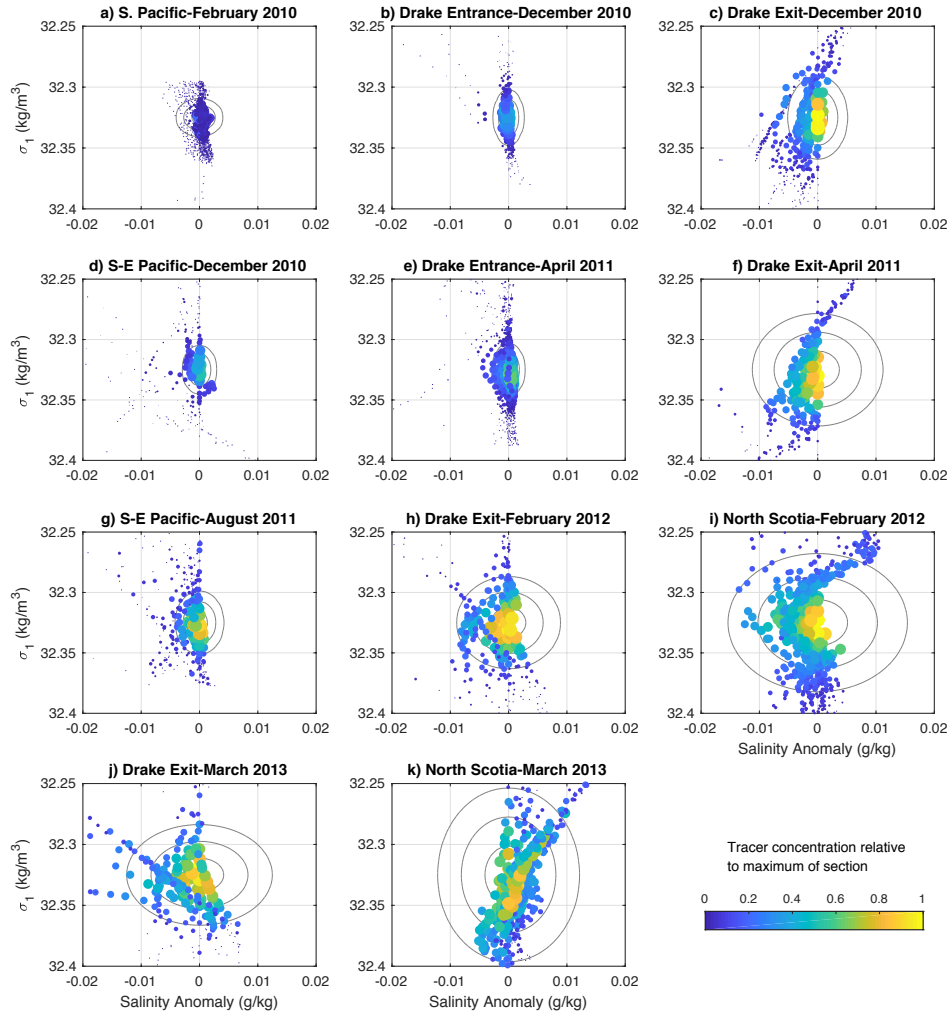


Figure 4. Data from all 11 sections from the five DIMES cruises discussed are shown in potential density versus isopycnal salinity anomaly coordinates. Each point is colored by the tracer concentration relative to the maximum of that section (see Fig.2 for these values). Grey contours show the $\sigma/2$, σ and $3\sigma/2$ contours of a fit of a 2D Gaussian curve to these data.

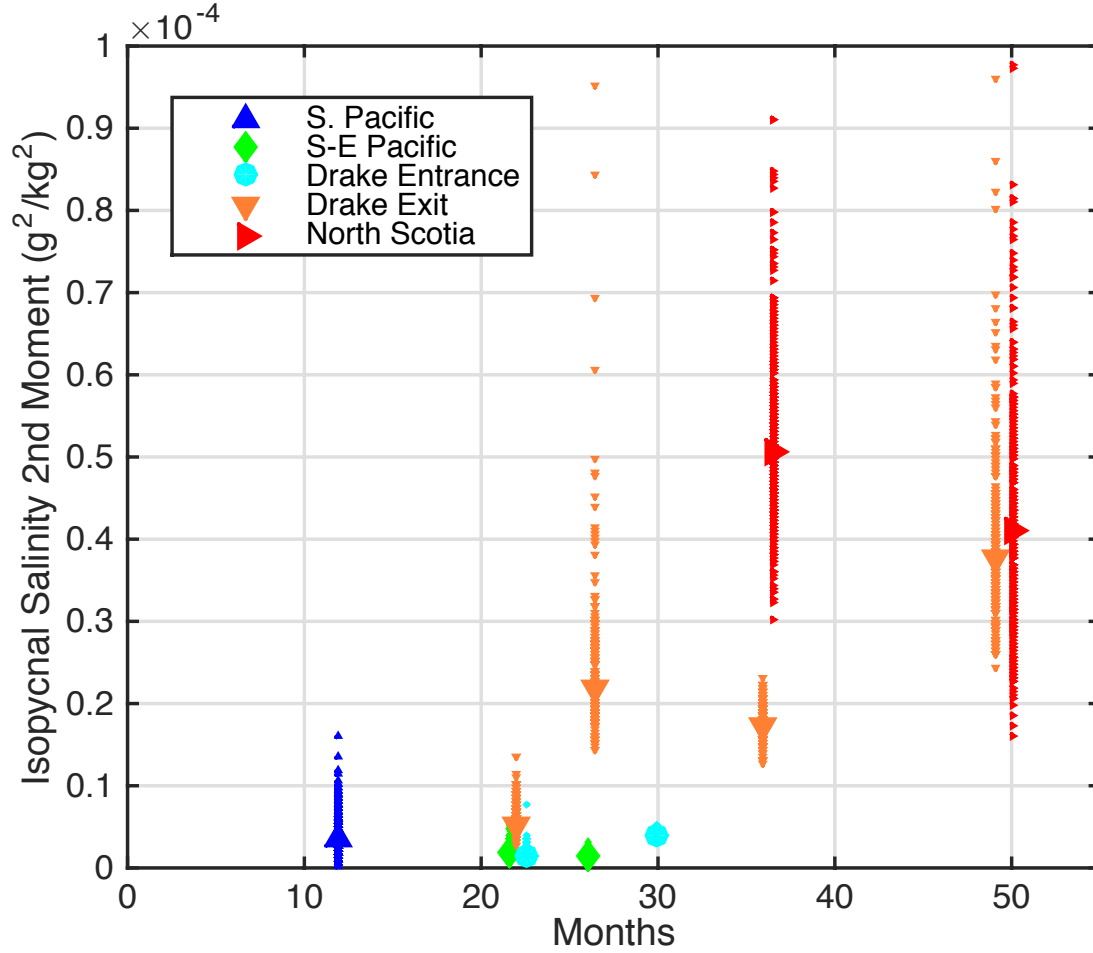


Figure 5. Isopycnal second moment of the tracer in salinity coordinates derived from the Gaussian fits in Fig. 3 versus time since release. Each small marker (making up the error bars) represents a single member of the bootstrap ensemble, and the larger marker the result of using all the data.

On an isopycnal surface, the isopycnal salinity anomaly (S') is defined as the local salinity minus some reference salinity (S_0). We ~~choose the reference salinity~~ define S_0 on each density layer to be the salinity at the ~~location on the isopycnal where the cast where the largest~~ largest. ~~On the release isopycnal S_0 remains close to 34.65g kg^{-1} throughout our study domain, decreasing slightly toward the east, but is always larger than 34.645g kg^{-1} .~~ measured. In order for the tracer to disperse in this coordinate, it must either cross ~~isotherms~~ isohalines at constant density (i.e. changing salinity with a compensating change in temperature) or cross isopycnal surfaces. Our focus here is on dispersion in the isopycnal direction.

~~The choice to~~ We define S_0 separately for each section, rather than as the salinity value on which the tracer was injected, ~~is intended.~~ This is in part because as denser and lighter isopycnals are reached by the tracer their reference salinity may change, and in part to account for migration of the peak due to gradual along-isopycnal transport. ~~However, the effect of this choice is negligible relative to other sources of uncertainty~~ On the release isopycnal S_0 remains close to 34.65g kg^{-1} throughout our study domain. S_0 appears to decrease slightly toward the east, but the trend is not robust and S_0 is always larger than 34.645g kg^{-1} .

In Figure 4, the tracer distributions for each section are mapped onto density versus salinity anomaly coordinates. While in geographical coordinates the dispersion of the tracer has multiple maxima and minima and appears to contract meridionally with time, in density versus salinity anomaly coordinates the tracer spreads out more monotonically.

In order to quantify the spreading of the tracer in isopycnal salinity anomaly coordinates, we apply a nonlinear least squares fit (using Matlab's `fminsearch` algorithm) of a two-dimensional Gaussian distribution in that reference frame. This is done at each section to yield the standard deviation of salinity in the along-isopycnal direction. As mentioned above, growth of the tracer patch in the diapycnal direction during the initial two years of the experiment was analyzed by Ledwell et al. (2011) and by Watson et al. (2013) and further discussion of diapycnal mixing is left to future work.

The evolution of the second moment of the tracer in isopycnal salinity anomaly coordinates (the square of the standard deviation) is shown in Fig. 5. There is an apparent weak spreading of the tracer in the first 24 months, with the tracer patch growing to second moment values generally less than $5 \times 10^{-6} (\text{g/kg})^2$; then, over the subsequent 24 months, more rapid spreading of the tracer occurs, reaching second moment values of order $5 \times 10^{-5} (\text{g/kg})^2$.

To account for the various sources of sampling error, we estimate uncertainty using the following bootstrapping method. For each section, the tracer observations are randomly sub-sampled allowing for repeated sampling of the same data. For a section with N samples, N observations are chosen at random (with repetition), and the second moment determined. This is then repeated N times. Each estimate is shown in Fig.5.

The uncertainty analysis reveals a larger range of second moment estimates for the initial South Pacific survey after 12 months than in surveys conducted after 20-30 months in the same region, potentially indicating an initial lack of correspondence between salinity and tracer filaments (Fig. 5). Uncertainties then increase for the later period and in the Scotia Sea, likely due to reduced tracer concentrations, poor coverage of the Gaussian distribution, and a lack of consistency of the Gaussian model due to anisotropic variations in mixing and a changing background salinity and density field.

Nonetheless, there is a notable increase in the rate at which the tracer spreads in isopycnal salinity anomaly coordinates between the initial two years and the subsequent years of the experiment. This could be explained by a change in the rate

at which the tracer is mixed, or by a change in background salinity gradient. In the next section, we investigate ~~the~~ these explanations.

4 Projection from isopycnal salinity anomaly to distance coordinates

170 In order to interpret our analysis in terms of geographical dispersion, we next relate the isopycnal salinity anomaly coordinate to an equivalent cross-stream distance. We use the climatological mean distance between isohalines along the ACC to effect this transformation. Although such a transformation results in information loss relating to the moving salinity coordinate, it is instructive in linking dispersion to an apparent mixing coefficient for comparison with other work.

Distances between isohalines are determined using the entirety of available hydrographic data for the region. The hydro-
175 graphic compilation used in this study includes ship-based observations from the World Ocean Database (<http://www.nodc.noaa.gov/OC5/SELECT/dbsearch/dbsearch.html>) and from the Argo program (<http://www.argo.ucsd.edu>, <http://argo.jcommops.org>), as well as from ship-based observations directly obtained from individual PIs (see Sallée et al., 2010). Ideally, distances between isohalines would be determined for the precise period of the DIMES experiment but due to data sparsity we have used the entire database.

180 For each vertical cast, potential density and salinity are determined. Salinity is then linearly interpolated onto the $\sigma_1 = 32.325$ kg m⁻³ isopycnal surface (Fig. 7). Maps of these raw salinity values show a clear ridge of high salinity running along the ACC on this isopycnal. Higher salinity gradients are apparent further to the east as the ACC contracts. It is along this ridge that the tracer is released.

If fine-resolution (e.g., eddy-resolving), real-time and realistic salinity data were available on the isopycnal surface, we
185 would form a time-varying salinity coordinate by calculating the area contained between salinity ranges and remap this onto a quasi-meridional distance (e.g., following Marshall et al., 2006). However, such a density of data is not available from an observational product. Instead, we estimate the distance coordinate directly from the in-situ data. We do this by, first, estimating the mean location of the salinity contour along which the tracer is centred; and, second, calculating the average distance from that contour to other salinity measurement sites.

190 The western South Pacific and South Atlantic are partitioned into seven bands between longitudes 250°E, 260°E, 270°E, 280°E, 290°E, 300°E, 310°E and 320°E. Within each band, we determine the average latitude of salinity observations that fall between 34.645 g kg⁻¹ and 34.65 g kg⁻¹ (using a simple arithmetic mean). This defines a latitude ($y_0(x)$) for each of the seven bands, and effectively determines the approximate path the tracer would follow if it did not mix irreversibly. We use 10° and not narrower bands to avoid noise arising from a minimal number of salinity observations being made on the isopycnal.
195 A smooth set of points every 0.5° of longitude are then used to define the curve for $y_0(x)$, using a 1-dimensional cubic spline interpolation.

For each isopycnal salinity anomaly observation (S') we determine its distance ($D(S')$) from the curve $y_0(x)$. Distance is defined as the minimum great-circle distance from the observation to a point on the curve $y_0(x)$. The mean distance, $\overline{D(S')}$, is then the average of $D(S')$ for a given band of longitudes and over a range of salinities close to S' . $\overline{D(S')}$ is used to transform

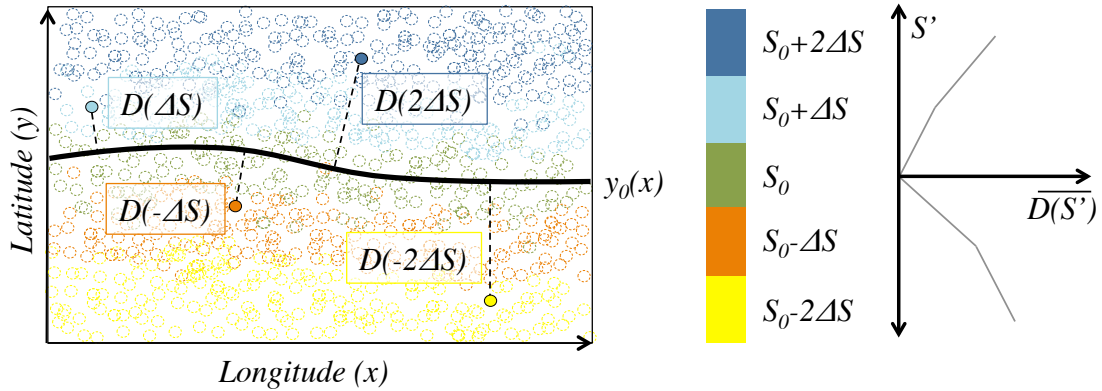


Figure 6. Schematic describing the method by which the mean distance as a function of salinity anomaly ($\overline{D(S')}$) is calculated. Circles represent salinity observations on an isopycnal surface. The latitude of observations close to the target salinity ($S_0 \pm \Delta S/2$; green) are used to define a locus of latitudes ($y_0(x)$; solid line). The minimum great circle distance (D) of each observation from $y_0(x)$ is then determined and binned as a function of the salinity anomaly ($S' = S - S_0$). Distances are averaged within each bin, giving a relationship between salinity anomaly and distance $\overline{D(S')}$.

the salinity anomaly coordinate into an equivalent distance coordinate. In regions where $y_0(x)$ follows a line of constant latitude (as is approximately the case in the South Pacific), $\overline{D(S')}$ is effectively the average meridional distance of water parcels with salinity S' , from the line $y_0(x)$. $D(S')$ is averaged within each 10° band and within salinity bins of 0.005 g kg^{-1} , as shown in Fig.7b.

Our distance coordinate is analogous to other pseudo-distances used in diffusivity studies in the Southern Ocean, where quasi-stream-following coordinates are used. For example, Naveira Garabato et al. (2011) use a similar approximate conversion between dynamic height and latitudinal distance when estimating eddy stirring length scales. It should be noted that there is some unavoidable loss of spatial information in the use of water mass-following coordinates. While the distance coordinate aims to relate changes in salinity at constant density to changes in distance, it is impossible to know the actual path taken by tracers, and so the distance conversion will always be approximate. We discuss the impact of changes in both the distance coordinate with longitude and its impact on apparent diffusivity in the next section.

The distance $\overline{D(S')}$ decreases substantially between the South Pacific and the Scotia Sea. At the release site in the South Pacific waters become 0.01 g/kg fresher over approximately 700 km, while they change by the same amount over only 300 km in the Scotia Sea.

In order to translate the salinity second moment (Fig. 5) into units of distance squared (as relevant to the estimation of a mixing coefficient) we construct ‘reference profiles’ based on $\overline{D(S')}$. The use of a reference profile is routine when converting isopycnally averaged tracer observations into vertical distance for the purpose of inferring a vertical diffusivity (Ledwell et al., 1993). Since there is a substantial change in the salinity gradient between the South Pacific and the Scotia Sea, and there is an apparent change in the rate at which the tracer spreads in salinity after 18-24 months, we have defined three mean profiles for:

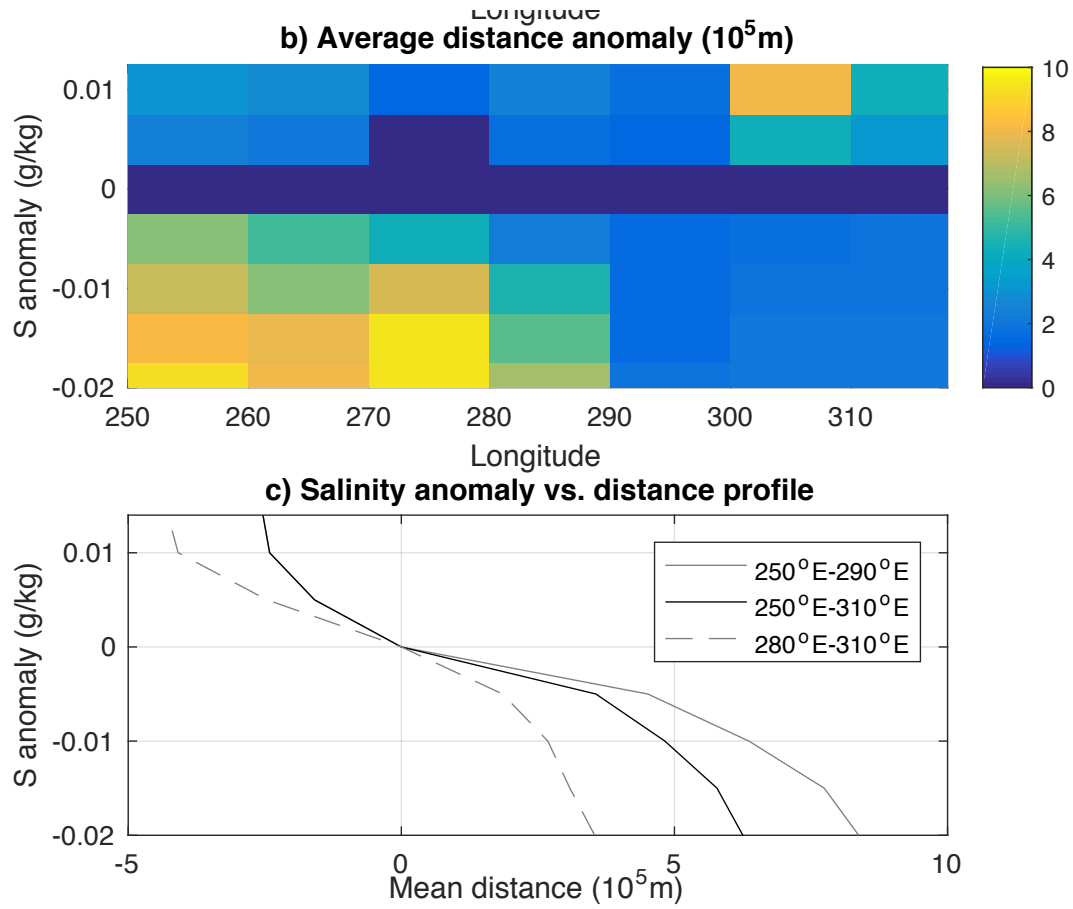


Figure 7. a) ~~Salinity observations interpolated onto the release isopycnal surface (circles). A spline fit of the mean latitude of salinities between 34.645 g kg^{-1} and 34.65 g kg^{-1} is shown with a black line.~~ b) The mean minimum distance of observations in each salinity class to the black line in 10° longitude bands. ~~c) The mean salinity versus distance profile for the entire survey region and for a western and an eastern regions. In the eastern-western most region there were insufficient fresher (negative) high salinity anomalies are measured observations to produce a profile for the positive salinity anomalies there.~~

the entire region between 250°E and 310°E , a western region between 250°E and 290°E , and an eastern region between 280°E and 310°E . The choice of longitudes here is arbitrary, and our aim is to merely assess the sensitivity of second moments and diffusivities estimated to a range of possible profiles.

Given distance as a function of salinity for each section, $\overline{D(S')}$, we use the climatological hydrography to map the tracer from isopycnal salinity-anomaly to distance-anomaly coordinates. The same distance versus salinity anomaly profiles are used on all isopycnals.

225 We apply a non-linear least-squares fit of a two-dimensional Gaussian distribution to each section to yield the standard width in the isopycnal direction (σ_{iso}), with the resulting along-isopycnal component of the second moments shown in Fig. 8 now in the conventional units of squared metres.

5 Interpretation of the isopycnal growth of the tracer patch

Given the change in the isopycnal second moment at each section ($\Delta\sigma_{iso}^2$) and the time between section occupations (Δt), we
 230 can examine whether the tracer patch grows linearly, as would be expected from the ensemble area of a tracer patch with a constant diffusion coefficient (K_{iso}), such that

$$\Delta\sigma_{iso}^2 = 2K_{iso}\Delta t., \quad (1)$$

or if there is a temporal change in the growth rate either indicating different phases of the tracer evolution or geographical changes in K_{iso} .

235 In Figure 8a, the second moments of the tracer are plotted as a function of time since release, using the mean salinity versus distance profile for the entire survey region. The classical calculation of the eddy diffusion coefficient based on Lagrangian data statistics was first introduced by Taylor (1922), who showed that under stationary conditions and after multiples of the Lagrangian correlation time, the area of a cloud of particles will grow linearly in time at a rate known as the effective eddy diffusivity. In this paper, we describe the linear growth from an infinitesimally small second moment with an “apparent diffusivity”.
 240 We next test this simple model of the growth of the tracer patch.

The apparent diffusivity is on the order of $50 \text{ m}^2 \text{ s}^{-1}$ in the South Pacific leading up to the eastern South Pacific and Drake Entry sections, and on the order of $400 \text{ m}^2 \text{ s}^{-1}$ integrated over both the South Pacific and Scotia Sea regions. Downstream sections such as the Drake Exit exhibit a large range of apparent diffusivities (i.e. when fitting second moment growth all the way back to the origin) from order $200 \text{ m}^2 \text{ s}^{-1}$ to order $600 \text{ m}^2 \text{ s}^{-1}$, with later diffusivities tending to be larger even though
 245 the tracer has transited through the same geographical domain.

The change in apparent diffusivity between the earlier period and western region, and the later period and eastern region, can be explained by at least three mechanisms: first, the difference in salinity gradient from the eastern to western region could translate into virtual increase of apparent diffusivity as we have not yet accounted for such variations; second, the tracer may enter a region of more vigorous isopycnal mixing in the east; third, the apparent diffusivity is low at early stage after tracer
 250 release because the tracer is still in a slow exponential growth regime, before achieving faster growth after some lag time on the order of months to years (Garrett, 1983) and coincidentally when it enters the eastern region. The later two possibilities are addressed in more detail in the discussion section below.

To ascertain whether the change in apparent diffusivity could be explained by a change in the salinity gradient itself, we estimate a diffusivity in two phases using salinity versus distance profiles for the western and eastern regions separately (shown
 255 in Fig.7). For the western region, we use only tracer measurements made in the first 26 months of the experiment and to the west of 290°E . These estimates assume that mixing is linear from the release date. For the eastern region, we use only measurements

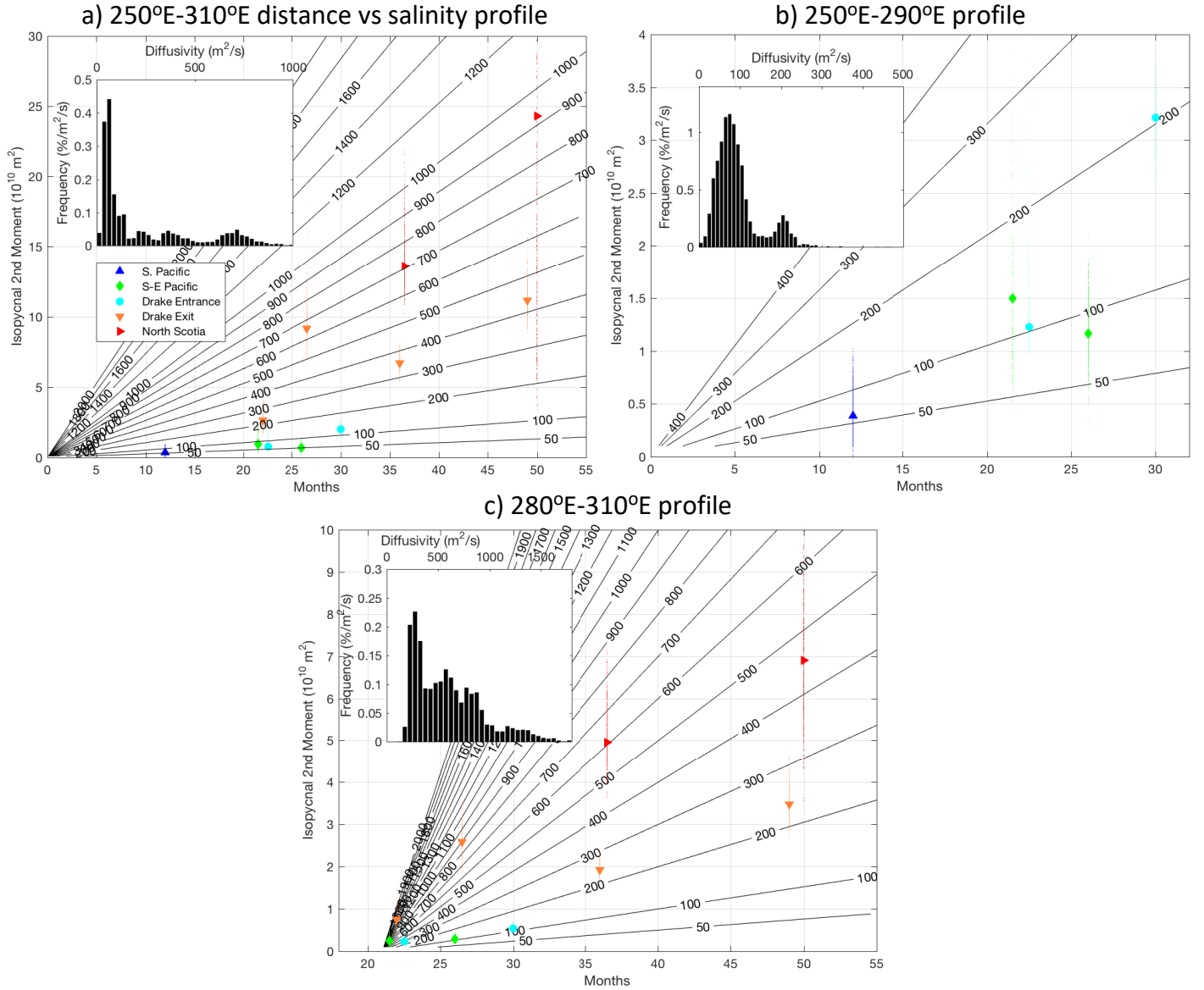


Figure 8. Isopycnal second moment of the tracer versus time since release, computed by projecting from tracer versus salinity anomaly into tracer versus distance, using a constant distance versus salinity profile. Panel a) uses the profile from salinity data between 250°E and 310°E, b) between 250°E and 290°E, and c) 280°E and 310°E. Only tracer data gathered between those ~~latitudes~~longitudes are shown. Each small marker represents a single member of the bootstrap ensemble, and the larger marker the result of using all the data. The rate of change of the second moment in time is proportional to an apparent diffusivity (equation 1). Contours of apparent diffusivity are shown in black. a) and b) show the case where the growth is linear from the release date, and c) shows an offset of 21 months. Within each panel are shown the distribution functions of diffusivity estimates. In a) and b) these assume constant mixing from the release date. In c) these estimates are based on the slope between the two eastern South Pacific sections and the two Scotia Sea sections.

made after 20 months and to the east of 280°E. The eastern region estimates are made by taking the difference in the second moment estimates from the South-East Pacific and Drake Entry sections and those measured at least 6 months later at the Drake Exit and North Scotia sections. Although the statistics of the diffusivity estimates are not normal, we estimate the error bounds
260 based on the 16th and 84th deciles (equivalent to ± 1 standard deviation for a normal distribution).

Considering only the sections in the western region in the first 26 months, this analysis yields a diffusivity of 40–100 m² s⁻¹ (45–130 m² s⁻¹ if the final Drake Entry section at 30 months is included). We estimate a diffusivity of 250–870 m² s⁻¹ in the eastern region. This suggests that even when considering a change in the background salinity gradient there is still a substantial increase of diffusivity between the western and eastern region, so something else must explain this increase of diffusivity. We
265 ~~note, however, that a change in the background salinity gradient might explain some portion of the apparent increase in the tracer migration to different salinities on the isopycnal~~ in diffusivity.

6 Discussion

In a previous study, data from DIMES together with output of a numerical model were used to quantify isopycnal mixing in the eastern South Pacific (Tulloch et al., 2014). Those authors estimated a diffusion coefficient using the ensemble area of the tracer
270 patch and found it to be of order 700 m² s⁻¹. An additional study used float observations to estimate a diffusion coefficient on the order of 800 m² s⁻¹ (LaCasce et al., 2013). Here, we have taken a complementary approach and attempt to quantify the irreversible mixing of the tracer as it spreads both in the South Pacific and Scotia Sea regions. Using our novel coordinate framework and assuming linear growth from an infinitesimally small patch, we demonstrate that, as the tracer disperses the evolution of the area of the tracer is consistent with an apparent diffusivity of 70 ± 30 m² s⁻¹ in the Southeast Pacific,
275 increasing to 560 ± 310 m² s⁻¹ downstream as the tracer enters the Scotia Sea. While our estimate of apparent diffusivity in the Scotia Sea is consistent with Tulloch et al. (2014) and LaCasce et al. (2013), we note that our estimate in the south east Pacific is significantly lower than their estimate.

While we cannot here disentangle the exact reason for such a difference with previous authors for our estimate in the southeast Pacific, we explore whether the increase of dispersion from the Southeast Pacific to the Scotia Sea could be explained
280 by the time evolution of the regime of dispersion of the tracer patch rather than by a regional difference in conditions. In other words, we explore the possibility that the tracer dispersion is initially very slow, and rapidly increases after some time lag, making a linear growth assumption like we did above inappropriate. Indeed, (Garrett, 1983) discussed that the evolution of a tracer patch (that has already formed an approximately Gaussian distribution; the DIMES tracer was initially dispersed in a 20 km by 20 km cross shape) should have two distinct phases in its evolution: one first phase where the tracer forms streaks, so
285 where the actual area of the tracer grows slowly; and a second phase after some time lag as the actual area approaches the area of an ellipse surrounding the tracer, the growth rate of the actual area of the tracer then asymptotes toward linear growth.

The time-lag and time evolution of the area of the tracer patch in the two different regimes can be expressed as a function of a number of parameters of the flow field (Garrett, 1983, see the Appendix). By trying to best estimate those parameters and bootstrapping a best fit our observed tracer patch dispersion with Garrett (1983)'s theoretical prediction, we are able to

290 estimate the isopycnal mixing K_{iso} reached in the phase of linear growth of the tracer patch, as well as the time lag at which this regime is reached (see the Appendix). From the ensemble of solutions, we find that the isopycnal diffusivity lies between $240 \text{ m}^2 \text{ s}^{-1}$ and $550 \text{ m}^2 \text{ s}^{-1}$ (Fig.9a shows the distribution). The lag times are between 20 and 32 months. If we use the much lower small-scale diffusivity ($K_s=0.04 \text{ m}^2 \text{ s}^{-1}$; see appendix), the solutions for K_{iso} and the lag time do not change substantially ($K_{iso}=290\text{--}600 \text{ m}^2 \text{ s}^{-1}$; lag time = 19-29 months). Both the results of Tulloch et al. (2014) and LaCasce et al. (2013) are consistent with the linear growth rate that we find here of $240\text{--}550 \text{ m}^2 \text{ s}^{-1}$. This linear growth sets in after an initial slow growth phase, as predicted by the theory of Garrett (1983) and suggested our observation of a step change in diffusivities between the South Pacific and Scotia Sea. Additionally the lag time is consistent with the point at which we note the change in diffusivities.

300 Above we are not arguing here that there is necessarily a large increase in effective isopycnal stirring between the Pacific and Atlantic in the Southern Ocean. We are pointing out that an increase in the rate of irreversible mixing of a tracer patch, as our analysis suggests, is expected (Garrett, 1983) even without changes in rates of eddy stirring or small scale mixing.

Alternative explanations for the spread of apparent isopycnal diffusivities in Fig. 8 can not be ruled out. It is possible that frontal suppression inhibited mixing in the South Pacific and that this broke down as the tracer entered Drake Passage, although this interpretation would arguably be at odds with the diffusivity estimates made by Tulloch et al. (2014) and LaCasce et al. (2013). Alternatively, the tracer growth may not have reached the lag time, and may still be in a relatively weak mixing regime (potentially explaining why the implied diffusivities are on the low side of Tulloch et al. (2014) and LaCasce et al. (2013)). In this case, it may be that geographical changes in vertical mixing drive geographical changes in the size of filaments, and therefore the apparent isopycnal mixing inferred (Smith and Ferrari, 2009). Vertical mixing was indeed found to increase as the tracer moved from the Pacific Ocean into the Scotia Sea (Watson et al., 2013).

310 We have neglected the effects of along stream mixing in this analysis as is customary in vertical mixing calculations (Ledwell et al., 1993). In principle, if the tracer is mixed at the same rate in the along stream direction at all salinities, the maximum concentration of the tracer will reduce but the second moment will be preserved. If, however, the tracer is mixed at different rates at different salinities (for example it is mixed strongly close the release salinity and weakly further away) then this could distort the second moment and therefore affect our diffusivity estimates.

315 7 Conclusions

Observations of a passive tracer released in the South Pacific Ocean have been discussed and we have projected tracer observations onto isopycnal salinity anomaly coordinates. The proposed coordinate is equivalent to isopycnal temperature anomaly and is stream-following. For the tracer to deviate from a line of constant temperature and salinity, irreversible transformations must occur. Spreading of the tracer in this coordinate hence relates to irreversible mixing.

320 The second moment of the tracer in salinity coordinates grows very slowly initially to order $0.05 \text{ g}^2/\text{kg}^2$ in the South Pacific over the first 20-25 months. It-The initially tight correlation between salinity at constant density and the tracer could be exploited in future tracer release campaigns to predict where the core of the tracer might be found. Essentially if one is looking

for a tracer in the deep ocean, the best place to look is likely to be at the same temperature and salinity (and therefore density) that the tracer was released at.

325 The second moment then grows to order $0.4 \text{ g}^2/\text{kg}^2$ by 50 months, suggesting a change in the rate at which the tracer spreads through isopycnal salinity space.

In order to relate dispersion in salinity coordinates to isopycnal mixing in geographical coordinates, we have related isopycnal salinity to cross-stream distance in the same way that density has been related to depth in previous studies. ~~The~~ We have estimated the growth of the second moment of the tracer in these equivalent geographical coordinates ~~has then been estimated.~~

330 In distance coordinates, the isopycnal second moment grows slowly in the first 26 months at order $75 \text{ m}^2 \text{ s}^{-1}$, then rapidly thereafter at order $550 \text{ m}^2 \text{ s}^{-1}$. The initial slow growth of the area of a tracer patch proposed by Garrett (1983) is able to explain these two regimes, although does not entirely preclude alternative explanations. Based on these data, the predicted lag time before the onset of linear growth of the tracer patch area is 20–32 months. The rate of isopycnal mixing (representative of the large-scale dispersion of the tracer) is predicted to be $240\text{--}550 \text{ m}^2 \text{ s}^{-1}$ and is consistent with, although somewhat lower
335 than, two recent studies of the same region and period.

Appendix A

According to Garrett (1983), a tracer patch that has already formed an approximately Gaussian distribution (the DIMES tracer was initially dispersed in a 20 km by 20 km cross shape) should have two distinct phases in its evolution:

1. The tracer forms streaks. The area of an ellipse surrounding the tracer grows much faster than the actual area of the tracer
340 (A), which evolves according to

$$A = \pi \frac{K_s}{\gamma} e^{\alpha \gamma (t - \frac{1}{4} \gamma^{-1})}, \quad (\text{A1})$$

where K_s is a small-scale diffusivity, $\gamma = \sqrt{u_x^2 + v_y^2}$ is the strain rate (u_x is the zonal gradient of the zonal velocity, and v_y is the meridional gradient of the meridional velocity), and α is a constant of order 1.

2. As the actual area approaches the area of an ellipse surrounding the tracer, the growth rate of the actual area of the tracer
345 then asymptotes toward linear growth, where K_{iso} obeys (Eq. 1). We term the time at which (1) and (A1) give the same value for A and σ_{iso} the *lag time* (specifically referred to as t_2 in Garrett (1983)).

Using typical values for the stratification and strain in the ocean, Garrett (1983) estimated the lag time to be on the order of 1 year. To complete this calculation for the region in question, the small-scale diffusivity (K_s), strain (γ), and α are required. We use the small-scale diffusivity estimated by Boland et al. (2015) of $20 \text{ m}^2 \text{ s}^{-1}$. As noted by Boland et al. (2015), this value
350 is about three orders of magnitude larger than computed from the equation proposed by Young et al. (1982) and used in the Garrett (1983) study. It is also one order of magnitude larger than the $2\text{--}3 \text{ m}^2 \text{ s}^{-1}$ estimated by (Ledwell et al., 1993) for a tracer patch at 300 m depth in the eastern North Atlantic. We therefore test the sensitivity of the lag time to this choice below. To determine the strain (γ), we use SatGEM data (Meijers et al., 2011) mapped onto the release isopycnal and interpolated onto

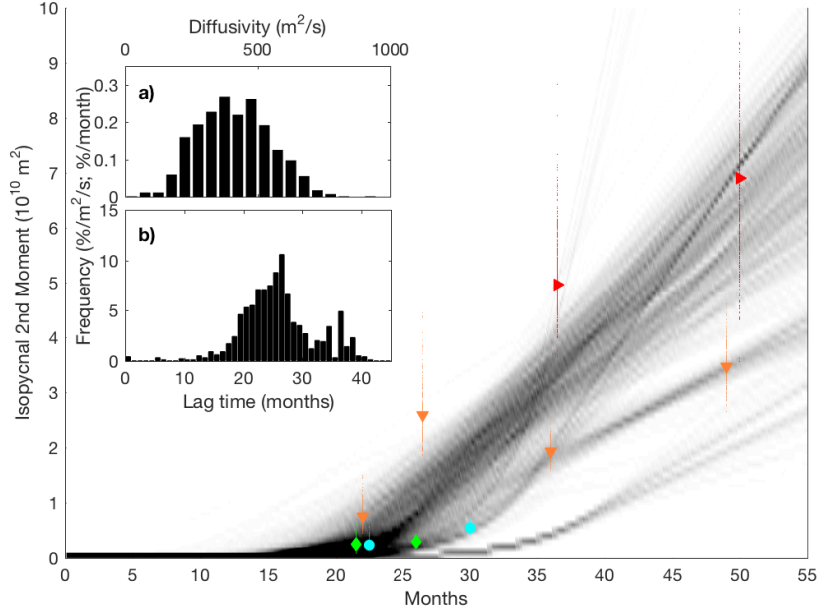


Figure A1. As in Fig. 8, but with the shading showing the density of solutions from 1000 best fits of the Garrett (1983) model where the sections are randomly sub-sampled. The two subplots show the distribution of isopycnal mixing coefficients (a) and lag times (b).

the $y(\bar{S})$ line defined in section 4 based on satellite and hydrographic data from the DIMES survey period. Between 250°E and 290°E, we find $\gamma \approx 2 \times 10^{-6} s^{-1}$.

The most significant uncertainty in the estimation of the lag time lies in our choice of α . As most of the variation from site to site of the dispersion process is presumably captured by γ , one might expect α to be roughly the same at each site of mesoscale stirring. The variation of α would quantify changes in the statistics of the strain other than its variance, for example variations in the Lagrangian autocorrelation of the strain rate.

Given the above numbers and using $\alpha = 0.5$ (the value adopted by Garrett (1983)) we obtain a lag time of 2 months. With $\alpha = 0.2$ (the value estimated from a simulated tracer release in the North Atlantic by Lee et al. (2009)), the lag time increases to 6 months, and for $\alpha = 0.1$ and 0.05 the lag times are 13 and 29 months, respectively. We estimate the uncertainty in γ to be 10-20%, by shifting the averaging window for the SatGEM fields by 10° to the east and west. Although the strain rate could be diagnosed in a range of ways, potentially leading to a larger uncertainty, it is likely that γ has less influence on the uncertainty in (A1) than α .

As the lag time is uncertain, we choose to use equation (1) to solve for both K_{iso} and α using our estimates of σ_{iso}^2 . In order to capture the behaviour of slow followed by fast growth phases, we match (1) to (A1) for the slow growth period with $\sigma_{iso}^2 = A/2\pi$. Implicit in this fitting procedure is the assumption that, during the initial growth phase, our second moments,

based on the tracer projected from salinity to distance coordinates, are related to the total area of the tracer patch. We cannot
370 support this with theory. We simply use equation (A1) as a model that offers the behaviour of slow followed by fast growth.
We only interpret the inferred lag time and K_{iso} that describe the linear growth phase.

Using the entire ensemble of σ_{iso}^2 estimates, we solve for K_{iso} and α such that the continuous line matching (A1) and (1)
at the lag time gives the best fit to the estimated second moments (using Matlab's `fminsearch` algorithm). We estimate the
uncertainty again by bootstrapping, this time subsampling the 11 sections entering the estimate. That is, for each ensemble
375 member, 11 non-unique random numbers are chosen and the corresponding section data are used to estimate K_{iso} and α . This
process is repeated 1000 times to form an ensemble of K_{iso} and α estimates.

Competing interests. The authors have no competing interests.

Acknowledgements. This research was supported by the Natural Environment Research Council (NERC), and the DIMES project was also
supported by the National Science Foundation (NSF). We thank Jim Ledwell for many thoughtful contributions and discussions regarding
380 this manuscript. We also thank all those who worked in the preparation and execution of the DIMES experiment. The data are publicly
available through the British Oceanographic Data Centre (www.bodc.ac.uk/projects/data_management/international/dimes/).

References

- Boland, E. J. D., Shuckburgh, E., Haynes, P. H., Ledwell, J. R., Messias, M.-J., and Watson, A. J.: Determining a sub-mesoscale diffusivity using a roughness measure applied to a tracer release experiment in the Southern Ocean, *Journal of Physical Oceanography*, 45, 1610–1631, 2015.
- Garrett, C.: On the initial streakiness of a dispersing tracer in two-and three-dimensional turbulence, *Dynamics of Atmospheres and Oceans*, 7, 265–277, 1983.
- Gnanadesikan, A., Pradal, M.-A., and Abernathey, R.: Isopycnal mixing by mesoscale eddies significantly impacts oceanic anthropogenic carbon uptake, *Geophysical Research Letters*, 42, 4249–4255, 2015.
- Gregory, J. M.: Vertical heat transports in the ocean and their effect on time-dependent climate change, *Climate Dynamics*, 16, 501–515, 2000.
- Ho, D. T., Ledwell, J. R., and Smethie, Jr., W. M.: Use of SF5CF3 for ocean tracer release experiments, *Geophysical Research Letters*, 35, L04 602, 2008.
- Iselin, C. O. D.: Water-Mass Transformations in a Neutral Density Framework and the Key Role of Light Penetration, *Trans. Am. Geophys. Union*, 20, 414, 1939.
- Killworth, P.: An equivalent barotropic mode in the fine resolution AntArctic model, *Journal of Physical Oceanography*, 22, 1379–1387, 1992.
- LaCasce, J., Ferrari, R., Marshall, J., Tulloch, R., Balwada, D., and Speer, K.: Float-derived isopycnal diffusivities in the DIMES experiment, *Journal of Physical Oceanography*, 2013.
- Ledwell, J., Watson, A., and Law, C.: Evidence of slow mixing across the pycnocline from an open-ocean tracer experiment, *Nature*, 364, 701–702, 1993.
- Ledwell, J. R., St. Laurent, L. C., Garton, J. B., and Toole, J. M.: Diapycnal mixing in the AntArctic circumpolar current, *Journal of Physical Oceanography*, 41, 241–246, 2011.
- Lee, M.-M., Nurser, A. G., Coward, A. C., and De Cuevas, B. A.: Effective eddy diffusivities inferred from a point release tracer in an eddy-resolving ocean model, *Journal of Physical Oceanography*, 39, 894–914, 2009.
- Marshall, J. and Speer, K.: Closure of the meridional overturning circulation through Southern Ocean upwelling, *Nature Geoscience*, 2012.
- Marshall, J., Shuckburgh, E., Jones, H., and Hill, C.: Estimates and implications of surface eddy diffusivity in the Southern Ocean derived from tracer transport, *Journal of physical oceanography*, 36, 1806–1821, 2006.
- Meijers, A., Bindoff, N., and Rintoul, S.: Estimating the four-dimensional structure of the Southern Ocean using satellite altimetry, *Journal of Atmospheric and Oceanic Technology*, 28, 548–568, 2011.
- Morris, M. Y., Hall, M. M., St. Laurent, L. C., and Hogg, N. G.: Abyssal mixing in the Brazil basin, *Journal of Physical Oceanography*, 31, 3331–3348, 2001.
- Naveira Garabato, A. C., Ferrari, R., and Polzin, K. L.: Eddy stirring in the Southern Ocean, *Journal of Geophysical Research: Oceans* (1978–2012), 116, 2011.
- Naveira Garabato, A. C., Polzin, K. L., Ferrari, R., Zika, J. D., and Forryan, A.: A microscale view of mixing and overturning across the Antarctic Circumpolar Current, *Journal of Physical Oceanography*, 46, 233–254, 2016.
- Rudnick, D. L. and Martin, J. P.: On the horizontal density ratio in the upper ocean, *Dynamics of Atmospheres and Oceans*, 36, 3 – 21, 2002.

- Sallée, J. B., Speer, K., Rintoul, S., and Wijffels, S.: Southern Ocean thermocline ventilation, *Journal of Physical Oceanography*, 40, 509–529, 2010.
- 420 Sallée, J.-B., Matear, R. J., Rintoul, S. R., and Lenton, A.: Localized subduction of anthropogenic carbon dioxide in the Southern Hemisphere oceans, *Nature Geoscience*, 5, 579–584, 2012.
- Sijp, W. P., Bates, M., and England, M. H.: Can isopycnal mixing control the stability of the Thermohaline Circulation in ocean climate models?, *Journal of Climate*, 19, 5637–5651, 2006.
- Smith, K. S. and Ferrari, R.: The production and dissipation of compensated thermohaline variance by mesoscale stirring, *Journal of Physical*
 425 *Oceanography*, 39, 2477–2501, 2009.
- Sokolov, S. and Rintoul, S. R.: Circumpolar structure and distribution of the AntArctic Circumpolar Current fronts: 1. Mean circumpolar paths, *Journal of Geophysical Research: Oceans* (1978–2012), 114, 2009.
- Taylor, G. I.: Diffusion by continuous movements, *Proceedings of the london mathematical society*, 2, 196–212, 1922.
- Toole, J. M. and McDougall, T. J.: Mixing and stirring in the ocean interior, in: *Ocean Circulation and Climate*, edited by Siedler, G., Church, J., and Gould, J., pp. 337–356, Academic Press,, 2001.
- 430 Tulloch, R., Ferrari, R., Jahn, O., Klocker, A., LaCasce, J., Ledwell, J. R., Marshall, J., Messias, M.-J., Speer, K., and Watson, A.: Direct estimate of lateral eddy diffusivity upstream of Drake Passage, *Journal of Physical Oceanography*, 44, 2593–2616, 2014.
- Veronis, G.: On properties of seawater defined by temperature, salinity, and pressure, *Journal of Marine Research*, 30, 227–255,, 1972.
- Watson, A. J., Ledwell, J. R., Messias, M.-J., King, B. A., Mackay, N., Meredith, M. P., Mills, B., and Garabato, A. C. N.: Rapid cross-density
 435 ocean mixing at mid-depths in the Drake Passage measured by tracer release, *Nature*, 501, 408–411, 2013.
- Young, W., Rhines, P., and Garrett, C.: Shear flow dispersion, internal waves and horizontal mixing in the ocean, *Journal of Physical Oceanography*, 12, 515–527, 1982.
- Zika, J. D., McDougall, T. J., and Sloyan, B. M.: A tracer-contour inverse method for estimating ocean circulation and mixing, *Journal of Physical Oceanography*, 40, 26–47, 2009a.
- 440 Zika, J. D., Sloyan, B. M., and McDougall, T. J.: Diagnosing the Southern Ocean Overturning from tracer fields, *Journal of Physical Oceanography*, 39, 2926–2940, 2009b.
- Zika, J. D., Sommer, L., Dufour, J., J-M., C. M., B., B., Brasseur, P., Dussin, R., Penduff, T., D., I., Lenton, A., Madec, G., Mathiot, P., Orr, J., Shuckburgh, E., and Vivier, F.: Vertical eddy fluxes in the Southern Ocean, *Journal of Physical Oceanography*, 43, 941–955, 2013.