

Authors replies to the interactive comments of anonymous referee #1 (12 May 2019) on “Seasonal variability of intermediate water masses in the Gulf of Cadiz: implications of the Antarctic and Subarctic seesaw model” by David Roque et al.

RC: denotes referee’s comments

5 **AR:** denotes authors’ reply

RC: Page 1, Title: “Antarctic and Subarctic seesaw model”. The reference to a “seesaw model” in the title but nowhere else in the text should be avoided.

AR: Reviewer is right, we have remove the term model from the title.

10 **RC:** Page 1, Abstract: The sentence “the seasonal variability for the predominance of these intermediate water masses is explained by a novel model based on the concatenation of several wind-driven processes acting during the different seasons”, overrates some- how the importance of the methodology used in this work.

AR: Reviewer is right, we have redrafted these line of the abstract expressing the subject in a more objective fashion.

15 **RC:** Page 2, lines 28, 29: Since MW is characterized by low nutrients, its interaction with AAIW, (characterized by high nutrients) can only cause an increment on the MW nutrients (and not the other way around as expressed in the manuscript). In what concerns the dissolved oxygen, as both AAIW and MW have low concentrations, it is not clear how can their interaction increment the AAIW concentration.

20 **AR:** Reviewer is right. We have redrafted this part of the text and have removed the phrase referring to this subject. It was a mistake.

RC: Page 7, line 1: in fact, the AAIW penetration in the GoC seems “more accentuated and closer to the African coast” in autumn if we look at the salinity distribution; however, from the oxygen distribution this seems to happen in summer.

AR: Reviewer is right; this part of the text has been corrected accordingly to the reviewer observation.

25 **RC:** Page 7, line 3: It is not clear that the monthly distributions shown by the WOA data always agree with the observed data behaviour. Page 7, line 7: Although the oxygen concentration shows the major entrance of the AAIW close to the African coast occurring in November, this is not clear from the salinity distributions.

AR: We have redrafted the text paying more importance to the coincidence as to the oxygen concentration data of WOA data with the observed data. We have added the phrase

“attending to the oxygen concentration distribution, which offers the most marked differences with the other water masses (see table 2)”

RC: Page 7, line 8: “. . .restricted during the spring months”. In fact, this is shown only in March by the salinity distribution and only in April by the oxygen distribution.

5 **AR:** We have added the text ‘only slightly suggested in March by the salinity distribution and in April by the oxygen distribution.’

RC: Page 7, lines 16, 17: the salinity and temperature sections are not discussed in the text but only the oxygen distribution.

10 **AR:** As we told in the previous question, we give more confidence to the oxygen distribution than to the salinity distribution as to identified the different intermediate water masses. By these reason salinity distributions are not mentioned.

We have added the text ‘Note that salinity and temperature distributions are not helpful to discern between AAIW and SAIW (see table 2).’

15 **RC:** Page 7, lines 24-26: The SAIW shows its lowest percentages (less than 10%) in boxes closer to the Iberian coast (from E to I) during autumn, while the highest values are found in winter in these boxes. The ENACW in the closer to coast boxes (G, H) shows its highest values in spring and summer. . .

AR: It has been corrected accordingly to the reviewer suggestions.

RC: Page 9, lines 24, 25: looking at Fig. 11, the referred latitude values, 50° and 30°N, could perhaps be substituted by 48° and 36°?

20 **AR:** Reviewer is right. This item has been corrected in the text.

RC: Page 11: this is the only page in the text where NAO is referred as a cause for the N Atlantic gyre’ displacements. The rest of the text mentions only seasonal variations of the gyres position. Attention should be made to the fact that NAO is not a seasonal process and so NAO and seasonal effects should not be confused.

AR: Reviewer is right. We have added some lines to better understand this reference.

25 We have added the text ‘While in our case we are not dealing with the NAO variability it is worth noting that the effect on the subtropical gyre dynamics of a positive/negative NAO are fairly similar to the effects that a winter/summer wind forcing produce.’

30 **RC:** Page 32: Figure 12 seems to be considered by the authors a good illustration of the processes referred in the text. It shows the seasonal (summer versus winter) displacement of the North Atlantic gyres and the paths of water masses (not all relevant in the text) but there are other depicted processes, like “upwellings”, ITCZ

displacement (July versus January), which are not even mentioned in the text. I wonder how relevant and helpful this figure is in the present context.

AR: Reviewer is right. Figure 12 is now the figure 1 and it is called in the introduction in order to help the description of the intermediate water circulation in the Atlantic.

- 5 **RC:** Page 1 and following: in the general oceanography literature, the water mass found in the North Atlantic and originating in the Mediterranean basin is called Mediterranean Water (MW) and not Mediterranean Outflow Water (MOW). In the present manuscript, the acronym MOW is used in the whole text but is MW that appears in the figures (1, 5, 6, 7, 8, and 9).

AR: We have changed in the whole manuscript the MOW denomination by MW as the reviewer suggests.

- 10 **RC:** Page 2, line 23: define what is meant by “upper MOW core”

AR: There is a reference (Ambar and Howe 1979) that we have added in the introduction, which describes the Mediterranean Outflow Water and how it is divided into two cores; the upper and lower.

The rest of minor corrections have been corrected following the reviewer suggestions.

15

20

25

RC: denotes referee’s comments

5 **AR:** denotes authors’ reply

10 **RC:** In past studies, the Eastern North Atlantic Central Water (ENACW) was separated in a subtropical and a subpolar fraction (i.e. Voelker et al., 2015). Yet, the authors only define ENACW without specifying its origin. The authors instead define Subarctic Intermediate water (SAIW) which I am not sure what the difference is between the previously reported ENACW of subpolar origin. Perhaps the authors could clarify this for the reader. I think this would help to relate their study better to previously published papers on the modern hydrography of the region.

15 **AR:** Reviewer is right as to the convenience of clarify this subject. There is no general agreement in the denomination of these water masses along the existing literature. We have added some text in order to clarify these denominations, also considering new references to Voelker et al., 2015 and other works.

New added references:

20 Rios, A.F. Perez,F.F., Fraga,F., Water masses in the upper and middle North- Atlantic Ocean East of the Azores. Deep Sea Research. Part A Oceanogr. Res.Pap.39 (3-4A), 645–658, 1992.
25 Voelker A.H.L., Colman A., Olack G., Waniak J. J., Hodell D., Oxygen and hydrogen isotope signatures of Northeast Atlantic water masses, Deep Sea Research Part II: Topical Studies in Oceanography, 116: 89-106, 2015.

RC: Secondly, the authors argue that AAIW “pushes” MOW up the shelf during autumn. I was wondering how these findings relate to the seasonal changes in MOW density. During autumn, MOW reaches its annual density minimum (Millot et al. 2006). Though my question is, does the MOW flow higher up on the shelf during autumn due to the
30 AAIW pushing it up or does the less dense MOW simply settle higher up on the shelf by itself, and thus allows AAIW to extend vertically within the water column?

AR: Reviewer has provided a very interesting point which deserves to be included in the interpretation of our results about the relation between AAIW and MOW. Unfortunately, our observations do not
35 allow to assess what of the two mechanisms may be behind this behavior. However, taking into account the information published in Millot et al. (2006), the possibility for a less dense MOW be

settled closer to the slope leaving room for the AAIW penetrates easily into the Gulf of Cadiz may not be discarded. These ideas are added in the modified version of the manuscript.

New added reference:

5

Millot C., Candela J., Fuda J.L, Tber Y., Large warming and salinification of the Mediterranean outflow due to changes in its composition, Deep Sea Research Part I: Oceanographic Research Papers, 53 (4), 656-666, 2006.

10 **RC:** AAIW intrusion into the Gulf of Cadiz and its interactions with MOW. Millot
et al. (2006) argued that MOW become more saltier and warmer after the 1990s.
The change in MOW characteristics between 1960-1980 vs the 1990-2000s is often
used as an analog for glacial-interglacial changes of MOW conditions. Hence, I am
wondering if the authors see any change in AAIW presence and simultaneously MOW
15 settling depth between 1950-1980 and 1990-2000s? I feel that including this kind of
temporal information could substantially enhance the current discussion under section
4.2. where the authors try to hint at this relationship and its possible interest for paleoceanographers
but do not provide any real new insights.

20 **AR:** Certainly, the suggested subject is very interesting and consequently we have tried to deal with it.
Unfortunately, the spatial coerture of the observations is not adequate for performing such analysis.
Note in the attached figure, where indicated are the locations of the available casts, the lack of data in
the spring and summer seasons for the period 1990-2018.

25 **RC:** p.2 Lines 2 to 4: Please rephrase this sentence. It is very long and contains to many
information. Please break it up into at least two sentences. Although is meridional heat transport not
the same as MOC? Does meridional freshwater transport not imply THC?

AR: Reviewer is right, we have taken into account his comments and have redrafted this lines
30 accordingly.

RC: p.2 Line 4: What do you mean by "their"? THC or MOC or any other transport you
listed previously? Specify.

35 **AR:** Reviewer is right, the phrase has been redrafted and now it leaves clear that we refer to the
intermediate water masses.

RC: p.2. Line 12-13: What do you mean by "cold" and "warm" periods? Interglacial and
glacial? Stadial and interstadials? Specify.

AR: In the new version this subject is clarified and specified.

5 **RC:** p.2 Line 25 to 26: Is this not more or less the same information as provided in Lines 15-17. Please check if this sentence and the above-mentioned sentences one cannot be spliced together.

AR: We have removed the duplicity of the information as reviewer suggests.

10 **RC:** p.4. Lines 5 to 9: Did you compare the wind data between 1979-2018 only to hydrographic data for the same time frame or did you use the entire data set from 1900 to 2013 for that? If you used the entire time series of the hydrographic data set would that not be problematic given the effects that global warming had on wind field changes in the last decades?

15 **AR:** Reviewer is right in making this question. However, in our analysis the wind data we used match with the WOA data in the section located at 36 ° N and not with the observations. We have added some lines to leave more clear this subject in the section 2.1, where we describe the data set.

20 **RC:** p.5 Line 11ff: Generally, I am missing some statements here regarding the data preprocessing steps, and the software (e.g. MATLAB?) used for the analysis. To the best of my knowledge PCA requires the data to be gaussian distributed prior to analysis. How did you pre-process your data?

25 **AR:** The analysis has been performed using the MATLAB function PCA. It is now indicated in the manuscript. In the PCA observations are not imposed to follow a Gaussian distribution. What reviewer must mean is that the observations must be referred to their averaged values before the PCA application. In the we have redrafted this section in order to allow for more clarity in the description of the technique and the way it will be applied to the observations new version on the manuscript.

30 **RC:** p.6: Line 18 to 24: This is does not like a result. Does this paragraph really require a section header and number? I find this bit somewhat confusing.

35 **AR:** We think that a previous description of the spatial distribution of the variables along the different seasons is convenient and choose to emplace it as a first subsection within the results section, we think that this option is better than dedicate an additional section dealing with the descriptive analysis.

RC: p.7 Line 20: What do you mean by “: : seems to have a certain intra-annual variability,..”. Please elaborate on this if you consider it important; if not rephrase it.

AR: We have redrafted the sentence accordingly the reviewer suggestion.

RC: p.10 Line 31: I think this is a typo by resolution of “1o” of the wind: : : do you mean 10?

5

AR: Effectively, there is a typo mistake, actually it should read as 1° (one degree) when talk about the Machin and Pelegri (2009) analysis. As we described in the methodology section, the wind data providing by the ERA-interim reanalysis have a much better spatial resolution (0.125 x 0.125 degrees)

10 The rest of minor corrections have been corrected following the reviewer suggestions.

15

20

25

Seasonal variability of intermediate water masses in the Gulf of Cadiz: implications of the Antarctic and Subarctic seesaw. ~~model~~

5

Roque, D. ¹, Parras-Berrocal, I.², Bruno, M. ², Sánchez-Leal, R.³, Hernández-Molina, F.J. ⁴

¹Institute of Marine Sciences of Andalusia (ICMAN-CSIC), University Campus Rio San Pedro. Puerto Real, Cádiz11510, Spain.

10 ²Applied Physics Department, University of Cádiz, Puerto Real, Cádiz 11130, Spain.

³Spanish Institute of Oceanography (IEO), Cádiz Oceanographic Centre, Muelle de Levante, Puerto Pesquero, Cádiz 11006, Spain.

⁴Department of Earth Sciences, Royal Holloway, University of London, Egham, Surrey TW20 0EX, UK.

Correspondence to: David Roque (David.roque@icman.csic.es)

15

Abstract. Global circulation of intermediate water masses has been extensively studied; however, its regional and local circulation along continental margins and variability and implications on sea floor morphologies are still not well known. In this study the intermediate water mass variability in the Gulf of Cádiz and adjacent areas has been analysed and its implications discussed. Remarkable seasonal variations of the Antarctic Intermediate Water (AAIW) and the Subarctic Intermediate Water (SAIW) are determined. During autumn a greater presence of the AAIW seems to be related to a reduction in the presence of SAIW and Eastern North Atlantic Central Water (ENACW). This interaction also affects the Mediterranean Water (MW), which is pushed by the AAIW toward the upper continental slope. In the rest of the seasons, the SAIW is the predominant water mass reducing the presence of the AAIW. This seasonal variability for the predominance of these intermediate water masses is explained by a novel model based on in terms of the concatenation of several wind-driven processes acting during the different seasons. Our finding is important for a better understanding of regional intermediate water mass variability with implications in the Atlantic Meridional Overturning Circulation (AMOC) but further research is needed in order to decode their changes during the geological past and their role, especially related to the AAIW, in controlling both the morphology and the sedimentation along the continental slopes.

20
25
30

Key words: Intermediate Water Mass circulation; Seasonal variability; Antarctic Intermediate Water; Subarctic Intermediate Water; Mediterranean Water; Gulf of Cádiz; Atlantic meridional overturning circulation.

1 Introduction

~~The intermediate water masses, their circulation and associated oceanographic processes are essential to understanding meridional heat, freshwater and nutrient transports, the Thermohaline Circulation (THC) and the Meridional Overturning Circulation (MOC) and oceanic sink for anthropogenic CO₂ (Sabine et al. 2004).~~

- 5 The intermediate water masses, their circulation and associated oceanographic processes are essential to understanding global Thermohaline Circulation (THC). Concretely, these water masses take part of the Meridional Overturning Circulation (MOC) carrying a significant part of the meridional heat, freshwater and nutrient transports in the global ocean. Also, it is an important oceanic sink for anthropogenic CO₂ (Sabine et al. 2004). In figure 1 shown is a general sketch of the main circulation patterns that these intermediate water masses describe in the Atlantic Ocean.
- 10 Although their circulation at global scale has been extensively studied (Rahmstorf 2006), ~~their~~ the spreading, interactions and the regional implications of these intermediate waters along continental margins are still not well known. At a global scale, the Antarctic Intermediate Water (AAIW) is one of the most relevant intermediate waters, since it is an important component of the upper branch of the MOC in the Southern Hemisphere subtropical gyre (Pahnke, Goldstein, and Hemming 2008; Talley 2003). It is characterised by a salinity minimum and high nutrient concentration between 500-800 m to ca. 1500 m depth, with
- 15 its main core located at 900 m (Fig. 2). The AAIW spreads along the eastern boundaries of all major oceans, although its original characteristics are best observed in the Southern Hemisphere (Stramma and England 1999). Several authors have reported a significant time variability of AAIW presence in the North Atlantic, enhanced during cold periods and weakens and shoals during warmer periods, at different scales, as glacial/interglacial stadia and shorter interstadials (Oppo 2000; Curry and Oppo 2005; Jung et al. 2010; Makou, Oppo, and Curry 2010; Muratli et al. 2010; Wainer
- 20 et al. 2012). The AAIW is well identified year-round in the eastern boundary of the North Atlantic. It spreads along the African coastline up to approximately 28.5 °N but during autumn it can extend up to 32 °N (Tsuchiya, Talley and McCartney 1992; Machín and Pelegrí 2009) and even into the Gulf of Cádiz (GoC) (Cabeçadas, Brogueira, and Gonçalves 2002; Louarn and Morin 2011; Hernández-Molina et al. 2014), where it interacts with the MW, perhaps restricting the spreading of the latter, especially between summer and winter (Cabeçadas et al., 2002; Knoll et al., 2002; Louarn & Morin, 2011).
- 25 Traditionally, only two intermediate water masses are considered in the GoC (Ambar and Howe, 1979; Baringer and Price, 1997; Van Aken, 2000): The Eastern North Atlantic Central Water (ENACW) and the Mediterranean Outflow Water (MW) (Fig. 2). The ENACW is formed by strong evaporation first and further winter cooling later along the Azores Front (Pollard and Pu 1985; Rios et al., 1992), winter cooling of saline surface water near the European ocean margin west and northwest of
- 30 Spain and Portugal (Pollard and Pu 1985). From here, it circulates southward penetrating into the GoC in the 250 - 700 m depth range. The ENACW interacts actively with the MW close to the western Strait of Gibraltar (Louarn and Morin 2011) and with the upper MW core, with a depth between 600-800 m. (Ambar and Howe 1979) further west, throughout the GoC continental slope (Louarn and Morin 2011; Bellanco and Sánchez-Leal 2016).

The AAIW spreads northeastwards following the Moroccan and Mauritanian continental slopes. This intermediate water enters in the Gulf of Cádiz, where it interacts with the MW, perhaps restricting the spreading of the latter, especially between summer and winter (Cabeçadas et al., 2002; Knoll et al., 2002; Louarn & Morin, 2011). This interaction causes the increment in AAIW nutrient and dissolved oxygen concentrations due to mixing with the MW, particularly between 35° N and 37° N (M. van Aken 2000).

Another important intermediate water mass in the GoC is the Subarctic Intermediate Water (SAIW). It is formed by winter cooling of surface water in three main regions: a) North Western North Atlantic, north of the subarctic front, b) the Porcupine Seabight, and c) northern Bay of Biscay (Van Aken 2001). A significant part of the variety of water formed in the latter two regions, progresses below the North Atlantic Current and flows towards the Eastern Atlantic margin, penetrating into the GoC from a south-southwestern direction and moving in the depth range of 400-800 m (Cabeçadas et al. 2002).

In several works, the SAIW and the ENACW have been traditionally referred to as the lower and upper ENACW (Louarn and Morin 2011; Carracedo et al. 2014) or as subpolar and subtropical origin ENACW (Voelker et al., 2015). Following Van Aken 2000; Van Aken 2001, we use the former denominations. Currently, there is a lack of information about the seasonal variability of these intermediate water masses in the region. Bellanco and Sánchez-Leal 2016 analysed the interaction between the upper MW core and the ENACW on the upper GoC continental slope. The authors suggested an enhanced upper MW core and a less stratified ENACW in winter, resulting in an upslope expansion of the MW core and a more effective mixing with the overlying ENACW. In contrast, they noted a weakened and deeper MW core and a thicker ENACW during late summer and early autumn.

The study by Machín and Pelegrí 2009 is relevant for consideration of the seasonal variations of the AAIW water within the Gulf of Cádiz. Although focussed on the Canary Islands region, the authors reported a clear AAIW increase during autumn when compared with other seasons. The question whether this AAIW increase has implications on the other water masses circulating in the region is addressed in the present paper. Therefore, our main aims are: a) to determine the AAIW extension and variability vicinity the Gulf of Cádiz; b) to identify its interplays with other intermediate water masses; c) to hypothesise about its implication on the continental margin morphology. We analyse a large conductivity, temperature, and depth (CTD) and oxygen concentration profile database extracted from various providers, complemented with the World Ocean Atlas (WOA13).

2. Data set and methodology

2.1 The Data set

In order to identify water masses coming from remote locations we considered a study area spanning from 30°-40° North and 15°-5.5° West (Fig. 3). The domain includes the GoC and the surrounding areas into the GoC (African coast, Portugal coast and Strait of Gibraltar). We have gathered all available observations from WODB, WOCE, MEDATLAS, CORIOLIS, SEADATANET databases, complemented with data from other individual cruises, mostly carried out by the University of

Cádiz (Golfo 2001, Medout 2011, Estrecho 2008). The temporal distribution of profiles span from 1900-2013, although the bulk of the data was acquired after 1950. The resulting product consists of a database including vertical profiles of temperature, salinity, density and dissolved oxygen concentration. The latter will be used to discern the AAIW from the SAIW and the ENACW (Machín and Pelegrí 2009; Louarn and Morin 2011; Carracedo et al. 2014; Hernández-Molina et al. 2014). We also included the World Oceanographic Atlas monthly objectively analysed (1° grid) climatological fields (<https://www.nodc.noaa.gov/OC5/woa13/>).

To study the seasonal variability, we grouped observations into 3-month seasonal bins, starting in December (i.e., winter spans December through February, spring spans March through April, and so on). Since the analysis will be focused on intermediate water masses, we only used the observations taken within the 400-1000 m depth range. Figures 3 and 4 show the seasonal distribution of vertical profiles as well as the WOA data nodes. The figures reveal the homogeneous spatial distribution of profiles.

Data base	Temporal range	Link
WOD	1900-2013	https://www.nodc.noaa.gov/OC5/WOD13/data13geo.html
WOCE	1990-1999	http://www.ewoce.org/data/index.html
Medatlas	1900-2010	https://odv.awi.de/data/ocean/medatlasii/
Coriolis	1990-2012	https://odv.awi.de/data/ocean/coriolis-cora-3-dataset/
Seadatanet	1930-2010	https://www.seadatanet.org/
WOA	1955-2009	https://www.nodc.noaa.gov/OC5/SELECT/woaselect/woaselect.html

Table 1. Details of the different databases used in the analysis.

In addition, to examine the possible mechanisms behind the time variability of water masses we used monthly wind data taken from the ERA-Interim reanalysis (Dee et al. 2011) spanning 1979-2018, downloaded from <https://www.ecmwf.int/en/forecasts/datasets/archive-datasets/browse-reanalysis-datasets>. The spatial data resolution is 0.125 x 0.125 degrees.

2.2 Optimum Multiparameter Analysis

In order to quantify the percentage in which each water mass was presented in the studied area we applied the Optimum Multiparameter Analysis (OMP) to each seasonal dataset. This technique assumes that the value of any sea water property, measured at each depth in the ocean, is the result of the mixing of a certain number of water masses present in the region (Tomczak and Large 1989). It has become a standard tool in oceanography to resolve water mass mixing in regional scales studies (Poole and Tomczak 1999; Álvarez et al. 2004; Johnson 2008; Louarn and Morin 2011; Pardo et al. 2012).

Mathematically, it implies solving an overdetermined system of linear equations which is composed of (n+1) equations, 'n' being the number of unknown variables, the fraction (percentage) of each water mass present in the mixing. As an example, for a problem with four water masses the following system of equations would apply:

$$5 \quad x_1T_1+x_2T_2+x_3T_3+x_4T_4 = T_o \quad (1)$$

$$x_1S_1+x_2S_2+x_3S_3+x_4S_4 = S_o \quad (2)$$

$$x_1C_1+x_2C_2+x_3C_3+x_4C_4 = C_o \quad (3)$$

$$x_1+x_2+x_3+x_4 = 1 \quad (4)$$

10 where the x_{is} are the fraction (percentage) of each water mass present (i varying from 1 to 4); T_o , S_o and C_o , the observed temperature, salinity and concentration of some conservative property (i.e. oxygen) at each point; T_{is} , S_{is} and C_{is} are the characteristic values of properties for each water mass type.

15 The analysis is restricted to the depth range of 400-1000 m and considers the following four water mass types: AAIW, SAIW, ENACW and MW. The characteristic values of properties for these water masses in the GoC region have been taken from (Louarn and Morin 2011) (Table 2). Note that the difference in S and T between the AAIW and SAIW is very small and can only be distinguished by their oxygen concentration. For this reason, we have chosen oxygen as the other conservative property in the OMP analysis.

WATER MASS TYPE	Temperature (° C)	Salinity	Oxygen (µmol/Kg)
AAIW	10.25	35.62	167
ENACW	16.374	36.289	225.93
SAIW	10.659	35.434	185.2
MW	13.9	36.64	180

Table 2. Values of physical-chemical variables taken for the different water masses.

2.3 Principal component analysis

20 The principal component analysis (PCA) is a statistical procedure that allows the transformation of a set of observations, which contain variables possibly correlated among them, into a set of values of uncorrelated variables called principal components (Pearson 1901). When the problem under study contains a large number of observations the maximum number of principal components to be sought for is equal to the number of variables. This transformation is defined in such a way that the first principal component has the largest possible variance, and the successive components progressively reduce their variance.

25 This technique has been applied, using the MATLAB function PCA, on the fractions of the four water mass types determined in the OMP analysis previously described, in order to identify common patterns of behaviour among them while they change with the seasons. Therefore, the observed variables of our PCA problem are these fractions of each water mass type at the 9

boxes: x_1 to x_{36} . Subsequently, the values of these variables through the different seasons are arranged into four rows and the resulting file is subjected to the PC analysis. The resulting principal components (PCs) may be expressed as:

$$PC_k(t) = \sum_{i=1}^{nv} C_k^i [x_i(t) - \bar{x}_i] \quad (5)$$

5 Where t stands for the time (season); indexes k and i do it for the given PC and variables respectively, being nv the number of analysed variables (36 in our case); \bar{x}_i is the average value of the given variables through the different seasons. In this way, each PC is built as a linear combination of the observed variables x_i weighted by a set of coefficients C_k^i . At the same time, matrix algebra allows us to write the inverse problem:

$$x_i(t) = \bar{x}_i + \sum_{k=1}^{nc} C_k^i PC_k(t) \quad (6)$$

10 Where nc is the number of considered PCs. Therefore, each of the observed values of the variables x_i may be expressed as a linear combination of the resolved PCs weighted by the coefficients C_k^i already introduced.

Now the absolute values that take these coefficients for a given PC along the different variables enable us to identify which of them are related to that PC. In order to visualise the temporal patterns contained in the resolved PCs, it is worthwhile to separate the products ($C_k^i \cdot PC_k$) corresponding to each climatic season for each PC. Note that the values of these products represent deviations of the variables with respect to their time averaged values, as equation (6) indicates. Later, using these quantities, we will be able to map the seasonal variability contained in each PC and assess how intense is its manifestation in the different spatial locations of the studied area.

20

3. Results

3.1 Spatial distribution of physical- chemical properties

As a first step of the data analysis, several spatial representations of the different variables have been elaborated:

25 a. Representation of the spatial distribution of the variables on the isopycnic surface of 27.5 which best characterizes the position of the AAIW core in the region (Van Aken 2001; Cabeçadas et al. 2002; Louarn and Morin 2011; Hernández-Molina et al. 2014).

b. Representation of vertical sections of the variables along the meridional section at a latitude of 36° N which meets two important conditions: (i) To allow an adequate identification of the AAIW pathway by the GoC and (ii) To contain a high number of profiles covering as homogeneously as possible, during the different seasons, the given vertical sections.

3.1.1 Spatial distribution on the 27.5 isopycnic surface

Figures 3 and 4 show, respectively, the distributions of salinity and oxygen concentration on the 27.5 isopycnic surface, for the seasonal values contained in the observed data (upper row) and for the monthly values provided by the WOA database (following three rows).

5 Concerning the observed data, we found low oxygen concentration values (Fig. 4) coincident with low salinity values (Fig. 3), attributable to the AAIW presence (see Table 2), penetrating from lower latitudes into the GoC in all seasons, although it is remarkable that this penetration is more accentuated and closer to the African coast in autumn **but also in summer**. Note also that the lowest presence of AAIW is found in spring (Fig. 3 and 4).

10 The monthly distributions shown by the WOA data on the 27.5 isopycnic, roughly agree with the previous commented behaviour. It must be noted that in this case these data do not offer such a detailed spatial resolution of the region closer to the continental margin as the observed data do. However, **those** maps allow us to gain insight into the inter-annual variability of the AAIW distribution close to the GoC. In this sense, **attending to the oxygen concentration distribution, which offers the most marked differences with the other water masses (see table 2)**, we can see that the major entrance of the AAIW close to the African coast occurs in November. At the same time, we can see that the spreading of the AAIW toward the GoC is more
15 restricted during the spring months, **only slightly suggested in March by the salinity distribution and in April by the oxygen distribution**. In addition, in May, June and July this spreading is re-established, albeit to a lesser extent than in autumn.

3.1.2 Vertical section distribution in zonal direction at latitude 36 ° N

Figure 5 shows the zonal distribution of dissolved oxygen, salinity and temperature along 36° N. Low oxygen values characteristic of the AAIW occur year-long in the 700-1200 m depth range. As suggested before, the lowest oxygen
20 concentrations occur in autumn close to the African continental slope. This increased AAIW presence close to the African Coast in autumn was already reported (Tsuchiya et al. 1992; Knoll et al. 2002; Machín and Pelegrí 2009, 2016), although at lower latitudes.

In summer, the low oxygen zone spreads zonally, extending to Cape San Vicente (Fig. 5). In winter, the low oxygen signal is less evident, **relative oxygen values are higher**, perhaps suggesting weaker AAIW presence in winter. **Note that salinity and
25 temperature distributions are not helpful to discern between AAIW and SAIW (see table 2)**.

3.2 OMP analysis

The AAIW is present as an intermediate water mass extending along the middle slope from northern Morocco to the GoC year-round. There seems to be a certain intra-annual variability, with enhanced AAIW presence in autumn. To elucidate the pattern, we applied the OMP analysis to the dataset of vertical profiles in the target depth range (400-1000 m). Subsequently,
30 we binned the results into 9 1°x1° boxes (Fig. 6). As suggested before, the highest AAIW percentages are found in autumn. Only boxes **G** (the closest to the continent) and **C** (the farthest from the coast) show always AAIW percentages below 40 %.

The SAIW shows its lower percentages (less than 10 %) in boxes closer to the Iberian coast (from E to I) during autumn while the higher values are found in winter in these boxes. The ENACW in the closer to coast boxes (G and H) shows its higher values in spring and summer while the MW shows these in winter and autumn. These results show the relationship among the different water masses. On one hand, in autumn the AAIW displaces the SAIW while the reverse situation occurs in winter.

5 On the other hand, the alternation in predominance of these two water masses seems to be related to (i) a major confinement of the MW toward the coast in autumn (by the enhanced AAIW presence) and winter (by the SAIW) and (ii) a displacement toward offshore of the ENACW in the same seasons.

Regarding the OMP analysis on the WOA data, we have selected data located around a zonal section at a latitude of 36 ° N (Fig. 6) in order to assure a clear identification of the AAIW coming from the Canary Islands latitude where this water mass

10 has been previously identified close to the African coast (Machín and Pelegrí, 2009; 2016; Louarn and Morin, 2011). Similar to the case of the observed profiles only data in the depth range of 400-1000 m have been considered. The water mass percentages have been computed for each month along the climatic year. Figure 6 shows the vertical sections of computed percentages of AAIW for February, April, July and November. The stronger AAIW presence occurs in November, when it is found near the African continent. We observe a weaker AAIW presence from February to April. The OMP results computation

15 assumes indicates that the autumn increase of the AAIW goes along with a reduction of the SAIW fraction, hence illustrating a sort of competitive seesaw between the two water masses. Figure 10a shows the climatic monthly values of the averaged percentages over the vertical section percentages of the four water masses. It can be seen that the SAIW is the most predominant water throughout most of the year, namely greater than 70 % for all months, with the exception of November when the AAIW rises to 40 %.

20 3.3 PC analysis

In order to carry out a better assessment of the seasonal variations of water mass percentages and the interrelation between the different water masses, we have applied a PCA on the set of computed percentages. As explained in section two, this technique will allow us to identify common patterns in the seasonal variations of these percentages in the nine boxes located in the GoC shown in Figure 6.

25 In Figures 7 and 8, the results of this analysis are shown. The first PC (Fig. 7) shows a clear interaction between the AAIW and SAIW. In autumn a greater presence of the AAIW, coming from lower latitudes, seems to be related to a reduction in the presence of the SAIW coming from higher latitudes. In addition, this first principal component also reflects a significant increase in the presence of the MW in the box closest to the continental slope. The second PC (Fig. 8), picks up another clear interaction between the four water masses, but now it seems to be caused by a greater presence of the SAIW in winter that produces a displacement of the AAIW and ENACW and again a confinement of the MW against the continental slope.

30 The interpretation of these results is sketched in Figure 9, which shows the likely preferential tracks of the different intermediate waters along the GoC in the different seasons. In autumn the AAIW penetrates closer to the continental slope while the SAIW runs more displaced southward. Also, the ENACW and MW are found near pushed toward the coast. In winter

the situation is reversed regarding AAIW and SAIW behaviour. Now the SAIW is flowing closest to the continental slope, the AAIW is displaced southward and once again the ENACW and MW are confined toward the continental slope. The situation in spring and summer is similar to the one in winter **exception made for the increased transport of AAIW, close to the African coast, in summer.**

5 3.4 Wind forcing in the north Atlantic and intermediate water presence in the Gulf of Cádiz

Variability of the meridional transport in the North Atlantic is linked with two important wind driven mechanisms (Machín and Pelegrí 2009; Barrier et al. 2014):

The meridional Sverdrup transport:

10

$$M_y = \frac{1}{\rho_0 \beta_0} \left[\frac{\partial \tau_y}{\partial x} - \frac{\partial \tau_x}{\partial y} \right] \quad (7)$$

and the Ekman pumping:

$$w_E = \frac{1}{\rho_0} \left[\frac{\partial}{\partial x} \left(\frac{\tau_y}{f} \right) - \frac{\partial}{\partial y} \left(\frac{\tau_x}{f} \right) \right] \quad (8)$$

Where τ_x and τ_y are, respectively, the zonal and meridional components of wind stress; ρ_0 is sea water density; $f = f_0 + \beta_0 y$ is Coriolis parameter, where β_0 is the variation with latitude of f in the β plane.

15 We computed both magnitudes from wind velocity data provided by ERA-Interim reanalysis spanning the period 1979-2018. Figures 10 and 11 show, **respectively**, the meridional Sverdrup transport and the Ekman pumping for January and July, the two seasonal opposites in a climatological year. They are shown for the region of the North Atlantic spanning the latitudes 10° N to 70° N and for the zoomed region focussed on the Gulf of Cádiz.

20 The meridional Sverdrup transport peaks close to the eastern coast (Figure 11). This suggests small-scale horizontal wind stress gradients near the continent. The Sverdrup transport along the eastern coast of Portugal is southward year-round, with highest (lowest) values in January (July). Along the African coast this transport is northward year-round, with highest (lowest) values in July (January). More detailed information about the seasonal variations of these transports can be found in Figure 10b where the mean monthly climatological values of Sverdrup transport are shown at three points close to the coast, namely at latitudes 30° N, **35.5° N** and 40° N. At 30° N meridional transport is positive (northward) all year showing an increase in summer with a peak in July. This northward transport close to the African coast may contribute to the northward progression of the AAIW from latitudes as low as 10° up to at least 30° N. In contrast, the transport at 40° N is southward year-round, peaking in winter. Therefore, this behaviour could explain a special progression of the SAIW close to the Portuguese coast from high latitudes down to the GoC during this season.

25 Concerning the Ekman pumping, Figure 12 shows its spatial distribution in the same two months of the climatological year, 30 January and July, in the same domains considered in Figure 10. Note that the zones with negative values of the Ekman pumping roughly depict the location of the gyres within the basin. In winter (i.e. January) **the zone where convergence** (negative Ekman

pumping) is more important within the subtropical gyre reaches latitudes as high as 48° while in summer (i.e. July) this zone is more reduced and displaced to latitudes lesser than 36°. Therefore, in winter, a more developed subtropical gyre may favour the increasing transport of high latitude intermediate waters toward the GoC while, in summer, a displaced towards the south gyre is not able to transport these high latitude intermediate waters toward the Gulf of Cádiz.

5 Besides the small scale variations in Ekman pumping, we observe generalised divergence (positive Ekman pumping) near the eastern ocean margins all year-round. As the Ekman pumping is implicitly accounted for in the Sverdrup transport, we expect that divergence near the continents may be held responsible for the local intensification of the meridional Sverdrup transport. In order to present more detailed information about the time variability of the Ekman pumping at the latitude of the Gulf of Cádiz, Figure 10c shows the monthly climatological averages of this variable, inside the GoC, in a box limited by latitudes 35° and 36° N and longitudes 7° and 8° W, and outside the gulf, in a box limited by latitudes 35° and 36° N and longitudes 19° and 20° W. Inside the GoC there is permanent divergence (positive pumping) in the Ekman layer caused by a small-scale cyclonic wind pattern existing in this area. This divergence, which is more intense during summer, would favour the displacement of the water masses underneath the Ekman layer toward the gulf, exerting a suction effect on them. So, intermediate waters that arrive at a latitude close to the gulf could continue progressing northward thanks to this effect. Outside the GoC there is a permanent convergence (negative pumping), which is more intense during winter and summer. It is expected that during these seasons the dominant downwelling existing in the Ekman layer of this zone would not favour the transport of intermediate waters in that direction. However, in spring and autumn the intensity of these convergences decrease significantly, which could diminish the capacity of blocking the transport of intermediate waters in that direction.

15 In the following section we discuss all these preliminary results as well as the results attached in the related references in order to depict a conceptual model that allows explanation of the mechanisms that control the fluctuation of intermediate water masses in the GoC.

4. Discussion

4.1 Extension and variability of the AAIW and its interrelation with other intermediate water masses

25 Presence of the AAIW in the GoC has been reported before (H. M. van Aken 2000; Cabeçadas et al. 2002; Brogueira, Cabeçadas, and Gonçalves 2004; Louarn and Morin 2011; Preu et al. 2013; Hernández-Molina et al. 2014). There is also evidence of greater autumn AAIW presence near the African margin at least up to 32 °N (Tsuchiya et al. 1992; Knoll et al. 2002; Machín and Pelegrí 2009). Thus far, we remain uncertain whether this seasonal variability extends into the GoC.

In section 3 we confirmed AAIW presence year-round along the middle slope from the northern Moroccan margin and into the GoC. We inferred certain seasonal AAIW variability featuring an autumnal approach to the continent, summer horizontal spread and offshore separation. Winter and particularly spring are characterized by a weaker AAIW presence.

30 Moreover, the results of the PCA on the water mass percentages allow the identification of clear interactions between the four water masses. In autumn a greater presence of the AAIW, coming from lower latitudes, seems to be related to a reduction in

the presence of the SAIW and ENACW. This interaction also affects the MW, which is pushed by the AAIW toward the continental slope. In winter, the SAIW is the predominant water mass reducing the presence of the AAIW and ENACW and once again pushing the MW toward the continental slope. Note that in autumn a less dense MW entering the Gulf of Cadiz (Millot et al., 2006), may be settled closer to the slope making easier the AAIW penetration into the Gulf of Cadiz.

5

The next step now is to investigate the physical mechanism that triggers these seasonal variations in the water masses presence. Machín and Pelegrí 2009 explained the arrival of the AAIW to latitudes around the Canary Islands in terms of as the divergences produced by the Ekman pumping close to the African coast, and the subsequent stretching of the water column below, which promotes promoting a northward movement of the intermediate waters in order to conserve its potential vorticity.

10 However, the identified divergence regions were located too far from the African coast to explain the observed confinement toward the coast of the observed AAIW core. Perhaps the spatial resolution of 1° of the wind data used was too coarse to capture the small scale variation of winds close to the continent. The importance of these small scale variation of winds has been recognised in several studies (Kanzow et al. 2010; Machín et al. 2010; Pérez-Hernández et al. 2013; Velez-Belchi et al., 2017) in connection with the generation of baroclinic Rossby waves that propagate toward the interior ocean and may affect 15 the Atlantic meridional overturning circulation (AMOC).

Barrier et al. (2014), who have analysed the response of the North Atlantic subtropical gyre to the North Atlantic Oscillation (NAO) and other atmospheric regimes (Fig. 12), conclude that this response involved important changes in meridional transport of water masses in this basin. For instance, a positive/negative NAO displaces the subtropical gyre to a higher/lower latitude. A gyre centred at a higher latitude favours a southward meridional transport of high latitude water masses by the 20 eastern boundary while a gyre centred at lower latitude does not favour this southward transport of water masses from higher latitudes. In terms of the intermediate water masses we are dealing with, a positive NAO would prevent the entrance of the AAIW toward the GoC in favour of a greater SAIW arrival here, while a negative NAO would weaken the southward transport of the latter and favour the spread of the AAIW toward the Gulf of Cádiz. While in our case we are not dealing with the NAO variability, it is worth noting that the effect on the subtropical gyre dynamics of a positive/negative NAO are fairly similar to 25 the effects that a winter/summer wind forcing produces.

Keeping these previous results in mind and referring to the results presented in section 3.3, we will propose a mechanism based on the seasonal variation of wind forcing in the North Atlantic that could explain the variations in the presence of the intermediate water masses in the GoC. Focussing on the greater presence of the AAIW in autumn, it seems that the following two types of processes are required:

- 30 a) Processes that promote the transport of intermediate waters (AAIW and SAIW) from high and low latitudes toward the GoC.
b) Processes that may favour the northward transport of intermediate waters when these have arrived at latitudes close to the GoC.

Regarding the first type of processes, we detach the small scale variability of the wind stress curl close to the continents and its implications in the near continent meridional Sverdrup transport. As shown in Figure 10b, these transports southward along the Portuguese coast and northward along the African coast, maintain a permanent direction during the whole year but become more intense from June to September along the African coast and from October to February along the Portuguese coast.

5 Therefore, during summer the conditions for a decisive northward progression of the AAIW along the African coast are met and this mechanism could be responsible for bringing the AAIW up to the Canary Islands region. However, since these transport processes diminish considerably in September, they may not be able to sustain the subsequent northward progression of the AAIW that could explain the observed maximum in the percentage of the AAIW along the slope of northern Morocco and the GoC attached in November. Therefore, it is then necessary to find additional processes that help sustain this northward

10 progression up to the GoC. This leads us to the second type of processes.

Regarding the second type of processes, we will consider the seasonal variations of the Ekman pumping within GoC and in the zone of the subtropical gyre closest to GoC. Figure 10c shows these values for the different climatological months. Note that when the Ekman pumping becomes less negative to the west of the GoC, southward transport on the eastern branch of the gyre weakens and this could favour a greater spreading of the AAIW towards the north. On the one hand, this weakening of

15 the negative Ekman pumping in this zone is more pronounced during March-June and September-November. On the other hand, the Ekman pumping inside the GoC is positive during the whole year. As previously described, this permanent divergence in the Ekman layer caused by a small scale cyclonic wind pattern existing in this area and more intense during summer, would favour the displacement of the water masses underneath the Ekman layer toward the GoC, exerting a suction effect on them. Therefore, intermediate waters that arrive at a latitude close to the gulf could continue progressing northward

20 inside the gulf thanks to this effect. Note that this Ekman pumping experiences a significant increase in November after having reduced its intensity during September and October.

4.2 Implication of the AAIW on the morphology of the continental margin

Intermediate water masses have been shaping the morphology along the northern Moroccan coast, the GoC and the Atlantic Iberian continental margins (see compilations in Hernández Molina et al., 2011, 2016). During the last decades numerous

25 researchers and institutions have analysed the influence of both the MW and ENACW on the sea floor morphology with great detail, particularly within the GoC (e.g., Madelain, 1970; Melières 1974; Nelson et al., 1993, 1999; Hernández-Molina et al., 2003, 2011, 2014 and 2016; Llave et al., 2007; Garcia et al., 2009; Roque et al., 2012, Sánchez-Leal et al., 2017, among many others). These authors identified large depositional and erosional (contourite) features along the middle and upper continental slopes due to the vertical and lateral variation of the aforementioned intermediate water masses. The results obtained in the

30 present study reveal clear seasonal variations of the AAIW and its interrelation with the SAIW, MW and ENACW. Nevertheless, changes in distribution of these intermediate water masses and the implications in particular of the AAIW for shaping the morphology and controlling sedimentation along the northern Moroccan coast, GoC and the Atlantic Iberian

margins **have** not been considered so far and two new questions may arise: Is there any influence of the AAIW along the continental slope at present? Was there any influence of these intermediate water masses in the past?

Some recent papers have described the occurrence of bottom current features along the middle slope of the northern Moroccan margin, which do not fit well with present circulation of the ENACW and the **MW** and its associated interphases (pycnoclines).

5 The onset of these features has been related both to the action of deep tides or a branch of upper **MW** veering southwards off the Strait of Gibraltar along the Moroccan margin (e.g., Vandorpe et al., 2014, 2016; Lebreiro et al., 2018). Deep (barotropic and baroclinic) tides are important secondary processes amplifying the background water mass circulation generating local and smaller features but are not relevant for large regional depositional or erosional feature formation along continental slopes (Rebesco et al., 2014; Hernández-Molina et al., 2016). In contrast, a branch of upper **MW** veering southwards off the Strait of
10 Gibraltar along the Moroccan margin is apparently against the Coriolis forces in the area (Baringer and Price, 1997, 1999) as well as the reported **MW** regional circulation (Sánchez-Leal et al., 2017). Northward flowing of a vigorous AAIW close to the margin, as reported here, could be considered as a plausible regional control factor in developing those features. However, this would require more detailed sedimentary, morphologic and paleoceanographic work in order to confirm this hypothesis. Vertical variations of the **MW** and ENACW have been reported at short (seasonally) scales (e.g., Borenäs et al., 2002, Bellanco
15 and Sánchez-Leal, 2016) and in longer geological cycles (Llave et al., 2006; Voelker et al., 2006; Rogerson et al., 2012; Hernández-Molina et al., 2016; Lofi et al., 2016 among other). The Pliocene and Quaternary (last 5.3 Ma) sedimentary evolution of the slope has been related to those vertical changes. For example, in glacial periods some authors have reported that the **MW** was flowing approximately 700 m deeper than today with associated changes in both East North Atlantic Deep Water (ENADW) and North Atlantic Deep Water (NADW) (Schönfeld and Zahn, 2000; Schönfeld et al., 2003, Rogerson et
20 al., 2012). An open debate about the relationship between the variation in the paths of these water masses and the sedimentary evolution along the northern Moroccan coast, GoC and the Atlantic Iberian continental margins has been ongoing since the recent Integrated Ocean Drilling Program (IODP) Expedition 339 in the GoC (Expedition 339 Scientists, 2012; **Stow et al., 2013**; Hernández-Molina et al., 2013; 2016). However, in this debate the influence of the AAIW in the past has not been taken into account.

25 The AAIW represents a cold intermediate water mass formed at the ocean surface in the Antarctic Convergence Zone/Antarctic Polar Front (between 50° to 60°S), mainly at the southwest of the southern tip of South America (Tomczak and Godfrey, 2003). After its formation the AAIW flows north as an intermediate water mass as far as 20°N, with trace amounts as far as 60°N. It continues northward until it encounters other intermediate water masses (Talley, 1999). This is the case for the AAIW in the Atlantic Ocean (and similar in the Indian Ocean) where this water mass has higher influence and is denser in comparison
30 with the Pacific Ocean where the AAIW is comparatively less important (Bostock et al., 2013). The formation and circulation of the AAIW is an important component of the upper branch of the AMOC that is associated with the transport of heat and salt within the Southern Hemisphere subtropical gyre (Stramma and England, 1999). Different authors have reported enhanced AAIW circulation during colder periods at different scales (e.g., Oppo and Horowitz, 2000; Curry and Oppo, 2005; Pahnke et al., 2008; Muratli et al., **2010**; Makou et al., 2010; Jung et al., **2010**; Wainer et al., 2012 among **others**). For example, during

the last glacial, there is increased formation of intermediate water and the production of NADW is significantly weakened, and the NADW is replaced in large extent by enhanced AAIW (Wainer et al., 2012), which circulated lightly with a main core ~1100 m in a depth range between 900 and 1270 m (Makou et al., 2010). Therefore, vertical and lateral variations of the AAIW during glacial vs interglacial periods have been reported (e.g.: Viana et al., 2002; Bozzano et al., 2011; Preu et al., 2012; 2013; 5 Voigt et al., 2013), and some authors demonstrated that during the last decades the AAIW has been reduced, significantly warmer (0.058–0.158°C / decade) and shoaling (30–50 dbar / decade) since becoming less dense [up to 20.03 (kg/ m³) / decade], due to global warming (e.g., Downes et al., 2010; Shmidtko and Johnson, 2012).

Therefore, based on all the above considerations we can conclude that the paths of the AAIW had to vary throughout the geological past at different scales, increase during cold periods and decrease and shoal during warmer periods. The results 10 presented in this paper are important and any future discussion on this subject should consider the lateral and vertical interaction of intermediate water masses in general and evaluate the role of AAIW in the past in particular, since its influence could be important, especially related to colder periods, in controlling the sedimentation along the slope. For example, in contributing to higher siliceous production in determinate time periods as has been described with Expedition 339 in the GoC (Expedition 339 Scientists, 2012; Stow et al., 2013; Hernández-Molina et al., 2013; 2016).

15 5. Conclusions

The analysis of the seasonal variation of the intermediate water masses carried out in the GoC and adjacent areas has determined remarkable changes of the Antarctic Intermediate Water (AAIW) and the Subarctic Intermediate Water (SAIW). During autumn a greater presence of the AAIW, coming from lower latitudes, seems to be related to a reduction in the presence of the SAIW and the ENACW. This interaction also affects the Mediterranean Water (MW) which is pushed by the AAIW 20 toward the upper continental slope. In the rest of the seasons, the SAIW is the predominant water mass reducing the presence of AAIW.

This seasonal variability in the interchange between these intermediate water masses can be explained based on the concatenation of several wind-driven processes acting during the different seasons. The summer intensification of the Sverdrup transports near the African coast makes the progression of AAIW possible from low latitudes up to latitudes above the Canary 25 Islands. Subsequently, once the AAIW has reached latitudes close to the gulf, its northward transport is sustained due to a decrease in the intensity of negative Ekman pumping within the subtropical gyre west of the Gulf of Cádiz, which presents its minimum intensity during autumn (Fig. 12). This transport toward the GoC is also favoured by the permanent cyclonic wind system that dominates locally in the GoC, although it shows its highest intensity in the months of July to August. In November it again experiences a significant increase. The high percentage of the SAIW during winter, spring and summer could be 30 explained by the permanent southward Sverdrup transport that occurs near the coast of the Iberian Peninsula which favours the arrival of the SAIW to the gulf. From September onward this transport begins to weaken due to the arrival of the AAIW from the south and the deviation of part of the SAIW transport toward the eastern side of the subtropical gyre (west the of GoC), where the intensity of the negative Ekman pumping is reduced between September and November.

Our results are important for a better understanding of intermediate water mass variability along the northern Moroccan coast, GoC and the Atlantic Iberian margins but further paleoceanographic, sedimentary and morphological research is needed in order to decode changes in the geological past and determine how these water masses, in particular the AAIW, have been shaping the morphology and controlling the sedimentation along the northern Moroccan coast, the GoC and the Atlantic Iberian margins.

10

15

20

25

30

References

- Ambar, I., Howe, M.: Observations of the Mediterranean Outflow- I. Mixing in the Mediterranean outflow. *Deep-Sea Research*, Vol 26A, pp 535 to 554, [https://doi.org/10.1016/0198-0149\(79\)90095-5](https://doi.org/10.1016/0198-0149(79)90095-5), 1979.
- Ambar, I., Howe, M.: Observations of the Mediterranean Outflow- I. The deep circulation in the vicinity of the Gulf of Cadiz. *Deep-Sea Research*, Vol 26A, pp 555 to 568, [https://doi.org/10.1016/0198-0149\(79\)90096-7](https://doi.org/10.1016/0198-0149(79)90096-7), 1979.
- 5 Álvarez, M., Pérez, F.F., Bryden H., Ríos, A.F.: Physical and Biogeochemical Transports Structure in the North Atlantic Subpolar Gyre. *Journal of Geophysical Research: Oceans* 109(C3), <https://doi.org/10.1029/2003JC002015>, 2004.
- Baringer, M.O., Price, J.F.: Momentum and energy balance of the Mediterranean outflow. *Journal of Physical Oceanography* 27 (8), 1678–1692, [https://doi.org/10.1175/1520-0485\(1997\)027<1678:MAEBOT>2.0.CO;2](https://doi.org/10.1175/1520-0485(1997)027<1678:MAEBOT>2.0.CO;2), 1997.
- 10 Baringer, M.O., Price, J.F.: A review of the physical oceanography of the Mediterranean outflow. *Marine Geology* 155, 63–82, [https://doi.org/10.1016/S0025-3227\(98\)00141-8](https://doi.org/10.1016/S0025-3227(98)00141-8), 1999.
- Barrier, N., Cassou, C., Deshayes, J., Treguier, A.M.: Response of North Atlantic Ocean Circulation to Atmospheric Weather Regimes. *Journal of Physical Oceanography* 44(1):179–201, <https://doi.org/10.1175/JPO-D-12-0217.1>, 2014.
- Bellanco, M.J., Sánchez-Leal, R.F.: Spatial Distribution and Intra-Annual Variability of Water Masses on the Eastern Gulf of Cadiz Seabed. *Continental Shelf Research* 128(October):26–35, <https://doi.org/10.1016/j.csr.2016.09.001>, 2016.
- 15 Borenäs, K.M., Wahlin, A.K., Ambar, I., Serra, N.: The Mediterranean outflow splitting—a comparison between theoretical models and CANIGO data. *Deep-Sea Research II* 49, 4195–4205, [https://doi.org/10.1016/S0967-0645\(02\)00150-9](https://doi.org/10.1016/S0967-0645(02)00150-9), 2002.
- Bostock, H., Sutton, P., Williams, M.J.M., Opdyke, B.: Reviewing the circulation and mixing of Antarctic Intermediate Water in the South Pacific using evidence from geochemical tracers and Argo float trajectories, *Deep-Sea Res. I*, 73, 84-98, <https://doi.org/10.1016/j.dsr.2012.11.007>, 2013.
- 20 Bozzano, G., Violante, R.A., Cerredo, M.E.: Middle slope contourite deposits and associated sedimentary facies off NE Argentina. *Geo-Marine Letters*, 31, 495-507, <https://doi.org/10.1007/s00367-011-0239-x>, 2011.
- Brogueira, M. J., Cabeçadas, G., Gonçalves, C.: Chemical Resolution of a Meddy Emerging off Southern Portugal. *Continental Shelf Research* 24(15):1651–57, <https://doi.org/10.1016/j.csr.2004.05.012>, 2004.
- 25 Cabeçadas, G., Brogueira, M.J., Gonçalves, C.: The Chemistry of Mediterranean Outflow and Its Interactions with Surrounding Waters. *Deep-Sea Research Part II: Topical Studies in Oceanography* 49(19):4263–70, [https://doi.org/10.1016/S0967-0645\(02\)00154-6](https://doi.org/10.1016/S0967-0645(02)00154-6), 2002.
- Carracedo, L. I., M. Gilcoto, H. Mercier, F. F. Pérez.: Seasonal Dynamics in the Azores-Gibraltar Strait Region: A Climatologically-Based Study. *Progress in Oceanography* 122:116–30, <https://doi.org/10.1016/j.pocean.2013.12.005>, 2014.
- 30 Cheng H., Sinha A., Wang X., Cruz F. W., Edwards R. L.: The Global Paleomonsoon as seen through speleothem records from Asia and the Americas. *Climate Dynamics* 39: 1045–1062, <https://doi.org/10.1007/s00382-012-1363-7>, 2012.
- Coulbourne, B., Foote, K.D.: Variability of Stratification and Circulation on the Flemish Cap during the Decades of 1950s-1990s. *J. Nortw. Atla. Fish. Sci.* 26, 103-122, 2000.

- Curry, W. B., Oppo, D. W.: Glacial Water Mass Geometry and the Distribution of $\delta^{13}\text{C}$ of ΣCO_2 in the Western Atlantic Ocean. *Paleoceanography* 20(1):1–12, <https://doi.org/10.1029/2004PA001021>, 2005.
- Dee, D. P., Uppala, S. M., Simmons, A. J., Berrisford, P., Poli, P., Kobayashi, S., Andrae, U., Balmaseda, M. A., Balsamo, G., Bauer, P., Bechtold, P., Beljaars, A. C. M., van de Berg, L., Bidlot, J., Bormann, N., Delsol, C., Dragani, R., Fuentes, M., Geer, A. J., Haimberger, L., Healy, S. B., Hersbach, H., Hólm, E. V., Isaksen, I., Kållberg, P., Köhler, M., Matricardi, M., McNally, A. P., Monge-Sanz, B. M., Morcrette, J.-J., Park, B.-K., Peubey, C., de Rosnay, P., Tavolato, C., Thépaut, J.-N., Vitart, F.: The ERA-Interim Reanalysis: Configuration and Performance of the Data Assimilation System. *Quarterly Journal of the Royal Meteorological Society* 137(656):553–97, <https://doi.org/10.1002/qj.828>, 2011.
- Downes, S. M., Bindoff, N. L., Rintoul, S.R.: Changes in the subduction of Southern Ocean water masses at the end of the twenty-first century in eight IPCC models. *J. Climate*, 23, 6526–6541, <https://doi.org/10.1175/2010JCLI3620.1>, 2010.
- Expedition 339 Scientists.: Mediterranean outflow: environmental significance of the Mediterranean outflow water and its global implications. IODP Preliminary Report, p. 339 <http://dx.doi.org/10.2204/iodp.pr.339.2012>, 2012.
- Faugères, J.C., Mézerais M.L., Stow D.: Contourite drift types and their distribution in the North and South Atlantic Ocean basins. *Sed. Geol.* 82, 189–203, [https://doi.org/10.1016/0037-0738\(93\)90121-K](https://doi.org/10.1016/0037-0738(93)90121-K), 1993.
- Pérez, F.F., Mercier, H., Vázquez-Rodríguez, M., Lherminier, P., Velo, A., Pardo, P.C., Rosón, G., Ríos, A. F.: Atlantic Ocean CO_2 uptake reduced by weakening of the meridional overturning circulation. *Nature Geosci.* 6, 146–152, <http://dx.doi.org/10.1038/ngeo1680>, 2013.
- Fratantoni, D.M.: North Atlantic surface circulation during the 1990s observed with satellite-tracked drifters. *J. Geophys. Res.* 106, 22067–22093, <https://doi.org/10.1029/2000JC000730>, 2001.
- García M., Hernández-Molina F.J., Llave E., Stow D., León R., Fernández-Puga M.C., Díaz del Río V., Somoza L.: Contourite erosive features caused by the Mediterranean Outflow Water in the Gulf of Cadiz: quaternary tectonic and oceanographic implications. *Mar Geol* 257:24–40, <https://doi.org/10.1016/j.margeo.2008.10.009>, 2009.
- Gil, J., Sánchez, R., Cerviño, S., Garabana, D.: Geostrophic Circulation and Heat Flux across the Flemish Cap, 1988-2000. *J. Northw. Atla. Fish. Sci.* 34, 61-81, <http://dx.doi.org/10.2960/J.v34.m510>, 2008.
- Hernández-Molina, F.J., Llave, E., Somoza, L., Fernández-Puga, M.C., Maestro, A., León, R., Medialdea, T., Barnolas, A., García, M., Díaz del Río, V., Fernández-Salas, L.M., Vázquez, J.T., Lobo, F., Alveirinho Dias, J.M., Rodero, J., Gardner, J. Looking for clues to paleoceanographic imprints: A diagnosis of the Gulf of Cadiz contourite depositional systems. *Geology* (2003) 31 (1):19:22. [https://doi.org/10.1130/0091-7613\(2003\)031<0019:LFCTPI>2.0.CO;2](https://doi.org/10.1130/0091-7613(2003)031<0019:LFCTPI>2.0.CO;2).
- Hernández-Molina, F.J., Serra N., Stow D.A.V., Llave E., Ercilla G., van Rooij D. Along-slope oceanographic processes and sedimentary products around the Iberian margin. *Geo-Marine Letters* (2011) 31:315. <https://doi.org/10.1007/s00367-011-0242-2>.
- Hernández-Molina, F.J., Stow, D.A.V., Alvarez-Zarikian, C.: Expedition IODP 339 Scientists: IODP expedition 339 in the gulf of Cadiz and off west Iberia: decoding the environmental significance of the Mediterranean outflow water and its global influence. *Sci. Drill.* 16, 1–11, <https://doi.org/10.5194/sd-16-1-2013>, 2013.

- Hernández-Molina, F. J., LLave, E., Preu, B., Ercilla, G., Fontan, A., Bruno, M., Serra, N., Gomiz, J.J., Brackenridge, R.E., Sierro, F.J., Stow, D.A.V., García, M., Juan, C., Sandoval, N., Arnaiz, A.: Contourite Processes Associated with the Mediterranean Outflow Water after Its Exit from the Strait of Gibraltar: Global and Conceptual Implications. *Geology* 42(3):227–30, <http://dx.doi.org/10.1130/G35083.1>, 2014.
- 5 Hernández-Molina, F. J., Sierro F. J., Llave E., Roque C., Stow D.A.V., Williams T., Lofi J., Van der Schee M., Arnáiz A., Ledesma S., Rosales C., Rodríguez-Tovar F.J., Pardo-Igúzquiza E., Brackenridge R. E. *Marine Geology* 377:7-39. <https://doi.org/10.1016/j.margeo.2015.09.013>
- Iorga, M., Lozier, M.S.: Signatures of the Mediterranean outflow from a North Atlantic climatology 1. Salinity and density fields. *J. Geophys. Res.* 104, 25985–26009, <https://doi.org/10.1029/1999JC900115>, 1999.
- 10 Johnson, G. C.: Quantifying Antarctic Bottom Water and North Atlantic Deep Water Volumes. *Journal of Geophysical Research: Oceans* 113(5):1–13, <https://doi.org/10.1029/2007JC004477>, 2008.
- Jung, S. J. A., Kroon, D., Ganssen, G., Peeters, F., Ganeshram, R.: Southern Hemisphere Intermediate Water Formation and the Bi-Polar Seesaw. *PAGES News* 18(1):36–39, 2010.
- Kanzow, T., Cunningham, S.A., Johns, W.E., Hirschi, J. J.-M., Marotzke, J., Baringer, M.O., Meinen, C.S., Chidichimo, M.P.,
- 15 Atkinson, C., Beal, L.M., Bryden, H.L., Collins, J.: Seasonal Variability of the Atlantic Meridional Overturning Circulation at 26.5°N. *Journal of Climate* 23(21):5678–98, <https://doi.org/10.1175/2010JCLI3389.1>, 2010.
- Knoll, M., Hernández-Guerra, A., Lenz, B., López Laatzén, F., Machín, F., Müller, T.J., Siedler, G: The Eastern Boundary Current System between the Canary Islands and the African Coast. *Deep-Sea Research Part II-Topical Studies In Oceanography* 49(17):3427–40, [https://doi.org/10.1016/S0967-0645\(02\)00105-4](https://doi.org/10.1016/S0967-0645(02)00105-4), 2002.
- 20 Krauss, W., Fahrbach, E., Aitsam, A., Elken, J., Koske, P.: The North Atlantic Current and its associated eddy field southeast of Flemish Cap. *Deep Sea Res.* 34, 1163-118, [https://doi.org/10.1016/0198-0149\(87\)90070-7](https://doi.org/10.1016/0198-0149(87)90070-7), 1987.
- Lavander, K. L., Davis, R. E., Owens, W.B.: Mid-depth recirculation observed in the Labrador and Irminger seas by direct velocity measurements. *Nature*, 407, 66-68, <https://doi.org/10.1038/35024048>, 2000.
- Lebreiro S.M., Antón L., Reguera M.I., Marzocchi A., *Paleoceanographic and climatic implications of a new Mediterranean*
- 25 *Outflow branch in the southern Gulf of Cadiz. Quaternary Science Reviews. Vol 197:92-111, https://doi.org/10.1016/j.quascirev.2018.07.036.*
- Llave E., Hernández-Molina F.J., Somoza L., Stow D.A.V., Díaz del Río V.: Quaternary evolution of the contourite depositional system in the Gulf of Cadiz. Economic and paleoceanographic importance of contourites. *Geol Soc Lond Spec Publ* 276:49–79, <https://doi.org/10.1144/GSL.SP.2007.276.01.03>, 2007.
- 30 Llave E., Schönfeld J., Hernández-Molina F.J., Mulder T., Somoza L., Díaz del Río V., Sánchez-Almazo I.: High-resolution stratigraphy of the Mediterranean outflow contourite system in the Gulf of Cadiz during the late Pleistocene: the impact of Heinrich events. *Mar Geol* 227:241–262, <https://doi.org/10.1016/j.margeo.2005.11.015>, 2006.
- Lofi, J., Voelker, A. H. L., Ducassou, E., Hernández-Molina, F. J., Sierro, F. J., Bahr, A., Galvani, A., Lourens, L. J., Pardo-Igúzquiza, E., and Pezard, P.: Quaternary chronostratigraphic framework and sedimentary processes for the Gulf of Cadiz and

- Portuguese Contourite Depositional Systems derived from Natural Gamma Ray records: *Marine Geology*, v. 377, p. 40-57, <https://doi.org/10.1016/j.margeo.2015.12.005>, 2016.
- Louarn, E. and Morin P.: Antarctic Intermediate Water Influence on Mediterranean Sea Water Outflow. *Deep-Sea Research Part I: Oceanographic Research Papers* 58(9):932–42, <https://doi.org/10.1016/j.dsr.2011.05.009>, 2011.
- 5 Machín, F. and Pelegrí J. L.: Northward Penetration of Antarctic Intermediate Water off Northwest Africa. *Journal of Physical Oceanography* 39(3):512–35, <https://doi.org/10.1175/2008JPO3825.1>, 2009.
- Machín, F. J. et al.: Seasonal Flow Reversals of Intermediate Waters in the Canary Current System East of the Canary Islands. *Journal of Physical Oceanography* 40(8):1902–9, <https://doi.org/10.1175/2010JPO4320.1>, 2010.
- Machín, F. J. and Pelegrí J. L.: Interaction of Mediterranean Water Lenses with Antarctic Intermediate Water off Northwest
10 Africa. *Scientia Marina* 80(S1):205–14, <http://dx.doi.org/10.3989/scimar.04289.06A>, 2016.
- Mackie, J.: Paleocurrent and paleoclimate reconstruction of the Western Boundary Undercurrent and Labrador Current on the Grand Banks of Newfoundland, thesis, Dalhousie University, 2005.
- Madelain, F.: Influence de la topographie du fond sur l'écoulement méditerranéen en entre le Détroit de Gibraltar et le Cap Saint-Vincent. *Cahiers Oceanographiques* 22, 43–61, 1970.
- 15 Makou, M. C., Oppo, D.W., Curry, W.B.: South Atlantic Intermediate Water Mass Geometry for the Last Glacial Maximum from Foraminiferal Cd/Ca. *Paleoceanography* 25(4):1–7, <https://doi.org/10.1029/2010PA001962>, 2010.
- Melières, F.: Recherches sur la dynamique **sédimentaire** du Golfe de Cádiz (Espagne). These de Doctoral, University of Paris A, 235pp, 1974.
- 20 Millot C., Candela J., Fuda J.L., Tber Y., Large warming and salinification of the Mediterranean outflow due to changes in its composition, *Deep Sea Research Part I: Oceanographic Research Papers*, 53 (4), 656-666, 2006.
- Muratli, J., Chase, Z., Mix A. C., McManus, J.: Increased Glacial-Age Ventilation of the Chilean Margin by Antarctic Intermediate Water. *Nature Geoscience* 3(1):23–26, <https://doi.org/10.1038/ngeo715>, 2010.
- Nelson, C. H., Baraza, J., Maldonado, A.: Mediterranean **undercurrent sandy** contourites, Gulf of Cadiz, Spain. *Sed Geol* 82:103–131, [https://doi.org/10.1016/0037-0738\(93\)90116-M](https://doi.org/10.1016/0037-0738(93)90116-M), 1993.
- 25 Nelson, C.H., Baraza, J., Maldonado, A., Rodero, J., Escutia, C., Barber, J.H. Jr.: Influence of the Atlantic inflow and Mediterranean outflow currents on Late Quaternary sedimentary facies of the Gulf of Cadiz continental margin. *Mar Geol* 155:99–129, [https://doi.org/10.1016/S0025-3227\(98\)00143-1](https://doi.org/10.1016/S0025-3227(98)00143-1), 1999.
- Oppo, D. W., Horowitz, M.: Glacial Deep Water Geometry : South Atlantic Benthic Foraminiferal Cd / Ca and / $\delta^{13}C$ Evidence. 15(2):147–60, <https://doi.org/10.1029/1999PA000436>, 2000.
- 30 Pahnke, K., Goldstein S. L., Hemming S. R.: Abrupt Changes in Antarctic Intermediate Water Circulation over the Past 25,000 Years. *Nature Geoscience* 1(12):870–74, DOI: 10.1038/ngeo360, 2008.
- Pardo, P. C., Pérez F.F, Velo A., Gilcoto M.: Water Masses Distribution in the Southern Ocean: Improvement of an Extended OMP (EOMP) Analysis. *Progress in Oceanography* 103:92–105, <https://doi.org/10.1016/j.pocean.2012.06.002>, 2012.
- Pearson, K.: On Lines and Planes of Closest Fit to Systems of Points in Space. *Philosophical Magazine* 2(11):559–72., 1901.

- Peliz, A., Dubert, J., Santos, A.M.P., Oliveira, P.B., LeCann, B.: Winter upper ocean circulation in the Western Iberian Basin—fronts, eddies and poleward flows:an overview. *Deep Sea Res. Part I: Oceanogr. Res.Pap.* 52(4), 621–646, <https://doi.org/10.1016/j.dsr.2004.11.005>, 2005.
- Peliz, A., Marchesiello, P., Santos, A.M.P., Dubert, J., Teles-Machado, A., Marta-Almeida, M., LeCann,B.: Surface
5 circulation in the Gulf of Cadiz: 2. Inflow–outflow coupling and the Gulf of Cadiz slope current.*J.Geophys.Res.* 114,C03011. <http://dx.doi.org/10.1029/2008jc004771>, 2009.
- Pérez-Hernández, M. D., Hernández Guerra, A., Fraile-Nuez, E., Comas-Rodríguez, I., Benítez-Barrios, V.M., Dominguez-Yanes, J.F., Vélez-Belchí, P., De Armas, D.: The Source of the Canary Current in Fall 2009. *Journal of Geophysical Research: Oceans* 118(6):2874–91, <https://doi.org/10.1002/jgrc.20227>, 2013.
- 10 Pickart, R.S., McKee, T.K., Torres, D.J., Harrington, S.A.: Mean Structure and Interannual Variability of the Slopewater System South of Newfoundland. *J. Phys. Oceanog.* 29, 2541-2558, [https://doi.org/10.1175/1520-0485\(1999\)029<2541:MSAIVO>2.0.CO;2](https://doi.org/10.1175/1520-0485(1999)029<2541:MSAIVO>2.0.CO;2), 1999.
- Pollard, R. T., Pu. S.: Structure and Circulation of the Upper Atlantic Ocean Northeast of the Azores. *Progress in Oceanography* 14(C):443–62, [https://doi.org/10.1016/0079-6611\(85\)90022-9](https://doi.org/10.1016/0079-6611(85)90022-9), 1985.
- 15 Poole, R., Tomczak, M.: Optimum Multiparameter Analysis of the Water Mass Structure in the Atlantic Ocean Thermocline. *Deep-Sea Research I* 46(2):1895–1921, [https://doi.org/10.1016/S0967-0637\(99\)00025-4](https://doi.org/10.1016/S0967-0637(99)00025-4), 1999.
- Preu, B., Hernández-Molina, F.J., Violante, R., Piola, A.R., Paterline, C.M., Schwenk, T., Voigt, I., Krastel, S., Spiess, V.: Morphosedimentary and Hydrographic Features of the Northern Argentine Margin: The Interplay between Erosive, Depositional and Gravitational Processes and Its Conceptual Implications. *Deep-Sea Research Part I: Oceanographic Research*
20 *Papers* 75:157–74, <https://doi.org/10.1016/j.dsr.2012.12.013>, 2013.
- Preu, B., Schwenk, T., Hernández-Molina, F.J., Violante, R., Paterlini, M., Krastel, S., Tomasini, J., Spieß, V.: Sedimentary growth pattern on the northern Argentine slope: The impact of North Atlantic Deep Water on southern hemisphere slope architecture. *Marine Geology* 329–331, 113-125, <https://doi.org/10.1016/j.margeo.2012.09.009>, 2012.
- Rahmstorf, S.: Thermohaline Ocean Circulation. *Encyclopedia of Quaternary Sciences* 1–10, 2006.
- 25 Raymo, M.E., Oppo, D.W., Flower, B.P., Hodell, D.A., McManus, J.F., Venz, K.A., Kleiven, K.F., McIntyre, K.: Stability of North Atlantic Water masses in face of pronounced natural climate variability, *Paleoceanography*, 19, PA2008, doi:10.1029/2003PA000921, 2004.
- Rebesco, M., Hernández-Molina, F.J., Van Rooij, D., Wåhlin, A.: Contourites and associated sediments controlled by deep-water circulation processes: state of the art and future considerations. *Mar. Geol.* 352, 111–154, <https://doi.org/10.1016/j.margeo.2014.03.011>, 2014.
- 30 Rhein, M.: Oceanography: Drifters reveal deep circulation. *Nature* 407, 30-31, <https://doi.org/10.1038/35024186>, 2000.
- Rogerson, M., Rohling, E.J., Bigg, G.R., Ramirez, J.: Paleooceanography of the Atlantic-Mediterranean exchange: Overview and first **quantitative assessment** of climatic forcing:*Rev. Geophys.*, v. 50, RG2003, doi:<http://dx.doi.org/10.1029/2011RG000376>, 2012.

- Ríos, A.F. Perez, F.F., Fraga, F., Water masses in the upper and middle North- Atlantic Ocean East of the Azores. *Deep Sea Research. Part A Oceanogr. Res.Pap.* 39 (3-4A), 645–658, 1992.
- Roque, C., Duarte, H., Terrinha, P., Valadares, V., Noiva, J., Cachão, M., Ferreira, J., Legoinha, P., Zitellini, N.: Pliocene and Quaternary depositional model of the Algarve margin contourite drifts (gulf of Cadiz, SW Iberia): seismic architecture, tectonic control and paleoceanographic insights. *Mar. Geol.* 303–306, 42–62, <https://doi.org/10.1016/j.margeo.2011.11.001>, 2012.
- Sabine, C. L., Feely, R.A., Gruber, N., Key, R.M., Lee, K., Bullister, J.L., Wanninkhof, R., Wong, C.S., Wallace, D.W.R., Tilbrook, B., Millero, F. J., Peng T.H., Kozyr, A. Ono, T., Ríos, A.F.: The Oceanic Sink for Anthropogenic CO₂. *Science* 305(5682):367–71, DOI: 10.1126/science.1097403, 2004.
- Sánchez-Leal, R.F., Bellanco, M.J., Fernández-Salas, L.M., García-Lafuente, J., Gasser-Rubinat, M., González-Pola, C., Hernández-Molina, F.J., Pelegrí, J.L., Peliz, A., Relvas, P., Roque, D., Ruiz-Villarreal, M., Sammartino, S., Sánchez-Garrido, J.C.: The Mediterranean Overflow in the Gulf of Cadiz: A rugged journey. *Scientific Reports* 3(11), DOI:10.1126/sciadv.aao0609, 2017.
- Schlitzer, R., Ocean Data View, <https://odv.awi.de>, 2018
- Schönfeld, J., Zahn, R.: Late glacial to Holocene history of the Mediterranean Outflow. Evidence from benthic foraminiferal assemblages and stable isotopes at the Portuguese margin. *Palaeogeogr. Palaeoclimatol. Palaeoecol.* 159 (1–2), 85–111, [https://doi.org/10.1016/S0031-0182\(00\)00035-3](https://doi.org/10.1016/S0031-0182(00)00035-3), 2000.
- Schönfeld, J., Zahn, R., Abreu, L.: Surface and deep water response to rapid climate changes at the Western Iberian Margin. *Glob. Planet. Chang.* 36, 237–264, [https://doi.org/10.1016/S0921-8181\(02\)00197-2](https://doi.org/10.1016/S0921-8181(02)00197-2), 2003.
- Shmidtko, S., Johnson, G.C.: Multidecadal Warming and Shoaling of Antarctic Intermediate Water, *J. Climate*, 25, 207–221, <https://doi.org/10.1175/JCLI-D-11-00021.1>, 2012.
- Stein, M.: Oceanography of the Flemish Cap and Adjacent Waters. *J. Northw. Atla. Fish. Sci.* 37, 135–146, doi:10.2960/J.v37.m652, 2007.
- Stow, D.A.V., Hernández-Molina, F.J., Alvarez Zarikian, C.A., the Expedition 339 Scientists, 2013b. Proceedings IODP, 339. Integrated Ocean Drilling Program Management International, Tokyo <http://dx.doi.org/10.2204/iodp.proc.339>, 2013.
- Stramma, L., Siedler, G.: Seasonal changes in the North Atlantic subtropical gyre, *J. Geophys. Res.*, 93(C7), 8111–8118, doi:10.1029/JC093iC07p08111, 1988.
- Stramma, L., England, M.: On the Water Masses and Mean Circulation of the South Atlantic Ocean. *Journal of Geophysical Research* 104:20863–83, <https://doi.org/10.1029/1999JC900139>, 1999.
- Talley, L. D.: Shallow, Intermediate, and Deep Overturning Components of the Global Heat Budget. *Journal of Physical Oceanography* 33(3):530–60, [https://doi.org/10.1175/1520-0485\(2003\)033<0530:SIADOC>2.0.CO;2](https://doi.org/10.1175/1520-0485(2003)033<0530:SIADOC>2.0.CO;2), 2003.
- Talley, L. D.: Some aspects of ocean heat transport by the shallow, intermediate and deep overturning circulations. In *Mechanisms of Global Climate Change at Millennial Time Scales*, Geophys. Mono. Ser., 112, American Geophysical Union, ed. Clark, Webb and Keigwin, 1–22, <https://doi.org/10.1029/GM112p0001>, 1999.

- Tomczak, M., Large, D.: Optimum Multiparameter Analysis of Mixing in the Thermocline of the Eastern Indian Ocean. *Journal of Geophysical Research* 94(C11):16141–49, <https://doi.org/10.1029/JC094iC11p16141>, 1989.
- Tomczak, M., Godfrey, J S.: *Regional Oceanography: an Introduction* 2nd edn. pp.63-82, 2003.
- Tsuchiya, M., Talley L.D., Michael S., McCartney, M.S.: An Eastern Atlantic Section from Iceland Southward across the Equator. *Deep Sea Research Part A. Oceanographic Research Papers* 39(11–12):1885–1917, [https://doi.org/10.1016/0198-0149\(92\)90004-D](https://doi.org/10.1016/0198-0149(92)90004-D), 1992.
- Van Aken, H. M.: The Hydrography of the Mid-Latitude Northeast Atlantic Ocean I. The Deep Water Masses, [https://doi.org/10.1016/S0967-0637\(99\)00092-8](https://doi.org/10.1016/S0967-0637(99)00092-8), 2000.
- Van Aken, Hendrik M.: The Hydrography of the Mid-Latitude Northeast Atlantic Ocean, DOI: 10.1016/S0967-0637(99)00092-8, 2000.
- Van Aken, Hendrik M.: The Hydrography of the Mid-Latitude Northeast Atlantic Ocean - Part III: The Subducted Thermocline Water Mass. *Deep-Sea Research Part I: Oceanographic Research Papers* 48(1):237–67, [https://doi.org/10.1016/S0967-0637\(00\)00059-5](https://doi.org/10.1016/S0967-0637(00)00059-5), 2001.
- Vandorpe T., Van Rooij D., de Haas H. *Statigraphy and paleoceanography of a topography-controlled contourite drift in the Pen Duick area, southern Gulf of Cádiz. Marine Geology Vol 349: 136-151.* <https://doi.org/10.1016/j.margeo.2014.01.007>.
- Vandorpe T., Martins I., Vitorino J., Hebbeln D., García M., Van Rooij D.: *Bottom currents and their influence on the sedimentation pattern in the El Arraiche mud volcano province, southern Gulf of Cadiz. Marine Geology Vol 378:114-126.* <https://doi.org/10.1016/j.margeo.2015.11.012>.
- Velez-Belchi, P., Perez-Hernandez, M. D., Casanova-Masjoan, M, Cana, L., Hernandez-Guerra, A.: On the Seasonal Variability of the Canary Current and the Atlantic Meridional Overturning Circulation. *122:4518–38*, <https://doi.org/10.1002/2017JC012774>, 2017.
- Viana, A.R., Hercos, C.M., Almeida Jr., W., Magalhães, J.L.C., Andrade, S.B.: Evidence of bottom current Influence on the Neogene to Quaternary sedimentation along the Northern Campos Slope, SW Atlantic Margin, Deep-Water Contourite Systems: Modern Drifts and Ancient Series, Seismic and Sedimentary Characteristics. *Geological Society, London, Memoirs* 22, pp. 249-259, <https://doi.org/10.1144/GSL.MEM.2002.022.01.18>, 2002.
- Voelker, A.H.L., Lebreiro, S.M., Schönfeld, J., Cacho, I., Erlenkeuser, H., Abrantes, F.: Mediterranean outflow strengthening during northern hemisphere coolings: a salt source for the glacial Atlantic? *Earth Planet Sci. Lett.* 245, 39e55. <https://doi.org/10.1016/j.epsl.2006.03.014>, 2006.
- Voelker A.H.L., Colman A., Olack G., Waniek J. J., Hodell D., *Oxygen and hydrogen isotope signatures of Northeast Atlantic water masses, Deep Sea Research Part II: Topical Studies in Oceanography, 116: 89-106, 2015.*
- Voigt, I., Henrich, R., Preu, B.M., Piola, A.R., Hanebuth, T.J.J. Schwenk, T., Chiessi, M.: A submarine canyon as a climate archive – Interaction of the Antarctic Intermediate Water with the Mar de Plata Canyon (Southwest Atlantic). *Marine Geology, 341: 46-57*, <https://doi.org/10.1016/j.margeo.2013.05.002>, 2013.

Wainer, I., Goes M., Murphy L. N., Brady E.: Changes in the Intermediate Water Mass Formation Rates in the Global Ocean for the Last Glacial Maximum, Mid-Holocene and Pre-Industrial Climates. *Paleoceanography* 27(3):1–11, <https://doi.org/10.1029/2012PA002290>, 2012.

Yashayaev, I, **Clarke**, A.: Evolution of North Atlantic water masses inferred from Labrador Sea salinity series. *Oceanography* 5 21, 30-45, <https://doi.org/10.5670/oceanog.2008.65>, 2008.

10

15

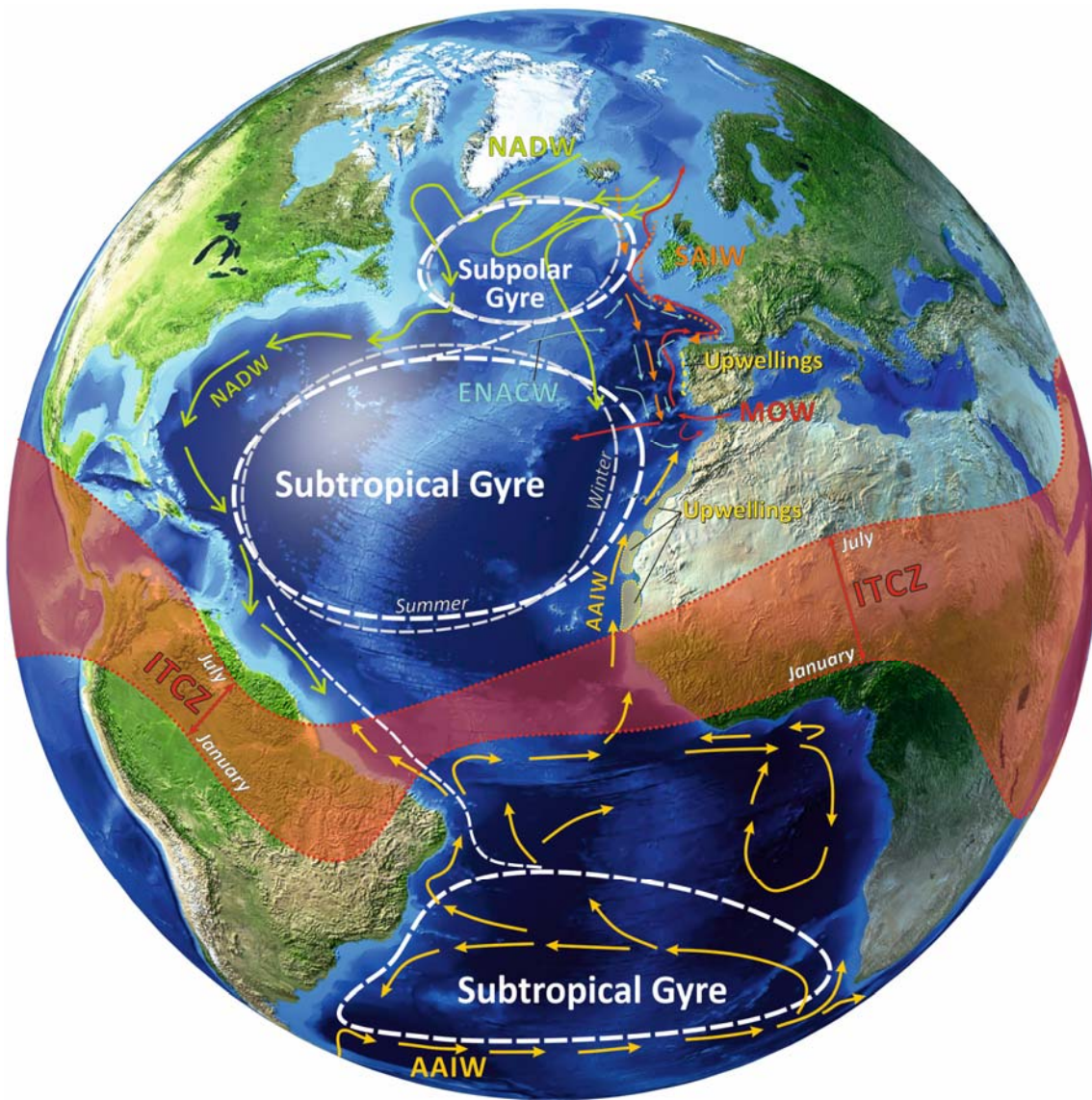


Figure 1. Sketch of the intermediate waters circulation along Gulf of Cádiz (GoC) and surrounding areas in the Atlantic Ocean. The position of the main gyres, the Intertropical Confluence Zone (ITCZ) and circulation of the AAIW, SAIW, ENACW and MW are indicated. (Compilation based on; Krauss et al., 1987; Stramma and Siedler, 1988; Faugères et al., 1993; Iorga and Lozier 1999; Pickart et al., 1999; Stramma and England, 1999; Coulbourn and Foote, 2000; Lavander et al., 2000; Rhein, 2000; Fratantoni, 2001; Raymo et al., 2004; Mackie, 2005; Peliz et al., 2005, 2009; Rahmstorf, 2006; Stein, 2007; Gil et al., 2008; Yashayaev, and Clarke, 2008; Hernández-Molina et al., 2011 and references therein; Cheng et al., 2012; Pérez et al., 2013).

5

10

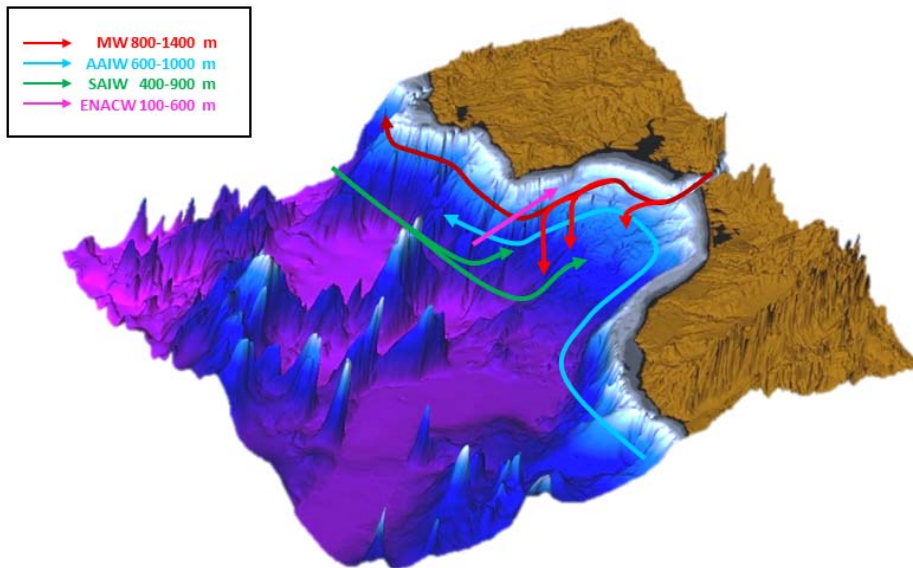


Figure 2. Illustration of intermediate water mass circulation in the Gulf of Cádiz. The red line indicates the **MW** along the Spanish and Portuguese coast. The blue line is for the AAIW coming from the African coast from the south. The green line is for the modified SAIW coming from the northwest of the Iberian Peninsula. The purple line is for the ENACW coming from the western part of the Gulf of Cádiz.

5

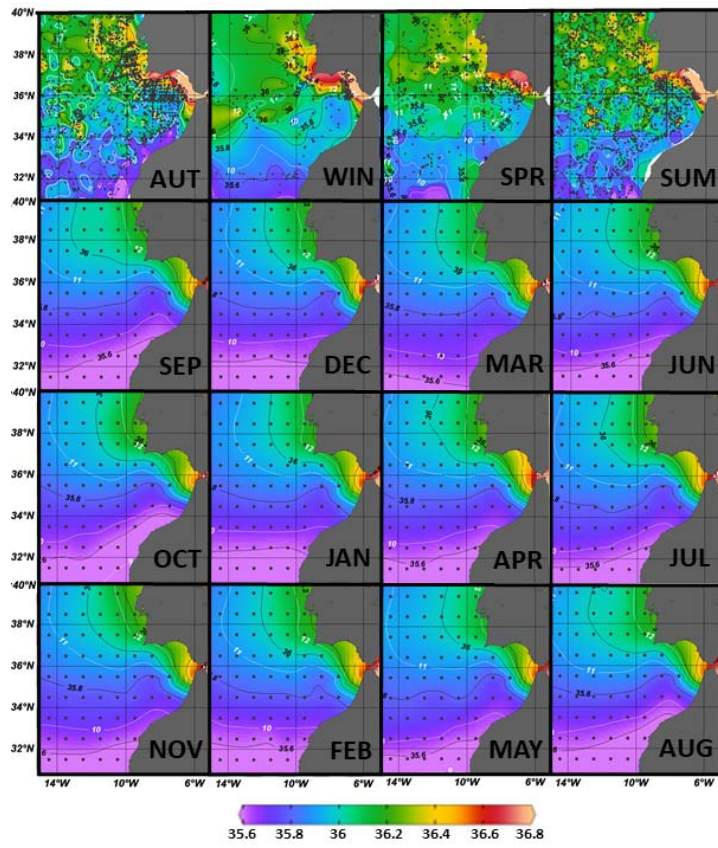


Figure 3. Observed salinity on the isopycnic surface $\sigma = 27.5$ for the different seasons (top row). The rows below show the same distributions for each climatological month as shown by WOA data. The white lines represent the temperature values at density $\sigma = 27.5$.

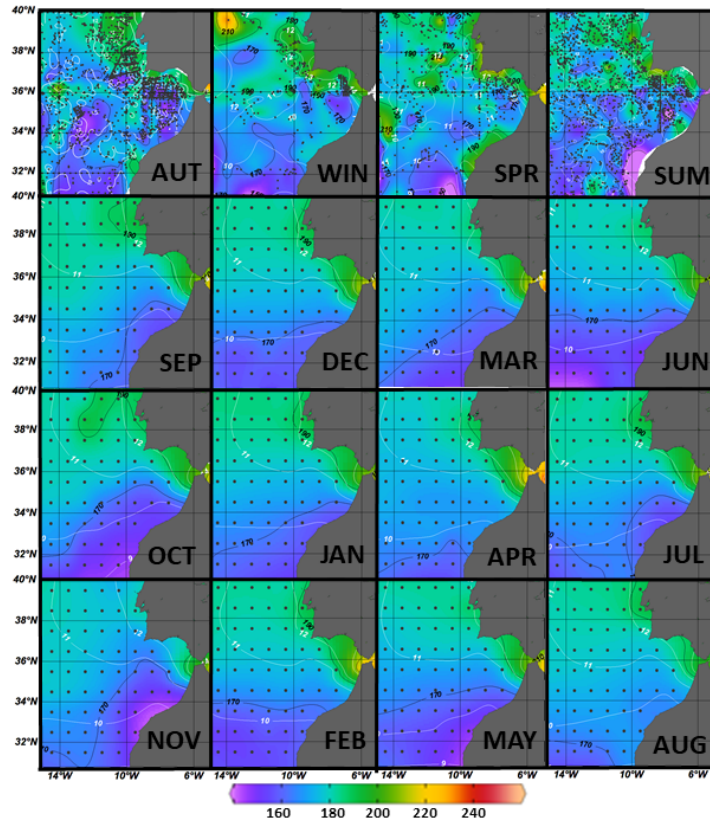


Figure 4. Observed oxygen concentration on the isopycnic surface $\sigma=27.5$ for the different seasons (top row). The rows below show the same distributions for each climatological month as shown by WOA data. The white lines represent the temperature values at density $\sigma=27.5$.

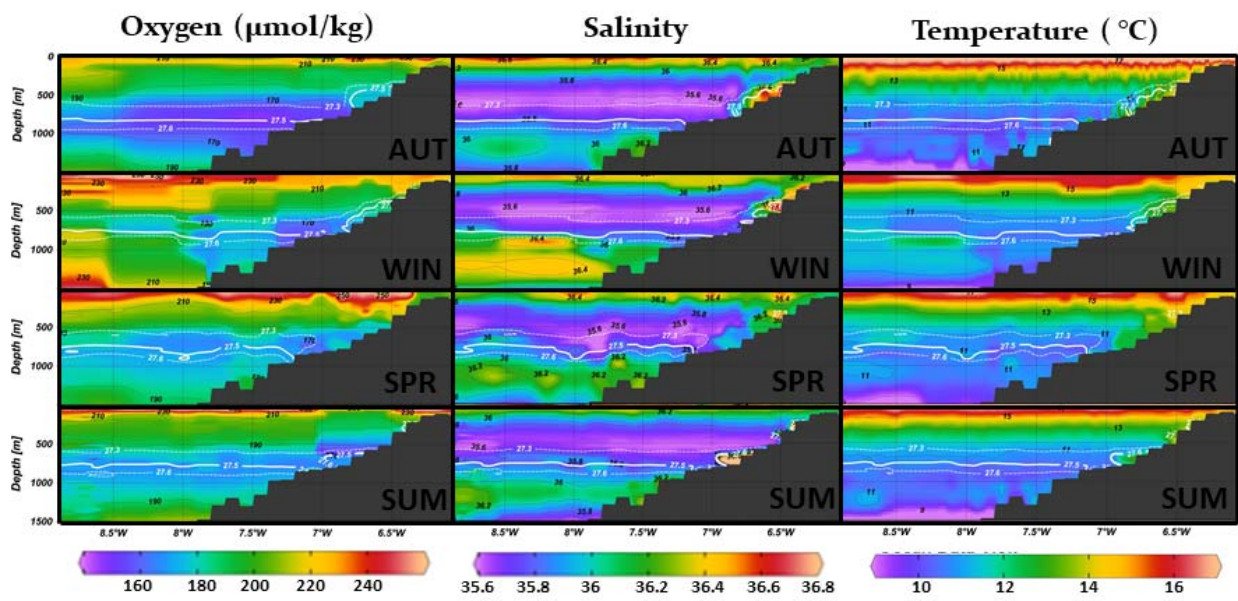


Figure 5. Vertical sections disposed zonally at a latitude of 36°N of observed variables for each season. From left to right: Oxygen concentration, Salinity and Temperature. From top to bottom: the different seasons.

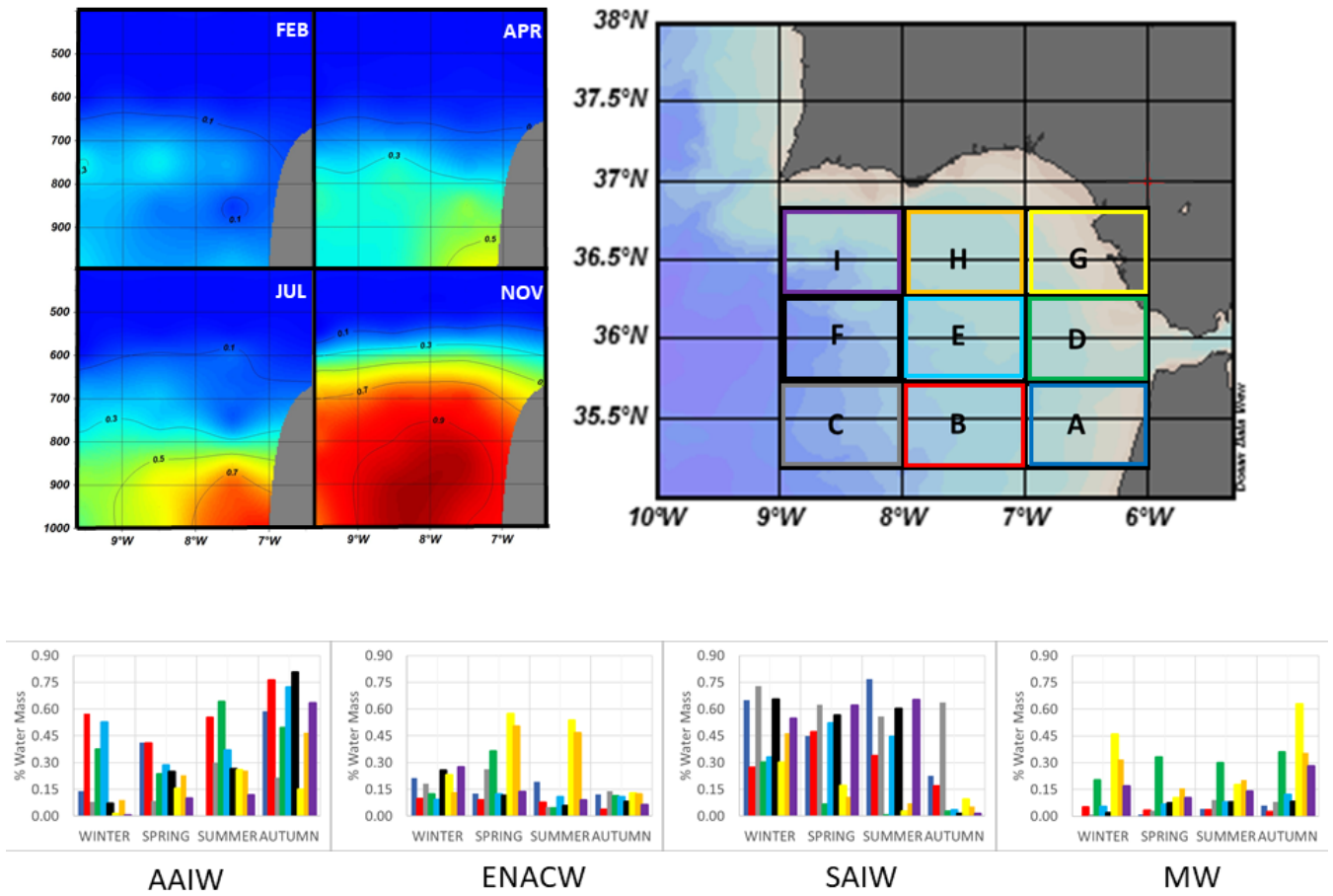


Figure 6. Values of percentages of each water mass resulting from the OMP analysis in each of the boxes shown in the map in the right hand lower corner, for each season. In the left hand lower corner, the resulting percentages are shown from the OMP analysis applied on the WOA data base for a zonal section at 36 °N in selected climatological months. The data selected for OMP analysis are those in the depth range of 400-1000 m.

5

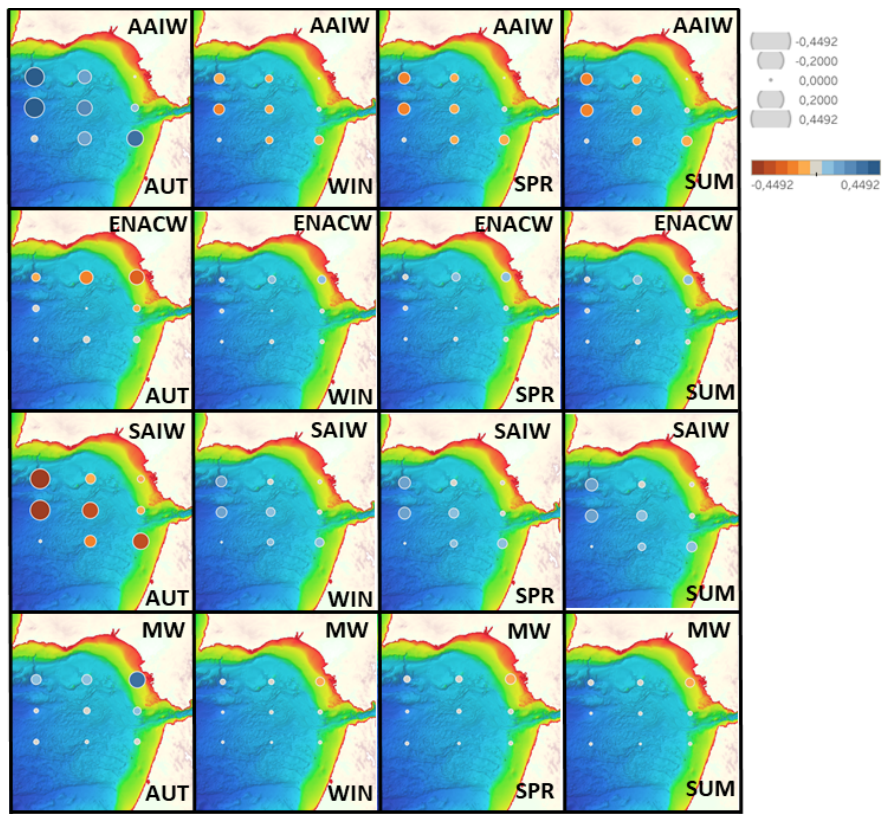


Figure 7. Seasonal variation of the percentages of each water mass given by the first principal component resulting from the PCA on the percentages previously estimated in the nine boxes considered in the GoC. **Values are deviations from the averaged, through the different seasons, percentage at each location.**

5

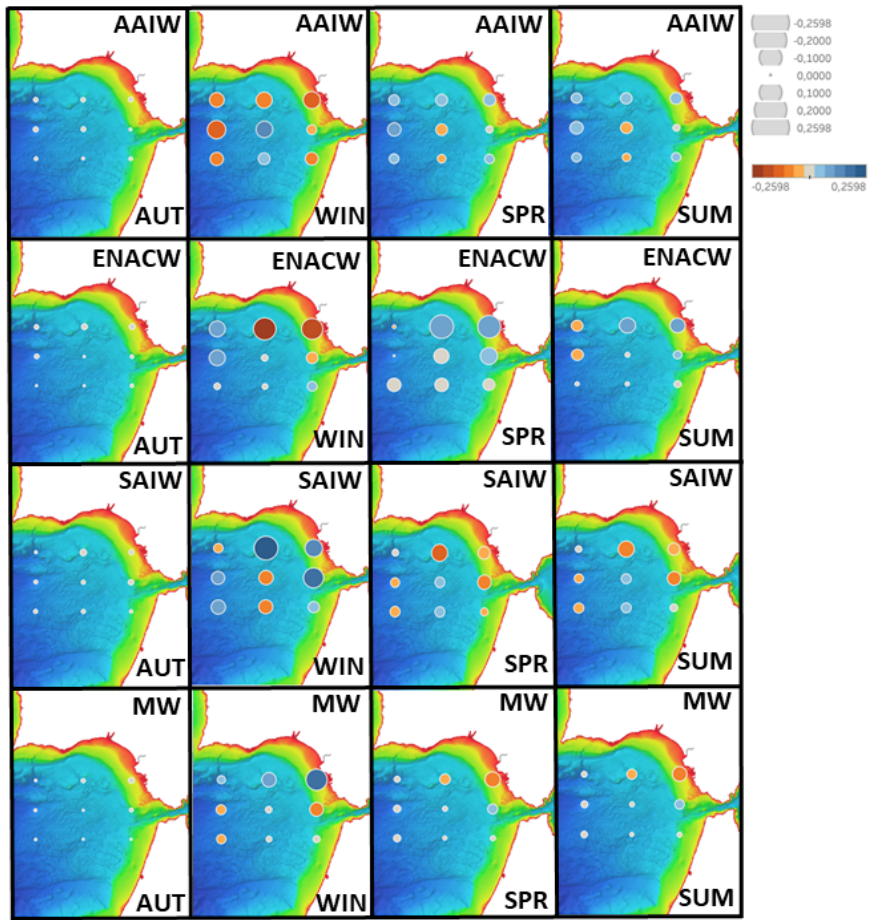


Figure 8. As figure 6 but for the second principal component.

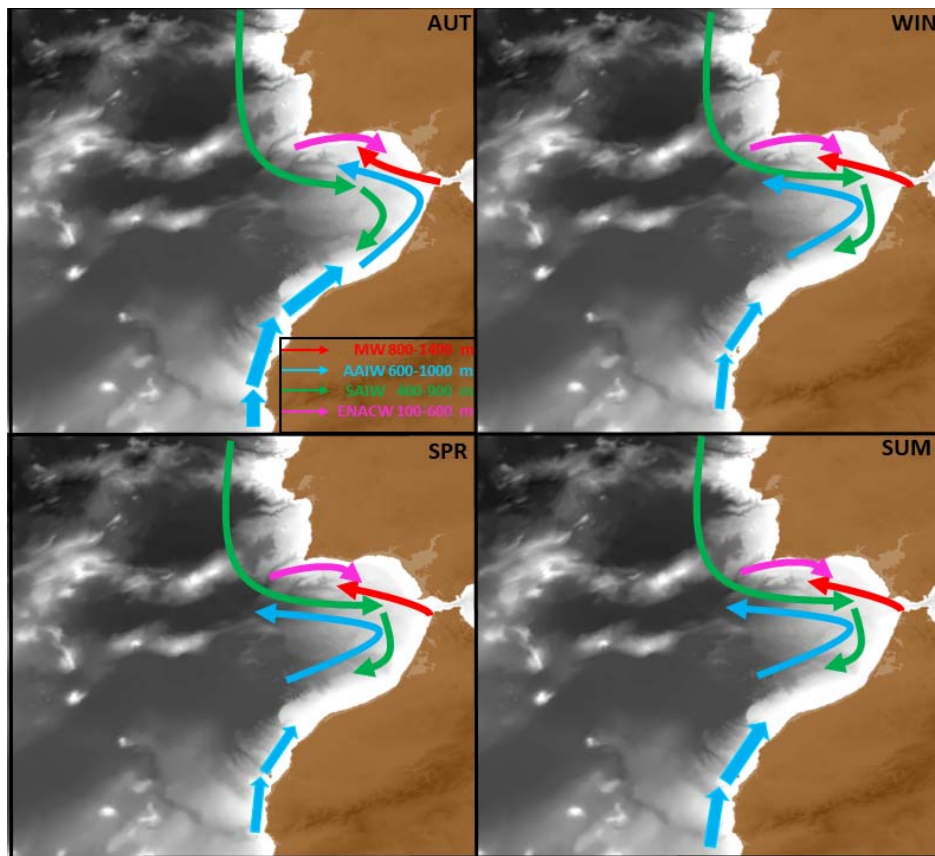


Figure 9. Illustration of the preferential tracks of the different intermediate water masses throughout the different seasons. Increased thickness of the arrows closer to the African coast point out the likely increase in the transport of AAIW in Autumn and Summer.

5

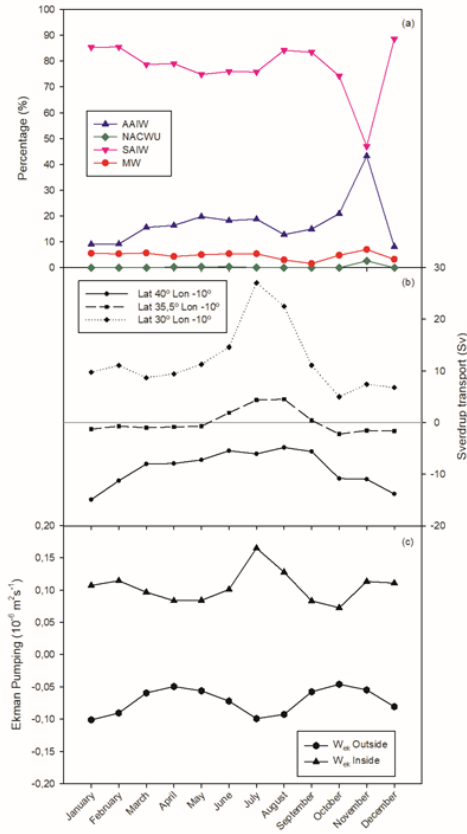


Figure 10. a) Averaged percentages of each water mass resulting from the application of OMP analysis on WOA data, for each climatological month, at 35.5 °N in the Gulf of Cádiz. b) Sverdrup transport at three locations close to the continental borders: south of GoC (30 °N, 10 °W), in the GoC (35.5 °N, 10 °W), north of GoC (40 °N, 10 °W). c) Monthly Ekman pumping in two zones: Outside the GoC (between 35°-36° N and 19°-20° W) and Inside the GoC (between 35°-36° N and 7°- 8° W).

5

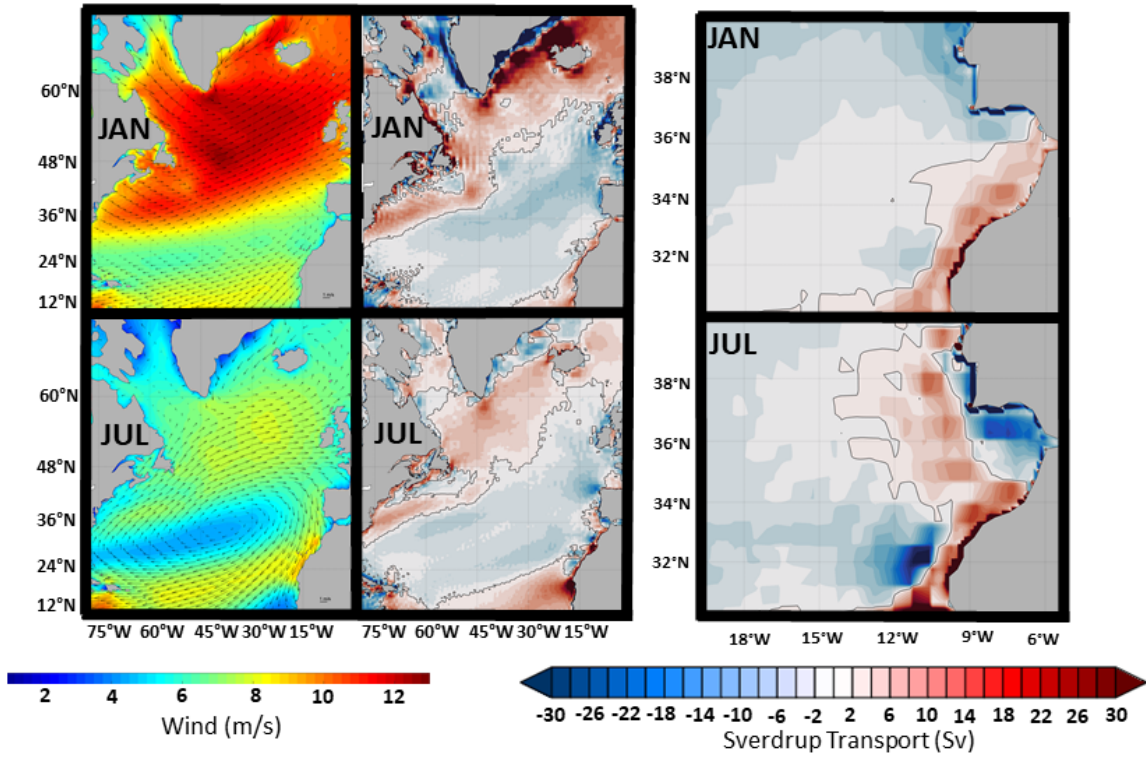


Figure 11. Maps of surface winds and Sverdrup transport in January (upper) and July (lower). Right maps are a zoomed study region of surface Sverdrup transport.

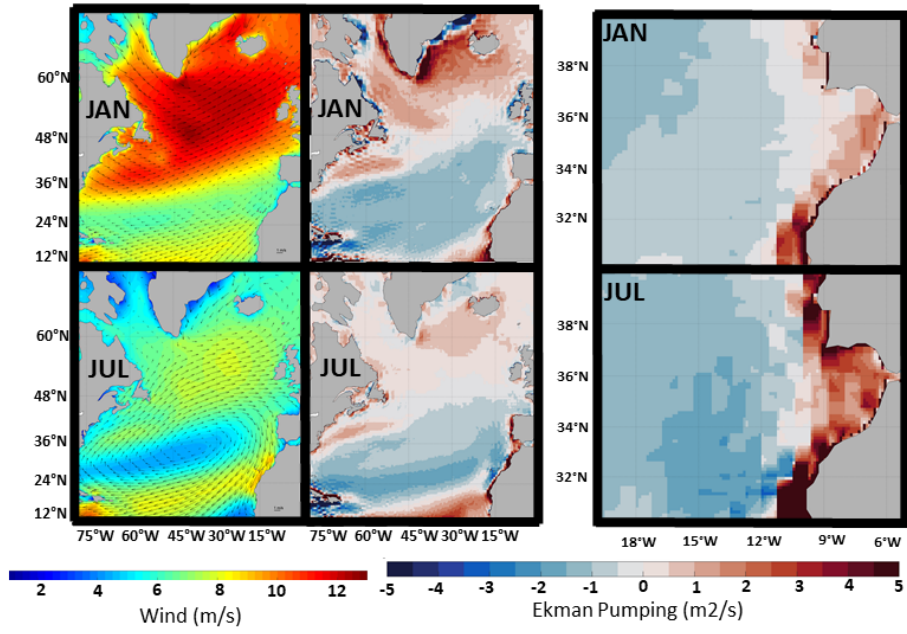


Figure 12. As figure 10 but for Ekman pumping.