

Dear Editor,

We'd like to thank you for your excellent work on our manuscript numbered "os-2019-43". Based on your comments, we have modified the manuscript. Please find below a point-to-point response marked in blue, with changes in the text cited in green. The page numbers and line numbers in this document refer to the revised version of the manuscript without using the revision mode in the Microsoft Word.

(1) Reviewer 1 highlighted the necessary comparison to other published work. You now acknowledge that work, but currently you expect your readers to read all the papers and compare them. But how do your results compare to those published elsewhere? Could you for example have a table or figure quoting results from other studies and directly comparing them to yours? They may not be exactly the same sites or time periods, but please help your readers. Then, if you see the same behaviour, great! If they are different, then why? It's not really enough to say "oh yes, such-and-such a study looked at the same area before".

Reply:

Thank you for your constructive suggestions.

We are sorry that we did not fully compare our results to those in the published papers. According to your comment, we have further compared them. As there are spatial and temporal inhomogeneities in the seasonal variations of the principal tidal constituents and the accurate results in the published papers are difficult to extract, it is not feasible to quantitatively compare our results to the published results using a table or figure. Therefore, we have added some new comparisons in the Sections 5 (Discussion).

Compared to the annual averages, the mean M_2 amplitude at E2 in this study increases by 6.90 cm (approximately 9.33%) in the summer and decreases by 6.68 cm (approximately 9.03%) in the winter, close to the estimated values in Foreman et al. (1995) (6%), Huess and Andersen (2001) (6%) and Müller et al. (2014) (5%–10%). Besides, the spatial distribution of the differences between the simulated M_2 tidal amplitudes in summer and those in winter in Figure 10 shows that the M_2 tidal amplitudes in summer are larger than those in winter in Bohai Bay,

Laizhou Bay and Liaodong Bay, which is the same as that obtained by analysing the sea level data at several tidal gauge stations in the Bohai Sea in Fang and Wang (1986) and that simulated by numerical model in Kang et al. (2002). Besides, the summer amplitudes of M_2 tide in some areas in the Bohai Sea are less than those in winter, as shown in Figure 10, and the similar results are also obtained in Kang et al. (1995), Muller et al. (2014) and Devlin et al. (2018).

In general, the M_2 tidal amplitude in summer is larger than that in winter in many areas, including the Bohai Sea (Fang and Wang, 1986), the North Sea (Huess and Andersen, 2001; Gräwe et al., 2014; Müller et al., 2014), most of the Ganges-Brahmaputra-Meghna delta (Tazkia et al., 2017), the seas of Southeast Asian (Devlin et al., 2018), Liverpool (Corkan, 1934), Victoria (Foreman et al., 1995), the western part of the Yellow and East China Seas (Kang et al., 2002), the Hudson Bay and Foxe Basin (St - Laurent et al., 2008) and so on, which is the same as that obtained by analysing the observations at E2 and Dalian in this study. Devlin et al. (2018) found that the diurnal and semidiurnal tidal amplitudes and phases exhibited a high degree of seasonality in the seas of Southeast Asia, and Fang and Wang (1986) indicated that the O_1 tidal amplitude in summer was also larger than that in winter in the Bohai Sea, which are similar to those concluded in this study.

It can be seen that the seasonal variations of the principal tidal constituents obtained by analysing the observations at E2 and Dalian and those simulated using numerical model in this study have the similar trend with those in the published papers. The novel EHA is used to estimate the seasonal variations and the numerical experiments using three-dimensional MITgcm are performed to explore the physical mechanisms in this study, so this study is not the simply repetitive work of any published papers.

Changes:

P9L6: For the semi-diurnal tides M_2 and S_2 , the simulated amplitudes in summer were larger than those in winter in Bohai Bay, Laizhou Bay, Liaodong Bay, which was the same as that obtained by analysing the sea level data at several tidal gauge stations in the Bohai Sea in Fang and Wang (1986) and that simulated by numerical model in Kang et al. (2002), and smaller than those in winter in the middle of the Bohai Sea.

P10L6: The seasonality of the principal tidal constituents has been investigated widely. As shown in Müller et al. (2014), there were significantly seasonal variations in M_2 tide in several coastal regions and the maximum annual tide was in July (± 1 month) in most of the ocean. However, the spatial and temporal inhomogeneities were also existed and the summer amplitudes of M_2 tide were less than those in winter in several areas, as shown in Kang et al. (1995), Müller et al. (2014), Devlin et al. (2018) and Figure 10 in this study. In general, the M_2 tidal amplitude in summer was larger than that in winter in many areas, including the Bohai Sea (Fang and Wang, 1986), the North Sea (Huess and Andersen, 2001; Gräwe et al., 2014; Müller et al., 2014), most of the Ganges-Brahmaputra-Meghna delta (Tazkia et al., 2017), the seas of Southeast Asian (Devlin et al., 2018), Liverpool (Corkan, 1934), Victoria (Foreman et al., 1995), the western part of the Yellow and East China Seas (Kang et al., 2002), the Hudson Bay and Foxe Basin (St - Laurent et al., 2008), and so on, which was the same as that obtained by analysing the observations at E2 and Dalian in this study. Devlin et al. (2018) found that the diurnal and semidiurnal tidal amplitudes and phases exhibited a high degree of seasonality in the seas of Southeast Asia, and Fang and Wang (1986) indicated that the O_1 tidal amplitude in summer was also larger than that in winter in the Bohai Sea, which were similar to those concluded in this study. The seasonality of the principal tidal constituents obtained in the study was mainly similar to those in previous studies, but the novel EHA was firstly used to estimate the seasonal variations of the principal tidal constituents and the numerical experiments using three-dimensional MITgcm were performed to explore the physical mechanisms.

(2) Related to Reviewer 1 (comment 14) and Reviewer 2 (comment 2).

I'm not certain that what you are calling " M_2 ", " S_2 " etc are actually the same thing when calculated by the different techniques. Each of the amplitudes A in Equations 1 and 2 are only defined as part of a whole system. As soon as you change the number of constituents fitted, and particularly whether A is time-varying, then you've changed the whole equation. I wonder if this is related to the huge N_2 in the figure 5c? Can you explain this better, before I ask the reviewers to have another look?

Reply:

Thank you for your comment.

Tides originate from the gravitational forces of the sun and moon acting on a rotating earth (Newton, 1687). The astronomical forcing for tides can be written as a linear combination of sinusoidal terms, each having a distinct amplitude, phase lag and temporal frequency (Doodson, 1921). The oceanic response to this forcing can be expressed in the same manner, where each sinusoid is referred to as a tidal constituent (Foreman and Henry, 1989). The harmonic analysis requires calculating the amplitudes and phase lags for a finite number of sinusoidal functions with known frequencies (Foreman and Henry, 1989). In theory, when the number of constituents fitted is changed, the estimated harmonic constant of the tidal constituents will not be changed, as long as the suitable method is used.

The main points of the 14th comment of Reviewer #1 and the second comment of Reviewer #2 are that the estimated harmonic parameters in the old manuscript contain the other signals and the spurious seasonality is caused by the unresolved constituents. According to the fifth comment of Reviewer #2, we have used the inference procedure in the monthly analysis in SHA to remove the influence of unresolved constituents. Besides, we have embedded the nodal correction into EHA to eliminate the influence of 18.6-year nodal modulation and added the minor constituents with constant harmonic parameters in EHA to resolve more constituents in the revised manuscript. As shown in Figures 4 and 6 in the revised manuscript, the estimated seasonal variations of the principal tidal constituents using EHA are similar to those obtained using SHA; in addition, the spurious seasonality is removed, indicating that the modified methods are reasonable and the harmonic parameters of tidal constituents calculated by the different techniques are the same things.

The power spectral densities of the observed sea level at Dalian, as shown in Figure 5, are used to demonstrate the existing tidal constituents in the observations. The huge N_2 in Figure 5c indicates that the N_2 constituent is significant at Dalian. The N_2 in Figure 5c is the actual signal in the sea level observations and not related to the estimated harmonic parameters of the other tidal constituents. To further show that the huge N_2 will not affect the estimated seasonality

of the tidal constituents, we have designed new experiments NE1-NE3. In the revised manuscript, only M_2 , K_1 , S_2 and O_1 were selected as the principal tidal constituents to be investigated using SHA and EHA. In SHA, the automated constituent selection algorithm in T_TIDE was used to determine the analysed constituents (N_2 was included in fact); in addition, the unresolved constituents P_1 and K_2 were inferred from K_1 and S_2 , respectively, with the inference parameters taken from a yearly harmonic analysis of the sea-level observations. In EHA, the harmonic parameters of M_2 , K_1 , S_2 , O_1 , P_1 and K_2 were estimated together; in addition, the harmonic parameters of M_2 , K_1 , S_2 and O_1 were assumed to be temporally varying and those of P_1 and K_2 were assumed to be constant. In new experiment NE1, the N_2 was added to be principal tidal constituents with temporally varying harmonic parameters and estimated together with the other tidal constituents using EHA. The other settings of EHA in NE1 were the same as those in the EHA in the revised manuscript. As shown in the following Figure R1, the estimated harmonic parameters of M_2 , K_1 , S_2 and O_1 were almost equal to those in the revised manuscript. In new experiment NE2, the N_2 was assumed to be the minor tidal constituents with constant harmonic parameters and estimated together with the other tidal constituents using EHA. The other settings of EHA in NE2 were the same as those in the EHA in the revised manuscript. As shown in the following Figure R2, the estimated harmonic parameters of M_2 , K_1 , S_2 and O_1 in NE2 were almost equal to those in the revised manuscript. In new experiment NE3, only M_2 , S_2 , K_1 and O_1 were estimated together using SHA and the unresolved constituents P_1 and K_2 were inferred from K_1 and S_2 ; in fact, the N_2 was not considered. The other settings of SHA in NE3 were the same as those in the SHA in the revised manuscript. As shown in the following Figure R3, the estimated harmonic parameters of M_2 , K_1 , S_2 and O_1 were almost equal to those in the revised manuscript. The results indicated that the estimated harmonic parameters of the principal tidal constituents in the revised manuscript are not changed, no matter the N_2 is considered or not in both EHA and SHA.

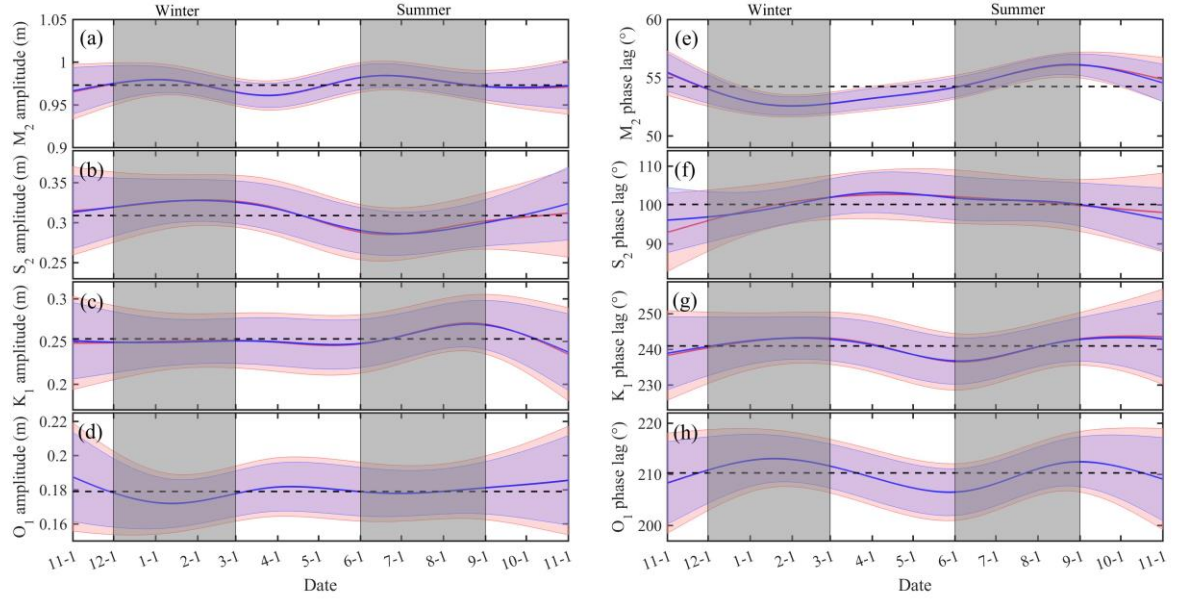


Figure R1. Time series of the estimated temporally varying tidal amplitudes of principal tidal constituents, including (a) M_2 , (b) S_2 , (c) K_1 and (d) O_1 , at Dalian using EHA in the revised manuscript (red lines) and in the new experiment NE1 (blue lines). (e-h) Similar to (a-d), but for the estimated temporally varying tidal phase lags. Shading indicate the corresponding 95% confidence intervals.

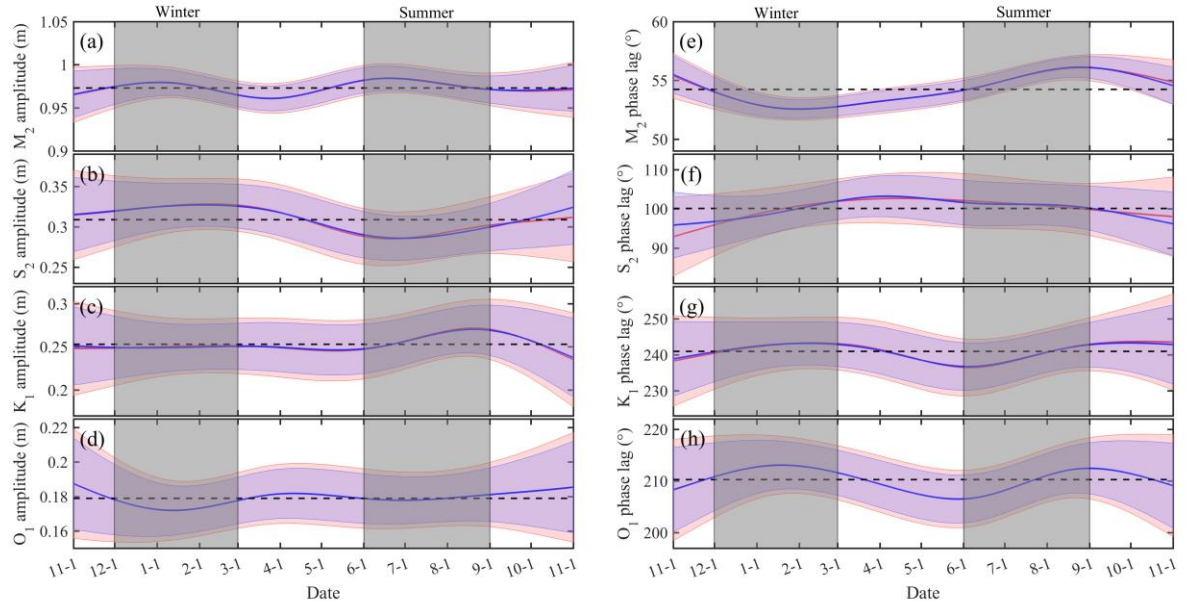


Figure R2. Similar to Figure R1, but for those at Dalian estimated using EHA in the revised manuscript (red lines) and in the new experiment NE2 (blue lines).

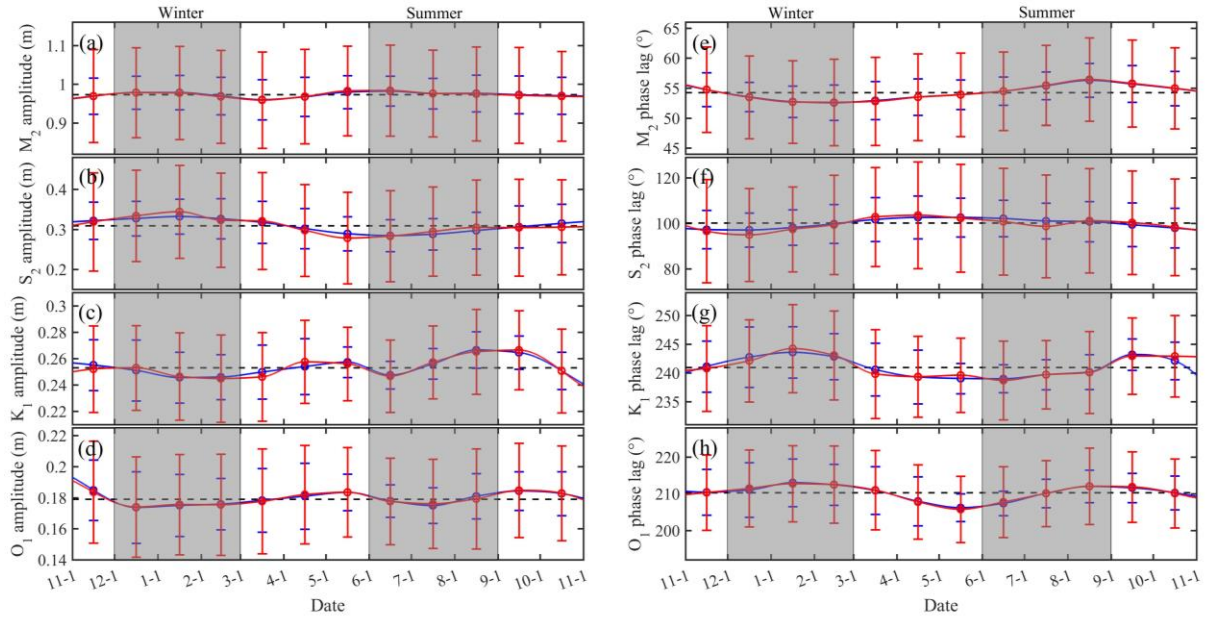


Figure R3. Time series of the estimated temporally varying tidal amplitudes of principal tidal constituents, including (a) M_2 , (b) S_2 , (c) K_1 and (d) O_1 , at Dalian using SHA in the revised manuscript (blue lines) and in the new experiment NE3 (red lines). (e-h) Similar to (a-d), but for the estimated temporally varying tidal phase lags. Vertical bars indicate the corresponding 95% confidence intervals.

References

- Corkan, R. H.: An Annual Perturbation in the Range of Tide, Proceedings of the Royal Society of London, 144, 537-559, 1934.
- Devlin, A. T., Zaron, E. D., Jay, D. A., Talke, S. A., and Pan, J.: Seasonality of Tides in Southeast Asian Waters, Journal of physical oceanography, 48, 1169-1190, 2018.
- Doodson, A. T.: The harmonic development of the tide-generating potential, Proceedings of the Royal Society of London. Series A, Containing Papers of a Mathematical and Physical Character, 100, 305-329, 1921.
- Fang, G. and Wang, J.: An analysis of the astrometeorological constituents of tide in the Bohai Sea, Acta Oceanologica Sinica, 5, 486-495, 1986.
- Foreman, M. G. G. and Henry, R. F.: The harmonic analysis of tidal model time series, Advances in Water Resources, 12, 109-120, 1989.

- Foreman, M. G. G., Walters, R. A., Henry, R. F., Keller, C. P., and Dolling, A. G.: A tidal model for eastern Juan de Fuca Strait and the southern Strait of Georgia, *Journal of Geophysical Research Oceans*, 100, 721-740, 1995.
- Gräwe, U., Burchard, H., Müller, M., and Schuttelaars, H. M.: Seasonal variability in M2 and M4 tidal constituents and its implications for the coastal residual sediment transport, *Geophysical Research Letters*, 41, 5563-5570, 2014.
- Huess, V. and Andersen, O.: Seasonal variation in the main tidal constituent from altimetry, *Geophysical Research Letters*, 28, 567-570, 2001.
- Kang, S. K., Chung, J.-y., Lee, S.-R., and Yum, K.-D.: Seasonal variability of the M 2 tide in the seas adjacent to Korea, *Continental Shelf Research*, 15, 1087-1113, 1995.
- Kang, S. K., Foreman, M. G., Lie, H. J., Lee, J. H., Cherniawsky, J., and Yum, K. D.: Two - layer tidal modeling of the Yellow and East China Seas with application to seasonal variability of the M2 tide, *Journal of Geophysical Research: Oceans*, 107, 2002.
- Müller, M., Cherniawsky, J. Y., Foreman, M. G., and von Storch, J.-S.: Seasonal variation of the M2 tide, *Ocean Dynamics*, 64, 159-177, 2014.
- Newton, I.: *Philosophiae naturalis principia mathematica*, 1687.
- St - Laurent, P., Saucier, F., and Dumais, J. F.: On the modification of tides in a seasonally ice - covered sea, *Journal of Geophysical Research: Oceans*, 113, 2008.
- Tazkia, A., Krien, Y., Durand, F., Testut, L., Islam, A. S., Papa, F., and Bertin, X.: Seasonal modulation of M2 tide in the Northern Bay of Bengal, *Continental Shelf Research*, 137, 154-162, 2017.

Seasonal variation of the principal tidal constituents in the Bohai Sea

Daosheng Wang^{1,2}, Haidong Pan³, Guangzhen Jin⁴, Xianqing Lv³

¹ College of Marine Science and Technology, China University of Geosciences, Wuhan 430074, China

² Shenzhen Research Institute, China University of Geosciences, Shenzhen 518057, China

5 ³Physical Oceanography Laboratory/CIMST, Ocean University of China and Qingdao National Laboratory for Marine Science and Technology, Qingdao 266100, China

⁴ School of Marine Sciences, Sun Yat-Sen University and Key Laboratory of Marine Resources and Coastal Engineering in Guangdong Province, Guangzhou 510275, China

Correspondence to: Xianqing Lv (xqinglv@ouc.edu.cn)

10 **Abstract.** The seasonal variation of tides plays a significant role in water level changes in coastal regions. In this study, seasonal variations of four principal tidal constituents, including M_2 , S_2 , K_1 , and O_1 , in the Bohai Sea, China, were studied by analysing one-year sea-level observations at E2 and 17-year sea-level observations at Dalian with an enhanced harmonic analysis. At E2, the M_2 tidal amplitude and phase lag had annual frequencies, with large values in summer and small values in winter, while the frequencies of S_2 and K_1 tidal amplitudes are also nearly annual. In contrast, the O_1 tidal amplitude increased
15 constantly from winter to autumn. The maxima of phase lags appeared twice in one year for S_2 , K_1 and O_1 , taking place near winter and summer. The seasonal variation trends estimated by the enhanced harmonic analysis at Dalian are different from those at E2, except for the M_2 phase lag. The M_2 and S_2 tidal amplitudes varied semi-annually and annually, respectively, and were relatively significant at Dalian. The results of numerical experiments indicate that the seasonality of vertical eddy viscosity induced seasonal variations of the principal tidal constituents at E2, while the variations at Dalian were due to the
20 seasonality of stratification and vertical eddy viscosity.

1 Introduction

Although there is no primary seasonal cycle in the moon's orbit, a significant seasonal variation in the principal lunar tidal constituent has been observed and is dominant in coastal and polar regions (Müller et al., 2014). In particular, the seasonal variation in the major tidal constituent M_2 has received considerable attention (Gräwe et al., 2014).

25 Corkan (1934) inferred a seasonal modulation of the M_2 tide by analysing several sea-level records near the British coast. Foreman et al. (1995) observed a seasonal cycle of the M_2 amplitude at Victoria, which is on the southern tip of Vancouver Island off Canada's Pacific coast. Kang et al. (1995) revealed the seasonal variability of the M_2 tidal harmonic constants in the seas adjacent to Korea. Huess and Andersen (2001) found a seasonal variation in the M_2 constituent in the northwest European shelf. Kang et al. (2002) investigated the seasonal variability of the M_2 tide in the Yellow and East China Seas. Georgas (2012)
30 observed seasonal episodes of significant tidal damping and modulation in the Hudson River estuary. Müller et al. (2014) studied the global seasonal cycle of the M_2 tide and found significant seasonal variations in several coastal areas, including the

North Sea, East China Sea and Yellow Sea, Sea of Okhotsk and regions of the Banda, Timor, and Arafura Seas north of Australia. Tazkia et al. (2017) found that the M_2 amplitude changed markedly between winter and summer in the northern Bay of Bengal.

Several other studies have analysed the seasonal variability of the M_2 tide in polar regions. Mofjeld (1986) observed seasonal fluctuations of the tidal harmonic parameters on the north-eastern Bering Sea shelf. Kagan and Sofina (2010) showed that the seasonal variability of tidal constituents was widespread in the Arctic Ocean. Further, Müller et al. (2014) studied the global seasonal cycle of the M_2 tide and likewise identified significant seasonal variations in the Arctic regions.

Previous studies have primarily focused on the seasonal variation in the M_2 amplitude without considering the seasonality of other tidal constituents and their phase lags (Gräwe et al., 2014). Indeed, several studies have investigated the seasonality of several constituents. For example, Fang and Wang (1986) studied the seasonal variations of M_2 , N_2 , O_1 and M_4 in the Bohai Sea by introducing astro-meteorological constituents; Devlin et al. (2018) found that the diurnal (K_1 and O_1) and semidiurnal (M_2 and S_2) tidal amplitudes and phase lags exhibited strong seasonal variability in the seas of Southeast Asia.

In this study, sea-level observations at one mooring station (E2) and one tidal gauge station (Dalian) in the Bohai Sea were used to investigate the seasonal variability of the principal tidal constituents M_2 , S_2 , K_1 and O_1 using an enhanced harmonic analysis (EHA). The rest of the paper is organised as follows. In Section 2, the sea-level observations in the Bohai Sea are reported and the analysis methods are described. In Section 3, the seasonal variability of the principal tidal constituents is estimated by analysing observations. The mechanisms underlying the seasonal variability are discussed by using numerical experiments in Section 4. Further discussions and conclusions occupy Sections 5 and 6, respectively.

2 Observations and methods

2.1 Observations

From 0000 UTC 1 November 2013 to 0000 UTC 1 November 2014, total sea levels were observed hourly using a moored pressure gauge accurate to within 5 cm (Lv et al., 2018), at E2 station in the Bohai Bay, China (Figure 1). The time series of the total sea levels at E2 is shown in Figure 2a, demonstrating the continuous coverage of the observations.

Hourly sea-level data at the Dalian tidal gauge station were obtained from the University of Hawaii Sea Level Center and used. After 1979, Dalian shared position with Laohutan (Feng et al., 2015), so the sea-level data at Dalian were comprised of data from Dalian from 1980-1990 and from Laohutan from 1991-1997, as shown in Figure 2b.

2.2 Classical harmonic analysis

A sea level is composed of components from different sources (Godin, 1972; Foreman, 1977; Fang, 1986; Pawlowicz et al., 2002; Foreman et al., 2009):

$$\begin{aligned}
\zeta(t) &= \zeta_0 + \sum_{k=1}^K \left\{ f_k(t) A_k \cos[V_k(t) + u_k(t) - g_k] \right\} + R(t) \\
&= \zeta_0 + \sum_{i=1}^{N_{NR}} \left\{ f_i(t) A_i \cos[V_i(t) + u_i(t) - g_i] \right\} + R(t) + \\
&\quad \sum_{j=1}^{N_R} \left\{ f_j(t) A_j \cos[V_j(t) + u_j(t) - g_j] + \sum_{n=1}^{N_l} f_n(t) A_n \cos[V_n(t) + u_n(t) - g_n] \right\}
\end{aligned} \tag{1}$$

where $\zeta(t)$ is the total sea level; ζ_0 is the mean sea level; A and g are the amplitude and phase lag (UTC time, the same below), respectively; f and u are the nodal corrections to amplitude and phase lag, respectively; V is the astronomical argument; R is the nontidal component; K is the number of tidal constituents; N_{NR} is the number of non-reference constituents; N_R is the number of reference constituents; and N_l is the number of constituents to be inferred from the j^{th} reference constituent.

The mean sea level, amplitude and phase lag of each constituent can be solved by analyzing a time series of sea-level observations at a specific point using classical harmonic analysis (CHA). With different assumptions and conditions, CHA can be performed using the T_TIDE (Pawlowicz et al., 2002), U_TIDE (Codiga, 2011) or Institute of Ocean Sciences Tidal Package (Foreman et al., 2009). In this study, T_TIDE, in which the astronomical argument varies linearly and the nodal correction is performed after least squares fit, is used to realize CHA.

2.3 Segmented harmonic analysis

Following Foreman et al. (1995), Kang et al. (1995), Müller et al. (2014) and Devlin et al. (2018), sea-level observations are divided into monthly segments by calendar month and CHA with nodal and inference corrections is applied to each monthly segment to obtain the discrete tidal harmonic parameters (i.e., amplitude and phase lag). Then the discrete amplitude and phase lag at each monthly segment are interpolated using cubic spline interpolation to obtain the temporally varying amplitudes and phase lags. This methodology is termed segmented harmonic analysis (SHA). Following Kang et al. (1995), the sea-level observations in every monthly segment are analyzed only when the duration of the observations is greater than 26 days.

2.4 Enhanced harmonic analysis

By combining CHA with independent point scheme and cubic spline interpolation, Jin et al. (2018) developed EHA to directly obtain temporally varying mean sea level and tidal harmonic parameters. In contrast, the harmonic parameters are assumed to be constant in CHA and SHA. A MATLAB toolkit, S_TIDE, was released to support EHA by Pan et al. (2018b). In this study, nodal and astronomical argument corrections are embedded into the least square fit, following Foreman et al. (2009); in addition, the harmonic parameters of the minor tidal constituents are assumed to be constant and computed together with the temporally varying harmonic parameters of the principal tidal constituents to resolve more constituents and retain computational stability. The sea level in EHA is as follows:

$$\zeta(t) = \zeta_0(t) + \sum_{i=1}^I \left\{ f_i(t) A_i(t) \cos[V_i(t) + u_i(t) - g_i(t)] \right\} + \sum_{j=1}^J \left\{ f_j(t) A_j \cos[V_j(t) + u_j(t) - g_j] \right\} \quad (2)$$

where I is the number of principal tidal constituents with temporally varying harmonic parameters; J is the number of minor tidal constituents with constant harmonic parameters; and the mean sea level and nontidal component are included in $\zeta_0(t)$.

Similar to Jin et al. (2018) and Pan et al. (2018b), the independent point scheme and cubic spline interpolation are used to jointly determine solve the temporally varying and constant harmonic parameters, which are not shown here for brevity. As mentioned in Pan et al. (2018b), the temporally varying harmonic parameters obtained using EHA with different numbers of independent points represent oscillations on different time scales. In this study, six independent points are used to obtain the seasonal variability of the principal tidal constituents.

3 Results

One-year sea-level observations at E2 were analyzed using CHA with the automated constituent selection algorithm (Pawlowicz et al., 2002). According to the signal-to-noise ratio (Pawlowicz et al., 2002; Matte et al., 2013), M_2 , K_1 , S_2 and O_1 were selected as the principal tidal constituents to be investigated in this study.

3.1 Seasonal variability at E2

As shown in Figure 3, the significant constituent near K_1 was P_1 , which was unresolved when analysing one-month observations (Fang and Wang, 1986), while that for S_2 was K_2 in the semidiurnal frequency band. Therefore, when the monthly analysis was performed in SHA, the automated constituent selection algorithm in T_TIDE was used to determine the analysed constituents; in addition, the unresolved constituents P_1 and K_2 were inferred from K_1 and S_2 , respectively, with the inference parameters taken from a yearly harmonic analysis of the one-year sea-level observations at E2 (Kang et al., 1995; Foreman et al., 2009). When EHA was used to directly analyse the sea-level observations at E2, the harmonic parameters of M_2 , K_1 , S_2 , O_1 , P_1 and K_2 were estimated together; in detail, the harmonic parameters of M_2 , K_1 , S_2 and O_1 were assumed to be temporally varying and those of P_1 and K_2 were assumed to be constant.

As shown in Figure 4, the estimated harmonic parameters obtained with SHA and EHA, including the temporally varying amplitudes and phase lags, were nearly equal and near those estimated using CHA, indicating that the temporal variations in the harmonic parameters of the principal tidal constituents at E2 can be reasonably estimated using both SHA and EHA. Based on Wei and Wang (2012) and Zhang et al. (2017), spring, summer, autumn and winter were defined as March to May, June to August, September to November and December to February of the following year, respectively. The temporally varying harmonic parameters of the principal tidal constituents showed seasonal variations (Figure 4). For M_2 , the seasonal variations were significant; in detail, the amplitude reached maximum in summer and minimum in winter, just as the phase did, as in Müller et al. (2014). The seasonality of the S_2 amplitude was not significant, but the estimated results using EHA increased

significantly in summer. The temporal variation of the K_1 amplitude spanned one period, with maxima and minima in summer and winter, respectively. In stark contrast, the O_1 amplitude increased from winter to autumn. The phase lags of the S_2 , K_1 and O_1 components varied semi-annually, in which the phase lags were larger in summer and winter and smaller in spring and winter, respectively. In the four principal tidal constituents, only the M_2 amplitude had the similar variation trend as the phase lag.

The seasonally averaged amplitudes and phase lags of the principal tidal constituents are listed in Table 1. The variation trends of the averaged harmonic parameters of these constituents were the same as those obtained using EHA in Figure 4. Compared to the annual averages, the mean M_2 amplitude increased by 6.90 cm (approximately 9.33%) in the summer and decreased by 6.68 cm (approximately 9.03%) in the winter, close to the estimated values in Foreman et al. (1995) (6%), Huess and Andersen (2001) (6%) and Müller et al. (2014) (5%–10%). For S_2 (K_1), the averaged amplitudes decreased by 4.71% (7.72%) in the winter and increased by 7.93% (5.91%) in the summer, indicating a nearly annual variation as shown in Figure 4. The mean O_1 amplitude in the summer increased by 3.45 cm compared to that in the winter. Only the M_2 phase lag in winter was smaller than the annual average, and the phase lags in both winter and summer were larger than the corresponding annual average for the other three principal tidal constituents.

3.2 Seasonal variability at Dalian

The multiyear data at Dalian shown in Figure 2b were analysed year by year. In each year, one-year sea-level observations were analysed using CHA, SHA and EHA with settings similar to those used for data from E2. As shown in Figure 5, P_1 and K_2 were the significant constituents unresolved in the monthly analysis, just like at E2. Therefore, P_1 and K_2 were inferred from K_1 and S_2 in SHA and taken as minor constituents with constant harmonic parameters in EHA. The estimated harmonic parameters from various years were then averaged (Fang and Wang, 1986) and are shown in Figure 6. The estimated harmonic parameters using both the SHA and EHA were near to those obtained using CHA, showing that the estimated results were reasonable. In addition, the estimated harmonic parameters obtained using EHA were much closer to those obtained using SHA for data from Dalian than those from E2.

The variation trends of the harmonic parameters estimated using EHA at Dalian were different from those at E2, except for the M_2 phase lag (Figure 6). The M_2 amplitude at Dalian varied semi-annually, with large values in summer and winter and small values in spring and autumn, respectively. The S_2 amplitude had significant annual variation, with maximum in winter and minimum in summer, which is opposite of the variation trend of S_2 amplitude at E2. The K_1 amplitude was nearly constant from winter to spring and increased during the summer. The O_1 amplitude reached the minimum in the winter and summer while increasing slightly in the spring and autumn. The estimated S_2 phase lag reached the maximum in the spring with small variation. The K_1 and O_1 phase lags trended the same, increasing in the winter and summer while decreasing in the spring and early autumn.

The averaged amplitudes and phase lags of the principal tidal constituents at Dalian, as listed in Table 2, show a seasonal variation that was generally smaller than that at E2. All of the seasonal changes of the principal tidal constituents were less

than 1.80 cm, a variation that only appeared in the S_2 amplitude at E2. In addition, all of the seasonal changes of the phase lags were less than 2.20° , while the S_2 and K_1 phase lags at E2 changed by at least 5.00° in the summer and winter, respectively. The rate of change in the M_2 amplitude at Dalian was less than 1%, which was significantly less than that at E2. The rates of changes in all phase lags were less than 1%, except for the M_2 phase lag, which was larger than 2% in both summer and winter compared to the annual averages, and larger than those at E2. An increase in the S_2 amplitude of 5.34% occurred in the winter, larger than its decrease in the winter at E2.

In summary, the harmonic parameters of the principal tidal constituents at E2 and Dalian varied seasonally, and the seasonality of the tides at E2 was significantly different from that at Dalian. The amplitude of the principal tidal constituent M_2 at E2 varied annually, while that at Dalian was semi-annual. The M_2 phase lags at E2 and Dalian had the similar variation trend, with larger values in summer and small values in winter. The S_2 amplitude in winter at E2 was less than that in summer, which was opposite that at Dalian. The K_1 amplitude at E2 had an annual frequency, with large values in summer and small values in winter, while the O_1 amplitude increased steadily. In contrast, the variations of the K_1 and O_1 amplitudes at Dalian were small. The maxima of the S_2 , K_1 and O_1 phase lags at E2 appeared twice, like those of K_1 and O_1 and different from that of S_2 at Dalian.

4 Mechanisms for the seasonal variability

Several previous studies have investigated the seasonal variability of the M_2 amplitude. Three main mechanisms have been proposed:

1) Seasonal variations of the mean sea level. Corkan (1934) related the seasonal modulation of the M_2 tide near the British coast to seasonal variations of sea level and atmospheric pressure. Tazkia et al. (2017) pointed out that the seasonal variability of the sea level generated by many processes can induce a seasonal variation of the M_2 tide, as tidal wave propagation was controlled by water depth on the first order.

2) Seasonally varying stratification. Foreman et al. (1995) presumed that the seasonal variability of the M_2 amplitude at Victoria, Canada was induced by the changes in stratification due to seasonal variability in estuarine flow. Kang et al. (2002) used a two-layer numerical model to investigate the baroclinic response of the tide and tidal currents in the Yellow and East China Seas, and found that seasonal stratification had several noticeable effects on the tides, including varying degrees of current shear, frictional dissipation, and barotropic energy flux. Müller (2012) indicated that in shallow seas, seasonal variations in stratification were a major factor for the observed seasonal modulation in tides. Müller et al. (2014) pointed out that the seasonal changes in stratification on the continental shelf affected the vertical profile of the eddy viscosity to further cause the seasonal variability of the M_2 tide.

3) Seasonally varying ice coverage. St-Laurent et al. (2008) proposed that the significant seasonal variations of the M_2 surface elevation in all regions of the Hudson Bay system were essentially caused by under-ice friction. Georgas (2012) pointed out that the seasonal episodes of significant tidal damping (reductions in tidal amplitudes by as much as 50%) observed in the

Hudson River estuary were primarily caused by the under-ice friction as well. Müller et al. (2014) found that the frictional effect between the sea ice and ocean surface layer led to the seasonal variability of the M_2 tide.

Other mechanisms, including long-term changes in the tidal potential (Molinas and Yang, 1986), interactions with other physical phenomena (Huess and Andersen, 2001; Pan et al., 2018a), changes in the internal tide with corresponding small changes in its surface expression (Ray and Mitchum, 1997; Colosi and Munk, 2006), as well as a number of other more technical reasons, may also change the M_2 tidal amplitude on various time scales. The above reasons have been presented or discussed in Woodworth (2010), Müller (2012), Müller et al. (2014) and Tazkia et al. (2017).

4.1 Design of numerical experiments

The Bohai Sea in north China freezes to varying degrees every winter for approximately 3–4 months (Su and Wang, 2012). According to the back-effect connection of the coastal shelf and open ocean via resonance mechanisms (Arbic et al., 2009; Arbic and Garrett, 2010), sea ice may be important to the seasonality of principal tidal constituents. However, Zhang et al. (2019) found that the damping effect of sea ice on the astronomical tides was almost negligible in the Bohai Sea employing numerical experiments with a three-dimensional ice-ocean coupled model. Therefore, ice coverage was not considered in this study. Several numerical experiments (Exp1–Exp4) were carried out to simulate the four principal tidal constituents in the Bohai Sea under different conditions using MITgcm (Marshall et al., 1997), testing the influence of seasonal variations of mean sea level and stratification on the seasonal variability of the principal tidal constituents.

Identical model settings were used in all of the numerical experiments and described as follows. The simulation area was the Bohai Sea as shown in Figure 1b. The horizontal resolution was $2' \times 2'$, with 16 layers in the vertical direction with thicknesses ranging from 2–5 m. The four principal tidal constituents M_2 , S_2 , K_1 , and O_1 were implemented as tidal forcing at the east open boundary, whose data were predicted using the constant harmonic parameters extracted from the TPXO model (Egbert and Erofeeva, 2002). Sea surface boundary conditions were not considered. The horizontal eddy viscosity coefficient was set to $1.0 \times 10^3 \text{ m}^2/\text{s}$, and the quadratic bottom drag coefficient was set to 1.3×10^{-3} (Wang et al., 2014). The integral time step was 60 s and the total simulation time was 60 d. The results of the final 30 d were used to calculate the harmonic parameters using CHA.

Details of the model settings for numerical experiments Exp1–Exp4 are listed in Table 3. In Exp1, the simulation started from 0000 UTC 1 January 2014, while the simulation started from 0000 UTC 1 July 2014 in Exp2–Exp4. In Exp1, horizontally homogeneous profiles of the initial temperature and salinity (Figure 7) were extracted from the HYCOM global analysis results in winter, while those in summer were used in Exp2–Exp4. The vertical eddy viscosity coefficient was specified directly and no turbulence closure schemes were used. In Exp1, the vertical eddy viscosity coefficient was set to $2.0 \times 10^{-3} \text{ m}^2/\text{s}$ through a trial and error procedure. According to Müller et al. (2014), the eddy viscosity in summer was reduced by orders of magnitude compared to well-mixed conditions in winter, as the stratification stabilized the water column. Therefore, the vertical eddy viscosity coefficient was decreased by one-half in Exp3 to test the influence of the vertical eddy viscosity caused by the stratification. As shown in Figure 8, monthly means of the low-pass sea levels, filtered using a cosine-Lanczos filter with a

high frequency cut-off of 0.8 cpd, were nearly equal to the estimated mean sea level using SHA. They exhibited the same variation trend as those obtained using EHA, with large values in summer and small values in winter. Given the difference between the averaged mean sea level in summer and that in winter, Exp4 included 1 0.2-m increase of water depth to test the influence of mean sea level.

5 4.2 Results

The simulated harmonic parameters of the four principal tidal constituents in the numerical experiments and those obtained from observations at E2 and Dalian are shown in Figure 9. The simulated harmonic parameters were a little far from the observed results, except the M_2 amplitude at E2 simulated in Exp1 and that simulated in Exp2, possibly because the constant bottom drag coefficient was used (Wang et al., 2014). Still, the differences between the simulated results in the different numerical experiments can be used to test the influence of potential factors on the seasonal variability of the principal tidal constituents.

The observed amplitudes at E2 in summer were larger than those in winter for all four principal tidal constituents, as shown in Figure 9, but the simulated amplitudes in Exp2 were nearly equal to those in Exp1. In contrast, both the decreased vertical eddy viscosity coefficient in Exp3 and the increased mean sea level in Exp4 increased the amplitudes for all principal tidal constituents. The increases of the observed M_2 and S_2 amplitudes at E2 from winter to summer were 13.58 cm and 2.62 cm, respectively, while those were 13.34 cm (2.08 cm) and 2.75 cm (0.56 cm) for simulated results in Exp3 (Exp4) compared to those in Exp1. In addition, the increases of the observed K_1 and O_1 amplitudes were also captured better by the simulated results in Exp3 than those in Exp 4, as shown in Figure 9. Therefore, the seasonally varying amplitudes of all principal tidal constituents were primarily impacted by the seasonal variation of vertical eddy viscosity. Differences between the simulated phase lags in Exp3 and those in Exp1 indicated that the seasonal variation of vertical eddy viscosity caused the same trends as the changes between the observed phase lags in summer and those in winter for all principal tidal constituents except K_1 . In contrast, the changes in stratification in Exp2 and mean sea level in Exp4 only captured the variation trend of the S_2 and O_1 phase lags, respectively. The aforementioned results demonstrated that seasonal variation in the vertical eddy viscosity was the most important mechanism influencing the seasonal variability of principal tidal constituents at E2.

The seasonal variation of the S_2 amplitude was the most significant at Dalian, but the decrease in the simulated result from winter (Exp1) to summer (Exp2) was less than 1 cm and the simulated S_2 amplitudes in Exp3 and Exp4 were larger than that in Exp1, indicating the seasonality of stratification as a possible reason. However, the simulated seasonal variation was too weak, possibly because the simple horizontally homogeneous temperature and salinity profiles could not reflect reality. The water depth is large in the eastern part of Bohai Sea (Figure 1b), so the stratification and ocean circulation were noteworthy and had significant effects on the tides. The increases of the M_2 and O_1 amplitudes were only captured by the changes in the vertical eddy viscosity coefficient in Exp3 and stratification in Exp2, respectively, while the increases of K_1 amplitudes in Exp3 and Exp4 agreed with the observed results at Dalian. The variation lags of the M_2 and S_2 phase lags were not captured well and the simulated results in Exp2 were the best results, while those for K_1 and O_1 were best captured by the decrease of

the simulated results in Exp3 compared to those in Exp1. On the whole, the seasonal variations of the principal tidal constituents at Dalian were determined by the seasonality of stratification and vertical eddy viscosity.

The variations of the simulated amplitudes from winter (Exp1) to summer (Exp3) in the entire Bohai Sea are shown in Figure 10. The spatial distribution of the variations in M_2 tidal amplitude had a strong positive correlation ($R=0.98$) with that in the S_2 tidal amplitude, similar to that for the diurnal tides ($R=0.98$). Furthermore, the distributions were possibly related to tidal wave propagation as their patterns were similar to the co-phase lines, as shown in Figure 10. For the semi-diurnal tides M_2 and S_2 , the simulated amplitudes in summer were larger than those in winter in Bohai Bay, Laizhou Bay, Liaodong Bay, which was the same as that obtained by analysing the sea level data at several tidal gauge stations in the Bohai Sea in Fang and Wang (1986) and that simulated by numerical model in Kang et al. (2002), and smaller than those in winter in the middle of the Bohai Sea. The spatial distribution of the absolute differences between the M_2 tidal amplitude in summer and that in winter was similar to that in Müller et al. (2014). For the diurnal tides K_1 and O_1 , the simulated amplitudes in summer were larger than those in winter in Bohai Bay, Laizhou Bay, Liaodong Bay and the middle areas, while smaller than those in winter in the northeast part of the Bohai Strait.

5 Discussions

In this study, the EHA developed in Jin et al. (2018) and Pan et al. (2018b) was further improved in order to resolve more tidal constituents by adding the minor constituents whose harmonic parameters were assumed to be constant and computed together with the temporally varying harmonic parameters of the principal tidal constituents. The nodal and astronomical argument corrections were embedded into the least square fit to eliminate the influences of nodal cycle and linearly varying astronomical argument. In fact, there have been multiple improvements to T_TIDE in the past decades, such as R_T_TIDE (Leffler and Jay, 2009), versatile tidal analysis (Foreman et al., 2009), U_TIDE (Codiga, 2011) and NS_TIDE (Matte et al., 2013). In R_T_TIDE, versatile tidal analysis and U_TIDE, the harmonic parameters (i.e., amplitude and phase lag) are assumed to be constant, although they have some improvements to T_TIDE. However, harmonic parameters are not constant and have multiscale temporal variations, as shown in Corkan (1934), Kang et al. (1995), Müller et al. (2014), Devlin et al. (2018), and so on. Neglecting seasonal variation of tides will introduce significant error in sea-level prediction (Fang and Wang, 1986). Therefore, EHA, in which the harmonic parameters of the principal tidal constituents are assumed to be temporally varying and computed directly within the least squares fit, improved T_TIDE in other ways. In NS_TIDE, the harmonic parameters are also assumed to be temporally varying. However, the temporally varying harmonic parameters are assumed to be functions of river flow and greater diurnal tidal range at the reference station, so it can be applied only to river tides, while EHA can be applied in analyzing any time series. On the whole, EHA used in this study is indeed enhanced than other methods.

The duration of hourly sea-level observations at E2 used in this study was only one year, which is a limitation. Although the rare event might slightly skew seasonal pattern of tides, the seasonal variations of the principal tidal constituents M_2 , S_2 , K_1 and O_1 obtained using EHA were the same as those using traditional EHA, indicating that the results are not unreasonable

and can reflect the seasonal variations of tides in the analysis period. The strong seasonal variations of the principal tidal constituents can be captured by the results of numerical experiments. The multi-annually averaged results at Dalian also showed the seasonal variations of the principal tidal constituents, but the results of numerical experiments were not in accordance with the observed results, which may be because only the horizontally homogeneous profiles of the initial temperature and salinity were used and the temporally varying ocean circulation were not considered.

The seasonality of the principal tidal constituents has been investigated widely. As shown in Müller et al. (2014), there were significantly seasonal variations in M_2 tide in several coastal regions and the maximum annual tide was in July (± 1 month) in most of the ocean. However, the spatial and temporal inhomogeneities were also existed and the summer amplitudes of M_2 tide were less than those in winter in several areas, as shown in Kang et al. (1995), Müller et al. (2014), Devlin et al. (2018) and Figure 10 in this study. In general, the M_2 tidal amplitude in summer was larger than that in winter in many areas, including the Bohai Sea (Fang and Wang, 1986), the North Sea (Huess and Andersen, 2001; Gräwe et al., 2014; Müller et al., 2014), most of the Ganges-Brahmaputra-Meghna delta (Tazkia et al., 2017), the seas of Southeast Asian (Devlin et al., 2018), Liverpool (Corkan, 1934), Victoria (Foreman et al., 1995), the western part of the Yellow and East China Seas (Kang et al., 2002), the Hudson Bay and Foxe Basin (St - Laurent et al., 2008), and so on, which was the same as that obtained by analysing the observations at E2 and Dalian in this study. Devlin et al. (2018) found that the diurnal and semidiurnal tidal amplitudes and phases exhibited a high degree of seasonality in the seas of Southeast Asia, and Fang and Wang (1986) indicated that the O_1 tidal amplitude in summer was also larger than that in winter in the Bohai Sea, which were similar to those concluded in this study. The seasonality of the principal tidal constituents obtained in the study was mainly similar to those in previous studies, but the novel EHA was firstly used to estimate the seasonal variations of the principal tidal constituents and the numerical experiments using three-dimensional MITgcm were performed to explore the physical mechanisms.

The seasonal variations of stratification and vertical eddy viscosity and their influences on the tidal amplitudes may be as follows. In winter, the strong northwest Asia monsoon develops a vertically well-mixed condition (Yanagi et al., 2001; Jeon et al., 2014), which will not stabilize the tidal currents and will lose more energy, leading to smaller tidal amplitudes. As the surface heating rate and freshwater discharge increase, the mixing is insufficient to homogenize the input potential energy and cause stratified conditions in summer (Huang et al., 1999; van Haren, 2000), during which the reduced vertical eddy viscosity will increase the tidal amplitudes. However, the S_2 amplitude at Dalian was larger in winter and smaller in summer, which is inconsistent with the other principal tidal constituents and should be further investigated in future studies.

6 Conclusions

In this study, based on one-year sea-level observations at E2 and 17-year sea-level observations in the Bohai Sea, the seasonal variability of the principal tidal constituents was investigated using different methods. When the sea-level observations at E2 and Dalian were analysed, the seasonal variations of all principal tidal constituents obtained using EHA were nearly equal to those obtained using SHA (Figures 4 and 6), indicating that the seasonal variations were not related to

the applied methods. At both E2 and Dalian, the principal tidal constituents M_2 , S_2 , K_1 and O_1 exhibited seasonal variations (Figures 4 and 6). The M_2 amplitude at E2 varied annually, while that at Dalian was semi-annual. The M_2 phase lags at E2 and Dalian had the similar variation trend, with large values in summer and small values in winter. The S_2 amplitude in winter at E2 was less than that in summer, which was opposite that at Dalian. The K_1 amplitude at E2 had an annual variation, with large values in summer and small values in winter, while the O_1 amplitude increased steadily. On the contrary, the variations of the K_1 and O_1 amplitudes at Dalian were small. The maxima of the S_2 , K_1 and O_1 phase lags at E2 appeared twice, which was the same as those of K_1 and O_1 and different from that of S_2 at Dalian.

Through several numerical experiments, the mechanisms of the seasonal variability of the principal tidal constituents were investigated. The seasonal variations of the principal tidal constituents at E2 were caused by the seasonality of the vertical eddy viscosity, while the seasonal variations at Dalian were mainly induced by the seasonality of stratification and vertical eddy viscosity, although the simulated results were not consistent well with the observed results. Therefore, the synchronous simulation of circulation and tides, and a reasonable parameterization scheme to convert the variations in stratification to those in vertical eddy viscosity were essential for precise simulation of the tides when considering the temporally varying harmonic parameters.

15 Data availability

The HYCOM global analysis data is available at <http://hycom.org>. New version of S_TIDE package can be downloaded from <https://www.researchgate.net/project/Adaptation-of-tidal-harmonic-analysis-to-nonstationary-tides>. The hourly sea level observations at Dalian are available at <https://uhsic.soest.hawaii.edu/datainfo/>. The hourly sea level observations at E2 used in this work are available from the authors upon request (xqinglv@ouc.edu.cn).

20 Acknowledgements

This work was supported by the National Key Research and Development Program of China (Grant No. 2017YFC1404700), the Discipline Layout Project for Basic Research of Shenzhen Science and Technology Innovation Committee (Grant No. 20170418), the Guangdong Special Fund Program for Economic Development (Marine Economic) (Grant No. GDME-2018E001) and the Three Big Constructions: Supercomputing Application Cultivation Projects.

25 References

- Arbic, B. K. and Garrett, C.: A coupled oscillator model of shelf and ocean tides, *Continental Shelf Research*, 30, 564-574, 2010.
- Arbic, B. K., Karsten, R. H., and Garrett, C.: On tidal resonance in the global ocean and the back-effect of coastal tides upon open-ocean tides, *Atmosphere-Ocean*, 47, 239-266, 2009.

- Codiga, D. L.: Unified tidal analysis and prediction using the UTide Matlab functions, Graduate School of Oceanography, University of Rhode Island, Narragansett, RI, 2011.
- Colosi, J. A. and Munk, W.: Tales of the venerable Honolulu tide gauge, *Journal of physical oceanography*, 36, 967-996, 2006.
- Corkan, R. H.: An Annual Perturbation in the Range of Tide, *Proceedings of the Royal Society of London*, 144, 537-559, 1934.
- 5 Devlin, A. T., Zaron, E. D., Jay, D. A., Talke, S. A., and Pan, J.: Seasonality of Tides in Southeast Asian Waters, *Journal of physical oceanography*, 48, 1169-1190, 2018.
- Egbert, G. D. and Erofeeva, S. Y.: Efficient Inverse Modeling of Barotropic Ocean Tides, *Journal of Atmospheric & Oceanic Technology*, 19, 183-204, 2002.
- 10 Fang, G. and Wang, J.: An analysis of the astrometeorological constituents of tide in the Bohai Sea, *Acta Oceanologica Sinica*, 5, 486-495, 1986.
- Fang, G., Zheng Weiwen, Chen Zongzhu, Wang Ji: *Analysis and Prediction of Tides and Tidal Currents*, China Ocean Press, Beijing, 1986.
- Feng, X., Tsimplis, M. N., and Woodworth, P. L.: Nodal variations and long-term changes in the main tides on the coasts of C hina, *Journal of Geophysical Research: Oceans*, 120, 1215-1232, 2015.
- 15 Foreman, M. G., Cherniawsky, J., and Ballantyne, V.: Versatile harmonic tidal analysis: Improvements and applications, *Journal of atmospheric and oceanic technology*, 26, 806-817, 2009.
- Foreman, M. G. G.: *Manual for tidal heights analysis and prediction*, Institute of Ocean Sciences, Patricia Bay, 1977.
- Foreman, M. G. G., Walters, R. A., Henry, R. F., Keller, C. P., and Dolling, A. G.: A tidal model for eastern Juan de Fuca Strait and the southern Strait of Georgia, *Journal of Geophysical Research Oceans*, 100, 721-740, 1995.
- 20 Georgas, N.: Large seasonal modulation of tides due to ice cover friction in a midlatitude estuary, *Journal of physical oceanography*, 42, 352-369, 2012.
- Godin, G.: *The analysis of tides*, University of Toronto Press, 1972.
- Gräwe, U., Burchard, H., Müller, M., and Schuttelaars, H. M.: Seasonal variability in M2 and M4 tidal constituents and its implications for the coastal residual sediment transport, *Geophysical Research Letters*, 41, 5563-5570, 2014.
- 25 Huang, D., Su, J., and Backhaus, J. O.: Modelling the seasonal thermal stratification and baroclinic circulation in the Bohai Sea, *Continental Shelf Research*, 19, 1485-1505, 1999.
- Huess, V. and Andersen, O.: Seasonal variation in the main tidal constituent from altimetry, *Geophysical Research Letters*, 28, 567-570, 2001.
- Jeon, C., Park, J. H., Varlamov, S. M., Yoon, J. H., Kim, Y. H., Seo, S., Park, Y. G., Min, H. S., Lee, J. H., and Kim, C. H.: Seasonal variation of semidiurnal internal tides in the East/Japan Sea, *Journal of Geophysical Research: Oceans*, 119, 2843-2859, 2014.
- 30 Jin, G., Pan, H., Zhang, Q., Lv, X., Zhao, W., and Gao, Y.: Determination of Harmonic Parameters with Temporal Variations: An Enhanced Harmonic Analysis Algorithm and Application to Internal Tidal Currents in the South China Sea, *Journal of atmospheric and oceanic technology*, 35, 1375-1398, 2018.
- 35 Kagan, B. and Sofina, E.: Ice-induced seasonal variability of tidal constants in the Arctic Ocean, *Continental Shelf Research*, 30, 643-647, 2010.
- Kang, S. K., Chung, J.-y., Lee, S.-R., and Yum, K.-D.: Seasonal variability of the M 2 tide in the seas adjacent to Korea, *Continental Shelf Research*, 15, 1087-1113, 1995.
- 40 Kang, S. K., Foreman, M. G., Lie, H. J., Lee, J. H., Cherniawsky, J., and Yum, K. D.: Two-layer tidal modeling of the Yellow and East China Seas with application to seasonal variability of the M2 tide, *Journal of Geophysical Research: Oceans*, 107, 2002.
- Leffler, K. E. and Jay, D. A.: Enhancing tidal harmonic analysis: Robust (hybrid L1/L2) solutions, *Continental Shelf Research*, 29, 78-88, 2009.
- 45 Lv, X., Wang, D., Yan, B., and Yang, H.: Coastal sea level variability in the Bohai Bay: influence of atmospheric forcing and prediction, *Journal of Oceanology and Limnology*, doi: 10.1007/s00343-019-7383-y, 2018. Accepted, 2018.
- Müller, M.: The influence of changing stratification conditions on barotropic tidal transport and its implications for seasonal and secular changes of tides, *Continental Shelf Research*, 47, 107-118, 2012.
- Müller, M., Cherniawsky, J. Y., Foreman, M. G., and von Storch, J.-S.: Seasonal variation of the M2 tide, *Ocean Dynamics*, 64, 159-177, 2014.

- Marshall, J., Hill, C., Perelman, L., and Adcroft, A.: Hydrostatic, quasi-hydrostatic, and nonhydrostatic ocean modeling. *J Geophys Res* 102(C3):5733-5752, *Journal of Geophysical Research Atmospheres*, 102, 5733-5752, 1997.
- Matte, P., Jay, D. A., and Zaron, E. D.: Adaptation of classical tidal harmonic analysis to nonstationary tides, with application to river tides, *Journal of atmospheric and oceanic technology*, 30, 569-589, 2013.
- 5 Mofjeld, H. O.: Observed tides on the northeastern Bering Sea shelf, *Journal of Geophysical Research: Oceans*, 91, 2593-2606, 1986.
- Molinas, A. and Yang, C. T.: Computer Program User's Manual for GSTARS (Generalized Stream Tube model for Alluvial River Simulation), U.S. Bureau of Reclamation Engineering and Research Center, Denver, Colorado, USA, 1986.
- 10 Pan, H., Guo, Z., Wang, Y., and Lv, X.: Application of the EMD Method to River Tides, *Journal of atmospheric and oceanic technology*, 35, 809-819, 2018a.
- Pan, H., Lv, X., Wang, Y., Matte, P., Chen, H., and Jin, G.: Exploration of tidal-fluvial interaction in the Columbia River estuary using S_TIDE, *Journal of Geophysical Research: Oceans*, 123, 6598-6619, 2018b.
- Pawlowicz, R., Beardsley, B., and Lentz, S.: Classical tidal harmonic analysis including error estimates in MATLAB using T_TIDE, *Computers & Geosciences*, 28, 929-937, 2002.
- 15 Ray, R. D. and Mitchum, G. T.: Surface manifestation of internal tides in the deep ocean: Observations from altimetry and island gauges, *Progress in Oceanography*, 40, 135-162, 1997.
- St-Laurent, P., Saucier, F., and Dumais, J. F.: On the modification of tides in a seasonally ice-covered sea, *Journal of Geophysical Research: Oceans*, 113, 2008.
- 20 Su, H. and Wang, Y.: Using MODIS data to estimate sea ice thickness in the Bohai Sea (China) in the 2009–2010 winter, *Journal of Geophysical Research: Oceans*, 117, 2012.
- Tazkia, A., Krien, Y., Durand, F., Testut, L., Islam, A. S., Papa, F., and Bertin, X.: Seasonal modulation of M2 tide in the Northern Bay of Bengal, *Continental Shelf Research*, 137, 154-162, 2017.
- van Haren, H.: Properties of vertical current shear across stratification in the North Sea, *Journal of marine research*, 58, 465-491, 2000.
- 25 Wang, D., Liu, Q., and Lv, X.: A study on bottom friction coefficient in the Bohai, Yellow, and East China Sea, *Mathematical Problems in Engineering*, 2014, Article ID 432529, 2014.
- Wei, S. and Wang, M.: Sea ice properties in the Bohai Sea measured by MODIS-Aqua: 2. Study of sea ice seasonal and interannual variability, *Journal of Marine Systems*, 95, 41-49, 2012.
- 30 Woodworth, P.: A survey of recent changes in the main components of the ocean tide, *Continental Shelf Research*, 30, 1680-1691, 2010.
- Yanagi, T., Sachoemar, S. I., Takao, T., and Fujiwara, S.: Seasonal Variation of Stratification in the Gulf of Thailand, *Journal of Oceanography*, 57, 461-470, 2001.
- Zhang, H., Qiu, Z., Sun, D., Wang, S., and He, Y.: Seasonal and Interannual Variability of Satellite-Derived Chlorophyll-a (2000–2012) in the Bohai Sea, China, *Remote Sensing*, 9, 582, 2017.
- 35 Zhang, N., Wang, J., Wu, Y., Wang, K.-H., Zhang, Q., Wu, S., You, Z.-J., and Ma, Y.: A modelling study of ice effect on tidal damping in the Bohai Sea, *Ocean Engineering*, 173, 748-760, 2019.

Table 1. Averaged amplitudes (cm) and phase (°) of the principal tidal constituents obtained using EHA at E2

Constituents	Parameter	Annual	Winter	Spring	Summer	Autumn
M_2	Amplitude	73.97	67.29	71.56	80.87	76.04
	Phase	210.03	209.11	209.42	212.04	209.52
S_2	Amplitude	20.81	19.83	18.87	22.46	22.06
	Phase	273.74	276.69	272.81	279.67	265.80
K_1	Amplitude	30.30	27.96	29.99	32.09	31.13
	Phase	30.57	31.31	30.39	33.55	27.01
O_1	Amplitude	24.43	21.92	24.13	25.37	26.27
	Phase	345.91	351.35	340.62	348.00	343.79

5 **Table 2. Averaged amplitudes (cm) and phase (°) of the principal tidal constituents obtained using EHA at Dalian**

Constituents	Parameter	Annual	Winter	Spring	Summer	Autumn
M_2	Amplitude	97.32	97.53	96.79	97.96	97.00
	Phase	54.25	52.93	53.43	55.34	55.28
S_2	Amplitude	30.89	32.54	30.91	29.1	31.02
	Phase	100.12	99.45	102.47	101.08	97.44
K_1	Amplitude	25.32	25.02	24.78	26.18	25.3
	Phase	240.94	242.44	239.91	239.31	242.15
O_1	Amplitude	17.91	17.41	18.05	17.88	18.29
	Phase	210.29	212.4	208.54	209.62	210.65

Table 3. Model settings for the numerical experiments

No.	Season	A_z^a (m ² /s)	Depth (m)
Exp1	Winter	2.0×10 ⁻³	Original
Exp2	Summer	2.0×10 ⁻³	Original
Exp3	Summer	1.0×10 ⁻³	Original
Exp4	Summer	2.0×10 ⁻³	Original+0.2

^a Vertical eddy viscosity coefficient.

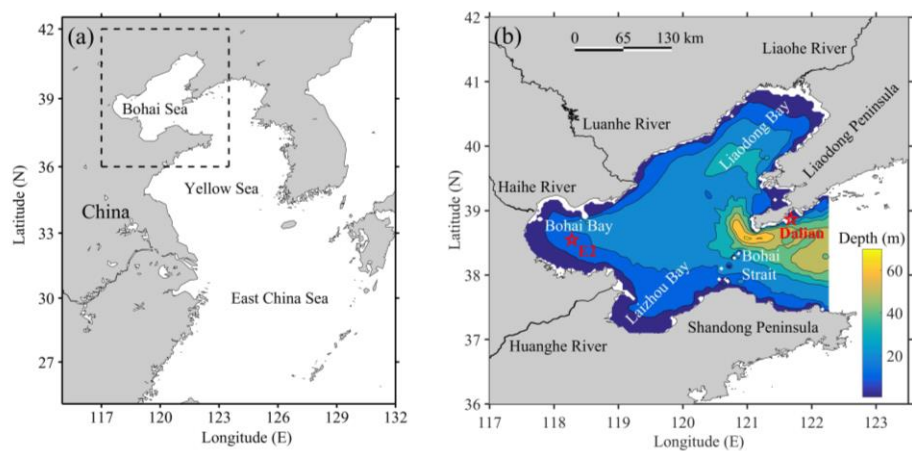


Figure 1. (a) General location of the Bohai Sea (rectangle with dashed lines); and (b) locations of the observation stations (red stars), E2 and Dalian, in the Bohai Sea, and bathymetry of the Bohai Sea (colours).

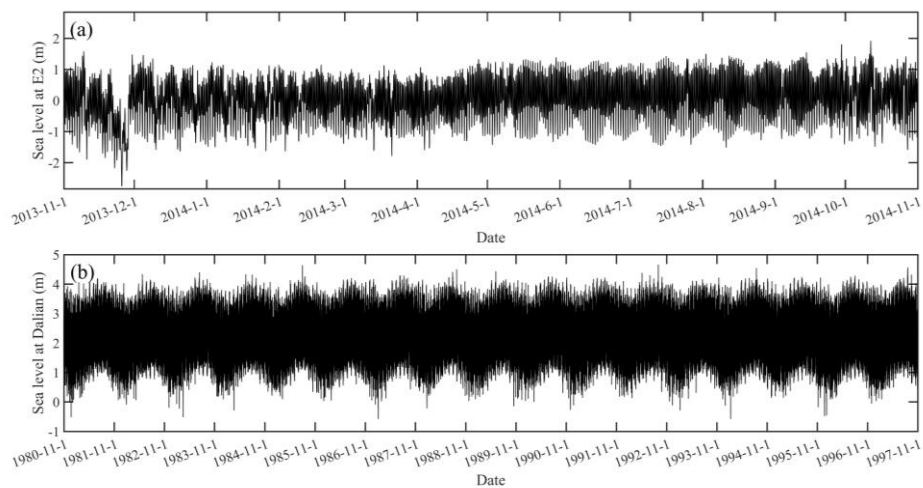


Figure 2. Time series of the observed sea level at (a) E2 and (b) Dalian.

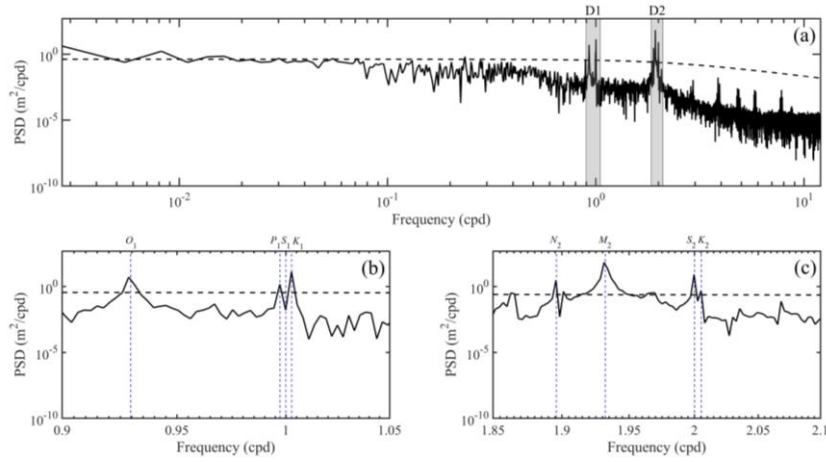


Figure 3. Power spectral densities of the observed sea level at E2 (black line) in (a) all frequency bands, (b) the diurnal frequency band, and (c) the semidiurnal frequency band. In all panels, black dashed lines denote the corresponding 5% significance level against red noise.

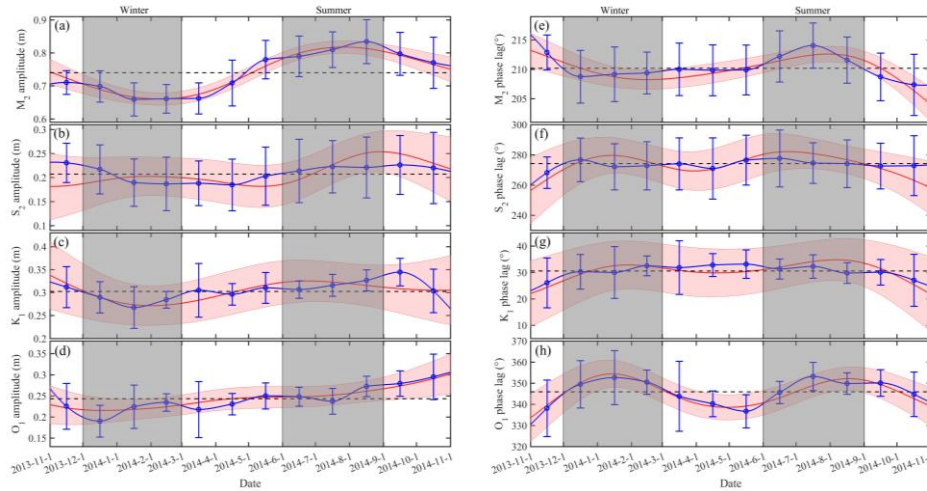


Figure 4. Time series of the estimated temporally varying tidal amplitudes of principal tidal constituents, including (a) M_2 , (b) S_2 , (c) K_1 and (d) O_1 , at E2 when CHA (black dashed lines), SHA (blue lines) and EHA (red lines) were used. (e-

h) Similar to (a-d), but for the estimated temporally varying tidal phase lags. Blue vertical bars and pink shading indicate the corresponding 95% confidence intervals.

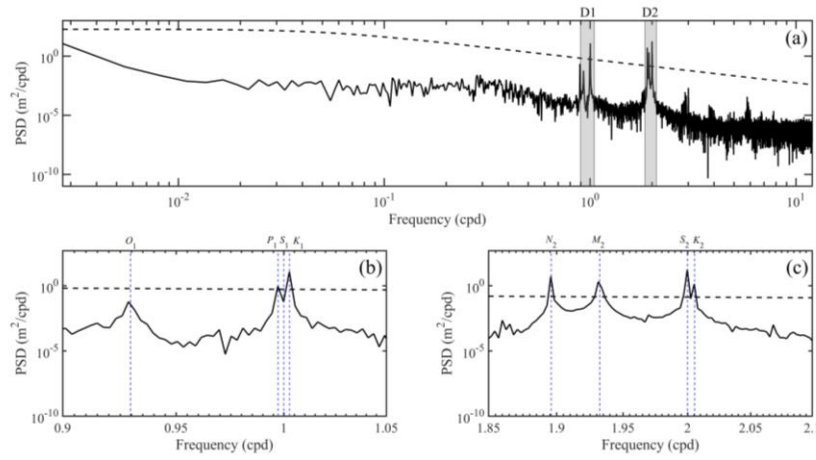


Figure 5. Similar to Figure 3, but for those at Dalian.

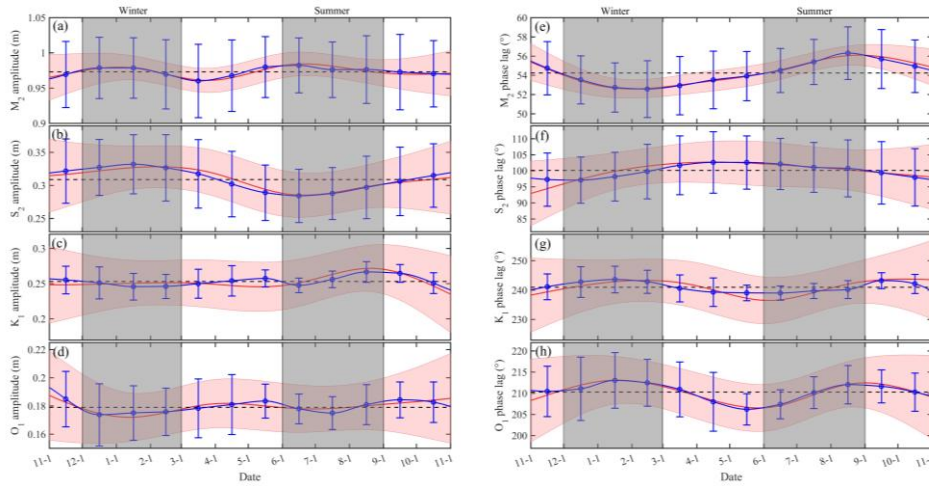


Figure 6. Similar to Figure 4, but for multi-yearly averaged values at Dalian.

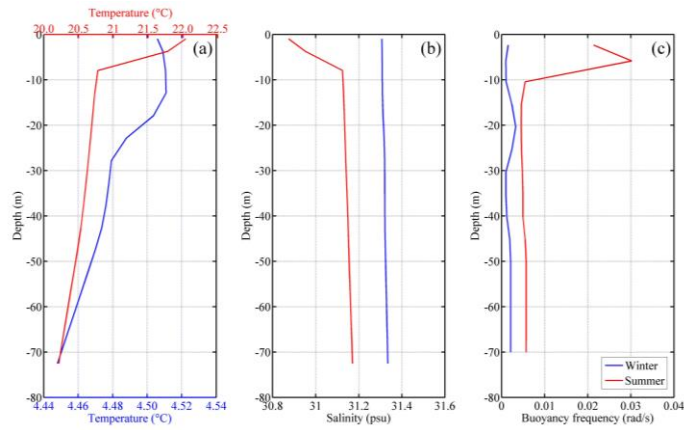


Figure 7. Horizontally homogeneous profiles of the initial (a) temperature, (b) salinity and (c) buoyancy frequency used in the numerical experiments, in winter (blue solid lines) and in summer (red solid lines).

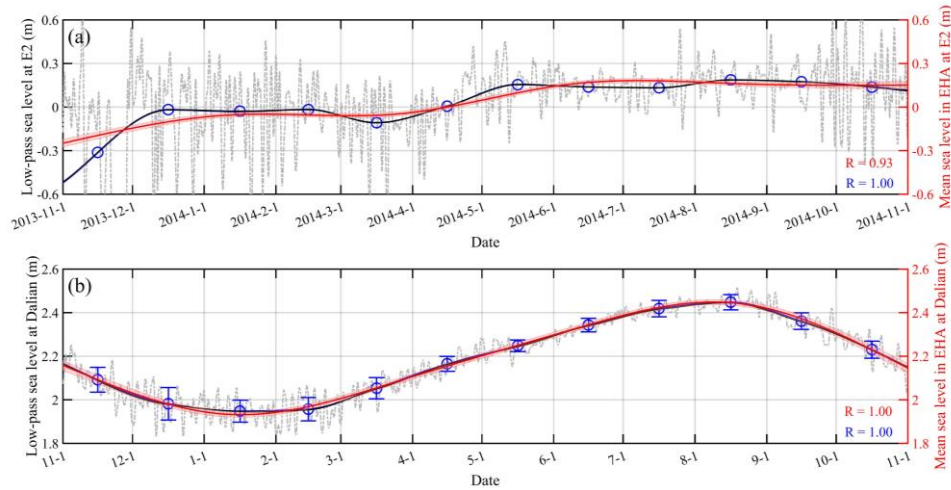


Figure 8. Time series of the original low-pass sea level (grey line), the monthly averages of the original low-pass sea level (blue circles), the interpolated values of the monthly averaged low-pass sea level using the cubic spline

interpolation (blue line) and the estimated mean sea level using SHA (black line) and EHA (red line), at (a) E2 and (b) Dalian. Only the original low-pass sea levels with absolute values less than 0.6 m are shown in panel (a). Pink shading indicates the corresponding 95% confidence intervals, while blue vertical bars designate the standard deviation in multi-yearly averaging.

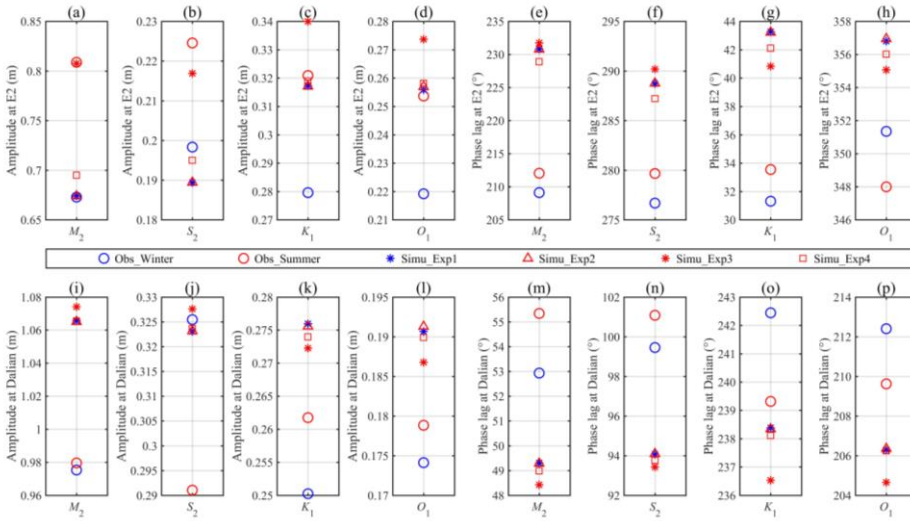


Figure 9. (a) Averaged M_2 tidal amplitude in winter (blue circle) and summer (red circle) by analysing observations at E2 using EHA, and those obtained by analysing the simulated results in Exp1 (blue asterisk), Exp2 (red triangle), Exp3 (red asterisk) and Exp4 (red square). (b-d) Similar to (a), but for S_2 , K_1 and O_1 at E2, respectively. (e-h) Similar to (a-d), but for the phase lags at E2. (i-p) Similar to (a-h), but for those at Dalian.

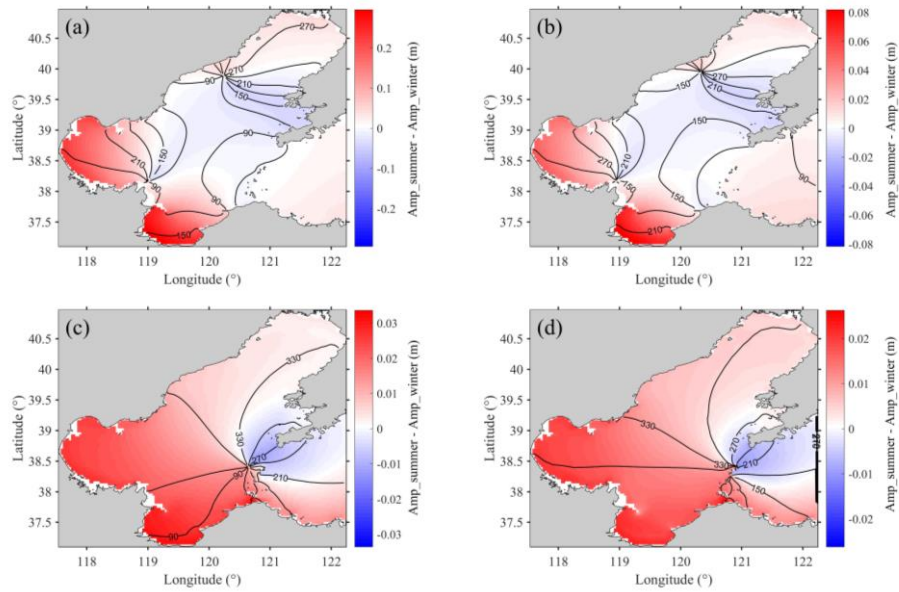


Figure 10. (a) Difference between the simulated M_2 tidal amplitudes in summer (Exp3) and those in winter (Exp1) (colours), and the co-phase lines of the M_2 tide in winter (Exp1) (black lines). (b-d) similar to (a), but for S_2 , K_1 and O_1 , respectively.