

We would like to thank the reviewer for the thorough review and the suggestions that have helped to significantly improve our manuscript “The climate change signal in the Mediterranean Sea in a regionally coupled atmosphere-ocean model”. The point-by-point response to the review comments are presented in bold, whereas our answers are in standard text.

Reviewer’s comments:

Referee #2: The first comment of the Referee#1 touched an important point about a projection run with the ocean driven offline by stand-alone REMO in the coupling area. However, the authors provided the new figure 4 of differences between ROM_P0 and the stand-alone REMO forced by ERA-Interim. Here we can see a different/opposite behavior of ROM_P0 and the stand-alone REMO. For example, for T_2M in JJA over the Mediterranean Sea, ROM_P0 is about 1-2°C colder than ERA-Interim (Fig.3d) but about 1.5-2°C colder than REMO (Fig.4d). Thus, the stand-alone REMO can be about 0.5°C warmer than ERA-Interim. I suggest the authors redo the figure 3 for the stand-alone REMO. In case the opposite results are found, I think it is interesting to see how the projection for temperature, salinity and sea level height will be when the stand-alone REMO is used over the coupling domain, if these experiments are available. If the authors have not done these experiments yet, I suggest to write a sentence about the planned experiments as an outlook for the future work.

Response: Thank you for the suggestion. We agree with both reviewers that a projection run with the ocean driven offline by stand-alone REMO in the coupling area would add valuable information on ROM behavior and we are planning to make such a run in the near future. We recognize the benefit of such an experiment and have added to the manuscript the following statement (see Page 13 Line 13f):

“In order to explicitly assess the role of the regional coupling on the simulated temperature, salinity and sea level, the results presented here will be compared with those from MPI-OM driven offline by stand alone in the coupling area, which is in progress.”

Referee #2: Abstract: “We assess the climate change signal in the Mediterranean Sea with the regionally coupled model”: Shall it be “provide” or another more suitable word instead of “assess”? The authors can compare the climate change signal obtained from your model results with other previous studies but cannot assess whether the signal is right or wrong because the truth is unavailable.

Response: Thank you for the suggestion. We have used “analyze” instead of “assess”.

Referee #2: Can the authors argue in the manuscript why you used the MPI-EMS_LR to force ROM instead of MPI-EMS_MR?

Response: At the end of section 2.3 we now explain why we use MPI-ESM-LR as driving model instead of -MR:

“We have used MPI-ESM-LR to force ROM in experiments ROM_P1 and ROM_P2 because -LR was used in a wider set of CMIP5 experiments and with more realizations than -MR (Giorgetta et al., 2013). Both present the same horizontal resolution in the atmosphere, and although MPI-ESM-MR has a higher vertical resolution, mainly in the upper troposphere and lower stratosphere, the main differences in the simulations can be found in the middle atmosphere (Stevens et al, 2013). According to a recent benchmarking exercise of CMIP5 models (Lauer et al., 2017) their overall performance is quite similar. Junglaus et al. (2013) provided a detailed description and evaluation of the ocean performance of MPI-ESM-LR and -MR, and concluded that both behaved similarly in many aspects, although -LR simulated the Labrador Sea and the North Atlantic more accurately, at least in the mean state and mean variability features.”

Referee #2: The reference Somot et al. (2018) is not cited in the manuscript.

Response: Thank you for the remark. We have now included the reference (see Page 2 Line 34)

Referee #2: Table 1: time step of REMO is missing.

Response: Thank you for the remark. REMO integration time step is now indicated in the text and in Table 1.

Referee #2: Figure 11: please re-plot the figure with a different scale of current velocity (e.g. 0.1 m/s) to make the vectors more visible. Zoom in the figure doesn't help to make the vectors more visible but decrease the quality of the figure.

Response: We have followed the suggestion of the reviewer regarding the figure, choosing 0.1 m/s as scaling factor in order to improve the figure (the wide range of velocities makes it difficult to render a nice vector field).

Referee #2: Page 2 Line 31: still “RAOCMs”

Response: We have made the correction in the revised manuscript.

Referee #2: Page 3 Line 15: It should be better with “For this work, the ROM climate model (Sein et al. 2015) has been used.”. The current sentence “For this work, the ROM climate model has been used (Sein et al. 2015).” sounds like this current work was already published in Sein et al. (2015).

Response: We have made the correction in the revised manuscript.

Referee #2: Page 3 Line 24: “info” is an informal word. Please use “information”.

Response: We have made the correction in the revised manuscript.

Referee #2: Page 5 Line 29: “For a better ... in the Mediterranean Sea, comparisons ...”: The added “,” would make the sentence easier to understand.

Response: We have made the correction in the revised manuscript.

Referee #2: Page 6 Line 28: “The largest discrepancies for DJF are located” or “... DJF can be seen ...”

Response: We have made the correction in the revised manuscript.

Referee #2: Page 7 Line 1: is summer the very dry season in Mediterranean Sea region? or do you mean a specific very dry summer?

Response: We mean that Mediterranean summers are very dry. We have tried to avoid misunderstandings in the manuscript (see Page 7 Line 27)

Referee #2: Page 7 Line 7-9: Please rewrite the sentence: “Over land the simulated fields have a larger dependency on the internal details of the atmospheric component, and the impact of the coupling is dependent on the large-scale circulation and land-sea contrasts.”

Response: We have rewritten the sentence in the revised manuscript (see Page 8 Lines 1f).

Referee #2: Page 7 Line 12-13: “The large-scale ... offsets the effect ...”: I do not get the meaning of this sentence.

Response: We have rewritten the sentence in the revised manuscript (see Page 8 Line 8f).

Referee #2: Page 7 Line 17: “determinate” \diamond “determined”.

Response: We have made the correction in the revised manuscript.

Referee #2: Page 7 Line 25-28: sentence is too long and not clear what the authors mean.

Response: We have rewritten the sentence in the revised manuscript (see Page 8 Line 22f).

Referee #2: Page 8 Line 10: “near to -1⁰C”: should use “approximately” or “about”

Response: We have made the correction in the revised manuscript.

Referee #2: Page 9 Line 10: “inflow jet runs along the African continental coastline”

Response: We have made the correction in the revised manuscript.

Referee #3: The English has to be checked by someone professional, at the moment the paper is full of strange formulations and errors. It is unclear to me, why the chapters 3 lack almost completely citations, except 3.4, and all the relevant point and citations are to be found in chapter 4. It would be easier to read when the results are compared to other scientific publications and in the discussion, the processes are discussed. My annotations are full of “whys” and almost no answers can be found.

Response: Thank you for your remarks.

The English has been checked by a professional in the revised manuscript.

Regarding Sections 3 and 4: we consider it better to show ROM model results and its evaluation compared to the reference datasets and MPI-ESMs in section 3, while placing the results in a wider context (comparison to other scientific publications) and the discussion of processes in section 4, as they often complement or support each other. We have decided to maintain the same structure, but Sections 3 and 4 have been significantly rewritten, in order to improve the readability.

We hope your questions will be answered in this document and in the revised manuscript.

Referee #3: There is no explanation about the initialization of the ocean model. Was there a spin-up calculated and if yes how? Usually MPI-OM needs a coupled of hundred years to reach quasi-equilibrium. This is the big disadvantage of a model setup like yours so it should be discussed.

Response: The spin-up of MPI-OM was done according to the procedure described in Sein et al. (2015): In the stand-alone mode, MPI-OM is started with climatological temperature and salinity data (Levitus et al., 1998). Subsequently, it is integrated four times through the 1948-2000 period forced by ERA-40 until quasi-equilibrium is reached. For the coupled runs, the model is started from the final state reached in the last stand-alone run e integrated again three times forced by ERA-Interim (see Page 5 Line 2f). Once the quasi-equilibrium state has been reached, it can be used as initial condition for different simulations around different areas, thereby alleviating the described disadvantage.

Referee #3: Please use ROM_P0 or P1 everywhere in the text where you discuss your runs and not the model in general. It is less confusing then comparing the discussions with the figures, where these names are used. Please label the figures itself with DJF or SST or whatever, so it is faster to grasp what is shown.

Response: We have used the names of each ROM simulations (P0, P1, P2) and labeled the figures throughout the revised manuscript.

Referee #3: Page 1, line 13: The Black Sea is mentioned already in the abstract but no results regarding climate change variability w.r.t. the Black Sea is discussed. And no results at all about the Black Sea are shown, not to speak of the circulation as mentioned here.

Response: The Black Sea and the Atlantic Ocean have been mentioned to describe the model domain and to stress the global coverage of the ocean model and that the water exchanges of the Mediterranean with the adjacent basins are not prescribed, but explicitly simulated by ROM. In this paper we do not aim to study the Atlantic Ocean or the Black Sea. In order to avoid any misunderstanding we have reformulated that sentence in the abstract to

"so that the water exchanges with the adjacent North Atlantic and Black Sea are explicitly simulated"

Referee #3: Line 20: Please add citation for hot spot. The 2nd sentence of the Introduction is mere speculation without any base.

Response: Thank you for the remark. We have added the citation for hot spot (Giorgi, 2006; Cramer, 2019). The 2nd sentence of the Introduction has been removed.

Referee #3: Line 26f: the deficit is compensated by the Strait of Gibraltar. Does this mean the inflow of fresh water from the Black Sea does not play a role in the budget?

Response: Thank you for the remark. Of course the water exchange through the Dardanelles plays its role in the Mediterranean Sea water budget. We have made the correction in the revised manuscript.

Referee #3: Line 28: local intense air-sea interaction does not make sense. Only if the whole MedSea is local, which is kind of strange in this paper.

Response: Thank you for the remark. We have made the correction in the revised manuscript.

Referee #3: Page2, line 12: pls skip the “was”.

Response: We have made the correction in the revised manuscript.

Referee #3: Line 27f: This is also a strange perspective. It is not the choice of the scenario which conditions the signal, it is driving factors which are prescribed in the scenario. And the scenarios are well thought off pathways of the future evolution of the climate change signal. This sentence here can be understood by climate critics that you only have to choose the right scenario to get the answer you want. This should not be written like this.

Response: Thank you for pointing out this unclear formulation. We have rewritten the sentence in the revised manuscript (Page 2 Line 28f).

Referee #3: Line 32f: what are the problems with open boundary conditions you mention here? This is one of the key features of your model setup so please describe it with more insight.

Response: One of the main problems of AORCMs is the prescription of lateral boundary conditions for the regional ocean models which are mainly based on monthly means from global ocean reanalysis data sets (e.g. HYCOM [Metzger et al., 2014]), damping the ocean dynamics on time scales less than 1 month. Those regional climate models should effectively resolve the small-scale processes that are not adequately represented in the coarser model data used as boundary conditions. This creates inconsistencies between the regional model solution and the external data that can be avoided with the consideration of a global ocean model with refines resolution within the coupled domain (e. g. ROM) (Sein et al. 2015). Such an approach was employed by Izquierdo and Mikolajewicz (2019) in an ocean-only process study to account for the impact of the interaction of processes of different space and time scales on the Mediterranean Water Outflow (MOW) spreading, of particular importance in the Strait of Gibraltar and the Gulf of Cádiz. We have included this information in the revised manuscript (Page 3 Line 1f).

Referee #3: Line 34: it is the first detailed evaluation but the run has also been used in other studies? A bit of a contradiction here.

Response: Darmaraki et al. (2019) evaluated only the SST using the historical simulation (1976-2005, our ROM_P1) in a study that compares the performance of 17 simulations with 6 different models, therefore, the evaluation is only partial. This one is the first comprehensive evaluation of ROM high-resolution atmosphere-ocean simulation for present climate (1980-2012, ROM_P0).

Referee #3: Page 3: line 4: evolution at the end? Maybe towards the end would be better. It is a process.

Response: Thank you. We have made the correction in the revised manuscript.

Referee #3: Line 6: skill not skills

Response: We have made the correction in the revised manuscript.

Referee #3: Line 8: better: driving model (mpi-esm) and skip the last part of the sentence.

Response: We have made the correction in the revised manuscript.

Referee #3: Line 24: information

Response: We have made the correction in the revised manuscript.

Referee #3: Page 4, line 27: “we make a dynamical downscaled of present time simulation”. Please rewrite this sentence. Why did you force the ROM with MPI-ESM-LR? Later it is getting clear, that LR and MR differ very much although it is nowhere discuss why, so why this forcing?

Response: Thank you for the remarks. We have rewritten the wrong sentence in an appropriate way in the revised manuscript (Page 5 Line 15f).

Regarding the reasons behind using MPI-ESM-LR as driving model, we have included the explanation at the end of section 2.3. We also refer to Jungclaus et al. (2013) and Stevens et al. (2013) for a detailed analysis of both configurations.

"We have used MPI-ESM-LR to force ROM in experiments ROM_P1 and ROM_P2 because -LR was used in a wider set of CMIP5 experiments and with more realizations than -MR (Giorgetta et al., 2013). Both present the same horizontal resolution in the atmosphere, and although MPI-ESM-MR has a higher vertical resolution, mainly in the upper troposphere and lower stratosphere, the main differences in the simulations can be found in the middle atmosphere (Stevens et al, 2013). According to a recent benchmarking exercise of CMIP5 models (Lauer et al., 2017) their overall performance is quite similar. Jungclaus et al. (2013) provided a detailed description and evaluation of the ocean performance of MPI-ESM-LR and -MR, and concluded that both behaved similarly in many aspects, although -LR simulated the Labrador Sea and the North Atlantic more accurately, at least in the mean state and mean variability features."

Referee #3: Page 5, line 23: “we made comparisons”. No good english.

Response: Thank you. We have made the correction in the revised manuscript.

Referee #3: Line 25: based on the NEMO code. Which model do you talk about here? Generally, I would skip a lot of information on the data but the resolution in space and time and the citations. But this is your choice.

Response: We are talking about MEDSEA_REANALYSIS_PHY_006_009. The ocean global climate model used to produce the MEDSEA_REANALYSIS_PHY_006_009 are NEMO version 3.2 for the period 1955-2012 and NEMO version 3.4 for the period 2013-2015 (Fratanni et al., 2015). In any case we have followed your suggestion and deleted some information in the revised manuscript (Page 6 Line 24f).

Referee #3: Line 30: against other ESMs are required.

Response: Thank you. We have made the correction in the revised manuscript.

Referee #3: Line 30: Why and how is the setup of MPI-OM different compared to MPI-ESM? And how are these differences relevant when looking at the results of ROM compared to the MPI-ESM-LR/MR?

Response: The MPI-OM configuration used for all experiments features the grid over North America and Northwestern Africa. The horizontal resolution ranges from 5 km (close to the NW African coast) to 100 km in southern oceans (see Fig. 2b). This feature allows a local high resolution in the region of interest allowing the study of local-scale processes while maintaining a global domain (e.g. Izquierdo and Mikolajewicz, 2019). ROM-MPI-OM has higher resolution in the Mediterranean than any of the MPI-

ESMs. The low resolution (LR) configuration uses for the ocean a bipolar grid with 1.5° resolution and the medium resolution (MR) decreases the horizontal grid spacing of the ocean to 0.4° with a tripolar grid, two poles localized in Siberia and Canada and a third pole at the South Pole (Giorgetta et al., 2013).

The higher resolution will play a role in the ROM results.

Referee #3: Page 6, line 1: is HAMOCC used? What role does it play in the MedSea climate change simulations? Why is OASIS3 used and not OASIS3-MCTx?

Response: The HAMOCC model is coupled to our ROM coupled system, but we did not switch HAMOCC on in our runs. So HAMOCC is not accounted for in the simulations, and therefore does not play a role in our Mediterranean Sea climate change results. However, we think that switching HAMOCC on 1) would reduce the summer cold SST bias in ROM_P0 (see below our answer to one of your remarks), and potentially would have an impact on the Mediterranean climate change.

We are aware that OASIS3-MCTx offers better possibilities. However, the model was developed with OASIS3 and for now we are keeping it as the coupler. We are planning to change to OASIS3-MCTx in the near future, when we will run simulations with higher resolution. The limitations of OASIS3 will then most likely become critical.

Referee #3: Line 17f: what is the explanation for the overestimation of the Azores high? The location is quite close to the boundary of REMO so where does it come from? The boundary formulation? If the ocean is the source, then there are deficits in the ocean circulation in the Atlantic which might play a role in the MedSea as well.

Response: The REMO domain used in the simulation also includes the North Atlantic and the Azores high is included in the domain and its core is located far enough from the boundaries (the closer boundary is the northern one, see Fig. 2b). The biases in its representation (overestimation of MSLP) can be attributed to the model, in fact, to a SST cold bias in the North Atlantic. This feature is common to ocean GCMs and also appears in the MPI-OM configurations used in MPI-ESM-LR and -MR. This cold SST bias is related to the difficulties that the model has in accurately capturing the path of the Gulf Stream and North Atlantic Current (Keeley et al., 2012, Jungclaus et al., 2013). Our oceanic component has a high resolution, permitting eddy in the North Atlantic. However, we found that although the path of the simulated Gulf Stream and North Atlantic Current is improved compared to MPI_ESMs and most of the global coupled models, the improvement is not enough to completely alleviate the MSLP bias. As indicated in Sein et al. (2018), the resolution of the oceanic model plays a very important role, and significant improvements in the simulation of the Azores High can be made using an ocean model that is eddy resolving in the region of the frontal currents.

Referee #3: Line 23f: Could it be that REMO has a problem simulating the circulation over mountainous areas? There used to be a formulation in REMO smoothing out this effect, maybe this was not used? Generally, the great benefit of regional climate modelling is the higher resolution accompanied by a better representation of mountains. There is a sentence (Page 7, line 9f) in the paper talking about the benefits but leaving out this mountain/orography effect. So please discuss this point somewhere.

Response: We indeed use the formulation that improves the representation of the circulation over mountainous regions in REMO (see Page 8 Line 5f). We think that in this case a significant part of the discrepancies arises from the differences in the height of the mountains in the model and reanalysis due to the different resolution of REMO (25 km) and ERA-Interim (c.a. 80 km; T255 spectral).

Referee #3: Line 26: could play a role. Good question. Do they? Did you look at this point in more detail? Or is it due to interpolation artefacts?

Response: The Air Temperature biases in this are mainly related to the SST biases. In winter, ROM's SST is warmer than OISSTV2 in this region, most likely due to the relatively coarse atmospheric resolution. For instance, Akhtar et al. (2018), found that a higher atmospheric resolution strengthens the simulated 10 wind, which increases the latent heat release and therefore lowers the SST. In our model

weaker than observed winds lead to a lower latent heat, warmer SST and therefore, lower air surface temperature.

Referee #3: Line 30: Same is true for the last sentence on this page, did you check where the anomalies come from?

Response: This can be related to the transport of precipitable water, which is influenced by the simulated evaporation over the ocean.

Referee #3: Page 7, line 11ff: Why is MSLP higher in the coupled run?

Response: The higher MSLP are mainly related to cold SST biases.

Referee #3: Page 8, line 2: more the northern part of the eastern MedSea.

Response: We have made the correction in the revised manuscript.

Referee #3: Line 6: higher resolution where ocean or atmos?

Response: Higher resolution in both.

Referee #3: Line 8: what simulation is discussed here? P0?

Response: Yes, it is ROM_P0. As we have said above, we have included the name of each simulation throughout the revised text.

Referee #3: Line 17f: what data set configuration?

Response: The lower horizontal resolution of EN4 v4.1.1 (1°x1°).

Referee #3: Line 20: this is the first time, aerosols are mentioned. It would be nicer to have this information in the general description of the model. And then, why are aerosols neglected?

Response: Thank you for the remark. The information on aerosols is now included in the REMO description section. Our version of REMO does not include an aerosol module. We use climatological values (Tanre et al., 1984) for aerosols and the longer time scale aerosol forcing is not represented. The aerosol climatology used has some deficiencies related to its low resolution and an unrealistic dust component that are reflected in the weakness of the increasing trend of modeled SST (see Page 4 Line 9f).

Referee #3: Line 21: offset of SST: what about the spin-up of the ocean model?

Response: See our answer to the 2nd referee #3 comment.

Referee #3: Line 25f: last part of the sentence is not understandable. And what is climate uncertainty? Please define.

Response: Thanks for the remark. Climatological was not the appropriate word. We think of the observational gridded datasets RMSE as a measure of the "observational" uncertainty. We have rewritten the sentence trying to express it in a better way (see Page 9 Line 24f).

Referee #3: Line 27: Chapter 3.3: The influence of HD is nowhere discussed. Why is there so much freshwater inflow from HD? This is missing in this chapter.

Response: Thank you for the remark. There is not so much freshwater inflow from HD. Indeed, HD freshwater inflow is below estimates from other authors (there was a mistake in the figure corresponding

to river runoff in Table 4, the correct value is 0.06 Sv). Now we have added a brief HD discussion to this chapter.

Referee #3: Page 9, line 3: why is ROM always saltier? HD? Spin-up? Surface fluxes? Please explain.

Response: ROM_P0 is closer to EN4 and CMEMS climatologies than MPI-ESM-LR and -MR simulations. This improvement in SSS is due to improved surface fluxes due to the higher horizontal resolution in the Mediterranean Sea and partly due to the seasonally varying fresh water flux correction.

Referee #3: Line 29: RCSM4 model turns up out of the blue. What model is this, citation?

Response: Thank you for the remark. We have included the citation for RCSM4 model (Sevault et al., 2014) in the revised manuscript (Page 10 Line 32).

Referee #3: Page 10, first paragraph: global warming everywhere? Please skip such general sentences.

Response: We agree with the reviewer. We have made the correction in the revised manuscript.

Referee #3: Line 13: Figure 13 is not easy to understand, so please label this figures themselves with variable and time slot.

Response: We have labeled all figures in the revised manuscript.

Referee #3: Line 6f: which run is discussed, which period. And an av. Zonal SST from north to south is really hard to distinguish from that figure.

Response: We are discussing the ROM_P1 simulation (1976-2005, Fig. 13a). We have rephrased the sentence.

Referee #3: Line 21: already in the present day simulation is too much fresh water in the Bosphorus and close to the Nile, this will be transported to the future scenarios.

Response: The Reviewer is right. There is an excess of fresh water in those areas due to an excessive fresh water input from Dardanelles and from the Nile. However, this effect is quite localized. This pattern is also evident in ROM_P1, so it seems that it can be transported into future scenarios. However, its impact would be quite local and restricted to the northern Aegean Sea and close to the Nile. The freshening of the western Mediterranean is clearly related to the Atlantic influence: see Fig. 15, where Western Mediterranean (averaged) gets fresher at the surface, while the Eastern Mediterranean gets saltier.

Referee #3: Line 26f: where does the diff between MR and LR come from?

Response: Differences are related to different ocean grids, a bipolar curvilinear grid (GR1.5, nominal 1.5° resolution) for -LR and a tripolar curvilinear grid (TP04, nominal 0.4° resolution) for -MR (Jungclaus et al., 2013).

Referee #3: Line 19: where did you discuss the circulation in the Adriatic Sea and compared it to observations?

Response: We have not discussed the circulation in the Adriatic Sea. We wanted to stress ROM's ability to reproduce smaller scale details. The sentence is rewritten in the revised version.

Referee #3: Page 12, first paragraph: the discussion would be a bit more interesting if the resolution of the different models mentioned compared to ROM would be written somewhere.

Response: We have included a new Table 5 where the horizontal resolution of the different models has been summarized.

Referee #3: Line 27f: so why do you speculate and not do some analysis and answer this question?

Response: We have added a piece of text describing a preliminary analysis on this issue:

“It is difficult to attribute the bias to single cause without considering the multiplicity and complexity of all the involved conditions; therefore, this topic deserves a separate and focussed study. However, a preliminary sensitivity analysis changing the optical properties of the water (changing from model standard Jerlov Ia to Jerlov II) clearly indicates that the related turbidity increase is responsible for a larger absorption of downward shortwave radiation in the upper layer, and leading to a warmer SST. This also would explain why colder SST biases appear in summer, when the impact of biologically-induced redistribution of heat in the water column is larger. Switching HAMOCC on would, to some extent, contribute to the reduction of this cold bias. However, until a thorough study is carried out, the contribution of other mechanisms cannot be discarded.” (Page 13 Line 30f). Fig. 1 shows the results of the sensitivity experiment.

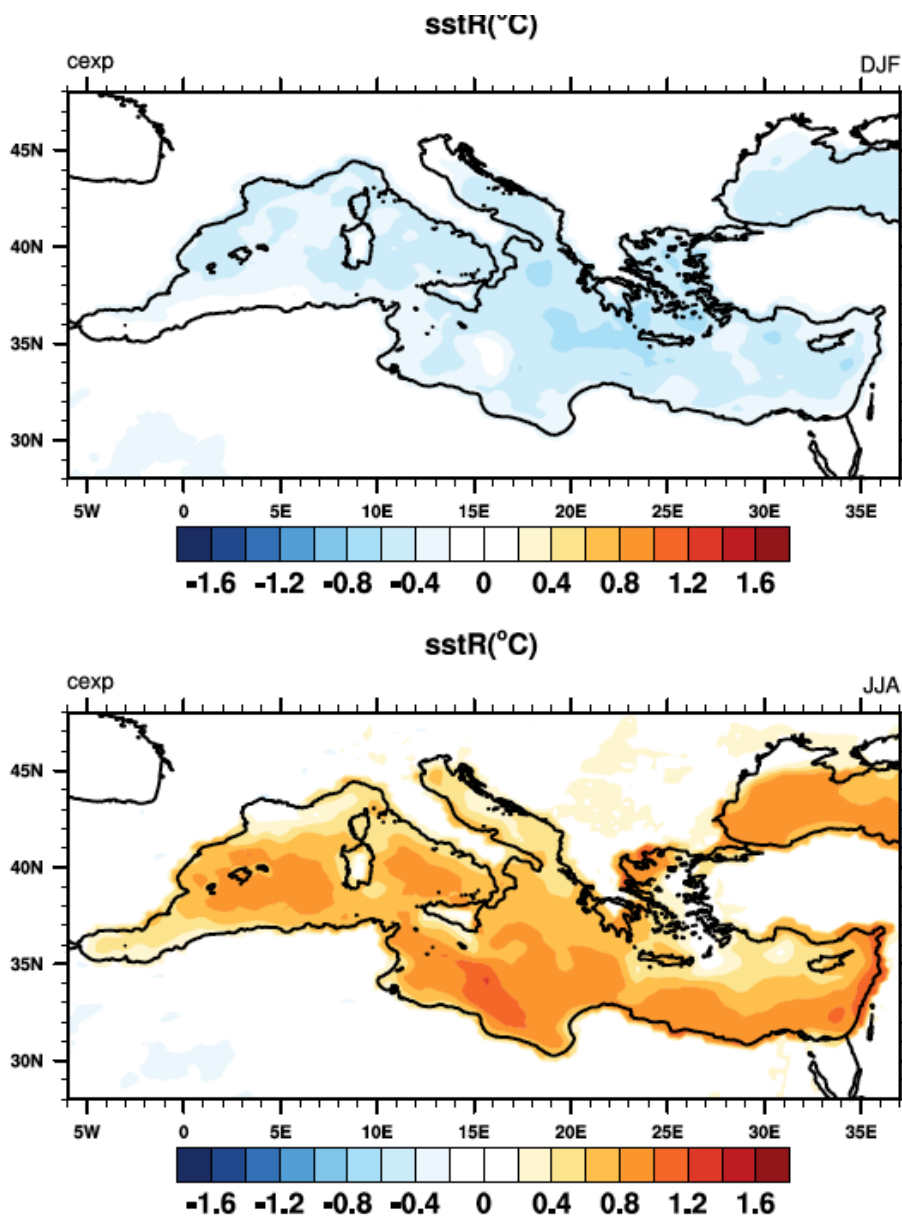


Fig. 1. DJF and JJA SST differences, averaged for the period 1980-2012, between ROM_JerlovII and ROM_JerlovIa (Figure not included in the manuscript)

Referee #3: Page 13, line 4: please mention the 31m in the model description. Is this the depth of the first layer or only the choice to compare it to other studies? Unclear.

Response: The first layer depth of the model is 8 m. We have chosen the 31 m level depth to remove the high-frequency variability of the uppermost ocean while retaining a characteristic upper ocean circulation pattern. Also, the choice of this level depth makes our results more comparable with other studies (see Page 14 Line 15f). We have included information about the first layer depth in the model description (see Page 5 Lines 1-2).

Referee #3: Line 11: RCSM4 is not to be found in Fig 12b.

Response: Yes, you are right. We have not used RCSM4 model data in our study, we have just compared our result with those obtained by Sevault et al. (2014) with the RCSM4 model as we have carried out the same analysis.

Referee #3: Line 17: what is the absence of resolution? Sound more like a philosophical question.

Response: We mean the lack of resolution. We have made the correction in the revised manuscript.

Referee #3: Line 24: what is the multi-model Mediterranean? And what are model increases? Lot of errors on this page. ☹️ Like differences instead of different and filed instead of field and so on. Not very nice to read. Lots more.

Response: The English has now been checked by a professional.

Referee #3: Page 14, line 9: where was the transport through the Dardanelles Strait discussed?

Response: We have not discussed the transport through the Dardanelles Strait, although it was with available observation (Sanchez-Gomez et al., 2011) and RCMS4 model estimates (Sevault et al., 2014) (see Table 4). However, our point here is to indicate that the higher ocean resolution allows to explicitly resolve the water exchange through more realistic (in the sense of cross-sectional dimensions) straits.

Referee #3: Generally: in the conclusion: I could like to see a good overview about the benefits of this coupled system ROM compared to others without the global ocean, a short overview over the evaluation, i.e. how well is the model behaving in the ERA-Interim simulation to have a good feeling about the future projections. And then the climate change signal which was simulated. Maybe some problems/shortcomings of the model and some ideas how to improve well known deficits.

Response: We have substantially updated the discussion and conclusions (sections 4 and 5) in the revised manuscript.

List of relevant changes:

- We have fully reviewed the manuscript following the comments and the suggestions that the reviewers have done. We have tried to answer all the referee's questions which were full of "whys" in the revised manuscript such as:

- why we use MPI-ESM-LR as driving model instead of -MR
- how the spin-up of the ocean model have been calculated
- description of ROM configuration and experiments set-up
- differences between MPI-OM and MPI-ESM
- the role of HAMOCC over the STT bias
- explanation of overestimation for the Azores high
- why are aerosols neglected
- the influence of HD

Furthermore, we have substantially updated the discussion and conclusions, where we have included more insight analysis and a good overview about the benefits of this coupled system model. You could find all changes in the marked-up manuscript version bellow.

- We have used the names of each ROM simulations (P0, P1, P2) and labeled the figures throughout the revised manuscript.

-We have re-plotted the Fig. 11 choosing 0.1 m/s as scaling factor to improve the figure.

- Water budget calculation was wrong because there was a mistake in providing the values for river runoff (R). Now the results are checked and the water budget is ok.

- We have included a new Table 5 where we summarize the resolution of the different models used in this study to discuss ROM.

- The English has been checked by a professional in the revised manuscript.

The climate change signal in the Mediterranean Sea in a regionally coupled atmosphere-ocean model

Ivan Parras-Berrocal¹, Ruben Vazquez¹, William Cabos², Dmitry Sein^{3,4}, Rafael Mañanes¹, Juan Perez-Sanz², Alfredo Izquierdo¹

5 ¹[Instituto Universitario de Investigación Marina \(INMAR\)](#), University of Cádiz, [Puerto Real](#), Cádiz, 11510, Spain

²Department of Physics and Mathematics, University of Alcala, Alcala de Henares, 28801, Spain

³Alfred Wegener Institute for Polar and Marine Research, Bremerhaven, 27570, Germany

⁴Shirshov Institute of Oceanology, Russian Academy of Science, Moscow, Russia

10 *Correspondence to:* Ivan M. Parras-Berrocal (ivan.parras@uca.es)

Abstract. We analyze the climate change signal in the Mediterranean Sea using the regionally coupled model REMO-OASIS-MPIOM (ROM). The ROM oceanic component is global with regionally high horizontal resolution in the Mediterranean Sea, so that the water exchanges with the adjacent North Atlantic and Black Sea are explicitly simulated. Simulations forced by ERA-Interim show an accurate representation of the present Mediterranean climate. Our analysis of
15 the RCP8.5 scenario using the Max-Planck Institute Earth System Model shows that the Mediterranean waters will be warmer and saltier throughout most of the basin by the end of this century. In the upper ocean layer temperature is projected to have a mean increase of 2.73°C, while the mean salinity increases by 0.17 psu, presenting a decreasing trend in the Western Mediterranean, opposite to the rest of the basin. The warming initially takes place at the surface and propagates gradually to the deeper layers. Hydrographic changes have an impact on intermediate waters characteristics, potentially
20 affecting the Mediterranean Thermohaline Circulation in the future.

1 Introduction

The Mediterranean Sea is expected to be among the world's most prominent and vulnerable climate change “hot spots” ([Giorgi, 2006](#); [Cramer et al., 2018](#)). As such, the region is an optimal case study site to test new approaches to bridging the gap between science and society, using a sound scientific basis of climate information and applicable to a broad range of
25 vulnerable sectors.

The Mediterranean is a regional sea surrounded by Africa, Europe and Asia and divided into two sub-basins (eastern and western) through a sill that does not exceed 400 m depth between Sicily and the African continent. The freshwater balance in the Mediterranean basin is negative, since the evaporation exceeds precipitation and river run-off ([Sanchez-Gomez et al., 2011](#)). This deficit is compensated by a net inflow of water through the straits of Gibraltar and Dardanelles. The region is
30 located in a transitional area between tropical and mid-latitudes and presents a complex orography and coastlines where intense air-sea and land-sea interactions take place. These intense air-sea interactions together with the inflow of Atlantic

water drive the Mediterranean thermohaline circulation (MTHC) (Fig. 1), suggesting that atmosphere-ocean regional coupled models (AORCMs) could be conducive to the study of atmospheric and oceanic processes in the Mediterranean Sea. Different AORCMs with typical horizontal resolution of 25-50 km in the atmosphere and 10-20 km in the ocean have been developed to study the climate of the Mediterranean Sea (Somot et al., 2008; L'Hévéder et al., 2013; Sevault et al., 2014; Cavicchia et al., 2015; Darmaraki et al., 2019). Akhtar et al. (2018) found that higher horizontal resolution (9 km) in the atmosphere improves the simulation of the wind and the turbulent heat fluxes, although they conclude that higher resolution models do not perform better in all aspects than coarser configurations. Somot et al. (2008) developed the Sea Atmosphere Mediterranean Model (SAMM), presenting a new concept of AORCMs through the coupling of the atmospheric global model (ARPEGE; Déqué and Piedelievre, 1995) and the regional high-resolution (10 km) ocean model (OPAMED; Somot et al., 2006). Their results under the A2 (IPCC, 2000) climate change scenario showed an increase of temperature and salinity both in shallow (3.1°C and 0.48 psu) and in deeper layers (1.5°C and 0.23 psu) of the Mediterranean Sea (Somot et al., 2006) at the end of the 21st century. In 2013, the European CIRCE project was launched (Gualdi et al., 2013), in order to facilitate the coordination among the scientific community responsible for regional climate modeling in the Mediterranean. The beginnings of CIRCE can be traced back to the work of Dubois et al. (2012) who compared different AORCMs and regional climate models (RCMs). In addition, these authors analyzed a projection (1950-2050) of the Mediterranean climate under the A1B scenario simulated by an ensemble of five coupled regional models. For the first time, realistic atmosphere-ocean net flows were obtained predicting a Mediterranean surface warming between 0.8°C and 2°C. Shaltout and Omstedt (2014) analyzed the Mediterranean SST for 2005 to 2100 from the Coupled Model Intercomparison Project phase 5 (CMIP5) model ensembles under the RCP2.6, RCP4.5, RCP6.0 and RCP8.5 scenarios (Taylor et al., 2012). The CMIP5 ensemble means projected SST warming under all considered scenarios (from 0.5°C under RCP2.6 to 2.6°C in RCP8.5). The authors concluded that the warming was mainly controlled by the amount of greenhouse gas emissions. More recently, Adloff et al. (2015) estimated that at the end of the 21st century the mean Mediterranean SST and SSS will increase between 1.73 and 2.97°C, and 0.48 and 0.89 psu, respectively. Their results were based on an ensemble of six simulations performed with different configurations of the NEMOMED8 (Beuvier et al., 2010) ocean model under different scenarios. Darmaraki et al. (2019) employed an ensemble of 17 fully coupled atmosphere-ocean simulations to study the evolution of SST and marine heat waves in the Mediterranean Sea for the period 1976-2100. The ensemble mean showed a 3.1°C increase in the Mediterranean mean SST under the RCP8.5 scenario by the end of the century. By 2100 projections showed stronger and more intense Mediterranean marine heat waves. Most of the above-mentioned studies show that the driving factors prescribed in the emissions scenarios condition the expected warming of the Mediterranean Sea.

30 These modeling efforts are coordinated through the Med-CORDEX initiative (Ruti et al., 2015; www.medcordex.eu), which is the regional climate modelling taskforce of the HyMeX program (www.hymex.org). In the framework of Med-CORDEX a broad range of new reference datasets for regional climate evaluation are being compiled, and the evaluation of new fully coupled regional climate models for understanding the processes that are responsible for the Mediterranean climate variability and trends is being carried out (Somot et al., 2018).

In these models the oceanic component of the AORCMs is also regional. One of the main problems of AORCMs is the prescription of lateral boundary conditions for the regional ocean models, which are mainly based on monthly means from global ocean reanalysis datasets (e. g. HYCOM [Metzger et al., 2014]), damping the ocean dynamics on time scales of less than one month. Those regional climate models should effectively resolve the small-scale processes that are not adequately represented in the coarser model data used as boundary conditions. This creates inconsistencies between the regional model solution and the external data that can be avoided with the consideration of a global ocean model with refined resolution within the coupled domain (Sein et al., 2015). Such an approach was employed by Izquierdo and Mikolajewicz (2019) in an ocean-only process study to account for the impact of the interaction of processes of different space and time scales on the Mediterranean Water Outflow (MOW) spreading, of particular importance in the Strait of Gibraltar and the Gulf of Cádiz.

5

10 The use of an ocean global model (Max-Planck Institute Ocean Model, MPI-OM) in the REMO-OASIS-MPIOM (ROM) coupled system model, could prevent some of the problems associated with the open boundary conditions for the Mediterranean Sea, allowing the study of processes that take place in the Mediterranean region but originating in the North Atlantic Ocean. This study aims to contribute to the Med-CORDEX initiative with a first detailed evaluation of high-resolution atmosphere-ocean simulations for present climate with the coupled ROM model. Furthermore, we analyze the

15 evolution of the Mediterranean Sea under the RCP8.5 scenario with boundary conditions taken from CMIP5 simulation using the Max Planck Institute Earth System model (MPI-ESM). In particular, we focus on ocean properties such as SST and SSS and their evolution towards the end of the 21st century.

The objectives of this study can be summarized as follows:

- (i) Assess the skill of ROM in reproducing the observed Mediterranean Sea regional climate when driven by ERA-Interim reanalysis.
- (ii) Examine the value that high-resolution ROM adds to the driving model (MPI-ESM).
- (iii) Assess the projected climate change signal in the Mediterranean Sea under the RCP8.5 scenario.

This article is organized as follows: a general description of our coupled model and each of its components is presented in section 2. In section 3 we present the results of the model validation followed by the coupled simulations for the

25 Mediterranean region. Finally, section 4 contains the discussion and the conclusions are outlined in section 5.

2 Methods

ROM (Sein et al., 2015) comprises the REgional atmosphere MOdel (REMO; Jacob et al., 2001), the Max Planck Institute Ocean Model (MPI-OM; Marsland et al., 2003; Junglauss et al., 2013), the HAMburg Ocean Carbon Cycle (HAMOCC) model (Maier-Reimer et al., 2005), the Hydrological Discharge (HD) model (Hagemann and Gates, 1998, 2001), the soil

30 model of REMO (Rechid and Jacob, 2006) and a dynamic/thermodynamic sea ice model (Hibler, 1979) which are coupled via OASIS3.0 (Valcke, 2013) coupler, and abbreviated as ROM from REMO-OASIS-MPIOM.

2.1 Atmosphere (REMO)

The atmospheric component of ROM is the REMO. Its dynamic core and discretization in space and time are based on the Europa-Model of the Germany Weather service (Majewski, 1991). The physical parameterizations are taken from the global climate model ECHAM versions 4 and 5 (Roeckner et al., 1996, 2003). The variables that exchange information between
5 REMO and MPI-OM via OASIS are 10 m wind velocity, wind stress over water, wind stress over sea ice, liquid precipitation, solid precipitation, net shortwave radiation, total heat flux over water, conductive heat flux and residual heat flux (Fig. 2a). To avoid the largely different extensions of the grid cells close to the poles, REMO uses a rotated grid, with the equator of the rotated system in the middle of the model domain. The horizontal discretization is carried out on the Arakawa C-grid and the hybrid vertical coordinates are defined according to Simmons and Burridge (1981). Our version of
10 REMO does not include an aerosol module. The information about aerosols is based on the climatology from Tanre et al. (1984). The spatial distributions of the optical thickness of land, sea, urban, and desert aerosols, and well mixed tropospheric and stratospheric background aerosols are represented. More information about the parameterizations of the atmospheric component can be found in Sein et al. (2015).

2.2 Ocean (MPI-OM)

15 The oceanic component of ROM is the MPI-OM developed at the Max Planck Institute for Meteorology (Hamburg, Germany). MPI-OM is a free surface, primitive equations ocean model, which uses the Boussinesq and incompressibility approximations. MPI-OM is formulated on an orthogonal curvilinear Arakawa C-grid (Arakawa and Lamb, 1977) with variable spatial resolution. This grid allows for the placement of the poles over land, thus removing the numerical singularity associated with the convergence of meridians at the geographical North Pole. An additional advantage of the curvilinear grid
20 is that a higher resolution in the region of interest can be obtained, while maintaining a global domain. Using the global ocean model alleviates issues related to ocean open boundary conditions and provides an additional “degree of freedom” in the model setup and tuning, which can help increase the performance of the ocean component within the region of interest. The model parameterizations and setup are described in Sein et al. (2015).

2.3 ROM configuration and experiments set-up

25 Fig. 2a shows the coupling scheme used in ROM. In the region covered by REMO the atmosphere and the ocean interact while the rest of the global ocean is driven by energy fluxes, momentum and mass from global atmospheric data used as external forcing. In the experiments analyzed here, data from ERA-Interim reanalysis (Dee et al., 2011) and MPI-ESM-LR (Giorgetta et al., 2013) are used to provide lateral boundary conditions to REMO and to force MPI-OM outside the coupling region.

30 The MPI-OM grid used in this setup is represented by black lines in Fig. 2b. In the Mediterranean region the highest horizontal resolution of MPI-OM is 7 km (south of the Alboran Sea) while the lowest resolution is 25 km (eastern coasts of

the Mediterranean Sea). MPI-OM has 40 vertical z-levels with increasing layer thickness with depth, with the first layer nominal depth located at 8 m. The spin-up of MPI-OM was done according to the procedure described in Sein et al. (2015): In the stand-alone mode, MPI-OM is started with climatological temperature and salinity data (Levitus et al., 1998). Subsequently, it is integrated four times through the 1948-2000 period forced by ERA-40 until quasi-equilibrium is reached.

5 For the coupled runs, the model is started from the final state reached in the last stand-alone run e integrated again three times forced by ERA-Interim.

The REMO domain covers the North and Tropical Atlantic, a large part of Africa, South America and the Mediterranean region (red line, Fig. 2b) with a resolution of approximately 25 km on a rotated grid and a time step of 120 s. More information about the ROM coupled system is summarised in Table 1. The HD model (global domain) computes the river discharge at 0.5° resolution and an information exchange takes place every 60 minutes, while HD interacts with MPI-OM and REMO every 24 hours (Fig. 2a).

In this study, 30-year time series from three different experiments have been analyzed. The first simulation, ROM_P0, was forced by ERA-Interim for the time period 1980-2012 and used to assess the skill of ROM to reproduce the observed regional climate over the Mediterranean Sea. In order to present an integrated vision of the impact of climate change in the

15 Mediterranean Sea, we dynamically downscale the MPI-ESM-LR historical simulation covering the period 1950-2005 (for our analysis we take ROM_P1 from 1976-2005) and the climate change projection for 2006-2009 (for our analysis we take ROM_P2 from 2070-2099) under the Representative Concentration Pathway 8.5 (RCP8.5) scenario.

The driving model, MPI-ESM, has been used in different configurations for CMIP5 in a series of climate change experiments (Giorgetta et al., 2013). MPI-ESM is composed of ECHAM 6 (Stevens et al., 2013) for atmosphere and MPI-OM (Jungclaus et al. 2013) for ocean as well as JSBACH (Reick et al., 2013) for terrestrial biosphere and HAMOCC (Ilyina et al., 2013) for the ocean's biogeochemistry. The coupling of the atmosphere, ocean and land surface is made possible by the OASIS3 (Valcke, 2013) coupler. MPI-ESM-LR (low resolution) uses T63/1.9° horizontal resolution and 47 hybrid sigma/pressure levels for the atmosphere and a bipolar grid with 1.5° horizontal resolution (near the equator) for the ocean, while the -MR (mixed resolution) version has the same horizontal resolution in the atmosphere, although doubles the number

20 of vertical levels in the atmosphere and decreases the horizontal grid spacing of the ocean to 0.4° by means of a tripolar grid (Giorgetta et al., 2013).

We have used MPI-ESM-LR to force ROM in experiments ROM_P1 and ROM_P2 because -LR was used in a wider set of CMIP5 experiments and with more realizations than -MR (Giorgetta et al., 2013). Both present the same horizontal resolution in the atmosphere, and although MPI-ESM-MR has a higher vertical resolution, mainly in the upper troposphere and lower stratosphere, the main differences in the simulations can be found in the middle atmosphere (Stevens et al, 2013). According to a recent benchmarking exercise of CMIP5 models (Lauer et al., 2017) their overall performance is quite similar. Jungclaus et al. (2013) provided a detailed description and evaluation of the ocean performance of MPI-ESM-LR and -MR, and concluded that both behaved similarly in many aspects, although -LR simulated the Labrador Sea and the North Atlantic more accurately, at least in the mean state and mean variability features.

25

30

2.4 Validation Methodology

ROM-simulated present Mediterranean climate is analyzed in terms of mean state, seasonal cycle and interannual variability of some of the atmospheric and oceanic variables. For the ROM atmospheric component REMO, three representative variables were chosen: Mean Sea Level Pressure (MSLP), near-surface temperature (T2m) and total precipitation. For the ocean component MPI-OM Sea Surface Temperature (SST), Sea Surface Salinity (SSS), Sea Surface Height (SSH) and the sub-surface current velocity are considered. These fields are compared to gridded data from different sources to evaluate the ROM model's ability to simulate the present Mediterranean climate. These datasets are derived from observations or reanalysis where appropriate (Table 2).

For MSLP and T2m we compare the output of ROM with ERA-Interim reanalysis. The ERA-Interim data assimilation system uses a 2006 release of the Integrated Forecasting System (IFS) developed jointly by ECMWF and Météo-France. The spatial resolution of the dataset is approximately 80 km (T255 spectral) on 60 vertical levels from the surface up to 0.1 hPa (Dee et al., 2011); data can be freely accessed at <https://www.ecmwf.int/en/research/climate-reanalysis/era-interim>. Total precipitation is validated against the Tropical Rainfall Measuring Mission (TRMM; Huffman et al., 2014) dataset, a joint mission between NASA and the Japan Aerospace Exploration Agency (JAXA) to study rainfall for weather and climate research.

Three datasets were used for the evaluation of the SST: ERA-Interim, EN4 and OISST. EN4 was derived by Good et al. (2013) who carried out a 1-degree monthly objective analysis from ocean temperature and salinity bathythermograph profiles (MBT, XBT). The version EN4.1.1 used here includes the improvements of the estimation of MBT's and XBT's downward velocity developed by Gouretski and Reseghetti (2010). The NOAA daily Optimum Interpolation Sea Surface Temperature (OISST; Reynolds et al., 2007) combines observations from different platforms (satellites, ships, buoys) on a regular global grid 1/4° x 1/4°. Currently, the OISST dataset is considered the best-observed SST dataset available, in terms of spatial and temporal resolution.

For SSS we used the two following datasets: EN4 v.4.1.1 (Good et al., 2013) and MEDSEA_REANALYSIS_PHY_006_009 (Fратиanni et al., 2015) implemented by the Copernicus Marine Environment Monitoring Service (CMEMS) and with a 1/16° horizontal resolution in the Mediterranean.

The potential of ROM to improve the simulation of the regional Mediterranean Sea climate is assessed by comparisons against the MPI-ESM outputs (MPI-ESM-LR and MPI-ESM-MR).

3 Results

In this section, a selection of key fields corresponding to the period 1980-2012 of ROM forced by ERA-Interim (ROM_P0) is presented. In a second step changes in the Mediterranean Sea under RCP8.5 conditions are estimated from the analysis of

differences between present climate (1976-2005, ROM_P1) and the climate projection (2070-2099, ROM_P2) carried out by ROM driven by MPI-ESM-LR.

3.1 Atmosphere validation

Mean sea level pressure (MSLP) is a good indicator of large-scale circulation, which influences near-surface temperature (T2m) and precipitation distributions. Erroneous MSLP gradients lead to an erroneous regional wind circulation, and can also have a strong effect on ocean circulation (Sein et al., 2015). Figs. 3a and 3b display the biases of modeled MSLP with respect to ERA-Interim for the boreal winter (defined as December, January, and February; DJF) and summer (defined as June, July, and August; JJA) in the 1980-2012 period (ROM_P0). ROM_P0 provides a good agreement with ERA-Interim MSLP, showing maximum deviations smaller than 3 hPa over most of the domain for both seasons. The strongest departures can be found in DJF, due to an overestimation of the Azores high during the winter months. Those differences could be attributed partly to REMO parameterizations, but a more important role could be played by the deficiencies in the simulated ocean circulation in the North Atlantic, which result in a cold SST bias located at the subtropical gyre. Jungclaus et al. (2013) consider this cold bias appearing in MPI-ESM-LR and -MR to be a persistent feature in state-of-the-art climate models, where lack of resolution prevents a proper representation of the Gulf Stream separation (Dengg et al., 1996), although they also mention other possible causes. Nonetheless, these relatively small deviations imply a small change in terms of regional wind circulation. During summer months (Fig. 3b) MSLP biases are much smaller over the Mediterranean. Figs. 3c and 3d show T2m biases for DJF and JJA. For both seasons the departures are typically below 3°C over most of the coupled domain, except for the Alps, the Pyrenees, the Atlas, the Caucasus and the Armenian highlands (Figs. 3c and 3d). This disagreement can be attributed to differences in the resolution of orographic features. Winter months show the largest T2m biases located close to the Mediterranean coastline, where atmospheric-ocean interactions may play a role. At first glance, ROM_P0 generally underestimates the simulated cumulative precipitation over most of the Mediterranean region, for both winter and summer seasons. The largest discrepancies for DJF are located over the Black Sea, the Adriatic Sea, the Gulf of Lions and the southwest portion of the Iberian Peninsula (Fig. 3e), where negative anomalies can reach 3mm/d. Moreover, it is worth stating that during the same period the total precipitation was overestimated in regions linked to significant topographic reliefs (e.g. the Alps). Some coastal areas also showed positive anomalies that are most likely related to the transport of precipitable water which is influenced by the simulated evaporation over the ocean (atmosphere-ocean coupling). In the very dry Mediterranean summer season, ROM_P0 shows a clear tendency to underestimate the precipitation (Fig. 3f). Over the ocean, this bias can be related to the cold SST bias, common to most of the AORCMs simulations of the Mediterranean climate (see Darmaraki et al., 2019). The seasonal mean precipitation is reasonably well simulated by our coupled system throughout most of the Mediterranean basin. However, the systematic errors (up to ± 3.5 mm/d) remain substantial over the region in terms of precipitation.

The impact of interactive atmosphere-ocean coupling in REMO is shown in Fig. 4, presenting the climatology differences between ROM_P0 and stand-alone REMO in the simulations forced by ERA-Interim for MSLP, T2m, and precipitation.

Over land the simulated fields are less influenced by the coupling and are largely dependent on the details of the atmospheric component. On the other hand, the impact of the coupling can be remote, through the large-scale circulation (the signal which comes from the North Atlantic) and the land-sea contrasts account for the local effects. Therefore, we can expect the differences over land to be minimal, except for the regions where the large-scale circulation or the land-sea contrasts are significant. In addition, the ROM model uses a formulation that improves the representation of the circulation over mountainous regions in REMO, which will also play a role.

The winter MSLP over the Atlantic is higher in the coupled run (Fig. 4a), causing an anomalous strong anticyclonic circulation that extends to land and the Mediterranean Sea, west of the Balearic Islands. The influence of the large-scale MSLP anomaly cancels the effect of the local warmer SST, which would create a low-pressure bias here (see Fig. 5, where the SST biases are represented). However, elsewhere over the Mediterranean Sea, where the ROM_P0 SST is colder (warmer) than ERA-Interim, a higher (lower) MSLP is simulated by ROM_P0. In summer (Fig. 4b), the differences in MSLP seem to be determined mainly by the colder SST in ROM_P0, which leads to higher MSLP in the model than in the reanalysis.

The changes in T2m induced by the coupling over the Mediterranean (Figs. 4c and 4d) seem to be determined mainly by the SST (see also Fig. 5), through the turbulent heat fluxes. In both seasons the T2m differences induced by the coupling correspond very well with the SST biases with respect to ERA-Interim. However, in winter T2m also seems to be influenced by the transport of Atlantic air carried by the too strong anticyclonic circulation simulated in the Atlantic. Over land the differences in winter T2m are mainly determined by the changes induced in large scale circulation by the interactive SST in the Atlantic, while in summer the land-sea contrasts seem to be more significant.

The differences between the SST from ERA-Interim and the simulations by ROM_P0 are also reflected in the rainfall simulated by REMO and ROM_P0 (Figs. 4e and 4f). In winter, the Mediterranean Sea regions where the ROM_P0 SST is warmer have a higher precipitation, while colder ROM_P0 SST leads to lower precipitation. The impact of the SST biases on the precipitation is clearer in summer: the cold SST bias in ROM_P0 leads to weaker precipitation throughout the Mediterranean Sea, especially in the northern part. There, the deficit of precipitation in ROM_P0 with respect to REMO is comparable in magnitude to the ROM_P0 precipitation bias (Fig. 3f).

3.2. SST

3.2.1 Seasonal cycle

The differences between ROM_P0 and observed SST climatologies for winter (DJF) and summer (JJA) in the period 1980-2012 are presented in Fig. 5. The SST seasonal cycle is well represented by the model, although its amplitude is reduced over most of the Mediterranean Sea. The deviations in absolute value do not exceed 3°C, although ROM_P0 shows a cold bias, which is more significant in the northern part of the eastern Mediterranean Sea, especially in summer (Fig. 5).

In DJF ROM_P0 overestimates SST over the northern Mediterranean coasts and the whole western basin, showing warm biases reaching 2°C (Figs. 5a, 5b and 5c). In summer, the cold SST bias extends over a large part of the Mediterranean domain (Figs. 5d, 5e, and 5f).

In order to assess the improvement that higher resolution in ROM brings to the simulation of the present Mediterranean climate (ROM_P0), comparisons with MPI-ESM-LR and -MR have been done (Fig. 6):

SST seasonal cycle amplitude is smaller in ROM_P0 than in MPI-ESMs, with warmer DJF and colder JJA. The SST differences are smaller than 3°C in the whole Mediterranean basin. In winter, ROM_P0 shows warmer temperatures than MPI-ESM (-LR and -MR, Figs. 6a and 6b) with the exception of southeastern Mediterranean coasts where negative differences appear (approximately -1°C). In JJA ROM_P0 is significantly colder over the western basin (-1.5°C), southern coasts (-0.5°C), Levantine and Aegean seas (-3°C) while it is warmer in the Tyrrhenian, Adriatic and Ionian seas (up to +1°C; Figs. 6c and 6d).

3.2.2 Interannual variability

The time series of yearly mean SST averaged over the Mediterranean Sea for the period 1980-2012 (ROM_P0) shows cold biases (from 0.1 to 1.4°C) against ERA-Interim, EN4 and OISST datasets (Fig. 7), in agreement with the results displayed in Fig. 5. ERA-Interim (purple line) and OISST (red line) present a consistent behavior and ROM_P0 shows a mean cold bias of 0.6°C. The largest deviations are found for EN4 (yellow line) due to the lower resolution of the dataset.

ROM_P0 shows a warming trend in SST, as in the observational datasets, albeit slightly weaker (Table 3). Also, the interannual variability evident in the observed datasets is properly reproduced by ROM_P0.

A Taylor diagram (Fig. 8) was used to quantitatively evaluate ROM_P0 performance. ERA-Interim, EN4 and ROM_P0 are all well correlated ($r > 0.7$) with the observation-based analysis (OISST). ROM_P0 SST standard deviation (0.27°C) is close to that of OISST, ERA-Interim and EN4 (0.32, 0.34 and 0.33°C, respectively). The corresponding root-mean-square-errors (RMSE, red contours) show good ROM_P0 performance simulating the interannual variability of SST, with ROM_P0 closer to EN4 than EN4 to OISST and ERA-Interim. This could be interpreted as ROM_P0 SST lying close to the uncertainty inherent to observational gridded datasets.

3.3 SSS

Fig. 9 shows the differences between the SSS modeled by ROM_P0 and the selected datasets averaged for DJF and JJA during the period 1980-2012. All cases show a positive bias over the western basin and Adriatic Sea and negative bias throughout the Levantine Sea and north Aegean Sea. In the northeast Adriatic Sea, by the Po Delta, the largest positive differences occur (3 psu), and to the north of the Aegean Sea the largest negative differences (-3 psu) are found. Nevertheless, the deviations do not exceed, in absolute value, 0.5 psu in a large part of the domain (Fig. 9). Deficiencies in simulated precipitation are propagated into HD model river discharge, which is reflected in the SSS. ROM simulated river

runoff into the Mediterranean is smaller than most of the observational estimates (e.g. Struglia et al., 2004; Wang and Polcher, 2019) and lower than other AORCMs estimates (see Table 4). The influence of river runoff on SST is highlighted by the coincidence of largest SSS biases with locations of large rivers (Po, Nile) and with the Dardanelles Strait, whose net flow is also larger than estimates (Sánchez-Gómez et al., 2011).

- 5 The ROM_P0 SSS is compared with MPI-ESM-LR and -MR in Fig. 10. ROM_P0 is always saltier over the whole Mediterranean, with a decreasing difference towards the southeast. In general, ROM_P0 SSS is closer to EN4 and CMEMS climatologies than any of the MPI-ESM versions, due to the higher horizontal resolution of ROM_P0 in the atmosphere and the ocean.

3.4 SSH and circulation

- 10 To conclude with the analysis of the ocean component of ROM, the SSH was analyzed. The time-averaged SSH and horizontal current velocity at 31 m depth simulated by ROM_P0 between 1980 and 2012 are shown in Fig. 11. It can be clearly seen that Atlantic surface waters enter through the Strait of Gibraltar to the Western Mediterranean; after crossing the Alboran Sea the Atlantic water flows along the African coast. At the Strait of Sicily, part of the Atlantic water deflects northward along the coast of the Tyrrhenian Sea, while the rest continues flowing to the Eastern basin. ROM_P0 reproduces
15 quite clearly the well-known deep water formation sites, especially in the Gulf of Lions, southern Adriatic Sea and in the Levantine Sea (near Crete and Rhodes islands) identified by the presence of three cyclonic gyres. These cyclonic gyres concur with negative SSH values, which highlight the sinking of surface waters. The mean SSH closely reproduces the well-established steady basin and sub-basin scale circulation pattern (e.g. Bergamasco and Malanotte-Rizzoli, 2010). However, some of the meso-scale structures of circulation may escape the model's horizontal resolution in the Eastern basin (ca. 25
20 km).

- A first order comparison of the model's SSH to the AVISO Sea Level Anomaly (SLA) (SSALTO/DUACS, 2013) can be done by adding only the thermosteric contribution (as a constant resulting from the average over the whole basin) to the dynamic SSH of the model (Sevault et al., 2014). Fig. 12 shows the yearly mean and the seasonal cycle of ROM_P0 SSH compared to altimetric data. The modeled SSH shows lower values than the observed (Fig. 12a); however, it represents well
25 the behavior of the AVISO SLA time series. The amplitude of the mean seasonal cycle is 12 cm for the simulation, and 14.5 cm for AVISO (Fig. 12b). Therefore, the model is able to reproduce a realistic interannual variability and seasonal cycle.

- Finally, a mass balance was carried out to estimate the net transport of water throughout the Strait of Gibraltar and Dardanelles in order to compare the water flux modeled by ROM with the observations. Table 4 gives the water budget of ROM_P0 averaged over the period 1980-2012. The water loss by evaporation (E) is greater than the gain by precipitation (P) and river runoff (R) generating a deficit of 0.053 Sv in the basin. However, this deficit is partially compensated by the net water inflow through the Strait of Gibraltar (0.030 Sv) and the Dardanelles, where the inflow (0.132 Sv) exceeds the outflow (0.109 Sv). ROM_P0 water budget is 0.007 Sv lower compared to the RCSI4 model (Sevault et al. 2014), although a significant part of the difference is due to difference in river runoff.

3.5 Projections under RCP8.5 scenario

Fig. 13 shows the mean SST and SSS fields for the present climate (1976-2005, ROM_P1) together with the differences with respect to future projections under the RCP8.5 scenario (ROM_P2-ROM_P1). At a basin scale, the SST (ROM_P1, Fig. 13a) increases from north_{west} to south_{east} over the Mediterranean Sea, with the western Mediterranean colder than the eastern, especially in the Gulf of Lions and in the northern Adriatic Sea where the SST minima are located (Fig. 13a). The warmest area is found along the Levantine Sea coast. The averaged Mediterranean SST is 18.61°C and at the end of the 21st century under RCP8.5 scenario it is expected to have a mean increase of 2.73°C, with a projected warming ranging from a maximum of 3.80°C at the Aegean Sea to a minimum of 0.90°C at the Alboran Sea (Fig. 13b).

To verify that the simulated warming trend remains stable and is not affected by the strong ROM SST bias, comparisons for DJF and JJA have been performed separately (see Supplementary Figures). The comparable warming is appreciable in both seasons, with a larger SST in the eastern basin. The influence of seasonal cycle is limited to the location of the minima and maxima.

As shown in Fig. 13c, at the surface the Eastern Mediterranean is saltier than the Western Mediterranean, reaching 39 psu at the Levantine Sea. The Western basin presents lower salinities (< 38.25 psu) influenced by the inflow of Atlantic freshwater through the Strait of Gibraltar (36.60 psu) along the African coasts up to the Ionian Sea. Another source of freshwater is located at the Dardanelles strait where the Black Sea outflow has salinities lower than 35 psu. The averaged Mediterranean SSS is 38.02 psu, while under the RCP8.5 projection it will experience a mean increase of 0.17 psu. The differences between the mean SSS projection and present climate shows a dipolar structure through the Mediterranean Sea (Fig. 13d). Under the RCP8.5 scenario, the Western Mediterranean is expected to increase slightly in fresh water (from -0.5 to -1 psu), while the Eastern will become saltier. It is precisely at the north of the Aegean Sea where largest SSS increases (4 psu) are found.

MPI-ESM-LR and -MR projections under the RCP8.5 scenario at the end of the 21st century are slightly warmer than that of ROM over most of the Mediterranean Sea. Namely, the projected mean SST increases are 2.80 and 2.87°C for MPI-ESM-LR and -MR, respectively (Table 6). Compared to ROM, both MPI-ESMs show a tendency to shift the largest warming to the west, more notoriously in MPI-ESM-MR, with a local minimum extending over the eastern basin (Figs. 14a and 14b). It is also remarkable that MPI-ESM-MR identifies the maximum warming at the Adriatic Sea (Fig. 14b).

The mean SSS increase projected by ROM for the 2070-2099 period compared to 1976-2005 under RCP8.5 (ROM_P2-ROM_P1) is larger than for any of the MPI-ESMs (Table 4), but the salinity change dipolar spatial pattern is roughly the same in all three projections (Figs. 13d, 14c and 14d).

Fig. 15 shows the mean temporal evolution of temperature and salinity anomalies in the water column over the Western and Eastern Mediterranean throughout the 21st century according to ROM projection for the RCP8.5 scenario. To calculate these anomalies in a given region we first average horizontally, over the area indicated in Fig. 15 insets, the temperature and salinity in each MPI-OM level for the present time period (1976-2005) and the RCP8.5 projection period (2006-2099). The anomalies are defined as the difference between the time series for the RCP8.5 scenario (2006-2099) and the time mean for

the present climate period (ROM_P1). The Mediterranean Sea shows a gradual increase of its temperature throughout the entire water column (Figs. 15a and 15c), which is more evident in surface layers. The warming accelerates in the second half of the century, with a very clear warming signal in the upper 500 m in the Eastern Mediterranean. This warming signal propagates at intermediate depths (200-500 m, corresponding to the equilibrium depth of Levantine Intermediate Waters (LIW), e.g. Menna and Poulain, 2010) into the western basin. At the end of the 21st century the eastern basin is expected to experience a surface temperature increase of up to 3.8°C and the western up to 3°C. At 1000 m depth the water temperature will increase by 0.6°C for both basins, which is a very significant warming at these depths.

The time evolution of mean salinity anomalies displays different patterns throughout the Mediterranean Sea. During the 21st century the upper layer (0-100 m) of the Western Mediterranean is projected to freshen (-0.5 psu) while the deeper layers tend to get saltier up to 0.5 psu. However, the Eastern Mediterranean will increase its salinity up to 0.5 psu in the entire water column throughout the current century. It is interesting to note that both the temperature and the salinity increases in the Western Mediterranean at intermediate depths are delayed compared to the eastern Mediterranean.

4 Discussion

AORCMs are capable of improving the simulation of the climate system by the driving model through dynamical downscaling from GCMs (e.g. Li et al., 2012; Sein et al., 2015). The regionalization implemented in our ROM model provides higher horizontal resolution, allowing the representation of local scale and mesoscale processes that are not detectable by MPI-ESMs. The higher horizontal resolution also allows ROM_P0 to resolve explicitly the water exchange through realistic Gibraltar and Dardanelles Straits. In addition, ROM_P0 is able to give a more detailed representation, including mesoscale features, of the main characteristics of the ocean circulation in the Mediterranean Sea, while in MPI-ESM-LR the ocean model is missing those details due to the lack of required horizontal resolution. Compared to other state-of-the-art regional climate models, ROM introduces the novel approach of implementing a global ocean model with high horizontal resolution at regional scales. This allows us to obtain information of the global ocean without losing spatial resolution in the coupling area. An important disadvantage of the proposed model, described previously in Sein et al. (2014), is that the bias and internal variability generated from the global domain can influence the results in the coupled domain, making it difficult to separate the source of bias.

ROM is able to reproduce the main characteristics of the climate of the Mediterranean Sea. The biases of the main atmospheric and oceanic parameters are in the range shown by other state-of-the-art regional models (L'Hévéder et al., 2013; Sevault et al., 2014; Akhtar et al., 2018; Darmaraki et al., 2019).

The seasonal MSLP was validated against ERA-Interim, showing biases smaller than ± 3 hPa over most the domain for DJF and JJA, a performance similar to other models (see e.g. Giorgi and Lionello, 2008). Positive MSLP biases over a large extent of the domain during DJF (Fig. 3a) could generate anticyclonic conditions which lead to a greater stability and lower storm generation; while in JJA (Fig. 3b) the biases are generally much lower. These MSLP biases are related to too cold

modeled SST. With respect to the seasonal cycle of near-surface atmospheric parameters such as near-surface (2m) temperature (T2m) and precipitations, the LMDz-NEMO-Med coupled model (L'Hévéder et al., 2013) (Table 5) gives a bias (range of -4; +4°C/-2; +3 mm/d, respectively) which is comparable to the ROM_P0 estimates (Figs. 3c, 3d, 3e and 3f). Similar to most of the Mediterranean regional models, ROM_P0 shows higher than observed rainfall over areas with pronounced topography, such as the Alps (Artale et al., 2010; L'Hévéder et al., 2013; Di Luca et al., 2014) (Table 5). More recently, Fantini et al. (2016) also reported a similar bias (± 3 mm/d) in an ensemble of regional coupled models forced by ERA-Interim. Panthou et al. (2018) observed that for heavy precipitation increasing resolution increases the wet biases. We agree with the final consideration of Fantini et al. (2016); the authors propose that in order to improve the performance of RCMs in simulating precipitation high quality and high-resolution observation essential for the assessment of the models.

10 The comparison of the ROM_P0 with stand-alone REMO shows that the changes in SST generated by the coupling in the Atlantic Ocean influence the simulated Mediterranean climate, causing a spurious anticyclonic circulation in winter which impacts the surface temperature in the Western Mediterranean. In summer the modeled SST is significantly colder than observations, leading to colder T2m and less precipitation over the basin, as the colder SST reduces the evaporation. In order to explicitly assess the role of the regional coupling on the simulated temperature, salinity and sea level, the results presented

15 here will be compared with those from MPI-OM driven offline by stand alone in the coupling area, which is in progress. Regarding SST and SSS ROM_P0 shows biases within 3°C, correlation coefficients above 0.7 and RMSE below 0.25°C when compared to ERA-Interim, EN4 and OISST datasets. ROM_P0 presents cold biases along the Eastern Mediterranean that become stronger and extend to the whole basin in summer months. The summer biases are common to most of the Mediterranean regional coupled simulations (see for instance, Dubois et al., 2012; Li et al., 2012, Sevault et al., 2014).

20 Akhtar et al. (2018) studied the impact of resolution and coupling in modelling the climate of the Mediterranean Sea and concluded that coupling generates a negative bias in SST. Most recently, Darmaraki et al. (2019) assessed an ensemble of 17 simulations from six models, in which our ROM coupled system was included. Their results showed an averaged cold bias ranging from (-0.29 to -1.01°C) when regional models are compared to satellite data. This cold bias is very evident in Fig. 7, where ROM_P0 shows averaged Mediterranean SSTs that reproduce the trend and interannual variability but are

25 systematically colder than reference climatologies during the period 1980-2012, a common trait with other RCSMs (Sevault et al., 2014; Ruti et al., 2015). Macias et al. (2018) showed that a simple spatially-uniform bias correction improves the simulated surface oceanic conditions of the Mediterranean basin when forcing an oceanic model with atmospheric data from RCM realizations. The causes of the cold summer SST biases could be related either to a deficit of solar radiation by the atmospheric model or to shortcomings in the simulation of certain processes in the ocean model, such as vertical mixing or

30 turbidity. It is difficult to attribute the bias to single cause without considering the multiplicity and complexity of all the involved conditions; therefore, this topic deserves a separate and focussed study. However, a preliminary sensitivity analysis (not shown) changing the optical properties of the water (changing from model standard Jerlov Ia to Jerlov II) clearly indicates that the related turbidity increase is responsible for a larger absorption of downward shortwave radiation in the upper layer, and leading to a warmer SST. This also would explain why colder SST biases appear in summer, when the

impact of biologically-induced redistribution of heat in the water column is larger. Switching HAMOCC on would, to some extent, contribute to the reduction of this cold bias. However, until a thorough study is carried out, the contribution of other mechanisms cannot be discarded. The SSS simulated by ROM_P0 shows seasonal biases within 1 psu, with a similar magnitude and spatial distribution to those in RCM4 (Sevault et al., 2014). The biases are higher in some problematic areas, such as the northern Adriatic Sea and Dardanelles Strait (Fig. 9), a feature that has also been shown in previous studies (L'Hévéder et al., 2013; Di Luca et al., 2014; Sevault et al., 2014). The Mediterranean water fluxes simulated by ROM_P0 (Table 4) have been compared to available observations (Sanchez-Gomez et al., 2011; Soto-Navarro et al., 2014) and model (Sevault et al., 2014) estimates, providing a physically consistent assessment in the straits. ROM_P0 water balance terms over the Mediterranean Sea are similar to those obtained by different authors (Table 4). The main difference is the exchange flows through the Strait of Gibraltar, where ROM_P0 presents estimates much lower than those shown by Soto-Navarro et al. (2014), although the net flow is in agreement with most estimates.

The ROM_P0 SSH and surface (31m) circulation are able to reproduce the different quasi-permanent elevation/depression (anticyclonic/cyclonic) structures occurring in the Mediterranean Sea (Fig. 11). The cyclonic gyres (SSH depressions) correspond to the water mass formation sites. The 31m depth level has been chosen to remove the high-frequency variability of the uppermost ocean, while retaining a characteristic upper ocean circulation pattern. Furthermore, the choice of this level depth makes our result more comparable with previous studies, such as L'Hévéder et al. (2013) and Sevault et al. (2014). For the period 1980-2012 the comparison between ROM_P0 and AVISO (SSALTO/DUACS, 2013) altimetry data (Fig. 12a) produced a satisfactory correlation of 0.61, similar to that obtained by the RCM4 (0.68). (Sevault et al., 2014). Finally, the ROM_P0 amplitude of the mean seasonal cycle measured was 12 cm while for AVISO it was 14.5 cm (Fig. 12b) and for RCM4 16.9 cm (Sevault et al., 2014).

In general, despite some systematic errors, we have shown that ROM_P0 satisfactorily reproduces the mean state, seasonal cycle and interannual variability shown in the analyzed variables from ERA-Interim (1980-2012). There is a clear improvement over the driving MPI-ESM, and ROM_P0 skills are comparable to other AORCMs. The use of a global ocean grid allows us to overcome the difficult prescription of ocean lateral boundary conditions, but more importantly, to take into account the possible feedbacks between changes in Mediterranean Sea state and changes in the adjacent North-Atlantic, which may be of importance for climate projections. Adloff et al. (2015) studied the Mediterranean Sea response to climate change by means of a set of numerical experiments using the regional ocean model NEMOMED8 and concluded that the sensitivity of the evolution of the Mediterranean water masses to the choice of the Atlantic boundary conditions is at least of the same order as the sensitivity to the choice of the socio-economic scenario. The model also proved capable of reproducing the area-averaged interannual standard deviations of SST for the Mediterranean Sea (Fig. 16d). As seen in Fig. 16, the ROM coupled system presents yearly SST standard deviations close to the reference OISST dataset. In fact, ROM_P0 does not only improve the yearly spatial standard deviations compared to the MPI-ESMs (Figs. 16e and 16f) but also compared to ERA-Interim and EN4 (Fig. 16b and 16c). The MPI-ESM-LR and -MR are not able to reproduce those local patterns due to the lack of resolution, which indicates that the dynamical downscaling from MPI-ESM improves the simulation of GCMs.

In our simulations, the Mediterranean Sea will be warmer and saltier at the end of 21st century. This process is gradual but accelerates in the last third of the century. Under the RCP8.5 scenario ROM provides integrated estimates of climate change similar to other models (Table 6). The mean Δ SST projected by ROM under the RCP8.5 scenario is 2.73°C (ROM_P2-ROM_P1), close to MPI-ESM simulations, which show an SST increase of 2.80°C (-LR) and 2.87°C (-MR). It is also close to the mean increase (2.6°C) projected by the CMIP5 ensemble of Shaltout and Omstedt (2014) (Table 6). These SST warming estimates also agree with those obtained by Adloff et al. (2015) using a 6-member scenario simulation (3.1°C warming) and by Darmakari et al. (2019) using a 6-model ensemble (warming from 2.7 to 3.8°C). In contrast, the ROM P2 projected mean SSS change is much smaller than estimated by other authors (Somot et al., 2006; 2008, Adloff et al., 2015; see Table 6). This is related to the dipolar structure of the Δ SSS field (Fig. 13d) pointing to a remarkable salinization in the Eastern Mediterranean, and a slight freshening in a large fraction of the western basin. This is a direct consequence of the North-Atlantic Ocean influence, taken into account through ROM global ocean model, in the thermohaline fields and circulation in the Mediterranean Sea.

The time evolution of the Mediterranean water masses characteristics shows a warming that initially takes place at the surface and gradually penetrates to deeper layers in both eastern and western basins, while there is also a gradual salinity increase, except in the upper 100 m layer of the western basin where there is a freshening. The Eastern Mediterranean, at depths corresponding to LIW, the warming and salinization accelerate in the last third of the century; this warm and salty signal at intermediate depths subsequently propagates into the western basin. All these changes will have an impact on the Mediterranean Thermohaline Circulation, which will be addressed in the near future.

5 Conclusions

In this study, the regional atmosphere-ocean coupled model ROM (Sein et al., 2015) was described and validated for the Mediterranean region. The ROM coupled system has demonstrated some benefits compared to other AORCMs without the global ocean. The use of a global ocean model solves some problems of oceanic boundary conditions, allows a better understanding of coupling feedbacks between coupled and uncoupled ocean areas (Sein et al., 2015), which is of capital importance for the Mediterranean Sea, and provides an additional “degree of freedom” in the model. This setup would improve the performance of the model within the region of interest adjusting the ocean component (Sein et al. 2015). In terms of the climate change projections, the use of a global ocean model also introduces improvements to the AORCMs without the global ocean. ROM, as a refined global ocean model coupled with a regional climate change atmospheric model, is able to obtain accurate simulations both within and outside of the coupled area. This prevents the introduction of biases in the results. However, regional ocean models implement lateral boundary conditions provided by coarser global AOGCMs scenario simulations, generating biases in the results (Sein et al. 2015).

The experiment in which our model is driven by ERA-Interim shows good performance in simulating the present climate. ROM is able to reproduce the main characteristics of the Mediterranean Sea, providing a physically consistent estimation of

the average behavior, seasonal cycle and interannual variability of both atmospheric and oceanic parameters. However, there is place for further improvement in reducing certain biases (SST and MSLP) by isolating the causes through targeted sensitivity experiments.

5 The model also demonstrated improvements of local processes, such as the exchange of water through the Gibraltar and Dardanelles Straits or internal sea behaviors contrasted to ESMs. The dynamical downscaling from MPI-ESM implemented in our AORCM offers high spatial resolution, able to reproduce in remarkable detail important local and mesoscale ocean features in the Mediterranean basin.

Our analysis of the simulations driven by the MPI-ESM RCP8.5 scenarios shows that by the end of the 21st century the Mediterranean Sea will be warmer and saltier throughout most of the basin. The temperature in the upper ocean layer during 10 the period 2070-2099 will increase by 2.73°C in comparison with the 1976-2005 control period, while the mean salinity will increase by 0.17 psu. The warming that initially takes place at the surface propagates gradually to the deeper layers. Furthermore, it is very remarkable that the Western Mediterranean surface layer presents a decreasing salinity tendency, opposite to the rest of the Mediterranean. There is a change in the LIW characteristics, which propagates from the Eastern Mediterranean to the west, pointing to MTHC changes in the future.

15 An important disadvantage of the proposed model is that the bias and internal variability generated from the global domain can influence the results in the coupled domain, making it difficult to separate the source of bias.

Finally, we conclude that the ROM is a powerful model system that can be used to estimate possible impacts of climate change on regional scale. In the future, we plan to use our ROM coupled system to characterize and analyze the climate variability of deep water formations in the Mediterranean Sea.

20 **Acknowledgements**

Simulations were done at the German Climate Computing Centre (DKRZ). DS was supported by PRIMAVERA funding received from the European Commission under Grant Agreement 641727 of the Horizon 2020 research program and by the state assignment of FASO Russia (theme No. 0149-2019-0015).

References

- 25 Adloff, F., Somot, S., Sevault, F., Jordà, G., Aznar, R., Déqué, M., Herrmann, M., Marcos, M., Dubois, C., Padorno, E. and Alvarez-Fanjul, E.: Mediterranean Sea response to climate change in an ensemble of twenty first century scenarios, *Clim. Dynam.*, 45 (9-10), 2775-2802, doi: 10.1007/s00382-015-2507-3, 2015.
- Akthar, N., Brauch, J., and Ahrens, B.: Climate modeling over the Mediterranean Sea: impact of resolution and ocean coupling, *Clim. Dynam.*, 51(3), 933-948, doi: 10.1007/s00382-017-3570-8, 2018.

- Arakawa, A. and Lamb, V. R.: Computational design of the basic dynamical processes of the UCLA general circulation model, *General Circulation of the Atmosphere*, 17, 173–265, 1977.
- Artale, V., Calmanti, S., Carillo, A., Dell’Aquila, A., Herrmann, M., Pisacane, G., Ruti, P. M., Sannino, G., Struglia, M. V., Giorgi, F., Bi, X., Pal, J. S. and Rauscher, S.: An atmosphere–ocean regional climate model for the Mediterranean area: assessment of a present climate simulation, *Clim. Dynam.*, 35(5), 721-740, doi: 10.1007/s00382-009-0691-8, 2010.
- 5 Bergamasco, A and Malanotte-Rizzoli, P.: The circulation of the Mediterranean Sea: a historical review of experimental investigations, *Adv. Ocean. Limol.*, 1:1, 11-28, doi:10.1080/19475721.2010.491656, 2010.
- Beuvier, J., Sevault, F., Herrmann, M., Kontoyiannis, H., Ludwig, W., Rixen, M., Stanev, E., Béranger, K. and Somot, S.: Modeling the Mediterranean Sea interannual variability during 1961-2000: focus on the Eastern Mediterranean Transient, *J. Geophys. Res.*, 115, C08017, doi: 10.1029/2009JC005950, 2010.
- 10 Cavicchia, L., Gualdi, S., Sanna, A. and Oddo, P.: The Regional Ocean-Atmosphere Coupled Model COSMP-NEMO_MFS, CMCC Res. Paper, RP0254, 2015.
- [Cramer, W., Guiot, J., Fader, M., Garrabou, J., Gattuso, J-P., Iglesias, A., Lange, M. A., Lionello, P., Llasat, M. C., Paz, S., Peñuelas, J., Snoussi, M., Toreti, A., Tsimplis, M. N., Xoplaki, E.: Climate change and interconnected risks to sustainable development in the Mediterranean, *Nat. Clim. Change*, 8:972-980, doi:10.1038/s41558-018-0299-2, 2018.](#)
- 15 [Darmaraki, S., Somot, S., Sevault, F., Nabat, P., Cabos Narvaez, W. D., Cavicchia, L., Djurdjevic, V., Li, L., Sannino, G. and Sein, D. V.: Future evolution of Marine Heatwaves in the Mediterranean Sea, *Clim. Dynam.*, doi: 10.1007/s00382-019-04661-z, 2019.](#)
- Dee, D. P., Uppala, S. M., Simmons, A. J., Berrisford, P., Poli, P., Kobayashi, S., Andrae, U., Balmaseda, M. A., Balsamo, G., Bauer, P., Bechtold, P., Beljaars, A. C. M., van den Berg, L., Bidlot, J., Bormann, N., Delsol, C., Dragani, R., Fuentes, M., Geer, A. J., Haimberger, L., Healy, S. B., Hersbach, H., Hólm, E. V., Isaksen, L., Kallber, P., Kohler, M., Matricardi, M., McNally, A. P., Monge-Sanz, B. M., Morcrett, J. J., Park, B. K., Peubey, C., de Rosnay, P., Tavolato, C., Thépaut, J.N. and Vitart, F.: The ERA-Interim reanalysis: configuration and performance of the data assimilation system, *Q. J. Roy. Meteor. Soc.*, 137, 553–597, doi: 10.1002/qj.828, 2011.
- 20 [Dengg, J., Beckmann, A. and Gerdes, R.: The Gulf Stream separation problem, in *The Warmwatersphere of the North Atlantic Ocean*, edited by W. Krauss, 253–290, Gebr. Bornträger, Berlin, 1996.](#)
- Déqué, M., and Piedelievre, J. P.: Latest issue climate simulation over Europe, *Clim. Dynam.*, 11, 321–339, doi: 10.1007/BF00215735, 1995.
- Di Luca, A., Flaounas, E., Drobinski, P. and Lebeaupin-Brossier, C.: The atmospheric component of the Mediterranean Sea water budget in a WRF multi-physics ensemble and observations, *Clim. Dynam.*, 43 (9-10), 2349-2375, doi: 0.1007/s00382-014-2058-z, 2014.
- 30 Dubois, C., Somot, S., Calmanti, S., Carillo, A., Déqué, M., Dell’Aquila, A., Elizalde, A., Gualdi, S., Jacob, D., L’Hévéder, B., Li, L., Oddo, P., Sannino, G., Scoccimarro, E. and Sevault, F.: Future projections of the surface heat and water budgets of

- the Mediterranean Sea in an ensemble of coupled atmosphere–ocean regional climate models, *Clim. Dynam.*, 39 (7–8), 1859–1884, doi: 10.1007/s00382-011-1261-4, 2012.
- Fantini, A., Raffaele, F., Torma, C., Bacer, S., Coppola, E., Giorgi, F., Ahrens, B., Dubois, C., Sanchez, E. and Verdecchia, M.: Assessment of multiple daily precipitation statistics in ERA-Interim driven Med-CORDEX and EURO-CORDEX experiments against high resolution observations, *Clim. Dynam.*, 51 (3), 877-900, doi: 10.1007/s00382-016-3453-4, 2018.
- 5 Fratianni, C., Simoncelli, S., Pinardi, N., Cherchi, A., Grandi, A. and Dobricic, S.: Mediterranean RR 1955-2015 (Version1) [Dataset]. Copernicus Monitoring Environment Marine Service (CMEMS), doi: 10.25423/MEDSEA_REANALYSIS_PHY_006_009, 2015.
- Giorgetta, M. A., Jungclaus, J., Reick, C. H., Legutke, S., Bader, J., Böttinger, M., Brovkin, V., Crueger, T., Esch, M., Fieg, K., Glushak, K., Gayler, V., Haak, H., Hollweg, H.-D., Ilyina, T., Kinne, S., Kornblueh, L., Matei, D., Mauritsen, T., Mikolajewicz, U., Mueller, W., Notz, D., Pithan, F., Raddatz, T., Rast, S., Redler, R., Roeckner, E., Schmidt, H., Schnur, R., Segschneider, J., Six, K. D., Stockhause, M., Timmreck, C., Wegner, J., Widmann, H., Wieners, K.-H., Claussen, M., Marotzke, J., Stevens, B.: Climate and carbon cycle changes from 1850 to 2100 in MPI-ESM simulations for the Coupled Model Intercomparison Project phase 5, *J. Adv. Model. Earth Sy.*, 5, 572–597, doi: 10.1002/jame.20038, 2013.
- 10 Giorgetta, M. A., Jungclaus, J., Reick, C. H., Legutke, S., Bader, J., Böttinger, M., Brovkin, V., Crueger, T., Esch, M., Fieg, K., Glushak, K., Gayler, V., Haak, H., Hollweg, H.-D., Ilyina, T., Kinne, S., Kornblueh, L., Matei, D., Mauritsen, T., Mikolajewicz, U., Mueller, W., Notz, D., Pithan, F., Raddatz, T., Rast, S., Redler, R., Roeckner, E., Schmidt, H., Schnur, R., Segschneider, J., Six, K. D., Stockhause, M., Timmreck, C., Wegner, J., Widmann, H., Wieners, K.-H., Claussen, M., Marotzke, J., Stevens, B.: Climate and carbon cycle changes from 1850 to 2100 in MPI-ESM simulations for the Coupled Model Intercomparison Project phase 5, *J. Adv. Model. Earth Sy.*, 5, 572–597, doi: 10.1002/jame.20038, 2013.
- 15 Giorgi, F.: Climate change hot-spots, *Geophys. Res. Lett.*, 33 (8), doi: 10.1029/2006GL025734, 2006.
- Giorgi, F. and Lionello, P.: Climate change projections for the Mediterranean region, *Global Planet. Change*, 63, 90–104, doi: 10.1016/j.gloplacha.2007.09.005, 2008.
- Good, S. A., Martin, M. J. and Rayner, N. A.: EN4: Quality controlled ocean temperature and salinity profiles and monthly objective analyses with uncertainty estimates, *J. Geophys. Res-Oceans.*, 118 (12), 6704-6716, doi: 10.1002/2013JC009067, 2013.
- 20 Gouretski, V. and F. Reseghetti.: On depth and temperature biases in bathythermograph data: Development of a new correction scheme based on analysis of a global ocean database, *Deep-Sea Research I.*, 57, 812-833, doi:10.1016/j.dsr.2010.03.011, 2010.
- Gualdi, S., Somot, S., Li, L., Artale, V., Adani, M., Bellucci, A., Braun, A., Calmanti, S., Carillo, A., Dell’Aquila, A., Déqué, M., Dubois, C., Elizalde, A., Harzallah, A., Jacob, D., L’Hévéder, B., May, W., Oddo, P., Ruti, P., Sanna, A., Sannino, G., Scoccimarro, E., Sevault, F. and Navarra, A.: The CIRCE simulations: regional climate change projections with realistic representation of the Mediterranean Sea, *B. Am. Meteorol. Soc.*, 94 (1), 65-81, doi: 10.1175/BAMS-D-11-00136.1, 2013.
- Hagemann, S. and Dümenil-Gates, L.: A parameterization of the lateral waterflow for the global scale, *Clim. Dynam.*, 14, 17–31, doi: 10.1007/s003820050205, 1998.
- 30 Hagemann, S. and Dümenil-Gates, L.: Validation of the hydrological cycle of ECMWF and NCEP reanalysis using the MPI hydrological discharge model, *J. Geophys. Res.* 106 (D2), 1503–1510, doi: 10.1029/2000JD900568, 2001.
- Hibler III, W.D.: A dynamic thermodynamic sea ice model, *J. Phys. Oceanogr.*, 9, 815–846, doi: 10.1175/1520-0485(1979)009<0815:ADTSIM>2.0.CO;2, 1979.

- Huffman, G., Bolvin, D., Braithwaite, D., Hsu, K., Joyce, R. and Xie, P.: Integrated Multi-satellite Retrievals for GPM (IMERG), version 4.4. NASA's Precipitation Processing Center, accessed 31 March, 2015, <ftp://arthurhou.pps.eosdis.nasa.gov/gpmdata/>, 2014.
- Ilyina, T., Six, K., Segschneider, J., Maier-Reimer, E., Li, H. and Nunez-Riboni, I.: Global ocean biogeochemistry model HAMOCC: Model architecture and performance as component of the MPI-Earth System Model in different CMIP5 experimental realizations, *J. Adv. Model. Earth Sy.*, doi: 10.1029/2012MS000178, 2013.
- IPCC.: Emissions Scenarios. Summary for Policymakers. A special Report of IPCC Working Group III, Cambridge University Press, Cambridge, 2000.
- IPCC.: Climate change 2013: the physical science basis. Working group I contribution to the fifth assessment report of the intergovernmental panel on climate change. Cambridge University Press, Cambridge, 2013.
- 10 [Izquierdo, A. and Mikolajewicz, U.: The role of tides in the spreading of Mediterranean Outflow waters along the southwestern Iberian margin, *Ocean Model.*, 133,27-43, doi: 10.1016/j.ocemod.2018.08.003, 2019.](#)
- Jacob, D.: A note to the simulation of the annual and interannual variability of the water budget over the Baltic Sea drainage basin, *Meteorol. Atmos. Phys.*, 77(1-4), 61-73, doi: 10.1007/s007030170017, 2001.
- 15 Jungclaus, J. H., Fischer, N., Haak, H., Lohmann, K., Marotzke, J., Matei, D., Mikolajewicz, U., Notz, D. and von Storch, J. S.: Characteristics of the ocean simulations in MPIOM, the ocean component of the MPI-Earth system model, *J. Adv. Model Earth Sy.*, 5, 422– 446, doi: 10.1002/jame.20023, 2013.
- Lauer, A., Eyring, V., Righi, M., Buchwitz, M., Defourny, P., Evaldsson, M., Friedlingstein, P., de Jeu, R., de Leeuw, G., Loew, A., Merchant, C. J., Müller, B., Popp, T., Reuter, M., Sandven, S., Senftleben, D., Stengel, M., Van Roozendaal, M.
- 20 Wenzel, S. and Willén, U.: Benchmarking CMIP5 models with a subset of ESA CCI Phase 2 data using the ESMValTool, *Remote Sens. Environ.*, 203, 9-39, doi: 10.1016/j.rse.2017.01.007, 2017.
- Levitus, S., Boyer, T. P., Conkright, M. E., O'Brien, T., Antonov, J., Stephens, C., Stathoplos, L., Johnson, D. and Gelfeld, R.: World Ocean Database 1998, vol.1, Introduction, NOAA Atlas NESDIS 18, Ocean Clim. Lab., Natl. Oceanogr. Data Cent., U.S. Gov. Print. Off., Washington, D. C., 1988.
- 25 L'Hévéder, B., Li, L., Sevault, F. and Somot, S.: Interannual variability of deep convection in the Northwestern Mediterranean simulated with a coupled AORCM, *Clim. Dynam.* 41 (3-4), 937-960, doi: 10.1007/s00382-012-1527-5, 2013.
- Li, H., Kanamitsu, M. and Hong, S. Y.: California reanalysis downscaling at 10 km using an ocean-atmosphere coupled regional model system, *J. Geophys. Res.*, 117, D12118, doi: 10.1029/2011JD017372, 2012.
- 30 Macias, D., Garcia-Goriz, E., Dosio, A., Stips, A. and Keuler, K.: Obtaining the correct sea surface temperature: bias correction of regional climate model data for the Mediterranean Sea, *Clim. Dynam.*, 51, 1095-1117, doi: 10.1007/s00382-016-3049-z, 2018.

- Maier-Reimer, E., Kriest, I., Segschneider, J. and Wetzol, P.: The HAMburg Ocean Carbon Cycle Model HAMOCC5.1 Technical Description Release 1.1, Ber. Erdsystemforschung, 14, <http://hdl.handle.net/11858/00-001M-0000-0011-FF5C-D>, 2005.
- 5 Majewski, D.: The Europa-Modell of the Deutscher Wetterdienst. Seminar Proceedings ECMWF, Reading, vol. 2, 147–191, 1991.
- Marsland, S. J., Haak, H., Jungclaus, J. H., Latif, M. and Roeske, F.: The Max-Planck- Institute global ocean/sea ice model with orthogonal curvilinear coordinates, *Ocean Model.* 5 (2), 91–127, doi: 10.1016/S1463-5003(02)00015-X, 2003.
- [Menna, M. and Poulain, P. M.: Mediterranean intermediate circulation estimated from Argo data in 2003–2010, *Ocean Sci.* 6, 331–343, doi: 10.5194/os-6-331-2010, 2010.](#)
- 10 Metzger, E. J., Smedstad, O. M., Thoppil, P. G., Hurlburt, H. E., Cummings, J. A., Wallcraft, A. J., Zamudio, L., Franklin, D. S., Posey, P. G., Phelps, M. W., Hogan, P. J., Bub, F. L. and DeHaan, C. J.: US Navy Operational Global Ocean and Arctic Ice Prediction Systems, *Oceanography* , 27(3), 32-43, doi: 10.5670/oceanog.2014.66, 2014.
- Panthou, G., Vrac, M., Drobinski, P., Bastin, S. and Li, L.: Impact of model resolution and Mediterranean Sea coupling on hydrometeorological extremes in RCMs in the frame of HymMeX and MED-CORDEX, *Clim. Dynam.*, 51, 915-932, doi: 15 10.1007/s00382-016-3374-2, 2018.
- Rechid, D. and Jacob, D.: Influence of monthly varying vegetation on the simulated climate in Europe, *Meteorol. Z.*, 15, 99–116, doi: 10.1127/0941-2948/2006/0091, 2006.
- Reick, C. H., Raddatz, T., Brovkin, V. and Gayler, V.: The representation of natural and anthropogenic land cover change in MPIESM, *J. Adv. Model. Earth Sy.*, 5, 1–24, doi: 10.1002/jame.20022, 2013.
- 20 Reynolds, R. W., Smith, T. M., Liu, C., Chelton, D. B., Casey, K. S. and Schlax, M. G.: Daily High-Resolution-Blended Analyses for sea surface temperature, *J. Climate*, 20 (22), 5473-5496, doi: 10.1175/2007JCLI1824.1, 2007.
- Roeckner, E., Arpe, K., Bengtsson, L., Christoph, M., Claussen, M., Dümenil, L., Esch, M., Giorgetta, M., Schlese, U. and Schulzweida, U.: The Atmospheric General Circulation Model ECHAM-4: Model description and simulation of present-day-climate, Rep. 218, MPI für Meteorol., Hamburg, Germany, 1996.
- 25 Roeckner, E., Bäuml, G., Bonaventura, L., Brokopf, R., Esch, M., Giorgetta, M., Hagemann, S., Kirchner, I., Kornbluh, L., Manzini, E., Schlese, U. and Schulzweida, U.: The atmospheric general circulation model ECHAM 5. PART I: Model description, Rep. 349, MPI für Meteorol., Hamburg, Germany, <http://hdl.handle.net/11858/00-001M-0000-0012-0144-5>, 2003.
- Ruti, P. M., Somot, S., Giorgi, F., Dubois, C., Flaounas, E., Obermann, A., Dell’Aquila, A., Pisacane, G., Harzallah, A., Lombardi, E., Ahrens, B., Akhtar, N., Alias, A., Arsouze, T., Aznar, R., Bastin, S., Bartholy, J., Béranger, K., Beuvier, J., Bouffies-Cloch e, S., Brauch, J., Cabos, W., Calmanti, S., Calvet, J. C., Carillo, A., Conte, D., Coppola, E., Djurdjevic, V., Dobrinski, P., Elizalde-Arellano, A., Gaertner, M., Galan, P., Gallardo, C., Gualdi, S., Goncalves, M., Jorba, O., Jorda, G., L’Heveder, B., Lebeaupin-Brossier, L., Li, L., Liguori, G., Lionello, P., Macias, D., Nabat, P.,  onol, B., Raikovic, B.,

- Ramage, K., Sevault, F., Sannino, G., Struglia, M. V., Sanna, A., Troma, C. and Vervatis, V.: MED-CORDEX initiative for Mediterranean Climate studies, *Bull. Am. Meteorol. Soc.*, 97 (7), 1187-1208, doi: 10.1175/BAMS-D-14-001761, 2015.
- Sánchez-Gómez, E., Somot, S., Josey, S. A., Dubois, C., Elguindi, N. and Déqué, M.: Evaluation of Mediterranean Sea water and heat budgets simulated by an ensemble of high resolution regional climate models, *Clim. Dynam.*, 37(9-10), 2067-2086, doi: 10.1007/s00382-011-1012-6, 2011.
- 5 Sein, D. V., Koldunov, N. V., Pinto, J. G. and Cabos, W.: Sensitivity of simulated regional Arctic climate to the choice of coupled model domain. *Tellus A.*, 66, 1-23966. doi: 10.3402/tellusa.v66.23966, 2014.
- Sein, D. V., Mikolajewicz, U., Gröger, M., Fast, I., Cabos, W., Pinto, J. G., Hagemann, S., Semmler, T., Izquierdo, A. and Jacob, D.: Regionally coupled atmosphere-ocean-sea ice-marine biogeochemistry model ROM: 1. Description and validation, *J. Adv. Model. Earth Sy.*, 7, 268–304, doi: 10.1002/2014MS000357, 2015.
- 10 Sevault, F., Somot, S., Alias, A., Dubois, C., Lebeaupin-Brossier, C., Nabat, P., Adloff, F., Déqué, M. and Decharme, B.: A fully coupled Mediterranean regional climate system model: design and evaluation of the ocean component for the 1980–2012 period, *Tellus A.*, 66, 1-23967, doi: 10.3402/tellusa.v66.23967, 2014.
- Shaltout, M. and Omstedt, A.: Recent sea surface temperature trends and future scenarios for the Mediterranean Sea, *Oceanologia*, 56 (3), 411-443, doi: 10.5697/oc.56-3.411, 2014.
- 15 Simmons, A. J. and Burridge, D. M.: An energy and angular-momentum conserving vertical finite-difference scheme and hybrid vertical coordinate, *Mon. Weather. Rev.*, 109, 758–766, doi: 10.1175/1520-0493(1981)109<0758:AEAAMC>2.0.CO;2, 1981.
- Somot, S., Sevault, F. and Déqué, M.: Transient climate change scenario simulation of the Mediterranean Sea for the 21st century using a high-resolution ocean circulation model, *Clim. Dynam.*, 27, 851–879, doi: 10.1007/s00382-006-0167-z, 2006.
- 20 Somot, S., Sevault, F., Déqué, M. and Crépon, M.: 21st century climate change scenario for the Mediterranean using a coupled atmosphere–ocean regional climate model, *Global and Planet. Change*, 63 (2), 112-126, doi: 10.1016/j.gloplacha.2007.10.003, 2008.
- 25 Somot, S., Ruti, P., Ahrens, B., Coppola, E., Jordà, G., Sannino, G. and Solmon, F.: Editorial for the Med-CORDEX special issue, *Clim. Dynam.*, 51, 771-777, doi: 10.1007/s00382-018-4325-x, 2018.
- Soto-Navarro, J., Somot, S., Sevault, F., Beuvier, J., Criado-Aldeanueva, F., García-Lafuente, J. and Béranger, K.: Evaluation of regional ocean circulation models for the Mediterranean Sea at the Strait of Gibraltar: volume transport and thermohaline properties of the outflow, *Clim. Dynam.*, 44, 1277-1292, doi: 10.1007/s00382-014-2179-4, 2014.
- 30 SSALTO/DUACS.: User Handbook (M)SLA and (M)ADT near-real time and delayed time products. Nomenclature: SALP-MU-P-EA-21065-CLS. Issue 3, Rev. 4. Reference: CLSDOS- NT-06-034, 2013.
- Stevens, B., Giorgetta, M., Esch, M., Mauritsen, T., Crueger, T., Rast, S. Salzmann, M., Schmidt, H., Bader, J., Block, K., Brokopf, R., Fast, I., Kinne, S., Kornbluh, L., Lohmann, U., Pincus, R., Reichler, R. and Roeckner, E.: Atmospheric

component of the MPI-M Earth system model: ECHAM6, *J. Adv. Model. Earth Sy.*, 5, 146–172, doi: 10.1002/jame.20015, 2013.

[Struglia, M.V., Mariotti, A. and Filograsso, A.: River discharge into the Mediterranean Sea: climatology and aspects of the observed variability, *J. Clim.*, 17, 4740-4751, doi: 10.1175/JCLI-3225.1, 2004.](#)

5 Tanre, D., Geleyn, J. F., and Slingo, J. M.: First results of the introduction of an advanced aerosol-radiation interaction in the ECMWF low resolution global model, *Aerosols and their Climatic Effects*, edited by: Gerber, H. and Deepak, A., Hampton, Virginia, 133–177, 1984.

Taylor, K., Stouffer, R. and Meehl, G.: An overview of CMIP5 and the experiments design, *Bull. Am. Meteorol. Soc.*, 93 (4), 485-498, doi: 10.1175/BAMS-D-11-00094.1, 2012.

10 Thorpe, R. B., and Bigg, G. R.: Modelling the sensitivity of the Mediterranean outflow to anthropogenically forced climate change, *Clim. Dynam.* 16, 355–368, doi: 10.1007/s003820050333, 2000.

Tomczak, M. and Godfrey S. J.: *Regional Oceanography: an Introduction*, Pergamon, New York, 274-280, 1994.

Valcke, S.: The OASIS3 coupler: a European climate modelling community software, *Geosci. Model Dev.*, 6, 373-388, doi: 10.5194/gmd-6-373-2013, 2013.

15 [Wang, F. and Polcher, J.: Assessing the freshwater flux from the continents to the Mediterranean Sea, *Sci. Rep.* 9, 8024, doi: 10.1038/s41598-019-44293-1, 2019.](#)

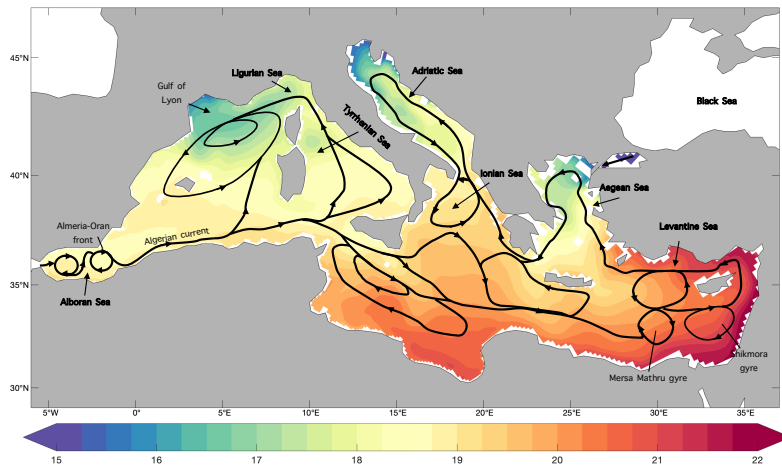


Figure 1: Mediterranean basin: 1980-2012 mean SST (°C) and upper ocean currents (Based on Tomczak and Godfrey, 1994).

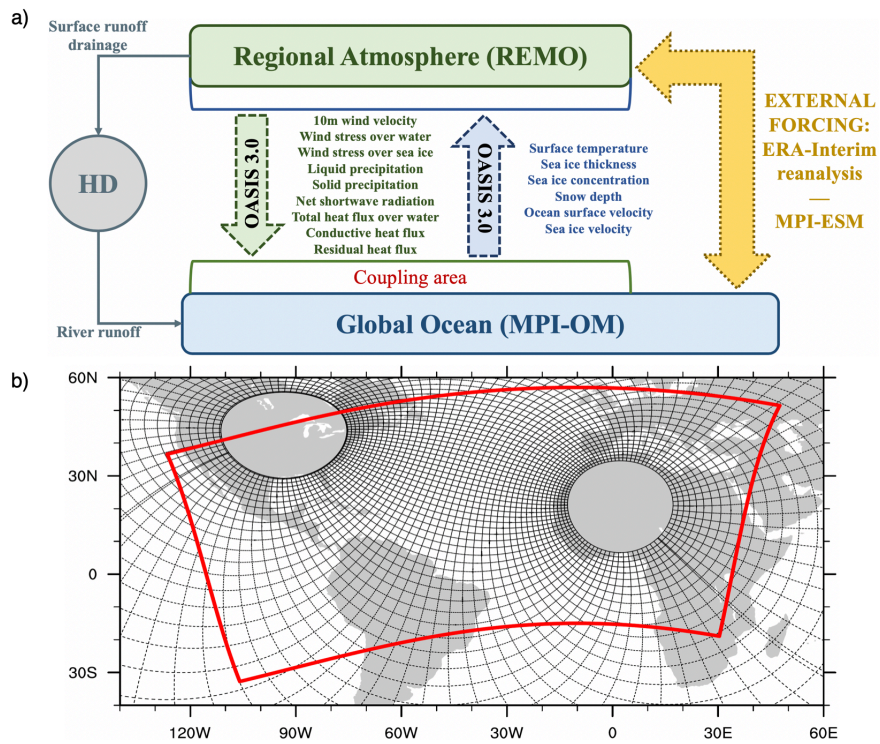


Figure 2: (a) ROM coupling scheme. (b) Atmospheric and oceanic ROM grids. MPI-OM variable resolution grid (black lines, drawn every twelfth), REMO domain (red line).

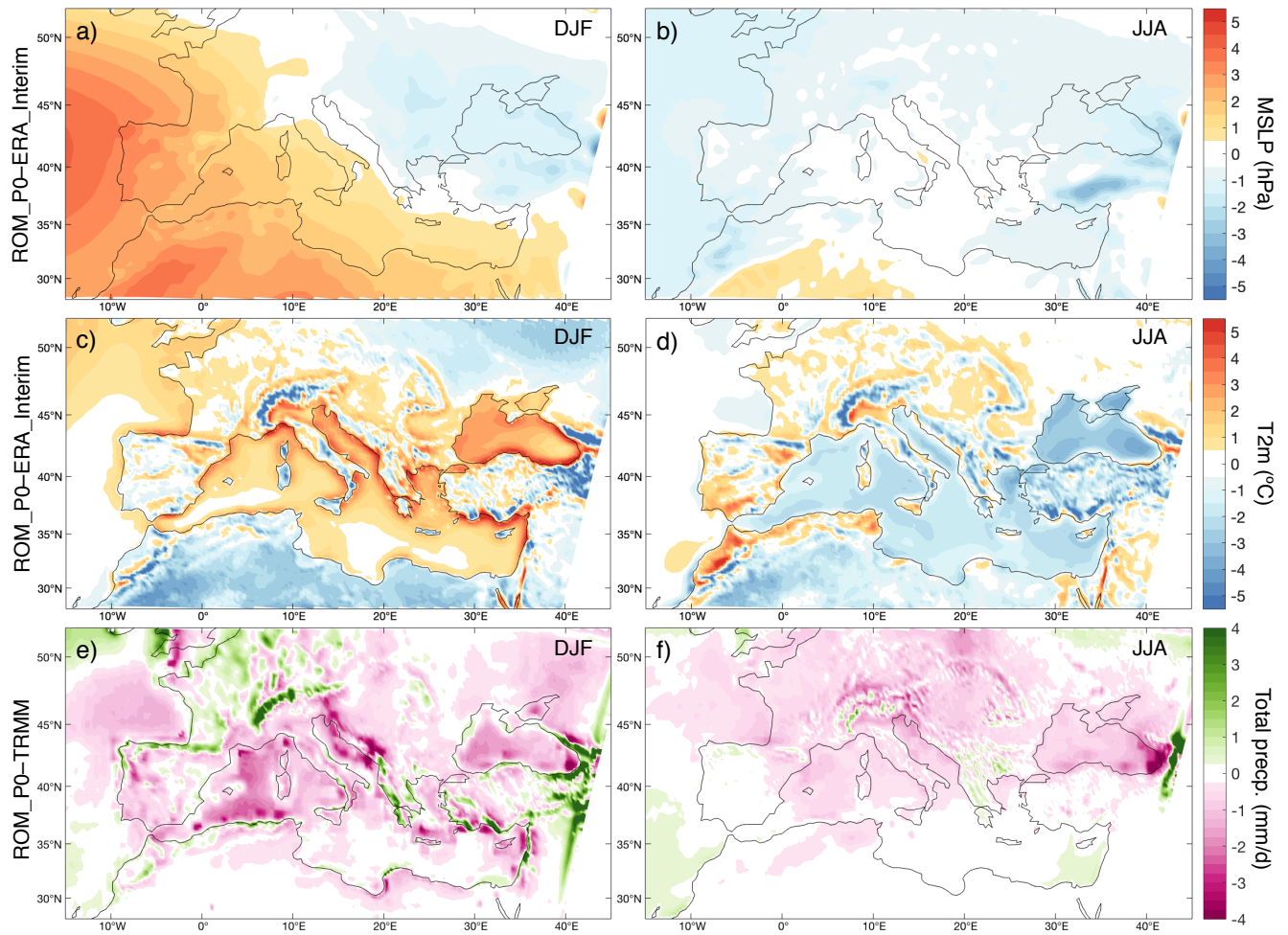


Figure 3: Differences between ROM_P0-ERA-Interim and TRMM for the 1980-2012 period in mean sea level pressure (MSLP, hPa) (upper row), near-surface (2m) temperature (T2m, °C) (middle) and precipitation (mm/d) (bottom). Left, DJF; right, JJA.

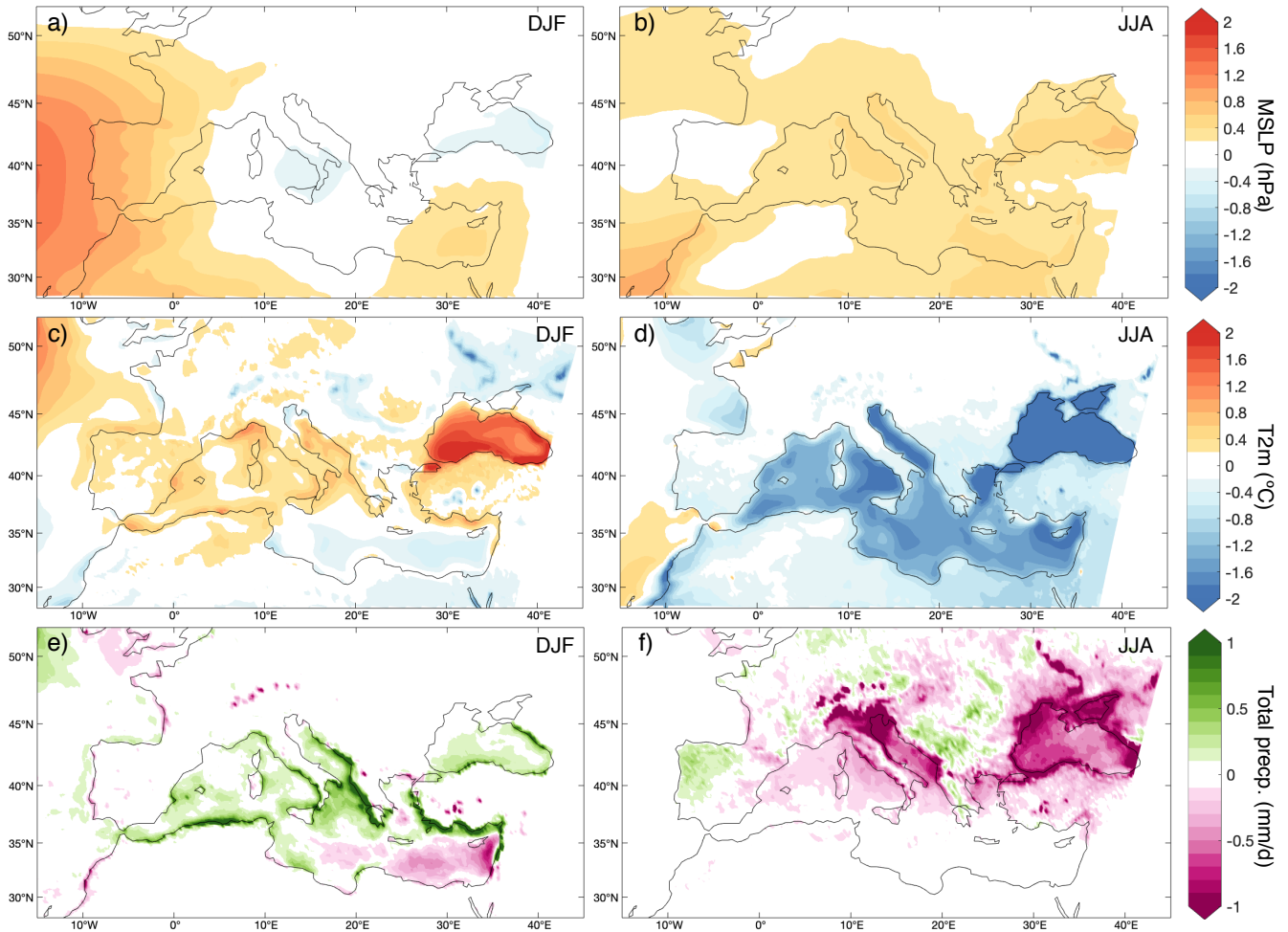


Figure 4: Differences between ROM_P0 and stand-alone REMO forced by ERA-Interim for the 1980-2012 period in mean sea level pressure (MSLP, hPa) (upper row), near-surface (2m) temperature (T2m, °C) (middle) and precipitation (mm/d) (bottom). Left, DJF; right, JJA.

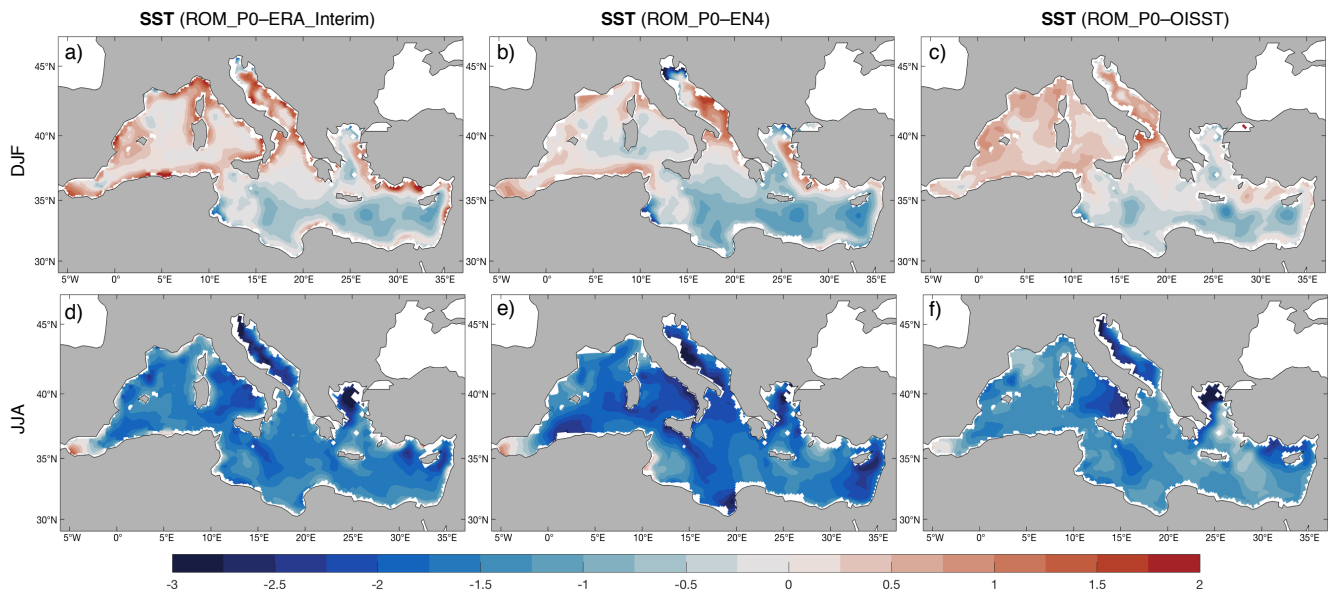
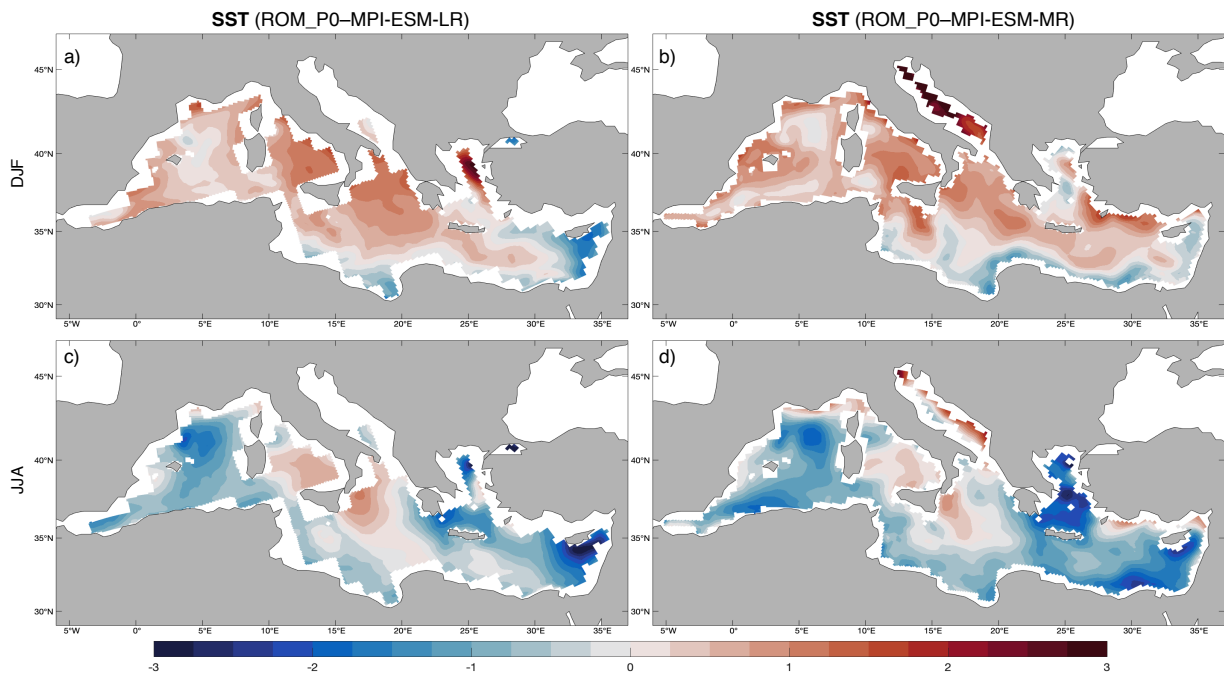


Figure 5: Difference between the ROM_P0 SST (°C) and the different climatologies (ERA-Interim [left], EN4 [middle] and OISST [right]) in winter (DJF, top), and summer (JJA, bottom).



5 Figure 6: SST difference (°C) between ROM_P0 and MPI-ESM-LR (left) and -MR (right) in winter (DJF, top), and summer (JJA, bottom).

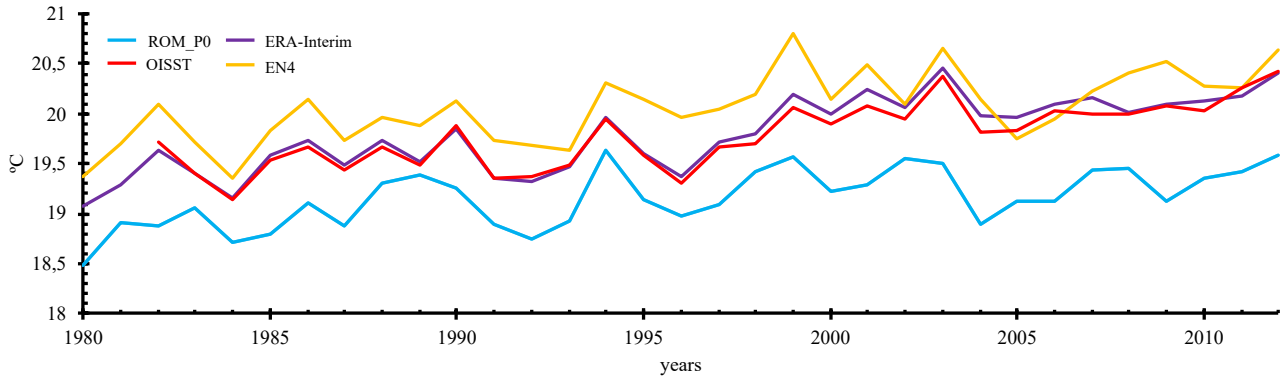
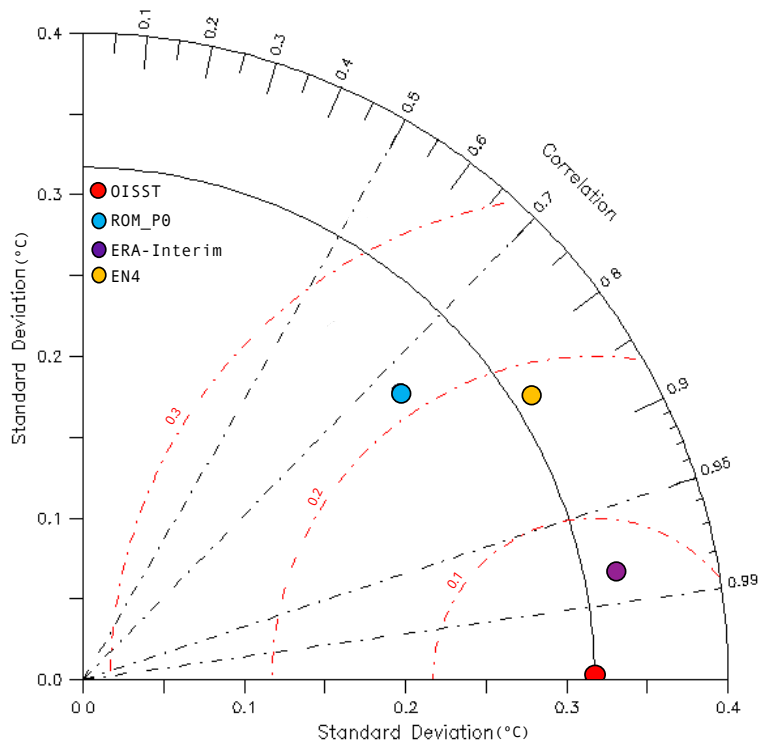


Figure 7: Time series of yearly mean (1980-2012) SST (°C) averaged over the Mediterranean basin. ROM_P0 (blue), OISST (red), ERA-Interim (purple) and EN4 (yellow).



5

Figure 8: Taylor Diagram for Mediterranean SST during the 1982-2012 period. The diagram summarizes the relationship between standard deviation (°C), correlation (r) and RMSE (red lines) (°C) for all datasets. The gridded OISST was employed as reference.

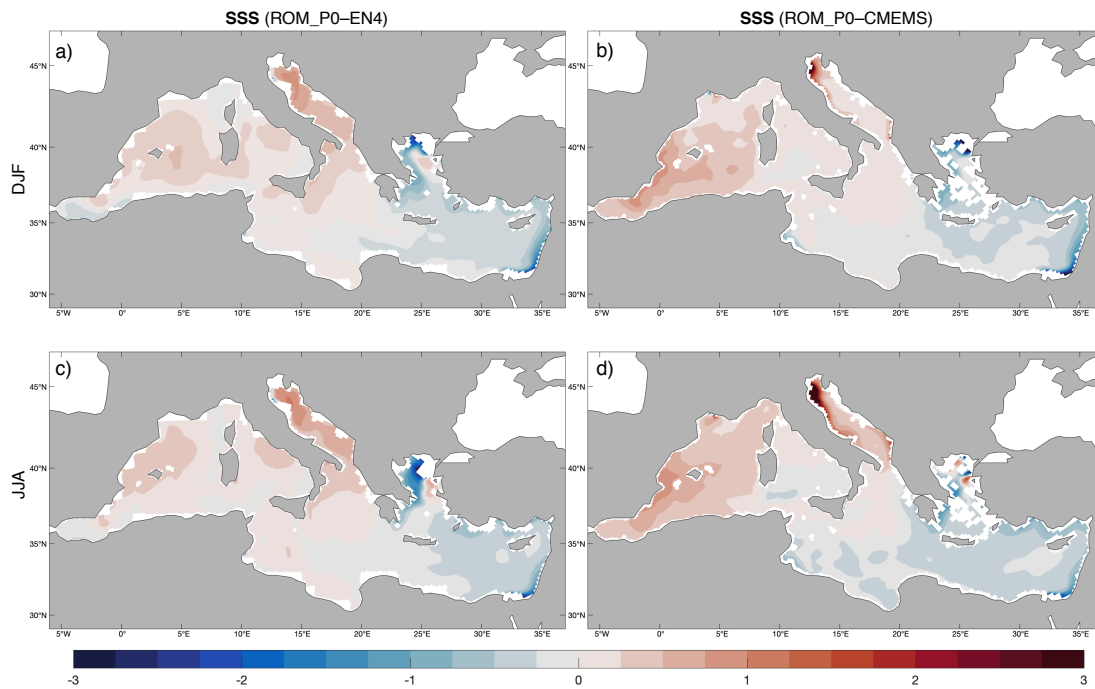
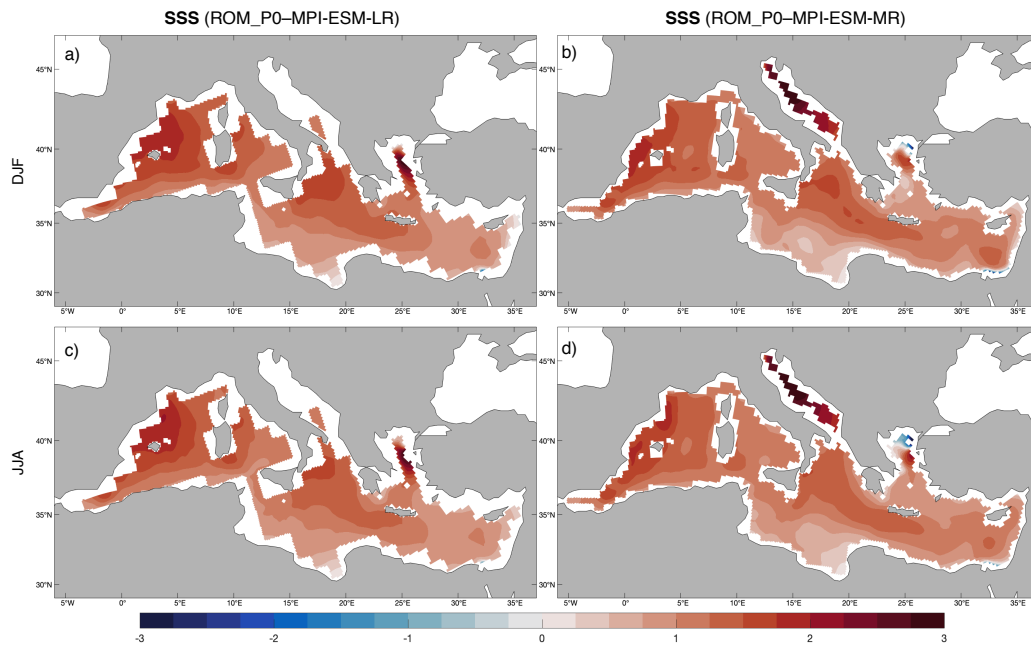


Figure 9: SSS (psu) difference between the ROM_P0 climatologies (EN4 [left] and CMEMS [right]) in winter (DJF, top), and summer (JJA, bottom).



5 Figure 10: SSS (psu) difference between the ROM_P0 and MPI-ESM-LR (left), -MR (right) in winter (DJF, top), and summer (JJA, bottom).

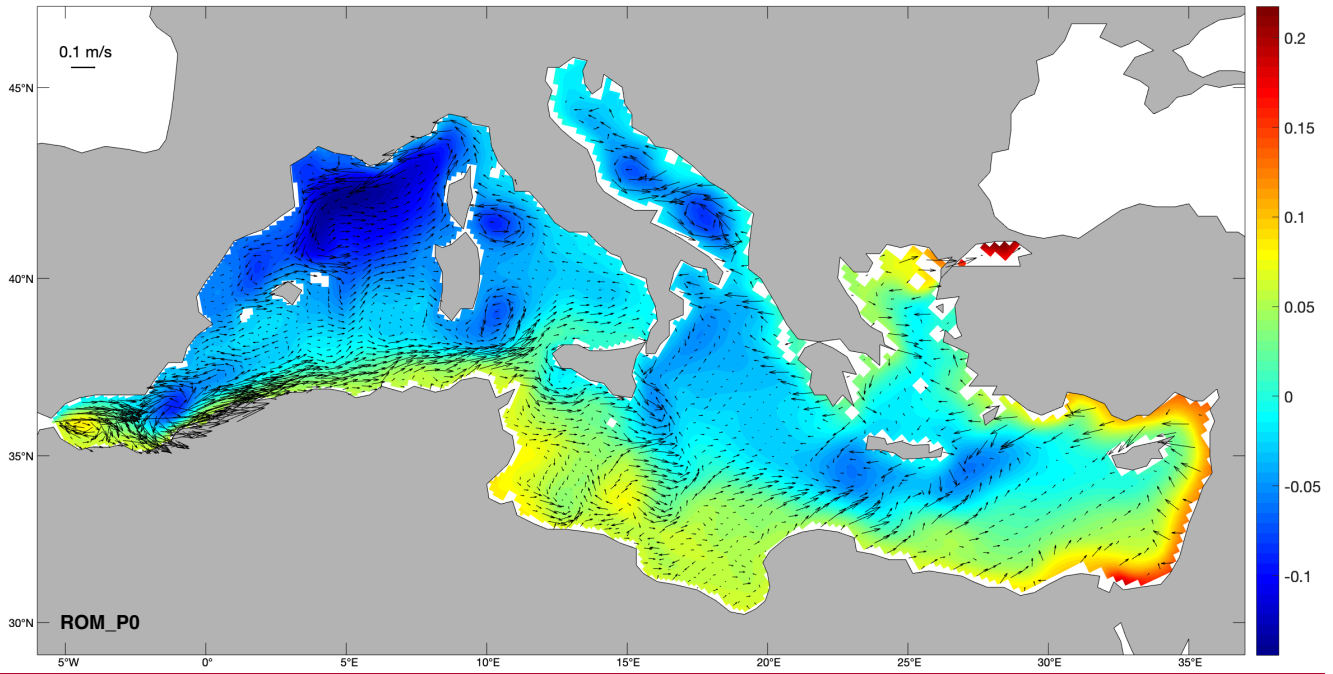
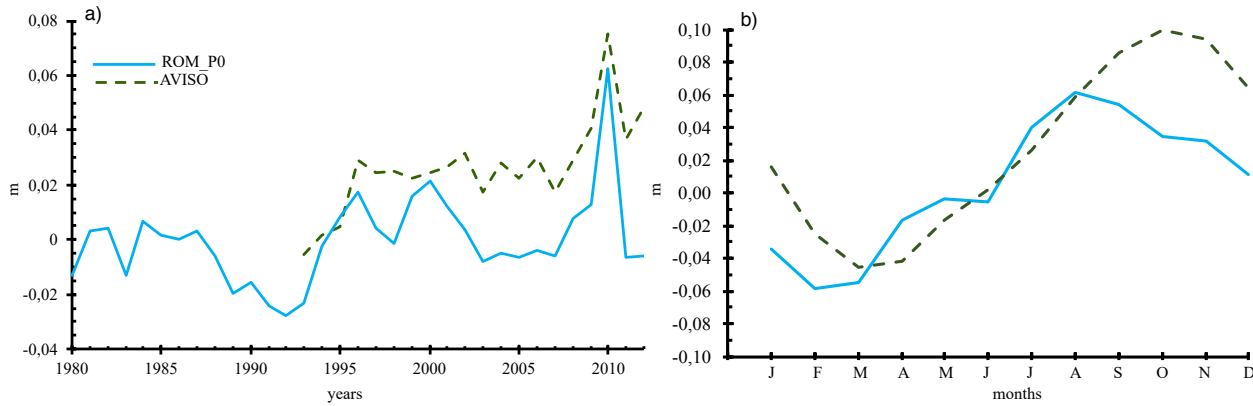


Figure 11: Mean (1980-2012) ROM_P0 SSH (m) and horizontal current velocity at 31 m depth (vectors, in m/s). Only every sixth vector is plotted.



5

Figure 12: Time series of mean (1980-2012) sea-level anomalies averaged over the Mediterranean basin (left, in m). For ROM_P0 (blue), the dynamic SSH is added to the thermosteric term. Model data are compared to observations (AVISO, green dashed). ROM_P0 seasonal cycle is compared to AVISO data (right).

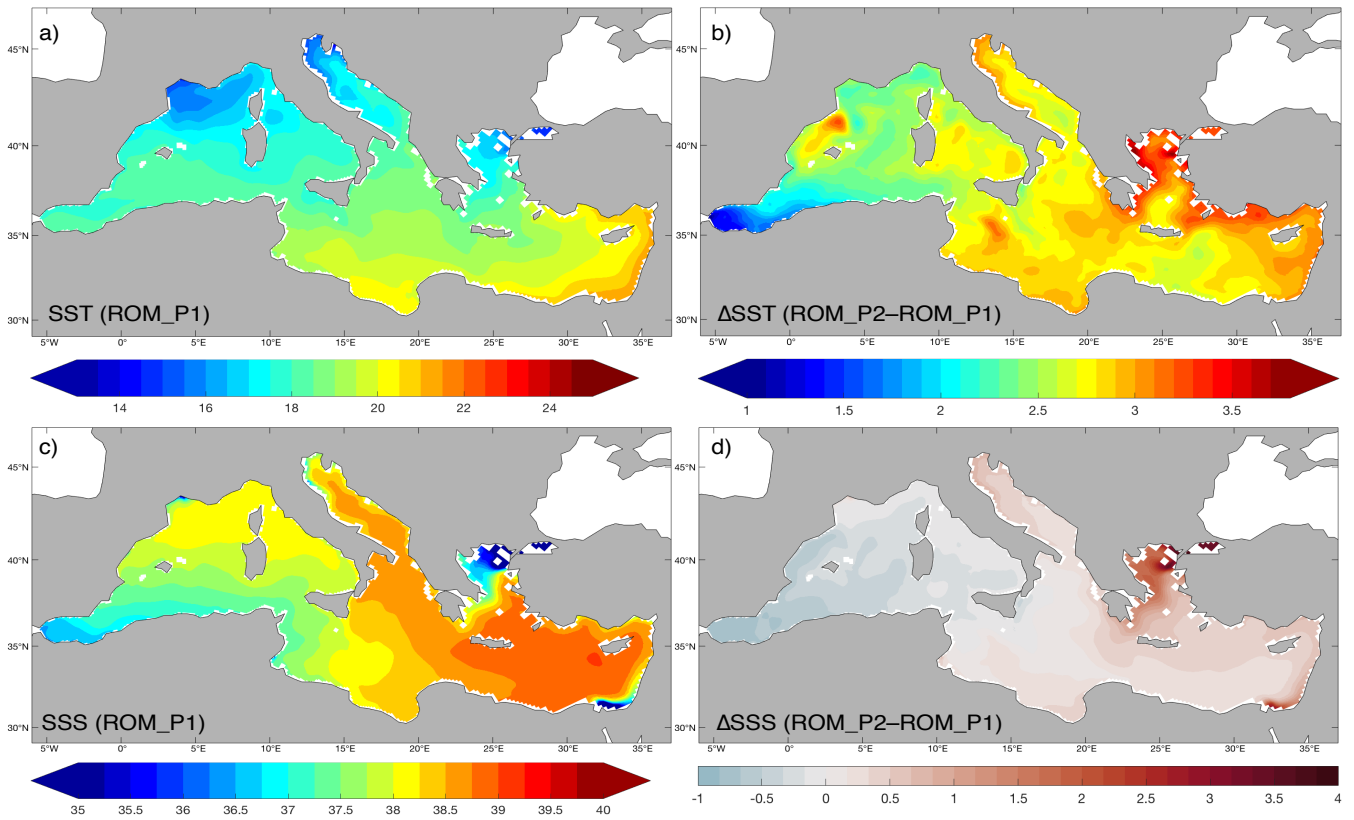


Figure 13: Mean SST (in °C, top left) and SSS (in psu, bottom left), averaged over the 1976-2005 period (ROM_P1). Difference between mean SST (in °C, top right) and SSS (in psu, bottom right) RCP8.5 projection (2070-2099, ROM_P2) and present climate (1976-2005, ROM_P1).

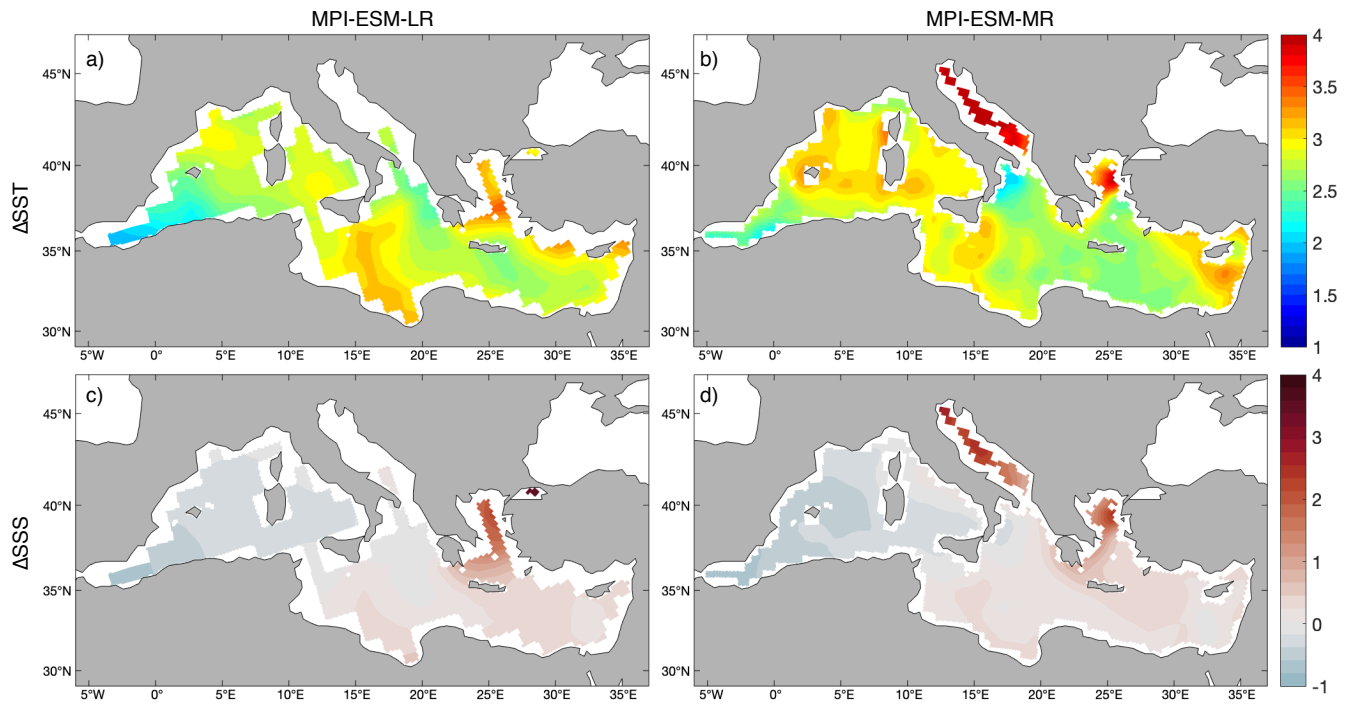


Figure 14: SST (in $^{\circ}C$, upper row) and SSS (in psu, bottom) MPI-ESM-LR (left) and -MR (right) anomaly fields estimated as the difference between the average of the RCP8.5 projection (2070-2099) and present climate (1976-2005).

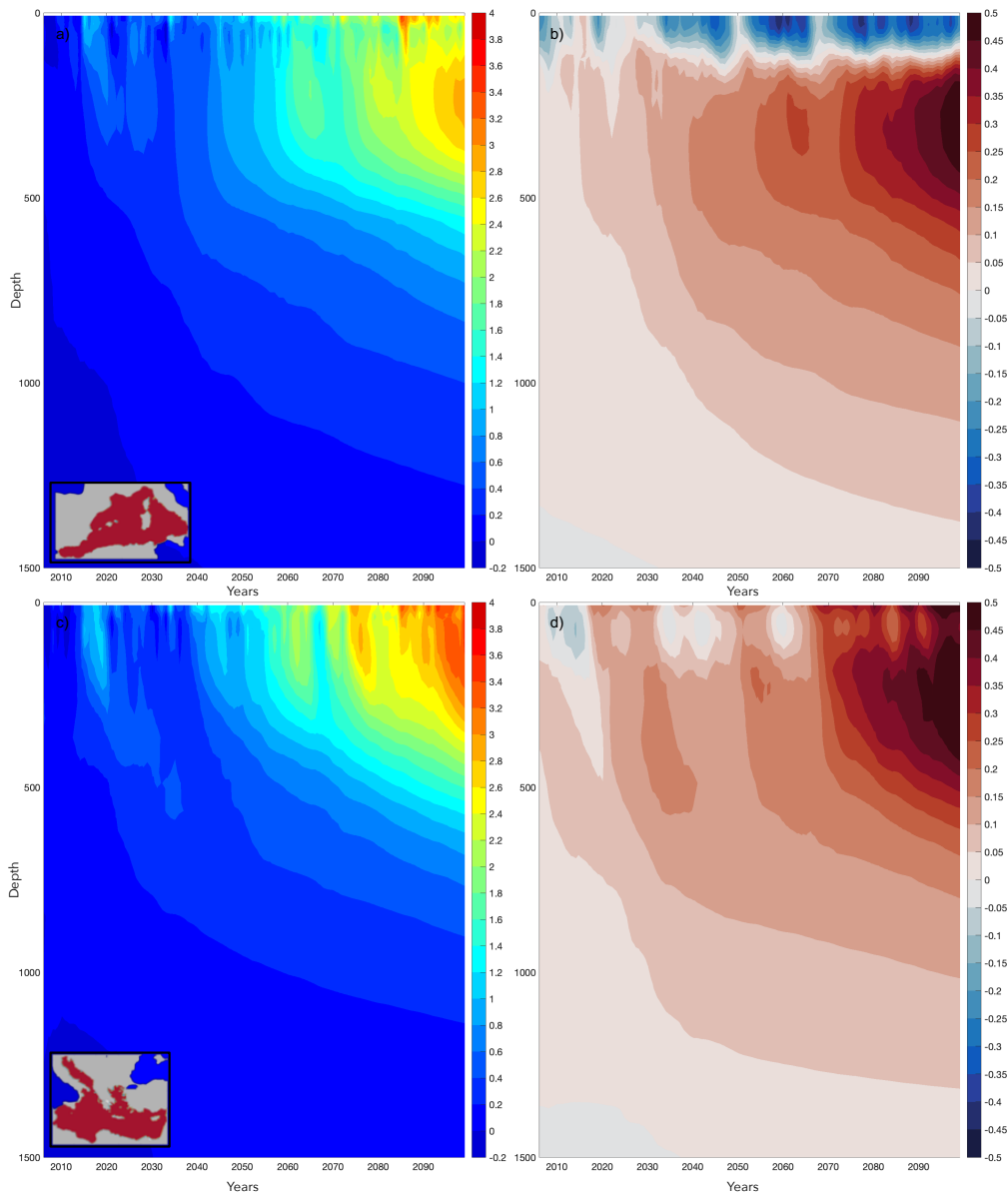


Figure 15: Temporal evolution of mean temperature (in °C, left) and salinity (in psu, right) throughout the twenty-first century at Western (upper row) and Eastern Mediterranean (bottom).

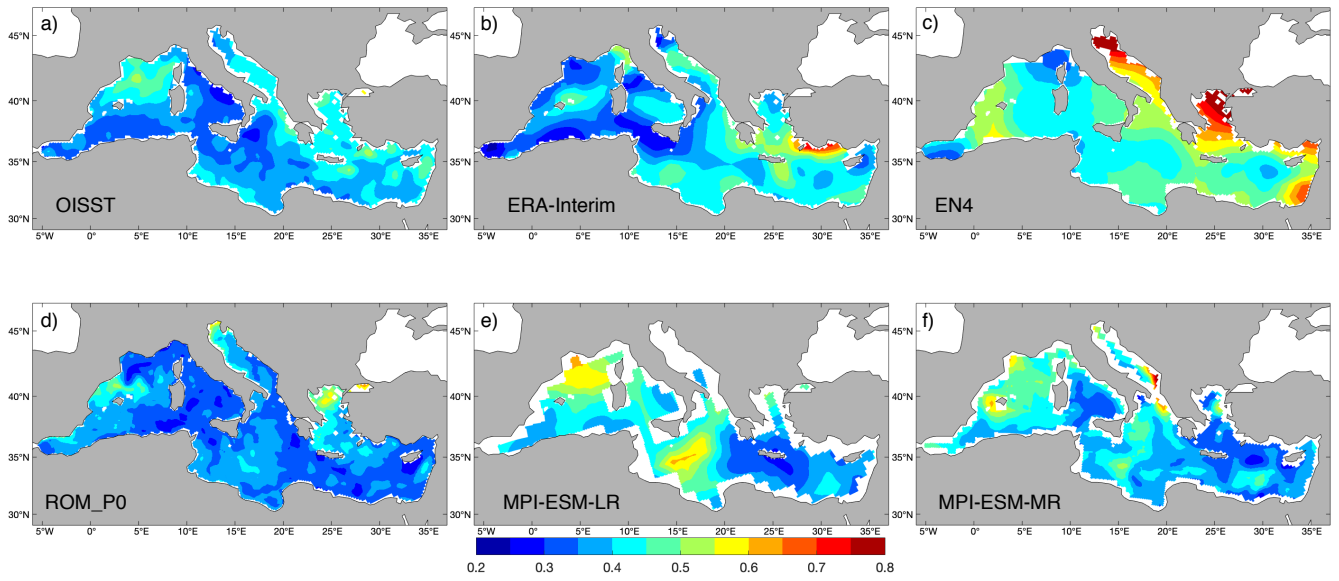


Figure 16: Yearly mean SST standard deviation (in °C) for 1982-2012 period: OISST (a), ERA-Interim (b), EN4 (c), ROM_P0 (d), MPI-ESM-LR (e) and MPI-ESM-MR (f).

5

10

Table 1. Characteristics of ROM atmosphere-ocean regional coupled model used in this study. Modified from Darmaraki et al. (2019). For details see Sein et al. (2015).

Institute	AWI/GERICS
Driving GCM	MPI-ESM-LR
Med. Sea Model	MPI-OM
Ocean Res.	7-25 km
Num. of z-levels (ocean)	40
SST (1st layer depth)	16 m
Timestep (ocean)	900 s
Atmosphere model	REMO
Atmosphere Res.	25 km
Timestep (atmosphere)	120 s
Coupling frequency	60 min

Table 2. Datasets used in the ROM validation.

	Parameters	Period	Spatial resolution	Datasets
Atmosphere	MSLP	1980-2012	80 km (T255 spectral)	ERA-Interim (Dee et al., 2011)
	T2m	1980-2012	80 km (T255 spectral)	ERA-Interim (Dee et al., 2011)
	Precipitation	1997-2012	1/4° x 1/4°	TRMM (Huffman et al., 2014)
Ocean	SST	1982-2012	1/4° x 1/4°	OISST (Reynolds et al., 2007)
		1980-2012	80 km (T255 spectral)	ERA-Interim (Dee et al., 2011)
		1980-2012	1° x 1°	EN4 v.4.1.1 (Good et al., 2003; Gouretski and Reseghetti, 2010)
		1980-2012	1.5° x 1.5° / 0.4° x 0.4°	MPI-ESM-LR and -MR (Giorgetta et al., 2013)
	SSS	1980-2012	1° x 1°	EN4 v.4.1.1 (Good et al., 2003; Gouretski and Reseghetti, 2010)
		1980-2012	1/16° x 1/16°	CMEMS (Fратиanni et al., 2015)
		1980-2012	1.5° x 1.5° / 0.4° x 0.4°	MPI-ESM-LR and -MR (Giorgetta et al., 2013)
SSH	1993-2012	1/4° x 1/4°	SSALTO/DUACS L4	

Table 3. Trend computed from yearly means during 1980-2012 by the different analysis into the Mediterranean Sea.

	ROM_P0	OISST	ERA Interim	EN4	MPI-ESM-LR	MPI-ESM-MR
°C/year	+0.016	+0.027	+0.029	+0.022	+0.028	+0.020

Table 4. Water balance and exchange flows for the Mediterranean Sea according to ROM_P0, RCSM4 and observation-based estimates. All results are presented in Sverdrups (Sv).

Parameters	1980-2012 mean ROM_P0	RCSM4 Sevault et al., (2014)	Estimates
Evaporation	0.093	0.110	0.086-0.089 (Sánchez-Gómez et al., 2011)
Precipitation	0.034	0.040	0.020-0.047 (ibid)
Runoff	0.006	0.010	-
E-P	0.059	0.070	0.039-0.069 (ibid)
E-(P+R)	0.053	0.060	-
Gibraltar in	0.554	0.850	0.81 (Soto-Navarro et al., 2014)
Gibraltar out	0.524	0.800	0.78 (ibid)
Gibraltar net	0.030	0.050	0.04-0.10 (ibid)
Dardanelles in	0.132	-	-
Dardanelles out	0.109	-	-
Dardanelles net	0.023	0.007	0.008-0.01 (Sánchez-Gómez et al., 2011)

Table 5. Resolution of the different models used in this study to discuss ROM.

Model	Model configuration	Atmosphere/Ocean Resolution	References
MGME ensemble	Global	1 - 4° / -	Giorgi and Lionello, (2018)
PROTHEUS	AORCM	30 km / 13 km	Artale et al. (2010)
LMDz-NEMO-Med	AORCM	30 km / 9 – 12 km	L'Hévéder et al. (2013)
WRF RCM	RCM	50 km / -	Di Luca et al. (2014)
CNRM-RCSM4	AORCM	50 km / 9 – 12 km	Sevault et al. (2014)
RCM11	RCM	12 km / -	Fantini et al. (2016)
RCM44		50 km / -	

Table 6. Mediterranean Sea spatial averaged changes in SST and SSS at the end of the twenty-first century as compared with the present climate.

	Scenario	ΔSST (°C)	ΔSSS (psu)
ROM	RCP8.5	+2.73	+0.17
MPI-ESM-LR	RCP8.5	+2.80	+0.10
MPI-ESM-MR	RCP8.5	+2.87	+0.12
Thorpe and Bigg (2000)	2XCO ₂	+4	-
Somot et al. (2006)	A2	+2.50	+0.33
Somot et al. (2008)	A2	+2.60	+0.43
Shaltout and Omstedt (2014)	RCP2.6	+0.5	-
(ibid)	RCP4.5	+1.15	-
(ibid)	RCP6.0	+1.42	-
(ibid)	RCP8.5	+2.6	-
Adloff et al. (2015)	A2	+2.53	+0.48
(ibid)	A2-F	+2.97	+0.69
(ibid)	A2-ARF	+2.97	+0.89
(ibid)	B1-ARF	+1.73	+0.70
Darmaraki et al. (2019)	RCP8.5	+3.1	-