



A revised ocean glider concept to realize Stommel's vision and supplement Argo floats

Erik M. Bruvik¹, Ilker Fer¹, Kjetil Våge¹, Peter M. Haugan^{1,2}

¹Geophysical Institute, University of Bergen, Bergen, 5020, Norway

5 ² Institute of Marine Research, Bergen, 5817, Norway

Correspondence to: Ilker Fer (ilker.fer@uib.no)

Abstract. This paper revisits Stommel's vision for a global glider network and the Argo design specification. A concept of floats with wings, so-called slow underwater gliders, is explored. An analysis of the energy/power consumption shows that, by operating gliders with half the vehicle volume at half the speed compared to present gliders, the energy requirements for long duration missions can be met with available battery capacities. Simulation experiments of slow gliders are conducted using the horizontal current fields from an eddy-permitting ocean reanalysis product. By employing a semi-Lagrangian, streamwise navigation whereby the glider steers at right angles to ocean currents, we show that the concept is feasible. The simulated glider tracks demonstrate the potential for efficient coverage of key oceanographic features and variability.

1 Introduction

15 In Stommel's (1989) vision for the year 2021, oceans would be monitored using instruments with wings. These robots would profile through the water column by changing their buoyancy in alternating vertical cycles of ascents and descents, with their wings providing the horizontal propulsion to "glide" through the oceans. It is now timely to look back and revisit this vision and assess status.

20 Today, the oceans are indeed extensively monitored by buoyancy driven robots – albeit without wings. These instruments are called floats, and approximately 4000 floats profile the oceans in the Argo programme (Roemmich et al., 2009). Their contribution to the knowledge of the oceans is substantial (Riser et al., 2016), yet, juxtaposing the Argo-programme and Stommel's vision invites a curious investigation as to why the floats lack wings and in that sense fall short of realizing his vision. The original Argo design specification (Roemmich et al., 1999, p.3) explicitly mentions the possibility of a winged gliding float:

“... , a profiling float equipped with wings for dynamic positioning during ascent and descent, offers further potential. This “gliding” float will provide a similar number of T/S [temperature and salinity] profiles at a fixed location or along a programmed track.”



The stated potential has not yet been realized, and further motivates the inquiry presented here.

Floats, without wings, are now a simpler and more mature technology developed since the 1950's (Gould, 2005; Davis et al., 2001). Underwater gliders, floats with wings (hereafter referred to as gliders), are a newer, more complex development starting in the 1990's. The first successful glider designs materialized in the early 2000s (Davis, Eriksen and Jones, 2002; Jenkins et al., 2003), and have by now demonstrated their role as a mature and useful tool for oceanographic exploration of phenomena, e.g. boundary currents where floats typically have short residence times (Rudnick, 2016; Lee and Rudnick, 2018).

However, the enthusiasm that came with the first gliders has cooled somewhat (Rudnick, 2016), and gliders also fall short of realizing Stommel's vision. For instance, Stommel envisioned a global glider effort, compared to the current regional efforts; he envisioned endurance of years compared to months; and he foresaw 1000 gliders compared to a few tens in operation simultaneously. Only in one aspect do current gliders meet Stommel's expectation: their horizontal velocity is indeed approximately 25 cm s^{-1} . We will, in the following, dispense with this latter requirement and argue that his vision may thereby be readily realized.

Stommel never seriously assessed the power requirements, suggesting instead that gliders could harvest energy from the ocean thermocline. This has proved less than practical and is also not a solution for the global ocean.

Current glider designs (Sherman et al., 2001; Eriksen et al., 2001; and Webb et al., 2001) operate roughly according to the maxim "1/2 knot at 1/2 Watt", i.e. they glide through the ocean at a horizontal velocity of roughly half a knot (25 cm s^{-1}) consuming about half a Watt of power. We will in this paper rather pursue and propose an alternative operating point of "1/4 knot at 1/16 Watt", which significantly increases the endurance of gliders. Costs aside, if the endurance of gliders could match that of floats then there would be no reason they should not match in numbers and application also.

2 Fundamental considerations

2.1 Energy

Consider first the profiling vehicle (float or glider) of volume V_0 at rest at a certain depth or pressure p_0 . The ascent toward the ocean surface is initiated by increasing the volume by ΔV_0 , typically by pumping fluid from an internal to an external reservoir. This initial pumping supplies all the energy, $p_0 \Delta V_0$, needed to propel the vehicle to the surface.

30



However, due to ocean stratification additional pumping is necessary as the vehicle rises to maintain the initial excess buoyancy ΔV_0 . Most of the in-situ ocean stratification is due to the compressibility of sea water, but temperature and salinity changes also contribute. The total energy thus expended may be expressed as:

$$E = p_0 \Delta V_0 + \frac{1}{2} V_0 p_0^2 (\kappa_w - \kappa_h) + V_0 \int_0^{p_0} p \frac{1}{\rho_0} \frac{d\sigma_t}{dp} dp, \quad (1)$$

where κ_w and κ_h are the compressibility of sea water and vehicle hull respectively. The last term shows how ocean stratification from temperature and salinity, expressed by the density anomaly σ_t , costs additional energy. Note that this is also one of the main parameters we seek to measure during profiling.

Equation (1) ignores the effect of hull thermal expansion since it is small compared to sea water thermal expansion (but not negligible depending on hull material). An exact equation must include the full equation of state (EOS) of both seawater and the vehicle hull (but then becomes intractable). Furthermore, all terms and integrands must be weighted with the efficiency of the buoyancy engine of a particular vehicle.

We have also only stated the energy usage for the ascent part of the dive-climb cycle, which is essentially the same for both floats and gliders. Gliders generally operate in a symmetric mode in which the glider arrives at the target profile depth with a negative buoyancy equal to that used for the ascent (ΔV_0). Due to compressibility effects, descending floats typically settle more gradually at the target depth (Davis et al., 1992), possibly also with a pause or parking at an intermediate depth as is done with Argo floats.

In the following we will assume a pump efficiency as indicated in Fig. 1. This is similar to pump efficiencies reported by Davis et al. (1992) and Kobayashi et al (2010).

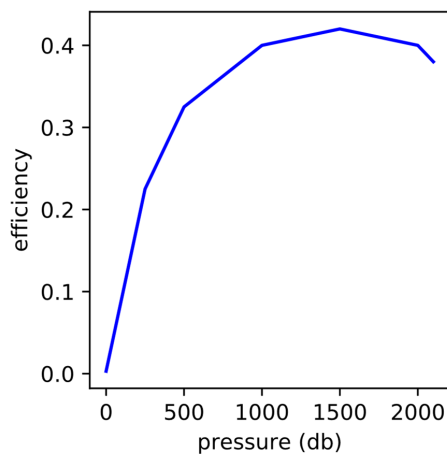


Figure 1. Typical buoyancy engine efficiency (electric to p-V-work) variation with profiling pressure.

Further we will assume an aluminium hull with volumetric coefficient of thermal expansion of $7 \times 10^{-5} \text{ }^\circ\text{C}^{-1}$, and a
5 compressibility which is 90% of that of seawater ($4.42 \times 10^{-6} \text{ db}^{-1}$). For the vehicle hull we may then use the following EOS:

$$V(p, T) = V_0 \left(1 - \kappa_h(p - p_0) + \alpha_{T,h}(T - T_0) \right), \quad (2)$$

where $\alpha_{T,h}$ is the volumetric thermal expansion coefficient of the hull and p_0 and T_0 are a reference pressure and temperature respectively. The EOS for seawater is given by TEOS-10 (IOC, 2010).

As an example, we calculate the energy consumed to ascend a tropical Atlantic profile from the World Ocean Atlas 2018
10 (Locarnini et al., 2018; Zweng et al., 2018) as shown in Fig 2. Vehicle volume is set at 25 L.

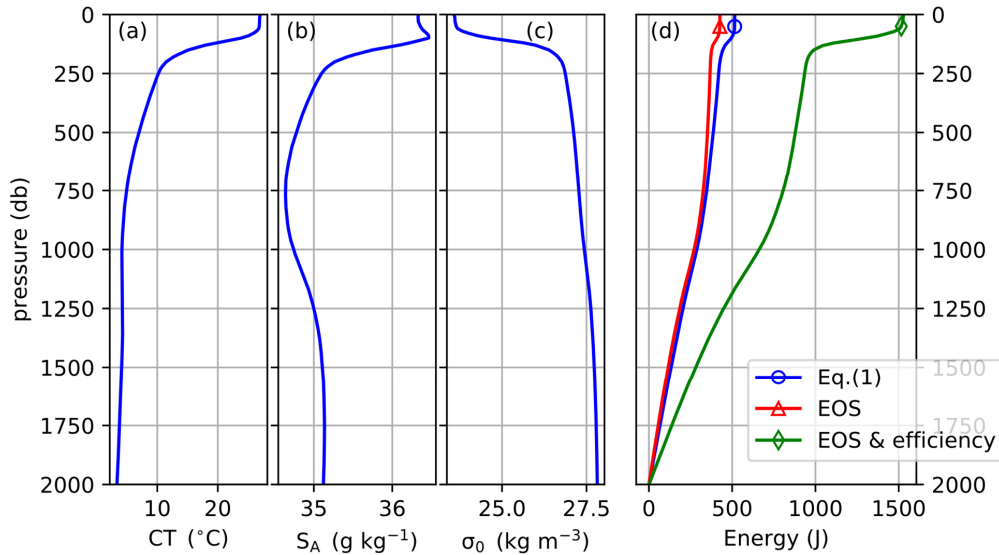


Figure 2. Profiles of a) conservative temperature, b) absolute salinity, c) potential density anomaly and d) energy consumed. The energy shown is that required to ascend from 2000 db toward surface estimated by the two last terms of Eq. (1) (blue), calculated from the full EOS of both water and hull (red), and also accounting for the pump efficiency from Fig. 1 (green). The example profile is from the tropical Atlantic (WOA18, 5.5°S, 25.5°W).

Equation (1) approximates the energy consumption well, but slightly overestimates compared to the full EOS formulation. This is primarily due to Eq. (1) neglecting the thermal expansion of the hull (which will assist the vehicle in reaching the surface).

10

2.2 Drag and power

The drag force acting on the vehicle may be expressed as (Khoury and Gillett, 1999):

$$\mathbf{F}_D = \frac{1}{2} \rho V_0^{2/3} C_{DV} |\mathbf{v}| \mathbf{v}, \quad (3)$$

where ρ is the density and C_{DV} is the volume-based surface area referenced coefficient of drag and \mathbf{v} is the 3D velocity vector of the vehicle. The area, $V_0^{2/3}$, can be replaced by any other reference area deemed suitable, such as the cross-section, length-squared, or as commonly done in aircraft design, the planform area of the wings (Hoerner, 1965). We choose the volume-based area since we expect drag to be dominated by skin friction which would scale with the wetted surface area. It should be

15



noted that different shapes will have different C_{DV} 's, but for a given shape, Eq. (3) is also indicative of the scaling of drag with vehicle volume.

Power required, i.e. the product of force and velocity, is thus:

$$P = \frac{1}{2} \rho V_0^{2/3} C_{DV} |\mathbf{v}|^3, \quad (4)$$

- 5 which was advertised in the introduction for the operation point “1/4 knot at 1/16 Watt”. We will use 13 cm s^{-1} (1/4 knot) as a reference velocity for the rest of the paper (note that we refer to the horizontal velocity and not $|\mathbf{v}|$ then).

2.3 Lift

For a winged vehicle, i.e. glider, lift is generated by the wings (Anderson, 2011; Thomas, 1999). It is known that wings are
10 not efficient in flow with low speeds (low Reynolds numbers) (Schmitz, 1975; McMasters, 1974); however, Sunada et al. (2002) demonstrate that wings at low Reynolds numbers will perform adequately. At low speeds lift-to-drag ratios will be low (5-10), but sufficient for ocean profiling.

The generation of lift also causes so-called induced drag. In other words, the drag coefficient is also a function of the vehicle's
15 angle relative to the direction of flow past the vehicle (the angle of attack). This effect is discussed in greater detail by Anderson (2011) and Thomas (1999), and is reasonably small here.

Categorized as flying vehicles, gliders (as discussed herein) operate in the regime of paper planes, small birds and large insects.

20 2.4 Velocity and hydrodynamic model

A hydrodynamic model is needed to calculate the vertical and horizontal components of the vehicle velocity arising from the action of the drag and lift forces. We define the hydrodynamic model in its abstract and implicit form:

Given expressions for vehicle drag and lift, and values for vehicle net buoyancy and orientation (pitch angle), apply
25 Newton's first law to solve for the velocity and the angle of attack in conditions of steady planar flight.

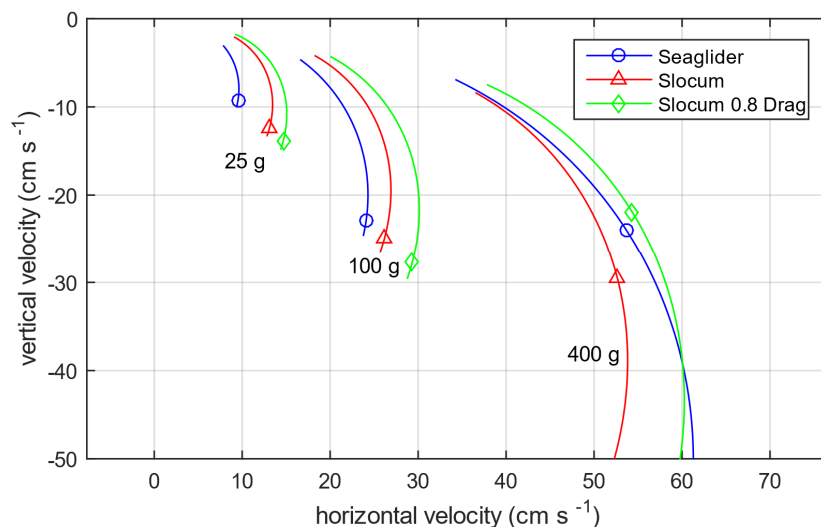
The vehicle will then glide through the water at an angle which is the sum of pitch angle and angle of attack (α). As each glider can have different expressions for drag and lift, and we here are concerned with a hypothetical glider, we do not elaborate



further on the hydrodynamic model and refer to Merkelbach, 2010; Graver, 2005 (sec. 5.1.3); Eriksen et al., 2001 and Sherman et al., 2001 for suitable expressions and parameterizations for lift and drag.

The angle of attack, however, deserves a comment in relation to lift and drag. Lift is proportional to angle of attack until the vehicle stalls and the production of lift reduces abruptly. In slow flight in particular, caution must be exercised not to exceed the stall angle of attack. Drag resulting from the generation of lift, i.e. induced drag, is proportional to α^2 , hence small for small values of α (but not negligible).

In Fig. 3 we show the results from hydrodynamic models of two widely-used gliders, the Seaglider (Eriksen et al., 2001; Frajka-Williams et al., 2011) and the Slocum glider (Webb et al., 2001; Merkelbach et al., 2010). We also show the performance, in terms of velocity, of a hypothetical Slocum glider with half the volume and 20% reduced drag. The reduction of volume is discussed in the next section. The 20% lower drag is justified since Eq. (3) indicates a drag reduction of 37% for a vehicle with half the volume. We deem 20% drag reduction to be a conservative estimate and will account for induced drag and parasitic drag from appendages not represented in Eq. (3). The lift and size of the wings of this hypothetical glider is left unchanged, but it might be necessary to increase the size of the wings slightly, to compensate for the reduction in lift from a smaller hull (Merkelbach et al., 2010).



5 **Figure 3. Performance as reflected in velocity (speed polars) of the Seaglider and the Slocum glider for three different net buoyancies of 25 g, 100 g and 400 g. Also shown, a hypothetical Slocum glider with half volume and 20% reduced drag. At low vertical speeds, the polars are cut off at an angle of attack of 5 degrees. The angle of attack decreases with increasing vertical velocity.**

Our discussion about the performance of a glider with smaller volume is preliminary. A careful glider design should include simulations (Lidtke et al., 2018), tank tests (Sherman et al., 2001), tank-tests in combination with simulations (Jagadeesh et al., 2009), and field tests where velocities are measured (Eriksen et al., 2001; Merckelbach et al., 2019). We find the
10 extrapolation for the hypothetical glider toward a slower velocity and lower buoyancy to be safe, and expect no significant Reynolds number effects, neither on lift nor drag. For speeds of $O(10 \text{ cm s}^{-1})$, glider Reynolds numbers are of order 10^4 and 10^5 for wing chords ($\sim 10 \text{ cm}$) and vehicle lengths ($\sim 100 \text{ cm}$), respectively.

We see in Fig. 3 that the modified Slocum glider with 80 % drag can achieve the desired horizontal velocity of 13 cm s^{-1} for a
15 vertical velocity of 5 cm s^{-1} at a net buoyancy force of 25 g (0.245 Newton), and at an acceptable angle of attack ($\alpha < 5$). This translates to a horizontal displacement through water of 2.6 m per 1 m of profile depth, and a cycle period of almost day for a 2000 m (2031 db) deep profile. The profile depth is chosen primarily to be compatible with Argo float sampling and also to escape surface currents which tend to be larger than currents at depth.



2.5 Preliminary discussion

All propulsive energy, pressure-volume work $p_0\Delta V_0$, initially supplied will eventually be used to overcome drag. We need not consider residual kinetic energy when the vehicle reaches the surface since it is of order 1 J at the low speeds involved here, and the terms of Eq. (1) are typically $O(1$ kJ).

5

Based on the definition of work we restate Eq. (1) with the drag expression, Eq. (3), inserted and integrated over a linear path s (distance) to the surface:

$$E = \frac{1}{2}\rho V_0^{2/3} C_{DV} |\mathbf{v}|^2 s + \frac{1}{2}V_0 p_0^2 (\kappa_w - \kappa_h) + V_0 \int_0^{p_0} p \frac{1}{\rho_0} \frac{d\rho}{dp} dp, \quad (5)$$

The following considerations follow from this equation. The speed and vehicle volume should be as small as possible. The factor $V_0^{2/3}$ in the first term might indicate that larger vehicles are better (Jenkins et al., 2003). This effect, however, is reduced
10 by the other terms which are proportional to vehicle volume, especially for a profiling vehicle which must traverse the pycnocline (third term). Hull compressibility should match that of seawater and this effect becomes increasingly important as profiling depth or pressure is increased.

The distance s to the surface is simply the depth for a vertically profiling float. Gliders, with displacement in the horizontal
15 direction, have a longer path depending on the glide angle. Thus, gliding inherently is a costlier endeavour than profiling vertically. Also, the equation indicates that the drag of the floats should be reduced for further energy savings. A stability disc was introduced to Argo primarily to ensure better stability and communication at the surface (Davis et al., 1992); however, it turns the float into a hydrodynamically blunt object. The stability disc is not needed on floats with faster telemetry and can be removed to lower the drag and energy consumed. Glider wings suppress heaving motions at the surface, offering relatively
20 stable communication conditions.

Equation (5) in itself indicates no optimum and instead a viable low energy consumption must be sought. Considerations including so-called hotelling loads arising from the energy consumed by sensors may introduce optima (Graver, 2005 sec. 7.2.1; Jenkins et al., 2003), but fall outside of the scope of this paper. For the vision presented here, a power-hungry sensor
25 must be avoided. This casts doubts whether a pumped C-T system could be employed on a slow glider. Unpumped conductivity cells have been used in gliders successfully, and after appropriate corrections (Lueck and Picklo, 1990; Garau et al., 2011) supply data of adequate quality. Such corrections will be challenging for a relatively slow flow past the sensor in a slow glider, but technically possible. Further calibrations and bias removal will also be possible against Argo floats and ship-based measurements.

30

A net buoyancy change of 50 cc at the transition from descent to ascent at 2000 db will consume 2.5 kJ, assuming a pump efficiency of 40% (Davis et al., 1992). Assuming that the dive-climb and turning behaviour of a 1000-m rated Seaglider is



representative for a slow glider, based on data from our glider missions operated from Bergen (not shown), we estimate that heading control will consume approximately 1 kJ per dive for the compass electronics and the roll or yaw mechanics. Detailed power budgets and engineering calculations is out of the scope of this study. We estimate that 1/16 Watt corresponds to 5.4 kJ day⁻¹. In other words, there will be 1.9 kJ remaining to expend on vehicle compressibility and ocean stratification (in a
5 dive-climb cycle period of one day). The power rating of 1/16 W is equivalent to 1.6 kg year⁻¹ of lithium primary batteries¹. These numbers are for vehicle propulsion and heading control only, and an operational glider should allow for an additional 1/16 W for sensors and communications.

In summary, we propose that a future slow glider (or float with wings) is feasible if the volume and speed are halved relative
10 to present gliders.

2.6 Navigation

In an environment where ocean current velocities typically exceed vehicle velocity, the navigation strategy must be adjusted, or else the vehicle is simply too slow for the normal navigational notions to be feasible. Specifically, navigation with traditional latitude and longitude waypoints along straight lines must be given up. Instead, we propose to navigate in Lagrangian
15 streamwise coordinates.

The Lagrangian streamwise navigation is achieved when the glider steers at right angles to ocean currents, and never attempts to compensate these currents. Thus, it will be able to step into or out of any coherent current structure – be it an eddy, a front, or a boundary current. Trajectories will be spirals and oblique winding lines, and not linear transects along bathymetric
20 gradients. The glider will operate in a semi-Lagrangian and semi-Eulerian mode. This, however, represents a significant upgrade to Lagrangian only floats.

We call the proposed method of navigation “Eulerian roaming”, where Eulerian refers to the streamline traversing capability and roaming to the Lagrangian drift. Colloquially one might be tempted to summarize the “Eulerian roaming” with two
25 common sayings or proverbs: “only dead fish follow the flow” and “never oppose a stronger force – out-maneuvre”. Davis et al. (2009) summarize it as follows: “*in a strong adverse current, steer rapidly across the current while making up ground where the currents are weak or favorable*”. To the extent possible, in weak or favourable currents, one might still apply regular navigation. Lekien et al. (2008) address this problem.

¹ Based on the current specification of the Electrochem 3B0036 DD Lithium primary cell:

https://electrochemsolutions.com/wp-content/uploads/sites/3/2017/05/3B0036_Datasheet-2017.pdf

Which is rated at 26 Ah, 3.2 V @ 1 A discharge, derated 10% for operation at 0 °C, cell mass of 213 g. This gives a specific energy content of 1.27 MJ kg⁻¹.



Stommel (1989) notes: “Having to decide what heading to choose stimulated modelers and descriptive oceanographers to exercise their minds and their computers.”, and we will attempt so in the following.

3. Experimental glider trajectory simulation

- 5 What missions would be possible with a glider traveling at only 13 cm s^{-1} ? In order to explore this question, we set up a simulation experiment using slow gliders. The gliders profile to 2000 m at a vertical velocity of 5 cm s^{-1} giving a cycle time of approximately one day (0.93 days to be precise).

3.1 Glider simulation in a reanalysed ocean

- 10 In the simulation the gliders will attempt to navigate the reanalysed ocean of Mercator GLORYS12 provided by the Copernicus Marine Environment Monitoring Service (CMEMS). This reanalysis is based on the real-time global ocean forecasting of CMEMS which is detailed by Lellouche et al. (2018). The reanalysis is eddy permitting with a horizontal resolution of $1/12^\circ$ (approximately 8 km) and 50 vertical levels. Temporally the output is given as daily means. For further details about the product we refer to the product user manual (CMEMS, 2018). For the purposes of the simulation here, the reanalysis need not
15 be accurate, but should be qualitatively realistic in order to mimic the real ocean to obtain representative simulated trajectories.

A fourth-order Runge-Kutta method with adaptive timesteps (RK45) is used to integrate glider and ocean velocities to yield the glider’s position. Maximum timestep is 600 s, but this is reduced to 60 s at the surface or near the bottom, and, otherwise adjusted automatically. The glider’s velocity is fixed at 13 cm s^{-1} in the horizontal plane and 5 cm s^{-1} in the vertical direction.

20

The velocity fields from the reanalysis product are linearly interpolated in space and time. The glider is advected in an Euclidian flat earth coordinate system, but re-projected per dive or if glider displacement exceeds 25 km. We observe no artefacts arising from the numerical scheme, linear interpolation, or spatial reference. The coarse bathymetry of the model with only 50 levels (steps increasing with depth) aggravates plunges steeper than the glider trajectory. When climbing bathymetry, the glider
25 would occasionally fly into these plunges and get stuck, and in such cases the glider was jerked up 5 m at the time until the glider was clear of the bathymetry. This is not an issue for real gliders equipped with altimeters.

The drift at the surface, for about 5 to 10 minutes while communicating in between dives, is ignored. The results, however, are not sensitive to this.

30



3.2 Navigational recipe

The glider is steered according to the principles set out in Sect. 2.6. To express a recipe for the Eulerian roaming navigation we formulate the following pseudo code or set of rules:

- 5 A) Traverse the ocean at $\pm 90^\circ$ relative to the measured average current over the previous dive (i.e. step into or out of a certain current feature).
- B) If depth-average current is not available, steer along or opposite to the gradient of the local bathymetry.
- C) If neither A) nor B), steer to the nearest current feature as indicated by satellite altimetry (or in future, as appearing in operational ocean now- and fore-casts).
- 10 D) If none of the above provide an informed heading, use an opportunistic heading deemed suitable for the mission in general.

The ordering of rules is not coincidental. They provide a hierarchy from the simplest autonomous modes (A and B²) to complex autonomous modes only achievable by reliance on external sensors (altimetry and models) and human or artificial intelligence (rule C and D respectively). In the experiments presented here, we do not attempt to automate the selection of active rule, but
15 future work must do this. For now, we rely on a skilled human pilot (a.k.a. artificial artificial intelligence).

We suppose that an up-to-date and accurate map of sea surface heights (SSH) is available, and to mimic this we use the SSH of the reanalysis as an input for the mode C above. As will be discussed in Sect. 4.5, we find this a reasonable assumption for
20 the near future.

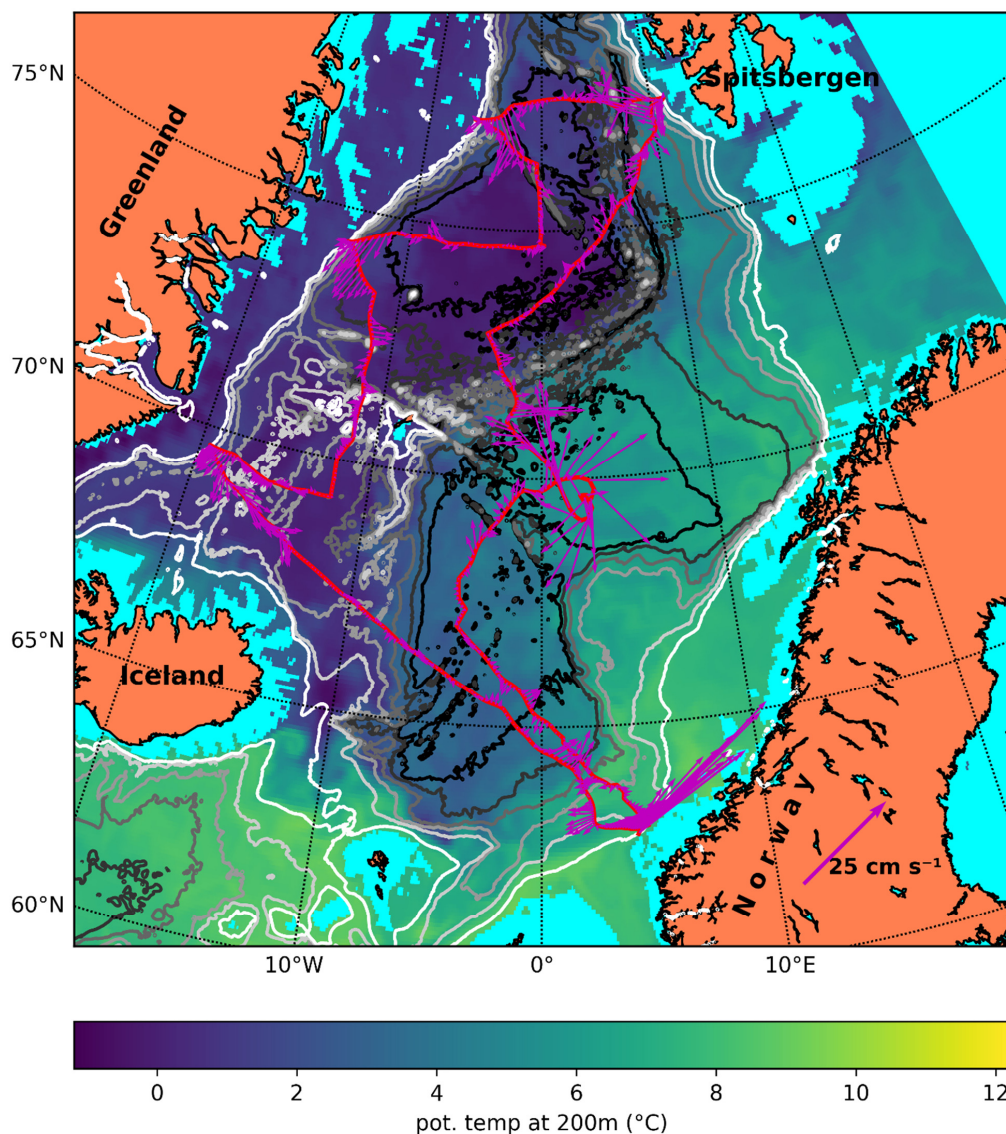
Occasionally the simulated glider visited ice-covered waters (eastern coast of Greenland), and we will here assume that the following under ice navigation can be executed; “head west under ice until the 500-m isobath, then turn back (without surfacing)”. This can be interpreted as an under-ice version of rule B above. Gliders today are equipped with ice-avoidance algorithms, which make similar scenarios applicable.

25 4 Results and discussion

4.1 The Nordic Seas

To test the slow glider, we first simulate a mission in the Nordic Seas where we attempt to visit known features and currents. The Nordic Seas are bounded by Norway, Greenland, the Greenland-Scotland Ridge in the south, and Fram Strait in the north.

² The glider could have a bathymetric map installed to autonomously calculate the topographic gradient.



5 Figure 4. Slow glider mission in the Nordic Seas. The glider mission starts at the south-eastern corner, off Norway at 62.8°N 4.25°E at the 500-m isobath and returns 1.5 years later. The glider track proceeds counter-clockwise. Bathymetric contours are drawn at 500 m intervals. Arrows indicate depth-averaged currents measured/experienced by the glider (e.g. Rudnick et al., 2018). The temperature at 200 m is also shown to indicate water mass distribution: $T > 4$ °C is typically Atlantic Water with $S > 35$. Note that the temperature at 200 m introduces an implicit isobath at 200 m leaving shelves in a light blue colour.



The mission, Fig. 4, starts off the west-cape of Norway in the south at the 500-m isobath (62.8°N, 4.25°E, 24 June 2015 at noon UTC). The glider first heads NW off the shelf-slope. In the middle of the Norwegian Sea the glider heads NE into the Lofoten Basin where it visits the semi-permanent anticyclone, the Lofoten Basin Eddy (Yu et al., 2017). It then crosses the Mohn Ridge into the Greenland Sea, proceeds NE to Spitsbergen where it turns westward at the 500-m isobath. Unless otherwise noted, we always turn the glider near the continental shelf break, at the 500-m isobath. The glider then crosses Fram Strait eastward to Greenland, and then proceeds south to the Greenland Sea. After visiting the east Greenland shelf again, the glider heads for the Iceland Sea, works another section toward the Greenland shelf, and heads SE to cross the Iceland and Norwegian Seas, reaching the recovery point where it was launched after 1.5 years at sea.

The glider performs 691 cycles. The energy consumption, using the technique and values described in Sect. 2, is 2.9 MJ (or 2.3 kg of Lithium primary batteries).

The mission executed can be summarized as follows: visit the main features of the Nordic Seas (excluding the shallow Barents Sea). Due to the relatively modest currents encountered we find that we may “ferry” the glider around according to rule D (Sect. 3.2) in the central parts of the basins. Near boundaries we used rules A and B, which often resulted in the same heading.

4.2 Gulf Stream

In order to test the slow glider in a more challenging, energetic environment, we visit the Gulf Stream.

This mission, Fig. 5, starts at the coast of Florida/Georgia (again at the 500-m isobath, 30°N, 80°W, 27 September 2015, noon UTC). The glider is rapidly advected NE by the strong currents, but is able to probe the Gulf Stream twice before it, together with the Gulf Stream, leaves the shelf break (35°N). The rapid advection with the stream continues, but not uncontrollably: at 66°W the glider intentionally visits a cold-core ring. Around 56°W the glider is caught up in an energetic meander of the Gulf Stream. The time and location of where the glider was ejected out of this meander was somewhat coincidental.

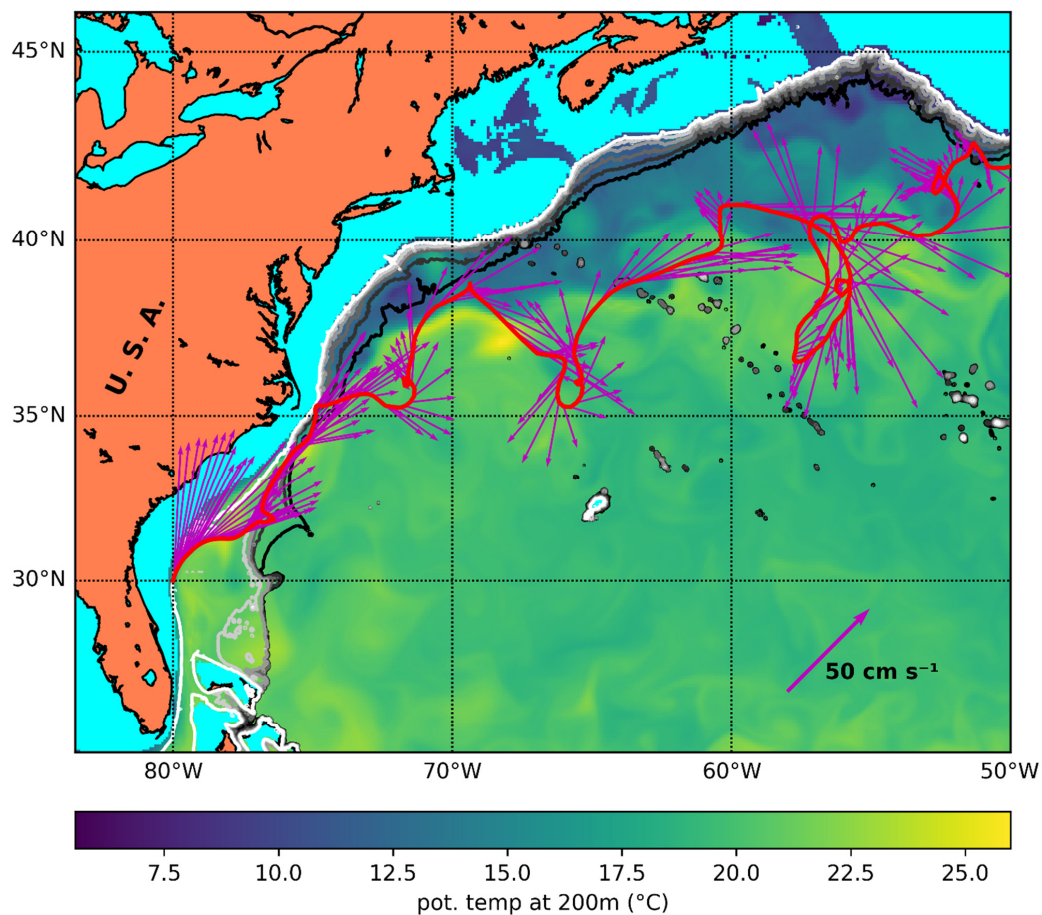


Figure 5. Slow glider in the Gulf Stream off the east coast of the USA. The glider starts at the coast of Florida at the 500 m-isobath. Bathymetric contours drawn at 500 m intervals to 3000 m. The temperature at 200 m is also shown to represent the water mass distribution.

5

The Eularian roaming through this energetic environment is realistic and has been successfully performed previously. Using Spray gliders, Todd et al. (2016) collected transects across the Loop Current in the Gulf of Mexico, and across the Gulf Stream between 35-41°N, downstream of Cape Hatteras. To collect these sections, the gliders were instructed to attempt to fly at right



angles to the measured flow (horizontal speed of the Spray glider through the water was approximately 25 cm s^{-1} , the vertically averaged speed of the western boundary current regularly exceeded 1 m s^{-1}). The Spray gliders were operated to a maximum 1000 m depth, using the so-called “current-crossing navigation mode”, in which the glider adjusts its heading after each dive to steer a fixed direction relative to measured depth-averaged currents (Todd et al., 2016). This navigation mode is similar to
5 our rule A. It is thus demonstrated that a glider can persistently progress across a strong and variable current without continuous intervention of a pilot.

Since our hypothetical glider ended up off Newfoundland, it was natural to continue the mission into the northern branch of the North Atlantic Current (NAC), and the continuation of the mission is shown in Fig. 6.
10

At 55°N the decision is made to visit the southern tip of Greenland rather than continuing up along the Reykjanes Ridge to Iceland. From the southern tip of Greenland, it would be possible to work the Subpolar Gyre, but we opted to head for recovery at Iceland where the glider arrives after 721 cycles, after 1.8 years. Energy consumption is estimated at 3.4 MJ, equivalent to approximately 2.7 kg of Lithium primary batteries.
15

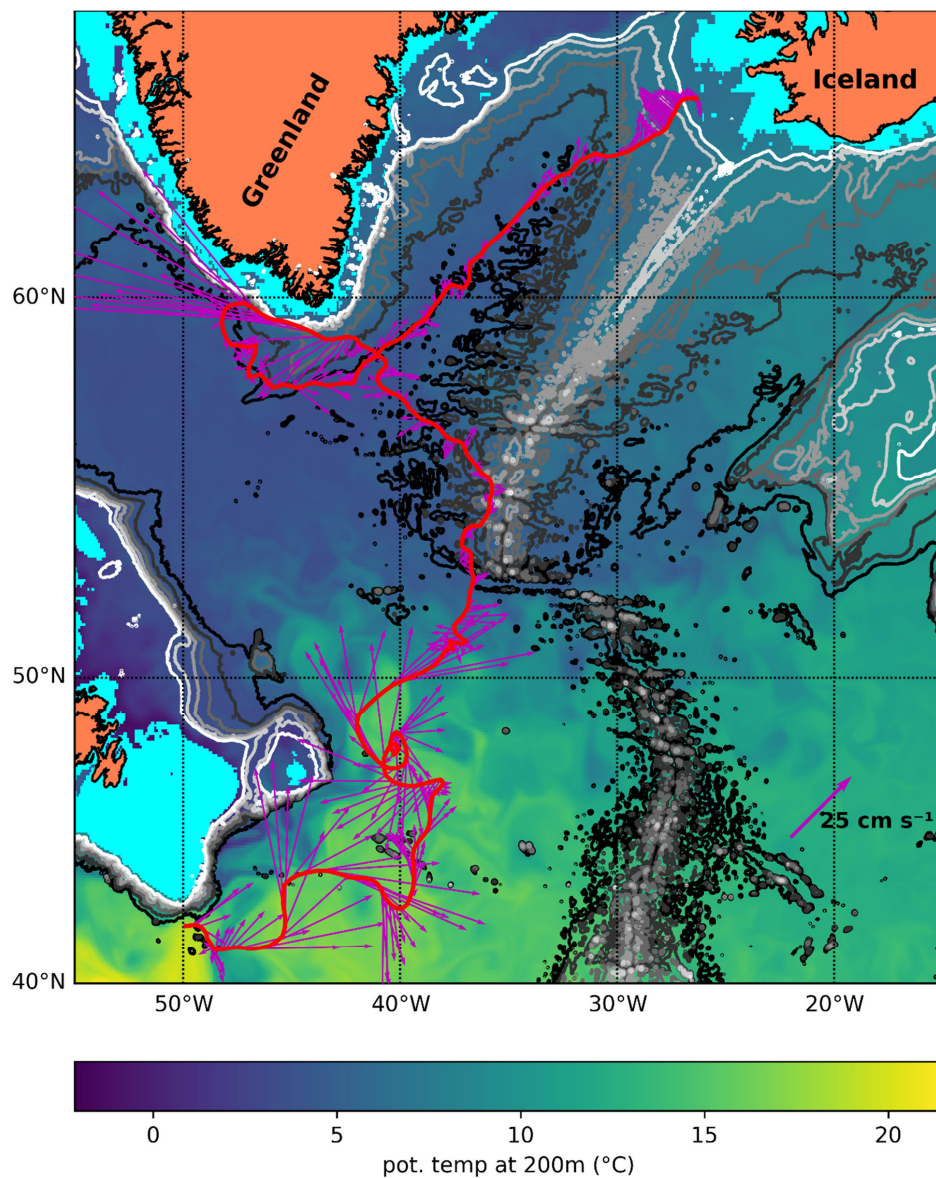


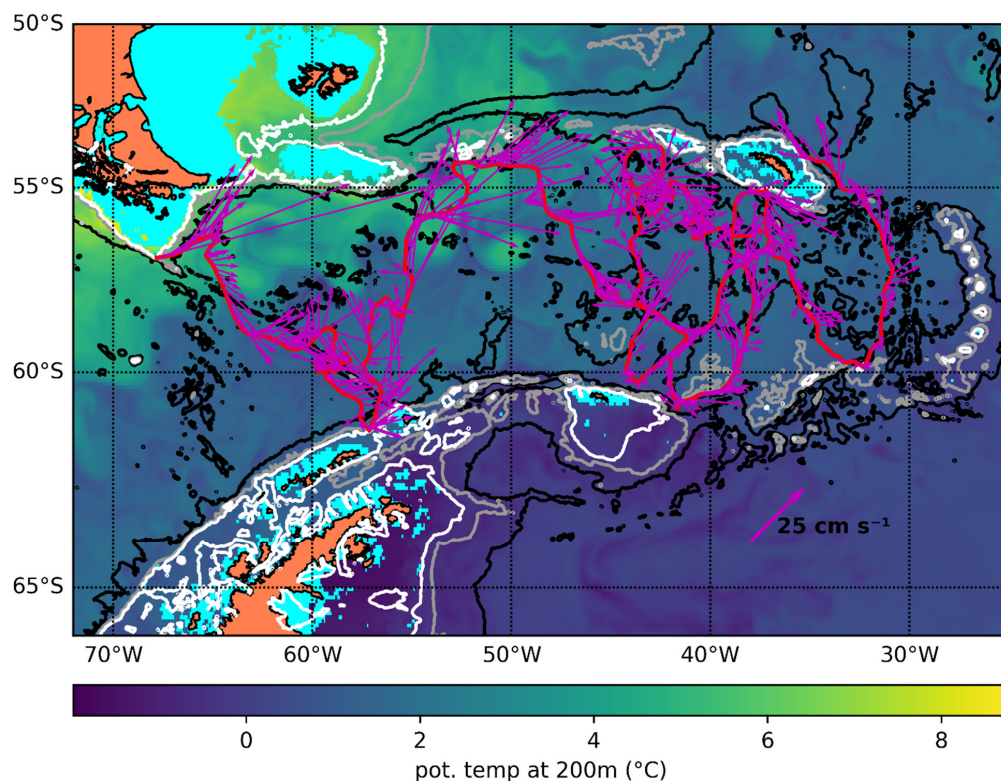
Figure 6. Slow glider mission continued into the North Atlantic Current. The glider ends at Iceland in the north-eastern corner of the map. Bathymetric contours are at 500 m intervals. The temperature at 200 m is also shown.



4.3 Drake Passage

The Drake Passage between the South-American and the Antarctic continents probably represents the world's most interesting choke point (or area) as the Antarctic Circumpolar Current (ACC) must pass through it, and we simulate a mission here as well.

- 5 The glider is launched off the tip of South America (67.8°W , 56.97°S , 26 May 2015), and attempts a transect southward across the Drake Passage. For the Drake Passage part of this mission, we attempt to do linear transects with a direct crossing of the passage. However, the slow glider is advected out of the passage in two transects (Fig. 7). This is due to the general flow of the ACC in the passage - it is simply not possible to perform a transect without drift-off here with a slow glider.



10

Figure 7. Slow glider trajectory in the Drake Passage, launched off the tip of South-America (NW corner). Bathymetric contours are at 500 m, 1500 m and 3000 m. Mission ends at South Georgia Island.



After being advected out of the Drake Passage, the glider is capable of staying in the Scotia Sea to the east, where it executes a distorted butterfly before recovery at South Georgia Island after 638 cycles. Energy consumption is estimated at 3.1 MJ (2.5 kg of Lithium primary batteries).

5

4.4 Discussion and summary

In the Nordic Seas, the slow roaming glider or winged float would significantly complement the Argo float array in the area. The slow glider is able to sample fronts, eddies and boundary currents as well as basin interiors, whereas Argo floats tend to be constrained within the 2000-m isobath of the basin where they were launched (Voet et al., 2010).

10

The mission exemplified in the Nordic Seas targets to observe the circulation and water mass properties at key locations in the Nordic Seas. This region is a key component of the Atlantic Meridional Overturning Circulation (AMOC) in which warm waters flow northward near the surface and cold waters return equatorward at depth. The variability of the Atlantic Water characteristics is of importance to the climate in western Europe, weather and sea ice conditions, on primary production and fish habitats. The Nordic Seas are an important area for water mass transformation (Mauritsen et al., 1996, Isachsen et al., 2007). The newly produced or transformed dense waters return southward between Iceland and Greenland through Denmark Strait, and east of Iceland across the Greenland-Scotland Ridge, contributing to the lower limb of the AMOC. Transects worked by a slow glider will provide highly needed and crucial observations in the Norwegian Atlantic Current at Svinøy (Høydalsvik et al., 2013), in the deep convection regions in the Greenland and Iceland Seas (Brakstad et al., 2019; Våge et al., 2018), and in the Lofoten Basin which is a hotspot for Atlantic water transformation (Bosse et al., 2018). The transect in Fram Strait will capture the properties and variability in the return Atlantic Water along the Polar Front in the northern Nordic Seas (de Steur et al., 2014). Particularly the interior Greenland and Iceland Seas, and the east Greenland shelf are under-sampled, and the observations will be useful in understanding the role of wintertime open ocean convection in the western basins of the Nordic Seas and the effect of an ice edge in retreat toward Greenland (Moore et al., 2015; Våge et al., 2018).

25

Similarly, slow glider observations from the Gulf Stream and the Drake Passage mission examples will advance characterization of mean pathways, mesoscale variability and energetics in climatologically important regions. Furthermore, the Eulerian roaming will allow sampling of snapshots of mesoscale eddies. In the Lofoten Basin, a similar navigation option was used to spiral in and out of the Lofoten Basin Eddy by instructing the glider to fly at a set angle from the measured depth-averaged current (Yu et al., 2017). Profiles collected from such missions will be useful in characterising the coherent eddy structures, filaments along fronts and around mesoscale eddies (see Testor et al., 2019, and the references therein). An additional strength of glider observations is the ability to infer absolute geostrophic currents (e.g., Høydalsvik et al., 2013).

30



The transects resulting from Eulerian roaming are different than and less regular compared to the sections occupied by ship-based surveys, typically normal to the isobath orientation. Strong current speed exceeding the speed of gliders will result in oblique sampling. However, the local streamwise coordinate system (Todd et al., 2016), applied to for instance the Gulf Stream and the Loop Current, is demonstrated to be a powerful approach to calculate volume transport rates, potential vorticity structures and provide insight into processes governing flow instabilities.

Regarding the navigation in general we note that it was easier and required less skill and intelligence in strong currents, when only a choice between left or right could be made (rule A), this often coincided with bathymetry (rule B). In weak currents, the navigational options increased, and we resorted to skilful and intelligent use of rules C and D. The intelligence, however, does not seem to be very advanced as it essentially is an image processing task on the SSH image (albeit a vector image) for local steering decisions. Global steering decisions such as general area to visit will require some oceanographic intelligence and is probably not suitable for automation.

While we have shown tracks of individual gliders, it should be clear that the impact of a slow roaming glider concept will increase when employed in large numbers. Also, the simulations here where a few gliders are hand-piloted does not show the full potential of the approach. Future simulations can include a large number of gliders to train artificial intelligence to perform the piloting.

4.5 Outlook – altimetry, models and Argo

The upcoming Surface Water and Ocean Topography (SWOT) altimetry mission (Fu and Ubelmann, 2014) will yield an unprecedented view of the ocean surface. Within the swath of the altimeter, approximately 120 km wide, we will see snapshots of oceanic mesoscale and sub-mesoscale structure and variability, albeit at a slower repeat cycle of 21 days. However, advances in processing (Ubelmann et al., 2015) will likely fill the temporal gaps in a dynamically meaningful way, leading to maps of SSH with high temporal resolution, and enable operational model capabilities and applications hereto unimagined (Bonaduce et al., 2018).

There was always a strong coupling among altimetry, models and observations of ocean interior (Le Traon, 2013). The Argo programme's name was chosen because of its affinity with the then upcoming altimetric mission of the Jason satellites. Argo was the ship of Jason and the argonauts in their quest for knowledge. As altimetry advances, it is necessary to ask whether Argo and our quest for knowledge should advance in parallel. While SWOT altimetry will yield a (sub-)mesoscale view of the ocean, Argo remains primarily a basin and seasonal scale technology. We propose that the slow glider concept, essentially the gliding float that the Argo design specification calls for, could add a mesoscale component to Argo. This natural development



enhances the Argo as a component of the global ocean observation system, and supplements the regular glider operations, which are at present regional and process-oriented (Testor et al., 2009; Liblik et al., 2016; Testor et al., 2019).

Since we propose to steer the glider using maps of SSH and model output, the proposed slow glider would also provide an
5 even tighter integration of altimetry, models and observations of ocean interior.

Other developments in the Argo programme further suggest a progression in this direction. Floats are increasingly being equipped with more advanced sensor suites in the biogeochemical program (Riser et al., 2016; Roemmich et al., 2019). A new ArgoMix component with turbulence sensors (thermistors and airfoil shear probes), is also under consideration to map the
10 spatial and temporal patterns of ocean mixing. The capabilities of the sensors call for a more advanced vehicle navigating the mesoscale ocean as well.

In the example missions presented here the glider is launched off the coast and recovered at the coast. Logistical challenges aside, this opens up new participatory dimensions with coastal communities. It might also be judged as a more environment
15 friendly alternative to the Argo floats which are submitted to the ocean upon mission completion.

5 Conclusions

We show that oceanographic useful and sensible trajectories are possible with a slow roaming glider. Looking back at the quote from the Argo design specification in the introduction, one might say that the expectations to a gliding float were too
20 high. The notion of “a fixed location or along a programmed track” is not feasible due to energy constraints limiting velocity, nor is the notion indispensable or necessary. Even though we here mostly explore the concept of “Eulerian roaming” navigation, the slower and smaller glider will be able to maintain station (virtual mooring) or follow well-defined section lines at sites where currents are weak.

25 The velocity of 25 cm s^{-1} is unrealistic for endurance missions of years given the current status of battery (and/or energy harvesting) technology. The speed mentioned by Stommel (1989) in his vision, was merely an example and should not be a constraint. We have shown that 13 cm s^{-1} is sufficient to navigate the ocean giving due consideration to energy/power constraints.

30 Future work should firstly attempt to verify the concepts and findings presented here using existing gliders in the real ocean. The gliders should be operated at a lower speed than usual (refer to Fig. 3) and navigated as outlined in Sect. 2.6 and 3.2. Future work should also include observing system simulation experiments (e.g. L'Hévéder et al., 2013; Chapman and Sallée,



2017) whereby data assimilation from fleets of slow gliders demonstrate benefit and increased model skill in operational models. The piloting should also be automated, and work might be directed at developing artificial intelligence doing day-to-day piloting.

- 5 This paper demonstrates that slow gliders or Argo floats with wings are desirable and potentially feasible – the slow glide is on.

Data availability. The data used in this paper are made freely available by CMEMS (CMEMS, 2018) and in the World Ocean Atlas 2018 (<https://www.nodc.noaa.gov/OC5/woa18/>).

Author contribution. E.M. Bruvik and I. Fer wrote the paper with revisions and suggestions from K. Våge and P.M. Haugan. E.M. Bruvik performed the simulation experiments.

- 15 *Competing interests.* I. Fer is a member of the editorial board of Ocean Science, but other than that the authors declare that they have no conflict of interest.

Acknowledgements. The glider team at the Geophysical Institute spurred many interesting discussions about gliders and glider technology. The glider activities here were initially financed by the Research Council of Norway under grant no. 197316.

20

References

- Anderson J.D.: Fundamentals of Aerodynamics, 5th Edition McGraw-Hill, New York, ISBN 978-007-128908-5, 2011
- Bonaduce A., Benkiran M., Remy E., Le Traon P.Y. and Garric G.: Contribution of future wide-swath altimetry missions to
25 ocean analysis and forecasting, *Ocean Science*, 14, 1405-1421, 2018
- Bosse A., Fer I., Sjøiland H., and Rosby T.: Atlantic water transformation along its poleward pathway across the Nordic Seas, *Journal of Geophysical Research: Oceans*, 123, 6428–6448, <https://doi.org/10.1029/2018JC014147>, 2018
- Brakstad A., Våge K., Håvik L. and Moore G.W.K.: Water mass transformation in the Greenland Sea during the period 1986-2016, *J. Phys. Oceanogr.*, 49, 121-140, 2019
- 30 Chapman C. and Sallée J.B.: Can we reconstruct mean and eddy fluxes from Argo floats?, *Ocean Modelling*, 120, 83-100, 2017



- CMEMS: Product User Manual For the Global Ocean Physical Reanalysis product
GLOBAL_REANALYSIS_PHY_001_030, Issue 1.1, 2018 available at:
<http://cmems-resources.cls.fr/documents/PUM/CMEMS-GLO-PUM-001-030.pdf>
See also: [http://marine.copernicus.eu/services-portfolio/access-to-](http://marine.copernicus.eu/services-portfolio/access-to-products/?option=com_csw&view=details&product_id=GLOBAL_REANALYSIS_PHY_001_030)
5 [products/?option=com_csw&view=details&product_id=GLOBAL_REANALYSIS_PHY_001_030](http://marine.copernicus.eu/services-portfolio/access-to-products/?option=com_csw&view=details&product_id=GLOBAL_REANALYSIS_PHY_001_030) (last visited
30.Mar.2019)
- Davis R.E., Webb D.C., Regier L.A. and Dufour J.: The Autonomous Lagrangian Circulation Explorer (ALACE), J. of
Atmospheric and Oceanic Technology, 9, 264-285, 1992
- Davis R.E., Sherman J.T. and Dufour J.: Profiling ALACEs and Other Advances in Autonomous Subsurface Floats, J. of
10 Atmospheric and Oceanic Technology, 18, 982-993, 2001
- Davis R.E., Eriksen C.C. and Jones C.P.: Autonomous Buoyancy-driven Underwater Gliders, in: The Technology and
Applications of Autonomous Underwater Vehicles, Griffiths G, ed., Taylor and Francis, London, 37-58, 2002
- Davis R.E., Leonard N.E. and Fratantoni D.M.: Routing strategies for underwater gliders, Deep-Sea Research II, 56, 173-
187, 2009
- 15 de Steur L., Hansen E., Mauritzen C., Beszczynska-Moeller A., Fahrbach E.: Impact of recirculation on the East Greenland
Current: results from moored current meter measurements between 1997 and 2009, Deep Sea Research Part I:
Oceanographic Research Papers, 92, 26-40, 2014
- Eriksen C.C., Osse T.J., Light R.D., Wen T., Lehman T.W., Sabin P.L., Ballard J.W. and Chiodi A.M.: Seaglider: A Long-
Range Autonomous Underwater Vehicle for Oceanographic Research, IEEE J. of oceanic Engineering, 26, 424-436,
20 2001
- Frajka-Williams E., Eriksen C.C., Rhines P.B. and Harcourt R.R.: Determining Vertical Water Velocities from Seaglider, J.
of Atmospheric and Oceanic Technology, 28, 1641-1656, 2011
- Fu L-L. and Ubelmann C.: On the Transition from Profile Altimeter to Swath Altimeter for Observing Global Ocean Surface
Topography, J. of Atmospheric and Oceanic Tech., 31, doi:10.1175/JTECH-D-13-00109.1, 2014
- 25 Garau B., Ruiz S., Zhang W.G., Pascual A., Heslop E., Kerfoot J., and Tintoré J.: Thermal Lag Correction on Slocum CTD
Glider Data, J. of Atmospheric and Oceanic Tech., 28, 1065-1071, 2011
- Gould W.J.: From Swallow floats to Argo—the development of neutrally buoyant floats, Deep-Sea Research II, 52, 529–
543, 2005
- Graver J.G.: Underwater Gliders: Dynamics, Control and Design, PhD Thesis, Princeton University, 2005
- 30 Hoerner S.F.: Fluid-dynamic Drag, Hoerner Fluid Dynamics, Bakersfield, CA, USA, LCCCN 64-19666, 1965
- Høydalsvik F., Mauritzen C., Orvik K.A., LaCasce J.H., Lee C.M. and Gobat J.: Transport estimates of the Western Branch
of the Norwegian Atlantic Current from glider surveys, Deep-Sea Research I, 79, 86–95, 2013



- Håvik L., Pickart R.S., Våge K., Torres D., Thurnherr A.M., Beszczynska-Moeller A., Walczowski W., and Von Appen W.J.: Evolution of the East Greenland Current from Fram Strait to Denmark Strait: Synoptic measurements from summer 2012, *J. Geophys. Res. Oceans*, 122, 1974–1994, doi:10.1002/2016JC012228, 2017
- 5 IOC, SCOR and IAPSO: The international thermodynamic equation of seawater - 2010: calculations and use of thermodynamic properties, Intergovernmental Oceanographic Commission, Manuals and Guides No.56, UNESCO (English), 196, 2010
- Isachsen P.E., Mauritzen C. and Svendsen H.: Dense water formation in the Nordic Seas diagnosed from sea surface buoyancy fluxes, *Deep Sea Research Part I: Oceanographic Research Papers*, 54, 1, 22-41, 2007
- Jagadeesh P., Murali K. and Idichandy V.G.: Experimental investigation of hydrodynamic force coefficients over AUV hull form, *Ocean Engineering*, 36, 113-118, 2009
- 10 Jenkins S.A., Humphreys D.E., Sherman J., Osse J., Jones C., Leonard N., Graver J., Bachmayer R., Clem T., Carrol P., Davis P., Berry J., Worley P. and Wasyl J.: Underwater Glider System Study, Scripps Institution of Oceanography, Technical Report No. 53, 2003
- Khoury G.A. and Gillett J.D. (eds.): *Airship Technology*, Cambridge Univ. Press, Cambridge, UK ISBN 978-0521430746, 1999
- 15 Kobayashi T., Asakawa K., Watanabe K., Ino T., Amaike K., Iwamiya H., Tachikawa M., Shikama N. and Mizuno K.: New buoyancy engine for autonomous vehicles observing deeper oceans, *Proc. 20th Int. Offshore Polar Eng. Conf.* 2, 401–405, 2010
- L'Hévéder B., Mortier L., Testor P., and Lekien F.: A Glider Network Design Study for a Synoptic View of the Oceanic Mesoscale Variability, *J. of Atmospheric and Oceanic Tech.*, 30, 1472-1493, 2013
- 20 Le Traon P.Y.: From satellite altimetry to Argo and operational oceanography: three revolutions in oceanography, *Ocean Science*, 9, 901-915, 2013
- Lee C.M. and Rudnick D.L.: *Underwater Gliders*, in *Observing the Oceans in Real Time*, Springer Oceanography, Cham, Switzerland, ISBN 978-3-319-66492-7, 2018
- 25 Lekien F., Mortier L. and Testor P.: Glider Coordinated Control and Lagrangian Coherent Structures, *IFAC Proceedings Volumes*, 41, 1, 125-130, 2008
- Lellouche J.M., Greiner E., Le Galloudec O., Garric G., Regnier C., Drevillon M., Benkiran M., Testut C.E., Bourdalle-Badie R., Gasparin F., Hernandez O., Levier B., Drillet Y., Remy E., and Le Traon P.Y.: Recent updates to the Copernicus Marine Service global ocean monitoring and forecasting real-time 1/12° high-resolution system, *Ocean Science*, 14, 1093–1126, <https://doi.org/10.5194/os-14-1093-2018>, 2018
- 30 Liblik T., Karstensen J., Testor P., Alenius P., Hayes D., Ruiz S., Heywood K.J., Pouliquen S., Mortier L. and Mauri E.: Potential for an underwater glider component as part of the Global Ocean Observing System, *Methods in Oceanography*, 17, 50-82, 2016



- Lidtke A.K., Turnock S.R. and Downes J.: Hydrodynamic Design of Underwater Gliders Using k-kL- ω Reynolds Averaged Navier–Stokes Transition Model, *IEEE J. of oceanic Engineering*, 43, 2, 356-368, 2018
- Locarnini R.A., Mishonov A.V., Baranova O.K., Boyer T.P., Zweng M.M., Garcia H.E., Reagan J.R., Seidov D., Weathers K., Paver C.R. and Smolyar I.: *World Ocean Atlas 2018, Volume 1: Temperature.*, Mishonov A, Technical Ed.; in preparation, 2018
- 5 Lueck R.G. and Picklo J.J.: Thermal inertia of conductivity cells: Observations with a Sea-Bird cell, *J. Atmos. Oceanic Technol.*, 7, 756–768, 1990
- Mauritzen, C.: Production of dense overflow waters feeding the North Atlantic across the Greenland-Scotland Ridge. Part 1: evidence for a revised circulation scheme, *Deep Sea Res. I: Oceanographic Research Papers*, 43, 6, 769–806, 1996
- 10 Merckelbach L., Berger A., Krahmman G., Dengler M. and Carpenter J.: A dynamic flight model for Slocum gliders and implications for turbulence microstructure measurements, *J. Atmos. Oceanic Technol.*, in press, doi:10.1175/JTECH-D-18-0168.1, 2019
- Merckelbach L., Smeed D. and Griffiths G.: Vertical Water Velocities from Underwater Gliders, *J. of Atmospheric and Oceanic Technology*, 27, 547-563, 2010
- 15 Moore G.W.K., Våge K., Pickart R.S. and Renfrew I.A.: Decreasing intensity of open-ocean convection in the Greenland and Iceland seas, *Nature Climate Change*, 5, 877–882, 2015
- Mork K.A., Skagseth Ø., Ivshin V., Ozhigin V., Hughes S.L. and Valdimarsson H.: Advective and atmospheric forced changes in heat and fresh water content in the Norwegian Sea, 1951–2010, *Geophys. Res. Lett.*, 41, 6221–6228, doi:10.1002/2014GL061038, 2014
- 20 Price J.F.: Lagrangian and Eulerian Representations of Fluid Flow: Kinematics and the Equations of Motion, available at: <http://www.whoi.edu/science/PO/people/jprice/class/ELreps.pdf>, 2006
- Riser S.C., Freeland H.J., Roemmich D., Wijffels S., Troisi A., Belbéoch A., Gilbert D., Xu J., Pouliquen S., Thresher A., Le Traon P.Y., Maze G., Klein B., Ravichandran M., Grant F., Poulain P.M., Suga T., Lim B., Sterl A., Sutton P., Mork K.A., Vélez-Belchí P.J., Ansong I., King B., Turton J., Baringer M. and Jayne S.R.: Fifteen years of ocean observations
- 25 with the global Argo array, *Nature Climate Change*, 6, 145-153, 2016
- Roemmich D., Boebel O., Freeland H., King B., Le Traon P.Y., Molinari R., Brechner Owens W., Riser S., Send U., Takeuchi K. and Wijffels S.: On The Design and Implementation of Argo – A Global Array of Profiling Floats, available at: <http://www.argo.ucsd.edu/argo-design.pdf>, 1999
- Roemmich D., Johnson G.C., Riser S., Davis R., Gilson J., Brechner Owens W., Garzoli S.L., Schmid C. and Ignaszewski
- 30 M.: The Argo Program: Observing the Global Ocean with Profiling Floats, *Oceanography*, 22, 2, 34-43, 2009
- Roemmich D., Alford M., Claustre H., Johnson K., King B., Moum J., Oke P., Brechner Owens W., Pouliquen S., Purkey S., Scanderbeg M., Suga T., Wijffels S., Zilberman N., et al.: On the future of Argo: An enhanced global array of physical and biogeochemical sensing floats, *Frontiers in Marine Science*, in review, 2019



- Rudnick D.L.: Ocean Research Enabled by Underwater Gliders, *Annu. Rev. Mar. Sci.*, 8, 519–541, doi:10.1146/annurev-marine-122414-033913, 2016
- Rudnick D.L., Sherman J.T. and Wu A.P.: Depth-Average Velocity from Spray Underwater Gliders, *J. of Atmospheric and Oceanic Technology* 35 1665-1673 doi:10.1175/JTECH-D-17-0200.1, 2018
- 5 Schmitz F.W.: Aerodynamik des Flugmodells – Tragflügelmessungen I + II bei kleinen Geschwindigkeiten, Luftfahrtverlag Walter Zuerl, Steinebach-Woerthsee, Germany, 6th printing/edition, 1975
- Sherman J., Davis R.E., Owens W.B. and Valdes J.: The Autonomous Underwater Glider “Spray”, *IEEE J. of Oceanic Engineering*, 26, 437-446, 2001
- Stommel H.: The Slocum Mission, *Oceanography*, 2, 22-25, 1989
- 10 Sunada S., Yasuda T., Yasuda K. and Kawachi K.: Comparison of Wing Characteristics at an Ultralow Reynolds Number, *J. of Aircraft*, 39, 2, 331-338, 2002
- Testor P., Meyers G., Pattiaratchi C., Bachmayer R., Hayes D., Pouliquen S., Petit de la Villeon L., Carval T., Ganachaud A., Gourdeau L., Mortier L., Claustre H., Taillandier V., Lherminier P., Terre T., Visbeck M., Karstensen J., Krahnmann G., Alvarez A., Rixen M., Poulain P.-M., Osterhus S., Tintore J., Ruiz S., Garau B., Smeed D., Griffiths G., Merckelbach L., Sherwin T., Schmid C., Barth J.A., Schofield O., Glenn S., Kohut J., Perry M.J., Eriksen C., Send U., Davis R., Rudnick D., Sherman J., Jones C., Webb D., Lee C., Owens B.: Gliders as a component of future observing systems, in: Hall J. (ed.), Harrison D.E. (ed.), Stammer D. (ed.) *Proceedings of the OceanObs'09 conference: ocean information for society: sustaining the benefits, realizing the potential*. Paris: ESA, (WWP-306), 22 p. (ESA Publication; WWP-306). Venice, Italy, 2009
- 15 Testor P., de Young B., Rudnick D., Glenn S., Hayes D., Lee C.M., Pattiaratchi C., Hill K., Heslop E., Turpin V., et al.: OceanGliders: a component of the integrated GOOS, *Frontiers in Marine Science*, in review, 2019
- Thomas F.: *Fundamentals of Sailplane Design – Grundlagen fuer den Entwurf von Segelflugzeugen*, College Park Press, Maryland, USA, ISBN 0-9669553-0-7, 1999
- Todd R.E., Brechner Owens W. and Rudnick D.L.: Potential Vorticity Structure in the North Atlantic Western Boundary Current from Underwater Glider Observations, *Journal of Physical Oceanography*, 46, 327-348, 2016
- 25 Ubelmann C., Klein P. and Fu L.L.: Dynamic Interpolation of Sea Surface Height and Potential Applications for Future High-Resolution Altimetry Mapping, *J. of Atmospheric and oceanic Technology*, 32, 177-184, 2015
- Voet G., Quadfasel D., Mork K.A. and Sjøiland H.: The mid-depth circulation of the Nordic Seas derived from profiling float observations, *Tellus A: Dynamic Meteorology and Oceanography*, 62, 4, 516-529, 2010
- 30 Våge K., Papritz L., Håvik L., Spall M.A. and Moore G.W.K.: Ocean convection linked to the recent ice edge retreat along east Greenland, *Nature Communications*, 9, doi:10.1038/s41467-018-03468-6, 2018
- Webb D.C., Simonetti P.J. and Jones C.P.: SLOCUM: An Underwater Glider Propelled by Environmental Energy, *IEEE J. of Oceanic Engineering*, 26, 447-452, 2001



Yu L.S., Bosse A., Fer I., Orvik K.A., Bruvik E.M., Hessevik I., and Kvalsund K.: The Lofoten Basin eddy: Three years of evolution as observed by Seagliders, *J. Geophys. Res. Oceans*, 122, 6814–6834, doi:10.1002/2017JC012982, 2017

Zweng M.M., Reagan J.R., Seidov D., Boyer T.P., Locarnini R.A., Garcia H.E., Mishonov A.V., Baranova O.K., Weathers K., Paver C.R. and Smolyar I.: World Ocean Atlas 2018, Volume 2: Salinity., Mishonov A., Technical Ed.; in

5 preparation, 2018