

Variability of distributions of wave set-up heights along a shoreline with complicated geometry

Tarmo Soomere^{1,2}, Katri Pindsoo¹, Nadezhda Kudryavtseva¹, Maris Eelsalu¹

¹Laboratory of Wave Engineering, Department of Cybernetics, School of Science, Tallinn University of Technology, Akadeemia tee 21, Tallinn, 12618, Estonia

²Estonian Academy of Sciences, Kohtu 6, Tallinn, 10130, Estonia

Correspondence to: Tarmo Soomere (soomere@cs.ioc.ee)

Abstract. The phenomenon of wave set-up may substantially contribute to the formation of devastating coastal flooding in certain coastal areas. We study the appearance and properties of empirical probability density distributions of the occurrence of different set-up heights on an approximately 80 km long section of coastline near Tallinn in the Gulf of Finland, the eastern Baltic Sea. The study area is often attacked by high waves propagating from various directions and the typical approach angle of high waves varies considerably along the shore. The distributions in question are approximated by an exponential distribution with a quadratic polynomial as the exponent. Even though different segments of the study area have substantially different wave regimes, the leading term of this polynomial is usually small (between -0.005 and 0.005) and varies insignificantly along the study area. Consequently, the distribution of wave set-up heights substantially deviates from a Rayleigh or Weibull distribution (that usually reflect the distribution of different wave heights). On about $\frac{3}{4}$ of the occasions, it is fairly well approximated by a standard exponential distribution. In about 25% of the coastal segments, it qualitatively matches a Wald (inverse Gaussian) distribution. The Kolmogorov–Smirnov test (D -value) indicates that the inverse Gaussian distribution systematically better matches the empirical probability distributions of set-up heights than the Weibull, exponential or Gaussian distributions.

1 Introduction

Global sea level rise in most of existing projections of climate change (Cazenave et al., 2014) is often associated with major consequences for the coastal zone (Hallegatte et al., 2013). The resulting economic damages to low-lying coastal areas (Darwin and Tol, 2001) may lead to a significant loss of worldwide wellbeing by the end of this century (Pycroft et al., 2016). Global sea level rise, however, contributes only a small fraction to the most devastating coastal flooding. These events, in addition to being economically extremely damaging (Meyer et al., 2013), may also lead to massive loss of life and the destruction of entire coastal communities (Dube et al., 2009).

A devastating flooding is usually caused by the interplay of several drivers, with fundamentally different predictability, and physical, dynamic and statistical properties. A reasonable forecast of the joint impact of tides, low atmospheric pressure (inverted barometric effect), wind-driven surge and wave-induced effects requires a cluster of dedicated atmospheric, ocean

circulation and wave models. The resulting high water levels may be additionally amplified by specific mechanisms and events such as tide–surge interactions (Batstone et al., 2013; Olbert et al., 2013), meteorologically driven long waves (Pattiarachi and Wijeratne, 2014; Pellikka et al., 2014; Vilibic et al., 2014) or seiches (Vilibic, 2006; Kulikov and Medvedev, 2013). In addition, wave-driven effects at the waterline such as wave set-up and run-up (Stockdon et al., 2006) may greatly contribute to the damaging potential of extreme water levels. These phenomena are driven by momentum carried by waves, and have different time scales and appearance. When a wave crest reaches the shore, the resulting short-term inland movement of the water, with a time scale comparable with the wave period, is termed run-up (see, e.g., Didenkulova, 2009 for an overview and references). In contrast, wave set-up is the increase in the mean water level due to the release of the momentum of breaking waves (Dean and Bender, 2006).

Along with contemporary numerical simulations and a direct search for worst-case scenarios (e.g., Averkiev and Klevanny, 2010), the use of the probabilistic approach is another classic way to quantify the properties of extreme water levels and related risks. The relevant literature contains substantial work on statistical parameters of water level variations (e.g., Serafin and Ruggiero, 2014; Fawcett and Walshaw, 2016), and extreme water levels and their return periods (e.g., Purvis et al., 2008; Haigh et al., 2010; Arns et al., 2013). Similar probabilistic analysis has been extensively applied to average and extreme wave properties (e.g., Orimolade et al., 2016; Rueda et al., 2016), wave-driven effects at the waterline (Holland and Holman, 1993; Stockdon et al., 2006), and the properties of meteotsunamis (Geist et al., 2014, Bechle et al., 2015). On most occasions severe coastal flooding occurs under the joint impact of several drivers. This feature generates the necessity to consider multivariate distributions of their properties. Most often, the simultaneous occurrence of storm surges and large waves is addressed (e.g., Hawkes et al., 2002; Wadey et al., 2015; Rueda et al., 2016b). A few studies also include an analysis of joint distributions of significant wave heights, periods and directions (Masina et al., 2015).

Typical probability distributions of different constituents of extreme water levels may be fundamentally different. The distribution of observed and numerically simulated water levels is usually close to a Gaussian one (Bortot et al., 2000; Johansson et al., 2001; Mel and Lionello, 2014; Soomere et al., 2015). The total water level in semi-sheltered seas with extensive subtidal or weekly-scale variability may contain two components. In the Baltic Sea, one of these (that reflects the water volume of the entire sea) has a classic quasi-Gaussian distribution whereas the other component (that reflects the local storm surge) has an exponential distribution and apparently mirrors a Poisson process (Soomere et al., 2015) similar to the non-tidal residual in the North Sea (Schmitt et al., 2018). The probabilities of occurrence of different single wave heights are at best approximated either by a Rayleigh (Longuet-Higgins, 1952), Weibull (Forristall, 1978) or Tayfun distribution (Socquet-Juglard et al., 2005). The probability distribution of run-up heights usually follows the relevant distribution for incident wave heights (Denissenko et al., 2011) but can be approximated by a Rayleigh distribution even if the approaching wave field does not represent a Gaussian process (Denissenko et al., 2013). The empirical probabilities of average or significant wave heights in various offshore conditions usually resemble either a Rayleigh or a Weibull distribution (Muraleedharan et al., 2007; Feng et al., 2014), while Pareto-type distributions are more suitable for the analysis of meteotsunami heights (Bechle et al., 2015).

In this paper we focus on the appearance and properties of empirical distributions of wave-driven local water level set-up. This process, called set-up in the following, may often provide as much as 1/3 of the total water level rise during a storm (Dean and Bender, 2006) and significantly contribute to extreme sea level events (Hoeke et al., 2013; Melet et al., 2016, 2018). This phenomenon contributes to the overall level of danger in the coastal zone. For example, the baseline level of wave run-up (Leijala et al., 2018) includes the local elevation of water level owing to set-up. The physics of set-up has been known for half a century (Longuet-Higgins and Stewart, 1964). Adequate parameterisations of this phenomenon have been introduced more than a decade ago (Stockdon et al., 2006). Numerous field measurements have been performed to establish its properties (see Dean and Walton, 2010 and references therein) and many models take it into account to a certain extent (SWAN, 2007; Roland et al., 2009; Alari and Kōuts, 2012; Moghimi et al., 2013).

5 The contribution from wave set-up still provides one of the largest challenges in the modelling of storm surges and flooding (Dukhovskoy and Morey, 2011; Melet et al., 2013). This feature reflects the intrinsically complicated nature of its formation. First of all, the set-up height strongly depends on the approach angle of waves at the breaker line. This angle is well-defined only if the coastline is almost straight, the nearshore is mostly homogeneous in the alongshore direction and the wave field is close to monochromatic (Larson et al., 2010; Viška and Soomere, 2013; Lopez-Ruiz et al., 2014; 2015). Generally, this angle is a complicated function of shoreline geometry, nearshore bathymetry, wave properties and instantaneous water level. Even if the basic properties of wave fields (usually given in terms of significant wave height, mean or peak period, and mean propagation direction) are perfectly forecast or hindcast at a nearshore location, the evaluation of the further propagation of waves is a major challenge because, for example, refraction properties and the location of the breaking line change with the local water level.

10 Several studies have focused on the maxima of set-up heights over certain coastal areas (Soomere et al., 2013; O'Grady et al., 2015) or the maximum contribution from set-up to the local water level extremes (Pindsoo and Soomere, 2016). The problem of evaluation of maximum set-up heights has a relatively simple solution on comparatively straight open ocean coasts. The nearshore of such coasts is usually fairly homogeneous in the alongshore direction and the highest waves tend to approach the shore relatively small angles. These features make it possible to use simplified schemes for the evaluation of the joint impact of refraction and shoaling in the nearshore (e.g., Larson et al., 2010). On many occasions it is acceptable to assume that waves propagate directly onshore (O'Grady et al., 2015) or to reduce the problem to an evaluation of the properties of the highest waves that approach the shore from a relatively narrow range of directions (Soomere et al., 2013). In areas with complicated geometry, and especially in coastal segments where high waves may often approach at large angles, it is necessary to take into account full refraction and shoaling in the nearshore (Viška and Soomere, 2013; Pindsoo and Soomere, 2015).

15 20 25 30

The formation of high set-up depends on many details of the storms and the impacted nearshore. It does not necessarily exhibit its maximum level in the coastal sections that are affected by the highest waves. The maximum storm surge and maximum set-up usually do not occur simultaneously (Pindsoo and Soomere, 2015). On the contrary, in coastal areas with

complicated geometry each short segment may have its own ‘perfect storm’ that creates the highest sum of storm surge and set-up (Soomere et al., 2013). These observations call for further analysis of the properties of the set-up phenomenon.

As described above, research into the statistical properties of the main drivers of high local water levels and the reach of swash generated by large waves that attack the shore have revealed that the relevant distributions of the magnitude of these drivers are very different. The knowledge of the shape and parameters of such distributions is often crucial in various forecasts and management decisions.

In this paper we address the basic features of empirical distributions of set-up heights along an approximately 80 km long coastal section in the vicinity of Tallinn Bay in the Gulf of Finland, the Baltic Sea. The shoreline of the study area has a complicated geometry and contains segments with greatly different orientations. The goal is to identify the typical shapes of the distributions of the probability of occurrence of simulated set-up heights and to analyse the alongshore variability of these distributions.

The paper is organised as follows. Section 2 introduces the method of evaluation of the maximum set-up height for obliquely approaching waves, the method for the reconstruction of long-term wave climate, the forcing data and the procedure of evaluation of properties of breaking waves based on the output of the wave model. Section 3 presents an insight into the appearance of the empirical distribution of wave set-up heights and its variations along the coast. The Kolmogorov–Smirnov test is applied to estimate the goodness of match of the empirical distribution of set-up heights with common theoretical distributions. Several implications of the results are discussed in Section 4.

2 Methods and data

2.1 Set-up height for obliquely incident waves

The classic concept of wave set-up (Longuet-Higgins and Stewart, 1962) relates the local increase in the water level with the release of the onshore component of radiation stress in the process of wave breaking. In ideal conditions, the maximum set-up height η_{\max} (with respect to the still water level) created by monochromatic waves with a constant height propagating directly onshore along a planar impermeable beach is (McDougal and Hudspeth, 1983; Hsu et al., 2006)

$$\eta_{\max} = d_b \frac{40\gamma_b^2 - 3\gamma_b^4}{128} \approx \frac{5}{16} \gamma_b H_b, \quad (1)$$

where $\gamma_b = H_b/d_b$ is the breaking index that is assumed to be constant all over the surf zone, d_b is the still water depth at the breaker line and H_b is the wave height at the breaker line (Fig. 1). Expression (1) is used in many engineering applications (Dean and Dalrymple, 1991) and studies into the properties of the set-up of waves that approach the shore at a relatively small angle (see Soomere et al., 2013 and references therein).

If waves approach under a non-negligible angle θ with respect to the shore-normal, the situation is much more complicated. Shi and Kirby (2008) argue that the water level set-down at the breaker line is invariant with respect to the approach angle of waves. The average deviation η of the sea surface from the still water level within the surf zone of an impermeable planar beach is (Hsu et al., 2006; Shi and Kirby, 2008; the power of γ_b in the first term at the right-hand side of their expression being corrected):

$$\eta = \frac{\gamma_b^2 \sin^2 \theta_b}{2h_b(8 + 3\gamma_b^2 - 2\gamma_b^2 \sin^2 \theta_b)}(d^2 - d_b^2) - \frac{3\gamma_b^2 - 2\gamma_b^2 \sin^2 \theta_b}{8 + 3\gamma_b^2 - 2\gamma_b^2 \sin^2 \theta_b}(d - d_b) - \frac{\gamma_b^2}{16}d_b. \quad (2)$$

The last term at the right-hand side of Eq. (2) represents the water level set-down η_b at the breaker line and θ_b is the wave approach direction at breaking. Here $d = d(x)$ represents the water depth measured from the still water level at a particular distance x from the shoreline and η is a function of x . The maximum wave set-up η_{\max} occurs somewhere inland where the maximum “depth” d_{\max} is negative and the thickness of the water sheet $d^* = d_{\max} + \eta_{\max} = 0$, and thus $\eta_{\max} = -d_{\max}$. For this location, Eq. (2) reduces to:

$$\eta_{\max} + d_{\max} = \frac{\gamma_b^2 \sin^2 \theta_b}{2h_b(8 + 3\gamma_b^2 - 2\gamma_b^2 \sin^2 \theta_b)}(d_{\max}^2 - d_b^2) - \frac{3\gamma_b^2 - 2\gamma_b^2 \sin^2 \theta_b}{8 + 3\gamma_b^2 - 2\gamma_b^2 \sin^2 \theta_b}(d_{\max} - d_b) - \frac{\gamma_b^2}{16}d_b + d_{\max} = 0. \quad (3)$$

For shore-normal waves $\theta_b = 0$ and Eq. (3) reduces to a linear equation:

$$-\frac{3\gamma_b^2}{8 + 3\gamma_b^2}(d_{\max} - d_b) - \frac{\gamma_b^2}{16}d_b + d_{\max} = 0. \quad (4)$$

In this case the maximum set-up height η_{\max} is defined by Eq. (1).

For obliquely approaching waves Eq. (3) is a quadratic equation with respect to $q = d_{\max}/d_b$:

$$\frac{\gamma_b^2 \sin^2 \theta_b}{2(8 + 3\gamma_b^2 - 2\gamma_b^2 \sin^2 \theta_b)}(q^2 - 1) - \frac{3\gamma_b^2 - 2\gamma_b^2 \sin^2 \theta_b}{8 + 3\gamma_b^2 - 2\gamma_b^2 \sin^2 \theta_b}(q - 1) - \frac{\gamma_b^2}{16} + q = 0. \quad (5)$$

This equation can be rewritten as

$$8q^2\gamma_b^2 \sin^2 \theta_b + 128q + \gamma_b^2(40 - 3\gamma_b^2) - \gamma_b^2 \sin^2 \theta_b(40 - 2\gamma_b^2) = 0. \quad (6)$$

Equation (6) has two negative solutions for physically reasonable values of γ_b . The physically relevant solution to Eq. (6) must be bounded and should be almost equal to $q \approx -5\gamma_b^2/16$ for very small approach angles $\theta_b \approx 0$. Therefore, the expression

$$q_1 = \frac{-32 + \sqrt{1024 - 2\gamma_b^4 \sin^2 \theta_b [40 - 3\gamma_b^2 - \sin^2 \theta_b (40 - 2\gamma_b^2)]}}{4\gamma_b^2 \sin^2 \theta_b} \quad (7)$$

provides the desired solution. Equation (7) deviates from expression (30) of Hsu et al. (2006) for reasons discussed by Shi and Kirby (2008). The maximum set-up height for obliquely approaching waves is thus

$$\eta_{\max} = -q_1 d_b = -\frac{q_1 H_b}{\gamma_b}. \quad (8)$$

5 This quantity is called simply set-up height below.

2.2 Wave time series in the nearshore of the study area

The study area, an approximately 80 km long coastal segment of Tallinn Bay and Muuga Bay (Fig. 2), is an example of a wave-dominated micro-tidal region. The shoreline is locally almost straight for scales up to 1–2 km. Several relatively straight sections along the Suurupi Peninsula (grid points 1–10 in Fig. 2) and the area of Saviranna (grid points 137–143 in Fig. 2) are open to the north. However, at larger scales (from a few kilometres) the coast contains large peninsulas and bays deeply cut into the mainland. The shores of these landforms are open to different directions and have greatly different wave regimes (Soomere, 2005). As the formation of set-up crucially depends on the wave height and approach direction, this type of coastal landscape makes it possible to analyse the wave set-up distribution for coastal sections with radically different wave climates (Soomere et al., 2013).

15 The fetch length in the Gulf of Finland is >200 km for westerly and easterly winds but <100 km for all other wind directions. The highest significant wave height (5.2 m) in the Gulf of Finland has been recorded at a location just a few tens of km to the north of the study area (Tuomi et al., 2011). The strong winds in this region blow predominantly from the south-west and north-north-west. Easterly storms are less frequent but may generate waves as high as those generated by westerly storms (Soomere et al., 2008). Strong storms with winds from the north-north-west may generate significant wave heights >4 m in the interior of Tallinn Bay (Soomere, 2005). The varying mutual orientation of high winds, propagation direction of waves and single shoreline segments makes it possible to identify potential alongshore variations in the distributions of set-up heights.

We employ time series of wave properties (significant wave height, peak period and propagation direction with a temporal resolution of 3 h) reconstructed using the wave model WAM cycle 4 and one-point high-quality wind information from the vicinity of the study area (a caisson lighthouse at Kalbådagrund, Fig. 2) for 1981–2016 in ice-free conditions. The wave model is implemented in a triple nested version with the resolution of the innermost grid about 470 m (Soomere, 2005). The wave height is estimated with the accuracy of 1 cm, wave direction is represented using 24 directions and wave period using at least 25 frequencies from 0.042 Hz with an increment of 1.1. The details of model implementation and the use of wind information are provided in Appendix 1. The shoreline of the study area is divided into 174 coastal segments with a length of

about 500 m (Fig. 2). Each segment corresponds to a nearshore wave model grid cell. Ignoring the presence of sea ice may lead to an overestimation of the overall wave energy in the region.

To roughly estimate the adequacy of reconstructed time series of wave properties, the outcome of the wave model is compared with the results of wave measurements made by the Marine Systems Institute, Tallinn University of Technology, at Tallinnamadal (Fig. 2, 59°42.723' N, 24°43.890' E). The data comes from a pressure sensor and does not contain information about wave direction. The accuracy of estimates of significant wave height is ± 0.1 m. The description of the location and parameters of the sensor are presented in http://efficiensea.org/files/mainoutputs/wp4/efficiensea_wp4_27.pdf. The data set is available at <https://www.emodnet-physics.eu/map/platinfo/piroosplot.aspx?platformid=8974>.

As the wave measurements at Tallinnamadal are available starting from 2012, the comparison is performed for the time interval of 2012–August 2016. The measured wave properties are compared with the modelled properties at the closest grid point of the sea area represented at 470 m resolution at 59°41' N, 24°45' E. The sensor is located about 3 km from the border of this area and the distance between the location of the sensor and the centre of the closest grid cell is 3.34 km. The comparison (Fig. 3) only includes the instants when both measured (green) and modelled (red) significant wave height were available.

The basic properties of wave heights such as the maximum (measured 5.58 m, modelled 5.77 m), mean (measured 0.643 m, modelled 0.697 m) and median (measured 0.40 m, modelled 0.54 m) are represented reasonably. The bias of the model (about 0.05 m) is at the same level as the typical bias for modelled wave properties in the Baltic Sea in the most recent simulations (Björkqvist et al., 2018). As our study basically relies on statistical properties of wave fields (the probability of occurrence of seas with different significant wave height, period, and direction), the analysis below, strictly speaking, does not require an exact reconstruction of the sequence of wave events. In this context, the root mean square difference of the modelled and measured time series wave heights (0.5 m) is reasonable. This value is about twice as large as in (Björkqvist et al., 2018) for the Gulf of Finland (0.20–0.31 m) or northern Baltic Proper (0.26 m) and is comparable to the value of this quantity for the Sea of Bothnia (0.31–0.56 m, Björkqvist et al., 2018).

The highest waves in the coastal area over the entire simulation interval are plausible (Soomere et al., 2013, Figure 3). The maximum wave height in 1981–2012 was 5.2 m in a section that was fully open to one of the directions of the strongest winds from north-north-west. Such wave conditions have been measured twice since 2001 in the interior of the Gulf of Finland (Soomere, 2005; Pettersson et al., 2013).

The appearance of the empirical probability distributions of the occurrence of different wave heights is similar for both data sets (Fig. 3). The location and height of the peaks of these distributions (that represent the properties of most frequently occurring waves) have a reasonable match. The model overestimates to some extent the frequency of waves with heights of 0.8–1.5 m and underestimates the frequency of highest waves in the area (>2 m). The overall appearance of the distribution for modelled wave heights resembles a Weibull distribution. The empirical distribution for measured wave heights higher

than 0.4 m better matches an exponential distribution and exhibits much larger variability in the frequency of very high (>3 m) waves.

2.3 Nearshore refraction and shoaling

The nearshore grid cells selected for the analysis (Fig. 2) are located in water depth ≥ 4 m in order to avoid problems with reconstruction of wave heights under possible intense wave breaking in these cells in strong storms. Some of the cells are located in much deeper water, at a depth of 20–27 m. The nearshore of the study area contains various underwater features and bottom inhomogeneities. This means that shoaling and refraction may considerably impact the wave fields even along the relatively short paths (normally ≤ 1 km in our model setup) from the model grid cells to the breaker line. The predominant wind directions in strong storms are from the south-west, north-north-west and west (Soomere et al., 2008). Consequently, high waves often approach some of the selected grid cells at large angles with respect to the shore-normal. As a result, oversimplified approaches to replicate the changes in wave properties in the immediate nearshore (Lopez-Ruiz et al., 2014; 2015) and even advanced approximations of refraction and shoaling (Hansen and Larson, 2010) may fail.

For this reason we calculate the joint impact of shoaling and refraction of approaching waves in the framework of linear wave theory. We assume that the numerically evaluated wave field for each time instant is monochromatic. The wave height is characterised by the numerically simulated (significant) wave height H , peak period T_p and mean propagation direction θ (clockwise with respect to the direction to the North). These properties are evaluated at the centre of each selected grid cell. The significant wave height at this location is denoted as H_0 . The approach direction θ_0 at this location with respect to the onshore-directed normal to the shoreline is calculated from θ based on an approximation of the relevant (about 500 m long) coastal segment by a straight line that follows the average orientation of the shoreline in this segment. It is assumed that the nearshore seabed from the centre of each grid cell to the waterline is a plane with isobaths parallel to this straight line. Finally, we assume that breaking waves are long waves. Then the wave height H_b at the breaking line can be found as the smaller real solution of the following algebraic equation of 6th order (Soomere et al., 2013; Viška and Soomere, 2013):

$$\frac{H_b^5 g}{H_0^4 \gamma_b} \left(1 - \frac{g H_b}{\gamma_b} \frac{\sin^2 \theta_0}{c_{f0}^2} \right) = c_{g0}^2 (1 - \sin^2 \theta_0). \quad (9)$$

Here c_g is the group speed, c_f is the phase speed and the subscripts “0” and “b” indicate the relevant value at the centre of the particular wave model grid cell and at the breaker line, respectively. The phase and group speed at the wave model grid cell are estimated based on the standard expressions of linear theory using the wave number k evaluated from the full dispersion relation for linear monochromatic waves $2\pi/T_p = \sqrt{gk \tanh kd_0}$ with the period equal to the peak period T_p and

the water depth d_0 equal to the model depth for the particular grid cell. The set of assumptions is completed with the common notion that the breaking index is $\gamma_b = H_b/d_b = 0.8$ (Dean and Dalrymple, 1991).

The procedure of evaluation of set-up heights is thus as follows. We start from the numerically simulated significant wave height H_0 , peak period T_p , and mean propagation direction θ with respect to the direction North. Next we calculate the

5 phase (c_{fb}) and group speed (c_{gb}) of such waves at the model grid cell and find the propagation direction θ_0 with respect to the shore-normal. Equation (9) is employed subsequently to evaluate the changes to the wave height owing to refraction and shoaling as the wave travels from the model grid point to the breaker line. In essence, it links the model output H_0 (given in terms of significant wave height) with the height H_b of breaking waves and also makes it possible to evaluate the breaking depth from the definition of the breaking index. The phase and group speed at the breaker line are estimated from
10 the dispersion relation for long waves: $c_{gb} = c_{fb} = \sqrt{gd_b}$. The wave approach direction θ_b at the breaker line with respect to the shore-normal is calculated from Snell's law $\sin \theta/c_f = \text{const}$. Thereafter we employ Eqs. (7) and (8) to find the set-up height for the particular time instant.

Several earlier studies of extreme set-up heights (Soomere et al., 2013; Pindsoo and Soomere, 2015) took into account only waves that propagated at small angles (not larger than $\pm 15^\circ$) with respect to the shore-normal and ignored the correction
15 expressed in Eqs. (7, 8) for waves that approached at a nonzero angle. This approach is denoted S2013 below.

3 Results

3.1 Maximum set-up heights

The phenomenon of wave set-up is only significant if large waves propagate towards the shore. This is usually the case on open ocean coasts where swells almost always create set-up. The situation may be different in sheltered sea areas with
20 complicated geometry where the wind wave energy may, on average, propagate even in an offshore direction. The wind regime of the study area is a superposition of four wind systems (Soomere et al., 2008). The most frequent wind direction is from the south-west (that is, from the mainland to the sea). The proportion of wave fields that propagate onshore is 40–70% along the study area (Fig. 4). The properties of set-up heights discussed below thus represent 40 000–70 000 examples of wave fields in each coastal segment. The only exception is grid cell 107 (Figs. 2, 4) between the Viimsi Peninsula and the
25 island of Aegna that is sheltered for almost all wind directions.

We start from a comparison of maximum set-up heights evaluated using the above-described approach and the method employed in S2013. The two sets of estimates differ insignificantly (by less than 0.1 m) in about 80% of the coastal segments (Fig. 5). The alongshore variations in the maxima of set-up heights evaluated from Eq. (8) are considerably smaller

than those estimated using the approach of S2013. The largest examples of set-up heights reach 1 m and the majority of maximum set-up heights for single coastal sections are 0.6–0.8 m in both sets of estimates.

The largest differences between the two sets become evident in segments that are sheltered from predominant storm directions, most notably in deeply cut bays. Estimates based on Eqs. (7, 8) are often remarkably (by up to 50%) higher in these segments than those derived using S2013. This feature signals that the highest waves approach the shore at a relatively large angle in such segments.

In other words, refraction often redirects wave energy so that even beaches that are seemingly well sheltered geometrically may at times receive remarkable amounts of wave energy (*cf* Caliskan and Valle-Levinson, 2008). The differences in the maxima of set-up heights evaluated using the two approaches for such coastal sections are often 0.2–0.3 m and reach up to 0.5 m. Such a strong impact of refraction is thought to be responsible for a local increase in wave heights in the Baltic Sea (Soomere, 2003) and also in extreme ocean conditions (Babanin et al., 2011). The processes that are not resolved by the wave model WAM such as reflection and diffraction may add even more wave energy to seemingly sheltered coastal segments.

To the contrary, S2013 overestimates the maximum set-up height in a few locations at headlands that are fully open to the Gulf of Finland (Fig. 5). A likely reason for this feature is the sensitivity of the formation of set-up with respect to the approach angle of waves. The magnitude of set-up decreases with an increase in the approach angle. This decrease is ignored in S2013 and the height of set-up created by waves that approached at angles of 10–15 degrees with respect to shore-normal was overestimated.

Some differences between the results presented in this paper and those described in S2013 and Pindsoo and Soomere (2015) stem from the use of different time intervals in these papers. Simulations for 1981–2012 indicate that the maximum set-up heights in coastal areas open to the east were mostly created in the 1980s (Soomere et al., 2013) even though the maximum wave heights occurred much later, starting from the mid-1990s. This feature may be related to a change in the directional structure of strong winds with easterly storms being relatively weak for about two decades. There is increasing evidence that strong easterly storms have returned to the area. For example, an event with a significant wave height of 5.2 m was recorded in the Gulf of Finland during an extreme easterly storm on 29–30 November 2012 (Pettersson et al., 2013). Pindsoo and Soomere (2015) observed that many new all-time highest set-up events apparently occurred in coastal segments open to the east since 2012. This process has led to the generation of maxima of simulated wave heights at a number of locations on the eastern Viimsi Peninsula (grid cells 108–130 in Fig. 2) in 2013 (Fig. 6).

3.2 Frequency of occurrence of set-up heights

As the modelled wave heights are evaluated with an accuracy of 1 cm, using even finer resolution for the construction of empirical probability distributions is not justified. The total number of entries in the time series of positive set-up heights is 40 000–70 000. Therefore, using the resolution of 1 cm ensures that at least a few examples will belong to the relevant “size

classes” of set-up heights down to frequencies of about $10^{-2}\%$. This range of frequencies is apparently large enough to estimate the main properties of the distributions in question.

The shape of empirical distributions of the occurrence of set-up heights varies extensively in the study area (Fig. 7). It matches an exponential distribution in the majority (about 75%) of the model coastal segments¹. Such a distribution is represented by a straight line in semi-logarithmic (log-linear) coordinates used in Figs. 7, 8. It apparently reflects a background Poisson process that also describes storm surges in the study area (Soomere et al., 2015). This distribution appears in coastal segments that are open to the common strong wave directions. For example, grid point 23 (Fig. 7a) is open to the northwest and north, grid point 96 (Fig. 7c) is located near the western shore of Viimsi Peninsula and is open to the west and northwest, and grid point 145 (Fig. 7f) is widely open to the directions from the northwest to the northeast.

The distribution is convex upwards at a few locations that are sheltered from most of the predominant approach directions of strong waves, including north-north-west. This shape is evident in the most sheltered location of eastern Kopli Bay (grid point 43, Fig. 7b) and to a lesser extent in coastal sections sheltered by the island of Aegna (grid point 106, Fig. 7d). The relevant empirical distributions of set-up heights can be reasonably approximated by a two-parameter Weibull or Gaussian distribution. They both have a convex upwards shape in log-linear coordinates.

A subset (about ¼) of the presented distributions exhibit a different, clearly concave upwards shape in log-linear coordinates. This feature is evident in coastal sections that are sheltered from a few (but not all) predominant wave directions. Strong winds blow in this region usually from three directions: west, north-north-west, and east (Soomere et al., 2008). The segments that exhibit a concave upwards shape of the distribution (e.g., grid point 129, Fig. 7e) are mostly sheltered against waves that approach from the west or north-north-west but are open to the east. However, segments that are widely open to all strong wave directions (e.g., grid point 1, Fig. 8) may also exhibit a concave upwards shape of the empirical distribution of set-up heights.

This concave upwards appearance clearly differs from the shape of the usual distributions of the magnitude of wave phenomena (Fig. 8) such as the classic (Rayleigh) distribution of single wave heights (Longuet-Higgins, 1952), the Tayfun distribution of the heights of largest waves, the Weibull family of distributions for the occurrence of various wave conditions, or the Rayleigh distribution for run-up of (narrow-banded) Gaussian wave fields (Didenkulova et al., 2008).

To further explore the shape of the distributions of set-up heights and their possible variations along the shoreline, we assume that these distributions belong to the family of exponential distributions. The overall appearance of empirical distributions in log-linear coordinates (Fig. 7) suggests that their shape can be, as a first approximation, matched with a

¹ An early discussion version of this paper (available at <https://www.earth-syst-dynam-discuss.net/esd-2016-76>) contained a bug in the script for the calculation of set-up heights and for the subsequent evaluation of the parameters of their probability density function. This bug led to an erroneous conclusion about the frequency of occurrence of various kinds of distributions of set-up heights in different coastal sections as well as to severe overestimation of the frequency of matches of these distributions with an inverse Gaussian distribution.

quadratic polynomial $az^2 + bz + c$, where z is the set-up height. In other words, the empirical probability density $P(z)$ in log-linear coordinates used in Figs. 7, 8 is approximated by the following function:

$$P(z) = \exp(az^2 + bz + c) \quad (10)$$

In the case $a=0$, distribution (10) reduces to a classic exponential distribution $\sim A\exp(bz)$. The values $a < 0$ correspond to convex upwards distributions that eventually can be approximated by a Weibull or Gaussian distribution whereas $a > 0$ indicates that the distribution is locally concave upwards. A more important difference between distributions with $a=0$ and $a \neq 0$ is in the nature of their tails. If $a=0$, the probability of large set-up heights decreases as $\sim A\exp(bz)$ when $z \gg 1$ while in the case $a < 0$ this probability decreases much faster, as $\sim A\exp(az^2)$. It is often said that the former distribution has a heavy tail (and a comparatively large probability of very large set-up heights) whereas the latter distribution has a light tail (and a lower probability of very large set-up heights). The case $a > 0$ is only possible locally for a certain range of set-up heights and serves as an indication that some relatively large set-up heights are more probable than expected from distributions with $a \leq 0$.

Such a fitting procedure is not straightforward for several reasons. Firstly, the number of nonzero points of the distributions in Fig. 7 is highly variable along the study area, similar to the variation in the typical magnitude of the set-up. Secondly, the relevant empirical distributions have gaps for some value(s) of the set-up height. A natural reason for this feature is that we are looking at very low probabilities (down to 0.001%, that is, a few occasions) of occurrence of relatively high set-up events in the period 1981–2016. Thirdly, a few locations have several outliers – remarkably high set-up events that do not follow the general appearance of the empirical distribution of set-up heights for the particular location (Fig. 7b, d, f). Such events apparently reflect severe storms in which the wind pattern was favourable for the development of very large waves that approached a certain coastal segment at a small angle. The presence of similar outliers is characteristic, for example, for time series of sea level in Estonian waters (Suursaar and Sooäär, 2007) and is associated with situations when strong storms blow from a specific direction.

To estimate the impact of these aspects on the results, we performed three versions of the fitting procedure. Firstly, we used all data points in the relevant distributions starting from the height of 0.01 m to evaluate the coefficients a , b and c . Secondly, we used for the same purpose only set-up heights from 0.01 m to 0.4 m (Fig. 7). This approach was not applicable in some locations where set-up heights did not reach 0.4 m. Thirdly, we evaluated these coefficients starting from the height of 0.01 m to the first gap in the empirical distribution (the lowest set-up height that did not occur in 1981–2016). Doing so made it possible to check whether the shape of the distribution is governed by the majority of events or if it is dominated by the presence of a few very large set-up heights (Fig. 8).

The particular values of the coefficients a , b and c depend to some extent on the chosen version (Fig. 7). The shape of the approximate distribution is invariant with respect to the particular choice. All distributions also match reasonably well data

points corresponding to the largest set-up heights. The differences between the resulting theoretical distributions are mostly insignificant. The relevant estimates of the coefficients a , b , c are located almost in the middle of the 95% confidence intervals of each other (Fig. 7). All coefficients of the quadratic approximation of the exponent vary insignificantly along the study area. This is remarkable because the shape of the relevant Weibull distribution (and thus the shape parameter of this distribution) for different wave heights varies considerably in the study area (Soomere, 2005).

The coefficients a at the leading term of the approximating polynomial (Fig. 9, 10) are mostly very small, in the range of $(-0.005, 0.005)$. Their 95% confidence intervals normally include the zero value. This feature indicates that on most occasions the parameter a can be set to zero and the distribution of set-up heights can be reasonably approximated with an exponential distribution at a 95% level of statistical significance. On such occasions, the entire process can be adequately approximated by a Poisson process and the parameter b characterises the vulnerability of the particular coastal segment with respect to the set-up phenomenon similar to the analysis of storm-driven high water levels (Soomere et al., 2015).

A few outliers of the parameter a in relatively sheltered coastal segments were negative and reached values down to -0.08 (Fig. 9). These values correspond to distributions with convex upwards shape in semi-logarithmic coordinates and are thus qualitatively similar to the family of Gaussian or Weibull distributions.

The values of c are all positive and mostly in the range of 2.5–4 (Fig. 9). The values of parameter b are, as expected, almost everywhere negative, concentrated around -0.2 , typically varying between -0.1 and -0.4 . A few locations with positive values of this parameter correspond to large negative values of a .

3.3 Comparison of fits to classic distributions

Importantly, in about a quarter of the coastal segments in the study area, the leading term a of the quadratic polynomial $az^2 + bz + c$ is positive at a 95% significance level. Note that this estimate is valid for single points only and is not applicable for the entire set of such points. A positive leading term corresponds to the concave-up appearance of the relevant distributions of set-up heights for a certain range of these heights. This means that large set-up events may be systematically much higher and/or occur much more frequently than one could expect from the Gaussian, Weibull or Poisson-type statistics. The described features indicate that the empirical distribution of set-up heights can be, at least locally, approximated using an inverse Gaussian (Wald) distribution with a probability density function (Folks and Chhikara, 1978)

$$P = \sqrt{\frac{\lambda}{2\pi z^3}} \exp\left[-\frac{\lambda(z-\mu)^2}{2\mu^2 z}\right]. \quad (11)$$

For a certain set of parameters λ (the shape parameter) and μ (the mean), a part of the graph of this function has a concave upward shape in semi-logarithmic coordinates (Fig. 8) and may locally well approximate the empirical distributions of set-up heights at the relevant locations. For large values of z , this function behaves similar to the probability density function of an

exponential distribution. In the above-mentioned notion, it has a “heavy” tail and signals that large set-up heights are more frequent than for a Gaussian or Weibull process.

To shed more light on which theoretical distribution is most suitable for the description of the probabilities of occurrence of wave set-up heights, we fitted the distributions using the *R* packages “fitdistrplus” for fitting any distribution to the data
5 (Delignette-Muller and Dutang, 2005; v. 1.0-14), “actuar” (v. 2.3-3) for fitting with the inverse Gaussian distribution, and “gofit” (v. 1.3.4) to make an initial guess of the parameters of the inverse Gaussian distribution under *R* version 3.6.1.

As an example of the appearance of the fit by different theoretical distributions, we consider the westernmost point of the study area presented in Fig. 8. The fit was performed for the set-up values in the range from 0.01 to 0.4 m (Fig. 11). While the inverse Gaussian fit performs well (Fig. 11a), exponential, Gaussian and Weibull distributions (Fig. 11b) do not replicate
10 the location and height of the maximum of the empirical distribution and inaccurately follow it for larger set-up values. A variation in the cut-off values leads to a certain change in the parameters of the fitted distribution, but the inverse Gaussian fit remains appropriate for all cut-off values.

The goodness of fit of the cumulative distribution function (CDF) with different theoretical distributions is much better (Fig. 12). Still, the empirical data do not follow a Gaussian distribution, whereas both Weibull and exponential distributions
15 provide an acceptable match to the observed distribution. The inverse Gaussian distribution shows the best agreement among the tested CDFs. As expected, the differences between the empirical and theoretical distributions are relatively small for larger set-up heights but become more evident for the frequently occurring set-up heights (Fig. 12).

We applied a Kolmogorov–Smirnov test to clarify which theoretical distribution describes the data in question best. The smaller is the *D*-value (Kolmogorov–Smirnov statistic), the smaller is the difference between the distributions. The
20 corresponding *D*-values are 0.039 for the inverse Gaussian distribution, 0.067 for the Weibull distribution, 0.120 for the exponential distribution, and 0.158 for the Gaussian distribution. Even though an inverse Gaussian distribution best matches the empirical distribution of set-up heights at this location, the hypothesis that the data and random points from the fitted inverse Gaussian distribution are from the same distribution was rejected, even at an 80% confidence level. The probability that the empirical distribution represents a data set with one of the other tested theoretical distributions was much smaller.

This proportion of the “remoteness” of all four distributions from the empirical probability distribution of set-up heights
25 persists for the entire study area and different cut-off values (Fig. 13). The cut-off values were tested in the range from 40% to 95% of the maximum set-up height in a particular coastal section. In terms of *D*-values of the Kolmogorov–Smirnov test, an inverse Gaussian distribution systematically shows a better approximation to the empirical distribution of set-up heights than all other distributions. The Weibull distribution overall provides a slightly worse fit except for several (<7%) coastline
30 locations (Fig. 13). An exponential distribution, even though it seems to follow the empirical distribution closely on most occasions, has a smaller probability of describing set-up heights adequately. This feature reflects the fact that exponential distributions are a particular (one-parameter) case of the family of (two-parameter) Weibull distributions.

4 Discussion

4.1 The shape of empirical distributions of set-up heights

A comparison of the estimates of set-up heights with similar results obtained in earlier studies with a simplified scheme for the treatment of waves with different approach angles reveals the importance of proper hindcasting and handling of wave approach direction for this kind of analysis. Our steps in this direction include the use of high-quality wind measurements for wave modelling, systematic calculation of the joint impact of refraction and shoaling from the wave model grid cells to the breaker line, and implementation of an appropriately corrected evaluation scheme of set-up heights for obliquely approaching waves.

The core message from the analysis is that the empirical probability distribution of set-up heights z can usually be fairly well approximated by a standard exponential distribution $\exp(-\lambda z)$ even in very differently oriented segments of a coastal section with complicated geometry. When the exponent function of the general exponential distribution is approximated using a quadratic function $az^2 + bz + c$, the coefficient of its leading term does not differ from zero at a 95% significance level for more than $\frac{3}{4}$ of the coastal segments of the study area. As the study area contains a variety of sections with different orientations and with radically different wave properties, it is likely that the qualitative shape of the distribution of set-up heights only weakly depends on the properties of the local wave climate. This conjecture is supported by a fairly limited alongshore variation in the coefficients $b \approx -0.2 \pm 0.1$ and $c \approx 3.25 \pm 0.75$ of this approximation (Fig. 9).

Another important message is that the basic shape of this distribution function is concave upwards in a log-linear plot for a substantial number of coastal segments. In these segments, $a > 0$. The concave upwards local shape of such distributions can be adequately approximated with an inverse Gaussian (Wald) distribution. Similar to the exponential distribution, the probability density function of an inverse Gaussian distribution decays as $\exp(-\lambda z)$ for $z \gg 1$. Even though the absolute values of the coefficients of the leading term of such a quadratic approximation are relatively small, the fit with other classic distributions, such as Gaussian or Weibull distributions (Fig. 8) that decay as $\exp(-\lambda z^2)$ for $z \gg 1$, is systematically worse. Therefore, even though there is no rigorous evidence that the empirical data follow an inverse Gaussian distribution, it provides the closest fit to the data compared to the other three tested distributions.

This result is intriguing because applications of inverse Gaussian (Wald) distributions are scarce in descriptions of geophysical phenomena. Perhaps the most well-known example of the use of a Wald distribution is to describe the time a Brownian motion (with positive drift) takes to reach a fixed positive level. Other examples include statistical properties of soil phosphorus (Manunta et al., 2002), long-distance seed dispersal by wind (Katul et al., 2005), and some models of failure (Park and Padgett, 2005).

A comparison of Figs. 5 and 9 indicates that the variations in the leading coefficient a of the approximating quadratic function are uncorrelated with the values of maximum set-up heights. It could thus be hypothesised that the locations where an inverse Gaussian distribution governs the properties of set-up heights appear because of a specific match of the directional

structure of winds and the orientation of the coastline. This feature also signals that the basic features of the distribution of set-up heights are only weakly (if at all) connected with the severity of the local wave climate. This conjecture is supported by comparatively small variations in the values of other parameters in the polynomial approximation (Fig. 9b, c).

A subtle implication from the qualitative match of statistics of set-up heights with an inverse Gaussian distribution is that set-up events with heights close to extreme heights may be much more frequent than their estimates based on classic Gaussian or Weibull statistics and also clearly more frequent than similar estimates for Poisson processes. This increase in the probability of large wave set-up events is “balanced” by a similar decrease in the relative number of events with an average magnitude compared to normally or Weibull distributed events. The described features basically indicate that the frequency and role of close-to-extreme set-up events (and their contribution to damages and economic losses) may be underestimated based on observations of similar events of average height. In particular, severe set-up events may occur substantially more frequently than might be expected from the probability of the occurrence of severe seas.

4.2 Limitations of the analysis

The empirical distribution of measured wave heights (Fig. 3) provides an estimate of statistical properties of wave heights at the border of the study area. This distribution largely follows an exponential distribution for 1.2–3.2 m high waves and is slightly convex upwards for 0.5–1.5 m high waves. The appearance of the distribution of modelled wave heights in the offshore (Fig. 3) is clearly convex upwards in the range of relatively frequent wave heights of 0.5–1.7 m. It would thus be natural to expect that this property also becomes evident in set-up heights that largely follow breaking wave heights. This is, however, not the case: the appearance of the distributions of set-up heights is either an approximately straight line or a line that is locally concave upwards.

The difference in the shapes of distributions for modelled and measured wave heights suggests that the approximations employed to evaluate wave properties (Appendix 1) are not responsible for the presence of concave upwards distributions of set-up heights. On the contrary, a natural conjecture from Fig. 3 is that, ignoring ice cover, the particular method for evaluation of wave properties and the use of discontinuous (3 h) one-point wind data have at least partially supported the convex upwards shape of the distribution of offshore wave heights compared to measured data.

Some of the introduced assumptions such as the ideal plane and rigid seabed, the presence of a dry coast without any vegetation or sources of bottom shear stress, and ignoring the wave period (or steepness) and the particular value of the coastal slope (and thus wave reflection) in the calculations are not fully realistic. In other words, it is assumed that all coastal segments are (i) favourable for the formation of high set-up and (ii) approximately homogeneous alongshore. These assumptions are only valid for some segments of the study area. They all generally lead to an overestimation of set-up heights. The presence of vegetation or the impact of bottom shear stress leads to a decrease in the set-up height by a constant factor (Dean and Bender, 2006). It is therefore likely that the use of these assumptions mainly leads to a stretch of the resulting distributions of set-up heights towards larger values but does not modify their basic shape.

It might be expected that the impact of other simplifications such as the assumption of monochromatic wave fields, using a constant value of the breaking index and employing a long wave approximation for breaking waves, generally emphasises the role of approach directions. Therefore, it could be hypothesised that the set of assumptions used makes the established features more noticeable than they would be for real wave fields.

5 Finally, we note that the presented results do not require any modification of the classic estimates of extreme values of set-up heights and their return periods based on, for example, the block maximum method. Namely, the limiting distributions of independent block maxima follow either a Gumbel, three-parameter Weibull or Fréchet distribution, notwithstanding the distribution of the underlying values (Coles, 2004). This general theorem is obviously also valid for any time series that follows an inverse Gaussian distribution.

10 5 Conclusions

The shape of empirical probability distributions of set-up heights is evaluated for different segments of a coastal section with complicated geometry around Tallinn Bay in the Gulf of Finland, the Baltic Sea. This distribution commonly follows well an exponential distribution for a wide range of probabilities. The leading term of the relevant approximation of the exponent with a quadratic polynomial $az^2 + bz + c$, where z is the set-up height, is nonzero at a 95% level of statistical significance in
15 about 1/4 of the segments. In these segments, the coefficient a is positive and the distribution approximately follows an inverse Gaussian (Wald) distribution. According to the Kolmogorov–Smirnov statistics (D -value), the inverse Gaussian distribution systematically better matches the empirical probability distributions of set-up heights than two-parameter Weibull, exponential or Gaussian distributions.

20 **Code availability:** From the authors on request (Matlab and R scripts).

Data availability: Kalbådagrund wind data are available from the Finnish Meteorological Institute.

Wave measurements: <https://www.emodnet-physics.eu/map/platinfo/piroosplot.aspx?platformid=8974>

Sample availability: not applicable.

Authors team: Tarmo Soomere, Katri Pindsoo, Nadezhda Kudryavtseva, and Maris Eelsalu,

25 **Author contribution.** T. Soomere designed the study, derived the equations and approximations used in the paper, produced Figure 5, compiled the introduction and discussion, checked the consistency of the results, and polished the text. K. Pindsoo developed the scripts, ran the simulations, produced most of graphics, and drafted the parts of the manuscript body. N. Kudryavtseva performed testing of fits of empirical data with different theoretical distributions, wrote the relevant parts of the text and prepared Figures 11–13. M. Eelsalu recalculated the graphics, performed a comparison of the properties of the
30 reconstructed waves with measured waves near the study area, evaluated the distributions of set-up heights for time series of wave properties measured in the northern Baltic proper, drafted the relevant parts of the manuscript, and produced updated maps.

Competing interests: The authors declare that they have no conflict of interest.

Disclaimer: All authors have approved the submitted version.

Acknowledgements

The research was financed by the institutional support of the Estonian Ministry of Education and Research (IUT33-3), the project “Sebastian Checkpoints – Lot 3 Baltic” of the call MARE/2014/09 and by the Estonian Research Council (ETAg) to two networks: the ERA-NET Rus+ network EXOSYSTEM and FLAG-ERA network FuturICT2.0. The final stage of the study was also supported by the EEA project EMP480. The authors are greatly thankful the Finnish Meteorological Institute for making the Kalbådgrund wind data public, the Marine Systems Institute, Tallinn University of Technology, for providing wave data at Tallinnamadal, to three anonymous referees for valuable suggestions towards improvement of the manuscript, and to Prof Kevin Parnell for the help in preparation of the final version of the manuscript.

Appendix 1. Implementation of the wave model

Time series of significant wave height, peak period and propagation direction were reconstructed using the wave model WAM cycle 4 and one-point high-quality wind information. The wave model was implemented in a triple nested version with the resolution of the innermost grid about 470 m as in Soomere (2005). The regular rectangular grid of the coarse model covered the whole Baltic Sea with a step of $3 \times 6'$ ($3'$ along latitudes and $6'$ along longitudes, that is, about three nautical miles). The full wave spectrum from the coarse model was used as boundary conditions for the first nesting with a similar regular grid with a step $1 \times 2'$ (about 1 nautical mile). This grid covered the interior of the Gulf of Finland to the east of $23^{\circ}18'E$. The bathymetry of these two models was based on data from Seifert et al. (2001) with a resolution $1 \times 2'$. The full wave spectrum from the model for the Gulf of Finland was used as boundary conditions for the second nesting. The study area (Fig. 2) was covered by a regular grid with a step of $1/4 \times 1/2'$ between $24^{\circ}28'$ and $25^{\circ}16'E$ and to the south of $59^{\circ}41'N$. The bathymetry for the second nesting was constructed based on maps issued by the Estonian Maritime Board with a typical resolution of about 200 m. Wave height is presented in terms of significant wave height H . This quantity, often denoted as H_S , is defined as $H = \sqrt{m_0}$, where m_0 is the zero-order moment of the one-dimensional wave spectrum, and is estimated with a resolution of 1 cm.

We applied 24 evenly spaced directions and 25 frequencies ranging from 0.042 to 0.41 Hz with an increment of 1.1. Experience with this model in the Baltic Sea and Finnish archipelago indicates that it is important to adequately represent wave growth in low wind and short fetch conditions (Tuomi et al., 2011; 2012). To meet this requirement, in calculations with the wind speed below 10 m/s we applied an increased frequency range of waves up to 2.08 Hz in order to correctly represent wave growth in low wind conditions after calm periods (Soomere, 2005).

We employed a simplified method for rapid reconstruction of long-term wave climate. The computations are speeded up by replacing exact calculations of wave generation, interactions and propagation by an analysis of precomputed maps of wave properties for different wind speed, direction, and duration. This simplification relies on a favourable feature of the local wave regime, namely that wave fields rapidly become saturated and have relatively short memory in the study area (Soomere, 2005). Consequently, a reasonable reproduction of wave statistics is possible by the assumption that an instant wave field in Tallinn Bay is a function of a short time period of wind dynamics. This assumption justifies splitting the calculations of time series of wave properties into independent sections with duration of 3–12 hours. The details of the model set-up, bathymetry used, and the implementation and validation of the outcome have been repeatedly discussed in the literature (Soomere, 2005; Soomere et al., 2013).

As nearshore wave directions in areas with complex geometry and bathymetry may be greatly impacted by local features, it is crucial to properly reconstruct the offshore wave directions (Björkqvist et al., 2017). This is only possible if the wave model has correct information about wind directions. To ensure high quality of the input wind information, we use wind data from an offshore location in the central part of the gulf. The wind recordings at Kalbådagrund (59°59' N, 25°36' E, a caisson lighthouse located on an offshore shoal) are known to represent marine wind properties well (Soomere et al., 2008). Even though this site is located at a distance of about 60 km from the study area, it is expected to correctly record wind properties in the offshore that govern the generation of surface waves in the open sea. The wind measurements are made at Kalbådagrund at the height of 32 m above the mean sea level. Height correction factors, to reduce the recorded wind speed to the reference height of 10 m used in wave models, are 0.91 for neutral, 0.94 for unstable and 0.71 for stable stratifications (Launiainen and Laurila, 1984). To the first approximation, the factor 0.85 was used in the computations similarly to (Soomere, 2005; Soomere et al., 2013).

Wind properties at Kalbådagrund were recorded starting from 1981 once every 3 h for more than two decades, but since then they have been filed at a higher time resolution. To ensure that the forcing data is homogeneous, we downsampled the newer higher-resolution recordings by selecting the data entries once in 3 h. The entire simulation interval 1981–2016 contained 103 498 wind measurement instants with a time step of 3 h. In about 9000 cases (less than 10% of the entire set) either wind speed or direction was missing. These time instants were excluded from further analysis. As some of these instants involved quite strong winds, our analysis may underestimate the highest wave set-up events for some segments of the shore. However, as we are interested in the statistical properties of most frequently occurring set-up heights and in the alongshore variations of these properties, it is likely that omitting these data does not substantially impact the results.

References

Alari, V. and Kõuts, T.: Simulating wave–surge interaction in a non-tidal bay during cyclone Gudrun in January 2005. In: Proceedings of the IEEE/OES Baltic 2012 International Symposium “Ocean: Past, Present and Future. Climate Change

- Research, Ocean Observation & Advanced Technologies for Regional Sustainability,” May 8–11, Klaipėda, Lithuania. IEEE Conference Publications, <https://doi.org/10.1109/BALTIC.2012.6249185>, 2012.
- Arns, A., Wahl, T., Haigh, I. D., Jensen, J., and Pattiaratchi, C.: Estimating extreme water level probabilities: A comparison of the direct methods and recommendations for best practise, *Coast. Eng.*, 81, 51–66, <https://doi.org/10.1016/j.coastaleng.2013.07.003>, 2013.
- Averkiev, A. S. and Klevanny, K. A.: A case study of the impact of cyclonic trajectories on sea-level extremes in the Gulf of Finland, *Cont. Shelf Res.*, 30, 707–714, <https://doi.org/10.1016/j.csr.2009.10.010>, 2010.
- Babanin, A. V., Hsu, T.-W., Roland, A., Ou, S.-H., Doong, D.-J., and Kao, C. C.: Spectral wave modelling of Typhoon Krosa, *Nat. Hazards Earth Syst. Sci.*, 11, 501–511, <https://doi.org/10.5194/nhess-11-501-2011>, 2011.
- 10 Batstone, C., Lawless, M., Tawn, J., Horsburgh, K., Blackman, D., McMillan, A., Worth, D., Laeger, S., and Hunt, T.: A UK best-practice approach for extreme sea-level analysis along complex topographic coastlines, *Ocean Eng.*, 71, 28–39 <https://doi.org/10.1016/j.oceaneng.2013.02.003>, 2013.
- Bechle, A. J., Kristovich, D. A. R., and Wu, C. H.: Meteotsunami occurrences and causes in Lake Michigan, *J. Geophys. Res.-Oceans*, 120, 8422–8438, <https://doi.org/10.1002/2015JC011317>, 2015.
- 15 Björkqvist, J.-V., Tuomi, L., Fortelius, C., Pettersson, H., Tikka, K., and Kahma, K. K.: Improved estimates of nearshore wave conditions in the Gulf of Finland, *J. Mar. Syst.*, 171, 43–53, <https://doi.org/10.1016/j.jmarsys.2016.07.005>, 2017.
- Björkqvist, J.-V., Lukas, I., Alari, V., van Vledder, G. Ph., Hulst, S., Pettersson, H., Behrens, A., and Männik, A.: Comparing a 41-year model hindcast with decades of wave measurements from the Baltic Sea, *Ocean Eng.*, 152, 57–71, <https://doi.org/10.1016/j.oceaneng.2018.01.048>, 2018.
- 20 Bortot, P., Coles, S., and Tawn, J.: The multivariate Gaussian tail model: an application to oceanographic data, *J. Roy. Stat. Soc. A-Appl. Stat.* 49, 31–49, <https://doi.org/10.1111/1467-9876.00177>, 2000.
- Caliskan, H. and Valle-Levinson, A.: Wind-wave transformations in an elongated bay, *Cont. Shelf Res.*, 28, 1702–1710, <https://doi.org/10.1016/j.csr.2008.03.009>, 2008.
- Cazenave, A., Dieng B., Meyssignac, B., von Schuckmann, K., Decharme, B., and Berthier, E.: The rate of sea-level rise, *Nat. Clim. Change*, 4, 358–361, <https://doi.org/10.1038/nclimate2159>, 2014.
- 25 Coles, S.: An introduction to statistical modeling of extreme values. Springer, 3rd printing, Springer, London, 208 pp., <https://doi.org/10.1007/978-1-4471-3675-0>, 2004.
- Darwin, R. F. and Tol, R. S. J.: Estimates of the economic effects of sea level rise, *Environ. Resource Economics*, 19, 113–129, <https://doi.org/10.1023/A:1011136417375>, 2001.
- 30 Dean R. G. and Dalrymple R.A: *Water Wave Mechanics for Engineers and Scientists*. World Scientific, <https://doi.org/10.1142/1232>, 1991.

- Dean, R. G. and Bender, C. J.: Static wave set-up with emphasis on damping effects by vegetation and bottom friction, *Coast. Eng.*, 53, 149–165, <https://doi.org/10.1016/j.coastaleng.2005.10.005>, 2006.
- Dean, R. G. and Walton, T. L.: Wave setup. In: *Handbook of Coastal and Ocean Engineering* (Kim, Y. C., ed.), World Scientific, New Jersey et al., 1–23, https://doi.org/10.1142/9789812819307_0001, 2010.
- 5 Delignette-Muller, M. L., and Dutang, C.: fitdistrplus: An R package for fitting distributions, *J. Statistical Software*, 64(4), 1–34, <https://doi.org/10.18637/jss.v064.i04>, 2015.
- Denissenko, P., Didenkulova, I., Pelinovsky, E., and Pearson, J.: Influence of the nonlinearity on statistical characteristics of long wave runup, *Nonlin. Proc. Geophys.*, 18(6), 967–975, <https://doi.org/10.5194/npg-18-967-2011>, 2011.
- Denissenko, P., Didenkulova, I., Rodin, A., Listak, M., and Pelinovsky, E.: Experimental statistics of long wave runup on a
10 plane beach, *J. Coast. Res.*, Special Issue 65, 195–200, <https://doi.org/10.2112/SI65-034.1>, 2013.
- Didenkulova, I.: New trends in the analytical theory of long sea wave runup. In: *Applied Wave Mathematics* (Quak, E. and Soomere, T., eds.), Springer, 265–296, https://doi.org/10.1007/978-3-642-00585-5_14, 2009.
- Didenkulova, I., Pelinovsky, E., and Sergeeva, A.: Statistical characteristics of long waves nearshore, *Coast. Eng.* 58, 94–102, <https://doi.org/10.1016/j.coastaleng.2010.08.005>, 2008.
- 15 Dube, S. K., Jain, I., Rao, A. D., and Murty, T. S.: Storm surge modelling for the Bay of Bengal and Arabian Sea, *Nat. Hazards*, 51, 3–27, <https://doi.org/10.1007/s11069-009-9397-9>, 2009.
- Dukhovskoy, D.S. and Morey, S. L.: Simulation of the Hurricane Dennis storm surge and considerations for vertical resolution, *Nat. Hazards*, 58, 511–540, <https://doi.org/10.1007/s11069-010-9684-5>, 2011.
- Fawcett, L. and Walshaw, D.: Sea-surge and wind speed extremes: optimal estimation strategies for planners and engineers,
20 *Stoch. Environ. Res. Risk Assess.*, 30, 463–480, <https://doi.org/10.1007/s00477-015-1132-3>, 2016.
- Feng, X., Tsimplis, M. N., Quartly, G. D., and Yelland, M. J.: Wave height analysis from 10 years of observations in the Norwegian Sea, *Cont. Shelf. Res.* 72, 47–56, <https://doi.org/10.1016/j.csr.2013.10.013>, 2013.
- Forristall, G. Z.: Statistical distribution of wave heights in a storm, *J. Geophys. Res.-Oceans*, 83(NC5), 2353–2358, 1978.
- Folks, J. L. and Chhikara, R. S.: The inverse Gaussian distribution and its statistical application—A review, *J. R. Stat. Soc. Ser. B-Methodol.*, 40, 263–289, <https://doi.org/10.1111/j.2517-6161.1978.tb01039.x>, 1978.
25
- Geist, E. L., ten Brink, U. S., and Gove, M.: A framework for the probabilistic analysis of meteotsunamis, *Nat. Hazards*, 74, 123–142, <https://doi.org/10.1007/s11069-014-1294-1>, 2014.
- Hallegatte, S., Green, C., Nicholls, R. J., and Corfee-Morlot, J.: Future flood losses in major coastal cities, *Nat. Clim. Change*, 3, 802–806, <https://doi.org/10.1038/nclimate1979>, 2013.
- 30 Hawkes, P. J., Gouldby, B. R., Tawn, J. A., and Owen, M. W.: The joint probability of waves and water levels in coastal engineering design, *J. Hydraulic Res.*, 40, 241–251, <https://doi.org/10.1080/00221680209499940>, 2002.

- Haigh, I. D., Nicholls, R., and Wells, N.: A comparison of the main methods for estimating probabilities of extreme still water levels, *Coast. Eng.*, 57, 838–849, <https://doi.org/10.1016/j.coastaleng.2010.04.002>, 2010.
- Hoeke, R. K., McInnes, K. L., Kruger, J. C., McNaught, R. J., Hunter, J. R., and Smithers, S. G.: Widespread inundation of Pacific islands triggered by distant-source wind-waves, *Glob. Planet. Change*, 108, 128–138, <https://doi.org/10.1016/j.gloplacha.2013.06.006>, 2013.
- Holland, K. T. and Holman, R. A.: The statistical distribution of swash maxima on natural beaches, *J. Geophys. Res.-Oceans*, 98(C6), 10271–10278, <https://doi.org/10.1029/93JC00035>, 1993.
- Hsu, T.-W., Hsu, J. R.-C., Weng, W.-K., Wang, S.-K., and Ou, S.-H.: Wave setup and setdown generated by obliquely incident waves, *Coast. Eng.*, 53, 865–877, <https://doi.org/10.1016/j.coastaleng.2006.05.002>, 2006.
- 10 Johansson, M., Boman, H., Kahma, K., and Launiainen, J.: Trends in sea level variability in the Baltic Sea, *Boreal Environ. Res.* 6, 159–179, 2001.
- Katul, G. G., Porporato, A., Nathan, R., Siqueira, M., Soons, M. B., Poggi, D., Horn, H. S., and Levin, S. A.: Mechanistic analytical models for long-distance seed dispersal by wind, *American Naturalist*, 166, 368–381, <https://doi.org/10.1086/432589>, 2005.
- 15 Kulikov, E. A. and Medvedev, I. P.: Variability of the Baltic Sea level and floods in the Gulf of Finland, *Oceanology*, 53, 145–151, <https://doi.org/10.1134/S0001437013020094>, 2013.
- Launiainen, J. and Laurila, T.: Marine wind characteristics in the northern Baltic Sea, *Finnish Mar. Res.*, 250, 52–86, 1984.
- Larson, M., Hoan, L. X., and Hanson, H.: Direct formula to compute wave height and angle at incipient breaking, *J. Waterw. Port C-ASCE*, 136, 119–122, doi: 10.1061/ASCEWW.1943-5460.0000030, 2010.
- 20 Leijala, U., Björkqvist, J./V., Johansson, M. M., Pellikka, H., Laakso, L., Kahma, K. K.: Combining probability distributions of sea level variations and wave run-up to evaluate coastal flooding risks, *Nat. Hazards Earth Syst. Sci.*, 18, 2785–2799, <https://doi.org/10.5194/nhess-18-2785-2018>, 2018.
- Longuet-Higgins, M. S.: On the statistical distribution of the heights of sea waves, *J. Mar. Res.*, 11, 1245–1266, 1952.
- Longuet-Higgins, M. S. and Stewart, R. W.: Radiation stress and mass transport in gravity waves with application to "surf-beats", *J. Fluid Mech.*, 8, 565–583, <https://doi.org/10.1017/S0022112062000877>, 1962.
- Longuet-Higgins, M. S. and Stewart, R. W.: Radiation stresses in water waves: a physical discussion with applications, *Deep-Sea Res.*, 11, 529–562, [https://doi.org/10.1016/0011-7471\(64\)90001-4](https://doi.org/10.1016/0011-7471(64)90001-4), 1964.
- Lopez-Ruiz, A., Ortega-Sanchez, M., Baquerizo, A., and Losada, M. A.: A note on alongshore sediment transport on weakly curvilinear coasts and its implications, *Coast. Eng.*, 88, 143–153, <https://doi.org/10.1016/j.coastaleng.2014.03.001>, 2014.

- Lopez-Ruiz, A., Solari, S., Ortega-Sanchez, M., and Losada, M.: A simple approximation for wave refraction – Application to the assessment of the nearshore wave directionality, *Ocean Modell.*, 96, 324–333, <https://doi.org/10.1016/j.ocemod.2015.09.007>, 2015.
- Manunta, P., Feng, Y., Goddard, T., Anderson, A. M., and Cannon, K.: Analysis of soil test phosphorus to assess the risk of P transport in a watershed, *Comm. Soil Sci. Plant Analysis*, 33, 3481–3492, <https://doi.org/10.1081/CSS-12001452>, 2002.
- McDougal, W. G., and Hudspeth, R. T.: Wave setup/setdown and longshore current on non-planar beaches, *Coast. Eng.*, 7, 103–117, [https://doi.org/10.1016/0378-3839\(83\)90007-8](https://doi.org/10.1016/0378-3839(83)90007-8), 1983.
- Masina, M., Lamberti, A., and Archetti, R.: Coastal flooding: A copula based approach for estimating the joint probability of water levels and waves, *Coast. Eng.*, 97, 37–52, <https://doi.org/10.1016/j.coastaleng.2014.12.010>, 2015.
- Mel, R. and Lionello, P.: Verification of an ensemble prediction system for storm surge forecast in the Adriatic Sea, *Ocean Dyn.*, 64, 1803–2814. <https://doi.org/10.1007/s10236-014-0782-x>, 2014.
- Melet, A., Almar, R., and Meyssignac, B.: What dominates sea level at the coast: a case study for the Gulf of Guinea, *Ocean Dyn.*, 66, 623–636, <https://doi.org/10.1007/s10236-016-0942-2>, 2016.
- Melet, A., Meyssignac, B., Almar, R., and Le Cozannet, G.: 2018. Under-estimated wave contribution to coastal sea-level rise, *Nature Clim. Change*, 8, 234–239, <https://doi.org/10.1038/s41558-018-0088-y>, 2018.
- Meyer, V., Becker, N., Markantonis, V., Schwarze, R., van den Bergh, J. C. J. M., Bouwer, L. M., Bubeck, P., Ciavola, P., Genovese, E., Green, C., Hallegatte, S., Kreibich, H., Lequeux, Q., Logar, I., Papyrakis, E., Pfurtscheller, C., Poussin, J., Przylyski, V., Thieken, A. H., and Viavattene, C.: Assessing the costs of natural hazards – state of the art and knowledge gaps, *Nat. Hazards Earth Syst. Sci.*, 13, 1351–1373, <https://doi.org/10.5194/nhess-13-1351-2013>, 2013.
- Moghimi, S., Klingbeil, K., Gräwe, U., and Burchard, H.: A direct comparison of a depth-dependent Radiation stress formulation and a Vortex force formulation within a three-dimensional coastal ocean model, *Ocean Modell.*, 70, 132–144, <https://doi.org/10.1016/j.ocemod.2012.10.002>, 2013.
- Muraleedharan, G., Rao, A. D., Kurup, P. G., Nair, N. U., and Sinha, M.: Modified Weibull distribution for maximum and significant wave height simulation and prediction, *Coast. Eng.* 54, 630–638, <https://doi.org/10.1016/j.coastaleng.2007.05.001>, 2007.
- O’Grady, J. G., McInnes, K. L., and Hoeke, R. K.: Forecasting maximum wave setup hazards around Australia, *Coasts & Ports Conference 2015*, 15–18 September 2015, Pullman Hotel, Auckland, 636–641, 2015.
- Olbert, A. I., Nash, S., Cunnane, C., and Hartnett, M.: Tide-surge interactions and their effects on total sea levels in Irish coastal waters, *Ocean Dyn.*, 63, 599–614, <https://doi.org/10.1007/s10236-013-0618-0>, 2013.
- Orimolade, A. P., Haver, S., and Gudmestad, O. T.: Estimation of extreme significant wave heights and the associated uncertainties: A case study using NORA10 hindcast data for the Barents Sea, *Marine Structures*, 49, 1e17, <https://doi.org/10.1016/j.marstruc.2016.05.004>, 2016.

- Park, C. and Padgett, W. J.: Accelerated degradation models for failure based on geometric Brownian motion and gamma processes, *Lifetime Data Anal.*, 11, 511–527, <https://doi.org/10.1007/s10985-005-5237-8>, 2005.
- Pattiaratchi, C. and Wijeratne, E. M. S.: Observations of meteorological tsunamis along the south-west Australian coast, *Nat. Hazards*, 74, 281–303, <https://doi.org/10.1007/s11069-014-1263-8>, 2014.
- 5 Pellikka, H., Rauhala, J., Kahma, K.K., Stipa, T., Boman, H., and Kangas, A.: Recent observations of meteotsunamis on the Finnish coast, *Nat. Hazards*, 74, 197–215, <https://doi.org/10.1007/s11069-014-1150-3>, 2014.
- Pettersson, H., Lindow, H., and Brüning, T.: Wave climate in the Baltic Sea 2012, HELCOM Baltic Sea Environment Fact Sheets 2012. <http://helcom.fi/baltic-sea-trends/environment-fact-sheets/hydrography/wave-climate-in-the-baltic-sea/>, 2013.
- Pindsoo, K. and Soomere, T.: Contribution of wave set-up into the total water level in the Tallinn area, *Proc. Estonian Acad. Sci.*, 64(3S), 338–348, <https://doi.org/10.3176/proc.2015.3S.03>, 2015.
- 10 Purvis, M. J., Bates, P. D., and Hayes, C. M.: A probabilistic methodology to estimate future coastal flood risk due to sea level rise, *Coast. Eng.* 55, 1062–1073, <https://doi.org/10.1016/j.coastaleng.2008.04.008>, 2008.
- Pycroft, J., Abrell, J., and Ciscar, J. C.: The global impacts of extreme sea-level rise: A comprehensive economic assessment, *Environ. Resource Economics*, 64, 225–253, <https://doi.org/10.1007/s10640-014-9866-9>, 2016.
- 15 Roland, A., Cucco, A., Ferrarin, C., Hsu, T.-W., Liao, J.-M., Ou, S.-H., Umgiesser, G., and Zanke, U.: On the development and verification of a 2-D coupled wave-current model on unstructured meshes, *J. Mar. Syst.*, 78, S244–S254, <https://doi.org/10.1016/j.jmarsys.2009.01.026>, 2009.
- Rueda, A., Camus, P., Mendez, F. J., Tomas, A., and Luceno, A.: An extreme value model for maximum wave heights based on weather types, *J. Geophys. Res-Oceans*, 121, 1262–1273, <https://doi.org/10.1002/2015JC01095>, 2016a.
- 20 Rueda, A., Camus, P., Tomas, A., Vitousek, S., and Mendez, F. J.: A multivariate extreme wave and storm surge climate emulator based on weather patterns, *Ocean Modell.*, 104, 242–251, <https://doi.org/10.1016/j.ocemod.2016.06.008>, 2016b.
- Sallenger Jr, A. H., List, J. H., Gelfenbaum, G., Stumpf, R. P., and Hansen, M.: Large wave at Daytona Beach, Florida, explained as a squall-line surge, *J. Coast. Res.*, 11, 1383–1388, <https://www.jstor.org/stable/4298439>, 1995.
- Schmitt, F. G., Crapoulet, A., Hequette, A., and Huang, Y.: Nonlinear dynamics of the sea level time series in the eastern English Channel, *Nat. Hazards*, 91(1), 267–285, <https://doi.org/10.1007/s11069-017-3125-7>, 2018.
- 25 Seifert, T., Tauber, F., and Kayser, B.: A high resolution spherical grid topography of the Baltic Sea, 2nd edition, Baltic Sea Science Congress, Stockholm 25–29 November 2001, Poster 147, <http://www.io-warnemuende.de/topography-of-the-baltic-sea.html>, 2001.
- Serafin, K. A., and Ruggiero, P.: Simulating extreme total water levels using a time-dependent, extreme value approach, *J. Geophys. Res.-Oceans*, 119, 6305–6329, <https://doi.org/10.1002/2014JC010093>, 2014.
- 30

- Socquet-Juglard, H., Dysthe, K., Trulsen, K., Krogstad, H. E., and Liu, J. D.: Probability distributions of surface gravity waves during spectral changes, *J. Fluid Mech.*, 542, 195–216, <https://doi.org/10.1017/S0022112005006312>, 2005.
- Soomere, T.: Anisotropy of wind and wave regimes in the Baltic Proper, *J. Sea Res.*, 49, 305–316, [https://doi.org/10.1016/S1385-1101\(03\)00034-0](https://doi.org/10.1016/S1385-1101(03)00034-0), 2003.
- 5 Soomere, T.: Wind wave statistics in Tallinn Bay, *Boreal Environ. Res.*, 10, 103–118, 2005.
- Soomere, T., Myrberg, K., Leppäranta, M., and Nekrasov, A.: The progress in knowledge of physical oceanography of the Gulf of Finland: a review for 1997–2007, *Oceanologia*, 50(3), 287–362, 2008.
- Soomere, T., Pindsoo, K., Bishop, S. R., Käärd, A., and Valdmann, A.: Mapping wave set-up near a complex geometric urban coastline, *Nat. Hazards Earth Syst. Sci.*, 13, 3049–3061, <https://doi.org/10.5194/nhess-13-3049-2013>, 2013.
- 10 Soomere, T., Eelsalu, M., Kurkin, A., and Rybin, A.: Separation of the Baltic Sea water level into daily and multi-weekly components, *Cont. Shelf Res.*, 103, 23–32, <https://doi.org/10.1016/j.csr.2015.04.018>, 2015.
- Stockdon, H. F., Holman, R. A., Howd, P. A., and Sallenger, A. H.: Empirical parameterization of setup, swash, and runup, *Coast. Eng.*, 53, 573–588, <https://doi.org/10.1016/j.coastaleng.2005.12.005>, 2006.
- Suursaar, Ü., and Sooäär, J.: Decadal variations in mean and extreme sea level values along the Estonian coast of the Baltic
- 15 Sea, *Tellus A*, 59(2), 249–260, <https://doi.org/10.1111/j.1600-0870.2006.00220.x>, 2007.
- [SWAN]: SWAN Technical Documentation. Delft University of Technology. The Netherlands, 2007.
- Tuomi, L., Kahma, K. K., and Pettersson, H.: Wave hindcast statistics in the seasonally ice-covered Baltic Sea, *Boreal Environ. Res.*, 16, 451–472, 2011.
- Tuomi, L., Kahma, K. K., and Fortelius, C.: Modelling fetch-limited wave growth from an irregular shoreline, *J. Mar. Syst.*,
- 20 105, 96–105, <https://doi.org/10.1016/j.jmarsys.2012.06.004>, 2012.
- Vilibic, I.: The role of the fundamental seiche in the Adriatic coastal floods, *Cont. Shelf Res.*, 26, 206–216, <https://doi.org/10.1016/j.csr.2005.11.001>, 2006.
- Vilibic, I., Monserrat, S., and Rabinovich, A. B.: Meteorological tsunamis on the US East Coast and in other regions of the World Ocean, *Nat. Hazards*, 74, 1–9, <https://doi.org/10.1007/s11069-014-1350-x>, 2014.
- 25 Viška, M., and Soomere, T.: Simulated and observed reversals of wave-driven alongshore sediment transport at the eastern Baltic Sea coast, *Baltica*, 26(2), 145–156, <https://doi.org/10.5200/baltica.2013.26.15>, 2013.
- Wadey, M. P., Brown, J. M., Haigh, I. D., Dolphin, T., and Wisse, P.: Assessment and comparison of extreme sea levels and waves during the 2013/14 storm season in two UK coastal regions, *Nat. Hazards Earth Syst. Sci.*, 15, 2209–2225, <https://doi.org/10.5194/nhess-15-2209-2015>, 2015.

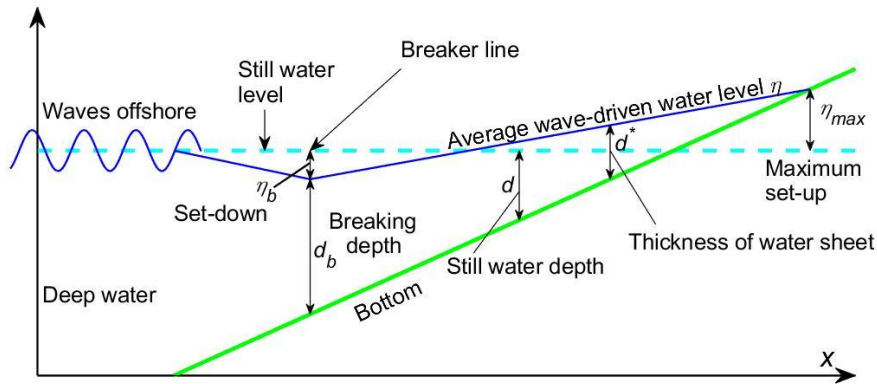
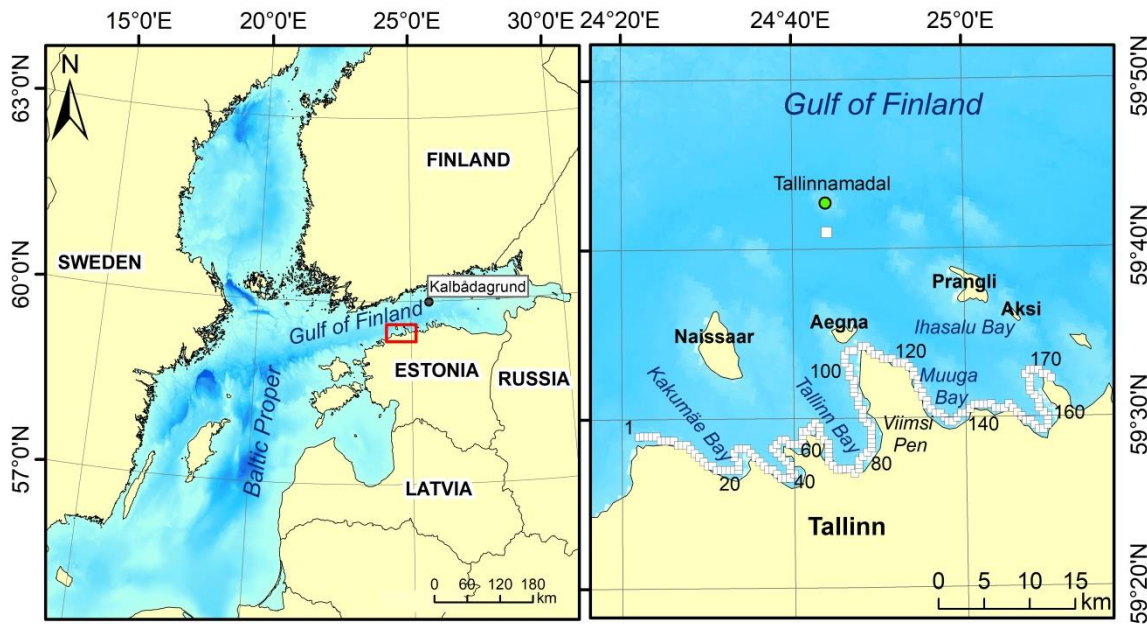


Figure 1: Scheme of the cross-section of a coastal area with wave set-up. The sign of η is positive if the average wave-driven water level exceeds the still water level and negative in the opposite case. The sign of d is positive in the area covered by still water and negative the otherwise dry section of the coast. The quantity d^* is non-negative.



5

Figure 2: Study area (red box in the left panel) in the vicinity of Tallinn Bay. Small circles along the shoreline in the right panel indicate the nearshore grid cells of the wave model WAM with a resolution of about 470 m. The grid cells are numbered consecutively from the west to the east. The green circle shows the location of the wave buoy at Tallinnamadal and the white square to the south of it the closest grid point of the wave model used for comparison of modelled and measured wave data.

10

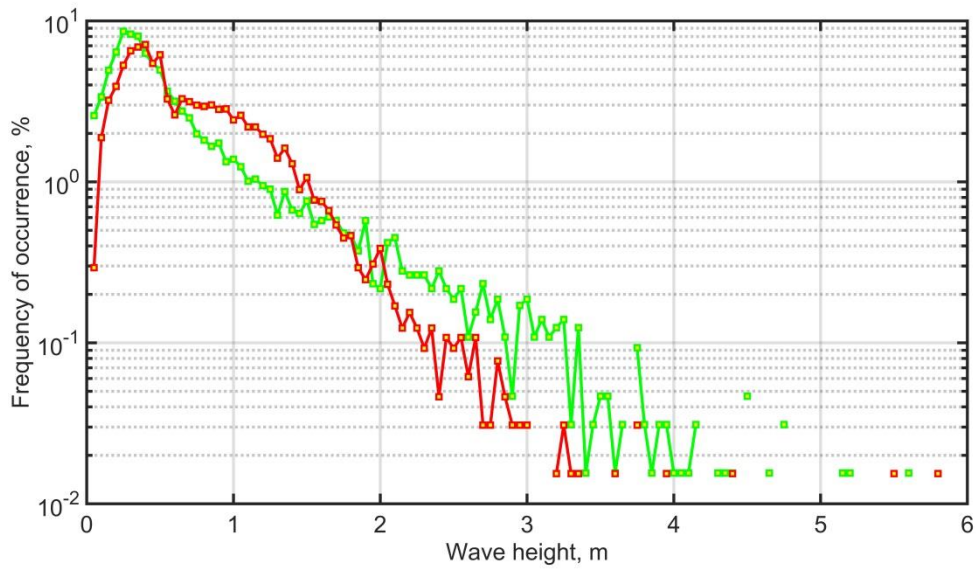


Figure 3: Empirical probability distributions of measured wave heights at Tallinnamadal (green) and modelled wave heights in the closest grid cell (red) with a resolution of 1 cm in 2012–2016. The missing lines between the data points indicate gaps in the sets of frequencies.

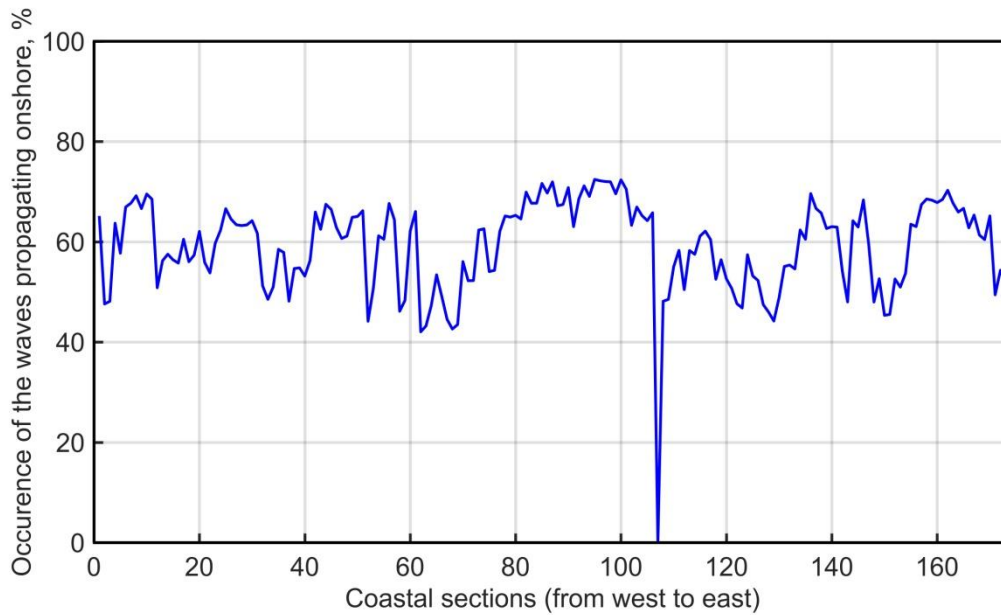


Figure 4: The percentage of occurrence of waves that propagate onshore and produce elevated wave set-up events in the study area.

5

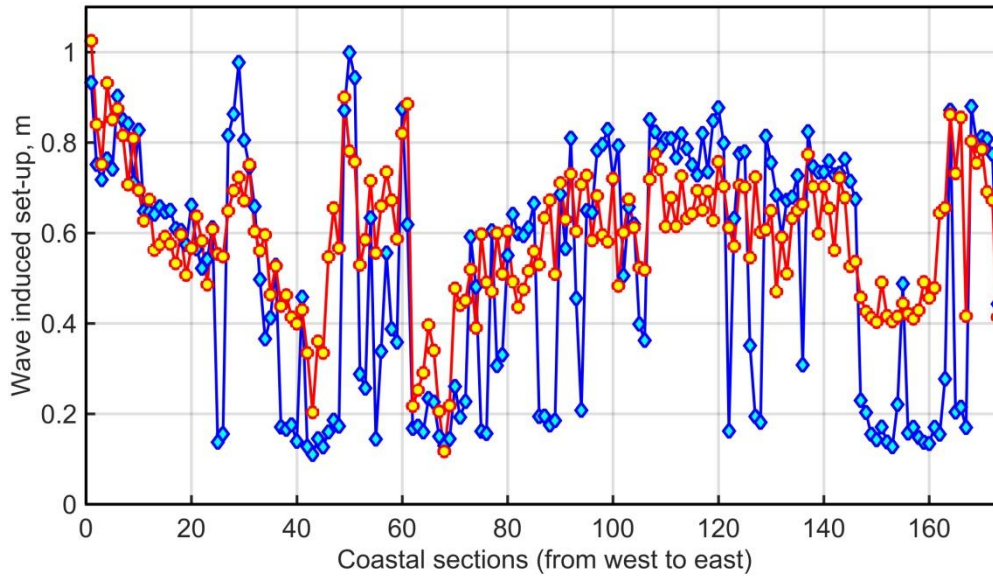


Figure 5: Maximum set-up heights evaluated using all onshore-propagating wave fields and Eqs. (1–8) (red circles) and similar heights evaluated using only those waves that approach the shore at an angle less than $\pm 15^\circ$ from shore-normal (blue diamonds).

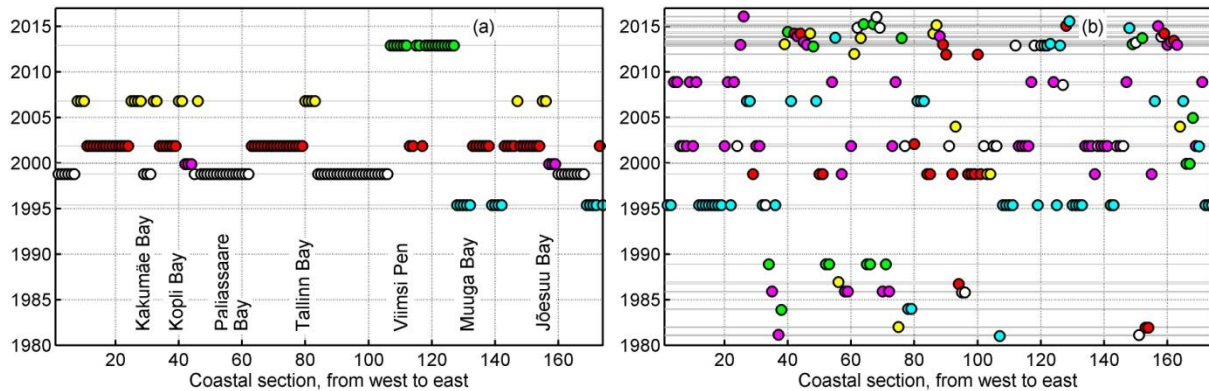
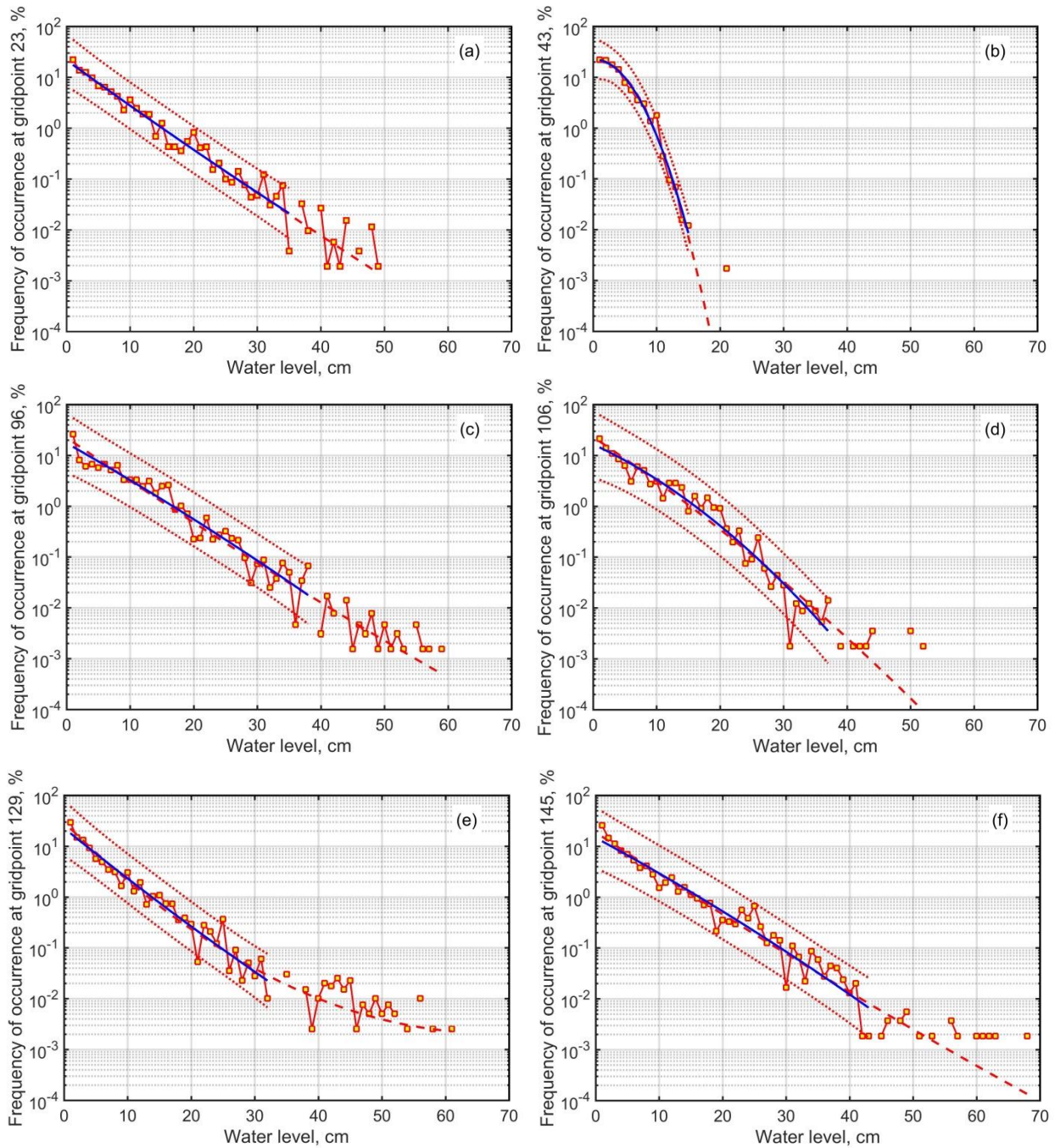
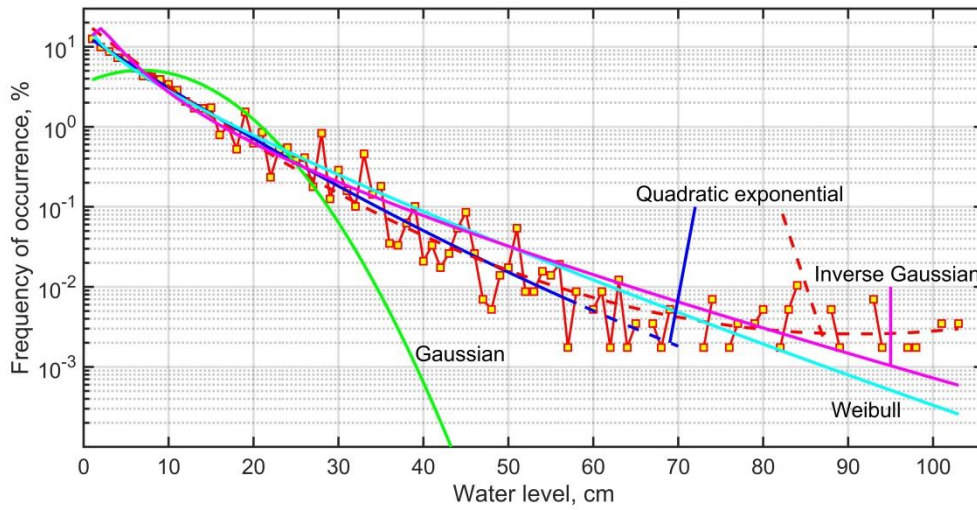


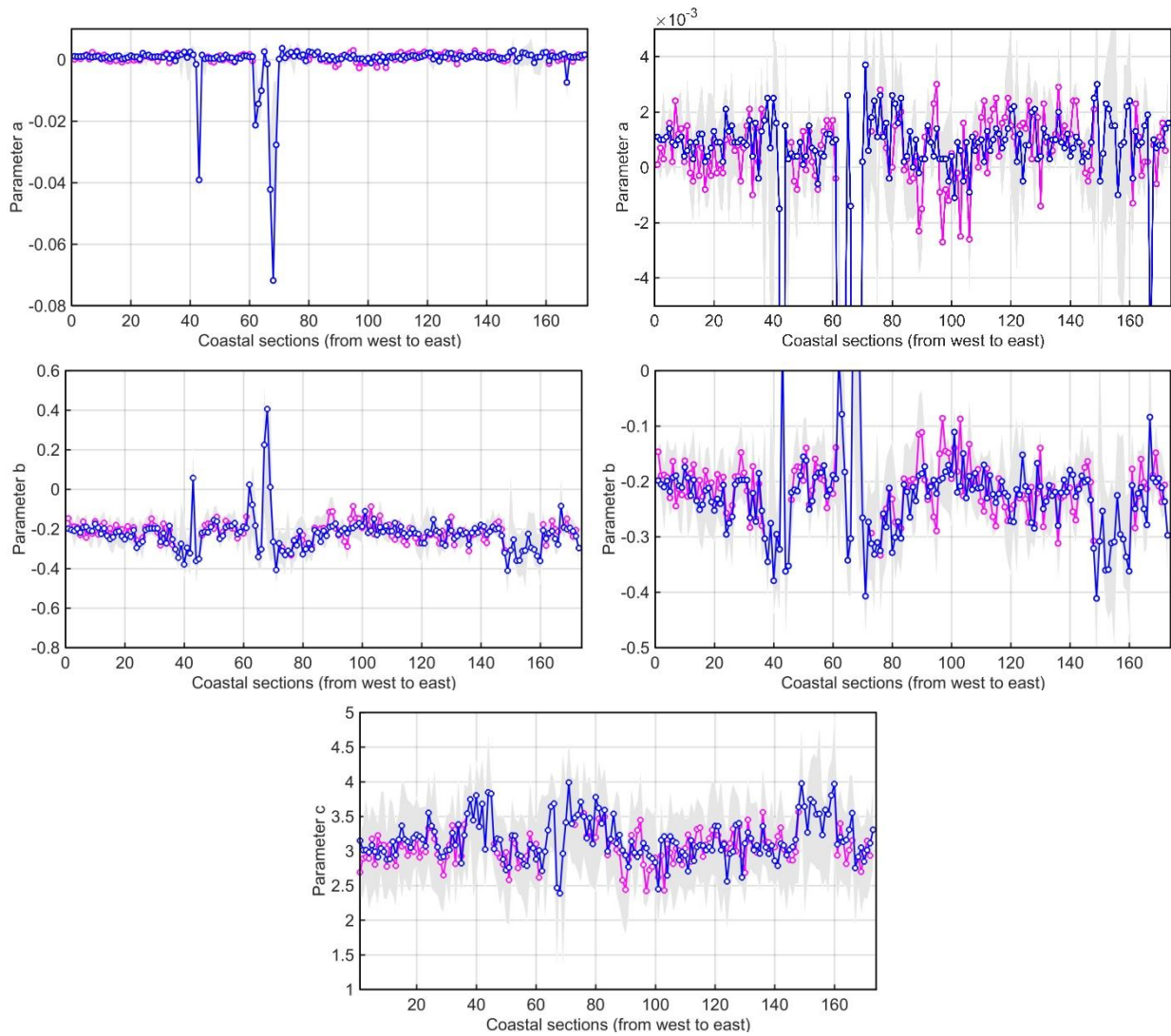
Figure 6: (a) Six storms that caused the highest waves in different coastal sections of the study area in January 1981–May 2016. Notice the cluster of green circles along the eastern coast of Viimsi Peninsula in an autumn storm of 2013. (b) 58 storms that caused the highest wave set-up in these sections in January 1981–May 2016. The set-up heights are evaluated similarly to the procedure in (Pindsoo and Soomere, 2015) using only waves approaching at an angle $\pm 15^\circ$ with respect to shore-normal. Colours vary cyclically in time and correspond to different storms in single years.



5 **Figure 7: Simulated distributions of various set-up heights (red squares) at various locations in the Tallinn Bay area open to different directions. Blue line: interpolation with a quadratic function from the set-up height of 0.01 m to the first gap in the empirical distribution; red dotted lines: its 95% confidence intervals; red dashed line: similar interpolation using all data points. The interpolating lines evaluated using only the data points from 0.01 m to 0.4 m are fully masked by blue lines. The resolution of all distributions is 1 cm.**



5 **Figure 8:** Simulated distributions of various set-up heights (red squares) with a resolution of 1 cm in the westernmost coastal segment of the study area (grid point 1 in Fig. 2) and the relevant Gaussian (mean 6.811 cm, standard deviation 7.83 cm), Weibull (shape parameter 0.8342, location parameter 6.22 cm) and inverse Gaussian (Wald, shape parameter 5.154, scale parameter or mean 6.811 cm) distributions evaluated using the method of moments. Blue line: interpolation of the empirical distribution in semi-logarithmic coordinates with a quadratic function (equivalently, the formal local exponential distribution with a general quadratic exponent) from the set-up height of 0.01 m to the first gap in the empirical distribution ($a = 0.0004$, $b = -0.16$, $c = 2.66$); red dashed line: similar interpolation using all data points ($a = 0.0011$, $b = -0.20$, $c = 3.02$).



5 **Figure 9: Alongshore variation of the coefficients a , b , c of the quadratic approximation $az^2 + bz + c$ of the exponent of empirical distributions of set-up heights in the Tallinn Bay area. For the parameters a and b , more detailed alongshore variation is presented in graphs with vertically stretched scales. Blue line: the respective parameter calculated for the range of set-up heights from 0.01 m to the first gap in the empirical distribution; the grey area marks the 95% confidence interval of this value, the pink line describes the values of the relevant parameter for the range of set-up heights from 0.01 m to 0.04 m.**

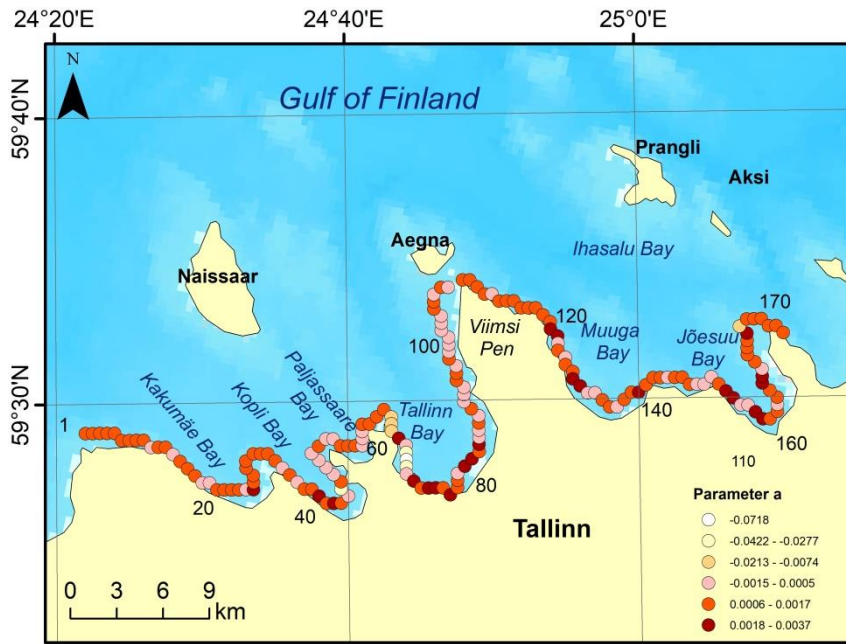


Figure 10: Alongshore variation in the coefficient of the leading term (colour code) in the approximation of the exponent of the empirical distribution of set-up heights at single locations. The grid cells are numbered consecutively from the west to the east.

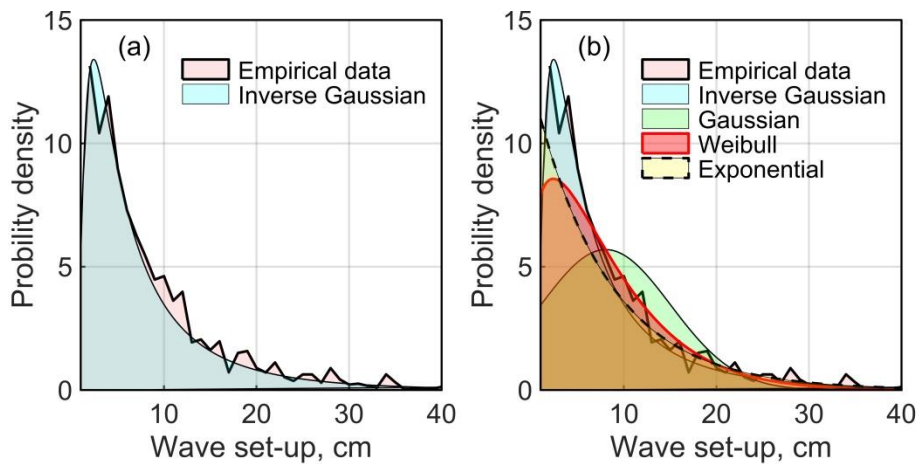
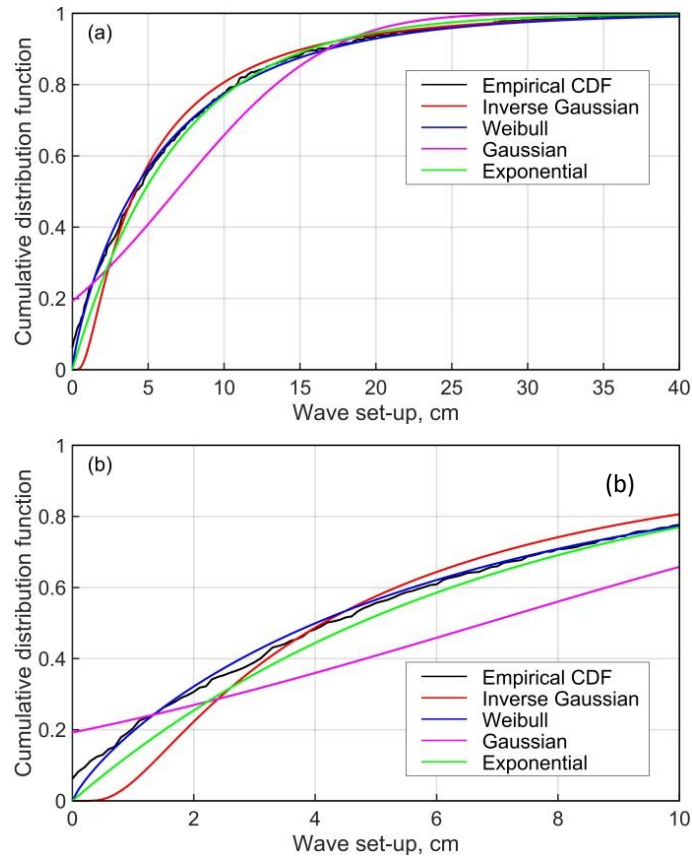
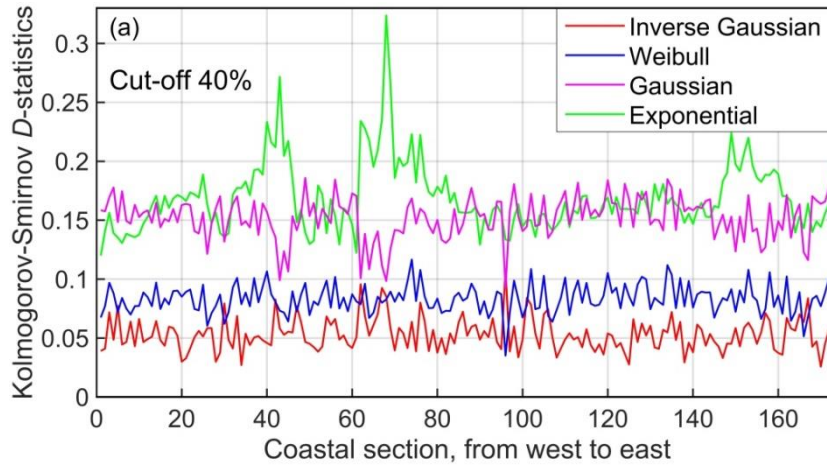


Figure 11. (a) The best fit of the data set presented in Fig. 8 in the range of 0.01–0.4 m with an inverse Gaussian distribution with the mean $\mu = 0.0804 \pm 0.0004$ m and shape $\lambda = 0.0793 \pm 0.0005$ and the best fit of the same data set with an exponential (rate 12.44 ± 0.06 1/m), Gaussian (mean 0.0804 ± 0.0003 m, std 0.0700 ± 0.0002 m) and Weibull (shape parameter 1.247 ± 0.004 , scale parameter 0.0867 ± 0.0003 m) distribution.



5 **Figure 12:** (a) Match of the cumulative distribution function of the empirical distribution of occurrence of different set-up heights for the data presented in Fig. 8 with inverse Gaussian, Weibull, Gaussian and exponential distributions. (b) The same match for set-up heights ≤ 10 cm.



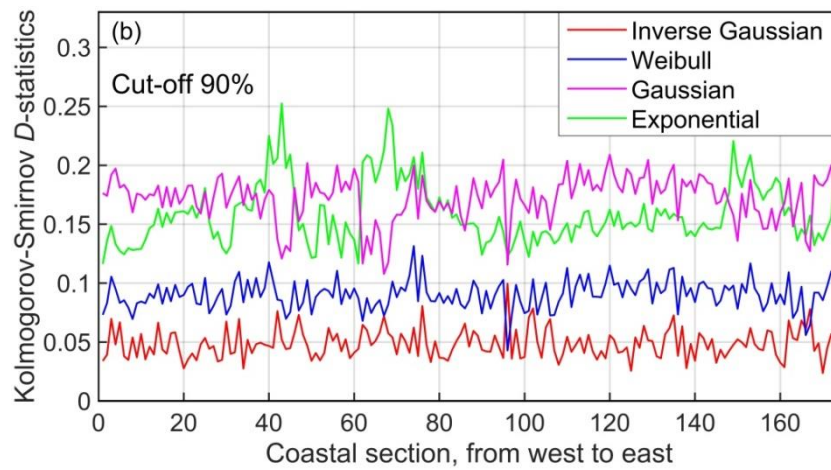


Figure 13: Alongshore variation in the D -value of Kolmogorov-Smirnov test for the goodness of fit of the empirical probability distribution of set-up heights with an inverse Gaussian, Weibull, exponential, and Gaussian distribution for different cut-off values (40% and 90% of the maximum set-up height in a particular coastal section).