

Interactive comment on “Synergy between satellite observations and model simulations during extreme events” by Anne Wiese et al.

A. Sánchez-Arcilla (Editor) agustin.arcilla@upc.edu

Received and published: 3 October 2018

Based on the performed reviews this paper should emphasize what is actually novel and that is the satellite data assessment using a wave model. In a comparison the difference between wind fields as driver for the resulting wave fields should be analysed in terms of objective parameters. For instance running the meteorological model or sampling a given wind field at different grid sizes. This objective comparison trying to modify only one element at a time within the whole comparison process would add value to the paper and increase the strength of the essential message which should be related to the quality of satellite data and its limitations.

Dear Editor,

We would like to thank the three reviewers for their valuable comments about our manuscript. They have raised important points that helped us to improve the clarity and the understanding of the study. The revised manuscript reflects these comments and a point-to-point response to them is provided below. The changes can be checked in the track changes document. We have now revised the manuscript and emphasized what is the novel. In particular, we have now made our manuscript much clearer, following the reviewers' suggestions and added more analyses and discussion of the different wind data used. Also more detailed analyses on the comparisons have been made and the limitations of the satellite data and methods used have been identified.

The robustness of the Sentinel-3A data should be emphasized, stressing the importance of data quality regardless of flight direction or wind direction.

Authors: Thanks for this comment, which we believe is important for our work. As mentioned above we have rewritten the statement emphasizing on the importance of the new Sentinel-3A data quality regardless of flight direction or wind direction.

Finally the title should be reconsidered since it does not reflect the wave model validation effort which is one of the main components of the paper.

Authors: Following also the comments of two reviewers, the title of the revised manuscript has been modified, accordingly.

We hope that this submission answers the comments and questions of the reviewers.

Interactive comment on “Synergy between satellite observations and model simulations during extreme events” by Anne Wiese et al.

Anonymous Referee #1

Received and published: 3 September 2018

Overview:

This paper focusses on the issue of improving wave model performance by improving the driving wind fields. It is following many other papers on this topic but does add some originality in its assessment of the differences between wave model outputs. The wave model outputs are compared with in situ data as the ground truth. The results are similar to previous work in demonstrating that wave model results are sensitive to the wind forcing, which is not surprising or very new. A secondary part of the work is in examining the quality of satellite data on significant wave height, showing that the most recent satellite Sentinel-3A is superior to previous satellites, especially within 10km of the coast, but still requires bias correction of the significant wave height before any improvement in wave model performance could be achieved by its assimilation into an operational model.

Authors: We would like to thank to the reviewers for the valuable comments about our manuscript. Important points have been raised that helped us to improve the clarity and the understanding of our study.

General:

The paper is generally clearly written and readable, apart from a few errors (listed below). However it could be improved by some reorganisation and rationalisation.

Authors: We have revised our manuscript – reorganizing it following reviewers’ suggestions.

Authors: The revised manuscript reflects these comments and a point-to-point response to them is provided below.

The motivation for the study and the order of the presentation could be sharpened up.

Authors: This has been modified in the revised manuscript

The satellite data assessment is stated to be the main motivation but the bulk of the paper addresses the wave model forcing by different atmospheric model wind fields and assessing which performs better. This exercise is somewhat flawed as the wind fields come from different models and it is not clear what are the differences between these. This should be discussed further.

Authors: We agree. The first part of the paper is focused on the wave model forcing by different atmospheric model wind fields and assessing which performs better. This has been now stressed in the introduction and the abstract has been also modified, accordingly. The differences between the different models is discussed in more detail.

Some are reanalysis products and some are forecasts. Presumably these have different wind datasets assimilated into them. Thus it is not really a like-for-like comparison. The issue of model spatial and temporal resolution could be more rigorously assessed by sampling the same wind field at different resolutions, but this is not done.

Authors: We agree with the comment. We don’t aim here to make assessment and quantitative analyses of the different wind forcing provided by different centers and sources. The wind data sets indeed differ in their horizontal and spatial resolution as well as the data that are assimilated (or not). This is further discussed in Section 2.3. Our motivation is explained now better in the introduction. The aim in this study is to give an overview of the performance of the wave model over the considered area. These analyses were needed to define our “reference forcing” and further proceed with those model simulations and assessments of the satellite data of Sentinel-3A in comparisons with older altimeter data widely used for validations, in-situ observations together with the model simulations. This has been also emphasized in the Discussion.

The authors state that the WAM model performs well with all the datasets, which has already been demonstrated.

Authors: The only publication we are aware of comparing wave data with ERA-interim and ERA5 wind forcing is Nose et al. (2018) "Predictability of storm wave heights in the ice-free Beaufort Sea". This is, though, focused for a different region and for only two months. This has now been referred to in the text and added to the references. Since wind re-analyses of ERA-5 are still new there are still no sufficient publications about WAM performance under this forcing on regional scales.

It is also known that higher spatial and temporal resolution improves the wave model performance.

Authors: We agree. More discussion and references have been added. We demonstrate in our study the wave model performance for the considered area with the available wind forcing. This has been re-formulated now to make our statements more clear.

There is an interesting comparison between results, using an EOF analysis to show differences in wind speed, direction and location of the maximum affecting the maximum wave height in an extreme event. Using reference to a model ensemble where it is demonstrated that some wind fields are better quality than others seem somewhat perverse – can this be justified?

Authors: In our study we do not aim at stating that one wind field is better than the other. Rather we wanted to demonstrate with which wind field WAM produces the best results in order to compare the satellite data with the model. We rephrased this and made our statements clearer.

Overall this paper needs moderate revision before acceptance for publication.

Detailed comments:

1. The title should include 'of wind and waves' after 'simulations'

Authors: Thanks! It has been added to the title.

2. The first line of the abstract is somewhat misleading as only satellite wave data are evaluated. Also this part of the work is second to the study of the spatial and temporal resolution of the wind forcing for the wave model and so perhaps should not be introduced first.

Authors: We agree. The abstract has been re-organized and rephrased following this comment.

3. P 2 line 7, suggest inserting 'in determining' to replace 'of'

Authors: This has been inserted.

4. P 2 line 31 'flagging of (data)' – explain further, this is rather cryptic.

Authors: The word has been replaced by discarding.

5. P 5 line 11 – 30 times 15 does not equal 360 - check directional resolution

Authors: You are right. It is 24 directions.

6. P 6, line 6, why is wind data interpolated to 0.25 deg in this case? Is this a typo?

Authors: This is how the output is made available. We rephrased the paragraph.

7. On p 6 there is repeated use of increased resolution while referring to reduce grid size, this should be more clear.

Authors: This has been modified.

8. In Table 2 use consistent units for spatial resolution

Authors: Thank you. The units have been homogenized.

9. P 6 line 22, state extreme event is in September.

Authors: This has been added.

10. P 7 line 5 and subsequent – use of a strange reference to calm conditions – does this mean zero wind or less than a threshold? It seems superfluous to state the models give the same result when there is no wind!

Authors: Thank you. The word calm was not correctly used here. What we meant were wind speeds below 5 Bft or significant wave height below 2m. Therefore, we modified that.

11. Presumably there can be residual swell. Does the model use the same boundary forcing for each case? This seems implied by p 5 line 15. Are all the wind fields consistent near the open boundary? Could this be an issue – discuss.

Authors: Yes, you are right. In our study the boundary conditions are the same for all the model simulations. This has been added and discussed in the revised manuscript.

12. P 10 line 6 this sentence is not necessarily self-evident, why?

Authors: We agree. The sentence has been rephrased and we made our statements clearer.

13. P 11, lines 9-13 – the term ‘period’ of the peak is a bit confusing, maybe use ‘duration or persistence.

Authors: This has been changed.

14. P 11 lines 23-24, stating the obvious?

Authors: We agree. However we decided to keep these statements since they summarize the importance of our findings in the first part of the manuscript and provide a transition to the second part that is on the synergy analyses. We provided arguments for choosing the wave-model run for validation analyses. This is now clarified.

15. P 16, lines 9-10 – using coupled model not demonstrated here – don’t state this unless using reference to other work

Authors: Our apologies. This has been deleted.

16. Watch out for missing spaces between words in a few instances e.g. p5, p11

Authors: Thanks and we are very sorry for this. It has been fixed.

Interactive comment on “Synergy between satellite observations and model simulations during extreme events” by Anne Wiese et al.

Anonymous Referee #2

Received and published: 5 September 2018

General Comments The paper deals with interesting topic of the performance of WAM model in the region of North and Baltic Seas. The authors analyses the sensitivity and the accuracy of the model WAM using different wind models (and considering different time steps and resolutions). They found that the time resolution is crucial (hourly data) in this region in order to reproduce the significant peak of the wave height and its correct location. Moreover, they describe which is the best (most accurate) wind forcing model in the region. The performance of the newly Sentinel-3A data is compared with other operational satellites (Jason-2 and Cryosat-2) showing the better results for Sentinel-3A in the coastal areas (mainly in the first 10km). The analysis also reveals that the Sentinel-3A quality is independent of the satellite flights direction, metocean conditions, and even for the wind direction relative to the flight direction. To my knowledge, this is the first study that describes at this detail this kind of process and Sentinel performance in this region. In general, the manuscript is well organized and written, allowing an easy reading and following up the discussion and conclusions. In my opinion, a set of few changes would allow the publication of the manuscript in the journal. I recommend minor revision.

Authors: We are very grateful for the kind considerations about our manuscript

However, still some points that the authors should consider.

1) Are some of the wind models used for the analysis already assimilating data? If this is true, it should be considered when comparing all the results. Moreover, the validation of the winds should not include the assimilated data.

Authors: We agree and this is now discussed in the revised manuscript. For the ECMWF reanalysis, near the surface, in-situ wind data were indeed part of the data provided to the 4Dvar. Sure the wind data enter in the system but so are all the other data and the vibrational approach will attempt to improve the fit with all these observations but it does not mean that one can expect a perfect fit. Actually, it is one of the key diagnostics when looking at the performance of the DA system, namely the fit to the data from the first guess and the analysis. Generally one expects to have a better fit with the analysis. So it is still worthwhile to look at the comparison.

Also, the short range forecasts by the ECMWF from the 4Dvar system have been influenced by the data assimilation because the assimilation is performed over a 6 or 12 window with data that can be more recent (by a few hours) than the start time of each forecast. For the DWD forecast, the in-situ wind data is assimilated into the analysis used to initialize the forecast but for the forecast itself, no data was assimilated.

For the coastDat-3 data set no data was assimilated at all.

This explanation has been added in Section 2.3.

2) About EOF. I am not sure that it gives more information than observed in Figure 4. By the way, looking at Figure 4 it is clearly observed the displacement of the location of maximum Hs to the NE in the 6h models. So basically, the first mode of the EOF as you have it now are related with this “displacement”. It would be nice to apply the EOF only to the 6h (or 1h) and not only for the event of 29th September, but also for the entire simulation. In that sense you can describe how are the modes related to both the time and the space variability.

Authors: The EOF analysis is carried out for one event for the whole ensemble in order to estimate the differences between the model simulations with the different wind forcings. Sure, most of the differences can already be observed by looking at each ensemble member individually but this analysis combines all of them. We now did the EOF analysis for June till August 2016 for the difference between the two ERA5 model simulations in order to estimate the influence of the different temporal resolutions over time, but this only revealed again, that during normal conditions both model simulations are very similar with an explained variance of only 3.13% for the dominant mode of the EOF and even less

for further modes (Figure 1). The large differences between the model simulations appear only for extreme events, which is why we concentrated on that. We have now added the above explanations in the revised manuscript.

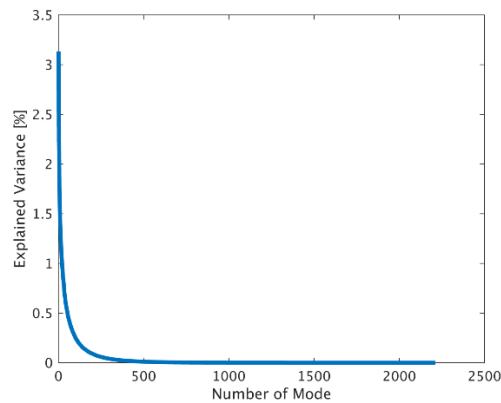


Figure 1: The explained variance for each mode of the EOF analysis for the difference between the model simulation with hourly and six hourly ERA5 wind forcing for summer 2016.

3) Could you define the statistics used? RMS, Bias and correlation are well known. But what about SI? Are you referring to the RMSE normalized by the mean observed values?

Authors: We agree. The statistical analyses that have been used in our study are have been defined in the Appendix.

4) While comparing the same model with different time resolutions seems appropriate, I do not have the same feeling when the spatial resolution comparison is done. You are comparing different models, not the same model with different resolutions. In this case, if you want to check the sensitivity of the model to different wind forcing resolutions I would suggest to do some spatial subsetting from the finer resolution.

Authors: Thank you for the comment. The wind data sets that have been used here indeed differ in their horizontal and spatial resolution as well as the data that are assimilated (or not). This is further discussed in Section 2.3. The aim in this study is to give an overview of the performance of the wave model over the considered area with different available wind products, so that other scientist planning to performed similar simulations have an idea what to expect. Our motivation is explained now clearer in the introduction. These comparisons were also used do define our “reference forcing” and further proceed with those model simulations and assessments of the satellite data of Sentinel-3A in comparisons with older altimeter data widely used for validations, in-situ observations together with the model simulations. This has been also emphasized in the Discussion.

Specific Comments

P2L10-L12: This sentence seem to indicate that the wave models always worked good and with high accuracy, and bad or good results are only dependent on the meteorological models. In my opinion, it should be rephrased.

Authors: In our manuscript, we refer to the paper by Cavaleri and Bertotti, 1997 and the state-of-the- art provided by that manuscript.

“Our experience as wave modellers, hence of users of surface wind products, strongly suggests the lack of sufficient resolution as a likely culprit. As pointed out in the introduction, advanced wave models are at present more accurate than the meteorological models, and they are therefore good indicators of the quality of the driving wind fields.”

We have now re-written this in the revised manuscript making this clearer.

P2L18: define acronym SWAN

Authors: We have added the full name.

P3L19: what it this mail referred to?

Authors: We have changed the source of the data.

P4: some acronyms not specified: i.e. JCOMM, ORBCOMM, GOES and WMO

Authors: This has been fixed in the revised manuscript:

P5L14-L15: some information about the coarser model simulation? Spatial, frequency and temporal resolutions?

Authors: The information has been added.

P6L3-L11: there is a kind of a mess in these lines. All the models are “interpolated” to different resolutions (finer) than the original. However, the operational ECMWF of 9km (0.08°) is interpolated to 0.125°. Aren’t you losing some information in this process?

Authors: Our apologies for the confusion. This has been re-written in the revised manuscript. Explaining that this is how the model output is made available. We have added also more information about the wind forcing data.

Table 2: are the models list following some order? I would ordinate them from coarser to finer (and homogenize horizontal dimension units).

Authors: We are sorry for the confusion. The units have been homogenized and ordinated.

P7L30-L32 : where have you seen this? is there any figure I am missing?

Authors: This is clarified in the revised manuscript. We calculated the bias and haven’t shown any figure for this.

P8L15: change “time step” for “instant” or “event”

Authors: We agree. Thank you. This has been changed.

P8L18: I am not sure if the word ensemble here is the most appropriate. Probably you can use: numerical tests.

Authors: We decided to stick to the word “ensemble” here, because it better reflects our idea behind using the different model experiments.

P10L11-L14: could you mark the in situ measurements used here in the Figure 1?

Authors: They are marked with the white box. We rephrased the sentence to make this clear.

P11_L1-L3: why don’t you analyze the event two days before? It is not 7m of Hs, but more than 4m.

Authors: The extreme event is analyzed as well in Section 3.2.3. We refer to the section and corresponding values.

P12-L14: do you take into account some kind of land-mask? For example, what happens if your mooring is inside a bay, and the satellite track is outside (with land between them)?

Authors: You are right. This has not been taken into account. We clarified this in the revised manuscript.

Table 3: number of data used for the analysis please.

Authors: This has been added.

Figure 1: explain the black and white boxes.

Authors: We have added an explanation in the figure caption.

Figure 2: what is M and R in the text boxes (also in Figure 3)?

Authors: We have added an explanation in the figure caption.

Do the 6h and 1h models have the same number of “entries”?

Authors: Yes, because only the wind forcing is 6 hourly, but the wave model still has hourly output.

Figure 4: the OBCs seems a bit different in some cases (4a and b shows wave heights in the NW corner not observed in the others...). Is this related only to wind forcing?

Authors: The OBCs are the same for all model simulations. The differences are solely because of the different wind forcings. We have now made this clear in the revised manuscript.

Interactive comment on “Synergy between satellite observations and model simulations during extreme events” by Anne Wiese et al.

M. Espino Infantes

manuel.espino@upc.edu

Received and published: 24 September 2018

General Comments: In this work, first the authors present the validation, again in situ observations, of the results of the WAM wave model forced with different wind models with different spatial and temporal resolution for the North and Baltic Seas. Concluding that in this area the results of the WAM model are more precise when is forced with winds of lower temporal resolution. For later, using the previous model results, in order to demonstrate that the wind and wave satellite observations of the Sentinel 3 are more accurate near the coast than any other of the previous available satellite observations. However, there are some points that in my opinion the authors should consider:

- The biggest effort of the work is in the validation of the results of the WAM wave model, which is not reflected in the title or in the abstract of the work.

Authors: We agree. The title has been changed now to include also the WAM wave model validations.

- On the other hand, in this validation different wind models are used, which are not sufficiently described and their differences and similarities are not listed (Example, if they incorporate or not assimilation of data, etc.), which is very important at the time of understand the differences in the subsequent wave results.

Authors: This is a very good point also made by one of the other reviewers. We added in the revised version more information about the different wind data used in this study.

- Finally, mention the need to incorporate in the text the definition of the error statistics that have been used throughout the work (eg, SI)

Authors: Thank you for this comment – this is very good point. This has been added now.

I recommend minor revision before acceptance for publication.

Detailed comments:

1. The title could be "Synergy between WAM model simulation and Sentinel 3 observations during a extreme events"

Authors: Thank you for the suggestion. We agree that it is important to add the wave model. We however decided not to specify the name of the wave model WAM in the title but just to use wave, in order to attract a wider audience to read our study.

The title now is "Synergy of wind wave model simulations and satellite observations during extreme events"

2. With the same idea above, the abstract should be rewritten.

Authors: You are right. We have now re-written the abstract incorporating also the information about the wave model WAM simulations.

3. P5 Figure 1: Explain in text of the figure the three colors boxes

Authors: We agree. This has been added.

4. P5 line 11: There is an error in the directional resolution described

Authors: Thank you and apologies for our mistake. This has been corrected.

5. P6 table 2: I recommend use the same units for the spatial resolution of the different meteo models. The same along the text.

Authors: We agree. The units have been homogenized.

6. P8 lines 9-18: Change “ensemble” for “different model experiments” or “numerical tests”

Authors: We decided to use “ensemble” here, because it better reflects our idea behind using the different model experiments.

7. P11 lines 9-13: The concept of “period of the peak” can be confusing in this context of results of wave models and it is more frequent to call it “storm duration”

Authors: “Period of the peak” has been changed to “duration of the peak”.

8. P16, lines 9-10: Explain why do you think that using wave-atmosphere coupling models could you improved your results

Authors: This statement has been modified in the revised manuscript.

Synergy ~~between satellite observations and~~ of wind wave model simulations and satellite observations during extreme events

Anne Wiese¹, Joanna Staneva¹, Johannes Schulz-Stellenfleth¹, Arno Behrens¹, Luciana Fenoglio-Marc², and Jean-Raymond Bidlot³

¹Institute of Coastal Research, Helmholtz-Zentrum Geesthacht, Geesthacht, Germany

²Institute of Geodesy and Geoinformation, University of Bonn, Bonn, Germany

³European Centre for Medium-Range Weather Forecasts, Reading, UK

Correspondence: Anne Wiese (anne.wiese@hzg.de)

Abstract. In this study, the quality of ~~wind and~~ wave data provided by the new Sentinel-3A satellite is evaluated and the sensitivity of the wave model to wind forcing is tested. We focus on coastal areas, where altimeter data are of lower quality ~~than those and wave modelling is more complex than~~ for the open ocean. ~~The satellite data of Sentinel-3A, Jason-2 and CryoSat-2 are assessed in a comparison with in situ measurements and spectral wave model (WAM) simulations. The~~ In the first part of the
5 study, the sensitivity of the wave model to wind forcing is evaluated using data with different temporal and spatial resolution, such as ERA-Interim and ERA5 reanalyses, ECMWF operational analysis and short-range forecasts, German Weather Service (DWD) forecasts and regional atmospheric model simulations -coastDat. Numerical simulations show that both the wave model forced using the ERA5 reanalyses and that forced using the ECMWF operational analysis/forecast demonstrate the best capability over the whole study period, as well as during extreme events. To further estimate the variance of the significant wave
10 height of ensemble members for different wind forcings, especially during extreme events, an empirical orthogonal function (EOF) analysis is performed. In the second part of the study, the satellite data of Sentinel-3A, Jason-2 and CryoSat-2 are assessed in comparison with in situ measurements and spectral wave model (WAM) simulations. Intercomparisons between remote sensing and in situ observations demonstrate that the overall quality of the former is good over the North Sea and Baltic Sea throughout the study period, although the significant wave heights estimated based on satellite data tend to be greater than
15 the in situ measurements by 7 cm to 26 cm. The quality of all satellite data near the coastal area decreases; however, within 10 km off the coast, Sentinel-3A performs better than the other two satellites. Analyses in which data from satellite tracks are separated in terms of onshore and offshore flights have been carried out. No substantial differences are found when comparing the statistics for onshore and offshore flights. Moreover, no substantial differences are found between satellite tracks under various metocean conditions. Furthermore, the satellite data quality does not depend on the wind direction relative to the flight
20 direction. Thus, the quality of the data obtained by the new Sentinel-3A satellite over coastal areas is improved compared to that of older satellites.

1 Introduction

Information on the state of the sea in coastal areas is of great interest, as waves are a crucial factor of important activities conducted at sea. Therefore, an accurate wave forecast and hindcast is very important for marine traffic, recreational activities on the water, urban development near the coast, ecosystem restoration, renewable energies and offshore management (Gautier and Caires, 2015; Thomas and Dwarakish, 2015). Global ocean wave forecasts with coarser spatial resolution have already reached a remarkable level of accuracy (Janssen and Bidlot, 2018). However, for inner basins and coastal areas, higher resolution is required, and numerical wave models still have some deficits (Cavaleri and Bertotti, 2003b; Van Vledder and Akpınar, 2015).

In many studies, the meteorological input has already been found to be a crucial factor for conducting good wave forecasts (Teixeira et al., 1995; Cavaleri and Bertotti, 2003b, 2004; Cavaleri et al., 2007; Thomas and Dwarakish, 2015; Van Vledder and Akpınar, 2015). The wind data used to force a wave model needs to be very accurate since, in coastal areas, the fetch is limited and small islands can block wave propagation. Small changes in wind direction can lead to drastically different wave results. The wind speed is a crucial factor ~~of~~ in determining the significant wave height. However, peaks and extreme events are frequently not well simulated by the wave model because the meteorological input underestimates the wind speed (Cavaleri et al., 2007; Cavaleri, 2009). More than 20 years ago, Cavaleri and Bertotti (1997) suggested that the general performance of the wave model as well as its performance during extreme events can be improved by using a wind input field with a higher spatial resolution. Since the most advanced wave models at that time were more accurate than the meteorological ones, the quality of the wave model output was a very good indicator of the quality of the meteorological input data. Cavaleri and Bertotti (2003b, 2004) analysed the accuracy of the modelled wind and wave fields of enclosed seas, such as the Mediterranean Sea, with respect to the spatial resolution of the wind fields. They found that the modelled surface wind speeds are almost always underestimated, which they attributed to a lack of spatial resolution (Cavaleri and Bertotti, 2003b). When the meteorological input data has a higher spatial resolution, the average results of the wave model are indeed closer to the ground truth (Cavaleri and Bertotti, 2004). However, even today, wind data inaccuracy leads to discrepancies between wave model simulations (Thomas and Dwarakish, 2015; Van Vledder and Akpınar, 2015). Van Vledder and Akpınar (2015) assessed the sensitivity of the wave model SWAN (Simulating Waves Nearshore) to the spatial and temporal resolution of wind input data in the area of the Black Sea. They concluded that the wave model results are critically sensitive to the spatial resolution and less sensitive to the temporal resolution of the meteorological input data. Similar analyses have been conducted both globally (Feng et al., 2006) and for coastal areas such as that around the Mediterranean Sea (Cavaleri and Bertotti, 2003a, b, 2004; Signell et al., 2005; Bolaños-Sanchez et al., 2007; de León and Soares, 2008; de León et al., 2012), the Caribbean Sea and Gulf of Mexico (Appendini et al., 2013), ~~and~~ the Black Sea (Van Vledder and Akpınar, 2015) and the Beaufort Sea (Nose et al., 2018) but not for the area of interest in the present study, i.e., that around the North and Baltic Seas and with the wind data available at present. Hence, the accuracy of the spectral wave model WAM is assessed for both normal and extreme conditions using different meteorological input data presently available. The sensitivity of the wave model to the meteorological input data as well as their temporal and spatial resolution is estimated. Also the wind data with which the wave model performs best with

respect to the observations will be determined for the later comparisons of wave model with the newly available satellite data of the meteorological input data is estimated Sentinel-3A.

Another way to increase the accuracy of the modelled significant wave height is by assimilating the significant wave height measured by satellites into a first-guess wave field (Thomas and Dwarakish, 2015). While altimeter data related to the open ocean are of good quality and used routinely, for coastal areas, their quality tends to deteriorate, which results in systematic ~~flagging-discarding~~ of up to a few tens of kilometres from the coast (Cipollini et al., 2010; Vignudelli et al., 2011; Fenoglio-Marc et al., 2015). One issue in coastal altimetry is land contamination in the footprint of the altimeter due to different ocean and land surface reflectivities, leading to incorrect interpreted waveforms and therefore incorrect significant wave heights (Cipollini et al., 2010; Vignudelli et al., 2011). Hence, the advantage of improving the sea state by assimilating altimeter data into the wave model cannot be employed close to a coast, where people are interested in accurate wave forecasting to protect and design coastal structures such as, e.g., dykes (Thomas and Dwarakish, 2015). The difficulties in taking satellite measurements close to a coast, e.g., retracking at a land/sea interface, have already been reduced by CryoSat-2 and, even more so, by Sentinel-3A (Beneviste and Vignudelli, 2009). In this paper, the quality of the newly available Sentinel-3A data is analysed in comparison with the data from CryoSat-2 and Jason-2, especially that related to coastal areas. Also, the data quality of the Sentinel-3A wave measurements for onshore versus offshore flights, different metocean conditions and relative wind and flight direction is examined. Then, the data ~~are is~~ merged with the wave model results to produce a best-guess wave field.

In the next section, the measured satellite and ~~in situ~~ in-situ data as well as the wind forcing data and the numerical wave model used are described (Sect. 2). This is followed by an assessment of the sensitivity of the wave model to different wind input data (Sect. 3). In Sect. 4, the quality of the newly available satellite data from Sentinel-3A with respect to that of older satellites is analysed. Then, the satellite and model data are combined to generate a best-guess wave field (Sect. 5). The summary and conclusions are given in the last section (Sect. 6).

2 Data and Model

Here, the ocean wave model WAM is forced using different meteorological input data to evaluate the sensitivity of the model to different wind input spatial and temporal resolutions. Therefore, the numerical model and wind input data used are introduced in this section. Information regarding the in situ measurements used here is also given. Furthermore, the satellite data, especially that of the new Sentinel-3A satellite, are presented.

2.1 Satellite altimeter data

In this study, wave height data derived from the Jason-2, CryoSat-2 and Sentinel-3A altimeter missions are used. Jason-2 is a classical pulse-limited altimeter operating in low-resolution mode (LRM) that was in operation, with a revisiting time of 10 days, from June 2008 to October 2016 (~~annonymous~~avisoftp.cnes.fr).

The CryoSat-2 satellite, launched in April 2010, is the first space-borne instrument with synthetic aperture radar (SAR) capabilities. It can operate in one of three modes, i.e., SAR mode, interferometric SAR (SARIn) mode and low-rate mode

Table 1. Type and availability of the satellite data.

Satellite	S	Mode	Period	Product Name
Jason-2	J2	LRM	16.04.2016 - 25.11.2016	J2-LRMAVISO-1Hz
CryoSat-2	C2	SAR	01.01.2016 - 31.12.2016	C2-SARGOPD-1Hz
CryoSat-2	C2	RDSAR	31.12.2014 - 20.08.2017	C2-RDSARRADS-1Hz
Sentinel-3A	S3A	RDSAR	15.06.2016 - 15.11.2016	S3A-RDSARNTC-1Hz
Sentinel-3A	S3A	SAR	06.04.2016 - 20.08.2017	S3A-SARRADS-1Hz

(LRM), following a geographical mask, which is regularly updated. Compared to conventional pulse-limited (or conventional) altimetry (CA), SAR altimetry provides a better along-trajectory resolution and a higher signal-to-noise ratio (SNR). Over the northeastern Atlantic, CryoSat-2 operates in SAR mode. Data collected in SAR mode and processed similarly to LRM mode data are called reduced SAR (RDSAR) data. We use CryoSat-2 RDSAR data (C2-RDSARRADS-1Hz) from the RADS
5 (<http://rads.tudelft.nl/rads/rads.shtm>) database and SAR products from the grid processing on demand (GPOD) service at ES-RIN (C2-SARGPOD-1Hz) (<https://gpod.eo.esa.int>).

Sentinel-3A, launched in February 2016, is the first satellite operating entirely in SAR mode. RDSAR products are also available. Essentially, the altimeter data are 1D profiles along the ground track of the satellite, with a footprint size of 1.5 km up to 10 km depending on the sea state across the track. The resolution along the track of the satellite is approximately 7 km
10 for 1 Hz measurements. Each track is repeated every 27 days, with a deviation of ± 1 km in longitudinal direction. ‘Ascending’ passes are from south-southeast to north-northwest, whereas ‘descending’ passes are from north-northeast to south-southwest. In the present study the official Sentinel-3 SAR (S3A-SARNTC-1Hz) and RDSAR products (S3A-RDSARNTC-1Hz) are used, which are made available directly by Copernicus (<https://sentinels.copernicus.eu/>). The same data are available from RADS.

2.2 In situ measurements

15 In situ observations have great accuracy, but their geographical distribution is highly inhomogeneous, being mainly along coastal regions of industrialized countries. Gaps in measurements and other types of inhomogeneities also occur frequently in in situ observational records (Bidlot et al., 2002). While remote sensing measurements can be seen as a viable alternative to buoy observations, the shortness of the existing time series and the poor temporal resolution pose limitations to their use in wave climate studies (Stopa, 2018).

20 The results of the wave model and the satellite measurements are evaluated via a comparison with in situ observations at 165 locations. Most of the data are from the Global Telecommunication System (GTS), which were obtained by and are archived at the European Centre for Medium-Range Weather Forecasts (ECMWF) (Bidlot and Holt, 2006); other data were gathered by the ECMWF as part of the [JCOMM Joint Technical Commission for Oceanography and Marine Meteorology \(JCOMM\)](#) Wave Forecast Verification project (Bidlot 2017). This data set was augmented with in situ wave buoy data provided
25 by the Federal Maritime and Hydrographic Agency (Bundesamt für Seeschifffahrt und Hydrographie, BSH). Fig. 1 shows

the locations of these in situ data. Moored wave data buoys are anchored at fixed locations and regularly collect observations from different atmospheric and oceanographic sensors. Moored buoys are usually deployed to serve national forecasting needs, to serve maritime safety needs or to observe regional climate patterns (<http://www.jcommops.org/dbcp/platforms/types.html>). Data are usually collected by either Argos, Iridium, ORBCOMM, GOES or METEOSAT, transmitted in real-time and shared on the GTS of the [WMO World Meteorological Organisation \(WMO\)](http://www.wmo.int/). They are generally upgraded or serviced yearly. Over the North Sea and Norwegian Sea, the bulk of the data comes from the oil and gas industry, kindly supplied to the meteorological community via the GTS. Generally, the data are from instruments mounted on a platform or a rig. Note, however, that due to a lack of metadata in the GTS record, it is impossible to determine exactly which sensor was used. Wave height, wind speed and wind direction measurements are available every hour. Following a basic visual inspection of the data, the wave height measurements are collocated with the wave model simulations, using the grid point closest to the location of the in situ measurements. The wind measurements, however, have to be adjusted to a height of 10 m above the surface to compare the measurements with the model data. For the wind speed, the method used by Bidlot et al. (2002) is applied. With the steady-state neutrally stable logarithmic vertical wind profile relation (Eq. 1), the friction velocity (u^*) is calculated from the wind speed at the measurement height ($U(z)$) with the assumption that the surface roughness (z_0) can be specified by the Charnock relation (Eq. 2) with a constant parameter (α) of 0.018 and g denoting the acceleration due to gravity. κ in Eq. 1 is the von Kármán constant and has a value of 0.41. After obtaining u^* via Eq. 1, the wind speed at $z=10$ m can be calculated using the same equation.

$$U(z) = \frac{u^*}{\kappa} \ln \left(\frac{z}{z_0} \right) \quad (1)$$

$$z_0 = \alpha \frac{u^{*2}}{g} \quad (2)$$

2.3 Wave model WAM and meteorological input data used

The spectral wave model WAM Cycle4.6.2 is used here (WAMDI Group, 1988; Komen et al., 1994; Staneva et al., 2017). The model runs as shallow water version taking into account depth refraction and wave breaking, and is therefore suitable for coastal applications. The 2D wave spectra are calculated on a polar grid with ~~30~~²⁴ directional 15° sectors and 30 frequencies logarithmically spaced from 0.042 to 0.66 Hz. A spherical grid is used for the spatial dimensions, with $\sim 0.06^\circ$ resolution in the x-direction (east-west) and $\sim 0.03^\circ$ resolution in the y-direction (north-south). The bathymetry and the study area are shown in Fig. 1. The forcing values at the open boundaries of the model domain are calculated via a coarser model simulation for the whole North Atlantic driven by ERA-Interim winds. The coarser model has a spacial resolution of 0.25° in both directions and the same spectral resolution as the finer model described above. These forcing values are used for all model simulations conducted within this study.

To estimate the sensitivity of the wave model to the temporal and spatial resolutions of the meteorological input, different wind input data are used (Table 2). The ERA-Interim, ERA5 and coastDat-3 reanalyses, as well as the ECMWF operational

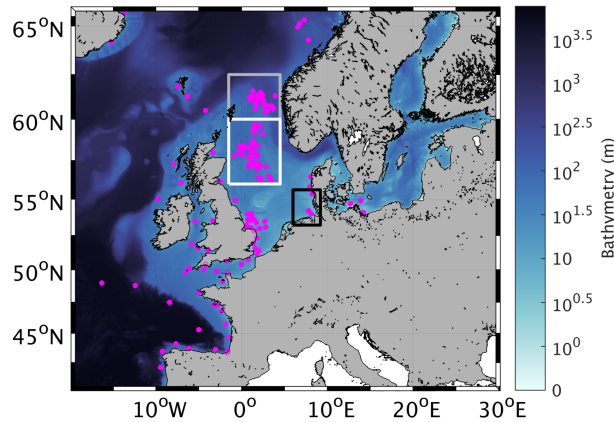


Figure 1. Bathymetry of the model area and locations of the GTS measurements. The boxes indicate the area of the German Bight (black) and the GTS measurements in the northern part of the North Sea used for the comparisons in Sections 3.2.1 and 3.2.3 (grey and white).

analysis/forecast and the German Weather Service (Deutscher Wetterdienst, DWD) forecast, are used as meteorological input data to force the wave model. ERA-Interim is a global reanalysis produced by the ECMWF (Dee et al., 2011). The temporal resolution of the output is six hours, and the spatial-grid resolution is approximately 79 km (Berrisford et al., 2009). The downloaded data are interpolated to data is made available with a spatial resolution of 0.125° . The successor of ERA-Interim is ERA5 (Hersbach and Dee, 2016). The spatial-resolution-grid size of the model is increased-reduced to 31 km (0.28125°). The output is downloaded and interpolated to made available on a 0.25° grid. Furthermore, very important for the wave model simulations is that the temporal resolution of the output ERA5 is increased to an hourly one (ECMWF, 2017b). For both reanalysis, near surface in-situ wind data were part of the data provided to the 4Dvar data assimilation. In addition, the ECMWF 6-hour operational analysis is used to force the wave model. When hourly temporal resolution of the output is needed, the first twelve-12 hours of the forecast wind fields from 0 and 12 UTC are taken, with the operational analysis at 0 and 12 UTC being used to initialize the forecast. The horizontal resolution of the grid is ~ 9 km (ECMWF, 2017a) and is interpolated to a spatial-resolution-of-available on a 0.125° for the downloaded data grid. Also, the short range forecasts by the ECMWF from the 4Dvar system have been influenced by the data assimilation because the assimilation is performed over a 6 or 12 window with data that can be more recent (by a few hours) than the start time of each forecast. Aside from the wind input provided by the ECMWF, the hindcast coastDat-3 produced by the Helmholtz-Zentrum Geesthacht (HZG) using the COSMO-CLM model (Rockel et al., 2008; Geyer, 2014) is used to force the wave model. The coastDat-3 output has a temporal resolution of one hour and uses a rotated grid with a spatial resolution of 0.11° (HZG, 2017), which is about 7 km in the centre of the model domain. Vertically, 40 levels up to an altitude of 22.7 km are used. As boundary conditions for the model domain, ERA-Interim is used. Here, no data is assimilated into the model. Another data set used to force the wave model is the DWD forecast, which is produced using the ICON_EU numerical model with a spatial-grid resolution of 6.5 km and an output that is available every

hour (Reinert et al., 2018). For the DWD forecast, the in-situ wind data is assimilated into the analysis used to initialize the forecast but for the forecast itself, no data is assimilated. The impact of the temporal resolution of the wind forcing on wave simulations is evaluated in the next Section. Therefore, model experiments with six-hour wind forcing from ERA5 and the DWD forecast are conducted, with the wind data being updated every six hours based on the hourly output.

Table 2. Horizontal and temporal resolutions of the meteorological input data.

Meteo Data Set	Resolution	
	Horizontal	Time
ERA-Interim	79 km x 79 km	6 h
coastDat-3 <u>ERA5</u>	0.11° x 0.11° <u>31 km x 31 km</u>	1 h/ <u>6 h</u>
ECMWF operational analysis/forecast	9 km x 9 km	6 h/1 h
<u>ERA5-coastDat-3</u>	31-7 km x 31-7 km	1 h / 6 h
DWD forecast	6.5 km x 6.5 km	1 h/6 h

5 3 Sensitivity of wave model to wind conditions

In this section, the sensitivity of the wave model to different wind input data and their different spatial and temporal resolutions ~~of the wind input data~~ is analysed by assessing the general performance of the wave model under different wind forcings over the entire study period (from June to November 2016) and the entire model area. The quality of the simulated significant wave height during an extreme event in September 2016 is analysed in detail.

10 3.1 General performance of modelled waves and winds

3.1.1 Significant wave height

To study the sensitivity of the wave model simulations to the wind conditions, WAM is forced using eight different wind data sets, as described in Sect. 2.3. The general performance of WAM on all different wind data sets is similar and good compared to the in situ observations (Fig. 2). Especially during ~~eatm-normal~~ conditions, the significant wave heights in the eight model
15 experiments are similar. However, during extreme events, the differences in the simulated significant wave height become more apparent. Particularly, the WAM simulation with coastDat-3 wind forcing overestimates the large significant wave heights (Fig. 2b). Also, the simulation with hourly wind forcing of the DWD forecast tends to slightly overestimate the large significant wave heights (Fig. 2g). On the other hand, WAM forced using ERA-Interim, the ECMWF operational analysis/forecast and ERA5
20 wind data slightly underestimates the large significant wave heights with respect to the measurements taken at the GTS stations (Fig. 2a, 2c, 2d, 2e and 2f). Regarding the statistical values, the best wave model performance is seen in the simulation forced using the hourly ECMWF operational analysis/forecast atmospheric data. Using the DWD forecast as wind forcing data leads

to a smaller bias $\bar{\epsilon}$ (Eq. A6). However, the root mean square error (RMSE) (Eq. A4) of 29.9 cm and the scatter index (SI) (Eq. A5) of 0.191 are the lowest, and the correlation coefficient (CORR) (Eq. A7) of 0.959 is the largest for the model simulations performed using hourly ECMWF operational analysis/forecast wind data. The differences in the statistical values for the results of WAM with the ECMWF operational analysis/forecast and ERA5 data are very small and approximately one magnitude less than the differences in the results produced with the ERA-Interim, coastDat-3 and DWD forecast wind forcings. Therefore, the model simulations with wind forcings of either the ECMWF operational analysis/forecast or ERA5 produce good results that are closer to the GTS measurements than the simulations with the other wind forcings. Notably, the model results corresponding to hourly wind input have better statistical values than the corresponding simulation with six-hour wind input (compare Fig. 2c to Fig. 2d). This once again justifies the crucial importance of using high-frequency wind forcing data (with a minimum of one hour) for wave simulations, especially for operational purposes.

3.1.2 Wind input data

When comparing the wind speed with the in situ GTS measurements (Fig. 3), the best statistical values are achieved by ERA5 (Fig. 3d), although all performances are fairly similar. For this analysis, the original wind data are used; therefore, only the ERA-Interim data are taken every six hours, whereas all other wind data are taken every hour. For high wind speeds, a slight underestimation of the modelled wind speed compared to the GTS measurements still occurs. However, this underestimation reflects a large improvement compared to the underestimation found by Cavaleri and Bertotti (2003b). The overprediction of coastDat-3, which can be seen for high significant wave heights, is not evident for the magnitude of the wind in the wind forcing (Fig. 3b). One possible reason for the higher significant wave heights during extreme events might be the wind direction, which has a bias of approximately 12° for the coastDat-3 data (not shown here). Hence, the wind direction is shifted to the right, affecting the fetch length in the North Sea, especially for northwesterly wind directions. For the other wind data, the bias of the wind direction is only approximately 1° to 2° . Since the fetch in coastal areas is limited because of the presence of land, this shift in wind direction can impact the simulated significant wave height.

The general performances of WAM under all different wind forcings are good and fairly similar, especially under **calm normal** conditions, where no major differences are found. During extreme events, however, the model simulations tend to be spread out, with the coastDat-3 wind forcing overestimating and the ERA-Interim, ECMWF operational analysis/forecast and ERA5 wind forcings underestimating the large significant wave heights. In the wind data, this cannot be found. The wind is only very slightly underestimated. Particularly, the overestimation of the significant wave height with the coastDat-3 wind forcing cannot be found in the wind data.

3.2 Evaluation of the ensemble during an extreme event

As described in the previous section, the modelled significant wave heights tend to spread out during extreme events for different model experiments. Here, a more detailed analysis of data variability during an extreme event is provided. During the study period from June to November 2016, an extreme event occurred on 29th September 2016. The centre of the low pressure system was located along the coast of Norway. Thus, the highest wind speeds occurred in the northern part of the North Sea,

and the corresponding highest significant wave heights could be found in the northern part of the North Sea. At 11 UTC, the area with maximum significant wave height coincided with the locations of the GTS measurements. Hence, this [time-step event](#) is chosen for further analyses.

3.2.1 Significant wave height of each ensemble member

5 In Fig. 4, the wave height estimates of each ensemble member for 29 September 2016, 11 UTC, are shown together with the locations of the GTS measurements. The horizontal patterns of the eight model runs for this extreme event are quite different. The largest significant wave height is found in the model simulation with the coastDat-3 wind forcing of more than 9 m (Fig. 4b). The smallest maximum significant wave height is found for the model simulation with the six-hour ECMWF operational analysis wind forcing (Fig. 4d). Notably, the maximum of the model simulation with six-hour wind forcing (Fig. 4a, 4d, 4f and 10 4h) is shifted further to the east than in the model simulations with hourly wind input (Fig. 4b, 4c, 4e and 4g). Furthermore, in the model simulations with the six-hour wind input, the maximum of the significant wave height is smaller than that with the hourly wind input. This again emphasizes the importance of using higher-time-frequency wind data for wave simulations over the study area.

When comparing the modelled significant wave height with the GTS measurements in the northern part of the North Sea 15 (55° N 2° W to 62.5° N 5° E, white and gray box in Fig. 1), none of the simulations is perfectly in line with the measurements, but the model simulation with the hourly ERA5 wind forcing has a bias of only -0.02 m and an SI of 0.144 (Fig. 4e). For the model simulation with the ERA5 wind forcing, the RMSE is 0.56 m, which is smallest compared to that of the other model experiments. The only simulation with a smaller SI is the run with the hourly ECMWF operational analysis/forecast wind forcing, achieving a value of 0.139 (Fig. 4c). The bias, though, is 0.1843 m, which is clearly larger than the bias for the model 20 simulation with the hourly ERA5 wind forcing. The model experiment simulation with the six-hour ERA5 wind forcing has the largest SI (0.193) as well as the largest RMSE (Fig. 4f). Compared to the GTS measurements, the simulations with the ERA-Interim, six-hour ECMWF operational analysis and both ERA5 wind forcings underestimate the significant wave height, with the largest underestimation (0.57 m) being made by the model simulation with the six-hour ERA5 wind forcing (Fig. 4f). The model simulations with the coastDat-3, hourly ECMWF operational analysis/forecast and both DWD forecasts all 25 overestimate the significant wave height in the northern part of the North Sea by up to 1.28 m for the case of coastDat-3 wind forcing (Fig. 4b).

3.2.2 Empirical orthogonal functions

To study the variance of the significant wave height of the eight ensemble members during the extreme event, an empirical orthogonal function (EOF) analysis of the extreme event on 29th September 2016, 11:00 UTC, is performed. The EOF analysis 30 is carried out as described by Björnsson and Venegas (1997).

Fig. 5a shows the mean of the ensemble depicted in Fig. 4. The associated standard deviation with respect to the mean is given in Fig. 5b. Clearly, the largest difference between the ensemble members is located in the northern part of the North Sea. The ensemble members also differ substantially with respect to the local wave height maximum off the coast of Iceland.

The first EOF of the significant wave height represents 56.16 % of the total variance of the ensemble. The maximum variance is found in the area of the maximum significant wave height in the northern part of the North Sea (Fig. 5a and 5c). This demonstrates that the largest difference between the different model simulations is the magnitude of the significant wave height peak. In this case, the model simulation with the coastDat-3 wind forcing has the highest simulated significant wave height maximum (9.5 m), and the model simulation with the six-hour ECMWF operational analysis wind forcing, the lowest simulated significant wave height maximum (6.6 m).

The maximum of the second EOF of the significant wave height, which represents 19.31 % of the total variance, is located in the northern part of the model domain near the coast of Iceland (Fig. 5d), which overlaps the area of the second maximum significant wave height (Fig. 5a). This shows that the model simulations also differ in terms of the magnitude of the maximum significant wave height in the northern part of the model domain. In this area, the significant wave height in the model simulations with the ERA-Interim and coastDat-3 forcings is clearly larger than that in the model simulations with the other wind forcings. These two differences are also found regarding the standard deviation of the ensemble. Combining the first two EOFs explains 75.47 % of the total variance of the ensemble. However, with the EOF, more differences in the model simulations can be found.

The third EOF pattern shows a dipole in the northern part of the North Sea (Fig. 5e). This means that in the model simulations, the exact positions of the significant wave height maximum differ. The orientation of the dipole is in the east-west direction and therefore represents the variation of the peak location in the different model simulations in the zonal direction. In this context, larger differences are especially found between the model simulations with the hourly and six-hour wind forcings, with a peak shift of approximately 290 km. The third EOF represents 9.98 % of the total variance.

The fourth EOF explains 7.71 % of the total variance. This EOF reveals the larger-scale differences in the synoptic situation and, therefore, in the wind fields, which are also reflected in the wave field. In the wind forcing data, the exact location of the centre of the low-pressure system and, therefore, the area of light wind differs, which also leads to different wave heights off the coast of the northern part of Norway. In addition, due to the different strengths of the wind fields in the wind forcings, the significant wave height west of Ireland in the Atlantic as well as off the coast of Norway is larger relative to that east of Great Britain due to the fetch conditions (Fig. 5f).

In order to estimate the difference between the model simulations with hourly and six hourly wind forcing during the whole time period, a temporal EOF over the difference between the model simulations with hourly and six hourly ERA5 wind forcings is conducted. Here, no dominant EOF can be found, since the first EOF has an explained variance of 3.13 %. This shows that the model simulations do not substantially differ during normal conditions, which are present most of the time during the whole time period analyzed. However, as shown above the model simulations substantially differ during extreme events.

3.2.3 Time series of significant wave height, wind speed and wind direction

~~Since the largest difference in significant wave height between the ensemble members is the magnitude~~ Further investigation of the magnitude in significant wave height of the respective peak ~~, further investigation is required~~ is required, since this is the largest difference between the ensemble members. Time series extracted from the ensemble members are compared to the

time series of the GTS measurements (Fig. 6). For this analysis, the mean of the GTS measurements in the northern part of the North Sea (55° N 2° W to 60° N 5° E, white box in Fig. 1) at each time step is taken, and the standard deviation is calculated to estimate the variation of the measurements within the considered area. The same is done for the significant wave height of each ensemble member at the locations of the GTS measurements. Here, only the southern part of the in situ measurements in the northern part of the North Sea is taken (only white box in Fig. 1 and not grey and white as in Sec. 3.2.1), as the time series of the northern and southern parts differ due to the centre of the low-pressure system passing over only the northern part of the in situ measurements. Therefore, the mean is taken for in situ measurements with similar temporal behaviours.

Fig. 6a depicts the spread of the simulated significant wave heights between the experiments with different wind forcings. During the extreme event, the maximum significant wave height varies between 4.7 m for the simulation with the six-hour ERA5 wind forcing and 6.9 m for the simulation with the coastDat-3 wind forcing. The observed significant wave height from the GTS measurements lies in between the two extremes at 5.3 m. Therefore, coastDat-3 overestimates the significant wave height by approximately 1.6 m. During this extreme event, the overestimation is mainly due to coastDat-3 overestimating the wind speed at that time (Fig. 6b). Also, in coastDat-3, the wind direction is shifted in the clockwise direction by approximately 12° for the majority of time during this extreme event (Fig. 6c). This impact is likely to be small compared to the overestimation of the wind speed, as the fetch is rather limited with respect to the wind directions between south and west-northwest. The wind direction in other areas may affect the significant wave height in this area, though, due to swells travelling into the analysed area. For coastDat-3, the area affected by high wind speeds and, therefore, also by high significant wave heights is larger than that for the other wind forcings (Fig. 4b). This might also contribute to the high significant wave height shown in Fig. 6a, as the values averaged in this analysis cover the northern part of the North Sea.

The model experiment with the six-hour ERA5 wind forcing yields the lowest significant wave heights for 29th September 2016 (Fig. 6a). In this simulation, the peak is underestimated by approximately 0.6 m. This underestimation of the significant wave height is also due to the underestimation of the wind speed (Fig. 6b). Since WAM receives the wind data only every six hours, the wind speed peak is missed in the wind forcing; therefore, the peak in terms of the significant wave height is omitted. This problem can also be seen for the model simulations with the ERA-Interim and six-hour ECMWF operational analysis wind forcing. Although the wind speed of the hourly DWD forecast and ECMWF operational analysis/forecast matches the observed wind speed very well (Fig. 6b), WAM overestimates the peak in the significant wave height (Fig. 6a). This might indicate that WAM needs to be further tuned regarding the significant wave height during extreme events. Another possible reason for this overestimation could be the swells travelling into the area. To clearly conclude either reason, more extreme events need to be analysed. For this extreme event, WAM simulates the maximum significant wave height two hours earlier, even though the timing of the wind speed peak fits well for the two wind forcings.

The peak in the observed significant wave height is best illustrated by the model simulation with the hourly ERA5 wind forcing (Fig. 6a). The maximum significant wave height differs by only approximately 0.01 m. However, in this run, similar to the simulations with the coastDat-3 data, hourly DWD forecast and hourly ECMWF operational analysis, the simulated peak in the significant wave height occurs two hours earlier than the observed peak. The model simulation with the six-hour DWD forecast wind forcing slightly overestimates the observed peak (Fig. 6a), although the maximum wind speed is below

the maximum observed wind speed (Fig. 6b). The period-duration of the peak for all model simulations with the six-hour wind forcing in terms of the significant wave height is longer than that for the model simulations with hourly wind forcing. Here, period-duration of the peak is estimated based on the time at which the significant wave height exceeds 99 % of the peak value. For this significant wave height peak, the period-duration of the peak for the model simulations with hourly wind forcing is one hour, whereas for the model simulations with six-hour wind forcing, the period-duration of the peak is three to four hours.

One and two days earlier, two smaller wave height peaks occur. The first one on 27th September 2016 is overestimated by all of the model experiments, although the corresponding peak in the wind speed is captured well by the model simulations with the hourly ERA5 and ECMWF operational analysis/forecast wind forcings. The six-hour wind forcings capture this peak very well, but due to the wind speed being high three hours prior to and after the peak, the simulated significant wave height is too high. The model simulation with the hourly DWD forecast wind forcing is the most successful at reproducing the significant wave height peak, although the estimated wind speed is lower than the observed wind speed. The second peak is best matched by both model simulations with the ECMWF operational analysis/forecast wind forcing. Both simulations with ERA5 wind forcings slightly underestimate the significant wave height peak. All other simulations overestimate the significant wave height.

During calm-normal conditions both before and after the peaks, the results of all model simulations are very similar. From the analyses above, it can be concluded that during extreme events, the wave model results are quite sensitive to the wind forcing. Hence, high-quality wind data are needed to improve the ability to predict the sea state. For our area of interest, a higher temporal resolution of the wind forcing is more important than a higher spatial resolution. Although the spatial resolution of the DWD forecast and coastDat-3 is higher than that for ERA5 and the ECMWF operational analysis, the wave model simulations using the latter two increase the model capabilities. However, clearly better results can be found via model simulations with hourly wind forcing than via those with six-hour wind forcing. This conclusion differs from that of the study on the Black Sea by Van Vledder and Akpınar (2015). Notably, the different spatial resolutions tested are produced by different atmospheric models or model setups, which can also lead to differences. Therefore, the differences cannot only be traced back to the different spatial resolutions. In our study, wave model simulations with the hourly ECMWF operational analysis/forecast as well as the hourly ERA5 wind forcing produce the best results, as they are results more similar to the observations made during the extreme event at the end of September ~~2016.~~ 2016, than model simulations with the other wind forcings. Also, the statistical values for the entire study period and over the study area are better for the model simulations forced with hourly ERA5 and ECMWF operational analysis/forecast than for the model simulations with the six other wind data sets. Under calm-normal conditions, the model simulations with all eight wind forcings produce fairly similar results.

4 Comparison of Satellite Data

In this section, the quality of the newly available Sentinel-3A satellite data is assessed and compared to that of older satellite data. The focus in this study is on coastal areas, where the quality of both the satellite as well as the model data tends to deteriorate. Also, the quality of the Sentinel-3A data is analysed based on the relative orientation of the coastline and satellite heading, varying metocean conditions, and the wind direction relative to the satellite flight direction. In this section, when

comparing satellite data with the simulated significant wave height, the model simulation with the ERA5 wind forcing is used, as this simulation, along with that with the ECMWF operational analysis/forecast wind forcing, produced the best results during both extreme events and ~~calm~~normal conditions (Section 3).

4.1 General quality of measured significant wave height

5 To estimate the overall performances of the different satellite products during the entire study period and over the study area, scatter plots of the in situ measurements versus remote sensing measurements are analysed (Fig. 7). For these comparisons, the satellite data are allowed to have a maximum spatial distance of 20 km and a maximum time gap of 30 min with respect to the in situ measurements (Fenoglio-Marc et al., 2015). The general performances of all five satellite products are good and very similar. The correlation between all products varies by only 3 % with values ranging from 94 % to 97 %. The SI is the
10 largest for the CryoSat-2 RDSAR product, being approximately 0.22. For the SAR products of Sentinel-3A and CryoSat-2 as well as for Jason-2, the SI is approximately 0.17. However, the satellites tend to overestimate the significant wave height of in situ measurements, especially Sentinel-3A SAR and both CryoSat-2 products, with biases of up to 26 cm. The smallest bias (only 6 cm) is found for the Jason-2 measurements.

4.2 Scatter index along the satellite track

15 To analyse the spatial distribution of the quality of the satellite data, the SI between the modelled and measured significant wave heights along the satellite tracks within each grid box is calculated for Jason-2 and Sentinel-3A SAR (Fig. 8). Since very few data exist within each grid box during the study period, for this analysis, the study period is extended to the end of August 2017 to achieve a more robust SI result. For both satellites, the SI is small over the open ocean and becomes larger closer to the coast. Notably, in coastal areas, the SI for Sentinel-3A SAR is smaller than that for Jason-2. Especially in the northern part of
20 the Baltic Sea, the Danish Straits and along the coastal areas of the southern North Sea, the SI is reduced for Sentinel-3A SAR compared to that for Jason-2. This clearly indicates that Sentinel-3A SAR performs better over coastal areas than Jason-2.

To quantify this, the statistical values within the first 10 km off the coast are calculated for all three different satellites (Table 3). In some earlier studies, this area was neglected due to the deteriorating quality of the satellite data (Fenoglio-Marc et al., 2015). For Sentinel-3A, the RMSE is reduced by approximately 0.1 m and the SI is reduced by 0.17 compared to the values for
25 the other two satellites. The bias is reduced by 0.08 m compared to that for Jason-2 and 0.16 m compared to that for CryoSat-2. The correlation for Sentinel-3A is increased by 10 % compared to that for Jason-2 and 5 % compared to that for CryoSat-2. Furthermore, the statistics of Sentinel-3A within the first 10 km are closer to those over the whole study area, which is not the case for the the other two satellites (Table 3; see Fig. 7). This indicates that the quality of the data of Sentinel-3A over coastal areas is closer to that over the open ocean compared to the data quality of CryoSat-2 and Jason-2.

Table 3. Comparison of the data quality within the first 10 km off the coast for all three satellites.

	<u>Entries</u>	RMSE (m)	SI	Bias (m)	Correlation
Jason-2	<u>1076</u>	0.5219	0.4977	0.2461	0.8075
CryoSat-2 SAR	<u>1360</u>	0.4860	0.4957	0.3334	0.8548
Sentinel-3A SAR	<u>4192</u>	0.3985	0.3324	0.1682	0.9138

4.3 Comparison of data quality for onshore and offshore flights

Due to the way satellite altimeter data are processed, the data quality can deteriorate in the vicinity of coastlines, particularly for passes from land to ocean. To test how much the satellite measurements over the study area are affected by this problem, the flights are separated into onshore and offshore flights, with onshore flights passing from the ocean to the shore and offshore flights passing from the shore to the ocean. For the analysis here, again, only measurements within the first 10 km off the coast are taken. When comparing the statistical values for Sentinel-3A SAR for both onshore and offshore flights, no substantial differences are found, and the statistical values are very similar (Tab. 4). Therefore, the transition from land to water does not influence the quality of the satellite observations over our study area.

Table 4. Comparison of the data quality, organized by onshore and offshore flights, for Sentinel-3A SAR. Only measurements taken within the first 10 km off the coast are used.

	<u>Entries</u>	RMSE (m)	SI	Bias (m)	Correlation
onshore	<u>1694</u>	0.3877	0.3244	0.1666	0.9151
offshore	<u>2151</u>	0.3981	0.3219	0.1695	0.9195

4.4 Comparison of data quality for long- and short-fetch conditions

Another assessment of the quality of the data measured by the satellites can be carried out by analysing their quality in terms of the fetch conditions. To test this, Sentinel-3A SAR data within the German Bight (53.23° N 6° E to 55.62° N 9.2° E, black box in Fig. 1) are split into two groups: that for long-fetch situations and that for short-fetch situations. Long-fetch situations within the German Bight are characterized by northwesterly winds, while short-fetch conditions occur for southeasterly winds. The analyses demonstrate that the data quality for both situations is very similar (Tab. 5). The SI and the correlation have better values for long-fetch situations. The correlation between modelled and measured significant wave heights for long-fetch situations is 98 %, being 4 % larger than that for short-fetch situations. The SI for long-fetch situations is 0.09. The SI for short-fetch situations is approximately twice as large, i.e., 0.19. The RMSE and the bias, though, are better under short-fetch conditions. The RMSE, which is 21.6 cm for short-fetch situations, is approximately 16 cm smaller under short-fetch conditions than under long-fetch conditions. The bias under short-fetch conditions is only 0.7 cm. This is due to the over-

and underestimation of the measured data essentially cancelling each other. Under long-fetch conditions, this is not the case, as the bias amounts to 33 cm. When analysing all directions, the statistical values lie between those under long- and short-fetch conditions. Hence, it can be concluded that the satellite measurements do not yield clearly better results for any of the conditions.

Table 5. Comparison of the data quality, organized by long- and short-fetch situations within the German Bight, for Sentinel-3A SAR.

	<u>Entries</u>	RMSE (m)	SI	Bias (m)	Correlation
long fetch (NW)	<u>143</u>	0.3796	0.0943	0.3299	0.9809
short fetch (SW)	<u>86</u>	0.2164	0.1854	0.0065	0.9411
all directions	<u>993</u>	0.2763	0.1658	0.1660	0.9524

5 4.5 Comparison of data quality for different relative wind and flight directions

In previous studies, e.g., Chelton and Freilich (2005), a dependency of the data quality on the wind and wave direction relative to the movement of a satellite was found, as satellites move while measuring the wind and wave conditions. Therefore, in this analysis, the measured significant wave height data are separated in terms of the wind direction relative to the satellite track. A slightly smaller RMSE, SI and bias can be found in situations where the wind comes from the direction opposite that of satellite motion. The best correlation, though, is achieved under cross-wind conditions, having a value of 96.7 %. Since the differences between all situations are quite small, i.e., 1.3 % for the correlation, 6 cm for the bias, 0.009 for the SI and 6.6 cm for the RMSE, the difference in the statistical values for all three situations cannot be regarded as substantial. Therefore, it can be concluded that the quality of the Sentinel-3A measurements does not depend on the wind direction relative to the satellite flight direction.

Table 6. Comparison of the data quality, organized by the wind direction relative to the satellite flight direction, for Sentinel-3A SAR.

	<u>Entries</u>	RMSE (m)	SI	Bias (m)	Correlation
along-wind	<u>7366</u>	0.4396	0.1643	0.2794	0.9645
opposing-wind	<u>6257</u>	0.3757	0.1553	0.2254	0.9544
cross-wind	<u>14940</u>	0.4416	0.1625	0.2886	0.9673

15 The newly available Sentinel-3A data yield better results for coastal areas compared to the data quality of older satellites such as Jason-2 and CryoSat-2. ~~For~~ Especially within the first 10 km from the coast, the statistical values of Sentinel-3A are substantially better than the ones for Jason-2 and CryoSat-2. Also, for Sentinel-3A, no substantial differences are found regardless whether the satellites pass from land to water or vice versa. Furthermore, the quality of the Sentinel-3A data does not differ substantially under either long- or short-fetch conditions within the German Bight. When comparing the data quality

based on the wind direction relative to the satellite flight direction, again, no substantial differences can be found. Therefore, the data quality is not affected by relative flight direction and the coastline or the wind direction, as well as different metocean conditions.

5 Synergy of Satellite Data and Model Ensemble

5 To enhance the quality of the significant wave height data of the ensemble mean, the satellite measurements and the ensemble of the modelled significant wave height are combined to produce a best-guess wave field using the EOFs. A more detailed explanation of this method, which is based on a maximum a posteriori approach, can be found in Schulz-Stellenfleth and Stanev (2010). The technique is illustrated for the extreme event on 29th September 2016, 11 UTC (Fig. 9). When comparing the ensemble mean of the significant wave height (Fig. 5a) to the GTS measurements in the northern part of the North Sea
10 (55° N 2° W to 62.5° N 5° E, white and gray box in Fig. 1), where the maximum in significant wave height occurs, both are found to be in very good agreement, with an SI of 0.139, a bias of 0.11 m and an RMSE of 0.56 m. When using the satellite data with the satellite measurement standard deviation as an observation error, and when no bias correction is performed, the statistical values of the best-guess wave field in terms of the GTS measurements become worse compared to the ensemble mean. To force the analysis to stay close to the already good ensemble mean, a rather high value of 3 m is assumed for the
15 observation errors. The significant wave height reconstructed using the EOFs and the satellite measurements then have an SI of 0.138, a bias of 0.36 m and an RMSE of 0.65 m with respect to the GTS data (not used for the reconstructed significant wave height). As this is still not superior to the ensemble mean, a bias correction of the satellite measurements is carried out. The reconstructed significant wave height (Fig. 9) then has the same SI as that before the bias correction, but the standard deviation of the error is reduced from 0.70 m to 0.65 m, and the bias and RMSE are improved to 0.06 m and 0.54 m, respectively. For
20 this extreme event, the results demonstrate that a bias correction is absolutely necessary before assimilating the satellite data into a wave model. The analyses show that the model can be guided towards the right direction by the satellite data but that the satellite data are still not accurate enough compared to the in situ observations to be used to strictly force the model towards the satellite observations.

6 Summary and Conclusions

25 In this study, the sensitivity of the wave model to wind forcing data with different spatial and temporal resolutions is tested. The analysis shows that the general performances of WAM for all different wind forcings are good and fairly similar. Especially during eaIm-normal conditions, no major differences can be found. During extreme events, however, the model simulations tend to be spread out, with the model simulation with the coastDat-3 and DWD wind forcings tending to overestimate the significant wave height and the model simulations with the ECMWF operational analysis/forecast, ERA-Interim and ERA5
30 wind forcings tending to underestimate the high significant wave heights. The EOF analysis shows that the largest differences between the model simulations is the magnitude of the peak significant wave height, with a difference of 2.92 m between

the smallest and largest significant wave height peaks. Also, the location of the maximum differs, especially between the simulations with hourly and six-hour wind forcings, with approximately 290 km between the peaks. Furthermore, the larger-scale wind conditions change the wave conditions. The analysis of the time series clearly shows that hourly wind forcing data are needed to simulate the significant wave height peak correctly, as a six-hour wind forcing often misses the wind speed peak and, therefore, also the significant wave height peak. The best results [of the wind wave model WAM](#) are obtained by the [simulation-simulations](#) with the ECMWF operational analysis/forecast and ERA5 wind [foreing. Further improvements in wave forecasting may be possible using a coupled wave-atmosphere model, depending on the atmospheric model used.](#) [forcings.](#)

Furthermore, the quality of the newly available Sentinel-3A data is assessed in comparison with data from older satellites, i.e., Jason-2 and CryoSat-2. The general performances are good and fairly similar between all satellite products, although all products tend to overestimate the in situ significant wave height measured within the GTS. The analysis of the spatial distributions of the satellite data quality reveals better results for Sentinel-3A over coastal areas than for Jason-2. Especially within the first 10 km off the coast, these differences become apparent. In further analyses, no substantial differences between onshore and offshore satellite flights as well as for different metocean conditions can be found. Also, the satellite data quality does not depend on the wind direction relative to the flight direction. Therefore, Sentinel-3A has a clear advantage over the other satellites when utilized over coasts, exhibiting better skills than those of the other satellites compared to the wave model.

In the last section, where the ensemble and satellite data are merged, the carrying out of bias correction before assimilating satellite data into a wave model is shown to be necessary. Also, for an extreme event, satellite data can be used to guide an ensemble towards a better best-guess wave field, though it cannot be used to strictly force the ensemble towards the satellite data, as they are not accurate enough compared to the in situ measurements.

20 [Appendix A: Calculation of statistical values](#)

[Mean Value:](#)

$$\bar{R} = \frac{1}{N} \sum_{i=1}^N R_i \quad (\text{A1})$$

[Errors:](#)

$$E = M - R \quad (\text{A2})$$

25 [Standard deviation of the errors:](#)

$$s_E = \sqrt{\frac{1}{N-1} \sum_{i=1}^N (E_i - \bar{E})^2} \quad (\text{A3})$$

Root Mean Square Error:

$$RMSE = \sqrt{\frac{1}{N} \sum_{i=1}^N (M_i - R_i)^2} \quad (A4)$$

Scatter Index:

$$SI = \frac{s_E}{\bar{R}} \quad (A5)$$

5 Bias:

$$bias = \bar{E} \quad (A6)$$

Correlation:

$$CORR = \frac{1}{N-1} \sum_{i=1}^N \left(\frac{M_i - \bar{M}}{s_M} \right) \left(\frac{R_i - \bar{R}}{s_R} \right) \quad (A7)$$

Competing interests. The authors declare that they have no conflict of interest.

- 10 *Acknowledgements.* This publication has received funding from the European Union's H2020 Programme for Research, Technological Development and Demonstration under grant agreement no. H2020-EO-2016-730030-CEASELESS. Luciana Fenoglio acknowledge the support of the European Space Agency (ESA) within the project SAR Altimetry Coastal & Open Ocean Performance (SCOOP). The authors would like to thank Beate Geyer for providing coastDat-3 wind data.

References

- Appendini, C. M., Torres-Freyermuth, A., Oropeza, F., Salles, P., López, J., and Mendoza, E. T.: Wave modeling performance in the Gulf of Mexico and Western Caribbean: wind reanalyses assessment, *Applied Ocean Research*, 39, 20–30, 2013.
- Beneviste, J. and Vignudelli, S.: Challenges in Coastal Satellite Radar Altimetry, *Eos*, 90, 2009.
- 5 Berrisford, P., Dee, D., Fielding, K., Fuentes, M., Kallberg, P., Kobayashi, S., and Uppala, S.: The ERA-interim archive, <https://www.ecmwf.int/sites/default/files/elibrary/2011/8174-era-interim-archive-version-20.pdf>, accessed: 01.March 2018, 2009.
- Bidlot, J. and Holt, M.: Verification of operational global and regional wave forecasting systems against measurements from moored buoys., 2006.
- Bidlot, J.-R., Holmes, D. J., Wittmann, P. A., Lalbeharry, R., and Chen, H. S.: Intercomparison of the performance of operational ocean wave forecasting systems with buoy data, *Weather and Forecasting*, 17, 287–310, 2002.
- 10 Björnsson, H. and Venegas, S.: A Manual for EOF and SVD analyses of Climatic Data, CCGCR Report, 97, 112–134, 1997.
- Bolaños-Sanchez, R., Sanchez-Arcilla, A., and Cateura, J.: Evaluation of two atmospheric models for wind-wave modelling in the NW Mediterranean, *Journal of Marine Systems*, 65, 336–353, 2007.
- Cavaleri, L.: Wave modeling-Missing the peaks, *Journal of Physical Oceanography*, 39, 2757–2778, 2009.
- 15 Cavaleri, L. and Bertotti, L.: In search of the correct wind and wave fields in a minor basin, *Monthly weather review*, 125, 1964–1975, 1997.
- Cavaleri, L. and Bertotti, L.: The characteristics of wind and wave fields modelled with different resolutions, *Quarterly Journal of the Royal Meteorological Society*, 129, 1647–1662, 2003a.
- Cavaleri, L. and Bertotti, L.: The improvement of modelled wind and wave fields with increasing resolution, 2003b.
- Cavaleri, L. and Bertotti, L.: Accuracy of the modelled wind and wave fields in enclosed seas, *Tellus A*, 56, 167–175, 2004.
- 20 Cavaleri, L., Alves, J.-H., Ardhuin, F., Babanin, A., Banner, M., Belibassakis, K., Benoit, M., Donelan, M., Groeneweg, J., Herbers, T., et al.: Wave Modelling-The State of the Art, 2007.
- Chelton, D. B. and Freilich, M. H.: Scatterometer-based assessment of 10-m wind analyses from the operational ECMWF and NCEP numerical weather prediction models, *Monthly Weather Review*, 133, 409–429, 2005.
- Cipollini, P., Benviste, J., Bouffard, J., Emery, W., Fenoglio-Marc, L., Gommenginger, C., Høyer, J., Kurapov, A., Madsen, K., Mercier, F., Miller, L., PAscual, A., Ravichandran, M., Shillington, F., Snaith, H., Strub, P. T., Vandemark, D., Vignudelli, S., Wilkin, J., Woodworth, P., and Zavala-Garay, J.: The role of coastal altimetry in coastal observing systems, *Proceedings of OceanObs*, 9, 181–191, 2010.
- 25 de León, S. P. and Soares, C. G.: Sensitivity of wave model predictions to wind fields in the Western Mediterranean sea, *Coastal Engineering*, 55, 920–929, 2008.
- de León, S. P., Orfila, A., Gómez-Pujol, L., Renault, L., Vizoso, G., and Tintoré, J.: Assessment of wind models around the Balearic Islands for operational wave forecast, *Applied Ocean Research*, 34, 1–9, 2012.
- Dee, D. P., Uppala, S., Simmons, A., Berrisford, P., Poli, P., Kobayashi, S., Andrae, U., Balmaseda, M., Balsamo, G., Bauer, P., et al.: The ERA-Interim reanalysis: Configuration and performance of the data assimilation system, *Quarterly Journal of the royal meteorological society*, 137, 553–597, 2011.
- ECMWF: IFS documentation, <https://www.ecmwf.int/en/forecasts/documentation-and-support/changes-ecmwf-model/ifs-documentation>, accessed: 05.July 2018, 2017a.
- 35 ECMWF: ERA5 data documentation, <https://software.ecmwf.int/wiki/display/CKB/ERA5+data+documentation#ERA5datadocumentation-Spatialgrid>, accessed: 01.March 2018, 2017b.

- Feng, H., Vandemark, D., Quilfen, Y., Chapron, B., and Beckley, B.: Assessment of wind-forcing impact on a global wind-wave model using the TOPEX altimeter, *Ocean Engineering*, 33, 1431–1461, 2006.
- Fenoglio-Marc, L., Dinardo, S., Scharroo, R., Roland, A., Dutour Sikiric, M., Lucas, B., Becker, M., J., B., and Weiss, R.: The GermanBight: A validation of CryoSat-2 altimeter data in SAR mode, *Advances In Space Research*, 55, 2641–2656, 2015.
- 5 Gautier, C. and Caires, S.: Operational Wave Forecasts in the Southern North Sea, in: 36th IAHR World Congress, 28th June–3 July, 1, pp. 2–5, 2015.
- Geyer, B.: High-resolution atmospheric reconstruction for Europe 1948-2012: coastDat2, *Earth System Science Data*, 6, 147, 2014.
- Hersbach, H. and Dee, D.: ERA5 reanalysis is in production, https://software.ecmwf.int/wiki/display/CKB/What+is+ERA5?preview=/58140637/58140636/16299-newsletter-no147-spring-2016_p7.pdf, 2016.
- 10 HZG: coastDat-3_COSMO-CLM_ERAI. World Data Center for Climate (WDCC) at DKRZ., https://cera-www.dkrz.de/WDCC/ui/ceraresearch/entry?acronym=coastDat-3_COSMO-CLM_ERAI, accessed: 13.March 2018, 2017.
- Janssen, P. A. and Bidlot, J.-R.: Progress in operational wave forecasting, *Procedia IUTAM*, 26, 14–29, 2018.
- Komen, G. J., Cavaleri, L., and Donelan, M.: Dynamics and modelling of ocean waves, Cambridge university press, 1994.
- Nose, T., Webb, A., Waseda, T., Inoue, J., and Sato, K.: Predictability of storm wave heights in the ice-free Beaufort Sea, *Ocean Dynamics*,
 15 pp. 1–20, 2018.
- Reinert, D., Prill, F., Frank, H., Denhard, M., and Zängl, G.: Database Reference Manual for ICON and ICON-EPS, 2018.
- Rockel, B., Will, A., and Hense, A.: The regional climate model COSMO-CLM (CCLM), *Meteorologische Zeitschrift*, 17, 347–348, 2008.
- Schulz-Stellenfleth, J. and Stanev, E.: Statistical assessment of ocean observing networks—A study of water level measurements in the German Bight, *Ocean modelling*, 33, 270–282, 2010.
- 20 Signell, R. P., Carniel, S., Cavaleri, L., Chiggiato, J., Doyle, J. D., Pullen, J., and Sclavo, M.: Assessment of wind quality for oceanographic modelling in semi-enclosed basins, *Journal of Marine Systems*, 53, 217–233, 2005.
- Staneva, J., Alari, V., Breivik, Ø., Bidlot, J.-R., and Mogensen, K.: Effects of wave-induced forcing on a circulation model of the North Sea, *Ocean Dynamics*, 67, 81–101, 2017.
- Stopa, J. E.: Wind forcing calibration and wave hindcast comparison using multiple reanalysis and merged satellite wind datasets, *Ocean*
 25 *Modelling*, 2018.
- Teixeira, J., Abreu, M., and Soares, C. G.: Uncertainty of ocean wave hindcasts due to wind modeling, *Journal of Offshore Mechanics and Arctic Engineering*, 117, 294–297, 1995.
- Thomas, T. J. and Dwarakish, G.: Numerical wave modelling—A review, *Aquatic Procedia*, 4, 443–448, 2015.
- Van Vledder, G. P. and Akpınar, A.: Wave model predictions in the Black Sea: sensitivity to wind fields, *Applied Ocean Research*, 53,
 30 161–178, 2015.
- Vignudelli, S., Kostianoy, A., Cipollini, P., and Benveniste, J.: Coastal Altimetry, Springer, 2011.
- WAMDI Group: The WAM model—A third generation ocean wave prediction model, *Journal of Physical Oceanography*, 18, 1775–1810, 1988.

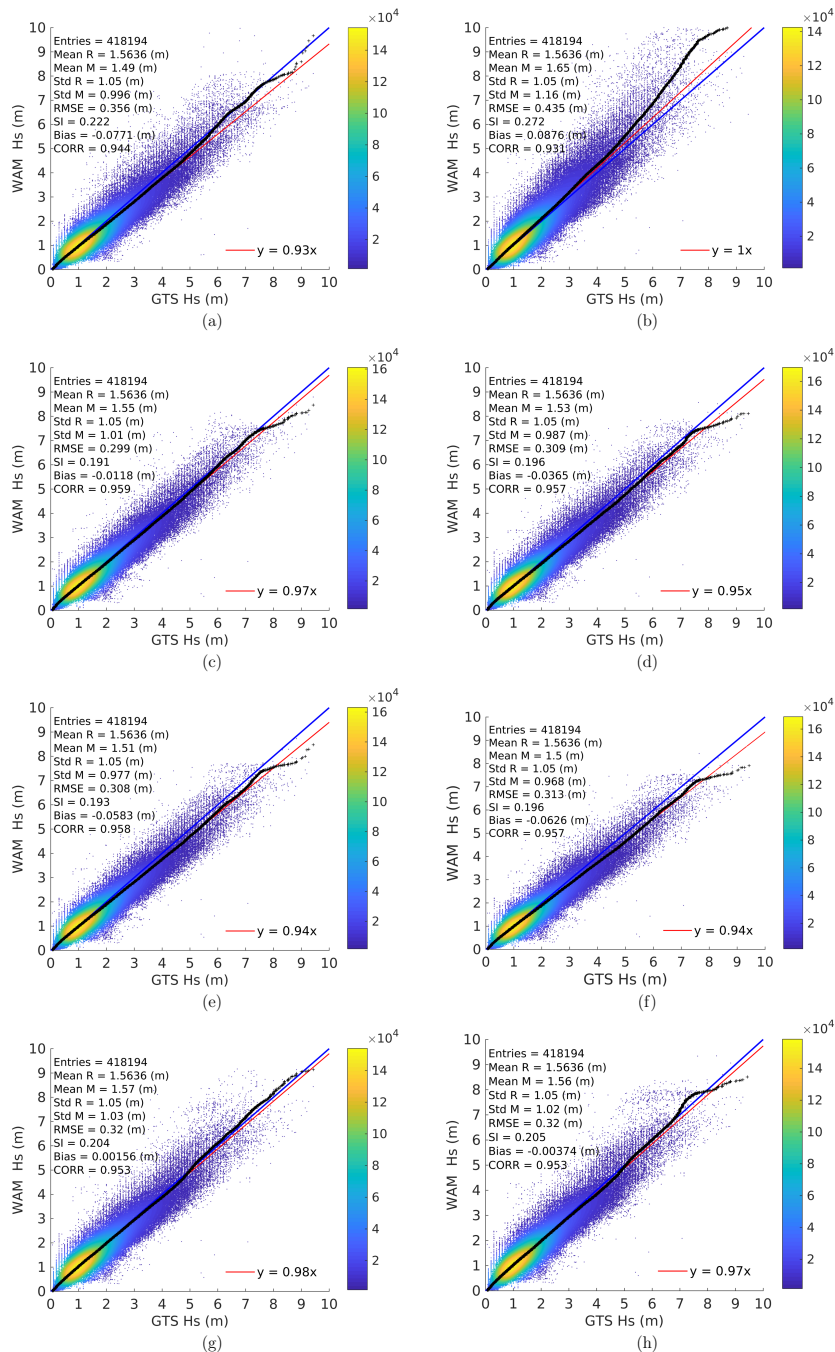


Figure 2. QQ scatter plot for measured (GTS wave data) significant wave height as reference (R) and computed-modelled (WAM) significant wave heights (M) with (a) ERA-Interim, (b) coastDat-3, (c) hourly and (d) six-hour ECMWF operational analysis/forecast; (e) hourly and (f) six-hour ERA5; and (g) hourly and (h) six-hour DWD forecast wind forcings from June to November 2016: QQ plot (black crosses), 45° reference line (blue line) and least-squares best-fit line (red line).

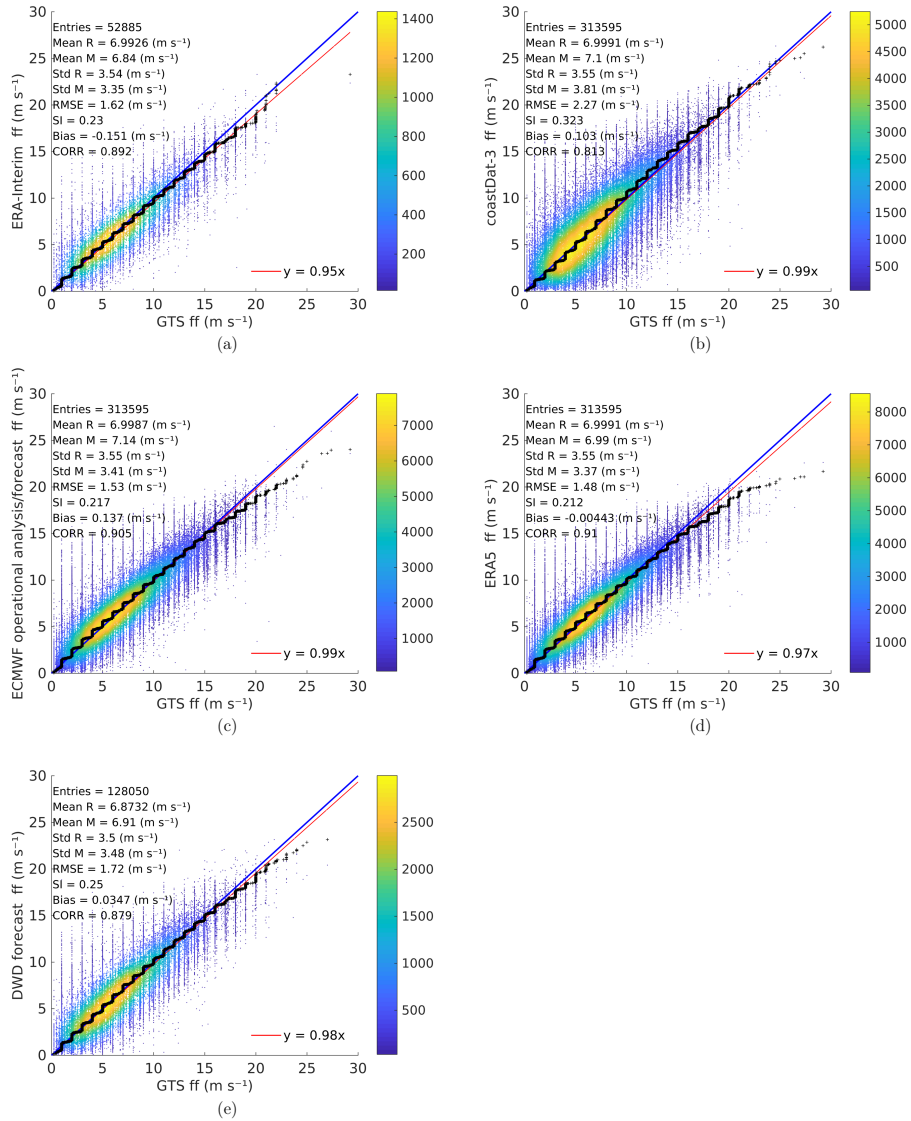


Figure 3. QQ scatter plot for measured (GTS wave buoys) wind speeds as reference (R) and computed-modelled wind speeds (M) from (a) ERA-Interim, (b) coastDat-3, (c) ECMWF operational analysis/forecast, (d) ERA5 and (e) DWD forecast from June to November 2016: QQ plot (black crosses), 45° reference line (blue line) and least-squares best-fit line (red line).

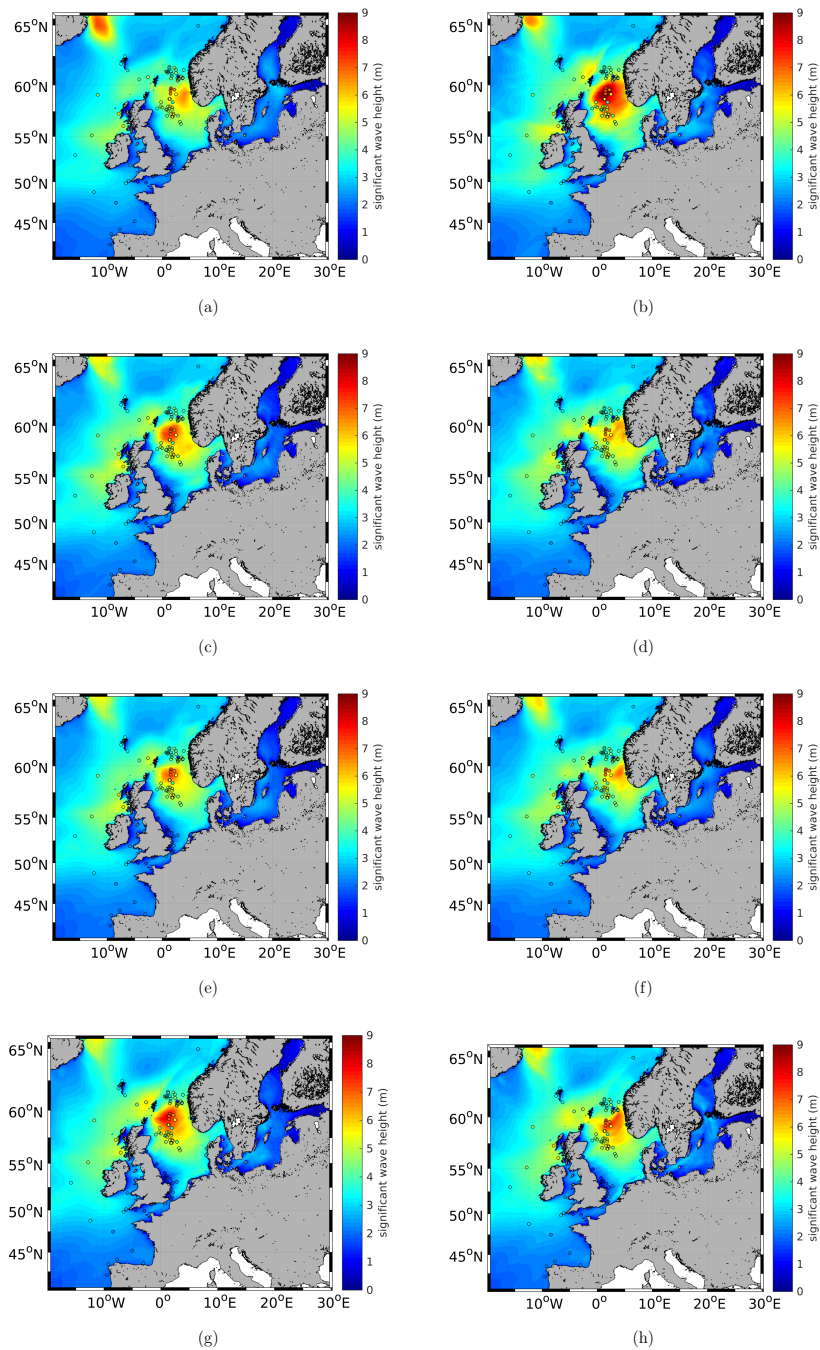


Figure 4. The significant wave height (m) of the ensemble for 29 September 2016, 11 UTC, as well as the GTS measurements for the model simulations with the (a) ERA-Interim, (b) coastDat-3, (c) hourly and (d) six-hour ECMWF operational analysis/forecast; (e) hourly and (f) six-hour ERA5; and (g) hourly and (h) six-hour DWD forecast wind forcings.

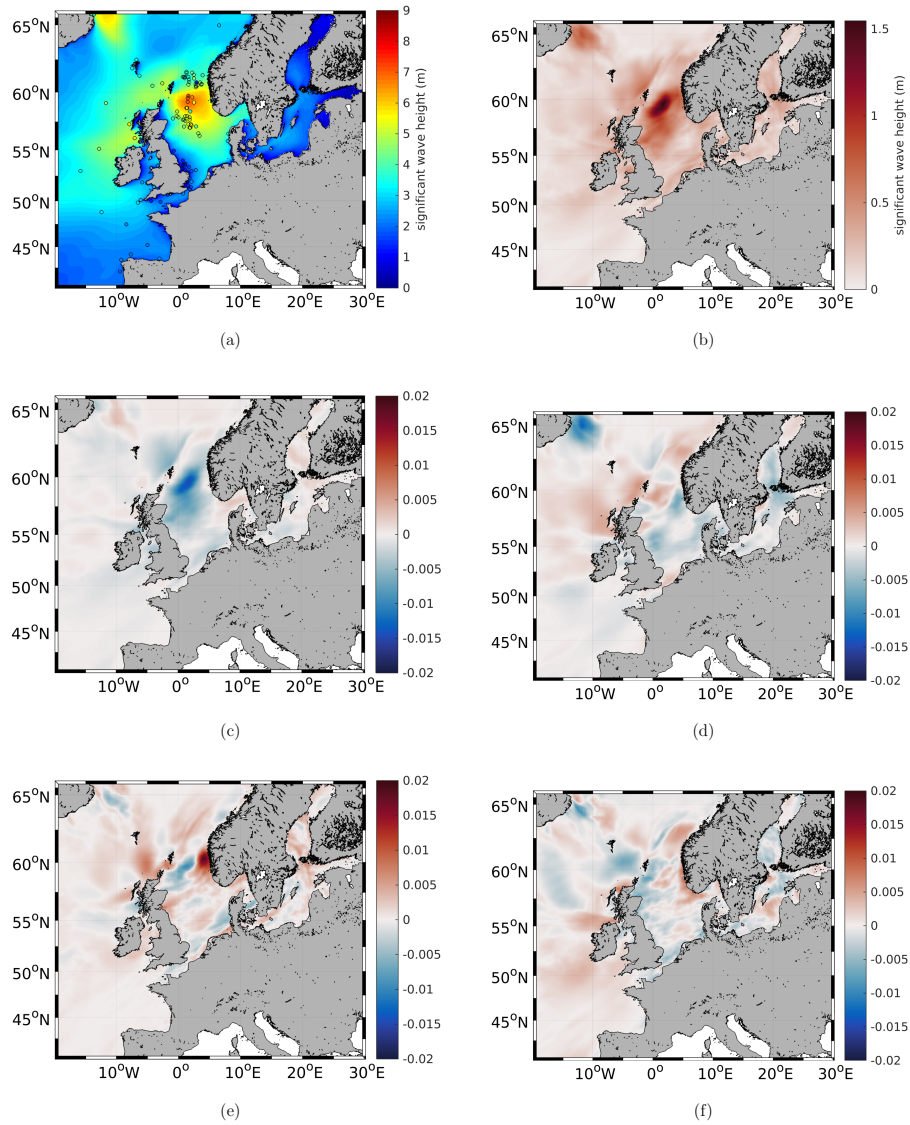
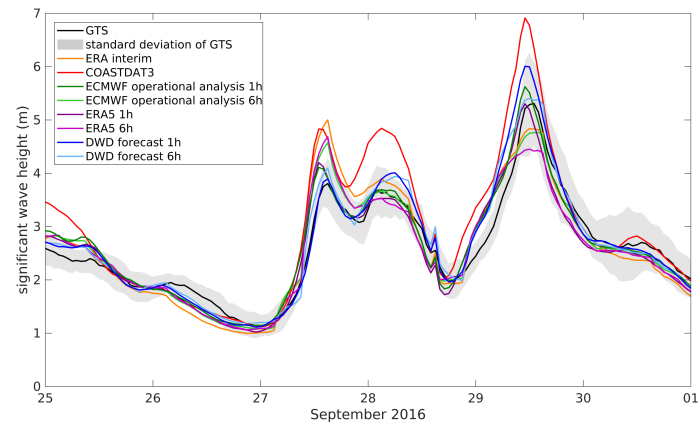
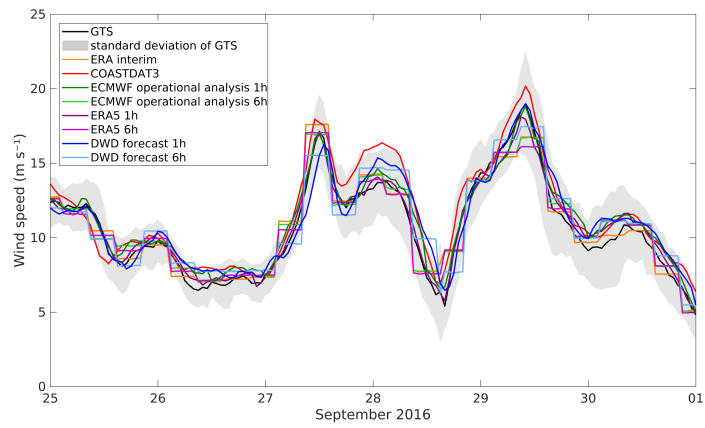


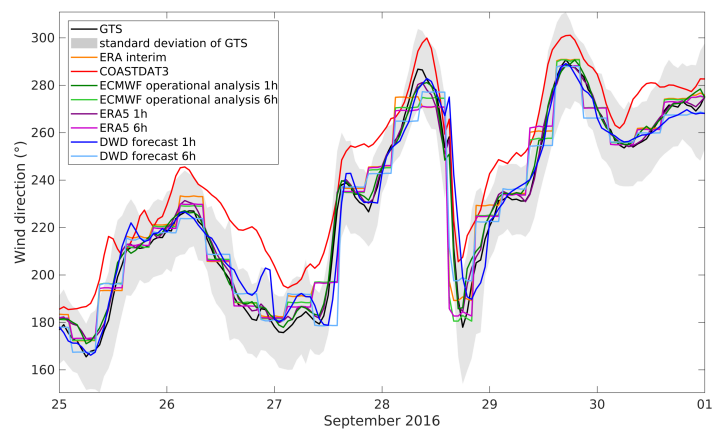
Figure 5. (a) The mean significant wave height (m) of the ensemble for 29 September 2016, 11 UTC, as well as (b) the standard deviation and the EOFs representing (c) 56.16 %, (d) 19.31 %, (e) 9.98 % and (f) 7.71 % of the total variance.



(a)



(b)



(c)

Figure 6. Time series of significant wave height (m) as modelled by WAM with different wind forcings and GTS measurements within the northern part of the North Sea (55° N 2° W to 60° N 5° E, white box in Fig. 1).

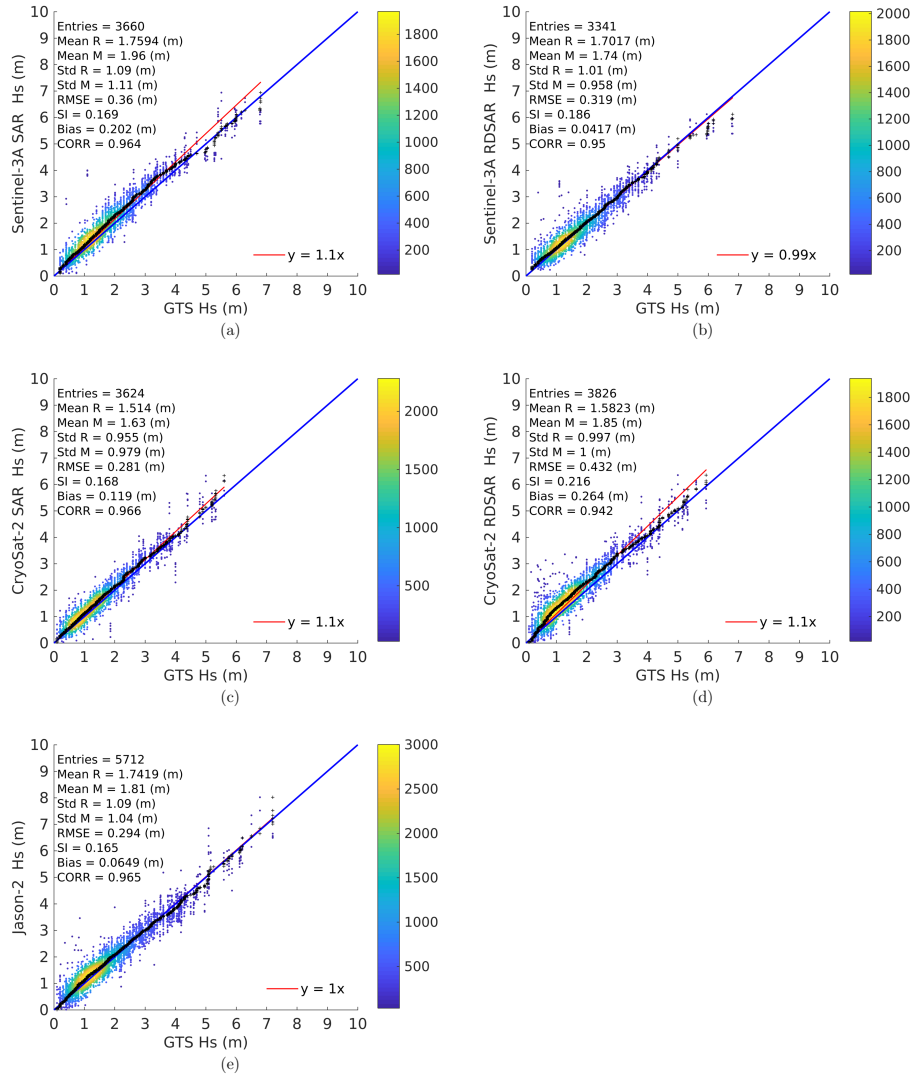


Figure 7. QQ scatter plots of measured significant wave height – in situ GTS (R) vs. remote sensing data (M) of (a) Sentinel-3A SAR, (b) Sentinel-3A RDSAR, (c) CryoSat-2 SAR, (d) CryoSat-2 RDSAR and (e) Jason-2 from June to November 2016: QQ plot (black crosses), 45° reference line (blue line) and least-squares best-fit line (red line).

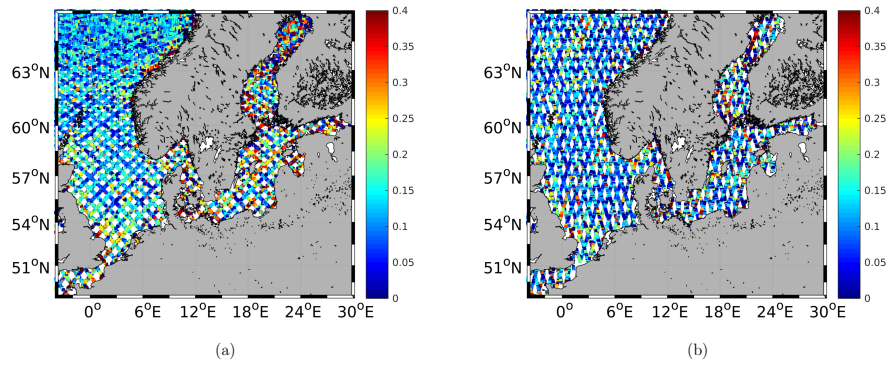


Figure 8. Scatter index between satellite and modelled significant wave heights along the satellite tracks for (a) Jason-2 and (b) Sentinel-3A SAR.

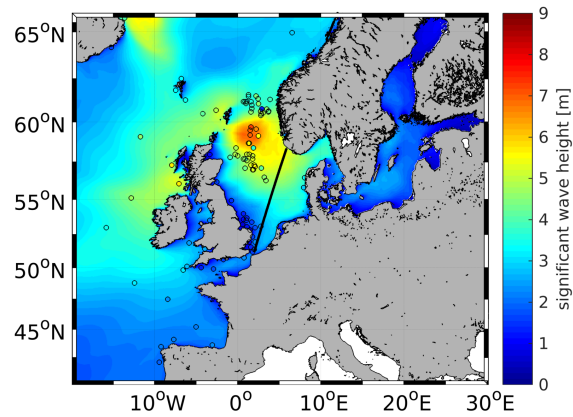


Figure 9. Best guess of the significant wave height of the ensemble, together with the Sentinel-3A data, on 29th September 2016 at 11 UTC.