

1 **Discovering sounds in Patagonia, characterizing sei whale (*Balaenoptera borealis*)**
2 **downsweeps in the south-eastern Pacific Ocean.**
3
4 **Running title: Sei whale vocalizations in Chile**
5 Sonia Español-Jiménez¹⁾, Paulina A. Bahamonde^{1,2)}, Gustavo Chiang¹⁾, Verena
6 Häussermann³⁾
7 ¹ MERI Foundation, Avenida Kennedy 5682, Santiago de Chile, Chile.
8 ² Núcleo Milenio INVASAL, Concepción, Chile.
9 ³ Facultad de Ciencias Naturales, Escuela de Ciencias del Mar, Pontificia Universidad
10 Católica de Valparaíso, Avenida Brasil 2950, Valparaíso, Chile, and Huinay Scientific
11 Field Station, Chile.
12 sespanol@fundacionmeri.cl

13 Abstract

14 The sei whale (*Balaenoptera borealis*) is one of the least known whale species.
15 Information on sei whales distributions and its regional variability in the south-eastern
16 Pacific Ocean are even more scarce than that from other areas. Vocalizations of sei
17 whales from this region are not described yet. This research presents the first
18 characterization of sei whale sounds recorded in Chile during austral autumn of 2016
19 and 2017. A total of 41 calls were identified to be sei whale downsweeps. In 2016, calls
20 ranged from an average maximum frequency of 105.3 Hz down to an average minimum
21 35.6 Hz over 1.6 s with a peak frequency of 65.4 Hz. During 2017, calls ranged from an
22 average maximum frequency of 93.3 Hz down to 42.2 Hz (over 1.6 s) with a peak
23 frequency of 68.3 Hz. The absolute minimum frequency recorded was 30 Hz and the
24 absolute maximum frequency was 129.4 Hz. Calls generally occurred in pairs, but triplets
25 or singles were also registered. These low frequency sounds share characteristics with
26 recordings of sei whales near the Hawaii Islands, but with differences in the maximum
27 frequencies and duration. These calls distinctly differ from sounds previously described
28 for sei whales in the Southern Ocean and are the first documented sei whale calls in the
29 south-eastern Pacific.

1. Introduction

The sei whale (*Balaenoptera borealis*; Lesson 1828) is the third largest rorqual in the Balaenopteridae family, after the blue whale (*B. musculus*) and the fin whale (*B. physalus*). It is also one of the least known whales. The sei whale is a cosmopolitan species found in temperate oceans and subpolar areas (Mackintosh, 1942; Gambell, 1968; Rice, 1998; Horwood, 2002; Reeves *et al.*, 2002; Jefferson *et al.*, 2008). It prefers deep offshore waters with temperatures below 20°C and avoids semi enclosed bodies of water (Omura and Nemoto, 1955; Gambell, 1985). North Atlantic, North Pacific and Antarctic populations are almost certainly separated and probably subdivided into geographic stocks (Horwood, 1987; Baker *et al.*, 2004; Kanda *et al.*, 2006; Huijser *et al.*, 2018). International Whaling Commission in 1991 divided the global sei whale population in “stocks” (based on the distribution of catches, sightings and mark-recapture data) for management purposes (Donovan, 1991). However, genetic studies provide a different population distribution. For example, in the North Atlantic Ocean, the sei whale population from Iceland, the Gulf of Maine and the Azores share the same genetic diversity, showing the wide latitudinal and longitudinal ranges they moved. Furthermore, the genetic divergence between North Pacific and North Atlantic stocks is well known, but no studies of this genetic structure between hemispheres or within the Southern Ocean have been presented (Huijser *et al.*, 2018). In the Southern Hemisphere, sei whale sightings were recorded from the Subtropical Convergence to the Antarctic Convergence, but the only observation record of adult animals come from the austral summer in south of the Antarctic Convergence (Gambell, 1974; Lockyer, 1977). In general, sei whales migrate seasonally from the reproduction areas in low latitudes in winter to their feedings areas in high latitudes in summer (Reeves *et al.*, 1998).

Reproduction areas are poorly known (Perry *et al.*, 1999) and feeding areas show great variability between years (Jonsgård and Darling, 1977). Population boundaries and migratory patterns are also poorly understood. In the austral summer there are concentrations of sei whales between 40° and 50°S; older, larger individuals tend to travel to northern Antarctic, while smaller, younger individuals tend to stay at lower latitudes (Rice, 1998; Acevedo *et al.*, 2017).

Because of their smaller size, speed and elusiveness, sei whales were comparatively less important as target species for hunting until the early 1960s. After the decline of the most profitable species such as blue whales, fin whales and humpback whales, the whaling industry increased the hunting pressure on sei whales (Gambell, 1985). Thirty years ago, between the Antarctic and the North Pacific, many whales were taken from the coasts of Peru and Chile (Tonnessen and Johnsen, 1982). Most captures were carried out by the pelagic whaling in the Antarctic, which hunted more than 110,000 sei whales between 1960 and 1970 (Horwood, 2002). The International Whaling Commission estimated the size of the sei whale populations in the South Hemisphere to be 37,000 individuals after the cessation of the commercial captures in 1984, while this number was estimated 191,000 in the 1940s (Gambell, 1985). Between 1929 and 1983 sei whales captures represented 17.3% of the total catch of whales in Chile. It was the third most hunted species with approximately 1,664 individuals captured principally on the north and central coasts (Aguayo-Lobo, 1974; Aguayo-Lobo *et al.*, 1998), although these include an unknown number of Bryde whales (Valdivia *et al.*, 1981; Gallardo *et al.*, 1983; Aguayo-Lobo *et al.*, 1998). After the whale-hunting moratorium imposed by the International Whaling Commission in 1980, several research projects focused on the populations and recovery status of the large whales such as right whales, humpback

78 whales, blue whale and fin whales (Reeves *et al.*, 2002). Since 1976, sei whales have
79 been listed as endangered (IUCN 2018). Today, sei whales are the least studied of the
80 large whales and there has been a lack of data since the end of the commercial hunting
81 (Prieto *et al.*, 2011).

82 In Chile, there are opportunistic sightings and strandings of sei whales from Antofagasta
83 (in the north) to the Magellan Strait (in the south), including the islands of Juan
84 Fernandez (Gallardo *et al.*, 1983; Schlatter, 1987; Aguayo-Lobo *et al.*, 1998; Findlay *et*
85 *al.*, 1998; Pastene and Shimada, 1999; Guzmán, 2006; Acevedo *et al.*, 2017). Many
86 sightings in Central Chile and Northern Patagonia (33°-48°S) have been reported since
87 1966, when 286 whales were sighted in March of 1966 (between 43° and 45°S); 114 in
88 October of the same year (between 46° and 48°S), all between 30 and 190 km off the
89 shore (Aguayo-Lobo, 1974). In March 1968 Japanese whalers reported the sightings of
90 several hundreds of sei whales between 46° 40' and 48°S, with a peak concentration 30
91 km off the coast of the Tres Montes Peninsula at the northern limit of The Penas Gulf
92 (Pastene and Schimada, 1999). In 2015, at Penas Gulf the largest recorded baleen whale
93 mass mortality event was reported with 363 registered carcasses of baleen whales
94 (Häussermann *et al.*, 2017). Genetic and morphological analysis confirmed that the
95 examined animals were sei whales (Häussermann *et al.*, 2017). These historical sightings
96 support the hypothesis of Guzman (2006) about the presence of sei whales feeding in
97 Chilean Patagonia between Chiloe island and the Magellan Strait (Acevedo *et al.*, 2017).
98 Since the sei whale is endangered and poorly known, population studies are crucial as a
99 support for its conservation. Autonomous passive acoustic monitoring devices facilitate
100 the monitoring of cetaceans by recording their vocal signals. Passive acoustic data can

then be used to characterize and understand their acoustic behavior and determine their distribution patterns in time and space (Clark and Ellison, 1989; Richardson *et al.*, 1995).

Acoustic signals produced by sei whales are poorly known (Prieto *et al.*, 2011). To date, vocalizations have been described from six different geographic areas: New England (USA), Nova Scotia (Canada), Hawaii (USA), Azores (Portugal), Auckland Islands (New Zealand,) and Antarctic Peninsula (Thompson *et al.*, 1979; McDonald *et al.*, 2005; Rankin and Barlow, 2007; Baumgartner *et al.*, 2008; Calderan *et al.*, 2014; Romagosa *et al.*, 2015). There is no record of sei whale vocalizations from the South-eastern Pacific Ocean. Comparison from intraspecific sounds from different geographic regions is interesting for possible acoustic clues to both stock and taxonomic identities. Consequently, the aim of this work is to describe sei whale vocalizations based on opportunistic recordings at the Penas Gulf, Chile and to obtain a framework baseline about the characterizes of sei whales populations in the South-eastern Pacific Ocean.

2. Methods

Two cruises to the Penas and Tres Montes Gulf (46.2-48.0° S, 74.0-75.4° W) aboard the motor sailing vessel Saoirse were carried out in May 2016 and May 2017 during which biological, oceanographic and acoustics studies were carried out (fig 01). Marine mammals were identified visually with binoculars and the naked eye for a team of experienced marine mammal observers in the vessel.

Two different hydrophones were used for the recordings: an icListenHF hydrophone (sensitivity -171 dBV re 1 μ Pa with pre-amp; frequency response 10–200kHz from Ocean Sonic, Canada); and a SoundTrap 202 STD hydrophone (sensitivity -205 dBV re 1 μ Pa;

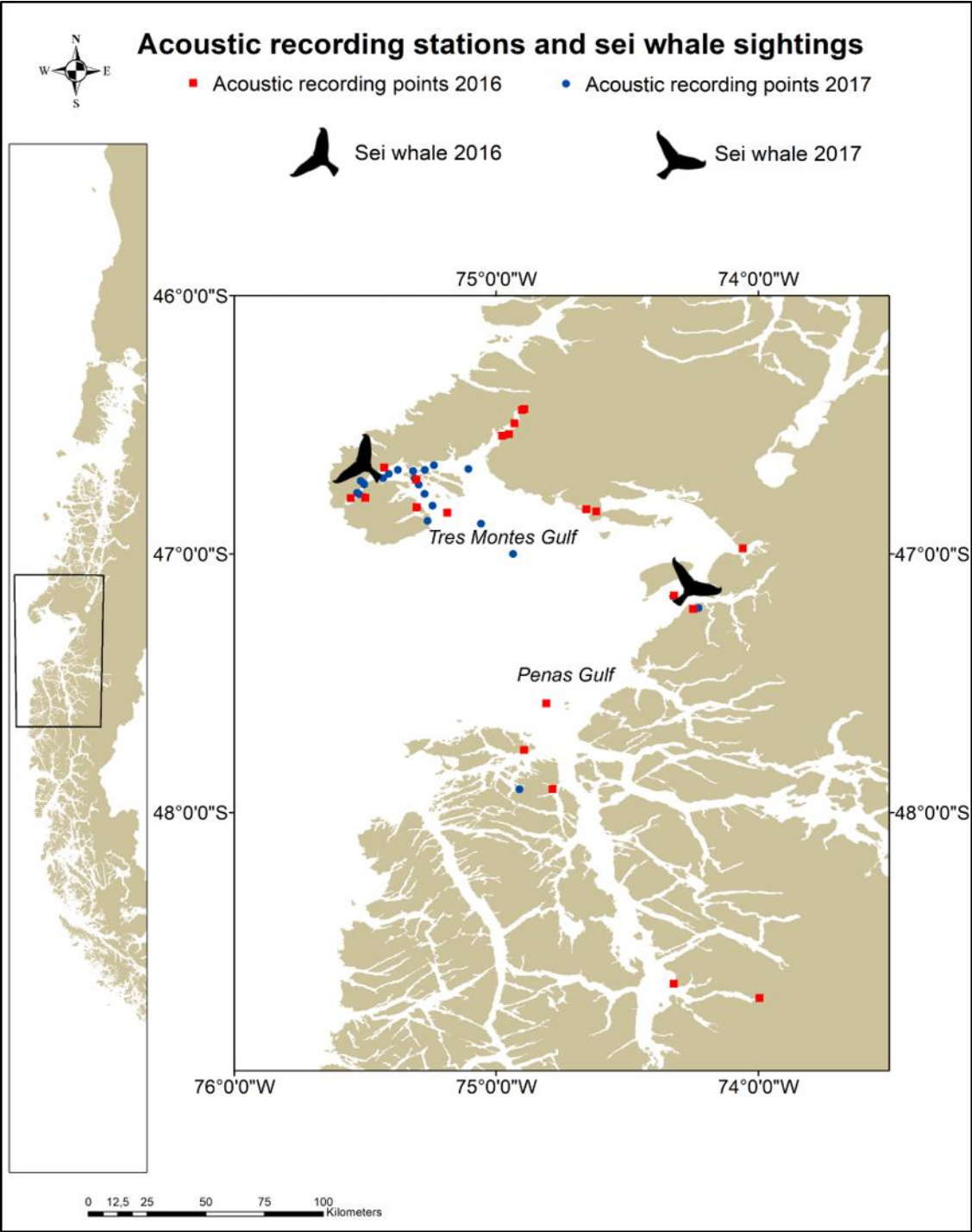
frequency response 60000Hz \pm 3 dB from Ocean Instruments, New Zealand). Also, we made stereo recordings on several occasions with an HTI-96-MIN hydrophone (flat frequency response from 0.02 to 30 kHz) connected to a handy recorder (H4nPro from ZOOM).

Opportunistic and planned recordings were carried out depending on the weather conditions and the vessel location. In 2016, recordings were not more than one day in each location where hydrophones were suspended over the side of the vessel. However, in 2017, also, in 3 different locations, hydrophone were deployed between 2-5 days. In these cases, hydrophones were deployed at a depth of 5 or 10 m on rocky bottom with about 40 meters bottom depth using a row with a mooring at the end and surface buoys on the opposite side. In both years, during the day or night, hydrophones were deployed at a depth of 5 and 10 meters from the stationary vessel. Opportunistic recordings were continuous, but in the night when the vessel was at anchor, the recordings were in intervals of 10-30 minutes each hour to guarantee the capacity of the acoustic personnel to study the recording during the next day.

During all the recordings, the engine vessel was turn off. All the recordings were stored in the internal card memory of the equipments, and at the end of the day these were download in a portable computer.

Audio data were analyzed using Raven Pro 1.5 (Cornell University, Ithaca, NY). Low and high frequency (Hz), frequency range (Hz), peak frequencies (the frequency at which the maximum power occurred within a call) and duration (s) for all calls found and attributed to sei whales were analysed from spectrograms and waveform plots created in Raven Pro 1.5 (Hann window; 50% overlap; window size 14563 samples; DFT 16384 samples).

Figure 01. Study area including sighting and recording locations. The whale tail indicates the area where sei whale were sighted and vocalizations were identified.



3. Results

Sei whales were sighted in both expeditions (2016 and 2017). In addition, during one day in 2017, humpback whales were sighted. Sound was recorded during 16 days in 2016 in 23 opportunistic recordings locations and during 19 days in 24 locations in ~~2017~~2017. A total of 363 hours was recorded between both expeditions, because the recordings were not continuous during every day, 136 hours (63 archives) in 2016 and 227 hours (483 archives) in 2017. Recordings were not the same duration or the same sampling rate because they were opportunistic. Sei whale calls were found in 8 archives for 3 days, on 7 May 2016 and 10-11 May 2017, at 2 different locations (one in 2016 and other in 2017) (Table 1). In acoustic data from 2016, sei whale calls were detected when sei whales were sighted closer the vessel (fig 02). In 2017, between 8 and 10 May, sei whales were sighted in the area after sei whale calls had been recorded (fig 02). Sei whale calls from 2016 were only recorded around midday, while in 2017 they were recorded in the late afternoon or at night (Table 1).

174

175

176 Figure 02. Photographed sei whale at Penas and Tres Montes Gulf a) 7 May, 2016.

177 Photo by: Katie McConnell; b) 10 May, 2017. Photo by: Keri-Lee Pashuk.

178



179

180



Table 1. Sei whale recordings at Penas and Tres Montes Gulf.

Year	Date	Local Hour	Latitude	Longitude	Sampling rate	Hydrophone depth (meters)	Recording duration (minutes)	Hydrophone	Sightings
2016	07-may	14:07	S47°09.625'	W074°19.266'	44100	5	34	HTI-96-MIN hydrophone + Handy recorded	2 individuals of sei whale closer to the vessel. Figure 02 (a).
2017	10-may	19:43 22:43 23:43	S46°46.100'	W75°31.400'	48000	10	30 minutes each hour	SoundTrap 202 STD	3 individuals of sei whale in the area between 8-10 May. Figure 02 (b).
2017	11-may	00:43 02:43 05:43 07:43	S46°46.100'	W75°31.400'	48000	10	31 minutes each hour	SoundTrap 202 STD	3 individuals of sei whale in the area between 8-10 May. Figure 02(b).

Only in two occasions humpback whale sounds above 2000 Hz were detected, in the rest of the analyzed audios, only sei whale sounds were detected without associated calls. Only calls with high-visual quality were measured. All vocalizations reported in this study were identified as downsweep calls (fig 03). We identified a total of 41 calls; 5 calls in 2016 and 36 in 2017. In 2016, calls ranged from an average maximum frequency of 105.3

190 Hz (SD=18.3 Hz) down to an average minimum frequency of 35.6 Hz (SD=4.6 Hz) over 1.6
191 s (SD=0.1 s) with a peak frequency of 65.4 Hz (SD=14.1 Hz) (Table 2). In 2017, calls ranged
192 from an average maximum frequency of 93.3 Hz (SD=10.9 Hz) down to 42.2 Hz (SD=5.6
193 Hz) over 1.6 s (SD=0.3 s) with a peak frequency of 68.3 Hz (SD=14.2 Hz). The minimum
194 frequency was 30 Hz and the maximum frequency was 129.4 Hz. Calls occurred in pairs
195 (n=12), singles (n=5) or triplets (n=4) (Table 2).

Figure 03. Spectrogram of sei whale vocalization recorded with the hydrophone (32768 FFT, Hamming window). A. five seconds spectrogram zoomed in on a pair of calls. B. five seconds spectrogram of a pair of call. C. A pair and a single call of sei whale call within 15 seconds.

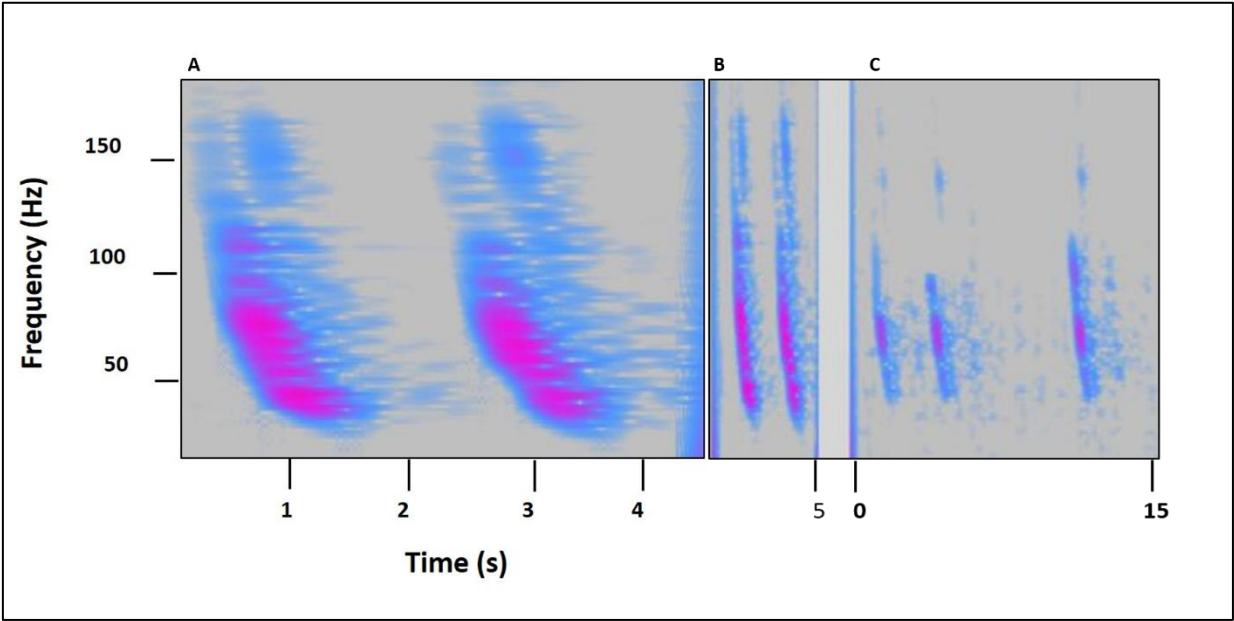


Table 2. Comparison of the frequency and timing of recorded calls in the present study with studies in other areas. Values are mean value \pm standard deviation. ND = no data (the study did not include that information)

Source	Location	Year/nº vocalizations	High Frequency (Hz)	Low frequency (Hz)	Peak frequency (Hz)	Duration (s)
Present study	Chile, South-eastern Pacific	2016/5	105.3 \pm 18.3	35.6 \pm 4.6	65.4 \pm 14.1	1.6 \pm 0.1
		2017/36	93.3 \pm 10.9	42.2 \pm 5.6	68.3 \pm 14.2	1.6 \pm 0.3
Romagosa <i>et al.</i> (2015)	Azores, Northern Atlantic Ocean	2012/53	99.8 \pm 13.6	37.4 \pm 8.4	52.0 \pm 11.4	1.21 \pm 0.33
Calderan <i>et al.</i> (2014)	Auckland Islands, Southern Atlantic Ocean	2013/4	78.0 \pm 2.0	69.0 \pm 08	73.8 \pm 0.5	1.1 \pm 0.0
		2013/4	83.3 \pm 4.1	53.8 \pm 4.9	78.3 \pm 3.1	1.2 \pm 0.0
		2013/30	66.3 \pm 10.7	36.6 \pm 2.1	45.8 \pm 11.0	1.2 \pm 0.3
Gedamke and Robinson (2010)	East Antarctica, Southern Ocean	2006/ND	570	170	ND	ND
Baumgartner <i>et al.</i> (2008)	New England, North western Atlantic Ocean	2006-2007/108	82.3 \pm 15.2	34.0 \pm 6.2	ND	1.38 \pm 0.37
Rankin and Barlow (2007)	Hawaii, Pacific Ocean	2002/2	100.3 \pm 11.1	44.6 \pm 2.9	ND	1.2 \pm 0.007
		2002/105	39.4 \pm 3.4	21 \pm 2.4		1.2 \pm 0.11
McDonald (2005)	West Antarctica, Southern Ocean	2003/50	433	192	ND	0.45 \pm 0.3
Knowlton <i>et al.</i> (1991)	Canada, Northern Atlantic Ocean	1986-1989/ND	3500	1500	ND	0.5-0.8
Thompson (1979)	Canada, Northern Atlantic Ocean	ND	3000	ND	ND	0.7

4. Discussion

Given that recordings from this project were opportunistic and without digital acoustic recording tags (DTAG) deployed in sei whales we cannot prove the origin of the calls. However, we can confirm with reasonable certainty that vocalizations recorded off Penas and Tres Montes Gulf were produced by sei whales, due to the sightings of this species during the recordings and the expeditions. Blue whales (*Balaenoptera musculus*), fin whale (*Balaenoptera physalus*) or minke whales (*Balaenoptera acutorostrata*) produce downsweep as well (Thompson *et al.*, 1996; Schevill and Watkins, 1972; Watkins, 1981). Bryde whales (*Balaenoptera brydei*) has also several call types, included downsweep, but inhabit tropical and subtropical waters and we do not have any record in this area yet (Omura, 1959; Wade and Gerrodette, 1993; Oleson, *et al.*, 2003). Generally, fin whales downsweep have initial frequencies below 35 Hz and final frequencies around 20-18 Hz (Watkins, 1981), similar than minke whales but with shorter durations (0.2-0.3 sec) and higher frequencies (130-60 Hz) (Schevill and Watkins, 1972). Minke whales in the North Atlantic produce long pulse trains (Mellinger *et al.*, 2000), these were not recorded in this area, fin and minke whales downsweep are definitively different than our recordings. Only downsweeps from blue whales described in Chile, through the DTAG data, has a lower peak frequency and duration; minimum frequency is higher than our results and downsweep had been accompanied by the Southeast Pacific type 2 (SEP2) (Saddler *et al.*, 2017), supporting our results, that our records are really from sei whales. In addition, sei whale vocalizations described here show very similar characteristics to those described off Azores Islands by Romagosa *et al.* (2015), off New England by Baumgartner *et al.* (2008) and off Hawaii by Rankin and Barlow (2007). In these areas, sei whale vocalizations are characterized by low frequency

downsweeps. However, sei whales sweeps recorded off Nova Scotia by Thompson (1979) and Knowlton et al. (1991) or in Antarctic waters by McDonald (2005), Gedamke and Robinson (2010) are different from our recording and are characterized by higher frequencies.

Rankin and Barlow (2007) describe two ranges for the low frequency downsweeps, 100-44 Hz and 39-21 Hz with durations of 1.0 s and 1.3 s, respectively. In the present study, the minimum frequency was 30 Hz, being the average calls in the upper range defined by those authors. The range of frequencies described here are similar to what Baumgartner *et al.* (2008), Newhall *et al.* (2012) and Romagosa *et al.* (2015) reported, although the maximum frequency reported in the present study is higher. The higher frequency calls recorded in the North Pacific (Hawaii) and in the present study are similar, but our results showed higher frequencies in the top range (maximum off 111.4 Hz versus 129.4 Hz, respectively) and a longer duration (maximum 1.27 s versus 2.27 s, respectively). The similarities could be expected due to the possibility of there being a stereotypical call used in feeding grounds, as suggested by Romagosa *et al.* (2015). However, sei whales recorded in this study have shown a different call with higher frequencies and longer durations than those detected from North Atlantic or North Pacific waters.

In the sub-Antarctic Auckland Islands, a series of four calls is predominant (Calderan *et al.*, 2014), but the calls recorded at Penas Gulf occurred principally in pairs, although single calls and triplets were also detected. During this study, no four-call series were recorded as have been recorded in North Atlantic or Pacific waters (Baumgartner *et al.*, 2008, Newhall *et al.*, 2012, Romagosa *et al.*, 2015).

Sei whale calls from Antarctic waters are characterized by broadband, tonal, frequency modulated vocalizations between 100 and 600 Hz with durations between 1 and 3 s (McDonald 2005, Gedamke and Robinson, 2010). These calls do not present similarities with the calls recorded here. This may be due a geographic separation of the populations, suggesting that different sei whale populations produce different stereotypic calls. The structure of the calls of sei whales is more variable between whales than within an individual whale (Baumgartner *et al.*, 2008). This suggests that sei whales present in Antarctic waters do not transit through southern Chile, or at least near shore Patagonia, in their migration to the breeding grounds in lower latitudes. Thus, the sei whales found in Chile, near shore in Penas and Tres Montes Gulf, might represent a different population. As recordings were opportunistic, the duration of recordings was variable, and this maybe influenced in the few calls that we recorded., so visual observations, tagging efforts and genetic studies are needed to verify this hypothesis.

In the present study, most acoustic activity was recorded during the night, while Baumgartner and Fratantoni (2008), Newhall *et al.* (2012) and Romagosa *et al.* (2015) recorded calls mostly during the day. These darkness patterns coincide with results from humpback whales songs reported from Chile (Español-Jiménez and van der Schaar, 2018). However, low frequency sei whale downsweeps may have a different function from the stereotyped humpback vocalizations considered as songs (Edds-Walton 1997). Though the behavior of sei whales is poorly studied, most studies on this species state that sei whales prefer offshore waters, but these new records and sightings along the coast of Penas and Tres Montes Gulf (Aguayo-Lobo 1974; Pastene and Schimada, 1999; Häussermann *et al.*, 2017), demonstrated a wide habitat range, with the whales probably following productive feeding areas. If this is true, it is reasonable to assume

that the calls of sei whale's calls are influenced by the feeding conditions (as proposed by Baumgartner and Fratantoni (2008)) and have communicative functions, e.g. cooperatively searching for prey as suggested Newhall *et al.* (2012). Baumgartner and Fratantoni (2008) hypothesize that calling rates are reduced at night while the whales are feeding but increase with social activity during the day when copepods are either more difficult or less efficient to capture at depth. Our data could not support this hypothesis since calls were recorded at night and it was not possible to observe what activities the whales were engaged in. Another factor that could be important in the discussion about the acoustic behavior is background noise, which might be masking biologically important signals and impede the communications between individuals (Clark *et al.*, 2009).

This new description of sei whale calls adds knowledge to the vocalizations and distribution of an endangered species (IUCN, 2018) red-listed under criteria A-1. It is also listed in Appendix I ("Endangered migratory species") and II ("Migratory species with unfavorable conservation status which require international agreements for their conservation and management") in the Convention on the Conservation of Migratory Species of Wild Animals (Bonn Convention 1979). Satellite tracking of the Chilean sei whale population, individual photo identification, distribution and characteristics of the prey species, behavioral, genetic and oceanographic studies are necessary to test some hypotheses and improve our understanding of this species.

Acknowledgements

This research would not have been possible without the assistance of Keri-Lee Pashuk and Greg Landreth of Patagonia Projects who organized the funding and operations of

300 expedition vessel SRV Saoirse supporting HF29 and HF32 expeditions; in addition, we
301 want to thank Michael Kean, Gastón Herrera, Sebastián Durán, Cristian Santana,
302 Valentina Molinos; Mark Woods of Ocean Sonic and Daniel Zitterbart for provided
303 hydrophones; John Atkins to Ocean Instruments for help in the configurations. These
304 expeditions were funded by Blue Marine Foundation, Global Marine Networks (USA);
305 Iridium Communications Inc.; Deep Trekker Inc (Canada), MERI Foundation, Huinay
306 Foundation and Fondecyt project nr 1161699. We are very grateful to Alessandro
307 Bocconcelli and Joe Warren for their feedback on this research, also to the anonymous
308 referee. This is publication nr 161 of Huinay Scientific Field Station. Paulina Bahamonde
309 is supported by Nucleo Milenio INVASAL funded by Chile's government program,
310 Iniciativa Científica Milenio from Ministerio de Economía, Fomento y Turismo.

311 References

- 312 Acevedo, C., Aguayo-Lobo, A., González, A., Haro, D., Olave, C., Quezada, F., Martínez,
313 F., Garthe, S., and Cáceres, B.: Occurrence of sei whales (*Balaenoptera borealis*) in the
314 Magellan Strait from 2004-2015, Chile, *Aquat. Mamm.*, 43 (1), 63, 2017.
- 315 Aguayo-Lobo, A.: Baleen whales of continental Chile, Pp: 209 – 217, William E. Schevill,
316 Editor. *The Whale Problem: A Status Report*. Harvard University Press, 419 pp, 1974.
- 317 Aguayo-Lobo, A., Torres, D., and Acevedo J.: Los mamíferos marinos de Chile: I. Cetacea,
318 Serie Científica INACH, 48, 19–159, 1998.
- 319 Baker, C. S., Dalebout, M. L., Funahashi, N., Ma, Y. U., Steel, D., and Lavery, S.: Market
320 surveys of whales, dolphins and porpoises in Japan and Korea, 2003–2004, with
321 reference to stock identity of sei whales. Paper SC/56/BC3 presented to the IWC
322 Scientific Committee, June 2004 (unpublished). Available from the IWC Office
- 323 Baumgartner, M.F., and Fratantoni, D.M.: Diel periodicity in both sei whale vocalization
324 rates and the vertical migration of their copepod prey observed from ocean gliders,
325 *Limnol. Oceanogr.*, 53, 2197–2209, 2008.
- 326 Baumgartner, M.F., Van Parijs, S.M., Wenzel, F.W., Tremblay, C.J., Carter Esch, H., and
327 Warde, A.M.: Low frequency vocalizations attributed to sei whales (*Balaenoptera*
328 *borealis*), *J. Acoust. Soc. Am.*, 124 (2), 1339-1349, 2008.
- 329 Calderan, S., Miller, B., Collins, K., Ensor, P., Double, M., Leaper, R., and Barlow, J.: Low-
330 frequency vocalizations of sei whales (*Balaenoptera borealis*) in the Southern Ocean, *J.*
331 *Acoust. Soc. Am.*, 136 (6), EL418-EL423, 2014.

332 Clark, C.W., and Ellison, W.T.: Numbers and distributions of bowhead whales, *Balaena*
 333 *mysticetus*, based on the 1986 acoustic study off Pt Barrow Alaska, Report of the
 334 International Whaling Commission, 39, 297-303, 1989.

335 Clark, C.W., Ellison, W.T., Southall, B.L., Hatch, L., Van Parijs, S.M., Frankel, A., and
 336 Ponirakis, D.: Acoustic masking in marine ecosystems: Intuitions, analysis, and
 337 implication, Mar. Ecol. Prog. Ser., 395, 201-222, 2009.

338 Donovan, G.P.: A review of IWC stock boundaries, International Whaling Commission,
 339 Special Issue, 13, 39-68, 1991.

340 Edds-Walton, P.L.: Acoustic communication signals of mysticete whales, Bioacoustics 8,
 341 47–60, 1997.

342 Español-Jiménez, S., and van der Schaar, M.: First record of humpback whale songs in
 343 Southern Chile: Analysis of seasonal and diel variation, Mar. Mam. Sci., 34 (3): 718–733,
 344 2018.

345 Findlay, K., Pitman, R., Tsurui, T., Sakai, K., Ensor, P., Iwakami, H., Ljungblad, D., Shimada,
 346 H., Thiele, D., Van Waerebeek, K., Huckle-Gaete, R., Sanino-Vattier, G.P. :1997/1998 IWC-
 347 Southern Ocean whale and ecosystem research (IWC/SOWER) blue whale cruise, Chile,
 348 Report presented to the International Whaling Commission, Muskat, Oman, 1998.

349 Gallardo, V.A., Arcos, D., Salamanca, M., and Pastene, L.A.: On the occurrence of Bryde's
 350 whale (*Balaenoptera edeni* Anderson 1878) in an upwelling area off Central Chile, Report
 351 of the International Whaling Commission, 33, 481-488, 1983.

352 Gambell, R.: Seasonal cycles and reproduction in sei whales of the Southern
 353 Hemisphere, Discovery Reports, 35, 31-134, 1968.

354 Gambell, R.: A review of population assessments of Antarctic sei whales, Report of the
 355 International Whaling Commission, Special Issue 1, 44-49, 1974.

356 Gambell, R.: Sei whale, *Balaenopera borealis*, Lesson 1828, Pp: 155 – 170. In: Sam H.
 357 Ridgway and Richard Harrison Editors. Handbook of Marine Mammals. Vol 3. The
 358 Sirenian and Baleen whales. Academic Press, London, 369 pp., 1985.

359 Gedamke, J., and Robinson, S.M.: Acoustic survey for marine mammal occurrence and
 360 distribution off East Antarctica (30–80°E E) in January-February 2006, Deep Sea Res., II
 361 57, 968–981, 2010.

362 Guzmán, A.: Avistamientos de ballena azul *Balaenoptera musculus* (Linnaeus, 1758) y sei
 363 *B. borealis* Lesson, 1828 en la costa nor-occidental de la isla de Chiloé, Chile (Blue whale
 364 *Balaenoptera musculus* (Linnaeus, 1758) and sei whales *B. borealis* Lesson, 1828
 365 sightings in the north-occidental coastal in the Chiloé islands, Chile). Boletín del Museo
 366 Nacional de Historia Natural, Chile, 55, 51-60, 2006.

367 Häussermann, V. Gutstein, C.S., Bedington, M., Cassis, D., Olavarria, C., Dale, A.C.,
 368 Valenzuela-Toro, A.M., Perez-Alvarez, M.J., Sepúlveda, H.H., McConnell, K.M., Horwitz,
 369 F.E., and Försterra, G.: Largest baleen whale mass mortality during strong El Niño event
 370 is likely related to harmful toxic algal bloom, PeerJ, 5, e3123, 2017.

371 Horwood, J.W.: The sei whale: Population biology, ecology and management, London:
 372 Croom Helm, 1987.

373 Horwood, J.W.: Sei whale *Balaenoptera borealis*, In W. F. Perrin, B. Würsig, and J. G. M.
 374 Pp. 1069-1070. Thewissen (Eds.), Encyclopedia of marine mammals. San Diego:
 375 Academic Press, 1352 pp., 2002.

376 Huijser, L. A., Bérubé, M., Cabrera, A. A., Prieto, R., Silva, M. A., Robbins, J., Kanda, N.,
 377 Pastene, L. A., Goto, M., Yoshida, H., Víkingsson, G. A., and Palsboll, P. J. : Population
 378 structure of North Atlantic and North Pacific sei whales (*Balaenoptera borealis*) inferred
 379 from mitochondrial control region DNA sequences and microsatellite
 380 genotypes. *Conservation Genetics*, 19, 1007-1024, 2018. IUCN 2018. The IUCN Red List
 381 of Threatened Species. Version 2018-1.

382 Jefferson, T.A., Webber, M.A., and Pitman, R.L. (Eds.): *Marine mammals of the world: A*
 383 *comprehensive guide to their identification*, San Diego: Academic Press., 616 pp., 2008.

384 Johnson, S. C. Johnson, S.C., Širović, A., Buccowich, J.S., Debich, A.J., Roche, L.K., Thayre,
 385 B., Wiggins, S.M., Hildebrand, J.A., Hodge, L.E.W., and Read, A.J.: *Passive acoustic*
 386 *monitoring for marine mammals in the Jacksonville Range Complex*, Marine Physical
 387 *Laboratory Technical Memorandum 548*, Scripps Institution of Oceanography,
 388 University of California San Diego, La Jolla, CA. 2010.

389 Jonsgård, Å., and Darling, K.: On the biology of the eastern North Atlantic sei whale,
 390 *Balaenoptera borealis* Lesson, *Reports of the International Whaling Commission*, 1, 124–
 391 129. Special issue, 1977.

392 Kanda, N., Goto, M. and Pastene, L.A.: Genetic characteristics of western North Pacific
 393 sei whales, *Balaenoptera borealis*, as revealed by microsatellites, *Marine Biotechnology*,
 394 8, 86–93, 2006.

395 Knowlton, A., Clark, C. W. and Kraus, S. D.: *Sounds recorded in the presence of sei whales*
 396 *Balaenoptera Borealis*, *Abstract Book of The Ninth Biennial Conference on the Biology*
 397 *of Marine Mammals.*, 40 pp. Chicago, Illinois, USA, 1991.

398 Lockyer, C.: Some possible factors affecting the age distribution of the catch of sei
 399 whales in the Antarctic, Reports of the International Whaling Commission, Special Issue,
 400 1, 63-70, 1977.

401 Mackintosh, N.A.: The southern stocks of whalebone whales, Discovery Reports, 22,
 402 197-300, 1942.

403 McDonald, M. A., Hildebrand, J. A., Wiggins, S. M., Thiele, D., Glasgow, D. and Moore, S.
 404 E.: Sei whale sounds recorded in the Antarctic, J. Acoust. Soc. Am., 118, 3941–3945,
 405 2005.

406 Mellinger, D. K., Carson, C. D., and Clark, C. W.: Characteristics of minke whale
 407 (*Balaenoptera acutorostrata*) pulse trains recorded near Puerto Rico. Marine Mammal
 408 Science, 16(4), 739-756, 2000

409 Newhall, A.E., Lin, Y.-T., Lynch, J.F., Baumgartner, M.F., and Gawarkiewicz, G.G.: Long
 410 distance passive localization of vocalizing sei whales using an acoustic normal mode
 411 approach, J. Acoust. Soc. Am., 131 (2), 1814–1825, 2012.

412 Oleson, E. M., Barlow, J., Gordon, J., Rankin, S., and Hildebrand, J. A.: Low frequency calls
 413 of Bryde's whales. Marine Mammal Science, 19(2), 160-172, 2003.

414 Omura, H., and Nemoto, T.: Sei whales in the adjacent waters of Japan. III. Relation
 415 between movement and water temperature, Reports of the International Whaling
 416 Commission, Special Issue, 10, 79–87, 1955.

417 Omura, H.: Bryde's whale from the coast of Japan. The Scientific Reports of the Whales
 418 Research institute, 14, 1-33, 1959, 1959.

419 Pastene, L.A., and Shimada, H.: Report of a sighting survey in Chile's exclusive economic
 420 zone with comments on sei whale distribution, *Anales del Instituto de la Patagonia, Serie*
 421 *Ciencias Naturales (Chile)*, 27, 51-62, 1999.

422 Perry, S.L., DeMaster, D.P. and Silber, G.K.: The great whales: history and status of six
 423 species listed as endangered under the U.S. Endangered Species Act of 1973, *Mar. Fish.*
 424 *Rev.*, 61, 1–74, 1999.

425 Prieto, R., Janiger, D., Silva, M.A., Waring, G.T., and Gonçalves, J.M.: The forgotten
 426 whale: A biblio-metric analysis and literature review of the North Atlantic sei whale
 427 *Balaenoptera borealis*, *Mammal Rev.*, 42 (3), 235-272, 2011.

428 Rankin, S., and Barlow, J.: Vocalizations of the sei whale *Balaenoptera borealis* off the
 429 Hawaiian Islands, *Bioacoustics*, 16, 137–145, 2007.

430 Richardson, W.J., Greene, C.R.J., Malme, C.I., and Thomson, D.H. Pp: 33–58. *Marine*
 431 *mammals and noise: Measurement procedures in.* Academic Press, San Diego, CA. 576
 432 pp., 1995.

433 Reeves, R.R., Silber G., and Payne, P.M.: Draft recovery plan for the fin whale
 434 *Balaenoptera physalus* and sei whale *Balaenoptera borealis*, prepared for the Office of
 435 Protected Resources, National Marine Fisheries Service, Silver Spring, MD, 1998.

436 Reeves, R.R., Stewart, B.S., Clapham, P.J., and Powell, J.A. (Eds.): *Marine mammals of*
 437 *the world*, New York: Alfred A. Knopf/Chanticleer Press, 2002.

438 Rice, D.W.: *Marine mammals of the world: Systematics and distribution*, (Special
 439 Publication Number 4). Lawrence, KS: The Society for Marine Mammalogy. 231 pp.,
 440 1998.

441 Romagosa, M., Boisseau, O., Cucknell, A. C., Moscrop, A., and McLanaghan, R.: Source
 442 level estimates for sei whale (*Balaenoptera borealis*) vocalizations off the Azores, J.
 443 Acoust. Soc. Am., 138 (4), 2367-2372, 2015.

444 Saddler, M.R., Bocconcelli, A., Hickmott, L.S., Chiang, G., Landea-Briones, R.,
 445 Bahamonde, P.A., ... and Sayigh, L.S.: Characterizing Chilean blue whale vocalizations
 446 with DTAGs: a test of using tag accelerometers for caller identification, Journal of
 447 Experimental Biology, jeb-151498. 2017.

448 Schevill, W.E., and Watkins, W.A.: Intense low-frequency sounds from an Antarctic
 449 minke whale, *Balaenoptera acutorostrata*, Breviora, 388, 1-8. 1972.

450 Schlatter, R.: Avistamientos de mamíferos marinos durante SIBEX-Fase 2, en el estrecho
 451 de Bransfield y aguas adyacentes (Sightings of marine mammals during SIBEX-Phase 2,
 452 in the Bransfield Strait and adjacent waters), Serie Científica INACH, 36, 167-174, 1987.

453 Thompson, T.J., Winn, H.E., and Perkins, P.J.: Mysticete sounds. Behaviour of Marine
 454 Mammals, Cetaceans, edited by H. E. Winn and B. L. Olla (Plenum, New York), 3, 403–
 455 431, 1979.

456 Thompson, P. O., Findley, L. T. and Vidal, O.: Underwater sounds of blue whales,
 457 *Balaenoptera musculus*, in the Gulf of California, Mexico. Mar. Mamm. Sci. 12, 293-296.
 458 1996.

459 Tonnessen, J.N. and Johnsen, A.O.: The history of modern whaling, University of
 460 California Press. Berkeley, California. 798 pp., 1982.

461 Valdivia, J., Ramirez, P., and Franco, F.: The exploitation of Bryde's whales in the
 462 Peruvian Sea, Report of the International Whaling Commission, 31, 441-448, 1981.

463 Wade, P. R., and Gerrodette, T.: Estimates of cetacean abundance and distribution in
464 the Eastern Tropical Pacific. Report of the International Whaling Comission, 43, 477-493,
465 1993.