

Radiational Tides: their double-counting in storm surge forecasts and contribution to the Highest Astronomical Tide.

Joanne Williams¹, Maialen Irazoqui Apecechea², Andrew Saulter³, and Kevin J. Horsburgh¹

¹National Oceanography Centre, Joseph Proudman Building, 6 Brownlow St, Liverpool, UK

²Deltares, Delft, Netherlands

³Met Office, Fitzroy Road, Exeter, UK

Correspondence to: JOANNE WILLIAMS (JOLL@NOC.AC.UK)

Abstract. Tide predictions based on tide-gauge observations are not just the astronomical tides, they also contain radiational tides - periodic sea level changes due to atmospheric conditions and solar forcing. This poses a problem of double-counting for operational forecasts of total water level during storm surges. In some surge forecasting, a regional model is run in two modes: tide-only, with astronomic forcing alone; and tide-and-surge, forced additionally by surface winds and pressure. The surge residual is defined to be the difference between these configurations and is added to the local harmonic predictions from gauges. Here we use the Global Tide and Surge Model based on Delft-FM to investigate this in the UK and elsewhere, quantifying the weather-related tides that may be double-counted in operational forecasts. We show that the global S_2 atmospheric tide is captured by the tide-and-surge model, and observe changes in other major constituents, including M_2 . The Lowest and Highest Astronomical Tides levels, used in navigation datums and design heights, are derived from tide predictions based on observations. We use our findings on radiational tides to quantify the extent to which these levels may contain weather-related components.

1 Introduction

The operational forecast in several countries of storm surge still-water levels is based on a combination of a harmonic tidal prediction and a model-derived forecast of the meteorologically induced storm surge component. The forecast is based on the “non-tidal residual”, the difference of two model runs with and without weather effects. This is linearly added to the “astronomical prediction” derived from local tide-gauge harmonics (Flowerdew et al., 2010). This approach is taken in the UK because the complexity and large range of the tides is such that it has historically been difficult to model them to sufficient accuracy. The same method was applied in the Netherlands until 2015 when improvements to the local surge model DCSM-v6 made it unnecessary (Zijl et al., 2013). It is still in use operationally in the extra-tropical US, where results of the SLOSH surge model are added to local tidal predictions (National Weather Service, 2018); similarly in Germany, using the BSHmod model (BSH, 2018); and is also used in the new Aggregate Sea-level Forecasting under evaluation in Australia, which also incorporates sea-level anomalies from a global baroclinic model (Taylor and Brassington, 2017).

There are several possible sources of error in this procedure. The purpose of the combined tide-and-surge model is to capture the well-documented non-linear interactions of the tide and surge. (e.g. Proudman, 1955). Yet the forecasting procedure

assumes that the non-tidal residual may be added linearly to a gauge-based tide prediction. There is also an assumption that the tide-only model and the harmonic prediction from the gauge are equivalent. In fact, the harmonics at the gauge will also be affected by the weather, so there is the potential for double-counting of radiational (weather-related) tidal constituents.

In section 2, we show that the double counting of radiational tides has a potential contribution to forecasting error not just on long time scales (through S_a , S_{sa}) but also on a fortnightly cycle due to variations in S_2 and in the phase of M_2 . We also show that the assumption of non-linearity may introduce errors if phase predictions disagree between model and observations.

Specific radiational tides have been studied using response analysis, for example the solar-diurnal S_1 by Ray and Egbert (2004), and semi-diurnal S_2 by Dobslaw and Thomas (2005). In section 3 we look at more constituents, and demonstrate that the atmospheric tide at S_2 may be observed in the GTSM model.

Highest and Lowest Astronomical Tide (HAT and LAT) are important datums used for navigation, and are calculated from tidal predictions. In section 4 we use the model predictions to quantify to what extent HAT and LAT are influenced by weather-related tides, and show that in many places several cm of what is reported as HAT is attributable to periodic weather patterns.

There are other contributors to water level, including steric effects and river flow, that will also create differences between the tide gauge and the forecast water levels, particularly seasonally and which may be out of phase with the atmospheric contribution. The problem of double-counting of periodic changes does not arise if they are omitted from the surge model entirely, but they may contribute to HAT and LAT calculations. These effects are not included in this study.

2 Surge forecasting

The current procedure for forecasting total water level in the UK is as follows:

1. Run a barotropic shelf model (CS3X, currently transitioning to NEMO Surge (O'Neill and Saulter, 2017)) in tide-and-surge mode, forced by an ensemble of wind and pressure from the current weather forecast to give timeseries $M_s(\mathbf{x}, t)$ at each location \mathbf{x} . Also run the shelf model in tide-only mode, to get $M_t(\mathbf{x}, t)$. Get the residual from these models, $M_r = M_s - M_t$.
2. At individual tide-gauge locations, derive a tide harmonic prediction $\tilde{G}(\mathbf{x}_g, t)$ based on past records. This is assumed to be more accurate locally than the model tide.
3. Forecast the total water level F at each location as model residual plus gauge harmonic prediction, $F(\mathbf{x}_g, t) = M_r(\mathbf{x}_g, t) + \tilde{G}(\mathbf{x}_g, t)$.
4. Finally, it has been proposed (Hibbert et al., 2015) that the forecast could apply various “empirical corrections” to nudge the forecast towards the observed level G based on the mismatch of the peak tide over the last few days. However no formal correction schemes have been implemented.

2.1 Tide-and-surge model

Since similar procedures are implemented elsewhere in the world, in this paper we replace the shelf model with GTSM. This is the forward Global Tide and Surge Model developed at Deltares, on a base of Delft-FM (Flexible Mesh) (Verlaan et al., 2015.; Irazoqui Apecechea et al., 2018 (*In review*)). The version used in this paper has resolution from around 50 km in the open ocean to around 5 km at the coast. We ran the model in two modes, tide-only M_t and tide-and-surge M_s . The atmospheric forcing used was the ECMWF ERA-Interim 6-hourly reanalysis (Dee et al., 2011), downloaded at 0.25° resolution but from a spherical harmonic equivalent to $\sim 0.75^\circ$. Validation of the major tidal coefficients has been favourable, and although the model under-predicts the effect of tropical cyclones, due to coarse temporal and spatial resolution in the weather reanalysis, most surge events are captured. We make the assumption that tropical cyclones at any given location are sufficiently rare that the tidal coefficients fitted over a year should not be very different if those surges are underestimated. Due to limitations of data storage and post-processing the output from the model was only saved at high frequency at all grid points for one month (Jan 2012) and a subset of coastal points for the year 2013. All runs were preceded by 11 days spin-up.

2.2 Harmonic analysis and selection of tidal constituents

Harmonic analysis (Pugh and Woodworth, 2014, Chapter 4) gives a tidal prediction \tilde{G} as:

$$\tilde{G}(t) = Z_0 + \sum_N A_n f_n \cos[\sigma_n t - g_n + (V_n + u_n)], \quad (1)$$

where Z_0 is the mean of the gauge data and the amplitudes A_n and phases g_n are associated with the tidal constituents with astronomically-determined frequencies σ_n . $f_n(t)$ and $u_n(t)$ are nodal modulations to amplitude and phase, applied in order to allow for the 18.61 year nodal cycle and 8.85 year longitude of lunar perigee cycle. V_n are the phases of the equilibrium tide, which we take as for Greenwich, using UTC for all times.

The choice and number of tidal constituents determined by harmonic analysis are typically chosen according to the length and frequency of data available. In this paper we use 62 harmonics where there is one year's data, 115 for more than one year, as listed in table B1. To derive harmonics from the global model from only 1 month's data, we use 26 independent primary constituents, and a further 8 related constituents. We will use \tilde{M}_s and \tilde{M}_t to indicate harmonic prediction time series from the tide-and-surge model and tide model respectively.

2.3 Quantifying the effect on forecast of double-counting radiational tides

A significant source of error for this method is that a tide-gauge is measuring the total water level, and hence the harmonic prediction \tilde{G} includes all wave, steric, river levels and surge effects. This is not therefore a prediction of the astronomical tide alone. Steric, wave and river effects are omitted by the barotropic model, but M_s does include periodic radiational effects, which may be double-counted. We can test a minimum effect of this double-counting purely within the model by using \tilde{M}_s , the harmonic prediction of the model *including surge*, as a proxy for the harmonics of the observations at gauges. Then the forecast procedure can be estimated as $M_r + \tilde{M}_s$.

To estimate Δ , the error in this model forecast, we can once again use the model, assuming $M_s \approx W$. Hence $\Delta = M_s - (M_r + \tilde{M}_s) = M_t - \tilde{M}_s$. That is, the minimum error from the current forecast procedure is equal to the error in the harmonic prediction from the model including surge at estimating the *tide-only* model, figure 1(top). There are several striking features here, annual cycles peaking around March in the Arctic, January in South-East Asia, and June in Europe. Fortnightly cycles occur almost everywhere, with amplitudes of several cm. We will examine the causes of these below.

If it were possible to avoid the double-counting, and provide astronomical tidal harmonics for the observations, the prediction would instead be equivalent to $M_r + \tilde{M}_t$, and the error would become $\Delta = M_s - (M_r + \tilde{M}_t) = M_t - \tilde{M}_t$, as shown in figure 1(bottom). Since we are using the model as proxy for observations, if the harmonic prediction were an exact reproduction of the tide-only model then $\Delta = 0$. In practice $\Delta < 5$ cm at most UK sites and the monthly cycle has gone, but in the Bristol Channel there is still an error of around 50 cm, indicating that the 62 harmonic constituents are not capturing all of the model tide. This is consistent with the conclusions of Flowerdew et al. (2010), who found an “average [across UK ports] rms error [in harmonic prediction of a tide-only run] of 7 cm with a maximum value of 29 cm at Newport, in the Bristol Channel”, using 50 constituents on the CS3X model.

2.4 Fortnightly cycle arising from small changes to S_2 phase

M_2 has a period of 12.42 hours and S_2 exactly 12 hours. They move in and out of phase with each other twice in a lunar month, resulting in the spring-neap cycle. A small change in phase to S_2 harmonic would result in a change of which days it is in phase with M_2 , and hence a substantial change in total tidal amplitude at a given date. For example, near Avonmouth in the Bristol channel S_2 derived from M_s has an amplitude 3.5 cm greater than S_2 derived from M_t , however there is a phase change of around 3.5° , so the tide arrives 7 minutes later. Figure 2 shows how this and smaller changes in M_2 account for differences between \tilde{M}_t and \tilde{M}_s of up to 5–8 cm, on a fortnightly cycle between these limits. This can account for about half the error in forecasted high-water at Avonmouth, which varies between 5 and 20cm on a fortnightly cycle (Byrne et al., 2017, figure 4). Similar variation in error of the forecast was seen by Flowerdew et al. (2010).

2.5 Quantifying surge-forecasting error due to disregarding non-linearity

The forecasting approach of linear addition of a non-linear model residual to a harmonic prediction, $F = M_r + \tilde{G}$, can also cause errors. Disagreements in phase between the model tide M_t and harmonic prediction from the gauge \tilde{G} affect the forecast of an individual surge event.

Consider a simplified example, where the tide can be modelled by a single constituent, $M_t = A \cos(\sigma t)$. Suppose there is a storm-surge in which there is an uniform additional water level A_s and an advancement of the tide of $t = \delta$, so the tide-and-surge model is $M_s = A_s + A \cos(\sigma(t + \delta))$. As before, the model residual is given by $M_r = M_s - M_t$.

Suppose the harmonic prediction at the gauge agrees in amplitude to the tide-only model, but has slightly different phase: $\tilde{G} = A \cos(\sigma(t + \epsilon))$.

The skew surge is defined as the difference between the maximum water level, here $\max(M_s)$, and $\max(\tilde{G})$. The error in the skew surge forecast is $E = \max(M_r + \tilde{G}) - \max(M_s)$. Substituting in and assuming phase changes are small, we find A_s

cancels out and can show analytically that

$$E \approx A(\cos(\sigma\epsilon) - \cos(\sigma(\delta + \epsilon)) + \cos(\sigma\delta) - 1).$$

This is illustrated in figure 3, with $A = 3$ m, $\sigma = 2\pi/12.42\text{hr}^{-1}$ (M_2), and the surge advancing the tide by $\delta = 30$ min. The residual M_r is decreasing during High Water due to the advanced tide. So if the observed harmonics have High Water later than the model ($\epsilon=5$ min), the forecast skew surge is underestimated by 3 cm. If the observed harmonics predict High Water earlier than the model ($\epsilon=-5$ min), the forecast skew surge is overestimated by 3 cm.

Although in practice there are more constituents, a similar relationship will still hold in a small window about each high tide. Where there are frequent surges with consistent effect on the tidal phase we would expect ϵ to have the same sign as δ , as the gauge registers water levels more like the tide-and-surge model than the tide-only model and the harmonic predictions would follow suit.

3 The difference of specific harmonics

Figure 4 shows the vector difference in individual constituents between tide-and-surge and tide-only models run for 2013, along the coast globally. With some exceptions in the Arctic and Antarctic, the effect on S_a is around 5–20 cm, with around half that effect on S_{sa} , although in the Indian Ocean there is a change to S_a only. Since the model was only run for one year, S_a may not be representative of all years, but figure 4 indicates typical changes. In the Baltic, the seasonal change is wind-forced, but elsewhere it is consistent with the annual and semi-annual cycles in sea-level atmospheric pressure (Chen et al., 2012).

MS_f is affected by the surge component, as a side effect of the interaction between M_2 and S_2 . This is because MS_f is the fortnightly constituent which arises from the combination of M_2 and S_2 , with a speed equal to the difference of their speeds. MS_4 is the counterpart to this, with a speed equal to the sum of the speeds of M_2 and S_2 (Pugh and Woodworth, 2014). Less explicable is the effect on M_m and M_f , but it may be due to insufficient separation with MS_f over a relatively short record. The diurnal constituents K_1 and O_1 are affected by less than 5 cm, and are only changed regionally in the Antarctic. S_1 however is everywhere less than 0.1 cm in the tide-only model, but with the surge model peaks at 0.5 cm in northern Australis, the broadest regional effect being has 0.2–0.3 cm, in South-East Asia, consistent with the findings of (Ray and Egbert, 2004).

It may come as a surprise that constituents such as M_2 , which has a purely lunar frequency, could possibly be affected by the weather. There is a very small atmospheric tide at M_2 , peaking at the equator at about 0.1 mbar (Schindelegger and Dobsław, 2016). But more significant is the non-linear interaction of surge and tide. The surge may consistently advance the phase of the tide during low pressure events and certain wind configurations. A high pressure system could delay the phase of the tide, but there is asymmetry between these events, so there is a net bias on the phase when the weather is included.

The effect on higher order constituents is everywhere less than 5 cm. The maximum difference in the UK and globally for each constituent is given in Appendix B. In the UK, the constituents affected the most by including the surge are S_2 , S_{sa} , M_2 , S_a , M_m , MS_4 , MS_f and M_f , with a maximum change of > 2 cm, and a further 19 constituents change 1–2 cm. Globally, S_a and S_{sa} are far more significant, but S_2 , M_f , M_2 , M_m , MS_f , S_1 , K_1 , K_2 , O_1 , M_{A2} , and MS_4 all change more than 4 cm (somewhere on the global coast). A vector difference of 13 cm in S_2 is seen in north-west Australia.

These results are robust to the number of constituents fitted, 115, 62 or 34, to within 0.2 cm.

3.1 S₂ atmospheric tide

Some of the difference between harmonics of surge and tide-only models is directly attributable to the atmospheric tides. The global atmospheric pressure field contains S₂ variations with amplitude of about $1.25 \cos^3 \phi$ millibars, for latitude ϕ (Pugh and Woodworth, 2014). GSTM air pressure and wind forcing is taken from the ERA-Interim data set (Appendix A), and the ocean response to that forcing at S₂ is contained in the difference between harmonic predictions of the M_s and M_t model runs (figure 5). It is consistent with response analysis based on the S₂ tides seen in ECMWF reanalysis data (figure 2, Dobsław and Thomas, 2005), and in a 2-layer model forced by 8 constituents (figure 1b, Arbic, 2005).

4 Highest Astronomical Tide and Lowest Astronomical Tide

- 10 The Highest Astronomical Tide (HAT) is used internationally for flood-forecasting references levels and in navigation for clearance under bridges. HAT can be used in structural design alongside skew surge as an independent variable for determining return period water levels. Lowest Astronomical Tide (LAT) is also an important parameter, recommended for use as the datum on navigation charts (IHO, 2017). Once the phases and amplitudes A_n and g_n are known, $H(t)$ is fully determined for all time by equation (1), and the future HAT and LAT are given by $\max(H(t))$ and $\min(H(t))$. But because of the overlap in phase of
- 15 the forcing between the constituents, and the f_n and u_n nodal modulations, it is not trivial to write HAT or LAT algebraically. They are therefore determined by inspection of the predicted tides, preferably over a 18.6 year nodal cycle. Figure 6a shows the range, HAT minus LAT, when we do this by synthesising a predicted tide at 15 minute intervals over 18.6 years, globally. Radiational effects are omitted from this figure, which is based on a tide-only run. Since this data was limited to 1 month, it uses only 34 constituents, therefore omitting S₁ and the long-period contributions to HAT and LAT.
- 20 An approximate calculation of $\text{Range} = 2(\mathbf{M}_2 + \mathbf{S}_2 + \mathbf{O}_1 + \mathbf{K}_1)$ is occasionally used (e.g. Yotsukuri et al., 2017), but the error due to this can be over 1 metre (figure 6b). N₂ is a significant contributor, at about 20% of M₂ in many sites worldwide. A few tens of centimetres are accounted for by the omission of the nodal modulations, and there are also the shallow water constituents at the coast.

Figure 6c shows the effect on HAT and LAT using the constituents derived with surge in the GTSM. In many places round

25 the world the HAT is higher when the tide-and-surge model is used. So the observation-based HAT has been raised by some radiational component. But in most of the UK, the HAT goes down when the tide-and-surge model is used to generate the tidal predictions. This is because the peak of the weather-related components does not coincide with the maximum astronomical effects alone. This implies that since the tide-gauge predictions include surge, the observation-based HAT in the UK is actually about 10 cm lower than true astronomical-only tidal height.

- 30 LAT tends to move the opposite way, so in most places the maximum tidal range is increased by using the tide-and-surge model. That is, the true astronomical-only tidal range is slightly less than that quoted from harmonics based on predictions. In

Scotland, (just above Liverpool in figure 6c) both LAT and HAT go down when the surge model is used to generate the tidal predictions, so the quoted LAT and HAT are actually about 10 cm lower than astronomical only.

The most extreme changes shown in Figure 6c are in the Arctic and Antarctic, and should be interpreted with some caution as these areas are the least well represented in the model.

- 5 In places with small tide, seasonal signals may be dominant and they may be important to include for practical purposes. For example along the French/Italian coast from Mallorca to Sicily there is about a 7 cm increase in HAT and 3 cm decrease in LAT using the surge rather than tide-only model, so a Highest “Astronomical” Tide based on predicted tide from observations actually contains about 7 cm due to seasonal winds.

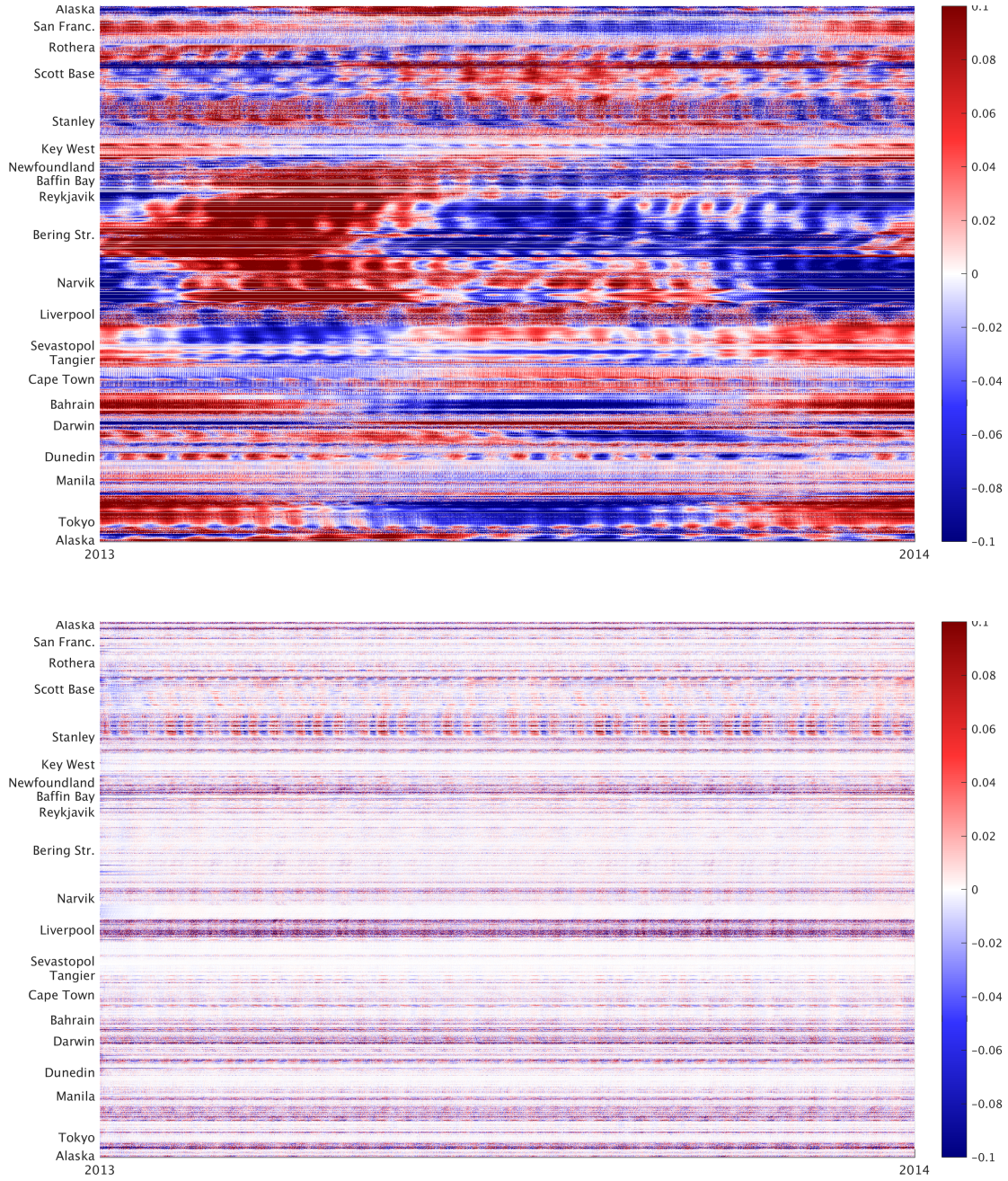


Figure 1. Time series (2013) of error (m) in 62-constituent harmonic prediction from (top panel) tide-and-surge \tilde{M}_s and (bottom panel) tide-only \tilde{M}_t models at estimating the tide-only model M_t . The vertical axis is a continuous line around the world coastline, starting and ending at Alaska via East Pacific, Antarctica, West Atlantic, Arctic, East Atlantic, Indian Ocean, Australasia, and West Pacific. See appendix A for full explanation and a reference map.

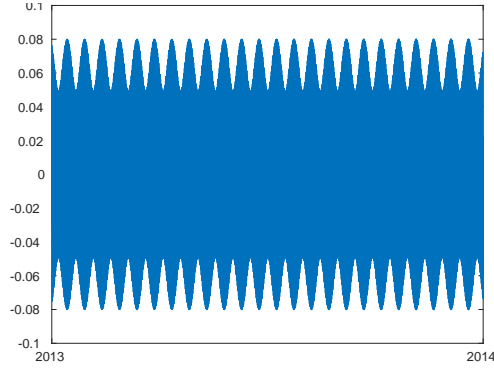


Figure 2. Fortnightly cycle of prediction change (metres) due to small changes in constituents $M_2 + S_2$ alone, based on Avonmouth. S_2 amplitude change = 3.5 cm, phase change 3.5° , M_2 amplitude change 1 cm, phase change 0.2° .

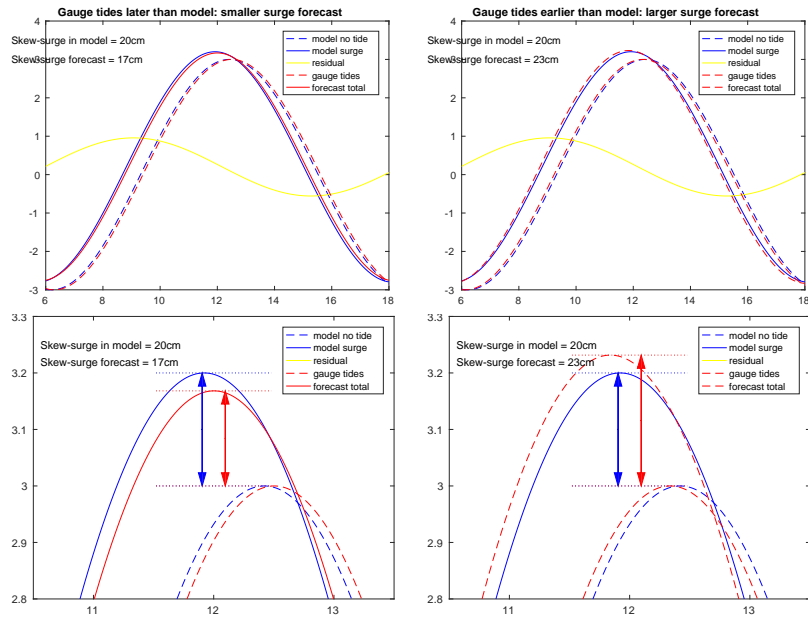


Figure 3. Suppose a surge adds a constant amplitude of 20 cm and advances the underlying 3 m amplitude M_2 tide by a constant 30 min. If the harmonics of the observations differ in phase by 5 min from the model a forecast error of ± 3 cm will result as shown. Lower panels are magnified to show the High Water.

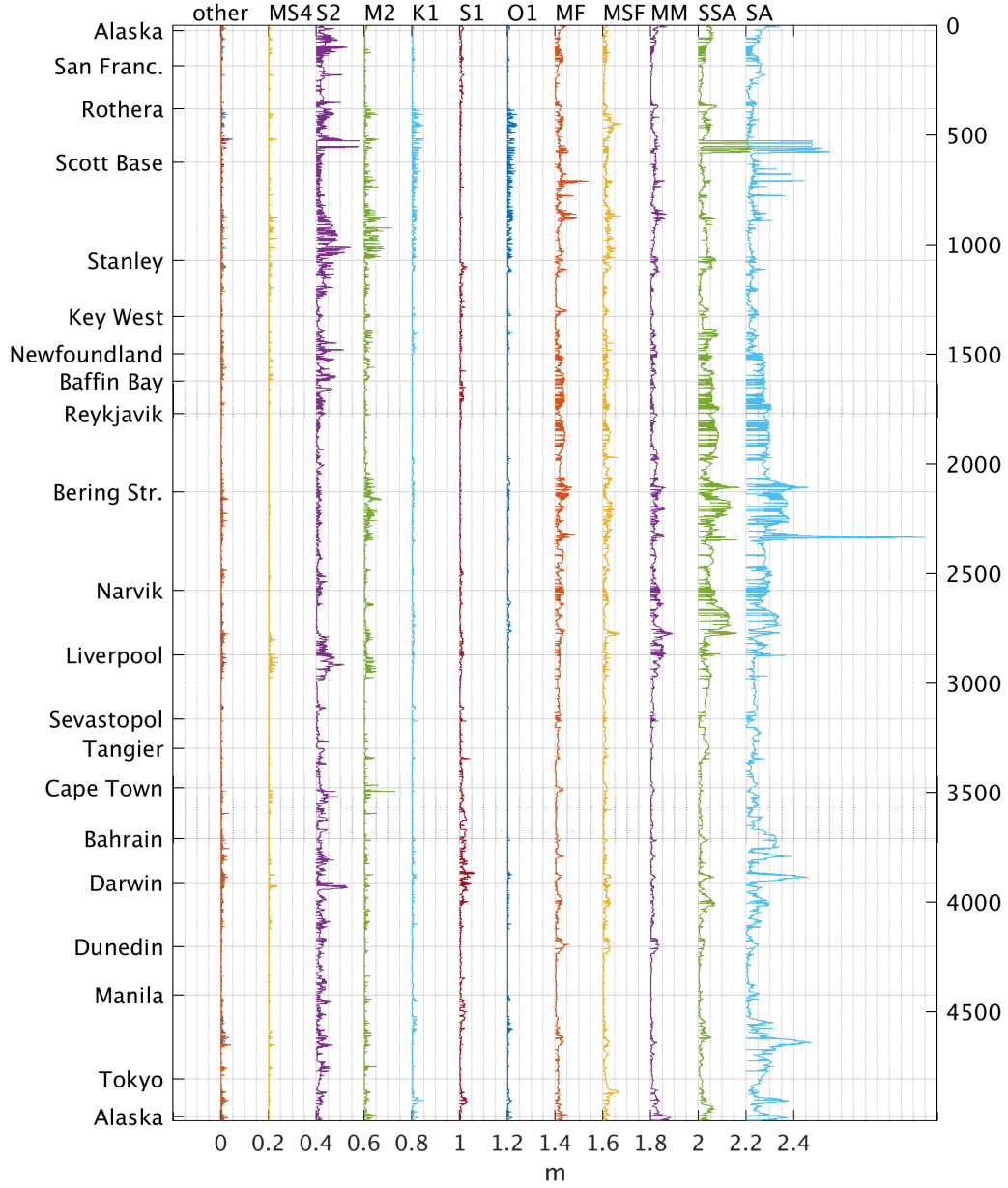


Figure 4. Vector difference (m, offset) between coefficients fitted to GTSM tide-and-surge (M_s) or tide-only (M_t) model. This is the breakdown into constituents of the difference between panels of figure 1. The maximum effects for these harmonics and others are given in table B1. See figure 1 and appendix A for explanation of coastal axis.

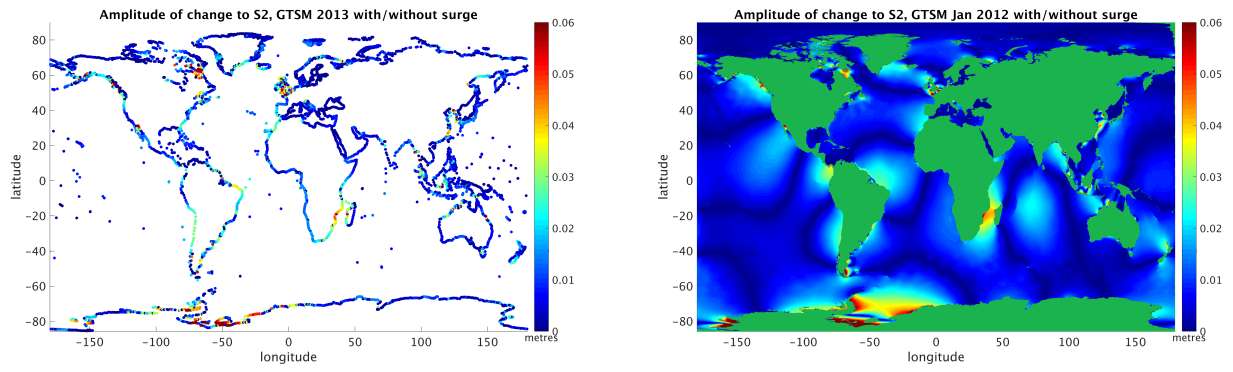


Figure 5. Amplitude (m) of S_2 difference between coefficients fitted to GTSM tide-and-surge (M_s) or tide-only (M_t) model. First panel: coastal data only, whole of 2013; second panel: 26 primary coefficients fitted to January 2012 only.

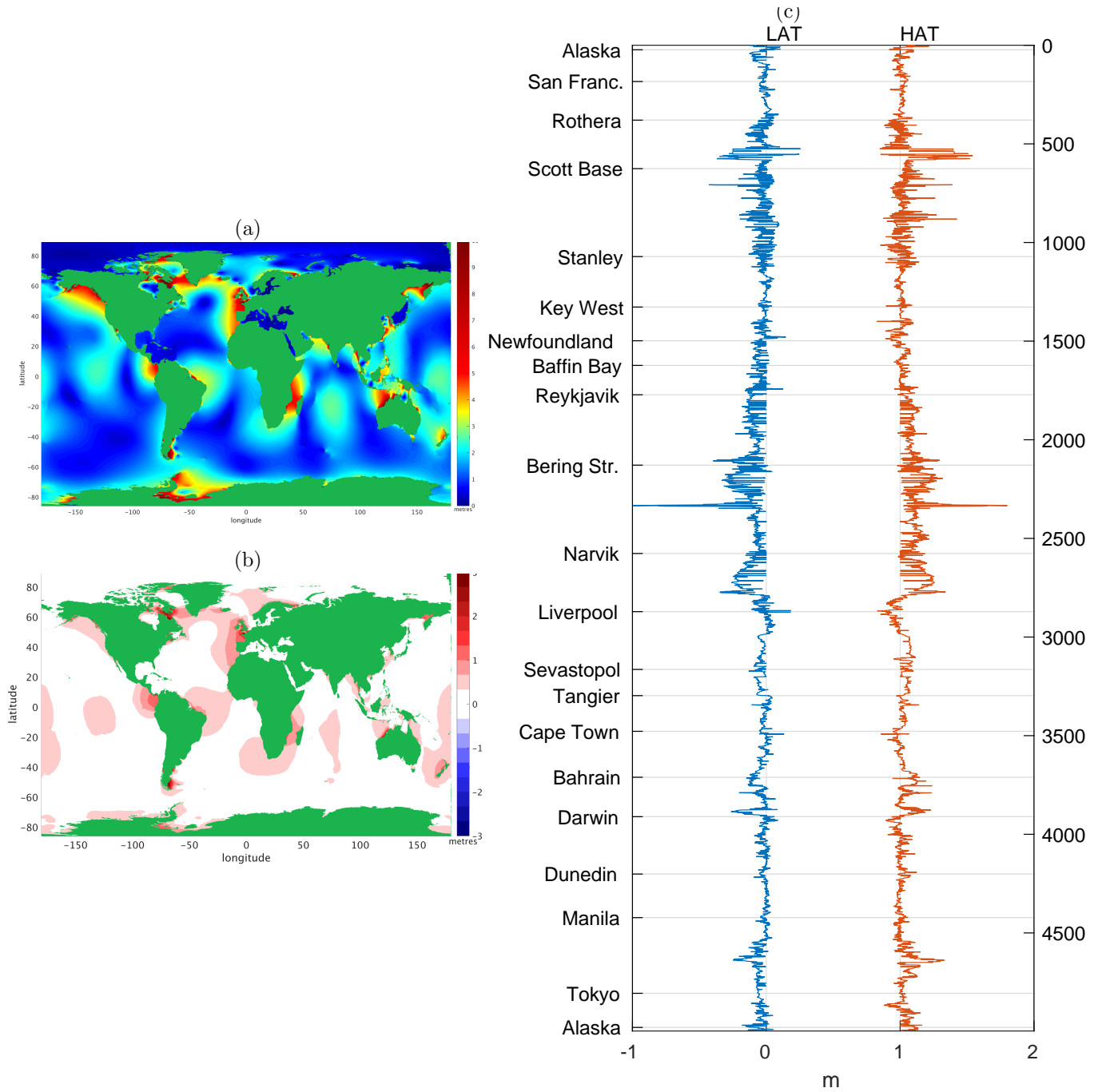


Figure 6. (a) Range calculated from max & min of 18.6yr prediction, 15 min interval, from 26 primary and 8 related constituents and nodal modulations derived from 1 month tide-only GTSM; (b) Difference between (a) and $2(M_2 + S_2 + O_1 + K_1)$, from the same run; (c) Change in metres along coast of predicted LAT (blue) and HAT (red, offset 1 m) between \tilde{M}_t and \tilde{M}_s (tide only or tide-and-surge). Tides derived from 62 constituents from GTSM 2013. See appendix A for explanation of coastal axis.

5 Conclusions

There are substantial changes in tidal constituents fitted to tide-only and tide-and-surge model results. Even constituents with purely lunar frequencies, including M_2 , may be affected by the surge, perhaps owing to asymmetry in phase changes of the tide under high and low pressure weather systems.

- 5 Some effects of the weather on tides are double-counted in the forecast procedure used in the UK, where model residuals are added to gauge-based tide predictions. Even if the model were perfect, the minimum error from the current forecast procedure would be at least the error in the harmonic prediction including surge at estimating the tide-only model. If 62 constituents are fitted, this has a standard deviation of 20 cm at Avonmouth and 4–10 cm at most other UK gauges. 5–8 cm of the error at Avonmouth is due simply to a small change in phase of the S_2 harmonic. Further errors in total water level and skew surge
10 arise directly from the linear addition of the harmonic prediction to the non-linear residual, particularly where there is a phase difference between model and gauge tidal harmonics.

- Understanding and quantifying these errors is extremely important for forecasters, who will often need to advise or intervene on the expected surge risk, often based on a direct comparison between observed residuals and the forecast non-tidal residual. Where, for example, such a comparison may lead to the observed residual falling outside the bounds of an ensemble of forecast
15 non-tidal residuals, the forecaster may significantly (and potentially incorrectly) reduce their confidence in the model's estimate of surge if they are unaware of the additional errors associated with the harmonic tide and whether or not they have been addressed within the ensemble forecast's post processing system. For comparison, across the UK tide-gauge network, short range ensemble forecast RMS spread is of order 5–10 cm (Flowerdew et al., 2013). It is noted that, in the UK, the majority of coastal flood events occur around peak spring tides (Haigh et al., 2015), where the sensitivity to any errors in the M_2 – S_2 phase
20 relationship is arguably at its highest.

- The atmospheric tide, at S_2 is present in the ERA Interim forcing, and the ocean response to it, with amplitude about 1–5 cm, can be seen in the difference between the model results with and without surge. There is hence an argument for including an atmospheric tide forcing in a “tide-only” model, and this is being explored by Irazoqui Apecechea et al. (2018 (*In review*)). In this case, care would need to be taken to omit the direct atmospheric tide forcing in the tide-and-surge version, to avoid a
25 different form of double-counting.

- The estimates of Highest and Lowest Astronomical Tide are influenced by radiational tides. HAT and LAT are most readily calculated by inspecting long time series of predicted tides, and if observation-based, these predictions will include weather-related components. In most places globally this results in HAT being calculated as higher than the strictly astronomical component, and LAT being lower, however the opposite is true in the UK. The effects are of the order of ~ 10 cm.

- 30 For many practical purposes it is correct to include predictable seasonal and daily weather-related cycles in the HAT and LAT. However the separate effects should be understood, as the radiational constituents may be subject to changing weather patterns due to climate change. It is also important not to double-count weather effects, if HAT or LAT are used in combinations with surge for estimating return-period water levels.

These considerations about HAT would also apply (proportionally less) to other key metrics such as mean high water.

Appendix A: Ordering of model sites around the coast

The coastal points in the model output are spaced roughly every 80 km, and also wherever a tide gauge is situated, according to the GESLA data set. Due to automatic procedures to select output sites, a few may be incorrectly sited at model dry sites - these are clearly seen in plots as lacking sufficient high-frequency variability. The along-coast plots are ordered approximately from west to east around the world coastline, starting and ending at Alaska. The order is indicated in figure A1.

The algorithm for coastal order is as follows:

1) Define a single global coastline polygon.

This is done using the GSHHG (Global Self-consistent, Hierarchical, High-resolution Geography) data set (Wessel and Smith, 1996), version gshhg2.3.6 (August 19, 2016, downloaded from www.ngdc.noaa.gov). We use the coarse resolution, with only Level 1 (coastline) and Level 6 (Antarctic Ice Shelf), although consistent results for this technique can be obtained including enclosed lakes. To merge the separate landmasses and islands into a weakly simple polygon, topologically equivalent to a disc, we start with a single landmass and add others in turn using pairs of identical edges as "bridges". We start with the main landmass of Eurasia L_1 , and find the closest vertex l to a vertex p from any of the remaining polygons $[P_2, \dots, P_N]$. Suppose p belongs to polygon P_j . Then we add P_j to L_1 using two new edges \vec{lp} and \vec{pl} , to give a new merged polygon L_2 . The vertices of L_2 are then $[L_1(1 : l), P_j(p : \text{end}, 1 : p - 1), L_1(l : \text{end})]$. Now repeat, searching for the nearest point in L_2 to any vertex in the remaining polygons $[P_2, \dots, P_{j-1}, P_{j+1}, \dots, P_N]$. It is necessary for all initial polygons to be defined in the same sense (anticlockwise). If inland seas (Level 2) are included, they should be defined clockwise. The GSHHG data is consistent with this definition. Distance for nearest points are defined as arc-length on a sphere.

This technique has the benefit of tending to group island chains together in a consistent order. It cannot produce crossing edges. Because polygons are added in distance order, islands near continents are added to their neighbouring coast, and remote mid-ocean islands tend to be clustered, and attached to the nearest continent. The coasts of the Pacific, Atlantic and Indian and Arctic Oceans are all treated clockwise. Antarctica is attached across Drake Passage and ordered Westward. Nearby locations across narrow islands (particularly Sumatra), isthmuses (Panama), and straits (Gibraltar) may be widely separated in the order. But neighbouring points in the order can be expected to have fairly smoothly varying oceanography, with the "bridges" often, although not necessarily, approximating shoals.

As a final step we adjust the starting point of L_2 to be in Alaska, for convenience of mapping.

2) Rank the coastal points according to the nearest point on the global polygon.

Having defined this coastal order, we can apply it to any coastal data set, for example tide gauges. We number the vertices $[1, \dots, K]$. For each of the gauge locations T we find the nearest vertex k , and then rank the gauges according to T_k . In the event of gauges being much closer than the resolution of the vertices, a quick method for refinement is to linearly interpolate with extra vertices along polygon edges. Some problems may also occur with islands not in the coarse resolution data, which will tend to jump to the nearest coast.

A further advantage here is that having defined the coastal polygon, the same order can be applied to different data sets and models, leading to closely comparable along-coast plots.

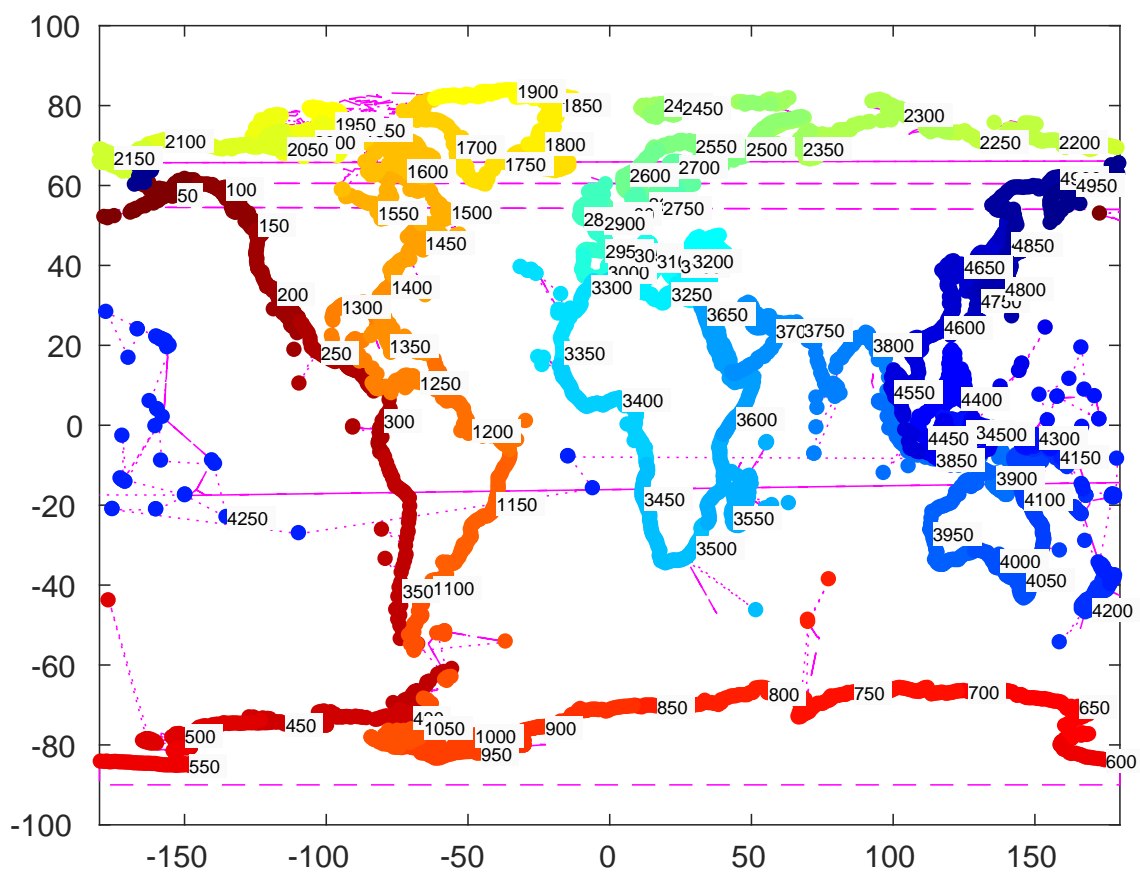


Figure A1. - Sites used for analysis showing the order of coastal points (Red to Blue points shown above correspond to top-to-bottom in Figures 1, 4 and 6)

Appendix B: Tidal constituents

Table B1 lists the constituents used in this paper. For short records, related constituents are used, and we fit 34 constituents with only 26 independent terms.

Table B1. Tidal Harmonic Constituents referred to in this paper, and the maximum change between GTSM tide-only (M_t) or with tide-and-surge forcing (M_s), at coastal locations, as from figure 4.

Name	Speed (deg/hour)	18.6yr list	1 year list	Max effect of surge in UK(cm)	Max effect of surge globally (cm)	1 month list Related	1 month list Primary
Total:		115	62			8	26
Sa	0.041 069	yes	yes	4.8	74.8	-	-
Ssa	0.082 137	yes	yes	5.6	23.4	-	-
Mm	0.544 375	yes	yes	4.2	9.3	-	yes
MSf	1.015 896	yes	yes	3.2	7.9	-	yes
Mf	1.098 033	yes	yes	2.1	14.0	-	-
2Q1	12.854 286	yes	yes	1.1	2.2	-	-
sigma1	12.927 140	yes	yes	1.1	1.3	-	-
Q1	13.398 661	yes	yes	0.7	1.6	-	yes
rho1	13.471 515	yes	yes	0.7	1.2	-	-
O1	13.943 036	yes	yes	0.7	4.3	-	yes
MP1	14.025 173	yes	yes	0.6	1.5	-	-
M1	14.496 694	yes	yes	0.5	1.4	-	yes
chi1	14.569 548	yes	yes	0.3	1.0	-	-
pi1	14.917 865	yes	yes	0.5	1.9	yes	-
P1	14.958 931	yes	yes	0.9	3.1	yes	-
S1	15.000 000	yes	yes	1.4	6.5	-	-
K1	15.041 069	yes	yes	1.0	5.1	-	yes
psi1	15.082 135	yes	yes	0.3	3.2	yes	-
phi1	15.123 206	yes	yes	0.6	1.3	yes	-
theta1	15.512 590	yes	yes	0.5	1.1	-	-
J1	15.585 443	yes	yes	1.0	1.2	-	yes
SO1	16.056 964	yes	yes	0.5	2.3	-	-
OO1	16.139 102	yes	yes	0.5	1.4	-	yes

Table B1. Continued.

Name	Speed (deg/hour)	18.6yr list	1 year list	Max effect of surge in UK(cm)	Max effect of surge globally (cm)	1 month list Related	1 month list Primary
Total:		115	62			8	26
2MN2S2	26.407 938	yes	-	-		-	-
3M(SK)2	26.870 175	yes	-	-		-	-
3M2S2	26.952 313	yes	-	-		-	-
OQ2	27.341 696	yes	yes	0.5	1.1	-	-
MNS2	27.423 834	yes	yes	0.8	1.1	-	-
MnuS2	27.496 687	yes	-	-		-	-
MNK2S2	27.505 971	yes	-	-		-	-
2MK2	27.886 071	yes	-	-		-	-
2N2	27.895 355	yes	yes	0.8	1.3	yes	-
mu2	27.968 208	yes	yes	1.7	2.7	-	yes
SNK2	28.357 592	yes	-	-		-	-
NA2	28.398 661	yes	-	-		-	-
N2	28.439 730	yes	yes	1.3	3.2	-	yes
NB2	28.480 796	yes	-	-		-	-
nu2	28.512 583	yes	yes	0.8	1.5	yes	-
OP2	28.901 967	yes	yes	1.2	2.8	-	-
MA2	28.943 036	yes	yes	0.8	4.3	-	-
M2	28.984 104	yes	yes	5.1	13.0	-	yes
MB2	29.025 173	yes	yes	1.3	3.9	-	-
MKS2	29.066 242	yes	yes	1.6	3.1	-	-
lambda2	29.455 625	yes	yes	1.3	1.6	-	-
L2	29.528 479	yes	yes	1.1	1.3	-	yes
2MN2	29.528 479	yes	-	-		-	-
2SK2	29.917 863	yes	-	-		-	-
T2	29.958 933	yes	yes	0.6	1.6	yes	-
S2	30.000 000	yes	yes	11.8	18.2	-	yes
R2	30.041 067	yes	yes	0.7	1.8	-	-
K2	30.082 137	yes	yes	1.1	5.0	yes	-
MSnu2	30.471 521	yes	-	-		-	-
MSN2	30.544 375	yes	yes	1.1	1.2	-	-
KJ2	30.626 512	yes	yes	0.6	1.0	-	-
2SM2	31.015 896	yes	yes	1.6	2.1	-	yes
2MS2N2	31.088 749	yes	-	-		-	-
SKM2	31.098 033	yes	-	-		-	-

Table B1. Continued.

Name	Speed (deg/hour)	18.6yr list	1 year list	Max effect of surge in UK(cm)	Max effect of surge globally (cm)	1 month list Related	1 month list Primary
Total:		115	62			8	26
MQ3	42.382 765	yes	-	-		-	-
NO3	42.382 765	yes	yes	0.5	1.6	-	yes
2MP3	43.009 277	yes	-	-		-	-
M3	43.476 156	yes	yes	0.1	0.7	-	yes
SO3	43.943 036	yes	yes	1.1	2.4	-	-
MK3	44.025 173	yes	yes	0.7	1.6	-	yes
2MQ3	44.569 548	yes	-	-		-	-
SK3	45.041 069	yes	yes	0.5	2.4	-	-
2MNS4	56.407 938	yes	-	-		-	-
3MK4	56.870 175	yes	-	-		-	-
3MS4	56.952 313	yes	-	-		-	-
MN4	57.423 834	yes	yes	0.7	1.3	-	yes
Mnu4	57.496 687	yes	-	-		-	-
2MSK4	57.886 071	yes	-	-		-	-
M4	57.968 208	yes	yes	1.7	3.0	-	yes
SN4	58.439 730	yes	yes	1.0	1.4	-	yes
3MN4	58.512 583	yes	-	-		-	-
MS4	58.984 104	yes	yes	3.2	4.1	-	yes
MK4	59.066 242	yes	yes	0.7	1.9	-	-
2MSN4	59.528 479	yes	-	-		-	-
S4	60.000 000	yes	yes	0.8	3.1	-	-
SK4	60.082 137	yes	yes	0.5	2.3	-	-
3MK5	71.911 244	yes	-	-		-	-
M5	72.460 261	yes	-	-		-	-
MSO5	72.927 140	yes	-	-		-	-
3MO5	73.009 277	yes	-	-		-	-
MSK5	74.025 173	yes	-	-		-	-
2(MN)S6	84.847 668	yes	-	-		-	-
3MNS6	85.392 042	yes	-	-		-	-
4MK6	85.854 280	yes	-	-		-	-
4MS6	85.936 417	yes	-	-		-	-
2MSNK6	86.325 801	yes	-	-		-	-

Table B1. Continued.

Name	Speed (deg/hour)	18.6yr list	1 year list	Max effect of surge in UK(cm)	Max effect of surge globally (cm)	1 month list Related	1 month list Primary
Total:		115	62			8	26
2MN6	86.407 938	yes	yes	0.4	0.8	-	yes
2Mnu6	86.480 792	yes	-	-		-	-
3MSK6	86.870 175	yes	-	-		-	-
M6	86.952 313	yes	yes	0.7	1.2	-	yes
MSN6	87.423 834	yes	yes	0.6	1.1	-	yes
4MN6	87.496 687	yes	-	-		-	-
2MS6	87.968 208	yes	yes	1.4	2.6	-	yes
2MK6	88.050 346	yes	yes	0.3	0.9	-	-
3MSN6	88.512 583	yes	-	-		-	-
MKL6	88.594 720	yes	-	-		-	-
2SM6	88.984 104	yes	yes	0.6	1.4	-	yes
MSK6	89.066 242	yes	yes	0.4	1.5	-	-
2(MN)8	114.847 668	yes	-	-		-	-
3MN8	115.392 042	yes	-	-		-	-
M8	115.936 417	yes	-	-		-	-
2MSN8	116.407 938	yes	-	-		-	-
3MS8	116.952 313	yes	-	-		-	-
3MK8	117.034 450	yes	-	-		-	-
MSNK8	117.505 971	yes	-	-		-	-
2(MS)8	117.968 208	yes	-	-		-	-
2MSK8	118.050 346	yes	-	-		-	-
4MS10	145.936 417	yes	-	-		-	-
3M2S10	146.952 313	yes	-	-		-	-
4MSN12	174.376 146	yes	-	-		-	-
5MS12	174.920 521	yes	-	-		-	-
4M2S12	175.936 417	yes	-	-		-	-

Author contributions. Williams carried out the model runs and post-processing, using Irazoqui Apecechea's recent developments to the GTSM model code and global grid. Saulter advised on Met Office procedures. Williams prepared the manuscript with contributions from all co-authors.

Competing interests. The authors declare that they have no conflict of interest.

- 5 *Acknowledgements.* We are grateful for funding from the EU under the Atlantos project, Horizon 2020 Grant No. 633211, and from the Met Office. Some of the results in this paper first appeared as an internal National Oceanography Centre report Williams et al. (2018). We thank Martin Verlaan of Deltares and Clare O'Neill for model development work, Phil Woodworth, Richard Ray and two anonymous reviewers for helpful suggestions during the final preparation of the paper.

References

- Arbic, B. K.: Atmospheric forcing of the oceanic semidiurnal tide, *Geophysical Research Letters*, 32, <https://doi.org/10.1029/2004GL021668>, 2005.
- BSH: The operational model system at BSH, http://www.bsh.de/en/Marine_data/Forecasts/Prediction_models/index.jsp, accessed 18 May 2018, 2018.
- Byrne, D., Robbins, G., Counsell, N., How, A., Saulter, A., O'Neill, C., and Pope, J.: Improving Sea Level Forecasting at Newport, Internal report, 2017.
- Chen, G., Qian, C., and Zhang, C.: New Insights into Annual and Semiannual Cycles of Sea Level Pressure, *Monthly Weather Review*, 140, 1347–1355, <https://doi.org/10.1175/MWR-D-11-00187.1>, 2012.
- Dee, D. P., Uppala, S. M., Simmons, A. J., Berrisford, P., Poli, P., Kobayashi, S., Andrae, U., Balmaseda, M. A., Balsamo, G., Bauer, P., Bechtold, P., Beljaars, A. C. M., van de Berg, L., Bidlot, J., Bormann, N., Delsol, C., Dragani, R., Fuentes, M., Geer, A. J., Haimberger, L., Healy, S. B., Hersbach, H., Hólm, E. V., Isaksen, I., Kållberg, P., Köhler, M., Matricardi, M., McNally, A. P., Monge-Sanz, B. M., Morcrette, J.-J., Park, B.-K., Peubey, C., de Rosnay, P., Tavolato, C., Thépaut, J.-N., and Vitart, F.: The ERA-Interim reanalysis: configuration and performance of the data assimilation system, *Quarterly Journal of the Royal Meteorological Society*, 137, 553–597, <https://doi.org/10.1002/qj.828>, 2011.
- Dobslaw, H. and Thomas, M.: Atmospheric induced oceanic tides from ECMWF forecasts, *Geophysical Research Letters*, 32, <https://doi.org/10.1029/2005GL022990>, 110615, 2005.
- Flowerdew, J., Horsburgh, K., Wilson, C., and Mylne, K.: Development and evaluation of an ensemble forecasting system for coastal storm surges, *Quarterly Journal of the Royal Meteorological Society*, 136, 1444–1456, <https://doi.org/10.1002/qj.648>, 2010.
- Flowerdew, J., Mylne, K., Jones, C., and Titley, H.: Extending the forecast range of the UK storm surge ensemble, *Quarterly Journal of the Royal Meteorological Society*, 139, 184–197, <https://doi.org/10.1002/qj.1950>, 2013.
- Haigh, I. D., Wadey, M. P., Gallop, S. L., Loehr, H., Nicholls, R. J., Horsburgh, K., Brown, J. M., and Bradshaw, E.: A user-friendly database of coastal flooding in the United Kingdom from 1915–2014, *Scientific Data*, 2, 150 021–, <https://doi.org/10.1038/sdata.2015.21>, 2015.
- Hibbert, A., Royston, S. J., Horsburgh, K. J., Leach, H., and Hisscott, A.: An empirical approach to improving tidal predictions using recent real-time tide gauge data, *Journal of Operational Oceanography*, 8, 40–51, <https://doi.org/10.1080/1755876X.2015.1014641>, 2015.
- IHO: Regulations for International (INT) Charts and Chart Specifications of the IHO, International Hydrographic Organization, https://www.iho.int/iho_pubs/standard/S-4/S-4%20Ed%204.7.0%20July%202017%20EN.pdf, 2017.
- Irazoqui Apecechea, M., Verlaan, M., Williams, J., de Lima Rego, J., Muis, S., van der Pijl, S., and Kernkamp, H.: GTSM v3.0: A next generation Global Tide and Surge Model, *Ocean Dynamics*, 2018 (*In review*).
- National Weather Service: Extra-tropical storm surge 2.2, <http://slosh.nws.noaa.gov/etsurge>, accessed on 14 March 2018, 2018.
- O'Neill, C. and Saulter, A.: NEMO-Surge: Forecast performance during 2016–2017 winter trial, Tech. Rep. 622, Met Office, 2017.
- Proudman, J.: The propagation of tide and surge in an estuary, *Proceedings of the Royal Society of London A: Mathematical, Physical and Engineering Sciences*, 231, 8–24, <https://doi.org/10.1098/rspa.1955.0153>, 1955.
- Pugh, D. and Woodworth, P.: *Sea-Level Science: Understanding Tides, Surges, Tsunamis and Mean Sea-Level Changes*, Cambridge University Press, Cambridge, ISBN 9781107028197, 2014.
- Ray, R. D. and Egbert, G. D.: The Global S1 Tide, *Journal of Physical Oceanography*, 34, 1922–1935, [https://doi.org/10.1175/1520-0485\(2004\)034<1922:TGST>2.0.CO;2](https://doi.org/10.1175/1520-0485(2004)034<1922:TGST>2.0.CO;2), 2004.

- Schindelegger, M. and Dobslaw, H.: A global ground truth view of the lunar air pressure tide L2, *Journal of Geophysical Research: Atmospheres*, 121, 95–110, <https://doi.org/10.1002/2015JD024243>, 2016.
- Taylor, A. and Brassington, G. B.: Sea Level Forecasts Aggregated from Established Operational Systems, *Journal of Marine Science and Engineering*, 5, <https://doi.org/10.3390/jmse5030033>, 2017.
- 5 Verlaan, M., Kleermaeker, S. D., and Buckman, L.: GLOSSIS: Global storm surge forecasting and information system., in: Australasian Coasts & Ports Conference, edited by Australia, E. and IPENZ, 22nd Australasian Coastal and Ocean Engineering Conference and the 15th Australasian Port and Harbour Conference., p. 229, Engineers Australia and IPENZ, <https://search.informit.com.au/documentSummary;dn=703696922952912;res=IELENG>, 2015.
- Wessel, P. and Smith, W. H. F.: A global, self-consistent, hierarchical, high-resolution shoreline database, *Journal of Geophysical Research: Solid Earth*, 101, 8741–8743, <https://doi.org/10.1029/96JB00104>, 1996.
- 10 Williams, J., Saulter, A., O'Neill, C., Brown, J., and Horsburgh, K.: A reassessment of the UK operational surge forecasting procedure, Research & Consultancy Report 62, National Oceanography Centre, 2018.
- Yotsukuri, M., Tamura, M., Kumano, N., Masunaga, E., and Yokoki, H.: Global impact assessment of sea level rise based on RCP/SSP scenarios., *Global Environment Engineering Research*, (adopted), https://www.jstage.jst.go.jp/browse/jscejer/73/1/_contents, 2017.
- 15 Zijl, F., Verlaan, M., and Gerritsen, H.: Improved water-level forecasting for the Northwest European Shelf and North Sea through direct modelling of tide, surge and non-linear interaction, *Ocean Dynamics*, 63, 823–847, <https://doi.org/10.1007/s10236-013-0624-2>, 2013.