

5 Interactive comment on “Impact of mesoscale eddies on water mass and oxygen distribution in the eastern tropical South Pacific” by Rena Czeschel et al.

Anonymous Referee #1

Received and published: 5 February 2018

10 Review of Manuscript: "Impact of mesoscale eddies on water mass and oxygen distribution in the eastern tropical South Pacific" by Rena Czeschel et al.

15 This paper used multiple-platform observations to investigate different types of mesoscale eddies in the eastern tropical South Pacific region. The transports and life-cycle evolution of the observed eddies is the main point of this paper, which provide with a lot of valuable information of the eddies within this region. The results of this paper is abundant and interesting, if the authors can put the observational results into a more consistent story, the significance of this paper will be improved substantially. Some further clarification and discussion are also needed. I recommend considering publication after major revision, and I will leave my questions in the Specific Comments.

20 **Reply to reviewer #1**

We would like to thank the reviewer for taking the time and for providing constructive and very specific comments, which helped to improve the manuscript considerably. The revised manuscript emphasizes the transport of eddies and the title has been changed to “Transport, properties and life-cycles of mesoscale eddies in the eastern tropical South Pacific”. The “Discussion and conclusion” paragraph has been changed to “Discussion and outlook” and restructured.

25 **We have carefully addressed his/her comments. The point-by-point responses follow below (written in bold).**

30 **Note: During the review process we noted the failure of the temperature sensors in 70, 78 and 280 m in the Stratus mooring in November 2014, September 2014 and March 2015, respectively. For calculations of the annual mean as a background field only data were used that covered an entire year (10 April 2014 to 9 April 2015). Therefore we skipped these temperature data as well as the uncomplete salinity data in 85 m depth for the calculation of the annual mean, which lead to slight modifications. Therefore Fig. 6a,b and Fig. 9b has been refigured and calculations of the AHA**

35 **and ASA (Table 1), the heat and salt transport across the Stratus mooring (Table 2) as well as heat and salt fluxes in the ETSP (chapter 4.3) have been corrected.**
40 **We corrected the eddy track of ACE2 for the first weeks, which is shown in the movie (supplement) and Fig. 1. Consequently, the composite of the ACE2 of the surface signatures for SLA, SST anomaly and chlorophyll have slightly changed (Fig. 4c, g, k) as well as the properties of ACE2 in Fig. 5.**

Specific Comments:

1. Page 2, Line 3-5: It is a little confusing to say the “isolation” and “mixing” of the water mass at the same time. If the mixing reaches maximum, the water mass is no longer strictly isolated. Maybe the reader can understand the meaning of authors comment after finishing the whole paper, as the presentation here within the abstract, the author could give a clarified presentation.

We rewrote the sentence to: “Furthermore, four profiling floats were trapped in the ACE2 during its westward propagation between the formation region and the open ocean, which allows conclusions on lateral mixing of water mass properties with time between the core of the eddy and the surrounding water. Strongest lateral mixing was found between the seasonal thermocline and the eddy core during the first half of the eddy lifetime.”

2. Page 5, Line 14-17: A sketch of the mooring and the equipment/probes on it will help readers to imagine how the mooring operates.

We added a sketch of the mooring and the distribution of all instruments in the supplementary Fig. S1. Consequently we changed the consecutive numbering of the corresponding figures S1-S3 to S2-S4 in the figure caption as well as in the text.

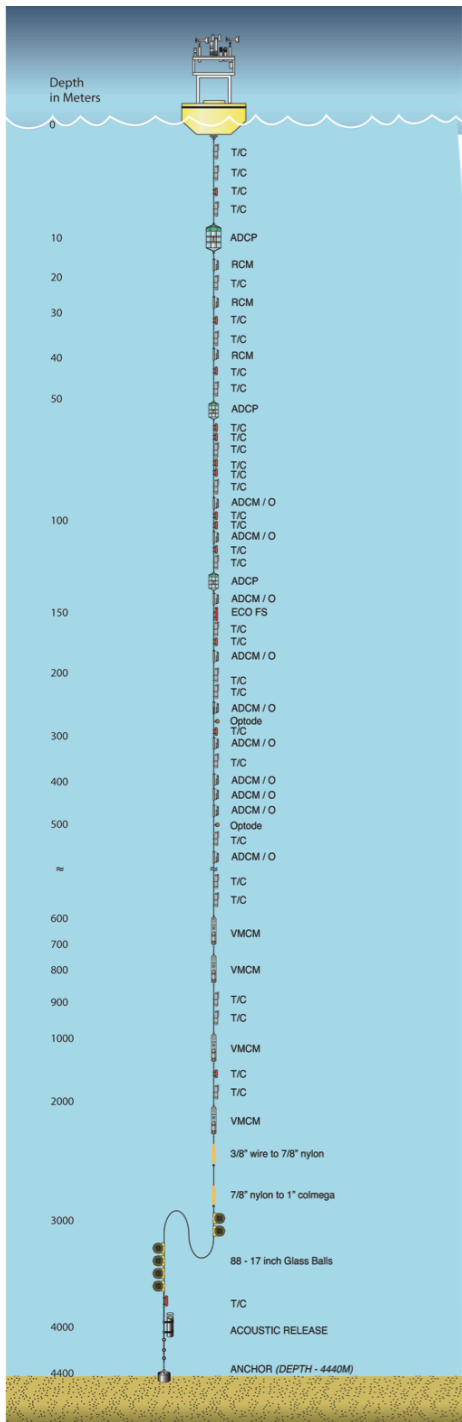


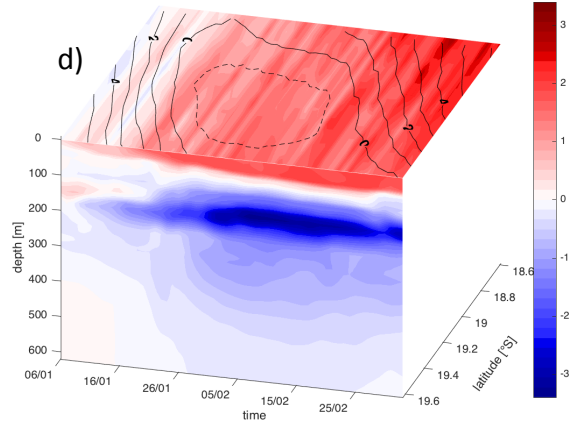
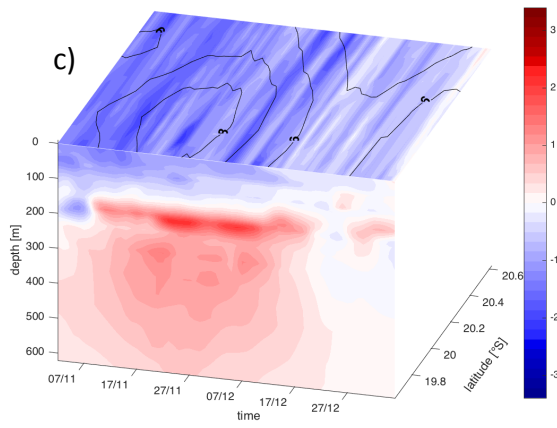
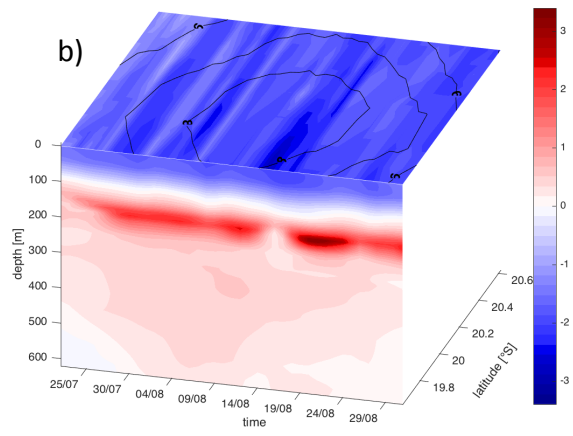
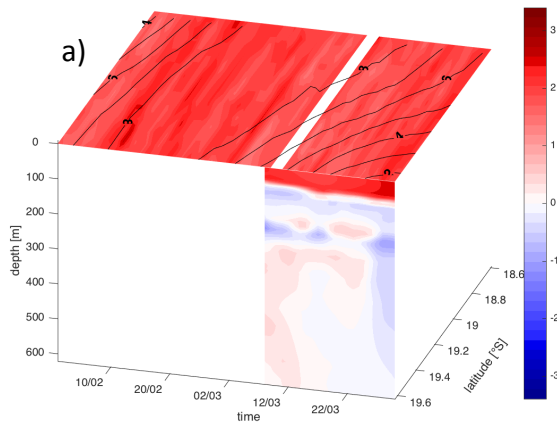
Fig. S1. Distribution of the instruments attached to the Stratus mooring between 8 March 2014 to 25 April 2015.

3. Page 7, Line 5-9: The figure of the trajectory of the Argo floats should be given, which will directly demonstrate how the floats being trapped and moving with the eddy.

5 **We have followed your suggestions. In order to improve the visualization we added the track of eddy ACE2 as well as the trajectories of the relevant floats into the movie (supplementary) to better follow the movements of the floats within the eddy instead of a new figure (showing the trajectories of the floats that are trapped in the eddy). The locations of the floats that cross the eddies are also marked in the composite of the eddies (Fig. 4). We hope that you agree with this**
10 **approach.**

4. Page 8, Line 1-6: The high-frequency observation of mesoscale eddies by mooring is quite valuable. With the altimeter data providing the eddies' location and radius, the mooring observations can be
15 projected onto eddy center coordinate and reconstruct the three-dimensional structure of the mesoscale eddies (Similar to Fig.4), which may give a lot of useful information of the eddies.

We have tried to follow your idea of a three-dimensional plot. The figures below show the time series of the temperature anomalies vs depth at the position of the Stratus mooring (19°37'S, 84°57'W) and the Hovmoeller diagram (time-latitude) of sea surface temperature anomaly (coloured) and sea level anomaly (contoured) at the longitude position of the Stratus mooring for the a) MWE, b) ACE1, c) ACE2, and d) CE. We do not think that these plots would enhance the amount of information about the eddies significantly. Instead, we added a Hovmoeller-diagramm (time-latitude) of the SLA at the longitude position of the Stratus mooring (Fig. 3b, see below)
20 **showing the position of the individual eddies in relation to the mooring (white dashed line).**
25



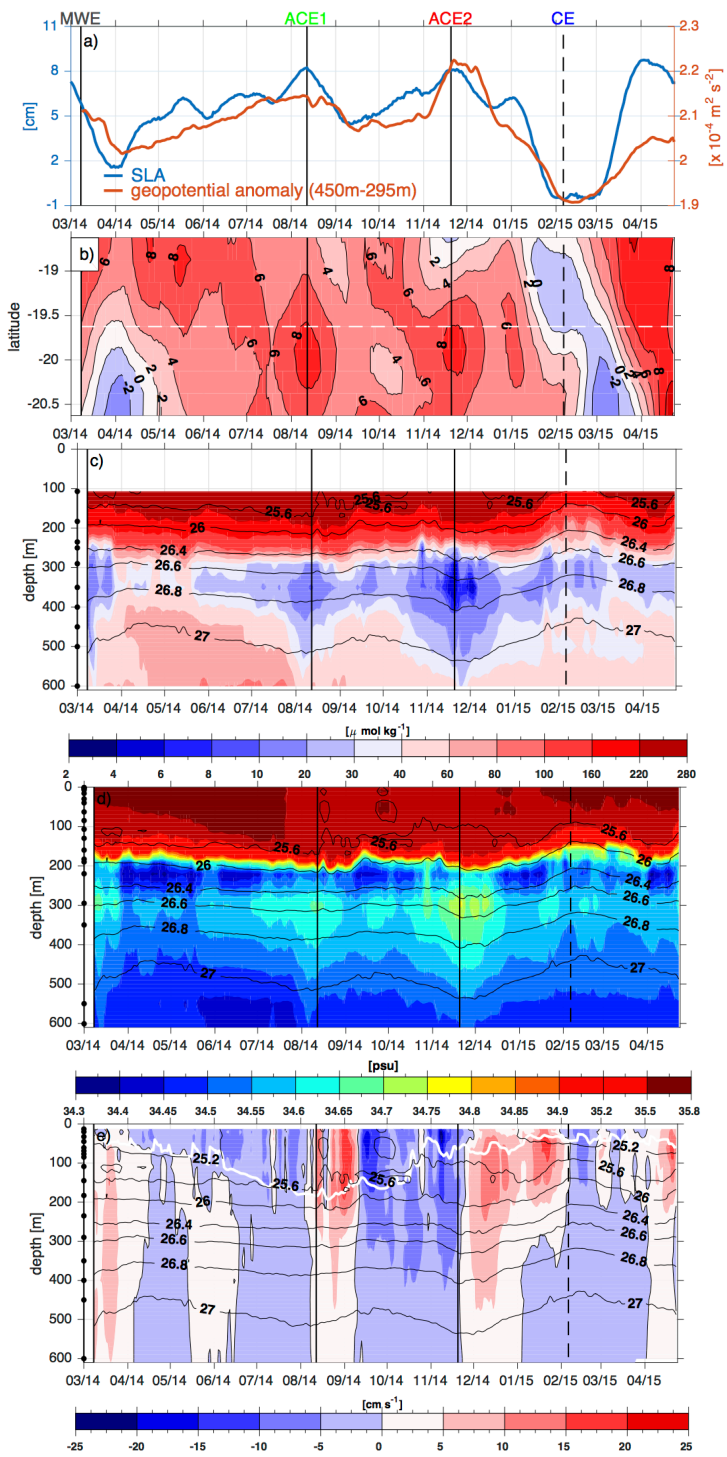


Figure 3. Time series for the deployment period 8 March 2014 to 25 April 2015 at the position of the Stratus mooring (19°37'S, 84°57'W) for (a) weekly delayed, high-pass filtered sea level anomaly (in cm; blue curve) and geopotential anomaly between 450 and 295 m depth in $\text{m}^2 \text{s}^{-2}$ (orange curve), (c) oxygen in $\mu\text{mol kg}^{-1}$, (d) salinity and (e) the meridional velocity component in cm s^{-1} , Hovmoeller diagram (time-latitude) at the longitude position of the Stratus mooring for (b) SLA in cm. The white curve in (e) is the mixed layer depth defined for the depth where the potential density anomaly is 0.125 kg m^{-3} larger than at the surface. The black dots on the vertical line at the left mark the depths of the used oxygen (c), conductivity (d) and velocity (e) sensors and the black contour lines are selected density contours. Black solid (dashed) lines show the date of the passages of the anticyclonic (cyclonic) eddies.

5. Page 12, Line 14-17: There is two types of transports can be done by eddies: stirring and trapping. The stirring transport happen when there is a background tracer gradient, with the swirling velocity of eddies, the down-gradient transport of tracer will emerge. The stirring transport does NOT need the eddy to move. On the other hand, when eddy traps a water mass within its core area, the tracer within this water mass will be transported. The net flux of this kind of trapped-transport happens when the eddy is moving and the trapped water mass having different properties contrasted with surrounding environment. The main focus of the authors is the second kind of transportation. This should be clarified. And with the measurements of the mooring, the first kind of stirring transport can also be evaluated quantitatively.

Thank you very much, you are absolutely right. We have added a few sentences in the manuscript to clarify that:

25 **“Horizontal eddy transport can be explained by two mechanisms: 1) by eddy stirring, which occurs at the periphery of the eddy (e.g. Gaube et al., 2015; Chelton et al., 2011) and 2) by eddy transport of water masses trapped in the eddy interior (Gaube 2013; 2015). We are focusing on the latter mechanism. “**

30 6. Page 18, Line 1-5: From Fig.5c, significant variation of the nonlinear parameter U/c can be observed. At the same time, the nonlinear parameter U/c is also used by the authors to compute the vertical extent of the trapped fluid by the eddy. This means the volume of the trapped water by the eddy will also experience significant variation. But the trapped water mass is expected to be quite coherent and isolated, what will cause significant variation of its volume. The authors should give further clarification and discussion.

Yes, you are right and now we have discussed this in the text on p18:

40 **“Nonetheless, significant variations of the nonlinear parameter U/c determined at the surface might indicate changes of the volume of the eddies, which can be influenced by friction, stratification, fluctuations of the mean flow or the collapse with other eddies. Maps of SLA show a permanent change of the radius due to an irregular and varying shape and the merging with**

other eddies (supplement: Movie M1), which makes it sometimes difficult to track an eddy during its whole lifetime. Fluctuations are also produced by the coarse resolution of the satellite data ($\frac{1}{4}^\circ \times \frac{1}{4}^\circ$) and the merging algorithms used by AVISO. However, the MWE and CE show stronger fluctuations of the nonlinear parameter than the ACE1/2, which probably mirrors the higher variability of the swirl velocity of both eddy types (Fig. 5b). Nonetheless, the nonlinear parameter U/c is always higher than 1 and therefore indicates a trapped volume despite strong fluctuations at the surface. The small variations of the eddy properties of the ACE2 (Fig. 5a-e) suggest a relatively stable structure.”

10

7. Page 22, Line 6-8: The lateral mixing between eddy-core and surrounding water is related to the evolution of eddy, especially its decaying processes. Could the lateral mixing derived from the Argo floats be used to explain the variation of eddy amplitude observed by altimeter?

15 **Thanks for the hint. For a better overview we marked the residence time of the four floats that were trapped in ACE2 in Fig. 5a and discussed the mixing with the observations from altimeter data (p23).**

20 **“During this period the variability of the amplitude of the ACE2 is negligibly small, which might be due to the coarse resolution of the satellite data. The radius increases up to 50 km with a nearly consistent rotation velocity at the same time (Fig. 5a, b). During the second half of the lifetime the radius of the ACE2 slightly increases but the maximal rotation velocity and therefore the nonlinear parameter decreases until the decay of the ACE2.”**

25

30

5 Interactive comment on “Impact of mesoscale eddies on water mass and oxygen distribution in the eastern tropical South Pacific”
by Rena Czeschel et al.

Anonymous Referee #2

Received and published: 16 February 2018

10

The manuscript explores the consequences of eddies transporting properties out of the low oxygen upwelling region associated with the Peruvian-Chilean coast and into the oligotrophic open S. Pacific. Transport by coherent eddies rather than by mean flow (or lateral mixing associated with turbulent flow around eddies) is potentially an important component of any attempt to budget properties within a region. Hence it is of significant interest in understanding the controls on a low oxygen region such as the one studied. While the authors bring a lot of detail to the study I feel that they lose track a little of this broader intention and don't really match up to their title as well as they could at present. My main suggestions are hopefully useful ones to bridge this gap.

15

20 **Reply to reviewer #2**

We would like to thank the reviewer for his/her helpful comments, which helped to improve the manuscript during the revision. The revised manuscript emphasizes the transport of eddies and the title has been changed to “Transport, properties and life-cycles of mesoscale eddies in the eastern tropical South Pacific”. The “Discussion and conclusion” paragraph has been changed to “Discussion and outlook” and restructured.

25

We have modified the manuscript to address his/her comments. A detailed response follows below (written in bold).

30

Note: During the review process we noted the failure of the temperature sensors in 70, 78 and 280 m in the Stratus mooring in November 2014, September 2014 and March 2015, respectively. For calculations of the annual mean as a background field only data were used that covered an entire year (10 April 2014 to 9 April 2015). Therefore we skipped these temperature data as well as the uncomplete salinity data in 85 m depth for the calculation of the annual mean, which lead to slight modifications. Therefore Fig. 6a,b and Fig. 9b has been refigured and calculations of the AHA and ASA (Table 1), the heat and salt transport across the Stratus mooring (Table 2) as well as heat and salt fluxes in the ETSP (chapter 4.3) have been corrected.

35

We corrected the eddy track of ACE2 for the first weeks, which is shown in the movie (supplement) and Fig. 1. Consequently, the composite of the ACE2 of the surface signatures for SLA, SST anomaly and chlorophyll have slightly changed (Fig. 4c, g, k) as well as the properties of ACE2 in Fig. 5.

40

5 First, the fluxes associated with the eddies need context. The area of interest needs to be more clearly defined at the start and the reasons given for these choices. At present some of this key information is not presented until p15. The authors should then provide westward fluxes out of the region due to the mean flow. The westward mean current can be calculated from the mooring data. 'Outside' eddy profiles can be used for mean tracer properties (salt, temperature, oxygen) if there are concerns over simply averaging them introducing biases.

10 **Results of the eddy heat fluxes have been placed in a wider context (see chapter 4.3) and the investigation of fluxes associated with eddies is now mentioned in the introduction.**

15 **“Knowledge about the initial eddy-core conditions near the generation areas, measurements during the mid-age of the eddy due to Argo floats and measurements of the Stratus mooring at the end of the eddy lifetime allows us to investigate the fluxes associated with the eddies and the lateral mixing from the eddy-core water masses with its surrounding waters.**

20 **We think that the area of interest is well described and reasons for this choice are described in detail in the Introduction (“Peruvian upwelling region”, “largest eddy frequency in the ETSP”, “Stratus ORS mooring is located in the transition zone between the OMZ and the well-oxygenated subtropical gyre”, “weak mean currents” and many more besides).**

25 **Westward fluxes are shown in the supplement (Fig. S4, annual and multi-year mean of zonal and meridional velocity at the Stratus mooring) and are discussed in the chapter 5 “Discussion and outlook”.**

30 **The one-year mean (10 April 2014 to 9 April 2015) of tracer properties (salinity, temperature and oxygen) at the Stratus mooring is already used as ‘outside’ eddy profile for the calculation of the anomalies trapped within the eddies (Fig. 6). The method has been described in chapter 3.1 and the annual mean of oxygen and a T-S diagram at the Stratus mooring is shown in Fig. 9.**

25

30 Second, the flux estimates need to include uncertainties. I’m not suggesting that the authors are in a position to accurately estimate the eddy transport - they themselves acknowledge that it is not possible given the small sample size. However, the numbers they give still need to come with likely uncertainties to be of wider use. Two several sources of uncertainty in particular come to mind:

35 - Definition of the eddy core -The mean diameter between filtered max north and south velocities is used so the standard deviation could provides estimates of uncertainty. I would also question whether the maximum velocities are good indicators of the eddy boundary. The position of maximum velocity is an area of considerable angular shear and hence potentially of lateral mixing. The extent of solid body rotation (i.e. the radius to which velocity still increases linearly) could be argued to be a better definition for the purposes of coherent eddy transport.

40 **Interesting point and yes, it is worth discussing different indicators to estimate the size of an eddy. Taking the maximum velocity for the eddy boundary is a common indicator in comparative studies (Chaigneau et al. 2011). For the comparison of the calculated AHA, ASA, AOA with studies from Chaigneau et al. (2011) it is necessary to use the same method.**

We write in the text (p8): “Often the eddy boundary is defined as the streamline with the strongest swirl velocity (for more information on such an eddy detection algorithm see e.g. Nencioli et al., 2010). For comparison of our results with the results of e.g. Chaigneau et al. (2011) we also use the boundary definition of the streamline with the strongest swirl velocity.”

5 Additionally, we calculated error bars for the radius, volume and transport of the eddies (see table 1 and text, p8):

“Error bars for the horizontal eddy boundaries are computed using the mean of the maximum absolute values of the hourly-mean southward and northward velocity. As a result the swirl velocity increases and likewise the vertical extent of the eddies due to the ratio between swirl velocity U and propagation velocity c . Nonetheless, the deviations of the horizontal boundaries of the eddy are small. The deviations of the radius are used to estimate the error for AHA, ASA and AOA from uncertainties of the size of the eddies.”

15 - Observations taken offset from the eddy centre -using an eddy thought to be sampled close to the centre would allow this to be assessed.

Generally, this is a good idea. Due to the strong development of the eddies during their westward propagation the offset would be probably time dependent. Additionally, due to the coarse temporal and spatial resolution the centre of the eddy cannot be located precisely. Therefore, at present our observations do not allow us to assess an offset.

25 Third, judging from the movie there is not just variability in eddy properties passing through Stratus. There may be variability in the number and intensity of eddies crossing different parts of the north-south line through Stratus. This affects how well Stratus can be viewed as a position to monitor these eddy fluxes. The satellite data could be used to construct plots of numbers and mean anomalies of eddies crossing in a period versus latitude along this line. Ideally the plot would be flat give or take the inevitable noise but big peaks would suggest potential bias. For the existing analysis in the manuscript the authors need to show how sensitive their analysis of the satellite data is to the choice of 7 days visibility and 45-150km (p9, line 8)

This is a very nice idea for an extra paper or for a study with model data. Determining the seasonal or interannual variability of heat fluxes from eddies would be beyond the scope of our manuscript.

35 We are discussing the seasonal variability of the eddies generated off the coast (Fig. 2) and the eddy coverage in the ETSP (Fig. 1). We added estimations about the number of eddies dissipating within the transition zone which is located around the Stratus mooring.

40 I also have a number of more specific points:

- the paper would be benefit from a schematic showing the regions and boundaries of interest plus mean (rather than eddy) fluxes

We calculated the eddy fluxes for anticyclones and cyclones more specifically for an offshore area in the ETSP and heat transport estimates of Chaigneau et al. (2008) into context with the results.

Changes in the text on page 15:

5 “Available anomalies of heat, salt, and oxygen of cyclonic and anticyclonic eddies gained from the Stratus mooring and from the literature (Table 1) are now used to estimate the relative contribution of long-lived eddies to fluxes of mass, heat, salt, and oxygen in an offshore area of the ETSP. The mean heat (in W), salt (in kg s^{-1}) and oxygen transport ($\mu\text{mol s}^{-1}$) are calculated by multiplying the amount of AHA, ASA, and AOA of the composite eddies with the number of eddies dissipating per year in an offshore area (corresponding to a flux divergence). We define an
10 area reaching in north-south direction from 10° - 24° S. The transition area is bordered in the east by a line running parallel to the Peruvian and Chilean coast at a distance of 6° and in the west by the 90° W-longitude corresponding to a size of $\sim 1.7 \times 10^6 \text{ km}^2$. Based on averaged satellite measurements 58.6 eddies of all eddies that are generated off the coast (Fig. 2) reach the offshore area per year from which 28.9 are cyclones and 29.7 are anticyclones. 2.1 cyclones, and 0.7
15 anticyclones and mode-water eddies propagate into the area west of the 90° W longitude meaning that 26.8 of the cyclones and 29 of the anticyclones and mode-water eddies have dissipated and therefore transported a certain amount of heat, salt, and oxygen into the offshore zone. Based on the mean of AHA, ASA, and AOA for the composite eddies the mean transport of heat (salt, oxygen) per year from the coastal region into the transition zone is $-6.4 \times 10^{12} \text{ W}$ ($-2.4 \times 10^5 \text{ kg s}^{-1}$,
20 $-5.7 \times 10^{10} \mu\text{mol kg}^{-1} \text{ s}^{-1}$) for cyclones and $4.7 \times 10^{12} \text{ W}$ ($1.5 \times 10^5 \text{ kg s}^{-1}$, $-5.9 \times 10^{10} \mu\text{mol kg}^{-1} \text{ s}^{-1}$) for anticyclones and mode-water eddies in agreement with estimates for transport anomalies of heat and salt in this region by Chaigneau et al., 2011. “

25 - the properties of the OMZ need to be stated early on -typical depth range, oxygen concentration, horizontal extent

We rewrote relevant parts of the Introduction (p4):

30 “In general, the large-scale oxygen distribution in the ETSP is dominated by a strong OMZ at depths of 100-900 m with minimum oxygen values at about 350 m depth ($\sigma_t=26.8 \text{ kg m}^{-3}$) and suboxic conditions of $<4.5 \mu\text{mol kg}^{-1}$ off Peru (e.g., Karstensen et al., 2008; Paulmier and Ruiz-Pino, 2009 or Fig. 1b). In the OMZ the oxycline of $60 \mu\text{mol kg}^{-1}$ extends along the South American coast from 35° S to the equator where it reaches westward to nearly 160° E (Llanillo et al. 2018). “

35 - there is considerable blurring of results and discussion. For example p9, l21 to p10, l11 would be better in a discussion. Also, p14, lines 3 and 9 and other places.

40 We modified the text of the manuscript and we hope that it is now easier to follow. E.g., we moved part of the text on p9 l21 to p10, l11 (first text version) to the Discussion and removed part of the text as it was redundant with text in the Discussion. Also part of the former p14, lines 3 to 9 was moved to the Discussion.

- the authors rightly point out the difficulty in separating seasonal from other variability given the existing data but it would be good to see some discussion of what would be necessary to allow these to be separated in the future.

5 **The “Discussion and conclusion” paragraph was changed to “Discussion and outlook” and an outlook included what would be necessary for separating the variability components: “The most promising methods to tackle the open questions would be long-term measurements near the coast, glider measurements in the center of the eddies and accompanying model investigations”.**

10 - the discussion of what has been lost on p16, lines 1-9 is a little confusing. Given the choice of the Stratus mooring effectively as a monitoring station on the boundary of the region it seems odd to discuss what has been lost when the eddies have reached this point rather than what they are carrying beyond it. What they’ve already lost is irrelevant to the budget given the focus on Stratus.

The text on page 16 was modified and hopefully is no longer confusing.

15 **“Both types of eddies show negative oxygen fluxes in the layer defined as the depth of the coherent structure of the eddy (Table 1) meaning that anticyclones and cyclones transport less oxygenated water into the upper and middepth open ocean and therefore have an impact on the balance and size of the OMZ in the ETSP, which is also confirmed by models (Frenger et al., 2018).”**

20
Minor stuff:

-p3, line 7: "in different"

Done, thanks.

25

-p6, lines 12-14: cut "has taken over...scientific content" as not relevant to paper
Done.

30
-p7, line 6: cut 'were'
Done

35 -p8, lines 8-9: A fuller explanation of how this was done is needed

The sentence has been rewritten:

“Assuming a symmetric eddy, the centre of the MWE passed the mooring on 8 March 2014 and fully passed the mooring until end of March 2014. The measurements of the eastern part of the eddy during that time span were mirrored to obtain the full coverage of the MWE.”

40

-p8, line 10: cut "of"

Done

5 -p10, line 22: "typical" by what metric?

The sentence has been rewritten:

10 **“The mooring instruments recorded the parameter distribution at the southern rim of the MWE revealing anomalous low oxygen of less than $10 \mu\text{mol kg}^{-1}$ and anomalous high salinity (temperature) of more than 34.65 psu (10.6°C) in the eddy core in 300 m depth. It was accompanied with an upward bending of isopycnals above (~ 250 m depth) and downward bending beneath (~ 350 m depth) the eddy core (Fig. 3c, d), which is typical for a mode water eddy in contrast to anticyclonic and cyclonic eddies.”**

15 -p10, lines 24 and 25 and Fig 3: this isn't very clear in the figure.

You are right, thanks. The text has been modified:

20 **“The mooring instruments recorded the parameter distribution at the southern rim of the MWE revealing anomalous low oxygen of less than $10 \mu\text{mol kg}^{-1}$ and anomalous high salinity (temperature) of more than 34.65 psu (10.6°C) in the eddy core in 300 m depth. It was accompanied with an upward bending of isopycnals above (~ 250 m depth) and downward bending beneath (~ 350 m depth) the eddy core (Fig. 3c, d), which is typical for a mode water eddy in contrast to anticyclonic and cyclonic eddies.”**

25 -p11, lines 5 and 20: why was 183 m chosen?

We wanted to show the impact of eddies on water mass properties in the near surface layer, which is not influenced by variability in the mixed layer. As in the region of the Stratus mooring the mixed layer reaches down to about 160 m depth (Czeschel et al. 2015) the instrument below the mixed layer in 183 m depth was chosen.

30

-p16, lines 12-14: need a fuller explanation

35 **The negative oxygen fluxes by cyclones and anticyclones are defined for and dependant of the layer defined as the depth of the coherent structure of the eddy (Table 1), now mentioned in the text. The model investigation mentioned is published and the reference changed to Frenger et al. 2018 instead of pers. com.**

40 **“Both types of eddies show negative oxygen fluxes in the layer defined as the depth of the coherent structure of the eddy (Table 1) meaning that anticyclones and cyclones transport less oxygenated water into the upper and middepth open ocean and therefore have an impact on the maintenance and size of the OMZ in the ETSP, which is also confirmed by models (Frenger et al., 2018).”**

-p17, lines 17-18: Chlorophyll concentration does not imply growth. Units of production are not mg/m³. The phytoplankton community could have grown or been entrained as far back as the formation region/time.

5 **Thank you for this information, it should have been chlorophyll concentration instead of chlorophyll production, this is now corrected.**

10 -p18, lines 5-11: ability to estimate Ro accurately is very dependent on the resolution of sampling. I would be more cautious unless you can show that your sampling resolution would not have biased the result.

You are right, regarding the resolution of 0.25° x 0.25° of the underlying SLA data the statements are too strong. We rewrote the mentioned paragraph as followed:

15 **“This is consistent with our observations showing constant Rossby numbers of less than 0.1 between 0.2 and 0.8 reflecting a stable, geostrophic phase over 60 % of the lifetime of all eddy types. At the beginning and at the end of the eddy lifetime the Rossby numbers are increasing and indicating the influence of possible ageostrophic processes. But the increase of the Rossby number for both anticyclones is not as striking as for the MWE and CE. However, a very detailed and exact discussion about the evolution of the Rossby Radius (and also the radius, the average maximal rotation and the nonlinearity) and possible ageostrophic processes is not possible due to the coarse resolution of the underlying SLA data.”**

25 -p19, line 4: reference needed for this statement on lateral mixing
The sentence has been modified.

-p19, lines 6-7. High velocity in itself is not a guarantee. The circular flow of an eddy needs to be taken into account as considerable rotational/angular shear will take place in high velocity areas outside the region of solid body rotation.

30 **You are right. The sentence has been reworded:**

“This density level corresponds to a depth between 100 and 170 m, where a high swirl velocity exists within the ACE2 (Fig. 6a), which is essential to keep up the coherent structure.”

35 p20, lines 12-18: this is not very clear e.g. "too high for heat" relative to what?

The passage has been clarified and modified due to the corrected number for the AHA:

40 **“In this study the negative respectively positive heat anomalies of the CE (-8.9 x10¹⁸ J), ACE2 (8.1 x10¹⁸ J) and MWE (1.0 x10¹⁸ J) almost balance each other. In contrast, the sum of negative respectively positive salt anomalies transported within the CE (-41.5 x10¹⁰ kg), ACE2 (25.2 x10¹⁰ kg), and MWE (-3.1 x10¹⁰ kg) is unbalanced.”**

p20, line 21: AHA twice
Done, thanks.

5 p21, lines 5 to 8: if the eddies are exporting oxygen deficit from the OMZ region aren't they eroding rather than maintaining it?
Now we say "balancing" instead of "maintaining".

10 p21, line 14: highest amount globally? Based on what bearing in mind that proper diagnosis requires vertical profiles?
The observations by Zhang et al. 2017 are based on Argo floats and the highest amount of MWE is shown in their Figure 2, now mentioned in the revised text.
15 **"According to a global investigation of Argo floats the eastern South Pacific off Peru and Chile seems to have the highest amount of MWEs, which are also deep reaching compared to other regions (Zhang et al., 2017; their Fig. 2)."**

p21, lines 22-23: Has this feature of the model been verified in any way?
20 **The results from Pegliasco are from observations. We included a reference for a observation/model comparison by Kurian et al., 2011.**
"Observations and model results for the California Current system showed a good agreement between observed and modelled eddy structures (Kurian et al. 2011)."

25
p22, lines 11-12: need explanation of what sort of mixing and a reference.
The statement has been modified and we have added a reference:
"Stronger mixing during the first half of the eddy lifetime could be related to a stronger wind curls near the coast in comparison to the open ocean (Albert et al. 2010, their Fig. 1b)."

30

p22, line 26: reference needed for the mean circulation values
Reference Ayon et al. 2008 included for mean circulation.

35

p23, line 5: " main contributor" is a strong claim. By what metric?
The sentence has been reworded:

40 **"Observations from the mooring deployment period March 2014 to April 2015 and profiling floats deployed near eddies in March 2014 (Fig. 1) show the importance of eddies in the weak flow region of the ETSP as mesoscale eddies play a crucial role in water mass distribution."**

Supplementary material, fig S2: the caption needs to be clearer.

Figure caption has been rewritten.

5 **“Figure S3. Vertical profiles from data of four floats during their stay within the ACE2 at different stages of its lifetime (6900532: day 235, 6900530: day 379, 6900529: day 398, and 6900527: day 482). Shown are the changes per day of a) oxygen, b) temperature, and c) salinity on density surfaces between float 6900530 and 6900532 (blue), between float 6900529 and 6900530 (green) and between float 6900527 and 6900529 (red).”**

10

15

20

25

Transport, properties and life-cycles of mesoscale eddies in the eastern tropical South Pacific

~~Impact of mesoscale eddies on water mass and oxygen distribution in the eastern tropical South Pacific~~

5 Rena Czeschel¹, Florian Schütte¹, Robert A. Weller², Lothar Stramma¹

¹GEOMAR Helmholtz Centre for Ocean Research Kiel, Düsternbrooker Weg 20, 24105 Kiel, Germany

²Woods Hole Oceanographic Institution (WHOI), 266 Woods Hole Rd, Woods Hole, MA 02543, USA

Correspondence to: R. Czeschel (rczeschel@geomar.de)

10 **Abstract.** The influence of mesoscale eddies on the flow field and the water masses, especially the oxygen distribution of the eastern tropical South Pacific is investigated from a mooring, float and satellite data set. Two anticyclonic (ACE1/2), one mode water (MWE) and one cyclonic eddy (CE) are identified and followed in detail with satellite data on their westward transition with velocities of 3.2 to 6.0 cm/s from their generation region, the shelf of the Peruvian and Chilean upwelling regime, across the Stratus Ocean Reference Station (ORS) (~20°S, 85°W) to their decaying region far west in the oligotrophic open ocean. The ORS is located in the transition zone between the oxygen minimum zone and the well-oxygenated South Pacific subtropical gyre. Velocity, hydrographic, and oxygen measurements at the mooring show the impact of eddies on the weak flow region of the eastern tropical South Pacific. Strong anomalies are related to the passage of eddies and are not associated to a seasonal signal in the open ocean. The mass transport of the four observed eddies across 85°W is between 1.1 and 1.8 Sv. The eddy type dependent available heat, salt and oxygen anomalies are ~~8.17.6~~ $8.17.6 \times 10^{18}$ J (ACE), ~~1.00.8~~ $1.00.8 \times 10^{18}$ J (MWE), ~~-8.99.4~~ $-8.99.4 \times 10^{18}$ J (CE) for heat, ~~25.23.9~~ $25.23.9 \times 10^{10}$ kg (ACE2), ~~-3.16~~ -3.16×10^{10} kg (MWE), ~~-412.58~~ -412.58×10^{10} kg (CE) for salt and ~~-3.6~~ -3.6×10^{16} μ mol (ACE2), ~~-3.5~~ -3.5×10^{16} μ mol (MWE), ~~-6.5~~ -6.5×10^{16} μ mol (CE) for oxygen showing a ~~strong~~ imbalance between anticyclones and cyclones for ~~heat and~~ salt transports probably due to seasonal variability of water mass properties in the formation region of the eddies. Heat, salt and oxygen fluxes out of the coastal region across the ORS region in the oligotrophic open South Pacific are estimated based on these eddy anomalies and on eddy statistics (gained out of 23 years

of satellite data). Furthermore, four profiling floats were trapped in the ACE2 during its westward propagation between the formation region and the open ocean, which allows conclusions on ~~the lateral mixing isolation~~ of water mass properties ~~and the lateral mixing~~ with time between the core of the eddy and the surrounding water ~~showing the s~~Strongest lateral mixing was found between the seasonal thermocline and the eddy core during the first half of the eddy lifetime.

1 Introduction

The eastern tropical South Pacific (ETSP) containing the Peruvian upwelling regime, which is one of the four major eastern boundary upwelling systems, shows pronounced meso- and submesoscale variability (e.g. Capet et al., 2008; McWilliams et al., 2009; Chaigneau et al., 2011). Mesoscale variability in the ocean occurs as linear Rossby waves and as nonlinear vortices or eddies. During the last two decades eddies have been recognized to play an important role in the vertical and horizontal transport of momentum, heat, mass and chemical constituents of seawater (e.g., Chelton et al., 2007; Klein and Lapeyre 2009) and therefore contribute to the large-scale water mass distribution. Especially in upwelling areas, eddies have been identified as major agents for the exchange between coastal waters and the open ocean (e.g. Chaigneau et al., 2008; Pegliasco et al., 2015; Schütte et al., 2016a). At least three types of eddies have been identified: cyclonic, anticyclonic and anticyclonic mode water eddies (e.g., McWilliams, 1985; D'Asaro, 1988; McGillicuddy Jr. et al., 2007) as well as a transition from cyclonic eddies to 'cyclonic thinnies' to exist throughout the world ocean (McGillicuddy Jr. 2015). Usually, isopycnals in anticyclonic eddies are depressed for the entire vertical extent of the eddy while in mode-water eddies a thick lens of water deepens the main thermocline while shoaling the seasonal thermocline (McGillicuddy Jr. et al., 2007). Mode water eddies are also often referred as intrathermocline eddies (ITEs) (Hormazabal et al., 2013). Cyclones dome both the seasonal and main pycnocline.

Several analyses of the mean eddy properties offshore the Peruvian coast are conducted in the last decade and found the largest eddy frequency in the ETSP off Chimbote (~9°S) and south of San Juan (15°S) (e.g. Chaigneau et al., 2008 or Fig. 1a). Using a combination of Argo float profiles and satellite data the three-dimensional mean eddy structure of the eastern South Pacific was described for the

temperature, salinity, density, and geostrophic velocity field of cyclones as well as anticyclones (Chaigneau et al., 2011). However, a distinction in ‘regular’ anticyclones and anticyclonic mode water eddies is still pending in the ETSP. From recent findings (Stramma et al., 2013, Schütte et al., 2016a; Schütte et al., 2016b) it seems to be mandatory to distinguish between these two eddy types as they strongly differ in their efficiency to transport conservative tracers, especially in upwelling areas. In addition it is observed that the different eddy types influence non-conservative tracers, like dissolved oxygen, in different ways within their isolated eddy cores. Especially cyclones and anticyclonic mode-water eddies have been reported to create an isolated biosphere, which greatly differs from the biosphere present in the surrounding areas (Altabet et al., 2012; Löscher et al., 2015). In these eddy cores the oxygen concentration can decrease with time (Fiedler et al., 2016; Schütte et al., 2016b). In wide areas of the world oceans eddies with an open ocean low-oxygen core are observed (e.g. North Pacific: Lukas and Santiano-Mandujano, 2001; South Pacific: Stramma et al., 2013; tropical North Atlantic: Karstensen et al., 2015). These low-oxygen eddies have strong impacts on sensible metazoan communities and marine life (Hauss et al., 2016). Anammox is the leading nitrogen loss process in ETSP eddies whereas denitrification was undetectable (Callbeck et al., 2017), while denitrification appears only patchy in the ETSP (Dalsgaard et al., 2012). Low-oxygen eddies release a strong negative oxygen anomaly during their decay, which may influence the large-scale oxygen distribution (Schütte et al., 2016b). ~~A description of the oxygen structure for the ETSP dependent on the eddy type (cyclone, anticyclone and mode water eddy) is to our knowledge not reported so far.~~

The following paper includes an analysis of the three different eddy types and their impact on the water masses and oxygen distribution in the ETSP and is based on the Stratus Ocean Reference Station (ORS) mooring. The Stratus mooring is located at $\sim 20^{\circ}\text{S}$, 85°W in the transition zone between the oxygen minimum zone (OMZ) and the well-oxygenated subtropical gyre (e.g. Tsuchiya and Talley, 1998). Eddy analyses were also done in the past at the Stratus mooring, where a snapshot of a strong anticyclonic mode water eddy was observed in March/April 2012 (Stramma et al., 2014). In this paper we investigate in more detail the mooring period March 2014 to April 2015 and set a focus on the isolation and development of an eddy core during its isolated lifetime. We intensively followed eddies of each kind (two ‘regular’ anticyclones, one anticyclonic mode water eddy and one cyclone) which

crossed the Stratus mooring position, from their formation areas near the coast to their decay eastwards of the Stratus mooring (Fig. 1). During their lifetime one of these eddies were also partly sampled by several profiling floats equipped with oxygen sensors which were deployed in March 2014 within the eddies (Fig. 1).

5 In general, the large-scale oxygen distribution in the ETSP is dominated by a strong OMZ at depths of 100-900 m with minimum oxygen values at about 350 m depth ($\sigma_\theta=26.8 \text{ kg m}^{-3}$) and suboxic conditions of $<4.5 \mu\text{mol kg}^{-1}$ off Peru (e.g., Karstensen et al., 2008; Paulmier and Ruiz-Pino, 2009 or Fig. 1b). In the OMZ the oxycline of $60 \mu\text{mol kg}^{-1}$ extends along the South American coast from 35°S to the equator where it reaches westward to nearly 160°E (Llanillo et al. 2018).

10 In the ETSP the zonal tropical current bands supply oxygen (O_2) rich water to the OMZ (Stramma et al., 2010). In contrast, the mid-depth circulation in the eastern South Pacific Ocean is sluggish in the region of the OMZ. As the mean currents are weak, eddy variability strongly influences the flow and ultimately supplies oxygen-poor water to the OMZ (Czeschel et al., 2011). A rough estimate of the oxygen budget of the eastern tropical Pacific ocean (Stramma et al., 2010) was used to estimate 22% by
15 vertical mixing, 33% by advection and the largest component of 45% by eddy mixing (Brandt et al., 2015).

The mean upper ocean circulation of the ETSP is relatively complex exhibiting several surface and subsurface currents. It is described to be composed out of the South Pacific subtropical gyre with the north-eastern current band shown to be located south of 10 to 15°S called Humboldt Current, South
20 Equatorial Current, Oceanic Chile-Peru Current or Peru Oceanic Current (e.g. Kessler 2006; Ayón et al., 2008), a set of several zonal current bands between the subtropical gyre and the equator (e.g. Kessler 2006; Czeschel et al., 2015) as well as poleward and equatorward current bands near the South American continent (e.g. Chaigneau et al., 2013). The shipboard zonal velocity component along about 86°W composed of three ADCP surveys showed larger regions with westward then eastward flow
25 between 13°S and 22°S (Brandt et al., 2015), however with influence by eddy features in ADCP measurements in November 2012 (Czeschel et al., 2015).

In general most of the eddies in the ETSP propagate westward originating from eddy generation hotspots near the coast following different eddy corridors (Fig. 1a). Coastal water properties are

captured within the eddy-cores and transported on their way into the open ocean across several oxygen, temperature, and salinity gradients (Fig. 1 b, c, d). The coastal water mass properties differ, due to the upwelling, which is strongest in the austral winter months from a seasonal cycle. The upwelled water near the coast identified as Equatorial Subsurface Water (ESSW) (e.g. Thomsen et al., 2016) is colder, fresher and less oxygenated in austral winter than in austral summer.

This paper describes the temperature, salinity and oxygen anomaly of the different eddy types in the ETSP and their efficiency to dissipate the existing gradients. Of special interest is the eddy type dependent isolation of the eddy cores during different eddy life stages. Knowledge about the initial eddy-core conditions near the generation areas, measurements during the mid-age of the eddy due to Argo floats and measurements of the Stratus mooring at the end of the eddy lifetime allows us to investigate the [fluxes associated with the eddies and the](#) lateral mixing from the eddy-core water masses with its surrounding waters.

2 Data sets

2.1 Stratus mooring

Since October 2000 the Stratus mooring has been maintained at about 20°S, 85.5°W mainly to collect an accurate record of surface meteorology and air-sea fluxes of heat, freshwater, and momentum (Colbo and Weller, 2009). In addition velocity, pressure, temperature, conductivity sensors (for salinity computation) and 13 oxygen sensors were added to the mooring within the water column during the deployment period 8 March 2014 to 25 April 2015 at 19°37'S, 84°57'W (velocity sensors used in this paper were also added during the deployment period 6 April 2011 to 29 May 2012 at 19°41'S, 85°34'W). The depth distribution of the different measuring devices for the 2014 to 2015 deployment period are given in Supplement Table S1 [and Figure S1](#) (depth distribution of the velocity sensors for the 2011 to 2012 deployment period are listed in Stramma et al. (2014)). Annual mean velocity profiles were computed for the upper 600 m for the two Stratus mooring deployment periods 2011/2012 and 2014/2015 where oxygen measurements were conducted. To avoid influences of a-seasonal signals only the period 10 April to 9 April of the following year was computed and only instruments [were](#) used

which recorded the velocity for the entire period. These mean velocity profiles can be compared with the October 2000 to December 2004 mean velocity components (Colbo and Weller, 2007).

From the 13 oxygen sensors added to the 2014/2015 mooring period (Supplement Table S1), three instruments recorded erroneous oxygen values, which could not be corrected after the recovery. The remaining ten oxygen sensors consist out of eight Aanderaa oxygen sensors in SeaGuard instruments, which were used with the manufacturers calibration (accuracy $<8 \mu\text{mol kg}^{-1}$ or 5%) and two oxygen-loggers, which received an additional lab-calibration. For the 15 MicroCats (pressure, temperature and salinity), a data calibration is done against shipboard CTD data during the service cruises (RV Ron Brown RB 14-01 and RV Cabo de Hornos) and later by comparison with the data overlap with the previous mooring and by returning the instruments to SeaBird for laboratory calibration. The SeaGuard conductivity sensors in 107 m and 350 m depth have an offset of -0.13 psu and -0.18 psu, respectively.

2.2 Satellite data

~~Aviso (Archiving, Validation, and Interpretation of Satellite Oceanographic) s~~Satellite derived sea level anomalies (SLA) data ~~were provided by Copernicus Marine and Environment Monitoring Service (CMEMS) obtained and were~~ used to identify and track the different eddies passing the Stratus mooring and to document the position of the floats within the eddies. ~~The Copernicus Marine and Environment Monitoring Service (CMEMS, <http://marine.copernicus.eu>) has taken over the whole processing and distribution of the products formerly distributed by AVISO with no changes in the scientific content.~~ The delayed-time “all-sat-merged” reference dataset of SLA is used which is mapped on an $\frac{1}{4}^\circ \times \frac{1}{4}^\circ$ Cartesian grid and has a temporal resolution of one day. The time period January 1993 to December 2015 were chosen for the SLA and the geostrophic velocity anomalies are also provided by ~~CMEMSAVISO~~.

For sea surface temperature (SST) the “Microwave Infrared Fusion Sea Surface Temperature” from Remote Sensing System (www.remss.com) is used. The data consist out of SST measurements of all operational microwave (MW) radiometer (TMI, AMSR-E, AMSR2, WindSat) and infrared (IR) SST measurements (Terra MODIS, Aqua MODIS). Considered are here daily data with 9 km resolution from January 2013 to December 2015.

For sea surface chlorophyll (Chl) the MODIS/Aqua Level 3 data product mapped on a 4 km grid available at <http://oceancolor.gsfc.nasa.gov> provided by the NASA is used. The time period January 2013 to December 2015 with a daily resolution is chosen. Note, that the Chl data is cloud dependent as it is measured via IR.

5 2.3 Argo floats

Seven profiling Argo floats with Aanderaa oxygen sensors were deployed in March 2014 at 19°36'S, 84°58'W; 19°27'S, 83°01'W; 19°15'S, 80°30'W and 18°58'S, 76°59'W. The deployment locations (Fig. 1a) were chosen to be close to anticyclonic or cyclonic eddies determined from SLA figures. The floats were deployed in pairs with drifting depth at 400 and 1000 dbar and cycling intervals of 10 days, except for 18°58'S, 76°59'W ~~were~~ only one float was deployed at 400 dbar drifting depth. From that seven Argo floats, four floats remained for a longer period within eddies which later crossed the Stratus mooring and are therefore used in more detail for our calculations in the paper (the four Argo floats are: 6900527, 6900529, 6900530 and 6900532). Typically a full calibration of the oxygen sensors on the Argo floats is not available. The different manufactures of Argo float oxygen sensors specify their measurement error at least better than 8 $\mu\text{mol kg}^{-1}$ or 5%. Additionally the Argo float profiles of temperature, salinity and oxygen are compared and calibrated against the measurements of the Stratus mooring and against each other giving a relative accuracy.

3 Methods

From the Stratus mooring time series (from 8 March 2014 to 25 April 2015) of velocity, temperature, salinity and oxygen eddies of each type are identified and followed back and forward in time with the help of satellite data. The focus is set on one mode water eddy (MWE), two anticyclonic eddies (ACE1, ACE2) and one cyclonic eddy (CE) as they are also sampled by Argo floats (including oxygen sensors) in before.

25

3.1 Heat, salt, and oxygen anomaly at the Stratus mooring

Available heat, salt and oxygen anomalies (AHA, ASA and AOA) were calculated as described in Chaigneau et al. (2011) and Stramma et al. (2014). At the Stratus mooring eddy core anomalies were estimated by the difference between the mean of temperature, salinity and oxygen within the eddy boundaries and the background field estimated from the annual mean for the period 10 April 2014 to 9 April 2015. Eddy boundaries are determined for every depth by the mean of the maximum absolute values of the 90 h low-pass filtered southward and northward velocity. The mean westward propagation of the eddies estimated from SLA measurements is used to convert the time axis to a space axis leading to a mean radius. The vertical extent is defined as the depth of the coherent structure of the eddy, which is the ratio between the swirl velocity U and the propagation velocity c of the eddy. If $U/c > 1$, the feature is nonlinear and maintains its coherent structure while propagating westward (Chelton et al., 2011). The swirl velocity is derived from the mean of the absolute values of the maximum 90 h low-pass filtered southward and northward velocity. Error bars for the horizontal eddy boundaries are computed using the mean of the maximum absolute values of the hourly-mean southward and northward velocity. As a result the swirl velocity increases and likewise the vertical extent of the eddies due to the ratio between swirl velocity U and propagation velocity c . Nonetheless, the deviations of the horizontal boundaries of the eddy are small. The deviations of the radius are used to estimate the error for AHA, ASA and AOA from uncertainties of the size of the eddies.

At the time when the mooring was deployed, part of the MWE had already passed the mooring. Assuming a symmetric eddy, the centre of the MWE passed the mooring on 8 March 2014 and fully passed the mooring until end of March 2014. Therefore, the measurements of the eastern part of the eddy during that time span were mirrored to obtain the full coverage of the MWE.

3.2 Determining ~~of~~ properties of the MWE, ACE1/2 and CE conducted from satellite data

The eddy shape is identified by analysing streamlines of the SLA-derived geostrophic flow around an eddy centre (high/low SLA). Often the eddy boundary is defined as the streamline with the strongest

swirl velocity (for more information on such an eddy detection algorithm see e.g. Nencioli et al., 2010).
For comparison of our results with the results of e.g. Chaigneau et al. (2011) we also use the boundary definition of the streamline with the strongest swirl velocity. Note that the identified areas are irregularly circular therefore the circle-equivalent area is used to estimate the eddy radius. Due to the resolution of the SLA data the eddy radius must be at least 45 km to unambiguously state that the identified area is a coherent mesoscale eddy and not an artificial signal. Clearly identified individual eddies may have a smaller radius than 45 km to get tracked. Eddies are tracked forward and backward in time following the approach described by Schütte et al. (2016a). To estimate the percentage of eddy coverage in the ETSP eddies are identified and tracked between 1993 and 2015. In the following it was counted how often a grid point ($0.5^\circ \times 0.5^\circ$) was covered by an eddy structure. For the identification of eddy generation areas every newly detected eddy closer than 600 km off the coast is counted in $1^\circ \times 1^\circ$ boxes. The sum of all these boxes is taken to compute the seasonal cycle of eddy generation. The Argo float profiles and the mooring time series are separated into data conducted within cyclones, anticyclones and the “surrounding area” which is not associated with eddy-like structures also following the approach of Schütte et al. (2016a). In addition the relative position of the mooring or Argo float profile in relation to the eddy center and eddy boundary could be computed.

Furthermore, the composites of the eddy surface signatures (SLA, SST and Chl) consist of 150×150 km snapshots around the identified eddy centres. To exclude large-scale variations, the used SST data is low-pass filtered (cut-off wavelength of 15° longitude and 5° latitude) and subtracted from the original data to preserve only the mesoscale variability (see Schütte et al., 2016a for more details).

4 Results

4.1 General eddy generation and its seasonal cycle in the ETSP

In the ETSP 5244 eddies (49% cyclones; 51% anticyclones) are found between January 1993 to December 2015 (requirement: having a radius between 45 km and 150 km and visible for more than 7 days). Both types of eddies have an average radius of about 70 km and on average 15 % of the ETSP are covered everyday with eddies (Fig. 1a). Most of the eddies are generated close to the Peruvian or Chilean coast, where large horizontal/vertical shears exist in an otherwise quiescent region. In almost

entirely consistence with Chaigneau et al. (2008), hotspot locations of eddy generation are near the coast around 10°S and between 16°S to 22°S (Fig. 2a, b). The four eddies (MWE, CE, ACE1, and ACE1) described in detail below originate from the latter region. After their generation near the coast the anticyclonic eddies tend to propagate north-westward whereas cyclonic vortices migrate south-
5 westward (e.g. Chaigneau et al., 2008) into the open ocean. The seasonal cycle of eddy generation, based on all eddy new detections closer than 600 km off the coast, peaks in March and has its minimum in September (Fig. 2c), whereas cyclonic eddies exhibit a stronger amplitude. However, both anticyclonic as well as cyclonic eddies have their seasonal peak of formation in austral summer/fall (February/March) and the lowest number at the end of austral spring (September; Fig. 2d).

10 The full eddy generation mechanisms are complex, whereby boundary current separation due to a sharp topographic bend is one important aspect of the eddy formation (Molemaker et al., 2015; Thomsen et al., 2016). It is suggested that anticyclones are generated due to instabilities of the Peru Chile Undercurrent (PCUC), whereas cyclonic eddies are formed from instabilities of the equatorward surface currents (Chaigneau et al., 2013). In this context the strength of the PCUC is essential (Thomsen et al.,
15 2016). Observations as well as models show a weak seasonal variability of the PCUC off Peru which is stronger in austral summer and fall (Thomsen et al., 2016; Chaigneau et al., 2013; Penven et al., 2005) and might explain the higher number of eddy generation during this season. Other model simulations have revealed a seasonal cycle in eddy flux that peaks in austral winter at the northern boundary of the OMZ, while it peaks a season later at the southern boundary (Vergara et al., 2016). The PCUC also
20 experiences relatively strong fluctuations with periods of a few days to a few weeks (Huyer et al., 1991).

~~Intraseasonal and interannual variability is another factor modulating the strength of the PCUC off Chile and therefore the formation rate of anticyclonic eddies (Shaffer et al., 1999). El Niño (La Niña) events deepen (shoal) the thermocline and intensify (weaken) the PCUC (e.g. Montes et al., 2011; Combes et al., 2015). Although the strength of the PCUC increases during El Niño events the transport of mode water eddies decreases, which is due to a weakened baroclinic instability related to the deepening of the thermocline (Combes et al., 2015).~~

25

4.2 Eddy observations from March 2014 to April 2015 at Stratus mooring

From March 2014 to April 2015 the Stratus mooring was located at 84°57'W, 19°37'S, about 1500 km offshore in the oligotrophic open ocean. Oxygen, salinity and meridional velocity component time series for the upper 600 m (Fig. 3; Supplement Fig. S24) record the passage of several eddies between March 2014 and April 2015. These observations are in agreement with the satellite data (SLA, SST and Chl) at the mooring location and the 450 to 295 m geopotential anomaly (Fig. 3a).

At the time of the mooring deployment on 8 March 2014 an anticyclonic mode water eddy with a radius of 43 km passed westward with the eddy centre to the north of the mooring while a cyclonic eddy was located south of the mooring site (Fig. 3b; Supplement Movie M1). The mooring instruments recorded the parameter distribution at the southern rim of the MWE ~~revealing anomalous and the typical oxygen, salinity and density distribution for mode water eddies:~~ low oxygen of ~~less than~~ 103.4 $\mu\text{mol kg}^{-1}$ and ~~anomalous~~ high salinity (temperature) of ~~more than~~ 34.6559 psu (10.69.47°C) in the eddy core in 3050 m depth. It was accompanied with ~~ans~~ upward bending of isopycnals above (~~~250 m depth~~) and downward bending beneath (~~~350 m depth~~) the eddy core (Fig. 3c, d), which is typical for a mode water eddy in contrast to anticyclonic and cyclonic eddies. (Fig. 3b, e). In late March 2014 the MWE had ~~pass~~ moved the mooring westward.

A strong oxygen decrease as well as a salinity increase with a strong downward displacement of the isopycnals at mid-depth in early August 2014 was related to an anticyclonic eddy (eddy ACE1; Fig. 3b Fig. 3c) that passed the mooring south of it (Fig. 3b). In the upper 250 m the oxygen concentration increased with the maximum about 10 days later than the oxygen minimum at 290 to 600 m depth (Supplement Fig. S24). At 183 m depth, maxima in oxygen, temperature and salinity of 265 $\mu\text{mol kg}^{-1}$, 17.73°C and 35.38 psu were reached in mid-August 2014 reflecting the deepening of the pycnocline which brings warmer, more saline and oxygen-rich waters to deeper levels. The ACE1 shows meridional velocities of more than 5 cm s^{-1} in the upper 300 m depth (Fig. 3d Fig. 3e).

Another strong oxygen decrease influenced the oxygen distribution from early November 2014 to early January 2015. This anticyclonic eddy (eddy ACE2) had a radius of 53 km and showed the strongest downward displacement of the isopycnals in the 300 to 600 m range. At 350 m depth lowest oxygen values of 3.8 $\mu\text{mol kg}^{-1}$ were reached in early December 2014 (Fig. 3b Fig. 3c). The massive deepening

of the pycnoclines is also reflected by maxima in salinity (34.69 psu) and temperature (10.33°C) in 350 m depth (not shown). The ACE2 shows high meridional velocities of more than 5 cm s⁻¹ in the upper 450 m depth.

5 | The lowest SLA and geopotential anomaly of the mooring deployment period was connected to a strong upward displacement of the isopycnals in February/March 2015 (~~Fig. 3b~~Fig. 3c). The doming of the pycnoclines from January to March 2015 is associated with the typical signature of cyclonic eddies, which uplift colder, less saline and low oxygen waters to shallower depths. Low values in oxygen, temperature and salinity at 183 m depth of 69.1 μmol kg⁻¹, 11.7°C and 34.54 psu in early February 2015 were related to a cyclonic eddy (CE) with a radius of 71 km. Water properties of the CE may be associated with the Eastern South Pacific Intermediate Water which is transported by equatorward surface currents (Chaigneau et al., 2011).

15 | According to the SLA satellite maps the centre of the MWE passed north of the mooring (Fig. 3b). The centre of the westward propagating ACE1 and the ACE2 passed the Stratus mooring only 14 km respectively 17 km south of it, hence the Stratus measurements were close to the centre of these two eddies (Fig. 3b; Supplement Movie M1). However, satellite data show that the mooring captured only the northern segment of the ACE1 (Fig. 34b), therefore the radius of 28 km determined from measurements at the Stratus mooring is small in comparison to a mean radius of 40 km from satellite maps (Fig. 5a). Oxygen anomalies from January to March 2015 are related to by two consecutive cyclonic eddies explaining the long lasting and strong anomaly. The first eddy (CE) passed the mooring 20 | 43 km north of it and then merged with a second cyclonic eddy and passed to the south of the mooring (Fig. 3b).

Therefore, eddy events lead to a strong signal in water mass properties up to 196 (40) μmol kg⁻¹ in oxygen, 0.84 (0.18) psu in salinity and 6.0 (1.9) °C in temperature in 183 m (350 m) depth. The oxygen time series at 107 m depth (Supplement Fig. S24) does not show larger anomalies from the mean values 25 | in March and late August, at the time the Stratus mooring near sea surface temperature signal showed the maximum and minimum of a seasonal signal (Colbo and Weller, 2007; their Fig. 3). Hence, the maxima and minima described above for the Stratus time series at 183 m and 350 m are clearly related to eddies and not related to the seasonal signal in the upper layer of the open ocean.

4.3 Net transport of heat, salt, and oxygen via eddies in the ETSP

Horizontal eddy transport can be explained by two mechanisms: 1) by eddy stirring, which occurs at the periphery of the eddy (e.g. Gaube et al., 2015; Chelton et al., 2011) and 2) by eddy transport of water masses trapped in the eddy interior (Gaube 2013; 2015). We are focusing on the latter mechanism.

The question on how much anomalous water properties an eddy is able to trap and transport into the open ocean depends on the relation between swirl velocity and propagation velocity. The MWE and the ACE2 have a similar propagation velocity of 4.3 and 4.2 cm s^{-1} , respectively. The CE propagates fastest (6 cm s^{-1}) and the ACE1 propagates slowest (3.2 cm s^{-1}) (Fig. 6a), which fits well to the mean westward propagation speed of 3-6 cm s^{-1} and 4.3 cm s^{-1} estimated for eddies in the region off Peru (Chaigneau et al., 2008; 2011).

The observed swirl velocity at Stratus mooring is in accordance with other values measured in the ETSP (Chaigneau et al., 2011; Stramma et al., 2013; 2014). All anticyclones (MWE, ACE1 and ACE2) show high rotation values in the upper 200 m depth with maximum velocities of 11, 13 and 17 cm s^{-1} respectively (Fig. 6a), which is between the values of mean anticyclonic eddies (9 cm s^{-1} , Chaigneau et al., 2011) and a strong relatively young anticyclonic coastal mode water eddy (35 cm s^{-1} , Stramma et al., 2013). Further, the stronger swirl velocity of ACE2 agrees very well with an anticyclonic eddy, which passed the Stratus mooring during September to December 2011 at about the same season as for ACE2 (19 cm s^{-1} , Stramma et al., 2014). Typically for anticyclones, largest velocities occur in the upper 250 m depth, whereas the MWE shows weak rotation in the near surface and a deeper core instead. Below 250 m depth, the swirl velocity of ACE1 is significantly weaker than the swirl velocity of ACE2. Nonetheless, due to the much slower propagation velocity of ACE1 the fluid stays trapped within the eddy ($U/c > 1$) leading to a deep vertical extent of both anticyclones of 504 m (ACE1) and 523 m (ACE2) as described for mean anticyclones in the ETSP (Chaigneau et al., 2011).

Within the eddy boundaries of the two anticyclones (ACE1 and ACE2), positive anomalies of temperature and salinity were observed between 100 and 600 m depth (Fig. 6b, c). Between 150 and 200 m depth maximum anomalies of 2.1°C (ACE1) and 1.5°C (ACE2) in temperature and 0.35 psu

(ACE1) and 0.24 psu (ACE2) in salinity were measured which are significantly higher than described for the mean of a composite of anticyclones (0.8°C, 0.08 psu; Chaigneau et al., 2011). Due to the uplift (depression) of isopycnals above (below) 200 m depth the MWE shows negative (positive) anomalies in temperature and salinity between 50 and 200 m (below 200 m) depth, which are weak in comparison to the other two anticyclones.

Oxygen shows a mainly negative anomaly below 220 and 280 m depth respectively within the anticyclones MWE, AC1 and AC2. Both, the MWE and the ACE2 are having their largest negative anomalies in 250 m depth and a second minimum in 450 m depth, which is just above and below the core of the OMZ indicating the transport of low oxygenated water masses from a region with a larger vertical expansion of the OMZ (Fig. 6d). In the core depth of the OMZ at 350 m depth only weak negative oxygen anomalies are possible as the oxygen content is already low, but still the passage of the stronger anticyclone ACE2 results in oxygen decrease by 14 $\mu\text{mol/kg}$.

Water mass anomalies within the MWE lead to an available heat, salt and oxygen anomaly (AHA, ASA, AOA) of 1.008×10^{18} J, -3.16×10^{10} kg and -3.5×10^{16} μmol . These values are about five times smaller in comparison to a mode-water eddy that was also measured at the Stratus mooring in February/March 2012 (Stramma et al., 2014; Table 1). ASA is even negative in 2015 due to the strong doming in the upper 200 m. As both mode-water eddies have about the same propagation speed and volume, the differences of water mass properties point towards seasonal or interannual variations of the water mass characteristics during their formation. The MWE is generated in February, when upwelling-favourable alongshore winds weaken and SST increases (Gutiérrez et al., 2011), whereas the mode-water eddy observed by Stramma et al. (2014) is generated in April, when the PCUC, which transports oxygen-deficient ESSW (Hormazabal et al., 2013), has its poleward maximum (Shaffer et al., 1999; Penven et al., 2005; Chaigneau et al., 2013). ~~Additionally, the mode-water eddy observed by Stramma et al. (2014) was generated in year 2011, which is considered as a La Niña period, when generally lower oxygen and higher salinity values exist in the upper 100 m depth (Stramma et al., 2016) leading to higher anomalies of salt and oxygen of the MWE observed by Stramma et al. (2014) in comparison to the actual MWE.~~ In addition, the MWE passed to the north of the Stratus mooring during its

deployment, hence the method to define the fully MWE parameter might lead to higher deviations to the real eddy parameters.

The volume of ACE2 ($4.6 \times 10^{12} \text{ m}^3$) is in agreement to the mean anticyclones (Chaigneau et al., 2011) and the open-ocean anticyclone (Stramma et al., 2013) but three times larger than the weaker ACE1, which is partly due to the underestimated radius (Table 1). The AHA, ASA, and AOA of ACE2 are $8.17.6 \times 10^{18} \text{ J}$, $25.23.9 \times 10^{10} \text{ kg}$ and $-3.6 \times 10^{16} \text{ } \mu\text{mol}$ and therefore far greater than the AHA, ASA and AOA of ACE1 ($1.8 \times 10^{18} \text{ J}$, $5.54 \times 10^{10} \text{ kg}$, $-0.02 \times 10^{16} \text{ } \mu\text{mol}$). The weak negative AOA of ACE1 result from the strong and positive oxygen anomaly in the upper 280 m depth in comparison to the background water mass. Strong differences between the results for ACE1 and ACE2 are of course due to the higher volume of the ACE2 but might also reflect the conditions at different seasons during the formation of the eddies leading to varying water mass properties. ACE1 (ACE2) is generated in austral summer (winter) when upwelling-favourable winds weaken (strengthen). Estimations of AHA and ASA within ACE2 match the mean values of Chaigneau et al. (2011). In comparison to the open-ocean eddy (Stramma et al., 2013) the AHA of the ACE2 is twice as high, but the AOA is only half as much (Table 1).

The cyclonic eddy in March 2015 (CE) has maximum velocities of 14 cm s^{-1} in 50 m depth (Fig. 6a). Due to the high translation speed of the CE, the vertical extent of 176 m depth is much shallower than the vertical extent of the anticyclones, which is consistent with the mean cyclones (Chaigneau et al., 2011). The mean temperature shows a pronounced negative anomaly within the eddy boundaries between 70 m and 430 m depth with a maximum anomaly of -2.3°C in 160 m (Fig. 6b) resulting in a negative AHA of $-8.99.4 \times 10^{18} \text{ J}$. The salinity is negative between 40 m and 220 m depth with a maximum anomaly of -0.32 psu in 160 m depth (Fig. 6c). This results in an extremely large negative ASA of $-41.52.8 \times 10^{10} \text{ kg}$. Oxygen shows a strong negative anomaly in the upper 320 m having a maximum anomaly of $-69 \text{ } \mu\text{mol kg}^{-1}$ in 180 m depth (Fig. 6d) due to the uplift of the main thermocline leading to a negative AOA of $-6.5 \times 10^{16} \text{ } \mu\text{mol}$ for the 107 to 176 m depth layer. Although the volume of the CE is in good agreement with the mean values of Chaigneau et al. (2011), the estimated AHA and ASA are much higher (Table 1), which is likely due to strong seasonal variations during the generation of the CE. The CE is formed in austral winter off Peru when coastal alongshore winds intensify leading

to an enhanced upwelling of cold as well as nutrient-rich and oxygen-poor water due to high biological production. Additionally, equatorward surface currents, which transport the relatively cold and fresh Eastern South Pacific Intermediate Water, are strongest during austral winter (Gunther, 1936).

Fluxes of mass, heat, salinity, and oxygen are estimated from the volume, AHA, ASA, and AOA (Table 1) for the period in which the MWE, ACE2, and CE cross the 85°W longitude at the Stratus mooring. The ratio of the heat fluxes of the three different eddies mirror the differences between volume, AHA, ASA, and AOA of the respective eddies because of the similar duration of the passages of the eddies. Transports of mass anomaly for the CE, ACE2 and MWE are again similar and range between 1.1 Sv for the CE to 1.8 Sv for ACE2 (Table 2). Due to the local conditions and different water masses during its formation, the CE shows a strong negative transport of heat ($-3.84.0 \times 10^{12}$ W) and salt ($-17.58.1 \times 10^4$ kg s⁻¹) across the mooring, whereas the ACE2 transports the highest positive amount of heat (3.20×10^{12} W) and salt ($10.09.5 \times 10^4$ kg s⁻¹) per year. Whereas the transport of heat and salt of the MWE is relatively small in comparison to the CE and ACE2, the transport of low oxygen water of -1.8×10^{10} μmol s⁻¹ is in the same range as the CE and ACE2 due to a thick lens of low-oxygen water within the MWE.

Available anomalies of heat, salt, and oxygen of cyclonic and anticyclonic eddies gained from the Stratus mooring and from the literature (Table 1) are now used to estimate the relative eddy-contribution of long-lived eddies to fluxes of mass, heat, salt, and oxygen in an offshore area of the ETSP. The mean heat (in W), salt (in kg s⁻¹) and oxygen transport (μmol s⁻¹) are calculated by multiplying the amount of AHA, ASA, and AOA of the composite eddies with the number of eddies dissipating per year in an offshore area in a given area (corresponding to a flux divergence) mean heat (in W m⁻²), salt (in kg s⁻¹ m⁻²) and oxygen release (μmol s⁻¹ m⁻²) were calculated. We define an area reaching in north-south direction from 10°-24.2°S. The transition area is bordered in the east by a line running parallel to the Peruvian and Chilean coast at a distance of 6° and in the west by the 90°W-longitude of the Stratus mooring (86°W) corresponding to a size of $\sim 1.72 \times 10^6$ km². Based on averaged satellite measurements 58.6228 eddies of all eddies that per year are generated off the coast (Fig. 2) reach in the offshore area per year east of 86°W from which 28.9411.7 are cyclones and 29.7416.3 are anticyclones. 2.146.3 cyclones, and 13.90.7 anticyclones and mode-water eddies propagate into the area west of the 90°W

~~longitude the Stratus mooring~~ meaning that ~~26.895.4~~ of the cyclones and ~~102.429~~ of the anticyclones and mode-water eddies have dissipated and therefore ~~transport~~ released a certain amount of heat, salt, and oxygen into the ~~offshore~~ transition zone. Based on the mean of AHA, ASA, and AOA for the composite eddies the mean ~~transport of~~ heat (salt, oxygen) ~~release~~ per year ~~from the coastal region into the transition zone~~ and m^2 is ~~$-6.42.4 \times 10^{12} \text{ W-m}^2$~~ (~~$-2.4 \text{ 8.9} \times 10^{55} \text{ kg s}^{-1} \text{ m}^{-2}$~~ , ~~$-5.7 \times 10^{10} \text{ 2.0} \times 10^{11} \mu\text{mol kg}^{-1} \text{ s}^{-1} \text{ m}^{-2}$~~) for cyclones and ~~$41.76 \times 10^{13} \text{ 10}^{12} \text{ W-m}^2$~~ (~~$1.55.0 \times 10^{55} \text{ kg s}^{-1} \text{ m}^{-2}$~~ , ~~$-5.92.1 \times 10^{10+11} \mu\text{mol kg}^{-1} \text{ s}^{-1} \text{ m}^{-2}$~~) for anticyclones and mode-water eddies in agreement with estimates for transport anomalies of heat and salt in this region by Chaigneau et al., 2011.

Heat and especially salt fluxes across the Stratus mooring as well as for the ETSP reveal an imbalance between anticyclones and cyclones which are due to a higher ~~stronger~~ transport of anomal colder and fresher water within cyclones from the coast off Peru and Chile into the upper open ocean. Both types of eddies show negative oxygen fluxes in the layer defined as the depth of the coherent structure of the eddy (Table 1) meaning that anticyclones and cyclones transport less oxygenated water into the upper and middepth open ocean and therefore have an impact on the bal- ~~mainten~~ance and size of the OMZ in the ETSP, which is also confirmed by models (~~1-~~Frenger et al., 2018, ~~pers. communication~~).

4.4 Properties of the observed eddies MWE, ACE1/2 and CE during their lifetime

With the help of satellite data the four eddies (MWE, ACE1/2 and CE) could be identified and followed from areas near the Peruvian and off the Chilean coast to the areas of dissipation westwards of the Stratus mooring in the open ocean. The trajectories of the three anticyclonic eddies (MWE, ACE1/2) were extrapolated to the formation regions near the coast between ~~20+~~°S and 23°S (Fig. 1). The CE formed during end of July 2014 off the Peruvian coast during the winter season when upwelling is usually strong and decayed in mid-March 2015 after propagating 1200 km in more than seven months. Both the MWE and the ACE1 started off the Chilean coast during the end of the summer season with usually low upwelling. The MWE can be followed for about two years till March 2015 propagating 2880 km. The ACE1 is tracked for 620 day until it decayed end of November 2014 after propagating 1750 km. The ACE2, which was generated during the upwelling season end of winter in September 2013 and decayed in June 2015, propagated westward for 2350 km in 650 days.

As expected from the polarity depending meridional deflection of all eddies (anticyclones – equatorward, cyclones - poleward) also the individual pathways of the ACE1 and ACE2 show a north-westward direction whereas the CE migrates more south-westwards (Fig. 1a). Note, that the MWE shows no clear meridional deflection on the way to the west.

- 5 Anticyclonic eddies (MWE, ACE1/2) are associated with a positive SLA, wherein ACE2 shows the strongest mean elevation of all anticyclonic eddies of 8 cm (Fig. 4c) and cyclonic eddies are identified by a negative SLA, wherein the CE shows a mean minimum SLA of -2 cm in the centre of the eddy (Fig. 4d). Nevertheless, the CE showed the largest SLA differences at the Stratus mooring (Fig. 3a). In general, mode-water eddies are difficult to detect by satellite altimetry due to a relatively weak velocity
- 10 at the near-surface (Fig. 6a) which is generated by the typical distribution of the isopycnals. Therefore, it is noteworthy that the MWE has a stronger SLA (7 cm) than the relatively weak ACE1 (6 cm). The SLA of the MWE indicates higher variability during its lifespan than the other eddies (Fig. 5e). The maximum SLA of the anticyclonics is obtained during their mid-age, whereas the SLA of the CE decreases after the very beginning.
- 15 Due to the uplift of the seasonal pycnocline in both eddies, MWE as well as CE, cold and nutrient rich water is upwelled into the euphotic zone leading to enhanced biological production, which is reflected by negative SST anomalies of -0.04°C (MWE, Fig. 4e) and -0.08°C (CE, Fig. 4h) and high chlorophyll
- 20 concentration of 0.19 mg m^{-3} (CE, Fig. 4l). Surprisingly, the mean SST (Chl) of the ACE1 and ACE2 are negative (high) and around zero, respectively, as one would expect positive (low) SST (Chl) anomalies due to the depression of the thermoclines. The development of the SST predominantly shows negative anomalies with short periods of positive anomalies for the anticyclonics (Fig. 5f).
- The development of further eddy properties (radius [km], rotating velocity [m s^{-1}], nonlinearity parameter and Rossby Number) during the normalized lifespan are shown in Figure 5 indicating that the observed eddies pass the Stratus mooring during their mid-age (MWE and ACE2) and during the end of
- 25 their lifetime (ACE1 and CE). The anticyclonics ACE1/2 have their maximum radius during the last third of their lifetime, whereas the development of the radius of the MWE is symmetric and the radius of the CE increases during the first third of its lifetime (Fig. 5a). Note the decreasing maximum rotation velocity of the ACE2 during the second half of its lifetime (Fig. 5b).

Water mass anomalies can only be preserved within an eddy if the feature is nonlinear and maintains its coherent structure. During their full lifetime the nonlinear parameter $U/c > 1$ for all eddies confirm the coherent feature (Fig. 5c). Nonetheless, significant variations of the nonlinear parameter U/c determined at the surface might indicate changes of the volume of the eddies, which can be influenced by friction, stratification, fluctuations of the mean flow or the collapse with other eddies. Maps of SLA show a permanent change of the radius due to an irregular and varying shape and the merging with other eddies (supplement: Movie M1), which makes it sometimes difficult to track an eddy during its whole lifetime. Fluctuations are also produced by the coarse resolution of the satellite data ($1/4^\circ \times 1/4^\circ$) and the merging algorithms used by AVISO. However, the MWE and CE show stronger fluctuations of the nonlinear parameter than the ACE1/2, which probably mirrors the higher variability of the swirl velocity of both eddy types (Fig. 5b). Nonetheless, the nonlinear parameter U/c is always higher than 1 and therefore indicates a trapped volume despite strong fluctuations at the surface. The small variations of the eddy properties of the ACE2 (Fig. 5a-e) suggest a relatively stable structure.

All eddies indicate a Rossby number $R_o < 1$ describing the typical scale for mesoscale eddies (Fig. 5d). The mean life cycle of an eddy consists of a growth and decaying phase, both lasting about 20% of its lifetime and a stable phase in between (Liu et al., 2012; Frenger et al., 2015; Samelson et al., 2014). ~~This is which is not~~ consistent with our observations showing constant Rossby numbers of less than 0.1 ~~for ACE1 and ACE2 between 0.2 and 0.8~~ reflecting a stable, geostrophic phase phase over ~~690 %~~ of the lifetime of ~~all the eddy types~~. ~~In contrast to this, MWE and CE show a longer growing phase of 30 % and also a longer decaying phase of 40 %, where the stable phase with a Rossby number of less than 0.1 remains short.~~

At the beginning and at the end of the eddy lifetime the Rossby numbers are increasing and indicating the influence of possible ageostrophic processes. But the increase of the Rossby number for both anticyclones is not as striking as for the MWE and CE. However, a very detailed and exact discussion about the evolution of the Rossby Radius (and also the radius, the average maximal rotation and the nonlinearity) and possible ageostrophic processes is not possible due to the coarse resolution of the underlying SLA data.

4.5 Observations of Argo floats within the eddy-core of ACE2 during its mid-age

ACE2 has been tracked via SLA from March 2014 on, passed the Stratus mooring in November 2014 and decayed in June 2015. During this period, four floats (Fig. 7) were captured within the ACE2 during its westward propagation at different times providing information about different stages of the eddy. The first float (#6900532) was trapped in the period from mid-April to mid-May 2014 at 77.1°W, 19.9°S (supplement: movie M1). The eddy shows the core at about isopycnal 26.4 kg m⁻³ (~180 m depth) with extremely low oxygen of less than 4 μmol kg⁻¹ between 150 and 400 m depth (Fig. 7a) and enhanced salinity of more than 34.8 psu in the upper 240 m depth (Fig. 8a). The warm, salty and oxygen-depleted water mass of the core of the ACE2 coincides with the water mass of the likely formation region of the ACE2 obtained from the MIMOC climatology (Fig. 9a, b) reflecting the characteristics of the oxygen-depleted ESSW. The ESSW is carried poleward by the secondary southern subsurface countercurrent (Montes et al., 2014), feeds the subsurface PCUC (Hormazabal et al., 2013) and is then transported along the Peruvian and Chilean coast where anticyclonic eddies are likely generated (Chaigneau et al., 2011).

15 In September 2014, about four months later and more than 6° further west at 83.4°W, 19.4°S, a second float (#6900530) was trapped in the same eddy ACE2 (supplement: movie M1). The core was still located at isopycnal 26.4 kg m⁻³ (~230 m depth) showing minimum oxygen values of less than 4 μmol kg⁻¹ (Fig. 7b) and maximum salinity of more than 34.8 psu (Fig. 8b) between 200 and 280 m depth. However, the vertical extent of anomaly high salinity and anomaly low oxygen has decreased (Fig. 9a, 20 b) which is likely due to lateral mixing ~~by turbulent diffusion at the boundary of the eddy~~. Mixing mostly takes place above the core of the eddy between the density layers $\sigma_\theta=25.7$ and $\sigma_\theta=26.3$ kg m⁻³ (supplement Fig. S32) with largest changes in oxygen (0.5 μmol kg⁻¹ day⁻¹), temperature (-0.007°C day⁻¹), and salinity (-0.002 psu day⁻¹) at about $\sigma_\theta=26.0$ kg m⁻³. This density level corresponds to a depth between 100 and 170 m, where a high swirl velocityies exists within the ACE2 (Fig. 6a), which isare 25 essential to keep up the coherent structure. and therefore should inhibit lateral mixing.

Shortly after, in October 2014, a third float (#6900529) stayed in the ACE2 at about 82.8°W, 20.4°S. The strongest water property anomaly is now located at isopycnal 26.6 kg m⁻³ (~310 m depth) showing

minimum oxygen of less than $8 \mu\text{mol kg}^{-1}$ (Fig. 7c). The salinity anomaly transported within the eddy has declined furthermore to about 34.65 psu (Fig. 8c). The development of the water mass properties within the eddy points towards mixing along density surfaces between $\sigma_{\theta}=26.0 \text{ kg m}^{-3}$ ($\sim 190 \text{ m}$) and $\sigma_{\theta}=26.5 \text{ kg m}^{-3}$ (280 m). The changes are strongest above the core of the eddy at about $\sigma_{\theta}=26.3 \text{ kg m}^{-3}$ ($\sim 205 \text{ m}$ to 240 m) showing the mixing of oxygen-rich ($2.8 \mu\text{mol kg}^{-1} \text{ day}^{-1}$), colder ($-0.07^{\circ}\text{C day}^{-1}$) as well as fresher water ($-0.017 \text{ psu day}^{-1}$) into the ACE2 (supplement Fig. S32).

Decreased anomalies might also be related to the fact that the float did not capture the eddy centre as it was located in the southeast rim of the eddy (Fig. 4c). Whereas the salinity measurements of the float differ from those of the Stratus measurements obtained during the passage of the ACE2 (Fig. 9b), the oxygen anomaly transported in the core agrees well (Fig. 9a).

After the ACE2 has passed the Stratus mooring in November 2014, the last of the four floats (#6900527) was trapped at the southern rim of the eddy (Fig. 4c) from December 2014 to January 2015 at about 86.4°W , 20.4°S . The eddy core is still clearly visible, although water mass properties within the core of the ACE2 has further changed (oxygen $> 10 \mu\text{mol kg}^{-1}$, Fig. 7d) and the vertical extent of the eddy has declined. Mixing of slightly oxygen-richer water can be observed over the whole water column (supplement Fig. S32a), whereas warmer and more saline water is entrained in the upper part of the eddy ($\sigma_{\theta} > 26.3 \text{ kg m}^{-3} \approx 240 \text{ m}$ depth) and colder and fresher water below. These changes might also be due to the location of the float outside the eddy boundary.

5. Discussion and ~~outlook~~conclusion

The ETSP is known for its high eddy frequency (Chaigneau et al., 2008). There is still limited knowledge in this region about the dynamics of eddies especially on their effective transport and their dissipation. In this study the activity of three different types of eddies (mode water, anticyclonic, and cyclonic eddy) during their westward propagation was investigated from the formation area in the upwelling area off Peru and Chile into the open ocean. The focus was on the development of the eddies, seasonal conditions during their formation, their life-cycles and fluxes and the change of water mass properties transported within the isolated eddies using a broad range of observational data such as SLA,

SST, and Chl from satellites as well as hydrographic data and oxygen from the Stratus mooring and from Argo floats.

Available heat, salt, and oxygen anomalies could be computed for the investigated eddies. Generally, heat and salt anomalies transported within eddies are positive for anticyclones and negative for cyclones

5 and might be compensated as they are of about the same amount (Chaigneau et al., 2011). In this study the negative respectively positive heat anomalies of the CE (-8.9×10^{18} J), ACE2 (8.1×10^{18} J) and MWE (1.0×10^{18} J) almost balance each other. In contrast, the sum of negative respectively positive salt anomalies transported within the CE (-41.5×10^{10} kg), ACE2 (25.2×10^{10} kg), and MWE (-3.1×10^{10} kg) is unbalanced.

10 The AOA is negative for all types of eddies (MWE: -3.5×10^{16} μmol ; ACE2: -3.6×10^{16} μmol ; CE: -6.5×10^{16} μmol), whereby the transport of oxygen-low water from the upwelling region into the open ocean is more surface intensified due to the shallow structure of the cyclonic eddies. Additionally, the mode-water eddy observed by Stramma et al. (2014) was generated in year 2011,

15 which is considered as a La Niña-period, when generally lower oxygen and higher salinity values exist in the upper 100 m depth (Stramma et al., 2016) leading to higher anomalies of salt and oxygen of the MWE observed by Stramma et al. (2014) in comparison to the actual MWE. In contrast, in this study negative anomalies of the water mass properties within the observed cyclonic eddy are too high for heat and salt (-9.4×10^{18} J, -42.8×10^{10} kg) as they could be balanced by positive anomalies of heat and salt transported within the anticyclonic (7.6×10^{18} J, 23.9×10^{10} kg) and the mode water eddy (0.8×10^{18} J, -3.6×10^{10} kg). Therefore, seasonal variability such as fluctuation of alongshore upwelling-favourable

20 winds off Peru and Chile as well as interannual variability such as El Niño/La Niña have an impact on the water mass properties trapped and transported within eddies from the coast of Peru and Chile into the open ocean reflecting the high variability of AHA and ASHA. ~~The AOA is negative for all types of eddies (MWE: -3.5×10^{16} μmol ; ACE2: -3.6×10^{16} μmol ; CE: -6.5×10^{16} μmol), whereby the transport of oxygen low water from the upwelling region into the open ocean is more surface intensified due to the shallow structure of the cyclonic eddies.~~

25 For the Atlantic Ocean the low-oxygen eddy cores has been attributed to high productivity in the surface (Schütte et al., 2016b), enhanced respiration of sinking organic material at subsurface depth (Fiedler et al., 2016) and a strong isolation of the eddy core (Karstensen et al., 2017). An anticyclonic

mode water eddy observed in the Pacific at the Stratus mooring in February/March 2012 indicated high primary production just below the mixed layer (Stramma et al., 2014). According to a global investigation of Argo floats the eastern South Pacific off Peru and Chile seems to have the highest amount of MWEs, which are also deep reaching compared to other regions (Zhang et al., 2017; their Fig. 2). Nevertheless, in the mooring deployment period 2014/2015 only one MWE crossed to the north of the mooring and the results have to be regarded with caution. Even though the AHA and ASA of the MWE are small in comparison to both the anticyclonic eddies and the cyclonic eddy the transport of low oxygen water is in the same range as the other eddies due to the typical thick lens of low oxygen water within mode water eddies.

From a combination of satellite data and Argo profiles long-lived eddies (lifetime longer than 30 days) in the Peru-Chile upwelling system 55% of the sampled anticyclonic eddies had subsurface-intensified maximum temperature and salinity anomalies below the seasonal pycnocline, whereas 88% of the cyclonic eddies are surface intensified (Pegliasco et al., 2015). The 55% subsurface-intensified anticyclonic eddies represent mode water eddies while the 45% surface intensified anticyclones are 'regular' anticyclonic eddies. Observations and model results for the California Current system showed a good agreement between observed and modelled eddy structures (Kurian et al., 2011).

Satellite-based estimate of the surface-layer eddy heat flux divergence, while large in coastal regions, is small when averaged over the southeast Pacific Ocean, suggesting that eddies do not substantially contribute to cooling the surface layer in this region (Holte et al., 2013). In this study, the release of fluxes of heat (cyclones: $-6.42.4 \times 10^{123} \text{ W-m}^{-2}$; anticyclones: $41.76 \times 10^{123} \text{ W-m}^{-2}$) and salt ($-28.49 \times 10^5 \text{ kg s}^{-1}\text{-m}^{-2}$; $15.50 \times 10^5 \text{ kg s}^{-1}\text{-m}^{-2}$) estimated from long-lived eddies dissipating in the ETSP confirms the discrepancy between different types of eddies leading to a net transport of colder and fresher water from the formation regions off Peru and Chile into the open ocean. In contrast, all three types of eddies show a negative oxygen flux of $-5.72.0 \times 10^{11} \mu\text{mol kg}^{-1} \text{ s}^{-1}\text{-m}^{-2}$ for cyclones and $-5.92.1 \times 10^{10+} \mu\text{mol kg}^{-1} \text{ s}^{-1}\text{-m}^{-2}$ for anticyclones and mode-water eddies pointing towards an active role of eddies in balancmaintaining and shaping the OMZ confirmed by model studies (Frenger et al., 2018).

~~For the Atlantic Ocean the low oxygen eddy cores has been attributed to high productivity in the surface (Schütte et al., 2016b), enhanced respiration of sinking organic material at subsurface depth~~

~~(Fiedler et al., 2016) and a strong isolation of the eddy core (Karstensen et al., 2017). An anticyclonic mode water eddy observed at the Stratus mooring in February/March 2012 indicated high primary production just below the mixed layer (Stramma et al., 2014). According to a global investigation the eastern South Pacific off Peru and Chile seems to have the highest amount of MWEs, which are also deep reaching compared to other regions (Zhang et al., 2017). Nevertheless, in the mooring deployment period 2014/2015 only one MWE crossed to the north of the mooring and the results have to be regarded with caution. Even though the AHA and ASA of the MWE are small in comparison to both the anticyclonic eddies and the cyclonic eddy the transport of low oxygen water is in the same range as the other eddies due to the typical thick lens of low oxygen water within mode water eddies.~~

~~From a combination of satellite data and Argo profiles long lived eddies (lifetime longer than 30 days) in the Peru Chile upwelling system 55% of the sampled anticyclonic eddies had subsurface intensified maximum temperature and salinity anomalies below the seasonal pycnocline, whereas 88% of the cyclonic eddies are surface intensified (Pegliasco et al., 2015). The 55% subsurface intensified anticyclonic eddies represent mode water eddies while the 45% surface intensified anticyclones are 'regular' anticyclonic eddies.~~

Thus, the variability of eddy generation on different timescales might be an important factor for the variability of the OMZ. Eddy generation off the coast between 8° and 24°S peak in austral summer/spring, which agrees with the strengthening of the PCUC and the possible mechanism of the generation of eddies due to instabilities. However, this is not in agreement with model simulations showing an eddy-induced offshore transport off Peru that peaks in austral spring (winter) at the southern (northern) boundary of the OMZ (Vergara et al., 2016). As the PCUC also shows strong fluctuations lasting a few days up to a few weeks (Huyer et al., 1991) it might be difficult to determine a seasonal dimension between the PCUC and the rate of eddy formation. El Niño (La Niña) events deepen (shoal) the thermocline and intensify (weaken) the PCUC (e.g. Montes et al., 2011; Combes et al., 2015).

Intraseasonal and interannual variability is another factor modulating the strength of the PCUC off Chile and therefore the formation rate of anticyclonic eddies (Shaffer et al., 1999). El Niño (La Niña) events deepen (shoal) the thermocline and intensify (weaken) the PCUC (e.g. Montes et al., 2011; Combes et al., 2015). Although the strength of the PCUC increases during El Niño events the transport

~~of mode water eddies decreases, which is due to a weakened baroclinic instability related to the deepening of the thermocline (Combes et al., 2015), and therefore might play a role for the amount of eddy generation on interannual time scales.~~

In this study ~~T~~the development of isolated water mass properties was investigated on the basis of four floats trapped within an anticyclonic eddy indicating lateral mixing of all water properties (oxygen, temperature, and salinity). The water mass within the core of the ACE2 shows the typical characteristics of the salty and oxygen-depleted ESSW. The mixing is strongest between the seasonal thermocline and the core of the eddy at about $\sigma_\theta=26.3 \text{ kg m}^{-3}$ (~205 to 240 m depth) and takes place during the first half of the lifetime of the eddy. ~~During this period the variability of the amplitude of the ACE2 is negligibly small, which might be due to the coarse resolution of the satellite data. The radius increases up to 50 km with a nearly consistent rotation velocity at the same time (Fig. 5a, b). During the second half of the lifetime the radius of the ACE2 slightly increases but the maximal rotation velocity and therefore the nonlinear parameter decreases (Fig. 5c) until the decay of the ACE2.~~ Stronger mixing during the first half of the eddy lifetime ~~could~~~~might~~ be related to a stronger wind curls near the coast in comparison to the open ocean (Albert et al. 2010, their Fig. 1b). However, as the changes might also be due to the fact that the floats might be located at different positions within the eddy or near the outer edge these results show be regarded with caution. ~~Often~~~~As~~ floats are carried with the eddies near the outer edge of the eddy, ~~the floats~~ avoid the core of eddies and hence underestimate the strength of eddies. Especially floats with a parking depth at 400 m stay near the edge of eddies and shift between cyclonic and anticyclonic features. If located in the ETSP at southern boundaries of anticyclones or northern boundaries of cyclones the floats move eastward while floats at northern boundaries of anticyclones or southern boundaries of cyclones move westward (see Supplement Movie M1).

~~Eddies play an important role in the weak circulation region of the ETSP. Regarding the mean flow in the ETSP at the position of the Stratus mooring ~~T~~~~the zonal annual mean velocity components for the periods 2011/2012 and 2014/2015 as well as for the period October 2000 to December 2004 are quite different (between -4.6 and $+2.5 \text{ cm s}^{-1}$), while the meridional components are generally weaker (between -2.1 and 2.3 cm s^{-1}) and more similar (Supplement Fig. S43). In 2011/2012 the flow component is south-eastward between 100 and 450 m depth and in 2014/2015 south-westward in the

upper 50 m depth, north-westward at 50 to 250 m depth and mainly southward at 250 to 600 m depth. The north-westward flow at 50 to 250 m depth in 2014/2015 would fit to a mean South Pacific subtropical gyre circulation (e.g. [Ayón et al. 2008](#)) however the period 2011/2012 showed mean eastward flow at all depths between 50 and 600 m and also the 2000/2004 period (Colbo and Weller, 2007) eastward flow component at 45 to 235 m showed the opposite flow component. Hence, the different measurement periods at the Stratus mooring do not support the view of a mean north-westward flow of the South Pacific subtropical gyre at the mooring location and other processes dominate the flow field.

Observations from the mooring deployment period March 2014 to April 2015 and profiling floats deployed near eddies in March 2014 (Fig. 1) show the importance of eddies in the weak flow region of the ETSP as mesoscale eddies play a crucial role in ~~are a main contributor for~~ water mass distribution. High anomalies of heat, salt, and oxygen transported within eddies into the ETSP suggests the influence of seasonal and/or interannual variability in the formation regions off Peru and Chile.

It is necessary to further gain knowledge about the seasonal, ~~and~~ interannual and other variability having an impact on the generation of eddies and on the water mass properties that are trapped within eddies to understand their impact on the maintenance and shape of the OMZ. The most promising methods to tackle the open questions would be long-term measurements near the coast, glider measurements in the center of the eddies and accompanying model investigations.

20

A Supplement is related to this article.

Author contributions. R. Czeschel, F. Schütte, and L. Stramma conceived the study. R. Czeschel handled the float data. F. Schütte collected and interpreted the satellite data set. R.A. Weller is responsible for the Stratus ORS mooring measurements and the data processing. All authors discussed, wrote and modified the manuscript.

Acknowledgements. Financial support was received through Woods Hole Oceanographic Institution (R.A.W.) and the GEOMAR (R.C., L.S. and F.S.). The Stratus Ocean Reference Station is supported by the National Oceanic and Atmospheric Administration (NOAA) Climate Observation Program (NA09AR4320129, OAA CPO FundRef number (100007298)). This work is a contribution of the
5 Deutsche Forschungsgemeinschaft (DFG) supported project “Sonderforschungsbereich 754: Climate-Biogeochemistry Interactions in the Tropical Ocean” (<http://www.sfb754.de>). The Copernicus Marine and Environment Monitoring Service (CMEMS) (<http://marine.copernicus.eu>) has taken over the whole processing and distribution of the products formerly distributed by AVISO with no changes in the scientific content.

10|

15

20

25

References

- [Albert, A., Echevin, V., Lévy, M., and Aumont, O.: Impact of nearshore wind stress curl on coastal circulation and primary productivity in the Peru upwelling system, *J. Geophys. Res.*, 115, C12033, doi:10.1029/2010JC006569, 2010.](#)
- 5 Altabet, M. A., Ryabenko, E., Stramma, L., Wallace, D. W. R., Frank, M., Grasse, P., and Lavik, G.: An eddy-stimulated hotspot for fixed nitrogen-loss from the Peru oxygen minimum zone, *Biogeosciences*, 9, 4897–4908, doi:10.5194/bg-9-4897-2012, 2012.
- Ayón, P., Criales-Hernandez, M. I., Schwamborn, P., and Hirche, H.-J.: Zooplankton research off Peru: A review, *Prog. Oceanogr.*, 79, 238-255, doi:10.1016/j.pocean.2008.10.020, 2008.
- 10 Brandt, P., Bange, H. W., Banyte, D., Dengler, M., Didwischus, S.-H., Fischer, T., Greatbatch, R. J., Hahn, J., Kanzow, T., Karstensen, J., Körtzinger, A., Krahnemann, G., Schmidtke, S., Stramma, L., Tanhua, T., and Visbeck, M.: On the role of circulation and mixing in the ventilation of oxygen minimum zones with a focus on the eastern tropical North Atlantic, *Biogeosciences*, 12, 489-512, doi:10.5194/bg-12-489-2015, 2015.
- 15 Callbeck, C.M., Lavik, G., Stramma, L., Kuypers, M.M.M., and Bristow, L.A.: Enhanced nitrogen loss by eddy-induced vertical transport in the offshore Peruvian oxygen minimum zone, *PLoS ONE*, 12(1):e0170059 doi:10.1371/journal.pone.0170059, 2017.
- Capet, X., McWilliams, J. C., Molemaker, M. J., and Shchepetkin, A. F.: Mesoscale to submesoscale transition in the California current system. Part II: Frontal processes, *Journal of Physical*
- 20 *Oceanography*, 38(1), 44–64, 2008.
- Chaigneau, A., Gizolme, A., and Grados, C.: Mesoscale eddies off Peru in altimeter records: Identification algorithms and eddy spatiotemporal patterns, *Prog. Oceanogr.*, 79, 106-119, 2008.
- Chaigneau, A., Le Texier, M., Eldin, G., Grados, C., and Pizarro, O.: Vertical structure of mesoscale eddies in the eastern South Pacific Ocean: A composite analysis from altimetry and Argo profiling
- 25 floats, *J. Geophys. Res.*, 116, C11025, doi:10.1029/JC007134, 2011.
- Chaigneau, A., Dominguez, N., Eldin, G., Vasquez, I., Flores, R., Grados, C., and Echevin, V.: Near-coastal circulation in the northern Humboldt Current system from shipboard ADCP data, *J. Geophys. Res.*, 118, 5251-5266, doi:10.1002/jgrc.20328, 2013.

- Chelton, D. B., Schlax, M. G., Samelson, R.M., and de Szoeke, R. A.: Global observations of large oceanic eddies, *Geophys. Res. Lett.*, 34, L15606, doi:10.1029/2007GL03812, 2007.
- Chelton, D. B., Gaube, P., Schlax, M. G., Early, J. J., Samelson, R. M.: The influence of nonlinear mesoscale eddies on near-surface oceanic chlorophyll, *Science* 334, 328, doi: 10.1126/science.1208897, 2011.
- Colbo, K., and Weller, R.: The variability and heat budget of the upper ocean under the Chile-Peru stratus, *J. Mar. Res.*, 65, 607-637, 2007.
- Colbo, K., and Weller, R.: Accuracy of the IMET sensor package in the subtropics, *J. Atmos. Oceanic Technol.*, 26, 1867-1890, doi:10.1175/2009JTECHO667.1, 2009.
- 10 Combes, V., Hormazabal, S., and Di Lorenzo, E.: Interannual variability of the subsurface eddy field in the Southeast Pacific, *J. Geophys. Res. Oceans*, 120, 4907–4924, doi:10.1002/2014JC010265, 2015.
- Czeschel, R., Stramma, L., Schwarzkopf, F. U., Giese, B. J., Funk, A., and Karstensen, J.: Middepth circulation of the eastern tropical South Pacific and its link to the oxygen minimum zone, *J. Geophys. Res.*, 116, C01015, doi:10.1029/2010JC006565, 2011.
- 15 Czeschel, R., Stramma, L., Weller, R. A., and Fischer, T.: Circulation, eddies, oxygen and nutrient changes in the eastern tropical South Pacific, *Ocean Sci.*, 11, 455-470, doi:10.5194/os-11-455, 2015.
- D’Asaro, E. A.: Generation of submesoscale vortices - a new mechanism, *Journal of Geophysical Research-Oceans*, 93(C6), 6685–6693, 1988.
- 20 Dalsgaard, T., Thamdrup, B., Fariás, L., and Revsbech, N. P.: Anammox and denitrification in the oxygen minimum zone of the eastern South Pacific, *Limnology and Oceanography*, 57(5), 1331-1346, 2012.
- Fiedler, B., Grundle, D. S., Schütte, F., Karstensen, J., Löscher, C. R., Hauss, H., Wagner, H., Loginova, A., Kiko, R., Silva, P., Tanhua, T., and Körtzinger, A.: Oxygen utilization and downward carbon flux in an oxygen-depleted eddy in the eastern tropical North Atlantic, *Biogeosciences*, 13, 5633–5647, doi:10.5194/bg-13-5633-2016, 2016.
- 25

- Frenger, I., Bianchi, D., Stührenberg, C., Oeschies, A., Dunne, J., Deutsch, C., Galbraith, E., and Schütte, F.: Biogeochemical role of subsurface coherent eddies in the ocean: Tracer cannonballs, hypoxic storms, and microbial stewpots? *Global Biogeochemical Cycles*, 32, 226-249, doi:10.1002/2017GB005743, 2018.
- 5 Frenger, I., Münnich, M., Gruber, N., and Knutti, R.: Phenomenology of Southern Ocean eddies, *Journal of Geophysical Research – Oceans*, 120, 7413-7449, doi:10.1002/2015JC011047, 2015.
- Gaube, P., Chelton, D. B., Strutton, P. G., and Behrenfeld, M. J.: Satellite observations of chlorophyll, phytoplankton biomass, and Ekman pumping in nonlinear mesoscale eddies, *J. Geophys. Res. Oceans*, 118, 6349 Oceans Oceansansies, es, ddie, 2013.
- 10 Gaube, P., Chelton, D. B., Samelson, R. M., Schlax, M. G. and Ond . ., L. W.: Satellite observations of mesoscale eddy-induced Ekman pumping, *J. Phys. Oceanogr.*, 45(1), 104.Oce, 2015.
- Gunther, E.R.: A report on oceanographic investigations in the Peru Coastal Current. *Discovery Reports* 13, 107–276, 1936.
- Gutiérrez, D., et al.: Coastal cooling and increased productivity in the main upwelling zone off Peru since the mid-twentieth century, *Geophys. Res. Lett.*, 38, L07603, doi: 10.1029/2010GL046324, 2011.
- 15 Hauss, H., Christiansen, S., Schütte, F., Kiko, R., Edvam Lima, M., Rodrigues, E., Karstensen, J., Löscher, C. R., Körtzinger, A., and Fiedler, B.: Dead zone or oasis in the open ocean? Zooplankton distribution and migration in low-oxygen modewater eddies, *Biogeosciences*, 13, 1977–1989, doi:10.5194/bg-13-1977-2016, 2016.
- 20 Holte, J., Straneo, F., Moffat, C., Weller, R., and Farrar, J. T.: Structure and surface properties of eddies in the southeast Pacific Ocean, *J. Geophys. Res. Oceans*, 118, 1-15, doi:10.1002/jgrc.20175, 2013.
- Hormazabal, S., Combes, V., Morales, C. E., Correa-Ramirez, M., Di Lorenzo, E., and Nunez, S.: Intrathermocline eddies in the coastal transition zone off central Chile (31-41°S), *J. Geophys. Res.*, 118, 1-11. Doi:10.1002/jgrc.20337, 2013.
- 25 Huyer, A., Knoll, M., Paluszkiwicz, T., and Smith, R. L.: The Peru Undercurrent: a study in variability, *Deep Sea Res., Part A*, 38, suppl. 1, 247-279, 1991.

- Karstensen, J., Stramma, L., and Visbeck, M.: Oxygen minimum zones in the eastern tropical Atlantic and Pacific oceans, *Prog. Oceanogr.*, 77, 331-350, 2008.
- Karstensen, J., Fiedler, B., Schütte, F., Brandt, P., Körtzinger, A., Fischer, G., Zantopp, R., Hahn, J., Visbeck, M., and Wallace, D.: Open ocean dead zones in the tropical North Atlantic Ocean, *Biogeoscience* 12, 2597-2605, doi: 10.5194/bg-12-2597-2015, 2015.
- 5 Karstensen, J., Schütte, F., Pietri, A., Krahnemann, G., Fiedler, B., Grundle, D., Hauss, H., Körtzinger, A., Löscher, C.R., Testor, P., Vieira, N., and Visbeck, M.: Upwelling and isolation in oxygen-depleted anticyclonic modewater eddies and implications for nitrate cycling, *Biogeosciences*, 14, 2167-2181, doi: 10.5194/bg-14-2167-2017, 2017.
- 10 Kessler, W. S.: The circulation of the eastern tropical Pacific: a review, *Prog. Oceanogr.*, 89, 181-217, doi:10.1016/j.pocean.2006.03.009, 2006.
- Klein, P., and Lapeyre, G: The oceanic vertical pump induced by mesoscale and submesoscale turbulence, *Annu. Rev. Mar. Sci*, 1, 351-373, 2009.
- 15 [Kurian, J., Colas, F., Capet, X., McWilliams, J. C., and Chelton, D. B: Eddy properties in the California Current system, *J. Geophys. Res. Oceans*, <https://doi.org/10.1029/2010JC006895>, 2011.](https://doi.org/10.1029/2010JC006895)
- Liu, Y., Dong, C., Guan, Y., Chen, D., McWilliams, J., and Nencioli, F.: Eddy analysis in the subtropical zonal band of the North Pacific Ocean, *Deep-Sea Res. I.*, 68, 54–67, 2012.
- 20 [Llanillo, P. J., Pelegrí, J. L., Talley, L. D., Peña-Izquierdo, J., and Cordero, R.R.: Oxygen pathways and budgets for the eastern South Pacific oxygen minimum zone, *J. Geophys. Res.*, 123, \[doi:10.1002/2017JC013509\]\(https://doi.org/10.1002/2017JC013509\), 2018.](https://doi.org/10.1002/2017JC013509)
- Löscher, C. R., Fischer, M. A., Neulinger, S. C., Fiedler, B., Philippi, M., Schütte, F., Singh, A., Hauss, H., Karstensen, J., Körtzinger, A., Künzel, S., and Schmitz, R. A.: Hidden biosphere in an oxygen-deficient Atlantic open-ocean eddy: future implications of ocean deoxygenation on primary production in the eastern tropical North Atlantic, *Biogeosciences*, 12, 7467-7482, doi: 10.5194/bg-12-7467-2015, 2015.
- 25 Lukas, R., Santiago-Mandujano, F.: Extreme water mass anomaly observed in the Hawaii ocean time-series, *Geophys. Res. Lett.* 28, 15, doi:10.1029/2001GL013099, 2001.

- McGillicuddy, D. J. Jr.: Formation of intraseasonal lenses by eddy-wind interaction, *J. Phys. Oceanogr.*, 45, 606-612, doi:10.1175/JPO-D_14-0221.1, 2015.
- McGillicuddy, D. J. Jr., Anderson, L. A., Bates, N. R., Bibby, T., Buesseler, K. O., Carlson, C. A., Davis, C. S., Ewart, C., Falkowski, P. G., Goldthwait, S. A., Hansell, D. A., Jenkins, W. J., Johnson, R., Kosnyrev, V. K., Ledwell, J. R., Li, Q. P., Siegel, D. A., and Steinberg, D. K.: Eddy/wind interactions stimulate extraordinary mid-ocean plankton blooms, *Science*, 316, 1021-1026, 2007.
- McWilliams, J. C.: Submesoscale, coherent vortices in the ocean, *Reviews of Geophysics*, 23(2), 165–182, 1985.
- 10 McWilliams, J. C., Colas, F., and Molemaker, M. J.: Cold filamentary intensification and oceanic surface convergence lines, *Geophys. Res. Lett.*, doi: 10.1029/2009GL039402, 2009.
- Molemaker, M. J., McWilliams, J. C., and Dewar, W. K.: Submesoscale instability and generation of mesoscale anticyclones near a separation of the California undercurrent, *J. Phys. Oceanogr.*, 45, 613–629, doi:10.1175/JPO-D-13-0225.1, 2015.
- 15 Montes, I., Schneider, W., Colas, F., Blanke, B., and Echevin, V.: Subsurface connections in the eastern tropical Pacific during La Niña 1999–2001 and El Niño 2002–2003, *J. Geophys. Res.*, 116, C12022, doi:10.1029/2011JC007624, 2011.
- Montes, I., Dewitte, B., Gutknecht, E., Paulmier, A., Dadou, I., Oschlies, A., and Garçon, V.: High-resolution modeling of the Eastern Tropical Pacific oxygen minimum zone: Sensitivity to the tropical oceanic circulation, *J. Geophys. Res.-Oceans*, 119, 5515–5532, doi:10.1002/2014JC009858, 2014.
- 20 Nencioli, F., Dong, C., Dickey, T., Washburn, L., and McWilliams, J. C.: A vector geometry based eddy detection algorithm and its application to a high-resolution numerical model product and high-frequency radar surface velocities in the southern California bight, *Journal of Atmospheric and Oceanic Technology*, 27(3), 564–579, 2010.
- 25 Paulmier, A., and Ruiz-Pino, D.: Oxygen minimum zones (OMZs) in the modern ocean, *Prog. Oceanogr.*, 80, 113-128, doi:10.1016/j.pocean.2008.08.001, 2009.

- Pegliasco, C., Chaigneau, A., and Morrow, R.: Main eddy vertical structures observed in the four major Eastern Boundary Upwelling Systems, *J. Geophys. Oceans*, 120, 6008-6033, doi:10.1002/2015JC010950, 2015.
- Penven, P., Echevin, V., Paspera, J., Colas, F., and Tam, J.: Average circulation, seasonal cycle, and mesoscale dynamics of the Peru Current system: A modeling approach, *J. Geophys. Res.*, 110, C10021, doi: 10.1029/2005JC002945, 2005.
- Samelson, R.M., Schlax, M.G., and Chelton, D.B.: Randomness, Symmetry, and Scaling of Mesoscale Eddy Life Cycles. *J. Phys. Oceanogr.*, 44, 1012–1029, <https://doi.org/10.1175/JPO-D-13-0161.1>, 2014.
- 10 Shaffer, G., Hormazabal, S., Pizarro, O., and Salinas, S.: Seasonal and interannual variability of winds, current and temperature near the coast of Chile, *J. Geophys. Res.*, 104, 29,951 – 29,961, 1999.
- Schütte, F., Brandt, P. and Karstensen, J.: Occurrence and characteristics of mesoscale eddies in the tropical northeast Atlantic Ocean, *Ocean Sci.*, 12, 663–685, doi:10.5194/os-12-663-2016, 2016a.
- Schütte, F., Karstensen, J., Krahnmann, G., Hauss, H., Fiedler, B., Brandt, P., Visbeck, M., and
15 Körtzinger, A.: Characterization of “dead-zone” eddies in the tropical Northeast Atlantic Ocean, *Biogeosciences*, 13, 5865-5881, doi:10.5194/bg-13-5865-2016, 2016b.
- Stramma, L., Johnson, G.C., Firing, E., and Schmidtko, S.: Eastern Pacific oxygen minimum zones: Supply paths and multidecadal changes, *J. Geophys. Res.*, 115, C09011, doi:10.1029/2009JC005976, 2010.
- 20 Stramma, L., Bange, H.W., Czeschel, R., Lorenzo, A., and Frank, M.: On the role of mesoscale eddies for the biological productivity and biogeochemistry in the eastern tropical Pacific Ocean off Peru, *Biogeosciences*, 10, doi:10.5194/bg-7293-2013, 2013.
- Stramma, L., Weller, R. A., Czeschel, R., and Bigorre, S.: Eddies and an extreme water mass anomaly observed in the eastern south Pacific at the Stratus mooring, *J. Geophys. Res. Oceans*, 119, 1068-
25 1083, doi:10.1002/2013JC009470, 2014.
- Stramma, L., Fischer, T., Grundle, D. S., Krahnmann, G., Bange, H. W., Marandino, C. A.: Observed El Niño conditions in the eastern tropical Pacific in October 2015, *Ocean Sci.*, doi:10.5194/os-12-861-2016, 2016.

- Thomsen, S., Kanzow, T., Krahnmann, G., Greatbatch, R. J., Dengler, M., and Lavik, G.: The formation of a subsurface anticyclonic eddy in the Peru-Chile Undercurrent and its impact on the near-coastal salinity, oxygen, and nutrient distributions, *J. Geophys. Res. Oceans*, 121, 476–501, doi:10.1002/2015JC010878, 2016.
- 5 Tsuchiya, M., and Talley, L. D.: A Pacific hydrographic section at 88°W: Water-property distribution, *J. Geophys. Res.*, 103, 12,899-12.918, 1998.
- Vergara, O., Dewitte, B., Montes, I., Garcon, V., Ramos, M., Paulmier, A., and Pizarro, O.: Seasonal variability of the oxygen minimum zone off Peru in a high-resolution regional coupled model, *Biogeosciences*, 13, doi:10.5194/bg-13-4389-2016, 2016.
- 10 Zhang, Z., Zhang, Y., and Wang, W.: Three-compartment structure of subsurface-intensified mesoscale eddies in the ocean, *J. Geophys. Res. Oceans*, 122, doi:10.1002/2016JC012376, 2017.

15

20

25

Table 1. Properties and available heat, salt and oxygen anomalies (AHA, ASA, AOA) with error bars of one mode-water eddy (MWE), two anticyclones (AE1 and AE2) and one cyclonic eddy (CE) measured at the Stratus mooring in 2014/2015 within the vertical layer of the coherent structure in comparison to measurements in February/March 2012 (Stramma et al., 2014 (STR14), mode-water eddy) at the Stratus mooring, at 83°50'W, 16°45'S in November 2012 (Stramma et al., 2013 (STR13), anticyclone) and mean values for 10°S-20°S relative to a mean climatology (Chaigneau et al., 2011 (CH11), anticyclones and cyclones). Based on instruments available the vertical extent for heat and salt computations (TS) and oxygen (OX) differs. It is important to note that the radius of the ACE1 might be underestimated.

		Mode-water eddies		Anticyclones				Cyclones	
		MWE	STR14	ACE1	ACE2	STR13	CH11	CE	CH11
Lifetime (days)		768	315	624	650			229	
Propagation (cm s ⁻¹)		4.3	4	3.2	4.2	4.8	4.3	6	4.3
Radius (km)		43±2	38	(28±2)	53±4	49	58	71±1	62
Vertical extent (m)	TS	43-620	45-600	13-504	13-523	0-600	0-450	13-176	0-200
	OX	107-600		107-504	107-523			107-176	
Volume (x10 ¹² m ³)	TS	3.4±0.4	2.5	(1.3±0.2)	4.6±0.4	4.7	4.9	2.7±0.1	2.6
	OX	2.9±0.4		(1±0.1)	3.8±0.4			1.1±0	
AHA (x10 ¹⁸ J)		1.0±0.20 8	5.8	(1.8±0.8)	8.1±2.17 6	3.7	6.5	- 8.9±0.79 4	-5.9
ASA (x10 ¹⁰ kg)		- 3.1±0.46	19.3	(5.5±1.0 4)	253.2±3. 79	18.7	17.4	- 412.5±0.1 8	-14.7
AOA (x10 ¹⁶ μmol)		-3.5±1.2	-10.5	(-0.02 ±0.32)	-3.6 ±1.9	-7.6	-/-	-6.5±0.5	-/-

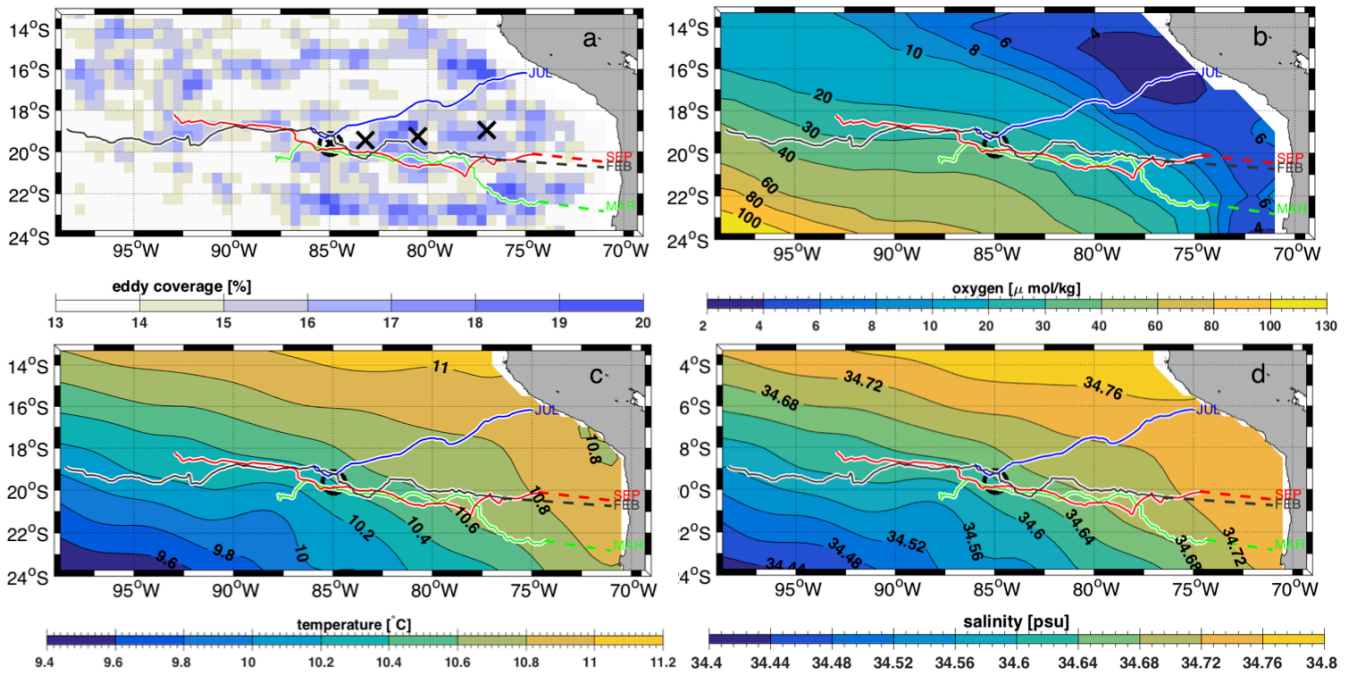
Table 2. Mass, heat, salt and oxygen transport with error bars of MWE, ACE2, CE across 85°W of the Stratus mooring 2014/2015.

	MWE	ACE2	CE
Mass transport (Sv)	1.7±0.1	1.8±0	1.1±0
Heat transport (x 10 ¹² Watt)	0.5±0.14	3.2±0.60	-34.8±0.30
Salt transport (x 10 ⁴ kg s ⁻¹)	- 1.6±0.38	10.0±0.89 5	- 17.5±0.38 ±
Oxygen transport (x 10 ¹⁰ μmol s ⁻¹)	-1.8±0.4	-1.4±0.7	-2.7±0.1

5

10

15



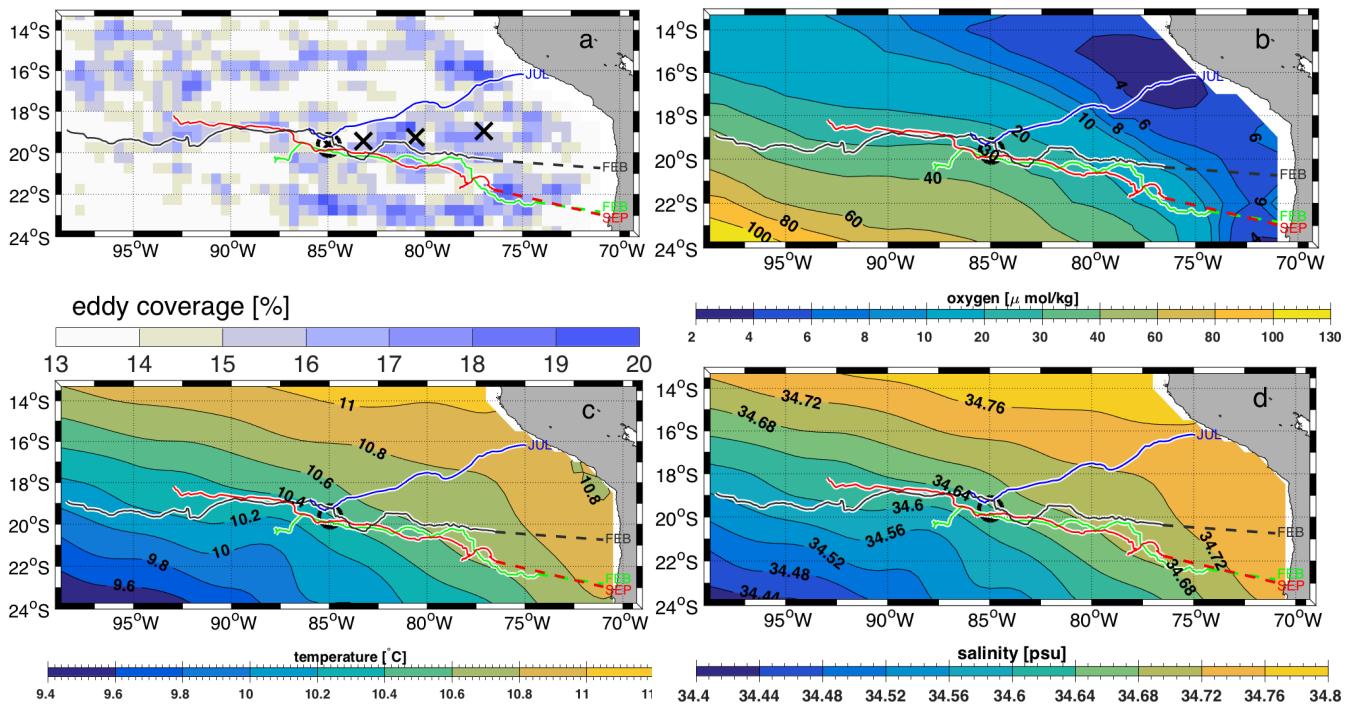


Figure 1. a) Percentage of eddy coverage determined from Aviso Sea Level Anomaly (SLA) during the period from 1993 to 2015. The mean distribution of b) oxygen, c) temperature and d) salinity on density surface 26.6 kg m^{-3} derived from MIMOC climatology. The black Xs show the location of the float deployments, the westernmost X with the circle is also the location of the Stratus mooring. The green, red and black lines represent trajectories of the anticyclones (ACE1, ACE2) and the anticyclonic mode water eddy (MWE), whereas the blue line is associated to the trajectory of a cyclone (CE). Dashed lines show the extrapolated tracks to the formation regions and the estimated time of formation. All of these eddies have crossed close to the mooring position and are examined in more detail.

10

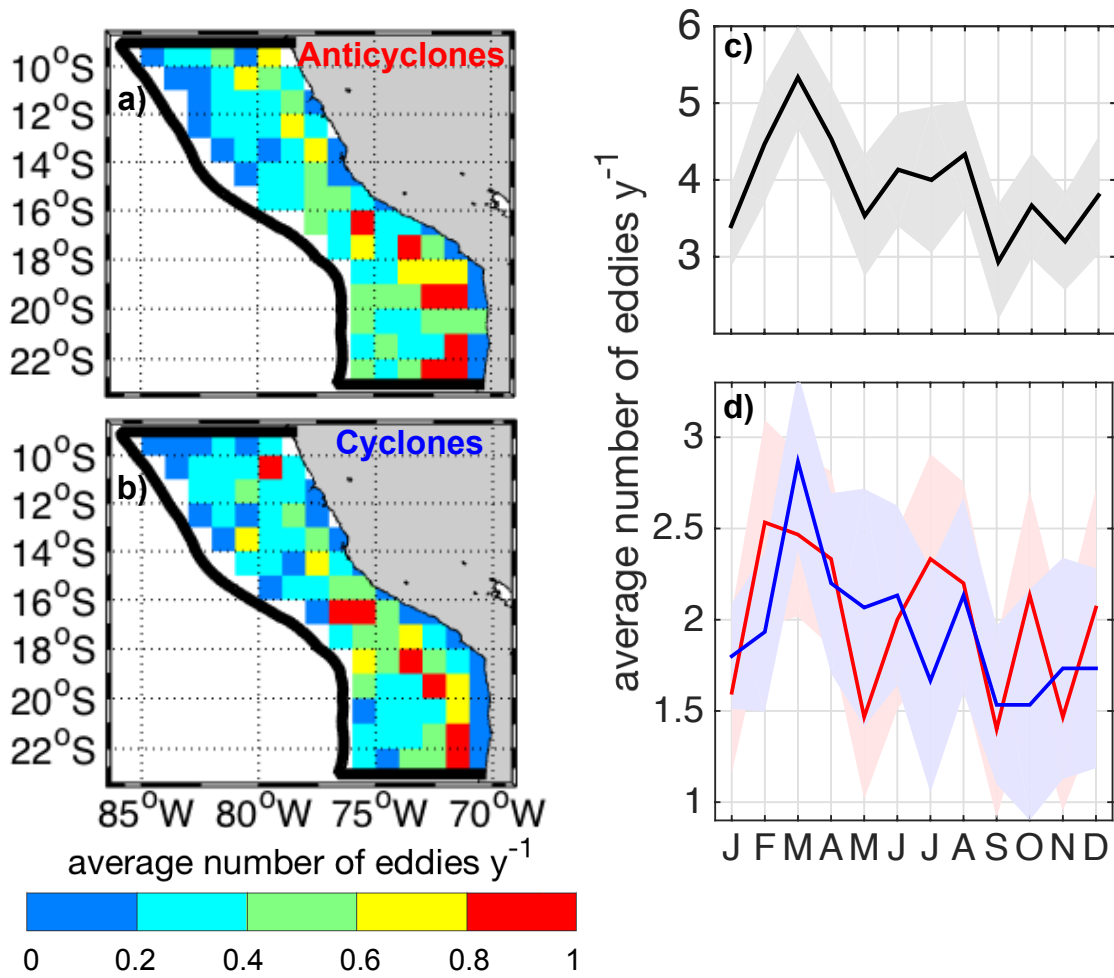
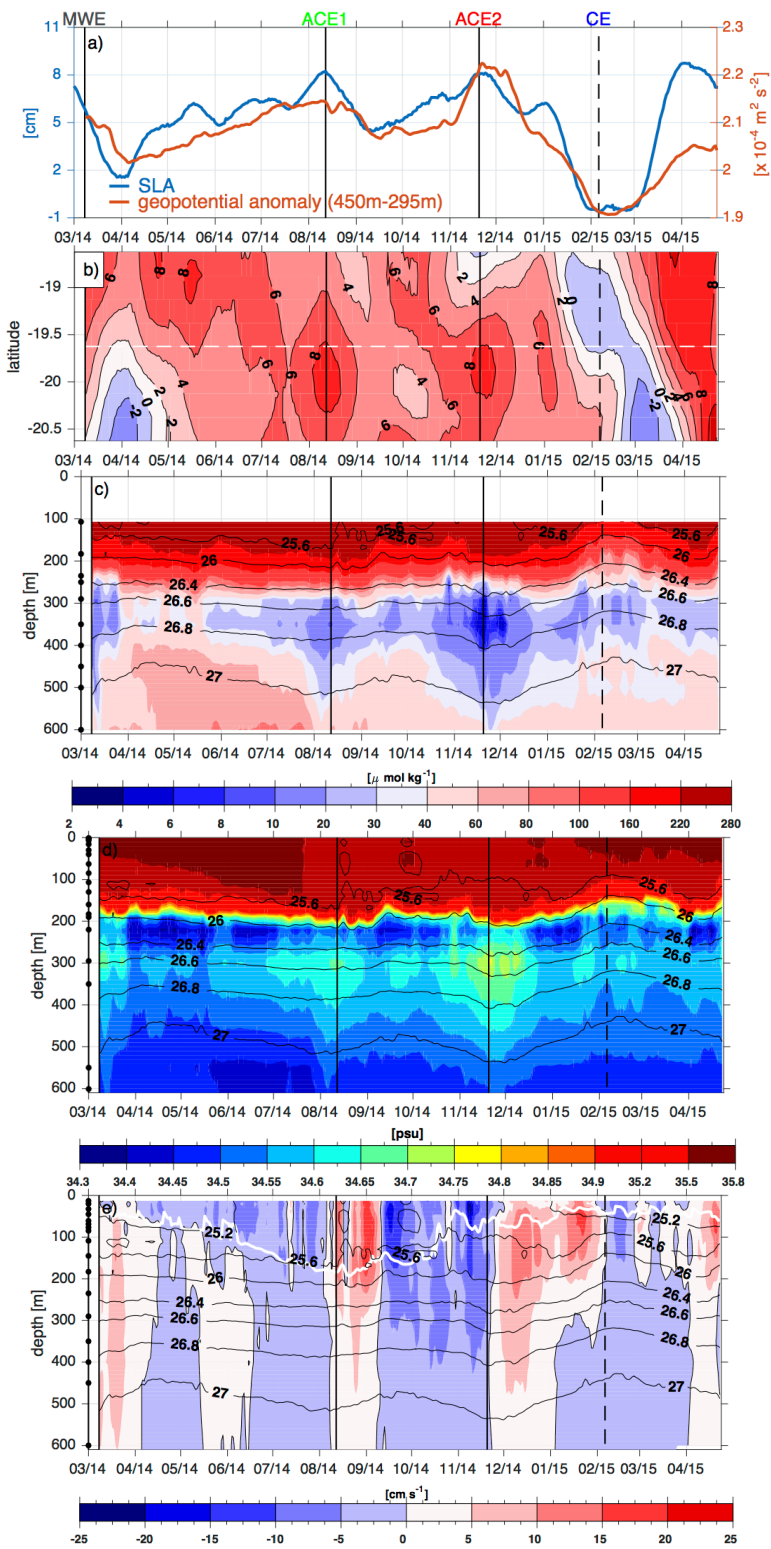


Figure 2: Number of a) anticyclones and b) cyclones generated in 1° x 1° boxes (colors) between 1993 and 2015 closer than 600 km off the coast (coastal region). Seasonal cycle of the number of all eddies (black line), anticyclones (red line) and cyclones (blue line) generated in the coastal region are shown in c) and d).



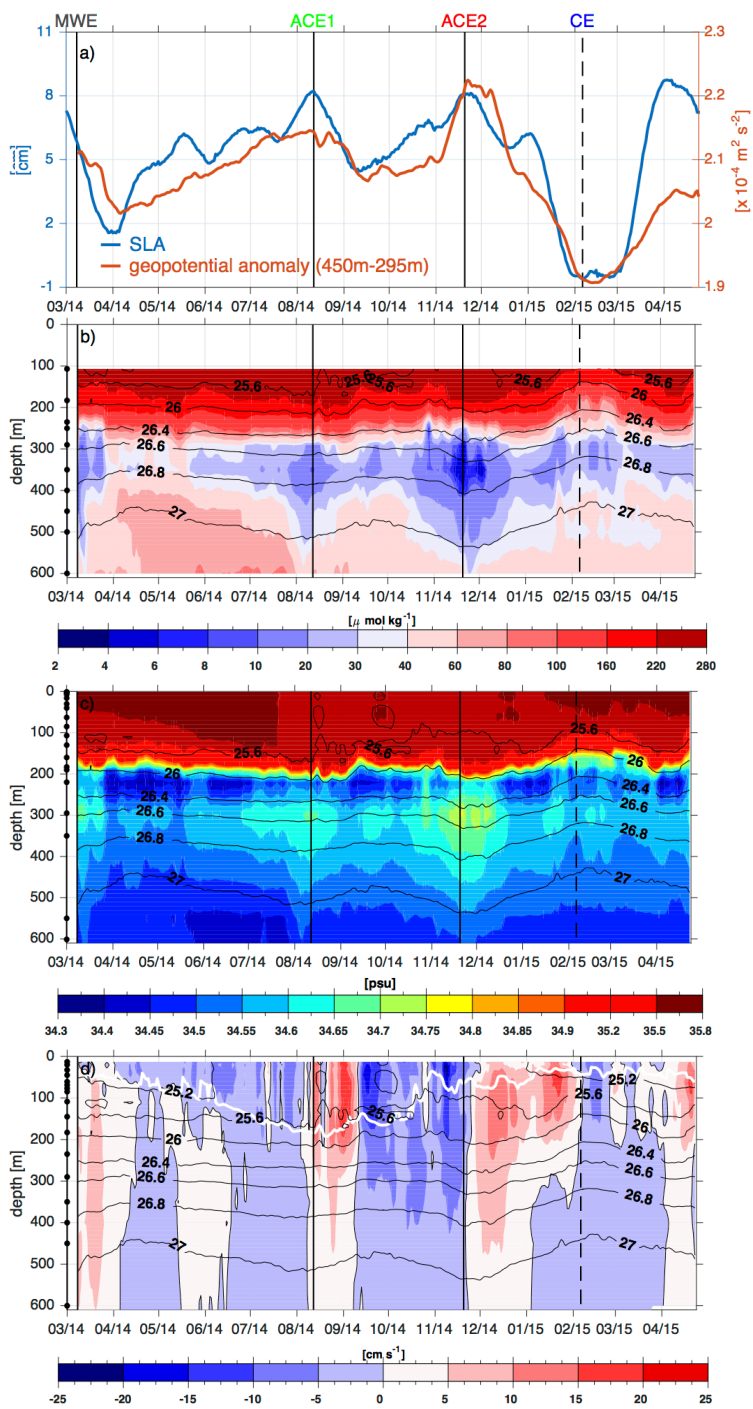


Figure 3. Time series ~~of the Stratus mooring (19°37'S, 84°57'W)~~ for the deployment period 8 March 2014 to 25 April 2015 at the position of the Stratus mooring (19°37'S, 84°57'W) for (a) weekly delayed, high-pass filtered sea ~~levelsurface height~~ anomaly (in cm; blue curve) and geopotential anomaly between 450 and 295 m depth in $\text{m}^2 \text{s}^{-2}$ (orange curve), ~~(b)-(c)~~ oxygen in $\mu\text{mol kg}^{-1}$, ~~(de)~~ salinity and ~~(ee)~~ the meridional velocity component in cm s^{-1} , Hovmoeller diagram (time-latitude) at the longitude position of the Stratus mooring for (b) SLA in cm. The white curve in ~~(ee)~~ is the mixed layer depth defined for the depth where the potential density anomaly is 0.125 kg m^{-3} larger than at the surface. The black dots on the vertical line at the left mark the depths of the used oxygen ~~(cb)~~, conductivity ~~(de)~~ and velocity ~~(ee)~~ sensors and the black contour lines are selected density contours.

10 Black solid (dashed) lines show the date of the passages of the anticyclonic (cyclonic) eddies.

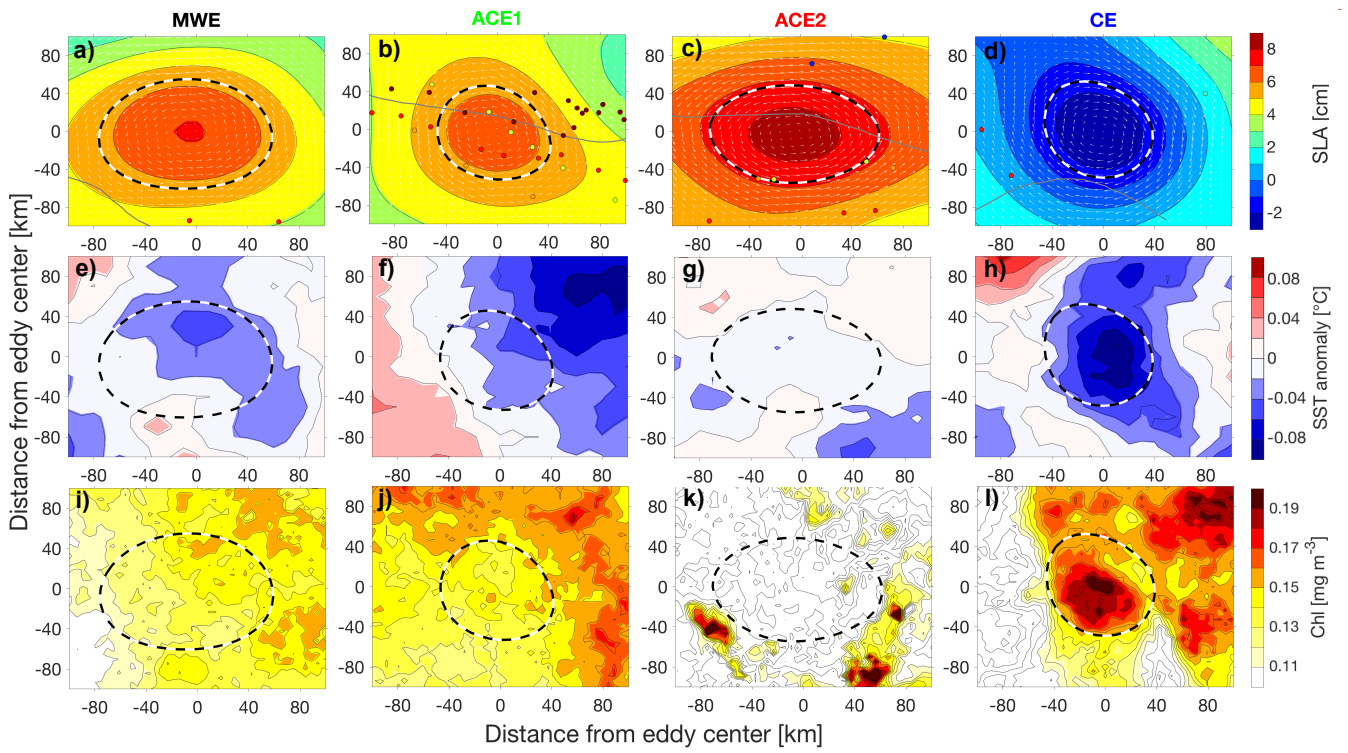
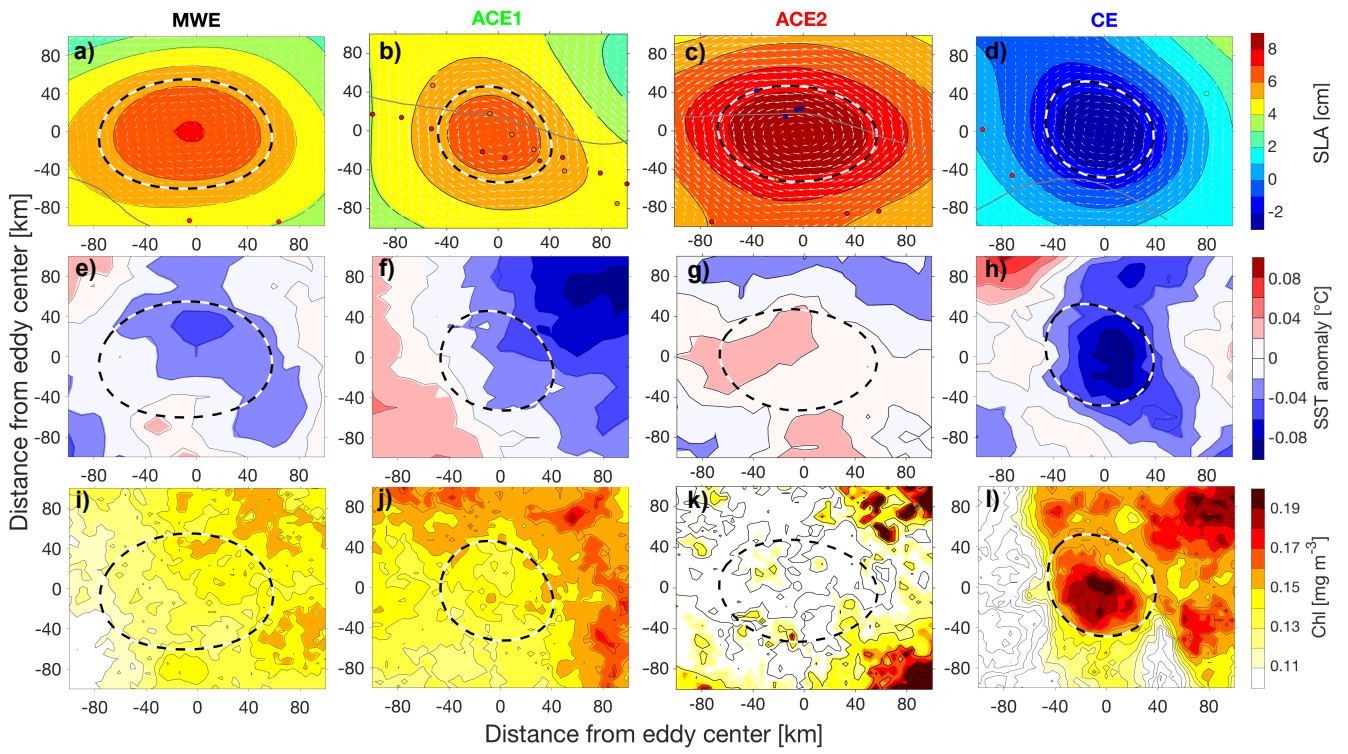
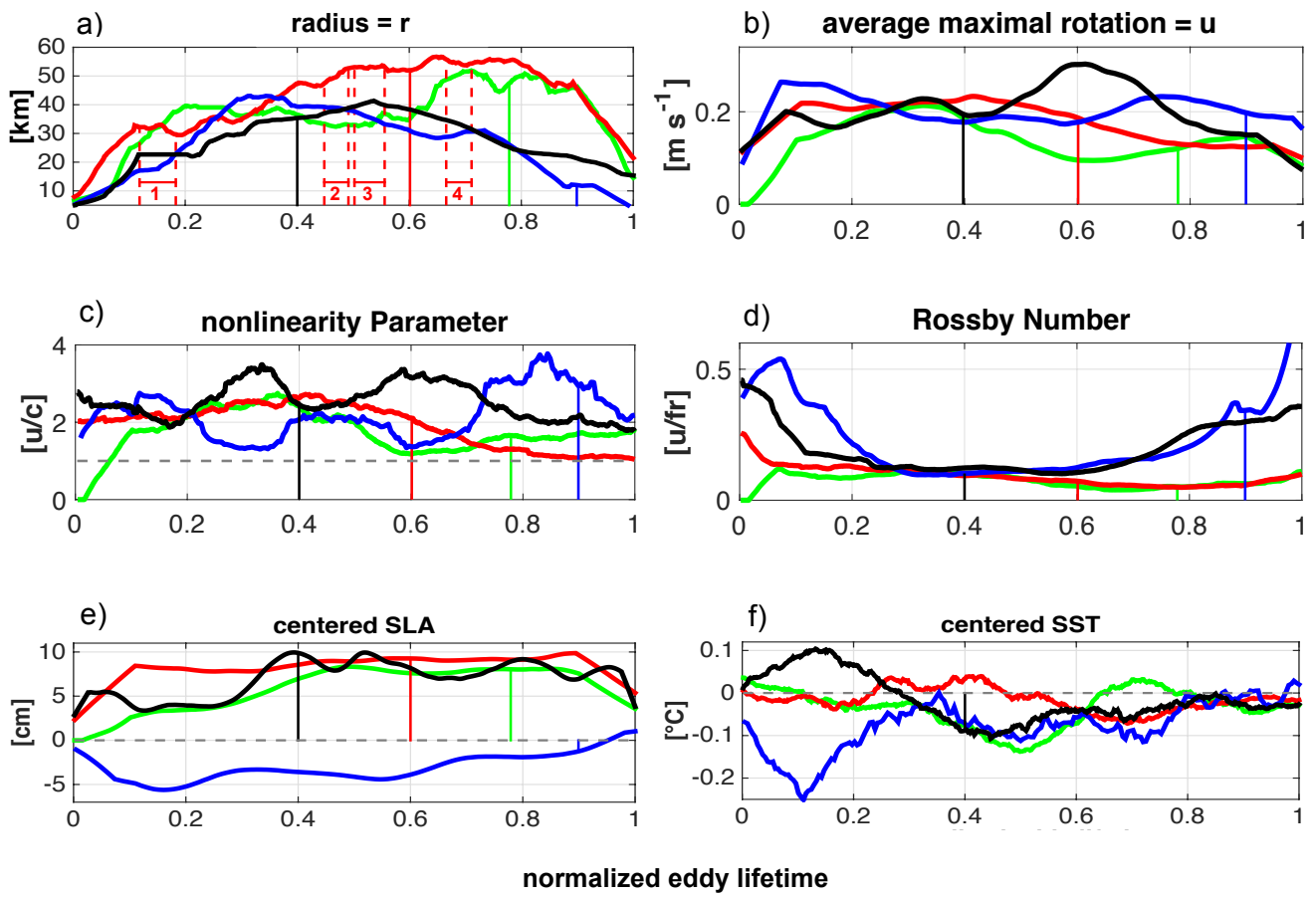
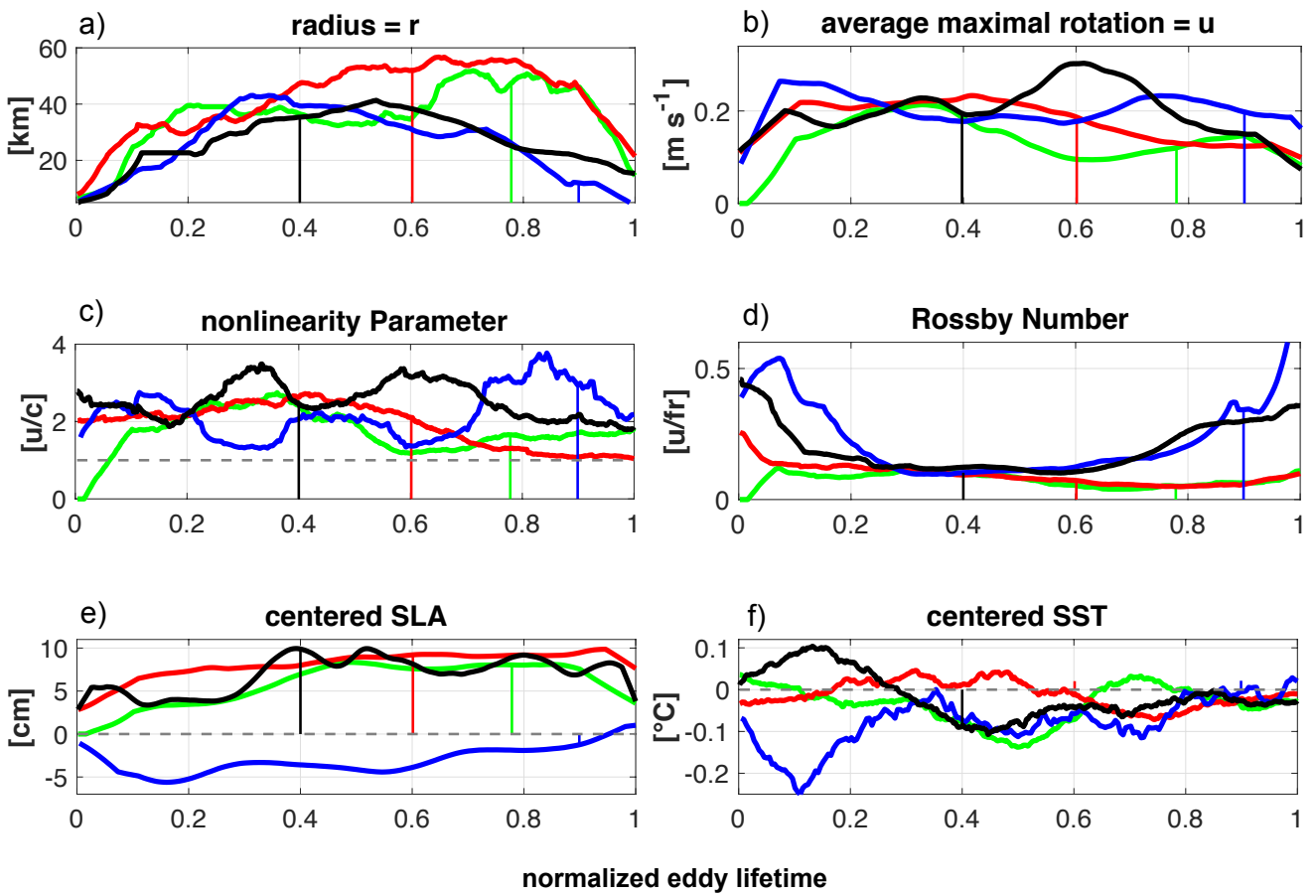
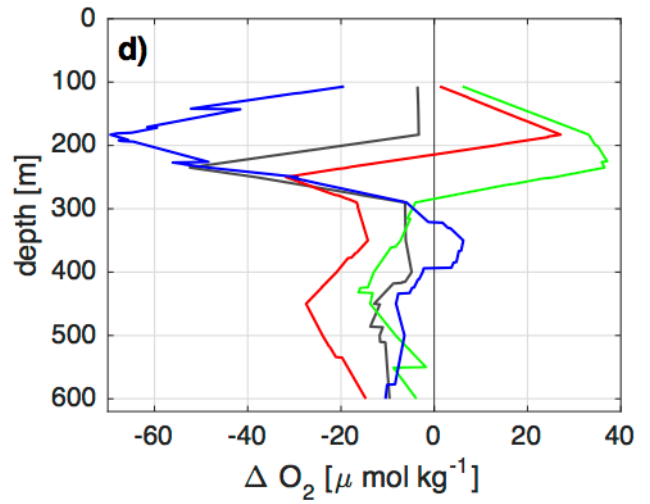
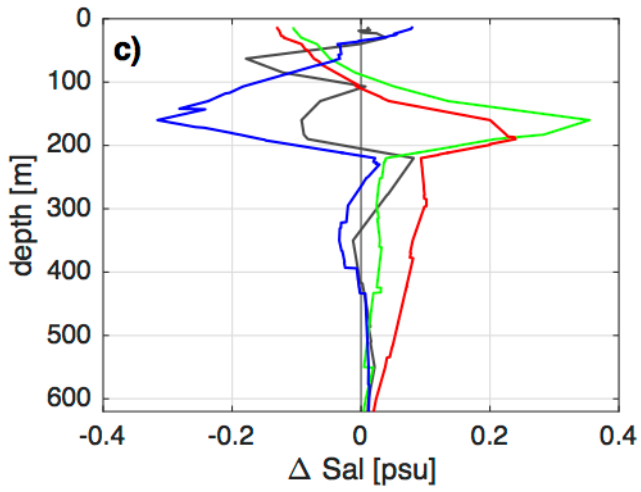
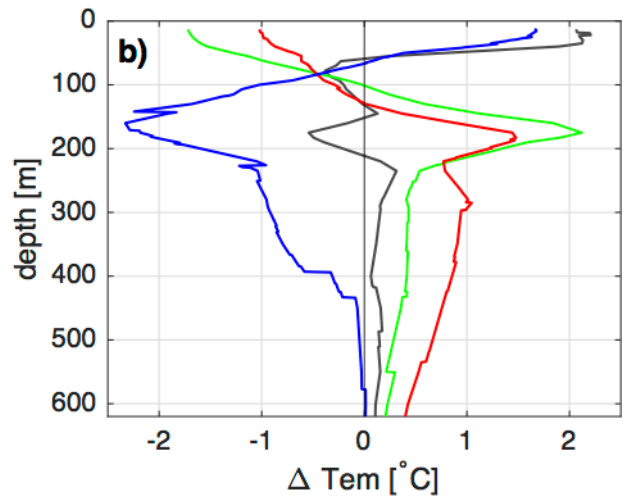
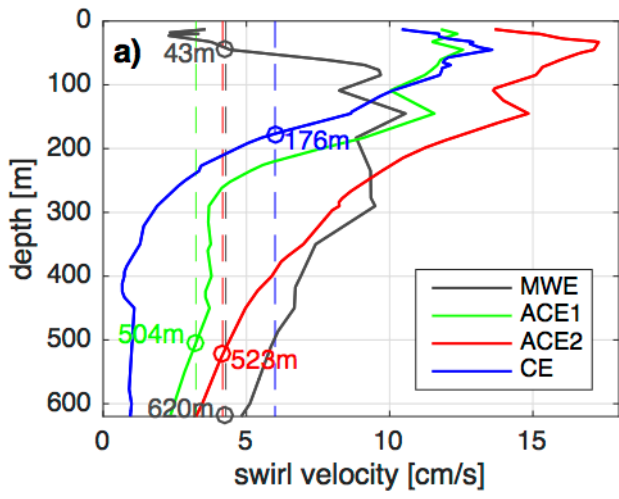


Figure 4. Composite of the MWE (a, e, i), ACE1 (b, f, j), ACE2 (c, g, k) and CE (d, h, l) surface signatures for SLA, SST anomaly, and Chl. The dashed black and white line is the eddy boundary, defined as the streamline of strongest velocity. The grey line in a) and d) is the position of the Stratus mooring during the eddy passage. The locations of the floats crossing the eddies are marked by coloured dots (float #6900527 – red, #6900529 – orange, #6900530 – green, #6900532 - blue).





5 | **Figure 5.** a) Eddy radius, b) averaged maximum rotation velocity, c) nonlinearity parameter (u/c), d) Rossby number (U/f^*r), e) centred SLA, and f) centered SST anomaly against normalized eddy lifetime of the ACE1 (green), ACE2 (red), CE (blue), and MWE (black). The coloured solid lines mark the passage at the Stratus mooring of the corresponding eddies. The residence times of the four floats trapped in the ACE2 are marked by red dashed lines in a).



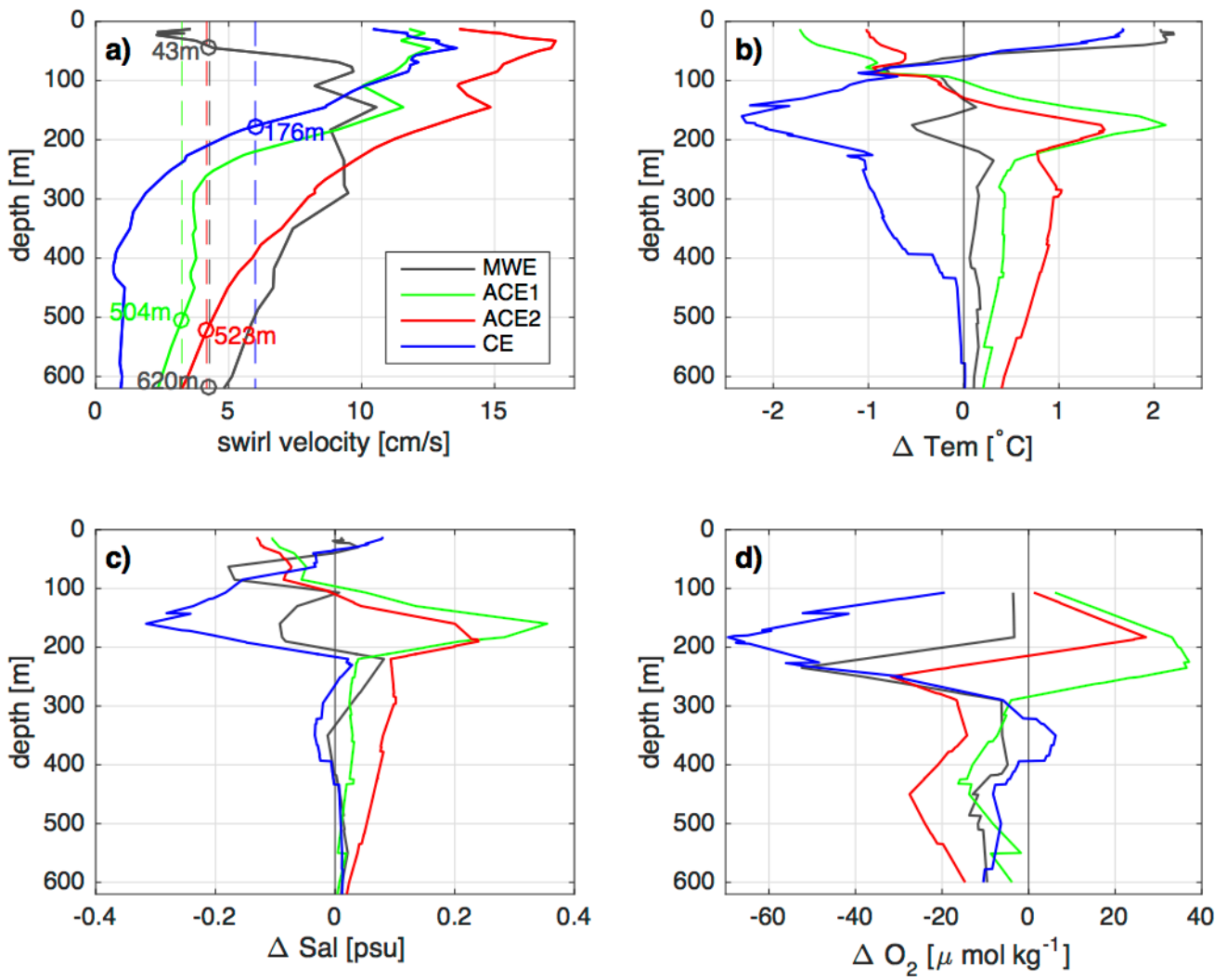


Figure 6. a) Swirl velocity vs depth (solid lines), propagation velocity (dashed lines) and vertical extent of the trapped fluid (circles) of three anticyclonic eddies (MWE: grey, ACE1: green, ACE2: red) and a cyclonic eddy (CE: blue). Profiles of anomalies of b) temperature, c) salinity and d) oxygen [$\mu\text{mol kg}^{-1}$] calculated as the difference between the core of MWE (grey), ACE1 (green), ACE2 (red) and CE (blue) and the 1-year-mean of the Stratus mooring (10 April 2014 - 9 April 2015).

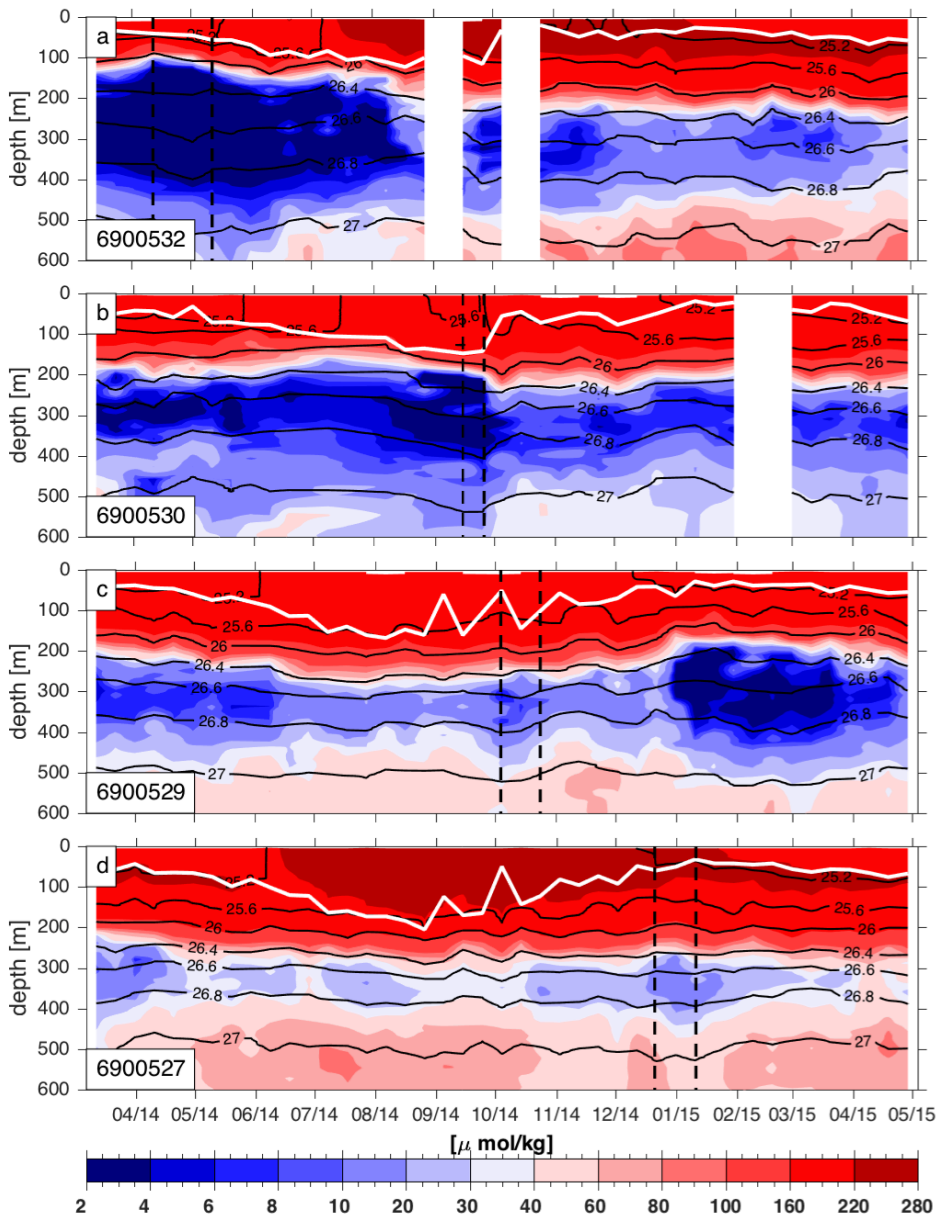


Figure 7. Distribution of oxygen (in $\mu\text{mol kg}^{-1}$, coloured) and density (black lines) vs time in the upper 600 m depth of floats 6900532 (a), 6900530 (b), 6900529 (c) and 6900527 (d) which have been trapped within the ACE2 at different stages. The residence time in ACE2 of the floats in April/May 2014, 5 September 2014, October 2014 and December 2014/January 2015 is marked by dashed black lines. The white curve is the mixed layer depth defined for the depth where the potential density anomaly is 0.125 kg m^{-3} larger than at the surface.

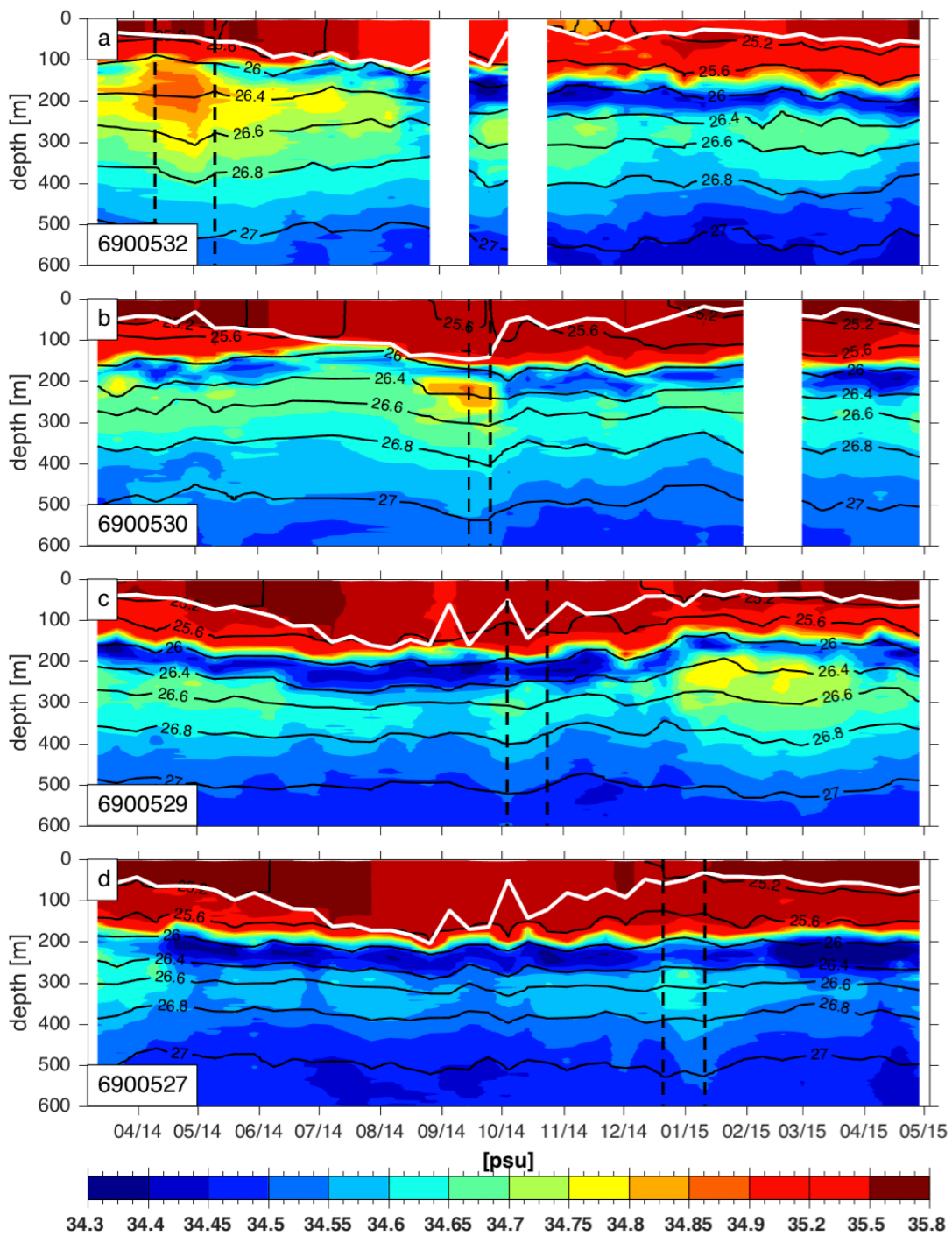
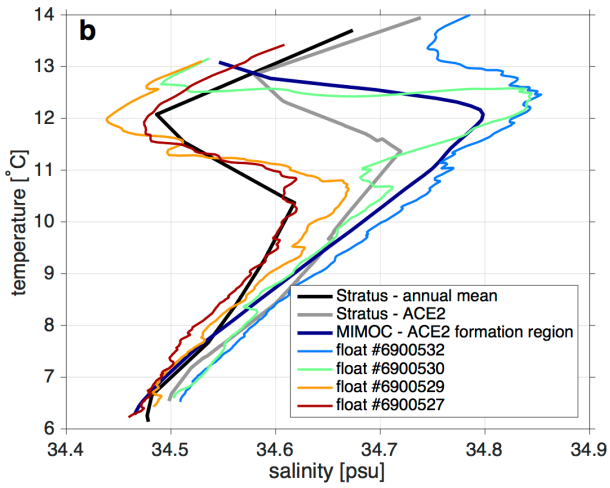
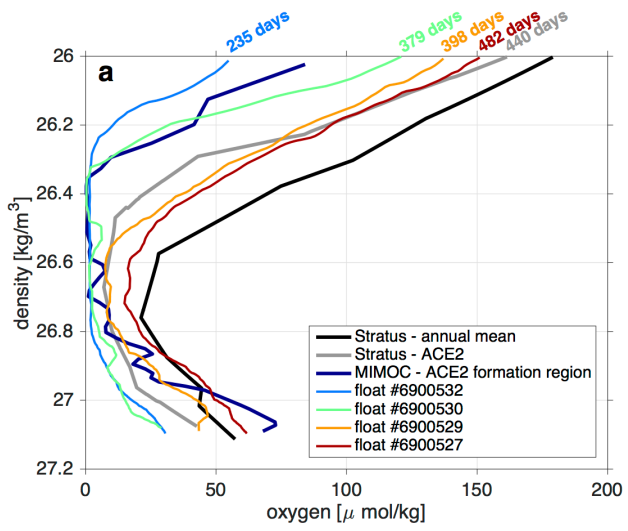


Figure 8. Same as Fig. 7 but for salinity distribution.



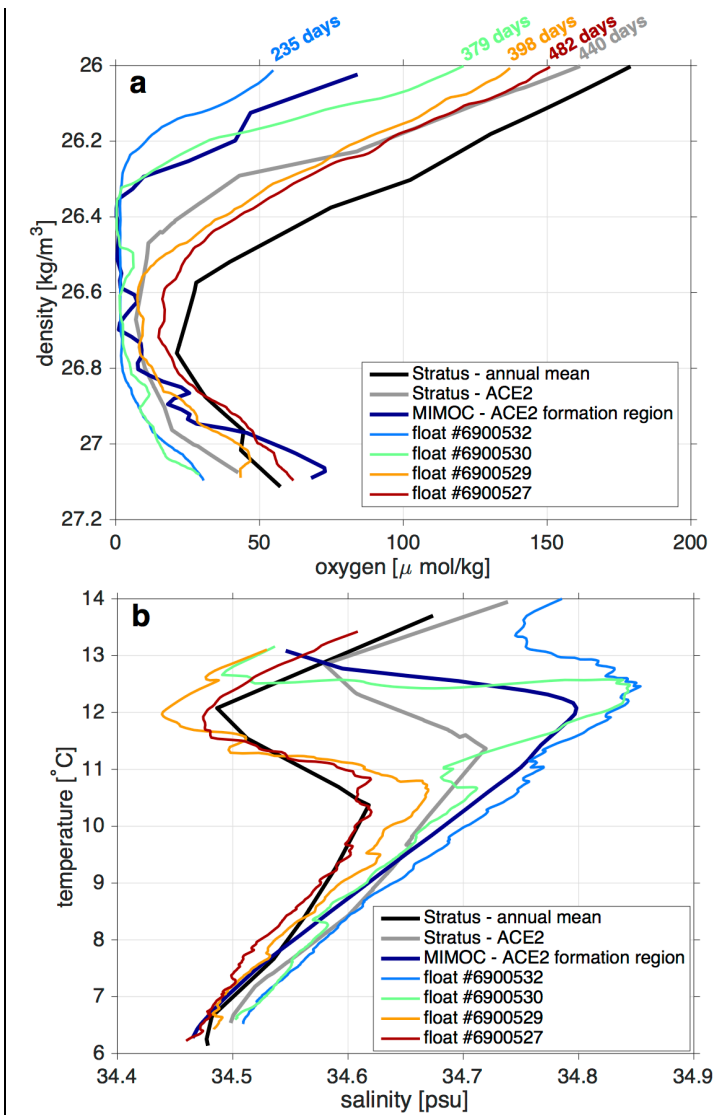


Figure 9. Profiles of a) oxygen vs density and b) TS-diagrams at the Stratus mooring (84°57'W, 19°37'S) for a 1-year-mean (10 April 2014 to 9 April 2015; black) and during the passage of the ACE2 in November 2014 (grey line), from the estimated formation region at 71°W, 23°S from the MIMOC climatology (dark blue) and from data of four floats (6900527, -29, -30 and -32) trapped in the ACE2 (for coloured lines see legend). The age of the ACE2 in days during the respective measurement is indicated in the upper panel. The age of the ACE2 (in days) at the time of the respective float measurements is marked in the upper panel.