

To:

Prof. John M. Huthnance,

Topic Editor

Ocean Science.

Sub:- Submission of revised manuscript [# os-2018-47].

Dear Prof. John M. Huthnance,

Thank you for your email dated on 01st March 2019 with the reviews of our manuscript titled "Estimation of geostrophic current in the Red Sea based on Sea level anomalies derived from extended satellite altimetry data".

We have revised the manuscript in accordance with the comments from the Referee 2 and Topic Editor. The comments really helped us in improving the manuscript further. We thank you and the reviewers for the constructive criticism.

A point-by-point response to the comments of the reviewer is enclosed along with the revised manuscript.

We look forward to hearing from you.

Thanking you,

Yours sincerely,

(A. M. Taqi)

Responses to the Referee comments:

General comment.

Thank-you again for your revised manuscript. In the following, I copy “Referee 2 comments” (which you may have seen) but have added in some of my own and some which attempt to represent the original concerns of Referee 1 which still need more attention in my opinion. (Unfortunately, I do not have a re-review from Referee 1).

“In this article, the authors use altimetric data extended toward the coast to describe the monthly climatological circulation in the Red Sea. This study provides a spatial configuration of the mesoscale eddies in the basin and their evolution along a climatological year. The authors also discuss the interannual variability of this surface circulation.

After taking into account the different reviews, the overall quality of the manuscript has improved. Particularly the data and method and the validation sections, where the authors provided more informations on their calculations as well as comparisons with in-situ observations.

The structure of the paper and its aim is clear, but in my opinion some figures remain unclear and the text still contains some grammatical errors. I recommend publication after minor revisions.

Response:

We thank the topic editor and Referee for their construction comments. Following is the response to specific comments point by point.

Specific comments

FIGURES

Comments [1]: Figure 4, Change the last colorbar to have matching fonts. I also suggest changing the maximal and minimal value of the colorbar as figures 4c to 4f only exhibit one color.

Reply: The colorbar is changed as suggests.

Comments [2]: Figure 5 and 6: I still think these figures are not readable which is a shame as they show the main result of the paper. For each month, only a color is exhibited, arrows are quite small, and for the months of June through September, the «

AE » and « CE » fonts are not readable over a yellow color. As the SLA can be centered at 0, a « balance colorbar » (as the one found here:

<https://matplotlib.org/cmoccean/>) could help improve greatly the figure.” I think March and April are the wrong way around (either in layout or labelling).

Reply: Figure 5 and 6 are modified for more clarity with appropriate colorbar and clear arrows of suitable sizes. The labeling also has been modified.

Comments [3]: “Figure 7: Same remark as the previous figure for the axis of the colorbars.” This could be outside the panel border if that helps.

Reply: Figure 7 modified accordingly unified and only one colorbar presented for all panels.

Comments [4]: “I provide hereafter some grammatical corrections for the english. But as non-native English speaker I do not think it covers everything in the paper. I suggest having a thorough review of the English in the text.

Reply: The manuscript is carefully reviewed for English after modifying for those comments.

ABSTRACT

Comments [5]: Line 10: delete initial “The”.

Reply: The manuscript is modified. Line number: [10].

Comments [6]: Lines 10-11. “Due to this,” -> “Hence”

Reply: The manuscript is modified. Line number: [10].

Comments [7]: Line 13. “. . data set . .”

Reply: The manuscript is modified. Line number: [13].

Comments [8]: Line 16. “patterns”

Reply: The manuscript is modified. Line number: [16].

Comments [9]: “Line 19 : I suggest changing the end of the sentence by « except along the eastern coast where they flow in the opposite direction».

Reply: The manuscript is modified. The entire paragraph from line 18-23 is modified.
Line number: [18-23].

Comments [10]: Line 21: « except for a small area near the eastern coast ».

Reply: The manuscript is modified. Line number: [20-22].

Comments [11]: Line 21: « This flow is modified by the presence of ».”

Reply: The manuscript is modified. Line number: [20-22].

Comments [12]: Line 26. Omit “while in winter both cyclonic and anticyclonic eddies are present” (unnecessary repetition)

Reply: The manuscript is modified. Line number: [26].

“INTRODUCTION”

Comments [13]: Line 31: « between the continents ».

Reply: The manuscript is modified. Line number: [31].

Comments [14]: Line 32: the words « latitude » and « longitude » are not necessary.

Reply: The manuscript is modified. Line number: [32].

Comments [15]: Line 52: « that are often present ».

Reply: The manuscript is modified. Line number: [52].

Comments [16]: Line 54: « 18°N and 24°N »

Reply: The manuscript is modified. Line number: [54].

Comments [17]: Line 70: « from the coastline ».

Reply: The manuscript is modified. Line number: [70].

Comments [18]: Line 84: I suggest « advect » instead of « circulate ».”

Reply: The manuscript is modified. Line number: [84].

Comments [19]: Line 90. Delete “coastal region where in the”

Reply: The manuscript is modified. Line number: [89].

Section 2.

Comments [20]: Line 132. “. . sea: either . .”

Reply: The manuscript is modified. Line number: [131].

Comments [21]: Line 142. “very” -> “vary”

Reply: The manuscript is modified. Line number: [141].

Comments [22]: Line 145. Delete “is”

Reply: The manuscript is modified. Line number: [144].

Comments [23]: Line 150. “negligibly small”. To answer referee 1, I think you should give a value (of the RMS difference, and compare that with the RMS value of the surface current).

Reply: The observed difference between the surface geostrophic current corresponding to level of no motion at 500m and 700m are negligibly small, with RMSE around 0.003 m/s at surface.

Line number: [149].

“RESULTS AND DISCUSSION

Comments [24]: Line 159 : « on the other hands » should not be used. Change to something like « In contrast, near the coasts, weak correlation is found between the two datasets, the correlation coefficient being 0.45 to 0.7 ».”

Reply: The manuscript is modified. Line number: [158-159].

Comments [25]: Line 165. Better “. . observed coastal tide gauge data . .”

Reply: The manuscript is modified. Line number: [164].

Comments [26]: Lines 174-176. This sentence repeats what is in previous text and Table 2.

Reply: The sentence is removed from manuscript.

Comments [27]: “Line 175 : « shows ».”

Reply: The manuscript is modified. Line number: [174].

Comments [28]: Line 183. “central” – why this restriction?

Reply: The region was selected based on the availability and distribution of cruise data.

Comments [29]: Line 189. “in agreement with Bower and Farrar (2015) findings” Is this now for all their data (referee 1 comment)?

Reply: Yes, it agrees with Bower and Farrar (2015) during October 2011 cruise.

Comments [30]: “Line 199 : « three cruises ».”

Reply: The manuscript is modified. Line number: [198].

Comments [31]: Table 3 and Table 4. What is the meaning of Standard Deviation as distinct from RMSE here? Why of all the values given is Stdv > RMSE only for the top row of Table 3 – is there a mistake here?

Reply: Estimation RMSE and STD were rechecked and Tables 3 and 4 are modified accordingly. From the row calculations it’s clear that RMSE and STD give the same test, so we kept only RMSE in Table 3 since we compare the model and observed values.

Table 3 After check

After check	Month-Year	Bias (m/s)	RMSE (m/s)	σ (m/s)	CC	P-Value
FSM-SLA	Mar-2010	-0.0085	0.065	0.065	0.54	0.01
AVISO		-0.01	0.08	0.08	0.48	0.14
FSM-SLA	Apr-2011	-0.28	0.31	0.31	0.61	0.02
AVISO		-0.87	0.89	0.89	0.44	0.13
FSM-SLA	Oct-2011	-0.19	0.49	0.49	0.53	0.10
AVISO		-0.51	0.70	0.70	0.49	0.16

Final Table 3 (which is presented in the manuscript)

	Month-Year	Bias (m/s)	RMSE (m/s)	CC	P-Value
FSM-SLA	Mar-2010	-0.0085	0.065	0.54	0.01
AVISO		-0.01	0.08	0.48	0.14
FSM-SLA	Apr-2011	-0.28	0.31	0.61	0.02
AVISO		-0.87	0.89	0.44	0.13
FSM-SLA	Oct-2011	-0.19	0.49	0.53	0.10
AVISO		-0.51	0.70	0.49	0.16

While in Table 4 we kept only STD since we compare the climatology and annual mean

Table 4 After check

Year	bias	RMSE	σ	CC
2010	-0.01	0.03	0.03	0.54
2011	-0.01	0.02	0.02	0.77
2012	-0.01	0.02	0.02	0.55
2013	-0.01	0.03	0.03	0.79
2014	-0.02	0.05	0.05	0.73
Note: The p-value corresponding to all comparison is very low ($P < 0.0001$), indicating that the results from correlation are significant.				

Final Table 4 (which is presented in the manuscript)

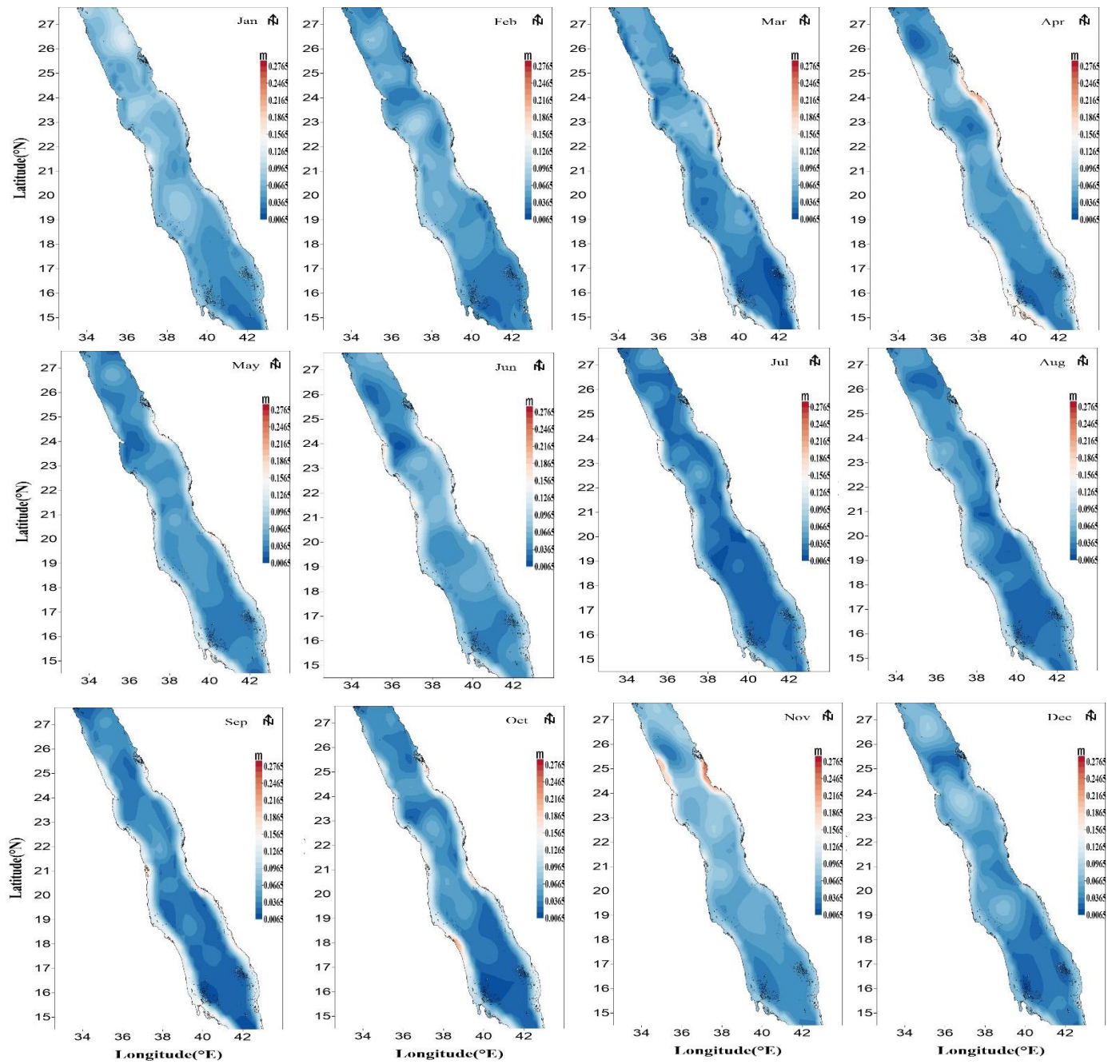
Year	bias	σ	CC
2010	-0.01	0.03	0.54
2011	-0.01	0.02	0.77
2012	-0.01	0.02	0.55
2013	-0.01	0.03	0.79
2014	-0.02	0.05	0.73
Note: The p-value corresponding to all comparison is very low ($P < 0.0001$), indicating that the results from correlation are significant.			

Comments [32]: “Line 224 : « starts ».”

Reply: The manuscript is modified. Line number: [223].

Comments [33]: Section 3.2. Figures 5, 6 show monthly patterns from averaging the 5- or 6-years month by month (as I understand it). Reviewer 1 questioned this. Differences between these monthly figures are only significant if they are greater than the differences between all the Januarys, all the Februarys etc. So I think you also need to show maps of the standard deviations of the January maps, February maps etc., i.e. 12 maps corresponding to Figures 5, 6 which show a measure of the uncertainty of Figures 5, 6.

Reply: Please refer to the figure blow, which show the maps of the standard deviations of all months which reveals low standard deviations.



Comments [34]: Line 264. Better “. . October but an anticyclonic eddy forms between . .

Reply: The manuscript is modified. Line number: [263].

Comments [35]: Lines 305-307 is very unclear. Why should the annual and 6-year mean values be the same? How can all the biases be negative if the mean is of all the contributing years? “less” than what?

Reply: Please refer to reply to comment (31), where the RMSE is reposed from this Table.

The text is modified of more clarity as follow.

“The statistical analysis between annual FSM-SLA with 6-year climatology shown in Table 4. The correlation is significant for all the years with standard deviation less than 0.1. the bias is very small regardless its sign.”

Comments [36]: Lines 316-317. “. . along the middle from 20°N to the north.” seems to partly repeat and partly contradict “The mean flow is toward the north mostly along the western coast and center up to 23°N . . .”

Reply: The manuscript is modified as follow.

“During winter, the mean flow is toward the north all over the entire width of Red Sea, this result agrees with Sofianos and Johns, (2003). In addition, a southward flow of geostrophic currents were observed along the eastern coast at (22°N-24°N) and the western coast at (23°N-20°N). During summer, the flow is towards the south along the western side of the sea while in southern part the flow spreads across most of the width of the Red Sea with a narrow northward flow near the eastern coast”.

Line number: [317-322].

Comments [37]: Lines 320-321. Better “. . southern part the flow occupies most of the width of the Red Sea with a narrow northward flow near the eastern coast.”

Reply: The manuscript is modified as shown in comment 34.

Line number: [317-322].

“CONCLUSION

Comments [38]: Line 329 to 331 : This sentence should be removed as it is repeated in the last paragraph.

Reply: The sentence was removed from manuscript.

Comments [39]: Line 332 : « shows ».”

Reply: The manuscript is modified. Line number: [329].

Comments [40]: Line 333. “. . parts show negligible . .”

Reply: The manuscript is modified. Line number: [330].

Comments [41]: “Line 334 : « geostrophic current ».

Reply: The manuscript is modified. Line number: [332].

Comments [42]: Line 335-336 : « except along the eastern coast where they flow in the opposite direction ».

Reply: The manuscript is modified. Line number: [332-334].

Comments [43]: Line 337 : « except a small part [...] and of the western coast ».

Reply: The sentence was rephrased, as follow.

“In winter, currents flow to the north for the entire sea except for a southward flow along small part of the eastern (22°N-24°N) and western coast (20°N-23°N)”.

Line 332 to 336

Comments [44]: Lines 341-2 : «. . northern Red Sea more than in the southern part. The mean amplitude . .».

Reply The sentence was rewritten, as follow.

“. In winter, the cyclonic eddies are beside the western coast and anticyclonic eddies on the eastern side in the Red Sea, while in summer it is concentrated along the central Red Sea in early summer, with some cyclonic eddies transfer to the east coast in late summer”.

Line number: [341-344].

Comments [45]: Line 341-343 : Please rewrite this sentence.”

Reply: Please refer to reply to comment (44).

Comments [46]: Line 347. Omit “than winter”

Reply: The manuscript is modified. Line number: [345].

Comments [47]: Line 348. “. . paper is considered . .”

Reply: The manuscript is modified. Line number: [346].

Following is the list of response to comments sent by Topic editor, Prof. Huthnance John on 10/1/2019. Some of those comments are already answered in the above responses, the remaining comment are listed below.

Comments [48]: Line 163. “lower” -> “less”

Reply: The manuscript is modified. Line number: [162].

Comments [49]: Line 181. “. . FSM-SLA. White . .”

Reply: The manuscript is modified. Line number: [181].

Comments [50]: Line 249. “. . south over almost all the width . .”

Reply: The manuscript is modified. Line number: [248].

Comments [51]: Line 250. “anticyclone”

Reply: The manuscript is modified. Line number: [249].

Comments [52]: Line 251. “cyclone”

Reply: The manuscript is modified. Line number: [249].

Comments [53]: Lines 254-5. Not “cause reversed of changes in the direction of flow”. Maybe “cause changes in the direction of flow” or “cause reversals of the direction of flow”

Reply: The manuscript is modified. Line number: [253-254].

Comments [54]: Line 258. “, during this season” -> “in summer”.

Reply: The manuscript is modified. Line number: [257].

Comments [55]: Lines 270-271. I think this is wrong and directly contradicts lines 343-344.

Reply: The paragraph is modified in the manuscript as follow.

“During early summer the eddies are concentrated along the central Red Sea. By August and September some of the cyclonic eddies are shifted towards the eastern coast. During winter the cyclonic eddies are often condensed along the western side of the Red Sea, while anticyclonic eddies along the eastern side of the Red Sea”.

Which is now in line with lines 343-344.

Line number: [269-272].

Comments [56]: Line 285. More like “3 cm” in figure?

Reply: The manuscript is modified. Line number: [286].

Comments [57]: Lines 298-299. “. . cyclonic eddy is replaced . .”

Reply: The manuscript is modified. Line number: [298].

Comments [58]: Line 302. “which” -> “but”

Reply: The manuscript is modified. Line number: [301].

Comments [59]: Lines 335-336. I think this is wrong and directly contradicts lines 320-321.

Reply: This sentence is modified in manuscript. Line number: [316-321] and [331-338]

Comments [60]: Lines 341-343. “. . southern side. The mean amplitude for anticyclonic and cyclonic eddies at lower latitudes has small amplitude and at higher latitudes has larger amplitude.

Reply: The manuscript is modified. Line number: [339-340].

Estimation of geostrophic current in the Red Sea based on Sea level anomalies derived from extended satellite altimetry data

Ahmed Mohammed Taqi^{a,b}, Abdullah Mohammed Al-Subhi^a, Mohammed Ali
Alsaafani^a and Cheriyei Poyil Abdulla^a

^aDepartment of Marine Physics, King Abdulaziz University, Jeddah, Saudi Arabia;

^bDepartment of Marine Physics, Hodeihah University, Hodeihah, Yemen

Correspondence to: Ahmed. M. Taqi (ataqi@stu.kau.edu.sa)

Abstract

Geostrophic currents data near the coast of the Red Sea has large gaps. Hence, the sea level anomaly (SLA) data of Jason-2 has been reprocessed and extended towards the coast of the Red Sea and merged with AVISO data at the offshore region. This processing has been applied to build a gridded data set to achieve best results for the SLA and geostrophic current. The results obtained from the new extended data at the coast are more consistent with the observed data (CTD) and hence geostrophic current calculation. The patterns of SLA distribution and geostrophic currents are divided into two seasons; winter (October – May) and summer (June – September). The geostrophic currents in summer are flowing southward all over the Red Sea except for narrow northward flow along the east coast. In winter, currents flow to the north for the entire Red Sea except for a small southward flow near the central eastern and western coast. This flow is modified by the presence of the cyclonic and anticyclonic eddies, which are more concentrated in the central and northern Red Sea. The results show anticyclonic eddies (AE) on the eastern side of the Red Sea and cyclonic eddies (CE) on the western side during winter. In summer, cyclonic eddies are more dominant for the entire Red Sea. The result shows a change in some eddies from anticyclonic during winter to cyclonic during summer in the north between 26.3°N – 27.5°N. Furthermore, the lifespan of cyclonic eddies is longer than that of anticyclonic eddies.

1. Introduction

The Red Sea is a narrow semi-enclosed water body that lies between the continents of Asia and Africa. It is located between 12.5°N-30°N and 32°E-44°E in an NW-SE orientation. Its average width is 220 km and the average depth is 524 m (Patzert, 1974). It is connected at its northern end with the Mediterranean Sea through the Suez Canal and at its southern end with the Indian Ocean through the strait of Bab El- Mandab. The exchange of water through Bab El-Mandab (shallow sill of 137 m) is the most significant factor that determines the oceanographic properties of the Red Sea (Smeed, 2004).

During winter, the southern part of the Red Sea is subject to SE monsoon wind, which is relatively strong from October to December, with a speed of 6.7-9.3 ms⁻¹ (Patzert, 1974). During the summer season, the wind is shifting its direction to be from NW. On the other hand, in the northern part of the Red Sea, the dominant wind is NW all year around.

The circulation in the Red Sea is driven by strong thermohaline and wind forces (Neumann and McGill, 1961; Phillips, 1966; Quadfasel and Baudner, 1993; Siedler, 1969; Tragou and Garrett, 1997). Several studies in the Red Sea have focused on thermohaline circulation, where they found that the exchange flow between the Red Sea and Gulf of Aden consists of two layers in winter and three layers in summer through Bab El- Mandab (e.g. Phillips 1966; Tragou and Garrett 1997; Murray and Johns 1997; S. Sofianos and Johns 2015; Al Saafani and Shenoi, 2004; Smeed, 2004). Other studies describe the basin-scale circulation based on modelling approach, usually forced at a relatively low-resolution (1°x1°) by buoyancy flux and global wind (Clifford et al., 1997; Sofianos, 2003; Tragou and Garrett, 1997; Biton et al., 2008; Yao et al., 2014a,b). The horizontal circulation in the Red Sea consists of several eddies, some of them are semi-permanent eddies (Quadfasel and Baudner, 1993), that are often present during the winter (Clifford et al., 1997; Sofianos and Johns, 2007) in the northern Red Sea. The circulation system in the central Red Sea is dominated by cyclonic (CE) and anticyclonic eddies (AE), mostly between 18°N and 24°N. Eddies are also found in the southern Red Sea but not in a continuous pattern (Johns et al., 1999). Zhan et al., (2014) reported recurring or persistent eddies in the north and the central Red Sea, although there are differences in the number of eddies, their location, and type of vorticity (cyclonic or anticyclonic).

The long-term sea level variability in the Red Sea is largely affected by the wind stress and the combined impact of evaporation and water exchange across the strait of Bab El Mandeb (Edwards, 1987; Sultan et al., 1996). The Sea level in the Red Sea is higher during winter and lower during summer (Edwards, 1987; Sofianos and Johns, 2001; Manasrah et al., 2004). It is characterized by two cycles, annual and semi-annual, where the annual cycle is dominant (Abdallah and Eid, 1989; Sultan and Elghribi, 2003).

In recent years, there has been an increasing interest for using satellite altimetry Sea level anomaly (SLA) which offer large coverage and long data period for providing measurements of SSH, wave height and wind speed (Chelton et al., 2001). However, the altimeter data undergoes several processing stages for corrections due to the atmosphere and ocean effects (Chelton et al., 2001). The satellite altimetric data has been used for the open ocean for a long time with great success, while the data of the coastal region suffers from gaps of almost 50 km from the coastline. The coastal region requires further corrections due to additional difficulties based on the closeness of the land (Deng et al., 2001; Vignudelli et al., 2005; Desportes et al., 2007; Durand et al., 2009; Birol et al., 2010). In the past two decades, many researchers have sought to develop different methods to improve the quality, accuracy and availability of altimetric data near the coast (e.g. Vignudelli et al., 2000; Deng and Featherstone, 2006; Hwang et al., 2006; Guo et al. 2009, 2010; Vignudelli et al., 2005; Desportes et al., 2007; Durand et al., 2009; Birol et al., 2010; Khaki et al., 2014; Ghosh et al., 2015; Taqi et al., 2017). The satellite altimetry faces three types of problems near the coast; (1) the echo interference with the surrounding ground as well as the inland water surface reflection (Andersen and Knudsen, 2000; Mantripp, 1966), (2) environmental and geophysical corrections such as dry tropospheric correction, wave height, high frequency and tidal corrections from global models, etc. and (3) spatial and temporal corrections during sampling (Birol et al., 2010).

The ocean currents **advect** water worldwide. They have significant influence on the transfer of energy and moisture between the ocean and the atmosphere. Ocean currents play a significant role in climate change in general. In addition, they contribute to the distribution of hydrological characteristics, nutrients, contaminants and other dissolved materials between the coastal and the open areas, and among the adjacent coastal regions. Ocean currents carry sediment from and to the coasts, so play a significant role in shaping of the coasts. That is important densely inhabited

coastal region, producing large amounts of pollutants. Understanding of the currents helps us in dealing with the pollutants and coastal management.

The objective of the present research is to study the geostrophic current in the Red Sea including the coastal region using the modified along track Jason-2 SLA along the coast produced by Taqi et al., (2017).

2. Material and Methods

2.1. Description of data

2.1.1 Fourier series model (FSM) SLA

The SLA data used in this study is weekly Jason-2 along the track from June 2009 (cycle 33) to October 2014 (cycle 232) which has been extended to the coastal region by Taqi et al., (2017). To cover all the period, additional tracks were added up to December 2014 (cycle 239). The extended data shows a good agreement with the coastal tide gauge station data. In brief, the FSM method of extending SLA consists of four steps; the first step is the removal from SLA the outliers which are outside three times standard deviation from mean. Second step; the SLA is recomputed using Fourier series equation along the track. Third step; the data is then filtered to remove the outliers in the SLA with time similar to the first step. Finally, the SLA data is linearly interpolated over the time to form the new extended data which is called FSM. For more details on the FSM method, refer to Taqi et al., (2017).

2.1.2 AVISO, Tide Gauge, and hydrographic datasets

This study uses two types of SLA data; The first set is the (SLA), which has been downloaded from the Archiving Validation and Interpretation of Satellite Oceanographic (AVISO) (<ftp://ftp.aviso.altimetry.fr/global/delayed-time/grids/msla/all-sat-merged>). The second dataset is the SLA from the extended FSM data. The temperature and salinity profiles used for geostrophic estimation are received from three cruises, the first cruise was during March 16 to 29, 2010 onboard R/V Aegaeo between 22°N to 28°N along the eastern Red Sea with a total of 111 Conductivity, Temperature and Depth (CTD) profiles. For more details; see Bower and Farrar (2015). The second cruise was on April 3 to 7, 2011 onboard Poseidon between 17°N to 22°N in the central eastern Red Sea and the third one was during October 16 to 19, 2011 onboard the same vessel between 19°N to 23°N in the central eastern Red Sea as a part of Jeddah transect, KAU-KEIL Project. For more details; consult R/V POSEIDON cruise P408/1 report (Schmidt et al.,

2011). The availability of in-situ observations is limited in space and time because of the spatial and temporal distribution of the available cruises. Finally, three tide gauges data at the eastern coastline of the Red Sea are obtained from the General Commission of Survey (SGS) at the Kingdom of Saudi Arabia (Fig.1) and their location details are shown in Table 1.

2.2 Method

The SLA data used in this study are coming from two sources: (1) the FSM data near the coast and (2) the AVISO data along the axis of the Red Sea. The steps to merge the two datasets and calculating the geostrophic currents are given below.

First, the along-track FSM data are used to produce gridded data to a spatial resolution of $0.25^\circ \times 0.25^\circ$ for the comparison with Aviso data. In the second step, AVISO data near the coast is removed, and replaced with the coastal FSM gridded data leaving space between the two data set according to the width of the sea: either one or two grid cells. This gap was filled using kriging interpolation method to smooth the dataset. The merged data hereafter called as FSM-SLA. Finally, surface geostrophic currents are estimated from FSM-SLA data using the following equation;

$$u_g = -\frac{g}{f} \frac{\partial \zeta}{\partial y} \quad v_g = \frac{g}{f} \frac{\partial \zeta}{\partial x} \quad (1)$$

Where (u_g, v_g) is the surface geostrophic current, g is gravity, f is the Coriolis parameter and ζ is the sea surface height. The estimation of geostrophic currents from CTD data is using the following equation;

$$u_g = -\frac{1}{f\rho} \frac{\partial p}{\partial y} \quad v_g = \frac{1}{f\rho} \frac{\partial p}{\partial x} \quad (2)$$

where ρ is the density of seawater, p is hydrostatic pressure derived from the density. The stations have depths that vary from 50 to 2344 m. However, most of the stations (~90 %) exceed the 500 m depth. Previous study by Quadfasel and Baudner (1993) used 400 m as level of no motion to calculate geostrophic current in the Red Sea. Based on ADCP measurements, Bower and Farrar (2015) shown that, on average, 75–95 % of the vertical shear occurred over the top 200 m of the water column. Moreover, the ADCP measurements of current speed below 500 m is very small; about ~0.06 m/s at 600 m depth (Bower and Farrar, 2015). Therefore, expecting negligible variability below 500 m, a depth of 500 m was selected as a level of no motion. We have compared

the geostrophic current corresponding to level of no motion at 500m and 700m. The observed difference between both are negligibly small, with RMSE around 0.003 m/s at surface.

Table 1. The location of tide gauge stations and period of measurement.

Station	Latitude	Longitude	Period
Jazan	16.87	42.55	1/1/2013 to 31/12/2013
Jeddah	21.42	39.15	1/1/2013 to 31/12/2013
Yanbu	23.95	38.25	1/1/2013 to 31/12/2013

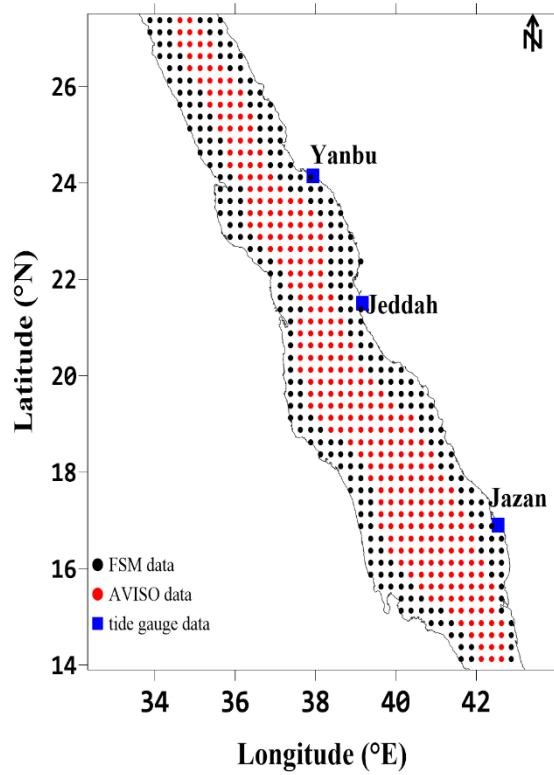


Figure 1. show the study area and the grid-points locations with a spatial resolution of $0.25^\circ \times 0.25^\circ$ and locations of the tide gauges.

3. Result and Discussion

3.1 Validation of FSM-SLA and geostrophic current

The statistical analysis has been conducted to show the quality of FSM-SLA as compared with AVISO. The Correlation Coefficient (CC) reveals a good agreement between the two

datasets in the open sea (about 0.7 to 0.9) and is shown in Fig. 2. In contrast, near the coasts, weak correlation is found between the two datasets, the correlation coefficient being 0.45 to 0.7. Furthermore, the observed SLA from the coastal tide gauge is compared with the FSM-SLA data and AVISO datasets. Table 2. illustrates some of the statistical analysis, where the root mean square error (RMSE) is less for FSM-SLA as compared to that of AVISO.

Table 2. statistical analysis for AVISO and FSM-SLA data with observed coastal tide gauge data (in 2013).

	Jasan		Jeddah		Yanbu	
	FSM-SLA	AVISO	FSM-SLA	AVISO	FSM-SLA	AVISO
CC	0.936	0.914	0.915	0.906	0.907	0.895
RMSE(m)	0.073	0.085	0.069	0.094	0.067	0.104
Note: The p-value corresponding to all comparison is very low ($P < 0.0001$), indicating that the results from correlation are significant.						

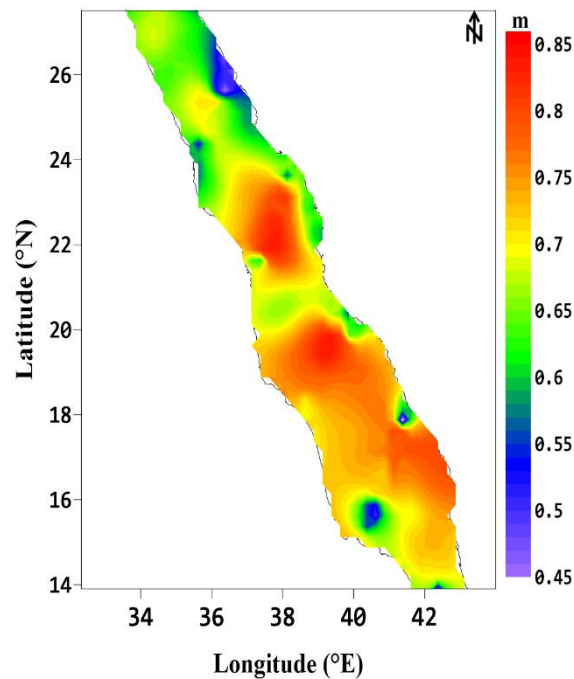


Figure 2. show the correlation coefficient between AVISO and FSM data

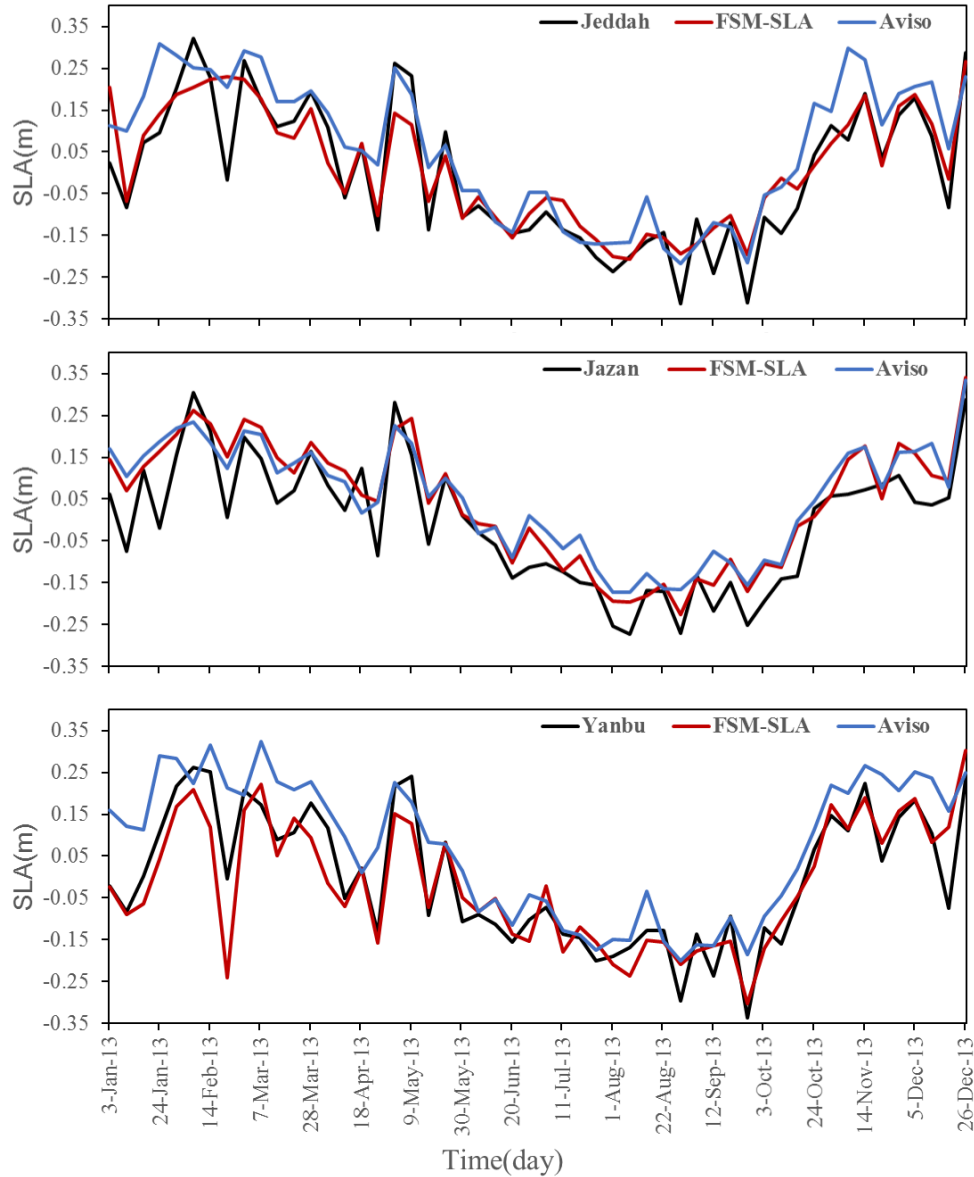


Figure 3. Comparison of SLA from three tide gauge (black), with grid FSM-SLA data (red) and Aviso (blue)

Figure 3 shows the SLA time series for 2013 from the three coastal stations as compared with the FSM-SLA and AVISO. The three stations datasets have similar seasonal pattern and FSM-SLA coincides with observed SLA in shorter-duration fluctuations. The comparison of FSM-SLA data and the observed SLA data (at Jazan, Jeddah, and Yanbu stations) shows a better correlation than between the AVISO and observed SLA data as shown in Fig.3 and Table .2. These correlation coefficient differences indicate that the FSM-SLA shows better accuracy near the coast. These

results were consistent with those obtained for along-track Jason-2 SLA with coastal stations by Taqi et al., (2017).

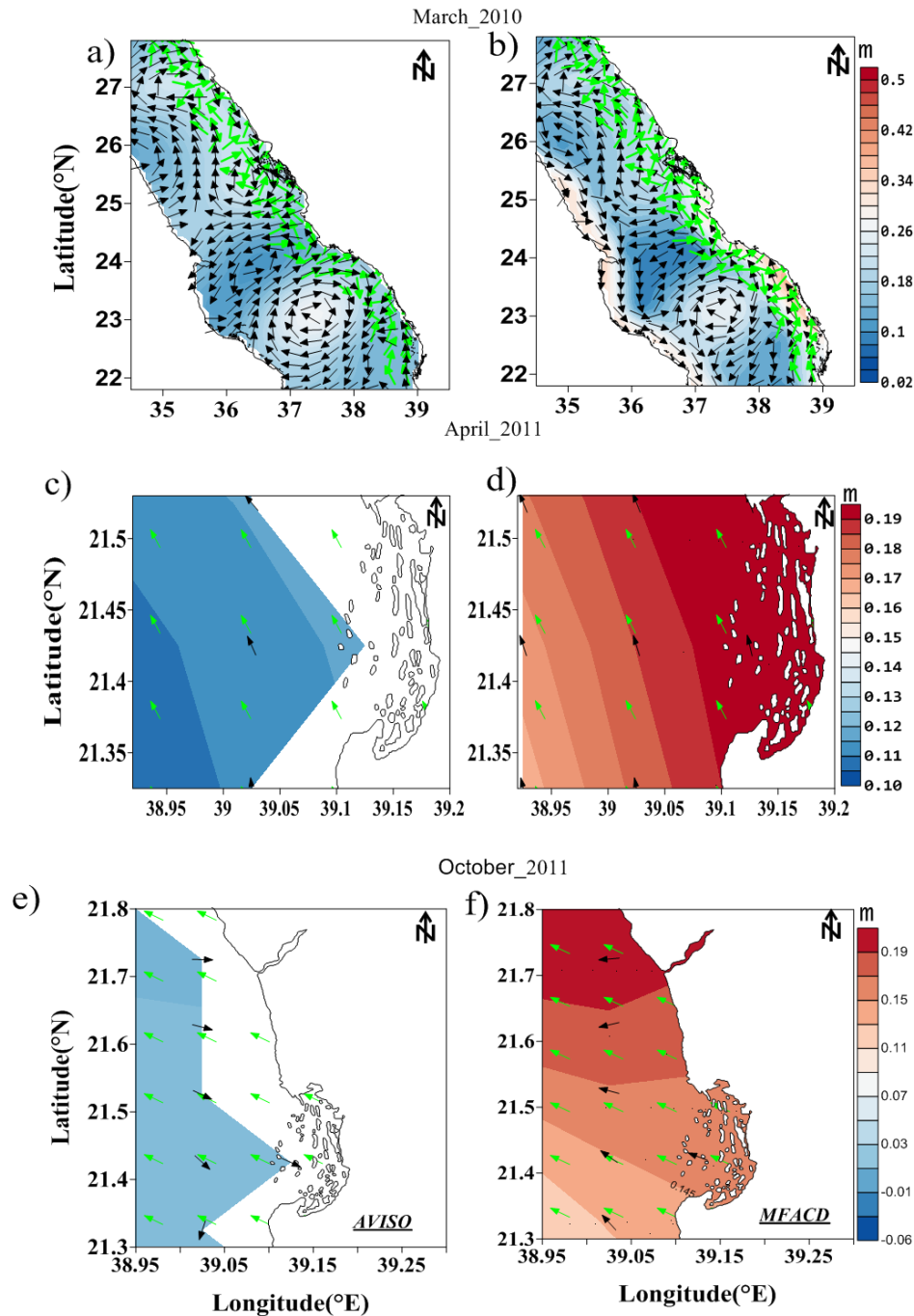


Figure 4. Comparison for three months' SLA (color) and geostrophic currents (black vectors) between (left) AVISO and (right) FSM-SLA. **red** and **Green** vectors show geostrophic currents from CTD data.

Figure 4 shows a comparison between the geostrophic currents for the central Red Sea derived from AVISO and FSM-SLA for three different times (March 2010, April 2011, and October 2011), those different periods corresponding to the timing of three cruises described in section 2.1.

It can be seen from the Fig. 4(b, d & f) that there is a significant matching in the directions of geostrophic currents from FSM-SLA with CTD data near the coast and offshore. This result is in agreement with Bower and Farrar (2015) findings, especially in October 2011 (Fig. 4f). In March 2010, the geostrophic current near the coast estimated from FSM-SLA is in match with directions of CTD-derived geostrophic current in most regions. However, the directions of geostrophic currents from AVISO are not always in match with CTD-derived one especially in October 2011.

In March 2010 the geostrophic currents along the eastern coast of the Red Sea are towards the north for both FSM-SLA and AVISO, except between $22.2^{\circ} - 23^{\circ}\text{N}$, where the FSM-SLA and CTD data geostrophic currents are in the same direction while AVISO geostrophic current is in the opposite direction (see Fig. 4a,4b).

Table 3. statistical analysis for the speed of geostrophic current from FSM-SLA and AVISO compared with CTD-derived geostrophic current from the **three** cruises.

current speed		Month-Year	Bias (m/s)	RMSE (m/s)	CC	P- Value
	FSM-SLA	Mar-2010	-0.0085	0.065	0.54	0.01
	AVISO		-0.01	0.08	0.48	0.14
	FSM-SLA	Apr-2011	-0.28	0.31	0.61	0.02
	AVISO		-0.87	0.89	0.44	0.13
	FSM-SLA	Oct-2011	-0.19	0.49	0.53	0.10
	AVISO		-0.51	0.70	0.49	0.16

The speed of geostrophic current data derived from FSM-SLA and CTD during the months (March 2010, April 2011, October 2011) shows a stronger correlation compared with the speed of geostrophic current derived from AVISO and CTD as shown in Fig. 4 and Table 3.

3.2 Description of FSM-SLA and geostrophic current

Figure 5 shows monthly climatology variation for the 6-year period for SLA and geostrophic current. The SLA is higher during the period from October to May and lower during rest of the year, this pattern is consistent with previous studies (Patzert, 1974; Edwards, 1987; Ahmad and Sultan, 1989; Sofianos and Johns, 2001; Sultan and Elghribi, 2003; Manasrah et al., 2004, 2009). Based on calculations made here, the geostrophic current of Red Sea along the eastern coast is northward while along the western coast is southward. This northward flowing current is consistent with a previous study by Bower and Farrar (2015). Similar results are also obtained from three-dimensional modeling by (Clifford et al., 1997; Eshel and Naik, 1997; Sofianos, 2003, 2002). The Fig.5 presents the surface circulation during January in the northern part, where two eddies formed between $25^{\circ} - 27.5^{\circ}\text{N}$. The first eddy is an anticyclone between $26.3^{\circ} - 27.5^{\circ}\text{N}$ on the eastern side of the Red Sea. The other eddy is cyclonic located between $25^{\circ} - 26.3^{\circ}\text{N}$ near the western coast. To the south of that, there are two other eddies between $22.5^{\circ} - 24.7^{\circ}\text{N}$, cyclonic on the western side and anticyclonic on the eastern side. These results match those observed in previous studies by (Eladawy et al., 2017; Sofianos and Johns, 2003a). Two cyclonic eddies and an anticyclonic eddy found at $19.5^{\circ} - 22.5^{\circ}\text{N}$ are consistent with those modeled by Sofianos and Johns, (2003). Near Bab al-Mandab, there is a cyclonic eddy on the western side between $15^{\circ} - 16.5^{\circ}\text{N}$.

In February, the surface circulation of the Red Sea is similar to that during January, with some differences in the eddies structure. The anticyclonic eddy near 27°N on the eastern sides of the Red Sea starts shifting toward the western coast, while a cyclonic eddy at $25^{\circ} - 26.3^{\circ}\text{N}$ starts appearing. The cyclonic eddies between $22.5^{\circ} - 24.7^{\circ}\text{N}$ on the western side are less clear in this month.

In March and April, all the eddies are located along the central axis of the Red Sea. In the north, the anticyclonic eddy near 27°N is shown in both months, while the cyclonic eddy is not clear during March and April. The anticyclonic eddy shown near $23-24^{\circ}\text{N}$ during March is weakening during April. Also, the anticyclonic eddy between $19-20^{\circ}\text{N}$ is shrinking during April.

In May, there is no clear eddy between 27.5°N and 25°N . However, four eddies are clearly existing between $19.5^{\circ} - 25^{\circ}\text{N}$; two cyclonic eddies at $24^{\circ} - 25^{\circ}\text{N}$, and $20^{\circ} - 22^{\circ}\text{N}$, two anticyclonic eddies at $23^{\circ} - 24^{\circ}\text{N}$, and $19.5^{\circ} - 20^{\circ}\text{N}$. From the previous results, it can be seen several cyclonic

and anticyclonic eddies distributed all over the Red Sea and these results match those in modelling studies (Clifford et al., 1997; Eladawy et al., 2017; Sofianos, 2003, 2002, Yao et al., 2014a)

During June, the flow of the geostrophic currents in the northern part reversed its direction. This accompanies a formation of large cyclonic eddy extending from 25.5° – 27.5° N occupying the entire width of the Red Sea. To the south of it, another cyclonic eddy observed between 24° – 25° N and an anticyclonic eddy between 23° – 24° N are also noticed during June with a similar strength during May. The cyclonic eddy seen between 17° – 20° N during May, is also seen during this month with more strength. To the south of it, the flow is towards the Bab el-Mandab following normal summer pattern. The flow pattern along the coast is similar to results of (Chen et al., 2014) for winter (January to April). The short-term climatology of geostrophic current in the Red Sea is dominated by cyclonic and anticyclonic eddies all over the Red Sea, and especially in the central and northern parts of the sea.

During July-September, the flow of the geostrophic currents structure is similar to that of June with two cyclonic eddies north of 24.5° N and an anticyclonic eddy between 23° – 24° N. South of these eddies, another cyclonic eddy extends to 19° N. Furthermore, south of 19° N, there is an outflow towards the south over almost all the width of the Red Sea with narrow inflow along the eastern coast of the Red Sea. The Fig. 6 also shows an anticyclone between 18° - 19° N and a cyclone between 16° - 17° N during August and September. These results are consistent with the results from previous studies (Clifford et al., 1997; Eladawy et al., 2017; Sofianos, 2003, 2002, Yao et al., 2014b).

During summer (June-September), the changes in wind speed and direction cause reversals of the direction of flow consequently, the locations of eddies are also changed (Chen et al., 2014). The surface current flows from the Red Sea to the Gulf of Aden through the Bab-el-Mandeb. The anticyclonic eddy shown in the north at 27.5° N in winter is replaced with cyclonic eddy, during this season. In summer is dominated by cyclonic eddies as shown in Fig. 6.

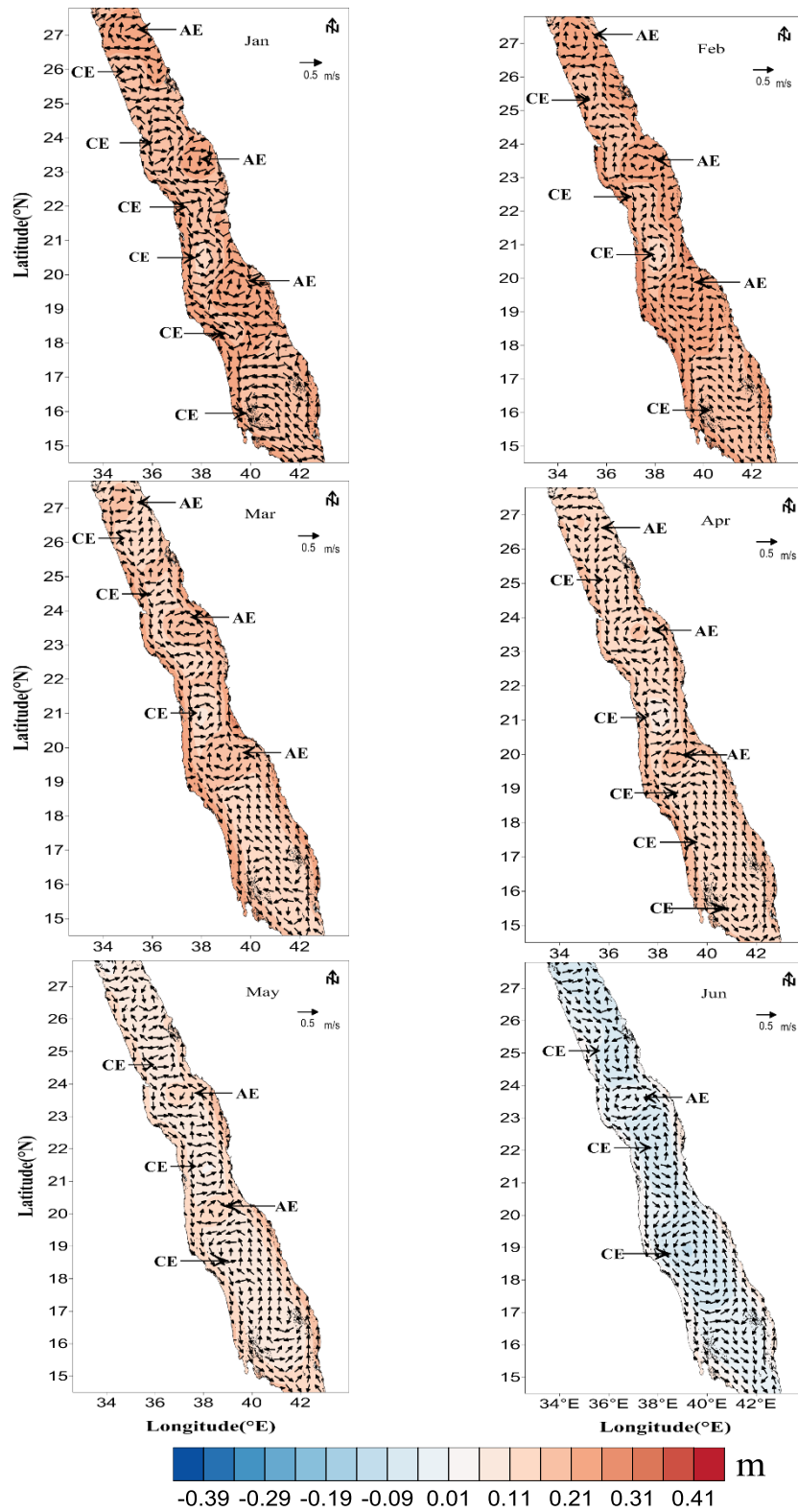


Figure 5. shown monthly climatology for geostrophic current and Sea level anomaly (Reference current length =0.5m/s)

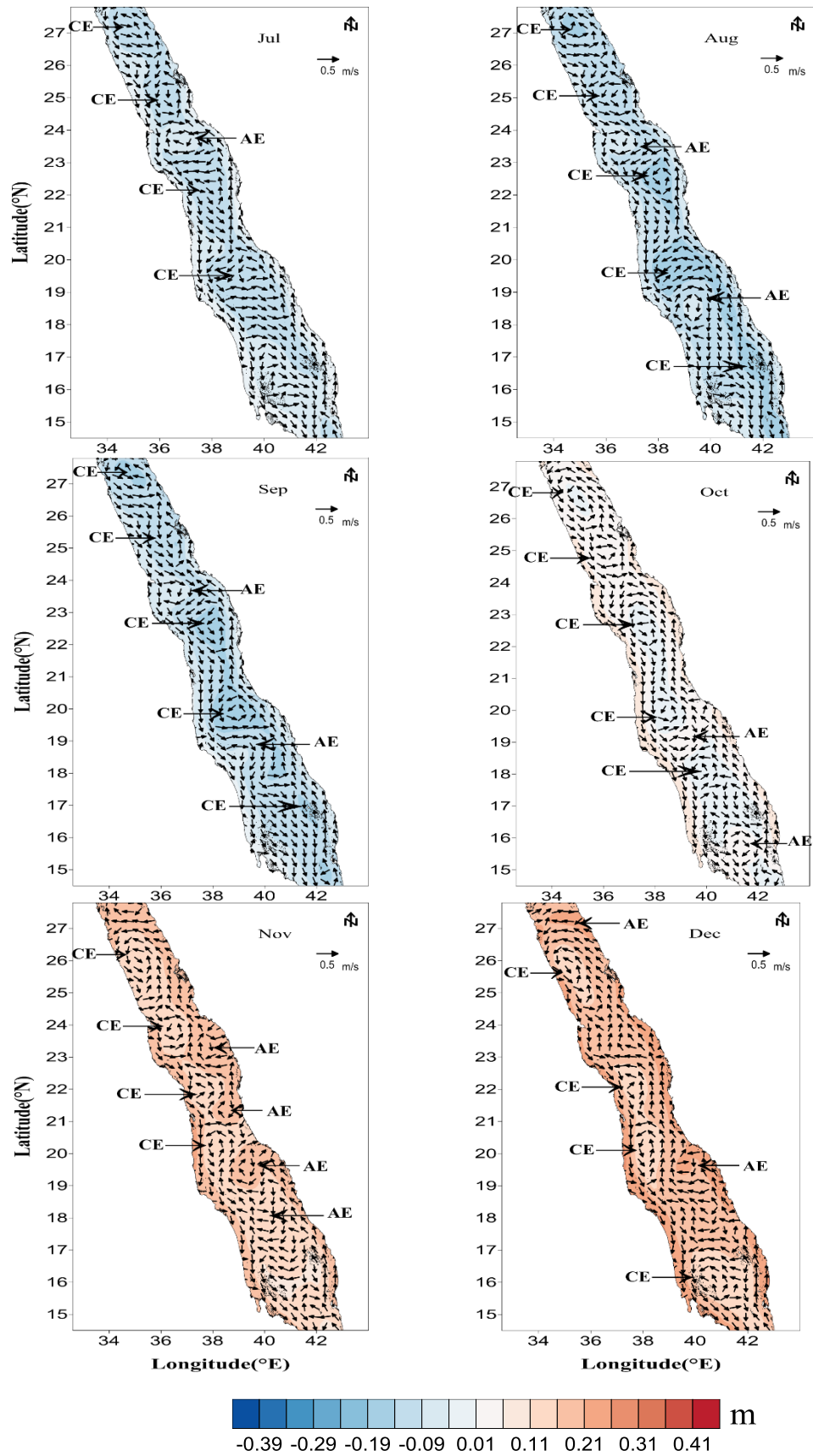


Figure 6. As Fig. 5 for July to December

During October, the geostrophic current is weak as compared with that during September, still cyclonic but with less strength. The anticyclone seen during September between 23° – 24° N is not clear during **October but an anticyclonic eddy forms between 15° N– 16° N**. In the central and southern parts, the flow of the geostrophic currents is towards south along the western coast and towards the north along the eastern side with the presence of cyclonic and anticyclonic eddies in the central axis of the Red Sea with a weak flow. In November and December, the structure of geostrophic currents are similar to that of October but with stronger currents and well established cyclonic and anticyclonic eddies.

During early summer the eddies are concentrated along the central Red Sea. By August and September some of the cyclonic eddies are shifted towards the eastern coast. During winter the cyclonic eddies are often condensed along the western side of the Red Sea, while anticyclonic eddies along the eastern side of the Red Sea. Their formation might be related to wind forces and thermohaline (Neumann and McGill, 1961; Phillips, 1966; Quadfasel and Baudner, 1993; Siedler, 1969; Tragou and Garrett, 1997).

Since the general circulation in the Red Sea is largely modified with the presence of cyclonic and anticyclonic eddies, the identification of eddies in the study area were conducted based on defining the eddies in terms of SLA (Chelton et al., 2011). Figure 7 shows statistical variability of lifespan, number of eddies, amplitude, and the mean speed of geostrophic current in the center of the eddies with latitude for 6 years. Statistical analysis indicates that eddies are generated over the entire Red Sea, mostly concentrated between 18° – 24° N, obviously stronger than any other latitude. The amplitude of an eddy has been defined as the differences between the estimated basic height of the eddy boundary and the extremum value of SLA inside the eddy interior parts. The mean amplitude for anticyclonic is between 1.3 cm at southern Red Sea to 5.3 cm at northern Red Sea and for cyclonic eddy is between 1.6 cm at southern Red Sea to 4.2 cm at northern Red Sea. The result indicates the average value of eddy amplitude in the Red Sea (including low latitude and high latitude) is about **2.96** cm, which is within the reasonable range defined by (Chelton et al., 2011). The average lifespan of the cyclonic eddies is longer than that of the anticyclonic eddies. Moreover, the mean speed of geostrophic current for the entire Red Sea is about 5–10 cm/s, which has reached three-times higher in the 25° – 26° N latitude band for both

cyclonic and anticyclonic. These results match those observed in previous study Zhan et al., (2014).

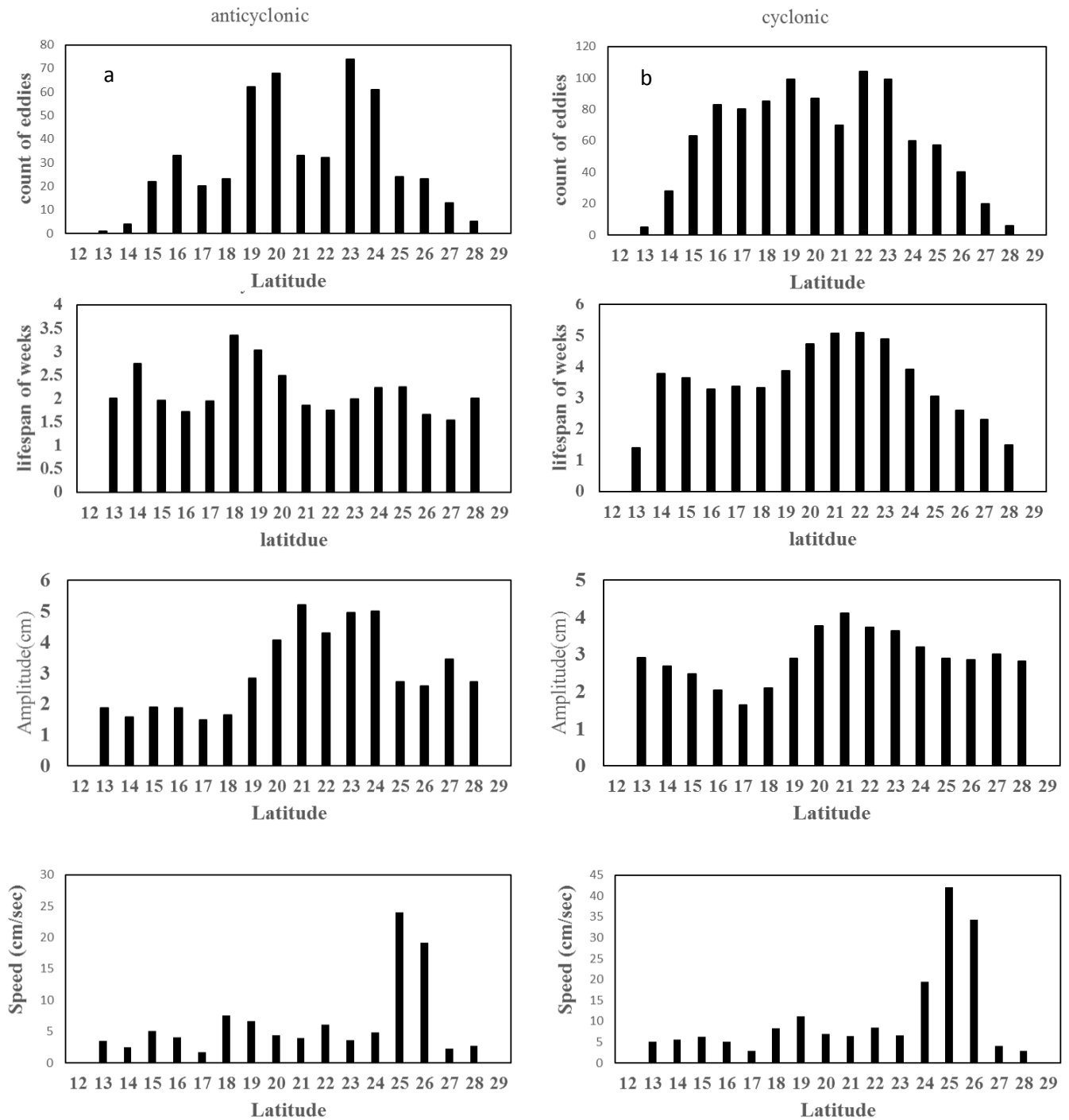


Figure 7. the variability of eddies with latitude for cyclonic (right panel) and anticyclonic (left panel).

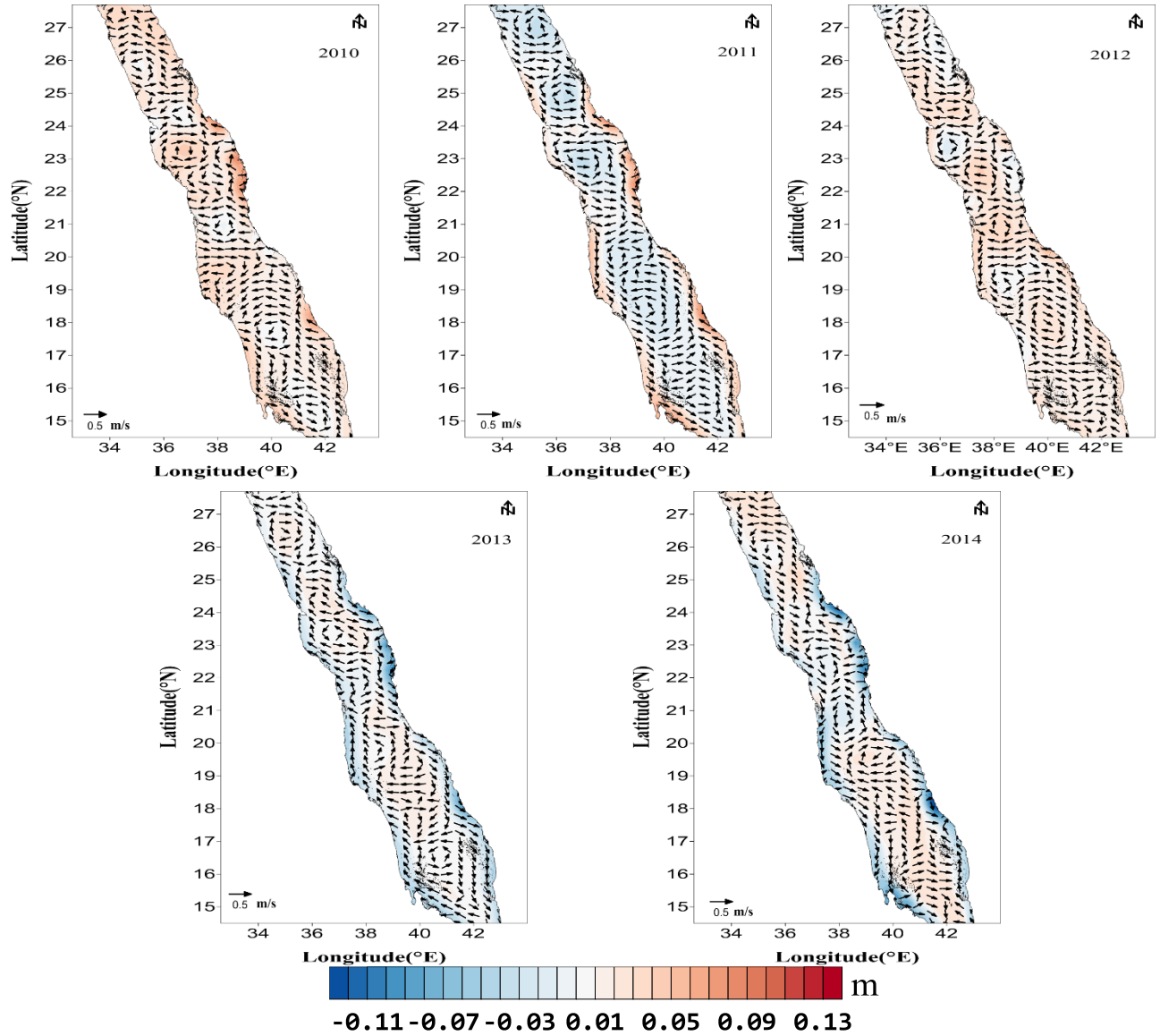


Figure 8. Maps of the annual mean SLA as a deviation from 6-yr mean.

Figure 8 shows the annual mean of SLA as deviation from the 6-year mean. The interannual variability of SLA and geostrophic currents is clearly seen in the southern part of the Red Sea while in the northern part, the pattern is similar for all years except for 2013 where the cyclonic eddy is replaced by anticyclonic eddy. The SLA and geostrophic distribution observed during 2011 are similar to that shown in Papadopoulos et al., (2015), with the cyclonic eddy along the eastern side seen more clearly. Moreover, due to extension of our data we could compute the cyclonic pattern up to the coast. The geostrophic currents direction is irregular along the coast but is northward most of the time. The eddies were mostly concentrated in the north and central parts of the Red Sea.

The statistical analysis between annual FSM-SLA with 6-year climatology shown in Table 4. The correlation is significant for all the years with standard deviation(σ) less than 0.1. the Bias is very small regardless its sign.

Table 4. Statistical analysis for the annual mean of FSM-SLA compared deviation from 6-yr mean.

Year	Bias	σ	CC
2010	-0.012	0.034	0.544
2011	-0.009	0.023	0.774
2012	-0.010	0.025	0.548
2013	-0.011	0.033	0.791
2014	-0.019	0.047	0.726
Note: The p-value corresponding to all comparison is very low ($P < 0.0001$), indicating that the results from correlation are significant.			

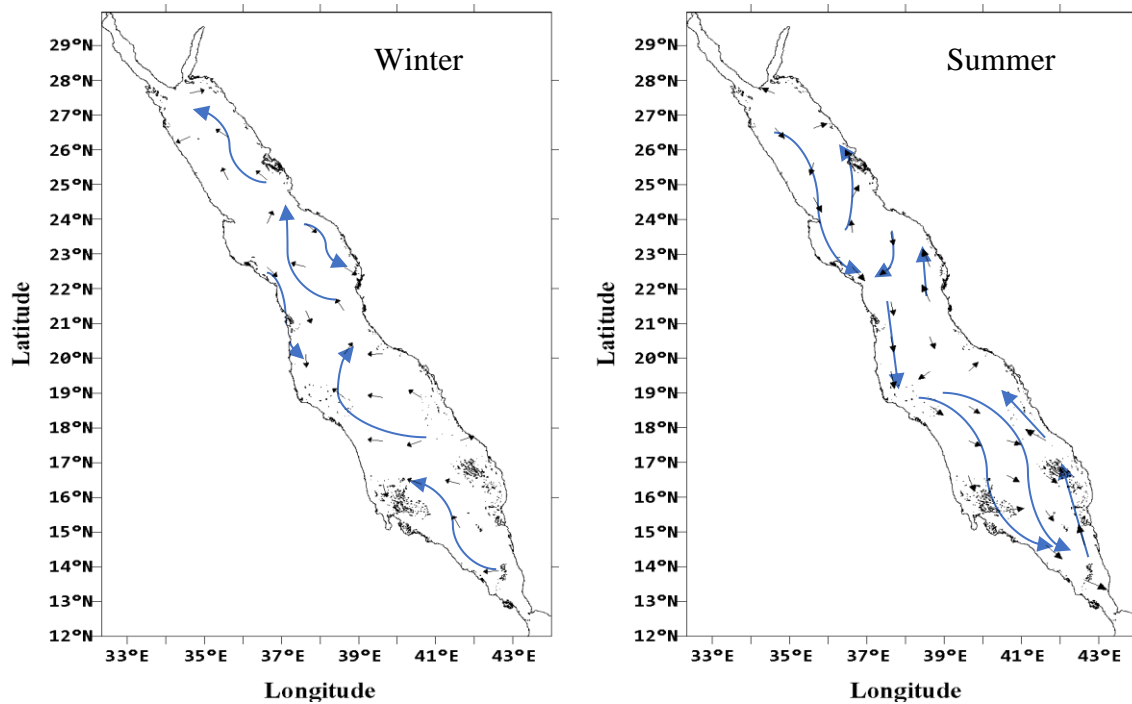


Figure 9. Winter and summer seasonal average surface geostrophic currents, black arrows are actual surface geostrophic currents and blue arrows are schematic streamline.

Figure 9 shows the general schematic of the seasonal variability of geostrophic currents derived from 6 years. During winter, the mean flow is toward the north all over the entire width of Red Sea, this result agrees with Sofianos and Johns, (2003). In addition, a southward flow of geostrophic currents were observed along the eastern coast at (22°N-24°N) and the western coast

at (23°N-20°N). During summer, the flow is towards the south along the western side of the sea while in southern part the flow spreads across most of the width of the Red Sea with a narrow northward flow near the eastern coast.

4. Conclusion

In general, the geostrophic current has been estimated from FSM-SLA for Red Sea region, and the distribution of the geostrophic current shows that the winter period extends from October to May and summer period extends from June to September. This pattern is similar to that shown by (Sofianos and Johns, 2001). There was a lack in measurements of coastal currents in the Red Sea. This study was able to produce data near the coast. The major new findings from the present study include the monthly geostrophic pattern in the Red Sea which has not been published before.

The southern Red Sea shows significant interannual variability in the geostrophic current pattern, while the central and northern parts show negligible difference over the years. The geostrophic current flow along the eastern coast is towards the north while along the western coast of the sea it is southward. Seasonally, the geostrophic currents in summer are flowing southward except along the eastern coast where they flow in the opposite direction. In winter, currents flow to the north for the entire sea except for a southward flow along small part of the eastern (22°N-24°N) and western coast (20°N-23°N). In this study, northward flowing eastern coastal current during summer is documented for the first time in the Red Sea.

The cyclonic eddies were relatively larger than the anticyclonic eddies in the Red Sea. The eddies are concentrated in the central and northern Red Sea more than in the southern side. The mean amplitude for anticyclonic and cyclonic eddies at lower latitudes have small amplitude and at higher latitudes have a larger amplitude. In winter, the cyclonic eddies are beside the western coast and anticyclonic eddies on the eastern side in the Red Sea, while in summer it is concentrated along the central Red Sea in early summer, with some cyclonic eddies transfer to the east coast in late summer. Also, in some locations there is a noticeable change from anticyclonic during winter to cyclonic during summer and vice versa between 26.3°N –27.5°N. The analysis of the eddies found that during the summer the cyclonic eddies are dominant in the entire Red Sea, while eddies of both polarities observed during winter. The finding of this paper is considered the first of its type in the Red Sea for extending SLA and geostrophic currents to the coast beside giving more details of eddies spatial and temporal variabilities in the coastal region.

Acknowledgments

The authors are deeply grateful to the data providers. JPL Physical Oceanography Distribution Active Archive Center (PODAAC), the Archiving Validation and Interpretation of Satellite Oceanographic (AVISO) to provide Jason-2 data. This also extends to the Saudi Arabian GCS for providing hourly tide gauge data along the coast of the Red Sea. They are thankful for the High-Performance Computing center at King Abdulaziz University (<http://hpc.kau.edu.sa>) for giving us a chance to use their facilities during analyses of data. Our thanks are for King Abdulaziz University, Jeddah, Saudi Arabia and Hodeidah University, Yemen for making this research possible.

References

- Abdallah, A. M. and Eid, F. M.: On the steric sea level in the Red Sea, *Int. Hydrogr. Rev.*, 66(1), 115–124., 1989.
- Ahmad, F. and Sultan, S. A. R.: On the heat balance terms in the central region of the Red Sea, *Deep Sea Res. Part A. Oceanogr. Res. Pap.*, 34(10), 1757–1760, 1987.
- Ahmad, F. and Sultan, S. A. R.: Surface heat fluxes and their comparison with the oceanic heat-flow in the red-sea, *Oceanol. acta*, 12(1), 33–36, 1989.
- Al Saafani, M. A. and Shenoi, S. S. C.: Seasonal cycle of hydrography in the Bab el Mandab region, southern Red Sea, *Proc. Indian Acad. Sci. Earth Planet. Sci.*, 113(3), 269–280, doi:10.1007/BF02716725, 2004.
- Andersen, O. B. and Knudsen, P.: The role of satellite altimetry in gravity field modelling in coastal areas, *Phys. Chem. Earth, Part A Solid Earth Geod.*, 25(1), 17–24, doi:10.1016/S1464-1895(00)00004-1, 2000.
- Birol, F., Cancet, M. and Estournel, C.: Aspects of the seasonal variability of the Northern Current (NW Mediterranean Sea) observed by altimetry, *J. Mar. Syst.*, 81(4), 297–311, doi:10.1016/j.jmarsys.2010.01.005, 2010.
- Bower, A. and Farrar, J. T.: Air – Sea Interaction and Horizontal Circulation in the Red Sea, in *The Red Sea the Formation, Morphology, Oceanography and Environment of a Young Ocean Basin*, edited by N. M. A. Rasul and I. C. F. Stewart, pp. 329–342, Springer., 2015.
- Chelton, D. B., Schlax, M. G. and Samelson, R. M.: *Progress in Oceanography Global*

observations of nonlinear mesoscale eddies, *Prog. Oceanogr.*, 91(2), 167–216, doi:10.1016/j.pocean.2011.01.002, 2011.

Chelton, U. B., Ries, J. C., Haines, B. J., FU, L.-L. and Callahan, P. S.: Satellite Altimetry and Earth Sciences, in *Satellite Altimetry and Earth Sciences A Handbook of Techniques and Applications*, edited by L.-L. FU and A. Cazenave, pp. 1–122, Academic Press, San Diego, California ,USA., 2001.

Chen, C., Li, R., Pratt, L., Limeburner, R., Berdsley, R., Bower, A., Jiang, H., Abualnaja, Y., Xu, Q., Lin, H., Liu, X., Lan, J. and Kim, T.: Process modeling studies of physical mechanisms of the formation of an anticyclonic eddy in the central Red Sea, *J. Geophys. Res. Ocean.*, 119, 1445–1464, doi:10.1002/2013JC009351, 2014.

Clifford, M., Horton, C., Schmitz, J. and Kantha, L. H.: An oceanographic nowcast/forecast system for the Red Sea, *J. Geophys. Res. Ocean.*, 102(C11), 25101–25122, doi:10.1029/97JC01919, 1997.

Deng, X. and Featherstone, W. E.: A coastal retracking system for satellite radar altimeter waveforms : Application to ERS-2 around Australia, *J. Geophys. Res.*, 111((C06012)), 1–16, doi:10.1029/2005JC003039, 2006.

Deng, X., Featherstone, W. E., Hwang, C. and Shum, C. K.: Improved Coastal Marine Gravity Anomalies at the Taiwan Strait from Altimeter Waveform Retracking, in *Proceedings of the International Workshop on Satellite Altimetry for Geodesy, Geophysics and Oceanography.*, 2001.

Desportes, C., Obligis, E. and Eymard, L.: On Wet Tropospheric Correction For Altimetry In Coastal Regions, in ‘Envisat Symposium 2007’, Montreux, Switzerland, pp. 23–27., 2007.

Durand, F., Shankar, D., Birol, F. and Shenoi, S. S. C.: Spatio-temporal structure of the East India Coastal Current from satellite altimetry, *J. Geophys. Res. Ocean.*, 114(2), 18, doi:10.1029/2008JC004807, 2009.

Edwards, F. J.: *Climate and oceanography, Red sea*, 1, 45–68, 1987.

Eladawy, A., Nadaoka, K., Negm, A., Abdel-Fattah, S., Hanafy, M. and Shaltout, M.: Characterization of the northern Red Sea’s oceanic features with remote sensing data and outputs from a global circulation model, *Oceanologia*, 59(3), 213–237, doi:10.1016/j.oceano.2017.01.002, 2017.

Eshel, G. and Naik, N. H.: Climatological Coastal Jet Collision, Intermediate Water Formation, and the General Circulation of the Red Sea, *Am. Meteorol. Soc.*, (1989), 1233–1257,

doi:10.1175/1520-0485, 1997.

Ghosh, S., Kumar Thakur, P., Garg, V., Nandy, S., Aggarwal, S., Saha, S. K., Sharma, R. and Bhattacharyya, S.: SARAL/AltiKa Waveform Analysis to Monitor Inland Water Levels: A Case Study of Maithon Reservoir, Jharkhand, India, *Mar. Geod.*, 38(S1), 597–613, doi:10.1080/01490419.2015.1039680, 2015.

Hwang, C., Guo, J., Deng, X., Hsu, H. Y. and Liu, Y.: Coastal gravity anomalies from retracked Geosat/GM altimetry: Improvement, limitation and the role of airborne gravity data, *J. Geod.*, 80(4), 204–216, doi:10.1007/s00190-006-0052-x, 2006.

Johns, W. E., Jacobs, G. a, Kindle, J. C., Murray, S. P. and Carron, M.: Arabian Marginal Seas and Gulfs Report of a Workshop held at., 2000.

Khaki, M., Forootan, E. and Sharifi, M. A.: Satellite radar altimetry waveform retracking over the Caspian Sea, *Int. J. Remote Sens.*, 35(17), 6329–6356, 2014.

Manasrah, R., Badran, M., Lass, H. U. and Fennel, W.: Circulation and winter deep-water formation in the northern Red Sea, *Oceanologia*, 46(1), 5–23, 2004.

Manasrah, R., Hasanean, H. M. and Al-Rousan, S.: Spatial and seasonal variations of sea level in the Red Sea, 1958-2001, *Ocean Sci. J.*, 44(3), 145–159, doi:10.1007/s12601-009-0013-4, 2009.

Mantripp, D.: Radar altimetry, in *The Determination of Geophysical Parameters From Space*, edited by N. . Fancey, I. . Gardiner, and R. A. Vaughan, p. 119, Institute of Physics Publishing, London, UK., 1966.

Morcos, S. A.: Physical and chemical oceanography of the Red Sea, *Ocean. Mar. Biol. Ann. Rev.*, 8, 73–202, 1970.

Murray, S. P. and Johns, W.: Direct observations of seasonal exchange through the Bab el Mandab Strait, *Geophys. Res. Lett.*, 24(21), 2557–2560, 1997.

Neumann, A. C. and McGill, D. A.: Circulation of the Red Sea in early summer, *Deep Sea Res.*, 8(3–4), 223–235, 1961.

Osman, M.: Evaporation from coastal water off Port-Sudan, *J. King Abdulaziz Univ. Mar. Sci.*, 17(4), 1–2, 1985.

Papadopoulos, V. P., Zhan, P., Sofianos, S. S., Raitsos, D. E., Qurban, M., Abualnaja, Y., Bower, A., Kontoyiannis, H., Pavlidou, A. and Asharaf, T. T. M.: Factors governing the deep ventilation of the Red Sea, *J. Geophys. Res. Ocean.*, 120(11), 7493–7505, 2015.

Patzert, W. C.: Wind-induced reversal in Red Sea circulation, *Deep Sea Res. Oceanogr.*, 21(2),

109–121, 1974.

Phillips, O. M.: On turbulent convection currents and the circulation of the Red Sea, *Deep Sea Res.*, 13(6), 1149–1160, 1966.

Quadfasel, D. and Baudner, H.: Gyre-scale circulation cells in the Red-Sea, *Oceanol. Acta*, 16(3), 221–229, 1993.

Schmidt, M., Devey, C. and Eisenhauer, A.: FS Poseidon Fahrtbericht/Cruise Report P408 [POS408]-The Jeddah Transect; Jeddah-Jeddah, Saudi Arabia, 13.01.-02.03. 2011.

Siedler, G.: General circulation of water masses in the Red Sea, in *Hot Brines and Recent Heavy Metal Deposits in the Red Sea*, edited by E. T. DEGENS and D. A. Ross, pp. 131–137, Springer-Verlag, New York., 1969.

Smeed, D. A.: Exchange through the Bab el Mandab, *Deep Sea Res. Part II Top. Stud. Oceanogr.*, 51(4), 455–474, 2004.

Sofianos, S. and Johns, W. E.: Water mass formation, overturning circulation, and the exchange of the Red Sea with the adjacent basins, in *The Red Sea the Formation, Morphology, Oceanography and Environment of a Young Ocean Basin*, edited by N. M. A. Rasul and I. C. F. Stewart, pp. 343–353, Springer., 2015.

Sofianos, S. S.: An Oceanic General Circulation Model (OGCM) investigation of the Red Sea circulation: 2. Three-dimensional circulation in the Red Sea, *J. Geophys. Res.*, 108(C3), 3066, doi:10.1029/2001JC001185, 2003.

Sofianos, S. S. and Johns, W. E.: An Oceanic General Circulation Model (OGCM) investigation of the Red Sea circulation, 1. Exchange between the Red Sea and the Indian Ocean, *J. Geophys. Res.*, 107(C11), 3196, doi:10.1029/2001JC001184, 2002.

Sofianos, S. S. and Johns, W. E.: Observations of the summer Red Sea circulation, *J. Geophys. Res.*, 112, 1–20, doi:10.1029/2006JC003886, 2007.

Sofianos, S. S. and Johns, W. E.: Wind induced sea level variability in the Red Sea, *Geophys. Res. Lett.*, 28(16), 3175–3178, 2001.

Sultan, S. A. R. and Elghribi, N. M.: Sea level changes in the central part of the Red Sea, *Indian J. Mar. Sci.*, 32(2), 114–122, 2003.

Sultan, S. A. R., Ahmad, F. and Nassar, D.: Relative contribution of external sources of mean sea-level variations at Port Sudan, Red Sea, *Estuar. Coast. Shelf Sci.*, 42(1), 19–30, 1996.

Taqi, A. M., Al-Subhi, A. M. and Alsaafani, M. A.: Extension of Satellite Altimetry Jason-2 Sea

Level Anomalies Towards the Red Sea Coast Using Polynomial Harmonic Techniques, *Mar. Geod.*, doi:10.1080/01490419.2017.1333549, 2017.

Tragou, E. and Garrett, C.: The shallow thermohaline circulation of the Red Sea, *Deep Sea Res. Part I Oceanogr. Res. Pap.*, 44(8), 1355–1376, 1997.

Vignudelli, S., Cipollini, P., Astraldi, M., Gasparini, G. P. and Manzella, G.: Integrated use of altimeter and in situ data for understanding the water exchanges between the Tyrrhenian and Ligurian Seas, *J. Geophys. Res.*, 105(C8), 19649–19664, doi:10.1029/2000JC900083, 2000.

Vignudelli, S., Cipollini, P., Roblou, L., Lyard, F., Gasparini, G. P., Manzella, G. and Astraldi, M.: Improved satellite altimetry in coastal systems: Case study of the Corsica Channel (Mediterranean Sea), *Geophys. Res. Lett.*, 32(L07608), 1–5, doi:10.1029/2005GL022602, 2005.

Yao, F., Hoteit, I., Pratt, L. J., Bower, A. S., Zhai, P., Kohl, A. and Gopalakrishnan, G.: Seasonal overturning circulation in the Red Sea: 1. Model validation and summer circulation, *J. Geophys. Res. Ocean.*, 119, 2238–2262, doi:10.1002/2013JC009331, 2014a.

Yao, F., Hoteit, I., Pratt, L. J., Bower, A. S., Köhl, A., Gopalakrishnan, G. and Rivas, D.: Seasonal overturning circulation in the Red Sea: 2. Winter circulation, *J. Geophys. Res. Ocean.*, 119(4), 2263–2289, doi:10.1002/2013JC009331, 2014b.

Zhan, P., Subramanian, A. C., Yao, F. and Hoteit, I.: Eddies in the Red Sea: A statistical and dynamical study. *Geophys. Res. Ocean.*, 119, 3909–3925, doi:10.1002/2013JC009563, 2014.