

Interactive comment on “Mesoscale processes regulating the upper layer dynamics of Andaman waters during winter monsoon” by Salini Thaliyakkattil Chandran et al.

Salini Thaliyakkattil Chandran et al.

salinitc@gmail.com

Received and published: 11 January 2019

Reviewer 3

1) Oceanic circulation in upper ocean is not only geostrophic, identification of eddy through geostrophic current is not enough. It is better to follow Okubo-Weiss parameter method to identify eddies As per the reviewer's suggestion we adopted the Okubo-Weiss parameter method in the revised manuscript. 2) It is suggested to use OSCAR current observations rather than using geostrophic current Earlier studies argued that geostrophic current is dominated in the eddy region. Therefore we used geostrophic current observations. As per the reviewer's suggestion we used Okubo-Weiss param-

Printer-friendly version

Discussion paper



eter method to track the eddy.

3) It is known that equatorial westerly jet (Wyrkti jet) produces down welling kelvin wave which propagate as a coastal Kelvin and radiate Rossby wave which favors cyclonic eddies in the BoB including Andaman Sea. These mechanism is already reported by earlier study but here authors connected it with bio-geochemistry using in-situ should be reflected and discussed in detail. Author mentioned that they measured vertical velocity but throughout the manuscript it is not displayed. It is suggested use them in this study and may compare it with upwelling of isotherms etc.

We estimated vertical velocity from the OSCAR current 5 day average data. The eddy area is characterized with high positive vertical velocity and this supported the upwelling of isotherm and the existence of cold core eddy at 8°N.

4) Author mentioned vertical stability and vertical shear of currents favors the formation of eddies. It can control vertical mixing, however shear of horizontal current in horizontal plane supports the formation of eddies. This what discussed by Okubo-Weiss. Author should drop related sentences from the abstract about vertical shear and stratification.

we attempted Okubo-Weiss method and included in the revised manuscript. 5) It is mentioned that BoB upper ocean stratification restrict nutrient supply and later it is mentioned that eddy support up welling and nutrient supply, however it is not clear what is a role of waves and convective mixing? According to figure 8 higher chlorophyll is reported in north BoB, where stratification is more. By adopting Okubo-Weiss method we identified only one cold core eddy present i.e. CE1. But high production pocket is observed at 13°N and 93°E. The reason for this high production is explained using Kelvin waves and convective mixing. Gomes et al. (2000) found that production along the east coast of India is inhibited by stratification caused by river discharge and monsoonal cloud cover, physical processes such as ocean currents and eddies are able to erode stratification and upwell nutrients.

Please also note the supplement to this comment:

<https://www.ocean-sci-discuss.net/os-2018-23/os-2018-23-AC5-supplement.pdf>

Interactive comment on Ocean Sci. Discuss., <https://doi.org/10.5194/os-2018-23>, 2018.

OSD

[Interactive
comment](#)

[Printer-friendly version](#)

[Discussion paper](#)



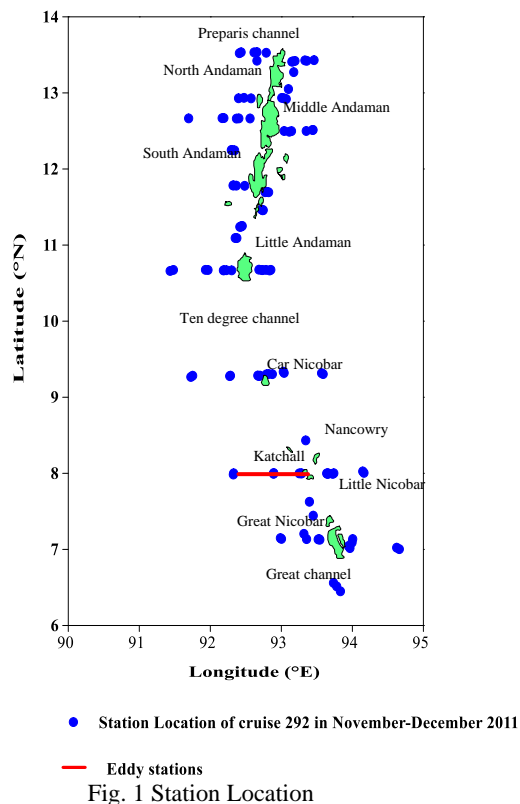


Fig. 1. Fig. 1 Station Location

Printer-friendly version

Discussion paper



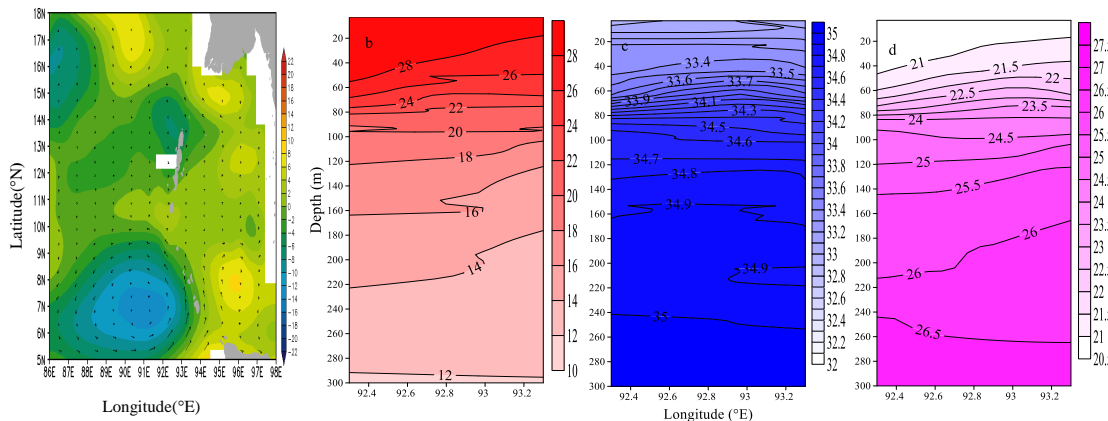


Fig. 2 a) Sea Surface Height (cm- Aviso weekly) and geostrophic current (cm/s) and the eddy location b) Vertical temperature ($^{\circ}\text{C}$), c) salinity and d) density (kg/m^3) distribution at the eddy location

Fig. 2. Fig. 2 a) Sea Surface Height (cm- Aviso weekly) and geostrophic current (cm/s) and the eddy location b) Vertical temperature ($^{\circ}\text{C}$), c) salinity and d) density (kg/m^3) distribution at the

Printer-friendly version

Discussion paper



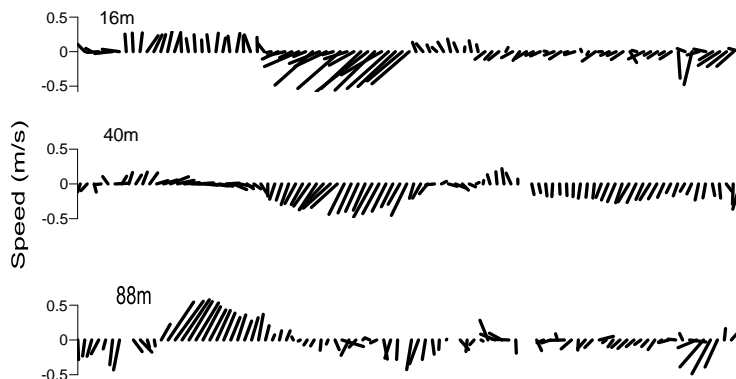


Fig. 3 Horizontal current (m/s) structure at different depth at 8°N

Fig. 3. Fig. 3 Horizontal current (m/s) structure at different depths along 8°N

[Printer-friendly version](#)[Discussion paper](#)

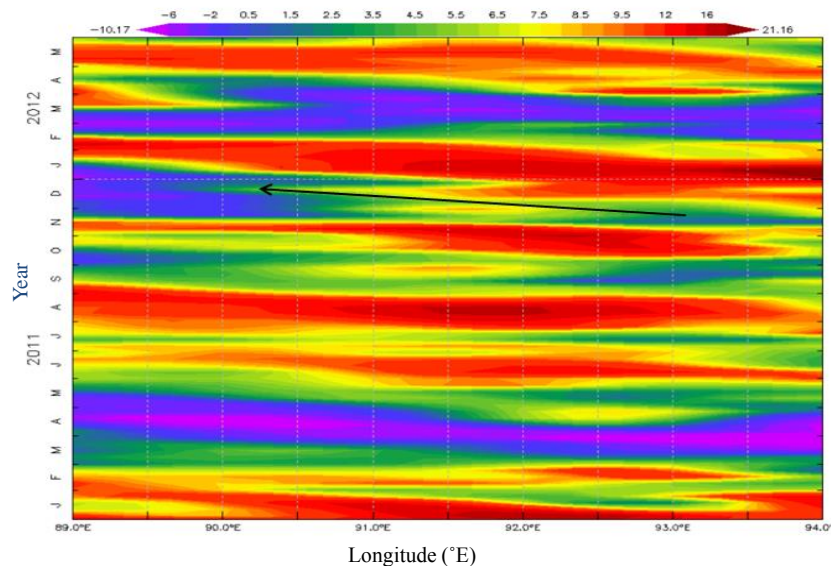


Fig. 4 Hovmuller diagram of SSHA(m) (Aviso monthly) along 8°N

Fig. 4. Fig. 4 Hovmuller diagram of SSHA(m) (Aviso monthly) along 8°N

[Printer-friendly version](#)

[Discussion paper](#)



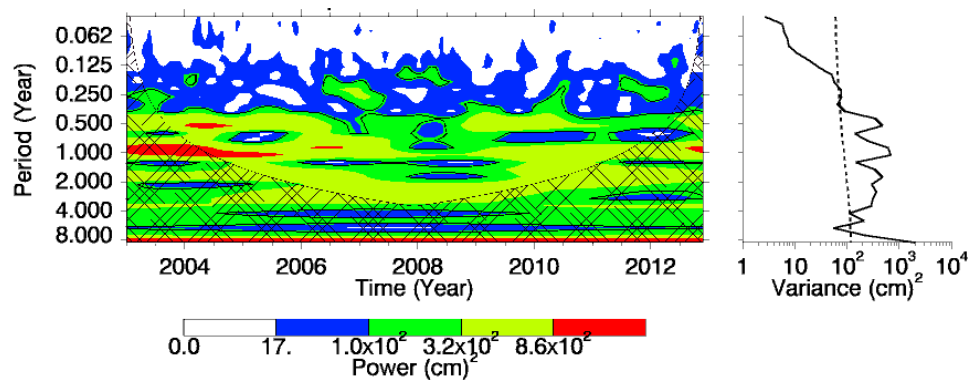


Fig. 5. Wavelet spectra of SSHA (m- Aviso monthly from 2003-2013) along 8°N

Fig. 5. Fig. 5. Wavelet spectra of SSHA (m- Aviso monthly from 2003-2013) along 8°N

[Printer-friendly version](#)

[Discussion paper](#)



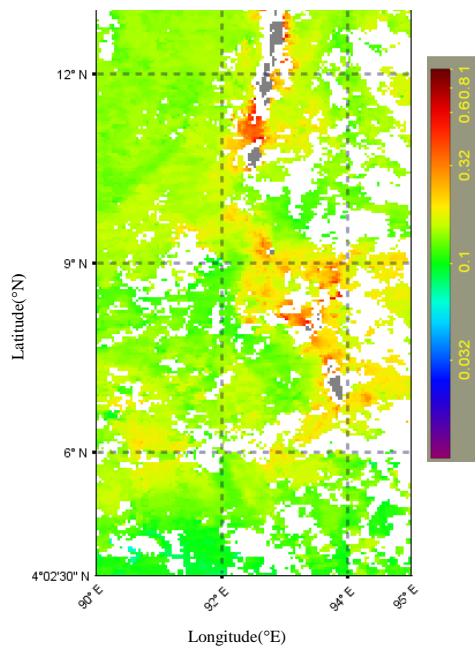


Fig. 6 chl a (mg/m^3 - weekly MODIS Aqua) pattern during the insitu observation

Fig. 6. Fig. 6 chl a (mg/m^3 - weekly MODIS Aqua) pattern during the insitu observation

[Printer-friendly version](#)[Discussion paper](#)

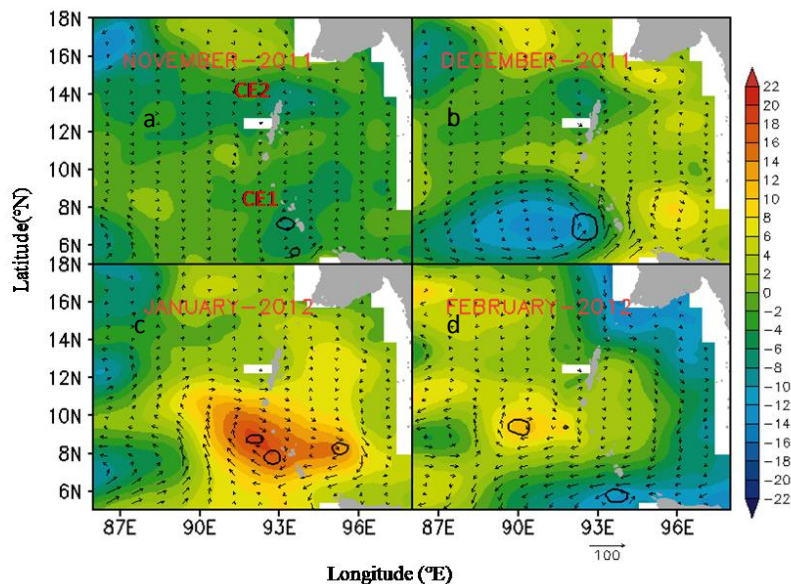


Fig. 7 Merged map of SSHA (m), Geostrophic current (cm/s) and Okubo-Weiss parameter (Black contour of $-2 \times 10^{-11} \text{ s}^{-2}$) from Aviso during a) November b) December c) January d) February

Fig. 7. Fig. 7 Merged map of SSHA (m), Geostrophic current (cm/s) and Okubo-Weiss parameter (Black contour of $-2 \times 10^{-11} \text{ s}^{-2}$) from Aviso during a) November b) December c) January d) February

Printer-friendly version

Discussion paper



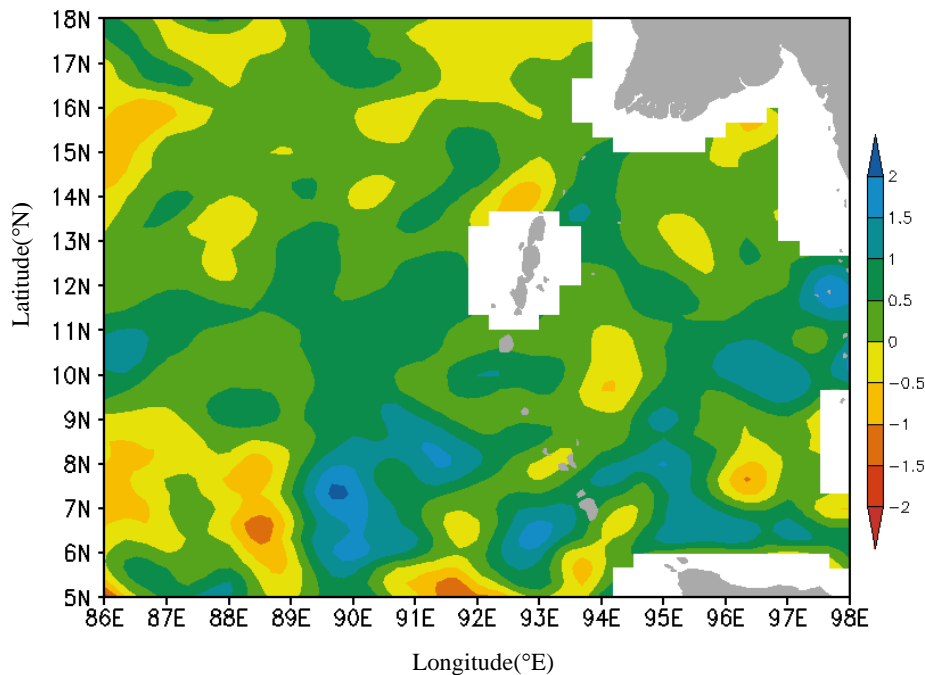


Fig.8 Vertical velocity (x 10⁻⁵) at 50m depth from OSCAR in Andaman waters during the eddy period

Fig. 8. Fig.8 Vertical velocity (x 10⁻⁵) at 50m depth from OSCAR in Andaman waters during the eddy period

[Printer-friendly version](#)[Discussion paper](#)

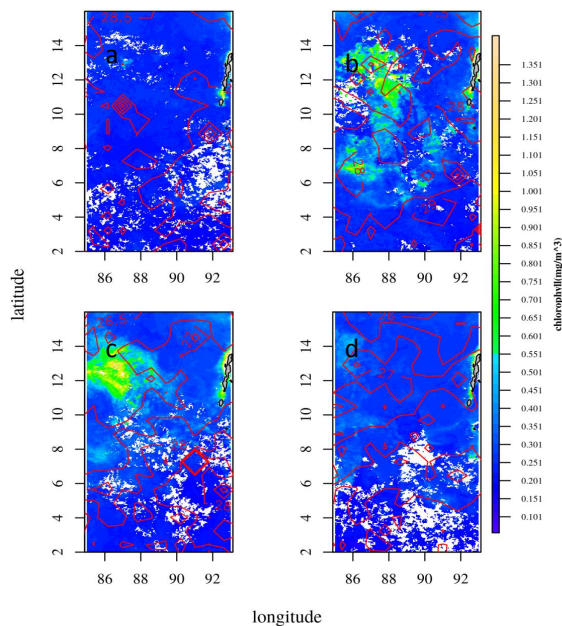


Fig.9 Overlap map of SST ($^{\circ}\text{C}$ -monthly MODIS Aqua) and Chl a (mg/m^3 - monthly MODIS Aqua) during a) November, b) December, c) January, d) February

Fig. 9. Fig.9 Overlap map of SST ($^{\circ}\text{C}$ -monthly MODIS Aqua) and Chl a (mg/m^3 - monthly MODIS Aqua) during a) November, b) December, c) January, d) February

Printer-friendly version

Discussion paper

