

Interactive comment on “Mesoscale processes regulating the upper layer dynamics of Andaman waters during winter monsoon” by Salini Thaliyakkattil Chandran et al.

Salini Thaliyakkattil Chandran et al.

salinitc@gmail.com

Received and published: 13 December 2018

Reviewer 1 1) Authors have mentioned the mixed layer depth and isothermal layer depth. It would be better to mention the method or criteria adopted in the manuscript Included the same in the revised manuscript 2) Authors need to discuss about the role of ENSO in modulating the oceanic eddies and planetary waves in the discussion section.

Chen et al. (2012) studied the interannual variability mechanism of the mesoscale eddies in BoB and pointed that the eddy activities do not directly link to El Nino Southern Oscillation (ENSO) events and are sensitive to the baroclinic instability of the back-

Printer-friendly version

Discussion paper



ground flow.

3) There are several methods to quantify the oceanic eddies (e.g Okubo-Weiss), please adopt any objective method, such that eddy identification and tracking can be done.

Adopted Okubo-Weiss parameter method to track the eddy and included in the revised manuscript.

4) Wind stress curl values over the locations can be provided in a tabular format

By adopting the Okubo-Weiss method we identified only one eddy. The wind stress curl values for CE2 and CE3 dropped from the revised manuscript

Please also note the supplement to this comment:

<https://www.ocean-sci-discuss.net/os-2018-23/os-2018-23-AC1-supplement.pdf>

Interactive comment on Ocean Sci. Discuss., <https://doi.org/10.5194/os-2018-23>, 2018.

Printer-friendly version

Discussion paper



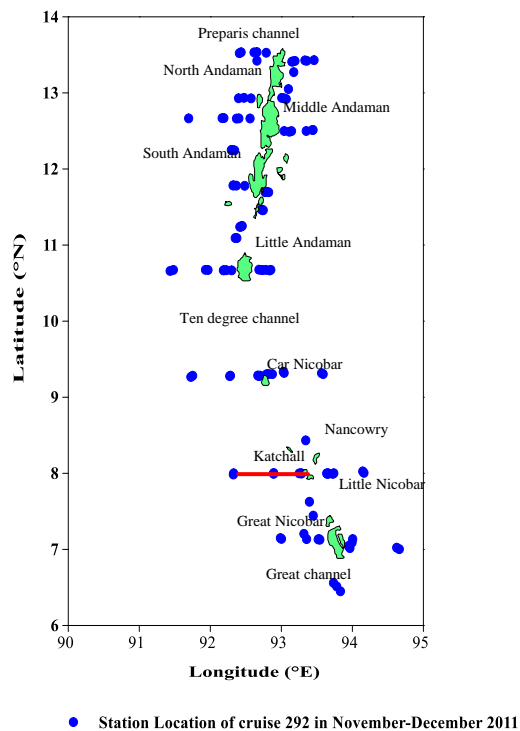


Fig. 1 Station Location

Fig. 1. Fig. 1 Station Location

Printer-friendly version

Discussion paper



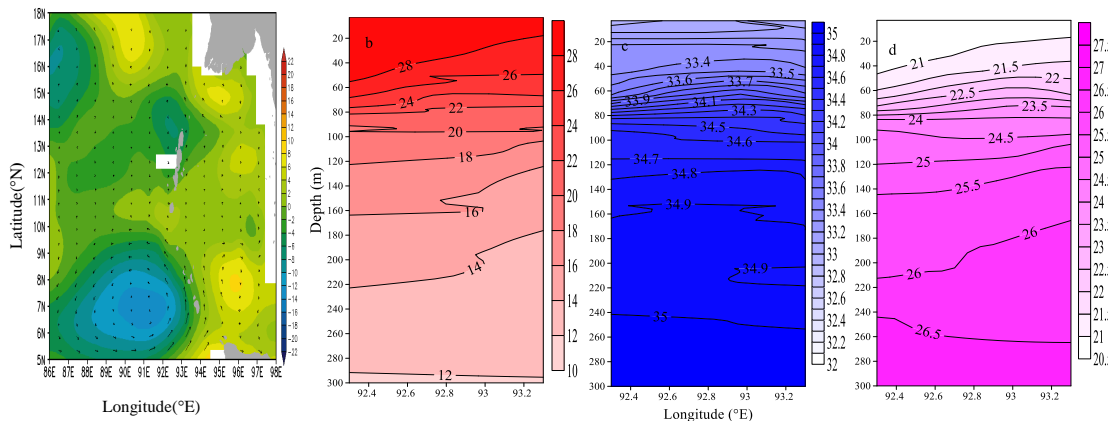


Fig. 2 a) Sea Surface Height (cm- Aviso weekly) and geostrophic current (cm/s) and the eddy location b) Vertical temperature ($^{\circ}\text{C}$), c) salinity and d) density (kg/m^3) distribution at the eddy location

Fig. 2. Fig. 2 a) Sea Surface Height (cm- Aviso weekly) and geostrophic current (cm/s) and the eddy location b) Vertical temperature ($^{\circ}\text{C}$), c) salinity and d) density (kg/m^3) distribution at the

Printer-friendly version

Discussion paper



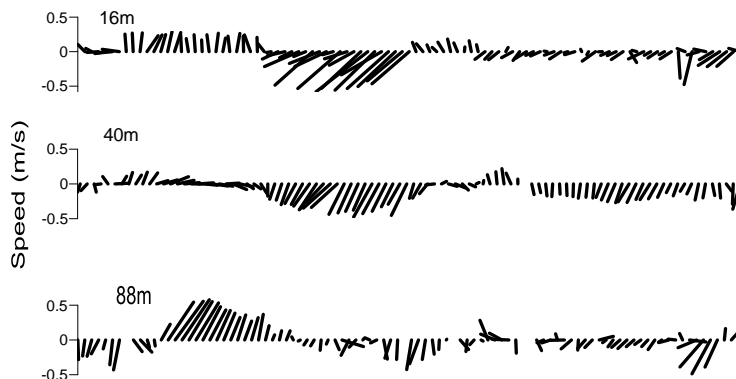


Fig. 3 Horizontal current (m/s) structure at different depth at 8°N

Fig. 3. Fig. 3 Horizontal current (m/s) structure at different depths along 8°N

[Printer-friendly version](#)[Discussion paper](#)

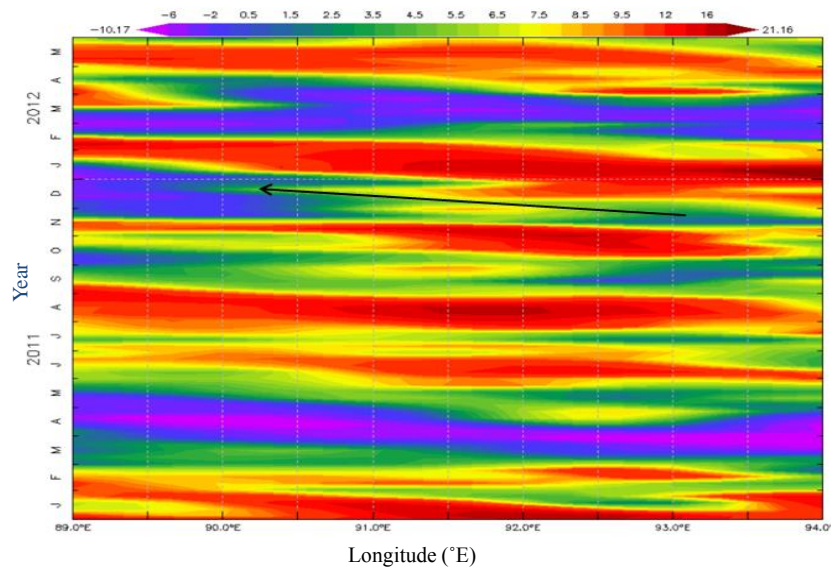


Fig. 4 Hovmuller diagram of SSHA(m) (Aviso monthly) along 8°N

Fig. 4. Fig. 4 Hovmuller diagram of SSHA(m) (Aviso monthly) along 8°N

[Printer-friendly version](#)

[Discussion paper](#)



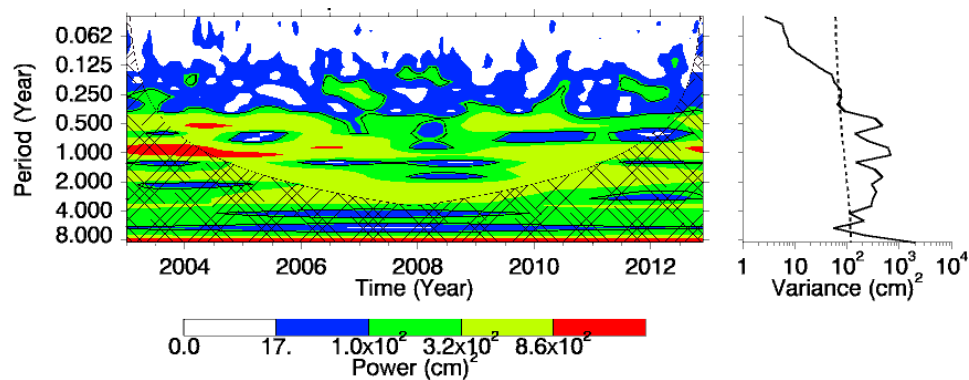


Fig. 5. Wavelet spectra of SSHA (m- Aviso monthly from 2003-2013) along 8°N

Fig. 5. Fig. 5. Wavelet spectra of SSHA (m- Aviso monthly from 2003-2013) along 8°N

[Printer-friendly version](#)

[Discussion paper](#)



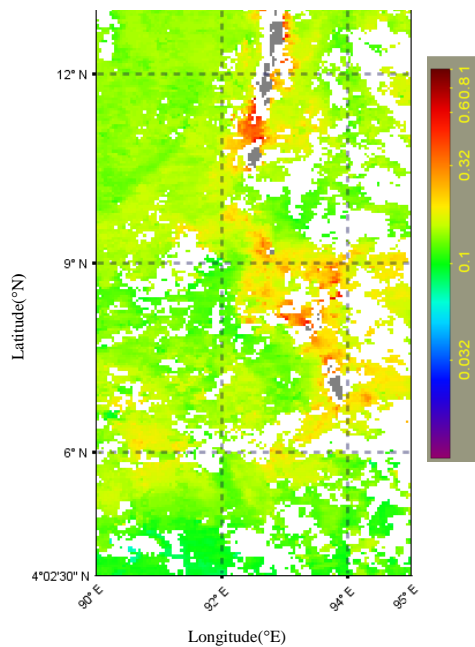


Fig. 6 chl a (mg/m^3 - weekly MODIS Aqua) pattern during the insitu observation

Fig. 6. Fig. 6 chl a (mg/m^3 - weekly MODIS Aqua) pattern during the insitu observation

[Printer-friendly version](#)[Discussion paper](#)

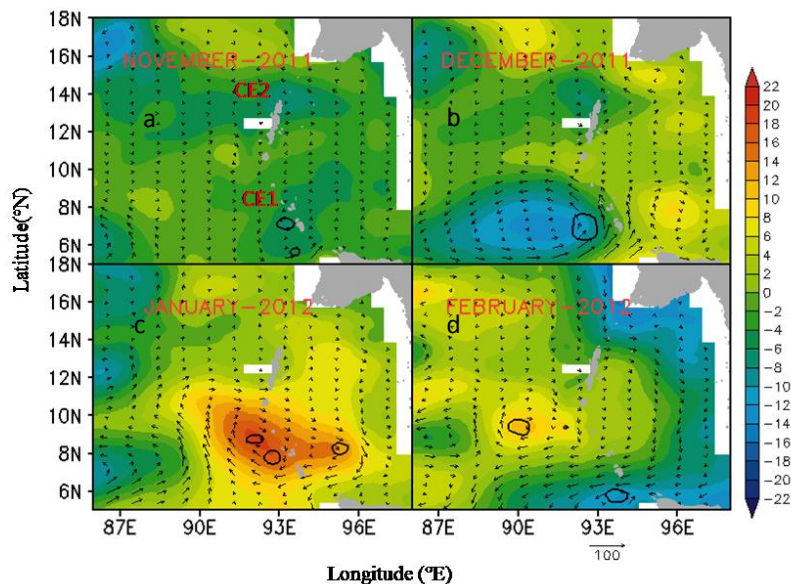


Fig. 7 Merged map of SSHA (m), Geostrophic current (cm/s) and Okubo-Weiss parameter (Black contour of $-2 \times 10^{-11} \text{ s}^{-2}$) from Aviso during a) November b) December c) January d) February

Fig. 7. Fig. 7 Merged map of SSHA (m), Geostrophic current (cm/s) and Okubo-Weiss parameter (Black contour of $-2 \times 10^{-11} \text{ s}^{-2}$) from Aviso during a) November b) December c) January d) February

Printer-friendly version

Discussion paper



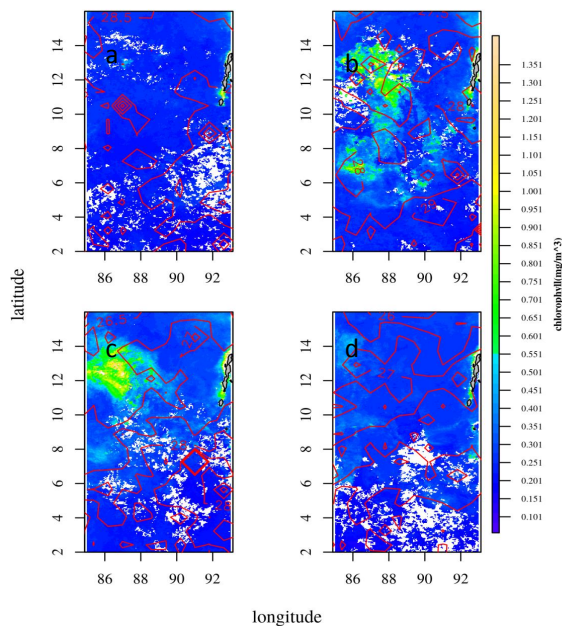


Fig.8 Overlap map of SST ($^{\circ}\text{C}$ -monthly MODIS Aqua) and Chl a (mg/m^3 - monthly MODIS Aqua) during a) November, b) December, c) January, d) February

Fig. 8. Fig.8 Overlap map of SST ($^{\circ}\text{C}$ -monthly MODIS Aqua) and Chl a (mg/m^3 - monthly MODIS Aqua) during a) November, b) December, c) January, d) February

Printer-friendly version

Discussion paper

