

We are grateful to Reviewer1 for the time and efforts assessing our work, and for providing comments.

These comments are reproduced below, in italics.

Responses and modifications proposed to the manuscript are shown in bold.

General comments:

This study presents a new ocean-atmosphere coupled operational system (CPLDA) with weakly coupled data assimilation developed at Met Office. In the first part, the model components are described and compared to previous coupled and uncoupled systems (GloSea and FOAM respectively). The weakly coupled data assimilation method from Lea et al. (2013, 2015) is also detailed. This system is operated and evaluated during one year (2015) with 6-hour analysis and daily 7-day forecast. The system performances are then compared with the operational ocean-only FOAM (Ryan

et al. 2015) and Mercator PSY4 systems and with different observational (SST, MLD, 15 m velocities, SLA) datasets. Atmospheric forcings and turbulent fluxes are also analysed. In summary, the CPLDA system performs as well as ocean-only systems despite its increased complexity and constitute a promising first step toward a fully coupled operational system.

The manuscript provides a precise description of the CPLDA system, underlining the benefits and limitations compared to other MetOffice systems and observations. It is globally well written and scientific analyses are seriously presented. However, I recommend the following modifications to improve the manuscript quality and understanding. I have the feeling that some sensitivity tests and analysis are still missing to better cover the system description and validation. This is mainly due to the fact that besides the ocean model similar configurations between CPLDA and FOAM, there a large number of differences between the two systems. Consequently, it is sometimes difficult for the authors to assess precisely the differences between the systems because too much parameters change at the same time. Some additional sensitivity tests allow to better understand those differences (for example, the one month experiment is a different scheduling for the DA). But others sensitivity tests are missing to clearly understand and to disentangle the numerous modifications between the systems. As a consequence, some analysis are not very convincing because of this lack of sensitivity experiments. Depending on the authors will and capacity to run these additional simulations, some corrections will have to be made to the text to confirm or infirm the hypothesis proposed. If no supplementary experiments can be done, some comments must be added to the text to emphasize the limitations of the study. Because atmospheric forcings and surface fluxes are strongly related to SST, upper temperature and MLD, the section 3.4 should be moved before the section 3.3 about velocities (that I would rename “upper or ML velocities”). It is not always clear if the authors are talking about the analysis, the forecast or both in the whole manuscript. It makes the study understanding less clear to follow and more difficult to understand. I think the manuscript can be easily improved by clearly stating this.

Experiments have been undertaken using the ocean-only FOAM system to look at the impact of reducing the assimilation window from 24 to 6 hours. These experiments have helped to decompose the effect of the shortened assimilation window from the effect of the coupling and aid in the interpretation of the comparisons to the FOAM system in the manuscript. It is important to note that the scheduling of the operational CPLDA system and the availability of

observations will not be investigated in these experiments. These experiments have been described in the manuscript and referred to in the relevant sections

We agree with reviewer1 about the organisation of the paper and we will move the section on surface fluxes before the velocities.

Specific comments:

p.1 - Introduction: The introduction is not really relevant because it is mostly a repeat of the system description in section 2. The introduction should be improved to better describe the context of this study, i.e to describe the main physical and technical arguments in favour of developing a coupled system with weakly coupled assimilation (instead of independent systems and assimilations). A description of what is done in other operational centres (ECMWF, NCEP, . . .) could also help to better understand the framework and the interest of the system presented here.

To provide more context the Met Office efforts, we will update the introduction and in particular we propose to add:

“Coupled systems are used in wide range of applications (short and medium range forecasts, seasonal forecasts, climate prediction and future scenario projections) and improving the initialization of these systems can play a significant part to reduce the development of errors. Using separate atmosphere and ocean analyses to initialize a coupled system can result in an imbalanced system. The imbalance can cause an initialisation shock which potentially increases the development of errors during the forecast. Using a coupled data assimilation (DA) approach has been shown to reduce this initialisation shock (Mulholland et al., 2015). “

and

“In recent years, several centres have developed operational coupled data assimilation systems. Penny and Hamill (2017) provide an overview of many of these efforts, showing the diversity of approaches available. For example, the European Centre for Medium-Range Weather Forecast (ECMWF) has developed a weakly coupled ocean-atmosphere data assimilation system (Browne et al., 2019) which is now operational. This system is shown to reduce forecast errors compared with forecasts initialised from uncoupled analyses. The National Centers for Environmental Prediction (NCEP) is using a coupled data assimilation system for seasonal and sub-seasonal predictions (Saha et al., 2014). At JAMSTEC, a low resolution strongly coupled system was developed to be used for experimental seasonal and decadal prediction, while the US Naval Research Laboratory coupled model is initialised from separate analyses but uses a high-resolution ocean component (1/25). Similarly, the Canadian Centre for Meteorological and Environmental Prediction operational global coupled system uses uncoupled analyses but taking great care to maintain consistency of surface boundary conditions between components in order to avoid initialisation shocks. Smith et al. (2018) show good forecast performance

compared to the atmosphere-only counterpart of this system, with the most significant impact associated with decreased tropical cyclone intensification.

”

p.3 l.10-12: it is not clear if VarBC is activated or not in the present study, please specify this in the text.

We propose to add: “all the CPLDA experiments in this paper use VarBC.”

p.5 l.30: please justify why such changes regarding IAU and observation operator were made in CPLDA compared to FOAM.

3-hour IAU are used so for the 00Z analyses the full increments will have been added to the background. These analyses can subsequently be used by groups running initialised coupled forecasts. We propose to add:

“This choice is in part to ensure that on the 00Z cycle (with window from 21Z to 03Z) the full increments have been added to the ocean state by 00Z. Hence these ocean restarts can subsequently be used, in exactly the same way as 00Z ocean restarts from FOAM, by groups running initialised coupled forecasts.”

p.6 l.20: scheduling of the operational system ?
it will be corrected

p.6 l.25: I don't understand why some results should come from the operational version of the system and others from “test” version ? I find this confusing. Perhaps it should be better to talk about the actual operational version only in the conclusion to avoid any confusion.

We propose to include a paragraph on the SLA to the paper. The results from the test experiment 2015 highlighted the degradation of the SLA statistics compared to FOAM cause by the scheduling. The results from the operational system with updated scheduling are presented only to highlight how this problem was solved.

p.6 l.31: please add Lellouche et. al 2018 as a reference for Mercator-Ocean PSY4 system.

This reference will be added :

Lellouche, Jean-Michel & Greiner, Eric & Le Galloudec, Olivier & Garric, Gilles & Regnier, Charly & Drevillon, Marie & Mounir, Benkiran & Testut, Charles-Emmanuel & Bourdalle-Badie, Romain & Gasparin, Florent & Hernandez, Olga & Levier, Bruno & Drillet, Yann & Remy, Elisabeth & Traon, Pierre-Yves. (2018). Recent updates to the Copernicus Marine Service global ocean monitoring and forecasting real-time 1/12° high-resolution system. Ocean Science. 14. 1093-1126. 10.5194/os-14-1093-2018.

p7 l.9-11: I think these results are important and should be added to the paper as a distinct section or paragraph with a dedicated figure to illustrate the differences in terms of SLA bias and RMSE between FOAM and the 2 versions of CPLDA with the

different schedulings. It is also unclear if the results presented here are those from the current operational system or from the version used in the study (“old scheduling”).

We agree with the comment and will add a figure to illustrate these results and make clear that the version used for this assessment uses the old scheduling. We propose to add:

“CPLDA 2015 and FOAM sea surface height are assessed against observations using class4 statistics (Ryan et al., 2015). The observations used are provided by CMEMS and include data from Altika, CryoSat-2 and Jason-2 satellites. Altimeter bias correction is applied to the observations. For each model comparison against the satellite observations, the model’s own altimeter bias is used. This is important because the altimeter bias contains information from the model mesoscale so correcting observations using the altimeter bias from one model to assess a second model penalises this second model.

Fig 1 shows a timeseries of the sea level anomaly (SLA) difference statistics assessed against CMEMS observations. In the 2015 experiment with the original scheduling, CPLDA SLA root-mean-squared error (RMSE) is significantly larger than FOAM SLA RMSE (Fig 1a). The larger RMSE in CPLDA can be attributed to the difference in the number of SLA observations assimilated.

Fig 2 shows the number of observations assimilated daily by both systems in 2015; the number assimilated by CPLDA is significantly smaller than the number assimilated by FOAM. Differences in scheduling can explain this the CPLDA 2015 experiment “best analysis” runs earlier in the day than the comparable FOAM analysis so fewer observations are available.

Following these results, the scheduling of the CPLDA operational system was updated in April 2018. The best analyses at 06Z, 12Z and 18Z are now delayed allowing more observations to be assimilated, as already described in section 2. This change, along with a change in the Met Office database (MetDB) allowing a more frequent ingestion of SLA observations, has resulted in a significant reduction of the CPLDA RMSE (see Fig 1b). The experiments using the FOAM system to look at the effect of the shorter assimilation window in CPLDA showed no significant difference in SLA statistics between the 6 and 24 hour systems.”

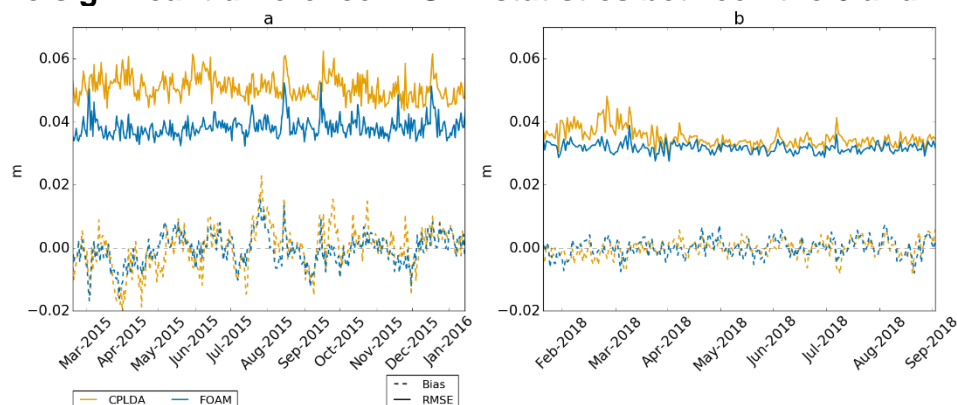


Figure 1: SLA class4 statistics with respect to CMEMS satellite product (Jason2, Cryosat-2 and Altika) for CPLDA and FOAM. a. For the long CPLDA experiment

in 2015 with the old scheduling. b. from the operational systems for 2018, the CPLDA scheduling was updated to allow more observations to be assimilated in April 2018.

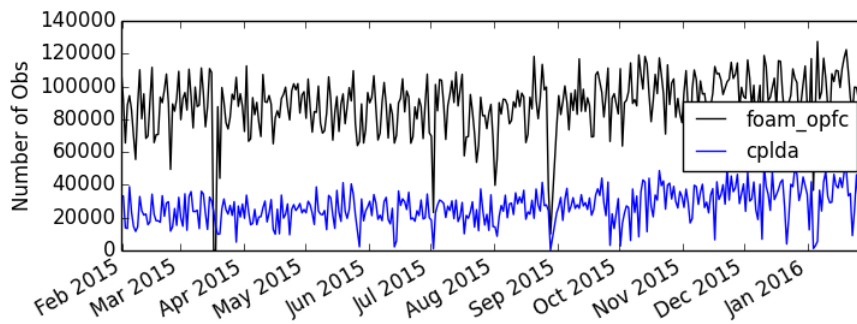


Figure 2: Daily number of SLA observations assimilated in FOAM operational system for 2018 (black line, foam_opfc) and in the CPLDA 2015 experiment (blue line, cplda)”

p.14 section 3.4 should be moved close to the sections 3.1 and 3.2 as it is directly related to changes in SST and MLD. It would improve the readability of the manuscript. We agree with this comment and will change the order of the sections accordingly.

p.7 l.28-30 This hypothesis should be directly tested by doing some additional sensitivity experiments using a 24h window with CPLDA or a 6h window with FOAM to confirm it or not.

Experiments carried out using an ocean-only model to look at the impact of reducing the assimilation window from 24 to 6 hours. Manuscript has been updated accordingly.

p.7 l.30 “in CPLDA” -> “in CPLDA analysis”: it is not clear when the author is talking about the analysis or the forecast. Please specify it everywhere it is necessary in the text.

Manuscript updated accordingly

p.7 l.31: is there a way to measure this “overfitting” ? It is not clear why FOAM SST forecast performs better than CPLDA and how is it related to this overfitting.

Overfitting can be measured by withholding a sub-set of observations from the DA, these are then used for validation. This approach is not pragmatic in an operational setting where you want to get the best analysis possible at runtime. The magnitude of this overfitting will be assessed in future experiments. These experiments will include investigating scaling the background errors for the 6-hour window (current values calculated from system using 24 hour window). It is thought that in the current CPLDA system background errors are too large (less weight in the DA) thus observations are given too much weight in the assimilation and introducing observation noise.

Similar performance is seen in CPLDA and FOAM forecasts at lead times of 36 hours and beyond. The manuscript has been updated to clarify this.

p.8 fig.1: the forecast duration is 7 days (168h), please expand the figure axis accordingly

p.8 l.19: it could be interesting to give the effective SST resolution for both system even without showing the figure to get an idea of the scale range resolved.

The effective SST resolution is the same for both system around 50km. This statement has been added to the manuscript.

p.9 section 3.2: please add PSY4 in the analysis and Figure 3 if possible to be more coherent with others sections and to get a more complete comparison between products.

Although this would be a useful addition to the manuscript it would require a substantial amount of data processing. As the scope of the paper is the CPLDA system the comparison to FOAM is valuable as the systems are relatively similar which isn't the case for PSY4.

p.9 l.9: please give the reference associated with this product.

We have added the reference to ARGO product:

INSITU_GLO_NRT_OBSERVATIONS_013_030

p.9 l.11: please give the range of the RMSE increase to be able to compare it to the SST RMSE.

T rmse increased from 0.67 at day1 to 0.73 at day5. This has been added to the manuscript.

p.10 l.15: the warm bias and associated significant RMSE ($\sim 1^\circ\text{C}$) located at $\sim 100\text{m}$ is not discussed nor explained in the text. Please add a paragraph about this. If the discussion about King et al. 2018 results explain it, it should appear more explicitly in the text.

This section has been re-written (see below) and the reviewer comments on RMSE addressed.

"Temperature and Mixed Layer Depth

The temperature of CPLDA is assessed against Argo profile observations provided by CMEMS (Wehde et al., 2016). The class 4 global temperature statistics for the best analysis are presented in Fig 7a. The results for the forecast (not shown) are similar to the best analysis with the mean bias staying unchanged and the RMSE slightly increasing from 0.67 K at 12 hours to 0.73 K at 108 hours. CPLDA 5 has a cold bias in the subsurface which is maximum (around 0.1 K) at 10 m and present in the thermocline down to approximately 50 m. A smaller warm bias is present at around 100 m, but this is over a greater depth range so represents a large amount of heat. A subsurface cold bias is present in the ocean-only FOAM system but with a smaller amplitude. For the CPLDA results shown, the number of profile observations being assimilated was smaller than in FOAM due to differences in scheduling of assimilation cycles. Even in tests with the operational scheduling (referred to in section 2.6) the sub-surface bias in CPLDA persists despite the increased number of observations being assimilated. In both CPLDA and FOAM the temperature RMSE is largest in the thermocline which highlights its variability; the RMSE is larger in CPLDA than in FOAM.

The temperature profile can be affected by the vertical propagation of surface temperature increments through the water column. King et al. (2018) show that the succession of positive and negative temperature increments has an asymmetric effect on the vertical temperature structure due to the way the temperature increment at the surface is propagated to the bottom of the mixed layer. A negative surface increment weakens the stratification and so deepens the mixed layer, this means that a subsequent positive surface increment is projected deeper. Experiments looking at the assimilation time window in an ocean only system show that the shorter assimilation cycle in CPLDA (6 hours), relative to FOAM (24 hours), leads to increased temporal noise in the increments and a deepening of the mixed layer.

In CPLDA the large negative increment applied at the surface (Fig 7b) is propagated down to approximately 50 m, below this a small warm increment is applied down to approximately 150 m. The fact that the negative increment is projected deeper in CPLDA than in FOAM and the dipolar structure in the vertical is consistent with idealised experiments into vertical propagation of temperature increments, (King, pers. comm. 2018). CPLDA has a larger negative increment at the surface than FOAM. Below approximately 200 m the magnitude of the average temperature increment is small (Fig 7b) and the increments applied by CPLDA and FOAM are similar. The differences observed in global average temperature increments are reproduced in the ocean-only assimilation time-window experiments comparing 6- to a 24-hour window. It is therefore likely that the differences observed in the global temperature increment are due to the shorter assimilation window in CPLDA.

Mixed Layer Depth statistics from the analysis confirm that CPLDA has a deeper MLD than the assimilated profile observations. The MLD statistics presented here use the Kara mixed layer depth with a density based criteria. CPLDA mean error against the assimilated observations is 5.2 m too deep while the RMSE is 34.7 m. Similarly the MLD in FOAM is deeper than the observations but both the mean error (2.1 m too deep) and the RMSE (32.6 m) are reduced. These statistics confirm that the CPLDA MLD is deeper than FOAM (Fig 8). During the forecast MLD RMSE and bias persist for both systems (not shown). Experiments running FOAM with a 6-hour assimilation time window show that the shorter window results in an over-deepening of the MLD by 2.9 m relative to that using a 24 hour window; this is consistent with the 3.1 m difference observed between CPLDA and FOAM. The change in MLD due to the shorter assimilation window may be caused by the asymmetric effect of the surface temperature increment on vertical temperature structure. The overdeepening of the mixed layer will lead to a misplacement of the thermocline which will contribute to the larger RMSE in the thermocline in CPLDA than in FOAM observed in figure 7a. It is worth noting that differences in wind stress between CPLDA and FOAM will also affect the MLD.

Experiments support the shorter assimilation window in CPLDA causing the differences observed in the global increments (Fig 7b) and in MLD (Fig 8) between CPLDA and FOAM. However these experiments were not able to reproduce the sub-surface bias observed in CPLDA relative to FOAM (Fig 7a).

We are currently unable to attribute this bias to the shorter assimilation window. This may be due to the experiments not being long enough (6 months) or more likely that the bias is a result of the differences in forcing between CPLDA and FOAM described in the next section. Future work is planned to look in depth at the vertical propagation of surface increments using a 1-D model and may aid in the attribution of the observed sub-surface bias.”

p.10 l.17: are you talking about analysis or forecast ? Please detail both aspects regarding MLD.

We have updated the text to make it clear that the MLD results presented are from the analysis. During the forecast the rmse and bias persist (not shown).

p.11 l.5: I totally agree with the author: an additional experiment using FOAM with a 6h window or CPLDA with a 12h window is needed to disentangle this effect from other possible factors such as atmospheric forcings, turbulent fluxes schemes, . . . Hence, I strongly suggest to the author to do this simulation if the modifications of the systems are not too heavy and depending on available computing resources. I would greatly improve the manuscript discussion and strengthen the results presented here.

These experiments have been carried out, see 1st comment.

p.11 section 3.3: please add a word if the product is also assimilated or other products related to oceanic currents. Please make a better distinction between analysis and forecast biases and RMSE.

The currents are not assimilated. We have updated the text to make clear what is analysis what is forecast

p.11 l.20: the sentence is in contradiction with what is stated above at p.11 l.15-16 (“bias and RMSE stable during forecast”). Please correct this or give more explanations.

The bias and RMSE are stable during the forecast on a global scale but in the tropical pacific where there are large erroneous currents in the analysis the RMSE decreases during the forecast.

p. 12 l.1-2: is it possible to confirm this statement by comparing directly the number of assimilated observations between both systems please ? Would it be possible to conduct the same kind of tests to address other questions or comments in the manuscript related to the difference in term of assimilation time window or observation number ?

In the new paragraph on SLA we will add a plot highlighting the difference in the numbers of observation between FOAM and CPLDA 2015 experiments. The question of the assimilation time window has been investigated by running an experiment with FOAM using a 6-hour window, the text has been updated with these results. i.e.,

“The experiments using the FOAM system to look at the effect of the shorter assimilation window in CPLDA showed no significant difference in SLA statistics between the 6 and 24 hour systems.”

p.12 l.6-7: again, an additional test with a different time window would strongly clarify these statements and give a real matter for discussion.

Yes as above

p.12 l.10-11: again, an additional 1-month experiment using the new MDT would clarify this.

The MDT will not be updated in the current iteration of the CPLDA system so these experiments will not be undertaken. The next generation O-A coupled system which is being developed currently uses an updated MDT from CNES-CLS09 to CNES-CLS13 and initial results look promising but these results are outside the scope of this paper. The final implementation will likely use CNES-CLS18 but this is yet to be tested.

p.12 fig. 5: Figure 5 is not described nor employed in the text. Please suppress it or comment it.

We will remove Figure 5

p.13 l.2-3: on the contrary, it has been shown that coupled models have more EKE damping than ocean-only forced models (see Renault et al. 2016 for example). Consequently, this explanation is incomplete or erroneous.

We agree with the reviewer; the text is not clear. We propose to update it:

“Eddy Kinetic Energy (EKE) was also compared in CPLDA, FOAM and PSY4. In an ocean-only model, using the ocean velocity to calculate the wind stress has a damping effect on the eddies (Duhaut and Straub, 2006; Dawe and Thompson, 2006; Renault et al., 2016). Despite the expected reduced damping effect in a coupled system, we did not observe a higher EKE in CPLDA than in FOAM. However at $\frac{1}{4}$ deg resolution, the mesoscale is poorly represented and most of the EKE is injected into the model by the SLA assimilation. Hence differences in EKE between CPLDA and FOAM are mainly caused by differences in SLA observations assimilated, or impacts of the shorter assimilation window, rather than due to a reduced eddy damping by the wind stress.”

p.14-15 – section 3.4: There is no numbers in this section text to quantify the differences between atmospheric forcings heat fluxes and stresses. It will make the comparison easier and more “physical” if you add them.

We calculated the average value for the flux differences plotted in Figure 8. On average, CPLDA loses more heat than FOAM which contributes to the colder SST observed in CPLDA. The differences in short wave radiation show some strong patterns with the largest difference in the eastern boundary upwelling but on average its contribution is limited. On average for the global ocean, the strongest contributions come from the latent heat differences.

Average for total heat flux diff (CPLDA-FOAM) = -3.9 W/m²

Average for latent heat diff (CPLDA – CPLDA with CORE)=+9.61 W/m² (1)

Average for latent heat diff (CPLDA – NWP)=-14.50 W/m² (2)

Average for short wave diff (CPLDA-FOAM) =+1.05 W/m² (3)

(1)+(2)+(3) = -3.84 W/m²

These values have been added to the Figure 8 captions and are also referred to in the text.

p.15 l.1-3: the shortwave (SW) bias pattern suggest an SW overestimation on all eastern boundary upwelling systems. This is usually related to an underestimation of the low-level stratiform clouds which atmospheric models have difficulties to represent. A comment about this atmospheric bias should be added if it is also present in NWP.
The stratocumulus clouds are under estimated in Met office atmosphere model and causes a short-wave overestimation on the eastern boundary upwelling systems. The bias gradually reduces as the resolution increases; the resolution is lower in the atmosphere component of CPLDA (40km) than in the NWP fluxes forcing FOAM (17km) and so the overestimation is larger in CPLDA.

p.15 l.21: please give a quantification of the contributions of atmospheric state and latent heat to the total net heat flux difference.

Globally, the differences in latent heat due to the different bulk formulae (+9.61 W/m²) and the different atmosphere (-14.50 W/m²) are the main contributions to the difference in heat fluxes.

p. 15 – wind stress analysis: I have some difficulties to correctly understand this part. First, there is no distinction between atmospheric analysis and forecasts. I suppose analysis are relatively close to MetOp observations as they are probably assimilated, while 7-days forecasts must have quickly increasing surface stress errors. Consequently, it is difficult to guess where the stress differences between CPLDA and MetOp come from. Then, CPLDA wind stress is strongly and globally underestimated (~ -0.1 N/m²) compared to MetOp. This bias is far larger than the difference between CPLDA and FOAM ($\sim +0.5$ N/m²). I don't think this is related to bulk formulae differences (COARE 3.0 is nearly identical to COARE 3.5 except in very strong wind conditions which statistically almost never occur). It can be partially related to the fact that scatterometers usually provide surface stress in atmospheric neutral stability condition, but it cannot explain the global underestimation observed here. This can also be related to the absolute or relative wind/current coupling in CPLDA. But finally, I don't understand why this global stress underestimation is not associated with warm SST and shallow MLD biases in both FOAM and CPLDA as it should be the case. Please explain clearly why it is not the case.

All wind stress presented are from the analysis.

Investigations are ongoing as to why the differences to observations are larger than expected. As we are unable to explain the observed differences at present the comparison to MetOp observations has been removed from the figure and the manuscript.

The large negative increment suggests the model is too warm, the MLD is constrained by the assimilation of not only profile observations but also the SST observations as described in section 3.2. Without a free-run it's hard to know what the MLD would look like due to wind-stress differences only without the effect of the surface increments on the MLD.

p.16 – conclusion: Conclusion should be updated accordingly to the modifications done in the manuscript.

We have updated the conclusion

We are grateful to Reviewer2 for the time and efforts assessing our work, and for providing comments.

These comments are reproduced below, in italics.

Responses and modifications proposed to the manuscript are shown in bold.

General Comments:

This paper presents an evaluation of the ocean component of an atmosphere-ocean coupled prediction system that has been running in real-time at the UK Metoffice and builds upon the work presented by Lea et al. (2015). In particular, this system employs a “weakly coupled” data assimilation approach, which affects the analysis and forecast quality in a number of ways. A systematic approach is used to provide an objective evaluation of the different state variables (sea surface temperature, mixed layer depth, currents) against accepted reference datasets, including other operational forecast products. The presentation is generally clear, but remains fairly descriptive, limiting the conclusions that can be drawn from the study. Many of the differences between the coupled and operational forecasting systems are due to differences in particular parameter choices and not directly due to the coupled model or “weakly coupled data assimilation” themselves. As a result, the value of the paper is limited to a presentation of the baseline skill of the system. Even this is put somewhat in question, as the results (for currents and sea level) are shown to be sensitive to differences in data assimilated in the two systems resulting in much larger errors in the coupled system.

The paper would benefit significantly from having additional experiments to clarify the impact of the different parameter choices and a more in-depth analysis of results.

Additionally, the paper would benefit from some reorganization as the differences in fluxes are described near the end of the paper, much of which is needed to understand the differences being presented in previous sections.

I recommend the paper for publication but strongly encourage the authors to deepen the analysis of the results and provide additional experiments to shed-light on the source of differences.

Idem reviewer1

Experiments have been undertaken using the ocean-only FOAM system to look at the impact of reducing the assimilation window from 24 to 6 hours. These experiments have helped decompose the effect of the shortened assimilation window from the effect of the coupling and aid in the interpretation of the comparisons to the FOAM system in the manuscript. It is important to note that the scheduling of the operational CPLDA system and the availability of observations will not be investigated in these experiments. These experiments have been described in the manuscript and referred to in the relevant sections.

We agree with reviewer2 about the organisation of the paper and we will move the section on surface fluxes before the velocities. We will also add a paragraph on the SLA results.

Specific Comments:

Section 1: The introduction is limited to activities at the UK Metoffice and would benefit greatly from some context into why weakly coupled data assimilation is of interest and previous efforts. For example, a study has recently been published that should be

referenced in this discussion (Browne et al., 2019). Moreover, several centers are now running coupled forecasting systems operationally, which should be mentioned to provide context into UK Metoffice efforts. Browne, P.A., de Rosnay, P., Zuo, H., Bennett, A. and Dawson, A., 2019. Weakly Coupled Ocean–Atmosphere Data Assimilation in the ECMWF NWP System. Remote Sensing, 11(3), p.234.

To provide more context the Met Office efforts, we will update the introduction and in particular we propose to add:

“Coupled systems are used in wide range of applications (short and medium range forecasts, seasonal forecasts, climate prediction and future scenario projections) and improving the initialization of these systems can play a significant part to reduce the development of errors. Using separate atmosphere and ocean analyses to initialize a coupled system can result in an imbalanced system. The imbalance can cause an initialisation shock which potentially increases the development of errors during the forecast. Using a coupled data assimilation (DA) approach has been shown to reduce this initialisation shock (Mulholland et al., 2015). “

and

“In recent years, several centres have developed operational coupled data assimilation systems. Penny and Hamill (2017) provide an overview of many of these efforts, showing the diversity of approaches available. For example, the European Centre for Medium-Range Weather Forecast (ECMWF) has developed a weakly coupled ocean-atmosphere data assimilation system (Browne et al., 2019) which is now operational. This system is shown to reduce forecast errors compared with forecasts initialised from uncoupled analyses. The National Centers for Environmental Prediction (NCEP) is using a coupled data assimilation system for seasonal and sub-seasonal predictions (Saha et al., 2014). At JAMSTEC, a low resolution strongly coupled system was developed to be used for experimental seasonal and decadal prediction, while the US Naval Research Laboratory coupled model is initialised from separate analyses but uses a high-resolution ocean component (1/25). Similarly, the Canadian Centre for Meteorological and Environmental Prediction operational global coupled system uses uncoupled analyses but taking great care to maintain consistency of surface boundary conditions between components in order to avoid initialisation shocks. Smith et al. (2018) show good forecast performance compared to the atmosphere-only counterpart of this system, with the most significant impact associated with decreased tropical cyclone intensification.

”

Pg1, L19: Johns et al. (2012) is a technical report that appears not to be publically available. There are a number of such reports referenced here. If these reports are only available upon request, than greatly detail regarding their content should be included in the text. Also for Lea et al. (2013).

We propose to add details for both references:

“In Johns et al. (2012), a large set of global coupled atmosphere-ocean-sea ice 15-day hindcasts were initialised from separate atmosphere and ocean-ice analyses. Compared to uncoupled forecasts, the coupled 15-day hindcasts show improved forecasting skill especially in the Tropics, a strongly coupled region where small changes in sea surface temperature (SST) can exert a major influence on patterns of convection and remote responses to diabatic heating. Both atmosphere and ocean biases benchmarked against control simulations suggest a more vigorous water cycle, improved large-scale circulation, enhanced convection, stronger teleconnections and somewhat improved representation of the Madden-Julian oscillations. They conclude that significant benefits should arise from full integration of a coupled NWP system.”

and

“The approach taken to develop the CPLDA system is described in detail in Lea et al. (2013, 2015). It is based on the existing coupled model developed for seasonal forecasting and climate prediction and on existing data assimilation systems for the ocean, sea-ice, land and atmosphere. The data assimilation follows a “weakly coupled” approach. This means the coupled model provides background information for separate analyses in each sub-component with the increments being added back into the coupled model. Lea et al. (2013) assessed the performance of the system against uncoupled control experiments for two short trials (December 2011 and June 2012).”

Pg2, L14: “To avoid duplication of previous work . . . we did not investigate the impact on the diurnal cycle already covered in Lea et al., (2013)”. This is a fairly important point that is referred to later in terms of errors in temperature and mixed layer depth. Since Lea et al., (2013) is only a technical report these results could be included here (or at least explained more clearly).

We propose to add:

“They investigated the impact of the initialisation on the diurnal cycle of SST by comparing to geostationary satellite data from SEVIRI. They looked at the diurnal SST range and showed that the initialisation of the coupled forecast has very little impact on this. Lea et al. (2015) showed that in the South Pacific the coupled model diurnal cycle errors against observations are somewhat amplified compared to the ocean-only control. However the diurnal cycle is perhaps under-estimated in the central North Atlantic (Lea et al., 2013).”

Pg. 3, L1: COARE3.0, please add a reference. Also this is not noted in Table 1.

This reference will be added

Fairall, C.W., E.F. Bradley, J.E. Hare, A.A. Grachev, and J.B. Edson, 2003: Bulk Parameterization of Air–Sea Fluxes: Updates and Verification for the COARE Algorithm. J. Climate, 16, 571–591, [https://doi.org/10.1175/1520-0442\(2003\)016<0571:BPOASF>2.0.CO;2](https://doi.org/10.1175/1520-0442(2003)016<0571:BPOASF>2.0.CO;2)

We have updated table 1 accordingly.

Pg. 3, L9: Lea et al. (2015) note significant difficulties associated with runoff. How is runoff handled here? Are there differences between FOAM and CPLDA?

Due to the issues in Lea et al. (2015), we are for the moment using the same climatological run off as in FOAM. Since Lea et al. (2015), runoff from the atmosphere/land component may well have improved and we plan to revisit using this in future.

Pg. 3, L32: "Haney retroaction". Please provide a reference and more details. I.e. what is the timescale of the relaxation? To what fields?

A Haney flux correction (Haney, 1971) is applied to the sea surface salinity (SSS) based on the difference between the model and climatology. The magnitude of the restoring on SSS is -33.33 mm/day/psu. This has been added in the text and in table 1. This reference has also been added:

Haney,R. 1971. Surface boundary conditions for ocean general circulation models. J. Phys. Oceanogr. 1: 241–248.

Pg.4, L19: It says here that CPLDA uses a fixed freezing temperature, which differs from what is indicated in Table1.

Reviewer is correct; table 1 has been corrected.

Pg. 5, L27-32: It may be useful to note here that there is also an impact on the observation cutoff time that affects the number of SLA observations used.

We propose to add this:

"It is also important to note that differences in observation cutoff due to difference in operational scheduling impact the number of observations assimilated by each system."

Pg. 6, Sec2.6: If the CPLDA system has been running operationally since October 2016, why is it necessary to run additional experiments? If the aim here is to benchmark the skill of CPLDA as compared to FOAM why not use the operational runs? If it possible to make additional runs, could a longer run with the SLA observation cutoff corrected be produced? This would make the evaluation much more straightforward.

Since October 2016, the operational CPLDA suite had several updates and bug fixes so we could not have a long enough period with consistent settings to be able to properly assess the system. We will not be able to produce a longer run with the corrected cutoff but results from the Operational CPLDA system with the updated scheduling allowing more SLA observations to be assimilated now shows similar SLA statistics than the FOAM system.

Pg. 6, L17: "There are a few differences. . .". What is the impact of these differences? If they are not too significant an analysis of the operational run compared to FOAM for Oct. 2016 onwards could add additional insight to the paper.

There are differences between the operational system in 2016 and the same system in 2018 (several upgrades and bug fixes). The 2015 experiment was made to assess the 2018 version of the operational system. As noted in the manuscript some differences are unavoidable (different observations available) and the other main difference is the scheduling that was update in the operational system in June 2018 as a result of the assessment of the 2015 experiment.

Pg. 7, L7: SLA is an important variable providing information regarding the circulation and mesoscale activity. It is also relevant here to provide context to the errors in 15m velocity. I would strongly encourage you to include these results, despite the poor results. Ideally, an additional run could be made with the cutoff issue corrected.

The current CPLDA operational system with the updated scheduling allowing more observations to be assimilated has SLA statistics similar to FOAM. A section on the SLA results will be added to the manuscript.

“CPLDA 2015 and FOAM sea surface height are assessed against observations using class4 statistics (Ryan et al., 2015). The observations used are provided by CMEMS and include data from Altika, CryoSat-2 and Jason-2 satellites. Altimeter bias correction is applied to the observations. For each model comparison against the satellite observations, the model’s own altimeter bias is used. This is important because the altimeter bias contains information from the model mesoscale so correcting observations using the altimeter bias from one model to assess a second model penalises this second model.

Fig 1 shows a timeseries of the sea level anomaly (SLA) difference statistics assessed against CMEMS observations. In the 2015 experiment with the original scheduling, CPLDA SLA root-mean-squared error (RMSE) is significantly larger than FOAM SLA RMSE (Fig 1a). The larger RMSE in CPLDA can be attributed to the difference in the number of SLA observations assimilated.

Fig 2 shows the number of observations assimilated daily by both systems in 2015; the number assimilated by CPLDA is significantly smaller than the number assimilated by FOAM. Differences in scheduling can explain this the CPLDA 2015 experiment “best analysis” runs earlier in the day than the comparable FOAM analysis so fewer observations are available.

Following these results, the scheduling of the CPLDA operational system was updated in April 2018. The best analyses at 06Z, 12Z and 18Z are now delayed allowing more observations to be assimilated, as already described in section 2. This change, along with a change in the Met Office database (MetDB) allowing a more frequent ingestion of SLA observations, has resulted in a significant reduction of the CPLDA RMSE (see Fig 1b). The experiments using the FOAM system to look at the effect of the shorter assimilation window in CPLDA showed no significant difference in SLA statistics between the 6 and 24 hour systems.”

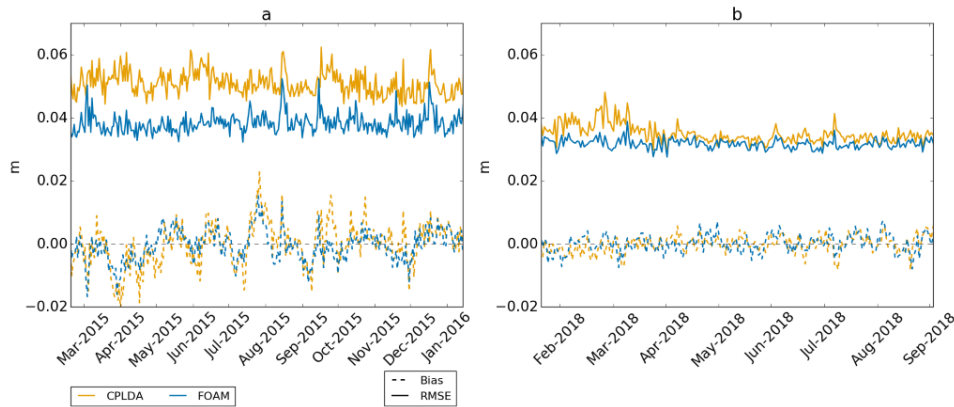


Figure 1: SLA class4 statistics with respect to CMEMS satellite product (Jason2, Cryosat-2 and Altika) for CPLDA and FOAM. a. For the long CPLDA experiment in 2015 with the old scheduling. b. from the operational systems for 2018, the CPLDA scheduling was updated to allow more observations to be assimilated in April 2018.

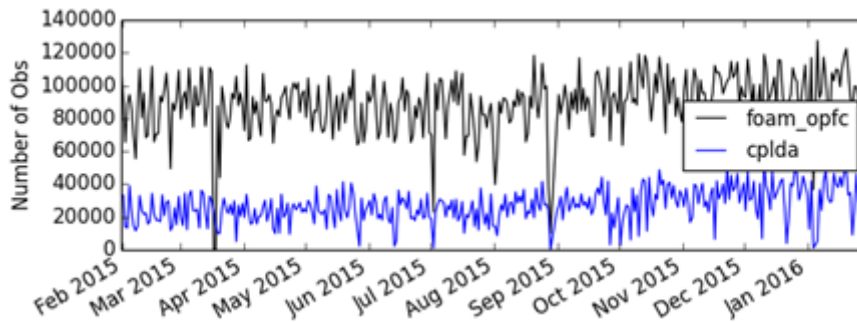


Figure 2: Daily number of SLA observations assimilated in FOAM operational system for 2018 (black line, foam_opfc) and in the CPLDA 2015 experiment (blue line, cplda)”

Pg. 7, L16: It is argued that sea ice is not evaluated because of a difference in freezing temperature. However, there are differences in many other aspects as well (bulk formulae, SLA observation cutoff, assimilation window). If the aim is to benchmark the performance of the system, than an evaluation of the sea ice component should be included as well.

We propose include a figure illustrating the sea ice results.

“Sea ice:

Fig 3 shows the sea ice extent and volume respectively for CPLDA and FOAM best analyses. It shows that the sea ice extent is similar between CPLDA and FOAM and is also comparable to OSTIA. Fig 3 shows that the sea ice volumes are similar in the Arctic but in the Antarctic CPLDA has a reduced volume compared to FOAM in the Southern Hemisphere winter and spring. Differences in volume can be attributed to differences in sea ice thickness probably caused by differences in freezing temperature treatment. Fig 4 shows the sea

ice extent forecast for the melting season in Arctic (August) and Antarctic (February) for CPLDA and FOAM. Both models have the tendency to melt too much ice during the forecast especially in the Arctic; in the Antarctic the exaggerated melting in CPLDA is slightly reduced compared to that observed in FOAM. Differences in freezing temperature treatment referred to in 2.3 may have impacted the sea ice simulation.”

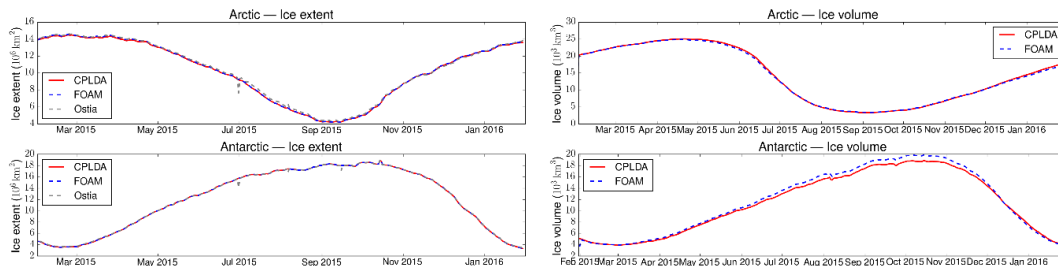


Figure 3: Time series of sea ice extent (left) and sea ice volume for CPLDA (2015 experiment) and FOAM

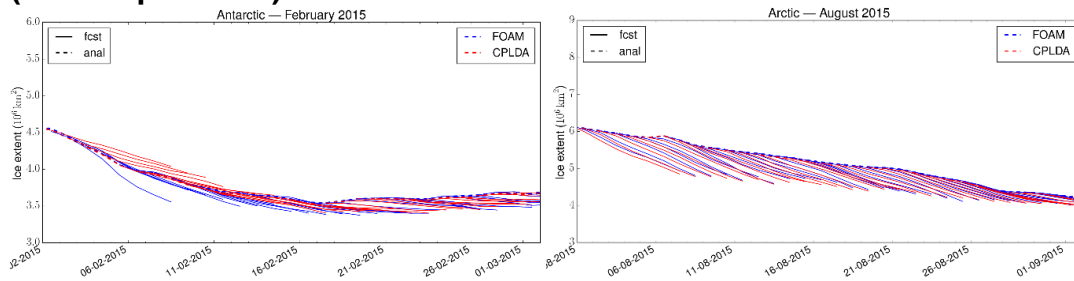


Figure 4: Sea ice extent forecast for CPLDA (2015 experiment) and FOAM during the melting season (February in Antarctic and August in Arctic)

Pg. 7, L20: Is it the instantaneous SST or a daily average?
We use the daily average - it has been clarified in the text.

Pg. 8, L9: Should this be 0.01K? The global mean difference in bias between CPLDA and PSY4 appears to be less than 0.05K. Also, if OSTIA is cooler than CPLDA and PSY4 assimilates OSTIA, why is PSY4 warmer than CPLDA?
Global average difference between CPLDA and OSTIA is 0.06K; the text has been updated.

Using Class4 statistics from the GODEA model inter-comparison (see figure 3) PSY4 (purple) is generally biased warm and OSTIA (grey) is generally biased cold relative to surface drifters, this is consistent with the results presented for 2015. This reasons for the difference in SST characteristics between the systems despite PSY4 assimilating OSTIA could be due to model biases, atmospheric forcing etc but diagnosing these is outside the scope of this paper.

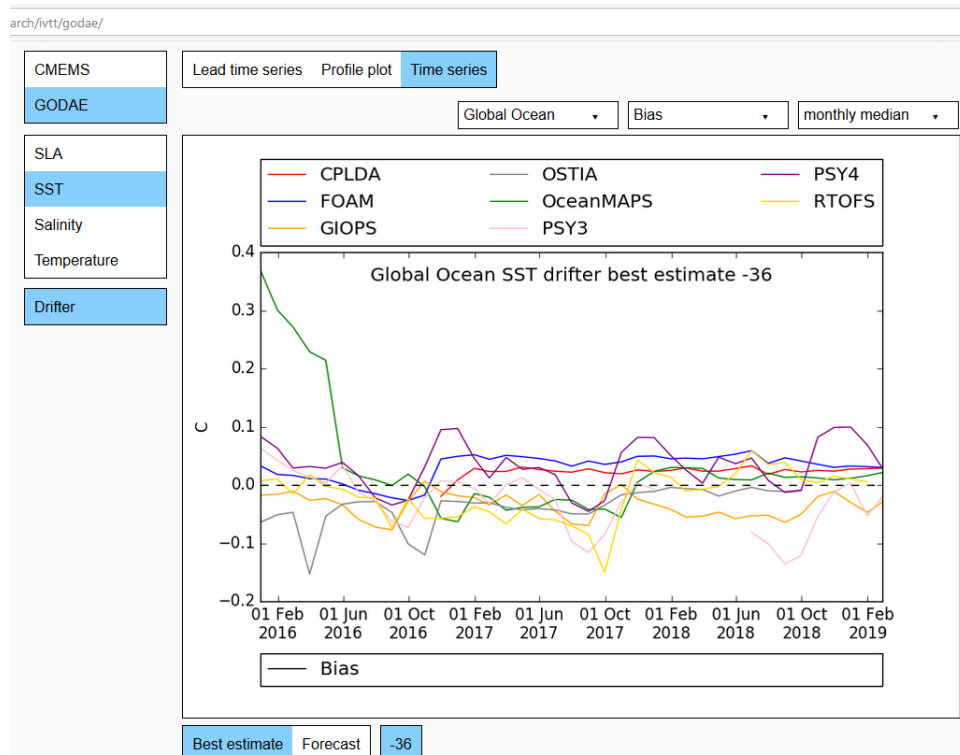


Figure 5. Global SST class4 bias compared to drifting buoy observations

Pg. 8, L19: The Fiedler reference is only “in prep”. I recommend providing a more thorough explanation with a “personal communication” to Fiedler.

We propose to add:

“The SST spatial variability for each of the experiments was determined by wavenumber auto spectra analysis. All spectra results were calculated on the native grid of the analysis (ORCA025). For each region of interest, the spectra were calculated along the horizontal coordinates closest to a given latitude. The power spectral density of each latitude was calculated using the Welch’s average periodogram method, with 28 degrees of freedom and Hanning window. The overlapping length for each band averaging was half the band length (Fiedler, 2018). The results for CPLDA and FOAM are very similar; in both systems the effective SST resolution is around 50 km.”

Pg. 9, Fig. 2d: What is the global mean value of this? It would be helpful to include this on all four panels. It appears to me that it is positive, which seems in conflict with Fig. 3b that shows CPLDA has a more negative global near-surface temperature increment.

Global mean values have been added to the figure titles. The global mean value of the difference between CPLDA and FOAM surface T increments is -0.01K which is consistent with Fig 7b (previously Fig 3b).

Pg.10, L5-14: This asymmetrical effect of SST increments is quite an important difference between CPLDA and FOAM and warrants further explanation. Perhaps an

example figure showing profiles and how the increments deteriorate the profile. However, the argument is based on the fact that large increments in CPLDA then create a large asymmetrical effect on SST. But why are the increments larger in the first place?

This section has been re-written, see below. Experiments have shown that the larger increment is likely a symptom of the shorter assimilation window in CPLDA compared to FOAM.

"Temperature and Mixed Layer Depth

The temperature of CPLDA is assessed against Argo profile observations provided by CMEMS (Wehde et al., 2016). The class 4 global temperature statistics for the best analysis are presented in Fig 7a. The results for the forecast (not shown) are similar to the best analysis with the mean bias staying unchanged and the RMSE slightly increasing from 0.67 K at 12 hours to 0.73 K at 108 hours. CPLDA 5 has a cold bias in the subsurface which is maximum (around 0.1 K) at 10 m and present in the thermocline down to approximately 50 m. A smaller warm bias is present at around 100 m, but this is over a greater depth range so represents a large amount of heat. A subsurface cold bias is present in the ocean-only FOAM system but with a smaller amplitude. For the CPLDA results shown, the number of profile observations being assimilated was smaller than in FOAM due to differences in scheduling of assimilation cycles. Even in tests with the operational scheduling (referred to in section 2.6) the sub-surface bias in CPLDA persists despite the increased number of observations being assimilated. In both CPLDA and FOAM the temperature RMSE is largest in the thermocline which highlights its variability; the RMSE is larger in CPLDA than in FOAM.

The temperature profile can be affected by the vertical propagation of surface temperature increments through the water column. King et al. (2018) show that the succession of positive and negative temperature increments has an asymmetric effect on the vertical temperature structure due to the way the temperature increment at the surface is propagated to the bottom of the mixed layer. A negative surface increment weakens the stratification and so deepens the mixed layer, this means that a subsequent positive surface increment is projected deeper. Experiments looking at the assimilation time window in an ocean only system show that the shorter assimilation cycle in CPLDA (6 hours), relative to FOAM (24 hours), leads to increased temporal noise in the increments and a deepening of the mixed layer.

In CPLDA the large negative increment applied at the surface (Fig 7b) is propagated down to approximately 50 m, below this a small warm increment is applied down to approximately 150 m. The fact that the negative increment is projected deeper in CPLDA than in FOAM and the dipolar structure in the vertical is consistent with idealised experiments into vertical propagation of

temperature increments, (King, pers. comm. 2018). CPLDA has a larger negative increment at the surface than FOAM. Below approximately 200 m the magnitude of the average temperature increment is small (Fig 7b) and the increments applied by CPLDA and FOAM are similar. The differences observed in global average temperature increments are reproduced in the ocean-only assimilation time-window experiments comparing 6- to a 24-hour window. It is therefore likely that the differences observed in the global temperature increment are due to the shorter assimilation window in CPLDA.

Mixed Layer Depth statistics from the analysis confirm that CPLDA has a deeper MLD than the assimilated profile observations. The MLD statistics presented here use the Kara mixed layer depth with a density based criteria. CPLDA mean error against the assimilated observations is 5.2 m too deep while the RMSE is 34.7 m. Similarly the MLD in FOAM is deeper than the observations but both the mean error (2.1 m too deep) and the RMSE (32.6 m) are reduced. These statistics confirm that the CPLDA MLD is deeper than FOAM (Fig 8). During the forecast MLD RMSE and bias persist for both systems (not shown). Experiments running FOAM with a 6-hour assimilation time window show that the shorter window results in an over-deepening of the MLD by 2.9 m relative to that using a 24 hour window; this is consistent with the 3.1 m difference observed between CPLDA and FOAM. The change in MLD due to the shorter assimilation window may be caused by the asymmetric effect of the surface temperature increment on vertical temperature structure. The overdeepening of the mixed layer will lead to a misplacement of the thermocline which will contribute to the larger RMSE in the thermocline in CPLDA than in FOAM observed in figure 7a. It is worth noting that differences in wind stress between CPLDA and FOAM will also affect the MLD.

Experiments support the shorter assimilation window in CPLDA causing the differences observed in the global increments (Fig 7b) and in MLD (Fig 8) between CPLDA and FOAM. However these experiments were not able to reproduce the sub-surface bias observed in CPLDA relative to FOAM (Fig 7a). We are currently unable to attribute this bias to the shorter assimilation window. This may be due to the experiments not being long enough (6 months) or more likely that the bias is a result of the differences in forcing between CPLDA and FOAM described in the next section. Future work is planned to look in depth at the vertical propagation of surface increments using a 1-D model and may aid in the attribution of the observed sub-surface bias.”

Pg. 10, Fig. 3: What is the explanation for the large increments between 50-100m and associated increase in RMSE in CPLDA? Is it related to the asymmetric effect of SST increments? If so, this should be described.

This section has been re-written (see above) and the increased RMSE addressed.

Pg. 10, L16: How is the mixed layer depth calculated? The Fig. 4 caption quotes Kara (2000), but some explanation of the methodology used would be appropriate.

For the stats presented the Kara mixed layer uses a density based criteria. It takes the top most observed profile density (calculated from T and S using the Jackett and McDougall 1994 equation of state) (as long as it is shallower than 10m) and calculates the depth of the first observation where the density is (first) greater than the density resulting from an decrease in temperature of 0.8 degrees. C compared to the surface value. A linear interpolation of the depth of this observation and the one above gives one observation of MLD from one temperature and salinity profile observation. (No observation results from a temperature only profile). The same procedure is done for the model equivalent temperatures and salinities which gives the model equivalent MLD. The results of many profiles are gathered to give the statistics of MLD.

Pg. 10, L17: "mean error .. is -5.2m". The text (Pg. 10, line2) notes that CPLDA has a deeper mixed layer than FOAM, shouldn't this value be positive?

The error calculated is observation minus model that why the values are negative. We agree it is not clear and have changed the text accordingly (5.2 m too deep instead of -5.2).

Pg. 11, Fig. 4b: Please state whether positive values are deeper or shallower in CPLDA.

Positive value mean CPLDA is deeper. We have added this to the legend of the figure.

Pg. 11, L2-4: It is difficult to follow this reasoning when we haven't yet seen the differences in wind stress. This section would be easier to follow if Sec3.4 was presented first providing context regarding differences surface fluxes.

We agree with the reviewer and have changed the order of the sections by putting the surface fluxes section before the velocities.

Pg. 11, L7: "Predictions of ocean current are important for marine activities". It would be helpful to expand somewhat since this statement is vague. Also, it should be "currents".

We propose to add:

"Predictions of ocean currents are important for marine activities. They are used for a number of practical applications such as ship routing, marine search and rescue, pollution monitoring, offshore oil and gas industry, and marine renewable energy."

Pg. 11, L19: Are differences in tropical Pacific alone capable of affecting global statistics this much? Or are there large differences elsewhere as well?

Yes, there is no statistically significant differences in the other regions. We propose to add :

"In regions other than the Tropical Pacific no significant differences are observed, with CPDLA and FOAM statistics similar."

Pg. 11, L21: If the shorter window affects the increments in a direct manner that influences the results to this degree, I think it warrants some further description.

Perhaps some examples of increments in this area. This is extremely relevant to the overall effort to produce a “weakly coupled” data assimilation system and should be elaborated upon.

It is thought that this problem is less to do with the shorter window and more to do with the availability of SLA observations due to the timeliness of the obs sources assimilated (the updated scheduling somewhat alleviates the problem). This has been confirmed by the assimilation window experiments detailed above: very little differences were observed in SLA statistics between the 6 and 24 hour assimilation window experiments.

Pg. 11, L21: By how much are the number of observations limited? This too could be expanded upon to clarify the impact of the assimilation window on results.

Plot of the number of SLA observations has been added to the SLA section, there is also a slight reduction in the no of profile observations assimilated in CPLDA (5-10%).

Pg. 12, L3: If the operational system uses the updated scheduling than why not evaluate it instead of the experiment with the reduced number of observations?

The schedule of the operational system has been updated as a result of the assessment made with the 2015 experiment as it highlighted than the scheduling at the time limited the number of observations impacting especially the SLA and currents. At the time of writing we only had a short period of the operational system with the updated schedule.

Pg.12, L7: If the unrealistic currents are not always caused by the reduced number of SLA observations, than perhaps the observations are simply covering up an existing issue in the coupled model. This issue warrants further investigation, it its central to many of the results presented.

The issue is to do with not having the profile observations to constrain the changes in density structure caused by the assimilation of SLA observations. Similar model blow-ups were not observed during the 6 month experiments looking at the assimilation window length.

Pg. 14, L8-9: A “reduced heat loss” should lead to warmer SSTs shoudn’t they?

This is a mistake it should say:” The reduced heat gain compared to FOAM between 30S and 30N contributes to the colder SST observed in CPLDA”

Pg. 14, L9-10: While the differences in short wave radiation and latent heat clearly contribute to differences in net heat flux difference. These fields both have large scale patterns, whereas there is a notable small scale pattern in the net heat flux difference not explained.

The difference is due to the difference in the representation of the mesoscale between the 2 models, eddies are not located in the same exact positions as there are not completely constraint by the observations (DA). We have added the following text:

“The small scale pattern differences are due to differences in the representation of the mesoscale between the two models (eddies are not completely

constrained by the observations and so are not located in exactly the same positions)."

Pg. 17, L25-27: As noted above, the argument about the noisier increments is quite important to the overall conclusions. I would recommend a deeper analysis be made of this issue.

See above, this has been investigated.

Pg. 19, L8: should be "well-placed"

It has been corrected

Assessment of ocean analysis and forecast from an atmosphere-ocean coupled data assimilation operational system

Catherine Guiavarc’h¹, Jonah Roberts-Jones¹, Chris Harris¹, Daniel J. Lea¹, Andrew Ryan¹, and Isabella Ascione¹

¹Met Office, FitzRoy Road, EX1 3PB, Exeter, United Kingdom

Correspondence: Chris Harris (christopher.harris@metoffice.gov.uk)

Abstract. The development of coupled atmosphere-ocean prediction systems with utility on the short-range Numerical Weather Prediction (NWP) and ocean forecasting timescales has accelerated over the last decade. This builds on a body of evidence showing the benefit, particularly for weather forecasting, of more correctly representing the feedbacks between surface ocean and atmosphere. It prepares the way for more unified prediction systems with the capability of providing consistent surface meteorology, wave and surface ocean products to users for whom this is important. Here we describe a coupled ocean-atmosphere system, with weakly coupled data assimilation, which was operationalised at the Met Office as part of the Copernicus Marine Environment Service (CMEMS). We compare the ocean performance to that of an equivalent ocean-only system run at the Met Office, and other CMEMS products. Sea surface temperatures in particular are shown to verify better than in the ocean-only systems, although other aspects including temperature profiles and surface currents are slightly degraded. We then discuss the plans to improve the current system in future as part of the development of a “coupled NWP” system at the Met Office.

Copyright statement. TEXT

1 Introduction

~~The coupled atmosphere-land-ocean-ice data assimilation system (CPLDA) has been running operationally since October 2016 and its ocean forecast and analysis have been delivered daily to the Copernicus Marine Environment Monitoring Service (CMEMS) since July 2017.~~

Coupled systems are used in wide range of applications (short and medium range forecasts, seasonal forecasts, climate prediction and future scenario projections) and improving the initialization of these systems can play a significant part to reduce the development of errors. Using separate atmosphere and ocean analyses to initialize a coupled system can result in an imbalanced system. The imbalance can cause an initialisation shock which potentially increases the development of errors during the forecast. Using a coupled data assimilation (DA) approach has been shown to reduce this initialisation shock (Mulholland et al., 2015).

For many years, the Met Office has been running short-range prediction systems separately for the atmosphere and the ocean. Although seasonal forecasts use coupled models, they are initialised from separate uncoupled analyses. [Since October 2016, the Met Office coupled atmosphere-land-ocean-ice data assimilation system \(CPLDA\) has been running operationally and its ocean forecast and analysis have been delivered daily to the Copernicus Marine Environment Monitoring Service \(CMEMS\) since July 2017.](#) The CPLDA system is the first operational Met Office system providing a seamless coupled analysis and forecast. It follows work done in the Met Office in recent years to highlight the impact of coupling for the short to medium range forecast (Johns et al., 2012) and to develop a coupled DA system (Lea et al., 2013) that could in the future replace the uncoupled atmosphere and ocean short range prediction systems. [In Johns et al. \(2012\), a large set of global coupled atmosphere-ocean-sea ice 15-day hindcasts were initialised from separate atmosphere and ocean-ice analyses. Compared to uncoupled forecasts, the coupled 15-day hindcasts show improved forecasting skill especially in the Tropics, a strongly coupled region where small changes in sea surface temperature \(SST\) can exert a major influence on patterns of convection and remote responses to diabatic heating. Both atmosphere and ocean biases benchmarked against control simulations suggest a more vigorous water cycle, improved large-scale circulation, enhanced convection, stronger teleconnections and somewhat improved representation of the Madden-Julian oscillations. They conclude that significant benefits should arise from full integration of a coupled NWP system.](#)

[In recent years, several centres have developed operational coupled data assimilation systems. Penny and Hamill \(2017\) provide an overview of many of these efforts, showing the diversity of approaches available. For example, the European Centre for Medium-Range Weather Forecast \(ECMWF\) has developed a weakly coupled ocean-atmosphere data assimilation system \(Browne et al., 2019\) which is now operational. This system is shown to reduce forecast errors compared with forecasts initialised from uncoupled analyses. The National Centers for Environmental Prediction \(NCEP\) is using a coupled data assimilation system for seasonal and sub-seasonal predictions \(Saha et al., 2014\). At JAMSTEC, a low resolution strongly coupled system was developed to be used for experimental seasonal and decadal prediction, while the US Naval Research Laboratory coupled model is initialised from separate analyses but uses a high-resolution ocean component \(\$1/25^\circ\$ \). Similarly, the Canadian Centre for Meteorological and Environmental Prediction operational global coupled system uses uncoupled analyses but taking great care to maintain consistency of surface boundary conditions between components in order to avoid initialisation shocks. Smith et al. \(2018\) show good forecast performance compared to the atmosphere-only counterpart of this system, with the most significant impact associated with decreased tropical cyclone intensification.](#)

The approach taken to develop the CPLDA system is described in detail in Lea et al. (2013, 2015). It is based on the existing coupled model developed for seasonal forecasting and climate prediction and on existing data assimilation systems for the ocean, sea-ice, land and atmosphere. The data assimilation follows a “weakly coupled” approach. This means the coupled model provides background information for separate analyses in each sub-component with the increments being added back into the coupled model. Lea et al. (2013) assessed the performance of the system against uncoupled control experiments for two short trials (December 2011 and June 2012). In this paper, we present results from the first long simulation run with the CPLDA system. We run the system for a year (February 2015 to January 2016) with 6-hourly analysis and daily 7-day forecast.

The Met Office Ocean Forecasting R&D group (OFRD) has been providing ocean analyses and forecasts from the Forecast Ocean Assimilation Model (FOAM) for many years. FOAM is an accurate system that verifies well against similar international systems (Ryan et al., 2015) making it a suitable benchmark against which to assess the ocean component of the CPLDA system. In this study, we investigate the added value of an ocean analysis and forecast provided by a coupled system and try to understand the causes of the differences between the coupled and uncoupled systems. As the primary focus of this study is to assess the quality of the product delivered to CMEMS, our work focussed mainly on the assessment of the ocean component of the CPLDA system. To avoid duplication of previous work not every aspect has been investigated. For instance, we did not investigate the impact on the diurnal cycle already covered in ~~Lea et al. (2013).~~ [Lea et al. \(2013, 2015\). They investigated the impact of the initialisation on the diurnal cycle of SST by comparing to geostationary satellite data from SEVIRI. They looked at the diurnal SST range and showed that the initialisation of the coupled forecast has very little impact on this. Lea et al. \(2015\) showed that in the South Pacific the coupled model diurnal cycle errors against observations are somewhat amplified compared to the ocean-only control. However the diurnal cycle is perhaps under-estimated in the central North Atlantic \(Lea et al., 2013\)](#)

A description of the CPLDA system and of the experimental set-up used to assess the system are presented in section 2, together with a description of the differences with the FOAM configuration. The results are presented in section 3. We focus on assessment of the ocean analysis and forecast from CPLDA as well as comparison with FOAM analysis and forecast and with the Mercator 1/12° analysis (PSY4). Assessment of the differences at the air-sea interface between the coupled system and the uncoupled systems are also presented. Section 4 summarises the main results and provides discussions and plans for future work.

2 Description of the coupled data assimilation system and experiments

The weakly coupled ~~atmosphere-land-ocean-ice~~ [atmosphere-land-ocean-ice](#) data assimilation system (CPLDA) is built on the coupled system developed by Lea et al. (2015). Details of the scientific and technical implementation [of the](#) system is described in their paper. The CPLDA system has been running operationally since October 2016 and is the first Met Office operational coupled forecasting system with complete consistency between the analyses and the forecast. The coupled forecast is initialised by coupled analysis for both ocean and atmosphere components. This continuity means that the atmosphere and ocean components are identical in the analysis and in the forecast. The previous coupled forecasting system was using uncoupled analyses from FOAM (Blockley et al., 2014) and NWP (Numerical Weather Prediction) to initialise the GloSea coupled forecast (MacLachlan et al., 2014). In that case both the atmosphere and ocean components differed between the analysis and the forecast. The different components of the CPLDA system are described below and the differences with the FOAM system used for comparison in the next sections are highlighted.

2.1 Atmosphere component and surface forcing

In the CPLDA system, analysis and forecast fluxes are calculated using bulk formulae based on COARE3.0 ([Fairall et al., 2003](#)) within the Unified Model (MetUM) atmosphere at 40 km resolution and interpolated and passed to the NEMO ocean component by the OASIS3 coupler (Valcke, 2006). The FOAM system used interpolated atmospheric fields from the operational Met Office global NWP configuration of the MetUM (at 17 km resolution in 2015) with CORE bulk formulae (Large and Yeager, 2004) to calculate the turbulent fluxes. The CPLDA atmospheric component is the GA6.0 (Walters et al., 2017) atmospheric science configuration (also used by GloSea) for both the analysis and forecast while the NWP configuration used to force FOAM was GA6.1 (note that this distinction mainly relates to aspects of the land-surface treatment and is largely irrelevant from the ocean point of view). The CPLDA atmosphere data assimilation system is described in detail in Lea et al. (2015). It uses an incremental strong constraint 4DVAR system similar to Rawlins et al. (2007). One addition to the system described in Lea et al. (2015) is that the CPLDA atmosphere data assimilation now uses a variational bias correction (VarBC) to continuously update the bias correction applied to observations. VarBC (Lorenc, 2013) was not implemented operationally in the NWP system until March ~~2016~~-2016; however, all the CPLDA experiments in this paper use VarBC.

2.2 Ocean component

The ocean configuration is described in detail below and the CPLDA and FOAM ocean components are summarised in Table 1. Both CPLDA and FOAM systems use the global ocean configuration GO5 (Megann et al., 2014). GO5 uses version 3.4 of the NEMO modelling system (Madec and the NEMO team, 2008) with the ORCA025 tripolar horizontal grid (which has a $1/4^\circ$ or 28 km horizontal grid spacing at the equator reducing to 7 km at high southern latitudes, and 10 km in the Arctic Ocean) and is based on the configuration developed by Mercator Ocean. The vertical coordinate system is based on geopotential levels using the DRAKKAR 75 level set which provides an increased near surface resolution (including 1 m surface layers to help resolve shallow mixed layers and potentially capture diurnal variability) without compromising resolution at depth. The model bathymetry is DRAKKAR v3.3 which is based on the ETOPO1 data set (Amante and Eakins, 2009) with additional data in coastal regions from GEBCO (General Bathymetric Chart of the Oceans; IOC, IHO and BODC). Partial cell thicknesses at the ocean floor allow a better representation of ocean topography and in combination with an energy- and enstrophy-conserving momentum advection scheme and a free slip lateral momentum boundary condition improve the mesoscale circulation, and in particular the simulation of western boundary currents. The tracers are advected using a total-variation-diminishing (TVD) scheme (Zalesak, 1979) and a linear filtered free surface is used to remove high frequency gravity waves. Tracer diffusion is laplacian along isopycnals, and horizontal momentum diffusion is performed using a bilaplacian operator along geopotential levels. The vertical diffusion implemented in the CPLDA system is the Turbulent Kinetic Energy (TKE) scheme of Gaspar et al. (1990) updated to ensure dynamical consistency in the space/time discretisations (Burchard, 2002). The background diffusivity and viscosity includes a double diffusive mixing parametrisation and a parametrisation to attempt to model the mixing effect of Langmuir circulation. In CPLDA, both analysis and the forecast use a Haney retroaction to control sea surface salinities, a 3D Newtonian damping towards a World Ocean Atlas 2001 climatology (to prevent long term drift of sub-surface tracer fields) and

a pressure gradient bias correction in the Tropics (Bell et al., 2004) to ensure temperature and salinity increments are retained by the model. The Haney flux correction (Haney, 1971) is applied to the sea surface salinity (SSS) based on the difference between the model and climatology; the magnitude of the restoring on SSS is $-33.33 \text{ mm day}^{-1} \text{ psu}^{-1}$. A summary of the settings for the ocean component in FOAM and CPLDA is shown in Table 1. Most settings are identical except for necessary differences in the surface forcing and a shorter assimilation time window for CPLDA. The ocean data assimilation is described in more detail in section 2.5.

2.3 Sea ice component

The sea ice model (CICE version 4.1; Hunke and Lipscomb, 2010) runs on the same ORCA025 grid as NEMO, and with five ice thickness categories. The CICE model determines the spatial and temporal evolution of the ice thickness distribution (ITD) due to advection, thermodynamic growth and melt, and mechanical redistribution / ridging (Thorndike et al., 1975). The CPLDA system documented predates the development work described in West et al. (2016) and Ridley et al. (2018). Therefore when running coupled to the Unified Model (MetUM) atmosphere, the CPLDA system uses the zero-layer thermodynamic model of Semtner (1976), with a single layer of both ice and snow in CICE. The FOAM system, on the other hand, uses a five layer thermodynamic model (four ice layers and one snow layer). Ice dynamics are calculated using the elastic-viscous-plastic (EVP) scheme of Hunke and Dukowicz (2002). In CPLDA, for both the analysis and forecast, the ice top and bottom conductive heat fluxes are calculated within the atmosphere model, interpolated by OASIS, and then passed to NEMO from where they can be accessed by CICE. In GloSea, the heat fluxes calculated by the atmosphere model were also used but in the FOAM analysis CICE used its own bulk formulation to specify surface boundary conditions.

In FOAM the freezing temperature is dependent on salinity to provide a more realistic representation of ice melting and freezing mechanisms and to give better consistency when assimilating both sea surface temperature and sea ice concentration. For technical reasons the initial coupled DA system assessed here used a fixed freezing temperature of -1.8°C , as did the GloSea system. However salinity dependence was later introduced in CPLDA in September 2018. The GSI6 global sea-ice configuration used in the CPLDA system is detailed in Rae et al. (2015).

2.4 Ocean observations

The ocean observations assimilated into the CPLDA system are the same as ~~the~~in FOAM. These are as follows:

- Satellite SSTs – sub-sampled level 2 data supplied by the Global High-Resolution Sea Surface Temperature (GHR SST) project comprising Advanced Very High Resolution Radiometer data (NOAA & MetOp), microwave AMSR-2 data and Visible Infrared Imaging Radiometer Suite (VIIRS) data. Note that daytime satellite SST data with a strong diurnal signal where the wind speed is less than 6 m s^{-1} is not used.
- ~~In-situ~~In situ SSTs – from moored buoys, drifting buoys and ships (the in-situ observations are considered unbiased and used as a reference for satellite SST bias correction).
- Sea level anomaly (SLA) observations – from Jason-2, Jason-3, CryoSat-2, SARAL/AltiKa and Sentinel-3a platforms.

- Sub-surface temperature and salinity profiles from Argo profiling floats, underwater gliders, moored buoys, marine mammals, and manual profiling methods.
 - Sea ice concentration - Special Sensor Microwave Imager/Sounder (SSMIS) data provided by the EUMETSAT Ocean Sea Ice Satellite Application Facility (OSI-SAF) as a daily gridded product on a 10 km polar stereographic projection.
- 5 Model fields are mapped into observation space using the NEMO observation operator to create nearest timestep model counterparts at the observation location using bilinear interpolation in the horizontal and cubic splines in the vertical directions.

2.5 Ocean data assimilation

The CPLDA system is based on a “weakly coupled” data assimilation approach. The coupled model is used to provide background information for separate ocean, sea-ice, atmosphere and land analyses. The increments generated from these separate analyses are added back into the coupled model (Lea et al., 2015).

For the ocean and sea-ice DA both FOAM and CPLDA use NEMOVAR (Mogensen et al., 2012) – an incremental 3D-Var, first guess at appropriate time (FGAT) assimilation scheme designed specifically for use with NEMO and further tuned at the Met Office for the $1/4^\circ$ global model (Waters et al., 2013, 2015). The state vector in NEMOVAR consists of temperature, salinity, surface elevation, sea ice concentration and horizontal velocities. Key features of NEMOVAR are the multivariate relationships which are specified through a linearised balance operator (Weaver et al., 2006) and the use of an implicit diffusion operator to model background error correlations (Mirouze and Weaver, 2010). As detailed in Waters et al. (2013), the NEMOVAR system includes bias correction schemes for both sea surface temperature (SST) and altimeter data (using the CNES-CLS09 Mean Dynamic Topography (MDT) of Rio et al. (2011) as a reference). The temperature and unbalanced salinity are assimilated using two horizontal correlation length scales (Mirouze et al., 2016) following the method described in Martin et al. (2007). FOAM and CPLDA run one outer loop and 40 iterations of the inner loop minimisation of the cost function. Note that the sea ice DA is run in a separate assimilation step to the ocean DA.

Analysis updates are made to the state variables in the NEMO model, with the exception of sea ice concentration updates which are made in the CICE model. Updates increasing ice concentration are always made to the thinnest category ice, whilst updates decreasing ice concentration are made to the thinnest ice thickness category available in that grid cell (Blockley et al., 2014). The snow thickness on ice is preserved where there is existing ice, but initialised to zero where new ice is added to a previously ice free grid cell (Blockley et al., 2014).

A few technical changes to the FOAM ocean data assimilation system are needed to fit into the coupled framework. The first technical change made was to match the atmosphere cycling. In the FOAM system, the observation operator and incremental analysis update (IAU) ~~were~~are performed in separate NEMO runs. In CPLDA, this has been altered such that the IAU is followed by observation operator in one combined model run. The second major change from FOAM to CPLDA was to reduce the assimilation time window of the ocean from 24 h to 6 h to match the time window of the atmosphere (see Lea et al., 2015). The third change was to reduce the period over which the increment is added to the ocean model in the IAU from 24 h to 3 h. This choice is in part to ensure that on the 00Z cycle (with window from 21Z to 03Z) the full increments have been added

to the ocean state by 00Z. Hence these ocean restarts can subsequently be used, in exactly the same way as 00Z ocean restarts from FOAM, by groups running initialised coupled forecasts. It is also important to note that differences in observation cutoff due to difference in operational scheduling impact the number of observations assimilated by each system.

No specific tuning has been made for the coupled system. The error covariances used in CPLDA were calculated in the context of the uncoupled FOAM system with a 24 hour cycle. It would be expected that we would improve the DA results by recalculating the error covariances for a coupled model and for a 6-hour window (this is planned for future work).

2.6 Experiments

In order to assess the CPLDA system, we ran a 13-month calibration period from 01/01/2015 to 31/01/2016 with 6-hourly analysis and daily 7-day forecast. To allow parallel running, the 13 months were realised in two sections, each starting from “uncoupled” initial conditions from the FOAM and NWP operational analyses. The first section was from 01/12/2014 to 30/06/2015, whilst the second section was from 01/06/2015 to 31/01/2016. For both sections, the first month is taken as a spin-up period and discarded. No discontinuity has been observed between 06/2015 from the first section and 07/2015 from the second section and so all assessment undertaken considers the whole of 2015. Every six hours, a delayed “~~Best Analysis~~best analysis” runs 24 hours behind real-time with a catch-up to real-time only required to launch the 7-day forecasts on the 00Z cycle. For running of delayed-time trials, like that for 2015 described in this paper, the operational availability of observations is replicated by using receipt time information when they are extracted from the Met Office observations database (MetDB). In the following sections, we assess the CPLDA system against the ocean-only FOAM system for the 2015 period. FOAM has been used as the Met Office operational ocean forecasting system for many years. It uses atmospheric forcing from the Met Office NWP operational system and is described in detail in Blockley et al. (2014). Differences between the CPLDA and FOAM ocean configurations are shown in Table 1. There are a few differences between the CPLDA system assessed in the majority of this paper and the final operational implementation. As the systems were running for different periods observations not available, or not yet operationally implemented, in 2015 (Jason-3 and Sentinel-3 sea level anomaly data, and VIIRS sea surface temperatures) are only assimilated in the final operational version. More significantly the scheduling of the operational system has been modified ~~operationally~~ to allow additional observations to be assimilated. ~~For the 06Z cycle the “Best Analysis” runs 42 hours behind, at 12Z the “Best Analysis” runs 36 hours behind, at 18Z the “Best Analysis” runs 30 hours behind and finally, at 00Z the “Best Analysis” runs 24 hours behind.~~ The result of these changes is that the “best analysis” runs further behind real time, at 12Z the “Best Analysis” runs 36 hours behind, at 06Z, 12Z and 18Z the “Best Analysis” runs cycles (42, 36 and 30 hours behind and finally, at 00Z the “Best Analysis” runs respectively, compared to 24 hours behind previously). As for the 2015 trial the catch-up to real time is only required to launch the forecast (operationally this is now 10 days) once per day on the 00Z cycle. Where any results are shown from the CPLDA system running with this modified scheduling (as opposed to that used in the 2015 trial) ~~that this~~ is clearly indicated.

Additional experiments have been undertaken using the ocean-only FOAM system to look at the impact of running the data assimilation with a shorter assimilation window. The FOAM system was run in hindcast mode (forecasts were not generated) for 6 months from 01/03/2018 to 31/08/2018 with the analysis length and assimilation window set to 6 and 24 hours. These

experiments should decompose the effect of the shortened assimilation window from the effect of the coupling and aid in the interpretation of the comparisons to the FOAM system described herein.

3 Results

In this section, we present the results from a one year assessment of the CPLDA system from February 2015 to January 2016.

5 A one year experiment is required to obtain representative results and longer experiments are complex to run because of the computational cost and the constant evolution of the observation network, particularly for the atmosphere component. We assess the CPLDA ocean component against observations and other benchmark operational ocean analyses and forecasts (Met Office FOAM and Mercator 1/12° PSY4 [\(Lellouche et al., 2018\)](#)). “Class 4” metrics are widely used to assess the accuracy of ocean forecasting systems. They are statistics of the differences between oceanic observations (in situ or satellite) and their
10 model (forecast or analysis) equivalent at the time and location of the observation (Ryan et al., 2015).

In the following subsections, we present in detail the results from the assessment of the sea surface ~~temperature (SST), the three-dimensional temperature and salinity, the height, sea ice, sea surface temperature, three-dimensional temperature, mixed layer depth (MLD) and the currents at 15 m. Results for the sea level anomaly (SLA) are not presented in detail here but were assessed against CMEMS satellite observations~~ Although this paper largely presents results from the ocean component of the
15 coupled system, we also discuss the impact of differences in surface forcing between CPLDA and FOAM and how these relate to the atmospheric configurations used in the two systems.

3.1 Sea Surface Height

CPLDA 2015 and FOAM sea surface height are assessed against observations using class4 statistics (Ryan et al., 2015). The observations used are provided by CMEMS and include data from Altika, Cryostat2 CryoSat-2 and Jason-2 using class-4
20 statistics. For the one-year reference run CPLDA, The SLA root-squared-mean satellites. Altimeter bias correction is applied to the observations. For each model comparison against the satellite observations, the model’s own altimeter bias is used. This is important because the altimeter bias contains information from the model mesoscale so correcting observations using the altimeter bias from one model to assess a second model penalises this second model. Fig. 1 shows a timeseries of the sea level anomaly (SLA) difference statistics assessed against CMEMS observations. In the 2015 experiment with the original
25 scheduling, CPLDA SLA root-mean-squared error (RMSE) is significantly larger in CPLDA compared to FOAM than FOAM SLA RMSE (Fig. 1a). The larger RMSE in CPLDA can be attributed to the difference in the number of SLA observations assimilated by the two systems. Following these findings, Fig. 2 shows the number of observations assimilated daily by both systems in 2015; the number assimilated by CPLDA is significantly smaller than the number assimilated by FOAM. Differences in scheduling can explain this the CPLDA 2015 experiment “best analysis” runs earlier in the day than the comparable FOAM
30 analysis so fewer observations are available. Following these results, the scheduling of the CPLDA operational system was changed to allow the analysis to run later. This resulted in an increase of the number updated in April 2018. The best analyses at 06Z, 12Z and 18Z are now delayed allowing more observations to be assimilated, as already described in section 2.

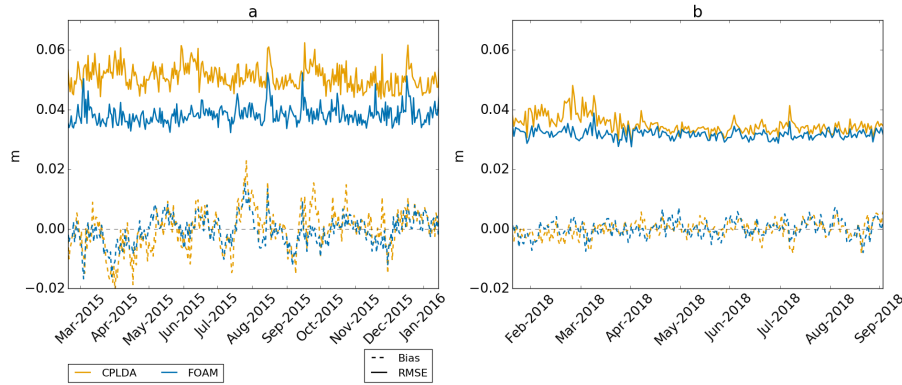


Figure 1. SLA class4 statistics with respect to CMEMS satellite product (Jason2, CryoSat-2 and Altika) for CPLDA and FOAM. (a) For the long CPLDA experiment in 2015 with the old scheduling. (b) from the operational systems for 2018, the CPLDA scheduling was updated to allow more observations to be assimilated in April 2018.

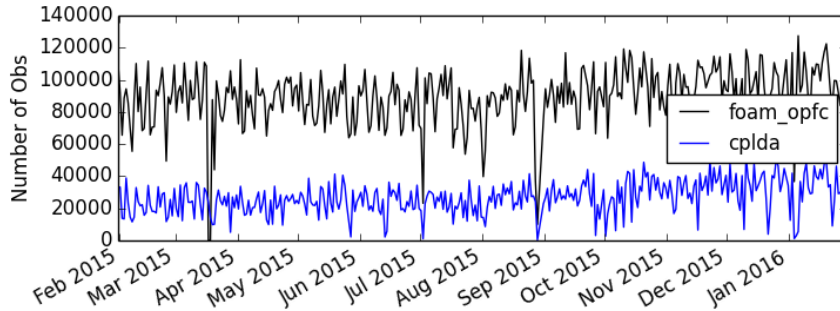


Figure 2. Daily number of SLA observations assimilated in FOAM operational system for 2015 (black line, foam opfc) and in the CPLDA 2015 experiment (blue line, cplda)

This change, along with a change in the Met Office database (MetDB) allowing a more frequent ingestion of SLA observations ~~assimilated and~~, has resulted in a significant reduction of the ~~SLA RMSE~~. In the current operational system with the updated scheduling, the ~~SLA RMSE~~ and mean bias are similar to those from the ocean-only operational system FOAM (not shown). This paper presents the results from the ocean component of the coupled system. The results for the sea ice are ~~not detailed but~~ CPLDA RMSE (see Fig 1b). The experiments using the FOAM system to look at the effect of the shorter assimilation window in CPLDA showed no significant difference in SLA statistics between the 6 and 24 hour systems.

3.2 Sea Ice

Fig 3 shows the sea ice extent and ~~sea ice volume between CPLDA analysis and FOAM analysis was observed and volume~~ respectively for CPLDA and FOAM best analyses. It shows that the sea ice extent is similar between CPLDA and FOAM and

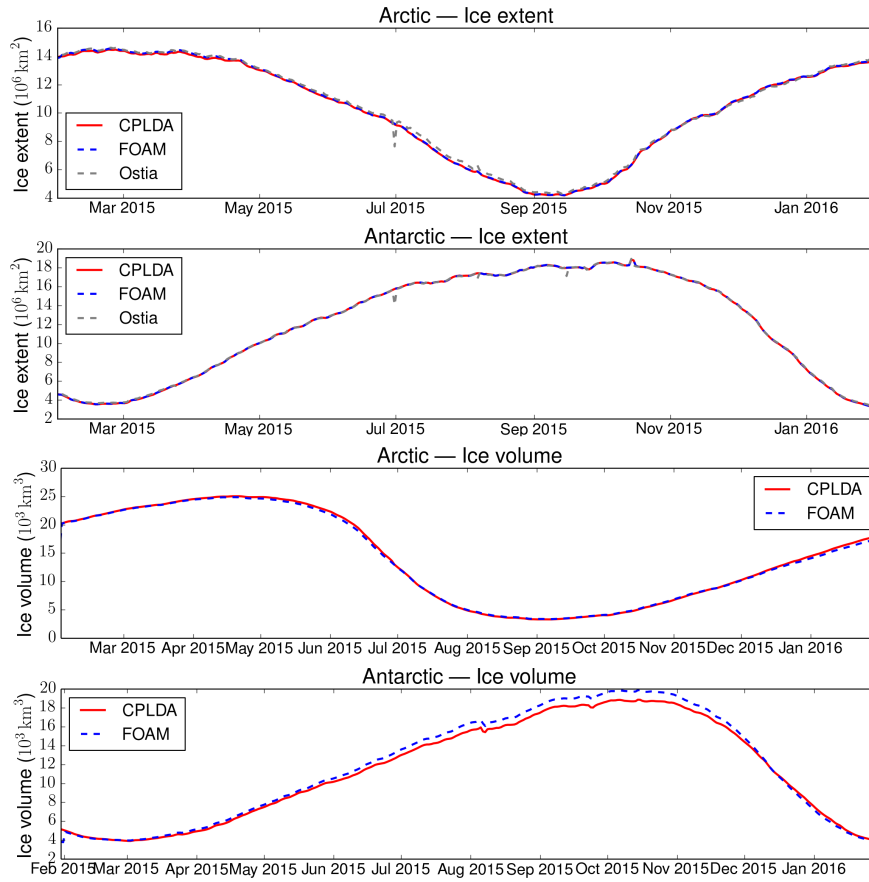


Figure 3. Time series of sea ice extent and sea ice volume for CPLDA (2015 experiment) and FOAM

is also comparable to OSTIA(not shown). During the melting season, the CPLDA forecast has a-. Fig 3 shows that the sea ice volumes are similar in the Arctic but in the Antarctic CPLDA has a reduced volume compared to FOAM in the Southern Hemisphere winter and spring. Differences in volume can be attributed to differences in sea ice thickness probably caused by differences in freezing temperature treatment. Fig 4 shows the sea ice extent forecast for the melting season in Arctic (August) and Antarctic (February) for CPLDA and FOAM. Both models have the tendency to melt too much ice ;this problem is also seen, to a similar degree, in FOAM(not shown). Differences between FOAM and CPLDA sea ice are not assessed in any more detail here due to the difference in during the forecast especially in the Arctic; in the Antarctic the exaggerated melting in CPLDA is slightly reduced compared to that observed in FOAM. Differences in freezing temperature treatment referred to in 2.3 which may have impacted the sea ice simulation.

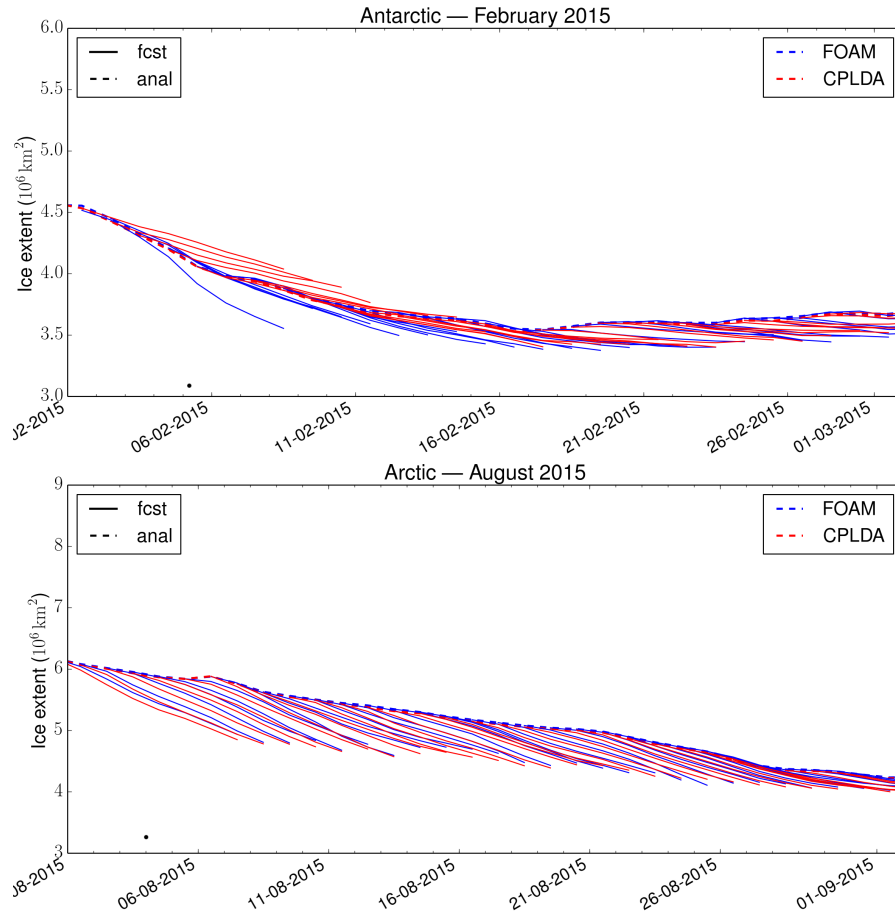


Figure 4. [Sea ice extent forecast for CPLDA \(2015 experiment\) and FOAM during the melting season \(February in Antarctic and August in Arctic\)](#)

3.3 [Sea Surface Temperature and mixed layer depth](#)

3.3 [Sea Surface Temperature](#)

We present class 4 statistics against ~~in-situ~~ [in situ](#) drifting buoy observations provided by US GODAE. The model SST is defined to be the temperature of the top ocean model grid-box which is at 0.5 m depth. The RMSE and mean bias statistics for

5 CPLDA analysis and forecast are shown in Fig [??-5](#) and compared to FOAM, PSY4 and GloSea statistics. A small cold bias (-0.02 K) is present in CPLDA in the analysis but does not increase during the forecast. In comparison, the coupled forecast from the GloSea system initialised from uncoupled system exhibits a warm bias significantly increasing during the forecast (+0.09 K after 132 hours; Fig [??-5](#)a). CPLDA is the only system showing a cold bias, the two uncoupled systems FOAM and PSY4 have a small warm bias. [Experiments investigating reducing the assimilation window from 24 to 6 hours in the FOAM](#)

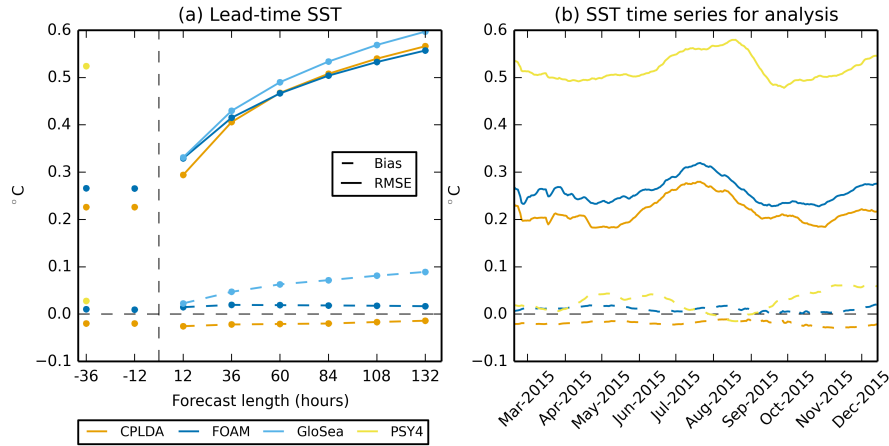


Figure 5. SST (model minus observation) class 4 statistics with respect to drifting buoys: (a) RMSE and mean biases at various lead times; (b) Time series of RMSE and mean biases in the “best analysis” from each system.

system show that the difference observed in bias is unlikely to be due to the shorter assimilation window. The cold bias is therefore more likely related to the differences in heat fluxes between the systems described in section 3.5.

The SST RMSE is reduced in the CPLDA analysis-analyses compared to the FOAM analysis-but-increases-more-than-the FOAM-RMSE-during-the-forecast (Fig ?? analyses (this is also observed for the 12-hour forecast). Between 12 and 36 hour forecasts the rate of increase of RMSE is greater in CPLDA than in FOAM so that at forecast length of 36 hours and beyond the RMSE is similar in both systems (Fig 5a). The smaller-data-assimilation-time-shorter data assimilation window in CPLDA (6 hours) compared to FOAM (24 hours) can-explain-explains the improved SST analysis RMSE in CPLDA. Lea-et-al.(2013)-investigated-the-impact-of-the-assimilation-time-window-on-Experiments investigating reducing the assimilation window in the FOAM system and found that reducing the time window from 24 hours to 6 hours improved SST statistics. They improved SST analysis statistics (both RMSE and bias). This supports the results of Lea et al. (2015) who suggested that with a shorter cycle the SST model errors have less time to grow. The reduced-SST-RMSE-increase in RMSE between 12- and 36-hour forecasts in CPLDA could also-be-cause-by-be due to the analysis overfitting the observations. By-fitting-the-The analysis fittingthe observations too closely ,improves the statistics for the analysis are-improved-but as a consequence there is a quicker degradation during the forecast. Future work is required to assess the magnitude of this overfitting by withholding a sub-set of observations from the data assimilation (these observations can then be used as an independent validation dataset). The RMSE for analysis SSTs in PSY4 is significantly larger than CPLDA but unlike CPLDA and FOAM, PSY4 does not assimilate SSTs from drifting buoys directly; instead it assimilates the near real-time Operational Sea surface Temperature and sea Ice Analysis (OSTIA) (Donlon et al., 2012), in which the drifting buoys have have been assimilated. Furthermore, when using grid point verification PSY4 statistics may suffer from a “double penalty” whereby higher resolution models are often penalised compared to coarser resolution models for missed or misplaced events or false alarms.

The SST RMSE from all models exhibits a seasonal cycle (Fig?? 5b) with an increased RMSE during the Northern Hemisphere summer. This increase can be attributed to the Northern Hemisphere bias of the observing network in terms of the number of observations. During the Northern Hemisphere summer the mixed layer depth is shallow which leads to a more responsive mixed layer, thus SST variability is increased which is reflected in the increase in the global RMSE during these months.

The CPLDA SST analysis is also assessed via comparison with OSTIA (Fig??a) 6a). The global average CPLDA SST is warmer than OSTIA, with the difference being approximately -0.10 ± 0.06 K. This difference corresponds to a known cold bias in the OSTIA analysis relative to independent top-level Argo observations (Roberts-Jones et al., 2012) so could illustrate a potential bias in OSTIA. However CPLDA SSTs (from the top 1 m thick model layer) are also expected to differ from OSTIA because they will capture some of the diurnal cycle while OSTIA is a foundation SST free of diurnal warming. Fig ??6b shows the difference between CPLDA and FOAM SST analysis annual means. CPLDA SST is generally colder than FOAM which corresponds to the biases observed in Fig ??5. The differences between the two systems are much smaller than that observed between OSTIA and CPLDA as expected due to similarity in the ocean models and data. Bimodal differences are observed in the areas with high SST gradient such as the Western boundary currents, Antarctic Circumpolar Current and in the Zapiola rise region. These differences are due to differences in the position of SST fronts rather than due to the ability of the two analyses to resolve mesoscale features. ~~Indeed, to investigate the ability to resolve mesoscale features, To investigate mesoscale feature resolution~~ we calculated the SST spectral power using the method described in Fiedler (2018) ~~and both, The SST spatial variability for each of the experiments was determined by wavenumber auto spectra analysis. All spectra results were calculated on the native grid of the analysis (ORCA025). For each region of interest, the spectra were calculated along the horizontal coordinates closest to a given latitude. The power spectral density of each latitude was calculated using the Welch's average periodogram method, with 28 degrees of freedom and Hanning window. The overlapping length for each band averaging was half the band length (Fiedler, 2018). The results for CPLDA and FOAM exhibit similar results (not shown). are very similar; in both systems the effective SST resolution is around 50 km.~~

On average, the CPLDA temperature increment at the surface is negative (Fig ??6c), meaning that the data assimilation is cooling the model at the surface; this is also an issue in FOAM to a lesser degree and may ~~be a surface manifestation of a sub-surface bias described in the next section due to the under-estimation of the wind stress described in section 3.5.~~ The largest increments (both positive and negative) are observed in regions of enhanced SST variability such as the Gulf Stream, Kurushio current and the ~~ACC~~ Antarctic Circumpolar Current. Large negative increments are also applied in the Tropics in regions of tropical instability waves. In the Tropical Pacific, the imprint from the TAO moorings is clearly visible. Fig ??6d shows the difference in temperature increment at the surface between CPLDA and FOAM. Bimodal differences are observed in the regions of enhanced SST variability ~~and at the location of the TAO moorings.~~ The degree to which the increments (and therefore the data assimilation) are responsible for the differences in SST between the two systems shown in Fig ?? and Fig ??5 and Fig 6b varies regionally but large scale similarities are seen in the pattern of the differences.

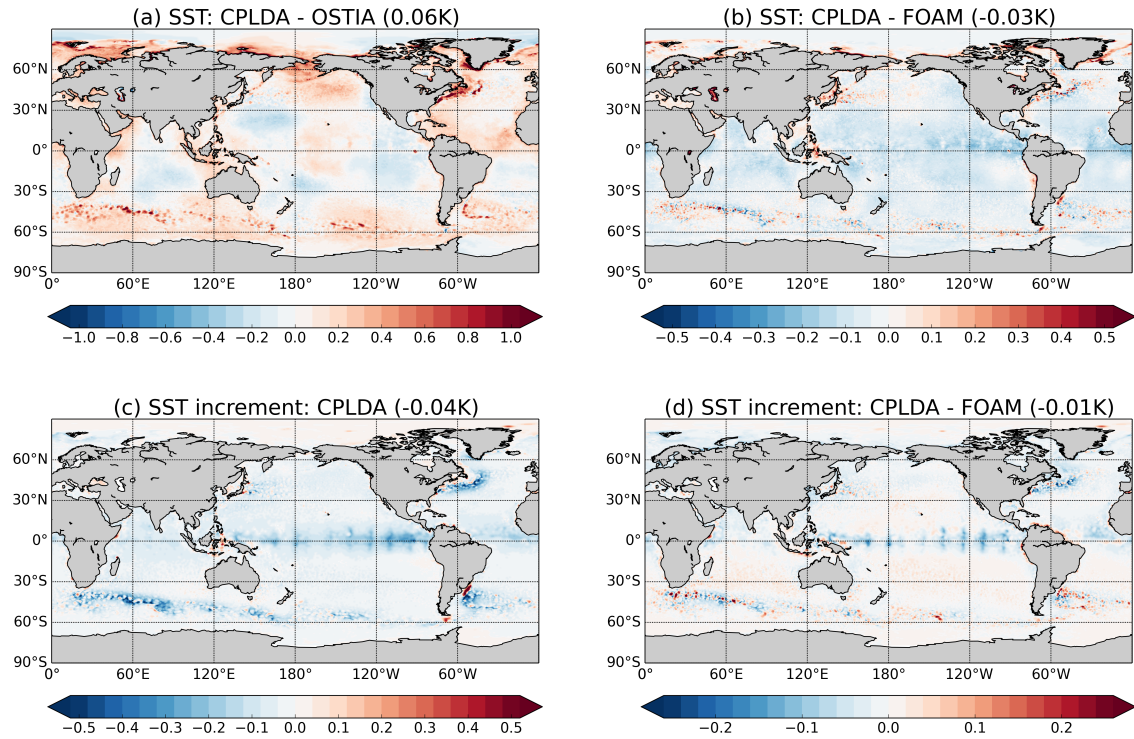


Figure 6. CPLDA SSTs in 2015 compared to (a) OSTIA (0.06 K) and (b) FOAM (-0.03 K); (c) mean SST increments in 2015 for CPLDA (-0.04K); (d) mean SST increments in 2015 for CPLDA compared to FOAM (-0.01 K). Values in parentheses are averages for the global ocean.

3.4 Temperature and Mixed layer depth

The temperature of CPLDA is assessed against Argo profile observations provided by CMEMS (Wehde et al., 2016). The class 4 global temperature statistics for the best analysis are presented in Fig ??7a. The results for the forecast (not shown) are similar to the best analysis with the mean bias staying unchanged and the RMSE slightly increasing from 0.67 K at 12 hours to 0.73 K at 108 hours. CPLDA has a cold bias in the subsurface which is maximum (around 0.1 K) at 10 m and present in the thermocline down to approximately 50 m. A smaller warm bias is present at around 100 m, but this is over a greater range of depths so represents a large amount of heat. The temperature RMSE is largest in the thermocline highlighting its variability. A subsurface cold bias is present in the ocean-only FOAM system but with a smaller amplitude; the RMSE in the thermocline is also smaller in FOAM. For the CPLDA results shown, the number of profile observations being assimilated was smaller than in FOAM due to differences in scheduling of assimilation cycles. Even in tests with the operational scheduling (referred to in section 2.6) the sub-surface bias in CPLDA persists despite the increased number of observations being assimilated. The sub-surface bias can be attributed to In both CPLDA and FOAM the temperature RMSE is largest in the thermocline which highlights its variability; the RMSE is larger in CPLDA than in FOAM.

The temperature profile can be affected by the vertical propagation of the surface temperature increments through the water column. King et al. (2018) shows show that the succession of positive and negative temperature increments has an asymmetric effect on the vertical temperature structure due to the way the temperature increment at the surface is propagated to the bottom of the mixed layer. A negative surface increment weakens the stratification and so deepens the mixed layer, this means
5 that a subsequent positive surface increment is projected deeper. Experiments looking at the assimilation time window in an ocean-only system show that the shorter assimilation cycle in CPLDA (6 hours), relative to FOAM (24 hours), leads to increased temporal noise in the increments and a deepening of the mixed layer.

In CPLDA the large negative increment applied at the surface (Fig ??e7b) is propagated down to approximately 50 m. This corresponds to the response observed in idealised experiments detailed in King et al. (2018). With a shorter assimilation
10 window, below this a small warm increment is applied down to approximately 150 m. The fact that the negative increment is projected deeper in CPLDA than in FOAM, the temporal noise in the CPLDA temperature increments from cycle to cycle is increased and may be partly responsible for causing the mixed layer to over-deepen over time, resulting in the cold sub-surface bias relative to FOAM. Some options for reducing the asymmetric effect of the SST increments in the subsurface were described in King et al. (2018). These may be tested and implemented in future versions of the CPLDA system and the dipolar structure
15 in the vertical is consistent with idealised experiments into vertical propagation of temperature increments, (King, pers. comm. 2018). CPLDA has a larger negative increment at the surface than FOAM. Below approximately 200-400-200 m the magnitude of the average temperature increment is small (Fig ??e7b) and the increments applied by CPLDA and FOAM are similar.

The differences observed in global average temperature increments are reproduced in the ocean-only assimilation time-window experiments comparing 6- to a 24-hour window. It is therefore likely that the differences observed in the global temperature
20 increment are due to the shorter assimilation window in CPLDA.

Mixed Layer Depth statistics from the analysis confirm that CPLDA has a deeper MLD than the assimilated profile observations. The MLD statistics presented here use the Kara mixed layer depth with a density based criteria. CPLDA mean error against those the assimilated observations is -5.2 m-5.2 m too deep while the RMSE is 34.7 m. As expected, the CPLDA MLD is deeper than FOAM (Fig ??). As for CPLDA, the MLD- Similarly the MLD in FOAM is deeper than in the observations but
25 both the mean error (2.1 m too deep) and the RMSE are reduced (-2.1 m for the mean error, (32.6 m for the RMSE). The deeper MLD in CPLDA could be caused by the asymmetric effect of the sub-surface temperature increment on vertical temperature structure but also by differences in wind stress between the two system. Further experiments) are reduced. These statistics confirm that the CPLDA MLD is deeper than FOAM (Fig 8). During the forecast MLD RMSE and bias persist for both systems (not shown). Experiments running FOAM with a 6-hour 6-hour assimilation time window (consistent with CPLDA)
30 are needed to help to separate the impact of the assimilation time window from the impact of the wind stress.

Annual mean Kara mixed layer depth in m (Kara et al. (2000) using temperature criterion of 0.8°C: (a) CPLDA, and (b) difference between CPLDA and FOAM.

3.5 Velocities

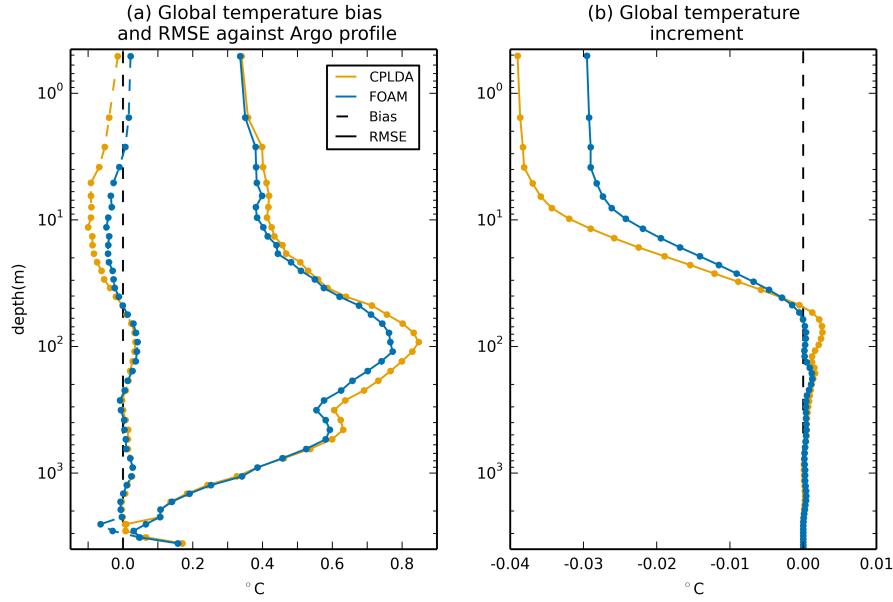


Figure 7. (a) CPLDA and FOAM global average mean bias and RMSE temperatures compared to Argo observations using class 4 methodology; (b) Global average mean temperature increments applied in CPLDA and FOAM.

Predictions of ocean current are important for marine activities. To assess the velocities at 15 m, we compare CPLDA to measurements from drifters. We use an in-situ delayed mode product from CMEMS (Etienne, 2017) show that the shorter window results in an over-deepening of the MLD by 2.9 m relative to that using a 24 hour window; this is designed for reanalysis purposes with the best available version of in-situ data for ocean surface currents. The data are collected from the Surface Drifter Data Assembly Centre (SD-DAC at NOAA AOML). All surface drifters data are processed to check for drogue loss and a wind slippage correction is applied to undrogued buoys. The wind slip correction is computed following Rio (2012). We compared 15 m model velocities against 15 m CMEMS observations corrected with wind slippage for the year 2015. Despite a limited number of observations compared to SST observations, the observation coverage from drifter is generally good except in the Tropical Atlantic. The class 4 statistics for the 15 m velocities for the global ocean are presented in Fig ??.

CPLDA presents a negative bias (-0.07 m s^{-1}) and a RMSE of 0.19 m s^{-1} . Both the bias and the RMSE are stable during the forecast (not shown). The bias in the uncoupled systems (FOAM and PSY4) is the same and the RMSE close (0.18 for FOAM; 0.17 for PSY4) consistent with the 3.1 m difference observed between CPLDA and FOAM. The change in MLD due to the shorter assimilation window may be caused by the asymmetric effect of the surface temperature increment on vertical temperature structure. The over-deepening of the mixed layer will lead to a misplacement of the thermocline which will contribute to the larger RMSE in the thermocline in CPLDA than in FOAM observed in figure 7a. It is worth noting that differences in wind stress between CPLDA and FOAM will also affect the MLD.

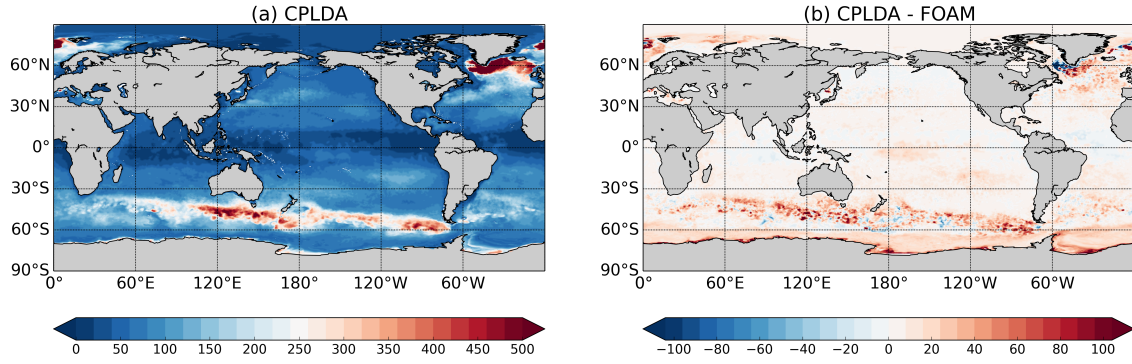


Figure 8. Density-plot for 15-m Annual mean Kara mixed layer depth in m velocity (Kara et al. (2000) using temperature criterion of 0.8°C : model-best analysis against drifting-buoys observations for (a) CPLDA, and (b) FOAM-difference between CPLDA and (c) PSY4-FOAM. Positive value means CPLDA MLD is deeper than FOAM MLD.

The larger RMSE in CPLDA is mainly due to periods of large RMSE in April 2015 and November 2015 in the Tropical Pacific (see Fig ??). The increased RMSE is caused by spurious currents in the West Tropical Pacific (Fig ??). During the forecast, the currents weaken and the RMSE decreases suggesting they are caused by the data assimilation. The shorter data assimilation window in CPLDA limits the number of observations and causes noisier increments; in addition a reduced total number of SLA observations are assimilated in CPLDA compared to FOAM. We reran the CPLDA system for a month from 15/10/2015 with the updated scheduling allowing more observations to be assimilated. In this experiment, the RMSE is significantly reduced and now similar to FOAM. Experiments support the shorter assimilation window in CPLDA causing the differences observed in the global increments (Fig 7b) and in MLD (Fig 8) between CPLDA and PSY4 (see shaded area in Fig ??). The spurious currents north of Indonesia are suppressed (Fig ??). However, in the current CPLDA operational system (running with the updated scheduling allowing more observations to be assimilated), there are still periods with unrealistic currents developing in the West Tropical Pacific (not shown). These unrealistic currents caused by SLA assimilation are not present in the FOAM system which uses the same assimilation scheme and assimilates the same observations as CPLDA. This strongly suggests that it could be caused by the FOAM. However these experiments were not able to reproduce the sub-surface bias observed in CPLDA relative to FOAM (Fig 7a). We are currently unable to attribute this bias to the shorter assimilation window in CPLDA.

This is not tested yet, but tuning the error covariances for the shorter time window may reduce or eliminate the above problem. We would expect smaller estimated background errors and consequently smaller and less noisy increments. The updated MDT (CNES-CLS13) Rio et al. (2014) is significantly improved particularly around the Maritime Continent compared to the older MDT used in these experiments and so using the newer MDT in the CPLDA system may also reduce this issue.

15-m velocity using class 4 statistics with respect to velocities derived from drifting buoys for 2015. RMSE and mean bias are shown for CPLDA and FOAM, as well as PSY4 and, for a short test period, CPLDA using the operational scheduling allowing assimilation of additional SLA observations. 15-m velocity average (in m s^{-1}) in the West Tropical Pacific for the

week from 05/11/2015 to 11/11/2015 for (a) CPLDA, (b) FOAM and (c) CPLDA with the current operational scheduling allowing assimilation of additional SLA observations.

Despite the mean bias and RMSE values, CPLDA velocities are only moderately correlated to observations (0.50). This correlation is weaker than in FOAM (0.55) and PSY4 (0.62). Only PSY4 is skillful using the definition that a correlation greater than 0.6 is an indication of a skillful forecast (Murphy and Epstein, 1989; Hollingsworth et al., 1980). Correlation varies substantially from region to region (Table 2). In some regions, CPLDA correlation is near or above 0.60 as in the North Pacific while in North Atlantic the correlation is poor (0.10). All the models have skillful correlation in the North Pacific but poor correlation in the North Atlantic. This was previously observed by Blockley et al. (2012) in a previous version of the FOAM system. They explained the lack of skill in the North Atlantic by the domination of the mesoscale which is more difficult to predict while in “quieter” regions the model performed better. It is in the Southern Ocean, a region largely dominated by the mesoscale, that the $1/12^\circ$ model (PSY4) most clearly outperforms the $1/4^\circ$ models (CPLDA, FOAM). Here PSY4 has a correlation of 0.62 while CPLDA and FOAM have correlations of 0.45 and 0.50 respectively.

Eddy Kinetic Energy (EKE) was also compared in CPLDA, FOAM and PSY4 due to the expectation that a coupled system should not suffer from the same eddy damping as when the ocean velocity is used in the calculation of the wind stress forcing an ocean-only system like FOAM (Duhaut and Straub, 2006; Dawe and Thompson, 2006; Renault et al., 2016). However at This may be due to the experiments not being long enough (6 months) or more likely that the bias is a $1/4^\circ$ resolution, the mesoscale is poorly represented and most of the EKE is injected into the model by the SLA assimilation. Hence any differences in EKE between CPLDA and FOAM are mainly caused by differences in SLA observations assimilated, or impacts of the shorter assimilation window, rather than due to a reduced eddy damping by the wind stress result of the differences in forcing between CPLDA and FOAM described in the next section. Future work is planned to look in depth at the vertical propagation of surface increments using a 1-D model and may aid in the attribution of the observed sub-surface bias.

3.5 Atmosphere and surface fluxes

In this section, we assess the atmosphere component of CPLDA, focussing on the interface with the ocean, in particular the surface fluxes. We compare CPLDA surface fluxes to FOAM over the ocean; we have not yet investigated the fluxes over the ice. The differences in net total heat flux are shown in Fig ??-9. On average CPLDA receives less (heat than FOAM (-3.9 W m^{-2})). CPLDA receives less (or loses more) heat in the Tropics than FOAM except in the Gulf of Guinea and in the East Pacific along the Peruvian and Chilean coast. At higher latitude, CPLDA loses less heat than FOAM especially in the regions of large latent heat loss (Kuroshio and Gulf Stream). The reduced heat loss gain compared to FOAM between 30S and 30N contributes to the colder SST observed in CPLDA. The differences in net heat flux compared to FOAM are mainly due to differences in short-wave radiation and short-wave radiation and particularly in latent heat (Fig ??-9). The small scale pattern differences are due to differences in the representation of the mesoscale between the two models (eddies are not completely constrained by the observations and so are not located in exactly the same positions).

Fig ??9c shows the difference in short-wave short-wave radiation between CPLDA and FOAM. On average, CPLDA receives more short-wave radiation than FOAM ($+1.05 \text{ W m}^{-2}$). The difference is large in the southern hemisphere where CPLDA

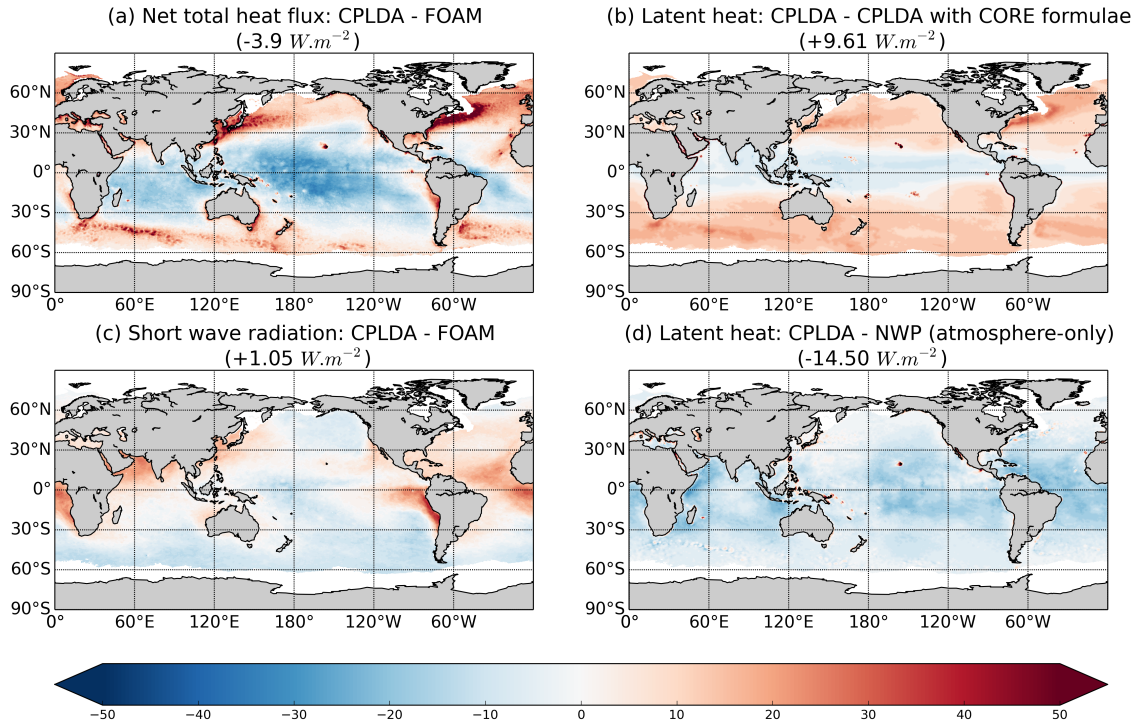


Figure 9. Annual mean net downward heat flux differences, in $W m^{-2}$: (a) total heat flux difference between CPLDA and FOAM ($-3.9 W m^{-2}$), (b) latent heat flux difference caused by using COARE3.0 bulk formulae in CPLDA rather than CORE as in FOAM ($+9.61 W m^{-2}$), (c) short-wave radiation difference between CPLDA and FOAM ($+1.05 W m^{-2}$), and (d) latent heat difference between CPLDA and the atmosphere-only NWP system, both of which are using COARE3.0 bulk formulae ($-14.5 W m^{-2}$). In bracket, are the average values for the global ocean.

receives significantly less short-wave radiation than FOAM. In the equatorial region, CPLDA receives less short-wave radiation in the West Pacific but receives significantly more short-wave radiation than FOAM in the East Pacific and in the Atlantic including the whole Gulf of Guinea. The stratocumulus clouds are under-estimated in the Met Office atmospheric model and cause a short-wave over-estimation on the eastern boundary upwelling systems. The differences in short-wave radiation between CPLDA and FOAM in these regions suggest that this bias is larger in CPLDA. In the northern hemisphere, ~~in-the Pacific~~ CPLDA receives less short-wave radiation in the Pacific, while in the Atlantic it receives more ~~short-wave~~. Overall, the differences observed in short-wave radiation are significant and contribute to the differences observed in total heat fluxes. We have performed a shorter simulation of the CPLDA system with a higher atmospheric resolution (17 km) which gives similar results ~~to CPLDA~~ (not shown) to CPLDA meaning that the differences in the fluxes between CPLDA and FOAM ~~is~~ are not caused by the differences in resolution.

The differences in latent heat can be decomposed into two components. First, the atmosphere component in CPLDA differs from the atmosphere model (NWP) used to force FOAM. Fig ~~??~~9d shows the difference between CPLDA and NWP latent heat.

The NWP latent heat is calculated using the same bulk formulae as CPLDA but is using OSTIA SSTs as a surface boundary condition. This shows that even with the same bulk formulae the evaporation is significantly higher in CPLDA than in NWP. In CPLDA, the air at 10 m is drier than in NWP causing increased evaporation and increased latent heat loss. The signal is stronger in the Tropics and contributes to the differences in total heat flux seen between CPLDA and FOAM, with FOAM losing less heat than CPLDA in the Tropics.

Secondly, there are differences in latent heat due to the use of different bulk formulae in CPLDA and FOAM. To investigate the difference caused by the bulk formulae, we recalculated CPLDA fluxes using CORE bulk formulae (Large and Yeager, 2004) as used in FOAM. Fig. 9b shows the differences in latent heat when using CORE formulae. At high latitude the latent heat loss is increased with the largest differences observed in the regions with large latent heat loss. On the other hand, in the equatorial band, the latent heat loss is reduced with CORE formulae. The impact of the bulk formulae on the latent heat calculation is significant and contributes to the differences in total heat flux. An impact is also observed on the sensible heat but with a much small magnitude (not shown). The addition of the differences in latent heat caused by having a different atmospheric state (Fig. 9d) and those caused by using different bulk formulae (Fig. 9b) can explain much of the difference seen in the net heat flux into the ocean between CPLDA and FOAM (Fig. 9a).

The sum of the latent heat differences and short wave differences equals -3.84 W m^{-2} , close to the difference in net total heat flux (-3.9 W m^{-2}).

Air-sea momentum flux is a crucial forcing for the ocean as it is through the wind stress that the atmosphere drives the ocean. The CPLDA wind stress magnitude annual mean is shown in Fig. 10a). ~~The magnitude of the wind stress is underestimated compared to observations from the MetOp satellites (Fig. 9b); however the wind stress~~ wind stress in CPLDA is almost everywhere stronger than in FOAM. The differences in wind stress between CPLDA and FOAM are mainly caused by the different bulk formulae. Indeed, when recalculating CPLDA wind stress using the same (CORE) bulk formulae as FOAM, the differences between CPLDA and the new calculated wind stress are similar to the differences between CPLDA and FOAM (Fig. 10c and 10d). The new wind stresses are calculated with CORE bulk formulae but using CPLDA windspeed and surface currents. This highlights the importance in the choice of bulk formulae for the wind stress calculation. However, we note that it is not equivalent to running CPLDA using CORE bulk formulae, as reduced wind stress would imply feedback to the atmosphere causing an increase in wind speed and therefore limiting the reduction in wind stress. ~~It is also important to note that MetOp wind stress is not observed directly and is also calculated using bulk formulae. The drag coefficient used is close to the COARE3.5 drag coefficient (Driesenaar et al., 2017).~~

Because of the large differences caused by the bulk formulae, comparing the differences in wind stress is equivalent to comparing the different drag coefficient used. ~~The UM bulk formulae used in CPLDA (based on COARE3.0) are closer to those used to process MetOp wind stress (equivalent to COARE3.5) than the CORE formulae used in FOAM; hence CPLDA wind stress is closer to MetOp wind stress than FOAM.~~ Brodeau et al. (2017) highlighted disagreement in drag coefficient between different bulk formulae with the ~~algorithm~~ COARE 3.0 algorithm producing higher wind stress. They mention that the latest improvements in the COARE algorithm (version 3.5) suggest that the drag coefficient of COARE3.0 is likely too small in strong wind conditions. ~~It confirms our finding with the wind stress calculated by COARE3.5 (MetOp) being larger~~

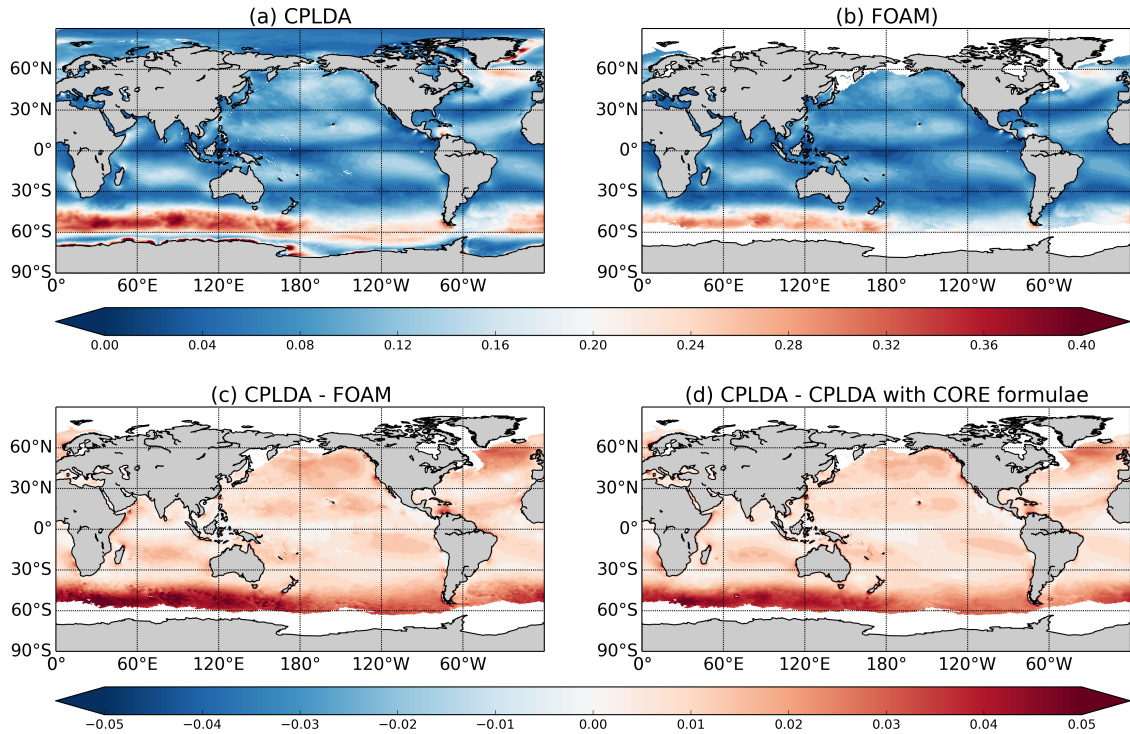


Figure 10. Annual mean wind stress magnitude in N m^{-2} : (a) CPLDA, (b) ~~Wind-stress-product from ASCAT instrument on MetOp satellites~~FOAM, (c) Wind stress difference between CPLDA and FOAM, and (d) Wind stress difference caused by using COARE3.0 bulk formulae in CPLDA rather than CORE as in FOAM

~~than the wind stress calculated by COARE3.0 (CPLDA)~~This suggests that the wind stresses calculated in CPLDA may be underestimated at times, although improved compared to those used by FOAM.

3.6 Velocities

Predictions of ocean currents are important for marine activities. They are used for a number of practical applications such as ship routing, marine search and rescue, pollution monitoring, the offshore oil and gas industry, and marine renewable energy. To assess the velocities at 15 m, we compare CPLDA to measurements from drifters. The observations are independent as no ocean current observations are assimilated by the system. We use an in situ delayed mode product from CMEMS (Etienne, 2017); this is designed for reanalysis purposes with the best available version of in situ data for ocean surface currents. The data are collected from the Surface Drifter Data Assembly Centre (SD-DAC at NOAA AOML). All surface drifters data are processed to check for drogue loss and a wind slippage correction is applied to undrogued buoys. The wind slip correction is computed following Rio (2012). We compared 15 m model velocities against 15 m CMEMS observations corrected with wind slippage

for the year 2015. Despite a limited number of observations compared to SST observations, the observation coverage from drifters is generally good except in the Tropical Atlantic.

The class 4 statistics for the 15 m velocities for the global ocean are presented in Fig 11. On average the CPLDA analysis has a negative bias (-0.07 m s^{-1}) and a RMSE of 0.19 m s^{-1} . In all regions except the Tropical Pacific, both the bias and the RMSE are stable during the forecast (not shown). The bias in the uncoupled system analyses (FOAM and PSY4) is the same as CPLDA and the RMSE close (0.18 for FOAM; 0.17 for PSY4). The larger RMSE in CPLDA analysis is mainly due to periods of large RMSE in April 2015 and November 2015 in the Tropical Pacific (see Fig 11). In regions other than the Tropical Pacific no significant differences are observed, with CPLDA and FOAM statistics similar. The increased RMSE in the analysis is caused by spurious currents in the West Tropical Pacific (Fig 12). During the forecast, the currents weaken and the RMSE decreases suggesting they are caused by the data assimilation. The shorter data assimilation window in CPLDA limits the number of observations and causes noisier increments; in addition a reduced total number of SLA observations are assimilated in CPLDA compared to FOAM. We re-ran the CPLDA system for a month from 15/10/2015 with the updated scheduling allowing more observations to be assimilated. In this experiment, the RMSE in the analysis is significantly reduced and now similar to FOAM and PSY4 (see shaded area in Fig 11). The spurious currents north of Indonesia are suppressed (Fig 12). However, in the current CPLDA operational system (running with the updated scheduling allowing more observations to be assimilated), there are still periods with unrealistic currents developing in the West Tropical Pacific (not shown). These unrealistic currents caused by SLA assimilation are not present in the FOAM system which uses the same assimilation scheme and assimilates the same observations as CPLDA. This strongly suggests that they are caused by the shorter assimilation window in CPLDA. ~~This suggests that~~

Tuning the error covariances for the shorter time window may reduce or eliminate the above problem. Smaller estimated background errors would give the observation less weight in the analysis and lead to smaller, less noisy increments. Future work investigating re-estimating the background error covariances is planned. The updated CNES-CLS13 Mean Dynamic Topography of Rio et al. (2014) is significantly improved, particularly around the Maritime Continent, compared to the ~~wind stresses calculated in CPLDA may be underestimated at times, although improved compared to those used by FOAM.~~ CNES-CLS09 version used in these experiments. Hence using a newer MDT in the CPLDA system may also reduce this issue.

Despite the mean bias and RMSE values, CPLDA velocities are only moderately correlated to observations (0.50). This correlation is weaker than in FOAM (0.55) and PSY4 (0.62). Only PSY4 is skillful using the definition that a correlation greater than 0.6 is an indication of a skillful forecast (Murphy and Epstein, 1989; Hollingsworth et al., 1980). Correlation varies substantially from region to region (Table 2). In some regions, CPLDA correlation is near or above 0.6 , as in the North Pacific, while in North Atlantic the correlation is poor (0.10). All the models have skillful correlation in the North Pacific but poor correlation in the North Atlantic. This was previously observed by Blockley et al. (2012) in an earlier version of the FOAM system. They explained the lack of skill in the North Atlantic by the domination of the mesoscale which is more difficult to predict while in more benign regions the model performed better. It is in the Southern Ocean, a region largely dominated by the mesoscale, that the $1/12^\circ$ model (PSY4) most clearly outperforms the $1/4^\circ$ models (CPLDA, FOAM). Here PSY4 has a correlation of 0.62 while CPLDA and FOAM have correlations of 0.45 and 0.50 respectively.

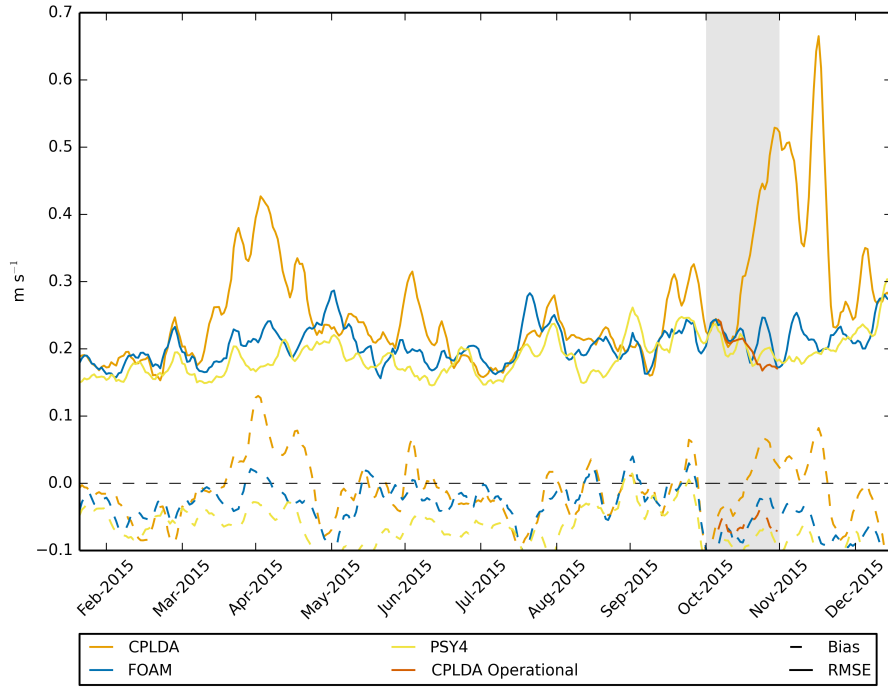


Figure 11. 15 m velocity using class 4 statistics with respect to velocities derived from drifting buoys for 2015. RMSE and mean bias are shown for CPLDA and FOAM, as well as PSY4 and, for a short test period, CPLDA using the operational scheduling allowing assimilation of additional SLA observations.

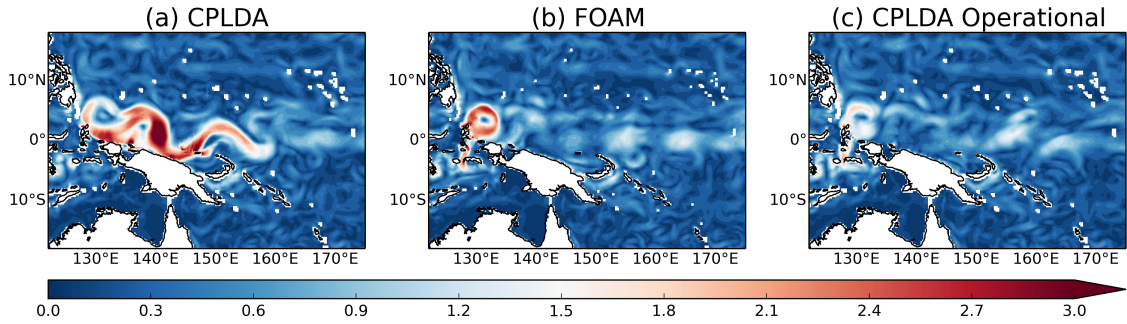


Figure 12. 15 m velocity average (in m s^{-1}) in the West Tropical Pacific for the week from 05/11/2015 to 11/11/2015 for (a) CPLDA, (b) FOAM and (c) CPLDA with the current operational scheduling allowing assimilation of additional SLA observations.

Eddy Kinetic Energy (EKE) was also compared in CPLDA, FOAM and PSY4. In an ocean-only model, using the ocean velocity to calculate the wind stress has a damping effect on the eddies (Duhaut and Straub, 2006; Dawe and Thompson, 2006; Renault et al., 2006). Despite the expected reduced damping effect in a coupled system, we did not observe a higher EKE in CPLDA than in FOAM.

However at $1/4^\circ$ resolution, the mesoscale is poorly represented and most of the EKE is injected into the model by the SLA assimilation. Hence differences in EKE between CPLDA and FOAM are mainly caused by differences in SLA observations assimilated, or impacts of the shorter assimilation window, rather than due to a reduced eddy damping by the wind stress.

4 Conclusions

5 Since July 2017, the CPLDA system has been delivering an ocean analysis and forecast to CMEMS operationally. This was a significant upgrade as prior to this ocean products were delivered to CMEMS from the coupled GloSea system which was initialised from uncoupled ocean (FOAM) and atmosphere (Met Office NWP) analyses. Here we have assessed the first long (1-year) experiment using the CPLDA system in a pseudo-operational mode. Previous studies with an earlier similar system (Lea et al., 2015) presented the results only from short (1-month) trials. This longer trial has allowed an in-depth assessment
10 of the CPLDA system against observations, and comparison of its ocean analysis and forecast to current benchmark products like the Met Office $1/4^\circ$ model FOAM and the Mercator $1/12^\circ$ model PSY4.

Overall, the CPLDA system performs well compared to the FOAM system. After applying an update to the scheduling to allow more observations to be available at the run-time, the SLA statistics are now similar to FOAM statistics both for the bias and RMSE. The SST statistics are improved with an RMSE significantly smaller than in FOAM and the warm bias that
15 was developing in the coupled GloSea forecasts is not present in CPLDA. However, despite improving the SST, the vertical propagation of the SST increments ~~has~~ may have contributed to an increased sub-surface cold bias in CPLDA. The cold bias is present in FOAM but is worsened in CPLDA. The increased cold bias is also associated with a deepening of the MLD in CPLDA. The statistics for the 15 m current are similar in CPLDA and FOAM except for two periods when CPLDA exhibits large errors in the West Tropical Pacific caused by the SLA assimilation. Again these are largely addressed by the scheduling
20 modification to allow more observations to be assimilated. The 15 m currents from both models have a poor correlation to observations.

Compared to other systems used to produce ocean analyses, the short data assimilation window distinguishes the CPLDA system from the others. The impact of the data assimilation time window was investigated by Lea et al. (2013). They ran FOAM
25 Lea et al. (2015) (1 month experiment) and further investigated in experiments described herein (6 month experiments). The FOAM system was run with a 6-hourly cycle (and assimilation window) for a month and compared the results with the standard FOAM 24-hourly cycle. They Lea et al. (2015) found a small impact on the temperature and salinity profiles, and on the SLA statistics, but saw an improvement in the SST statistics explained because with a shorter cycle the model errors have less time to grow. The shorter cycle These results were supported by the new longer experiments detailed in this paper. The shorter window in CPLDA compared to FOAM has a positive impact on the SST analysis but the RMSE increase during the
30 forecast is enhanced in CPLDA suggesting that the system may be overfitting the observations. The shorter cycle also has an impact on the subsurface temperature bias. CPLDA has a larger cold subsurface temperature bias than FOAM and an increased Mixed Layer Depth assimilation window in CPLDA also leads to the surface temperature increments being propagated deeper and to an over-deepening of the mixed layer depth. This can be partly explained by the asymmetric effect of noisy surface

temperature increments on the vertical temperature structure. ~~A negative surface increment weakens the stratification and deepens the MLD, then the subsequent positive surface increment is projected deeper (King et al., 2018). Over time, noise in the increments causes a deepening of the MLD. CPLDA has noisier increments than FOAM due to the shorter assimilation window, and this causes the increased cold sub-surface bias in CPLDA. The~~ In the assimilation scheme the depth to which the

- 5 SST increment is propagated is determined by the ~~MLD~~ Mixed Layer Depth of the background field. In the current system, the background field used is that at the first time step of the observation operator. To reduce the noise, a future improvement could be to use a daily mean field instead of the instantaneous field. This method has been tested with a UK shelf model (King et al., 2018) but has not yet been tested for the CPLDA system.

The impact of the short assimilation is also seen in the surface currents near the equator where the SLA assimilation is
10 responsible for the large erroneous currents in CPLDA in the West Tropical Pacific. The problem is also present in the FOAM system with a 24-hour window; indeed both systems have excessive Eddy Kinetic Energy along the equator. However, it is likely that having a 6-hourly cycle makes the problem worse as it limits the numbers of observations assimilated creating large increments which cause the spurious currents. It highlights the need to improve the SLA assimilation, in particular, using background error covariances appropriate to a 6-hour assimilation window. The error covariances currently used are the same
15 as those used the FOAM system, but estimates specific to the CPLDA system would take into account the 6-hour assimilation window as well as the different model error characteristics of the coupled model relative to the ocean-only model. The 1-year run carried out gives us the data to allow the estimation of error covariances for the CPLDA system; making these improvements to the ocean DA should help to resolve the problems seen in equatorial currents and hopefully improve the correlation of the model velocity to drifter velocities.

- 20 For many years, ocean analyses and forecasts have been produced from forced ocean models. Using a coupled system brings some new challenges. When assessing the CPLDA system it is important to understand which changes are genuine impacts of coupled processes and feedbacks, as opposed to unavoidable changes in the system set-up (like, for example, the use of a 6-hourly assimilation window). The comparison between CPLDA and FOAM surface fluxes highlighted some significant differences in CPLDA and NWP atmospheric fields. Firstly, there is a significant difference in 10 m air temperature with the
25 NWP fields (used to force FOAM) being warmer than CPLDA; this is also associated with an increased specific humidity at 10 m. Differences in both air temperature and humidity are large scale and especially significant between 30°S and 30°N. With colder and drier air at 10 m in CPLDA, the evaporation is larger causing more heat loss by latent heat. This extra heat loss in CPLDA compared to FOAM contributes to the differences in SST observed with CPLDA being colder than FOAM. ~~The other main difference between CPLDA and FOAM fluxes is the differences in short-wave radiation; on average FOAM receives more short-wave radiation than CPLDA. The difference in atmospheric resolution does not explain the difference in short-wave radiation but it could be a consequence of differences in evaporation impacting the amount of cloud. The fact that CPLDA receives less short-wave radiation also contributes to a cooler SST compared to FOAM. Because of the~~ Given we have been unable to attribute the sub-surface bias observed in CPLDA to the shorter assimilation window, it is likely this is also related to the surface flux differences between CPLDA and FOAM.

The differences in atmospheric configurations between the NWP model used to force FOAM in 2015 and ~~CPLDA, that~~ in CPLDA mean it is difficult to separate the impact of the coupling. A more ~~in-depth in-depth~~ investigation with a recently developed NWP model using the same configuration as CPLDA is required to understand how much of these differences are caused by the coupling. In addition, further work is needed to understand the relationship between the differences in ~~short-wave~~ short-wave radiation and those in surface air temperature and specific humidity.

The assessment of the surface fluxes also emphasised the importance of the bulk formulae. In CPLDA, the fluxes are calculated by the atmosphere component using the UM bulk formulae (based on COARE3.0) while in FOAM the fluxes are calculated by NEMO using CORE bulk formulae. One of the main impacts of the different bulk formulae is the differences in wind stress. Despite having similar winds, the magnitude of the CPLDA wind stress is significantly larger than that of FOAM, particularly in the Southern Ocean. This is partly responsible for the increased, and too deep, Mixed Layer Depth in CPLDA. ~~We note though that compared to a more up-to-date bulk formulae (COARE3.5) used for the wind stress observations (MetOp) both COARE3.0 and CORE have too weak wind stress in high wind conditions.~~

The 40 km atmospheric resolution of CPLDA is not high enough to make sensible comparisons of NWP performance with that of the Met Office operational NWP system (which at the time had a resolution of 17 km) but a basket of metrics used for assessing model performance suggests that CPLDA atmospheric performance is good and at least comparable to atmosphere-only systems at equivalent resolution. In fact because the 2015 CPLDA trial included VarBC (Cameron and Bell, 2016) which was not included in the NWP system until 2016, some aspects of the CPLDA system out-performed the much higher resolution NWP system as operational at the time.

A “coupled NWP” system is now being developed based upon the operational CMEMS system described here. This will have a much higher resolution (10 km) atmosphere with the aim of delivering both weather and ocean forecast products from a single system by ~~2020-21, 2021~~. On this timescale it is hoped that it will be possible to address some of the issues already discussed where the CPLDA performance is slightly degraded compared to FOAM. However the very good performance for analysis SSTs in CPLDA compared to both FOAM and OSTIA, as well as the ability to evolve these through the forecast, suggests that such a system will be ~~well-place~~ well-placed to improve upon the performance of the existing NWP system. A subsequent upgrade of this system would be to increase the ocean resolution to $1/12^\circ$ as well as incorporating a wave model and using ensemble information to improve the ocean data assimilation.

Code availability. The Met Office Unified Model (MetUM) is available for use under licence. A number of research organizations and national meteorological services use the UM in collaboration with the Met Office to undertake basic atmospheric process research, produce forecasts, develop the UM code, and build and evaluate Earth system models. For further information on how to apply for a licence, see <http://www.metoffice.gov.uk/research/modelling-systems/unified-model>.

- 5 JULES is available under licence free of charge. Further information on how to gain permission to use JULES for research purposes can be found at <https://jules-lsm.github.io/>.

The model code for NEMO v3.6 is available from the NEMO website (<http://www.nemo-ocean.eu>). On registering, individuals can access the code using the open-source subversion software (<http://subversion.apache.org/>).

- 10 The model code for CICE is available from the Met Office code repository <https://code.metoffice.gov.uk/trac/cice/browser>. In order to implement the scientific configuration of GC2 and to allow the components to work together, a number of branches (code changes) are applied to the above codes. Please contact the authors for more information on these branches and how to obtain them.

Competing interests. No competing interests are present.

Acknowledgements. This work has been carried out as part of the Copernicus Marine Environment Monitoring Service (CMEMS). CMEMS is implemented by Mercator Ocean International in the framework of a delegation agreement with the European Union.

References

- Amante, C. and Eakins, B. W.: ETOPO1 1 Arc-Minute Global Relief Model: Procedures, Data Sources and Analysis, NOAA Technical Memorandum NESDIS NGDC-24, 2009.
- Bell, M., Martin, M., and Nichols, N.: Assimilation of data into an ocean model with systematic errors near the equator, Q.J.R. Meteorol. Soc., 130, 873–893, 2004.
- Blockley, E. W., Martin, M. J., and Hyder, P.: Validation of FOAM near-surface ocean current forecasts using Lagrangian drifting buoys, Ocean Science, 8, 551–565, <https://doi.org/10.5194/os-8-551-2012>, <https://www.ocean-sci.net/8/551/2012/>, 2012.
- Blockley, E. W., Martin, M. J., McLaren, A. J., Ryan, A. G., Waters, J., Lea, D. J., Mirouze, I., Peterson, K. A., Sellar, A., and Storkey, D.: Recent development of the Met Office operational ocean forecasting system: an overview and assessment of the new Global FOAM forecasts, Geoscientific Model Development, 7, 2613–2638, <https://doi.org/10.5194/gmd-7-2613-2014>, <https://www.geosci-model-dev.net/7/2613/2014/>, 2014.
- Bourdallé-Badie, R. and Treguier, A.: A climatology of runoff for the global ocean-ice model. ORCA025, Mercator-Ocean reference : MOO-RP-425-365-MER august 2006, 2006.
- Brodeau, L., B., B., S.K., G., and C., W.: Climatologically significant effects of some approximations in the bulk parameterizations of turbulent air-sea fluxes, J. Phys. Oceanogr., 47, 5–28, <https://doi.org/10.1175/JPO-D-16-0169.1>, 2017.
- Browne, P. A., de Rosnay, P., Zuo, H., Bennett, A., and Dawson, A.: Weakly Coupled Ocean Atmosphere Data Assimilation in the ECMWF NWP System, Remote Sensing, 11, <https://doi.org/10.3390/rs11030234>, <http://www.mdpi.com/2072-4292/11/3/234>, 2019.
- Burchard, H.: Energy-conserving discretisation of turbulent shear and buoyancy production, Ocean Model., 4, 347–361, 2002.
- Cameron, J. and Bell, W.: The testing and planned implementation of variational bias correction (VarBC) at the Met Office, 20th International TOVS study conference, Madison, WI, https://cimss.ssec.wisc.edu/itwg/itsc20/papers/11_01_cameron_paper.pdf, 2016.
- Dawe, J. T. and Thompson, L. A.: Effect of ocean surface currents on wind stress, heat flux, and wind power input to the ocean, Geophys. Res. Lett., 33, 1–5, 2006.
- Donlon, C. J., Martin, M., Stark, J., Roberts-Jones, J., Fiedler, E., and Wimmer, W.: The Operational Sea Surface Temperature and Sea Ice Analysis (OSTIA) system, Remote Sensing of Environment, 116, 140 – 158, <https://doi.org/10.1016/j.rse.2010.10.017>, <http://www.sciencedirect.com/science/article/pii/S0034425711002197>, advanced Along Track Scanning Radiometer(AATSR) Special Issue, 2012.
- Driesenaar, T., Bentamy, A., and de Kloe, J.: Quality Information Document for the Global Ocean Wind Products WIND_GLO_WIND_L3_NRT_OBSERVATIONS_012_002 WIND_GLO_WIND_L3_REP_OBSERVATIONS_012_005 WIND_GLO_WIND_L4_REP_OBSERVATIONS_012_003, CMEMS Quality Information Document, <http://marine.copernicus.eu/documents/QUID/CMEMS-OSI-QUID-012-002-003-005.pdf>, 2017.
- Duhaut, T. H. A. and Straub, D. N.: Wind stress dependence on ocean surface velocity: implications for mechanical energy input to ocean circulation, J. Phys. Oceanogr., 36, 202–211, 2006.
- Etienne, H.: Quality Information Document for Global Ocean Delayed Mode in-situ Observations of Ocean Surface Currents and Temperature from Drifters. INSITU_GLO_UV_L2_REP_OBSERVATIONS_013_044, CMEMS Quality Information Document, <http://marine.copernicus.eu/documents/QUID/CMEMS-INS-QUID-013-044.pdf>, 2017.

- Fairall, C. W., Bradley, E. F., Hare, J. E., Grachev, A. A., and Edson, J. B.: Bulk Parameterization of Air–Sea Fluxes: Updates and Verification for the COARE Algorithm, *Journal of Climate*, 16, 571–591, [https://doi.org/10.1175/1520-0442\(2003\)016<0571:BPOASF>2.0.CO;2](https://doi.org/10.1175/1520-0442(2003)016<0571:BPOASF>2.0.CO;2), [https://doi.org/10.1175/1520-0442\(2003\)016<0571:BPOASF>2.0.CO;2](https://doi.org/10.1175/1520-0442(2003)016<0571:BPOASF>2.0.CO;2), 2003.
- Fiedler, E.: Improvements to feature resolution in the OSTIA sea surface temperature analysis using the NEMOVAR assimilation scheme, in review for QJRM, 2018.
- Gaspar, P., Gregoris, Y., and Lefevre, J. M.: A simple eddy kinetic energy model for simulations of the ocean vertical mixing: tests at station Papa and long-term upper ocean study site, *J. Geophys. Res.*, 95, 16 179–16 193, <https://doi.org/10.1029/JC095iC09p16179>, 1990.
- Haney, R. L.: Surface Thermal Boundary Condition for Ocean Circulation Models, *Journal of Physical Oceanography*, 1, 241–248, [https://doi.org/10.1175/1520-0485\(1971\)001<0241:STBCFO>2.0.CO;2](https://doi.org/10.1175/1520-0485(1971)001<0241:STBCFO>2.0.CO;2), [https://doi.org/10.1175/1520-0485\(1971\)001<0241:STBCFO>2.0.CO;2](https://doi.org/10.1175/1520-0485(1971)001<0241:STBCFO>2.0.CO;2), 1971.
- Hollingsworth, A., Arpe, K., Tiedtke, M., Capaldo, M., and Savijrvi, H.: The Performance of a Medium-Range Forecast Model in Winter: Impact of Physical Parameterizations, *Monthly Weather Review*, 108, 1736–1773, [https://doi.org/10.1175/1520-0493\(1980\)108<1736:TPOAMR>2.0.CO;2](https://doi.org/10.1175/1520-0493(1980)108<1736:TPOAMR>2.0.CO;2), [https://doi.org/10.1175/1520-0493\(1980\)108<1736:TPOAMR>2.0.CO;2](https://doi.org/10.1175/1520-0493(1980)108<1736:TPOAMR>2.0.CO;2), 1980.
- Hunke, E. C. and Dukowicz, J. K.: The elastic-viscous-plastic sea ice dynamics model in general orthogonal curvilinear coordinates on a sphere – incorporation of metric terms, *Mon. Weather Rev.*, 130, 1848–1865, 2002.
- Hunke, E. C. and Lipscomb, W.: CICE: the Los Alamos sea ice model documentation and software user’s manual. Version 4.1, LA-CC-06-012, Technical report, Los Alamos National Laboratory, N.M., 2010.
- IOC, IHO and BODC: Edition of the GEBCO Digital Atlas, published on CD-ROM on behalf of the Intergovernmental Oceanographic Commission and the International Hydrographic Organization as part of the General Bathymetric Chart of the Oceans, British Oceanographic Data Centre, Liverpool, UK, 2003.
- Johns, T., Shelly, A., Rodriguez, J., Copsey, D., Guiavarc’h, C., and Sykes, P.: Report on extensive coupled ocean-atmosphere trials on NWP (1-15 day) timescales, Met Office PMS key deliverable report, 2012.
- Kara, A. B., Rochford, P. A., and Hurlburt, H. E.: An optimal definition for ocean mixed layer depth, *Journal of Geophysical Research: Oceans*, 105, 16 803–16 821, <https://doi.org/10.1029/2000JC900072>, <https://agupubs.onlinelibrary.wiley.com/doi/abs/10.1029/2000JC900072>, 2000.
- King, R. R., While, J., Martin, M. J., Lea, D. J., Lemieux-Dudon, B., Waters, J., and O’Dea, E.: Improving the initialisation of the Met Office operational shelf-seas model, *Ocean Modelling*, 130, 1 – 14, <https://doi.org/https://doi.org/10.1016/j.ocemod.2018.07.004>, <http://www.sciencedirect.com/science/article/pii/S1463500318302099>, 2018.
- Large, W. G. and Yeager, S. G.: Diurnal to decadal global forcing for ocean and sea ice models: the data sets and flux climatologies, Technical Report TN-460+STR, NCAR, 105 pp, 2004.
- Lea, D. J., Mirouze, I., Martin, M. J., Shelly, A., Hines, A., and Sykes, P.: Assessment of a weakly coupled atmosphere-land-ocean-ice data assimilation system., Met Office Deliverable report. September 2013., 2013.
- Lea, D. J., Mirouze, I., Martin, M. J., King, R. R., Hines, A., Walters, D., and Thurlow, M.: Assessing a new data assimilation system based on the Met Office coupled atmosphere-land-ocean-sea ice model, *Monthly Weather Review*, 143, 4678–4694, 2015.
- Lellouche, J.-M., Greiner, E., Le Galloudec, O., Garric, G., Regnier, C., Drevillon, M., Benkiran, M., Testut, C.-E., Bourdalle-Badie, R., Gasparin, F., Hernandez, O., Levier, B., Drillet, Y., Remy, E., and Le Traon, P.-Y.: Recent updates to the Copernicus Marine Service global ocean monitoring and forecasting real-time 1/12° high-resolution system, *Ocean Science*, 14, 1093–1126, <https://doi.org/10.5194/os-14-1093-2018>, <https://www.ocean-sci.net/14/1093/2018/>, 2018.

- Lengaigne, M., Menkes, C., Aumont, O., Gorgues, T., Bopp, L., André, J.-M., and Madec, G.: Influence of the oceanic biology on the tropical Pacific climate in a coupled general circulation model, *Climate Dynamics*, 5, 503–516, <https://doi.org/10.1007/s00382-006-0200-2>, 2007.
- Lorenc, A.: VSDP32. VAR documentation, Met Office report, 2013.
- MacLachlan, C., Arribas, A., Peterson, A., Fereday, D., Scaife, A. A., Gordon, M., Vellinga, M., A., W., Comer, R., Camp, J., and Xavier, P.: Description of GloSea5: the Met Office high resolution seasonal forecast system, *Q. J. Roy. Meteor. Soc.*, <https://doi.org/doi:10.1002/qj.2396>, 2014.
- Madec, G. and the NEMO team: NEMO ocean engine, Note du Pôle de modélisation, Institut Pierre-Simon Laplace (IPSL), No. 27, ISSN 1288-1619, 2008.
- Martin, M. J., Hines, A., and Bell, M. J. : Data assimilation in the FOAM operational short-range ocean forecasting system: a description of the scheme and its impact, *Q. J. Roy. Meteorol. Soc.*, 133, 981–995, 2007.
- Megann, A., Storkey, D., Aksenov, Y., Alderson, S., Calvert, D., Graham, T., Hyder, P., Siddorn, J., and Sinha, B.: GO5.0: The joint NERC-Met Office NEMO global ocean model for use in coupled and forced applications, *Geosci. Model Dev.*, 7, 1069–1092, 2014.
- Mirouze, I. and Weaver, A.: Representation of correlation functions in variational assimilation using an implicit diffusion operator, *Q. J. Roy. Meteor. Soc.*, 136, 1421–1443, 2010.
- Mirouze, I., Blockley, E. W., Lea, D. J., Martin, M. J., and Bell, M. J.: A multiple length scale correlation operator for ocean data assimilation, *Tellus A: Dynamic Meteorology and Oceanography*, 68, 29 744, <https://doi.org/10.3402/tellusa.v68.29744>, <https://doi.org/10.3402/tellusa.v68.29744>, 2016.
- Mogensen, K., Balmaseda, M. A., and Weaver, A.: The NEMOVAR ocean data assimilation system as implemented in the ECMWF ocean analysis for System 4, European Centre for Medium-Range Weather Forecasts, 2012.
- Mulholland, D. P., Laloyaux, P., Haines, K., and Balmaseda, M. A.: Origin and Impact of Initialization Shocks in Coupled Atmosphere–Ocean Forecasts, *Monthly Weather Review*, 143, 4631–4644, <https://doi.org/10.1175/MWR-D-15-0076.1>, <https://doi.org/10.1175/MWR-D-15-0076.1>, 2015.
- Murphy, A. H. and Epstein, E. S.: Skill Scores and Correlation Coefficients in Model Verification, *Monthly Weather Review*, 117, 572–582, [https://doi.org/10.1175/1520-0493\(1989\)117<0572:SSACCI>2.0.CO;2](https://doi.org/10.1175/1520-0493(1989)117<0572:SSACCI>2.0.CO;2), [https://doi.org/10.1175/1520-0493\(1989\)117<0572:SSACCI>2.0.CO;2](https://doi.org/10.1175/1520-0493(1989)117<0572:SSACCI>2.0.CO;2), 1989.
- Paulson, C. A. and Simpson, J. J.: Irradiance measurements in the upper ocean, *J. Phys. Oceanogr.*, 7, 952–956, 1977.
- Penny, S. G. and Hamill, T. M.: Coupled Data Assimilation for Integrated Earth System Analysis and Prediction, *Bulletin of the American Meteorological Society*, 98, ES169–ES172, <https://doi.org/10.1175/BAMS-D-17-0036.1>, <https://doi.org/10.1175/BAMS-D-17-0036.1>, 2017.
- Rae, J. G. L., Hewitt, H. T., Keen, A. B., Ridley, J. K., West, A. E., Harris, C. M., Hunke, E. C., and Walters, D. N.: Development of the Global Sea Ice 6.0 CICE configuration for the Met Office Global Coupled model, *Geosci. Model Dev*, 8, 2221–2230, <https://doi.org/10.5194/gmd-8-2221-2015>, 2015.
- Renault, L., Molemaker, M. J., McWilliams, J. C., Shchepetkin, A. F., Lemarié, F., Chelton, D., Illig, S., and Hall, A.: Modulation of Wind Work by Oceanic Current Interaction with the Atmosphere, *Journal of Physical Oceanography*, 46, 1685–1704, <https://doi.org/10.1175/JPO-D-15-0232.1>, <https://doi.org/10.1175/JPO-D-15-0232.1>, 2016.
- Ridley, J. K., Blockley, E. W., Keen, A. B., Rae, J. G. L., West, A. E., and Schroeder, D.: The sea ice model component of HadGEM3-GC3.1, *Geoscientific Model Development*, 11, 713–723, <https://doi.org/10.5194/gmd-11-713-2018>, <https://www.geoscientific-model-dev.net/11/713/2018/>, 2018.

- Rio, M.-H.: Use of Altimeter and Wind Data to Detect the Anomalous Loss of SVP-Type Drifters Drogue, *Journal of Atmospheric and Oceanic Technology*, 29, 1663–1674, <https://doi.org/10.1175/JTECH-D-12-00008.1>, 2012.
- Rio, M.-H., Guinehut, S., , and Larnicol, G.: New CNES-CLS09 global mean dynamic topography computed from the combination of GRACE data, altimetry, and in situ measurements, *J. Geophys. Res.*, 116, C07 018, <https://doi.org/doi:10.1029/2010JC006505>, 2011.
- 5 Rio, M.-H., Mulet, S., and Picot, N.: Beyond GOCE for the ocean circulation estimate: Synergetic use of altimetry, gravimetry, and in situ data provides new insight into geostrophic and Ekman currents, *Geophysical Research Letters*, 41, 8918–8925, <https://doi.org/10.1002/2014GL061773>, <https://agupubs.onlinelibrary.wiley.com/doi/abs/10.1002/2014GL061773>, 2014.
- Roberts-Jones, J., Fiedler, E. K., and Martin, M. J.: Daily, Global, High-Resolution SST and Sea Ice Reanalysis for 1985-2007 Using the OSTIA System, *Journal of Climate*, 25, 6215–6232, <https://doi.org/10.1175/JCLI-D-11-00648.1>, <https://doi.org/10.1175/JCLI-D-11-00648.1>, 10 1, 2012.
- Ryan, A., Regnier, C., Divakaran, P., Spindler, T., Mehra, A., Smith, G., Davidson, F., Hernandez, F., Maksymczuk, J., and Liu, Y.: GODAE OceanView Class 4 forecast verification framework: global ocean inter-comparison, *Journal of Operational Oceanography*, 8, 98–111, 2015.
- Saha, S., Moorthi, S., Wu, X., Wang, J., Nadiga, S., Tripp, P., Behringer, D., Hou, Y.-T., Chuang, H.-y., Iredell, M., Ek, M., Meng, J., Yang, R., Mendez, M. P., van den Dool, H., Zhang, Q., Wang, W., Chen, M., and Becker, E.: The NCEP Climate Forecast System Version 2, 15 *Journal of Climate*, 27, 2185–2208, <https://doi.org/10.1175/JCLI-D-12-00823.1>, <https://doi.org/10.1175/JCLI-D-12-00823.1>, 2014.
- Semtner, A. J.: A model for the thermodynamic growth of sea ice in numerical investigations of climate, *J. Phys. Oceanogr.*, 6, 379–389, 1976.
- Smith, G. C., Belanger, J.-M., Roy, F., Pellerin, P., Ritchie, H., Onu, K., Roch, M., Zadra, A., Colan, D. S., Winter, B., Fontecilla, J.-S., and 20 Deacu, D.: Impact of Coupling with an Ice-Ocean Model on Global Medium-Range NWP Forecast Skill, *Monthly Weather Review*, 146, 1157–1180, <https://doi.org/10.1175/MWR-D-17-0157.1>, <https://doi.org/10.1175/MWR-D-17-0157.1>, 2018.
- Thorndike, A., Rothrock, D., Maykut, G., and Colony, R.: The thickness distribution of sea ice, *J. Geophys. Res.*, 80, 4501–4513, 1975.
- Valcke, S.: OASIS3 User Guide (prism 2-5), PRISM Support Initiative No 3, 2006.
- Walters, D., Boutle, I., Brooks, M., Melvin, T., Stratton, R., Vosper, S., Wells, H., Williams, K., Wood, N., Allen, T., Bushell, A., Copsey, 25 D., Earnshaw, P., Edwards, J., Gross, M., Hardiman, S., Harris, C., Heming, J., Klingaman, N., Levine, R., Manners, J., Martin, G., Milton, S., Mittermaier, M., Morcrette, C., Riddick, T., Roberts, M., Sanchez, C., Selwood, P., Stirling, A., Smith, C., Suri, D., Tennant, W., Vidale, P. L., Wilkinson, J., Willett, M., Woolnough, S., and Xavier, P.: The Met Office Unified Model Global Atmosphere 6.0/6.1 and JULES Global Land 6.0/6.1 configurations, *Geoscientific Model Development*, 10, 1487–1520, [https://doi.org/10.5194/gmd-10-1487-](https://doi.org/10.5194/gmd-10-1487-2017) 2017, <https://www.geosci-model-dev.net/10/1487/2017/>, 2017.
- 30 Waters, J., Lea, D. J., Martin, M. J., Storkey, D., and While, J.: Describing the development of the new FOAM-NEMOVAR system in the global 1/4 degree configuration, *Met Office Technical Report 578*, 2013.
- Waters, J., Lea, D. J., Martin, M. J., Mirouze, I., Weaver, A., and While, J.: Implementing a variational data assimilation system in an operational 1/4 degree global ocean model, *Quarterly Journal of the Royal Meteorological Society*, 141, 333–349, <https://doi.org/10.1002/qj.2388>, <https://rmets.onlinelibrary.wiley.com/doi/abs/10.1002/qj.2388>, 2015.
- 35 Weaver, A. T., Deltel, C., Machu, E., Ricci, S., and Daget, N.: A multivariate balance operator for variational ocean data assimilation, *Quarterly Journal of the Royal Meteorological Society*, 131, 3605–3625, <https://doi.org/10.1256/qj.05.119>, <https://rmets.onlinelibrary.wiley.com/doi/abs/10.1256/qj.05.119>, 2006.

Wehde, H., V. Schuckmann, K., Pouliquen, S., Grouazel, A., Bartolome, T., Tintore, J., De Alfonso Alonso Munoyerro, M., and the INS-TAC team: Quality Information Document For Near Real Time IN SITU products INSITU_GLO_NRT_OBSERVATIONS_013_030, CMEMS Quality Information Document, <http://marine.copernicus.eu/documents/QUID/CMEMS-INS-QUID-013-030-036.pdf>, 2016.

West, A. E., McLaren, A. J., Hewitt, H. T., and Best, M. J.: The location of the thermodynamic atmosphere–ice interface in fully coupled
5 models - a case study using JULES and CICE, *Geoscientific Model Development*, 9, 1125–1141, [https://doi.org/10.5194/gmd-9-1125-](https://doi.org/10.5194/gmd-9-1125-2016)
2016, <https://www.geosci-model-dev.net/9/1125/2016/>, 2016.

Zalesak, S. T.: Fully multidimensional flux-corrected transport algorithms for fluids, *Journal of Computational Physics*, 31, 335 –
362, [https://doi.org/https://doi.org/10.1016/0021-9991\(79\)90051-2](https://doi.org/https://doi.org/10.1016/0021-9991(79)90051-2), <http://www.sciencedirect.com/science/article/pii/0021999179900512>,
1979.

Table 1. The FOAM , CPLDA and GloSea ocean configurations

Ocean configuration	FOAM	CPLDA	GloSea forecast
Data assimilation	NEMOVAR (3D-Var-FGAT, dual length scale) with 40 iterations	NEMOVAR (3D-Var-FGAT, dual length scale) with 40 iterations	N/A
Assimilation time window	24h	6h	N/A
Surface forcing	CORE and CICE bulk formulae with UKMO GA6.1 NWP fields	Directly coupled (COARE3.0)	Directly coupled
Surface forcing resolution	17km (3-hourly heat fluxes and 1-hourly 10m wind)	GA6.0 fluxes 40km resolution (1-hourly)	GA6.0 fluxes 50km resolution (3-hourly)
Penetration radiation	R-G-B (Lengaigne et al., 2007)	2-band (Paulson and Simpson, 1977)	2-band (Paulson and Simpson, 1977)
Rivers	Climatological estimates	Climatological estimates	Calculated by river scheme in Unified Model
Haney retroaction	(Bourdallé-Badie and Treguier, 2006) SSS (-33.33 mm day⁻¹ psu⁻¹)	(Bourdallé-Badie and Treguier, 2006) SSS (-33.33 mm day⁻¹ psu⁻¹)	None
3D Newtonian damping	Temperature and salinity (1-year time scale)	Temperature and salinity (1-year timescale)	None
Pressure gradient correction	Yes (Bell et al., 2004)	Yes (Bell et al., 2004)	None
Salinity dependent freezing temperature	Yes	Yes - No	No

Table 2. Velocity class 4 statistics against drifting buoys for 2015 in m s^{-1}

Model	CPLDA			FOAM			PSY4		
	Bias	RMSE	Correlation	Bias	RMSE	Correlation	Bias	RMSE	Correlation
Global	-0.07	0.19	0.50	-0.07	0.18	0.55	-0.07	0.17	0.62
North Atlantic	-0.15	0.21	0.10	-0.14	0.21	0.12	-0.15	0.21	0.14
North Pacific	-0.06	0.58	0.60	-0.06	0.58	0.62	-0.06	0.58	0.63
Southern Ocean	-0.09	0.25	0.45	-0.08	0.24	0.50	-0.08	0.22	0.62