

## Response to comments from Referee #1

Review on the paper “The Arctic Front and its variability in the Norwegian Sea” by Roshin P. Raj, Sourav Chatterjee, Laurent Bertino, Antonio Turiel, Marcos Portebella. The paper is devoted to position clarification of the Arctic front in the Norwegian Sea based on TOPAZ Reanalysis data as well as satellite and atmospheric reanalysis data. Authors apply a new method of front detecting using so-called Singularity analysis. The results obtained are plausible and they are of great interest to specialists. The paper is written in good language and well-illustrated. Thus, I suggest that this paper might be published with minor revision.

Below I offer a few comments on the text of the article that can be taken into account by the authors.

We thank Prof. Belonenko for her constructive comments. A point-to-point response is given below. The revised text in the manuscript is highlighted in blue.

P 2, line 13. “The NwAFC on its way to the north encounters three deep currents (Fig. 1), one over the Mohn Ridge flows in the opposite direction”. – Second part of this statement must be confirmed by the appropriate links.

We agree. This statement is now supported by a reference (Orvik, 2004). Page 2, line 18.

P 2, line 25. It seems “The location of the AF in the Norwegian Sea coincides roughly with the topography along which the NwAFC flows” is not a good phrase for the reader.

We agree. The text is be redrafted. Page 2, line 24-25.

I suggest that the item 3.3 Singularity analysis should be described more detailed since this method is very few used and new. It is unclear main differences the Singularity analysis from the method of maxima gradients of scalar parameters to estimate front location. This is optional, but it would be good for the reader of the paper. An online service provided by the Barcelona Expert Center (<http://bec.icm.csic.es/CP34GUIWeb/>) is a Private Zone and cannot be checked.

Yes, we agree. In the revised version of the manuscript we provide descriptive details of the singularity analysis in the Appendix Section (pp.10, line 5-31; pp.11, line 1-18).

Notice that the main difference between maxima gradients and singularity exponents is that singularity exponents are normalized so the absolute value of the gradient is irrelevant, what is important is the degree of correlation between nearby gradients (and singularity exponents are dimensionless measures of that correlation). Regarding the Singularity Analysis Service, it is only private in the sense that only registered users can access the service, but registration is free.

*Orvik, K. A., 2004. The deepening of the Atlantic water in the Lofoten Basin of the Norwegian Sea, demonstrated by using an active reduced gravity model. Geophys. Res. Lett. 31, L01306, doi:10.1029/2003GL018687.*

## Response to comments from Anonymous Referee #2

The study looks into the structure and variability of the Arctic front in the Nordic Seas using satellite SST and wind data as well as an ocean reanalysis. There are some interesting aspects in this paper, but the study seems to touch (briefly) upon a number of questions that one loses track of the main objective. Because of this, I do not recommend this study for publication in its present form. The main issues are listed below.

We thank the reviewer for the constructive comments. Below we provide point-to-point response of the major and general comments. The revised text in the manuscript is highlighted in blue.

### Major and general comments

- The singularity analysis is not well defined and is currently only descriptive without any mathematical formulations.

We agree. In the revised version of the manuscript we provide descriptive details of the singularity analysis in the Appendix Section (pp.10, line 5-31; pp.11, line 1-18).

- It is mentioned that a positive (negative) singularity exponent provides information about regularity (irregularity). This does not add much to the understanding of the method unless you thoroughly explain it. Moreover, Figures 4-6 show exponents less than +0.3 in blue colours, but you discuss most of these results as they were strictly negative.

We thank the reviewer for pointing out this. In the revised version of the manuscript, the methodology is explained thoroughly in the Appendix Section (pp.10, line 5-31; pp.11, line 1-18).

In Figures 4-6, negative singularity exponents are highlighted (stripped) in order to distinguish it from positive values. Kindly note that there are no major changes in the discussion based on the updated figures.

- What is the reason for these three atmospheric modes when the North Atlantic Oscillation is apparently the most important mode? Are the other modes and their explained variance even significant?

It is true that the North Atlantic Oscillation (NAO) is the most dominant atmospheric mode in the North Atlantic and Nordic Seas. However, it is also known that the location of the centers of the NAO dipole can be affected through the interplay with the East Atlantic (EAP) and the Scandinavian (SCAN) teleconnection patterns (Moore et al., 2012; Chafik et al., 2017). Also note that even though the impact of NAO on the slope current is well-known, its impact on the front current and on the Arctic-Front is not very clear.

Also note that recent studies show that even though EAP and SCAN only explains less than 20% (EAP: 18% and SCAN: 16%) of the MSLP variability, its effect on the Nordic Seas cannot be neglected (Comas-Bru and McDermott, 2013; Chafik et al., 2017).

We agree that reasoning needs to be mentioned in the manuscript. We thank the reviewer for pointing this out. The updated version of the manuscript includes the above-mentioned points (pp. 2, line 33; pp.3 line 1-6; pp.4, line 4-6).

- The timescale of interest is not well defined; you show most of your results for summer and winter but the atmospheric indices you base your composite analysis on are in fact on monthly time scales. I cannot therefore reconcile the results presented in this study and this is a major issue.

We agree that there is confusion in the use of different timescales. The first part of the paper is devoted to the seasonal variation of the Arctic Front. Whereas the composite analysis is meant to show the variation related with different climate modes, for which the monthly time scales are the most relevant. We believe that these are two separate aspects and should not be mixed. This has been clarified in the revised version of the manuscript (pp.2, line 28-30; pp.3, line 4-6; pp.8, line 2). We thank the reviewer for pointing this out.

- Consider showing the significant regions for the composite analysis.

We have included significance in composite analysis (Figures 9, 10 and 11).

- I do not see the difference between the Arctic Front and the Norwegian Atlantic Front Current? You talk about the former and make a sudden transition to the latter. What is the difference over the Mohn Ridge?

We agree that the reviewer has a valid point, since the Norwegian Atlantic Front Current (NwAFC) is a baroclinic current. However, we also have reasons for considering them separate over the Mohn Ridge. In our study the Arctic Front is defined as the region with the maximum in temperature gradient, one of the classical methods used to distinguish between two distinct water masses, in our case the Atlantic Water and the Arctic Waters. Moreover, our study shows that the core of the NwAFC is stronger during -NAO, while the AF is weaker during the same period. Our results show that the shift (spreading and narrowing) in the core (defined by the maximum speed) of the NwAFC associated with the variability in the deep ocean circulation forced by atmospheric variability, which is then linked to the variability in the strength of the Arctic Front (Figure 12). Hence they cannot be considered the same.

In the updated version of the manuscript the text is revised where the sudden transition noted by the reviewer is avoided (pp.8, line 5-8, 17-24).

- The SST-wind relationship at the fronts in the Nordic Seas is interesting but rather descriptive and not convincing at this stage. This needs more careful investigation and needs to be mathematically formulated.

We agree that more quantitative work needs to be done in terms of SST and wind interaction. However, we believe that the qualitative agreement supports well enough the main goal of the manuscript (variability of the Arctic Front), and the SST-wind topic in itself has the potential to be a separate paper. We think that it should still be of interest to the readers to see the new results. In the revised version we will make sure that these results are not influencing the major conclusions of the study and in the discussion part we will also highlight the need for a detailed analysis of the wind-SST relationship over the Arctic Front. We believe that the inclusion of these results in this study will result in new studies focusing exclusively on the subject (pp. 5, line 27-29).

- Does the ocean reanalysis also assimilate the same satellite data you are using? If so, are the similarities you find surprising?

Yes, TOPAZ reanalysis assimilates measurements including along-track altimetry data, sea surface temperatures, sea ice concentrations and sea ice drift from satellites along with in-situ temperature and salinity profiles. Hence, we agree that the similarities are not surprising, although not warranted due to the residual errors of assimilation. But the intent is to show that the reanalysis data is able to reproduce the Arctic Front. This is clearly mentioned in the revised version of the manuscript (pp. 6, line 30-33).

- Some of the texts in the results do not simply fit in there and should be removed or moved to the introduction (one of the many examples is in pp. 7, line 2-3 about seabirds. Another example is the discussion about mesoscale eddies, which I do not see how it fits in)

We agree. In the revised version, the discussion about the seabirds is limited to the introduction part.

However, note that the discussion on the mesoscale eddies is needed to explain the absence of the Arctic Front signature in the singularity exponent map over the northern Vøring Plateau (pp.6, line 8-16). Please note that the discussion on the mesoscale eddies is supported by the supplementary Figure S2.

- There is quite some speculation in the first paragraph of page 8, which needs to be made more sound, especially in relation to the reduced gravity model of Orvik (2004). This is an important part of the paper.

We thank the reviewer for his comment. We have revised the paragraph (pp.8, line 25-33, pp.9, line 1-8).

*Chafik, L., Nilsen, J. E. Ø., and Dangendorf, S.: Impact of North Atlantic Teleconnection Patterns on Northern European Sea Level. Journal of Marine Science and Engineering, 5, 43, 2017.*

*Comas-Bru, L.; McDermott, F. Impacts of the EA and SCA patterns on the European twentieth century NAO–winter climate relationship. Q. J. R. Meteorol. Soc. 2013, 140, 354–363.*

Moore, G.W.K., Renfrew, I.A., and Pickart, R.S. Multidecadal Mobility of the North Atlantic Oscillation. *J. Clim.* 2012, 26, 2453–2466.

*Orvik, K. A., 2004. The deepening of the Atlantic water in the Lofoten Basin of the Norwegian Sea, demonstrated by using an active reduced gravity model. Geophys. Res. Lett. 31, L01306, doi:10.1029/2003GL018687.*

# The Arctic Front and its variability in the Norwegian Sea

Roshin P. Raj<sup>1</sup>, Sourav Chatterjee<sup>2</sup>, Laurent Bertino<sup>1</sup>, Antonio Turiel<sup>3</sup>, Marcos Portabella<sup>3</sup>

<sup>1</sup>Nansen Environmental and Remote Sensing Center, Bjerknes Centre for Climate Research, Thormøhlens gate 47, Bergen, Norway

5 <sup>2</sup>National Centre for Polar and Ocean Research, Goa, India

<sup>3</sup>Barcelona Expert Centre, Institute of Marine Sciences (ICM-CSIC), Barcelona, Spain

*Correspondence to:* Roshin. P. Raj (roshin.raj@nersc.no)

**Abstract.** The Arctic Front (AF) in the Norwegian Sea is an important biologically productive region which is well-known for its large feeding schools of pelagic fish. A suite of satellite data, a regional coupled ocean-sea ice data assimilation system (the TOPAZ reanalysis) and atmospheric reanalysis data is used to investigate the variability in the lateral and vertical structure of the AF. A method, the so-called ‘Singularity Analysis’, is applied on the satellite and reanalysis data for 2D spatial analysis of the front, whereas for the vertical structure, a horizontal gradient method is used. We present new evidences of active air-sea interaction along the AF due to enhanced momentum mixing near the frontal region. The frontal structure of the AF is found to be most distinct near the Faroe Current in the southwest Norwegian Sea and along the Mohn Ridge. Coincidentally, these are the two locations along the AF where the air-sea interactions are most intense. This study investigates in particular the frontal structure and its variability along the Mohn Ridge. The seasonal variability in the strength of the AF is found to be limited to the surface. The study also provides new insights on the influence of the three dominant modes of the Norwegian Sea atmospheric circulation on the AF along the Mohn Ridge. The analyses show a weakened AF during the negative phase of the North Atlantic Oscillation (NAO-), even though the geographical location of the front does not vary. The weakening of AF during NAO- is attributed to the variability in the strength of the Norwegian Atlantic Front Current over the Mohn Ridge associated with the changes in the wind field.

10  
15  
20  
25  
30

## 1 Introduction

Ocean fronts are boundaries between distinct water masses with large gradient in temperature or salinity (e.g., Bakun, 1996; D'Asaro et al., 2011). The Arctic Front (AF; Swift and Aagaard, 1981; Piechura and Walczowski, 1995) is one of the most prominent ocean fronts in the Norwegian Sea. Similar to its counterparts in the world ocean, the AF is an important biologically productive region also known for its large feeding schools of pelagic fish (e.g. Holst et al., 2004; Blindheim and Rey, 2004; Melle et al., 2004). On its influence on higher trophic levels, it is important to note that the Jan Mayen Island located near the AF is an important breeding region inhabited by large colonies of seabirds (Norway Ministry of Environment, 2008-2009).

The AF in the Norwegian Sea extends from the Iceland-Faroe Plateau to the Mohn-Knipowich Ridge (Nilsen and Nilsen, 2007) and is associated with the interaction of the warm and saline Atlantic Water and the cold and fresher Arctic Water (Blindheim and Ådlandsvik, 1995). As shown in Fig. 1, the Atlantic Water is carried into the Norwegian Sea via the Norwegian Atlantic Current (e.g., Orvik et al., 2001; Raj et al., 2016), which is a two-branch current system, with an eastern branch following the shelf edge as a barotropic slope current, and a western branch following the western rim of the Norwegian Sea as a topographically guided front current (Poulain et al., 1996; Orvik and Niiler, 2002; Skagseth and Orvik, 2002; Orvik and Skagseth, 2003). These two branches are known as the Norwegian Atlantic Slope Current (NwASC; Skagseth and Orvik, 2002) and the Norwegian Atlantic Front Current (NwAFC; Mork and Skagseth, 2010) respectively. On its poleward journey, the NwASC bifurcates, one part flowing into the Barents Sea and the other continuing towards the Fram Strait as the core of the West Spitsbergen Current (Helland-Hansen and Nansen, 1909, Aagaard et al., 1985). The NwAFC on its way to the north encounters three deep currents (Fig. 1), one over the Mohn Ridge flows in the opposite direction (Orvik, 2004). The NwAFC continues poleward, topographically guided by the Mohn Ridge and the Knipovich Ridge, as the western branch of the West Spitsbergen Current (WSC; Walczowski and Piechura, 2006). The Atlantic Water carried by the western branch of the West Spitsbergen Current recirculates mostly within the Nordic Seas, as the Return Atlantic Water (RAW; Eldevik et al., 2009). This AW mixes with the Polar Waters transported south from the Arctic by the East Greenland Current and forms the hydrographically distinct Arctic Water (Blindheim and Østerhus, 2005). The further interaction of the Arctic Water with warm and saline Atlantic Water results in the AF (Swift, 1986). [The location of the AF follows the topography and coincides with the location where Arctic Water meets the Atlantic Water.](#)

The AF has been subject of many studies (e.g., Piechura and Walczowski, 1995; Nilsen and Nilsen, 2007). However, the impact of the large-scale atmospheric forcing on the spatial (lateral) and vertical variability of the front has not yet been described. Our study aims to examine the structure (lateral and vertical) of the AF using satellite and reanalysis data, [on climatological-mean and seasonal-mean timescales \(1991-2015\). The near permanent structure of the AF justifies its investigation on long timescales.](#) In addition, the study aims to examine the influence of the three dominant modes of the large-scale atmospheric forcing in the Norwegian Sea, i.e., the North Atlantic Oscillation (NAO), the East Atlantic Pattern (EAP) and the Scandinavian Pattern (SCAN), on the variability of the AF. [NAO is the most dominant atmospheric mode in the North](#)

Atlantic and Nordic Seas (Fig. 2). Even though the impact of NAO on the NwASC is well-known, its impact on the NwAFC and on the AF is not clearly documented. Furthermore, it has been reported that the location of the centers of the NAO dipole can be affected through the interplay with EAP and SCAN teleconnection patterns (e.g., Moore et al., 2012; Chafik et al., 2017). The independent effect of EAP and SCAN on the AF has also been not investigated yet. We perform composite analysis (see Section 2) on the monthly ocean and atmospheric reanalysis data in order to capture the variability and thus to delineate the impact of the 3 main atmospheric modes of the Norwegian Sea on the AF. In Section 2, we describe the different datasets and methods used in this study. The results are presented in Section 3 and are discussed and summarized in Section 4.

## 2 Data

### 2.1 TOPAZ Reanalysis data

TOPAZ is a coupled ocean and sea ice data assimilation system for the North Atlantic and the Arctic that is based on the Hybrid Coordinate Ocean Model (HYCOM) and the Ensemble Kalman Filter data assimilation, the results of its 4<sup>th</sup> version (TOPAZ4) have been extensively validated (e.g., Lien et al., 2016; Xie et al., 2016; Chatterjee et al., 2018). The ocean model in TOPAZ4 is an eddy permitting model with 28 hybrid z-isopycnal layers at a horizontal resolution of 12 to 16 km in the Nordic Seas and the Arctic. TOPAZ4 represents the Arctic component of the Copernicus Marine Environment Monitoring Service (CMEMS) and is forced by the European Centre for Medium-Range Weather Forecasts (ECMWF) Reanalysis (ERA Interim) and assimilates measurements including along-track altimetry data, sea surface temperatures, sea ice concentrations and sea ice drift from satellites along with in-situ temperature and salinity profiles. The monthly TOPAZ4 results used in this study for the time period 1991-2015 have been obtained via the Copernicus marine services ([marine.copernicus.eu](http://marine.copernicus.eu)).

### 2.2 Satellite and atmospheric reanalysis data

Advanced Microwave Scanning Radiometer (AMSRE; 2002-2011; 0.25° grid) SST and QuikSCat winds (1999-2009; 0.25° grid) are the satellite datasets used in this study. These monthly gridded datasets are obtained from <http://apdrc.soest.hawaii.edu>. For the analysis using satellite data, this study only uses the data from the overlapping time-period of AMSRE and QuikSCat, i.e., 8 years (2002-2009). In addition, monthly outputs (winds and mean sea level pressure (MSLP); 0.25° grid) from the ECMWF ERA Interim (Dee et al., 2011), which also assimilates the above-mentioned satellite datasets during the above-mentioned coincident periods, is used in this study over a longer time period, i.e., 1991-2015.

## 3 Methods

### 3.1 EOF analysis

The monthly detrended and deseasoned ERA Interim MSLP data is used to calculate the three leading empirical orthogonal functions (EOFs) of atmospheric variability in the North Atlantic (80°W to 50°E and 30°N to 80°N), which is based on a singular value decomposition, according to the method described by Hannachi et al. (2007). The data are weighted by the

cosine of its latitude at every grid point of the study region to account for decreasing grid sizes towards the pole. The three leading modes of atmospheric variability in the North Atlantic are the North Atlantic Oscillation (NAO), the East Atlantic Pattern (EAP), and the Scandinavian Pattern (SCAN). These three EOFs explain respectively 34%, 18% and 16% of the MSLP variability over the north Atlantic (Fig. 2). **Eventhough EAP and SCAN individually explains less than 20% of MSLP variability (EAP: 18%; SCAN: 16%), several studies found that its effect on the Nordic Seas cannot be neglected (Comas-Bru and McDermott, 2013; Chafik et al., 2017).** The total variance (68%) explained by the three modes estimated in our study is comparable to those computed in earlier studies using the NCEP data (60%; Chafik et al., 2017). Standardized principle components of the three modes are used as indices for NAO, EAP and SCAN respectively (Fig S1).

### 3.2 Composite analysis

10 For composite analysis, the positive/negative phase of NAO (NAO+/NAO-) are categorized as those months with NAO index values (Section 3.1) above/below one standard deviation calculated over the entire period from 1991 to 2015. Similarly, the positive/negative phase of EAP and SCAN are estimated from their respective time series (Fig S1). **Significance of difference in the composite mean and climatological mean is estimated using the two-sample t-test for equal means (Snedecor and Cochran, 1989).**

### 15 3.3 Singularity analysis

There are several methods used in previous studies to identify ocean fronts from satellite data (e.g., Cayula and Cornillon, 1992; Garcia-Olivares et al., 2007; Turiel et al., 2008). One of them is the Singularity Analysis, which has been established as a powerful tool to detect frontal structures and streamlines from satellite images (Turiel et al., 2008, 2009; Portabella et al., 2012; Lin et al., 2014; Umbert et al., 2014). The Singularity Analysis does not require knowledge of the velocity field, because  
20 it is a Eulerian method exploiting the scaling properties of the spatial correlations of the gradients of a given scalar field. The Singularity Analysis of a given scalar map yields its associated singularity exponent. Singularity exponents are dimensionless and can be derived from any scalar quantity, e.g., SST (Turiel et al., 2009). Our study uses Singularity Analysis to detect the AF in the Norwegian Sea from satellite data (SST and wind speed) as well as from ocean reanalysis data (temperature). Singularity exponents of the above scalar variables have been estimated using an online service provided by the Barcelona  
25 Expert Center (<http://bec.icm.csic.es/CP34GUIWeb>). The online toolbox first evaluates the modulus of the gradient of the scalar at each point in the specified domain, i.e., the Norwegian Sea in our study. The resulting field is then projected on a given wavelet at different resolution scales. Then a log-log regression of the wavelet projection versus the resolution scale is used to determine the scaling properties of the gradient correlations, and the slope of such a regression is precisely the singularity exponent. Therefore, Singularity Analysis assigns a singularity exponent to each point in an image. The singularity  
30 exponent value provides information about the local regularity (if positive) or irregularity (if negative) of the signal at the given point, being in fact an extension of the concept of differentiability (Turiel et al., 2008). Due to its connection with the



theory of turbulent flows, it has been shown that the singularity exponents obtained from any ocean scalar delineate the streamlines of the flow. [Details of the method is provided in the Appendix Section.](#)

## 4 Results and Discussion

### 4.1 Surface structure of the Arctic front

5 The spatial distribution of the climatological (2002-2009) SST of the Norwegian Sea, shown in Fig. 3a illustrates a typical example of the distribution of surface waters in the Norwegian Sea. The figure shows that the warmest waters are confined to the eastern Norwegian Sea, while the coldest waters are found in the Greenland Basin west of the Mohn Ridge. From a closer inspection, the comparatively large temperature gradient associated with the AF at the Mohn Ridge (Piechura and Walczowski, 1995) can be identified. This large temperature gradient over the Mohn Ridge is associated with the warm Atlantic Water in  
10 the Lofoten Basin and the colder Arctic Waters in the Greenland Basin. In addition to SST, we use remotely sensed winds to identify the ocean fronts in the Norwegian Sea, as has been done for the parts of the global ocean (e.g., Song et al., 2006). Fig. 3b shows the spatial distribution of the climatology (2002-2009) of wind speed in the Norwegian Sea. Note that the choice of time-averaged fields assists in avoiding the possible contamination of the wind field by the rapid evolution of weather patterns (Chelton et al., 2004). Comparison of Fig. 3a and 3b reveals stronger/weak winds over warm/cold waters. Even though shown  
15 for the first time in the Norwegian Sea, the increase/decrease in surface wind speed when it blows from cold/warm to warm/cold water is well-known and the physical mechanism has been extensively studied (e.g., Friehe et al., 1991; Chelton et al., 2004; Song et al., 2006). The response of the surface wind to the temperature fronts has been studied on different timescales (monthly, Chelton et al., 2001; seasonal, O'Neill et al., 2003; and climatological, Chelton et al., 2004) especially in the western boundary currents. Stronger surface winds over warmer waters are due to efficient turbulent convection that transfers  
20 momentum down to the surface (Wallace et al., 1989). This process known as momentum mixing mechanism destabilizes air over warm water, and the increased turbulent mixing of momentum accelerates near-surface winds. Conversely, cold SST suppresses the momentum mixing, decouples the near-surface wind from wind aloft, and decreases the near surface wind. Another interesting feature seen in the wind field is the cold tongue of Arctic Water in the southern Norwegian Sea (~63°N, 8°W to 4°W; location 2 in Fig. 4a). This cold tongue is caused by mixing of the water mass carried by the North Icelandic  
25 Irminger Current into the surrounding waters, mostly in the east Icelandic Current, which flows into the southwest Norwegian Sea, where it forms a cold tongue of Arctic character (Helland-Hansen and Nansen, 1909; Blindheim and Malmberg, 2005). [Note that the main focus of the present study is to study the mean and variability of the AF. The SST-wind interaction over the AF revealed in this study warrants a detailed analysis and needs to be mathematically formulated, and hence is out-of-scope of this study.](#)

30 Singularity exponents estimated from these mean satellite SST and wind speed fields, as shown in Fig. 4, provide a clearer and consistent picture of the AF in the Norwegian Sea compared to the original scalar fields. The AF in the Norwegian Sea are characterised by negative singularity exponents. Previous studies using singularity exponent analysis also found similar

results in frontal regions (e.g., Fig. 5 in Turiel et al., 2008). Regarding the SST, regions with negative singularity exponents correspond to regions with higher irregularity, i.e., to grid points with stronger gradient variations (see Figs. 3a and 4a for SST) than the neighbouring grid points (sharp transition). On the other hand, regions with positive singularity exponents are those where the gradient variations are weak. The frontal region at the Mohn Ridge (location 1 in Fig. 4a) and that associated with the cold tongue and the Faroe Current in the southwest Norwegian Sea (location 2) are the locations where the AF is most prominent. The imprint of East Icelandic Current can also be seen in Fig. 4a (location 3). The AF extending north from the cold tongue region is locked between the 1800 m and 2400 m depth contour (location 4). The signature of the AF at location 4 is not very prominent compared to locations 1 and 2. Further north over the Vøring Plateau (location 5), the continuation of the AF is not captured in our analysis. Note that this is also a region of intense mesoscale eddy activity. The tracks of mesoscale eddies in the region obtained from Raj et al. (2016; updated time series till 2016) is shown in Fig. S2. The figure shows dominance of mesoscale eddies across the AF at locations 4 and 5, more prominent at location 5. Eddies are known to contribute significantly to the total oceanic heat and salt transport by advective trapping (Dong et al., 2014), stirring and mixing (Morrow and Le Traon, 2012). Most importantly they can play an important role in the cross-frontal transport (Dufour et al., 2015). Eddy-induced mixing and cross-frontal transport can reduce the sharp distinction of the water masses at the AF in location 5 compared to the other four. This can be a reason for the absence of the AF signature in the singularity exponents map. Quantifying the impact of mesoscale eddies on the AF needs a dedicated effort and is out of the scope of our study.

All the above SST-related features are also portrayed in the map of singularity exponents of the wind speed (Fig. 4b), estimated from the mean satellite wind speed map (shown in Fig. 3b). Regions with the sharpest changes in wind speed are consistent with those found in the SST map (Fig. 4a). In other words, regions where SST is found to experience sharp changes correspond well to those with large changes in wind speed, thereby confirming the role of strong momentum mixing along the frontal regions. The analysis is repeated using other remote sensing datasets (WindSAT SST, AVHRR SST, WindSAT wind speed and AMSRE wind speed) in order to examine whether the ocean fronts in the Norwegian Sea can be retrieved irrespective of the satellite data and sensor used. Singularity Analysis on these satellite SST and wind speed datasets also illustrates similar AF signatures to those seen in Fig. 4 (not shown). Hence it can be stated that the satellite-derived wind speed and SST data reveal the frontal structure of the AF, irrespective of the sensor used. Thus, it is shown that Singularity Analysis is able to portray a much clearer representation of the AF, compared to the original scalar fields.

#### 4.2 Subsurface structure of the Arctic Front

Next, we assess the performance of the TOPAZ4 reanalysis results in reproducing the horizontal structure of the AF in the Norwegian Sea, using a longer period (1991-2015) than that of the satellite data (2002-2009). The surface signature of the AF estimated from TOPAZ4 SST output (Fig. 5a) agrees with that of the satellite SST data (Fig.4a). As mentioned in Section 2.1, TOPAZ4 reanalysis assimilates measurements including along-track altimetry data, sea surface temperatures, sea ice concentrations and sea ice drift from satellites along with in-situ temperature and salinity profiles. Hence, the similarities in Fig.4a and 5a are not surprising, although not warranted due to the residual errors of assimilation. Nevertheless, the figures

confirm that TOPAZ4 reanalysis data is able to reproduce the AF signature and indicates that the TOPAZ4 results can be used to study the subsurface part of the AF. Further analysis show that the horizontal structure of the AF in deeper ocean is similar to the surface: most distinct along the Mohn Ridge and near the Faroe Current in the southwest Norwegian Sea (as shown by the TOPAZ4 potential temperature singularity exponent maps in Figs. 5b and 5c).

5           Next, in order to examine the seasonal variability of the AF in the Norwegian Sea, the Singularity Analysis is applied to the seasonal climatologies of SST and potential temperature at 200 m (Fig. 6). The surface signature of AF is found to be stronger during winter (DJF; Fig. 6a), while the frontal signature is less evident during summer (JJA; Fig. 6b). These results agree with the analysis done using seasonal satellite SST data (not shown). Note that the analysis of the subsurface temperature fields (Figs. 6c and 6d) does not reproduce the seasonal variability of the surface frontal structure (Figs. 6a and 6b). Thus, it  
10 can be concluded that the seasonal variability of the frontal structure is limited to the surface and not found in the subsurface. This is likely to be associated with the surface heating of the ocean during summer that in turn reduces the surface horizontal temperature gradient, evidence of which is found as a thin layer of (upper 25 m) low temperature gradient near the surface during summer (Fig. 7c), which is not present in winter (Fig. 7b), that disconnects the subsurface signatures of the front from the surface.

15           The TOPAZ4 reanalysis, which successfully replicates the lateral variability of the AF (Fig. 5-6), is further used to investigate the vertical structure of the AF and its variability. For this analysis the focus area is limited to a single section (shown in Fig. 4a) taken across the Mohn Ridge, where a strong frontal signature is found in the singularity exponents maps (Fig. 4-6). A similar section was used by Piechura and Walczowski (1995), to study the AF across the Mohn Ridge using CTD data during the time period 1987-1993. Fig. 7a-c shows respectively the mean, winter and summer climatology of potential  
20 temperature along the vertical cross-section at the Mohn Ridge (location shown in Fig 4a). To the east (left side of the figure), the figure shows the warm Atlantic Water residing in the Lofoten Basin, while the cold waters reside in the Greenland Sea (right side of the figure). Note that these results agree with those reported by Piechura and Walczowski (1995). The temperature gradient along the vertical section delimits the AF at the Mohn Ridge (Fig. 7d). The location of the core of the front along the section across the Mohn Ridge is marked as red in Fig. 4a. At the location of the AF, a temperature change of roughly 2 degrees  
25 can be noted from Fig. 7a. The potential temperature gradient (0.04 degree/km) across the core of the AF is comparable with those reported at other high-latitude frontal regions (Lobb et al., 2003). The AF extends from the surface down to 600 m depth with the core stretching over depths from 50 m to 400 m, as indicated by the strong potential temperature horizontal gradient areas (dark blue contours) in Figs. 7d-f. The frontal structure is well connected to the surface during winter (Figs. 7b and 7e), while in summer, the stratified layer of warm water at the surface (upper 25 m) disconnects the AF deeper layers from the  
30 surface (Figs. 7c and 7f). The figures also show that there is no seasonal variability in the location of the core of the AF over the Mohn Ridge.

### 4.3 Impact of large-scale atmospheric forcing on the Arctic front

The impact of the large-scale atmospheric forcing in the Norwegian Sea (Fig. 2) on the variability of the AF over the Mohn Ridge is investigated next using composite analysis on monthly TOPAZ4 data. For this, composite maps (Section 3.2) of the temperature across the Mohn Ridge during the positive and negative phases of NAO, EAP and SCAN are produced and the gradient in mean temperature is estimated. The analysis shows that the location of the core of the AF along the Mohn Ridge is not influenced by the large-scale atmospheric variability (Fig. 8, Fig. S3). Here, the AF is defined as the region with the maximum in temperature gradient, a classical definition used to distinguish between two distinct water masses, in this case the Atlantic Water and the Arctic Waters. The non-variability in the location of the position of the AF further indicates that the location of the two water masses does not alter. However, Fig. 8b shows a weakening of the AF during the negative phase of NAO (NAO-). The weakening of the AF during NAO- is prominent in the upper 450 m depth (Fig. 8b). Compared to NAO, the 2<sup>nd</sup> (EAP) and 3<sup>rd</sup> (SCAN) modes of atmospheric variability in the Norwegian Sea do not show a major impact on the AF over the Mohn Ridge (Fig. S3). Further analysis thus only focuses on the two opposite phases of NAO. The atmospheric circulation associated with the positive and negative phases of NAO estimated using the ERA Interim surface winds is shown in Fig. 9. During NAO+, the composite map shows a distinct anomalous cyclonic pattern, centered on the Barents Sea Opening (Fig. 9a). In contrast, during NAO-, a weakened cyclonic circulation is found (shown as anomalous anticyclonic circulation) centered near the Mohn Ridge (Fig. 9b).

Next, we investigate the link between the atmospheric circulation during NAO- (Fig. 9b) and the weakening of the AF over the Mohn Ridge (Fig. 8b). We hypothesise that the impact of NAO on ocean currents of the region may influence the AF. Previous studies have reported the impact of the atmospheric variability on the ocean currents in the Norwegian Sea (e.g., Skagseth et al., 2008; Raj et al., 2018). Over the Mohn Ridge the NwAFC transports warm AW poleward. Our results (Fig. 10) show that the core of the NwAFC over the Mohn Ridge, is narrower and strengthened, especially at depths during NAO-, while during NAO+ it is broader and comparatively weaker in the subsurface (Fig. 10). The narrowing of the NwAFC associated with its strengthening during NAO- has resulted a shift of its core by about 20-40 km away from the AF (Fig. 10b). Also, the strength of the NwAFC in the region where it gets narrower (AF indicated by dashed line in Fig 10b) is also significantly different (shown as striped in Fig. 10b) from the climatological mean.

While majority of previous studies reported the positive relation of NAO with the speed of the NwASC (e.g., Skagseth and Orvik, 2002), our results show that the NwAFC behaves in an opposite way. One of the possible mechanisms by which a weakening in the cyclonic atmospheric circulation during NAO- (Fig. 9b) results in the strengthening of the NwAFC (Fig. 10b) is via its influence on the cyclonic gyre circulation of the Lofoten Basin. Near the Mohn Ridge, the cyclonic gyre circulation of the Lofoten Basin is counter-propagating in comparison to the northward flow of the NwAFC (see Fig.1). It has been argued that this counter-propagating part of the cyclonic gyre acts as a hinderance to the northward flow of the NwAFC, which in turn results in the weakening of the NwAFC (Orvik, 2004). In his study using a reduced gravity model, Orvik (2004) showed that a weakening of the gyre circulation will result in the strengthening of the NwAFC as the hindrance is reduced. Regarding the link between NAO- and Lofoten Basin gyre circulation, we hypothesise that a weakening of the cyclonic

atmospheric circulation during NAO- can result in the weakening of the Lofoten Basin gyre circulation. [The evidence of this atmospheric-ocean interaction is shown in Fig. 11](#). The figure shows the composite of the monthly barotropic stream function (BSFD) data (estimated from depth-averaged currents) from the TOPAZ4 reanalysis, and exhibits the gyre circulations in the Lofoten Basin, the Greenland Sea and the Norwegian Basin. The negative values seen in Fig. 11a during NAO+ indicate stronger cyclonic circulation. [According to the figure](#), the cyclonic Lofoten Basin gyre circulation during NAO+ is found to be intensified. On the contrary, a weakening of the Lofoten Basin gyre circulation is found during NAO- (Fig 11b; positive values indicate a weaker cyclonic circulation). [This weakening in the gyre circulation of the Lofoten Basin during NAO- \(Fig. 11b\) can result in the strengthening of NwAFC \(Fig. 10b\) as there is less hindrance to the northward flow.](#)

The discussion above explains the link between the variability in the atmospheric circulation during NAO- (Fig. 9b) and the strengthening and narrowing of the NwAFC over the Mohn Ridge (Fig. 10b). [Associated with the strengthening and narrowing of the NwAFC during NAO-](#), our study also identified a shift (20-40 km) in the core of the NwAFC away from the core of the AF. A shift in the core of the NwAFC from the topographically trapped AF can result in the decrease in temperature gradient across the front, in turn leading to the weakening of the front. A schematic illustration of the different processes connecting NAO- to a weakened AF as explained above is shown in Fig. 12.

## 15 **5 Summary**

Satellite-derived SST and wind speed data are good upper level proxies for the hydrographic signature of semi-permanent ocean fronts across the Norwegian Sea. They reveal the frontal structure of the AF, irrespective of the sensor used. The AF is found to be strongest over the Mohn Ridge and near the Iceland Faroe Plateau. The study [shows evidences of active air-sea interaction along the AF](#). Compared to the original scalar fields (SST and wind speed), a more precise picture of the AF in the Norwegian Sea is obtained from their corresponding singularity exponents. The AF at the Mohn Ridge extends from the surface down to 600 m depth. The seasonal variability of the AF is limited to the surface and associated with the surface heating of the ocean during summer that reduces the horizontal surface temperature gradient. There is no seasonal variability in the location of the AF core over the Mohn Ridge. For the first time, the role of the three dominant atmospheric modes in the Norwegian Sea on the variability of the AF is investigated. Out of the three, only the NAO influences the AF along the Mohn Ridge. The study reveals a profound weakening of the AF over the Mohn Ridge during NAO-, which is further associated with the variability of the prevailing atmospheric circulation. A weakening of the cyclonic atmospheric circulation during NAO- weakens the deep gyre circulation of the Lofoten Basin which in turn results in a strengthened and narrower NwAFC in opposite direction. The narrowing of the NwAFC causes its core to shift eastwards (20-40 km) from the core of the topographically trapped AF, which leads to a decreased temperature gradient across the front, and in turn to the weakening of the front.

## **Acknowledgements**

This research is funded by the Copernicus Arctic MFC services. We also acknowledge the CPU provided by the Norwegian supercomputing project Sigma2 (nn2993k) and the storage space (ns2993k). Author Sourav thanks Nansen scientific Society for the support. We also thank Dr. Richard. E. Danielson for his helpful suggestions.

## 5 Appendix A: Singularity analysis

In 1941, Kolmogorov (Kolmogorov, 1941) introduced the concept of scale invariant dissipations. Turbulence is characterized by an infinite amount of degrees of freedom and thus it is impossible to fully characterize what happens at each element of the fluid. However, the large number of degrees of freedom allowed for a statistical approach, and thus turbulent flows could be characterized by effective quantities. What Kolmogorov proposed was that there is a simple relation between the energy dissipation at a scale L and the energy dissipation at a smaller scale r, as:

$$\frac{\varepsilon_r}{\varepsilon_L} = \left(\frac{r}{L}\right)^\beta \quad (\text{A1})$$

Where  $\varepsilon_r$  is the dissipation at the scale r and  $\varepsilon_L$  is the dissipation at the larger scale L. This relation was called “normal scaling” as it implies a simple distribution of energy across scales; in fact, it is sometimes referred as linear scaling because equation (A1) implies that plot of the logarithm of  $\varepsilon_r$  versus the logarithm of r should be a straight line of slope  $\beta$ . It was soon realized that “normal scaling” was not frequent at all. On the contrary, the plots of the logarithm of the energy dissipation at scale r versus the logarithm of r generally showed a concave curve, the so-called “anomalous scaling”, thus revealing that there was a much richer statistical interplay between the scales. Equation (A1) can be generalized in a stochastic way to account for that fact, namely:

$$\varepsilon_r \sim \eta_L^r \varepsilon_L \quad (\text{A2})$$

Where  $\eta_L^r$  is a random stochastic variable which only depends on the ratio of scales r and L, and the symbol  $\sim$  means that both sides have identical statistical distribution. The variable  $\eta_L^r$  is called the cascade variable, because it defines a cascade relation (its distribution for a change in scale L to r must be the same if we change first from scale L to any intermediate scale l and then from l to r).

In 1985, Parisi and Frisch (Parisi and Frisch, 1985) first introduced the concept of multifractal to explain that in fact the properties of cascade variables could be understood if we supposed that there is a hierarchy of fractal components  $F_h$ , each one associated to a particular local dissipation exponent h, and such that the fractal dimensions of each fractal component could be related with the distribution of the cascade variables. There has been an extensive literature by Turiel and collaborators explaining the connection between this microscopic behavior (the local exponents h) and the global statistical properties, what led to the introduction of singularity analysis. By means of singularity analysis we want to determine the local properties of scaling of the energy dissipation or any other scalar variable in a turbulent flow. To evaluate singularity analysis, we must proceed by applying continuous wavelet transforms to the variable under study (let us call it  $\theta$ ), namely

$$T_{\psi}|\nabla\theta(\vec{x}, r) \equiv \int d\vec{y} \frac{1}{r^2} \Psi\left(\frac{\vec{y}-\vec{x}}{r}\right) |\nabla\theta(\vec{y})| \quad (\text{A3})$$

Where  $r$  is the scale of observation and  $x$  is the point at which the wavelet is been applied. We apply the wavelet projection on the modulus of the gradient of the variable because it has been shown to be useful to remove long-range correlations and thus reveal the actual local behavior of the function (Turiel et al., 2008). For turbulent fluids, according to Parisi and Frisch (1985)

5 the cascade relation translates into the wavelet projection as:

$$T_{\psi}|\nabla\theta(\vec{x}, r) \propto r^{h(\vec{x})} \quad (\text{A4})$$

Therefore, a log-log regression of the wavelet projection versus the logarithm of the scale allows to calculate the singularity exponent  $h(x)$ , which would be the slope of that regression. Something important to notice about singularity exponents is that they are unitless: they are dimensionless measurements of the local correlation of the gradient of the variable  $\theta$  at the point  $x$  with the same variable at the neighbouring points. Therefore, changes in the amplitude of the variable are irrelevant, as they just change the proportionality constant in (A4) that is not accounted in the log-log regression because it only contributes to the intercept (and  $h(x)$  is the slope of that regression). In fact, local changes in amplitude that change slowly enough across the area do not change the singularity exponents either. Singularity analysis is then more robust than other approaches as Wavelet Modulus Transform Maxima, because it is not affected by those artifacts, and does not imply any particular condition on the geometry of the singularity fronts (WTMM require maxima points to be isolated); in addition, singularity analysis is in a close connection with the turbulent properties of the flow. The choice of the particular wavelet allows for a better discrimination of the singularity exponents at the resolution scale; in this paper we have chosen the same as in Pont et al. (2013).

## References

- Aagaard, K., Swift, J. H., and Carmack, E. C.: Thermohaline circulation in the Arctic Mediterranean Seas, *J. Geophys. Res.*, 20 90, 4833–4846, 1985.
- Bakun, A.: *Patterns in the Ocean: Ocean Processes and Marine Population Dynamics* (California Sea Grant College System, San Diego), 1996.
- Blindheim, J. and Malmberg, S.-A.: The mean sea level pressure gradient across the Denmark Strait as indicator of conditions in the North Icelandic Irminger Current, In: *The Nordic Seas: An Integrated Perspective*. AGU Geophysical Monograph (158), 25 edited by H, Drange. T. Dokken, T. Furevik, R. Gerdes, W. Berger. Washington, American Geophysical Union (AGU), 2005.
- Blindheim, J. and Østerhus, S.: The Nordic Seas, main oceanographic features. In *The Nordic Seas: An Integrated Perspective*. AGU Geophysical Monograph (158, pp 11-38), edited by H, Drange. T. Dokken, T. Furevik, R. Gerdes, W. Berger, Washington, American Geophysical Union (AGU), 2005.
- Blindheim, J. and Ådlandsvik, B.: Episodic formation of intermediate water along the Greenland Sea Arctic Front. *ICES* 30 *CM1995/Mini:6*. 11 pp. (mimeo), 1995.
- Blindheim, J. and Rey, F.: Water-mass formation and distribution in the Nordic Seas during the 1990s. *Journal of Marine Science*, 61, 846-863, 2004.

- Cayula, J. -F., and Cornillon, P. : Edge detection algorithm for SST images. *Journal of Atmospheric and Oceanic Technology*, 9, 67–80, 1992.
- Chafik, L., Nilsen, J. E. Ø., and Dangendorf, S.: Impact of North Atlantic Teleconnection Patterns on Northern European Sea Level. *Journal of Marine Science and Engineering*, 5, 43, 2017.
- 5 Chatterjee, S., Raj, R. P., Bertino, L., Skagseth, Ø., Ravichandran, M., and Johannessen, O. M. : Role of Greenland Sea gyre circulation on Atlantic Water temperature variability in the Fram Strait. *Geophysical Research Letters*, 45, 8399–8406. <https://doi.org/10.1029/2018GL079174>, 2018.
- Chelton, D. B., S. K. Esbensen, M. G. Schlax, N. Thum, M. H. Freilich, F. J. Wentz, C. L. Gentemann, M. J. McPhaden, and P. S. Schopf : Observations of coupling between surface wind stress and sea surface temperature in the Eastern Tropical  
10 Pacific, *J. Clim.*, 14, 1479–1498, 2001.
- Chelton, D. B., M. G. Schlax, M. H. Freilich, and R. F. Milliff (2004), Satellite measurements reveal persistent small-scale features in ocean winds, *Science*, 303, 978– 983.
- [Comas-Bru, L and F. McDermott \(2013\), Impacts of the EA and SCA patterns on the European twentieth century NAO–winter climate relationship. Q. J. R. Meteorol. Soc. 140, 354–363.](#)
- 15 D’Asaro, E., Lee, C., Rainville, L., Harcourt, R. and Thomas, L.: Enhanced turbulence and energy dissipation at ocean fronts. *Science*, 332(6027), 318–322, 2011.
- Dee, D. P. et al., “The ERA-Interim Reanalysis: Configuration and Performance of the Data Assimilation System,” *Quarterly Journal of the Royal Meteorological Society*, Vol. 137, No. 656, 2011, pp. 553-597. doi:10.1002/qj.828.
- Dong, C., McWilliams, J.C., Liu, Y., Chen, D., 2014. Global heat and salt transports by eddy movement. *Nat. Commun.* 5,  
20 3294.
- Dufour, O. C et al., 2015: Role of mesoscale eddies in cross- frontal transport of heat and biogeochemical tracers in the Southern Ocean. *J. Phys. Oceanogr.*, 45, 3057–3081, doi:10.1175/JPO-D-14-0240.1.
- Eldevik, T., Nilsen, J. E. Ø., Iovino, D., Olsson, K. A., Sandø, A. B. and Drange, H.: Observed sources and variability of Nordic seas overflow. *Nature Geoscience*, 2, 406–410, doi:10.1038/ngeo518, 2009.
- 25 Friehe, C. A., Shaw, W. J., Rogers, D. P., Davidson, K. L., Large, W. G., Stage, S. A., Crescenti, G. H., Khalsa, S. J. S., Greenhut, G. K. and Li, F.: Air-sea fluxes and surface layer turbulence around a sea surface temperature front. *Journal of Geophysical Research*, 96, 8593–8609, 1991.
- Garcia-Olivares, A., Isern-Fontanet, J., and Garcia-Ladona, E.: Dispersion of passive tracers and finite-scale Lyapunov exponents in the Western Mediterranean Sea. *Deep Sea Research I*, 54, 253–268, 2007.
- 30 Hannachi, A., Jolliffe, I.T., Stephenson, D.B., 2007. Empirical orthogonal functions and related techniques in atmospheric science: a review. *Int. J. Climatol.* 27, 1119–1152.
- Helland-Hansen, B., and Nansen, F.: The Norwegian Sea: its physical oceanography based upon the Norwegian Research 1900-1904. Report on Norwegian Fishery and Marine Investigations., vol.2, 1909.*



- Holst, J.C., Røttingen, I., and Melle, W.: The herring. In H. R. Skjoldal (Ed.), *The Norwegian Sea Ecosystem*. Tapir Academic Press, Trondheim, Norway pp. 203-226, 2004.
- Lien, S. V., Hjøllo, S. S., Skogen, M. D., Svendsen, E., Wehde, H., Bertino, L., Counillon, F., Chevallier, M. and Garric, G.: An assessment of the added value from data assimilation on modelled Nordic Seas hydrography and ocean transports, *Ocean Modelling*, 99, 43-59, 2016.
- [Kolmogorov, A. N. \(1941\). Dissipation of energy in a locally isotropic turbulence. \*Dokl. Akad. Nauk. SSSR\* 32, 16-18.](#)
- Lin, W., Portabella, M., Stoffelen, A., Turiel, A. and Verhoef, A.: Rain identification in ASCAT winds using singularity analysis. *IEEE Geoscience and Remote Sensing Letters*, 11 (9), 1519-1523. <https://doi.org/10.1109/LGRS.2014.2298095>, 2014.
- 10 Lobb, J., Weaver, A. J., Carmack, E. C. and Ingram, R. G.: Structure and mixing across an Arctic/Atlantic front in northern Baffin Bay. *Geophysical Research Letters*, 30(16), 1833. doi:10.1029/2003GL017755, 2003.
- Melle, W., Ellertsen, B., and Skjoldal, H.R.: Zooplankton: The link to higher trophic levels. In the *Norwegian Sea Ecosystem*, 137-202. Trondheim Tapir Academic Press, 2004.
- [Moore, G.W.K., Renfrew, I.A., and Pickart, R.S.\(2012\). Multidecadal Mobility of the North Atlantic Oscillation. \*J. Clim.\* 2012, 26, 2453–2466.](#)
- 15 Mork, K. A., and Ø. Skagseth (2010), A quantitative description of the Norwegian Atlantic Current by combining altimetry and hydrography, *Ocean Sci.*, 6, 901–911.
- Morrow, R. and Le Traon, P.-Y. Recent advances in observing mesoscale ocean dynamics with satellite altimetry. *Adv. Spa. Res.* 50, 1062–1076 (2012).
- 20 Nilsen, J. E. Ø. and Nilsen, F.: The Atlantic Water Flow along the Vøring Plateau: Detecting Front Structures in Oceanic Station Time Series. *Deep Sea Research, Part 1*, 54(3), 297-319. doi:10.1016/j.dsv.2006.12.012, 2007.
- Norway Ministry of Environment, 2008-2009. *Integrated Management of the Marine Environment of the Norwegian Sea*. Report No. 37 to the Storting. (in English). pp. 1-151.
- O'Neill, L. W., D. B. Chelton, and S. K. Esbensen, 2003: Observations of SST-induced perturbations of the wind stress field over the Southern Ocean on seasonal timescales. *J. Climate*, 16, 2340–2354, doi:10.1175/2780.1.
- 25 Orvik, K. A., Skagseth, Ø. and Mork, M.: Atlantic inflow to the Nordic Seas. Current structure and volume fluxes from moored current meters, VM-ADCM and SeasOar-CTD observations. *Deep Sea Research, Part 1*, 48, 937-957, 2001.
- Orvik, K. A. and Niiler, P. 2002.: Major pathways of Atlantic water in the northern North Atlantic and Nordic Seas toward Arctic. *Geophysical Research Letters*, 29(19), 1896. doi:10.1029/2002GL015002, 2002.
- 30 Orvik, K. A., and Ø. Skagseth (2003), Monitoring the Norwegian Atlantic slope current using a single moored current meter, *Cont Shelf Res.* 23, 159–176.
- [Orvik, K. A., 2004. The deepening of the Atlantic water in the Lofoten Basin of the Norwegian Sea, demonstrated by using an active reduced gravity model. \*Geophys. Res. Lett.\* 31, L01306, doi:10.1029/2003GL018687.](#)

- Parisi, G., and U. Frisch (1985), On the singularity structure of fully developed turbulence. In *Turbulence and Predictability in Geophysical Fluid Dynamics*. Proc. Intl. School of Physics E. Fermi, pp. 84-87, ed. M. Ghil, R. Benzi and G. Parisi, North Holland.
- Piechura, J., and Walczowski, W.: The Arctic Front: structure and dynamics. *Oceanologia*, 37 (1), 47–73, 1995.
- 5 Pont, O., A. Turiel and H. Yahia (2013), Singularity analysis of digital signals through the evaluation of their unpredictable point manifold. *International Journal of Computer Mathematics* 90:8, 1693-1707.
- Poulain, P. M., A. Warn-Varnas, and P. P. Niiler (1996), Near-surface circulation of the Nordic seas as measured by Lagrangian drifters, *J. Geophys. Res.*, 101(C8), 237–258.
- Portabella, M., Stoffelen, A., Lin, W., Turiel, A., Verhoef, A., Verspeek, J. and Ballabrera-Poy, J.: Rain effects on ASCAT  
10 retrieved winds: towards an improved quality control. *IEEE Geoscience and Remote Sensing Letters*, 50 (7), 2495-2506. <https://doi.org/10.1109/TGRS.2012.2185933>, 2012.
- Raj, R. P., Chafik, L., Nilsen, J. E. Ø., Eldevik, T. and Halo. I.: The Lofoten vortex of the Nordic Seas, *Deep Sea Research, Part I*, 96, 1–14. doi:10.1016/j.dsr.2014.10.011, 2015.
- Raj, R. P., Johannessen, J. A., *Eldevik, T., Nilsen, J. E. Ø.* and Halo. I.: Quantifying Mesoscale Eddies of the Lofoten Basin.  
15 *Journal of Geophysical Research Oceans*, 121, 2016.
- Raj, R. P., J. E. Ø. Nilsen, J. A. Johannessen, T. Furevik, O. B. Andersen, L. Bertino (2018) Quantifying Atlantic Water transport to the Nordic Seas by remote sensing. *Remote Sensing of Environment.*, 216, 758-769, <https://doi.org/10.1016/j.rse.2018.04.055>.
- Skagseth, Ø. and K. A. Orvik (2002), Identifying fluctuations in the Norwegian Atlantic Slope Current by means of empirical  
20 orthogonal functions, *Cont. Shelf Res.*, 22, 547–563, 2002.
- Skagseth, Ø., T. Furevik, R. Ingvaldsen, H. Loeng, K. A. Mork, K. A. Orvik, and V. Ozhigin (2008), Volume and heat transports to the Arctic Ocean via the Norwegian and Barents Seas, in *Arctic - Subarctic Ocean Fluxes*, edited by R. Dickson, J. Meincke, and P. Rhines, Springer Verlag, 25-64.
- [Snedecor, G.W., and Cochran, W.G., \(1989\). Statistical Methods, Eight Edition. Iowa State University Press.](#)
- 25 Song, Q., Cornillon, P. and Hara, T.: Surface wind response to oceanic fronts. *Journal of Geophysical Research*, 111,C12006, doi:10.1029/2006JC003680, 2006.
- Swift, J.H., and Aagaard, K.: Seasonal transitions and water mass formation in the Iceland and Greenland Seas. *Deep Sea Research*, 28A, No. 10, 1107- 1129, 1981.
- Swift, J.H.: The arctic waters. In: Hurdle, B.G. (Ed.), *The Nordic Seas*. Springer, Berlin (Chapter 5), 1986.
- 30 Turiel, A., Sole, J., Nieves, V., Ballabrera-Poy, J. and Garcia-Ladona, E.: Tracking oceanic currents by singularity analysis of Micro-Wave Sea Surface Temperature images, *Remote Sensing of Environment*, 112, 2246–2260, 2008.
- Turiel, A., Nieves, V., Garcia-Ladona, E., Font, J., Rio, M.-H. and Larnicol, G.: The multifractal structure of satellite sea surface temperature maps can be used to obtain global maps of streamlines. *Ocean Science*, 5(4), 447–460, 2009.

Umbert, M., Guimbard, S., Lagerloef, G., Thompson, L., Portabella, M., Ballabrera-Poy, J. and Turiel, A.: Detecting the surface salinity signature of Gulf Stream cold-core rings in Aquarius synergistic products. *Journal of Geophysical Research Oceans*, 120, 859–874. doi:10.1002/2014JC010466, 2015.

Walczowski, W. and Piechura, J.: New evidence of warming propagating toward the Arctic Ocean. *Geophysical Research Letters*, 33, L12601. doi:10.1029/2006GL025872, 2006.

Wallace, J.M., Mitchell, T.P. and Deser, C.: The influence of sea surface temperature on surface wind in the eastern equatorial Pacific: seasonal and interannual variability. *Journal of Climate*, 2, 1492–1499, 1989.

Xie, J., Bertino, L., Counillon, F., Lisæter, K. A., and Sakov, P. (2016). Quality assessment of the TOPAZ4 reanalysis in the Arctic over the period 1991-2013, *Ocean Science*, 13(1), pp. 123-144.

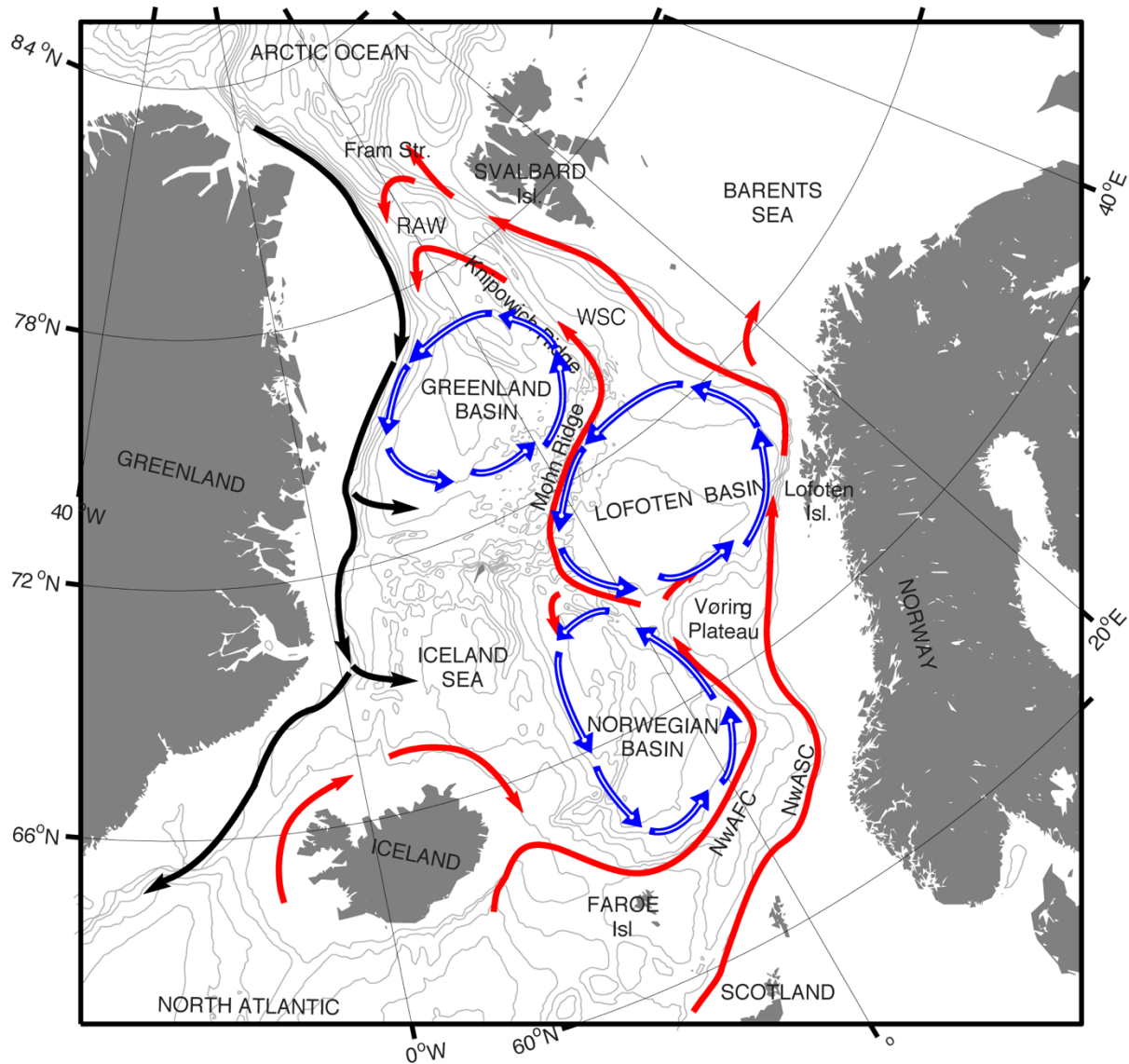
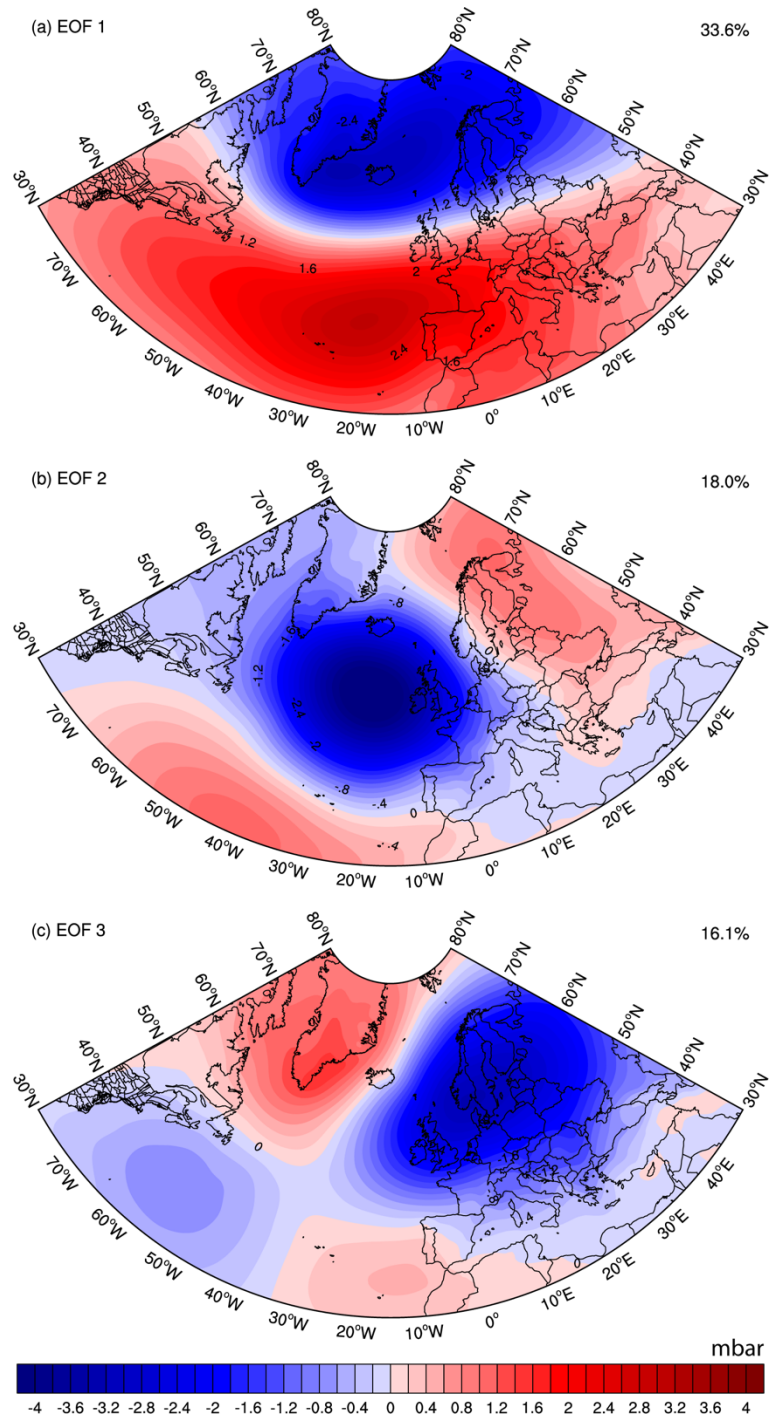


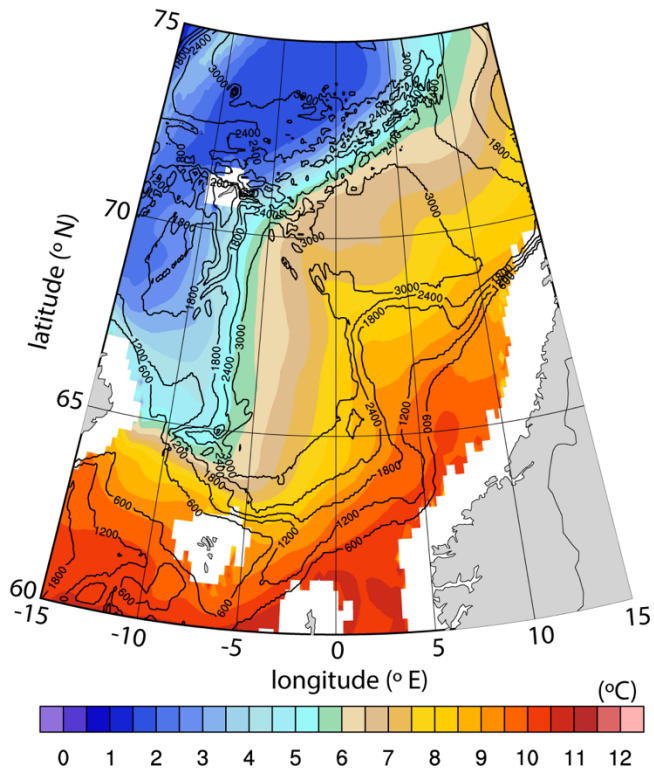
Figure 1: The Nordic Seas with schematic water pathways showing the northward flowing Atlantic Water in the surface (red) and southward flowing East Greenland Current (black). The two branches of the Norwegian Atlantic Current, the Norwegian Atlantic slope current (NwASC) and Norwegian Atlantic front current (NwAFC) are represented by red arrows. The cyclonic gyre circulations in the Norwegian Basin, Lofoten Basin and Greenland Basin are indicated in blue. See Chatterjee et al. (2018) and Raj et al. (2015) for details. Grey isobaths are drawn for every 600 m. The location of the Arctic Front in the Norwegian Sea coincides with the location of the NwAFC.

5

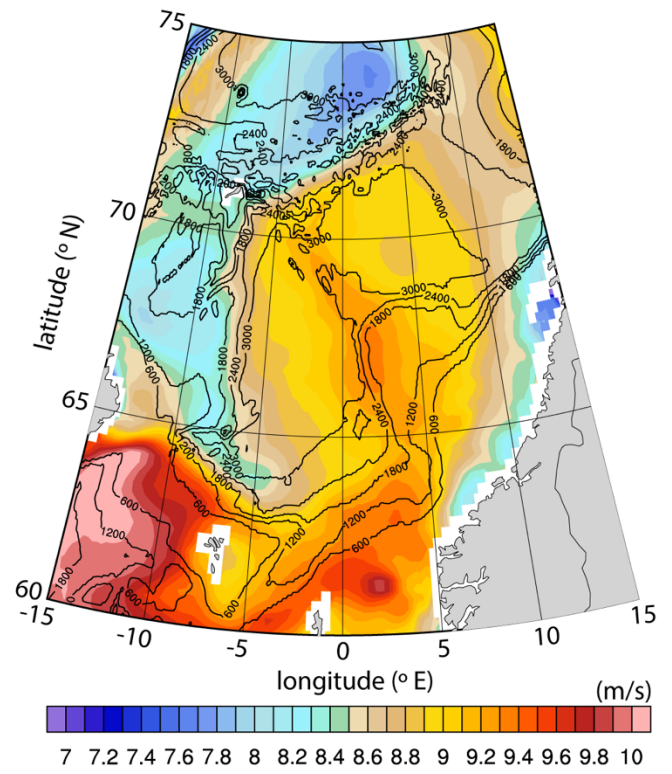


**Figure 2: First three EOF modes of deseasoned and detrended ERA Interim MSLP (1991-2015) multiplied by the standard deviation of the corresponding principle components. The number in right corner of each panel indicates the percentage of variance explained.**

(a) SST



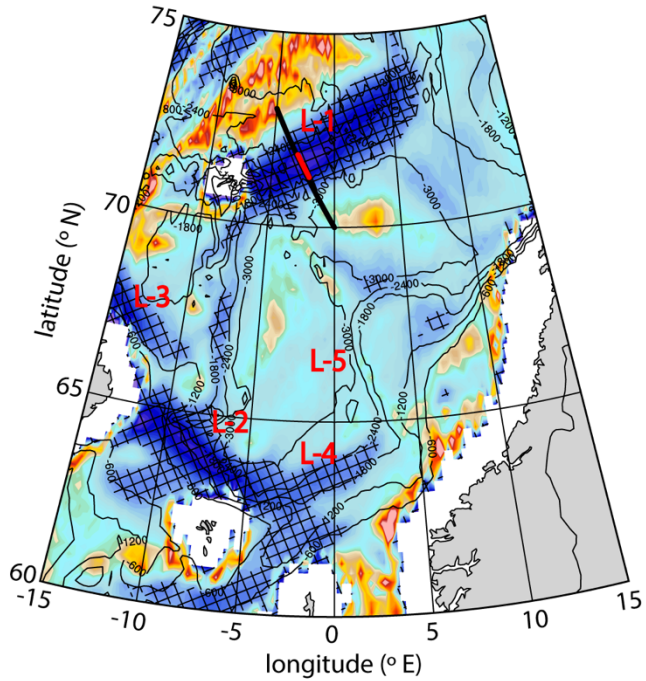
(b) Wind Speed



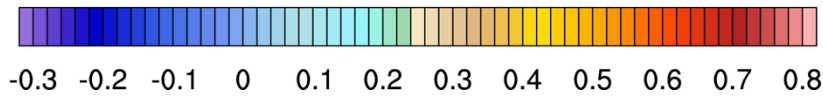
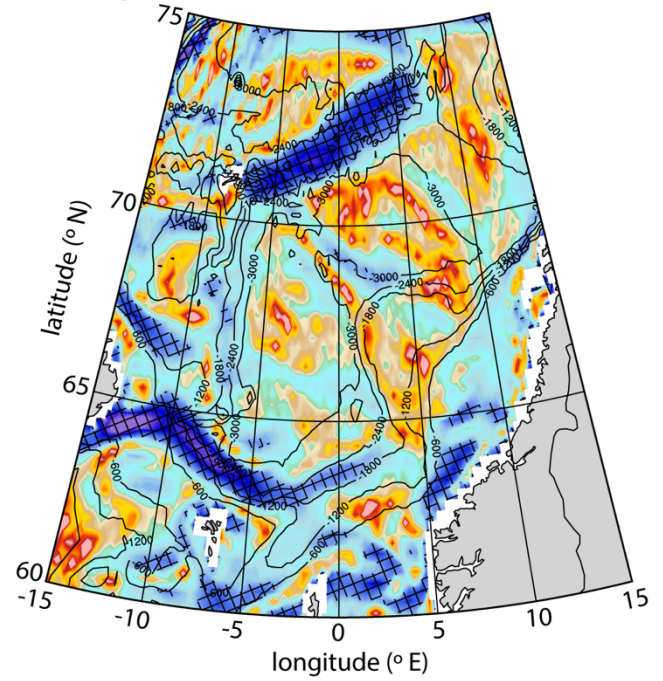
**Figure 3: Climatological mean (2002-2009) (a) AMSRE SST (°C) and (b) QuikSCAT wind speed (m/s). Black isobaths are drawn for every 600 m.**

5

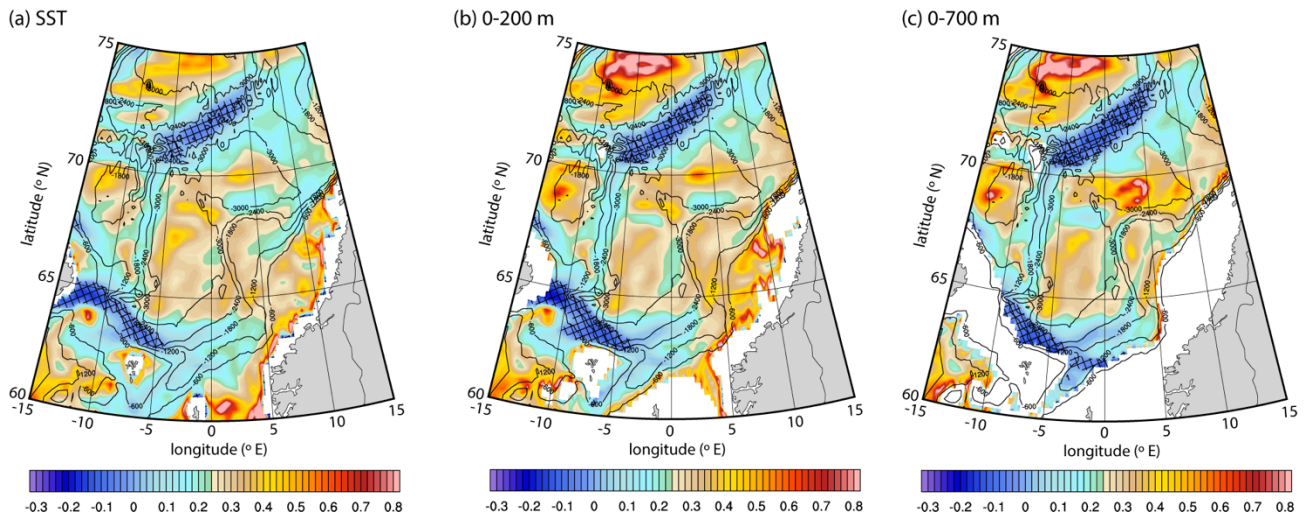
(a) SST



(b) Wind speed



5 **Figure 4: Singularity exponents estimated from the climatological mean (2002-2009) (a) AMSRE SST and (b) QuikSCat wind Speed. Black isobaths are drawn for every 600 m. In panel a, the bold black line shows the location of the vertical section across the Mohn Ridge shown in Figures 7, 8 and 10. The position of the core of the AF shown in Fig. 7 is marked as red over the bold black line. Locations 1, 2, 3,4 and 5 are represented respectively by L-1, L-2, L-3, L-4 and L-5. Negative values are highlighted (black stripes).**



5 **Figure 5: Singularity exponents estimated from TOPAZ (a) SST, (b) upper 200 m and (c) upper 700 m depth averaged potential temperature for the time period 1991-2015. Black isobaths are drawn for every 600 m. Regions shallower than 200 m and 700 m are masked respectively in panels b and c. Negative values are highlighted (black stripes).**



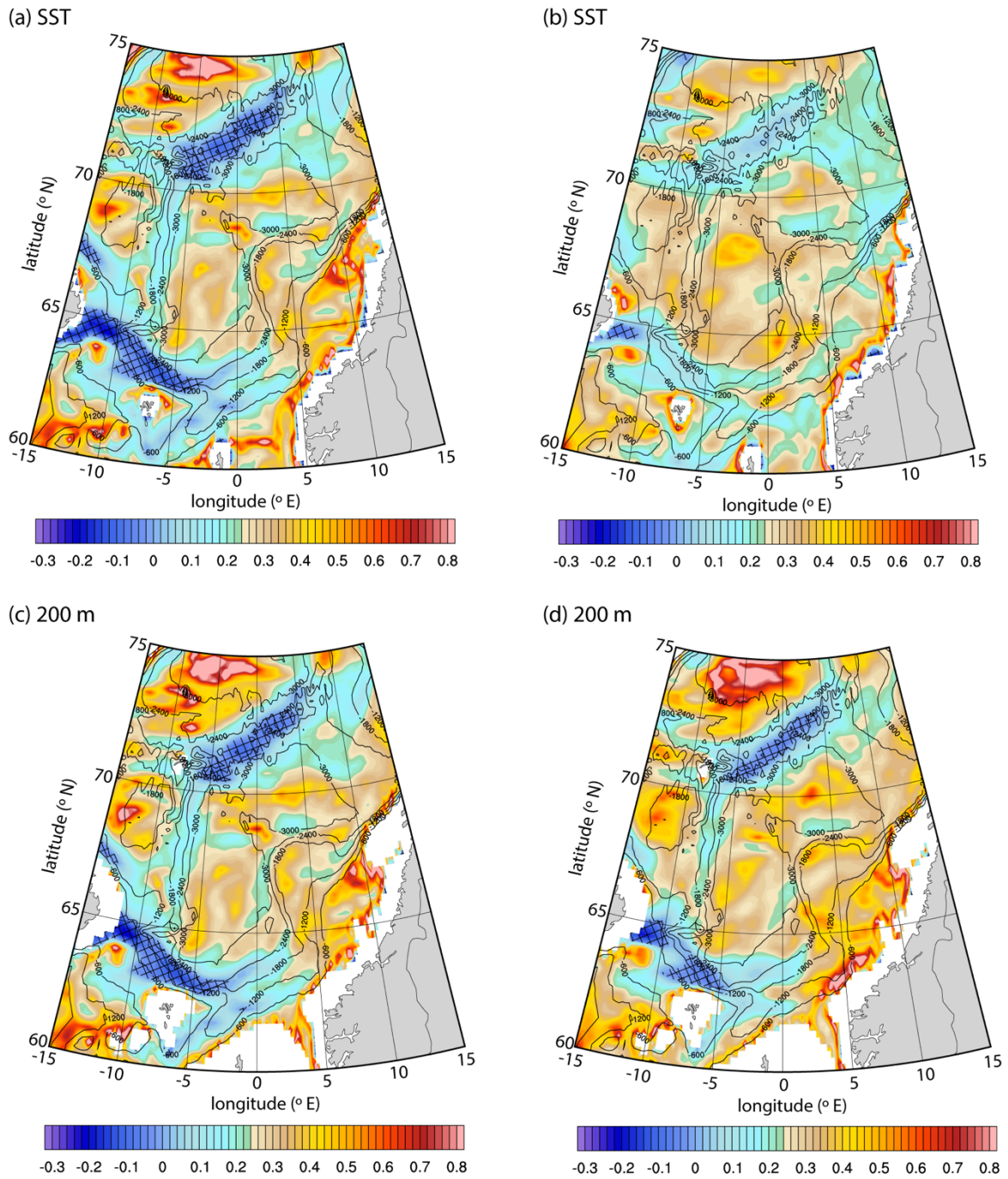
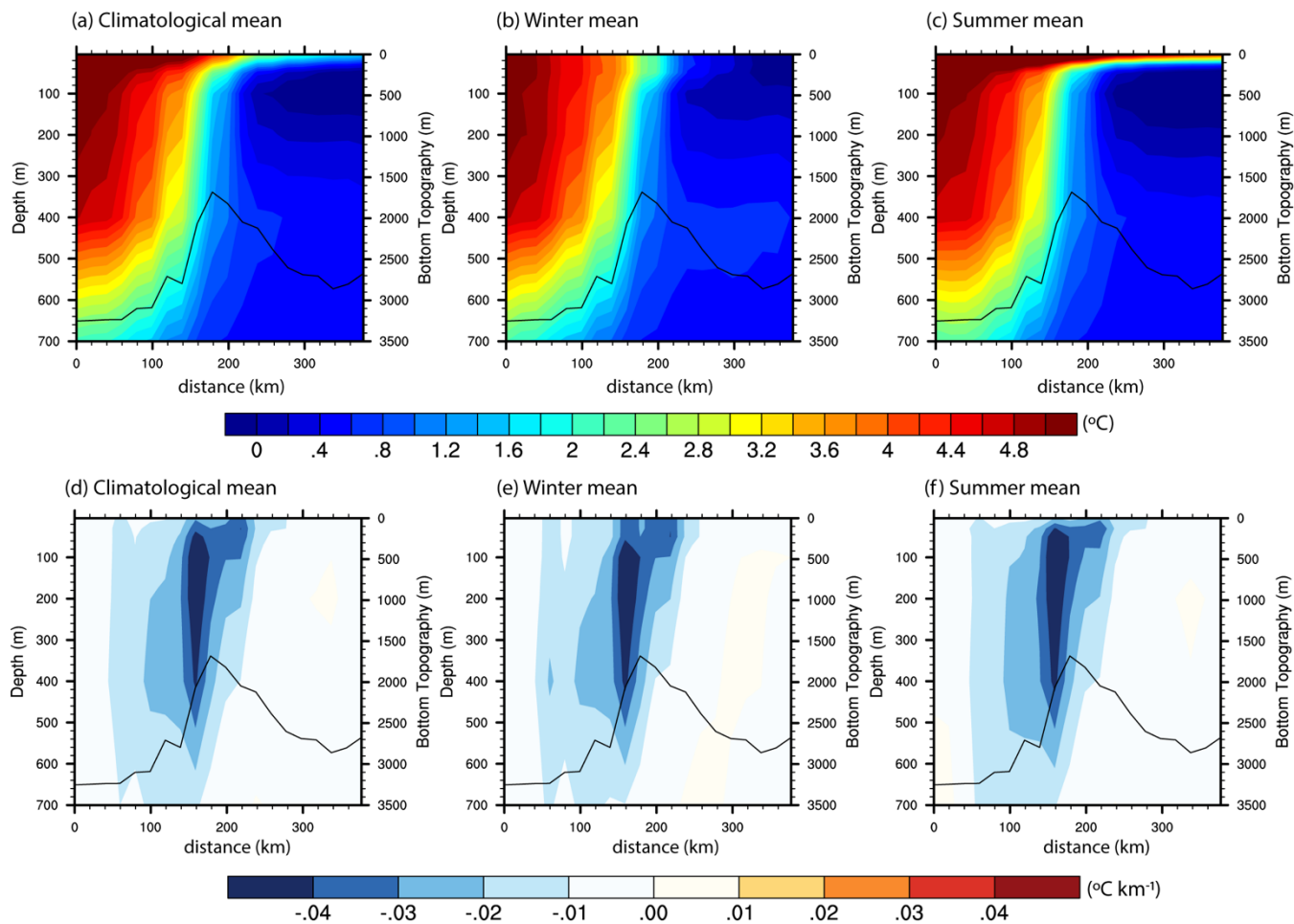


Figure 6: Singularity exponents estimated from TOPAZ (a-b) SST and (c-d) 200 m potential temperature for (a, c) winter (DJF) and (b, d) summer (JJA) for the time period 1991-2015. **Negative values are highlighted (black stripes).**



**Figure 7: Temperature (a-c) and its horizontal gradient (d-f) along the hydrographic section across the Mohn Ridge. Climatological mean (a, d), winter (b, e) and summer (c, f). The bottom topography along the section is indicated by the black contour.**

5

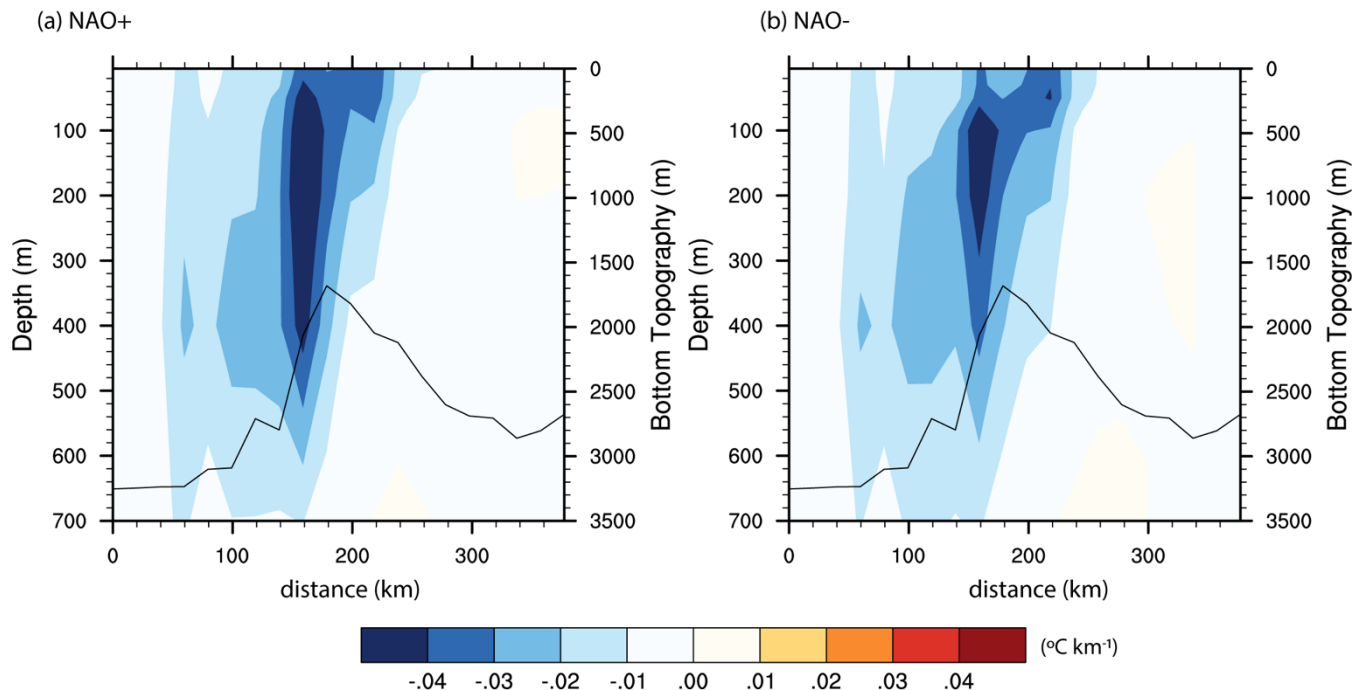


Figure 8: Gradient in the mean potential temperature ( $^{\circ}\text{C} / \text{km}$ ) along the hydrographic section across the Mohn Ridge during (a) NAO+ and (b) NAO-. The bottom topography along the section is indicated by the black contour.

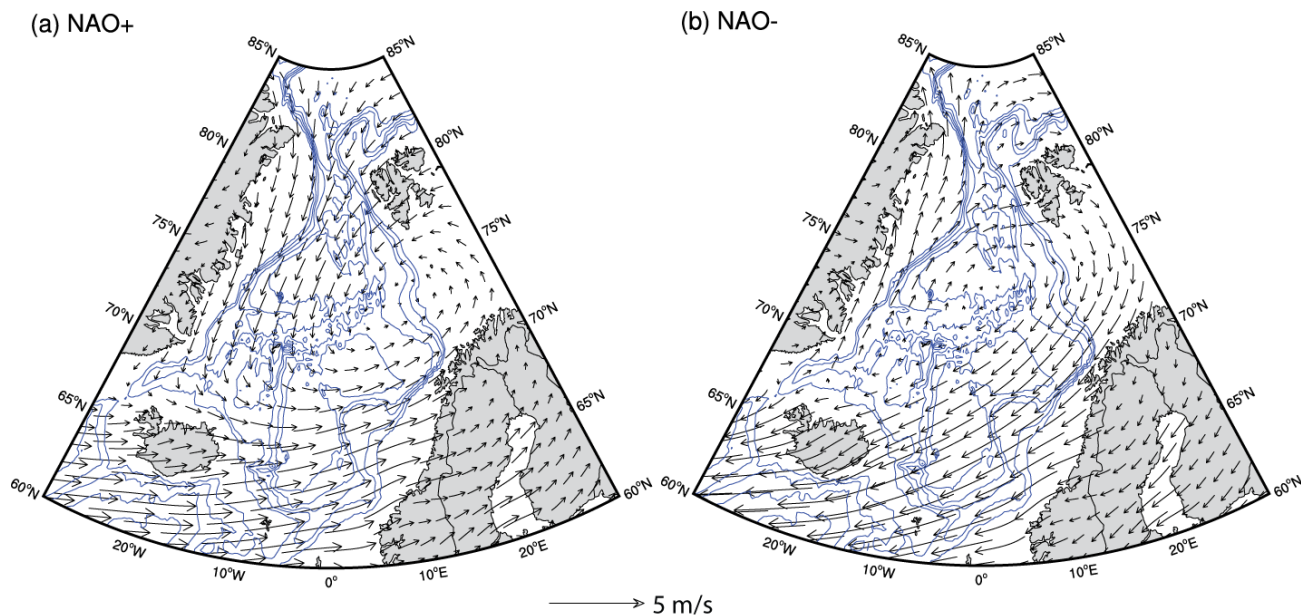
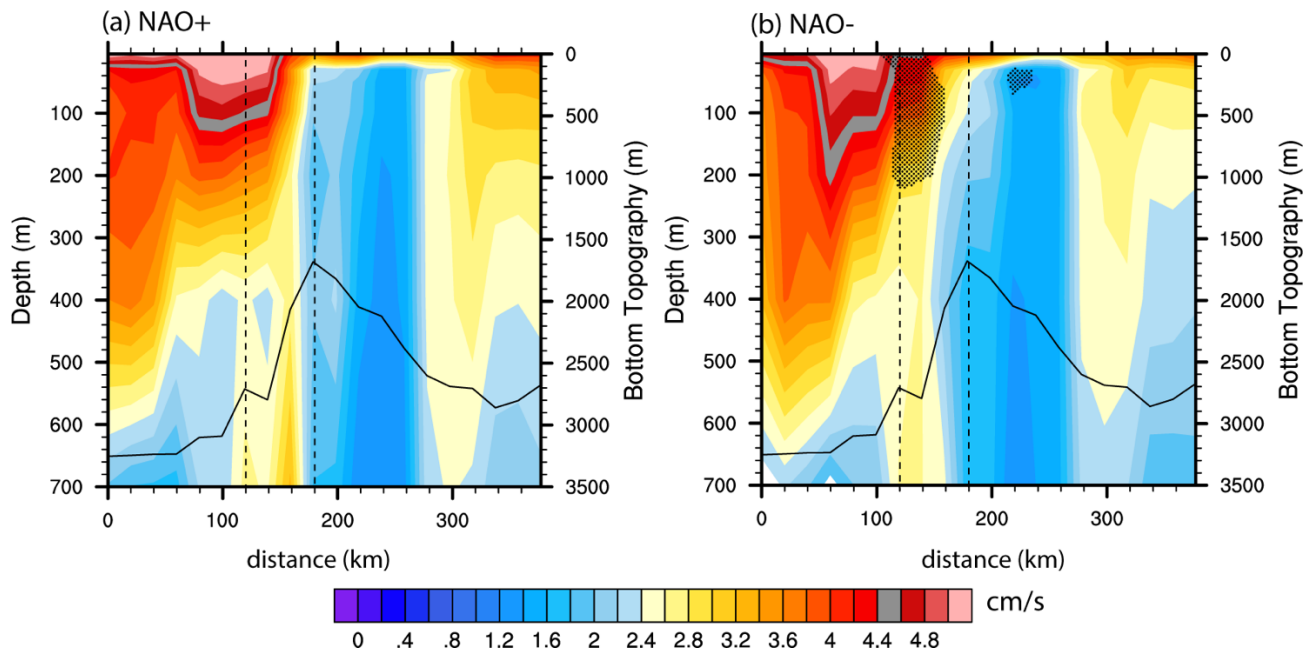


Figure 9: Composite map of anomalous winds (vectors), during (a) NAO+ and (b) NAO-. Anomalies are computed using monthly climatology fields for the period 1991-2015. Blue isobaths are drawn for every 600 m. **Only significant anomalies (10% significance level) are shown.**

5



5 **Figure 10: Composite of currents speed (cm/s) along the hydrographic section across the Mohn Ridge during (a) NAO+ and (b) NAO-. The dashed vertical lines show the position of the core of the AF. Black striped region in panel b indicates the region where the composite mean speed is significantly different from the climatological mean speed at 10% significance level.**

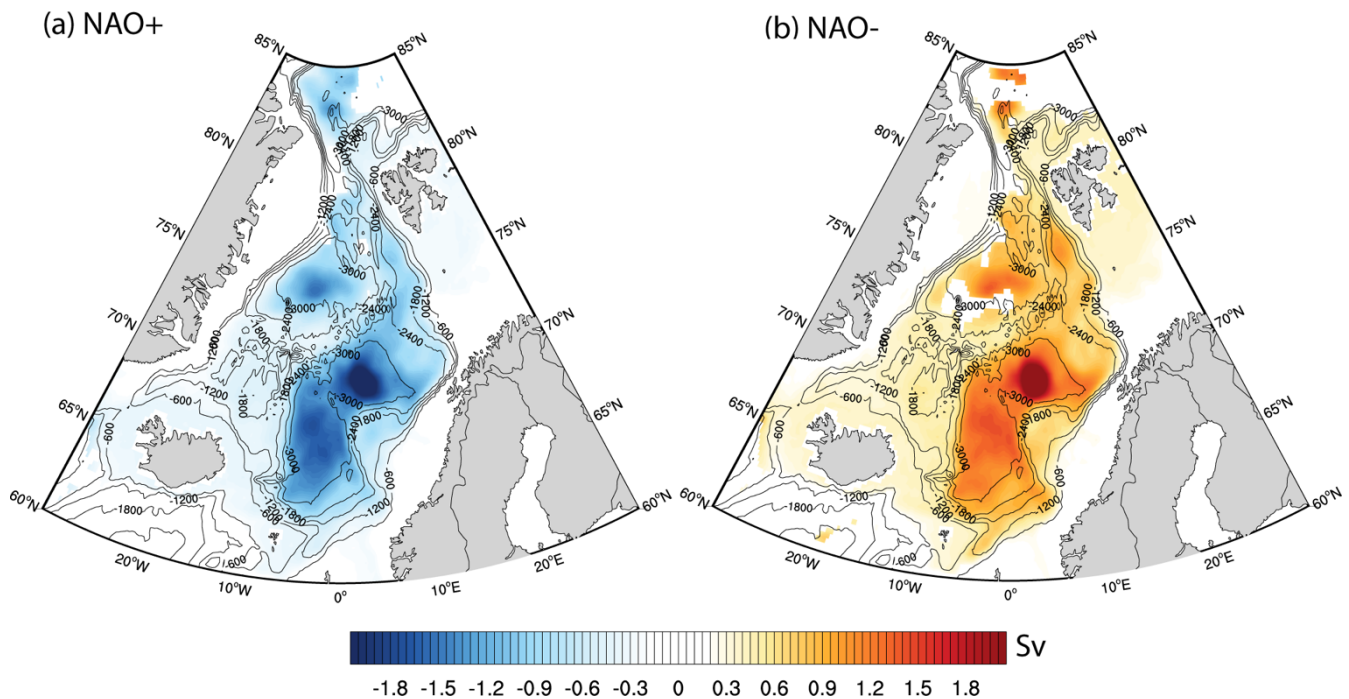


Figure 11: Composite map of anomalous BSFD, during (a) NAO+ and (b) NAO-. Black isobaths are drawn for every 600 m. Anomalies are computed using monthly climatology fields for the period 1991-2015. Only significant anomalies (10% significance level) are shown.

5

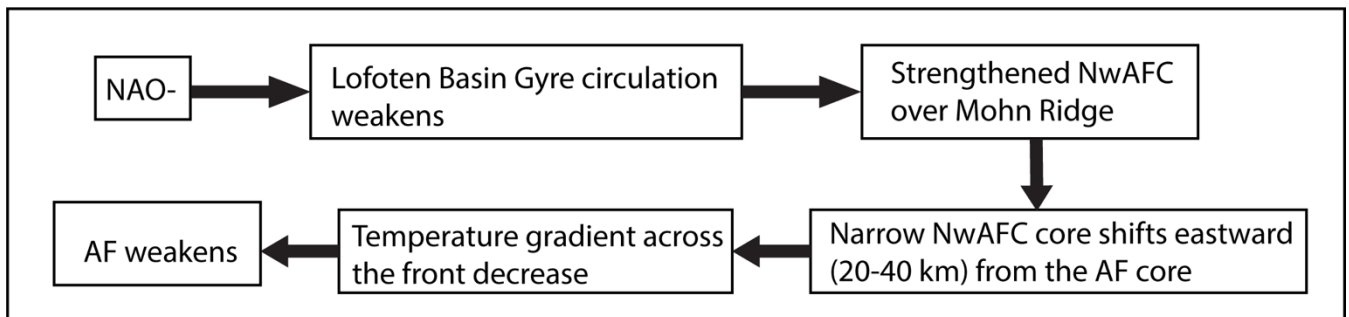
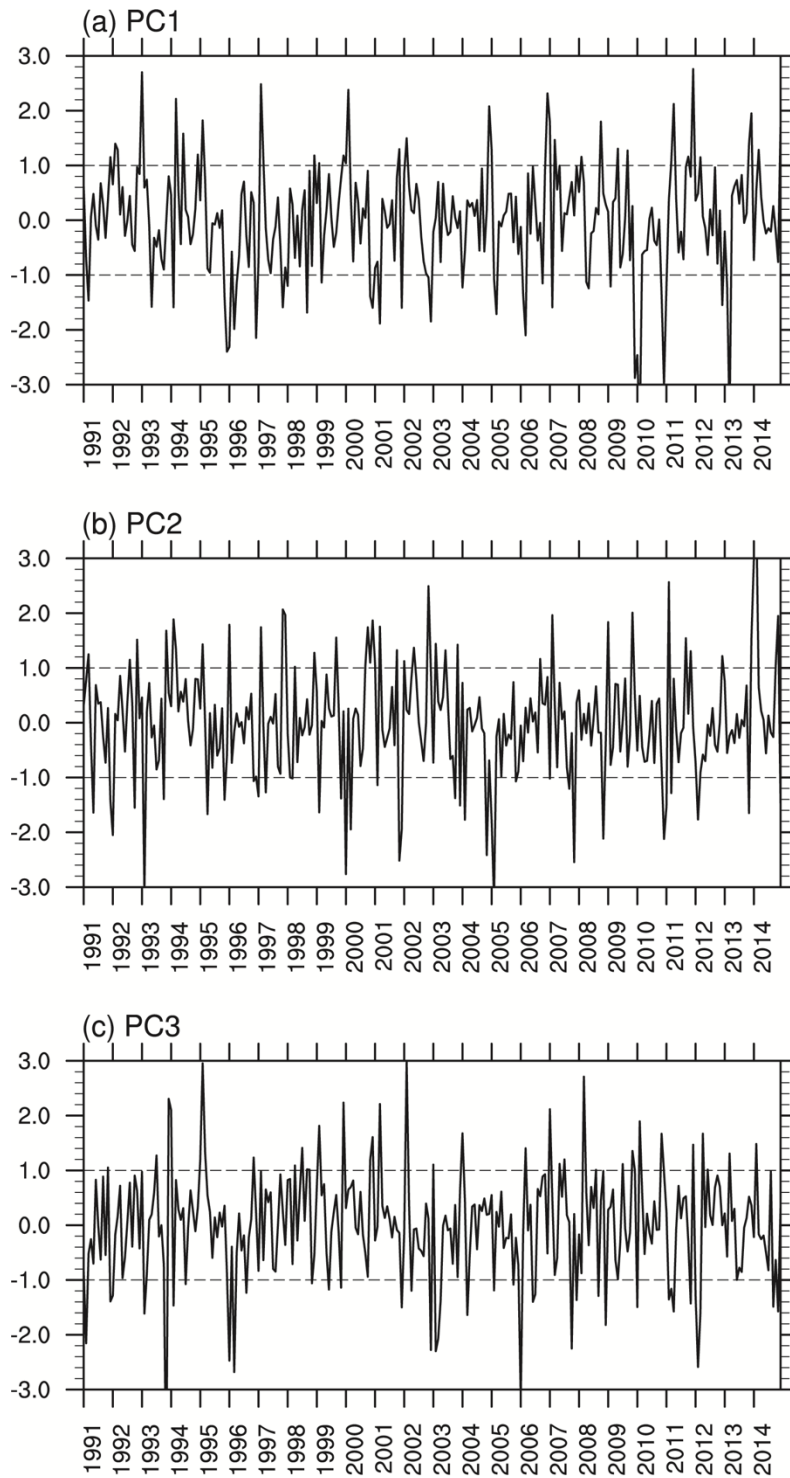
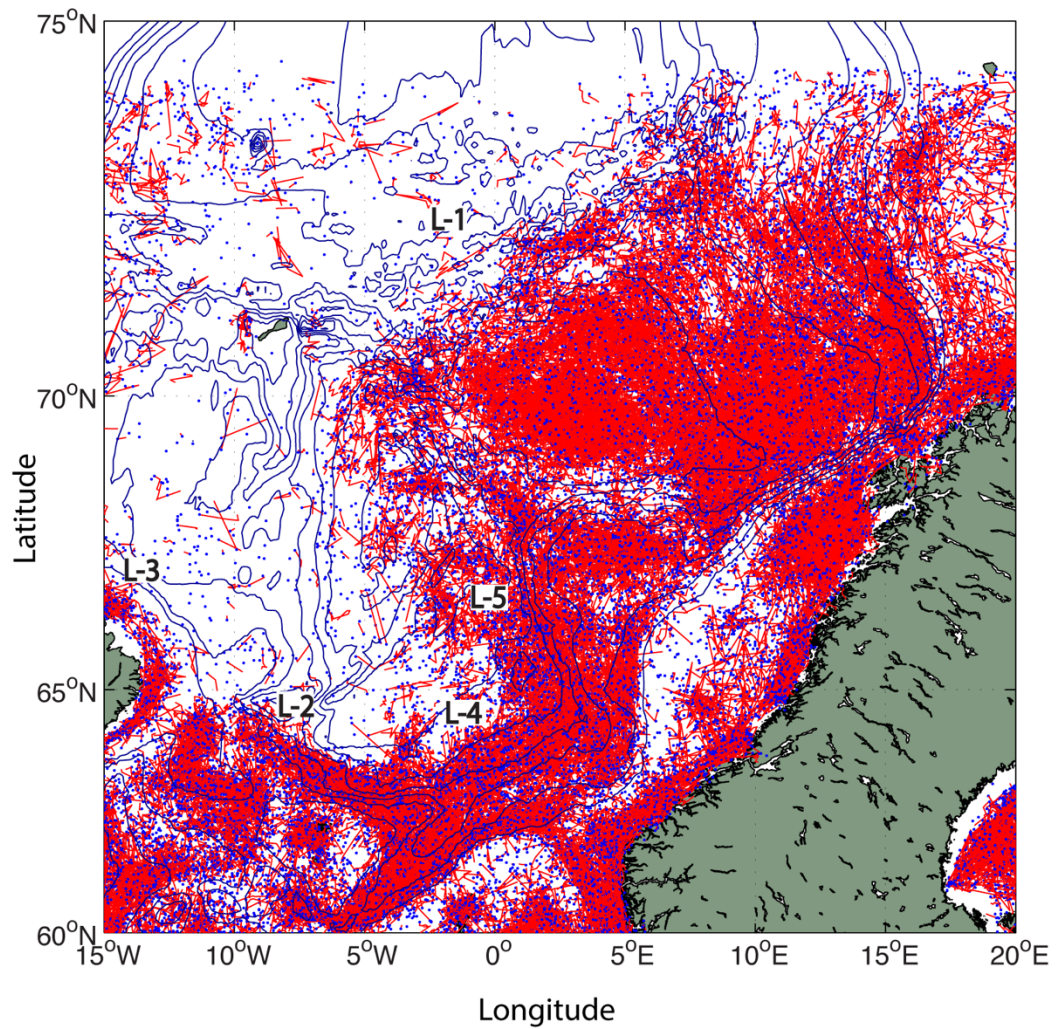


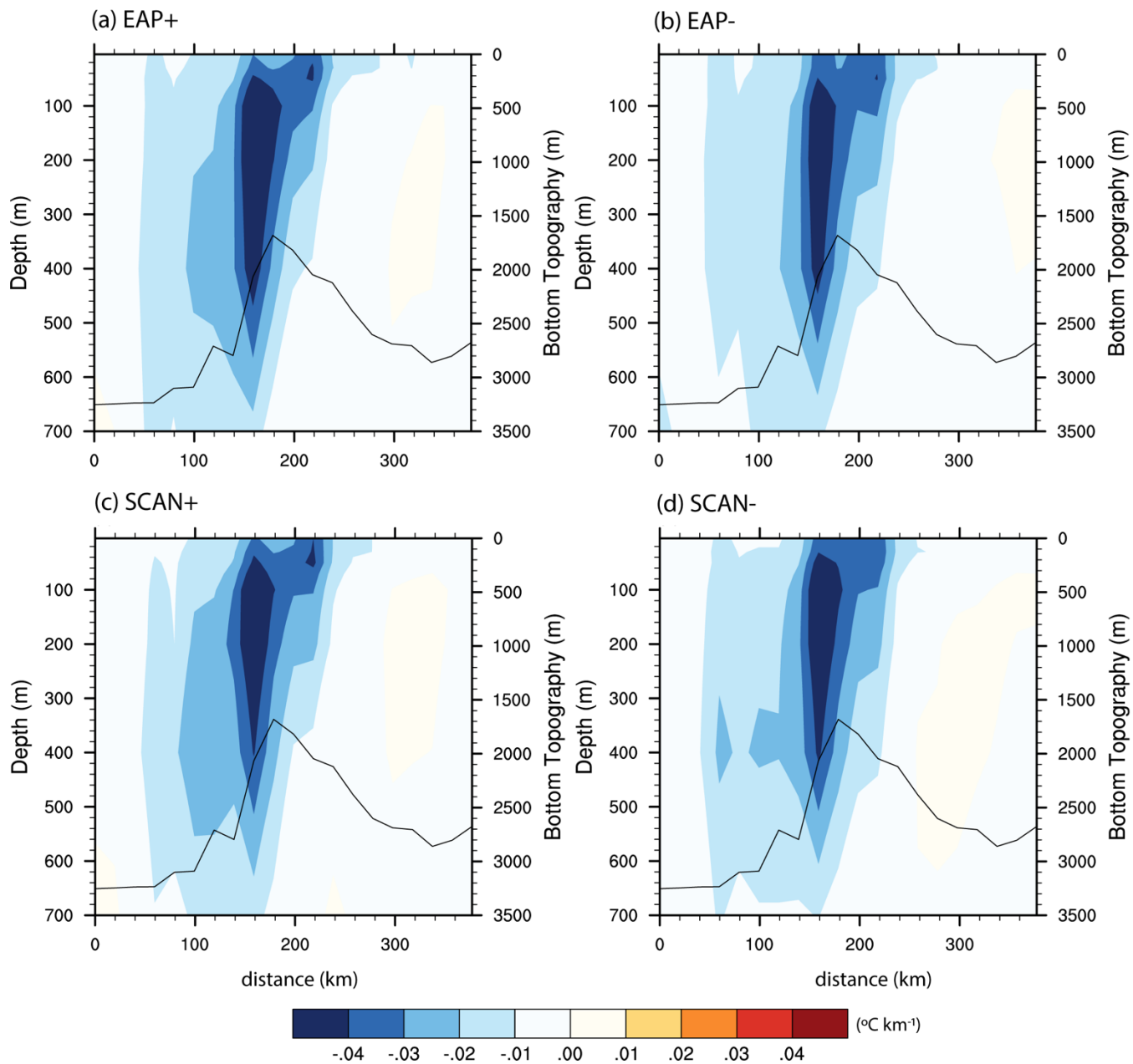
Figure 12: Graphical representation of the different processes associated with the weakening of the AF during NAO-.



**Figure S1: The principal component time series (standardized) of the first three modes of MSLP shown in Fig 2.**



**Figure S2: Tracks of all detected mesoscale eddies in the Norwegian Sea from the data obtained from Raj et al. (2016). Blue dots indicate the location of eddy generation. Locations 1, 2, 3, 4 and 5 are represented respectively by L-1, L-2, L-3, L-4 and L-5.**



5 **Figure S3: Gradient in the mean potential temperature ( $^{\circ}\text{C}/\text{km}$ ) along the hydrographic section across the Mohn Ridge during positive (left panels) and negative (right panels) phases of (a, b) EAP and (c, d) SCAN. The bottom topography along the section is indicated by the black contour.**