

Dear Referees,

All your remarks about the English and about the presentation have been considered. The document has been reviewed by a native speaker. Sorry to not take the time to do that in the previous releases.

About the 2 remarks :

- The flagging approach : The idea is not to appropriate a work on flagging that has been done by IFREMER (F. Gohin). The flagging is part of the source code that was provided by IFREMER. However, as suggested, it is good to clarify our positioning (section 2.2 has been modified in this way).
- The algorithms used: It seems the section 2.1 with the information about the new release was misleading. I confirm we are using the 3 algorithms (taking benefit of CI since Nov 2018). So, we have slightly modified the introduction to better introduce the section 2.1 where it is explained that when using OC5, we are in fact using mainly OCX which has been adapted for some range of values.

Please find below the new release with and without track changes. The improvement about figures is not part of the track change, but all have been revisited.

Thank you again for your contributions.

Philippe Garnesson on behalf the authors.

The CMEMS GlobColour Chlorophyll-a Product Based on Satellite Observation: multi-sensor merging and flagging strategies.

Philippe Garnesson¹, Antoine Mangin¹, Odile Fanton d'Andon¹, Julien Demaria¹, Marine Bretagnon¹

¹ACRI-ST, Sophia-Antipolis, 06904, France

5 *Correspondence to:* Philippe Garnesson (Philippe.garnesson@acri-st.fr)

Abstract. This paper concerns the GlobColour merged chlorophyll-a products based on Satellite Observation (SeaWiFS, MERIS, MODIS, VIIRS and OLCI) and disseminated in the framework of the Copernicus Marine Environmental Monitoring Service (CMEMS).

10 This work highlights the main advantages provided by the Copernicus GlobColour processor which is used to serve CMEMS with a long time series from 1997 to present at Global level (4 km of spatial resolution) and for the Atlantic level 4 product (1 km).

To compute the merged chlorophyll-a product, two major topics are discussed:

- The strategy for merging remote sensing data; for which two options are considered. On the one hand, a merged chlorophyll-a product computed from a prior merging of the remote-sensing reflectance of a set of sensors. On another
15 hand, a merged chlorophyll-a product resulting from a combination of chlorophyll-a products computed for each sensor.
- The flagging strategy used to discard non-significant observations (e.g. clouds, high glint...)

20 These topics are illustrated by comparing the CMEMS GlobColour products provided by ACRI-ST (Garnesson et al., 2019) with the OC-CCI/C3S project (Sathyendranath et al., 2018). While GlobColour merges chlorophyll-a products with a specific flagging, the OC-CCI approach is based on a prior reflectance merging before chlorophyll-a derivation and uses a more constrained flagging approach.

Although this work addresses these two topics, it does not pretend to provide a full comparison of the two datasets, which will require a better characterisation and additional inter-comparison with in situ data.

1 Introduction

25 The Copernicus Marine Environmental Service (CMEMS) provides regular and systematic reference information on the physical state and on marine ecosystems for global oceans and for European regional seas (temperature, currents, salinity, sea surface height, sea ice, marine optical properties, etc.).

This capacity encompasses satellite and in situ data-derived products, the description of the current situation (analysis), the prediction of the situation a few days ahead (forecast), and the provision of consistent retrospective data records for recent years (re-analysis).

The Ocean Thematic Assembly Centre (OCTAC) is part of CMEMS and is dedicated to the dissemination of Ocean Colour (OC) products derived from Satellite based remote sensing (Le Traon et al., 2015). OCTAC provides Global and Regional (Arctic, Atlantic, Baltic, Black Sea and Mediterranean) products for the period spanning from 1997 to present.

For Global products, the Copernicus GlobColour processor is used operationally since 2009 to serve CMEMS and its precursors (a series of EU research projects called MyOcean).

The GlobColour processor has initially been developed in the framework of the GlobColour project started in 2005 as an ESA Data User Element (DUE) project to provide a continuous data set of merged L3 Ocean Colour products. Since the beginning of the project, GlobColour has been continuously used by more than 600 users worldwide. This effort has been continued in the framework of CMEMS to derive (among others) the chlorophyll-a Ocean Colour core product.

Many algorithms have been published to retrieve chlorophyll-a from reflectance data derived from satellite observations (e.g., Muller Karger et al., 1990, Aiken et al., 1995, Morel 1997, O'Reilly et al., 1998, 2000). Since early 2018, the CMEMS GlobColour chlorophyll-a product is based on the merging of 3 algorithms:

- the CI approach (Hu, 2012) for oligotrophic water (70% to 80% of ocean),
- the common approach OCx (OC3, OC4, OC4Me depending on the sensor) for mesotrophic water
- the OC5 algorithm (Gohin et al., 2002) for complex waters, which is of specific interest for end users who manage complex waters along the coastal zone.

It should be noted that the OC5 algorithm is based on a lookup table implementation which handles both complex and mesotrophic waters (see section 2.1 Merging approach)

The work presented here highlights the conceptual advantage of the CMEMS Copernicus GlobColour processor with regards to flagging and merging of sensors. In the following sections, results are described and illustrated with comparison to the OC-CCI products.

The comparison between GlobColour and OC-CCI is especially relevant since the same chlorophyll-a algorithms (CI and OC5) are used by the two initiatives: it implies the differences in performance mainly result from the merging strategies and flagging schemes.

2 Methods

2.1 Merging approach

The CMEMS GlobColour merged chlorophyll-a product relies at present on the following sensors: SeaWiFS (1997-2010), MERIS (2002-2012), MODIS-Aqua (2002-present), VIIRS-NPP (2012-present) and OLCI-S3A (2016-present).

5 The long time series from 1997 to present relies on different sensors, observing the Earth at different spectral bands (and different bandwidth), with different acquisition times (so different atmospheric and sun conditions), and with different spatial resolutions from about 300 meters to 1 km at nadir (larger on the swath border). Main characteristics of the sensors/bands used for CMEMS are summarized in Table 1. VIIRS-NOOA20 and OLCI-S3B will be ingested in the operational products in 2019. It should be noted that the global chlorophyll-a product is at present provided at a 4km spatial resolution, but the objective in
10 the coming years is to provide, at least along the coast, a chlorophyll-a product at 300 meters resolution.

All sensors used observe the Earth along a helio-synchronous orbit. Figure 1 displays the coverage of a single sensor which is unable to provide the full Earth coverage over a single day (Maritorena et al., 2010). VIIRS provides a larger swath than the other sensors, but the coverage is incomplete because of sun glint.

When more than one sensor is available for the same period it is possible to take advantage of their complementarity and
15 redundancy for a number of benefits. For instance, since they may record the same spot at different times of the day, morning haze can impact one sensor and not another (Toole et al., 2000).

To compute a multi-sensor chlorophyll-a product, mainly two merging approaches exist.

- A first approach (used by OC-CCI) is based on merged Reflectance of Remote-Sensing (RRS) computed in a prior step and then used to derive chlorophyll-a. Based on a band shifting and bias correction approach, merged RRS for the standard
20 SeaWiFS wavelengths (412, 443, 490, 510, 555 and 670 nm) are provided. The blended chlorophyll-a algorithm used in the OC-CCI v3.1 release attempts to weight the outputs of the best performing algorithms based on the water types in presence.
- Conversely, in a second approach (used by CMEMS GlobColour), chlorophyll-a is computed in an initialisation step for each sensor using its specific characteristics (spectral band, resolution), and then the mono-sensor chlorophyll-a products
25 are resampled and merged. The continuity of the different algorithms was initially obtained using a water classification approach (Saulquin al., 2018). Starting in early 2018, a new approach has been adopted:
 - First, the continuity of algorithms used for mesotrophic and complex waters are guaranteed by the OC5 lookup table. The OC5 lookup table is initialized using the OC3 and OC4 coefficients from agencies and then empirically adjusted when the green band exceeds a given threshold (see Gohin et al., 2002 for details).
 - Then, the CI and OC5 continuity is ensured using the same approach as NASA. When the chlorophyll-a concentration
30 is in the range 0.15 to 0.2 mg.m^{-3} , a linear interpolation of OC5 and CI is used. This provides continuity between the two algorithms.

2.2 Flagging approach

Inputs of the Copernicus GlobColour processor are the level 2 products provided by the space agencies. To derive chlorophyll-a, the input level 2 reflectance and input flags are used (level 2 provides flags/indicators about the quality of the reflectance at pixel basis). For instance, a pixel can be impacted by a sun glint effect. In such case reflectance data is available, but it is recommended by agencies not to use it for further processing. Each space agency publishes flagging data based on its own strategy which has been designed to guarantee the quality of its products. The drawback is that for complex water (especially along coastal area), a large proportion of the data is flagged, resulting in level 3 products with limited coverage.

Since early 2018, the GlobColour processor has been modified to apply a lower level of flagging resulting in a better spatial and temporal coverage. This modification is inherited from the OC5 algorithm (Gohin et al., 2002) which was initially designed for coastal monitoring. OC5 uses its own strategy to flag data: the algorithm uses both the official flags and empirical thresholds that have been tuned for each sensor (e.g. the OC5 sun zenith angle (SZA) is set to 78° instead 70°).

The OC5 flagging strategy is used by the GlobColour sensor approach but not by the OC-CCI approach which uses a specific OC5 lookup table applied on the merged reflectances.

Concerning OC-CCI, the flagging strategy for release v3.1 depends on the sensor. When the reflectance data originates from level 2 data provided by the agency (SeaWiFS and VIIRS-SNPP) the official flags are applied. When the POLYMER algorithm (Steinmetz et al. 2011) is used for atmospheric correction (MERIS and MODIS) a generic pixel identification and classification algorithm called Idepix is used (part of BEAM software) instead the standard POLYMER flagging (which is too permissive).

3 Results and Discussion

3.1 The reflectance merging approach

The reflectance merging approach is used by OC-CCI to derive the global Chlorophyll-a OC-CCI timeseries and by the regional CMEMS products. As pointed by Volpe et al. (2019) for the regional Mediterranean products, the band merging approach has the advantage of providing a homogeneous dataset of spectral reflectance from which can be derived, in full consistency for the long term, different environmental parameters, among them chlorophyll-a products but also light attenuation, Kd, Suspended Particulate Matter and others.

However, the consistency of the long-time series provided by OC-CCI suffers from some limitations. Figure 2, from OC-CCI Product user guide, intercompares the different releases of the OC-CCI time series. It shows that the V2 release was strongly impacted by the MERIS sensor stopping operations in April 2012 (see Table 1). The V3 release demonstrates a trend depending on the sensors used: It increases for the period 2002-2010 (based on the contributions of SeaWiFS, MODIS and MERIS and decrease for the period 2012-2017 as only MODIS and VIIRS-SNPP are used).

On a regional scale, strong limitations on the consistency of the time-series and trends derived are observed as illustrated for the Arctic on Figure 3. Strong variations are also observed throughout the years. For instance, before 2002, only SeaWiFS is available, limiting the quality of the output data. Then the end of the MERIS lifetime and start of VIIRS SNPP in 2012 causes the same trend as described above.

- 5 It is known that both MODIS and VIIRS instruments have major calibration issues starting in about 2012. VIIRS-SNPP degradation has been identified a few months after launch and MODIS, while designed for a lifetime of 7 years, is still operating after 17 years. MODIS calibration has required regular modifications to adjust the temporal trends (R2009.1, R2010.0 and especially R2012.0). At the end of 2017, a NASA reprocessing called R2018 has significantly alleviated VIIRS issues and more importantly corrected the MODIS drift with a new procedure to regularly update the MODIS calibration (available about
10 3 months after acquisition).

It should be noted that this new NASA processing (called R2018.1) does not yet benefit the full OC-CCI series (only for the recent OC-CCI v3.1 extension until June 2018) but a new OC-CCI v4 release is scheduled for 2019.

- It should also be noted that the R2018 dataset still suffers from issues which will continue to impact future reprocessing
15 attempts. Indeed, VIIRS RRS443 and RRS488 increase regularly since 2012 while MODIS is comparatively more stable. Figure 4 shows the relative RRS443 difference between VIIRS and MODIS (in %) based on the monthly NASA R2018 global products at 4km. VIIRS suffers from a significant drift since its launch as illustrated with January evolution for years 2012, 2016, 2019. In January 2012, 90 % of MODIS pixels at global level were higher than VIIRS-SNPP, while in January 2019 100% of VIIRS-SNPP pixels were higher than MODIS.

- 20 Another major difficulty for merging RRS for the different sensors is that the observed bias varies according to the region and season considered as previously shown with artificial trends along the years.

Figure 5 shows the inter-comparison of RRS at about 670nm between VIIRS-SNPP and OLCI-S3A compared to MODIS. It shows very important bias (e.g 82% of the pixels of OLCI exceeds a relative difference of 20%), and in the case of MODIS, the equatorial zone has a different behaviour than high latitude.

- 25 Impact of such reflectance merging on chlorophyll-a is showed on the Figure 6. For the year 2018, it shows limitation in its ability to handle clear water (the color scale has been set to the range 0.01 to 0.2 mg/l): discontinuities between tracks of the sensor clearly appear.

The previous illustrations demonstrate the limitation of the assumption of consistency along the OC-CCI time series (and at daily basis on Figure 6) but it is clear that the GlobColour products are also impacted by the quality of input RRS upstream.

- 30 Figure 7 shows the month to month evolution of the chlorophyll-a median concentration computed at global level for OC-CCI and GlobColour products. To make the two datasets inter-comparable, monthly statistics are computed on common pixels. The yellow sections on the plot shows the change of sensor combinations. Trends and gaps should be carefully interpreted while taking into account the sensor used. The oscillations of the median through time are linked to the sensor coverage which is moving from North to South for high latitude (due to the variation of the sun zenith angle which render measurements in winter

unfeasible). At the beginning of SeaWiFS (Sept 1997 to mid-1998) data was only partially available, resulting in limited coverage. When MODIS and MERIS started in 2002 spatial coverage was improved. It means that the gap at this date does not correspond to a change in the continuity of the time-series but a change in the spatial coverage of pixels used to compute the median. The higher values for OC-CCI are most likely linked to the NASA R2018 reprocessing which is used by GlobColour but not yet by OC-CCI. During this R2018 reprocessing, MOBY (in situ data) and SeaWiFS calibration were also improved with a resulting decrease in chlorophyll-a of order 10% for all sensors.

3.2 The chlorophyll-a merging approach

This approach is the one used by the GlobColour processor for the CMEMS products and is not designed to solve the issues linked to the upstream data. However, the sensor approach (instead starting from merged RRS) has crucial advantages compared to the previous one:

- When a new sensor (or a new reprocessing of an existing sensor) becomes available, limited efforts are required because the bias correction is limited to the chlorophyll-a field of the considered sensor. For the merged reflectance approach, the bias correction of 5 reflectance measurements and interpolations is required to simulate the band 510 (this band is not available for VIIRS-SNPP, VIIRS-JPSS1 and MODIS (see Table 1)).
- For the CI algorithm, the GlobColour processor benefits from the efforts of the space agencies to adjust the coefficients accounting for the high variability of the band 670 (
- Figure 5) for each sensor.
- It should be noted that the chlorophyll-a algorithm is applied on the level 2 sensor grid while in the merging approach it is applied on the common grid required to merge the reflectance. The use of sensor level 2 grid guarantees that the algorithm is applied on reflectance with consistent time observations. On the other hand, when reflectance is re-projected on a common grid, it results in mixing pixels observed with an observation shift that can raise to 4 hours (see Table 1) in the case of MODIS and VIIRS-JPSS1). This consideration is of minor significance in the case of the Global products with a spatial resolution of 4 km but will become more significant when product will be provided at a resolution of 300 meters.

3.3 The flagging approach

When compared to the official agencies' recommendations, the OC5 flagging strategy significantly improves the spatial coverage of the product especially for NASA sensors. In the framework of CMEMS we have estimated that at sensor level the coverage is increased by a factor of 3.2 for VIIRS-NPP, 2.6 for MODIS-a , 1.6 for MERIS, 2 for SeaWiFS, and 1.3 for OLCI-S3A.

Therefore, for the merged product, GlobColour chlorophyll-a coverage is improved by a factor 2.8 compared to OC-CCI. For the period 2002-2012 the increase in coverage is limited to a factor 1.5. Figure 8 and Figure 9 show the result of the flagging strategy depending the OC-CCI or GlobColour approach.

Figure 10 shows that the combination of the usage of this flagging strategy and OLCI leads to a considerable improvement of the coverage without creating additional artefacts. As of today, both products benefit of the latest NASA R2018 reprocessing.

Figure 11 shows that, in certain cases, the OC-CCI coverage could be better than the GlobColour one. However, in this example the OC-CCI approach is affected by significant noise, potentially due to cloud contamination. This noise might be due to level 2 inputs. Indeed, while GlobColour is using the level 2 from agencies, OC-CCI starts from level 1, applies POLYMER algorithm to MERIS and MODIS along with a specific flagging.

4 Conclusion

This work presents different ways to merge sensors and different flagging strategies to estimate the daily chlorophyll-a field.

Compared to the chlorophyll-a merging approach, the key advantage of the reflectance merging approach is that it provides a homogeneous dataset of spectral reflectance useful when deriving the chlorophyll-a product using a common algorithm. One could expect a better consistency for the long time series. However as illustrated above, this assumption is not true since the homogeneity of the spectral reflectance is at present not obtained (spatial and temporal discontinuities exist).

It should be underlined that this limitation also exists with the sensor chlorophyll-a merging approach: in both approaches if a temporal trend is observed it should be carefully analysed.

The present findings highlight the advantage of a Chlorophyll-a per sensor merging approach compared to the reflectance merging approach:

- The sensor approach facilitates the ingestion of a new sensor or a new reprocessing. Consequently, NASA R2018 and OLCI-S3A have been successfully introduced in April 2018 for the merged chlorophyll-a GlobColour chain but is not yet available in the other initiatives (OC-CCI or CMEMS regional product). The addition of VIIRS-NOOA20 (JPSS) and OLCI-S3B in the merged GlobColour chlorophyll-a product will occur in July 2019.
- It should be noted that the reflectance merging approach provides a limited set of six common spectral bands based on the SeaWiFS sensor. For more recent sensors (i.e. Modis, VIIRS-SNPP and VIIRS-JPPS1) only 5 native reflectance are available (see Table 1): the band at 510 nm is obtained by interpolation. Other extra bands from MERIS or MODIS or OLCI which are not part of the 6 bands are not usable in the reflectance merging approach (because the spatial complementarity of the sensors cannot be used at daily level and for the full time series). For the chlorophyll-a merging approach, when extra bands are available (i.e. MERIS, MODIS and OLCI) they can be used to improve the algorithm in the future. This perspective is already investigated to retrieve PFT from OLCI (e.g. Xi, 2018).

- The sensor approach provides an improved daily spatial coverage when OC5 is applied on the sensor reflectance (not on merged reflectance). For the period spanning from 2012 to present the spatial coverage is improved by an important factor (about 2.8) when compared to the OC-CCI product. Both open ocean and coastal areas are improved. It is required for many users involved in the EU Water Framework and Marine Strategy Framework Directive. To satisfy users interested in coastal data, a better spatial resolution (300 meters) is also required. From this point of view the chlorophyll-a merging approach is also more promising (algorithm can be applied on the level 2 track grid to limit the mixing of the pixels).

A better spatial coverage is also a key point to guarantee the quality of the CMEMS GlobColour chlorophyll-a “cloud free” product (called daily L4 in the CMEMS catalogue) which is based on a spatial and temporal interpolation of daily level 3 product. A better daily coverage limits the risk of artefact due to interpolation.

Acknowledgement

We thank Emmanuel Boss and another anonymous referee for their constructive comments which allowed us to improve the quality of this manuscript.

References

Aiken, J., Moore, G. F., Trees, C. C., Hooker, S. B., & Clark, D. K.: The SeaWiFS CZCS-type pigment algorithm. In S. B. Hooker, and E. R. Firestone (Eds.), SeaWiFS Technical Report Series, 29 : Goddard Space Flight Center 38 p., 1995

Garnesson, P., Mangin A., Bretagnon M. : Quality User Guide, Ocean Colour Production Centre, Satellite Observation GlobColour-Copernicus Products, <http://marine.copernicus.eu/>, 2019

Gianluca Volpe et al. Mediterranean ocean colour Level 3 operational multi-sensor processing, Ocean Science Ocean Sci., 15, 127–146, 2019 <https://doi.org/10.5194/os-15-127-2019>, 2019

Gohin, F., Druon, J.N. and Lampert, L.: A five channel chlorophyll concentration algorithm applied to SeaWiFS data processed by SeaDAS in coastal waters. International journal of remote sensing, 23(8), 1639-1661, 2002.

Hu, C., Lee, Z. and Franz, B.: Chlorophyll-a algorithms for oligotrophic oceans: A novel approach based on three-band reflectance difference. Journal of Geophysical Research: Oceans, 117(C1), 2012.

- Le Traon, P.Y., Antoine, D., Bentamy, A., Bonekamp, H., Breivik, L.A., Chapron, B., Corlett, G., Dibarboure, G., DiGiacomo, P., Donlon, C. and Faugère, Y.: Use of satellite observations for operational oceanography: recent achievements and future prospects. *Journal of Operational Oceanography*, 8(sup1), s12-s27, 2015.
- 5 Maritorena, S., d'Andon, O.H.F., Mangin, A. and Siegel, D.A.: Merged satellite ocean color data products using a bio-optical model: Characteristics, benefits and issues. *Remote Sensing of Environment*, 114(8), 1791-1804, 2015.
- Morel, A.: Optical properties of oceanic case 1 waters revisited. In *Ocean Optics XIII* (Vol. 2963, pp. 108-115). International Society for Optics and Photonics, February 1997.
- 10 Müller-Karger, F.E., McClain, C.R., Sambrotto, R.N. and Ray, G.C. (1990). A comparison of ship and coastal zone color scanner mapped distribution of phytoplankton in the southeastern Bering Sea. *Journal of Geophysical Research: Oceans*, 95(C7), 11483-11499, 1990.
- 15 O'Reilly, J.E., Maritorena, S., Mitchell, B.G., Siegel, D.A., Carder, K.L., Garver, S.A., Kahru, M. and McClain, C.: Ocean color chlorophyll algorithms for SeaWiFS. *Journal of Geophysical Research: Oceans*, 103(C11), 24937-24953, 1998.
- O'Reilly, J.E., Maritorena, S., Siegel, D.A., O'Brien, M.C., Toole, D., Mitchell, B.G., Kahru, M., Chavez, F.P., Strutton, P., Cota, G.F. and Hooker, S.B.: Ocean color chlorophyll-a algorithms for SeaWiFS, OC2, and OC4: Version 4. SeaWiFS
20 postlaunch calibration and validation analyses, Part, 3, 9-23, 2000.
- Pardo, S., Brando, V., Taylor, B., Quality Information Document (QUID) of Ocean Monitoring Indicators (OMI) for OCTAC, Issue 1.0, 12. Sep. 2018.
- 25 Sathyendranath, S.; Grant, M. and all (2018): ESA Ocean Colour Climate Change Initiative (Ocean_Colour_cci): Version 3.1 Data. Centre for Environmental Data Analysis, 04 July 2018. doi:10.5285/9c334fbe6d424a708cf3c4cf0c6a53f5.
- Saulquin, B., Gohin, F. and Fanton d'Andon, O.: Interpolated fields of satellite-derived multi-algorithm chlorophyll-a estimates at global and European scales in the framework of the European Copernicus-Marine Environment Monitoring Service. *Journal of Operational Oceanography*, 2018.
- 30 Steinmetz F, Pierre-Yves Deschamps, P-Y, Ramon, D (2011) Atmospheric correction in presence of sun glint: application to MERIS, *Optics Express*, Vol. 19, Issue 10: 9783-9800. <http://dx.doi.org/10.1364/OE.19.009783>.

Toole, D.A., Siegel, D.A., Menzies, D.W., Neumann, M.J. and Smith, R.C.: Remote-sensing reflectance determinations in the coastal ocean environment: impact of instrumental characteristics and environmental variability. *Applied Optics*, 39(3), 456-469, 2000.

- 5 Vantrepotte, V. and Mélin, F.: Temporal variability of 10-year global SeaWiFS time-series of phytoplankton chlorophyll-a concentration. *ICES Journal of Marine Science*, 66(7), 1547-1556, 2009.

Xi, H. , Losa, S. N. , Mangin, A. , Soppa, M. A. , Garnesson, P. , Demaria, J. , d'Andon, O. H. F. and Bracher, A. (2018): Global Retrieval Algorithms for Phytoplankton Functional Types (PFTs): toward the Applications
10 to OLCI and GlobColour Merged Products , *Ocean Optics Conference XXIV*, Dubrovnik Croatia, 7 October 2018 -
hdl:10013/epic.e9a41e28-ef93-43bd-b20a-c613693bd5d8 , 12 October 2018 .

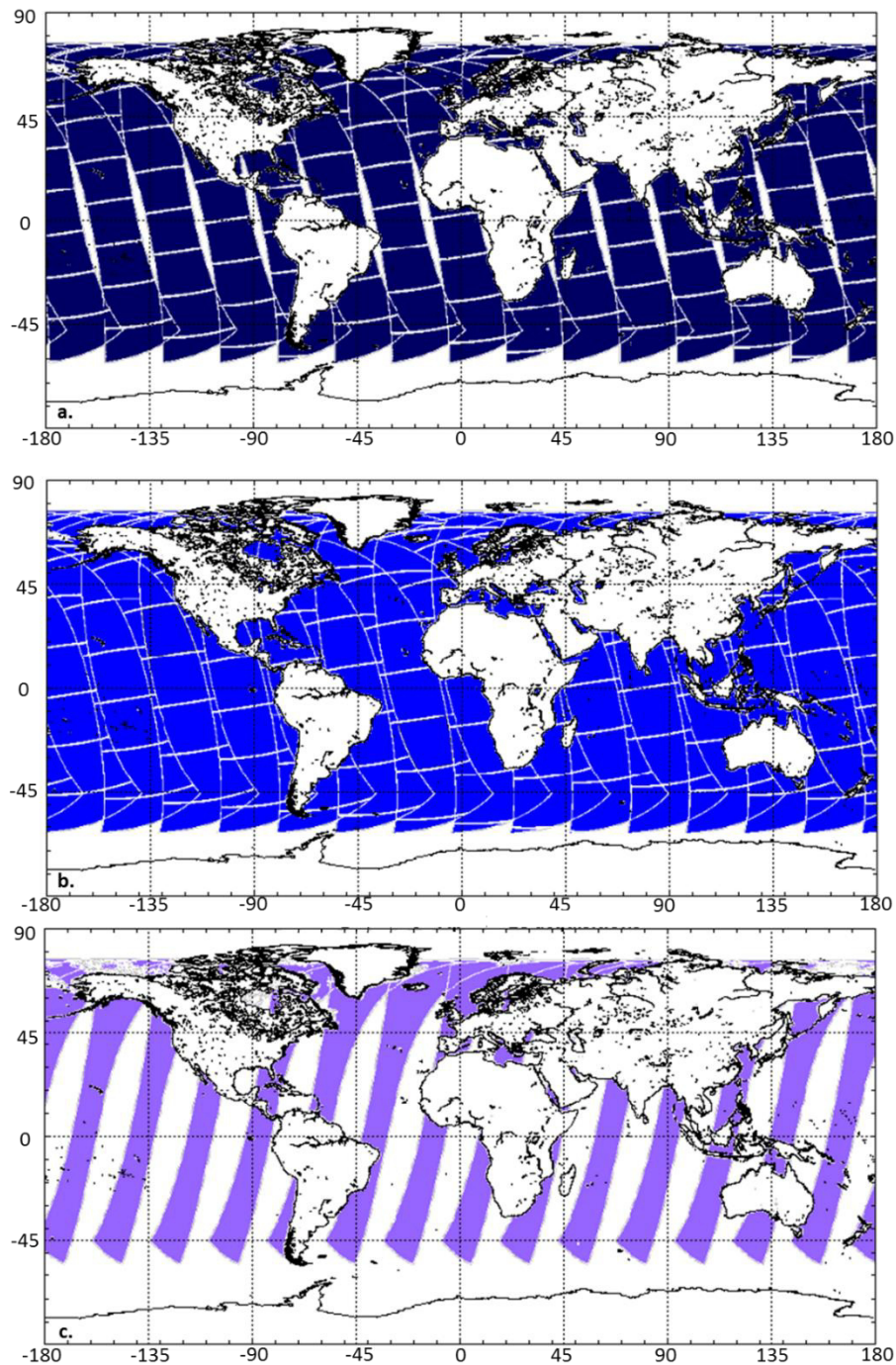


Figure 1: Swath of the different sensors used at present by CMEMS for (a) MODIS-Aqua, (b) VIIRS-NPP and (c) OLCI-S3A. In practice the effective swath coverage is reduced mainly due to clouds or sun glint effects.

Source : <http://octac.acri.fr>.

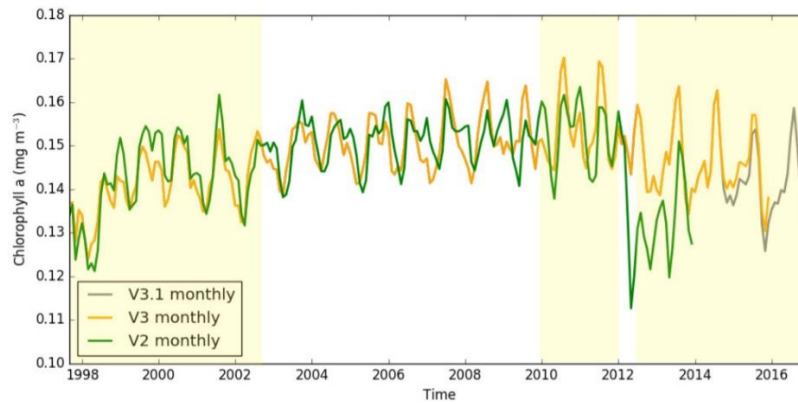


Figure 2: Comparison of the Global Median chlorophyll-a concentration as function of time for v2.0, v3.0 and v3.1 using the monthly composite as input. Source: OC-CCI Product User Guide, release 3.1.0, 24th of April 2017.

5

Yellow part shows change of sensor combinations (see Table 1)

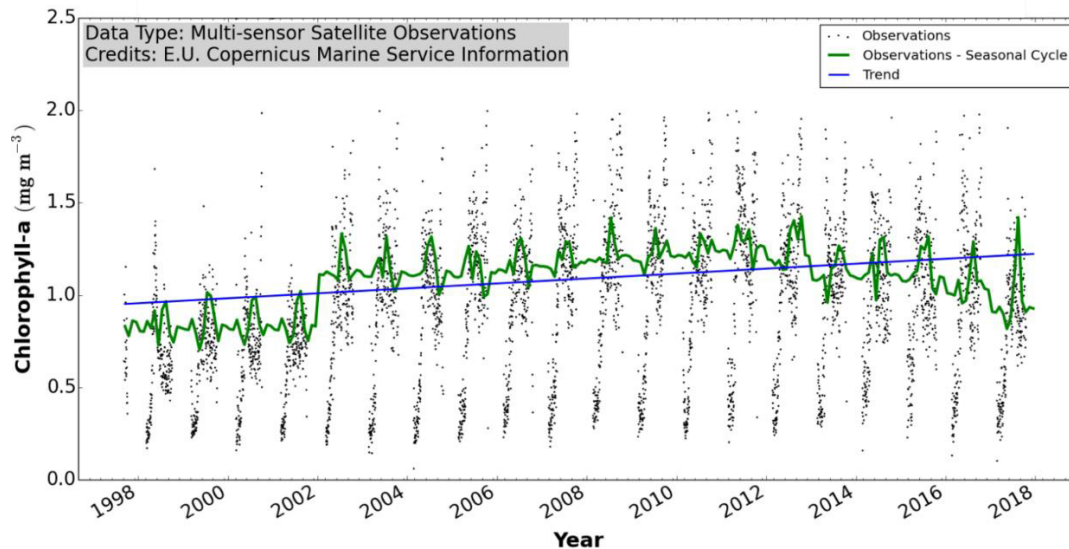


Figure 3 : Arctic time series and trend (1997-2017) from OC-CCI product. The time series are derived from the regional chlorophyll-a reprocessed (REP) products as distributed by CMEMS which, in turn, results from the application of the regional chlorophyll-a algorithms with remote sensing reflectances provided by the ESA Ocean Colour Climate Change Initiative (ESA OC-CCI). Daily regional mean values are calculated by performing the average (weighted by pixel area) over the region of interest. A fixed annual cycle is extracted from the original signal, using the Census-I method as described in Vantrepotte et al. (2009). The de-seasonalised time series is derived by subtracting the seasonal cycle from the original time series, and then fitted to a linear regression to obtain the linear trend. Source: CMEMS OMI QUID.

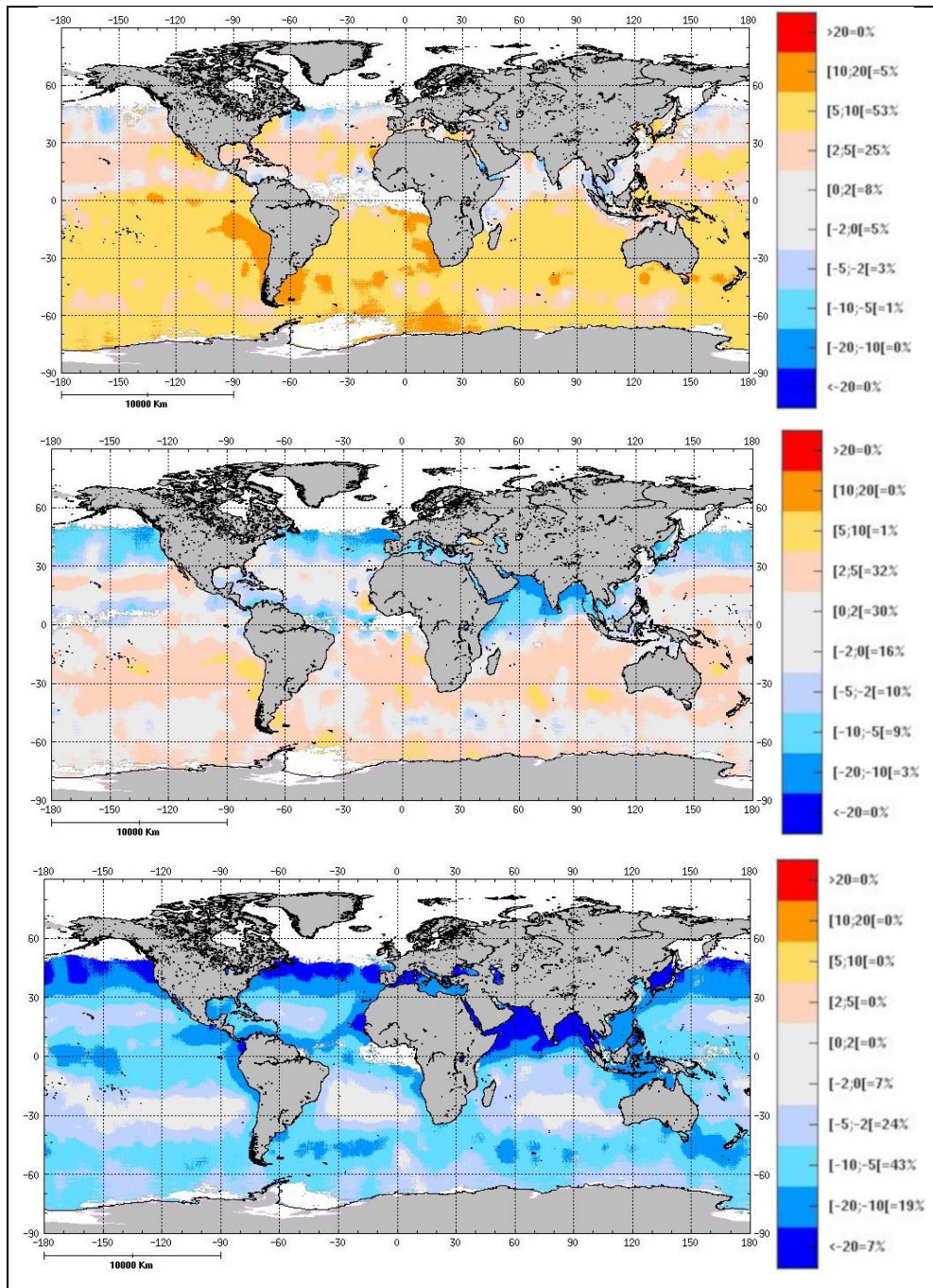


Figure 4: relative difference at RRS443 of VIIRS and MODIS (in %) based on the monthly NASA R2018 global products at 4km). VIIRS suffers from a significant trend since it has been launched as illustrated with January month evolution for years (a) 2012, (b) 2016 and (c) 2019.

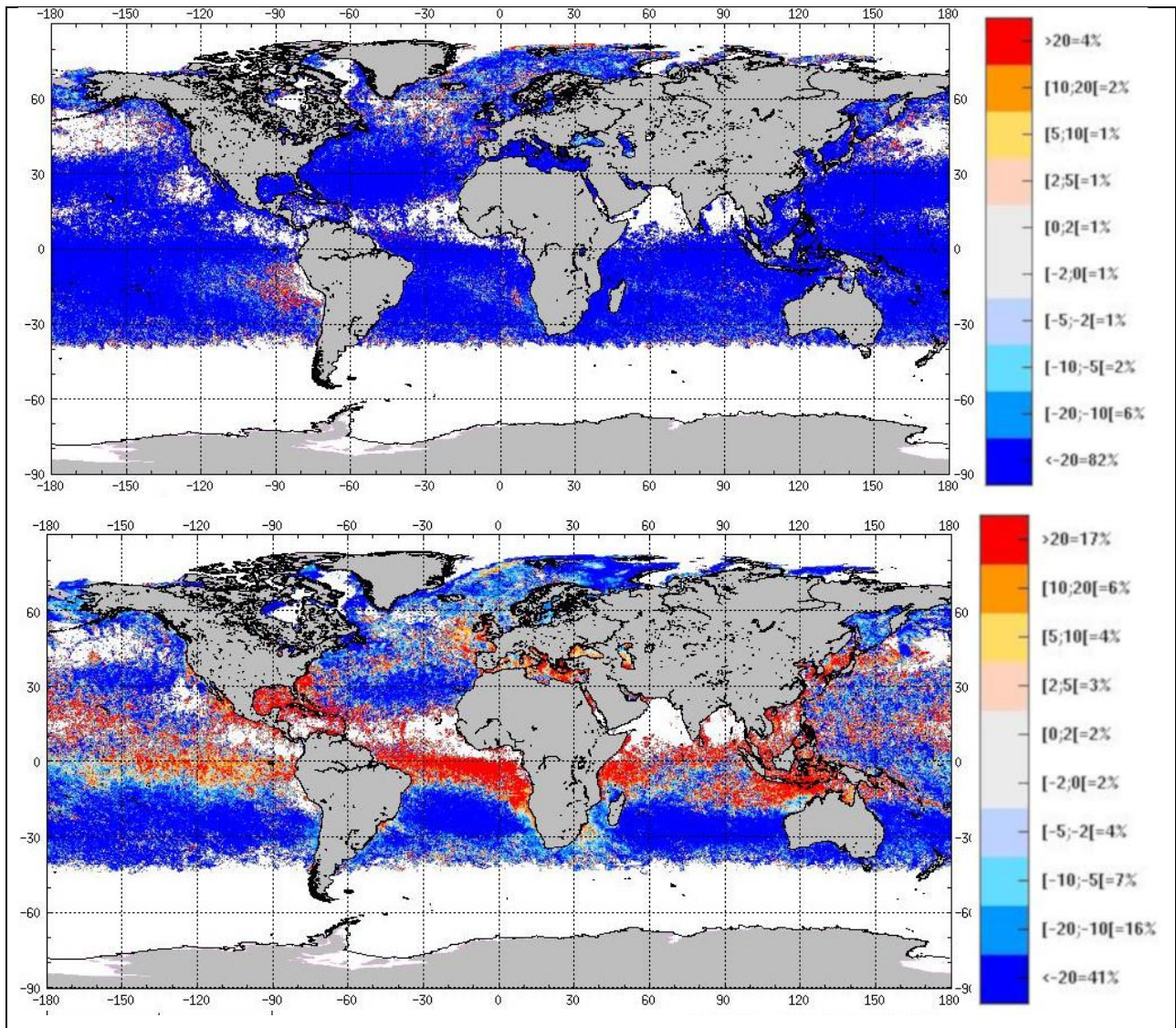


Figure 5: Relative difference between sensors $[(S1-S2)/S2]$ of monthly RRS (June 2018), for (a) MODIS-RRS667 and OLCI-RRS665 and (b) VIIRS-RRS671 and MODIS-RRS667. Source: these plots are part of the monitoring done by the OCTAC and reported on <http://octac.acri.fr>.

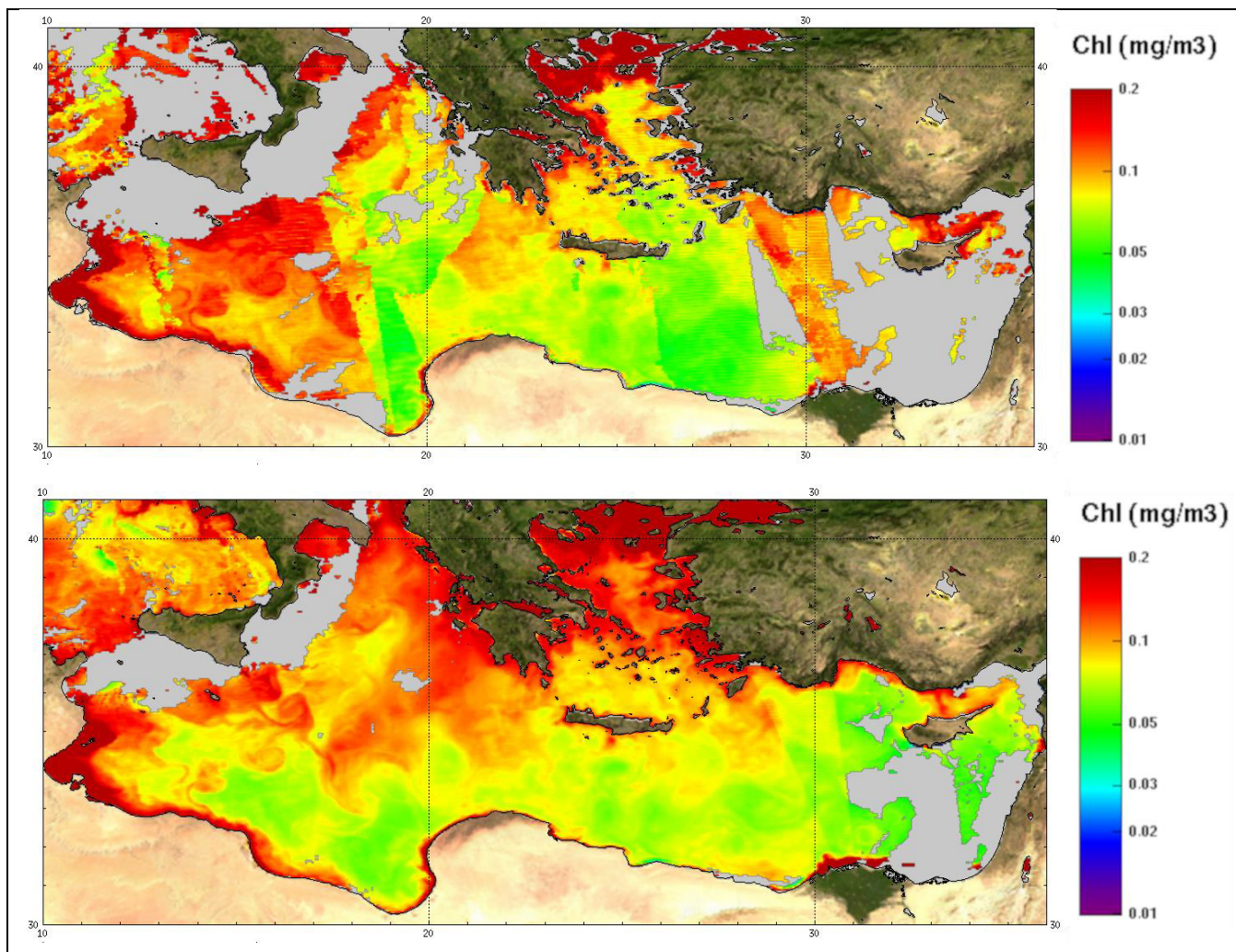


Figure 6: Inter-comparison of (a) OC-CCI and (b) GlobColour product (13 June 2018) for Oligotrophic water (CI algorithm). The color scale has been set to the range 0.01 to 0.2 mg/l: discontinuities between tracks of the sensor clearly appeared on the OC-CCI case at the top.

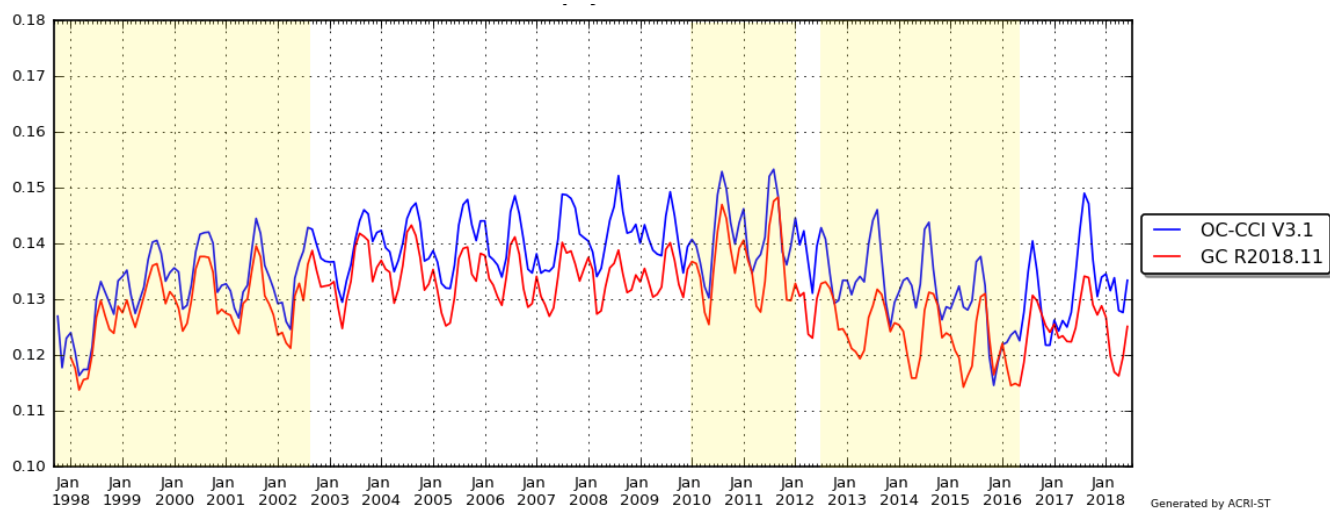


Figure 7: Comparison of the Global median chlorophyll-a concentration as function of time for OC-CCI v3.1 (blue line) and GlobColour R2018.11 (red line) at global level and for common pixels. Yellow part shows change of sensor combinations. The discontinuities and trends of the median along the time should be carefully interpreted according the sensors used.

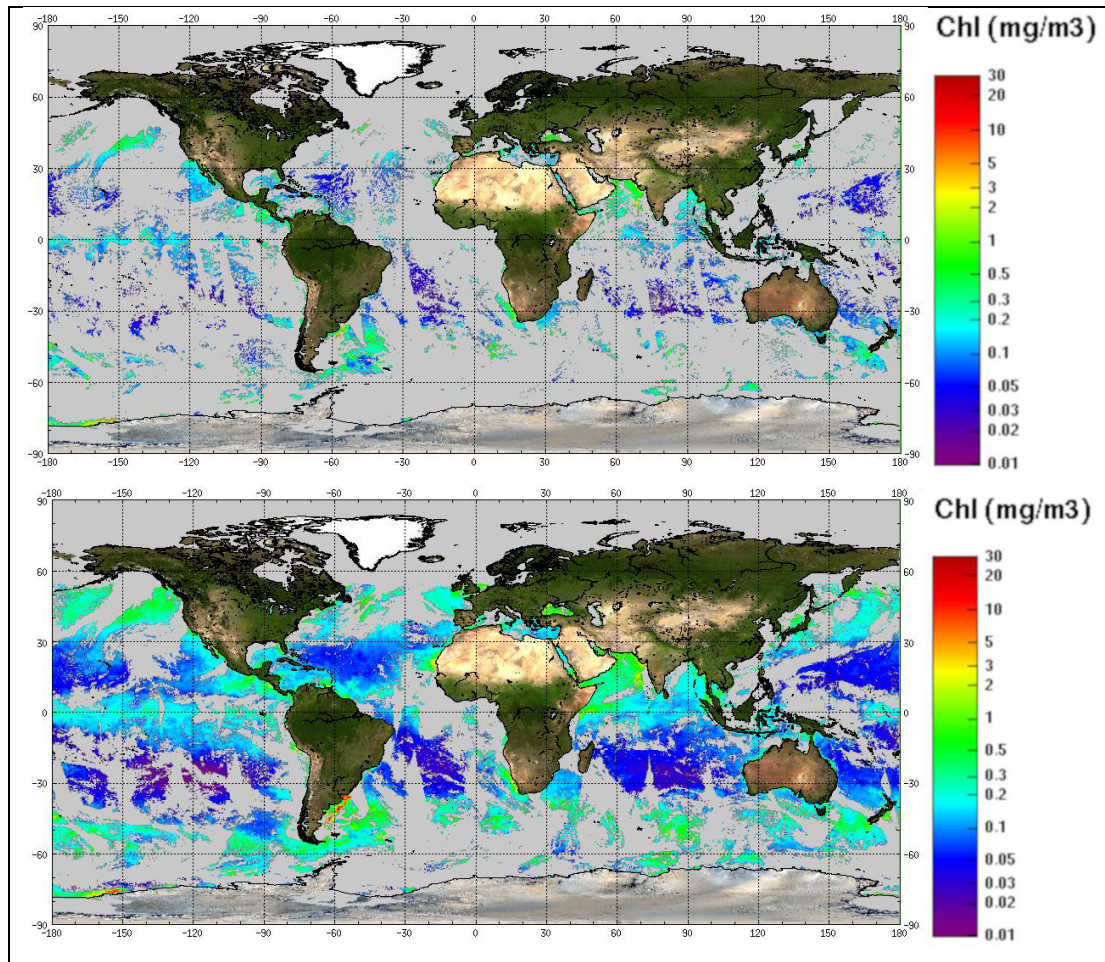


Figure 8: Chlorophyll-a concentration (15 Dec. 2017), (a) OC-CCI level 3 product and (b) GlobColour product. The two initiatives are using MODIS-A, and VIIRS-SNPP at this date, in complement OLCI-S3A is also used by GlobColour products

5

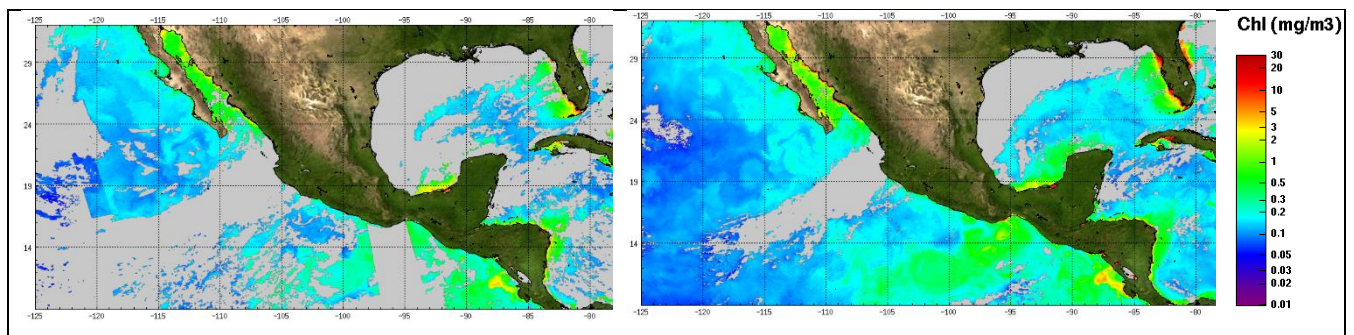


Figure 9: Chlorophyll-a concentration (15 Dec 2017): (a) OC-CCI level 3 product, (b) GlobColour product.

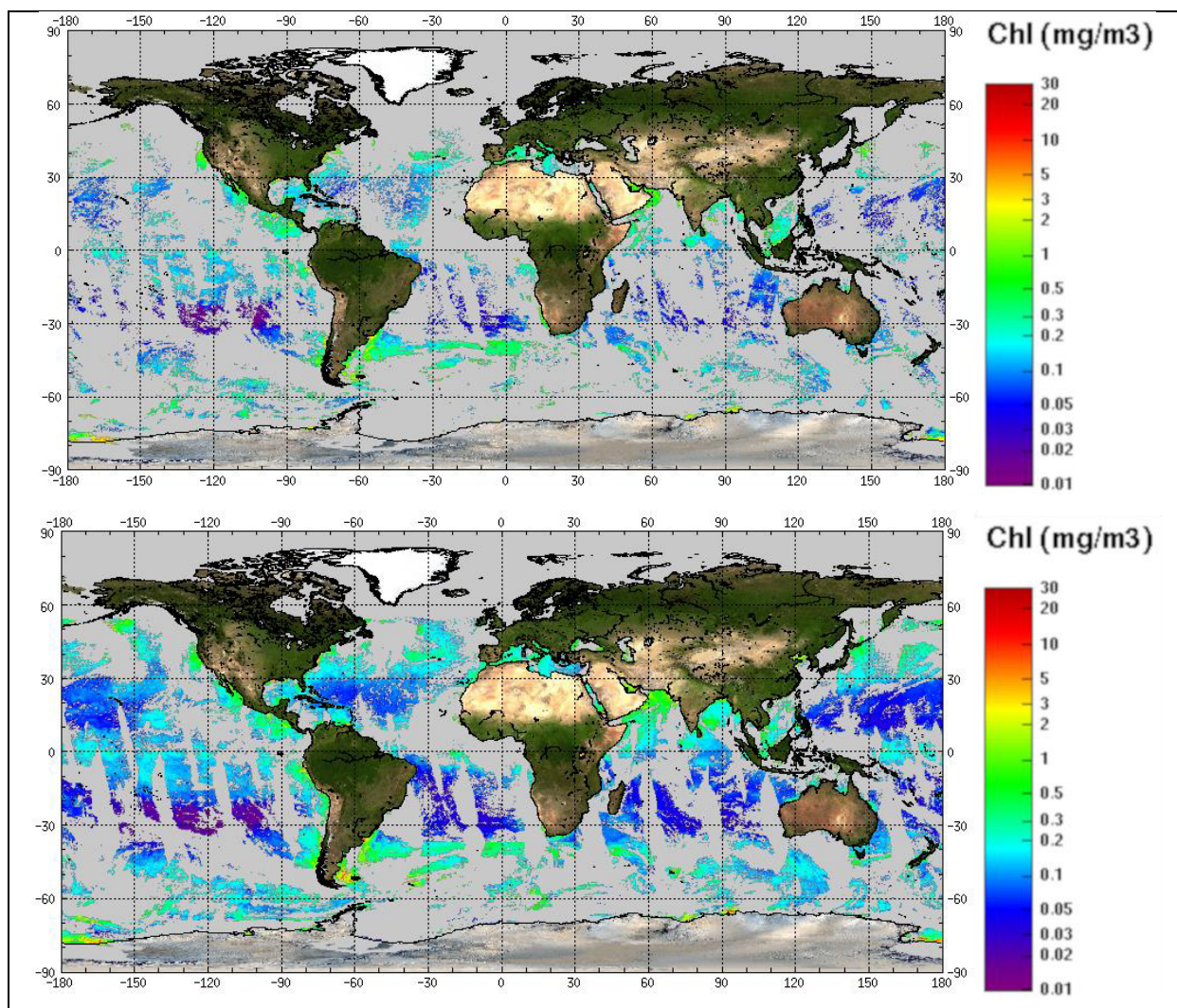


Figure 10: Chlorophyll-a concentration (1 Jan 2012), (a) OC-CCI level3 product and (b) GlobColour product.

The two initiatives are using MODIS-A, MERIS and VIIRS-SNPP at this date.

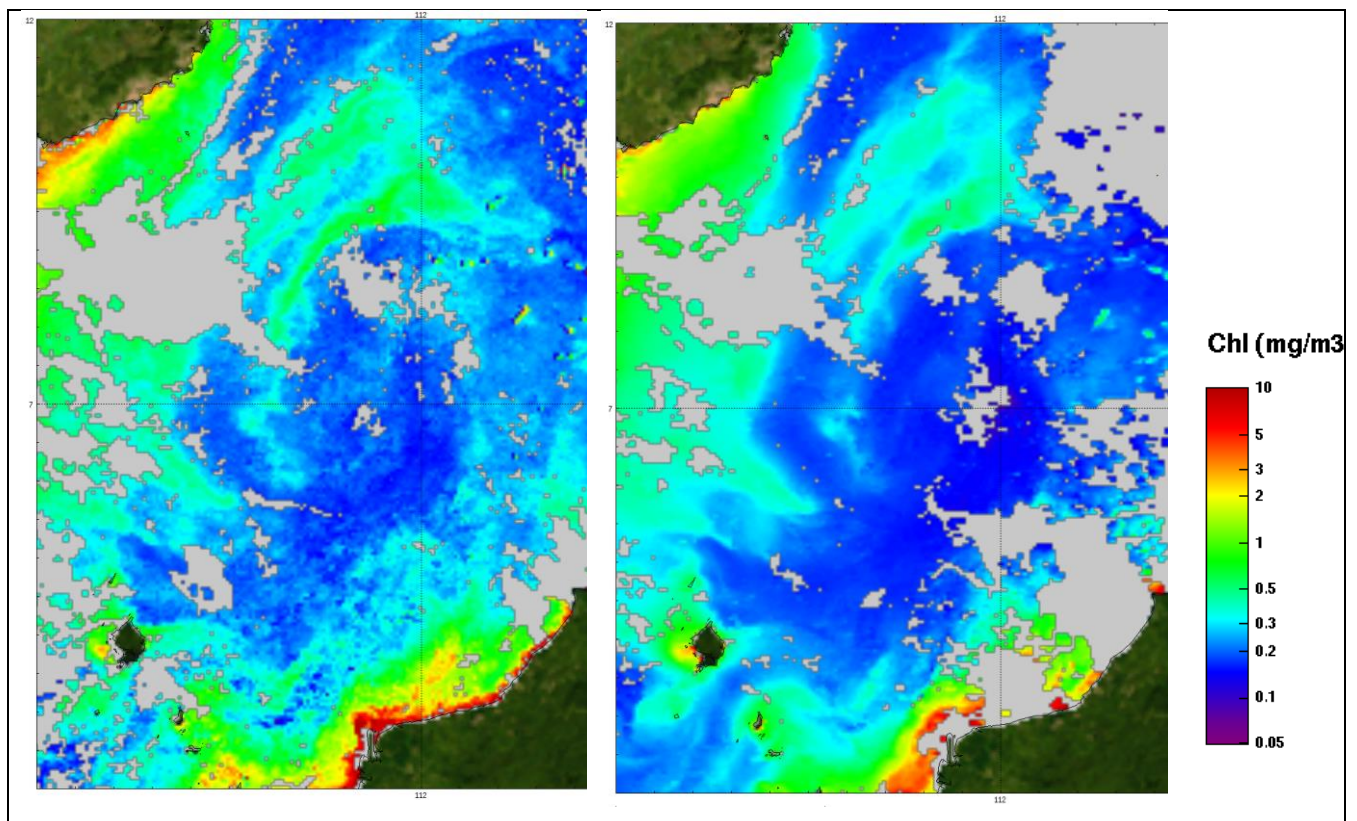


Figure 11: Chlorophyll-a concentration (1 Jan. 2012), (a) OC-CCI level3 product, (b) GlobColour product.

Table 1: Main characteristics of sensors/bands used for CMEMS (VIIRS-JPPS1 and OLCI-S3B will be used by the GlobColour processor in the framework of the CMEMS release scheduled in July 2019).

Sensor	RRS Wavelengths (nm)	Spatial Resolution At Nadir (km)	Swath width (km)	Equator crossing time	Period
SeaWiFS	412,443,490,510,555,670	1 & 4	1502	12:20	1997-2010
MERIS	413,443,490,510,560,620,667,681,709	1 & 0.3	1150	10:00	2002-2012
MODIS-Aqua	412,443,469,488,531,547,555,645,667,678	1	2330	13:30	2002-present
VIIRS-NPP	410,443,486,551,671	1	3040	10:30	2012-present
OLCI S3A	400,412,442,490,510,560,620,665,674,681,709	1.2 & 0.3	1270	10:00	2016-present
VIIRS-JPPS1/NOAA20	411,445,489,556,667	0.75	3040	9:50	Dec-2017-present
OLCI S3B	400,412,442,490,510,560,620,665,674,681,709	1.2 & 0.3	1270	10:00	2018-present

The CMEMS GlobColour Chlorophyll-a Product Based on Satellite Observation: multi-sensor merging and flagging strategies.

Philippe Garnesson¹, Antoine Mangin¹, Odile Fanton d'Andon¹, Julien Demaria¹, Marine Bretagnon¹

¹ACRI-ST, Sophia-Antipolis, 06904, France

²Laboratory example, city, postal code, country

Correspondence to: Philippe Garnesson (Philippe.garnesson@acri-st.fr)

Abstract. This paper concerns the GlobColour merged chlorophyll-a products based on Satellite Observation (SeaWiFS, MERIS, MODIS, VIIRS and OLCI) and disseminated in the framework of the Copernicus Marine Environmental Monitoring Service (CMEMS).

This work highlights the main advantages provided by the Copernicus GlobColour processor which is used to serve the CMEMS with a long time series from 1997 to present at Global level (4 km of spatial resolution) and for the Atlantic level 4 product (1 km).

To compute the merged chlorophyll-a product, two major topics are discussed:

- The strategy for merging remote sensing data; for which two options are considered. On the one hand, a merged chlorophyll-a product computed from a prior merging of the remote-sensing reflectance of a set of sensors. On another hand, a merged chlorophyll-a product resulting from a combination of chlorophyll-a products computed for each sensor.
- The flagging strategy used to discard non-significant observations (e.g. clouds, high glint...)

These topics are illustrated by comparing the CMEMS GlobColour products provided by ACRI-ST (Garnesson et al., 2019) with the OC-CCI/C3S project (Sathyendranath et al., 2018). While GlobColour is merging merges chlorophyll-a products with a specific flagging, the OC-CCI approach is based on a prior reflectance merging before chlorophyll-a derivation and is useds a more constraintsuses a more constrained flagging approach.

Although this work addresses these two topics, it does not pretend to provide a full comparison of the two datasets, which will require a better characterisation- and additional inter-comparison with in situ data.

1 Introduction

The Copernicus Marine Environmental Service (CMEMS) provides regular and systematic reference information on the physical state and on marine ecosystems for the global oceans and for the European regional seas (temperature, currents, salinity, sea surface height, sea ice, marine optical properties, etc.).

This capacity encompasses satellite and in situ ~~observation~~data-derived products, the description of the current situation (analysis), the prediction of the situation a few days ahead (forecast), and the provision of consistent retrospective data records for recent years (re-analysis).

The Ocean Thematic Assembly Centre (OCTAC) is part of CMEMS and is dedicated to the dissemination of Ocean Colour (OC) products derived from Satellite ~~Observation~~-based remote sensing (Le Traon et al., 2015). ~~The~~ OCTAC provides Global and Regional (Arctic, Atlantic, Baltic, Black Sea and Mediterranean) products for the period spanning from 1997 to ~~the~~ present. For Global products, the Copernicus GlobColour processor is used operationally since 2009 to serve CMEMS and its precursors (a series of EU research projects called MyOcean).

The GlobColour processor has ~~been~~ initially been developed in the framework of the GlobColour project started in 2005 as an ESA Data User Element (DUE) project to provide a continuous data set of merged L3 Ocean Colour products. Since the beginning of the project, ~~the Copernicus~~ GlobColour has been continuously serving-used by more than 600 users worldwide. This effort has been continued in the framework of CMEMS to derive (among others) the chlorophyll-a Ocean Colour core product.

Many algorithms have been published to retrieve chlorophyll-a from reflectance datas derived from (RRS) ~~observed by the satellite observations~~ (e.g., Muller Karger et al., 1990, Aiken et al., 1995, Morel 1997, O'Reilly et al., 1998, 2000). ~~In CMEMS (since beginning of 2018),~~ Since early 2018, the the-CMEMS GlobColour chlorophyll-a product is based on the merging of ~~3relies on a combination of different~~several algorithms:

- the CI approach (Hu, 2012) for oligotrophic water (70% to 80% of ocean), ~~the CI approach (Hu, 2012) is used,~~
- the common approach OCx (OC3, OC4, OC4Me depending on the sensor) for mesotrophic water; ~~the classical approach OCx (OC3, OC4, OC4Me depending on the sensor);~~
- the OC5 algorithm (Gohin et al., 2002) for complex waters; ~~another major contribution is, the use of empirical OC5 algorithm (Gohin et al., 2002)~~ which is of specific interest for end users who ~~should~~ manage complex waters along the coastal zone.

It should be noted that the OC5 algorithm is based on a lookup table implementation which handles both complex and mesotrophic waters (see section 2.1 Merging approach2.1)

The work presented here highlights the conceptual advantage of the CMEMS Copernicus GlobColour processor ~~concerning~~ with regards to flagging and merging of sensors. In the following sections, results are described and illustrated with comparison to the OC-CCI/C3S products.

The comparison between GlobColour and OC-CCI is especially relevant since the same chlorophyll-a algorithms (CI/HUE and OC5) are used by the two initiatives: it ~~means~~ implies the differences in performance mainly ~~come~~ result from the merging strategies and flagging schemes.

2 Methods

2.1 Merging approach

The CMEMS GlobColour merged chlorophyll-a product relies at present on the following sensors: SeaWiFS (1997-2010), MERIS (2002-2012), MODIS-Aqua (2002-present), VIIRS-NPP (2012-present) and OLCI-S3A (2016-present).

- 5 ~~It means that t~~The long time series from 1997 to present relies on different sensors, observing the Earth at different spectral bands (and different bandwidth), with different acquisition times (so different atmospheric and sun conditions), and with different spatial resolutions from about 300 meters to 1 km at nadir (larger on the swath border). Main characteristics of the sensors/bands used for CMEMS are summarized in Table 1. VIIRS-NOOA20 and OLCI-S3B will be ingested in the operational products in 2019.
- 10 It should be noted that the global chlorophyll-a product is at present provided at a 4km spatial resolution, but the objective in the coming years is to provide, at least along the coast, a chlorophyll-a product at 300 meters of-resolution.
- All sensors used observe the Earth along a helio-synchronous orbit. ~~Figure 1 shows~~displays the coverage of a single~~One~~ sensor ~~which is not-un~~able to provide the full Earth coverage ~~for-over~~ a ~~single~~given day (Maritorena et al., 2010, ~~Figure 1~~). VIIRS provides a larger swath than the other sensors, but the coverage is incomplete because of sun glint.
- 15 When more than one sensor is available for the same period ~~it is of interest to take benefit~~~~it is possible to take advantage~~ of their complementarity and redundancy ~~of sensors~~~~for a number of benefits~~. For instance, ~~depending-on~~sensing times~~since they may record the same spot at different times of the day~~, morning haze can impact one sensor ~~and not~~ another (Toole et al., 2000).

To compute a multi-sensors chlorophyll-a product, mainly two merging approaches exist.

- 20 • A first approach (used by ~~OC-CCI~~) is based on merged Reflectance ~~of Remote-Sensing~~ (RRS) computed in a prior step and then used to derive chlorophyll-a. Based on a band shifting and bias correction approach, merged RRS for the standard SeaWiFS wavelengths (412, 443, 490, 510, 555 and 670 nm) are provided. The blended chlorophyll-a algorithm used in the ~~OC-CCI~~ v3.1 release attempts to weigh~~t~~ the outputs of the best performing algorithms based on the water types in presence.
- 25 • Conversely, in a second approach (used by CMEMS GlobColour), ~~the~~chlorophyll-a is computed in an initialisation step for each sensor using ~~its~~ specific characteristics ~~of the considered sensor~~ (spectral band, resolution), and then the mono-sensor chlorophyll-a products are resampled and merged. The continuity of the different algorithms was initially obtained using a water classification approach (Saulquin al., 2018). ~~Beginning-Starting in early~~of 2018, a new approach has been adopted:
- 30 ○ First, the continuity of algorithms used for mesotrophic and complex waters ~~are~~ -guaranteed by the OC5 lookup tables. The OC5 lookup table ~~is -is~~ initialized using the OC3 and OC4 coefficients from agencies and then empirically adjusted when the green band exceeds a ~~given~~ threshold (see Gohin et al., 2002 for details).

- Then, the CI and OC5 continuity is ~~based-ensured on the same~~using the same approach as NASA. – When the chlorophyll-a concentration is in the range 0.15 ~~and to~~ 0.2 mg.m⁻³, a linear interpolation of OC5 and CI is used. This provides continuity between the two algorithms.

5 2.2 Flagging approach

Inputs of the Copernicus GlobColour processor are the level 2 products provided by the space agencies. To derive ~~the~~ chlorophyll-a ~~map~~, the input level 2 reflectance (~~RRS~~) and input flags are used (level 2 provides flags/indicators about the quality of the reflectance at pixel basis). For instance, a pixel can be impacted by a sun glint effect. In such case reflectance ~~data are-is~~ available, but it is recommended by agencies ~~to not to use it-it in the processing for further processing~~. Each space agency publishes ~~flagging data based on its own~~flagging strategy which has been designed to guarantee the quality of its products. The drawback is that for complex water (especially along coastal area), a large proportion of the ~~the~~ data ~~are-is~~ usually flagged, resulting in level 3 products with ~~a~~ limited coverage.

Since early April 2018, the GlobColour processor has been modified to apply a lower level of flagging resulting in a better spatial and temporal coverage. This modification is inherited from ~~One specificity of~~ the OC5 algorithm (Gohin et al., 2002) ~~is to use its own strategy to flag data (the algorithm was which was~~ initially designed for coastal monitoring). OC5 uses its own strategy to flag data: the algorithm. It is based on part of ~~uses both~~ the official flags ~~plus and~~ empirical thresholds that have been tuned for each sensor (e.g. the OC5 sun zenith angle (SZA) is set to 78° instead 70°).

The OC5 flagging strategy is used by the GlobColour sensor approach but ~~does not benefit to by~~ the OC-CCI approach which uses a specific OC5 lookup table ~~to be appliedy to~~ the merged reflectances.

Concerning OC-CCI/C3S the flagging strategy for release v3.1 depends ~~on~~f the sensor. When the reflectances data originates from ~~are based on the~~ level 2 data provided by the agency (SeaWiFS and VIIRS-SNPP) the official flags ~~from the agencies~~ are applied. When the POLYMER algorithm (Steinmetz et al. 2011) is used for atmospheric correction (MERIS and MODIS) a generic pixel identification and classification algorithm called Idepix is used (part of BEAM software) instead the standard POLYMER flagging (which is too permissive).

3 Results and Discussion

3.1 The reflectance merging approach

The reflectance merging approach is used by ~~the OC-C3S~~ CCI to derive the global Chlorophyll-a OC-CCI timeseries and by the regional CMEMS products. As pointed by Volpe et al. (2019) for the regional Mediterranean products, the band merging approach has the advantage of providing a homogeneous dataset of spectral reflectance from which can be derived, in full

consistency for the long term, different environmental parameters, among them chlorophyll-a products but also light attenuation, Kd, Suspended Particulate Matter and others.

However, the consistency of the long-time series provided by OC-CCI suffers from some limitations. ~~Figure 2~~ ~~Figure 2, from~~ ~~The OC-OC-CCI Product user guide, (Figure 2)~~ intercompares the different releases of the OC-CCI time series. It shows that the V2 release was strongly impacted ~~when the by the MERIS sensor has stopped stopping operations~~ in April 2012 (see ~~Table 1~~ ~~Table 1~~). The V3 release demonstrates a trend depending on the sensors used: It increases for the period 2002-2010 (based on the contributions of SeaWiFS, MODIS and MERIS) and decrease for the period 2012-2017 ~~(based as only on MODIS and VIIRS-SNPP are used)~~.

On a regional scale, ~~the figure 3 for the Arctic (derived from the CCI products, source CMEMS OMI QUID) also demonstrates~~ strong limitations ~~about on~~ the consistency of the time-series and trends ~~that are derived~~ ~~are also observed as~~ ~~illustrated for the Arctic on Figure 3~~ ~~Figure 3~~. Strong variations are also observed throughout the years. For instance, ~~During the first period until 2002 before 2002, only SeaWiFS is available, limiting the quality of the output data. then in 2012 there is the end of the MERIS contribution and the starting of VIIRS SNPP with the same trends as above~~ ~~Then the end of the MERIS lifetime and start of VIIRS SNPP in 2012 causes the same trend as described above.~~

It is known that both MODIS and VIIRS instruments have major calibration issues starting ~~at in~~ about 2012. VIIRS-SNPP degradation has been identified a few months after launch and MODIS, ~~while~~ designed for a lifetime of 7 years, ~~is now 17 years old~~ ~~is still operating after 17 years~~. MODIS calibration has required regular modifications to adjust the temporal trends (R2009.1, R2010.0 and especially R2012.0). At the end of ~~year~~ 2017, ~~the a~~ NASA reprocessing ~~called R2018 (called R2018)~~ has significantly ~~improved alleviated these issues for VIIRS~~ ~~VIIRS issues~~ and ~~especially more importantly corrected~~ the MODIS drift with a new procedure to regularly update the MODIS calibration (available about 3 months after acquisition).

It should be noted that this new NASA processing (called R2018.1) does not yet benefit ~~to~~ the full OC-CCI series (only for the recent OC-CCI v3.1 extension until June 2018) but a new OC-CCI v4 release is scheduled for 2019.

It should ~~be~~ also ~~be noted~~ ~~underlined~~ that the R2018 ~~dataset is~~ still suffering from issues which will continue to impact ~~the~~ future reprocessing ~~attempts, and illustrate issues especially for VIIRS sensor wavelength at 443 and 488~~. Indeed, VIIRS RRS443 and RRS488 increase regularly since 2012 while MODIS is comparatively more stable. ~~The~~ ~~Figure 4~~ ~~Figure 4~~ shows the relative ~~RRS443~~ difference ~~at RRS443 of between~~ VIIRS and MODIS (in %) based on the monthly NASA R2018 global products at 4km. VIIRS suffers from a significant drift since its launch as illustrated with January evolution for years 2012, 2016, 2019. In January 2012, 90 % of MODIS ~~pixels~~ at global level ~~was~~ higher than VIIRS-SNPP, while in January 2019 100% of VIIRS-SNPP pixels ~~was were~~ higher than MODIS.

Another major difficulty for merging RRS for the different sensors is that the observed bias varies according to the region ~~and~~ ~~season~~ considered, ~~and the season~~ and as previously shown with artificial trends along the years. ~~The~~

~~Figure 5~~Figure-5 shows the inter-comparison of RRS at about 670nm between VIIRS-SNPP and OLCI-S3A compared to MODIS. It shows very important bias (e.g 82% of the pixels of OLCI exceeds a relative difference of 20%), and in the case of MODIS, the equatorial zone has a different behaviour than high latitude.

Impact of such reflectance merging on chlorophyll-a is showed on the ~~Figure 6~~Figure-6. ~~It shows for~~For the year 2018, ~~it shows~~ limitation in its ability to handle clear water (the color scale has been set to the range 0.01 to 0.2 mg/l): discontinuities between tracks of the sensor clearly appeared.

The previous illustrations ~~aim at demonstrating~~ the limitations ~~about of~~ the assumption of ~~the~~ consistency along the OC-CCI time series (and at daily basis ~~on Figure 6~~Figure-6) but ~~it~~ is clear that the GlobColour products are also impacted by the quality of input RRS upstream.

~~Figure 7~~Figure-7 shows ~~at monthly basis~~the month to month evolution of the chlorophyll-a median concentration computed at global level for OC-CCI and GlobColour ~~monthly~~ products. To make the two datasets inter-comparable, monthly statistics are computed on common pixels. The yellow sections on the plot shows the change of sensor combinations. Trends and gaps should be carefully interpreted according while taking into account the sensor used. The oscillations of the median ~~along the~~through time ~~is~~are linked to the ~~should be carefully interpreted:~~ sensor coverage which is moving from North to South for high latitude (~~according~~due to the variation of the sun zenith angle which ~~make~~render impossible the measurements in winter unfeasible). ~~it is due to a change of the spatial coverage linked to the sensors used, not due to a chlorophyll-a concentration change. To make the two datasets inter-comparable, statistics at monthly basis are computed on common pixels. However, the spatial coverage varies when the sensors used are changed. For instance, At the beginning of SeaWiFS (Sept 1997 to mid 1998mid-1998) data was only partially available, -resulting also in a limited coverage. until~~When MODIS and MERIS ~~was~~ started ~~during in~~ -2002 ~~the~~ spatial coverage was improved~~only SeaWiFS is contributing~~. It means ~~that~~, the gap at this date ~~doesn't~~does ~~not~~not corresponds to a change in the continuity of the time-series but a change ~~of in~~ the spatial coverage pixels of pixels used to compute the median. ~~It means potential trends should be only considered when same sensors are used (yellow sections on the plot shows the change of sensor combination).~~ The higher values for OC-CCI are probably most likely linked to the NASA R2018 reprocessing which is used by GlobColour but not yet by OC-CCI. During this R2018 reprocessing, ~~the~~ MMOBY (in situ data) and SeaWiFS calibration were also improved with a resulting decrease in chlorophyll-a of order 10% for all sensors.

3.2 The chlorophyll-a merging approach

This approach is the one used by the GlobColour processor for the CMEMS products and is not ~~proposed~~-designed to solve the issues linked to the upstream data. However, the sensor approach (instead starting from merged RRS) has ~~ve~~ crucial advantages compared to the previous one:

- 5 • When a new sensor (or ~~when~~ a new reprocessing of ~~this~~-an existing sensor) ~~is~~-becomes available, limited efforts are required because the bias correction is limited to the chlorophyll-a field of the considered sensor. For the merged reflectance approach, the bias correction of 5 reflectance measurements and interpolation ~~s~~ is required to ~~to~~ simulate the band 510 ~~is required~~ (this band is not available for VIIRS-SNPP, VIIRS-JPPS1 and MODIS (see Table 1~~Table 4~~)).
- ~~For the CI-Hue algorithm, the GlobColour processor~~ takes-benefits ~~from~~-of the efforts of the ~~spatial~~-space agencies to adjust, ~~for each sensor,~~ the coefficients ~~taking to take into account~~accounting for the high variability of the band 670 (see Figure 5~~Figure 5~~) for each sensor.
- It should be noted that the chlorophyll-a algorithm is applied on the level 2 sensor grid while in the merging approach it is applied on the common grid required to merge the reflectance. The use of sensor level 2 grid guarantees that the algorithm is applied on reflectance with consistent time observations. On the ~~other~~ hand~~posite~~, when reflectance ~~are~~-is re-projected on a common grid, it results in mixing pixels observed with an observation shift that can ~~of~~-raise to 4 hours (see Table 1~~Table 4~~) in the case of MODIS and VIIRS-JPSS1). This consideration is of minor significance~~not fully relevant~~ in the case of the Global products with a spatial resolution of 4 km but will become more significant~~sensitive~~ when product will be provided with at a resolution of 300 meters ~~of resolution~~.

20 3.3 The flagging approach

When ~~C~~compared to the official ~~agencies~~agencies' recommendations, the OC5 flagging strategy significantly improves significantly the spatial coverage of the product especially for NASA sensors. In the framework of CMEMS we have estimated that at sensor level, the coverage is ~~improved~~-increased with the following factors~~by a factor of 3.2 for~~: VIIRS-NPP-~~x3.2~~, 2.6 for MODIS-a ~~x2.6~~, 1.6 for MERIS-~~x1.6~~, 2 for SeaWiFS-~~x2~~, and 1.3 for OLCI-S3A-~~x1.3~~

- 25 ~~As a consequence~~Therefore, for the merged product, ~~it has been measured that~~ GlobColour chlorophyll-a ~~product~~ coverage is improved by a factor 2.8 compared to OC-CCI. For the period 2002-2012 the increase in coverage is limited to a factor 1.5. (Figure 8~~Figure 8~~ and Figure 9~~Figure 9~~ shows the result of the flagging strategy depending the OC-CCI or GlobColour approach~~when bot SeaWiFS, MODIS and MERIS are used~~).

- 30 Figure 10 shows that ~~T~~he combination of the usage of ~~the~~-this flagging strategy and OLCI ~~permits to~~leads to a considerable improvement of-improve considerably the coverage without creating additional artefacts ~~(see Figure 10)~~. ~~As of today~~today, ~~this date~~, both products benefit of the last test NASA R2018 reprocessing.

Figure 11 shows that, ~~Note that~~ in certain cases, the OC-CCI coverage could be better than the GlobColour one (~~e.g. Figure 11~~). However, in this example the OC-CCI approach is affected by ~~a significant~~ important noise, potentially due to cloud contamination. This noise might be due to level 2 inputs. Indeed, while GlobColour is using the level 2 from agencies, OC-CCI starts from level 1, applies POLYMER algorithm to MERIS and MODIS ~~plus~~ along with a specific flagging.

5 4 Conclusion

This work presents different ways to merge sensors and different flagging strategies to estimate the daily chlorophyll-a field ~~at daily basis~~.

Compared to the chlorophyll-a merging approach, the ~~major interest~~ key advantage of the reflectance merging approach is ~~that it~~ it provides a homogeneous dataset of spectral reflectance useful ~~to when~~ deriving the chlorophyll-a product using a common algorithm. ~~It is expected~~ One could expect ~~should lead to~~ a better consistency for the long time series. However as illustrated ~~above in the previous section~~, this assumption is not true since the homogeneity of the spectral reflectance is at present not obtained (spatial and temporal discontinuities exist).

It should be underlined that this limitation also exists with the sensor chlorophyll-a merging approach: in both approaches if a temporal trend is observed ~~along the time~~ it should be carefully analysed.

The present findings ~~illustrated in the previous sections~~ highlight the advantage of a Chlorophyll-a per sensor merging approach compared to the reflectance merging approach:

- The sensor approach facilitates the ingestion of a new sensor or a new reprocessing. Consequently, ~~the~~ NASA R2018 and OLCI-S3A have been successfully introduced in April 2018 for the merged chlorophyll-a GlobColour chain but is not yet available in the other initiatives (OC-CCI or CMEMS regional product). The addition of VIIRS-NOAA20 (JPSS) and OLCI-S3B in the merged GlobColour chlorophyll-a product will occur ~~in July~~ during 2019.
- It should be noted that the reflectance merging approach provides a limited set of six common spectral bands based on ~~the~~ SeaWiFS sensors. For more recent sensors (i.e. Modis, VIIRS-SNPP and VIIRS-JPPS1) only 5 native reflectance are available (see ~~Table 1~~ Table 4): the band at 510 nm is obtained by interpolation. Other extra bands from MERIS or MODIS or OLCI which are not part of the 6 bands are not usable in the reflectance merging approach (because the spatial complementarity of the sensors cannot be used at daily level and for the full time series). For the chlorophyll-a merging approach, when extra bands are available (i.e. MERIS, MODIS and OLCI) they can be used to improve the algorithm in the future. This perspective is already investigated to retrieve PFT from OLCI (e.g. Xi, 2018).
- The sensor approach provides an improved daily spatial coverage when OC5 ~~is is~~ is applied on the sensor reflectance (not on merged reflectance). For the period spanning from 2012 to present the spatial coverage is improved ~~with~~ by an important factor (about 2.8) when compared to the OC-CCI product. Both open ocean and coastal areas are improved. It is required for many users involved in the EU Water Framework and Marine Strategy Framework

Directive. To satisfy ~~the users~~ interested in coastal ~~data community~~, a better spatial resolution (300 meters) is also required. From this point of view the chlorophyll-a merging approach is also more promising (algorithm can be applied on the level 2 track grid to limit the mixing of the pixels).

A better spatial coverage is also a key point to guarantee the quality of the CMEMS GlobColour chlorophyll-a “cloud free” product (called daily L4 in the CMEMS catalogue) which is based on a spatial and temporal interpolation of daily level ~~3 level~~ 3 product. A better daily coverage limits the risk of artefact due to interpolation.

Acknowledgement

- 10 We thanks Emmanuel Boss and another anonymous referee for their constructive comments which allow ed us to improve the quality of this manuscript.

References

- 15 Aiken, J., Moore, G. F., Trees, C. C., Hooker, S. B., & Clark, D. K.: The SeaWiFS CZCS-type pigment algorithm. In S. B. Hooker, and E. R. Firestone (Eds.), SeaWiFS Technical Report Series, 29 : Goddard Space Flight Center 38 p., 1995
- Garnesson, P., Mangin A., Bretagnon ~~M.-M.~~ : Quality User Guide, Ocean Colour Production Centre, Satellite Observation GlobColour-Copernicus Products, <http://marine.copernicus.eu/>, 2019
- 20 Gianluca Volpe et al. Mediterranean ocean colour Level 3 operational multi-sensor processing, Ocean Science Ocean Sci., 15, 127–146, 2019 <https://doi.org/10.5194/os-15-127-2019>, 2019
- Gohin, F., Druon, J.N. and Lampert, L.: A five channel chlorophyll concentration algorithm applied to SeaWiFS data processed by SeaDAS in coastal waters. International journal of remote sensing, 23(8), 1639-1661, 2002.
- 25 Hu, C., Lee, Z. and Franz, B.: Chlorophyll-a algorithms for oligotrophic oceans: A novel approach based on three-band reflectance difference. Journal of Geophysical Research: Oceans, 117(C1), 2012.
- Le Traon, P.Y., Antoine, D., Bentamy, A., Bonekamp, H., Breivik, L.A., Chapron, B., Corlett, G., Dibarboure, G., DiGiacomo, P., Donlon, C. and Faugère, Y.: Use of satellite observations for operational oceanography: recent achievements and future
- 30 prospects. Journal of Operational Oceanography, 8(sup1), s12-s27, 2015.

Maritorena, S., d'Andon, O.H.F., Mangin, A. and Siegel, D.A.: Merged satellite ocean color data products using a bio-optical model: Characteristics, benefits and issues. *Remote Sensing of Environment*, 114(8), 1791-1804, 2015.

Morel, A.: Optical properties of oceanic case 1 waters revisited. In *Ocean Optics XIII* (Vol. 2963, pp. 108-115). International Society for Optics and Photonics, February 1997.

Müller-Karger, F.E., McClain, C.R., Sambrotto, R.N. and Ray, G.C. (1990). A comparison of ship and coastal zone color scanner mapped distribution of phytoplankton in the southeastern Bering Sea. *Journal of Geophysical Research: Oceans*, 95(C7), 11483-11499, 1990.

O'Reilly, J.E., Maritorena, S., Mitchell, B.G., Siegel, D.A., Carder, K.L., Garver, S.A., Kahru, M. and McClain, C.: Ocean color chlorophyll algorithms for SeaWiFS. *Journal of Geophysical Research: Oceans*, 103(C11), 24937-24953, 1998.

O'Reilly, J.E., Maritorena, S., Siegel, D.A., O'Brien, M.C., Toole, D., Mitchell, B.G., Kahru, M., Chavez, F.P., Strutton, P., Cota, G.F. and Hooker, S.B.: Ocean color chlorophyll-a algorithms for SeaWiFS, OC2, and OC4: Version 4. SeaWiFS postlaunch calibration and validation analyses, Part, 3, 9-23, 2000.

Pardo, S., Brando, V., Taylor, B., Quality Information Document (QUID) of Ocean Monitoring Indicators (OMI) for OCTAC, Issue 1.0, 12. Sep. 2018.

Sathyendranath, S.; Grant, M. and all (2018): ESA Ocean Colour Climate Change Initiative (Ocean_Colour_cci): Version 3.1 Data. Centre for Environmental Data Analysis, 04 July 2018. doi:10.5285/9c334fbe6d424a708cf3c4cf0c6a53f5.

Saulquin, B., Gohin, F. and Fanton d'Andon, O.: Interpolated fields of satellite-derived multi-algorithm chlorophyll-a estimates at global and European scales in the framework of the European Copernicus-Marine Environment Monitoring Service. *Journal of Operational Oceanography*, 2018 ~~Oceanography~~, 2018.

Steinmetz F, Pierre-Yves Deschamps, P-Y, Ramon, D (2011) Atmospheric correction in presence of sun glint: application to MERIS, *Optics Express*, Vol. 19, Issue 10: 9783-9800. <http://dx.doi.org/10.1364/OE.19.009783>.

Toole, D.A., Siegel, D.A., Menzies, D.W., Neumann, M.J. and Smith, R.C.: Remote-sensing reflectance determinations in the coastal ocean environment: impact of instrumental characteristics and environmental variability. *Applied Optics*, 39(3), 456-469, 2000.

Vantrepotte, V. and Mélin, F.: Temporal variability of 10-year global SeaWiFS time-series of phytoplankton chlorophyll-a concentration. *ICES Journal of Marine Science*, 66(7), 1547-1556, 2009.

Xi, H. , Losa, S. N. , Mangin, A. , Soppa, M. A. , Garnesson, P. , Demaria, J. , d'Andon, O. H. F. and Bracher, A. (2018): Global Retrieval Algorithms for Phytoplankton Functional Types (PFTs): toward the Applications to OLCI and GlobColour Merged Products , Ocean Optics Conference XXIV, Dubrovnik Croatia, 7 October 2018 -
5 [hdl:10013/epic.e9a41e28-ef93-43bd-b20a-c613693bd5d8](https://hdl.handle.net/10013/epic.e9a41e28-ef93-43bd-b20a-c613693bd5d8) , 12 October 2018 .

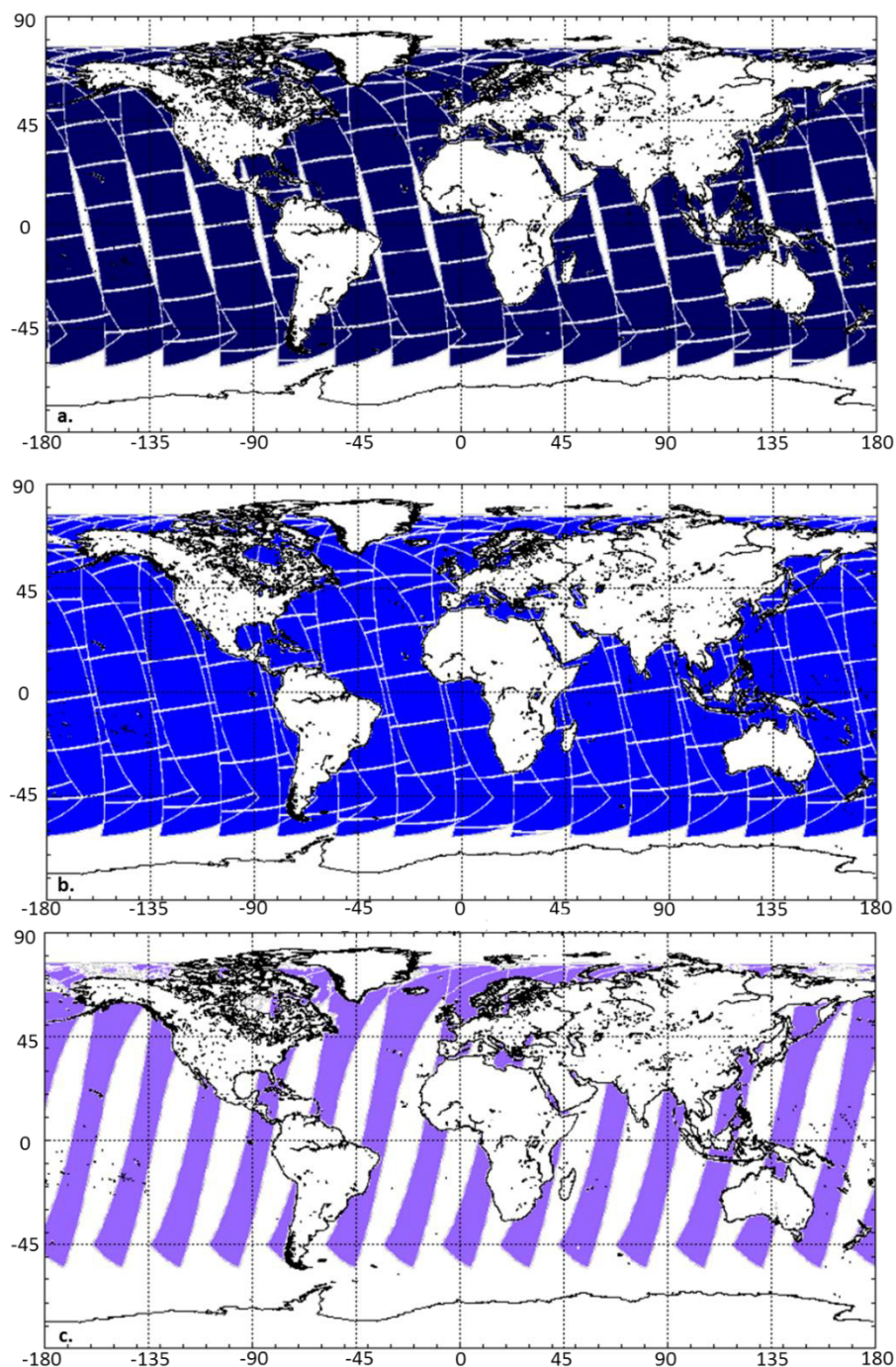


Figure 1: Swath of the different sensors used at present by CMEMS for (a) MODIS-Aqua, (b) VIIRS-NPP and (c) OLCI-S3A. In practice the effective swath coverage is reduced mainly due to clouds or sun glint effects.

~~Source:~~ Source : <http://octac.acri.fr>.

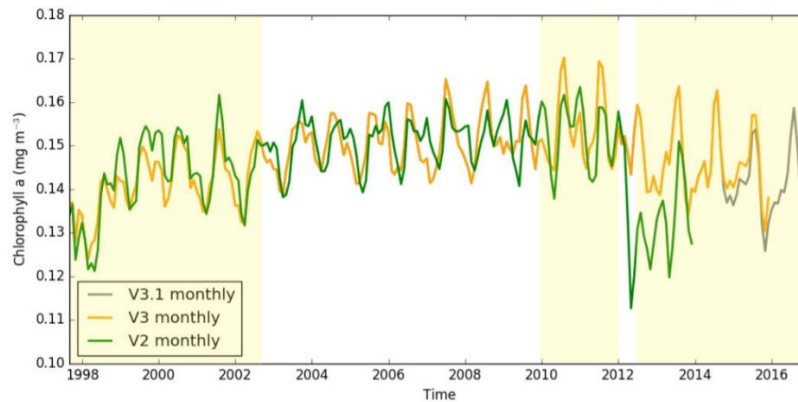


Figure 2: Comparison of the Global Median chlorophyll-a concentration as function of time for v2.0, v3.0 and v3.1 using the monthly composite as input. Source: [OC-CCI Product User Guide](#), release 3.1.0, 24th of April 2017.

Yellow part shows change of sensor combinations (see [Table 1](#) ~~Table 1~~)

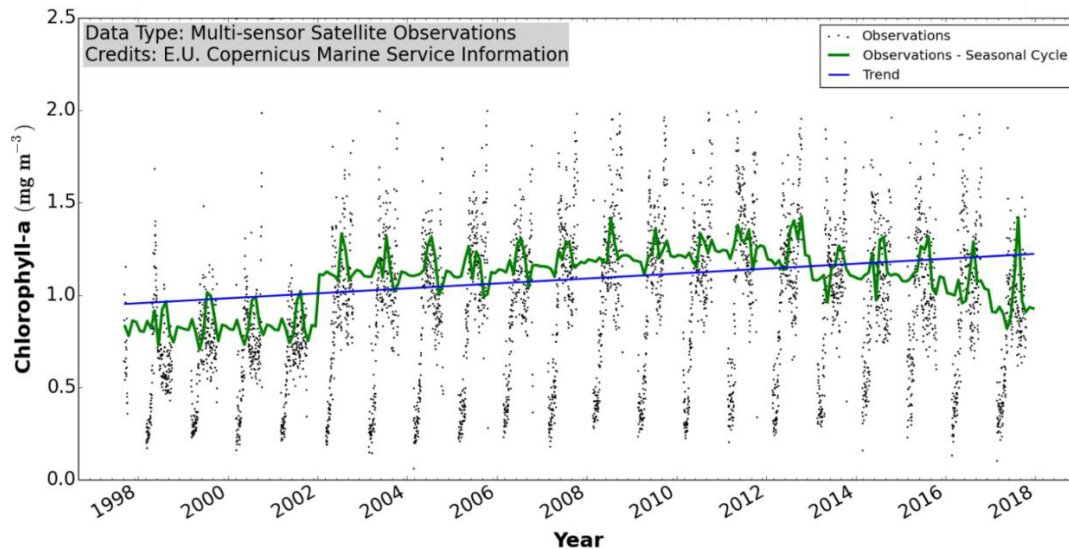


Figure 3 : Arctic time series and trend (1997-2017) from [OC-CCI](#) product. The time series are derived from the regional chlorophyll-a reprocessed (REP) products as distributed by CMEMS which, in turn, results from the application of the regional chlorophyll-a algorithms with remote sensing reflectances (~~RRS~~) provided by the ESA Ocean Colour Climate Change Initiative (ESA OC-CCI). Daily regional mean values are calculated by performing the average (weighted by pixel area) over the region of interest. A fixed annual cycle is extracted from the original signal, using the Census-I method as described in Vantrepotte et al. (2009). The de-seasonalised time series is derived by subtracting the seasonal cycle from the original time series, and then fitted to a linear regression to obtain the linear trend. Source: CMEMS [OMI](#) QUID.

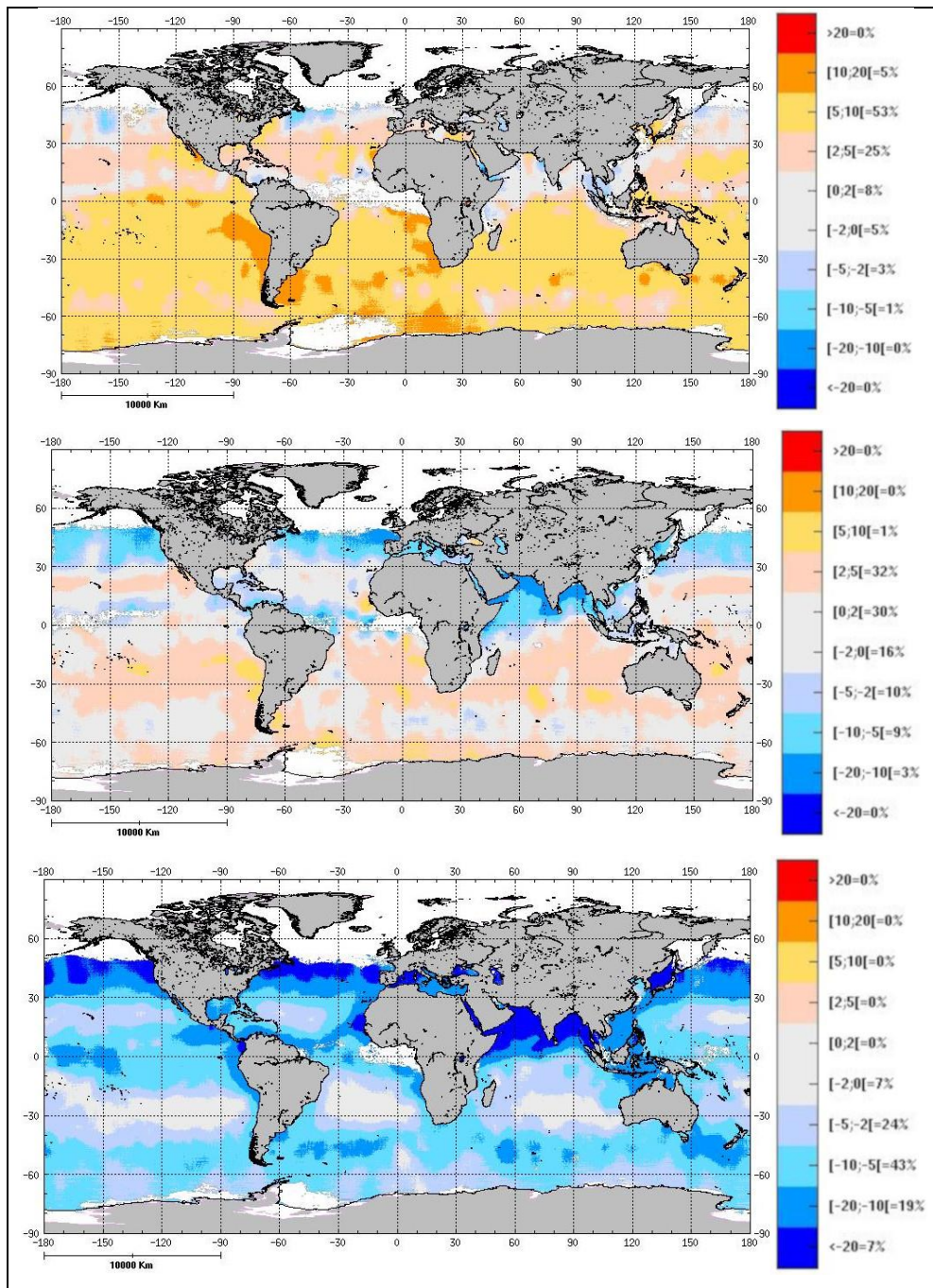


Figure 4: relative difference at RRS443 of VIIRS and MODIS (in %) based on the monthly NASA R2018 global products at 4km). VIIRS suffers from a significant trend since it has been launched as illustrated with January month evolution for years (a) 2012, (b) 2016 and (c) 2019.

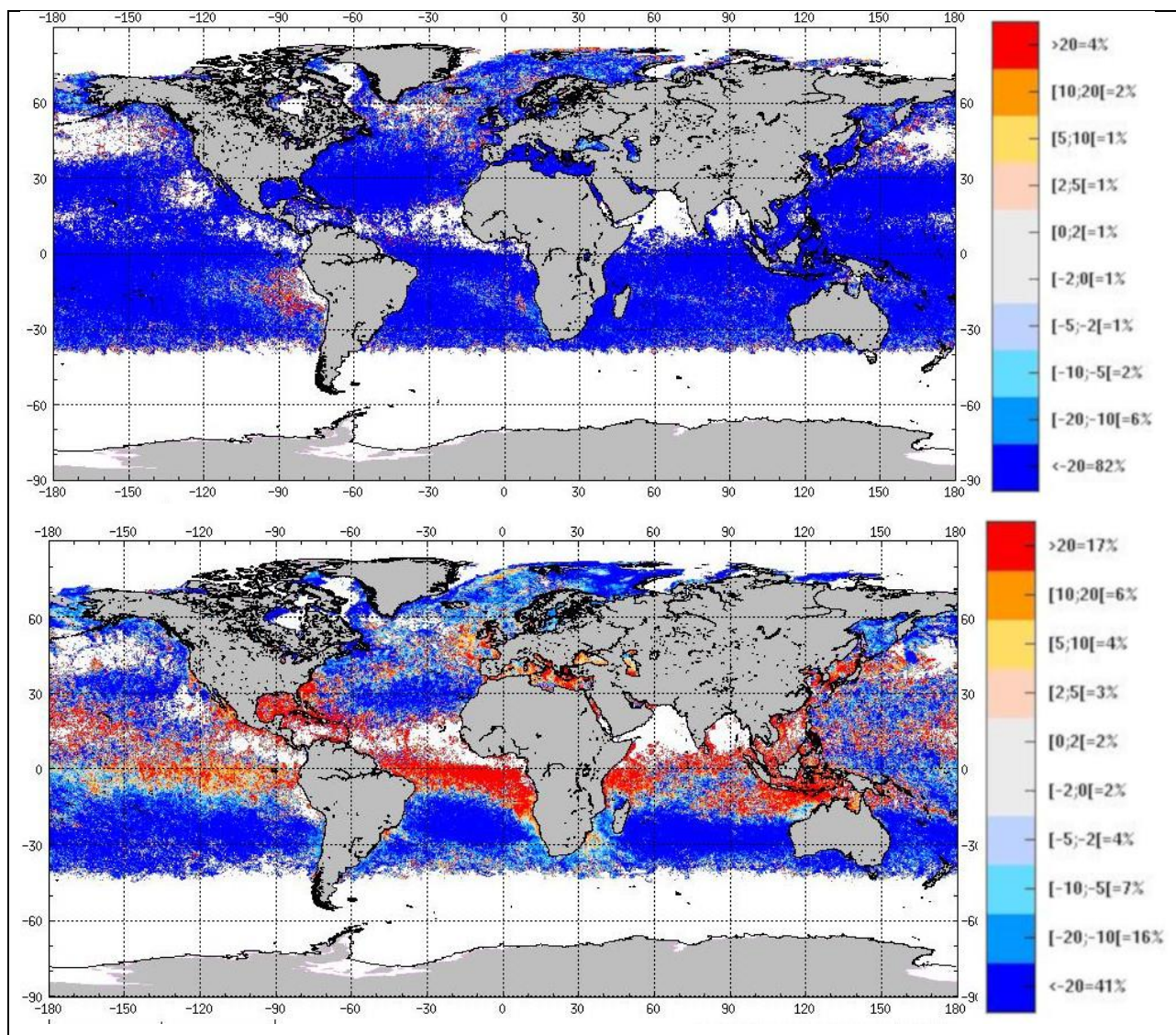


Figure 5: Relative difference between sensors $[(S1-S2)/S2]$ of monthly NRRS (June 2018), for (a) MODIS-NRRS667 and OLCI-NRRS665 and (b) VIIRS-NRRS671 and MODIS-NRRS667. Source: these plots are part of the monitoring done by the OCTAC and reported on <http://octac.acri.fr>.

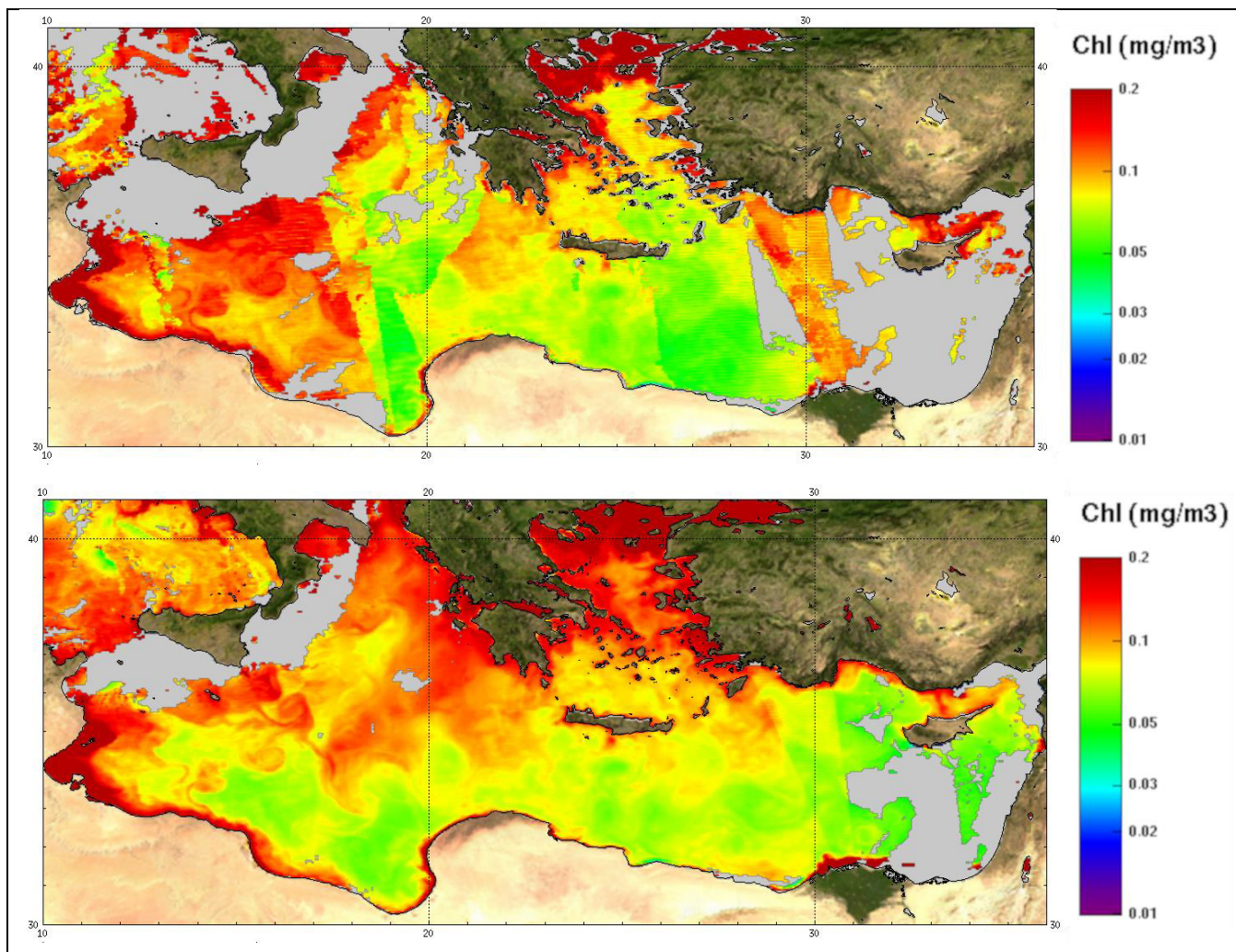


Figure 6: Inter-comparison of GlobColour product and (a) OC-CCI during and (b) GlobColour product (13 June -2018) for Oligotrophic water (CI/HU algorithm). The color scale has been set to the range 0.01 to 0.2 mg/l: discontinuities between tracks of the sensor clearly appeared on the OC-CCI case at the top.

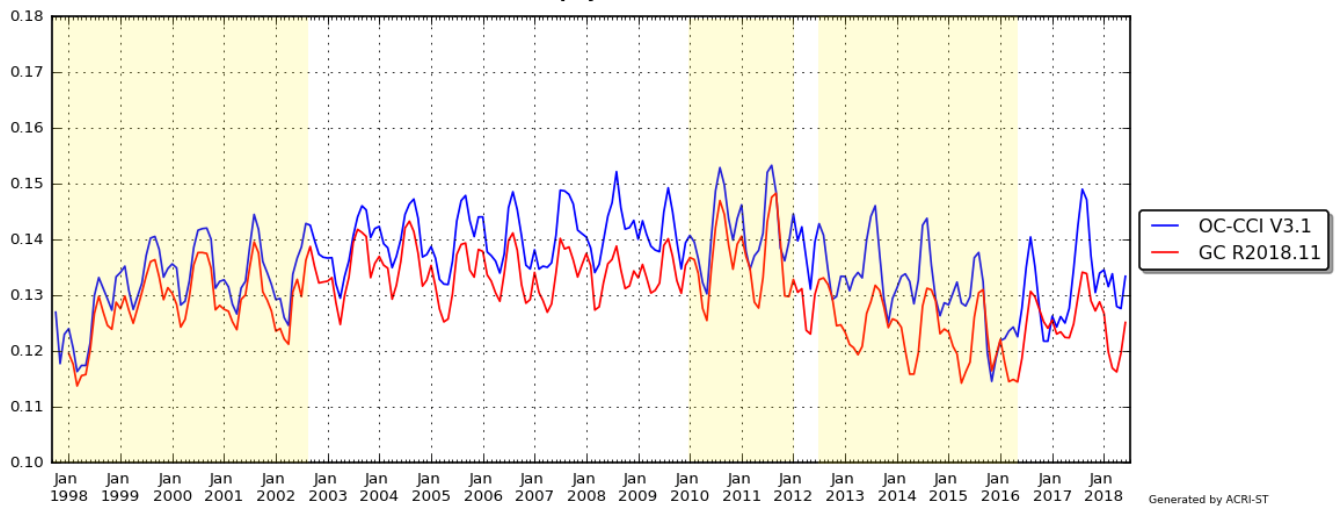


Figure 7: Comparison of the Global mMedian chlorophyll-a concentration as function of time for OC-CCI v3.1 (blue line) and GlobColour R2018.11 (red line) at global level and for common pixels. Yellow part shows change of sensor combinations.

- 5 The discontinuities and trends of the median along the time should be carefully interpreted according the sensors used. ~~it is due to a change of the spatial coverage linked to the sensors used, not due to a chlorophyll-a concentration change. It means potential trends should be only considered when same sensors (see).~~
- Yellow part shows change of sensor combinations (see Table 1)

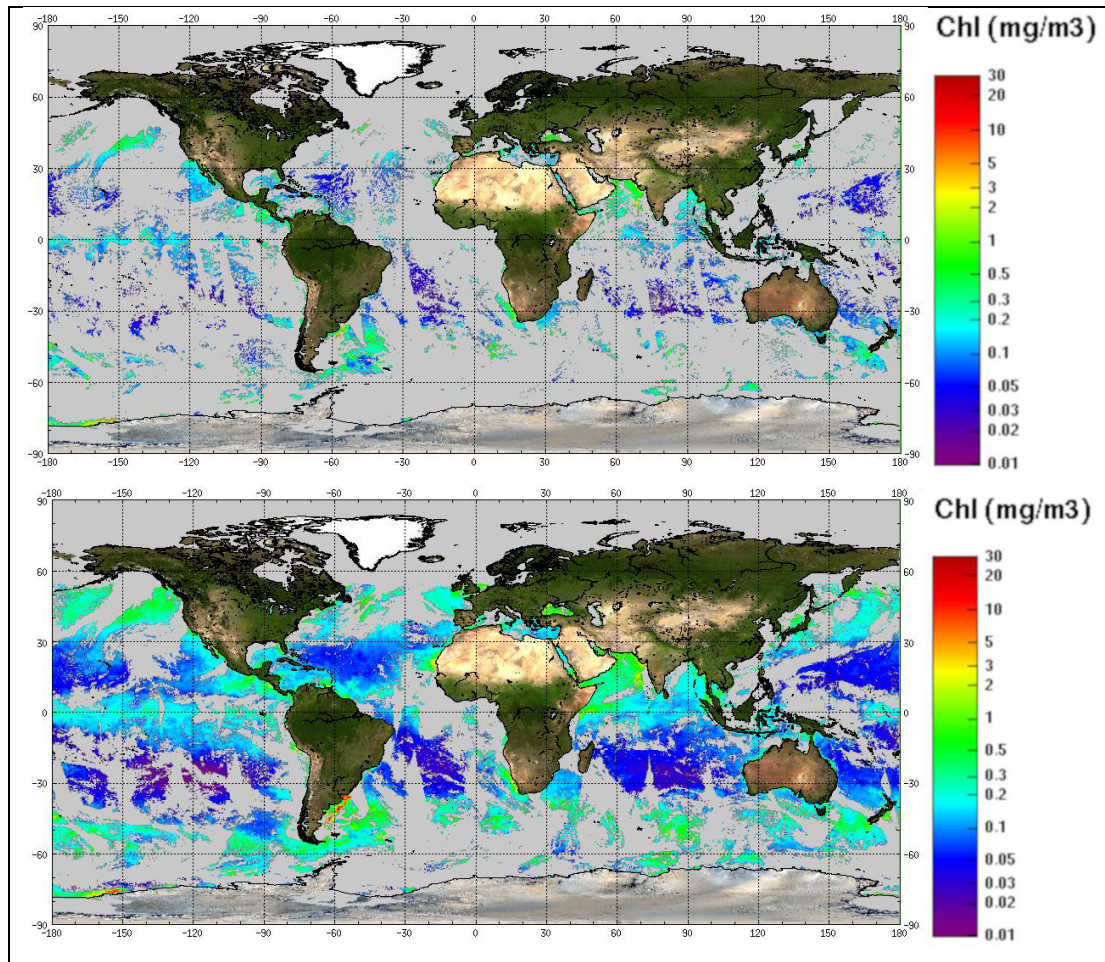


Figure 8: Chlorophyll-a concentration (15 Dec 2017), (a) [OC-CCI level 3 product](#) and (b) [GlobColour product](#). The two initiatives are using MODIS-A, and VIIRS-SNPP at this date, in complement OLCI-S3A is also used by GlobColour products

5

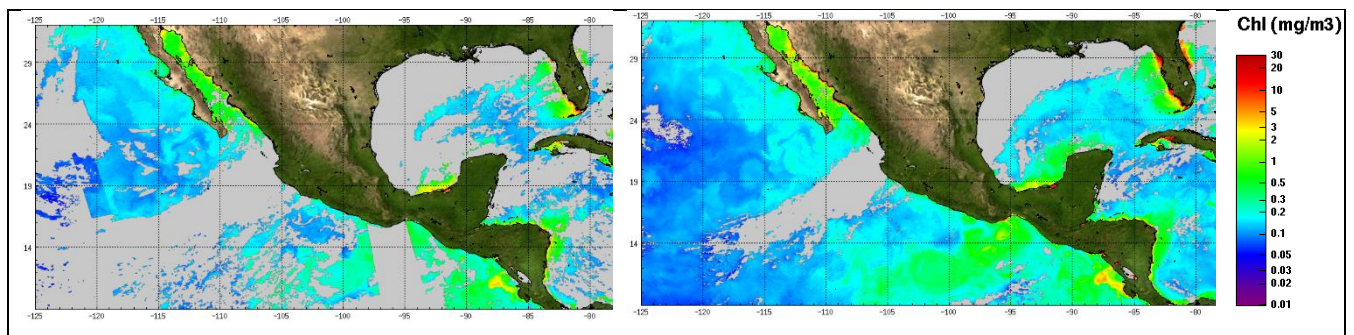


Figure 9: Chlorophyll-a concentration (15 Dec 2017): (a) [OC-CCI level 3 product](#), (b) [GlobColour product](#).

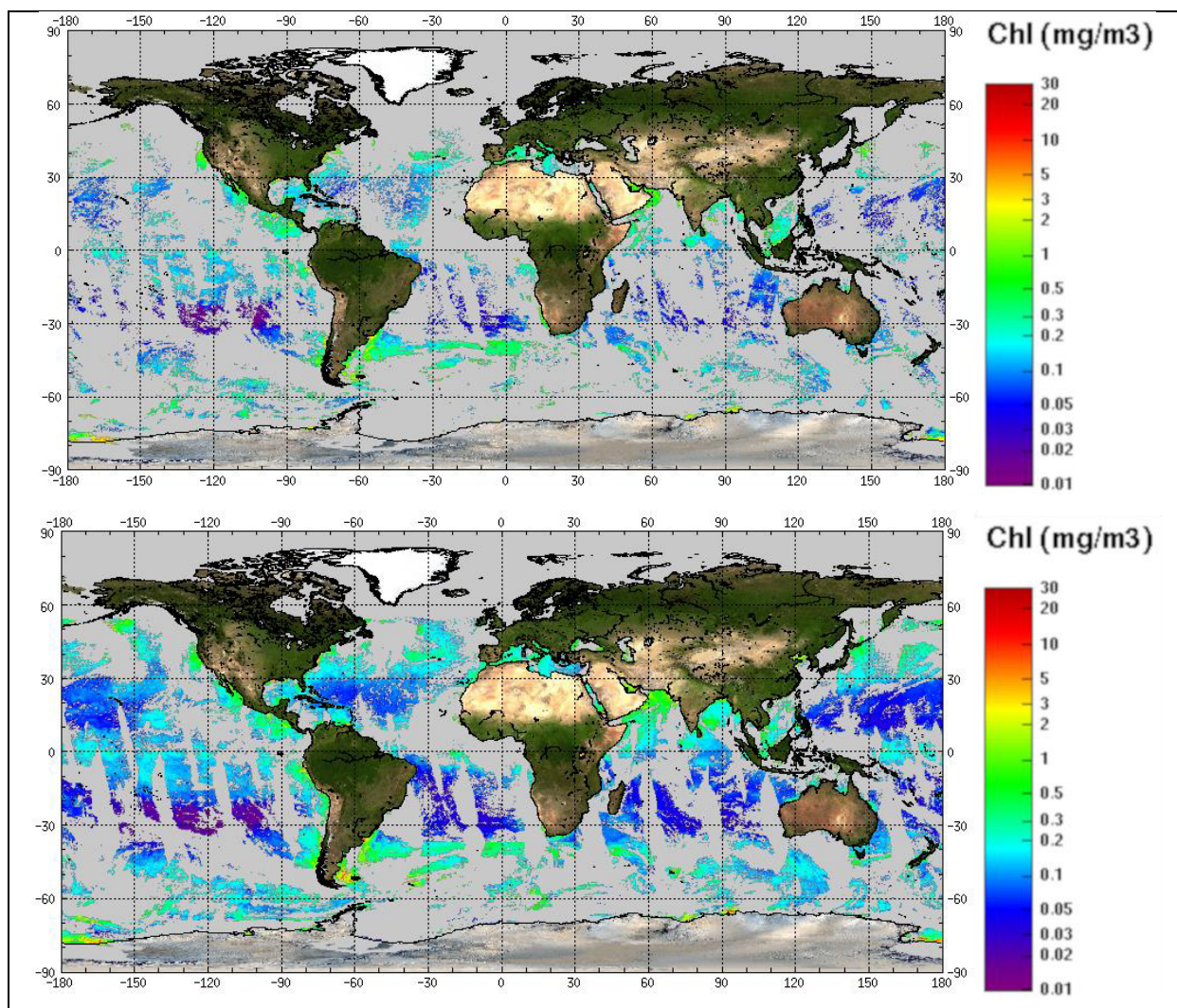


Figure 10: Chlorophyll-a concentration (1 Jan 2012), (a) [OC-CCI](#) level3 product and (b) [GlobColour](#) product.

The two initiatives are using MODIS-A, MERIS and VIIRS-SNPP at this date.

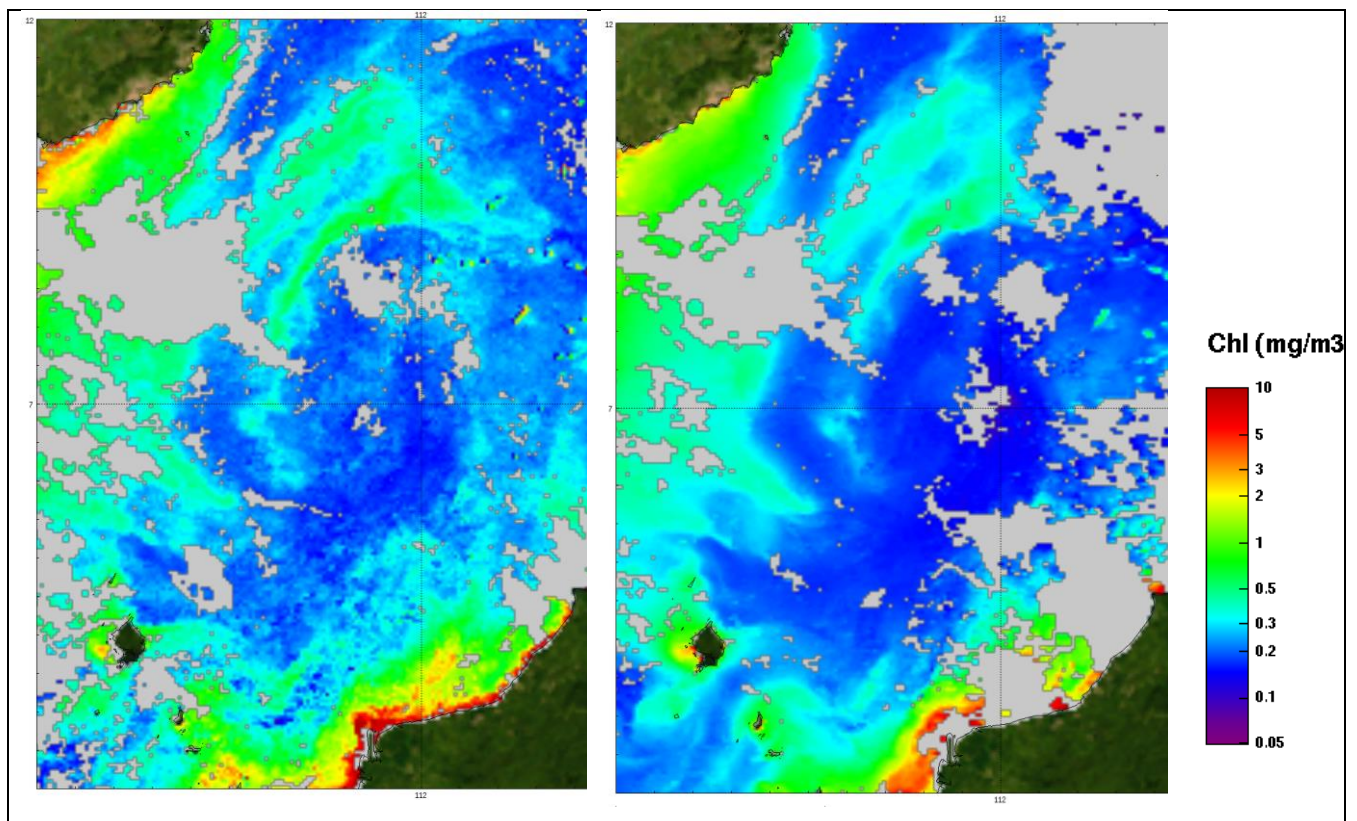


Figure 11: Chlorophyll-a concentration (1 Jan. 2012), (a) OC-CCI level3 product, (b) GlobColour product.

Table 1: Main characteristics of sensors/bands used for CMEMS ([VIIRS-JPPS1 and OLCI-S3B will be used by the GlobColour processor in the framework of the CMEMS release scheduled in July 2019](#)).:-

Sensor	RRS Wavelengths (nm)	Spatial Resolution At Nadir (km)	Swath width (km)	Equator ^e crossing time	Period
SeaWiFS	412,443,490,510,555,670	1 & 4	1502	12:20	1997-2010
MERIS	413,443,490,510,560,620,667,681,709	1 & 0.3	1150	10:00	2002-2012
MODIS-Aqua	412,443,469,488,531,547,555,645,667,678	1	2330	13:30	2002-present
VIIRS-NPP	410,443,486,551,671	1	3040	10:30	2012-present
OLCI S3A	400,412,442,490,510,560,620,665,674,681,709	1.2 & 0.3	1270	10:00	2016-present
VIIRS-JPPS1/NOAA20	411,445,489,556,667	0.75	3040	9:50	Dec-2017-present
OLCI S3B	400,412,442,490,510,560,620,665,674,681,709	1.2 & 0.3	1270	10:00	2018-present