

Response to Referee #1

Authors' Answer: The paper has been revised according to the comments from the reviewers and we thank both reviewers for their very helpful comments and suggestions. Our point-by-point response is inserted in the reviewer's comments.

Reviewer's Comment: The Northwestern Mediterranean is an important region for the Mediterranean Overturning Circulation through the formation of Western Mediterranean Deep Water. The authors provide an original study of the north Balearic front, bordering the open-ocean deep convection area of the Western Mediterranean. They combine observations and a realistic air-sea coupled model to analyse the thermal and dynamical air-sea coupling for different wind regimes in the north Balearic front region. Particularly, they highlight the importance of the adiabatic Ekman buoyancy flux in destratifying the frontal zone during strong wind event (three times greater than the air-sea buoyancy flux). I really enjoyed reading this manuscript which I think was clearly written and well structured. I was particularly amazed by the excellent agreement between the coupled model system and the met-ocean observations. I think the work is significant and deserve prompt publication. I have however a few comments I would like the authors to address before the manuscript is considered for publication.

Minor comments:

RC: p5,l 12: By looking fig 6c), the MLD doesn't seem to deepen only by a few meters, it looks like it deepened from ~25m to ~40m. To avoid this interpretation problem, you should indicate the MLD on the different profiles of the figure, particularly because you mentioned it in the text.

AA: The MLD have been added to the Fig 6c. The MLD deepen from ~25 to ~40m. The text has been modified accordingly.

RC: P5, l14: slight is not very quantitative can you be more accurate?

AA: “slight“ has been replaced by a MLD deepening of about 20 meters.

RC: P7, l3-4: Any explanation why these small-scale structures were not observed?

AA: The filament structure simulated (see Fig. 4g) is not positioned at the same place in the reality.

RC: P7, l8: can you quantify how much smaller (10%, 100%,...)?

p7, l 10-11: What about the large 0.2 bias between model and obs in Oct. 26? Is it also due to the fact that the modelled profile was not in the same region/regime? Adding small maps on fig6, with the modelled and observed SST, zooming on the location of the profiles, would help understand if the profile were taken from the same type of region.

AA: This paragraph p7 l7-11 was modified :

“At the end of the strong wind event, the simulation showed a decrease of temperature and an increase in salinity, density and MLD. The temperature decrease was smaller than in the observations, 3.3°C compared to 5.3°C. Whereas the salinity increase was more important in the simulation than in the observations, 0.15 compared to 0.05. The increase of density and MLD were smaller than in the observations, 1 kg m⁻³ and 15 m compared to 1.32 kg m⁻³ and 25 m, respectively. However, it is worth to note that the observed profile is located to the north of the NBF whereas the corresponding one in the simulation is within the frontal zone. When the comparison is made with a simulated profil located slightly further east (41.8°N -5.15°E, green dashed line in Fig. 6), the simulation results are much closer to the Argo observations.”

The Argo profiles positions are now available on Figure 4.

RC: P9, l2: “the density does not increase” → the density appears to increase when looking the position of the isopycnal and the colorbar.

AA: Modified

RC: p9, 111: when you speak about correlation you should give the correlation coefficient in the text, otherwise you should find another term.

AA: Modified

RC: P10, 122: E and P are not variables shown in the equation E (4). You should rather introduce Q_{net} and F_w .

AA: Done

RC: P11, 12: Can you give the origin or the kind of processes which are part of R? Later on, you speak about advective processes, you should also introduce it here.

AA: The origin of processes which are part of R are now introduced p10 123: "The stratification index variation at depth H (with $H=250$ m, $H>MLD$) between times T1 and T2 can be approximated by the integral of buoyancy mass flux between times T1 and T2 (Eq 5). In order to evaluate the competing roles of the diabatic and Ekman buoyancy fluxes on stratification variation, these two term are diagnosed and compared to the stratification variations. Finally, to close our stratification budget diagnosis we evaluate the residual term corresponding to other potential sources of horizontal and vertical advection of buoyancy (geostrophic circulation, frontogenesis, Ekman pumping, ...) that are not directly diagnosed in this study".

RC: P11, 115-16: you could precise that the stratification gain is of the same order of magnitude than the cumulated EBF effect.

AA: Done

RC: P12, 114: in the BNF zone → in the eastern part of the NBF (down-front wind)

AA: Done

RC: p13, l25: “This process is not reproduced in our real case study.” → Do you have an explanation why?

AA: We explain that by the fact that the front is not constrained by the bathymetry.

Typos/ spelling mistakes:

RC: p1,l5: ... modelling system and focused... → modelling system. We focused

AA: Done

RC: p1,l9: I will split the sentence l8-l10 in two, I found it hard to follow.

AA: Done

RC: p4, l19: ‘..., the horizontal resolution of which is about’ →..., with an horizontal resolution of

AA: Done

RC: p6, l12: (of all the → from all the ?

AA: Done

RC: P7, l4: marked → intense?

AA: Modified

RC: P7, l7: was shown by the model on October 26th

AA: Corrected

RC: P7, l8: ... an increase in salinity and density [...], except for salinity. → something is not clear, can you double check the meaning?

AA: This section has been modified.

RC: P7, l15: obviously → slightly?

AA: Modified

RC: P7, l22: red → yellow-red?

AA: Modified

RC: P7, l28: less strong → reduced?

AA: Modified

RC: P8, l17: and after IOP16 (blue lines in fig 8)

AA: Modified

RC: p8, l27: The EW section (Fig. 8.b) before IOP16, which crosses the meander (Fig. 7c), intersects the NBF → The EW section (Fig. 8.b) crosses the meander (Fig. 7c) before IOP16. It intersects the NBF

AA: Modified

RC: p9, l1: in the heart → in the core?

AA: Corrected

Figures:

RC: fig3: You should add the ticks for all the time mentioned in the text (e.g. 18 UTC on October 27). Did you display the ticks for 0000UTC or 1200UTC?

AA: The figure 3 has been modified to be more readable.

RC: fig4. Drawing the NBF position on figure 4 would help to follow the text (p7,l9)

AA: Done

RC: fig5: - Can you add an indication of the period of strong wind mentioned in the text (e.g. by an horizontal line on top of the sections?)

- The tick labels cannot be seen clearly. Can you make sure to make them visible?

You should also plot the MLD on figure (d)-(g) as you discuss it in the text, but it's difficult to locate it on the subplots.

AA: The figure 5 has been modified to be more readable.

RC: Fig6: You should need the MLD on all profiles and add the criterion used (density based?),

for example by a small horizontal line on obs and model profiles.

AA: The MLD for all profiles was added to the density profile.

RC: It's difficult to clearly localised the green dash profile location on figure 4. Could you a subplot where you indicate the position of argo profiles in Oct. 26th for both model and obs SST maps? (by zooming on a box such as 42.5N-42.2N / 4.5E-5.5E). Can you also do it for the locations of the 2 profiles taken in October 31 st? It could help understanding why the profiles doesn't exactly match.

AA: The dash profile location has been added on figure 4.

RC: Fig7: - 14: line (a-c) → do you mean (a-b)?

- You should keep a numbering consistent between all figures (increasing from left to right and top to bottom)

AA: Done

RC: Fig8: This figure is difficult to read.

- For clarity, you should leave more horizontal and vertical spaces between the colorbar and vertical sections.
- Can you add axe labels for plots and colorbar?
- Do we need to see all these isopycnals? The superposition of isopycnal doesn't make the figure easy to read. What about keeping the 27 and 28 isopycnals as plain lines and the other as small dash lines? Could you also make sure that the contour labels are visible? (by adding them manually in the middle of the contour line for example?) Can you indicate the surface position of the front on the 25/10 and on 30/11 on top of the section by a specific marker (e.g. reverse triangle, arrow, ...) ? You could indicate the cyclonic gyre extension you are mentioning in the text.

AA: The figure 8 has been modified to be more readable.

RC: Fig 14: Could you indicate, on figure 13 for example, the area chosen for the two regions a and b?

AA: Done

Response to Referee #2

Authors' Answer: The paper has been revised according to the comments from the reviewers and we thank both reviewers for their very helpful comments and suggestions. Our point-by-point response is inserted in the reviewer's comments.

Reviewer's Comment: The paper presents an original study of the North Balearic Front dynamics during a strong wind event, combining observations, high-resolution coupled modelling and stratification budget. The authors give a complete overview of the atmospheric event and of the ocean front evolution. The validation of the coupled simulation is very convincing. The use of a stratification budget seems very promising in particular to better understand the coupled mechanisms involved.

Nevertheless, the fact that the equations are not fully detailed and that the residual term is not described but finally appears as a dominant term, gives the impression that only a part of this budget is considered.

Consequently, I suggest some major revisions to improve the paper before accepting its publication.

So, my main comment concerns the stratification budget (section 6) which is very briefly presented:

First, it could be very helpful to give a physical view of EBF. Reading Thomas and Lee (2005), I understood it is a destabilizing flux leading to convection and frontal intensification, but clearly I am not sure about my interpretation.

AA: Rephrased and Added sentences p10, line 9 to 23 :

“The stratification variation of water column can be modified through diabatic processes and horizontal or vertical advection of buoyancy. Most models assume that the stratification

budget is essentially driven by one-dimensional turbulent mixing of heat and water at air-sea interface. Following Merstens and Schott (1998) the air-sea exchanges induce a surface or diabatic buoyancy flux can be diagnosed as :

$$B_0 = g \cdot \alpha \cdot \frac{Q_{net}}{\rho_0 C_p} + g \cdot \beta \cdot SSS \cdot (E - P) \quad (2)$$

where B_0 is the diabatic buoyancy flux in $m^2 s^{-3}$, α the thermal expansion coefficient in K^{-1} , C_p the specific heat capacity in $J kg^{-1} K^{-1}$, β the saline contraction coefficient, SSS the Sea Surface Salinity, E the evaporation and P the precipitations in $m s^{-1}$.

This one-dimensional approximation is suitable if the ocean is horizontally homogeneous. In reality, mesoscale and submesoscale structures populate the ocean. These structures are marked by horizontal buoyancy fronts. As shown by Thomas and Lee (2005) and Thomas and Ferrari (2008), the stratification can be significantly modified by interactions between these fronts and Ekman flow generated by frictional forcing. When the winds are down-front, the density advection of dense water over light water by Ekman transport destabilizes the water column and triggers convection. This process destratifies the water column by Ekman advection of buoyancy and mixing through the mixed layer. On the contrary when the winds are up-front the Ekman flow yields an Ekman advective restratification in the surface layer. Following Thomas and Taylor (2010), the frictional forcing induces a wind-driven or Ekman Buoyancy Flux (EBF) which can be diagnosed as :

$$EBF = - \frac{g}{\rho_0} \vec{M}_e \cdot \nabla_h \rho_{(z=0)} \quad (3)$$

where EBF is the Ekman Buoyancy Flux in $m^2 s^{-3}$, M_e the Ekman transport (Eq. 4) in $m^2 s^{-1}$, ∇_h the horizontal gradient, and $\rho_{(z=0)}$ the surface density in $kg m^{-3}$, with

$$\vec{M}_e = \frac{\hat{z} \times \tau}{\rho_0 \xi_a} \quad (4)$$

where \hat{z} is the vertical unit vector, τ the wind stress in $N m^{-2}$, and ξ_a the absolute vorticity in s^{-1} .

RC: p10, line 10: “the friction induced a wind-driven or Ekman Buoyancy Flux (EBF) given by:”

AA: Modified

RC: Where does equation 6 come from? There is no residual term in equation 13 of Thomas and Lee (2005)? What is the value of H considered? Is the equation valid for any H or is there a limit considering the depth of the Ekman layer?

AA: I think you want to talk about equation 5. The variation of the water column stratification between times T1 et T2 can be approximated by the integral of the buoyancy flux that applies on the water column between time T1 and T2. As described above, two types of buoyancy flux generated by the air-sea exchanges can be distinguished: The diabatic buoyancy flux generated by the heat and water exchanges and the Ekman buoyancy flux generated by frictional forces. Equation 13 of Thomas and Lee (2005) corresponds to the sum of these two fluxes. As shown by Thomas and Ferrari (2008), diabatic processes and frictional forces are the only processes that can generate and destroy stratification. Our stratification budget diagnosis aims at assessing the competing roles of the diabatic buoyancy flux and Ekman buoyancy flux on the stratification evolution. However, the stratification of the water column can also be modified by horizontal and vertical advection of buoyancy. There is several sources of buoyancy advection in the water column (geostrophic circulation, frontogenesis, Ekman pumping, ...) which are in our budget induced in the so called residual term. The computation of these three terms (diabatic buoyancy flux, Ekman buoyancy flux and residual) provides a rough estimate of their respective contributions to the stratification evolution.

In our case we considered $H = 250$ m with $H > \text{MLD}$. Tests were performed tests with $H = 1000$ m and $H = 1500$, the results remain unchanged. In theory, the equation of Ekman buoyancy flux is valid as long as $\text{MLD} \gg \text{Ekman layer depth}$. However, Thomas and Lee (2005) show that this hypothesis is not crucial and the MLD can be of the same order of

magnitude as the Ekman layer. In our case, the Ekman layer depth is about 30 m and the MLD about 50m.

To clarify Equation 5, we added this paragraph p10 l23: " The stratification index variation at depth H (with $H = 250$ m, $H > \text{MLD}$) between times $T1$ and $T2$ can be approximated by the integral of buoyancy mass flux between times $T1$ and $T2$ (Eq 5). In order to evaluate the competing roles of the diabatic and Ekman buoyancy fluxes on stratification variation, these two term are diagnosed and compared to the stratification variations. Finally, to close our stratification budget diagnosis we evaluate the residual term corresponding to other potential sources of horizontal and vertical advection of buoyancy (geostrophic circulation, frontogenesis, Ekman pumping, ...) that are not directly diagnosed in this study".

RC: Maybe, one possibility to clarify this section is to give an enlarged description of the reasoning in an annexe. Obviously, the idea is not to reproduce the work from Thomas and Lee (2005) but to try to give the main insights.

AA: The work of Thomas and Lee (2005) is now more detailed in section 6 (see above).

RC: Concerning the residual term, it appears later in the text that you can attribute its value to horizontal advection or vertical advection/Ekman pumping. How? If there is a way, you must extract these terms from R and plot their values to complete the stratification budget.

AA: Extract the different terms of the residue is not the purpose of the paper which aims to compare the respective impact of diabatic processes and frictional forces on the evolution of stratification. In future work it would be interesting to calculate a buoyancy flux generated by Ekman pumping. However, this computation is not straightforward in a 3D realistic simulation.

RC: Finally, in section 7, it could be also interesting to discuss the possible limitations due to the hydrostatic assumption or to the convection parameterization in the ocean model.

AA: One limitation of turbulence parameterization is that the turbulence at surface is driven only by atmospheric forcing. Large Eddy Simulation (LES) with explicit resolution of turbulence shows that turbulence can also be generated through frontal instabilities (Thomas et al. 2013). It would be interesting to set up an realistic LES configuration in NWMS (currently too expensive) to explicitly solve turbulence and convective processes and to compare to our hydrostatic simulation.

Other comments:

RC: p2, lines 2-9: There is a kind of mixing between front/current in the very first sentence of the introduction. In my opinion, it could be helpful to describe the cyclonic circulation with the various branches/currents and then how it constrains/forms the surface density gradient?

AA: Rephrased sentences:

“The surface circulation in the North Western Mediterranean Sea (NWMS) is formed by a cyclonic oceanic gyre (Fig. 1). This cyclonic gyre is closed to the north and west by the Northern Current (Millot, 1999), and to the east by the West Corsica Current (WCC) (Fig. 1). The south branch of the surface gyre is defined by a frontal zone, the so-called North Balearic Front (NBF). The NBF is an extension of the Balearic Current (BC), from the Balearic Sea to the Ligurian Sea (Font et al., 1988). This surface density front (100-200 m deep) separates the warm and fresh Atlantic Water (AW) which has recently entered the south of the basin from the colder and saltier AW present in the center of cyclonic gyre (Millot and Taupier-Letage, 2005). This front forms a “Lagrangian barrier” (Mancho et al., 2008) which plays an important role on the nutrients budget and planktonic ecosystem (Estrada et al., 1999) and marine ecosystems distributions (Gannier and Praca, 2007; Cotté et al., 2011).”

RC: p2, line 21: “maintained strong precipitation offshore and over the southeastern French coasts”

AA: Done

RC: p2, lines 30-32: I am curious to know if there is any action of the perpendicular wind component?

AA: There is a perpendicular wind component but we have not studied its impact.

RC: p4, lines 20-21: It appears from fig 4 that the effective resolution of the OSTIA and Copernicus products are much larger than the indicated resolution (6 and 1 km, resp.). This is somehow mentioned p6, line 25 (“The horizontal resolution of the latter...of the model. ”), but could be rapidly indicated in this section 2.2 or commented.

AA: Rephrased and added sentences: “The first analysis is the global OSTIA product (Donlon et al., 2012), the horizontal resolution of which is about 6 km. This product is used in the ECMWF operational model. The second analysis is the Mediterranean Copernicus product (Buongiorno et al., 2013) provided at higher resolution (about 1 km). The spatial resolutions indicated above refers to the resolution at which the data are provided but not to their effective resolutions. ”

RC: p6, line 34: replace “extremity” by “end”.

AA: Done

RC: p8, lines 4-5 should not be in italic.

AA: Done

RC: p8, line 10: “Modified”: This is the first time this term appears. Could you explain it?

AA: This term correspond to the water mass named “Modified Atlantic Water (MAW)”, this water mass name is no longer used. “Modified“ has been deleted.

RC: p9, line 16: Remove here the comment about density: “During strong wind event, evaporation dominated and led to an upward (positive) water flux.”

AA: Done

RC: p9, line 19: You may refer here to fig 2 (instead of fig 10a)?

AA: Done

RC: p10: See my main comment + Please, detail g,

AA: Done

RC: rho_0, Qnet and Fw; Some sentences should not be in italic.

AA: Done

RC: p12, line 14: “during IOP16b”

AA: Done

RC: p13, line 26: “the front is less marked” this is not so clear for me from figs 4 and 7.

Are you talking about a smoothing? a reduction of the temperature difference?

AA: We are talking about a reduction of the density gradient. “the front is less marked” has been replaced by “the surface density gradient is less marked”.

RC: p14, line 2: “For example, Thomas et al. (2016) show”

AA: Done

RC: p15: refs Drobinski et al. and Ducrocq et al. 2014; In addition, I think URLs in this “References” section must refer to the “doi.org” pages.

AA: The references are generated directly by Latex with the copernicus template.

RC: Figure 5: precise “observation” or “simulation” on each panel if possible. For (c), the caption tells it is the simulation bias but it seems to be more ‘glider minus simulation’

AA: Corrected.

RC: Figure 7c: The red contour is not visible.

AA: The red contour is not drawn in the figure c. The caption has been modified.

RC: Figure 8 is difficult to read. Please consider here to plot separately the density sections for 25 oct., 30 oct. and the differences.

AA: Figure 8 has been modified for better visibility.

RC: Figure 10: Please, improve the resolution in order to distinguish the arrows. Precise in the caption if the arrows are for the wind or the wind stress + a reference length for vectors must be added.

AA: The resolution has been increased. The arrow corresponds to the wind stress, this information added in the caption and a reference length for vectors is given.

RC: Figure 14: the plots of “B0+EBF” are not necessary

AA: The plots of “B0+EBF” has been deleted.

Dynamics of North Balearic Front during an autumn Tramontane and Mistral storm: air-sea coupling processes and stratification budget diagnostic

Léo Seyfried¹, Claude Estournel¹, Patrick Marsaleix¹, and Evelyne Richard¹

¹Université de Toulouse, CNRS, UPS, Laboratoire d'Aérodynamique, Toulouse, France

Correspondence to: Léo Seyfried (leo.seyfried@aero.obs-mip.fr)

Abstract. The north Balearic front forms the southern branch of the cyclonic gyre in the North Western Mediterranean Sea. Its dynamics exhibits significant seasonal variability. During autumn, the front spreads northward during the calm wind periods and rapidly moves back southward when it is exposed to strong northerly wind events such as the Tramontane and Mistral. These strong winds considerably enhance the air-sea exchanges. To investigate the role of air-sea exchanges on the dynamics of the North Balearic front, we used observations and a high-resolution air-sea coupled modelling system, ~~and~~. We focused on a strong wind event observed in late October 2012, which was well-documented during the Hydrological Cycle Mediterranean Experiment. The coupled model was able to correctly reproduce the 4°C sea surface temperature drop recorded in the frontal zone together with the observed southwestward displacement of the front. The comparison between the weak wind period preceding the event and the strong wind event itself highlighted the impact of the wind regime on the air-sea coupling, ~~with both~~ thermal and dynamical couplings during. During the low wind period and mainly thermal coupling wind period the coupling is thermal and dynamical whereas during the strong wind period the coupling is mainly thermal. The effect of air-sea exchanges on the stratification variations in the frontal zone was investigated with a stratification budget diagnosis. The stratification variations are controlled by diabatic air-sea buoyancy flux, adiabatic Ekman buoyancy flux, and advective processes. During the strong wind period, the Ekman buoyancy flux was found to be three times greater than the air-sea buoyancy flux and thus played a major role in the destratification of the frontal zone. The role of Ekman pumping and inertial wave on the advective processes is also discussed.

1 Introduction

The North Balearic Front (NBF) is an extension of the Balearic Current (BC), from the Balearic Sea to the Ligurian Sea (Font et al., 1988). The NBF forms the south branch of the surface oceanic cyclonic gyre of surface circulation in the North Western Mediterranean Sea (NWMS), is formed by a cyclonic oceanic gyre (Fig. 1). This cyclonic gyre is closed to the north and west by the Northern Current (Millot, 1999), and to the east by the West Corsica Current (WCC) (Fig. 1). The south branch of the surface gyre is defined by a frontal zone, the so-called North Balearic Front (NBF). The NBF is an extension of the Balearic Current (BC), from the Balearic Sea to the Ligurian Sea (Font et al., 1988). This surface density front (100-200 m deep) separates the warm and fresh Atlantic Water (AW) which has recently entered the south of the basin from the colder and saltier AW present in the center of cyclonic gyre (Millot and Taupier-Letage, 2005). This front forms a “Lagrangian barrier” (Mancho et al., 2008) which plays an important role on the nutrients budget and planktonic ecosystem (Estrada et al., 1999) and marine ecosystems distributions (Gannier and Praca, 2007; Cotté et al., 2011).

The NBF dynamics is strongly influenced by mesoscale and submesoscale structures with significant seasonal variations (García et al., 1994). During winter the surface front is located to the south (around 40 °N) because of the densification of surface waters by open-ocean deep convection that occurs in the center of the gyre (Marshall and Schott, 1999). During summer the light AW present in the south of the basin spreads northward and the position of the front is further north. The short time scales variations of the surface front can also be significant in response to the wind variability: when the northern wind is weak, light water spreads northward over the dense water while when the northern wind is strong the front shifts southward (Estournel et al., 2016a).

This study focuses on the NBF dynamics during an autumn storm. This storm occurs during the Intensive Observation Period (IOP) number 16 (26-29 October 2012) of the HyMeX program (Drobinski et al., 2013; Ducrocq et al., 2013; Estournel et al., 2016b). This IOP can be divided into two parts, the first part IOP16a (26 October 2012) was dedicated to heavy precipitation events whereas the second part IOP16b (27-29 October 2012) focussed on strong wind events. During IOP16a the convergence between southwesterly and southeasterly flows initiated and maintained strong precipitation offshore and over the southeastern French coasts (Duffourg et al., 2016). During IOP16b a severe northerly wind event, associated with Tramontane and Mistral, and a large decrease of the Sea Surface Temperature (SST) were observed at the Lion meteorological buoy (Lebeaupin Brossier et al., 2014). Lebeaupin Brossier et al. (2014) explained this large SST drop by the intense surface heat losses producing cooling of surface water and vertical mixing. Estournel et al. (2016a) showed that the large decrease of SST at the buoy was also associated with the rapid southward displacement of the NBF.

The Tramontane and Mistral are two strong, dry and cold north-westerly/northerly winds which are channeled by the topography, between the Pyrenees and the Massif Central for the Tramontane, and between the Massif Central and the Alps for the Mistral (Fig. 1). These winds produce strong air-sea exchanges (Flamant, 2003; Hauser et al., 2003) which lead to important diabatic buoyancy losses for the sea and which also impact the NBF position in autumn (Seyfried et al., 2017). Furthermore, the Tramontane and Mistral have up- or down-front winds components over the NBF and the Northern Current. Down (up) front wind corresponds to a wind parallel and in the same (opposite) direction as the current (Fig. 1). In an academic study,

Thomas and Ferrari (2008) showed that the up or down front wind can respectively restratify or destratify the mixed layer. This modification of stratification is due to the differential advection of density by the Ekman transport which destabilizes the front and releases the symmetric instability (Taylor and Ferrari, 2010). To represent the modification of stratification generated by the Ekman transport, Thomas and Lee (2005) defined a surface adiabatic buoyancy flux named the Ekman buoyancy flux as the product between the Ekman transport and the horizontal surface buoyancy gradient. This physical diagnostic was applied to the real case of Kuroshio (Rainville et al., 2007) and Gulf Stream (Thomas et al., 2016), showing the major role of the Ekman buoyancy flux as compared to the diabatic buoyancy flux on the modification of stratification in frontal zones. In the NWMS, a realistic modelling study (Giordani et al., 2016) also analysed the respective roles of the diabatic air/sea and adiabatic Ekman buoyancy losses along the Northern Current front on the deep water formation during winter. This study found that the Ekman buoyancy flux contribution was dominant along the northern branch of the Northern Current.

In the NWMS (Lebeaupin Brossier and Drobinski, 2009; Small et al., 2012; Renault et al., 2012; Rainaud et al., 2017) showed the importance of using air-sea coupled modelling to represent the rapid variations of air-sea exchanges induced by the decrease of SST during Tramontane and Mistral events. Furthermore, in frontal zones, the air-sea exchanges are clearly an air-sea coupled process. The SST front and sea surface frontal currents directly impact the air-sea exchanges with significant feedback between the sea and the atmosphere (Small et al., 2008). The atmospheric response to the front creates wind stress divergence and curl impacting the sea by Ekman pumping (Chelton and Xie, 2010). These air-sea feedbacks in frontal zones may also have a marked influence on the diabatic and Ekman buoyancy fluxes (Thomas and Lee, 2005).

The first aim of this paper is to describe the dynamics of the NBF during IOP16 of the HyMeX programme. Our approach combines satellite data, in situ data and air-sea coupled simulation at kilometric scale. A second aim is to evaluate the air-sea exchanges in the frontal zone and investigate their impact on ocean stratification. In particular, the competing roles of the diabatic buoyancy flux, the adiabatic Ekman buoyancy flux, and advective processes will be assessed by means of an original stratification budget diagnosis.

This paper is organized as follows. Section 2 presents the IOP16 case study. In Section 3, the results of the air-sea coupled simulation are analysed and discussed with respect to the available observations. Then, the NBF dynamics and associated air-sea exchanges are investigated in Sections 4 and 5, respectively. The computation and results of the stratification budget diagnosis are presented in Section 6. Finally, the results are discussed and some conclusions are drawn in Section 7.

2 Case study

2.1 Atmospheric conditions

Figure 2 shows the Mean Sea Level Pressure (MSLP) and the surface air temperature and wind from the European Centre for Medium-range Weather Forecasts (ECMWF) analysis at 1200 UTC for IOP16a (26 October 2012) and IOP16b (27, 28 and 29 October 2012). IOP16a (Fig. 2.a) was characterized by low pressure centred over the Pyrenees and a southwesterly wind advecting warm air (temperature above 20 °C) over the NWMS. On the next day (Fig. 2.b), the low pressure was positioned over the Alps, leading to flow reversal with northwesterly/northerly winds advecting cold air over the NMWS. On 28 October

(Fig. 2.c) the surface low was deeper and located over the Ligurian Sea. The northwesterly/northerly wind increased and extended over the western Mediterranean basin with an air temperature lower than 10 °C in the NWMS. Finally, on 29 October (Fig. 2.d) the cyclone dissipated and the air temperature increased again.

The Lion meteorological buoy, positioned in the abyssal plain of the Gulf of Lion (4.64°E - 42.06°N, indicated by the black triangle in Fig. 2) and in the Tramontane and Mistral flows, provides hourly measurements of the 10-m wind, the 2-m temperature and humidity, and the SST (Fig. 3). During IOP16a (26 October 2012) the Lion buoy measured low wind speeds between 5 m s⁻¹ and 10 m s⁻¹. The 2-m temperature and relative humidity remained nearly constant around 20°C and 80%, respectively. At 0900 UTC a brief decrease in wind and 2-m temperature was observed, corresponding the signature of a precipitation event. Then, on 27 October, the wind speed increased from 8 m s⁻¹ at 0600 UTC to a maximum of 26.2 m s⁻¹ at 1800 UTC. On 28 October, the wind speed remained nearly constant around 22 m s⁻¹ and finally decreased on 29 October to less than 5 m s⁻¹ at the end of the day. A rapid decrease of the 2-m temperature was observed on 27 October during the wind increase, with a temperature drop of 7.5°C in a few hours. After this rapid decrease, the 2-m temperature continued to fall slowly, reaching a minimum of 8°C on 28 October at 0900 UTC before rising slowly by 3°C on 29 October. During IOP16b, the 2-m humidity decreased from 80% at 0000 UTC on 27 October to 40% at 0000 UTC on 30 October.

To summarize, this autumn Tramontane and Mistral storm (27, 28 and 29 October 2012) was characterised by northerly / northwesterly winds exceeding 20 m s⁻¹. Meanwhile, the surface air temperature and humidity dropped by 10 °C and 40%, respectively.

2.2 Oceanic conditions

Figure 4 (a-f) shows two SST analysis products from satellite observations before and after the strong wind event, and the SST difference. The first analysis is the global OSTIA product (Donlon et al., 2012), ~~the~~ with an horizontal resolution of ~~which is~~ about 6 km. This product is used in the ECMWF operational model. The second analysis is the Mediterranean Copernicus product (Buongiorno Nardelli et al., 2013) provided at higher resolution (about 1 km). The spatial resolutions indicated above refers to the resolution at which the data are provided but not to their effective resolutions. There is no significant difference between these two data sets. The NBF extends over several tens of kilometres in both products with steeper gradients in the high resolution product. At 0000 UTC on 25 October (Fig. 4 a and d) the NBF separated the northern water at 18.5 °C from the southern water at 21.5 °C, yielding a surface thermal front of 3 °C. The Lion buoy was positioned in the warm side of the frontal zone. At the end of IOP16 (30 October 2012, Fig. 4 b and e) the NBF had moved several tens of kilometres to the south and the Lion buoy was then positioned in the cold side of the frontal zone. During IOP16, the SST decrease (Fig. 4 c and f) was about 2°C in the basin and reached more than 3°C around the Lion buoy. The temperature of the southern water (northern water) was around 16°C (20°C), establishing a surface thermal front of 4°C. At the Lion buoy, the SST in-situ measurement (Fig. 3.d) showed a rapid decrease in SST of about 4°C between 1200 UTC on 27 October and 0000 UTC on 29 October in agreement with the analyses.

Gliders provided information on the oceanic stratification and the spatial distribution of water masses during IOP16 (see their position on Fig. 4). Two gliders were present near the Lion buoy on 25 October 2012, in the frontal zone (Fig. 5). During

the IOP, the first glider, named Eudoxus, moved to the west (section A-B in Fig. 5). The second glider, named Campe, moved to the south (section C-D in Fig. 5). Before the strong wind, according to the two gliders, the Mixed Layer Depth (MLD) near the Lion buoy was about 40 m, the potential temperature was higher than 19.5°C in the mixed layer (Fig. 5 d and f) and the salinity was lower than 38.2 (not shown). This temperature corresponds to the surface temperature of the cold side of the NBF (Fig. 4 a and d). According to the Eudoxus glider (Fig. 5.d), between the two ends of the section, the difference in the MLD was about 60 m and the temperature drop about 3.5°C . These differences resulted from both the crossing of the NBF and the onset of the strong wind. According to the Campe glider (Fig. 5.f), which remained on the southern side of the front, the difference in the MLD was 40 m and the temperature increased by 0.5°C . However, along this glider track, the 2°C temperature drop measured between October 27 and 29 was probably due to the strong wind event whereas the temperature increase observed after 29 October resulted from the southward displacement of the glider (see Fig. 4.e).

Furthermore, two Argo profiles (see their position on Fig. 4) were available during IOP16 in the frontal zone (Fig. 6). The first profile was obtained on 26 October, 40 km east of the Lion buoy (41.8°N - 5.05°E) and the second one on 31 October, 30 km east of the Lion buoy (41.8°N - 4.86°E). In the mixed layer, the potential temperature drop between the two profiles was large (about 5°C) while the salinity decrease was about 0.05. Finally, the potential density increase (about 1.32 kg m^{-3} at the surface) was driven directly by the potential temperature decrease and the MLD deepened ~~by only a few metres~~ from 25m to 40m.

In summary, the observations showed a rapid decrease of the SST (greater than 4°C) in the frontal zone. This rapid decrease was associated with the southward displacement of the NBF and a ~~slight deepening of~~ deepening of 20 meters of the MLD in the frontal zone. As satellite and in situ data give only a partial view of the NBF dynamics, and in order to better describe and understand this process, a high resolution air-sea coupled simulation was performed.

3 Numerical experiment

3.1 Air-sea coupled simulation

To perform the simulation, we used the Meso-NH - SURFEX - Symphonie system (Meso-NH: Lafore et al. (1997), SURFEX: Masson et al. (2012), Symphonie: Marsaleix et al. (2008, 2012); Michaud et al. (2012)) based on the SURFEX-OASIS interface (Voldoire et al., 2017). This coupled system was described and validated in Seyfried et al. (2017).

A high-resolution configuration of this coupled system was implemented with a horizontal resolution of 1 km in the oceanic model and of 2.5 km in the atmospheric model. At this resolution, the oceanic model can be considered as eddy-resolving. In the NWMS, the Rossby radius is of the order of 5 to 10 km (Beuvier et al., 2012), which corresponds to the effective resolution of the oceanic model. Bosse (2015) showed the ability of the Symphonie oceanic model to reproduce the symmetric instability process at this resolution. However, at this resolution, the oceanic model convection must be parameterized, as described in Estournel et al. (2016a). The non-solar heat fluxes and water fluxes are actually re-distributed over the whole mixed layer, in accordance with Deardorff et al. (1969). The atmospheric model at 2.5 km can be considered as a convection-permitting model i.e. the convection is directly resolved by the atmospheric model equations. In the vertical, the oceanic model uses 40

generalized sigma vertical levels, 10 of them in the first hundred metres (above the abyssal plain) with a resolution just below the sea surface of 1.5 metres. The atmospheric model uses 52 terrain-following vertical levels ranging from 15 to 15000 m.

Using the SURFEX OASIS3-MCT interface (Voldoire et al., 2017), the SST and sea surface current are sent to the SURFEX model, which then returns the wind stress (τ), the shortwave flux (SW), the non-solar heat fluxes ($Q_{ns} = LW + H + L$ with LW the longwave flux, H the sensible heat flux and L the latent heat flux) and the water fluxes ($E - P$, Evaporation minus Precipitation). The turbulent fluxes are calculated using the bulk parameterization developed by Moon et al. (2007). The coupling frequency is set to 10 minutes. Flux calculations are carried out on the atmospheric model grid (after bilinear interpolation of the oceanic fields) and are then bilinearly interpolated on the grid of the ocean model.

The atmospheric model covers the whole western Mediterranean basin (same spatial coverage as in Seyfried et al. (2017)).

The ocean model covers the western Mediterranean Sea, excluding the Alboran Sea and part of the Tyrrhenian Sea (same grid as in Seyfried et al. (2017)). In the oceanic part of the atmospheric grid not covered by the ocean grid, the air-sea fluxes are computed using the sea surface temperature provided by the SST OSTIA product (Donlon et al., 2012) and without using sea surface current.

The coupled simulation started at 0000 UTC on 25 October 2012 (24 hours before the beginning of IOP16) and ended at 0000 UTC on 30 October 2012 (at the end of IOP16). The ocean model was initialized with a coupled simulation as described in Seyfried et al. (2017) (of from all the simulations presented in this paper, the so-called “MOON” simulation was chosen for its better agreement with the available observations). Spin up was avoided as the initial state given by the “MOON” simulation was based on the same oceanic model configuration and grid. The boundary conditions of the ocean model were provided by the analyses of the MERCATOR-OCEAN operational centre (Lellouche et al., 2013) based on the NEMO model (Maraldi et al., 2013). Initial and boundary conditions of the atmospheric model were provided by the 6-hour ECMWF analyses with a horizontal resolution of $1/8^\circ$.

3.2 Simulation validation

The simulation was validated with in situ and satellite observations. At the Lion buoy (Fig. 3.a, b and c), the simulation correctly reproduced the wind intensity evolution but the wind absolute maximum at 1800 UTC on 27 October was underestimated by 5 m s^{-1} . The 2 m temperature and humidity were also well represented, but the rapid decrease in temperature observed around the wind maximum was slower in the model and a positive humidity bias of 10 % appeared at the end of the simulation.

Then, to validate the SST decrease in the NWMS and the NBF dynamics, the SST satellite analyses and the simulated SST were compared (Fig. 4). The simulated temperature field contained more small-scale structures (fronts, eddies, filaments) than the corresponding satellite field. The horizontal resolution of the latter was, in fact, substantially lower than that of the model.

The initial surface temperature and NBF position were well represented by the simulation but the extension of the warm AW to the east of the Lion buoy was greater than in the observations. At the end of IOP16, the SST decrease and the NBF southward shifting were also well represented even if the latter was less pronounced than in the observations. At the Lion buoy (Fig. 3.d) the SST decrease of 4°C was well represented by the simulation but the decrease started 6 hours earlier.

Finally, to validate the evolution of oceanic stratification, the simulation results were compared to the profiles obtained with the gliders and Argo (Figs 5 and 6). The comparison with the gliders showed that the initial state of the model was satisfactory (Fig. 5) near the Lion buoy even though the MLD was less deep (by about 20 m) and the thermocline thicker, probably because of the insufficient vertical resolution of the model. In comparison with results from the first glider (Eudoxus), which moved westward, the SST and MLD deepening were well represented. However, at the ~~extremity-end~~ of the section, the MLD was deeper than in the observation, probably because of the crossing of the Northern Current visible from the slope of the isopycnals, which differed in the simulation and the observations. For the second glider (Campe), which moved southward, the temperature evolution was represented differently by the glider and the simulation due to the presence of small-scale structures in the simulation that were not observed. During strong wind events, the temperature decrease was less ~~marked-intense~~ in the simulation but the MLD deepening was well represented. Finally, after the strong wind event (29 October), the temperature increase was not simulated. The Argo comparison (Fig. 6) showed good agreement for the initial temperature profile, while a surface negative salinity bias of about 0.2 was shown by the model. At the end of the strong wind event, the simulation showed a decrease of ~~the mixed-layer~~ temperature and an increase in salinity ~~and density that~~, density and MLD. The temperature decrease was smaller than in the observations, 3.3 °C compared to 5.3 °C. Whereas the salinity increase was more important in the simulation than in the observations, 0.15 compared to 0.05. The increase of density and MLD were smaller than in the observations, ~~except for salinity~~ 1 kg m⁻³ and 15 m compared to 1.32 kg m⁻³ and 25 m, respectively. However, it is worth to note that the observed profile ~~was obtained-is located~~ to the north of the NBF whereas ~~the corresponding one~~ in the simulation ~~it corresponded to-is within~~ the frontal zone ~~(see their position on Fig. 4). The temperature, salinity and density simulated to the north of the NBF~~. When the comparison is made with a simulated profil located slightly further east (41.8°N -5.15°E, green dashed line in Fig. 6) ~~were~~, the simulation results are much closer to the Argo observations.

To conclude, this simulation is satisfactory regarding the atmospheric and oceanic evolution, including air and sea parameters at the surface, the oceanic mixed layer deepening, and the NBF southward shift during the strong wind event. In addition, the 1 km resolution oceanic simulation correctly represents the narrow surface front, and associated meso and submesoscale structures, the position of which ~~obviously-slightly~~ differ from the actual ones.

25 4 Characteristics and dynamics of NBF

The NBF dynamics during IOP16 (26 October 2012 to 30 October 2012) is now examined through an analysis of the air-sea coupled simulation.

Figure 7 (a-b) represents the surface potential density spatial distribution before (0000 UTC on 26 October) and after (0000 UTC on 30 October) the IOP16 and Fig. 7 (c) shows the density difference between these two dates. Two specific surface water masses of the NWMS (the relatively light AW to the south and the dense AW to the north) clearly appear on Fig. 7 a and b (in blue and ~~red-yellow-red~~ respectively). Before IOP16 (Fig. 7.a), the Atlantic waters protrude northward forming a meander of light water extending to 42°N and from 3°E to 6°E. The difference of surface density between the two sides of the front is about 1 kg m⁻³ with a surface density gradient locally greater than 0.1 kg m⁻³ per kilometre. Filaments formed at the periphery of

the meander extend northward. Further to the east (around 6.5°E) a second intrusion of light water occurs, but its northward extension is smaller and its density front weaker. These two meanders shape the NBF, which can be characterized by the 27.0 kg m⁻³ surface isopycnal. After IOP16 (Fig. 7.b), the light water patch is shifted to the southwest and the surface potential density increases in the NWMS. The NBF surface density gradient is ~~less strong, reduced~~ except along the western part of the meander, and filament structures have dissipated. The NBF is now characterized by the 28.0 kg m⁻³ surface isopycnal. Looking at the surface density evolution between the beginning and the end of IOP16, the maximum potential density increase (Fig. 7.c), larger than 1.5 kg m⁻³, is located in the area impacted by the NBF dynamics (along the meander) and along the north coast of the Gulf of Lion. Note the appearance of cold, dense waters along the French coast (around 5.5°E), a sign of coastal upwelling.

- 10 The cumulative effect of the strong wind event on the stratification of the upper layers can be analysed through the Stratification Index (SI) (Estournel et al., 2016a).

$$SI(H) = \int_H^0 (\rho(H) - \rho(h)) dh \quad (1)$$

- ~~where ρ is the potential density (·) and H the reference level (·). SI is expressed in ·. It represents the amount of buoyancy to be extracted to mix the water column from the surface to level H and achieve a homogeneous density $\rho(H)$.~~ where ρ is the potential density (kg m⁻³) and H the reference level (m). SI is expressed in kg m⁻². It represents the amount of buoyancy to be extracted to mix the water column from the surface to level H and achieve a homogeneous density $\rho(H)$.

- Figure 7 (d-f) shows the SI at 250 m (depth below which no significant changes are observed), before and after IOP16, and the SI differences between these two periods. Before the IOP16 (Fig. 7.d), the light Atlantic Water corresponds to higher stratification, with an SI at 250 m greater than 120 kg m⁻². Inside this meander, a mesoscale anticyclonic eddy has a notable effect on stratification with an SI higher than 200 kg m⁻² (around 41°N and 4.5°E). The NBF separates this patch of highly stratified water from the less stratified ~~Modified~~ Atlantic Water characterized by an SI lower than 90 kg m⁻², i.e. a stratification front of about 30 kg m⁻². The filaments visible in the surface potential density map (Fig. 7.a) are too thin to have a significant impact on the upper layer integrated stratification. The SI evolution during IOP16 (Fig. 7.f) shows a maximum loss of stratification (about 50 kg m⁻²) in the northern and eastern parts of the NBF meander and a stratification gain (about 20 kg m⁻²) in the western part of the NBF meander. Outside the frontal region, SI variations appear to be related to the displacement of mesoscale and submesoscale eddies.

- Two vertical sections of potential density are now examined to illustrate the vertical processes. Figure 8 presents the vertical distribution of isopycnals before (black lines in Fig. 8) and after IOP16 (blue lines in Fig. 8) ~~IOP16~~ and the sea water potential density difference (in colours) along North-South (NS) and East-West (EW) sections (indicated by black lines in Fig. 7).

- 30 On the NS section (Fig. 8.a), before the strong wind event, the section intersects the NBF meander at 42.1°N (the NBF position is defined by the 27.0 kg m⁻³ isopycnal). South of the NBF, a patch of light AW, with a density lower than 27.0 kg m⁻³, extends over a depth of about 50 m. To the north, the light water thins to 10 m around 42.4°N, corresponding to the filament structure. This section also intersects the mesoscale anticyclonic eddy previously described around 41°N (explaining

the local deepening of the isopycnals), and the Northern Current along the bathymetric slope. Between 41.75°N and 42.75°N, the doming of the isopycnals corresponds to the cyclonic gyre. After the strong wind event, the NBF migrates southward by about 0.3° (about 35 km) and the NBF position is now defined by the 28.0 kg m⁻³ isopycnal. The maximum increase of potential density (more than 1.5 kg m⁻³ to a depth of 40 m) is obtained in the displacement area of the NBF.

- 5 The EW section (Fig. 8.b) ~~before IOP16, which~~ crosses the meander (Fig. 7e), ~~c)~~ before IOP16. It intersects the NBF twice, at about 4.0°E and 6.0°E. The isopycnal doming, corresponding to the cyclonic gyre, is also present between 3.4°E and 4.4°E, while the dive of the isopycnals to the west indicates the change of direction of the Northern Current, which follows the isobaths of the continental slope. After IOP16, the eastern intercept point of the NBF with the section of Fig. 8.b has been shifted westward by about 1.0° (about 80 km). The western intercept point has also moved westward but only by about 0.2°
- 10 (about 16 km). The maximum increase of potential density is obtained in the eastern part of the NBF, with an increase greater than 1.0 kg m⁻³ to a depth of 30 m. The density increase in the ~~heart-core~~ of the Atlantic water (between 3.8°E and 5.2°E) is smaller (< 1 kg m⁻³ at 40 m). Near the western part of the NBF (around 3.7°E), the density ~~does not~~ increase at the surface and decreases at 50 m depth due to the isopycnal deepening, which explains the SI increase in this region (Fig. 7.f).

To conclude, during the strong wind event, a horizontal displacement of the NBF of several tens of kilometres is simulated.

- 15 This directly impacts the evolution of oceanic stratification in the NBF zone. The stratification evolution is also impacted by vertical advective processes producing isopycnal deepening.

5 Air-sea exchanges

The air-sea exchanges can be divided into three fluxes: the wind stress (τ , in N m⁻²), the net heat flux ($Q_{net} = SW + LW + H + LE$, in W m⁻²) and the water flux (~~$E - P$~~ $F_w = E - P$, in mm h⁻¹).

- 20 Figure 9 shows the time evolution of wind stress, net heat flux and water flux calculated at the Lion buoy, positioned in the NBF zone. The wind stress ~~variation~~ (Fig. 9.a) ~~is directly correlated correspond~~ to the wind speed ~~variation~~ (Fig. 3.a), with a maximum wind stress higher than 1.5 N m⁻². On average, the net heat flux (Fig. 9.b) was close to zero between 25 and 26 October. During this low wind period the solar heat flux balanced the non-solar heat flux. During the strong wind event, upward (i.e. cooling the sea) net heat fluxes were correlated with the wind speed, with a maximum net heat flux close to 2000 W m⁻²
- 25 on 28 October 2012. The water flux (Fig. 9.c) was impacted by the high precipitation event occurring on 26 October, with a maximum downward instantaneous water flux of about 25 mm h⁻¹. During the strong wind event, evaporation ~~dominated and~~ led to an ~~increase in density~~ ~~upward (positive) water flux~~.

- The spatial distribution of air-sea fluxes is now examined. Figure 10 represents the wind stress, net heat flux and water flux averaged over IOP16a (26 October 2012) and IOP16b (27-29 October 2012). During IOP16a the NWMS is dominated
- 30 by weak southwesterly winds (Fig. ~~10~~2.a). During this period, the NBF directly impacts the wind stress distribution. The maximum of wind stress appears to the south of the front over the patch of warm AW. The net heat fluxes (Fig. 10.c) are also directly impacted by the NBF position. The maximum heat loss appears on the warm patch, due to the higher SST, directly impacting turbulent heat fluxes. Downward water fluxes (Fig. 10.e) are organized in bands during this high precipitation event.

During IOP16b, the NWMS is dominated by strong northerly/northwesterly winds (Fig. 10.b), corresponding to Tramontane and Mistral events. The maximum wind stress is located in these wind veins, off the Gulf of Lions. The NBF has no clear impact on the wind stress spatial distribution. On the other hand, the net heat flux and water flux are directly impacted by the NBF position, with a maximum heat and water loss higher than 1200 W m^{-2} and 30 mm day^{-1} on the warm side of the front, and cross frontal differences greater than 200 W m^{-2} and 10 mm day^{-1} .

The wind stress curl during IOP16a and IOP16b are presented on Fig. 11. As explained by Chelton and Xie (2010), surface winds are weaker on the cold side of a thermal front. This produces a divergence when the wind blows across the front and a curl when the wind blows parallel to the front. In the case of the NBF meander during the low wind period of IOP16a, Fig. 11.a indicates the wind curl modifications linked to the front. In the eastern part of the meander, a negative along-front wind stress curl appears clearly and, in the western part of the meander, a positive along-front wind stress curl also appears clearly. During IOP16b the wind stress curl appears principally around the Tramontane and Mistral wind corridors. A positive (negative) wind stress curl corresponds to the left cyclonic (right anticyclonic) side of the wind vein. In the eastern part of the NBF meander (around 5°E and 41.8°N) a positive wind stress curl appears. However, it is difficult to know whether the wind stress curl is directly connected to the NBF meander or to the fine wind jet structures. Finally, during the strong wind event, unlike the situation in the low wind event, the NBF meander does not appear to have a major influence on the wind stress curl.

To conclude, the NBF position and dynamics directly impact the spatial and temporal distributions of air-sea heat and water exchanges. Furthermore, during the low wind period, the NBF also impacts the wind stress with the generation of along-front wind stress curl.

6 Stratification budget diagnosis

The stratification variation of water column can be modified through diabatic processes and horizontal or vertical advection of buoyancy. Most models assume that the stratification budget is essentially driven by one-dimensional turbulent mixing of heat and water at air-sea interface. Following Mertens and Schott (1998) the air-sea exchanges induce a surface or diabatic buoyancy flux can be diagnosed as:

$$B_0 = g\alpha \frac{Q_{net}}{\rho_0 C_p} + g\beta SSS(E - P) \quad (2)$$

where B_0 is the diabatic buoyancy flux in $\text{m}^2 \text{ s}^{-3}$, α the thermal expansion coefficient in K^{-1} , C_p the specific heat capacity in $\text{J kg}^{-1} \text{ K}^{-1}$, β the saline contraction coefficient, SSS the sea surface salinity, E the evaporation and P the precipitations in m s^{-1} .

This one-dimensional approximation is suitable if the ocean is horizontally homogeneous. In reality, mesoscale and submesoscale structures populate the ocean. These structures are marked by horizontal buoyancy fronts. As shown by Thomas and Lee (2005), and Thomas and Ferrari (2008), the stratification can be significantly modified by interactions between these fronts and Ekman flow generated by frictional forcing. When the winds are down-front wind can destabilize the water column by

cross-front advection of density by Ekman flows. Following Thomas and Lee (2005) the friction induced buoyancy flux, the density advection of dense water over light water by Ekman transport destabilizes the water column and triggers convection. This process destratifies the water column by Ekman advection of buoyancy and mixing through the mixed layer. On the contrary when the winds are up-front the Ekman flow yields an Ekman advective restratification in the surface layer. Following

5 Thomas and Taylor, the frictional forcing induces a wind-driven or Ekman Buoyancy Flux (EBF) is given by which can be diagnosed as :

$$EBF = -\frac{g}{\rho_0} M_e \cdot \nabla_h \rho_{(z=0)} \quad (3)$$

~~where EBF is the Ekman Buoyancy Flux in , M_e the Ekman transport (Eq. 4) in , the horizontal gradient and $\rho_{(z=0)}$ the surface density in .~~ where EBF is the Ekman Buoyancy Flux in $\text{m}^2 \text{s}^{-3}$, M_e the Ekman transport (Eq. 4) in $\text{m}^2 \text{s}^{-1}$, ∇_h the

10 horizontal gradient, g the gravitational acceleration and $\rho_{(z=0)}$ the surface density in kg m^{-3} .

$$M_e = \frac{\hat{z} \times \tau}{\rho_0 \zeta_a} \quad (4)$$

~~where \hat{z} is the vertical unit vector, τ the wind stress in , and ζ_a the absolute vorticity in .~~ where \hat{z} is the vertical unit vector, τ the wind stress in N m^{-2} , and ζ_a the absolute vorticity in s^{-1} .

It is interesting to compare this flux to the buoyancy flux induced by diabatic processes and given by (Mertens and Schott, 1998):

$$B_0 = g\alpha \frac{Q_{net}}{\rho_0 C_p} + g\beta SSS F_w$$

~~where B_0 is the diabatic buoyancy flux in , α the thermal expansion coefficient in , C_p the specific heat capacity in , β the saline contraction coefficient, SSS the sea surface salinity, E the evaporation and P the precipitation in .~~

The stratification index variation at depth H (with $H=250 \text{ m}$, $H > \text{MLD}$) between times T_1 and T_2 can be approximated by

20 the integral of buoyancy mass flux between times T_1 and T_2 (Eq 5). In order to evaluate the competing roles of the diabatic buoyancy flux and the and Ekman buoyancy fluxes on stratification evolution we assume that the stratification index at depth H between the times T_1 and T_2 can be written as : variation, these two term are diagnosed and compared to the stratification variations. Finally, to close our stratification budget diagnosis we evaluate the residual term corresponding to other potential sources of horizontal and vertical advection of buoyancy (geostrophic circulation, frontogenesis, Ekman pumping, ...) that are

25 not directly diagnosed in this study.

$$\Delta SI(H) = SI(H)_{T_2} - SI(H)_{T_1} = \frac{\rho_0}{g} \int_{T_1}^{T_2} B_0(t) \cdot dt + \frac{\rho_0}{g} \int_{T_1}^{T_2} EBF(t) \cdot dt + R \quad (5)$$

~~where, the first and second right hand side terms represent the mass fluxes, induced by diabatic and friction processes respectively, whereas the third term induce all the remaining processes.~~ where, the first and second right hand side terms represent the mass fluxes, induced by diabatic and friction processes respectively, whereas the third term induce all the remaining processes.

5 Figures 12 and 13 present the spatial distribution of the different terms of the stratification budget diagnosis (Eq. 5) for IOP16a and IOP16b. During the low wind period (IOP16a), the stratification (Fig. 12.a) decreases (increases) along the western (eastern) part of the NBF meander, by about 20 kg m^{-2} . This stratification evolution is not directly controlled by the diabatic and Ekman buoyancy mass fluxes (Fig. 12 b and c), which are small relative to the residual term (Fig. 12.d). The advective processes play a dominant role in the evolution of stratification during this period of low wind. During the strong wind event
 10 (IOP16b), in contrast to the low wind period, the stratification (Fig. 13 a) decreases (increases) along the eastern (western) part of the NBF meander, by about 60 kg m^{-2} (20 kg m^{-2}). The evolution of the stratification (Fig. 13.a) is directly controlled by the diabatic and Ekman buoyancy mass fluxes (Fig. 13 b and c). The cumulated diabatic buoyancy mass flux loss (Fig. 13.b) is between 15 and 30 kg m^{-2} in the Tramontane and Mistral corridor, being slightly larger south of the NBF (not shown on Fig. 13.b but visible for the net heat flux on Fig. 10.c). However, stratification evolution in the NBF meander zone is principally
 15 driven by the Ekman buoyancy mass flux (Fig. 13.c). In the east (west) of the NBF meander, a down-front (up-front) wind generates an Ekman buoyancy flux of -30 to -45 kg m^{-2} (15 to 30 kg m^{-2}). In a second order, the residual term (Fig. 13.d) also plays a role in how stratification evolves in the NBF zone, particularly in the western part of the NBF meander, with a stratification gain.

Figure 14 shows the time evolution of the different terms of the stratification budget (Eq. 5) in the eastern and western parts
 20 of the NBF meander. Firstly, the presence of oscillations produced by inertial waves can be noted on the evolution of the stratification. These oscillations have a period of about 17 hours and amplitude of about 10 kg m^{-2} . Except for these oscillations, the stratification remains approximately constant from 25 to 27 October (IOP16a). During IOP16b, the stratification decreases (increases) along the eastern (western) part of the NBF meander, from 122 kg m^{-2} to 69 kg m^{-2} (from 86 kg m^{-2} to 102 kg m^{-2}). Along the east of the NBF meander (Fig. 14.a), the stratification decrease (53 kg m^{-2}) is due to the buoyancy fluxes
 25 and, more precisely, to the Ekman buoyancy flux, (45 kg m^{-2} compared to 17 kg m^{-2} for diabatic buoyancy mass flux). In this region, the advective processes remain negligible (about 1 kg m^{-2}). Along the west of the NBF meander (Fig. 14.b), the stratification decreases by about 5 kg m^{-2} during the low wind period and increases by about 20 kg m^{-2} during the strong wind period. The stratification decrease during the low wind period is driven by a negative Ekman buoyancy flux. During the strong wind period, the Ekman buoyancy flux of 20 kg m^{-2} balances the diabatic buoyancy loss of 18 kg m^{-2} . The residual
 30 term of about 18 kg m^{-2} plays a major role on the stratification increase in this zone.

The residual term is not negligible in our stratification budget diagnosis, particularly along the western part of the NBF meander. A source of this term is the vertical advection generated by the Ekman pumping directly connected to the wind stress curl (Eq. 6).

$$W_e = \frac{\nabla \times \tau}{\rho_0 \zeta_a} \quad (6)$$

5 To illustrate this, Fig. 15 shows the 28.5 kg m^{-3} isopycnal depth variation and the Ekman pumping averaged over IOP16a and IOP16b. During IOP16a, the isopycnal depth variation (Fig. 15.a) is directly anticorrelated with the residual term of the stratification budget (Fig. 12.d). The stratification decreases in ascending isopycnal zones and increases in subsiding isopycnal zones. This anticorrelation illustrates the major role of the vertical processes in the residual term. The Ekman pumping, generated by the interaction between the wind and the front, is an important source of this vertical advection (Fig. 15.c). Although, at the scale of the whole domain, the Ekman pumping does not appear to be correlated with the change in the level of the isopycnals, this is not the case along some parts of the meander such as its western part, where the angle between the wind and the isopycnals is small and the Ekman pumping seems to contribute to the change of stratification. During IOP16b, the isopycnal depth variations (Fig. 15.b) are also anticorrelated with the residual term of the stratification budget (Fig. 13.d). In the western, unlike in the eastern, part of the NBF meander, the isopycnal deepening is clearly produced by the Ekman pumping (Fig. 15.d).
10 Another source of vertical advection in frontal zones is the ageostrophic secondary circulation cell generated by down-front wind and frontogenesis processes (Thomas and Lee, 2005), with upward and downward vertical currents respectively in the light and dense parts of front. It is probably this circulation that impacts the isopycnal depth in this zone.

In conclusion, to a first-order approximation, the stratification variations in the ~~NBF-zone-during-IOP16~~eastern part of the NBF (down-front wind) during IOP16b are principally driven by the Ekman buoyancy flux generated by the interactions between the strong wind event and the NBF. However, the residual term of stratification budget diagnosis is not negligible, particularly in the western part of the front through an Ekman pumping effect.
20

7 Summary and Discussion

This case study focused on the evolution of NBF dynamics and stratification during IOP16 (26-29 October 2012), which, during a first period (IOP16a), was characterized by weak southwesterly winds followed, in period IOP16b, by a strong northerly wind event.
25

Before IOP16, the light AW present south of the NBF spread up to 42°N . After IOP16, the observations showed a southward displacement of the NBF, of several tens of kilometres, with a rapid decrease in SST, larger than 4°C in the frontal zone. To better describe and understand the NBF dynamics during this case-study we performed an air-sea coupled simulation at kilometeric scale. This simulation is in good agreement with the observations and has the ability to reproduce meso and submesoscale structures (eddies, fronts, filaments). The simulation showed that, before the strong northerly wind event, the NBF reached the Lion buoy and surface filaments of light water (not visible in the satellite SST) became detached and were
30

entrained northward. During the strong wind event, the simulation reproduced the rapid displacement of NBF, of several tens of kilometres, and the SST decrease by 4°C at the Lion buoy. Furthermore, the filaments were dissipated. As suggested by Estournel et al. (2016a), the SST decrease at the Lion buoy was associated with the NBF dynamics. This dynamics also impacted the oceanic stratification with a significant loss (gain) of about 40 kg m^{-2} (20 kg m^{-2}) of stratification along the eastern (western) part of the NBF meander.

During the period of light southwesterly wind, the NBF clearly impacted the wind stress and the net heat flux through two effects: first a decrease of the air-sea exchanges on the cold side of the NBF (to the north), and second, as explained by Chelton and Xie (2010), the formation of a wind stress curl.

During the strong wind event, contrary to the low wind event, the NBF had little impact on the wind stress distribution. The wind stress curl was mainly linked to the channelling of the Tramontane and Mistral by the continental orography. In contrast, the NBF directly impacted the heat and water budgets. The rapid SST cooling induced significant air-sea coupling, as suggested in other case studies in the NWMS (Lebeaupin Brossier and Drobinski, 2009; Small et al., 2008, 2012; Renault et al., 2012; Rainaud et al., 2017), by stabilizing the unstable atmospheric boundary layer and leading to a decrease of the turbulent fluxes. Furthermore, this study pointed out that the surface cooling was partly associated with a rapid NBF displacement, which led to additional air-sea coupling feedback. Therefore, a good representation of the frontal dynamics is essential to correctly depict the space and time evolution of the air-sea exchanges.

Finally, a stratification budget diagnosis was performed during the low and strong wind periods. The results differed greatly according to the wind regime. During the low wind period, the evolution of the stratification in the frontal zone was directly controlled by the advective processes whereas, during the strong wind period, it was controlled by the Ekman buoyancy flux, which could be up to three times stronger than the diabatic heat flux in the eastern part of the NBF. This flux directly impacted the frontal dynamics and the stratification variations. The stratification increased by up to 20 kg m^{-2} in the western part of the NBF meander (where the wind was parallel to and in the same direction as the current) and decreased by up to 40 kg m^{-2} in the eastern part of the NBF meander (where the wind was parallel but in the opposite direction to the current). The advective processes also played a role in the evolution of stratification. One of these processes clearly appears to be the Ekman pumping. Finally, the inertial waves also impacted the stratification, with variations of the order of 10 kg m^{-2} .

To the best of our knowledge, this study is the first realistic study that uses an air-sea coupled model to evaluate the impact of Ekman buoyancy fluxes on an oceanic front that is not topographically controlled. Without bathymetric constraint, the front moves by several tens of kilometres during the strong wind events. This displacement is associated with a marked loss of buoyancy and a rapid destratification, largely induced by the wind/front interaction. In an academic study, Thomas (2005) described a frontogenesis process generated by the Ekman buoyancy flux. This process is not reproduced in our real case study. On the contrary, after the strong wind event, the [front-surface density gradient](#) is less marked (Fig. 7). The front displacement probably prevents this process. In our case study the frontal dynamics clearly appears to be an air-sea coupling process. However, the impact of this coupling depends directly on the wind regime, as suggested by Small et al. (2008). During low wind periods, the NBF affects the diabatic buoyancy flux and the interactions between the thermal front and the Ekman pumping generated by wind stress, and can also impact the Ekman buoyancy flux. This interaction is, therefore, air-sea thermal

and dynamic coupling. During strong wind periods, the NBF position and dynamics clearly affect the diabatic buoyancy flux. They also affect the wind stress, but only weakly. There is, therefore, mainly air-sea thermal coupling.

The diabatic buoyancy flux and the adiabatic Ekman buoyancy flux are relevant parameters to quantify the thermal and the dynamic air-sea coupling effects on the evolution of stratification. However, this study also shows that the advective processes have an important effect on the stratification evolution. In a future work, the various sources of advection could be distinguished in the stratification budget to better understand the coupling effects, particularly the Ekman pumping. The interaction between inertial waves and front could also be studied in detail. For example, ~~(Thomas et al., 2016)~~ [Thomas et al. \(2016\)](#) show that the Ekman buoyancy flux is more efficient when the inertial waves reduce the stratification.

This case-study of the North Balearic Front highlights the major role of Ekman buoyancy fluxes in frontal dynamics and stratification evolution. The Ekman buoyancy fluxes could significantly influence the open-ocean deep convection that occurs in the centre of the cyclonic gyre of the Gulf of Lion during winter as shown by Giordani et al. (2016), who highlight a large impact along the eastern and northern branches of the NC. Estournel et al. (2016a) suggest that the autumnal NBF dynamics could play a major role in the preconditioning of the deep convection. Our study shows that this process is principally driven by Ekman buoyancy fluxes. In a future work, the impact of the Ekman buoyancy flux, all around the cyclonic gyre circulation, could be quantified during the different phases of the open-ocean deep convection.

Acknowledgements. This work is a contribution to the MISTRALS/HyMeX programme through the ASICS-MED (ANR-12-BS06-0003) project funded by the French National Agency for Research (ANR). Data were obtained from the HyMeX programme, sponsored by grants from MISTRALS/HyMeX and Météo-France. The authors acknowledge the international ARGO programme, the LEFE/GMMC programme and the French NAOS project for supporting the deployment of profilers. Argo and CTD data were collected and made freely available by the CORIOLIS project (<http://www.coriolis.eu.org>) and programmes that contribute to it. We acknowledge the crews of R/V Suroit and Tethys II and the scientists involved in the different cruises mentioned in this paper. Numerical simulations were performed using HPC resources from CALMIP (CALcul en Midi-Pyrénées, projects 1247, 09115 and 1325) and GENCI (Grand Equipement National de Calcul Intensif, project 010569)

References

- Beuvier, J., Béranger, K., Lebeaupin Brossier, C., Somot, S., Sevault, F., Drillet, Y., Bourdallé-Badie, R., Ferry, N., and Lyard, F.: Spreading of the Western Mediterranean Deep Water after winter 2005: Time scales and deep cyclone transport, 117, C07022, doi:10.1029/2011JC007679, <http://onlinelibrary.wiley.com/doi/10.1029/2011JC007679/abstract>, 2012.
- 5 Bosse, A.: Circulation générale et couplage physique-biogéochimie à (sous-) mésoéchelle en Méditerranée Nord-occidentale à partir de données in situ, Ph.D. thesis, Paris 6, <http://www.theses.fr/2015PA066451>, 2015.
- Buongiorno Nardelli, B., Tronconi, C., Pisano, A., and Santoleri, R.: High and Ultra-High resolution processing of satellite Sea Surface Temperature data over Southern European Seas in the framework of MyOcean project, 129, 1–16, doi:10.1016/j.rse.2012.10.012, <http://www.sciencedirect.com/science/article/pii/S003442571200394X>, 2013.
- 10 Chelton, D. B. and Xie, S.-P.: Coupled ocean-atmosphere interaction at oceanic mesoscales, doi:10.5670/oceanog.2010.05, <http://ir.library.oregonstate.edu/xmlui/handle/1957/23412>, 2010.
- Cotté, C., d'Ovidio, F., Chaigneau, A., Lévy, M., Taupier-Letage, I., Mate, B., and Guinet, C.: Scale-dependent interactions of Mediterranean whales with marine dynamics, 56, 219–232, <http://onlinelibrary.wiley.com/doi/10.4319/lo.2011.56.1.0219/full>, 2011.
- Deardorff, J. W., Willis, G. E., and Lilly, D. K.: Laboratory investigation of non-steady penetrative convection, *Journal of Fluid Mechanics*, 15, 35, 7–31, http://journals.cambridge.org/article_S0022112069000942, 1969.
- Donlon, C. J., Martin, M., Stark, J., Roberts-Jones, J., Fiedler, E., and Wimmer, W.: The Operational Sea Surface Temperature and Sea Ice Analysis (OSTIA) system, 116, 140–158, doi:10.1016/j.rse.2010.10.017, <http://www.sciencedirect.com/science/article/pii/S0034425711002197>, 2012.
- Drobinski, P., Ducrocq, V., Alpert, P., Anagnostou, E., Béranger, K., Borga, M., Braud, I., Chanzy, A., Davolio, S., Delrieu, G., Estournel, C., 20 Boubrahmi, N. F., Font, J., Grubišić, V., Gualdi, S., Homar, V., Ivančan-Picek, B., Kottmeier, C., Kotroni, V., Lagouvardos, K., Lionello, P., Llasat, M. C., Ludwig, W., Lutoff, C., Mariotti, A., Richard, E., Romero, R., Rotunno, R., Roussot, O., Ruin, I., Somot, S., Taupier-Letage, I., Tintore, J., Uijlenhoet, R., and Wernli, H.: HyMeX: A 10-Year Multidisciplinary Program on the Mediterranean Water Cycle, 95, 1063–1082, doi:10.1175/BAMS-D-12-00242.1, <http://journals.ametsoc.org/doi/abs/10.1175/BAMS-D-12-00242.1>, 2013.
- Ducrocq, V., Braud, I., Davolio, S., Ferretti, R., Flamant, C., Jansa, A., Kalthoff, N., Richard, E., Taupier-Letage, I., Aral, P.-A., Belamari, 25 S., Berne, A., Borga, M., Boudevillain, B., Bock, O., Boichard, J.-L., Bouin, M.-N., Bousquet, O., Bouvier, C., Chiggiato, J., Cimini, D., Corsmeier, U., Coppola, L., Cocquerez, P., Defer, E., Delanoë, J., Di Girolamo, P., Doerenbecher, A., Drobinski, P., Dufournet, Y., Fourrié, N., Gourley, J. J., Labatut, L., Lambert, D., Le Coz, J., Marzano, F. S., Molinié, G., Montani, A., Nord, G., Nuret, M., Ramage, K., Rison, W., Roussot, O., Said, F., Schwarzenboeck, A., Testor, P., Van Baelen, J., Vincendon, B., Aran, M., and Tamayo, J.: HyMeX-SOP1: The Field Campaign Dedicated to Heavy Precipitation and Flash Flooding in the Northwestern Mediterranean, 95, 1083–1100, 30 doi:10.1175/BAMS-D-12-00244.1, <http://journals.ametsoc.org/doi/abs/10.1175/BAMS-D-12-00244.1>, 2013.
- Duffourg, F., Nuissier, O., Ducrocq, V., Flamant, C., Chazette, P., Delanoë, J., Doerenbecher, A., Fourrié, N., Di Girolamo, P., Lac, C., Legain, D., Martinet, M., Saïd, F., and Bock, O.: Offshore deep convection initiation and maintenance during the HyMeX IOP 16a heavy precipitation event, 142, 259–274, doi:10.1002/qj.2725, <http://onlinelibrary.wiley.com/doi/10.1002/qj.2725/abstract>, 2016.
- Estournel, C., Testor, P., Damien, P., D'Ortenzio, F., Marsaleix, P., Conan, P., Kessouri, F., Durieu de Madron, X., Coppola, L., Lel- 35 louche, J.-M., Belamari, S., Mortier, L., Ulses, C., Bouin, M.-N., and Prieur, L.: High resolution modeling of dense water formation in the north-western Mediterranean during winter 2012–2013: Processes and budget, 121, 5367–5392, doi:10.1002/2016JC011935, <http://onlinelibrary.wiley.com/doi/10.1002/2016JC011935/abstract>, 2016a.

- Estournel, C., Testor, P., Taupier-Letage, I., Bouin, M.-N., Coppola, L., Durand, P., Conan, P., Bosse, A., Brilouet, P.-E., Beguery, L., and others: HyMeX-SOP2 The Field Campaign Dedicated to Dense Water Formation in the Northwestern Mediterranean, *Oceanography*, 29, 196–206, <https://hal.archives-ouvertes.fr/hal-01443236/>, 2016b.
- Estrada, M., Varela, R. A., Salat, J., Cruzado, A., and Arias, E.: Spatio-temporal variability of the winter phytoplankton distribution across the Catalan and North Balearic fronts (NW Mediterranean), 21, 1–20, <http://plankt.oxfordjournals.org/content/21/1/1.short>, 1999.
- Flamant, C.: Alpine lee cyclogenesis influence on air-sea heat exchanges and marine atmospheric boundary layer thermodynamics over the western Mediterranean during a Tramontane/Mistral event, 108, 8057, doi:10.1029/2001JC001040, <http://onlinelibrary.wiley.com/doi/10.1029/2001JC001040/abstract>, 2003.
- Font, J., Salat, J., and Tintoré, J.: Permanent features of the circulation in the Catalan Sea, <http://archimer.ifremer.fr/doc/00267/37808/>, 1988.
- 10 Gannier, A. and Praca, E.: SST fronts and the summer sperm whale distribution in the north-west Mediterranean Sea, 87, 187–193, doi:10.1017/S0025315407054689, 2007.
- García, M. J. L., Millot, C., Font, J., and García-Ladona, E.: Surface circulation variability in the Balearic Basin, 99, 3285–3296, doi:10.1029/93JC02114, <http://onlinelibrary.wiley.com/doi/10.1029/93JC02114/abstract>, 1994.
- Giordani, H., Lebeaupin-Brossier, C., Léger, F., and Caniaux, G.: A PV-approach for dense water formation along fronts: Application to the Northwestern Mediterranean, pp. n/a–n/a, doi:10.1002/2016JC012019, <http://onlinelibrary.wiley.com/doi/10.1002/2016JC012019/abstract>, 2016.
- 15 Hauser, D., Branger, H., Bouffies-Cloch  , S., Despiau, S., Drennan, W. M., Dupuis, H., Durand, P., Durrieu de Madron, X., Estournel, C., Eymard, L., Flamant, C., Graber, H. C., Gu  rin, C., Kahma, K., Lachaud, G., Lef  vre, J.-M., Pelon, J., Pettersson, H., Pigu  t, B., Queff  lou, P., Tailliez, D., Tournadre, J., and Weill, A.: The FETCH experiment: An overview, 108, 8053, doi:10.1029/2001JC001202, <http://onlinelibrary.wiley.com/doi/10.1029/2001JC001202/abstract>, 2003.
- 20 Lafore, J. P., Stein, J., Asencio, N., Bougeault, P., Ducrocq, V., Duron, J., Fischer, C., H  reil, P., Mascart, P., Masson, V., Pinty, J. P., Redelsperger, J. L., Richard, E., and Arellano, J. V.-G. d.: The Meso-NH Atmospheric Simulation System. Part I: adiabatic formulation and control simulations, 16, 90–109, doi:10.1007/s00585-997-0090-6, <http://link.springer.com/article/10.1007/s00585-997-0090-6>, 1997.
- Lebeaupin Brossier, C. and Drobinski, P.: Numerical high-resolution air-sea coupling over the Gulf of Lions during two tramontane/mistral events, 114, D10 110, doi:10.1029/2008JD011601, <http://onlinelibrary.wiley.com/doi/10.1029/2008JD011601/abstract>, 2009.
- 25 Lebeaupin Brossier, C., Arsouze, T., B  ranger, K., Bouin, M.-N., Bresson, E., Ducrocq, V., Giordani, H., Nuret, M., Rainaud, R., and Taupier-Letage, I.: Ocean Mixed Layer responses to intense meteorological events during HyMeX-SOP1 from a high-resolution ocean simulation, 84, 84–103, doi:10.1016/j.ocemod.2014.09.009, <http://www.sciencedirect.com/science/article/pii/S1463500314001401>, 2014.
- Lellouche, J.-M., Le Galloudec, O., Dr  villon, M., R  gnier, C., Greiner, E., Garric, G., Ferry, N., Desportes, C., Testut, C.-E., Bricaud, C., Bourdall  -Badie, R., Tranchant, B., Benkiran, M., Drillet, Y., Daudin, A., and De Nicola, C.: Evaluation of global monitoring and forecasting systems at Mercator O  an, 9, 57–81, doi:10.5194/os-9-57-2013, <http://www.ocean-sci.net/9/57/2013/>, 2013.
- 30 Mancho, A. M., Hern  ndez-Garc  a, E., Small, D., Wiggins, S., and Fern  ndez, V.: Lagrangian Transport through an Ocean Front in the North-western Mediterranean Sea, 38, 1222–1237, doi:10.1175/2007JPO3677.1, <http://journals.ametsoc.org/doi/abs/10.1175/2007JPO3677.1>, 2008.
- 35 Maraldi, C., Chanut, J., Levier, B., Ayoub, N., De Mey, P., Reffray, G., Lyard, F., Cailleau, S., Dr  villon, M., Fanjul, E. A., Sotillo, M. G., Marsaleix, P., and Team, M.: NEMO on the shelf: assessment of the Iberia-Biscay-Ireland configuration., 9, 745–771, doi:10.5194/os-9-745-2013, <https://hal.archives-ouvertes.fr/hal-00766544>, 2013.

- Marsaleix, P., Auclair, F., Floor, J. W., Herrmann, M. J., Estournel, C., Pairaud, I., and Ulses, C.: Energy conservation issues in sigma-coordinate free-surface ocean models, 20, 61–89, doi:10.1016/j.ocemod.2007.07.005, <http://www.sciencedirect.com/science/article/pii/S1463500307000984>, 2008.
- Marsaleix, P., Auclair, F., Duhaut, T., Estournel, C., Nguyen, C., and Ulses, C.: Alternatives to the Robert–Asselin filter, 41, 53–66, doi:10.1016/j.ocemod.2011.11.002, <http://www.sciencedirect.com/science/article/pii/S1463500311001788>, 2012.
- Marshall, J. and Schott, F.: Open-ocean convection: Observations, theory, and models, 37, 1–64, doi:10.1029/98RG02739, <http://onlinelibrary.wiley.com/doi/10.1029/98RG02739/abstract>, 1999.
- Masson, V., Le Moigne, P., Martin, E., Faroux, S., Alias, A., Alkama, R., Belamari, S., Barbu, A., Boone, A., Bouysse, F., Brousseau, P., Brun, E., Calvet, J.-C., Carrer, D., Decharme, B., Delire, C., Donier, S., Essauini, K., Gibelin, A.-L., Giordani, H., Habets, F., Jidane, M., Kerdraon, G., Kourzeneva, E., Lafaysse, M., Lafont, S., Lebeaupin Brossier, C., Lemonsu, A., Mahfouf, J.-F., Marguinaud, P., Mokhtari, M., Morin, S., Pigeon, G., Salgado, R., Seity, Y., Taillefer, F., Tanguy, G., Tulet, P., Vincendon, B., Vionnet, V., and Voldoire, A.: The SURFEXv7.2 land and ocean surface platform for coupled or offline simulation of Earth surface variables and fluxes, 5, 3771–3851, doi:10.5194/gmdd-5-3771-2012, <http://adsabs.harvard.edu/abs/2012GMDD....5.3771M>, 2012.
- Mertens, C. and Schott, F.: Interannual variability of deep-water formation in the northwestern Mediterranean, 28, 1410–1424, [http://journals.ametsoc.org/doi/abs/10.1175/1520-0485\(1998\)028%3C1410:IVODWF%3E2.0.CO%3B2](http://journals.ametsoc.org/doi/abs/10.1175/1520-0485(1998)028%3C1410:IVODWF%3E2.0.CO%3B2), 1998.
- Michaud, H., Marsaleix, P., Leredde, Y., Estournel, C., Bourrin, F., Lyard, F., Mayet, C., and Arduin, F.: Three-dimensional modelling of wave-induced current from the surf zone to the inner shelf, *Ocean Science*, 8, 657–681, doi:10.5194/os-8-657-2012, <https://www.ocean-sci.net/8/657/2012/>, 2012.
- Millot, C.: Circulation in the western Mediterranean Sea, 20, 423–442, <http://www.sciencedirect.com/science/article/pii/S0924796398000785>, 1999.
- Millot, C. and Taupier-Letage, I.: Circulation in the Mediterranean Sea, in: *The Mediterranean Sea*, edited by Salot, A., no. 5K in *Handbook of Environmental Chemistry*, pp. 29–66, Springer Berlin Heidelberg, <http://link.springer.com/chapter/10.1007/b107143>, DOI: 10.1007/b107143, 2005.
- Moon, I.-J., Ginis, I., Hara, T., and Thomas, B.: A Physics-Based Parameterization of Air–Sea Momentum Flux at High Wind Speeds and Its Impact on Hurricane Intensity Predictions, 135, 2869–2878, doi:10.1175/MWR3432.1, <http://journals.ametsoc.org/doi/abs/10.1175/MWR3432.1>, 2007.
- Rainaud, R., Lebeaupin Brossier, C., Ducrocq, V., and Giordani, H.: High-resolution air-sea coupling impact on two heavy precipitation events in the Western Mediterranean, pp. n/a–n/a, doi:10.1002/qj.3098, <http://onlinelibrary.wiley.com/doi/10.1002/qj.3098/abstract>, 2017.
- Rainville, L., Jayne, S. R., McClean, J. L., and Maltrud, M. E.: Formation of Subtropical Mode Water in a high-resolution ocean simulation of the Kuroshio Extension region, 17, 338–356, doi:10.1016/j.ocemod.2007.03.002, <http://www.sciencedirect.com/science/article/pii/S1463500307000418>, 2007.
- Renault, L., Chiggiato, J., Warner, J. C., Gomez, M., Vizoso, G., and Tintore, J.: Coupled atmosphere-ocean-wave simulations of a storm event over the Gulf of Lion and Balearic Sea, 117, <http://onlinelibrary.wiley.com/doi/10.1029/2012JC007924/full>, 2012.
- Seyfried, L., Marsaleix, P., Richard, E., and Estournel, C.: Modelling deep-water formation in the north-west Mediterranean Sea with a new air–sea coupled model: sensitivity to turbulent flux parameterizations, 13, 1093–1112, doi:10.5194/os-13-1093-2017, <https://www.ocean-sci.net/13/1093/2017/>, 2017.

- Small, R. J., deSzoeko, S. P., Xie, S. P., O'Neill, L., Seo, H., Song, Q., Cornillon, P., Spall, M., and Minobe, S.: Air–sea interaction over ocean fronts and eddies, 45, 274–319, doi:10.1016/j.dynatmoce.2008.01.001, <http://www.sciencedirect.com/science/article/pii/S0377026508000341>, 2008.
- Small, R. J., Carniel, S., Campbell, T., Teixeira, J., and Allard, R.: The response of the Ligurian and Tyrrhenian Seas to a summer Mistral event: A coupled atmosphere–ocean approach, 48, 30–44, doi:10.1016/j.ocemod.2012.02.003, <http://www.sciencedirect.com/science/article/pii/S1463500312000339>, 2012.
- Taylor, J. R. and Ferrari, R.: Buoyancy and Wind-Driven Convection at Mixed Layer Density Fronts, 40, 1222–1242, doi:10.1175/2010JPO4365.1, <http://journals.ametsoc.org/doi/abs/10.1175/2010JPO4365.1>, 2010.
- Thomas, L. and Ferrari, R.: Friction, Frontogenesis, and the Stratification of the Surface Mixed Layer, 38, 2501–2518, doi:10.1175/2008JPO3797.1, <http://journals.ametsoc.org/doi/full/10.1175/2008JPO3797.1>, 2008.
- Thomas, L. N.: Destruction of Potential Vorticity by Winds, 35, 2457–2466, doi:10.1175/JPO2830.1, <http://journals.ametsoc.org/doi/abs/10.1175/JPO2830.1>, 2005.
- Thomas, L. N. and Lee, C. M.: Intensification of Ocean Fronts by Down-Front Winds, 35, 1086–1102, doi:10.1175/JPO2737.1, <http://journals.ametsoc.org/doi/full/10.1175/JPO2737.1>, 2005.
- Thomas, L. N. and Taylor, J. R.: Reduction of the usable wind-work on the general circulation by forced symmetric instability, *Geophysical Research Letters*, 37, doi:10.1029/2010GL044680, <https://agupubs.onlinelibrary.wiley.com/doi/abs/10.1029/2010GL044680>.
- Thomas, L. N., Taylor, J. R., D’Asaro, E. A., Lee, C. M., Klymak, J. M., and Shcherbina, A.: Symmetric Instability, Inertial Oscillations, and Turbulence at the Gulf Stream Front, *Journal of Physical Oceanography*, 46, 197–217, doi:10.1175/JPO-D-15-0008.1, <https://doi.org/10.1175/JPO-D-15-0008.1>, 2016.
- Voltaire, A., Decharme, B., Pianezze, J., Lebeaupin Brossier, C., Sevault, F., Seyfried, L., Garnier, V., Bielli, S., Valcke, S., Alias, A., Accensi, M., Arduin, F., Bouin, M.-N., Ducrocq, V., Faroux, S., Giordani, H., Léger, F., Marsaleix, P., Rainaud, R., Redelsperger, J.-L., Richard, E., and Riette, S.: SURFEX v8.0 interface with OASIS3-MCT to couple atmosphere with hydrology, ocean, waves and sea-ice models, from coastal to global scales, 10, 4207–4227, doi:10.5194/gmd-10-4207-2017, <https://www.geosci-model-dev.net/10/4207/2017/>, 2017.

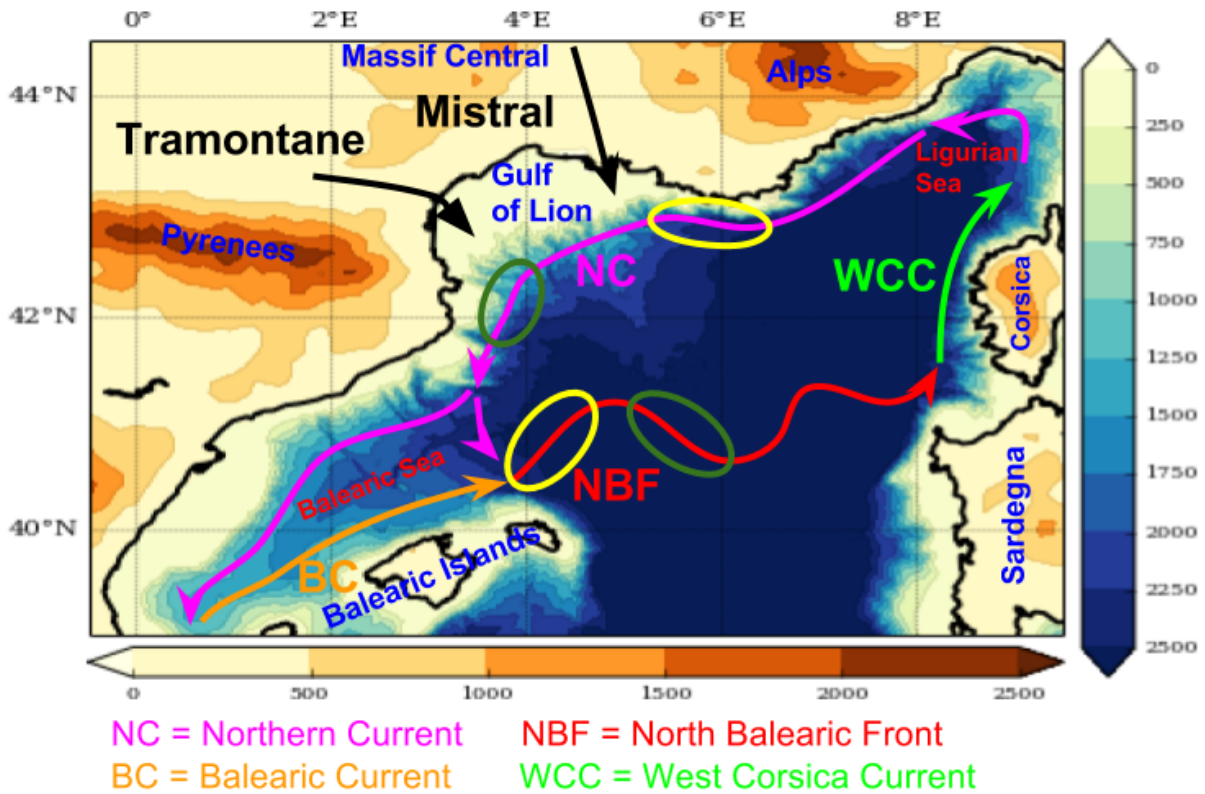


Figure 1. Schematic representation of the surface oceanic circulation in the North Western Mediterranean Sea. Coloured area: orography in brown and bathymetry in blue. The directions of the prevailing Mistral and Tramontane winds are indicated with black arrows. Up-front and down-front wind zones are indicated with yellow and green ellipses respectively.

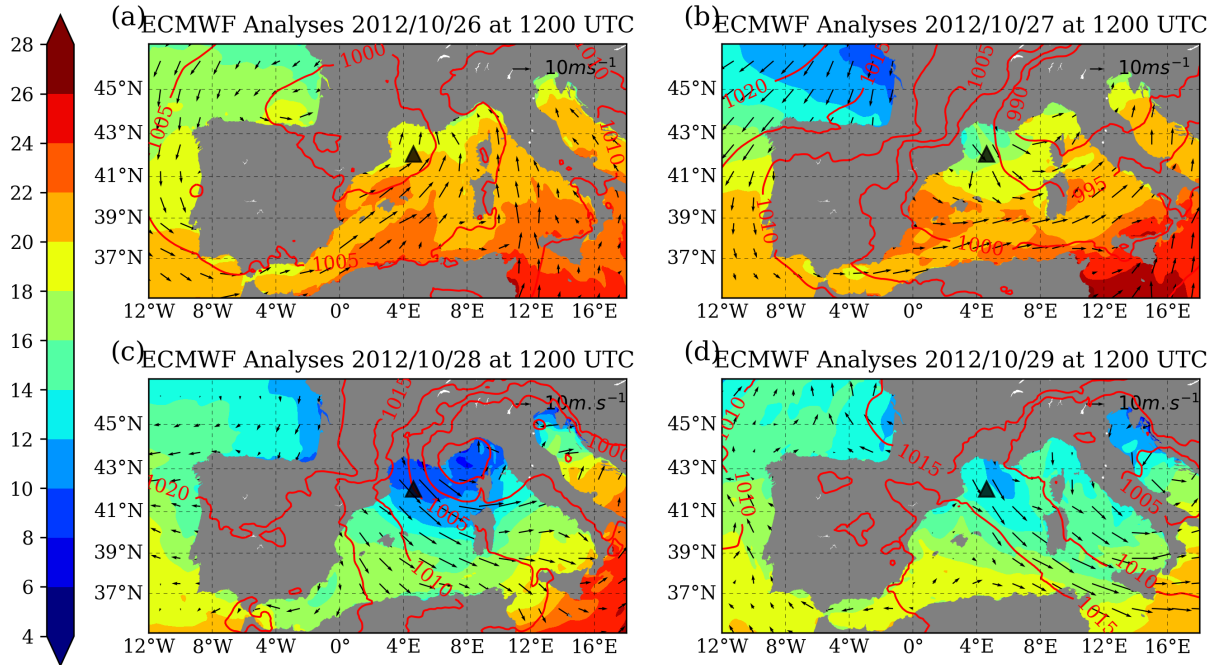


Figure 2. Atmospheric surface synoptic conditions from ECMWF analyses at 1200 UTC (a) on 2012/10/26, (b) on 2012/10/27, (c) on 2012/10/28 and (d) on 2012/10/29. Coloured area: atmospheric surface temperature in °C. Contour lines: mean sea level pressure in hPa. Arrows: surface wind. The black triangle indicates the position of the Lion meteorological buoy.

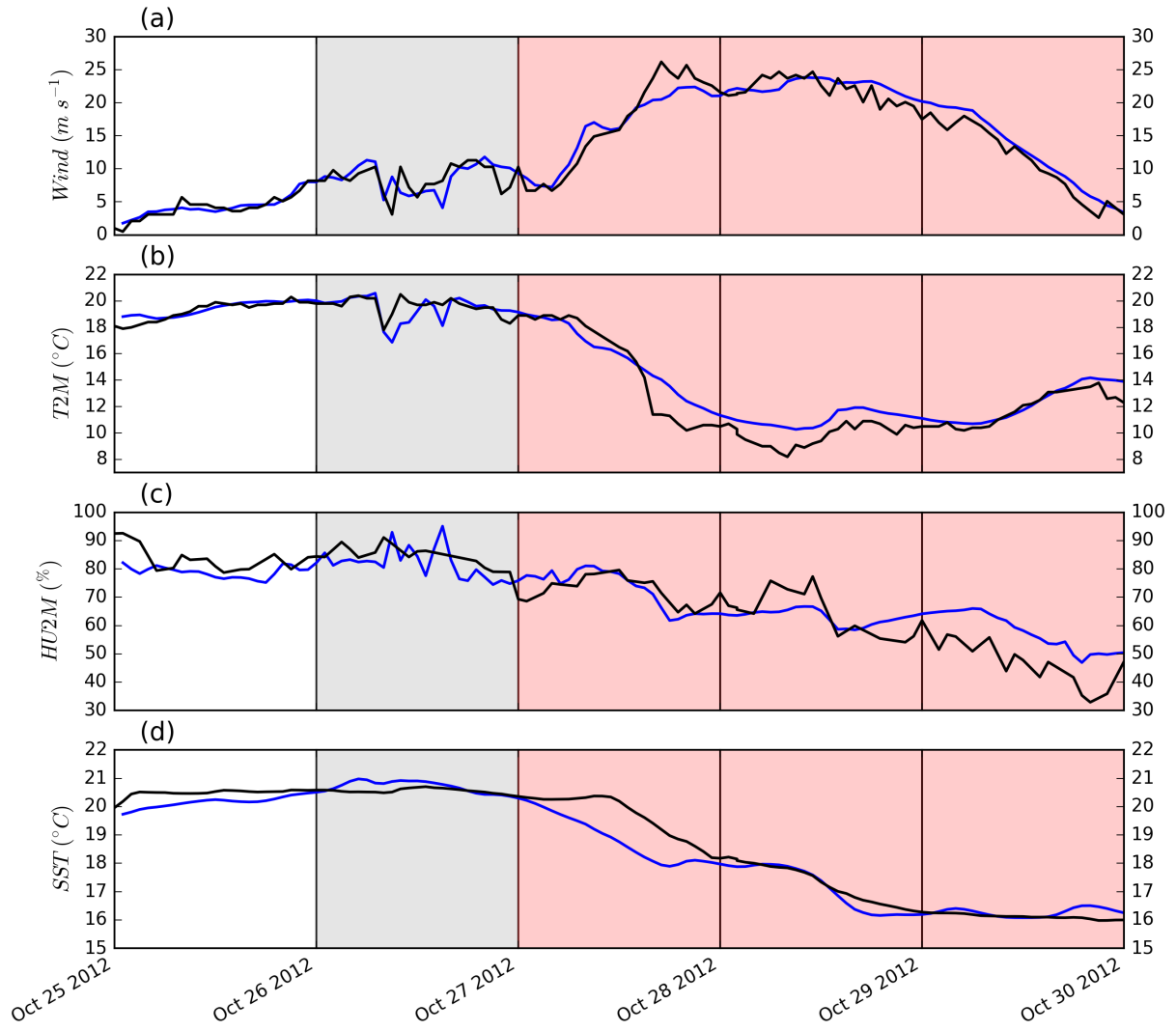


Figure 3. Time series at the Lion meteorological buoy of (a) the 10 m wind speed, (b) the 2 m air temperature, (c) the 2 m air humidity and (d) the Sea Surface Temperature. Observations in black and simulations in blue.

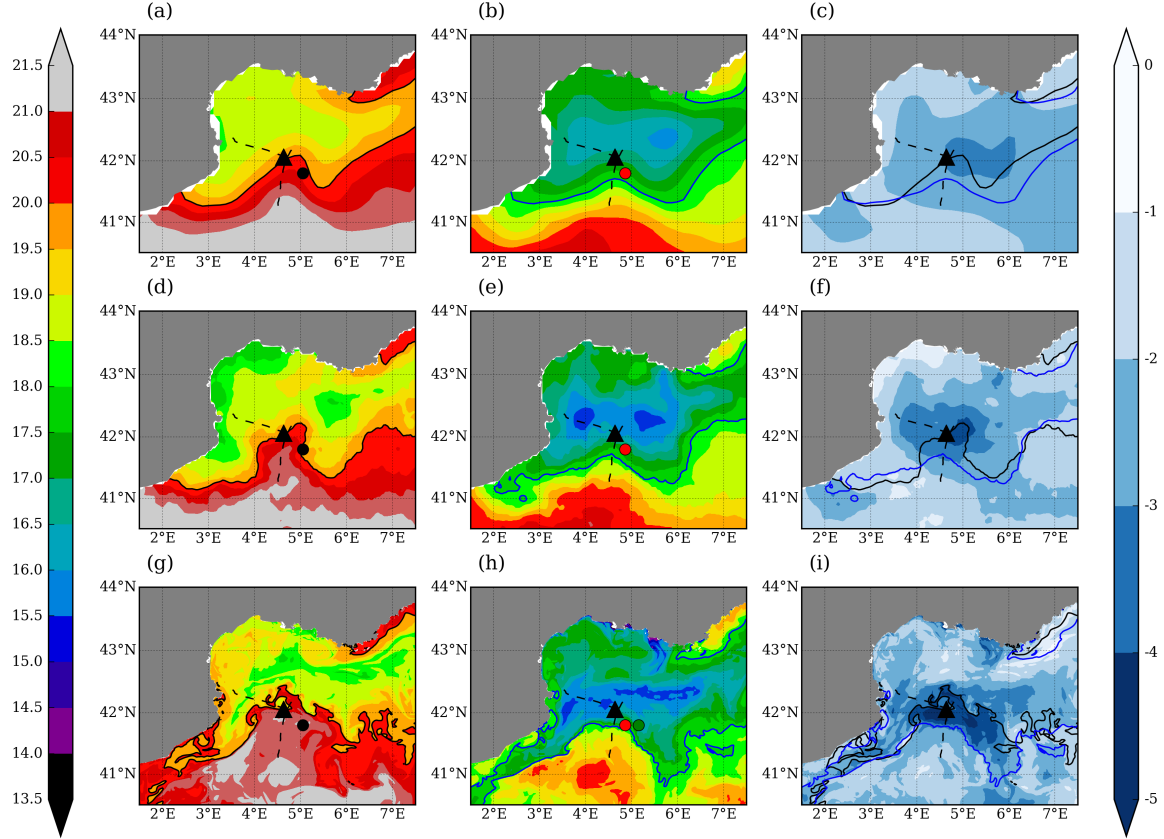


Figure 4. Sea Surface Temperature analysis from the OSTIA product (a-c), from the Mediterranean Copernicus product (d-f), and from the coupled simulation (g-i) at 0000 UTC on 25 October (a, d and g), at 0000 UTC on 30 October (b, e and h) and difference between 0000 UTC on 30 October and on 25 October (c, f and i). The triangle indicates the Lion buoy. The black-dots correspond to the position of the ARGO profiles shown in Fig. 6 and the dashed lines to the glider sections shown in Fig. 5.

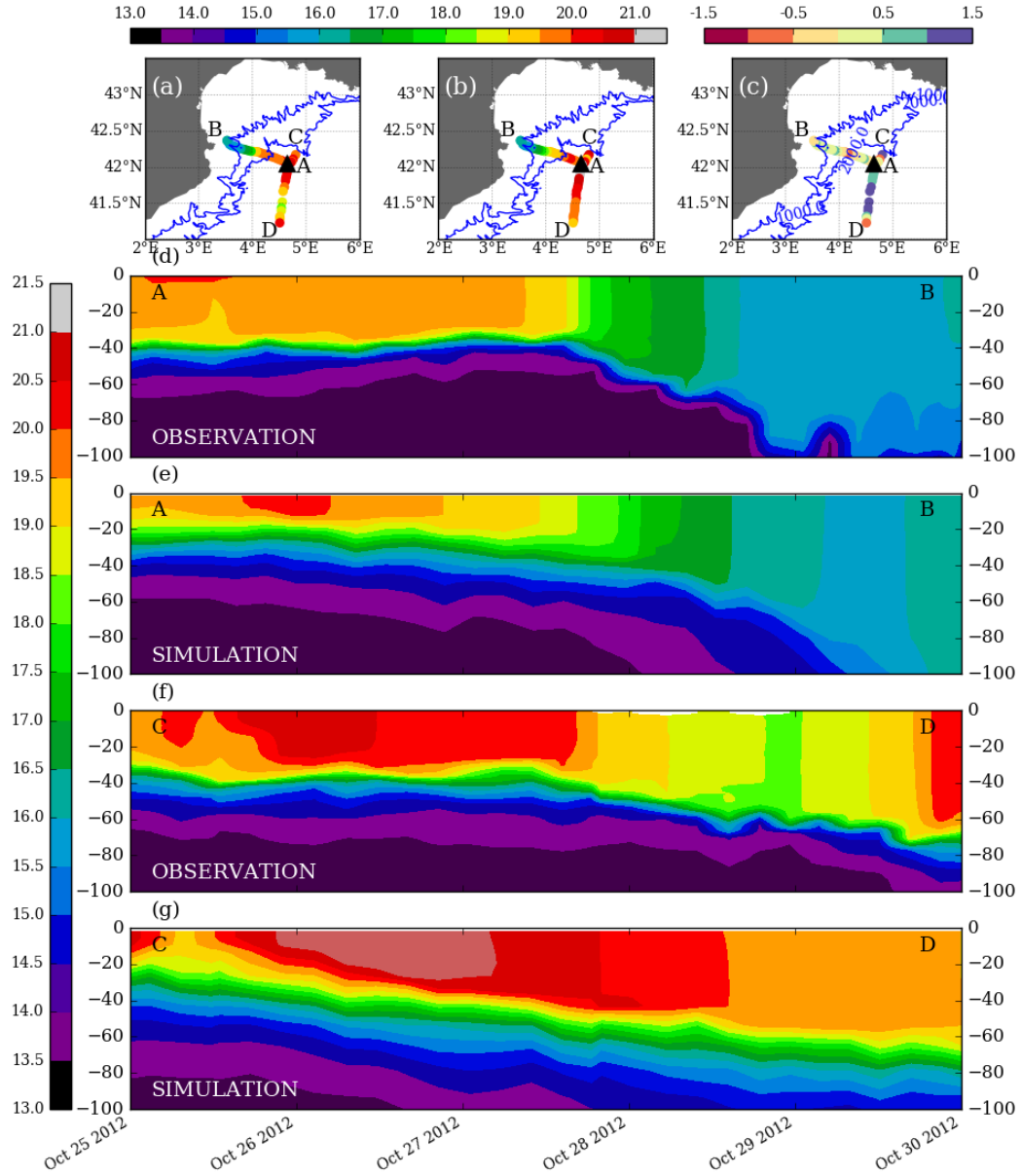


Figure 5. SST measurement (a), simulation (b) and bias of the simulation (c), along the trajectory of the glider Eudoxus (moving westward) and Campe (moving southward). Vertical section of potential temperature between 0 and 200 m depth for the Eudoxus glider observation (d) and simulation (e) and the Campe glider observation (f) and simulation (g).

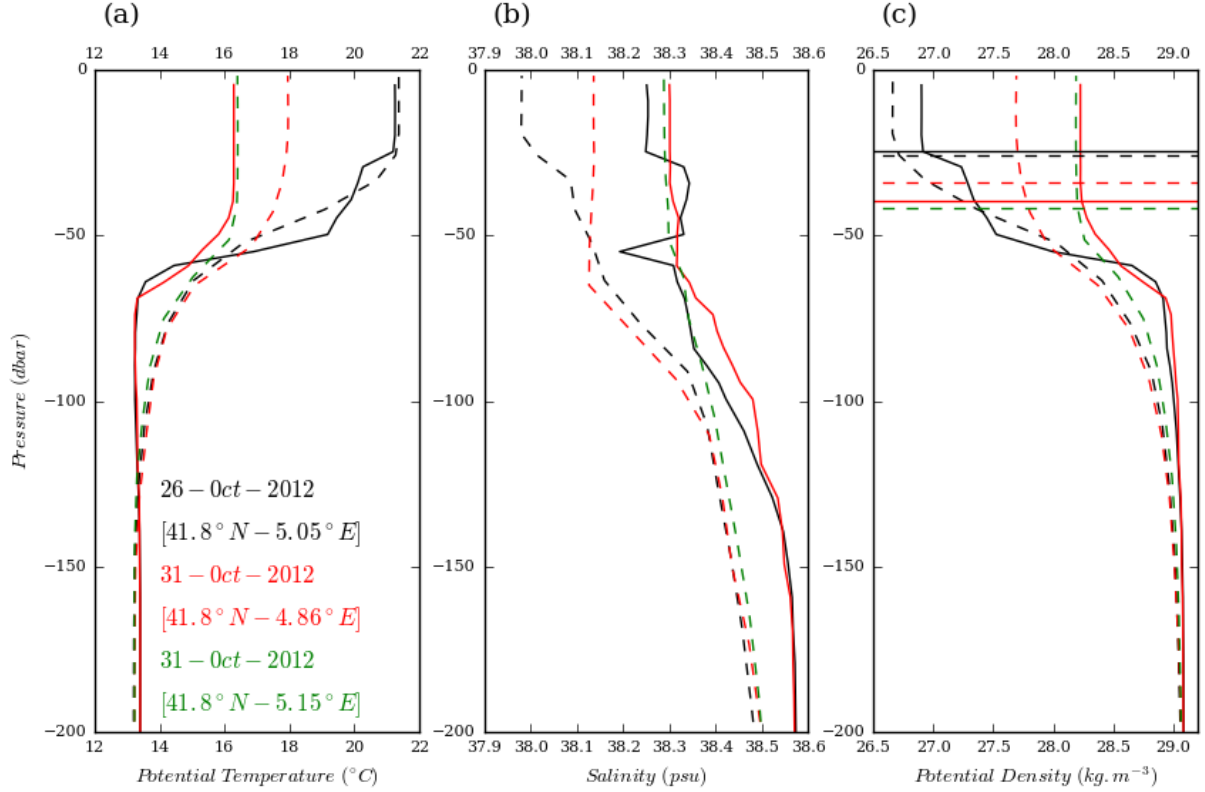


Figure 6. Argo potential temperature (a), salinity (b) and potential density (c) measured (solid line) and simulated (dashed line) at the different dates indicated in the figure. For 31 October, only simulated profiles are given (in green). The horizontal lines (c) indicated the MLD for each density profiles.

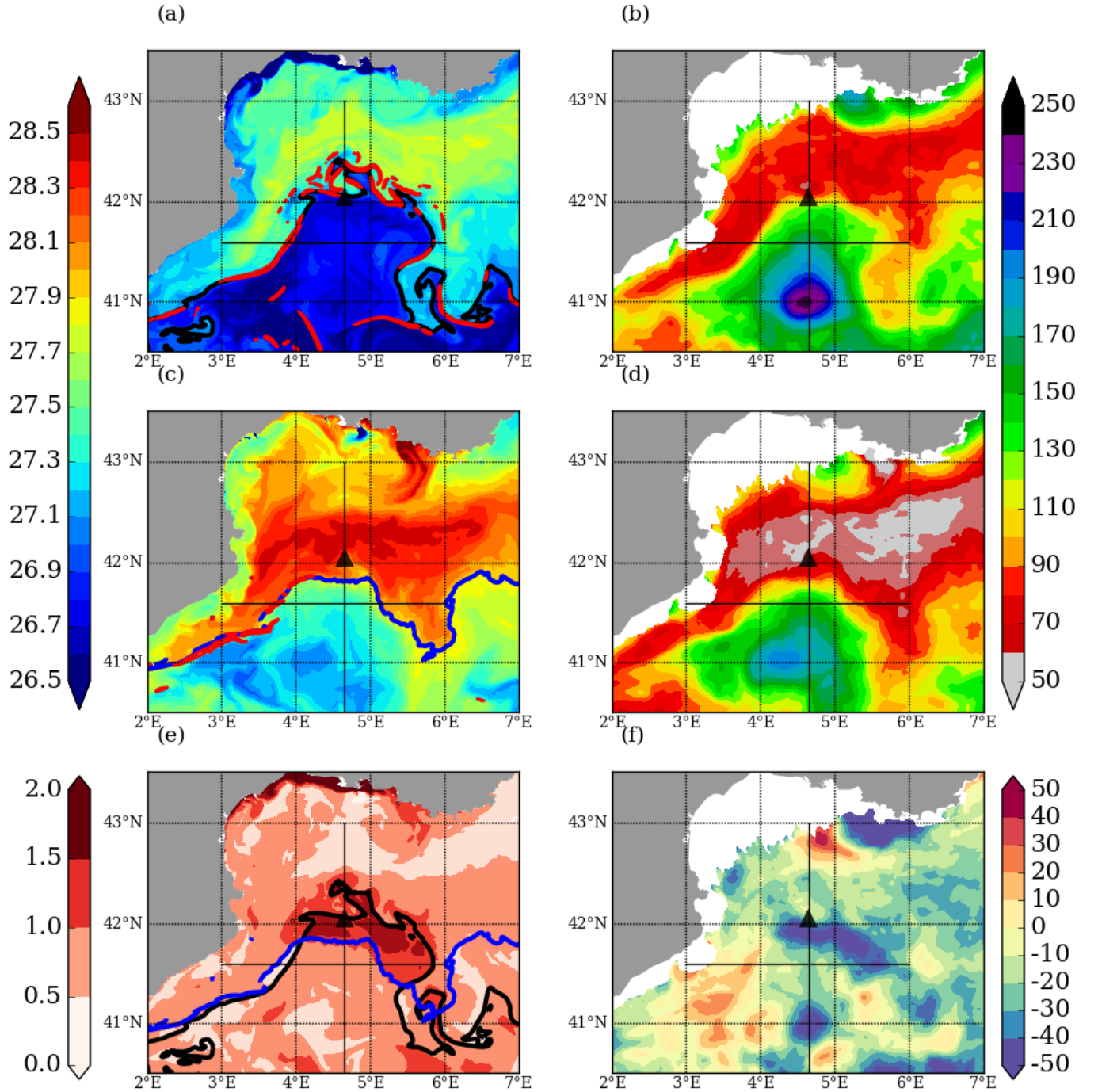


Figure 7. Sea surface density in kg m^{-3} (left column) and Stratification Index at 250 m in kg m^{-2} (right column), at 0000 UTC on 26 October (a and **b**), at 0000 UTC on 30 October (**b-c** and **ed**) and difference between 0000 UTC on 30 October and on 26 October (**e-e** and f). The black contour (a and **ee**) represents the 27.0 kg m^{-3} isopycnal, the blue contour (**b-and-c** and **e**) represents the 28.0 kg m^{-3} isopycnal and the red line (**a-ea** and **c**) represents the surface density gradient greater than 0.1 kg m^{-3} per kilometre. The black straight lines indicate the position of the vertical sections shown in Fig. 8.

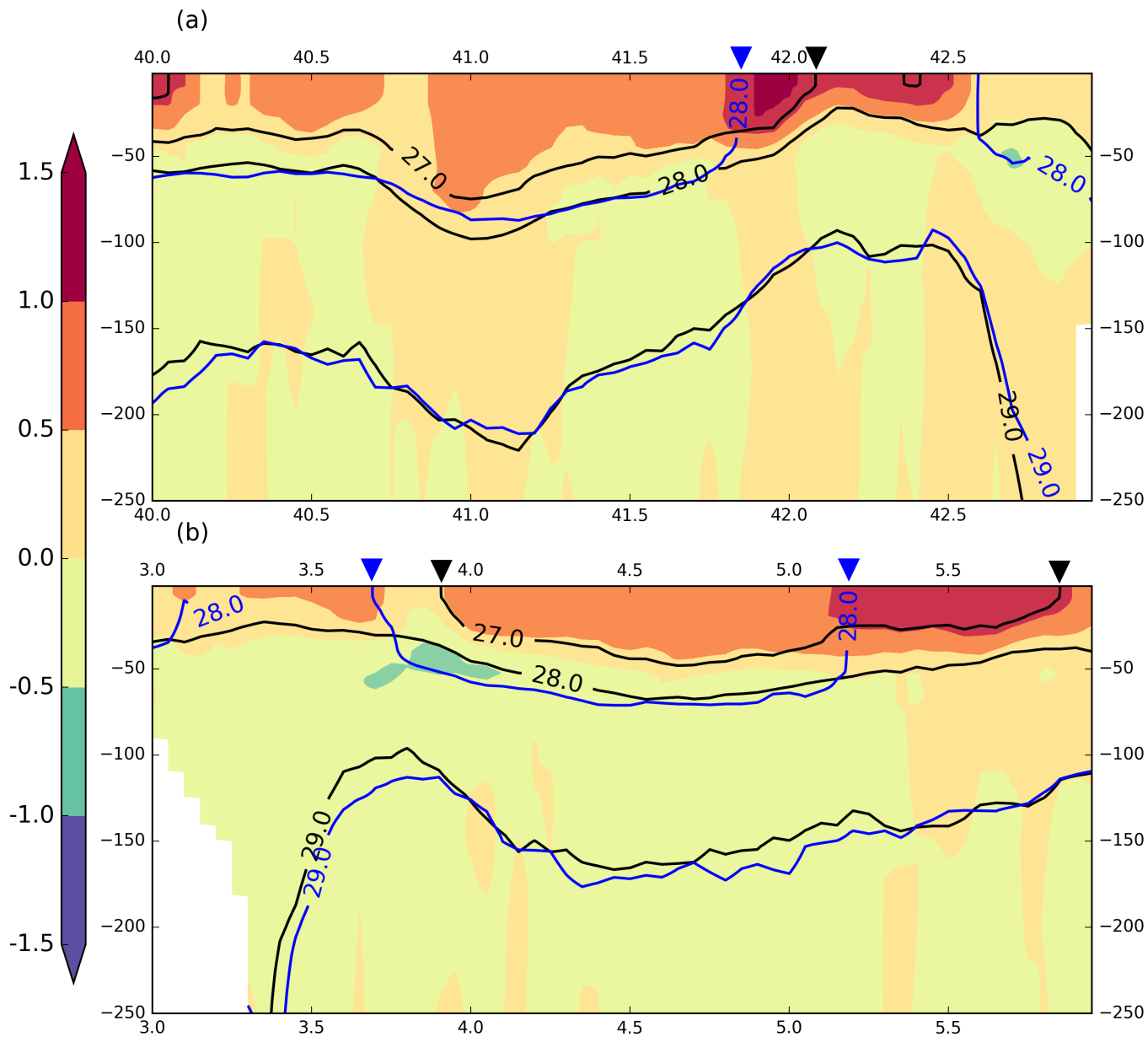


Figure 8. (a) South-North section at 4.65°E and (b) West-East section at 41.7°N (see Fig. 7 for their positions) of the potential density difference between 0000 UTC on 30 October and 0000 UTC on 25 October. Contour lines: Isopycnals on 25 October 2012 (black lines) and 30 October 2012 (blue lines).

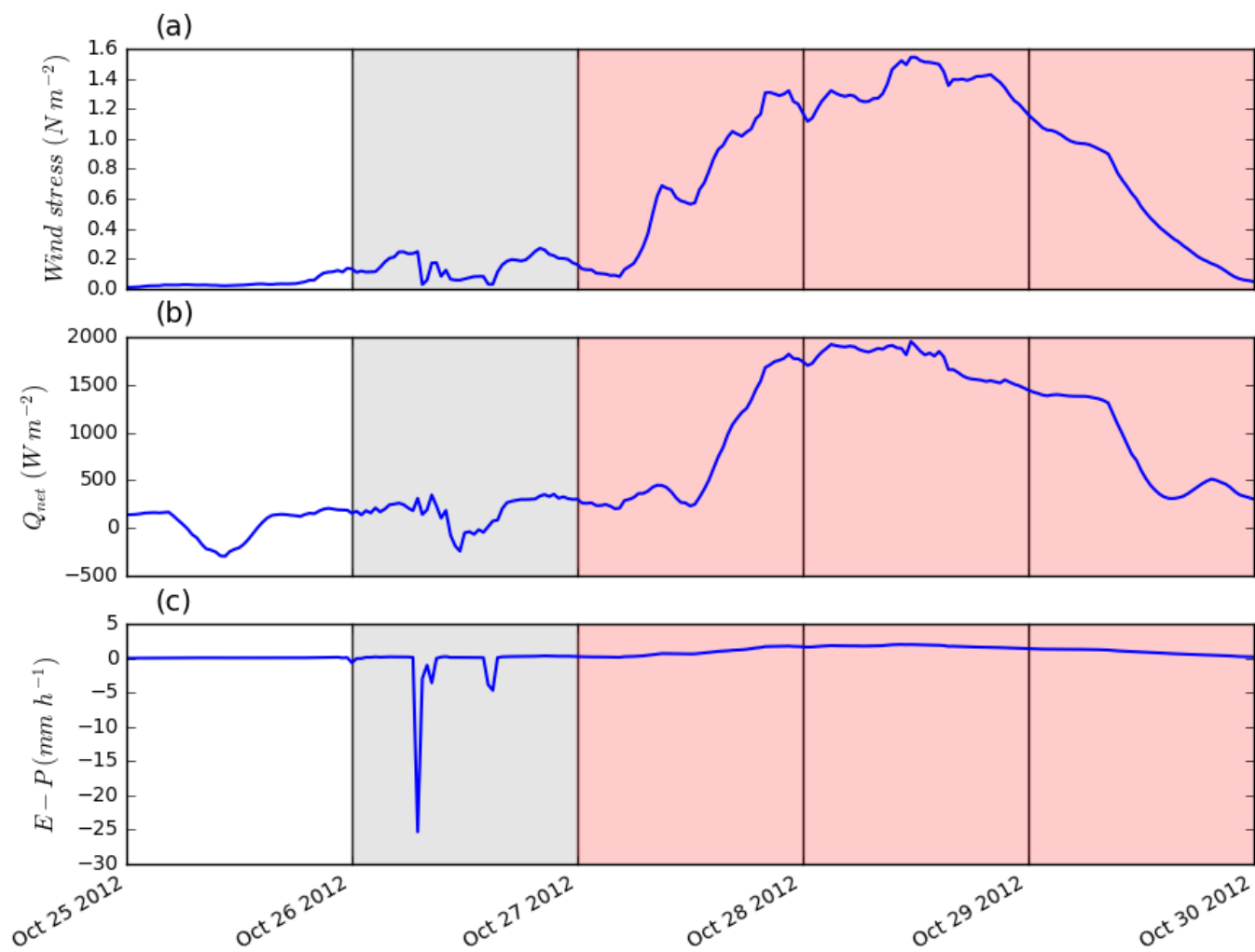


Figure 9. Time series of (a) the wind stress, (b) the net heat flux, and (c) the water flux simulated at the Lion meteorological buoy.

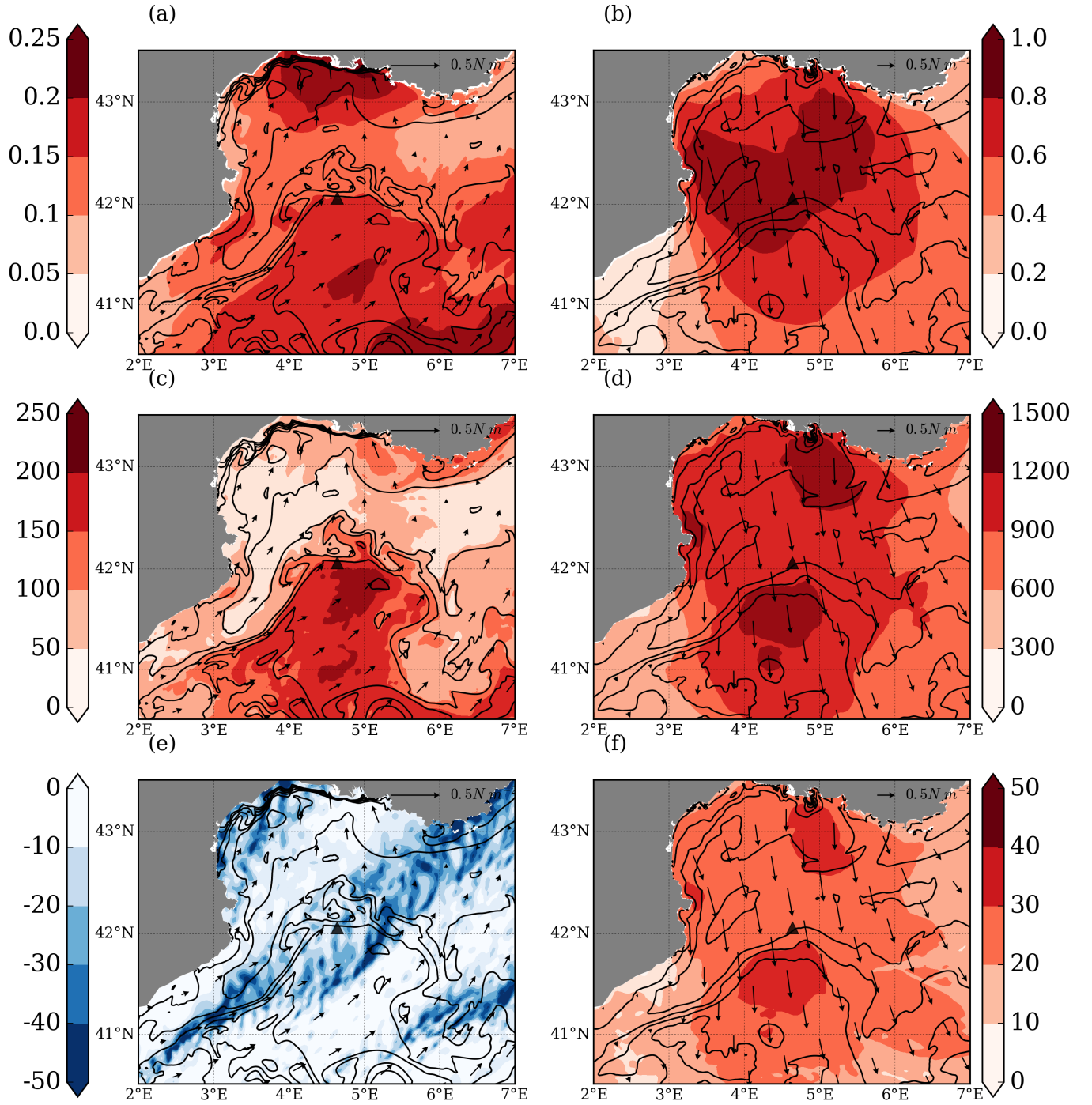


Figure 10. (a and b) wind stress (N m^{-2}), (c and d) net surface heat flux (W m^{-2}), (e and f) surface water flux (mm day^{-1}) averaged over IOP16a (left column) and IOP16b (right column). Contour lines: sea surface density averaged over IOP16a (left) and IOP16b (right), contour interval: 0.3 kg m^{-3} .

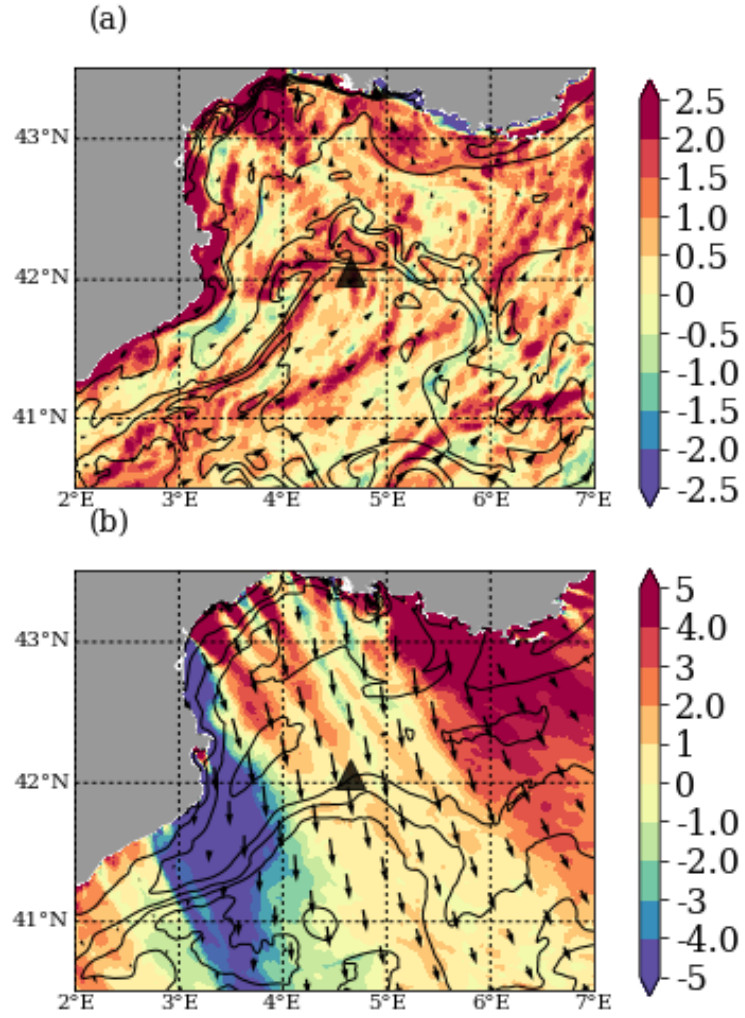


Figure 11. Wind stress curl ($\text{N m}^{-3} \times 10^6$) averaged over IOP16a (top) and IOP16b (bottom). Contour lines: sea surface density averaged over IOP16a (left) and IOP16b (right), contour interval: 0.3 kg m^{-3} .

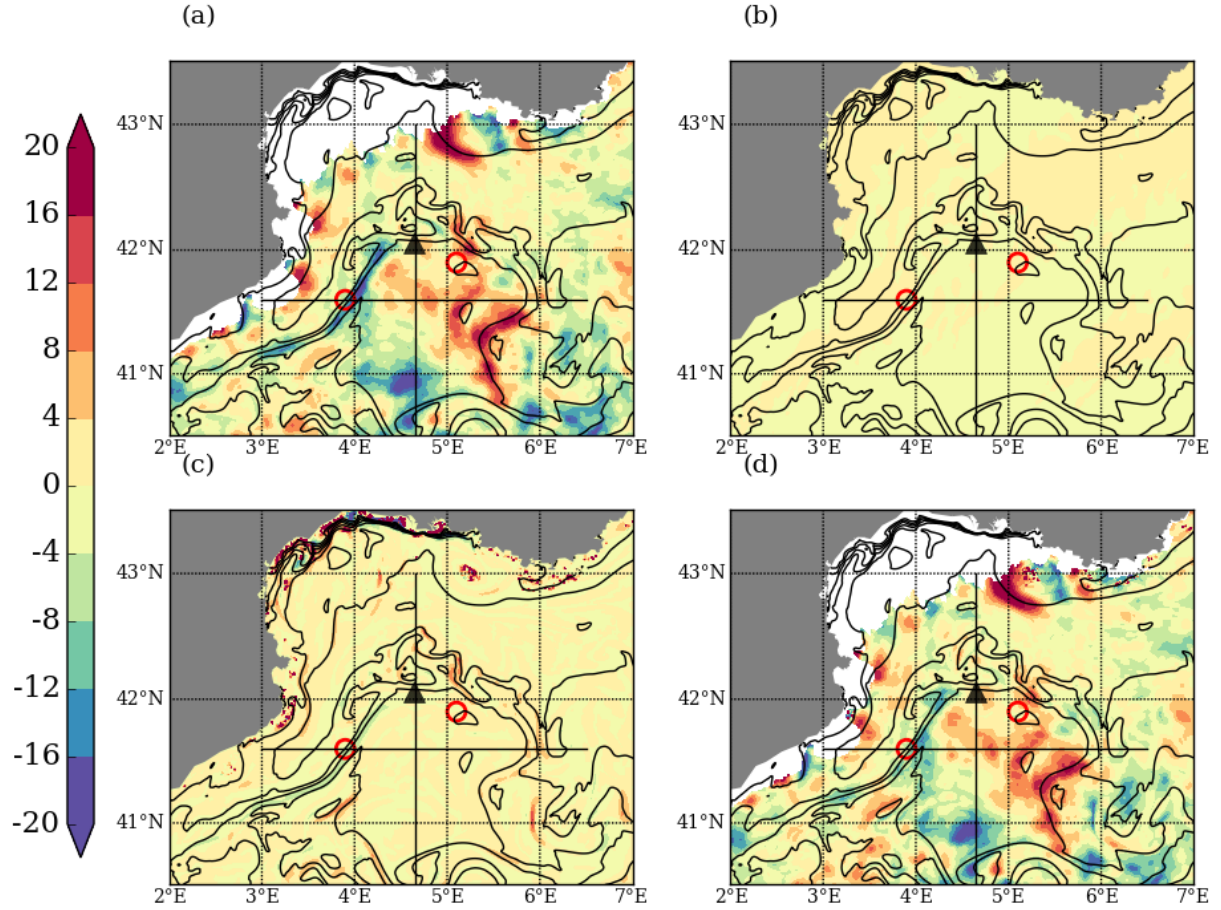


Figure 12. Stratification variation budget diagnosis (Eq. 5) during IOP16a, (a) SI difference, (b) diabatic buoyancy mass flux, (c) Ekman buoyancy mass flux, and (d) residual term. Red circles indicate the areas chosen for the budget diagnostic in Fig. 14

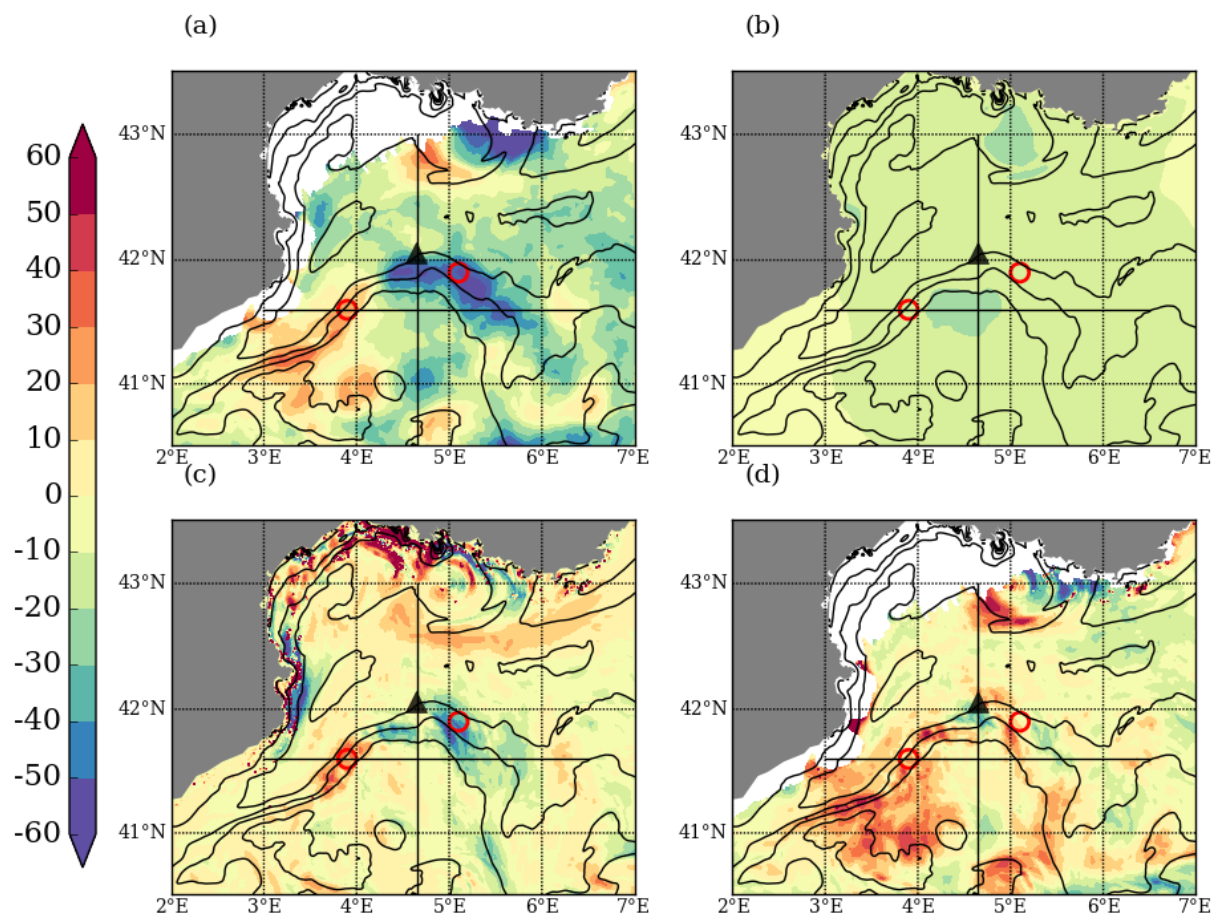


Figure 13. Same figure as Fig. 12 for IOP16b.

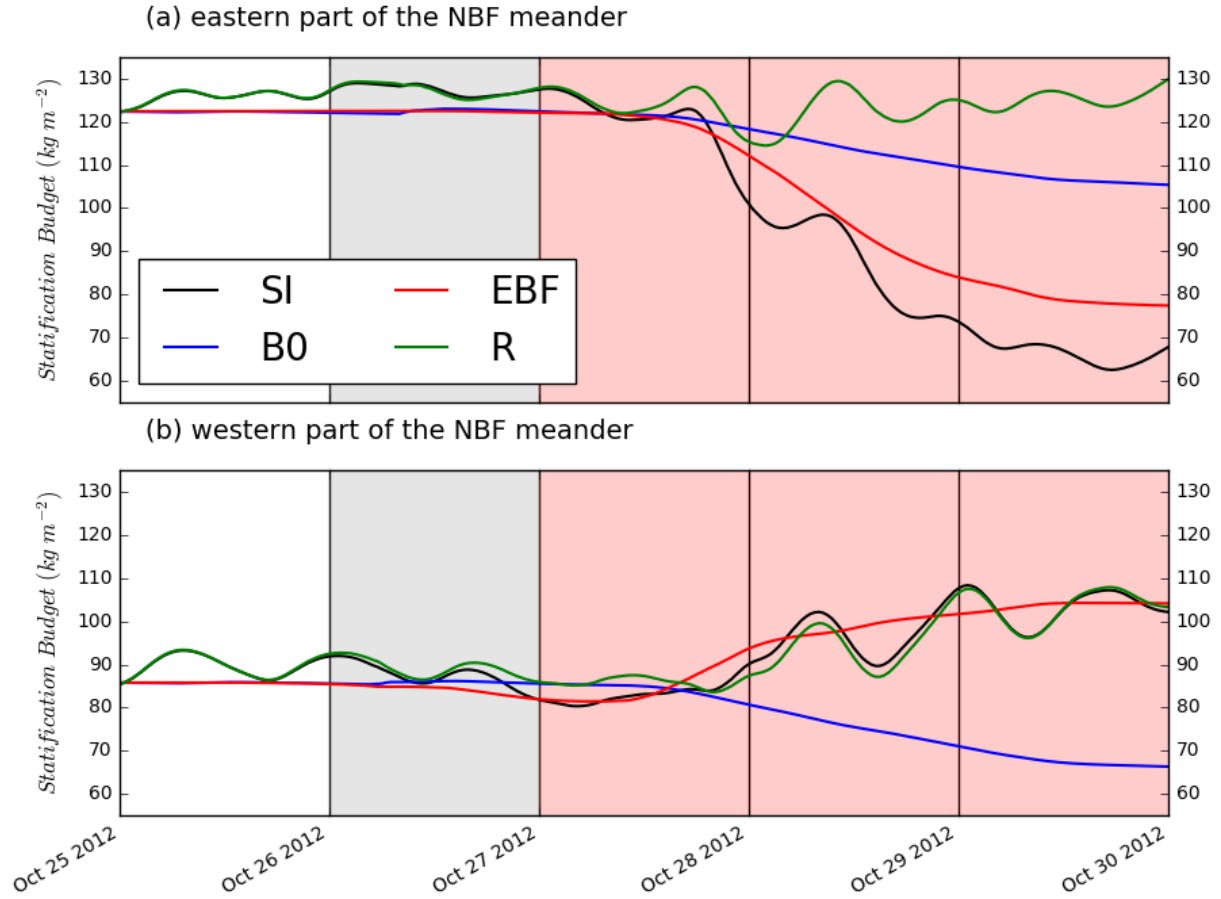


Figure 14. Time series of the different terms of the stratification budget diagnosis (SI in black, diabatic buoyancy flux in blue, Ekman buoyancy flux in red, total buoyancy flux in magenta and residual in green): (a) for the eastern part of the NBF meander (averaged over 10 km^2 around 41.9°N and 5.1°E) and (b) for the western part of the NBF meander (averaged over 10 km^2 around 41.6°N and 3.9°E , [see Fig. 12 and Fig. 13](#)). In order to compare the different terms, all the curves start with the same value, which is the initial SI.

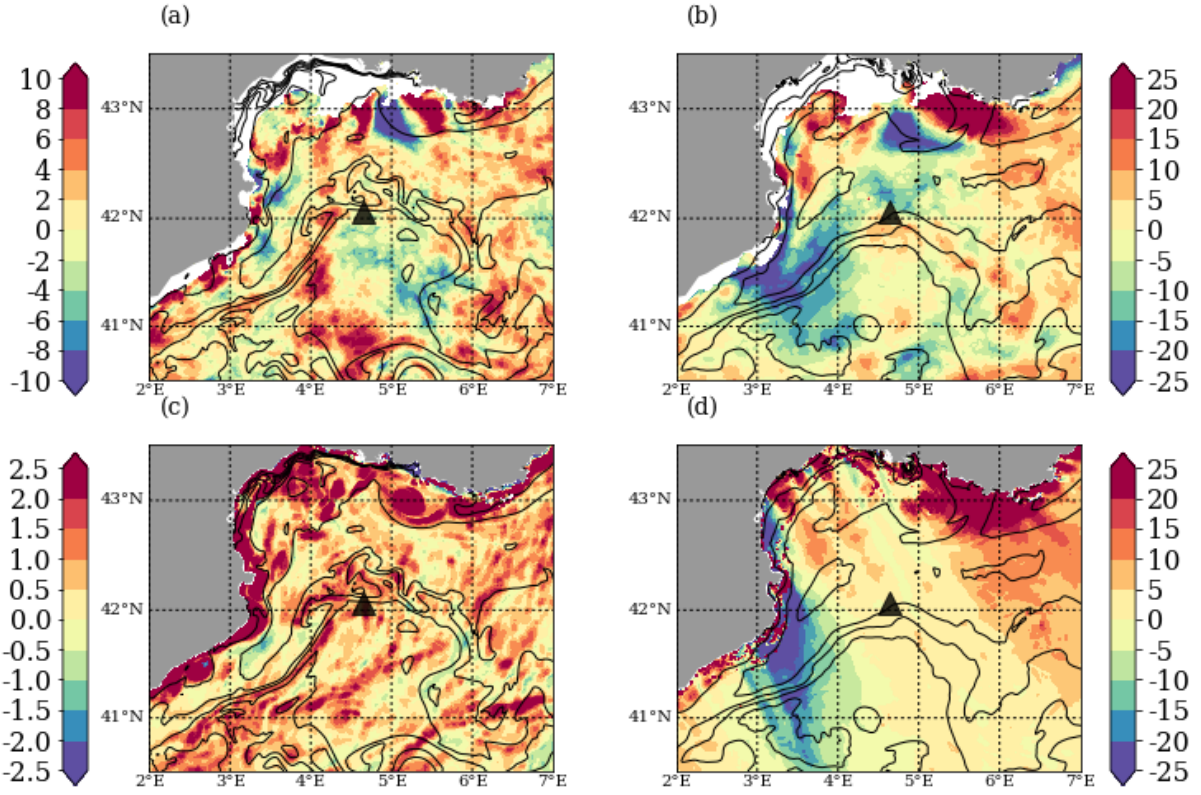


Figure 15. (a and b) 28.5 kg m⁻³ isopycnal deepening (m) and (c and d) Ekman pumping (m) during IOP16a (left column) and IOP16b (right column). Contour lines: sea surface density averaged over IOP16a (left) and IOP16b (right). Contour interval: kg m⁻³.