

We thank the topic editor for her careful reading of the manuscript and the answers to all the referee's questions, and for her appreciation for the work done in the paper. Comments are reproduced in bold italic to ease the reading. Text changes in the manuscript are in italics.

The original manuscript was generally well written. The author provided clear and adequate answers to all the referee's questions. The minor comments have all been taken into account in the new version of the manuscript.

I'm happy for the manuscript to be published taking into consideration two very minor comments: 1. avoid acronyms in the abstract (substitute CMEMS with the full name);

Non-public comments to the Author:

About my first request:

CMEMS can be substituted by Copernicus marine Service (short name) or Copernicus Marine Environment Monitoring Service (full name)

We have substituted CMEMS by Copernicus Marine Environment Monitoring Service in the abstract.

2. please add in the manuscript the explanation provided to referee 1 for fig.7. This could help other readers to better understand fig.7.

The following sentence has been added at the end of section 5.1.1 to better understand Fig. 7 :

"To explain why small difference exists between the black and the green curves before the critical scale, we have to note that the analysis increment obtained with the spatial localisation can include a large scale component, which can directly impact the large scale of the total analysis increment."

We thank referee #1 for his/her careful reading of the manuscript and for his/her appreciation for the work done in the paper. Comments are reproduced in bold italic to ease the reading. Text changes in the manuscript are in italics.

Answer to general comments

This paper presents a multiscale data assimilation method to take into account both large and small scales oceanic processes in an ocean operational system by spectral and spatial localisations. The paper is globally well written: most of the technical part is clear and the results are convincing.

My main questions are about the spectral transformation: 1) why the spherical harmonics transformation has been chosen? What is the strengths of this transformation compared to other spectral transformations?

Yes, we agree with the reviewer that this point was not sufficiently explained in the paper. The following paragraph has been added in section 3.2 to better justify the choice of spherical harmonics to separate scales :

"The use of spherical harmonics is not the most natural way to separate scales for fields that do not extend over the whole sphere. In principle, it would for instance be better to use the eigenfunctions of the Laplacian operator defined for the model domain. They would account for the land barriers and would display a better relation to the system dynamics. However, they would also be much more expensive to compute than the spherical harmonics, and would need to be stored and then loaded each time they are needed to separate scales. This is why we preferred using spherical harmonics in this study : they make the method numerically efficient and they are sufficient to obtain a relevant spectral decomposition of the input signal."

2) It seems that after the spectral transformation, each term (corresponding to a given wavelength of a spherical harmonic) has particularly a statistical sense, I just wonder if it also always has a physical interpretation, i.e. corresponds to an oceanic process at a specific scale. Even if so, do they really correspond to the scales observed in the data ?

Yes, they would have a clear interpretation if the domain extended over the whole sphere. As explained above (in the paragraph now included in the paper), they are used here as an efficient practical way to separate scales.

3) It is not clear to me how the observation error standard deviation along each spherical harmonics is obtained in the twin experiment. More importantly, how it can be obtained in realistic case?

In the twin experiment, the observation error standard deviation along each spherical harmonics is obtained by transforming (i) the innovation vector and (ii) the misfit with respect to the true state, and by computing the RMS difference between these two transformed vectors. This sentence has been included in the paper in section 3.3.2 to improve the explanation :

"It is then possible to evaluate the standard deviation of the observational error in the spectral domain by transforming (i) the innovation vector and (ii) the misfit with respect to the true state, and by computing the RMS difference between these two transformed vectors. More explicitly, this is done by computing the RMS between (...)"

In a realistic case, the above method can directly be transposed by simulating observational error in model

results, and by transforming the difference between the perturbed and unperturbed data. The standard deviation of the result is then an estimate of the observation error standard deviation along each spherical harmonics. The following sentence has been added in section 3.3.2 to clarify this point. *"In a realistic case, the above method can directly be transposed by simulating observational error in model results, and by transforming the difference between the perturbed and unperturbed data. The standard deviation of the result is then an estimate of the observation error standard deviation along each spherical harmonics."*

Answer to minor questions or remarks

Minor questions or remarks :

1) In Fig. 7, why small difference exists between the black and the green curves before the critical scale while almost no difference between the blue and the black curves after the critical scale?

The analysis increment obtained with the spatial localisation can recreate a large scale field. This impacts the large scale of the total analysis increment. On the contrary, the analysis increment resulting from the spectral localisation will only impact the result obtained for the large scales, because the scales have been treated separately by the spectral localisation. The residual field may contain a small amount of large scales that have not been treated by spectral localisation. Thus, green and black curves before the critical scale (large scales) can be more different than blue and black curves after this critical scale (residual scales).

2) many small spelling mistakes, please check

We did our best to check the manuscript again, but the manuscript has not been revised by a native English speaker.

We thank referee #2 for his/her careful reading of the manuscript and for his/her appreciation for the work done in the paper. Comments are reproduced in bold italic to ease the reading. Text changes in the manuscript are in italics.

Answer to general comments

The manuscript is clearly written and presents a data assimilation approach focusing on more accurate retrievals of the large scale SSH components from the data.

The authors should better justify the use of eigenmodes of the laplacian on a sphere for scale separation. These basis functions are natural in atmospheric applications, but in the oceanic data assimilation (into regional configurations in particular) it might be better to employ alternative expansions (e.g., laplacian eigenfunctions defined for the domain in use). Apart from being orthogonal, they have number of additional attractive properties, including spatial inhomogeneity of the supported scales and their implicit relation to model dynamics (e.g., tides).

Yes, we agree with the reviewer that this point was not sufficiently explained in the paper. The following paragraph has been added in section 3.2 to better justify the choice of spherical harmonics to separate scales :

"The use of spherical harmonics is not the most natural way to separate scales for fields that do not extend over the whole sphere. In principle, it would for instance be better to use the eigenfunctions of the Laplacian operator defined for the model domain. They would account for the land barriers and would display a better relation to the system dynamics. However, they would also be much more expensive to compute than the spherical harmonics, and would need to be stored and then loaded each time they are needed to separate scales. This is why we preferred using spherical harmonics in this study : they make the method numerically efficient and they are sufficient to obtain a relevant spectral decomposition of the input signal."

Answer to minor comments

1) Referring to the impact spatial localization, I would rather say that large scale correlation structures are "heavily suppressed", but not "removed" or "not used" in the analysis associated with spatially localized covariance.

Yes, this is true. Long-range correlations are removed, but the something certainly remains from the large-scale correlation structure. This has been corrected in the paper.

2) grammar issues (p.2: "spatial space", l.30, p.4: lines 7,14,20 etc.; caption to Fig. 11: description of panel c missing..). please correct

Yes, thank you. This has been corrected. In particular, we changed "spatial space" and "spectral space" to "spatial domain" and "spectral domain" everywhere.

We thank Benedicte Lemieux-Dudon, referee #3, for her careful reading of the manuscript and for her appreciation for the work done in the paper. Comments are reproduced in bold italic to ease the reading. Text changes in the manuscript are in italics.

Answer to general comments

This article focuses on the ensemble data assimilation systems which use the domain localization technique to prevent the contamination of the analysis with spurious long-range correlations due to ensemble error covariance matrix sampling errors. The authors propose a new data assimilation algorithm to solve the well-known drawbacks associated to the traditional localization techniques. Localization requires to define a decorrelation length (or radius of influence) which is known to be scale dependent. As a result a single decorrelation length cannot be suited for the wide range of scales represented in models and observations. Localization can also create noise especially when local analyses are superimposed. It also discards the true long-distance correlations (creating imbalance and loss of relevant information). This paper specifically address this later issue. The objective of the authors is to improve the analysis of the large scales without worsening the small scale components of the signal in order to use the full constraint of the observing system at all scales. To separate the small and large scales, the authors apply a spectral transformation based on a spherical harmonics decomposition which enables to carry out two successive analyses : i) a first analysis is performed in the spectral domain with a spectral localization of the large scales components of the signal, ii) a second analysis is performed in the spatial domain with the traditional domain localization applied over the remaining smaller scales of the residual components of the signal. This approach called “multiscale observational update algorithm” is said to be computationally affordable because it avoids the small scale spectral transformation by using the multi-scale filtering technique.

This technique is tested in the framework of a twin experiment using synthetic satellite altimetry observations over a realistic regional configuration (ie, North Atlantic and Nordic Seas) at resolution of a quarter of degree. A prior ensemble of 70 members is simulated with NEMO v3.6 and the multi-scale analysis is implemented in the SAM2 data assimilation system (Mercator Ocean).

This article deserves to be published with minor changes. The state of art is properly introduced, the methodology is relevant and precisely described (eg, twin experiment), the results are commented and illustrated with numerous figures. Several verification methods are used to validate the proposed data assimilation algorithm (rank histograms, RMSE, ensemble spread before and after the analysis,..). Figure 7 is especially convincing in showing that the multi-scale analysis algorithm can improve the update of the large scale components without downgrading the small scales.

The objective of the authors appears to be reached when using synthetic SSH observations in a realistic regional configuration. I have few comments and questions which are listed below. The particular points for which I would recommend clarifications concern questions related to the transformation of the observations and the consistency analysis in the spectral space presented on Figure 10.

Thanks again for all suggestions made to improve the manuscript. We did our best to take them into account as explained in more details below.

Answer to specific comments

** p.2 line 28 : typography.*

“compute removal of the between-scale covariances” : complete ?

”compute removal” is replaced by *”complete removal”*.

** p.2 line 35 : methodology.*

Can you explain the effect of neglecting the in-between scale covariance ? (see related questions p.9 line 8).

This is indeed an important question. But it is difficult to provide general statements describing this effect. This can depend on every particular application. The assumption is that the correlations between very different scales are weak and can be neglected. It is similar to the assumption made in spatial localisation where long-range correlations are neglected. In both cases, the effect is that information can be lost because of the localisation, and the importance of this effect depends on the magnitude of the correlation that have been neglected. The results of our example illustration tend to indicate that we loose less information with the multiscale approach than with spatial localisation alone. See our answer to the related question in p.9 to see how we tried to provide better explanations of this in the text of the paper.

** p.3 line 20 : suggestion.*

This information was given several times and could be removed here : “This combines spectral localization for the large scales with spatial localization for the small scales”

This sentence has suppressed.

** p.4 line 14 : typography.*

uncertainties repeated twice

”Uncertainties in air-sea fluxes uncertainties are” is replaced by *”Uncertainties in air-sea fluxes are”*.

** p.4 line 29 : clarification appreciated.*

The ensemble spread in the Gulf stream and Siberian Sea are too small/too large, respectively : “these characteristics do not affect the evaluation of the multiscale algorithm that is performed in this study”. Can you explain why ?

The explanation was indeed a bit too short. The reason is that we are using twin experiments, so that the evaluation of the method does not depend much on the realism of the model simulation, providing that the multiscale nature of the problem remains. To clarify, we modify the text as follows : *”However, since we are using twin experiments, the simulation does not need to be perfectly realistic to evaluate our approach (providing that the multiscale nature of the problem remains). These characteristics are thus not likely to affect the evaluation of the multiscale algorithm that is performed in this study.”*

** p.5 line 15 : language ?*

“which is very close to whose used by the Ensemble Transform Kalman Filter (ETKF)”

This part of the sentence is replaced by *”which is similar to that used in the Ensemble Transform Kalman Filter (ETKF)”*.

** p.6 line 25 : suggested clarification.*

“For a multivariate three-dimensional variable, this transformation can be applied to each vertical level of each model variable”. Which physical parameter do you control and update?

This question could be clarified when introducing the SEEK p.5.

In principle, all variables of the state vectors should be updated by the observational update. In this paper however, we are not performing a full data assimilation experiment, and we are only evaluating the method by updating some of the model variables. It is first applied to sea surface height, which is the observed variable, and it is also applied to temperature and salinity (in section 5.4) to illustrate the application of the method to non-observed variables.

In order to clarify this point, we add in the text p.5, line 16 : *"In the assimilation system, the observational update is usually applied to all model variables. In this paper however, the effect of the multiscale approach will mainly be evaluated by the update of SSH, which is the observed variable, and by the update of temperature and salinity to illustrate the application of the method to non-observed variables."*

*** p.6 line 28 : minor comment.**

"The reversible spectral transformation preserves the information for all degrees $l \leq l_{\max}$ "
Information about l_{\max} unclear at that stage : the spherical harmonics decomposition (ST) is not fully introduced yet.

The following sentences p.6 lines 28 and 29 :

"The reversible spectral transformation preserves the information for all degrees $l \leq l_{\max}$. Thus, the transformed fields contain the same information, until this degree, as that shown in the spatial space in Fig. 1."
 are replaced by :

"This reversible spectral transformation preserves the information for each l degree. The f_{lm} coefficients of the spherical harmonics decomposition can be computed for each l degree up to a selected degree $l = l_{\max}$. This transformed field contains the same information, until l_{\max} ", as shown in the spatial domain in Fig. 1."

*** p.6 line 30 and p.7 line 1 : suggestion when referring to Figure 3a, 3b**

You could explicitly mention that you are showing the f_{lm} coefficients of the spherical harmonics decomposition.

The description of the figures 3a and 3b have been modified : p.6 line 30 to p.7 line 2.

"The f_{lm} coefficients of each member of the prior ensemble has been computed for the SSH until the degree $l_{\max} = 60$, which corresponds to a wavelength $\lambda \approx 667$ km and a characteristic length $L \approx 106$ km. Figure 3a shows the standard deviation of this prior ensemble in the spectral domain. Figure 3b shows the result of the spectral transformation applied to the true SSH anomaly, i.e. the f_{lm} coefficients of the true SSH anomaly."

*** p.7 line 7 : correction.**

In Equation (3) (the inverse ST) since part of the original signal $f(\theta, \phi)$ is very likely filtered out by applying the cut-off degrees l_{\min} and l_{\max} , I would suggest that you replace the name of the function f .

The function $f(\theta, \phi)$ is now called $f_{l_{\min}}^{l_{\max}}(\theta, \phi)$. We modified the text as follows :

"From the spectrum f_{lm} , the field $f_{l_{\min}}^{l_{\max}}(\theta, \phi)$ can be reconstructed using the inverse transformation :

$$\text{ST}_{l_{\min} \rightarrow l_{\max}}^{-1} : f_{l_{\min}}^{l_{\max}}(\theta, \phi) = \sum_{l=l_{\min}}^{l_{\max}} \sum_{m=-l}^l f_{lm} Y_{lm}(\theta, \phi) \quad (1)$$

This inversion can be constrained to specific scales by choosing the values of l_{\min} and l_{\max} . The full field can be reconstructed since $f(\theta, \phi) = f_0^{\infty}(\theta, \phi)$. This is how the method separates scales.

*** p.7 line 16 : clarification.**

Could you explain further what is the “scale separator” your refer to?

The scale separation operator corresponds to the forward and then backward transformations. The scales are separated by choosing the l_{\min} and l_{\max} values for the backward transformation, following Eq. (3).

** p.8 line 1 : clarification / correction*

The least square problem of equations (4) and (5) is set to identify the best spherical harmonic coefficients (ie, f_{lm}) so that the reconstructed observation field $f(\theta, \phi)$ (here ssh) taken at the observation locations (ie, θ_k, ϕ_k) minimizes the distance to the observations (ie, f_k^o) with possibly an additional regularization term (minimal norm) and/or some bogus observations. You mention that the least square problem is only used for observations which are not on a regular grid (else you would apply the ST directly). It is said that “ p is the number of grid points of the domain” in equation (4). It seems to me that p is rather the observation space dimension.

Yes, this is true. p is the size of the observation vector, including bogus observations. This has been corrected in the paper : “where p is the size of the observation vector (including bogus observations)”

** p.9 line 8 : clarification.*

This comment is connected to my previous question about the impact of neglecting the in between scale covariance “p.2 line 35”. You are mentioning here that the “correlations between very different scales are weak and should be neglected by the data assimilation scheme and reduced to zero”. I am not fully convinced about this statement when looking at Figure 5a and 5b. You illustrate your statement showing the cross-scales correlations for two “small” degree parameters (ie, large spatial scales) with the other spectral scales of the system (l in $[0,60]$). The cross-scales correlations “between very different scales” do not seem to be all negligible. Could you explain if these figures are meant to justify : i) the spectral scale separation algorithm (correlations between large and smaller spatial scales are said to be weak), ii) the need of a spectral localization for the large scales. What is the link with the next statement “For the same reasons, each localization window will contain a number of degrees of freedom sufficiently low to be controlled with an ensemble of moderate size”?

Yes, we agree with the reviewer that this explanation was both too short and too optimistic. What the figures show is that most significant correlations are close to the reference scale. Most other cross-correlations are weak, which makes it reasonable to treat the different scales separately during the analysis step. However, it is true that there are also significant correlations for remote scales, and that neglecting these correlations corresponds to losing a potentially useful information. The only argument we can provide as a justification is that, in the spatial case (Fig. 2), there also exists significant correlations far from the observation, and that neglecting them also corresponds to losing a potentially useful information. The same kind of hypothesis is thus made to apply spatial localisation, even if some useful statistical relationships may be neglected. The question is then : which of the two localisations better preserves the meaningful structures contained in the ensemble. The results of our example illustration tend to indicate that we can lose less information with the multiscale approach than with spatial localisation alone. We tried to clarify this point in the paper with the following text added in p.9.

“Most correlations between very different scales are weak and might thus be neglected by data assimilation. This is the basic property allowing to introduce scale separation in the data assimilation scheme. However, it is true that there are also significant correlations for remote scales, and that neglecting these correlations corresponds to losing a potentially useful information. This is however similar to what happens with spatial localisation : in Fig. 2, there also exists significant correlations far from the reference location. The question is then : which correlations is it better to neglect to preserve the meaningful structures contained in the ensemble. This is the question that we will try to elucidate with our example application.”

** p.11 line 28 : suggestion for Figure 6a, 6b and 6c*

You mention that “Figures 6a and 6b show respectively the large scale of the mean ensemble of analysis increments obtained respectively with spatial localization or spectral localization (see Sect. 4.1.1). Hence, they have to be as similar as possible to the large scale part of the true anomaly showed on Fig. 4c”. Comparison might be easier if you would directly plot the difference between the true anomaly and mean ensemble of analysis increments.

Difference between the true anomaly and mean ensemble of analysis increments gives an information about how the analysis improves or not the ensemble according to the true state. However, knowledge of amplitudes of the true anomaly and these analysis increments is necessary to have a good physical understanding of what happens. This allows to check if the amplitude of the variable is physically accurate. For this reason, we prefer to keep our current figures.

** p.13 line 29 : clarification*

Regarding the results of Figure 8, did you apply zero bogus observations ?

Yes, we added zero bogus observations on the northern part of the domain, where there are no observations available from the SSH, see Fig. 1d. This has been clarified in the text of the paper.

** p.13 line 29: suggestion for Figure 8a and 8b.*

Comparison might be easier for the reader if you directly plot the difference between the increment of analyses for the full spectrum and the True anomaly.

For the same reasons as those relating to Figures 6a and 6b, we prefer to keep our current figures : knowledge of amplitudes of the true anomaly and these analysis increments is necessary to have a good physical understanding of what happens.

** p.15 line 8 : clarification needed for the rank histogram in the spectral space.*

You mention that “Ranks maps in the spectral space provide additional indication that all algorithms provides reliable updated ensembles”. You also say that “Figure 10 shows the maps of ranks in the spectral space for” the “ensemble”. Rank histograms usually present the following information (similarly to Figure 9) along the x and y-axis: 1) the $N+1$ ranks extracted from the N ensemble members (ie, the $N+1$ probability bins), 2) the counts of the verifying observation in each bins. On the “ranks map” of Figure 10, I cannot understand where are the counts of the synthetic observation used for verification (ie, the “true state”) ? On such plot, it seems to me that one dimension is missing to measure the statistical reliability of the ensemble with respect to the verifying observation (ie, the counts). Is Figure 10 equivalent in a way to plotting several rank histograms for several spectral range ? What type of features you expect to see to confirm the statistical reliability of the ensemble (prior and updates) with such map of ranks ? Where are the counts ?

In this figure, the ranks are computed using to the true state in the spectral domain, i.e. for each spectral coordinate (l, m) . For a given rank, the count is obtained by counting the number of spectral coordinates (l, m) belonging to that rank. It is possible to summarise these counts in a rank diagrams in the spectral domain like for the spatial domain. We decided to show the maps of ranks because it brings a new perspective and gives the same information. For a perfectly reliable ensemble, ranks would be evenly and randomly distributed over the entire spectral domain. The misunderstanding might come from the fact that is not the count that is displayed in the figures but the count normalized by the total number of data points to have numbers between 0 and 1. This was indeed not mentioned in the paper, and it is now clarified :

“The ranks are computed for each spectral coordinate (l, m) , and have been normalized by the total number of data points to have numbers between 0 and 1. For a perfectly reliable ensemble, ranks would be evenly and

randomly distributed over the entire spectral domain.”

Finally, as stated in the other reviews there are small language issues which you should try to correct (I cannot help on that topic).

We did our best to check the manuscript again, but the manuscript has not been revised by a native English speaker.

A multiscale ocean data assimilation approach combining spatial and spectral localisation

Ann-Sophie Tissier¹, Jean-Michel Brankart¹, Charles-Emmanuel Testut², Giovanni Ruggiero², Emmanuel Cosme¹, and Pierre Brasseur¹

¹Univ. Grenoble Alpes, CNRS, IRD, Grenoble INP, IGE, Grenoble, France

²Mercator Océan, Toulouse, France

Correspondence: Ann-Sophie Tissier (annsophie.tissier@gmail.com)

Abstract. Ocean data assimilation systems encompass a wide range of scales that are difficult to control simultaneously using partial observation networks. All scales are not observable by all observation systems which is not easily taken into account in current ocean operational systems. The main reason for this difficulty is that the error covariance matrices are usually assumed to be local (e.g. using a localization algorithm in ensemble data assimilation systems), so that the large scale patterns are removed from the error statistics.

To better exploit the observational information available for all scales in ~~CMEMS assimilation systems~~ [the assimilation systems of the Copernicus Marine Environment Monitoring Service](#), we investigate a new method to introduce scale separation in the assimilation scheme.

The method is based on a spectral transformation of the assimilation problem and consists in carrying out the analysis with spectral localisation for the large scales and spatial localisation for the residual scales. The target is to improve the observational update of the large scale components of the signal by an explicit observational constraint applied directly on the large scales, and to restrict the use of spatial localisation to the small scale components of the signal.

To evaluate our method, twin experiments are carried out with synthetic altimetry observations (simulating the JASON tracks), assimilated in a $1/4^\circ$ model configuration of the North Atlantic and the Nordic Seas.

Results show that the transformation to the spectral [space domain](#) and the spectral localization provides consistent ensemble estimates of the state of the system (in the spectral [space domain](#), or after backward transformation to the spatial [space domain](#)). Combined with spatial localisation for the residual scales, the new scheme is able to provide a reliable ensemble update for all scales, with improved accuracy for the large scale; and the performance of the system can be checked explicitly and separately for all scales in the assimilation system.

1 Introduction

Over the last decades, the spectral window of the oceanic processes observed from space has steadily increased. At the same time, model resolution has also improved to better understand and interpret the observed signals. This progress in observations and models is a challenge for ensemble data assimilation. Because the size of the ensemble is always very small compared to the

number of degrees of freedom to be monitored. The model is usually too expensive to perform large-size ensemble simulations. This means that the probability distribution of the possible states of ocean is described by a small sample as compared to the dimension of the subspace over which uncertainties develop. In particular, the rank of the ensemble covariance matrix is much smaller than the rank of the real error covariance matrix. A traditional approximation to solve this problem is to localise this error covariance matrix (Houtekamer and Mitchell, 1998; Hamill et al., 2001; Testut et al., 2003; Brankart et al., 2011). The analysis is then applied locally by only using observations within a defined radius of influence which is bound to decrease with the broadening of the spectral window controlled by the data assimilation. The control of large scales, namely larger than this radius of influence, thus results from the combination of a large number of local analyses.

The large scales structures, although they are well observed (in the ocean by altimetry, ARGO floats,...), are therefore only indirectly controlled by the algorithm. Observations contain simultaneously information about small scale structures (especially at the observation point) and about larger scale structures, taken into account the full observational network. Spatial localisation does not directly take advantage of each scale contained in the observations system.

Because of the limited size of the ensemble, it is difficult to explicitly control the full range of scales without separating the spectral components of the signal. Separation of scales during the analysis step of data assimilation algorithms allows us to adjust localisation according to the considered spectral band of the signal. This is helpful to directly control the large scales which are frequently and precisely observed (altimetry, ARGO floats, ...). To separate scales in data assimilation, two approaches have been previously studied : the multiscale filter and the spectral transformation. The multiscale filter consists in separating the signal in two spectral bands, delimited by a cutting scale, in order to achieve two distinct ensemble analysis in the spatial space-domain (Zhou et al., 2008; Zhang et al., 2009). In this scheme, applied to an EnKF, two distinct localisation windows are used to exploit correlations over a longer distance for the analysis of the large scales. A more approximate version has also been proposed by simply combining the increments obtained for each of the two spectral bands (Miyoshi and Kondo, 2013). A comparable approach was proposed for 3DVar systems by Li et al. (2015). Alternatively, Buehner (2012) proposed a spectral transformation approach within an EnVar system, which is a spatial and a spectral localisation with a wavelet transform. This method is more generic because scales are separated continuously from the largest scales to the smallest scales. Localisation is used to neglect the correlations between the components of the signal which are distant both in terms of spatial location and in terms of scales. However, this method would be expensive for large systems and could be difficult to insert in a global ocean assimilation system. More recently, Buehner and Shlyayeva (2015) and Caron and Buehner (2018) have developed a new formulation of this algorithm for EnVar systems. It incorporates the multiscale filter idea of decomposing the signal in several spectral bands and it avoids the compute-complete removal of the between-scale covariances (Buehner and Charron, 2007). This formulation makes use of an augmented spatial/spectral ensemble covariance matrix, whereas the result of the analysis is still computed in the spatial spacedomain.

Following a similar idea of combining the multiscale filter and spectral transformation approaches, we propose in the present paper to combine these two algorithms by applying a spectral analysis with spectral localisation (hereinafter called spectral localisation) to the large scales components of the signal and a spatial analysis with spatial localisation (hereinafter called spatial localisation) for the residual scales. By separating the components, we avoid using an augmented covariance matrix and

we thus potentially neglect useful statistical relationships. However, this makes the multiscale system less expensive and easier to implement in an existing ensemble data assimilation system. It is indeed expected that the spectral transformation of the large scales is cheap enough to be applied to large size global ocean system, and that spectral localisation is more appropriate than spatial localisation to capture the large scale components of the observed signal. On the other hand, for the small scale components, the spectral transformation becomes too expensive, and the local correlation structure prevails. The target is thus to improve the observational update of the large scale components of the signal by an explicit observational constraint applied directly on the large scales, and to restrict the use of spatial localisation to the residual scale components of the signal. These analyses should be done one after the other to be included in an existing sequential algorithm as operated for instance by Mercator Ocean.

The performance of this multiscale observational update is then studied with an example application in the context of CMEMS systems. We performed a 70-member ensemble simulation using the oceanic model NEMO (Nucleus for European Modelling of the Ocean (Madec, 2008)) version 3.6 at $1/4^\circ$ with the CREG4 configuration (Dupont et al., 2015) as part of the CMEMS project. This configuration of the North Atlantic and Nordic Seas is currently used at Mercator Ocean for developing and testing the future assimilation system. This configuration is thus appropriate to check that our new algorithm can be integrated in the data assimilation system of Mercator Ocean (SAM2) used for the CMEMS program.

The objective of this paper is to describe the multiscale observational update algorithm that we have developed and to evaluate its performance using the CREG4 ensemble system. The paper is organised as follows. In Sect. 2, we present the practical problem that we want to solve : we describe the prior ensemble, the observation system, and the difficulties associated to the multiscale correlation structure. In Sect. 3, we present the spectral transformation that is applied in this study to better display the multiscale correlation structure. In Sect. 4, we present the algorithm that we have developed to make a better use of the correlation structure for all scales. ~~This combines spectral localisation for the large scales with spatial localisation for the small scales.~~ In Sect. 5, we evaluate the resulting algorithm using the application problem described in Sect. 2. This is done by studying the reliability and resolution of the updated ensemble for each wavelength of the control variables.

2 Application problem

The purpose of this section is to introduce the example application that is used in this paper to study the performance of the multiscale observational update. This example application is chosen to serve the development of the CMEMS systems and to display the multivariate character of the assimilation problem. The model configuration and the prior ensemble simulation are described in Sect. 2.1; the assimilation problem is described in Sect. 2.2; and the multiscale character of the ensemble correlation structure is described in Sect. 2.3.

2.1 Ensemble model simulation

Our example application is based on a $1/4^\circ$ resolution model of the North Atlantic and the Nordic Seas. We used the oceanic model NEMO (Nucleus for European Modelling of the Ocean, (Madec, 2008)) version 3.6, with the CREG4 configuration

as part of the CMEMS project. NEMO, used by a large community, is developed by European institutes and is used by the majority of the CMEMS stakeholders. It is a primitive equation model which computes the following prognostic variables : 3D velocities, sea surface height, salinity and temperature. ERA-Interim reanalysis data, produced at ECMWF (Dee et al., 2011), are used for the atmospheric forcing. CREG4 is a realistic configuration for the North Atlantic and the Nordic Seas, at the $1/4^\circ$ horizontal resolution. This configuration is described in the work of Dupont et al. (2015), except that we use a $1/4^\circ$ version instead of the nominal $1/12^\circ$ resolution. It has been developed by Environment Canada and coupled with Mercator Ocean's SAM2 data assimilation system. The aim was to build a realistic description of the mean state and variability in the ~~Arctic Oceans and adjacent seas~~[North Atlantic and the Nordic Seas](#). The CREG4 configuration is currently used by Mercator Ocean and its resolution is sufficient to evaluate the multiscale assimilation algorithm, therefore we use it for our study.

Uncertainties in the model are explicitly simulated using the standard NEMO stochastic parametrisation module developed by Brankart et al. (2015). The aim is to produce an ensemble with a sufficient spread for all variables, especially for the observed variables, all over the domain. This technique has been used to simulate 6 different kinds of uncertainties in the model as described in Table 1. Concerning the equation of state, we used the stochastic parameterisation proposed in Brankart (2013). The two standard deviation values given in the table corresponds to the standard deviation of the random walks in the horizontal and the vertical directions. Uncertainties in air-sea fluxes ~~uncertainties~~ are parameterised using a multiplicative noise (with gamma pdf to make it positive) applied to the turbulent exchange coefficients simulated by NEMO following the algorithm from Large and Yeager (2009) extended to other parameters (and evaluated by Mercator Ocean). Ice uncertainties are parameterised using stochastic processes representing uncertainties in ice strength, in ice albedo, in ice/sea and ice/air drag coefficients.

With this stochastic modelling system, a 70-member ensemble simulation, without assimilation, is performed for the 8-month period between mid-January and mid-September 2011. It will be used to performed the analyses in the present paper. This ensemble simulation yields a probability distribution for the evolution of the system, in particular the ensemble mean, hereafter $\langle x_f \rangle$ where $\langle \cdot \rangle$ indicates an ensemble mean over the members of the ensemble, and the background error covariance matrix of the prior ensemble, P_f . Figures 1a and 1b show respectively the ensemble mean ($\langle x_f \rangle$) and the standard deviation of the prior ensemble. This ensemble is appropriate to illustrate the multiscale analysis in our study. Indeed, as will be shown later, the spread of the ensemble spans a wide range of scales from basin scale to mesoscale. Large scales as well as small structures are well represented which will allow us to evaluate our separation scale algorithm. Nevertheless, the standard deviation is too small in the regions of strong eddy activity as the Gulf Stream. This is mainly due to the model configuration (CREG4) which causes an excessive dissipation of the turbulent kinetic energy. Moreover, the variability is too large close to east Siberian sea. However, ~~these characteristics do not~~ [since we are using twin experiments, the simulation does not need to be perfectly realistic to evaluate our approach \(providing that the multiscale nature of the problem remains\). These characteristics are thus not likely to](#) affect the evaluation of the multiscale algorithm that is performed in this study.

2.2 Definition of the twin experiments

The assimilation problem investigated in this study is based on twin experiments with altimetry. In this kind of experiment, the true state is known and synthetic observations are built from this true state. It is generated by the same model to which data assimilation is applied. This method has the advantage that the effectiveness of the different algorithms can be directly
5 evaluated thanks to the known true state. One member of the ensemble simulation is left apart to be used as a reference (the simulated truth) from which the observations will be simulated : x_{true} . The prior ensemble (indicated thereafter by the subscript f as forecast during an assimilation step) used in the experiments is thus a 69-member ensemble.

In this study, to illustrate the behaviour of the multiscale algorithm, we will concentrate on studying the observational update of the prior ensemble on August 30, 2011. Figure 1c shows the true anomaly : $x_{\text{true}} - \langle x_f \rangle$. This true anomaly will be
10 used as a reference to evaluate the effectiveness of the different localisation schemes and of the multiscale analysis. Synthetic observations are simulated by adding a simulated observational noise (ϵ : a Gaussian noise with 5 cm standard deviation) to the true state (x_{true}) with the observation operator (H) along the track of the JASON altimeter :

$$y^o = Hx_{\text{true}} + \epsilon \quad (1)$$

In this experiment, a 10-day observation window is chosen to have the best coverage provided by JASON. Figure 1d shows the
15 resulting synthetic observation of the SSH. JASON altimeter does not provide any observation above 66° North latitude. In our example, there is thus no available observation to correct, during the analysis step, the large ensemble variance observed close to east Siberian sea (Fig. 1b). This is something that the multiscale approach will have to cope with.

The observational update of the prior ensemble will be performed with a square-root algorithm. The analysis scheme used at Mercator-Ocean is derived from the Singular Evolutive Extended Kalman filter (SEEK) (Pham et al., 1998; Brasseur and
20 Verron, 2006) which is ~~very close to whose used by~~ similar to that used in the Ensemble Transform Kalman Filter (ETKF) (Bishop et al., 2001). It can be applied indifferently in spatial-space the spatial domain as well as in spectral-space the spectral domain. In the assimilation system, the observational update is usually applied to all model variables. In this paper however, the effect of the multiscale approach will mainly be evaluated by the update of SSH, which is the observed variable, and by the update of temperature and salinity to illustrate the application of the method to non-observed variables. In the multiscale
25 algorithm developed in this study, nothing will be changed in the core of the square root algorithm : the only novelty is that a spectral transformation is applied before the observational update to allow spectral localisation rather than spatial localisation. A spatial localisation scheme has been already developed and evaluated (Testut et al., 2003; Brankart et al., 2011). For this study, it has been adapted to be used in the spectral domain.

2.3 Ensemble correlation structure

30 The 69-member ensemble correlation structure (without the true state, which has been left apart) is illustrated in Fig. 2a and Fig. 2b. It has been computed according to two arbitrary reference points : one in the Gulf Stream, and the other in the North-East Atlantic Ocean off the coast of Portugal. Ensemble correlation structure shows how the assimilation of an observation at

this reference point will influence the other regions during the analysis step. For $N = 69$ members, the correlation coefficient is significant at 95% if it is larger in absolute value than 0.2367. In both examples, the most important and significant values, i.e. where the observation will have an impact, are mostly confined around the reference point. Some significant correlations are observed further, but their values are lower and not reliable enough to be used during an assimilation step. The usual solution to avoid the spurious effect of non-significant ensemble correlations is to perform a spatial localisation during the analysis step. It consists in completing the correlation structure provided by the ensemble by the assumption that only local correlations are significant and usable (Houtekamer and Mitchell, 1998; Hamill et al., 2001). The long range correlations are thus assumed to be zero to perform the analysis step.

However, if we look at the same correlation structure (from the same ensemble) for the large scale component of the signal (characteristic scale larger than $L \approx 187\text{km}$), as illustrated in Fig. 2 (bottom panels), we see that there are significant correlations over a much larger range. Hence, a significant information of the large scale signal is available even if the size of the ensemble is small. But these are usually masked by the presence of the small scale signal. In the standard spatial localisation, these ~~long distance correlations are not used~~ large scale correlations structures are heavily suppressed and thus a part of the large scale information is not used during the analysis step. The goal is now to find a way to correctly exploit these correlations in the assimilation scheme to better estimate the large scale signal.

It seems difficult to explicitly control all scales of the system without separating the different spectral components of the signal. In this study, the main idea is to do a spectral transformation of all variables of the system in order to do the analysis in the spectral space-domain before going back in the spatial space-domain to do the next steps of the assimilation scheme.

3 Spectral transformation

The purpose of this section is to describe the linear transformation that will be applied on the state vectors and on the observation vectors to separate scales. The forward and backward transformation of the model data are described in Sect. 3.1 and Sect. 3.2 respectively; the transformation of observations and observation errors is described in Sect. 3.3; and the effect on the ensemble correlation structure is studied in Sect. 3.4.

3.1 Forward transformation : projection on the spherical harmonics

The forward transformation step means transforming into the spectral space-domain each input parameter used for the analysis, namely each member of the prior ensemble, but also observations and observational errors. A full two-dimensional signal in spherical coordinates, $f(\theta, \phi)$, can be projected on spherical harmonics $Y_{lm}(\theta, \phi)$ by the following spectral transformation (ST) :

$$\text{ST} : f_{lm} = \int_{\Omega} f(\theta, \phi) Y_{lm}(\theta, \phi) d\Omega \quad (2)$$

where l and m are the degree and order of each spherical harmonics, with $l \in \mathbb{N}$ and $|m| \leq l$. In principle, the integral in Eq. (2) extends over the whole sphere Ω . However, in the assimilation system, all fields $f(\theta, \phi)$ that need to be transformed are

anomalies with respect to the ensemble mean. In practice, it is thus possible to extend $f(\theta, \phi)$ with zeroes outside the available domain ($f(\theta, \phi) = 0$ on continents and outside the model domain) in order to compute the integral over the whole sphere. For a multivariate three-dimensional variable, this transformation can be applied to each vertical level of each model variable.

This spectral transformation provides a new point of view on the ensemble because it separates scales. Each degree l of the spherical harmonic indeed corresponds to a wavelength of a spherical harmonic $\lambda = \frac{2\pi R_c}{l}$ with R_c the Earth radius and thus to a characteristic scale $L = \frac{\lambda}{2\pi}$. ~~The This~~ reversible spectral transformation preserves the information for ~~all degrees~~ $l \leq l_{\max}$. ~~Thus, the transformed fields contain each degree l . The coefficients f_{lm} of the spherical harmonics decomposition can be computed for each degree l up to a selected degree $l = l_{\max}$. This transformed field contains~~ the same information, until ~~this degree, as that l_{\max} , as~~ shown in the spatial ~~space domain~~ in Fig. 1. ~~Figure 3a shows the standard deviation of the SSH. The coefficients f_{lm} of each member of the prior ensemble in the spectral space have been computed for the SSH until the degree $l_{\max} = 60$, $l_{\max} = 60$, which corresponds to a wavelength $\lambda \approx 667$ km, $\lambda \approx 667$ km and a characteristic length $L \approx 106$ km, $L \approx 106$ km. Figure 3a shows the standard deviation of this prior ensemble in the spectral domain. Figure 3b shows the result of the spectral transformation applied to the true SSH anomaly, i.e. the coefficients f_{lm} of the true SSH anomaly.~~ Similar patterns have been observed by Wunsch and Stammer (1995) from early altimetric observations. Most of the variability is concentrated at large scales (small l). The variance becomes weak for meridional structures, i.e. for $|m| \rightarrow l$.

3.2 Backward transformation : scale separation

From the spectrum f_{lm} , the ~~full field $f(\theta, \phi)$ can then field $f_{l_{\min}}^{l_{\max}}(\theta, \phi)$ can~~ be reconstructed using the inverse transformation :

$$\text{ST}_{l_{\min} \rightarrow l_{\max}}^{-1} : f_{l_{\min}}^{l_{\max}}(\theta, \phi) = \sum_{l=l_{\min}}^{l_{\max}} \sum_{m=-l}^l f_{lm} Y_{lm}(\theta, \phi) \quad (3)$$

This inversion can be constrained to specific scales by choosing the values of l_{\min} and l_{\max} . ~~The full field can be reconstructed since $f(\theta, \phi) = f_{l_{\min}}^{\infty}(\theta, \phi)$.~~ This is how the method separates scales.

Any spectral band can thus be extracted by choosing the range $[l_{\min}; l_{\max}]$ appropriately. Figure 4 shows the result of the extraction of the large scales applied to each member of the ensemble and to the true anomaly to keep only the large scales. In this case : $l_{\min} = 0$ and $l_{\max} = 34$, which corresponds to a wavelength $\lambda \approx 1177$ km and a characteristic scale $L \approx 187$ km. Small scales structures have been properly removed and only large scales structures remain visible on the figure.

~~The use of spherical harmonics is not the most natural way to separate scales for fields that do not extend over the whole sphere. In principle, it would for instance be better to use the eigenfunctions of the Laplacian operator defined for the model domain. They would account for the land barriers and would display a better relation to the system dynamics. However, they would also be much more expensive to compute than the spherical harmonics, and would need to be stored and then loaded each time they are needed to separate scales. This is why we preferred using spherical harmonics in this study : they make the method numerically efficient and they are sufficient to obtain a relevant spectral decomposition of the input signal.~~

3.3 Transformation of the observations

In theory, transformation of observations is not needed to separate scales in the assimilation system. It should be sufficient to introduce the scale separation operator in the observation operator of the existing algorithm. However, for practical reasons, the algorithm that we are proposing requires a preprocessing of the observations to separate scales. This is done to keep the algorithm easy to implement in an existing system : nothing new needs to be implemented except the scale separation operator, and to keep the resulting algorithm efficient enough to be applicable to large size assimilation system.

In this section, we show how this transformation of observations can be performed by regression of the observations on the spherical harmonics (see Sect. 3.3.1) and how the statistics of the observational errors can be transformed accordingly (see Sect. 3.3.2).

10 3.3.1 Regression of observations

For all observations that are not available on a regular grid (for which Eq. (2) could directly be applied), the spectral transformation can be performed by linear regression of the innovation vector (anomaly of the observations with respect to the ensemble mean) on the spherical harmonics.

The approach is to look for the spectral amplitudes f_{lm} so that the corresponding field $f(\theta, \phi)$ (up to degree l_{\max} following Eq. (3) with $l_{\min} = 0$) minimises the following distance to observations f^o :

$$J^o = \sum_{k=1}^p \frac{1}{(\sigma_k^o)^2} [f(\theta_k, \phi_k) - f_k^o]^2 \quad (4)$$

where p is the ~~number of grid points of the domain~~ size of the observation vector (including bogus observations); f_k^o is the observation at coordinates (θ_k, ϕ_k) ; σ_k^o is typically the observation error standard deviation (including the representativity error corresponding to the signal above degree l_{\max}) at coordinates (θ_k, ϕ_k) . If the observation system is insufficient to control all spectral components with sufficient accuracy, the final penalty function J can include a regularization term J^b as $J = J^o + \alpha J^b$, where the parameter α can be tuned (between 0 and 1) to modify the importance of J^b with respect to J^o . The regularization term J^b is the following norm of the spectral amplitudes f_{lm} of Eq. (2) :

$$J^b = \sum_{l=0}^{l_{\max}} \sum_{m=-l}^l \frac{f_{lm}^2}{\sigma_{lm}^2} \quad (5)$$

where σ_{lm} is typically the standard deviation of the signal along each spherical harmonics.

In practice, several additional modifications may need to be introduced in the algorithm and have been implemented for our study. (i) For a non-global model domain (such as CREG4), it may be better to reduce the basis of the spherical harmonics (for each degree l) to the subspace that is effectively spanned by the prior ensemble. (ii) For numerical efficiency reasons, it can be useful to perform the regression locally (over a local range of degree l), and then iterate until convergence. (iii) In case of large regions without observations (as the Nordic seas for spatial altimetry), it can be useful to add zero bogus observations to avoid triggering a spurious signal where no observation is available. For instance, in our study, we added observations in the northern region of the domain, where no JASON observations are available.

3.3.2 Observational error

The observational error results from both the initial Gaussian error with a standard deviation of 5 cm introduced on the true member to create the observation, and also the partial observation coverage and hence the algorithm used to do the regression. In theory, this error can be quantified. We suppose that the observational error is decorrelated at large scales. Indeed, the large scales correlations of this observational error are small compared to the observed large scale structures. This assumption will be verified in Sect. 5.2 by the consistency of the rank histograms. As part of our twin experiment, we propose the following procedure.

This error has been quantified following these steps. In this twin experiment, the true state is known. The chosen true member from which the observation has been created, initially belongs to an ensemble of $N + 1 = 70$ members. Then, in the same ways described above, $N + 1$ true members, x_{true}^i with $i \in [1; N + 1]$ can be used to generate observations $y^{o,i}$. It is then possible to evaluate the standard deviation of the observational error in the spectral ~~space, by domain by transforming (i) the innovation vector and (ii) the misfit with respect to the true state, and by computing the RMS difference between these two transformed vectors. More explicitly, this is done by computing~~ the RMS between $ST_{\text{regr}} [y^{o,i} - H \langle x_f \rangle]$ where the operator ST_{regr} provides the spectrum resulting from the regression of innovations $y^{o,i} - H \langle x_f \rangle$, and $ST [x_{true}^i - \langle x_f \rangle]$ where the operator ST provides the spectrum of the corresponding true anomalies $x_{true}^i - \langle x_f \rangle$, following Eq. (2).

This method is directly applicable to twin experiments, and can be transposed to a real system by simulating observational error and looking at how it is transformed in the spectral ~~space domain. In a realistic case, the above method can directly be transposed by simulating observational error in model results, and by transforming the difference between the perturbed and unperturbed data. The standard deviation of the result is then an estimate of the observation error standard deviation along each spherical harmonics.~~

3.4 Transformed correlation structure

We need to study the main dependencies and correlations between the different spectral components of the ocean fields in order to determine whether and how the scale separation could be used in the data assimilation scheme. Figure 5 shows two examples of ensemble correlation maps between spectral amplitudes. It is comparable to Fig. 2 but in the spectral ~~space domain~~ (amplitudes f_{lm} of Eq. (2)). Ensemble correlation structure is computed according to reference points in the spectral ~~space domain~~ and indicated by crosses in Fig. 5. It shows how the assimilation of the signal of an observation at these reference points will impact the other scales during the spectral analysis step. Similarly to Fig. 2, the significant and maximum area is confined near the reference points. ~~Correlations Most correlations~~ between very different scales are weak and ~~should might thus~~ be neglected by ~~the data assimilation scheme and reduced to zero. This property allows to introduce the data assimilation. This~~ ~~is the basic property allowing to introduce~~ scale separation in the data assimilation scheme with a reasonable cost. ~~However, it is true that there are also significant correlations for remote scales, and that neglecting these correlations corresponds to losing a potentially useful information. This is however similar to what happens with spatial localisation : in Fig. 2, there also exists significant correlations far from the reference location. The question is then : which correlations is it better to neglect~~

to preserve the meaningful structures contained in the ensemble. This is the question that we will try to elucidate with our example application.

To exploit this property of weak correlations between very different scales, a spectral analysis thus also requires to be localised, at least for the large scales in our study. The method of spectral localisation is the same as that usually used in the
 5 spatial spacedomain. For the same reasons, each localisation window will contain a number of degrees of freedom sufficiently low to be controlled with an ensemble of moderate size.

4 Combining spatial and spectral localisation

The objective of this section is to introduce and demonstrate the multiscale observational update algorithm, combining spectral localisation for the large scales and spatial localisation for the small scales. In Sect. 4.1, we show how spectral localisation
 10 can be obtained using the spectral transformation presented in Sect. 3, and how it can be combined with spatial localisation to build up the multiscale observational update algorithm. In Sect. 4.2, we compare the spatial and spectral localisation schemes, and demonstrate the improvement brought by spectral localisation in the control of the large scales. In Sect. 4.3, we use this comparison to determine the critical scale, l_c , above which spatial localisation starts performing better than spectral localisation. This critical scale is the key parameter that specifies how spatial and spectral localisation are combined in the multiscale
 15 observational update algorithm.

4.1 Multiscale observational update algorithm

We propose an algorithm for the multiscale analysis based on a combination of a spectral analysis with spectral localisation for the large scales (described by Eq. (7)) and a spatial analysis with spatial localisation for the residual scales (described by Eq. (6)). The large scales are defined by the critical scale l_c . The full algorithm is explained by the equations (8) to (12).
 20 For this new method, we need to combine an algorithm to perform the observational update (OU) of the ensemble with the forward (ST) and backward (ST^{-1}) spectral transformations previously defined by Eqs. (2) and (3). Any observational update algorithm can be chosen provided that it allows localisation, for instance the SEEK observational update (Brasseur and Verron, 2006) or the ETKF observational update (Bishop et al., 2001). This localisation will be applied in our case in the spectral space domain (OU_{spectral}) or in the spatial space domain (OU_{spatial}) depending on the context.

25 4.1.1 Spatial and spectral localisation

The analysis step is usually done in the spatial space domain with a spatial localisation (observational update OU_{spatial}) using spatial innovation. This step is applied to the prior ensemble anomaly, δx_f^i , with respect to prior ensemble mean (for member $i = 1, \dots, m$) to obtain the updated ensemble δx_a^i . It corresponds to the correction applied to the prior ensemble during the assimilation step.

$$30 \quad \delta x_f^i \rightarrow OU_{\text{spatial}} \rightarrow \delta x_a^i \tag{6}$$

Another approach is to apply the observational update in the spectral space-domain with spectral localisation ($\text{OU}_{\text{spectral}}$) to the prior ensemble (δx_f^i) after transformation into the spectral space-domain (ST). The spectral innovation is computed following Sect. 3.3.1. The resulting spectral analysis (δx_a^i with superscript LS for large scales) is only available up to the scale l_c , for which the spectral transformation has been done.

$$5 \quad \delta x_f^i \rightarrow \text{ST} \rightarrow \text{OU}_{\text{spectral}} \rightarrow \text{ST}_{0 \rightarrow l_c}^{-1} \rightarrow \delta x_a^{i,\text{LS}} \quad (7)$$

4.1.2 Multiscale analysis : description of the algorithm

Multiscale analysis combines a spectral localisation for the large scales, and spatial localisation for the residual scales.

- *First step : spectral localisation for the large scales*

10 Observational update with spectral localisation for the large scale part of the ensemble anomalies, as already described in the previous section, see Eq. (7).

$$\delta x_f^i \rightarrow \text{ST} \rightarrow \text{OU}_{\text{spectral}} \rightarrow \text{ST}_{0 \rightarrow l_c}^{-1} \rightarrow \delta x_a^{i,\text{LS}} \quad (8)$$

- *Second step : spatial localisation for the residual part*

Extract $\delta x_f^{i,\text{Res}}$: the residual part of each anomaly of the prior ensemble :

$$\delta x_f^i \rightarrow \text{ST} \rightarrow \text{ST}_{0 \rightarrow l_c}^{-1} \rightarrow \delta x_f^{i,\text{LS}} \quad (9)$$

$$\delta x_f^{i,\text{Res}} = \delta x_f^i - \delta x_f^{i,\text{LS}}$$

15 Then, compute δy^{Res} : the residual part of the innovation, using the current best estimate of the large scale field at the observation points :

$$\delta y^{\text{Res}} = \delta y - \text{H} \left(\frac{1}{N} \sum_{i=1}^N \delta x_a^{i,\text{LS}} \right) \quad (10)$$

20 Compute $\delta x_a^{i,\text{Res}}$: the residual part of the ensemble analysis increment, using the residual spatial innovation (δy^{Res}) during the observational update in the spatial space-domain with spatial localisation ($\text{OU}_{\text{spatial}}$). Spatial observational error has to be estimated and can be smaller than those chosen for the spatial localisation only (see Eq. (6)) to get better results at each scale. Indeed, a part of the error has already been taken into account during the spectral localisation for the large scales.

$$\delta x_f^{i,\text{Res}} \rightarrow \text{OU}_{\text{spatial}} \rightarrow \delta x_a^{i,\text{Res}} \quad (11)$$

- *Third step : full spectrum*

Compute δx_a^i : the final value of the ensemble analysis for the member i as the sum of Eq. (8) and Eq. (11) :

$$\delta x_a^i = \delta x_a^{i,LS} + \delta x_a^{i,Res} \quad (12)$$

This analysis increment is directly comparable to the analysis increment obtained with the spatial localisation applied to the full field, see Eq. (6).

5 4.2 Comparison of localisation schemes

The relevance of implementing a multiscale analysis rather than the usual spatial localisation is only validated if spectral localisation better retrieves large scales patterns of the signal than spatial localisation. To verify the validity of this assumption, we perform two different analyses in the context of the twin experiments described in Sect. 2.2. The first analysis is carried out with a spatial localisation only following Eq. (6), hereinafter called spatial localisation, whereas the second analysis uses a spectral localisation only following Eq. (7), hereinafter called spectral localisation. Spatial and spectral localisation radius have been optimised to obtain the best results in both experiments. The spatial localisation radius corresponds to a wavelength of spherical harmonic about 139km at the equator while those of spectral localisation is a rectangle of 3 in ordinate l-number and 1 in m-number. They have been deduced from the correlation ensemble (see for instance Fig. 2a and Fig. 2b for spatial localisation; and Fig. 5a and Fig. 5b for spectral localisation). The localisation radius are chosen small enough to avoid non significant correlations. In order to evaluate these localisation algorithms, they are compared for the large scales. As justified later in Sect. 4.3, we choose to define large scales as the range of scales $l \in [0; 34]$.

Each scale of spatial and spectral analysis increments has to be as close as possible to the corresponding scale of the true anomaly. The large scale part of this spatial analysis increment (δx_a^i of Eq. (6)) can be directly compared to the spectral analysis increment obtained from the large scale of the prior ensemble ($\delta x_a^{i,LS}$ of Eq. (7)). It can be extracted following Eq. (2) and Eq. (3), to obtain the corresponding large scales of the spatial analysis increment :

$$\delta x_a^i \rightarrow ST \rightarrow ST_{0 \rightarrow l_c}^{-1} \rightarrow \delta x_a^{i,LS} \quad (13)$$

Simultaneously, the obtained spectral analysis increment (Eq. (7)) is back into the spatial space-domain (applying ST^{-1} , following Eq. (3)) to be directly comparable to the large scales of the spatial analysis increment (Eq. (13)). Figures 6a and 6b show respectively the large scale of the mean ensemble of analysis increments obtained respectively with spatial localisation or spectral localisation (see Sect. 4.1.1). Hence, they have to be as similar as possible to the large scale part of the true anomaly showed on Fig. 4c.

Spectral localisation recovers large scales much better than spatial localisation, see Fig. 6 vs. Fig. 4c. In all cases, the analysis increment is significant only where JASON data are available (see Fig. 1d). The analysis and the type of localisation thus have no significant impact on the north of the model domain. This result reinforces the idea of a multiscale analysis with spectral localisation for the large scale. It is now necessary to determine the critical scale, l_c , from which the spatial localisation will be preferred.

4.3 Determining the critical scale

On average, spectral localisation only gives better results than spatial localisation for the large scales, but we need to check that this affirmation remains valid at each scale or that it exists a critical scale, l_c , from which this tendency is no more true. To determine l_c , a classic score is computed for the spatial localisation and the spectral localisation. It shows the improvement of the RMSE after/before the analysis by averaging sums over the whole model domain :

$$\rho = \frac{\text{RMSE}_{\text{posterior}}}{\text{RMSE}_{\text{prior}}} = \frac{\sqrt{(\overline{\langle x_a \rangle - x_{\text{true}}})^2}}{\sqrt{(\overline{\langle x_f \rangle - x_{\text{true}}})^2}} \quad (14)$$

where $\overline{}$ is the mean over the domain. Each member of this equation is then computed for all specific degree l , following Eq. (2) and (3) with $l_{\text{min}} = l_{\text{max}} = l$. During an analysis step, the RMSE of the observed variable will be reduced. The ratio thus allows to evaluate the accuracy of the analysis for each scale. Figure 7 shows this score for each degree l until 100 for the spatial analysis only and until 60 for the spectral analysis only.

This gives a new point of view to evaluate the results of an analysis, giving the efficiency of the spatial or spectral analysis at each scale and no more only for the full field. Spatial localisation deals with all scales at the same time. The score is almost the same at each scale : around 0.8. In contrast, this score of the spectral localisation is very sensitive to the scale. It is almost up to twice smaller than the one of the spatial localisation for the large scales. It increases with the degree until being similar and exceeding the spatial localisation score. The spectral observational error used for the spectral localisation has not been computed exactly from $l \approx 50$. This led to important values close to $l = 60$ which impacts the score shown in Fig. 7. However, if observational error has been computed exactly until larger degrees, the trend would follow a similar pattern.

Until around $l \approx 34$, spectral localisation further reduces the spatial RMSE than spatial localisation, which is consistent with the study of analysis increments in Fig. 6. While, for larger degrees l , this trend tends to reverse. The critical value, l_c , does not need to be very precise for the multiscale analysis. Indeed, the scores of spatial and spectral localisations are close on a range of degrees (here around 30 and 50 for instance). A variation of a few degrees on l_c will not have any major impact on the final results of the multiscale analysis. In this twin experiment and for all these reasons, the critical scale l_c is now fixed to $l_c = 34$.

5 Evaluation of the multiscale observational update

The aim of this section is to evaluate the multiscale analysis and to compare it with spatial analysis, for the full spectrum but also at each scale. For that purpose, we did a multiscale analysis following the algorithm presented in the previous Sect. 4.1.2, with the critical scale $l_c = 34$. This experiment is hereinafter called spectral+spatial localisation in figures.

In Sect. 5.1, we demonstrate that multiscale analysis keeps the advantages of spectral and spatial localisations at each wavelength. This is done by studying the error of spatial RMSE for each scale and comparing the analysis increment for the multiscale analysis and the spatial localisation. In Sect. 5.2, we check the reliability of these updated ensembles by computing rank histograms in the spatial and also spectral [spacesdomains](#). In Sect. 5.3, we show that the spread of the updated ensembles obtained with the multiscale analysis decreases much more than those of the spatial localisation at large scales as well as for all

scales. In Sect. 5.4, we evaluate the impact of the multiscale analysis on the non observed variables (temperature and salinity), with a multivariate analysis. We show that on average multiscale analysis reduces much more their spatial RMSE than the spatial localisation for large scales, and similar errors at smaller scales.

5.1 Error reduction at each wavelength

- 5 On average, the updated ensemble produced with the multiscale analysis should better approach the true state than those obtained with the spatial localisation only. To evaluate the efficiency of the multiscale analysis, the error has been computed in two ways : at each scale in the spectral space-domain, following Eq. (14), and in the spatial space-domain for the full spectrum, with a comparison of the analysis increments and the true state.

5.1.1 Spectral point of view : reduction of spatial RMSE for each scale

- 10 The previous score showing the evolution of the RMSE after/before the analysis on average on the model domain, following Eq. (14) is now computed for the multiscale analysis. Figure 7 (black curve) shows this score computed for each scale until $l = 100$.

- Multiscale analysis keeps the advantages of both localisations (spectral localisation in green and spatial localisation in blue). As expected, for the large scales $l \in [0; l_c]$ with $l_c = 34$, the multiscale analysis is much better than spatial localisation, and
15 has the same order of magnitude as the spectral localisation. Indeed, the same spectral localisation with the same configuration has been done for the multiscale analysis. For the residual scales, multiscale analysis allows to recover, as expected, similar results to the spatial localisation, especially for the smaller scales. Differences occur especially close to l_c and result from the contribution of the spatial localisation to treat the residual scales. To explain why small difference exists between the black and the green curves before the critical scale, we have to note that the analysis increment obtained with the spatial localisation can
20 include a large scale component, which can directly impact the large scale of the total analysis increment.

5.1.2 Spatial global point of view : analysis increment

- The analysis increments obtained with spatial localisation (Fig. 8a) or with multiscale analysis (spectral + spatial localisation, Fig. 8b) can be directly compared to the full spectrum of the true anomaly shown in Fig. 1c. The multiscale analysis allows to recover a part of the large scale pattern unlike the spatial localisation. It keeps advantages of the spatial localisation for the
25 residual scales.

- These analysis increments can be evaluated at each scales. Figures 6a and 6c show the large scales ($l \in [0; 34]$) of these analysis increments respectively for spatial localisation or multiscale analysis. They have been obtained from their respective full fields (Fig. 8a and Fig. 8b) following Eq. (2) and Eq. (3). Small structures have been well removed from the full spectrum. They have to be closer as possible to the large scales of the true anomaly shown Fig. 4c, which have been extracted from its
30 full field shown in Fig. 1c. Multiscale analysis and spectral localisation give similar results for the large scales and are better than the spatial localisation. This is consistent with observed reduction of spatial RMSE at each large scale, shown in Fig. 7.

5.2 Reliability of the updated ensemble

Updated ensemble should be reliable in ~~spatial-space~~the spatial domain but also in the spectral spacedomain. It means to check the coherence between the assumed probabilities and the observed statistics when the ensemble is compared to the verification data (the true state in our twin experiment, or observation in a real system). To check ensemble reliability, ranks
5 are traditionally computed in the spatial space-domain and summarised in a rank histogram. They show the distribution of observations with respect to the ensemble (Anderson, 1996; Talagrand et al., 1997). In our context of twin experiments, the prior ensemble is reliable by construction. Indeed, the true state originates from the same ensemble simulation as the other members. The reliability of the updated ensemble will be evaluated by comparing the rank histogram of the updated ensemble with the rank histogram of the prior ensemble. Hence, a flat rank histogram indicates a reliable ensemble, whereas a U-shaped
10 rank histogram indicates a lack of spread in the ensemble : the uncertainty is under-estimated (Anderson, 1996; Hamill, 2001). Alternatively, we propose a new point of view of these ranks, computing them in the spectral spacedomain. The interpretation of these new ranks has to corroborate the conclusions obtained in the spatial spacedomain.

5.2.1 Spatial rank histograms

Rank histograms have been computed, with respect to the true state, from spatial maps limited to the JASON domain for the
15 prior ensemble, the spatially updated ensemble and the multiscale updated ensemble. Figure 9b shows the rank histograms for the large scales ($l \in [0; l_c]$) for the same ensembles but also for the spectrally updated ensemble presented in the previous section.

Ranks histograms show that all these updated ensembles can be considered as reliable as the prior ensemble, both for the full spectrum and for the large scales. Indeed, the prior ensemble looks somewhat under dispersed but can be considered reliable
20 because the true member originates from the ensemble itself. The rank histograms of the updated ensembles are of the same order of magnitude as that of the prior ensemble. Thus, the small under-dispersion of the prior ensemble (which can only result from the limited size of the sample) has not increased during the analysis step. These consistent ranks histograms confirm that the observational error have been properly evaluated.

5.2.2 A new point of view : ranks map in the spectral spacedomain

25 Reliability of all updated ensemble (spatial localisation only and multiscale analysis) is now tested for degrees $l \in [0; 60]$ by calculating ranks in the spectral space-domain with respect to the true state. Ranks are computed following the same procedure as in the spatial space-domain but the members and the true state are previously transformed into the spectral space-domain following Eq. (2). Figure 10 shows the maps of ranks in the spectral space-domain for the prior ensemble, the spatially updated ensemble and the multiscale updated ensemble. The maps of ranks for the spectrally updated ensemble is not shown due to
30 similar results to the multiscale updated ensemble. This new point of view allows to diagnose the behaviour of the system for each scale.

Ranks maps in the spectral space-domain provide additional indication that all algorithms provides reliable updated ensembles. Observational error have been consistently evaluated. When The ranks are computed for each spectral coordinate (l, m) , and have been normalised by the total number of data points to have numbers between 0 and 1. For a perfectly reliable ensemble, ranks would be evenly and randomly distributed over the entire spectral domain. For our study, when degrees tend toward $l = m$, which corresponds to meridional signal, ranks are not all represented even for the prior ensemble. But, these spectral regions correspond to extremely weak standard deviation of the ensemble in the spectral space-domain (see Fig. 3a) : there is no meridional signal in the prior ensemble. They do not have an important impact on the spatial field. For the other degrees, ranks show that the prior ensemble is reliable. The spatially updated ensemble and the multiscale updated ensemble also remain reliable even if the latter seems to be somewhat less dispersed.

10 5.3 Resolution of the updated ensemble

The spread, or variance, of the prior and the updated ensemble (with $N = 69$ members) has been computed to check the resolution of the updated ensemble. For instance, for the prior ensemble, x_f :

$$\text{Spread} = \frac{1}{N} \sum_{i=1}^N (x_f^i - \langle x_f \rangle)^2 \quad (15)$$

The reliability of the ensemble has been checked previously with the rank histograms. Then, the smaller the spread after the analysis, the better the analysis. Figures 11 and 12 show the spread of the prior ensemble, the updated ensemble after spatial localisation, and the updated ensemble after a multiscale analysis (spectral + spatial localisation), respectively for the full spectrum and after extraction of the large scales ($l \in [0, l_c]$, with $l_c = 34$).

The multiscale analysis allows to decrease the ensemble spread more than the spatial localisation. The spread is much more reduced along JASON tracks, see Fig. 11c. This decrease is especially important for the large scales, see. Fig. 12c. For the large scales, the spread of the updated ensemble by spectral localisation is not shown due to similar results to those of multiscale analysis. Thus, knowing that all these ensembles are reliable, the more efficient algorithm is the multiscale analysis because of it has further reduced the spread of the ensemble and is the closest to the the true state.

5.4 Multivariate analysis

Multivariate analysis consists in extending the observational update to non observed variables, like temperature and salinity, in the state vector during the analysis. The experimental setup remain the same. The aim is to evaluate the impact of the multiscale analysis on these non observed variables and to check that it does not introduce more error than the spatial localisation. These errors could increase during the next forecast and cause some unrealistic values. For this purpose, we compute the score defined by Eq. (14) for each degree for the spatial localisation (spat) and for the multiscale analysis (spct + spat). Then, we compute for each level and each degree, the ratio of these scores, following Eq. (16).

$$\text{Ratio} = \frac{\rho_{\text{spat}}}{\rho_{\text{spct+spat}}} \quad (16)$$

Figure 13 shows these results for the temperature and salinity. Each depth of this figure thus correspond to the ratio of the blue and black curves of the Fig. 7, no more for the SSH but for the temperature or salinity instead of SSH.

On average, below and around the critical degree $l_c = 34$, the multiscale analysis further reduces the error as compared to the spatial localisation only. In a few cases, at basin scales, multiscale analysis appears to produce poorer results than spatial localisation. However, this effect is small as compared to the improvement made at the other depths and large scales. For smaller scales, these two analysis give similar results. It is consistent with the fact that a similar spatial localisation is done for the both analyses and with the results obtained for SSH (see Fig. 7).

6 Conclusions

We have formulated and evaluated a multiscale analysis approach for ensemble ocean data assimilation that provides a better recovering of the large scales than the current spatial analysis with spatial localisation. It has been developed to be used in the existing data assimilation system of Mercator Ocean used in the CMEMS project. This new scheme consists in performing a spectral analysis with spectral localisation for the large scales and a spatial analysis with spatial localisation for the residual scales.

The transformation to the spectral space-domain and the spectral localisation provide consistent ensemble estimates of the state of the system (in the spectral space-domain, or after backward transformation to the spatial space-domain). In terms of accuracy, this spectral localisation recovers the large scale structures better than the spatial localisation. For the large scales, spectral localisation yields lower errors than spatial localisation while keeping a reliable ensemble. Conversely, the spatial localisation is still preferable for the small scales.

This new spectral approach also gives a new point of view to diagnose the system. Traditional diagnostics as ensemble mean, spread, correlations structures, rank histograms, etc., gives information at each scales and no more only for the full field.

The multiscale analysis, which is a hybrid scheme combining spectral localisation for the large scales and spatial localisation for the residual scales, keeps the advantages of these two localisations. Consequently, it can significantly improve the current use of various ocean observing systems, particularly with regard to the large scale information contained in sparse distribution of observations as altimeters or ARGO floats.

The direct perspective of this study is to implement and test the method in the real CMEMS system developed at Mercator Ocean. The target is (i) to check that the method can be applied without deep modification of the existing system, (ii) to evaluate the operational gain that is obtained by an improved control of the large scale signal, and (iii) to enhance the diagnostic of the system by evaluating the performance separately for each scale. Some data assimilation steps have already been successfully carried out in the same context of our study (not shown). In the longer perspective, the implementation of this multiscale approach for ensembles might improve the CMEMS products of Mercator Ocean as the reanalysis which are used by a large scientific community.

Acknowledgements. This work was conducted as a contribution to the GLO-HR-ASSIM project, funded by the Copernicus Marine Environment Monitoring Service (CMEMS). CMEMS is implemented by Mercator Ocean International in the framework of a delegation agreement with the European Union. Additional support to this study was also provided by the CNES/OSTST/MOMOMS project. The calculations were performed using HPC resources from GENCI-IDRIS (Grant 2017-011279).

References

- Anderson, J. L.: A Method for Producing and Evaluating Probabilistic Forecasts from Ensemble Model Integrations, *Journal of Climate*, 9, 1518–1530, [https://doi.org/10.1175/1520-0442\(1996\)009<1518:AMFPAE>2.0.CO;2](https://doi.org/10.1175/1520-0442(1996)009<1518:AMFPAE>2.0.CO;2), 1996.
- Bishop, C. H., Etherton, B. J., and Majumdar, S. J.: Adaptive Sampling with the Ensemble Transform Kalman Filter. Part I: Theoretical Aspects, *Monthly Weather Review*, 129, 420–436, [https://doi.org/10.1175/1520-0493\(2001\)129<0420:ASWTET>2.0.CO;2](https://doi.org/10.1175/1520-0493(2001)129<0420:ASWTET>2.0.CO;2), 2001.
- Brankart, J.-M.: Impact of uncertainties in the horizontal density gradient upon low resolution global ocean modelling, *Ocean Modelling*, 66, 64–76, <https://doi.org/10.1016/j.ocemod.2013.02.004>, 2013.
- Brankart, J.-M., Cosme, E., Testut, C.-E., Brasseur, P., and Verron, J.: Efficient Local Error Parameterizations for Square Root or Ensemble Kalman Filters: Application to a Basin-Scale Ocean Turbulent Flow, *Monthly Weather Review*, 139, 474–493, <https://doi.org/10.1175/2010MWR3310.1>, 2011.
- Brankart, J.-M., Candille, G., Garnier, F., Calone, C., Melet, A., Bouttier, P.-A., Brasseur, P., and Verron, J.: A generic approach to explicit simulation of uncertainty in the NEMO ocean model, *Geoscientific Model Development*, 8, 1285–1297, <https://doi.org/10.5194/gmd-8-1285-2015>, 2015.
- Brasseur, P. and Verron, J.: The SEEK filter method for data assimilation in oceanography: a synthesis, *Ocean Dynamics*, 56, 650–661, <https://doi.org/10.1007/s10236-006-0080-3>, 2006.
- Buehner, M.: Evaluation of a Spatial/Spectral Covariance Localization Approach for Atmospheric Data Assimilation, *Monthly Weather Review*, 140, 617–636, <https://doi.org/10.1175/MWR-D-10-05052.1>, 2012.
- Buehner, M. and Charron, M.: Spectral and spatial localization of background-error correlations for data assimilation, *Quarterly Journal of the Royal Meteorological Society*, 133, 615–630, <https://doi.org/10.1002/qj.50>, 2007.
- Buehner, M. and Shlyayeva, A.: Scale-dependent background-error covariance localisation, *Tellus A: Dynamic Meteorology and Oceanography*, 67, 28 027, <https://doi.org/10.3402/tellusa.v67.28027>, 2015.
- Caron, J.-F. and Buehner, M.: Scale-Dependent Background Error Covariance Localization: Evaluation in a Global Deterministic Weather Forecasting System, *Monthly Weather Review*, 146, 1367–1381, <https://doi.org/10.1175/MWR-D-17-0369.1>, 2018.
- Dee, D. P., Uppala, S. M., Simmons, A. J., Berrisford, P., Poli, P., Kobayashi, S., Andrae, U., Balmaseda, M. A., Balsamo, G., Bauer, P., and et al.: The ERA-Interim reanalysis: configuration and performance of the data assimilation system, *Quarterly Journal of the Royal Meteorological Society*, 137, 553–597, <https://doi.org/10.1002/qj.828>, 2011.
- Dupont, F., Higginson, S., Bourdallé-Badie, R., Lu, Y., Roy, F., Smith, G. C., Lemieux, J.-F., Garric, G., and Davidson, F.: A high-resolution ocean and sea-ice modelling system for the Arctic and North Atlantic oceans, *Geoscientific Model Development*, 8, 1577–1594, <https://doi.org/10.5194/gmd-8-1577-2015>, 2015.
- Hamill, T. M.: Interpretation of Rank Histograms for Verifying Ensemble Forecasts, *Monthly Weather Review*, 129, 550–560, [https://doi.org/10.1175/1520-0493\(2001\)129<0550:IORHFV>2.0.CO;2](https://doi.org/10.1175/1520-0493(2001)129<0550:IORHFV>2.0.CO;2), 2001.
- Hamill, T. M., Whitaker, J. S., and Snyder, C.: Distance-Dependent Filtering of Background Error Covariance Estimates in an Ensemble Kalman Filter, *Monthly Weather Review*, 129, 2776–2790, [https://doi.org/10.1175/1520-0493\(2001\)129<2776:DDFOBE>2.0.CO;2](https://doi.org/10.1175/1520-0493(2001)129<2776:DDFOBE>2.0.CO;2), 2001.
- Houtekamer, P. L. and Mitchell, H. L.: Data Assimilation Using an Ensemble Kalman Filter Technique, *Monthly Weather Review*, 126, 796–811, [https://doi.org/10.1175/1520-0493\(1998\)126<0796:DAUAEK>2.0.CO;2](https://doi.org/10.1175/1520-0493(1998)126<0796:DAUAEK>2.0.CO;2), 1998.

- Large, W. G. and Yeager, S. G.: The global climatology of an interannually varying air–sea flux data set, *Climate Dynamics*, 33, 341–364, <https://doi.org/10.1007/s00382-008-0441-3>, 2009.
- Li, Z., McWilliams, J. C., Ide, K., and Farrara, J. D.: A Multiscale Variational Data Assimilation Scheme: Formulation and Illustration, *Monthly Weather Review*, 143, 3804–3822, <https://doi.org/10.1175/MWR-D-14-00384.1>, 2015.
- 5 Madec, G.: NEMO ocean engine, Note du Pôle de modélisation, Institut Pierre-Simon Laplace (IPSL), France, No 27, ISSN No 1288-1619, 2008.
- Miyoshi, T. and Kondo, K.: A Multi-Scale Localization Approach to an Ensemble Kalman filter, *SOLA*, 9, 170–173, <https://doi.org/10.2151/sola.2013-038>, 2013.
- Pham, D. T., Verron, J., and Roubaud, M.-C.: A singular evolutive extended Kalman filter for data assimilation in oceanography, *Journal of*
10 *Marine Systems*, 16, 323–340, [https://doi.org/10.1016/S0924-7963\(97\)00109-7](https://doi.org/10.1016/S0924-7963(97)00109-7), 1998.
- Talagrand, O., Vautard, R., and Strauss, B.: Evaluation of probabilistic prediction systems, in: *Workshop on Predictability*, 20-22 October 1997, pp. 1–26, ECMWF, ECMWF, Shinfield Park, Reading, 1997.
- Testut, C.-E., Brasseur, P., Brankart, J.-M., and Verron, J.: Assimilation of sea-surface temperature and altimetric observations during 1992–1993 into an eddy permitting primitive equation model of the North Atlantic Ocean, *Journal of Marine Systems*, 40–41, 291–316,
15 [https://doi.org/10.1016/S0924-7963\(03\)00022-8](https://doi.org/10.1016/S0924-7963(03)00022-8), 2003.
- Wunsch, C. and Stammer, D.: The global frequency-wavenumber spectrum of oceanic variability estimated from TOPEX/POSEIDON altimetric measurements, *Journal of Geophysical Research*, 100, 24 895, <https://doi.org/10.1029/95JC01783>, 1995.
- Zhang, F., Weng, Y., Sippel, J. A., Meng, Z., and Bishop, C. H.: Cloud-Resolving Hurricane Initialization and Prediction through Assimilation of Doppler Radar Observations with an Ensemble Kalman Filter, *Monthly Weather Review*, 137, 2105–2125,
20 <https://doi.org/10.1175/2009MWR2645.1>, 2009.
- Zhou, Y., McLaughlin, D., Entekhabi, D., and Ng, G.-H. C.: An Ensemble Multiscale Filter for Large Nonlinear Data Assimilation Problems, *Monthly Weather Review*, 136, 678–698, <https://doi.org/10.1175/2007MWR2064.1>, 2008.

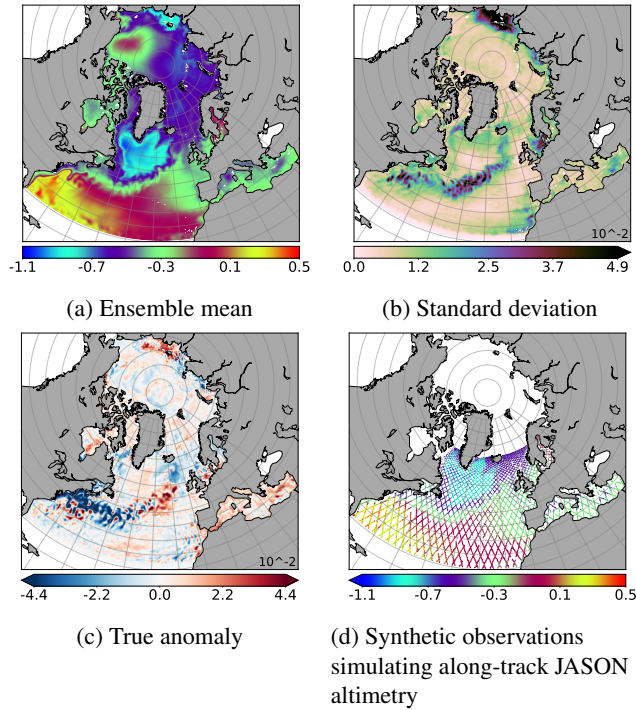


Figure 1. SSH (in m). Ensemble mean (a), standard deviation (b) of the prior ensemble ($N = 69$ members). The true anomaly (c) is defined as the difference between the true member (computed as an additional independent member of the ensemble) and the ensemble mean (a). Synthetic observations simulating along-track JASON altimetry (d) correspond to the true member along the track of JASON altimeter plus a noise, following Eq. (1).

Source of uncertainty	pdf	Standard deviation	Corr. timescale	Laplacian filter
Equation of state	normal	0.7/0.2 grid points	8 days	0
Air-sea fluxes	gamma	40%	8 days	3
Ice strength	gamma	40%	8 days	100
Ice albedo	beta	5%	8 days	100
Ice drag coefficients	gamma	10%	8 days	100

Table 1. Simulation of model uncertainties to perform the 70-member ensemble. It follows the working configuration used at Mercator Ocean to perform ensembles for research and development in the context of CMEMS systems.

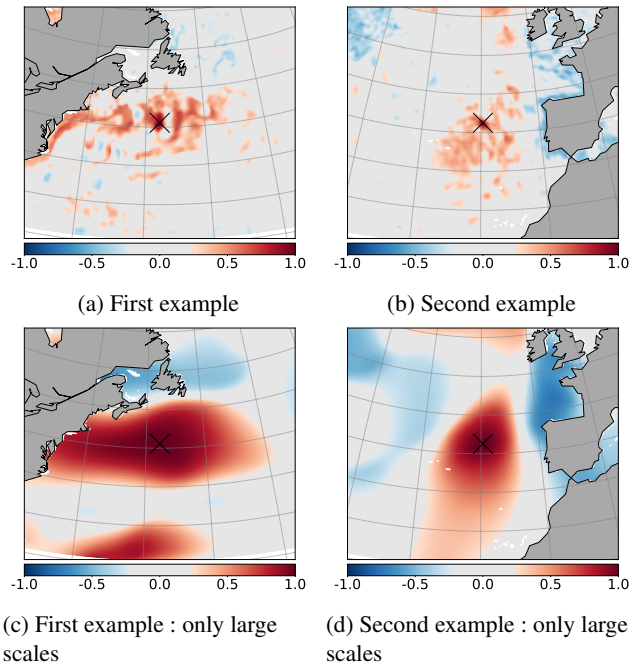


Figure 2. Two examples of ensemble correlation for the prior ensemble (SSH), according to two different reference points indicated by black crosses, computed for the full spectrum (top figures) and for the large scales (bottom figures, $l \in [0; l_c]$ with $l_c = 34$ following Eq. (2) and Eq. (3), which corresponds to a characteristic scale larger than $L \approx 187\text{km}$). Light grey colour corresponds to non significant values of ensemble correlations for an ensemble of $N = 69$ members (smaller in absolute value than 0.2367 with significance threshold at 95%).

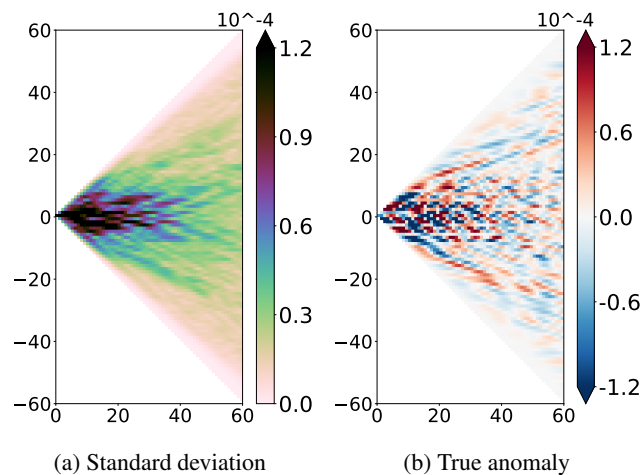


Figure 3. Standard deviation (a) of the prior ensemble and true anomaly (b) in the spectral space-domain (SSH), according to the degrees $l \in [0, 60]$ in abscissa and m in ordinate, see Eq. (2), which corresponds to a characteristic scale larger than $L \approx 106\text{km}$

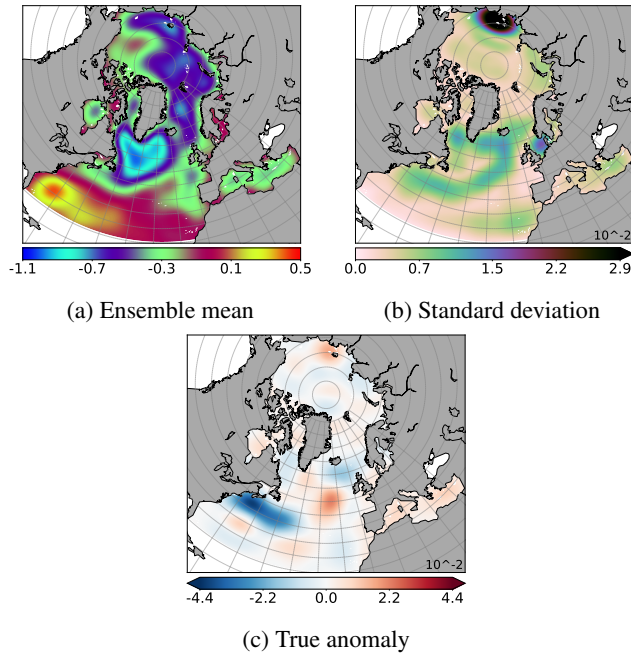


Figure 4. Ensemble mean (a), standard deviation (b) of the prior ensemble, and true anomaly (c) for the SSH (in m), after extraction of the large scales ($l \in [0; l_c]$ with $l_c = 34$, which corresponds to a characteristic scale larger than $L \approx 187\text{km}$, see Eq. (3)).

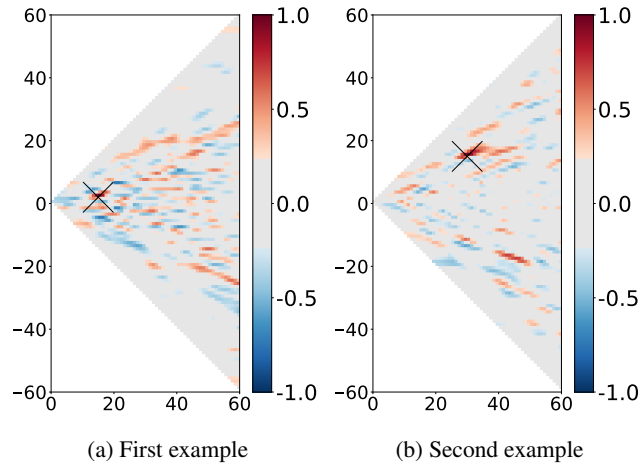


Figure 5. Two examples of ensemble correlation for the prior ensemble (SSH) in the spectral [spacedomain](#), according to the degrees $l \in [0, 60]$ in abscissa and m in ordinate, see Eq. (2). The two different reference points are indicated by black crosses. Light grey colour corresponds to non significant values of ensemble correlations for an ensemble of $N = 69$ members (smaller in absolute value than 0.2367 with significance threshold at 95%).

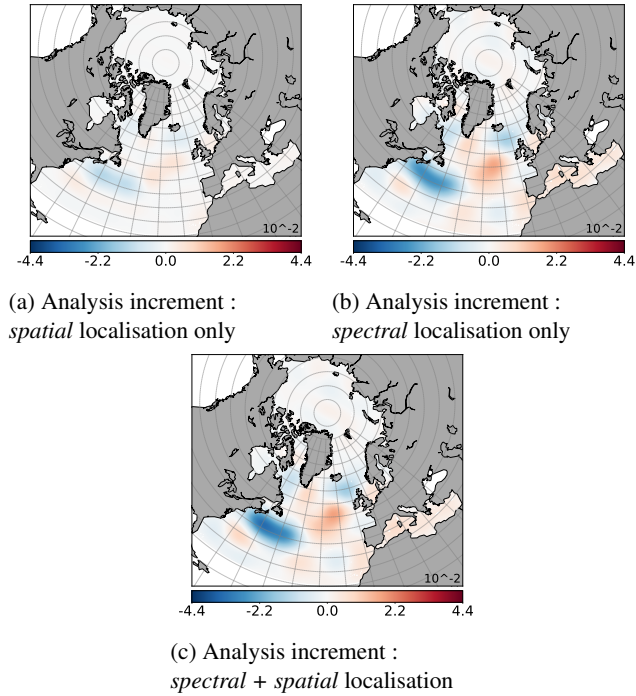


Figure 6. Ensemble mean of large scales part of the analysis increments (SSH in m), with $l \in [0, l_c]$, $l_c = 34$. (a) obtained after spatial localisation only and then filtered, see Eq. (6) and Eq. (3); (b) obtained after spectral localisation following Eq. (7); (c) obtained after multiscale analysis (spectral+spatial localisation, see Sect. 4.1.2). To be compared to the large scale true anomaly, Fig. 4c.

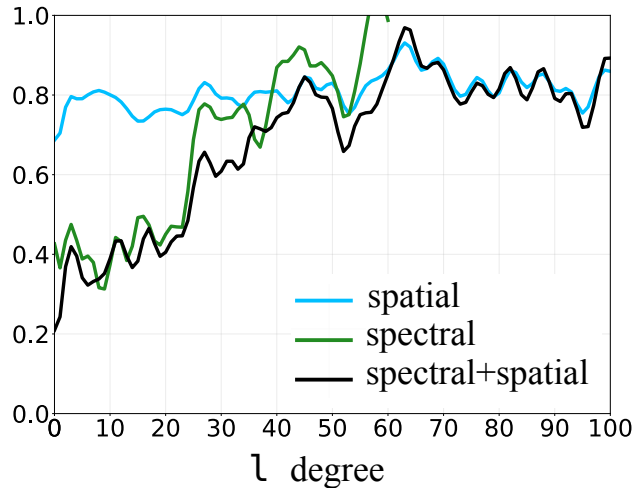
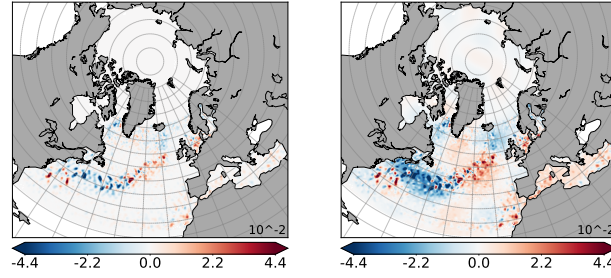


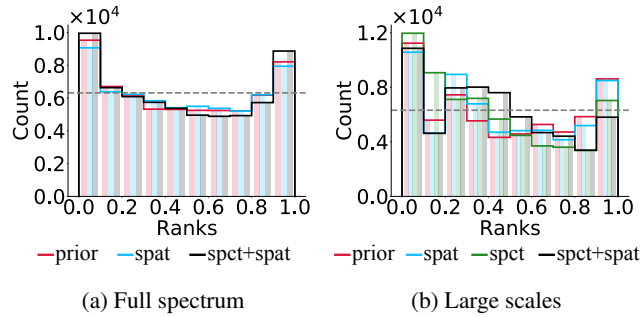
Figure 7. Reduction of spatial RMSE for each degree for the SSH, computed using Eq. (14). The blue curve (*spatial*) refers to the spatially updated ensemble, the green curve (*spectral*) to the spectrally updated ensemble, and the black curve (*spectral + spatial*) to the multiscale updated ensemble.



(a) Analysis increment :
spatial localisation

(b) Analysis increment :
spectral + spatial localisation

Figure 8. Same as Fig. 6a and Fig. 6c but keeping the full spectrum (no extraction of the large scales). (a) obtained after spatial localisation only, following Eq. (6); (b) obtained after multiscale analysis (spectral+spatial localisation) following Sect. 4.1.2. To be compared with Fig. 1c.



(a) Full spectrum

(b) Large scales

Figure 9. Spatial rank histogram on the JASON domain for the SSH. *prior* (in red), *spat* (in blue), *spct* (in green) and *spct + spat* (in black) correspond respectively to the prior ensemble, spatially updated ensemble, spectrally updated ensemble and to the multiscale updated ensemble. (a) Full spectrum; (b) After extraction of the large scales : $l \in [0; l_c]$ with $l_c = 34$.

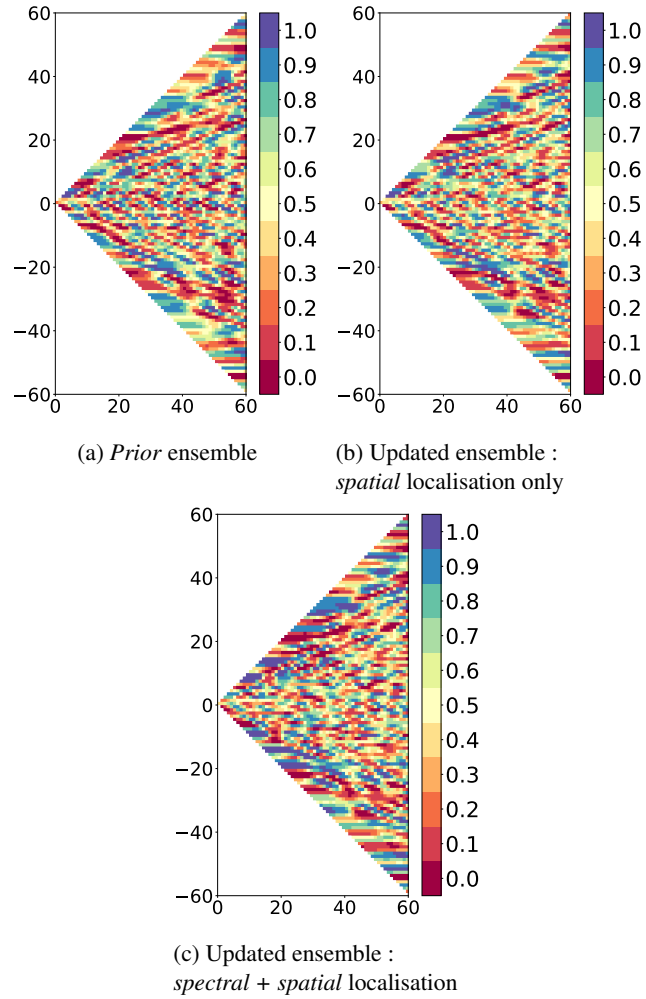


Figure 10. Maps of ranks in the spectral space-domain for the SSH, according to the degrees $l \in [0, 60]$ in abscissa and m in ordinate, see Eq. (2). (a) Prior ensemble; (b) and (c) updated ensembles respectively obtained after spatial localisation only (see Eq. (6)) or after the multiscale analysis (spectral+spatial localisation, see Sect. 4.1.2).

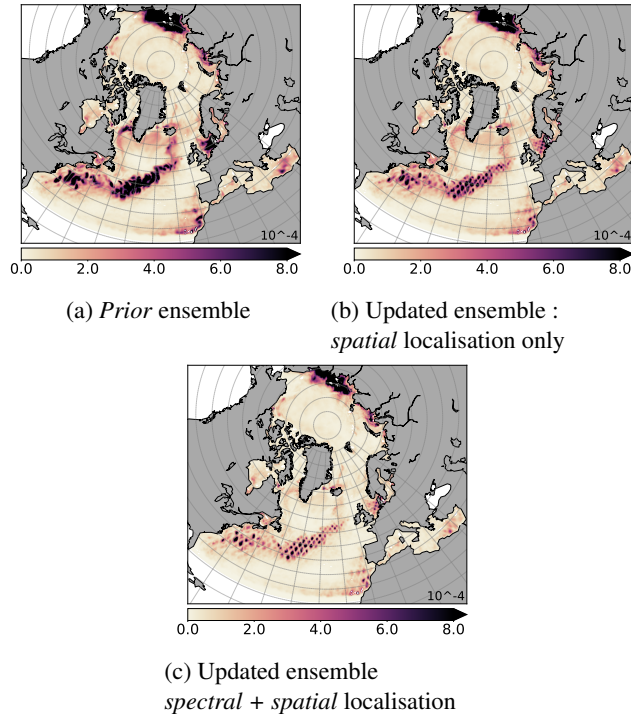


Figure 11. Ensemble spread of the prior (a), the updated ensembles obtained with (a) the spatial localisation only or with (bc) the multiscale analysis (spectral+spatial localisation), according to Eq. (15) (full spectrum) for the SSH.

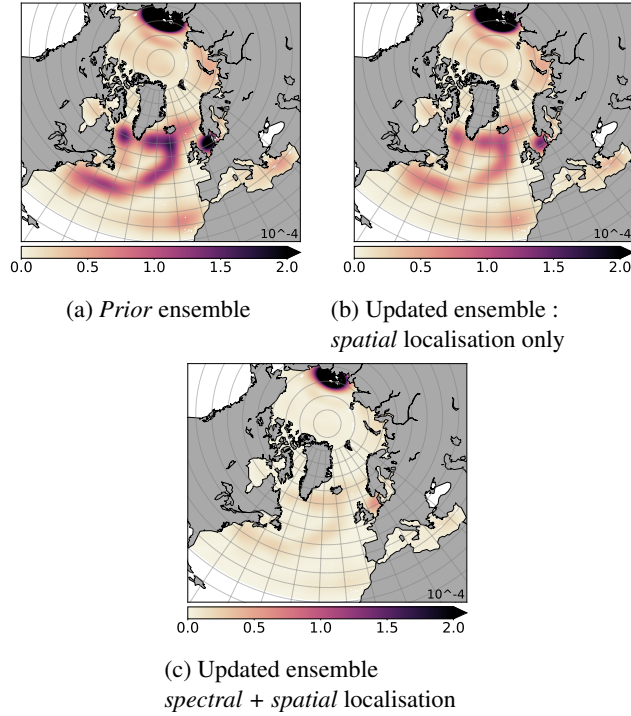


Figure 12. Same as Fig. 11 but after extraction of the large scales ($l \in [0; l_c]$ with $l_c = 34$, see Eq. (2) and Eq. (3)).

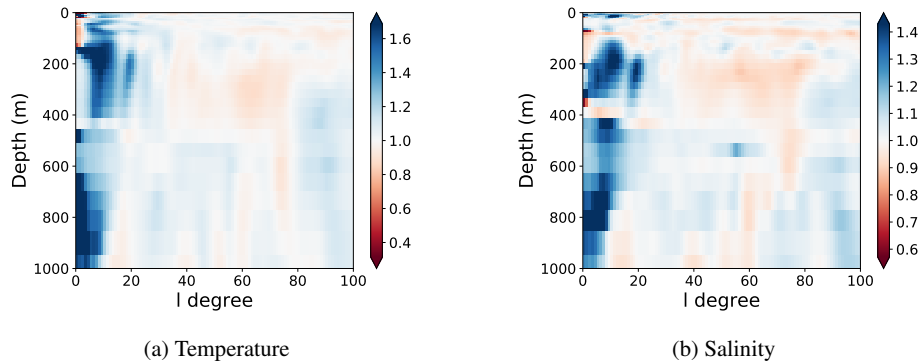


Figure 13. Improvement obtained by the multiscale analysis for temperature (a) and salinity (b). This improvement is measured by comparison to spatial localisation only using the ratio in Eq. (16). Blue (respectively red) colour corresponds to a better (respectively worse) correction of the error using the multiscale analysis as compared to spatial localisation only.