

## Comments of the Referee:

The revised version of the paper does not address any of my main criticisms and comments, as detailed in the following.

The authors choose not to perform any statistical test, “since it would generate a substantial formal overhead without promising a clear benefit”. My point is that testing should be done, rather than avoided, and the importance of the parameters should be tested rather than speculated.

Our point is that any testing will necessarily be based on assumptions that obviously are not satisfied in the present case. Looking at Fig. 3, for instance, reveals the presence of tidal signals (mentioned in the paper) in observed dispersion, undermining the assumption of iid random fluctuations. Another problem is that uncertainties of GPS based localization can hardly be quantified. Finally, it must be kept in mind that graphs like those in Fig. 3 refer to just one drifter pair rather than averages over several pairs. For all these reasons we never claimed that we could really prove exponential growth.

Please see our more specific responses below.

They did not provide the requested table quantifying initial distances between pairs and from OWFS, arguing that they are not defined in a clear way. I am not sure what do they mean...As a simple example, the “initial distance” in most papers is simply defined as the distance corresponding to the first data points...

The referee addresses two different questions. The first is the specification of initial distances of drifter pairs. In the experiments, drifter pairs were released as closely as possible, but the only quantitative measure we can provide is the first GPS based estimate. This estimate may refer to a time approximately 20 minutes after drifter deployment, sometimes (see in particular drifters C9 and C10) technical problems produced an even much larger delay. In the revised manuscript, we now introduced a new table (Table 2), which provides these GPS based estimates of initial distances for all drifter pairs. The new table contributes to the discussion of observational uncertainty (Section 2.1).

The second point is the specification of initial distances between drifters and neighbouring wind farms. We obviously have not been clear in our previous response. We now introduced the table of relative distances the referee wants to see (Table 3) at the beginning of Section 3. However, our point is that values for the distances between drifters and wind farms depend very much on the choice made regarding what should represent the wind farm location. In Table 3 we provide two different measures, one referring to the wind farm centre and the other referring to the location of the nearest wind turbine. Differences between these two numbers may be large and a ranking regarding distance from the wind farm therefore somehow arbitrary. For instance: for drifter  $A_1$  we get either 1.82 or 7.91 km, for drifter  $B_1$  we get 4.10 or 7.28 km. From the nearest engine perspective,  $A_1$  would definitely be closer, otherwise  $B_1$  would be the closest to the wind farm. One option might be to choose always the nearest turbine option, assuming that drifters will always be within this turbine’s turbulent wake. However, this situation is unlikely and the assumption cannot be substantiated based on observations.

They decided not to discuss and test the exponential fit. Their motivation is that there is no clear difference between results obtained using an exponential fit or other power law fits. But this is exactly my point! The exponential fit is simply not significant... And despite this, the authors mention in the abstract that “Drifter pairs can be classified in a remarkably clear way into those with spatial separation growing exponentially (and those growing) non-monotonically”.

We agree that some of our statements benefited from a revision. A major point is that a strict distinction between exponential and power law growth in time is difficult. To better address this point, we decided to include a small new figure (Fig. 15) that re-displays squared pair distances from experiment B (for all of them fitted  $e$ -folding times are very similar) now using, however, a logarithmic time axis appropriate for fitting a power law. The figure nicely shows the similarity between exponential and power law growth for longer drift times. However, it also illustrates how fitting the power law would be influenced by the choice of the lower bound of the time interval the fit is based on. This is crucial as uncertainty of drifter location can just be estimated.

However, the discrimination between exponential and power law growth must be distinguished from the identification of drifter pairs for which separation grows non-monotonically. It is quite obvious that neither an exponential nor a power law would fit the behaviour shown in Fig. 7e, for instance. The key question is, whether it is just a coincidence that all the (three) cases with non-monotonic growth of drifter separation occur for exactly those drifters that were furthest from the wind farm (see the new Table 3). Unfortunately, the number of drifters is too small for a reliable answer to this question. The data provide, however, indications that motivate future more comprehensive studies.

We checked the manuscript carefully and revised all sentences that might be (mis)understood in the sense that we claim to really prove a hypothesis (including changes in the abstract and the conclusion). It is quite clear that 12 pairs of drifters released at different places under different atmospheric conditions (!) can not be the basis for a formalized hypothesis testing, developed for well defined experimental set-ups from which a number of independent realizations can be obtained. What is more, the expectation of exponential (or power law) growth of pair separation is based on theoretical models that try to predict dominant aspects of drifter behaviour in the presence of turbulence. The effects of simplifications in such theories can hardly be quantified. For our study this means that we are looking for some resemblance with predicted exponential separation rate, not being able to exactly quantify 'resemblance'.

For the reasons mentioned, qualitative assessment of particle pair separations is a common approach in the literature (Haza et al. 2008, Koszalka et al. 2009, LaCasce 2010, Berti et al., 2011). Hypothesis testing in this context is extremely difficult or even impossible and results on relative dispersion at submesoscale are still inconclusive.

Overall, all my reservations on this paper remain the same, and i cannot accept it for publication in the present form. As already stated, the paper is nicely written and the authors are knowledgeable, but i think the results are not clear nor robust enough, and they do not add significantly to our understanding of the problem.

In our paper we invoke a large number of other studies that report different experiments. Few of these experiments are conclusive when seen individually. Referring to large sets of data, Poje et al. (2014, 2017) or Corrado et al. (2017) try to summarize the state of knowledge. In a broader context the contribution from our study is that the  $e$ -folding times we fitted to the data agree with what was found also in other experiments (e.g. Koszalka, 2009; Schroeder, 2011; Corrado et al., 2017). Conversely, the results published in other studies to some degree support our approach.

We hope that Tables 2, 3 and Fig. 15 provide the information the referee was asking for. In particular, we hope that we were able to better discriminate between non-monotonic and non-exponential (i.e. power-law) growth of pair separation. This distinction is essential for our response to the criticism raised by the referee. The non-monotonic behaviour of three drifter pairs seems quite obvious, no meaningful theoretical model of turbulent dispersion could be fitted to these time series (Fig. 7). For all other drifters, the much more subtle statistical distinction between exponential and power law

behaviour (new Fig. 15) would need more comprehensive data. Our review of published experiments partially compensated for that limitation.

#### Editorial comments:

Abstract (page 1) line 3. “. . non-monotonically. There . .”

Has been changed.

Section 2.1 page 4

Line 17. “exposed” should be “expounded” or “given” or perhaps simply omitted?

Has been replaced by ‘given’.

Line 31. “. . study on the extent to which position errors . .”

Has been corrected.

Section 2.2 page 6 line 13. Simpler “. . significance of spectral peaks, a permutation”

Has been changed accordingly.

Section 2.4 page 9 line 6. Better “. . This value, estimated by Callies et al. (2017) for the same drifter types, seems largely consistent . .”

Has been changed.

Section 3.1.3 page 18 lines 3-6 and figure 8. You do not show the squared distances for all possible drifter combinations as you do not involve C2, C6, C8, C10 (nor C3, presumably because too short). I guess that this is because the separation between C1 and C2 (for example) would make little difference to the squared distance plot with C4, C5, C7, C9. However, in view of the referee’s concern about the small numbers of drifters, I think you should at least comment on this.

We agree and added the following explanation: *“Due to the fact that initial distances between drifters released together are negligible relative to distances between different drifter pairs, we involved just one drifter from each pair (we chose C4 over C3 as the latter drifter’s trajectory ended early and had little temporal overlap with other drifters, see Fig. 6c)”*

Section 3.3 page 21.

Line 6. “. . locations (as occurs . .”

Has been corrected

Line 9. “direct contact with OWFs”. Please state a definition or criterion for this, as used to distinguish the plots in figures 11, 12. (Also a referee concern).

We added: “... in the sense that they enter the OWF area ...”

Line 19. “. . because, in the Lagrangian framework, data from just one . .”

Has been changed.

# Submesoscale dispersion of surface drifters in a coastal sea near offshore wind farms

Ulrich Callies<sup>1</sup>, Ruben Carrasco<sup>1</sup>, Jens Floeter<sup>2</sup>, Jochen Horstmann<sup>1</sup>, and Markus Quante<sup>1</sup>

<sup>1</sup>Helmholtz-Zentrum Geesthacht, Max-Planck-Str. 1, 21502 Geesthacht, Germany

<sup>2</sup>Institut für Hydrobiologie & Fischereiwissenschaft, Universität Hamburg, Germany

*Correspondence to:* U. Callies (ulrich.callies@hzg.de)

**Abstract.** We analyse relative dispersion of surface drifters released as pairs (6 instances) or triplets (2 instances) during three field experiments conducted in the German Bight in close proximity to wind farms. ~~Drifter pairs can be classified in a remarkably clear way into those with spatial separation growing either exponentially or non-monotonously.~~ There is some tentative evidence that ~~exponential relative dispersion growth rates preferably occur~~ nearly exponential growth of relative dispersion (non-local dispersion) preferably occurs for drifter pairs that are most exposed to the ~~possible~~ influence of a wind farm. Kinetic energy spectra and velocity structure functions ~~suggest~~ are analysed with regard to the assumption that turbulent energy could be injected by tides, possibly also via an interaction between tidal currents and wind turbine towers. Applicability of inertial range turbulence theory, however, can be doubted given distinct peaks of overtides observed in velocity power spectra. More comprehensive studies would be needed to better separate submesoscale effects of wind farms, tides and possibly baroclinic instabilities on observed drifter behaviour in a complex coastal environment.

*Copyright statement.* Author(s) 2017. CC Attribution 3.0 License.

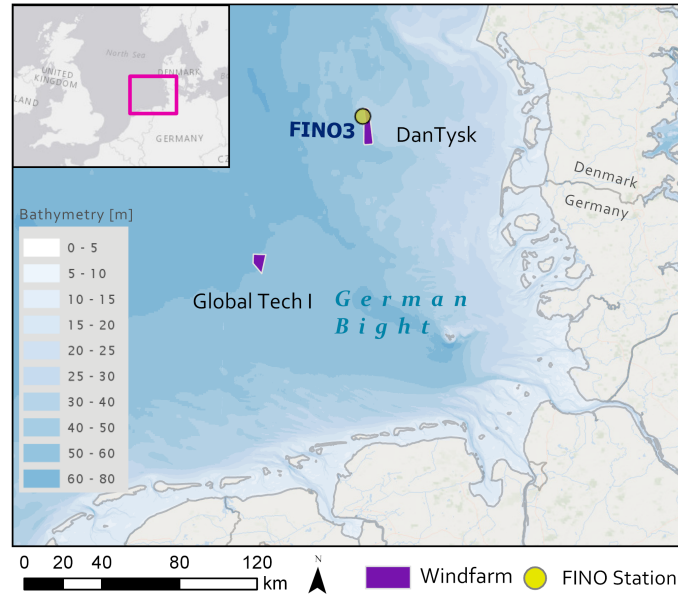
## 1 Introduction

Observing the spreading of drifters deployed pairwise is a powerful tool for analysing submesoscale flow structures. Submesoscale features are of interest for different reasons. From a theoretical point of view, understanding mesoscale turbulent features helps understand the mechanism how energy in a 2D quasi-geostrophic regime cascading towards larger scales (inverse energy cascade, see Charney, 1971) can nevertheless lose geostrophic balance and be injected to the microscale, where it is dissipated (McWilliams, 2008). Another reason is a more practical one. Knowing about the efficiency of relative dispersion at the submesoscale is important for proper simulation of early phase spreading of pollutant patches. It is crucial to know whether spreading will be driven by mesoscale structures resolved in numerical models (non-local dispersion) or if submesoscale turbulence on the scale matching the size of a pollutant patch is energetically relevant (local dispersion). In the latter case growth of a small-size oil slick, for instance, will exceed the rate predicted by traditional parametrizations in terms of hydrodynamic currents resolved in a model (Özgökmen et al., 2012).

In this study we analyse drift trajectories in the German Bight (North Sea) that cover just short periods (maximum 3.9 days, [see Table 1](#)). The German Bight (Fig. 1) is characterized by frequent eddies and meanders on different scales. Nearshore gyres may occur or be absent depending on prevailing wind conditions or baroclinic instabilities in connection with fronts (Becker et al., 1992), for instance. The [sub-mesoscale-submesoscale](#) we focus on has also been addressed by numerous other studies (e.g. Berta et al., 2016; Ohlmann et al., 2017; Poje et al., 2014). A key observation is that spreading rates may be much higher than those observed on the large-scale (e.g. Corrado et al., 2017). Initial separations of drifter pairs we analyse ([see Table 2](#)) are much below the local internal radius of deformation, which in the German Bight is in the range of approximately 2-20 km (Becker et al., 1983, 1999; Badin et al., 2009). Therefore our experiments explore the [sub-mesoscale-submesoscale](#) regime in which geostrophic horizontal turbulence interacts with vertical mixing (e.g. McWilliams, 2008), possibly triggered by the presence of wind farms (Floeter et al., 2017). Departure from geostrophic dynamics in submesoscale eddies can be quite substantial (Ohlmann et al., 2017). A recent experiment in the Gulf of Mexico with hundreds of drifters released (D’Asaro et al., 2018) revealed a quite complex behaviour: local clustering of drifters due to [sub-mesoscale-submesoscale](#) convergences was observed to coexist with spreading of such clusters.

A recent summary of relative dispersion in the ocean was given by Corrado et al. (2017). Analysing data from the Global Drifter Program, these authors found consistent behaviours in different ocean sub-basins. Conditions in coastal regions, however, are generally less homogeneous than in the open sea and may give rise to flow features that vary substantially on a scale of only few kilometres (Ohlmann et al., 2012). In the German Bight, strong tidal waves ( $M_2$ ) become distorted and shallow-water overtimes ( $M_4$  and  $M_6$ ) are generated via reflection and non-linear transformation processes (Stanev et al., 2014, 2016). The German sector of the German Bight is also an area in which a large number of offshore wind farms (OWFs) are planned, built or already operated. Although generation of turbulent wakes by OWF structures is a known effect (e.g. Li et al., 2014), the number of targeted studies of the impacts of OWFs on hydrodynamic conditions is very limited. Seasonal variation of stratification is a crucial factor influencing the North Sea food web (e.g. Ruurdij et al., 1997). While Carpenter et al. (2016) estimated little impact of OWFs on mean stratification in the German Bight, Floeter et al. (2017) found some observational evidence that stirring effects might increase vertical mixing and create upwelling cells near the OWFs. Impacts on hydrodynamic conditions could occur via changes in the atmospheric wind field from which energy is extracted, including additional atmospheric turbulence. An alternative process is tidally induced mixing in an array of OWF foundations. In this case turbulent wakes and vertical mixing generated by tide-driven oscillatory currents may also depend on the type of foundation structures used.

Based on data from experiments in the Mediterranean Sea, Schroeder et al. (2011) raised doubts that [sub-mesoscale-submesoscale](#) turbulent eddies are pervasive phenomena underlying turbulent transports. Alternatively, turbulent transports may be governed by larger mesoscale flow features. Such non-local transports (or drifter dispersion) are expected to occur in combination with Eulerian energy wave number spectra  $\propto k^{-3}$  or steeper (Bennett, 1984). Kraichnan (1967) predicted this for the enstrophy-cascading inertial range of 2D-turbulence, for instance. Indicative of a non-local regime driven by flow features larger than drifter separation is exponential growth of relative drifter dispersion (LaCasce, 2008). By contrast, local dispersion with power law dependence on time should coincide with a shallower slope of the energy spectrum, indicating the presence of energetic small scale eddies. Özgökmen et al. (2012) compiled relevant analyses available at that time (LaCasce and Ohlmann, 2003;



**Figure 1.** The study area German Bight. Drifter experiments were conducted in close vicinity to the two wind farms indicated in the plot. Research station FINO3 provides hydrodynamic currents on a 10 min basis.

Koszalka et al., 2009; Lumpkin and Elipot, 2010; Berti et al., 2011; Schroeder et al., 2011), more recent studies were reported by Beron-Vera and LaCasce (2016), Corrado et al. (2017), Poje et al. (2017) or Sansón et al. (2017). An assessment of the influence of the different flow regimes on turbulent transport is complicated by the fact that exponential increase of tracer separation in time is also characteristic of so-called Lagrangian chaos dealt with in the dynamical systems theory. This occurs

5 when passive objects show chaotic movements sensitive to initial conditions although they are embedded into laminar Eulerian currents (Boffetta et al., 2000; Tsinober, 2001, Sections 4.2, 4.3). Wiggins (2005) reviews applications of the dynamical systems approach in the context of oceanography.

The issue of either local or non-local dispersion at submesoscale seems not yet to have been solved. Berti et al. (2011) found early phase exponential separation at scales of the order of 1 km. By contrast, Corrado et al. (2017) observed rates of dispersion

10 at the submesoscale being about one order of magnitude higher than at the meso- or largescale and took this as an indication that dispersion was increased by the action of local eddies similar in size to drifter separation. In an experiment specifically targeted to a persistent coastal buoyant front possibly containing ~~sub-mesoscale~~submesoscale mixed layer instabilities, also Schroeder et al. (2012) found indications of relative dispersion enhanced by local dynamics.

The data studied here represent quite a complex situation in which effects of tides modified by travelling under shallow

15 sea conditions, baroclinic instabilities on the scale of the Rossby deformation radius and anthropogenic effects of OWFs may possibly combine. Sect. 2 describes the data available, the method of spectral analysis we applied to drifter velocities and summarizes basic concepts of two-particle statistics. In addition it ~~explains~~describes how simulated counterparts of ob-

served trajectories were produced. The results section starts with a detailed analysis of observed drifter trajectories and drifter pair separations being influenced by changing weather conditions (Sect. 3.1). Observed trajectories ~~influenced by changing weather conditions~~ are supplemented with corresponding simulations. Sect. 3.2 presents spectral analyses of both Eulerian and Lagrangian current velocities. Sect. 3.3 deals with two-particle statistics like separation velocities and velocity structure functions. Finally, Sect. 3.4 presents examples of simulated drifter dispersion based on two different stochastic parametrizations. After a discussion of our findings in Sect. 4, conclusions are summarized in Sect. 5.

## 2 Material and methods

### 2.1 Observational data

Surface drifter data were collected during three research cruises with RV Heincke (HE445, HE490, HE496) in the German Bight in the years 2015 and 2017. Table 1 summarizes for all drifters positions and times of their deployment. In addition, the table provides lengths of drifter tracks together with the linear distances between initial and final locations. We used drifters of type MD03i from Albatros Marine Technologies, shaped as cylinders with 0.1 m diameter and 0.32 m length. About 0.08 m protrude from the water surface, the ratio of drag area in to drag area outside the water is 33.2. Drogues of 0.5 m both length and diameter are attached 0.5 m below the sea surface, so that drifters are supposed to reliably represent currents in a surface layer of about 1 m depth. No drogue presence sensors were mounted for checking the conditions of the devices.

Although Albatros MD03 drifters have been widely used during the last years (e.g Lana et al., 2016; Callies et al., 2017; Sentchev et al., 2017; Onken et al., 2018), to our knowledge slippage of this drifter type has never been quantified. However, considering the drag ratio of 33.2, the parametrization ~~exposed-given~~ in Niiler et al. (1995) would predict a slippage of 1.1 to 1.6 cm/s, for 10 m/s wind speed and a velocity difference across the vertical extent of the drogue of roughly 0.1 cm/s. Quantification of a drifter’s slip is not trivial due to an influence of sea-state. For another type of drifter, the CODE drifter, Poulain et al. (2009) estimated slippage to be 1% of wind speed. By contrast, according to Poulain and Gerin (2019) slippage was estimated to be 0.1% of wind speed. Fortunately, specification of slippage effects is of minor importance for the present study. First, it can be expected that slippage effects affecting two drifters of the same type will not dominate separation of these drifters. Second, when comparing observations with corresponding simulations, the additional wind drag tuned for successful simulations will cover also slippage effects. Therefore, for the present study slippage effects were neglected.

Drifter positions were obtained from the Global Positioning System (GPS) and transmitted to the lab via the satellite communication system Iridium. A lab test was set up to evaluate accuracies of GPS devices. Four drifters were deployed in a small water tank at fixed positions, so that changes of their distances relative to each other (recorded for each of six pairs yielded from the four drifters) could directly be attributed to errors of GPS based localization. Based on 48 hours of observations, the 50<sup>th</sup>, 90<sup>th</sup> and 95<sup>th</sup> percentiles of relative distance errors were 12.4, 33 and 42 meters, respectively. Note that initial recordings of distances between drifter pairs (Table 2) are often within this estimated range of uncertainty. Real errors could be slightly larger because our test could not take into account possible effects of orbital motions due to waves. Haza et al. (2014) provide



an extensive study on ~~to which extent~~ the extent to which position errors can corrupt scale dependent two-point dispersion rates estimated from Lagrangian data.

In all field experiments sampling rates were about once every 20 min. For being able to calculate time dependent separations between drifters, all drifter locations were linearly interpolated to regular 20 min time intervals. Drifter velocities were derived from these interpolated regular data.

**Drifter set A:** On 21 May 2015, three drifters ( $A_2 - A_4$ ) were deployed as a triplet near the OWF DanTysk (Fig. 2a). DanTysk covering an area of roughly  $19 \times 5 \text{ km}^2$  is located about 70 km to the west of the ~~offshore~~ coastal islands near the Danish/German border (Fig. 1). The three drifters crossing the area of the OWF were tracked for a maximum time of 3.7 days (see Table 1).

The three drifters are a subset of nine drifters released in May 2015 during a longer cruise (HE445) of RV *Heincke*. The other six drifters ~~were~~ released individually and monitored between 9 and 54 days while they were drifting across the German Bight. ~~Their tracks~~ were analysed by Callies et al. (2017). Here, just drifter  $A_5$  will be ~~used~~ referred to, analysing its Lagrangian velocity power spectrum (see Sect. 3.2). Data from all nine drifters are freely accessible from a data repository (Carrasco and Horstmann, 2017).

**Drifter set B:** On 29 June 2017, one drifter triplet ( $B_1, B_2$  and  $B_3$ ) was deployed to the west of OWF Global Tech I (Fig. 4a). The OWF (Fig. 1) comprises 80 turbines with tripod foundations. It covers an area of about  $41 \text{ km}^2$  and is located more than 90 km to the north-west of the German island Juist. Water depth in the region is about 40 m. Drifter data taken on cruise HE490 of RV *Heincke* are freely accessible at Carrasco et al. (2017a).

Drifters were tracked for 1.9, 2.9 and 3.9 days, respectively. Another pair of drifters ( $B_4$  and  $B_5$ ) was deployed within the OWF about five hours later. These drifters were tracked for 1.9 and 2.9 days, respectively (see Fig. 4d).

**Drifter set C:** On 14/15 September 2017, five drifter pairs were deployed with spatial spacing of 5 nautical miles along a north-south transect to the west of OWF Global Tech I (Fig. 6a). Drifter tracks were recorded for up to 3.5 days. For drifters  $C_9$  and  $C_{10}$  some technical problems encountered after drifter deployment endured for nearly one day. Fig. 6 shows only data after these problems had been settled and the signals were obtained on a regular basis. All data taken on cruise HE496 are freely accessible at Carrasco et al. (2017b).

~~Note that all~~ All launch locations and times listed in Table 1 refer to the first signal received from the positioning system. As a result, ~~initial distances~~ the initial distances listed in Table 2 seem larger than they actually were at the time of drifter deployment, which may have taken place about 30 min ~~before~~ earlier. In particular the large 'initial' distances indicated for drifters  $C_9$  and  $C_{10}$  result from the technical problems already mentioned above.

Eulerian surface currents observed at 2 m depth were available from research station FINO3 (<https://www.fino3.de>), located approximately 80 km off the German coast in the immediate vicinity of the OWF DanTysk where experiment A took place (Fig. 1). Time resolution of these measurements taken with an acoustic Wave and Current Profiler (AWAC) is 10 min. For



technical reasons each hour one of these measurements is usually skipped. A special period without such data gaps (April-May 2010), needed for spectral analysis, did unfortunately not overlap with the time periods of our drifter experiments.

## 2.2 Spectral Analyses

Power spectra of both Eulerian and Lagrangian drifter velocities have been calculated using the maximum entropy method (MEM) based on algorithms presented in Marple (1987) and Press et al. (2002). This method has been chosen, since it is very efficient in detecting narrow spectral features or sharp peaks even if the underlying data series have a quite low number of sample points ( $N$ ). The behaviour of the spectral estimate using MEM depends on the appropriate choice of the order of the autoregressive model ( $M$ ). The number of peaks typically increases with  $M$ . If the order is chosen too high, spurious peaks may occur in the spectra. Therefore, several spectra for each case with different model orders have been calculated. The model order suggested by the Akaike information criterion (Akaike, 1974) has been found to be too low, known peaks were not resolved. Here an order selection of  $N=4$  to  $N=3$  produced satisfactory results in accordance with Weedon (2003). For some cases (longer data series) MEM spectra have been compared to FFT based power spectra to verify main peaks and spectral slopes as they are discussed here.

Besides all mentioned advantages, a drawback of the MEM method is that the statistical significance of the spectral peaks is difficult to assess. Nevertheless, to estimate the statistical significance of spectral peaks ~~the method applying~~, a permutation test (Good, 2000) as proposed and exemplified by Pardo-Igúzquiza and Rodríguez-Tovar (2005, 2006) has been followed. Identified spectral peaks referred to in the discussion section show high statistical confidence levels with values between 95% and 99% based on the permutation test (10,000 spectra) using an underlying red noise spectrum.

## 2.3 Velocity increments and structure functions

Let  $D_{ij}(t)$  denote separation between two drifters  $i$  and  $j$ , at time  $t$  being located at  $\mathbf{x}^{(i)}(t)$  and  $\mathbf{x}^{(j)}(t)$ , respectively:

$$D_{ij}(t) = | \mathbf{x}^{(i)}(t) - \mathbf{x}^{(j)}(t) | \quad (1)$$

Given a cloud of drifters, the mean squared separation of  $N$  pairs of drifters provides a measure of relative two-particle dispersion

$$D^2(t) = \langle D_{ij}^2(t) \rangle = \frac{1}{N} \sum_{i \neq j} D_{ij}^2(t) \quad (2)$$

where brackets denote averaging over all particle pairs. In the present study, however, we will analyse each drifter pair separately, so that squared separation  $D_{ij}^2(t)$  will be our key parameter. ~~The reason for doing so is that combining drifter pairs would make results less transparent and more difficult to discuss.~~ Of course such detailed analysis would not be feasible if the number of drifter pairs studied would be larger.

Relative dispersion is to be distinguished from absolute dispersion, a parameter from single particle statistics that describes a particle cloud's spread around its center of mass in combination with its drift from its release point. Differences between

absolute and relative dispersion are relevant at medium time scales when two particle velocity cross correlation depends on the character of Eulerian flows (LaCasce, 2008). Being the second moment of the distribution of relative particle displacements, relative dispersion is informative when this distribution is nearly Gaussian. Otherwise studying full distributions of relative drifter separations may be preferable (LaCasce, 2010).

- 5 In his seminal paper, Richardson (1926) assumed that separation of particle pairs will hardly be affected by eddies larger in diameter than the distance between the two tracer particles. Similarly, turbulent structures much smaller than drifter separation will not much contribute to further spreading. A disadvantage of relative dispersion  $D^2(t)$  is that its value at given time  $t$  does not necessarily relate to a specific spatial scale. Drifter pairs contributing to the average may travel under different flow regimes and thereby give rise to scale interference (Corrado et al., 2017). Considering Eulerian velocity differences  $\delta \mathbf{v}^{(E)}(\mathbf{r}, t) = \mathbf{v}(\mathbf{x} +$   
10  $\mathbf{r}, t) - \mathbf{v}(\mathbf{x}, t)$  between two locations separated by distance  $\mathbf{r}$  helps address the role of spatial scales. If possible implications of non uniform sampling due to specific flow structures are neglected (Poje et al., 2017), Eulerian velocities can be identified with Lagrangian drifter velocities. As a convenient scalar parameter the following Eulerian longitudinal velocity difference (Poje et al., 2014, 2017) can be used,

$$\delta v_{\parallel}^{(E)}(r, t) = \delta \mathbf{v}^{(E)}(\mathbf{r}, t) \cdot \hat{\mathbf{r}}(t) \quad (3)$$

- 15 with  $r = \|\mathbf{r}\|$  and  $\hat{\mathbf{r}} = \mathbf{r}/r$ . In 3D turbulence, the corresponding transverse velocity difference  $\delta \mathbf{u}_{\perp}^{(E)}$  could have any direction within a plane perpendicular to  $\hat{\mathbf{r}}$  (e.g. L  v  que and Naso, 2014). In 2D, however, its orientation is well defined and the component can be obtained as

$$\delta v_{\perp}^{(E)}(r, t) = \delta \mathbf{v}^{(E)}(\mathbf{r}, t) \times \hat{\mathbf{r}} \quad (4)$$

- where the convenient 2D analog  $\mathbf{a} \times \mathbf{b} = a_x b_y - a_y b_x$  of the 3D vector product was used. The second-order structure function is  
20 defined as the second moment of velocity differences between two neighbouring points (e.g. Kolmogorov, 1941; Pope, 2000). Based on Eqs. (3) and (4) it can again be decomposed into longitudinal and transverse components (Poje et al., 2017):

$$S_{2,\parallel}^{(E)}(r) = \langle \{\delta v_{\parallel}(r, t)\}^2 \rangle \quad ; \quad S_{2,\perp}^{(E)}(r) = \langle \{\delta v_{\perp}(r, t)\}^2 \rangle \quad (5)$$

In Eq. (5) we assumed isotropic conditions so that vector  $\mathbf{r}$  can be replaced by its scalar length  $r$ . Angular brackets denote averaging over each subset of paired locations after the full data were binned with regard to distance  $r$  (regardless of time  $t$ ).

- 25 Both time evolution of relative dispersion  $D^2(t)$  and spatial scale dependence of velocity structure functions like  $S_{2,\parallel}^{(E)}(r)$  can be theoretically linked to wave number power laws that hold for turbulent kinetic energy. In two dimensions the spectrum of turbulent energy  $E$  as function of wave number  $k$  may combine an inverse energy cascade at large scale with a direct enstrophy cascade at smaller scale, separated by a frequency where energy is injected (Kraichnan, 1967; Lesieur, 1997; LaCasce, 2008; Boffetta and Ecke, 2012):

$$30 \quad E(k) \propto \begin{cases} \varepsilon^{2/3} k^{-5/3} & \text{inverse energy cascade} \\ \eta^{2/3} k^{-3} & \text{direct enstrophy cascade} \end{cases} \quad (6)$$

Here, energy dissipation  $\varepsilon$  assumes the meaning of an energy flux to larger scales and  $\eta$  denotes an enstrophy dissipation or transfer rate. The spectrum for the 2D inverse energy cascade is identical with that for the direct cascade towards smaller scales that Richardson (1926) derived for 3D turbulence. From Eq. (6) the following explicit time dependences of squared drifter separation can be derived (Babiano et al., 1990; Ollitrault et al., 2005),

$$5 \quad D^2(t) \propto \begin{cases} \varepsilon t^3 & \text{inverse energy cascade} \\ \exp(c\eta^{1/3}t) & \text{direct enstrophy cascade} \end{cases} \quad (7)$$

with some positive constant  $c$ . It is known, however, that observing scaling laws (7) does not necessarily prove existence of an inertial energy cascade and the corresponding spectral power law (e.g. Zouari and Babiano, 1994; Tsinober, 2001).

After sufficiently long time, particle motions will become decorrelated and the power law behaviour of squared drifter separation will settle into normal diffusion (Kraichnan, 1966) for which relative diffusivity is expected to be constant (LaCasce and Bower, 2000) and twice the value of absolute diffusivity considered by Taylor (1921).

Following K41 scaling (Kolmogorov, 1941), in the inertial range of two-dimensional turbulence one has (Babiano et al., 1985; Boffetta and Ecke, 2012):

$$S_{2,\parallel}^{(E)}(r), S_{2,\perp}^{(E)}(r) \propto \begin{cases} \varepsilon^{2/3} r^{2/3} & \text{inverse energy cascade} \\ \eta^{2/3} r^2 & \text{direct enstrophy cascade} \end{cases} \quad (8)$$

Eqs. (6) and (8) are special instances of a more general phenomenological correspondence between  $E \propto k^{-\alpha}$  and  $S_2^{(E)}(r) \propto r^{\alpha-1}$  for different values of  $\alpha$ . However, for steep spectra with  $\alpha > 3$  this relationship does no longer hold and the velocity structure function saturates at  $r^2$  (Babiano et al., 1985). Boffetta and Ecke (2012) state that velocity structure functions may provide less information about small scale turbulent components than vorticity structure functions. The latter, however, are not available ~~based on~~ from the drifter data ~~of~~ analysed in this study.

## 2.4 Drifter simulations

20 For drifter simulations we employed the 2D Lagrangian transport module PELETS (Callies et al., 2011), based on surface currents archived from the hydrodynamic model BSHcmod (Dick et al., 2001). BSHcmod is run operationally by the Federal Maritime and Hydrographic Agency (BSH). PELETS, developed at Helmholtz-Zentrum Geesthacht (HZG), is designed for particle tracking on unstructured triangular grids. If ~~instead~~ hydrodynamic fields are provided on a structured grid, as in the case at hand, introducing diagonals splits each rectangular grid cells into two triangles. Using a simple Euler forward method, 25 particle velocities are updated each time a particle passes from one to another triangular grid cell. As a result of this concept, time step is not a constant. It has, however, an upper limit. If no edge is reached within 15 min, an additional update of drift velocity will be triggered.

BSHcmod is run on a two-way nested grid covering both the North Sea and the Baltic Sea. In the German Bight its horizontal resolution is 900 m. Although the vertical coordinate in BSHcmod is dynamical (Dick et al., 2008), re-gridded archived output

represents surface currents in terms of the mean in an upper 5 m water column. In a model validation study, Callies et al. (2017) found that an additional wind drag in terms of 0.6 % of the 10 m wind velocity  $\mathbf{u}_{10m}$  is appropriate to compensate for the lack of vertical grid resolution in archived model output. Therefore, for simulating drifter location  $\mathbf{x}$  as function of time  $t$ , the following equation is used:

$$5 \quad \frac{d\mathbf{x}}{dt} = \hat{\mathbf{v}}_E = \mathbf{v}_E + \beta \mathbf{u}_{10m} \quad (9)$$

Here  $\mathbf{v}_E$  denotes Eulerian marine surface currents from BSHcmod, archived on a 15 min basis, and  $\mathbf{u}_{10m}$  [corresponding](#) atmospheric forcing from the regional model COSMO-EU (Consortium for Small-Scale Modelling; Schulz and Schättler, 2014) run by the German Meteorological Service (Deutscher Wetterdienst - DWD) with spatial resolution 7 km. The value 0.006 is assigned to weighting factor  $\beta$ . This value, [estimated by Callies et al. \(2017\) for the same drifter type](#), seems largely  
 10 consistent with findings of a more recent experimental study by Meyerjürgens et al. (2019). From seven drifters tracked in the German Bight they estimated a wind slip of 0.27% and a total wind induced drifter motion of 1% of 10 m winds.

Grid resolution limits the scale of flow features that can be resolved. Drifter separations of less than 1 km are clearly beyond the resolution of BSHcmod. The general approach to overcome such problem is to include sub-grid scale turbulent processes via a scale-dependent random diffusion term. With such approach being implemented, even particles released at the same  
 15 initial location will start separating. Assuming that movements in the two dimensions are decoupled, in PELETS updates of a particle's position vector  $\mathbf{x}(t)$  after time  $dt$  are described by the following discretized version of the corresponding stochastic Langevin equation for each vector component  $x_i$ :

$$dx_i(t) = x_i(t + dt) - x_i(t) = [\hat{v}_{E,i}(t) + v'_i(t)] dt = \hat{v}_{E,i}(t) dt + \sqrt{2K} dW(t) \quad (10)$$

The right hand side of this equation combines a deterministic Eulerian velocity component  $\hat{v}_{E,i}(t)$  with a white-noise-driven  
 20 diffusion term  $v'_i(t)$ .  $K$  denotes horizontal eddy diffusivity and  $W$  is a Wiener process, independent increments of which have a zero mean and a second order moment  $\langle dW^2 \rangle = dt$ . Eq. (10) is appropriate for time increments that exceed the time particles need to lose memory of turbulent momentum (Heemink, 1990; Zambianchi and Griffa, 1994). The assumption of a clear gap between scales of mean and turbulent motions, respectively, also underlies the common eddy-diffusion parametrization as the Eulerian analogue of the Lagrangian model Eq. (10).

25 Following Schönfeld (1995), diffusivity  $K$  is assumed to depend on a characteristic length scale  $l$  according to a 4/3 power law (Stommel, 1949):

$$K(l) = K(l_0) \left( \frac{l}{l_0} \right)^{\frac{4}{3}} \quad (11)$$

For a reference length scale  $l_0 = 1$  km we chose  $K(l_0) = 1$  m<sup>2</sup>/s. This value roughly agrees with the value of 2.5 m<sup>2</sup>/s for a reference length scale of one nautical mile chosen by Schönfeld (1995). The length scale  $l$  in Eq. (11) was chosen to equal  
 30 spacing of the numerical grid.

To improve performance at early times after drifter deployment, Eq. (10) may be replaced by a random flight model that assigns a finite memory to turbulent drifter velocity (Durbin, 1980; Heemink, 1990; Griffa et al., 1995; LaCasce, 2008):

$$v'_i(t) = \left(1 - \frac{dt}{T_L}\right) v'_i(t - dt) + \frac{\sqrt{2K}}{T_L} dW(t) \quad (12)$$

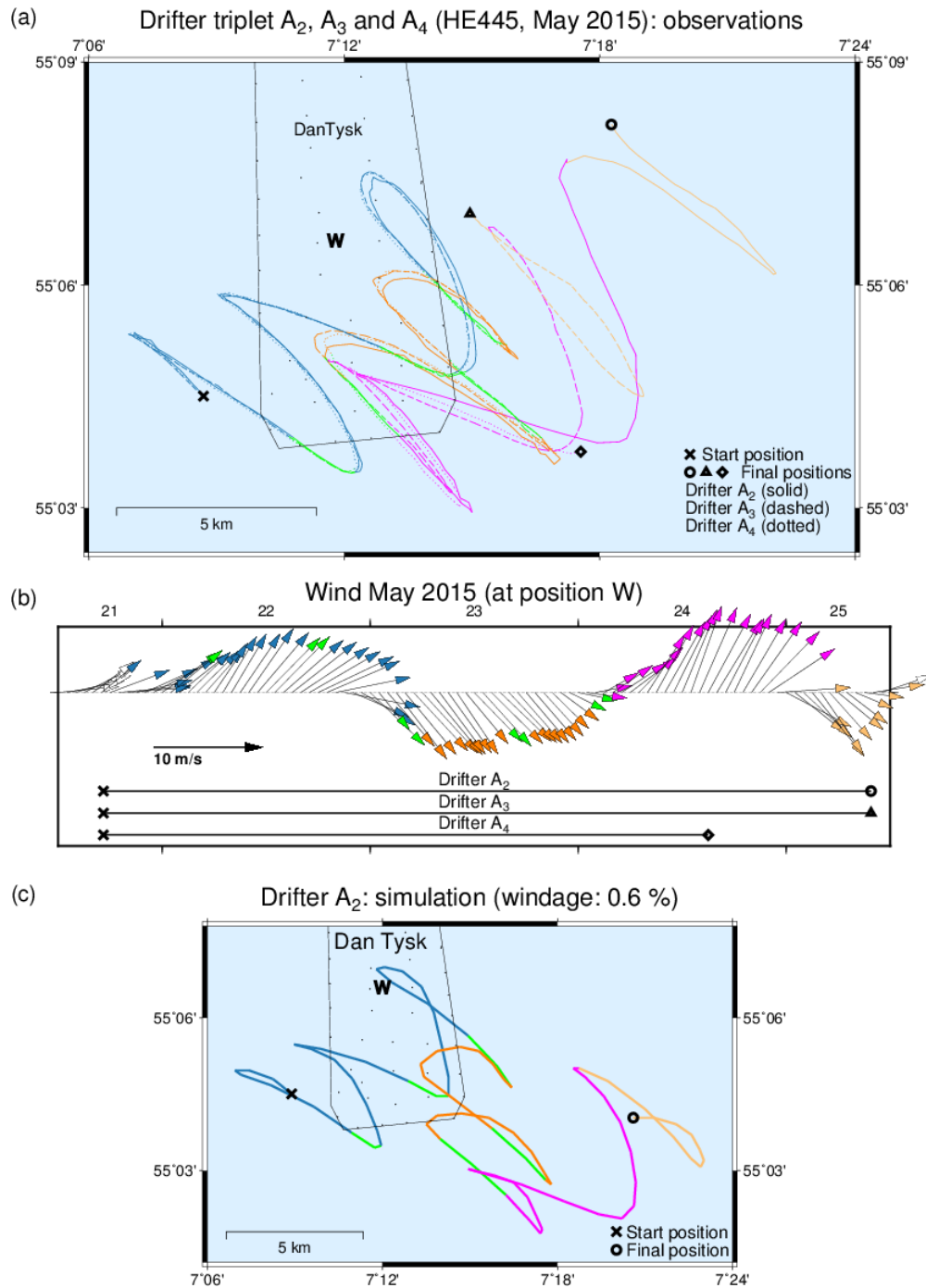
Here  $T_L$  denotes the Lagrangian decorrelation time. For  $dt = T_L$ , Eq. (12) coincides with the turbulent component in Eq. (10).

- 5 For drift times  $t - t_0$  much exceeding  $T_L$ , the diffusivity  $K$  equals the product  $\sigma^2 T_L$  (Falco et al., 2000), where  $\sigma^2$  denotes the turbulent velocity variance. With this substitution the random component of the turbulent velocity component  $v'_i$  assumes the form  $\sqrt{2\sigma^2/T_L} dW(t)$  which is more common (e.g. Griffa et al., 1995; Falco et al., 2000; Ohlmann et al., 2012). The advantage of Eq. (12) is that it directly refers to the scale dependent model parameter  $K$  in Eq. (11).

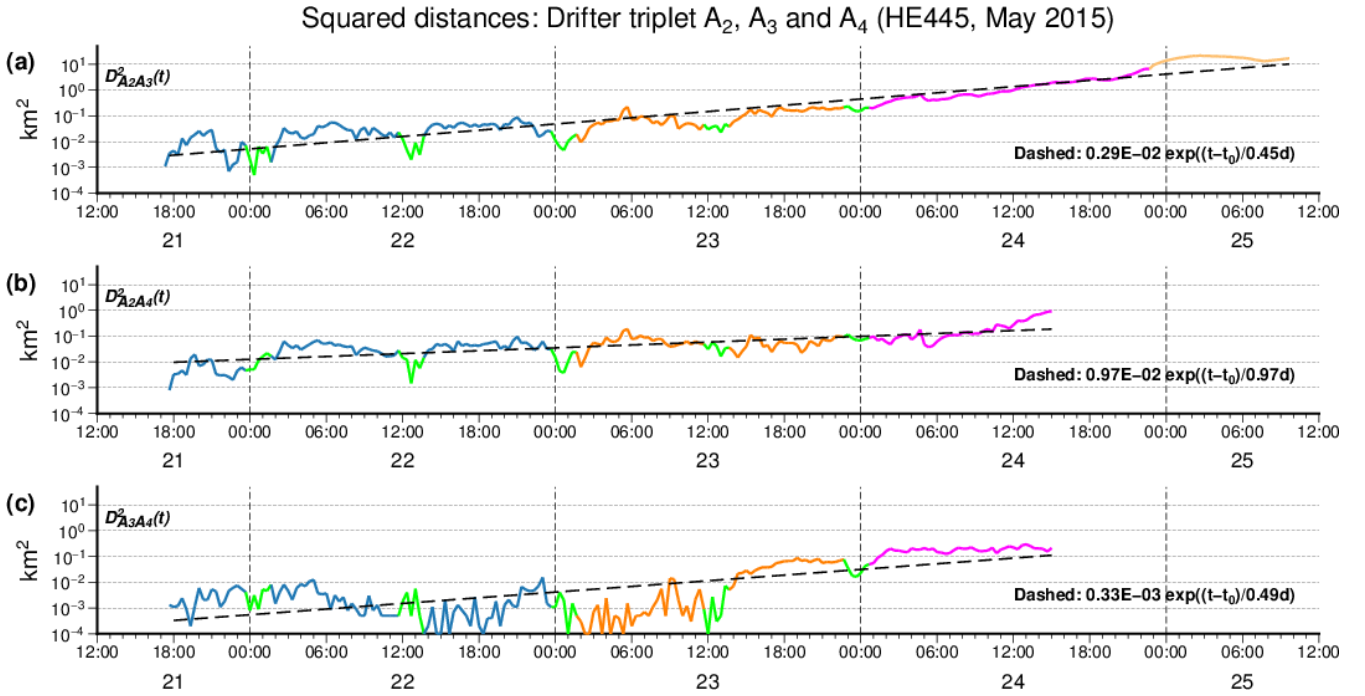
### 3 Results

- 10 The objective of this study is to examine whether drifter separations observed during three different experiments reflect the presence of wind farm related turbulence. It is reasonable to assume that wind farm effects would increase with decreasing distance between drifter and wind farm. However, due to the large wind farm area this distance is not well defined. Table 3 lists for each drifter its distance from the wind farm at the time of its first GPS based localization. The table provides two different measures, referring to either the center of the wind farm or the location of the nearest wind turbine. The two distances may  
 15 differ by a factor exceeding four (see experiment A), getting similar only when drifters are already far from the wind farm (see experiment C). Comparing experiments A and B, for instance, a clear ranking with regard to distance to the nearest wind turbine is not reproduced when referring to wind farm centres. Considering experiment C, distances of drifters  $C_5$  and  $C_6$  seem generally comparable with those of drifters  $B_1$ - $B_3$ , while for all other drifters  $C_i$  distances increase substantially.

- It must also be noted that all experiments were conducted in different years and therefore under completely independent  
 20 weather conditions. Unfortunately, experiments can therefore not be interpreted as a set of realizations within a fixed experimental set-up. Section 3.1 presents details of all drift trajectories~~analysed in this study. Plots show how drifters are~~, showing how  
drifters were located relative to wind farms and which winds they ~~are~~were exposed to. In Section ~~3.2 kinetic energy spectra are studied to assess the possible relevance of tidal movements as a source of turbulent energy. Then Section 3.3 presents probabilities of separation velocities and velocity structure functions. To check the hypothesis 3.3, looking for indications~~that  
 25 drifter separation might be influenced by wind farm related turbulence, theseseparation velocities and velocity structure func-  
tions are shown for different groups of drifters, separating in particular those drifters that are far enough to presumably not  
experience wind farm effects ~~. The section concludes with some results of simulated drifter dispersion (Section 3.4~~( $C_1$ - $C_4$ ,  $C_7$ - $C_{10}$ ; see Table 3).



**Figure 2.** (a) Observed trajectories of drifters A<sub>2</sub>, A<sub>3</sub> and A<sub>4</sub>. (b) Wind conditions during the experiment. The panel also ~~shows~~ indicates travel times of all trajectories. (c) Simulated trajectory A<sub>2</sub>. Different colours partitioning the observational period are used consistently across all panels.



**Figure 3.** Time evolutions of pairwise squared distances between members of drifter triplet  $A_2$ ,  $A_3$  and  $A_4$ . Segmentation using different colours is consistent with Fig. 2. Dashed lines represent the fitted exponential growth models annotated in each graph.

### 3.1 Drifter trajectories and separations

#### 3.1.1 Drifter set A

Trajectories of drifters  $A_2$ ,  $A_3$  and  $A_4$  are shown in Fig. 2a. Different colours are used to distinguish between periods with different wind conditions (Fig. 2b) or to highlight periods of special interest. Superimposed to tidal oscillations roughly oriented between south-east and the north-west, the drifter triplet first moves from the location of its deployment in the south-west of DanTysk towards the north-east, roughly in parallel with prevailing winds. Within about one day the drifters cross the OWF area. After winds veered to blow from the north-west, residual transports reverse their direction and the tide induced pattern of oscillatory drifter movements is shifted back towards the OWF area. ~~Note that this~~ This reversal does not depend on the choice of wind drag parameter  $\beta$  ~~parametrizing wind drag~~ in Eq. (9) but is already represented by the Eulerian surface currents  $v_E$ . The third day is again characterized by winds from the south-west, giving rise to another reversal of the residual transport direction. ~~Separation between drifters now~~ Now separation between drifters becomes clearly noticeable on the scale of the plot. At the end of the observation period, winds change again and blow from the north-west. The reaction to this last change in wind direction, however, differs between drifters  $A_2$  and  $A_3$  (drifter  $A_4$  has already been recovered at that time), reflecting gradients in residual current fields on a scale of few kilometres (the final distance between  $A_2$  and  $A_3$  is approximately 4 km).



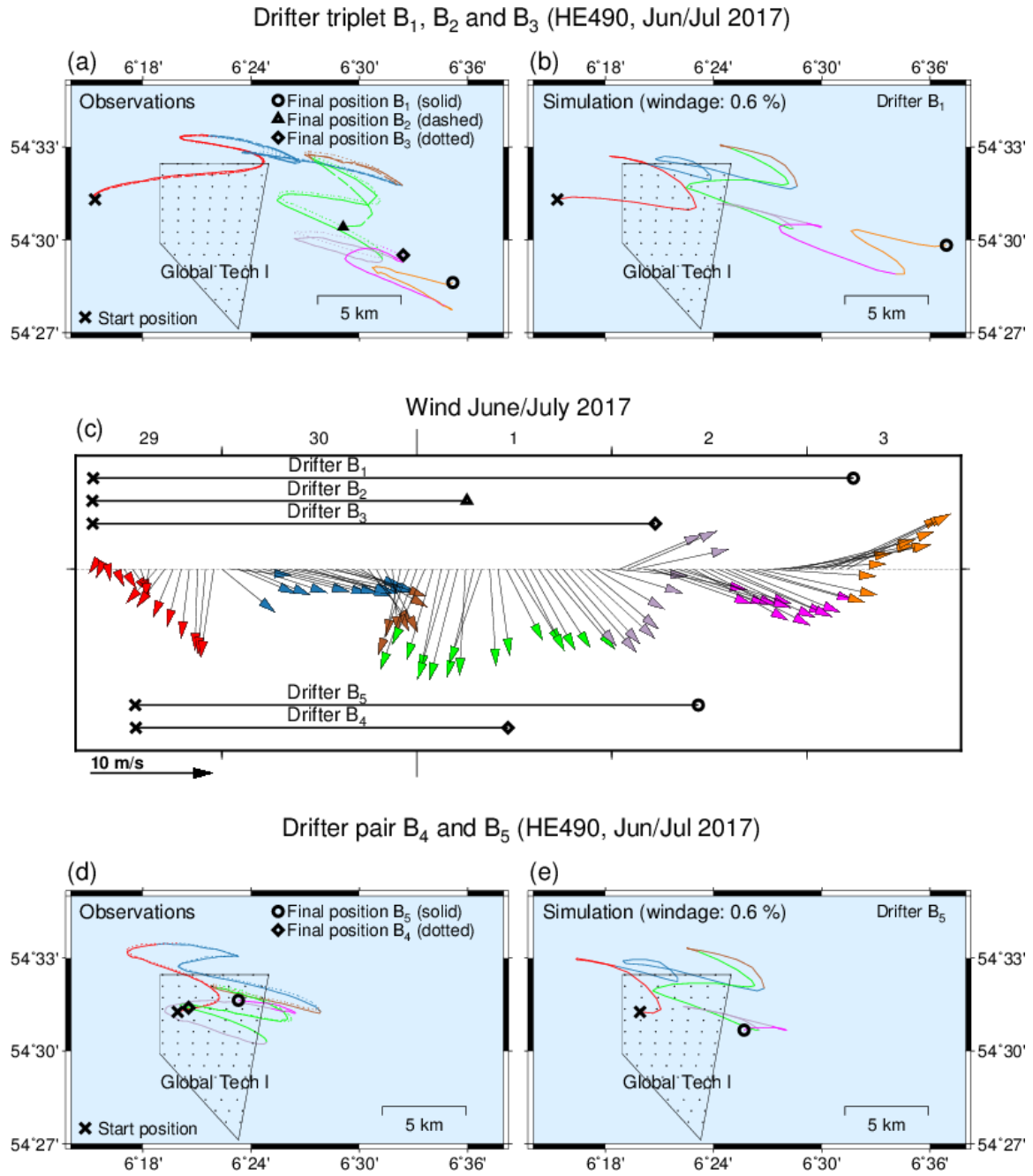
Fig. 2c displays the simulated counterpart of trajectory  $A_2$  without random diffusion. In the model any information about the presence of a wind farm is lacking. Colour-coding agrees with that used in Figs. 2a and b. Simulations well reflect the general patterns observed, which in particular confirms the reliability of winds underlying the simulations. On the mean, however, simulated transports are more southward, resulting in an error of about 8 km in the final locations predicted for drifter  $A_2$  or  $A_3$  (as initial location practically coincide, corresponding simulations-simulations without diffusion would differ just slightly in drift time). Simulation errors seem substantial relative to observed overall drifter displacements ( $A_2$ : 12.2 km;  $A_3$ : 8.1 km), but are very moderate in the light of the lengths of undulating drift paths ( $A_2$ : 87.4 km;  $A_3$ : 85.7 km; see Tab. 1).

For all three pairs yielded from the drifter triplet, semi-log plots in Fig. 3 show how squared drifter separations develop with time. Techniques for the evaluation of three particle dispersion (LaCasce and Ohlmann, 2003; Berta et al., 2016) were not applied. Colours used for time segmentation are consistent with those in Fig. 2. For each drifter pair, a model of exponential growth was fitted, possibly indicative of, as expected for a non-local regime, was fitted. For the two pairs  $A_2$ ,  $A_3$  and  $A_3$ ,  $A_4$  very similar e-folding times (about half a day) were found obtained, corresponding with a bit less than one day for non-squared separation. For drifters  $A_2$ ,  $A_4$  the estimated e-folding time is approximately twice as large. It should be noted, however, that the fit in Fig. 3c is quite uncertain and mainly based on the behaviour at larger distances. The more random behaviour observed at smaller distances might already reflect uncertainty in measurements (a squared distance of  $10^{-3}$  km<sup>2</sup> corresponds with the 90<sup>th</sup> percentile of errors measured in the lab, see Section 2.1). However, it is hard to tell why this uncertainty does not show up for the other two drifter pairs.

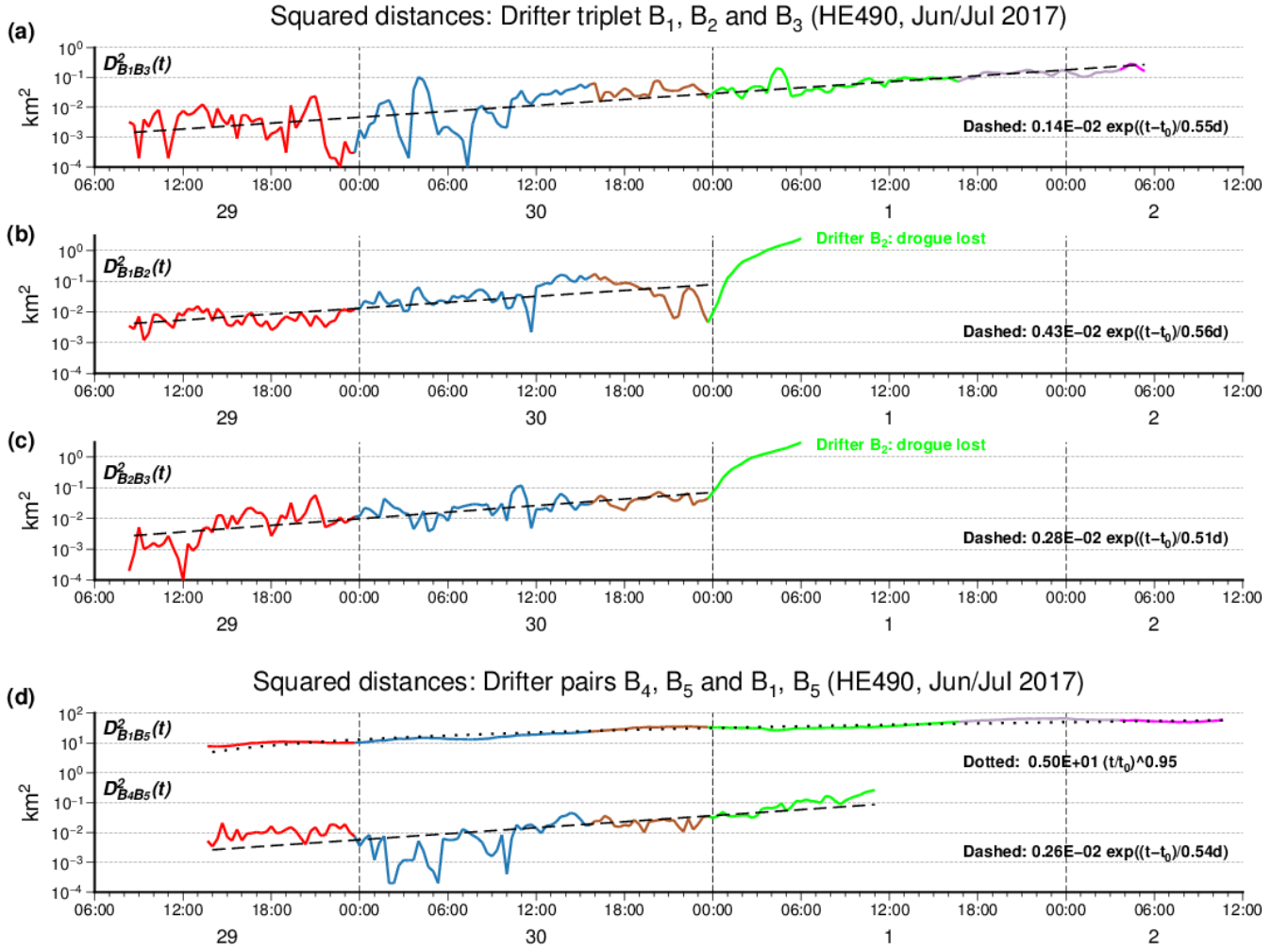
It should be noted that according to Fig. 3 drifter separation cannot really be described as growing exponentially, superimposed by random noise. Instead, dips (coloured in green) in separation between drifter  $A_2$  and either  $A_3$  or  $A_4$  (panels a and b) occur with regularity. According to Fig. 2a all those dips coincide with tidal currents oriented towards the south-east, possibly indicating convergent surface currents related to gradients in bathymetry. The effect is evident mostly for the two pairs including drifter  $A_2$  which tends to separate from the other two drifters (see Fig. 2a). In Fig. 3c the tidal signal does not emerge until separation of drifters  $A_3$  and  $A_4$  exceeds a threshold of approximately 100 m (corresponding with a squared separation of  $10^{-2}$  km<sup>2</sup>). During periods of about 6 hours (again half a tidal cycle), roughly between 22 May 06:00 and 23 May 12:00, the two drifters  $A_3$ ,  $A_4$  are closer than the exponential model predicts. In sum, the exponential model should be seen as just an indicator of what could be expected theoretically. Specification of uncertainty bounds of the fitted model does not seem reasonable in this context.

### 3.1.2 Drifter set B

This experiment comprised two drifter releases at slightly different locations. One triplet ( $B_1$ ,  $B_2$  and  $B_3$ ) was released in the west of OWF Global Tech I (see Fig. 1) and drifters were tracked for between 1.9 and 3.9 days (see Tab. 1). Observations are shown in Fig. 4a, a corresponding simulation without random diffusion in Fig. 4b. With a delay of a bit more than five hours, another two drifters ( $B_4$  and  $B_5$ ) were deployed inside the OWF and tracked for 1.9 and 2.9 days, respectively. Observations and a corresponding simulation are shown in Figs. 4d and e, respectively.



**Figure 4.** (a) Observed trajectories B<sub>1</sub>, B<sub>2</sub> and B<sub>3</sub>. (b) Simulated trajectory B<sub>1</sub>. (c) Wind conditions during the observational period. In addition the panel indicates travel times of all trajectories are indicated. (d) Observed trajectories B<sub>4</sub>, B<sub>5</sub>. (e) Simulated trajectory B<sub>5</sub>. Different colours are used for a consistent segmentation of the observational period.



**Figure 5.** (a-c) Time evolutions of pairwise squared distances between members of the drifter triplet  $B_1$ ,  $B_2$  and  $B_3$ . Dashed lines indicate the fitted exponential growth models annotated in each graph. In the two cases with drifter  $B_2$  involved, data in July are ignored in the fit as at that time the drifter presumably lost its drogue. (d) Distance between drifter pair  $B_4$ ,  $B_5$ . For comparison, the panel also contains the distance between the two drifters  $B_1$  and  $B_5$  that belong to different clusters. Colours used for segmentation of the observational period agree with those used in Fig. 4.

Time evolutions of squared drifter separations are presented in Fig. 5. For all drifter pairs an exponential model fitted to the data revealed approximately the same e-folding time of half a day. However, again these fits must not be overrated as observations show large variability at small drifter distances. Spatial scales at which such variability occurs seem comparable to those in experiment A (compare Figs. 5d and 3c) and again fluctuations might be attributable to uncertainties in GPS based drifter localization. On the other hand, variations show a certain coherence in time and sometimes include distances (up to 300 m, see Fig. 5a) that clearly exceed the limits of uncertainty.

Fig. 5d also includes the evolution of the squared distance between drifters  $B_1$  and  $B_5$  that belong to different clusters but nevertheless have overlapping periods of travel time. The fitted power law with an exponent close to one indicates a diffusive regime with linear growth of squared separation. This would be expected for separation distances larger than the typical size of relevant eddies, when uncorrelated velocities imply a constant relative diffusivity (e.g. LaCasce, 2008). According to Fig. 4d the two drifters stay always within or at least in the immediate vicinity of OWF Global Tech I so that OWF related turbulence could possibly explain diffusive behaviour at drifter separations between roughly 3 and 8 km observed in this case.

### 3.1.3 Drifter set C

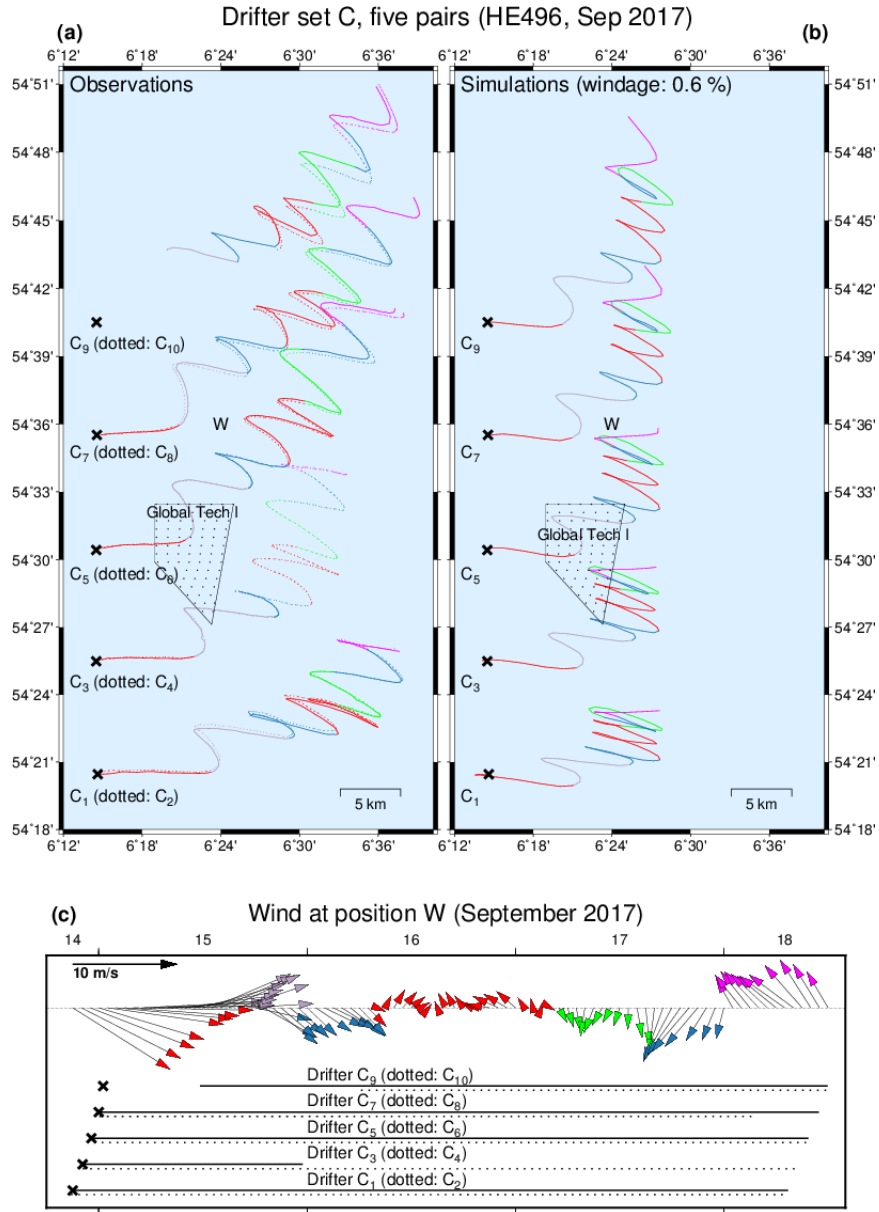
In experiment C, five drifter pairs were deployed at different locations along a south-north transect west of OWF Global Tech I (Fig. 6). Unlike the other two experiments, experiment C included periods of rather weak wind conditions (see Fig. 6c). All drift trajectories are characterized by persistent transports to the north-east. Generally, simulations tend to underestimate the eastward transport components but successfully represent a south-north gradient of the northward drift velocity component.

Squared separations reveal large differences between the five drifter pairs (Fig. 7). Only for one pair ( $C_5$ ,  $C_6$ ) relative dispersion growing exponentially seems a reasonable assumption (Fig. 7c), for all other pairs a less systematic non-monotonic behaviour is observed (the time series for drifter  $C_3$  is too short for an assessment). Fitting the exponential growth model for squared distances between drifters  $C_5$ ,  $C_6$  much depends on times when drifters have already left the OWF but may still feel OWF related turbulent wakes. The origin of short term decreases of distance during the first day of the drifter journey remains unclear.

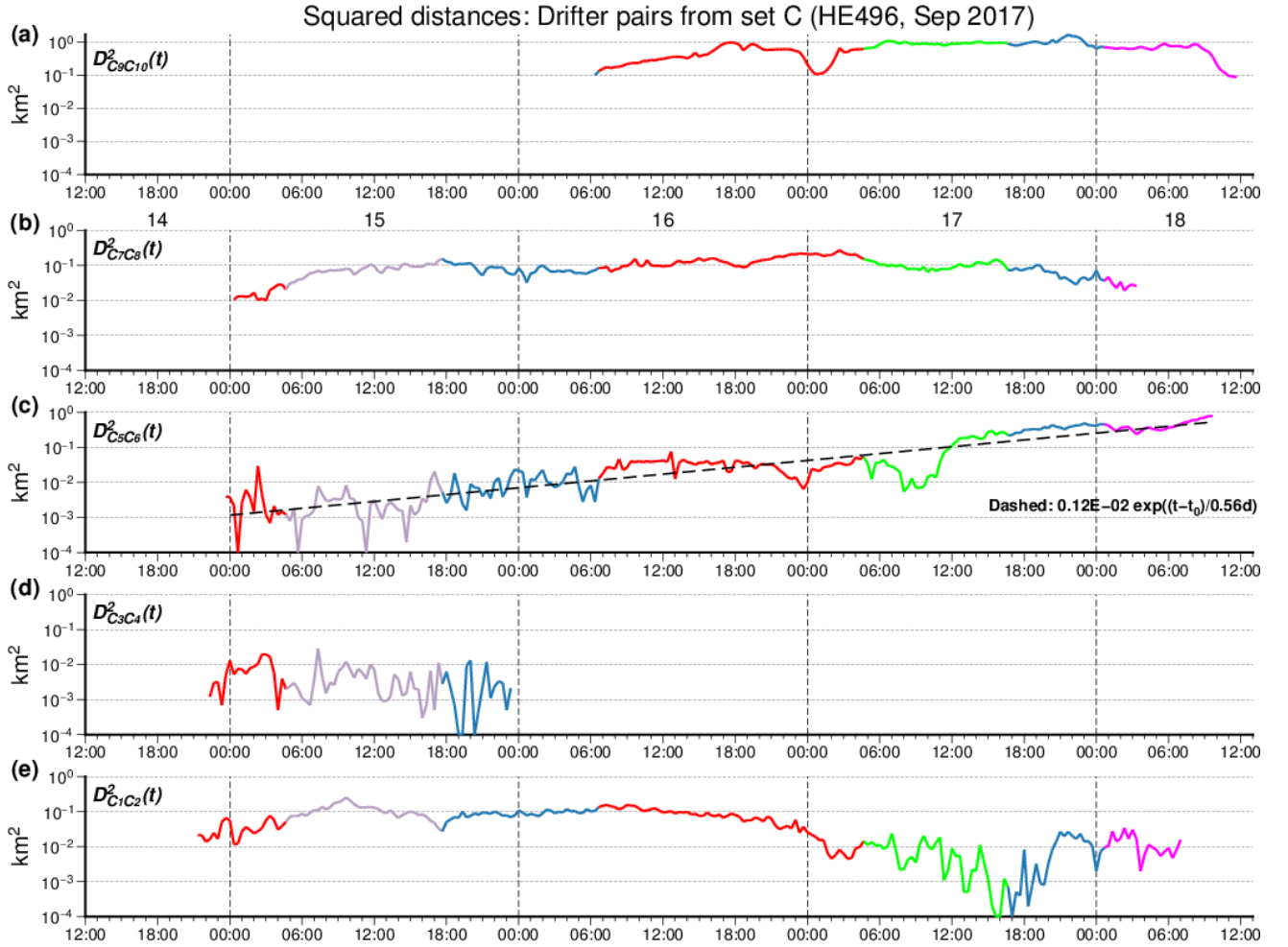
Fig. 8 shows the time evolutions of squared distances between drifters selected from different pairs released at different locations. Due to the fact that initial distances between drifters released together (Table 2) are negligible relative to distances between different drifter pairs, we involved just one drifter from each pair (we chose  $C_4$  over  $C_3$  as the latter drifter's trajectory ended early and had little temporal overlap with other drifters, see Fig. 6c). Due to the regular spacing of drifter pair release points (see Fig. 6a), the regrouped drifter pairs fall into classes with initial distances of approximately 5, 10, 15 or 20 nautical miles. Even for the same initial separation drifters are found to disperse very differently, trends even differ in sign. **Averaging** It is quite obvious that averaging such observations would **obviously** not provide meaningful insights.

### 3.2 Kinetic energy spectra

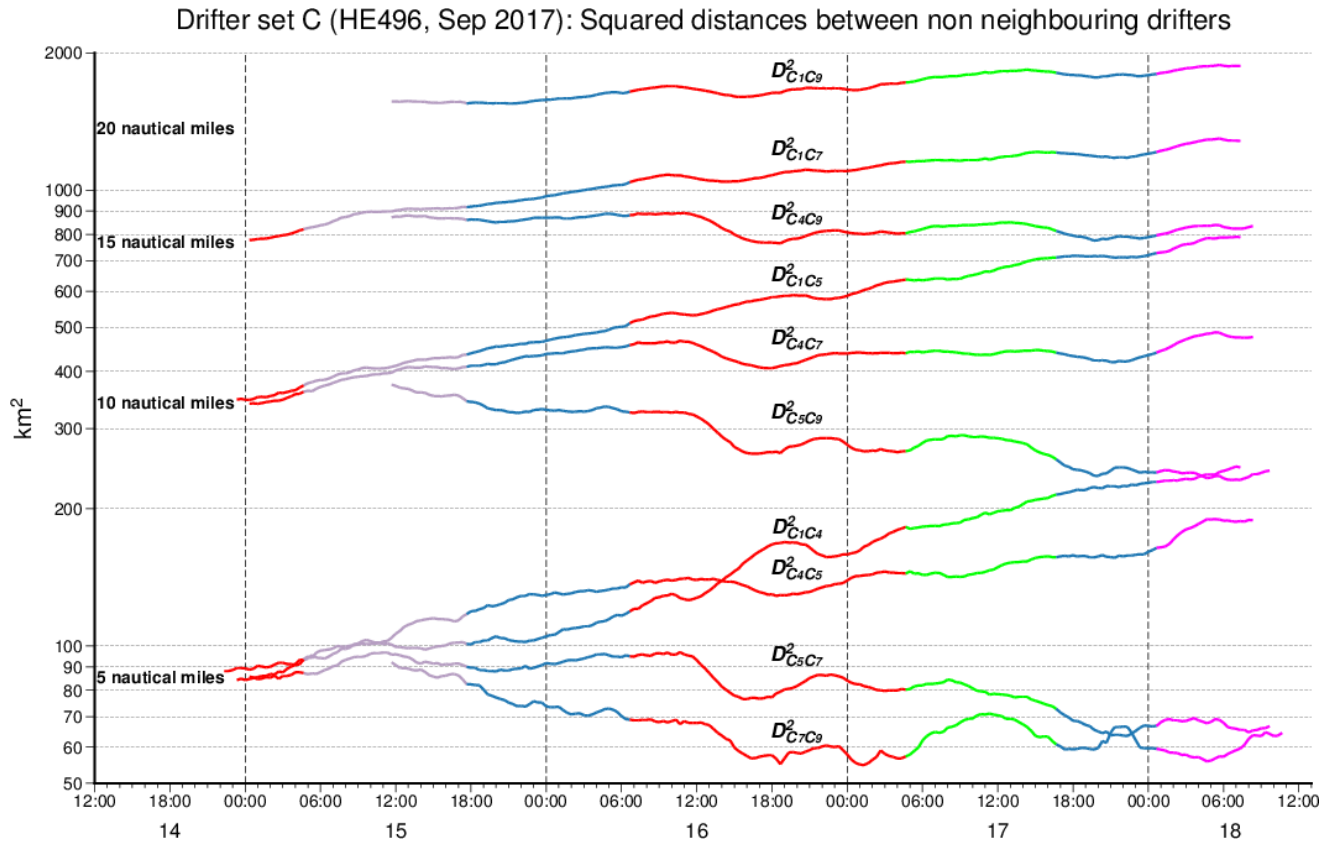
Fig. 9 shows a power spectrum of Eulerian velocities observed at research platform FINO3 (see Fig.1) during a two months period . The station is located next to where drifters from drifter set A were deployed. Although the time period underlying



**Figure 6.** (a) Trajectories of five drifter pairs. (b) Corresponding simulations. (c) Wind conditions during the observational period. Horizontal lines indicate drifter travel times. Different colours are used for a consistent segmentation of the observational period.



**Figure 7.** Panels show for each drifter pair the time dependent squared distance between them. For drifter pair  $C_5$ ,  $C_6$  an exponential growth model was fitted, with an e-folding time as indicated in the graph. Colours used for segmentation of the observational period agree with those used in Fig. 6.



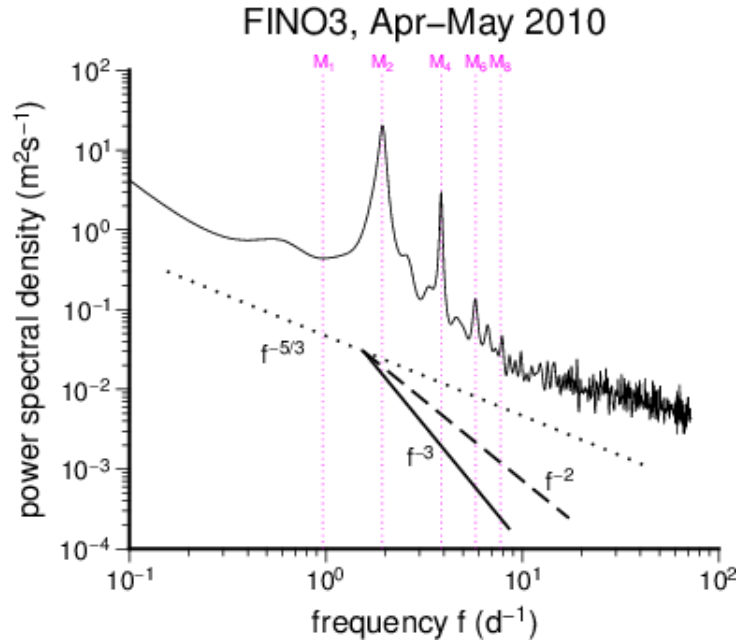
**Figure 8.** Time evolutions of squared distances between drifters not released together (members of different drifter pairs). Colours used for segmentation of the observational period agree with those used in Figs. 6 and 7.

Fig. 9 does not overlap with our field experiment, the spectrum nevertheless summarizes the general characteristics of kinetic energy at that location.

The spectrum shows a broadened peak around the frequency of the lunar semidiurnal tide  $M_2$  which is the principal tidal constituent in European continental shelves. In addition a clear signal of overtide  $M_4$  occurs, higher harmonics are only weakly recognizable. Overtides play a major role for shallow sea tidal variability and are also relevant in the German Bight region (e.g. Stanev et al., 2014). They are generated by tidal distortion due to non-linear mechanisms of either advection, causing all even harmonics such as  $M_4$ , or friction, causing odd harmonics such as  $M_6$  (Andersen, 1999).

According to Callies and Ferrari (2013) it is important for better understanding of the role of submesoscale turbulence to know how motions represented in the Eulerian spectrum project onto spatial scales. In a first step we compare the Eulerian energy spectrum (Fig. 9) with its Lagrangian counterparts. Fig. 10 shows Lagrangian velocity spectra analysed from four different drifters. Fig. 10a refers to drifter  $A_5$  that is not subject of our study on drifter pairs. Drifter  $A_5$  travelled, however, for nearly 49 days (see Callies et al., 2017) so that the length of data recorded compares to the time span underlying the Eulerian





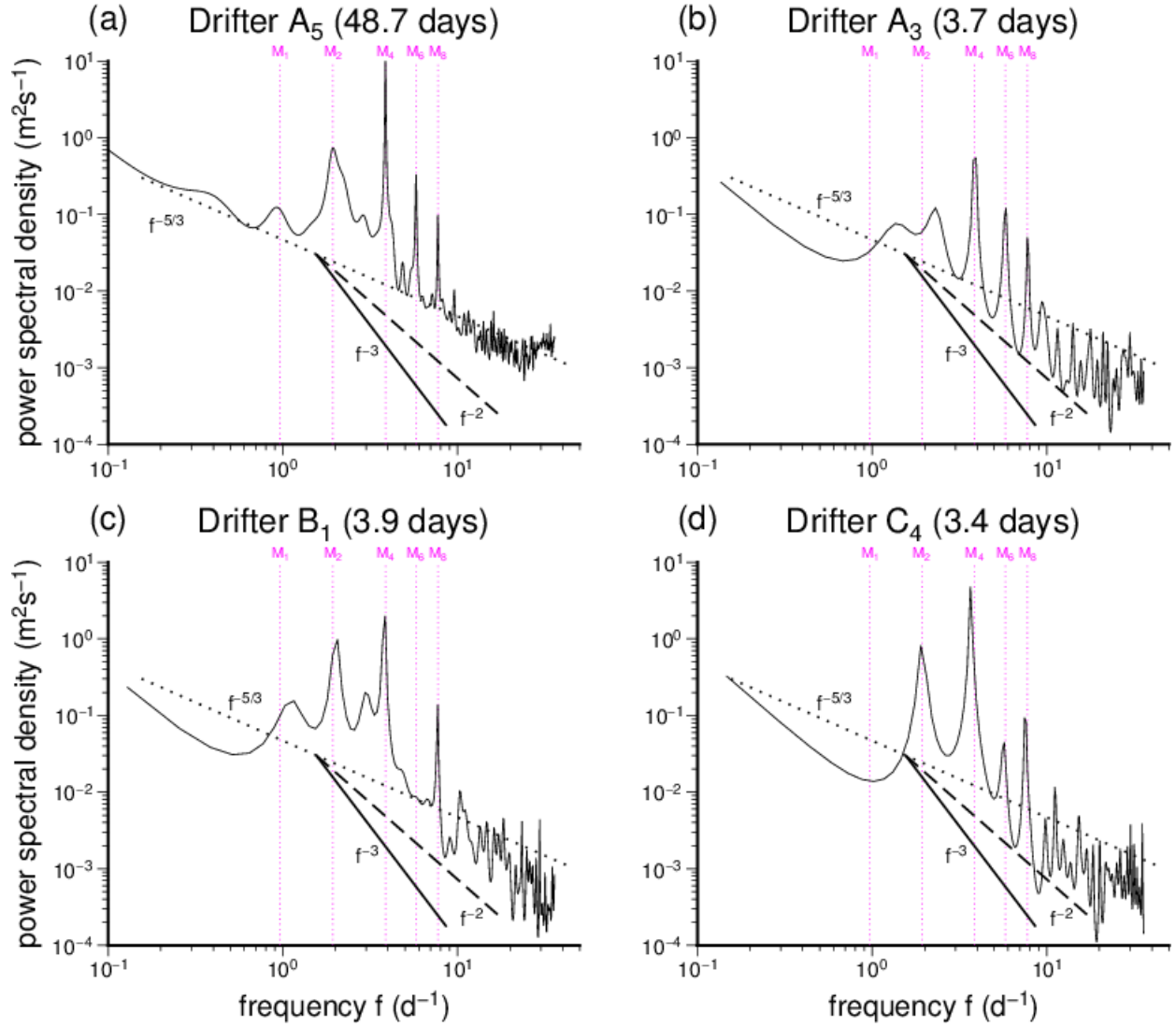
**Figure 9.** Power spectrum of Eulerian velocities observed at research platform FINO3 (see Fig. 1). Magenta coloured lines indicate frequencies of tidal constituents. Auxiliary black lines indicate reference spectral slopes.

spectrum in Fig. 9. In the low frequency range spectral slopes (approximately  $-5/3$ ) seem similar in the Eulerian and Lagrangian framework, respectively. Note, however, that these low frequency estimates are not very robust considering the limited lengths of time series. In the high frequency range a theoretical spectrum with slope  $-2$  (Landau and Lifshitz, 1987) approximates the Lagrangian data reasonably well. The Eulerian spectrum (Fig. 9) flattens out at its high frequency end beyond the tidal modes, reaching a slope of slightly less than  $-5/3$  which would be expected for an inertial energy cascade.

Panels (b)-(d) in Fig. 10 refer to three drifters from our present study. Although these drifters travelled for much shorter times, the spectra found are again at least not in obvious contradiction with an assumed theoretical  $f^{-2}$  spectrum. It must be noted, however, that uncertainties are high and that the spectrum for drifter A<sub>2</sub> (not shown), for instance, could also be approximated by  $f^{-5/3}$ . A finding consistent among all drifters including reference drifter A<sub>5</sub> is that the M<sub>2</sub> peak in the Eulerian spectrum (Fig. 9) is less dominant or smoother in the Lagrangian spectra (Fig. 10). Instead, sharp peaks of overtones up to even M<sub>8</sub> are much more pronounced in Lagrangian than in Eulerian spectra.

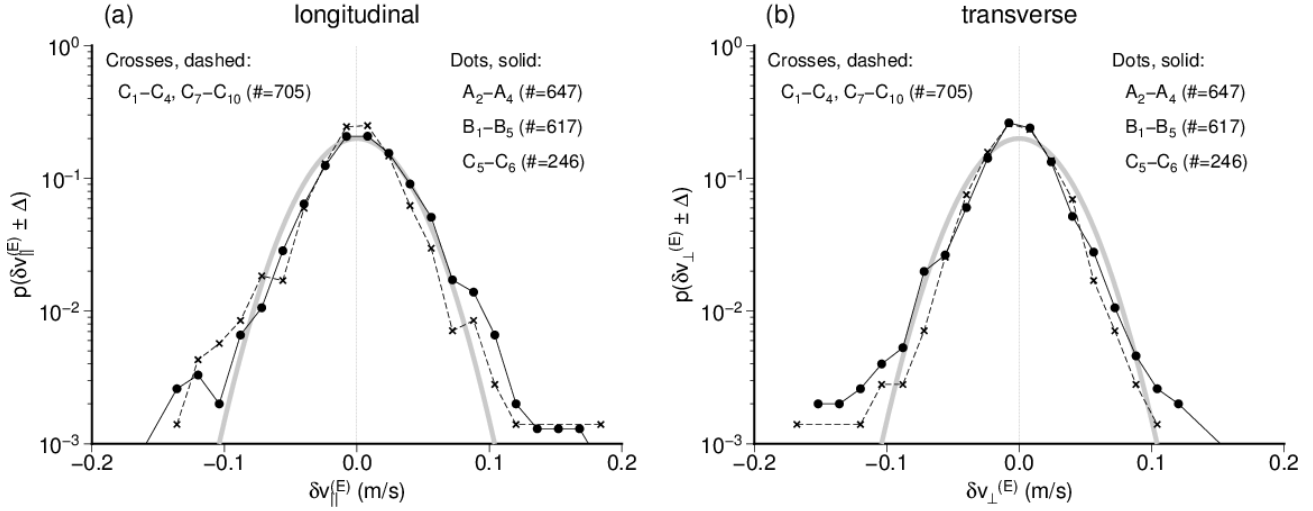
### 3.3 Velocity increments and structure functions

While single point velocity fluctuations are often close to a Gaussian distribution (e.g. LaCasce, 2005), this is often not true for two-point statistics (e.g. Tsinober, 2001, his Fig. 7.3). Fig. 11 shows the distributions of both longitudinal and transverse components of Eulerian separation velocity (see Eqs. (3) and (4)). The analysis refers to a subset of data conditioned by



**Figure 10.** Power spectra of Lagrangian velocities observed for four selected drifters. Auxiliary black lines indicate reference spectral slopes. Vertical magenta lines indicate frequencies of tidal constituents.

## Eulerian separation velocities ( $r < 2500$ m)



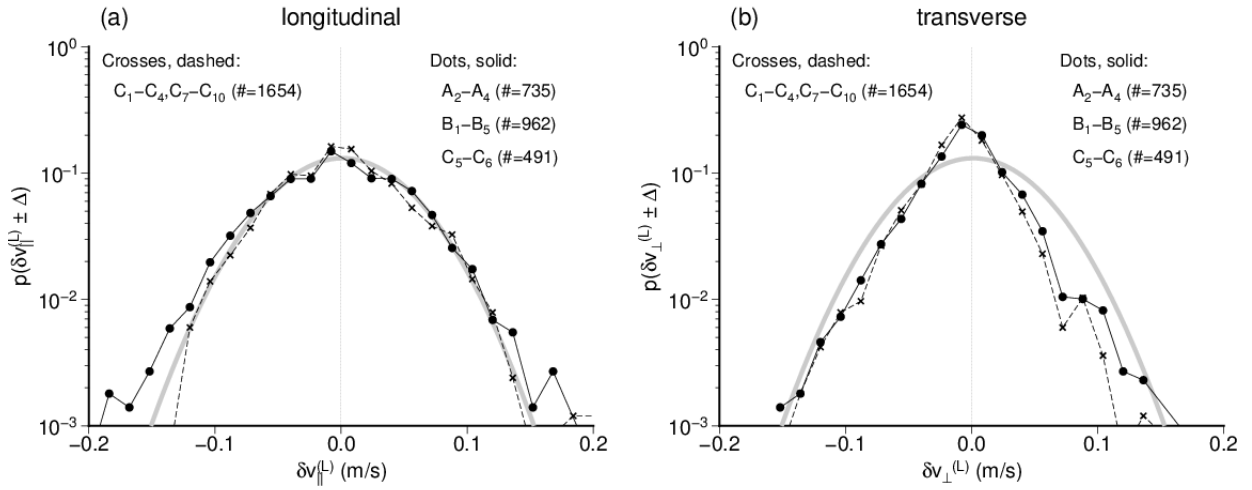
**Figure 11.** Probability distribution functions of (a) longitudinal and (b) transversal components of Eulerian separation velocities. Velocities grouped in bins of  $2\Delta=0.016$  m/s width were evaluated for drifter separations  $r < 2500$  m. Solid lines (dots) refer to drifters that were particularly close to and even entered OWFs (all drifters from sets A and B plus drifters  $C_5$  and  $C_6$ ), dashed lines (crosses) to those that presumably did not experience direct OWF effects (all remaining drifters from set C). For each group of drifters the number of pairwise samples it contributed is indicated. A reference normal distribution (indicated in grey) was fitted to the longitudinal component (panel (a)) and then just copied to panel (b) as a reference that facilitates a comparison of longitudinal and transverse velocity components.

drifter separations below 2500 m, which is roughly the maximum distance drifters released as pairs reach within the few days considered. It excludes, however, combinations of drifters deployed at different locations (as occurs in drifter sets B and C).

According to Fig. 11 probability distribution functions of longitudinal and transverse Eulerian separation velocities are both nearly Gaussian and not very different from each other. Both graphs in Fig. 11 also distinguish between drifter pairs getting in direct contact with OWFs (~~separating exponentially in time~~) and others (~~from in the sense that they enter the OWF area and others that travel more distant from the wind farm~~ (drifter set C, ~~separating non-monotonically~~). However, results). Results for these two groups ~~are turn out to be~~ very similar, slight differences can possibly be attributed to different weather conditions under which observations were taken. Longer tails of distributions indicate probabilities of fast divergence or convergence being slightly higher than expected for strictly Gaussian distributions. However, distributions in Fig. 11 do not show the pronounced exponential tails Poje et al. (2017) analysed from Grand LAgrangian Deployment (GLAD) data in the northern Gulf of Mexico in particular at small separation scales.

The limited number of drifters travelling pairwise motivates a consideration of Lagrangian velocity increments  $\delta v^{(L)}$  along single trajectories instead of Eulerian velocity increments  $\delta v^{(E)}$  between trajectory pairs. Increments  $\delta v^{(L)}(t)$  were obtained as differences between velocities of the same drifter at times  $t$  and  $t + \tau$ , where  $\tau = 20$  min corresponds with the time resolution

## Lagrangian velocity increments



**Figure 12.** Distributions of (a) longitudinal and (b) transversal components of Lagrangian separation velocities, calculated from binned velocities (bin width  $2\Delta=0.016$  m/s) based on 20 min time resolution. Solid lines (dots) refer to drifters that were particularly close to and even entered OWFs (all drifters from sets A and B plus drifters  $C_5$  and  $C_6$ ), dashed lines (crosses) to those that presumably did not experience direct OWF effects (all remaining drifters from set C). A normal distribution fitted to the longitudinal data (indicated in grey) was just copied from panel (a) to panel (b) as a reference that facilitates a comparison of distributions of the two velocity components.

of drifter observations. Distributions of the two components  $\delta v_{||}^{(L)}$  and  $\delta v_{\perp}^{(L)}$  are shown in Fig. 12. Note that sample sizes annotated in Fig. 12 are larger than those in Fig. 11 because, in the Lagrangian framework data, data from just one drifter must be available as opposed to two in the Eulerian framework.

Like in the Eulerian framework, distributions of Lagrangian longitudinal separation velocities look smooth and nearly normal with, however, slightly enhanced probabilities of large positive or negative values. Distributions obtained from different sets of drifters are again very similar. By contrast, distributions of transverse velocity components (Fig. 12b) do not just replicate the corresponding longitudinal distribution as they did in the Eulerian framework (Fig. 11b). Instead, the distributions of transverse Lagrangian velocity increments look more triangular (with more exponential wings) than their longitudinal counterparts (Fig. 12a). They also show a preference of negative values indicating counter-clockwise rotation. The latter possibly arises from  $M_2$  tidal ellipses which in the German Bight preferably rotate counter-clockwise (Stanev et al., 2014).

Returning to the Eulerian framework, Fig. 13 analyses expected drifter separation velocity as function of spatial distance  $r$ , considering the second-order structure functions  $S_{2,||}^{(E)}(r)$  and  $S_{2,\perp}^{(E)}(r)$  (see Eq. (5)). Like in Figs. 11 and 12 the analysis again distinguishes between two groups of drifters classified in terms of their possible contact with OWFs. Auxiliary dashed lines indicate the  $2/3$  slope expected from standard K41 scaling of inertial range turbulence within an either forward (3D) or inverse (2D) energy cascade. An alternative model ( $\sim r^{-2}$ , dotted lines) is associated with the assumption of a direct enstrophy

cascade in two-dimensional turbulence (see Eq. (8)). ~~Based on the limited amount of data available it is impossible to fit any meaningful power law to the data. Nevertheless, some conclusions suggest themselves.~~

The most striking feature that occurs for both  $S_{2,\parallel}^{(E)}$  and  $S_{2,\perp}^{(E)}$  is a plateau like structure in the range of roughly  $r = 50 - 1000$  m. This range falls within the distance between individual turbines of the OWF. The structure seems most pronounced for the transverse structure function analysed for drifters that were in contact with OWFs (Fig. 13b). Although some data points suggest a steeper slope for very small distances  $r$ , the hypothesis of a two-dimensional enstrophy cascade (scaling  $\sim r^2$ ) cannot be substantiated based on Fig. 13.

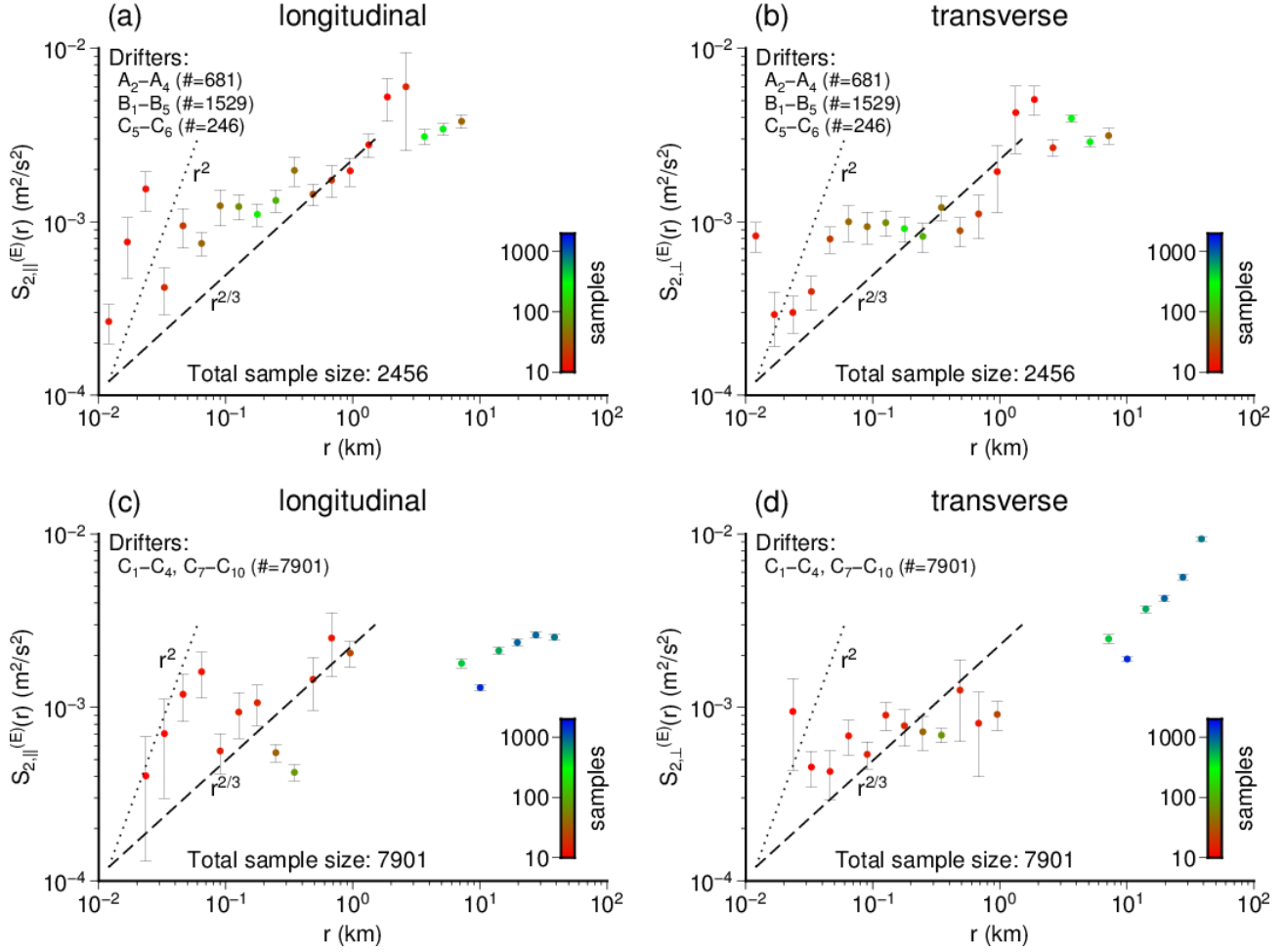
For data from experiment C, values of the longitudinal structure function  $S_{2,\parallel}^{(E)}(r)$  are too scattered to support the assumption of a plateau (Fig. 13c). On the other hand, for the transverse component  $S_{2,\perp}^{(E)}(r)$  even all values in the range of up to 1000 m could be assumed to be on a similar level given the degree of uncertainty indicated in the plot (Fig. 13d). As experiment C includes releases from different locations, Figs. 13c and d cover a larger range of values  $r$  than Figs. 13a and b. For large values of  $r$ , the transverse structure function  $S_{2,\perp}^{(E)}(r)$  in Fig. 13d seems to increase with approximately  $r^{2/3}$  as expected for an inverse 2D energy cascade, for instance. Surprisingly, for the longitudinal component (Fig. 13c) this  $r$ -dependence is missing, values of  $S_{2,\parallel}^{(E)}(r)$  tend to remain on a similar level as for smaller distances.

We did not consider Lagrangian counterparts of the Eulerian structure functions shown in Fig. 13. So far a general consensus about possible scaling laws of Lagrangian velocity structure function seems to be lacking (e.g. Biferale et al., 2008; Falkovich et al., 2012). Another reason is that with increasing values of travel time increment  $\tau$  the contributions from tidal currents will start to dominate Lagrangian single-particle velocity differences.

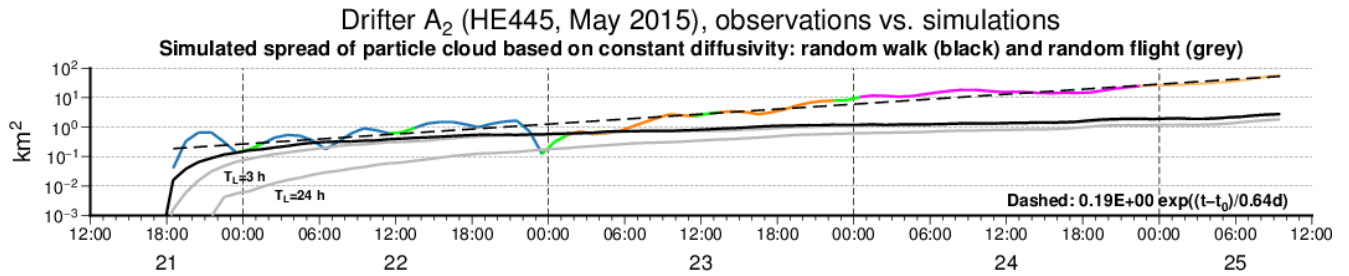
### 3.4 Simulated drifter dispersion

Taking drifter A<sub>2</sub> as an example, Fig. 14 shows the evolution of simulation error in terms of squared separation. Surprisingly, again an exponential model fits quite well, even e-folding time 0.64 days resembles those between different drifters. For comparison, Fig. 14 shows also the simulated spread of a particle cloud, obtained by using a random walk stochastic model superimposed to simulated mean Eulerian currents (Eq. (10)). After a short phase of very quick spreading from a common source point, for a period of approximately one day relative dispersion  $D^2$  (Eq. (3)) of the particle cloud develops in a way similar to simulation error. Later on, however, a simulated linear growth of  $D^2$  clearly underestimates the increase of simulation error.

Replacing the random-walk by a random-flight stochastic model (Eq. (12)), the period with reasonable rates of spreading can be adjusted by changing the values of Lagrangian decorrelation time  $T_L$ . Fig. 14 shows example simulations obtained with Lagrangian decorrelation times  $T_L=3$  h (analysed by Ohlmann et al., 2012, for instance) or  $T_L=24$  h. For larger values of  $T_L$  it takes longer until drifters lose memory of their initial turbulent velocities (zero in our example). Therefore initial turbulent velocities are another tuning parameter of the random flight model (together with diffusivity  $K$ ). In the long term, however, simulated drifter separation will always increase less fast than exponentially.



**Figure 13.** Second order velocity structure functions depending on drifter separation  $r$ . The range of distance  $r$  was subdivided into 25 bins with constant width on a logarithmic scale. Bins populated with less than 10 data point were ignored in the plots. Values are given for longitudinal (left) and transverse (right) components separately. Panels at the top or bottom combine drifters in contact with OWFs (**a**, **b**) and those travelling more distantly (**c**, **d**), respectively. Error bars represent standard deviations estimated by bootstrapping with sample size 1000.



**Figure 14.** Time evolution of squared separation between observed and simulated trajectories of drifter A<sub>2</sub>. Segmentation using different colours is consistent with that in Fig. 3. The dashed line indicates the fitted exponential growth model annotated in the graph. The solid black line represents relative dispersion  $D^2$  obtained from 100 trajectories initialized at the same location and simulated with random walk model Eq. (10). Grey lines show results when using random flight model Eq. (12) with  $T_L = 3$  h and  $T_L = 24$  h, respectively.

## 4 Discussion

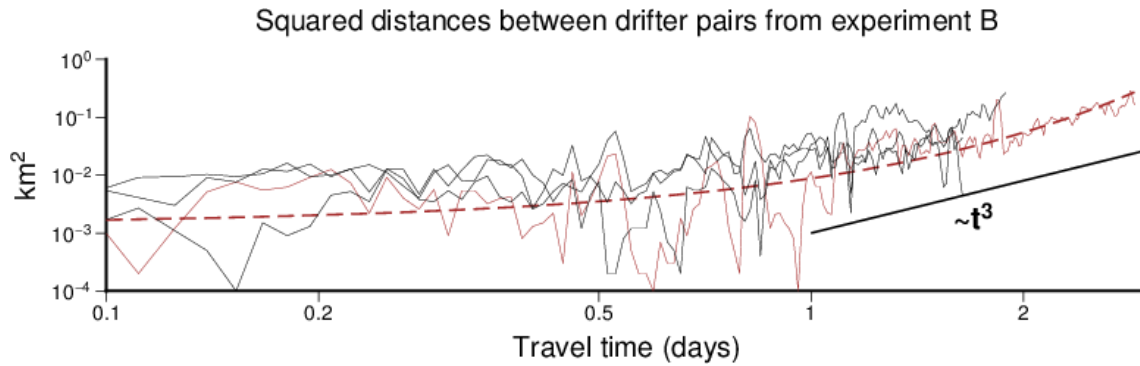
### 4.1 Drifter separations

Coastal currents can be complex and corresponding drifter experiments more site specific than open ocean experiments evaluated by Corrado et al. (2017), for instance. In particular the identification of relevant scales may be affected by regional bathymetry. Diverging time evolutions within the same 'bundle' in Fig. 8 convincingly illustrate how averaging dispersions of drifter pairs with same initial separation can sometimes be non-informative. Lumpkin and Elipot (2010) discuss some examples of 'atypical' drift trajectories influenced by mesoscale flow features in the North Atlantic and state that at larger scales separation is often non-monotonic.

In our analyses, noisy scatter of relative dispersion occurred at times when drifter separation was still below approximately 100 m. At this spatial scale, averaging over larger ensembles seems indispensable to achieve a stable statistical characterization, errors in drifter localization may be relevant for the analysis. In the longer term, however, all drifter pairs we studied could clearly be classified into those with separation growing monotonically and others that did not show such regular behaviour. The latter group of drifters was found to combine those with the largest distances to the wind farm.

For eight out of twelve individual drifter pairs, assuming that relative dispersion grows exponentially was found to be in reasonable agreement with observations. Except for one instance (e-folding time 0.97 d) all e-folding times fell into the narrow range between 0.45 and 0.56 days, suggesting a common physical background that distinguishes these cases from those that exhibit a long-term non-monotonic behaviour. On the other hand, it must also be acknowledged that among the pairs with monotonic growth of separation, a clear distinction between exponential (non-local dispersion) or power law (local dispersion) dependence on time is impossible on a purely statistical basis, given the amount of data we have available. To exemplify this problem, Fig. 15 re-displays time evolutions of squared distances between four drifter pairs from experiment B (Fig. 5), now using a logarithmic time scale. The graph highlights the longest time series (B<sub>1</sub>, B<sub>2</sub>), including the corresponding exponential





**Figure 15.** Squared distances from all pairs of experiment B are combined using a logarithmic time axis. Time series replicate the data already shown in Fig. 5, excluding just the very distant pair  $B_1, B_5$ . The brown time series highlights the pair  $B_1, B_3$  (Fig. 5a), the dashed line represents the corresponding exponential fit. The bold black line represents the slope that would be expected according to Richardson's law for local dispersion in, for instance, the inertial range of turbulent energy (see Eq. (7)).

fit. In addition, it also indicates the slope expected if Richardson's power law corresponding with local dispersion (Eq. (7)) would be satisfied. It is quite obvious that fitting the power law model is sensitive to the lower bound of the time interval taken into consideration. For the exponential growth model, distinction between assumed curvature and the influence of not precisely known accuracy of GPS based localization is difficult. Therefore, given the low number of observations available, prior knowledge about what could be expected is an essential ingredient of the overall analysis.

Pooling roughly 75 drifter pairs deployed with 5-10 m spacing in the Santa Barbara Channel, Ohlmann et al. (2012) observed circulation to change substantially on a scale of few kilometres. They found exponential growth of mean square pair separation until separation reached a value of approximately 100 m after just 5 hours time. Thereafter alternative models of  $D^2$  growing either quadratically or exponentially (e-folding time 0.38 days) both fitted the data reasonably well for the period 12 to 30 hours. Regarding scales in space and time, our data correspond with this latter period. However, in our case exponential models (Figs. 3 and 5) seem acceptable for three days and more, possibly because drifters in experiments A and B stayed within areas smaller than relevant mesoscale hydrodynamic structures.

All drifter pairs we studied could clearly be classified into those with exponential separation and others with non-monotonic behaviour. Noisy scatter of relative dispersion occurs at times when drifter separation is still below approximately 100 m. At this scale averaging over larger ensembles seems indispensable to achieve a stable statistical characterization, errors in drifter localization may be relevant for the analysis. In the longer term, however, distinction between those pairs that seem to obey the exponential law and those that do not (for non-monotonic growth also Richardson's power law would not be a meaningful alternative) is surprisingly clear. For eight out of twelve individual drifter pairs assuming that relative dispersion grows exponentially matched observations well. Except for one instance (e-folding time 0.97 d) all e-folding times fell into

the narrow range between 0.45 and 0.56 days. This suggests that the different behaviours we observed might have a physical background.

Many studies find the Rossby radius of deformation to separate exponential growth of pair separation from a Richardson growth regime. Data from the Gulf of Mexico Surface Current Lagrangian Program (SCULP), for instance, provided a large set of 140 drifter pairs (the majority of them being chance pairs) with initial separation below 1 km (LaCasce and Ohlmann, 2003; LaCasce, 2008). Given clear evidence of  $D^2$  growing exponentially for about 10 days (e-folding time roughly two days), LaCasce and Ohlmann (2003) suggest injection of enstrophy at the spatial scale of 40-50 km (deformation radius in the Gulf) which then cascades down to smaller scales in agreement with the assumption of non-divergent 2D-turbulence.

Koszalka et al. (2009) analysed exponential growth with an e-folding time of 0.5 days (like in our study) from drifter pairs and triplets deployed within the POLEWARD experiment (2007-2008) conducted in the Nordic Seas. Starting from initial distances  $< 2$  km the phase of exponential separation lasted for just two days up to a final distance of approximately 10 km, in agreement with the size of the local deformation radius. Also Schroeder et al. (2011) analysed e-folding times of 0.5-1 days from drifter clusters deployed in the Liguro-Provençal basin (Mediterranean Sea). These authors found exponential growth lasting for 4-7 days until drifter separation reached a value comparable with the scale of mesoscale circulation patterns (10-20 km in that region).

Also for drifters released near the Brazil Current, Berti et al. (2011) found exponential growth of relative dispersion (e-folding time  $\sim 3$  days) at scales comparable to the Rossby radius of deformation ( $\sim 30$  km). They identified, however, also a second exponential growth regime (e-folding time  $\sim 1$  day) on a much smaller scale of  $\mathcal{O}(1)$  km, assumed to be related to submesoscale flow structures. Studying surface drifter pairs released during the CLIMODE experiment in the Gulf Stream region, Lumpkin and Elipot (2010) found weak evidence for such exponential relative dispersion at scales  $< 2$  km (e-folding time roughly one day). On larger scales up to the Rossby deformation radius ( $\sim 30$  km) drifter separation did clearly not grow exponentially. Lumpkin and Elipot (2010) discuss possible reasons for this discrepancy with other studies, including the use of chance pairs or insufficient temporal spacing of data.

Taken all together, results on relative dispersion at submesoscale are still inconclusive. Uncertainties are high and results from different studies may be conflicting. According to Haza et al. (2008), whether or not an exponential regime can be identified may also depend on the sampling strategy underlying the analysis. Recent comprehensive analyses by Poje et al. (2014, 2017) or Corrado et al. (2017) illustrate the present state of knowledge.

Rich data from the GLAD experiment conducted in the Gulf of Mexico from July to October 2012 provides for 300 CODE drifters positions and two-point Lagrangian velocities with high resolution in both space ( $< 10$  m) and time (15 min) (Özgökmen and CARTHE, 2012). From an analysis of these data, Poje et al. (2014) reported evidence that at scales  $< 10$  km surface drifter dispersion was driven locally by the effects of eddies comparable in size with drifter separation. In agreement with Richardson's law this implies a shallower spectrum of Eulerian kinetic energy than it would be expected for non-local exponential drifter dispersion we found in our study. Poje et al. (2017) further elaborate on this idea, emphasizing the relevance of ageostrophic submesoscale motions for bypassing the quasi-geostrophic inverse energy cascade.

By contrast, conducting a comprehensive analysis of surface drifter data from the NOAA Global Drifter Program (GDP) Corrado et al. (2017), employing finite-scale Lyapunov exponents (Aurell et al., 1997) to resolve spatial scale dependence, came to the conclusion that exponential growth of drifter pair separation can be found in all parts of the global ocean on spatial scales below the Rossby deformation radius. However, at the ~~sub-mesoscale~~ submesoscale they found dispersion rates one  
5 order of magnitude larger, corresponding with an e-folding time of roughly 0.5 days for  $D^2(t)$ . Corrado et al. (2017) suggest the presence of structures in the Eulerian current field that are similar in size to trajectory separation. Existence of two distinct exponential growth regimes could reflect presence of a spectral gap between mesoscale and submesoscale transport regimes (Özgökmen et al., 2012, their Fig. 2).

Oscillatory tidal currents are dominant components of drifter transport in the German Bight (see Fig. 2a, for instance),  
10 similar to wind driven inertial oscillations in the GLAD data (Poje et al., 2014, 2017) which in that region may be difficult to separate from diurnal tidal motions (Gough et al., 2016). However, we found direct manifestation of oscillatory tides being restricted to small short-term dips, color coded (green) in Fig. 3, for instance. According to Fig. 2a these short-term drifter convergences all occurred during periods when tidal currents were oriented towards the south-east, possibly pointing towards bathymetry related effects. The observation is not indicative of convergences being related to any frontal structures or cyclonic  
15 vortices as reported by D’Asaro et al. (2018), for instance. ~~A hypothesis to be tested is whether stirring effects~~ Stirring by evenly distributed OWF turbines ~~are relevant for injecting~~ may be relevant for an injection of tidal energy into the turbulent system. It can plausibly be assumed that ~~a via straining such~~ regular stirring process ~~via straining~~ would generate filaments of vorticity that are expected to be seen in the presence of a 2D enstrophy cascade (Piretto et al., 2016).

Ridderinkhof and Zimmerman (1992) showed that Lagrangian chaos can be the principal mixing process in shallow tidal  
20 seas where tides interact with bottom topography (‘tidal random walk’). Although the hypothesis of similar chaotic stirring cannot be substantiated based on our data, it is at least consistent with the observation that ~~exponential-monotonic (possibly exponential)~~ growth was absent only for those drifters from experiment C that did not travel in close proximity to the OWFs (~~compare see~~ Figs. 6a and 7). ~~Note that experiments~~ Experiments A and B were all conducted in the immediate vicinity of OWFs (see Figs. 2 and 4) and drifters even entered the wind farm area. It should ~~also be noted that~~ be noted, however, that also  
25 wind speeds (and therefore impacts of OWFs on turbulence) were generally lower in experiment C than in experiments A and B (compare Fig. 6c with Figs. 2b and 4c).

For OWF forcing being non-local (relative dispersion growing exponentially) turbulent energy should be injected at a spatial scale larger than drifter separation. In fact drifter separations stayed below the distance of individual wind turbines (approximately 800 m) for most of the time drifters were tracked. Also the OWF as a whole might generate relevant hydrodynamic  
30 features at a larger scale. An interesting event at the end of the journey of drifters  $A_2$ ,  $A_3$  (Fig. 3a) hints at the potential influence of a flow feature at a scale comparable to the already larger drifter separation at that time ( $\sim 2$  km). For a couple of hours beginning at the end of 24 May the distance between the two drifters increased substantially (Fig. 3a, keep in mind the logarithmic scale of the graph). According to Fig. 2a this occurred because for some hours drifter  $A_3$  did not share a north-east drift component with drifter  $A_2$ . An interesting question is whether this reflects a flow feature ~~due to~~ generated by the presence

of the OWF. It is to be kept in mind, however, that a drifter distance of few kilometres is also near the lower bound of possible values of the baroclinic Rossby radius of deformation reported for the North Sea (Becker et al., 1983, 1999; Badin et al., 2009).

Finally, it is interesting to see that also the discrepancy between the observed trajectory  $A_2$  and corresponding simulations (Fig. 14) develops exponentially. The same holds for  $A_3$  and  $A_4$  (not shown). Also a comparison of Figs. 2a and c reveals that the distance between observed and simulated trajectories of drifter  $A_2$  grows at a rate comparable with the growth of distance between drifters  $A_2$ - $A_3$ . In the ~~particular case~~ case at hand, there is probably little scope left for further improvement of simulations.

## 4.2 Kinetic energy spectra

Some aspects of the Lagrangian velocity spectra in Fig. 10 resemble results that Lin et al. (2017) obtained in their analysis of data from the GLAD experiment in the Gulf of Mexico (Özgökmen and CARTHE, 2012; Poje et al., 2014, 2017). Lin et al. (2017) identified two spectral ranges with different spectral slopes separated by a (in that case diurnal) tidal peak. A  $f^{-5/3}$  model approximated the data in the low frequency range, which parallels our finding. For the high frequency range Lin et al. (2017) identified a spectrum with an exponent of about -2.75.

In the Gulf of Mexico study the two spectral ranges were sharply separated at the frequency of a diurnal oscillation. Lin et al. (2017) speculate that ~~the~~ tidal oscillations inject energy which then may cascade towards both smaller and larger scales. In our study we were in the favourable position to have direct measurements of Eulerian spectra (Fig. 9) that could be indicative of such cascade dynamics. On the other hand, the German Bight ~~tidal regime is~~ coastal tidal regime may be more complex than that in the Gulf of Mexico. According to Fig. 9 it seems that three rather than just two spectral ranges should be distinguished. In an intermediate frequency range between about 2 and 8  $\text{d}^{-1}$  a spectral slope of approximately  $f^{-2}$  occurs with sharp peaks related to the principal tidal constituent  $M_2$  and at least overtide  $M_4$ . A spectral slope of -3 would be in agreement (using Taylor's frozen turbulence transformation  $k \sim f/u$ , where  $u$  denotes mean velocity) with the assumption of a direct enstrophy cascade in 2D turbulence (see Eq. (6)). Here, however, tidal energy input can obviously not be described as ~~being~~-local in the frequency domain, overtides injecting energy at frequencies higher than  $M_2$  ~~may~~ could possibly reduce the spectral slope. Based on numerical simulations for a two month period without extreme atmospheric conditions, Stanev et al. (2014) found that an area of major  $M_4$  amplitudes off the North Frisian Wadden Sea originated from reflection and refraction of the Kelvin wave ~~underlying that underlies~~ the North Sea  $M_2$  tide. Large  $M_6$  velocity components were found to occur in estuaries and tidal channels with strong velocities and high friction. Such energy transfers between tidal constituents are clearly not a matter of pure turbulence expected to follow classical scaling laws.

For high frequencies beyond the range of tidal signals a Eulerian power spectrum of even less than -5/3 is observed in Fig. 9. With Taylor's frozen turbulence assumption, a -5/3 slope would reproduce Kolmogorov's law (Eq. (6)). Although this law can be found for very different systems (Tsinober, 2001, Section 7.3.4), it is also theoretically consistent with either a direct energy cascade in fully developed 3D turbulence or an inverse energy cascade in 2D turbulence. A -5/3 slope in Eulerian spectra would also be consistent with the fact that slopes in the Lagrangian spectra (Fig. 10) seem to be close to -2, predicted by the

Kolmogorov-Landau theory (Landau and Lifshitz, 1987) and confirmed experimentally for fully developed 3D turbulence (e.g. Mordant et al., 2001, 2003).

The low frequency part of the Eulerian spectrum in Fig. 9 is poorly underpinned by data and must be interpreted with due care. However, surprisingly the Lagrangian spectrum (Fig. 10a) seems to replicate a  $-5/3$  slope of the Eulerian spectrum. A  $-2$  slope expected theoretically in a Lagrangian framework derives from dimensional arguments, exponents in the Eulerian and Lagrangian framework differ because only in the Eulerian context the spectrum is assumed to depend on a mean velocity (Landau and Lifshitz, 1987, p. 135). However, a  $-5/3$  Lagrangian spectrum at low frequencies was also found by Lin et al. (2017) in their Gulf of Mexico study. As a possible problem these authors mention the presence of tidal movements which according to Beron-Vera and LaCasce (2016) can cause conflicting results between different types of analyses.

Middleton (1985) addresses the general question how Eulerian spectra translate into their Lagrangian counterparts. Elaborating on an original idea of Corrsin (1959), Middleton (1985) found that spectra observed in an Eulerian and Lagrangian framework, respectively, should agree when velocity changes depend more on local variations than on advective processes (see also LaCasce (2008) for a summary of the concept). This situation might prevail with the scales involved in tidal movements. Off the coast, spatial scales over which tidal currents change are larger than the tidal excursions of individual water bodies, which implies a minor role of advective processes.

### 4.3 Velocity increments and structure functions

~~A problem we are faced with is that velocity structure functions in~~ According to Fig. 13, velocity structure functions do not show the scaling with  $r^2$  that would be expected for non-local (i.e. exponential) relative dispersion ~~we observed for most of our drifter pairs~~ (see Eqs. (7) and (8)). Fig. 13 suggests a fast increase of  $S_2^{(E)}$  just for very small distances before the structure function levels off towards a plateau-like behaviour. Although our data are insufficient for fitting statistical models, for parts of the spectra shallower slopes  $\propto r^{2/3}$  seem more consistent with observations. A similar situation has also been reported in other studies based on larger sets of data (Beron-Vera and LaCasce, 2016), even when more sophisticated distance based measures like the finite-scale Lyapunov exponent (FSLE, see Aurell et al., 1997) were employed (Sansón et al., 2017). Beron-Vera and LaCasce (2016) understand their study as a warning not to deduce kinetic energy spectra from measurements of relative dispersion. To explain the seeming discrepancy, they proposed two different effects. First, values of distance  $r$  between drifters deployed pairwise do often not cover the whole range up to the mesoscale structure where energy for non-local forcing is injected. In our case one might argue that this range is covered by combinations of drifters from different pairs in experiment C, which provide the instances of large  $r$  values in Figs. 13c and d. However, these values are not indicative of structure functions growing faster than  $r^{2/3}$ .

A second explanation Beron-Vera and LaCasce (2016) propose is that  $S_2^{(E)}(r)$  values for small values of  $r$  are larger due to the effects of (in their experiment) regular inertial oscillations. The mechanism proposed is that for constant angular velocity the size of an inertial loop should correlate with drifter velocity, which may give rise to a correlation between drifter separation and separation velocity while mean dispersion after closed cycles remains unaffected. However, the strong externally forced tidal oscillations in our experiments vary smoothly in space and neighbouring drifters are supposed to experience similar

movements. Also the spatial scale of tidal waves seems clearly larger than the separations of mostly less than 1 km reached by most of our drifter pairs within the drift period of 3-4 days. Given the large tidal excursions (see Fig. 2a, for instance), in our case tidal movements cannot be seen as small scale disturbances overlaid to large scale movements. The situation seems different in experiment C (see Fig. 6a). However, for analysing such large scale homogeneous movements our time series of 3-4 days lengths are too short.

For isotropic turbulence the following relationship should relate the longitudinal and transverse second-order structure functions to each other (Kraichnan, 1966; Monin and Yaglom, 1975):

$$S_{2,\perp}^{(E)}(r) = \left(1 + \frac{r}{2} \frac{d}{dr}\right) S_{2,\parallel}^{(E)}(r) \quad (13)$$

Kramer et al. (2011) propose verifying Eq. (13) for checking the assumption of homogeneity and isotropy. Obviously However, our data are too noisy for following this approach, which according to Babiano et al. (1985) would not be fully conclusive anyway. It must also be noticed that for large drifter separations (up to 40 km in experiment C), systematic spatial patterns of the tidal regime may dominate the analysis in Fig. 13. It can reasonably be assumed that rotational components of tidal currents preferably impact the transverse components of velocity increments (L  v  que and Naso, 2014). Resulting dependences might happen to resemble what one would expect from statistical analyses.

#### 4.4 Simulated drifter dispersion

Fig. 14 exemplifies simulation error growth for drifter A<sub>2</sub>. Interestingly, also simulation errors for drifters C grow exponentially with similar e-folding times (not shown), notwithstanding the irregular behaviour of observed relative dispersion (Fig. 7). Comparing Figs. 6a and b reveals a (possibly location dependent) lack of eastward transport in simulations, which means that the observed and simulated drifters ,respectively, persistently experience different large scale background currents. This is reminiscent of exponential growth rates that occur when distances between drifters are stretched by eddies much larger in size than the distance between two drifters considered.

Simulation errors exceed simulated random spread of drifters. Simulations that employ an either zeroth-order (Eq. (10)) or first-order (Eq. (12)) stochastic model both underestimate drifter separation after more than about two days, while overestimating drifter separation in the very first hours after drifter deployment (Fig. 14). A clear distinction between processes resolved by the hydrodynamic model and sub-grid scale processes to be parametrized may be missing. Instead of assuming constant diffusivity, Ohlmann et al. (2012) used turbulent velocity standard deviations  $\sigma$  ranging between 0.7 and 5.1 cm/s depending on separation scales between 5 m and 2 km. With  $T_L = 3$  h, this corresponds with values of diffusivity  $K = \sigma^2 T_L$  approximately ranging between 0.5 and 28 m<sup>2</sup>/s. The lower bound of these values corresponds with the magnitude of the value obtained from Eq. (11) with grid resolution 900 m used in our simulations.

## 5 Conclusions

The most striking finding from the analysis of Analysing eleven trajectory pairs released in the German Bight ~~was that these could very~~, these could clearly be grouped into eight pairs ~~showing exponential~~ that showed a long-term monotonic increase of drifter separation (for distances exceeding estimated uncertainty of GPS based drifter localization) and three pairs distances of which changed in ~~a~~ an irregular non-monotonic way. ~~One (one pair travelled too short for a clear assessment. For seven out of~~). In all cases with monotonic behaviour, exponential growth of squared pair distance seemed a reasonable assumption, supported also by the fact that for seven pairs the ~~eight pairs~~ a fitted e-folding time for squared separation was found to be approximately was consistently about half a day, ~~for the eighth drifter pair the e-folding time was about~~ (for one pair it was twice as large). Pair separations growing exponentially would indicate the action of eddies that are much larger than distances between the drifters. Unfortunately, due to brevity of time series and the low number of drifters it was impossible to statistically

5 distinguish such non-local dispersion from local dispersion with power law dependence on time.

In light of this classification ~~we refrained from a statistical analysis considering all drifter pairs as independent realizations of the same generic behaviour.~~ Reasons for the differences we found can just be speculated. One hypothesis ~~is that would attribute observed dispersion rates to the~~ effects of OWFs ~~manifest themselves in drift behaviour (exponential separation rates).~~ ~~Even when.~~ Although this hypothesis cannot really be substantiated based on ~~the limited amount of observations~~ our limited

15 data, it is nevertheless consistent with the observation that ~~none of~~ the three pairs with non-monotonic growth ~~travelled were exactly those that did not travel~~ within a OWF or in close neighbourhood on its lee side.

Non-monotonic drifter separation could possibly be indicative of drifters getting trapped by coherent structures. Elhmaidi et al. (1993) ~~decomposed simulations of 2D turbulence with regard to either deformation or rotation dominating the local hydrodynamic structure and proposed the use of conditional averages.~~ Shelf sea conditions ~~depending on~~ with irregular coastal geometry

20 and bathymetry ~~must be expected to~~ manifest themselves in characteristic hydrodynamic structures at specific spatial scales. Non-monotonic drifter separation could possibly be indicative of drifters getting trapped by coherent structures. Indeed, already ~~on the scale of say 5-10 at distances > 5~~ nautical miles we found drifter behaviour to ~~reflect influence of mesoscale flow patterns~~ depend on location (see Fig. 8). ~~Under these conditions a~~ which makes statistical analysis of evolving drifter separation ~~on scales beyond few nautical miles is~~ a questionable enterprise. A threshold of scale separation can possibly be derived

25 from a plateau-like structure only hinted at, however, in the Eulerian second order structure function. ~~The scale separation at~~ (Fig. 13). The estimated separation at a scale of  $\mathcal{O}(1)$  km ~~overlaps would overlap~~ with distances between individual turbines in OWFs but is also not far from the magnitude of the internal radius of deformation, which in the German Bight is estimated to be few kilometres.

Important flow characteristics in the German Bight are also strong tidal currents. In the Eulerian kinetic energy spectrum

30 we found peaks of tidal constituents embedded in a spectral range with an approximately -2 slope. ~~Interestingly, in~~ In the Lagrangian spectra derived from drifter movements, even peaks related to higher-order overtones  $M_6$  and  $M_8$  were well defined. Energy injected at different frequencies and nonlinear transformation of energy between different tidal constituents, however, obviously goes beyond the classic concept of turbulent energy cascading across an inertial spectral range.



Definitely a ~~A~~ more systematic field study would have to be designed to ~~disentangle the aforementioned~~ better disentangle ~~the~~ different effects and to possibly identify effects of OWFs on turbulent mixing in the German Bight. The preliminary results of the present analysis could be helpful in designing such field experiment.

*Data availability.* The raw data sets A (HE445), B (HE490) and C (HE496) are freely available from Carrasco and Horstmann (2017) and Carrasco et al. (2017a, b).

*Author contributions.* JF, JH and RC collected the field data, RC was in charge for data management including quality control and documentation. MQ performed the spectral analyses. UC provided numerical drift simulations and prepared the manuscript with contributions from the four co-authors.

*Competing interests.* The authors declare that they have no conflict of interest.

*Acknowledgements.* The three RV Heincke research cruises were supported by grant numbers AWI\_HE445\_00 , AWI\_HE490\_00 and AWI\_HE331\_00. Drifter simulations were based on BSHcmod currents provided by the Federal Maritime and Hydrographic Agency (BSH). The 10 m wind data used are from the operational forecasting system of the Deutscher Wetterdienst (DWD). We thank BMWi (Bundesministerium für Wirtschaft und Energie) and the PTJ (Projektträger Juelich, Project Executing Organization) for making available Eulerian currents observed at FINO3. All graphs were produced using the Generic Mapping Tools software (GMT) available from [www.soest.hawaii.edu/gmt/](http://www.soest.hawaii.edu/gmt/). Ulrike Kleeberg assisted in preparing Fig. 1.

## References

- Akaike, H.: A new look at the statistical model identification, *IEEE Trans. Autom. Contr.*, AC-19, 716–723, 1974.
- Andersen, O. B.: Shallow water tides in the northwest European shelf region from TOPEX/POSEIDON altimetry, *J. Geophys. Res.*, 104(C4), 7729–7741, 1999.
- 5 Aurell, E., Boffetta, G., Crisanti, A., Paladin, G., and Vulpiani, A.: Predictability in the large: an extension of the concept of Lyapunov exponent, *Journal of Physics A: Mathematical and General*, 30, 1, <http://stacks.iop.org/0305-4470/30/i=1/a=003>, 1997.
- Babiano, A., Basdevant, C., and Sadourny, R.: Structure function and dispersion law in two-dimensional turbulence, *J. Atmos. Sci.*, 42, 941–949, 1985.
- Babiano, A., Basdevant, C., Le Roy, P., and Sadourny, R.: Relative dispersion in two-dimensional turbulence, *J. Fluid Mech.*, 214, 535–557, 10 1990.
- Badin, G., Williams, R. G., Holt, J. T., and Fernand, L. J.: Are mesoscale eddies in shelf seas formed by baroclinic instability of tidal fronts?, *J. Geophys. Res.*, 114, C10021, doi:10.1029/2009JC005340, 2009.
- Becker, G. A., Fiúza, A. F. G., and James, I. D.: Water mass analysis in the German Bight during MARSSEN, Phase I, *J. Geophys. Res.*, 88, C14, 9865–9870, 1983.
- 15 Becker, G. A., Dick, S., and Dippner, J. W.: Hydrography of the German Bight, *Mar. Ecol. Prog. Ser.*, 91, 9–18, 1992.
- Becker, G. A., Giese, H., Isert, K., König, P., Langenberg, H., Pohlmann, T., and Schrum, C.: Mesoscale structures, fluxes and water mass variability in the German Bight as exemplified in the KUSTOS-experiments and numerical models, *Deutsche Hydrographische Zeitschrift*, 51, 155–179, 1999.
- Bennett, A. F.: Relative dispersion: local and nonlocal dynamics, *J. Atmos. Sci.*, 41, 1881–1886, 1984.
- 20 Beron-Vera, F. J. and LaCasce, J. H.: Statistics of simulated and observed pair separations in the Gulf of Mexico, *J. Phys. Oceanogr.*, 46, 2183–2199, doi:10.1175/JPO-D-15-0127.1, 2016.
- Berta, M., Griffo, A., Özgökmen, T. M., and Poje, A. C.: Submesoscale evolution of surface drifter triads in the Gulf of Mexico, *Geophys. Res. Lett.*, 43, 11,751–11,759, doi:10.1002/2016GL070357, 2016.
- Berti, S., Dos Santos, F. A., Lacorata, G., and Vulpiani, A.: Lagrangian drifter dispersion in the Southwestern Atlantic Ocean, *J. Phys. Oceanogr.*, 41, 1659–1672, doi:10.1175/2011JPO4541.1, 2011.
- 25 Biferale, L., Bodenschatz, E., Cencini, M., Lanotte, A. S., Ouellette, N. T., Toschi, F., and Xu, H.: Lagrangian structure functions in turbulence: A quantitative comparison between experiment and direct numerical simulation, *Phys. Fluids*, 20, 065103, doi:10.1063/1.2930672, 2008.
- Boffetta, G. and Ecke, R. E.: Two-Dimensional Turbulence, *Annu. Rev. Fluid Mech.*, 44, 427–451, doi:10.1146/annurev-fluid-120710-101240, 2012.
- 30 Boffetta, G., Celani, A., Cencini, M., Lacorata, G., and Vulpiani, A.: Nonasymptotic properties of transport and mixing, *Chaos*, 10, 50–60, doi:10.1063/1.166475, 2000.
- Callies, J. and Ferrari, R.: Interpreting energy and tracer spectra of upper-ocean turbulence in the submesoscale range (1–200 km), *J. Phys. Oceanogr.*, 40, 840–844, 2013.
- 35 Callies, U., Plüß, A., Kappenberg, J., and Kapitza, H.: Particle tracking in the Vicinity of Helgoland, North Sea: A Model Comparison, *Ocean Dyn.*, 61, 2121–2139, 2011.

- Callies, U., Groll, N., Horstmann, J., Kapitza, H., Klein, H., Maßmann, S., and Schwichtenberg, F.: Surface drifters in the German Bight: model validation considering windage and Stokes drift, *Ocean Sci.*, 13, 799–827, doi:10.5194/os-13-799-2017, 2017.
- Carpenter, J. R., Merckelbach, L., Callies, U., Clark, S., Gaslikova, L., and Baschek, B.: Potential impacts of offshore wind farms on North Sea stratification, *PLoS ONE*, 11(8): e0160830, doi:10.1371/journal.pone.0160830, 2016.
- 5 Carrasco, R. and Horstmann, J.: German Bight surface drifter data from Heincke cruise HE445, 2015, <https://doi.pangaea.de/10.1594/PANGAEA.874511>, 2017.
- Carrasco, R., Floeter, J., and Horstmann, J.: Track of GPS-Drifters from HEINCKE cruise HE490, <https://doi.org/10.1594/PANGAEA.882329>, 2017a.
- Carrasco, R., Floeter, J., and Horstmann, J.: Track of GPS-Drifters from HEINCKE cruise HE496, <https://doi.org/10.1594/PANGAEA.882346>, 2017b.
- 10 Charney, J. G.: Geostrophic Turbulence, *J. Atmos. Sci.*, 28, 1087–1095, 1971.
- Corrado, R., Lacorata, G., Palatella, L., Santoleri, R., and Zambianchi, E.: General characteristics of relative dispersion in the ocean, *Sci. Rep.*, 7, 46291, doi:10.1038/srep46291, 2017.
- Corrsin, S.: Progress report on some turbulent diffusion research, *Advances in Geophysics*, 6, 161–163, 1959.
- 15 D’Asaro, E. A., Shcherbina, A. Y., Klymak, J. M., Molemaker, J., Novelli, G., Guigand, C. M., Haza, A. C., Haus, B. K., Ryan, E. H., Jacobs, G. A., Huntley, H. S., Laxague, N. J. M., Chen, S., Judt, F., McWilliams, J. C., Barkan, R., Kirwan, A. D., Poje, A. C., and Özgökmen, T. M.: Ocean convergence and the dispersion of flotsam, *Proceedings of the National Academy of Sciences*, 115, 1162–1167, doi:10.1073/pnas.1718453115, <https://www.pnas.org/content/115/6/1162>, 2018.
- Dick, S., Kleine, E., Müller-Navarra, S. H., Klein, H., and Komo, H.: The operational circulation model of BSH (BSHcmod) - Model description and validation, *Berichte des Bundesamtes für Seeschifffahrt und Hydrographie* 29/2001, BSH, Hamburg, Germany, 2001.
- 20 Dick, S., Kleine, E., and Janssen, F.: A new operational circulation model for the North Sea and Baltic Sea using a novel vertical co-ordinate setup and first results, in: *Coastal to Global Operational Oceanography: Achievements and Challenges. Proceedings of the Fifth International Conference on EuroGOOS*, 20-22 May 2008, Exeter, UK, edited by Dalhin, H., Bell, M. J., Flemming, N. C., and Petersen, S. E., 2008.
- 25 Durbin, P. A.: A random flight model of homogeneous turbulent dispersion, *Phys. Fluids*, 23, 2151–2153, doi:10.1063/1.862908, 1980.
- Elhmaidi, D., Provenzale, A., and Babiano, A.: Elementar topology of two-dimensional turbulence from a Lagrangian viewpoint and single-particle dispersion, *J. Fluid Mech.*, 257, 533–558, doi:10.1017/S0022112093003192, 1993.
- Falco, P., Griffa, A., Poulain, P.-M., and Zambianchi, E.: Transport properties in the Adriatic Sea as deduced from drifter data, *J. Phys. Oceanogr.*, 30, 2055–2071, 2000.
- 30 Falkovich, G., Xu, H., Pumir, A., Bodenschatz, E., Biferale, L., Boffetta, G., Lanotte, A. S., and Toschi, F.: On Lagrangian single-particle statistics, *Phys. Fluids*, 24, 055 102, 2012.
- Floeter, J., van Beusekom, J. E., Auch, D., Callies, U., Carpenter, J., Dudeck, T., Eberle, S., Eckhardt, A., Gloe, D., Hänselmann, K., Hufnagl, M., Janßen, S., Lenhart, H., Möller, K. O., North, R. P., Pohlmann, T., Riethmüller, R., Schulz, S., Spreizenbarth, S., Temming, A., Walter, B., Zielinski, O., and Möllmann, C.: Pelagic effects of offshore wind farm foundations in the stratified North Sea, *Progress in Oceanography*, 156, 154–173, doi:10.1016/j.pocean.2017.07.003, 2017.
- 35 Good, P.: *Permutation Test: A Practical Guide to Resampling Methods for Testing Hypotheses*, Second ed., Springer, New York, 2000.
- Gough, M. K., Reniers, A. J. H. M., MacMahan, J. H., and Howden, S. D.: Resonant near-surface inertial oscillations in the northeastern Gulf of Mexico, *J. Geophys. Res. Oceans*, 121, 2163–2182, doi:10.1002/2015JC011372, 2016.

- Griffa, A., Owens, K., Piterbarg, L., and Rozovskii, B.: Estimates of turbulence parameters from Lagrangian data using a stochastic particle model, *J. Mar. Res.*, 53, 371–401, 1995.
- Haza, A. C., Poje, A. C., Özgökmen, T. M., and Martin, P.: Relative dispersion from a high-resolution coastal model of the East Adriatic Sea, *Ocean Modell.*, 22, 48–65, doi:10.1016/j.ocemod.2008.01.006, 2008.
- 5 Haza, A. C., Özgökmen, T. M., Griffa, A., Poje, A. C., and Lelong, M.-P.: How does drifter position uncertainty affect ocean dispersion estimates?, *J. of Atmos. Oceanic Technol.*, 31, 2809–2828, doi:10.1175/JTECH-D-14-00107.1, 2014.
- Heemink, A. W.: Stochastic modelling of dispersion in shallow water, *Stochastic Hydrol. Hydraul.*, 4, 161–174, 1990.
- Kolmogorov, A. N.: The local structure of turbulence in incompressible viscous fluid for very large Reynolds numbers, *Dokl. Akad. Nauk SSSR*, 30, 9–13, reprinted in *Proc. R. Soc. Lond. A* 434, 9-13 (1991), 1941.
- 10 Koszalka, I., LaCasce, J. H., and Orvik, K. A.: Relative dispersion in the Nordic Seas, *J. Mar. Res.*, 16, 431–447, 2009.
- Kraichnan, R. H.: Dispersion of particle pairs in homogeneous turbulence, *Phys. Fluids*, 9, 1937–1943, 1966.
- Kraichnan, R. H.: Inertial ranges in two-dimensional turbulence, *Phys. Fluids*, 10, 1417–1423, 1967.
- Kramer, W., Keetels, G. H., Clercx, H. J. H., and van Heijst, G. J. F.: Structure-function scaling of bounded two-dimensional turbulence, *Phys. Rev.*, E 84, 026310, doi:10.1103/PhysRevE.84.026310, 2011.
- 15 LaCasce, J. H.: Eulerian and Lagrangian velocity distributions in the North Atlantic, *J. Phys. Oceanogr.*, 35, 2327–2336, doi:10.1175/JPO2833.1, 2005.
- LaCasce, J. H.: Statistics from Lagrangian observations, *Progress in Oceanography*, 77, 1–29, 2008.
- LaCasce, J. H.: Relative displacement PDFs from balloons and drifters, *J. Mar. Res.*, 68, 433–457, doi:10.1357/002224010794657155, 2010.
- LaCasce, J. H. and Bower, A.: Relative dispersion in the subsurface North Atlantic, *J. Mar. Res.*, 58, 863–894, 2000.
- 20 LaCasce, J. H. and Ohlmann, C.: Relative dispersion at the surface of the Gulf of Mexico, *J. Mar. Res.*, 61, 285–312, 2003.
- Lana, A., Marmain, J., Fernández, V., Tintoré, J., and Orfila, A.: Wind influence on surface current variability in the Ibiza Channel from HF radar, *Ocean Dyn.*, 66, 483–497, 2016.
- Landau, L. D. and Lifshitz, E. M.: *Fluid Mechanics*, 2nd edition, Pergamon Press, Oxford, UK, 1987.
- Lesieur, M.: *Turbulence in Fluids - Third Revised and Enlarged Edition*, Kluwer Academic Publishers, Dordrecht, The Netherlands, 1997.
- 25 Li, X., Chi, L., Chen, X., Ren, Y., and Lehner, S.: SAR observation and numerical modeling of tidal current wakes at the East China Sea offshore wind farm, *J. Geophys. Res. Oceans*, 119, 4958–4971, doi:10.1002/2014JC009822, 2014.
- Lin, L., Zhuang, W., and Huang, Y.: Lagrangian statistics and intermittency in Gulf of Mexico, *Scientific Reports*, 7:17463, doi:10.1038/s41598-017-17513-9, 2017.
- Lumpkin, R. and Elipot, S.: Surface drifter pair spreading in the North Atlantic, *J. Geophys. Res.*, 115, C12017, doi:10.1029/2010JC006338, 2010.
- 30 Lévêque, E. and Naso, A.: Introduction of longitudinal and transverse Lagrangian velocity increments in homogeneous and isotropic turbulence, *EPL (Europhysics Letters)*, 108, 54 004, <http://stacks.iop.org/0295-5075/108/i=5/a=54004>, 2014.
- Marple, S. L.: *Digital Spectral Analysis with Applications*, Prentice-Hall, Inc., Englewood Cliffs, New Jersey, 1987.
- McWilliams, J. C.: Fluid dynamics at the margin of rotational control, *Environ. Fluid Mech.*, 8, 441–449, 2008.
- 35 Meyerjürgens, J., Badewien, T. H., Shungudzemwoyo, P. G., Wolff, J.-O., and Zielinski, O.: A state-of-the-art compact surface drifter reveals pathways of floating marine litter in the German Bight, *Front. Mar. Sci.*, 6:58, doi:10.3389/fmars.2019.00058, 2019.
- Middleton, J. F.: Drifter spectra and diffusivities, *J. Mar. Res.*, 43, 37–55, 1985.
- Monin, A. S. and Yaglom, A. M.: *Statistical Fluid Dynamics: Mechanics of Turbulence*, The MIT Press, Cambridge, Massachusetts, 1975.

- Mordant, N., Metz, P., Michel, O., and Pinton, J.-F.: Measurement of Lagrangian velocity in fully developed turbulence, *Phys. Rev. Lett.*, 87, 214 501, doi:10.1103/PhysRevLett.87.214501, <https://link.aps.org/doi/10.1103/PhysRevLett.87.214501>, 2001.
- Mordant, N., Delour, J., L  veque, E., Michel, O., Arn  odo, A., and Pinton, J.-F.: Lagrangian Velocity Fluctuations in Fully Developed Turbulence: Scaling, Intermittency, and Dynamics, *Journal of Statistical Physics*, 113, 701–717, 2003.
- 5 Niiler, P. P., Sybrandy, A. S., Bi, K., Poulain, P. M., and Bitterman, D.: Measurements of the water-following capability of holey-sock and TRISTAR drifters, *Deep-Sea Research I*, 42, 1951–1964, 1995.
- Ohlmann, J. C., LaCasce, J. H., Washburn, L., Mariano, A. J., and Emery, B.: Relative dispersion observations and trajectory modelling in the Santa Barbara Channel, *J. Geophys. Res.*, 117, 1–14, 2012.
- Ohlmann, J. C., Molemaker, M. J., Baschek, B., Holt, B., Marmorino, G., and Smith, G.: Drifter observations of submesoscale flow kinematics  
10 in the coastal ocean, *Geophys. Res. Lett.*, 44, 330–337, 2017.
- Ollitrault, M., Gabillet, C., and Colin de Verdi  re, A.: Open ocean regimes of relative dispersion, *Journal of Fluid Mechanics*, 533, 381–407, doi:10.1017/S0022112005004556, 2005.
- Onken, R., Fiekas, H.-V., Beguery, L., Borrione, I., Funk, A., Hemming, M., Hernandez-Lasheras, J., Heywood, K. J., Kaiser, J., Knoll, M., Mourre, B., Oddo, P., Poulain, P.-M., Queste, B. Y., Russo, A., Shitashima, K., Siderius, M., and K  sel, E. T.: High-resolution observations  
15 in the western Mediterranean Sea: The REP14-MED experiment, *Ocean Science*, 14, 321–335, 2018.
-   zg  kmen, T. M. and CARTHE: GLAD experiment CODE-style drifter trajectories (low pass filtered, 15 minute interval records), northern Gulf of Mexico near DeSoto Canyon, July-October 2012, Gulf of Mexico Research Initiative, doi:10.7266/N7VD6WC8, 2012.
-   zg  kmen, T. M., Poje, A. C., Fischer, P. F., Childs, H., Krishnan, H., Garth, C., Haza, A. C., and Ryan, E.: On multi-scale dispersion under the influence of surface mixed layer instabilities and deep flows, *Ocean Model.*, 56, 16–30, doi:10.1016/j.ocemod.2012.07.004, 2012.
- 20 Pardo-Ig  zquiza, E. and Rodr  guez-Tovar, F. J.: MAXENPER: A program for maximum entropy spectral estimation with assessment of statistical significance by the permutation test, *Comput. Geosci.*, 31, 555–567, 2005.
- Pardo-Ig  zquiza, E. and Rodr  guez-Tovar, F. J.: Maximum entropy spectral analysis of climatic time series revisited: assessing the statistical significance of estimated spectral peaks., *Journal of Geophysical Research – Atmospheres*, 111, doi:10.1029/2005JD006293, 2006.
- Piretto, E., Musacchio, S., De Lillo, F., and Boffetta, G.: Irreversibility of the two-dimensional enstrophy cascade, *Phys. Rev. E*, 94, 053 116, doi:10.1103/PhysRevE.94.053116, <https://link.aps.org/doi/10.1103/PhysRevE.94.053116>, 2016.
- 25 Poje, A. C.,   zg  kmen, T. M., Lipphardt, B. L., Haus, B. K., Ryan, E. H., Haza, A. C., Jacobs, G. A., Reniers, A. J. H. M., Olascoaga, M. J., Novelli, G., Griffa, A., Beron-Vera, F. J., Chen, S. S., Coelho, E., Hogan, P. J., Kirwan, A. D., Huntley, H. S., and Mariano, A. J.: Submesoscale dispersion in the vicinity of the Deepwater Horizon spill, *Proceedings of the National Academy of Sciences*, 111, 12 693–12 698, doi:10.1073/pnas.1402452111, <http://www.pnas.org/content/111/35/12693>, 2014.
- 30 Poje, A. C.,   zg  kmen, T. M., Bogucki, D. J., and Kirwan, Jr., A. D.: Evidence of a forward energy cascade and Kolmogorov self-similarity in submesoscale ocean surface drifter observations, *Physics of Fluids*, 29, 020701, doi:10.1063/1.4974331, 2017.
- Pope, S. B.: *Turbulent Flows*, Cambridge University Press, Cambridge, UK, 2000.
- Poulain, P. and Gerin, R.: Assessment of the water-following capabilities of CODE drifters based on direct relative flow measurements, *J. Atmos. Oceanic Technol.*, doi:10.1175/JTECH-D-18-0097, 2019.
- 35 Poulain, P.-M., Gerin, R., Mauri, E., and Pennel, R.: Wind Effects on Drogued and Undrogued Drifters in the Eastern Mediterranean, *J. Atmos. Ocean. Tech.*, 26, 1144–1156, 2009.
- Press, W. H., Teukolsky, S. A., Vetterling, W. T., and Flannery, B.: *Numerical Recipes in C++*, 2. Edition, Cambridge University Press, Cambridge, 2002.

- Richardson, L. F.: Atmospheric Diffusion shown on a Distance-Neighbour Graph, *Proc. R. Soc. London, Ser. A*, 110, 709–737, 1926.
- Ridderinkhof, H. and Zimmerman, J. T. F.: Chaotic stirring in a tidal system, *Science, New Series*, 258, 1107–1111, 1992.
- Ruardij, P., Van Haren, H., and Ridderinkhof, H.: The impact of thermal stratification on phytoplankton and nutrient dynamics in shelf seas: a model study, *J. Sea Res.*, 38, 311–331, doi:10.1016/S1385-1101(97)00042-7, 1997.
- 5 Sansón, L. Z., Pérez-Brunius, P., and Sheinbaum, J.: Surface relative dispersion in the southwestern Gulf of Mexico, *J. Phys. Oceanogr.*, 47, 387–403, doi:10.1175/JPO-D-16-0105.1, 2017.
- Schönfeld, W.: Numerical Simulation of the Dispersion of Artificial Radionuclides in the English Channel and the North Sea, *J. Marine Syst.*, 6, 529–544, 1995.
- Schroeder, K., Haza, A. C., Griffa, A., Özgökmen, T. M., Poulain, P. M., Gerin, R., Peggion, G., and Rixen, M.: Relative dispersion in the Liguro-Provençal basin: From sub-mesoscale to mesoscale, *Deep-Sea Research I*, 58, 209–228, 2011.
- 10 Schroeder, K., Chiggiato, J., Haza, A. C., Griffa, A., Özgökmen, T. M., Zanasca, P., Molcard, A., Borghini, M., Poulain, P. M., Gerin, R., Zambianchi, E., Falco, P., and Trees, C.: Targeted Lagrangian sampling of submesoscale dispersion at a coastal frontal zone, *Geophys. Res. Lett.*, 39, L11608, doi:10.1029/2012GL051879, 2012.
- Schulz, J.-P. and Schättler, U.: Kurze Beschreibung des Lokal-Modells Europa COSMO-EU (LME) und seiner Datenbanken auf dem Datenserver des DWD, [https://www.dwd.de/SharedDocs/downloads/DE/modelldokumentationen/nwv/cosmo\\_eu/cosmo\\_eu\\_dbbeschr\\_201406.pdf?\\_\\_blob=publicationFile&v=3](https://www.dwd.de/SharedDocs/downloads/DE/modelldokumentationen/nwv/cosmo_eu/cosmo_eu_dbbeschr_201406.pdf?__blob=publicationFile&v=3), 2014.
- 15 Sentchev, A., Forget, P., and Fraunié, P.: Surface current dynamics under sea breeze conditions observed by simultaneous HF radar, ADCP and drifter measurements, *Ocean Dyn.*, 67, 499–512, 2017.
- Stanev, E. V., Al-Nadhairi, R., Staneva, J., Schulz-Stellenfleth, J., and Valle-Levinson, A.: Tidal wave transformations in the German Bight, 20 Ocean Dyn., 64, 951–968, 2014.
- Stanev, E. V., Schulz-Stellenfleth, J., Staneva, J., Grayek, S., Grashorn, S., Behrens, A., Koch, W., and Pein, J.: Ocean forecasting for the German Bight: from regional to coastal scales, *Ocean Sci.*, 12, 1105–1136, doi:os-12-1105-2016, 2016.
- Stommel, H.: Horizontal diffusion due to oceanic turbulence, *J. Mar. Res.*, 8, 199–225, 1949.
- Taylor, G. I.: Diffusion by continuous movements, *Proc. Lond. Math. Soc.*, 20, 196–212, 1921.
- 25 Tsinober, A.: *An Informal Introduction to Turbulence*, Kluwer Academic Publishers, Dordrecht, The Netherlands, 2001.
- Weedom, G.: *Times-Series Analysis and Cyclostratigraphy: Examining Stratigraphic Records of Environmental Cycles*, Cambridge University Press, Cambridge, UK, 2003.
- Wiggins, S.: The dynamical systems approach to Lagrangian transport in oceanic flows, *Annu. Rev. Fluid Mech.*, 37, 295–328, 2005.
- Zambianchi, E. and Griffa, A.: Effects of finite scales of turbulence on dispersion estimates, *J. Mar. Res.*, 52, 129–148, 1994.
- 30 Zouari, N. and Babiano, A.: Derivation of the relative dispersion law in the inverse energy cascade of two-dimensional turbulence, *Physica D*, 76, 318–328, 1994.

**Table 1.** Drifters considered in this study

Label	Start			End			Length	Dist	$\Delta T$
	Time (UTC)	°E	°N	Time (UTC)	°E	°N	[km]	[km]	[days]
<b>HE445 (May 2015):</b>									
A <sub>2</sub>	21 May (17:13)	7.1484	55.0752	25 May (09:47)	7.3080	55.1360	87.4	12.2	3.7
A <sub>3</sub>	21 May (17:13)	7.1480	55.0750	25 May (09:59)	7.2526	55.1160	85.7	8.1	3.7
A <sub>4</sub>	21 May (17:36)	7.1426	55.0786	24 May (15:00)	7.2960	55.0626	66.6	10.0	2.9
—									
A <sub>5</sub>	27 May (09:49)	5.9126	54.3752	15 Jul (01:28)	8.4680	55.1232	1264.0	184.4	48.7
<b>HE490 (June/July 2017):</b>									
B <sub>1</sub>	29 Jun (08:09)	6.2560	54.5214	3 Jul (05:45)	6.5864	54.4770	95.5	22.0	3.9
B <sub>2</sub>	29 Jun (08:04)	6.2576	54.5212	1 Jul (06:10)	6.4850	54.5070	49.9	14.8	1.9
B <sub>3</sub>	29 Jun (08:05)	6.2574	54.5212	2 Jul (05:21)	6.5406	54.4918	74.1	18.6	2.9
—									
B <sub>4</sub>	29 Jun (13:25)	6.3336	54.5214	1 Jul (11:14)	6.3422	54.5232	46.6	0.6	1.9
B <sub>5</sub>	29 Jun (13:20)	6.3322	54.5212	2 Jul (10:40)	6.3882	54.5272	71.4	3.7	2.9
<b>HE496 (September 2017):</b>									
C <sub>1</sub>	14 Sep (21:01)	6.2432	54.3408	18 Sep (07:23)	6.6272	54.4320	86.2	26.9	3.4
C <sub>2</sub>	14 Sep (20:49)	6.2442	54.3412	18 Sep (07:12)	6.6222	54.4340	86.4	26.6	3.4
—									
C <sub>3</sub>	14 Sep (22:09)	6.2416	54.4250	15 Sep (23:30)	6.4238	54.4762	25.1	13.1	1.1
C <sub>4</sub>	14 Sep (22:11)	6.2422	54.4250	18 Sep (08:32)	6.5596	54.5626	83.1	25.6	3.4
—									
C <sub>5</sub>	14 Sep (23:10)	6.2450	54.5078	18 Sep (09:44)	6.6208	54.6854	80.8	31.3	3.4
C <sub>6</sub>	14 Sep (23:30)	6.2472	54.5082	18 Sep (09:53)	6.6318	54.6820	80.7	31.5	3.4
—									
C <sub>7</sub>	15 Sep (00:01)	6.2482	54.5920	18 Sep (10:56)	6.6446	54.7668	76.6	32.1	3.5
C <sub>8</sub>	15 Sep (00:06)	6.2480	54.5920	18 Sep (03:32)	6.5618	54.7590	69.0	27.5	3.1
—									
C <sub>9</sub>	15 Sep (02:22)	6.2854	54.6766	18 Sep (11:56)	6.5972	54.8482	67.5	27.7	3.4
C <sub>10</sub>	15 Sep (16:50)	6.4134	54.7180	18 Sep (12:04)	6.5994	54.8512	46.5	16.0	2.2

Drifters released as pairs or triplets during three different field experiments in the German Bight. Initial and final locations were defined according to the list of locations communicated via the satellite communication network. Type: Drifter type used. Length: Sum of the lengths of linear segments connecting observed drifter locations. Dist: Linear distance between the first and the last drifter location observed.  $\Delta T$ : Days between the first and the last observation. Single drifter A<sub>5</sub> is not a subject of the present study but due to its long-lasting journey used as a reference in Fig. 10a.

**Table 2.** Initial distances between drifter pairs

Pair	<u>Time</u>	Dist (m)	Pair	<u>Time</u>	Dist (m)	Pair	<u>Time</u>	Dist (m)
<u>A<sub>2</sub>-A<sub>3</sub></u>	<u>21 May 17:20</u>	<u>34</u>	<u>B<sub>1</sub>-B<sub>2</sub></u>	<u>29 Jun 08:20</u>	<u>59</u>	<u>C<sub>1</sub>-C<sub>2</sub></u>	<u>14 Sep 21:20</u>	<u>145</u>
<u>A<sub>2</sub>-A<sub>4</sub></u>	<u>21 May 17:40</u>	<u>28</u>	<u>B<sub>1</sub>-B<sub>3</sub></u>	<u>29 Jun 08:20</u>	<u>56</u>	<u>C<sub>3</sub>-C<sub>4</sub></u>	<u>14 Sep 22:20</u>	<u>34</u>
<u>A<sub>3</sub>-A<sub>4</sub></u>	<u>21 May 17:40</u>	<u>36</u>	<u>B<sub>2</sub>-B<sub>3</sub></u>	<u>29 Jun 08:20</u>	<u>13</u>	<u>C<sub>5</sub>-C<sub>6</sub></u>	<u>14 Sep 23:40</u>	<u>64</u>
			<u>B<sub>4</sub>-B<sub>5</sub></u>	<u>29 Jun 13:40</u>	<u>72</u>	<u>C<sub>7</sub>-C<sub>8</sub></u>	<u>15 Sep 00:20</u>	<u>103</u>
						<u>C<sub>9</sub>-C<sub>10</sub></u>	<u>16 Sep 06:20</u>	<u>315</u>

Distances 'Dist' refer to the time of the first synchronous GP based localization (recordings every 20 minutes). See Section 2.1 for a discussion of uncertainties.

**Table 3.** Distances between drifters and wind farm

	A <sub>2</sub>	A <sub>3</sub>	A <sub>4</sub>		B <sub>1</sub>	B <sub>2</sub>	B <sub>3</sub>		B <sub>4</sub>	B <sub>5</sub>
<u>Nearest wind engine (km):</u>	<u>1.82</u>	<u>1.84</u>	<u>2.18</u>		<u>4.10</u>	<u>4.04</u>	<u>4.05</u>		<u>0.47</u>	<u>0.40</u>
<u>Center of the wind farm (km):</u>	<u>7.91</u>	<u>7.94</u>	<u>7.77</u>		<u>7.28</u>	<u>7.23</u>	<u>7.24</u>		-	-

	C <sub>1</sub>	C <sub>2</sub>	C <sub>3</sub>	C <sub>4</sub>	C <sub>5</sub>	C <sub>6</sub>	C <sub>7</sub>	C <sub>8</sub>	C <sub>9</sub>	C <sub>10</sub>
<u>Nearest wind engine (km):</u>	<u>15.99</u>	<u>15.88</u>	<u>9.20</u>	<u>9.19</u>	<u>4.66</u>	<u>4.46</u>	<u>7.11</u>	<u>7.14</u>	<u>20.90</u>	<u>21.22</u>
<u>Center of the wind farm (km):</u>	<u>20.26</u>	<u>20.14</u>	<u>12.23</u>	<u>12.21</u>	<u>7.67</u>	<u>7.47</u>	<u>11.81</u>	<u>11.84</u>	<u>24.60</u>	<u>25.47</u>

For drifters from set A, distances are evaluated relative to wind farm DanTysk, for drifters from sets B and C they refer to wind farm Global Tech 1. For drifters B<sub>4</sub> and B<sub>5</sub> distances to the center of the wind farm are not given, as these drifters were released from inside the wind farm (see Fig. 4d).