

Dear Editor,

We'd like to thank both reviewers for their comments and positive appraisal. Based on their comments, we have changed the manuscript. Please find below a point-to-point response marked in blue, with changes in the text cited in in green.

Thomas Frederikse and Theo Gerkema

Reviewer 1

The manuscript is focused on the amplitude of decadal and multidecadal variability of sea-level in the North Sea and its connections to the atmospheric forcing. The background motivation is to set a backdrop to frame the observed long-term trends of sea-level rise. The main conclusion is that wind forcing and sea-level-pressure variability are important contributors to the decadal sea-level variability, and that this variability is larger in the winter season. Methodologically, the study tries to separate the local atmospheric forcing from the impact of large-scale atmospheric patterns, and concludes that the relative importance of these two factors varies regionally. Also, the relative impact of the large-scale atmospheric patterns can be different depending on the location of the tide-gauge.

My overall impression of the manuscript is positive. It is in general clearly written and well structured. The motivation and conclusions should be interesting also for a wider readership. I have only some minor comments that the authors may want to consider in a slightly revised version.

1. My most important and more general comments pertains the separation of the atmospheric drivers between local and large-scale atmospheric patterns. I guess that both are not totally independent, at least the statistical models used do not explicitly attempt to separate the influence of both. Clearly, the large-scale patterns, such as the NAO, are also related to local changes in sea-level-pressure and local wind-stress, so that the amount of variances explained by local and large-scale patterns partially overlap. Could this overlap be quantified, or could these factors be statistically separated in a statistical model that uses all predictors simultaneously?

The local and large-scale models are indeed not independent: the large-scale atmospheric patterns and local wind and pressure changes are linked. Therefore, the vast part of the local wind and pressure changes can be explained by the large-scale patterns. The variability that is explained by the local wind and pressure changes after removing the variability resulting from the large-scale atmospheric variability is negligibly small. We have added an extra remark to make explicitly clear that large-scale atmospheric patterns and local wind and pressure are related quantities:

P2L22: These indices characterize the prevailing large-scale patterns in the atmosphere, but on a regional level, they translate into regional wind- and sea-level pressure changes that induce local sea-level variations.

2. Page 2, line 10 The sea-level response to atmospheric pressure often deviates from the inverse barometer effect (Woodworth, 2017b). I guess the authors mean a purely equilibrium inverse barometer effect, and that this deviation is caused by the time scales considered here (seasonal means) that indicate that the response of sea level to changes in atmospheric pressure do not reach equilibrium. Is this the cause or are there other causes? The authors may want to help the reader here.

Yes, we indeed meant that around the North Sea, the local relation between sea level and local atmospheric pressure is often different from what would be expected from the static equilibrium expected from the inverted barometer effect. The most likely cause for this departure is that pressure changes co-vary with local and remote winds, precipitation etc.,

which also affect sea level via surges, for example (Woodworth 2009). Since the adjustment time scale for the IB effect is generally much shorter than a season (Wunsch and Stammer, 1997), it is unlikely that this departure is linked to the time scales we are interested in. We have added an explanation on the possible reasons for this departure:

P2L13: It is known that the sea-level response to local atmospheric pressure variability along the British coast often deviates from the equilibrium inverse barometer effect, which has its likely cause in factors that co-vary with atmospheric pressure, such as wind-induced surges (Woodworth et al., 2009; Woodworth, 2017b).

3. Page 10 line 5 There is a duplication in this paragraph 'generally only explain a small part of the variability explain'

Fixed

4. Page 8, line 1 It must be noted that the principal components computed here, are not fully interchangeable ... Delete comma after 'here'

Fixed

5. Figure 3. The plots show the gliding linear trends. Actually, these plots do not only show the variability of the trends but also the long-term acceleration (or lack thereof). According to these plots, only the winter records of Oslo and Cuxhaven show an acceleration of the sea-level rate, whereas all for other records the rate is statistically flat. Is this interpretation correct? If yes, it may be worth a short comment. Also related to this, it may be worth to include in the plot error bars in the estimation of the trends. These error bars would be dependent on the period and record, but to include a shading around the main lines could clutter the plot. My suggestion would be to include a typical errorbar as side vertical segment just as a guideline for the reader.

Thank you very much for bringing up this comment and number 6. The plot indeed suggests accelerations in seasonal sea level for some stations, which to a large extent disappear when removing the atmospheric forcing. Note that we do not try to explain sea-level accelerations in this paper, but we fully agree that this point must be discussed. We have chosen not to quantify the effect on sea-level accelerations, but to note that the low-frequency variability could be interpreted as an acceleration, and removing the wind and pressure effects reduces this low-frequency variability, and thus the possible accelerations induced by this variability. We have added remarks about this acceleration in seasonal sea level, and the effects of removing the atmospheric forcing.

P7L3: This variability in seasonal deviations could also be interpreted as an acceleration: for example, the trend in winter sea-level deviations in Oslo and Cuxhaven is generally higher in the last few decades than in the first few decades, which could translate into a long-term positive acceleration in the seasonal sea-level deviation time series.

P12L17: For all seasons, the local and large-scale regression model explain a large fraction the running-mean trends. For winter and autumn, after applying the regression models, the residual seasonal trends have the same order of magnitude as typical secular mean sea level trends, and the trend differences between the beginning and end of the considered periods have been substantially reduced. However, not all low-frequency has been explained by the models, and the residual time series still contain trends and accelerations.

Furthermore, to avoid that the trends in Figure 3 are mis-interpreted as long-term trends and accelerations in annual sea level, we added an extra remark:

P7L6: Again, note that these trends are trends in seasonal deviations from annual-mean sea level, and they don't represent secular trends in sea level.

About the uncertainty estimates: we have added a shading to Figures 3 and 9, which now shows confidence intervals from the estimated trends under the assumption that the residual can be described by an AR1 process. For Figure 9, to prevent clutter, we have split up the

Figure into an upper and lower row. We have added a short remark on how these trends are computed to the Data and Methods section:

P6L3: To estimate trends in seasonal sea-level deviations, we use the Hector software (Bos et al., 2013), which computes the trend and the 1-sigma confidence intervals under the assumption that the residuals can be described by a first-order autoregressive (AR1) process.

We added a short sentence to discuss the reduction of the confidence intervals that results from applying the regression model:

P12L17: For winter and autumn, after applying the regression models, the residual seasonal trends have the same order of magnitude as typical secular mean sea level trends, and the trend differences between the beginning and end of the considered periods have been substantially reduced.

6. Figure 10 Related to my previous comment, it seems that after removing the impact of atmospheric forcing, only the Oslo winter record show a long-term acceleration. Would this be statistically significant ? would it be worth mentioning ?
Please see our remarks at point #5, which also handles this point.

Reviewer 2

This study investigates the importance of interannual variability in seasonal sea level records in the North Sea region and its relation to atmospheric drivers. To do so, long-term tide gauge records are analysed and compared to atmospheric forcing agents such as local wind stress and sea level pressure as well as large scale atmospheric patterns. The authors find that variability is largest for the winter season and show, by using a simple linear regression model, that a large part of this variability can be explained by atmospheric forcing – though varying regionally. Other possible drivers are not discussed. The study expands on previous studies that were confined to one record or focused on annual means of sea level. In that respect, it is an interesting study that deserves publication. I have a few, mostly minor, comments though that I think should be addressed.

Most importantly, the description of the analysis could be improved to be more concise and consistent. In particular, the relation between local wind and pressure should be examined in more detail, as they are both used as predictors in the model and are surely not independent of each other. For this, and other comments, see below. (Page and line numbers refer to the manuscript as downloaded from <https://www.ocean-sci-discuss.net/os-2018-102/os-2018-102.pdf>)

Page 1

Line 2: “... we quantify low-frequency seasonal variations from annual-mean sea level...” – I’m not sure I understand what you mean. Maybe “quantify the relative importance of seasonal variations to annual variability” or “separate seasonal variability from annual variability”?

We agree that this sentence is indeed ambiguous. We have changed this sentence to:

P1L2: In this study, we quantify low-frequency variability in seasonal deviations from annual-mean sea level and look for drivers of this variability.

Line 8: “... which have their cause in ...” – although it makes sense, I would be careful with implying causal relationships from the analysis in this study. We are actually talking about two interpretations of the same thing. I would suggest you replace the phrase with “which are related to”.

We have changed the sentence:

P1L6: We find that the variability is much stronger in winter and autumn than in other seasons, and that this winter and autumn variability is predominantly driven by wind and sea-level pressure anomalies which are related to large-scale atmospheric patterns.

Line 20: Replace “with a view” with “with respect”

Fixed

Page 2

Line 17: Do you mean the NAO or really the North Atlantic Ocean?

Fixed

Line 24: maybe clarify a bit? What do you mean by “The difference of the (...) difference”?

We have re-phrased this sentence:

P2L25: Seasonal deviations from annual-mean sea level contain strong multi-decadal components, who manifest themselves as possible trends and accelerations in records that span multiple decades

Page 3

Line 3: Is the year missing after PSMSL? Also, I can’t find PSMSL in the References. You can check the psmsl referencing recommendation here: <http://psmsl.org/data/obtaining/reference.php>

We have added the reference including extraction date to the bibliography

Line 6: “...a single record...” without the “s”

Fixed

Line 6: "... over the period..." or shorten to "over the common period".

Fixed

Line 26: "average to get seasonal anomalies": the same way you treated the tide gauge data, i.e. you subtract the annual mean and then average over the seasons?

Yes, this sentence has been altered to make the procedure clear:

P3L27: To obtain seasonal anomalies, we follow the same procedure as with the tide-gauge data: we remove the annual-mean and group the monthly anomalies into season-average anomalies.

Page 5

Equation 4: I can imagine that sea-level pressure and wind stress are correlated? Did you test for this? In that case, did you do a stepwise regression in order to check whether the inclusion of additional predictors increases the explained variance significantly?

We did not check for mutual correlations between regressors. We have implemented a stepwise regression model that subsequently adds regressors to the model and using an adjusted R^2 metric to check whether each new regressor explains a significant amount of variance. We have added a description of the followed procedure in the Data and Methods section. When updating the code, we discovered a bug which caused the wrong number was subtracted from the annual mean values. We have fixed this bug, double-checked the code, and updated all results with the improved code.

Line 9-14: It is implied that you use monthly data, but please mention it for completeness. Also, it might not be clear for the reader why you do not treat the reanalysis data the same way as the other data sources. For example, why do you remove the seasonal cycle, do you detrend it before the EOF analysis, and which data do you use in Equation 5: surely, you have to compute season-mean PCs in order to use the regression model?

We agree that is paragraph is sometimes unclear, and we have re-written the explanation of the procedure we followed. We do remove the trend and the mean seasonal cycle before computing the EOF analysis, as not removing the mean seasonal cycle results in a dominant EOF mode related to the mean seasonal cycle. This removal sounds contradictory, but we are interested in low-frequency deviations from the mean, and not in the mean seasonal cycle itself. We now explicitly mention this apparent contradiction in line xx:

P5L24: Note that removing the semi-annual and annual cycle does remove the mean cycles themselves, but not the low-frequency variability around the mean cycles, which is the quantity we are interested in.

Line 29: Replace while with with.

Fixed

Page 6

Figure 2: I would prefer to have the label standard deviation next to the colorbar.

Label has been moved

Line 3: "... each season..." without the "s"

Fixed

Line 5: Here, I'm not sure but I would suggest to replace between with in.

Fixed

Line 12: Maybe add "after vertical land movement due to GIA has been accounted for"? Or "secular trend in absolute sea level".

Fixed, used the phrase secular trend in geocentric sea level.

Page 7

Line 6: "In spring and summer, ...": there is something wrong with this sentence. Please check.

Fixed

Page 8

Figure 5, caption: Instead of "red lines" you might as well write "red arrows".

Fixed

Line 3: Replace by with with.

Fixed

Page 9

Line 1: I would suggest to replace "whose results" with "and the results"

Fixed, also fixed the reference to the wrong figure.

Line 11: "Interestingly," This sounds as if you mentioned the fact for the first time, but in fact you have done so already in the previous paragraph (Line 5). I would rewrite this sentence together with the next ones. They seem, somehow not consistent: you mention that amplitude and temporal behaviour differ in this region (Line 13) but it is a bit unclear which region you are referring to. The southern part of the North Sea?

We have revised this section to remove these ambiguities:

P8L13: Interestingly, for some stations in winter, especially for the stations in Belgium and in the southern part of the Netherlands, the large-scale model even explains more variability than the local model. This difference may have its cause in the complex wind and pressure patterns generated by the large-scale atmospheric patterns, which may not be well-captured by the single-point wind- and pressure time series used in Equation 4. For some other stations, such as Brest and Newlyn, the local model explains more variability than the large-scale model, suggesting that not all variability is driven by large-scale patterns, but local effects also play a role. The fact that both models explain a large fraction of the variability in autumn and winter shows that the variability is predominantly driven by wind- and pressure changes that are linked to large-scale atmospheric patterns.

Line 13: A parenthesis is missing after Figure 4.

Fixed

Line 25-26: How did you compute the fraction of explained variance of each predictor? Did you use the regression coefficients computed from Equation 4 and 5 (so, the full model), or did you perform the regression again with only one predictor? The results might be different, especially if the predictors (pressure and wind stress) are correlated.

We computed the fraction of explained variance using the regression coefficients computed from the full model, with the rejected regressors (non-significant/co-varying) not considered. We have added an extra line in the figure caption to clarify this:

Fig. 7 caption: The explained variance is computed using the regression coefficients from the model with all accepted terms, and not by only regressing each individual term.

Page 10

Figure 6 (and other Figures): it would be easier for the reader who is not that familiar with the region if you could also include the station numbers, not just the name, in the figures. This way it would be easier to find the location of the station by looking only at the upper part of Figure 1.

We have added the station numbers to figures 3,6,7,8, and 9.

Page 11

Figure 7: If this is only about the relative importance of the different predictors, I would consider to normalize the explained variances with the total variance. That way, differences between stations are more obvious and easier to assess.

We have considered that option, but in the current setting, the plot also depicts the ratio of the total variances and explained variances between stations, which would not be visible if the variances would be normalized. Hence, we have decided to keep the current layout.

Line 3: Replace are (first word) with is.

Fixed

Page 12

Figure 9, caption: There are no top or bottom panels.

This plot has changed as a result from remarks of reviewer #1, so the figure now actually has top and bottom panels.

Page 13

Line 3: “The major driving mechanism....” – at the risk of being pedantic, wind and pressure are not really a mechanism but rather a forcing. The question is through which mechanisms these forcing agents cause the variability in seasonal sea level.

We have re-phrased this sentence:

P13L6: This variability is largely forced by wind and pressure.

Line 13-17: First you state that the sea-level response to local changes in wind and pressure is mostly barotropic, only to write in the next sentence that it isn't strictly barotropic. While there is no contradiction, the reader might be confused about what you are aiming at (I was). I would suggest to rephrase the sentence.

We have re-phrased the sentence:

P14L2: However, the sea-level response to atmospheric forcing is mostly, but not necessarily fully barotropic in the North Sea

Line 17: “... and local and large scale atmospheric changes do not explain all variability.” – Can you think of other processes that could be responsible for the variability in seasonal sea level?

We have added two examples of different processes that could play an additional role:

P14L4: For example, processes like ocean circulation changes and low-frequency variability in freshwater fluxes from rivers and locks (e.g. Gerkema and Duran-Matute, 2017) could drive low-frequency sea-level deviations. As such, seasonal sea-level changes could still play a role in variability in storm-surge heights.

Line 20: “... multi-decadal trends in annual sea level are in general not representative for the trends of the winter record...” I agree to this general statement! But is it true for this region? It seems that the variability in winter could dominate the interannual variability as it is so large compared to the other seasons (except autumn). Have you looked at annual multi-decadal trends and compared them to the winter multi-decadal trends? Maybe, in this region, they are very similar and one might indeed infer winter decadal variability from annual means?

We haven't looked into the representativeness of winter-mean sea level for annual sea level, the latter indeed being likely affected by winter-mean sea level (hence the caveat of our methodology denoted on P3L21). Although this relationship is likely there, since this paper deals with seasonal sea-level deviations, and not with annual-mean sea-level variability, we have decided not to quantify the impact of individual seasons on annual-mean sea level. We have added an extra sentence to the conclusions that seasonal variability will eventually affect annual-mean sea level:

P14L10: Furthermore, seasonal wind- and pressure effects will eventually influence annual-mean sea-level variations.

Multidecadal variability in seasonal mean sea level along the North Sea coast

Thomas Frederikse¹ and Theo Gerkema²

¹Jet Propulsion Laboratory, California Institute of Technology, 4800 Oak Grove Drive, Pasadena, California, USA

²NIOZ Royal Netherlands Institute for Sea Research, Department of Estuarine and Delta Systems (EDS), and Utrecht University, PO Box 140, 4400 AC Yerseke, The Netherlands

Correspondence: Thomas Frederikse (thomas.frederikse@jpl.nasa.gov)

Abstract. Seasonal deviations from annual-mean sea level in the North Sea region show a large low-frequency component with substantial variability at decadal and multi-decadal time scales. In this study, we quantify low-frequency ~~seasonal variations~~ variability in seasonal deviations from annual-mean sea level and look for drivers of this variability. The amplitude, as well as the temporal evolution of this multi-decadal variability shows substantial variations over the North Sea region, and this spatial pattern is similar to the well-known pattern of the influence of winds and pressure changes on sea level on higher frequencies. The largest low-frequency signals are found in the German Bight and along the Norwegian coast. We find that the variability is much stronger in winter and autumn than in other seasons, and that this winter and autumn variability is predominantly driven by wind and sea-level pressure anomalies which ~~have their cause in~~ are related to large-scale atmospheric patterns. For the spring and summer seasons, ~~only a small~~ this atmospheric forcing explains a smaller fraction of the observed variability ~~can be explained by local and large-scale atmospheric changes.~~

Large-scale atmospheric patterns have been derived from a principal component analysis of sea-level pressure. The first principal component of sea-level pressure over the North Atlantic Ocean, which is linked to the North Atlantic Oscillation (NAO), explains the largest fraction of winter-mean variability for most stations, while for some stations, the variability consists of a combination of multiple principal components.

The low-frequency variability in season-mean sea level can manifest itself as trends in short records of seasonal sea level. For multiple stations around the North Sea, running-mean 40-year trends for autumn and winter sea level often exceed the long-term trends in annual mean sea level, while for spring and summer, the seasonal trends have a similar order of magnitude as the annual-mean trends. Removing the variability explained by atmospheric variability vastly reduces the seasonal trends, especially in winter and autumn.

20 1 Introduction

Analyses of sea-level records, with ~~a view respect~~ to deducing trends and their causes, as well as sea-level projections commonly focus on annual-mean values (~~Wahl et al., 2013; Piecuch et al., 2016; Slangen et al., 2017, e.g.~~) (e.g. Wahl et al., 2013; Piecuch et al., 2016; Slangen et al., 2017, e.g.). However, next to interannual sea-level variability, which is captured by annual-mean sea level, season-mean sea level (e.g.

winter-mean or summer-mean) could have its own variability on top of the annual-mean variability. In this study, we quantify this seasonal sea-level variability in the North Sea region, and look into its causes. It has already been demonstrated that for the Southwestern North Sea, different seasons show distinct variability patterns: Dangendorf et al. (2013) demonstrated the difference between annual-mean and seasonal variability from the Cuxhaven tide-gauge record. In particular, variability in
5 spring and summer (which were broadly similar) diverged strongly from the autumn and winter seasons. Hence, variability of annual-mean sea level is not necessarily representative for variability of seasonal sea level. In the case of Cuxhaven, the disparities were almost entirely explained by local atmospheric forcing (wind stress and atmospheric pressure).

While the common variability in and around the North Sea on decadal and longterm time scales is mostly driven by the baroclinic response to remote longshore wind stress (Dangendorf et al., 2014a; Frederikse et al., 2016a), local atmospheric
10 forcing is known to cause large and localized interannual sea-level signals in the North Sea (Marcos and Tsimplis, 2007; Dangendorf et al., 2014a; Frederikse et al., 2016b). Therefore, regional variations in seasonal sea-level variability are to be expected. Zonal winds have been shown to affect sea level much more along the Dutch and German coasts than along the British coast, where atmospheric pressure is relatively more important (Dangendorf et al., 2014a; Frederikse et al., 2016b);
~~although~~. It is known that the sea-level response to atmospheric pressure local atmospheric pressure variability along the
15 British coast often deviates from the equilibrium inverse barometer effect (Woodworth, 2017b), which has its likely cause in factors that co-vary with atmospheric pressure, such as wind-induced surges (Woodworth et al., 2009; Woodworth, 2017b).
For the German and Dutch coast, ~~it is well known that~~ a large part of the observed sea-level variability in the winter months can be explained by the North Atlantic Oscillation (NAO) (Wakelin et al., 2003; Yan et al., 2004), which mostly acts through
local wind forcing (Chen et al., 2014). The NAO contains a strong multi-decadal component, which results in multidecadal
20 winter-mean sea-level variability in this region (Dangendorf et al., 2012). However, the ~~North Atlantic Ocean~~ NAO does not explain all winter-mean atmospheric variability, and new atmospheric proxies have been proposed: Dangendorf et al. (2014b) uses a proxy based on shifted centers of action, while Chafik et al. (2017) uses the combination of teleconnection patterns, including the NAO, the East Atlantic Pattern (EAP) and Scandinavia Pattern (SCAN) to explain a larger factor of the local wind and pressure forcing along the east coast of the North Atlantic Ocean. These indices characterize the prevailing large-
25 scale patterns in the atmosphere, but on a regional level, they translate into ~~the actual atmospheric agents~~ regional wind- and sea-level pressure changes that induce local ~~sea level variations: wind stress and atmospheric pressure~~ sea-level variations.

~~The difference between seasonal and annual mean sea level difference has a~~ Seasonal deviations from annual-mean sea level contain strong multi-decadal ~~component, which manifests itself as trends~~ components, who manifest themselves as possible trends and accelerations in records that span multiple decades (Marcos and Tsimplis, 2007). For several stations along the
30 Dutch coast, Gerkema and Duran-Matute (2017) also suggested that this variability causes differences in trends estimated over 100-year long tide-gauge records.

The purpose of this paper is twofold: first, we want to quantify the multi-decadal variability in season-mean sea level for the North Sea region, and we want to investigate which fraction of the seasonal variability is caused by local and large-scale atmospheric forcing. As an explanatory factor for local forcing, we will look into winds and atmospheric pressure. Those local

forcing agents do contain a signal that is linked to large-scale atmospheric oscillation patterns. We will investigate whether changes in these large-scale atmospheric patterns are responsible for the multi-decadal variability in seasonal sea level.

2 Data and methods

For this study, we use monthly-mean sea-level observations from 33 tide-gauge stations around the North Sea, the Norwegian coast, and the English Channel. The data has been obtained from Permanent Service for Mean Sea Level database (PSMSL, ~~Holgate et al., 2013~~) (PSMSL, 2017; Holgate et al., 2013). We only use stations that are not flagged for possible problems and for which ~~that the~~ data is provided in a Revised Local Reference (RLR) to avoid stations with unstable datums. For Trondheim and Aberdeen, two individual tide-gauge records have been merged into a single ~~records-record~~ by adjusting both records to the mean over ~~the~~ period where both records overlap. Figure 1 shows a map with all the tide-gauge stations used in this study and the periods over which the stations have data. We limit our tide-gauge data to the period 1890-2014 to avoid the inclusion of the sea-level jump that is apparent in many Dutch tide-gauge stations around 1885. From that year, monthly mean sea level is based on mean sea level readings rather than mean tide level readings, which could result in a jump in the monthly data (Woodworth, 2017a). According to the PSMSL documentation, a correction has been applied to avoid this jump, but the jump is not apparent in some neighbouring stations, and as such, suspect. We only consider years for which at least 10 months of data is available. Starting from the monthly tide-gauge data, we compute seasonal sea-level anomalies as follows: first, we remove the annual-mean sea level from the monthly data. To ensure that each season consists of consecutive months, each year runs from December the year before until November. Then, gaps of two months and shorter are linearly interpolated. The resulting monthly time series is then separated into seasonal deviations for four seasons: winter (December, January, February, DJF), spring (March, April, May, MAM), summer (June, July, August, JJA), and autumn (September, October, November). The monthly sea-level data is averaged over each season, which results in four sea-level anomalies per year, one for each season. The resulting sea-level time series are thus seasonal deviations from annual mean sea level. Annual sea level can be affected by a large deviation in a particular season (e.g. a winter with very high sea level results in a higher annual mean), which in that case will result in an anomaly with an opposite sign during the other seasons. We have followed this approach instead of removing the linear trend or the low-frequency component from the tide-gauge data because in this region, the aforementioned baroclinic response to longshore wind forcing causes a large interannual variability signal, which would leak into the seasonal anomalies if only the linear trend or low-frequency variability instead of the annual mean is removed.

To obtain continuous records of wind stress and sea-level pressure anomalies, we use monthly-mean output from the NOAA twentieth-century reanalysis project version V2C (Compo et al., 2011) ~~and average to get seasonal~~. To obtain seasonal deviations from the annual-mean values, we follow the same procedure as with the tide-gauge data: we remove the annual-mean and group the monthly anomalies into season-average anomalies. We compute wind stress from the 10-meter wind speeds using

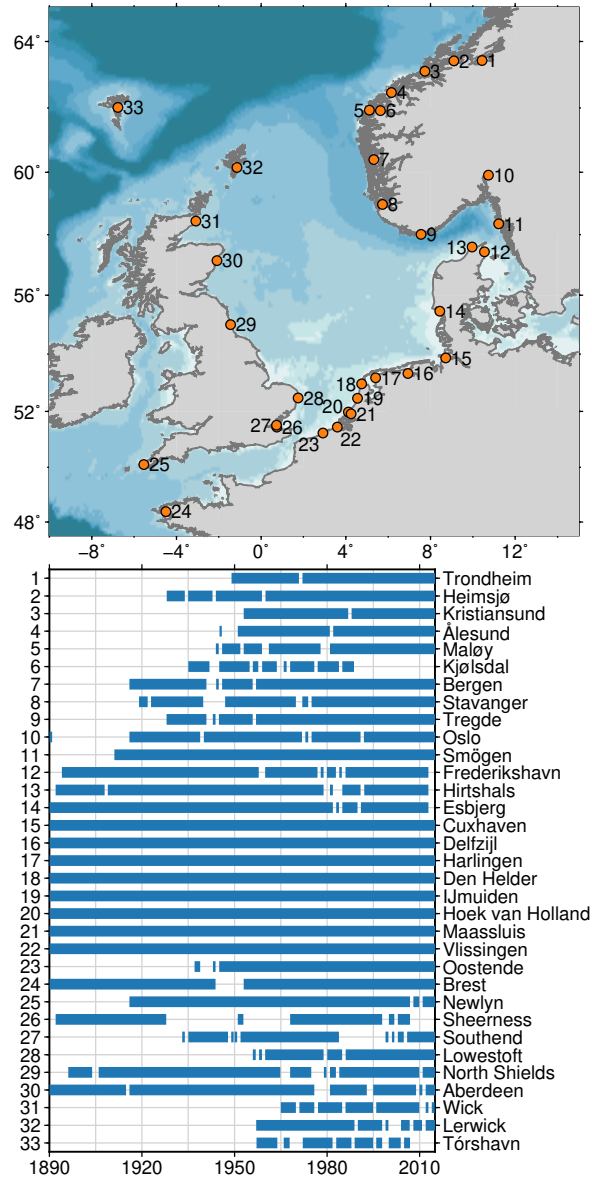


Figure 1. Locations of the tide-gauge stations and the availability of data at each station over the period 1890-2014. The numbers in the upper panel correspond to the numbers in the lower panel.

the following relation

$$\tau_u = \rho_{\text{air}} C_D u \sqrt{u^2 + v^2} \quad (1)$$

$$\tau_v = \rho_{\text{air}} C_D v \sqrt{u^2 + v^2}, \quad (2)$$

where ρ_{air} the density of air, u and v the zonal and meridional 10-meter wind velocity, and C_D the drag coefficient, which is
 5 parametrised following Pugh and Woodworth (2014):

$$C_D = 0.8 + 0.065 \sqrt{u^2 + v^2} \quad (3)$$

We parametrise the effects of seasonal local wind stress and sea-level pressure on sea level as a linear model:

$$\eta_{\text{obs}} = \alpha_0 + \alpha_1 p'(t) + \alpha_2 \tau_u(t) + \alpha_3 \tau_v(t) + \epsilon(t). \quad (4)$$

In this model, η_{obs} is the observed seasonal sea-level deviation, t is the time of the observation, $p'(t)$ is the local sea-level
 10 pressure anomaly, $\tau_u(t)$ the zonal wind stress, $\tau_v(t)$ the meridional wind stress, and $\epsilon(t)$ the residual. We obtained the pressure
 anomalies and wind stress values by taking the model value with the highest correlation coefficient within a 500km radius
 around each tide-gauge station. We solve this system using ordinary least squares, which gives us the regression parameters
 $[\alpha_0 \dots \alpha_3]$. We test for the significance of each regressor using a t -test statistic, and only include regressors ~~-, when for which~~
 the accompanying 95% confidence interval does not cross zero. Since the individual regressors could be mutually correlated,
 15 we apply a stepwise regression scheme. We start with the regressor that has the highest (absolute) correlation with the seasonal
sea-level deviations, and subsequently add the extra regressors, ranked by their correlation. We only consider regressors for
which the adjusted R^2 statistics increases after inclusion of that regressor. The adjusted R^2 statistic determines whether the
extra regressor results in a significantly higher fraction of explained variance, and is defined as

$$\hat{R}^2 = 1 - (1 - R^2) \frac{n - 1}{n - p - 1}, \quad (5)$$

20 with n the number of available season-years, and p the number of included regressors. R^2 is the fraction of explained variance,
which is defined as

$$R^2 = 1 - \frac{\text{var}(\eta_{\text{obs}} - \eta_{\text{exp}})}{\text{var}(\eta_{\text{obs}})} \quad (6)$$

with $\text{var}()$ the variance operator and η_{exp} the sea-level deviations explained by the regression models.

To obtain a link between coastal sea level and large-scale atmospheric patterns over the North Atlantic Ocean, we have
 25 computed the three leading principal components of the sea-level pressure field from the 20th Century Reanalysis following the
 procedure described in Chafik et al. (2017). The monthly gridded sea-level pressure field between $[80W - 50E, 30N - 80N]$ is
 selected, the ~~seasonal cycle is linear trend, the annual cycle and the semi-annual cycle are~~ removed, and from the resulting field,
 the three leading empirical orthogonal functions and associated principal components have been computed. We have chosen

the method from Chafik et al. (2017) over selecting the original indices to obtain a coherent set of large-scale atmospheric variability from a single data source. Note that removing the semi-annual and annual cycle does remove the mean cycles themselves, but not the low-frequency variability around the mean cycles, which is the quantity we are interested in.

5 From the monthly principal components, we compute seasonal anomalies by first removing the annual mean from the monthly data, and subsequently average the monthly data into seasonal anomalies. As with the effects of local winds and pressure changes, we compute the effect of large-scale atmospheric variability on local sea level using a linear regression model

$$\eta_{\text{obs}} = \beta_0 + \beta_1 \text{PC}_1(t) + \beta_2 \text{PC}_2(t) + \beta_3 \text{PC}_3(t) + \epsilon(t), \quad (7)$$

in which $\text{PC}_n(t)$ is the n th principal component. The regression coefficients, $[\beta_0 \dots \beta_3]$ are estimated using ordinary least squares using the same stepwise regression approach as used for the local wind and pressure model.

~~To assess the performance of the model, we use the fraction of explained variance R^2 , which is defined as :-~~

$$R^2 = 1 - \frac{\text{var}(\eta_{\text{obs}} - \eta_{\text{exp}})}{\text{var}(\eta_{\text{obs}})}$$

~~with $\text{var}(\cdot)$ the variance operator and η_{exp} the sea-level deviations explained by the regression models.~~ To obtain information on low-frequency variability, we use a second-order Butterworth low-pass filter with a cutoff period of 10 years. Note that the regression models are applied to unfiltered data, and that the filters have been applied as a post-processing step. To estimate trends in seasonal sea-level deviations, we use the Hector software (Bos et al., 2013), which computes the trend and the 1σ confidence intervals under the assumption that the residuals can be described by a first-order autoregressive (AR_1) process.

3 Results

The first objective of this paper is to quantify low-frequency seasonal variability for each season, which is shown in Figure 2. This figure depicts the standard deviation of the low-pass filtered seasonal sea-level time series, which is a measure of the typical amplitude of the multi-decadal variability in seasonal sea level. The figure shows that the low-frequency seasonal variability in winter and autumn is generally larger than in summer and spring for most stations, ~~while~~ with the winter-mean variability being the largest. The amplitude of low-frequency winter and autumn variability shows a clear regional pattern: high variability can be found in the German Bight, the Skagerrak between Norway and Denmark, as well as along the Norwegian coast towards the North, while for the southern North Sea, Brest, Newlyn, and the British coast, this variability is smaller. Although the low-frequency variability in spring and summer is substantially smaller than in winter, the spatial patterns for each ~~seasons~~ season show some similarities: also in spring and summer, the variability is highest for the stations surrounding the German Bight. The Southeastern North Sea is a hotspot for low-frequency variability in the region, but the ~~seasonal differences between~~ differences between seasonal and annual sea-level variability ~~Dangendorf et al. (2013) found~~ found by Dangendorf et al. (2013) for the Cuxhaven station are not a purely local phenomenon. This low-frequency variability can be interpreted as trends when short records are used. To quantify typical trends that could emerge from low-frequency variability

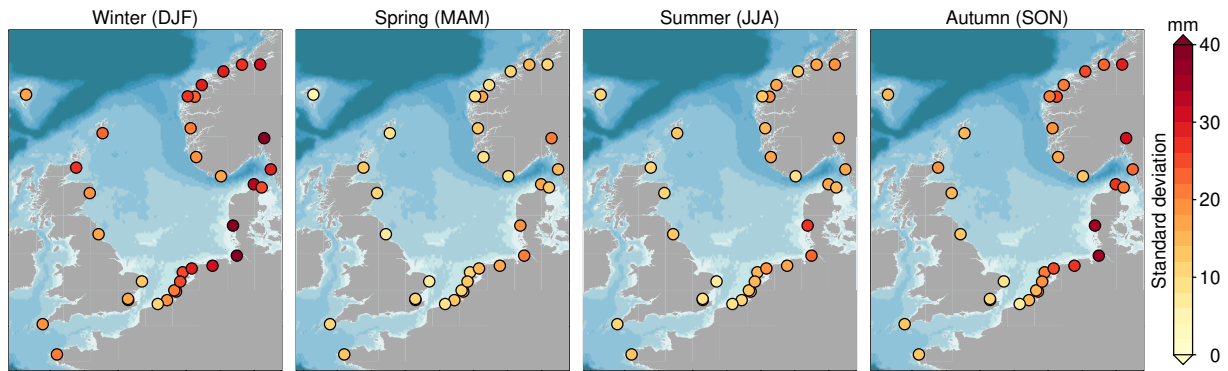


Figure 2. Standard deviation of the seasonal sea-level anomalies for each season after applying a 10-year low pass filter at all tide-gauge locations.

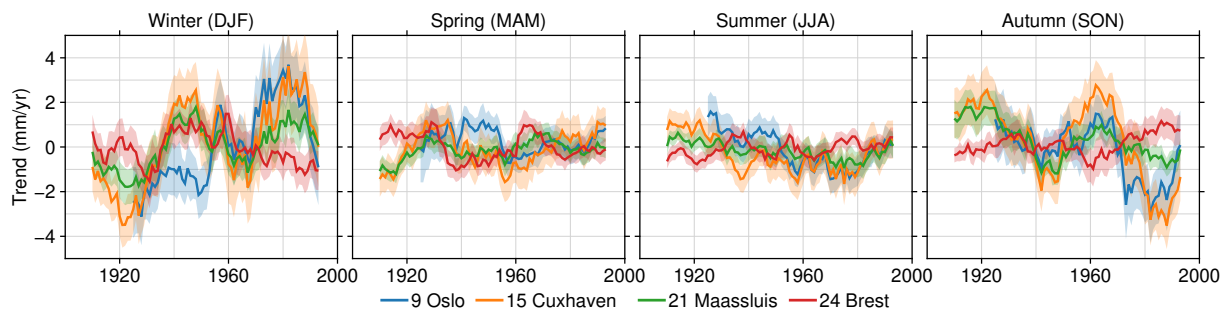


Figure 3. Running-mean trends in seasonal sea level deviations for four stations, using a 40-year window. Trends are only shown for time windows with at least 30 years of data. [The shading denotes the \$1\sigma\$ confidence interval.](#) Note that these trends have been computed from the time series without the low-pass filter applied. [The numbers in the legend correspond to the station numbers in Figure 1](#)

in season-mean sea level, we have computed 40-yr running mean trends in seasonal sea level [deviations](#) for four stations. The resulting trends are depicted in Figure 3. For all seasons, the trends in seasonal sea level can reach values in the same range of the [long-term trend in secular trend in geocentric mean sea level](#), which is typically in the order of 1-2 mm/yr for this region (Wahl et al., 2013) with the largest 40-year trends occurring during autumn and winter. [The confidence intervals for these 40-year trends are in the order of 1 mm/yr.](#) For Oslo and Cuxhaven, the seasonal trends sometimes ~~exceed~~[reach values in the order of 4 mm/yr](#), which is about twice the rate of the secular trend. [This variability in seasonal deviations could also be interpreted as an acceleration: for example, the trend in winter sea-level deviations in Oslo and Cuxhaven is generally higher in the last few decades than in the first few decades, which could translate into a long-term positive acceleration in the seasonal sea-level deviation time series.](#) Again, note that these trends are trends in seasonal deviations from annual-mean sea level, and [they don't represent secular trends in sea level.](#)

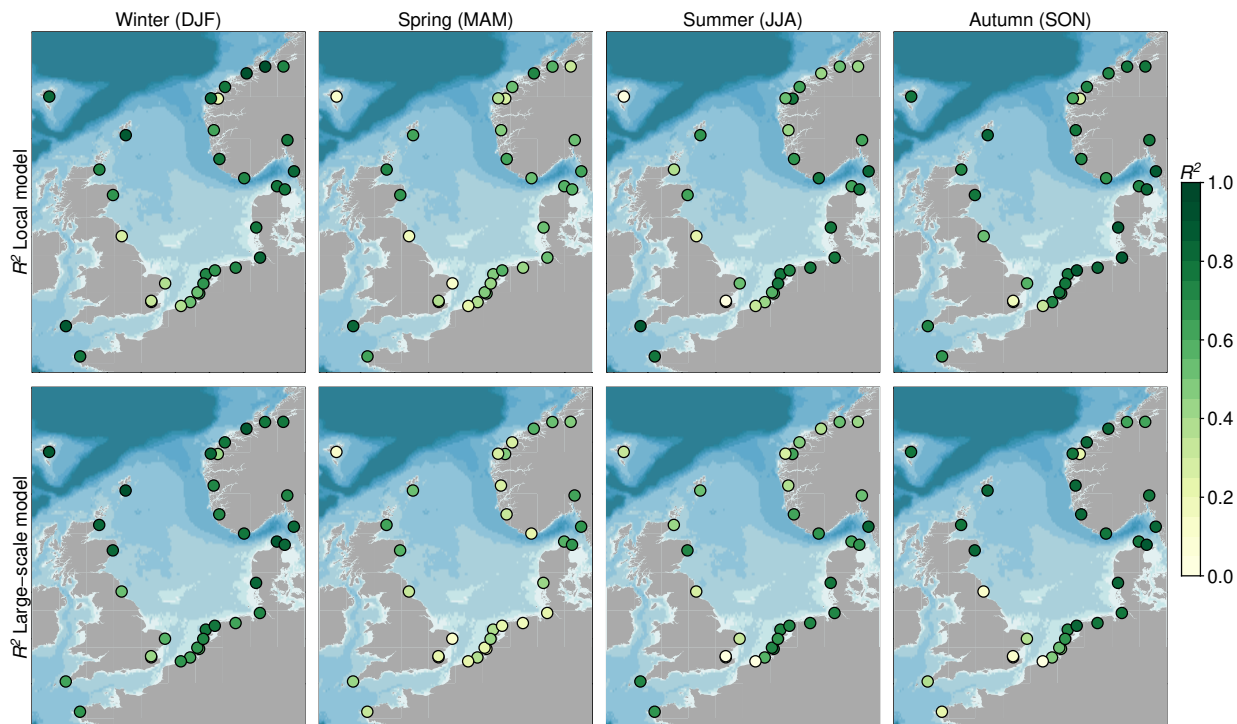


Figure 4. Fraction of 10-year low-pass filtered seasonal variance (R^2) explained by the local (top) and large-scale model (bottom) for each station.

To determine whether local wind and pressure changes are responsible for this variability, we compute the fraction of explained variance (R^2) of the local regression model (Equation 4) after applying a 10-year lowpass filter to both the seasonal sea-level deviations and the solution to the regression model. The results are depicted in the top row of Figure 4.

In autumn and winter, when the low-frequency variability is highest, the local regression model explains a large fraction of the variability for most stations. Especially in the winter (DJF) season, the model explains the majority of the observed variability ($R^2 > 0.5$) for most stations. In spring and summer, generally ~~only explain a small a smaller~~ part of the variability can be explained, which suggests that the long-term seasonal variability, which is already much smaller than the winter and autumn variability, is ~~not less~~ predominantly driven by wind- and pressure changes. However, for some stations, such as Brest and Newlyn, the local regression model explains the majority of the variability for all seasons.

10 ~~Since the local Local~~ wind and pressure variability ~~is known to be influenced are affected~~ by large-scale atmospheric ~~pattern circulation patterns~~, such as the NAO and EAP, ~~the~~. The next step is to investigate whether the multi-decadal variability in seasonal sea level ~~is also driven by deviations can be explained by the low-frequency variability in~~ these large-scale ~~atmospheric variability~~ patterns. To this end, we use the three leading principal components of surface pressure variability, as described in section 2. These principal components and their associated empirical orthogonal functions represent the major patterns of
 15 atmospheric variability and are displayed in Figure 5. As such, they share characteristics with well-known atmospheric tele-

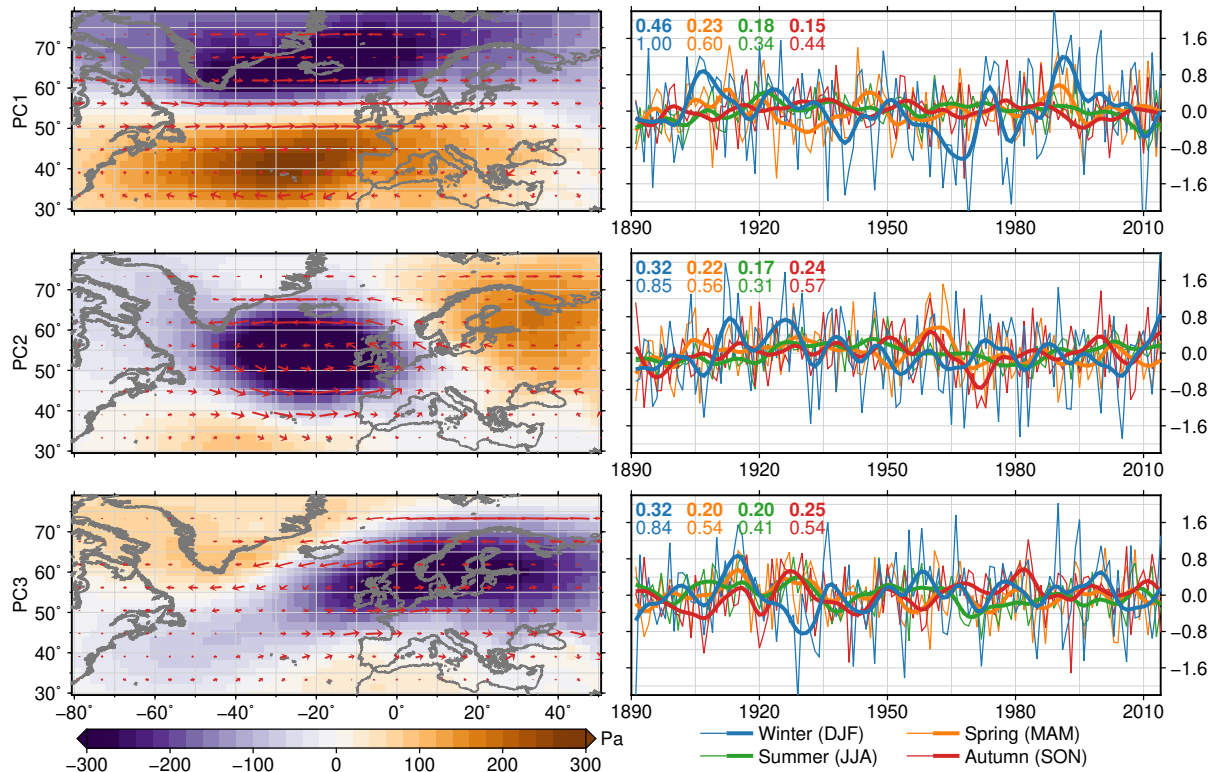


Figure 5. The first three Empirical Orthogonal Functions (EOFs) and accompanying Principal Components (PCs) of sea-level pressure above the North Atlantic Ocean. The left panels show the spatial patterns of each EOF. The red lines arrows depict the associated geostrophic wind vectors. The right panels show the season-mean PCs (thin line), and the season-mean PCs after applying a 10-year low pass filter. The variance of the monthly-mean principal components is scaled to 1, and the numbers in the top left corner denote the low-pass filtered variance (bold) and the unfiltered variance (regular) for each season. Multiplication of the EOF with the accompanying PC gives the resulting sea-level pressure anomaly in Pascal.

connection patterns. The distinct north-south pattern of the first principal component resembles the North Atlantic Oscillation (Hurrell et al., 2003), while the second and third PC are akin to the East Atlantic Pattern and the Scandinavia Pattern respectively (e.g. Cassou et al., 2004). It must be noted that the principal components computed here are not fully interchangeable with the commonly used original indices, which are generally computed using different methods. The first EOF is associated

5 by with westerly winds over the whole North Sea basin, while the second EOF shows a more meridionally-oriented wind effect, albeit with a curvature over the North Sea. EOF3 has its center of action over southern Scandinavia, and hence, the wind strength associated with this EOF shows a large north-south gradient over the North Sea, with stronger winds in the south. All three patterns show both season-to season variability (thin lines in Figure 5), as well as variability on multi-decadal scales (thick lines). For all three principal components, the variability in winter is the largest, both for the seasonal and low-pass

filtered time series. The difference is most pronounced for the first principal component, which is a well-known feature of the NAO (Hurrell et al., 2003), but it's visible in all three PC's at seasonal and the low-pass filtered time series.

The three PCs are used in the large-scale regression model (Equation 7), ~~whose and the~~ results are depicted in the bottom row of Figure ???. Like the local regression model, the large-scale regression model also explains a large fraction of the multi-
5 decadal variability in winter and autumn sea level, while for spring and summer, the explained fraction is ~~substantially smaller.~~
~~For generally smaller. Interestingly, for~~ some stations in winter, ~~the especially for the stations in Belgium and in the southern part of the Netherlands, the~~ large-scale model even explains more variability than the local model, ~~which is especially the case for the stations around the southern part of the North Sea.~~ This difference may have its cause in the complex wind and pressure patterns generated by the large-scale atmospheric patterns, which may not be well-captured by the single-point wind-
10 and pressure time series used in Equation 4. For some other stations, such as Brest and Newlyn, the local model explains more variability than the large-scale model, suggesting that not all variability is driven by large-scale patterns, but local effects also play a role. The fact that both models explain a large fraction of the variability in autumn and winter shows that the variability is predominantly driven by wind- and pressure changes that are linked to large-scale atmospheric patterns. ~~Interestingly, for the Southern part of the North Sea, the large-scale model explains a larger fraction of the variability than the local model.~~

15 Not only the amplitude of the variability (Figure 4), but also the temporal pattern differs between stations in this region, which can be seen in Figure 6. This figure shows time series of long-term winter-mean sea-level variability together with the results from both regression models at twelve representative stations. This figure again shows the major features of Figure 2 and 4: high variability in the German Bight, low variability along the British coast and the Southern North Sea and the ability of both regression models to explain a large part of this variability. The pattern of variability shows differences over the region:
20 the stations in the German Bight (Delfzijl, Cuxhaven, Esbjerg) and Oslo show a coherent variability pattern, which differs from the patterns found in other locations. For example, during the period 1985-2005, most stations along the eastern North Sea coast show an above-average sea level, which is much less pronounced along the British coast, and even corresponds to a drop in seasonal sea level for the stations Brest and Newlyn. For all these stations, both regression models explain these features, which shows that the differences between these stations must be caused by a difference in wind and pressure forcing, and
25 consequently, the large-scale atmospheric patterns affect different stations in a different way, and the variability at different stations may be attributable to different combination of influence from the large-scale patterns.

To understand these differences between the forcing mechanisms between the different stations, Figure ??-7 shows the fraction of explained variance for each individual regressor and the full regression model of low-pass filtered DJF sea level both the local and large-scale regression models. This figure shows that the origins of the forcing differ substantially throughout
30 the region: while the stations from the German Bight towards the Southern North Sea are dominated by zonal wind stress, the more northern stations are forced by a combination of zonal and meridional wind and sea-level pressure. At the other side of the English Channel, Brest and Newlyn are dominated by sea-level pressure effects. This is also the case for Torshavn, which can be explained by the fact that Torshavn is an off-shelf island, for which wind stress won't cause large storm surges due to the large ocean depth and the absence of a large ocean boundary. Along the northern Norwegian coast, which also shows a

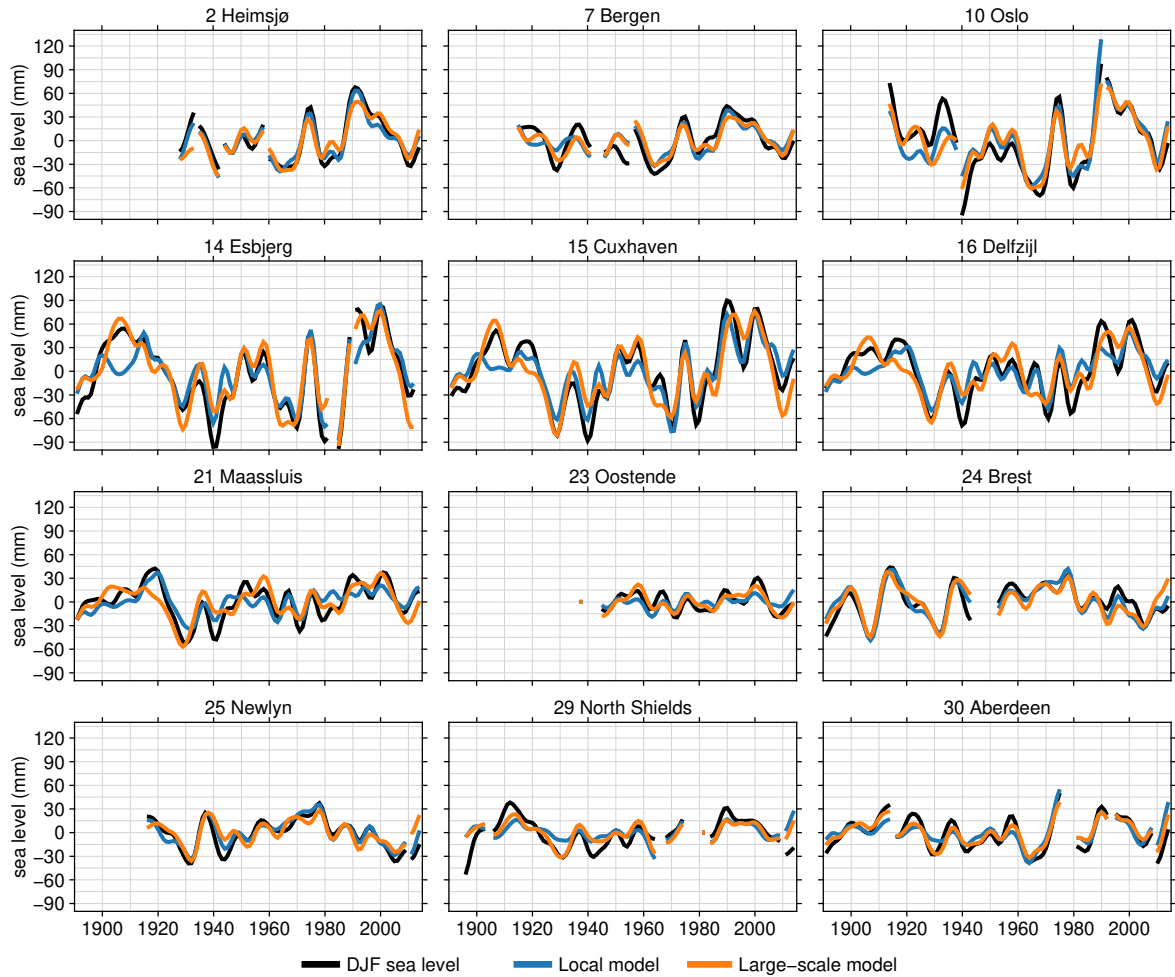


Figure 6. Time series of winter (DJF) sea level, the reconstructed sea level from the regression model, and the residual at selected tide-gauge stations. A 10-year low pass filter has been applied to all time series.

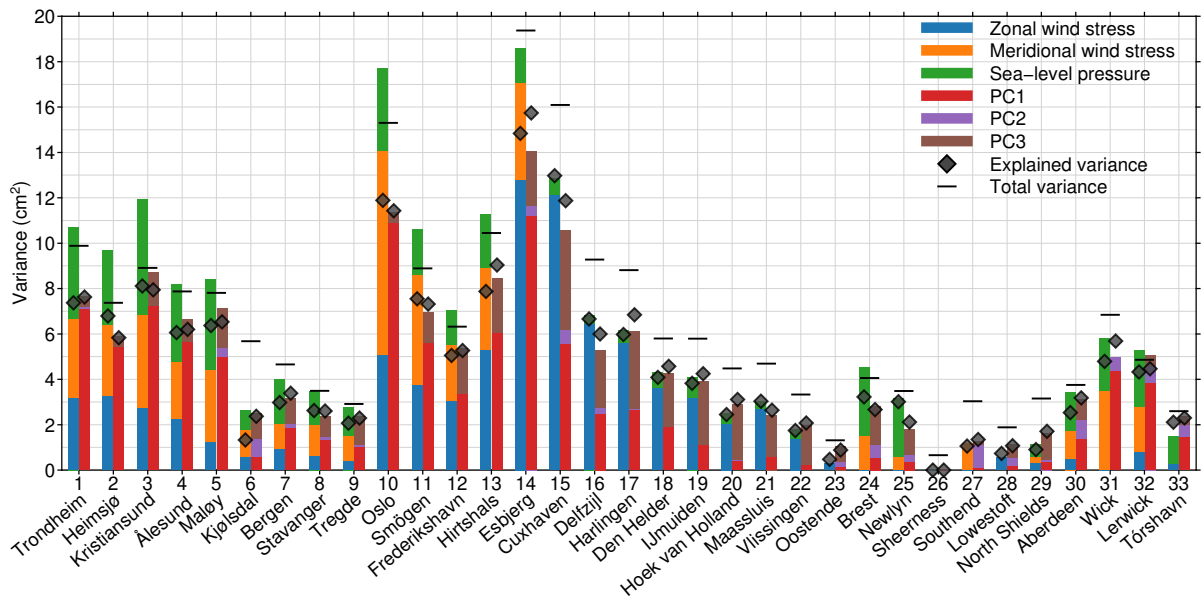


Figure 7. Total and explained variance of DJF sea level at each tide-gauge station. The left bar shows the variance explained by each term in the local model, and the right bar the variance explained by the large-scale model. [The explained variance is computed using the regression coefficients from the model with all accepted terms, and not by only regressing each individual term.](#) Negative fractions of explained variance are not shown. The total and explained variances have been computed after applying a 10-year low-pass filter. [The numbers on the lower axis correspond to the station numbers in Figure 1.](#)

large variability signal, both zonal and meridional wind, as well as surface pressure variability explain a large fraction of the variability.

Despite the large regional variations in the local forcing agents, the first principal component PC1, which is closely tied to the North Atlantic Oscillation, explains the largest fraction of the variability for most stations. For the [stations in the](#) Southern North Sea, which are less affected by the westerlies associated with this PC (see Figure 5), the third PC explains a large part of the variability. The first PC is associated with both zonal, meridional and pressure changes along the Norwegian coast, which explains the aforementioned impact of wind and pressure on the stations in that region. The third PC is associated with a strong zonal geostrophic wind component over the Southern North Sea. The second PC explains a small part of the variance, even though the signal does contain a considerable decadal winter-mean signal. The only exception are Brest and Newlyn, where the PC2 affects the zonal wind.

For the the autumn season, different factors affect the low-frequency variability, as shown in Figure 8. In autumn, the variability, which is generally much smaller than in winter is generally driven by the same drivers as the winter variability, but the local wind and pressure variability is driven by a different combination of large-scale patterns for some stations, especially along the German Bight, where the seasonal variability is now mostly driven by the third PC instead of the first PC.

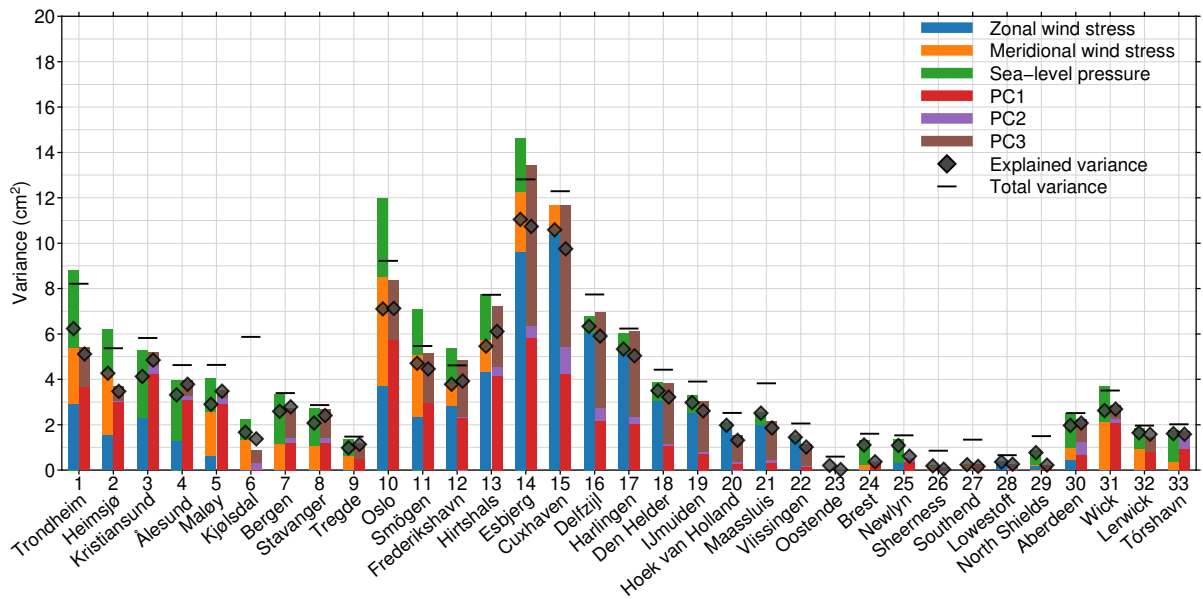


Figure 8. Same as Figure ???, but for the autumn (SON) season.

The trends in seasonal sea-level deviations, depicted in Figure 3, are also to a large extent caused by the atmospheric forcing. Figure 9 shows the same trends in seasonal deviation, but after removing sea-level deviations explained by the local and large-scale model. ~~The reduction in seasonal trends is largest in~~ For all seasons, the local and large-scale regression model explain a large fraction the running-mean trends. For winter and autumn, ~~and the after applying the regression models, the residual~~ seasonal trends have been reduced to the same order of magnitude as typical secular mean sea level trends. ~~Hence, although the simple regression model explains a large fraction of the variability, the unexplained variability still causes substantial seasonal trends,~~ and the trend differences between the beginning and end of the considered periods have been substantially reduced. However, not all low-frequency has been explained by the models, and the residual time series still contain trends and accelerations.

10 4 Conclusions

In this paper, we have analysed the low-frequency variability in the seasonal deviations from annual mean sea level in the North Sea region. Low-frequency variability of winter-mean and autumn-mean sea level shows a spatially-varying pattern, with the highest values encountered along the German Bight. ~~The major driving mechanism of this variability is~~ This variability is largely forced by wind and pressure. The wind generally plays a large role for locations that show large low-frequency variability, and ~~the variability~~ is indeed weaker where wind plays a minor role, e.g. the British North Sea coast. The low-frequency changes in local wind and pressure are linked to large-scale atmospheric patterns, which resemble the NAO, EAP and Scandinavia patterns. Hence, the low-frequency variability in large-scale atmospheric patterns translate into low-frequency

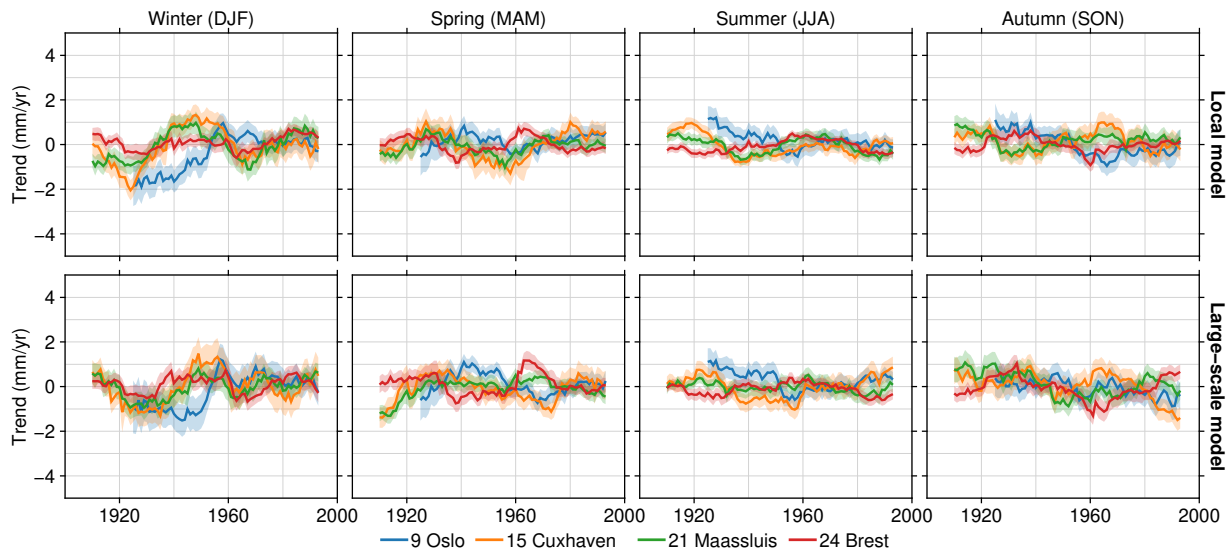


Figure 9. Running-mean 40-year trends in seasonal sea level deviations for four stations after removal of the local (dashed lines) and large-scale (solid lines) models. The top panels show trends in the original time series, and the bottom row shows the trends. Trends are only shown for time windows with at least 30 years of data. Note that these trends have been computed from the time series without the low-pass filter applied.

winter-mean and autumn-mean sea-level variability. In spring and summer, the low-frequency variability is smaller and can generally only to a small extent be explained by local and large-scale atmospheric forcing.

This seasonal sea-level variability is mostly caused by wind and pressure changes. Therefore, extreme sea levels associated with storm surge events are not superimposed onto this variability. In other words: a storm that occurs during a 'low phase' will not generate a lower surge level than when the same storm occurs during a 'high phase'. Because the sea-level response to local wind and pressure changes in the North Sea is mostly barotropic in nature (e.g. Chen et al., 2014; Dangendorf et al., 2014a), the typical sea-level adjustment time scale to wind and pressure changes will not be longer than a few days (Dimon et al., 1997). However, the sea-level response to atmospheric forcing is not strictly mostly, but not necessarily fully barotropic in the North Sea (Tsimplis et al., 2006; Calafat et al., 2012), and local and large-scale atmospheric changes do not explain all variability. For example, processes like ocean circulation changes and low-frequency variability in freshwater fluxes from rivers and locks (e.g. Gerkema and Duran-Matute, 2017) could drive low-frequency sea-level deviations. As such, seasonal sea-level changes could still play a role in variability in storm-surge heights.

Multi-decadal seasonal sea-level variability in the North Sea is of the same order of magnitude as the long-term trend in mean sea level, and as a result, multi-decadal trends in annual mean sea level are in general not representative for the trends of the winter record in isolation. For processes that rely on long-term sea level variability, for example coastal sand suppletion this difference needs to be taken into account. Furthermore, seasonal wind- and pressure effects will eventually influence

[annual-mean sea-level variations](#). Since a large part of the variability can be explained by a simple regression model, this correction should not pose a challenge.

Code and data availability. No substantial data sets and computer codes have been generated for this study.

Author contributions. T.G. conceived the idea for the study. T.F. did the data analysis and made the figures. Both authors contributed to the
5 analysis of the results and wrote the article.

Competing interests. The authors declare no competing interest

Acknowledgements. The tide-gauge data has been obtained from the Permanent Service for Mean Sea Level (PSMSL, www.psmsl.org). The NOAA 20th Century Reanalysis V2 data has been downloaded from www.esrl.noaa.gov/psd/data/20thC_Rean/. The principal component analysis has been conducted using eofs version 1.3 (Dawson, 2016). All figures have been produced with the Generic Mapping Tools (Wessel
10 et al., 2013). Part of this research (T.F.) was carried out at the Jet Propulsion Laboratory, California Institute of Technology, under a contract with the National Aeronautics and Space Administration.

References

- Bos, M. S., Fernandes, R. M. S., Williams, S. D. P., and Bastos, L.: Fast Error Analysis of Continuous GNSS Observations with Missing Data, *Journal of Geodesy*, 87, 351–360, <https://doi.org/10.1007/s00190-012-0605-0>, 2013.
- Calafat, F. M., Chambers, D. P., and Tsimplis, M. N.: Mechanisms of Decadal Sea Level Variability in the Eastern North Atlantic and the Mediterranean Sea, *Journal of Geophysical Research: Oceans*, 117, n/a–n/a, <https://doi.org/10.1029/2012JC008285>, 2012.
- Cassou, C., Terray, L., Hurrell, J. W., and Deser, C.: North Atlantic Winter Climate Regimes: Spatial Asymmetry, Stationarity with Time, and Oceanic Forcing, *Journal of Climate*, 17, 1055–1068, [https://doi.org/10.1175/1520-0442\(2004\)017<1055:NAWCRS>2.0.CO;2](https://doi.org/10.1175/1520-0442(2004)017<1055:NAWCRS>2.0.CO;2), 2004.
- Chafik, L., Nilsen, J., and Dangendorf, S.: Impact of North Atlantic Teleconnection Patterns on Northern European Sea Level, *Journal of Marine Science and Engineering*, 5, 43, <https://doi.org/10.3390/jmse5030043>, 2017.
- Chen, X., Dangendorf, S., Narayan, N., O’Driscoll, K., Tsimplis, M. N., Su, J., Mayer, B., and Pohlmann, T.: On Sea Level Change in the North Sea Influenced by the North Atlantic Oscillation: Local and Remote Steric Effects, *Estuarine, Coastal and Shelf Science*, 151, 186–195, <https://doi.org/10.1016/j.ecss.2014.10.009>, 2014.
- Compo, G. P., Whitaker, J. S., Sardeshmukh, P. D., Matsui, N., Allan, R. J., Yin, X., Jr, B. E. G., Vose, R. S., Rutledge, G., Bessemoulin, P., and BrÃ, S.: The Twentieth Century Reanalysis Project, p. 30, 2011.
- Dangendorf, S., Wahl, T., Hein, H., Jensen, J., Mai, S., and Mudersbach, C.: Mean Sea Level Variability and Influence of the North Atlantic Oscillation on Long-Term Trends in the German Bight, *Water*, 4, 170–195, <https://doi.org/10.3390/w4010170>, 2012.
- Dangendorf, S., Mudersbach, C., Wahl, T., and Jensen, J.: Characteristics of Intra-, Inter-Annual and Decadal Sea-Level Variability and the Role of Meteorological Forcing: The Long Record of Cuxhaven, *Ocean Dynamics*, 63, 209–224, <https://doi.org/10.1007/s10236-013-0598-0>, 2013.
- Dangendorf, S., Calafat, F. M., Arns, A., Wahl, T., Haigh, I. D., and Jensen, J.: Mean Sea Level Variability in the North Sea: Processes and Implications, *Journal of Geophysical Research: Oceans*, 119, <https://doi.org/10.1002/2014JC009901>, 2014a.
- Dangendorf, S., Wahl, T., Nilson, E., Klein, B., and Jensen, J.: A New Atmospheric Proxy for Sea Level Variability in the Southeastern North Sea: Observations and Future Ensemble Projections, *Climate Dynamics*, 43, 447–467, <https://doi.org/10.1007/s00382-013-1932-4>, 2014b.
- Dawson, A.: Eofs: A Library for EOF Analysis of Meteorological, Oceanographic, and Climate Data, *Journal of Open Research Software*, 4, <https://doi.org/10.5334/jors.122>, 2016.
- Dimon, P., Pietrzak, J. D., and Svensmark, H.: Correlations in Sea-Level Elevations, *Physical Review E*, 56, 2605–2614, <https://doi.org/10.1103/PhysRevE.56.2605>, 1997.
- Frederikse, T., Riva, R., Kleinherenbrink, M., Wada, Y., van den Broeke, M., and Marzeion, B.: Closing the Sea Level Budget on a Regional Scale: Trends and Variability on the Northwestern European Continental Shelf, *Geophysical Research Letters*, 43, 10,864–10,872, <https://doi.org/10.1002/2016GL070750>, 2016a.
- Frederikse, T., Riva, R., Slobbe, C., Broerse, T., and Verlaan, M.: Estimating Decadal Variability in Sea Level from Tide Gauge Records: An Application to the North Sea, *Journal of Geophysical Research: Oceans*, 121, 1529–1545, <https://doi.org/10.1002/2015JC011174>, 2016b.
- Gerkema, T. and Duran-Matute, M.: Interannual Variability of Mean Sea Level and Its Sensitivity to Wind Climate in an Inter-Tidal Basin, *Earth System Dynamics*, 8, 1223–1235, <https://doi.org/10.5194/esd-8-1223-2017>, 2017.

- Holgate, S. J., Matthews, A., Woodworth, P. L., Rickards, L. J., Tamisiea, M. E., Bradshaw, E., Foden, P. R., Gordon, K. M., Jevrejeva, S., and Pugh, J.: New Data Systems and Products at the Permanent Service for Mean Sea Level, *Journal of Coastal Research*, 288, 493–504, <https://doi.org/10.2112/JCOASTRES-D-12-00175.1>, 2013.
- Hurrell, J. W., Kushnir, Y., Ottersen, G., and Visbeck, M.: An Overview of the North Atlantic Oscillation, in: *Geophysical Monograph Series*, edited by Hurrell, J. W., Kushnir, Y., Ottersen, G., and Visbeck, M., vol. 134, pp. 1–35, American Geophysical Union, Washington, D. C., <https://doi.org/10.1029/134GM01>, 2003.
- Marcos, M. and Tsimplis, M. N.: Forcing of Coastal Sea Level Rise Patterns in the North Atlantic and the Mediterranean Sea, *Geophysical Research Letters*, 34, <https://doi.org/10.1029/2007GL030641>, 2007.
- Piecuch, C. G., Dangendorf, S., Ponte, R. M., and Marcos, M.: Annual Sea Level Changes on the North American Northeast Coast: Influence of Local Winds and Barotropic Motions, *Journal of Climate*, 29, 4801–4816, <https://doi.org/10.1175/JCLI-D-16-0048.1>, 2016.
- PSMSL: Permanent Service for Mean Sea Level, Tide Gauge Data Retrieved on 17 Aug 2017 from <http://www.psmsl.org/data/obtaining/>, 2017.
- Pugh, D. and Woodworth, P.: *Sea-Level Science: Understanding Tides, Surges, Tsunamis and Mean Sea-Level Changes*, Cambridge University Press, Cambridge ; New York, 2014.
- Slangen, A. B. A., Adloff, F., Jevrejeva, S., Leclercq, P. W., Marzeion, B., Wada, Y., and Winkelmann, R.: A Review of Recent Updates of Sea-Level Projections at Global and Regional Scales, *Surveys in Geophysics*, 38, 385–406, <https://doi.org/10.1007/s10712-016-9374-2>, 2017.
- Tsimplis, M. N., Shaw, A. G. P., Flather, R. A., and Woolf, D. K.: The Influence of the North Atlantic Oscillation on the Sea-Level around the Northern European Coasts Reconsidered: The Thermosteric Effects, *Philosophical Transactions of the Royal Society A: Mathematical, Physical and Engineering Sciences*, 364, 845–856, <https://doi.org/10.1098/rsta.2006.1740>, 2006.
- Wahl, T., Haigh, I., Woodworth, P., Albrecht, F., Dillingh, D., Jensen, J., Nicholls, R., Weisse, R., and Wöppelmann, G.: Observed Mean Sea Level Changes around the North Sea Coastline from 1800 to Present, *Earth-Science Reviews*, 124, 51–67, <https://doi.org/10.1016/j.earscirev.2013.05.003>, 2013.
- Wakelin, S. L., Woodworth, P. L., Flather, R. A., and Williams, J. A.: Sea-Level Dependence on the NAO over the NW European Continental Shelf, *Geophysical Research Letters*, 30, <https://doi.org/10.1029/2003GL017041>, 2003.
- Wessel, P., Smith, W. H. F., Scharroo, R., Luis, J., and Wobbe, F.: Generic Mapping Tools: Improved Version Released, *Eos, Transactions American Geophysical Union*, 94, 409–410, <https://doi.org/10.1002/2013EO450001>, 2013.
- Woodworth, P., Teferle, F., Bingley, R., Shennan, I., and Williams, S.: Trends in UK Mean Sea Level Revisited, *Geophysical Journal International*, 176, 19–30, <https://doi.org/10.1111/j.1365-246X.2008.03942.x>, 2009.
- Woodworth, P. L.: Differences between Mean Tide Level and Mean Sea Level, *Journal of Geodesy*, 91, 69–90, <https://doi.org/10.1007/s00190-016-0938-1>, 2017a.
- Woodworth, P. L.: Sea Level Change in Great Britain between 1859 and the Present, *Geophysical Journal International*, <https://doi.org/10.1093/gji/ggx538>, 2017b.
- Yan, Z., Tsimplis, M. N., and Woolf, D.: Analysis of the Relationship between the North Atlantic Oscillation and Sea-Level Changes in Northwest Europe, *International Journal of Climatology*, 24, 743–758, <https://doi.org/10.1002/joc.1035>, 2004.