

02/05/2018

Dear Dr. Hoppema,

5 We would like to thank the reviewer for their thoughtful reviews. Their contributions have strengthened our paper. We have responded to each of these points below, which are reflected in the manuscript. We have also included a copy of the manuscript which should include the relevant changes highlighted with track changes.

Kind Regards

10

Jonathan Tinker *et al.*

### Reviewer 1

15 Our aim in this paper is to draw evidence on the prospects of seasonal forecasting from the literature and from our own research. We recognise that some aspects will not come as a surprise to some readers; nonetheless, we believe that an overall perspective hasn't been presented before.

This may not have been clear in the original manuscript, given the spirit of the comments of Reviewer 1, and so we have added this into the section "scope of the study" to highlight his point to the reader.

20 We hope that this clarifies the purpose of the paper in response to Reviewer 1's general comments.

We now address the comments of Reviewer 1, paragraph by paragraph (after their introduction paragraph).

### Point 1

25 *The first approach, that is using a global circulation model (GCM), is rejected by the authors by referring to model limitations of GCMs. However, this rejection is trivial. Since the 1980s the development of regional circulation models (RCM) is motivated by limited representations of shelf sea dynamics in GCMs. Moreover the authors only highlight the deficiency of GCMs in simulating tidal mixing due to the neglect of tidal waves, which is also trivial and known.*

### Author's response:

30 While the deficiencies of global ocean models are simulating regional seas are well known to the scientific audience, we wanted to clarify that this means that the direct use of the seasonal forecasting system is not possible – there has been a lot of interest in using North Sea seasonal forecasts from marine users who may not have detailed understanding of the limitations of ocean modelling. While the rejection of the direct approach due to the global model's representation of NWS stratification is simple, the tidal mixing and stratification regimes of the NWS are dominant features of the NWS hydrography and are very important for the ecosystem of the NWS, and the potential end users.

### 35 Point 2

*Their account on the second approach, that is developing empirical relationships between predictable large-scale driving mechanisms and NWS conditions, is a mere correlation analysis of the NAO with reanalysis atmospheric forcing fields and T and S for various sectors of the NWS and eastern North Atlantic. Moreover, the found correlations are all well-known but in*

*the manuscript often not even cited. It is mentioned that correlations do not guarantee causal relations. However, underlying physical mechanisms linking the presented variables are poorly discussed.*

**Author's response:**

5 The correlations between the driving data and the NWS have been sufficient to make our point. More complex analysis is beyond the scope of the paper.

We have now referenced relevant papers.

We have discussed the mechanisms enough to show that the relationships are plausible; however, as this is not the main focus of the paper, a detailed discussion is not included.

**Point 3**

10 *Their exemplified "forecast" of English Channel SST based on the NAO index is only a comparison of SST and NAO index time series, quantified by the correlation coefficient. A suggestion how to construct SST from a predicted NAO index, though, is not presented.*

**Author's response:**

15 As we wanted to show how these relationships may be the basis of a very simple statistical forecast, the relationship between the SST and NAO was sufficient to elucidate our point. However, it's a good point about the equations - we have now put them in the figure.

**Point 4**

20 *The third approach, that is a dynamical downscaling of a GCM forecast by a RCM, is not yet presented but theoretically discussed by correlation analysis of annual mean T and S on the shelf with various boundary forcings for a regional reanalysis product. The idea behind this is that if the boundary forcings are significantly correlated with the NWS sectors and there is forecast skill by the GCM for large-scale driving mechanisms then a dynamical downscaling should be able to improve the forecast for the NWS. However, just as for the second approach, the found correlations are not new and sometimes the correlated variables even miss an underlying physical connection. For example, how should T and S at the northern boundary (65°N) influence the NWS? Why isn't the western boundary taken into account instead, which is much*  
25 *more relevant for water mass properties in the eastern North Atlantic.*

**Author's response:**

We again note the opening comment that this paper aims to give an overview of the prospects for seasonal forecasts, with evidence from the literature and our research.

30 We therefore outline the third approach, dynamic downscaling, and note that the NWS must respond to the boundary conditions for such an approach to be possible.

Although previous studies state relationships between the open ocean and the NW European shelf seas, it is important to show that these relationships exist within this model and its boundary conditions.

The example chosen for figure 11 was to highlight the difference in the response of the northern and southern regions to the atmospheric forcings. As we have tended to focus on the atmospheric forcings, we had simply chosen a northern and  
35 southern oceanic lateral boundary region for consistency. In response to your comment on the western boundary, we have replaced the northern boundary in figure 11.

**Point 5**

*Being aware of the many studies investigating the influence of NAO variations on the physical oceanic and atmospheric conditions of the NWS, the only thing I have learned from reading the manuscript is that the predictive skill for NWS T and S based on a forecast GCM (GloSea5) NAO index is very low. Other presented conclusions are either trivial or speculative.*

5 **Author's response:**

This is again relates to our need to clarify the scope of the paper, and our aim being to outline the prospects of NWS seasonal forecasting.

We hope that the new text in the “scope of the study” will clarify our aims for the reader.

**Reviewer 2**

10 Thank you for your review.

You make a very good point with your general criticism, and in response we have undertaken significant additional model evaluation. Thank you for your suggestions, as we feel this strengthens the paper considerably.

We have responded to your other comments, point-by-point below.

**Page 5, line 11:**

15 *I would assume that the SST assimilation in the CO5 reanalysis also disturbs the heat fluxes. Please give some information about this problem.*

**Author's response:**

The SST assimilation will improve the SST field, and will affect (improve) the upward radiation. The downward radiation that we consider in this paper is not affected.

20 I have said this in the text.

**Page 6, line 16:**

*Please complete the sentence.*

**Author's response:**

Rewritten

25 **Page 6, lines 20 to 24:**

*Please discuss the implications of both mentioned problems regarding the riverine forcing.*

**Author's response:**

Rewritten

**Page 9, line 19:**

30 *Obviously, due to the missing tides not enough turbulence is introduced into the system. This should be stated here.*

**Author's response:**

I have added this to section 2.3, and added a comment here.

**Page 9, line 27:**

5 *As already mentioned above, here, I see the main weakness of the paper. By this approach only processes related to the much less important southern entrance of the North Sea can be considered in detail. As recommended above, the authors should try also to look at other locations, also in the northern North Sea.*

**Author's response:**

This is a very good point, thanks for suggesting it.

We have extended the evaluation section significantly to include some more northern stations.

10 **Page 10, line 28:**

*Sentence unclear.*

**Author's response:**

Hopefully clarified

**Page 11, line 15:**

15 *Probably another reason for this behaviour is the fact that the different catchment areas are located in slightly different climate regimes, which also leads to an unclear signal of the run-off.*

**Author's response:**

If I have understood your point, it's a good one – I have added it earlier in the text.

**Page 11, line 33:**

20 *The SSS has not discussed before. Therefore its first mentioning at this place is a little surprising.*

**Author's response:**

Sea surface salinity is briefly discussed at the end of the previous paragraph. I have expanded on this a little.

If you mean the acronym SSS rather than the variable sea-surface salinity, I have redefined it in the previous paragraph.

**Page 12, lines 26-27.**

25 *This sentence needs to be substantiated. Otherwise it is just a platitude.*

**Author's response:**

This has been rewritten.

**Page 12, line 33:**

30 *Per se, it is not clear that boundary conditions are most important for an improved dynamical downscaling. Please give some explains. Also the effect of better represented regional atmospheric features is definitely of importance.*

**Author's response:**

They are not the most important thing for a successful NWS seasonal forecast based on dynamically downscaling a seasonal-forecast, the seasonal forecast is. However, it's important that the NWS will respond to the large-scale external environment, in which the seasonal forecast system does have skill – if it is very chaotic, and an initial conditions problem, we would not necessarily expect the NWS to respond to any predicted variability from the seasonal forecasting system. I have hopefully clarified this in the text.

**Page 13, line 4:**

*A repetition of the previous comment. In particular, if an uncoupled dynamical down-scaling is performed, also the regional atmospheric resolution will be of importance.*

10 **Author's response:**

See the response to the previous comment.

**Page 13, line 27:**

*Here, it should be mentioned that the impact of the major inflow is not considered appropriately, due to the choice of stations which are analysed.*

15 **Author's response:**

Hopefully this is not necessary with the additional reanalysis evaluation.

**Page 13, line 28 and 29:**

*This statement is misleading. As I understood the employed models include the influence from the Baltic Sea.*

**Author's response:**

20 Good point, this has been removed

**Page 13, line 33:**

*The exchange with the Atlantic has already been discussed before. Therefore, it is confusing to say, it will be considered later.*

**Author's response:**

25 Happy to remove the phrase saying we'll discuss it later.

**Page 14, line 5:**

*Such mentioned advective process from the open boundaries would imply that a considerable time-lag between the boundary signal and the reaction pattern in the North Sea exists. This should be discussed.*

**Author's response:**

30 We have done additional analysis for this, with lag correlation, and summarise the findings here. However as this study focuses on the surface fluxes, consideration of these lags doesn't impact the story of the paper much.

**Page 15, line 10:**

*This argument is not convincing. In principle, also opposing effects can be formulated empirically.*

**Author's response:**

That's true.

5 I have amended the text.

**Page 15, line 16:**

*To my mind also coupled atmosphere-ocean models could lead to a significant improvement, since regional atmospheric features and the ocean-atmosphere interaction is resolved more realistically in these types of models.*

**Author's response:**

10 We agree that this could be important, and have a model in development that may allow this to be considered. However, we think that assessment of this model is beyond the scope of this paper.

We have altered the text, say that this is a key area, rather than the key area.

**Page 16, line 14:**

15 *This statement is formulated very negative, and, it does not really reflect the general content of entire paper. Therefore, I would suggest to weaken it a bit.*

**Author's response:**

Thanks, I have weakened it.

# What are the prospects for seasonal prediction of the marine environment of the Northwest European shelf?

## Abstract.

5 Sustainable management and utilisation of the Northwest European Shelf Seas (NWS) could benefit from reliable forecasts of the marine environment on monthly-to-seasonal timescales. Recent advances in global seasonal forecast systems, and regional marine reanalyses for the NWS, allow us to investigate the potential for seasonal forecasts of the state of the NWS. We identify three possible approaches to address this issue: A) basing NWS seasonal forecasts directly on output from the Met Office's GloSea5 global seasonal forecast system; B) developing empirical downscaling relationships between large-scale climate drivers predicted by GloSea5, and the state of the NWS; and C) dynamically downscaling GloSea5 using a regional model. We reject A) after showing that the GloSea5 system is inadequate for simulating the NWS directly. Turning to B), we explore empirical relationships between the winter North Atlantic Oscillation (NAO), and NWS variables estimated using a regional reanalysis. We find some statistically significant relationships, and present a skilful prototype seasonal forecast for English Channel sea surface temperature.

10

15 We then consider the potential of C). We find large scale relationships between inter-annual variability in the boundary conditions and inter-annual variability modelled on the shelf, suggesting that dynamic downscaling may be possible. We also show that for some variables there are opposing mechanisms correlated to the NAO, for which dynamic downscaling may improve on the skill possible with empirical forecasts. We conclude that there is potential for the development of reliable seasonal forecasts for the NWS, and consider the research priorities for their development.

## 20 Copyright Statement

The works published in this journal are distributed under the Creative Commons Attribution 4.0 License. This licence does not affect the Crown copyright work, which is re-usable under the Open Government Licence (OGL). The Creative Commons Attribution 4.0 License and the OGL are interoperable and do not conflict with, reduce or limit each other.

© Crown copyright 2018

25

## 1. Introduction

### 1.1. Background

The Northwest European Shelf seas (NWS) are of wide economic, environmental and political importance. They support many ecosystem services and human activities, including fisheries, energy extraction and transmission (both renewable and non-renewable), shipping and waste removal. Most of these services and activities are sensitive to the variable environmental conditions under which they operate, for example:

30

- Shipping (transport and industrial) and offshore oil/gas and renewable operations are sensitive to wind/wave conditions and currents;
  - The capacity of sea-floor gas distribution networks is sensitive to bottom temperature (with capacity decreased in cold conditions when demand is likely to be highest);
  - Commercial and recreational fisheries are sensitive to large-scale primary production and the seasonal evolution of the marine food web, which in turn are sensitive to surface temperature, salinity and seasonal re-stratification (see e.g. Fernandes 2015);
  - Some specific commercial species have a life cycle or food web which is sensitive to near-bottom temperature (see e.g. Dulvy *et al.* 2008; Pörtner and Farrell 2008; Pörtner and Peck 2010; Jones *et al.* 2015; Pinnegar *et al.* 2017);
- 40

- Coastal installation operations may be sensitive to local flooding (surge events), to sea temperatures (e.g. ambient temperatures for power station cooling), and to consequential local ecosystem impacts (e.g. blocking of intakes by jellyfish blooms, environmental quality issues) (Schneider *et al.* 2015; Brown *et al.* 2016; Dawson *et al.* 2016).

Because of these sensitivities, the ability to predict variations in the marine environment is of great potential value for marine operations, management, planning and conservation. Weather and wave forecasting are of course well-established tools, and more recently operational forecasting of marine environmental variables such as temperature, salinity and currents for a few days ahead has matured to the extent that daily forecasts are now widely and freely available (e.g. for European regional seas through the Copernicus Marine Environment Monitoring Service <http://marine.copernicus.eu/>). Centennial climate projections are also available for the NWS (e.g. Tinker *et al.* 2016), but there is an important gap between these timescales. Over the last 10 years significant progress has been made on prediction at multi-annual to decadal time-scales (Hughes *et al.* 2017; McCarthy *et al.* 2017; MCCIP 2017), that may be particularly compatible with policy and legislation review and reporting cycles (Frost *et al.* 2016) as well as business planning and investment timeframes. In this paper we examine the prospects for prediction of the marine environment on a timeframe of 1-6 months ahead.

One can envisage many potential applications for marine predictions at this extended range. For example, setting and management of fishing quotas for maximum sustainable yield could take account of likely conditions for recruitment in that year, energy producers and suppliers could anticipate winter seasons with higher than usual demand and/or stress on the offshore supply network, and environmental regulators could use early warning of regions at increased risk of water quality issues to target monitoring resources at those regions. But first we must demonstrate that a useful level of predictive skill is achievable on these timescales. Of course, on the 3-6-month timescale, environmental variations are dominated by the seasonal cycle, and this is normally factored into existing decision-making processes. Here we are asking whether we can predict anomalies relative to the average seasonal cycle (e.g. unusually cold winters or unusually stormy autumns).

## 1.2. State of the art and possible approaches to NWS seasonal forecasts

Recent progress in climate modelling and prediction has shown that skilful predictions are possible several months ahead for some key elements of European climate. For example, Scaife *et al.*, (2014) show substantial skill in predicting the winter North Atlantic Oscillation (NAO) index 1-4 months ahead. There is even significant skill in predicting the winter NAO index one year ahead (Dunstone *et al.* 2016). The NAO is a key determinant of the nature of the European winter (e.g. Hurrell 1995) with a positive NAO index indicating mild, wet conditions and a negative NAO index indicating cold, dry conditions. This predictive skill has been exploited to demonstrate predictability in a number of user-relevant variables, e.g. relating the phase of the NAO index to the likely number of transport disruption (road, rail and air) impacts (Palin *et al.* 2016), but so far there has been less attention to seasonal predictability of marine variables (e.g. Hobday *et al.* 2016).

To address the problem of seasonal prediction for the NWS we must consider how to derive marine variables from the seasonal climate predictions. The seasonal predictions are produced from global ocean-atmosphere climate models which are initialised with observed conditions and run forward in time through the 1-6 month forecast period. Because the climate is not perfectly predictable on these timescales an ensemble of runs is used to derive a probabilistic prediction. To turn this into a prediction for NWS marine variables, three possible approaches can be envisaged:

- A. Read off the NWS marine variables (temperature, salinity, currents) directly from the underlying climate model;
- B. Use observations to derive empirical relationships between large-scale climate indices (e.g. NAO index) and the marine quantity of interest, for instance this could be for a fishery metric like Cod recruitment (Stige *et al.* 2006; Engelhard *et al.* 2014) or Squid abundance (van der Kooij *et al.* 2016), then input the forecast climate index to the empirical model to get a forecast of the quantity of interest ('empirical downscaling');
- C. Use the marine and atmospheric variables predicted by the climate model as inputs to a higher resolution regional model of the NWS ('dynamical downscaling').



Approach (A) is appealingly simple but is unlikely to be successful. The ocean resolution of the global seasonal forecast system GloSea5 used by Scaife *et al.*, (2014) is around 20 km in the NWS region, with 18 vertical levels in the top 50 m. While this is high by the standards of current global seasonal prediction systems it is still insufficient to resolve many features of the NWS circulation. Further, in common with most global climate models the GloSea5 system does not represent key shelf seas processes such as tidal mixing. While this has been shown to be a successful approach in other regions (e.g. Hobday *et al.* 2016 used this approach in Australia) we will show later that these deficiencies effectively rule out option (A) as a credible approach for the NWS.

### 1.3. Scope of this study

A number of scientific and technical developments have recently come together to enable us, for the first time, to assess the potential for seasonal forecasts for the NWS: first, the demonstration of skill of global seasonal forecasting systems in predicting key European climate indices several months ahead (e.g. Scaife *et al.* 2014); secondly the development of regional oceanographic models of the NWS, proven for use in operational prediction (O'Dea *et al.* 2012); and thirdly the combination of the regional NWS models with historical observations, to produce a consistent estimate of the time-varying state of the NWS over recent decades ('regional NWS reanalysis', Wakelin *et al.* 2014). The NWS regional model allows us to investigate the prerequisites of the dynamical downscaling approach (C), while the reanalysis allows us to investigate in detail the mechanisms of year-to-year variability, and so evaluate which elements of the NWS state are likely to be predictable. For the mean climate, the dynamical downscaling approach (C) has been shown to add value to the simple approach (A) of reading off variables from the underlying global climate model (e.g. Mathis *et al.* 2013).

In this study we use the above building blocks to evaluate the potential of seasonal predictability for the NWS. We address the following questions in turn:

- 1) How well does the global seasonal prediction system GloSea5 represent the state and inter-annual variability of the NWS? (Approach A);
- 2) Can a regional reanalysis adequately represent the inter-annual variability of the NWS? If so can we use it as a proxy to understand mechanisms of variability in the real world?
- 3) Do the predictable climate indices (e.g. NAO index) provide actual predictive skill for the NWS? (Approach B);
- 4) What are the prospects for improving NWS seasonal forecasts? (including prerequisites for Approach C).

Given the answers to (1-4), we conclude by assessing the prospects for seasonal prediction on the NWS and the likely pros and cons of empirical and dynamical downscaling approaches (B) and (C), and suggest near-term priorities for applications and research.

Our aim in this paper is to draw evidence on the prospects of seasonal forecasting from the literature and from our own research. We recognise that some aspects will not come as a surprise to some readers, nonetheless, we believe that an overall perspective hasn't been presented before.

## 2. Method

We use data from two modelling systems (NWS reanalysis (CO5) and GloSea5) and several observation datasets. Firstly, we describe and compare the two modelling systems, before introducing the observations datasets and the analysis techniques.

### 2.1. NWS Reanalysis (CO5)

The Met Office provides a reanalysis of the NW European shelf seas to the Copernicus Marine Environment Monitoring Service: this has been extensively described and validated (O'Dea *et al.* 2012; Wakelin *et al.* 2014), but here we give a brief overview.

The NWS Reanalysis is based on the NEMO Coastal Ocean model version 5 (CO5) implementation (Figure 1). This is on a regional 7 km grid extending from 40°4' N, 19° W to 65° N 13° E, with 50 terrain following levels (s-levels, Siddorn and

Furner 2013). The simulations run from 1983–2013. The model surface forcings were calculated with the Coordinated Ocean Research Experiments (CORE) bulk formulae (Large and Yeager 2009), using ERA Interim data (ERA-Interim; Dee *et al.* 2011). The ocean lateral boundary forcings before 1990 were taken from a simulation from the Forecasting Ocean Assimilation Model (FOAM, Bell *et al.* 2000), after which they were taken from the global reanalysis used to initialise the GloSea5 seasonal forecasting system. The river forcings were taken from the E-HYPE dataset (Donnelly *et al.* 2013) and include inter-annual variations. The CO<sub>2</sub> reanalysis assimilates Sea Surface Temperature (SST) from satellites.

The use of CORE bulk formulae will have a few important implications for this study. For example, the bulk formulae assume that the surface air temperature has an infinite heat reservoir, and so the SST will tend to follow the surface air temperature, rather than the opposite which occurs in reality. This will affect the relationship between the SST and surface air temperature. Furthermore, the CORE bulk formulae receive the downward component of the short-wave- and long-wave-radiation, and calculate the upward component internally. **This must be considered when interpreting the driving radiation fluxes, which are not net fluxes.** The SST data assimilation will improve the SST, which will affect the upward radiation, however, the downward radiation (that is considered in this study) is not affected by the SST assimilation.

## 2.2. GloSea5

The GloSea5 seasonal forecast system is described in detail by MacLachlan *et al.* (2014). Here we give a brief description, and focus on the difference between its ocean component and that of the CO<sub>5</sub> NWS Reanalysis. GloSea5 is based on the Met Office Hadley Centre climate model HadGEM3-GC2 (Williams *et al.* 2015). This is a coupled climate model combining the MetUM atmosphere model (N216, ~0.7° horizontal resolution, Walters *et al.* 2011; Brown *et al.* 2012), the ocean model NEMO (Megann *et al.* 2014), the land surface scheme JULES (Best *et al.* 2011), and the sea-ice model CICE (Hunke and Lipscomb 2010). The ocean model component is run on the ORCA025 grid — a 0.25° tri-polar grid (~27 km at the equator), with 75 horizontal z layers (of which 18 (24) are within the top 50 m (100 m)). NEMO ORCA025 is run with a data analysis system (3D-Var) to assimilate a range of observations, including SST (in-situ and along track satellite, mostly AVHRR (Pathfinder) and (A)ATSR (ESA), although some AMSRE are used during the GHRSSST period), sea-surface height (altimetry from AVISOv3 along track), sea ice concentration (OSI-SAF), and water column structure (ARGO floats).

To make seasonal forecasts, a set of GloSea5 simulations are run to form a forecast ensemble and re-forecast (hindcast) ensemble. Every day, 2 ensemble members are initialised and run forward for 216 days. The previous 3-weeks are combined into a 42-member ensemble to make a 6-month forecast, which is updated weekly. A re-forecast ensemble is also run every week (with the same modelling system) to correct bias and drift in the forecasts. This includes 4 start dates for the relevant month, for each of the previous 23 years, run forward for 216 days. The forecast ensemble is used to predict how the following 6 months will compare to this climatology. The system is also run as a continuous reanalysis (the GloSea5 ocean and sea-ice global reanalysis) from 1990–2015 to provide initial conditions for the ocean component of the hindcast ensemble. The atmospheric initial conditions for the forecast are taken from the Met Office operational weather forecast system, and the hindcast atmosphere is initialised from ERA-Interim.

GloSea5 shows improved year-to-year predictions of the major modes of variability compared to the previous system (GloSea4, Arribas *et al.* 2011). Predictions of the El Niño–Southern Oscillation are improved with reduced errors in the West Pacific. GloSea5 shows unprecedented levels of forecast skill and reliability for both the North Atlantic Oscillation and the Arctic Oscillation (MacLachlan *et al.* 2014).

## 2.3. Comparison between NWS Reanalysis and GloSea5

The GloSea5 ocean and sea-ice global reanalysis and CO<sub>5</sub> NWS reanalysis differ in a number of ways. Both rely on the ocean model NEMO, but run with grids of different horizontal and vertical resolutions. The GloSea5 global reanalysis system is a coupled global model system designed to capture the key components of the global climate system in order to

**Comment [MOU1]:** Review 2:

**Page 5, line 11:**

*I would assume that the SST assimilation in the CO<sub>5</sub> reanalysis also disturbs the heat fluxes. Please give some information about this problem.*

**AUTHORS RESPONSE:**

The SST assimilation will improve the SST field, and will affect (improve) the upward radiation. The downward radiation that we consider in this paper is not affected. I have said this in the text.

make a seasonal forecast, having used data assimilation over a wide range of variables to constrain the model. Conversely, the CO5 NWS reanalysis is a regional reanalysis, where a higher resolution ocean model is (one-way) forced from ERA Interim atmosphere forcing, using SST-only data assimilation. Effectively, the CO5 NWS reanalysis has a higher resolution and better representation of the NWS physics, whereas the GloSea5 global reanalysis has global scope and assimilates a wider range of observations. Both have high enough resolution to include an open Dover Strait allowing a route for Atlantic water into the southern North Sea which is important for simulating the local seasonal cycle of salinity.

The CO5 NWS reanalysis requires lateral boundary conditions (GloSea5 is a global model system and so doesn't need them) which are taken from FOAM before 1990 and from the GloSea5 Reanalysis thereafter. The change from FOAM to the GloSea5 Reanalysis ~~led-leads~~ to a discontinuity in the lateral boundary conditions, that ~~was-is~~ important for variables such as sub-surface temperature and salinity in the open ocean. While neither sub-surface temperature ~~and-nor~~ salinity are considered in this study, they may influence NWS properties (such as SSS and SST) that are considered.

An important difference between the two systems is that the CO5 NWS reanalysis is a shelf seas model that includes all the key shelf seas processes whereas the ORCA025, being a global model, neglects some regionally important processes, including dynamic tides. Tides are particularly important in this region, as the NWS contributes significantly to the global total tidal energy dissipation (Egbert and Ray 2001). While tides are modelled directly within the CO5 NWS reanalysis, tidal mixing is parameterised in GloSea5. This parameterisation (Simmons *et al.* 2004) is based on a climatology of turbulence associated with internal tide wave breaking, ~~tide~~ and steep bathymetry, (which is very low on the NWS-), thus tidal mixing is much less than in the CO5 NWS reanalysis.

There are also key differences in the riverine forcings, and the treatment of the Baltic Sea. The CO5 NWS reanalysis uses river forcings (with inter-annual variability) from the E-HYPE river model (which gives too much discharge), and treat the Baltic as an open boundary where T and S are relaxed to output from a Swedish Meteorological and Hydrological Institute (SMHI) model ~~forcings~~. GloSea5 uses a river climatology, and models the Baltic explicitly (although at too coarse a resolution to accurately simulate the complex interaction between the Baltic and NWS shelf sea). Both the river and Baltic climatologies will dampen the interannual variability of salinity, particularly near major river outflows, and downstream of the Baltic (in the Skagerrak ~~and~~ in the Norwegian Trench), which will weaken the interannual variability of the associated regional means, and tend to reduce their interannual correlations. The equivalent effect for temperature from the Baltic will be countered by the SST data assimilation.

## 2.4. Observations

Much of the evaluation of the CO5 NWS reanalysis (Wakelin *et al.* 2014) focused on the mean state of the model. Here we are more interested in the modelled temporal variability, and so undertake additional evaluation. We compare the model to limited observed time-series to assess its performance at replicating several observed events. Here we describe the observed time-series.

### 2.4.1. Southern North Sea Ferry data

Ferries are well established vessels of opportunity for oceanographic measurements taking regular long-term samples of surface water while the ship is on passage between ports (Bean *et al.* 2017). Observations can be in the form of samples taken by crew for subsequent testing in a laboratory or more sophisticated "Ferry boxes" as packages of instruments that semi-autonomously monitor temperature, salinity and other water properties. We use the monthly salinity data from the ferry on the Harwich to Hook of Holland route, which took quasi-weekly temperature and salinity samples at 9 standard stations between 1971 and 2012 (Joyce 2006) and is reported in the ICES Report on Ocean Climate (Larsen *et al.* 2016) and MCCIP Report Cards (Dye *et al.* 2013). We use point time-series from this dataset to compare to the model.

**Comment [MOU2]:** Reviewer 2:

**Page 6, line 16:**  
Please complete the sentence.  
**AUTHORS RESPONSE:**  
Rewritten.

## 2.4.2. Western Channel Observatory (WCO)

The Western Channel Observatory (WCO) is an oceanographic time-series in the Western English Channel (Smyth *et al.* 2015). *In situ* measurements are undertaken fortnightly at open shelf station E1 (50.03°N, 4.37°W) using the research vessels of the Plymouth Marine Laboratory and the Marine Biological Association. We compare time-series of temperature and salinity from a range of observed depths to model output from the nearest grid box.

### 2.4.3. ICES Report on Ocean Climate data

We use annual-mean time-series data from three stations used in the ICES Report on Ocean Climate (González-Pola *et al.* 2018): Malin Head weather station; Fair Isle; and Helgoland Roads. Malin Head SST (55.37°N 7.34°W) and is provided by the Irish Marine Institute/Met Eire. The Fair Isle time-series (59°N 2°W) is provided by Marine Scotland Science to measure the temperature and salinity (upper 100m) of Atlantic water entering the North Sea via the Fair Isle Current. The Helgoland Roads (54.1833°N 7.9°E) time-series is provide by the Alfred Wegener Institut/Helmholtz-Zentrum für Polar und Meeresforschung, and comprises of surface temperature and salinity. The data are freely available to download from ICES (<https://ocean.ices.dk/iroc/>).

### 2.4.3.2.4.4. NAO

The North Atlantic Oscillation (NAO) is a climatic phenomenon in the North Atlantic Ocean of fluctuations in the difference of atmospheric pressure at sea level between the Icelandic low and the Azores high. These fluctuations control the strength and direction of westerly winds and storm tracks across Europe (Hurrell 1995).

We use the NOAA National Weather Service Climate Prediction Center NAO data (<http://www.cpc.noaa.gov/products/precip/CWlink/pna/nao.shtml>), for monthly mean NAO index. We only use winter (DJF) for the years 1992/1993 – 2010/2011 to be consistent with the available GloSea5 ocean and sea-ice reanalysis NAO index time-series.

### 2.4.3.2.4.5. Storm track latitude index

When analysing the relationships of the shelf salinity we find correlation patterns which suggest storm track latitude may be important. We therefore analysed the mean sea level pressure data to produce a Storm track latitude index, following a method adapted from Lowe *et al.* (2009). The 3-hourly ERA Interim mean sea level pressure data from all modelled latitudes at 2°30'E were filtered with a Blackman band pass filter. The temporal variance of this filtered mean sea-level pressure was calculated for each month for each grid box at 2°30'E, and the latitude with the greatest variance was recorded as the storm track latitude. We consider the winter (DJF) mean storm track.

## 2.5. Analysis techniques

We use regional mean ~~time-series~~time-series of model output (surface, bed and surface minus bed, temperature and salinity, SST, NBT, DFT, SSS, NBS, DFS respectively) from the reanalysis, adapted from the region mask from Wakelin *et al.* (2012) (Figure 1a). We calculated monthly, seasonal and annual means from these ~~time-series~~time-series, as well as directly from the model. In addition to model output, we extract regional mean ~~time-series~~time-series for the ERAI surface forcings, the GloSea5 ocean lateral boundary conditions (using the masks in Figure 1b-d), and the E-HYPE river forcings.

### 2.5.1. Identifying relationships between the NWS response and the drivers.

We compare time-series of the shelf response to time-series of the drivers to identify important relationships. We note that a statistically significant correlation does not imply a causal relationship, and so we interpret the spatial patterns of the correlation coefficients to help interpret the underlying mechanisms behind the correlations. We consider it beyond the scope of this study to undertake sensitivity studies to explore any mechanisms in detail.

We use the region mask of Wakelin *et al.* (2012) (Figure 1a), to create regional mean ~~time-series~~ of the results from the NWS Reanalysis, including its atmospheric (downward radiative fluxes, surface air temperature and relative humidity, total precipitation, mean sea level pressure, winds) and riverine forcings. We average the oceanic T and S forcings around the boundary into 21 regions based on horizontal and vertical gradients to T and S (typically dividing the north, west and south-western boundaries into surface, mid-depth and deep layers (according to the typical modelled summer and winter mixed layer depths), and then divide the boundaries horizontally according to features within the data. A deep layer of salty, relatively warm water in the south-western and the southern part of the western boundary is identified as Mediterranean Intermediate Water and is treated separately. Most correlations have been found with the surface (0 - 30 m) regions, and so this study focuses on these regions. These regions are shown in Figure 1b-d. We also use annual and monthly mean time-series of the NAO and Storm Track latitude.

Model and observed time-series are compared to one another with Pearson's correlations, and their significance is noted at the 95% level. Typically, we compare the annual mean time-series, but we also compare at the seasonal time-scale. We also investigate lag-correlations between the shelf response, and possible drivers and climate indices. For example, the ~~time-series~~ of DJF NAO will be correlated with the DJF SST across the shelf (at 0-months lag). The DJF will then be compared to the JFM SST (January-March; 1-month lag), FMA (February-April; 2-month lag) etc. (e.g. Figure 6).

For consistency we have used the same region mask (e.g. Wakelin *et al.* 2012) for the river forcings as for the shelf seas variables and surface atmospheric forcings. However, this mask was not designed for rivers and so several regions must be treated with care, or excluded. For example, the northern North Sea region combines the river flow from small sections of the Scottish and Danish coasts which ~~does-do~~ not make sense – other regions to be excluded are the central North Sea, Shetland shelf region, and the North Atlantic regions. Other regions combine river flow from different coasts, but in a more sensible manner – for example the English Channel and Irish Sea regions combine river input from two coasts, but due to the smaller enclosed nature of these regions, this is sensible in terms of local salinity. In the modelling system, the rivers do not have a specified temperature, and so assume the local temperature when they reach the sea. Therefore, rivers predominantly affect salinity, with only secondary temperature effects (associated with changes in density driven circulation and stability).

As increased river flow reduces the local salinity, most correlations are expected to be negative.

### 3. Results

#### 3.1. Question 1: How well does the GloSea5 global seasonal prediction system represent the NWS?

Both GloSea5 and the CO5 NWS reanalysis assimilate similar SST observations, and so their simulated patterns of SST are relatively similar, and in agreement with observations. When looking at the near-bed temperatures (NBT) and the difference between the surface and bed temperatures (DFT), there are important differences between GloSea5 and the NWS Reanalysis. DFT is an important diagnostic of stratification – when  $DFT > 0.5$  °C the water column is considered stratified, and the  $DFT = 0.5$  °C isotherm is indicative of the location of the modelled tidal mixing fronts.

A time-series showing the seasonal cycle of areal extent of the stratification (from a 20-year mean) for both GloSea5 and the CO5 NWS reanalysis is presented in Figure 2a. The CO5 NWS reanalysis has been shown to have a generally good representation of the seasonal stratification where independent observations are available (O'Dea *et al.* 2012). While both the CO5 NWS reanalysis and GloSea5 show that the NWS is fully mixed in the winter (effectively no grid boxes are stratified), in GloSea5 more grid boxes are stratified in the summer than in the NWS Reanalysis: from April to September, the stratified area of the shelf is ~20% more in GloSea5 compared to NWS Reanalysis. Figure 2b shows a map of the stratified regions for May (an exemplar stratified month). This shows that much of the southern North Sea, English Channel and Irish Sea that is modelled as being mixed in May in the NWS Reanalysis, is stratified in GloSea5, due to insufficient turbulence within the GloSea5 NWS. This highlights an important weakness in using the GloSea5 system to provide direct information on the NWS.

**Comment [MOU3]:** Reviewer 1:

**Point 1**

*The first approach, that is using a global circulation model (GCM), is rejected by the authors by referring to model limitations of GCMs. However, this rejection is trivial. Since the 1980s the development of regional circulation models (RCM) is motivated by limited representations of shelf sea dynamics in GCMs. Moreover the authors only highlight the deficiency of GCMs in simulating tidal mixing due to the neglect of tidal waves, which is also trivial and known.*

**AUTHORS RESPONSE:**

While the deficiencies of global ocean models are simulating regional seas are well known to the scientific audience, we wanted to clarify that this means that the direct use of the seasonal forecasting system is not possible – there has been a lot of interest in using North Sea seasonal forecasts from marine users who may not have detailed understanding of the limitations of ocean modelling. While the rejection of the direct approach due to the global model's representation of NWS stratification is simple, the tidal mixing and stratification regimes of the NWS are dominate features of the NWS hydrography and are very important for the ecosystem of the NWS, and the potential end users.

**Comment [MOU4]:** Reviewer 2:

**Page 9, line 19:**

*Obviously, due to the missing tides not enough turbulence is introduced into the system. This should be stated here.*

**AUTHORS RESPONSE:**

I have added this to section 2.3, and added a comment here.

Further evidence is shown under Question 2 below that using GloSea5 NWS fields directly would be problematic. We therefore conclude that this approach (Approach A) is not viable, and some form of downscaling of the GloSea5 fields would be needed to generate reliable NWS forecasts.

### 3.2. Question 2: How well does the CO5 NWS reanalysis represent inter-annual variability on the NWS?

5 While the ability of the CO5 NWS reanalysis to simulate the mean state of the NWS is thoroughly evaluated (O'Dea *et al.* 2012; Wakelin *et al.* 2014), its ability to simulate inter-annual variability has received less attention. Evaluation requires long observed time-series, preferably of variables that are not assimilated into the reanalysis. Here we focus on 5 locations across the NWS: the Harwich to Hook of Holland ferry box in the southern North Sea; the Western Channel Observatory (WCO) in the English Channel; the Malin Head weather station, north of Ireland; the Fair Isles ~~time-series~~ (northeast of 10 Scotland), and then Helgoland Roads ~~time-series~~ in the southern North Sea. All these datasets are described in the Methods section.

First, we compare the observed time-series of surface salinity in the southern North Sea Ferry Box to that from GloSea5 and the CO5 NWS reanalysis (Figure 3). The time-series exhibits multi-year oscillations and these are well simulated by the NWS Reanalysis ( $r = 0.89$ ,  $p = 0.00$ ), despite the fact that it does not assimilate salinity observations. There is a fresh bias in 15 the model ( $-0.20$ ) and a slightly greater variation (standard deviation ratio of 1.11). GloSea5 does not capture a realistic multi annual variability ( $r = 0.2$ ,  $p = 0.00$  with standard deviation ratio of 1.81) and modelled salinity also shows a large fresh bias that increases due to a substantial salinity drift over the duration of the time-series – further evidence that direct reading from NWS fields from GloSea5 would be problematic. As there are differences in the river forcings between GloSea5 and the CO5 NWS reanalysis we would expect differences in the modelled salinity. The CO5 NWS reanalysis uses E-HYPE river 20 forcing (Donnelly *et al.* 2013) which are specified daily whereas GloSea5 uses a river climatology (Dai and Trenberth 2002; Bourdalle-Badie and Treguier 2006), and so exhibits no inter-annual variability.

Secondly, we compare the observed WCO temperature and salinity profiles to the nearest daily mean CO5 NWS reanalysis grid box (Figure 4). The WCO observations are not assimilated into the NWS Reanalysis, but the SST from complementary satellite products is. Unsurprisingly, the CO5 NWS reanalysis SST is in close agreement with the WCO observations, for 25 both the seasonal cycle, and the year to year variations at the surface and at depth (30 m). The inter-annual variability is well captured in SST for all seasons ( $r > 0.99$ ,  $p = 0.000$ ), and for most seasons at 30 m (typically  $r > 0.9$ , but September – November  $r = 0.59$ ). There is little seasonal cycle, trend or inter-annual variability in the WCO salinity (e.g. compare the inter-annual variability in Figure 3 and Figure 4). Given the lack of salinity seasonality, we compare all the WCO-reanalysis data pairs, which has a significant correlation of  $r = 0.49$  at the surface and  $r = 0.65$  at 30 m ( $p = 0.000$  for both cases).

30 The ICES data set includes annual mean data from three very different sites (Error! Reference source not found.). As we are most interested in the modelled variability, we evaluate against the anomalies (time-series minus mean) and consider the standard deviations and correlations.

The Malin Head time-series show a good agreement between the reanalysis and observed SST, with a significant Pearson's correlation of  $r = 0.87$ , and a relative standard deviation of  $rsd = 1.13$  (model standard deviation (0.47) divided by the observations standard deviation (0.42)). These results are remarkably good, but simply reflect that the model assimilates SST.

35 The Fair Isle time-series monitors the properties of one of the main pathways of Atlantic water into the North Sea, so evaluation is important to lend credibility to the results of this study. Here the observations are for the upper 100m, and so the data assimilation is less dominant in this comparison. As with the Malin Head data, there is a very good agreement with 40 the observations, with a significant correlation of  $r = 0.86$ , and relative standard deviation of 1.15, and a bias of  $0.75^{\circ}\text{C}$  (model too hot). The salinity evaluation is also good, with a significant correlation of  $r = 0.40$ , a relative standard deviation

**Comment [MOU5]:** Reviewer 2:  
Page 9, line 27:

*As already mentioned above, here, I see the main weakness of the paper. By this approach only processes related to the much less important southern entrance of the North Sea can be considered in detail. As recommended above, the authors should try also to look at other locations, also in the northern North Sea.*

**AUTHORS RESPONSE (16/4/2018):**

This is a very good point, thanks for suggesting it.  
We have extended the evaluation section significantly to include some more northern stations.

of 1.01, and a bias of 0.46 psu. Given the timing and frequency of many of the peaks and troughs, there appears to be a better (visual) agreement than is reflected by this correlations value.

The Helgoland Roads time-series shows an excellent temperature agreement ( $r = 0.99$ ,  $rsd = 0.98$ ,  $bias = -0.09^{\circ}\text{C}$ ). The salinity time-series' significant correlation with the reanalysis salinity ( $r = 0.69$ ) and relative standard deviation of 0.88, suggests a very good representation of the variability. There is a large bias (2.26 psu) however, reflecting the large spatial gradients within this region, and perhaps less riverine influence in the reanalysis.

There are two other ICES time-series in the vicinity of the North Sea. Utsira B, within the Norwegian Trench, and the Norwegian site Svinoy, off the shelf to the north of the Norwegian Trench, both in regions which are known to be difficult to model, and outside the main focus of the Reanalysis. Both showed much lower modelled salinity variability, and low correlations.

Further evaluation of the CO5 NWS reanalysis against other long time-series is planned through the Copernicus NWS regional Marine Forecasting Centre. These initial results suggest that the reanalysis can provide valuable information on inter-annual variability on the NWS, where there is a strong signal.

We now investigate empirical forecasts based on the response of the CMEMS reanalysis to the observed NAO, and then applied to the GloSea5 forecast NAO.

### 3.3. Question 3: Can predictable climate indices provide real predictive skill for the NWS?

In the literature, there are many empirical relationships between climate indices and various physical and biological responses. The CMEMS reanalysis (through data assimilation) combines observations with models to give the best possible state estimate of the NWS, and so provides a powerful tool to develop such relationships. We focus on the winter NAO, as it is an important source of year-to-year variability in the NWS, and GloSea5 has predictive skill for the winter NAO. By investigating relationships between the CMEMS reanalysis fields and the observed (NOAA) NAO, and then considering how these relationships change when we use the GloSea5 forecast NAO, we can explore the empirical approach to NWS seasonal forecasting. We note that many of the relationship we find between the NAO and the NWS are not new, and are underlain by published relationships (e.g. Becker and Pauly 1996; Dippner 1997; Hurrell and Van Loon 1997; Hurrell and Deser 2009).

First we focus on shelf temperature, and restrict our analysis to the surface forcing that we consider important for shelf temperatures. We investigate the correlations (and lagged correlations) between the winter (DJF) NAO and this subset of surface forcings surface forcing (Figure 6). We find a positive correlation of the NAO with the DJF surface air temperature (consistent with Hurrell and Van Loon 1997) and humidity (Figure 6a, e), and this persists for one month (to January-March) in most regions (Figure 6b, f). There is a significant negative correlation between DJF NAO and the incoming solar radiation for shelf regions west of the UK (Figure 6m), although this only persists to a significant level in the Irish Shelf (Figure 6n). DJF NAO is strongly positively correlated to the downward component of thermal radiation for most shelf regions west of the UK and for the Norwegian Trench (NT), and this persists for 3 months in some regions (English Channel) (Figure 6i-l).

We now consider the surface forcings we think are likely to be important for shelf salinity (Figure 7). The DJF NAO is strongly correlated with the DJF 10 m wind magnitude across the domain (consistent with Hurrell and Deser 2009), and this persists into the third month (March-May) for the southern and central North Sea (Figure 7i-l). The correlation between winter (DJF) NAO acts in opposite ways for winter (DJF) mean sea level and for total precipitation. The DJF mean sea-level pressure (total precipitation) is negatively (positively) correlated with DJF NAO in the northern regions and positively (negatively) correlated in the southern regions. These correlations persist for a few months in some regions (Figure 7a-d, e-h), and are consistent with the correlations of Hurrell and Deser (2009).

River systems can give additional predictability by continuing to respond after the forcing, or can reduce predictability by having such long response times that they act as a low-pass filter. Furthermore, different river catchment areas are located in

**Comment [MOU6]:** Reviewer 1:  
**Point 2**

*Their account on the second approach, that is developing empirical relationships between predictable large-scale driving mechanisms and NWS conditions, is a mere correlation analysis of the NAO with reanalysis atmospheric forcing fields and T and S for various sectors of the NWS and eastern North Atlantic. Moreover, the found correlations are all well-known but in the manuscript often not even cited. It is mentioned that correlations do not guarantee causal relations. However, underlying physical mechanisms linking the presented variables are poorly discussed.*

**AUTHORS RESPONSE**

The correlations between the driving data and the NWS have been sufficient to make our point. More complex analysis is beyond the scope of the paper.

We have now referenced relevant papers. We have discussed the mechanisms enough to show that the relationships are plausible; however, as this is not the main focus of the paper, a detailed discussion is not included.



different climate regimes, and so can respond in different ways, which can further complicate the response. The river runoff forcings in the Norwegian Trench (Figure 7m-p) are highly correlated with the DJF NAO, and this persists until the following summer (July-September, not shown). The runoff in regions influenced by northern British and Irish rivers (e.g. Irish Shelf) is also positively correlated with the NAO and shows persistence beyond the winter season. The regions including much of the European coast (Armorican Shelf, English Channel, and southern North Sea) show little correlation of runoff with the NAO, perhaps reflecting the larger catchments not having time to respond to the NAO, and their more southerly location. The river correlation patterns were consistent with those of Rödel (2006) and Bouwer et al. (2008).

Having shown the correlations of the NAO with the important surface forcings, we now look directly at the relationship between the observed DJF NAO and the shelf response (Figure 8). We find a significant positive correlation between the winter NAO and the winter SST in the most southern and eastern shelf regions (Figure 8a), consistent with previous studies (Dippner 1997; Hurrell and Van Loon 1997). In most of these regions, the significance of these correlation persists for one month (Figure 8b), and in the English Channel and southern North Sea a second month (February-April (FMA) SST, Figure 8c). The NBT correlations also show significant correlations with the NAO and having memory in some regions. The DJF NAO is generally not significantly correlated with SSS (Sea-Surface Salinity) in most regions, although there is a significant correlation in the Skagerrak/Kattegat, which persists until FMA (Figure 8e-h). There could be a much lower frequency salinity response to the NAO (e.g. Mysak et al. 1996; Belkin et al. 1998), which would not be captured by these correlations. Such a response may provide predictability on longer time scales.

The above results suggest that knowledge of the NAO index could provide some skill for important variables, at modest lead times of 1-2 months, even if the DJF NAO is only determined from observations (at the end of the December-February period). Because the GloSea5 system has skill in predicting the DJF NAO index from the previous November (Scaife et al. 2014), it is possible that the lead time could be increased by using the predicted rather than the observed NAO index. In Figure 9 we examine correlations for the same predicted NWS variables as in Figure 8, but this time using the DJF NAO index predicted from the ensemble mean of the GloSea5 forecast run the preceding November. Unsurprisingly the correlations are generally lower than for the observed NAO index, and many are not statistically significant at the 95 % level. However, the correlations are largely of the same sign and pattern as for the observed NAO index, and remain significant. This suggests that a prototype seasonal forecast based on the GloSea5 NAO may be possible. For SST and NBT, there are regions with exhibit persisted significant correlations (e.g. English Channel) which is promising. The correlation patterns for SSS are however, quite different to those from the observed NAO. There is a general negative correlation across the shelf that gets stronger with an increasing lag. The persistence in the NAO-SSS correlation reflects the longer term nature of salinity anomalies. The difference in the SSS correlation patterns between the observed and GloSea5 NAO perhaps act as an error estimate to this approach, suggesting caution and further assessment is needed before relying on an empirical seasonal forecast of this form for SSS. Overall, the results with the GloSea5 NAO suggest that real relationships exist between the forecast NAO and the observed NWS fields, and that further improvements in the seasonal NAO forecast would deliver higher levels of forecast skill and/or regional detail.

The correlations between the NAO and the shelf response describe how strong a linear relationship exists between the two. Where there is significant skill (a significant correlation) this linear relationship can be used to predict shelf response from the NAO. Here we show an example for one of the stronger NAO/shelf response correlations: English Channel SST. We have forecast the temperature based on both the observed NAO and GloSea5 forecast, and plotted this against the modelled temperature in Figure 9 (both have been normalised) with zero lag and the following 4 monthly lagged seasons (forecasting JFM, FMA etc. based on the DJF NAO). We also include the time-seriestime-series of the observed and GloSea5 DJF NAO for comparison. This figure shows how an NAO based seasonal forecast based on the relationships discussed in this paper would look.

**Comment [MOU7]:** Reviewer 2:  
**Page 11, line 15:**  
*Probably another reason for this behaviour is the fact that the different catchment areas are located in slightly different climate regimes, which also leads to an unclear signal of the run-off.*  
**AUTHORS RESPONSE:**  
If I have understood your point, it's a good one – I have added it earlier in the text.

**Comment [MOU8]:** Reviewer 2:  
**Page 11, line 33:**  
*The SSS has not discussed before. Therefore its first mentioning at this place is a little surprising.*  
**AUTHORS RESPONSE:**  
Sea surface salinity is briefly discussed at the end of the previous paragraph. I have expanded on this a little.  
If you mean the acronym SSS rather than the variable sea-surface salinity, I have redefined it in the previous paragraph.



While our example has focused on a region and variable with a relatively high correlation, the English Channel winter SST may have a direct application. For example, European Sea Bass (*Dicentrarchus labrax*) spawn between the southern North Sea and the Celtic Sea, in February-April within the 9 °C isotherm – this region expands in warmer years (Beraud *et al.* 2017). Sea bass is a high value fish that is exploited by commercial fisheries (ICES 2012) and is an important species for recreational anglers. The English Channel SST forecast for JFM (Figure 10) would be directly applicable to Sea Bass spawning. Furthermore, as the GloSea5 based forecasts also have skill, these forecast may be made in November (when the GloSea5 DJF NAO forecasts are made), and so provide January – February forecasts as early as November, such results could be used to inform precautionary management when needed. The equations for these prototype forecasts are given in Figure 10.

Developing a range of empirical forecasts is a possible way of producing NWS seasonal-forecasts, especially if based on predictable climatic indices such as the NAO. Investigating the relationships between the climatic drivers and the shelf response within NWS climate control simulation (i.e. using a multi-century global climate model run with fixed climate forcings, to drive a multi-century NWS simulation (Tinker *et al.* in preparation)) may allow much subtler relationships to be established than is possible with the relatively short modern observed period. However, there will always be limits to what is possible with empirical forecasts. However, due to empirical forecast's reliance of past observations, there can be limits to their use in the future, where conditions are outside the present day range.

#### 3.4. Question 4: What are the prospects for improving NWS seasonal forecasts?

With the maturity of seasonal forecasting systems, and shelf seas dynamic downscaling systems, it will not be long before seasonal forecast systems for the NWS, based on dynamical downscaling is technically possible. The underlying skill of the seasonal forecasting system would be the basis to any such NWS downscaling, and its skill, resolution etc. will be the leading order limit to the subsequent skill of the NWS seasonal forecast. However, the skill from the seasonal forecasting system must be able to propagate from its ocean and atmosphere and manifest itself on the NWS for it to have any skill. We can start to explore whether this is the case with the CMEMS reanalysis. If there is only a weak relationship between the boundary (lateral and surface) and the interior of the shelf, and internally generated chaotic variability dominates, any year-to-year variability modelled by GloSea5 will not manifest in the NWS. The NWS is considered to be quasi-isolated from the North Atlantic (Wakelin *et al.* 2009), however, it is a broad continental shelf sea and so interaction with the atmosphere is important. We now investigate the relationships between the state of the NWS in the CMEMS reanalysis and the boundary conditions that forced it, to see how much of the NWS variability is driven by the large-scale drivers, and how much is internally generated. We focus on the surface boundary conditions, as the advective lag between the lateral boundaries and the shelf make them less relevant for interannual variability and seasonal forecasting.

We consider the inter-annual correlations between the CO5 NWS reanalysis surface and open ocean boundary forcings and the NWS temperature and salinity in the regions defined in Figure 1 (see Figure 11). Our interpretation of the correlations must be informed by physical insight, recognising that correlation does not imply causation. We examine processes influencing temperature and salinity separately, since temperature is likely to be strongly influenced by surface heat exchange, whereas advective processes may play a stronger role for salinity due to a lack of direct feedback from surface salinity onto the atmosphere.

NWS surface temperatures are significantly correlated with temperatures at the open ocean boundaries of most of the domain (the northern boundary west of 10° W being the exception (not shown); example of other ocean boundary sections shown in Figure 11a, b); however, this is likely to be due to common surface forcings acting on the open ocean and shelf seas temperatures. Shelf SST is strongly correlated with surface air temperature as expected with the use of CORE bulk formulae. This is very homogenous across the shelf, so that the annual mean surface air temperature over the central North Sea is significantly correlated with the SST in all shelf regions (Figure 11g). This is also true of the humidity (Q2, Figure 11h) and

**Comment [MOU9]:** Reviewer 1:  
**Point 3**  
Their exemplified "forecast" of English Channel SST based on the NAO index is only a comparison of SST and NAO index time series, quantified by the correlation coefficient. A suggestion how to construct SST from a predicted NAO index, though, is not presented.

**AUTHORS RESPONSE:**  
As we wanted to show how these relationships may be the basis of a very simple statistical forecast, the relationship between the SST and NAO was sufficient to elucidate our point. However, it's a good point about the equations - we have now put them in the figure.

**Comment [MOU10]:** Reviewer 2:  
**Page 12, lines 26-27.**  
This sentence needs to be substantiated. Otherwise it is just a platitude.  
**AUTHORS RESPONSE:**  
This has been rewritten.

**Comment [MOU11]:** Reviewer 1:  
**Point 4**  
The third approach, that is a dynamical downscaling of a GCM forecast by a RCM, is not yet presented but theoretically discussed by correlation analysis of annual mean T and S on the shelf with various boundary forcings for a regional reanalysis product. The idea behind this is that if the boundary forcings are significantly correlated with the NWS sectors and there is forecast skill by the GCM for large-scale driving mechanisms then a dynamical downscaling should be able to improve the forecast for the NWS. However, just as for the second approach, the found correlations are not new and sometimes the correlated variables even miss an underlying physical connection. For example, how should T and S at the northern boundary (65°N) influence the NWS? Why isn't the western boundary taken into account instead, which is much more relevant for water mass properties in the eastern North Atlantic.

**AUTHORS RESPONSE:**  
We again note the opening comment that this paper aims to give an overview of the prospects for seasonal forecasts, with ...

**Comment [MOU12]:** Reviewer 2:  
**Page 12, line 33:**  
Per se, it is not clear that boundary conditions are most important for an improved dynamical downscaling. Please give some explains. Also the effect of better represented regional atmospheric features is definitely of importance.

**AUTHORS RESPONSE:**  
They are not the most important thing for a successful NWS seasonal forecast based on dynamical downscaling a seasonal-forecast, the seasonal forecast is. However, it's important that the NWS will respond to the large-scale external environment, in ...

**Comment [MOU13]:** Reviewer 2:  
**Page Page 13, line 4:**  
A repetition of the previous comment. In particular, if an uncoupled dynamical down-scaling is performed, also the regional atmospheric resolution will be of importance.  
**AUTHORS RESPONSE:**  
See the response to the previous comment.

the downward component of the thermal radiation (STRD, Figure 11i). The incoming solar radiation (SSRD) has smaller spatial scales, consistent with the synoptic spatial scale of the atmosphere (Figure 11m-o): in the annual mean, there is a positive correlation between incoming solar radiation in an example region (Northern North Sea) and the SST in the same region (Figure 11m), however the correlations reduce with distance from the region. There is also a strong seasonal cycle in the incoming solar radiation correlations (Figure 11n, o) with strong positive correlation when comparing summer incoming solar radiation and SST (clear sunny summer days imply strong solar heating) and (insignificant) negative correlation in the winter (clear sunny winter days are associated with strong long-wave night time cooling). The use of the CORE bulk formulae forcings preclude the investigation of the net radiative fluxes, as the outgoing radiation is calculated by the ocean model rather than being prescribed. Overall, variability in SST appears to be linked to large-scale drivers (which may be predictable), with some contribution from less-predictable synoptic scale variability at the regional scale.

The salinity on the NWS is primarily a balance between salty water entering the shelf from the North Atlantic, and its modification due to water exchanges with the atmosphere (e.g. precipitation) and dilution from rivers (and exchange with the Baltic). This leads to some intuitive relationships: the saltier the Atlantic is, the saltier the NWS; the greater the river flow and rainfall into the NWS, the fresher the NWS is. This can be considered the direct mechanism that controls salinity. An important secondary mechanism is the rate at which the NWS water is exchanged with the Atlantic.

The salinity in the regions of the CO5 NWS reanalysis domain off the shelf is strongly correlated with the salinity of the boundaries. For example the salinity in the north-western oceanic part of the domain is strongly correlated with the salinity boundary forcings along the western edge of the domain (e.g. [Western Boundary - Surface\\_Central](#) is correlated with SSS in Figure 11d) and this penetrates onto the shelf in the Shetland shelf region. The salinity of the large south-western oceanic region is positively (though not significantly) correlated with the surface salinity of the southern boundary (Southern Boundary - Surface\_East), but there is a suggestion that the influence of boundary forcing is advected onto the shelf through the Armorican Shelf, Celtic Sea, English Channel and into the southern and central North Sea due to significant correlations (Figure 11c). Note exemplar ocean boundary conditions in Figure 11a-d are not necessarily the strongest correlations between the shelf and the ocean boundary conditions, but provide a nice pair of opposing regions to highlight the west/south temperature/salinity differences in correlations. The lack of significance in the correlations between the SW oceanic region and the southern boundary salinity may reflect this large region blurring out a smaller correlated area (i.e. the tightly defined European slope current flowing northwards from the boundary towards the NWS).

There can be considerable advective lags between the ocean/lateral ocean boundaries, and the NWS. Analysis of Holt et al. (2012) suggests modelled conservative tracers in the open ocean took ~5 years to propagate on the NWS (when the shelf concentration reach ~80% of the ocean). High-frequency salinity anomalies at the lateral boundaries will not be correlated with NWS SSS annual means (i.e. Figure 11), but lower-frequency anomalies may be. As well as the instantaneous correlations between the shelf and lateral boundary annual mean salinities, we have also investigated the maximum lagged correlations (not shown). We found that the lags tend to corroborate Holt et al. (2012), with largely significant correlations between most shelf regions and the north and western boundary with lags of ~5-6 years, and significant correlations between the southern regions of the shelf and the southern boundary with 0 year lag (Figure 11c). This reflects the different lags for the different advective pathways. These lag correlations of 5-year mean between the lateral boundary conditions and the NWS SSS may suggest predictability at decadal time scales, but were not further considered here (due study scope, and to the reanalysis length). Within a seasonal prediction system, they would be included via the initial conditions.

Runoff from large rivers tends to be (negatively) correlated with salinity across the shelf (e.g. the European rivers that flow into the southern North Seas region; Figure 11e), while runoff into regions that only include smaller (e.g. UK and Irish) rivers tends to have only local effects (such as the rivers flowing in to the Irish Sea; Figure 11f).

The salinity across the shelf is significantly negatively correlated with total precipitation in the south of the domain (Figure 11p), but not with precipitation in the north of the domain (Figure 11j), which is insignificantly positively correlated.

**Comment [MOU14]:** Reviewer 2:

**Page 13, line 27:**

*Here, it should be mentioned that the impact of the major inflow is not considered appropriately, due to the choice of stations which are analysed.*

**AUTHORS RESPONSE:**

Hopefully this is not necessary with the additional reanalysis evaluation.

**Comment [MOU15]:** Reviewer 2:

**Page 13, line 28 and 29:**

*This statement is misleading. As I understood the employed models include the influence from the Baltic Sea.*

**AUTHORS RESPONSE:**

Good point, this has been removed

**Comment [MOU16]:** Reviewer 2:

**Page 13, line 33:**

*The exchange with the Atlantic has already been discussed before. Therefore, it is confusing to say, it will be considered later.*

**AUTHORS RESPONSE:**

Happy to remove the phrase saying we'll discuss it later.

Conversely, strong wind magnitudes (UV10) in the north of the domain are correlated with salinity across the domain (Figure 11i), but wind magnitude in the south of the domain is not (Figure 11r). Mean Sea Level Pressure (MSLP) in the south of the domain is positively correlated with salinity across the shelf (Figure 11q), but northern mean sea-level pressure is not (Figure 11k). These patterns suggest that the NWS salinity is responding to a large-scale driver (rather than simply local rainfall/river flow) such as varying exchange with the Atlantic. The meteorological relationship between these surface forcings (low mean sea-level pressure, high wind and rain) suggests stormy conditions, and the North/South correlation patterns of mean sea-level pressure, wind magnitude and total precipitation suggest storm track latitude may be important.

When we compare these variables against the winter storm track latitude (Figure 12), we find that a more northern storm track location does correlate negatively (positively) with mean sea-level pressure (wind magnitude and total precipitation) in the north of the domain, and the opposite in the south. We find that these correlations tend to reduce strength through the seasons being highest in winter (DJF) and reducing through to the spring (MAM). This suggests that the index of storm track latitude is important for these variables.

We find that shelf salinity is (insignificantly) positively correlated with a more northerly storm track, particularly in the Irish and Shetland Shelf, and the northern and central North Sea, and there is a suggestion of a lag in the correlation as you move towards the North Sea. One possible mechanism that could explain these correlations is the rate of exchange of water with the Atlantic.

Exchange of water between the NWS and the Atlantic tends to dominate the mean salinity of the North Sea (Sündermann and Pohlmann 2011). One of the main pathways of water into the North Sea is via the Fair Isle Current (Sheehan *et al.* 2017), fed by the European Slope Current. Both the Fair Isle Current and the European Slope Current have been shown to correlate with the NAO (Winther and Johannessen 2006; Marsh *et al.* 2017; Sheehan *et al.* 2017). This positive correlation means more (relatively) high salinity is advected onto the NWS under NAO positive condition, which would tend to increase the NWS salinity. We do not explicitly look at the European Slope Current in this study, but understanding its predictability could provide an important mechanism for NWS salinity predictability.

Because the strength of the inflow of North Atlantic water onto the shelf (the indirect mechanism affecting the year-to-year shelf salinity) and the direct mechanism (dilution from rivers and precipitation) are both correlated to NAO, but in an opposing manner, it is possible more information (than is contained within the simple NAO index) is needed to predict NWS salinity variability. Such a balance of opposing mechanisms may explain the relatively low NAO SSS correlations (Figure 8 i-l) despite the main drivers of salinity being correlated to NAO. In principle, dynamic downscaling may provide additional skill by modelling this mechanisms directly, although empirical forecasts can be designed to capture the opposing mechanisms.

The spatial patterns in the relationships in Figure 11 show that (some of) the variability on the NWS is strongly coupled to the large-scale boundary conditions – this is consistent with the established view that the NWS is a boundary driven system (with the caveat that we are using a non-eddy permitting model for the NWS). Hence the overall concept of (empirical or dynamic) down-scaling based on large-scale boundary drivers that may be predictable by a global seasonal forecast system is plausible. This suggests that ~~the a~~ key area for scientific effort is to evaluate and improve the predictability of the NWS boundary drivers as produced by GloSea5, ~~rather than needing a heavy investment in ensembles of the regional model.~~

Overall, we conclude that much of the year-to-year NWS variability is relatively tightly linked to the variability in the boundary conditions, which is a prerequisite for dynamic downscaling. We note that in some cases, there may be a balance of opposing mechanisms, or response to a sequence of NAO events, that may require more information that is encapsulated in the simple NAO Index - this may provide a pathway for additional predictability from dynamic downscaling when compared to empirical downscaling. Furthermore, much of the temperature and salinity variability on the NWS is linked to large scale climate variations (including river outflow which integrates rainfall over a large area) rather than to more local

**Comment [MOU18]:** Reviewer 2:  
Page 15, line 10:

*This argument is not convincing. In principle, also opposing effects can be formulated empirically.*

**AUTHORS RESPONSE:**

That's true.  
I have amended the text.

**Comment [MOU19]:** Reviewer 2:  
Page 15, line 16:

*To my mind also coupled atmosphere-ocean models could lead to a significant improvement, since regional atmospheric features and the ocean-atmosphere interaction is resolved more realistically in these types of models.*

**AUTHORS RESPONSE:**

We agree that this could be important, and have a model in development that may allow this to be considered. However, we think that assessment of this model is beyond the scope of this paper.

We have altered the text, say that this is a key area, rather than the key area.

effects (such as the direct effect of rainfall on the synoptic scale). This increases the prospect of useful seasonal predictions since global seasonal forecast systems are beginning to show significant skill in predicting large scale climate indices.

#### 4. Conclusions and Prospects

Our preliminary investigation shows that despite the useful skill that GloSea5 has in predicting certain large scale climate indices, its output cannot be used directly for shelf seas seasonal forecasts because of limited resolution, missing shelf sea processes and simplified treatment of river runoff. However, we have shown evidence that many aspects of inter-annual variability on the NWS are driven by large scale variations in elements of the atmospheric, oceanic and riverine forcings that are closely linked to the winter NAO index, for which there is considerable predictive skill at a lead time of several months. Indeed Figure 10 shows that a simple empirical downscaling approach driven by the forecast NAO index can provide significant skill in some variables/regions at a lead time of several months.

Further improvements to the reliability of the NAO forecast that are in principle achievable (e.g. Eade *et al.* 2014) would be expected to lead to further improvements in the forecasts for NWS regions.

Based on our results we can make a preliminary assessment of the three possible forecasting methods identified in the introduction:

- 15 A. Read off the NWS marine variables directly from the underlying climate model. This is not feasible with current generation seasonal forecast systems. Over the coming 5-10 years it is expected that such systems will move to higher ocean resolution, and may incorporate tidal processes and improved coupling with river hydrology (e.g. Holt *et al.* 2017). Hence this approach may become feasible in time, although the resolution of global climate models will remain coarse compared with what is achievable through regional models.
- 20 B. Empirical downscaling. Our results show that a significant level of skill can be achieved for a limited set of variables at a few months' lead time. The very limited availability of long observed time-series on the NWS means that the empirical climate response functions will often need to be developed using reanalyses. Our evaluation of the CO5 NWS reanalysis has shown encouraging evidence of its ability to capture inter-annual variability.
- 25 C. Dynamical downscaling. Our analysis of boundary drivers of NWS variability shows that in some cases there is not a high correlation of the key drivers with the winter NAO index. There could be more information in potentially predictable drivers than is contained in the simple NAO index. For example, we have shown evidence that the shelf salinity is affected by two opposing mechanisms associated with NAO, with the dominance of each mechanism being controlled by a different factor. This suggests that two different years with the same NAO index may have anomalously high or low salinity (driven by the NAO) on the NWS depending on something not captured by the NAO Index – in such a case there is potential for improved predictability from dynamical downscaling. The strongly boundary forced nature of the NWS circulation suggests that the downscaling step may be fairly tightly constrained by the boundary conditions. This would imply that uncertainties due to, for example, the initial conditions of the NWS may be small, allowing the available computing time to be concentrated in getting the most reliable possible predictions of the boundary conditions from the global seasonal forecast system, rather than requiring large ensembles of the shelf model. Demonstrating a dynamically downscaled forecast is beyond the scope of the current paper but is planned for a future study.
- 30
- 35

Even the limited level of predictive skill we have shown here for some regions of the NWS may be useful for certain applications, e.g. SST forecasts for February-April may give early indications of increased risk of harmful algal blooms, and predictions of near bottom temperature and its impacts on the gas supply network may inform more resilient energy planning.

- 40 Further developments will be needed to deliver a seasonal prediction system for the NWS with sufficient skill and reliability to inform user planning decisions over a wide range of applications. Specific research priorities are:

**Comment [j20]: Reviewer 1**  
**Point 5**

*Being aware of the many studies investigating the influence of NAO variations on the physical oceanic and atmospheric conditions of the NWS, the only thing I have learned from reading the manuscript is that the predictive skill for NWS T and S based on a forecast GCM (GloSea5) NAO index is very low. Other presented conclusions are either trivial or speculative.*

**AUTHORS RESPONSE:**

This is again relates to our need to clarify the scope of the paper, and our aim being to outline the prospects of NWS seasonal forecasting.

We hope that the new text in the "scope of the study" will clarify our aims for the reader.

**Comment [MOU21]: Reviewer 2:**  
**Page 16, line 14:**

*This statement is formulated very negative, and, it does not really reflect the general content of entire paper. Therefore, I would suggest to weaken it a bit.*

**AUTHORS RESPONSE:**

Thanks, I have weakened it.

- Assess user value for cases where we already have demonstrated some skill, and establish what skill/reliability would be needed to provide actionable forecast information in various sectors
  - In-depth assessment of regional reanalyses as a tool to develop empirical downscaling relationships
  - Assess potential added value of dynamical downscaling, initially through case studies
- 5
- Identify the largest sources of uncertainty in downscaled predictions (e.g. seasonal forecast fields for specific drivers, downscaling model), to inform where to focus development effort
  - Assess predictability in seasons other than winter. To date seasonal forecasting systems have shown less skill in the summer, but this is an active research area (e.g. Hall *et al.* 2017). It may also be possible to demonstrate some degree of memory in the shelf seas themselves, which would add to forecast lead times.
- 10
- Many challenges remain before we can derive seasonal forecasts for the NWS that are accurate and reliable for a wide range of regions and variables. It is likely that some variables will prove to be inherently unpredictable to any useful degree. But the early results presented here show that current seasonal forecast systems can already provide meaningful information with the potential for applications in marine operations and planning. As our understanding and capability develops, a close interaction between climate scientists, marine scientists and end users will be needed to bring the added value of seasonal
- 15
- forecast information into decision making in marine policy, planning and operations.

## 5. Data availability

The data used in this study is available from the Copernicus Marine Environment Monitoring Service (CMEMS) Northwest European Shelf reanalysis (NORTHWESTSHELF\_REANALYSIS\_PHYS\_004\_009) available from their online catalogue.

## 6. Author contribution

- 20
- JT designed the analysis, which was undertaken by JK and JT. JT and RW prepared the manuscript with contributions from all co-authors. RB, SD provided advice on policy and user relevance.

## 7. Competing Interests

The authors declare they have no conflict of interest.

## 8. Acknowledgements

- 25
- The authors thank Leon Hermanson, Craig MacLachlan and Drew Peterson (MOHC) for advice and support with working with GloSea5, and John Pinnegar (CEFAS) for his comments and proofreading, the reviewers for questions and comments that strengthened the manuscript (particularly relating to the reanalysis evaluation), and Enda O’Dea, Dave Storkey and Robert King (MOHC) for Nemo advice. This work was supported by the Joint BEIS/Defra Met Office Hadley Centre Climate Programme (GA01101) and by Defra ME5317 ForeDec – Developing the capability to use marine forecasts over
- 30
- seasons to decades. The Southern North Sea Ferry time-series work has been supported by Defra ME Cefas- SLA15/25 and is a contribution to the ICES Report on Ocean Climate (<https://ocean.ices.dk/iroc/>). This publication has been developed in cooperation with the European Union’s Horizon 2020 research and innovation project AtlantOS (633211).

## 9. References

- 35
- Arribas, A., Glover, M., Maidens, A., Peterson, K., Gordon, M., MacLachlan, C., Graham, R., Fereday, D., Camp, J., Scaife, A. A., Xavier, P., McLean, P., Colman, A. and Cusack, S. (2011). "The GloSea4 ensemble prediction system for seasonal forecasting." *Monthly Weather Review* **139**: 1891-1910 doi:10.1175/2010MWR3615.1.

- Bean, T. P., Greenwood, N., Beckett, R., Biermann, L., Bignell, J. P., Brant, J. L., Copp, G. H., Devlin, M. J., Dye, S. R., Feist, S. W., Fernand, L., Foden, D., Hyder, K., Jenkins, C. M., van der Kooij, J., Kröger, S., Kupschus, S., Leech, C., Leonard, K. S., Lynam, C. P., Lyons, B. P., Maes, T., Nicolaus, E. E. M., Malcolm, S. J. and McIlwaine, P. (2017). "A Review of the Tools Used for Marine Monitoring in the UK: Combining Historic and Contemporary Methods with Modelling and Socioeconomics to Fulfil Legislative Needs and Scientific Ambitions." *Frontiers in Marine Science* **4**(263): 1-39.
- 5 Becker, G. A. and Pauly, M. (1996). "Sea surface temperature changes in the North Sea and their causes." *ICES Journal of Marine Science* **53**: 887-898.
- Belkin, I. M., Levitus, S., Antonov, J. and Malmberg, S. A. (1998). "'Great Salinity Anomalies' in the North Atlantic." *Progress in Oceanography* **41**(1): 1-68 [https://doi.org/10.1016/S0079-6611\(98\)00015-9](https://doi.org/10.1016/S0079-6611(98)00015-9).
- 10 Bell, M. J., Forbes, R. M. and Hines, A. (2000). "Assessment of the FOAM global data assimilation system for real time operational ocean forecasting." *Journal of Marine Systems* **25**: 1-22.
- Beraud, C., van der Molen, J., Armstrong, M., Hunter, E., Fonseca, L. and Hyder, K. (2017). "The influence of oceanographic conditions and larval behaviour on settlement success - the European sea bass *Dicentrarchus labrax* (L.)." *ICES Journal of Marine Science* <https://doi.org/10.1093/icesjms/fsx195>.
- 15 Best, M. J., Pryor, M., Clark, D. B., Rooney, G. G., Essery, R. L. H., Ménard, C. B., Edwards, J. M., Hendry, M. A., Porson, A., Gedney, N., Mercado, L. M., Sitch, S., Blyth, E., Boucher, O., Cox, P. M., Grimmond, C. S. B. and Harding, R. J. (2011). "The Joint UK Land Environment Simulator (JULES), model description - Part 1: Energy and water fluxes." *Geoscience Model Development* **4**: 677-699 doi: 10.5194/gmd-4-677-2011.
- 20 Bourdalle-Badie, R. and Treguier, A. M. (2006). A climatology of runoff for the global ocean-ice model ORCA025, Mercator-Ocean.
- Bouwer, L. M., Vermaat, J. E. and Aerts, J. C. J. H. (2008). "Regional sensitivities of mean and peak river discharge to climate variability in Europe." *Journal of Geophysical Research: Atmosphere* **113**(D19) <https://doi.org/10.1029/2008JD010301>.
- 25 Brown, A., Milton, S. F., Cullen, M., Golding, B., Mitchell, J. and Shelly, A. (2012). "Unified modeling and prediction of weather and climate: A 25-year journey." *Bulletin of the American Meteorological Society* **93**(1865-1877) doi: 10.1175/BAMS-D-12-00018.1.
- Brown, I., Thompson, D., Bardgett, R., Berry, P., Crute, I., Morison, J., Morecroft, M., Pinnegar, J., Reeder, T. and Topp, K. (2016). UK Climate Change Risk Assessment Evidence Report: Chapter 3, Natural Environment and Natural Assets. Report prepared for the Adaptation Sub-Committee of the Committee on Climate Change. London.
- 30 Dai, A. and Trenberth, K. E. (2002). "Estimates of Freshwater Discharge from Continents: Latitudinal and Seasonal Variations." *Journal of Hydrometeorology* **3**: 660-687.
- Dawson, R. J., Thompson, D., Johns, D., Gosling, S., Chapman, L., Darch, G., Watson, G., Powrie, W., Bell, S., Paulson, K., Hughes, P. and Wood, R. A. (2016). UK Climate Change Risk Assessment Evidence Report: Chapter 4, Infrastructure. Report prepared for the Adaptation Sub-Committee of the Committee on Climate Change. London.
- 35 Dee, D. P., Uppala, S. M., Simmons, A. J., Berrisford, P., Poli, P., Kobayashi, S., Andrae, U., Balmaseda, M. A., Balsamo, G., Bauer, P., Bechtold, P., Beljaars, A. C. M., van de Berg, L., Bidlot, J., Bormann, N., Delsol, C., Dragani, R., Fuentes, M., Geer, A. J., Haimberger, L., Healy, S. B., Hersbach, H., Hólm, E. V., Isaksen, I., Kållberg, P., Köhler, M., Matricardi, M., McNally, A. P., Monge-Sanz, B. M., Morcrette, J.-J., Park, B.-K., Peubey, C., de Rosnay, P., Tavolato, C., Thépaut, J.-N. and Vitart, F. (2011). "The ERA-Interim reanalysis: configuration and performance of the data assimilation system." *Quarterly Journal of the Royal Meteorological Society* **137**: 553-597 doi: 10.1002/qj.828.
- 40 Dippner, J. W. (1997). "SST anomalies in the north sea in relation to the North Atlantic Oscillation and the influence on the theoretical spawning time of fish." *Deutsche Hydrografische Zeitschrift* **49**(2-3): 267-275.
- 45 Donnelly, C., Arheimer, B., Capell, R., Dahne, J. and Strömqvist, J. (2013). Regional overview of nutrient load in Europe - challenges when using a large-scale model approach, E-HYPE. *Understanding freshwater quality problems in a changing world. Proceedings of IAHS-IAPSO-IASPEI Assembly*. Gothenburg, Sweden.
- Dulvy, N. K., Rogers, S. I., Jennings, S., Stelzenmüller, V., Dye, S. R. and Skjoldal, H. R. (2008). "Climate change and deepening of the North Sea fish assemblage: a biotic indicator of warming seas." *Journal of Applied Ecology* **45**(4): 1029-1039.
- 50 Dunstone, N., Smith, D., Scaife, A., Hermanson, L., Eade, R., Robinson, N., Andrews, M. B. and Knight, J. R. (2016). "Skilful predictions of the winter North Atlantic Oscillation one year ahead." *Nature Geoscience* **9**: 809-814 doi:10.1038/ngeo2824.
- Dye, S. R., Holliday, N. P., Hughes, S. L., Inall, M., Kennington, K., Smyth, T., Tinker, J., Andres, O. and Beszczynska-Möller, A. (2013). Climate change impacts on the waters around the UK and Ireland: Salinity. *MCCIP Science Review 2013* doi:10.14465/2013.arc07.060-066.
- 55 Eade, R., Smith, D., Scaife, A., Wallace, E., Dunstone, N., Hermanson, L. and Robinson, N. (2014). "Do seasonal-to-decadal climate predictions underestimate the predictability of the real world?" *Geophysical Research Letters* **41**(15): 5620-5628 [10.1002/2014GL061146](https://doi.org/10.1002/2014GL061146).
- 60 Egbert, G. and Ray, R. D. (2001). "Estimates of M2 tidal energy dissipation from TOPEX/Poseidon altimeter data." *Journal of Geophysical Research* **Volume 106**(C10): 22475-22502 DOI: 10.1029/2000JC000699.
- Engelhard, G. H., Righton, D. A. and Pinnegar, J. K. (2014). "Climate change and fishing: a century of shifting distribution in North Sea cod." *Global change biology* **20**(8): 2473-2483.

- Fernandes, J. A. (2015). "Evaluating machine-learning techniques for recruitment forecasting of seven North East Atlantic fish species." *Ecological Informatics* **25**: 35-42 doi:10.1016/j.ecoinf.2014.11.004.
- Frost, M., Bayliss-Brown, G., Buckley, P., Cox, M., Dye, S. R., Sanderson, W. G., Stoker, B. and Withers Harvey, N. (2016). "A review of climate change and the implementation of marine biodiversity legislation in the United Kingdom." *Aquatic Conservation: Marine and Freshwater Ecosystems* **26**(3): 576-595.
- 5 González-Pola, C., Larsen, K. M. H., Fratantoni, P., Beszczynska-Möller, A. and Hughes, S. L. (2018). ICES Report on Ocean Climate 2016. *ICES Cooperative Research Report*. **339**: 110 pp.
- Hall, R. J., Jones, J. M., Hanna, E., Scaife, A. and Erdélyi, A. (2017). "Drivers and potential predictability of summer time North Atlantic polar front jet variability." *Climate Dynamics* **48**: 3869 doi:10.1007/s00382-016-3307-0.
- 10 Hobday, A. J., Spillman, C. M., Paige Eveson, J. and Hartog, J. R. (2016). "Seasonal forecasting for decision support in marine fisheries and aquaculture." *Fisheries Oceanography* **25**(45-56) doi:10.1111/fog.12083.
- Holt, J., Butenschön, M., Wakelin, S., Artioli, Y. and Allen, I. (2012). "Oceanic controls on the primary production of the northwest European continental shelf: model experiments under recent past conditions and a potential future scenario." *Biogeosciences* **9**: 97-117.
- 15 Holt, J., Hyder, P., Ashworth, M., Harle, J., Hewitt, H., Liu, H., New, A. L., Pickles, S., Porter, A., Popova, E., Allen, I., Siddorn, J. and Wood, R. (2017). "Prospects for improving the representation of coastal and shelf seas in global ocean models." *Geoscience Model Development* **10**: 499-523 doi:10.5194/gmd-10-499-2017.
- Hughes, S. L., Tinker, J., Dye, S. R., Andres, O., Berry, D. I., Hermanson, L., Hewitt, H., Holliday, P., Kent, E. C., Kennington, K., Inall, M. and Smyth, T. (2017). Temperature. *MCCIP Science Review 2017*: 22-41 doi:10.14465/2017.arc10.003-tem.
- 20 Hunke, E. C. and Lipscomb, W. H. (2010). CICE: The sea ice model documentation and software user's manual, version 4.1. Technical report LA-CC-06-012. Los Alamos National Laboratory. Los Alamos, NM.
- Hurrell, J. W. (1995). "Decadal trends in the North Atlantic Oscillation - regional temperatures and precipitation." *Science* **269**(5224): 676-679.
- 25 Hurrell, J. W. and Deser, C. (2009). "North Atlantic climate variability: The role of the North Atlantic Oscillation." *Journal of Marine Systems* **78**(1) 10.1016/j.jmarsys.2008.11.026.
- Hurrell, J. W. and Van Loon, H. (1997). "Decadal Variations in Climate Associated with the North Atlantic Oscillation." *Climate Change* **36**(3/4): 301-328 10.1023/A:1005314315270.
- ICES (2012). Report of the working group on assessment of new MoU species (WGNEW). ICES CM 2012/ACOM:20., Copenhagen, Denmark: 258.
- 30 Jones, M. C., Dye, S. R., Pinnegar, J. K., Warren, R. and Cheung, W. W. L. (2015). "Using scenarios to project the changing profitability of fisheries under climate change." *Fish and fisheries* **16**(4): 603-622.
- Joyce, A. E. (2006). The coastal temperature network and ferry route programme: long-term temperature and salinity observations. *Science Series Data Report*. Lowestoft, Cefas. **43**: 129.
- 35 Large, W. and Yeager, S. (2009). "The global climatology of an interannually varying air-sea flux data set." *Climate Dynamics* **33**: 341-364 doi: 10.1007/s00382-008-0441-3.
- Larsen, K. M. H., Gonzalez-Pola, C., Fratantoni, P., Beszczynska-Möller, A. and Hughes, S. L. (2016). ICES Report on Ocean Climate 2015. *ICES Cooperative Research Report*. **331**: 79 pp.
- 40 Lowe, J. A., Howard, T. P., Pardaens, A., Tinker, J., Holt, J., Wakelin, S., Milne, G., Leake, J., Wolf, J., Horsburgh, K., Reeder, T., Jenkins, G., Ridley, J., Dye, S. and Bradley, S. (2009). UK Climate Projections science report: Marine and coastal projections, Met Office Hadley Centre, Exeter, UK.
- MacLachlan, C., Arribas, A., Peterson, K. A., Maidens, A., Fereday, D., Scaife, A. A., Gordon, M., Vellinga, M., Williams, A., Comer, R. E., Camp, J., Xavier, P. and Madec, G. (2014). "Global Seasonal forecast system version 5 (GloSea5): a high-resolution seasonal forecast system." *Quarterly Journal of the Royal Meteorological Society* doi: 10.1002/qj.2396.
- 45 Marsh, R., Haigh, I. D., Cunningham, S. A., Inall, M., Porter, M. and Moat, B. I. (2017). "Large-scale forcing of the European Slope Current and associated inflows to the North Sea." *Ocean Science* **13**: 315-335 doi:10.5194/os-13-315-2017.
- Mathis, M., Mayer, B. and Pohlmann, T. (2013). "An uncoupled dynamical downscaling for the North Sea: Method and evaluation." *Ocean Modelling* **72**: 153-166.
- 50 McCarthy, G. D., Smeed, D. A., Cunningham, S. A. and Roberts, C. D. (2017). Atlantic Meridonal Overturning Circulation. *MCCIP Science Review 2017*: 1-7 doi:10.14465/2017.arc10.002-atl.
- MCCIP (2017). Marine Climate Change Impacts: 10 years' experience of science to policy reporting. Frost, M., Baxter, J., Buckley, P., Dye, S. R. and Stoker, B. Lowestoft, MCCIP: 12 doi: 10.14465/2017.arc10.000-arc.
- 55 Megann, A., Storkey, D., Aksenov, Y., Alderson, S., Calvert, D., Graham, T., Hyder, P., Siddorn, J. and Sinha, B. (2014). "GOS5.0: the joint NERC-Met Office NEMO global ocean model for use in coupled and forced applications." *Geoscience Model Development* **7**: 1069-1092 doi:10.5194/gmd-7-1069-2014.
- Mysak, L. A., Ingram, R. G., Wang, J. and van der Baaren, A. (1996). "The anomalous sea-ice extent in Hudson Bay, Baffin Bay and the Labrador Sea during three simultaneous NAO and ENSO episodes." *Atmosphere-Ocean* **34**(2): 313-343.
- 60 O'Dea, E., Arnold, A. K., Edwards, K. P., Furner, R., Hyder, P., Martin, M. J., Siddorn, J., Storkey, D., While, J., Holt, J. and Lui, H. (2012). "An operational ocean forecast system incorporating NEMO and SST data assimilation for the tidally driven European North-West shelf." *Journal of Operational Oceanography* **5**(1): 3-17 <http://dx.doi.org/10.1080/1755876X.2012.11020128>.



- Palin, E. J., Scaife, A. A., Wallace, E., Pope, E. C., Arribas, A. and Brookshaw, A. (2016). "Skillful Seasonal Forecasts of Winter Disruption to the U.K. Transport System." *Journal of Applied Meteorology and Climatology* **55**: 325-344 <https://doi.org/10.1175/JAMC-D-15-0102.1>.
- Pinnegar, J. K., Garrett, A., Simpson, S. D., Engelhard, G. H. and Van der Kooij, J. (2017). Fisheries. *MCCIP Science Review 2017*: 1-17 doi:10.14465/2017.arc10.007-fis.
- Pörtner, H. O. and Farrell, A. P. (2008). "Physiology and climate change." *Science* **322**: 690-692.
- Pörtner, H. O. and Peck, M. A. (2010). "Climate change effects on fishes and fisheries: towards a cause-and-effect understanding." *Journal of Fish Biology* **77**: 1745-1779.
- Rödel, R. (2006). *Influence of the North Atlantic Oscillation on spatial and temporal patterns in Eurasian river flows*. Fifth FRIEND World Conference, Havana, Cuba.
- Scaife, A. A., Arribas, A., Blockley, E., Brookshaw, A., Clark, R. T., Dunstone, N., Eade, R., Fereday, D., Folland, C. K., Gordon, M., Hermanson, L., Knight, J. R., Lea, D. J., MacLachlan, C., Maidens, A., Martin, M., Peterson, A. K., Smith, D., Vellinga, M., Wallace, E., Waters, J. and Williams, A. (2014). "Skillful long-range prediction of European and North American winters." *Geophysical Research Letters* **41**: 2514-2519 DOI: 10.1002/2014GL059637.
- Schneider, J., Tidwell, A. S., Fitzwater, S. A. and (2015) In: , p. (2015). The nuclear pipeline: Integrating nuclear power and climate change. *Engineering Identities, Epistemologies and Values*, Springer International Publishing: 271-286.
- Sheehan, P. M. F., Berx, B., Gallego, A., Hall, R. A., Heywood, K. J. and Hughes, S. L. (2017). "Thermohaline forcing and interannual variability of northwestern inflows into the northern North Sea." *Continental Shelf Research* **138**: 120-131 <https://doi.org/10.1016/j.csr.2017.01.016>.
- Siddorn, J. and Furner, R. (2013). "An analytical stretching function that combines the best attributes of geopotential and terrain-following vertical coordinates." *Ocean Modelling* **66**: 1-13 doi:10.1016/j.ocemod.2013.02.001.
- Simmons, H. L., Hallberg, R. W. and Arbic, B. K. (2004). "Internal wave generation in a global baroclinic tide model." *Deep-Sea Research II: Topical Studies in Oceanography* **51**(25-26): 3043-3068 <https://doi.org/10.1016/j.dsr2.2004.09.015>.
- Smyth, T., Atkinson, A., Widdicombe, S., Frost, M., Allen, I., Fishwick, J., Queiros, A., Sims, D. W. and Barange, M. (2015). "The Western Channel Observatory." *Progress in Oceanography* **137**(Part B): 335-341 <https://doi.org/10.1016/j.pocean.2015.05.020>.
- Stige, L. C., Ottersen, G., Brander, K., Chan, K. and Stenseth, N. C. (2006). "Cod and climate: Effect of the North Atlantic Oscillation on recruitment in the North Atlantic." *Marine Ecology Progress Series* **325**: 227-241 DOI: 10.3354/meps325227.
- Sündermann, J. and Pohlmann, H. (2011). "A brief analysis of North Sea physics." *Oceanologia* **53**(3): 663-689 <http://dx.doi.org/10.5697/oc.53-3.663>.
- Tinker, J., Lowe, J., Pardaens, A., Holt, J. and Barciela, R. (2016). "Uncertainty in climate projections for the 21st century northwest European shelf seas." *Progress In Oceanography* 10.1016/j.pocean.2016.09.003.
- Tinker, J., Palmer, M. D., Howard, T. P., Lowe, J. and Copsey, D. (in preparation). "Quantifying Coastal Sea Level Variability around the UK."
- van der Kooij, J., Engelhard, G. H. and Righton, D. A. (2016). "Climate change and squid range expansion in the North Sea." *Journal of Biogeography* **43**(11): 2285-2298.
- Wakelin, S., Holt, J., Blackford, J., Allen, I., Butenschön, M. and Artioli, Y. (2012). "Modeling the carbon fluxes of the northwest European continental shelf: Validation and budgets." *Journal of Geophysical Research: Oceans* **117**(C05020) DOI: 10.1029/2011JC007402.
- Wakelin, S., While, J., King, R., O'Dea, E., Holt, J., Furner, R., Siddorn, J., Martin, M. and Blockley, E. (2014). North West European Shelf Reanalysis NORTHWESTSHELF\_REANALYSIS\_PHYS\_004\_009. *MyOcean Quality Information Document* <http://marine.copernicus.eu/documents/QUID/CMEMS-NWS-QUID-004-009-011.pdf>.
- Wakelin, S. L., Holt, J. T. and Proctor, R. (2009). "The influence of initial conditions and open boundary conditions on shelf circulation in a 3D ocean-shelf model of the North East Atlantic." *Ocean Dynamics* **59**(1): 67-81 10.1007/s10236-008-0164-3.
- Walters, D. N., Best, M. J., Bushell, A. C., Copsey, D., Edwards, J. M., Falloon, P. D., Harris, C. M., Lock, A. P., Manners, J. C., Morcrette, C. J., Roberts, M. J., Stratton, R. A., Webster, S., Wilkinson, J. M., Willett, M. R., Boutle, I. A., Earnshaw, P. D., Hill, P. G., MacLachlan, C., Martin, G. M., Moufouma-Okia, W., Palmer, M. D., Petch, J. C., Rooney, G. G., Scaife, A. A. and Williams, K. D. (2011). "The Met Office Unified Model Global Atmosphere 3.0/3.1 and JULES Global Land 3.0/3.1 configurations." *Geoscience Model Development* **4**: 919-941 doi: 10.5194/gmd-4-919-2011.
- Williams, K. D., Harris, C. M., Bodas-Salcedo, A., Camp, J., Comer, R. E., Copsey, D., Fereday, D., Graham, T., Hill, R., Hinton, T., Hyder, P., Ineson, S., Masato, G., Milton, S. F., Roberts, M. J., Rowell, D. P., Sanchez, C., Shelly, A., Sinha, B., Walters, D. N., West, A., Woollings, T. and Xavier, P. K. (2015). "The Met Office Global Coupled model 2.0 (GC2) configuration." *Geoscience Model Development* **8**: 1509-1524 doi:10.5194/gmd-8-1509-2015.
- Winther, N. G. and Johannessen, J. A. (2006). "North Sea circulation: Atlantic inflow and its destination." *Journal of Geophysical Research* **111**(C12018) doi:10.1029/2005JC003310.



10. Figures

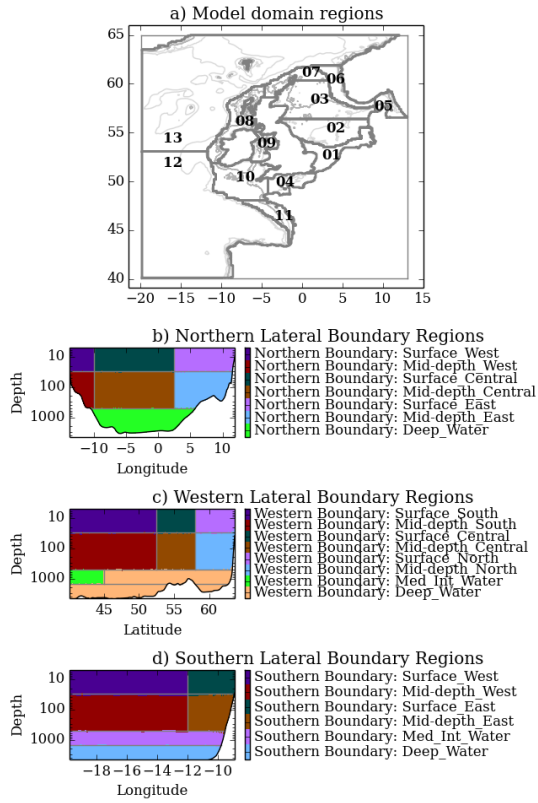


Figure 1 a) CO5 NWS reanalysis domain with analysis regions in bold grey, numbered as: 01 Southern North Sea; 02 Central North Sea; 03 Northern North Sea; 04 English Channel; 05 Skagerrak/Kattegat; 06 Norwegian Trench; 07 Shetland Shelf; 08 Irish Shelf; 09 Irish Sea; 10 Celtic Sea; 11 Armorican Shelf; 12 NE Atlantic (S); 13 NE Atlantic (N). b-d) Region mask used for the oceanic lateral boundary condition: b) The Northern Boundary is divided at 10° W and 2.5° E, and at 30 m and 500 m (below 500 m the boundary is not separated by longitude); c) The Western Boundary is separated at 30 m and 500 m, and at 52.5° N and 58° N. Mediterranean Intermediate Water is identified between 500 m and 1500 m south of 45° N, and this is separated. d) The Southern Boundary is divided at 30 m, 500 m and 1500 m. Above 500 m, the boundary is separated at 12° W.

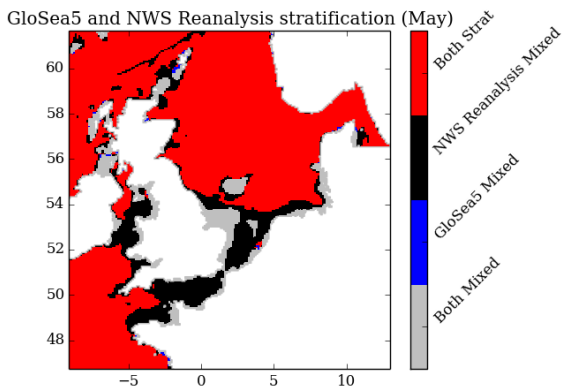
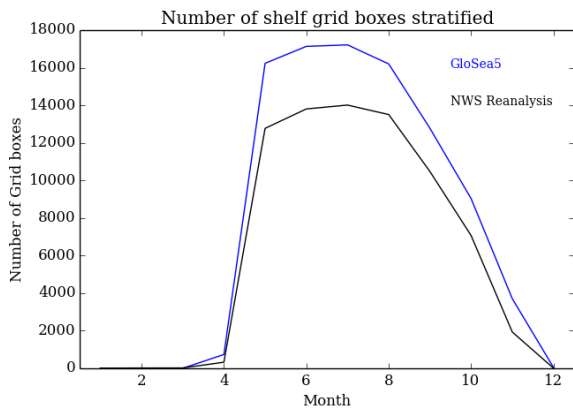


Figure 2 a) 20-year mean seasonal cycle of stratified extent for CO5 NWS reanalysis (black) and GloSea5 (blue). b) 20-year mean stratification map (for May, where  $(SST - NBT) = 0.5 \text{ }^\circ\text{C}$ ). Grey and red denote regions where both models agree that there is a mixed and stratified water column respectively. Black and Blue denote regions where the CO5 NWS reanalysis and GloSea5 disagree – black being where NWS considers the water column to be mixed, while GloSea5 considers it to be mixed, and blue being the opposite.

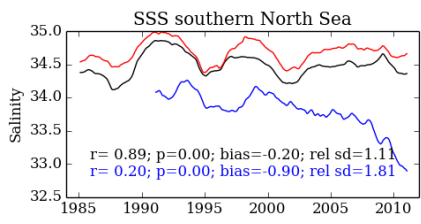
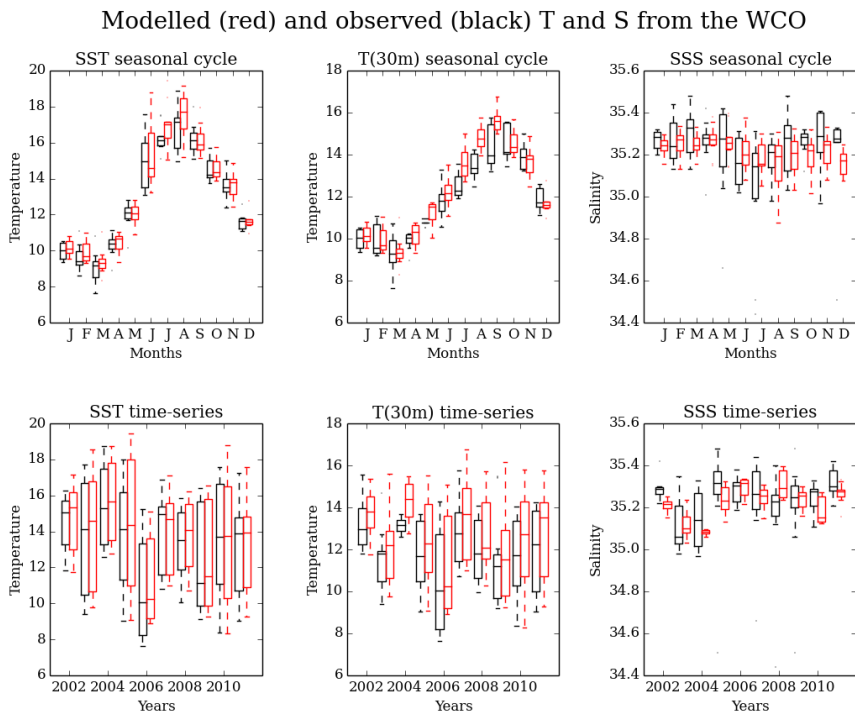


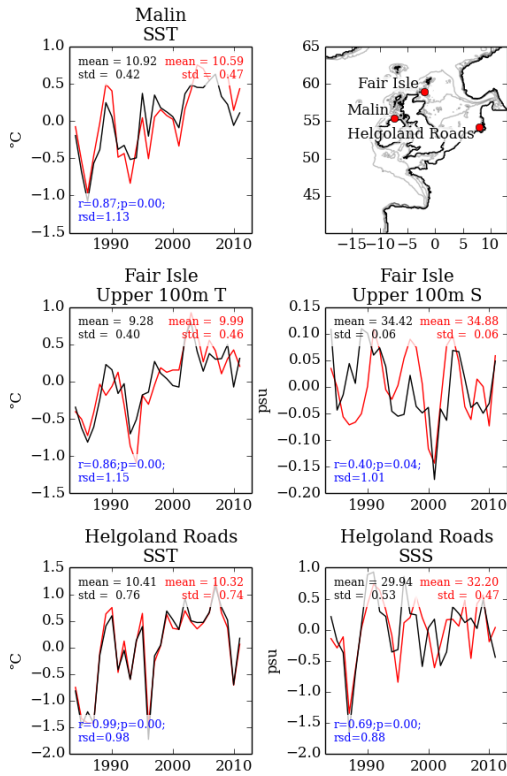
Figure 3 ~~Time-series~~Time-series of observed (ferry samples) southern North Sea salinity (red) compared to COS NWS reanalysis (black) and GloSea5 (blue) data, with 2 year running mean.



**Figure 4** Observed WCO E1 observed (black) temperature (surface: SST; and 30 m: T(30m)) and salinity (surface: SSS) compared to CO5 NWS reanalysis (red), showing the mean seasonal cycle and inter-annual timersieres (including both winter and summer observations). The nearest CO5 NWS reanalysis gridbox to the WCO site is used, without horizontal or vertical interpolation.

**Formatted:** Caption, Line spacing: 1.5 lines

T and S anomaly (annual mean)  
from ICES IROC and NWS Reanalysis



**Figure 5** Reanalysis evaluation with ICES temperature and salinity data. Data is presented as anomalies (the time-series mean is removed) to highlight the variability (reanalysis red; observations black), however the mean and standard deviation (and Pearson's correlation coefficient ( $r$ , with its significance ( $p$ )), relative standard deviation ( $rsd$ ), and root mean square) are given. Temperature (left panels) and salinity (right panels) from three ICES time series: Fair Isle (upper row); Helgoland Roads (middle row) and Malin Head (lower row). Lower right panel shows the location of these time series (Malin Head dataset does not include salinity).

5

Surface Forcing lag corr with NOAA DJF NAO (1985 - 2011)

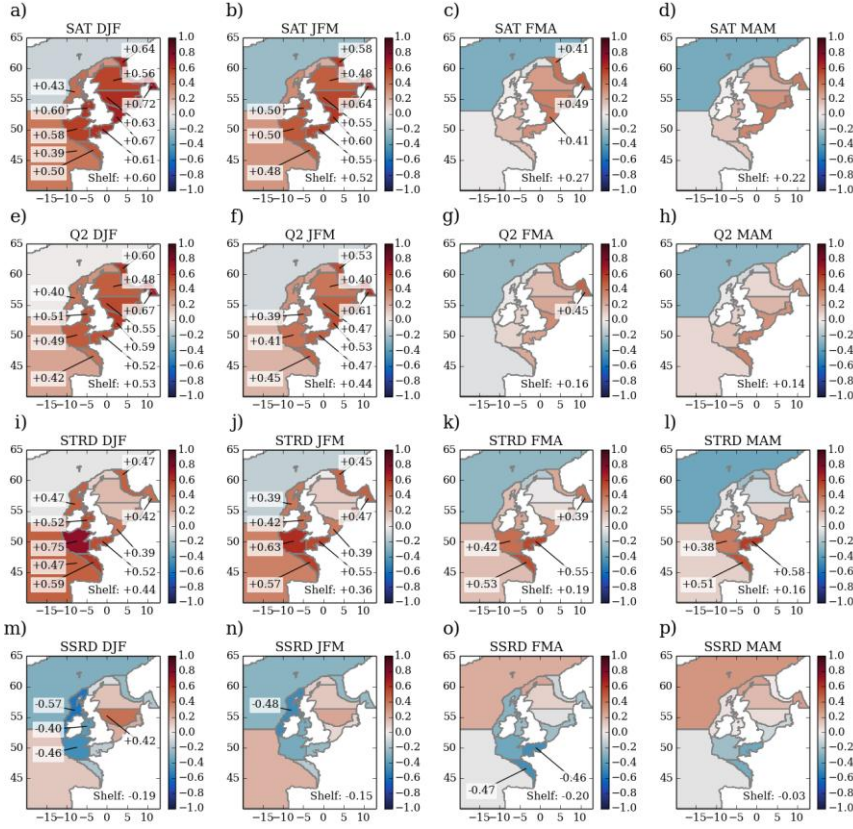


Figure 6 Correlation maps between winter (DJF) NAO and atmospheric surface fields associated with shelf temperature (Surface Air Temperature (SAT; a-d), humidity (Q2; e-h), Downwards component of the Thermal Radiation at the surface (STRD; i-l) and Downwards component of the Short-wave (Solar) Radiation (SSRD; m-p), upper to lower rows respectively). The left hand panels denote zero-lag (a, e, i, m), correlating the winter (DJF) NAO with the winter (DJF) surface forcing. The following columns denote 1, 2 and 3 month lags, correlating the winter (DJF) NAO against the JFM (Jan-Mar; b, f, j, n), FMA (Feb-Apr; c, g, k, o), MAM (Mar-May; d, h, l, p) surface forcing respectively. The correlation values are given for the shelf, and for regions where the correlation is significant.

5

Surface Forcing lag corr with NOAA DJF NAO (1985 - 2011)

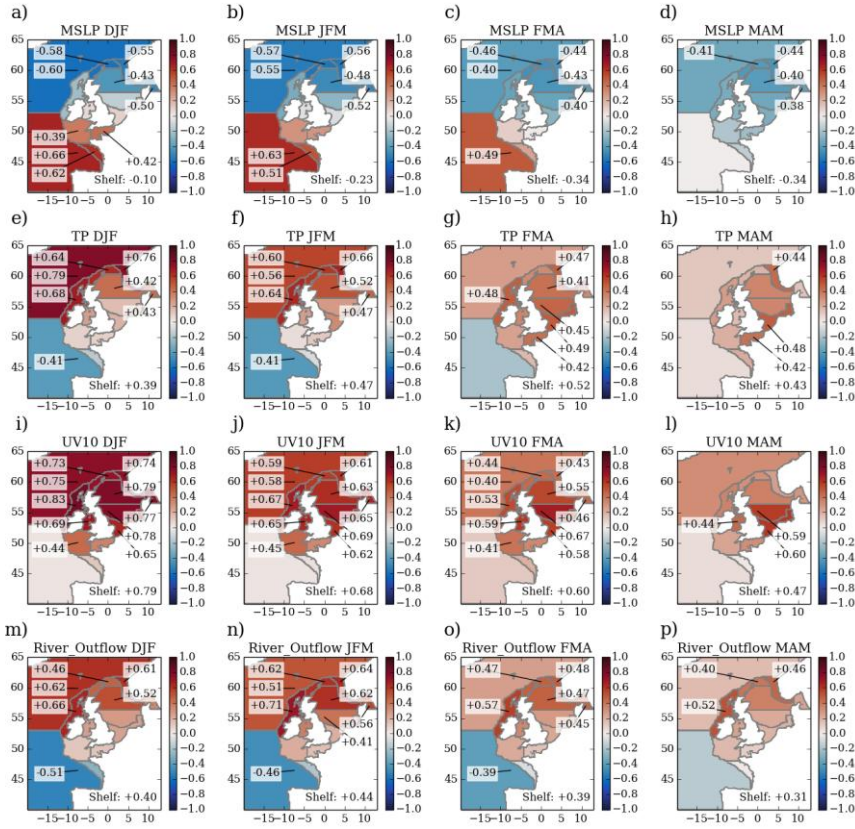


Figure 7 As Figure 6, but for atmospheric surface fields associated with SSS variability: Mean Sea Level Pressure (MSLP; a-d), Total Precipitation (TP; e-h), wind magnitude (UV10; i-l) and river outflow (m-p).

SST, NBT, SSS and SAT lag corr with NOAA DJF NAO (1993 - 2011)

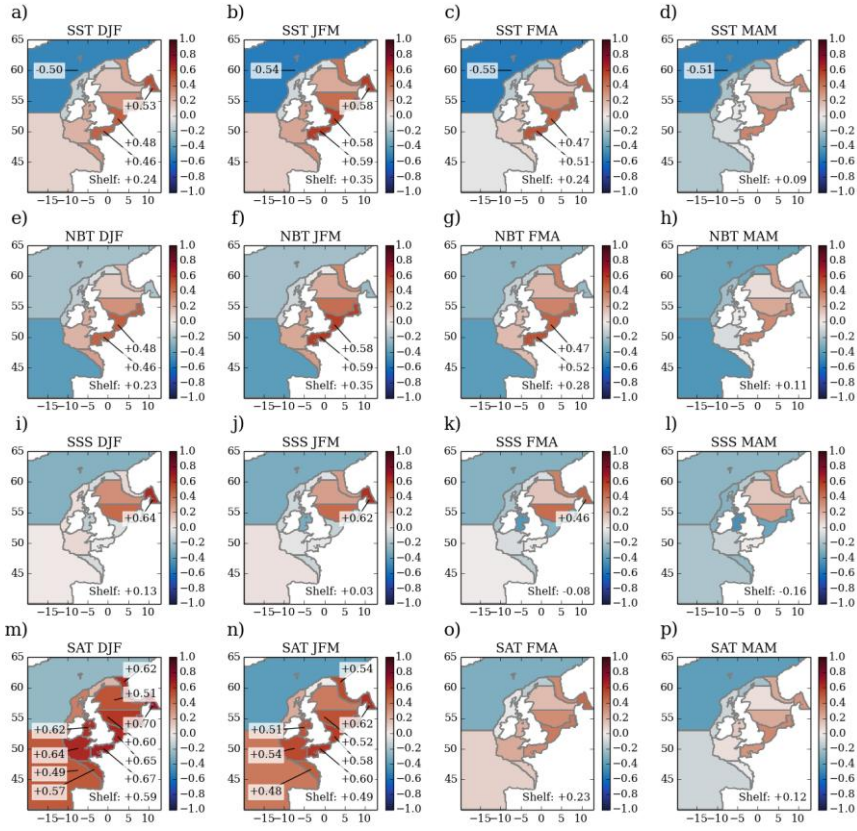


Figure 8 As Figure 6, but for the shelf response itself: SST (a-d), NBT (e-h), SSS (i-l) and SAT (surface air temperature; m-p).



SST, NBT, SSS and SAT lag corr with GloSea DJF NAO (1993 - 2011)

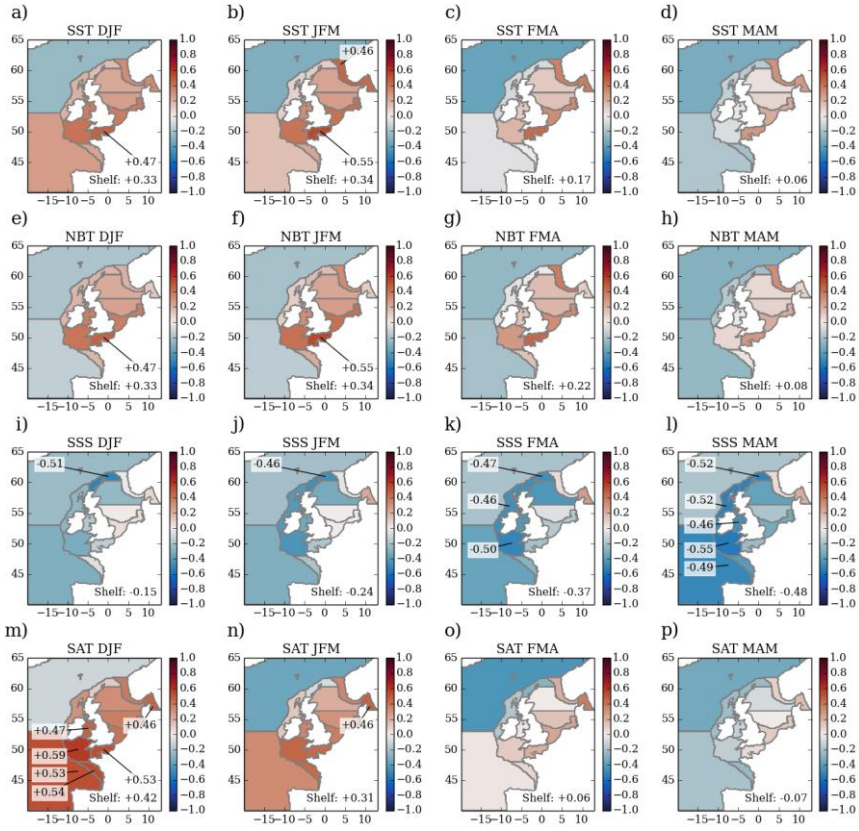


Figure 9 As with Figure 7, but using the GloSea5 forecast DJF NAO: SST (a-d), NBT (e-h), SSS (i-l) and SAT (surface air temperature; m-p).

Prototype seasonal forecast  
English Channel SST  
Reanalysis vs NAO based forecast

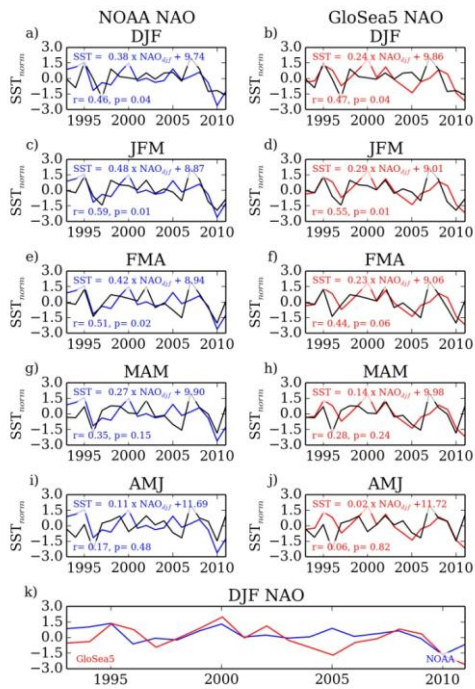


Figure 10 Exemplar regional seasonal forecast of English Channel SST (selected for the strength of the correlations): The seasonal forecasts is based on the linear relationship between the reanalysis SST, and the observed NAO (blue, left column: a, c, e, g, i) and GloSea5 Forecast NAO (red, second column, b, d, f, h, j). Each forecast (coloured line) is based on the DJF NAO, with each row showing the consecutive month (first column: DJF forecast; a, b; second row: JFM forecast; c, d... fifth row: AMJ forecast; i, j). For each panel, the black line represents the NWS reanalysis SST, which is the same for both the observed and GloSea5 NAO plots for that row. The coloured line represents the DJF NAO based forecast – while the amplitude of this varies with lag, the pattern is based on the same DJF NAO, and so the pattern remains the same for each column of a given row. Both modelled and forecast line have been normalised (removing the mean and dividing by the standard deviation) – this does not affect the strength or significance of the correlation. The equation for the forecast is given, with the strength of the correlations in each panel. The lowest panel (k) shows the ~~time-series~~ time-series of the observed (blue) and GloSea5 forecast DJF NAO (red).

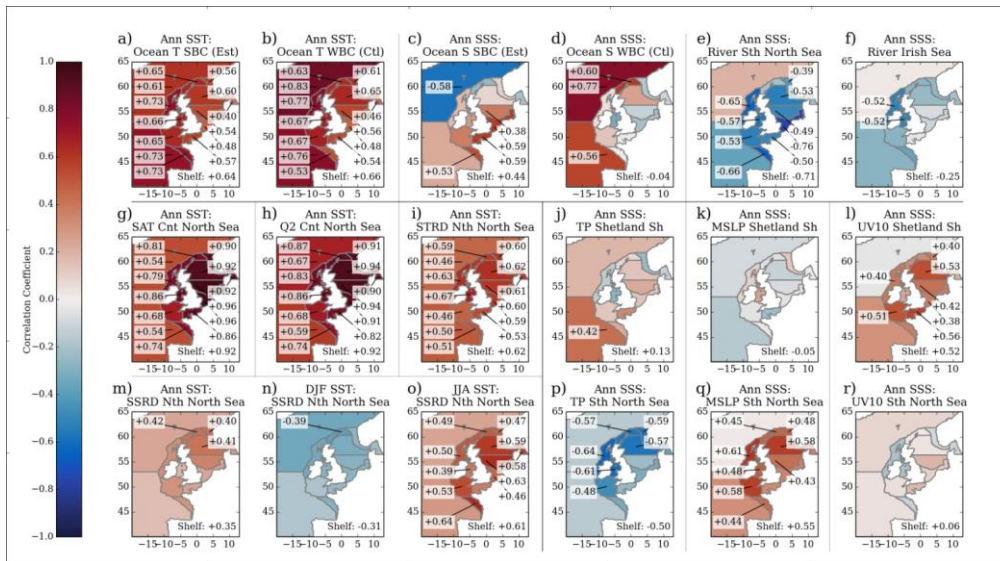


Figure 11 Correlation maps between time-series (annual mean unless stated otherwise) of model forcings and shelf response. Insignificant correlations are not given. The individual panels relate the shelf response to the forcing: a) SST and oceanic temperature at the south of the domain (Southern Boundary - Surface\_East); b) SST and oceanic temperature at the north of the domain (Western Boundary - Surface\_Central); c) SSS and oceanic salinity at the south of the domain (Southern Boundary - Surface\_East); d) SSS and oceanic salinity at the north of the domain (Western Boundary - Surface\_Central); e) SSS and river outflow into the southern North Sea; f) SSS and river outflow into the Irish Sea; g) SST and Surface Air Temperature in the central North Sea; h) SST and humidity (Q2) in the central North Sea; i) SST and Surface Thermal Radiation (Downwards) in the central North Sea; j) SSS and Total Precipitation in the Shetland Shelf region; k) SSS and Mean Sea Level Pressure in the Shetland Shelf region; l) SSS and wind magnitude (UV10) in the Shetland Shelf region; m) SST and Surface Solar Radiation (Downwards) in the northern North Sea; n) winter (DJF) SST and winter (DJF) Surface Solar Radiation (Downwards) in the northern North Sea; o) summer (JJA) SST and summer (JJA) Surface Solar Radiation (Downwards) in the northern North Sea; p) SSS and Total Precipitation in the southern North Sea; q) SSS and Mean Sea Level Pressure in the southern North Sea; r) SSS and wind magnitude (UV10) in the southern North Sea. The correlation maps given are not necessarily the strongest correlations, but have been selected to illustrate the observed patterns consistently.

Correlations with Winter (DJF 1985 - 2011) storm latitude

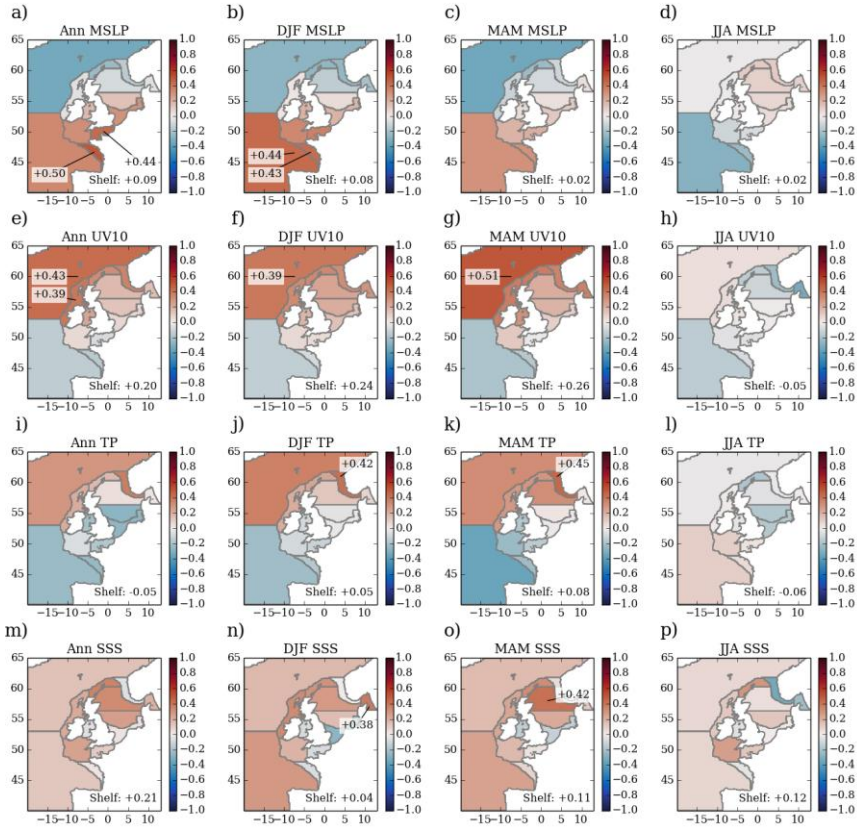


Figure 12 Correlations between winter (DJF) storm track latitude, and Annual mean, winter, spring and summer (left to right, autumn omitted as correlations weaken with time from winter) mean sea level pressure (MSLP; a-d), wind magnitude (UV10; e-h), precipitation (TP; i-l) and surface salinity (SSS; m-p).