

Answer to Referees

The authors would like to thank the reviewers for their comments, which helped improving this manuscript. In particular the introduction was largely rewritten following the important remarks on near-inertial motions, and figure 1 was redrawn. We also completely rewrote appendix B after we found an error in the analysis (we had perturbed the elevation instead of the pointing angles)

Answers to the 3 reviewers are listed below.

Reviewer #1

We thank our colleague for the kind and detailed comments and questions.

We also note that we have completely redone the analysis of Appendix B after we realized that we had perturbed the elevation and not the pointing angles, which gave a different periodicity for the error due to attitude misknowledge.

Below a point-by-point reply. In bold are the reviewer comments and our comments follow in normal font.

The clarity of the appendices is not as good as the main body of the text and could be improved. The only large gap is a clear description of the products that are expected.

We have worked to improve the readability of Appendix A. As for Appendix B it was completely rewritten based on new simulations, and now gives details of the fitting procedure used to retrieved the beam pointing parameters from the measured Doppler.

Major comments:

1) Page 8 & 9: The goal is clearly stated to be the retrieval of the Eulerian velocity. However, the velocity including Stokes drift will be of use for many topics (e.g., oil drift and air-sea fluxes). Will the Stokes drift also be made available?

The (quasi-) Eulerian velocity will be particularly used for the Level 3 product (multiple swaths with mapping is space and time) because of the rapid variation of the Stokes component which will also be provided in Level 2 products. This is now clarified.

Minor Comments:

2) Page 2, line 23: ATI provides speeds or more accurately vector components rather than velocities. Similar errors in word usage should be corrected throughout.

We have clarified the use of “speed” and “velocity”

{3) Page 3, line 7: at (UGD) to the end of the line.

We are not sure how to understand this comment.

{4) Page 5 line, 2, change ‘sea surface Us’ to ‘surface Us’

This has been corrected

5) Figure 10 would be better with a sharper color bar

This has been corrected

6) The clarity of the caption for fig. A1 should be improved

We have corrected the caption as follows:

Illustration of the use of cycles in azimuth θ' (circles) for the estimation of the integrated parameters at the location (black square) of cycle with direction θ .

Reviewer #2

We thank the reviewer for the thoughtful and thought-provoking remarks that have led to important changes in the manuscript.

Below a point-by-point reply. In bold are the reviewer comments and our comments follow in normal font.

his paper describes the concept of a space mission that will utilize the Doppler shift of radar returns to measure the ocean surface velocity, wave parameters, and sea ice drift. However, the small incidence angle of 12 degrees is highly undesirable for meeting the main mission objectives of ocean surface velocity, as well as sea ice drift for the following reasons:

1. Any measurement errors would be amplified by a factor of $1/\sin(12 \text{ degrees})$, or about 4.8.

We understand the reviewer concerns, but the question of errors should always be considered in the context of signal to noise ratio (SNR). Indeed, although the signal of the horizontal current is reduced by a factor 4 when going from, say, 55° to 12° , the noise is reduced by a factor 100 (20 dB) for average wind speeds (6 to 8 m/s, Yurovsky et al. 2016). As a result the SNR is better at 12° compared to larger incidence angles.

2. The Doppler shift is heavily contaminated by the radial motions of the waves. The correction for wave bias is very strenuous without much assurance.

Besides noise, measurements indeed contain a wave bias which varies little with incidence angle (from 6 to 20 degrees) because the wave orbital velocities are the same in all directions. It is thus correct that, relative to the current signal, this is amplified by $1/\sin(\theta_i)$.

In the end, the wave bias is of the same order of magnitude for Ka band at 12° as it is for C band at 23° , which corresponds to the wave mode data on Envisat used by Chapron et al. (2005) and Collard et al. (2008), and from which it was possible to measure the equatorial currents very clearly using a proxy based on modeled wind. Here we wish to correct the wave bias more precisely so that we do not need to average the data over many passes. A preliminary algorithm is described here. We expect that it will be perfected in the coming years.

3. The narrow swath makes the revisit time at a given location insufficient to sample the high-frequency motions like inertial currents and tidal currents that would overwhelm the low-frequency ocean currents that are the mission's main objectives. As noted in the paper, more than daily revisit will take place only at latitudes higher than 75 degs.

The mission's main objective is to measure currents, whatever their variability and nature. Indeed, surface currents contain many contributions (tides, near-inertial motions ...), that -- in the case of coastal regions -- are very well revealed by HF radars (e.g. Kim and Kosro 2013, Kim 2014) and drifter data (e.g. Poulain et al. 2013, Elipot and Lumpkin 2016). The relative magnitude of these inertial currents is highly variable and can range from 10% to 60% (Poulain et al. 2013 have a low ratio in the Mediterranean, Kim and Kosro have a higher ratio off the U.S. West coast, other places are tide dominated, such as the French continental shelf, see Arduin et al. 2009).

The sampling is certainly not ideal to resolve all these. This question raises the issue of how the data will be used. It is the same question with the diurnal aliasing in QuikScat wind measurements, and the relative variability of currents on a 3-day time scale and at 30 km resolution may be comparable to the variability of winds on a 12h time scale and at 25 km resolution. We have thus added the following sentences in the introduction:

As detailed below, the Sea Surface Kinematics Multiscale monitoring (SKIM) mission, propose to use map surface waves and currents with 6-km footprints with a 4 m resolution in range. These footprints are distributed across a 270 km wide swath, but do not cover the entire swath, leaving a gap between the features smaller than 6 km resolved with a footprint, and the features larger than 20 km fully mapped across the swath.

As the ocean is viewed in less than 1 minute during a single pass, the observed scene is basically a snapshot in which many ocean processes are aliased. Only those current features that vary on time scales of several days, or that have a constant phase and amplitude such as tides, can be measured without ambiguity. Evidence from High Frequency radars in coastal areas suggests that even near-inertial motions are coherent over time scales as large as 6 days at mid-latitudes \cite{Kim&Kosro2013}. Hence measured currents, even if every 3 days only, can provide useful constraints on the ocean circulation.

Another issue raised by the question is which contributions are least predictable and thus most useful in a data assimilative prediction system. We note that good results have already been obtained for tides and inertial motions in the past (Stammer et al. 2014, Jing et al. 2014).

Stammer, D. et al. (2014). Reviews of Geophysics Accuracy assessment of global barotropic ocean tide models. *Reviews of Geophysics*, 52, 243–282. <http://doi.org/10.1002/2014RG000450>.

Jing, Z., Wu, L., & Ma, X. (2015). Improve the simulations of near-inertial internal waves in the ocean general circulation models. *Journal of Atmospheric and Oceanic Technology*, 32(10), 1960–1970. <http://doi.org/10.1175/JTECH-D-15-0046.1>

The coverage of SKIM over time scales of 1' and 1'' in Fig 1 is way overstretch.

We agree and figure 1 has been completely redrawn and completed, and clarified. The meaning of the scales in Figure 1 is now clarified in the caption: 1' is the maximum time lag between two views of the same ocean region over one single pass: flying at 7 km/s with a 270 km swath diameter gives 38 s maximum time lag. And the acquisition frequency is around 4 Hz ($dt = 0.23$ s) for all beams. Hence these two time scales define the range of time within a “snapshot”.

Although the mission would take advantage of the spare parts of the SWIM instrument, they impose the limitation on the incidence angle and therefore are really a wrong choice for meeting the mission science objectives. This is somewhat like using the spare parts of a cheap ordinary car to build a sports car hoping to win the Formula One race. The mission might serve the role of demonstrating the technique, but it is highly unlikely that the mission would advance the knowledge of ocean surface circulation.

“Spare parts” is an exaggeration: SKIM is not using “spare parts” but builds on an existing design, with Ka band instead of Ku, a larger reflector (1.2 m instead of 0.8 m), and, most importantly Doppler capability which requires a very high PRF because of geometrical decorrelation. As for a “race”, SKIM is now in phase A with ESA and this will certainly help raising the profile of all proposals for measuring ocean circulation with Doppler. The fact that some components inheriting from previous missions certainly helped fitting in the tight budget of ESA Earth Explorer 9, not very different from the budget of SMOS. Clearly technological readiness level (TRL) was a big issue for this Earth Explorer 9. The incidence angle of 12° gives a 270 km swath for a 690 km orbit. This yields a revisit time of 3 days at mid latitudes that is consistent with the dynamical evolution time of 60 km wavelength patterns in the mesoscale field.

Given the preliminary result of Envisat we are thus confident that SKIM can deliver very useful data on ocean dynamics, in particular for tropical currents, mapping the equatorial divergence, tropical instability waves, but also the global mesoscale and inertial oscillations.

Reviewer 3

One comment concerns the estimate of current below the surface (the proposed instrument measures the surface one). The first author has worked on how the wave propagation velocity depends on the current vertical profile. I wonder if there is any way to use the wave spectrum and surface current information in this respect. However, possibly a counter argument is that the instrument provides only the (k,θ) spectrum, i.e. a geometrical picture of the situation, with no measured information on its dynamical, implicitly (f,θ) , behaviour.}

A larger dwell time than the 30~ms focused on a single footprint would be needed for going into a frequency-wavenumber analysis. Still, filtering data at a given wavenumber with the Delta-K technique (e.g. Alpers & Hasselmann) may - theoretically - allow the analysis of this shear by measuring the Doppler shift for different Delta-Ks, similar to what was done by Shrira et al. (2001) for HF radars. We have now clarified on page 8 (lines 19-24) the effect of a vertical shear on the measured velocities and our opinion that measuring the shear does not appear feasible.

A possibly more serious one concerns the measurement of the wave spectrum. Figure 5 at page 8 provides a clear perspective of the logical flow of actions and data. It is clear that the availability, hence the measurement, of the $E(k,\theta)$ spectrum is a key point, obviously required, apart from other needs, to estimate the Stokes drift. However, how to measure $E(k,\theta)$ is not detailed and developed enough in my view.

The SWIM approach of Danielle Hauser et al (2017) is cited, but SKIM is a different instrument and its performance should be described in more details.

We have added a few details, and we also refer the reader to Nouguier et al. (2018). Without doubling the length of the paper it would be hard to cover the topic. We thus conclude the introduction section with

The present paper focuses on currents, and a detailed description of wave measuring capabilities with SKIM will be given elsewhere.

page 18 lines 2 and 16

These sentences have been re-written.

page 20 line 6

This sentence has been rewritten.

Measuring currents, ice drift, and waves from space: the Sea Surface KInematics Multiscale monitoring (SKIM) concept

Fabrice Ardhuin¹, Yevgueny Aksenov², Alvis Benetazzo³, Laurent Bertino⁴, Peter Brandt⁵, Eric Caubet⁶, Bertrand Chapron¹, Fabrice Collard⁷, Sophie Cravatte⁸, Jean-Marc Delouis¹, Frederic Dias⁹, Gerald Dibarboure¹⁰, Lucile Gaultier⁷, Johnny Johannessen⁴, Anton Korosov⁴, Georgy Manucharyan¹¹, Dimitris Menemenlis¹², Melisa Menendez¹³, Goulven Monnier¹⁴, Alexis Mouche¹, Frederic Nouguiet¹, George Nurser², Pierre Rampal⁴, Ad Reniers¹⁵, Ernesto Rodriguez¹², Justin Stopa¹, Celine Tison¹⁰, Clement Ubelmann¹⁵, Erik van Sebille¹⁶, and Jiping Xie⁴

¹Laboratoire d'Océanographie Physique et Spatiale (LOPS), Univ. Brest, CNRS, Ifremer, IRD, Brest, France

²National Oceanographic Center, Southampton SO14 3ZH, UK

³Institute of Marine Sciences, National Research Council (ISMAR-CNR), Venice, Italy

⁴Nansen Environmental and Remote Sensing Center, Bergen, Norway

⁵GEOMAR Helmholtz Centre for Ocean Research Kiel, Kiel, Germany

⁶Thales Alenia Space, Toulouse, France

⁷OceanDataLab, Locmaria Plouzané, France

⁸LEGOS, Université de Toulouse, CNES, CNRS, IRD, Toulouse, France

⁹University College, Dublin, Ireland

¹⁰CNES, Toulouse, France

¹¹Division of Geological and Planetary Sciences, California Institute of Technology, Pasadena

¹²Earth Sciences Division, Jet Propulsion Laboratory, California Institute of Technology, Pasadena, California

¹³Environmental Hydraulics Institute "IH Cantabria" Universidad de Cantabria, Santander, Spain

¹⁴SCALIAN ALYOTECH, Rennes, France

¹⁵CLS, Toulouse, France

¹⁶Utrecht University, The Netherlands

Correspondence to: Fabrice Ardhuin (ardhuin@ifremer.fr)

Abstract. We propose a ~~new~~-satellite mission that uses a near-nadir Ka-band Doppler radar to measure surface currents, ice drift and ocean waves at spatial scales of 40 km and more, with snapshots at least every day for latitudes 75 to 82, and every few days otherwise. The use of incidence angles at 6 and 12 degrees allows a measurement of the directional wave spectrum which yields accurate corrections of the wave-induced bias in the current measurements. The instrument principle, algorithm

5 for current [velocity-vector retrieval](#) and mission performance are presented here. The proposed instrument can reveal features on tropical ocean and marginal ice zone dynamics that are inaccessible to other measurement systems, as well as a global monitoring of the ocean mesoscale that surpasses the capability of today's nadir altimeters. Measuring ocean wave properties facilitates many applications, from wave-current interactions and air-sea fluxes to the transport and convergence of marine plastic debris and assessment of marine and coastal hazards.

1 Introduction

Because the ocean surface is the interface between ocean, atmosphere and land, surface currents play an important role in defining the fluxes of heat, momentum, carbon, water, etc. between Earth System components. The ocean surface velocity combines surface currents (mainly driven by winds, density gradients, and tides), with a wave-induced drift, known as Stokes drift. This total mass movement transports surface heat, salt and everything that is in the upper ocean, natural or man-made, including marine plastic debris (van Sebille et al., 2015). While vastly improving over the satellite era, there are still important gaps in our knowledge of ocean currents and waves. Satellite altimeters have been around for over ~~20 years, but 25 years,~~ revealing mesoscale ocean dynamics and providing a global view of the wind-generated waves.

~~Still, the~~ along-track sea level anomaly ~~and significant wave height are not sufficient to characterize~~ ~~misses most of the~~ the multi-scale motions of ~~the oceans. This is particularly true~~ surface ocean, because of a limited resolution (e.g. Fu and Ubelmann, 2014) and because a large component of surface currents is not in geostrophic balance. That second aspect is particularly relevant near the equator (Cravatte et al., 2016), around in strong western boundary currents (Rouault et al., 2010; Rio et al., 2014), and everywhere due to near-inertial motions (Kim and Kosro, 2013; Poulain et al., 2016; Elipot et al., 2016). Around the edge of the sea ice (Korosov and Rampal, 2017), and in strong western boundary currents (Rouault et al., 2010; Rio et al., 2014), both altimeter and SAR processing difficulties and the small scales of currents conjure in making it a blind spot in today's observation systems (Korosov and Rampal, 2017).

Other available measuring systems are very local, such as HF radars, or global with a sparse coverage, such as drifters (e.g. Elipot et al., 2016). As shown on figure 1, a single polar orbiting satellite with a swath width of 270 km could extend the capability of existing systems for monitoring ocean surface velocities, in particular for wavelengths between 60 and 1000 km and periods ranging from 3 days to 30 days. Because larger scales move slower, the coarser time resolution at the equator also yields a coarser spatial resolution.

As detailed below, the Sea Surface KInematics Multiscale monitoring (SKIM) mission, propose to use map surface waves and currents with 6-km footprints resolved at 4 m resolution in range. These footprints are distributed across a 270 km wide swath, but do not cover the entire swath, leaving a gap between the features smaller than 6 km resolved with a footprint, and the features larger than 20 km fully mapped across the swath. As the ocean is viewed in less than 1 minute during a single pass, the observed scene is basically a snapshot in which many ocean processes are aliased. Only those current features that vary on time scales of several days, or that have a constant phase and amplitude such as tides, can be measured without ambiguity. Evidence from High Frequency radars in coastal areas suggests that even near-inertial motions are coherent over time scales as large as 6 days at mid-latitudes (Kim and Kosro, 2013). Hence measured currents, even if every 3 days only, can provide useful constraints on the ocean circulation.

Measurements of ocean surface ~~velocities~~ currents from remote sensing platforms have used a wide range of techniques. The most widely used at large scales include satellite altimeters, possibly combined with scatterometer wind and in situ drifters

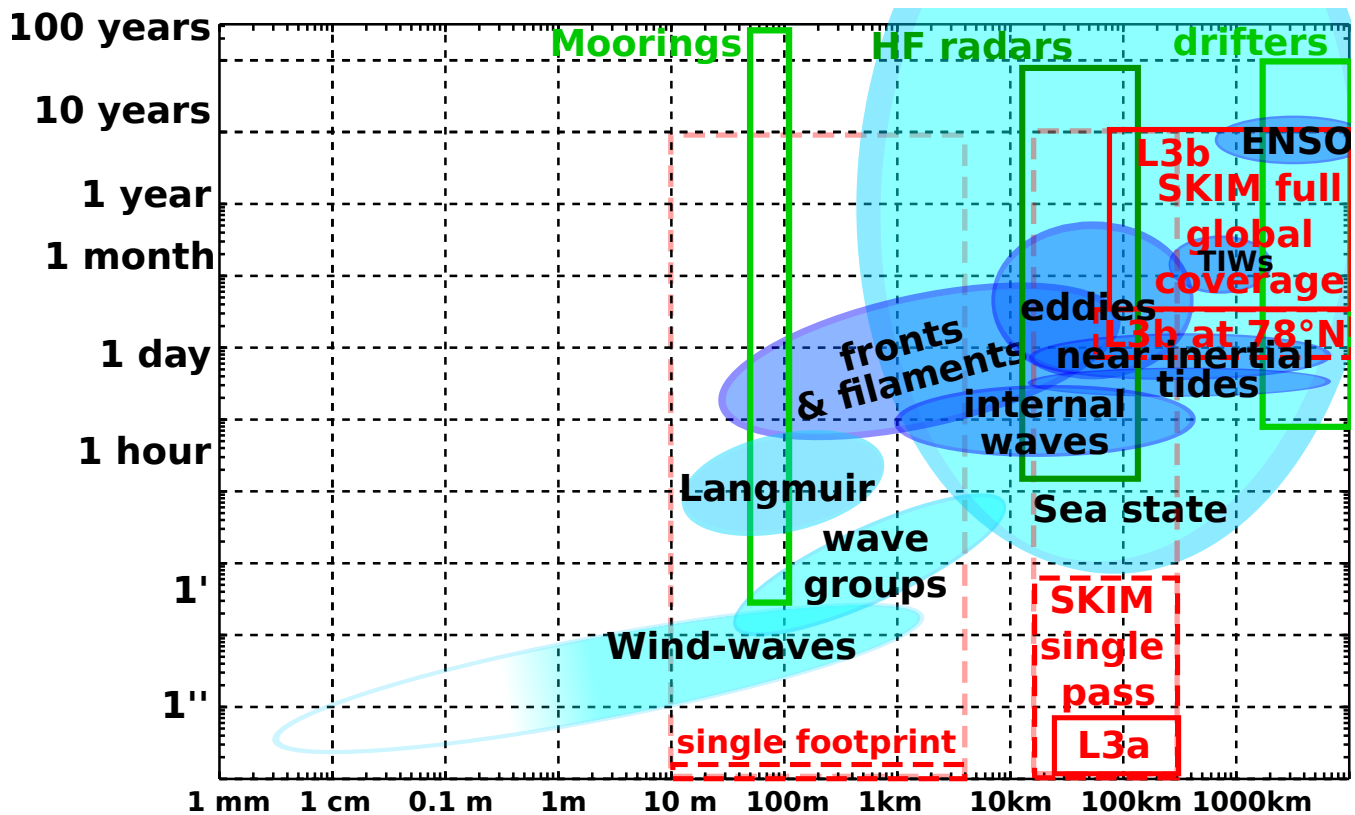


Figure 1. Typical periods and wavelengths of processes that contribute to the surface velocity. Ocean circulation processes are in dark blue, wave-related processes are in light blue. Scales resolved by existing measuring systems appear in green, and our proposition of a Sea surface Kinematics Multiscale (SKIM) satellite mission in red, with different scales resolved in a single pass level 3a product (L3a), or the full time history of the measurements gridded as a level 3b product (L3b). Note that a limited coverage in space or time leads to aliasing of the unresolved scales [that are in the pink boxes](#) (e.g. Stammer et al., 2000; Gille and Hughes, 2001). [Due to the polar orbit, the resolved periods varies from 12 days at the equator \(0°\) to 1 day at 78° latitude.](#)

(e.g. Bonjean and Lagerloef, 2002; Sudre et al., 2013; Rio et al., 2014). Other techniques such as image processing of optical or Synthetic Aperture Radar (SAR) imagery have been demonstrated in many regions (see Isern-Fontanet et al., 2017, for a review). Direct measurements of [ocean surface velocity](#) [the ocean surface current vector](#) using Doppler techniques [are is](#) now widely used in land-based radar systems, with operational use for current mapping in the high-frequency band, ranging from 3 to 30 MHz (Barrick, 1972). Interesting results have also been reported with land-based microwave radars (Forget et al., 2006, 2016), but the measured [radial](#) velocity is not fully understood.

Airborne and space-based measurements of surface velocity have been performed with across-track interferometric (ATI) SARs using two antennas (Goldstein and Zebker, 1987). This has been generalized to squinted ATI SARs to provide the two components of the current vector (Buck, 2005; Wollstadt et al., 2016). More recently, Chapron et al. (2005) have shown the

potential of using the Doppler centroid of ocean backscatter received by a single antenna. Although this measurement is more noisy than ATI, resulting in an effective coarser resolution, the velocity given by the Doppler centroid is equivalent to an ATI measurement (Romeiser et al., 2013) (Romeiser et al., 2014). Hence, the Doppler centroid method is a cost-effective solution for deriving current information from existing satellite missions such as Envisat and the Sentinel 1 constellation. This has already led to scientific application on the monitoring of intense currents (Rouault et al., 2010).

This demonstration of Doppler oceanography from space, using measurements of opportunity, has led us to propose a specially built Doppler radar altimeter that uses nadir and off-nadir beams in Ka-band. ~~This is the Sea Surface Kinematics Multiscale monitoring (SKIM) mission.~~ SKIM is designed to measure both the horizontal surface velocity vector (U, V) , i.e. surface current or ice drift, and the directional wave spectrum $E(k, \theta)$ where k is the wavenumber and θ is the azimuth of wave propagation. Wave spectra are used to correct for a wave-induced bias in the Doppler velocity. The purpose of the present paper is to describe the measurement principle and the expected instrument performance based on a preliminary analysis.

Doppler measurements start from a line of sight velocity U_{LOS} which contains a very large non-geophysical component U_{NG} due to the relative motion of the spacecraft relative to the solid Earth. The anomaly relative to U_{NG} can be interpreted as a horizontal geophysical Doppler contribution,

$$U_{GD} = (U_{LOS} - U_{NG}) / \sin(\theta_i) \quad (1)$$

where θ_i is the local incidence angle. The geometry of the measurement is illustrated in Figure 2.

Common to ATI and Doppler centroid techniques, is the contribution of orbital velocity of wind-waves to the geophysical velocity U_{GD} , in the form of a wave bias U_{WB} (Chapron et al., 2005; Mouche et al., 2008; Martin et al., 2016). ~~As a result,~~ so that the radial current, (projected on the mean sea surface in the azimuth of radar look, ~~is given by~~) is

$$U_R = (U_{GD} - U_{WB}). \quad (2)$$

U_R is the radial component of the Lagrangian mean velocity vector ~~(U, V)~~ $\mathbf{U} = (U, V)$, defined from the average drift velocity of water parcels. This Lagrangian mean drift is ~~$\mathbf{U} = \mathbf{U}_E + \mathbf{U}_S$, the vector~~ $\mathbf{U} = \mathbf{U}_E + \mathbf{U}_S$, the sum of a quasi-Eulerian current (Jenkins, 1989) ~~\mathbf{U}_E~~ \mathbf{U}_E and a Stokes drift ~~\mathbf{U}_S (Stokes, 1849).~~ ~~\mathbf{U}_S is the drift motion~~ \mathbf{U}_S (Stokes, 1849). \mathbf{U}_S is the surface drift vector due to waves, that arises from a correlation between the displacement and ~~velocity field. Its magnitude gradients of the velocity field: forward particle velocity at a crest is faster than the backward velocity at a trough. The Sto~~ \mathbf{U}_S at the sea surface \mathbf{U}_S is of the order of 1.0 to 1.8% of the wind speed, typically larger than the local wind-induced quasi-Eulerian current known as the Ekman current, unless a strong stratification is present (Ardhuin et al., 2009).

Previous applications have used the radial wind speed $U_{10,R}$ projected in the range direction as a proxy for estimating U_{WB} . As we review in section 2, this wind speed proxy is not sufficient for obtaining accurate instantaneous current velocities. We therefore propose in section 3 an algorithm for estimating U_{WB} within 10 to 20%, based on the measurement of ~~the directional wave spectrum also performed by SKIM. This joint measurement of currents and waves is the basis of the SKIM measurement concept~~ waves with a rotating radar system. This technique forms the conceptual basis for SKIM. Its expected overall performance and effective resolution is described in section 4. A summary and perspectives on applications and improvement in the

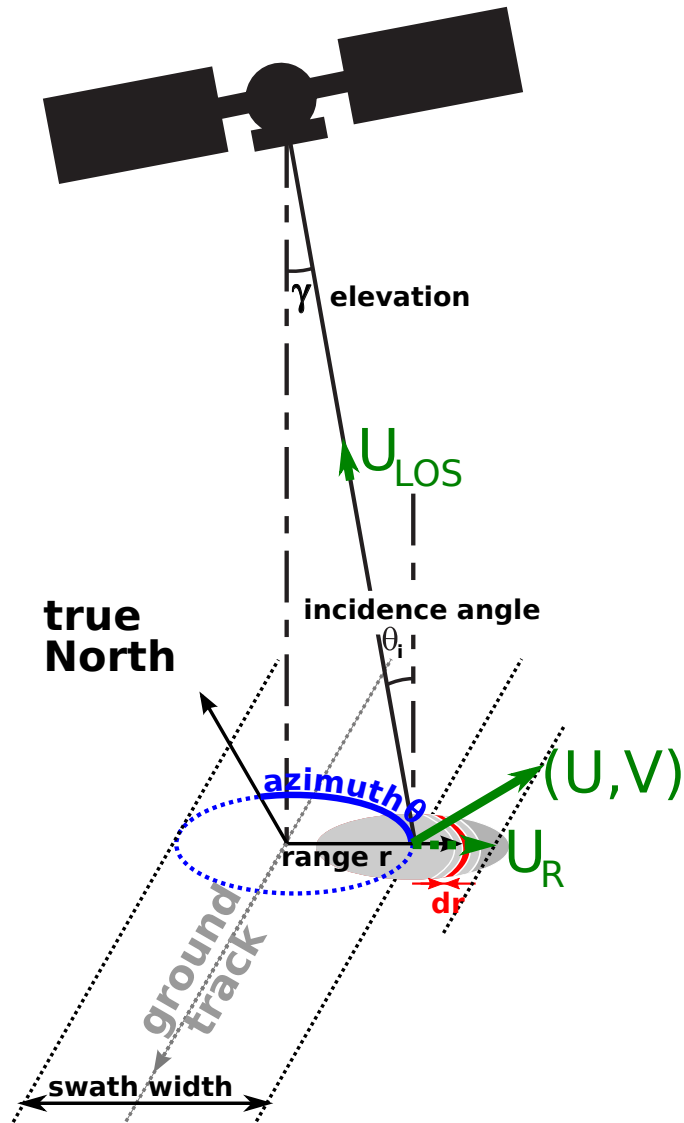


Figure 2. Geometry of measurement from a radar with a local incidence angle θ_i , looking towards azimuth θ . For simplicity of the schematic, we have taken $U_{WB} = 0$ and $U_{NG} = 0$, so that the line of sight velocity is simply $U_{LOS} = (U \sin \theta + V \cos \theta) \sin \theta_i$. Note that the diameter of the footprint (6 km) is exaggerated compared to the swath width (270 km) for readability. The small difference between elevation γ and incidence angle θ_i is due to the Earth curvature.

processing follow in section 5. The present paper focuses on currents, and a detailed description of wave measuring capabilities with SKIM will be given elsewhere.

5 2 Importance of mean slope speed or Stokes drift

2.1 Expected and observed dependence of U_{WB}

Because the velocity or phase shift recorded by a radar corresponds to the velocity weighted by the back-scattered power, the wave-induced bias U_{WB} is related to the mean slope velocity vector, $\mathbf{msv} = (\langle \partial^2 \zeta / \partial x \partial t \rangle, \langle \partial^2 \zeta / \partial y \partial t \rangle)$, due to the correlation between the normalized radar cross section (NRCS or σ_0) and the surface slope (e.g. Noguier et al., 2016) (e.g. Noguier et al., 20

10 For linear waves, \mathbf{msv} is equal to twice the surface Stokes drift vector (U_S, V_S) .

In practice U_{WB} is very close to a gain factor G multiplied by $U_{S,R}$, the surface Stokes drift projected on the range direction $U_{S,R}$ as described by Chapron et al. (2005) (Chapron et al., 2005) with an additional correction proportional to the Stokes drift in the azimuthal direction (Noguier et al., 2018). G is a function of radar frequency, incidence angle, and sea state. Figure 3 shows the expected dependence of G on the incidence angle for average wind speeds and a fully developed sea state, using a physical optics model or its Kirchoff approximation (The SKIM Team, 2017) Kirchoff approximation in the upwind direction (e.g. Noguier et al., 2018). A typical order of magnitude in Ka-band for incidence angles less than 15 degrees, is $G \simeq 25$, which is similar to values in C-band at higher incidence angles.

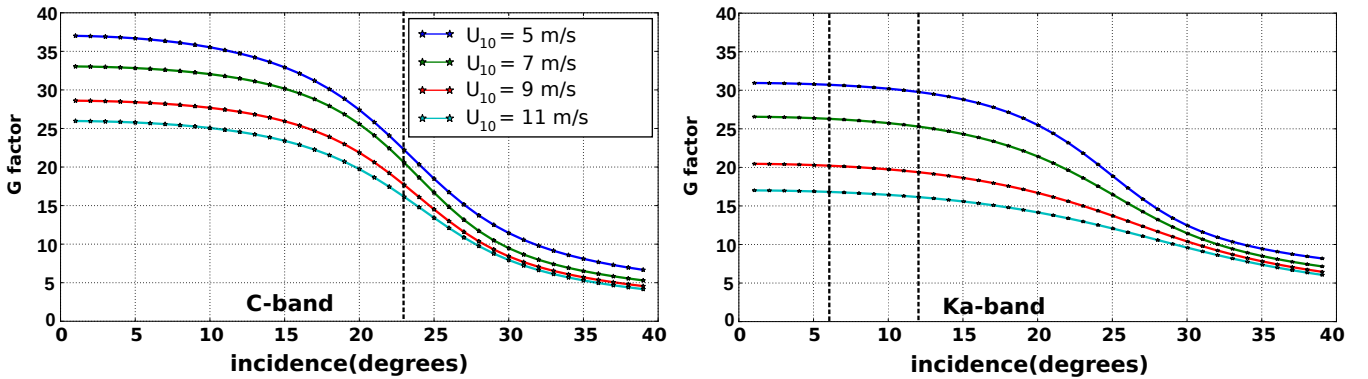


Figure 3. G factor in the upwind looking direction estimated using a Kirchoff approximation, for a wave spectrum given by Elfouhaily et al. (1997), representing a fully developed sea state for wind speeds U_{10} ranging from 5 to 11 m/s. left: C band, appropriate for Envisat and Sentinel 1, right: Ka band for SKIM. The vertical dashed lines show the incidence angles of the instruments.

This dependency of U_{WB} on the radial Stokes drift $U_{S,R}$ and incidence angle θ_i , as well as the order of magnitude of G are confirmed by the analysis of platform-based measurements by Yurovsky et al. (2017) Yurovsky et al. (2018), and airborne measurements from the AirSWOT instrument (The SKIM Team, 2017) (e.g. Noguier et al., 2018).

2.2 Estimation of U_{WB}

The surface Stokes drift vector (U_S, V_S) $U_S = (U_S, V_S)$ can be estimated from the directional wave spectrum, assuming linear wave theory (Kenyon, 1969). The wave spectrum $E(k, \theta)$ represents the distribution of the surface elevation variance across

wavenumbers k and azimuthal wave propagation directions θ . For waves in deep water this is

$$(U_S, V_S) = 2\sqrt{g} \int_0^{2\pi} \int_0^{\infty} (\sin \theta, \cos \theta) k^{1.5} E(k, \theta) dk d\theta, \quad (3)$$

which can be measured. This integral can be estimated from the first moments of a_1 and b_1 measured by directional wave buoys (Kuik et al., 1988). In the absence of directional measurements, only a non-directional Stokes drift is available $U_{S,nd} = 2\sqrt{g} \int_0^{\infty} k^{1.5} E(k) dk$.

10 which is about 50% larger. This estimation covers only frequencies up to 0.58 Hz.

The projected Stokes drift $U_{S,R}$ is correlated with the wind speed in the radial direction $U_{10,R}$. Hence, the approximation of U_{WB} as a function of $U_{10,R}$ is a logical first step proposed by Chapron et al. (2005) and Mouche et al. (2008), and used by Rouault et al. (2010) to retrieve surface currents.

However, for a given wind speed the sea state introduces a typical variation of $U_{S,R}$ that has a standard deviation of 40%. Further, the distribution of $U_{S,R}$ as a function of $U_{10,R}$ can change significantly from one region of the ocean to another. These properties are illustrated in figure 4 with data for the years 2011 to 2015, from the North-East Pacific station PAPA, in deep water (Thomson et al., 2013), and a North-East Atlantic coastal buoy Pierre Noires, in 60 m depth (Ardhuin et al., 2009). In both cases the wind speed is taken from operational ECMWF analyses. Directional wave moments were downloaded from CDIP and CEREMA. The Stokes drift was integrated over the frequency range of the Datawell Waverider buoy, from 0.025 to 0.58 Hz.

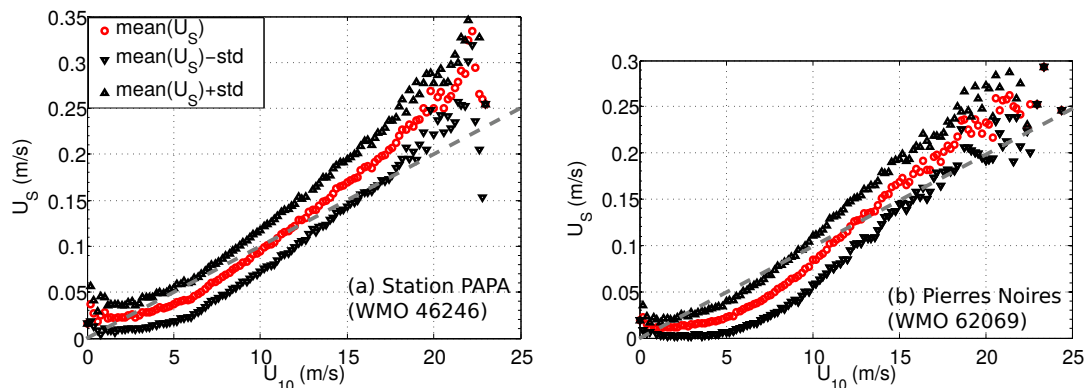


Figure 4. Example of mean value (in red) of the Stokes drift vector norm $U_S = |(U_S, V_S)|$ as a function of wind speed for two locations: station PAPA in the North-East Pacific, and buoy 62069 off the French Atlantic coast. The black symbols show the mean plus or minus one standard deviation for each wind speed. The dashed grey line is $U_S = 0.01U_{10}$. For both buoys, the non-directional Stokes drift (in blue) is about 50% higher. This estimation covers only frequencies up to 0.58 Hz.

Using the order of magnitude $U_S \approx 0.01U_{10}$, the sea-state variation means that a wind-only proxy for U_{WB} gives a root mean square (rms) error on the current that of the order of $40\% \times G \times 0.01 = 10\%$ of the wind vector. With a median wind speed of 7 m/s, this is a 70 cm/s error in the wind direction for C-band at 23° of incidence, or Ka-band at 12° . Such a high

value is not acceptable for a single satellite pass, but these errors cancel out when the Doppler velocity is averaged over many satellite passes, 10 or more, as done by Collard et al. (2008) and Rouault et al. (2010).

Even at the higher incidence angles of 58° proposed by Bourassa et al. (2016), for which we expect $G \simeq 7$ in Ka-band, the wave bias is reduced by a factor 4, but the rms error on U_{WB} is still significant at 20 cm/s, even if there is no error on the wind.

10 Larger incidence angles also suffer from lower backscatter levels and thus a larger instrumental error in the raw line of sight velocity U_{LOS} .

A possible intermediate approach is to use a numerical wave model to estimate $U_{S,R}$, with typical errors ranging from 15 to 20% in open ocean and deep water conditions according to Rasche and Ardhuin (2013). Yet, recent investigations by Ardhuin et al. (2017b) on the impact of ocean currents on small scale sea state variations suggest that it may be difficult to separate the
15 gradients in wave bias from the surface current at scales under 100 km.

Another more radical approach is to measure the sea state properties necessary for the evaluation of $U_{S,R}$, in addition to the Doppler velocity U_{LOS} . In general $U_{S,R}$ can be estimated from the directional wave spectrum. The details of this estimation with a rotating wave Doppler spectrometer, combining the ideas of Jackson et al. (1985) and Caudal et al. (2014), is presented in Appendix A. An overall accuracy of 10% for $U_{S,R}$ is expected from our preliminary algorithm.

20 3 Restitution of the total surface velocity

The algorithm proposed to retrieve the field of surface velocity vectors and wave spectra is summarized in Figure 5. ~~Logical tree going from Level 0 raw data to Level 3 gridded fields of surface velocity and wave parameters. For gridding with multiple satellite passes, we propose to use the quasi-Eulerian surface velocity defined as $U_E = U - U_S$ (Jenkins, 1989).~~

The elementary measured quantities are the power P and velocity U_{LOS} as a function of the range r within each footprint
25 of diameter 6 km, with a resolution dr that is determined by the 200 MHz radar bandwidth giving 0.75 m along the line of sight, and less than 4 m projected on the horizontal for $\theta_i = 12^\circ$. ~~Hence, these~~ The range-averaged line of sight velocity is also given by the phase difference between pairs of pulses (Zrnic, 1977). This estimate requires a strong correlation between consecutive echoes in spite of rapid motion of the footprint, which calls for a relatively high pulse repetition frequency, and thus the averaging over many pulses to reduce the random error on small phase shifts. We also note that the horizontal
30 current contribution to U_{LOS} occurs through the apparent vertical motion of the surface as waves are advected by the current (Nouguier et al., 2018). As a result, for depth-varying currents, the measured current corresponds to the advection velocity (Kirby and Chen, 1989) for waves contributing to the mean slope velocity. With our understanding of the instrument it does not appear feasible to estimate a possible vertical shear from the SKIM measurements that could otherwise be possible with the larger integration times of other measurement systems (e.g. Shrira et al., 2001). In summary, the basic measurement are
highly resolved in range but averaged over the footprint diameter in the perpendicular (azimuthal) direction. This averaging is the basic principle of the wave spectrometer laid out by Jackson et al. (1985). Namely, only the waves aligned with the line of
5 sight produce a modulation of the signal in the range direction (see also Nouguier et al., 2018, eq. 46).

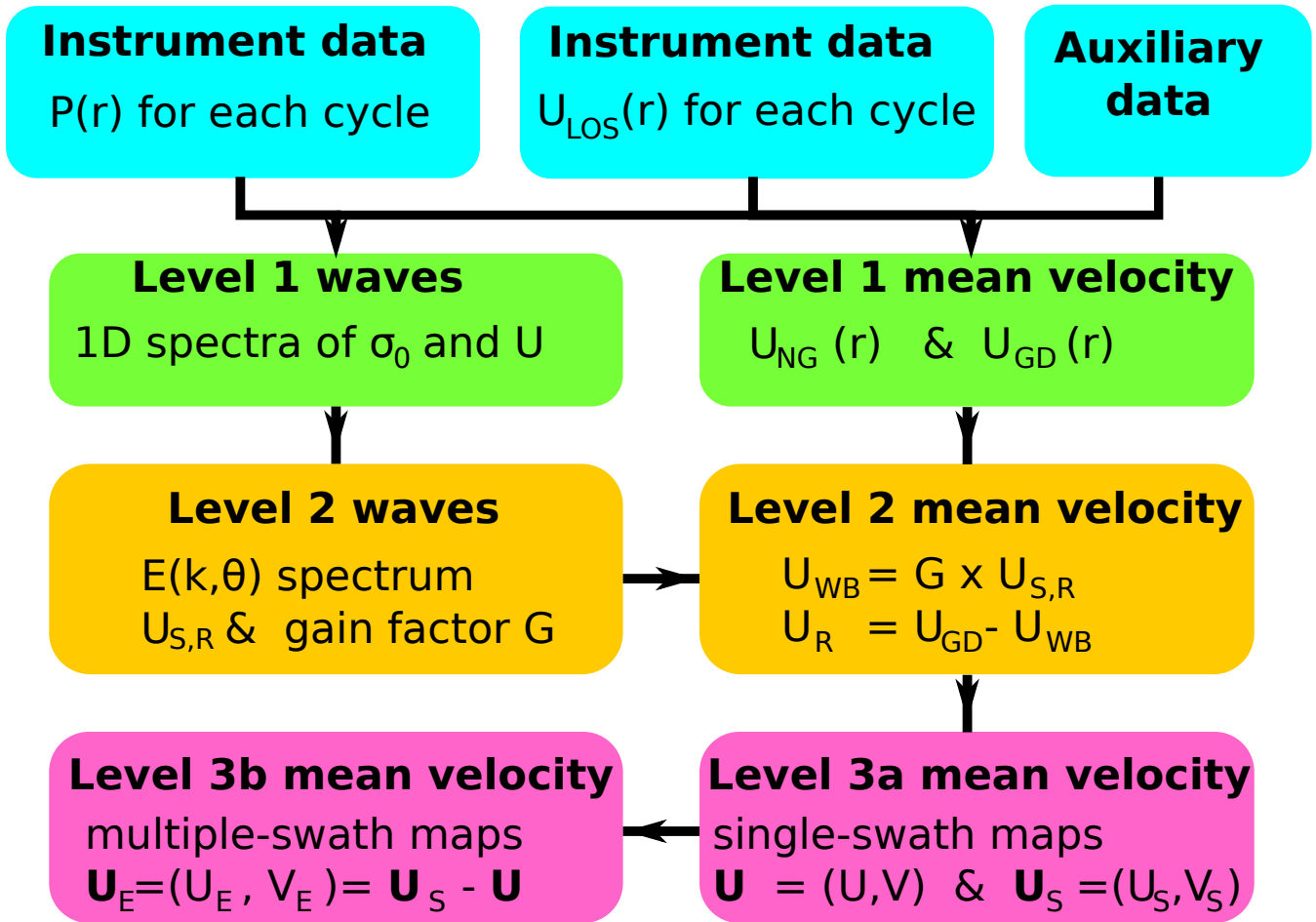


Figure 5. Logical tree going from Level 0 raw data to Level 3 gridded fields of surface velocity and wave parameters. For gridding with multiple satellite passes, we propose to use the quasi-Eulerian surface velocity defined as $\mathbf{U}_E = \mathbf{U} - \mathbf{U}_S$ (Jenkins, 1989).

Several effects introduce measurement errors. We have particularly investigated the following three terms in the error budget for the level 2 data (radial current velocity U_R),

- err_{DC} : The Doppler centroid estimation error is a function of the strength of the radar backscatter, hence of the incidence angle, radar transmitted power, altitude and averaging. Using broad margins (e.g. using only half of the rated Ka-band power) this was estimated to be under 10 cm/s at $\theta_i = 12^\circ$ and in the absence of ice (The SKIM Team, 2017). This error is a well known function of the azimuth relative to the satellite ground track.
- err_{PA} : A 5 cm/s second error corresponds to a Doppler shift of 56 Hz that can be obtained by an error in elevation of 8×10^{-5} degree (see Appendix B). However, such an error is easily detected thanks to the rotating beam. This is because any small mispointing that varies slowly in time produces a clearly identifiable pattern as a function of azimuth. This is

detailed in Appendix B. As a result, with a realistic attitude stability better than 2.7×10^{-4} degree over 20 s, we expect a rms contribution to the current error of a few cm/s. Our worst case scenario with random jumps of the attitude gave errors of 3 cm/s. This error will be neglected in the following sections.

- 10 – err_{WB} : The wave bias error is explained and justified in Appendix A. We have performed a detailed analysis on the error $\text{err}(U_{S,R})$ in the estimation of the radial Stokes drift $U_{S,R}$ over each footprint, which contributes to err_{WB} amplified by the G factor. Errors in the estimation of the G factor are not so easy to model but, for a given mean square slope, G is expected to have a weak dependence on sea state properties and it is related to the ratio of the Doppler and σ_0 spectra. We have therefore assumed that errors on the estimation of G should not cause an error larger than the error due to
- 15 uncertainties in $U_{S,R}$. Hence we used $\text{err}_{\text{WB}} = 2G \text{err}(U_{S,R})$

We have not considered the particular cases of extremely low backscatter, for wind speeds under 2 m/s, in which the three errors can be correlated, and we have assumed that these 3 error sources are uncorrelated.

4 Overall performance and effective resolution

4.1 From radial components to gridded vector fields

Here we show results corresponding to one particular set-up of the SKIM radar, which is called 'SKIM2' in [The SKIM Team \(2017\)](#) (see [The SKIM Team \(2017\)](#)). This configuration uses 8 beams, with one beam at nadir ($\theta_i = 0$), two beams at 6° and 5 beams at 12° . These beams rotate at 3.14 rotations per minute (one turn in 17.5 s) thanks to the rotation of a plate carrying feed horns arranged as shown in Figure 6.a.

- The horns are placed [at around](#) the focal point of a parabolic reflector, similar to the wave scatterometer SWIM ([Hauser et al., 2017](#)) which [is carried by of](#) the China-France Ocean Satellite (CFOSAT) mission ([Hauser et al., 2017](#)). The main differences between
- 5 SWIM and SKIM are the radar frequency (Ka instead of Ku band, giving smaller footprints), and the Doppler capability of SKIM.

Using incidence angles up to 12° and altitude of 695 km gives swath width of 270 km as shown in Fig. 6.b.

For each beam, [we have this gives](#) 60 measurement cycles of 1024 pulses [for each complete turn, each cycle is each with a](#) 36.6 ms [long duration for each cycle](#). The radar pulse repetition frequency is 32 kHz. The line-of-sight velocity is determined from the phase shift between consecutive pulses. These parameters define the instrument error err_{DC} , as listed in table 1.

- 5 The other important source of error, caused by inaccuracies in the wave bias correction is a function of the beam geometry but also of the strength of gradients of the Stokes drift, which are mostly caused by current gradients (Ardhuin et al., 2017b). This wave bias error is estimated following the method laid out in Appendix A.

- Finally, the last important source of error we have investigated is the mapping error, going from Level 2 data at each footprint to Level 3 data on a regular grid. This mapping error is similar to what happens with HF radars (e.g. Lipa and Barrick, 1983;
- 10 Kim et al., 2008). In particular, SKIM only measures radial components so that on the edges of the swath only the cross-track component is measured, and in the center there are only measurements of the along-track component, as shown in figure 7.

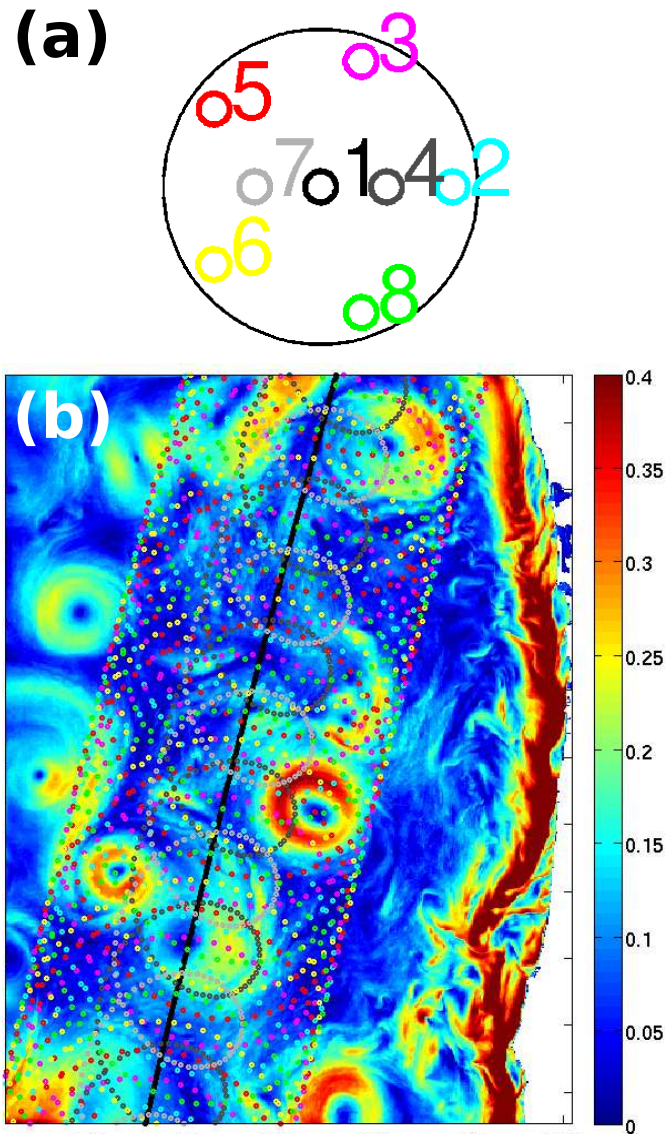


Figure 6. (a) Pattern of beams (1 is nadir, 4 and 7 are at 6° , the others at 12° incidence). The different colors help associating the footprint patterns in (b) with each beam. Background colors in (b) represent simulated currents velocities off the Oregon coast (in m/s), courtesy of Y. Chao, previously used by Fu and Ubelmann (2014) for the evaluation of the SWOT mission performance.

The use of the two incidence angles, 6 and 12° , allows to fill the swath and obtain cross-track measurements closer to the center of the swath. We can also use the nadir altimeter beam to obtain cross-track geostrophic velocities. An optimal interpolation method specially designed to ~~including~~ include covariances between the two current components has been adapted

15 to also include this additional nadir data (The SKIM Team, 2017).

Table 1. Summary of expected root mean square errors for Level 2 radial velocity (for $\theta_i = 12^\circ$) and along-track Level 3a (single swath snapshot) or zonal Level 3b (multi-swath time-evolving field) velocity component, based on the preliminary algorithms in the case of the SKIM2 configuration (open burst, 8 beams).

Region	Equator	Fram (open water)	Fram (ice)	Gulf Stream	Oregon coast
err _{DC}	< 0.1 m/s	< 0.1 m/s	< 0.1 m/s	< 0.01 m/s	< 0.01 m/s
err _{PA}	< 0.01 <u>0.03</u> m/s	< 0.01 <u>0.03</u> m/s	< 0.01 <u>0.03</u> m/s	< 0.01 <u>0.03</u> m/s	< 0.01 <u>0.03</u> m/s
err _{WB}	0.05 m/s	0.08 m/s	0.02 m/s	0.15 m/s	0.13 m/s
L3a, L_e	89 km	59 km	TBD	65 km	90 km
L3a error	0.03 m/s	0.11 m/s	TBD	< 0.09 m/s	0.04 m/s
L3b, L_e	290 km	62 km	TBD	71 km	95 km
L3b error	0.14 m/s	0.12 m/s	TBD	0.23 m/s	0.09 m/s

The combination of these three errors gives the total error that must be compared to the magnitude of the current. We have therefore defined an effective resolution wavelength L_e as the scale above which the total error is larger than the signal, as shown in Figure 8 for the case of the Gulf Stream.

The overall error depends on many factors related to the patterns in ocean currents and the instrument parameters. We have estimated all errors in particular ocean conditions, using state of the art models for the ocean circulation (e.g. Rocha et al., 2016; Gula et al., 2015) and associated ocean waves (~~Ardhuin et al., 2017b~~) ([Roland and Ardhuin, 2014](#); [Ardhuin et al., 2017b](#)). Model simulations were performed at resolutions on the order of 1.5 km for a set of regions for which we expect SKIM to have a strong contribution, resolving processes that are not accessible with today’s observing systems. These include an Arctic region with strong currents (Fram Strait), an equatorial region (in the Atlantic around 23° W), a western boundary current (the Gulf Stream) and a coastal region (Oregon).

The root mean square error on current components and the resulting effective resolution are summarized in Table 1, but they are better understood by comparing maps of currents from the simulated SKIM processing to the input modeled currents. Several examples are given by The SKIM Team (2017). It is also interesting to compare the results of different observing systems.

An important outcome of the SKIM simulations is that a wide swath is necessary to obtain the shorter revisit time needed to monitor the smaller ocean structures that evolve more rapidly.

Interferometric SAR technology will be used to produce a 120 km wide swath for the Surface Water Ocean Topography (SWOT) mission (see Figure 9). ~~Simulated ocean currents over the Gulf Stream, and associated SKIM and SWOT simulated observations for a single satellite pass.~~

The narrower swath gives a larger revisit time at mid-latitudes of 10 days with SWOT instead of 4 days with SKIM. As a result, only larger scale motions can be monitored with SWOT, with an effective wavelength $L_e = 115$ km in the Gulf Stream region, instead of 71 km with SKIM. The Doppler scatterometer mission proposed by Bourassa et al. (2016) has a much wider

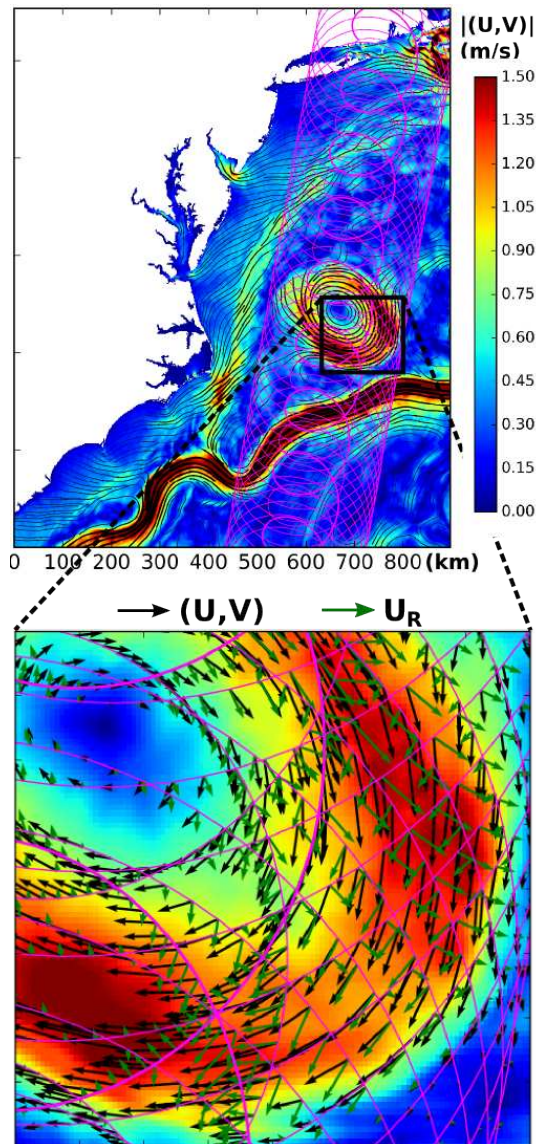


Figure 7. Illustration of current components U and V and radial component U_R in the case of the Gulf Stream.

swath, about 1800 km, and is designed to measure wind and current vectors. Because it measures at larger incidence angles for which signals are weaker, an accurate current estimate requires averaging over several passes, thereby reducing the effective temporal resolution. As a result, this is a great instrument for vector wind measurements but it is not clear if it would perform better than SKIM for current measurements.

In the case of SWOT, the interpretation of the sea surface height (SSH) in terms of current relies on the geostrophic equilibrium. Unbalanced motions, such as internal waves, also contribute to the SSH. As a result, the usual this simple interpretation

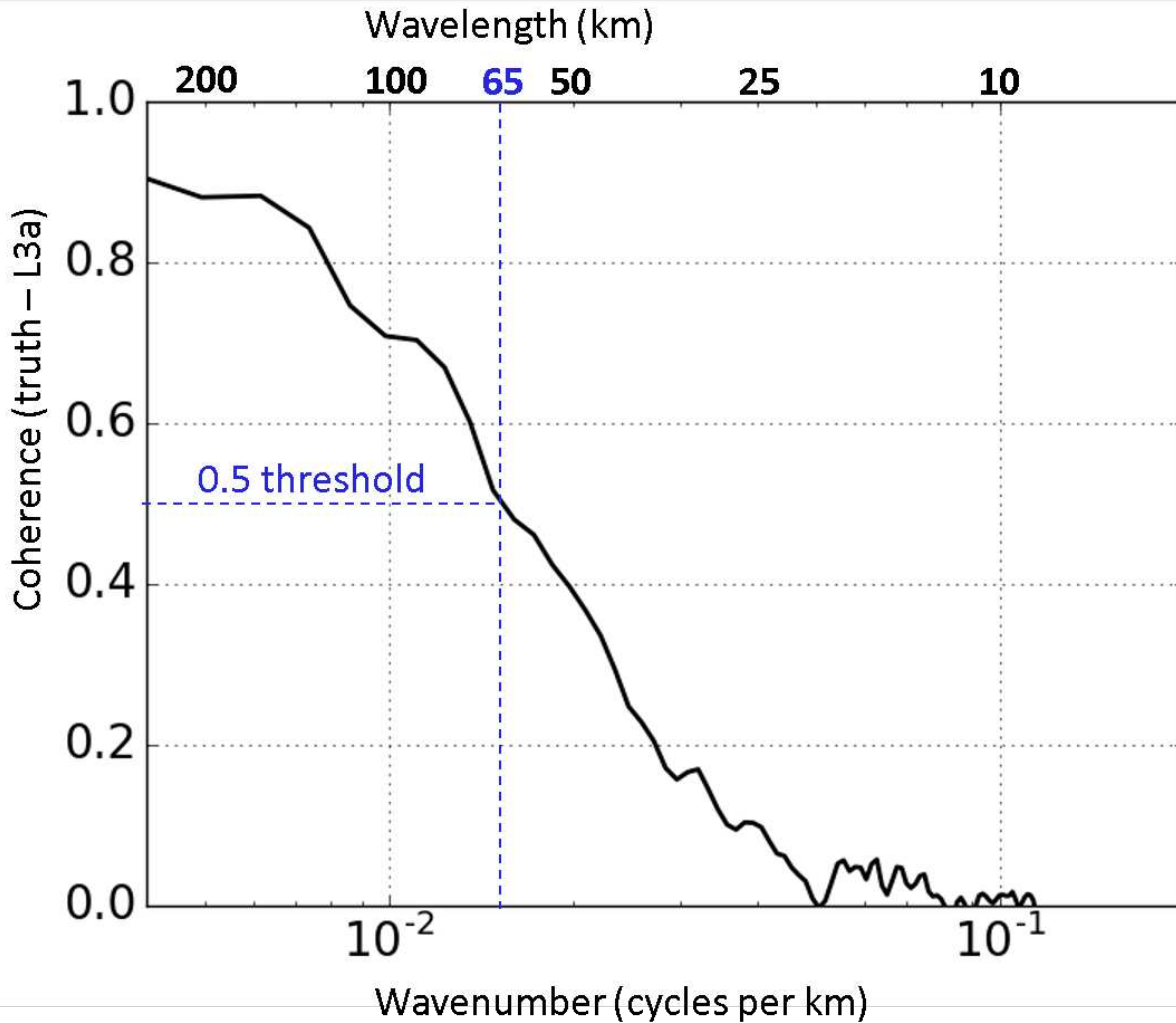


Figure 8. Average coherence of simulated SKIM Level 3a current with the “truth” provided by MITgcm simulations, in the case of the Gulf Stream, for October 2011.

of the SSH ~~in terms of currents~~ contains small scale noise associated to ageostrophic motions, shown in Figure 9.c,d. The separation of balanced and unbalanced motions is the topic of active research (e.g. Ponte et al., 2017).

- 10 ~~dynamical methods of interpolation (Ubelmann et al., 2016)~~, not considered here, can probably further improve on Further improvements in the restitution of temporal ~~evolution~~evolution, and thus the reduction for L_e for L3b products from both SWOT and SKIM, will benefit from dynamical methods which are under development (Ubelmann et al., 2016).

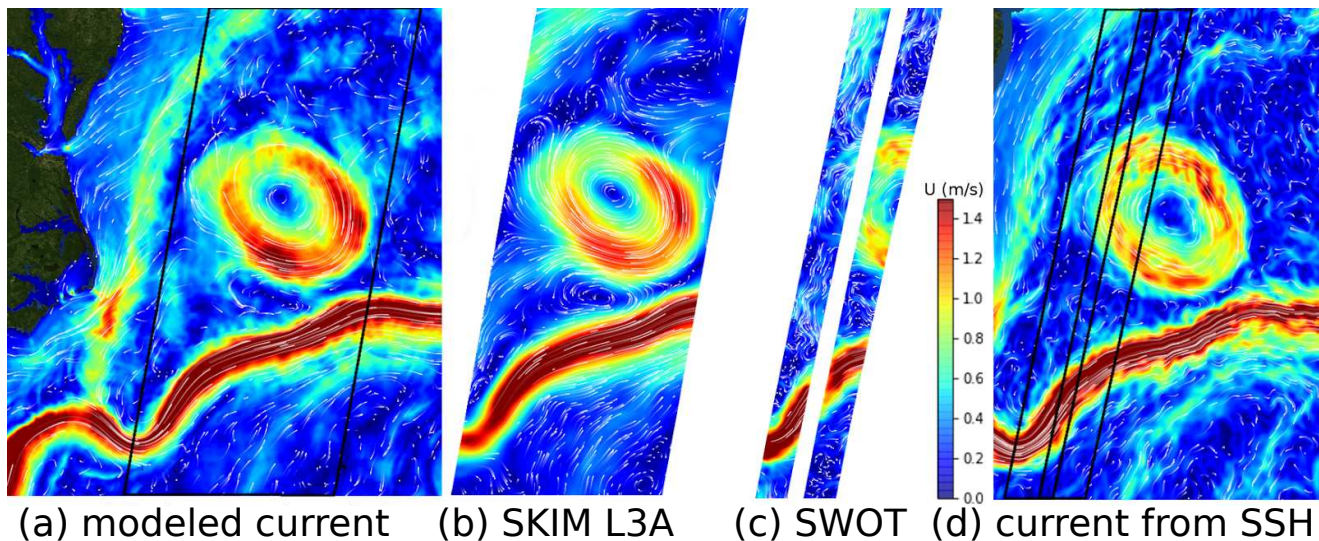


Figure 9. Simulated ocean currents over the Gulf Stream, and associated SKIM and SWOT simulated observations for a single satellite pass.

4.2 Challenges and opportunities over sea ice

~~The~~ With the expected widening of the Marginal Ice Zone (MIZ) in the Arctic ~~is expanding (e.g. Aksenov et al., 2017)~~. ~~This~~
 15 (e.g. Aksenov et al., 2017), ~~this expanding and~~ important region of the world ocean will not be well monitored in terms of
 currents by existing and planned satellite missions.

Ice concentration is the only parameter that is well monitored near the ice edge, with difficulties in recovering ice thickness
 and ice drift (Korosov and Rampal, 2017). The very rich dynamics across the ice edge offer great opportunities for Doppler-
 based measurements. In particular, narrow ice jets and eddies are observed in satellite imagery (Johannessen et al., 1983) and
 5 reproduced in high resolution models (Horvat et al., 2016).

These features cannot be monitored by today's altimetry due to their small scale and the changes in waveform shapes from
 open water to ice. In the ice, the wave-induced bias becomes negligible as the wave amplitude is strongly attenuated. On the
 contrary, the instrument noise is expected to increase by about a factor 2.5 due to a generally weaker (8 dB) back-scatter over
 ice compared to open ocean at incidence angles under 12° (The SKIM Team, 2017). A detailed analysis of errors right at the
 10 ice edge requires to take into account the strong variation in backscatter in all terms of the error budget. This is beyond the
 scope of the present paper.

Also, it should be possible to measure waves in ice, without the SAR processing used by Arduin et al. (2017a) but using
 the Doppler spectrum and the modulation ~~of the radar backscatter~~ due to range bunching. Indeed, it is not clear how strong the
 tilt modulation is over the ice, but range bunching is maximum for a swell steepness $ka = \tan\theta_i$, which is 0.1 for $\theta_i = 6^\circ$. A

15 swell steepness of 0.025, as in the Marginal Ice Zone observations reported by Sutherland and Gascard (2016), still produces a 20% (0.9 dB) modulation of σ_0 .

5 Preliminary study of surface current impact

In order to evaluate the contribution of a surface Doppler measurement in an ocean forecasting system, we have used the TOPAZ assimilation system, implemented in the Copernicus Arctic Marine Forecasting Center. This system uses a regional
20 configuration of the HYCOM ocean model over the North Atlantic and Arctic Oceans - without tides - and assimilates different types of satellite and in situ observations with an Ensemble Kalman Filter, running 100 dynamical members.

Each ensemble member receives random perturbations of the ocean surface conditions, including non-divergent random winds with an amplitude of 2.5 m/s (see Xie et al., 2017, for more information about the reanalysis). We have used the simulated uncertainties of SKIM Level 2 surface velocities, following their description above, to produce a measure of the
25 impact of assimilating SKIM surface currents in conjunction to all other observations on a typical weekly cycle of the TOPAZ reanalysis in May 2015, in a period of stable reanalysis operations following 24 years of data assimilation.

We measure the information content of the assimilated data using the Degrees of Freedom for Signal (DFS) (Cardinali et al., 2004). This DFS has a maximum value of 100 in the case of the EnKF used in TOPAZ. Target DFS values range from 0 to 10, above which there is a risk of “over-assimilation” (Sakov et al., 2012). The observation impact is calculated for each grid cell,
30 using knowledge of the space and time location of the observations, their uncertainty estimates, but not the actual observed values. Since all observations are assimilated jointly, the impact of one observation type reduces that of the other types. The DFS values are dependent on the background and observation uncertainties specified in the TOPAZ system and are different in a different ocean data assimilation system.

Figure 10 exhibits the DFS values obtained by assimilating simulated SKIM surface currents together with other real measurements. The highest DFS appears in frontal regions like the Equatorial Counter-Current, the Gulf Stream and the Azores Current. The area near the Equator shows particularly high values as the impact of traditional altimeter data is limited by the
5 vanishing of the Coriolis force. The South Atlantic is artificially removed as the simulated SKIM data used here only covers the North Atlantic.

The DFS indicate that SKIM provides the second largest impact overall, and the largest information content in the Gulf Stream and Equatorial regions for ocean data assimilation. It may seem counter-intuitive that the impact of surface currents from SKIM exceeds the impact of depth-averaged currents as of traditional altimeters in the Gulf Stream. This could be a transient effect due to the first-time assimilation of SKIM: the ensemble variance of surface currents may reduce on the following assimilation cycles and the DFS reduce accordingly. Alternatively it could be due to our assumption of negligible representativity errors.

5 The results presented here only utilize the surface currents but not yet the surface waves nor the sea ice drift from SKIM. This observing system simulation experiment (OSSE) is highly simplified and does not resolve complex feedbacks of repeated

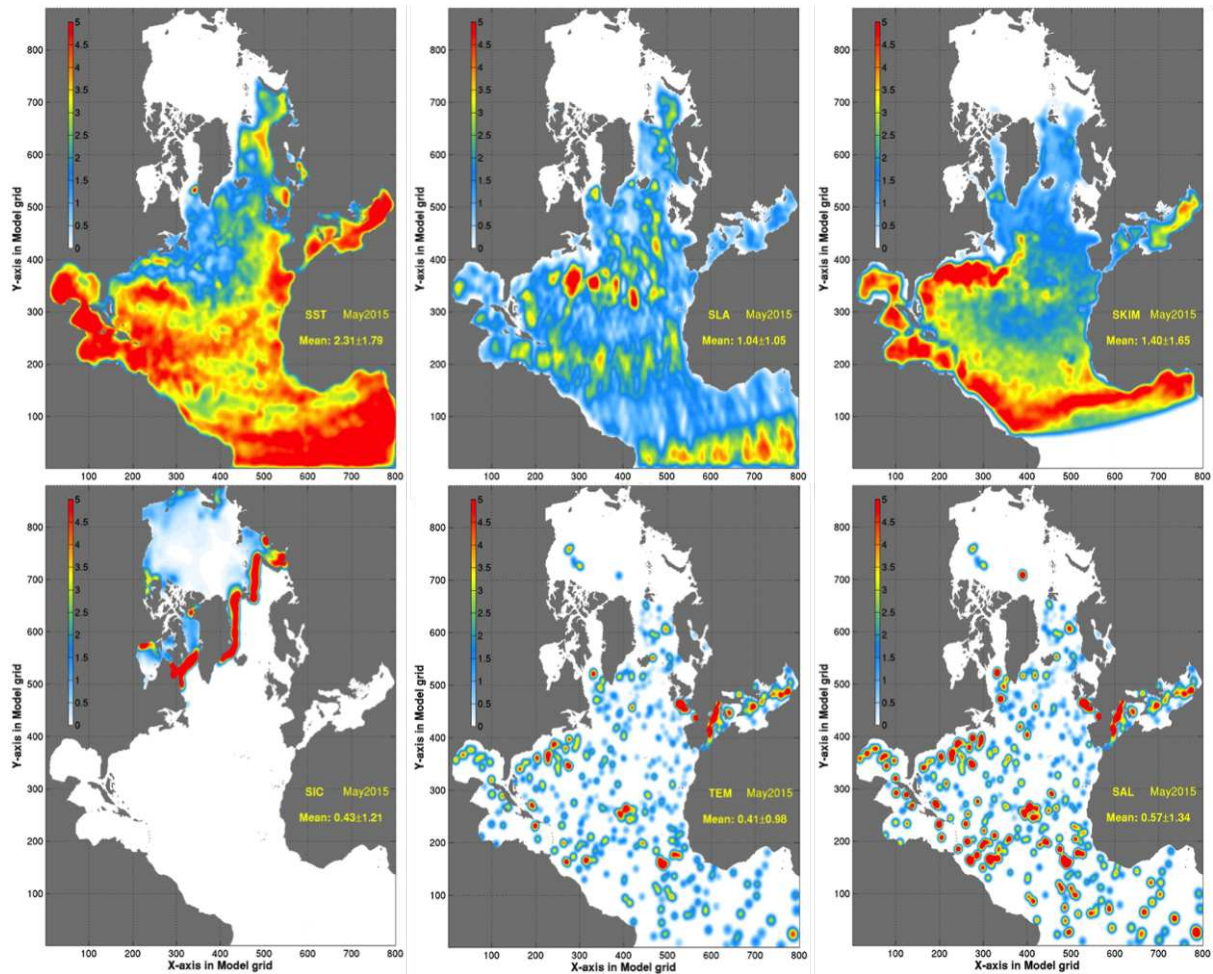


Figure 10. Degrees of Freedom for Signal of all assimilated observations during one week in May 2015. From Top line from left to right: OSTIA Sea Surface Temperature, CMEMS delayed-mode altimeter tracks, SKIM sea surface. Bottom line: OSI SAF Sea ice concentrations, in situ (incl. Argo) Temperature and Salinity profiles

data assimilation cycles. Still, this OSSE indicates that there is a scope for assimilation of sea surface currents in an operational forecasting system and that SKIM data should provide relevant information that is independent of existing ocean observations.

6 Conclusions and perspectives

- 10 Using nadir and near-nadir radar beams with Doppler measurements, the Sea surface Kinematics Multiscale monitoring (SKIM) mission is designed to measure surface velocity vectors and ocean wave spectra. Measuring wave spectra down to wavelengths of 20 m and possibly less makes it possible to estimate the surface Stokes drift vector and correct for a strong wave-induced bias in the surface velocity vector, which is of the order of a gain coefficient G times the surface Stokes drift.

15 The use of a rotating beam pattern is critical in reducing errors caused by knowledge uncertainties in the platform attitude, which is today the main source of error in the level 2 surface current derived from the Sentinel 1 SAR constellation. ~~We have chosen the same orbit as~~ Here we presented a performance analysis using the orbit of Sentinel-1C (S1C), except for a ~~4 degree~~ ° shift to the ~~East~~east. This is a sun-synchronous orbit, with a 98.2° inclination, altitude 693 km and 12-day repeat cycle. ~~The shift allows for a large overlap between SKIM and S1C on ascending tracks that will be useful at least for calibration purposes.~~

20 This geometry gives a swath width of 270 km and a relatively large signal to noise ratio thanks to the higher backscatter at these low incidence angles. The incidence angle of SKIM is limited to 12° by the choice of antenna technology that uses a rotating horn plate and fixed parabolic reflector. With this configuration, larger incidences lead to beam distortions. ~~This geometry gives a swath width of 270 km and a relatively large~~ The 4° shift allows for a large overlap between SKIM and S1C on ascending tracks that could be useful for calibration purposes. ~~Other choices in synergy with altimeters or radiometers could~~ justify a higher altitude, allowing for a wider swath at the price of a lower signal to noise ratio ~~thanks to the higher backscatter at these low incidence angles.~~ for the radar detected power.

Compared to the Envisat C-band measurements at incidence angles of 30° used by Rouault et al. (2010), in which case ~~$G \simeq 10$~~ $G \simeq 12$, the error on the wave bias is expected to be reduced by a factor 4 or more, allowing a single-pass estimation of the current components with an accuracy of the order of 0.1 m/s for a wavelength of about 60 km.

30 When the radial components are combined to produce maps of gridded vector velocity, the effective wavelength resolved, at which the signal is above the noise level, is of the order of 60 to 90 km for a single swath, depending on the pattern of currents. Except for latitudes 78 to 83° where the revisit time is less than one day, the effective resolution is degraded when the time evolution of the currents is considered. At mid latitudes this gives $70 < L_e < 100$ km, due to the 3-day revisit time.

Further improvement on the accuracy and effective resolution may come from many improvements in radar settings (e.g. use of full power instead of 50%, ~~and~~ evolution in amplifier technology) which could give larger transmitted power and reduce the instrument noise err_{DC} . Another source of improvement will be the reduction of wave bias error err_{WB} , in which our estimation of ~~errors on the~~ G factor error may well be overestimated. ~~Also,~~ and a combined analysis or assimilation of waves and currents could properly take into account the correlations of waves and currents and lead to more accurate current estimates. Hence the error level and resolution found in our simulations are probably conservative.

Our results clearly ~~shows~~ show that Doppler oceanography from space can be a very useful technique for monitoring space and time scales of the ocean ~~circulation~~ currents that are not well observed today. Future altimeter designs should probably consider adding off-nadir rotating beams for a more effective coverage of the ocean. In the present paper we have not discussed much the added benefits of ocean wave measurements with unprecedented spectral and spatial coverage. These will be discussed in other publications. We only point out here that the sea state variability at small scales is probably dominated by the effect of ocean currents (Ardhuin et al., 2017b). It is thus logical to measure waves and currents together, and possibly further use the measured variability of sea state parameters to further constrain the magnitude of current gradients.

Appendix A: Estimation of wave-induced bias U_{WB} from directional wave data

~~Wave spectra measurement from a rotating real aperture radar is described in detail in Jackson et al. (1985), and the additional use of Doppler measurements for removing the 180° ambiguity on the wave propagation direction was demonstrated by Caudal et al. (2014). As a result we will not discuss the accuracy of wave measurements, which is extensively discussed by Hauser et al. (2017) with a similar system, and only point out that SKIM should have more accurate wave spectra than SWIM due, among other factors, to a smaller footprint that leads to a larger amplitude of modulations, which scales as the inverse of the footprint diameter. We will thus focus on the estimation of the wave-induced bias from the wave spectrum.~~

One important difficulty for the estimation of $U_{S,R}$ by projecting eq. (3) in direction θ , is that the Stokes drift contains contributions from all directions θ' whereas the measurement on a single footprint only give contributions in the look direction θ . For each footprint in azimuth θ' we only have the contribution of the waves propagating in direction θ' , which we define as

$$U_{S,1D}(\theta') = 2\sqrt{g} \int_0^{k_{\max}} k^{1.5} E(k, \theta') dk + F(k_{\max}, \theta') E(k_{\max}, \theta'), \quad (\text{A1})$$

where k_{\max} is the wavenumber of the shortest resolved waves. Assuming that the spectrum of shorter waves rolls off like k^3 and neglecting non-linear effects gives $F(k_{\max}, \theta') = \sqrt{g} k_{\max}^{2.5}$. ~~For k_{\max} corresponding to a 20 m wavelength (as expected for SKIM), Using~~ hourly averaged measured spectra at station PAPA, ~~this~~ gives a typical random error of 6%. ~~Waves shorter than if k_{\max} corresponds to a 20 m are generally less important due to a wavelength. The~~ general broadening of the directional spectrum towards high frequency ~~(e.g. ?) gives a weaker importance of shorter waves (e.g. Peureux et al., 2018).~~

Given that the wave spectrum varies both along the sea surface and with directions, we have to interpolate either in spectral space (from θ to θ') or in physical space (x and y). Simulations indicate that variations in physical space are less severe than those in directions, as illustrated on Figure A1, over a Gulf Stream ring where the Stokes drift is enhanced by wind blowing against the current. We thus estimate $U_{S,R}$ using

$$U_{S,R}(x, y, \theta) \simeq \sum \cos(\theta - \theta') U_{S,1D}(x', y', \theta') \Delta\theta', \quad (\text{A2})$$

where the sum is over all directions ~~;~~ and the approximation is due to the fact that the location (x, y) is different from (x', y') where the contribution $U_{S,1D}(x', y', \theta')$ is measured. In practice we use the locations (x', y') that ~~have the right azimuth θ' , and that~~ are closest to (x, y) , separated by a distance $r(\theta')$. The variations of $U_{S,1D}(\theta')$ over the distance $r(\theta')$, which is typically less than 50 km, is mostly due to the effect of currents on waves (Ardhuin et al., 2017b).

In our simulations we have also varied the beam rotation speed, number of beams and number of azimuths per rotation. Because these parameters give different locations of footprints we have used an approximation of the radial Stokes drift $U_{S,R}$ from the map of Stokes drift vectors instead of the full directional spectrum, this is

$$U_{S,R}(x, y, \theta) \simeq \frac{2}{\pi} \sum U_{S,R}(x', y', \theta') \cos(\theta - \theta') \Delta\theta', \quad (\text{A3})$$

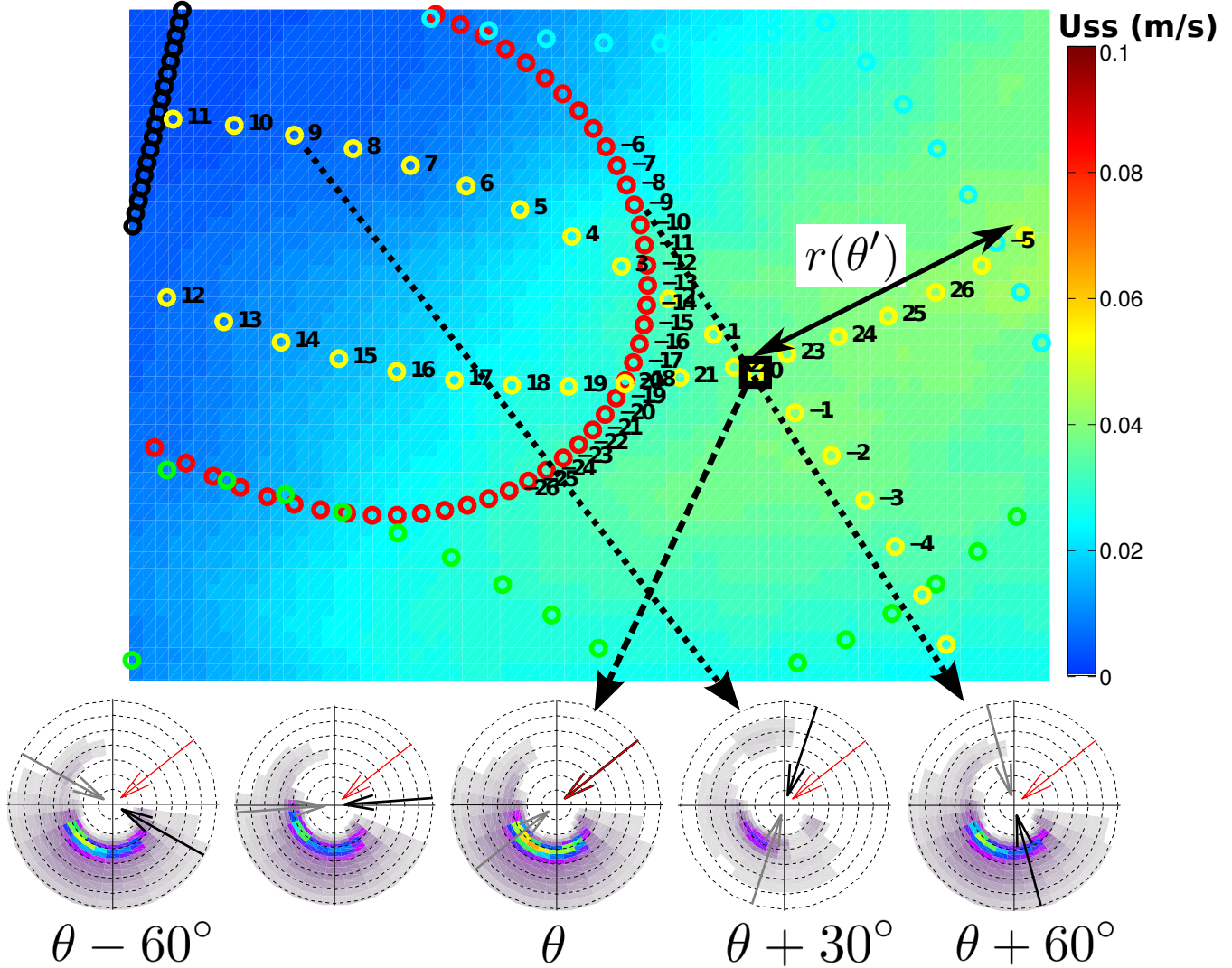


Figure A1. Use Illustration of the use of cycles in azimuth θ' (circles) for the estimation of the integrated parameters wave bias $U_{WB} = GU_{SB}$ at the location (black square) of cycle with direction θ (black square numbered 0). The background color shows the magnitude of U_S . The circles are the location of footprints for azimuths $\theta - \pi/2$, numbered -26, to $\theta + \pi/2$, numbered 26. The distance $r(\theta')$ is a source of error. The and the bottom wave spectra $E(f, \theta)$ are at the location of different cycles, with wave energy plotted in the direction from which it arrives. In each spectra the red arrow is direction θ , and the black and grey arrows show θ' and $\theta' + \pi$, the dashed circles correspond to frequencies 0.1 to 0.7 Hz. This pattern of footprints correspond to a 6-beam 'SKIM1' configuration (The SKIM Team, 2017), with 108 azimuths. The SKIM2 configuration with 8 beams and 60 azimuths gives an average distance $r(\theta')$ that is 15 to 30 shorter, leading to smaller errors in the estimation a source of U_{WB} . This is why SKIM2 is used in the present paper error.

where the sum is over angles $\theta - \pi/2 < \theta' < \theta + \pi/2$ and the nearest ~~available~~ available footprints with these azimuths are taken. Eq. (A3) relies on the assumption of small variability of the vector (U_S, V_S) on the scale of the beam rotation. Indeed, $U_{S,R}(\theta)$ is the projection of (U_S, V_S) in direction θ . If (U_S, V_S) is uniform in space then $U_{S,R} = |U_S, V_S| \cos(\theta - \theta_0)$, with θ_0 the direction of the Stokes drift vector. ~~This approximation gives errors in $U_{S,R}(\theta)$ that are typically less than 3-~~

We have performed realistic high-resolution simulations in a wide range of conditions: Oregon coast, Gulf Stream, equatorial currents, Fram strait, Agulhas current, ~~for which~~. Based on all these simulations and assuming a constant G , we find that the error err_{WB} ~~that is only due to an error in the estimate of $U_{S,R}$ on the estimation of U_{WB}~~ , has a negligible bias and a standard deviation that is of the order of,

$$\text{std}(\text{err}_{WB}) \simeq \varepsilon G \text{std}(U_S) r_2 / 20 \text{km} \quad (\text{A4})$$

where ε is a non-dimensional factor which ranges from 0.10 in the case of the Equator near 23 W, to 0.18 in the Gulf Stream case. $\text{std}(U_S)$ is the standard deviation of the Stokes drift magnitude over the region that contribute to $U_{S,R}$ using eq. (A2).

The distance

$$r_2 = \sqrt{\sum [r(\theta') \cos(\theta - \theta')]^2 / N} \sqrt{\sum [r(\theta') \cos(\theta - \theta')]^2 / N} \quad (\text{A5})$$

is the root mean square distance, over the N cycles with directions θ' that contribute to the estimation of $U_{S,R}(\theta)$, between the position of the footprint for azimuth θ and the footprints for θ' weighted by ~~$\cos(\theta' - \theta)$~~ $\cos(\theta' - \theta)$. Hence, in the open ocean r_2 is completely specified by the geometry of the footprints, itself given by the rotation speed of the horn plate and the number of beams. In the case presented here r_2 is close to 20 km for the 12° beams, and 15 km for the 6° beams.

In order to ~~allow for errors due to~~ take into account the variability of G and random errors in the estimation of the wave spectrum, we have used an error twice as large as given by eq. (A4), ~~namely we use~~

$$\text{err}_{WB} = 2G \times \text{err}(U_{S,R})$$

~

The error err_{WB} has smaller scales than both U_R and $U_{S,R}$, as shown in figure A2. The largest errors are associated with current gradients. This suggests that using some knowledge on wave-current interactions could lead to smaller errors.

Appendix B: Attitude restitution using antenna rotation

The non-geophysical contribution to the Doppler ~~centroid~~ centroid frequency (f_{NG}) arises from the acquisition geometry (satellite attitude and instrument pointing) and the platform velocity. This frequency is much higher than the geophysical frequency, and it must be estimated carefully. Its theoretical expression is given by Raney (1986)

$$\begin{aligned} f_{NG} = & \frac{2V_{sc}}{\lambda} \sin \gamma \cos \theta \\ & \times \left[1 - \frac{\omega_e}{\omega} (\epsilon \cos \beta \sin \Psi \tan \theta + \cos \Psi) \right] \\ & + \frac{2V_{sc}}{\lambda} e \cos \gamma \frac{\sin(\beta - p)}{\sqrt{1 + e^2 + 2e \cos(\beta - p)}}, \end{aligned} \quad (\text{B1})$$

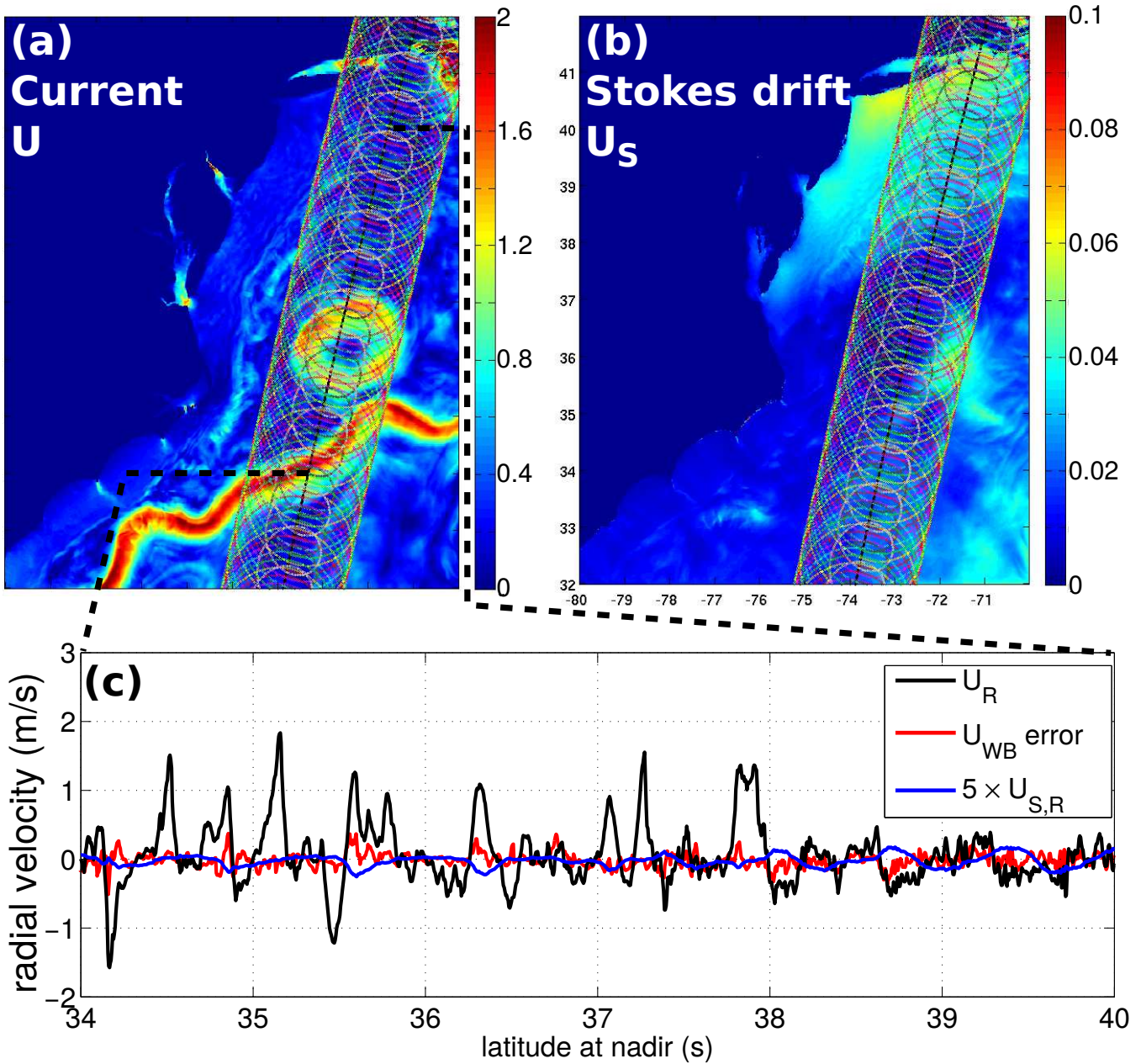


Figure A2. Example of (a) current in the Gulf Stream and associated (b) Stokes drift, and (c) errors for the estimation of UWB for beam 8 (12° incidence, green circles in top panels). In this example the standard deviation of err_{WB} given by eq. (??) is 10 cm/s, which is of the order of $5U_{S,R}$. Note that the measured geophysical Doppler is $U_{GD} = U_{WB} + GU_{S,R}$ with $G \simeq 25$.

- 5 where $\lambda \simeq 8 \text{ mm}$ is the radar wavelength, V_{sc} is the spacecraft velocity, γ is the elevation angle, θ is the azimuth angle, ϵ is equal to 1 if $\theta \in [0, -\pi]$ and -1 otherwise, ω_e is the angular rotation rate of the Earth, ω is the angular rotation rate of the spacecraft, Ψ is the angular position on the orbit, e is the eccentricity of the orbit, p the argument of the perigee.

All the parameters of f_{NG} are well ~~determined~~ expected for the azimuth known expected for uncertainties in the azimuth θ and the elevation γ of the radar beam, due the imperfect knowledge of the satellite attitude. As given by eq. (B2), the azimuth and elevation are perturbed by a tilt γ_0 that is maximum for the azimuth θ_0 relative to the ground track azimuth. These angles are defined in figure B1.

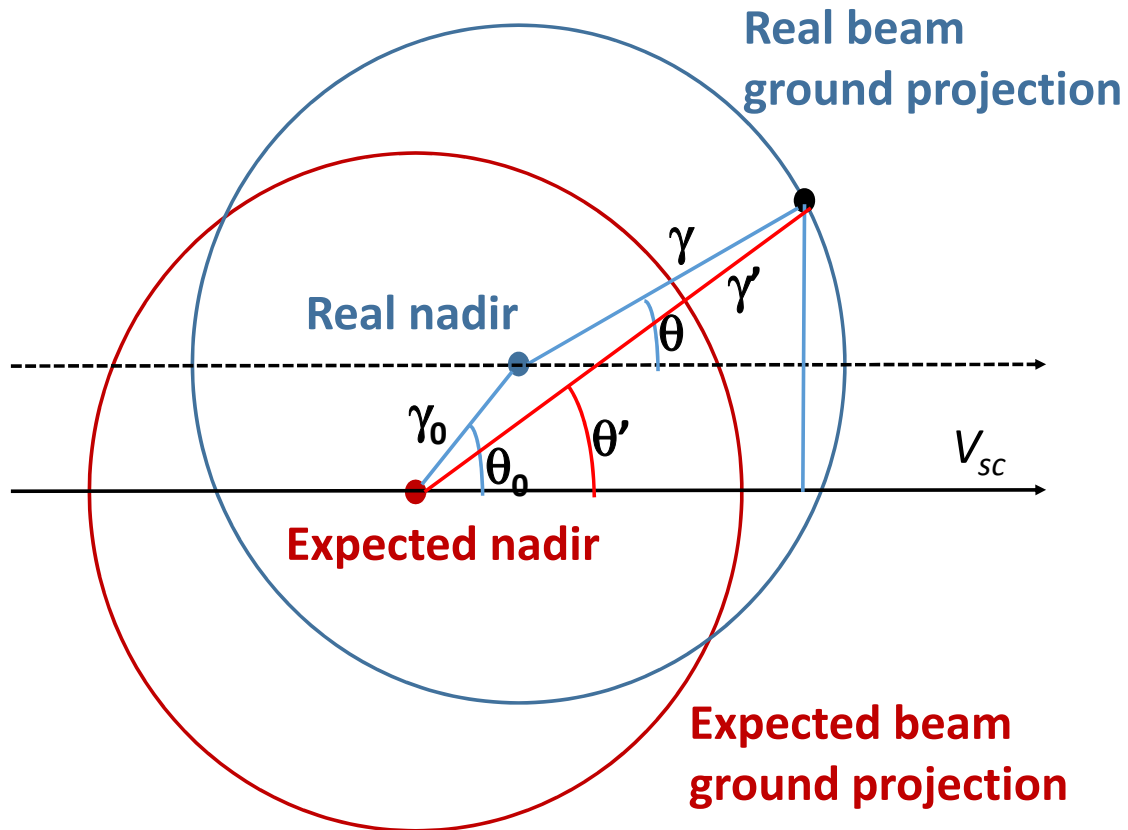


Figure B1. Definition of mispointing geometrical parameters γ_0 and θ_0 . We recall that Z is the satellite altitude.

We have assumed that

- the antenna rotation speed is very well known and very stable (it can also be re-estimated after launch on a regular basis),
- the satellite attitude varies slowly (a preliminary requirement is below 10^{-4} °/s),
- instrument noise is not correlated in time (pure white noise) and then is uncorrelated with any satellite attitude variation. It is therefore not considered here.

Hence γ_0 and θ_0 define the difference between the expected and the real nadir position projected on the ground introduced by the satellite attitude misknowledge, so that γ' and θ' are the parameter to be used instead of γ and θ in eq. (B1). It is very important to note that the γ_0 and θ_0 parameters can vary in time. These time variations describe the satellite attitude misknowledge changes.

Provided that $\gamma_0/\gamma \ll 1$ then

$$\begin{aligned}\gamma' &= \gamma + \gamma_0 \cos(\theta - \theta_0) \\ \theta' &= \theta - \gamma_0 \sin(\theta - \theta_0)\end{aligned}\tag{B2}$$

The Doppler shift residue $\delta f_{\text{NG}}(\gamma_0, \theta_0)$ induced by the satellite attitude misknowledge is computed using the eqs. (B1) and (B2).

The situation is better understood by using the fact that $e \ll 1$ and $\omega_e/\omega \ll 1$, leading to simplified equation

$$\begin{aligned}\Delta f_{\text{NG}}(\gamma_0, \theta_0) &\approx \frac{2V_{sc}}{\lambda} \gamma_0 \\ &[\cos \gamma \cos \theta \cos(\theta - \theta_0) \\ &+ \sin \gamma \sin \theta \sin(\theta - \theta_0)].\end{aligned}\tag{B3}$$

In our case, $\gamma < 12^\circ$, $\Delta f_{\text{NG}}(\gamma_0, \theta_0)$ is dominated by the term $\cos \gamma \cos \theta \cos(\theta - \theta_0)$ that only contains only twice the beam rotation frequency as shown in figure B2.

For example, looking at the black curve in figure B2, a positive tilt γ_0 in direction $\theta_0 = 0$ gives the same positive Doppler anomaly when looking forward along the track ($\theta = 0$) when the Doppler is positive and $\gamma' = \gamma + \gamma_0$, and backward $\theta = 180^\circ$ when the Doppler is negative and $\gamma' = \gamma - \gamma_0$.

The pointing knowledge that is provided by the complete system (including SKIM, star trackers, etc.) (around 0.2° in elevation and 0.5° in azimuth) is not sufficient to get accurate retrieval of f_{NG} . As shown in figure B2, a tilt γ_0 of only 0.003° gives errors in the retrieved radial current speed up to 0.75 m/s. However, compared to Sentinel-1 for which the retrieval of these parameters is complicated by the spacecraft attitude control, in the case of SKIM, we can use the rotation of the antenna beams in the case of SKIM. The expected variations of the full-Doppler centroid $f_{\text{DC}} = f_{\text{NG}} + f_{\text{GD}}$ over one or several full rotations can be used to estimate the Doppler centroid frequency correct for attitude errors. Here we demonstrate the use of a matching algorithm, based on a Nelder-Mead optimization. f_{NG} model fitting, the amplitude of the velocity residue induced by the satellite attitude misknowledge can be decreased to 3 cm s^{-1} .

~~We have assumed that~~ The capability to estimate γ_0 and θ_0 from the measured Doppler depends on the contents of the time series of f_{GD} and f_{NG} . In cases when currents and Stokes drift are spatially uniform, the dominant geophysical signal $GU_{S,R}$ is dominated by the beam rotation frequency ω_b (see appendix A), whereas the beam mispointing only contains $2\omega_b$. However, any spatial structure in currents and Stokes drift will produce contributions at $2\omega_b$ that are mixed with the mispointing signal.

~~Simulations have been performed based on a Monte-Carlo approach with 200 runs. From Eq. B1, frequency signals are generated taking into account noise sources. One source is the coherency loss (SNR impact). Another is the residual wave contribution at the footprint scale, for which we first used a random uniformly distributed noise in the range $[-1, 1]$ m/s. Fortunately,~~

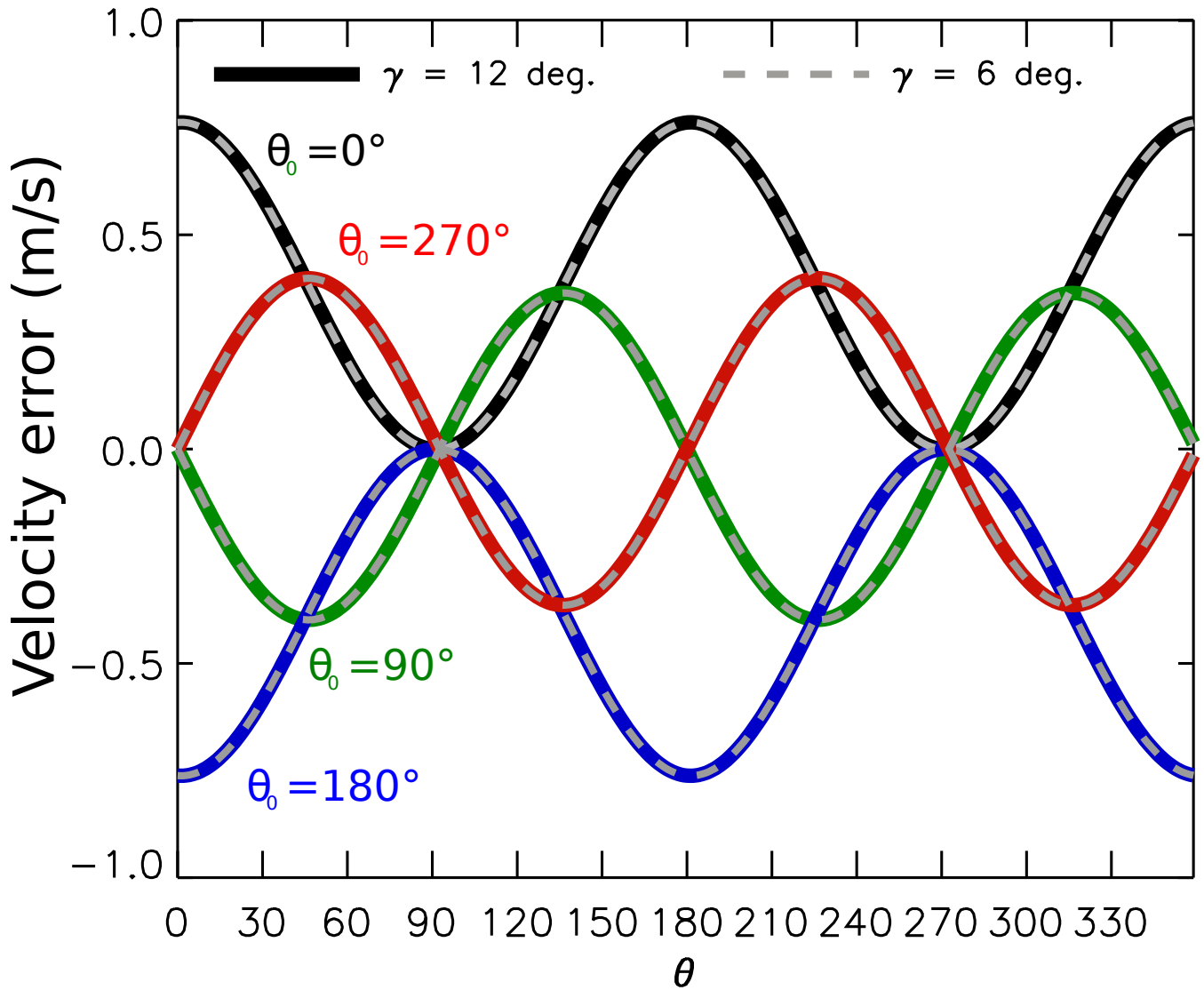


Figure B2. Velocity errors induced by a miscalculation $\gamma_0 = 0.003^\circ$ of the satellite attitude, as a function of the azimuth relative to the satellite track, and for four examples of θ_0 . The two beams incidence angles are superimposed (thick lines: 12° , thin dashed lines: 6°). These errors are dominated by a contribution at twice the beam rotation frequency ω_b .

there are large differences between f_{GD} and f_{NG} for different incidence angles. At the SKIM angles $\cos\gamma \simeq 1$ and the mispointing errors at 12° and 6° are almost the same (grey dashed lines and thick solid lines are superimposed in Figure B2). In contrast, the geophysical signal is proportional to $\sin\gamma$ and doubles between 6° and 12° .

- 15 First simulations have been run with no platform attitude and with only random residual contributions of waves. In this case, the impact of the attitude miscalculation is tested. These angles are injected in the prior solution of the optimization. No impact

of the prior knowledge is found. The next equation that approximates the data model D_i at the sample i is the model used to fit the γ_0 and θ_0 values in f_{DC} ,

$$\begin{aligned}
 D_i = f_{DC,i} - \bar{f}_{NG} &\approx \sin \gamma_i (\cos \theta_i U_p + \sin \theta_i V_p) + \\
 20 \quad &A_k \Delta f_{NG,i,x} + \\
 &B_k \Delta f_{NG,i,y} + N_i.
 \end{aligned} \tag{B4}$$

In eq. (B4), $f_{DC,i}$ is the observed signal at the sample i , \bar{f}_{NG} is the value of f_{NG} for the nominal satellite attitude, $(U_{GD,p}, V_{GD,p})$ is the geophysical velocity vector in the pixel p at the sea surface (see below for pixel definition), $(\Delta f_{NG,i,x}, \Delta f_{NG,i,y})$ is the decomposition of the satellite attitude misknowledge at the sample i , N_i is the noise at the sample i , $A_k = \gamma_k \cos \theta_k$ and $B_k = \gamma_k \sin \theta_k$ are the two parameters to be fitted to characterize the satellite attitude misknowledge expected stable during the period k . In the present study k is equal to one full beam rotation.

Here the ground speed (U_p, V_p) is taken constant in a given pixel p at the sea surface. The pixel definition uses the HEALPIX spherical binning (Górski et al., 2005) with `nside` = 256 equivalent to pixel area of $\approx 14 \times 14$ arcmin², that is 25 by 25 km. This binning provides pixels with the same surface on all the sphere and ease the software writing. Using B4 the difference $R_{i,p}$ is built from all D_i inside a pixel to be independent from any (U_p, V_p) values,

$$\begin{aligned}
 R_{i,p} &= D_i - P.M^{-1} \cdot \begin{pmatrix} \sum_j \sin \gamma_j \cos \theta_j M_j \\ \sum_j \sin \gamma_j \sin \theta_j M_j \end{pmatrix} \\
 &- A_k \Delta f_{NG,i,x} \\
 &+ P.M^{-1} \cdot \begin{pmatrix} \sum_j \sin \gamma_j \cos \theta_j A_k \Delta f_{NG,j,x} \\ \sum_j \sin \gamma_j \sin \theta_j A_k \Delta f_{NG,j,x} \end{pmatrix} \\
 &- B_{0,i} \Delta f_{NG,i,y} \\
 10 \quad &+ P.M^{-1} \cdot \begin{pmatrix} \sum_j \sin \gamma_j \cos \theta_j B_k \Delta f_{NG,j,y} \\ \sum_j \sin \gamma_j \sin \theta_j B_k \Delta f_{NG,j,y} \end{pmatrix}
 \end{aligned} \tag{B5}$$

with

$$\begin{aligned}
 P &= \begin{pmatrix} \sin \gamma \cos \theta_j \\ \sin \gamma \sin \theta_j \end{pmatrix} \\
 M &= \begin{pmatrix} \sum_j \sin^2 \gamma_j \cos^2 \theta_j & \sum_j \sin^2 \gamma_j \cos \theta_j \sin \theta_j \\ \sum_j \sin^2 \gamma_j \cos \theta_j \sin \theta_j & \sum_j \sin^2 \gamma_j \sin^2 \theta_j \end{pmatrix}
 \end{aligned} \tag{B6}$$

15 It is important to understand that several rotations are solved together otherwise the matrix M cannot be inverted by lack of redundant information in the same pixel. Thus, set of γ_k and θ_k values are extracted by minimizing the $\chi^2 = \sum_{p,i} (R_{i,p}^2)$

combining different γ beams over several antenna rotation to increase the azimuth sampling. There is still potential correlation between $\Delta f_{\text{NG}}(\gamma_0, \theta_0)$ and geophysical Doppler frequency shifts because the hypothesis that (U_p, V_p) is always the same is not true in time neither within the signal from different beams. Furthermore, this model is based on a white instrument noise.

20 Instrument noise does not introduce an average bias as long as it is not correlated in time and not correlated to the linear fit of $\Delta f_{\text{NG}}(\gamma_0, \theta_0)$. Further investigations will check the level of the expected correlation between $\Delta f_{\text{NG}}(\gamma_0, \theta_0)$ and the noise. In our estimates, the reconstructed values of the pair (γ_0, θ_0) are only affected by the correlation between the non-geophysical and geophysical signals.

25 Simulations have been done to include ~~linear variations of the platform attitude during the rotation and realising geophysical~~ random drifts of the satellite attitude within 10^{-4} °/s variations. Geophysical Doppler contributions f_{GD} has been computed from surface currents and wave-induced biases estimated from numerical models ~~MITgem and WAVEWATCH III~~ of the ocean circulation and waves. The case of Oregon area is illustrated in Fig B3. The ~~velocity error is very~~ standard deviation of the error on Doppler velocity is found to be around 0.04 m/s after cleaning and is related to the correlation between the two simulated values of $\Delta f_{\text{NG}}(\gamma_0, \theta_0)$ and f_{GD} . The error induced by the satellite attitude misknowledge is time locally higher when the
5 signal has more structures. This advocates to average the determination of these errors on larger data set. This can be possible if the satellite attitude is more stable or the drift follows physical law decoupled from expected f_{GD} signal.

In conclusion, the case of Oregon area illustrated in Fig B3 shows that the cleaned velocity error is relatively small (< 0.025 0.04 m/s). The algorithm has been tested on other regions (not illustrated here) with similar ~~but often better~~ results.

Author contributions. All authors have contributed to the writing of the paper. The wave bias error analysis was performed by FA, GM and
10 EC analyzed the Doppler centroid estimation error, JMD, CT and EC analyzed the error due to platform attitude. LG and CU combined these errors to produce simulated data that was used by JX for DFS analysis with TOPAZ. The optimal interpolation scheme was adapted by CU and will be described elsewhere in more details.

Competing interests. The authors declare that they have no conflict of interest.

Acknowledgements. Support from LabexMer via grant ANR-10-LABX-19-01, and Copernicus Marine Environment Monitoring Service
15 (CMEMS) as part of the Service Evolution program is gratefully acknowledged. Additional support from CNES was given through the VASCO phase 0 study and R&T contracts.

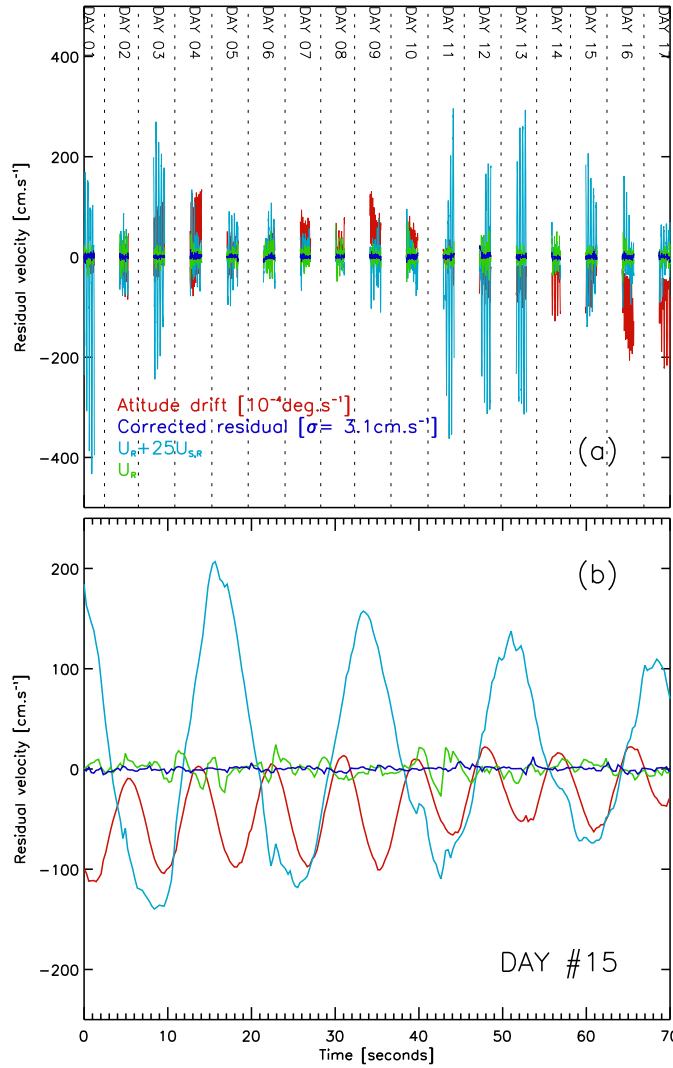


Figure B3. Maximum-velocity-Velocity residual error (in cm/s) for the Oregon coast simulations non corrected (red curve) and corrected (blue curve) by removing the fit of the satellite attitude misknowledge combining beams and 8 (γ_0, θ_0) couples by antenna rotation. The Doppler-centroid has been estimated for (afixed SKIM track) shows simulated data over Oregon-area one satellite pass for day 21. (b) results for all satellite passes in the domain shown in figure 6. All WW3 run times of month This time frame in September 2014 includes winds speeds up to 22 m/09-s. For each pass the duration is stretched over 20 hours in order to make it visible. U_R and $U_{R,S}$ signals are considered also shown for scale. The satellite attitude drifts randomly (10^{-4} °/s). The error induced by the satellite attitude misknowledge is higher when the geophysical signal is stronger and less uniform.

References

- Aksenov, Y., Popova, E. E., Yool, A., Nurser, A. G., Williams, T. D., Bertino, L., and Bergh, J.: On the future navigability of Arctic sea routes: High-resolution projections of the Arctic Ocean and sea ice, *Marine Policy*, 75, 300–317, doi:10.1016/j.marpol.2015.12.027, 2017.
- 20 Arduin, F., Marié, L., Rascle, N., Forget, P., and Roland, A.: Observation and estimation of Lagrangian, Stokes and Eulerian currents induced by wind and waves at the sea surface, *J. Phys. Oceanogr.*, 39, 2820–2838, doi:10.1175/2009JPO4169.1, <http://journals.ametsoc.org/doi/pdf/10.1175/2009JPO4169.1>, 2009.
- Arduin, F., Chapron, B., Collard, F., Smith, M., Stopa, J., Thomson, J., Doble, M., Wadhams, P., Blomquist, B., Persson, O., and Collins, III, C. O.: Measuring ocean waves in sea ice using SAR imagery: A quasi-deterministic approach evaluated with Sentinel-1 and in situ data, *Remote sensing of Environment*, 189, 211–222, doi:10.1016/j.rse.2016.11.024, 2017a.
- 25 Arduin, F., Rascle, N., Chapron, B., Gula, J., Molemaker, J., Gille, S. T., Menemenlis, D., and Rocha, C.: Small scale currents have large effects on wind wave heights, *J. Geophys. Res.*, 122, 4500–4517, doi:10.1002/2016JC012413, 2017b.
- Barrick, D. E.: First order theory and analysis of MF/HF/VHF scatter from the sea, *IEEE Trans. Antennas Propagat.*, AP-20, 2–10, 1972.
- Bonjean, F. and Lagerloef, G. S. E.: Diagnostic Model and Analysis of the Surface Currents in the Tropical Pacific Ocean, *J. Phys. Oceanogr.*, 32, 2938–2954, doi:10.1175/1520-0485(2002)032<2938:DMAAOT>2.0.CO;2, 2002.
- 30 Bourassa, M. A., Rodriguez, E., and Chelton, D.: Winds and current mission: Ability to observe mesoscale air/sea coupling, in: *Proceedings of IEEE International Geoscience and Remote Sensing Symposium (IGARSS)*, pp. 7392–7395, IEEE, doi:10.1109/IGARSS.2016.7730928, 2016.
- Buck, C.: An extension to the wide swath ocean altimeter concept, in: *Proceedings of the IEEE International Geoscience and Remote Sensing Symposium (IGARSS)*, 2013., vol. 8, pp. 543–5439, IEEE, doi:10.1109/IGARSS.2005.1525970, 2005.
- 35 Cardinali, C., Pezzulli, S., and Andersson, E.: Influence-matrix diagnostic of a data assimilation system, *Q. J. R. Meteorol. Soc.*, 130, 2767–2786, 2004.
- Caudal, G., Hauser, D., Valentin, R., and Gac, C. L.: KuROS: A New Airborne Ku-Band Doppler Radar for Observation of Surfaces, *J. Atmos. Ocean Technol.*, 31, 2023–2245, doi:10.1175/JTECH-D-14-00013.1, 2014.
- Chapron, B., Collard, F., and Arduin, F.: Direct measurements of ocean surface velocity from space: interpretation and validation, *J. Geophys. Res.*, 110, doi:10.1029/2004JC002809, 2005.
- 5 Collard, F., Mouche, A., Chapron, B., Danilo, C., and Johannessen, J.: Routine High Resolution Observation Of Selected Major Surface Currents From Space, in: *Proceedings of SEASAR 2008*, SP-656, ESA, ESA - ESRIN, Frascati, Italy, http://earth.esa.int/workshops/seasar2008/participants/287/pres_287_Collard.pdf, 2008.
- Cravatte, S., Kessler, W. S., Smith, N., Wijffels, S. E., and Contributing Authors: First Report of TPOS, Tech. Rep. 215, GOOS, <http://tpos2020.org/first-report/>, 2016.
- 10 Elfouhaily, T., Chapron, B., Katsaros, K., and Vandemark, D.: A unified directional spectrum for long and short wind-driven waves, *J. Geophys. Res.*, 102, 15 781–15 796, 1997.
- Elipot, S., Lumpkin, R., Perez, R. C., Lilly, J. M., Early, J. J., and Sykulski, A. M.: A global surface drifter data set at hourly resolution, *J. Geophys. Res.*, 121, 2937–2966, doi:10.1002/2016JC011716, 2016.
- 15 Forget, P., Saillard, M., and Broche, P.: Observations of the sea surface by coherent L band radar at low grazing angles in a nearshore environment, *J. Geophys. Res.*, 111, C09 015, doi:10.1029/2005JC002900, 2006.

- Forget, P., Saillard, M., Guérin, C.-A., Testud, J., and Bouar, E. L.: On the Use of X-Band Weather Radar for Wind Field Retrieval in Coastal Zone, *J. Atmos. Ocean Technol.*, 82, 899–917, doi:10.1175/JTECH-D-15-0206.1, 2016.
- 20 Fu, L.-L. and Ubelmann, C.: On the Transition from Profile Altimeter to Swath Altimeter for Observing Global Ocean Surface Topography, *J. Atmos. Ocean Technol.*, 31, 560–568, 2014.
- Gille, S. T. and Hughes, C. W.: Aliasing of high-frequency variability by altimetry: Evaluation from bottom pressure recorders, *Geophys. Res. Lett.*, 28, 1755–1758, doi:10.1029/1999GL011263, 2001.
- Goldstein, R. M. and Zebker, H. A.: Interferometric radar measurement of ocean surface current, *Nature*, 328, 707–709, 1987.
- Górski, K. M., Hivon, E., Banday, A. J., Wandelt, B. D., Hansen, F. K., Reinecke, M., and Bartelmann, M.: HEALPix: A Framework for 25 High-Resolution Discretization and Fast Analysis of Data Distributed on the Sphere, *ApJ*, 622, 759–771, doi:10.1086/427976, 2005.
- Gula, J., Molemaker, M. J., and McWilliams, J. C.: Gulf Stream Dynamics along the Southeastern U.S. Seaboard, *J. Phys. Oceanogr.*, 45, 690–715, 2015.
- Hauser, D., Tison, C., Amiot, T., Delaye, L., Corcoral, N., and Castillan, P.: SWIM: The First Spaceborne Wave Scatterometer, *IEEE Trans. on Geosci. and Remote Sensing*, 55, 3000–3014, 2017.
- 30 Horvat, C., Tziperman, E., and Campin, J.-M.: Interaction of sea ice floe size, ocean eddies and sea ice melting, *Geophys. Res. Lett.*, 43, 8083–8090, doi:10.1002/2016GL069742, 2016.
- Isern-Fontanet, J., Lapeyre, G., Rouillet, G., Danioux, E., Chapron, B., Le Gentil, S., and Sasaki, H.: Retrieval and assimilation of velocities at the ocean surface, *Nonlin. Processes Geophys. Discuss.*, doi:10.5194/npg-2017-14, 2017.
- Jackson, F. C., Walton, W. T., and Peng, C. Y.: A comparison of in situ and airborne radar observations of ocean wave directionality, *J. Geophys. Res.*, 90, 1005–1018, 1985.
- 35 Jenkins, A. D.: The use of a wave prediction model for driving a near-surface current model, *Deut. Hydrogr. Z.*, 42, 133–149, 1989.
- Johannessen, O. M., Johannessen, J. A., Morison, J., Farrelly, B. A., and Svendsen, E. A. S.: Oceanographic Conditions in the Marginal Ice Zone North of Svalbard in Early Fall 1979 With an Emphasis on Mesoscale Processes, *J. Geophys. Res.*, 88, 2755–2769, 1983.
- Kenyon, K. E.: Stokes drift for random gravity waves, *J. Geophys. Res.*, 74, 6991–6994, 1969.
- Kim, S. Y. and Kosro, P. M.: Observations of near-inertial surface currents off Oregon: Decorrelation time and length scales, *J. Geophys. Res.*, 118, 3723–3736, doi:10.1002/jgrc.20235, 2013.
- 5 Kim, S. Y., Terrill, E. J., and Cornuelle, B. D.: Mapping surface currents from HF radar radial velocity measurements using optimal interpolation, *J. Geophys. Res.*, 113, C10 023, doi:10.1029/2007JC004244, 2008.
- Kirby, J. T. and Chen, T.-M.: Surface waves on vertically sheared flows: approximate dispersion relations, *J. Geophys. Res.*, 94, 1013–1027, 1989.
- 10 Korosov, A. A. and Rampal, P.: A Combination of Feature Tracking and Pattern Matching with Optimal Parametrization for Sea Ice Drift Retrieval from SAR Data, *Remote Sens.*, 9, 258, doi:10.3390/rs9030258, 2017.
- Kuik, A. J., van Vledder, G. P., and Holthuijsen, L. H.: A method for the routine analysis of pitch-and-roll buoy wave data, *J. Phys. Oceanogr.*, 18, 1020–1034, <http://journals.ametsoc.org/doi/pdf/10.1175/1520-0485%281987%29017%3C0845%3ATROWDT%3E2.0.CO%3B2>, 1988.
- 15 Lipa, B. J. and Barrick, D. E.: Least-squares methods for the extraction of surface currents from CODAR crossed-loop data: Application at ARSLOE, *IEEE J. Oceanic Eng.*, 8, 226–253, 1983.

- Martin, A. C. H., Gommenginger, C., Marquez, J., Doody, S., Navarro, V., and Buck, C.: Wind-wave-induced velocity in ATI SAR ocean surface currents: First experimental evidence from an airborne campaign, *J. Geophys. Res.*, 121, 1640–1653, doi:10.1002/2015JC011459, 2016.
- 20 Mouche, A. A., Chapron, B., and Reul, N.: Predicted Doppler shifts induced by ocean surface wave displacements using asymptotic electromagnetic wave scattering theories, *Waves in Random and Complex Media*, 18, doi:10.1080/17455030701564644, 2008.
- Nouguier, F., Mouche, A., Rascle, N., Chapron, B., and Vandemark, D.: Analysis of Dual-Frequency Ocean Backscatter Measurements at Ku- and Ka-Bands Using Near-Nadir Incidence GPM Radar Data, *IEEE Geoscience And Remote Sensing Letters*, 31, 2023–2245, doi:10.1109/LGRS.2016.2583198, 2016.
- 25 Nouguier, F., Chapron, B., Collard, F., Mouche, A., Rascle, N., Ardhuin, F., and Wu, X.: Sea surface kinematics from near-nadir radar measurements, *IEEE Trans. on Geosci. and Remote Sensing*, revised, http://tiny.cc/SKIMonRG_NOUG, 2018.
- Peureux, C., Benetazzo, A., and Ardhuin, F.: Note on the directional properties of meter-scale gravity waves, *Ocean Science*, 14, 41–52, doi:10.5194/os-14-41-2018, 2018.
- Ponte, A. L., Klein, P., Dunphy, M., and Le Gentil, S.: Low-mode internal tides and balanced dynamics disentanglement in altimetric observations: Synergy with surface density observations, *J. Geophys. Res.*, 122, 2143–2155, doi:10.1002/2016JC012214, 2017.
- 30 Poulain, P.-M., Bussani, A., Gerin, R., Jungwirth, R., Mauri, E., Menna, M., and Notarstefano, G.: Mediterranean surface currents measured with drifters: From basin to subinertial scales, *Oceanography*, 26, 38–47, doi:10.5670/oceanog.2013.03, 2016.
- Raney, R. K.: Doppler properties of radars in circular orbits, *Int. J. Remote Sensing*, 7, 1153–1162, 1986.
- Rascle, N. and Ardhuin, F.: A global wave parameter database for geophysical applications. Part 2: model validation with improved source term parameterization, *Ocean Modelling*, 70, 174–188, doi:10.1016/j.ocemod.2012.12.001, 2013.
- 35 Rio, M.-H., Mulet, S., and Picot, N.: Beyond GOCE for the ocean circulation estimate: Synergetic use of altimetry, gravimetry, and in situ data provides new insight into geostrophic and Ekman currents, *Geophys. Res. Lett.*, 41, 8918–8925, doi:10.1002/2014GL061773, 2014.
- Rocha, C. B., Chereskin, T. K., and Gille, S. T.: Mesoscale to Submesoscale Wavenumber Spectra in Drake Passage, *J. Phys. Oceanogr.*, 46, 601–620, doi:10.1175/JPO-D-15-0087.1, 2016.
- Roland, A. and Ardhuin, F.: On the developments of spectral wave models: numerics and parameterizations for the coastal ocean, *Ocean Dynamics*, 64, 833–846, doi:10.1007/s10236-014-0711-z, 2014.
- 5 Romeiser, R., Runge, H., Suchandt, S., Kahle, R., Rossi, C., and Bell, P.: Comparison Of Current Fields From Terrasar-X And Tandem-X Along-Track Interferometry And Doppler Centroid Analysis, in: *Proceedings of the IEEE International Geoscience and Remote Sensing Symposium (IGARSS)*, 2013., IEEE, 2013.
- Romeiser, R., Runge, H., Suchandt, S., Kahle, R., Rossi, C., and Bell, P.: Quality Assessment of Surface Current Fields From TerraSAR-X and TanDEM-X Along-Track Interferometry and Doppler Centroid Analysis, *IEEE Trans. on Geosci. and Remote Sensing*, 52, 2759–
- 10 2772, doi:10.1109/TGRS.2013.2265659, 2014.
- Rouault, M. J., Mouche, A., Collard, F., Johannessen, J. A., and Chapron, B.: Mapping the Agulhas Current from space: An assessment of ASAR surface current velocities, *J. Geophys. Res.*, 41, C10 026, doi:10.1029/2009JC006050, 2010.
- Sakov, P., Counillon, F., Bertino, L., Lisæter, K. A., Oke, P. R., and Korabiev, A.: TOPAZ4: an ocean-sea ice data assimilation system for the North Atlantic and Arctic, *Ocean Sci.*, 8, 633–656, doi:10.5194/os-8-633-2012, <http://www.ocean-sci.net/8/633/2012/>, 2012.
- 15 Shrira, V. I., Ivonin, D. V., Broche, P., and de Maistre, J. C.: On remote sensing of vertical shear of ocean surface currents by means of a single-frequency VHF radar, *Geophys. Res. Lett.*, 28, 3955–3958, 2001.

- Stammer, D., Wunsch, C., and Ponte, R. M.: De-aliasing of global high frequency barotropic motions in altimeter observations, *Geophys. Res. Lett.*, 27, 1175–1176, doi:10.1029/1999GL011263, 2000.
- Stokes, G. G.: On the theory of oscillatory waves, *Trans. Camb. Phil. Soc.*, 8, 441–455, 1849.
- 20 Sudre, J., Maes, C., and Garçon, V.: On the global estimates of geostrophic and Ekman surface currents, *Limnology and Oceanography: Fluids and Environments*, 3, 1–20, doi:10.1215/21573689-2071927, 2013.
- Sutherland, P. and Gascard, J. C.: Airborne remote sensing of ocean wave directional wavenumber spectra in the marginal ice zone, *Geophys. Res. Lett.*, 43, 4659–4664, doi:10.1002/grl.53444, 2016.
- The SKIM Team: Sea surface KINematics Multiscale monitoring, full proposal for ESA EE9, Tech. rep., Laboratoire d’Océanographie Physique et Spatiale, Brest, France, doi:10.13140/RG.2.2.18902.86084/1, prepared for European Space Agency, 192 pp., 2017.
- 25 Thomson, J., D’Asaro, E. A., Cronin, M. F., Rogers, W. E., Harcourt, R. R., and Shcherbina, A.: Waves and the equilibrium range at Ocean Weather Station P, *J. Geophys. Res.*, 118, 595–5962, doi:10.1002/2013JC008837, 2013.
- Ubelmann, C., Cornuelle, B., and Fu, L.-L.: Dynamic Mapping of Along-Track Ocean Altimetry: Method and Performance from Observing System Simulation Experiments, *J. Atmos. Ocean Technol.*, 33, 1691–1699, doi:10.1175/JTECH-D-15-0163.1, 2016.
- 605 van Sebille, E., Wilcox, C., Lebreton, L., Maximenko, N., Hardesty, B. D., van Franeker, J. A., Eriksen, M., Siegel, D., Galgani, F., and Law, K. L.: A global inventory of small floating plastic debris, *Environ. Res. Lett.*, 10, 124006, doi:10.1088/1748-9326/10/12/124006, 2015.
- Wollstadt, S., López-Dekker, P., De Zan, F., and Younis, M.: Design Principles and Considerations for Spaceborne ATI SAR-Based Observations of Ocean Surface Velocity Vectors, *IEEE Trans. on Geosci. and Remote Sensing*, 99, 1–20, doi:10.1109/TGRS.2017.2692880, 610 2016.
- Xie, J., Bertino, L., Counillon, F., Lisæter, K. A., and Sakov, P.: Quality assessment of the TOPAZ4 reanalysis in the Arctic over the period 1991–2013, *Ocean Science*, 13, 123–144, doi:10.5194/os-13-123-2017, <http://www.ocean-sci.net/13/123/2017/>, 2017.
- Yurovsky, Y. Y., Kudryavtsev, V. N., Grodsky, S. A., and Chapron, B.: Normalized Radar Backscattering Cross-section and Doppler Shifts of the Sea Surface in Ka-band, in: *Proceedings of the Progress In Electromagnetics Research Symposium (PIERS)*, May 2017, St Petersburg, 615 Russia, IEEE, 2017.
- Yurovsky, Y. Y., Kudryavtsev, V. N., Chapron, B., and Grodsky, S. A.: Sea surface kinematics from near-nadir radar measurements, *IEEE Trans. on Geosci. and Remote Sensing*, p. in press, doi:10.1109/TGRS.2017.2787459, 2018.
- Zrnic, D. S.: Spectral Moment Estimates from Correlated Pulse Pairs, *IEEE Trans. Aero. Electronic Sys.*, 13, 344–354, doi:10.1109/TAES.1977.308467, 1977.