

Response to comments of Topic Editor

Topic Editor Decision: Publish subject to minor revisions (review by editor) (27

Nov 2017) by John M. Huthnance

Comments to the Author:

5 Dear Authors

Thank-you again for your revised manuscript. The referee has now seen it and asks for one correction as well as making two remarks which you should perhaps also take into account.

Reply:

10 Dear Dr. Huthnance:

Thank you very much for your decision on our manuscript and making invaluable comments and suggestions! Our response to your and Referee's comments is given in red below. In this response we use the following abbreviations:

R1 - The previous revised manuscript,

15 R2 - The present revised manuscript,

TPR - The present response.

Correction: "I think the statement on basin width being smaller than half the Kelvin wavelength leading to bound Poincaré waves is not correct. The expression for critical basin width is in fact more complicated and depending on Coriolis parameter as well:
20 $b_{crit} = \pi \sqrt{gh / (\omega^2 - f^2)}$ as one may derive e.g. from Eq.(8) of Hendershott & Speranza [1971] or other sources. Please revisit this statement and correct."

Remarks:

Reply: We thank Referee #1 for bringing our attention to Eq. (8) of Hendershott and Speranza (1971, hereafter HS71). The formula for critical basin width given in this
25 comment is surely correct; but our statement "Since the basin width is smaller than half of the Kelvin wavelength, the Poincaré modes can only exist in a bound form" on page 7 is also correct. The reason is as follows. The formula given in this comment is

$$B < \pi \sqrt{\frac{gh}{\sigma^2 - f^2}} \quad (R1)$$

in which we use the same notation as used in our manuscript for consistence; the

equality sign in the comment is replaced with inequality sign in (R1) following previous convention (including HS71 and Fang and Wang (1966) which we shall mention again later). The above inequality can be rewritten in the form

$$B < \frac{\lambda}{2} \sqrt{\frac{1}{1-(\frac{f}{\sigma})^2}} \quad (\text{R2})$$

5 where $\lambda = 2\pi \frac{\sqrt{gh}}{\sigma}$ is the Kelvin wavelength. Our statement “the basin width is smaller than half of the Kelvin wavelength” can be mathematically expressed as

$$B < \frac{\lambda}{2} \quad (\text{R3})$$

It can be readily seen that as long as (R3) is satisfied, the inequality (R2) is also satisfied, because $\sqrt{\frac{1}{1-(\frac{f}{\sigma})^2}}$ is always equal to or greater than 1. Therefore, our statement “the

10 Poincaré modes can only exist in a bound form” has no problem.

Additional remarks:

(a) In his previous comments Referee #1 proposed an equation $Q^2 = \alpha^2 - \beta^2$. We are sorry for having not found the error in his formula, and adopting this formula in Eq. (16) of R1. The correct equation should be $Q^2 = \beta^2 - \alpha^2$. Therefore, In R2 we

15 have changed Eq. (16) to

$$s_n = (r_n^2 + \alpha^2 - \beta^2)^{\frac{1}{2}} \quad (\text{R4})$$

(b) Five years before the work of HS71, Fang and Wang (1966, hereafter FW66) had already given the inequality (1) in a slightly different form. The inequality (47) of their paper is as follows:

20 $\frac{1-s^2}{l^2} < 1 \quad (\text{R5})$

in which s and l are dimensionless quantities, defined as (their Eq. (6))

$$s = f/\sigma ; l = \frac{\pi \sqrt{gh}}{B \sigma} \quad (\text{R6})$$

Inserting (R6) into (R5), taking square root of the result, and multiplying the root by $\frac{\pi \sqrt{gh}}{\sigma} \sqrt{\frac{1}{1-(\frac{f}{\sigma})^2}}$, these immediately yield (R1). In (R6) l is in fact equal to $\frac{\lambda/2}{B}$, so that

25 from (R5) and (R6) we can readily get the inequality (R2). The paper FW66 was published more than 50 years ago in a Chinese journal, and now is not internationally available, we shall attach its e-version (PDF) as a supplement to this response or to our

manuscript.

(c) The restriction of the inequality (R3) is stronger than (R2), but (R3) is simpler and easier to be remembered. Furthermore, it is of some historical significance: this condition was regarded as the condition for a narrow sea by Grace in 1931 (please see
5 the inequality (6) of Godin, 1965). This condition was also presented in FW66 (the “narrow sea theory” was first developed by Sterneck in 1922).

(d) If $f > \sigma$, the inequality (R1) as well as (R2) becomes meaningless. We can prove that in this case the Poincaré modes can only exist in an exponentially decaying (or bound) form regardless of the basin width. In fact, if $f > \sigma$, we then have

$$10 \quad \alpha^2 - \beta^2 = \left[\left(\frac{f}{\sigma}\right)^2 - 1\right]k^2 > 0 \quad (R7)$$

This implies $s_n > 1$ according to Eq. (R4) above (in the above derivation we have neglected friction for simplicity as did in deriving (R1)).

Remarks:

15 1) “- I do not understand the distinction on tides vs tide dynamics made by the authors when rebutting my request to expand on earlier literature on the study site.”

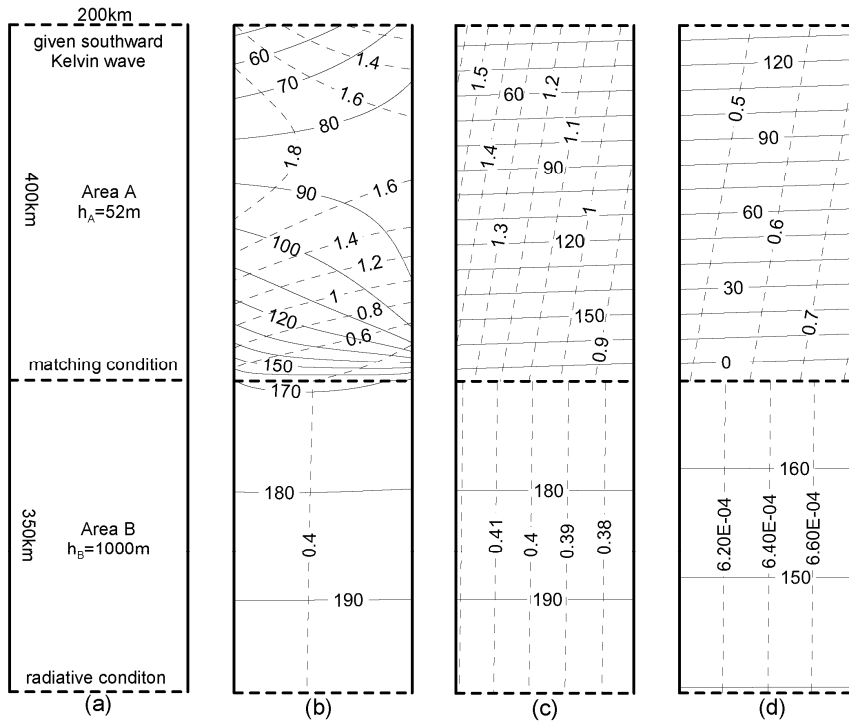
Reply: In our opinion this is similar to the case of physical oceanography versus dynamical physical oceanography: the former includes the latter and another discipline, descriptive physical oceanography. The review on earlier studies has been expanded in
20 R2, please see line 11, p. 5 to line 11, p. 6 of TPR below.

2) “- I somewhat regret that the theoretical effort of deriving a frictional radiating condition is not taken, even though its effect is shown to be small. I personally think that adopting the idealized modelling philosophy implies that - once the model has been formulated - one should try to avoid unnecessary approximations in the mathematical
25 solution as much as possible.”

Reply: According to this comment, we have changed the radiative condition with friction included in R2. That is, Eq. (6) is changed from $u = \pm \sqrt{\frac{g}{h}} \zeta$ in R1 to $u = \pm \sqrt{\frac{g}{(1-i\mu)h}} \zeta$ in R2. Correspondingly the statement “Strictly speaking, Eq. (6) is valid only in the frictionless case; if friction is considered, it contains an error of the order of

μ^2 , and there is a phase difference between u and ζ (Fang and Wang, 1966). In the present study we still use the form of Eq. (6) due to smallness of the value μ^2 in R1 now is replaced with the statement “The relationship between u and ζ shown in Eq. (6) is based on the solution for progressive Kelvin waves in presence of friction, which will be given in Eqs. (9) and (10) below. If $\mu \ll 1$, a simpler equation $u = \pm \sqrt{\frac{g}{h}} \zeta$ can be used to replace Eq. (6)” in R2.

Experiments 1-3 in the subsection 4.1 (which involve the radiative condition) have been re-computed. Figures 5-7 are also replaced with the re-computed results. The differences between the original and re-computed results are very small. As an example, a comparison between the corresponding results for Ex. 1 is shown below. From the figure we can see that the differences are almost invisible, except that in Area B, where the amplitude of northward Kelvin wave reduces from about 6×10^{-4} m to about 3×10^{-6} m. The latter is more reasonable, though both are very close to zero.



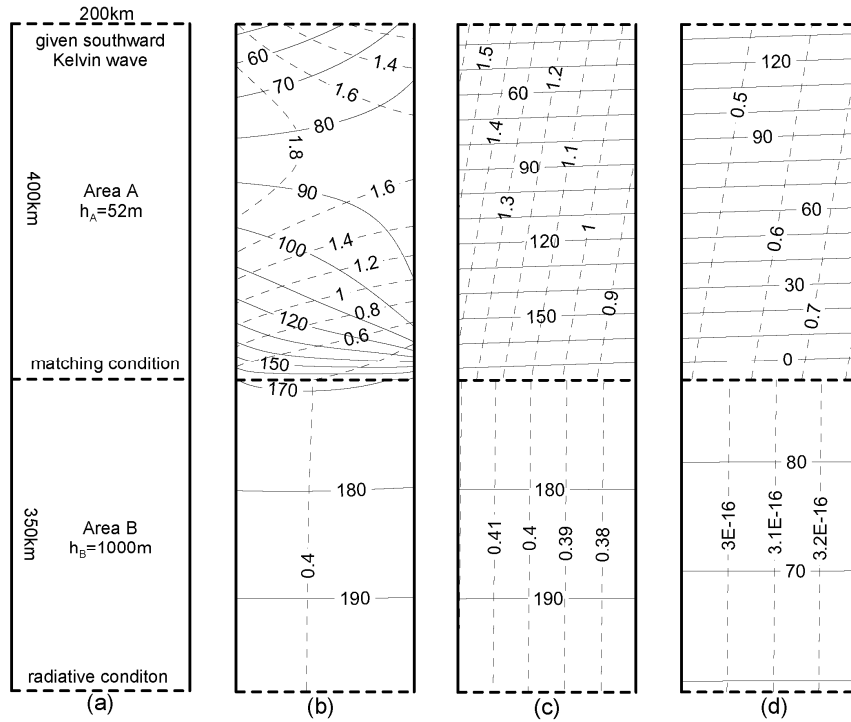


Figure R1. Comparison between the results using different radiative conditions for Ex.1.

The upper panel is the result using radiative condition $u = \sqrt{\frac{g}{h}} \zeta$; the lower using $u = \sqrt{\frac{g}{(1-i\mu)h}} \zeta$.

5

Please do make the correction.

Regarding remark 1, the point being made by the referee was that you list (page 2, lines 11-13) many references on tides in Taiwan Strait without saying something about what is learned from those references. There should be some benefit to the paper in citing

10 each reference.

Reply: According to this comment the statement “Most studies have attempted to establish accurate numerical models and thus to give accurate spatial structures of the tides and tidal currents in the strait (Yin and Chen, 1982; Fang et al., 1984; Ye et al., 1985; Lü et al., 1999; Lin et al., 2000; Lin et al., 2001; Jan et al., 2002; Jan et al., 2004a; 15 Jan et al., 2004b; Zhu, et al., 2009; Hu et al., 2010; Zeng et al., 2012; Yu et al., 2015; Yu et al., 2017)” has been replaced with a more detailed description: “Yin and Chen (1982) first developed two-dimensional model for tides in the TS without showing tidal

currents. Fang et al. (1984) again developed a two-dimensional model and obtained rather accurate distribution of tidal currents. They suggested that the semidiurnal tidal motion in the TS was maintained mainly by the energy flux from the ECS and partly by that from the SCS. Ye et al. (1985) and Lü and Sha (1999) developed three-dimensional models for the strait and also found that the southward energy flux of semidiurnal tides from the ECS was much greater than the northward flux. Lin et al. (2000, 2001) emphasized the anomalous amplification of semidiurnal tides in the strait, and attributed the amplification to a resonance. Jan et al. (2004b) modeled the tides using an optimization approach. Zhu, et al. (2009), Hu et al. (2010), and Zeng et al. (2012) further developed more accurate numerical models. Yu et al. (2017) studied the propagation and dissipation of tidal waves in the strait”.

Regarding remark 2, I think the effect of friction as represented in your manuscript is to replace “h” in (6) by “h(1-i μ)” (making the same simplification as for (6) which applies to a Kelvin wave with v=0).

Reply: Yes, we have made corresponding change. Please see line 26, p.3 to line 4, p. 5 of TPR.

Additional Editor comments.

Page 5 lines 17-18. I think “if friction is considered, it contains an error of the order of μ^2 ,” refers to the amplitude (only; not the phase).

Reply: In R2 friction has been included in the radiative condition, the statement “if friction is considered, it contains an error of the order of μ^2 ” now is not needed. Please see reply to referee’ comment above (line 26, p. 3 to line 6, p. 4 of TPR).

Page 7 lines 3-4. “the high-order Poincaré modes decay from the boundary very quickly (e.g., Godin, 1965)”;

Reply: “(e.g., Godin, 1965)” has been replaced with “as can be seen from large s_n in (11) and (12)”.

Page 8 line 11. “northeast” -> “northwest”?

Reply: Here we describe the wave propagation along the Taiwan coast. For clarity we have replaced the statement “the wave propagates southward in the northeast area and propagates northward in the southeast area” with the statement “along the Taiwan coast the wave propagates southward in the northern area and propagates northward in the southern area”.

Page 10 line 5. “northward Kelvin wave is weaker than the northward wave on average”.

Do you mean “. . . weaker than the southward wave . . .”?

Reply: Yes, the second “northward” is wrong, in R2 it has been replaced with “southward”.

Additional Note: The following are your comments we received on Nov. 7, 2017. In R2 these suggestions have all been adopted and the text is revised accordingly. We copy these comments below.

Meanwhile I have a few editorial comments for you to take into account in any final version.

20

Page 8

Lines 11-12. Better “. . . The largest amplitudes are roughly along the cross section of 150 km and appear as an anti-nodal band. . . .”

Lines 17-18. Better “. . . using only superposed Kelvin waves (Fig. 3c) . . .”

25

Page 9

Line 1. Better “. . . Poincaré modes play a role . . .”

Line 2. Better “. . . modes make nearly . . .”

Line 8. Better “. . . and superposed Poincaré modes are necessary . . .”

30

Line 9. “. . . Poincaré modes in . . .”

Line 11. “. . . but has an angle . . .” (this is still true!)

Line 24. Better “. . . tides here have the . . .”

Lines 24-25. “. . . two waves, exceeding 2.1 m, as already seen . . .”

35

Page 10.

Line 5. “. . . northward Kelvin wave is weaker than the southward wave on average . . .”?

Bottom line. Better “. . . there is again an anti-nodal band . . .”

Page 12 line 6. “. . performed a second . .”

Page 13 line 4. “. . performing a third . .”

5

Page 14 line 12. “. . Kelvin wave, with . .”

Modification list

(According to Revision#2)

Page 2.

Lines 14-23. The statement “Most studies have attempted to establish accurate numerical models and thus to give accurate spatial structures of the tides and tidal currents in the strait (Yin and Chen, 1982; Fang et al., 1984; Ye et al., 1985; Lü et al., 1999; Lin et al., 2000; Lin et al., 2001; Jan et al., 2002; Jan et al., 2004a; Jan et al., 2004b; Zhu, et al., 2009; Hu et al., 2010; Zeng et al., 2012; Yu et al., 2015; Yu et al., 2017)” has been replaced with a more detailed description:

“Yin and Chen (1982) first developed two-dimensional model for tides in the TS without showing tidal currents. Fang et al. (1984) again developed a two-dimensional model and obtained rather accurate distribution of tidal currents. They suggested that the semidiurnal tidal motion in the TS was maintained mainly by the energy flux from the ECS and partly by that from the SCS. Ye et al. (1985) and Lü and Sha (1999) developed three-dimensional models for the strait and also found that the southward energy flux of semidiurnal tides from the ECS was much greater than the northward flux. Lin et al. (2000, 2001) emphasized the anomalous amplification of semidiurnal tides in the strait, and attributed the amplification to a resonance. Jan et al. (2004b) modeled the tides using an optimization approach. Zhu, et al. (2009), Hu et al. (2010), and Zeng et al. (2012) further developed more accurate numerical models. Yu et al. (2017) studied the propagation and dissipation of tidal waves in the strait”.

Line 24. “and Ye et al. (1985)” has been added after “Fang et al. (1984, 1999)”.

Line 26. “2004” has been changed to “2004a”.

Page 5.

Line 2. “ $u = \sqrt{\frac{g}{h}}\zeta$ ” has been changed to “ $u = \pm \sqrt{\frac{g}{(1-i\mu)h}}\zeta$ ”.

Page 6.

Lines 3-5. The statement “Strictly speaking, Eq. (6) is valid only in the frictionless case; if friction is considered, it contains an error of the order of μ^2 , and there is a phase difference between u and ζ (Fang and Wang, 1966). In the present study we still use the form of Eq. (6) due to smallness of the value μ .” has been changed to “The relationship between u and ζ shown in Eq. (6) is based on the solution for progressive Kelvin waves in presence of friction, which will be given in Eqs. (9) and (10) below. If $\mu \ll$

1, a simpler equation $u = \pm \sqrt{\frac{g}{h}}\zeta$ can be used to replace Eq. (6).”

Line 19. The equation (16) “ $s_n = (r_n^2 - \alpha^2 + \beta^2)^{\frac{1}{2}}$ ” has been changed to “ $s_n = (r_n^2 + \alpha^2 - \beta^2)^{\frac{1}{2}}$ ”.

Page 7.

Line 17. “(e.g. Godin 1965)” has been changed to “as can be seen from large s_n in (11) and (12)”.

Page 8.

Lines 18-19. “along the Taiwan coast” has been added before “the wave propagates southward” and the words “northeast” and “southeast” have been changed to “northern” and “southern”, respectively.

Line 19. “The highest amplitude band presents roughly...” has been changed to “The largest amplitudes are roughly...”.

Line 25. The word “a” has been replaced by “only”.

Page 9.

Line 1. “wave alone” has been changed to “waves”.

Line 9. “Poincaré mode plays” has been changed to “Poincaré modes play”.

Line 10. “Poincaré mode has” has been changed to “Poincaré modes make”.

Line 16. “Poincaré mode is” has been changed to “Poincaré modes are”.

Line 17. “Poincaré mode” has been changed to “Poincaré modes”.

Line 19. “.. but had an angle” has been changed to “... but has an angle”.

Line 20. The word “here” has been added after “... the superposed tides”.

Page 10.

Line 1. “which exceeds” has been changed to “exceeding”.

Line 20. “... is weaker than the northward wave ...” has been changed to “... is weaker than the southward wave ...”.

Page 11.

Line 4. “... there is also an anti-nodal band ...” has been changed to “... there is again an anti-nodal band ...”.

Page 12.

Figure 5. (and other places: Page 13. Figure 6 and Page 14. Figure 7) has been replaced with a re-computed results.

Line 6. “... we performed the second experiment ...” has been changed to “... we performed a second experiment ...”

Page 13.

Line 4. “... performing the third experiment ...” has been changed to “... performing a third experiment ...”

Page 14.

Lines 12. “Kelvin waves” have been changed to “Kelvin wave”.

Revision #2

An analytical study of M_2 tidal waves in the Taiwan Strait using an extended Taylor method

5 Di Wu¹, Guohong Fang^{1,2}, Xinmei Cui^{1,2}, Fei Teng^{1,2}

¹The First Institute of Oceanography, State Oceanic Administration, Qingdao, 266061, China

²Laboratory for Regional Oceanography and Numerical Modeling, Qingdao National Laboratory for Marine Science and Technology, Qingdao, 266237, China

Correspondence to: Guohong Fang (fanggh@fio.org.cn)

10 **Abstract.** The tides in the Taiwan Strait (TS) feature large semidiurnal lunar (M_2) amplitudes. An extended Taylor method is employed in this study to provide an analytical model for the M_2 tide in the TS. The strait is idealized as a rectangular basin with a uniform depth, and the Coriolis force and bottom friction are retained in the governing equations. The observed tides at the northern and southern openings are used as open boundary conditions. The obtained analytical solution, which consists of a stronger southward propagating Kelvin wave, a weaker northward propagating Kelvin wave, and two families of

15 Poincaré modes trapped at the northern and southern openings, agrees well with the observations in the strait. The superposition of two Kelvin waves basically represents the observed tidal pattern, including an anti-nodal band in the central strait, and the cross-strait asymmetry (greater amplitudes in the west and smaller in the east) of the anti-nodal band. Inclusion of Poincaré modes further improves the model result in that the cross-strait asymmetry can be better reproduced. To explore the formation mechanism of the northward propagating wave in the TS, three experiments are carried out, including the deep

20 basin south of the strait. The results show that the southward incident wave is reflected to form a northward wave by the abruptly deepened topography south of the strait, but the reflected wave is slightly weaker than the northward wave obtained from the above analytical solution, in which the southern open boundary condition is specified with observations. Inclusion of the forcing at the Luzon Strait strengthens the northward Kelvin wave in the TS, and the forcing is thus of some (but lesser) importance to the M_2 tide in the TS.

25 1 Introduction

The Taiwan Strait (TS) is the sole passage connecting the East China Sea (ECS) and the South China Sea (SCS). The strait is approximately 350 km long, 200 km wide and located mostly on the continental shelf with a mean depth of approximately

50 metres. The bottom topography of the TS can be viewed as the extension of the ECS shelf in the north and becomes irregular in the south. The SCS deep basin is located south of the strait and is connected to the Pacific Ocean through the Luzon Strait (LS). An abrupt depth change is present between the TS and the SCS deep basin (Fig. 1).

The tides in the strait feature large M_2 amplitudes. The greatest amplitude based on tidal gauge observations along the western Taiwan coast, reported by Jan et al. (2004b), is 1.73 m at Taichung and is 2.10 m at Matsu near the mainland coast. Matsu is an island located approximately 20 km away from the coast. Satellite observations indicate that the greatest amplitude appears near Haitan Island, located south of Matsu (Fig. 2), and exceeds 2.2 m. Thus, the tidal regime of the M_2 constituent has an anti-nodal band near the cross-strait line from Haitan to Taichung, with greater amplitudes in the west and smaller in the east, and this feature is called asymmetry by Yu et al. (2015). Compared to M_2 , which has maximum amplitude over 2.2 m, the amplitudes of the rest of the constituents are much smaller: the maximum amplitudes of S_2 , K_1 and O_1 observed at 11 coastal gauge stations reported by Jan et al. (2004b) are 0.66, 0.39 and 0.27 m, respectively. Figure 2 displays the distribution of the M_2 tidal constituent based on the global tidal model DTU10, which is constructed on the basis of multi-mission altimeter observations. Hereafter, we shall regard the DTU10 model results as observations. The tides in the TS have attracted a great number of studies since the 1980s. Yin and Chen (1982) first developed two-dimensional model for tides in the TS without showing tidal currents. Fang et al. (1984) again developed a two-dimensional model and obtained rather accurate distribution of tidal currents. They suggested that the semidiurnal tidal motion in the TS was maintained mainly by the energy flux from the ECS and partly by that from the SCS. Ye et al. (1985) and Lü and Sha (1999) developed three-dimensional models for the strait and also found that the southward energy flux of semidiurnal tides from the ECS was much greater than the northward flux. Lin et al. (2000, 2001) emphasized the anomalous amplification of semidiurnal tides in the strait, and attributed the amplification to a resonance. Jan et al. (2004b) modeled the tides using an optimization approach. Zhu, et al. (2009), Hu et al. (2010), and Zeng et al. (2012) further developed more accurate numerical models. Yu et al. (2017) studied the propagation and dissipation of tidal waves in the strait. It has been well recognized from these numerical investigations that the semidiurnal tides in the TS consist mainly of two oppositely propagating waves, one from north to south and another from south to north. In particular, Fang et al. (1984, 1999) and Ye et al. (1985) suggested that the semidiurnal tidal motion in the TS was maintained mainly by the energy flux from the ECS and partly by that from the SCS. Jan et al. (2002, 2004a) further noticed that the southward propagating wave could be reflected when encountering the sharply deepened bottom topography south of the strait and suggested that the reflected wave is the main component of the northward propagating wave and that the contribution of the SCS is negligible. Yu et al. (2015) completed an extensive numerical study of the formation of the M_2 tide in the strait with a special focus on the asymmetric nature in the cross-strait direction.

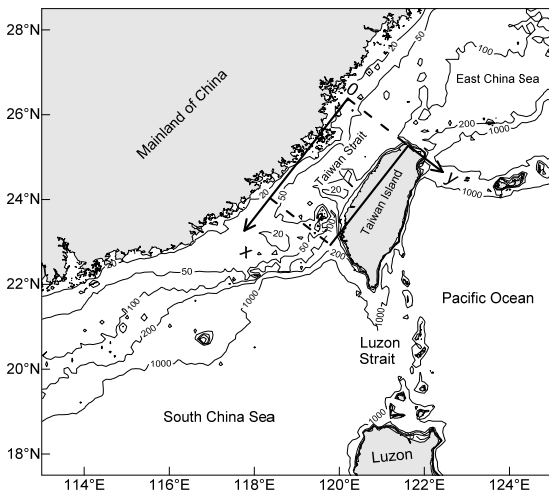
The existing studies almost all employed data analysis and numerical modelling, except that some simple dynamical analyses were performed using one-dimensional solutions to explain the model results by Jan et al. (2002) and Yu et al.

Deleted: Most studies have attempted to establish accurate numerical models and thus to give accurate spatial structures of the tides and tidal currents in the strait (Yin and Chen, 1982; Fang et al., 1984; Ye et al., 1985; Lü et al., 1999; Lin et al., 2000; Lin et al., 2001; Jan et al., 2002; Jan et al., 2004a; Jan et al., 2004b; Zhu, et al., 2009; Hu et al., 2010; Zeng et al., 2012; Yu et al., 2015; Yu et al., 2017).

Deleted: 2004

(2015). The purpose of the present study is to establish two-dimensional analytical models using an extended Taylor method (see Section 2 for details). In the analytical models, the classical Kelvin waves and Poincaré modes in idealized basins are used to approximately represent the tides in the natural basin. This enables us to estimate the strengths of the southward and the northward waves to reveal the role of each classical wave in the formation of the tides in the strait and to clarify how the waves are generated. In particular, we can roughly estimate the relative importance of the reflected wave at steep topography versus the incident wave from the LS in the formation of the northward Kelvin wave in the TS.

The Taylor problem is a classical tidal dynamic problem (Hendershott and Speranza, 1971). Since his pioneering work, Taylor's method has been subsequently developed and applied to many sea areas (e.g., Table 1 of Roos et al., 2011). In the previous applications, most of the studied basins have a closed end that can almost perfectly reflect the incident tidal wave, thus closely retaining the phase of the tidal elevation. In contrast, the topographic step south of the TS acts as a permeable interface that can only partially reflect the incident wave, and furthermore, the elevation phase of the reflected wave is changed by nearly 180° at the step (see Section 5.5 of Dean and Dalrymple, 1984). Therefore, the strait is also a locality of particular interest for the application of Taylor's method.



15 **Figure 1.** Bathymetric chart of the Taiwan Strait and its neighbouring area; the rectangle indicates the idealized model basin representing the Taiwan Strait. Isobaths are in metres (based on ETOPO1 from the US National Geophysical Center).

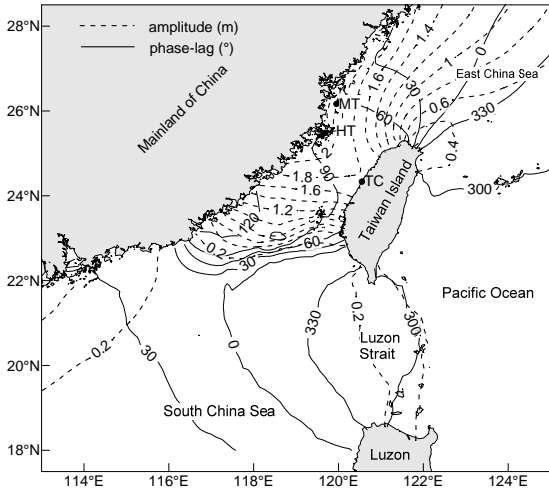


Figure 2. The M_2 tidal system in the Taiwan Strait and its neighbouring area (based on DTU10, see Cheng and Andersen, 2011). Solid lines represent the Greenwich phase-lag (in degrees), and dashed lines represent amplitude (in metres). (MT-Matsu, HT-Haitan, TC-Taichung)

5 2 Model formulation and solution method

Taylor (1922) first presented an analytical solution for tides in a semi-infinite rotating rectangular channel of uniform depth to explain the existence of amphidromic systems in gulfs. His solution showed that the tide in such a channel can be represented by the superposition of an incident Kelvin wave, a reflected Kelvin wave and a family of Poincaré modes trapped near the closed end. In 1925, Defant simplified Taylor's solution approach by applying the collocation method (see

10 Defant, 1961, pp. 213-215). In the original version of Taylor's problem, as well as the Defant's approach, the friction and open boundary condition were left out of consideration. Fang and Wang (1966) and Rienecker and Teubner (1980) extended the Taylor problem by taking friction into consideration in the governing equations. The introduction of friction can explain why the amphidromic point in the northern hemisphere shifts from the central axis toward the right, as seen from the closed end and looking seawards. The mechanism of the shift of the amphidromic point was also explained by Hendershott and

15 Speranza (1971), in which the dissipation was assumed to occur at the closed end of the basin rather than during the wave propagation. Fang et al. (1991) further extended the Taylor problem by introducing the open boundary condition, enabling solutions accounting for the finite length of the basin. Jung et al. (2005), Roos and Schuttelaars (2011), and Roos et al. (2011) further extended the Taylor method to model tides in multiple rectangular basins. The solution method used in the present study is basically the same as Fang et al. (1991), but with minor correction and generalization, as was done in studies

20 of Jung et al. (2005), Roos and Schuttelaars (2011), and Roos et al. (2011). The analytical method initiated by Taylor and developed afterward is called an extended Taylor method in this paper.

2.1 Governing equations and boundary conditions

The governing equations used in this study are as follows:

$$\begin{cases} \frac{\partial \tilde{u}}{\partial t} - f \tilde{v} = -g \frac{\partial \tilde{\zeta}}{\partial x} - \gamma \tilde{u} \\ \frac{\partial \tilde{v}}{\partial t} + f \tilde{u} = -g \frac{\partial \tilde{\zeta}}{\partial y} - \gamma \tilde{v} \\ \frac{\partial \tilde{\zeta}}{\partial t} = -h \left[\frac{\partial \tilde{u}}{\partial x} + \frac{\partial \tilde{v}}{\partial y} \right] \end{cases} \quad (1)$$

where t represents time; (x, y) are the Cartesian coordinates; (\tilde{u}, \tilde{v}) are the depth-averaged velocity components in the

5 (x, y) directions; $\tilde{\zeta}$ is the tidal elevation; h is the water depth, assumed uniform; γ is the frictional coefficient, taken as a constant; $g = 9.8 \text{ ms}^{-2}$ is the acceleration due to gravity; and f is the Coriolis parameter, also taken as a constant due to the smallness of the study area. The equations in (1) are two-dimensional linearized shallow water equations on an f -plane with the momentum advection neglected. The equations are the same as those used in the work of Taylor (1922), except that the bottom friction is incorporated, as in Fang and Wang (1966) and Rienecker and Teubner (1980). When a monochromatic

10 wave is considered, $(\tilde{\zeta}, \tilde{u}, \tilde{v})$ can be expressed as follows:

$$(\tilde{\zeta}, \tilde{u}, \tilde{v}) = \text{Re}\{(\zeta, u, v)e^{i\sigma t}\} \quad (2)$$

where (ζ, u, v) are complex amplitudes of $(\tilde{\zeta}, \tilde{u}, \tilde{v})$, respectively, and σ is the angular frequency of the wave, $i \equiv \sqrt{-1}$.

For this wave, the equations in (1) reduce as follows:

$$\begin{cases} (\mu + i)u - v = -\frac{g}{\sigma} \frac{\partial \zeta}{\partial x} \\ (\mu + i)v + u = -\frac{g}{\sigma} \frac{\partial \zeta}{\partial y} \\ \zeta = \frac{ih}{\sigma} \left[\frac{\partial u}{\partial x} + \frac{\partial v}{\partial y} \right] \end{cases} \quad (3)$$

15 in which $\mu = \frac{\gamma}{\sigma}$, $v = \frac{f}{\sigma}$.

Considering a rectangular basin with two parallel sidewalls of length L and with a width B , we placed the x axis along a sidewall and the y axis perpendicular to the x axis and pointing to the other sidewall. Thus, the basin is confined by $x = 0, L$ and $y = 0, B$, respectively. The boundary conditions along the sidewalls are taken as follows:

$$v = 0 \text{ at } y = 0 \text{ and } y = B \quad (4)$$

20 within $x \in (0, L)$. Along the cross sections, $x = 0$ and $x = L$, various choices of boundary conditions are applicable depending on the problem concerned:

$$u = 0, \text{ if the cross section is a closed boundary;} \quad (5)$$

$$u = \pm \sqrt{\frac{g}{(1-i\mu)h}} \zeta, \text{ if the free radiation in the positive/negative } x \text{ direction occurs on the cross section;} \quad (6)$$

$$\zeta = \zeta, \text{ if the tidal elevation is specified as } \zeta \text{ along the cross section;} \quad (7)$$

25 and/or

$$\zeta_A = \zeta_B \text{ and } u_A h_A = u_B h_B, \text{ if the cross section is a connecting boundary of two basins } A \text{ and } B, \text{ each with a different uniform depth of } h_A \text{ and } h_B. \quad (8)$$

Deleted: $\sqrt{\frac{g}{h}}$

The equations in (8) show the matching conditions accounting for sea level continuity and volume transport continuity, respectively. The individual equations (5) to (8), or their combination, may be used as boundary conditions for the cross sections. The relationship between u and ζ shown in Eq. (6) is based on the solution for progressive Kelvin waves in

presence of friction, which will be given in Eqs. (9) and (10) below. If $\mu \ll 1$, a simpler equation $u = \pm \sqrt{\frac{g}{n}} \zeta$ can be used

5 to replace Eq. (6).

Deleted: Strictly speaking, Eq. (6) is valid only in the frictionless case; if friction is considered, it contains an error of the order of μ^2 , and there is a phase difference between u and ζ (Fang and Wang, 1966). In the present study we still use the form of Eq. (6) due to smallness of the value μ .

2.2 General solution and collocation method

The governing equations in (3) have only the following four forms satisfying the sidewall boundary condition of (4) (see Fang et al., 1991, an error in the equation for β in their paper has been corrected here. Note: the error occurred during their preparation of the manuscript and the correct expression was used in their computations):

$$10 \quad \begin{cases} v_1 = 0 \\ u_1 = -a \exp(\alpha y + i\beta x) \\ \zeta_1 = \frac{\beta}{\sigma} ha \exp(\alpha y + i\beta x) \end{cases} \quad (9)$$

$$\begin{cases} v_2 = 0 \\ u_2 = b \exp[-(\alpha y + i\beta x)] \\ \zeta_2 = \frac{\beta}{\sigma} hb \exp[-(\alpha y + i\beta x)] \end{cases} \quad (10)$$

$$\begin{cases} v_3 = \sum_{n=1}^{\infty} \kappa_n \sin r_n y \exp(-s_n x) \\ u_3 = \sum_{n=1}^{\infty} \kappa_n (A_n \cos r_n y + B_n \sin r_n y) \exp(-s_n x) \\ \zeta_3 = \frac{ih}{\sigma} \sum_{n=1}^{\infty} \kappa_n (C_n \cos r_n y + D_{1,n} \sin r_n y) \exp(-s_n x) \end{cases} \quad (11)$$

and

$$\begin{cases} v_4 = \sum_{n=1}^{\infty} \lambda_n \sin r_n y \exp[-s_n(L-x)] \\ u_4 = \sum_{n=1}^{\infty} \lambda_n (A'_n \cos r_n y + B'_n \sin r_n y) \exp[-s_n(L-x)] \\ \zeta_4 = \frac{ih}{\sigma} \sum_{n=1}^{\infty} \lambda_n (C'_n \cos r_n y + D'_n \sin r_n y) \exp[-s_n(L-x)] \end{cases} \quad (12)$$

15 where

$$\alpha = \frac{v}{(1-i\mu)^{\frac{1}{2}}} k \quad (13)$$

$$\beta = (1-i\mu)^{\frac{1}{2}} k \quad (14)$$

$$r_n = \frac{n\pi}{B} \quad (15)$$

$$s_n = \sqrt{(r_n^2 + \alpha^2 - \beta^2)^{\frac{1}{2}}} \quad (16)$$

Deleted: $(r_n^2 - \alpha^2 + \beta^2)^{\frac{1}{2}}$

20 in which $k = \sigma/c$ is the wave number, with $c = \sqrt{gh}$ being the wave speed of the Kelvin wave in the absence of friction.

In Eq. (16), s_n has two complex values for each n , and here, we choose the one that has a positive real part. To satisfy equations in (3), (A_n, B_n, C_n, D_n) and (A'_n, B'_n, C'_n, D'_n) should be as follows:

$$A_n = \frac{[(\mu+i)^2 + v^2] r_n s_n}{(\mu+i)^2 r_n^2 + v^2 s_n^2} \quad (17)$$

$$B_n = \frac{v(\mu+i)(\alpha^2 - \beta^2)}{(\mu+i)^2 r_n^2 + v^2 s_n^2} \quad (18)$$

$$25 \quad C_n = r_n - s_n A_n \quad (19)$$

$$D_n = -s_n B_n \quad (20)$$

$$A'_n = -A_n \quad (21)$$

$$B'_n = B_n \quad (22)$$

$$C'_n = C_n \quad (23)$$

$$5 \quad D'_n = -D_n \quad (24)$$

Eqs. (9) and (10) represent Kelvin waves propagating in the $-x$ and x directions, respectively; Eqs. (11) and (12) represent two families of Poincaré modes trapped at the cross sections $x=0, L$, respectively. Coefficients $(a, b, \kappa_n, \lambda_n)$ are related to amplitudes and phases of Kelvin waves and Poincaré modes. These coefficients are to be determined by boundary conditions.

10 The collocation method is convenient when determining the coefficients $(a, b, \kappa_n, \lambda_n)$. The calculation procedure can be as follows. First, we truncate the family of Poincaré modes, Eqs. (11) and (12), at the N -th order, so that the number of undetermined coefficients for Poincaré modes is $2N$ and the total number of undetermined coefficients (plus those for Kelvin waves) is thus $2N + 2$. To determine these unknowns, we take equally spaced $N + 1$ dots, called collocation points, located at $y = \frac{B}{2(N+1)}, \frac{3B}{2(N+1)}, \dots, \frac{(2N+1)B}{2(N+1)}$ on both the cross sections $x = 0$ and L . At these points, one of the boundary

15 conditions given by Eqs. (5) - (8) should be satisfied. This yields $2N + 2$ equations. By solving this system of equations, we can obtain $2N + 2$ coefficients $(a, b, \kappa_n, \lambda_n)$. Since the high-order Poincaré modes decay from the boundary very quickly as can be seen from large s_n in (11) and (12), it is generally necessary to retain only a few lower order terms.

Deleted: (e.g., Godin, 1965)

3 Application to the Taiwan Strait

3.1 Model configuration and solution

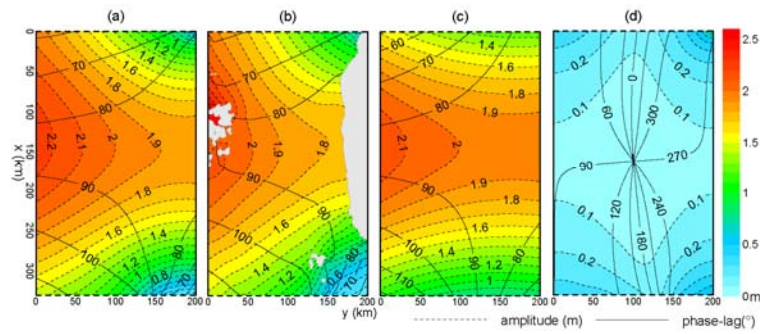
20 In this section, we will first establish an idealized analytical model for the TS. The strait is idealized as a rectangular basin with two sidewalls roughly along the China mainland and Taiwan coastlines, as shown in Fig. 1. The width and length of the model domain are taken as $B=200$ km and $L=330$ km, respectively. The depth is taken as $h = 52$ m, a mean depth calculated based on ETOPO1. We place the origin of the coordinates at the northernmost corner of the rectangle, the x axis along the mainland coast, and the y axis in an offshore direction. The axis of the strait is toward the south to southwest.

25 However, to keep it short, we will hereafter simply use "south" to refer "south to southwest", and similarly for other directions. The Coriolis parameter f is taken as $0.594 \times 10^{-4} \text{s}^{-1}$, corresponding to a latitude of $\varphi = 24^\circ \text{N}$. The angular frequency of the M_2 tide is $1.4052 \times 10^{-4} \text{s}^{-1}$. The friction coefficient γ can be estimated from the relation $\gamma = C_D \left(\frac{g}{3\pi} \right) \frac{U}{h}$, in which C_D and U represent the drag coefficient and amplitude of the M_2 tidal current, respectively (e.g., Chapter 8 of Dronkers, 1964). In this study, we take $C_D = 0.0026$ and $U = 0.5$ m/s based on the numerical results of Fang et al. (1984),

30 and then, $\mu = \gamma/\sigma$ is approximately equal to 0.15. From these parameter values, we can obtain the wavelength of the M_2

Kelvin wave as 1009 km. Since the basin width is smaller than half of the Kelvin wavelength, the Poincaré modes can only exist in a bound form (Godin, 1965; Fang and Wang, 1966). The e-folding length of decay of the lowest Poincaré mode is approximately 63 km, that is, the amplitude of this mode reduces to approximately 37% relative to its maximum value at a distance of 63 km away from the boundary. Equivalently, it may also reduce to approximately 20% relative to its maximum value at a distance of 100 km. The length scales of decay for higher order Poincaré modes are even shorter.

In this study, the families of Poincaré modes are truncated at $N = 19$ and 20 collocation points set along both the northern and southern open boundaries. The boundary condition (7) is employed with the values of $\hat{\zeta}$ equal to the observed harmonic constants from the global tide model DTU10 (Cheng and Anderson, 2011).



10 **Figure 3.** Tidal system charts for the M_2 constituent: (a) Present analytical model; (b) Observed distribution based on DTU10; (c) Contribution of Kelvin waves; (d) Contribution of Poincaré modes. Solid lines represent Greenwich phase-lag (in degrees); dashed lines represent amplitude (in metres).

The obtained analytical solution of the M_2 constituents is shown in Fig. 3a. For comparison, the observed M_2 tidal system chart based on DTU10 is also shown in Fig. 3b. Although the complicated bottom topography and the irregular coastlines are greatly simplified, the analytical model still agrees well with the observation. The observed tidal regime features significantly greater amplitudes along the mainland coast than along the Taiwan coast, showing the cross-strait asymmetry. The phase-lags near the mainland coast increase from north to south, showing a progressive wave nature, while those near the middle Taiwan coast have only small changes, showing a standing wave nature. That is, along the Taiwan coast the wave propagates southward in the northern area and propagates northward in the southern area. The largest amplitudes are roughly along the cross section of 150 km and appears as an anti-nodal band. The phase-lags in this band range from 80° to 90°.

These features have all been reproduced in the analytical model.

3.2 Kelvin waves and Poincaré modes

To reveal the relative importance of the Kelvin waves and Poincaré modes in the model, the superposition of two Kelvin waves is given in Fig. 3c and that of the Poincaré modes is given in Fig. 3d. The contribution of the Poincaré modes is observed to be much smaller than that of the Kelvin waves. The tidal system chart constructed using only superposed Kelvin

- Deleted: northeast
- Deleted: southeast
- Deleted: highest amplitude band presents
- Deleted: $x \approx$

Deleted: a

waves (Fig. 3c) resembles the complete model (Fig. 3a) and the observation (Fig. 3b) quite well, though the inclusion of the Poincaré modes improves the model to a certain degree. From Fig. 3a we can see that the difference between the highest amplitude on the west sidewall and that on the east sidewall in the anti-nodal band is approximately 0.4 m, while the corresponding difference shown in Fig. 3c is approximately 0.2 m. Thus, approximately half of the cross-strait asymmetry is explained by the superposition of two oppositely propagating Kelvin waves, with the southward one being stronger than the one moving northward. Here, both the Coriolis force and the weaker northward wave are the major factors. The superposition of Poincaré modes in this band has an amplitude of approximately 0.1 m on both sides and has nearly the same phase-lag as the superposed Kelvin wave on the west and a nearly opposite phase-lag to the superposed Kelvin wave on the east. Therefore, the superposed Poincaré modes play a role to increase the amplitudes in the west and reduce the amplitudes in the east and hence enhances the asymmetry. The superposed Poincaré modes make nearly the same contribution to the cross-strait asymmetry as the superposed Kelvin wave.

From the comparison, we find that the amplitude variation along the northern boundary in Fig. 3c is less than that in Fig. 3a. This shows that near the boundary, the Poincaré modes are of a certain importance. The existence of the Poincaré modes is related to the fact that the M_2 tide is from the Pacific Ocean; its amplitude increases from the deeper outer shelf toward the shallower inner shelf. This amplitude variation cannot be completely represented by the superposed Kelvin wave at a uniform depth, and a superposed Poincaré modes are necessary to compensate for their difference. The situation at the southern boundary is similar. The distribution of the superposed Poincaré modes in the anti-nodal band is clearly related to those at the northern and southern openings (Fig. 3d). Yu et al. (2015) suggested that the orientation of the topographic step south of the strait was not perpendicular to the strait axis but has an angle. This might cause the reflected wave to propagate toward the mainland coast and thus amplify the tides there. The present solution indicates that the obliqueness of the topographic step south of the TS may also play a role in the formation of the cross-strait asymmetry, as suggested by Yu et al. (2015), but it seems not to be a controlling factor.

The obtained analytical solution enables us to see the magnitudes and characteristics of both the southward and northward Kelvin waves. These two oppositely propagating waves, which correspond to Eqs. (9) and (10) respectively, are displayed separately in Figs. 4a and 4b. From Fig. 4a, we see that the phase-lag of the southward wave increases from north to south. The amplitude decreases from north to south due to friction and from west to east due to the Coriolis effect. The characteristics of the northward wave are the opposite. The area mean amplitude of the southward wave is 1.18 m, while that of the northward wave is 0.84 m, smaller than the former by 0.34 m. Along the western sidewall, the amplitudes of the southward wave range from approximately 1.4 m to 1.6 m, while those of the northward wave range from approximately 0.6 to 0.7 m; thus, the superposition of the waves is dominated by the former and appears as a southward progressive wave. Around the cross section $x \approx 150$ km, the phase-lags of the southward and northward waves are nearly equal, between 80° and 90° . Thus, the superposed tides here have the greatest amplitudes equal to the sum of the amplitudes of these two waves,

Deleted: wave alone

Deleted: mode plays

Deleted: mode has

Deleted: mode is

Deleted: mode

Deleted: had

exceeding 2.1 m, as already seen in Fig. 3c. Along the eastern sidewall, however, the differences in amplitudes of the southward and northward waves are much smaller, and thus, the superposition of the waves tends to appear as a standing wave. Around the point $x \approx 150$ km, the phase-lags of the southward and northward waves are also nearly equal. Thus, the amplitude of the combined tide is also relatively large, equal to the sum of the amplitudes of these two waves, but now it is only slightly greater than 1.9 m, which is smaller than the corresponding value at the western sidewall.

Deleted: which exceeds

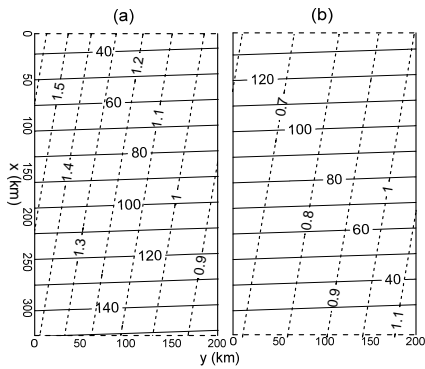


Figure 4. Southward (a) and northward (b) propagating Kelvin waves. Solid lines represent Greenwich phase-lag; dashed lines represent amplitude (in metres).

4 Formation mechanism of the northward Kelvin wave in the Taiwan Strait

In the preceding section, we have shown that the northward Kelvin wave is weaker than the southward wave on average, but they have a similar magnitude along the Taiwan coast. In this section, we will examine the formation mechanism of the northward Kelvin wave. There are two possible origins for the northward Kelvin wave in the TS. One is the reflection of the southward wave at sharply deepened topography and another is an incident wave from the Luzon Strait propagating toward the TS. In the following, we examine their respective contributions by using the extended Taylor models.

Deleted: northward

4.1 Reflection of the incident wave from the East China Sea at the topographic step

Three experiments have been carried out to explore the formation mechanism of the northward Kelvin wave in the TS. The first experiment (denoted as Ex. 1) has the model geometry shown in Fig. 5a. The TS is represented by area A, with the width and depth equal to the above single area model. Since the topographic step is located away from the southern boundary of the single area model domain (Fig. 1), we extend the length of the area to 400 km. Area B represents the deep basin south of the topographic step, and the water depth of the deep basin is taken as 1000 m, as was done in Jan et al. (2002 and 2004). The purpose of this experiment is to examine the effect of the topographic step in reflecting the incident wave from the ECS. The experimental design for area A is similar to that of Roos and Schuttelaars (2011): a southward Kelvin wave is specified to be identical to the single basin solution, as shown in Fig. 4a in the preceding section. The Poincaré modes trapped at the cross

section $x=0$ are neglected, while those trapped at the cross section $x=400$ km are retained. The matching condition (8) is applied at the connecting boundary of areas A and B, and the radiative condition (6) is used at the southernmost opening.

Figure 5b displays the solution of Ex.1. It can be seen that the basic pattern of the tidal regime is similar to that of the single area model solution shown in Fig. 3c. In particular, there is ~~again an anti-nodal band near $x=150$ km, though the amplitudes~~ in this band produced by this experiment are smaller than those given in Fig. 3c. The smallest amplitudes appear along the connecting cross section, showing that a nodal band exists there. Therefore, the anti-node is located approximately 250 km away from the topographic step. The wavelength of the M_2 tide in a channel of a uniform depth of 52 m is equal to 1009 km, and so, the distance between the anti-node and the topographic step is equal to one quarter of the wavelength. This result further implies that if the channel were 500 km long, resonance would occur. However, Taiwan Island is approximately 380 km long and is not able to support a resonance for the M_2 constituent. In fact, the resonant period of the TS is 13.5 h, according to the experiments performed by Cui et al. (2015), which is almost the same as one of the resonant periods of the ECS (13.7 h, obtained by Cui et al., 2015). This means that the tidal response in the TS is not independent, but rather closely related to the tides in the ECS.

The southward and northward Kelvin waves obtained from Ex. 1 are shown in Figs. 5c and 5d, respectively. Comparison of these figures with Figs. 4a and 4b indicates that in area A, the southward wave is identical, but the northward wave from Ex. 1 is weaker. For the area $x=0$ to 330 km and $y=0$ to 200 km, the area mean amplitude of the northward Kelvin wave is 0.57 m, which is smaller than the single area model value by 32%. In area B, the amplitudes of the transmitted southward Kelvin wave are approximately 0.4 m, and those of the northward wave are negligible. An important difference in the co-phase-lag distributions is that Figs. 3a-c show a northward propagation along the southern part of the eastern sidewall, while Fig. 5b does not have such a feature. This is because in the single area case, the amplitudes of the northward Kelvin wave are greater than those of the southward Kelvin wave in this area (Figs. 4a, 4b), while in Ex. 1, this situation does not occur (Figs. 5c, 5d).

The relative magnitudes of the incident and the reflected and transmitted Kelvin waves can be evaluated by comparing their amplitudes along the connecting cross section at $x=400$ km. The sectional mean amplitudes for the incident, reflected and transmitted waves, H_i , H_r and H_t are 1.06, 0.64 and 0.40 m, respectively (Figs. 5c, 5d). Thus, the ratios H_r/H_i and H_t/H_i are equal to 0.61 and 0.37 respectively. The corresponding values based on the theory ignoring the earth's rotation can be calculated from $\frac{H_r}{H_i} = \frac{1-\rho}{1+\rho}$ and $\frac{H_t}{H_i} = \frac{2\rho}{1+\rho}$ with $\rho = \sqrt{h_A/h_B}$ (e.g., Dean and Dalrymple, 1984, p. 144). Substitution of the present model depths into these equations yields $H_r/H_i = 0.63$ and $H_t/H_i = 0.37$. This indicates that the magnitude of the reflected waves in the two-dimensional case with the earth's rotation being taken into account is smaller than that based on the theory with the earth's rotation being ignored.

Deleted: also

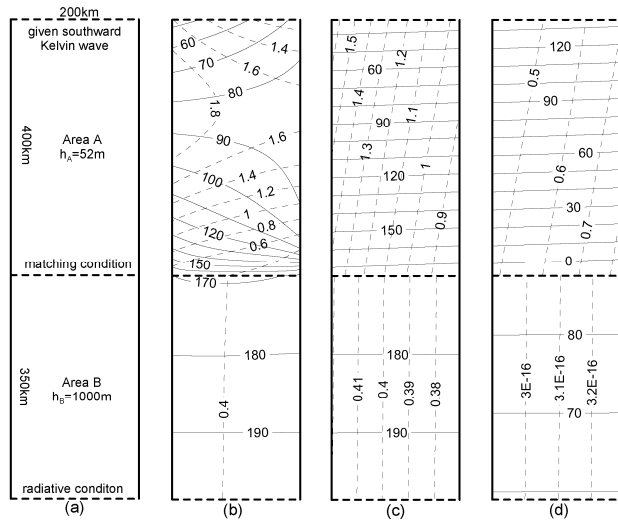
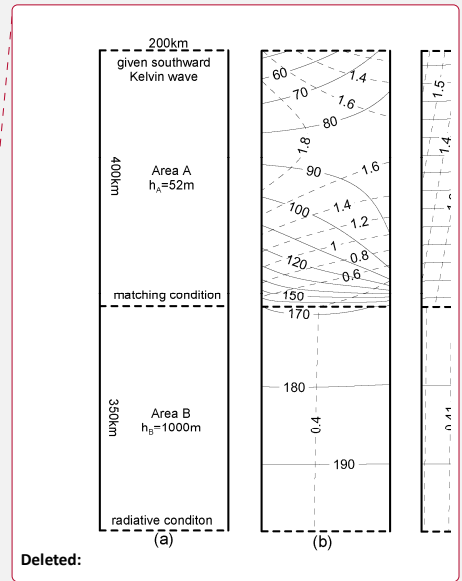


Figure 5. Model domain and boundary conditions of Ex. 1 (a); solution of Ex. 1 (b); southward Kelvin waves (c); northward Kelvin waves (d). Solid lines represent Greenwich phase-lag (in degrees); dashed lines represent amplitude (in metres).

4.2 Influence of the shelf region southwest of the Taiwan Strait

5 From Fig. 1, we can see that there is a narrow shelf along the mainland coast. To simulate the effect of the narrow shelf on the tides in the TS, we performed a second experiment, numbered Ex. 2. In this experiment, the deep basin has moved 60 km eastward, allowing the tides in the shallow basin to freely radiate southward as shown in Fig. 6a. The radiative condition (6) is retained along the southernmost opening. The results of Ex. 2 are given in Fig. 6. It can be seen that the tides in area A have only small changes, though the deep basin has moved 60 km eastward. Observable changes can only be found in area B where the tidal amplitudes are slightly reduced.



Deleted:

Deleted: the

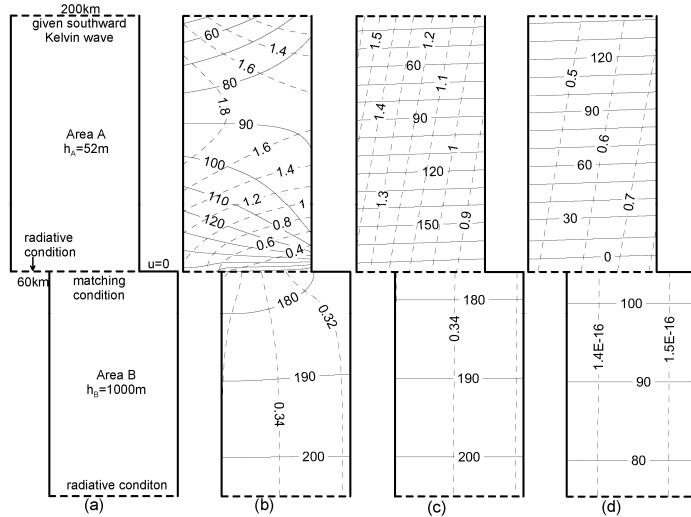
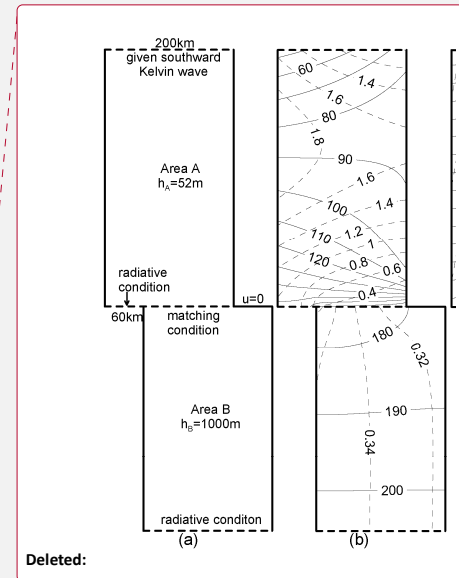


Figure 6. Same as Figure 5, but for Ex. 2.

4.3 Influence of the Luzon Strait forcing

The purpose of performing a third experiment, numbered Ex. 3, is to consider the tidal input from the LS. The major difficulty in including the LS input in Taylor's model for the TS is that the LS has a meridional orientation, while Taylor's model does not allow any part of the sidewalls to open. Here, we will use a rather crude model to solve this issue. We use the same model domain as Ex. 2, but the radiative boundary condition (6) is retained only for the west segment of the southernmost opening, and the boundary condition (7) is applied to the remaining east segment of the opening. From Fig. 1, we can see that the cross section from the mainland shelf to the LS is much longer than the width of the LS. Thus, in our model, we take the lengths of the west and east segments to be 120 km and 80 km, respectively, as shown in Fig. 7a. In addition, from Fig. 2, we observe that the tidal amplitude along the LS is roughly 0.2 m, and the phase-lag is approximately 310° . Since a significant portion of the incident wave from the LS propagates toward the SCS deep basin (e.g., Fang et al., 1999; Yu. et al., 2015), we use a 0.1 m amplitude and 310° phase-lag as an open boundary condition for the east segment of the southernmost opening in Ex. 3. The model results are given in Figs. 7b to 7d. From Fig. 7b, we can see that the amplitudes of the tide in area A now become greater than the results of Ex. 2 (Fig. 6b), and a northward propagating character can be seen in the south-eastern portion of area A. These improvements can be attributed to the increased amplitudes of the northward Kelvin wave (Figs. 6d, 7d).



Deleted: the

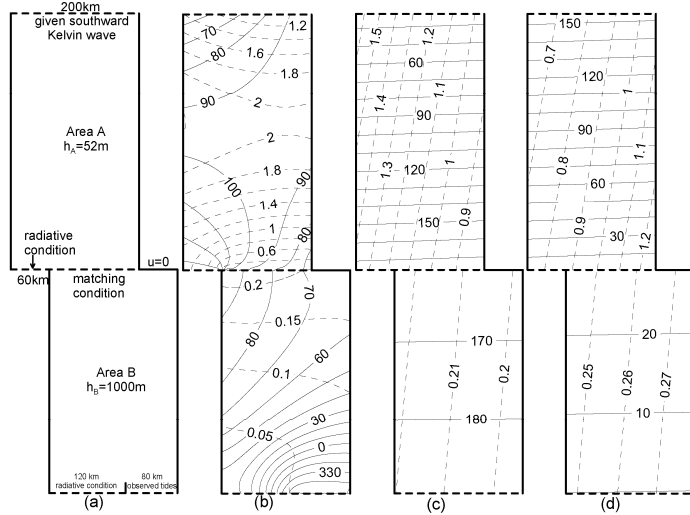


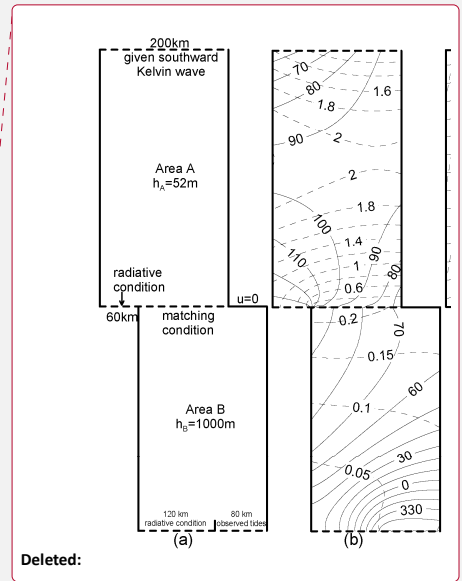
Figure 7. Same as Figure 5, but for Ex. 3.

5 Summary and discussion

In the present study, we first established an analytical model for the M_2 tide in the TS using the extended Taylor method. The superiority of the analytical solution is that the tides can be decomposed into a southward Kelvin wave, a northward Kelvin wave, and two families of Poincaré modes, providing a deeper insight into the dynamics of the tides in the area. Though the coastlines and bottom topography are greatly simplified, the model-produced pattern resembles the observed tidal regime quite well. We then carried out several experiments to examine the formation mechanism of the northward propagating wave, especially the roles of the abruptly deepened bottom topography south of the TS and the tidal forcing in the LS in the formation of the northward wave. From this study, we have obtained the following results.

The M_2 tide in the TS can be basically represented by the superposition of a southward propagating and a northward propagating Kelvin wave, with the former being stronger than the latter. The superposed Kelvin waves give an anti-nodal band near the cross-strait transection, roughly from Haitan Island to Taichung. The maximum amplitude on the mainland side is greater than that on the Taiwan side, showing the cross-strait asymmetry. Therefore, the observed features can be reproduced by the superposition of a stronger southward propagating and a weaker northward propagating Kelvin wave. In this regard, the Coriolis force and the weaker northward wave play essential roles.

Inclusion of the Poincaré modes in the analytical model improves the model results: the east to west increase in amplitudes along the northern and southern openings is better reproduced; and in particular, the Poincaré modes make approximately the same contribution as the Kelvin waves to the cross-strait asymmetry in the anti-nodal band.



The reflection of the southward wave at the abruptly deepened topography south of the TS is a major contribution to the formation of the northward propagating wave in the strait. However, the reflected wave is slightly weaker than that obtained from the analytical solution with open boundary conditions determined by the observations. Inclusion of the tidal forcing at the LS strengthens the northward Kelvin wave in the TS and thus improves the model result. This indicates that the LS forcing is of some (but lesser) importance to the M_2 tide in the TS.

The analytical solutions can help us to understand the dynamics of tidal motion in the TS, but there are some limitations. For example, the LS is located on the east side of the study area, while the Taylor model does not allow for a forcing on the sidewalls, and thus, we are bound to let a part of southern opening represent the LS (Fig. 7a). In addition, we have assumed that the water depth changes from 52 m to 1000 m immediately at the connecting cross section without considering the existence of the continental slope at that location. The obliqueness of the orientation of the topography step relative to the cross-strait direction is also ignored. These approximations will induce uncertainty in the results for the magnitude of the reflected wave.

Acknowledgements. This study was supported by the NSFC-Shandong Joint Fund for Marine Science Research Centers (Grant No. U1406404), the National Natural Science Foundation of China (Grant No. 41706031), the Basic Scientific Fund for National Public Research Institutes of China (Grant No. 2014G15), and the National Key Research and Development Program of China (Grant No. 2017YFC1404201). The authors sincerely thank Dr. Huthnance and two anonymous Referees for their constructive comments and suggestions, which are of great help in improving our study.

References

- Cheng, Y. C., and Andersen, O. B.: Multimission empirical ocean tide modeling for shallow waters and polar seas, *Journal of Geophysical Research: Oceans*, 116, 1130-1146, 2011.
- Cui, X., Fang, G., Teng, F., and Wu, D.: Estimating peak response frequencies in a tidal band in the seas adjacent to China with a numerical model, *Acta Oceanologica Sinica*, 34, 29-37, 2015.
- Dean, R. G. and Dalrymple, R. A.: *Water Wave Mechanics for Engineers and Scientists*, World Scientific Publishing Co. Pte. Ltd, Singapore, 353 pp., 1984.
- Defant, A.: *Physical oceanography*, Vol. II, Pergamon Press, New York, 598 pp, 1961.
- Dronkers, J. J.: *Tidal Computations in Rivers and Coastal Waters*, North-Holland Publishing Company, Amsterdam, 518 pp, 1964.
- Fang, G. H. and Wang, J. S.: Tides and tidal streams in gulfs, *Oceanologia et Limnologia Sinica*, 8, 60-77 (in Chinese with English abstract), 1966.

- Fang, G. H., Yang, J. F., and Thao, Y. C.: A two-dimensional numerical model for tidal motion in the Taiwan Strait, *Marine Geophysical Research*, 7, 267-276, 1984.
- Fang, G. H., Kwok, Y. K., Yu, K. J., and Zhu, Y. H.: Numerical simulation of principal tidal constituents in the South China Sea, Gulf of Tonkin and Gulf of Thailand, *Continental Shelf Research*, 19, 845–869, 1999.
- 5 Fang, Z., Ye, A. L., and Fang, G. H.: Solutions of tidal motions in a semi-closed rectangular gulf with open boundary condition specified, *Tidal Hydrodynamics*, edited by: Paker, B. B., John Wiley & Sons Inc., New York, 153-168 pp., 1991.
- Godin, G.: Some remarks on the tidal motion in a narrow rectangular sea of constant depth, *Deep-Sea Research*, 12, 461-468, 1965.
- 10 Hendershott, M. C., and Speranza, A.: Co-oscillating tides in long, narrow bays; the Taylor problem revisited. *Deep-Sea Research*, 18, 959–980, 1971.
- Hu, C. K., Chiu, C. T., Chen, S. H., Kuo, J. Y., Jan, S., and Tseng, Y. H.: Numerical simulation of barotropic tides around Taiwan, *Terrestrial Atmospheric & Oceanic Sciences*, 21, 71-84, 2010.
- Jan, S., Chern, C. S., and Wang, J.: Transition of tidal waves from the East to South China Seas over the Taiwan Strait: Influence of the abrupt step in the topography, *Journal of Oceanography*, 58, 837-850, 2002.
- 15 Jan, S., Chern, C. S., Wang, J. and Chao S. Y.: The anomalous amplification of M_2 tide in the Taiwan Strait, *Geophysical Research Letters*, 31, L07308, doi:10.1029/2003GL019373, 2004a.
- Jan, S., Wang, Y. H., Wang D. P., and Chao, S. Y.: Incremental inference of boundary forcing for a three-dimensional tidal model: tides in the Taiwan Strait, *Continental Shelf Research*, 24, 337-351, 2004b.
- 20 Jung, K. T., Park, C. W., Oh, I. S., and So, J. K.: An analytical model with three sub-regions for M_2 tide in the Yellow Sea and the East China Sea, *Ocean Science Journal*, 40, 191-200, 2005.
- Lin, M. C., Juang, W. J., and Tsay, T. K.: Application of the mild-slope equation to tidal computations in the Taiwan Strait, *Journal of Oceanography*, 56, 625-642, 2000.
- Lin, M. C., Juang, W. J., and Tsay, T. K.: Anomalous amplifications of semidiurnal tides along the western coast of Taiwan, *Ocean Engineering*, 28, 1171-1198, 2001.
- 25 Lü, X. G. and Sha, W. Y.: Three-dimensional numerical simulation of M_2 tide in the Taiwan Strait. *Journal of Oceanography of the Huanghai and Bohai Seas*, 17, 16-25 (in Chinese with English abstract), 1999.
- Rienecker, M. M. and Teubner, M. D.: A note on frictional effects in Taylor's problem. *Journal of Marine Research*, 38, 183–191, 1980.
- 30 Roos P. C., and Schuttelaars H. M.: Influence of topography on tide propagation and amplification in semi-enclosed basins, *Ocean Dynamics*, 61, 21-38, 2011.
- Roos, P. C., Velema, J. J., Hulscher, S. J. M. H., and Stolk, A.: An idealized model of tidal dynamics in the North Sea:

- Resonance properties and response to large-scale changes, *Ocean Dynamics*, 61, 2019-2035, 2011.
- Taylor, G. I.: Tidal oscillations in gulfs and rectangular basins. *Proceedings of the London Mathematical Society*, Ser. 2, 20, 148-181, 1922.
- Ye, A. L., Chen, Z. Y., and Yu, Y. F.: Numerical investigation of three-dimensional semidiurnal waves in the Taiwan Strait and its adjacent areas, *Oceanologia et Limnologia Sinica*, 16, 439-450 (in Chinese with English abstract), 1985.
- 5 Yin, F., and Chen, S. H.: Tidal Computation on Taiwan Strait, *Journal of the Waterway Port Coastal & Ocean Division*, 108, 539-553, 1982.
- Yu, H. Q., Yu, H. M., Ding, Y., Wang, L., Kuang, L.: On M_2 tidal amplitude enhancement in the Taiwan Strait and its asymmetry in the cross-strait direction, *Continental Shelf Research*, 109, 198-209, 2015.
- 10 Yu, H. Q., Yu, H. M., Wang, L., and Kuang, L., Wang, H., Ding, Y., Ito, S. I., and Lawen, J.: Tidal propagation and dissipation in the Taiwan Strait, *Continental Shelf Research*, 136, 57-73, 2017.
- Zeng, G., Hu, J., Hong, H., and Qi, Y.: Numerical study on M_2 tidal system in the Taiwan Strait, *Procedia Environmental Sciences*, 12, 702-707, 2012.
- Zhu, J., Hu J. Y., Zhang, W. Z., Zeng, G. N., Chen, D. W., Chen J. Q., Shang S. P.: Numerical study on tides in the Taiwan Strait and its adjacent area, *Marine Science Bulletin*, 11(2), 23-36, 2009.
- 15