

We would like to thank both referees for their helpful comments and input, which we want to address in the following way:

Referee #1

5 1. Comment

It is not clear to me why to introduce the "new water" Temperature Minimum Layer (TML) in the wide water masses panorama as the same authors define it as "not an autonomous water mass, but consists of WIW modified continually on its way through the WMED." So I would suggest to use WIW anyway, even if it has characteristics that differ from other WIWs. If authors evaluate it is necessary a distinction then, like AW transforms in MAW during its path, I would suggest to
10 define it as modified Winter Intermediate Water (mWIW). This would better avoid any confusion and let immediately understand of what you are speaking about. Modifications in the whole manuscript are then necessary.

**Answer: the term 'Temperature Minimum Layer (TML)' was already used in some previous papers (e.g. Allan et al., 2008; Forryan et al., 2012. Turbulent mixing in the eddy transport of Western Mediterranean Intermediate Water to the Alboran Sea, JGR, 117, C09008, doi:10.1029/2012JC008284). They describe TML as a water mass which is
15 strongly influenced by WIW but has lost its characteristic values due to mixing. Therefore, we did not create the term TML but only adopted it to distinguish between the cold water mass observed in the south and the WIW eddy. We are reluctant to introduce a new name like modified WIW (mWIW), though we agree, that this would be a suitable name and would avoid any confusions. Using the same expression WIW for both features might even increase confusion. If acceptable, we would like to stick to the term TML and replace 'influenced by WIW' by 'modified
20 WIW' in Table 2 to make clear they have the same origin.**

2. Comment:

Two important papers, not mentioned here, should be considered in the comparison of water masses with historical data in the whole manuscript, in my opinion: the first paper is on water masses in the Sardinia Channel Bouzinac C., J. Font, C.
25 Millot, (1999). Hydrology and currents observed in the channel of Sardinia during the PRIMO-1, experiment from November 1993 to October 1994. J. Mar. Sys., 20, 1-4, 333–355, [https://doi.org/10.1016/S0924-7963\(98\)00074-8](https://doi.org/10.1016/S0924-7963(98)00074-8);
the second focuses on the study of LIW in the Sardinian Sea in 2002-2004 and completes other papers mentioned in the manuscript (Sorgente et al., 2003; Puillat et al., 2003; Ribotti et al., 2004) on the hydrodynamics in the area Puillat I., R.
30 Sorgente, A. Ribotti, S. Natale, V. Echevin, (2006). Westward branching of LIW induced by Algerian anticyclonic eddies close to the Sardinian slope, Chemistry and Ecology, 22, S1, S293 - S305, DOI: 10.1080/02757540600670760

Answer: thank you for pointing out the two important papers of Bouzinac et al. (1999) and Puillat et al. (2006) which we added to our study.

3. Technical Corrections:

35

- page 3, line 29: delete comma (,) before bibliographic reference.

Answer: done

40

- page 4, line 3: change "whole area" with "northern part of the area" as it is mentioned that it occurred above 39.6 °N (Ribotti et al., 2004).

Answer: we pointed out that the salinity inversion occurred over the whole sampling field while the upwelling mainly took place north of 40° N.

45

- page 4, line 10: change 300 m in 400 m (see in Bouzinac et al., 1999; Puillat et al., 2006)

Answer: done

- page 9, line 15 and page 13, line 29: add Borghini et al., 2014. Its Table 2 perfectly fits with what mentioned in the sentences.

Answer: done

50

- page 12, line 21: delete the whole line as it is repeated at page 13, line 1.

Answer: done

- page 13, line 10: delete "moving" as there are no permanent eddies in the Sardinian Sea.

5 **Answer: we delete ‘northward moving’ in this sentence, but added another sentence concerning the northward movement of the eddy observed during REP14-Med.**

10 Referee #2

1. Comment

Section 2: I suggest to reduce strikingly the comparisons between sensors because this topic was already discussed in the technical report of Knoll et al 2015 and because, as the same authors explain in the first paragraph of section 4, “the differences between CTD sensors were not considered”.

15 **Answer: we reduced the text in section 2 and eliminated former Fig. 4 and 5 to diminish the dominance of this section.**

2. Comment

20 Section 3. I suggest to don’t repeat in the text the hydrographic characteristics already summarized in Table 2 (e.g. Line 28: :
: varied between 13.6 and 24 _C and between 37.1 and 38.3: : etc).

Answer: in most cases we tried to avoid repetitions of characteristic values given in Table 2.

3. Comment

25 Page 6, Line 30: Add a sentence to introduce/describe Fig 7 before to speak about their evidences/results.

Answer: we added a sentence at the beginning of section 3 to introduce Fig. 5 (former Fig. 7).

4. Comment

Section 5: reduce the first paragraph (Lines 24-29).

30 **Answer: we reduced the first paragraph of section 5.**

5. Comment

Lines 14-21: this paragraph appears not related with the context of Currents; put it in the right context or remove it.

Answer: we removed the paragraph on weather conditions and upwelling.

35

6. Comment

Fig. 1: Add bathymetry lines as in Fig 14 and specify the geographical location of transect 1, 5 10.

Answer: We added bathymetry lines and transect numbers in Fig. 1.

7. Comment:

Figure 12: remove this figure and add other two subplots in Figure 13.

40 **Answer: we changed the arrangement in Fig. 10 (former Fig. 12), but did not add them as subplots in Fig. 11 (former Fig. 13), since they do not refer to MAW or LIW like the other figure.**

45

Hydrography and Circulation West of Sardinia in June 2014

Michaela Knoll¹, Ines Borrione², Heinz-Volker Fiekas¹, Andreas Funk¹, Michael P. Hemming³, Jan Kaiser³, Reiner Onken⁴, Bastien Queste³, and Aniello Russo²

¹Wehrtechnische Dienststelle für Schiffe und Marinewaffen, Maritime Technologie und Forschung (WTD71), Berliner Straße 115, 24340 Eckernförde, Germany

²NATO Science and Technology Organization, Centre for Maritime Research and Experimentation (CMRE), Viale San Bartolomeo 400, 19126 La Spezia, Italy

³Centre for Ocean and Atmospheric Sciences (COAS), School of Environmental Sciences, University of East Anglia (UEA), Norwich Research Park, Norwich, NR4 7TJ, United Kingdom

⁴Helmholtz-Zentrum Geesthacht, Centre for Materials and Coastal Research (HZG), Max-Planck-Straße 1, 21502 Geesthacht, Germany

Correspondence to: michaelaknoll@bundeswehr.org

Abstract. In the mainframe of the REP14-MED sea trial in June 2014, the hydrography and circulation west of Sardinia, observed by means of gliders, shipborne CTD instruments, towed devices, and vessel-mounted ADCPs, are presented and compared with previous knowledge. So far, the circulation is not well known in this area, and the hydrography is subject to long-term changes. Potential temperature, salinity, and potential density ranges, as well as core values of the observed water masses were determined. Modified Atlantic Water (MAW), with potential density anomalies below 28.72 kg m^{-3} , showed a salinity minimum of 37.93 at 50 dbar. Levantine Intermediate Water (LIW), with a salinity maximum of about 38.70 at 400 dbar, was observed within a range of $28.72 < \sigma_{\theta} \text{ [kg m}^{-3}] < 29.10$. MAW and LIW showed slightly higher salinities than previous investigations. During the trial, LIW covered the whole area from the Sardinian shelf to $7^{\circ}15' \text{ E}$. Only north of 40° N was it tied to the continental slope. Within the MAW, a cold and saline anticyclonic eddy was observed in the southern trial area. The strongest variability in temperature and salinity appeared around this eddy, and in the southwestern part of the domain, where unusually low saline surface water entered the area towards the end of the experiment. An anticyclonic eddy of Winter Intermediate Water was recorded moving northward at 0.014 m s^{-1} . Geostrophic currents and water mass transports calculated across zonal and meridional transects showed a good agreement with vessel-mounted ADCP measurements. Within the MAW, northward currents were observed over the shelf and offshore, while a southward transport of about 1.5 Sv occurred over the slope. A net northward transport of 0.38 Sv across the southern transect decreased to zero in the north. Within the LIW, northward transport of 0.6 Sv across the southern transects were mainly observed offshore, and decreased to 0.3 Sv in the north where they were primarily located over the slope. This presentation of the REP14-MED observations helps to further understand the long-term evolution of hydrography and circulation in the Western Mediterranean, where considerable changes occurred after the Eastern Mediterranean Transient and the Western Mediterranean Transition.

1 Introduction

From 6 to 25 June 2014, an extensive experiment called REP14-MED was carried out west of Sardinia in the area between 39°12' N and 40°12' N and between 7°15' E and 8°18' E (Onken et al., 2017). In this paper, all dates refer to the year 2014 unless otherwise stated. The two research vessels *Alliance* and *Planet*, and a variety of measuring platforms were used to capture the hydrography and circulation in the area. One of the objectives was to collect data for operational ocean forecasting, model validation, and the evaluation of forecasting skill. Other aims were to explore the variability of the ocean and to study mesoscale and sub-mesoscale features. For those investigations, a detailed analysis of the recorded measurements is necessary. Therefore, the aim of this study is to provide an overview of the hydrography and circulation west of Sardinia observed during REP14-MED. Within the trial period of 18 days, measurements were made at the same position on several occasions. This enabled a study of short-term variations in the upper water column, The REP14-MED observations were compared with previous knowledge to investigate long-term changes.

The hydrography of the Sardinian Sea, which is located between 38° N and 42° N, and between 7° E and the Sardinian coast (Ribotti et al., 2004), is characterized by various water masses: Modified Atlantic Water (MAW; see Table 1 for list of acronyms), Winter Intermediate Water (WIW), Temperature Minimum Layer (TML), Levantine Intermediate Water (LIW), Western Mediterranean Deep Water (WMDW), and Bottom Water (BW). Atlantic Water entering the Western Mediterranean (WMED) at the surface through the Strait of Gibraltar is intensively mixed and modified on its way towards the east. This water mass, referred to as MAW, covers approximately the upper 150 m of the WMED with a salinity range of 36.5 to 38.0 in the Algerian Basin (Benzohra and Millot, 1995) and 37.2 to 38.2 in the Sardinian Sea (Sorgente et al., 2003). The core of MAW is characterized by a minimum in salinity found during summer at about 50-70 m depth and during winter close to the surface (La Violette, 1994). Based on historical data, the mean potential temperature and salinity of the core in summer in the Sardinian Sea are 17.71 °C and 37.61 with a standard deviation of 2.87 °C and 0.33, respectively (Sparnocchia et al., 1994). WIW consists of cooled and homogenized MAW formed in winter during cold wind events in the northern WMED (Juza et al., 2013). It is characterized by local minima in potential temperature and salinity at about 150 to 200 m depth, with magnitudes depending on the formation conditions. Values of 12.35 °C and 38.3 are observed in the zone of formation (Benzohra and Millot, 1995, Vargas-Yáñez et al., 2012). WIW mainly follows the path of MAW westward along the European continental slope and across the Algerian Basin (Millot, 1999; Benzohra and Millot, 1995). An additional pathway of WIW directly connecting the formation area to the Algerian Basin is expected to be induced by frontal eddies associated with the North Balearic Front (Millot, 1999; Fuda et al., 2000). This North Balearic front separates the Atlantic Water reservoir in the south from the saltier and denser waters in the north (Olita et al., 2013). TML is observed in the Alboran Sea (Allen et al., 2008), the Algerian Basin (Benzohra and Millot, 1995) and the Sardinian Sea (Sorgente et al., 2003). It is not an autonomous water mass, but consists of WIW modified continually on its way through the WMED. Potential temperature and salinity values are below 13.2 °C and 38.3, respectively. LIW is formed in the eastern Mediterranean, entering the WMED through the Strait of Sicily. It is characterized by high salinities with core values of about 38.7 (Juza et al., 2013; Juza et al., 2015; Bosse et al., 2015). In the Sardinian Sea, the mean core values of potential

temperature and salinity during summer based on historical data are 13.51 °C and 38.58 with a standard deviation of 0.20 °C and 0.06, respectively (Sparnocchia et al., 1994). WMDW is formed in winter by deep convection of mixed MAW and LIW in the northwestern corner of the WMED, mainly in the Gulf of Lions, with potential temperatures and salinities of 12.8 °C to 12.9 °C and 38.4 to 38.5, respectively. WMDW spreads through the WMED and occupies the water column below 800 m
5 (La Violette, 1994; Schott et al., 1996; Rixen et al., 2005; Bosse et al., 2015).

In recent decades, water masses in the Mediterranean Sea have been subject to considerable change. The Eastern Mediterranean Transient (EMT) caused a significant increase in the heat and salt content of the LIW (Roether et al., 2007; Roether et al., 2014). This increase in temperature and salinity has reached the western basins and has affected, amongst
10 others, the characteristics of WMDW. Below 200 dbar, the mean temperature and salinity in the WMED have risen by about 0.04 °C and 0.015, respectively, per decade since 1961, with increases in LIW twice as large as in the deep water (Borghini et al., 2014). Since the 1950s, the heat and salt content of BW have increased steadily. This increase has heavily intensified since 1985 (Rixen et al., 2005; Krahnmann and Schott, 1998). A major deep water formation event in winter 2004/05 started the Western Mediterranean Transition (WMT) (Schroeder et al., 2016). Within two years, BW experienced an increase in
15 potential temperature and salinity of 0.038 °C and 0.016, respectively (Schroeder et al., 2008). One reason for the changes in the deep water is the transfer of the EMT signal to the WMED, with higher heat and salt content of the advected LIW which is part of the WMDW formation.

The circulation in the Sardinian Sea is scarcely known from previous investigations. The upper 300 m of the water column is
20 dominated by meso- (10-100 km) to sub-mesoscale (< 10 km) features, predominantly anticyclonic eddies of different origin (Puillat et al., 2003; Ribotti et al., 2004). Large Algerian Eddies (AE), with a diameter of 50 to 250 km, are generated in the Algerian Basin by baroclinic instabilities of the Algerian Current, which flows eastward along the African coast. These AEs embed less saline water of Atlantic origin and circulate cyclonically within a gyre around the Algerian Basin with a mean speed of a few centimeter per second. They have lifetimes of up to 3 years (Puillat et al., 2002), often extending from the
25 surface to about 350 m or deeper, and bring relatively fresh MAW from the Algerian coast to the Sardinian Sea (Millot, 1999; Testor and Gascard, 2005; Olita et al., 2013). Several AEs were observed in the Sardinian Sea between 7°24' E and
8° E during the MedGOOS experiments in 2001 and 2002; (Ribotti et al., 2004; [Puillat et al., 2006](#)). Results of ocean general circulation models show that these eddies feed the Western Sardinian Current (WSC), a quasi-permanent southward flow at the surface west of Sardinia (Olita et al., 2013; Olita et al., 2015; Pinardi et al., 2013). At the southwest corner of Sardinia,
30 the WSC is located closer to the coast and reaches its maximum intensity. Coastal upwelling, especially evident in the southwestern part of Sardinia, is pre-conditioned by the WSC (Olita et al., 2013).

According to Ekman theory, northerly winds induce favorable conditions for upwelling along the western Sardinian coast. This could be observed during MedGOOS 3 in September 2001 where wind speeds between 4 and 12 m s⁻¹ were recorded

(Ribotti et al., 2004). At that time, a vertical salinity inversion occurred at about 30 to 50 m depth in the whole [sampling field area](#). Therefore, upwelling, [which mainly took place north of 40° N](#), was leading to lower salinities close to the shore. This salinity inversion may have been generated by evaporation or by saline water from the shelf pushed by the wind-induced Ekman transport further offshore. Water on the shelf can be significantly more saline than further offshore where
5 AEs bring fresher water from the south (Ribotti et al., 2004).

The LIW spreads into the WMED between 200 and 800 m depth (La Violette, 1994). South of Sardinia, the LIW vein flowing westward is about 50 km wide, with a core at about [4300 m \(Bouzinac et al., 1999\)](#). At the southwest corner of Sardinia, it turns northward and follows the continental slope (Sorgente et al., 2003). The LIW vein becomes wider,
10 shallower and cooler (Millot, 1999). It continues northward west of Corsica and turns to the west, flowing as a coastal current along the European slope, where it takes part in the formation of WMDW. At the southwest corner of Sardinia, the LIW sporadically spreads westward. Instead of a permanent flow branch, it is due to [patches or](#) filaments of LIW [swirling around](#)
~~around~~ [induced by](#) AEs ([Puillat et al., 2006](#); Millot and Taupier-Letage, 2005) or due to the formation of barotropic Sardinian Eddies (SE) with LIW characteristics (Testor and Gascard, 2005; Bosse et al., 2015). The SEs stay south of the North
15 Balearic Front and are often entrained southward by the Algerian Gyre. SEs are formed at intermediate depths, but usually show a surface signature after some weeks (Olita et al., 2013). The westward transport of LIW into the WMED is estimated to be roughly 1 Sv (Millot, 1999), while the eastward transport of MAW at the Sardinian Channel is nearly 2 Sv. A rough estimation of the total northward transport between Sardinia and Mallorca (Spain) based on water and salt budgets yielded about 0.4 Sv (Bethoux, 1980).

20

This paper is organized into six sections. Since several instruments were involved in this study, a comparison is carried out in Sect. 2 to distinguish between variations due to instrumental bias and due to environmental features. The characteristics of the different water masses recorded in the trial area are specified in Sect. 3. These are compared with previous investigations and potential temporal changes are discussed. The vertical and horizontal distributions of the water masses are indicated and
25 special features like eddies and fronts are presented. Based on the CTD profiles, taken at the same position on several occasions within the measuring period of 18 days, short-term variations in the upper water column are discussed in Sect. 4. Direct current observations obtained with vessel-mounted ADCPs are presented in Sect. 5 and compared with geostrophic velocities and transports calculated within the MAW and the LIW based on the CTD transects covering the area between the Sardinian coast and the deep ocean at 7°15' E. Finally, the paper's findings are summarized in Sect. 6.

30

2 Data Set and Sensor Comparison

For this paper, temperature and salinity measurements were utilised from the following instruments: Sea-Bird CTDs from *Alliance* and *Planet*, an Oceanscience Underway CTD (UCTD), a towed CTD chain, a towed ScanFish, three Seagliders named Fin (SG537), Kong (SG524), and Minke (SG510), and six Slocum gliders called Elettra, Noa, Jade, Zoe, Dora, and WTD71. The CTD data were mainly obtained along 11 zonal transects, partly repeated several times and spaced by 6 nmi (nautical miles) or about 11 km from each other. Further zonal transects situated in-between were surveyed several times back and forth by the gliders (Fig. 1).

A comparison between the different CTD instruments was carried out to ensure that observed differences were based on actual environmental variability. In the deep ocean, where the natural variability of potential density anomaly (σ_θ) was low, a systematic difference of 0.008 kg m^{-3} was observed between the CTD sensors of *Planet* and *Alliance* (Fig. 2), which was slightly above the expected accuracy of about 0.004 kg m^{-3} . ~~Investigations of profiles deeper than 2000 dbar showed that this discrepancy was due to about 0.001 S m^{-1} higher conductivity values recorded by *Planet*, but the cause of this bias is unknown (Knoll et al., 2015a, Onken et al., 2017). Water samples taken by *Planet*, and analysed by a Guildline Autosal salinometer perfectly agreed with the corresponding CTD values, and the double sensors of the CTD probe of *Alliance* showed no significant differences. The Sea-Bird CTD sensors were calibrated in a similar fashion shortly before the cruise at the NATO Science and Technology Organization, Centre for Maritime Research and Experimentation (STO CMRE). Data obtained by the CTD instruments of both ships were processed with the same manufacturer software using almost identical parameters.~~

Systematic differences in σ_θ in the deep ocean were also observed between the shipborne CTDs and some of the deep profiling gliders. Compared to the *Planet* CTD measurements, gliders Noa, Jade, and Minke recorded slightly lower σ_θ ~~by about -0.012 , -0.008 and -0.003 kg m^{-3} , respectively~~, while glider Fin observed slightly higher σ_θ ~~of $+0.006 \text{ kg m}^{-3}$ values~~ (Fig. 3). No significant difference was observed between the *Planet* measurements and glider Kong. Glider Dora exhibited high variations in σ_θ at about 900 dbar, whereas all other CTD instruments showed almost constant zonal values. Since measurements of *Planet* covered all latitudes of the trial area, the shifts cannot simply be explained by latitudinal changes. The differences in σ_θ between the sensors of the shipborne CTDs and the gliders were small, but mostly constant. In contrast to σ_θ , variations in potential temperature and salinity at a pressure of 900 dbar were much higher, with values rising towards the east (Fig. 3). Due to the variability in potential temperature and salinity, the differences between σ_θ values of the different instruments cannot be ascribed to a specific sensor. Only the discrepancy between the Sea-Bird CTDs of both ships could be explained by differences in conductivity due to the existence of profiles below 2000 dbar (Knoll et al., 2015a).

Data ~~retrieved from~~ the ARGO float 6901836, ~~achieved, comprising of one deep profile down to a pressure of more than 1200 dbar~~ in the trial area in June, agreed well with σ_θ values obtained in the deep ocean by *Alliance*, ~~but a difference of about 0.008 kg m^{-3} was seen between the float and *Planet* measurements (Fig. 4)~~. Further casts were ~~obtained recorded~~ using an UCTD at the outer limits of the trial area (Fig. 1). ~~Some of these profiles reached pressure levels of more than 500 dbar. The data were processed by adding observed pressure offsets and applying time constants to reduce salinity spikes.~~ The σ_θ values below 400 dbar were often about 0.015 kg m^{-3} lower than the ones observed in nearby CTD casts of *Planet* ~~(Fig. 5)~~. However, due to the ~~expected~~ temperature and salinity accuracy of the UCTD ~~of about~~ was only $0.005 \text{ }^\circ\text{C}$ and 0.05 , respectively. ~~Therefore~~, the observed difference in σ_θ was not significant.

- 10 In the upper water column, the range of natural variations was too large to detect small differences between the different sensors. The measurements of the shallow gliders Elettra, Zoe and WTD71 were within the range of the CTD observations obtained by both ships. The same is true for the measurements obtained in the upper 200 m of the water column by the towed CTD chain and the ScanFish, ~~recorded concurrently between 21 and 23 June. Both devices covered at most the upper 200 dbar of the water column, where the natural variability was high.~~ Before towing, in-situ calibration coefficients of the
- 15 CTD chain sensors were determined based on simultaneously recorded CTD casts of *Planet*. Thus, no systematic discrepancy existed between the CTD chain and the Sea-Bird CTD of *Planet*. The accuracies of the CTD chain measurements were about $0.02 \text{ }^\circ\text{C}$ and 0.05 , respectively. A comparison between the CTD chain and the ScanFish towed in sync showed no significant differences.
- 20 Concerning investigations of temperature and salinity variability in the upper water column, the differences between the platforms were negligible when compared with natural variations. However, for studying changes in σ_θ at greater depths, the differences between the different sensors have to be taken into account.

3 Water Masses

- The characteristics of the different water masses, observed by means of all CTD instruments and gliders used during REP14-MED, are specified below distinguishing between ranges and core values of the different parameters (Fig. 4, Table 2). ~~The observations are~~ and compared with earlier results ~~(Table 2)~~. The indicated salinity and potential density anomaly values given in Table ~~2~~ correspond to the CTD observations of *Planet*. According to the sensor comparison results, these values exhibit uncertainties in conductivity and potential density of about 0.001 S m^{-1} and 0.01 kg m^{-3} , respectively. Also spatial changes in the water mass characteristics are presented by means of selected zonal transects of potential temperature, salinity and potential density anomaly (Fig. 5) as well as horizontal distributions of various parameters at different depth or density levels (Fig. 6, 7, 8, 9).
- 25
- 30

MAW

The potential temperature and salinity of MAW in the trial area varied between 13.6 and 24 °C and between 37.1 and 38.3, respectively (Fig. 6a). The ~~observed~~ salinity range of MAW observed during REP14-MED was slightly higher than the older measurements of Sparnocchia et al. (1994) and Benzohra and Millot (1995) (Table 2). The salinity and σ_θ values increased towards the shelf (Fig. 57). A local salinity minimum occurred at about 50 dbar, with mean values of 37.93 somewhat higher, and with about 15.19 °C considerably colder, than the mean historical values observed by Sparnocchia et al. (1994). In order to understand how salinity within the core of the MAW changed with longitude, values and pressure levels of the salinity minima identified in all CTD profiles collected from *Planet* and *Alliance* are shown in Fig. 8 Fig. 6 panels a and b, with sampling locations marked in Fig. 1. Close to the coast, the salinity minima within pressure values of 40 and 80 dbar increased to > 38.

The core of the MAW with the salinity minimum was located at about $\sigma_\theta=28.19 \text{ kg m}^{-3}$ (Fig. 6 Fig. 4 a). The lower boundary was defined at the $\sigma_\theta=28.72 \text{ kg m}^{-3}$ isopycnal, which corresponded to a pressure level of 80 to 140 dbar (Fig. 8 Fig. 6 c). Below this isopycnal, the salinity strongly increased as a result of LIW. Furthermore, TML and WIW were observed at depths below this density level.

Towards the end of the experiment, unusually low salinities of less than 37.2 occurred at the surface in the southwestern part of the trial area (Fig. 8 Fig. 6 d). This feature did not appear in the earlier CTD measurements of *Planet* obtained in the same area at the beginning of the experiment. Similar salinity values of less than 37.2 were observed in AEs in the eastern part of the Algerian Basin (Benzohra and Millot, 1995, Taupier-Letage et al., 2003), and they also occurred in two anticyclonic eddies in the Sardinian Sea (Sorgente et al., 2003).

Within the MAW, an intra-pycnocline anticyclonic eddy with a diameter of about 50 km was observed in the southern part of the domain, around 39°20' N and 7°43' E (Fig. 9 Fig. 7). It was also apparent in transect 10, where the distance between the 27.5 and 28 kg m^{-3} isopycnals strongly increased (Fig. 7 Fig. 5 c, f, i). The presence of the eddy led to significantly modified local water properties, with strongest effects around 50 dbar (Russo et al. 2015, Borrione et al., 2015). Salinities measured within the eddy were close to 38.2, and thus higher than those in the surrounding waters, in particular those to the west, where salinity ranged between 37.7 and 37.9 (Fig. 9 Fig. 7). In the same area, just west of this eddy, where the low salinities were observed, the unusually low saline water mass described above, with salinities of less than 37.2, appeared at the surface at the end of the experiment.

WIW/TML

During REP14-MED, WIW was not observed as a continuous layer, but was confined to an anticyclonic WIW eddy detected by various platforms between 170 and 400 dbar (Russo et al., 2015). It had a diameter of about 11 km. Zonal transect 5 crossed the center of this eddy (Fig. 7 Fig. 5 -b, -e, -h). Several repeat CTD stations showed that the eddy moved northward during the experiment with a mean velocity of about 0.014 m s^{-1} . ~~The eddy was characterized by potential temperatures below 13.1°C and an almost constant σ_θ value of 28.99 kg m^{-3} . The core values of potential temperature and salinity were $<12.9^\circ\text{C}$ and <38.3 , respectively, at about 250 dbar. These~~ The observed core values of the eddy (Table 2) were in agreement with previous observations of WIW in the northern WMED (Vargas-Yáñez et al., 2012; Juza et al., 2013), the Alboran Sea (Allen et al., 2008), and the Algerian Basin (Benzohra and Millot, 1995) (Table 2), but to our knowledge no WIW eddy with such low temperatures and salinities has been documented in the Sardinian Sea in the past.

A relatively cold ($< 13.3^\circ\text{C}$) and fresh (< 38.3) water mass with core densities between 28.86 and 28.89 kg m^{-3} was detected between 120 and 270 dbar in the southwestern part of the trial area (Fig. 10 Fig. 8). To distinguish this water mass from the WIW transported by the eddy, it is called TML (Allen et al., 2008), though it was strongly influenced by WIW. Since the observed TML was warmer and less dense than the WIW eddy, it is likely that the two water masses have a different history, having formed at different times. Several patches of TML water with slightly higher potential temperatures were observed during the MedGOOS experiments all over the Sardinian Sea (Sorgente et al., 2003, Ribotti et al., 2004).

Like the unusually low saline surface water, the TML entered the domain from the south and moved northward as indicated by the detection times (Fig. 10 Fig. 8). It was not observed in the CTD measurements of *Planet*, which were obtained in the same area, but some time earlier before the first TML recording on the 18 June. Although TML and the unusually low surface salinities were detected in the same area at the end of the trial period, they did not always appear simultaneously as indicated by the WTD71 glider measurements. While the TML was already observed for the first time on 18 June (Fig. 10 Fig. 8) the unusually low surface salinities were recorded some time later on 22 June (Fig. 8 Fig. 6 d).

LIW

The strong increase in salinity observed below $\sigma_\theta=28.72 \text{ kg m}^{-3}$ indicated the presence of the LIW layer (Fig. 6 Fig. 4) with core characteristics given in Table 2. ~~Within the whole trial area, the mean potential temperature, salinity and σ_θ values in the core of the LIW were 13.91°C , 38.70 and 29.06 kg m^{-3} , respectively, at a mean pressure level of about 400 dbar (Fig. 11 a, b).~~ Like MAW, LIW exhibited slightly higher salinity values compared to the historical data in the Sardinian Sea (Sparnocchia et al., 1994), likely due to the transfer of the EMT signal to the WMED (Roether et al., 2014).

East of $7^\circ47' \text{ E}$, the LIW core salinity of 38.71 showed only small changes, while farther offshore it varied between 38.55 and 38.74 due to relatively low values in the northeast (Fig. 11 Fig. 9 a, b). In contrast to earlier investigations, where LIW was attached closely to the Sardinian shelf break east of the 2000 m isobath (Puillat et al., 2003; Sorgente et al., 2003),

during REP14-MED it covered the whole trial area west of the shelf. Only north of 40° N the LIW core was tied to the continental slope (Fig. 4 Fig. 9 d). However, the thickness of the LIW layer decreased towards the west to less than 500 m due to the rise of the isopycnals (Fig. 7 Fig. 5 g, h, i). For this study, the lower boundary of LIW was set to the potential density anomaly of $\sigma_{\theta}=29.1 \text{ kg m}^{-3}$, which corresponded to a pressure level between 540 and 740 dbar (Fig. 4 Fig. 9 c).
5 Deeper than this, the vertical increase in σ_{θ} was strongly reduced (Fig. 2).

WMDW

The REP14-MED data set showed that the WMDW was separated into an upper and lower part (Fig. 6 Fig. 4). The upper part was strongly influenced by the overlying LIW. The potential temperature and salinity decreased with depth from 13.70 °C to 12.91 °C, and from 38.68 to 38.48, respectively, while σ_{θ} slightly increased from 29.10 to 29.11 kg m^{-3} (Fig. 2). Changes in
10 the lower part, found below approximately 1500 m, were very small. The potential temperature decreased, and salinity increased only slightly by about 0.01 °C and 0.005, respectively. These low values of about 12.90 °C and 38.48 were in agreement with WMDW specifications given in the literature (La Violette, 1994; Benzohra and Millot, 1995; Testor and Gascard, 2005). A further increase in potential temperature and salinity below 2300 dbar indicated the occurrence of BW.

BW

15 BW was observed at the deep CTD stations on the western side of the domain. Below 2300 dbar, the WMDW showed an increase in potential temperature and salinity of about 0.01 °C and 0.01, respectively, with a corresponding increase in σ_{θ} of approximately 0.005 kg m^{-3} (Fig. 6 Fig. 4). The increase started at potential temperatures and salinities of 12.91 °C and 38.49, respectively. These values were even higher than those observed in previous investigations (Table 2), which detected a continuous increase in potential temperature, salinity, and layer thickness starting in winter 2004/2005 (Schroeder et al.,
20 2008; Schroeder et al., 2016; Borghini et al., 2014).

4 Short-Term Variability

Due to various repetitions of CTD casts at fixed positions, the REP14-MED data set is perfectly suited for studying short-term variability. Since most CTD casts covered only the upper water column, the variability estimations were restricted to MAW and LIW. Therefore, the differences between the CTD sensors were not considered. They were negligible with respect
25 to the natural variability of the system.

In order to study variability of water mass characteristics in the region, a grid of stations was designed and for each grid point all profiles obtained from various instruments in close vicinity were gathered to investigate short-term temporal changes at a fixed location. The grid consisted of 259 stations, 107 of them almost matched the positions of the CTD stations
30 which were 6 nmi apart (Fig.1). The other 152 stations were located along the glider tracks between 39°21' N and 40°3' N

and between 7°15' E and 8°18' E with a distance of 3 nmi in the east-west and 6 nmi in the north-south direction. The glider as well as the ScanFish data were split into separate, alternating dive and climb profiles. For each profile a geographical position was determined by calculating the mean position during the respective dive and climb period. All CTD, UCTD, CTD chain and ScanFish profiles within 2 nmi of a grid station were collected. The glider profiles within a zonal and meridional distance of 1 and 2 nmi, respectively, from a grid station were assigned to this position. All CTD chain, ScanFish and glider profiles recorded in quick succession and allocated to the same grid station were replaced by the corresponding mean profiles. Between 0 and 13 profiles were allocated to each of the 259 grid stations (Fig. 12 Fig. 10 -a). No profile was assigned to 13 grid stations which were located at the eastern edge of the glider tracks. On 37 grid stations only one profile was collected and 113 grid stations had 4 or more profiles assigned. The grid stations with more than one profile covered time periods between the first and last profile of 0.18 to 16.26 days (Fig. 12 Fig. 10 b). The short time periods were recorded at grid stations close to the turning points of the glider tracks. Time periods of 8 days and more were allocated to 139 grid stations.

To eliminate variations resulting from internal waves, temperature and salinity profiles were interpolated on σ_θ levels with a step size of 0.02 kg m^{-3} , which was above the observed accuracy. At the σ_θ levels of the cores of MAW and LIW, mean temporal values of potential temperature and salinity as well as corresponding standard deviations and temporal gradients based on a linear least square fit were calculated (Fig. 13 Fig. 11). The same calculations were carried out for the mean potential temperature and salinity values within the σ_θ ranges of MAW and LIW (not shown). Both calculations showed very similar spatial distributions. Within MAW (Fig. 13 Fig. 11, left panel), the highest salinities were observed close to the shore and in the anticyclonic eddy observed in the southern part of the trial area. The strongest variability occurred in close proximity to this eddy, as well as in the southwestern part of the domain, where a mean temporal decrease in salinity was observed. This was the area where unusually low saline water entered the region at the surface towards the end of the experiment. Farther north, the salinity variability was low. Occasional temporal increases in salinity were observed at those stations, where the corresponding time periods of the assigned profiles were short (Fig. 12 Fig. 10 b). The LIW core covered most of the trial area west of the shelf (Fig. 13 Fig. 11, right panel). Less saline water was observed only in the northwestern part of the area, separated by a frontal region. The highest variability occurred at this front, with a temporal increase in salinity observed. A comparison between the CTD measurements of *Alliance* and *Planet* separated by about 8 days confirmed a northward movement of the front during the experiment. Temporal variability and gradients were comparatively low in all other regions. Corresponding calculations of variability and temporal gradients for potential temperature (not shown) yielded similar results.

5 Circulation

Underway current measurements were carried out with a vessel-mounted 75 kHz ADCP on *Alliance* and a 150 kHz ADCP on *Planet*. Due to severe functional problems all *Planet* ADCP data before 10 June were discarded. The later current measurements only had sufficient quality between 100 and 150 m. There, they agreed well with the simultaneously recorded ADCP data of *Alliance* (Knoll et al., 2015b). ~~Due to the working schedule of *Alliance*, CTD profiles of the zonal transects were often not obtained consecutively, hence geographical maps of the current data often showed a particularly strong mixture of spatial and temporal changes.~~

Three periods of continuous current measurements at 125 m are presented in ~~Fig. 14~~Fig. 12. Northward currents were mainly observed offshore, while a southward flow often occurred over the continental slope. At the end of the experiment, the ADCP measurements at 125 m depth showed southward currents in the southwest of the domain (~~Fig. 14~~Fig. 12 c). The geographical position, depth and time of these southward currents coincided with the TML water mass that appeared in this region. Although in general, the TML water moved northward, this water mass may have been embedded in an anticyclonic eddy, with southward currents at its eastern edge. The anticyclonic eddy observed in the southern part of the trial area was evident in the upper ADCP measurements of *Alliance* (Russo et al., 2015, Borrione et al., 2015). The characteristics of this eddy (~~Fig. 9~~Fig. 7) were different from those expected in an AE with low salinities in the center, or in a newly generated SE, since the eddy was limited to the upper 100 m. The origin of this eddy should be further investigated. Like during the MedGOOS 3 observations (Ribotti et al., 2004), there was no clear indication of an AE or SE in the REP14-MED data set. The anticyclonic movement of the WIW eddy was observed in the vessel-mounted ADCP measurements of *Alliance* (Russo et al., 2015). The general northward movement of this eddy, as well as of the TML water observed further south (~~Fig. 10~~Fig. 8), matched the northward currents recorded offshore by the ADCPs (~~Fig. 14~~Fig. 12). The path and history of the observed WIW eddy, as well as of the TML water, should be explored in more detail.

~~Higher salinities were found on the shelf when compared with those observed offshore (Fig. 8). The wind measurements of *Planet*, as well as the NOAA-FNMOC predictions, showed very calm weather conditions with wind speeds often below 5 m s^{-1} from northerly to westerly directions. The wind slightly increased on 15 and 16 June but immediately calmed down again. Isopycnals in the upper water column showed a slight rise towards the shelf indicating light upwelling conditions and a southward geostrophic current. However, in this case deep saltier water was forced onto the shelf, rather than fresher water from the MAW salinity minimum layer, as was observed in MedGOOS 3 (Ribotti et al., 2004). The depth of the isopycnals directly on the shelf often decreased again towards the coast especially observed in the southern zonal transects (Fig. 7), indicating a northward flow.~~

Geostrophic currents and transports were calculated based on the CTD transects obtained by *Alliance* and *Planet* for the water masses of MAW ($\sigma_\theta \leq 28.72 \text{ kg m}^{-3}$) and LIW ($28.72 < \sigma_\theta \text{ [kg m}^{-3}] \leq 29.1$) (~~Fig. 15~~Fig. 13). A level of no motion (LNM) was assumed at 1000 dbar, which was within the upper WMDW and the maximum depth level of most of the CTD

profiles. In shallower areas, the reference layer was set to the deepest value close to the bottom. For comparison, the LNM was also set to the isopycnal surface of $\sigma_\theta=29.1 \text{ kg m}^{-3}$, the boundary between LIW and WMDW (not shown). The geostrophic transports calculated with the different LNMs were similar, and the largest differences occurred within the meridional transports of LIW at the western boundary of the domain. Due to the rise of the $\sigma_\theta=29.1 \text{ kg m}^{-3}$ isopycnal (Fig. 14 Fig. 9 c), those transports were slightly smaller compared to the ones calculated with a LNM at 1000 dbar.

Within MAW, the meridional transports on the western side of the trial area, as well as over the Sardinian shelf, headed north, while over the continental slope mainly southward transports were observed (Fig. 15 Fig. 13 a, c). This matched the vessel-mounted ADCP measurements. The magnitude of the southward transport across each transect was about -0.15 Sv. The western extent of this southward flow reached areas with bottom depths of more than 2000 m in the northern CTD transects. In the south it was restricted to regions with bottom depths between 200 and 1000 m. This southward flow resembled the WSC described by Olita et al. (2013), and the northward current in the west could be part of the Algerian Gyre (Testor and Gascard, 2005). The mean net transports across the zonal transects were mainly heading towards the north. They decreased from 0.38 Sv in the south to almost zero across the northern four transects. Measurements along the meridional transects were not synoptic, because the ship's route was mostly in the east-west direction, following the zonal transects shown in Fig. 1. Nevertheless, transport estimates were also calculated along meridional transects, as they could give additional insights into the MAW and LIW transports in the region. The zonal transports (Fig. 15 Fig. 13 e) showed mean westward transports around -0.2 Sv west of $7^\circ 30' \text{ E}$ and almost zero net transports in the eastern part of the trial area. The strong east- and westward transports in the southern domain at about $39^\circ 21' \text{ N}$ and $30^\circ 15' \text{ N}$, respectively, as well as the nearby north- and southward currents, related well with the anticyclonic eddy described earlier (Russo et al., 2015, Borrione et al., 2015).

Within the LIW layer, northward transports prevailed over the whole trial area (Fig. 15 Fig. 13 b, d). Locally observed southward transports did not present a continuous flow, but in conjunction with the zonal transports, probably indicated anticyclonic eddies in this layer (e.g. the southern and the WIW eddy). The transport rates over the shelf were negligible, since there the LIW covered only a small part of the water column, and the LNM was set to the bottom. Like in the MAW, the strongest transports to the north in the LIW occurred offshore. Only for the northernmost transects, the maximum northward flow took place over the continental slope. This fitted to the hydrographic distribution of LIW described earlier. The net northward transport of about 0.6 Sv across the southern transect declined to 0.3 Sv across the northern one (Fig. 15 Fig. 13).

6 Summary and Conclusions

~~The hydrography and circulation west of Sardinia observed in June were presented and compared with previous knowledge.~~

Since the hydrographic survey was based upon different CTD instruments, a sensor comparison was initially carried out. Because σ_θ in the WMDW was nearly constant, small but nevertheless significant differences could be detected. Despite careful calibrations of the various sensors before the cruise, small but systematic differences in σ_θ of about $\pm 0.01 \text{ kg m}^{-3}$ were observed between some instruments, which was slightly above the expected nominal accuracies. Looking at profiles deeper than 2000 dbar, we identified conductivity as the cause of the differences between the Sea-Bird CTD sensors of *Planet* and *Alliance*. Systematic differences between the other deep profiling instruments (ARGO float, Seagliders, and Slocum gliders) appeared in the σ_θ field, but the cause of this could not be identified. In the upper ocean, the differences between the sensor platforms were negligible compared to the natural variability. However, for studying density variations at greater depth, the shifts between the different sensors have to be taken into account. When planning to use different instruments in future studies to investigate small variations, it is important to pay attention to possible significant sensor discrepancies.

The characteristics of the different water masses observed during REP14-MED were presented and compared with previous results in the area. The most interesting features within the MAW, with $\sigma_\theta < 28.72 \text{ kg m}^{-3}$ and salinity minima of about 37.93 at 50 dbar, were a 50 km wide, anticyclonic eddy of unknown origin in the southern part of the domain, the appearance of unusually low saline surface water entering the area from the south at the end of the experiment, and a zonal salinity gradient with highest salinity values on the shelf. This gradient seemed quite common, either due to coastal upwelling or salinity reduction offshore caused by AEs. Unlike many other observations in this area (Ribotti et al., 2004; Testor and Gascard, 2005), no AEs or SEs were observed. Overall, the salinity in MAW in the Sardinian Sea has increased compared to previous investigations (Sparnocchia et al., 1994, Sorgente et al., 2003).

Further below, WIW was observed in an anticyclonic, ~~northward moving~~ eddy with potential temperature and salinity values below $12.9 \text{ }^\circ\text{C}$ and 38.3, respectively, at 250 dbar. Several repeat CTD stations showed that the eddy moved northward during the experiment with a mean velocity of about 0.014 m s^{-1} . No previous observation of a WIW eddy in the Sardinian Sea with such low temperatures and salinities has been documented in the past. Slightly warmer and shallower TML water coming from the south was only recorded at the end of the cruise. During the MedGOOS experiments, TML was observed all over the Sardinian Sea (Sorgente et al., 2003, Ribotti et al., 2004). The path and history of the observed WIW eddy, as well as of the TML water, should be explored in more detail.

The LIW layer located at potential density anomalies between $28.72 < \sigma_\theta \text{ [kg m}^{-3}] < 29.10$ covered the whole trial area from the Sardinian coast to $7^\circ 15'$ E, but the thickness of the layer decreased towards the west. The LIW vein was tied only to the continental slope north of 40° N , as was observed for the whole area in previous measurements (Sorgente et al., 2003). The LIW core exhibited mean potential temperatures and salinities of $13.91 \text{ }^\circ\text{C}$ and 38.70, respectively. These values were

higher than the historical data in the Sardinian Sea (Sparnocchia et al., 1994), likely due to the transfer of the EMT signal to the WMED (Roether et al., 2014).

5 The WMDW was divided into two parts, with larger vertical gradients in the upper water column, and smaller variations in the lower water column (below 1500 dbar). The potential temperature and salinity values of the lower WMDW of 12.9 °C and 38.38, respectively, were in good agreement with earlier investigations (La Violette, 1994; Benzohra and Millot, 1995; Testor and Gascard, 2005). The rise in temperature and salinity in the BW due to the WMT was observed in the deep CTD profiles. The potential temperature and salinity values of > 12.91 °C and > 38.49, respectively, confirmed the continuous increase since winter 2004/2005 (Schroeder et al., 2008; Schroeder et al., 2016; [Borghini et al., 2014](#)). In general, the CTD
10 measurements confirmed the steady increase of the heat and salt content in the different water masses of the WMED observed since the last decades. The data set might contribute to further investigations addressing the long-term evolution on hydrography in the WMED, where considerable changes occurred after EMT and WMT.

15 Due to various repetitions of CTD casts at fixed positions, the data set was perfectly suited for studying short-term variability in the upper water column. In the MAW, the strongest variability was observed around the southern eddy, as well as in the southwestern part of the region, where unusually low saline surface water entered the area after 17 June. In the LIW, the highest variability occurred at the front in the northwest, moving northward over the course of the experiment.

20 The direct current measurements in the upper ocean obtained with vessel-mounted ADCPs reflected the occurrence of anticyclonic eddies (e.g. the southern and WIW eddy). Northward currents were mainly observed offshore, while a southward flow often occurred over the continental slope. The relatively calm wind conditions induced only very light upwelling, increasing the salinity on the shelf.

25 Geostrophic currents and transports were calculated across the CTD transects assuming a LNM at 1000 dbar. In general, the results matched the ADCP observations. Within the MAW, the meridional transports offshore and over the shelf headed north, while over the continental slope mainly southward transports of about -0.15 Sv were observed, resembling the WSC described by Olita et al. (2013). The mean net transports across the zonal transects were mainly heading towards the north, decreasing from 0.38 Sv in the south to almost zero in the north. Within the LIW, northward transports of about 0.6 Sv in the south primarily occurred offshore, decreasing to 0.3 Sv in the north, where it was located over the slope, corresponding to
30 the observed spreading of LIW. There was no continuous southward flow over the slope but occasional southward currents were probably often part of anticyclonic eddies in the LIW. The observed northward transport rates west of Sardinia were about half of the estimated 1 Sv LIW entering the WMED.

Author contributions. Michaela Knoll was responsible for the collection and processing of CTD, CTD chain, UCTD, and ADCP data on *Planet*. Ines Borrione and Aniello Russo ~~collected and processed~~ [contributed to the analysis of](#) the CTD, ScanFish, and ADCP data of *Alliance* and the CMRE Slocum gliders. Andreas Funk processed the data of the WTD71 glider. The Seaglider data were processed by Michael Hemming and Bastien Queste, supervised by Jan Kaiser. Reiner Onken was the coordinator of the experiment and chief scientist on *Alliance*, while Heinz-Volker Fiekas was chief scientist on *Planet*. Michaela Knoll prepared the manuscript with contributions of all co-authors.

Acknowledgements. The authors want to thank all crew members of the research vessels *Alliance* and *Planet* for helping to collect such an extraordinary data set. Thanks go to all scientists and technicians involved in the field campaign and data processing. Special thanks go to Pierre-Marie Poulain for providing the ARGO float data, and to Karen Heywood, the principal investigator from UEA, and Gareth Lee, head of the UEA Glider Facility, for providing the Seagliders. Jan Kaiser, Karen Heywood, and Michael Hemming were supported by funding from the Defence Science and Technology Laboratory (DSTL, UK) in close co-operation with Direction générale de l'armement (DGA, France). CMRE activities, including *Alliance*, were supported by the NATO Allied Command Transformation (ACT) through project SAC000404.

15 **References**

Allen, J.T., Painter, S.C., and Rixen, M.: Eddy transport of Western Mediterranean Intermediate Water to the Alboran Sea. *Journal of Geophysical Research*, Vol. 113, C04024, doi: 10.1029/2007JC004649, 2008.

Benzohra M. and Millot, C.: Characteristics and circulation of the surface and intermediate water masses off Algeria. *Deep-Sea Research I*, Vol. 42, No. 10, 1803-1830, 1995.

20 Bethoux, J.-P.: Mean water fluxes across sections in the Mediterranean Sea, evaluated on the basis of water and salt budgets and of observed salinities. *Oceanologica Acta*, Vol. 3, 79-88, 1980.

Borghini, M., Bryden, H., Schroeder, K., Sparnocchia, S., and Vetrano, A.: The Mediterranean is becoming saltier. *Ocean Sci.*, 10, 693-700, 2014.

25 Borrione, I., Russo, A., Fiekas, H.-V., Heywood, K., Knoll, M., and Onken, R.: Prominent sub-mesoscale variability in the west Sardinian Sea as revealed by multi-platform sampling strategy. EGU General Assembly 2015, Vienna, Austria, 2015EGUA..17.1795B, 2015.

Bosse, A., Testor, P., Mortier, L., Prieur, L., Taillandier, V., d'Ortenzio, F., and Coppola, L.: Spreading of Levantine Intermediate Waters by submesoscale coherent vortices in the northwestern Mediterranean Sea as observed with gliders. *Journal of Geophysical Research: Oceans*, 120, 1599-1622, doi: 10.1002/2014JC010263, 2015.

30 [Bouzinac, C., Font, J., and Millot, C.: Hydrology and currents observed in the channel of Sardinia during the PRIMO-1 experiment from November 1993 to October 1994. *Journal of Marine Systems*, 20, 333-355, 1999.](#)

- Fuda, J.-L., Millot, C., Taupier-Letage, I., Send, U., and Bocognano, J.M.: XBT monitoring of a meridian section across the Western Mediterranean Sea. *Deep-Sea Research*, 47, 2191-2218, 2000.
- Juza, M., Renault, L., Ruiz, S., and Tintoré, J.: Origin and pathways of Winter Intermediate Water in the Northwestern Mediterranean Sea using observations and numerical simulation. *Journal of Geophysical Research: Oceans*, Vol. 118, 6621-6633, doi: 10.1002/2013JC009231, 2013.
- 5 Juza, M., Mourre, B., Lellouche, J.-M., Tonani, M., and Tintoré, J.: From basin to sub-basin scale assessment and intercomparison of numerical simulations in the Western Mediterranean Sea. *Journal of Marine Systems*, 149, 36-49, 2015.
- Knoll, M., Benecke, J., Russo, A., and Ampolo-Rella, M.: Comparison of CTD measurements obtained by NRV Alliance and RV Planet during REP14-MED. Technical Report WTD71-0083/2015 WB, 34 pp, 2015a.
- 10 Knoll, M., Benecke, J., and Borrione, I.: ADCP measurements obtained by RV Planet during REP14-MED. Technical Report WTD71-0094/2015 WB, 52 pp, 2015b.
- Krahmann, G. and Schott, F.: Longterm increases in western Mediterranean salinities and temperatures: Anthropogenic and climate sources. *Geophysical Research Letters*, 25(22), 4209-4212, 1998.
- 15 La Violette, P.E.: Overview of the Major Forcings and Water Masses of the Western Mediterranean Sea. *Coastal and Estuarine Studies, Seasonal and Interannual Variability of the Western Mediterranean Sea*. P.E. La Violette (Ed.), American Geophysical Union, Washington, DC, 1994.
- Millot, C.: Circulation in the Western Mediterranean Sea. *Journal of Marine Systems*, 20, 423-442, 1999.
- Millot, C. and Taupier-Letage, I.: Additional evidence of LIW entrainment across the Algerian subbasin by mesoscale eddies and not by a permanent westward flow. *Progress in Oceanography*, 66, 231-250, 2005.
- 20 Olita, A., Ribotti, A., Fazioli, L., Perilli, A., and Sorgente, R.: Surface circulation and upwelling in the Sardinia Sea: A numerical study. *Continental Shelf Research*, 71, 95-108, doi: 10.1016/j.csr.2013.10.011, 2013.
- Olita, A., Iermano, I., Fazioli, L., Ribotti, A., Tedesco, C., Pessini, F., and Sorgente, R.: Impacts of currents on surface flux computations and their feedback on dynamics at regional scales. *Ocean Science*, 11, 657-666, doi:10.5194/os-11-657-2015, 2015.
- 25 Onken, R., Fiekas, H.-V., Beguery, L., Borrione, I., Funk, A., Hemming, M., Heywood, K.J., Kaiser, J., Knoll, M., Poulain, P.-M., Queste, B., Russo, A., Shitashima, K., Siderius, M., and Küsel, E.T.: High-Resolution Observations in the Western Mediterranean Sea: The REP14-MED Experiment. *Ocean Science* (this issue), 2017.
- Pinardi, N., Zavatarelli, M., Adani, M., Coppini, G., Fratianni, C., Oddo, P., Simoncelli, S., Tonani, M., Lyubartsev, V., Dobricic, S., and Bonaduce, A.: Mediterranean Sea large-scale low-frequency ocean variability and water mass formation rates from 1987 to 2007: A retrospective analysis. *Prog. Oceanogr.*, online first, doi:10.1016/j.pocean.2013.11.003, 2013.
- 30 Puillat, I., Millot, C., and Taupier-Letage, I.: Algerian Eddies lifetime can near 3 years. *Journal of Marine Systems*, 31, 245-259, 2002.

- Puillat, I., Sorgente, R., and Ribotti, A.: Circulation in the Sardinian Sea: A synergetic approach by in situ data, a three dimensional model and infrared imagery. *Geophysical Research Abstracts*, Vol. 5, 13117, 2003.
- 5 [Puillat, I., Sorgente, R., Ribotti, A., Natale, S., and Echevin, V.: Westward branching of LIW induced by Algerian anticyclonic eddies close to the Sardinian slope. *Chemistry and Ecology*, 22:1, 293-305, doi: 10.1080/02757540600670760, 2006.](#)
- Ribotti, A., Puillat, I., Sorgente, R., and Natale, S.: Mesoscale circulation in the surface layer off the southern and western Sardinia Island in 2000-2002. *Chemistry and Ecology*, 20:5, 345-363, 2004.
- Rixen, M., Beckers, J.-M., Levitus, S., Antonov, J., Boyer, T., Maillard, C., Fichaut, M., Balopoulos, E., Iona, S., Dooley, H., Garcia, M.-J., Manca, B., Giorgetti, A., Manzella, G., Mikhailov, N., Pinardi, N., and Zavatarelli, M.: The Western Mediterranean Deep Water: A proxy for climate change. *Geophysical Research Letters*, 32, L12608, doi: 10.1029/2005GL022702, 2005.
- 10 Roether, W., Klein, B., Manca, B.B., Theocharis, A., and A. Kioroglou, A.: Transient eastern Mediterranean deep waters in response to the massive dense-water output of the Aegean Sea in the 1990s. *Progress in Oceanography*, 74, 540-571, doi:10.1016/j.pocean.2007.03.001, 2007.
- 15 Roether, W., Klein, B., and Hainbucher, D.: The Eastern Mediterranean Transient: Evidence for Similar Events Previously? in: *The Mediterranean Sea: Temporal Variability and Spatial Patterns*, Geophysical Monograph 202. First Edition. Edited by Borzelli, G.L.E., M. Gačić, P. Lionello, and P. Malanotte-Rizzoli. © American Geophysical Union. Published by John Wiley & Sons, Inc, 2014.
- Russo, A., Borrione, I., Falchetti, S., Knoll, M., Fiekas, H.-V., Heywood, K., Oddo, P., and Onken, R.: Intense mesoscale variability in the Sardinian Sea. *EGU General Assembly 2015, Vienna, Austria, 2015EGUA..17.1745R*, 2015.
- 20 Schott, F., Visbeck, M., Send, U., Fischer, J., Stramma, L., and Desaubies, Y.: Observations of deep convection in the Gulf of Lions, northern Mediterranean, during the winter of 1991/92. *Journal of Physical Oceanography*, 26, 505-524, 1996.
- Schroeder, K., Ribotti, A., Borghini, M., Sorgente, R., Perilli, A., and Gasparini, G.P.: An extensive Mediterranean deep water renewal between 2004 and 2006. *Geophysical Research Letters*, 35, L18605, doi: 10.1029/2008GL035146, 2008.
- 25 Schroeder, K., Chiggiato, J., Bryden, H.L., Borghini, M., and Ben Ismail, S.: Abrupt climate shift in the Western Mediterranean Sea. *Scientific Reports*, 6:23009, doi: 10.1038/srep23009, 2016.
- Sorgente, R., Ribotti, A., and Puillat, I.: Water masses and diagnostic circulation west of Sardinia from 23 March to 4 April 2001. *Building the European Capacity in Operational Oceanography: Proceedings of the third international conference on EuroGOOS*, Dahlin, H. et al. (eds.), Elsevier, 2003.
- 30 Sparnocchia, S., Manzella, G.M.R., and La Violette, P.E.: The Interannual and Seasonal Variability of the MAW and LIW Core Properties in the Western Mediterranean Sea. *Coastal and Estuarine Studies, Seasonal and Interannual Variability of the Western Mediterranean Sea*. P.E. La Violette (Ed.), American Geophysical Union, Washington, DC, 1994.
- Taupier-Letage, I., Puillat, I., Millot, C., and Raimbault, P.: Biological response to mesoscale eddies in the Algerian Basin. *Journal of Geophysical Research*, 108, No. C8, 3245, doi 10.1029/1999JC000117, 2003.

Testor, P. and Gascard, J.-C.: Large scale flow separation and mesoscale eddy formation in the Algerian Basin. *Progress in Oceanography*, 66, 211-230, 2005.

Vargas-Yáñez, M., Zunino, P., Schroeder, K., López-Jurado, J.L., Plaza, F., Serra, M., Castro, C., García-Martínez, M.C., Moya, F., and Salat, J.: Extreme Western Intermediate Water formation in winter 2010. *Journal of Marine Systems*, 105-108, 52-59, 2012.

Table 1. Abbreviations of water masses, features and areas used in this study. The acronyms mainly correspond to the recommendations of the round table session on Mediterranean Water Mass Acronyms at the 36th CIESM (Commission Internationale pour l'Exploration Scientifique de la mer Méditerranée) Congress in Monte Carlo in September 2001 (<http://ciesm.org/events/RT5-WaterMassAcronyms.pdf>).

5

Acronym	Water mass, Feature, Area
AE	Algerian Eddy
BW	Bottom Water
EMT	Eastern Mediterranean Transient
LIW	Levantine Intermediate Water
MAW	Modified Atlantic Water
SE	Sardinian Eddy
TML	Temperature Minimum Layer
WIW	Winter Intermediate Water
WMDW	Western Mediterranean Deep Water
WMED	Western Mediterranean
WMT	Western Mediterranean Transition
WSC	Western Sardinian Current

Table 2. Ranges and core characteristics of the parameters pressure, potential density anomaly (σ_θ), potential temperature (Θ), and salinity (S) of water masses in the WMED obtained from literature and the REP14-MED data set. Specifications in brackets refer to core values. Italic indications correspond to TML characteristics.

Water mass characteristic origin	Pressure range (core) [dbar]	σ_θ range (core) [kg m^{-3}]	Θ range (core) [$^\circ\text{C}$]	S range (core)	Reference study where values are measured or just mentioned
MAW low-salt Strait of Gibraltar	0-140 (50)	<28.72 (28.19)	13.6-24.2 (15.19) (summer 17.71)	37.15-38.3 (37.93) (summer 37.61)	REP14-MED data Sparnocchia et al., 1994 La Violette, 1994
	0-200 (summer:50-70)			36.5-37.5	
	0-150		13.5-23	36.5-38.0	Benzohra and Millot, 1995
	0-150		13.7-15.2	37.2-38.2	Sorgente et al., 2003
WIW / TML cold/low-salt / cold layer northern WMED, not formed every year / <i>influenced</i> by <i>modified</i> WIW	170-400 (250) <i>120-270</i> (200) (150-200) <i>150-250</i> 200->360 (<300)	(28.99) (28.86-28.89) 28.8-28.9	(<12.9) (<13.25) (12.65-13.2) 13.3-13.5 (12.9) (<13.5) 11.5-13.0	(<38.3) (38.24-38.30) (38.3) (38.3) (38.20) (38.2) <38.3	REP14-MED data Benzohra and Millot, 1995 Sorgente et al., 2003 Allen et al., 2008 Vargas-Yáñez et al., 2012 Juza et al., 2013
LIW saline Strait of Sicily	80-740 (402)	28.72-29.1 (29.06)	13.2-14.2 (13.91) (summer 13.51)	38.24-38.74 (38.70) (summer 38.58)	REP14-MED data Sparnocchia et al., 1994 La Violette, 1994 Benzohra and Millot, 1995 Sorgente et al., 2003 Juza et al., 2013; Juza et al., 2015 Bosse et al., 2015
	200-800 (300-500)			38.45-38.75 (38.5-38.7)	
	300-800		13.6-14.0	38.64-38.70	
	300-400		13.2-14.0	38.5-38.7	
	200-500	29.03-29.10		(38.68-38.70)	
WMDW σ_θ changes small, monotonic decrease of Θ and S winter formation in NW Mediterranean	upper 540-1500 lower 1500-2300 800-3000 >600	29.10-29.11 29.11-29.117	12.91-13.70 12.91-12.90 12.75-12.90 12.75-12.90 12.8-12.9	38.48-38.68 38.48-38.485 38.4-38.48 38.42-38.47 38.48	REP14-MED data La Violette, 1994 Benzohra and Millot, 1995 Testor and Gascard, 2005 Schroeder et al., 2008 Bosse et al., 2015
	>2000	29.1	≤ 12.83 in 2004	≤ 38.45 in 2004	
	>1000	29.1	12.85-12.89	38.48-38.50	
BW developed after WMT increase of Θ , S, σ_θ near bottom same origin as WMDW	>2300 >3000 >2000 >2000 1900	>29.118 (increase 0.005) >29.11 in 2010 29.119	>12.91 (increase 0.01) 12.85 in 2005 12.85-12.88 in 2006 12.90 in 2013	>38.49 (increase 0.01) 38.46 in 2005 38.455-38.47 in 2006 38.485 in 2013	REP14-MED data La Violette, 1994 Schroeder et al., 2008 Schroeder et al., 2008 Schroeder et al., 2016 Schroeder et al., 2016

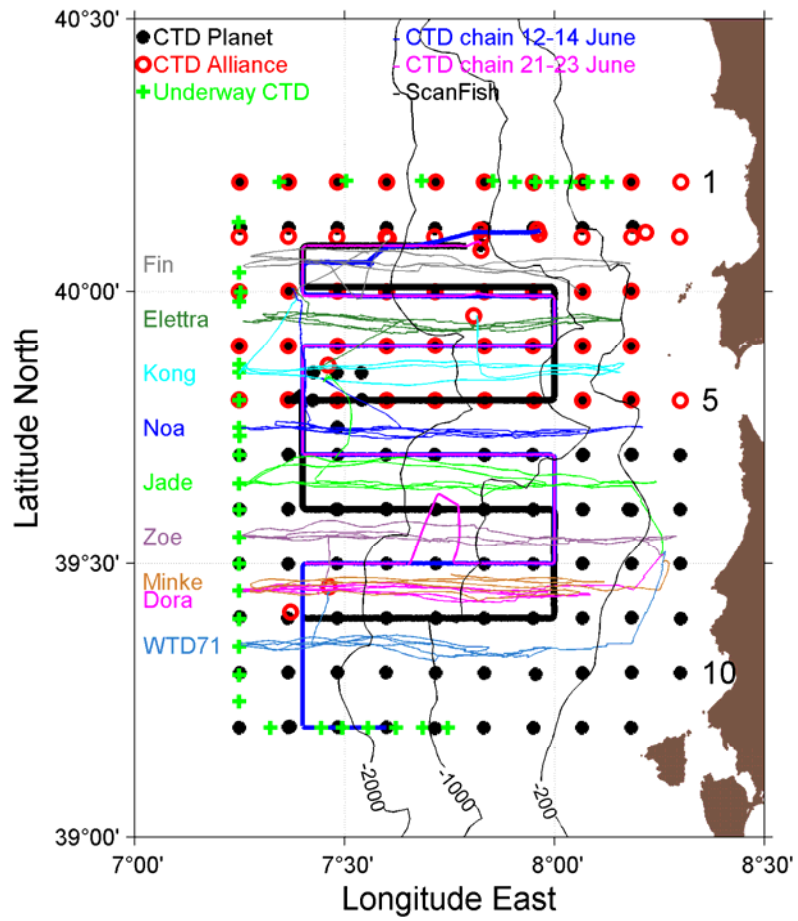


Figure 1. CTD data sets obtained with different instruments. Glider names are specified next to their tracks. For reference, zonal CTD transects 1, 5 and 10 are also marked. Thin black lines denote the 200, 1000 and 2000 m isobaths.

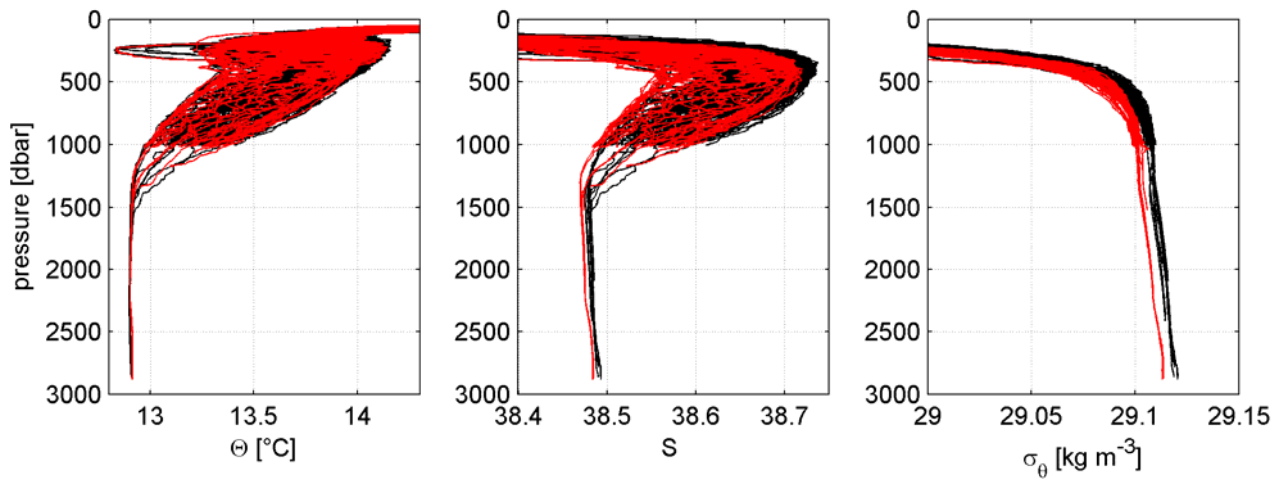


Figure 2. Potential temperature (Θ), salinity (S) and potential density anomaly (σ_{θ}) profiles of Sea-Bird CTD casts obtained by *Planet* (black) and *Alliance* (red) with focus on the lower water column.

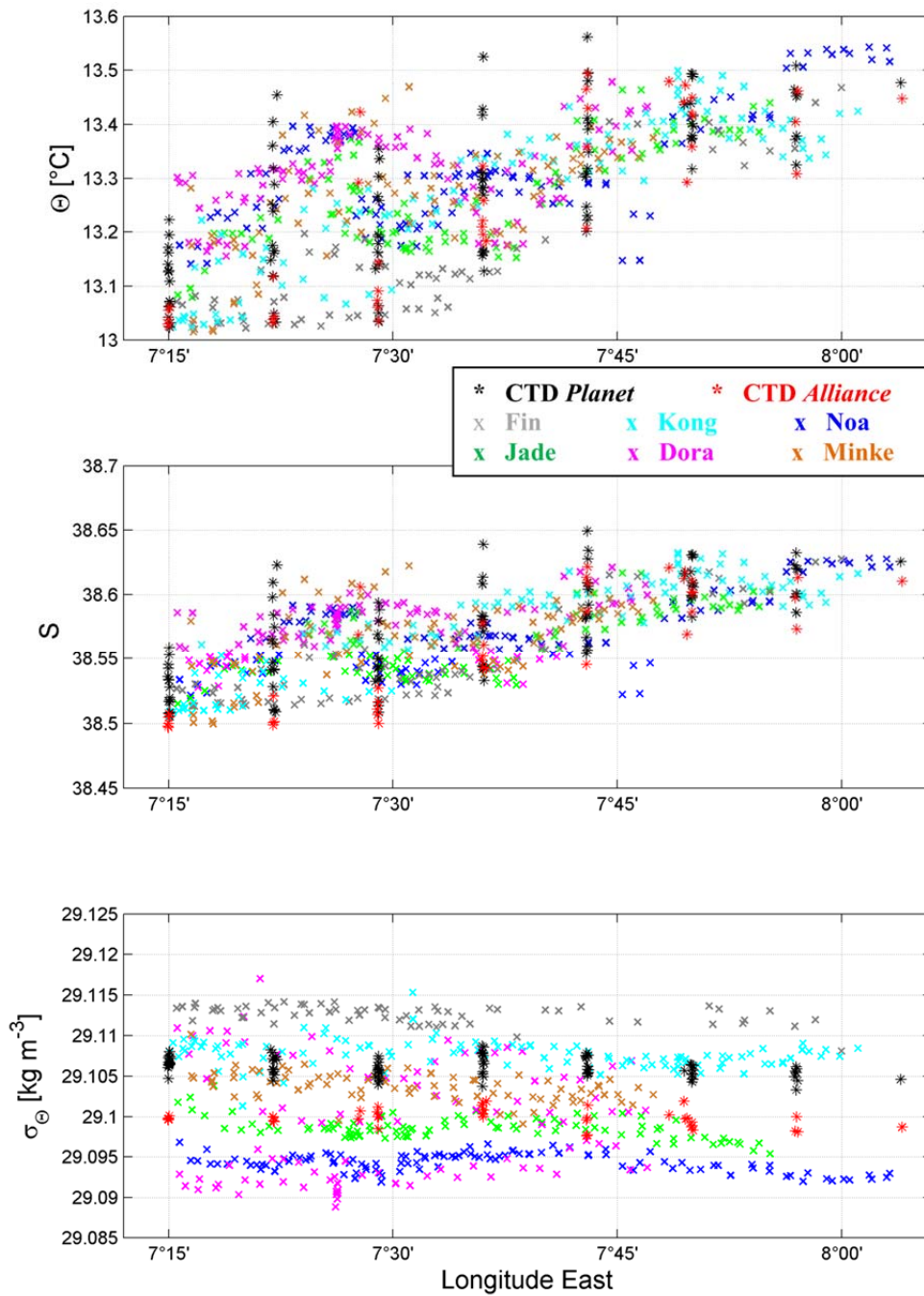


Figure 3. Potential temperature (Θ), salinity (S) and potential density anomaly (σ_{Θ}) at roughly 900 dbar versus longitude of all CTD and glider profiles available at that pressure level. *Planet* covered all latitudes of the trial area, *Alliance* observed in the northern part, and the gliders surveyed at selected latitudes given in Fig. 1.

Figure 4. Potential temperature (Θ), salinity (S) and potential density anomaly (σ_θ) profiles obtained from ARGO float 6901836 (14 June) and nearby profiles of *Planet* (17 June) and *Alliance* (11 June).

5 **Figure 5.** Potential temperature (Θ), salinity (S) and potential density anomaly (σ_θ) profiles of the Underway CTD (UCTD) (15 June) and nearby profiles of *Planet* (18 June) and *Alliance* (9 June).

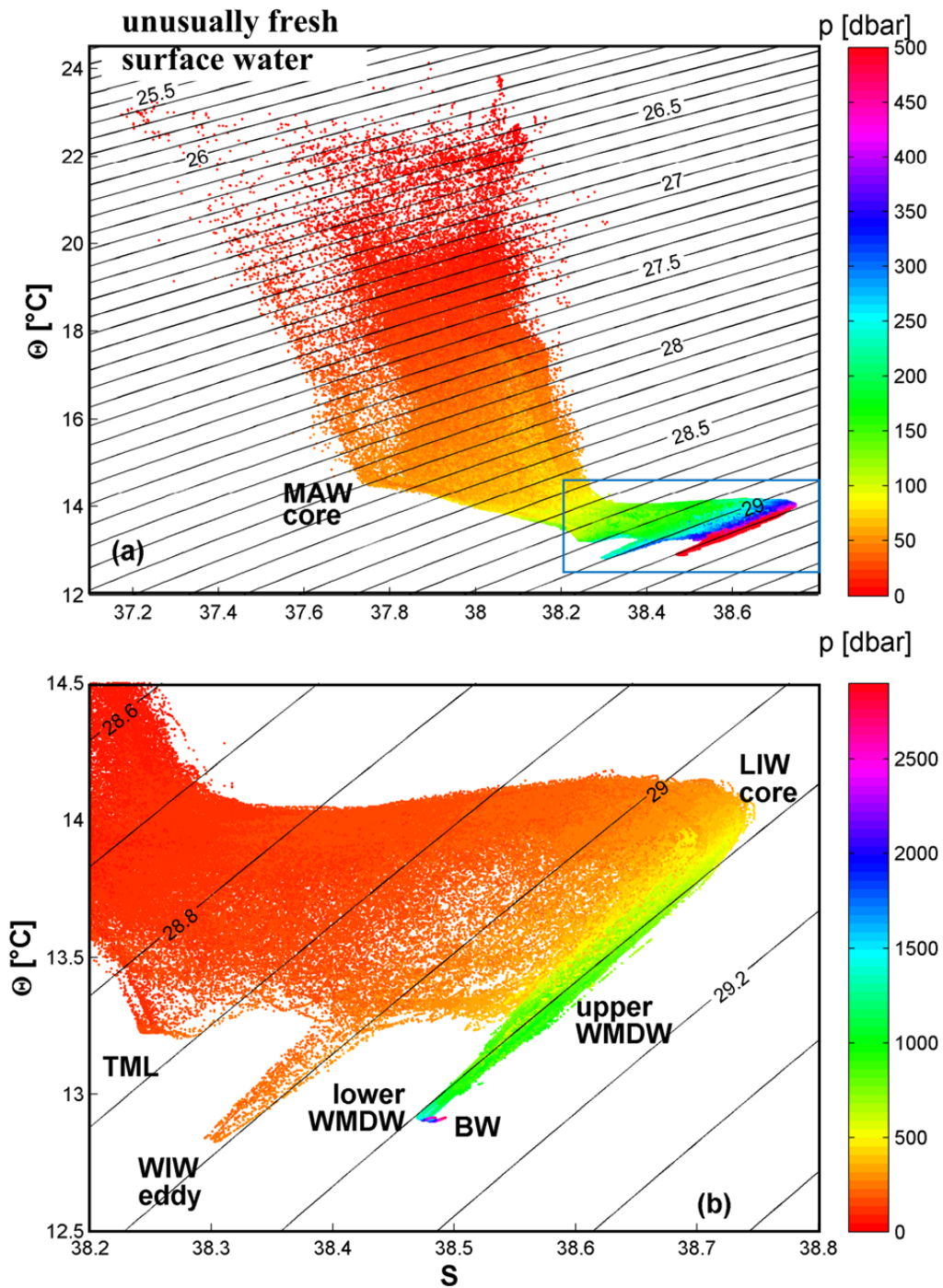


Figure 46. Potential temperature/salinity (Θ/S) diagram with contours of potential density anomaly (σ_{θ}) (black) of all CTD casts and gliders. Diagrams are presented for the (a) whole water column with coloured pressure in the upper 500 dbar and unicolour below (blue box indicates the range shown in Fig. 6 b), and (b) lower water column with coloured pressure between 0 and 2900 dbar.

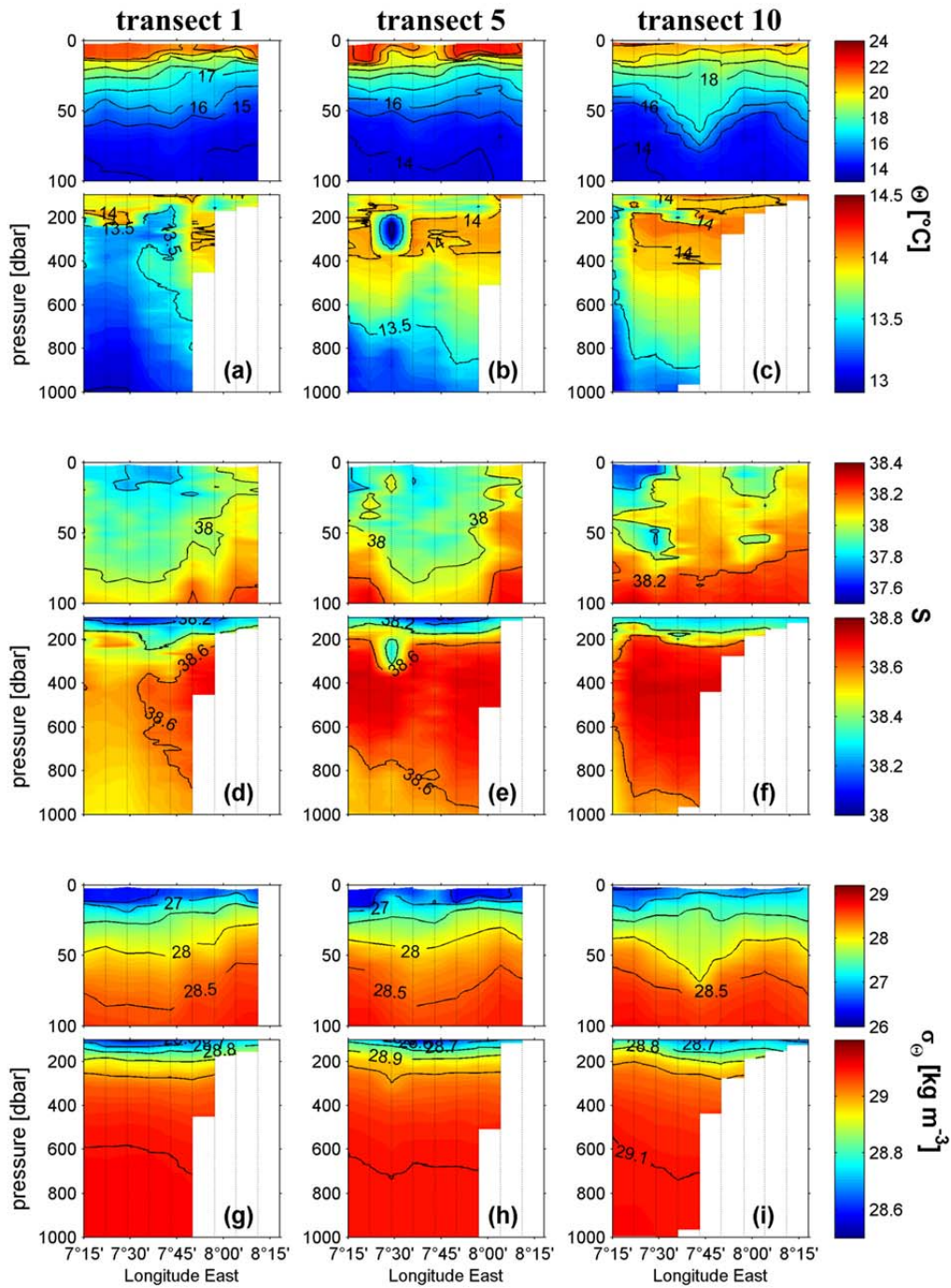


Figure 57. Potential temperature (Θ), salinity (S), and potential density anomaly (σ_θ) along the zonal (a, d, g) transect 1 (40°12' N), (b, e, h) transect 5 (39°48' N), and (c, f, i) transect 10 (39°18' N) in the upper 100 and 1000 dbar based on *Planet* CTD casts (dotted lines) given in Fig. 1.

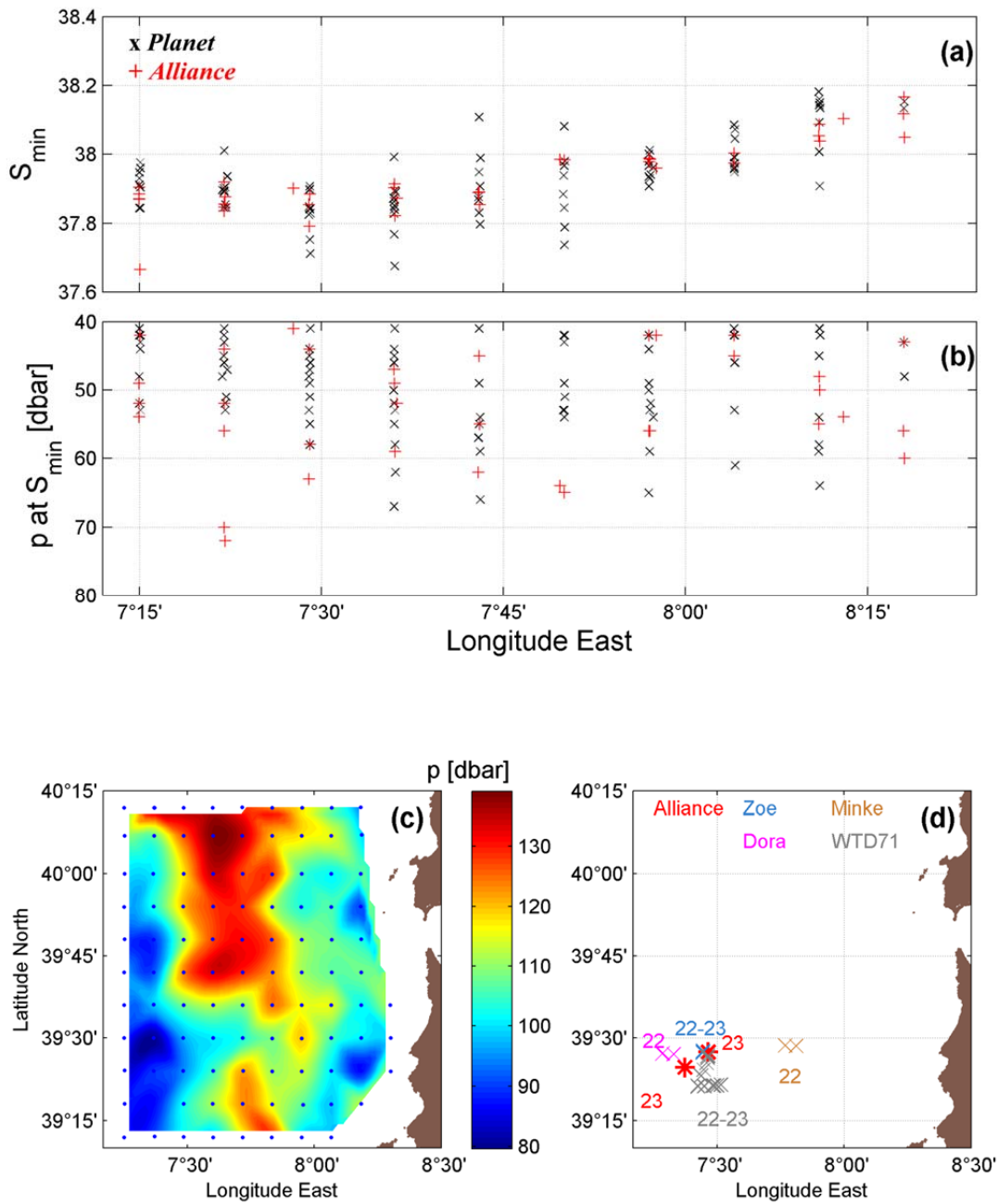


Figure 68. Characteristics of MAW, (a) salinity minimum (S_{\min}) within 40 to 80 dbar of all Planet (x) and Alliance (+) CTD casts, (b) corresponding pressure (p) levels of S_{\min} , (c) pressure level of lower boundary of MAW ($\sigma_{\theta}=28.72 \text{ kg m}^{-3}$) based on Planet CTD casts, (d) Positions and June dates of all CTD and glider profiles with measurements of unusually low saline surface water ($S < 37.32$ within 0 to 50 dbar).

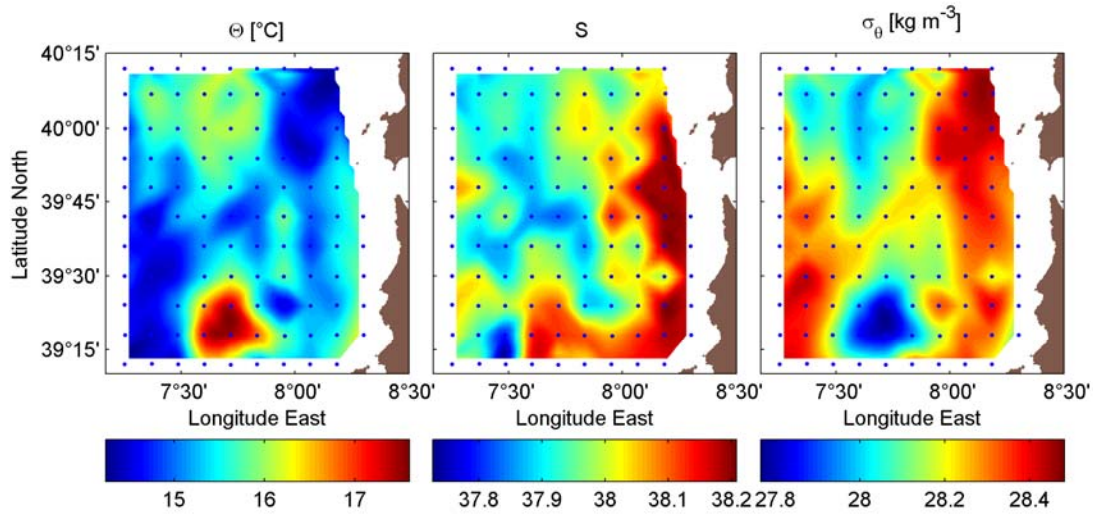
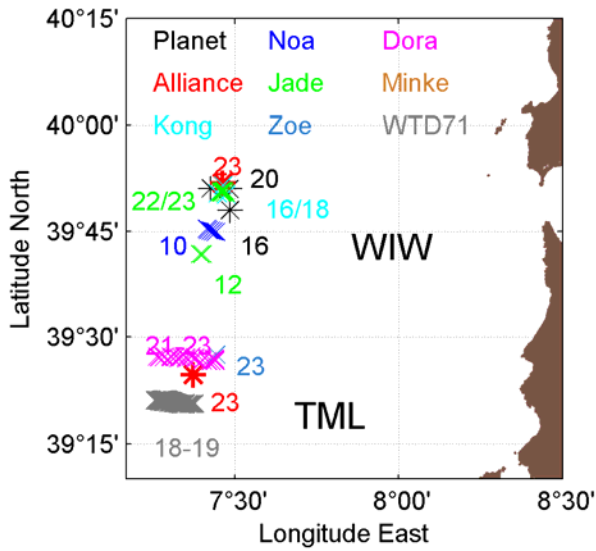


Figure 79. Potential temperature (Θ), salinity (S), and potential density anomaly (σ_θ) distribution at the pressure level of 50 dbar based on CTD casts (blue dots) obtained by *Planet* from 8-18 June.



5

Figure 810. Positions and June dates of all CTD and glider profiles with WIW and TML observations, respectively ($T < 13.3$ °C and $S < 38.33$ between 100 and 350 dbar).

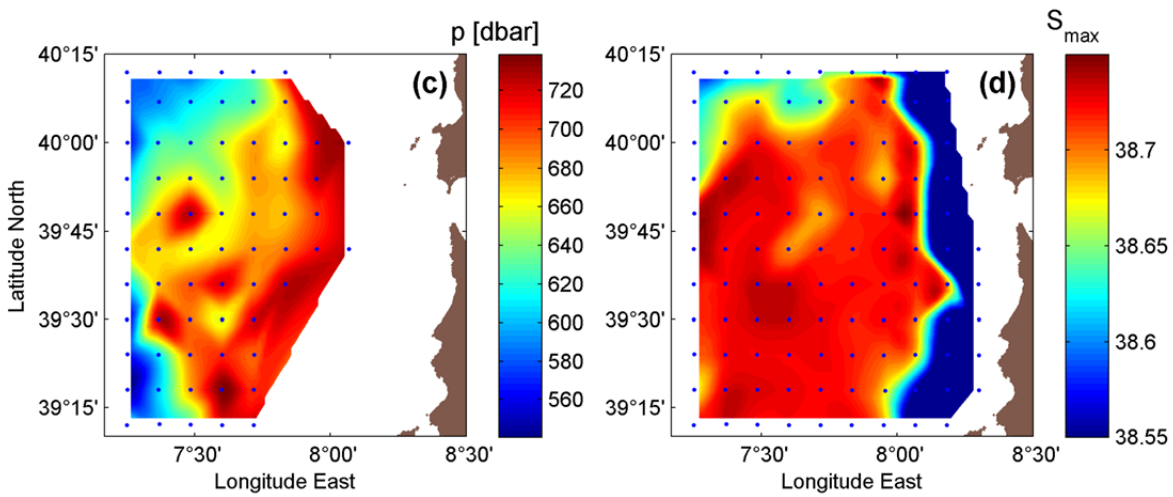
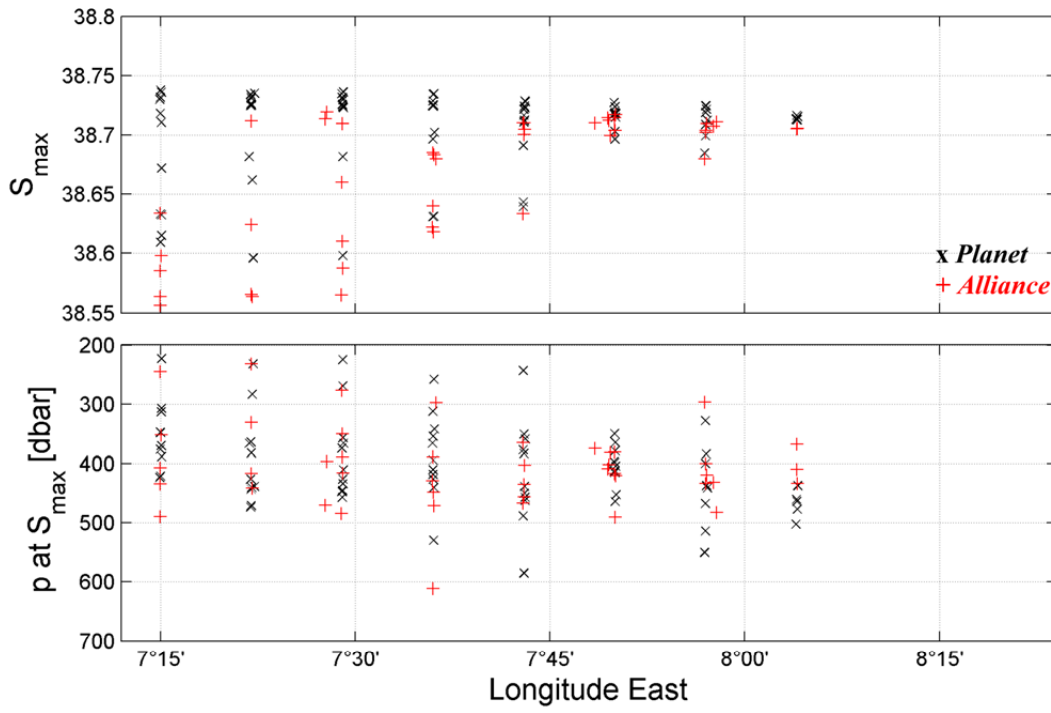


Figure 944. Characteristics of LIW, (a) salinity maximum (S_{\max}) of at least 400 dbar deep CTD casts of *Planet* (x) and *Alliance* (+), (b) corresponding pressure level of S_{\max} , (c) pressure level of lower boundary of LIW ($\sigma_{\theta}=29.1 \text{ kg m}^{-3}$) based on *Planet* CTD casts (blue dots), (d) maximum salinity (S_{\max}) > 38.55 based on *Planet* CTD casts (blue dots).

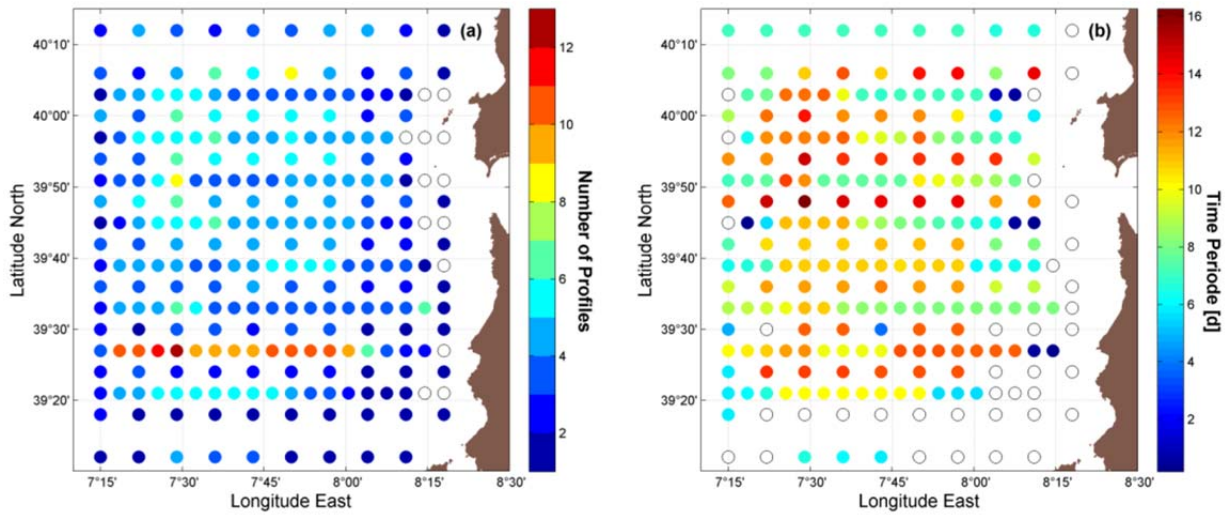


Figure 102. (a) Number of profiles gathered for each grid station (stations with no assigned profiles in white), and (b) time period in days between the first and last profile assigned to each grid station (stations with only one profile in white).

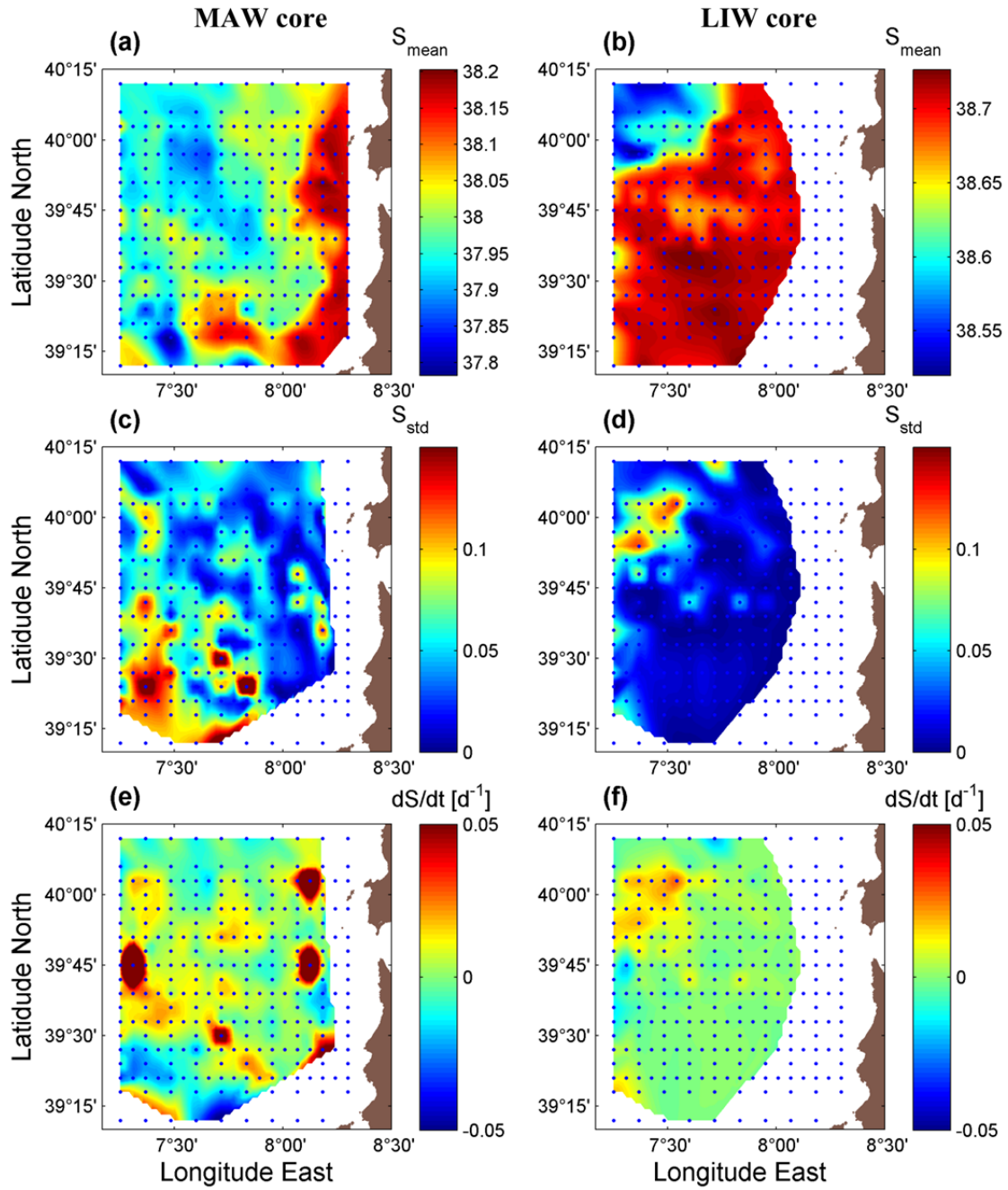


Figure 113. Mean salinity (S_{mean}), standard deviation (S_{std}), and linear temporal change in salinity per day (dS/dt [d^{-1}]) in the cores of (a, c, e) MAW ($\sigma_{\theta}=28.2 \text{ kg m}^{-3}$) and (b, d, f) LIW ($\sigma_{\theta}=29.06 \text{ kg m}^{-3}$) based on all collected data of the station grid (blue dots).

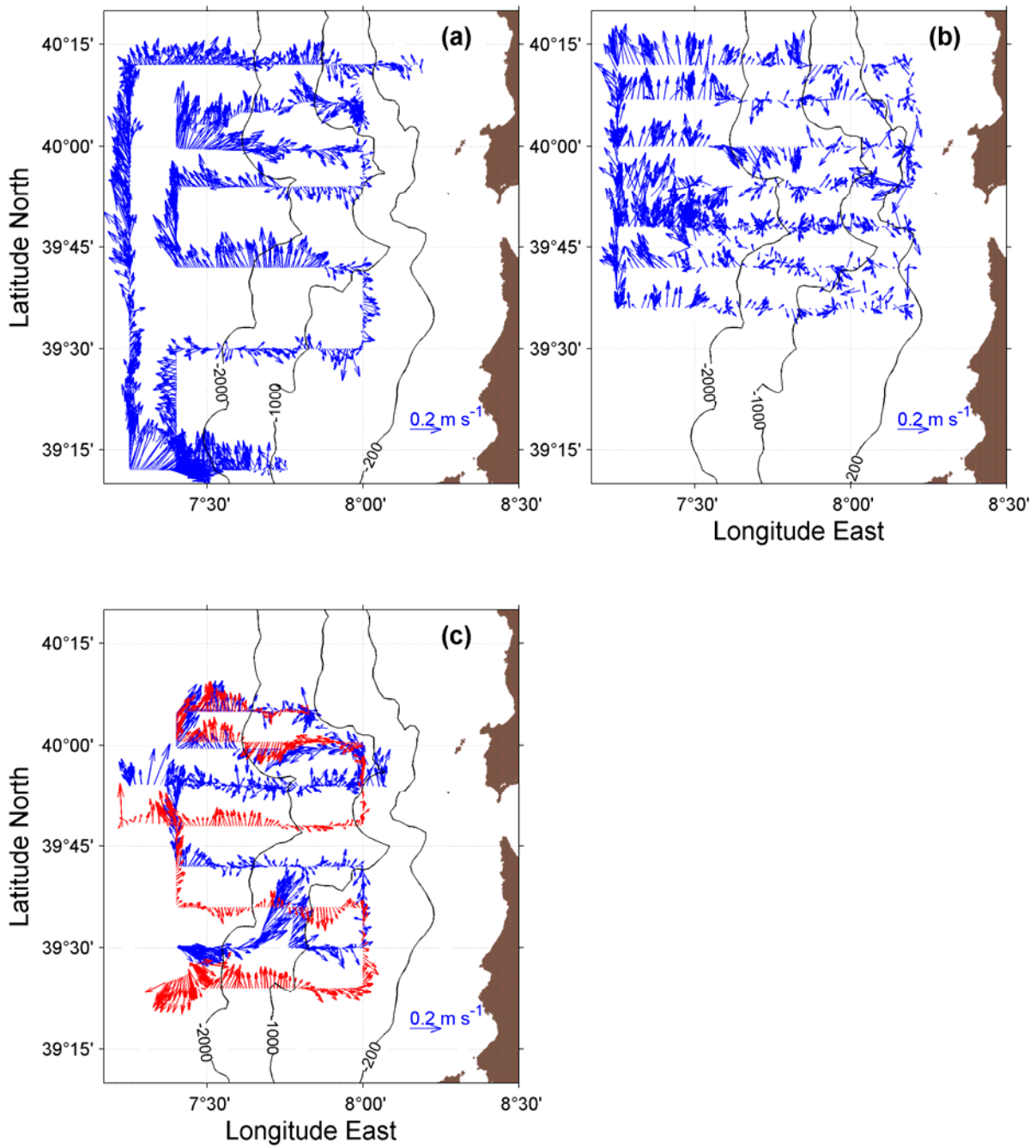


Figure 124. ADCP current vectors of *Alliance* (red) and *Planet* (blue) at 125 m depth averaged over 300 s for the time periods (a) 11 to 16 June, first CTD-chain tow, (b) 16 to 20 June, northern CTD-transects, (c) 21 to 23 June, second CTD-chain / ScanFish tow, including the isobaths at 200, 1000 and 2000 m depth.

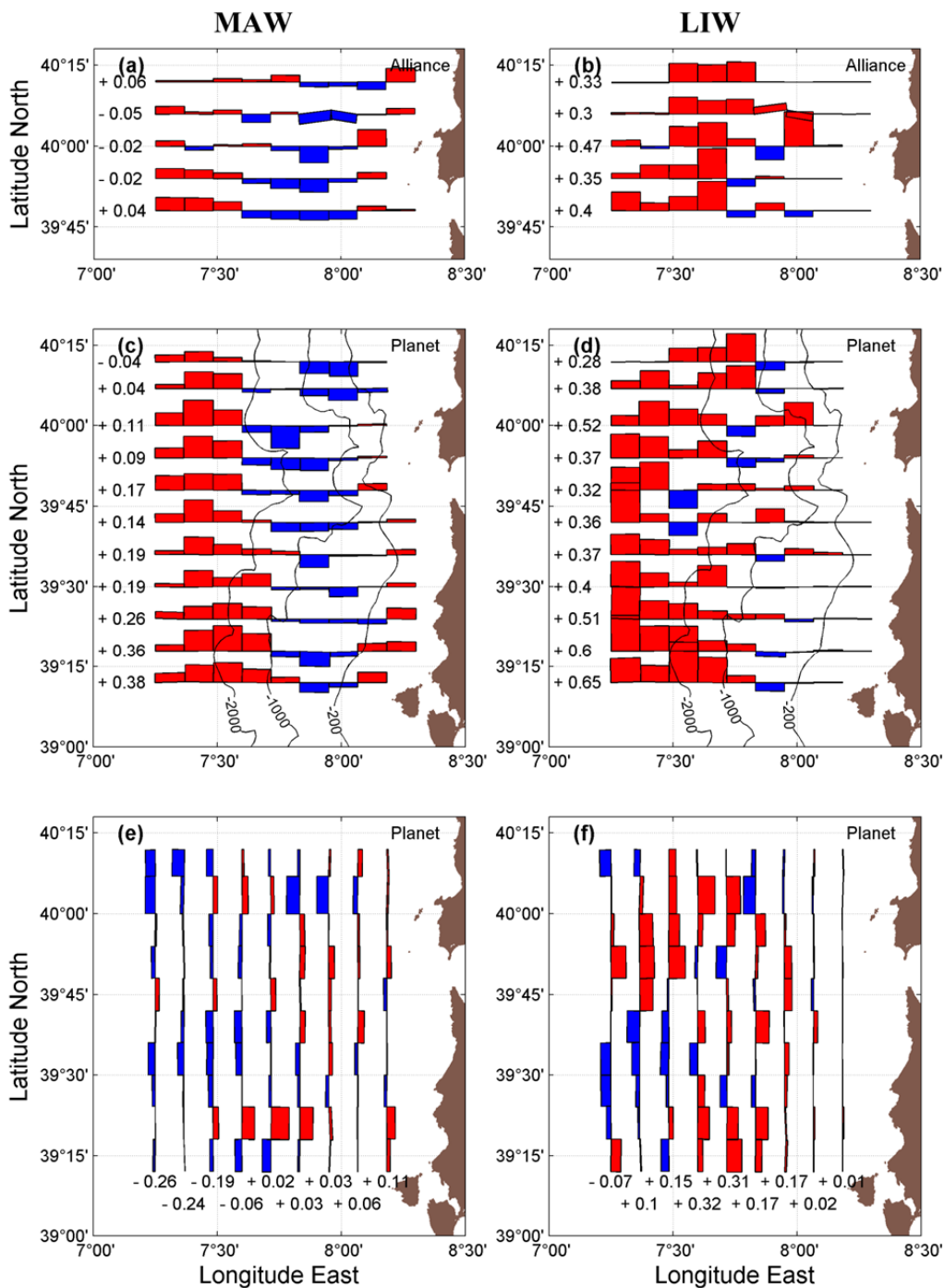


Figure 135. Geostrophic transports [Sv] calculated with a level of no motion (LNM) at 1000 dbar and bottom, respectively, along the CTD transects of (a, b) *Alliance* and (c, d, e, f) *Planet* within the water masses (a, c, e) MAW and (b, d, f) LIW. The net transports are noted beside each transect. Plots of the meridional transports observed by *Planet* additionally show the isobaths at 200, 1000 and 2000 m depth.