

Observations of brine plumes below Arctic sea ice - Response to reviewers

Algot K. Peterson

The author thanks the reviewers for their time and comments. The comments are reproduced below, followed by the authors response and any changes to the manuscript. Author responses are indented and typed in red.

Attached is also a track changes pdf highlighting the changes made in the manuscript, which also corrects a few typos.

C. Stevens (Referee)

craig.stevens@niwa.co.nz

Submitted on 09 Jan 2018

I am happy with the author's revisions and I think this is a nice contribution to the topic.

Anonymous Referee #2

Submitted on 05 Jan 2018

The overall argument is much clearer in the revised version, and I recommend publication after very minor revisions.

Page 8, line 13: '... positive heat flux.' Add '(cold salty water sinking from the ice into the first meter of the ocean).

The sentence now reads 'Brine released from warm sea ice is a possible explanation, as a source of cold, salty water sinking from the ice into the first meter of the ocean is consistent with negative salt flux and positive heat flux.'

Page 8, line 35 – page 10 line 1: This is somewhat confusing as written, and is much better stated on page 14 lines 4-6. Consider revising it here. 'The plumes are thus mixed more efficiently into the ambient water' is particularly confusing.

Clarified as follows: 'This does not imply that plumes are stronger during fast drift, but rather that w_{max} is dominated by increasingly large turbulent eddies. Stronger turbulence causes more efficient entrainment of ambient water into the plumes, leading to a lower peak in turbulent heat flux.'

Page 10 line 19: check the units on '0.7 m s⁻¹, or 9% of observed total salt release' this shouldn't be in m/s?

Salt fluxes in unit m/s follows from use of unitless salinity. $FS=w'S'$ then gives units m s⁻¹. Alternatively, this can be written g kg⁻¹ m s⁻¹, or psu m s⁻¹ but I prefer m s⁻¹, following recommended nomenclature from TEOS-10.

Page 12, line 20: 'under during severe melting'

Removed 'under'.

Observations of brine plumes below melting Arctic sea ice

Algot K. Peterson^{1,2}

¹Geophysical Institute, University of Bergen, Norway

²Bjerknes Centre for Climate Research, Norway

Correspondence to: Algot K. Peterson (algot@uib.no)

Abstract. In sea ice, interconnected pockets and channels of brine are surrounded by fresh ice. Over time, brine is lost by gravity drainage and flushing. The timing of salt release and its interaction with the underlying water can impact subsequent sea ice melt. Turbulence measurements 1 m below melting sea ice north of Svalbard reveal anti-correlated heat and salt fluxes. From the observations, 131 salty plumes descending from the warm sea ice are identified, confirming previous observations from a Svalbard fjord. The plumes are likely triggered by oceanic heat through bottom melt. Calculated over a composite plume, oceanic heat- and salt fluxes during the plumes account for 6% and 9% of the total fluxes, respectively, while only lasting in total 0.5% of the time. The observed salt flux accumulates to 7.6 kg m^{-2} , indicating nearly full desalination of the ice. Bulk salinity reduction between two nearby ice cores agree with accumulated salt fluxes to within a factor of two. The increasing fraction of younger, more saline ice in the Arctic suggests an increase in desalination processes with the transition to the 'new Arctic'.

1 Introduction

In the Arctic Ocean, sea ice is an effective barrier for exchange between the ocean and atmosphere. The presence of sea ice is, however, depending on a delicate balance between the atmospheric and oceanic heat fluxes. The inflowing Atlantic water contains enough heat to melt the Arctic sea ice in a few years (Turner, 2010), and a small change in oceanic heat flux can have huge implications for the heat balance at the interface. Understanding the processes that control vertical heat fluxes under the sea ice is important to understand the response of sea ice to a changing climate (Carmack et al., 2015). The interplay between heat and salt exchange at the ice-ocean interface can work to enhance or reduce sea ice melt in the Arctic Ocean (Sirevaag, 2009).

While sea ice in bulk is a source of freshwater to the upper ocean, the sea ice consists of fresh ice surrounding pockets of liquid brine, connected through a network of channels and capillaries (Petrich and Eicken, 2010). The brine remains at its salinity-determined freezing point, in thermal equilibrium with the surrounding ice, and brine salinity and volume adjusts to temperature changes by growing or melting fresh ice.

Over time, salt is lost from the sea ice. Timing of the salt release and how the salt is distributed in the water column is important in the evolution of the Arctic mixed layer. The main desalination processes of sea ice are gravity drainage and flushing of surface meltwater and melt ponds (Notz and Worster, 2009). While melt ponds are present only in advanced stages of melt, gravity drainage occurs throughout the seasons. Ice permeability is a controlling factor for gravity drainage, increasing

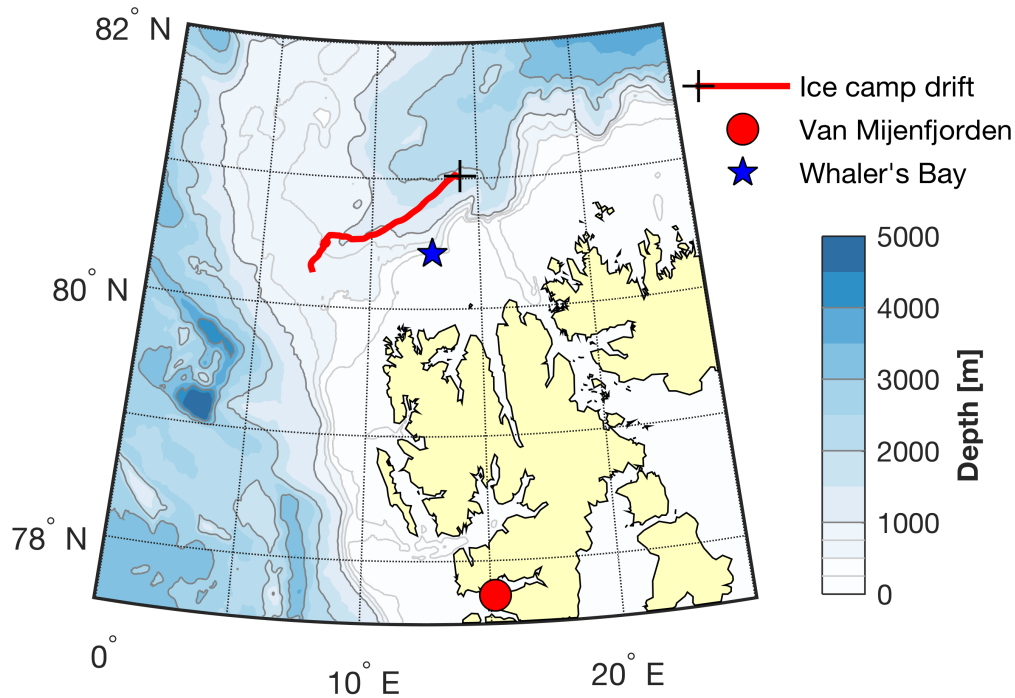


Figure 1. Overview of the study region north of Svalbard, showing the drift track of the ice camp studied here, with its starting point marked by a cross. The positions of the Van Mijenfjorden study (Widell et al., 2006) and Whaler's Bay (Sirevaag, 2009) are shown for reference.

with temperature as the ice warms (Golden et al., 1998). When sea ice warms to within a certain critical temperature range, full depth brine convection and desalination can occur, even before the onset of melt (Jardon et al., 2013). Furthermore, gravity drainage has been successfully modeled using a 1D sea ice model, and can be triggered both by atmospheric heat and bottom melt from oceanic heat (Griewank and Notz, 2013).

- 5 Despite theoretical understanding and successful modeling of spring-time brine convection, observations are sparse. Brine drainage in response to atmospheric warming may have been the cause of observed salinity anomalies below sea ice in Stor-fjorden (Jardon et al., 2013). Still, the main evidence so far has been observations of saline plumes descending from warming landfast sea ice in a Svalbard fjord (Widell et al., 2006). It has been hypothesized that this form of desalination can occur on drifting Arctic sea ice, but so far this has remained unverified. The existence of such plumes can be important to the desalina-
- 10 tion of sea ice, subsequent distribution of salinity in the upper water column, and could thus affect the otherwise strong surface stratification typical below melting ice.

The first observations of brine plumes released from drifting sea ice in the Arctic Ocean are presented here. The observations are collected in June 2015, in the MIZ north of Svalbard (Figure 1). The data is a subset of a previously reported under-ice turbulence data set (Peterson et al., 2017, 2016), and is part of the Norwegian Young Sea Ice Cruise (N-ICE2015, Granskog et al., 2016).

2 Data and methods

5 2.1 Turbulence instrument cluster

Under-ice turbulence measurements were made using a turbulence instrument cluster (TIC), deployed 1 m below the ice undersurface, relying on eddy-covariance to calculate turbulent fluxes of momentum and scalars from point measurements of temperature, salinity and currents. The cluster is fixed on a mast which is deployed through a hole in the sea ice, suspended on a wire which allows adjustment of the instrument depth. The concept is well-proven, and processing follows previous studies (McPhee, 2002; MCPhee et al., 2008). Detailed description of the setup is given in Peterson et al. (2017), briefly summarized below. Horizontal and vertical currents are rotated into the mean current direction (u), such that cross-stream (v) and vertical (w) current averages zero for a given 15-minute segment. The data gaps visible in Figure 2 are due to two corrupt data files.

Heat flux is calculated from the covariance of temperature and vertical velocity,

$$F_H = \rho_w c_p \langle w' T' \rangle, \quad (1)$$

15 where ρ_w is the water density and c_p is the specific heat capacity of the water, angled brackets indicate a temporal mean, and primes indicate detrended values (fluctuations about a 15-minute mean value). The heat flux is positive when warmer water is brought upward, and cold downward. Similarly, salinity flux is calculated as

$$F_S = \langle w' S' \rangle, \quad (2)$$

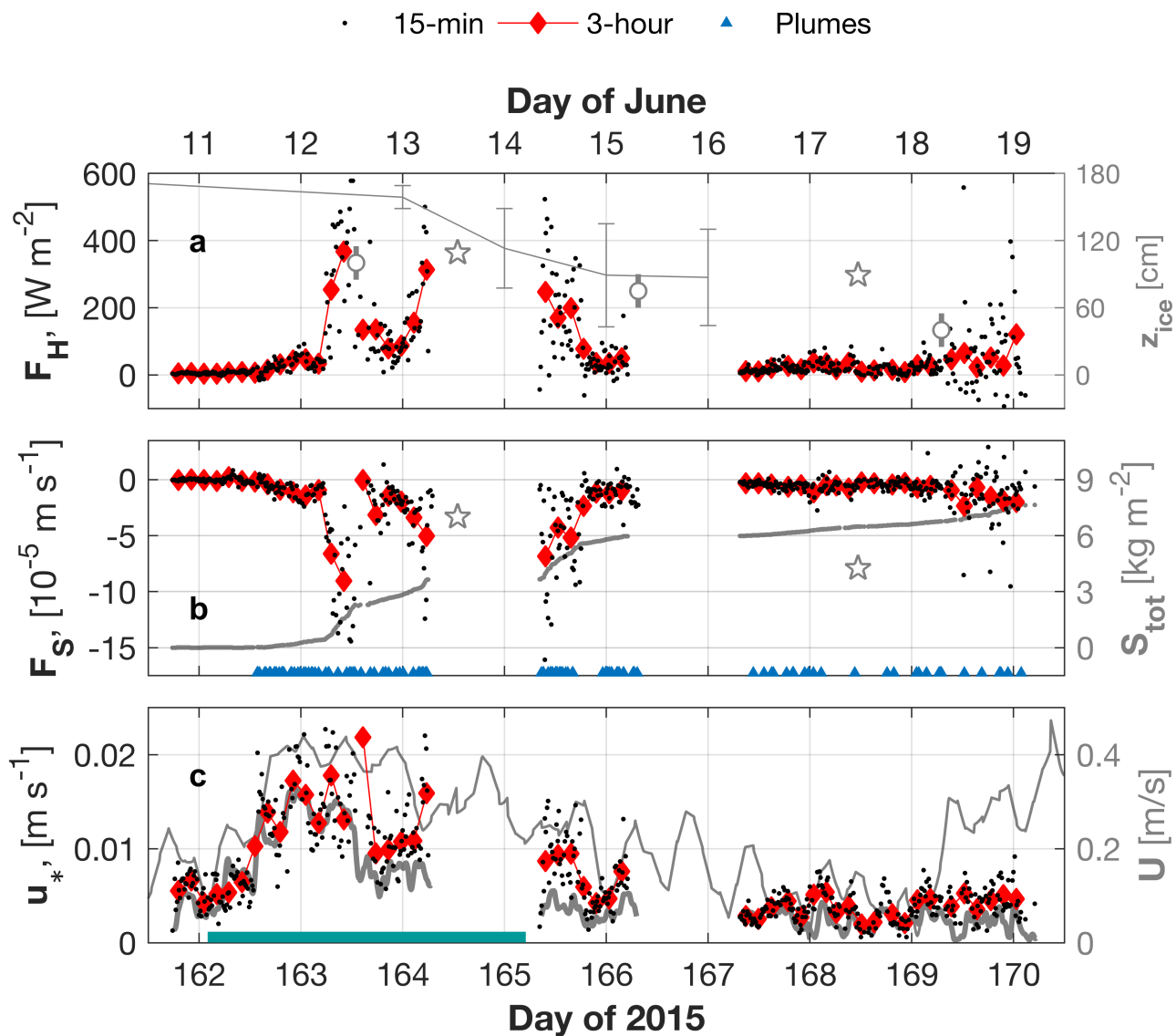
20 where F_S is positive when more saline water is brought upward, and fresher water moves down. Accumulated salt flux (units kg m^{-2}) is calculated by adding up 15-minute salt fluxes (m s^{-1}) multiplied by the segment's duration (s), using salinity in kg m^{-3} .

Covariance of horizontal to vertical velocity gives the components of Reynold's stress, presented here as friction velocity,

$$u_* = \sqrt{\tau} = [\langle u' w' \rangle^2 + \langle v' w' \rangle^2]^{1/4}, \quad (3)$$

where τ is the kinematic Reynolds stress magnitude.

25 The TIC data and the derived fluxes have been subjected to an extensive quality control, which is described in full in Peterson et al. (2017). The systematic approach is taken to ensure the validity of Taylor's hypothesis, which is crucial to the turbulent flux calculations. Taylor's hypothesis assumes that an eddy is essentially unchanged as it passes the measurement volume, allowing temporal measurements to be translated to spatial measurements. Each 15-min segment is split in 1-min half-overlapping subsegments, for which mean and root-mean-square values are calculated. This is compared to artificial Gaussian data, and is used to identify variability in the flow that may-violates Taylor's hypothesis, such as trends, rapid change in current direction and swell. Segments that do not meet the criteria indicate unsteady flow, and are excluded from the analysis. For the data presented here, 85 out of 612 segments (14%) were rejected in quality control. Additional details on processing and data considerations are discussed in Section 6.



t

Figure 2. Turbulent fluxes of (a) heat and (b) salt, and (c) friction velocity are shown as 15-minute data points (dots) and 3-hour bin-averages (diamonds). In (a), sea ice thickness is shown from manual measurements in the TIC hole (circles), hot wires (line) and two ice cores (stars). In (b) Total salt content of the ice cores (stars) and measured cumulative salt flux, S_{tot} is given in kg m^{-2} (gray). Identified plumes are indicated by blue triangles. In (c), the sea ice drift speed (thin) and along-stream current (TIC, thick) are shown (gray), and timing of a passing storm is indicated by the green line (defined by Cohen et al., 2017)).

2.2 Auxiliary data

5 The TIC data are supplemented by atmospheric data from a 10 m tall weather mast (Cohen et al., 2017; Hudson et al., 2015), and navigational data from the research vessel Lance, which was anchored to the same ice floe during the drifts, approximately 300-400 m away.

Environmental data from the upper ocean is obtained from profiles of temperature and salinity made using a microstructure sonde (MSS, Meyer et al., 2017a). The profiles were typically collected in sets of three casts, repeated three times daily. Casts
10 were made through a hydrohole about 50 m from the TIC site. Data was validated against the ship-borne CTD (conductivity, temperature, depth) and corrected for sensor drift. The data were analyzed using the Thermodynamic Equation of SeaWater 2010 (TEOS-10, McDougall and Barker, 2011) and Conservative Temperature (Θ) and Absolute Salinity (S_A) are used throughout.

Ice cores were sampled throughout the campaign, for different ice types and sampling variables (Granskog et al., 2017).
15 Two co-located ice cores with both temperature and salinity measurements were collected on the same ice floe as the flux measurements, and are used in this study. Brine volume is calculated as $\Phi = S_{bu}/S_{br}$, where S_{bu} is the bulk salinity, and brine salinity is calculated using the linear relation $S_{br} = -T_{ice}/0.05411$, which is adequate for warm ice (Notz et al., 2005).

In addition to the total height of the two ice cores, sea ice thickness is measured manually in the TIC hydrohole, and in a grid of hot wires (Figure 2). The manual measurements were read from a ruler (pers. comm., Amelie Meyer, January 2017).
20 Due to large, but unknown uncertainty, the measurements in Figure 2a are arbitrarily assigned ± 15 cm error bars. A set of four hot wires were set up in an area of deformed sea ice, initially nearly 2 m thick (Rösel et al., 2016). The error bars in Figure 2a is the standard deviation of the wires. Because of the spatial variability and uncertainties of the different measurements, all ice thickness should be interpreted with care.

3 Environmental setting

25 Observations were made from a drifting ice floe in the MIZ between June 10 to 19 (Figures 1 & 3). The drift took place over the Yermak Plateau, where a branch of the warm West Spitsbergen Current flows across the plateau (Meyer et al., 2017b). Over 9 days, the floe drifted 185 km, with an average drift speed of 23 cm s^{-1} , while water depths shoaled from about 2000 m to less than 1000 m over the Yermak Plateau. The floe had an approximate diameter of 1200 m, and likely consisted of only first year ice (Granskog et al., 2017). The TIC mast was deployed approximately 250 m from the floe edge. The ice drift was mostly
30 parallel to the ice edge (Figure 3).

Temperature at 1 m below the ice averaged to $\Delta T = 0.6^\circ\text{C}$ above freezing, lowest on June 11 ($\Delta T = 0.1^\circ\text{C}$) and highest (1.6°C) during the storm on June 13. Atlantic water flows along the topographic slope (Meyer et al., 2017b), and is often found at depths shallower than 30 m (defined as $T > 0^\circ\text{C}$, Figure 3). Toward the end of the drift a warm intrusion is also observed at 5 to 10 m depth.

Stratification (Figure 3b) in the upper 35 m varies significantly over the drift in and out of warmer waters. The mixed layer depth gradually changes from quite deep (>30 m) in the beginning of the drift, to non-existing at the end, varying with drift

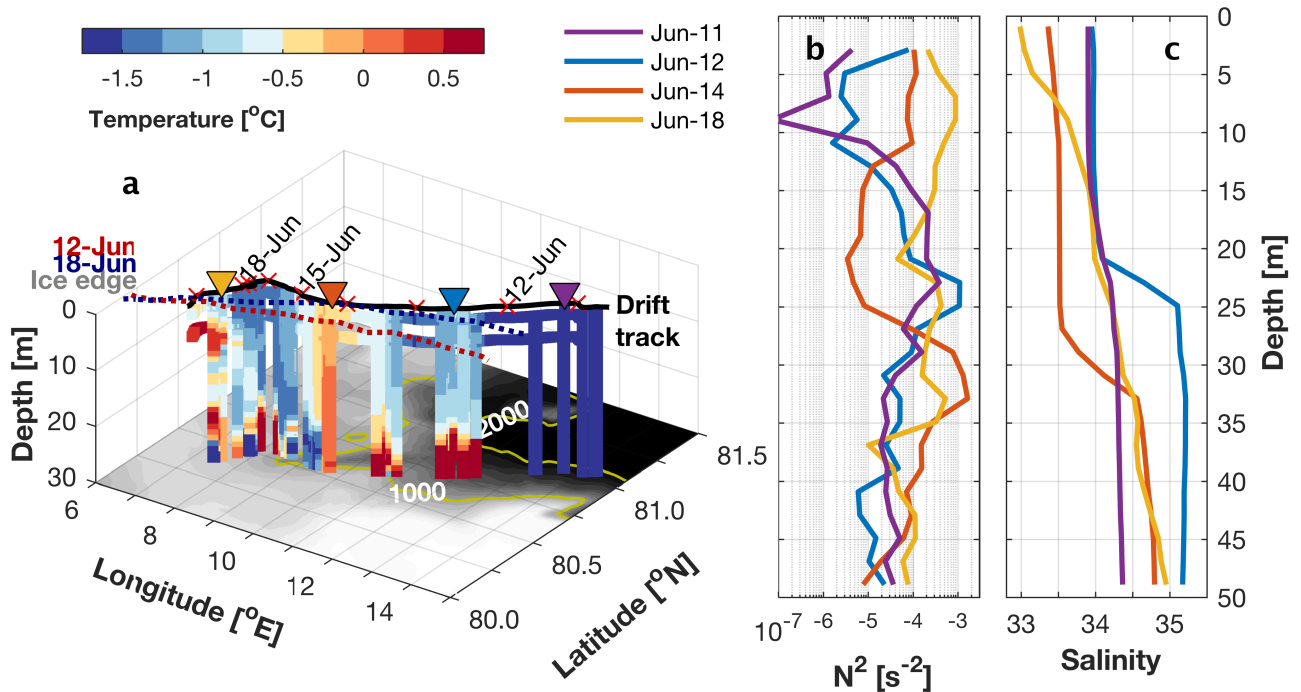


Figure 3. Ocean and sea ice conditions over the course of the drift. (a) Drift track between June 10 to June 19 (black) with daily ticks (crosses). Conservative Temperature (colors) data are derived from a combination of vertical MSS profiles in the upper 30 m and TIC time-series measurements from 1 and 5 m. The ice edge (50% concentration) is shown for June 12 and 18. Water depth is indicated in shading, with yellow isolines at 1000 m and 2000 m. Triangles mark the location of (b) four profiles of stratification (N^2) in the upper 50 m.

to and from areas where warm Atlantic water flows closer to the surface. First, there is a transition from waters of weak stratification (June 11) to gradually stronger surface stratification. On June 12, ~~The~~the top of the pycnocline is about 20 m, reaching 27 m on June 14. Towards the end of the drift, there is strong stratification continuously up to the surface, and there is no mixed layer present on June 18.

Although sea ice thickness measurements are coarse, significant melt is evident over the drift (Figure 2a). The measurements in the TIC hydrohole indicate a reduction from ~ 100 cm to ~ 40 cm between June 12 ~~to~~and 18. Less melt was seen from the ice cores, with a reduction from 109 cm to 89 cm between June 13 ~~to~~and 17. Hot wires measured a decrease from 174 cm to 87 cm over the measurements, although with a very large difference between sensors (variance of up to 46 cm). The ice around the hydrohole is likely melting faster compared to some distance away, and a representative sea ice reduction is likely somewhere between hydrohole and ice core values. Still, by the end of the measurements on June 19, the ice was only a few decimeters thick, and the floe was disintegrating.

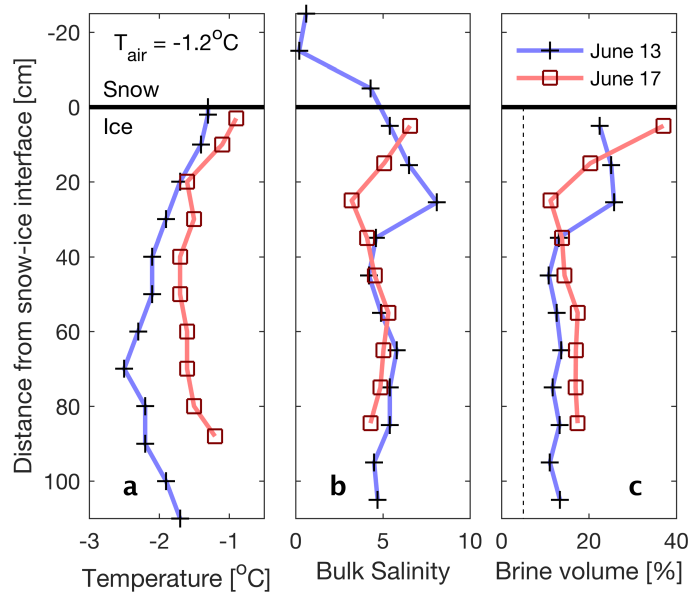


Figure 4. Vertical profiles of sea ice (a) temperature, (b) bulk salinity and (c) brine volume fraction. The ice cores are sampled about 100 m from the measurement site on June 13 and 17. Average temperatures are -1.9°C and -1.4°C , and bulk salinities are 6.4 and 4.8 for June 13 and 17, respectively. The typical 5% threshold required for gravity drainage (Cox and Weeks, 1975) is indicated (c, dotted line).

From an ice coring site located approximately 100 m from the measurement site (Granskog et al., 2016), but on the same ice floe, two ice cores sampled on June 13 and 17 give some insight (Figure 4). The ice core on June 13 shows 109 cm thick ice, with a 30 cm snow layer on top. The ice is rather warm, with a minimum temperature of -2.5°C in the interior of the ice, increasing towards the surface (-1.3°C) and the ice-ocean interface (-1.7°C). The 'C'-shaped temperature profile is indicative of a gradual warming from above. This is confirmed by atmospheric measurements, reporting temperate conditions throughout the measurements on the floe, with temperatures ranging from -2 to $+2^{\circ}\text{C}$ at 10 m height between June 7 to 20 (Cohen et al., 2017). The snow layer was thick (~ 30 cm), slowing heat exchange with the ice (Granskog et al., 2017). Comparison of the two ice cores reveals a decrease in bulk salinity from 6.4 to 4.8 in four days, as well as a decrease in thickness of 20 cm, together causing a decrease in salt content of 2.8 kg m^{-2} (calculated by multiplying bulk salinity with ice thickness).

4 Results

Eddy co-variance measurements from 1 m below the ice under-surface reveal anti-correlated turbulent heat and salt fluxes (Figure 2, $r = -0.94$), at a time of rapid bottom melt. Oceanic heat fluxes are directed towards the ice, and reach several hundred W m^{-2} in response to a passing storm. Salt fluxes are directed down from the ice, exceeding $-10^{-4} \text{ m s}^{-1}$. Downward flux of salt is typical of freezing conditions, such as that observed in refreezing leads in the pack ice north of Alaska (McPhee

and Stanton, 1996). During melting conditions, heat and salt fluxes are more typically both positive, as fresh meltwater is fluxed downward, and is replaced by warmer water from below.

5 At the surface we generally find cooler, fresher water than below (Figure 3), consistent with observed melting at the surface. The negative salt flux can thus not be caused by entrainment of saline water from below. The observed heat- and salt fluxes implies relatively cool, saline water above warmer, fresher water, which is an inherently unstable configuration that cannot be sustained over time. Unstable conditions can occur during a frontal passage, where the observation point (ice floe) drifts from cool and saline water into an area of warmer, fresher water (McPhee et al., 1987; Sirevaag, 2009). When the floe drifts
10 into recently ice-free waters, freshened from sea ice melt and warmed by the sun, cool water moving with the ice floe could be dragged over warm water, setting up an instability with appropriate gradients. The floe drifts over recently ice-free waters on two occasions, and for shorter periods such overturning might be expected, most notably in the last hours on June 12, concurrent with the decreasing flux magnitudes. However, the negative relationship between heat and salt fluxes is sustained over several days, during both increasing and decreasing temperatures, signaling a process which is continually feeding the
15 instability. Negative correlation between the fluxes is consistent throughout the measurements. The turbulent heat flux is a likely forcing agent, as both fluxes increase with drift speed (Figure 2c) and upper ocean temperature (Figure 3a).

Brine released from warm sea ice is a possible explanation, [as a source of cold, salty water sinking from the ice into the first meter of the ocean is](#) consistent with negative salt flux and positive heat flux. Resemblance to the observations in the fjord study by Widell et al. (2006) inspired the search for an inferred, mean plume structure. Events are identified in a similar manner,
20 requiring at least five consecutive points where $w' < 0$, $S' > 1 \times 10^{-5}$ and the salt flux magnitude, $|w'S'|$, exceeds 10^{-4} m s^{-1} or at least five times the root mean square value over the 15-minute segment. A 60 second window centered on the peak $w'S'$ value is used to construct a mean plume ensemble. For each iteration, the 15-minute window is moved 5 minutes in order to also detect plumes otherwise falling on the edge of a window. Duplicate events are removed, leaving 131 identified plumes for the ensemble average, shown in Figure 5. Averaging is done using a bootstrap calculation (Emery and Thomson, 2001),
25 which resamples the data 1000 times to obtain an estimate of the average value occurring by chance. The mean plume and its 95% confidence interval from bootstrap calculations are shown in Figure 5. The shading represents percentiles of the data as a display of the variability between plumes.

The inferred plume is approximately symmetric in time about its peak. Anomalies in temperature and salinity gradually increase toward their peak values over about 10-15 s before they decrease again at the same pace. Vertical velocity perturbations,
30 and thus also the fluxes, increase more abruptly, reaching a peak of $2\text{-}6 \text{ cm s}^{-1}$ in about 7 s, before returning to near-zero. Horizontal velocity typically retards by around 5 cm s^{-1} during the plumes. Temperature and salinity anomalies deviate somewhat from symmetry, averaging positive ($2.1 \times 10^{-3} \text{ }^\circ\text{C}$ and 4.0×10^{-3}) before the plume, approaching zero after. There is, however, considerable variation between individual events, and these are just characteristics of the mean structure. Individual plumes typically have sharper interfaces, and the smooth transitions in Figure 5 is partly due to averaging. Salt- and heat fluxes
35 averaged over the 14 s surrounding the inferred plume peak are $F_S = -3.7 \times 10^{-4} \text{ m s}^{-1}$ and $F_H = 1058 \text{ W m}^{-2}$, respectively. The values observed here are up to one order of magnitude greater than those found by Widell et al. (2006) (See Table 1).

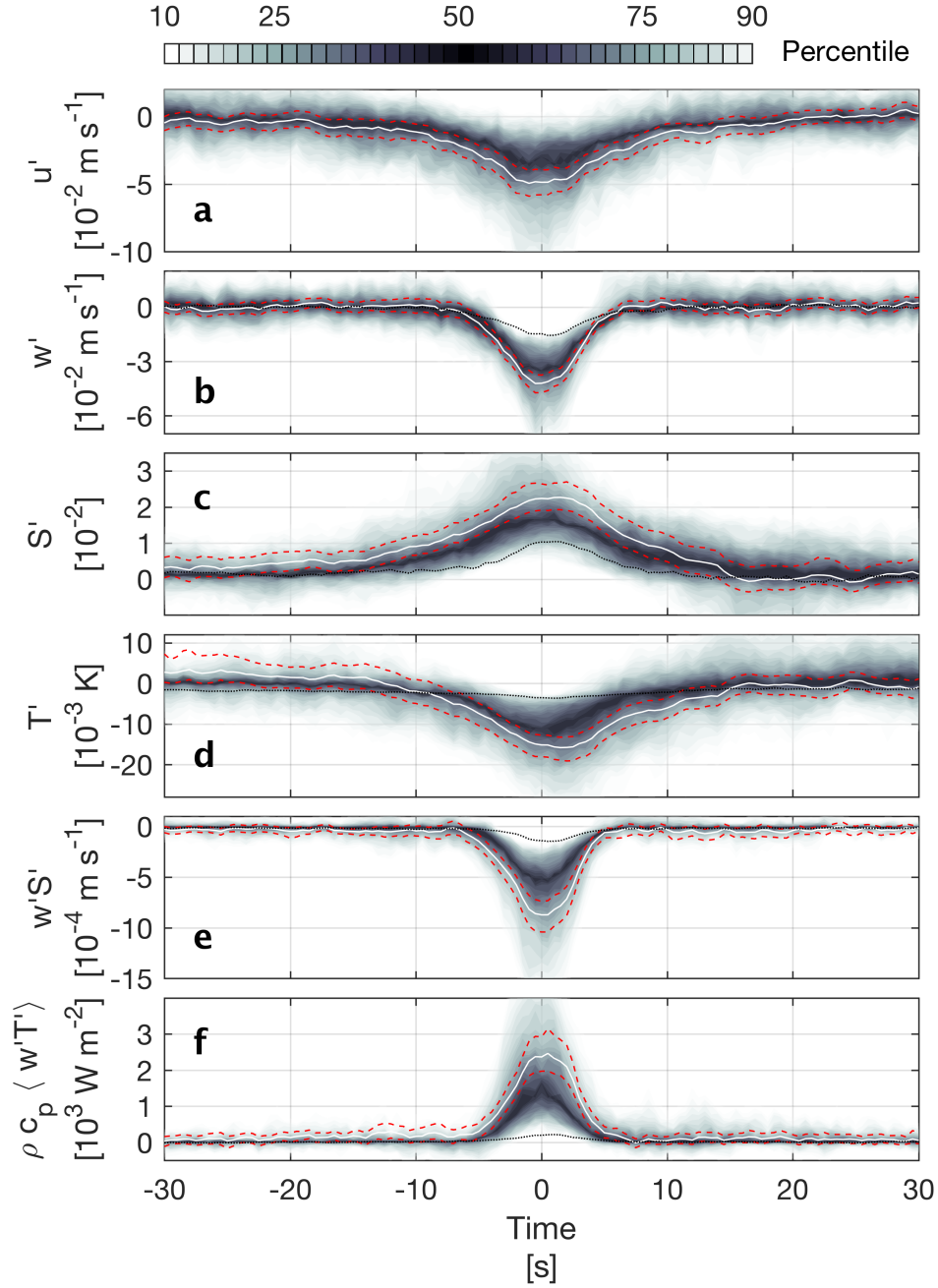


Figure 5. Composite of 131 plumes, identified using the peak in $\langle w'S' \rangle$, presented in a 60 second window. Spread in the data is shown as percentiles (shading), overlain by the mean (white) and its 95% confidence interval from bootstrap calculations (dashed red). Variables are fluctuations of (a) horizontal and (b) vertical velocity, (c) salinity (d) temperature, and turbulent fluxes of (e) salt and (f) heat. The results from Widell et al. (2006) are shown for reference (black dotted lines).

Location/study	Statistic	w'	S'	T'	F_S	F_H
		[cm s ⁻¹]	[10 ⁻³]	[mK]	[10 ⁻⁴ ms ⁻¹]	[W m ⁻²]
Open leads (McPhee and Stanton, 1996)	1-h mean				-0.15	5.9
Van Mijenfjorden (Widell et al., 2006)	Plume peak	-1.6	10	-3.7	-1.5	215
Whaler's Bay (Sirevaag, 2009)	Mean				0.19	268
	Overall mean				-0.19	75
Yermak Plateau	Plume mean	-2.0	18	-11	-3.7	1058
	Plume peak	-4.2	23	-15.8	-8.7	2465

Table 1. Statistics of fluctuations and turbulent fluxes in the present study over the Yermak Plateau in comparison with other Arctic studies of turbulent heat and salt fluxes.

The impact of drift velocity on the plume observations is investigated in Figure 6. Drift speed does not relate linearly with the maximal heat flux in the plumes. In fact, many of the most intense plumes observed (highest F_H) are during weak or moderate current speed. The peak in vertical velocity increases with increasing current speed (Figure 6b). This does not imply that plumes are stronger during fast drift, but rather that w_{max} is ~~determined by w' of the larger~~ dominated by increasingly large turbulent eddies. ~~The plumes are thus mixed more efficiently into the ambient water~~ Stronger turbulence causes more efficient entrainment of ambient water into the plumes, leading to a lower peak in turbulent heat flux. Drift speed also relates to the deviation in temperature from freezing, $\Delta T = T - T_f$, calculated from mean S_A and Φ over the 14 s surrounding the peak in vertical velocity. For low drift speed, many of the plume observations carry water that is supercooled relative to the ambient. The supercooling is caused by the lower salinity-determined equilibrium temperature of the brine within the sea ice. Supercooling decreases with drift speed, and is not observed for plumes where the mean current exceeds ~ 25 cm s⁻¹, consistent with stronger mixing of the plumes during high drift speed. Plumes associated with high maximum heat fluxes are more often supercooled than not.

The accumulated salt release during the flux observations was 7.6 kg m⁻², summed over available measurements between June 11 to 19 (Figure 2b). This is equivalent to a salinity decrease of 5 for 1.5 m thick ice. The salt flux observed here is approximately equivalent to the total salt content of the June 13 ice core. About half of the salt flux was observed before the ice core was sampled, so desalination had already taken place before coring. The salt flux observed after the time of coring accounts for 57% of the total salt content of the ice core on June 13. The salt flux measured between the time of the two cores is 2.8 kg m⁻², the same amount as the change in salt content of the two ice cores. However, gaps in the time-series point to a discrepancy between ice cores and observed salt flux. Assuming the salt flux during the measurement gaps was equal to the mean of available measurements, the accumulated salt flux between the two ice cores is approximately twice the observed reduction in the ice cores. The discrepancy might be linked to spatial inhomogeneity in ice composition and melt rates, variability between individual ice cores, or measurement errors (Section 6). Agreement between measured fluxes and salinity in ice cores within a factor of two supports that the salt flux can originate in brine release from the sea ice.

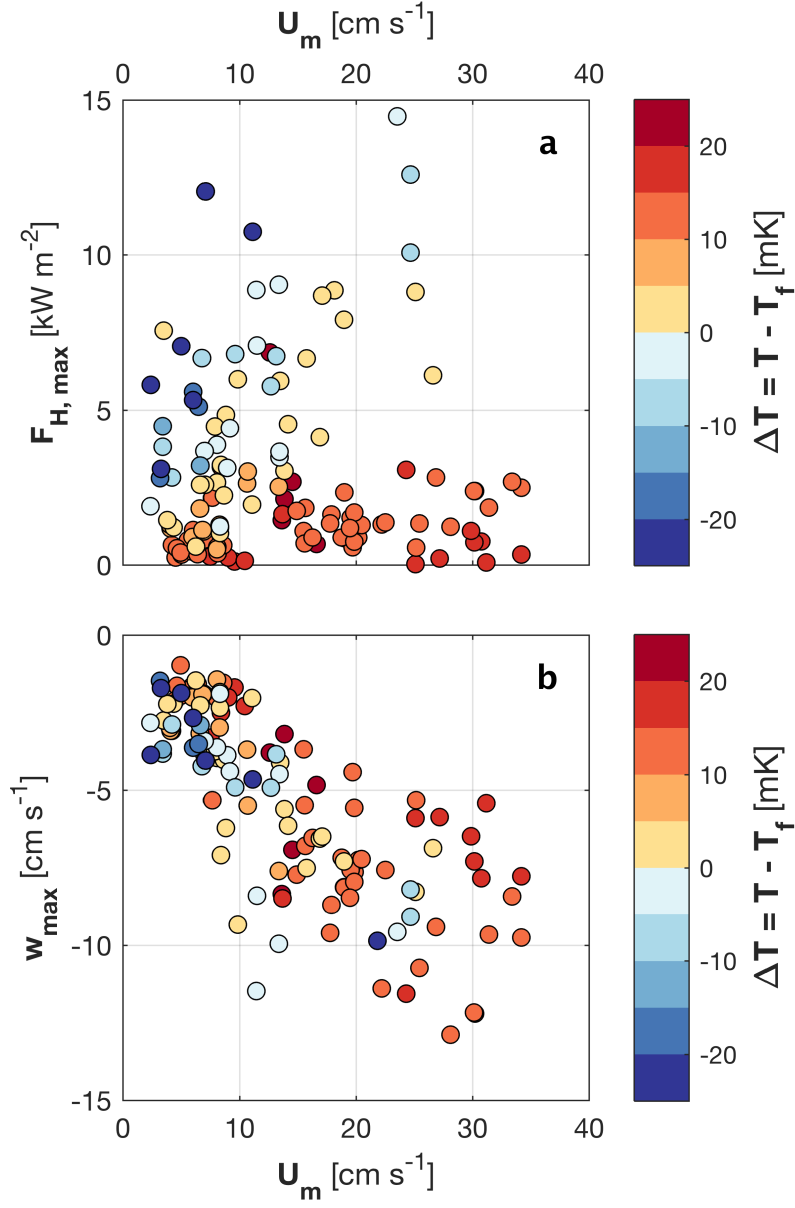


Figure 6. Mean horizontal current (U_m) vs. instantaneous (a) maximum heat flux and (b) minimum vertical current speed. Circles are color coded for temperature above freezing ($\Delta T = T - T_f$), calculated using mean Absolute Salinity and Conservative Temperature (McDougall and Barker, 2011). Mean values are calculated over the 14 s surrounding the peak vertical current speed of each identified plume.

Calculated over the 14 s surrounding the peak salinity flux in the mean plume structure, the 131 identified events account for 0.7 m s^{-1} , or 9% of the observed total salt release, within a duration of 31 minutes (0.5% of the time), illustrating the intensity of the events. The heat flux averaged over the composite plume is 1058 W m^{-2} , and the plumes account for 6% (4.7 W m^{-2}) of the average observed heat flux between noon June 11 until the end of measurements on June 19. However, the plumes can additionally cause mixing of the surface layers, which could counteract stabilizing effects of bottom melt. The overall effect of the plumes on heat fluxes is thus difficult to quantify. Upper ocean hydrography profiles (Figure 3, Meyer et al., 2016) do not provide conclusive evidence, as advection and mixed layer deepening from wind forcing obscures any effect from the plumes.

Percolation or flushing of melt ponds could influence the measurements. Although the first melt pond was noted on June 9, they remained at a very early stage throughout the measurement period reported here. The pond fraction reached an estimated 10% coverage. Mostly, ponds had formed at deformation areas where freeboard was negative, and were thus flooded with sea water rather than actual melt ponds (pers. comm., A. Rösel, January 14, 2017). Salinity measurements from three melt ponds revealed an Absolute Salinity of 20-29 g kg^{-1} (Shestov, 2017). The ice core from June 13 (Figure 4) had a 2 cm negative freeboard, and the deepest snow layer had a salinity of 4.3. Based on this, and noting the high permeability of the ice (high liquid fraction, Figure 4c), percolation may have played a role in the desalination process, but is not pursued further here.

The combined heat flux from above and below finally melted the sea ice. Substantial melt is also evident from the different ice thickness measurements (Figure 2a). At the end of the flux measurements there were only a few decimeters of ice left, and the floe disintegrated as the instruments were recovered on June 19. Over the course of the measurements, bottom melt caused an overall reduction in salinity measured at 1 m by approximately 1.

5 Discussion

The observations of saline plumes presented here extend the findings of Widell et al. (2006), and are the first observations of such plumes from drifting Arctic sea ice. While the structure is similar to the observations from Van Mijenfjorden (Widell et al., 2006), which were made with the same instrumentation on landfast ice, the magnitudes observed here are much greater, with peak values of salt and heat fluxes in the average plume of $F_S = -8.7 \times 10^{-4} \text{ m s}^{-1}$ and $F_H = 2465 \text{ W m}^{-2}$ (See Table 1). While the measurements by Widell et al. (2006) were made during little (or no) ice melt, the present observations were made ~~under~~ during severe melting, which may be the primary difference between the two studies. The fjord study concluded that oceanic heat from the tidal inflow likely triggered brine release from the temperate ice (Widell et al., 2006).

During melting conditions, desalination can happen by gravity drainage or flushing (Notz and Worster, 2009). Flushing can occur when there is an overhead pressure from meltwater at the surface. The negative freeboard in the ice core and saline melt ponds indicate that there was in fact overhead seawater at the surface, which may have caused, or at least increased, desalination.

Gravity drainage occurs when the buoyancy of the brine exceeds the dissipative effects of thermal diffusion and viscosity within the sea ice. Atmospheric cooling in winter causes higher brine salinity, and thus density, in the upper part of the ice column. This makes the brine unstable, and convection within the ice takes place when the ice is sufficiently permeable (Notz

and Worster, 2009). As the ice warms in spring, permeability increases as illustrated in Figure 7. The brine fraction in the ice
5 cores exceeds 10% throughout the ice (Figure 4c), both well above the typical 5% threshold required for gravity drainage (Cox
and Weeks, 1975). The instability needed for full-depth brine convection in the ice can be triggered either by atmospheric or
oceanic heat, or a combination of the two (Griewank and Notz, 2013). The temperature at the ice-ocean interface is always at
its salinity-determined freezing point, and warming from below can only be caused by freshening at the interface by ice melt.

Ice melts at the ocean interface when the heat supplied by the ocean exceeds the conductive heat flux in the ice. The high
10 oceanic heat fluxes are caused by a combination of the passing storm, presence of warm Atlantic water near the surface and the
high mobility of the sea ice driving mixing (Peterson et al., 2017; Meyer et al., 2017b), and accounts for much of the observed
melt. As the interface freshens, the interface's salinity-determined temperature $T_f(S)$ increases (Figure 7). T_f remains high
as long as the freshwater is allowed to remain at the interface, or enough new melt water is supplied. Additionally, freshwater
supplied by melting at the ice-ocean boundary increases the density deficit between the lower part of the ice and of the brine,
15 which may increase the potential for gravity drainage.

The various ice thickness data (Figure 2a) show that significant melt was indeed occurring, up to as much as 25 cm day⁻¹
during the observation period. Furthermore, the present observations show positive temperature anomalies prior to the plume
events (Figure 5c). The positive temperature anomaly before the plumes, the sustained positive heat fluxes (Figure 2a) and
rapid melt suggest that oceanic heat plays a key role through ice melt, required for triggering repeated convection events.

20 The difference in salt content between the two ice cores is mostly (~75%) due to reduction in ice thickness. The rapid ice
melt is thus cause of most of the salt release, and likely the reason for the large difference between values observed here and
those of Widell et al. (2006), where little or no ice melt took place. In addition to gravity drainage or flushing of brine, the
brine pockets become directly exposed as melt progresses, and sink past the measurement volume. Considering most of the ice
volume is lost during the measurements, is is not surprising if most of the original brine content in the ice is lost. It is, however,
25 surprising that measurements at 1 m below the ice are of the same order of magnitude as the total desalination, which calls for
an investigation of possible measurement errors or biases (Section 6).

When sea ice melts, it contributes to a net freshening of the upper ocean, since the bulk salinity is about 5 (Figure 4). Over
the course of the drift, a freshening of the surface layer is observed, while the turbulence measurements at 1 m show negative
salt flux. This paradox warrants some consideration of the structure of sea ice. Sea ice consists of freshwater ice surrounding
30 pockets of liquid high-salinity brine. When the sea ice melts, the brine sinks through the surface layer due to its high density,
while the fresh meltwater stays at the surface. The fresh surface water is gradually entrained into the mixed layer, but since the
salt flux is nearly always negative, this freshwater flux likely occurs on timescales longer than the 15-minute segments used
here. Why freshwater at the surface is not immediately mixed down, even during quite strong mixing events, is not entirely
clear. The ice floe consists of first-year ice (Granskog et al., 2017), but the floe was deformed through several storms. This is
35 evident e.g. from the hot wire measurements, which were made in an area of deformed ice. A rough under-surface of the sea
ice leads to a thicker layer where molecular viscosity and diffusivity is important. This "transitional sublayer" is usually taken
as 1/30 of the scale of the roughness elements, and is on the scale of a few centimeters (McPhee, 2017).

Since the salt flux observed within the 131 identified plumes only account for 9% of the total salt flux, most of the salt flux takes place outside these plumes. Many more plumes are likely present nearby, but do not reach, or cross, the measurement volume. Such plumes would bring higher salinity water somewhere above the TIC, rather than being immediately mixed in with the freshwater at the ice-ocean interface. Subsequent mixing would be observed as a negative salt flux, although not identified as a plume. This may be the reason why salt fluxes are consistently negative, even though direct plume observations are more sporadic.

Brine released from sea ice would initially be at its salinity-determined freezing point, in balance with the surrounding ice. As the brine descends from the ice, it may thus be supercooled relative to its surroundings. When the horizontal velocity (and u_*) is greater, shear mixes and dilutes the released salt plumes more than during calm conditions. This is consistent with the observation of less supercooling with higher mean current, as seen in Figure 6. Maximum vertical velocity in the plumes coincided with higher drift speed, which is likely caused by stronger turbulent eddies. The individual plumes do not grow more intense with stronger turbulence, but are more efficiently mixed into the surroundings.

The observations of brine plumes raise interesting questions concerning the conditions in which they occur, and importantly, why they have not been observed before. Few studies have reported measurements of turbulent salt fluxes in the Arctic Ocean, and the season of the observations may be of the essence. In the preceding ice camp (Floe 3) in the N-ICE campaign, the salt fluxes were below the sensor accuracy level, and could not be analyzed for correlation with heat flux. The study by Sirevaag (2009) is relevant for comparison, because it was set in roughly the same place, Whaler's Bay, in April 2003. The differences between this study and Sirevaag (2009) may give some clues to the matter. They deployed the TIC in a refrozen lead, surrounded by ridged multiyear sea ice. An ice core revealed a linear temperature gradient of -21.7 K m^{-1} , meaning that the ice was not above the critical 5% threshold for gravity drainage. The cold ice column may explain why brine was prevented from leaving the sea ice in plumes, despite rapid melt. When brine is released slowly as melt progresses, it is more likely to be mixed in with meltwater, than to descend in plumes.

6 Error sources and biases

Salinity is calculated from a SeaBird Electronics SBE4 conductivity cell. The dependence of salinity on both conductivity and temperature can introduce spurious salt fluxes because of difference in response time between the temperature sensor and the conductivity cell. The standard SBE4 was chosen for flux calculations rather than the SBE7 micro-conductivity sensor, because the SBE7 reported suspicious values for part of the record. McPhee and Stanton (1996) made a comparison of a ducted conductivity cell (SBE4) with a fast-response micro-conductivity sensor (SBE7), and showed that most of the covariance occurred at lower frequencies. About 75% of the salinity flux was resolved by the SBE4. The present observations are obtained during moderate to strong forcing ($5\text{-}35 \text{ cm s}^{-1}$ drift speed), which improves response time of the conductivity cell. It is advisable to interpret the observed fluxes with this uncertainty in mind, but note that the fluxes from the ducted conductivity are more likely an underestimate than an overestimate.

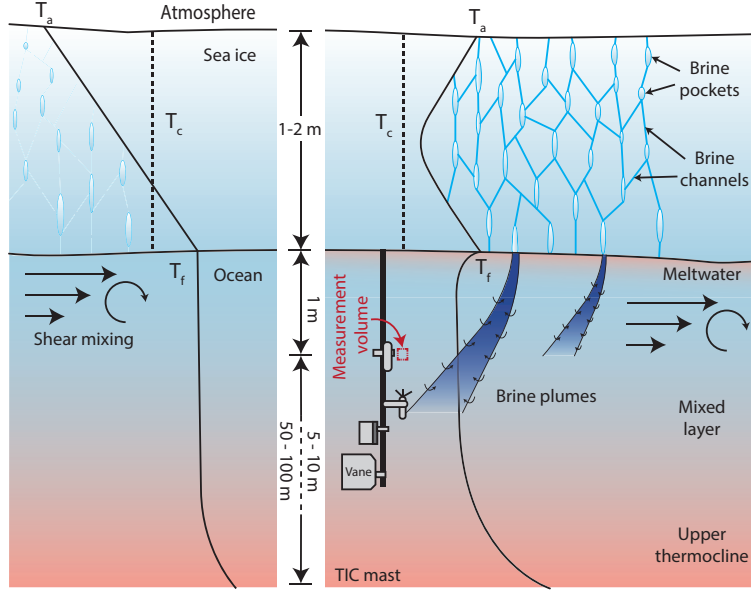


Figure 7. To the left is an early spring situation where the upper ocean is near freezing, and temperature in the ice is still below the critical temperature T_c , which must be exceeded for gravity drainage to occur. When the atmosphere warms the ice, permeability of the sea ice increases, and gravity drainage can occur. The brine plumes are triggered by meltwater below the ice, by directly exposing brine pockets, or by elevating the freezing point temperature T_f at the interface. The TIC mast is shown for reference, with measurement volume at 1 m below the ice.

Considering the possibility of a baroclinic signal from the edge of the ice floe contaminating the measurements, the vertical modal structure is calculated from the profiles of buoyancy frequency shown in Figure 3b. The phase velocity of the first baroclinic vertical mode is $0.25\text{--}0.43 \text{ m s}^{-1}$ for the four profiles. Taking the closest distance to the floe edge of $\sim 200 \text{ m}$, this implies a time scale for a signal originating at the floe edge of around 10 min. This is comparable to the segment length used for flux calculations (15 min), which could violate the validity of Taylor’s hypothesis here. However, the systematic quality control described in Section 2 was designed to identify any violation of Taylor’s hypothesis, and would thus have been excluded from the analysis.

Increased buoyancy frequency during the summer drift could affect the flux measurements. While the typical buoyancy period was about 1 h for the most of the drift (January through May), periods around 10 min and less were seen in June. Oscillations with periods on the order of the 15 min segment length could affect turbulent fluxes. However, recalculating the data set using 5 min segments revealed no significant differences, and Peterson et al. (2017) concluded that the systematic quality control had already flagged any contaminated segments.

The hydrohole, through which the turbulence mast is deployed, can be suspected to affect measurements, and lateral heating may have caused faster melt in some radius around the hole. Still, the horizontal component of the flow is larger than the vertical, and observations made at the TIC represent conditions at the ice interface some distance away. Taking a vertical

velocity anomaly of $2\text{--}5\text{ cm s}^{-1}$, and the mean horizontal component of $\Delta U \sim 10\text{ cm s}^{-1}$ (difference between drift velocity and current measured at 1 m, Figure 2), a plume signal moves some 2-5 m in the horizontal over the 1 m vertical distance from the ice-ocean interface. The swiftest vertical speeds are also typically associated with large horizontal speed (Figure 6). This indicates that even for the large vertical speed seen in the plumes, influence from processes around the hydrohole is typically not expected.

The exact distance between the TIC measurement volume and the ice undersurface may be important for the absolute values observed, as one would expect plumes to gradually expand in size, but weaken in terms of buoyancy anomaly, with distance from the ice. The manual measurements of ice thickness are accompanied by adjustments of the instrument depth. After each ice thickness measurement, the instrument was elevated to account for the ice melt. Interpreted from notes of these adjustments, the measurement volume was always at the correct depth within the range of the measurement uncertainty. In Figure 2a, the uncertainty is arbitrarily set to $\pm 15\text{ cm}$.

Overall, salinity decreases by about 1 over the course of the drift, as measured by the instrument at 1 m. At the same time, the accumulated salt flux accounts for an increase in salinity of 1.7, if distributed over the 4.7 m average mixed layer depth (Meyer et al., 2017b). The apparent inconsistency is caused by the separation in time-scales. Over longer time-scales, freshwater from ice melt is fluxed downwards, but is not apparent in the turbulence record because each 15-minute segment is detrended before fluxes are calculated. The comparison between accumulated salt flux and the salt contents of the ice core indicates that most of the brine in the ice convects down past the surface layer, rather than blending in with the fresh meltwater at the interface. Thus, it appears brine plumes as observed here affect the timing of the salt release, alter how the salt from sea ice is distributed in the water column, and can be an important factor influencing mixing during sea ice melt.

7 Concluding Remarks

This study reports observations of inversely correlated heat and salt fluxes below melting sea ice north of Svalbard. The evidence suggests that the fluxes are caused by brine release from the sea ice as it melts, and a significant fraction of the salt fluxes are seen descending past the measurement volume in plumes. Desalination of sea ice similar to that observed here likely occurs in the MIZ in spring in general, where enough heat is present to trigger such events. The present desalination appears to be forced by a combination of flushing, gravity drainage and direct release of salt through rapid melt caused by oceanic heat flux. Triggering by ocean heat flux is less likely in the Arctic interior, both because there is typically less heat available to be mixed up (e.g. less open water to be warmed by insolation), and less mixing due to internal forces in the pack ice. In the interior Arctic Ocean, sea ice is typically second- or multi-year ice, which is thicker and less saline than first-year ice. Brine release in the quantities reported here are thus more likely a MIZ phenomenon. With the transition towards a more seasonal ice cover in the Arctic, the fraction of first year ice is increasing (Meier et al., 2014). First year ice is more saline (Petrich and Eicken, 2010), with an equivalently greater potential for brine drainage. While this could indicate that saline first year ice can melt faster than fresher multi-year ice, in otherwise similar conditions, the transition to more FYI comes with increased freshwater run-off and increased upper ocean stratification (Nummelin et al., 2016). Desalination appears as a significant process in sea

ice melt, although small in comparison to frontal processes and solar heating. Understanding desalination processes may still
5 be increasingly more important in the "new Arctic", and requires more targeted field campaigns.

Data availability. The following data sets are used in this study and are publicly available at the Norwegian Polar Data Centre: Turbulence instrument cluster data (Peterson et al., 2016), microstructure sonde (MSS) profiles (Meyer et al., 2016), meteorological data (Hudson et al., 2015), ice thickness from hot wires (Rösel et al., 2016) and ice core data (Gerland et al., 2017).

Competing interests. The author declares no competing interests.

Acknowledgements. The field work has been supported by the Norwegian Polar Institute's Centre for Ice, Climate and Ecosystems (ICE) through the N-ICE project. The author would like to thank everyone involved in the field work, and Amelie Meyer in particular, for keeping
5 the instruments going until the very end. Thanks to Ilker Fer, Dirk Notz, Mats Granskog, Martin Vancoppenolle, Craig Stevens and ~~one anonymous reviewer~~ the anonymous reviewers for useful discussions and input, and to Miles McPhee for making the instrumentation available. The author is supported by the Research Council of Norway, through the project 229786, with additional support from the Centre for Climate Dynamics at the Bjerknes Centre through the grant BASIC: Boundary Layers in the Arctic Atmosphere, Seas and Ice Dynamics.

References

- 10 Carmack, E. C., Polyakov, I. V., Padman, L., Fer, I., Hunke, E., Hutchings, J. K., Jackson, J., Kelley, D. E., Kwok, R., Layton, C., Melling, H., Perovich, D. K., Persson, O., Ruddick, B., Timmermans, M.-L. L., Toole, J. M., Ross, T., Vavrus, S., and Winsor, P.: Toward quantifying the increasing role of oceanic heat in sea ice loss in the new Arctic, *Bulletin of the American Meteorological Society*, 96, 2079–2105, doi:10.1175/BAMS-D-13-00177.1, 2015.
- Cohen, L., Hudson, S. R., Walden, V. P., Graham, R. M., and Granskog, M. A.: Meteorological conditions in a thinner Arctic sea ice regime from winter to summer during the Norwegian Young sea ice expedition (N-ICE2015), *Journal of Geophysical Research*, 122, 7235–7259, doi:10.1002/2016JD026034, 2017.
- 15 Cox, G. F. N. and Weeks, W. F.: Brine drainage and initial salt entrapment in sodium chloride ice, *CRREL Research Report*, 1975.
- Emery, W. J. and Thomson, R. E.: *Data analysis methods in physical oceanography*, Elsevier, 2nd edn., 2001.
- Gerland, S., Granskog, M. A., King, J., and Rösel, A.: N-ICE2015 ice core physics: temperature, salinity and density [Data set], doi:10.21334/npolar.2017.c3db82e3, 2017.
- 20 Golden, K. M., Ackley, S. F., and Lytle, V. I.: The percolation phase transition in sea Ice, *Science*, 282, 2238–2241, doi:10.1126/science.282.5397.2238, 1998.
- Granskog, M. A., Assmy, P., Gerland, S., Spreen, G., Steen, H., and Smedsrud, L. H.: Arctic research on thin ice: Consequences of Arctic sea ice loss, *Eos*, 97, doi:10.1029/2016EO044097, 2016.
- 25 Granskog, M. A., Rösel, A., Dodd, P. A., Divine, D. V., Gerland, S., Martama, T., Leng, M. J., Martma, T., and Leng, M. J.: Snow contribution to first-year and second-year Arctic sea ice mass balance north of Svalbard, *Journal of Geophysical Research - Oceans*, pp. 2017–2033, doi:10.1002/2016JC012398, 2017.
- Griewank, P. J. and Notz, D.: Insights into brine dynamics and sea ice desalination from a 1-D model study of gravity drainage, *Journal of Geophysical Research: Oceans*, 118, 3370–3386, doi:10.1002/jgrc.20247, 2013.
- 30 Hudson, S. R., Cohen, L., and Walden, V.: N-ICE2015 surface meteorology [Data set], doi:10.21334/npolar.2015.056a61d1, 2015.
- Jardon, F. P., Vivier, F., Vancoppenolle, M., Lourenço, A., Bouruet-Aubertot, P., and Cuypers, Y.: Full-depth desalination of warm sea ice, *Journal of Geophysical Research: Oceans*, 118, 435–447, doi:10.1029/2012JC007962, 2013.
- McDougall, T. J. and Barker, P. M.: *Getting started with TEOS-10 and the Gibbs Seawater (GSW) Oceanographic Toolbox*, 2011.
- McPhee, M. G.: Turbulent stress at the ice/ocean interface and bottom surface hydraulic roughness during the SHEBA drift, *Journal of Geophysical Research*, 107, 8037, doi:10.1029/2000JC000633, 2002.
- 35 McPhee, M. G.: The sea ice – ocean boundary layer, in: *Sea ice*, edited by Thomas, D. N., chap. 5, pp. 138–159, John Wiley & Sons, Ltd, 3rd edn., 2017.
- McPhee, M. G. and Stanton, T. P.: Internal waves and velocity fine structure in the Arctic Ocean, *Journal of Geophysical Research*, 101, 6409–6428, doi:10.1029/91JC01071, 1996.
- 5 McPhee, M. G., Maykut, G. A., and Morison, J. H.: Dynamics and thermodynamics of the ice/upper ocean system in the marginal ice zone of the Greenland Sea, *Journal of Geophysical Research*, 92, 7017, doi:10.1029/JC092iC07p07017, 1987.
- McPhee, M. G., Morison, J. H., and Nilsen, F.: Revisiting heat and salt exchange at the ice-ocean interface: Ocean flux and modeling considerations, *Journal of Geophysical Research*, 113, C06 014, doi:10.1029/2007JC004383, 2008.

- Meier, W. N., Hovelsrud, G. K., van Oort, B. E., Key, J. R., Kovacs, K. M., Michel, C., Haas, C., Granskog, M. A., Gerland, S., Perovich,
10 D. K., Makshtas, A., and Reist, J. D.: Arctic sea ice in transformation: A review of recent observed changes and impacts on biology and
human activity, *Reviews of Geophysics*, 52, 185–217, doi:10.1002/2013RG000431, 2014.
- Meyer, A., Fer, I., Sundfjord, A., Peterson, A. K., Smedsrud, L. H., Muijlwick, M., Randelhoff, A., Håvik, L., Koenig, Z.,
Onarheim, I. H., Davies, P., Miguët, J., and Kusse-Tiuz, N.: N-ICE2015 ocean microstructure profiles (MSS90L) [Data set],
doi:10.21334/npolar.2016.774bf6ab, 2016.
- 15 Meyer, A., Fer, I., Sundfjord, A., and Peterson, A. K.: Mixing rates and vertical heat fluxes north of Svalbard from Arctic winter to spring,
Journal of Geophysical Research: Oceans, 119, 7123–7138, doi:10.1002/2016JC012441, 2017a.
- Meyer, A., Sundfjord, A., Fer, I., Provost, C., Villaciers Robineau, N., Koenig, Z., Onarheim, I. H., Smedsrud, L. H., Duarte, P., Dodd, P. A.,
Graham, R. M., Schmidtke, S., and Kauko, H. M.: Winter to summer oceanographic observations in the Arctic Ocean north of Svalbard,
Journal of Geophysical Research: Oceans, p. in press, doi:10.1002/2016JC012391, 2017b.
- 20 Notz, D. and Worster, M. G.: Desalination processes of sea ice revisited, *Journal of Geophysical Research: Oceans*, 114, 1–10,
doi:10.1029/2008JC004885, 2009.
- Notz, D., Wettlaufer, J. S., and Worster, M. G.: A non-destructive method for measuring the salinity and solid fraction of growing sea ice in
situ, *Journal of Glaciology*, 51, 159–166, doi:10.3189/172756505781829548, 2005.
- Nummelin, A., Ilıcak, M., Li, C., and Smedsrud, L. H.: Consequences of future increased Arctic runoff on Arctic Ocean stratification,
25 circulation, and sea ice cover, *Journal of Geophysical Research: Oceans*, 121, 617–637, doi:10.1002/2015JC011156, 2016.
- Peterson, A. K., Fer, I., Randelhoff, A., Meyer, A., Håvik, L., Smedsrud, L. H., Onarheim, I. H., Muijlwick, M., Sundfjord, A., and McPhee,
M. G.: N-ICE2015 ocean turbulent fluxes from under-ice turbulent cluster [Data set], doi:10.21334/npolar.2016.ab29f1e2, 2016.
- Peterson, A. K., Fer, I., McPhee, M. G., and Randelhoff, A.: Turbulent heat and momentum fluxes in the upper ocean under Arctic sea ice,
Journal of Geophysical Research - Oceans, 122, 1–18, doi:10.1002/2016JC012283, 2017.
- 30 Petrich, C. and Eicken, H.: Growth, structure and properties of sea ice, in: *Sea ice*, edited by Thomas, D. N. and Dieckmann, G. S., chap. 2,
pp. 23–77, John Wiley & Sons, Ltd, 2nd edn., 2010.
- Rösel, A., Bratrein, M., King, J. A., Itkin, P., Divine, D., Ervik, Å., Gallet, J.-C., Gierisch, A., Haapala, J., Oikkonen, A., Liston, G. E.,
Nicolaus, M., Polashenski, C. M., Spreen, G., Gerland, S., Granskog, M. A., and Perovich, D. K.: N-ICE2015 ice thickness from hot wires
[Data set], doi:10.21334/npolar.2016.263a317f, 2016.
- Shestov, A.: Field report on the Ridge activity during N-ICE2015, Leg 6, Tech. rep., UNIS, 2017.
- Sirevaag, A.: Turbulent exchange coefficients for the ice/ocean interface in case of rapid melting, *Geophysical Research Letters*, 36, L04 606,
doi:10.1029/2008GL036587, 2009.
- 410 Turner, J. S.: The melting of ice in the Arctic Ocean: The influence of double-diffusive transport of heat from below, *Journal of Physical
Oceanography*, 40, 249–256, doi:10.1175/2009JPO4279.1, 2010.
- Widell, K., Fer, I., and Haugan, P. M.: Salt release from warming sea ice, *Geophysical Research Letters*, 33, L12 501,
doi:10.1029/2006GL026262, 2006.