

# Author's response to the referee comments on the manuscript of "On the meridional ageostrophic transport in the tropical Atlantic"

Yao Fu, Johannes Karstensen, and Peter Brandt

yfu@geomar.de

We thank the editor and both referees for the very helpful comments. Here is our response to the comments. It is organized as follows: the referee's comment is first repeated in black colour, followed by the author's response and the corresponding changes in the manuscript in blue colour. At the end, we included a change-tracking version of the manuscript. The author's response part has page number in Roman numerals from I to XIII, the manuscript part has page number in Arabic numerals from 1 to 45.

## Response to the anonymous Referee # 1

In this study two cross-basin hydrographic sections closing the Atlantic at 14.5N and 11S are used to study the meridional ageostrophic, Ekman and heat and salt transports in the first 300m of the water column. This objective is assessed through hydrographic data (uCTD, CTD, ADCP and TSG), together with in situ winds and wind products (ASCAT, ECMWF and NCEP) and model outputs (GECCO2).

The manuscript is very well written, is well structured, clear, detailed and provides with interesting results of the surface layer. I strongly recommend its publication, after some minor changes.

Thank you very much for the positive evaluation and the following suggestions.

Page 19 lines 11-16 and Figure 5. The three wind datasets presents a high agreement between them, with the exception of the westernmost side of 14.5° N, which suggest that the difference in this area cannot be explained by the different drag coefficient formulation. I believe the source of the difference between winds observed in the western side of the northern transect is linked with some local effect. For example, in other areas, such as the Canary Islands, the QuikScat and NCEP data does not resolve the Von Karman structures that are shed from interactions of the flow with the islands as consequence of a low-resolution topography (e.g. Mason et al. 2011, Pérez-Hernández et al. 2015).

The three wind stress datasets in Figure 5a are ship measured wind stress (black), satellite-based L4 near-real-time wind stress with 6-h temporal resolution (red), and the monthly wind stress from NCEP reanalysis in May 2013 (black dashed). It is expected that the ship and satellite wind stress is very close to each other, since the satellite wind stress was extracted to the nearest ship time and position. However, the biggest difference between the monthly wind stress and the other two in the westernmost part of the 14.5 N section is more likely due to an aliasing effect of the cruise measurement. The temporal variability of the wind is relatively high in the western third of the section. The wind over this region was relatively weak when the cruise started on 28 April 2013, then gradually became stronger during the first week of the cruise. Therefore, the monthly mean wind stress over this region should be stronger than the in-situ wind stress at the measurement time.

At 11 S the satellite wind stress is generally larger than the ship wind stress, while at 14.5 N they tend to agree better. We attributed this to the use of different drag coefficient formulation (COARE 3 for satellite wind product; Large and Yeager, 2004 for ship wind). But we think that the referee's suggestion about the unresolved local effect by the satellite and NCEP data provides another possible explanation to the differences in the different wind stress data. Accordingly, we have added this reason on Page 22, line 23-27.

Page 19. How is the uncertainty of the Ekman transport estimated?

The uncertainty of the indirect Ekman transport is estimated by using the standard deviation of the 6-h NCEP/CFSr wind stress between 2000 and 2011. This is described on page 23, line 8-13. We think that the unresolved temporal variability by a single ship transect is the main source for the uncertainty of the indirect Ekman transport calculation.

Page 3, equation 2. Reading from line 15 to line 19, I understand that equation 2 should be  $V_{ageos} = V_{obs} - V_{geos} - V_{ageosEkman}$ .

The description on page 3 line 15-17 was not clear enough to correspond with equation 2. Therefore, we modified Eq. 2 and the text as follows:

An ageostrophic velocity ( $v_{ageos}$ ) can be calculated as the difference of the direct observed velocity ( $v_{obs}$ ) and

the geostrophic velocity ( $v_{geos}$ ). The ageostrophic velocity might consist of an Ekman component ( $v_{Ekman}$ ) and components that are not in Ekman balance (e.g. inertial currents). Often the non-Ekman components are assumed to be 0, and  $v_{Ekman}$  is expected to equal  $v_{ageos}$ . Under this assumption, the Ekman velocity can be derived as follows:

5 
$$v_{Ekman} = v_{obs} - v_{geos}. \quad (2)$$

Now it is on page 3, line 14-19.

Figure2, Beware that two subplots have been label as (d).

10 It is changed.

Page 13. In the paragraphs in between lines 6 and 24, could cite Figure 3 or 4 when defining the mean TTP and MLD depths, and same for the respective paragraph on the 11° S section.

15 Figure 3 and 4 are cited now page 15, between line 3 and line 17.

20

## Response to the anonymous Referee # 2

This manuscript provides estimates of the wind-driven meridional mass, heat, and salt transports across zonal lines at 14.5N and 11S in the tropical Atlantic. The authors use a variety of data sets to estimate the transport, most importantly a collection of measurements from CTD casts and ADCP measurements during cruises across each zonal transect. Because of the difficulty and effort involved with acquiring this kind of data set, and the thorough analysis of the data, these results deserve to be published. They will be useful for others estimating transports from observations and for validating numerical model simulations.

The authors have done a good job describing the methodology and presenting the data.

It's good to see that similar results are usually obtained for a variety of methods and wind products (after accounting for deviations of winds during the Lagrangian cruises from monthly mean gridded winds). I have two main suggestions for improvement, followed by more minor comments and edits.

Thank you very much for the positive evaluation and the following suggestions.

Main comments:

1. The manuscript contains a lot of description of the data and methodology, and a lot of it is presented in the "Results and discussion" section. For example, the different options for penetration depth of wind-driven currents, level of no motion, methodology for calculating heat and salt transports. I suggest putting most of the data and methodology text into a section (or two) before the results/discussion section. This will improve the flow of the manuscript and allow readers to focus more on the important results instead of being led back and forth between results and methods throughout the manuscript. I also suggest trying to shorten the data/methodology description wherever possible. I give some suggestions in my minor comments below.

As the referee suggested, we moved some part of the method description from the "Results and discussion" section to a separate section "Method" before the "Results and discussion" and shortened the descriptions correspondingly. These include the calculation of the geostrophic and ageostrophic velocity, the error estimation of the direct Ekman transport calculation, and the different methods for the Ekman heat and salt transport calculation.



2. The discussion of the "bigger picture" can be improved. The authors mention the importance of meridional transport for the AMOC and the connection to the STCs, and there are some comparisons to previous transport estimates, but to a large extent the manuscript presents a detailed set of calculations along two latitude lines during specific times of the year. Error estimates based on aliasing of inertial currents are given, but one also wonders about longer-timescale fluctuations in winds (seasonal, interannual) and how representative the authors' estimates are for annual, seasonal, and monthly climatological mean transport. Some discussion of these considerations would improve the manuscript.

As the referee suggested, we added a short discussion about the seasonal and interannual variability of Ekman transport, and compared our Ekman transport estimates with an annual climatology calculated from the NCEP/CFSr 6-h wind stress data. It is on page 30, line 19-28.

Minor comments:

Section 1: At the end of this section it would be helpful for the authors to describe how their study differs from others (data used, time of year of measurements, etc.).

There are a number of methodological improvements based on new technologies: we used uCTD data which now offers to do this type of studies from moving ships (e.g. container ships); we used satellite-based wind product and reanalysis wind products, and compared the Ekman transport estimates between these wind products. We also compared the observation-based Ekman transport with the GECCO2 assimilation products at the same location. This is now mentioned at the end of the first section on page 6, line 4-15.

Section 2: At the beginning of this section (and in figure 1) please indicate the exact dates when each section was occupied.

This is added on page 6, line 22-24, page 7, line 1, and in the caption of figure 1 on page 39.

Section 2.3: Why use two different bulk formulas for wind stress? Can you use the same for in situ and satellite winds? Same comment for lines 15-16 on p. 19.

The wind speed of the CMEMS product is derived from retrievals of scattermeters ASCAT and OSCAT, and combined with the ECMWF operational wind analysis. The wind stress data is estimated using COARE 3 model (Fairall et al., 2003) and directly available through the CMEMS website. The ship wind stress was calculated by using the bulk formula by Large and Yeager, 2004. In this case, the ship and satellite wind stress agrees very well at 14.5 N, while the ship wind stress is generally weaker than the satellite wind stress at 11 S.

We also calculated the ship wind stress using the COARE 3.0 model. In this case, the ship wind stress tends to agree better with the satellite wind stress at 11 S. However, at 14.5 N, the ship wind stress is generally stronger than the satellite wind stress.

Besides, we also calculated the ship wind stress by using Large and Pond, 1981, Smith, 1988 and Yelland, 1996, and found that the ship wind stress by using Large and Yeager, 2004 returns the indirect Ekman transport estimates that are most consistent with the direct Ekman transport estimates at both sections. If the other bulk formulas were applied to calculate the ship wind stress, the indirect Ekman transport estimates would be much higher than the direct Ekman transport estimates at both sections.

Section 3.2: I suggest moving the discussion of reference depth (p. 15, lines 10-25) before description of the geostrophic velocity calculation in the preceding paragraph.

Page 15 line 10-25 describes the calculation of the reference velocity. We re-structured the text following the referee's suggestion. The relative geostrophic velocity calculation from the CTD/uCTD data was first described, than the calculation of the reference velocity from the ADCP data was discussed. Afterwards, the ageostrophic velocity was calculated and the sensitivity of the ageostrophic velocity to the reference depth was discussed. We feel it is necessary to structure the text in this order, since the reference velocity can only be calculated, if the relative geostrophic velocity is first known. This part of the text is now moved to the "Method" section on page 13 and 14.

p. 16-18: To focus the manuscript more, I recommend removing, or at least shortening considerably, the parts dealing with the removal/identification of the velocity signal below the TTP since it does not affect the transport calculations.

Following the referee's suggestion, we shortened the text by deleting the calculation of Ekman transport using a wave-removed ageostrophic velocity and correspondingly modified Fig. 3. Although the identification of the wave-like velocity signal is not conclusive, the information about the horizontal and vertical structure of the ageostrophic velocity and the method of separating this signal from the ADCP velocity might still be interesting for the potential readers. This part of the text is now on page 20-21.

Section 4: Some discussion of seasonality would be useful. What do you think are the error bars on your estimates, considering seasonal changes in winds and stratification, for example? Or what are the error bars for your weekly/monthly estimates considering interannual variability?

The discussion of seasonality is now added on page 30, line 7-17. The error bars for the monthly estimates at 14.5 N and 11 S is now given by the standard deviation of the monthly mean Ekman transport in May and July between 1979 and 2010 by using the NCEP/NCAR monthly wind stress. In this way, the interannual variability of the monthly Ekman transport estimates at the two latitudes in the respective month should be taken into account. It is now on page 23, line 11-13.

Figure 1: It's difficult to see the CTD locations in the N. Atl. transect. Maybe plot them a little above/below the uCTD marks? Also, maybe add black and white shading of mean zonal wind stress as background and make uCTD marks a different colour?

In Figure 1, the uCTD position at 14.5 N is now shifted 0.5 to the north. A mean zonal wind stress calculated from NCEP/CFSr monthly wind stress between 1979 and 2011 is plotted as grey background shading with contours. The uCTD position is now marked as blue dots. The caption of Figure 1 is modified correspondingly.

Language edits:

p. 2, line 11: change 'has' to 'have'

Changed.

p. 2, line 17: change 'they' to 'and'

Changed.

p. 2, line 20: add hyphen between 'Ekman' and 'driven'

5 Added.

p. 3, lines 3-4: change 'is' to 'was' (two instances)

Changed.

10

p. 4, line 1: change 'application' to 'applications' and 'approach' to 'approaches'

Changed, now on page 4, line 3-4.

15

p. 4, line 8: delete 'of the direct approach'

Deleted.

p. 7, line 6: delete 'of' before '+/-0.001'

20

Deleted.

p. 7, line 14: change 'sink' to 'sinks'

25

Changed, now on page 7, line 19.

p. 7, line 26: change comma to period and begin new sentence with "We..."

Changed, now on page 8, line 5.

30

p. 7, line 27: change comma to semicolon

- Changed, now on page 8, line 6.
- p. 7, line 28: change 'allow water passing' to 'allowing water to pass'
- 5 Changed, now on page 8, line 7.
- p. 8, line 10: change '...leading) and' to '...leading), which'
- 10 Changed, now on page 8, line 17.
- p. 8, line 20: change 'a' to 'an'
- Changed, now on page 8, line 27.
- 15 p. 9, line 7: delete 'to'
- Deleted.
- 20 p. 9, line 15: delete 'the' before 'three'
- Deleted.
- p. 10, line 1: change 'compare' to 'compared'
- 25 Changed, now on page 10, line 8.
- p. 11, line 17: insert 'the' after 'from'
- 30 Inserted, now on page 11, line 22.

p. 12, line 20: change 'isotherm' to 'isotherms'

Changed, now on page 19, line 3.

5 p. 14, line 14: change 'flew' to 'flowed'

Changed, now on page 20, line 2.

p. 15, line 2: change 'At' to 'Along the'

10

Changed, now on page 13, line 12.

p. 15, line 7: insert 'and' after 'choice,'

15 Inserted, now on page 13, line 17.

p. 17, lines 26-27: delete comma after 'waves', insert 'a' before 'near-inertial', and insert comma after 'forcing'

Done, now on page 21, line 20-21.

20

p. 18, line 2: delete comma

Deleted.

25 p. 18, line 20: insert 'and' after comma

This part of the text is removed.

p. 18, line 21: change 'decrease' to 'decreases'

30

This part of the text is removed.

X

p. 18, line 22: change 'appears being' to 'appears to be'

This part of the text is removed.

5

p. 19, line 11: change 'of' to 'in'

Changed, now on page 22, line 15.

10 p. 19, line 13: insert comma after first 'stress'

Inserted, now on page 22, line 17.

p. 19, line 14: change to '...wind speeds from the ship and satellite are very...'

15

Changed, now on page 22, line 18.

p. 19, line 19: change 'anomalous' to 'anomalously'

20 Changed, now on page 22, line 22.

p. 19, line 20: change 'were' to 'was'

Changed, now on page 22, line 23.

25

p. 20, line 5: change 'arises' to 'arise'

Changed, now on page 23, line 13.

30 p. 20, lines 27-28: delete commas and insert 'of' after 'because'

Deleted and inserted, now on page 15, line 25.

p. 21, lines 6-7: change to '...motion and therefore...'

5 Changed, now on page 16, line 5.

p. 21, line 8: insert 'Because' at beginning of sentence

Inserted, now on page 24, line 1.

10

p. 21, line 13: change 'constant as' to 'to equal'

Changed, now on page 24, line 6.

15 p. 21, line 26: change '...question followed...' to '...question that follows...'

Changed, now on page 24, line 19.

p. 21, line 28: change 'not conclusive' to 'inconclusive'

20

Changed, now on page 24, line 21.

p. 23, line 10, change 'observation' to 'observations'

25 Changed, now on page 26, line 7.

p. 23, line 19: insert 'the' after 'that'

Inserted, now on page 26, line 16.

30

p. 23, line 23: change 'estimate based' to 'estimates based on'



Changed, now on page 26, line 20.

p. 23, line 27: change 'fluctuation' to 'fluctuations' and 'this is' to 'which are'

5

Changed, now on page 26, line 24-25.

p. 25, line 13: change 'were' to 'was'

10 Changed, now on page 16, line 22.

p. 26, line 1, change 'estimated' to 'estimate'

This sentence has been rephrased; now on page 17, line 12.

15

p. 27, line 25: change 'is' to 'are'

Changed, now on page 27, line 27.

20 p. 30, line 12: change 'meridional' to 'zonal'?

Changed, now on page 31, line 2.

# On the meridional ageostrophic transport in the tropical Atlantic

Yao Fu<sup>1</sup>, Johannes Karstensen<sup>1</sup>, Peter Brandt<sup>1,2</sup>

<sup>1</sup>GEOMAR Helmholtz Centre for Ocean Research Kiel, Kiel, Germany

<sup>2</sup>Christian-Albrechts-Universität zu Kiel, Kiel, Germany

Correspondence to: Yao Fu (yfu@geomar.de)

**Abstract.** The meridional Ekman volume, heat and salt transport across two trans-Atlantic sections near 14.5° N and 11° S were estimated using in-situ observations, wind products and model data. A meridional ageostrophic velocity was obtained as the difference between the directly measured total velocity and the geostrophic velocity derived from observations. Interpreting the section mean ageostrophy to be the result of an Ekman balance, the meridional Ekman transport of  $6.2 \pm 2.3$  Sv northward at 14.5° N and  $11.7 \pm 2.1$  Sv southward at 11° S is estimated. The integration uses the top of the pycnocline as an approximation for the Ekman depth, which is on average about 20 m deeper than the mixed layer depth. The Ekman transport estimated based on the velocity observations agrees well with the predictions from in-situ wind stress data of  $6.7 \pm 3.5$  Sv at 14.5° N and  $13.6 \pm 3.3$  Sv at 11° S. The meridional Ekman heat and salt fluxes calculated from sea surface temperature and salinity data or from high-resolution temperature and salinity profile data differ only marginally. The errors in the Ekman heat and salt flux calculation were dominated by the uncertainty of the Ekman volume transport estimates.

## 1 Introduction

In the tropical Atlantic Ocean, strong and steady easterly trade winds generate a poleward meridional flow in the surface layer. According to the classical linear theory of Ekman (1905), under the momentum balance between steady wind stress and Coriolis force, the wind-driven flow spirals clockwise with depth, the Ekman spiral, while the vertical integration of the spiral results in a net volume transport to the right of the wind direction (northern hemisphere), the Ekman transport. A convergence is created in the subtropics, where the poleward Ekman transport induced by the trade

Yao Fu 27/4/2017 16:08

Deleted: wind products,

Yao Fu 5/5/2017 09:43

Deleted: Wave-like structures exist in the ageostrophic velocity with 60-80 m vertical scale and large horizontal coherence, which are likely associated with near-inertial waves. The

Yao Fu 5/5/2017 09:44

Deleted: estimated by integrating the ageostrophic velocity was

Yao Fu 5/5/2017 09:44

Deleted: ,

Yao Fu 5/5/2017 09:47

Deleted: which

Yao Fu 5/5/2017 09:47

Deleted: The top of the pycnocline well represents the penetration depth of the Ekman currents at both sections, which was typically 20 m deeper than the local mixed layer depth. We observed that in

Yao Fu 5/5/2017 09:48

Deleted: the

Yao Fu 27/4/2017 16:10

Deleted: calculation, using only the

Yao Fu 5/5/2017 09:49

Deleted: had a negligible impact on the resulting fluxes compared to using

Yao Fu 5/5/2017 09:49

Deleted: covering the Ekman layer

Yao Fu 27/4/2017 16:10

Deleted: in

winds interacts with the equatorward Ekman transport induced by the mid-latitude Westerlies. In simple linear vorticity theory, the Ekman convergence in subtropics drives an equatorward Sverdrup transport that explains many aspects of the wind driven gyre circulation, such as [the Subtropical Cells \(STC\)](#). Schott et al. (2004) calculated the Ekman divergence (21-24 Sv,  $1 \text{ Sv} = 10^6 \text{ m}^3 \text{ s}^{-1}$ ) between  $10^\circ \text{ N}$  and  $10^\circ \text{ S}$  in the tropical Atlantic using climatological wind to infer the strength of the STC; Rabe et al. (2008) further analyzed the variability of the STC using the same sections based on assimilation products, and found that on timescales longer than 5 years to decadal, the variability of poleward Ekman divergence leads the variability of geostrophic convergence in the thermocline.

The meridional Ekman transport is, depending on the latitude, an important upper layer contribution when estimating the strength of the Meridional Overturning Circulation (MOC, Friedrichs and Hall, 1993; Klein et al., 1995; Wijffels et al., 1996). The variations in the meridional Ekman transport have been found to cause barotropic adjustment of the MOC in the ocean interior on different time scales. Cunningham et al. (2007) reported that the upper ocean had an immediate response to the changes in Ekman transport at sub-seasonal to seasonal timescales, while Kanzow et al. (2010) found that on the seasonal timescale, the Ekman transport was less important than the mid-ocean geostrophic transport, whose seasonal variation was dominated by the seasonal cycle of the wind stress curl. McCarthy et al. (2012) analysed a low MOC case during 2009 and 2010, [and](#), also pointed out that on the interannual timescale, although the Ekman transport played a role, its variability was relatively small compared to the variability in mid-ocean geostrophic transport, especially in the upper 1100 m.

Of interest for large scale overturning studies is also the meridional Ekman-driven heat and freshwater fluxes that provide an important upper layer constraint, for example, for geostrophic end point arrays (McCarthy et al., 2015; McDonagh et al., 2015). In many cases, sea surface temperature (SST) has been found to be a sufficient constraint for the Ekman layer temperature (Wijffels et al., 1994; Chereskin et al., 2002). This probably is not too much of a surprise as the heat flux is primarily determined by the transport and less by the relative small variability in temperature. However, the unresolved vertical structure of the water column could lead to an unknown bias, for example, due to the difference between the mixed layer depth (MLD) and the depth of Ekman layer. An extreme case has been reported for the Northern Indian Ocean at  $8^\circ \text{ N}$  at the end of a summer monsoon event (Chereskin et al.,

Yao Fu 21/4/2017 16:26

Deleted: s

Yao Fu 21/4/2017 16:26

Deleted: they

Yao Fu 21/4/2017 16:27

Deleted:

Yao Fu 27/4/2017 16:12

Deleted: the June 1998 case in

2002), where the direct Ekman temperature transport was 5% smaller when using the temperature within the top of the pycnocline (TTP, as a proxy of the Ekman layer depth) than using the SST, and the corresponding mean temperature in the Ekman layer was 1.1 °C cooler than the averaged SST. In this case, the mean TTP depth was 92 m deeper than the mean MLD.

5 Assuming the upper layer ageostrophic flow in Ekman balance, the meridional Ekman transport ( $T_{Ekman}$ ) can be estimated indirectly from zonal wind stress data or directly from integrating observed ageostrophic Ekman velocity ( $v_{Ekman}$ ):

$$T_{Ekman} = \frac{1}{\rho} \frac{\tau_x}{f} = - \int_{-D_E}^0 v_{Ekman} , \quad (1)$$

where  $\tau_x$  is the zonal wind stress,  $\rho$  is the density of sea water,  $f$  is the Coriolis parameter of the respective latitude, and  $D_E$  is the Ekman depth.  $D_E$  can be defined as the e-folding scale depth of the Ekman spiral, leading to an analytical solution of  $D_E = \sqrt{\frac{2A_v}{f}}$ , where  $A_v$  is a constant vertical eddy viscosity (Price et al., 1987). Ekman's solution also reveals a surface Ekman velocity  $V_0 = \frac{\tau}{\sqrt{\rho^2 f A_v}}$ , which is 45° to the right (left) of the wind blowing direction in the northern (southern) hemisphere.

15 An ageostrophic velocity ( $v_{ageos}$ ) can be calculated as the difference of the direct observed velocity ( $v_{obs}$ ) and the geostrophic velocity ( $v_{geos}$ ). The ageostrophic velocity might consist of an Ekman component ( $v_{Ekman}$ ) and components that are not in Ekman balance (e.g. inertial currents). Often the non-Ekman components are assumed to be 0, and  $v_{Ekman}$  is expected to equal  $v_{ageos}$ . Under this assumption, the Ekman velocity can be derived as follows:

$$v_{Ekman} = v_{obs} - v_{geos} \quad (2)$$

20 Direct velocity profile data, for example from ADCP, and geostrophic velocities, from hydrographic data, are used in studies comparing direct with indirect Ekman transport estimates (e.g. Chereskin and Roemmich, 1991; Wijffels et al., 1994; Garzoli and Molinari, 2001). The Ekman transport is then derived from vertical integration of the  $v_{Ekman}$ .

Yao Fu 21/4/2017 16:27

**Deleted:** is

Yao Fu 21/4/2017 16:27

**Deleted:** is

Yao Fu 27/4/2017 16:16

**Deleted:** that

Yao Fu 27/4/2017 16:17

**Deleted:** meridional

Yao Fu 1/5/2017 18:51

**Deleted:** is

Yao Fu 27/4/2017 16:27

**Deleted:** , and

Yao Fu 4/5/2017 14:30

**Deleted:** merid Ekman Trasnport

Yao Fu 27/4/2017 16:29

**Deleted:** ,  $v_{Ekman}$  is the ageostrophic Ekman velocity

Yao Fu 7/5/2017 09:26

**Deleted:**  $D_E$

Yao Fu 7/5/2017 09:26

**Deleted:**  $D_E$

Yao Fu 7/5/2017 09:26

**Deleted:**  $A_v$

Yao Fu 2/5/2017 10:08

**Formatted:** Tabs: 3.25 cm, Left

Yao Fu 6/4/2017 12:33

**Deleted:** Meridional ageostrophic currents can be calculated from the difference between direct velocity observations ( $v_{obs}$ ) and geostrophic currents ( $v_{geos}$ ). However, when an ageostrophic meridional component that is not in Ekman balance (e.g. inertial currents) ( $v_{ageos_{non\ Ekman}}$ ) is taken into account: -

Yao Fu 3/5/2017 10:10

**Deleted:**  $-v_{ageos_{non\ Ekman}}$

Yao Fu 27/4/2017 16:39

**Deleted:** ,

Yao Fu 27/4/2017 16:40

**Deleted:** often  $v_{ageos_{non\ Ekman}}$  is assumed to be 0, so  $v_{Ekman}$  equals  $v_{ageos}$ .

Yao Fu 5/5/2017 10:04

**Deleted:** such

Yao Fu 4/5/2017 11:02

**Deleted:** ageos

For both equations it is relevant to recall that the Ekman balance is derived for an ocean with constant vertical viscosity and infinite depth, forced by a steady wind field (Ekman 1905). Such conditions are not found in the real ocean; therefore, applications of the indirect (Eq. 1) and direct (Eq. 2) approaches suffer from different kinds of errors. For the indirect approach (Eq. 1) the temporally varying wind field, the momentum flux calculated from the wind speed, and the unknown partitioning of the wind energy input into the Ekman layer at different frequency bands, are probably the most important sources of errors introduced into any Ekman current/transport estimate. For the direct approach, unknown lower integration depth, momentum flux variability, errors introduced by the experimental design (e.g. an shipboard ADCP does not resolve the upper 10-20 m of the flow, which is often assumed equal to the values at the first valid bin) or instrument errors can impact obtained results.

Many observational studies on Ekman dynamics that compare indirect and direct approaches have been conducted in the trade wind regions, where at least the wind stress forcing is relatively constant. Using shipboard ADCP data together with Conductivity-Temperature-Depth (CTD) profile data, Chereskin and Roemmich (1991) directly estimated an Ekman transport of  $9.3 \pm 5.5 Sv$  at  $11^\circ N$  in the Atlantic by integrating an ageostrophic velocity from the surface to a depth equivalent to TTP. The ageostrophic velocity was obtained by subtracting the geostrophic velocity from the ADCP velocity. Using a similar direct method, Wijffels et al. (1994) estimated an ageostrophic transport of  $50.8 \pm 10 Sv$  at  $10^\circ N$  in the Pacific. Chereskin et al. (1997) found Ekman transports of  $-17.6 \pm 2.4 Sv$  and  $-7.9 \pm 2.7 Sv$  during and after a southwest monsoon event at  $8.5^\circ N$  in the Indian Ocean, respectively. In all the above studies, the direct estimates agree within 10-20% of the estimates obtained by using the in-situ wind data (Eq. 1). Both the direct approach and indirect approach also show consistent transport structure across all the basins, which can be seen from the cumulative meridional Ekman transport curves from one boundary to the other. An indication for the existence of an Ekman balance in the upper ocean is the occurrence of an Ekman spiral. In all the above publications an “Ekman spiral”-like feature has been identified. Because  $v_{geos}$  can be estimated only perpendicular to the CTD stations and all studies are based on more or less zonal CTD section, the three dimensional structure of the Ekman spiral can not be obtained. However, the Ekman flow becomes evident by a near-surface maximum of the meridional ageostrophic velocity decreasing smoothly below within the upper 50 to 100 m to zero.

Yao Fu 1/5/2017 18:54

Deleted: the

Yao Fu 27/4/2017 16:38

Deleted: eq

Yao Fu 27/4/2017 16:38

Deleted: eq

Yao Fu 27/4/2017 16:38

Deleted: eq

Yao Fu 21/4/2017 16:30

Deleted: of the direct approach

Yao Fu 27/4/2017 16:39

Deleted: But it may have the potential to separate the ageostrophic current into an Ekman and a non-Ekman component (e.g. near-inertial internal waves).

Yao Fu 1/5/2017 18:56

Deleted: the

Yao Fu 27/4/2017 16:42

Deleted: evidence

Despite the fact that the zonal wind in the above studies was predominantly uniform in one direction, their ageostrophic velocity showed pattern of alternating currents. Also the section-averaged ageostrophic velocity profiles often exhibited structures that are not a result of an Ekman balance. Chereskin and Roemmich (1991) reported signals of internal wave propagation that was responsible for a peak in their section-integrated ageostrophic transport profile below the Ekman layer. Garzoli and Molinari (2001) also reported on vertically alternating structures in the section-averaged ageostrophic velocity profile at 6° N in the Atlantic. They proposed several possible candidates that could contribute to creating this structure, such as inertial currents within the latitude range of the North Equatorial Counter Current (NECC), and tropical instability waves with northward and southward velocities. Besides, they argued that the advective terms in the momentum equations might also produce a large non-Ekman ageostrophic transport in the presence of large horizontal shears between NECC and the northern branch of the South Equatorial Current (nSEC).

The appearance of these non-Ekman ageostrophic currents is not surprising, since it has been long recognized that the temporal variability of the wind field leads to wind energy input into the Ekman layer at subinertial and near-inertial frequencies. Wang and Huang (2004) estimated the global wind energy input into the Ekman layer at subinertial frequencies (frequency lower than 0.5 cycle per day) to be 2.4 TW, while Watanabe and Hibiya (2002) and Alford (2003) estimated that at near-inertial frequencies the wind energy input was 0.7 and 0.5 TW, respectively. Elipot and Gille (2009) estimated the wind energy input into the Ekman layer for the frequency range between 0 and 2 cpd at 41° S in the Southern Ocean using surface drifter data. They found that the near-inertial input (between 0.5  $f$  and 2 cpd) contributes to 8% of the total wind energy input (here the “total” means frequency range between 0 and 2 cpd), which may still underestimate the near-inertial contribution due to limitations in their data. All these studies suggest that at least about 10% of the wind energy (frequency range between 0 and 2 cpd) into the Ekman layer is at near-inertial frequencies, which is used to supply the non-Ekman ageostrophic motions (inertial oscillation, near-inertial internal waves, etc.). Therefore, complicated structures in the directly observed ageostrophic velocity as reported by Chereskin and Roemmich (1991) and Garzoli and Molinari (2001) can be anticipated.

Yao Fu 5/5/2017 10:04

Deleted: ted

Yao Fu 5/5/2017 10:05

Deleted: north- and southward.

Yao Fu 5/5/2017 10:05

Deleted: The

Yao Fu 5/5/2017 10:06

Deleted: clearly non-Ekman

Yao Fu 5/5/2017 10:06

Deleted: a propagation

Yao Fu 5/5/2017 10:07

Deleted: a strong

Yao Fu 5/5/2017 10:07

Deleted: structures

Yao Fu 27/4/2017 16:44

Formatted: Font:Italic

Yao Fu 5/5/2017 10:07

Deleted: details

The purpose of the present study is to estimate the Ekman volume, heat and freshwater transport across two trans-Atlantic sections nominally along 14.5° N and 11° S by using direct and indirect methods, and to analyse the vertical structure of the ageostrophic flow by using high-resolution velocity and hydrographic data. In previous studies, the geostrophic velocity was estimated using CTD profile data with station spacing of approximately 30 to 60 nm, and only in-situ and climatological wind data were available. In this study, we apply the recently introduced underway-CTD (uCTD), which allows profiling with denser station spacing of about 8 to 10 nm or less and does not require additional station time by measuring from moving ships (e.g. volunteer commercial and research vessels). We first describe the processing of the uCTD data in details, and apply the uCTD data to calculate the Ekman transport. We also test the sensitivity of the Ekman transport estimates with respect to the CTD profile resolution. We then apply wind data from different sources to indirectly estimate the Ekman transport, including the in-situ (ship) wind, satellite-based wind product, and reanalysis wind products. In order to integrate the observation-based Ekman transport estimates into the large-scale tropical Atlantic context, we compared our results with the GECCO2 ocean syntheses data. This work is structured as follows:

The processing of the data is described in section 2. The methods used in the calculation of Ekman volume, heat and salt transport are described in section 3. The vertical and horizontal structure of the ageostrophic velocity, together with the Ekman volume, heat and salt transport estimated using different datasets and different methods are presented and discussed in section 4, followed by a summary in section 5.

## 2 Data

Two trans-Atlantic zonal sections near 14.5° N and 11° S were occupied by the R/V Meteor on three cruise legs (M96, M97 and M98). The 14.5° N section began with cruise M96 off the coast of Trinidad and Tobago on April 28, 2013. The section ended on M96 at about 20° W on May 20, and was continued to the African coast during M97 from June 08 to June 09 (Fig. 1). During these surveys, 64 CTD stations were conducted along the 14.5° N section with an average spacing of 40 nm (75 km). Parallel to the CTD system, the uCTD system was operated between the adjacent CTD stations when the ship was steaming at 10 to 12 kn. In total, 317 uCTD profiles were achieved, with an average

- Yao Fu 2/5/2017 11:08  
**Deleted:** Typically, on a large-scale cruise survey.
- Yao Fu 2/5/2017 11:42  
**Deleted:** have
- Yao Fu 27/4/2017 16:44  
**Deleted:** 50
- Yao Fu 10/4/2017 16:10  
**Deleted:** High-resolution CTD data, such as XCTD or the
- Yao Fu 27/4/2017 16:45  
**Deleted:** .
- Yao Fu 10/4/2017 15:53  
**Deleted:** .
- Yao Fu 10/4/2017 15:53  
**Deleted:** We
- Yao Fu 10/4/2017 15:54  
**Deleted:** will
- Yao Fu 10/4/2017 16:21  
**Deleted:** use
- Yao Fu 5/5/2017 10:10  
**Deleted:** to
- Yao Fu 2/5/2017 11:55  
**Deleted:** as well as of the heat and salt fluxes
- Yao Fu 2/5/2017 11:49  
**Deleted:** two
- Yao Fu 5/5/2017 10:11  
**Deleted:** .
- Yao Fu 22/4/2017 22:49  
**Deleted:** .
- Yao Fu 22/4/2017 22:51  
**Deleted:** 3
- Yao Fu 22/4/2017 22:51  
**Deleted:** 4
- Yao Fu 6/4/2017 17:00  
**Deleted:** from 28 April through 22 July 2013.
- Yao Fu 6/4/2017 16:55  
**Deleted:** .
- Yao Fu 6/4/2017 16:56  
**Deleted:** jointly completed by cruise M97 from 20° W to the African coast
- Yao Fu 6/4/2017 16:56  
**Deleted:** The section ended on M96 at about 20° W and was continued to the African coast during M97 20 days later.

spacing of 8 nm (15 km). The 11° S section was surveyed during M98 from July 06 to July 23, 2013. In this section, the standard CTD was only operated on the shelf and at the shelf break; during the transit across the Atlantic, only the uCTD was in use. All together, 290 uCTD profiles were taken during the survey with an average spacing of 11 nm (20 km). Shipboard ADCP and anemometer were in continuous operation through the entire cruises.

## 2.1 CTD and uCTD measurements

The CTD work was carried out with a Sea-Bird Electronic (SBE) 9 plus CTD system. The two temperature sensors were calibrated at the manufacturer just before the cruise M96 in March 2013. The conductivity measurements were calibrated by comparing the bottle stop data with Salinometer measurements of bottle samples. All CTD system quality control procedures followed the GO-SHIP recommendations (Hood et al., 2010). The accuracy of the CTD data was estimated to be  $\pm 0.001$  °C for temperature and  $\pm 0.002$  g kg<sup>-1</sup> for salinity.

The uCTD system used at both zonal sections was an Oceanscience Series II UnderwayCTD. It consisted of a probe, a tail and a winch. The probe is equipped with a temperature (SBE-3F), a conductivity (SBE-4) and a pressure sensor from SBE. A tail spool reloading system allows the rope spooled on the tail to be paid out when the probe falls freely. The sensors record data at a frequency of 16 Hz. For most of the profiles about 250-300 m of rope were spooled on the tail spool (which set the fall depth) and the recording time length was set to 100 seconds and about 1600 data recordings per cast were obtained. From the tail spool the probe sinks freely with a nominal speed of 4 m s<sup>-1</sup>. However, due to the back and forth unspooling of the rope from one end of the tail to the other, the sinking speed typically varies from 3 to 4.5 m s<sup>-1</sup>. After the rope on the tail is paid out completely, the probe still sinks at speed less than 2 m s<sup>-1</sup> in the last tens of meters of its sinking before winched back to the ship and recovered back to deck. Three probes were used during the two section surveys (#70200126 and #70200068 along the 14.5° N section; #70200068 and #70200138 along the 11° S section). The uCTD winches were out of service several times during the three cruise legs. Although they were repaired on-board, several measurement gaps were left, for example, between 29° W and 27° W (Fig. 1).

Yao Fu 6/4/2017 17:04

Deleted: R/V Meteor

Yao Fu 27/4/2017 16:48

Deleted: in this study

Yao Fu 1/5/2017 18:58

Deleted: on

Yao Fu 21/4/2017 16:31

Deleted: of



The post-calibration of the uCTD data was done in two major steps, the first step is a sensor calibration procedure, which corrects the temperature sensor error due to viscous heating, the conductivity sensor error due to thermal mass delay, and the lag between the conductivity and temperature sensors; the second step is data validation in reference to CTD profile data and to thermosalinograph (TSG) data.

5 The first step was done following Ullman and Hebert (2014) (hereafter UH2014). We will briefly describe the process here, for details please refer to their work. The uCTD is an unpumped CTD system; the rapid sinking speed of  $4 \text{ m s}^{-1}$  allowing water to pass through the sensor package at  $3.56 \text{ m s}^{-1}$  (UH2014). This flow rate is much higher than a pumped CTD system ( $1 \text{ m s}^{-1}$ ), which leads to a clear viscous heating effect of the uCTD temperature sensor. This was corrected using a steady-state result of

10 Larson and Pedersen (1996) for the perpendicular flow case (cf. Eq. 8 of UH2014). The thermal mass correction was performed following the algorithm of Lueck and Picklo (1990) and using the mean values of error magnitude and time constant from UH2014 (cf. Table 1 of UH2014).

From the uCTD profiles alone a time lag correction was determined from cross-correlation of temperature and conductivity sensor small-scale variability. The variability was calculated by

15 subtracting a 6<sup>th</sup> order Butterworth low-pass filtered profile with a cut-off frequency of 4 Hz from the corresponding temperature and conductivity time series of each profile. The highest correlation was found for a  $1/16 \text{ s}$  lag (conductivity leading), which equals the sampling frequency of 16 Hz data. Application of the lag eliminated most of the spikes in the salinity profiles when the sinking speed of the probe was above about  $1.5 \text{ m s}^{-1}$ . However, when the sinking speed was below  $1.5 \text{ m s}^{-1}$ , this

20 correction would cause the spikes pointing at the opposite direction and indicates an inverse dependency of the lag on the sinking speed. This result is consistent with that reported by UH2014, and we corrected the lag following their lag model (cf. Eq. 7 of UH2014), but adjusted their parameters to match our data. The data recorded with a sinking speed smaller than  $0.3 \text{ m s}^{-1}$  was neglected (including all upcast data).

25 Validation of the lag corrected uCTD against CTD profile data revealed for the  $14.5^\circ \text{ N}$  section a drift in the conductivity sensors of the uCTD probes #70200126 and #70200068. A bias correction in the sense of an absolute salinity offset (uCTD – CTD) was determined based on the temperature-salinity space (Rudnick and Klinke, 2007) by considering the conservative temperature range from  $12^\circ$  to  $14^\circ \text{ C}$  and

Yao Fu 21/4/2017 16:33

Deleted: ,

Yao Fu 21/4/2017 16:33

Deleted: we

Yao Fu 21/4/2017 16:34

Deleted: ,

Yao Fu 21/4/2017 16:35

Deleted: s

Yao Fu 21/4/2017 16:36

Deleted: ing

Yao Fu 21/4/2017 16:37

Deleted: and

Yao Fu 21/4/2017 16:38

Deleted: a

using all uCTDs between adjacent CTD pairs. This particular temperature range was chosen because it belongs to the Atlantic central water, whose T/S relation is nearly linear, which implies that in this temperature range, the spreading of salinity measured during different uCTD casts should be tight. Besides, it was also surveyed by almost all uCTD casts along the section. For probe #70200126, the salinity offset fluctuates around a mean value of  $0.038 \text{ g kg}^{-1}$  west of  $39^\circ \text{ W}$  (CTD station 34), east of which the offset shifts abruptly to around  $0.151 \text{ g kg}^{-1}$ . The calibration was done by applying the mean offset values to the salinity data in the corresponding groups of uCTDs. The salinity data of the last few profiles of probe #70200126 (between  $30^\circ \text{ W}$  and  $29^\circ \text{ W}$ ) were extremely noisy, and not possible to calibrate. This probe was not further used during the rest of the section due to its poor quality of the salinity data. For probe #70200068, the salinity offset remains around 0 west of  $36^\circ \text{ W}$  (CTD station 38), and then abruptly shifts to around  $0.295 \text{ g kg}^{-1}$  between  $36^\circ \text{ W}$  and  $23.5^\circ \text{ W}$  (CTD station 56). East of  $23.5^\circ \text{ W}$  to the African coast, the offset shows a linear decreasing trend. This is likely due to the increasing portion of South Atlantic central water (SACW) in the central water layer when approaching the coastal region, which is less saline than the North Atlantic central water (NACW), and consequently shifting the slope of the T/S curve. As a result, the linear trend of the offset east of  $23.5^\circ \text{ W}$  should not be due to instrument error. Therefore, only a mean offset was calculated and applied to calibrate each corresponding group of profiles made by #70200068. The reasons for the abrupt drift in the salinity (as obtained from the conductivity sensors) are not clear, but it is likely that due to the repeated intensive usage, the conductivity sensors were contaminated or impacted (hit ship hull).

The shipboard TSG provides another source of validation and calibration of uCTD data. On R/V Meteor, the TSG (SBE38 for temperature sensor, SBE21 for conductivity sensor) measures temperature and salinity at an intake at approximately 6.5 m depth. For all three legs, the TSG conductivity cell was calibrated from salinity analysis of water samples taken at the water intake, and a comparison with CTD data (if available) was also done. The uCTD salinity calibration was done by calculating the conductivity offset between the uCTD at 6.5 m and the averaged TSG conductivity within 5-min before and after the uCTD downcast. For probe #70200126, the drift of its conductivity sensor manifests also east of  $39^\circ \text{ W}$ , the conductivity offset west of  $39^\circ \text{ W}$  is about  $-0.022 \text{ S m}^{-1}$ , while east of that is about  $0.094 \text{ S m}^{-1}$ . These differences in conductivity correspond to a change in salinity of  $-0.015$  and  $0.08 \text{ g kg}^{-1}$ .

Yao Fu 21/4/2017 16:39

Deleted: to

Yao Fu 21/4/2017 16:39

Deleted: the

kg<sup>-1</sup>, respectively. For probe #70200068, the conductivity offset is indistinguishable from 0 west of 36° W, while east of that is 0.156 S m<sup>-1</sup>, which corresponds to a salinity difference of 0 and 0.15 g kg<sup>-1</sup>. No trend in the offset east of 23.5° W is detected. For the 14.5° N section, we had uCTD, CTD, and TSG data available and the respective calibrations uCTD/CTD and uCTD/TSG could be compared. This was done in order to see if in case only TSG data is available (as it is the case for the 11°S section), still reasonable calibration results could be achieved. For both probes, the TSG derived drifts occurred in the same longitude range as they were detected using the CTD data. However, the magnitude of the offset was generally smaller for the TSG compared to the CTD-based method, especially for probe #70200126 in the longitude range west of 39° W, where even the sign of the offsets was opposite to each other. Such a difference is likely due to the fact that the CTD-based method employs a specific potential temperature range where the salinity variation is small, while the TSG-based method focuses only at near-surface values (6.5 m), where the salinity varies in a broad range. Therefore, we would trust more the CTD-based method, and note that if the TSG-based method returns a small conductivity offset (<0.03 S m<sup>-1</sup>), one might need more caution to apply this offset to calibrate the uCTD. However, one needs also more caution when applying the CTD-based calibration in regions, where the T/S relation of the central water shows a mixture effect of NACW and SACW. At the 11° S section, CTD data was only available at the beginning and end of the section, we could use only the TSG data as the primary source for validation. Fortunately no drift was detected in the uCTD probes conductivity cell, but a stable offset with a mean value of 0.131 S m<sup>-1</sup> and 0.073 S m<sup>-1</sup> was detected and applied for the probes #70200068 and #70200138, respectively.

After the offset/drift calibration, all the uCTD data was gridded vertically from the original resolution (~0.25 m at a nominal sinking speed of 4 m/s) to 1 m for the geostrophic velocity calculation later.

Following Rudnick and Klinke (2007), we estimated that the calibrated and gridded uCTD data have an accuracy of 0.02-0.05 g kg<sup>-1</sup> in salinity, and 0.004 °C in temperature.

All calculations in this study are based on the Thermodynamic Equation of State for seawater 2010 (TEOS-10, McDougall and Barker, 2011). TEOS-10 is introduced to replace the previous Equation of State, EOS-80, and it provides a thermodynamically consistent definition of the equation of state in terms of Gibbs function for seawater. The most obvious change in TEOS-10 is the adoption of

Yao Fu 21/4/2017 16:41

Deleted: compare

Yao Fu 27/4/2017 16:50

Deleted: We

Yao Fu 27/4/2017 16:51

Deleted: (Rudnick and Klinke, 2007)

conservative temperature ( $\theta$ ) and **absolute salinity** ( $S_A$ ) to replace the potential temperature and practical salinity. Although the new equation of state has a non-negligible effect on the density field in the deep ocean, its effect in the upper ocean is expected to be small; therefore, our results obtained using TEOS-10 should be comparable with the previous studies.

Yao Fu 27/4/2017 16:51

Deleted: Absolute Salinity

## 5 2.2 ADCP measurements

Direct current velocity profiles were measured continuously during all three cruise legs with vessel-mounted 75 kHz and 38 kHz Teledyne RDI Ocean Surveyors (OS75 and OS38). The OS75 was configured to measure at a rate of 2.2 s and a bin size of 8 m. The measurement range varied between 500 m and 700 m. The OS38 was set to measure at a rate of 3.5 s and at 16-m (32-m) bin size during 10 14.5° N (11° S) section. The measurement range was mostly 1200 m. Ship navigation information was synchronized to the ADCP system. The misalignment angles and amplitude factors were calibrated during post-processing. The processed data contain 10-minutes averaged absolute velocities in earth coordinates; the first valid bin for OS75 is **centered at** 18 m at 14.5° N and 13 m at 11° S, for OS38 is 21 m at both sections. In this study, only the OS75 velocity was used since it has a higher accuracy in 15 upper layers and higher vertical resolution. The uncertainties of 1-h averages were estimated by Fischer et al. (2003) to be 1–3 cm s<sup>-1</sup>.

## 2.3 Wind data

We used three different wind datasets in our analysis. First, we used the observed wind speed and direction recorded with the R/V Meteor anemometer, mounted at a height of 35.3 m. The wind data 20 were stored with a temporal resolution of one minute. True wind speed and direction were calculated using ship speed and direction from navigation system. On-station measurements were removed. The reduction from **the** observation height to 10 m standard height was calculated according to Smith (1988) and wind stress was calculated according to Large and Yeager (2004) assuming neutral stability. The final wind stress used for the Ekman transport calculation was binned in 50-km ensembles to filter out 25 small-scale variability.

The blended Satellite-based level-4 Near-Real-Time wind stress product (hereafter satellite wind stress) from Copernicus Marine Environment Monitoring Service (CMEMS) was used. The wind speed data is

derived from retrievals of scatterometers aboard satellite METOP-A (ASCAT) and Oceansat-2 (OSCAT) and combined with the European Centre for Medium-Range Weather Forecasts (ECMWF) operational wind analysis and gridded to  $0.25^\circ \times 0.25^\circ$  resolution in space and 6 hours in time. The wind stress data was estimated using COARE 3 model (Fairall et al., 2003).

- 5 Moreover, the NCEP/NCAR monthly zonal wind stress at  $14.5^\circ$  N and  $11^\circ$  S corresponding to the months of the cruises (i.e. May and July 2013) was used to calculate the Ekman transport.

#### 2.4 GECCO2 ocean synthesis data

- In order to integrate our local observational results into a large scale circulation the GECCO2 ocean synthesis data was used and compared (Köhl, 2015). GECCO2 is a German version of the MIT general circulation model "Estimating the Circulation and Climate of the Ocean system" (ECCO, Wunsch and Heimbach, 2006). It has  $1^\circ \times \frac{1}{3}^\circ$  resolution and 50 vertical levels. GECCO2 includes the Arctic Ocean with roughly 40 km resolution and a dynamic/thermodynamic sea ice model of Zhang and Rothrock, (2000). The synthesis uses the adjoint method to bring the model into consistency with available hydrographic and satellite data (Köhl, 2015). The prior estimate of the atmospheric state is included by adjusting the control vector, which consists of the initial conditions for the temperature and salinity, surface air temperature, humidity, precipitation and the 10-m wind speeds from the NCEP RA1 reanalysis 1948-2011 (Köhl, 2015). The surface fluxes are derived by the model via bulk formulae of Large and Yeager (2004). For the study period from May to July 2013 monthly and daily output data was available. It is important to note that the in-situ observational data measured during the cruises were not assimilated in the synthesis, while the satellite measured wind speed was assimilated but possibly modified via the synthesis.

### 3 Method

- According to Eq. 1 and Eq. 2, the meridional Ekman volume transport can be calculated from zonal wind stress data, as well as from observed ageostrophic velocity. Hereafter we refer the wind stress based calculation as the "indirect method", and the ageostrophic velocity based calculation as the

“direct method”. In this section, we describe some details of the geostrophic and ageostrophic velocity calculation, the error estimate of the direct Ekman transport calculation, and different methods to derive the Ekman heat and salt fluxes.

### 3.1 Geostrophic and ageostrophic velocity calculations

According to the thermal wind relation, relative geostrophic velocity referenced to the velocity at the reference depth can be calculated from the density field measured by the CTD and uCTD. At 14.5° N, two sets of the relative geostrophic velocity were calculated independently from the CTD and uCTD dataset. For CTDs, the relative geostrophic velocity referenced to 200 m was computed between the adjacent stations (average distance about 75 km). For uCTDs, in order to take the advantage of the high spatial resolution, the relative geostrophic velocity to 200 m was calculated between any closest pair of uCTD profiles with a minimum distance of 70 km (roughly the Rossby radius of deformation at this latitude). Along the 11° S section, CTD profiles were only taken in the vicinity of the coasts, and over most of the section only uCTD data is available (Fig. 1). Therefore the geostrophic velocity was computed from the combined CTD and uCTD dataset following the methodology applied to uCTD data at the 14.5° N section, except that at 11° S the minimum distance between the closest profiles was set to 90 km (roughly the Rossby radius of deformation at 11° S). Note that the distance between uCTD profiles for geostrophic velocity calculation is an arbitrary choice, and varying the distance from 70 km to 110 km makes a negligible effect on the total transport (less than 2%).

To obtain the absolute geostrophic velocity, the reference velocity at 200 m was obtained from the ADCP measurement. The ADCP velocity was projected to the normal direction of the cruise track and then averaged between the corresponding CTD/uCTD pairs. We did not include the ADCP velocity data recorded at the CTD stations, because velocity was repeatedly measured at a CTD station, zonally averaging the ADCP velocity would bias the result towards the on-station velocity. In previous studies (Wijffels et al., 1994; Chereskin et al., 1997; Garzoli and Molinari, 2001), the corresponding ADCP velocity at the reference depth was taken as the reference velocity, assuming that the flow at the reference depth was in geostrophic balance. However, the section-averaged ADCP velocity profile for the 14.5° N section show a complicated vertical structure (Fig. 3a) and it is not obvious at which depth

Yao Fu 22/4/2017 17:55

Moved (insertion) [1]

Yao Fu 22/4/2017 17:58

**Deleted:** At 14.5° N both CTD and uCTD measurement were done throughout the section and a geostrophic velocity was calculated from these two datasets independently.

Yao Fu 22/4/2017 18:01

**Deleted:** To obtain the absolute geostrophic velocity, the reference velocity at 200 m was obtained from the ADCP measurement. The ADCP velocity data was projected to the normal direction of the cruise track and then averaged between the corresponding CTD/uCTD pairs. We did not include the ADCP velocity data recorded at the CTD stations, because velocity was repeatedly measured at a CTD station, zonally averaging the ADCP velocity would bias the result towards the on-station velocity.

Yao Fu 22/4/2017 18:02

**Deleted:** At

Yao Fu 27/4/2017 16:55

**Deleted:** of

Yao Fu 22/4/2017 18:03

**Deleted:** .

... [1]

the flow is approximately in geostrophic balance. Thus, referencing the relative geostrophic velocity to the ADCP velocity only at a chosen depth may lead to a biased absolute geostrophic velocity. As a result, the ageostrophic velocity may be sensitive to the choice of the reference level. To overcome this problem, a reference velocity was calculated as an averaged offset between each relative geostrophic velocity and the corresponding ADCP velocity within a common depth range, over which the ageostrophic components are averaged to about 0. This averaged offset should represent the absolute geostrophic velocity at the reference depth and is roughly independent of the vertical variation due to the ageostrophic components. At 14.5° N, the common depth range for the CTD-based calculation is between 70 m to 500 m, which is expected to be below the surface Ekman layer and covered by both CTD and ADCP measurement. Due to the limitations in the maximum deployment depth, the uCTD-based calculation cover the depth range between 70 m and 250 m. At 11° S the depth range is between 100 m and 300 m, which should be also below the Ekman layer and was covered by the uCTD and ADCP measurement.

The ageostrophic velocity was then calculated as the difference between the ADCP velocity and the absolute geostrophic velocity. Note the choice of the depth range still affects the reference velocity due to the vertical variation in the ADCP meridional velocity. For example, using a depth range between 70 and 250 m for the CTD based calculation (same as the uCTD depth range) would decrease the final ageostrophic velocity by 0.44 cm s<sup>-1</sup>, using other depth range would not result in an absolute difference exceeding this value. This is much smaller compared to the uncertainty caused by using the ADCP velocity at a single depth as the reference velocity (up to 1.75 cm s<sup>-1</sup>), as can be anticipated from the section averaged meridional ADCP velocity (Fig. 3a). The sensitivity of the absolute geostrophic velocity to the choice of the reference level was also tested at 14.5° N. Changing the reference level from 150 m to 250 m would make a change in the absolute geostrophic velocity indistinguishable from zero.

### 3.2 Penetration depth of the Ekman flow

Because the ocean is not homogenous, a control surface must be defined that characterizes the maximum penetration depth of the momentum flux into the upper ocean. One choice would be the

Yao Fu 5/5/2017 10:13

Deleted: ,

Yao Fu 5/5/2017 10:28

Deleted: while for

Yao Fu 5/5/2017 10:28

Deleted: ,

Yao Fu 5/5/2017 10:28

Deleted: is

Yao Fu 5/5/2017 10:29

Deleted: , since the uCTD was only deployed to measure the upper 250 m depth.

Yao Fu 22/4/2017 22:44

Formatted: Space After: 6 pt

Yao Fu 27/4/2017 16:55

Deleted: ,

Yao Fu 27/4/2017 16:55

Deleted: r

Yao Fu 4/5/2017 14:36

Formatted: Heading 2, Indent: Left: 0 cm, Hanging: 1,02 cm

MLD, which we defined as the depth where the density increased by  $0.01 \text{ kg m}^{-3}$  in reference to the value at 10 m (following Wijffels et al. 1994). Along both sections, the MLD is relatively shallow (on average 25.1 m at  $14.5^\circ \text{ N}$  and 32.2 m at  $11^\circ \text{ S}$ ), and as such unlikely a representative of  $D_E$  (Fig. 3 and 4). According to the Ekman theory,  $D_E$  for water at  $14.5^\circ \text{ N}$  with a typical vertical eddy viscosity,  $A_v$  of  $0.02 \text{ m}^2 \text{ s}^{-1}$  would be 33.1 m (see the definition of  $D_E$  in Eq. 1).

Alternatively a TTP has been defined as the shallowest depth at which the density gradient is larger than  $0.01 \text{ kg m}^{-4}$  (Wijffels et al., 1994). The TTP is typically deeper than the MLD and better defines the transition depth between well-mixed and stratified ocean, up to which the momentum from the wind is transferred (Chereskin et al., 2002). At some locations along both sections we observed two homogenous layers of slightly different density and possibly a remnant of the seasonal mixed layer cycle. In these cases, the TTP depth was chosen as the deeper one of the depth that satisfies the density gradient criterion. Since TTP was defined based on a gradient criterion, it represents the bottom of a weakly stratified surface layer rather than a specific density surface. Along the  $14.5^\circ \text{ N}$  section, the mean TTP depth is 45.8 m (Fig. 3a). At both ends of the section, the TTP coincided with the MLD and was relatively shallow, while in the rest part of the  $14.5^\circ \text{ N}$  section, TTP was deeper than the MLD (Fig. 4c). Along the  $11^\circ \text{ S}$  section, the mean TTP depth is 56.8 m, and the TTP is deeper than the MLD throughout the section (Fig. 3b and 4d).

### 3.3 Error estimate of the direct Ekman transport

The errors of the direct Ekman transport were estimated following Chereskin and Roemmich (1991) and Wijffels et al. (1994). Assuming that near-inertial motions are the dominant source of error, decorrelation length scales were calculated as the distance that the ship travelled in a quarter of the inertial period at  $14.5^\circ \text{ N}$  (47.9 hours) and  $11^\circ \text{ S}$  (62.7 hours) resulting in 130 km and 230 km, respectively. In total, 38 segments of the  $14.5^\circ \text{ N}$  section and 25 segments of the  $11^\circ \text{ S}$  section were obtained by dividing the total distance of each section by the corresponding decorrelation length scale, respectively. The westernmost and easternmost 4 segments of each section were omitted because of the anomalously weak wind near the eastern boundary, and the strong boundary current in the western boundary region. The degree of freedom (DOF) of 30 and 17, respectively, was the number of the

Yao Fu 4/5/2017 14:37

Formatted: Space After: 6 pt

Yao Fu 22/4/2017 18:12

Moved (insertion) [2]

Yao Fu 22/4/2017 18:17

Deleted: ,



remaining segments. The ageostrophic transport within each segment was treated as an independent realization of the Ekman transport. Therefore, standard errors were calculated. Then the final error is given as the standard error times the DOF. Another factor that could lead to an uncertainty is the depth range used to calculate the reference velocity from the ADCP velocity. As discussed above, we argue that the vertical structure of the ageostrophic velocity should arise from the near-inertial motion and therefore, should be included already in this uncertainty estimate.

### 3.4 Ekman heat and salt flux calculation

The Ekman heat and salt fluxes,  $H_e$  and  $S_e$  respectively, were calculated by combining the indirect and direct Ekman volume transport estimates with  $\bar{\theta}$  and  $\bar{S}_A$  from different sources. Note that in order to calculate the Ekman fluxes in the context of mass conservation (Montgomery, 1974), it has to be assumed that the Ekman volume transport in the upper layer is balanced by an equal and opposite geostrophic return flow at depth. This is a reasonable assumption and has been routinely adopted in many inverse studies (Ganachaud and Wunsch, 2003). To account for this return flow, an averaged conservative temperature,  $\bar{\theta}$ , and absolute salinity  $\bar{S}_A$  was subtracted from the in-situ  $\theta$  and  $S_A$  at each section.  $\bar{\theta}$  and  $\bar{S}_A$  are the zonally and vertically (0-5000 m) averaged the conservative temperature and absolute salinity, calculated from the annual climatology of World Ocean Atlas 2013 v2 (Locarnini et al., 2013; Zweng et al., 2013) at each section. In the following, the calculation details of the Ekman heat flux and transport-weighted Ekman temperature is given; the calculation of the Ekman salt flux and transport-weighted Ekman salinity is analogue.

#### 3.4.1 Direct methods

By using the in-situ  $\theta$  together with the ageostrophic velocity within the layer from the sea surface to the TTP (referred to as TTP layer), the Ekman heat flux  $H_e$  was calculated (referred as: direct TTP/profile).

$$H_e = \rho C_p \int_{x_1}^{x_2} \int_{-TTP}^0 (\theta(x, z) - \bar{\theta}) v_{ageo}(x, z) dz dx, \quad (3)$$

Yao Fu 22/4/2017 18:18

Deleted: ,

Yao Fu 22/4/2017 18:32

Moved (insertion) [3]

Yao Fu 22/4/2017 18:36

**Deleted:** using the direct method (ageostrophic velocity approach) and the indirect method (wind stress approach). In the previous sections, we have discussed that the TTP was a reasonable assumption for the depth of  $D_E$  for both sections.

Yao Fu 22/4/2017 18:42

**Deleted:** Hence, using the  $\bar{\theta}$  and  $\bar{S}_A$  together with the ageostrophic velocity within the layer from the sea surface to the TTP (referred to as TTP layer) should give us the best estimate of the heat and salt fluxes (referred as: direct TTP/profile). As a comparison, the fluxes using only in-situ SST from the CTD and uCTD were also calculated (referred as direct TTP/surface). ... [2]

Yao Fu 27/4/2017 17:01

Deleted:  $S_A$

Yao Fu 27/4/2017 16:58

Deleted: of

Yao Fu 22/4/2017 22:58

Deleted: .

Yao Fu 22/4/2017 18:45

Deleted: 5

Yao Fu 22/4/2017 18:37

**Deleted:** The Ekman heat flux  $H_e$  were calculated using the direct TTP/profile method as .

where  $C_p$  is the specific heat capacity of sea water at constant pressure,  $\rho$  is the density of sea water, in this study we assumed a constant  $C_p = 4000 \text{ J kg}^{-1} \text{ }^\circ\text{C}^{-1}$  and a constant  $\rho = 1025 \text{ kg m}^{-3}$ ,  $v_{ageo}$  is the ageostrophic velocity,  $\theta$  is the in-situ conservative temperature,  $\bar{\theta}$  is the mean conservative temperature at the corresponding section.

It is useful to consider the Ekman heat flux as the product of the Ekman volume transport,  $M^y$  and the transport-weighted temperature,  $\theta_E$ . The transport-weighted temperature then can be calculated as follows

$$\theta_E = \frac{\int_{x_1}^{x_2} \int_{-TTP}^0 \theta(x, z) v_{ageo}(x, z) dz dx}{M_{direct}^y} \quad (4)$$

As a comparison to the direct TTP/profile method, the Ekman heat fluxes using only in-situ SST from the CTD and uCTD were also calculated (referred as direct TTP/surface). This was done by replacing the in-situ  $\theta(x, z)$  in Eq. 3 and Eq. 4 with the in-situ SST  $\theta(x, z = 0)$ .

The uncertainty of the direct Ekman heat and salt fluxes was estimated following Chereskin et al. (2002). Since the wind direction was predominantly uniform and westward, the uncertainty should mainly arise from the ageostrophic velocity that was opposite to the expected Ekman flow direction. Therefore, the uncertainty was calculated still using Eq. 3 and Eq. 4, except that only southward or northward ageostrophic velocity were used in both numerator and denominator for the  $14.5^\circ \text{ N}$  or  $11^\circ \text{ S}$  section, respectively.

### 3.4.2 Indirect surface method

Often Ekman heat and salt fluxes are estimated by combining the Ekman volume transport inferred from wind stress with the SST and SSS from a climatology or satellite measurements (e.g. McCarthy et al., 2015). Here, we calculated the heat flux using in-situ wind and in-situ SST data (referred as indirect surface) to compare with the direct estimates. Additionally, an annual Ekman heat and salt fluxes (referred as indirect annual) were calculated using an annual average of the monthly NCEP/NCAR reanalysis wind stress data between 1991 and 2013 and the annual average of SST and SSS from the

Yao Fu 22/4/2017 18:48

Deleted: Ekman

Yao Fu 22/4/2017 18:48

Deleted: .

Yao Fu 22/4/2017 18:38

Deleted: The direct surface calculation (direct TTP/surface) is similar to the direct TTP/profile method, for which,  $\theta(x, z)$  in Eq. 3 and Eq. 4 is replaced by its surface value  $\theta(x, z = 0)$ .

Yao Fu 22/4/2017 18:39

Deleted: Following Chereskin et al. (2002), to estimated the uncertainties of the direct Ekman heat and salt flux, only northward or southward ageostrophic velocity were used in both numerator and denominator in Eq. 3 and Eq. 4 for  $14.5^\circ \text{ N}$  or  $11^\circ \text{ S}$  section, respectively. Since the wind direction was predominantly uniform and westward, the uncertainty should mainly caused by the ageostrophic velocity that was opposite to the expected Ekman flow direction.

Yao Fu 22/4/2017 18:45

Deleted: 5

Roemmich and Gilson (2009) monthly Argo climatology (hereafter RG climatology). Following Levitus (1987), the Ekman heat flux for the indirect surface method was calculated as

$$H_e = C_p \int (\Theta(x, z = 0) - \bar{\Theta}) \frac{\tau_x}{f} dx, \quad (5)$$

where  $\tau_x$  is the in-situ wind stress in the tangential direction of the cruise track,  $f$  is the Coriolis parameter,  $\Theta(x, z = 0)$  is the in-situ SST. The transport-weighted temperature was calculated as follows,

$$\Theta_E = \frac{\int \Theta(x, z=0) \frac{\tau_x}{\rho f} dx}{M_{indirect}^y}, \quad (6)$$

The indirect annual method is an analogue to the indirect surface method, except, the Ekman volume transport and SST were derived from the NCEP/NCAR reanalysis wind stress and RG climatology, respectively.

### 3.4.3 Indirect TTP method

Wijffels et al. (1996) assumed a linear Ekman velocity profile between the surface and TTP and calculated the Ekman heat and salt fluxes using climatological wind stress data, combined with the in-situ temperature and salinity. Here we followed their method and used the in-situ  $\Theta$ ,  $S_A$  and wind to calculate the Ekman heat and salt fluxes (referred as indirect TTP) as a counterpart to the direct TTP method.

$$H_E = C_p \int \left[ \frac{2}{3} \Theta(x, z = 0) + \frac{1}{3} \Theta(x, z = TTP) - \bar{\Theta} \right] \frac{\tau_x}{f} dx, \quad (7)$$

where  $\Theta(x, z = TTP)$  is the in-situ conservative temperature at TTP depth from the CTD/uCTD. The transport-weighted temperature was calculated as follows,

$$\Theta_E = \frac{\int \left[ \frac{2}{3} \Theta(x, z=0) + \frac{1}{3} \Theta(x, z=TTP) \right] \frac{\tau_x}{\rho f} dx}{M_{indirect}^y}, \quad (8)$$

Yao Fu 22/4/2017 23:01

Deleted: is

Yao Fu 22/4/2017 18:45

Deleted: 5

Yao Fu 22/4/2017 18:44

Deleted: Following Wijffels et al. (1996), the Ekman heat flux for the indirect TTP method was calculated with the assumption of a linear weighting of the temperature and salinity with depth.

Yao Fu 22/4/2017 23:01

Deleted: is

Yao Fu 22/4/2017 18:48

Deleted: ,

## 4 Results and discussion

### 4.1 Upper layer hydrography at 14.5° N and 11° S

Along both sections (Fig. 2a, b) the typical upward tilting of isotherms towards the east, as a result of the subtropical gyre circulation, can be seen. Along nominal 14.5° N the water in the upper 50 m, compared to that at 11° S, was relatively warm and fresh, with an averaged  $\theta_s$  and  $S_A$  of about 26.03 °C and 36.15 g kg<sup>-1</sup>, respectively. The minimum  $S_A$  core near the western boundary probably originates from the freshwater runoff from the Amazon River (Fig. 2c). Together with the warm temperature, it forms the lightest water observed along the section (Fig. 2e). A subsurface salinity maximum layer of Subtropical Underwater (STUW) is centred at 100 m depth with  $S_A$  greater than 37.2 g kg<sup>-1</sup>. STUW is formed in the Subtropical Atlantic with Sea Surface Salinity (SSS) maximum due to excessive evaporation, and subducted equatorward (Talley et al., 2011). The upward tilt of the isopycnals from west to east is suggestive of a net southward geostrophic transport when excluding the western boundary, where sharp deepening of the isopycnals implies a northward, intensified boundary current (Fig. 2g). At 11° S, the surface water was cooler and more saline than that at 14.5° N with an averaged  $\theta_s$  and  $S_A$  of about 24.52 °C and 36.69 g kg<sup>-1</sup>. The STUW with maximum salinity larger than 37.3 g kg<sup>-1</sup> was centred at about 100 m but even saltier than that at 14.5° N. Likewise, a net northward geostrophic flow can be anticipated from the displacement of the isopycnals. At the western boundary, the North Brazil Undercurrent (NBUC) is characterized by a narrow and strong northward velocity band west of 35° W (Schott et al., 2005) (Fig. 2h). In the hydrographic data  $\theta_s/S_A$  variability is seen at both sections that are associated with mesoscale eddies. For instance, at 14.5° N/25° W, and 11° S/7° E, were cyclonic and anticyclonic eddies characterized by the upward peak of the isotherms, and were clearly visible from the geostrophic velocity sections (Fig. 2g, h).

The daily  $\theta_s$  and  $S_A$  data of the GECCO2 synthesis were extracted from the model grid to the nearest time and position of the ship measurement. In general, GECCO2 daily data reproduced the observed hydrographic structure very well (not shown). The upward tilt of the isopycnals from the west to the east and the subsurface salinity maximum with  $S_A$  larger than 37.2 g kg<sup>-1</sup> were clearly captured by GECCO2. However, the most obvious difference was at the western boundary of 11° S, where the

Yao Fu 5/5/2017 10:50

Deleted:  $\theta$

Yao Fu 5/5/2017 10:49

Deleted:  $S_A$

Yao Fu 4/5/2017 14:38

Deleted:  $\theta$

Yao Fu 5/5/2017 10:50

Deleted:  $\theta$

Yao Fu 5/5/2017 10:50

Deleted:  $S_A$

Yao Fu 4/5/2017 14:38

Deleted: Along 11° S, the mean MLD and mean TTP depth is 32.2 m and 56.8 m, respectively, generally deeper than that at 14.5° N.

Yao Fu 5/5/2017 10:50

Deleted:  $\theta$

Yao Fu 5/5/2017 10:50

Deleted:  $S_A$

Yao Fu 5/5/2017 10:51

Deleted:  $\theta$

Yao Fu 5/5/2017 10:51

Deleted:  $S_A$

surface salinity was not as high as the observed values, and the isopycnals were not tilting in the same direction, indicating that the shallow western boundary current in the GECCO2 flowed in the opposite direction compared to the observation at 11° S. But we expect that this difference should not impact the ageostrophic velocity calculation, since the geostrophic velocity must be removed from the total velocity.

#### 4.2 Vertical structure of the ageostrophic flow

Although northward (southward) ageostrophic velocity at 14.5° N (11° S) dominates the upper 50-70 m (Fig. 2i, j), as expected from the persistent westward trade winds, the appearance of southward (northward) velocity at 14.5° N (11° S) in the upper 50-70 m and below indicates the existence of non-Ekman ageostrophic components in the water column. This will be discussed in details below. The section-averaged ageostrophic velocity based on CTD data at 14.5° N shows a relatively complicated vertical structure with multiple maxima and minima (Fig. 3a). It has a northward maximum velocity of 3.5 cm s<sup>-1</sup> near the surface, and decreases to about 0.3 cm s<sup>-1</sup> at about 60 m, followed by a minor peak at about 80 m before approaching 0 at 100 m. Another peak of 1 cm s<sup>-1</sup> appears at about 150 m, and below 180 m the velocity changes direction. When the ageostrophic velocity is calculated based on the uCTD data, it has a very consistent structure and strength compared to the CTD-based ageostrophic velocity (Fig. 3a). This is meaningful information as the hydrographic data at 11° S consists primarily of uCTD data. The good agreement between the CTD and uCTD data analysis at 14.5° N justify the use of either one or the other. At 11° S, the ageostrophic velocity shows a near-surface southward maximum of 4.3 cm s<sup>-1</sup> and decreases almost linearly in the upper 70 m and gradually approaches 0 at about 100 m (Fig. 3b). In contrast to the northern section the vertical variations of the ageostrophic velocity profile below 100 m are very small.

Assuming that the Ekman balance would hold true along the analyzed sections, the ageostrophic velocity would decrease undisturbed from its surface maximum to about 0 at a certain depth (Ekman depth,  $D_E$ ). However, the observed wave-like structure at 14.5° N indicates that other processes must play a role in setting the section mean ageostrophic flow field. To identify this wave-like structure, we tried to separate the non-Ekman ageostrophic flow from the other components by using the ADCP

Yao Fu 21/4/2017 16:59

Deleted: flew

Yao Fu 22/4/2017 17:55

**Moved up [1]:** At 14.5° N both CTD and uCTD measurement were done throughout the section and a geostrophic velocity was calculated from these two datasets independently. For CTDs, the relative geostrophic velocity referenced to 200 m was computed between the adjacent stations (average distance about 75 km). For uCTDs, in order to take the advantage of the high spatial resolution, the relative geostrophic velocity to 200 m was calculated between any closest pair of uCTD profiles with a minimum distance of 70 km (roughly the Rossby radius of deformation at this latitude). To obtain the absolute geostrophic velocity, the reference velocity at 200 m was obtained from the ADCP measurement. The ADCP velocity data was projected to the normal direction of the cruise track and then averaged between the corresponding CTD/uCTD pairs. We did not include the ADCP velocity data recorded at the CTD stations, because velocity was repeatedly measured at a CTD station, zonally averaging the ADCP velocity would bias the result towards the on-station velocity. At 11° S section, CTD profiles were only taken in the vicinity of the coasts, and over most of the section only uCTD data is available (Fig. 1). Therefore the geostrophic velocity was computed from the combined CTD and uCTD dataset following the methodology applied to uCTD data at the 14.5° N section, except that at 11° S the minimum distance between the closest profiles was set to 90 km (roughly the Rossby radius of deformation at 11° S). Note that the distance of uCTD profiles for geostrophic velocity calculation is an arbitrary choice, varying the distance from 70 km to 110 km makes a negligible effect on the total transport (less than 2%).

Yao Fu 12/4/2017 15:57

**Deleted:** When the geostrophic velocity is calculated based on uCTD data instead of CTD data, due to the much higher horizontal resolution, the geostrophic velocity field is noisier than that based on CTD data, but the basin-scale structure of the circulation is very similar. For instance, at the western boundary energetic northward cross-

Yao Fu 12/4/2017 16:31

Deleted: ageostrophic vertical

Yao Fu 12/4/2017 16:34

Deleted: where

Yao Fu 12/4/2017 16:34

Deleted: came from

Yao Fu 12/4/2017 16:35

**Deleted:** we first investigated the ADCP velocity. Since the ADCP measurement should capture all the velocity components, the priority was

velocity. A residual velocity was calculated by subtracting an 80-m boxcar filtered velocity profile from the original ADCP meridional velocity (Fig. 4a and 4b). The 80-m filter window was determined based on the vertical length scale of the wave-like structure in the section-averaged ageostrophic velocity profile by visual inspection. At 14.5° N, vertically alternating structures with wavelength of 60 to 80 m are clearly visible, they are coherent and persistent throughout the section, and are most pronounced between 52° W and 46° W (Fig. 4a). At 11° S, similar signals are visible for most of the section, but not as strong as at 14.5° N (Fig. 4b).

Zonally averaging the residual velocity results in a velocity profile with vertically alternating structure similar to that in the section-averaged ageostrophic velocity in both strength and structure, indicating that the vertical variation in the ageostrophic velocity mainly arises from the presence of high order baroclinic waves. Figure 4c and 4d show the buoyancy frequency ( $N^2$ ) for the two sections, respectively. It appears that the wave-like signals occur mainly in the strongly stratified layer (pycnocline) marked by high  $N^2$  values.  $N^2$  is calculated as follows:

$$N^2 = \frac{g}{\rho_0} \frac{\partial \rho(z)}{\partial z}, \quad (9)$$

where  $g$  is the gravitational acceleration,  $\rho_0 = 1025 \text{ kg m}^{-3}$  is the reference density, and  $\rho(z)$  is the in-situ potential density as a function of depth,  $z$ .  $\rho(z)$  was calculated by using a combination of CTD and uCTD profile data with a re-gridded vertical resolution of 5 m at both sections.

Chereskin and Roemmich (1991) also observed energetic, circularly polarized, relative currents of large horizontal coherence below the base of the mixed layer at 11° N in the Atlantic. They described the signal as the propagation of near-inertial internal waves, and argued that the presence of a near-inertial peak in internal wave spectra, together with continuously varying wind forcing, would guarantee the appearance of these waves. Using satellite based wind stress data, we examined the changes of wind stress at the measurement points within the last two weeks before the ship arrived at the measurement point. Although the wind stress strongly changed along the whole section, it is still not indicative why the wave signal is strongest between 52° W and 46° W at 14.5° N. It is tempting to believe that these waves are near-inertial internal waves. However, due to the fact that the ship moved nearly constantly except when it was on station, it is extremely difficult to identify what exactly these signals are. More

Yao Fu 5/5/2017 16:05  
Formatted: Space After: 0 pt

Yao Fu 5/5/2017 16:51  
Deleted: ( $N^2$ ) calculated from a combination of CTD and uCTD data

Yao Fu 5/5/2017 16:52  
Deleted:  $N^2$

Yao Fu 5/5/2017 16:04  
Formatted: Font:(Default) +Theme Body, English (UK)

Yao Fu 12/4/2017 17:21  
Deleted: Correspondingly, a secondary maximum appeared at 150 m in their section-integrated ageostrophic transport (analogue to the section-averaged ageostrophic velocity).

Yao Fu 21/4/2017 17:04  
Deleted: .

Yao Fu 12/4/2017 17:21  
Deleted: iable

Yao Fu 12/4/2017 16:39  
Deleted: tried to

Yao Fu 12/4/2017 17:24  
Formatted: Not Highlight

Yao Fu 21/4/2017 17:06  
Deleted: .

Yao Fu 12/4/2017 17:22  
Deleted: shows

Yao Fu 12/4/2017 17:24  
Formatted: Not Highlight

Yao Fu 12/4/2017 17:24  
Formatted: Not Highlight

Yao Fu 12/4/2017 17:22  
Deleted: s

Yao Fu 12/4/2017 17:23  
Deleted: in the last two weeks before the ship's arrival for

Yao Fu 12/4/2017 17:24  
Formatted: Not Highlight

Yao Fu 12/4/2017 17:24  
Formatted: Not Highlight

Yao Fu 12/4/2017 17:24  
Deleted: . as they mainly exist below the mixed layer, are coherent at large horizontal length scales, and occurred after varying wind field

Yao Fu 12/4/2017 16:02  
Deleted: .

... [7]

sophisticated methods may be applied to analyze the wave-like signal, for instance, Smyth et al. (2015) took the Doppler shift in the shipboard current measurement into account, and translated observed Yanai wave properties into the reference frame of the mean zonal flow. But this is obviously beyond the scope of this work.

### 4.3 Ekman transport

#### 4.3.1 Indirect method

According to Eq. 1, the Ekman transport can be calculated from the wind stress data (referred as indirect method) by integrating the left-hand side of Eq. 1 zonally. The in-situ wind stress data and a satellite-based wind stress product from CMEMS were used. The satellite wind stress data were extracted from the original grid to the nearest time and nearest position of the ship navigation. Both in-situ and satellite wind stress were projected to the tangential direction of the cruise track, so that the cross-section Ekman transport at each grid point was calculated. Note that both sections were occupied nominally zonally, therefore, we will refer cross-section Ekman transport as meridional Ekman transport for simplicity hereafter.

Overall, the satellite wind stress agrees well with the ship wind stress (Fig. 5) except in the region between 40° W and 30° W at 14.5° N, where the zonal ship wind stress is larger than the zonal satellite wind stress, and at 11° S the ship wind stress is generally smaller than the satellite wind stress. Since the 10-m wind speeds from the ship and satellite are very close to each other at both sections (not shown), the difference in the wind stress may be due to use of different drag coefficient formulation (COARE 3 for CMEMS wind product; Large and Yeager, 2004 for ship wind stress). In comparison to the NCAR/NCEP monthly zonal wind stress, the weaker ship wind stress at the western half of the 14.5° N section indicates that the cruise started with anomalously weak winds, while at 11° S the observed wind stress (both ship and satellite observation) was consistent with the monthly mean wind stress. It is also reported that differences in the different wind stress data may also arise from the unresolved local effect by the satellites and NCEP data (Mason et al., 2011; Pérez-Hernández et al., 2015). For instance, near the Canary Islands, the NCEP monthly data does not resolve the Von Karman structure caused by the interaction of wind with the islands due to its low resolution.

Yao Fu 12/4/2017 17:24

Formatted: Not Highlight

Yao Fu 12/4/2017 17:24

Formatted: Not Highlight

Yao Fu 21/4/2017 17:09

Deleted: of

Yao Fu 21/4/2017 17:11

Deleted: wind speed between the ship and satellite is very

Yao Fu 19/4/2017 17:22

Deleted: is likely

Yao Fu 19/4/2017 17:44

Deleted: This effect will become more obvious, when the meridional Ekman transport is estimated using the satellite and ship wind stress.

Yao Fu 21/4/2017 17:13

Deleted: were

As expected, at 14.5° N, the indirect estimate of the Ekman transport from the in-situ wind stress is  $6.7 \pm 3.5$  Sv, only 0.4 Sv larger than that from the satellite wind stress. Using the monthly mean wind stress from NCEP/NCAR during the M96/M97 cruise month (May 2013), the total transport is  $8.8 \pm 1.4$  Sv. The difference between the monthly wind estimate and in-situ wind estimate is mainly due to the anomalously weak wind when the cruise started from the western boundary (Fig. 5a). At 11° S, the indirect Ekman transport from the in-situ wind stress is  $13.6 \pm 3.3$  Sv, while the transport from the satellite wind stress is 2.0 Sv higher, due to the higher value of the satellite wind stress (Fig. 5b). The NCEP/NCAR monthly wind stress in July 2013 returns a transport of  $15.3 \pm 1.9$  Sv. The errors shown with the indirect ship wind estimates are given by the standard deviation of the long-term Ekman transport calculated using 6-h NCEP/CFSR wind stress between the years 2000 and 2011 at the two latitudes. The errors of the monthly estimates are given by the standard deviation of the monthly mean Ekman transport in May (July) between 1979 and 2013 at 14.5° N (11° S) calculated from the NCEP/NCAR monthly wind stress. Another source of uncertainty may arise from the wind stress calculation using different bulk formulas, which could lead to an uncertainty as large as 20% (Large and Pond, 1981). This may explain the difference in the indirect estimates between using in-situ wind stress and the satellite wind stress at 11° S.

#### 4.3.2 Direct method

The direct meridional Ekman transport is derived from vertically integrating the ageostrophic velocity profiles (Eq. 1, right-hand side). As already mentioned, one critical assumption is the integration depth ( $D_E$ ). Applying the TTP as an estimate of  $D_E$ , the total Ekman transport at 14.5° N based on CTD data is  $6.2 \pm 2.3$  Sv, while applying a uniform depth of 50 m results in an alternative estimate of  $6.5 \pm 1.9$  Sv, and applying the local MLD results in a transport of  $5.1 \pm 1.4$  Sv. When integrating the ageostrophic velocity calculated from the uCTD data to the TTP, the Ekman transport is  $6.6 \pm 2.3$  Sv. At 11° S, the direct estimate by applying the TTP, a uniform depth of 80 m, and the MLD is  $-11.7 \pm 2.1$  Sv,  $-12.0 \pm 2.4$  Sv, and  $-8.0 \pm 1.4$  Sv, respectively (“-”denotes southward transport). The errors given with the transport estimates were calculated by considering the aliasing effect of the inertial wave during the cruise following Chereskin and Roemmich, (1991) as described in the method section.

Yao Fu 22/4/2017 22:43

**Deleted:** arises

Yao Fu 17/4/2017 22:37

**Deleted:** Note that the Ekman transport estimates listed above were calculated using the original ageostrophic velocity. Integrating the wave-removed ageostrophic velocity at 14.5° N to the TTP depth would result in an estimate indistinguishable from the estimates using original ageostrophic transport, since the boxcar filter was only applied below the local TTP depth.

Yao Fu 22/4/2017 18:12

**Moved up [2]:** Assuming that near-inertial motions are the dominant source of error, decorrelation length scales were calculated as the distance that the ship travelled in a quarter of the inertial period at 14.5° N (47.9 hours) and 11° S (62.7 hours) resulting in 130 km and 230 km, respectively. In total, 38 segments of the 14.5° N section and 25 segments of the 11° S section were obtained by dividing the total distance of each section by the corresponding decorrelation length scale, respectively. The westernmost and easternmost 4 segments of each section were omitted, because the anomalously weak wind near the eastern boundary, and the strong boundary current in the western boundary region. The degree of freedom (DOF) of 30 and 17, respectively, was the number of the remaining segments. The ageostrophic transport within each segment was treated as an independent realization of the Ekman transport. Therefore, standard errors were calculated. Then the final error is given as the standard error times the DOF. Another factor that could lead to an uncertainty is the depth range used to calculate the reference velocity from the ADCP velocity. As discussed above, we argue that the vertical structure of the ageostrophic velocity should arise from the near-inertial motion, therefore, should be included already in this uncertainty estimate.

Yao Fu 21/4/2017 15:02

**Deleted:** and Wijffels et al., (1994)



Because the shallowest valid bin depth of the ADCP measurement was 18 m (13 m) at 14.5° N (11° S), the ageostrophic velocity was extrapolated linearly to the surface using the value of the first two bins. Note that we did not assume a surface maximum of the ageostrophic velocity everywhere, since for individual profiles the ageostrophic velocity at the first bin depth may be smaller than that at the second bin, which would result in a smaller surface ageostrophic velocity. In previous studies (Chereskin and Roemmich, 1991; Wijffels et al., 1994), the velocity above the first ADCP bin was assumed to equal the value at the first bin. Using this assumption would reduce Ekman transport at 14.5° N by 0.56 Sv (9% of total northward transport), and at 11° S by 0.14 Sv (1% of total southward transport). According to the classical Ekman theory, the surface Ekman velocity ( $V_0$ ) is 45° to the right (left) of the wind blowing direction in the northern (southern) hemisphere and can be derived from the total wind stress (see the definition of  $V_0$  in Eq. 1). As a comparison to the linear extrapolation above the first ADCP bin, we also calculated the meridional Ekman velocity at the surface using the total in-situ wind stress and a constant  $A_v$  of 0.02 m<sup>2</sup>s<sup>-1</sup>. Then the meridional ageostrophic velocity above the first ADCP bin was linearly interpolated using the value at the first bin and the surface meridional Ekman velocity predicted from the in-situ wind stress. The resulting Ekman transport is 1.2 Sv (0.7 Sv) smaller than that using a linear extrapolation method at 14.5° N (11° S). Note that we chose a linear extrapolation method, because it resulted in a better agreement between the indirect and direct estimates, but it may overestimate the total ageostrophic transport.

A question that follows is whether the ageostrophic flow in the mixed layer has shear or is constant with depth referred to a slab-like shape. Given the large variation of the MLD throughout the sections, basin-wide averages are inconclusive. Chereskin and Roemmich (1991) found shear structure in the mixed layer at 11° N in the Atlantic, while Wijffels et al. (1994) reported a slab-like shape at 10° N in the Pacific, and attributed the shear structure found by Chereskin and Roemmich (1991) to an improper definition of MLD. Following their method, the depth was normalized by the local MLD before averaging the ageostrophic velocity across the basin (Fig. 6). At 14.5° N, for a slab-like ageostrophic structure, Fig. 6 would show a nearly constant profile from the surface to about the MLD. Instead, it shows strong shear above the MLD. Such strong shear is insensitive to the definition of MLD. For example, choosing a density threshold of 0.005 kg m<sup>-3</sup>, the shear still exists below 0.4 MLD. At 11° S,

Yao Fu 21/4/2017 17:18

Deleted: T

Yao Fu 21/4/2017 17:19

Deleted: constant as

Yao Fu 21/4/2017 17:20

Deleted: followed

Yao Fu 21/4/2017 17:22

Deleted: not

no slab-like structure in the ageostrophic velocity was found, either. The constant value above 0.3 MLD is a consequence of using a constant velocity above 18 m, the shallowest ADCP bin. Therefore, we would conclude that ageostrophic shear exists within the mixed layer in our cases, as expected from the classical Ekman theory.

5 The cumulative Ekman transport from the western to the eastern boundary shows an overall match between the direct and indirect methods (Fig. 7a, b). At 14.5° N, the in-situ wind was relatively weak at the beginning and the end of the section. Correspondingly, the increment in transport within these two segments was moderate, while in the central part of the section, where the wind was strong, the rapid accumulation of Ekman transport is directly visible in both indirect and direct estimates. The direct  
10 estimates using TTP and 50-m depth are very close to the in-situ wind estimates. The estimate using 50-m depth tends to overestimate the transport close to both ends of the section. Applying the MLD as integration depth tends to underestimate the total transport by about 1.5 Sv, compared to the ship wind estimate. This is mainly because it fails to capture the increase between 30° W and 25° W. Note that the uCTD-based direct estimate is consistent with the CTD based estimates, though it overestimates the  
15 transport in the middle of the section; the total transport as well as the transport structure is similar. This may be a result of the higher spatial resolution of the uCTD measurement, which captures more details in the horizontal features introduced by the wind.

At 11° S, the wind was strong in the western half of the basin, and gradually weakened in the eastern half towards the eastern boundary. Correspondingly, the Ekman transport accumulates rapidly to about  
20 12 Sv at 0° E, east of which the increment is very small for both direct and indirect estimates. Among the direct estimates, integrating the ageostrophic velocity to 80 m and TTP returns nearly identical transport in the western half of the section; the difference in the eastern half mainly reflects the shallower TTP towards the eastern boundary, while using the MLD for the integration underestimates the Ekman transport from the very beginning. Note that at both sections, the direct estimate using MLD  
25 is about one-fourth smaller than that using TTP depth. This agrees with the findings at 10° N in the Pacific by Wijffels et al. (1994), who reported that the Ekman flow within the mixed layer accounted for about two-third of the total Ekman transport, and the in-situ wind predicted the Ekman transport down to the TTP. Recalling the definition of  $D_E$  in Eq. 1, the vertical eddy viscosity  $A_v$  can be estimated

Yao Fu 27/4/2017 18:22

Deleted: ,

Yao Fu 27/4/2017 18:22

Deleted: first

Yao Fu 27/4/2017 18:23

Deleted: ,

Yao Fu 27/4/2017 18:23

Deleted: then

Yao Fu 27/4/2017 18:23

Deleted: when approaching

by using TTP as a representative of  $D_E$ . At  $14.5^\circ$  N, the mean  $A_v$  is  $0.038 \text{ m}^2 \text{ s}^{-1}$ , and at  $11^\circ$  S, the mean  $A_v$  is  $0.045 \text{ m}^2 \text{ s}^{-1}$ . These results fall in the range of previous estimates of  $A_v$ , which vary by more than one order of magnitude (Price et al., 1987; Chereskin, 1995; Lenn and Chereskin, 2009).

#### 4.4 Ekman transport from GECCO2

The daily data of the GECCO2 synthesis (2008 to 2014) allowed us to estimate the model Ekman transport, inspect the vertical structure of the ageostrophic velocity in the model and compare these results with the observations for the corresponding cruise time periods. The daily data were first extracted from the model grid to the nearest ship time and position. The Ekman transport in GECCO2 was calculated in a similar manner as the direct method used for the observational data. An ageostrophic velocity was calculated as the difference between the geostrophic velocity and total velocity with a reference depth of 200 m. The geostrophic velocity was computed from the temperature and salinity of GECCO2. The direct estimate of the meridional Ekman transport in GECCO2 was obtained by integrating the ageostrophic velocity vertically and zonally.

The section-averaged ageostrophic velocity at both sections shows a near surface maximum at about 15 m, then decreases sharply to 0 at about 50 m, the flow is purely geostrophic below 60 m (not shown). This vertical distribution of ageostrophic velocity indicates that the wind-driven Ekman component is the predominant contributor to the ageostrophic velocity in the GECCO2 model, and that nearly all the wind energy is utilized for the Ekman transport and confined to the upper 50 m at both sections. The total transport by integrating the ageostrophic velocity to 50 m is 7.6 Sv at  $14.5^\circ$  N, and 12.0 Sv at  $11^\circ$  S, respectively (Fig. 7), which is close to the indirect Ekman transport estimates based on GECCO2 daily wind stress of 7.4 Sv and 13.4 Sv, respectively.

This result agrees very well with the observed direct Ekman transport, which is likely due to the fact that GECCO2 daily wind stress has similar magnitude to the in-situ wind stress. The observed ageostrophic cumulative transport shows strong mesoscale fluctuations throughout the sections, which are characterized by the presence of northward and southward ageostrophic velocity even though the in-situ wind is persistently westward, while the GECCO2 ageostrophic transport accumulates smoothly (Fig. 7).

Yao Fu 27/4/2017 18:21

Deleted: manor

Yao Fu 21/4/2017 17:26

Deleted: this is

#### 4.5 Ekman heat and salt fluxes

The Ekman volume, heat and salt fluxes calculated using different methods are summarized in Table 1.

In the previous sections, we have shown that the TTP is a reasonable assumption for the depth of  $D_E$  for both sections. Hence, the direct TTP/profile method should give us the best estimate of the heat and salt fluxes. It is clear that the differences in Ekman volume transports dominate the differences in resulting

Ekman heat and salt fluxes. The higher Ekman volume transport by the indirect methods leads to higher heat and salt fluxes compared to the direct methods at both sections. At  $14.5^\circ$  N, the transport-weighted Ekman temperature from the direct TTP/surface method is  $0.10^\circ\text{C}$  higher than that from the direct TTP/profile method. This temperature difference corresponds to a change in the heat flux by only less than 1 %, which is very small compared to the uncertainty caused by the volume transport uncertainty.

The indirect TTP method returns the Ekman temperature and salinity value very close to that of the direct TTP/profile method, indicating that the assumption of a linear Ekman velocity profile between the surface and the TTP depth may be reasonable. This could be potentially interesting, since this method is independent of the ageostrophic velocity.

At  $11^\circ$  S, the difference between the direct TTP/profile and direct TTP/surface methods is negligible. The transport-weighted Ekman temperature from the indirect TTP and surface methods is significantly smaller than that from the direct methods. This may be caused by a combined effect of stronger Ekman volume transport by the indirect method near the eastern boundary (Fig. 7), and the cooler water temperature due to coastal upwelling. In other words, the indirect calculation tends to give excessive weighting to the cooler water, which results in lower values in the transport-weighted Ekman temperature. Such a combined effect has limited impact on the Ekman salinity.

The difference in the Ekman heat flux when using temperature at surface or within the TTP layer is much smaller than that for the extreme case at the end of the summer monsoon in the Indian Ocean in September 1995 reported by Chereskin et al. (2002). The choice of Ekman temperature and salinity has a negligible effect on the resulting heat and salt flux across the sections studied here.

Note that at  $14.5^\circ$  N (except for the indirect annual method) the Ekman heat fluxes (0.41 to 0.44 PW) estimated using direct and indirect methods based on ageostrophic velocity and in-situ wind are

Yao Fu 22/4/2017 18:32

**Moved up [3]:** The Ekman heat and salt fluxes,  $H_e$  and  $S_e$  respectively, were calculated using the direct method (ageostrophic velocity approach) and the indirect method (wind stress approach). In the previous sections, we have discussed that the TTP was a reasonable assumption for the depth of  $D_E$  for both sections. Hence, using the  $\bar{\theta}$  and  $\bar{S}_A$  together with the ageostrophic velocity within the layer from the sea surface to the TTP (referred to as TTP layer) should give us the best estimate of the heat and salt fluxes (referred as: direct TTP/profile). As a comparison, the fluxes using only in-situ SST from the CTD and uCTD were also calculated (referred as direct TTP/surface). Often Ekman heat and salt fluxes are estimated by combining the Ekman volume transport inferred from wind stress with the SST and SSS from a climatology or satellite measurements (e.g. McCarthy et al., 2015). Here, we calculated the heat flux using in-situ wind and in-situ SST data (referred as indirect surface) to compare with the direct estimates and previous studies. Wijffels et al. (1996) assumed a linear Ekman velocity profile between the surface and TTP and calculated the Ekman heat and salt fluxes using climatological wind stress data, combined with the in-situ temperature and salinity. Here we follow their method and use the in-situ  $\bar{\theta}$ ,  $S_A$  and wind to calculate the Ekman heat and salt fluxes (referred as indirect TTP) as a counterpart to the direct TTP method. Additionally, an annual Ekman heat and salt flux (referred as indirect annual) were calculated using an annual average of the monthly NCEP/NCAR reanalysis wind stress data between 1991 and 2013 and the annual average of SST and SSS from the Roemmich-Gilson monthly Argo climatology (Roemmich and Gilson, 2009, hereafter RG climatology). Note that in order to calculate the Ekman flux in the context of mass conservation (Montgomery, 1974), it has to be assumed that the Ekman volume transport in the upper layer is balanced by an equal and opposite geostrophic return flow at depth. This is a reasonable assumption and has been routinely adopted in many inverse studies (Ganachaud and Wunsch, 2003). To account for this return flow, an averaged conservative temperature,  $\bar{\theta}$ , and absolute salinity  $\bar{S}_A$  was subtracted from the in-situ  $\bar{\theta}$  and  $S_A$  at each section.  $\bar{\theta}$  and  $\bar{S}_A$  are the zonal and vertical (0-5000 m) average of the conservative temperature and absolute salinity, calculated from the annual climatology of World Ocean Atlas 2013 v2 (Locarnini et al., 2013; Zweng et al., 2013) at each section. It is worth to note that the Ekman salt flux presented in this study may not be very representative by its own but...

Yao Fu 27/4/2017 16:07

Deleted: gue. -

Yao Fu 21/4/2017 14:55

Deleted: C

Yao Fu 21/4/2017 17:36

Deleted: is

generally smaller compared with the estimates of 0.7 to 0.8 PW by Levitus (1987) or 0.6 to 0.8 PW by Sato and Polito (2005). As described above, both the direct and indirect methods in this study reflect the Ekman transport driven by the in-situ wind, which is weak compared to the monthly wind, especially in the western basin (Fig. 5a). By using the annual mean wind stress from NCEP/NCAR reanalysis and SST from RG climatology, the Ekman heat flux is 0.58 PW, which is close to the estimates of Sato and Polito (2005). At 11° S, the direct and indirect Ekman heat fluxes (0.8 to 0.96 PW) are rather close to the estimate of 1.05 PW by Levitus (1987) or within the range of values (0.7 to 1.0 PW) estimated by Sato and Polito (2005). Here, the Ekman volume transports estimated from in-situ wind and from the annual averaged wind were similar.

It is worth to note that the Ekman salt flux presented in this study may not be representative of an annual or long-term mean Ekman salt flux, but it may provide insight into the sensitivity of the Ekman salt flux on changes in Ekman volume transport and Ekman-layer salinity. This might help constraining salt conservation and resulting freshwater flux in studies of the meridional overturning circulation in the same region.

## **5. Summary**

The Ekman volume, heat and salt transport across zonal sections at 14.5° N and 11° S in the Atlantic were calculated by using an ageostrophic velocity based method (direct method) and a wind stress based method (indirect method). A cross-section ageostrophic velocity was calculated at each section following Chereskin and Roemmich (1991) and Wijffels et al. (1994) by subtracting the geostrophic velocity from the cross-section component of the ADCP velocity. At both sections, underway-CTD profiles were used for the ageostrophic velocity calculation. A comparison between the results based on standard CTD und uCTD data at 14.5° N revealed a consistent transport estimate with a robust vertical ageostrophic velocity structure and horizontal distribution of the Ekman transport. This has established our confidence to perform a similar calculation for the 11° S section, along which primarily uCTD profiles were taken.

Yao Fu 22/4/2017 22:49

Deleted: 4

The section-averaged ageostrophic velocity at 14.5° N and 11° S have a near-surface northward and southward maximum of 3.5 and 4.3 cm s<sup>-1</sup>, and decreases below to reach about zero at 60 m and 100 m, respectively. This is an indication of the Ekman spiral, and is consistent with the findings of Chereskin and Roemmich (1991) at 11° N in the Atlantic, Wijffels et al (1994) at 10° N in the Pacific and Chereskin et al. (1997) at 8.5° N in the Indian Ocean. Near-inertial oscillations are regarded as a dominant source of ageostrophic noise, which is superimposed upon the Ekman flow, but zonally averaging or integration over several inertial periods should remove most of it. However, below the surface-intensified Ekman flow, the ageostrophic velocity along both sections shows wave-like structures of 50-80 m vertical scale with multiple maxima and minima. By applying a boxcar filter, these wave-like signals were separated from the cross-section ADCP velocity (Fig. 4). The appearance of these structures is mainly below the TTP and coincides with the layer of maximum buoyancy frequency. They are characterized by a vertically alternating horizontal velocity with large horizontal coherence. Chereskin and Roemmich, (1991) also reported the presence of such waves within the main thermocline, which were coherent over large horizontal space scales. These are thought to be near-inertial internal waves.

The section averaged ageostrophic velocity had its maximum at the depth of the first valid bin of the ADCP (13-18 m), indicating that a shear existed within the ML, despite of its homogeneous density. Chereskin and Roemmich (1991) examined this at 11° N in the Atlantic by zonally averaging a MLD-normalized ageostrophic velocity, and concluded that shear existed in the ML. However, Wijffels et al. (1994) applied the same technique and found a slab-like layer of ageostrophic velocity above the MLD at 10° N in the Pacific and attributed the discrepancy to a loose definition of the MLD by Chereskin and Roemmich (1991). Following their methods, we also examined whether there was shear in the ageostrophic velocity within the ML along the two sections. It appears that at both sections, an ageostrophic shear existed in the ML, and this conclusion does not change if a more rigorous constraint on the MLD is used (Fig. 6).

The Ekman transport estimated by integrating the ageostrophic velocity zonally through the section and vertically to the local TTP depth is  $6.2 \pm 2.3$  and  $11.7 \pm 2.1$  Sv at 14.5° N and 11° S, respectively, which compares reasonably well to the estimates of  $6.7 \pm 3.5$  and  $13.6 \pm 3.3$  Sv by using the in-situ wind stress

Yao Fu 27/4/2017 18:35

**Deleted:** wind-driven

Yao Fu 27/4/2017 18:40

**Deleted:** vertically alternating its direction as well as

Yao Fu 27/4/2017 18:37

**Deleted:** Further studies using moored current observations are expected to deepen our understanding of these wave signals.

data. By using a fixed integration depth of 50 m at 14.5° N and 80 m at 11° S, the ageostrophic Ekman transport is not significantly different from those calculated using the TTP depth, while using the MLD as the integration depth, the ageostrophic Ekman transport is about one-fourth smaller than using the TTP depth. This is an indication that the wind-driven flow penetrates beyond the ML to the TTP, and it is consistent with the findings of Wijffels et al. (1994), who reported that two-thirds of the wind-driven transport was within the ML and that the TTP is a reasonable choice for the integration depth of the Ekman flow. Note that above the first ADCP bin (13-18 m), the meridional ageostrophic velocity was linearly extrapolated using the values from the first two bins. However, when the surface meridional Ekman velocity is assumed equal to the velocity of the first measured ADCP bin (constant extrapolation), or extrapolated toward the theoretical Ekman solution for the surface velocity, the total ageostrophic transport would be up to 1.2 Sv smaller than the results shown above. Therefore, the linear extrapolation may to some extent overestimate the Ekman transport.

Between the two sections, the poleward Ekman transport divergence is 17.9 Sv, the equatorward geostrophic convergence in the TTP layer is 6.2 Sv. This result agrees with the conclusion derived from theoretical consideration by Schott et al. (2004), who stated that the poleward Ekman divergence induced by the trade winds in both hemispheres is compensated by an equatorward convergence due to the geostrophic flow in the upper layer, but the compensation is generally assumed being not strong enough to reverse the Ekman divergence.

Note that the Ekman volume transport and the Ekman divergence estimated above were obtained by using data sampled during two Atlantic transects. The time series of Ekman transport calculated from the 6-h NCEP/CFSr wind stress from 2000 to 2011 shows clear seasonal cycle and interannual variability at both latitudes. The transport strength reaches its maximum in the winter months of the respective hemisphere, and its minimum in the summer months of the respective hemisphere. The annual climatology with standard deviation from this time series is  $7.9 \pm 3.5$  Sv at 14.5° N and  $-10.4 \pm 3.3$  Sv at 11° S. Our direct Ekman transport estimates agree well with the annual climatology. The uncertainties in the direct Ekman transport estimates are given by considering the aliasing effect of the near-inertial waves during the cruise. However, a larger uncertainty can be expected, when the seasonal to interannual variability of the Ekman transport is taken into account.

Yao Fu 5/5/2017 10:53

Deleted: ageostrophic

Yao Fu 5/5/2017 10:53

Deleted: ageostrophic

The cumulative Ekman transport shows rapid increase in the middle of the section and very little changes in the last quarter near the eastern boundary at both latitudes. This is because the zonal trade winds are generally strong and persistent in the western and middle part of the basin, while relatively weak and unstable in strength and direction near the eastern boundary. Similar horizontal characteristics of Ekman transport were also seen at 11° N and 6° S in the Atlantic (Chereskin and Roemmich, 1991; Garzoli and Molinari, 2001), 10° N in the Pacific (Wijffels et al., 1994). The GECCO2 ocean synthesis daily data were also used to calculate the meridional Ekman transport at 14.5° N and 11° S in the Atlantic by using the direct approach, which agrees very well with the observed results in respect to horizontal transport structure throughout the basin and the total transport amount. This was mostly due to the fact that GECCO2 assimilates the observed wind, and with a daily temporal resolution, it is possible for GECCO2 to reproduce the strength of the in-situ wind, thus the Ekman transport. This good agreement has lent us more confidence to use GECCO2 as a reference in further studies on the MOC at the same latitudes.

An Ekman layer temperature and salinity must be assigned when calculating the Ekman heat and salt fluxes. Our results suggest that using the SST and SSS for the meridional Ekman heat and salt flux calculation at the two sections is only marginally different from calculations using the temperature and salinity in the TTP layer. It is rather the uncertainty in the Ekman volume transport estimates that dominates the uncertainties in the Ekman heat and salt fluxes. This is in good agreement with the finding at 10° N in the Pacific by Wijffels et al. (1994), while in striking contrast to that at 11° N in the Atlantic by Chereskin and Roemmich (1991) who found the transport-weighted Ekman temperature is 1 °C cooler than the surface value. The reason for such a contrast is not clear, but it is possible that in their case the TTP was much deeper than the MLD, especially in the western half of the basin.

Since Ekman volume, heat, and salt transport are significant upper layer components of the MOC with respect to the mass, heat and freshwater conservation, further studies on the vertical and horizontal structure of the Ekman flow, as well as on the Ekman heat and salt fluxes are expected to deepen our understanding and facilitate the studies on MOC strength and variability. This study would also provide some reference for the follow-up studies on the MOC at the same latitudes.

Yao Fu 21/4/2017 17:38

Deleted: meridional

Yao Fu 5/5/2017 10:53

Deleted: ageostrophic

Yao Fu 27/4/2017 18:33

Deleted: the

Yao Fu 27/4/2017 18:33

Deleted: in

Yao Fu 27/4/2017 18:34

Deleted: the

Yao Fu 27/4/2017 18:34

Deleted: ing

Yao Fu 27/4/2017 18:34

Deleted:



## 5 Data availability

The Level-4 Near-real-time wind stress product is available at <http://marine.copernicus.eu/>. The NCEP/NCAR monthly wind stress data is available at <http://rda.ucar.edu/datasets/ds090.2/>. The NCEP/CFSR 6-h wind stress data is available at <http://rda.ucar.edu/datasets/ds093.0/>. The Reomich-Gilson monthly Argo climatology is available at [http://sio-argo.ucsd.edu/RG\\_Climatology.html](http://sio-argo.ucsd.edu/RG_Climatology.html). The GECCO2 ocean synthesis is available at <http://icdc.cen.uni-hamburg.de/1/projekte/easy-init/easy-init-ocean.html#c2231>. The world Ocean Atlas temperature and salinity data is available at <https://www.nodc.noaa.gov/OC5/woa13/>. The shipboard measurements during cruise M96, M97, and M98 will be available through PANGAEA at <https://doi.pangaea.de/10.1594/PANGAEA.870516>.

## 6 Acknowledgement

We thank Toste Tanhua for closing the M96 section towards the African coast during M97, as well as all the research teams and crews onboard R/V Meteor for their dedicated work during the three cruise legs. We thank Armin Köhl for providing the GECCO2 data and the information about the data. We also thank Richard Greatbatch for the comments on a previous version of the manuscript, and Gerd Krahmann for providing the matlab codes for uCTD sensor calibration. The blended level-4 wind stress data were provided by Copernicus Marine Environment Monitoring Service (CMEMS). This study is funded by the Deutsche Forschungsgemeinschaft as part of the cooperative project FOR1740 and by the German Federal Ministry of Education and Research as part of the cooperative projects RACE (03F0605B) and SACUS (03F0751A).

Yao Fu 22/4/2017 23:08

Deleted: , the DOI is under approval

Yao Fu 27/4/2017 18:41

Deleted: (

Yao Fu 27/4/2017 18:41

Deleted: )

Yao Fu 27/4/2017 18:41

Deleted: hard

Yao Fu 27/4/2017 18:42

Deleted: the

## References

- Alford, M. H.: Improved global maps and 54-year history of wind-work on ocean inertial motions, *Geophys. Res. Lett.*, 30(8), 1–4, doi:10.1029/2002GL016614, 2003.
- Chereskin, T. and Roemmich, D.: A Comparison of Measured and Wind-derived Ekman Transport at 11 N in the Atlantic Ocean, *J. Phys. Oceanogr.*, 21, 869–878, 1991.
- Chereskin, T. K., [Direct evidence for an Ekman balance in the California Current, J. Geophys. Res., 100\(C9\), 18261–18269, doi:10.1029/95JC02182, 1995.](#)
- Chereskin, T. K., Wilson, W. D., Bryden, H. L., Ffield, A. and Morrison, J.: Observations of the Ekman balance at 8°30' N in the Arabian Sea during the 1995 southwest monsoon, *Geophys. Res. Lett.*, 24(21), 2541, doi:10.1029/97GL01057, 1997.
- Chereskin, T. K., Wilson, W. D. and Beal, L. M.: The Ekman temperature and salt fluxes at 8°30'N in the Arabian Sea during the 1995 southwest monsoon, *Deep Sea Res. Part II Top. Stud. Oceanogr.*, 49(7–8), 1211–1230, doi:10.1016/S0967-0645(01)00168-0, 2002.
- Cunningham, S. A., Kanzow, T., Rayner, D., Baringer, M. O., Johns, W. E., Marotzke, J., Longworth, H. R., Grant, E. M., Hirschi, J. J., Beal, L. M., Meinen, C. S. and Bryden, H. L.: Temporal Variability of the Atlantic Meridional Overturning Circulation at 26.5 N, , 317(August), 935–938, 2007.
- Ekman, V. W.: On the influence of the earth's rotation on ocean-currents, *Astron. Phys.*, 2(11), 1905.
- Elipot, S. and Gille, S. T.: Estimates of wind energy input to the Ekman layer in the Southern Ocean from surface drifter data, *J. Geophys. Res. Ocean.*, 114(6), 1–14, doi:10.1029/2008JC005170, 2009.
- Fairall, C. W., Bradley, E. F., Hare, J. E., Grachev, A. A. and Edson, J. B.: Bulk parameterization of air-sea fluxes: Updates and verification for the COARE algorithm, *J. Clim.*, 16(4), 571–591, doi:10.1175/1520-0442(2003)016<0571:BPOASF>2.0.CO;2, 2003.
- Friedrichs, M. a. M. and Hall, M. M.: Deep circulation in the tropical North Atlantic, *J. Mar. Res.*, 51(4), 697–736, doi:10.1357/0022240933223909, 1993.
- Ganachaud, A. and Wunsch, C.: Large-Scale Ocean Heat and Freshwater Transports during the World Ocean Circulation Experiment, *J. Clim.*, 16(4), 696–705, doi:10.1175/1520-0442(2003)016<0696:LSOHAF>2.0.CO;2, 2003.

- Garzoli, S. and Molinari, R.: Ageostrophic transport in the upper layers of the tropical Atlantic Ocean, *Geophys. Res. Lett.*, 28(24), 4619–4622, doi:10.1029/2001GL013473/full, 2001.
- Hood, E. M., Sabine, C. L. and Sloyan, B. M.: The GO-SHIP Repeat Hydrography Manual: A Collection of Expert Reports and Guidelines. [online] Available from: <http://www.go-ship.org/HydroMan.html>, 2010.
- Kanzow, T., Cunningham, S. a., Johns, W. E., Hirschi, J. J.-M., Marotzke, J., Baringer, M. O., Meinen, C. S., Chidichimo, M. P., Atkinson, C., Beal, L. M., Bryden, H. L. and Collins, J.: Seasonal Variability of the Atlantic Meridional Overturning Circulation at 26.5°N, *J. Clim.*, 23(21), 5678–5698, doi:10.1175/2010JCLI3389.1, 2010.
- 10 Klein, B., Molinari, R. L., Müller, T. J. and Siedler, G.: A transatlantic section at 14.5N: Meridional volume and heat fluxes, *J. Mar. Res.*, 53(6), 929–957, doi:10.1357/0022240953212963, 1995.
- Köhl, A.: Evaluation of the GECCO2 ocean synthesis: transports of volume, heat and freshwater in the Atlantic, *Q. J. R. Meteorol. Soc.*, 141(686), 166–181, doi:10.1002/qj.2347, 2015.
- Large, W. and Pond, S.: Open ocean momentum flux measurements in moderate to strong winds, *J. Phys. Oceanogr.*, 11, 324–336, doi:10.1175/1520-0485(1981)011<0324:OOMFMI>2.0.CO;2, 1981.
- 15 Large, W. G. and Yeager, S. G.: Diurnal to decadal global forcing for ocean and sea-ice models: The data sets and flux climatologies., NCAR Tech. Note, TN--460+ST(May), 105pp, doi:10.5065/D6KK98Q6, 2004.
- Larson, N., and Pedersen A. M.: Temperature measurements in flowing water: Viscous heating of sensor tips. *Proceedings of the First IGHEM Meeting, Montreal, QC, Canada, IGHEM.* [Online] available at [http://www.seabird.com/technical\\_references/viscous.htm](http://www.seabird.com/technical_references/viscous.htm), 1996.
- 20 Lenn, Y. and Chereskin T. K.: Observations of Ekman Currents in the Southern Ocean, *J. Phys. Oceanogr.*, **39**, 768–779, doi: 10.1175/2008JPO3943.1, 2009.
- Levitus, S.: Meridional Ekman Heat Fluxes for the World Ocean and Individual Ocean Basins, *J. Phys. Oceanogr.*, 17(9), 1484–1492, doi:10.1175/1520-0485(1987)017<1484:MEHFFT>2.0.CO;2, 1987.
- 25 Locarnini, R. A., Mishonov, A. V., Antonov, J. I., Boyer, T. P., Garcia, H. E., Baranova, O. K., Zweng, M. M., Paver, C. R., Reagan, J. R., Johnson, D. R., Hamilton, M. and Seidov, D.: World Ocean Atlas 2013. Vol. 1: Temperature., 2013.

Yao Fu 27/4/2017 18:16

**Deleted:** [online] Available from: <http://onlinelibrary.wiley.com/doi/>

Yao Fu 27/4/2017 18:16

**Deleted:** (Accessed 8 September 2014),

Yao Fu 27/4/2017 18:16

**Deleted:** <http://dx.doi.org/>

- Lueck, R. G. and Picklo, J. J.: Thermal Inertia of Conductivity Cells: Observations with a Sea-Bird Cell, *J. Atmos. Ocean. Technol.*, 7(5), 756–768, doi:10.1175/1520-0426(1990)007<0756:TIOCCO>2.0.CO;2, 1990.
- 5 | [Mason, E., Colas F., Molemaker, J., Shchepetkin, A. F., Troupin, C., McWilliams, J. C., and Sangrà, P.: Seasonal variability of the Canary Current: A numerical study, \*J. Geophys. Res.\*, 116, C06001, doi:10.1029/2010JC006665, 2011.](#)
- 10 | McCarthy, G., Frajka-Williams, E., Johns, W. E., Baringer, M. O., Meinen, C. S., Bryden, H. L., Rayner, D., Duche, A., Roberts, C. and Cunningham, S. A.: Observed interannual variability of the Atlantic meridional overturning circulation at 26.5°N, *Geophys. Res. Lett.*, 39(19), 1–5, doi:10.1029/2012GL052933, 2012.
- McCarthy, G. D., Smeed, D. A., Johns, W. E., Frajka-Williams, E., Moat, B. I., Rayner, D., Baringer, M. O., Meinen, C. S., Collins, J. and Bryden, H. L.: Measuring the Atlantic Meridional Overturning Circulation at 26°N, *Prog. Oceanogr.*, 130, 91–111, doi:10.1016/j.pocean.2014.10.006, 2015.
- McDonagh, E. L., King, B. A., Bryden, H. L., Courtois, P., Szuts, Z., Baringer, M., Cunningham, S. A., 15 | Atkinson, C. and McCarthy, G.: Continuous estimate of Atlantic oceanic freshwater flux at 26.5°N, *J. Clim.*, 28(22), 8888–8906, doi:10.1175/JCLI-D-14-00519.1, 2015.
- McDougall, T. J. and Barker, P. M.: Getting started with TEOS-10 and the Gibbs Seawater (GSW) Oceanographic Toolbox, Intergov. Oceanogr. Comm. Rep., (June), 28 [online] Available from: [http://www.teos-10.org/pubs/Getting\\_Started.pdf](http://www.teos-10.org/pubs/Getting_Started.pdf), 2011.
- 20 | Pérez-Hernández, M. D., McCarthy, G. D., Vélez-Belchí, P., Smeed, D. A., Fraile-Nuez, E. and Hernández-Guerra, A.: The Canary Basin contribution to the seasonal cycle of the Atlantic Meridional Overturning Circulation at 26°N, *J. Geophys. Res. Ocean.*, 120(11), 7237–7252, doi:10.1002/2015JC010969, 2015.
- Price, J. F., WELLER, R. A. and SCHUDLICH, R. R.: Wind-Driven Ocean Currents and Ekman 25 | Transport, *Science*, 238(4833), 1534–1538, doi:10.1126/science.238.4833.1534, 1987.
- Rabe, B., Schott, F. a. and Köhl, A.: Mean Circulation and Variability of the Tropical Atlantic during 1952–2001 in the GECCO Assimilation Fields, *J. Phys. Oceanogr.*, 38(1), 177–192, doi:10.1175/2007JPO3541.1, 2008.

- Roemmich, D. and Gilson, J.: The 2004–2008 mean and annual cycle of temperature, salinity, and steric height in the global ocean from the Argo Program, *Prog. Oceanogr.*, 82(2), 81–100, doi:10.1016/j.pocean.2009.03.004, 2009.
- Rudnick, D. L. and Klinke, J.: The underway conductivity-temperature-depth instrument, *J. Atmos. Ocean. Technol.*, 24(11), 1910–1923, doi:10.1175/JTECH2100.1, 2007.
- 5 | [Smyth, W. D., Durland, T. S., and Moum, J. N.: Energy and heat fluxes due to vertically propagating Yanai waves observed in the equatorial Indian Ocean, \*J. Geophys. Res. Oceans\*, 120, 1–15, doi:10.1002/2014JC010152, 2015.](#)
- 10 | Sato, O. T. and Polito, P. S.: Comparison of the Global Meridional Ekman Heat Flux Estimated from Four Wind Sources, *J. Phys. Oceanogr.*, 35(1), 94–108, doi:10.1175/JPO-2665.1, 2005.
- [Schott, F. A., Dengler, M., Zantopp, R., Stramma, S., Fischer, J., and Brandt, P.: The Shallow and Deep Western Boundary Circulation of the South Atlantic at 5°–11°S. \*J. Phys. Oceanogr.\*, 35, 2031–2053, doi: 10.1175/JPO2813.1, 2005.](#)
- 15 | Schott, F. A., McCreary, J. P. and Johnson, G. C.: Shallow Overturning Circulations of the Tropical-Subtropical Oceans, *Earth's Clim.*, 261–304, doi:10.1029/147GM15, 2004.
- Smith, S. D.: Coefficients for sea surface wind stress, heat flux, and wind profiles as a function of wind speed and temperature, *J. Geophys. Res. Ocean.*, 93(C12), 15467–15472, doi:10.1029/JC093iC12p15467, 1988.
- Talley, L. D., Pickard, G. L., Emery, W. J. and Swift, J. H.: *Descriptive Physical Oceanography*, 2011.
- 20 | Ullman, D. S. and Hebert, D.: Processing of underway CTD data, *J. Atmos. Ocean. Technol.*, 31(4), 984–998, doi:10.1175/JTECH-D-13-00200.1, 2014.
- [Wang, W. and Huang, R.: Wind Energy Input to the Ekman Layer\\*, \*J. Phys. Oceanogr.\*, 34, 1267–1275, doi:10.1175/1520-0485\(2004\)034%3C1267:WEITTE%3E2.0.CO%3E2, 2004.](#)
- 25 | Watanabe, M. and Hibiya, T.: Global estimates of the wind-induced energy flux to inertial motions in the surface mixed layer, *Geophys. Res. Lett.*, 29(8), 1239, doi:10.1029/2001GL014422, 2002.
- Wijffels, S., Firing, E. and Bryden, H.: Direct Observations of the Ekman Balance at 10°N in the Pacific, *J. Phys. Oceanogr.*, 24(7), 1666–1679, doi:10.1175/1520-0485(1994)024<1666:DOOTEB>2.0.CO;2, 1994.

Yao Fu 1/5/2017 21:53

**Deleted:** Sanial, V., Beek, P. Van, Lansard, B., DOvidio, F., Kestenare, E., Souhaut, M., Zhou, M. and Blain, S.: *Journal of Geophysical Research : Oceans*, *J. Geophys. Res. Ocean.*, 119, 2227–2237, doi:10.1002/2013JC009305 Received, 2014.

Yao Fu 27/4/2017 18:15

**Deleted:** [online] Available from:

Yao Fu 27/4/2017 18:15

**Deleted:** 3B

Yao Fu 27/4/2017 18:14

**Deleted:** (Accessed 1 January 2015)

Yao Fu 1/5/2017 21:54

**Deleted:** (8)

Wijffels, S. E., Toole, J. and Bryden, H.: The water masses and circulation at 10 N in the Pacific, *Deep Sea Res. ...*, 43(4), 501–544, doi:10.1016/0967-0637(96)00006-4, 1996.

Zhang, J. and Rothrock, D.: Modeling Arctic sea ice with an efficient plastic solution, *J. Geophys. Res.*, 105(C2), 3325, doi:10.1029/1999JC900320, 2000.

- 5 Zweng, M. M., Reagan, J. R., Antonov, J. I., Mishonov, A. V., Boyer, T. P., Garcia, H. E., Baranova, O. K., Johnson, D. R., Seidov, D. and Bidlle, M. M.: *World Ocean Atlas 2013, Volume 2: Salinity.*, 2013.

Table 1: **Meridional** Ekman volume ( $M_{AE}^E$  in Sv), heat ( $H_e$  in PW) and salt ( $S_e$  in  $10^6$  kg  $s^{-1}$ ) fluxes calculated using different methods, and the transport-weighted temperature  $\theta_E$  and salinity  $S_{AE}$  in the Ekman layer. Positive and negative fluxes denote northward and southward fluxes, respectively. The uncertainties of the Ekman heat and salt flux is 0.4 PW and  $4.5 \times 10^6$  kg  $s^{-1}$  at  $14.5^\circ$  N, and 0.3 PW and  $6.5 \times 10^6$  kg  $s^{-1}$  at  $11^\circ$  S, respectively. The uncertainties of the transport-weighted Ekman temperature and salinity is  $0.20^\circ$  C and  $0.15$  g  $kg^{-1}$  at  $14.5^\circ$  N, and  $0.11^\circ$  C and  $0.10$  g  $kg^{-1}$  at  $11^\circ$  S, respectively.

Section		14.5° N					11° S				
		$\theta_E$	$S_{AE}$	$M_{AE}^E$	$H_e$	$S_e$	$\theta_E$	$S_{AE}$	$M_{AE}^E$	$H_e$	$S_e$
Direct	TTP/profile	25.52	36.33	6.21	0.413	5.40	25.41	36.83	-11.71	-0.842	-17.69
	TTP/surface	25.61	36.34	6.21	0.415	5.49	25.41	36.80	-11.71	-0.842	-17.38
Indirect	TTP	25.46	36.32	6.68	0.443	5.72	25.13	36.81	-13.64	-0.965	-20.50
	Surface	25.65	36.29	6.68	0.448	5.57	25.20	36.78	-13.64	-0.946	-20.04
	Annual	26.46	36.13	8.31	0.584	5.56	25.53	36.73	-11.02	-0.799	-15.49

Yao Fu 5/5/2017 10:53  
Deleted:  $\theta_E$

Yao Fu 5/5/2017 10:54  
Formatted: Superscript

Yao Fu 5/5/2017 10:54  
Deleted:  $\theta_E$

Yao Fu 5/5/2017 10:54  
Formatted: Superscript

Yao Fu 5/5/2017 10:54  
Formatted: Superscript

Yao Fu 5/5/2017 10:54  
Deleted:  $\theta_E$

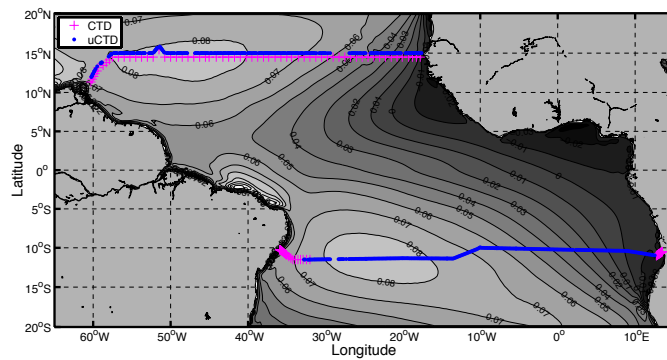


Figure 1: Positions of the CTD (magenta +) and uCTD (blue dots) measurement along 14.5° N and 11° S section. The 14.5° N section was completed during RV Meteor cruises M96 (28 April to 20 May 2013, west of 20° W) and M97 (08 June to 09 June 2013 east of 20° W), the 11° S section during M98 (06 July to 23 July 2013). Note that the uCTD position for 14.5° N section is artificially shifted to the north by 0.5° for visual clarity. The grey shading with contours is the mean zonal wind stress calculated from NCEP/CFSr monthly wind stress between 1979 and 2011 in  $\text{N m}^{-2}$ .

Yao Fu 10/4/2017 11:25

Deleted: ack

Yao Fu 10/4/2017 11:50

Formatted: Superscript



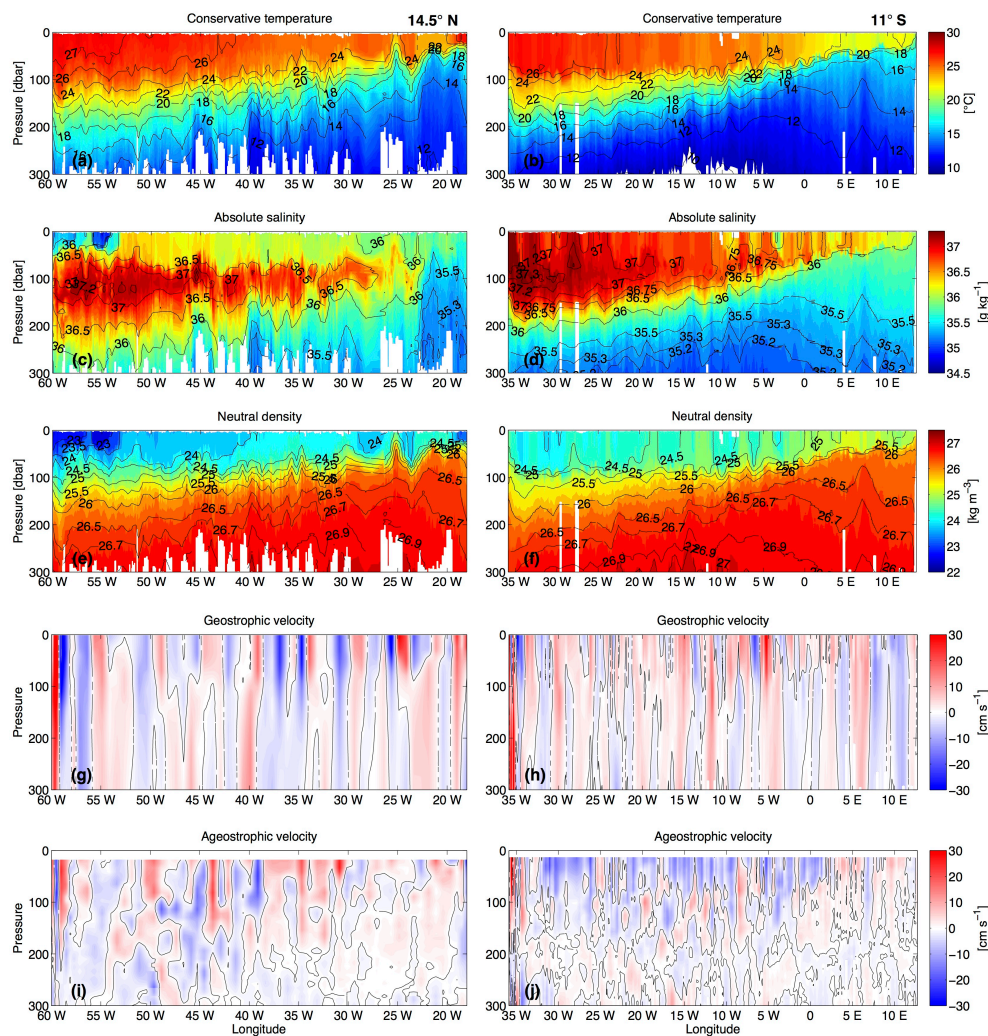
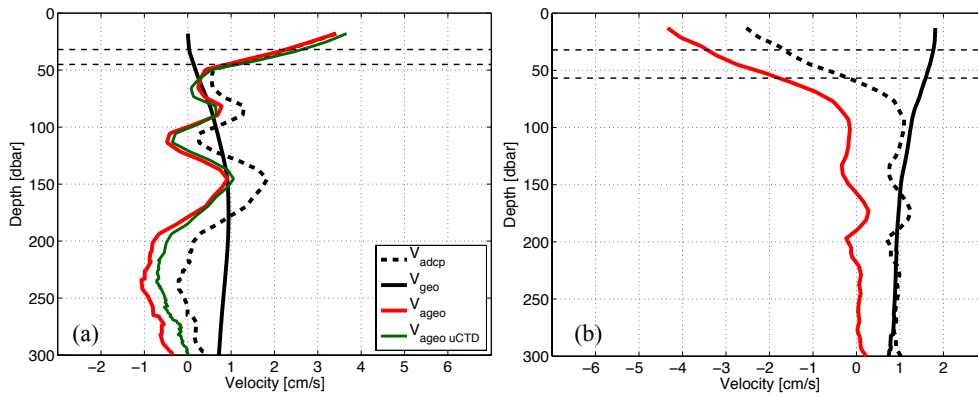


Figure 2: Vertical sections of conservative temperature in °C (a, b), absolute salinity in g kg<sup>-1</sup> (c, d), neutral density in kg m<sup>-3</sup> (e, f), geostrophic velocity in cm s<sup>-1</sup> (g, h), and ageostrophic velocity in cm s<sup>-1</sup> (i, j) at 14.5° N (left) and 11° S (right). All the available CTD and uCTD data were used to produce (a) to (f), and the contours were plotted with every 5<sup>th</sup> value for visual clarity. (g) and (i) were calculated using only CTD data, while (h) and (j) were calculated using CTD and uCTD data. The blanks were due to shallow measurement depth of the uCTD.

Yao Fu 7/5/2017 11:33

Deleted: .



5 | Figure 3: Section-averaged cross-track velocity profiles at (a) 14.5° N and (b) 11° S. The solid red curve in (a) is the ageostrophic velocity calculated from CTD data, and in (b) the geostrophic velocity calculated from CTD/uCTD data, the solid black curve is geostrophic velocity based on CTD data, the dashed black curve is ADCP velocity. The dark green curve is the ageostrophic velocity profile based only on uCTD data. The upper horizontal dashed line denotes the basin-wide averaged MLD and the lower denotes the basin-wide averaged TTP depth.

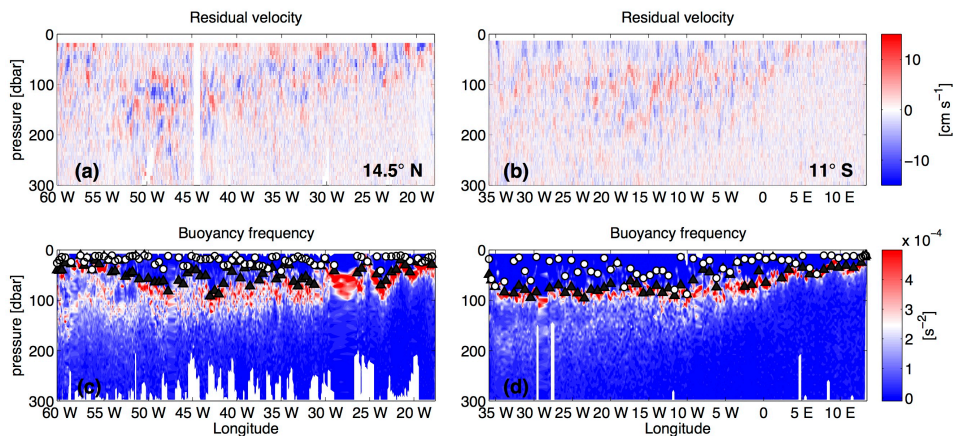
10

Yao Fu 3/5/2017 11:28

Deleted: based on

Yao Fu 3/5/2017 11:27

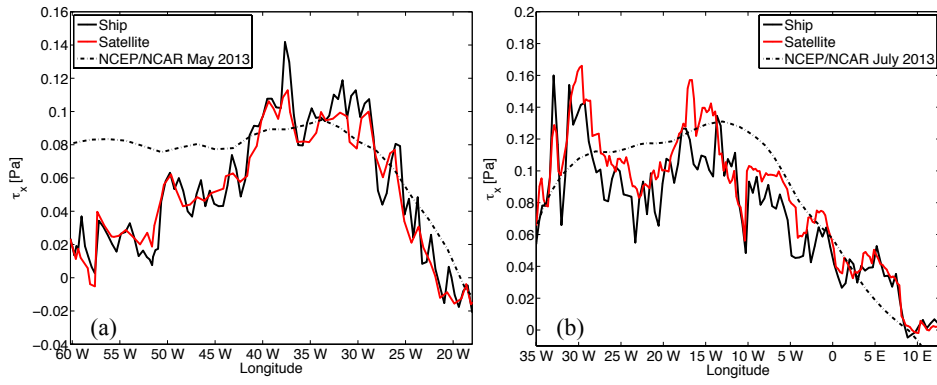
Deleted: , and the solid blue is the CTD-based ageostrophic velocity after the wave signal being removed (details see text)



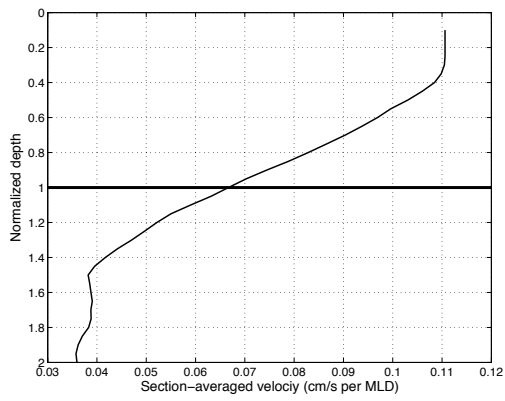
5 Figure 4: Vertical sections of residual meridional velocity in  $\text{cm s}^{-1}$  at (a)  $14.5^\circ \text{ N}$  and (b)  $11^\circ \text{ S}$  and of buoyancy frequency calculated from uCTD/CTD at (c)  $14.5^\circ \text{ N}$  and (d)  $11^\circ \text{ S}$ . Northward velocity in (a) and (b) is shaded in red, southward in blue. The residual velocity is calculated by subtracting an 80-m boxcar filtered profile from the original ADCP profile. The white circles in (c) and (d) denote the MLD, the black triangles denotes the TTP (see text for details). The MLD and TTP plotted here are subsampled for visual clarity. **Note that no uCTD measurements were conducted between  $30^\circ \text{ W}$  and  $25^\circ \text{ W}$  at  $14.5^\circ \text{ N}$ .**

Yao Fu 1/5/2017 22:18

Deleted: N



5 **Figure 5: Zonal wind stress along (a) 14.5° N and (b) 11° S. Ship wind stress (black line) was binned in 50-km interval. The satellite wind stress data (red) were extracted to the nearest ship time and position. The NCEP reanalysis monthly zonal wind stress (black dashed line) at the same latitude in the cruise month is also plotted.**



5 Figure 6: Section-averaged ageostrophic velocity at 14.5° N, normalized in depth by the local MLD. Velocity above 18 m is set equal to the velocity at 18 m. MLD is defined as the depth where the density is 0.01 kg m<sup>-3</sup> different from the value at 10 m.

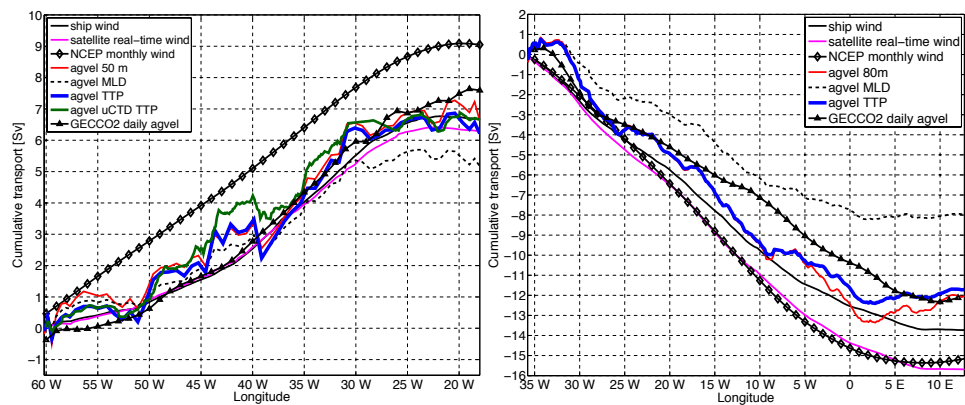


Figure 7: Cumulative meridional Ekman transport from the western to the eastern coast (a) at 14.5° N and (b) at 11° S. For both sections, the black solid curve marks the indirect Ekman transport estimate from the in-situ wind stress; the magenta solid curve denotes that from the satellite wind stress; and the black diamond line denotes that from the NCEP/NCAR monthly wind stress. The solid blue curve denotes the direct estimate by integrating the ageostrophic velocity to the TTP, the red solid to a uniform depth (50 m at 14.5° N and 80 m at 11° S), the black dashed line to the MLD. The black triangle line represents the direct estimate based on the GECCO2 daily data. The dark green line in (a) represents direct estimate integrated to the TTP based only on the uCTD data.