

Action taken on specific points raised by Reviewer #1

(Page and line numbers refer to the new manuscript)

Very few results about the calibration and intercalibration of the different sensors (quite exclusively limited to the ship based CTDs).

An intercomparison of the gliders was never planned: 11 gliders were in use for the oceanographic experiment (plus 5 backup gliders), and they were from 3 different manufacturers (Teledyne, Kongsberg, ALSEAMAR) and operated by 5 different institutions (CMRE, UEA, ALSEAMAR, WTD71, PSU). A real intercomparison would have been too complex in terms of organisational issues; therefore, we relied on the calibration of the manufacturers.

1. If the paper is the introductory paper for a special number, I would like to see at least some indications on the others papers of the special issue, with some, very rapid mentions of the main results; I guess that authors have already some idea of papers that will be submitted and of their main results.

The main results of the other papers in the special issue are summarized in the discussion. See P8L22-P11L5.

2. I cannot understand as, in the present “Argo era”, temperature and salinity observations are still not publicly shared (as the authors indicated at the end of the draft) and they are “available only for the partners of the experiment”. Although “interested institutions can sign up for partnership at any time”, I considered that in the present day ocean science strategy would impose a more open data availability. But it is simply my opinion.

The paragraph on *Data availability* has been rewritten. See P12 L14-15.

Action taken on specific points raised by Reviewer #2
(Page and line numbers refer to the new manuscript)

What is the overall scientific goal of the project?

The overall goal of the REP “projects“ is now defined in the Introduction (P2L7-8)

Scientific questions to be answered?

The particular objectives of REP14-MED are defined in the Introduction (P2L10-15)

For what scientific reason were special measurements carried out?

This is now specified in a new paragraph in Section 4 (P5L5-14)

What is the scientific goal of the special issue and which questions should be answered?

The scientific goal of the special issue will be defined in the (upcoming) Editorial.

What is the scientific content of each single manuscripts of the special issue (describing the results of the measurements)?

The main results of the other papers in the special issue are summarized in the Discussion. See P8L22-P11L5.

Additional major changes

(Page and line numbers refer to the new manuscript; for minor changes see the marked-up manuscript “diff.pdf”)

- The paragraph on “general circulation“ was rewritten (P2L23-P4L2)
- The paragraph on “CTD casts“ was rewritten (P5L5-14)
- The “Conclusions“ were rewritten; partly, paragraphs were adopted from the “Discussion“ of the old manuscript (P11L6-P12L12)
- “References“: more references added and style adjusted to *Ocean Science* rules.
- New Figure 2

In addition, several differences in the captions of tables and figures are highlighted in the marked-up manuscript “diff.pdf“; however, these are not real. Potentially, the programme “latexdiff“ got confused because the sequence of tables and figures was switched.

High-Resolution Observations in the Western Mediterranean Sea: The REP14-MED Experiment

Reiner Onken¹, Heinz-Volker Fiekas², Laurent Beguery³, Ines Borrione⁴, Andreas Funk², Michael Hemming^{5,10}, Jaime Hernandez-Lasheras⁹, Karen J. Heywood⁵, Jan Kaiser⁵, Michaela Knoll², Baptiste Mourre⁹, Paolo Oddo⁴, Pierre-Marie Poulain⁶, Bastien Y. Queste⁵, Aniello Russo⁴, Kiminori Shitashima⁷, Martin Siderius⁸, and Elizabeth Thorp Küsel⁸

¹Helmholtz-Zentrum Geesthacht Centre for Materials und Coastal Research (HZG), Max-Planck-Straße 1, 21502 Geesthacht, Germany

²Wehrtechnische Dienststelle für Schiffe und Marinewaffen, Maritime Technologie und Forschung (WTD71), Berliner Straße 115, 24340 Eckernförde, Germany

³ALSEAMAR, 9 Europarc Sainte Victoire, 13590 Meyreuil, France

⁴Centre for Maritime Research and Experimentation (CMRE), Viale San Bartolomeo 400, 19126 La Spezia, Italy

⁵Centre for Ocean and Atmospheric Sciences, School of Environmental Sciences, University of East Anglia (UEA), Norwich Research Park, Norwich, NR4 7TJ, United Kingdom

⁶Istituto Nazionale di Oceanografia e di Geofisica Sperimentale (OGS), Borgo Grotta Gigante 42/c, 34010 Sgonico (Trieste), Italy

⁷Kyushu University, International Institute for Carbon-Neutral Energy Research (I2CNER), Fukuoka 819-0395, Japan

⁸Portland State University (PSU), PO Box 751, Portland, OR 97207-0751, United States of America

⁹Sistema de Observación Costero de las Islas Baleares (SOCIB), Parc Bit, Naorte, 07121 Palma de Mallorca, Spain

¹⁰Laboratoire d'Océanographie et du Climat, 4, Place Jussieu, 75005 Paris, France.

Correspondence to: Reiner.Onken@hzg.de

Abstract. The observational part of the REP14-MED experiment was conducted in June 2014 in the Sardo-Balearic Sea west of Sardinia ~~Island~~ (Western Mediterranean Sea). Two research vessels collected high-resolution oceanographic data by means of hydrographic casts, towed systems, and underway measurements. In addition, a vast amount of data was provided by a fleet of 11 ocean gliders, time series were available from moored instruments, and information on Lagrangian flow patterns ~~were~~ was obtained from surface drifters and ~~one~~1 profiling float. The spatial resolution of the observations encompasses a spectrum over ~~four~~4 orders of magnitude from $\mathcal{O}(10^1 \text{ m})$ to $\mathcal{O}(10^5 \text{ m})$, and the time series from the moored instruments cover a spectral range of ~~five~~5 orders from $\mathcal{O}(10^1 \text{ s})$ to $\mathcal{O}(10^6 \text{ s})$. The objective of this article is to provide an overview of the huge data set which ~~is utilized by various ongoing has been utilised by various~~ studies, focusing on (i) ~~sub-mesoscale and mesoscale pattern analyses~~water masses and circulation, (ii) operational forecasting~~in terms of the development and assessment of sampling strategies, assimilation methods, and model validation, (iii) modeling the~~, (iii) data assimilation, (iv) variability of the ocean, and ~~(iv) testing of v~~new payloads for gliders.

1 Introduction

The REP14-MED experiment was conducted in the framework of the *Environmental Knowledge and Operational Effectiveness* research ~~program of CMRE~~ programme of the Centre for Maritime Research and Experimentation (CMRE). REP14-MED was part of a series of experiments denoted by the acronym REP (*Recognized Environmental Picture*). The suffix ‘MED’ stands for *Mediterranean*, in order to distinguish these experiments from another REP series conducted by the Portuguese Navy ~~-.Usually, those experiments take place-~~ in the Atlantic ~~and are attributed by the suffix “Atlantic”~~. REP14-MED was led by CMRE, and the experiment was supported by 20 partners from ~~six~~ 6 different NATO nations (Table 1). The activities at sea were conducted in June 2014 by the NATO Research Vessel *Alliance* and the Research Vessel *Planet* of the German Federal Ministry of Defence (Fig. 1), and comprised both oceanographic and acoustic observations. This article, however, describes only the oceanographic measurements which are the basis of several research papers ~~to be published in this Special Issue~~ published in the special issue “REP14-MED: A Glider Fleet Experiment in a Limited Marine Area” of Ocean Science. In addition, standard names are introduced which may be referred to by other papers related to REP14-MED, e.g. for sections, tracks, and moorings. The ~~objectives of the oceanographic surveys~~ overall goal of REP was to develop and test methods for the rapid characterisation of the marine environment, and the particular objectives of REP14-MED were to

1. Investigate water masses and circulation patterns off the west coast of Sardinia;
2. Collect data for operational ocean forecasting, model validation, and the evaluation of forecast skill;
3. Provide a data set for the development and comparison of different methods for data assimilation;
4. ~~Find the best sampling strategy for ocean forecasting;~~
5. Utilize Employ data from a fleet of gliders for a cost/benefit analysis;
6. Conduct a generic experiment for the exploration of the variability of the ocean;
7. ~~Analyse mesoscale and sub-mesoscale features;~~
8. Test new payloads for gliders.

The selection of the experimental site was driven by the requirements of the acoustic experiments and the objectives defined above: the acoustic experiments required a wide shelf area, and the operations of the glider fleet should take place in an area with little ship traffic and without strong boundary currents. Therefore, the waters off the west coast of Sardinia (Western Mediterranean) were selected (Fig. ??). From a morphological point of view, this area is ~~characterized~~ characterised by a wide continental shelf area, the width of which varies between about 40 km and 80 km. The shelf ends at water depths between 150 m and 200 m, followed by the continental slope which features several canyons. The deep-sea area belongs to the Sardo-Balearic Basin and exhibits water depths of up to 2800 m. ~~The surface circulation-~~

The general circulation of the Western Mediterranean was comprehensively described by Millot (1999) and Robinson et al. (2001), and this picture was still valid at the beginning of the experiment. Accordingly, the mean surface circulation at the experimental site is mainly related to the inflow of ~~Atlantic Water from the south-~~ “new” Modified Atlantic Water (MAW) from the Strait of Gibraltar by means of anticyclonic eddies shed by the Algerian Current (Ribotti et al., 2004), and it is known to be impacted by the transit and formation of anticyclonic eddies of different origins (Ribotti et al., 2004; Testor and Gascard, 2005). Ribotti et al. (2004) fou

~~a significant mesoscale activity generated by anticyclones originating from the Algerian Current. The~~ (Ribotti et al., 2004; Testor and Gascard, 2003).

Another branch of “old” MAW, which mixed with the underlying water masses on its large-scale cyclonic circulation through the Tyrrhenian, Ligurian, and Balearic Seas, comes probably from the west via the Balearic Current (?). Just below the MAW, Winter Intermediate Water (WIW) follows the path of the MAW along its whole cyclonic path. WIW is formed in late winter in the northern and northwestern Provençal Basin ~~to the north is mainly characterized by a surface intensified cyclonic gyre which contributes to the formation of~~ and it is supposed that it also finds a direct way from the formation sites to the Sardo-Balearic Basin via mesoscale eddies. Levantine Intermediate Water (LIW) originates from the Eastern Mediterranean and the direct path to the experimental site is via the Sicily Strait and the Sardinia Channel and then northward around the southern tip of Sardinia. After exiting the Strait of Sicily, another LIW branch joins the above mentioned circulation paths of “old” MAW. Below the LIW, Western Mediterranean Deep Water and Bottom Water are found. Finally, the North Balearic Front (Testor and Gascard, 2003) ~~. This front represents the separation between the Atlantic Water and the saltier and denser waters of the Provençal Basin~~ represents the confluence zone between the waters coming from the south and the waters from the north; according to Millot (1999), Fuda et al. (2000), Fuda et al. (2000) and Olita et al. (2013), it is located between about 40°N and 41°N .

The activities ~~of both vessels at sea~~ took place within the red box indicated in Fig. ?? which is the so-called *observational domain*. In the west, it is bounded by the $7^{\circ}15'\text{E}$ meridian, and in the east by the Sardinian coast. The southern and northern boundaries are at $39^{\circ}12'\text{N}$ and $40^{\circ}12'\text{N}$, and the area size is approximately 60 nmi (nautical miles) x 60 nmi or 111 km x 111 km, respectively. A summary of the observations is given in Table 2.

2 Measuring systems

Shipborne systems

Both *Alliance* and *Planet* are survey ships equipped with the standard oceanographic measuring systems. Only those systems which were used for the oceanographic experiments will be described (for more details, see Onken et al. (2014)). On *Alliance*, there were

- $2 \times \text{SBE CTD}$ (Conductivity-Temperature-Depth) probes with ~~Rosette~~ rosette sampler (for more details, see <http://www.seabird.com>)
- $1 \times \text{SBE CTD}$ probe with ~~Rosette~~ rosette sampler and optical sensors
- $1 \times \text{SATLANTIC HyperPro}$ optical profiler (<http://satlantic.com>)
- $2 \times$ towed ScanFish with dual CTD (<http://www.eiva.com>)
- $2 \times \text{RDI ADCPs}$ (Acoustic Doppler Current Profiler, <http://www.rdinstruments.com>), 300 kHz and 75 kHz
- $1 \times$ thermosalinograph (<http://www.seabird.com>)
- ship meteorological sensor systems

and on *Planet*

- $2 \times \text{SBE CTD}$ probe with ~~Rosette~~ rosette sampler
- $1 \times \text{OceanScience underway CTD}$ probe (*uCTD*, <http://www.oceanscience.com>)

- 1×towed CTD chain with 91 sensors 3.5 m apart (Sellschopp, 1997)
- 1×ADCP, 150 kHz
- ship meteorological sensor systems

Gliders

- 5 16 gliders from different manufacturers were provided for launch during the experiment, of which 11 were used for the tasks described in this article. Another ~~three were utilized~~ 3 were reserved for the acoustic experiments, and the remaining ~~two~~ 2 served as backup:
- 9×*Slocum* (CMRE, <http://www.webbresearch.com>)
 - 1×*Slocum* (PSU)
 - 10 – 1×*Slocum* (WTD71)
 - 3×*Seaglider* (UEA, <http://www.km.kongsberg.com>)
 - 2×*SeaExplorer* (~~ACSA~~ ALSEAMAR, <http://www.aesa-aleenalseamar-alcen.com>)

For further details and the technical specifications, see Table 3.

15 Surface drifters and profiling floats

In total, 17 surface drifters and 2 profiling floats were available:

- 9×*Albatros* (<http://www.albatrosmt.com>) MD03i surface drifters (CMRE)
- 3×*Albatros* ODi-Solar surface drifters (CMRE)
- 5×SVP (Lumpkin, 2005) surface drifters (OGS)
- 20 – 2×ARVOR-I profiling floats (OGS, <http://www.euro-argo.eu/Activities/Floats-Developments-Deployments/Existing-Floats>).

Moored instruments

Finally, CMRE provided in total ~~six~~ 6 moorings, named W1, M1, M2, M3, M4, M5:

- W1 is a *Datawell* Waverider buoy (<http://www.datawell.nl>)
- M1 consisted of the central mooring M1_{CTR} and a sideways extending ~~appendix~~ appendage M1_{APP} floating at the sea surface (Fig. ??). M1_{CTR} was equipped with an upward-looking 300-kHz ADCP mounted at a nominal depth of 100 m below the sea surface, a CTD probe at 1 m depth, and ~~with~~ a meteorological buoy at the surface (Table 4). M1_{APP} was connected by a 50m long rope to M1_{CTR} and extended to about 40m depth in the vertical direction. 41 Starmon mini temperature recorders (<http://www.star-oddi.com>) were densely spaced along the vertical cable in order to record temperature with high vertical resolution. In addition, ~~four~~ 4 RBR data loggers (<https://rbr-global.com>) were mounted
- 30 on the cable for determining the actual depth of the Starmons.
- M2, M3, M4, and M5 were “traditional” oceanographic sub-surface moorings equipped with CTD probes and current meters. A diagram of the general design of such a mooring, in this case M3, is displayed in Fig. ??, and the vertical arrangement of measuring devices for all moorings (M1, M2, M3, M4, M5) is shown in Table 4.

3 Schedule

The experiments at sea were separated into ~~three~~ 3 legs (Table 5). Leg 1 started on 6 June with the departure of *Alliance* and *Planet* from La Spezia ~~and Toulon, respectively (see Fig. ??), (Italy) and Toulon (France), respectively~~, and was solely dedicated to oceanography. Both vessels conducted a so-called CTD *initialisation* survey which covered the entire observational domain at 10km horizontal resolution. In addition, 11 gliders, ~~six~~ 6 moorings, 17 surface drifters, and ~~one~~ 2 sub-surface ~~float~~ floats were deployed by *Alliance*. Leg 1 was finished at 00:00 UTC (*Universal Coordinated Time*) on 12 June and *Alliance* called port in Porto Torres (Sardinia) for the exchange of personnel.

During Leg 2 (12–20 June), all activities on *Alliance* were related to acoustic experiments which will not be discussed in this article. However during this period of time, some limited data sets from short-term glider missions (not included in Table 5), CTD casts, and underway measurements are available for oceanographic analyses. At the same time, *Planet* continued with casts by lowered CTD (ICTD) and uCTD and measurements by the CTD chain.

After a short port call in Oristano, ~~Italy~~ (Sardinia, *Alliance* only), for another exchange of personnel, both vessels had a rendezvous for the inter-calibration of their CTD probes on 21 June. Afterwards, so-called *validation* surveys were conducted for about 40 h until 23 June, using the ScanFish (*Alliance*) and the CTD chain (*Planet*) simultaneously on parallel tracks. Thereafter, *Planet* finished her field work and headed towards Palma de Mallorca. *Alliance* remained another day in the area for the recovery of all gliders and moorings, concluding the experiment on 25 June in La Spezia.

4 Observations

~~In total, 315 CTD casts were taken by both vessels (Fig. ??). Additionally, 23 CTD profiles down to 350 m were recorded by~~ The purpose of all observations was to satisfy the objectives defined in the Introduction, except for the optical stations and the deployments of the ARVOR-I floats which were conducted in the framework of another project and in support of the MedArgo programme (Poulain et al., 2007), respectively. In particular, CTD data from shipborne casts and gliders and the underway measurements were applied for the investigation of water masses and circulation patterns (Objective 1). For Objectives 2, 3, and 4, all CTD data were used, and the ScanFish data sets were employed for the validation of model forecasts. The oceanographic and meteorological data of the M1 mooring served as the backbone for Objective 5, and new payloads for gliders (Objective 6) were tested on various gliders by means of passive acoustic monitoring systems and pH/pCO₂ sensors on glider *PlanetFin* ~~for the calibration of~~ (see Table 3). The data from the CTD chain are still under investigation. The surface drifter trajectories were included in the Mediterranean drifter data base at http://nettuno ogs.trieste.it/drifter/database_med, and the time series recordings on moorings M2–M5 have not yet been exploited.

30 CTD casts

In total, 256 ICTD casts were taken by both vessels (Fig. ??). The scheduled vertical extent of all casts was 1000 dbar or bottom depth (whatever was shallower) but a few casts especially at the western boundary of the observational domain reached greater depths in order to characterise the deep water masses. Casts taken during the deployment and recovery of moorings

always reached the bottom, whereas those taken during the deployment and recovery of gliders were limited to 1000 dbar as the gliders could not measure deeper than this. Additionally, 23 CTD profiles down to 350 m were recorded for the calibration of the CTD chain, 36 profiles down to a depth of 550 m were obtained by the uCTD, and 5 profiles to about 150 m were carried out with a CTD probe equipped with optical sensors (Tables 2, 5).

- 5 For the calibration of the CTD probes, water samples were taken with the ~~Rosette~~-rosette sampler on *Planet* on 57 stations during Leg 1 and on the inter-calibration station on 21 June. On the same station, samples were taken by *Alliance* as well, while no samples were taken on any other station. This was not considered necessary because the CTD probes were equipped with a double line of sensors for temperature and salinity.

- A comparison of the casts taken during Leg 1 revealed slight differences of 0.001 S m^{-1} between the conductivities measured on both vessels, where the conductivity recorded by *Alliance* is the lower value. This leads to differences of salinity and potential density of 0.010 and 0.008 kg m^{-3} , respectively. Although this shift is fairly small it is above the expected level of accuracy. Hereupon, Knoll et al. (2015b) investigated this issue in greater detail but it could not be clarified which sensor caused the observed shift. Therefore, the authors recommended to add 0.001 S m^{-1} to all CTD profiles recorded by *Alliance*, or to subtract the same value from the conductivities measured by *Planet*. The result of this procedure is illustrated in Fig. ??.
- 15 Here are shown maps of potential density at 990m depth before and after the applied correction.

Glider missions

- 11 gliders were deployed on 8 and 9 June in ~~two batches es of six and five~~ 2 batches of 6 and 5 respectively, at the positions marked by the green circles in Fig. ??a, and afterwards were directed to their nominal tracks G01, ..., G10. The distribution of the gliders on their assigned tracks was arranged in a way that at least every other track was occupied by a “deep” glider (pressure rating $>650 \text{ dbar}$). Track G08 was occupied by ~~two~~ 2 gliders (*Dora* and *Minke*) because *Dora* was a brand new glider equipped with a propeller drive and its performance should be compared with that of a conventional glider. All gliders except for *Clyde* and *Fin*, accomplished their tasks satisfactorily until recovery on 23 June (Fig. ??b) while commuting up to ~~five~~ 5 times between the eastern and western end of their tracks. *Clyde* had to be recovered earlier than planned on 12 June because of a hardware malfunction and was never redeployed, and *Fin* had to be recovered on 10 June because of a software problem. However, *Fin* was redeployed successfully the following day. After recovery, no apparent biofouling was observed on any glider.

CTD chain and ScanFish

- 30 The CTD chain towed by *Planet* came into operation twice, 12–14 June (Fig. ??a), and 21–23 June in sync with the ScanFish towed by *Alliance* as shown in Fig. ??b. The meridional distance between the zonal tracks in Fig. ??b is 10 km, and the zonal tracks are aligned with the zonal CTD sections (Fig. ??).

Optical stations

- 35 Optical measurements were carried out daily around local noon on 7–11 June. Each station consisted of an ensemble of vertical

profiles with the free-falling HyperPro and ~~one~~1 cast down to about 150m depth using the CTD probe equipped with optical sensors. For the position of the casts, see Fig. ???. Additional optical data are available from some gliders equipped with optical sensors and from the ScanFish.

5 Drifters and floats

During transit from La Spezia to the survey area, ~~one~~1 ARVOR-I float was launched on 6 June near the eastern mouth of the Bonifacio Strait in the Tyrrhenian Sea in support of the Argo programme and without any direct relevance to REP14-MED. A further 17 surface drifters and ~~one~~1 more ARVOR-I float were deployed 8–11 June in the observational domain. The deployment positions are shown in Fig. ???.

10

Moorings

Six moorings were deployed 8–11 June at the positions shown in Fig. ???. W1 and M1 were recovered on 20 June, and M2, M3, M4, M5 on 23 June.

15 Underway measurements

On *Alliance*, temperature and salinity at 2.5m depth were recorded continuously by a thermosalinograph during the entire survey. At the same time, the 75-kHz ADCP acquired the three-dimensional velocity field under the vessel down to a depth of 653 m with a vertical resolution of 16 m. Usable data of the vessel-mounted 150-kHz ADCP on *Planet* were obtained 10–23 June only at depths below 80 m. The profiling depth varied between about 180 m during daylight and 280 m during the night (Knoll et al., 2015a). For the tracks of the vessels see Fig. ???.

20

Continuous shipborne observations of meteorological parameters were recorded on both vessels. On *Alliance*, records of wind speed, wind direction, air temperature, air pressure, relative humidity, and wind gusts were made at ~~three~~3 locations on the foredeck (starboard and port) and at the stern, whilst on *Planet*, wind speed and direction at different positions on the vessel, relative humidity, air temperature, air pressure, visibility, altitude of clouds, and rain were recorded with sensors at ~~nine~~9 different locations within a height of 10–26 m. The seawater temperature was measured at 6m depth. Additional records of various meteorological parameters are available from the meteorological buoy on top of mooring M1.

25

~~Table 2 provides a statistics of most of the observations.~~

5 Complementary data

30 Weather and wave prediction models

For the entire experiment, weather analyses and forecasts of the COSMO (*Consortium for Small-Scale Modeling*) atmospheric model were made available by the Italian Weather Service *Centro Nazionale di Meteorologia e Climatologia Aeronautica* (CNMCA) in ~~two~~2 different setups, COSMO-ME and COSMO-IT. COSMO-ME covers the entire Mediterranean Sea with

a horizontal resolution of 7 km and provided 72-h forecasts. COSMO-IT encompasses Italy and the adjacent waters at a high resolution of 2.2 km but the forecast range was only 24 h. In addition, CNMCA also provided forecasts of the NETTUNO wave model for the entire Mediterranean.

5 Ocean circulation models

In order to assess the environmental conditions in the survey area and to support the efforts of the REP14-MED modeling community, the outputs of ~~five~~⁵ ocean circulation models were downloaded routinely from the respective servers. Products of the *Mediterranean Forecasting System* (MFS) and the MERCATOR global model were provided via CMEMS (*COPERNICUS Marine Environment Monitoring Service*), WMED – a high-resolution model of the waters around Sardinia – was obtained from IAMC, WMOP (*Western Mediterranean Operational Forecasting System*) was produced by SOCIB, and finally the Extended Range Prediction System was provided by NRL.

Remote sensing

Derived sea surface temperature was collected during the experiment by the CMRE *TeraScan* satellite system from the polar orbiting satellites POES and METOP.

Historical data

Historical data include temperature and salinity profiles extracted from the *World Ocean Database 2013* (Boyer et al., 2013) in a wider area surrounding the REP14-MED observational domain, and ~~four~~⁴ CTD cruises conducted by IAMC 2001–2003 (Ribotti et al., 2004).

6 Discussion

This article describes the oceanographic surveys of the REP14-MED experiment. The description is restricted to the geographic and oceanographic settings of the survey area, the schedule, the employed measuring systems, the timing and the positioning of all observations, and the availability of complementary data. No observations are shown; this is to avoid the anticipation of potential results of forthcoming publications.

The surveys undertaken at sea ~~provided a huge dataset, the properties of which satisfies all requirements to tackle the tasks as specified in the objectives~~ provide an extremely rich dataset that can be used for multiple studies on different topics. The major advantage of the data set is its consistency, which was not affected by the handful of glitches experienced:

- ~~The CTD initialization survey~~ Glider *Clyde* failed completely after 10 June. However, *Clyde* was fortunately positioned on track G01 and the malfunction did not impact the regularity of the entire glider track pattern.
- Glider *Fin* dropped out for about 1 day.
- On 23 June, *Planet* had to circumvent a fishing area while towing the CTD chain. This explains the northward excursion from track P09b in Fig. ??.

- Originally on mooring M1, a CTD probe was mounted directly at the sea surface but the recording of conductivity failed shortly after the deployment of the mooring.
- Two out of 40 thermistors in mooring M1 failed.

The objectives of the experiment as defined in the Introduction have been addressed by 9 scientific articles (including this one) which are assembled in a special issue of *Ocean Science*: using the data collected by the shipborne CTD probes, gliders, towed instruments, and vessel-mounted ADCPs, Knoll et al. (2017) investigated the hydrography and circulation patterns in the experimental area and compared them with previous knowledge. It turned out that the distribution of the water masses and the circulation resembled the classical picture as described by Millot (1999), but there were also significant differences: the temperature and salinity of MAW, LIW, and Bottom Water had increased compared to the observations during the last decade. By contrast to previous observations, LIW occupied the whole trial area; no LIW vein tied closely to the Sardinian coast was found south of 40° N. Within the MAW, an unusually cold and saline eddy was observed in the southern trial area while extremely low saline surface water entered the area in the southwest towards the end of the experiment. An anticyclonic WIW eddy was identified which may confirm the existence of a direct route of WIW from its formation region in the Ligurian Sea and in the Gulf of Lion to the observational site. Geostrophic transports were in reasonable agreement with the ADCP measurements. Within the MAW, northward transport was observed on the shelf while the currents over the slope headed to the south. Northward transport of LIW was predominantly observed offshore.

Concerning operational forecasting, a relocatable ocean prediction system was applied in hindcast mode to the survey data (Onken, 2017a). More than 6000 temperature and salinity profiles originating from the glider fleet and shipborne CTD probes were assimilated, and the forecasts were verified against observations from the ScanFish tows (Fig. ??) ~~was carried out on a regular 10 km × 10 km grid and thus resolved the internal Rossby radius of deformation which is 10–14 km in the Mediterranean Sea (Robinson et al., 2001). Hence, it is well suited for any task related to ocean forecasting, data assimilation, ??b).~~ In a sensitivity study, the forecast skill score (as defined by Murphy (1993)) was determined in dependency of various assimilation parameters, and it was shown that the score increased with increasing forecast range. Moreover, it was demonstrated that the vast number of observations can be managed by the applied objective analysis method without data reduction, enabling timely forecasts with acceptable goodness even on a commercially available personal computer.

Different schemes were adopted to assimilate the survey data. While Onken (2017a, b) applied objective analysis, a hybrid variational-ensemble scheme was developed by Oddo et al. (2016), and ? used a local multimodel ensemble optimum interpolation (EnOI). The hybrid scheme of Oddo et al. (2016) corrects both the systematic errors introduced from the initialisation, lateral and surface boundary conditions, and model parameterisation, and improves the representation of small-scale errors in the background error covariance matrix. An ensemble system was run offline for further use in the hybrid scheme, generated through perturbation of the assimilated observations. The results of 4 different experiments were compared. While the reference experiment had no systematic error correction, the other 3 experiments accounted for error corrections, combining the static and the ensemble-derived errors of the day. It was shown that the hybrid scheme reduced the mean absolute errors of the temperature and salinity misfits by 55 and ~~feature analyses, as long as it is restricted to mesoscale and larger-scale processes.~~ However, if CTD measurements of both vessels are combined for deep-water studies, the observed systematic difference of

about 0.010 in salinity between the CTD probes of 42%, respectively, versus statistics arising from standard climatological covariances without systematic error correction. ? presented the results of different simulations, assimilating temperature and salinity profiles from shipborne CTDs and gliders from REP14-MED, along with observations of sea surface temperature, sea level anomaly and Argo profiles over the whole Western Mediterranean Sea. The objectives were to explore the performance of the EnOI data assimilation scheme in ingesting both large scale data and dense profile observations over a reduced area, and to compare the performance of the CTD initialisation survey versus different configurations of glider fleet sampling including up to 8 vehicles. Results show the capacity of the system to ingest both type of data, leading to improvements in the representation of all assimilated variables. These improvements persist during the 3-day periods separating two analyses. However, the system presents some limitations in properly representing the anticyclonic eddy observed around 50-m depth in the southern part of the domain, due to the reduced vertical extension of the eddy, which is smoothed out by the vertical model error covariances provided by the ensemble. A verification of the forecasts using independent measurements from shipborne CTDs and the Scanfish shows that the simulations assimilating initial CTD data reduce the error by 30 to 40% with respect to the simulation without data assimilation. In the glider-data-assimilative experiments, the forecast error is reduced in terms of the root-mean-square error as the number of vehicles increases. The simulation assimilating CTDs outperforms the simulations assimilating data from 1 to 4 gliders. A fleet of 8 gliders provides a similar performance as the 10-km spaced CTD initialisation survey in these experiments. Moreover (A. Funk, personal communication, 2018; not included in the special issue), the incremental strong constraint 4Dvar technique was applied. Both profiles from shipborne CTDs and gliders are assimilated, and the impact of different sets of observational data on prediction quality is estimated. Convergence issues of the assimilation scheme are analysed and overall performance is compared to other data assimilation techniques.

A cost/benefit analysis of gliders vs. traditional platforms was presented by Russo et al. (2018): traditional observing platforms, i.e. research vessels, are expensive in terms of both human and financial resources, and are not able to provide comprehensive observations in challenging areas like the polar oceans. By contrast, observations on global scales are obtained from satellites but only for the sea surface. Hence, the underwater environment still remains largely unobserved. Autonomous underwater platforms promise to provide an affordable solution for filling the observative gap. In particular, marine gliders are demonstrating their capabilities for long missions by crossing the ocean basins up to increasing depths. Long endurances at sea are achieved at the cost of sacrificing glider speed, and this fact generates issues for several possible utilisations of the observations collected by gliders. A partial solution was represented by a fleet of coordinated gliders during the REP14-MED sea trial where 2 research vessels and 11 gliders sampled simultaneously the same limited area. This offered the opportunity for conducting a comparison between the 2 data sets aiming to assess several aspects, including capability to detect oceanographic features, improvements of operational forecasting skill, and economic costs.

The time series records of mooring M1 enabled an experiment for the exploration of the variability of the ocean. Onken (2017a) employed the Regional Ocean Modeling System (ROMS, Shchepetkin and McWilliams (2005)) in offline-nested mode to assess the sensitivity of the forecast skill of mixed-layer properties to initial conditions, boundary conditions, and mixing parameterisations. All forecasts were validated against the M1 thermistor records. The initial and lateral boundary conditions were provided by the Mediterranean Forecasting System (MFS, Tonani et al. (2014)) and by the MERCATOR global ocean circulation model

(Dréville et al., 2008). Nesting ROMS in MERCATOR and updating the initial conditions through data assimilation provided the best agreement of the predicted mixed-layer properties. Further improvement was obtained if the predicted atmospheric forcing fields were melded with real observations, and by the application of the $k-\omega$ vertical mixing scheme (Wilcox, 1988) with increased vertical eddy diffusivity. The predicted temporal variability of the mixed-layer temperature was reasonably well correlated with the observed variability, while the modelled variability of the mixed-layer depth exhibited only agreement with the observations near the diurnal frequency peak. For the forecasted horizontal variability, reasonable agreement was found with observations from a ScanFish section, but only for the mesoscale wave number band; the observed submesoscale variability was not reproduced.

New payloads for gliders were tested during the experiment: glider *Alliance Clyde* and was equipped with 2 hydrophones and an experimental pH/ $p(\text{CO}_2)$ sensor was for the first time installed on glider *Planet Fin* must be taken into account (Knoll et al., 2015b). The nominal tracks of the gliders (Fig. ??a) were arranged halfway between the zonal CTD sections of the initialization survey (Fig. ??). This improved the meridional resolution by a factor 2. Although *Clyde* failed about 36 hours after its deployment, the acoustic records were intact and complete because they were anyway limited to approximately 23 hours. The equipment used and the analysis of the data obtained are discussed by ?. Sperm whale regular clicks as well as dolphin clicks and whistles were identified. Cross-correlating clicks recorded on both hydrophones allowed for the estimation of the bearing of clicks and realisation of animal tracks. Two dual pH/ $p(\text{CO}_2)$ sensors were mounted on *Fin* – 1 standalone pair and another one integrated into the glider electronics. However, due to quality issues, only the data of the standalone pH sensor could be used and the article of ? is restricted to that one. During the deployment, pH was sampled over a period of 12 days. The vertical resolution of the pH sensor was good, but stability was poor and the sensor drifted in a non-monotonous fashion. An offset was applied to remove the sensor drift, reducing the spread of the data by approximately 2/3. Additional corrections decreased the apparent pH variability by a further 13 to 31%. Sunlight caused a sensor pH decrease in surface waters around local noon, highlighting the importance of shielding the sensor from light in future deployments. The corrected pH is presented along with other parameters measured by the glider. Maxima of pH were identified close to the depth of the summer chlorophyll maximum, and higher pH was associated with saltier LIW.

7 Conclusions

In June 2014 and in the framework of the REP14-MED experiment, a huge oceanographic dataset was collected by 2 research vessels, 11 gliders, and other measuring systems. The large volume of the dataset, its consistency and the quality, were the stimulus for various scientific studies which are published in the special issue “REP14-MED: A Glider Fleet Experiment in a Limited Marine Area” of this journal. This article provides an overview of the logistics of the survey and the observations at sea, and highlights the major findings of related articles published so far. All articles comply with the objectives defined above and address the following subjects:

- Water masses and circulation off the west coast of Sardinia;
- Operational forecasting and model validation;

- Different methods for data assimilation;
 - Variability of the ocean;
 - Cost/benefit analysis of gliders;
 - New payloads for gliders.
- 5 In the publications of the special issue, most of the defined objectives were addressed, but the richness of the observations has by far not yet been exploited adequately;
- The “wavelength” of the sawtooth-like glider path is between $\mathcal{O}(100\text{ m})$ and $\mathcal{O}(1\text{ km})$ depending on the water depth. Hence, the along-path resolution is on the same order of magnitude as that of ~~sub-mesoscale features~~. ~~The records of an individual glider also allow analyses of the temporal variability along its path as the same path is repeatedly sampled during the experiment. However, the spectral cut-off period of the variability lies between $\mathcal{O}(\text{days})$ in the central parts of the track and is close to zero at the return points~~submesoscale features and would enable corresponding analyses. Moreover, the alternating occupation of the tracks by deep and shallow gliders ~~enabled~~may enable model studies which assess the dynamical impact of the sub-thermocline flow on the overall circulation pattern. For instance, the data of all available gliders may be assimilated in a control run, while in another run the glider data below approximately 200 m
 - 15 depth are ignored. The huge amount of glider data also advances assimilation experiments aimed to test the efficiency of different sampling patterns (Oke et al., 2015) in terms of sub-sampling or “super observations” (Lorenc, 1981).
 - The original intention of the the ScanFish surveys (Fig. ??) was to provide a quasi-synoptic validation data set for model forecasts. ~~Synopticity is almost satisfied because the duration of the entire survey was a little less than 60 h.~~ As the wavelength of the undulating device is around ~~one~~1 kilometre (in deep water), the data are also suitable ~~to validate the forecasts of high-resolution numerical models with a comparable grid size. Depending on the tow speed, the vertical extent of the measurements comprise the depth range between the surface and about 250 m depth. This enables studies on the circulation of the surface and intermediate waters~~for investigations of submesoscale processes.
 - 20
 - The ~~duration of the CTD chain surveys (Fig. ??) during Legs 2 and 3 was about 51 h and 41 h, respectively. Hence, the time frames may also be considered quasi-synoptic. The Leg 3 survey was carried out synchronously with the ScanFish. Therefore, as the meridional distance between the ScanFish tracks and the tracks of the CTD chain was 20 km in each case, the combined data sets provide a meridional resolution of 10 km. Informative comparisons between the towed systems may be deduced from tracks P01b, ..., P03b (CTD chain) and from the aligned ScanFish tracks A01, ..., A03 (cf. Fig. ??b). While tracks no. 1 and 2 were carried out in “follow mode” where Planet was in the lead and Alliance was in pursuit at a distance of 1 nmi, the mode was switched to “parallel mode” during track 3 where Alliance was 1 nmi north of Planet. The maximum vertical extent of~~temporal resolution of the CTD chain measurements ~~depended on the towing speed and was usually about 190 m during Leg 2 and 140 m during Leg 3, i.e. somewhat less than the ScanFish. However, this potential deficit is compensated by the extremely high temporal resolution of~~is extremely high at about
 - 25
 - 30

3 s and, therefore, depending on the towing speed of 4–5 kn, a horizontal which is equivalent to a spatial resolution of less than 10 m allowed m at a tow speed of 4–5 kn. This would allow very detailed studies of sub-mesoscale features submesoscale features in the transition regime to the microscale.

– The sub-surface moorings M2, M3, M4, and M5 were equipped with CT probes and current meters (partly upward looking ADCPs) at standard depths. Hence, time series of scalar parameters and velocities are available for the upper ocean, the diurnal and seasonal thermocline, and for the levels of the intermediate and deep water masses. They may be used as well for model validation and would allow provide a deeper insight into the meridional exchange of water masses across the 40° N latitude circle.

– ~~The special design of the M1 mooring was intended to provide detailed information on the variability of the upper ocean: the temperature between the surface and 40 m depth was recorded with high vertical resolution for about 12 days, an upward-looking ADCP was mounted at 100 m depth, and various atmospheric parameters were recorded by a meteorological buoy on top of the mooring. Therefore, M1 — together with the waverider W1 — was an ideal test case for the development and validation of models focusing on the temporal variability. Moreover, the recordings of the meteorological buoy in conjunction with the observations on the survey vessels, may serve as a ground truth for the analyses and forecasts of atmospheric prediction models.~~

– ~~The surface drifters and the float (Fig. ??) together with the underway measurements (Fig. ??) by thermosalinograph and ADCP, provide additional information on the general circulation in the survey area, and the data could serve to validate forecast models.~~

– ~~The measurements on the optical stations together with optical data from the gliders and the SeanFish, contributed to an international project, the objective of which is to extend information from satellite remote sensing from the surface to the sub-surface.~~

Altogether, the surveys undertaken at sea provided an extremely rich dataset that can be used for multiple studies on different topics. The major advantage of the data set is its consistency, which was not affected by the handful of glitches experienced:

~~– 0.3 m Glider Clydefailed completely after 12 June. However, Clydewas fortunately positioned on track G01 and the malfunction did not impact the regularity of the entire glider track pattern. Glider Findropped out for about one day. On 23 June, Planethad to circumvent a fishing area while towing the CTD chain. This explains the northward excursion from track P09b in Fig. ?. Originally on mooring M1, a CTD probe was mounted directly at the sea surface but the recording of conductivity failed shortly after the deployment of the mooring. Two out of 40 thermistors in mooring M1 failed.~~

In June 2014, a huge dataset was collected by two research vessels, 11 gliders, and other measuring systems in the waters west of Sardinia. The large volume of the dataset, its consistency and the quality, were the stimulus for various scientific studies which will be published in a Special Issue of this journal. The present article provides an overview of the observations at sea. The objective is to acquaint all authors and readers of ongoing studies in the Special Issue with the background of the

~~observations and the logistics, and to prevent the scientific articles from repeating the same information~~ Hopefully, this article may encourage forthcoming studies which address these issues.

Data availability. All data of the REP14-MED experiment are available on the CMRE ~~data-server at [http://geos3ftp.server](http://geos3ftp.server.at)~~ [at \[ftp.cmre.nato.int\]\(http://ftp.cmre.nato.int\)](http://ftp.cmre.nato.int). ~~The data are NATO UNCLASSIFIED and available only for the partners of the experiment (cf. Table 1). However, interested institutions can sign up for partnership at any time. Requests~~ [Requests for access](#) may be directed to the ~~first author or to geos-webmaster@nurecmre.nato.int or pao@cmre.nato.int~~.

— *Author contributions.* Reiner Onken was the coordinator of the experiment and Chief Scientist on NRV *Alliance*, Heinz-Volker Fiekas was Chief Scientist on RV *Planet*, Laurent Beguery was the Principal Investigator from ALSEAMAR and provided the SeaExplorers, Ines Borriore and Aniello Russo were responsible for the collection and processing of CTD and ADCP data on NRV *Alliance*, Karen Heywood and Jan Kaiser were the Principal Investigators from UEA and provided the SeaGliders, Pierre-Marie Poulain provided the SVP drifters and the ARVOR-I floats, Michaela Knoll and Andreas Funk collected and processed all data on RV *Planet* and the data from the WTD71 glider, Bastien Queste and Michael Hemming processed the SeaGlider data, Kiminori Shitashima was in charge of the new pH/pCO₂ sensor on glider *Fin*, Jaime Hernandez-Lasheras, Baptiste Mourre, and Paolo Oddo contributed their assimilation studies, and Martin Siderius was the Principal Investigator from PSU; he provided the Slocum glider *Clyde* which was piloted by Elizabeth Thorp Küsel.

Acknowledgements. The authors would like to thank all partners which made REP14-MED such a great success. We appreciate the hard work of the officers, scientists, engineers and technicians on NRV *Alliance*, RV *Planet* and ashore who were responsible for the logistics of the experiment, launch and recovery of instruments, piloting of gliders, data acquisition, processing and archiving: Marion Mery (~~ACSA~~ [ALSEAMAR](#)), Marina Ampolo-Rella, Peter Anger, Gisella Baldasserini, George Botezatu, Alessandro Brogini, Daniele Cecchi, Giampolo Cimino, Marco Colombo, Rodney Dymond, Silvia Falchetti, Bartolome Garau, Craig Lewis, Michele Micheli, John Osler, Ivan Pennisi, Giuliana Pennucci, Richard Stoner, and Alex Trangeled (CMRE), Giovanni Quattrocchi and Andrea Satta (IAMC), Stefan Riedel (MARKDO), Gareth Lee and Stephen Woodward (UEA), Jens Benecke, Evelyn Ehlers, Malte Ehlers, Jörg Förster, Stefan Hasenpusch, Bernd Hilgenfeld, Daniel Jähne, Ralf Lühder, Lars Planert, Horst Schock, Marco Weidemann, and Lukas Zimmermann (WTD71). We thank *Kongsberg Maritime* who loaned SeaGlider *Kong* to UEA for this experiment. A special thanks is addressed to the masters and crews of NRV *Alliance* and RV *Planet* for their professionalism during the conduction of the experiments at sea, and to AMP who agreed to support the recovery of gliders in emergency situations. REP14-MED was sponsored by HQ Supreme Allied Command Transformation (Norfolk, VA, USA), and Michael Hemming's PhD project analysing REP14-MED data was funded by the Defence Science and Technology Laboratory (DSTL, UK).

References

- Boyer, T. P., [Antonov, J. I.](#), [Antonov, Baranova, O. K.](#), [Baranova, Coleman, C.](#), [Coleman, Garcia, H. E.](#), [Garcia, Grodsky, A.](#), [Grodsky, Johnson, D. R.](#), [Johnson, Locarnini, R. A.](#), [Locarnini, Mishonov, A. V.](#), [Mishonov, O'Brien, T. D.](#), [O'Brien, Paver, C. R.](#), [Paver, Reagan, J. R.](#), [Reagan, Seidov, D.](#), [Seidov, Smolyar, I. V.](#), [Smolyar, and Zweng, M. M.](#), [Zweng \(2013\)](#): World Ocean Database 2013. Sydney Levitus, Ed.; Alexey
- 5 Mishonov, Technical Ed.; NOAA Atlas NESDIS 72, 209 pp., [2013](#).
- [Dréville, M., Bourdallé-Badie, R., Derval, C., Lellouche, J. M., Rémy, E., Tranchant, B., Benkiran, M., Greiner, E., Guinehut, S., Verbrugge, N., Garric, G., Testut, C. E., Laborie, M., Nouel, L., Bahurel, P., Bricaud, C., Crosnier, L., Dombrowsky, E., Durand, E., Ferry, N., Hernandez, F., Le Galloudec, O., Messal, F., and Parent, L.: The GODAE/Mercator-Ocean global ocean forecasting system: results, applications and prospects. Journal of Operational Oceanography, 1, 1, 51–57, DOI: 10.1080/1755876X.2008.11020095, 2008.](#)
- 10 [Escudier2016](#)
- [Escudier, R., Mourre, B., Juza, M., and Tintoré, J.: Subsurface circulation and mesoscale variability in the Algerian subbasin from altimeter-derived eddy trajectories. Journal of Geophysical Research Oceans, 121, 6310–6322, doi: 10.1002/2016JC011760, 2016.](#)
- Fuda, J., Millot, C., Taupier-Letage, I., Send, U., and [J. Bocognano \(2000\)](#) [Bocognano, J.](#): XBT monitoring of a meridian section across the western Mediterranean Sea. Deep Sea Research I, 47(11), 2191–2218, [2000](#). [Garcia1996](#)
- 15 [García-Ladona, E., Castellón, A., Font, J., and Tintoré, J.: The Balearic current and volume transports in the Balearic Basin. Oceanologica Acta, 19\(5\), 489–497, 1996. Hemming2017](#)
- [Hemming, M. P., Kaiser, J., Heywood, K. J., Bakker, D. C. E., Boutin, J., Shitashima, K., Lee, G., Legge, O., and Onken, R.: Measuring pH variability using an experimental sensor on an underwater glider. Ocean Science, 13, 427–442, doi: 10.5194/os-13-427-2017, 2017.](#)
- [Hernandez2018](#)
- 20 [Hernandez-Lasheras, J., and Mourre, B.: Dense CTD survey versus glider fleet sampling: comparison of the performance for regional ocean prediction west of Sardinia. Ocean Science, ??, ???–???, doi: ???, 2018 \(to be updated\).](#)
- Knoll, M., [J. Benecke, and I. Borrione \(2015a\)](#) [Benecke, J., and Borrione, I.](#): ADCP measurements obtained by RV Planet during REP14-MED. Technical Report WTD71-0094/2015 WB, [51pp](#), [Bundeswehr Technical Centre for Ships and Naval Weapons, Naval Technology and Research, 52pp., 2015a.](#)
- 25 Knoll, M., [J. Benecke](#) [Benecke, J., Russo, A.](#), [Russo, and M., and Ampolo-Rella \(2015b\)](#), [M.](#): Comparison of CTD measurements obtained by NRV Alliance and RV Planet during REP14-MED. Technical Report WTD71-0083/2015 WB, [Bundeswehr Technical Centre for Ships and Naval Weapons, Naval Technology and Research, 34pp., 2015b.](#)
- [Knoll, M., Borrione, I., Fiekas, H.-V., Funk, A., Hemming, M. P., Kaiser, J., Onken, R., Queste, B., and Russo, A.: Hydrography and circulation west of Sardinia in June 2014. Ocean Science, 13, 889–904, doi: 10.5194/os-13-889-2017, 2017. Kusel2017](#)
- 30 [Küsel, E. T., Munoz, T., Siderius, M., Mellinger, D. K., and Heimlich, S.: Marine mammal tracks from two-hydrophone acoustic recordings made with a glider. Ocean Science, 13, 273–288, doi: 10.5194/os-13-273–2017, 2017.](#)
- [Lorenc, A.C. \(1981\): A global three-dimensional multivariate statistical interpolation scheme. Monthly Weather Review, 109, 701–721, 1981.](#)
- [Lumpkin, R. and M. Pazos \(2005\) Pazos, M.: Measuring surface currents with Surface Velocity Program drifters: the instrument, its data, and some recent results. National Oceanographic and Atmospheric Administration \(NOAA\), Atlantic Oceanographic and Meteorological Laboratory, Miami, Fla, USA, 56pp., 2005.](#)
- 35 [Millot, C. \(1999\): Circulation in the Western Mediterranean Sea. Journal of Marine Systems, 20\(1–4\), 423–442, 1999.](#)

- Murphy, A. H.: What is a good forecast? An essay on the nature of goodness in weather forecasting. *Weather Forecasting*, 8, 281–293, 1993.
- Oddo, P., Storto, A., Dobricic, S., Russo, A., Lewis, C., Onken, R., and Coelho, E.: A Hybrid Variational-Ensemble data assimilation scheme with systematic error correction for limited area ocean models. *Ocean Science*, 12, 1137–1153, doi: 10.5194/os-12-1137-2016, 2016.
- 5 Olita, A., ~~A. Ribotti~~Ribotti, A., Fazioli, L.~~Fazioli~~, Perilli, A.~~Perilli~~, and ~~R. Sorgente (2013)~~, and Sorgente, R.: Surface circulation and upwelling in the Sardinia Sea: A numerical study. *Continental Shelf Research*, 71, 95–108, 2013.
- Oke, P. R., ~~G. Larnicol~~Larnicol, G., Jones, E. M.~~Jones~~, Kourafalou, V.~~Kourafalou~~, Sperrevik, A. K.~~Sperrevik~~, Carse, F.~~Carse~~, Tanajura, C. A. S.~~Tanajura~~, Mourre, B.~~Mourre~~, Tonani, M.~~Tonani~~, Brassington, G. B.~~Brassington~~, ~~M.~~ Le Henaff, ~~G. R. M.~~, Halliwell Jr., ~~R. Atlas~~, ~~G. R.~~ Atlas, R., Moore, A. M.~~Moore~~, Edwards, C. A.~~Edwards~~, Martin, M. J.~~Martin~~, Sellar, A. A.~~Sellar~~, ~~A. Alvarez~~, ~~P. Alvarez~~, A., De Mey, and ~~M. Iskandarani (2015)~~ P., and Iskandarani, M.: Assessing the impact of observations on ocean forecasts and reanalyses: Part 2, Regional applications. *Journal of Operational Oceanography*, 8, Suppl. 1, s63–s79, 2015.
- 10 Onken, R.: Forecast skill score assessment of a relocatable ocean prediction system, using a simplified objective analysis method. *Ocean Science*, 13, 925–945, doi:10.5194/os-13-925-2017, 2017a.
- Onken, R.: Validation of an ocean shelf model for the prediction of mixed-layer properties in the Mediterranean Sea west of Sardinia. *Ocean Science*, 13, 235–257, doi: 10.5194/os-13-235-2017, 2017b.
- 15 Onken, R., ~~M.~~ Ampolo-Rella, M., Baldasserini, G.~~Baldasserini~~, Borriore, I.~~Borriore~~, Cecchi, D.~~Cecchi~~, Coelho, E.~~Coelho~~, Falchetti, S.~~Falchetti~~, Fiekas, H.-V.~~Fiekas~~, Funk, A.~~Funk~~, Jiang, Y.-M.~~Jiang~~, Knoll, M.~~Knoll~~, Lewis, C.~~Lewis~~, Mourre, B.~~Mourre~~, Nielsen, P.~~Nielsen~~, Russo, A.~~Russo~~, and ~~R. Stoner (2014)~~, and Stoner R.: REP14-MED Cruise Report. CMRE Cruise Report Series, CMRE-CR-2014-06-REP14-MED, CMRE, La Spezia, 76 pp., 2014.
- 20 Poulain, P.-M., Barbanti, R., Font, J., Cruzado, A., Millot, C., Gertman, I., Griffa, A., Molcard, A., Rupolo, V., Le Bras, S., and Petit de la Villeon, L.: MedArgo: a drifting profiler program in the Mediterranean Sea, *Ocean Science*, 3, 379–395, <https://doi.org/10.5194/os-3-379-2007>, 2007.
- Ribotti, A., ~~I. Puillat~~Puillat, I., Sorgente, R.~~Sorgente~~, and ~~S. Natale (2004)~~, and Natale, S.: Mesoscale circulation in the surface layer off the southern and western Sardinia island in ~~2000–2002~~. *Chemistry and Ecology*, 20:5, 345–363, 2004.
- 25 Robinson, A. R., Leslie, W. G., Theocharis, A., and Lascaratos, A. (2001): Mediterranean Sea circulation. In: *Encyclopedia of Ocean Science*, 3, 1689–1705, Academic Press, London, doi: 10.1006/rwos.2001.0376, 2001.
- Russo, A., Oddo, P., Borriore, I., and Onken, R.: Comparing capabilities and costs of oceanographic observations simultaneously collected in a limited marine area by autonomous vs. traditional platforms (ships). *Ocean Science*, ?, ???–???, doi: ????, 2018 (to be updated).
- Sellschopp, J. (1997): A towed CTD chain for two-dimensional high resolution hydrography. *Deep Sea Research Part I*, 44(1), 147–165, doi: 10.1016/S0967-0637(96)00087-8, 1997.
- 30 Shchepetkin, A. F., and McWilliams, J. C.: The Regional Ocean Modeling System: A split-explicit, free-surface, topography following coordinates ocean model. *Ocean Modelling*, 9, 347–404, 2005.
- Testor, P., and Gascard, J.-C. (2003): Large-scale spreading of deep waters in the Western Mediterranean Sea by submesoscale coherent eddies. *Journal of Physical Oceanography*, 33, 75–87, 2003.
- 35 Testor, P., and Gascard, J.-C. (2005): Large scale flow separation and mesoscale eddy formation in the Algerian Basin. *Progress in Oceanography*, 66, 211–230, 2005.
- Tonani M., Teruzzi, A., Korres, G., Pinardi, N., Crise, A., Adani, M., Oddo, P., Dobricic, S., Fratianni, C., Drudi, M., Salon, S., Grandi, A., Girardi, G., Lyubartsev, V., and Marino, S.: The Mediterranean Monitoring and Forecasting Centre, a component of the MyOcean system.

Proceedings of the Sixth International Conference on EuroGOOS 4–6 October 2011, Sopot, Poland. Edited by H. Dahlin, N.C. Fleming, and S.E. Petersson. EuroGOOS Publication no. 30, ISBN 978-91-974828-9-9, 2014.

Wilcox, D. C.: Reassessment of the scale-determining equation for advanced turbulence models. AIAA Journal, 26, 1299-1310, 1988.

Table 1. Partners of the experiment

Acronym	Name	Country
ACSA <u>ALSEAMAR</u>	Architecture et Conception de Systemas Avantes	France
AMP	Area Marina Protetta Penisola del Sinis	Italy
CMRE	Centre for Maritime Research and Experimentation	NATO
DGA	Direction Générale de l'Armement	France
DSTL	Defence Science Technology Laboratory	United Kingdom
HLS	Heat, Light and Sound Research	United States of America
IAMC	Istituto per l'Ambiente Marino Costiero	Italy
IIM	Istituto Idrografico della Marina	Italy
ISMAR	Istituto di Scienze Marine	Italy
MARKDO	Marinekommando	Germany
MIT	Massachusetts Institute of Technology	United States of America
MWC	Maritime Warfare Centre	United Kingdom
NRL	Naval Research Laboratory	United States of America
OGS	Istituto Nazionale di Oceanografia e di Geofisica Sperimentale	Italy
ONR	Office of Naval Research	United States of America
SOCIB	Sistema de Observación Costero de las Illes <u>Islas</u> Balears	Spain
PSU	Portland State University	United States of America
TWR	Teledyne Webb Research	United States of America
UEA	University of East Anglia	United Kingdom
UPMC	Université Pierre et Marie Curie	France
WTD71	Wehrtechnische Dienststelle für Schiffe und Marinewaffen, Maritime Technologie und Forschung	Germany

Potential density kg m^{-3} at 990 m depth (a) before and (b) after applying the salinity correction to the CTD casts taken during Leg 1. The positions of all casts are indicated by blue dots. All casts north of the dotted line were taken by Alliance, all casts south of that line were from Planet.

Table 2. ~~Greta, Natalie, and SEA004 were deployed only during Leg 2 within the framework of the acoustic experiments, Laura and Sophie served as backup. For the specifications of the sensors, see the web sites of the manufacturers in Section 2.~~ *PAM=passive acoustic monitoring system Summary of all observations. The variables names p, pCO_2, pH, T, S, U, V refer to pressure, CO₂ partial pressure, pH value, temperature, salinity, zonal and meridional velocity, respectively. Only those variables are mentioned which are relevant for the articles in the special issue.

* Additional parameters are available from these systems but they are beyond the scope of this article.

<u>Instrument</u>	<u>Data type</u>	<u>Variables</u>	<u>June Period</u>	<u>Track length [km]</u>	<u>Data volume</u>	<u>Remarks</u>
<u>Gliders</u>	<u>3D trajectory</u>	<u>T, S, p, pH, pCO_2^*</u>	<u>08–23</u>	<u>3278</u>	<u>133 glider days</u> <u>5731 profiles</u>	
<u>ScanFish</u>	<u>3D trajectory</u>	<u>T, S, p^*</u>	<u>21–23</u>	<u>365</u>	<u>535 profiles</u>	<u>resolution < 1321m</u>
<u>Thermo- salinograph</u>	<u>2D trajectory</u>	<u>T, S @2.5 m depth</u>	<u>06–25</u>	<u>3158</u>		<u>resolution < 10m</u>
<u>Surface drifters</u>	<u>2D trajectory</u>	<u>U, V, T</u>	<u>08–25</u>		<u>17 drifters</u>	<u>6-h sampling interval</u>
<u>Floats</u>	<u>2D trajectory</u>	<u>U, V, T, S</u>	<u>08–25</u>		<u>1 float</u>	<u>within observational domain</u>
	<u>vertical profile</u>	<u>T, S</u>	<u>08–28</u>		<u>3 profiles</u>	<u>within observational domain</u>
<u>ICTD casts</u>	<u>vertical profile</u>	<u>T, S, p^*</u>	<u>07–24</u>		<u>279 profiles</u>	<u>spatially crowded on Leg 2</u>
<u>uCTD casts</u>	<u>vertical profile</u>	<u>T, S, p</u>	<u>11–16</u>		<u>36 profiles</u>	
<u>CTD chain</u>	<u>vertical profile</u>	<u>T, S, p</u>	<u>11–14</u> <u>21–23</u>	<u>722</u>	<u>> 100 000 profiles</u>	<u>resolution < 10m</u>
<u>ADCP (ship)</u>	<u>vertical profile</u>	<u>U, V</u>	<u>07–25</u>	<u>5561</u>	<u>> 400 000 profiles</u>	
<u>Moorings</u>	<u>time series</u>	<u>T, S, U, V^*</u>	<u>08–23</u>			
<u>Meteorol. obs.</u>	<u>time series</u>		<u>06–25</u>			<u>shipborne and on M1</u>

Table 3. Specifications of the gliders provided for the experiment. *Greta*, *Natalie*, and *SEA004* were deployed only during Leg 2 within the framework of the acoustic experiments, *Laura* and *Sophie* served as backup. For the specifications of most sensors, see the web sites of the manufacturers in Section 2. *PAM=passive acoustic monitoring system

<i>name</i>	<i>make</i>	<i>rating [dbar]</i>	owner <u>operator</u>	Sensors and special properties
Clyde	Slocum	200	PSU	CTD, PAM*
Dora	Slocum	1000	CMRE	CTD (pumped), propeller
Elettra	Slocum	200	CMRE	2×CTD (pumped and unpumped)
Greta	Slocum	200	CMRE	CTD, PAM*
Jade	Slocum	1000	CMRE	CTD (pumped), propeller
Laura	Slocum	200	CMRE	CTD
Natalie	Slocum	200	CMRE	CTD, PAM*
Noa	Slocum	1000	CMRE	CTD, <i>Wetlabs</i> puck
Sophie	Slocum	200	CMRE	CTD, 504 nm irradiance, <i>Wetlabs</i> puck
WTD71	Slocum	200	WTD71	CTD (pumped)
Zoe	Slocum	200	CMRE	CTD, 504 nm irradiance, <i>Wetlabs</i> puck
Fin	Seaglider	1000	UEA	SBE CT sail, O ₂ , 2×pH/pCO ₂
Minke	Seaglider	1000	UEA	SBE CT sail, O ₂
Kong	Seaglider	1000	UEA	SBE CT sail, PAM*
SEA003	SeaExplorer	650	ACSA <u>ALSEAMAR</u>	GPCTD, O ₂ , Chl A, CDOM, Bs770nm
SEA004	SeaExplorer	650	ACSA <u>ALSEAMAR</u>	PAM*

Table 4. Details of the moorings. All times are UTC. *RCM* stands for the Aanderaa current meters of the RCM series (<http://www.aanderaa.com>)

	W1	M1	M2	M3	M4	M5
Longitude	08°16.44' E	08°16.22' E	08°12.98' E	07°57.65' E	07°49.68' E	07°35.39' E
Latitude	39°30.71' N	39°30.80' N	40°05.98' N	40°06.14' N	40°06.36' N	40°05.24' N
Water depth	150	150	150	700	1300	2100
Deployment	08 June 07:47	08 June 07:14	10 June 06:42	10 June 11:30	10 June 15:56	11 June 07:18
Recovery	20 June 13:28	20 June 13:55	23 June 14:10	23 June 11:47	23 June 08:45	23 June 06:06
0 m	Waverider	Meteo buoy				
1 m		CTD				
20 m				CTD	CTD	CTD
100 m				CTD	CTD	CTD
		ADCP 300 kHz	ADCP 300 kHz			ADCP 300 kHz
200 m				CTD	CTD	CTD
				ADCP 150 kHz	ADCP 150 kHz	RCM
500 m				CTD	CTD	CTD
				RCM	RCM	RCM
1000 m					CTD	CTD
					RCM	RCM
1500 m						CTD
						RCM

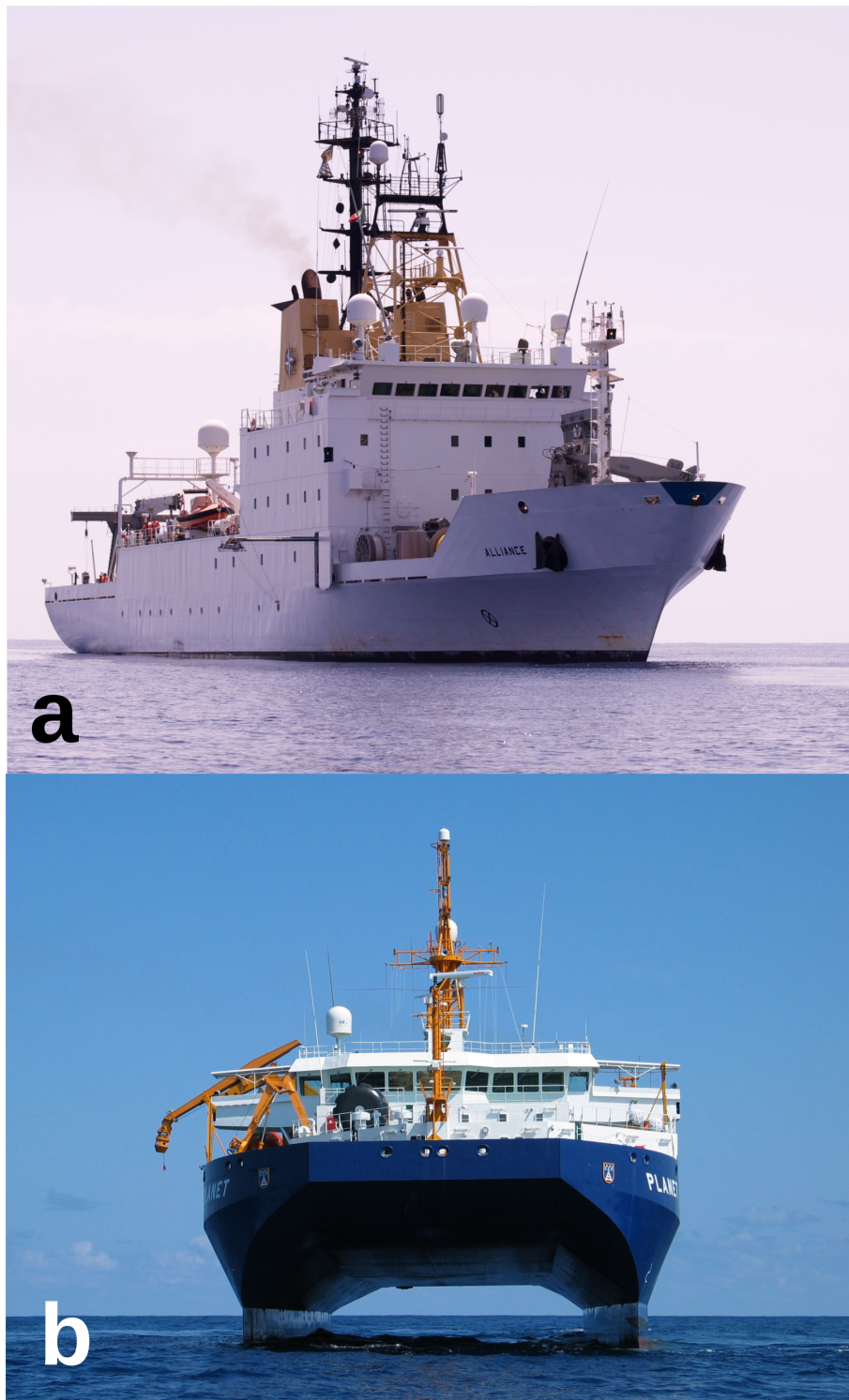


Figure 1. NRV *Alliance* (a) and RV *Planet* (b)

Instrument-Data-type-Variables-June-Track-Data-volume-Remarks-Period-length-kmGliders-3D-trajectory- T, S, p, pH, pCO_2^* -08-23-3278
 133-glider-days-5731-profiles-ScanFish-3D-trajectory- T, S, p^* -21-25-365-535-profiles-resolution- $<1321m$ Thermo-2D-trajectory- T, S
 @2.5m-depth-06-25-3158-resolution- $<10m$ salinograph-Surface-drifters-2D-trajectory- U, V, T -08-25-17-drifters-6-h-sampling-interval
 Floats-2D-trajectory- U, V, T, S -08-25-1-float-within-observational-domainvertical-profile- T, S -08-28-3-profiles-within-observational

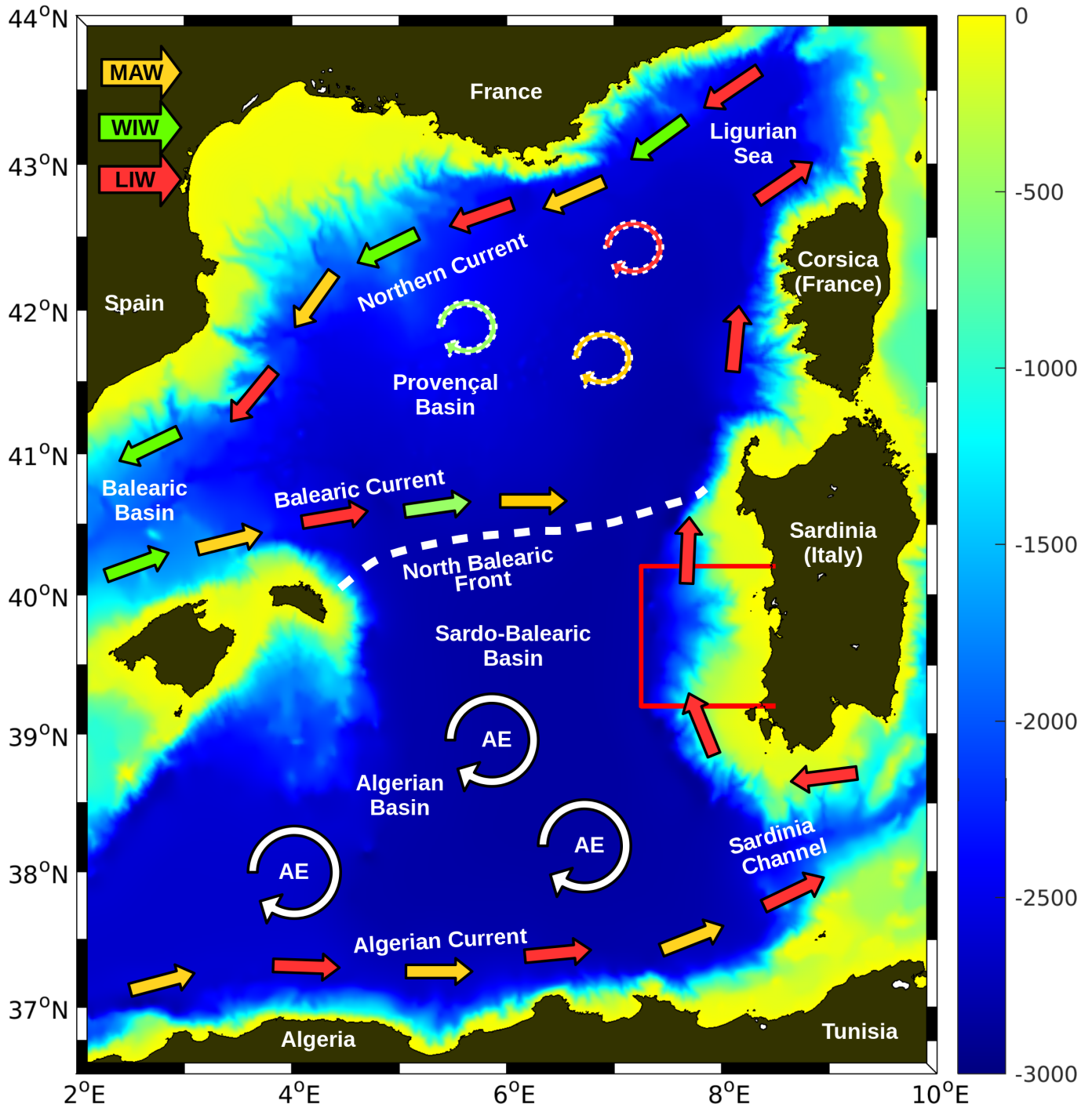


Figure 2. The large-scale circulation of the Western Mediterranean as it was known before the REP14-MED experiment. White-dashed circles indicate notional mesoscale eddies. The red box is the observational domain. Algerian eddies are marked by AE. For the other acronyms see text.

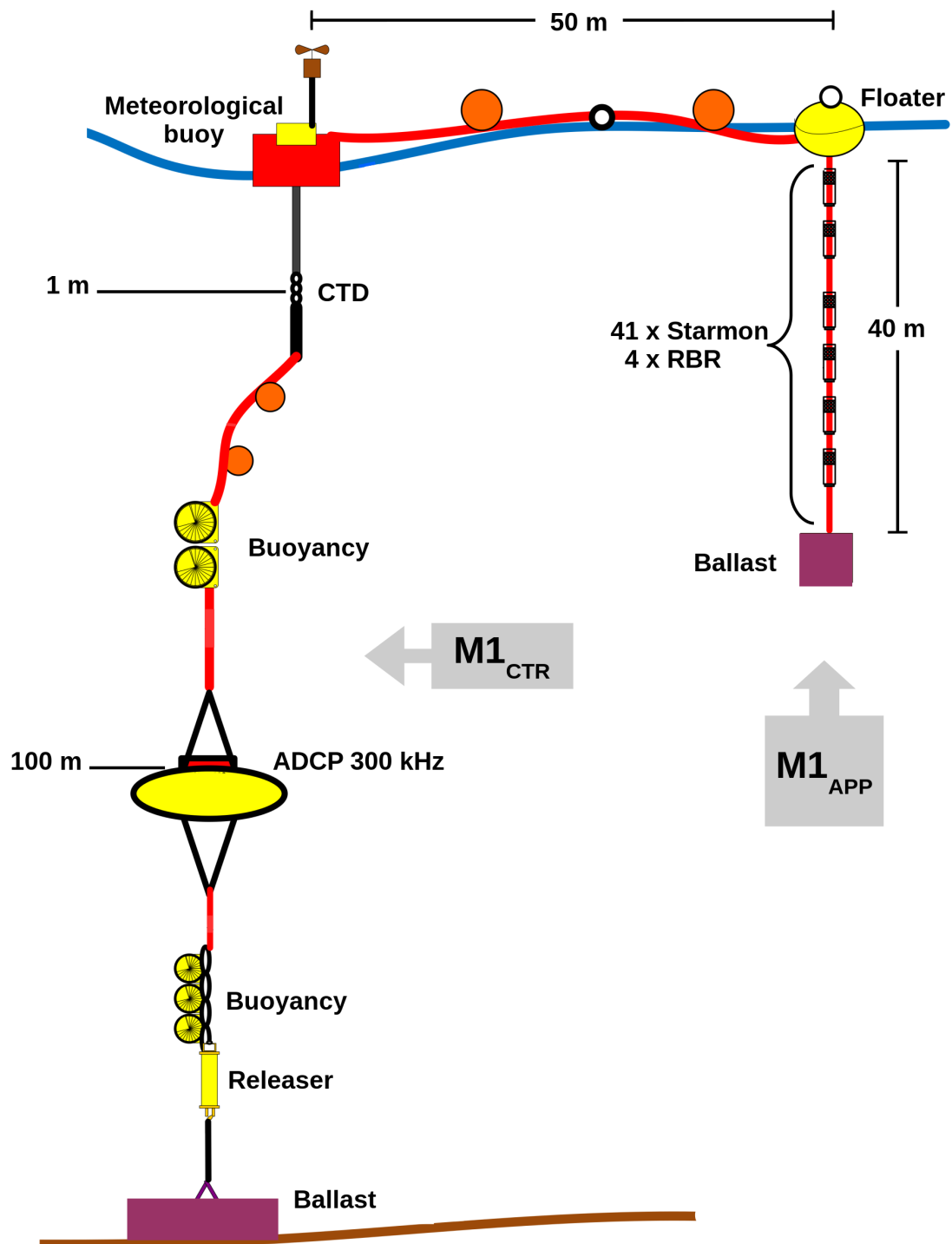


Figure 3. Design drawing of mooring M1. For explanations see text.

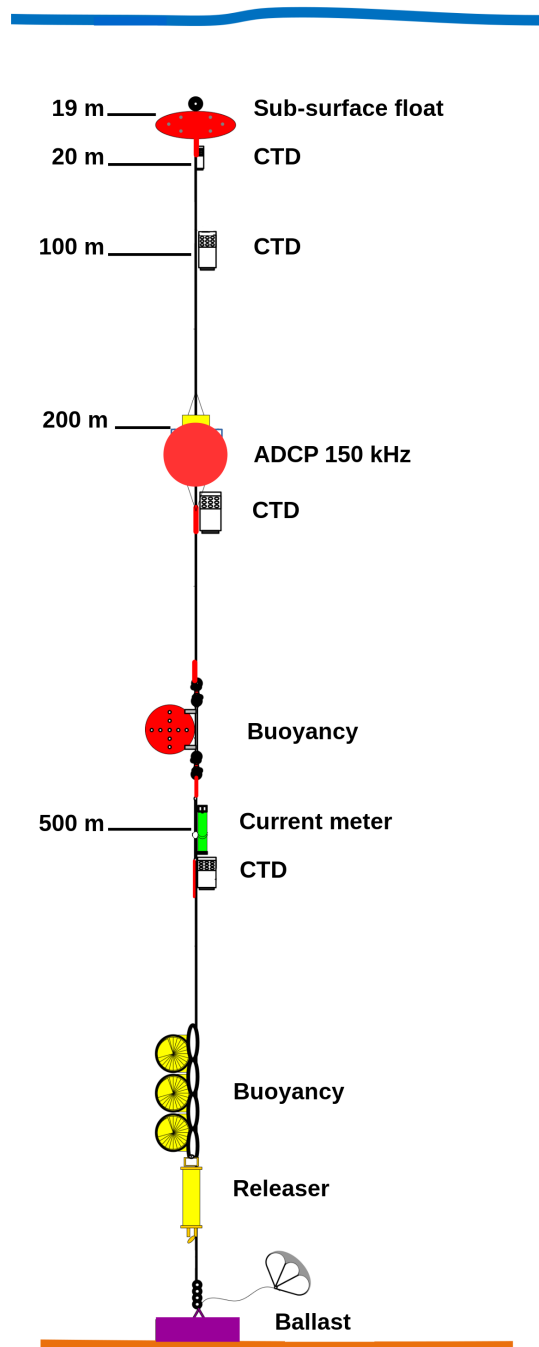


Figure 4. Design drawing of mooring M3. For explanations see text.

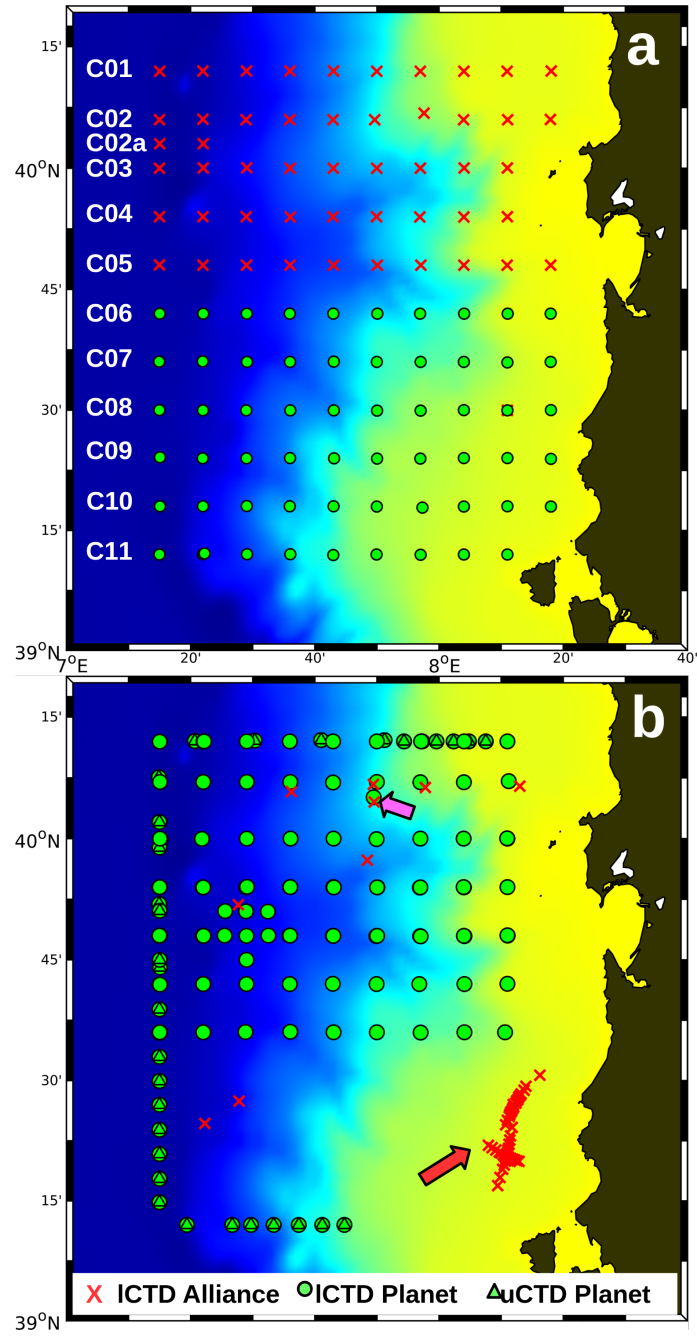


Figure 5. CTD casts taken during (a) Leg 1 and (b) Legs 2 and 3. Zonal sections in (a) are numbered C01, ..., C11. The 46 CTD casts taken by *Alliance* in the framework of the acoustic experiments during Leg 2 are highlighted by the red arrow, the magenta arrow points to the position of the CTD inter-calibration. Extra casts taken by *Planet* for the calibration of the CTD chain are not shown. The colour code for the water depth is the same as in Fig. ??.

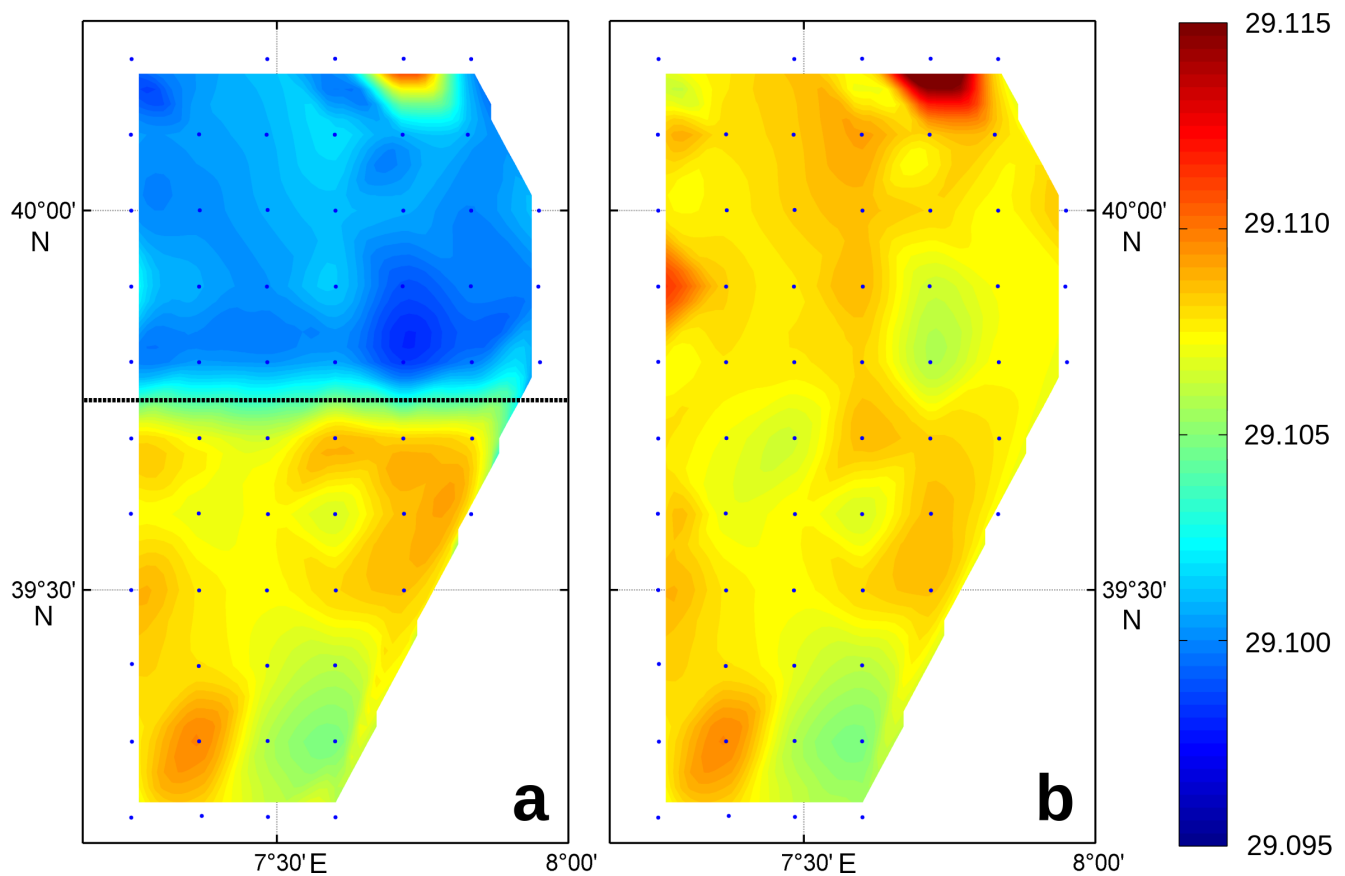


Figure 6. Potential density [kg m^{-3}] at 990m depth (a) before and (b) after applying the salinity correction to the CTD casts taken during Leg 1. The positions of all casts are indicated by blue dots. All casts north of the dotted line were taken by *Alliance*, all casts south of that line were from *Planet*.

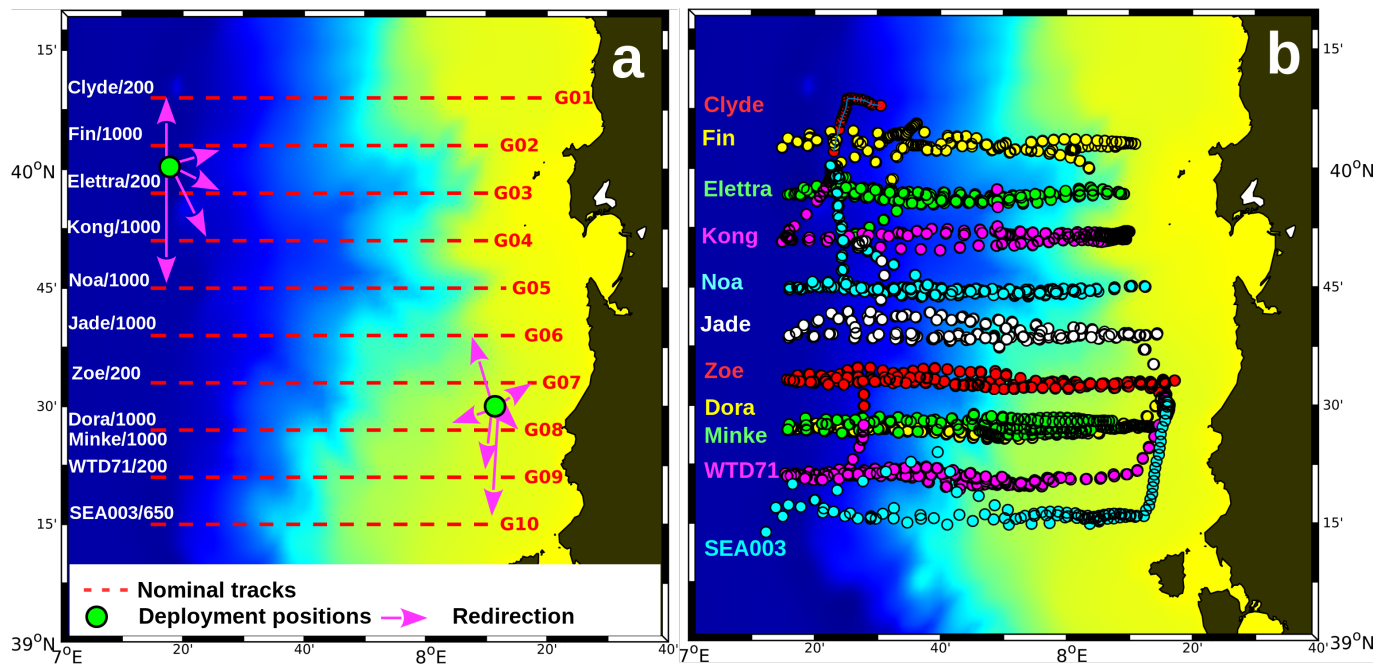


Figure 7. (a) Nominal tracks and deployment positions of all gliders launched during Leg 1. The names of the gliders are written at the western end of their respective tracks, and the number behind the name stands for the pressure rating in dbar. The gliders are redirected from the deployment positions to their nominal tracks. (b) Real tracks of all gliders 8–23 June. The circles indicate the surfacing positions. The colour code for the water depth is the same as in Fig. ??.

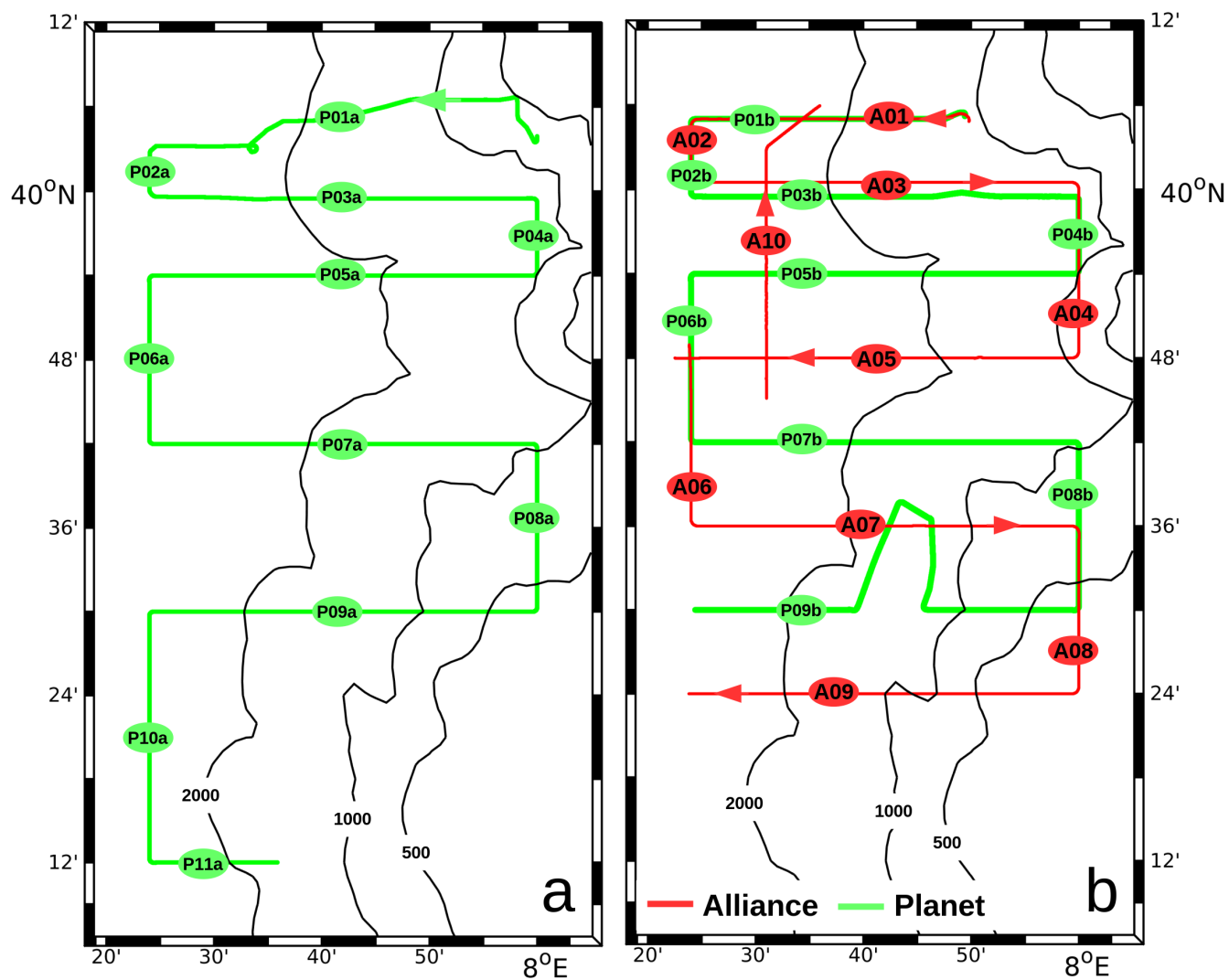


Figure 8. (a) CTD chain track of *Planet* during Leg 2. Tracks are numbered consecutively P01a, ..., P11a. (b) CTD chain tracks P01b,..., P09b of *Planet* and ScanFish tracks A01, ..., A10 of *Alliance* during Leg 3. Black lines indicate water depth [m].

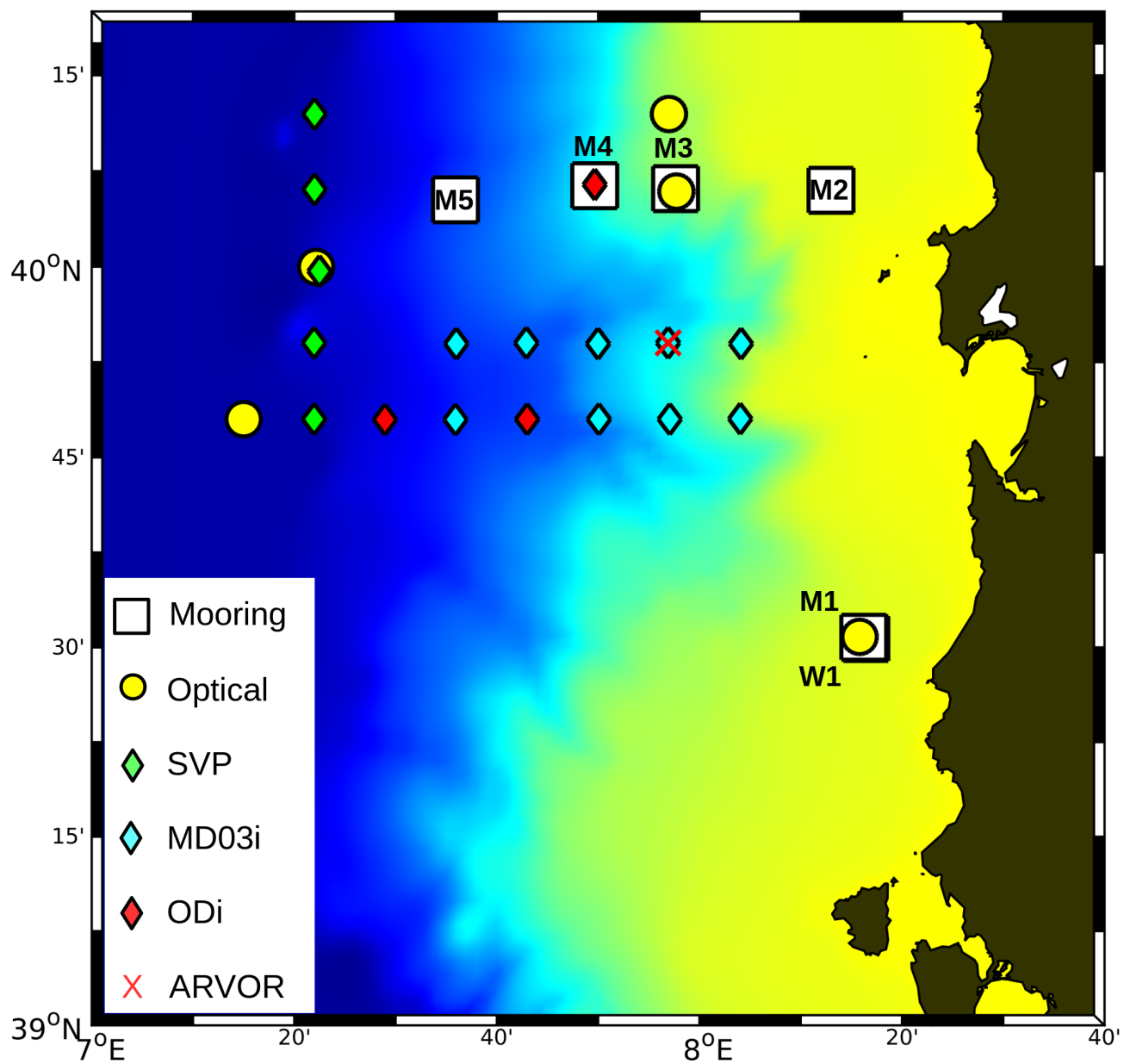


Figure 9. Positions of moorings, optical stations, and deployment positions of surface drifters (SVP, MD03i, ODi are drifter types) and the ARVOR-I float. The colour code for the water depth is the same as in Fig. ??.

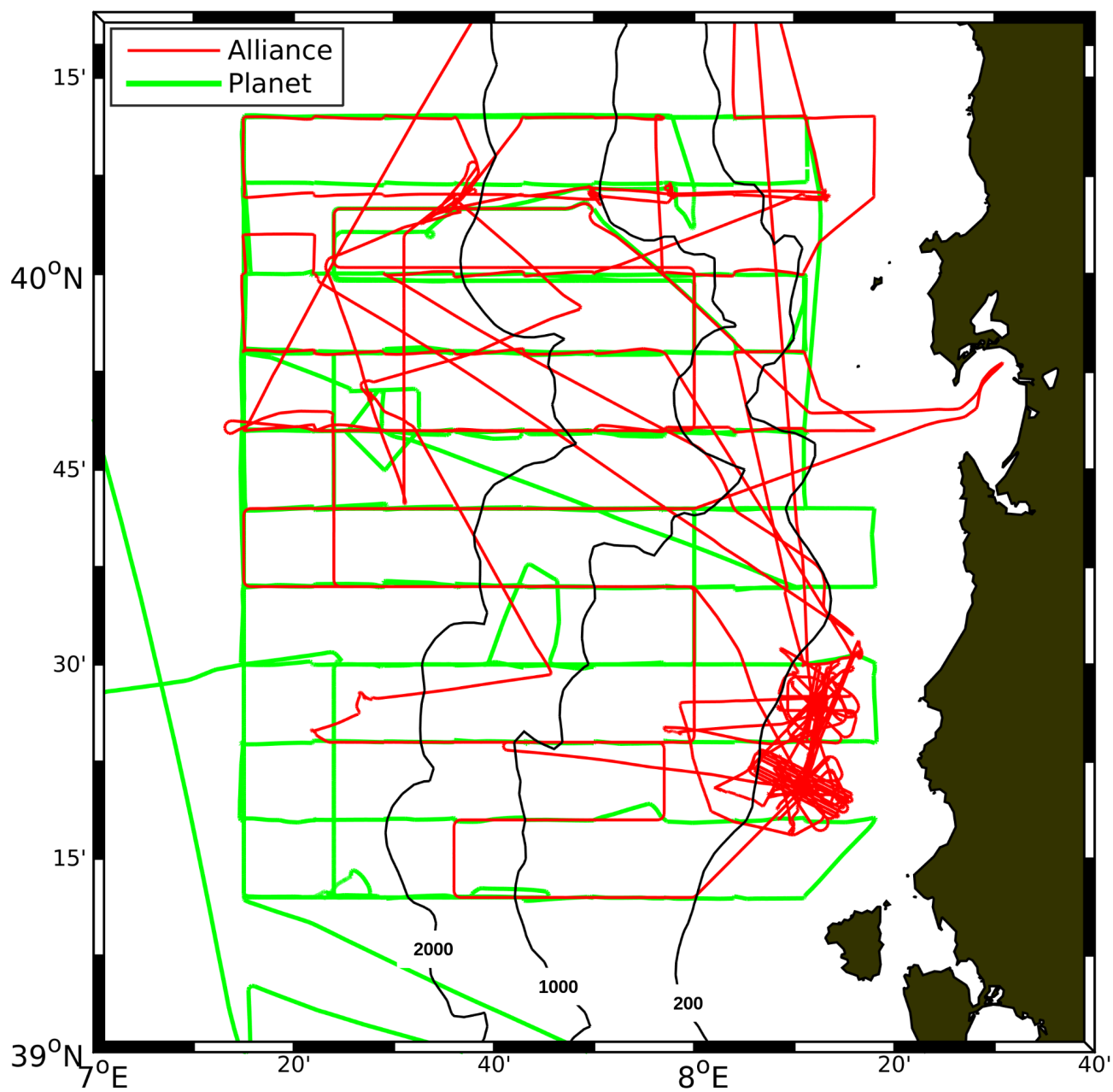


Figure 10. Ship tracks of *Alliance* and *Planet*. Black lines indicate water depth [m].