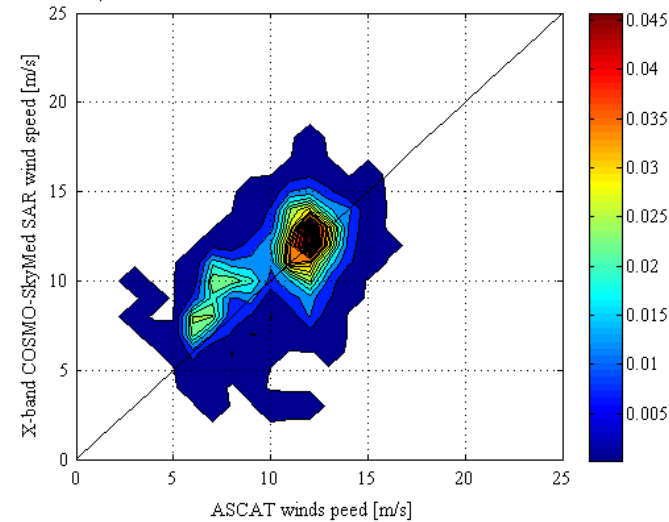
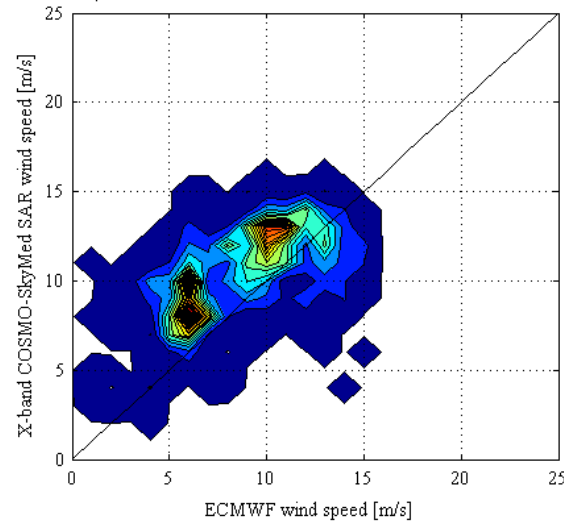


$\mu = -0.59 \text{ m/s}$ ,  $\sigma = 2.19 \text{ m/s}$ ,  $\text{RMSE} = 2.27 \text{ m/s}$



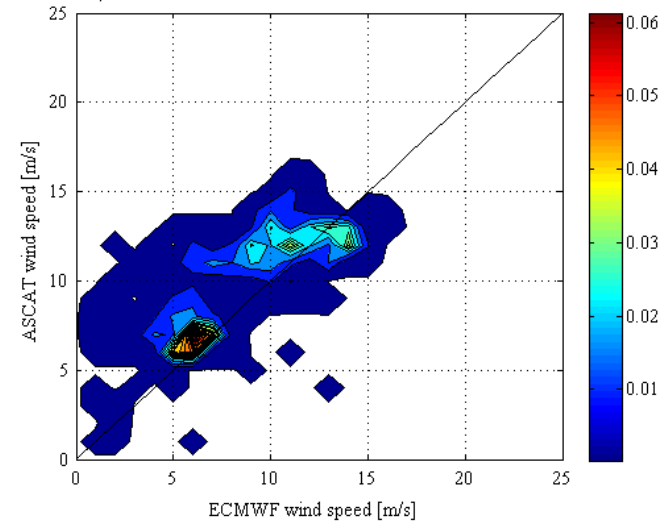
(a)

$\mu = -1.69 \text{ m/s}$ ,  $\sigma = 2.83 \text{ m/s}$ ,  $\text{RMSE} = 3.30 \text{ m/s}$



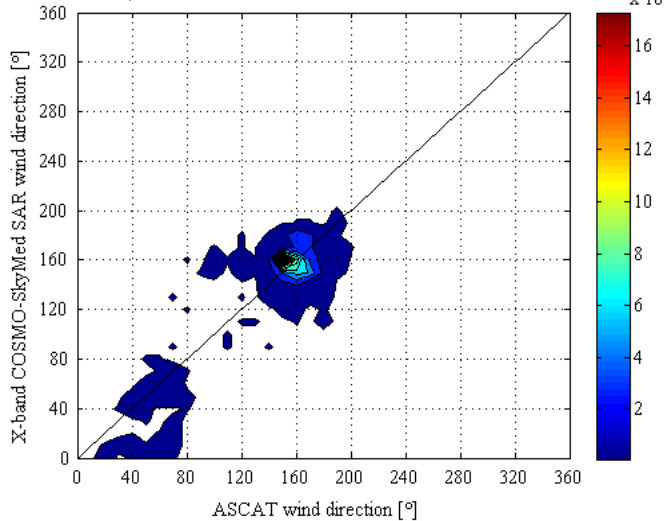
(b)

$\mu = -1.48 \text{ m/s}$ ,  $\sigma = 2.28 \text{ m/s}$ ,  $\text{RMSE} = 2.71 \text{ m/s}$



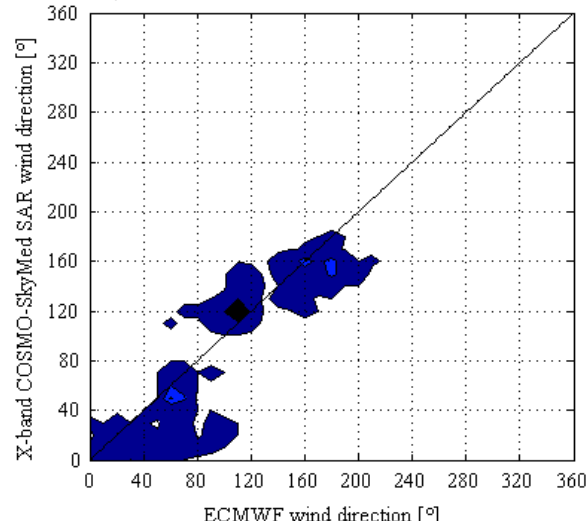
(c)

$\mu = 1.71^\circ$ ,  $\sigma = 18.88^\circ$ ,  $\text{RMSE} = 18.95^\circ$



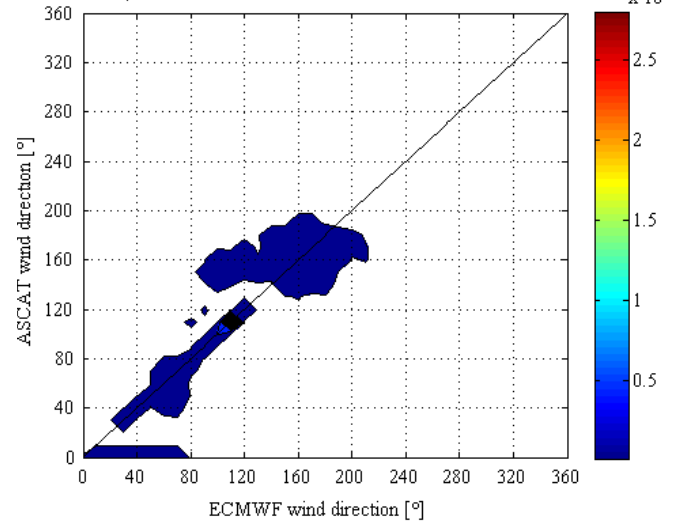
(d)

$\mu = 7.54^\circ$ ,  $\sigma = 22.63^\circ$ ,  $\text{RMSE} = 23.85^\circ$



(e)

$\mu = 4.69^\circ$ ,  $\sigma = 22.76^\circ$ ,  $\text{RMSE} = 23.24^\circ$



(f)