

pdftitle=Air-water interface gas flux pdfauthor=V. M. N. C. S. Vieira
title Manuscript prepared for Ocean Sci. Discuss.
with version 3.5 of the L^AT_EX class copernicus_discussions.cls.
Date: 27 December 2012

Numerical tools to estimate the flux of a gas across the air-water interface and assess the heterogeneity of its forcing functions

V. M. N. C. S. Vieira

CCMar—Centre of Marine Sciences, Universidade do Algarve, Campus de Gambelas,
8005–139 Faro, Portugal

Correspondence to: V. M. N. C. S. Vieira (vvieira@ualg.pt)

Abstract

abstr A numerical tool was developed for the estimation of gas fluxes across the air water interface. The primary objective is to use it to estimate CO₂ fluxes. Nevertheless application to other gases is easily accomplished by changing the values of the parameters related to the physical properties of the gases. A user friendly software was developed allowing to build upon a standard kernel a custom made gas flux model with the preferred parametrizations. These include single or double layer models; several numerical schemes for the effects of wind in the air-side and water-side transfer velocities; the effect of turbulence from current drag with the bottom; and the effects on solubility of water temperature, salinity, air temperature and pressure. It was also developed an analysis which decomposes the difference between the fluxes in a reference situation and in alternative situations into its several forcing functions. This analysis relies on the Taylor expansion of the gas flux model, requiring the numerical estimation of partial derivatives by a multivariate version of the collocation polynomial. Both the flux model and the difference decomposition analysis were tested with data taken from surveys done in the lagoony system of Ria Formosa, south Portugal, in which the CO₂ fluxes were estimated using the IRGA and floating chamber method whereas the CO₂ concentrations were estimated using the IRGA and degasification chamber. Observations and estimations show a remarkable fit.

1 Introduction

intro

The appropriate algorithms for the estimation of gas fluxes across the air-water interface have been the subject of great concern by the scientific community. One of its most notorious applications is in studies about the CO₂ exchange between the atmosphere and the global oceans (Takahashi et al., 2002, 2009) coastal oceans (Frankignoulle, 1988; Frankignoulle and Borges, 2001; Sweeney, 2003; Vandemark et al., 2011), estuaries (Carini et al., 1996; Raymond et al., 2000; Hunt et al., 2011; Oliveira, 2011, 2012), rivers (Cole and Caraco, 2001), lagoons

(Thomaz et al., 2001) and lakes (Cole and Caraco, 1998; Koné et al., 2009; Sahlée et al., 2011). The marine and aquatic environments may work as either net sinks or net sources of CO₂ for the atmosphere. Nevertheless, this shows a great spatial and temporal variability (Smith and Hollibaugh, 1993; Duarte and Prairie, 2005; Borges, 2005; Borges et al., 2005). The flux of CO₂ across the air-water interface is fundamental to estimate the carbon budget of marine and aquatic ecosystems and classify them as either autotrophic, upon net CO₂ consumption by primary producers, or heterotrophic, upon net CO₂ production by bacterial degradation of organic carbon. Coastal oceans and riverine systems are believed to be globally heterotrophic, remineralizing organic carbon imported from terrestrial ecosystems (Smith and Hollibaugh, 1993; Cole and Caraco, 2001; Duarte and Prairie, 2005; Borges et al., 2005). Although occupying a small fraction of the global ocean the coastal oceans are major sources of CO₂ to the atmosphere, presenting an average CO₂ flux per unit area about 5 times higher than the open ocean (Smith and Hollibaugh, 1993). The flux of a gas across the air-water interface has also been studied for the cases of volatile pollutants, such as organochlorine pesticides, hydrocarbons and heavy metals. These are often imported from industrial and agricultural catchment areas through river basins to the coastal waters of highly populated coastal areas where they may be released to the atmosphere.

There are many physical, chemical and even biological aspects mediating the fluxes of gases across the air-water interface. There is also an extensive literature covering the majority of these aspects. However, very few attempts were made to try and integrate several of these factors, particularly when it involves combining distinct fields of knowledge as chemistry, physical oceanography, meteorology and numerical modelling. Therefore, the first objective of the current work was to develop a numerical tool that provides an accurate estimate of the flux of a gas across the air-water interface. Focus was kept on CO₂. For studies of other gases it is required substituting the adequate parameters in the model. This numerical tool was based on that of Johnson (2010) but underwent several upgrades: (i) it is possible to choose between single or double layer models; (ii) new numerical schemes for the effect of wind in the water-phase transfer velocity by Mackay and Yeun (1983), Carini et al. (1996), Raymond and Cole (2001), Zhao et al. (2003) and Borges et al. (2004b) where introduced; (iii) the effect of sea surface agitation

in the water-phase transfer velocity was added; (v) the effect of atmospheric stability in both the air-side and water-side transfer velocities was added; and (iv) the effect in the water-phase transfer velocity of turbulence due to current drag with the bottom following O'Connor and Dobbins (1958) was added. This latter may play a fundamental role in regulating the gas transfer velocity in macro and mesotidal estuarine and lagoony systems. The second objective of this work was to develop a numerical method that allows decomposing a difference in the gas fluxes between two distinct situations into the effects of their differences in the environmental variables. This enables the identification of the variables responsible by differences in fluxes between two situations. The current work is intended to set the grounds for further research. This shall consist on including more environmental processes, improve the algorithms of the currently included ones, submit the tools to a wide range of environmental conditions and to conjugate them with numerical modelling labs such as MOHID (www.MOHID.com), ECO lab (www.dhisoftware.com) or WASP (www.epa.gov/athens/research/wasp.html).

2 State of the art

The flux ($\text{mol m}^{-2} \text{s}^{-1}$) of a gas across the air-water interface is usually estimated as $F = k(C_a/k_H - C_w)$, where k (m s^{-1}) is the transfer velocity which often has incorporated the chemical enhancement factor α (scalar), C_a and C_w (mol m^{-3}) are the CO_2 concentrations in the air and water, respectively, and k_H (scalar) is the Henry's constant in its C_a/C_w form. Here, a positive F represents a flux from the air to the water. The gas flux is frequently estimated by the alternative formulation $F = k\alpha\Delta p\text{CO}_2$, where the CO_2 concentration in the air is given in its partial pressure and the CO_2 concentration in the water is given in its expected air partial pressure would it be at equilibrium with the water and α is Bunsen's gas solubility coefficient, equivalent to Henry's constant (k_H) in its C_w/P_a form. Sander (1999) and Johnson (2010) proposed algorithms to estimate the Henry's constant and convert it into its several forms. In order to estimate the effects of water temperature, salinity, air temperature and pressure on solubility/volatility these formulations consider the physical and molecular properties of the air, gas, water and its solvents.

The k term represents the transfer velocity (also known as *piston velocity*) of the gas

molecules across the air-water interface. In still air and still water conditions this movement of molecules across the thin layer is due to diffusive transport and thus constrained by the environmental variables that regulate diffusivity. However, when at least one of the phases is not still, turbulence at the interface becomes the main factor regulating the gas transport. The simpler models for the estimation of the transfer velocity consider a single thin layer (Carini et al., 1996; Raymond and Cole, 2001; Borges et al., 2004b; Zappa et al., 2007) across which the transfer velocity equals the water-phase transfer velocity ($k = k_w$). Full explanation of all the algorithms for the k_w estimates would be too extensive and beyond the scope of the current work. In this work, focus is kept in the fundamental physical aspects and the methods to simulate them. A provisional turbulence driven water transfer velocity ($k_w^\#$) is usually estimated as a function of the wind speed (u_{10}) at 10 meters height or alternatively, of the air-side friction velocity (u_*) at the air-water interface (Mackay and Yeun, 1983; Zhao et al., 2003). Most often, these are first to second degree polynomials. A constant with the value of 10^{-3} is sometimes added to the $k_w^\#$ representing the transfer velocity in still conditions, i.e. the transfer velocity due to diffusivity when wind speed is zero. There are more physical phenomena that affect the water-side transfer velocity and for which have been proposed algorithms to simulate them. Such are the cases of the formation of bubbles with high wind speeds and breaking waves (Memery and Merlivat, 1985; Woolf, 1997, 2005; Zhao et al., 2003; Duan and Martin, 2007), wave field (Taylor and Yelland, 2001; Oost et al., 2002; Fairall et al., 2003; Hwang, 2005; Zhao and Xie, 2010), rain (Ho et al., 2004; Zappa et al., 2009; Turk et al., 2010), surfactants (Frew et al., 2004) and the variability of the wind velocity over longer time intervals (Wanninkhof, 1992). The parametrization by Fairall et al. (2000) attempts to congregate the fundamental environmental factors over the open ocean.

The provisional water transfer velocity (k_w^{wind}) is estimated for fresh water at 20 °C and rectified to the final water transfer velocity (k_w) at actual temperature and salinity multiplying it by the chemical enhancement factor (α). This factor is usually taken as $(Sc_w/600)^{-0.5}$

$$k_w = (k_w^{wind} + k_w^{current}) \cdot \left(\frac{600}{Sc_w} \right)^{0.5} \quad (1)$$

where Sc_w is the Schmidt number of water estimated for the actual temperature and salinity,

600 is usually accepted as the Schmidt number for fresh water at 20 °C and distinct exponents have been proposed, particularly when related to sea surface agitation or the presence of surfactants. The Schmidt number at actual water temperature and salinity may be given by algorithms of a statistic nature (Carini et al., 1996; Raymond and Cole, 2001; Borges et al., 2004b). These are polynomials that best fitted observations. Alternatively, Johnson (2010) proposed a mechanistic numerical scheme that accounts for the effects of temperature and salinity considering several the physical properties of pure water, its solutes, and the diffusing gas. In such case the mass diffusivity in the water may be estimated by the algorithms proposed by Hayduk and Laudie (1974), Hayduk and Minhas (1982) and Wilke and Chang (1955). Borges et al. (2004b) proposed adding to the wind driven turbulence the turbulence due to the water current and its drag with the bottom ($k_w^{current}$) as this may be an important source of turbulence in coastal waters. Its algorithm is given by O'Connor and Dobbins (1958). Woolf (2005) further proposed splitting the k_w^{wind} term into a term for sea surface agitation plus a term for whitecap (i.e. bubble formation from breaking waves).

Equation (1) is one of the most used formulations for the water-side transfer velocity. It was the adopted in this work and thus was presented with detail. There are nevertheless other two widely used formulations. The Bulk model was implemented in the COARE algorithm (Fairall et al., 1996; Grachev and Fairall, 1997; Fairall et al., 2003) to estimate the fluxes of heat, humidity and gases across the air-water interface, forced by wind, atmospheric stability and sea-surface agitation, and associated to the eddy-covariance field methodology. Surface renewal theory and micro-scale wave breaking congregate a vast body of literature, developed by B. Jähne, E. J. Bock, and associates at the University of Heidelberg and C. J. Zappa, N. M. Frew, W. R. McGillis and associates at the Woods Hole Oceanographic Institution, devoted to the estimation of the transfer velocities of gases, heat and humidity sustained on a common numerical scheme. The work by Frew et al. (2004) relying on such scheme bonds the effects of the main related environmental factors.

A slightly more complex model, the thin film model (Liss and Slater, 1974; Johnson, 2010), also called the two-resistance model (Mackay and Yeun, 1983), considers along the air-water interface both the water-phase and the air-phase thin layers. The final transfer velocity is the

weighted harmonic mean of the air-side and water-side transfer velocities, k_a and k_w respectively. Depending on whether the flux is being estimated from the air-side or the water-side point of view, the transfer velocity scheme weights the opposite phase transfer velocity by the Henry's constant. In the formulation above the flux (F) is estimated from the water point of view and thus the transfer velocity (k) is estimated as in Eq. (2).

$$k = \left(\frac{1}{k_w} + \frac{1}{k_H \cdot k_a} \right)^{-1} \quad (2)$$

To compute the flux from the air point of view ($F = k(C_a - k_H \cdot C_w)$) the transfer velocity must also be estimated from the air point of view Eq. (3). Despite the different transfer velocities the fluxes yielded by both methods are equal.

$$k = \left(\frac{k_H}{k_w} + \frac{1}{k_a} \right)^{-1} \quad (3)$$

In this *thin film* model the water-phase transfer velocity (k_w) is estimated likewise the transfer velocity in the single thin layer model Eq. (1) whereas the air-phase transfer velocity (k_a) needs a different formulation. The k_a is mainly driven by the wind velocity. Therefore, Duce et al. (1991), Liss (1973) and Shahin et al. (2002) estimate k_a directly from u_{10} whereas Mackay and Yeun (1983), Zhao et al. (2003) and Johnson (2010) estimate it from the friction velocity (u_*). The simplest way to get to u_* from u_{10} is through the drag coefficient: $CD = (u_*/u_{10N})^2$, where N stands for neutral atmospheric stability conditions. The simplest formulation is by Duce et al. (1991) proposing a fixed value drag coefficient, which has been proved to be unrealistic. A variable drag coefficient dependent on u_{10} was estimated from field surveys (Smith, 1980), wind tunnel experiments (Mackay and Yeun, 1983) and deep water wind seas (Taylor and Yelland, 2001). Sethuraman and Raynor (1975) proposed drag coefficients dependent on the surface roughness and estimated by the Reynolds number, or dependent on the atmospheric stability and estimated by the Richardson number. Air temperature and pressure may also affect the air transfer velocity. Therefore, Mackay and Yeun (1983), Shahin et al. (2002) and Johnson (2010) propose air transfer velocity equations that include temperature and/or pressure dependent terms of the air diffusivity (D_a) and/or the Schmidt number of air (Sc_a).

3 Methods

3.1 The gas flux model

The current work provided a numerical scheme for the estimation of the flux of a gas through the air-water interface, a Matlab® based free open source software package to implement it and a tutorial for the software; available as online supplementary material *InterfaceGasFlux 1.2.zip*. Model implementation followed the section above. It could be either as single layer or double layer (*thin film*) and the transfer velocity estimates relied on eq. (1). A thorough explanation on the available optionals is presented in the software tutorial. Several of the k_w and k_a algorithms relied on the friction velocity, which could be estimated from u_{10} using the CD. The most comprehensive model implementation included the effects of sea-surface roughness and atmospheric stability on the turbulence driven transfer velocities.

Surface roughness is dependent on the wave field and therefore, on the wind intensity and on the distance it has been acting upon the water surface (i.e. the fetch) generating a shear stress. The formulation proposed followed the same rationale as the AERMOD, developed by the Environmental Protection Agency (EPA). The basic principle was to adapt the log-wind profile equation solving for friction velocity as a function of wind speed and roughness length. Then, apply this estimate to the available friction velocity based formulations of air-side and water-side transfer velocities, k_a and k_w respectively. Still, atmospheric stability may also play an important role in the relation of wind speed with friction velocity. Thus, a more accurate formulation is the log-linear wind profile Eq. (4) named so because it incorporates a logarithmic term for roughness length and a linear term for atmosphere stability.

$$u_z - u_s = \left(\frac{u_*}{k}\right) \cdot \left(\ln\left(\frac{z}{z_0}\right) + \psi_u(z, z_0, L)\right) \quad (4)$$

Here, u_z (m s^{-1}) is the wind velocity at height z (m), u_s (m s^{-1}) is the collinear component of the water current velocity at the sea surface, k is the von Kármán constant (usually 0.4) and z_0 (m) is the roughness length. To avoid confusion it must be noted that z is height in meteorology whereas is depth in oceanography and that von Kármán constant (k) should not be confounded

with the transfer velocity (k). The linear term is the atmospheric stability function ψ_u , also called ψ_m as it is the vertical transfer of momentum being addressed. There are also ψ_h and ψ_q for the vertical transfers of heat and humidity. It is the integrated non-dimensional gradient given by

$$\psi_u(z, z_0, L) = \beta \frac{z - z_0}{L} \quad (5)$$

for atmospheric stable conditions whereas for unstable conditions are proposed several different algorithms, all much more complex (Businger et al., 1971; Dyer, 1974; Stull, 1988; Lee, 1997). The β is a constant usually between 4.5 and 5 and L (m) is the Monin-Obukhov length given by

$$L = -u_*^3 c_p \rho \Theta (k \cdot g \cdot H)^{-1} \quad (6)$$

where u_* is the friction velocity (m s^{-1}), ρ is the air density (g m^{-3}), Θ is the potential temperature of air (K), c_p is the specific heat of air ($\text{J g}^{-1} \text{K}^{-1}$), H is the vertical heat flux ($\text{J m}^{-2} \text{s}^{-1}$) assumed positive upwards and g is the gravitational acceleration (m s^{-2}). Given the absence of data about the vertical heat flux L was estimated from the bulk Richardson number following two different formulations by Stull (1988) and Lee (1997). This required data at two different heights. It was arbitrarily chosen that at $z=10$ air temperature equalled T_a whereas at $z=0$ air temperature equalled the temperature of the sea surface. However, the 'cool skin' and 'warm layer' formulations were not implemented. Air pressure was always P and relative humidity was 0.7 at $z=10$ and 1 at $z=0$, following Lange et al. (2004). Potential and virtual temperatures were estimated according to Stull (1988). The log-linear wind profile Eq. (4) was solved for the friction velocity

$$u_* = \frac{(u_z - u_s)k}{\ln(z) - \ln(z_0) + \psi_u(z, z_0, L)} \quad (7)$$

It was also implemented an alternative formulation by Sethuraman and Raynor (1975) estimating the drag coefficient as a linear function of the difference between air and water temperatures. However, it was of limited use as (i) it is only valid for $-3^\circ\text{C} \leq \Delta T \leq 3.7^\circ\text{C}$ and (ii) it can not be conjugated with roughness length formulations.

The field estimates of roughness length were done according to Taylor and Yelland (2001) formulation, $z_0/H_s = A(H_s/\Omega L_p)^B$, where H_s (m) is the significant wave height, L_p (m) is the wave length of waves at the peak wave spectrum, Ω is a scaling constant presently introduced, $A = 1200$ and $B = 4.5$. This parameterization predicts the drag coefficient (and thus also the friction velocity and roughness length) increases with increasing fetch and wind duration. Other parameterizations by Donelan (1982, 1990), Smith et al. (1992), Oost et al. (2002) and Fairall et al. (2003) estimate the wave age based on peak wave speed and friction velocity. These were not tested as their requirement for a friction velocity input would return a circular function.

3.2 Field estimates and units conversions

The wave field data was collected by Instituto Hidrográfico's buoy located 6.1 km off shore from Ria Formosa and over 93 m depth. Boat trips were performed inside Ria Formosa and at the nearby coastal ocean to collect the remaining data. An excel worksheet with the data is provided together with the software in the online supplementary material *InterfaceGasFlux 1.2.zip*. This worksheet is proposed as the protocol for the required data.

The gas concentrations are commonly estimated from the field in either mol m^{-3} or ppm units. In the current work was used data with the IRGA and floating chamber sampling procedure, yielding the gas concentrations in ppm. The software accepted gas concentrations in either form and converted these into mol m^{-3} to estimate the fluxes. There were two distinct types of conversions: (i) the [gas] in the air converted between ppm and mol m^{-3} using the ideal gas law, and (ii) the [gas] in the water converted between mol m^{-3} and its equivalent air ppm at equilibrium, using Henry's constants. The details on these conversions are provided on Supplement A, together with the protocol for the estimation of the flux from the floating chamber data. Preliminary tests with the model yielded a flux even when the CO_2 concentrations (both given in ppm) in the water and in the air were in equilibrium. It enlightened the need for careful, accurate conversion between the distinct forms of the Henry's constants. The k_{Hpc} is the Henry's constant for water at 25°C and 0 ppt salinity given in its P_a/C_w form. It has a value of 29.4118. The k_{H} is the Henry's constant for a given temperature and salinity in its C_a/C_w form. Johnson (2010) presents an algorithm to estimate k_{H} from k_{Hpc} . This algorithm is represented in the first

line of the braced expression in Eq. (8). The $f(T)$ and $f(S)$ represent the functions that resolve for the given temperature and salinity respectively, $T_{K,w}$ is water temperature in Kelvin and α_H is a constant with the value of 12.2. This constant is given by Sander (1999) in an algorithm to estimate k_{Hcp} from k_H (in the second line of the braced expression in equation 8) were $T_{K,a}$ is air temperature in Kelvin. The k_{Hcp} is needed to convert the equilibrium CO_2 concentration in the water from ppm to $mol\ m^{-3}$ at the given environmental conditions (Eq. A5). However, it is fundamental that the k_{Hcp} estimation for those environmental conditions follow the same algorithm previously used for the k_H estimation for the same environmental conditions Eq. (8). Furthermore, it is also essential to note that the temperature in Sander (1999) expression is relative to air. This is not explicit in the original article and one may easily be misled assuming it is water temperature because this is the main control of solubility. However, its effect was already accounted for in the k_H estimation from k_{Hpc} . This is demonstrated by developing the flux equation to $C_a/(C_w \cdot k_H) = 1$. If both CO_2 concentrations are given in ppm and their conversions are introduced into this equation, knowing that $P_{(atm)} = 101325.01\ Pa$, Eq. (9) is obtained; but only if the temperature in Sander (1999) expression is air temperature. Otherwise, the equation only applies when air and water temperatures are equal. Equation (9) was also used to accurately determine α_H as 12.1866.

$$\left\{ \begin{array}{l} k_H = \frac{\alpha_H \cdot k_{Hpc} \cdot f(S)}{T_{K,w} \cdot f(T)} \\ k_{Hcp} = \frac{\alpha_H}{T_{K,a} \cdot k_H} \end{array} \right. \Rightarrow k_{Hcp} = \frac{T_{K,w} \cdot f(T)}{T_{K,a} \cdot k_{Hpc} \cdot f(S)} \quad (8)$$

$$\frac{C_a}{C_w k_H} = 1 \Rightarrow \frac{101325.01}{10^3 \cdot R \cdot \alpha_H} = 1 \quad (9)$$

3.3 Decomposition of the Difference in the gas Fluxes (DDF)

For some studies it may be useful to compare a particular case of a gas flux with that of a reference situation, identifying and ranking the causes for the difference. The environmental conditions of the reference situation were recorded in a column vector x_a and its CO_2 flux was estimated by the numerical model above as f_a . The environmental conditions of the particular

case were recorded in a column vector x_b and its CO₂ flux was estimated by the numerical model as f_b . The difference between the environmental conditions of the particular case and of the reference situation (Δx) was given in the column vector h Eq. (10). It was chosen to separate atmospheric stability from the remaining effects of air and water temperatures (the software allows doing so). Therefore, the column vectors were arranged as $x_1 = C_{\text{air}}$, $x_2 = T_{\text{air}}$, $x_3 = P$, $x_4 = u_{10}$, $x_5 = z_0$, $x_6 = \psi_u$, $x_7 = C_w$, $x_8 = T_w$, $x_9 = S$, $x_{10} = w$ and $x_{11} = z_w$. It is important to note subscript a presently stands for the reference situation and not for air.

$$h = \begin{bmatrix} h_1 \\ \dots \\ h_i \end{bmatrix} = \begin{bmatrix} x_1 \\ \dots \\ x_i \end{bmatrix}_b - \begin{bmatrix} x_1 \\ \dots \\ x_i \end{bmatrix}_a \quad (10)$$

The difference in the CO₂ flux was given by $f_b - f_a$. It was decomposed into its multiple parcels, each attributable to the difference in a particular environmental variable or interactions between variables. This decomposition was possible developing the Taylor expansion of the gas flux model:

$$f_b - f_a = \sum_{n=0}^{\Theta} \frac{1}{n!} \left[\left(h_1 \frac{\partial}{\partial x_1} + h_2 \frac{\partial}{\partial x_2} + \dots + h_i \frac{\partial}{\partial x_i} \right)^n \cdot f_k \right] - f_a \quad (11)$$

There were two sources of error here. One was the difference between observed (f_{obs}) and estimated (f_{est}) fluxes. This was only addressed by the gas flux numerical model and not by the DDF. The other was the difference between the estimated left-hand side and the estimated right-hand side of Eq. 11. This was the remainder of the Taylor expansion tending to zero as Θ tends to ∞ . The integer Θ stated the highest order terms used, usually high enough for the remainder to be close to zero. However, as there were many independent variables the number of higher order terms was too big and its estimation computationally too heavy. Therefore, the software enabled to automatically adjust this decomposition for a specified number of independent variables, each with its own Θ_i order terms Eq. (12). Each term of the Taylor expansion was located in a specified entry of a data array (named *TaylorArray*) with i dimensions Eq. (13). In this case it was a hyper-volume with 11 dimensions. The coordinate of each term in each dimension was

given by the respective rank of its partial derivative. This procedure enabled a variable-wise sorting out of insignificant terms, optimizing computational effort. The multivariate form of the Taylor expansion has each term preceded by a coefficient given by the multinomial in Eq. (14). However, the numerator in Eq. (14) cancels out with the denominator from the middle quotient in Eq. (13), thus simplifying the calculus Eq. (15). Subtracting f_a was done setting the first entry in *TaylorArray* to zero.

$$f_b - f_a = \sum_{n_1=1}^{\Theta_1+1} \sum_{n_2=1}^{\Theta_2+1} \dots \sum_{n_{11}=1}^{\Theta_{11}+1} (TaylorArray_{n_1, n_2, \dots, n_{11}}) - f_a \quad (12)$$

$$TaylorArray_{n_1, n_2, \dots, n_{11}} = \binom{\sum n_i}{n_1, n_2, \dots, n_{11}} \frac{\prod h_i^{n_i}}{(\sum n_i)!} \frac{\partial^{\sum n_i} f_{k_1, k_2, \dots, k_{11}}}{\partial^{n_1} x_1 \partial^{n_2} x_2 \dots \partial^{n_{11}} x_{11}} \quad (13)$$

$$\binom{\sum n_i}{n_1, n_2, \dots, n_{11}} = \frac{(\sum n_i)!}{\prod (n_i!)} \quad (14)$$

$$TaylorArray_{n_1, n_2, \dots, n_{11}} = \prod_{i=1}^{11} \left(\frac{h_i^{n_i}}{n_i!} \right) \frac{\partial^{\sum n_i} f_{k_1, k_2, \dots, k_{11}}}{\partial^{n_1} x_1 \partial^{n_2} x_2 \dots \partial^{n_{11}} x_{11}} \quad (15)$$

The partial derivatives were estimated numerically at point k located within the interval between x_a and x_b . While the detailed explanation on the procedure is available in Supplement B, here only a brief overview is presented. The gas flux function was approximated by a collocation polynomial in its turn estimated by a multivariate adaptation of Newton's finite difference formula. The collocation polynomial was partially derived to each of the dimensions. The output was a numerical estimate of the partial derivatives of the collocation polynomial that fitted with accuracy the partial derivatives of the gas flux function for any particular point in the hyper-volume of independent variables.

Ideally, the whole gas flux difference was partitioned between the independent variables and not between combinations of these variables. To achieve this, each multivariate term of the Taylor expansion was itself evenly partitioned among the independent variables contributing to

it. The remainder was estimated subtracting the sum of the estimated terms to the actual gas flux difference given by $f_b - f_a$. It allowed tracking the accuracy of the results, which was one of the criteria used for model optimization. The other was the computational time required to perform the calculus. The model optimization was tested for each dimension at a time and included three features:

1. The order of the partial derivative (Θ_i) worth evaluating. This is illustrated with the simpler situation: if the effect of a variable (x_i) in the gas flux was simulated by a second degree polynomial, it was not worth the inclusion on the i^{th} dimension of the Taylor expansion of the terms with orders (Θ_i) higher than 2 as these did not increase the accuracy of the estimates whereas they did increase significantly the computational effort. Having all the Θ_i set, it was only included in the Taylor expansion the multivariate terms with the crossed partial derivatives with orders up to $\Theta_1, \Theta_2, \dots$ and Θ_{11} .
2. The number of steps ahead (n_i) worth taking in Newton's finite difference formula for the collocation polynomial in order to accurately estimate the partial derivative of order Θ_i . In the example above, one step ahead is not enough to accurately estimate a second order derivative but only a first order. Two steps ahead are enough to estimate the second order derivative. More than two steps ahead may (or not) increase the accuracy of the estimates of second order derivatives. Having all the n_i set, for the estimation of the crossed partial derivatives with orders up to $\Theta_1, \Theta_2, \dots$ and Θ_{11} were only taken n_1, n_2, \dots and n_{11} steps ahead.
3. In the process of numerically estimating derivatives, it is crucial the size of the steps taken forward or backward (the δ_i) in Newton's finite difference formula for the collocation polynomial. If these are too large or too small, with increasing order of the terms the δ_i raised to higher powers lead towards infinity or infinitesimal, which turns the error unbearable. A simple, direct answer to this problem was choosing the δ_i to always be in the vicinity of 1. However, for some variables, their increase in steps of size 1 would get them out of bounds, that is, far out of the interval given by $x_{i,a}$ and $x_{i,b}$. Thus, it was also necessary to play with the units upon which the steps were taken so that they would be

within bounds but still represented by numbers with one digit: (a) gas concentrations could be converted from mol m^{-3} into mmol m^{-3} ; (b) air pressure from atm into kilopascal (*KPa*); (c) wind speed from m s^{-1} into Km h^{-1} ; (d) roughness length from m into dm, cm, mm or 10^{-1} mm; (e) ψ_u , a scalar, into $\cdot 10$, $\cdot 100$ or $\cdot 1000$ units, (f) current speed from m s^{-1} into dm s^{-1} , cm s^{-1} , m min^{-1} , hm h^{-1} or km h^{-1} ; and (g) depth from m into dm, dam or hm.

This analysis presented a bias when the [gas] were supplied in units of ppm to a model that works with units of mass volume⁻¹ and there was a temperature and/or pressure difference between reference and alternative sites. To clearly illustrate this issue, consider a reference and alternative sites that were equal in every variable except air pressure. In this case the reference and alternative sites have equal [gas] when expressed in units of ppm but different [gas] when expressed in units of mass volume⁻¹ simply because equal amounts of gaseous mass occupy different volumes when subject to different pressures. The bias was not being considered the effect on the gas flux of this [gas] difference induced by the air pressure. Therefore, there was a part of the flux that was missing. Therefore, the numerical estimates of the partial derivatives had to be rectified: when the [gas] were given in ppm it was not automatically converted to mol m^{-3} . First, the steps further were taken in Newton's finite difference formula with the [gas] still in ppm units as these were equally well suited for that purpose. Only after each step was taken the respective ppm was converted to the mol m^{-3} that was fed to the flux model. This procedure enabled to account for the effects of air temperature and pressure variations on the conversion of the gas concentrations.

4 Results

4.1 Air-side transfer velocity

Wind was the most influential factor affecting the air-side transfer velocity. Several algorithms simulating this relation are presented in Fig. 1. All the equations about the wind effect including a term for the drag coefficient (Johnson, 2010; Mackay and Yeun, 1983) were very coherent among each other. As expected, the Duce et al. (1991) constant drag coefficient underestimated

the air transfer velocity at high wind speeds relative to the drag coefficient parameterizations by Smith (1980) and Mackay and Yeun (1983). Furthermore, this parameterization passed through the origin, meaning no CO₂ flux at still air. Other formulations presented the same problem, as was the case of the COARE formulation by Jeffrey et al. (2010). In the COARE algorithm this was solved with the addition of a gustiness term (Grachev and Fairall, 1997; Fairall et al., 2003). Presently, this was solved with the addition of a constant (10^{-3}) following Mackay and Yeun (1983) and Johnson (2010). Only the algorithm by Shahin et al. (2002) simulated perceptible effects of air temperature and pressure on k_a (not shown), but these were relatively meaningless. Some formulations use the friction velocity instead of u_{10} . This subject is explored in the 'friction velocity' section.

4.2 Water-side transfer velocity

The water diffusivity equations yielded approximate results with water temperature changing from 0 °C to 30 °C (Fig. 2a). Thus, choosing different diffusivity equations had little effect on both the Schmidt number of water (Sc_w) and the chemical enhancement factor (α) when estimated according to Johnson (2010). Other α algorithms by Borges et al. (2004b), Carini et al. (1996) and Raymond and Cole (2001) also yielded approximate results with changing temperature (Fig. 3a). The estimates of the effect of salinity in both the water diffusivity (Fig. 2b) and α (Fig. 3b) were very subtle. The Carini et al. (1996) and Raymond and Cole (2001) algorithms do not account for salinity in the α estimate. When comparing the several available algorithms for the relation of wind speed with k_w^{wind} , two groups were set aside (Fig. 4). The first group had the algorithms developed for open ocean estimates and/or strong winds. Their relations were exponential. The formulation by Mackay and Yeun (1983) was estimated in a wind tunnel with wind speeds between 5 and 22 m s⁻¹ and extrapolated for environmental conditions using the wind dependent drag coefficient scheme by Smith (1980). The second group had the algorithms developed from river and estuarine surveys in low wind regimes. The Carini et al. (1996) and Borges et al. (2004b) functions were linear. The Raymond and Cole (2001) is an exponential function estimated exclusively from wind speeds below 8 m s⁻¹. Its extrapolation to high winds was a wild guess yielding the fastest transfer velocities. Some formulations use

the friction velocity instead of u_{10} . This subject is explored in the 'friction velocity' section. Only one algorithm, by O'Connor and Dobbins (1958), was used to estimate the effect of water current and depth on the water-side transfer velocity (k_w^{current}). The transfer velocity increased non-linearly with increasing water current and decreasing depth (Fig. 5). Its magnitude was similar to the magnitude of the water transfer velocity imposed by low to moderate winds.

4.3 friction velocity

Some formulations for both the air-side and water-side transfer velocities rely on u_* rather than on u_{10} , thus allowing to account for the effects of roughness length and atmospheric stability. In Fig. 6 was simulated T_a changing from 0°C to 40°C while T_w was fixed at 15°C . It simulated atmospherically unstable conditions when $T_a < T_w$ and atmospherically stable conditions otherwise. The bulk Richardson number was negative in the former case and positive in the latter. The Stull (1988) and Lee (1997) formulations largely mismatched. However, both predict (i) values within the expected bounds, (ii) friction velocity increasing with conditions changing from stable to unstable (increased momentum transfer across the atmosphere boundary layer) and (iii) friction velocity increasing with roughness length (higher roughness lengths created more wind drag). The estimates with the Sethuraman and Raynor (1975) formulation were only plotted for ΔT within its specific bounds. In this case it corresponded to $12^\circ\text{C} \leq T_a \leq 18^\circ\text{C}$. After wind, roughness length and atmospheric stability were the next most influential factors in both the air-side and water-side transfer velocities (Fig. 7). The schemes by Mackay and Yeun (1983), were fit to wind tunnel data and thus, in the absence of long fetches (and therefore of rough surfaces) and under neutral atmospheric conditions. However, when these effects were added the transfer velocity estimates increased significantly and could even surpass the highest estimates by formulations based on oceanic data.

4.4 The Δ_{gas}

The overall influence of water temperature and salinity on the CO_2 flux was estimated with the temperature set to 17.38°C (Fig. 8). This is the water temperature at which the Henry's constant

equals 1 for a 0 ppt salinity and 1 atm air pressure. The CO_2 concentrations in mol m^{-3} in the x axis correspond to the CO_2 concentrations of 200 to 900 ppm in water at 17.38°C and 0 ppt. Water temperature and salinity had a dual effect in the CO_2 flux across the air-water interface. The changes in the y intercept were due to their effects in the solubility of CO_2 (k_H), whereas the steepness of the slopes were given by their effects in the water-side transfer velocities (Fig. 8a). The same test was done isolating the ΔCO_2 term (Fig. 8b). Water temperature and salinity only affected the y intercept of the functions due to their effects in the solubility of CO_2 . All slopes exhibited the same steepness as the transfer velocity was not included in the function. A fairly similar process occurred with the effects of air pressure.

4.5 Model application

The model was tested by comparing the CO_2 flux estimates with the CO_2 fluxes observed in Ria Formosa's main channels and at the nearby coastal ocean with the IRGA and floating chamber technique (Fig. 9). The model estimates were forced by the data on the environmental variables that were simultaneously collected. Data was not available to allow for estimates of roughness length inside Ria Formosa. Therefore, given the calm weather and smooth sea surface, these were arbitrarily given the value of $z_0 = 10^{-4}$ m (see Mackay and Yeun (1983) and Vickers and Mahrt (2006)). It tended to increase excessively the gas flux estimates on the 3rd of March and 15th of April. The stable and near neutral atmospheric conditions predicted for the April surveys did not have much effect on the gas flux predictions. On the other hand, the atmospherically unstable conditions predicted for the 3rd of March overestimated the gas flux. For the nearby coastal ocean the inclusion of sea-state and atmospheric stability was crucial for predictions to approximate the observations (in Fig. 9). Using the adapted Taylor and Yelland (2001) formulation with $A = 1200$, $B = 4.5$ and $\Omega = 1$ yielded roughness lengths around 10^{-7} m to 10^{-6} m and very poor fits (not shown). These improved significantly when an $\Omega = 0.355$, $A = 1.26$ and $B = 1.2$ where used. Changing from the Mackay and Yeun (1983) k_w^{wind} formulation to the Zhao et al. (2003) formulation turned the fit almost into a perfect match suggesting whitecap was fundamental at setting the water-side transfer velocity.

The overall transfer velocity (i.e. the harmonic mean) estimated either from the water or air

point of view (Fig. 10) was limited by the water-side transfer velocity. Their values are always approximate. On the other hand, the air-side transfer velocity was always about two orders of magnitude faster, proving it was never limiting the exchange.

The ΔCO_2 in Ria Formosa's water body showed a pattern much similar to the CO_2 flux (Fig. 11) still, with a smoother variation. Here, positive values represent depletion (forcing uptake) whereas negative values represent surplus (forcing escape) of CO_2 in the water relative to what would be expectable if it was in equilibrium with the overlying atmosphere. It was evident the heterogeneity of the Ria Formosa water body in terms of CO_2 budget. In March it was behaving autotrophically, with a depletion of CO_2 relative to the atmosphere whereas in April it showed an erratic behaviour, changing from autotrophic to heterotrophic in just a few hours.

4.6 Tuning the decomposition of the difference in the gas fluxes

The DDF analysis must be optimized before its application with the intention to minimize both the error in the estimates and its computational effort. This includes choosing for each of the tested variables (x_i) the order of the partial derivatives (Θ_i), the size (δ_i) and number (n_i) of the steps taken, and the point of estimation of the partial derivatives (k_i) in units of steps from $x_{i,a}$. Knowing the computational effort and the error in the estimates are inversely proportional it was searched for the right balance. The inference of the best options was summarized in Table 1 and figures (12) and (13). The cpu time was estimated for the n_i steps in the tested variable with $n_i = 1$ for all other variables. Not all possible model variables were tested but only the ones currently used for the CO_2 flux estimates. The water temperature was set aside in figure 12 to exhibit a graphical representation of the typical evolution of the error. For this variable, as well as others like air temperature, salinity and wind speed, the optimal choices depended on the algorithms used. This work provides many optional algorithms and it was not feasible to test them all. Only a few were tested and presented in the results. This does not mean these few were the best at estimating the CO_2 flux and should always be preferred. The optimization process also diverged whether the CO_2 concentrations were given in units of ppm or mol m^{-3} . Generally, using the mol m^{-3} units gave more accurate or equally accurate results and with less

effort, the exception being with air temperature where it was the other way around.

Fitting the gas flux to the z_0 , w and z using a multivariate collocation polynomial was only accurate if the n_i steps of size δ_i closely covered the range (Δx_i) between the reference ($x_{i,a}$) and alternative ($x_{i,b}$) situations. It was attempted to feed the z_0 , w and z to the DDF tool in several units while adjusting the size and number of steps taken so that δ_i would always be close to 1. There was no globally better solution. In the examples shown in Table 1 the best options were to give w in hm h^{-1} and taking 5 steps of size 3.6, z in dam (10 m) and taking 5 steps of size 1.29, and z_0 in mm and taking 1 step of size 8.9.

The DDF was tested estimating ψ_u from T_a and T_w and partitioning its effect among the terms belonging to both these variables. All algorithms for the estimation of ψ_u use different equations for atmospherically stable or unstable conditions. When reference and alternative situations were both stable (or both unstable) it was enough to estimate the T_w terms to the third order ($\theta_8 = 3$ and $n_8 = 3$) with $\delta_8 = 1$ and the T_a terms to the fourth order (for a 0.1% error) or to the fifth order (for a 0.05% error) with $\delta_2 = 1$. When reference and alternative situations had contrasting atmospheric conditions, the finite difference method had to cover the full range from x_a to x_b . Otherwise, the method would use only one side of the function to extrapolate to the other side (with stable and unstable side equations), introducing severe error. This was done customizing the size of the steps taken ($\delta_i = h_i/n_i$). Then, it was enough to have $n_i = 3$. Although different, there is a coherence among stable and unstable side equations and the shape of the global function (in Fig. 6) is not that much irregular. Therefore, Newton's finite difference formula passed over it easily, generating little error. The DDF was also tested estimating ψ_u from T_a and T_w for the reference and alternative situations but using it as an independent variable for the collocation polynomial and Taylor expansion. Estimating ψ_u with $\delta_6 = 1$, and to the third order term gave a 0.3% error whereas to the fourth order term gave a 0.16% error. The full range from x_a to x_b was covered. Alternatively, automatically adjusting δ_6 to cover the full range gave a 0.14% error.

It was tested for the optimal point of estimation of the partial derivatives; that is, how far away from $x_{i,a}$ could the partial derivatives be estimated (Fig. 13). This distance is k_i in the collocation polynomial and is given in units of steps taken away from $x_{i,a}$. The k_i need not be

an integer number, as it was proved by testing it from 0 to 5 at 0.2 increments. The results are presented for the *easy* variable u_{10} and three *harsh* variables T_w , w and z . The partial derivatives of the *easy* variable could be equally well estimated at any k_i within the bounds of $x_{i,a}$ and $x_{i,b}$. On the contrary, the partial derivatives of the *harsh* variables could only be well estimated at $k_i = 0$.

It was tested whether it is possible to estimate the collocation polynomial once for a hypervolume comprising all the desired samples and then estimate each sample specific set of partial derivatives required for each DDF at its specific location within the hypervolume. This would relief the software from estimating a new hypervolume for each new DDF, which is very time consuming. On the available data set it was considered $x_{i,a}$ as the minimum x_i and $x_{i,b}$ as the maximum x_i , over all samples. Then, the partial derivatives were estimated at point $x_{i,c}$ so that $\min x_i \leq x_{i,c} \leq \max x_i$, inputting k_i in units of steps of size δ_i taken from $\min x_i$ (i.e. $k_i = (x_{i,c} - \min x_i) / \delta_i$), and as long as δ_i was always customized so that $\delta_i \cdot n_i = \max x_i - \min x_i$. The $n_{10} = 5$ was important for the accuracy of the estimates of the partial derivatives related to w . The accuracy was generally remarkable (Fig. 14). Nevertheless, for the *harsh* variable of current velocity there were still a few cases for which they were very poor. This error was not due to the method being tested but rather due to the independent estimation of the partial derivatives, used for the comparison: whenever $x_{i,c}$ was too close to $\min x_i$ or $\max x_i$ it forced δ_i to be much smaller than 1, bringing severe error to these estimates.

4.7 Applying the decomposition of the difference in the gas fluxes

The decomposition of the difference between the CO₂ fluxes in the air-water interface inside Ria Formosa on 15 April 2011 for the first sample in the time series and in the nearby coastal ocean on 3 March 2011 (Fig. 15) had only a 0.04 % error relative to the CO₂ fluxes predicted by the model. This is the remainder of the Taylor expansion, i.e. the error specific to the DDF method. Still, it is known the flux predicted for the 3 March was underestimated by about 2.5 mmol m⁻² d⁻¹. Therefore, at least for a few variables their correct terms should be larger than the ones presented. The CO₂ flux was positive in the coastal ocean, meaning CO₂ uptake, whereas it was negative inside Ria Formosa, meaning CO₂ escape from the water to the atmo-

sphere. As the coastal ocean was the reference situation (f_a), and Ria Formosa the alternative situation (f_b) the difference ($f_b - f_a$) was negative. The biggest contributor to this difference was the CO_2 concentration in the water (C_w) as the coastal ocean was behaving autotrophically on the 3 March and Ria Formosa was behaving heterotrophically on the 15 April, at least at that section and between 11:00 h and 13:00 h. A smaller CO_2 concentration in the air (C_a) over Ria Formosa also gave a significant contribution to the CO_2 flux difference. The effect of atmospheric stability/instability was estimated aside from those of air (T_a) and water (T_w) temperatures. Then, the remaining effects of temperatures, salinity (S) and air pressure (P) had only slight influence on the flux difference. The wind velocity (u_{10}) had a small negative term because it was slightly windier on the 15 April (4.5 m s^{-1}) than on the 3 March (3 m s^{-1}). Nevertheless, the coastal ocean surface was much rougher (z_0) than the water surface at the lagoony system, generating more drag, a much higher k_w^{wind} and thus the large z_0 positive term. Also, the general wind transferred more momentum (relatively) to the air in contact with the coastal ocean surface given the atmospherically unstable conditions verified on the 3 March 2011 than to the air in contact with the Ria Formosa water surface given the atmospherically stable conditions verified on the 15 April 2011. Thus, the positive term for ψ_u . It was assumed the misfit between the observed and predicted CO_2 fluxes at the coastal ocean was due to the underestimation of z_0 (due to uncertainty in the parameters) and/or ψ_u (by neglecting *cool skin* and *warm layer* effects). Therefore, it was expected the correct DDF terms for these variables to be larger. These positive terms discount from the overall negative sum meaning that if the Ria Formosa on the 15 April had its water surface as rough and the overlying atmosphere as unstable as the coastal ocean had on the 3 March, the CO_2 flux difference would be even higher as there would be more transfer velocity and thus more CO_2 being transferred to the air over Ria Formosa. Nevertheless, inside the lagoony system the turbulence from below, that is from current drag with the bottom, compensated for the lesser turbulence from above, as it is shown by the negative terms relative to current velocity (w) and depth (z).

5 Discussion

5.1 Model implementation

The application of the present model to estimate the CO₂ flux across the air-water interface showed the overall transfer velocity to be limited by the water-side transfer velocity. This is the expected for sparingly soluble gases such as CO₂ (Upstill-Goddard, 2006; Johnson, 2010). In this case the inclusion or not of the air-side transfer velocity and the choice of its formulation were irrelevant. The fundamental aspect was the water-side transfer velocity and the algorithms chosen to simulate it. On the contrary, for gases that are very soluble or react with water the air-side transfer velocity is expected to be the limiting factor (Upstill-Goddard, 2006). In these cases the inclusion of the air-side transfer velocity should be crucial to accurately simulate the gas fluxes. Sander (1999) provides an extensive list of gases and their solubility in water. The estimation of the overall transfer velocity by the harmonic mean of the air-side and water-side transfer velocities weighted by the gas solubility proved to be an effective way to simulate this dynamics.

Many different algorithms are available on the literature to estimate the water-side transfer velocities. The simpler ones are empirical formulations relating to the effect of a single factor as wind, whitecap or current. Allowing for a variable drag coefficient dependent on wind speed, sea-surface agitation and other physical properties of the atmosphere and ocean (Sethuraman and Raynor, 1975; Smith, 1980; Mackay and Yeun, 1983; Smith et al., 1992; Taylor and Yelland, 2001) increases substantially the model accuracy. It is equally important to consider the advective components of k_a and k_w tend asymptotically to zero as the atmosphere changes to still air and the sea changes to still or deep water, the diffusive transport becoming the dominant feature. Therefore, any model parametrization meant to be applied to coastal studies and inland waters, where low wind is frequent, should account for the diffusive component of k_a and k_w and hence force them to stabilize in accurate values as turbulence decreases. However, most of the available formulations either neglect the diffusive transport or show great discordance about their related transfer velocities, revealing the lack of care this subject has been devoted.

Wind based algorithms developed from open ocean data are usually second or higher order

polynomials that increase the transfer velocity enormously with wind speed. Still, there is great variability within this set of algorithms. The wind based algorithms developed for coastal systems by Carini et al. (1996) and Borges et al. (2004b) are linear functions that underestimate the transfer velocities at high wind speeds relative to the open ocean formulations. Regarding this matter, three points should be taken into consideration: (i) at higher wind speeds the open ocean formulations are still interpolating whereas the coastal system formulations are extrapolating, (ii) at wind speeds as high as 30ms^{-1} even the open ocean formulations are extrapolating, (iii) fetch is a fundamental aspect not taken into consideration in any of these formulations and exhibits its widest change precisely when compared between coastal systems and open ocean. Raymond and Cole (2001) fit an exponential function to data from estuaries collected at low winds. Extrapolation to high winds yielded transfer velocities outstandingly higher than any other, even for open ocean. This is probably the best demonstration that the application of many transfer velocity algorithms should be restricted to the specified environmental conditions upon which they were developed.

Slightly more elaborated algorithms integrate the effects of a few factors, allowing for an increase in their applicability and accuracy. However, most of these are still empirical relations constrained to the environmental range upon which they were tested. Considering the broad applicability to the coastal ocean, rivers, estuaries and lagoony systems it is relevant that only the numerical schemes by Borges et al. (2004b) and Johnson (2010) comprise the effect of salinity changes and only the one by Borges et al. (2004b) import the effects of current drag from previous authors. A few numerical schemes have gone further with more mechanistic approaches to the environmental processes they are representing. This allows for a significant increase in their applicable environmental range and possible interaction with complementary formulations. It is the particular case of Memery and Merlivat (1985), Johnson (2010), the COARE algorithm and the vast body of literature related to the surface renewal theory and micro-scale wave breaking.

The present numerical scheme tries to incorporate all these options and develop a software able to estimate the gas flux across the air-water interface under the broadest range of environmental conditions with a unique model parametrization. The estimates of the water-side

transfer velocity showed that in shallow coastal waters the effect of water current can be as important as the effect of low to moderate winds. In macro and mesotidal estuarine and lagoony systems higher tidal driven water currents occur on a daily basis, whereas high winds do not. Therefore, the effects of water current and depth are fundamental for the model performance in coastal environments. On the other hand, the attempts to calibrate the model for the coastal ocean samples demonstrated the importance of roughness length and atmospheric stability for the estimation of the gas fluxes across the surface of large water bodies.

The roughness length formulation by Taylor and Yelland (2001) is very practical as it requires only two parameters from the wave field. It is also very intuitive as it states the roughness length scaled to the wave height is proportional to the wave slope, this function being linear or exponential depending on the exponent (B) value. However, the wave fields are not uniform and may be decomposed into a wave spectrum where each of its components potentially gives a relative contribution to the roughness length. The alternative proposed by Taylor and Yelland (2001) is to use the peak component of the wave spectrum. This simplification may imply loss of information and predictive power. However, Moon et al. (2004) have demonstrated for tropical cyclones the Charnock coefficient is mainly determined by wind speed and the peak wave age, thus supporting such simplification. This problem is aggravated by the fact that roughness length is a theoretical concept that can not be tested directly. Usually are used proxies such as the friction velocity, the drag coefficient or the Reynolds number (Sethuraman and Raynor, 1975; Taylor and Yelland, 2001; Fairall et al., 2003; Frew et al., 2004; Moon et al., 2004).

The present simulations have demonstrated atmospheric stability to have a huge potential to influence the friction velocity and therefore the transfer velocity. Nevertheless, the evaluation of atmospheric stability and its application to marine coastal environments should be cautious as Vickers and Mahrt (2006) propose that (i) Monin–Obukov similarity theory does not apply to sea surfaces with sharp temperature gradients and (ii) the sensible heat flux is better correlated with the sea surface temperature in a 1–2 km downstream lag. Here may lay the explanation for the predicted atmospherically unstable conditions overestimating the CO_2 flux on the 3rd of March survey inside Ria Formosa. At the coastal ocean the atmosphere boundary layer was only in contact with the sea-surface and thus their temperature gradient was estimating real at-

mospherically unstable conditions. Inside Ria Formosa was not high-tide and the atmosphere boundary layer was in contact with much other surfaces besides the sea-surface. Their temperature gradient was estimating probably unreal atmospheric unstable conditions. The formulation by Stull (1988) is apparently the most reliable. The formulation by Lee (1997) had two problems. The first was it did not work for stable conditions of $Ri_b > 0.2$. This is a problem common to many other formulations based in the Businger et al. (1971) and Dyer (1974) works. The other was that for very unstable conditions ($Ri_b \leq -0.2$) the function started behaving exponentially, which is unreal. In the publication by Lee (1997) this does not happen. Yet, the algorithm was scrupulously imported to the present model and software. Both these formulations rely on the famous works by Businger et al. (1971) and Dyer (1974). These had robust experimental designs and data sets, becoming the core of the science about atmospheric stability. The work by Sethuraman and Raynor (1975) was more modest. The small data set did not have $|\Delta T| > 3^\circ\text{C}$ and was very scattered around the linear fit, bringing legitimate suspicious about the adequacy of the equation structure and parameter values. When $\Delta T > 3.7^\circ\text{C}$ the equation predicts a negative drag coefficient, which is physically impossible. When $\Delta T < -3^\circ\text{C}$ the equation quickly tends to predict hurricane force friction velocities.

Under high winds the effects of whitecap and bubbles become important (Memery and Merlivat, 1985; Zhao et al., 2003; Woolf, 2005) and therefore should be added to the model. Memery and Merlivat (1985) propose a complex algorithm that accounts for many physical properties of water and bubbles. Woolf (2005) states the water-side transfer velocity as the addition of a term for the breaking waves and another for non-breaking waves. Presently it was only implemented the simpler solution by Zhao et al. (2003). It is debatable whether this formulation should or not be overlapped with the roughness length formulation as ultimately both account for the effect of the wave field in k_w^{wind} and therefore may be redundant. In the preliminary test performed in this work their overlap gave the best results, far beyond any other.

In the coastal ocean, as the swell approaches the shore the drag with the shallower bottom compact the waves, decreasing the wave length while keeping the wave height. The wave slope increases and thus also the roughness length (Taylor and Yelland, 2001). Therefore, these authors expect the gas transfer velocity to increase as the coastal ocean approaches the shore.

This has two implications for the current work. One is that the data from field surveys or oceanographic numerical laboratories should not neglect the effect of increasing wave slope with decreasing depth. The other is to clarify that the surface roughness in Ria Formosa is generated exclusively inside the lagoon and independent from the swell outside. Nevertheless, it should be considered the possibility the downwind depth profile inside estuarine and lagoony systems may have an effect in roughness length and consequently in the gas transfer velocity, as Upstill-Goddard (2006) proposes for generalized shallow waters. Also the presence of surfactants decreases the gas transfer velocity (Memery and Merlivat, 1985; Frew et al., 2004), particularly with lower wind speeds, and surfaces with shorter waves are more affected by surfactants (Frew et al., 2004). Therefore, a likelier presence of surfactants inside estuaries and lagoons than in the nearby coastal oceans should also be considered.

Finally, the current software allows for the gas concentrations to be input in units of ppm although the model requires them to be converted to units of mol m^{-3} . This conversion is dependent on temperature, pressure and salinity, and thus is yet another way to account for the effects of these variables in the flux of a gas across the air-water interface. This is not a model artificialization but rather represents simple objective environmental features. Taking the example of the atmosphere, as an air mass changes its density it keeps its inner relative gas concentrations (given in ppm) but changes its volumetric gas concentrations (given in mol m^{-3}), thus affecting its gas exchanges with any other distinct entity.

5.2 Model alternatives

The quantification of the effects of wind and surface roughness was done following two alternatives: (i) the Wind log-linear Profile and (ii) the Sethuraman and Raynor (1975) formulation. It is also possible to use the Frew et al. (2004) transfer velocity formulation where it is the exponent upon the Schmidt number to show a dependency on sea surface roughness. For an indirect estimation of roughness length from the wave field was used Taylor and Yelland (2001) formulation relating surface roughness to the wave slope. Frew et al. (2004) and Hwang (2005) present alternative formulations based on the Mean Square Slope. The wave slope may be esti-

mated using a pressure transducer. However, in the smooth surfaces that often occur in estuarine and lagoony systems under calm weather are required pressure transducers with resolutions higher than 4 Hz. Alternatively, the wave field may be estimated using a scanning laser slope gauge (Frew et al., 2004).

Alternatively, friction velocity may be estimated from the roughness length following Charnock's model (Charnock, 1955): $z_0 = \alpha_c u_*^2 / g$, where α_c is Charnock's coefficient. This alternative implies estimating α_c as a function of u_{10} and the input wave age (Moon et al., 2004). Friction velocity may also be estimated from the near surface covariance of horizontal (u') and vertical (w') wind components. Then, the gas flux model and DDF analysis must account for friction velocity directly and in replacement of roughness length (z_0) and wind speed (u_{10}). For the model estimation the calculus is simpler as it is a simple function of the horizontal and vertical variability of the wind components. Nevertheless, as for all the alternatives presented that require simpler calculus, these have the cost of information being lost for the DDF analysis. For the example shown in this work it would not be possible to access whether (or how much) of the difference between the CO₂ flux inside the lagoon and in the coastal ocean was either due to the difference in the wind properties or due to the difference in the sea surface roughness.

The total transfer velocity of a gas may also be estimated from the total transfer velocity of heat (Frew et al., 2004). The relation is given by $k_{\text{gas}} = k_{\text{heat}} (Sc/Pr)^{-n}$, where Sc is the Schmidt number, Pr is the Prandtl number and n is a scalar (usually between 0.5 and 0.7). In its turn $k_{\text{heat}} = j_{\text{heat}} / (\rho c_p \Delta T)$, where ρ and c_p are seawater density and specific heat, respectively; ΔT is the seawater temperature difference between the "cool skin" and the bulk of the surface boundary layer, which may be estimated from infrared imagery; and j_{heat} is the net heat flux density at the sea surface, which may be estimated from micrometeorological measurements.

5.3 Tuning the decomposition of the difference in the gas fluxes

When performing the DDF it is intended to have the most accurate results, still, not wasting time. generally it is not worth taking more steps than the optimal order of the partial derivative. The optimal choices varied with the numerical options but also with the units used to give the CO₂ concentrations. This latter was because several environmental variables affected the

solubility/volatility and therefore the conversion of the CO₂ concentrations when given in ppm to the mol m⁻³ units required by the flux model.

The DDF optimization relative to z_0 (x_5), ψ_u (x_6), w (x_{10}) and z (x_{11}) was more complicated because fitting the gas flux using an n^{th} order collocation polynomial was only accurate if the n_i steps closely covered the h_i range (for i equal to 5, 6, 10 and 11). This obliges to conjugate h_i with: (1) the chosen x_i units to feed the model, (2) the n_i steps taken and (3) the δ_i size of the steps taken. Therefore, the optimization of the DDF relative to these variables must always be customized to the data set. A good rule of thumb is to choose the units so that h_i has one digit. Afterwards, δ_i should equal the maximum h_i found for all alternative sites divided by n_i keeping in mind that δ_i should never get too big nor too small. In order to illustrate the relevance of such a procedure the optimization of the DDF relative to the depth parametrization was intentionally shown (in Table 1) for a reference site at open ocean ($z = 67$ m) and an alternative site inside Ria Formosa ($z = 2.5$ m). Big depth differences may occur in future applications of this DDF tool. Therefore, it was essential to show that the collocation polynomial is so sensitive to depth that $n_i \cdot \delta_i$ must match h_i for the DDF to be accurate. In this case it was $5 \cdot 1.29 \text{ dam} = 6.45 \text{ dam}$. However, this DDF tool is also intended to be applied to several (possibly many) alternative situations and it is not practical for the user to have to customize δ_i by hand for each new alternative situation. Therefore, the software was updated to do it automatically, whenever required by the user, to whatever variables selected, in whatever units fed to the DDF tool, by setting $\delta_i = h_i/n_i$. With this customization may occur a hidden bias passing undetected. When $n_i \cdot \delta_i$ is very close to h_i the Taylor series always closely matches $f_b - f_a$, irrespective of n_i . This implies that the estimated error (1 minus the sum of all the terms) is very low although each term individually may be biased; in fact, even if relevant higher order terms are missing. The end result is a very low estimated error although the partition of $f_b - f_a$ among the several environmental variables is severely biased. To overcome this problem the choice of Θ_i and n_i must be independent of this customization process where $\delta_i = h_i/n_i$.

One important and immediate application of this DDF tool is to conjugate it with numerical modelling labs such as MOHID, ECO lab, URI's, WRL's or FIO's. These numerical labs simulate the evolution of the physical, chemical and biological properties of the marine and aquatic

environments in a particular area. In order to do that the domain area is often divided into thousands to tens of thousands of smaller units. The evolution of the model properties are often estimated at time intervals of a few seconds. It is unfeasible to apply the DDF tool to thousands of locations every few seconds. However, it is possible to drastically lighten it up to the point of enabling this application. The feature that turns the DDF algorithm computationally heavy is the estimation of the hyper-volume of multivariate finite differences needed for the estimation of the partial derivatives. The execution of this calculus for each point and iteration is what makes its application unbearable. The solution to this problem relies on the estimation of this hyper-volume only once for the whole spatial domain over a major time interval. This hyper-volume must then comprise a grid that, for each of the environmental variables, stretches from the minimum to the maximum recorded values, including reference and all alternative sites. Afterwards, it is possible to accurately estimate the partial derivatives at any point inside this grid because the algorithm used for its estimation (presented in Supplement B) works equally well for k_i being an integer or fractional number. The tests to the estimation of the partial derivatives at any point $x_{i,c}$ inside this grid gave a remarkable accuracy, proving this to be the right solution.

5.4 Insights to the subject system

The gas flux model integrated with the DDF have shown to be valuable tools for the study of any gas crossing the air-water interface, may it be a pollutant or part of a biogeochemical cycle. The gas flux numerical scheme allows choosing the empirical formulations most suited to a particular case or alternatively, mechanistical formulations of broader application. It further allows identifying past cases where inappropriate parametrizations may have been used and quantifying the expected biases. As an example, Oliveira (2012) studied the portuguese coast as a sink/source of CO_2 . For that they estimated its flux between the atmosphere and the coastal ocean adjacent to the Douro, Tagus and Sado estuaries. The fluxes were estimated from the formulations by Carini et al. (1996), Raymond and Cole (2001) and Borges et al. (2004b) applied to measures of the required environmental variables. However, actual field measurements of the fluxes were not done, which would enable validation. The problem here was that these formulations were neither developed from open ocean data nor are supported by data on high wind

conditions. While the use of the Carini et al. (1996) and Borges et al. (2004b) parametrizations clearly underestimate the flux at open ocean, the extrapolation of the exponential function by Raymond and Cole (2001) is a very wild guess. To illustrate it, during the cold front that rampant over Europe, the water off-shore Ria Formosa at the 4 February 2012 by 9 h 50 m, was at 15.1 °C, the significant wave height was 1.54 m, the wave length was 31.6 m, the average wave period was 4.5 s, the air was at 6 °C and the wind was blowing off-shore at 10 m s⁻¹. Following Taylor and Yelland (2001) formulation with its original parameters $z_0=2.3$ mm. Following Stull (1988) the $Rib=-0.04$, $\psi_u=-0.81$ and $u_* = 0.53$ m s⁻¹. Given these conditions the sea-surface roughness, whitecap and atmospheric instability should play a major role setting the water-side transfer velocity. This, estimated by the Carini et al. (1996) and Borges et al. (2004b) formulations is of 20.3 and 26.8 cm h⁻¹, respectively. When estimated by the Raymond et al. (2000) formulation is of 63.3 cm h⁻¹. When estimated from the Wind Log–Linear Profile and the Zhao et al. (2003) formulation for the effect of wind and whitecap, it is of 56.2 cm h⁻¹. But, if atmospheric stability is estimated from the formulation by Lee (1997) based on Businger et al. (1971), the $u_* = 0.64$ m s⁻¹ and the water-side transfer velocity is 71.6 cm h⁻¹.

When using the CO₂ flux across the air-water interface as a proxy for the ecosystem metabolism one must have into account it is also strongly dependent on the influence of turbulence on the transfer velocity. To correct for this Frankignoulle (1988), Smith and Hollibaugh (1993), Raymond et al. (2000), Cole and Caraco (2001), Koné et al. (2009) and Torres et al. (2011) tested using only the difference term of the flux equation. By decomposing the fluxes in all their parcels the DDF further allows accurate estimates of the influence of a wide range of environmental variables in mediating the flux, together with its spatial and temporal variability. Furthermore, this tool allows focusing on the effect of a specific variable at different places, different times or under different methodologies filtering out the undesired effects of changes in other variables. It is also possible to use the DDF tool focusing in a specific aspect. For the subject of the drives for a transfer velocity it only requires replacing the flux by the transfer velocity as the dependent variable. Similarly, for the subject of the drives for a difference between the gas concentrations in the air and water phases it only requires the replacement of the flux by the ΔC or Δppm as the dependent variables.

The gains brought by this new gas flux numerical model and DDF tool were clearly demonstrated with the comparison between Ria Formosa on the 14 of April 2011 and its surrounding coastal ocean on the 3 March 2011. While the coastal ocean was behaving autotrophically the Ria Formosa was behaving heterotrophically, at least between 11 h and 13 h and at that particular site. The bulk of the CO₂ flux difference was indeed due to the difference in the CO₂ concentrations in the water inside and outside. However, there were also other factors taking part that the DDF enabled to set aside. While the transfer velocity in the ocean was set by turbulence from above, inside the mesotidal lagoony system it was majorly set by turbulence from below. A similar contrast was presented by Borges et al. (2004a) when comparing between micro, meso and macrotidal estuaries. On the other hand, Ho et al. (2011) determined the transfer velocity in the Hudson river was basically set by wind speed and independent of current drag with the bottom. Still, these authors admitted such results may have been influenced by samples having been taken tendentiously over ≥ 5 m depths.

The Δ CO₂ series suggest Ria Formosa could be behaving autotrophically on the early March when the water was around 17 °C and could be behaving heterotrophically on the mid April when the water was around 20.5 °C. This change with temperature may be related to the dominant biological process taking place. Photosynthesis by seagrass meadows is much less sensitive to temperature changes than respiration by bacteria. Furthermore, the water column at the sampled Ria Formosa channel during ebb tide changed from autotrophic to heterotrophic in a couple of hours, proving there was a strong spatial/temporal heterogeneity in the CO₂ balance. It is hypothesized the metabolic status of a particular section of the water column was related to it being over a seagrass meadow or a mud-flat in its near past. Seasonal and short term shifts of the CO₂ balance in estuaries, lagoony systems and coastal waters were already reported by Raymond et al. (2000), Cole and Caraco (2001), Frankignoulle et al. (2001), Borges et al. (2004a), Borges (2005), Koné et al. (2009), Hunt et al. (2011), Torres et al. (2011) and Oliveira (2012).

6 conclusions

Wide spatial and temporal variabilities of gas concentrations in the water, in the overlying air and their fluxes across the air-water interface are widely documented for the open oceans, the coastal oceans and riverine systems. These gas fluxes have a multitude of potential forcing functions. However, their integration and the establishment of their relative importances has been underachieved. This is particularly evident from how atmospheric stability, sea-surface roughness and current drag with the bottom have often been devalued in studies about riverine systems and coastal waters. The currently presented numerical tools give a significant contribution to this subject. Now it is easier to use a single model for any type of marine and freshwater environment and to conclude the differences found between those report exclusively to the environments and not to different numerical options. Furthermore, the numerical scheme allows for the upgrade of each relevant environmental process already implemented as well as the addition of new processes. Any interested researcher is free to add a particular formulation for its own personal use and is further invited to share it with everyone else. The versatility of the present model, tools and software allows the user to follow two distinct approaches. The user may choose to use the formulations available in the literature that best fit to a particular situation. These tend to be more of an empirical nature and to fail under largely different environmental conditions. Alternatively, the user may build the model upon a more mechanistic approach, computationally heavier, but tending to yield better global fits. The DDF tool allows for the quantification of the effects of all the environmental variables and processes involved in the gas flux across a particular air-water interface relative to a reference one. It further allows to focus in a specific variable or process eliminating the error from the remaining ones.

Supplementary material related to this article is available online at:

<http://\@journalurl/\@pvol/\@fpage/\@pyear/\@journalnameshortlower-\@pvol-\@fpage-\@pyear-supplement.pdf>.

Acknowledgements. To Martin Johnson, Marcos Mateus and Oscar Ferreira for their comments and insights.

Vasco Vieira was supported by a *Fundação para a Ciência e Tecnologia* (FCT) grant PTDC/AAC-CLI/103348/2008.

References

references

- Borges, A. V.: Do we have enough pieces of the jigsaw to integrate CO₂ fluxes in the coastal ocean? *Estuaries*, 28, 3–27, 2005.
- Borges, A. V., Delille, B., Schiettecatte, L. S., Gazeau, F., Abril, G., and Frankignoulle, M.: Gas transfer velocities of CO₂ in three European estuaries (Randers Fjord, Scheldt, and Thames), *Limnol. Oceanogr.*, 49, 1630–1641, 2004a.
- Borges, A. V., Vanderborcht, J. P., Schiettecatte, L. S., Gazeau, F., Ferron-Smith, S., Delille, B., and Frankignoulle, M.: Variability of the Gas Transfer Velocity of CO₂ in a Macrotidal Estuary (the Scheldt), *Estuaries*, 27, 593–603, 2004b.
- Borges, A. V., Delille, B., and Frankignoulle, M.: Budgeting sinks and sources of CO₂ in the coastal ocean: Diversity of ecosystems counts, *Geophys. Res. Lett.*, 32, L14601, <http://dx.doi.org/10.1029/2005GL023053>doi:10.1029/2005GL023053, 2005.
- Businger, J. A., Wyngaard, J. C., Izumi, Y. and Bradley, E. F.: Flux profile relationships in the atmospheric surface layer. *J. Atmos. Sci.*, 28, 181189, 1971.
- Carini, S., Weston, N., Hopkinson, C., Tucker, J., Giblin, A., and Vallino, J.: Gas exchange rates in the Parker River estuary, Massachusetts. *Biol. Bull.*, 191, 333–334, 1996.
- Charnock, H.: Wind stress on a water surface, *Quart. J. Roy. Meteor. Soc.*, 81, 639–640, 1955.
- Cole, J. J. and Caraco, N. F.: Atmospheric exchange of carbon dioxide in a low-wind oligotrophic lake measured by the addition of SF₆, *Limnol. Oceanogr.*, 43, 647–656, 1998.
- Cole, J. J. and Caraco, N. F.: Carbon in catchments: connecting terrestrial carbon losses with aquatic metabolism, *Mar. Freshwater Res.*, 52, 101–110, 2001.
- Donelan, M. A.: The dependence of the aerodynamic drag coefficient on wave parameters, First International, Conference on Meteorology and Air-Sea Interaction of the Coastal Zone, The Hague, Netherlands, *Amer. Meteor. Soc.*, 381–387, 1982.
- Donelan, M. A.: Air-sea interaction, in: *Ocean Engineering Science*, vol.9, The Sea, edited by: Le Mehaute, B. and Hanes, D. M., John Wiley, Hoboken, N. J., 239–292. 1990.

- Duan, Z. and Martin, J. L.: Integration of impact factors of gas-liquid transfer rate, 37th Annual Mississippi Water Resources Conference, <http://www.wri.msstate.edu/pdf/duan07.pdf>, last access: 2011, 2007.
- Duarte, C. M. and Prairie, Y. T.: Prevalence of heterotrophy and atmospheric CO₂ emissions from aquatic ecosystems, *Ecosystems*, 8, 862–870, 2005.
- Duce, R. A., Liss, P. S., Merrill, J. T., Atlas, E. L., Buat-Menard, P., Hicks, B. B., Miller, J. M., Prospero, J. M., Arimoto, R., Church, T. M., Ellis, W., Galloway, J. N., Hansen, L., Jickells, T. D., Knap, A. H., Reinhardt, K. H., Schneider, B., Soudine, A., Tokos, J. J., Tsunogai, S., Wollast, R., and Zhou, M.: The Atmospheric Input of Trace Species to the World Ocean, *Global Biogeochem. Cy.*, 5, 193–259, 1991.
- Dyer, A. J.: A review of flux-profile relationships. *Bound. Lay. Meteorol.*, 7, 363372, 1974.
- Fairall, C. W., Bradley, E. F., Rogers, D. P., Edson, J. B., and Young, G. S.: Bulk parameterization of air-sea fluxes for tropical ocean global atmosphere coupled ocean atmosphere response experiment, *J. Geophys. Res.*, 101, 3747–3764, 1996.
- Fairall, C. W., Hare, J. E., Edson, J. B., and McGillis, W.: Parameterization and micrometeorological measurement of air-sea gas transfer, *Bound. Lay. Meteorol.*, 96, 63–106, 2000.
- Fairall, C. W., Bradley, E. F., Hare, J. E., Grachev, A. A., and Edson, J. B.: Bulk parameterization of air-sea fluxes: updates and verification for the COARE algorithm, *J. Climate*, 16, 571–591, 2003.
- Frankignoulle, M.: Field measurements of air-sea CO₂ exchange, *Limnol. Oceanogr.*, 33, 313–322, 1988.
- Frankignoulle, M. and Borges, A. V.: European continental shelf as a significant sink for atmospheric CO₂, *Global Biogeochem. Cy.*, 15, 569–576, 2001.
- Frankignoulle, M., Borges, A., and Biondo, R.: A new design of equilibrator to monitor carbon dioxide in highly dynamic and turbid environments, *Wat. Res.*, 35, 1344–1347, 2001.
- Frew, N. M., Bock, E. J., Schimpf, U., Hara, T., Haubecker, H., Edson, J. B., McGillis, W. R., Nelson, R. K., McKenna, S. P., Uz, B. M., and Jahne, B.: Air-sea gas transfer: Its dependence on wind stress, small-scale roughness, and surface films, *J. Geophys. Res.*, 109: C08S17, <http://dx.doi.org/10.1029/2003JC002131>doi:10.1029/2003JC002131, 2004.
- Grachev, A. A. and Fairall, C. W.: Dependence of the Monin–Obukhov Stability Parameter on the Bulk Richardson Number over the Ocean, *J. Appl. Meteorol.*, 36, 406–414, 1997.
- Hayduk, W. and Laudie, H.: Prediction of diffusion coefficients for non-electrolytes in dilute aqueous solutions, *AIChE Journal*, 20, 611–615, 1974.
- Hayduk, W. and Minhas, B. S.: Correlations for prediction of molecular diffusivities in liquids, *Can. J.*

- Chem. Eng., 60, 295–299, 1982.
- Ho, D. T., Zappa, C. J., McGillis, W. R., Bliven, L. F., Ward, B., Dacey, J. W. H., Schlosser, P., and Hendricks, M. B.: Influence of rain on air-sea gas exchange: Lessons from a model ocean, *J. Geophys. Res.*, 109, <http://dx.doi.org/10.1029/2003JC001806>[doi:10.1029/2003JC001806](https://doi.org/10.1029/2003JC001806), 2004.
- Ho, D. T., Schlosser, P., and Philip, M. O.: On factors controlling air-water gas exchange in a large tidal river, *Estuar. Coast.*, 34, 1103–1116, 2011.
- Hunt, C. W., Salisbury, J. E., Vandemark, D., and McGillis, W.: Contrasting Carbon Dioxide Inputs and Exchange in Three Adjacent New England Estuaries, *Estuar. Coast.*, 34, 68–77, 2011.
- Hwang, P. A.: Wave number spectrum and mean square slope of intermediate-scale ocean surface waves, *J. Geophys. Res.*, 110: C10029, <http://dx.doi.org/10.1029/2005JC003002>[doi:10.1029/2005JC003002](https://doi.org/10.1029/2005JC003002), 2005.
- Jeffery, C., Robinson, I., and Woolf, D.: Tuning a physically-based model of the air-sea gas transfer velocity, *Ocean Modell.*, 31, 28–35, <http://dx.doi.org/10.1016/j.ocemod.2009.09.001>[doi:10.1016/j.ocemod.2009.09.001](https://doi.org/10.1016/j.ocemod.2009.09.001), 2010.
- Johnson, M. T.: A numerical scheme to calculate temperature and salinity dependent air-water transfer velocities for any gas, *Ocean Sci.*, 6, 913–932, 2010.
- Koné, Y. J. M., Abril, G., Kouadio, K. N., Delille, B., and Borges, A. V.: Seasonal Variability of Carbon Dioxide in the Rivers and Lagoons of Ivory Coast (West Africa), *Estuar. Coast.*, 32, 246–260, 2009.
- Lange, B., Larsen, S., Hjstrup, J., and Barthelmie, R.: Importance of thermal effects and sea surface roughness for offshore wind resource assessment, *J. Wind Eng. Ind. Aerod.*, 92, 959–988, 2004.
- Lee, H. N.: Improvement of Surface Flux Calculations in the Atmospheric Surface Layer, *J. Appl. Meteorol.*, 36, 1416–1423, 1997.
- Liss, P.: Processes of gas exchange across an air-water interface, *Deep-Sea Res. Oceanogr. Abstracts*, 20, 221–238, 1973.
- Liss, P. S. and Slater, P. G.: Flux of gases across the air-sea interface, *Nature*, 247, 181–184, 1974.
- Liss, P. S. and Merlivat, L.: Air-sea gas exchange rates: Introduction and synthesis, in: *The role of sea-air exchange in geochemical cycling*, edited by: Buat-Menard, P., D. Riedel, Hingham, MA, 113–139, 1986.
- Mackay, D. and Yeun, A. T. K.: Mass transfer coefficient correlations for volatilization of organic solutes from water, *Environ. Sci. Technol.*, 17, 211–217, 1983.
- McGillis, W. R., Edson, J. B., Ware, J. D., Dacey, J. W. H., Hare, J. E., Fairall, C. W., and Wanninkhof, R.: Carbon dioxide flux techniques performed during GasEx 98, *Mar. Chem.*, 75, 267–280, 2001.
- Memery, L. and Merlivat, L.: Modelling of gas flux through bubbles at the air water Interface, *Tellus*,

- 37, 272–285, 1985.
- Moon, I., Ginis, I., and Hara, T.: Effect of surface waves on Charnock coefficient under tropical cyclones, *Geophys. Res. Lett.*, 31, L20302, <http://dx.doi.org/10.1029/2004GL020988>, 2004.
- Nightingale, P. D., Malin, G., Law, C. S., Watson, A. J., Liss, P. S., Liddicoat, M. I., Boutin J., and Upstill-Goddard, R. C.: In Situ evaluation of air-sea gas exchange parameterizations using novel conservative and volatile tracers, *Global Biogeochem. Cy.*, 14, 373–387, 2000.
- O'Connor, D. and Dobbins, W.: Mechanisms of reaeration in natural streams, *T. Am. Soc. Civ. Eng.*, 123, 641–684, 1958.
- Oliveira, A. P. E.: Fluxos de CO₂ na interface ar gua num sistema estuarino português e zona costeira adjacente. PhD. Instituto Superior Técnico, Universidade Técnica de Lisboa, Portugal, 2011.
- Oliveira, A. P., Cabçadas, G., and Pilar-Fonseca, T.: Iberia Coastal Ocean in the CO₂ Sink/Source Context: Portugal Case Study, *J. Coast. Res.*, 28, 184–195, 2012.
- Oost, W. A., Komen, G. J., Jacobs, C. M. J., and van Oort, C.: New evidence for a relation between wind stress and wave age from measurements during ASGAMAGE, *Bound. Lay. Meteorol.*, 103, 409–438, 2002.
- Raymond, P. A. and Cole, J. J.: Gas Exchange in Rivers and Estuaries: Choosing a Gas Transfer Velocity, *Estuaries*, 24, 312–317, 2001.
- Raymond, P. A., Bauer J. E., and Cole. J. J.: Atmospheric CO₂ evasion, dissolved inorganic carbon production, and net heterotrophy in the York River estuary, *Limnol. Oceanogr.*, 45, 1707–1717, 2000.
- Sahlée, E., Rutgersson, A., Podgrajsek, E. and Bastviken D.: Eddy-covariance measurements of methane fluxes from a Swedish lake. *Geophysical Research Abstracts*, 13, EGU2011-11914-8
- Sander, R.: Compilation of Henry's law constants for inorganic and organic species of potential importance in environmental Chemistry (Version 3), <http://www.henrys-law.org>, last access: 2011, 1999.
- Sethuraman, S. and Raynor, G. S.: Surface drag coefficient dependence on the aerodynamic roughness of the sea, *J. Geophys. Res.*, 80, 4983–4988, 1975.
- Shahin, U. M., Holsen, T., and Odabasi, M.: Dry deposition measured with a water surface sampler: a comparison to modeled results, *Atmos. Environ.*, 36, 3267–3276, 2002.
- Smith, S. D.: Wind stress and heat flux over the ocean in gale force winds, *J. Phys. Oceanogr.*, 10, 709–726, 1980.
- Smith, S. D., Anderson, R. J., Oost, W. A., Kraan, C., Maat, N., DeCosmo, J., Katsaros, K. B., Davidson, K. L., Bumke, K., Hasse, L., and Chadwick, H. M.: Sea surface wind stress and drag coefficients: The HEXOS results, *Bound. Lay. Meteorol.*, 60, 109–142, 1992.

- Smith, S. V. and Hollibaugh, J. T.: Coastal metabolism and the oceanic organic carbon balance, *Rev. Geophys.*, 31, 75–89, 1993.
- Stull, R. B.: An introduction to Boundary Layer Meteorology, Kluwer Academic Publishers, Dordrecht, 649pp, 1988.
- Sweeney, C.: The annual cycle of surface CO₂ and O₂ in the Ross Sea: A model for gas exchange on the continental shelves of Antarctica, in: *Biogeochemistry of the Ross Sea*, edited by: DiTullio, G.R. and Dunbar, R. B., *Antar. Res. S.*, vol 78, AGU, Washington, D.C., 295–312, 2003.
- Sweeney, C., Gloor, E., Jacobson, A. R., Key, R. M., McKinley, G., Sarmiento, J. L., and Wanninkhof, R.: Constraining global air-sea gas exchange for CO₂ with recent bomb 14C measurements, *Global Biogeochem. Cy.*, 21: GB2015, doi:200710.1029/2006GB002784, 2007.
- Takahashi, T., Sutherland, S. C., Sweeney, C., Poisson, A., Metzl, N., Tilbrook, B., Bates, N., Wanninkhof, R., Feely, R. A., Sabine, C., and Olafsson, J.: Biological and temperature effects on seasonal changes of pCO₂ in global surface ocean, *Deep-Sea Res.*, 49, 1601–1622, 2002.
- Takahashi, T., Sutherland, S. C., Wanninkhof, R., Sweeney, C., Feely, R. A., Chipman, D. W., Hales, B., Friederich, G., Chavez, F., Watson, A., Bakker, D. C. E., Schuster, U., Metzl, N., Yoshikawa-Inoue, H., Ishii, M., Midorikawa, T., Sabine, C., Hopemma, M., Olafsson, J., Arnarson, T. S., Tilbrook, B., Johannessen, T., Olsen, A., Bellerby, R., de Baar, H. J. W., Nojiri, Y., Wong C. S., and Delille, B.: Climatological mean and decadal change in surface ocean pCO₂, and net sea-air CO₂ flux over the global oceans, *Deep-Sea Res.*, 56, 554–577, <http://dx.doi.org/10.1016/j.dsr2.2008.12.009>doi:10.1016/j.dsr2.2008.12.009, 2009.
- Taylor, P. K. and Yelland, M. J.: The dependence of sea surface roughness on the height and steepness of the waves, *J. Phys. Oceanogr.*, 31, 572–590, 2001.
- Thomaz, S. M., Enrich-Prast, A., Gonçalves Jr., J. F., dos Santos, A. M., and Esteves, F. A.: Metabolism and gaseous exchanges in two coastal lagoons from Rio de Janeiro with distinct limnological characteristics, *Braz. Arch. Biol. Tech.*, 44, 433–438, 2001.
- Torres, R., Pantoja, S., Harada, N., González, H. E., Daneri, G., Frangopulos, M., Rutllant, J. A., Duarte, C. M., Rúaiz-Halpern, S., Mayol, E., and Fukasawa, M.: Air-sea CO₂ fluxes along the coast of Chile: From CO₂ outgassing in central northern upwelling waters to CO₂ uptake in southern Patagonian fjords, *J. Geophys. Res.*, 116, C09006, <http://dx.doi.org/10.1029/2010JC006344>doi:10.1029/2010JC006344, 2011.
- Turk, D., Zappa, C. J., Meinen, C. S., Christian, J. R., Ho, D. T., Dickson, A. G., and McGillis, W. R.: Rain impacts on CO₂ exchange in the western equatorial Pacific Ocean, *Geophys. Res. Lett.*, 37, L23610, <http://dx.doi.org/10.1029/2010GL045520>doi:10.1029/2010GL045520, 2010.

- Upstill-Goddard, R. C.: Air-sea gas exchange in the coastal zone, *Estuar. Coast. Shelf S.*, 70, 388–404, 2006.
- Vandemark, D., Salisbury, J. E., Hunt, C. W., Shellito, S. M., Irish, J. D., McGillis, W. R., Sabine, C. L., and Maenner, S. M.: Temporal and spatial dynamics of CO₂ air sea flux in the Gulf of Maine, *J. Geophys. Res.*, 116: C01012, <http://dx.doi.org/10.1029/2010JC006408>doi:10.1029/2010JC006408, 2011.
- Vickers, D. and Mahrt, L.: Evaluation of the air-sea bulk formula and sea-surface temperature variability, *J. Geophys. Res.*, 111, 5002–5016, 2006.
- Wanninkhof, R.: Relationship between wind speed and gas exchange over the ocean, *J. Geophys. Res.*, 97, 7373–7382, 1992.
- Wilke, C. R. and Chang, P.: Correlation of diffusion coefficients in dilute solutions, *AIChE Journal*, 1, 264–270, 1955.
- Woolf, D. K.: Bubbles and their role in gas exchange, in: *The Sea Surface and Global Change*, edited by: Liss, P. S. and Duce, R. A., Cambridge University Press, Cambridge, 173–205, 1997.
- Woolf, D. K.: Parameterization of gas transfer velocities and sea-state-dependent wave breaking, *Tellus*, 57B, 87–94, 2005.
- Zappa, C. J., McGillis, W. R., Raymond, P. A., Edson, J. B., Hints, E. J., Zemelink, H. J., Dacey, J. W. H., and Ho, D. T.: Scaling gas transfer with turbulent dissipation for a range of environmental processes, *Geophys. Res. Lett.*, 34: L10601, <http://dx.doi.org/10.1029/2006GL028790>doi:10.1029/2006GL028790, 2007.
- Zappa, C. J., Ho, D. T., McGillis, W. R., Banner, M. L., Dacey, J. W. H., Bliven, L. F., Ma, B., and Nystuen, J.: Rain-induced turbulence and air-sea gas transfer, *J. Geophys. Res.*, 114, C07009, <http://dx.doi.org/10.1029/2008JC005008>doi:10.1029/2008JC005008, 2009.
- Zhao, D. and Xie, L.: A practical bi-parameter formula of gas transfer velocity depending on wave states, *J. Oceanogr.*, 66, 663–671, 2010.
- Zhao, D., Toba, Y., Suzuki, Y., and Komori, S.: Effect of wind waves on air-sea gas exchange: proposal of an overall CO₂ transfer velocity formula as a function of breaking-wave parameter, *Tellus B*, 55, 478–487, 2003.

Table 1. Optimization of the DDF. (a) any D_w scheme, (b) with whitecap formulation. (ad. fit.) δ_i adjusted to fit h_i . Optimality is **bolded**.

table

x_i	Θ	n	Error(%)	Further options	[CO ₂]units
C_a	1	1;5	$10^{-12};10^{-11}$		ppm
C_a	1	1	10^{-14}		mol m ⁻³
T_a	1;2;3;4;5	1;2;3;4;5	3.876; 0.285 ;0.133;0.138;0.138	k_{a_i} :Joh10	ppm
T_a	1;2;3;4;5	1;2;3;4;5	3.877; 0.285 ;0.133;0.138;0.138	k_{a_i} :Joh10(COARE)	ppm
T_a	1;2;3;4;5	1;2;3;4;5	3.881; 0.286 ;0.133;0.138;0.138	k_{a_i} :M&Y83	ppm
T_a	1;2;3; 4;5	1;2;3; 4;5	83.36;12.80;1.337; 0.023 ;10 ⁻⁴	k_{a_i} :M&Y83	mol m ⁻³
P	1;2;3	1;2;3	0.138 ;0.138;0.138		ppm
P	1;2;3	1;2;3	0.046 ;10 ⁻⁴ ;10 ⁻⁶		mol m ⁻³
u_{10}	1;2;3;4;5	1;2;3;4;5	48.5;8.9; 0.04 ;0.05;0.04	k_w :McG01	ppm
u_{10}	1;2;3;4;5	5	53.3;13.2; 0.17 ;0.10;0.04	k_w :McG01	ppm
u_{10}	1;2; 3 ;4;5	1;2; 3 ;4;5	48.5;8.9; 0.07 ;0.01;0.001	k_w :McG01	mol m ⁻³
u_{10}	1;2;3;4;5	1;2;3;4;5	32.7;6.89; 0.94 ;0.12;0.04	k_w :R&C01	ppm
u_{10}	1;2;3;4;5	5	35.8;9.46;1.83; 0.39 ;0.04	k_w :R&C01	ppm
u_{10}	1;2;3;4;5	1;2;3;4;5	0.07;0.034;0.036;0.037;0.037	k_w :Bea04	ppm
u_{10}	1;2;3;4;5	5	0.07 ;0.033;0.036;0.038;0.037	k_w :Bea04	ppm
z_0	1;2;3;4;5	1;2;3;4;5	67.9;56.3;49.1;43.7;39.2	$\delta=1; z_0 = \text{mm}$	ppm
z_0	1;2;3;4;5	1;2;3;4;5	0.138	$\delta=\text{ad. fit.}$	ppm
				$z_0 = \text{mm}$	
C_w	1;2;5	1;2;3;4;5	0.015		ppm
C_w	1	1	10^{-14}		mol m ⁻³
S	1;2;3;4;5	5	0.269;0.037;0.037;0.037;0.037	α :Joh10 (a)	ppm
S	1;2;3;4;5	5	0.355;0.038;0.037;0.037;0.037	α :Bea04	ppm
S	1;2;3;4;5	1;2;3;4;5	0.037 ;0.037;0.037;0.037;0.037	α :both (a)	ppm
S	1;2;3;4;5	5	0.42 ;0.0005;10 ⁻⁷ ;10 ⁻¹⁰ ;10 ⁻¹⁴	α :Joh10 (a)	mol m ⁻³
S	1;2;3;4;5	5	0.42 ;0.0012;10 ⁻⁶ ;10 ⁻⁹ ;10 ⁻¹⁴	α :Bea04	mol m ⁻³
S	1;2;3;4;5	1;2;3;4;5	0;0;0;0;10 ⁻¹⁴	α :both(a)	mol m ⁻³
w	1;2;3;4;5	1;2;3;4;5	44.9;31;24;19.7;16.7	$\delta=1$	ppm
				$w = \text{m min}^{-1}$	
w	1;2;3;4;5	1;2;3;4;5	44.6;30.5;23.4;19;15.8	$\delta=1$	ppm
				$w = \text{hm h}^{-1}$	
w	1;2;3;4; 5	1;2;3;4; 5	3.66;3.01;2.55;2.2; 1.92	$\delta=\text{ad. fit.}$	ppm
				$w = \text{hm h}^{-1}$	
z	1;2;3;4;5	1;2;3;4;5	341;612;615;341;91.6	$\text{delta}=1$	ppm
				$z=\text{m}$	
z	1;2;3;4; 5	1;2;3;4; 5	269;338;201;46.5; 0.04	$\delta=\text{ad. fit.}$	ppm
				$z = \text{m}$	

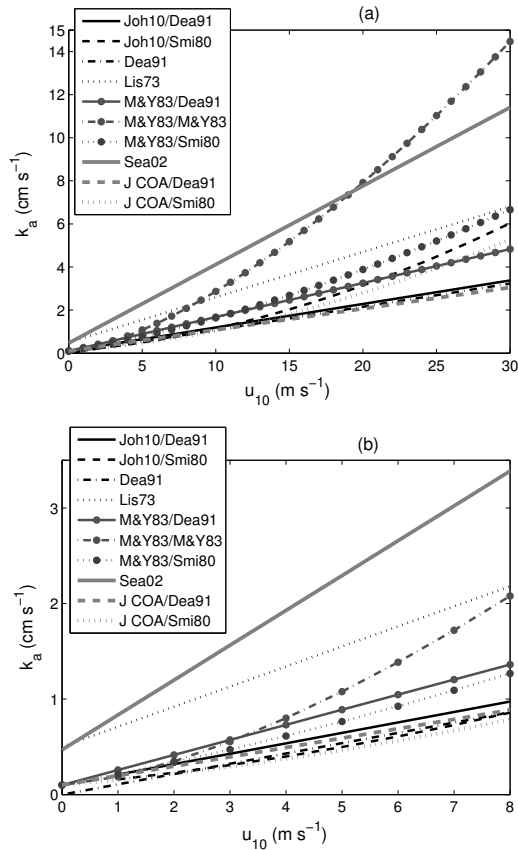


Fig. 1. Effect of wind (u_{10}) below 30 m s^{-1} (a) and below 8 m s^{-1} (b) on the air-side transfer velocity (k_a). First reference: friction velocity equation. Second reference: drag coefficient equation. ‘Joh10’: Johnson (2010); ‘Dea91’: Duce et al (1991); ‘Lis73’: Liss (1973); ‘M&Y83’: Mackay and Yeun (1983); ‘Sea02’: Shahin et al 2002; ‘J COA’: Johnson (2010) adaptation of COARE; ‘Smi80’: Smith (1980). $T_a = 20^\circ\text{C}$ and $P=1$ atm.

figure

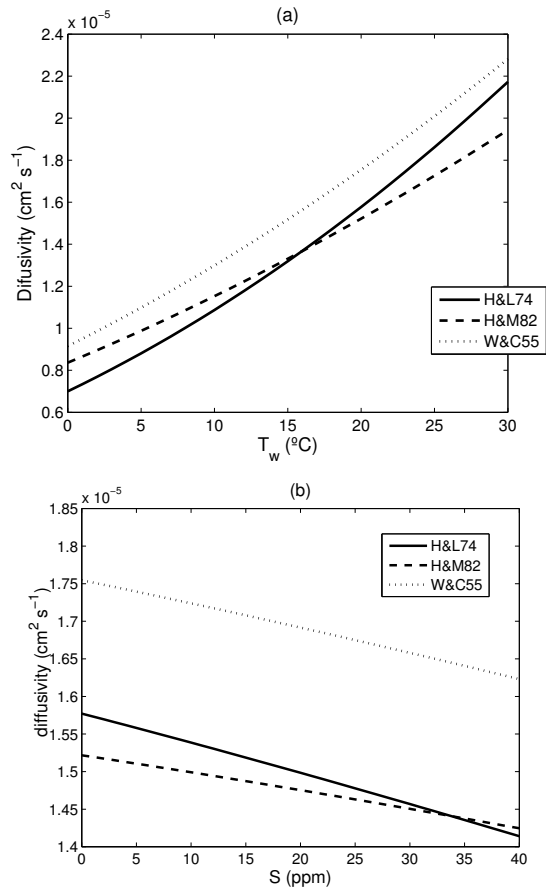


Fig. 2. Effects of T_w (a) and S (b) on the water diffusivity. ‘H&L74’: Hayduk and Laudie (1974); ‘H&M82’: Hayduk and Minhas (1982); ‘W&C55’: Wilke and Chang (1955).

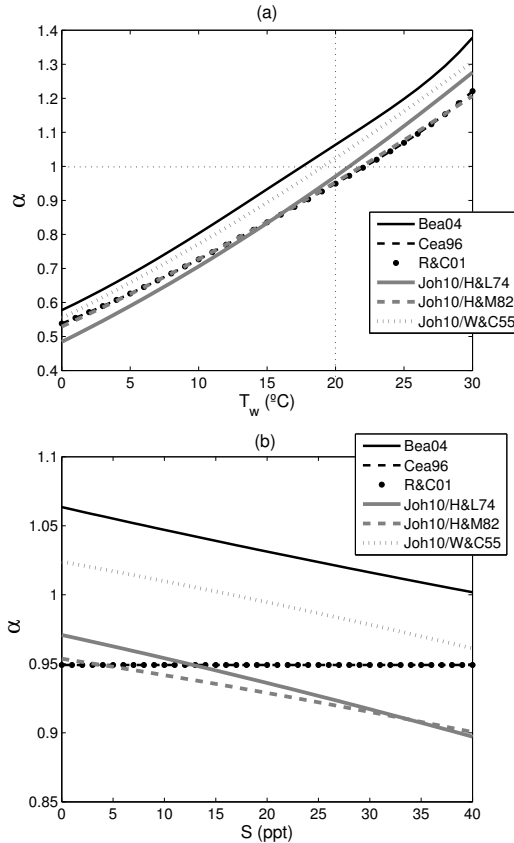


Fig. 3. Effects of T_w (a) and S (b) on the chemical enhancement factor (α) in fresh water. ‘Bea04’: Borges et al (2004); ‘Cea96’: Carini et al (1996); ‘R&C01’: Raymond and Cole 2001. Johnson (2010) α estimate with water diffusivity by: ‘H&L74’: Hayduk and Laudie (1974); ‘H&M82’: Hayduk and Minhas (1982); ‘W&C55’: Wilke and Chang (1955).

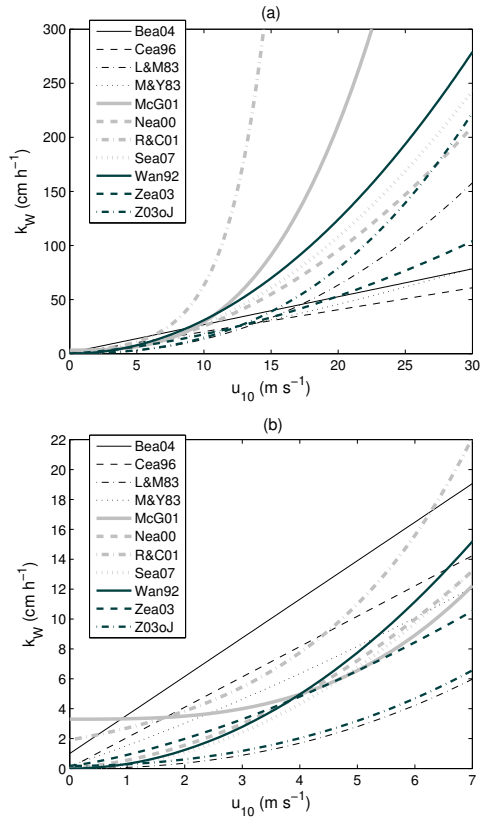


Fig. 4. Effect of u_{10} below 30 m s^{-1} (a) and below 7 m s^{-1} (b) on the water transfer velocity (k_w^{wind}). ‘Bea04’: Borges et al., (2004); ‘Cea96’: Carini et al (1996); ‘R&C01’: Raymond and Cole (2001); ‘L&M83’: Liss and Merlivat (1983); ‘M&Y83’: Mackay and Yeun (1983); ‘McG01’: McGillis (2001); ‘Nea00’: Nightingale et al., (2000); ‘Sea07’: Shahin et al., (2007); ‘Wan9’: Wanninkhof (1992); ‘Zea03’: Zhao et al., (2003, not accounting for whitecap); ‘Z03oJ’: Zhao et al., (2003) on data from Jähne et al., (1985). Where applicable the u_* was estimated from u_{10} using the drag coefficient by Smith (1980).

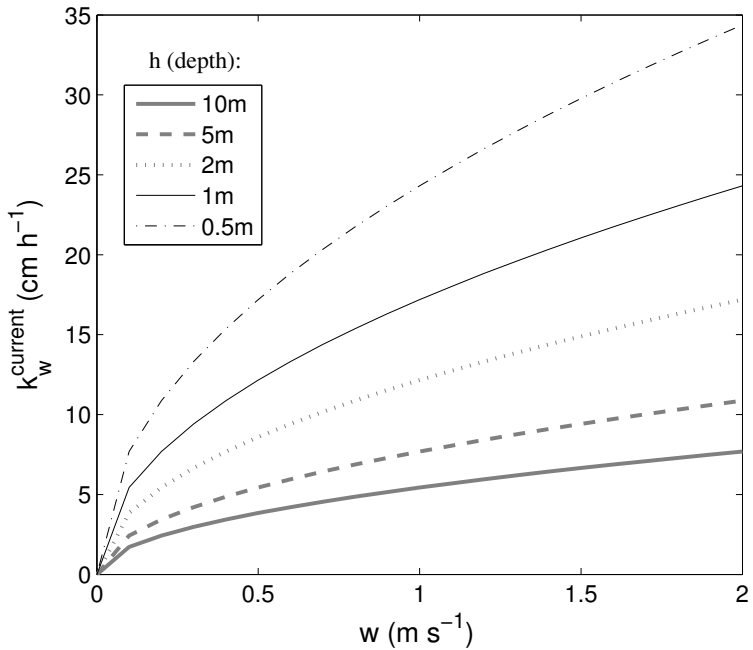


Fig. 5. Effect of water current (w) and depth (h) on the water transfer velocity (k_w^{current}) according to O'Connor and Dobbins (1958).

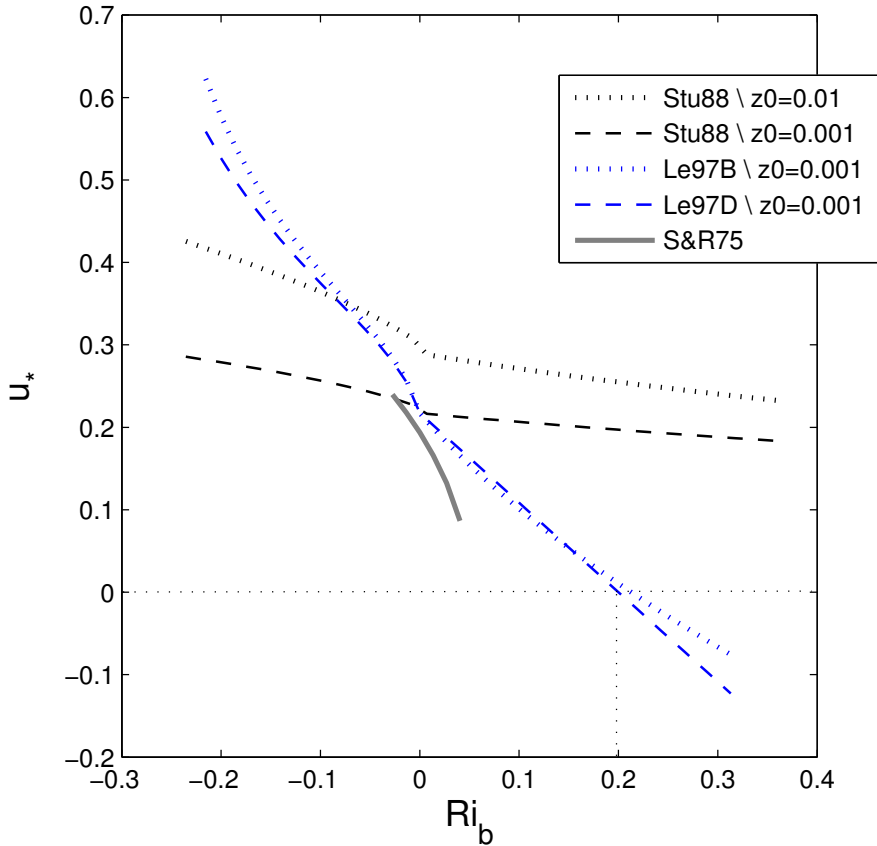


Fig. 6. Effects of atmospheric stability and roughness length on friction velocity according to the formulations by 'Set75' Sethuraman and Raynor (1975), 'Stu88' Stull (1988) and 'Le97' Lee (1997) based on 'B' Businger et al. (1971) or 'D' Dyer (1974). z_0 in m. Simulations with $u_{10} = 5 \text{ m s}^{-1}$, $15^\circ\text{C} < T_a < 40^\circ\text{C}$ and $T_w = 15^\circ\text{C}$.

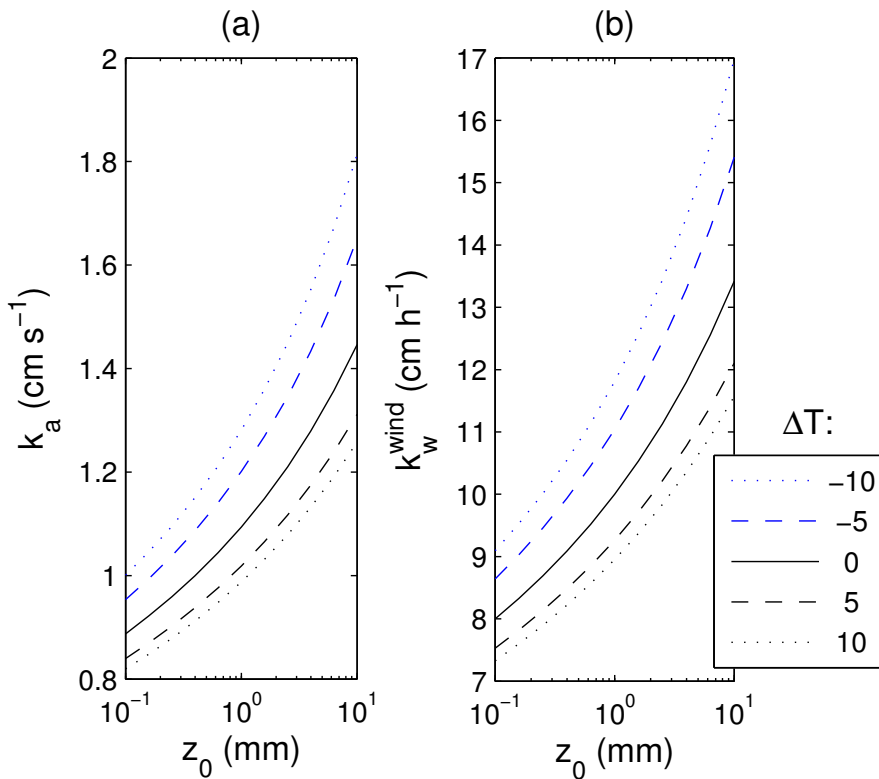


Fig. 7. Effect of surface roughness (measured by z_0) and atmospheric stability (measured by $\Delta T = T_a - T_w$) in (a) the air-side and (b) the water-side transfer velocities. $T_w = 15^\circ\text{C}$, $u_{10} = 5 \text{ m s}^{-1}$, k_a and k_w^{wind} by Mackay and Yeun (1983) and atmospheric stability scheme by Stull (1988).

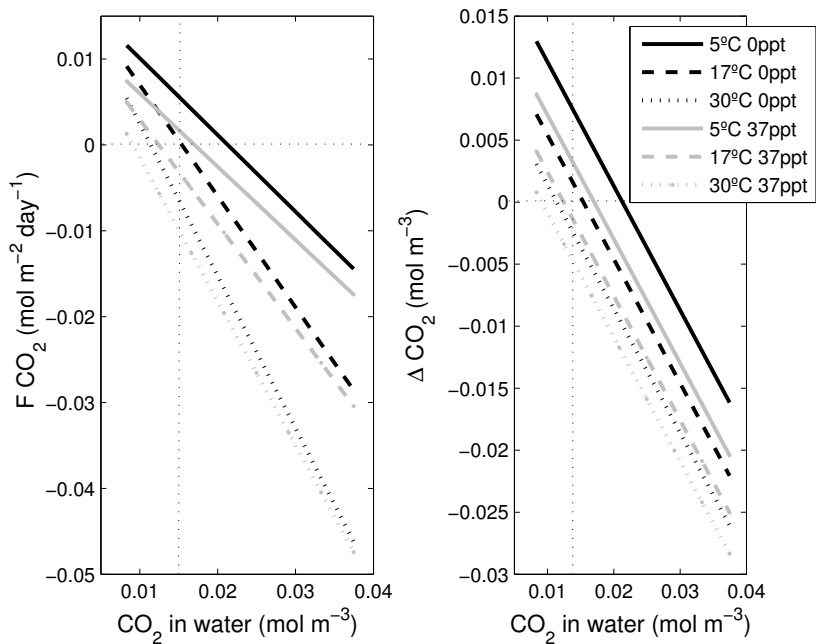


Fig. 8. Effects of $[\text{CO}_2]_w$, T_w and S in (a) the CO_2 flux across the air-water interface and (b) the ΔCO_2 . The $[\text{CO}_2]_a$ was fixed at 370 ppm, $u_{10} = 0.1 \text{ m s}^{-1}$, $P = 1 \text{ atm}$ and $w = 0.1 \text{ m s}^{-1}$. Transfer velocity (k) by double layer (DL), k_w^{wind} by McGillis (2001), atmospheric stability was neglected, α by Johnson (2010), D_w by Wilke and Chang (1955), CD by Smith (1980) and k_a by Mackay and Yeun (1983).

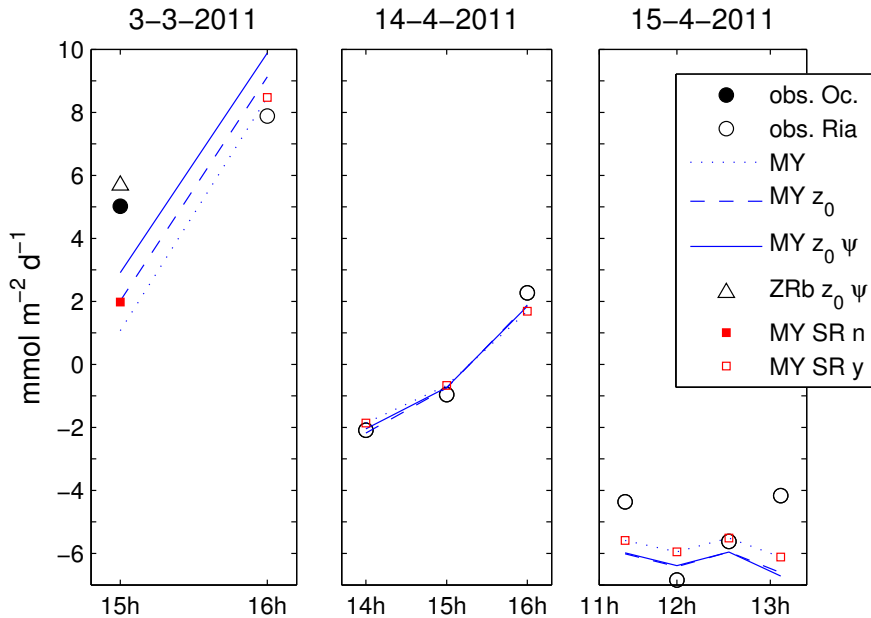


Fig. 9. CO₂ flux across the air-water interface (obs) observed (Ria) inside Ria Formosa or (Oc) in the nearby coastal ocean, and predicted by (MY) Mackay and Yeun (1983) or (ZRb) Zhao et al. (2003) with breaking wave parameter, (z_0) accounting for roughness length following Taylor and Yelland (2001) and (ψ) accounting for atmospheric stability following Stull (1988) or (SR) following Sethuraman and Raynor (1975) (y) within tested range or (n) slightly beyond tested range. All: transfer velocity (k) by double layer, α by Johnson (2010), D_w by Wilke and Chang (1955), and k_a by Mackay and Yeun (1983).

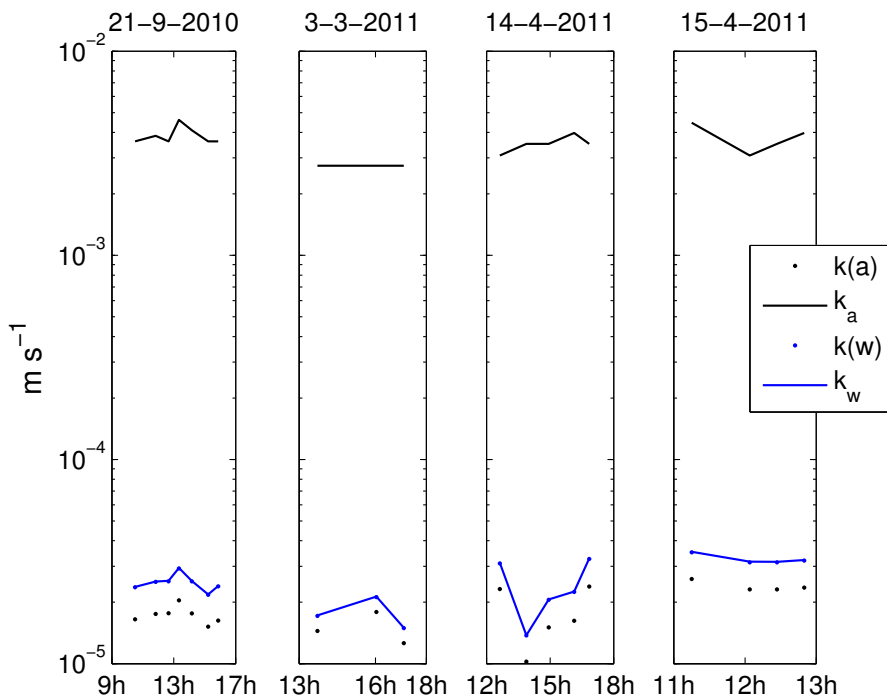


Fig. 10. Transfer velocity limiting phase. Overall transfer velocity from the air ($k(a)$) and from the water point of view ($k(w)$); air-side transfer velocity (k_a) and water-side transfer velocity (k_w).

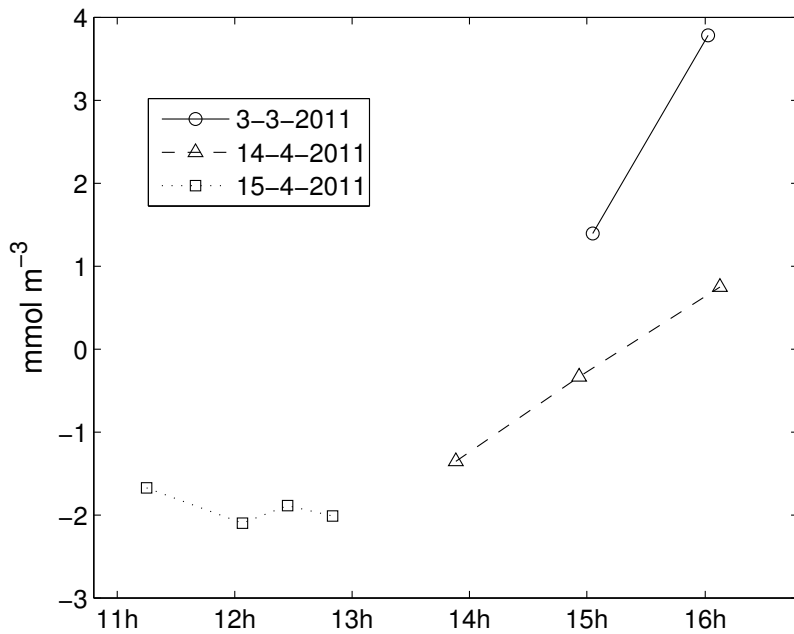


Fig. 11. ΔCO_2 for the three sampled time series.

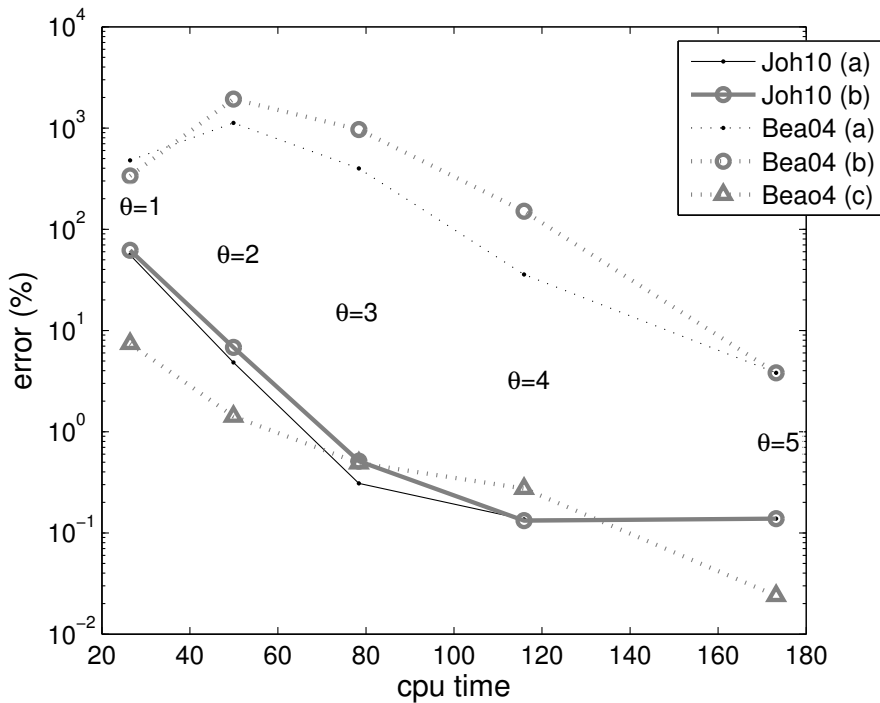


Fig. 12. Choosing n and Θ for the $T_w^{\circ C}$ terms in the DDF. (a) $n = \Theta$ and (b) $n = 5$. The (a) and (b) estimates with $[CO_2]$ given in ppm. (c) $n = \Theta$ with $[CO_2]$ given in $mol\ m^{-3}$.

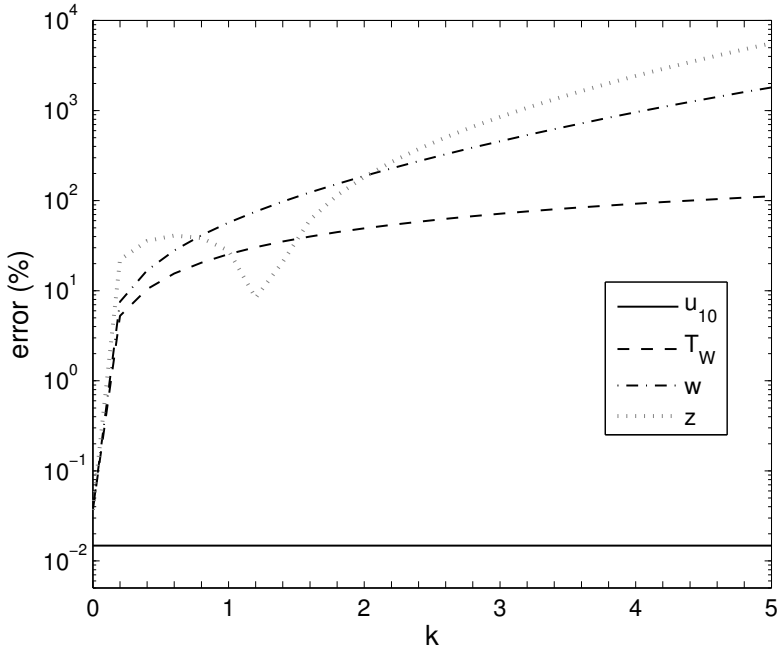


Fig. 13. Optimal k for wind speed (u_{10}), water temperature (T_w), current velocity (w) and depth (z). All $n_i = 5$ and $\Theta_i = 5$. The $\delta_4 = 2 \text{ km h}^{-1}$ (u_{10}), $\delta_8 = 1.8 \text{ }^\circ\text{C}$ (T_w), $\delta_{10} = 0.7488 \text{ hm h}^{-1}$ (w) and $\delta_{11} = 1.29 \text{ dam}$ (z).

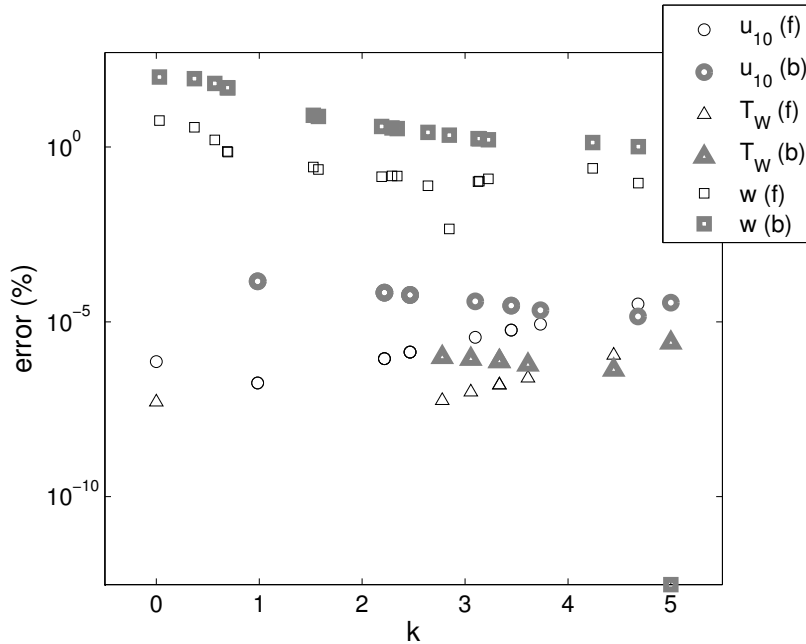


Fig. 14. Accuracy of the partial derivatives estimated at k_i located between $\min x_i$ and $\max x_i$. Results are shown for wind speed (u_{10}), water temperature (T_w) and current velocity (w). Derivatives estimated by (f) forward formula and (b) backward formula.

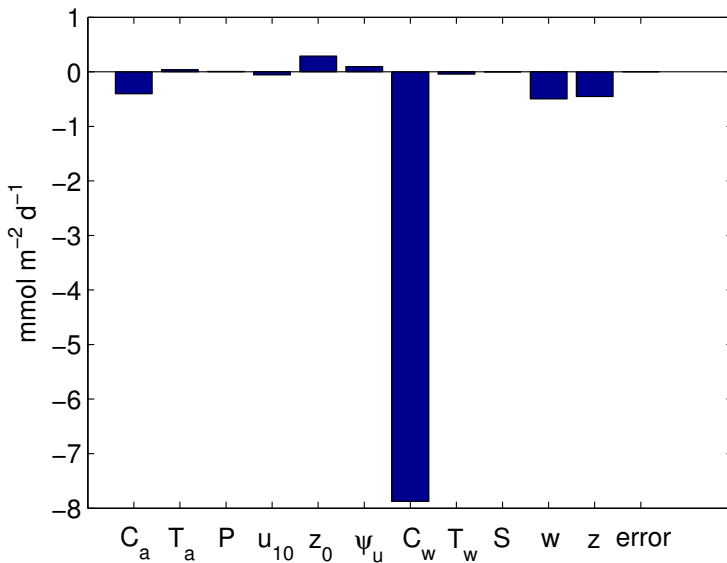


Fig. 15. Decomposition of the difference between the CO₂ Flux in Ria Formosa on the 15 April 2011 and in the nearby coastal ocean on the 3 March 2011. Transfer velocity (k) by double layer, k_w^{wind} by Mackay and Yeun (1983), k_w^{current} by O'Connor and Dobbins (1958), α by Johnson (2010), D_w by Wilke and Chang (1955), k_a by Mackay and Yeun (1983) and ψ_u by Stull (1988). (C_a) CO₂ in the air, (T_a) air temperature, (P) air pressure, (u_{10}) wind speed, (z_0) roughness length, (ψ_u) atmospheric stability (C_w) CO₂ in the water, (T_w) water temperature, (S) salinity, (w) water current, (z) depth. Vectors n and Θ were [2 2 1 2 3 3 1 3 1 2 2].