

This discussion paper is/has been under review for the journal Ocean Science (OS).
Please refer to the corresponding final paper in OS if available.

The vertical structure of oceanic Rossby waves: a comparison of high-resolution model data to theoretical vertical structures

F. K. Hunt¹, R. Tailleux², and J. J.-M. Hirschi³

¹School of Ocean and Earth Science, National Oceanography Centre, University of Southampton, Southampton, UK

²Department of Meteorology, University of Reading, Reading, UK

³National Oceanography Centre, Southampton, UK

Received: 20 April 2011 – Accepted: 29 April 2011 – Published: 13 May 2011

Correspondence to: F. K. Hunt (freja.hunt@noc.soton.ac.uk)

Published by Copernicus Publications on behalf of the European Geosciences Union.

OSD

8, 1089–1129, 2011

The vertical structure of oceanic Rossby waves

F. K. Hunt et al.

Title Page

Abstract

Introduction

Conclusions

References

Tables

Figures

⏪

⏩

◀

▶

Back

Close

Full Screen / Esc

Printer-friendly Version

Interactive Discussion



Abstract

Tests of the new Rossby wave theories that have been developed over the past decade to account for discrepancies between theoretical wave speeds and those observed by satellite altimeters have focused primarily on the surface signature of such waves. It appears, however, that the surface signature of the waves acts only as a rather weak constraint, and that information on the vertical structure of the waves is required to better discriminate between competing theories.

Due to the lack of 3-D observations, this paper uses high-resolution model data to construct realistic vertical structures of Rossby waves and compares these to structures predicted by theory. The meridional velocity of a section at 24° S in the Atlantic Ocean is pre-processed using the Radon transform to select the dominant westward signal. Normalized profiles are then constructed using three complementary methods based respectively on: (1) averaging vertical profiles of velocity, (2) diagnosing the amplitude of the Radon transform of the westward propagating signal at different depths, and (3) EOF analysis. These profiles are compared to profiles calculated using four different Rossby wave theories: standard linear theory (SLT), SLT plus mean flow, SLT plus topographic effects, and theory including mean flow and topographic effects.

The model data supports the classical theoretical assumption that westward propagating signals have a well-defined vertical modal structure associated with a phase speed independent of depth, in contrast with the conclusions of a recent study using the same model. The model structures were surface intensified, with a sign reversal at depth in some regions, notably occurring at shallower depths in the East Atlantic. SLT provides a good fit to the model structures in the top 300 m, but grossly overestimates the sign reversal at depth. The addition of mean flow slightly improves the latter issue, but is too surface intensified. SLT plus topography rectifies the overestimation of the sign reversal, but overestimates the amplitude of the structure for much of the layer above the sign reversal. Combining the effects of mean flow and topography provided the best fit for the mean model profiles, although small errors at the

OSD

8, 1089–1129, 2011

The vertical structure of oceanic Rossby waves

F. K. Hunt et al.

Title Page

Abstract

Introduction

Conclusions

References

Tables

Figures



Back

Close

Full Screen / Esc

Printer-friendly Version

Interactive Discussion



surface and mid-depths are carried over from the individual effects of mean flow and topography, respectively. Across the section the best fitting theory varies between SLT plus topography and topography with mean flow, with, in general, SLT plus topography performing better in the east where the sign reversal is less pronounced. None of the theories could accurately reproduce the deeper sign reversals in the west. All theories performed badly at the boundaries. The generalization of this method to other latitudes, oceans, models and baroclinic modes would provide greater insight into the variability in the ocean, while better observational data would allow verification of the model findings.

1 Introduction

Advances in the satellite observation of the ocean surface have led to significant progress in our theoretical understanding of oceanic Rossby waves, most notably on the “too-fast” Rossby wave issue that was prompted by the pioneering study by Chelton and Schlax (1996). However, the nature of satellite observations also means that improved theories of Rossby wave propagation have focused so far only on the surface signature of such waves, with little being known on how such theories would perform on the predictions of the vertical structure of such waves for lack of suitable observations. Thus, Tailleux and McWilliams (2001) showed how two physically different theories for Rossby waves, one based on the bottom-pressure compensated theory (which in effect accounts for the effect of rough bottom topography but no background mean flow) and that of the mean flow theory of Killworth et al. (1997) in a flat bottom ocean both were able to reproduce observed phase speeds with approximately the same degree of scatter while being based on fundamentally different physical principles. As shown in the present paper, these two theories however predict significantly different vertical structures for the Rossby waves, suggesting that insights into the actual vertical structure of observed Rossby waves may help in discriminating between different theories.

OSD

8, 1089–1129, 2011

The vertical structure of oceanic Rossby waves

F. K. Hunt et al.

Title Page

Abstract

Introduction

Conclusions

References

Tables

Figures

⏪

⏩

◀

▶

Back

Close

Full Screen / Esc

Printer-friendly Version

Interactive Discussion



The vertical structure of oceanic Rossby waves

F. K. Hunt et al.

Title Page

Abstract

Introduction

Conclusions

References

Tables

Figures



Back

Close

Full Screen / Esc

Printer-friendly Version

Interactive Discussion



Rossby waves play a critical role in the climate system, acting as a large scale adjustment mechanism for ocean basins to buoyancy forcing (Pedlosky, 1979; Gill, 1982), influencing the intensification (Anderson and Gill, 1975; Anderson and Killworth, 1977; Deser et al., 1999) and position (Taguchi et al., 2005) of western boundary currents and providing a possible source of variability in the Atlantic Meridional Overturning Circulation (Hirschi et al., 2007). Rossby waves are also associated with quasi-periodic climate cycles, such as the El Nino-Southern Oscillation (Picaut et al., 1997).

The interaction of the displacement of density gradients and the transport of energy by Rossby waves is important in all these processes; however, the understanding of these vital oceanic and climatic phenomena is hindered by a lack of knowledge of the vertical structure of Rossby waves. These density adjustments provide a link in the feedback between the atmospheric forcing of the ocean and the oceanic forcing of the atmosphere, but their slow speed delays the transmission of these forcings between ocean regions by years to decades. This can potentially be exploited to predict the seasonal to decadal behaviour of the system, but requires more than a surface understanding. While the vertical structure is unknown the reliability of the results of seasonal and longer-term climate models remains uncertain because their representation of the full structure of Rossby waves cannot be validated. Additionally, Rossby wave characteristics may change with a changing climate (Fyfe and Saenko, 2007), the effects and feedbacks of which cannot be fully appreciated from a surface-only perspective.

Typical investigations of Rossby waves based on linear theory decompose the wave into an infinite number of vertical “normal modes”, and their analogous forms in WKB theory, and assume that the phase speed is independent of depth. This produces vertical waveforms such as the barotropic mode and the first and second baroclinic modes. Commonly observations of Rossby waves are interpreted as the first baroclinic mode, prompting a search for factors that could increase the speed of this mode to match the enhanced speeds calculated from satellite observations (Killworth et al., 1997); however, as noted by Tailleux (2003), topography may slow down the barotropic mode enough as to make its phase speed close to observed ones. The assumption

that distinct modes of propagation still persist in the presence of a nonzero background mean flow, topography, nonlinearities, and diabatic processes, and that these are characterized by a vertically-coherent structure with a well-identified propagation speed independent of depth has been widespread so far, but still remain to be fully validated for lack of suitable observational data, although some attempts at doing so have been recently developed as reviewed below.

Previous sub-surface or in-situ observations of Rossby waves have often been restricted to a single, or a few, depth levels and thus limited in their ability to resolve the full 3-D structure. However recent hydrographic measurements have been able to provide some insight. For example, in Hagen (2005), transects of the top 1000 m of the north-east Atlantic were shown to exhibit significant undulations in potential density surfaces, decreasing in amplitude with depth to become almost insignificant below 250 dbar at 10° N and below 500 dbar at 21° N, suggesting surface intensification. Vertical structures found by decomposition of the data into eigenfunctions yielded surface intensification of the waves that was more prominent the further north the section and which reduced in magnitude with depth, slightly increasing in speed at the ocean bottom and showing no reversal of velocity in the profile, contrary to the expectations from standard linear theory for the first baroclinic mode.

ARGO profiling floats provide a hope of a widespread method for detecting the structure of Rossby waves below the surface. Chu et al. (2007) used data from ARGO floats in the North Atlantic to extract vertical profiles of Rossby waves. They found that the second baroclinic mode was always dominant, with the contributions of other modes geographically variable. This produced profiles with a subsurface maximum at approximately 1000 m and a secondary maximum in the region of 100 m with no reversal at depth, in concurrence with the results of Hagen (2005). Overall these studies support Chelton and Schlax (1996)'s conclusions that the standard linear theory for Rossby waves is inadequate to account for the properties of actual signals.

Owing to the sparse and local nature of existing hydrographic measurements, however, it is often hard to derive unambiguous conclusions about the vertical structure of

OSD

8, 1089–1129, 2011

The vertical structure of oceanic Rossby waves

F. K. Hunt et al.

Title Page

Abstract

Introduction

Conclusions

References

Tables

Figures



Back

Close

Full Screen / Esc

Printer-friendly Version

Interactive Discussion



The vertical structure of oceanic Rossby waves

F. K. Hunt et al.

[Title Page](#)[Abstract](#)[Introduction](#)[Conclusions](#)[References](#)[Tables](#)[Figures](#)[Back](#)[Close](#)[Full Screen / Esc](#)[Printer-friendly Version](#)[Interactive Discussion](#)

actual Rossby waves. As a result, it is only natural to turn to high-resolution numerical ocean model simulations as a means to investigate the issue of the vertical structure of oceanic Rossby waves, as numerical data are in general not hampered by spatial or temporal resolution issues. Recently, Lecoindre et al. (2008) investigated the propagation of Rossby waves in a high-resolution z-coordinate model on selected isopycnal surfaces in the North-Atlantic Ocean and found a systematic slow down of the simulated waves with depth, in contrast with the assumption made in most Rossby wave theories that Rossby waves propagate as vertically-coherent structures with a phase speed independent of depth. A comparison of theoretical profiles of meridional velocity to those generated by a high resolution model of the Pacific by Aoki et al. (2009) found a surface intensified wave from the model data that was comparable to theoretical vertical structures that included the effects of mean flow and topography. Furthermore they found the fit improved with the addition of finite wavelength effects.

In the present study, we seek to develop further insights into the issue by using 3 different methods to generate empirical vertical structures of Rossby wave propagation in the Atlantic Ocean using velocity anomalies from the same high-resolution numerical model as used in Lecoindre et al. (2008). Unlike in the latter study, however, the velocity anomalies are not projected on isopycnal surfaces, but retained in their original z-coordinate system. Moreover, we then seek to compare the empirical vertical structures obtained with those predicted by the standard and extended Rossby wave theories, similarly as in Aoki et al. (2009), to evaluate their success, and determine whether the performances of any given theory extend to the whole water column.

Section 2 describes how vertical structures are constructed from the model data and how the theoretical structures are determined. Section 3 presents the structures identified and compares them to theory, while Sect. 4 discusses the results and their context. Section 5 draws conclusions from the study and gives recommendations for further research.

2 Method

Model data is used since currently the observational data is of inadequate spatial and temporal resolution to yield useful basin wide vertical structures on the scales required for Rossby wave detection. In this study, we use the numerical simulations of an eddy-permitting ocean model, namely the French CLIPPER model (Treguier et al., 1999), which has a high horizontal and vertical resolution, uses realistic bottom topography and is driven by realistic forcings (see Table 1). The standard model outputs are 5-day means, which is adequate to investigate the relatively slow baroclinic Rossby wave signals of interest for this study.

This model's ability to produce realistic simulations of oceanic Rossby waves has been tested with observed and simulated surface phase speeds and shows good agreement (Lecointre et al., 2008). The model also performs well in a comparison between observed and simulated eddy kinetic energy (Penduff et al., 2004), which is important considering the possibility of interpreting the westward propagating signals as eddies rather than waves (Chelton et al., 2007). The good agreement between observed and simulated characteristics of baroclinic wave and eddies activities in the sea surface height suggest that it is reasonable to assume that the degree of realism achieved for the surface signature of the variability also pertain to its vertical structure, which motivates the use of such a model for the present study.

The method and technique developed in this study to investigate the vertical structure of westward propagating signals is illustrated for a particular longitudinal section. Specifically, a section at 24° S is chosen for investigation due to strong Rossby wave propagation in this region and the range of bottom topography at this location, including the continental slope, which is relatively gentle; the abyssal plane, which is flat; the Mid-Atlantic Ridge, which has some sharp topography; and the Walvis Ridge, which forms a very sharp topographic barrier in the east (see Fig. 1 for section topography). This allows the influence of bottom topography on the vertical structures to be evaluated in different conditions.

The vertical structure of oceanic Rossby waves

F. K. Hunt et al.

Title Page

Abstract

Introduction

Conclusions

References

Tables

Figures



Back

Close

Full Screen / Esc

Printer-friendly Version

Interactive Discussion



The vertical structure of oceanic Rossby waves

F. K. Hunt et al.

Title Page

Abstract

Introduction

Conclusions

References

Tables

Figures



Back

Close

Full Screen / Esc

Printer-friendly Version

Interactive Discussion



The meridional component of velocity is used to determine the vertical structures using three different methods. To isolate the Rossby wave signal from other dynamical processes, we apply the Radon transform (Radon, 1917; Deans, 1983; Cipollini et al., 2006) to meridional velocity anomalies. The propagating signals with the largest westward amplitude are then isolated by using a Gaussian filter, after which the filtered Radon transform is back-transformed into physical space to produce a field that contains only westward propagating signals around the dominant propagation speed. This procedure is repeated for all depth levels. It was occasionally found that the dominant speed at a particular level would differ from that exhibited by the surface level; in general, however, the Radon power would nevertheless exhibit a secondary peak corresponding to the dominant surface speed, in which case the Gaussian filter would therefore be applied to the secondary peak, rather than to the dominant peak, in order to isolate a vertical Rossby wave structure associated with vertically coherent propagation, as is usually assumed in WKB theories of Rossby wave propagation. Each of the methods constructs profiles that are normalized by their absolute maximum to produce profiles that are easily comparable both between methods and with the theoretical profiles.

The first method constructs vertical profiles of meridional velocity from the back-transformed and filtered data at each time and longitude, which are each normalized by their absolute maximum. The profiles are then averaged over time to produce an average profile for each longitude (creating a meridional section of vertical structures), or averaged over time and longitude to produce a single average profile representative of the section. In general, the vertical structure obtained by averaging normalized vertical structure does not necessarily vary between -1 and 1 , and therefore has to be renormalized.

In order to illustrate the range of vertical structures spanned, the standard deviation (SD) of the individual normalized profiles is added to and subtracted from the mean profile. This provides a typical “envelope” of possible values. As the focus is on the vertical structures, the standard deviation profiles are renormalized to bring their absolute

maximum to unity, in order to make all profiles comparable. The resulting structures can be compared to the mean to discover how the structure might vary within the data. This process is repeated for each of the following methods.

In the second method, the vertical structures are estimated directly from the Gaussian-filtered Radon transform before it is back-transformed. Specifically, a vertical profile is constructed from the amplitude of the filtered Radon transform at each depth of the model, which is then normalized, averaged and re-normalized as in the previous method. The standard deviation is also calculated and applied to the mean in the manner described above. This method yields a vertical profile pertaining to the entire longitudinal section that the Radon is applied to, and therefore does not vary with longitude by construction, unlike the other methods.

The third method uses empirical orthogonal functions (EOFs) to determine the structures in the back-transformed filtered velocity data. EOF analysis is conducted, using MATLAB's SVD function, for all times at each longitude. The structure represented by the first EOF accounts on average for 72 % of the variance in the data (maximum 91 % (over rough/sharp topography), minimum 58 % in the flatter regions), therefore the first EOF was taken to be the representative structure in the data. The first EOF structures are normalized, averaged and re-normalized as before and the standard deviation is treated as above again.

Theoretical structures are calculated for each of the following scenarios: no mean flow, flat bottom (corresponding to the standard linear theory); mean flow, flat bottom (corresponding to Killworth et al., 1997 theory); no mean flow, bottom pressure decoupling (BPD), i.e. including the effects of topography (corresponding to Tailleux and McWilliams, 2001 theory); and mean flow, BPD (corresponding to Killworth and Blundell, 2005 theory). Theoretical profiles are constructed using the model outputs of zonal velocity for the mean flow and the temperature and salinity fields to calculate profiles of buoyancy frequency squared (N^2). The theoretical basis for these scenarios is presented below.

The vertical structure of oceanic Rossby waves

F. K. Hunt et al.

Title Page

Abstract

Introduction

Conclusions

References

Tables

Figures



Back

Close

Full Screen / Esc

Printer-friendly Version

Interactive Discussion



The Rossby wave theory is based on the quasi-geostrophic vorticity equation (see Pedlosky, 1979 for derivation):

$$\left[\frac{\partial}{\partial t} - \frac{\partial \psi}{\partial y} \frac{\partial}{\partial x} + \frac{\partial \psi}{\partial x} \frac{\partial}{\partial y} \right] \left[\nabla^2 \psi + \beta y + \frac{\partial}{\partial z} \left(\frac{f^2}{N^2} \frac{\partial \psi}{\partial x} \right) \right] = 0 \quad (1)$$

where: t = time, x = eastward coordinate, y = northward coordinate, z = vertical coordinate, ψ = geostrophic stream function, f = Coriolis parameter, β = north/south gradient of f , N^2 = buoyancy frequency.

The influence of the background meridional velocity can be neglected due to its limited impact on the phase speed (Killworth et al., 1997), therefore the geostrophic stream function can be written as: $\psi = -U(z)y + \phi(x, y, z, t)$, to describe wave-like perturbations to the background flow. When the stream function is substituted into the above equation and linearized with respect to ϕ the result, from Aoki et al. (2009), is:

$$\left[\frac{\partial}{\partial t} + U \frac{\partial}{\partial x} \right] \left[\nabla^2 \phi + \frac{\partial}{\partial z} \left(\frac{f^2}{N^2} \frac{\partial \phi}{\partial z} \right) \right] + \left[\beta + \frac{\partial}{\partial z} \left(\frac{f^2}{N^2} \frac{\partial U}{\partial z} \right) \right] \frac{\partial \phi}{\partial x} = 0 \quad (2)$$

The wave solution of the above equation is taken as $\phi = \Phi(z) \exp[i(kx + ly - \sigma t)]$, where $\Phi(z)$ is the amplitude, which yields:

$$(U - c) \left[-K^2 \Phi + \frac{d}{dz} \left(\frac{f^2}{N^2} \frac{d\Phi}{dz} \right) \right] + \left[\beta - \frac{d}{dz} \left(\frac{f^2}{N^2} \frac{dU}{dz} \right) \right] \Phi = 0 \quad (3)$$

where: $c = \frac{\sigma}{k}$ and $K^2 = k^2 + l^2$.

The boundary conditions for this equation at the surface and the bottom determine the vertical structure and phase speed.

The standard linear theory (Rossby, 1939; Gill, 1982) assumes a rigid lid (i.e. the vertical velocity vanishes at the surface and bottom) and no mean flow with a flat bottom.

The vertical structure of oceanic Rossby waves

F. K. Hunt et al.

Title Page

Abstract

Introduction

Conclusions

References

Tables

Figures

◀

▶

◀

▶

Back

Close

Full Screen / Esc

Printer-friendly Version

Interactive Discussion



These assumptions simplify Eq. (3) to give:

$$\frac{d}{dz} \left(\frac{f^2}{N^2} \frac{d\Phi}{dz} \right) + \left(-\frac{\beta}{c} - K^2 \right) \Phi = 0 \quad (4)$$

using boundary conditions of: $w \propto \frac{d\Phi}{dz} = 0$ at $z = 0, -H$.

This equation and boundary conditions can be used to determine the vertical structure of the wave through an eigenvalue problem. There are an infinite number of vertical modes of increasing complexity, however the mode of interest here is the first baroclinic mode. This theory is referred to as the “no mean flow, flat bottom theory” denoted “SLT”.

If the effects of the mean flow on the meridional component of the local potential vorticity is included then the equation becomes:

$$(U - c) \left[\frac{d}{dz} \left(\frac{f^2}{N^2} \frac{d\Phi}{dz} \right) \right] + \left[\beta - \frac{d}{dz} \left(\frac{f^2}{N^2} \frac{dU}{dz} \right) \right] \Phi = 0 \quad (5)$$

with boundary conditions of: $(U - c) \frac{d\Phi}{dz} - \frac{dU}{dz} \Phi = 0$ at $z = 0, -H$.

This theory is referred to as “mean flow, flat bottom theory” denoted “U flat” and is the type of problem investigated by Killworth et al. (1997).

Bottom pressure decoupling or compensation is a theory put forward by Tailleux and McWilliams (2001) to account for the influence of topography whereby the waves are surface intensified and nearly insensitive to the bottom. This theory gives a profile using the boundary conditions $\phi = 0$ at $z = -H$ with the above equation. This theory is the “mean flow, bottom pressure decoupling theory” denoted “U BPD” and, with $U = 0$, the “no mean flow, bottom pressure decoupling theory” denoted “BPD”.

The model profiles are compared to the theoretical profiles using the root mean square error (RMSE). The lower the RMSE value the smaller the error between the profiles and so the better the fit. The RMSE is calculated according to:

The vertical structure of oceanic Rossby waves

F. K. Hunt et al.

Title Page

Abstract

Introduction

Conclusions

References

Tables

Figures

◀

▶

◀

▶

Back

Close

Full Screen / Esc

Printer-friendly Version

Interactive Discussion



$$\text{RMSE} = \sqrt{\frac{\sum (x_t - x_m)^2}{n}} \quad (6)$$

where x_t = theoretical profile, x_m = model profile and n = number of points in the profile.

The correlation between the RMSE and different variables can help highlight possible causes of the errors between the model sections and theoretical sections. The variables compared to the section RMSEs are: the mean flow, U ; the unfiltered meridional velocities, v ; the filtered meridional velocity anomalies; the buoyancy frequency, N^2 ; and the topography. A correlation can either be positive (the RMSE increases as the value of the variable increase) or negative (the RMSE increases as the value of the variable decreases) and the closer to one the correlation coefficient (R) is the stronger the correlation. It is calculated using Eq. (7). The significance of the correlation is tested at the 99 % confidence level.

$$R = \frac{n \sum x_t x_m - (\sum x_t)(\sum x_m)}{\sqrt{[n \sum x_t^2 - (\sum x_t)^2] [n \sum x_m^2 - (\sum x_m)^2]}} \quad (7)$$

The coefficient of determination or R^2 is used to determine the proportion of the variance in the RMSE that can be explained by a variable, if all the variance can be explained then R^2 has a value of 1, if none of the variance can be explained the value is zero.

3 Results

The amplitude of the Radon transform of the meridional velocity anomalies at 24° S before filtering is shown in Fig. (2) at a number of selected depths. The phase speed at which the amplitude is maximum (corresponding to signal selected by the filter) is

The vertical structure of oceanic Rossby waves

F. K. Hunt et al.

Title Page

Abstract

Introduction

Conclusions

References

Tables

Figures

◀

▶

◀

▶

Back

Close

Full Screen / Esc

Printer-friendly Version

Interactive Discussion



indicated with an arrow and it is clear that while the maximum of every layer does not necessarily lie on this line (see 1046 m and 2004 m lines), there is always at least a local maximum in the same location. This is the location chosen to apply the Gaussian filter and corresponds to selecting a wave speed of 5.6 cm s^{-1} . The excluded second, third and fourth peaks correspond to phase speeds of 4.8 cm s^{-1} , 4.1 cm s^{-1} and 3.7 cm s^{-1} , respectively.

The means of the model profiles constructed using the three different methods, shown by the solid lines in Fig. (3), display some striking similarities as well as some differences. The structure is consistently surface intensified, the Radon amplitude profile being most so, showing decreasing amplitude with depth, becoming zero, or near zero at the bottom. The EOF profile decreases most rapidly of the three below 1000 m, showing a very small sign reversal below about 2900 m, while the normalized velocity profile reaches zero amplitude around 4000 m, becoming briefly negative, whereas the Radon amplitude profile remains positive for the entire depth, only reaching zero at the bottom.

The envelope of the profiles obtained from the addition and subtraction of one standard deviation provides an insight into the variety of structures that make up the mean and are shown in Fig. (3) by the dashed lines. In all three cases they show that there are likely to be profiles in some locations that have a quite significant sign reversal occurring between 900 m and 2000 m, although it is less pronounced in the EOF case. The normalized velocity and Radon amplitude +1 SD profiles indicate that there are also locations that see no sign reversal.

The longitudinal changes in structure obscured by the mean profiles are striking, as shown in Fig. (4). There is a significant deepening of the depth of sign reversal from east to west and eastwards of the Walvis Ridge, with the sign reversal disappearing in places westwards of between 30 and 35° W . The EOF section is significantly smoother than the normalized velocity section as the variance not explained by the first EOF is contained in the remaining EOFs. The sign reversal in the east Atlantic is slightly stronger in the EOF profile, while in the west the region of positive amplitudes that

The vertical structure of oceanic Rossby waves

F. K. Hunt et al.

[Title Page](#)[Abstract](#)[Introduction](#)[Conclusions](#)[References](#)[Tables](#)[Figures](#)[Back](#)[Close](#)[Full Screen / Esc](#)[Printer-friendly Version](#)[Interactive Discussion](#)

extends significantly deeper than elsewhere decreases more rapidly with depth than is seen in the normalized velocity profiles. The average of these two sections is used for comparison with the theoretical sections and is shown in the bottom panel of Fig. (4).

The sections illustrate that the structures found by the addition and subtraction of the standard deviation from the mean profile are representative of the range of structures in the section and so form a simple and succinct way to display the variability within the section.

The vertical profiles obtained from the four different theories and their standard deviations, are shown in Fig. (5) alongside those profiles obtained from the model data. The SLT shows a steady decrease in amplitude with depth resulting in a sign reversal at between 1000 and 1500 m, and remains negative throughout the water column, even for the structures taking account of the SD, albeit with a very small shift towards zero with depth although values remain significantly negative at the bottom. The U Flat profile is more surface intensified than the SLT profile, with the amplitude decreasing quickly in the surface layer, slowing to a more gradual reduction below around 200 m. A sign reversal occurs for all three structures between 1000 and 1400 m and maintains a more or less constant negative value with depth, although the plus SD structure remains much closer to zero, while the minus SD structure reaches negative values similar to those in the SLT profiles. This theory shows the biggest range of structures within the data. The BPD structures display a slow but steady decrease in amplitude with depth, not reaching zero until after 2500 m, which is considerably deeper than the SLT and U Flat profiles, after which all three structures remain extremely close to zero. The U BPD profiles show a very similar rapid surface decline to that seen in the U Flat structures, although the following slow down in rate of decline is greater in this case, being more characteristic of the BPD structures, again not reaching zero until after 2500 m and continuing very close to zero for the remaining depth.

These single profiles can be compared to the single profiles constructed from the model data. The grey lines in Fig. 5 show the model profiles. The SLT profiles agree well with the normalized velocity and EOF profiles at the surface, down to about 600 m,

The vertical structure of oceanic Rossby waves

F. K. Hunt et al.

Title Page

Abstract

Introduction

Conclusions

References

Tables

Figures



Back

Close

Full Screen / Esc

Printer-friendly Version

Interactive Discussion



The vertical structure of oceanic Rossby waves

F. K. Hunt et al.

Title Page

Abstract

Introduction

Conclusions

References

Tables

Figures

◀

▶

◀

▶

Back

Close

Full Screen / Esc

Printer-friendly Version

Interactive Discussion



although they decrease in amplitude slower than the radon amplitude profile over the same depth. After this depth the model profiles' reduction in amplitude slows and approaches the zero line, while the SLT profiles continue to decrease past the zero point at the same rate as at the surface until after 1500 m when the rate decreases and then remains negative for the rest of the depth, whereas the model profiles remain very close to zero, although the normalized velocity and EOF profiles do make a small negative excursion below 4000 and 3000 m, respectively. The surface fit is good but the fit at depth is poor. The U Flat profiles show a more or less constant negative offset from the model profiles, although the surface layer agreement with the radon amplitude profile is a little better, however on the whole while this theory captures the shape of the model profiles it over-estimates the sign reversal to a similar degree as the SLT theory. The U Flat plus SD profile comes close to the model profiles between 4000 and 4500 m, but is otherwise a poor fit. The decrease from the surface is too slow and steady in the BPC profile and consequently the fit above about 1700 m is poor, however the fit below this depth is very good, although it does not permit the sign reversals seen in the model profiles however small. The U BPC profiles agree much more closely with the model profiles, although the decrease is too rapid in the top few hundred meters then too slow down to 1500 m, however the discrepancies are not very large, while the agreement is excellent at depth.

When the theoretical profiles are subtracted from the mean model profile the areas where each performs best can be identified, see Fig. 6c. Down to about 300 m SLT performs best, however below this depth the U BPD theory performs best, despite both over- and under-estimating the structure at different locations within the profile, with its largest errors above 1500 m. It is clear the U Flat theory is consistently poor because of the negative offset seen in Fig. 5. At depth the BPD and the U BPD perform similarly well, but BPD overestimates to a greater degree above 2000 m.

To objectively identify which theoretical profile best fits the model data the RMSE is used. Table 2 displays the RMSE of each of the theoretical profiles compared to each of the model profiles and compared to the mean of the model profiles. In all cases the

theory with the best fit (lowest RMSE) was U BPD, while the worst fit (highest RMSE) theory was SLT; U Flat was second worst and BPD was second best.

To look at the longitudinal changes in vertical structure predicted by theory, sections across the basin can be constructed, see Fig. 7. The SLT section has a reasonably constant depth positive layer, which shallows slightly over topographic obstacles, and a strong sign reversal with depth, as seen in the single profiles, which becomes more pronounced as the water becomes shallower. The U Flat section is much more longitudinally variable, as might be expected from the inclusion of a longitudinally varying mean flow, which is also suggested by the larger range of structures in the SD profiles (Fig. 5b). The surface positive layer is shallower than the SLT positive layer and reduces in amplitude much more rapidly at the surface, as the individual profiles showed. In common with the SLT section, sign reversals are stronger over topography, however this is much more variable in the U Flat section and tends to be displaced to the west of topographic obstacles, while the positive layer can be seen to shallow to their east. The structure to the east of the Walvis ridge is very different to the rest of the basin being highly surface intensified with a slight sign reversal at depth. The positive layer of the BPD section is deeper than either the SLT or U Flat sections and is largely uniform in depth. There is no sign reversal. The U BPD section again has a positive layer deeper than the SLT or U Flat sections, but is mostly shallower than the BPD section and is longitudinally variable, although perhaps less so than U Flat, as is suggested by the smaller range of structures shown by the U BPD SD profiles in Fig. 5d. The positive layer deepens west of topography such as the eastern boundary and the Walvis Ridge and to a smaller extent the Mid-Atlantic Ridge and shallows to the east of topography seen at the Walvis Ridge, the Mid-Atlantic Ridge and the western boundary, however there is no associated intensification of sign reversal as seen in the U Flat section. Similarly to the U Flat section, the structure is different to the east of the Walvis Ridge, being more surface intensified until close to the eastern boundary when the structure becomes more similar to that of the main basin. The magnitude of the sign reversal remains constant throughout the basin and is only slight.

The vertical structure of oceanic Rossby waves

F. K. Hunt et al.

Title Page

Abstract

Introduction

Conclusions

References

Tables

Figures



Back

Close

Full Screen / Esc

Printer-friendly Version

Interactive Discussion



The vertical structure of oceanic Rossby waves

F. K. Hunt et al.

[Title Page](#)[Abstract](#)[Introduction](#)[Conclusions](#)[References](#)[Tables](#)[Figures](#)[Back](#)[Close](#)[Full Screen / Esc](#)[Printer-friendly Version](#)[Interactive Discussion](#)

To compare the fit between the longitudinal variability of the model and theories the theoretical sections (Fig. 7) can be subtracted from the mean model section (Fig. 4c) to highlight where they differ; this is shown in Fig. 8. As shown by the individual profiles the SLT performs quite well at the surface, particularly in the range -30° W to 0° , which is an area of flatter topography, excluding above the Mid-Atlantic Ridge. There is a large negative error at depth due to the overestimation of the sign reversal, with the error being largest where the reversals intensify around topography in the theoretical section but not in the model section. The error in the U Flat section is entirely negative as the negative offset seen in the single profiles continues throughout the entire basin, with the error highest at the surface and lowest at depth, particularly in the regions of flatter topography. The error tends to increase where intensification of the sign reversal occurs to the west of topography in the theory but not in the model, however there is no corresponding change in error for the shallowing of the positive layer to the east of topography as this is somewhat the case in the mean model profile, although not to the same degree as the U Flat displays. The majority of the error in the BPD section is in the surface layer where the slowdown is too slow and steady compared to the model, while agreement at depth is much better than the SLT and U Flat sections, being particularly good between the Mid-Atlantic Ridge and the Walvis Ridge below 2000 m. The error in the U BPD section is much more heterogeneous than the other sections, with the largest errors at the surface, although both over- and under-estimation occurs. The largest of these occurs either side of the Walvis Ridge where a too deep positive layer and too shallow positive layer occur to the west and east respectively. There is also a large error at the eastern boundary where the surface layer is too deep. The overestimation at the surface corresponds to the deepening of the surface layer west of topography seen in the theoretical section that is not representative of the model section. There is an area of very good agreement with the model at depth to the west of the Walvis Ridge. It is in a similar location to the area of good fit in the BPD section, although it does not extend as far up the water column as in the BPD section. Common to all sections is an area of underestimation in the west below the surface layer. This

results from the inability of all the theories to reproduce the deepening of the positive layer in the west in the model sections, with the error being largest in the SLT section and least in the BPD section for this problem.

RMSE of the theoretical structure compared to the mean model structure at each longitude can be used to quantitatively determine the quality of the fit between model and theory and is shown in Fig. 9. All the theories perform very badly at the boundaries, which maybe due to the shallow water column and/or the rapidly changing gradients; however the behaviour of more interest is that in deep water regions. The SLT and U Flat theories have very similar RMSE, with SLT more often having a higher RMSE i.e. the worse fit, although, particularly in the east, there are locations where the U Flat has the higher RMSE. The BPD and U BPD RMSEs are also similar, being generally lower than the SLT and U Flat RMSEs, with U BPD providing the best fit in the west while BPD generally provides a better fit in the east. BPD has the most consistent RMSE across the basin. Overall the theories including mean flow do better in the west than the no mean flow counterparts for the same topographic condition, however the situation is reversed in the east.

To investigate which factors might be influencing the errors the correlation and the coefficient of determination (R^2) of different variables compared to the section RMSEs is calculated and shown in Tables 3 and 4, respectively. The variables compared to the RMSEs are: U , raw v , filtered v anomalies, N^2 , and topography. The variables that show a significant correlation at the 99% confidence level for all theories are U , raw v , N^2 and topography. The significant correlations are all negative (so the error increases as the values of the variable decreases) except for N^2 . The strongest correlations occur between all theories with U and topography and additionally for U Flat and U BPC with N^2 .

The R^2 value indicates how much of the variance in the RMSEs can be accounted for by the variables. Particularly high values are again found for all theories with U and topography, with the highest values for U Flat with N^2 and topography and between U BPC with N^2 .

The vertical structure of oceanic Rossby waves

F. K. Hunt et al.

[Title Page](#)[Abstract](#)[Introduction](#)[Conclusions](#)[References](#)[Tables](#)[Figures](#)[◀](#)[▶](#)[◀](#)[▶](#)[Back](#)[Close](#)[Full Screen / Esc](#)[Printer-friendly Version](#)[Interactive Discussion](#)

4 Discussion

The wave speed estimated from the Radon transform (5.6 cm s^{-1}) agrees well with observations of baroclinic Rossby waves at 24° S in the Atlantic, (e.g. Chelton and Schlax, 1996), supporting the findings of Lecointre et al. (2008) that this model data is capable of accurately representing Rossby waves. However, the vertical coherence of the dominant speed (seen in Fig. 2) contradicts their finding that there is a consistent slow down of phase speed with depth, despite using the same model data as this study (but for the North Atlantic), rather supporting the classical assumption that phase speed is constant with depth. Interestingly this appears to be true of all the peaks in the Radon transform, not just the largest that is taken to correspond to the first baroclinic mode, but also the progressively smaller peaks that may correspond to higher order modes, suggesting the assumption may be valid for all modes. However, in this study the Radon transform was applied to a whole latitudinal section meaning the response is an amalgamation of the behaviours across the basin, while Lecointre et al. (2008) adopted a more localized approach, so it is possible that the assumption of a phase speed constant with depth is not appropriate in some individual locations or regions, but that as a generalized large scale approximation it is still valid. Alternatively it is possible that the heavy pre-processing and filtering applied by Lecointre et al. (2008) to the same data may have somehow impacted on the vertical coherence of the propagation speeds. This is something that needs further investigation and clarification to ensure assumptions have a physical basis and are appropriate to the scale of investigation.

It is difficult to assess the realism of the vertical structures obtained from the model because of the lack of observations with a good vertical resolution (the very motivation for the study!), let alone observations coincident with the region of interest, and so confidence in the structures mainly comes from the similarities between the profiles constructed using different methods and the model's proven ability to produce realistic Rossby waves (Lecointre et al., 2008) as well as producing recognizable first baroclinic forms.

The vertical structure of oceanic Rossby waves

F. K. Hunt et al.

Title Page

Abstract

Introduction

Conclusions

References

Tables

Figures



Back

Close

Full Screen / Esc

Printer-friendly Version

Interactive Discussion



The vertical structure of oceanic Rossby waves

F. K. Hunt et al.

Title Page

Abstract

Introduction

Conclusions

References

Tables

Figures



Back

Close

Full Screen / Esc

Printer-friendly Version

Interactive Discussion



The vertical structure found by Chu et al. (2007) used temperature data from ARGO floats in the north Atlantic and as a result is quite different to those found here with a pronounced sub-surface maximum at 1500 m and zero amplitude at the surface. Their findings showed a large contribution from the second baroclinic mode in the structure.

Hagen (2005) investigated the structure in the top 1000 m in the north Atlantic using dynamic depths and found the first baroclinic mode dominated while the second mode could be neglected where assumption of a flat bottom was reasonable but would have a significant contribution where topography is sharp. Here the second baroclinic mode was explicitly excluded to concentrate on the first baroclinic mode, although it does seem plausible that the second mode could be influential in this data, particularly because of the rough topography, as the second peak in the Radon transform is very comparable in amplitude to the peak selected and if, tentatively, interpreted as corresponding to the second mode would certainly contribute significantly to the signal. This analysis could easily be repeated for the additional peaks seen in the Radon amplitude, which may provide further insight as to the skill of the theories.

The resolution of the longitudinal structure of the vertical structure of Rossby waves is novel, illustrating the variability across the basin, however since this is currently not achievable observationally the realism of these variations are unknown, although they still provide an interesting insight since just as the surface characteristics vary across the basin so would the underlying structures be expected to.

The longitudinal structure of the vertical profiles is not simple to explain. Similar patterns of deepening in the west are not seen in the density field of the model output, or the individual temperature and salinity fields. There is a slight shallowing of the pycnocline, thermocline and halocline in the east, however the scale of the variation is not comparable to that seen in the vertical profiles or at an equivalent depth. Nor does the structure reflect the bottom topography. The structures within the velocity fields also do not reflect the longitudinal structure. The case of this intense deepening in the west is not only difficult to explain but is also not captured by any of the theoretical sections and examinations of hydrographic sections at similar latitudes also present

no “real world” candidate for the cause of deepening. The use of un-validated model structures means it is unclear whether it is the theories or the model that is lacking in accurately describing the longitudinal structure.

The failings of the theoretical profiles compared to the model profiles are very similar in nature to those found by Aoki et al. (2009), who applied alternative methods to model data to determine the vertical structure of Rossby waves in the Pacific Ocean. Vertical structures were constructed using model data from the Earth Simulator OGCM (OFES) and compared to the same four theoretical scenarios used here, although the effects of a finite wavelength were included, which is not considered here. In common with the findings here, using both mean flow and topography generated the best fitting vertical profile, as shown by the profile RMSEs (Table 2) and qualitatively by their Fig. 7, however the surface fit of their mean flow and topography theory is better than that of the U BPC profile although they both show a common region of worse fit between 500 and 1000 m. The better fit seen with their mean flow and topography theory and model profile may be due to the inclusion of finite wavelengths, which needs much more investigation and consideration, or alternatively could be due to the model used representing Rossby waves in a different way to the CLIPPER model. Their standard theory produced a similar gross overestimation of the sign reversal at depth, as did including just mean flow, although to a lesser extent, which also produced the too fast slow down at the surface seen in the U Flat profiles. Their bottom pressure decoupling theory also displayed the too gradual reduction in amplitude with depth apparent in the BPD profile. Additionally the depths of the theories approaching or passing zero are very comparable. The main contrasts between the Aoki et al. (2009) structures and those presented here is an obvious surface layer above 400 m after which the amplitude remains constant for approximately 200 m down the water column, which is very different from the smooth reductions in amplitude presented here, although this is probably due to the differing density structures of the different oceans.

The RMSEs indicate that none of the theories are really adequately describing the model structures and in addition reveal that in different locations different theories are

The vertical structure of oceanic Rossby waves

F. K. Hunt et al.

Title Page

Abstract

Introduction

Conclusions

References

Tables

Figures



Back

Close

Full Screen / Esc

Printer-friendly Version

Interactive Discussion



performing best, in general in the west U BPD performs best, while in the east BPD is best, suggesting some aspects of the different theories are more appropriate for different locations, possibly related to their differing conditions such as topography, velocities, density structure etc. It is clear however that with consistently the highest RMSEs (Table 2 and Fig. 9), as has been discovered at the surface (e.g. Chelton and Schlax, 1996; Fu and Chelton, 2001), the standard linear theory is inadequate, except in the top 300 m of the vertical structure, where it performs the best (Figs. 5a and 8a). Why this is the case is unclear as the assumptions seem no more valid in this layer than the rest of the water column.

The inclusion of topography is clearly the biggest factor in improving the agreement between model and theory as the BPD and U BPD theories vie for lowest RMSE across the section (Fig. 9) while the improvement in RMSE of the individual profiles from the SLT on the inclusion of topography (BPD) on average more than halves the RMSE, in comparison to the inclusion of mean flow (U Flat) resulting in a reduction of less than 20% from the SLT RMSE on average. The addition of mean flow to the topography (U BPD) on average improves the RMSE from the BPD RMSE by the same amount as between the SLT RMSE and the U Flat RMSE suggesting that the improvements from mean flow and topography are additive and do not interact to effect the profile. This additive property only appears to hold on average for the vertical profiles. When Fig. 9, showing the RMSEs for the sections, is examined it is clear the RMSEs of U Flat and BPD do not combine to produce the form of the U BPD RMSE curve. In this case the effects of topography and mean flow do appear to interact differently at different locations affecting the skill of the theory at each point. However the dominance of topography over mean flow in terms of improving the fit may be due to the location of the section as it has been suggested that equatorwards of 30° mean flow may be less influential (e.g. Colin de Verdiere and Tailleux, 2005; Aoki et al., 2009).

The source of the errors for each theory can be investigated by examining the correlation between different variables and the RMSEs. The one of the highest correlations was found between all theories and the topography, with the theories including mean

The vertical structure of oceanic Rossby waves

F. K. Hunt et al.

Title Page

Abstract

Introduction

Conclusions

References

Tables

Figures



Back

Close

Full Screen / Esc

Printer-friendly Version

Interactive Discussion



flow being slightly stronger, suggesting that while topography is the most important factor in reducing the RMSEs there are still shortcomings in how it is incorporated as shallower water is increasing the errors, leading to peaks in RMSE over the mid-Atlantic Ridge and Walvis Ridge. The R^2 analysis indicates that the topography could be accounting for between 49 and 64 % of the error suggesting this is an area that needs greater investigation and theoretical attention.

The correlation between the mean flow and the RMSE is slightly weaker than for the topography but could explain a substantial fraction of the error, particularly in the U Flat and U BPD cases. In this case since the majority of the zonal velocity in this section is westward (i.e. negative) the correlation coefficient indicates that the stronger the current the worse the error. This reinforces the importance of including mean flow but again its representation may need further investigation.

The vertical density structure as represented by N^2 also has a strong correlation with the error, in particular for those theories including mean flow where extremely strong correlation is indicated by a correlation coefficient of 0.9 for the U Flat theory. This indicates that the higher the value of N^2 the higher the errors. In fact in the case of U Flat N^2 could explain up to 79 % of the error variance, while it could explain around half the error in the U BPD case, in severe contrast to a mere 9 % explained for the SLT and BPD theories. Why stability of the water column would have a greater influence on the errors when mean flow is included is unclear.

Interestingly the statistically significant correlation between the RMSE and the unfiltered velocity suggests that the filtering may need to exclude less of the velocity data in order to capture the entirety of the variability within this mode. This could be aided in future by using the methodology of Aoki et al. (2009) that defines the region to filter by examining the frequency-wavenumber spectrum of the data to select the signals that correspond to the theoretical dispersion relations. The error this accounts for is between 19 and 24 %, except for U Flat where it only accounts for 10 %. The addition of meridional velocity to the mean flow theoretical calculations has been shown to produce little improvement to the agreement between theoretical and observed phase

The vertical structure of oceanic Rossby waves

F. K. Hunt et al.

[Title Page](#)[Abstract](#)[Introduction](#)[Conclusions](#)[References](#)[Tables](#)[Figures](#)[◀](#)[▶](#)[◀](#)[▶](#)[Back](#)[Close](#)[Full Screen / Esc](#)[Printer-friendly Version](#)[Interactive Discussion](#)

speeds (Killworth et al., 1997), although the effect on the 3-D structure was not considered. This might explain why the percentage of the error explained is relatively small for the U Flat theory, while the higher value when topography is included with the mean flow may be due to topographic influence on the velocity. Including the meridional velocity may well produce improvements in the way theory describes the vertical structure, however this is not simple as a finite meridional wave number would need to be defined, which could introduce further errors as it is generally poorly defined.

Generalizing this study to other latitudes and ocean basins would help identify any pattern in the regions where different theories perform best and would help clarify the issue of assuming a constant phase speed with depth. In addition comparison with data from different models using the same method might help highlight areas where the model-theory discrepancies are more likely to be due to model error or more due to theoretical shortcomings. Advances in monitoring the vertical structure of the ocean would further aid this by allowing validation of the model vertical structures. Additionally extending the method to include higher baroclinic modes could provide a broader evaluation of the theories' capabilities. Theoretical considerations not included in this study but which could potentially improve the model-theory fit are finite wavelengths and the examination of non-purely zonal wave propagation. This study emphasises the importance of considering all aspects of a theory when assessing its competence and encourages wider use of measures alongside surface phase speed to determine theoretical capabilities.

5 Conclusions

- There is evidence to suggest that the assumption of a phase speed constant with depth is justified and may be valid for all modes, although further investigation is needed to confirm if this is the case for both local and large scales.

The vertical structure of oceanic Rossby waves

F. K. Hunt et al.

Title Page

Abstract

Introduction

Conclusions

References

Tables

Figures



Back

Close

Full Screen / Esc

Printer-friendly Version

Interactive Discussion



- Using three different methods surface intensified vertical structures were identified, with some regions experiencing sign reversals at depth.
- The longitudinal structure revealed markedly different structures in the east and west Atlantic, with the west showing areas of no sign reversal or deep sign reversal, contrasted to the east where sign reversal consistently occurred between 1000 and 2000 m.
- The standard linear theory does not adequately describe the vertical structure because it grossly overestimates the amplitude of the sign reversal at depth, however a good fit is provided for the top 300 m.
- The addition of mean flow to the standard theory improves the agreement between model and theory by slightly reducing the overestimation of sign reversal at depth, but is too surface intensified leading to an underestimation of the amplitude of the structure above the sign reversal.
- The addition of the effects of bottom topography gives an improved fit to both the standard theory and the standard theory plus mean flow by a more successful description of the structure at depth, however the surface structure reduces in amplitude too slowly consequently overestimating the amplitude of the structure above the sign reversal.
- Combining the effects of mean flow and topography provided the best fit for the individual model profiles, although an initial slight underestimation of the amplitude in the surface layer followed by a slight overestimation at mid depths are carried over from the individual effects of mean flow and topography, respectively.
- Over the length of the section the best fitting theory varies between only topography and topography with mean flow, with, in general, topography only performing better in the east.

The vertical structure of oceanic Rossby waves

F. K. Hunt et al.

Title Page

Abstract

Introduction

Conclusions

References

Tables

Figures



Back

Close

Full Screen / Esc

Printer-friendly Version

Interactive Discussion



- None of the theoretical profiles reproduce the deepening of the sign reversal in the west, although whether this is a shortcoming of the theories or the model, or both, is unknown due to lack of observational data.
- The generalization of this method to other latitudes, oceans, models and baro-
clinic modes would provide a greater insight into the variability in the ocean, while
better observational data would allow verification of the model findings.
- Additional theoretical considerations include the effects in finite wavelengths and
non-zonal propagation and the use of a wider range of measures of theoretical
success than surface phase speed.

Acknowledgements. R. T. acknowledges partial financial support from CNES.

References

- Anderson, D. L. and Gill, A. E.: Spin-up of a stratified ocean, with application to upwelling, *Deep-Sea Res.*, 22, 583–596, 1975.
- Anderson, D. L. and Killworth, P. D.: Spin-up of a stratified ocean, with topography, *Deep-Sea Res.*, 24, 709–732, 1977.
- Aoki, K., Kubokawa, A., Sasaki, H., and Sasai, Y.: Mid-latitude Baroclinic Rossby wave in a high-resolution OGCM Simulation, *J. Phys. Oceanogr.*, 39, 2264–2279, 2009.
- Barnier, B.: Forcing the Ocean, in: *Ocean Modelling and Parameterization*, The Netherlands: Kluwer Academic Publishers, 45–80, 1998.
- Chelton, D. B. and Schlax, M. G.: Global observations of Rossby waves, *Science*, 272, 234–238, 1996.
- Chelton, D. B., Schlax, M. G., Samelson, R. M., and de Szoeke, R. A. Global observations of large oceanic eddies, *Geophys. Res. Lett.*, 34, L15606, 10.1029/2007GL030812, 2007.
- Chu, P. C., Ivanov, L. M., Melnichenko, O. V., and Wells, N. C.: On long baroclinic Rossby waves in the tropical North Atlantic observed from profiling floats, *J. Geophys. Res.-Oceans*, 112(C5), C05032, doi:10.1029/2006JC003698, 2007.

The vertical structure of oceanic Rossby waves

F. K. Hunt et al.

Title Page

Abstract

Introduction

Conclusions

References

Tables

Figures



Back

Close

Full Screen / Esc

Printer-friendly Version

Interactive Discussion



The vertical structure of oceanic Rossby waves

F. K. Hunt et al.

Title Page

Abstract

Introduction

Conclusions

References

Tables

Figures

◀

▶

◀

▶

Back

Close

Full Screen / Esc

Printer-friendly Version

Interactive Discussion



- Cipollini, P., Quartly, G. D., Challoner, P. G., Cromwell, D., and Robinson, I. S.: Remote sensing of extra-equatorial planetary waves, in: *Manual of Remote Sensing, Volume 6: Remote Sensing of Marine Environment*, edited by: Gower, J. F., Bethesda MD, USA: American Society for Photogrammetry and Remote Sensing, 61–84, 2006.
- 5 Colin de Verdiere, A. and Tailleux, R.: The Interaction of a Baroclinic Mean Flow with Long Rossby Waves, *J. Phys. Oceanogr.*, 35, 865–879, 2005.
- Deans, S. R.: *The Radon Transform and some of its applications*, John Wiley, 1983.
- Deser, C., Alexander, M. A., and Timlin, M. S. Evidence for a Wind-Driven Intensification of the Kuroshio Current Extension from the 1970s to the 1980s, *J. Climate*, 12, 1697–1706, 1999.
- 10 Fu, L.-L. and Chelton, D. B.: Large-scale ocean circulation, in: *Satellite Altimetry and Earth Sciences: A Handbook for Techniques and Applications*, edited by: Fu, L.-L. and Cazenave, A., Academic Press, 133–169, 2001.
- Fyfe, J. C. and Saenko, O. A.: Anthropogenic speed-up of oceanic planetary waves, *Geophys. Res. Lett.*, 34(10), L10706, doi:10.1029/2007GL029859, 2007.
- 15 Gill, A. E.: *Atmosphere-Ocean Dynamics*, San Diego: Academic Press, 1982.
- Hagen, E.: Zonal Wavelengths of Planetary Rossby Waves Derived from Hydrographic Transects in the Northeast Atlantic Ocean, *J. Oceanogr.*, 61, 1039–1046, 2005.
- Hirschi, J. J.-M., Killworth, P. D., and Blundell, J. R.: Subannual, seasonal and interannual variability of the North Atlantic meridional overturning circulation, *J. Phys. Oceanogr.*, 37(5), 1246–1256, 2007.
- 20 Killworth, P. D. and Blundell, J. R.: The Dispersion Relation for Planetary Waves in the Presence of Mean Flow and Topography. Part II: Two-Dimensional Examples and Global Results, *J. Phys. Oceanogr.*, 35(11), 2110–2133, 2005.
- Killworth, P. D., Chelton, D. B., and de Szoeke, R. A.: The Speed of Observed and Theoretical Long Extratropical Planetary Waves, *J. Phys. Oceanogr.*, 27(9), 1946–1966, 1997.
- 25 Lecointre, A., Penduff, T., Cipollini, P., Tailleux, R., and Barnier, B.: Depth dependence of westward-propagating North Atlantic features diagnosed from altimetry and a numerical 1/6° model, *Ocean Sci.*, 4, 99–113, doi:10.5194/os-4-99-2008, 2008.
- Pedlosky, J.: *Geophysical Fluid Dynamics*, New York: Springer-Verlag, 1979.
- 30 Penduff, T., Barnier, B., Dewar, W. K., and O’Brien, J. J.: Dynamical Response of the Oceanic Eddy Field to the North Atlantic Oscillation: A Model-Data Comparison, *J. Phys. Oceanogr.*, 34, 2615–2629, 2004.

- Picaut, J., Masia, F., and du Penhoat, Y.: An advective-reflective conceptual model for the oscillatory nature of the ENSO, *Science*, 277, 663–666, 1997.
- Radon, J.: Über die Bestimmung von Funktionen durch ihre Integralwerte langs Gewisser Mannigfaltigkeiten, *Berichte Sachsische Akademie der Wissenschaften, Leipzig. Math.-Phys.*, 69, 262–267, 1917.
- Rossby, C.-G. A.: Relation between variations in the intensity of the zonal circulation of the atmosphere and the displacements of the semi-permanent centres of action, *J. Mar. Res.*, 2, 38–55, 1939.
- Smith, W. H. and Sandwell, D. T.: Global seafloor topography from satellite altimetry and ship depth soundings, *Science*, 277, 1957–1962, 1997.
- Taguchi, B., Xie, S.-P., Mitsudera, H., and Kubokawa, A.: Response of the Kuroshio Extension to Rossby Waves Associated with the 1970s Climate Regime Shift in a High-Resolution Ocean Model, *J. Climate*, 18, 2979–2995, 2005.
- Tailleux, R.: Comment on “The Effect of Bottom Topography on the Speed of Long Extratropical Planetary Waves”, *J. Phys. Oceanogr.*, 33, 1536–1541, 2003.
- Tailleux, R. and McWilliams, J. C.: The Effect of Bottom Pressure Decoupling on the Speed of Extratropical, Baroclinic Rossby Waves, *J. Phys. Oceanogr.*, 31, 1461–1476, 2001.
- Treguier, A. M., Reynaud, T., Pichevin, T., Barnier, B., Molines, J. M., de Miranda, A. P., Mesinger, C., Beismann, J. O., Madec, G., Grima, N., Imbard, M., and Le Provost, C.: The CLIPPER Project: High resolution modelling of the Atlantic, *International WOCE Newsletter*, 36, 3–5, 1999.

The vertical structure of oceanic Rossby waves

F. K. Hunt et al.

[Title Page](#)[Abstract](#)[Introduction](#)[Conclusions](#)[References](#)[Tables](#)[Figures](#)[Back](#)[Close](#)[Full Screen / Esc](#)[Printer-friendly Version](#)[Interactive Discussion](#)

The vertical structure of oceanic Rossby waves

F. K. Hunt et al.

Title Page

Abstract

Introduction

Conclusions

References

Tables

Figures

◀

▶

◀

▶

Back

Close

Full Screen / Esc

Printer-friendly Version

Interactive Discussion



Table 1. Specifics of the CLIPPER model configuration used to generate the data.

Model Parameter	Value
Domain	Atlantic Ocean 20° N to 60° S
Horizontal resolution	1/6° on a MERCATOR grid
Vertical resolution	42 geopotential levels (max resolution 12 m at the surface, min resolution 200 m at depth)
Temporal resolution	5 day averages
Model run	10 yr
Bottom topography	Resolution of between 1 and 12 km (Smith and Sandwell, 1997)
Forcing	Daily ECMWF ERA15 reanalysis (Barnier, 1998)
Output variables used	Zonal velocity (u), Meridional velocity (v), Salinity (S), Temperature (T)

The vertical structure of oceanic Rossby waves

F. K. Hunt et al.

Table 2. The root mean square error of the theoretical profiles compared to each model profile and the mean model profile.

	Normalized Velocities	Radon Amplitude	First EOF	Mean Model
SLT	0.22	0.23	0.19	0.21
U Flat	0.19	0.16	0.17	0.17
BPD	0.07	0.13	0.07	0.09
U BPD	0.04	0.06	0.06	0.04

[Title Page](#)
[Abstract](#)
[Introduction](#)
[Conclusions](#)
[References](#)
[Tables](#)
[Figures](#)
[Back](#)
[Close](#)
[Full Screen / Esc](#)
[Printer-friendly Version](#)
[Interactive Discussion](#)


The vertical structure of oceanic Rossby waves

F. K. Hunt et al.

Table 3. Correlation coefficient between the root mean square errors of the theoretical sections compared to the model section for different variables. Correlations significant at 0.01 are in bold.

	SLT RMSE	U Flat RMSE	BPD RMSE	U BPD RMSE
<i>U</i>	-0.5	-0.6	-0.5	-0.6
Unfiltered ν	-0.4	-0.3	-0.4	-0.4
Filtered ν	0.1	-0.1	0.1	0.0
N^2	0.3	0.9	0.3	0.7
Topography	-0.7	-0.8	-0.7	-0.8

Title Page

Abstract

Introduction

Conclusions

References

Tables

Figures

◀

▶

◀

▶

Back

Close

Full Screen / Esc

Printer-friendly Version

Interactive Discussion



The vertical structure of oceanic Rossby waves

F. K. Hunt et al.

Table 4. Coefficient of Determination (R^2) for each of the root mean square errors of the theoretical sections compared to the mean model section for different variables.

	SLT RMSE	U Flat RMSE	BPD RMSE	U BPD RMSE
U	0.24	0.36	0.23	0.39
Unfiltered v	0.24	0.10	0.22	0.19
Filtered v	0.01	0.01	0.01	0.00
N^2	0.09	0.79	0.09	0.51
Topography	0.49	0.64	0.49	0.64

[Title Page](#)
[Abstract](#)
[Introduction](#)
[Conclusions](#)
[References](#)
[Tables](#)
[Figures](#)
[Back](#)
[Close](#)
[Full Screen / Esc](#)
[Printer-friendly Version](#)
[Interactive Discussion](#)

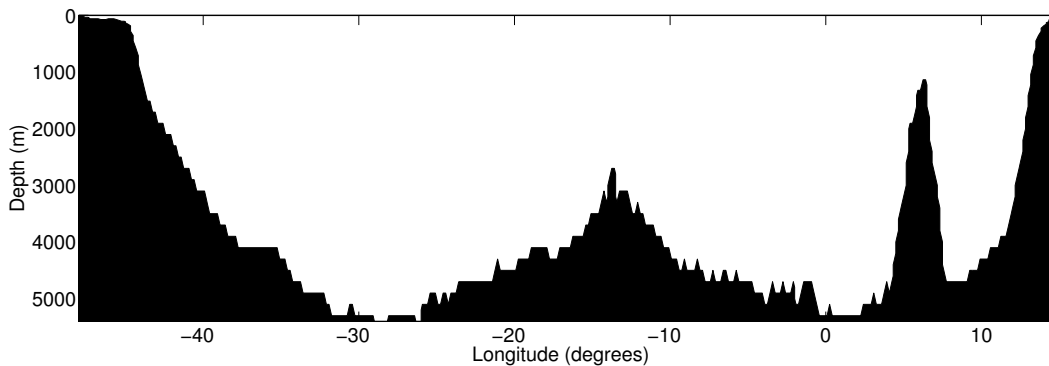



Fig. 1. Bottom topography of section at 24° S.

The vertical structure of oceanic Rossby waves

F. K. Hunt et al.

Title Page

Abstract

Introduction

Conclusions

References

Tables

Figures

⏪

⏩

◀

▶

Back

Close

Full Screen / Esc

Printer-friendly Version

Interactive Discussion



The vertical structure of oceanic Rossby waves

F. K. Hunt et al.

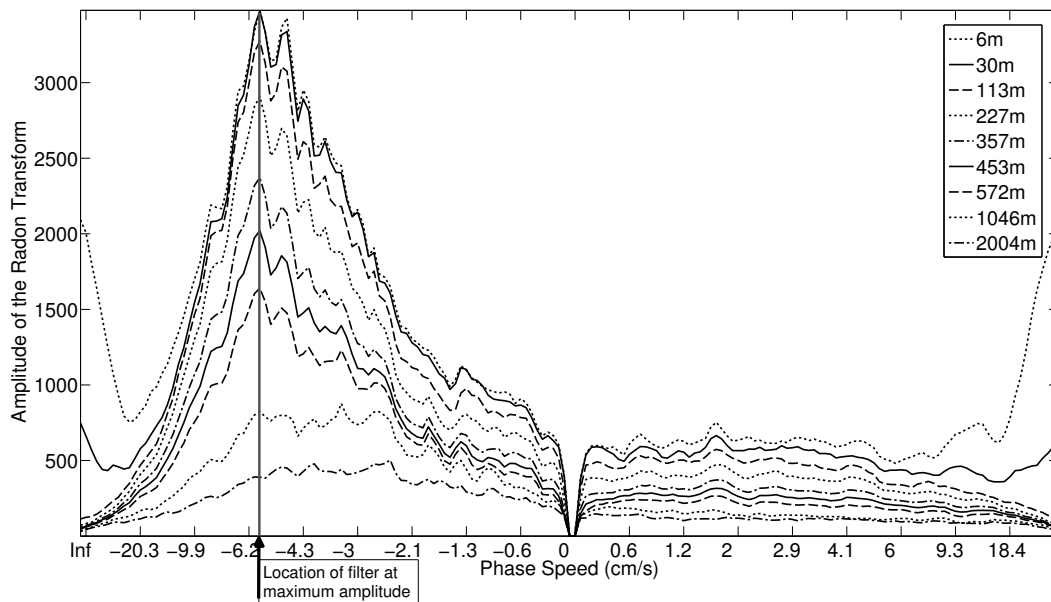


Fig. 2. The amplitude of the Radon transform with phase speed for a selection of example depths. Arrow and vertical line indicate the location chosen for the filter.

Title Page

Abstract

Introduction

Conclusions

References

Tables

Figures

◀

▶

◀

▶

Back

Close

Full Screen / Esc

Printer-friendly Version

Interactive Discussion



The vertical structure of oceanic Rossby waves

F. K. Hunt et al.

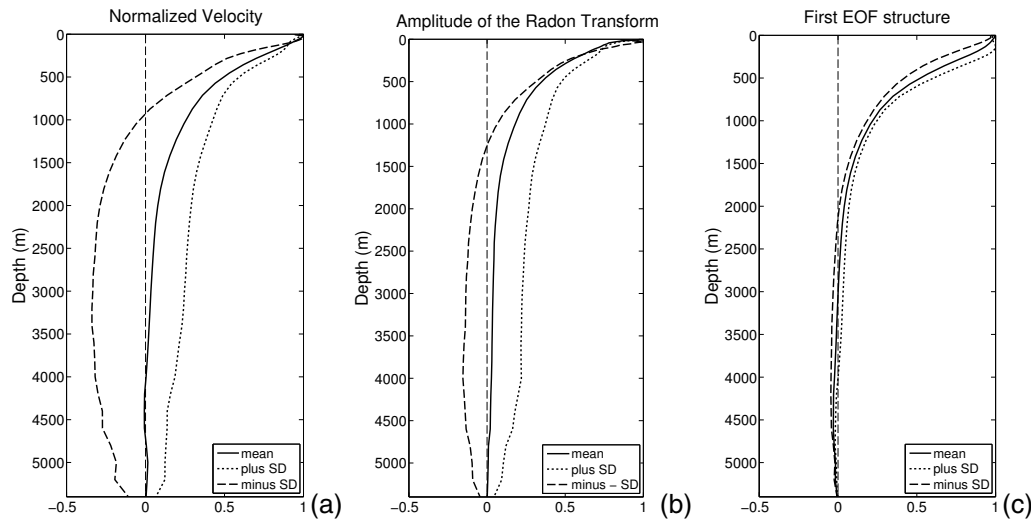


Fig. 3. Normalized vertical profiles from the model data with their normalized ± 1 standard deviation profiles. **(a)** The normalized v velocity method, **(b)** the amplitude of the Radon transform method and **(c)** the EOF method.

[Title Page](#)[Abstract](#)[Introduction](#)[Conclusions](#)[References](#)[Tables](#)[Figures](#)[◀](#)[▶](#)[◀](#)[▶](#)[Back](#)[Close](#)[Full Screen / Esc](#)[Printer-friendly Version](#)[Interactive Discussion](#)

**The vertical structure
of oceanic Rossby
waves**

F. K. Hunt et al.

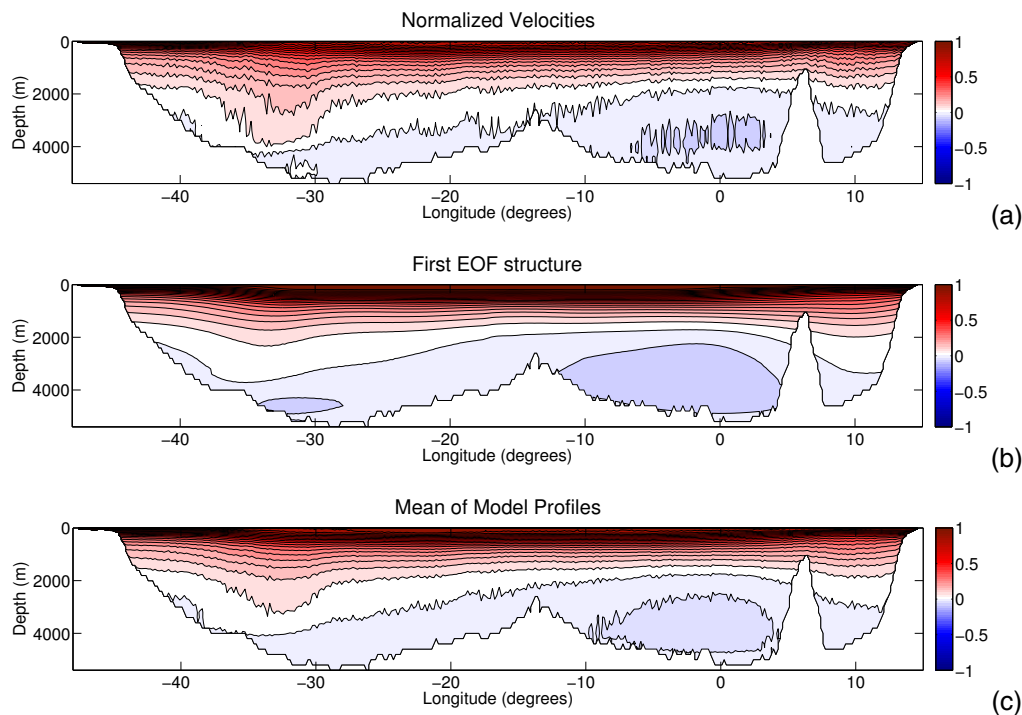


Fig. 4. Longitudinal sections showing the model profiles from (a) the normalized velocity method, (b) the EOF method, and (c) the mean of (a) and (b) i.e. the mean model section. Contour interval is 0.05.

Title Page

Abstract

Introduction

Conclusions

References

Tables

Figures

◀

▶

◀

▶

Back

Close

Full Screen / Esc

Printer-friendly Version

Interactive Discussion



The vertical structure of oceanic Rossby waves

F. K. Hunt et al.

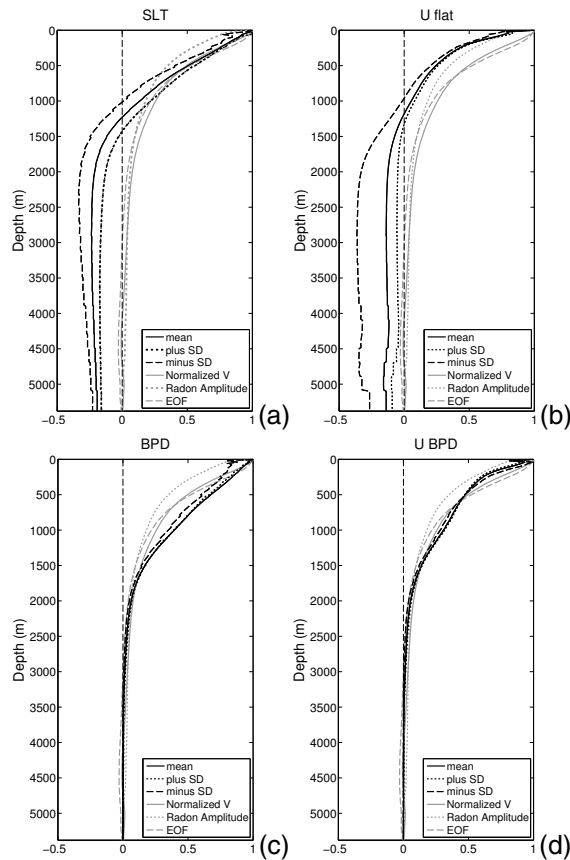


Fig. 5. Theoretical vertical profiles with their normalized ± 1 standard deviation profiles (black curves). **(a)** Standard linear theory, **(b)** mean flow with a flat bottom, **(c)** no mean flow with topography and **(d)** mean flow and topography. The grey lines are the same in each panel and show the model profiles for the 3 methods as a comparison.

[Title Page](#)
[Abstract](#)
[Introduction](#)
[Conclusions](#)
[References](#)
[Tables](#)
[Figures](#)
[◀](#)
[▶](#)
[◀](#)
[▶](#)
[Back](#)
[Close](#)
[Full Screen / Esc](#)
[Printer-friendly Version](#)
[Interactive Discussion](#)

The vertical structure of oceanic Rossby waves

F. K. Hunt et al.

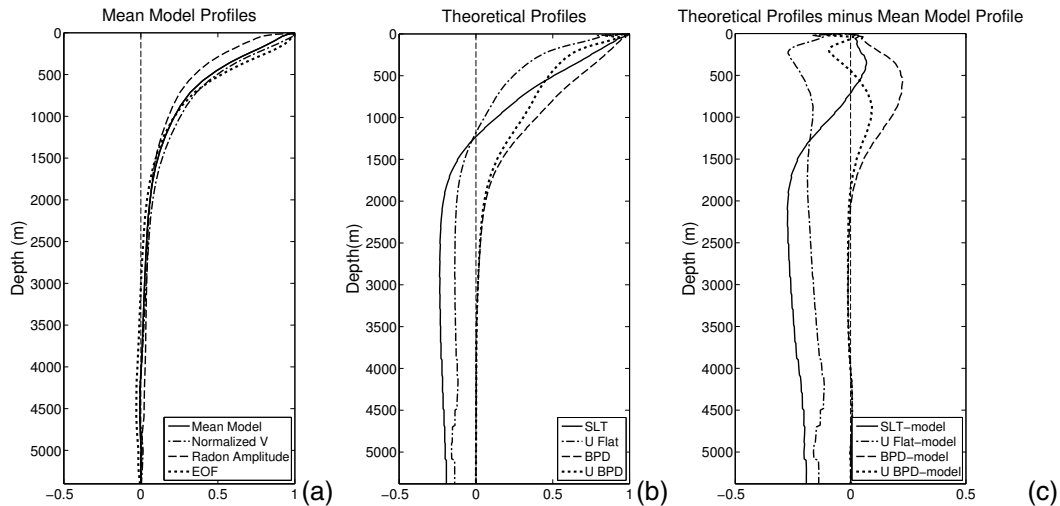


Fig. 6. Comparison of model and theoretical profiles. **(a)** Model profiles including a mean profile that is the mean of the profiles from the 3 methods, **(b)** theoretical profiles and **(c)** the theoretical profiles minus the mean model profile.

Title Page

Abstract

Introduction

Conclusions

References

Tables

Figures

◀

▶

◀

▶

Back

Close

Full Screen / Esc

Printer-friendly Version

Interactive Discussion



The vertical structure of oceanic Rossby waves

F. K. Hunt et al.

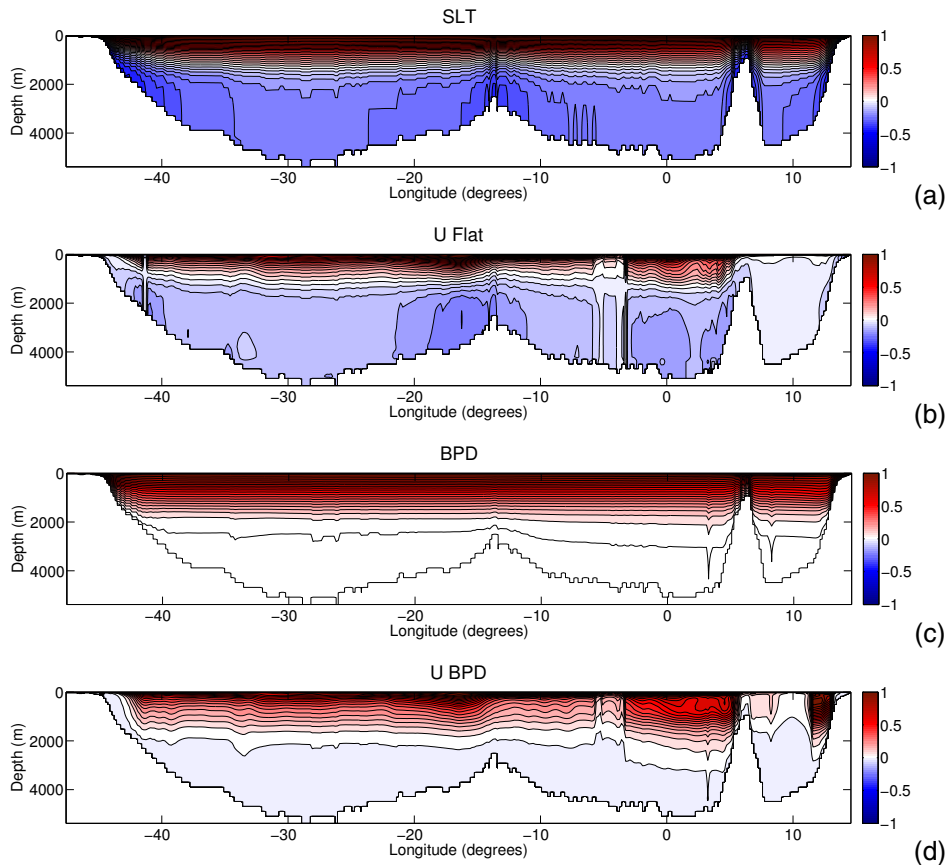


Fig. 7. Theoretical sections. **(a)** Standard linear theory, **(b)** mean flow with a flat, **(c)** no mean flow with topography and bottom **(d)** mean flow and topography. Contour interval is 0.05.

Title Page

Abstract

Introduction

Conclusions

References

Tables

Figures

◀

▶

◀

▶

Back

Close

Full Screen / Esc

Printer-friendly Version

Interactive Discussion



The vertical structure of oceanic Rossby waves

F. K. Hunt et al.

Title Page

Abstract

Introduction

Conclusions

References

Tables

Figures

◀

▶

◀

▶

Back

Close

Full Screen / Esc

Printer-friendly Version

Interactive Discussion

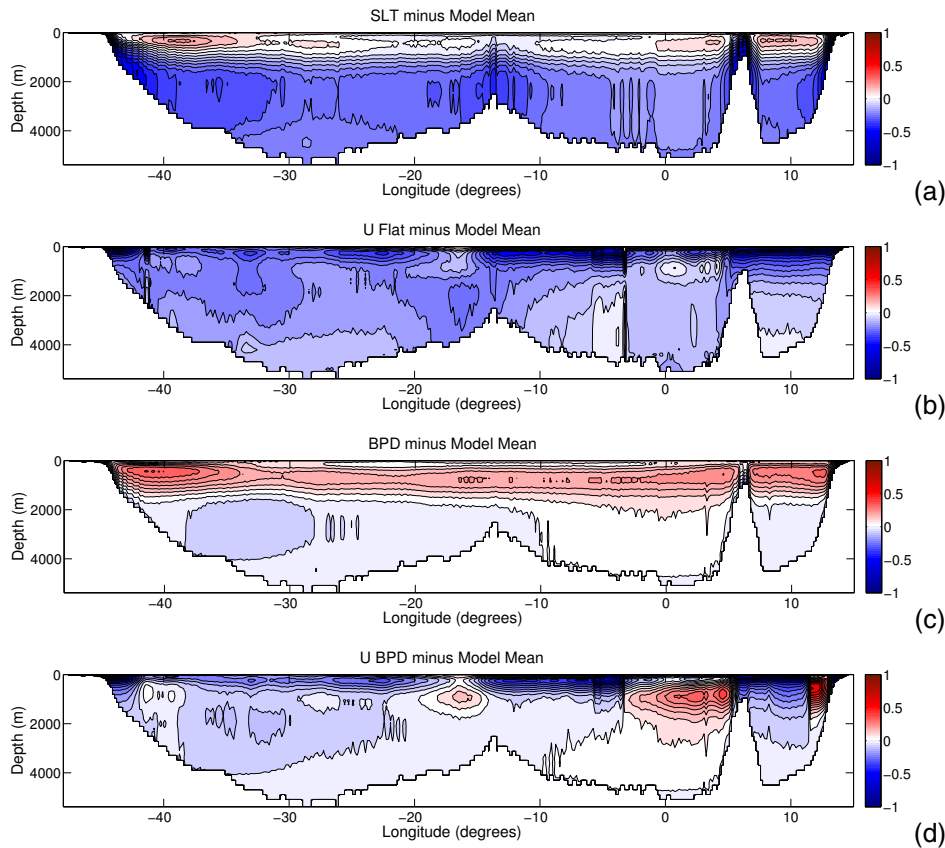


Fig. 8. Theoretical sections (Fig. 7) minus the mean model section (Fig. 4c). **(a)** Standard linear theory minus the mean model section, **(b)** mean flow with a flat bottom minus the mean model section, **(c)** no mean flow with topography and bottom minus the mean model section, and **(d)** mean flow and topography minus the mean model section. Contour interval is 0.05.

**The vertical structure
of oceanic Rossby
waves**

F. K. Hunt et al.

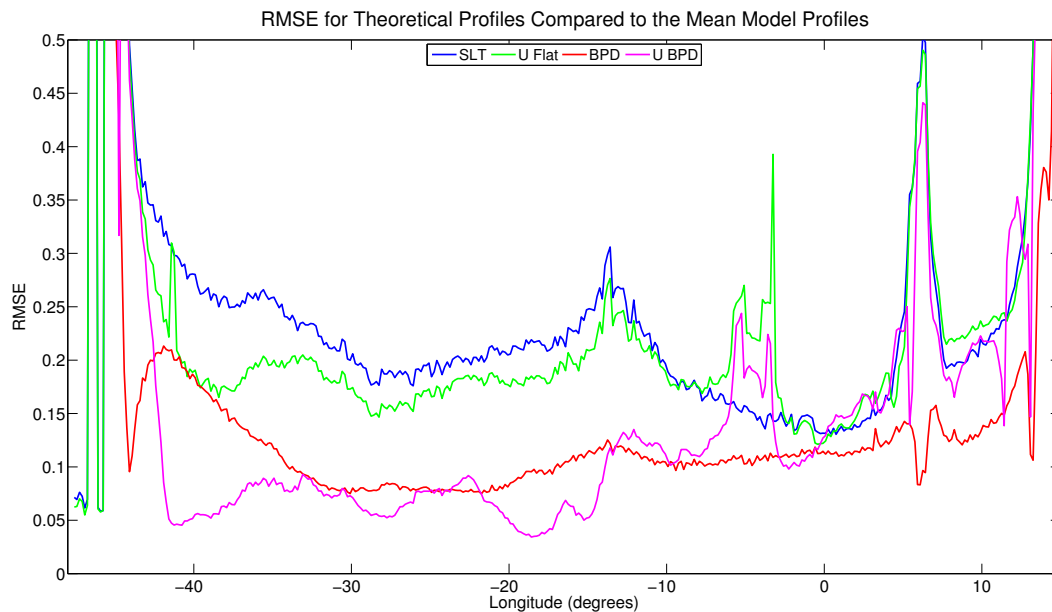


Fig. 9. The root mean square error of the theoretical sections compared to the mean model section.

[Title Page](#)[Abstract](#)[Introduction](#)[Conclusions](#)[References](#)[Tables](#)[Figures](#)[◀](#)[▶](#)[◀](#)[▶](#)[Back](#)[Close](#)[Full Screen / Esc](#)[Printer-friendly Version](#)[Interactive Discussion](#)