

Papers published in *Ocean Science Discussions* are under  
open-access review for the journal *Ocean Science*

# Metrics of hurricane-ocean interaction: vertically-integrated or vertically-averaged ocean temperature?

**J. F. Price**

Woods Hole Oceanographic Institution, Woods Hole, Massachusetts 02543, USA

Received: 1 April 2009 – Accepted: 15 April 2009 – Published: 5 May 2009

Correspondence to: J. F. Price (jprice@whoi.edu)

Published by Copernicus Publications on behalf of the European Geosciences Union.

**OSD**

6, 909–951, 2009

## Metrics of hurricane-ocean interaction

J. F. Price

Title Page

Abstract

Introduction

Conclusions

References

Tables

Figures

◀

▶

◀

▶

Back

Close

Full Screen / Esc

Printer-friendly Version

Interactive Discussion



## Abstract

The ocean thermal field is often represented in hurricane-ocean interaction by a metric termed the upper Ocean Heat Content (OHC), the vertical integral of ocean temperature in excess of 26°C. High values of OHC have proven useful for identifying ocean regions that are especially favorable for hurricane intensification. Nevertheless, it is argued here that a more direct and robust metric of the ocean thermal field may be afforded by a vertical average of temperature, in one version from the surface to 100 m, a typical depth of vertical mixing by a mature hurricane. OHC and the depth-averaged temperature, dubbed  $T_{100}$ , are well correlated over the deep open ocean in the high range of OHC,  $OHC \geq 75 \text{ kJ cm}^{-2}$ . They are poorly correlated in the low range of OHC,  $\leq 50 \text{ kJ cm}^{-2}$ , in part because OHC is degenerate when evaluated on cool ocean temperatures  $\leq 26^\circ\text{C}$ . OHC and  $T_{100}$  can be qualitatively different also over shallow continental shelves: OHC will generally indicate comparatively low values regardless of the ocean temperature, while  $T_{100}$  will take on high values over a shelf that is warm and upwelling neutral or negative, since there will be little cool water that could be mixed into the surface layer. Some limited evidence is that continental shelves may be regions of comparatively small sea surface cooling during a hurricane passage, but more research is clearly required on this important issue.

## 1 Hurricanes and the ocean

Hurricanes draw energy from the ocean in the form of sensible and latent heat (enthalpy) fluxes that result from very high wind speeds and a rather small temperature difference between the subtropical atmosphere and warmer sea surface, typically only a few °C (Emanuel, 1999). Hurricanes are known to cool the sea surface by anywhere from 1 to 4°C (Fig. 1; Leipper and Volgenau, 1972; Price, 1981; Zedler et al., 2002; D'Asaro et al., 2007), locally, which is enough to reduce or even reverse the hurricane-

OSD

6, 909–951, 2009

## Metrics of hurricane-ocean interaction

J. F. Price

Title Page

Abstract

Introduction

Conclusions

References

Tables

Figures

◀

▶

◀

▶

Back

Close

Full Screen / Esc

Printer-friendly Version

Interactive Discussion



ocean temperature difference. This hurricane-induced cooling of the sea surface must reduce the hurricane-ocean heat flux and thus the hurricane intensity to some degree (Bender et al., 1993; Schade and Emanuel, 1999; Cione and Uhlhorn, 2003). The object of this study is an improved representation of the ocean thermal conditions that contribute to greater or lesser cooling of the sea surface by a hurricane, with the long range goal being improved forecasting of hurricane-ocean interaction.

In what follows the pre-hurricane (initial) temperature field  $T_i(x, y, z)$  is presumed known in the sense of being observable by more or less routine in situ and remote ocean observing systems. The SST of a hurricane wake,  $T_w(x, y, z=0)$ , is also observable by remote sensing methods, as in Fig. 1a, but of course only after the fact, i.e., after a hurricane passage. The ocean side of the forecasting problem is to predict the SST under a hurricane,  $T_h(x, y, z=0)$  (Cione and Uhlhorn, 2003). This  $T_h$  is not routinely observable because of the heavy clouds and rain of the hurricane itself. In later Sects. 2 and 3, the emphasis will be on modelling and forecasting the observable wake temperature,  $T_w$ , and then on closing we will come back to consider the relationship between  $T_h$ ,  $T_i$  and  $T_w$  suggested by a handful of in situ observations, roughly  $T_h \approx (T_i + T_w)/2$  (D'Asaro et al. (2007) and Fig. 1c and d).

The ocean models of a forecasting system can take one of several forms. In the first place, ocean data  $T_i(x, y, z)$  may be combined with three-dimensional (3-D) ocean circulation, mixing and wave models that may in turn be coupled to a weather prediction model. These comprehensive, coupled air-sea models can be used to make detailed forecasts of specific storms (Ginis, 2002; Bender et al., 2007; Chen et al., 2007) and will soon be a primary forecast tool in some weather centers. At the other extreme of complexity, the same ocean data and an understanding of the salient ocean mixing and thermodynamics might also be combined into a mappable, two-dimensional ( $x, y$ ) variable that could serve as a qualitative (visual) and statistical 'metric' of the ocean thermal field (DeMaria et al., 2005). The first such ocean metric, upper Ocean Heat Content, or OHC, was written down by Leipper and Volgenau (1972) almost forty years ago. OHC is widely accepted and used in operational forecasting today (Goni and Tri-

**Metrics of hurricane-ocean interaction**

J. F. Price

Title Page

Abstract

Introduction

Conclusions

References

Tables

Figures



Back

Close

Full Screen / Esc

Printer-friendly Version

Interactive Discussion



nes, 2003; DeMaria et al., 2005; and see especially the informative, recent review by Mainelli et al., 2008). The history of OHC, described briefly below, includes some notable successes that have served to demonstrate an important role for ocean observations and ocean models within hurricane forecasting. But there are also persistent anomalies that seem to indicate room for improvement.

## 1.1 The first ocean metric, upper ocean heat content

OHC is defined in this hurricane-ocean context as the vertical integral of ocean temperature in excess of 26°C,

$$\text{OHC}(x, y) = \rho_o C_p \int_{Z_{26}}^0 (T_i(x, y, z) - 26) dz, \quad (1)$$

where the lower limit of integration is the depth of the 26 °C isotherm. The leading factors,  $\rho_o = 1025 \text{ kg m}^{-3}$  and  $C_p = 4.0 \times 10^3 \text{ J kg}^{-1}$  are sea water density and heat capacity, usually taken as constants. The reference temperature, 26°C, is an average (dry bulb) temperature in the subtropical atmospheric boundary layer and so  $T_i(x, y, z=0) - 26$  is a measure of the thermal disequilibrium between the atmosphere and the initial state of the ocean. It is well-known that 26°C is also the approximate, lower range of SST at which hurricanes are observed to form (Gray, 1968). Warm or cool as used here will then be with respect to 26°C. In the usual case that ocean temperature is monotonically increasing toward the surface, waters with temperature less than 26°C make no contribution to OHC.<sup>1</sup>

<sup>1</sup>The quantity defined by Eq. (1) has also been called hurricane heat potential (Leipper and Volgenau, 1972), and tropical cyclone heat potential (Goni and Trinanes, 2003). To the extent that 'heat content' implies conservation properties, these might be better names (and see Warren (2006) on this common usage of 'heat'). Conservation issues are of two kinds, roughly thermodynamic and fluid dynamic. OHC is not conserved under mixing because of changes in density and heat capacity. These errors are very small in the present context, but

Title Page

Abstract

Introduction

Conclusions

References

Tables

Figures

◀

▶

◀

▶

Back

Close

Full Screen / Esc

Printer-friendly Version

Interactive Discussion



---

**Metrics of  
hurricane-ocean  
interaction**J. F. Price

---

[Title Page](#)[Abstract](#)[Introduction](#)[Conclusions](#)[References](#)[Tables](#)[Figures](#)[◀](#)[▶](#)[◀](#)[▶](#)[Back](#)[Close](#)[Full Screen / Esc](#)[Printer-friendly Version](#)[Interactive Discussion](#)

OHC was not derived from theory or from an ocean model so much as it was constructed *ad hoc* on the intuitive, reasonable basis that if hurricane-ocean heat exchange is important to a hurricane, then oceanic regions having larger or smaller OHC should be more or less favorable for hurricane formation or intensification (Leipper and Volgenau, 1972) (hereafter just intensification). There will be a discussion of mechanisms in what follows, but for now we note that this expectation has been largely borne out in forecasting practice and in statistical analysis (hindcast) within the high range of OHC, roughly  $\text{OHC} \geq 60 \text{ kJ cm}^{-2}$  (Goni and Trinanes, 2003; Scharoo et al., 2006; McTaggart-Cowan et al., 2007; Lin et al., 2008; Mainelli et al., 2008; see also Sun et al., 2006). OHC takes on the largest values,  $\geq 100 \text{ kJ cm}^{-2}$ , over oceanic regions having a comparatively thick, warm surface layer, often in association with a subtropical gyre interior or an associated western boundary current system, the Kuroshio or the Gulf of Mexico's Loop Current (Shay et al., 2000). An important correlation between these high OHC features and hurricane intensification has been found in late summer conditions can be almost completely avoided by use of potential enthalpy (McDougall, 2003). A much bigger conservation error may arise from the lower limit of integration for OHC, the depth of the  $26^\circ\text{C}$  isotherm,  $Z_{26}$ . In the presence of vertical mixing near  $Z_{26}$ , which occurs commonly (Fig. 1b and 1c, and D'Asaro et al., 2007), this lower limit is not a material surface whose motion would be connected by continuity with the surrounding fluid. To appreciate the consequence, imagine that vertical mixing within the ocean surface layer (no hurricane-ocean heat flux) acts to cool the surface layer, eventually below  $26^\circ\text{C}$ . The depth  $Z_{26}$  will move upward through the water column, and OHC will vanish when  $Z_{26}$  reaches the sea surface, i.e., as the surface layer cools below  $26^\circ\text{C}$ . This decrease of OHC in a given column is not necessarily balanced by a gain at some other location in the domain; OHC simply disappears as a result of mixing and sufficient cooling of the surface layer. This non-conservation is not at issue for the interpretation of any single map of OHC, but it can be pernicious when OHC is used in an analysis. For example, estimates of time-changing, decreasing OHC during a hurricane passage are likely to lead to overestimates of the magnitude of the inferred hurricane-ocean heat exchange, even if vertical and horizontal advection are accounted correctly. The phrase 'upper ocean heat content' has also been used to mean the temperature integral over the (fixed) upper 750 m (Willis et al., 2004).

in which the pre-hurricane SST field is often quasi-uniform horizontally (Figs. 2 and 3). Wide experience has thus shown that OHC provides significant information on the ocean thermal field beyond that provided by the SST field alone.

There are also observations that do not appear to fit within the OHC framework. At one level this is not unexpected; ocean thermal conditions, no matter how represented, are not the sole nor necessarily the most important determinant of hurricane intensity. Large-scale wind and humidity distributions are at least as important, and internal variability occurs within hurricanes on small spatial and time scales that are very difficult to predict (Marks et al., 1998). One notable, apparent anomaly has real consequences for forecasting, viz., the correlation between hurricane intensity and OHC found in the high range of OHC disappears within the low range of OHC,  $0 \leq \text{OHC} \leq 60 \text{ kJ cm}^{-2}$  (Mainelli et al., 2008). Thus, while high values of OHC are found to favor hurricane intensification, low values of OHC evidently have very little if any significant, consistent effect, either positive or negative. The apparent lack of sensitivity to low range OHC could be a property of the atmosphere, of course, but on the other hand, case studies have shown that a sufficiently cool sea surface can have a pronounced damping effect upon hurricane intensity (Monaldo et al., 1997; Walker et al., 2005). The loss of correlation between hurricane intensity and OHC at low OHC is considered in some detail in Sects. 3.1.2 and 3.2.1 and the conclusion will be that OHC does not bear a consistent relationship to any SST in cool, deep ocean conditions or in shallow water. The upshot is that OHC does not appear to be an ideal metric of hurricane-ocean interaction in these conditions. To be fair to Leipper and Volgenau (1972), this amounts to holding OHC up to a wider and higher standard than they had envisioned. However, maps of OHC (Goni and Trinanes, 2003) and statistical analyses using OHC as the ocean metric (DeMaria et al., 2005; Mainelli et al., 2008) necessarily show and average over all oceanic regions where hurricanes occur, and not excluding regions with small or vanishing OHC. Thus the parameter space of cool SST and shallow water is unavoidable in a discussion of ocean metrics that are intended for more than a subjective interpretation, which is the intent here.

## Metrics of hurricane-ocean interaction

J. F. Price

Title Page

Abstract

Introduction

Conclusions

References

Tables

Figures

◀

▶

◀

▶

Back

Close

Full Screen / Esc

Printer-friendly Version

Interactive Discussion



## 1.2 The goal and the plan of this paper

The goal of this work is to enhance the value of ocean observations and ocean models that might be used within a hurricane forecasting or analysis scheme. The scope is limited to the ocean half of hurricane-ocean interaction, and the object is a new, rationalized ocean metric. The approach will be to build upon the extensive history of OHC reviewed above, while also making use of guidance from 3-D ocean models and ocean process studies that were unavailable when OHC was first proposed. The starting point for a new metric is a review of the processes that cause sea surface cooling by a hurricane, Sect. 2. This leads to the hypothesis that a vertical average of upper ocean temperature is a more direct metric for SST underneath a hurricane than is OHC, a vertical integral of ocean temperature. The consequences of averaging (the new metric) vis a vis integrating (OHC) are explored in Sect. 3; Sect. 3.1 considers the deep, open ocean, and Sect. 3.2 considers a continental shelf. A summary and remarks on possible future research on this topic are in the concluding Sect. 4.

## 2 The mechanisms of hurricane-ocean interaction

It goes almost without saying that upper ocean 'heat' content is not a substance this is transferred from the ocean into the atmosphere simply by contact. And specifically, high OHC does not by itself insure that there will be a high heat flux from the ocean into the atmosphere. A thermal disequilibrium between the ocean and hurricane, and thus the SST, must be involved as an intermediary. The route to a new ocean metric begins from this point of view and requires only two premises. Premise 1, which more or less repeats this obvious point, but is nevertheless useful for keeping focus, is that

P1: The direct effect of the ocean upon a hurricane is through the field of SST and especially the SST under the hurricane.

### Metrics of hurricane-ocean interaction

J. F. Price

Title Page

Abstract

Introduction

Conclusions

References

Tables

Figures



Back

Close

Full Screen / Esc

Printer-friendly Version

Interactive Discussion



Subsurface ocean temperature may be important indirectly, but only to the extent that it contributes to setting the SST. The SST under a hurricane is singled out simply because it coincides with the highest winds and thus with the greatest potential for hurricane-ocean heat exchange (Cione and Uhlhorn, 2003). Assuming that the initial temperature field  $T_i(x, y, z)$  is known (observed), then the task is to forecast the cooling of SST that occurs under a hurricane (taking the hurricane perspective, as in Fig. 1a) or during a hurricane passage (from the ocean perspective, Fig. 1c). (It might be added that P1 seems to elide a role for sea state out of ignorance, not conviction.)

## 2.1 Sea surface cooling processes

The sea surface underneath a hurricane is cooled by two distinct processes, by heat exchange across the sea surface noted above, and by vertical, turbulent mixing of cooler water upward into the surface layer (Price, 1981; Jacob et al., 2000; D'Asaro et al., 2007). If hurricane-induced sea surface cooling was due mainly to hurricane-ocean heat exchange, then OHC would be an appropriate metric for representing the ocean thermal field. Two lines of evidence indicate otherwise. In the pioneering study by Leipper and Volgenau (1972) it was noted that the large values of OHC found over much of the deep, subtropical oceans are far in excess of the time-integrated heat flux to a given hurricane, often by a factor of 10 or more (noted also by Cione and Uhlhorn, 2003, and by Mainelli et al., 2008). In a later Sect. 3.2, the net (time-integrated) heat flux to a single hurricane is estimated as  $Q_{\text{net}} \approx 4 \times 10^7 \text{ J m}^{-2} = 4 \text{ kJ cm}^{-2}$  (Fig. 5). This net heat flux will cool a water column that is 10 m thick by only about  $1^\circ\text{C}$  (Fig. 5). Thus, even a rather shallow, warm continental shelf will have a greater heat content, as estimated by OHC, than will be absorbed by a single hurricane. Over the deep, open ocean the SST cooling caused by heat loss is  $O(0.1)^\circ\text{C}$ , and in most respects negligible. On this basis alone it would seem unlikely that OHC per se sets a limit on hurricane-ocean interaction (aside from the case of very shallow water environments). This does not preclude that OHC may nevertheless serve as an effective proxy of the

Title Page

Abstract

Introduction

Conclusions

References

Tables

Figures



Back

Close

Full Screen / Esc

Printer-friendly Version

Interactive Discussion





ocean thermal field in some specific conditions, e.g., the warm, deep ocean conditions emphasized by Leipper and Volgenau (1972) (Sect. 3.1.1).

A number of subsequent, upper ocean field studies and model studies have found that the main process that cools the sea surface underneath a hurricane is vertical, turbulent mixing (Price, 1981; Bender et al., 1993; Sanford et al., 2007; D'Asaro et al., 2007). Thus the sea surface may cool significantly without there being an appreciable change in the upper ocean heat content (suitably chosen, footnote 1). The temperature profiles of Fig. 1d are an example; during the passage of Hurricane Frances (2004) the surface temperature cooled by about 2.5°C as the temperature profile became quasi-homogeneous over roughly the upper 100 m. A comparison of pre- and post-hurricane temperature profiles shows that the net cooling (temperature change times thickness) caused by vertical mixing near the surface is approximately balanced by the net warming caused by vertical mixing in the upper thermocline (this warming is not of direct interest here, but see Srivier and Huber, 2008). Detailed, quantitative studies of the upper ocean heat budget have found that the ratio of the heat flux due to vertical mixing compared to the hurricane-ocean heat exchange is  $O(10)$  in deep water cases (Jacob et al., 2000; Cione and Uhlhorn, 2003; D'Asaro et al., 2007), consistent with the observation noted above that the net heat loss is small compared to the cooling of the surface layer. The ocean side of hurricane-ocean interaction can then be summarized in Premise 2: While hurricane-ocean heat exchange may be very important to a hurricane, nevertheless

P2: The large amplitude, 1–4°C, cooling of the sea surface during a hurricane passage is due mainly to vertical mixing of cooler water into the ocean surface layer.

The dominant role of vertical mixing has been understood for some time. The present study could be viewed as an effort to synchronize an ocean metric with this understanding.

**Metrics of  
hurricane-ocean  
interaction**

J. F. Price

Title Page

Abstract

Introduction

Conclusions

References

Tables

Figures



Back

Close

Full Screen / Esc

Printer-friendly Version

Interactive Discussion



## 2.2 A new ocean metric, depth-averaged temperature

Given P1 and P2, it follows that a metric intended to represent the ocean thermal field within hurricane-ocean interaction should account first of all for the sea surface cooling effect of vertical mixing caused mainly by the very high winds of a hurricane, and secondarily for hurricane-ocean heat exchange. Vertical mixing is equivalent to vertical averaging, and this leads to the first of two hypotheses advanced in this paper: H1: The appropriate metric of the ocean thermal field is a vertical average of the initial (pre-hurricane) ocean temperature,

$$T_{\bar{d}}(x, y) = \frac{1}{d} \int_{-d}^0 T_i(x, y, z) dz, \quad (2)$$

where  $d$  is the depth of vertical mixing caused by a hurricane, i.e., the surface mixed-layer thickness.

The depth  $d$  has to be predicted if  $T_{\bar{d}}$  is to be predicted, and two methods for doing that are discussed below. The depth-averaged temperature,  $T_{\bar{d}}$ , is then an estimate of the mixed-layer temperature in the wake,  $T_{\bar{d}}(x, y) \approx T_w(x, y, z=0)$  and is intended to be an approximation of the SST computed by the 3-D hurricane-ocean models of the kind noted in Sect. 1.1. Aside from skin effects that are presumably very small, this  $T_{\bar{d}}$  is essentially the sea surface temperature.

Given that SST only decreases during a hurricane passage, the interpretation of  $T_{\bar{d}}$  is straightforward. High values, say  $T_{\bar{d}} \geq 28^\circ\text{C}$ , would indicate even slightly higher SST during a hurricane passage and thus an ocean thermal field that is favorable for hurricane intensification. On the other hand, low values, say  $T_{\bar{d}} \leq 24^\circ\text{C}$ , would just as clearly indicate low values of SST during a hurricane passage, and so an ocean thermal field that was unfavorable (or much less favorable) for intensification.

If there is a comparatively small temperature contrast in the water column above  $z = -d$  that is mixed vertically, as in profile (a) of Fig. 5, then vertical mixing will cause comparatively little cooling of the sea surface. This dependence of sea surface cooling

Title Page

Abstract

Introduction

Conclusions

References

Tables

Figures



Back

Close

Full Screen / Esc

Printer-friendly Version

Interactive Discussion



upon upper ocean stratification is a very important property of the ocean thermal field and, e.g., it provides a rationalization for the partial success of OHC as an ocean metric (Sect. 3.1).

The issue now turns to estimation or prediction of  $d$ . At some risk of confusion there are two versions of  $d$  suggested here. The first is a very simple, empirical, fixed-depth version that is based upon the CBLAST field observations of Fig. 1 and that serves most of the purposes of this study. There follows a more complex and capable variable-depth version that takes account of the spatially-variable density stratification of the initial field and that is better suited for most forecasting purposes.

### 2.2.1 Fixed depth, $d=100$ m and $T_{100}^-$

The simplest version of  $d$  is to take a fixed, a priori estimate,  $d=100$  m, or to the ocean bottom, if that is shallower.

The corresponding, depth-averaged temperature is then dubbed  $T_{100}^-$  (Figs. 4 and 5). The choice 100 m is admittedly a round number, but is consistent with the observed depth of vertical mixing under a category 3–4 hurricane, Hurricane Frances (2004) (Fig. 1b and 1c; Sanford et al., 2007; D’Asaro et al., 2007) used here as the base case. The depth of vertical mixing and the associated SST cooling vary across a hurricane track; 100 m is the maximum depth of vertical mixing, usually found about 30–70 km to the right of the track of a hurricane moving at a typical translation speed,  $U_h=5$  m s<sup>-1</sup> (Fig. 1a). The corresponding temperature  $T_{100}^-(x, y)$  map is then the minimum SST expected in a hurricane wake, and not the map for a single hurricane, as in Fig. 1a. The minimum temperature (maximum depth of mixing) was chosen because it is the least ambiguous SST to observe and is the SST that is most frequently cited, e.g., the cooling values of Sect. 1. Whether this  $T_{100}^-$  is the most appropriate value for hurricane-ocean interaction, vs. say  $T_h$ , the SST under the eye (Cione and Uhlhorn, 2003), is considered on closing in Sect. 4.3.

$T_{100}^-$  has the advantage of great simplicity and clarity; it follows from P1, P2, and

## Metrics of hurricane-ocean interaction

J. F. Price

Title Page

Abstract

Introduction

Conclusions

References

Tables

Figures

◀

▶

◀

▶

Back

Close

Full Screen / Esc

Printer-friendly Version

Interactive Discussion



the observation  $d=100$  m with no model required. A comparison of  $T_{\overline{100}}$  with OHC is sufficient to expose the essential differences between a depth-averaged and a depth-integrated temperature, and so  $T_{\overline{100}}$  is emphasized up through Sect. 3.1.

### 2.2.2 Variable depth $d$ and $T_{\overline{d}}$

5 Mixing to a depth of 100 m is, of course, not guaranteed. Given a minimal hurricane or a strongly stable density stratification (profile (b) of Fig. 5) the depth of mixing will be somewhat less. These and other factors can be accounted by an ocean mixing model that attempts to estimate  $d$  at each point  $(x, y)$ . This requires a good deal more data than does  $T_{\overline{100}}$ : the density profile,  $\rho(z)$ , which will in general require temperature and salinity profiles, as well as a few key pieces of data describing the hurricane of interest; the radius to maximum winds,  $R_h$  (35 km), the translation speed,  $U_h$  ( $5 \text{ m s}^{-1}$ ), and the maximum surface stress,  $\tau$  (5 Pa). Values in parentheses are from Hurricane Frances (2004) (Sanford et al., 2007).

15 This second version of  $d$  also requires a model or parameterization to connect vertical mixing in the upper ocean with the hurricane forcing.

The model applied here is that the bulk Richardson number of the surface mixed layer should not be less than a critical value,  $C=0.6$  (Price, 1981),

$$\frac{g\delta\rho d}{\rho_0 U^2} \geq C$$

or,

$$\frac{g[\rho(-d) - \frac{1}{d} \int_0^{-d} \rho(z) dz] d}{\rho_0 \left( \frac{\tau}{\rho_0 d} \frac{4R_h}{U_h} S \right)^2} \geq 0.6, \quad (3)$$

where  $g$  is the acceleration of gravity. The wind-driven current that appears in the denominator of the Richardson number,  $U$ , is estimated as the product of the wind

Title Page

Abstract

Introduction

Conclusions

References

Tables

Figures

◀

▶

◀

▶

Back

Close

Full Screen / Esc

Printer-friendly Version

Interactive Discussion



## Metrics of hurricane-ocean interaction

J. F. Price

Title Page

Abstract

Introduction

Conclusions

References

Tables

Figures

◀

▶

◀

▶

Back

Close

Full Screen / Esc

Printer-friendly Version

Interactive Discussion



stress-induced acceleration,  $\tau/\rho_0 d$ , and the hurricane residence time,  $4R_h/U_h$ . A similarity variable  $S$  is required to calibrate this scale estimate with numerical solutions made with a two-dimensional, translating hurricane wind stress field that rotates with time. The value of  $S$  depends upon  $R_h$  and  $U_h$  as well the Coriolis parameter,  $f$ , and the cross-track coordinate,  $y$ , i.e.,  $S=S(U_h/fR_h; y)$ , where  $U_h/fR_h$  is the nondimensional hurricane translation speed. In keeping with the decision to estimate the maximum mixing and so the minimum SST in the wake,  $S$  is evaluated at  $y=50$  km (Fig. 4 of Sanford et al., 2007) and  $S=1.35$ .<sup>2</sup>  $S$  is not terribly sensitive to small changes of the hurricane parameters. No doubt there are other mixing models that are equally valid for this purpose.

Eq. (3) is easily and very quickly solved numerically given a density profile that is discretized at intervals  $\Delta z$ . The left hand side (*lhs*) of Eq. (3) is evaluated with  $d=n\Delta z$  from the surface downwards, i.e., with  $n$  increasing from 1. The *lhs* starts with very low values, and is a monotonically increasing function of  $n$  (assuming that density increases with depth). The equation is considered solved for  $d$  when  $lhs \geq C$ , or when  $n\Delta z=b$ , where  $b$  is the bottom depth. Once Eq. (3) has been solved for  $d$ , the corresponding temperature, dubbed  $T_{\bar{d}}$ , is then estimated by the vertical average, Eq. (2), over the given initial temperature profile,  $T_j$ . (The Matlab script used to evaluate

<sup>2</sup>The current that appears in Eq. (3) is the maximum current that occurs at a given location during a hurricane passage. This varies with the across-track location, being significantly larger on the right side of a hurricane track, where the wind stress turns with time in partial resonance with the wind-driven near inertial motions that dominate  $U$ . Based upon the 3-D model results in Fig. 4 of Sanford et al., 2007, the maximum transport per unit width,  $U d=160$  m<sup>2</sup> s<sup>-1</sup> occurs at  $y=50$  km to the right of the track of Hurricane Frances. From the scaling relation for wind-driven current we can then estimate  $S=160/(\tau 4R_h/U_h\rho_0)=1.35$ . Thus  $S>1$  accounts for the (partial) resonance of wind and current on the right side of a hurricane track. For example, at 50 km to the left of the track,  $U d=60$  m<sup>2</sup> s<sup>-1</sup> and so the appropriate  $S=0.45$ . This is a specific way in which 3-D models are used to develop an ocean metric. A second way is that the approximations inherent in the  $T_{\bar{d}}$  model can be checked by verifying  $T_{\bar{d}}$  against the 3-D solutions (not shown here).

the Argo data analyzed here is available online at:  
<http://www.whoi.edu/science/PO/people/jprice/ekman/Td.zip> ).

The upper ocean model implicit in Eq. (3) is local, in that vertical mixing is the only process recognized; upwelling and horizontal advection are omitted. This is consistent with the notion of a mappable ocean metric since no specific hurricane track is implied. This makes a fair approximation to 3-D numerical model solutions (Price, et al., 1994) except in the range of small nondimensional translation speed, at which point upwelling begins to occur during the hurricane passage. The ocean surface cooling is then enhanced (Price, 1981; Yablonski and Ginis, 2008), which could be accommodated in a refined version of  $T_{\bar{d}}$  that took systematic account of low hurricane translation speed.

Notice that the denominator of the Richardson number, Eq. 3, depends only upon hurricane parameters that are presumed known and would presumably be fixed for a given map. The numerator depends only upon the pre-hurricane ocean density profile and will likely vary from point to point. The horizontal variation in a map of  $T_{\bar{d}}$  thus follows solely from the horizontally varying ocean temperature and salinity (density) field and, if the water column is shallow enough, the bottom depth.

### 3 The comparative geography of OHC, $T_{100}$ and $T_{\bar{d}}$

On first sight, the prescription for a depth-averaged temperature via Eq. (2) and the heat content computed via Eq. (1) do not look all that different, and in important and common circumstances, they will indeed give essentially the same forecast guidance. In other circumstances they may be quite different. The second hypothesis of this paper (really a corollary of H1) is that

H2: A depth-averaged temperature makes a useful ocean metric over a much wider range of conditions than does a depth-integrated temperature.

## Metrics of hurricane-ocean interaction

J. F. Price

Title Page

Abstract

Introduction

Conclusions

References

Tables

Figures

◀

▶

◀

▶

Back

Close

Full Screen / Esc

Printer-friendly Version

Interactive Discussion



To help understand whether and how OHC and the depth-averaged temperatures will differ, both kinds of metrics have been evaluated using observations from the deep, open ocean (Sect. 3.1) and from an idealized continental shelf (Sect. 3.2). Salinity effects are then noted very briefly in Sect. 3.3.

### 3.1 The deep ocean

Two open ocean regions are considered here; one is a 10 by 10 degree region of the western subtropical North Pacific centered on 23° N and 128° E that was studied by Lin et al. (2008). The available Argo temperature and salinity profiles were acquired for the months July through October of 2007 (297 profiles in total, Fig 6a). This region spawns some of the largest and most intense hurricanes (super typhoons) found anywhere in the world, and it is also a region having pronounced variability of the ocean mesoscale (Qiu, 1999). Eddies having a diameter of several hundred kilometers and sea surface height anomalies of  $\pm 20$  cm are common. These mesoscale eddies are accompanied by a raised or depressed thermocline (Fig. 5) and thus by substantial variations of OHC or  $T_{100}$  that are not well correlated with sea surface temperature (Fig. 6b and compare Figs. 2 and 3 and Figs. 2 and 4). As noted already, Lin et al. (2008) found that the intensification of the most intense super typhoons is spatially correlated (coincident) with warm eddies (depressed thermocline) that show up as regions of high OHC. These are also regions of very high  $T_{100}$  or  $T_{\bar{d}}$  (Fig. 5 and more below). The second open ocean region considered was the equivalent from the western North Atlantic, 15–30° N, and 100–140° W and for the same months of 2007. These North Atlantic data (and a few profiles from the Caribbean Sea, 313 profiles total) are almost indistinguishable from the North Pacific data, the only difference being fewer points in the range of very large OHC (Fig. 6c and 6d). Within both data sets there are no doubt profiles that were significantly effected by a typhoon or a hurricane. There is no attempt to sort these out, and all of the Argo profile data are treated as if they were initial data for the next storm.

Over these deep, open ocean regions,  $T_{100}$  and  $T_{\bar{d}}$  are highly correlated and ap-

## Metrics of hurricane-ocean interaction

J. F. Price

Title Page

Abstract

Introduction

Conclusions

References

Tables

Figures

◀

▶

◀

▶

Back

Close

Full Screen / Esc

Printer-friendly Version

Interactive Discussion



Title Page

Abstract

Introduction

Conclusions

References

Tables

Figures

◀

▶

◀

▶

Back

Close

Full Screen / Esc

Printer-friendly Version

Interactive Discussion



proximately equal (Fig. 7a and 7c). This means only that  $d=100$  m is about the same on average as is the variable  $d$  computed from Eq. (3) for each profile and for a category 3–4 hurricane. There is some variation of the estimated  $d$  within this sample:  $d$  is as large as 125 m on the most weakly stratified profiles (profile (a) of Fig. 5), and so  $T_{\bar{d}}$  is slightly cooler than  $T_{\bar{100}}$  in the range of cool temperatures;  $d$  is as small as 85 m on the profiles that are most strongly stratified (profile (b) of Fig. 5), but the resulting  $T_{\bar{d}}$  is almost indistinguishable from the fixed depth version,  $T_{\bar{100}}$ .

### 3.1.1 Warm oceans and the high range of OHC

Both of the depth-averaged temperatures are closely related (bijective) with OHC in the high range of  $T_{\bar{100}}$ ,  $T_{\bar{100}} \geq 27$  °C and OHC,  $\text{OHC} \geq 75$  kJ cm<sup>-2</sup> (Fig. 7b, 7d) It is not surprising that an especially warm, thick surface layer will indicate high values of OHC,  $T_{\bar{100}}$  and  $T_{\bar{d}}$  alike. What is not obvious is that the relationship between high range OHC and high  $T_{\bar{100}}$  appears to be very tight and almost identical in the western North Pacific and Western North Atlantic. Thus within a subtropical, summertime map, the contour lines of high  $T_{\bar{100}}$  are parallel with contour lines of high value OHC, and hence the high values of  $T_{\bar{100}}$  are expected to bear the same qualitative, spatial correlation with hurricane intensification as do high values of OHC (Lin et al., 2008; Shay et al., 2000; Mainelli et al., 2008; and compare Figs. 3 and 4). A depth-averaged temperature, either  $T_{\bar{100}}$  or  $T_{\bar{d}}$ , thus repeats the most useful, demonstrated property of OHC, *viz.*, high values of  $T_{\bar{100}}$  will identify open ocean regions where the thermal field is especially favorable for hurricane intensification. This was not accommodated after the fact, but follows straightforwardly from the definition of a depth-averaged temperature, Eq. (2), and the empirical relation between high range OHC and  $T_{\bar{100}}$  seen in these data (Fig. 7).

Indeed, the relation between high-range OHC and  $T_{\bar{100}}$  is so tight that if only warm, deep ocean conditions were relevant, then there wouldn't be any practical motive to continue on (though in light of P1 and P2 we might still want to know why there is a correlation between high OHC and hurricane intensification). However, as discussed in



Sect. 3.2.2, there may be shallow water regions that are equally favorable for hurricane intensification as assessed by a depth-averaged temperature, and yet that are missed altogether by the high OHC criterion that works well over a warm, deep ocean. Cool, deep ocean regions are also interesting.

### 5 3.1.2 Cooler oceans and the low range of OHC

OHC and  $T_{100}$  are not closely related in the range of low OHC,  $OHC \leq 50 \text{ kJ cm}^{-2}$  and low temperatures,  $T_{100} \leq 26.5^\circ\text{C}$  (Fig. 7b and 7d). As noted in Sect. 1.1, neither is there a statistical correlation between hurricane intensity and OHC within this low range of OHC (Lin et al., 2008; Mainelli et al., 2008). It could be the case that hurricanes are intrinsically not sensitive to low values of OHC so that (an undefined) low sensitivity is swamped by other, uncontrolled factors that appear as noise. However, there is evidence that hurricanes are significantly damped by a sufficiently cool SST (Monaldo et al., 1997; Walker et al., 2005) so that on the face of it, an ocean thermal metric should be expected to have a corresponding range in which hurricane intensity is damped.

15 While we can not discount the low sensitivity argument, a partial resolution of this issue may be as close at hand as Eq. (1): the loss of the tight relationship between high range OHC and the depth-averaged temperatures results from what is, on second look, a slightly peculiar property built into OHC, i.e., that all ocean temperatures less than the reference temperature  $26^\circ\text{C}$  are counted as zero. For example, if the temperature of a water column was  $0^\circ\text{C}$ , then the estimated OHC would be zero, and if the temperature of the water column was  $26^\circ\text{C}$ , then the OHC would again be exactly zero; insofar as OHC is concerned,  $T=0$  and  $T=26^\circ\text{C}$  are one and the same. As a consequence, roughly a third of the open ocean temperature profiles considered here (Fig. 7) map into one point in OHC-space,  $OHC=0$ , which might be termed a cool degeneracy. In maps of OHC this appears as regions that are at or near zero and of course horizontally uniform. There is just a hint of this cool degeneracy along the northern boundary of the North Pacific OHC map computed in late September (Fig. 3) and it becomes quite

Title Page

Abstract

Introduction

Conclusions

References

Tables

Figures

◀

▶

◀

▶

Back

Close

Full Screen / Esc

Printer-friendly Version

Interactive Discussion



prominent once seasonal cooling has developed in late October; see Goni and Trinanes (2003) and <http://www.aoml.noaa.gov/phod/cyclone/data/go.html> for examples.

In Sect. 1.1 it was noted that the reference temperature of OHC, 26°C, had a significant empirical basis. But whether there is a corresponding, literal cutoff in hurricane-ocean interaction for  $SST \leq 26^\circ\text{C}$  seems unlikely, if only because the wet bulb temperature of the hurricane lower atmosphere is usually a few °C less than the dry bulb temperature and of course there must be some variation in hurricane air temperatures. What appears to be certain is that OHC defined by Eq. (1) will have poor (or no) resolution in regions where the upper ocean temperature is comparable to or less than 26°C and hence OHC could not be expected to provide a nuanced account of the possible damping effect of still lower SST. This limitation of OHC is not shared by a depth-averaged temperature.

### 3.2 The coastal ocean

OHC and the depth-averaged temperatures can be quite different when evaluated over shallow water regions. The consequence for forecasts of hurricane-ocean interaction may be more or less significant depending upon the extent of the shallow water area affected in relation to a hurricane track. However, there can be little doubt that the limit of vanishing water depth should be treated in a physically plausible way by any hurricane forecasting scheme since it occurs in conjunction with hurricane land fall.

To illustrate the effects of bottom depth alone, OHC and  $T_{\bar{d}}$  were evaluated over an idealized continental shelf that was constructed along the lines of the West Florida Continental Shelf (Fig. 8a). The bottom slope was taken to be  $\partial b / \partial x = 10^{-3}$  and constant, with  $b$  the bottom depth, and  $x$  the across-shelf coordinate. The hydrography of continental shelves can vary a great deal from region to region (Allen et al., 1983) with important consequences for what follows. Given that the goal here is to illustrate bottom depth effects alone, the shelf hydrography was presumed to be upwelling neutral so that  $T_i(x,y,z) = T_i(z)$  and the thermal field horizontally homogeneous for  $z \geq -b(x)$ .

## Metrics of hurricane-ocean interaction

J. F. Price

Title Page

Abstract

Introduction

Conclusions

References

Tables

Figures

◀

▶

◀

▶

Back

Close

Full Screen / Esc

Printer-friendly Version

Interactive Discussion



---

**Metrics of  
hurricane-ocean  
interaction**

J. F. Price

---

[Title Page](#)
[Abstract](#)[Introduction](#)[Conclusions](#)[References](#)[Tables](#)[Figures](#)[⏪](#)[⏩](#)[◀](#)[▶](#)[Back](#)[Close](#)[Full Screen / Esc](#)[Printer-friendly Version](#)[Interactive Discussion](#)

The temperature profile  $T_i(z)$  was taken from the West Florida Shelf in summer (Hu and Muller-Karger, 2007) and had a warm and quasi-uniform surface layer about 25 m thick, and a comparatively large vertical gradient of temperature,  $0.15^\circ\text{C m}^{-1}$ , within the seasonal thermocline. This kind of shallow, strongly stable seasonal thermocline is typical of subtropical shelf regions that are not directly influenced by deep ocean currents, e.g., the South Atlantic Bight and the Middle Atlantic Bight (Schofield et al., 2008), if not impacted by Gulf Stream-derived eddies, or the northern Gulf of Mexico, aside from Loop Current eddies. The metrics OHC and  $T_{\bar{d}}$  were then sampled along a transect across the shelf (Figs. 8b and 8c).

### 3.2.1 Coastal ocean OHC

To evaluate OHC over shallow waters in which the bottom temperature exceeds  $26^\circ\text{C}$ , the lower limit of integration was presumed to be the bottom depth,  $b$ . Given this specific shelf and hydrography, the estimated OHC begins to decrease as the bottom depth becomes less than the depth of the  $26^\circ\text{C}$  isotherm, which is about 50 m in the temperature profile presumed here (Fig. 8b). Assuming a consistent deep-ocean and coastal-ocean interpretation of OHC, i.e., that regions having  $\text{OHC} \leq 50 \text{ kJ cm}^{-2}$  are not favorable for hurricane intensification (or at least less so than high OHC regions), then a shallow continental shelf would appear to be an unfavorable environment for hurricane intensification. We are going to suggest below that this may not be the case.

This consideration of a coastal ocean shows that OHC can vanish in two important, realizable limits: 1) over the deep ocean as  $T \rightarrow 26^\circ\text{C}$  from above, and discussed in the previous section, and, 2) over a coastal ocean as  $b \rightarrow 0$  and regardless of the temperature. If the underlying issue for hurricane-ocean interaction is SST rather than OHC *per se*, as we have argued it must be in P1 of Sect. 2, then it appears that OHC suffers from a second kind of degeneracy in shallow water in that very low values of OHC will be estimated in shallow-enough water even if the ocean temperature is high. Said a little differently, low values of OHC in a coastal ocean are not expected to have

the same consequence for hurricane-ocean interaction as do low values over the deep ocean. The combined effect of this cool and shallow water degeneracy is likely to be a part of the reason that OHC does not show a correlation with hurricane intensification in the low range of OHC (Mainelli et al., 2008).

### 5 3.2.2 Coastal ocean $T_{\bar{d}}$

A coastal warm layer: given the shelf topography and stratification presumed here, the depth-averaged temperature  $T_{\bar{d}}$  increases as the bottom depth becomes less than  $d_{do}=85$  m, the depth of mixing over the deep ocean given this rather stable stratification. The increase of  $T_{\bar{d}}$  shoreward of the 85 m isobath (Fig. 8c) follows from the increase of bottom temperature with decreasing bottom depth; as the bottom temperature increases there is less cold water available to be mixed upwards. This can be expected over a shelf on which the seasonal thermocline intersects the bottom, i.e., over shelves that are either upwelling neutral or negative. The result is that the across-shelf temperature profile  $T(x)$  exhibits what might be termed a Coastal Warm boundary Layer (CWL), whose half-width may be estimated roughly as

$$W_{\text{CWL}} \approx \frac{1}{2} d_{do} / \frac{\partial b}{\partial x}, \quad (4)$$

and in this case,  $W_{\text{CWL}}=55$  km.

An inner-coastal cool layer: heat loss to the hurricane must become a significant process for sea surface cooling where the water is shallow enough (Shen and Ginis, 2003). To account approximately for this hurricane-ocean heat exchange, the depth-averaged temperature  $T_{\bar{d}}$  can be perturbed by subtracting a typical net hurricane-ocean heat flux,  $Q_{\text{net}}$ , from the water column.  $Q_{\text{net}}$  is estimated roughly as the average heat loss from the ocean to a hurricane,  $1000 \text{ W m}^{-2}$ , times a typical hurricane residence time, 12 h (Cione and Uhlhorn, 2003; Chen et al., 2007), and so  $Q_{\text{net}} \approx 4 \times 10^7 \text{ J m}^{-2}$ , or in the non-SI units often used for OHC,  $Q_{\text{net}} \approx 4 \text{ kJ cm}^{-2}$ . The revised depth-averaged

Title Page

Abstract

Introduction

Conclusions

References

Tables

Figures

◀

▶

◀

▶

Back

Close

Full Screen / Esc

Printer-friendly Version

Interactive Discussion



temperature is then,

$$T_{\bar{d}} - Q_{\text{net}} / \rho_o C_p b, \quad (5)$$

where  $b$  is the water depth, shown as the dashed line of Fig. 8c. The resulting Inner-Coastal Cool boundary Layer (ICCL), follows the qualitative expectations of OHC in the sense that the cooling is inversely related to water depth,  $b$ . The width of this cool layer may be estimated roughly as the region where the temperature is decreased by  $\Delta T = 1^\circ\text{C}$  or more,

$$W_{\text{ICCL}} \approx \frac{Q_{\text{net}}}{\rho_o C_p \Delta T} / \frac{\partial b}{\partial x}, \quad (6)$$

and in this case,  $W_{\text{ICCL}} = 12$  km.

Thus the post-hurricane coastal ocean sea surface temperature computed by the  $T_{\bar{d}}$  model may show two boundary layers when compared to the outlying and otherwise similar deep ocean – a coastal warm layer (CWL, and warm compared to the outlying deep ocean) in which the characteristic process is a reduced heat flux associated with vertical mixing, and an inner-coastal cool layer (cool compared to the warm layer), in which hurricane ocean heat exchange is important. This ICCL follows the expectations implicit to OHC, and a comparison of the amplitude and width of the ICCL and the CWL gives a visual impression of the relative importance of vertical mixing and hurricane-ocean heat exchange, insofar as the SST over a continental shelf is concerned. Given the upwelling neutral shelf considered here, the outer warm layer is considerably wider than the inner cool layer. For typical bottom slopes and heat loss values,

$$\frac{W_{\text{CWL}}}{W_{\text{ICCL}}} = \frac{d_{do}/2}{Q_{\text{net}} / \rho_o C_p \Delta T} \approx 4. \quad (7)$$

The maps of Figs. 3 and 4 offer an example in the broad, shallow continental shelf off of the south and east coast of China (South China Sea north to the Yellow Sea).

Title Page

Abstract

Introduction

Conclusions

References

Tables

Figures

◀

▶

◀

▶

Back

Close

Full Screen / Esc

Printer-friendly Version

Interactive Discussion



**Metrics of  
hurricane-ocean  
interaction**

J. F. Price

Title Page

Abstract

Introduction

Conclusions

References

Tables

Figures

◀

▶

◀

▶

Back

Close

Full Screen / Esc

Printer-friendly Version

Interactive Discussion



These are depicted as regions of generally low OHC,  $\leq 40 \text{ kJ cm}^{-2}$ , despite having fairly high SST, simply because they are shallow. In contrast, the estimated depth-averaged temperature (Fig. 4 is  $T_{100}$  which has the same relation to bottom depth as does  $T_d$ ) indicates that these shelf regions are likely to remain fairly warm during a hurricane passage by virtue of the CWL phenomenon. Hence these shelf regions appear to be somewhat favorable for hurricane intensification, as seen in a depth-averaged temperature  $T_{100} \geq 27^\circ\text{C}$ . Some of the effected shelf regions are as wide as several hundred kilometers and likely to be of significance for hurricane-ocean interaction, or at least for our prediction of hurricane-ocean interaction. Other shelf regions appear nearly the same when diagnosed with OHC or  $T_{100}$ , notably east of the Phillipines, where the continental shelf is quite narrow. To summarize – on the results presented here, at least some coastal oceans – those having broad, shallow continental shelves and hydrography that is upwelling neutral or negative – would appear to be favorable environments for hurricane intensification (Fig. 9), a result that could not have been anticipated from OHC.

### 3.2.3 Coastal ocean observations

As hurricanes cross a continental shelf they are also very likely to be making land fall, which is usually expected to cause a rapid and significant decrease of hurricane intensity (but see McTaggart-Cowen et al., 2007, who note that this is not necessarily the case if the land surface is flat, warm and wet, e.g., South Florida). However, our concern here is exclusively with the ocean thermal field, and some evidence is that shallow water environments may indeed be favorable for hurricane intensification. That is, hurricane-induced sea surface cooling has been observed to be reduced over shallow water regions compared to the cooling over outlying, deep water regions. Hazelworth (1968) analyzed the time series data from weather ships for hurricane passages, and made a very brief and tentative mention of such a shallow water effect. The first explicit report was evidently made by Cornillon et al. (1987), and more recently this

phenomenon has been observed on the West Florida Continental Shelf by Hu and Muller-Karger (2003). The latter two studies inferred that the principal cause of the reduced sea surface cooling over shallow water was the absence of cool water at depths that could be mixed into the surface layer, just as happens here with the depth-averaged temperature. Emanuel (1999) noted the relevance of this shallow water effect in the context of hurricane-ocean interaction.<sup>3</sup>

### 3.3 Salt-stratified water column

In the event that salinity makes an important contribution to the upper ocean density stratification, then  $T_{\bar{d}}$  can, in principle, differ from both OHC and  $T_{100}$  which acknowledge temperature only. Important salinity effects may arise where there is a comparatively fresh ocean surface layer, which often occurs in a coastal ocean, and especially down-coast from the estuary of a major river (Price, 1981; Bingham, 2007). There are also open ocean regions in which salinity makes an appreciable contribution to the static stability of the upper ocean, e.g., the barrier layer of the western tropical Pacific and parts of the Indian Ocean (McPhaden et al., 2009).

If the net salinity anomaly (thickness times salinity anomaly in the initial state) is as large as about 20 m, then the fresh layer will inhibit vertical mixing significantly. The effect upon the sea surface temperature will depend upon whether the fresh layer is

<sup>3</sup>During the summer of 2005 there were a number of intense hurricanes that crossed over the Gulf of Mexico, including Katrina (2005), which passed over the Louisiana shelf, and Wilma (2005), which passed over Florida Bay and the southern end of the West Florida shelf. SST imagery of these significant events provides some additional qualitative evidence of a coastal warm layer and sometimes a hint of an inner-coastal cool layer, though not always distinct from land effects; see the collection of GOES-12 SST images in <http://www.whoi.edu/science/PO/people/jprice/ekman/GofM-SST-2005.zip> A much more comprehensive resource is the Louisiana State University Earth Scan web site, <http://www.esl.lsu.edu/quicklinks/hurricanes/> Almost needless to say, attributing cause, given only the SST, is very uncertain.

Title Page

Abstract

Introduction

Conclusions

References

Tables

Figures

◀

▶

◀

▶

Back

Close

Full Screen / Esc

Printer-friendly Version

Interactive Discussion



warmer or cooler than the water below. If the former, then salinity stratification will act to reduce the depth of vertical mixing and thus sea surface cooling. If the latter, then vertical mixing will act to increase the surface temperature (see the Nordic Sea example of Saetra et al., 2003), a possibility missing altogether from OHC, which omits any reference to salinity (or density). This anomalous surface warming effect of vertical mixing would be present in  $T_{100}$ , but in general, a salinity effect upon static stability requires an explicit treatment of density, e.g., by means of  $T_{\bar{\sigma}}$  or something more comprehensive.

## 4 In closing

### 4.1 Summary

The standard metric of the ocean thermal field within hurricane-ocean interaction is a depth-integrated ocean temperature, upper Ocean Heat Content or OHC. OHC has been shown to provide valuable forecast guidance in warm, deep ocean conditions (Lin et al., 2008; Mainelli et al., 2008) but the argument made here is that a depth-averaged temperature,  $T_{100}$  or  $T_{\bar{\sigma}}$ , may be more appropriate over a much wider range of conditions. The argument was made on two premises: P1, that SST and especially SST under a hurricane is the directly relevant ocean variable, and P2, the observation that cooling is due mainly to vertical mixing rather than to hurricane-ocean heat exchange. Two hypotheses follow: H1, a depth-averaged ocean temperature is the direct proxy (or metric) for SST under a hurricane, and H2, a depth-averaged temperature is a more robust metric of hurricane-ocean interaction than is OHC.

The majority of hurricanes and typhoons form over the deep, open ocean in late summer when sea surface temperature is warmest. In that circumstance, OHC and  $T_{100}$  or  $T_{\bar{\sigma}}$  will provide essentially the same forecast guidance, i.e., that an ocean region having a warm ( $T \geq 26^\circ\text{C}$ ) thick surface layer will be a favorable environment for

Title Page

Abstract

Introduction

Conclusions

References

Tables

Figures

◀

▶

◀

▶

Back

Close

Full Screen / Esc

Printer-friendly Version

Interactive Discussion





hurricane intensification. This could be taken as a warrant for OHC – that a high OHC region resists cooling due to hurricane-ocean heat exchange (which we have suggested is not plausible, Sect. 2.1), or equally, evidence in favor of  $T_{100}$  or  $T_d$  – that a thick warm surface layer resists the cooling effect of vertical mixing. This latter interpretation is in common with most recent studies (Lin et al., 2008; McTaggart-Cowen et al., 2007; Mainelli et al., 2008) and is the interpretation espoused and implemented here in the form of an ocean metric. Admittedly, if only warm and deep ocean conditions were relevant, then this distinction would be of little or no practical importance (Fig. 9).<sup>4</sup>

But there are at least three other realizable circumstances in which the mechanism becomes crucially important in as much as OHC and depth-averaged temperature will give quite different forecast guidance (1). Cool, open ocean waters. Hurricanes tend to form over warm ( $SST \geq 26^\circ C$ ) regions, but may later move over much lower SSTs during their life cycle (a striking example is shown by Monaldo et al., 1997). The cool

<sup>4</sup>The seasonal cycle of cooling on warm subtropical continental shelves serves as an interesting counterpoint to the hurricane-ocean interaction phenomenon of interest here. Around the Gulf of Mexico, the cooling phase of the seasonal cycle begins in earnest with the first cold air outbreak (see the satellite imagery noted above and the cold air outbreak beginning in mid-October, 2005 following the passage of Hurricane Wilma, 2005). Where a hurricane can be characterized by very strong winds and a rather small air-sea temperature difference, cold air outbreaks over the Gulf of Mexico are the complement in the sense that they have moderate wind speeds but very cold and dry air that sets up a very large air-sea temperature difference that is sustained for several days. Hence, while a cold air outbreak must cause some vertical mixing (Lentz et al., 2003), it will certainly also cause very significant heat loss from the ocean. The spatial pattern of the sea surface cooling following a cold air outbreak follows the qualitative expectations of OHC: shallow, inner shelf regions (small OHC) clearly cool in advance of deeper, outer shelf regions (larger OHC). The cooling phase of the seasonal cycle on subtropical continental shelves might thus be seen as a macro version of the inner-coastal cool layer described in Sect. 3.2, and with the equivalent ratio Eq. (7) more or less inverted. In other words, something akin to OHC is the relevant metric for the SST response when air-sea heat exchange is the dominant physical process, i.e., the seasonal cooling of subtropical shelves but not the upper ocean response to a hurricane.

**Metrics of  
hurricane-ocean  
interaction**

J. F. Price

Title Page

Abstract

Introduction

Conclusions

References

Tables

Figures

◀

▶

◀

▶

Back

Close

Full Screen / Esc

Printer-friendly Version

Interactive Discussion



degeneracy built in to OHC effectively restricts its application to warm ocean conditions. The depth-averaged temperatures do not have this property, and an analysis of  $T_{100}^-$  or  $T_d^-$  could, in principle, allow for a forecast (or explain, in hindcast) a damping effect of cool sea surface temperatures upon hurricane intensity (though it remains to define what that may be) (2). Salt-stratified waters. While temperature is a sufficient proxy for density and static stability in most conditions, salinity can have a significant and sometimes decisive effect on static stability in special locations, for example within or near estuaries. OHC and  $T_{100}^-$  are silent on salinity effects, which can be accounted by a model that estimates vertical mixing from static stability,  $T_d^-$ , provided that salinity is known (3). Shallow waters. OHC and the depth-averaged temperatures can be quite different when evaluated over shallow, continental shelf regions. OHC will generally indicate that shallow regions (shallow compared to the depth of the 26°C isotherm) are an unfavorable environment for hurricane intensification, while  $T_{100}^-$  or  $T_d^-$  may indicate the opposite, that shallow regions (shallow compared to the depth of vertical mixing in the deep ocean,  $d_{do}$ ) can be favorable for hurricane intensification compared to an otherwise similar deep ocean (Fig. 9). To the point – this study indicates that, land effects aside, a shallow, warm continental shelf may be as favorable for hurricane intensification as is a deep, open ocean, warm regime, e.g., the Loop Current or warm eddies of the subtropical gyre interior (compare the depth averaged-profiles of Fig. 5a and 5c).

## 4.2 Remarks on the coastal ocean

SST and distance offshore are at once the most readily observed property of the coastal ocean and are the property of immediate interest for hurricane-ocean interaction and forecasting. It is important to appreciate that the specific relationship between SST and distance offshore shown in Fig. 8c is not universal because the hydrography of any given continental shelf may be quite different from the upwelling neutral case considered in Sect. 3.2. The thermal field on many continental shelves depends upon

### Metrics of hurricane-ocean interaction

J. F. Price

Title Page

Abstract

Introduction

Conclusions

References

Tables

Figures



Back

Close

Full Screen / Esc

Printer-friendly Version

Interactive Discussion



---

**Metrics of  
hurricane-ocean  
interaction**J. F. Price

---

[Title Page](#)[Abstract](#)[Introduction](#)[Conclusions](#)[References](#)[Tables](#)[Figures](#)[⏪](#)[⏩](#)[◀](#)[▶](#)[Back](#)[Close](#)[Full Screen / Esc](#)[Printer-friendly Version](#)[Interactive Discussion](#)

the depth and (at least) the cross-shelf coordinate,  $x$ , so that  $T=T(x, z)$ . In shelf regions that are upwelling positive, e.g., Campeche Bank or the Louisiana-Texas shelf in late summer (Walker, 2005), the thermocline will be lifted toward the coast ( $\frac{\partial T}{\partial x} \geq 0$  for the configuration of Fig. 8a) and cool water may be present very close to shore and very close to the sea surface. Preliminary calculations (not shown here) suggest that even fairly modest upwelling can bring enough cool water onto the inner shelf to eliminate or reverse the OCWL that is expected over upwelling neutral or negative shelf regions. On some shelves, e.g., the Middle Atlantic Bight, the early summer thermocline may be thin enough, O(30 m) (Schofield et al., 2008) that the width of the coastal warm layer may be no more than a few kilometers, and so probably negligible. Given the great range and temporal variability of coastal ocean hydrography, a key requirement for forecasting hurricane-ocean interaction over shelf regions will be to observe and to model the ocean stratification in more or less real time.

The present treatment of the coastal ocean response to a hurricane (Sect. 3.2.2) was simplified to the point that  $T_{\bar{d}}$  could be characterized as a null model: the estimated (deep ocean) vertical mixing was simply stopped if it reached the ocean bottom. That must happen, of course, but so may a great deal else that was outside the scope of the present treatment. For example, rotary inertial motions, which dominate the vertical shear of the open ocean wind-driven current, must be inhibited near coast lines. At a minimum, there must occur transient up- and down-welling that was not accounted for in the local version of  $T_{\bar{d}}$  presented here. Surface gravity waves generated by an approaching hurricane can be very energetic, and may cause intense vertical mixing within a thick bottom boundary layer, even before the direct effect of the hurricane wind stress reaches the bottom (Glenn et al., 2008). Finally, the pre-hurricane thermal and salinity fields around continental shelves will often vary in three dimensions, with marked effects on the post-hurricane SST and salinity observed at fixed sites (Xie et al., 1997; Chu et al., 2000, and Bingham, 2007). When the possibilities of variable hurricane incidence angle and translation speeds are considered in combination with the coastal phenomenon noted just above, then it becomes evident that the parameter

space for hurricane-coastal ocean interaction is very extensive and well worth additional study and synthesis. We certainly need to understand which map – OHC in Fig. 3 or  $T_{100}$  in Fig. 4 – gives the better account of hurricane-ocean interaction over continental shelves, and over cool, open ocean regions.

## 5 A look ahead

Forecasting of hurricanes or any natural phenomenon is a pragmatic endeavor. Insight from models and observations can help to point the way to new hypotheses or methods, but forecasting success can only be told from actual practice (Lin et al., 2008; Mainelli et al., 2008) which was not attempted here. The best result of this discussion would be to stimulate a fresh look at hurricane-ocean interaction, and specifically, to encourage further testing of ocean metrics drawn from an expanded hypothesis-space. Just two examples: A revised OHC: the conservation error of OHC (footnote 1 of Sect. 1), along with the cool degeneracy noted in Sect. 3.1.2 could be remedied for most hurricane analysis or forecasting purposes simply by choosing a reference temperature that is below the depth of vertical mixing and the lower limit of relevant SSTs, e.g., 22° C. This variant of OHC will have improved conservation and statistical properties over a wider range of conditions than does the usual form, Eq. (1), but there is still no guarantee that heat content will be the most relevant physical quantity for hurricane-ocean interaction over shallow continental shelves (Sect. 3.2) and especially those that are to some degree salt-stratified (Sect. 3.3). A derivative of  $T_{\bar{d}}$ : the depth-averaged temperatures estimated here were intended to be the minimum of SST expected in a hurricane wake. An important question beyond the present scope is whether hurricane-ocean interaction could be better represented by something other than this minimum SST, e.g., an average of the observed pre-hurricane SST and  $T_{\bar{d}}$  would be a better approximation to the SST under the maximum winds of a hurricane (Cione and Uhlhorn, 2003; Fig. 10). In a similar way, if the issue on a given day was the possible intensification of a moderate tropical storm, then a much reduced mixing depth, say  $h=50$  m, or a much reduced

### Metrics of hurricane-ocean interaction

J. F. Price

Title Page

Abstract

Introduction

Conclusions

References

Tables

Figures



Back

Close

Full Screen / Esc

Printer-friendly Version

Interactive Discussion



wind stress amplitude in the mixing model (Eq. 3),  $\tau=0.5$  Pa, would be appropriate. Explicit treatment of slowly moving storms would require development of the low  $U_h$  limit to account for upwelling and, in shallow water, heat loss to the hurricane.

Discovering the optimum ocean metric is not likely to come easily; OHC and depth-averaged temperatures are well-correlated in some important circumstances and, in any event, the ocean thermal field is just one of several factors that make up the complex environment of a hurricane. A thorough exploration and sensitive test of ocean metrics will require a large suite of case studies that span the full range of ocean conditions that are relevant for hurricane-ocean interaction. No doubt such a study could be aided considerably by guidance from the best possible air and sea coupled models that include a coastal ocean.

*Acknowledgements.* This research was supported by the US Office of Naval Research through the project Impact of Typhoons on the Western North Pacific (ITOP). Thanks to T. Sanford of the Applied Physics Laboratory, University of Washington for the EM-APEX data of Fig. 1 and for valuable comments on a draft manuscript. Thanks to J. J. Park and Y.-O. Kwon of the Woods Hole Oceanographic Institution for the quality-controlled Argo data sets and to ITOP colleagues Dong-Shan Ko of the Naval Research Laboratory, S. Jayne of the Woods Hole Oceanographic Institution, E. D'Asaro of the Applied Physics Laboratory, University of Washington, I.-I. Lin of Taiwan National University and S. Chen of the University of Miami for valuable discussions of this research. T. Farrar and B. Warren of Woods Hole Oceanographic Institution provided insightful comments on a draft manuscript and N. Walker of Louisiana State University, R. He of North Carolina State University and K. Brink of the Woods Hole Oceanographic Institution are thanked for their advice on the coastal ocean. The satellite images of Fig. 1 are from the JPL POET data server, and the NOAA/NESDIS Environmental Visualization Program.

**Metrics of  
hurricane-ocean  
interaction**

J. F. Price

Title Page

Abstract

Introduction

Conclusions

References

Tables

Figures

◀

▶

◀

▶

Back

Close

Full Screen / Esc

Printer-friendly Version

Interactive Discussion



## References

- Allen, J. S., Beardsley, R. C., Blanton, J. O. , et al.: Physical oceanography of continental shelves, *Rev. Geophys.*, 21(5), 1149–1181, 1983.
- 5 Bender, M. A., Ginis, I., and Kurihara, Y.: Numerical simulations of tropical cyclone-ocean interaction with a high resolution coupled model, *J. Geophys. Res.-Atmos.*, 98, 23,245–23,263, 1993.
- Bender, M., Ginis, I., Tuleya, R., Thomas, B., Marchok, T.: The operational GFDL coupled hurricaneocean prediction system and a summary of its performance, *Mon. Weather Rev.*, 135, 3965–3989, 2007.
- 10 Bingham, F. M.: Physical response of the coastal ocean to Hurricane Isabel near landfall, *Ocean Sci.*, 3, 159–171, 2007, <http://www.ocean-sci.net/3/159/2007/>.
- Black, P. G., D’Asaro, E., Drennan, W. M., French, J. R., Sanford, T. B., Terrill, E. J. , Niiler, P. P., Walsh, E. J., and Zhang, J.: Air-sea exchange in hurricanes: Synthesis of observations from the Coupled Boundary Layer Air-Sea Transfer Experiment, *B. Am. Meteorol. Soc.*, 88, 357–374, 2007.
- 15 Chen, S. S., Price, J. F., Zhao, W., Donelan, M. A., and Walsh, E. J.: The CBLAST-Hurricane program and the next-generation fully coupled atmosphere-wave-ocean models for hurricane research and prediction, *B. Am. Meteorol. Soc.*, 88, 311–317, 2007.
- 20 Chu, P. C., Veneziano, J. M., Fan, C., Carron, M. J., and Liu, W. T.: Response of the South China Sea to Tropical Cyclone Ernie 1996, *J. Geophys. Res.*, 105(C6), 13,991–14,009, 2000.
- Cione, J. J. and Uhlhorn, E. W.: Sea surface temperature variability in hurricanes: Implications with respect to intensity change, *Mon. Weather Rev.*, 131, 1783–1796, 2003.
- Cornillon, P., Stramma, L., and Price, J. F.: Satellite observations of sea surface cooling during hurricane Gloria, *Nature*, 326, 373–375, 1987.
- 25 D’Asaro, E. A., Sanford, T. B., Niiler, P. P., and Terrill, E. J.: Cold wake of Hurricane Frances, 34, L15609, doi:10.1029/2007GRL030160, 2007.
- DeMaria, M., Mainelli, M., Shay, L. K., Knafp, J. A., Kaplan, J.: Further improvements to the Statistical Hurricane Intensity Prediction Scheme (SHIPS), *Weather. Forecast.*, 20, 531–543, 2005.
- 30 Emanuel, K. A.: Thermodynamic control of hurricane intensity, *Nature*, 401, 665–669, 1999.
- Ginis I.: Tropical cyclone-ocean interactions’, in: *Atmosphere-Ocean Interactions*, edited by:

OSD

6, 909–951, 2009

### Metrics of hurricane-ocean interaction

J. F. Price

Title Page

Abstract

Introduction

Conclusions

References

Tables

Figures

◀

▶

◀

▶

Back

Close

Full Screen / Esc

Printer-friendly Version

Interactive Discussion



- Perrie, W., WIT Press, *Advances in Fluid Mechanics Series*, 33, 83–114, 2002.
- Glenn, S., Jones, C., Twardowski, M., Bowers, L., Kerfoot, J., Kohut, J., Webb, D., and Schofield, O.: Glider observations of sediment resuspension in a Middle Atlantic Bight fall transition storm, *Limnol. Oceanogr.*, 53(5, part 2), 2180–2196, 2008.
- 5 Goni, G. J. and Trinanes, J. A.: Ocean thermal structure monitoring could aid in the intensity forecast of tropical cyclones, *Eos. Trans. Amer. Geophys. Union*, 84, 573–580, 2003.
- Gray, W., Global view of tropical disturbances and storms, *Mon. Weather Rev.*, 96, 669–700, 1968.
- Hazelworth, J. B.: Water temperature variation resulting from hurricanes, *J. Geophys. Res.*, 10 73(16), 5105–5123, 1968.
- Hu, C. and Muller-Karger, F. E.: Response of sea surface properties to Hurricane Dennis in the eastern Gulf of Mexico, *Geophys. Res. Lett.*, 34, L07606, doi:10.1029/2006GRL028935, 2007.
- Jacob, S. D., Shay, L. K., Mariano, A. J. and Black, P. G.: The 3d oceanic mixed layer response to hurricane Gilbert, *J. Phys. Oceanogr.*, 30, 1407–1429, 2000.
- 15 Ko, D. S., Martin, P. J., Rowley, C. D., and Preller, R. H.: A real-time coastal ocean prediction experiment for MREA04, *J. Marine Systems*, 69, 17–28, doi:10.1016/j.jmarsys.2007.02.022, 2008.
- Leipper, D. and Volgenau, D.: Upper ocean heat content of the Gulf of Mexico, *J. Phys. Oceanogr.*, 2, 218–224, 1972.
- 20 Lentz, S., Shearman, K., Anderson, S., Plueddemann, A., and Edson, J.: Evolution of stratification over the New England shelf during the Coastal Mixing and Optics study, August 1996–June 1997, *J. Geophys. Res. Oceans*, 108(C1), 3008, doi:10.1029/2001JC001121, 2003.
- Lin, I.-I., Wu, C.-C., Pun, I.-F., and Ko, D.-S.: Upper ocean thermal structure and the western North Pacific category 5 typhoons, Part I: Ocean features and the category 5 typhoon’s intensification, *Mon. Weather Rev.*, 136, 3288–3306, doi:10.1175/2008MWR2277.1, 2008.
- 25 Mainelli, M., DeMaria, M., Shay, L. K., and Goni, G.: Application of oceanic heat content estimation to operational forecasting of recent Atlantic category 5 hurricanes, *Weather Forecast.*, 23(1), 3–16, 2008.
- 30 Marks, F. M., Shay, L. K., and PDT-5 : Landfalling tropical cyclones: Forecast problems and associated research opportunities, *B. Am. Meteorol. Soc.*, 79, 305–323.
- McDougall, T. J.: Potential enthalpy: A conservative oceanic variable for evaluating heat content and heat fluxes, *J. Phys. Oceanogr.*, 33, 945–963, 2003.

---

**Metrics of  
hurricane-ocean  
interaction**J. F. Price

---

[Title Page](#)[Abstract](#)[Introduction](#)[Conclusions](#)[References](#)[Tables](#)[Figures](#)[◀](#)[▶](#)[◀](#)[▶](#)[Back](#)[Close](#)[Full Screen / Esc](#)[Printer-friendly Version](#)[Interactive Discussion](#)



**Metrics of  
hurricane-ocean  
interaction**

J. F. Price

Title Page

Abstract

Introduction

Conclusions

References

Tables

Figures

◀

▶

◀

▶

Back

Close

Full Screen / Esc

Printer-friendly Version

Interactive Discussion



McPhaden, M. J., Foltz, G. R., Lee, T., Murthy, V. S. N., Ravichandran, M., G. A. Vecchi, J. Vialard, Wiggert, J. D., and Yu, L.: Ocean-atmosphere interactions during Cyclone Nargis, *Eos. Trans. Amer. Geophys. Union*, 90, 53–60, 2009.

McTaggart-Cowan, R., Bosart, L. F., Gyakum, J. R., and Atallah, E. H.: Hurricane Katrina (2005), Part I: Complex life cycle of an intense tropical cyclone, *Mon. Weather Rev.*, 135, 3905–3926, 2007.

Monaldo, F. M., Sikora, T. D., Babin, S. M., and Sterner, R. E.: Satellite imagery of sea surface temperature cooling in the wake of Hurricane Edouard (1996), *Mon. Weather Rev.*, 125, 2716–2721, 1997.

Price, J. F.: Upper ocean response to a hurricane, *J. Phys. Oceanogr.*, 11, 153–175, 1981.

Price, J. F., Sanford, T. B., and Forristall, G. Z.: Forced stage response to a moving hurricane, *J. Phys. Oceanogr.*, 24(2), 233–260, 1994.

Qiu, B.: Seasonal eddy field modulation of the North Pacific Subtropical Countercurrent: TOPEX/Poseidon observations and theory, *J. Phys. Oceanogr.*, 29, 1670–1685, 1999.

Saetra, O., Linders, T., and Debernard, J. B.: Can polar lows lead to a warming of the ocean surface?, *Tellus A*, 60, 141–153, 2008.

Sanford, T. B., Price, J. F., Girton, J. B., and Webb, D. C.: Highly resolved ocean response to a hurricane, *Geophys. Res. Lett.*, 34, L13604, doi:10.1029/2007GL029679, 2007.

Schade, L. R. and Emanuel, K. A.: The ocean's effect on the intensity of tropical cyclones: results from a simple coupled atmosphere-ocean model, *J. Atmos. Sci.*, 56, 642–651, 1999.

Scharroo, R., Smith, W. H. F., and Lillibridge, J. L.: Satellite altimetry and the intensification of Hurricane Katrina, *EOS Trans. AGU*, 86(40), p. 366, 2006.

Schofield, O., Chant, J. L., Cahill, B., Castelao, R., Gong, D., Kahl, A., Kohut, J., Montes-Hugo, M., Ramadurai, R., Ramey, P., Yi, X., and Glenn, S.: The decadal view of the Mid-Atlantic Bight from the COOLroom: Is our coastal system changing?, *Oceanography*, 21(4), 108–117, 2008.

Shay, L., Goni, G., and Black, P.: Effects of warm oceanic features on Hurricane Opal, *Mon. Weather Rev.*, 128, 131–148, 2000.

Shen, W., and Ginis, I.: Effects of surface heat flux-induced sea surface temperature changes on tropical cyclone intensity, *Geophys. Res. Lett.*, 30(18), 1933, doi:10.1029/2003GRL017878, 2003.

Striver, R. L., and Huber, M.: Observational evidence for an ocean heat pump induced by tropical cyclones, *Nature*, 447, 577–580, doi:10.1038/nature05785, 2007.



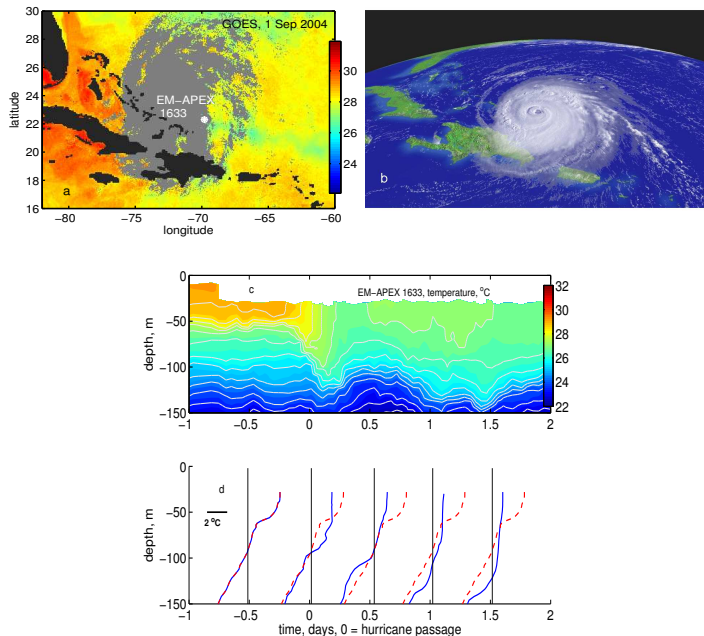
- Sun, D., Gautam, R., Cervone, G., Boybei, Z., and Kafatos, M.: Comment on “Satellite altimetry and the intensification of Hurricane Katrina”, EOS Trans. AGU, 87(8), p. 89, 2006.
- Walker, N. D.: Wind and eddy-related shelf/slope circulation processes and coastal upwelling in the northwestern Gulf of Mexico, in: Circulation in the Gulf of Mexico: observations and models of the American Geophysical Union, Geophys. Mon. Ser., 161 , 295–314, 2005.
- Walker, N. D., Leben, R. R., and Balasubramanian, S.: Hurricane-forced upwelling and chlorophyll  $\alpha$  enhancement within cold-core cyclones in the Gulf of Mexico, Geophys. Res. Lett., 32, L18610, doi:10.1029/2005GL0023716, 2005.
- Warren, B. A.: The first law of thermodynamics in a salty ocean, Progr. Oceanogr., 70, 149–167, 2006.
- Willis, J. A., Roemmich, D., and Cornuelle, B.: Interannual variability in upper ocean heat content, temperature, and thermocline expansion on global scales, J. Geophys. Res.-Oceans, 109, C12036, doi:10.1029/2003JC002260, 2004
- Xie, L., Pietrafesa, L. J., Bohm, E., Zhang, C., and Li, X.: Evidence and mechanism of hurricane Fran-induced ocean cooling in the Charleston trough, Geophys. Res. Lett., 25, 769–772, 1998.
- Yablonski, R. and Ginis, I.: Limitation of one-dimensional ocean models for coupled hurricane-ocean model forecasts, Mon. Weather Rev., submitted, 2008.
- Zedler, S. E., Dickey, T. D., Doney, S. C., Price, J. F., Yu, X., Mellor, G. L.: Analyses and simulations of the upper ocean’s response to Hurricane Felix at the Bermuda Testbed Mooring site: 13–23 August 1995, J. Geophys. Res. Oceans, 107(C12), 3232, doi:10.1029/2001JC000969, 2002.
- Wada, A., and Chan, J. C. L.: Relationship between typhoon activity and upper ocean heat content, Geophys. Res. Lett., 35, L17603, doi:10.1029/2008GRL035129, 2008.

---

**Metrics of  
hurricane-ocean  
interaction**J. F. Price

---

[Title Page](#)[Abstract](#)[Introduction](#)[Conclusions](#)[References](#)[Tables](#)[Figures](#)[◀](#)[▶](#)[◀](#)[▶](#)[Back](#)[Close](#)[Full Screen / Esc](#)[Printer-friendly Version](#)[Interactive Discussion](#)



**Fig. 1.** Observations from CBLAST Hurricane Frances (2004) (see Black et al., 2007 for an overview of CBLAST). **(a)** GOES SST image of the subtropical western North Atlantic showing Hurricane Frances (clouds are shown as a light gray mass) as it passed the site where EM-APEX floats had been air-launched one day before (the white asterisk denotes float 1633; Sanford et al., 2007). Frances was moving west northwest at 5 to 6 m s<sup>-1</sup>. Notice that SST was higher ahead of Hurricane Frances (to the west), than behind. Within the coolest part of the wake, SST was reduced by about 3°C (see also D’Asaro et al., 2007). **(b)** A nearly simultaneous true color image, also from GOES. **(c)** Time-depth section of temperature measured by EM-APEX float 1633. The color coding of temperature is the same in this section as in the SST map above. **(d)** The corresponding temperature profiles. The red dashed profile was observed before the hurricane passage and is repeated as a reference for subsequent profiles that are shown at half-day intervals. The shallowest measured temperature at 30 m depth decreased by about 2.5°C, roughly consistent with the GOES SST image.

Metrics of hurricane-ocean interaction

J. F. Price

Title Page	
Abstract	Introduction
Conclusions	References
Tables	Figures
◀	▶
◀	▶
Back	Close
Full Screen / Esc	
Printer-friendly Version	
Interactive Discussion	



---

## Metrics of hurricane-ocean interaction

J. F. Price

---

Title Page

Abstract

Introduction

Conclusions

References

Tables

Figures



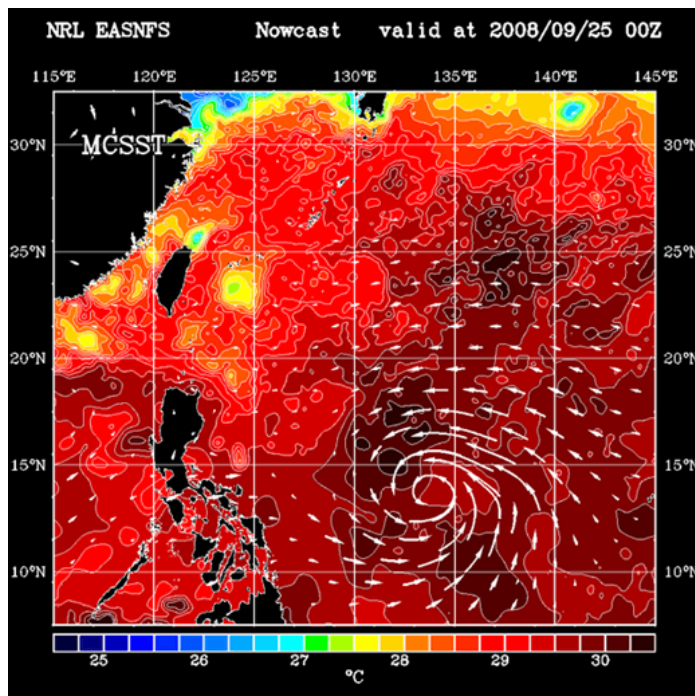
Back

Close

Full Screen / Esc

Printer-friendly Version

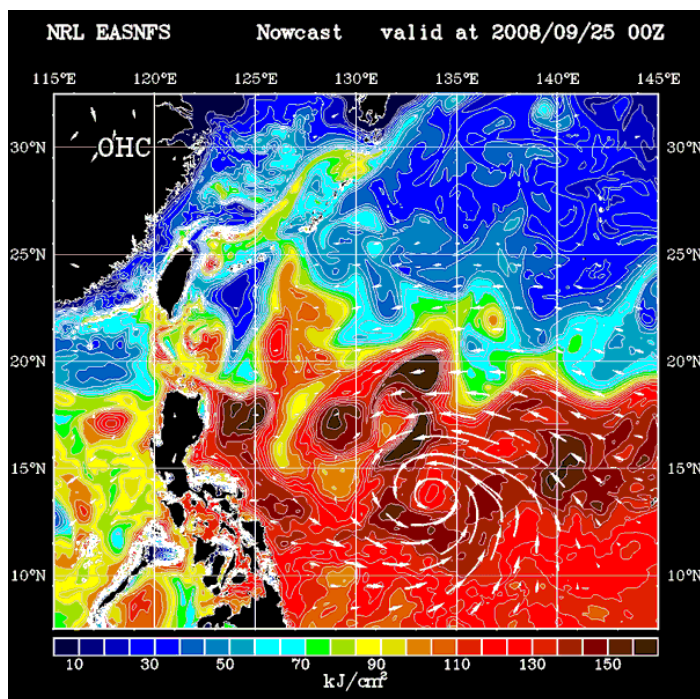
Interactive Discussion



**Fig. 2.** A synoptic map of SST from the East Asian Seas Nowcast and Forecast System (EAS-NFS) of the Naval Research Laboratory (Ko et al., 2008) for 25 September 2008. The white vectors are low level wind.

## Metrics of hurricane-ocean interaction

J. F. Price



**Fig. 3.** A synoptic map of OHC computed by the EASFNFS. The corresponding SST was in the previous figure. Note that the largest values of OHC are found along the axis of the subtropical gyre, roughly 17° N west of Luzon, and especially in mesoscale patches that correspond to relative highs of the sea surface height (about 20 cm amplitude). Uniformly low values of OHC are estimated along the northern boundary of this region, and also along the wide, shallow continental shelf south and east of China.

Title Page

Abstract

Introduction

Conclusions

References

Tables

Figures

◀

▶

◀

▶

Back

Close

Full Screen / Esc

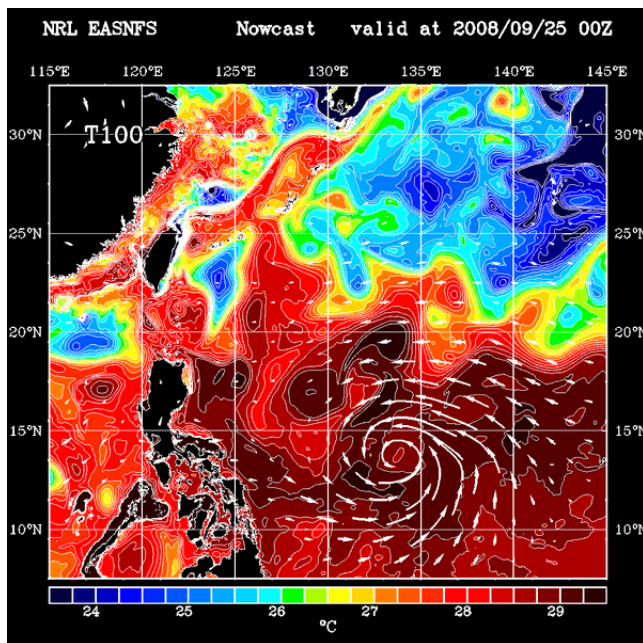
Printer-friendly Version

Interactive Discussion



## Metrics of hurricane-ocean interaction

J. F. Price



**Fig. 4.** A map of  $T_{100}$ , the ocean temperature averaged over the upper 100 m or to the ocean bottom (introduced in Sect. 2.2) computed by the EAS NFS of the Naval Research Laboratory. This map was computed on the same ocean temperature field as was OHC of Fig. 3 and may be compared directly. The highest values of OHC and  $T_{100}$  corresponding to the subtropical gyre ridge along 15° N are similar in shape in these maps. The low values are in some respects quite different, especially along the southeastern coast of China; OHC indicates low values simply because of shoaling water depth, where  $T_{100}$  indicates fairly high values within a coastal warm boundary layer (defined in Sect. 3.2.2) that is up to several hundred kilometers in width. This map was kindly provided by Dr. Dong-Shan Ko of the Naval Research Laboratory.

Title Page

Abstract

Introduction

Conclusions

References

Tables

Figures

◀

▶

◀

▶

Back

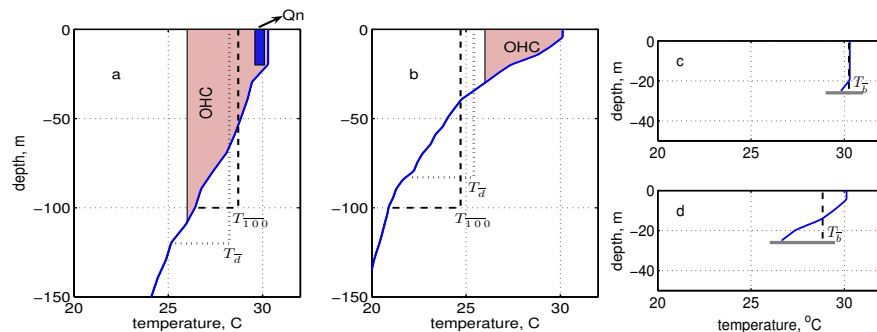
Close

Full Screen / Esc

Printer-friendly Version

Interactive Discussion



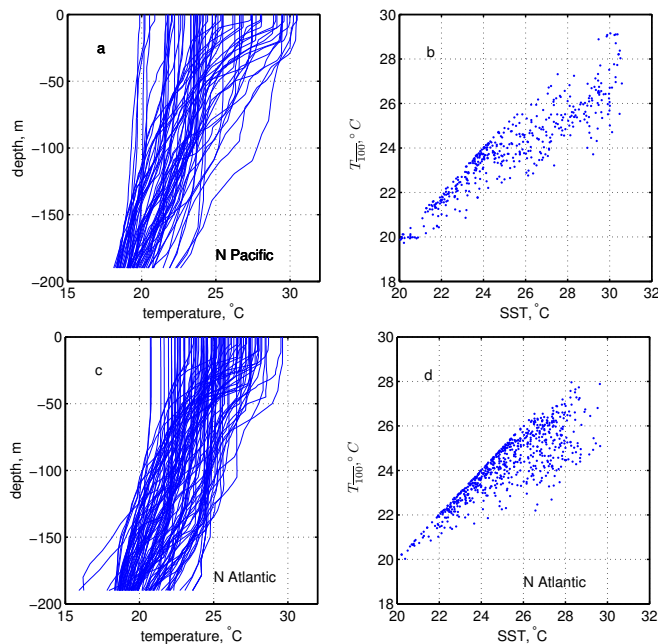


**Fig. 5.** Deep, open ocean Argo float temperature profiles from the western, subtropical North Pacific, both of which have  $SST \approx 30^\circ\text{C}$ . These two profiles are rather extreme examples of a deep thermocline and a thick surface layer, profile **(a)** at left, and a shallow thermocline and thin surface layer, profile **(b)** at right. OHC is proportional to the lightly shaded area and thus more or less proportional to the thermocline depth. The much smaller, darker shaded area near the surface in **(a)** is proportional to an estimate of the net hurricane-ocean heat exchange,  $Q_n \approx 4 \text{ kJ cm}^{-2}$  (Sect. 3.2.2). The dashed line labelled  $T_{T=100}$  is the temperature profile after vertical mixing to a depth of 100 m, a typical depth of mixing by a category 3 hurricane (Sect. 2.2.1). Note that mixing to 100 m cools the sea surface of profile (a) by only about  $1.5^\circ\text{C}$  because the water that was mixed upward into the surface layer was only slightly cooler than the water present above  $z = -100 \text{ m}$ . Either ocean metric, OHC or  $T_{T=100}$ , would indicate that temperature profile (a) is favorable for hurricane intensification. In profile (b), the cooling effect of the same vertical mixing is much greater,  $\approx 5^\circ\text{C}$ , and notice that OHC is also much smaller; both ocean metrics would indicate that profile (b) is not favorable (or comparatively less favorable) for intensification than is profile (a). The dotted lines labeled  $T_{T=d}$  are the temperature profiles after vertical mixing from the surface to a depth of  $d = 120 \text{ m}$  (a) or  $d = 85 \text{ m}$  (b) (why these depths is discussed in Sect. 2.2.2). **(c)** and **(d)** The profiles from (a) and (b) but with a shallow bottom indicated at (arbitrarily) 25 m; discussed in Sects. 3.2 and 4.1.

[Title Page](#)
[Abstract](#)
[Introduction](#)
[Conclusions](#)
[References](#)
[Tables](#)
[Figures](#)
[◀](#)
[▶](#)
[◀](#)
[▶](#)
[Back](#)
[Close](#)
[Full Screen / Esc](#)
[Printer-friendly Version](#)
[Interactive Discussion](#)


## Metrics of hurricane-ocean interaction

J. F. Price



**Fig. 6.** Deep, open ocean Argo float observations used to evaluate the metrics. **(a)** Argo temperature profiles from the western subtropical North Pacific (every seventh profile of 297 total; salinity not shown). The region sampled was centered on  $23^{\circ}$  N and  $128^{\circ}$  E and included June through October of 2007. **(b)** Sea surface temperature (SST; the shallowest measured temperature in a profile) and the depth-averaged temperature,  $T_{100}$ , from the profiles at left. Note that  $T_{100}$  and SST are not well correlated, especially in the range of highest SST values. The same is true of SST and OHC and of SST and  $T_d$  (not shown). **(c)** Argo temperature profiles from the western subtropical North Atlantic, same time period and 313 profiles in total. **(d)** SST and  $T_{100}$  from the western North Atlantic.

Title Page

Abstract

Introduction

Conclusions

References

Tables

Figures

◀

▶

◀

▶

Back

Close

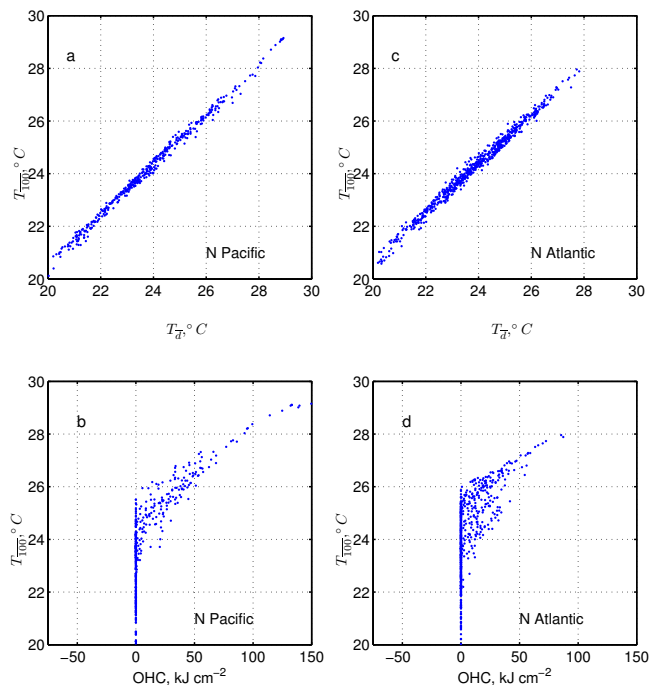
Full Screen / Esc

Printer-friendly Version

Interactive Discussion







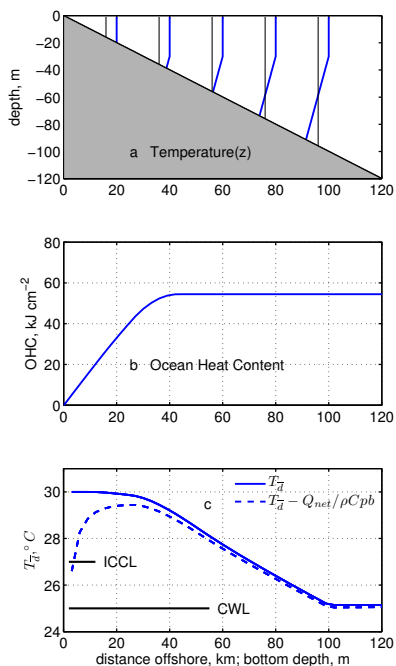
**Fig. 7.** Scatter diagrams of the ocean metrics. **(a)** The vertically-averaged temperatures,  $T_{100}$  and  $T_d$ , computed from the Argo profiles of Fig. 6a. **(b)** Upper Ocean Heat Content (OHC) and  $T_{100}$  (note that this panel is below the corresponding panel (a)). In this deep, open ocean region,  $T_{100}$  and  $T_d$  are highly correlated with each other, and in the higher range of OHC, they are both highly correlated with OHC. In the low range of OHC, where SST is close to  $26^\circ\text{C}$ , the correlation between OHC and the depth-averaged temperatures is poor. OHC is zero on profiles where the temperature is less than  $26^\circ\text{C}$  throughout the water column, about one third of the profiles in this sample. **(c)** The vertically-averaged temperatures,  $T_{100}$  and  $T_d$ , computed from the North Atlantic Argo profiles Fig. 6c. **(d)** OHC corresponding to the North Atlantic data of (c).

[Title Page](#)
[Abstract](#)
[Introduction](#)
[Conclusions](#)
[References](#)
[Tables](#)
[Figures](#)
[◀](#)
[▶](#)
[◀](#)
[▶](#)
[Back](#)
[Close](#)
[Full Screen / Esc](#)
[Printer-friendly Version](#)
[Interactive Discussion](#)




## Metrics of hurricane-ocean interaction

J. F. Price



**Fig. 8.** The variation of OHC and  $T_d$  along a transect of an idealized continental shelf that could be characterized as fairly broad and upwelling neutral. **(a)** The temperature profile came from the West Florida Continental Shelf. The thin vertical lines are at  $26^\circ\text{C}$  and the scale for temperature is as for distance. The bottom slope is about 1.5 to 2 times that of the West Florida Shelf. **(b)** OHC decreases with decreasing bottom depth,  $d \leq 40$  m, which is slightly less than the depth of the  $26^\circ\text{C}$  isotherm. **(c)**  $T_d$  increases with decreasing bottom depth less than 85 m, the depth of mixing estimated for this stratification over a deep ocean. The dashed line is  $T_d$  modified with a nominal heat loss to the hurricane. ICCL is the width of the Inner-Coastal Cool Layer (Sect. 3.3.2) and CWL is the width of the Coastal Warm Layer.

Title Page

Abstract

Introduction

Conclusions

References

Tables

Figures

◀

▶

◀

▶

Back

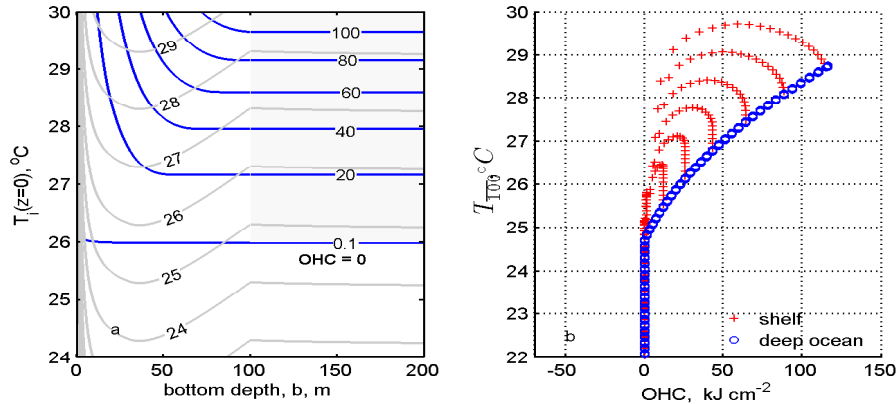
Close

Full Screen / Esc

Printer-friendly Version

Interactive Discussion





**Fig. 9. (a)** Dependence of  $OHC$  (thin dark blue lines) and  $T_{100}$  (thicker gray lines) upon initial ocean temperature and bottom depth. The bottom slope was as in Fig. 8a. The temperature profile had a 30 m thick mixed layer and a constant vertical gradient,  $0.05^{\circ}C\ m^{-1}$ , typical of the open ocean. The temperature was varied by subtracting a constant, 0 to  $6^{\circ}C$ , from the entire profile. Both  $OHC$  and  $T_{100}$  increase with increasing ocean temperature. Over the deep ocean and for warm temperatures,  $OHC$  and  $T_{100}$  are similar (the lightly shaded, upper right quadrant). However, the dependence upon bottom depth is quite different and reflects the difference between vertically-integrating,  $OHC$ , which has a maximum at the warmest temperature and the greatest bottom depth, or vertically-averaging,  $T_{100}$ , which has a maximum at the warmest temperature and a bottom depth of 30 m, the initial mixed layer thickness. **(b)** A scatter diagram of the data at left. The big blue dots are from the deep ocean, and the fan of red points are from the continental shelf (the spacing of these points is arbitrary). Notice that for this temperature profile (fixed vertical gradient)  $OHC$  and  $T_{100}$  are exactly similar for warm temperatures over the deep ocean (big blue dots and compare with Fig. 7b and 7d where this is not the case).  $OHC$  and  $T_{100}$  are decidedly not similar over the continental shelf.

Title Page

Abstract

Introduction

Conclusions

References

Tables

Figures

◀

▶

◀

▶

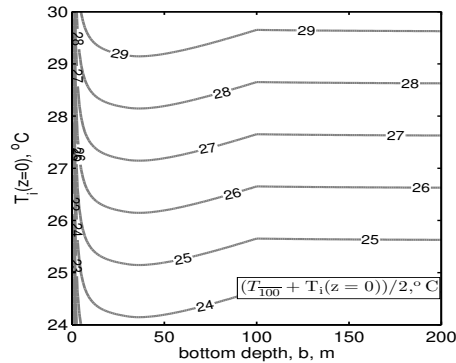
Back

Close

Full Screen / Esc

Printer-friendly Version

Interactive Discussion



**Fig. 10.** The simple average of  $T_{100}$  and the initial SST for the data of Fig. 9a. This temperature is thought to be a better estimator of the SST under the high wind speed, central region of a hurricane, and in that regard may be the most relevant SST insofar as hurricane-ocean interaction is concerned. It is, of course, much harder to observe. Notice that this temperature is slightly greater than  $T_{100}$  over the deep ocean,  $z > -b$ , but is nearly equal to  $T_i$  over the mid-continental shelf. Overall this temperature is very similar to  $T_{100}$ .

**Metrics of hurricane-ocean interaction**

J. F. Price

Title Page

Abstract

Introduction

Conclusions

References

Tables

Figures

◀

▶

◀

▶

Back

Close

Full Screen / Esc

Printer-friendly Version

Interactive Discussion

