

Papers published in *Ocean Science Discussions* are under open-access review for the journal *Ocean Science*

Ecogenomic sensors

C. A. Scholin

What are “ecogenomic sensors?” – a review and thoughts for the future

C. A. Scholin

Monterey Bay Aquarium Research Institute 7700 Sandholdt Road Moss Landing,
CA 95039, USA

Received: 10 June 2008 – Accepted: 4 December 2008 – Published: 30 January 2009

Correspondence to: C. A. Scholin (scholin@mbari.org)

Published by Copernicus Publications on behalf of the European Geosciences Union.

Title Page

Abstract

Introduction

Conclusions

References

Tables

Figures

⏪

⏩

◀

▶

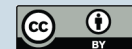
Back

Close

Full Screen / Esc

Printer-friendly Version

Interactive Discussion



Abstract

The OceanSensors08 workshop held 31 March–4 April 2008 in Warnemünde, Germany, brought together an international group of marine scientists, sensor developers and technologists with a common interest in shaping the future of ocean sensing. In preparation for that meeting a series of review papers were commissioned, one of which was meant to cover *Sensors for Ocean-omics*. The “ocean-omics” topic was cast very broadly. The notion was to review use of genetic techniques for assessing presence and diversity of organisms, their genomic capacity and gene expression, and to provide a prospectus of how such methods could be applied in an autonomous capacity. I chose “ecogenomic sensor” as a descriptor to convey the essence of such a system – a device that integrates genetic level sensing with larger scale environmental characterization. But what exactly are ecogenomic sensors? A clear definition is lacking and conceptualizations of these devices far outweigh actual hardware that can be deployed in the ocean. This prospectus builds from that point. I advance a definition of “ecogenomic sensor” and outline the opportunities and challenges associated with developing such devices. Suggestions as to how this class of instrument may be further refined and applied are offered against the backdrop of the Autonomous Microbial Genosensor (AMG) and Environmental Sample Processor (ESP). Applications that center on detection of DNA and RNA are emphasized. The word “review” appears in the title at the request of the editors.

1 Introduction

An internet search using the phrase “ecogenomic sensor” will return numerous references that speak broadly to the idea of detecting molecular markers indicative of specific organisms, genes or other biomarkers within an environmental context. A strict and unified definition of “ecogenomic sensor” is lacking, however, and the phrase is used commonly for laboratory-based tools and techniques as well as semi or fully

OSD

6, 191–213, 2009

Ecogenomic sensors

C. A. Scholin

Title Page

Abstract

Introduction

Conclusions

References

Tables

Figures

⏪

⏩

◀

▶

Back

Close

Full Screen / Esc

Printer-friendly Version

Interactive Discussion



Ecogenomic sensors

C. A. Scholin

Title Page

Abstract

Introduction

Conclusions

References

Tables

Figures

◀

▶

◀

▶

Back

Close

Full Screen / Esc

Printer-friendly Version

Interactive Discussion



autonomous systems that can be deployed outside of laboratory. Here I consider an ecogenomic sensor from the perspective of a field-portable device applied towards oceanographic research or water quality monitoring. It is a class of instrument that employs wet chemistry molecular analytical techniques to assess the presence and abundance of specified set of organisms, their genes and/or metabolites in near real-time. For the purposes of the OceanSensors08 workshop the premise was that this class of instrument would sense molecular signatures that are already known, like defined sequences of DNA or RNA. Ecogenomic sensors as conceived of here would thus be used to observe a set of defined biomolecular signatures in time-series fashion. Furthermore, information gleaned from such devices would be viewed within a larger observatory framework. Knowledge of the environmental conditions that prevailed at the time of sampling is essential if the molecular signatures detected and quantified are to be interpreted in an appropriate manner. Descriptions of the suite of sensors providing that framework are reviewed by others (e.g., OceanSensors08, 2008). At a minimum, an essential observatory backbone would include basic chemical, physical and bulk biological assessments such as temperature, salinity, pressure, chlorophyll fluorescence, etc. In that sense my definition of ecogenomic sensor parallels and narrows concepts outlined by Doney et al. (2004), Devereux et al. (2005) and the “sensor robot” vision as illustrated in Fig. 1.

1.1 Molecular markers as sensing elements

The study of aquatic organisms at the molecular level has been a focus of research for decades. Subjects span environments from all corners of the globe, the shallowest of waters to the deep-sea, cold seeps to hot vents. Target organisms span an equally impressive range – viruses and phage to the largest marine mammals. The ready availability and reliability of commercially available instruments, methods and supplies has made it possible dig into the molecular underpinnings of just about everything that is “environmental.” The biotechnology revolution has played a key role in that regard. Most recently this has come to include genomics and associated technolo-

Ecogenomic sensors

C. A. Scholin

[Title Page](#)[Abstract](#)[Introduction](#)[Conclusions](#)[References](#)[Tables](#)[Figures](#)[◀](#)[▶](#)[◀](#)[▶](#)[Back](#)[Close](#)[Full Screen / Esc](#)[Printer-friendly Version](#)[Interactive Discussion](#)

gies (e.g., Venter et al., 2004; DeLong et al., 2006; Giavannoni et al., 2008). These achievements, coupled with advances in ocean observatory technology and plans to extend those networks, have fueled the idea of applying “molecular sensors” in remote settings (Sandifer, 2007; HARRNESS Anonymous, 2007). Hence, the notion of ecogenomic sensors as an emergent technology is fast becoming engrained within the ocean science psyche even though there is no formal agreement on what that phrase means. The evolution and application of ecogenomic sensors seems as natural as instruments that have brought real-time chemical, physical and bio-optical assessments of the ocean to our desks at mere click of button. The picture is rosy – the technological leap required to achieve comprehensive ecogenomic sensing appears straightforward and timely.

Sweet as that dream may be, precious few examples of ecogenomic sensors exist and many longstanding challenges remain largely unmet. At present, for the majority of ocean research and monitoring programs, it is often not possible, practical nor cost effective to use conventional molecular analytical methods and equipment while in the field. Instead the vast majority of work generally occurs in specially equipped laboratories after the return of a discrete set of samples, limiting opportunities to collect molecular analytical data in near real-time time. Combined with sampling opportunities that are limited by financial, logistical or ship scheduling constraints, 4-D views of the environment from a molecular analytical perspective are often done retrospectively and intermittently. The reality of ecogenomic sensors is thus far removed from that implied in Fig. 1. Yet the image and underlying concepts do accurately reflect systems under development to some degree. The image also captures the requirement to embed such sensors within a broad ocean observatory framework.

2 In the footsteps of biomedicine: the quest for ecogenomic sensors

Zehr et al. (OceanSensors08, 2008) provide a comprehensive summary of the application of molecular analytical techniques for environmental research. Other useful, recent

reviews that serve as background information for this article include Devereux (2006), Metfies et al. (2006), Paul et al. (2007), Goodwin and Litaker (2008), and Scholin et al. (2008). These contributions and many others delve into the details of experimental concepts, tools and techniques, and the advantages and limitations of specific methodologies. Such details are not repeated here. Instead this contribution emphasizes the functional requirements for detecting specific microorganisms and the genes they harbor and express, and some of the challenges faced when projecting the development and use of novel instruments that will utilize these techniques onboard autonomous platforms. The views expressed are intentionally broad and draw from both academic and commercial sectors, and were meant to spur discussion at the OceanSensors08 workshop.

The development of molecular diagnostic equipment that is portable, battery operated and requires little training to use is a major focus of research in support of the biomedical industry. "Point-of-care-diagnostics" promises to make biomedical tests far smaller and easier to use than they are at present, and this will impact options for developing biosensors with ocean science applications (e.g., Metfies et al., 2006; LeGier et al., 2007). One of the real miracles of modern molecular biology is the ability to detect specific molecules at fleetingly low concentrations on a μ l, even nl scale. This has been a boon for biomedical applications given the tremendous advantage of requiring little sample material (drop of blood, skin swab). This makes integration of sample collection, processing and analytical functions in very small form factor possible.

Ecogenomic sensors rest fundamentally on the same ideals, but within the environmental domain sampling presents a much greater challenge. Many organisms or genes of interest may be relatively rare, requiring sample volumes of 100's of ml to ensure that at least a few target cells are captured. More practical by today's standards are sample volumes of many Ls to acquire a representative group of organisms from a given location at any one instant, and to accommodate vagaries of sample processing (Goodwin and Litaker, 2008). The relative abundance of the target organism, or target molecule, compared to the matrix of material within which those targets are embedded can also

Ecogenomic sensorsC. A. Scholin

[Title Page](#)[Abstract](#)[Introduction](#)[Conclusions](#)[References](#)[Tables](#)[Figures](#)[◀](#)[▶](#)[◀](#)[▶](#)[Back](#)[Close](#)[Full Screen / Esc](#)[Printer-friendly Version](#)[Interactive Discussion](#)

Ecogenomic sensorsC. A. Scholin

[Title Page](#)[Abstract](#)[Introduction](#)[Conclusions](#)[References](#)[Tables](#)[Figures](#)[◀](#)[▶](#)[◀](#)[▶](#)[Back](#)[Close](#)[Full Screen / Esc](#)[Printer-friendly Version](#)[Interactive Discussion](#)

vary greatly in environmental samples. The size range of particles encountered in natural samples is another important consideration. Organisms of interest in the natural environment may be free-living or found in aggregates, or both, further impacting the design of systems for automating sample collection and sample processing prior to final analysis (e.g., Lyons et al., 2007; Palmer et al., 2008). Many investigations targeting microbes apply a pre-filtration step to remove particles greater than $\sim 1 \mu\text{m}$ prior to further analysis. Applying the same technique in an autonomous mode is not necessarily trivial. Consequently, working to overcome problems associated with sample acquisition and handling – the “front end” – should be viewed as an important step towards achieving an ecogenomic sensing capability. Such seemingly mundane needs are often overlooked in favor of the more exciting challenge of developing and applying the “back end” molecular detection schemes themselves. This situation is reflected in the disparity between technologies available for collecting samples from the ocean versus those available for sample analysis in a laboratory.

As summarized by authors cited earlier, molecular analyses focus on both intact cells and subcellular fractions. Typically, particles in a sample are concentrated and then a series of reagents applied in a time and temperature dependent fashion. Extraction chemistries may be invoked to purify particular fractions prior to analysis. Target molecules may be detected solely on the basis of their inherent physical properties, or revealed using a variety of intermolecular reactions, such as antibody/antigen recognition, nucleic acid hybridization and enzyme mediated processes. Signal transduction and quantification most commonly involves optical techniques, though electrochemistry and mass spectroscopy are also employed.

In the laboratory, different steps associated with sample processing (collection, concentration, extraction, analysis) are generally accomplished using different pieces of equipment. Some companies offer laboratory and field portable instruments that meet some or all of these needs (e.g., Luminex, Cepheid, Gyros, Idaho Technology), but for the most part those systems are designed with very specific biomedical research and “biothreat” diagnostic applications in mind. As far as I am aware only the Autonomous

Microbial Genosensor (AMG) and the Environmental Sample Processor (ESP), discussed in greater detail later, are designed to conduct cell-free molecular analyses in the ocean remotely (Paul et al., 2007). Both adhere to fundamental sample processing schemes that parallel procedures used in laboratories. A discussion of these basic methods follows. In addition, other commercially available technologies that are not designed to be part of autonomous ocean sensors, but that could be applied to ocean research and monitoring, are noted. The focus here is analysis of nucleic acids free in solution following cell lysis, though generically most of the same requirements apply to analysis of other cell fractions too (e.g., proteins, cell metabolites).

2.1 Sample collection and handling

Tangential and direct flow filtration techniques are used commonly to acquire marine microbes from cultured and natural samples. Tangential flow filtration (TFF) applies the sample parallel to the filter media. Material passing through the membrane is removed (permeate) while the remainder (retentate) is recirculated back to the sample reservoir. This approach offers the advantages of concentrating small cells and viruses from very large sample volumes and the filter is reusable. However, TFF membranes are prone to fouling and require maintenance. Direct flow filtration (DFF) applies the sample perpendicular to the membrane to separate permeate and retentate. Membrane adsorption of based on electrostatic interactions is yet another approach for concentrating target microbes (see Palmer et al., 2008 for a comprehensive review of sample collection methods). Relative to TFF, filters used for DFF handle less sample volume and are generally not reused. Though problems associated with fouling are greatly diminished, there is a requirement for exchanging filter media for each discrete sample. Some filter media can be used for both sample concentration as well for solid phase extraction chemistries (e.g., glass beads or glass fiber filters), making it possible to co-locate the steps of acquiring and fractionating material ahead of analysis. Although the latter approach is attractive, it is not employed commonly. A variation of the DFF is the “renewable filter”. This system has been applied to automate a variety of analy-

Ecogenomic sensors

C. A. Scholin

Title Page

Abstract

Introduction

Conclusions

References

Tables

Figures

◀

▶

◀

▶

Back

Close

Full Screen / Esc

Printer-friendly Version

Interactive Discussion



ses for pathogen detection (Straub et al., 2005; Bruckner-Lea, 2000). It is not clear if the renewable filter concept can be extended to handle large sample volumes typically needed for analysis of marine samples; this warrants further investigation.

Regardless of whether TFF or DFF is applied, collection methods used for analysis of marine microbes generally yield a series of discrete samples, each representing a volume of water collected at a particular time, location and depth. In the laboratory sets of samples are often processed in batch mode. There may be a significant time lag between sample collection and analysis, but once analysis is initiated a very large amount of data can be generated very quickly. This paradigm is not well suited for autonomous systems if near real-time data are desired. Ideally, hand-held or autonomous systems should be capable of processing samples serially immediately after collection, and in turn pass appropriate fractions to one or more molecular analyses downstream whilst initiating a new sample collection event. Molecular determinations would thus emerge one sample at a time, and at a relatively slow rate (per hour) compared to rapid (per minute) chemical, physical and bulk biological assessments typical of present day observing systems.

2.2 The case for microfluidics and sample homogenization

Achieving autonomous time-series measurements using molecular techniques rests with accommodating large sample volumes at the “front end” and supporting chemistries that require or greatly benefit from small scale reactions at the “back end”. Most of the analytical reagents employed are purchased in bulk and can be expensive, but when used in μl quantities (or less) are cost-effective on a per sample basis. For example, one might spend hundreds of US\$’s in supplies to run PCR reactions, but when amortized over many samples expenditures are reasonable (e.g., US\$5 per sample).

At the time of this writing, homogenizing cells and subjecting small, concentrated aliquots of that material to various analytical procedures appears to offer the most options for porting different molecular analyses from the laboratory to in situ autonomous

Ecogenomic sensors

C. A. Scholin

Title Page

Abstract

Introduction

Conclusions

References

Tables

Figures

◀

▶

◀

▶

Back

Close

Full Screen / Esc

Printer-friendly Version

Interactive Discussion

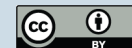


systems. This is not to imply that molecular analyses based on intact cells are without merit (e.g., Varshney, 2007), but rather reflects a theoretical and generic “bang for the buck” argument given the current problems of bridging the gap between collecting samples from the marine environment, and carrying out a wide range of molecular analyses. One notable exception is the work by Ottensen et al. 2006 where highly parallel single cell analyses were demonstrated. Sample homogenization can be achieved by physical (e.g., sonication; Chandler et al., 2001) or chemical/physical techniques (e.g., detergent, heat; Greenfield et al., 2006), either of which can be built in to autonomous systems. The details of how and when these different approaches are applied in the laboratory vary widely, and to some extent are driven by whether molecular fractionation/purification is required ahead of analysis or if direct analysis of the crude homogenate will suffice.

Methods that rely on nucleic acid amplification offer the most sensitive assays for detecting low levels of target sequences (e.g., see Zehr et al., 2008; OceanSensor08 and Frias-Lopez, 2008). These methods generally demand purified templates, though in some cases it may be possible to use crude homogenates or whole cells directly. Reaction mixtures are built up by adding a suite of reagents supplied in liquid or dehydrated form, the resulting cocktail is subjected to an appropriate thermal profile, and the reaction is often complete within 1 h. With the exception of the initial sample collection/concentration step, these methods employ reagents and equipment that are well supported by commercial vendors. For example, Cepheid offers a self-contained laboratory system – the GeneXpert – for processing samples and applying quantitative PCR, in many ways resembling the core functionality of the AMG. The GeneExpert is designed with clinical microbiology and counter bio-terrorism in mind, not environmental monitoring. This system does have potential for environmental research and monitoring, but developing the assays and producing the specialized reagent cartridges used in the GeneExpert would be very costly.

Less developed are methods that allow for direct analysis of target molecules without a requirement for amplification. This can be achieved by retaining target molecules on

Ecogenomic sensorsC. A. Scholin

[Title Page](#)[Abstract](#)[Introduction](#)[Conclusions](#)[References](#)[Tables](#)[Figures](#)[◀](#)[▶](#)[◀](#)[▶](#)[Back](#)[Close](#)[Full Screen / Esc](#)[Printer-friendly Version](#)[Interactive Discussion](#)

Ecogenomic sensors

C. A. Scholin

[Title Page](#)[Abstract](#)[Introduction](#)[Conclusions](#)[References](#)[Tables](#)[Figures](#)[◀](#)[▶](#)[◀](#)[▶](#)[Back](#)[Close](#)[Full Screen / Esc](#)[Printer-friendly Version](#)[Interactive Discussion](#)

a solid support, or reacting probes with target molecules in solution (e.g. Bavykin et al., 2001; Ahn et al., 2006; Greenfield et al., 2006; Dhadwal et al., 2007; Duy and Connell, 2007). Direct detection offers the advantage of reducing complexity of the detection chemistry, but such methods do not offer the same sensitivity for a wide range of target molecules as can be achieved when amplification techniques are applied. Instead, direct detection may be best applied for detecting highly abundant molecules, such as rRNA. When there is a need to detect low copy number targets, then alternative, albeit more demanding, methodologies such as those that invoke nucleic acid amplification may be required.

2.3 The search for multiple molecular markers contained in a single sample

For many environmental applications it is desirable to assess the presence of more than one target in a single sample. That is accomplished now using quantitative nucleic acid amplification techniques or through the application of probe arrays. In the laboratory, quantitative, amplification-based assays targeting multiple targets are often carried out in limited multiplexed reactions (detection of multiple targets in a single reaction). Detection of multiple markers can also be done parallel (e.g., multi-well plates), with appropriate controls and dilution series evaluated in a single run. Parallel processing on scales routinely applied in the laboratory (e.g., 96-well plates) could be difficult to achieve aboard autonomous ocean sensors in the near future. Instead, in the near term, it seems more likely that a limited number of reactions will be run at the same time (e.g., 2–10) and reactions carried out serially (e.g., Belgrader et al., 2003; Fukuba et al., 2004). By repeated cycles, it would be possible to build up a set of measurements for a given sample. But even with multiplexed reactions it could take hours to complete 10's of different reactions. Using probe arrays in concert with direct capture and amplification strategies may help alleviate some of those restrictions (e.g., Bevykin, 2001; Greenfield et al., 2006; Jones et al., 2007; Rich et al., 2007). Another way to overcome the limits imposed by carrying out PCR reactions by more conventional techniques is to utilize a microfluidic PCR array device such as that made by Fluidigm. One of their

systems is capable of performing over 2000 real time PCR reactions at the same time in a single chip, and reportedly requires less pipetting to set up than is required for a 96 well plate format. These chips and supporting hardware have been adapted for detection of multiple genes from single bacterial cells (Ottesen et al., 2006). It is not clear if such systems can be adopted for use aboard an autonomous platform operating in the sea.

Probe arrays offer a means of detecting a large number of target sequences in a single sample simultaneously. However, current methods typically require extensive, sample preparation procedures to obtain labeled and amplified material that is suitable for analysis. Currently, the most widely used format is immobilized oligonucleotides on glass slides (e.g., Rich et al., 2007; see also Agilent). Microbead arrays on fiber optic bundles (Ahn et al., 2006; Illumina), and flow-through systems that employ small, functionalized particles (Ellison and Burton, 2005; Luminex) are also highly developed formats. STMicroelectronics offers the In-Check platform, a microfluidic chip that combines PCR amplification and probe array detection functions. As noted earlier, Fluidigm's microfluidic dynamic arrays offer similar options for combining sample handling and analysis. Integrated devices like those could find application for deploying "conventional probe array chemistries" in an ocean setting so long as the upstream sample collection and handling are met by some other means. This poses significant, though not necessarily insurmountable, challenges for an autonomous system deployed at sea. Direct detection of target molecules in an array format without amplification is also feasible as noted earlier and described below.

2.4 Reagents storage and stability

Regardless of the approach chosen, all of the methods outlined above use expendable reagents. Systems that automate these methods, whether "hand held" or "autonomous," require a ready supply of those consumables and flush fluids for keeping the instrument clean. If single-use "chips" (microarrays or integrated fluidic devices) are employed, they too must be exchanged. Thus users will either carry materials with

Ecogenomic sensors

C. A. Scholin

Title Page

Abstract

Introduction

Conclusions

References

Tables

Figures

⏪

⏩

◀

▶

Back

Close

Full Screen / Esc

Printer-friendly Version

Interactive Discussion



Ecogenomic sensors

C. A. Scholin

[Title Page](#)[Abstract](#)[Introduction](#)[Conclusions](#)[References](#)[Tables](#)[Figures](#)[◀](#)[▶](#)[◀](#)[▶](#)[Back](#)[Close](#)[Full Screen / Esc](#)[Printer-friendly Version](#)[Interactive Discussion](#)

them in a mobile lab of sorts (i.e. take the lab to field to some extent) or the instrument must carry its own supply of consumables. For fully automated systems there are two approaches for meeting this need. The first is to use liquid stocks that are held in containers and accessed by a series of valves. This method is used in commercially available, deployable instruments for nutrient analyses (e.g., SubChem Systems) and in the ESP. Alternatively, reagents can be dehydrated or encapsulated in expendable cartridges such as Cepheid's GeneExpert and the AMG. Either way, the architecture of the instrument must accommodate reagents and other consumables (like filter media or probe arrays) that will be expended over time. Waste fluids will also be generated, and the instrument should have the capacity to store wastes onboard for proper disposal after retrieval. Thus, it is desirable to keep reactions volumes as low as possible.

Beyond simply storing reagents and waste materials, reagents must also be stable for extended periods of time at ambient temperature and under prevailing atmospheric conditions under which they are deployed. Generally, molecular biological reagents are stored at a variety of temperatures (frozen, chilled, room temperature) and used in a normal air atmosphere. That luxury is difficult to accommodate in a field setting on an autonomous platform. Use of dehydrated reagent cocktails overcomes this limitation for some applications, though the reagents would have to remain very dry to be stable. In any case, stored reagents must tolerate swings in temperature and function under conditions that are novel to say the least. Various gases, including water vapor, may accumulate if the instrument is contained in a pressure housing. Over time atmospheric conditions within the vessel can change and be nothing like air or dry nitrogen that might have been used to purge the vessel prior to deployment.

3 Autonomous “ecogenomic sensors” for ocean resaearch

I am aware of only two examples where the steps of sample collection and molecular analytical analysis are integrated into a single ocean-deployable instrument: the AMG and ESP (Paul et al., 2007). One could classify these instruments as “ecoge-

5 nomic sensors” given my definition of that phrase, though they are nowhere near as highly evolved as that stylized in Fig. 1. Despite their limitations, the AMG and ESP at least provide a glimpse into the developments directed at realizing systems for fielding molecular analytical techniques in a remote ocean setting. They also illustrate the ma-
10 turity gap between these instruments versus commercially available systems aimed at the biomedical, food and military markets.

The current prototype of the AMG collects water samples, filters cells and extracts nucleic acid using a series of expendable cartridges contained in a rotating carousel (Autonomous Microbial Genosensor). The AMG uses an isothermal RNA amplifica-
10 tion technique referred to as nucleic acid sequence-based amplification, or NASBA. The same chemistry can be applied using a hand held device (Casper et al., 2007). The AMG is undergoing field trials at the time of this writing. Deployments are being conducted off the west coast of Florida with the primary target being detection of the red tide dinoflagellate, *Karenia brevis* (J. Paul personal communication, 2008). This
15 system and the chemistries it emulates are promising. One prototype of the AMG is operational and there are plans to develop additional units in the future. The technology readiness level (TRL) of the AMG is roughly 6–7 based on the US Department of Defense scale.

20 The functionality of the ESP parallels that of the AMG. It too uses a rotating carousel to store reactions chambers (“pucks”) that house filter media and probe arrays. Pucks are loaded into various processing positions within the instrument using robotic mechanisms (Environmental Sample Processor, Roman et al., 2007). Currently the ESP utilizes DNA probe and protein arrays to detect target molecules indicative of species and the substances they produce. The DNA arrays employ a sandwich hybridization
25 method wherein rRNA is captured directly from a crude homogenate (Greenfield et al., 2006; Jones et al., 2007). The protein arrays use a competitive ELISA methodology (Doucette et al., unpublished). Application of the protein arrays follows the same basic steps and data telemetry as that for DNA arrays. An example of the kind of data be-
ing collected with the ESP is shown in Fig. 2. The ESP can also archive samples for

Ecogenomic sensorsC. A. Scholin

[Title Page](#)[Abstract](#)[Introduction](#)[Conclusions](#)[References](#)[Tables](#)[Figures](#)[◀](#)[▶](#)[◀](#)[▶](#)[Back](#)[Close](#)[Full Screen / Esc](#)[Printer-friendly Version](#)[Interactive Discussion](#)

laboratory analyses after the instrument is recovered, including fluorescent in situ hybridization (FISH), various nucleic acid analyses (cloning, sequencing) and algal toxin measurement (e.g., Greenfield et al., 2006). The TRL of the core ESP is 6–7. Three copies of the instrument are in operation now and two others will be built later this year (2008).

The ESP is meant to be modular system. It can be modified by adding external sampling modules to enable specialized sampling functions, and can accommodate a microfluidic module (or microfluidic block, MFB) for supporting small scale reactions downstream of sample collection and homogenization. Current sampling modules are designed such that the ESP can function in the deep-sea. Successful, short duration tests to 1000 m have been completed recently. The MFB is designed to accommodate separate molecular detection devices that require metering and moving fluids with μl accuracy and precision. Current work emphasizes a reusable solid phase extraction column for purifying nucleic acids and a 4-channel real-time PCR module. Refinement and testing of the deep-water sampling and MFB/PCR modules is ongoing. The deep-water sampling module has a TRL of 4–5 (a new 4 km-rated version is in testing phase now). The MFB/PCR module has a TRL of 3–5 and is not yet fully integrated with the core ESP.

3.1 Recommendations

Development of “ecogenomic sensors” can be enhanced through a variety of activities. Chief among them is creating dedicated teams composed of scientists, engineers and field operations specialists. The magnitude of the task at hand and the systems integration required demands a diverse work force that can focus on a development effort for an extended period of time. Second, there is a clear need to investigate “up-stream” techniques for collecting and handling samples. The cutting edge molecular analytical detection technologies are clearly not well aligned with raw water samples and large volumes typical of environmental research. Third, instrument developments should bear in mind the need to detect multiple targets contained within single sam-

Ecogenomic sensors

C. A. Scholin

Title Page

Abstract

Introduction

Conclusions

References

Tables

Figures



Back

Close

Full Screen / Esc

Printer-friendly Version

Interactive Discussion



Ecogenomic sensors

C. A. Scholin

[Title Page](#)[Abstract](#)[Introduction](#)[Conclusions](#)[References](#)[Tables](#)[Figures](#)[◀](#)[▶](#)[◀](#)[▶](#)[Back](#)[Close](#)[Full Screen / Esc](#)[Printer-friendly Version](#)[Interactive Discussion](#)

ples. There is a demand for visualizing many molecular signatures simultaneously and quantifying their interplay with changing environmental conditions. Some kind of array capability is needed and there are a variety of ways for meeting that requirement. Fourth, there is an expectation that ecogenomic sensors will function in large part as their laboratory counter parts do. That may work well for semi-automated systems that rely on people to handle materials and supplies, and where operations are conducted out of mobile labs largely free of the rigors imposed when instruments are deployed in the ocean. But the same chemistries may not do well for in situ systems where conditions are less predictable (variable temperature, shock and vibration, etc.). So research teams should remain open minded as to detection chemistries that offer alternatives to the “norm,” and not be wholly restricted by how something *must* be done given current dogma based on laboratory experience and industry standards. Fifth, system designs should consider options for sample archival. Preserved material can be used to help verify sensor functionality and serve the needs of basic research at that same time. Sixth, the advent of ecogenomic sensors places increased demands on data management and visualization tools. How one incorporates and displays molecular genetic data in 4-D is not well defined. Likewise, metadata associated with the analyses (batch of reagents, quality control information) will need to be tracked to ensure that molecular signatures seen at one time can be compared directly to the same observed at another time at another location by another sensor or team. Seventh, there is need for event response capability. Molecular analyses are inherently slow compared to most chemical and physical measurements. Even “rapid” tests by current standards can take 30min or more when time for sample collection is included, and in the process each analytical cycle expends limited supplies of consumables (and power). Having the ability to trigger sampling events based on assessments of the chemical and physical surroundings could greatly extend sensor deployment duration and reduce routine operations and maintenance costs. Lastly, results of whole-cell and cell-free assays applied to the same sample do not always yield the same impression as to what organisms are present (e.g., Scholin et al. 1999, 2000). Target cells may be free living, be

embedded in detrital material, actively growing, dead or dying. Even if the target cell is eaten by another species its biosignatures may persist for some period of time in food vacuoles or guts and even emerge in feces. The transfer of algal toxins in the food web is a vivid illustration of that point. Calibration of cell-free detection techniques relative to methods that rely on direct visualization of intact organisms therefore poses many challenges with respect to the interpretation and operational application of molecular analytical data.

4 Summary and conclusions

Development of ecogenomic sensors remains a ripe area for future investigation from science, policy and systems engineering standpoints. There are many options for realizing integrated systems. But definition of target molecules, detection methods and signal transduction modalities largely remain to be determined. The survey of approaches and companies provided here touch only a small subset of what is available from academic and commercial interests. Moreover, there remains a huge challenge of merging this class of instrument with different deployment platforms, and supplying necessary power and data telemetry infrastructure. Ecogenomic sensors could find themselves on buoys, cabled observatories, profiling systems, near surface or great depth, easily accessible or in very remote locations, on piers or adjacent to waterways, or in a mobile lab. Operations and maintenance requirements, and system costs, will vary accordingly and widely. Proxy measurements and modeling techniques could help interpolate between a discrete and limited set of sensors collecting data at a relatively low rate. Instruments designed for in situ use will benefit from an ability to apply multiple molecular analytical techniques to a single sample. One challenge in that regard is determining whether sample collection and handling requirements for a varied set of analyses are compatible. High biomass samples may be desired, even required, for direct capture assays like sandwich hybridization used in the ESP, but such concentrated samples might inhibit chemistries that employ amplification reactions such

Title Page

Abstract

Introduction

Conclusions

References

Tables

Figures

◀

▶

◀

▶

Back

Close

Full Screen / Esc

Printer-friendly Version

Interactive Discussion



as PCR. Extraction techniques that might be “optimal” for DNA or rRNA may destroy mRNA. No doubt, much work remains to define the assays that will be deployed in situ and their concomitant, upstream sample collection and processing requirements. While some common themes will almost certainly emerge, it is doubtful that a single “ecogenomic sensor” will meet our needs. In that light systems engineering should be driven by clear set of science and/or monitoring objectives rather than what is possible to achieve technologically.

References

- Agilent: <http://www.chem.agilent.com/Scripts/PCol.asp?IPage=494>, last access January, 2009.
- Ahn, S., Kulis, D. M., Erdner, D. L., Anderson, D. M., and Walt, D. R: Fiber-Optic Microarray for Simultaneous Detection of Multiple Harmful Algal Bloom Species, *Appl. Env. Microbiol.*, 72, 5742–5749, 2006.
- Bavykin, S. G., Akowski, J. P., Zakhariev, V. M., Barsky, V. E., Perov, A. N., and Mirzabekov, A. D.: Portable system for microbial sample preparation and oligonucleotide microarray analysis, *Appl. Env. Microbiol.*, 67, 922–928, 2001.
- Belgrader, P., Elkin, C. J., Brown, S. B., Nasarabadi, S. N., Langlois, R. G., Milanovich, F. P., Colston Jr., B. W., and Marshall, G. D.: A reusable flow-through polymerase chain reaction instrument for the continuous monitoring of infectious biological agents, *Anal. Chem.*, 75, 3446–3450, 2003.
- Bruckner-Lea, C. J., Stottlemire, M. S., Holman, D. A., Grate, J. W., Brockman, F. J., and Chandler, D. P.: Rotating rod renewable microcolumns for automated, solid-phase DNA hybridization studies, *Anal. Chem.*, 72, 4135–4141, 2000.
- Casper, E. T., Patterson, S. S., Bhanushali, P., Farmer, A., Smith, M., Fries, D. P., and Paul, J. H.: A handheld NASBA analyzer for the field detection and quantification of *Karenia brevis*, *Harmful Algae*, 6, 112–118, 2007.
- Cepheid: <http://www.cepheid.com/>, last access January, 2009.
- Chandler, D. P., Brown, J., Bruckner-Lea, C. J., Olson, L., Posakony, G. J., Stults, J. R.,

Ecogenomic sensors

C. A. Scholin

Title Page

Abstract

Introduction

Conclusions

References

Tables

Figures

◀

▶

◀

▶

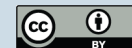
Back

Close

Full Screen / Esc

Printer-friendly Version

Interactive Discussion



Ecogenomic sensors

C. A. Scholin

Title Page

Abstract

Introduction

Conclusions

References

Tables

Figures

◀

▶

◀

▶

Back

Close

Full Screen / Esc

Printer-friendly Version

Interactive Discussion



Valentine, N. B., and Bond, L. J.: Continuous spore disruption using radially focused, high-frequency ultrasound, *Anal. Chem.*, 73, 3784–3789, 2001.

Committee on Ocean Policy: Charting the Course for Ocean Science in the United States for the next decade. An Ocean Research Priorities Plan and Implementation Strategy, NSTC Joint Subcommittee on Ocean Science and Technology, 26 January 26 2007 (available at: http://ocean.ceq.gov/about/sup_jsost_prioritiesplan.html, access June 2008), 2007.

DeLong, E. F., Preston, C. M., Mincer, T., et al.: Community genomics among stratified microbial assemblages in the ocean's interior, *Science*, 311, 496–503, 2006.

Devereux, R., Rublee, P., Paul, J. H., Field, K. G., and Santo Domingo, J. W.: Development and applications of microbial ecogenomic indicators for monitoring water quality: Report of a workshop assessing the state of the science, research needs and future directions, *Environ. Monitor. Assess.*, 116, 459–479, 2006.

Dhadwal, H., Mukherjee, S. B., Kemp, P., Aller, J., Liu, Y., and Radway, J.: A dual detector capillary waveguide sensor for detection and quantification of hybridized target species, *Anal. Chimica Acta*, 598, 147–154, 2007.

Doney, S., Abbott, M. R., Cullen, J. J., Karl, D. M., and Rothstein, L.: From genes to ecosystems: the ocean's new frontier, *Front. Ecol. Environ.*, 2, 457–466, 2004.

Duy, J. and Connell, L.: Fast and accurate detection of *Alexandrium* species using peptide nucleic acid probes and surface plasmon resonance. Fourth Symposium on Harmful Algae in the US, Woods Hole, MA, USA., Abstracts, p. 103, 2007.

Ellison, C. K. and Burton, R. S.: Application of bead array technology to community dynamics of marine phytoplankton, *Mar. Ecol. Prog. Ser.*, 288, 75–85, 2005.

Environmental Sample Processor: <http://www.mbari.org/ESP/>, last access January, 2009.

Frias-Lopez, J., Shi, Y., Tyson, G. W., Coleman, M. L., Schuster, S. C., Chisholm, S. W., and DeLong, E. F.: Microbial community gene expression in ocean surface waters, *Proc. Natl. Acad. Sci. USA*, 105, 3805–3810, 2008.

Fluidigm: <http://www.fluidigm.com/>, last access January, 2009.

Fukuba, T., Yamamoto, T., Naganuma, T., and Fuji, T.: Microfabricated flow-through device for DNA amplification – towards in situ gene analysis, *Chem. Eng. J.*, 101, 151–156, 2004.

Autonomous Microbial Genosensor: <http://www.marine.usf.edu/microbiology/genosensor.shtml>, last access January, 2009.

Giovannoni, S. J., Hayakawa, D. H., Tripp, H. J., Stingl, U., Givan, S. A., Cho, J.-C., Oh, H.-M., Kitner, J. B., Vergin, K. L., and Rappe, M. S.: The small genome of an abundant coastal

- ocean methylotroph, *Env. Microb.*, 10, 1771–1782, 2008.
- Goodwin, K. D. and Litaker, R. W.: Emerging technologies for monitoring recreational waters for bacteria and viruses, in: *Oceans and Human Health Risks and Remedies from the Seas*, edited by: Walsh, P. J., Smith, S. L., Fleming, L. E., Solo-Gabriele, H. M., and Gerwick, W. H., Academic Press, London, 381–404, 2008.
- Greenfield, D. I., Marin III, R., Jensen, S., Massion, E., Roman, B., Feldman, J., and Scholin, C.: Application of the Environmental Sample Processor (ESP) methodology for quantifying *Pseudo-nitzschia australis* using ribosomal RNA-targeted probes in sandwich and fluorescent in situ hybridization, *Limnol. Oceanogr. Methods*, 4, 426–435, 2006.
- Gyros: <http://www.gyros.com/>, last access January, 2009.
- Ramsdell, J. S., Anderson, D. M., and Glibert, P. M.: Harmful Algal Research and Response: A National Environmental Science Strategy 2005–2015. Ecological Society of America, Washington, D.C., 96 pp., 2005 (available at: <http://www.whoi.edu/redtide/page.do?pid=15075>, access 2008), 2005.
- Idaho Technology: <http://www.idahotech.com/>, last access January, 2009.
- Illumina: <http://www.illumina.com/>, last access January, 2009.
- Jones, W. J., Preston, C., Marin III, R., Scholin, C., and Vrijenhoek, R.: A Robotic Molecular Method for in situ Detection of Marine Invertebrate Larvae, *Molecular Ecology Resources*, 8, 540–550, 2007.
- LaGier, M. J., Fell, J. W., and Goodwin, K. D.: Electrochemical detection of harmful algae and other microbial contaminants in coastal waters using hand-held biosensors, *Marine Pollution Bulletin*, 54, 757–770, 2007.
- Luminex Corporation: <http://www.luminexcorp.com/>, last access January, 2009.
- Lyons, M. M., Lau, Y., Carden, W. E., Ward, J. E., Roberts, S. B., Somolowitz, R., Vallino, J., and Allam, B.: Characteristics of marine aggregates in shallow water ecosystems: Implications for disease ecology, *EcoHealth*, 4, 406–420, 2007.
- Metfies, K., Töbe, K., Scholin, C., and Medlin, L. K.: Laboratory and field applications of ribosomal RNA probes to aid the detection and monitoring of harmful algae, in *Ecology of Harmful Algae*, edited by: Granéli, E., and Turner, J. T., Springer Verlag, Berlin, 311–325, 2006.
- OceanSensors08: <http://www.io-warnemuende.de/conferences/oceans08/content.php?mode=whitepapers>, last access January, 2009.
- Ottesen, E. A., Hong, J. W., Quake, S. R., and Leadbetter, J. R.: Microfluidic digital PCR enables multigene analysis of individual environmental bacteria, *Science*, 314, 1464–1467,

Ecogenomic sensors

C. A. Scholin

Title Page

Abstract

Introduction

Conclusions

References

Tables

Figures

◀

▶

◀

▶

Back

Close

Full Screen / Esc

Printer-friendly Version

Interactive Discussion



2006.

- Palmer, C. J., Bonilla, J. A., Bonilla, T. D., Goodwin, K. D., Elmir, S. M., Abdelzaher, A. M., and Solo-Gabriele, H. M.: Future of Microbial Ocean Water Quality Monitoring, in: *Oceans and Human Health Risks and Remedies from the Seas*, edited by: Walsh, P. J., Smith, S. L., Fleming, L. E., Solo-Gabriele, H. M., and Gerwick, W. H., Academic Press, London, 405–421, 2008.
- Paul, J., Scholin, C., van den Engh, G., and Perry, M. J.: In situ Instrumentation, *Oceanography*, 20, 58–66, 2007.
- Rich, V. I., Konstantinidis, K., and DeLong, E. F.: Design and testing of “genome-proxy” microarrays to profile marine microbial communities, *Env. Microbiol.*, 10, 506–521, 2007.
- Roman, B., Scholin, C., Jensen, S., Massion, E., Marin III, R., Preston, C., Greenfield, D., Jones, W., and Wheeler, K.: Controlling a Robotic Marine Water Sampler with the Ruby Scripting Language, *Journal of American Laboratory Automation*, 12, 56–61, 2007.
- Sandifer, P., Sotka, C., Garrison, D., and Fay, V.: Interagency Oceans and Human Health Research Implementation, Plan: A Prescription for the Future. Interagency Working Group on Harmful Algal Blooms, Hypoxia, and Human Health of the Joint Subcommittee on Ocean Science and Technology. Washington, DC, 2007 (available at: http://www.whoi.edu/cms/files/COHH-impleplan_31823.pdf, access June 2008), 2007.
- Scholin, C., Jensen, S., Roman, B., Massion, E., Marin III, R., Preston, C., Greenfield, D., Jones, W., and Wheeler, K.: The Environmental Sample Processor (ESP) – An Autonomous Robotic Device for Detecting Microorganisms Remotely using Molecular Probe Technology, *Proceedings, OCEANS 2006 MTS/IEEE Conference*, Boston, MA. Marine Technology Society, Columbia, MD., 2006.
- Scholin, C. A., Gulland, F., Doucette, G. et al.: Mortality of sea lions along the central California coast linked to a toxic diatom bloom, *Nature* 403, 80–84, 2000.
- Scholin, C. A., Doucette, G. J. and Cembella, A. D.: Prospects for developing automated systems for in situ detection of harmful algae and their toxins, in *Real-Time Coastal Observing Systems for Ecosystem Dynamics and Harmful Algal Blooms*, edited by: Babin, M., Roesler, C. S., and Cullen, J. J., UNESCO Publishing, Paris, France, 2008.
- Scholin, C. A., Vrieling, E., Peperzak, L., Rhodes, L., and Rublee, P.: Detection of HAB species using lectin, antibody and DNA probes, in *Manual on Harmful Marine Microalgae*, edited by: Hallegraeff, G. M., Anderson, D. M., and Cembella, A. D., Intergovernmental Oceanographic Commission, UNESCO, Paris, 11, Second Edition, 131–64, 2003.

Ecogenomic sensors

C. A. Scholin

Title Page

Abstract

Introduction

Conclusions

References

Tables

Figures

◀

▶

◀

▶

Back

Close

Full Screen / Esc

Printer-friendly Version

Interactive Discussion



Scholin, C., Marin, R., Miller, P., Doucette, G., Powell, C., Howard., J., Haydock P., and Ray, J.: Application of DNA probes and a receptor binding assay for detection of Pseudo-nitzschia (Bacillariophyceae) species and domoic acid activity in cultured and natural samples, *J. Phycol.*, 35, 1356–1367, 1999.

5 STMicroelectronics: <http://www.st.com/stonline/products/technologies/labonchip/technology.htm>, last access January, 2009.

Straub, T. M., Dockendorff, B. P., Quiñonez-Díaz, M. D., et al.: Automated methods for multiplexed pathogen detection, *J. Microbiol. Methods*, 62, 303–16, 2005.

10 Varshney, M., Li, Y., Srinivasan, B., and Tung, S.: A label-free, microfluidics and interdigitated array microelectrode-based impedance biosensor in combination with nanoparticles immunoseparation for detection of Escherichia coli O157:H7 in food samples, *Sensors and Actuators B.*, 128, 99–107, 2007.

SubChem Systems: <http://www.subchem.com/>, last access January, 2009.

15 Venter, J. C., Remington, K., Heidelberg, J. F., et al.: Environmental genome shotgun sequencing of the Sargasso Sea, *Science*, 304, 66–74, 2004.

Wikipedia, Technology Readiness Level: http://en.wikipedia.org/wiki/Technology_Readiness_Level, last access January, 2009.

20 Zehr, J. P., Hewson, I., and Moisaner, P.: Molecular biology techniques and applications for ocean sensing, OceanSensors08, 31 March–4 April 2008 Warnemünde, Germany, 2008 (available at: <http://www.io-warnemuende.de/conferences/oceans08/content.php?mode=whitepapers>, access: June 2008), 2008.

Ecogenomic sensors

C. A. Scholin

Title Page

Abstract

Introduction

Conclusions

References

Tables

Figures

⏪

⏩

◀

▶

Back

Close

Full Screen / Esc

Printer-friendly Version

Interactive Discussion



Ecogenomic sensors

C. A. Scholin

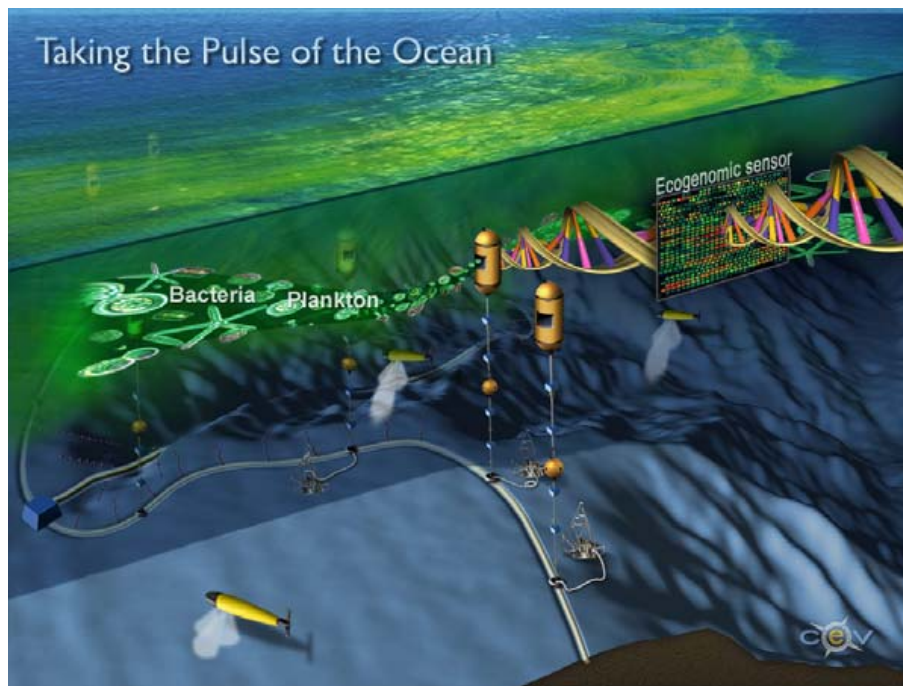


Fig. 1. Artist's rendition of ecogenomic sensors embedded within an array of airborne and in-water sensors. This image was cast in the broader vision of the US Ocean Observatories Initiative (OOI). Image courtesy of Dr. Virginia Armbrust, the Regional Scale Nodes Program, and the Center for Environmental Visualization, all at the University of Washington (after Armbrust et al., Report on the Ocean Genomics Workshop, <http://www.neptune.washington.edu/research/index.jsp?keywords=ECOGNM&title=Ecogenomics>).

Title Page

Abstract

Introduction

Conclusions

References

Tables

Figures

◀

▶

◀

▶

Back

Close

Full Screen / Esc

Printer-friendly Version

Interactive Discussion



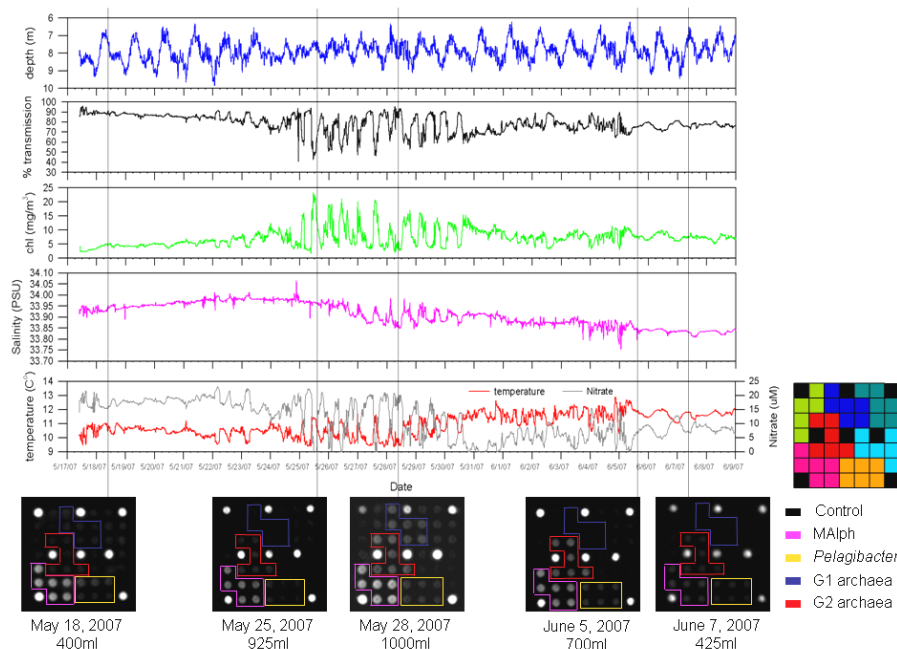


Fig. 2. In situ detection of marine bacterioplankton using ESP DNA probe arrays during a spring field deployment. The ESP was moored in Monterey Bay, California, 17 May–11 June, 2007. Top four graphs show physical and chemical data collected by contextual sensors on the ESP mooring during the deployment. The bottom images shows DNA probe arrays targeting rRNA indicative of various groups of marine bacterioplankton. Sample volume is shown underneath the array. The arrays shown are ~15mm×15mm. From Preston et al., in preparation, 2009. During the same deployment the ESP also developed probe arrays for invertebrates and harmful algae. An example of the latter is shown here: http://www.mbari.org/ESP/field_data/2007/HAB_2007.htm.

Title Page

Abstract

Introduction

Conclusions

References

Tables

Figures

◀

▶

◀

▶

Back

Close

Full Screen / Esc

Printer-friendly Version

Interactive Discussion

