

**Tsunami simulation
in the Eastern
Mediterranean**

A. G. Samaras et al.

This discussion paper is/has been under review for the journal Ocean Science (OS).
Please refer to the corresponding final paper in OS if available.

Simulation of tsunami generation, propagation and coastal inundation in the Eastern Mediterranean

A. G. Samaras¹, T. V. Karambas², and R. Archetti³

¹CIRI – EC, Fluid Dynamics Research Unit, University of Bologna, Via del Lazzaretto 15/5,
40131 Bologna, Italy

²Department of Civil Engineering, Aristotle University of Thessaloniki, University Campus,
54124 Thessaloniki, Greece

³Department of Civil, Chemical, Environmental and Materials Engineering, University of
Bologna, Viale Risorgimento 2, 40136 Bologna, Italy

Received: 31 March 2015 – Accepted: 20 April 2015 – Published: 8 May 2015

Correspondence to: R. Archetti (renata.archetti@unibo.it) and A. G. Samaras
(achilleas.samaras@unibo.it)

Published by Copernicus Publications on behalf of the European Geosciences Union.

Title Page

Abstract

Introduction

Conclusions

References

Tables

Figures



Back

Close

Full Screen / Esc

Printer-friendly Version

Interactive Discussion



Abstract

In the present work, an advanced tsunami generation, propagation and coastal inundation 2-DH model (i.e. 2-D Horizontal model) based on the higher-order Boussinesq equations – developed by the authors – is applied to simulate representative earthquake-induced tsunami scenarios in the Eastern Mediterranean. Two areas of interest were selected after evaluating tsunamigenic zones and possible sources in the region: one at the Southwest of the island of Crete in Greece and one at the East of the island of Sicily in Italy. Model results are presented in the form of extreme water elevation maps, sequences of snapshots of water elevation during the propagation of the tsunamis, and inundation maps of the studied low-lying coastal areas. This work marks one of the first successful applications of a fully nonlinear model for the 2-DH simulation of tsunami-induced coastal inundation; acquired results are indicative of the model's capabilities, as well of how areas in the Eastern Mediterranean would be affected by eventual larger events.

1 Introduction

The 2004 tsunami in Southeast Asia and its devastating effects brought to the public's attention the long neglected risk tsunamis pose for coastal areas. The issue had already alerted – to a certain extent – the scientific community (e.g. the review of Dawson et al., 2004 for Europe); however, it is evident that the 2004 event contributed significantly to the rise of awareness in public authorities and policy makers, resulting to a notable shift in related research as well. Accordingly, there has been a continuous effort post-2004 towards the improvement of the tools and methods used for the assessment of coastal vulnerability to tsunami-related hazards, with numerical modeling being the basis of all respective attempts.

Tsunami generation and propagation has been steadily studied since the late 1980s; nevertheless, the main gap in relevant knowledge can be identified as to what hap-

OSD

12, 673–699, 2015

Tsunami simulation in the Eastern Mediterranean

A. G. Samaras et al.

Title Page

Abstract

Introduction

Conclusions

References

Tables

Figures



Back

Close

Full Screen / Esc

Printer-friendly Version

Interactive Discussion



Tsunami simulation in the Eastern Mediterranean

A. G. Samaras et al.

Title Page

Abstract

Introduction

Conclusions

References

Tables

Figures



Back

Close

Full Screen / Esc

Printer-friendly Version

Interactive Discussion



pens when tsunami waves approach the nearshore and run inland. The sequence of a tsunami hitting the coast, itself, comprises a series of processes: from the tsunami generation and propagation, to coastal-zone hydrodynamics (including surf- and swash-zone dynamics), coastal inundation and wave-structure interactions with the built environment. Regarding the modeling part – and focusing on coastal inundation – exemplary reference can be made to the work of: Borrero et al. (2006), who used the MOST model (Titov and González, 1997) for tsunami generation and inundation in western Sumatra; Gayer et al. (2010), who used the MIKE21 Flow Model FM to simulate inundation based on roughness maps for Indonesia; Omira et al. (2010) who applied a modified version of the COMCOT model (Liu et al., 1998) to selected cases in Casablanca, Morocco; Apotsos et al. (2011), who used the Delft3D model to study inundation and sediment transport by the 2004 SE Asia tsunami in measured and idealized morphologies; and Løvholt et al. (2012), who used models based on the Boussinesq equations for tsunami propagation and nonlinear shallow-water wave equations for coastal inundation to simulate the 2011 Tohoku tsunami. Extending to coastal planning, vulnerability assessment and tsunami hazard mitigation, one may refer to the work of Bernard (2005), González et al. (2009), Post et al. (2009), Kumar et al. (2010), Sørensen et al. (2012) and González-Riancho et al. (2014).

Tsunamis in the Eastern Mediterranean have a long and significant history, and have attracted awareness due to the well-established geotectonic regime of the area (i.e. Papadopoulos and Chalkis, 1984; Papazachos and Papazachou, 1998; Soloviev et al., 2000; Papadopoulos, 2003; El-Sayed et al., 2004; Tinti et al., 2004; Papadopoulos and Fokaefs, 2005; Stefatos et al., 2006; Papadopoulos et al., 2014). The Aegean Sea and its surrounding areas, in particular, are not only the most active Mediterranean regions in terms of seismicity and tectonic movements, but their coastlines have also experienced numerous tsunami events in recent, historic and pre-historic times.

Earthquakes and submarine slides are the two principal tsunamigenic mechanisms in the aforementioned region, although volcanic eruption and collapse could not be ignored as a potential mechanism as well (e.g. the Late Minoan Thera event). The

Tsunami simulation in the Eastern Mediterranean

A. G. Samaras et al.

Title Page

Abstract

Introduction

Conclusions

References

Tables

Figures



Back

Close

Full Screen / Esc

Printer-friendly Version

Interactive Discussion



generation and propagation of tsunamis in the Eastern Mediterranean has been numerically studied by relatively few researchers, especially as compared to the geotectonic regime of the area. One may refer to the work of: Tinti et al. (2005), for scenarios of tsunamis of tectonic origin from the Algerian earthquake of 1980, the Eastern Sicily Arc and the Western/Eastern Hellenic Arc; Salamon et al. (2007), for tsunamis generated from landslide-/earthquake- scenarios impacting the coasts of Syria, Lebanon and Israel; Lorito et al. (2008) for earthquake-generated tsunamis from the Algeria-Tunisia, Southern Tyrrhenian, and Hellenic Arc source zones; as well as of Yolsal et al. (2007) and Periañez and Abril (2014), covering all generation mechanisms (geological faults, landslides, entry of pyroclastic flows into the sea and the collapse of a volcano caldera). However, the adequate representation of nearshore dynamics and coastal inundation remains as an issue in all relevant attempts for the area.

In the present work, an advanced tsunami generation, propagation and coastal inundation 2-DH model – developed by the authors – is applied to simulate representative earthquake-induced tsunami scenarios in the Eastern Mediterranean. Regarding the coastal hydrodynamics, the nonlinear wave transformation in the surf and swash zone is computed by a nonlinear breaking wave model based on the higher-order Boussinesq equations for breaking and non-breaking waves (Karambas and Samaras, 2014). Tsunami generation is simulated through additional time derivative terms in the continuity and momentum equations in order to represent displacements at the sea bed or surface. Inundation is simulated based on the “dry bed” boundary condition (Karambas and Koutitas, 2002); the model’s capability in representing swash zone hydrodynamics is validated through the comparison with the experimental data of Synolakis (1987). After evaluating tsunamigenic zones and possible sources in the region, two areas of interest were selected for the applications: one at the Southwest of the island of Crete in Greece and one at the East of the island of Sicily in Italy. Model results are presented in the form of extreme water elevation maps, sequences of snapshots of water elevation during the propagation of the earthquake-induced tsunamis, and inundation maps of the studied low-lying coastal areas. Regarding the inundation, in particular, this work

marks one of the first successful applications of a fully nonlinear model based on the Boussinesq equations for the 2-DH simulation of tsunami-induced coastal inundation, thus not resorting to estimates of the flooded area from simple superelevations of the water surface or from the spatial extension of cross-sectional runup results.

2 The model for tsunami generation, propagation and coastal inundation

2.1 Boussinesq equations for breaking/non-breaking waves and tsunami generation

Boussinesq-type equations are widely used for the description of the non-linear breaking and non-breaking wave propagation in the nearshore or long wave propagation in the open sea (Gobbi and Kirby, 1999; Gobbi et al., 2000; Ataie-Ashtiani and Najafi Jilani, 2007; Fuhrman and Madsen, 2009; Zhou and Teng, 2009; Zhou et al., 2011). Over the years, the classical Boussinesq equations have been extended so as to be able to include higher-order nonlinear terms, which can describe better the propagation of highly nonlinear waves in the shoaling zone. The linear dispersion characteristics of the equations have been improved as well, in order to describe nonlinear wave propagation from deeper waters (Zou, 1999). A thorough overview on Boussinesq-type models can be found in Brocchini (2013).

The higher-order Boussinesq-type equations for breaking and non-breaking waves used in this work are (Zou, 1999; Karambas and Koutitas, 2002; Karambas and Karathanassi, 2004; Karambas and Samaras, 2014):

$$\zeta_t + \nabla(h\mathbf{U}) = 0 \quad (1)$$

$$\begin{aligned} \mathbf{U}_t + \frac{1}{h} \nabla \mathbf{M}_u - \frac{1}{h} \mathbf{U} \nabla (\mathbf{U}h) + g \nabla \zeta + G = \frac{1}{2} h \nabla [\nabla \cdot (d\mathbf{U}_t)] - \frac{1}{6} h^2 \nabla [\nabla \cdot \mathbf{U}_t] \\ + \frac{1}{30} d^2 \nabla [\nabla \cdot (\mathbf{U}_t + g \nabla \zeta)] + \frac{1}{30} \nabla \left[\nabla \cdot (d^2 \mathbf{U}_t + g d^2 \nabla \zeta) \right] - d \nabla (\delta \nabla \cdot \mathbf{U})_t - \frac{\tau_b}{h} + \mathbf{E} \end{aligned} \quad (2)$$

Tsunami simulation in the Eastern Mediterranean

A. G. Samaras et al.

Title Page

Abstract

Introduction

Conclusions

References

Tables

Figures

◀

▶

◀

▶

Back

Close

Full Screen / Esc

Printer-friendly Version

Interactive Discussion



where \mathbf{M}_u is defined as:

$$\mathbf{M}_u = (d + \zeta) \mathbf{u}_0^2 + \delta (c^2 - \mathbf{u}_0^2) \quad (3)$$

and G as:

$$G = \frac{1}{3} \nabla \left\{ d^2 \left[(\nabla \cdot \mathbf{U})^2 - \mathbf{U} \cdot \nabla^2 \mathbf{U} - \frac{1}{10} \nabla^2 (\mathbf{U} \cdot \mathbf{U}) \right] \right\} - \frac{1}{2} \zeta \nabla [\nabla \cdot (d \mathbf{U}_t)] \quad (4)$$

In Eqs. (1) to (4) the subscript “ t ” denotes differentiation with respect to time, d = still water depth, \mathbf{U} = horizontal velocity vector $\mathbf{U} = (U, V)$ with U and V being the depth-averaged horizontal velocities along the x and y directions, respectively, ζ = surface elevation, h = total depth ($h = d + \zeta$), g = gravitational acceleration, $\tau_b = (\tau_{bx}, \tau_{by})$ = bottom friction term (shear stress components approximated by the use of the quadratic law according to Ribberink, 1998), δ = roller thickness (determined geometrically according to Schäffer et al., 1993), \mathbf{E} = eddy viscosity term (according to Chen et al., 2000), and \mathbf{u}_0 = bottom velocity vector $\mathbf{u}_0 = (u_0, v_0)$ with u_0 and v_0 being the instantaneous bottom velocities along the x and y directions respectively. In the above, \mathbf{M}_u is the excess momentum term introduced to account for energy dissipation due to wave breaking; the process itself is based on a specific characteristic of the breaker: the presence of the surface roller, i.e. the passive bulk of water transported with the wave celerity.

Regarding the effects of unresolved small-scale motions, they are parametrized applying the philosophy of the large eddy simulation. The effects of subgrid turbulent processes are taken into account by using the Smagorinsky-type subgrid model (Chen et al., 2000; Zhan et al., 2003). The components of the eddy viscosity term \mathbf{E} in Eq. (2) are defined as:

$$E_x = \frac{1}{d + \zeta} \left\{ (v_e [(d + \zeta) U]_x)_x + \frac{1}{2} (v_e [(d + \zeta) U]_y + [(d + \zeta) V]_x)_y \right\} \quad (5)$$

$$E_y = \frac{1}{d + \zeta} \left\{ (v_e [(d + \zeta) V]_y)_y + \frac{1}{2} (v_e [(d + \zeta) V]_x + [(d + \zeta) U]_y)_x \right\} \quad (6)$$

Tsunami simulation in the Eastern Mediterranean

A. G. Samaras et al.

Title Page

Abstract

Introduction

Conclusions

References

Tables

Figures



Back

Close

Full Screen / Esc

Printer-friendly Version

Interactive Discussion



with the eddy viscosity coefficient ν_e estimated from (Zhan et al., 2003):

$$\nu_e = 0.25d_x^2 \left[\left(\frac{\partial U}{\partial x} \right)^2 + \left(\frac{\partial V}{\partial y} \right)^2 + \frac{1}{2} \left(\frac{\partial U}{\partial y} + \frac{\partial V}{\partial x} \right)^2 \right]^{1/2} \quad (7)$$

Tsunami generation is simulated through additional terms in the continuity and momentum equations, Eqs. (1) and (2) respectively. The time derivative term $\zeta_{b,t}$ is added to Eq. (1) to represent bed level changes (Mitsotakis, 2009), thus transforming it to:

$$\zeta_t + \nabla(h\mathbf{U}) = \zeta_{b,t} \quad (8)$$

where ζ_b = bottom displacement; accordingly the term $\frac{d}{dt}\nabla\zeta_{b,t}$ is added to the right-hand side of Eq. (2). For the bottom displacement function the model follows the approach of Hammack (1973), considering two types of bed movements: an exponential and a half-sine one. The above method is called “active” tsunami generation. The model additionally includes the option for a “passive” tsunami generation (i.e. the introduction of the aforementioned displacement directly on the free surface), which is the one used in the present work as well.

2.2 Numerical scheme and boundary conditions

The numerical solution of the Boussinesq-type equations (Eqs. 1 and 2) is based on the accurate higher-order numerical scheme of Wei and Kirby (1995), who proposed a fourth-order predictor-corrector scheme for time stepping, discretizing the first-order spatial derivatives to fourth-order accuracy. The specific discretization has the advantage – over lower order schemes – of automatically eliminating error terms that would be of the same form as the dispersive terms and would, therefore, need to be corrected. The scheme consists of the third-order in time explicit Adams–Bashford predictor step and fourth-order in time implicit Adams–Bashford corrector step (Press et al., 1992; Wei and Kirby, 1995).

Tsunami simulation in the Eastern Mediterranean

A. G. Samaras et al.

Title Page

Abstract

Introduction

Conclusions

References

Tables

Figures



Back

Close

Full Screen / Esc

Printer-friendly Version

Interactive Discussion



Energy absorption at the open boundaries is accounted for through the introduction of artificial damping terms in the momentum equation (Eq. 2). In particular, terms F and G are added to the right-hand sides of the momentum equation expressions along the x and y directions, respectively; the terms are defined as (Wei and Kirby, 1995):

$$F = -\alpha_r r U \quad (9)$$

$$G = -\alpha_r r V \quad (10)$$

where $\alpha_r =$ constant to be determined for the specific run, and $r =$ relaxation parameter that varies from 0 to 1 within the specified damping zone ($r = 1$ at the outer edges of the zones and decreasing down to 0 at the edges facing the model domain) according to:

$$r = 1 - \tanh\left(\frac{i-1}{2}\right) \text{ for } i = 1, 2, 3, \dots, NN \quad (11)$$

with NN being the number of grid elements in the damping zone.

The above described damping layer is applied along with a radiation boundary condition, which for principal wave propagation direction close to the x axis is expressed by (Wei and Kirby, 1995):

$$\frac{\partial^2 \zeta}{\partial t^2} + c_1 \frac{\partial^2 \zeta}{\partial t \partial x} - \frac{c_1^2}{2} \frac{\partial^2 \zeta}{\partial y^2} = 0 \quad (12)$$

where $c_1 = (gd)^{1/2} =$ phase speed specified by the long-wave limit.

The coast in the model can be considered either as a solid (fully or partially reflecting) boundary, or as a boundary allowing sea mass inland penetration and inundation. The first case for a fully reflective boundary derives from the conservative assumption expressed by:

$$\frac{\partial \zeta}{\partial n} = 0, \quad Un = 0 \quad (13)$$

**Tsunami simulation
in the Eastern
Mediterranean**

A. G. Samaras et al.

Title Page

Abstract

Introduction

Conclusions

References

Tables

Figures



Back

Close

Full Screen / Esc

Printer-friendly Version

Interactive Discussion



where \mathbf{n} = unit landward normal vector; for a partially reflective boundary, it is simulated by properly adjusting the value of the eddy viscosity coefficient ν_e (see Eq. 7) in front of the coast. The second case is simulated based on the “dry bed” boundary condition for the simulation of runup, as described in detail by Karambas and Koutitas (2002).

2.3 Model validation

The model’s capability in representing swash zone hydrodynamics was validated through the comparison with the experimental data of Synolakis (1987), for the runup and rundown of breaking and non-breaking solitary waves on a plane beach. The experiments were carried out in the wave tank facility of the W. M. Keck Laboratories of the California Institute of Technology. The glass-walled tank’s dimensions were 37.73 m × 0.61 m × 0.39 m (length × width × depth); the sloping beach was constructed at a 1 : 19.85 slope ($\tan \alpha = 1 : 19.85$); the still water depth in the constant depth region was set to 0.2 m. The profile of the solitary wave reproduced, centred at $x = X_1$, is given by:

$$\zeta(x, 0) = \frac{H}{d} \operatorname{sech}^2 \gamma(x - X_1) \quad (14)$$

where H = solitary wave height and γ is defined as:

$$\gamma = \left(\frac{3H}{4d} \right)^{1/2} \quad (15)$$

Figure 1 shows the comparison of the normalized surface elevation between model results and the measurements of Synolakis (1987) for a solitary wave of $H/d = 0.28$ amplitude ratio, as a series of snapshots at consecutive non-dimensional time instances. Model predictions are in close agreement to the experimental data in both surf and swash zones. Runup and rundown are simulated well, with the collapse of the bore identified in Fig. 1d–f, and the moment of maximum runup in Fig. 1g.

Tsunami simulation in the Eastern Mediterranean

A. G. Samaras et al.

Title Page

Abstract

Introduction

Conclusions

References

Tables

Figures



Back

Close

Full Screen / Esc

Printer-friendly Version

Interactive Discussion



3 Applications in the Eastern Mediterranean

3.1 Tsunamigenic zones and sources

Figure 2 shows a map of the known tsunamigenic zones in the Mediterranean Sea region along with a relative scale of their potential for tsunami generation, calculated as a convolution of the frequency of occurrence and the intensity of tsunami events (Papadopoulos and Fokaefs, 2005; Papadopoulos, 2009). Sakellariou et al. (2007) summarized the possible tsunamigenic sources in the Eastern Mediterranean based on existing marine geological, bathymetric and seismic data; the results are presented in the map of Fig. 3.

3.2 Model applications

In the present work, the model for tsunami generation, propagation and coastal inundation presented in Sect. 2 was applied to two areas of interest: one at the Southwest of the island of Crete in Greece and one at the East of the island of Sicily in Italy. The areas, indicated in Fig. 3, comprise the sources of the earthquake-induced tsunami scenarios and the low-lying coastal areas where inundation phenomena were studied (see also Fig. 4).

Regarding the earthquake-induced tsunami scenarios, earthquakes that would generate a normalized wave amplitude of $\zeta_0 = 1$ m were considered; the lengths of the major and minor axes of the elliptical aftershock areas were estimated based on the empirical equations proposed by Karakaisis (1984), Papazachos et al. (1986) and Demetracopoulos et al. (1994):

$$\log L_{\text{major}} = -2.22 + 0.57 M \quad (16)$$

$$L_{\text{minor}} = L_{\text{major}}/3 \quad (17)$$

$$\log \zeta_0 = 0.98 M - 6.92 \quad (18)$$

where M = magnitude of the mainshock. It should be noted, of course, that due to the non-linearity of the studied phenomena the presented model results should not be used to estimate the absolute propagation/inundation characteristics of tsunamis with multiple or sub-multiple wave amplitudes at generation for the specific sources/areas of interest. The essence of the presented applications lies in testing the capabilities of the developed model and methodology for real case scenarios of operational interest in the Mediterranean; not in replicating single tsunami events, for which, furthermore, accurate inundation data would not be available.

Bathymetric information was extracted by the EMODnet Bathymetry Portal (EMODnet, 2015); shorelines by the GSHHS database (Global Self-consistent Hierarchical High-resolution Geography database; NOAA/NGDC, 2015). The topographic information for the coastal areas of interest were extracted by Digital Elevations Models of the NASA Shuttle Radar Topography Mission, at the best resolution available for the areas of interest (3 arc seconds for Crete and 1 arc second for Sicily; USGS/GDE, 2015). Figure 4 shows the location, the elevation and selected topographic contours of the low-lying coastal areas of interest where inundation phenomena were studied, at South-Southwest Crete (Fig. 4a) and East-Southeast Sicily (Fig. 4b).

4 Results and discussion

Figure 5 shows the simulated extreme water elevation (ξ/ξ_0) for the earthquake-induced tsunami scenarios at the Southwest of Crete (Fig. 5a) and at the East of Sicily (Fig. 5b). Sequences of snapshots of water elevation during tsunami propagation are presented in Figs. 6 and 7 for the two aforementioned scenarios, respectively. A tsunami generated at the Southwest of Crete (see Figs. 5a and 6) would impact most severely the adjacent coasts (as expected due to the source proximity), with calculated extreme water elevations reaching the normalized amplitude of the tsunami wave at generation. The impact is expected to be significant to the East part of the Libyan coast as well (approx. 250 km away from the tsunami source; at $x \approx 650 \text{ km} \div 750 \text{ km}$),

Tsunami simulation in the Eastern Mediterranean

A. G. Samaras et al.

| | |
|--------------------------|--------------|
| Title Page | |
| Abstract | Introduction |
| Conclusions | References |
| Tables | Figures |
| ◀ | ▶ |
| ◀ | ▶ |
| Back | Close |
| Full Screen / Esc | |
| Printer-friendly Version | |
| Interactive Discussion | |



Tsunami simulation in the Eastern Mediterranean

A. G. Samaras et al.

Title Page

Abstract

Introduction

Conclusions

References

Tables

Figures



Back

Close

Full Screen / Esc

Printer-friendly Version

Interactive Discussion



with extreme elevations locally exceeding $\zeta/\zeta_0 = 0.4$. A tsunami generated at the East of Sicily (see Figs. 5b and 7) would have a similar impact to adjacent coasts. Results do not indicate a significant impact to be expected to the Western coasts of Greece, as – at approximately 450 km away from the tsunami source – extreme elevations do not exceed locally $\zeta/\zeta_0 = 0.2$ (e.g. at the East coast of Peloponnese at $y \approx 900$ km). However, and although as stated in Sect. 3.2 results for the simulated scenarios should not be used to deduce the absolute characteristics of multiple or sub-multiple tsunamis (with regard to ζ_0), Fig. 7 is indicative of the areas to be affected by an eventual larger event (the same applies to Fig. 6, respectively).

Figure 8 shows the inundation maps of the studied low-lying coastal areas at: (a) South-Southwest Crete, and (b) East-Southeast Sicily. The inundated areas shown in Figs. 8a and 8b, where the inundation extent was more easily represented at the scale of interest, cover 3.429 and 0.641 km², respectively. Although for both cases inundation heights are comparable, the relatively steeper slopes at the studied coasts of Sicily result in an overall narrower inundation zone (with the inevitable added scale effect of the representation). Again, it should be noted that these areas are indicative of the ones to be affected by eventual larger events. Finally, regarding the simulation of inundation itself, Fig. 9 shows snapshots of the evolution of the phenomenon at the coasts of South-Southwest Crete for an exemplary exaggerated tsunami scenario (normalized wave amplitude of $\zeta_0 = 6$ m at generation); it should be underlined that these results serve only to demonstrate more clearly the performance of the model at the scale of the representation, and do not relate to the scenarios presented in the previous.

5 Conclusions

This work presents an advanced tsunami generation, propagation and coastal inundation 2-DH model (developed by the authors) and its applications for two representative earthquake-induced tsunami scenarios in the Eastern Mediterranean. The model is based on the higher-order Boussinesq equations, and its capability in representing

swash zone hydrodynamics is validated through the comparison with the experimental data of Synolakis (1987). The model is applied to two areas of interest: one at the Southwest of the island of Crete in Greece and one at the East of the island of Sicily in Italy.

Model results, presented in the form of extreme water elevation maps, sequences of snapshots of water elevation during the propagation of the earthquake-induced tsunamis, and inundation maps of the studied low-lying coastal areas, highlight the model's capabilities and are indicative of how areas in the region would be affected by eventual larger events. It should be noted that this work marks one of the first successful applications of a fully nonlinear model based on the Boussinesq equations for the 2-DH simulation of tsunami-induced coastal inundation, thus not resorting to estimates of the flooded area from simple superelevations of the water surface or from the spatial extension of cross-sectional runup results. Similar attempts can constitute the basis of a more detailed coastal flooding risk assessment and mitigation along the coasts of the Eastern Mediterranean.

Acknowledgements. Renata Archetti acknowledges the financial support of the Italian Flagship Project RITMARE (SP3-WP4-AZ2).

References

- Apotsos, A., Gelfenbaum, G., and Jaffe, B.: Process-based modeling of tsunami inundation and sediment transport, *J. Geophys. Res.-Earth*, 116, F01006, doi:10.1029/2010jf001797, 2011.
- Ataie-Ashtiani, B. and Najafi Jilani, A.: A higher-order Boussinesq-type model with moving bottom boundary: applications to submarine landslide tsunami waves, *Int. J. Numer. Meth. Fl.*, 53, 1019–1048, doi:10.1002/flid.1354, 2007.
- Bernard, E. N.: The US National Tsunami Hazard Mitigation Program: a successful state–federal partnership, *Nat. Hazards*, 35, 5–24, doi:10.1007/s11069-004-2401-5, 2005.
- Borrero, J. C., Sieh, K., Chlieh, M., and Synolakis, C. E.: Tsunami inundation modeling for western Sumatra, *P. Natl. Acad. Sci. USA*, 103, 19673–19677, doi:10.1098/rspa.2013.0496, 2006.

Tsunami simulation in the Eastern Mediterranean

A. G. Samaras et al.

Title Page

Abstract

Introduction

Conclusions

References

Tables

Figures



Back

Close

Full Screen / Esc

Printer-friendly Version

Interactive Discussion



Tsunami simulation in the Eastern Mediterranean

A. G. Samaras et al.

Title Page

Abstract

Introduction

Conclusions

References

Tables

Figures



Back

Close

Full Screen / Esc

Printer-friendly Version

Interactive Discussion



Brocchini, M.: A reasoned overview on Boussinesq-type models: the interplay between physics, mathematics and numerics, *P. Roy. Soc. A-Math. Phys.*, 469, 20130496, doi:10.1098/rspa.2013.0496, 2013.

Chen, Q., Kirby, J., Dalrymple, R., Kennedy, A., and Chawla, A.: Boussinesq modeling of wave transformation, breaking, and runup. II: 2-D, *J. Waterw. Port C. Div.*, 126, 48–56, doi:10.1061/(asce)0733-950x(2000)126:1(48), 2000.

Dawson, A. G., Lockett, P., and Shi, S.: Tsunami hazards in Europe, *Environ. Int.*, 30, 577–585, doi:10.1016/j.envint.2003.10.005, 2004.

Demetracopoulos, A. C., Hadjitheodorou, C., and Antonopoulos, J. A.: Statistical and numerical analysis of tsunami wave heights in confined waters, *Ocean Eng.*, 21, 629–643, doi:10.1016/0029-8018(94)90042-6, 1994.

El-Sayed, A., Korrat, I., and Hussein, H. M.: Seismicity and seismic hazard in Alexandria (Egypt) and its surroundings, *Pure Appl. Geophys.*, 161, 1003–1019, doi:10.1007/s00024-003-2488-8, 2004.

EMODnet Portal for Bathymetry: available at: <http://portal.emodnet-bathymetry.eu/>, last access: 11 February 2015.

Fuhrman, D. R. and Madsen, P. A.: Tsunami generation, propagation, and run-up with a high-order Boussinesq model, *Coast. Eng.*, 56, 747–758, doi:10.1016/j.coastaleng.2009.02.004, 2009.

Gayer, G., Leschka, S., Nöhren, I., Larsen, O., and Günther, H.: Tsunami inundation modelling based on detailed roughness maps of densely populated areas, *Nat. Hazards Earth Syst. Sci.*, 10, 1679–1687, doi:10.5194/nhess-10-1679-2010, 2010.

Gobbi, M. F. and Kirby, J. T.: Wave evolution over submerged sills: tests of a high-order Boussinesq model, *Coast. Eng.*, 37, 57–96, doi:10.1016/S0378-3839(99)00015-0, 1999.

Gobbi, M. F., Iacuta, Cio, F., Kirby, J. T., and Wei, G.: A fully nonlinear Boussinesq model for surface waves. Part 2. Extension to $O(kh)^4$, *J. Fluid Mech.*, 405, 181–210, doi:10.1017/S0022112099007247, 2000.

González, F. I., Geist, E. L., Jaffe, B., Kânoglu, U., Mofjeld, H., Synolakis, C. E., Titov, V. V., Areas, D., Bellomo, D., Carlton, D., Horning, T., Johnson, J., Newman, J., Parsons, T., Peters, R., Peterson, C., Priest, G., Venturato, A., Weber, J., Wong, F., and Yalciner, A.: Probabilistic tsunami hazard assessment at Seaside, Oregon, for near- and far-field seismic sources, *J. Geophys. Res.-Oceans*, 114, C11023, doi:10.1029/2008jc005132, 2009.

Tsunami simulation in the Eastern Mediterranean

A. G. Samaras et al.

Title Page

Abstract

Introduction

Conclusions

References

Tables

Figures



Back

Close

Full Screen / Esc

Printer-friendly Version

Interactive Discussion



González-Riancho, P., Aguirre-Ayerbe, I., García-Aguilar, O., Medina, R., González, M., Aniel-Quiroga, I., Gutiérrez, O. Q., Álvarez-Gómez, J. A., Larreynaga, J., and Gavidia, F.: Integrated tsunami vulnerability and risk assessment: application to the coastal area of El Salvador, *Nat. Hazards Earth Syst. Sci.*, 14, 1223–1244, doi:10.5194/nhess-14-1223-2014, 2014.

5 Google Earth: Image © 2015 Landsat, Data SIO, NOAA, US Navy, NGA, GEBCO, 2015.

Hammack, J. L.: A note on tsunamis: their generation and propagation in an ocean of uniform depth, *J. Fluid Mech.*, 60, 769–799, doi:10.1017/S0022112073000479, 1973.

Karakaisis, G. F.: Contribution to the Study of the Seismic Sequences in the Aegean and Surrounding Areas, Ph.D. thesis, Aristotle University of Thessaloniki, Thessaloniki, Greece, 1984.

10 Karambas, T. V. and Karathanassi, E. K.: Longshore sediment transport by nonlinear waves and currents, *J. Waterw. Port C. Div.*, 130, 277–286, doi:10.1061/(ASCE)0733-950X(2004)130:6(277), 2004.

Karambas, T. V. and Koutitas, C.: Surf and swash zone morphology evolution induced by nonlinear waves, *J. Waterw. Port C. Div.*, 128, 102–113, doi:10.1061/(ASCE)0733-950X(2002)128:3(102), 2002.

Karambas, T. V. and Samaras, A. G.: Soft shore protection methods: the use of advanced numerical models in the evaluation of beach nourishment, *Ocean Eng.*, 92, 129–136, doi:10.1016/j.oceaneng.2014.09.043, 2014.

20 Kumar, T. S., Mahendra, R. S., Nayak, S., Radhakrishnan, K., and Sahu, K. C.: Coastal vulnerability assessment for Orissa State, east coast of India, *J. Coastal Res.*, 26, 523–534, doi:10.2112/09-1186.1, 2010.

Liu, P. L., Woo, S.-B., and Cho, Y.-S.: *Computer Programs for Tsunami Propagation and Inundation*, Cornell University Press, Ithaca, NY, 1998.

25 Lorito, S., Tiberti, M. M., Basili, R., Piatanesi, A., and Valensise, G.: Earthquake-generated tsunamis in the Mediterranean Sea: scenarios of potential threats to Southern Italy, *J. Geophys. Res.-Sol. Ea.*, 113, B01301, doi:10.1029/2007jb004943, 2008.

Løvholt, F., Kaiser, G., Glimsdal, S., Scheele, L., Harbitz, C. B., and Pedersen, G.: Modeling propagation and inundation of the 11 March 2011 Tohoku tsunami, *Nat. Hazards Earth Syst. Sci.*, 12, 1017–1028, doi:10.5194/nhess-12-1017-2012, 2012.

30 Mitsotakis, D. E.: Boussinesq systems in two space dimensions over a variable bottom for the generation and propagation of tsunami waves, *Math. Comput. Simulat.*, 80, 860–873, doi:10.1016/j.matcom.2009.08.029, 2009.

National Oceanic and Atmospheric Administration/National Geophysical Data Center: available at: <http://www.ngdc.noaa.gov/mgg/shorelines/>, last access: 11 February 2015.

Omira, R., Baptista, M. A., Miranda, J. M., Toto, E., Catita, C., and Catalão, J.: Tsunami vulnerability assessment of Casablanca-Morocco using numerical modelling and GIS tools, *Nat. Hazards*, 54, 75–95, doi:10.1007/s11069-009-9454-4, 2010.

Papadopoulos, G. A.: Tsunami hazard in the Eastern Mediterranean: strong earthquakes and tsunamis in the Corinth Gulf, Central Greece, *Nat. Hazards*, 29, 437–464, doi:10.1023/a:1024703531623, 2003.

Papadopoulos, G. A.: Tsunamis, in: *The Physical Geography of the Mediterranean*, edited by: Woodward, J., Oxford University Press, Oxford, 493–512, 2009.

Papadopoulos, G. A. and Chalkis, B. J.: Tsunamis observed in Greece and the surrounding area from antiquity up to the present times, *Mar. Geol.*, 56, 309–317, doi:10.1016/0025-3227(84)90022-7, 1984.

Papadopoulos, G. A. and Fokaefs, A.: Strong tsunamis in the mediterranean sea: a re-evaluation, *ISSET Journal of Earthquake Technology*, 42, 159–170, 2005.

Papadopoulos, G. A., Gràcia, E., Urgeles, R., Sallares, V., De Martini, P. M., Pantosti, D., González, M., Yalciner, A. C., Mascle, J., Sakellariou, D., Salamon, A., Tinti, S., Karastathis, V., Fokaefs, A., Camerlenghi, A., Novikova, T., and Papageorgiou, A.: Historical and pre-historical tsunamis in the Mediterranean and its connected seas: geological signatures, generation mechanisms and coastal impacts, *Mar. Geol.*, 354, 81–109, doi:10.1016/j.margeo.2014.04.014, 2014.

Papazachos, B. C. and Papazachou, C.: *The Earthquakes of Greece*, Ziti Publications, Thessaloniki, Greece, 1998.

Papazachos, B. C., Koutitas, C., Hatzidimitriou, P. M., Karakostas, B. G., and Papaioannou, C. A.: Tsunami hazard in Greece and the surrounding area, *Ann. Geophys.*, 4, 79–90, 1986, <http://www.ann-geophys.net/4/79/1986/>.

Periáñez, R. and Abril, J. M.: Modelling tsunamis in the Eastern Mediterranean Sea. Application to the Minoan Santorini tsunami sequence as a potential scenario for the biblical Exodus, *J. Marine Syst.*, 139, 91–102, doi:10.1016/j.jmarsys.2014.05.016, 2014.

Post, J., Wegscheider, S., Mück, M., Zosseder, K., Kiefl, R., Steinmetz, T., and Strunz, G.: Assessment of human immediate response capability related to tsunami threats in Indonesia

Tsunami simulation in the Eastern Mediterranean

A. G. Samaras et al.

Title Page

Abstract

Introduction

Conclusions

References

Tables

Figures



Back

Close

Full Screen / Esc

Printer-friendly Version

Interactive Discussion



Tsunami simulation in the Eastern Mediterranean

A. G. Samaras et al.

Title Page

Abstract

Introduction

Conclusions

References

Tables

Figures



Back

Close

Full Screen / Esc

Printer-friendly Version

Interactive Discussion



at a sub-national scale, *Nat. Hazards Earth Syst. Sci.*, 9, 1075–1086, doi:10.5194/nhess-9-1075-2009, 2009.

Press, H. W., Teukolsky, S. A., Vetterling, W. T., and Flannery, B. P.: Numerical Recipes in Fortran 77, 2nd edn., *Fortran Numerical Recipes*, 1, Cambridge University Press, Cambridge, UK, 1992.

Ribberink, J. S.: Bed-load transport for steady flows and unsteady oscillatory flows, *Coast. Eng.*, 34, 59–82, doi:10.1016/S0378-3839(98)00013-1, 1998.

Sakellariou, D., Lykousis, V., Alexandri, S., Nomikou, P., and Rousakis, G.: Identification of Tsunami Source Areas in the Eastern Mediterranean that May Trigger Tsunamis in the Future, “Prevention and Management of Sea Originated Risks to the Coastal Zone” – CORI Project, INTERREG IIIB/ARCHIMED, Deliverable 1.1, University of the Aegean, Mytilene, Greece, 2007.

Salamon, A., Rockwell, T., Ward, S. N., Guidoboni, E., and Comastri, A.: Tsunami hazard evaluation of the eastern Mediterranean: historical analysis and selected modeling, *B. Seismol. Soc. Am.*, 97, 705–724, doi:10.1785/0120060147, 2007.

Schäffer, H. A., Madsen, P. A., and Deigaard, R.: A Boussinesq model for waves breaking in shallow water, *Coast. Eng.*, 20, 185–202, doi:10.1016/0378-3839(93)90001-O, 1993.

Soloviev, S. L., Solovieva, O. N., Go, C. N., Kim, K. S., and Shchetnikov, N. A.: Tsunamis in the Mediterranean Sea 2000 B.C.–200 A.D., *Advances in Natural and Technological Hazards Research*, Kluwer Academic Publishers, Dordrecht, the Netherlands, 2000.

Sørensen, M. B., Spada, M., Babeyko, A., Wiemer, S., and Grünthal, G.: Probabilistic tsunami hazard in the Mediterranean Sea, *J. Geophys. Res.-Sol. Ea.*, 117, B01305, doi:10.1029/2010jb008169, 2012.

Stefatos, A., Charalambakis, M., Papatheodorou, G., and Ferentinos, G.: Tsunamigenic sources in an active European half-graben (Gulf of Corinth, Central Greece), *Mar. Geol.*, 232, 35–47, doi:10.1016/j.margeo.2006.06.004, 2006.

Synolakis, C. E.: The runup of solitary waves, *J. Fluid Mech.*, 185, 523–545, 1987.

Tinti, S., Maramai, A., and Graziani, L.: The new catalogue of Italian Tsunamis, *Nat. Hazards*, 33, 439–465, doi:10.1023/b:nhaz.0000048469.51059.65, 2004.

Tinti, S., Armigliato, A., Pagnoni, G., and Zaniboni, F.: Scenarios of giant tsunamis of tectonic origin in the mediterranean, *ISET Journal of Earthquake Technology*, 42, 171–188, 2005.

Titov, V. and González, F.: Implementation and testing of the method of splitting tsunami (MOST) model, NOAA/Pacific Marine Environmental Laboratory, Seattle, WA, NOAA Technical Memorandum ERL PMEL-112, UNIDATA, Seattle, WA, 11 pp., 1997.

US Geological Survey/Global Data Explorer: available at: gdex.cr.usgs.gov/gdex/, last access: 17 February 2015.

Wei, G. and Kirby, J.: Time-dependent numerical code for extended Boussinesq equations, *J. Waterw. Port C. Div.*, 121, 251–261, doi:10.1061/(asce)0733-950x(1995)121:5(251), 1995.

Zhan, J. M., Li, Y. S., and Wai, O. W. H.: Numerical modeling of multi-directional irregular waves incorporating 2-D numerical wave absorber and subgrid turbulence, *Ocean Eng.*, 30, 23–46, doi:10.1016/S0029-8018(02)00005-7, 2003.

Zhou, H. and Teng, M.: Extended fourth-order depth-integrated model for water waves and currents generated by submarine landslides, *J. Eng. Mech.-ASCE*, 136, 506–516, doi:10.1061/(asce)em.1943-7889.0000087, 2009.

Zhou, H., Moore, C. W., Wei, Y., and Titov, V. V.: A nested-grid Boussinesq-type approach to modelling dispersive propagation and runup of landslide-generated tsunamis, *Nat. Hazards Earth Syst. Sci.*, 11, 2677–2697, doi:10.5194/nhess-11-2677-2011, 2011.

Zou, Z. L.: Higher order Boussinesq equations, *Ocean Eng.*, 26, 767–792, doi:10.1016/S0029-8018(98)00019-5, 1999.

**Tsunami simulation
in the Eastern
Mediterranean**

A. G. Samaras et al.

Title Page

Abstract

Introduction

Conclusions

References

Tables

Figures



Back

Close

Full Screen / Esc

Printer-friendly Version

Interactive Discussion



Tsunami simulation in the Eastern Mediterranean

A. G. Samaras et al.

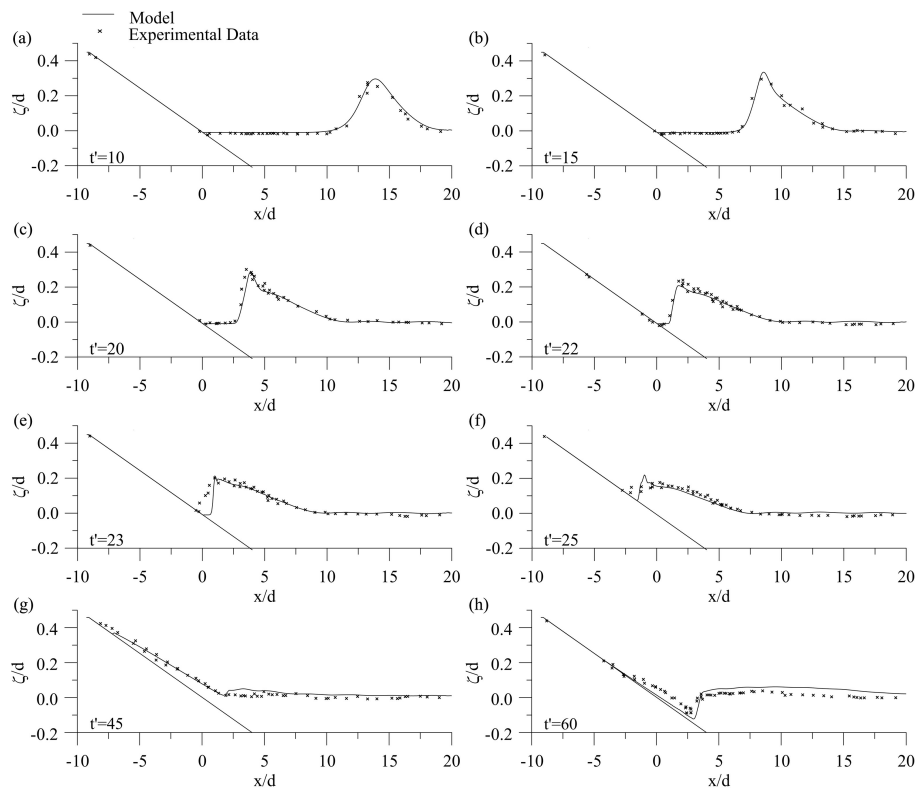


Figure 1. Runup and rundown of a solitary wave of $H/d = 0.25$ on a 1 : 19.85 plane sloping beach; comparison of the normalized surface elevation (ζ/d) between model results and the measurements of Synolakis (1987), at consecutive non-dimensional time instances ($t' = t(g/d)^{1/2}$).

[Title Page](#)
[Abstract](#)
[Introduction](#)
[Conclusions](#)
[References](#)
[Tables](#)
[Figures](#)
[◀](#)
[▶](#)
[◀](#)
[▶](#)
[Back](#)
[Close](#)
[Full Screen / Esc](#)
[Printer-friendly Version](#)
[Interactive Discussion](#)


Tsunami simulation in the Eastern Mediterranean

A. G. Samaras et al.

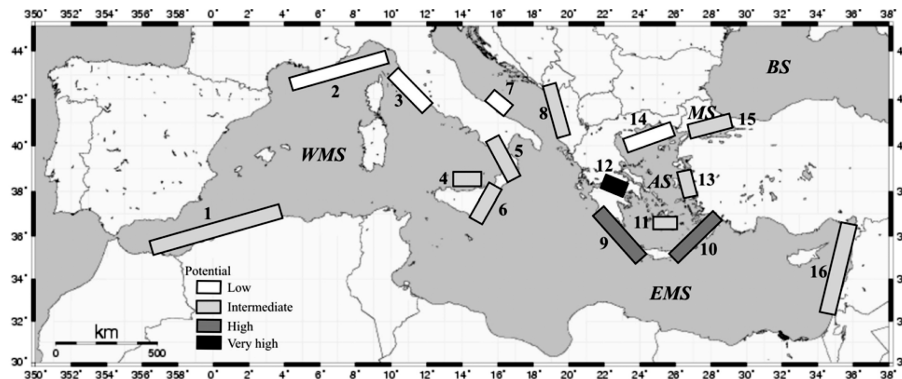


Figure 2. The tsunamigenic zones of the Mediterranean Sea and their respective tsunami potential (adopted from Papadopoulos and Fokaefs, 2005).

Title Page

Abstract

Introduction

Conclusions

References

Tables

Figures



Back

Close

Full Screen / Esc

Printer-friendly Version

Interactive Discussion



Tsunami simulation in the Eastern Mediterranean

A. G. Samaras et al.

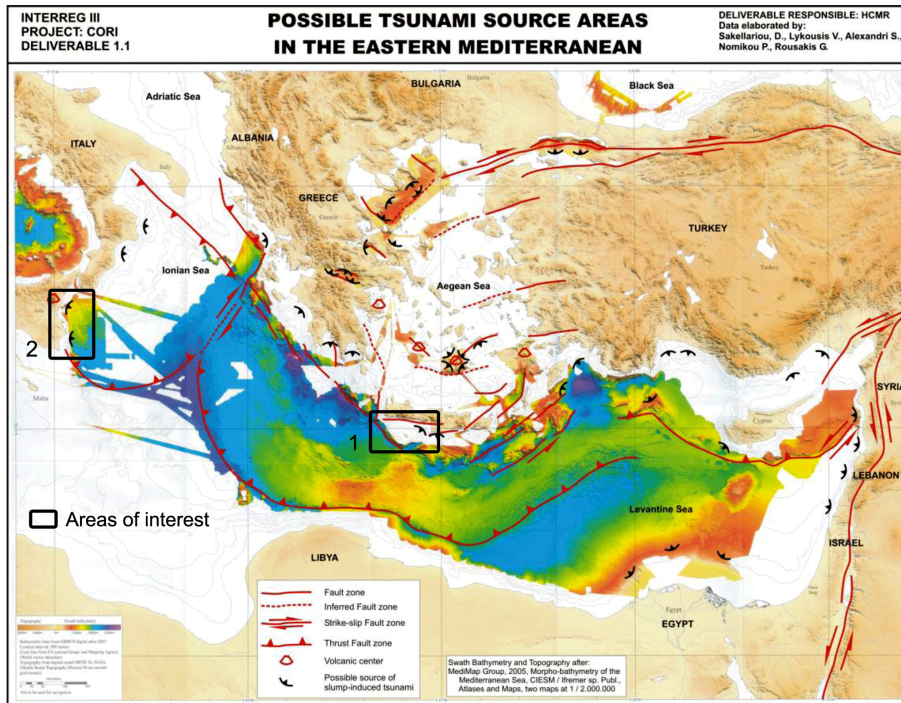


Figure 3. Possible tsunamigenic sources in the Eastern Mediterranean; the black rectangles outline the two areas of interest in the present work, comprising the sources of the earthquake-induced tsunami scenarios and the low-lying coastal areas where inundation phenomena were studied (adopted from Sakellariou et al., 2007; privately processed).

Title Page

Abstract

Introduction

Conclusions

References

Tables

Figures



Back

Close

Full Screen / Esc

Printer-friendly Version

Interactive Discussion



Tsunami simulation in the Eastern Mediterranean

A. G. Samaras et al.

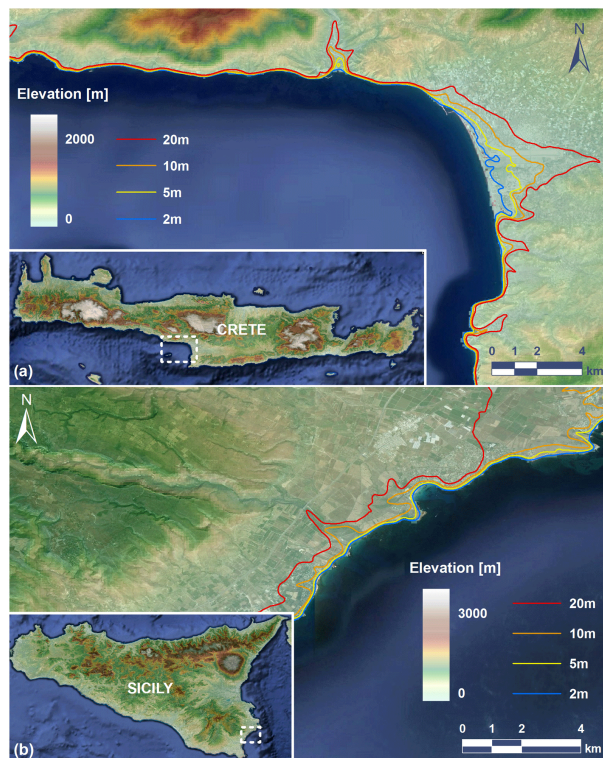


Figure 4. Location, elevation and selected topographic contours for the low-lying coastal areas of interest at: **(a)** South-Southwest Crete, and **(b)** East-Southeast Sicily (base images from Google Earth, 2015; privately processed using NASA SRTM data from USGS/GDE, 2015).

[Title Page](#)[Abstract](#)[Introduction](#)[Conclusions](#)[References](#)[Tables](#)[Figures](#)[Back](#)[Close](#)[Full Screen / Esc](#)[Printer-friendly Version](#)[Interactive Discussion](#)

Tsunami simulation in the Eastern Mediterranean

A. G. Samaras et al.

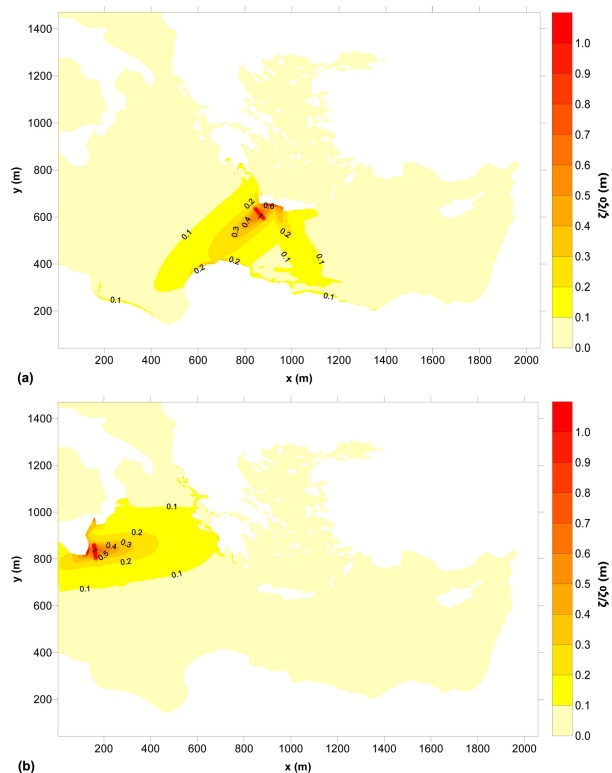


Figure 5. Simulated extreme water elevation (ζ/ζ_0) for the earthquake-induced tsunami scenarios at: **(a)** the Southwest of Crete, and **(b)** the East of Sicily.

[Title Page](#)[Abstract](#)[Introduction](#)[Conclusions](#)[References](#)[Tables](#)[Figures](#)[Back](#)[Close](#)[Full Screen / Esc](#)[Printer-friendly Version](#)[Interactive Discussion](#)

Tsunami simulation in the Eastern Mediterranean

A. G. Samaras et al.

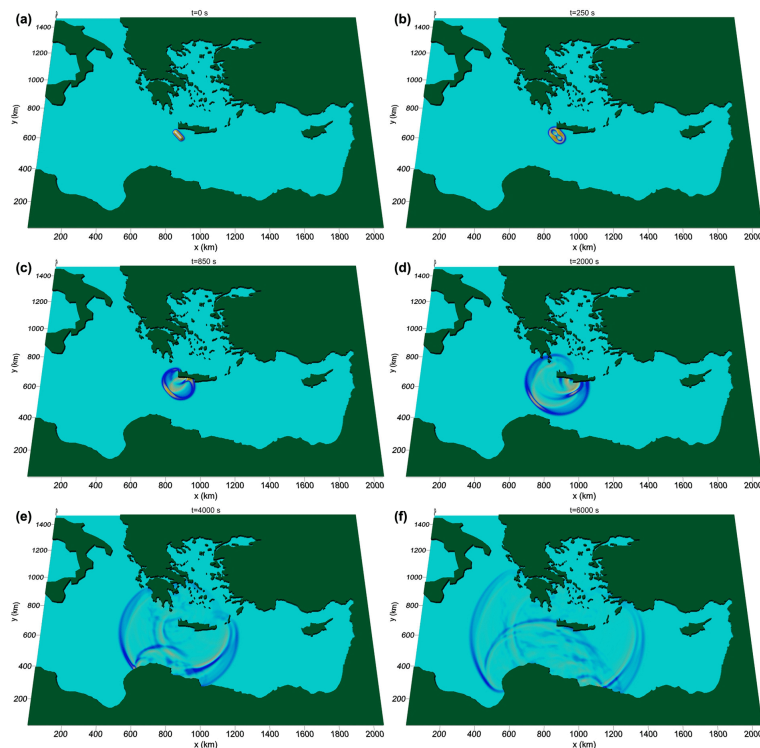


Figure 6. Sequences of snapshots of water elevation for the earthquake-induced tsunami scenario at the Southwest of Crete at: **(a)** $t = 0$ s (generation), **(b)** $t = 250$ s, **(c)** $t = 850$ s, **(d)** $t = 2000$ s, **(e)** $t = 4000$ s, and **(f)** $t = 6000$ s.

[Title Page](#)[Abstract](#)[Introduction](#)[Conclusions](#)[References](#)[Tables](#)[Figures](#)[◀](#)[▶](#)[◀](#)[▶](#)[Back](#)[Close](#)[Full Screen / Esc](#)[Printer-friendly Version](#)[Interactive Discussion](#)

Tsunami simulation in the Eastern Mediterranean

A. G. Samaras et al.

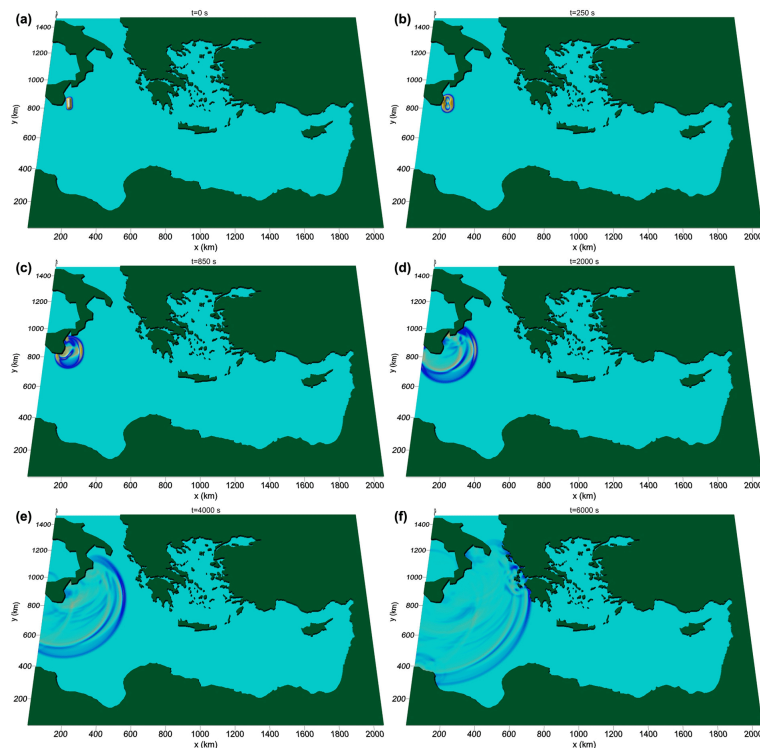


Figure 7. Sequences of snapshots of water elevation for the earthquake-induced tsunami scenario at the East of Sicily at: **(a)** $t = 0$ s (generation), **(b)** $t = 250$ s, **(c)** $t = 850$ s, **(d)** $t = 2000$ s, **(e)** $t = 4000$ s, and **(f)** $t = 6000$ s.

[Title Page](#)[Abstract](#)[Introduction](#)[Conclusions](#)[References](#)[Tables](#)[Figures](#)[◀](#)[▶](#)[◀](#)[▶](#)[Back](#)[Close](#)[Full Screen / Esc](#)[Printer-friendly Version](#)[Interactive Discussion](#)

Tsunami simulation in the Eastern Mediterranean

A. G. Samaras et al.

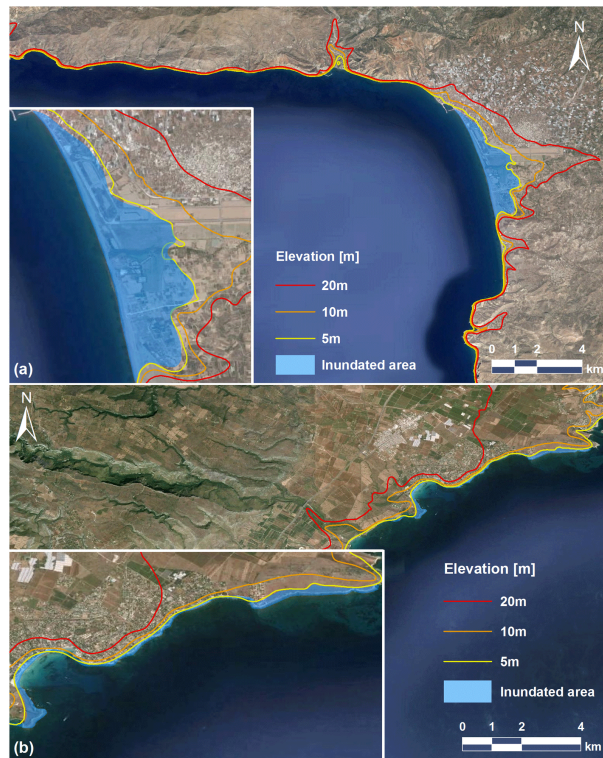


Figure 8. Inundation maps of the studied low-lying coastal areas at: **(a)** South-Southwest Crete, and **(b)** East-Southeast Sicily for the studied earthquake-induced tsunami scenarios (see also Figs. 4–7; base images from Google Earth, 2015; privately processed using NASA SRTM data from USGS/GDE, 2015).

Title Page

Abstract

Introduction

Conclusions

References

Tables

Figures

◀

▶

◀

▶

Back

Close

Full Screen / Esc

Printer-friendly Version

Interactive Discussion



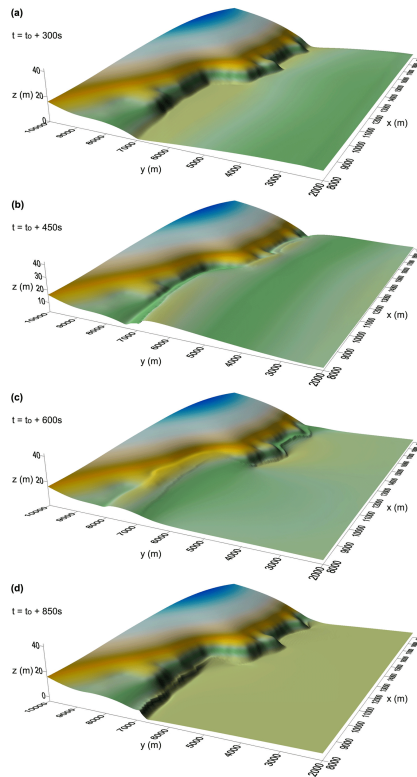


Figure 9. Snapshots of the evolution of inundation at the coasts of Southwest Crete (see also Fig. 4a) for an exemplary exaggerated tsunami scenario (normalized wave amplitude of $\zeta_0 = 6$ m at generation), presenting: **(a)** the propagation of the tsunami wave to the nearshore; **(b)** the wave breaking at the lower part and the runup at the upper part of the Figure; **(c)** the runup at the lower part and rundown at the upper part of the Figure; and **(d)** the rundown at the lower part of the figure.

**Tsunami simulation
in the Eastern
Mediterranean**

A. G. Samaras et al.

| | |
|--------------------------|--------------|
| Title Page | |
| Abstract | Introduction |
| Conclusions | References |
| Tables | Figures |
| ◀ | ▶ |
| ◀ | ▶ |
| Back | Close |
| Full Screen / Esc | |
| Printer-friendly Version | |
| Interactive Discussion | |

