

## Response to the comments of Topic Editor

Thank-you for your revised submission. I still think this needs some further revision. There are two overall points. [Eventually also the text will be copy edited, which I expect will introduce many changes to the use of English which you will need to check].

1) There is a focus on October, said here to be because this is when the influence of IOD on the waves is most apparent. However, the IOD affects conditions in other months and waves are larger in other months. I think there needs to be clearer explanation of why October is the month of particular interest.

**Reply:** The average SWH in the eastern AS during pre-monsoon (FMAM), SW monsoon (JJAS) and post-monsoon (ONDJ) are around 1, 2.7 and 0.7 m respectively with an annual average value of ~ 1.1 m. The earlier studies in the equatorial Indian Ocean has shown that "the IOD forced wind anomalies are maximum in the central equatorial IO [Sreenivas et al., 2012] and the significant anomalies appear around June, intensify in the following months and peaks at October". Due to the southwest monsoon (June to September) influence, it is difficult to identify the cause for the variations in SWH. Since the wind conditions in the AS are calmest and waves are wind-sea dominated in October and the IOD peaks in October, we have done the study for October.

Apart from the above, now the below sentence is also added.

The analysis is confined to October, when the impact of the IOD is strongest and wind conditions in the AS are calmest.

2) There are many statements about winds affecting SST and vice versa, and this is very confusing. I think it would help to bring all these statements together in one place to “paint” one self-consistent “picture”, and then to avoid other statements (it might be necessary to refer to the “picture”). Because SST defines DMI which is used as the measure of IOD, it is not helpful to further discuss the IOD – SST relation. [However, it does seem that IOD does not represent all SST influence.]

**Reply:** measure of IOD is the SST see-saw between the eastern and the western equatorial Indian Ocean. We agree that we should not have again discussed the SST through Figure 7. The purpose of presenting Figure 7 and Figure 8 is to show the spatial variation of SST, SLP and wind in the Arabian Sea during the 4 strong PIOD and 4 NIOD years to get a physical picture of what is going on.

The study shows that alteration of wind pattern mainly depends on the IOD induced SST variability in eastern and western equatorial IO. Some other unknown factors may also cause slight modification in the wind which requires more analysis to understand this variability.

This is stated in the conclusion.

The repeated statements are now deleted.

### **More detailed points.**

Line 2. Citations/references are to Glejin et al. If Glejin is the family name then it should appear as “J. Glejin” in the author list.

Reply: Author list corrected

Line 16. “ocean” not “oceanic process”?

Reply: We mean "the climatic oscillations in the oceanic processes". Hence retained as it is.

Lines 16-17. “.. influence of an inter-annual mode of variability, the . . .(IOD), on the wave climate . .”

Reply: Corrected

Lines 20-22. Waves depend on winds (line 22) which might in turn depend on equatorial SST and SLP (lines 20-21) The link needs to be made; at present the two sentences appear to contradict each other.

Reply: Corrected

Lines 31-32. “. . limited to short transition periods between . .”

Reply: Corrected

Line 43. “. . SW monsoon season . .”

Reply: Corrected

Line 45. “. . 34 years’ data. The average . .”

Reply: Corrected

Lines 56-57. “. . IO affect the spatial distribution . . in the tropical IO. The SST differs from that observed . .”

Reply: Corrected

Lines 61-62. “. . 1999]. “Positive” IOD (PIOD) is associated . .”

Reply: Corrected

Line 69. Not “continuously”; “continually” or omit.

Reply: Corrected

Lines 74-75 are repeated at lines 90-92.

Reply: deleted at 74-75

Line 83. “Walker”.

Reply: Corrected

Line 102. “. . numerical models are described . .”

Reply: Corrected

Line 116. “. . ERA-I was previously evaluated . .”

Reply: Corrected

Line 117. “performance compared with . .”

Reply: Corrected

Line 135. “. . in latitude and longitude . .”

Reply: Corrected

Lines 142-3 and lines 146-149. These are about the same thing and should be merged.

Reply: Corrected

Line 149. Omit “initial”?

Reply: Deleted

Lines 169-170. There is a contradiction between “calm” and “dominance of wind-sea”.

Reply: Corrected

Line 180. “implies” not “infers”.

Reply: Corrected

Line 185-186. “. . plot at the same six locations ..”

Reply: Corrected

Line 195. “. . direction and change . .”

Reply: Corrected

Lines 196-7. “component of wind blowing parallel” is unclear. Do you mean “. . merging with . . and north-westerly winds nearer the Indian coast.”

Reply: Corrected as ..., while over the central AS the wind vectors are from northerly direction and change their direction to north-westerly before merging with the westerly equatorial winds and north-westerly winds nearer the Indian coast.

Lines 205-207. I think the following would be better. “. . respectively. As observed from climatology, these figures illustrate that in the eastern AS the north-westerly wind vectors are modified to north-easterly. Instead . .”

Reply: Corrected

Line 208. “equatorial IO the wind blows . .”

Reply: Corrected

Lines 217-218. This sentence should be at the beginning of section 2.

Reply: Corrected

Lines 248-250. I think this sentence would be better as “SWH increases with the zonal wind component, and this increase is greater when the zonal wind component is positive than when it is negative.”

Reply: Corrected

Lines 255, 258, 259. With no definition of wave age the numbers are meaningless. If dimensional they need units. What values of wave age correspond to waves driving wind rather than the usual (wind driving waves)?

Reply: Defined

Lines 259-260. “. . the eastern AS is a wave-driven wind region, i.e. waves transfer momentum . .”

Reply: Corrected

Line 261. What is “mixed state”?

Reply: Defined

Line 264. “coarse” not “coarser”.

Reply: Corrected

Line 273. No “decrease of SLP . .” in 1997.

Reply: Yes. It is not in AS, it is in equatorial IO. The relevant sentence is as below.

It cause decrease of SLP in the western equatorial Indian Ocean and reverse occurs in eastern equatorial IO (not shown in this figure) during the positive phase of IOD and vice versa for negative IOD.

Line 306. “SLP” not “SST” ?

Reply: Corrected

Lines 305-307. Sentence better as “The north-eastern AS region is calm due to the absence of NW winds in the northern AS, in turn due to the associated negative SLP anomaly.”

Reply: Corrected

# Indian Ocean Dipole modulated wave climate of eastern Arabian Sea

T.R. Anoop<sup>1</sup>, V. Sanil Kumar<sup>1\*</sup>, P.R. Shanas<sup>1,2</sup>, ~~Glejin~~ Johnson Glejin<sup>1</sup>, M.M. Amrutha<sup>1</sup>

<sup>1</sup>Ocean Engineering Division, CSIR-National Institute of Oceanography (Council of Scientific & Industrial Research), Dona Paula, Goa 403 004 India Tel: 00918322450327, URL: [www.nio.org](http://www.nio.org)

<sup>2</sup>Ph.D student, Marine physics department, King Abdulaziz University, Jeddah, Saudi Arabia

\*Corresponding author: V.S.Kumar, CSIR-National Institute of Oceanography Goa Tel: 0091 832 2450 327 Fax: 0091 832 2450 602 Email: [sanil@nio.org](mailto:sanil@nio.org)

## Key points

- Paper investigates the influence of the Indian Ocean Dipole on the wave climate
- Winds from northern Arabian Sea is influenced by Indian Ocean Dipole
- Positive IOD causes decrease of short period waves and vice versa for negative phase
- Variation in wave height during positive/negative IOD due to change in wind direction

## Abstract

Intrinsic modes of variability have a significant role in driving the climatic oscillations in the oceanic processes. In this paper, we investigate the influence of an inter-annual mode of variability, the Indian Ocean Dipole (IOD), ~~influence of such inter-annual variability called the Indian Ocean Dipole (IOD)~~ on the wave climate of the eastern Arabian Sea (AS). Using measured, modeled and reanalysis wave data and reanalysis wind data, we show that the IOD plays a major role in the variability of wave climate of the study region. Due to the IOD induced changes in equatorial sea surface temperature and sea level pressure, the winds from the northern AS gets modified and it produce inter-annual variability in the wave climate over the eastern AS. ~~Inter-annual variability in the wave climate over the eastern AS during the IOD is due to the modification of winds from the northern AS.~~ The change in wind field over the AS due to IOD influence the generation or dissipation of wave field and hence cause the decrease in northwest short period waves during positive IOD and increase during negative IOD.

28 | **Key words:** surface waves, wave climate, long-term changes, ~~n~~<sup>n</sup>North Indian Ocean, climatic  
29 variability

## 1. Introduction

The north Indian Ocean (IO) is a unique ocean as compared to northern Atlantic and Pacific oceans. Because of the land locked northern boundary, the wind pattern in this region shows semiannual reversal and cause boreal summer (June-September) and winter (December-February) monsoons. Strong westerly in the equatorial IO is limited ~~to~~during short transition periods between the monsoons (both south-west (SW) and north-east (NE)). The equatorial zonal wind reaches maximum around April-May and October-November [Hastenrath and Polzin, 2004]. The wind in eastern AS shows decreasing trend during October and November [Ziegar et al., 2014 (supplementary information)].

Wind waves are the prominent feature of the ocean surface and play a major role in planning activities in the open ocean and in coastal zones [Anoop et al., 2015]. Hence, comprehensive understanding of the properties of the waves and their potential changes are the major knowledge required for sustainable management of both the coastal and offshore region. The wave climate of eastern AS shows large response to seasons and it shows maximum wave height during ~~south-west~~SW monsoon season [Chempalayil et al., 2012; Glejin et al., 2013a; Kumar et al., 2014; Anoop et al., 2015]. Glejin et al. (2012) analyzed the wave parameters in three locations of eastern AS during SW season and found that the wave height increased from south to north. Shanas and Kumar (2014) studied the changes in wind speed and significant wave height (SWH) in eastern AS by analyzing for 34 years data. The average SWH in the eastern AS during pre-monsoon (FMAM), SW monsoon (JJAS) and post-monsoon (ONDJ) are around 1, 2.7 and 0.7 m respectively with an annual average value of ~ 1.1 m [Glejin et al., 2013a]. Apart from seasons, Aboobacker et al. (2011) observed distinct wave characteristics during winter season (NE monsoon and early pre-monsoon) with periodicity ranging from two to five days associated with shamal events in northern AS. Glejin et al. (2013b) also observed the presence of summer shamal swells off Ratnagiri, a location in the ~~central~~eastern AS. The diurnal variation due to sea/land breeze has large influence on the wind-sea climate of eastern AS during the non-monsoon period [Neetu et al. 2006; Glejin et al. 2013a]. Long period southern hemispheric swells are ~~presented~~ in eastern AS except during the SW monsoon season [Glejin et al., 2013a].

The monsoon wind patterns in the north IO ~~cause~~affect the spatial distribution of sea surface temperature (SST) in the tropical IO. The SST distribution ~~and differs~~ is contrast to

~~from~~ that observed in Pacific and Atlantic that are warmer on the west [Vinayachandran et al., 2009]. In the IO, warm water is in the eastern side and cold water is in the western side [Vinayachandran et al., 2009]. This SST distribution overturns during the coupled oceanic and atmospheric phenomena in the equatorial IO known as Indian Ocean dipole (IOD) [Saji et al., 1999]. ~~The positive phase of IOD is known as P~~positive IOD (PIOD) ~~and~~ is associated with decreases (increases) of SST and increases (decreases) of sea level pressure (SLP) over the eastern (western) tropical IO. The negative phase of IOD is intensification of the normal condition [Vinayachandran et al., 2009]. In equatorial IO, IOD appears as a dominant contributor of SST variability during the boreal fall season (October-December) [Saji and Yamagatta, 2003]. About 12% of the SST variability in the IO is associated with dipole mode events [Vinayachandran et al., 2009]. There is a phase lag in the SST evolution between the eastern and western tropical IO [Saji et al., 2003] and the regions of positive anomaly (during ~~positive-PIOD~~) ~~continuously~~ vary with year [Vinayachandran et al., 2009]. The Dipole Mode Index (DMI) is the quantitative representation of strength of IOD and is a measure of the anomalous zonal SST gradient across the equatorial IO. It is defined as the difference between SST anomaly in a western (60°E-80°E, 10°S-10°N) and an eastern (90°E-110°E, 10°S-0°S) box. Seasonal phase locking is the important characteristic of the DMI time series, ~~thus significant anomaly appear in June and peaks in October.~~ It is moderately correlated with nino3 (ENSO) index, but it is strongly correlated with equatorial winds over the IO [Saji et al., 1999]. Monthly DMI are available in the website of Japan Agency of Marine-Earth Science and Technology ([www.jamstec.go.jp](http://www.jamstec.go.jp)).

The tropical IO displays strong inter-annual climate variability associated with the El Niño–Southern Oscillation (ENSO) and IOD [Murtugudde et al., 2000; Slingo and Annamalai, 2000]. Baquero-Bernal et al. [2002] found that IOD shows good correlation with ENSO in the equatorial Pacific Ocean. However, the correlation between the strength of ENSO and IOD are not linear [Shinoda and Han, 2005]. IOD co-occurring with ENSO are forced by a zonal wind shift in the descending branch of ~~W~~walker circulation in the eastern IO and the process that initiate IOD in the absence of ENSO are not clear [Vinayachandran et al., 2009].

The impact of IOD on the wind pattern in the equatorial IO is examined in the following studies. SST and SLP (~~sea level pressure~~) variation produced by IOD cause easterly zonal wind anomaly especially in its zonal component in equatorial IO [Reverdin,



1985; Murtugudde et al., 2000; Saji et al., 1999; Webster et al., 1999; Sreenivas et al., 2012]. The IOD forced wind anomalies are maximum in the central equatorial IO [Sreenivas et al., 2012] and the significant anomalies appear around June, intensify in the following months and peaks at October. The anomalous easterlies weaken the eastward Wyrтки jets [Wyrтки, 1971] in the equatorial IO [Reverdin, 1985]. The wind anomaly produced during IOD has longer duration, but ENSO has shorter duration [Rao et al., 2002].

Even though the influence of IOD on the wind pattern of IO is reported [Saji et al., 1999], the role of this event on the ~~wind-generated~~ wave climate of IO is not yet studied. Glejin et al. [2013c] pointed out the possibility of influence of IOD on the wave climate of southeast coast of India, but further analysis on this topic in this region is not carried out. Most of the studies in the past have focused on the influence of IOD on the wind pattern of equatorial IO. In this paper, we have examined the impact of IOD on the surface wind field of Arabian Sea and its impact on the wave climate of eastern Arabian Sea. The analysis is confined to October, when the impact of the IOD is strongest and wind conditions in the AS are calmest. Fig. 1a shows the study area. The data sets used in this study and the details of the numerical models are described in section 2. Section 3 describes results and discussion, and the main findings are summarized in section 4.

## 2. Data and methods

The major challenge for the wave climate study in eastern AS is the scarcity of long-term observational data. Here, in the present study we used the available measured data using Datawell directional waverider buoy off Ratnagiri (available from 2010 to 2014) and off Honnavar (available from 2008 to 2014) off central west coast of India. Among these, Ratnagiri is the northern and Honnavar is the southern location and these locations are spaced at ~ 350 km apart. The details of the data analysis are similar to that presented in Kumar et al. [2014]. The spectral climatology of the study area is presented by Kumar and Anjali [2015].

Due to scarcity of sufficient measured data, we used reanalysis product of ECMWF (European Centre for Medium-Range Weather Forecasts) i) ERA-40 [Uppala et al., 2005] for the period 1958 to 1978 and ii) ERA-I [Dee et al., 2011] for the period 1979 to 2014 for deriving the wind climatology. Spatial resolution of ERA-40 is 1.5° X 1.5° and ERA-I is 1° X 1°. Performance of ERA-I was previously evaluated over tropical and north IO and showed

good performance compared with observation for wind and wave [Kumar et al., 2013; Shanas and Kumar, 2014; Kumar and Naseef, 2015]. In the present study, blended data sets of ERA-40 and ERA-I is used only for long-term wind field analysis during positive, negative and neutral IOD years. Since ERA-I is the improved version of ERA-40 [Dee et al., 2011], we compared the ERA-40 with ERA-I during October from 1979 to 2001 (Figure 2). From the analysis, it is clear that the error in ERA-40 compared to ERA-I will not significantly affect the results when we blend these datasets together. For SST data we used the daily averaged Tropflux SST with 1° X 1° resolution from 1979 to 2014 [Kumar et al., 2012].

In order to simulate the directional wave spectrum at the buoy location, we have used ~~the two~~ third-generation spectral wave models; WAVEWATCH III (WW3) 4.18 and Simulating Waves Nearshore (SWAN) 41.01. WW3 is the wave model developed by NOAA/NCEP [Tolman, 1991; 2009] and is based on finite difference solving of the energy balance equation of the spectral wave action in the approximation of phase averaging. The coastal wave model SWAN is a third-generation, phase averaged numerical wave model for the simulation of waves in waters of deep, intermediate and finite depth [Booij et al., 1999]. The physical parameterization of model physics of WW3 is described in several works [e.g. Tolman, 1991; 2009] and that for SWAN by Booij et al. [1999], Ris et al. [1999] and Bunney [2011]. We have implemented a ~~coarse~~ resolution WW3 model with a resolution of 0.25° x 0.25° in latitude and longitude covering the entire domain in the IO (20° E-78° E and 70° S - 35° N) and a SWAN model with relatively finer grid of 1 minute in the NIO (70-75° E and 10-20° N). We used high-resolution bathymetry from the 1-minute gridded elevations/bathymetry for the world (ETOPO1) database [Amante and Eakins, 2009] available from the National Geophysical Data Centre (NGDC, United States).

Wave frequencies were discretized over 25 bins on a logarithmic scale from 0.04 to 1 Hz; wave direction was binned into 36 intervals of 10° each. WW3 run carried out using physical processes contained in source term package-2 (ST2) [Tolman and Chalikov, 1996]~~ST2 physics and the time series 2-dimensional energy density spectra obtained from it is used as the boundary condition for SWAN.~~ The terms selected are bottom friction and depth-induced breaking [Hasselmann et al., 1973]. The wind growth and white capping [Komen et al., 1984], quadruplet and triad interaction processes were activated. The WW3 model is driven by the surface wind fields from ERA-I at every 6 h interval and the time series 2-dimensional energy density spectra obtained is used as the boundary condition.

~~Offshore waves provide the necessary boundary forcing~~ for the higher-resolution near-shore wave model SWAN. ~~The two models coupled in such a way that the two dimensional spectral outputs from the coarser model WW3 were given as the initial boundary condition for the SWAN.~~ For comparison of the SWH estimated in deep water using WW3, the measured wave data collected using a moored Seatex buoy (Oceanor, Norway) under the National Data Buoy Programme [Premkumar et al., 2000] at AS2 location in the AS (15.00° N; 69.00° E; water depth ~ 3000 m) during October-December 2009 is used. The heave data of the buoy is recorded at 2 Hz interval for 17 minutes duration and from the recorded heave data, the wave spectrum is obtained through fast Fourier Transform and the SWH is estimated from the zeroth spectral moment ( $m_0$ ) as  $SWH = 4\sqrt{m_0}$ . For quantitative comparison between measured and model output, several error statistics have been determined; Pearson's linear correlation coefficient  $r$ , root-mean-square (RMS) error, bias, and scatter index (SI). The comparison of model results with measured data in deep water is carried out only for October 2009, since our study is only on the influence of IOD on the wave climate during October. But for shallow water area (Ratnagiri) which is our area of interest we carried out validation for 2011 September to November (Fig.ure 3). From this it is found that for shallow and deep water both models show 0.95 correlation. Whereas for deep water the model is slightly underestimating (-0.13m) and for shallow water it is overestimating (0.06 m). Scatter index and RMSE error of both models are very small. From this we can see that the model shows good performance in both deep and shallow water areas.

### 3. Results and discussion

During October and November, the waves in the AS are dominated by low-amplitude (SWH < 1 m) wind-seas~~The months of October and November are the calm period for the AS with dominance of wind-sea~~ [Young 1994; Chempalayil et al., 2012; Glejin et al., 2013a], and during this time the DMI reaches its maximum value. For this particular period we examined the role of DMI on the wave climate of eastern AS and observed that during October surface waves in this region shows response to DMI. We selected six locations (Fig.ure 1a) along the eastern AS which are at more than 100 km away from the coast of India (Table 1). The time series plot of ~~significant wave height (SWH)~~ and mean wave period (MWP) with DMI are shown in Fig.ure 4a. Correlation and partial correlation of the wave

parameters with DMI and SOI (southern oscillation index) are shown in Table 1 and it shows that SWH is negatively related and MWP is positively related to DMI. The influence of IOD increases towards south, but after removing ENSO (SOI) the correlation values in all locations decreases and maximum correlation is observed in the central AS (location L4). This ~~implies~~<sup>inferred</sup> that if influences of ENSO are removed, then IOD have more impact on the central eastern AS. Impact of ENSO with and without IOD is checked here and identified that without IOD, the impact of ENSO is significant only in the southern part of eastern AS. From this it is certain that in the eastern AS region IOD has more impact than ENSO and its effect is dominant off the central west coast of India. Variability of SWH and MWP with respect to DMI index from 1979 to 2013 is shown in time series plot ~~at the~~ same six locations (Figure 4a). The anomaly in the SWH varies between -0.2 m and 0.4 m and that for MWP from -2 s to 1 s. Maximum SWH and MWP anomaly is observed during 1997, which is the strongest IOD year for the study period.

The composite climatology (using ERA-40 and ERA-I) of October wind pattern (from 1958 to 2014) of AS and a part of equatorial IO is shown in Figure 1b. The wave measuring locations (Ratnagiri and Honnavar) in central eastern AS is shown as red dots (Figure 1a). The eastern AS region shows comparatively strong wind compared to the western AS. The wind from the northern AS passes parallel to the Indian west coast to eastern equatorial IO after merging with equatorial westerly, while over the central AS the wind vectors are from northerly direction ~~and~~ change their direction to north-westerly before merging with the westerly equatorial winds and north-westerly ~~component of wind blowing parallel to winds nearer~~ the Indian coast. This pattern of wind is due to the low pressure in the eastern equatorial IO due to the warm water in this region compared to western equatorial IO [Vinayachandran et al., 2009].

Pure positive IOD and combined events are considered following Aparna et al. [2012]. A pure IOD event is that which occurred in the absence of an ENSO event [Rao et al., 2002]. A positive (negative) IOD event that co-occurred with an El Niño (La Nina) is a combined IOD event. A pure ENSO event is defined similarly. The combined events are to be strong only if both El Niño and positive IOD events are strong. Figures 1c and 1d are the wind pattern during pure positive and combined IOD events respectively. ~~and these figures illustrates that the wind pattern in the eastern AS, which modify the north westerly wind vectors to north easterly as observed from its climatology. As observed from climatology,~~

these figures illustrate that in the eastern AS the north-westerly wind vectors are modified to north-easterly. Instead of going to eastern equatorial IO the wind it blows to western IO. This can be perceived as more strong in combined event of PIOD with a comparatively weak wind vectors along the southwest of India. During the negative IOD (NIOD) events (Figures 1e and 1f) wind blows over the central and eastern AS as north-westerly which is in contrast to the wind pattern during PIOD. This modification in the wind pattern over the central AS to either westward or eastward direction from its general climatology pattern during the PIOD or NIOD events is due to the IOD induced temperature variability in the equatorial IO.

Measured frequency-directional spectrum of surface waves from two locations off the central west coast of India are shown in Figure 5. ~~The measuring locations are marked as red dots (first row of Figure 5). Among these, Ratnagiri is the northern and Honnavar is the southern location and these locations are spaced at 350 km apart.~~ The wind pattern of corresponding years is shown in Figure 5a and year wise SST anomaly in west, east and DMI index for October is shown in Figure 4a and 4b. For the years 2008 to 2014, it can be seen that maximum positive DMI index is observed during 2011 (Figure 4a). During this year the winds in eastern AS has shifted its direction as north-easterly. Its influence is clearly visible in the frequency-directional spectrum of waves at Ratnagiri and Honnavar, due to the decrease in short period waves from northwest (NW) direction. This difference in higher energy at Ratnagiri than Honnavar is clearly evident from Figures 5b & 5c and is caused by the alteration of wind direction to NE before reaching Honnavar. So the dissipation of NW waves and weak wind at Honnavar region causes decrease in the short period wave energy. Similar patterns are observed in other years such as 2008, 2012 and 2014 which has got comparatively higher DMI. Endo and Tozuka (2015) classified 2008 as IOD Modoki, 2011 and 2012 as Canonical IOD years and hence higher DMI is observed in these years.

In contrast to the above, the only year with negative DMI during 2008 to 2014 is in 2010. During 2010, the wind pattern is in NW direction and dominance of short waves from NW is higher. Similar pattern can be seen in 2009 and 2013 as these years also have low DMI index. Unlike PIOD, during negative IOD, the short period waves are slightly higher at Ratnagiri than at Honnavar and this may be due to the dissipation of the waves from NW due to the larger distance travelled by the waves to reach Honnavar than Ratnagiri. From Figure 4b we can see that maximum positive anomaly in SST of western equatorial IO since 2008 is observed in 2009. However, the influences of high SST anomalies are not observed either in

the wind pattern or wave climate. This depicts that the modification of wind vectors not only depends on the SST anomaly in the west or east separately but also on the DMI index.

To confirm the influence of IOD induced turning wind pattern (Fig. 1b to 1f) on the waves off the west coast of India, we spatially averaged the zonal wind component within the region where wind shows alteration in its direction (14°N to 20°N; 70°E to 73°E) and averaged the short period waves within 0.14 Hz to 0.29 Hz frequency and 280°-320° direction. The scatter plot for both zonal wind and measured SWH in this particular direction and frequency range off Ratnagiri and off Honnavar for all years are shown in Figure 6. From the figure it can be seen that the zonal wind component in this region has a direct influence on the wave climate of this region. ~~For the positive value of zonal wind component, the influence on SWH is higher than the negative value of zonal wind and for positive zonal wind, wave height is comparatively higher than that during the negative zonal wind~~ SWH increases with the zonal wind component, and this increase is greater when the zonal wind component is positive than when it is negative.

During the negative phase of IOD, the swell height is slightly less than that during the positive phase (Fig. 5b and 5c). The turbulent sea state generated by dominance of short period waves during negative phase of IOD, leads to increased decay rate of swell [Ardhuin et al., 2009; Young et al., 2013]. The sign reversal of the air-sea momentum flux depends on a parameter known as inverse wave age (ratio of sea surface wind speed to the speed of the wave corresponding to peak frequency) and it is very useful to understand the present sea state [Grachev and Fairall, 2001; Hanley and Belcher, 2008; Hanley et al., 2010]. Here, we calculated the monthly (October) average inverse wave age off Ratnagiri and the values are 0.32, 0.11, 0.27, 0.35 and 0.17 from 2010 to 2014. ~~From this it is more evident that during the positive phase of IOD, the eastern AS turns as wave driven wind region and this time in this region, waves transfer momentum to wind. During the negative IOD period, region becomes mixed state. From this it is more evident that during the positive phase of IOD, the eastern AS is a wave-driven wind region (inverse wave age < 0.15), i.e. waves transfer momentum to wind. During the negative IOD period, region becomes mixed state (0.15 < inverse wave age < 0.83; both wind driven wave and wave driven wind are present).~~ The modelled frequency-directional spectrum off Ratnagiri and Honnavar from 2010 to 2014 is shown in figures 5d and 5e. Comparison of measured and modelled spectra off Honnavar and Ratnagiri shows that the spectral energy is overestimated by the model since the ERA-I wind data used in the



study is with a coarser resolution of  $1^\circ \times 1^\circ$  (Figure 5b and 5c). Even though the model overestimated the spectral energy, it can be observed that the model reproduced almost the same pattern as observed wave spectra. The influence of altering wind pattern is clearly evident in the modelled spectra as well.

Since IOD has large influence on SST variability in equatorial IO, here we show the SST of AS and western equatorial Indian Ocean in Figure 7. Here, we considered comparatively strong PIOD and NIOD events from 1979 to 2014. The PIOD years are 1982, 1994, 1997 and 2006 (left panel of Figure 7). Among these in 1994, IOD occurs in the absence of ENSO. The NIOD years are 1980, 1984, 1996 and 1998 (right panel). This SST variability produces variability in SLP (Figure 8). ~~It cause decrease of SLP in the western equatorial Indian Ocean and reverse occurs in eastern equatorial IO (not shown in this figure) during the positive phase of IOD and vice versa for negative IOD.~~ The wind pattern of the respective years for AS and part of equatorial IO are shown in same figure. ~~This low pressure system developed over the western and high pressure system in eastern equatorial IO (for positive phase of IOD) forces the modification of wind vectors in AS as discussed earlier.~~ Since the NIOD is the intensification of the normal condition of October [Vinayachandran et al., 2009], the SLP in western equatorial IO is higher and lower in eastern equatorial IO. Hence, the winds from the northern AS will propagate towards eastern equatorial IO along eastern AS. This is the influence of IOD induced temperature variability on SLP and wind direction.

Since the performance of numerical model is good we have carried out further analysis using this model for the period where measured data is not available. Simulated directional spectra for the years 1980, 1982, 1984, 1994, 1996, 1997, 1998 and 2006 are shown in Figure 9. Column one and three are for PIOD years off Ratnagiri and off Honnavar respectively, similarly column 2 and 4 are for NIOD years. From the figure it is evident that for the positive phase of IOD, the short period waves from the NW direction is less at both locations, whereas in 2006 it shows a conflicting result. From Figure 8, it is clear that in 2006 the wind pattern in the central AS is north-easterly as observed in the other PIOD events, but along the eastern AS wind vector are slightly extended southerly compared to the strong events observed during 1994 and 1997. Similar pattern, but comparatively less spatial extension in wind vectors towards south is also evident during 1982 (Figure 8).

In case of 1996, which is the strongest NIOD events considered for this study, we expect a more evident signature in SWH at the study locations: Ratnagiri and Honnavar. However, in the wave spectrum its signature is weaker than that observed in 1980 and 1984 (Figure 9). Wind pattern observed during the period, in 1996, is northerly down to 15° N then it turns as north-westerly and propagates towards eastern equatorial IO (Figure 8). ~~This makes the region over central west coast of India as calm area due to the change in wind pattern over the region which arises from the negative SLP anomaly at north of central west coast of India.~~ The change in wind pattern from the composite climatology of NIOD events (Figures 1e & 1f) cause the weakening of short period waves arriving from the NW and corresponding influence in directional wave spectra. Similarly, the second strongest NIOD events occurred in 1998, but the signature of this event is absent on the wave climate. ~~This is due to the absence of NW winds in northern AS due to the associated negative SST anomaly leads to north-eastern AS region to a calm condition~~ The northern-eastern AS region is calm due to the absence of NW winds in the northern AS, in turn due to the associated negative SLP anomaly.

#### 4. Conclusions

We analysed the wind pattern over the AS and examined the influence of IOD events on the wave climate of eastern Arabian Sea using reanalysis, observation, and model datasets. Analysis of wind pattern influenced by the IOD has been carried out by removing the influence of ENSO from IOD and vice versa. It has been found that IOD has significant influence on the wave climate off the central west coast of India compared to the northern and southern parts. The decreasing of wave height during positive IOD is due to the decrease of short period waves from northwest direction. Wind blowing from the northern AS is the major determining factor on wave climate. In general, climatology of wind pattern in central and eastern AS during October is northerly and north-westerly respectively. During PIOD events, wind vectors modify its direction and blow as north-easterly because of the IOD induced SST anomaly in the equatorial Indian Ocean. This brings a weakening of wind field over the central and south of central west coast of India. This change in direction of wind pattern in AS cause the decrease in wave height off central and south west coast of India during PIOD. Whereas, during NIOD events wind vectors turn to north-westerly instead of northerly winds in the composite climatology over the region during October. It leads to increasing of short period waves in same region. The influence of IOD on the wave climate



mainly depends on the modification of wind field caused by the phases of IOD event. If this wind pattern is absent even during strong IOD event, then the signature of IOD on the wave climate is also absent. This alteration of wind pattern mainly depends on the IOD induced SST variability in eastern and western equatorial IO and some other unknown factors may also cause slight modification in this wind which requires more analysis to understand this variability. From this study it is clear that IOD has an impact on the wave climate off west coast of India especially off the central west coast of India due to the decrease of north-westerly short period waves.

### Acknowledgements

Authors acknowledge the CSIR, New Delhi for funding the wave measurement at Honnavar and ESSO- INCOIS, Ministry of Earth Sciences, Government of India for funding the wave measurement at Ratnagiri. The director CSIR-NIO, Goa provided encouragement to carry out the study. The deep water buoy data used for validation of numerical model was collected by National Institute of Ocean Technology, Chennai and provided by Indian National Centre for Ocean Information Services (INCOIS) Ministry of Earth Sciences, Hyderabad. Dr. T. M. Balakrishnan Nair, Mr. Arun Nherakkol and Mr. Jai Singh provided support during data collection. We thank Dr. Vedpathak and Mr. Parag Kulkarni, Centre for Coastal & Marine Biodiversity, Dr. Babasaheb Ambedkar Marathwada University, Ratnagiri for providing the logistics required for wave data collection at Ratnagiri. This work forms part of the Ph.D. thesis of the first author. We thank the topic editor Dr. John M. Huthnance and the two reviewers for the critical review and the suggestions, which improved the scientific content of the paper. This work is NIO contribution No. 2015.

### References

Ardhuin, F., Chapron, B., and Collard, F.: Observation of swell dissipation across oceans, *Geophys. Res. Lett.*, 36, L06607, doi:10.1029/2008GL037030, 2009.

Aboobacker, V. M., Rashmi, R., Vethamony, P., and Menon, H. B.: On the dominance of pre-existing swells over wind seas along the west coast of India, *Cont. Shelf Res.*, 31(16), 1701-1712, 2011.

[Amante, C. and Eakins, B. W.: ETOPO1 1 arc-minute global relief model: procedures, data](#)

~~sources and analysis, NOAA Tech. Memo., NESDIS NGDC-24, National Oceanic and Atmospheric Administration, Boulder, Colorado, USA., 19 pp., 2009. Amante, C., and Eakins B. W.: ETOPO1 1 arc minute global relief model: Procedures, data sources and analysis, NOAA Tech. Memo., NESDIS NGDC 24, 19 pp., (2009).~~

Amrutha, M.M., Kumar, V.S. and Singh, J.: Changes in nearshore waves during the active sea/land breeze period off Vengurla, central west coast of India, *Annales Geophysicae* (in press), 2016.

Aparna, S. G., McCreary, J. P., Shankar, D., and Vinayachandran P. N.: Signatures of Indian Ocean Dipole and El Niño–Southern Oscillation events in sea level variations in the Bay of Bengal, *J. Geophys. Res. Oceans.*, 117, C10, 2012. [DOI: 10.1029/2012JC008055](https://doi.org/10.1029/2012JC008055)

Baquero-Bernal, A., Latif, M., and Legutke S.: On dipole like variability of sea surface temperature in the tropical Indian Ocean, *J. Clim.*, 15(11), 1358-1368, 2002.

Booij, N., Ris, R. C., and Holthuijsen L. H.: A third-generation wave model for coastal regions: 1. Model description and validation, *J. Geophys. Res. Oceans.*, 104(C4), 7649-7666. (1999).

~~Bunney, C.: A high resolution SWAN model assessment: North Norfolk to Humber. Forecasting Research Technical Report 557, Met Office, Devon, United Kingdom, 2011. Bunney, C.: A High Resolution SWAN Model Assessment: North Norfolk to Humber. Met Office Forecasting Research Technical Report., 557. (2011).~~

Chempalayil, S. P., Kumar, V. S., Johnson, G., Udhaba, D. G., and Vinayaraj, P.: Interannual and seasonal variations in nearshore wave characteristics off Honnavar, west coast of India, *Curr. Sci.*, 103, 286–292, 2012.

Dee, D. P., Uppala, S. M., Simmons, A. J., Berrisford, P., Poli, P., Kobayashi, S., ... and Vitart F.: The ERA-Interim reanalysis: Configuration and performance of the data assimilation system, *Q. J. R. Meteorolog. Soc.*, 137(656), 553-597, 2011.

Endo, S., and Tozuka, T.: Two flavors of Indian Ocean Dipole. *Climate. Dyn.*, 1-15, 2015.

Grachev, A. A., and Fairall, C. W.: Upward momentum transfer in the marine boundary layer, *J. Phys. Oceanogr.*, 31, 1698–1711, 2001.

402 Hanley, K. E., and Belcher, S. E.: Wave-driven wind jets in the marine atmospheric boundary  
403 layer, *J. Atmos. Sci.*, 65, 2646–2660, 2008.

404 Hanley, K E., Belcher, S. E., and Sullivan, P. P.: A global climatology of wind-wave  
405 interaction, *J. Phys. Oceanogr.*, 40(6), 1263-1282, 2010.

406 Glejin, J., Kumar, V.S., Sajiv, P.C., Singh, J., Pednekar, P., Kumar, K.A., Dora, G.U., and  
407 Gowthaman, R.: Variations in swells along eastern Arabian Sea during the summer monsoon,  
408 *Open J. Mar. Sci.*, 2 (2), 43–50, 2012.

409 Glejin, J., Kumar, V. S., Nair, T. B., and Singh J.: Influence of winds on temporally varying  
410 short and long period gravity waves in the near shore regions of the eastern Arabian  
411 Sea, *Ocean Sci.*, 9, 343-353, 2013a.

412 Glejin, J., Kumar, V. S., Nair, T. B., Singh, J., and Mehra P.: Observational Evidence of  
413 Summer Shamal Swells along the West Coast of India, *J. Atmos. Oceanic Technol.*, 30(2),  
414 379-388, 2013b

415 Glejin, J., Kumar, V. S., and Nair T. M. B.: Monsoon and cyclone induced wave climate over  
416 the near shore waters off Puduchery, south western Bay of Bengal, *Ocean Eng.*, 72, 277-286,  
417 2013c.

418 Hasselmann, K., Barnett, T.P., Bouws, E., Carlson, H., Cartwright, D.E., Enke, K., Ewing,  
419 J.A., Gienapp, H., Hasselmann, D.E., Kruseman, P., Meerburg, A., Mu"ller, P., Olbers, D.J.,  
420 Richter, K., Sell, W., and Walden H.: Measurements of wind-wave growth and swell decay  
421 during the Joint North Sea Wave Project (JONSWAP). *Deutsche Hydrographische Zeitschri*  
422 *Supplement A.*, 8(12) 95p, 1973.

423 Hastenrath, S., and Polzin D.: Dynamics of the surface wind field over the equatorial Indian  
424 Ocean, *Q. J. R. Meteorolog. Soc.*, 130 (597), 503-517, 2004.

425 Komen, G., Hasselmann, S., and Hasselmann K.: On the existence of a fully developed wind-  
426 sea spectrum, *J. Phys. Oceanogr.*, 14(8), 1271–1285, 1984.

427 Kumar, B. P., Vialard, J., Lengaigne, M., Murty, V. S. N., McPhaden, M. J., Cronin, M. F.,  
428 Pinsard, F., and Reddy K. G.: TropFlux wind stresses over the tropical oceans: evaluation and  
429 comparison with other products, *Clim. Dyn.*, 40, 2049-2071, 2013.

430 Kumar, B. P., Vialard, J., Lengaigne, M., Murty, V. S. N., and McPhaden M. J.: TropFlux:  
 431 air-sea fluxes for the global tropical oceans-description and evaluation, *Clim. Dyn.*, 38(7-8),  
 432 1521-1543, 2012.

433 Kumar, V. S., Shanas, P. R., and Dubhashi K. K.: Shallow water wave spectral characteristics  
 434 along the eastern Arabian Sea, *Nat. Hazard.*, 70(1), 377-394, 2014.

435 Kumar, V. S., and Naseef T. M.: Performance of ERA-Interim wave data in the nearshore  
 436 waters around India. *J. Atmos. Oceanic. Technol.*, 32(6), 1257-1269, 2015.

437 Kumar, V. S., and Anjali N. M.: Inter-annual variations in wave spectral characteristics at a  
 438 location off the central west coast of India, *Annales Geophysicae.*, 33, 159-167, 2015.

439 Murtugudde, R., McCreary, J. P., and Busalacchi A. J.: Oceanic processes associated with  
 440 anomalous events in the Indian Ocean with relevance to 1997–1998, *J. Geophys. Res.*  
 441 *Oceans.*, 105, 3295–3306, 2000.

442 Neetu, S., Shetye, S. R., and Chandramohan P.: Impact of sea breeze on wind-seas off Goa,  
 443 west coast of India, *J. Earth Syst. Sci.*, 115(2), 229-234, 2006.

444 Premkumar, K., Ravichandran, M., Kalsi, S. R., Sengupta, D., and Gadgil S.: First results  
 445 from a new observational system over the Indian Seas. *Curr Sci.*, 78, 323-330. (2000),

446 Rao, A. S., Behera, S. K., Masumoto, Y., and Yamagata T.: Interannual subsurface variability  
 447 in the tropical Indian Ocean with a special emphasis on the Indian Ocean Dipole, *Deep Sea*  
 448 *Res, Part II.*, 49, 1549–1572, 2002.

449 Reverdin, G.: Convergence in the equatorial surface jets of the Indian Ocean, *J. Geophys.*  
 450 *Res. Oceans.*, 90, C6, 11741-11750, 1985.

451 Ris, R.C., Holthuijsen, L.H., and Booij N.: A third-generation wave model for coastal regions  
 452 2. Verification, *J. Geophys. Res. Oceans*, 104 (4), 7667-7681. 1999.

453 Saji, N. H., and Yamagata T.: Structure of SST and Surface Wind Variability during Indian  
 454 Ocean Dipole Mode Events: COADS Observations, *J. Clim.*, 16(16), 2735-2751, 2003.

455 Saji, N. H., Goswami, B. N., Vinayachandran, P. N., and Yamagata T.: A dipole mode in the  
 456 tropical Indian Ocean, *Nature*, 401, 360–363, 1999.

457 Shanas, P. R., and Kumar V. S.: Temporal variations in the wind and wave climate at a  
 458 location in the eastern Arabian Sea based on ERA-Interim reanalysis data, *Nat. Hazards Earth*  
 459 *Syst. Sci.*, 14(5), 1371-1381, 2014.

460 Shinoda T., and Han W.: Influence of the Indian Ocean dipole on atmospheric sub seasonal  
 461 variability, *J. Clim.*, 18 3891 3909, 2005.

462 Slingo, J. M., and Annamalai, H.: The El Nino of the century and the response of the Indian  
 463 summer monsoon, *Mon. Weather Rev.*, 128, 1778–1797, 2000.

464 Sreenivas, P., Gnanaseelan C., and Prasad K. V. S. R.: Influence of El Niño and Indian  
 465 Ocean Dipole on sea level variability in the Bay of Bengal, *Global Planet. Change.*, 80, 215-  
 466 225, 2012.

467 Tolman, H. L.: User manual and system documentation of WAVEWATCH III TM version  
 468 3.14. Tech. Note., 276, [National Oceanic and Atmospheric Administration, National Weather](#)  
 469 [Service, Maryland, USA NOAA/NWS/NCEP/MMAB](#), 194p, 2009.

470 Tolman, H. L.: A third-generation model for wind waves on slowly varying, unsteady and  
 471 inhomogeneous depths and currents, *J. Phys.Oceanogr.*, 21, 782–797, 1991.

472 [Tolman, H.L., and Chalikov, D.: Source terms in a third-generation wind wave model. J.](#)  
 473 [Phys. Oceanogr., 26, 2497-2518, 1996.](#)

474 Uppala, S. M., Kållberg, P. W., Simmons, A. J., Andrae, U., Bechtold, V., Fiorino, M., and  
 475 Woollen J.: The ERA-40 re-analysis, *Q. J. Roy. Meteor Soc.*, 131(612), 2961-3012, 2005.

476 Vinayachandran, P. N., Francis, P. A., and Rao, S. A.: Indian Ocean dipole: processes and  
 477 impacts, *Current Trends in Science: Platinum Jubilee Special*, Indian Academy of Sciences  
 478 Bangalore, 569-589, 2009.

479 Webster, P. J., Moore, A. M., Loschnigg, J. P., and Leben R. R.: The great Indian Ocean  
 480 warming of 1997-1998: Evidence of coupled oceanic-atmospheric instabilities,  
 481 *Nature.*, 401(6751), 356-360, 1999.

- 482 Wyrski, K.: Oceanographic Atlas of the International Indian Ocean Expedition, 531 pp., Natl.  
483 Sci. Found., Washington, D. C, 1971.
- 484 Young, I. R.: Global ocean wave statistics obtained from satellite observations, Appl. Ocean.  
485 Res., 16.4, 235-248, 1994.
- 486 Young, I.R., Babanin, A.V., and Zieger, S.: The decay rate of ocean swell observed by  
487 altimeter, J. Phys. Oceanogr., 43, 2322-2333, 2013.
- 488 Zieger, S., Babanin, A.V., and Young, I.R.: Changes in ocean surface winds with a focus on  
489 trends of regional and monthly mean values, Deep Sea Res. Part 1, 86, 56-67, 2014.

Table 1: Correlation and partial correlation of SWH and MWP with DMI and NINO3 time series during October from 1979 to 2014.

	Correlation with DMI		Partial correlation with DMI (ENSO removed)		Correlation with ENSO		Partial correlation with ENSO (DMI removed)	
	SWH	MWP	SWH	MWP	SWH	MWP	SWH	MWP
<b>L1</b> (22°N;67°E)	-0.16	<b>0.37</b>	-0.19	0.23	-0.02	<b>0.30</b>	0.11	0.10
<b>L2</b> (19°N;70.5°E)	-0.27	<b>0.48</b>	-0.20	<b>0.29</b>	-0.19	<b>0.45</b>	0.03	0.20
<b>L3</b> (16.5°N;71.5°E)	<b>-0.38</b>	<b>0.68</b>	<b>-0.31</b>	<b>0.51</b>	-0.22	<b>0.53</b>	0.03	0.17
<b>L4</b> (13°N;73°E)	<b>-0.56</b>	<b>0.69</b>	<b>-0.40</b>	<b>0.52</b>	<b>-0.46</b>	<b>0.59</b>	-0.15	0.25
<b>L5</b> (10.5°N;74.5°E)	<b>-0.59</b>	<b>0.57</b>	<b>-0.34</b>	<b>0.33</b>	<b>-0.59</b>	<b>0.60</b>	<b>-0.33</b>	<b>0.35</b>
<b>L6</b> (7.5°N;76°E)	<b>-0.59</b>	<b>0.55</b>	<b>-0.35</b>	0.27	<b>-0.56</b>	<b>0.61</b>	<b>-0.29</b>	<b>0.40</b>

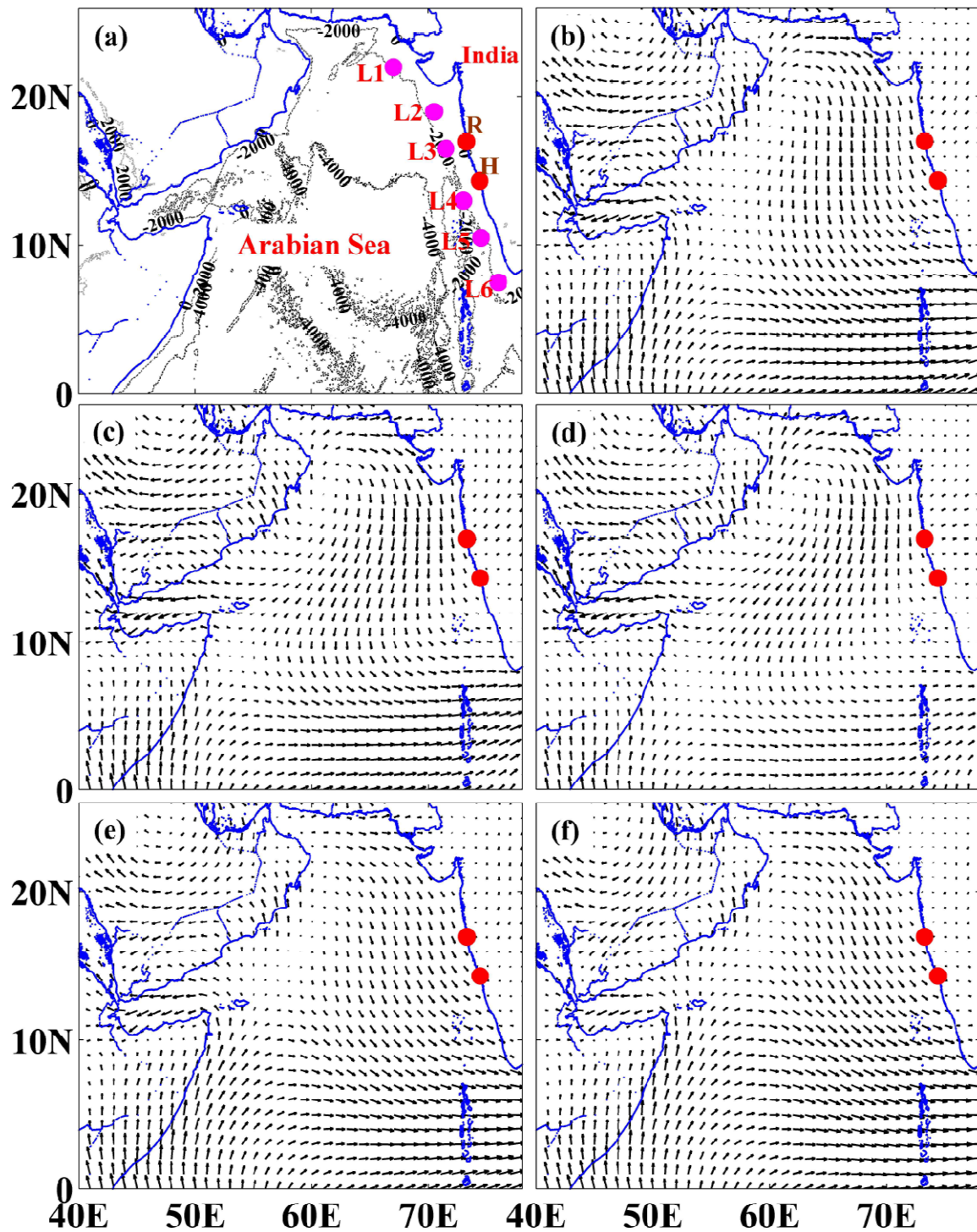


Figure 1: (a) The six locations considered to study the role of DMI on the wave climate isare L1 to L6. The wave measuring locations (Ratnagiri and Honnavar) in central eastern AS isare shown as red dots, b) Composite climatology of wind pattern during October in AS and part of equatorial Indian Ocean from 1958 to 2014. Averaged wind pattern during (c) pure positive IOD, (d) combined positive IOD, (e) Pure negative IOD and (f) Combined negative IOD from 1958 to 2014.



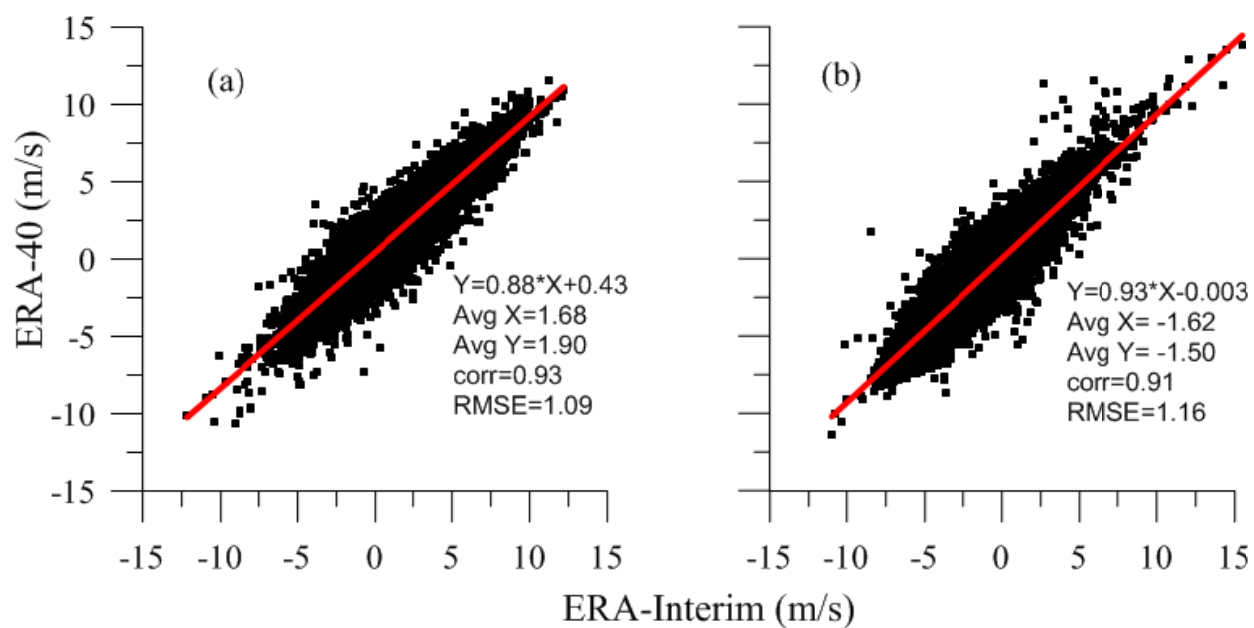


Figure 2 : Cross comparison of ERA-40 and ERA-I for October from 1979 to 2001. (a) zonal wind (b) meridional wind

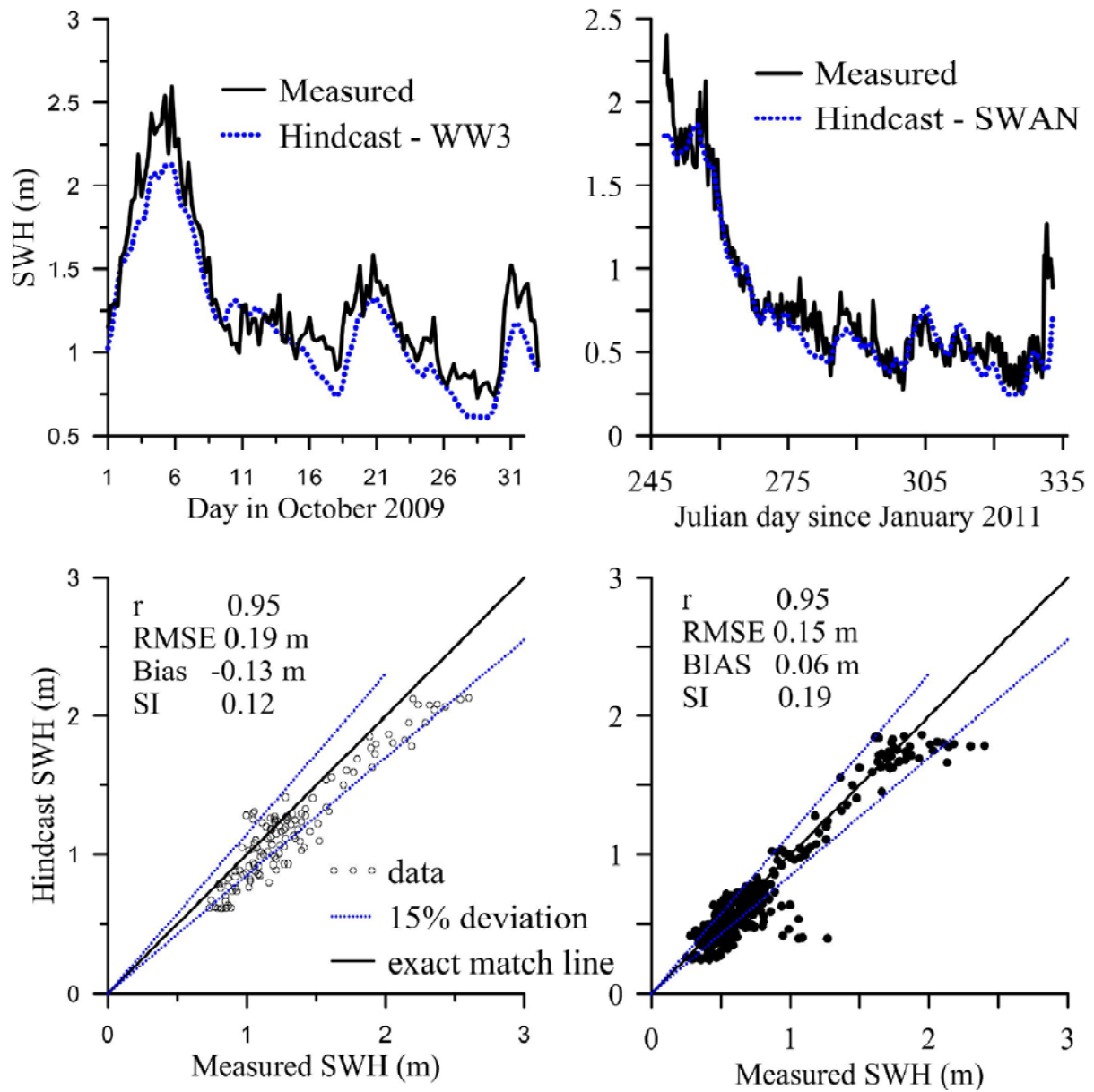


Figure 3: Comparison of hindcast SWH values with measured values. Left panel shows the values during October 2009 at deep water location and the right panel shows the values during September-November 2011 at shallow water location (Ratnagiri).

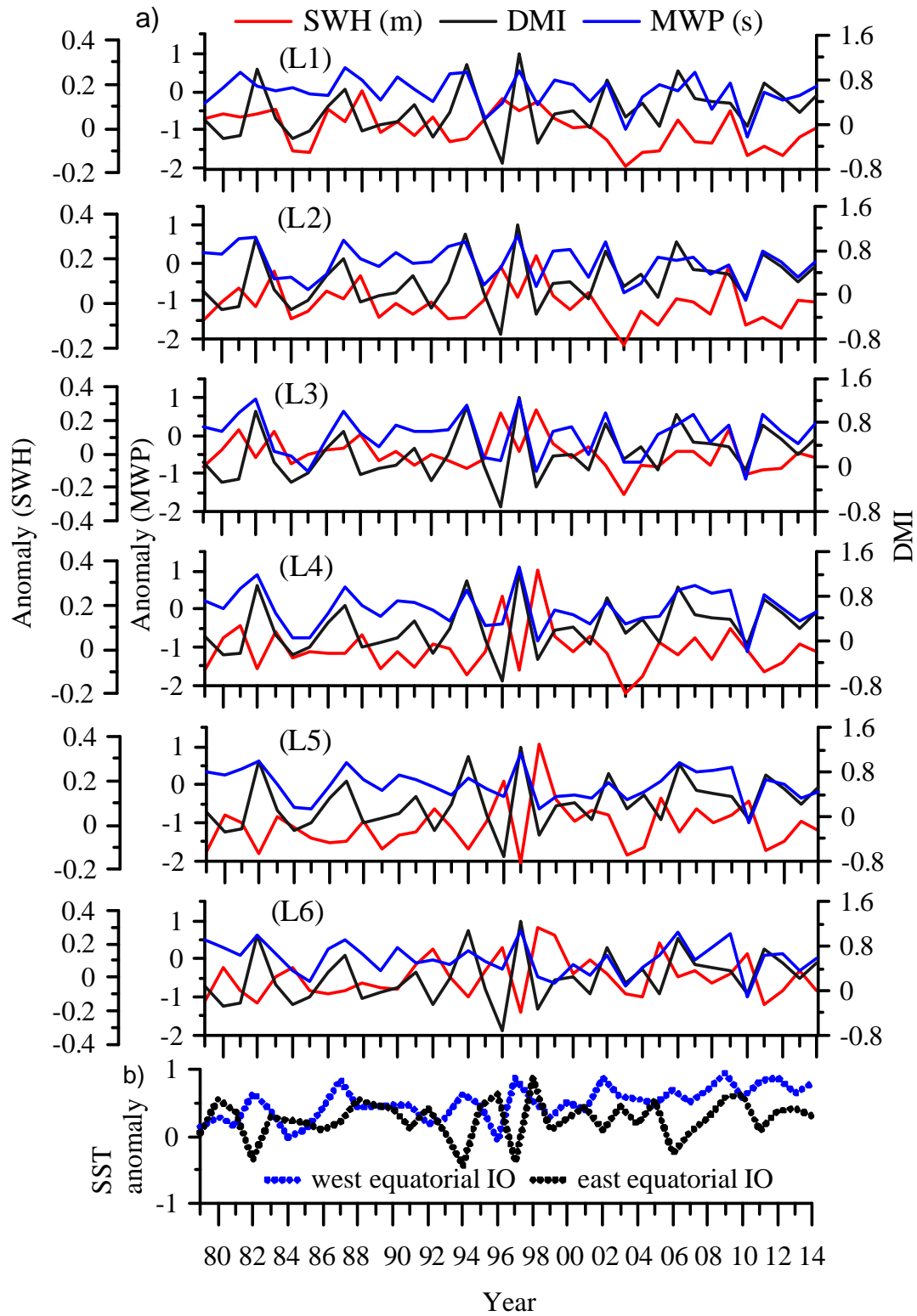


Figure 4 : a) Anomaly of significant wave height (SWH) and mean wave period (MWP) at selected six locations off west coast of India during October from 1979 to 2014. The wave data is from ERA-I. Locations are shown in Figure 1. b) Plot of SST anomaly in west and east equatorial IO. SST data is from Tropflux.

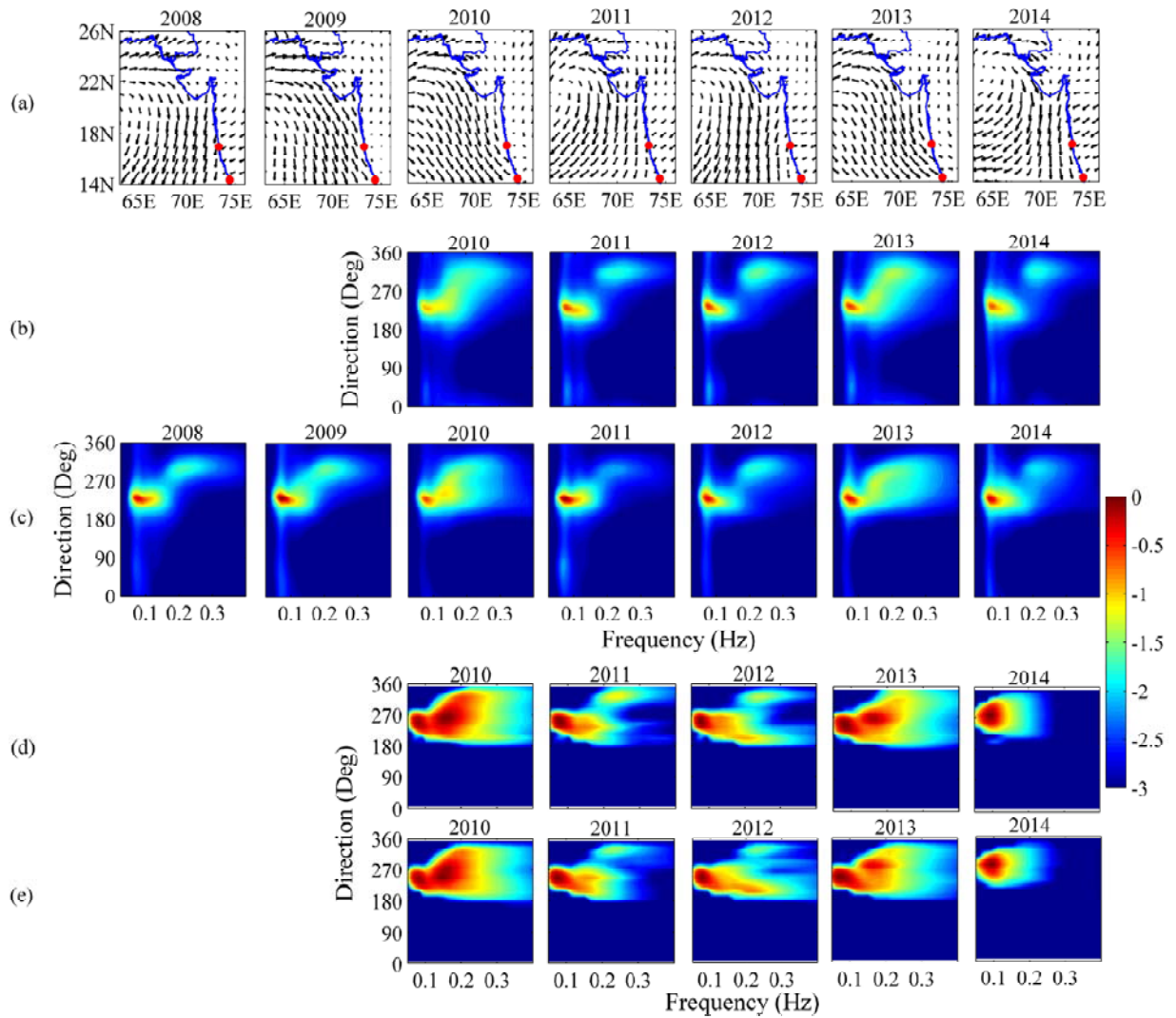
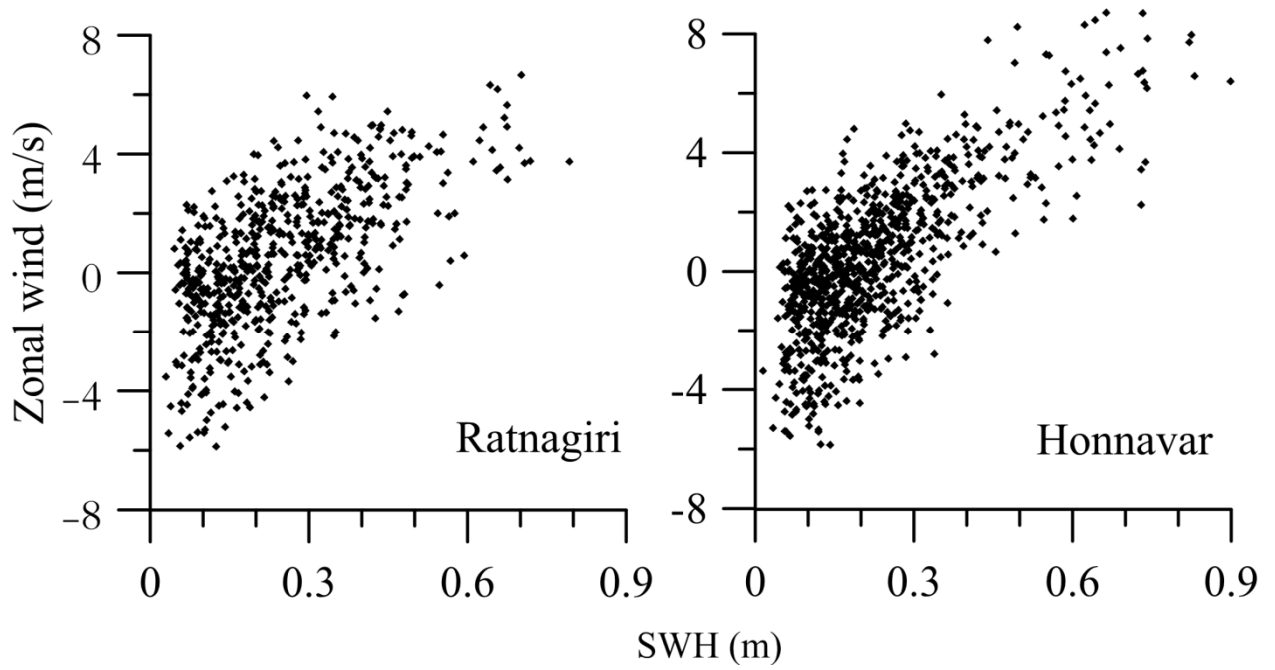


Figure5: Averaged wind pattern of October from 2008 to 2014 (row a). Averaged measured wave frequency-directional spectra from 2008 to 2014 off Ratnagiri (row b) and off Honnavar (row c) color bar is for spectral energy ( $\text{m}^2 \cdot \text{Deg} / \text{Hz}$ ) d) Modeled directional spectrum off Ratnagiri and (e) off Honnavar from 2010 to 2014. The spectral energy is shown in logarithmic scale base to 10. SST anomalies of eastern and western equatorial IO with dipole mode index are shown in Figure 4.



526

527 | Figure 6 : Scatter plot of zonal wind within 14 N to 20 N and 70 E to 73 E with ~~and~~ SWH of  
 528 high frequency range (0.14 Hz to 0.29 Hz) and NW direction waves (280° to 320°) off  
 529 Honnavar (from 2008 to 2014) and off Ratnagiri (from 2010 to 2014).

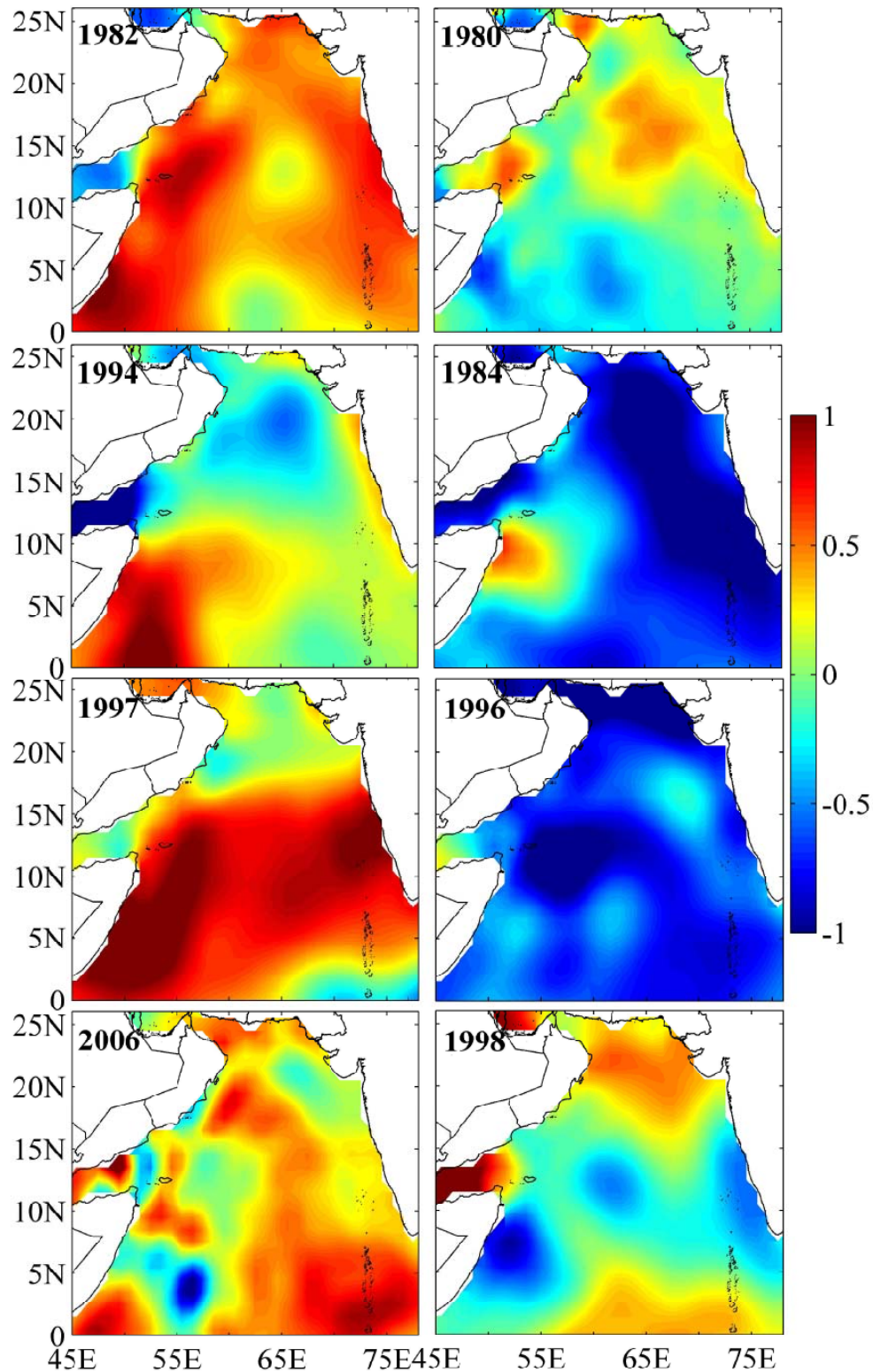


Figure 7: SST anomaly ( $^{\circ}\text{C}$ ) of eight strong positive (first column) and four negative (second column) IOD years from 1979 to 2014. Years are shown inside the figure and SST anomaly of eastern and western equatorial IO with Dipole Mode Index DMI for corresponding years are shown in Figure 4.



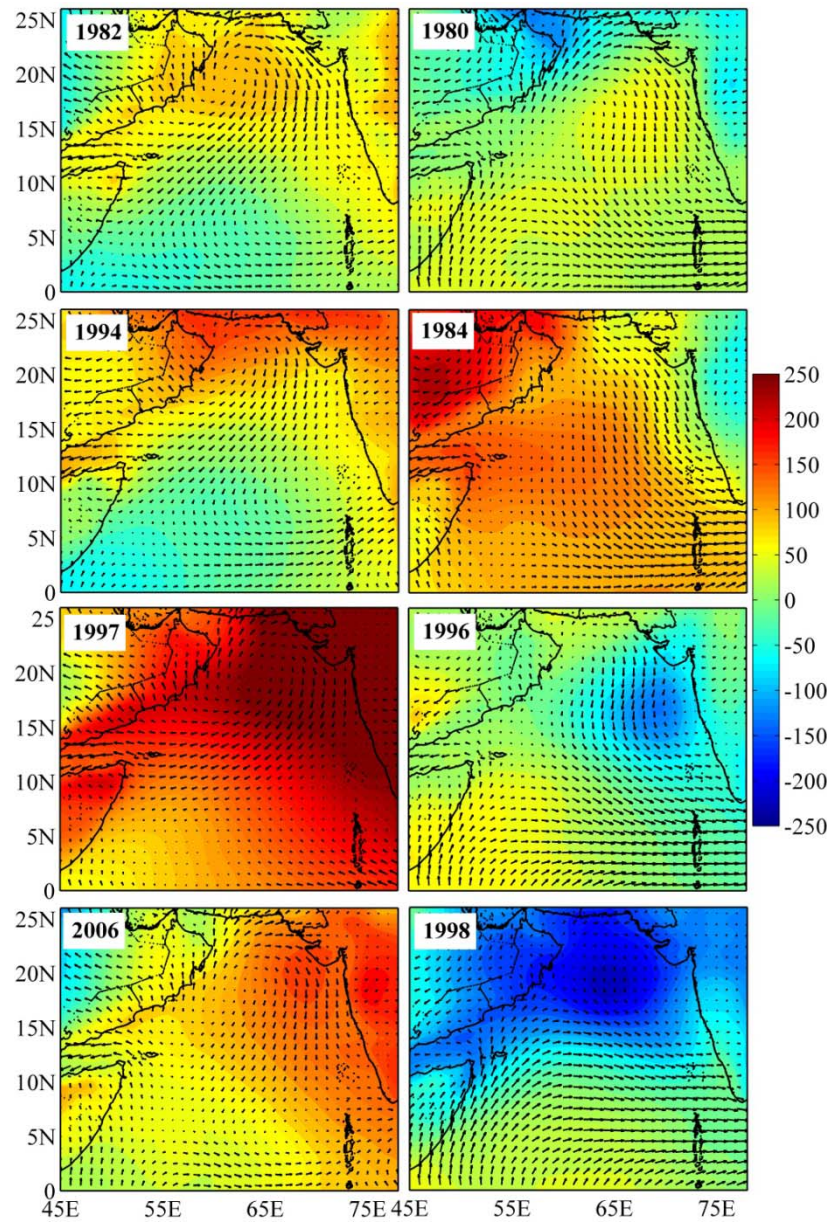


Figure 8: Wind vector (m/s) and SLP anomaly (Pa) of ~~eight~~four strong positive (first column) and four negative (second column) IOD years from 1979 to 2014. Years are shown inside the figure and SST anomaly of eastern and western equatorial IO with ~~Dipole-Mode-Index~~DMI for corresponding years are shown in Figure 4.

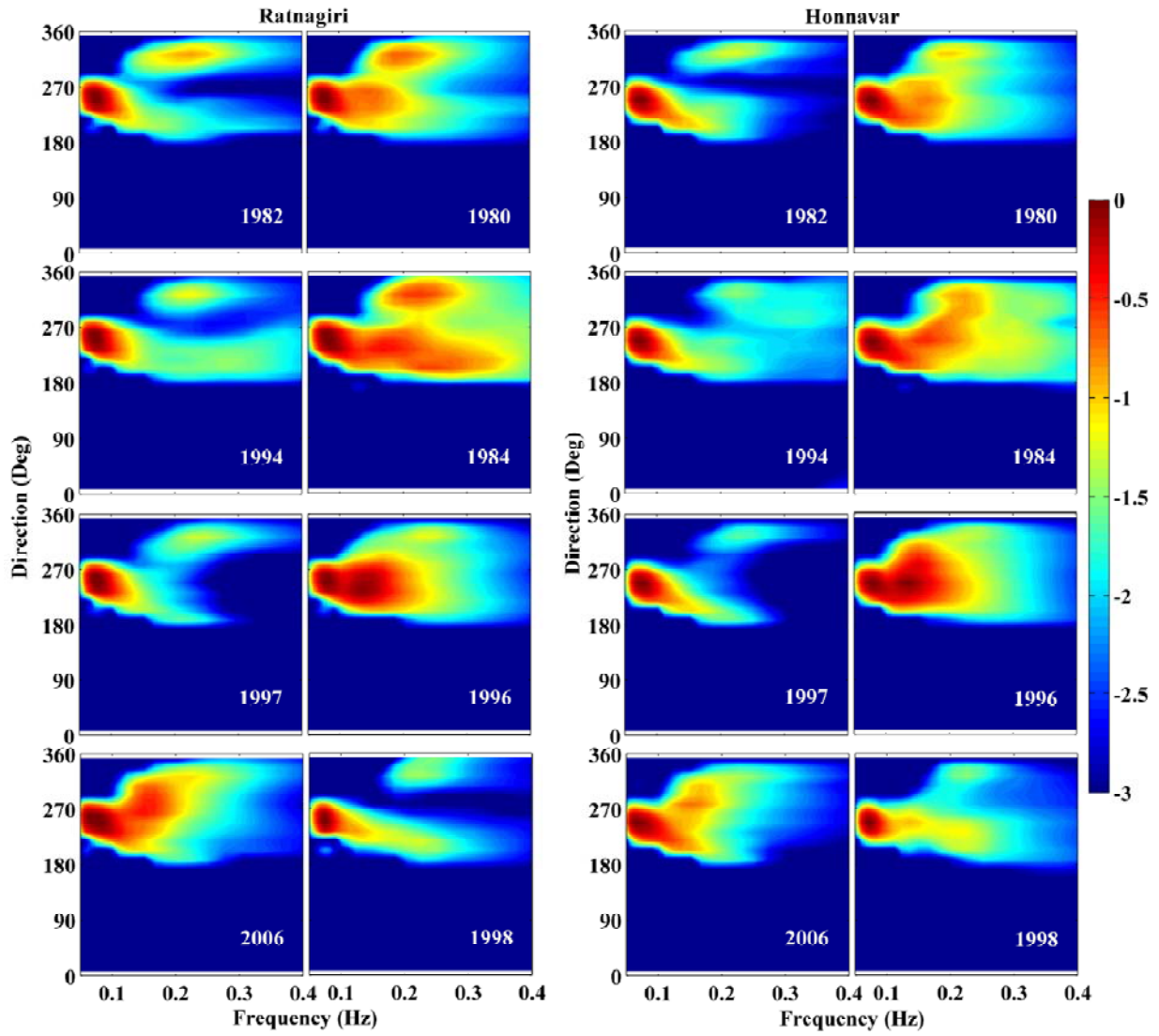


Figure 9: Modeled directional spectrum off Honnavar and Ratnagiri for selected positive and negative IOD years (columns one and three for positive IOD and two and four for negative IOD). Corresponding years are shown inside the figures and ~~dipole mode index~~ DMI are shown in Figure 4. The spectral energy is shown in logarithmic scale base to 10.