

## **Author's response**

The manuscript has been subjected to changes according to the suggestions and comments of the two referees. We hope that in the current version the paper is now suitable for publication on Ocean Science (OS). The changes performed on the text are reported step-by-step below.

### **Referee #1**

#### *Comments from Referee*

The only thing that I can add at this stage is with regard to the Discussion section that after revision has been turned into a separated section. In my opinion, this part is quite weak at the moment because authors only describe the C-CEMS components and the results obtained and this information has already been described in the previous sections of the document. The Discussion (without –s) should place the results obtained in this work in the “global” research context, confirming or refuting what has been described in the literature. The Discussion part should have the style of how Conclusions are presented at the moment, including references. Conclusions, in general terms, should summarize the content and purpose of the paper as well as the importance of the results obtained. I would encourage the authors to rewrite Discussion and Conclusions sections to reinforce the work presented.

#### *Author's response*

The Discussion and Conclusions sections have been rewritten as suggested by Referee #1. C-CEMS has been put in the “global” research context and some parts of Conclusions have been moved in Discussion to consider also the future developments regarded to the updating and applications of the observing system. Conclusions section now includes the purpose and the main results of the paper.

The main changes are reported in the:

- page 15 in the lines intervals 2-11, 18-21 and 29-32;
- page 16 in the lines intervals 1-2 and 23-32;
- page 17 in the lines intervals 1-9 and 12-25.

The new references related to the topics are included on the:

- page 24 in the lines interval 13-16 (Kourafalou et al., in press);
- page 26 in the lines interval 18-20 (Sayol et al., 2014) and 28-30 (Siddorn et al., 2007);
- page 27 in the lines interval 6-11 (Tintore et al., 2013);
- page 28 in the lines interval 10-12 (Weisberg et al., 2009).

## **Referee #2**

### *Comments from Referee*

Lastly, but importantly, the manuscript in its current form is crippled by disorganization. The Introduction and Results & Discussion sections are sprawling and difficult to follow. I do prefer to see in a scientific paper results and discussion well separated. The Data & physical section is not reasonably clean and is lacking in information, but the Methods & Methodology section is impenetrable with a lack of a simple workflow that could help the reader (Figure 2 is not helping the reader in that direction).

Still I do think there is no discussion in the paper that represent just a extended conclusion. The main question is: what is the scientific question you ask and what is the main advance you get after this paper? This is not clear still within this version. Please also consider that figure 2 is not helping at all in that direction.

So my previous review still holds:

What exactly do we gain from combined temporal C-CEMS approach that we cannot determine, for example, from a classical method? The technological advantage— and whether or not the analysis of that advantage is innovative—depends on the research question. At this stage the paper represent a seires of analysis that is unclear how they set up the innovative method.

### *Author's response*

The Introduction and Discussion sections have been changed emphasizing the advantages connected to the use of the observing systems in the analysis of the high spatial and temporal variability of the coastal processes. In particular we report a series of works that encourage to develop coastal observing systems, like C-CEMS, to identify episodic and occasional events that are scarcely identifiable using traditional methods. The figure 2 has been modified in order to better understand the C-CEMS role in the coastal sustainable management.

The main changes are reported in the:

- page 3 in the lines interval 14-33;
- page 4 in the lines interval 1-8;
- page 6 in the lines interval 10-22;
- page 15 in the lines intervals 2-11, 18-21 and 29-32;
- page 16 in the lines intervals 1-2 and 23-32;
- page 17 in the lines interval 1-9;
- page 32 in the lines interval 1-14.

The new references related to the topics are included on the:

- page 23 in the lines interval 9-10 (Glenn et al., 2000) and 14-15 (Haidvogel et al., 2000);
- page 24 in the lines interval 6-9 (Juza et al., in press), 10-12 (Korres and Lascaratos, 2003) and 13-16 (Kourafalou et al., in press);
- page 25 in the lines interval 3-6 (Malone et al., 2014), 17-18 (Oddo et al., 2005), 19-21 (Oddo et al., 2009) and 22-24 (Olita et al., 2012);
- page 26 in the lines interval 18-20 (Sayol et al., 2014) and 28-30 (Siddorn et al., 2007);
- page 27 in the lines interval 1-3 (Smith et al., 1987), 6-11 (Tintore et al., 2013), 12-13 (Tonani et al., 2008) and 14-17 (Tonani et al., 2015);
- page 28 in the lines interval 4-6 (Vidal-Vijande et al., 2011) and 10-12 (Weisberg et al., 2009).

#### Comments from Referee

Within the study area please consider to insert some key papers related to the dredged sediment management especially considering that you are dealing with a very specific regional area (page 4 line 9):

Cutroneo, L., et al. "Technical and public approaches to involve dredging stakeholders and citizens in the development of a port area." *Environmental Earth Sciences* 72.8 (2014): 3159-3171.

Bigongiari, Nicola, et al. "Assessing shelf aggregate environmental compatibility and suitability for beach nourishment: A case study for Tuscany (Italy)." *Marine pollution bulletin* 93.1 (2015): 183-193.

Cappucci, S., et al. "Integrated coastal zone management at Marina di Carrara Harbor: sediment management and policy making." *Ocean & Coastal Management* 54.4 (2011): 277-289.

#### Author's response

In the Study Area section, we have also considered the dredged sediment management along the Italian coasts including the papers suggested by the referee.

This change is reported at the page 5 in the lines interval 13-15.

The new references related to the topics are included in the:

- page 19 in the lines interval 15-17 (Bigongiari et al., 2015);
- page 20 in the lines interval 8-10 (Cappucci et al., 2011);
- page 22 in the lines interval 1-3 (Cutroneo et al., 2014).

#### Comments from Referee

Within the the multi-temporal C-CEMS approach to create an observatory and forecast system using also the Earth observation part please consider recent publications:

Filipponi et al., Ten-years sediment dynamics in Northern Adriatic sea investigated through optical remote sensing observations, Geoscience and Remote Sensing Symposium (IGARSS), 2015 IEEE International DOI: 10.1109/IGARSS.2015.7326258

Manzo, Ciro, et al. "Spectral characterization of coastal sediments using Field Spectral Libraries, Airborne Hyperspectral Images and Topographic LiDAR Data (FHyL)." International Journal of Applied Earth Observation and Geoinformation 36 (2015): 54-68.

#### Author's response

In the Satellite observations paragraph, we have considered the recent publications concerning the study of the coastal dynamic processes by EO data.

This change is reported at the page 8 in the lines interval 16-18.

The new references related to the topics are included on the:

- page 23 in the lines interval 1-4 (Filipponi et al., 2015);
- page 25 in the lines interval 9-11 (Manzo et al., 2015).

#### Comments from Referee

Paragraph 3.

I do not see the importance to be so detailed about several in the Remote sensing part. As an example why adding the ENVI software details? You can do similar analysis with other software unless there is something very peculiar that is not clear. The same comment apply to the data description.

#### Author's response

In the Satellite observations paragraph, we have eliminated the details regarding the methods used to process the AVHRR and MODIS data.

This change is reported on the page 8 in the lines interval 26-32 and on the page 9 in the lines interval 1-6.

#### Comments from Referee

Figures:

Please add Lat-Long within figure 1. Most of the readers do not know where Civitavecchia is.

#### Author's response

The Lat-Long coordinates have been added within the figure 1(B) on the page 30.

Comments from Referee

Figure 2. I do not see a clear explanation of the color and boxes within the block diagram. It is quite difficult to follow and link between the manuscript and the C-CEMS component in the scheme. Whoever wants to replicate the approach could have several problems to do so.

Author's response

At the page 32, the figure 2 and its caption has been modified in order to make it easier the part of C-CEMS components and, at the same time, to emphasize the C-CEMS role in supporting the management of marine environment resources.

In the other part of the manuscript, some technical corrections have been made to improve the structure and organization of the paper.

# The Civitavecchia Coastal Environment Monitoring System (C-CEMS): a new tool to analyse the conflicts between coastal pressures and sensitivity areas

S. Bonamano<sup>1</sup>, V. Piermattei<sup>1</sup>, A. Madonia<sup>1</sup>, F. Paladini de Mendoza<sup>1</sup>, A. Pierattini<sup>1</sup>, R. Martellucci<sup>1</sup>, C. Stefani<sup>1</sup>, G. Zappalà<sup>2</sup>, G. Caruso<sup>2</sup> and M. Marcelli<sup>1</sup>

[1]{Laboratory of Experimental Oceanology and Marine Ecology (LOSEM), DEB—University of Tuscia, Molo Vespucci, Port of Civitavecchia, Civitavecchia 00053, Rome, Italy}

[2]{ CNR - Istituto per l'Ambiente Marino Costiero, Messina, Italy }

Correspondence to: S. Bonamano (simo\_bonamano@unitus.it)

## Abstract

The understanding of the coastal environment is fundamental for efficiently and effectively facing the pollution phenomena, as expected by Marine Strategy Framework Directive, and for limiting the conflicts between anthropic activities and sensitivity areas, as stated by Maritime Spatial Planning. To address this, the Laboratory of Experimental Oceanology and Marine Ecology developed a multi-platform observing network that has been in operation since 2005 in the coastal marine area of Civitavecchia (Latium, Italy), where multiple uses and high ecological values closely coexist. The Civitavecchia Coastal Environment Monitoring System (C-CEMS), implemented in the current configuration, includes various components allowing to analyse the coastal conflicts by an ecosystem based approach. The long-term observations acquired by the fixed stations are integrated with in-situ data collected for the analysis of the physical, chemical and biological parameters of the water column, sea bottom and pollution sources detected along the coast. The in-situ data, integrated with satellite observations (e.g. temperature, chlorophyll-a and TSM), are used to feed and validate the numerical models, which allow the analysis and forecasting of the dynamics of pollutants dispersion under different conditions. To test the potential capabilities of C-CEMS, two case studies are here reported ~~in this work~~: 1) the analysis of fecal bacteria dispersion for bathing

1 water quality assessment and; 2) the evaluation of the effects of the dredged activities on  
2 *Posidonia* meadows, which make up most of the two sites of community importance located  
3 along the Civitavecchia coastal zone. The simulations ~~s outputs results~~ are overlapped  
4 ~~combined~~ with the thematic maps regarding presence of bathing areas and *Posidonia*  
5 *oceanica* distribution thus giving a first practical tool which could improve the resolution of  
6 ~~in order to solve~~ the conflicts between coastal uses (in terms of stress produced by anthropic  
7 activities) and sensitivity areas.

## 8 **1 Introduction**

9 Coastal ecosystems are characterized by ~~the spatial and temporal coexistence of~~ multiple ~~uses~~  
10 ~~connected to many~~ human activities such as aquaculture, energy production, maritime  
11 transport, tourism, and fishery that coexist both spatially and temporally in these areas. The  
12 overlap of such activities and their objectives leads to the generation of ~~has the ability to~~  
13 ~~create~~ user-user and user-environment conflicts (Douvere, 2008) that result in increasingly  
14 undesirable effects such as loss and destruction of habitat, pollution, climate change, over-  
15 fishing, and cumulative threats to the oceans and human health as a whole.

16 The Integrated Marine Policy (IMP) has faced this issue by the adoption of the Maritime  
17 Spatial Planning Directive (MSP, 2014/89/EU) whose main purpose is to promote the  
18 sustainable management of uses and conflicts in coastal areas through an ecosystem-based  
19 approach. MSP strategy allows to minimize the impacts on sensitivity areas, also enabling the  
20 achievement of the Good Environmental Status (GES) by 2020, requested by Marine Strategy  
21 Framework Directive (MSFD 2008/56/EC). In the last years a big effort ~~was~~ has been made  
22 by the scientific community to provide new approaches for the analysis of GES descriptors  
23 like the study of eutrophication (descriptor 5) through satellite ocean color data (Cristina et  
24 al., 2015) and the assessment of sea-floor integrity (descriptor 6) by SAR imagery (Pieralice  
25 et al., 2014). Important results have ~~were~~ also been obtained by the analysis of both  
26 commercial fishes and foodweb (descriptors 3 and 4), to assess the environmental status of  
27 European seas (Jayasinghe et al., 2015), and the levels of major contaminants (descriptors 8  
28 and 9) and their pollution effects on aquatic biota (Tornerio and Ribera d'Alcalà, 2014).

29 In keeping line with the holistic approach pursued by ~~nature of~~ the MSFD, the achievement  
30 and the maintenance of marine ecological standards need the support of monitoring networks  
31 which use L-TER observations and integrate multi-disciplinary datasets, fundamental to  
32 forecast specific events (Schofield et al., 2002). ~~However, a recent study by Crise et al. (2015)~~

1 ~~revealed gaps of data in the Mediterranean region (South European Seas), highlighting the~~  
2 ~~scarcity, dispersion and heterogeneity of coastal waters datasets. So, it is accordingly~~  
3 necessary to develop observational monitoring systems in the southern European coastal areas  
4 capable of collecting both high-resolution and long-term data and building multi-disciplinary  
5 datasets.

6 -Recent advances in communication and sensor technology have led to the development of  
7 worldwide multi-platform networks that provide a significant amount of data on different  
8 spatial and temporal scales for the study of oceanographic processes and marine ecosystem  
9 monitoring (Glasgow et al., 2004; Hart and Martinez, 2006; Kröger et al., 2009). These  
10 ~~observational systems monitoring tools~~ are especially suited for the monitoring of coastal  
11 ~~systems areas~~ (i.e., Chesapeake Bay Observing System, CBOS; Li et al., 2005; Long-term  
12 Ecosystem Observatory, LEO-15; Schofield et al., 2002) ~~characterized by high spatial and~~  
13 ~~time variability and affected by strong conflicts between human uses and ecosystem~~  
14 ~~conservation, where many of the processes related to natural or anthropic events (pollution~~  
15 ~~spilling, water discharges, river plume, etc.) are often episodic and occasional, consequently~~  
16 ~~they are scarcely identifiable using traditional methods (Schofield et al., 2002). Only an~~  
17 ~~integrated and multiplatform approach, which combines data and forecast models, allows the~~  
18 ~~characterization of the different events and conflicts in coastal waters (Smith et al., 1987;~~  
19 ~~Glenn et al., 2000; Haidvogel et al., 2000). Improved modeling and real-time sensing~~  
20 ~~capabilities in terms of accuracy and spatial and temporal resolution are required, also in order~~  
21 ~~to respond to both science and societal needs (Tintoré et al., 2013). Particularly, linking~~  
22 ~~observations and models has been recognized to be a critical step to achieve effective~~  
23 ~~integrated ecosystem assessment (Malone et al., 2014). The mathematical models cover a~~  
24 ~~fundamental role in the global and regional ocean forecasting systems since they assimilate~~  
25 ~~the observational data in order to produce reanalysis and forecast products of the most~~  
26 ~~relevant ocean and physical variables (Tonani et al., 2015). Most of regional operational~~  
27 ~~systems in the Mediterranean Sea are included into Mediterranean Forecasting System (MFS)~~  
28 ~~such as the Adriatic Forecasting System (Oddo et al., 2005), the Sicily Channel Regional~~  
29 ~~Model (Olita et al., 2012), the Tyrrhenian Sea Forecasting (Vetrano et al., 2010), the Aegean-~~  
30 ~~Levantine Forecast System (Korres and Lascaratos, 2003) or the Western Mediterranean~~  
31 ~~Operational Forecasting System (Juza et al., in press). Most of MSF products are~~  
32 ~~disseminated by MyOcean project (<http://marine.copernicus.eu>) which, together with satellite~~  
33 ~~and in-situ observations, developed the pre-operational European Copernicus marine service.~~



1 However, several simulations in the Mediterranean Sea are based on basin scale features and  
2 metrics (Tonani et al., 2008; Oddo et al., 2009; Vidal-Vijande et al., 2011) partially because  
3 of the lack of data at sub-basin scale. A recent study by Crise et al. (2015) revealed gaps of  
4 data in the Mediterranean region (South European Seas), highlighting the scarcity, dispersion  
5 and heterogeneity of coastal waters datasets. Conversely, the advancement from global to  
6 regional and local scale modelling, which is necessary to analyse and forecast the pollution  
7 phenomena in coastal areas, is applicable only in the region where a large amount of  
8 observing data exists.

9 As a first step in this direction ~~In this context~~, the Laboratory of Experimental Oceanology  
10 and Marine Ecology developed a multi-platform observing network which has been operating  
11 ~~operates~~ since 2005 in the coastal marine area of Civitavecchia (Italy, Tyrrhenian Sea,  
12 Western Mediterranean Sea), critically interested by the presence of many conflicts.

13 This paper presents the C-CEMS as a tool to support the management of conflicts between  
14 anthropic uses and sensitivity areas. ~~We~~ It focusesd on: (1) the functioning of C-CEMS and  
15 its components (Section 3); (2) its capabilities in estimating-reproducing the dispersion of  
16 fecal bacteria for bathing water quality assessment and of dredged fine sediments to evaluate  
17 the effects on *Posidonia oceanica* meadows present in the Sites of Community Importance  
18 (SCI) (Section 4); (3) the resulting analysis of "urban discharge - bathing area" and "dredging  
19 - SCI" conflicts (Section 5).

## 21 **2 Study area**

22 The study area is located along the north-east Tyrrhenian coast (Western Mediterranean sea)  
23 (Fig. 1A). The circulation of the Tyrrhenian basin is affected by mesoscale and seasonal  
24 variability (Hopkins, 1988; Pinardi and Navarra, 1993; Vetrano et al. 2010). The presence of a  
25 cyclonic gyre with a very pronounced barotropic component suggests that the wind plays  
26 ~~likely~~ a major role as a forcing agent (Pierini and Simioli, 1998). Like most of the Italian  
27 coast, the north-east Tyrrhenian one counts many tourist and industrial areas primarily used  
28 for maritime transport and energy production, involving an intense exploitation of marine  
29 resources. Nevertheless, it houses several biodiversity hotspots and marine protected areas for  
30 the conservation of priority habitats and species.

In particular this study is focused on the coastal zone between Marina di Tarquinia and Macchia Tonda in the northern Latium region of Italy (Fig. 1B) including Civitavecchia city, where all the above mentioned uses could produce potential conflicts. The Civitavecchia harbor is one of the largest in Europe in terms of cruise and ferry traffic; it represents a fundamental point of commercial exchange in Europe. Thanks to the new Port Regulating Plan, the Port of Civitavecchia has increased its commercial traffic and cruise passenger flow. The Interministerial Committee for Economic Planning (CIPE) approved the final project for the 'strengthening of Civitavecchia harbor hub – first parcel functional interventions: Cristoforo Colombo embankment extension, ferries and services docks realization'. All of these operations involve the handling of significant quantities of sediments; the impacts of dredging on the adjacent natural ecosystems can be varied and difficult to predict (~~Nayar et al., 2007~~; Windom, 1976; Cheung and Wong, 1993; Lohrer and Wetz, 2003; Zimmerman et al., 2003; Nayar et al., 2007). Many studies have recently focused on the importance of management of dredged sediments in harbour areas (Cappucci et al., 2011; Cutroneo et al., 2014; Bigongiari et al., 2015). In conflict with the port activities, the study area hosts four SCIs. They are characterized by the presence of habitats (*Posidonia oceanica* meadows and reefs of rocky substrates and biogenic concretions) and species (*Pinna nobilis* and *Corallium rubrum*) enclosed in the attachment 1 and 2 of the European Union (EU) directive 92/43/~~CEE~~C.

Moreover, the promotion of underwater natural beauty, touristic exploitation connected to the increased cruise traffic and the realization of ~~suitable~~new bathing facilities have led to a drastic increase in the population density in Civitavecchia during the summer. Many services are now available for recreation thanks to the several beach licenses granted for food, bathing, mooring of private vessels, and sport activities. An updated list of the Latium Region Office counts 72 beach licences released in 2014 to the municipal districts of Santa Marinella and Civitavecchia. However, this urban development was not associated with an ~~upgrade~~improvement of the wastewater treatment plant, which often caused the discharge of untreated water into the bathing areas. Along the coast, between Civitavecchia harbor and the Punta del Pecoraro bathing areas, four discharge points have been identified as shown in Fig. 1C in conflicts with the recreational use of the coastal zone. These discharge points present high concentrations of pathogenic bacteria ~~deriving from that have been potentially affected by~~ fecal contamination episodes.

### 3 Components of the C-CEMS

C-CEMS is a multi-platform observing system implemented in 2005 to face the coastal conflicts by an ecosystem-based approach. Accordingly to the Copernicus program, C-CEMS provides a monitoring service for the marine environment through multi-source data including in-situ and remote sensing observations. In addition, C-CEMS integrates this information within mathematical models that allow to simulate specific events and forecast potential impacts with a high spatial and temporal resolution, necessary to analyse the conflicts in coastal areas (Bonamano et al., 2015b).

The workflow reported in fig. 2 shows the interaction between the C-CEMS components and its functioning within the Driver-Pressure-State-Impact-Response (DPSIR) scheme. C-CEMS allows to assess the coastal pressures (Pressure) through the analysis of the dispersion of pollutants connected to the anthropic activities of the Civitavecchia area. It also enables to obtain thematic maps giving information about the sensitivity areas (State) represented mainly by marine protected areas and zones designated for recreational uses (bathing, diving, watersports, fishing, etc.). The overlap between them gives a fundamental contribution for GES achievement and MSP implementation, playing also a crucial role for the detection of the ongoing conflicts. If a conflict occurs, C-CEMS helps in the analysis of its potential impacts (Impact) on environment and socio-economical resources, supporting the choice of the best mitigation practices to be applied (Response).

The workflow indicates also all of the components of the C-CEMS which are described in detail in the following paragraphs.

~~As shown in Fig. 2, C-CEMS components interact between them to assess the coastal pressures analysing the dispersion of pollutant substances coming from the anthropic activities located along the Civitavecchia coastal area. Data provided by fixed stations, in-situ surveys, and remote sensing play a crucial role being used as input (I = input in Fig. 2) and for the validation (V = validation in Fig. 2) of the numerical models. They give a fundamental contribution in C-CEMS allowing to forecast the dispersion of pollutant substances within the sensitivity areas represented mainly by marine protected areas and zones designated for recreational uses (bathing, diving, watersports, fishing, etc.). To analyse the potential conflicts between the pressures on both marine coastal environment and human health, the results of~~

~~the pollutants dispersion, obtained under different weather conditions, are overlapped with the thematic maps of the sensitivity areas.~~

~~Since marine coastal ecosystems have been acknowledged as providing the most benefits among all terrestrial and marine ecosystems (Costanza et al., 1997), the appointment of an economic value to these natural resources is essential for correct planning of marine coastal areas. Nevertheless the economic impact on the natural capital in terms of losses of ecosystem goods and services has not been evaluated in this work.~~

~~The block diagram (Fig. 2) shows all of the components of the C-CEMS that are outlined in the following paragraphs.~~

*Fixed stations:* Time series data collection is fundamental to improve the ability to control and forecast spatial and temporal variations in a marine environment. To this end, different fixed stations were installed along the Civitavecchia coast to acquire physical, chemical, and biological data, as shown in Fig.1. In particular, a weather station (WS) acquires every 10 min wind speed, wind direction, air temperature, air pressure, humidity and solar radiation. The wind speed and direction represent the main forcing of the hydrodynamic model while the solar radiation data are used as input in the water quality model. Two buoys (WB1 offshore, WB2 nearshore) measure every 30 min wave statistical parameters (significant height, peak period, and mean direction). The wave model is fed with WB1 data and then validated with the wave height data collected by WB2. An Acoustic Doppler Profiler, ADP (WCS), deployed in a Barnacle seafloor platform, acquires both current (with an acquisition rate of 20 min) and wave height and direction (at intervals of 3 h). The current velocity components are employed for the validation of the hydrodynamic model. Three water quality fixed stations, one buoy (Water Quality Buoy, WQB) outside the Civitavecchia harbor and two coastal stations (WQS1 and WQS2), make it possible to acquire every 20 min sub-superficial sea temperature, conductivity (salinity, density), pH, dissolved oxygen, fluorescence of chlorophyll-a, and turbidity. In order to validate the satellite ocean color data, chlorophyll-a (Chla) and total suspended matter (TSM) data acquired by WQB were calibrated with the concentrations obtained by the water samples analyses. The physical and biological parameters of the WQS1 and WQS2, as well as those acquired by satellite observations, are used as initial conditions of the water quality model.

WQB and WQS data are processed following the SeaDataNet parameter quality control procedures: daily validated datasets are produced in order to monitor in near real time the

1 | water quality, ~~and~~ Edios xml files are provided for monthly time series and stored following  
2 | ISO 19139 and ISO 19115 formats provided for metadata.

3 | *In-situ surveys:* A spatial extension of the observatory system is provided by in-situ collected  
4 | data. The sampling strategy ~~iwas~~ conceived with ~~in~~ the scope and context of the project  
5 | objectives in order to select the most appropriate and efficient sampling approach. The field  
6 | surveys typically include periodic and ad-hoc activities. The firsts concern the measurement  
7 | ~~acquisition~~ of the physical, chemical and biological variables of the water column using  
8 | ~~performed by~~ multiparametric ~~rice~~ probes and sea water samples. Data acquired during periodic  
9 | surveys are used to validate and integrate the satellite observations in order to give the spatial  
10 | distributions of the seawater parameters as the initial conditions of the water quality model.  
11 | The ad-hoc samplings are carried out in order to define the nature and composition of the sea  
12 | bottom and to analyse the indicators of pollution near the human activities outputs. These data  
13 | feed the water quality model for the estimate of the bottom shear stress, as well as the  
14 | dispersion and/or the decay of pollutants in the nearshore coastal waters .

15 | *Satellite observations:* Remote sensing data are essential to provide synoptic and extensive  
16 | maps of biological and physical properties of the oceans (Schofield et al., 2002). Recently  
17 | Earth Observation (EO) data are also used to investigate the dynamic processes at high spatial  
18 | resolution along the Italian coasts (Filipponi et al., 2015; Manzo et al., 2015). Few studies,  
19 | among which Cristina et al. (2015), demonstrated the usefulness of remote sensing to support  
20 | the MSFD, using MEdium Resolution Imaging Spectrometer (MERIS) sensor products.  
21 | Similarly we exploited both ocean color from the Moderate Resolution Imaging  
22 | Spectroradiometer (MODIS) sensor and thermal infrared color from the Advanced Very High  
23 | Resolution Radiometer (AVHRR) to obtain daily Chla, TSM and sea surface temperature  
24 | (SST) data. Such sensors data were chosen for their availability both in the region of interest  
25 | and in the period of C-CEMS data acquisition.

26 | ~~Regarding the AVHRR data, they are downloaded from the NOAA website as a Local Area~~  
27 | ~~Coverage (LAC) dataset, at a resolution of 1.1 km. These data are processed using ENVI~~  
28 | ~~software, which computes SST images in degrees Celsius, using AVHRR bands 3, 4, and 5~~  
29 | ~~and applying the Multi-Channel Sea Surface Temperature (MCSST) algorithms (Pichel et al.,~~  
30 | ~~2001).~~

31 | ~~Regarding the MODIS data, we download from the NASA website and process by the~~  
32 | ~~SeaDAS image analysis package that is freely distributed to users by NASA. The processing~~

~~begins with a Level 1A file containing top of the atmosphere (TOA) radiance values recorded by the satellite radiometer. The second step is the Level 2 processing which takes the TOA radiance intensities in the Level 1A file and performs atmospheric corrections to derive a Level 2 file of normalized water leaving radiances (nLw), Chla concentration, geophysical parameters and quality control flags. A third step takes the geophysical data contained in the Level 2 file and maps it from the raw satellite perspective to a cylindrical coordinate system.~~

To estimate Chla concentration, MedOC3 bio-optical algorithm ~~is~~ was applied (~~Santoleri et al., 2008~~, Qin et al., 2007; Santoleri et al., 2008), while TSM ~~estimation is~~ was ~~derived~~ estimated from the 645 normalized water-leaving radiance (645 nLw) by applying the MUMM NIR atmospheric correction (Ruddick et al., 2006; Ondrusek et al., 2012).

~~Finally~~ Chla and TSM data collected by WQB and periodic in-situ surveys ~~are~~ were used to validate the algorithms used for remote sensing data. ~~A work is in progress to~~ We are working on the ~~implementation of~~ a local algorithm specifically developed in the area of interest (CASE II waters) in order to reach a better quantification of Chla and TSM concentrations along the study area (Cui et al., 2014). Accordingly with the Copernicus vision, the future development of this module considers to integrate EO data coming from the Optical High-Resolution Sentinel sensors (Drusch et al., 2012), in order to increase the spatial resolution for a more accurate analysis of coastal dynamic processes.

*Numerical models:* Mathematical models play a key role in the C-CEMS enabling by making ~~it possible~~ to analyse coastal processes at high spatial and temporal resolution. In this context, the entire datasets collected by fixed stations, satellite observations, and in-situ samplings were employed as input conditions and as a validation of the numerical simulations. The mathematical models used in C-CEMS included the DELFT3D package, specifically DELFT3D-FLOW (Lesser et al., 2004) to calculate marine currents velocity, SWAN (Booij et al., 1999) to simulate the wave propagation toward the coast, and DELFT3D-WAQ (Van Gils et al., 1993; Los et al., 2004) to reproduce the dispersion of conservative and non-conservative substances. The governing equations of these models are described in detail in Lesser et al. (2004) and Bonamano et al. (2015a).

The DELFT3D-FLOW model domain is rectangular and covers 70 km of coastal area with the Civitavecchia port located at the center. ~~We applied~~ Neumann boundary conditions were ~~applied~~ on the cross-shore boundaries in combination with a water-level boundary on the seaward side, which is necessary to ensure that the solution of the mathematical boundary

value problem is well-posed. Since small errors may occur near the boundaries, ~~we positioned~~ the study area was positioned away from the side of the model domain. The hydrodynamic equations ~~are-were~~ solved on a finite difference curvilinear grid with approximately 39,000 elements. In order to limit computational requirements, ~~we applied~~ a different resolution was applied in the model domain extending from  $15 \times 15$  m in the Civitavecchia harbor area to  $300 \times 300$  m near the seaward boundary. ~~We subdivided~~ The water column was subdivided in the vertical direction into 10 sigma layers with a uniform thickness to ensure sufficient resolution in the near-coastal zone.

Since dynamical processes occurring in coastal areas are modulated by wind and wave conditions (~~we neglect~~ tidal forcing was neglected because it does not exceed 0.40 m over the simulation periods), ~~we obtained~~ the hydrodynamic field was obtained by coupling the DELFT3D-FLOW with SWAN that uses the same computational grid. Wind data collected by WS were used to feed DELFT3D-FLOW, and the wave parameters acquired by WB1 (offshore wave buoy) were employed to generate the JONSWAP wave spectra (Hasselmann et al., 1980) as boundary conditions of the SWAN model.

To resolve the turbulent scale of motion, the values of horizontal background eddy viscosity and diffusivity were both set equal to  $1 \text{ m}^2\text{s}^{-1}$  (Briere et al., 2011), and the k- $\epsilon$  turbulence closure model was taken into account (Launder and Spalding, 1974). To assign the spatial patterns of physical and biological parameters as initial conditions of DELFT3D-WAQ, the satellite observations in the offshore zone and the WQS measures in the nearshore one were used respectively. These data ~~are-were~~ integrated in the water quality model applying the DINEOF technique (Beckers et al., 2006; Volpe et al., 2012) that reconstructs the missing data along the coast and in the areas affected by clouds.

Since the pollutants dispersion represents the C-CEMS results, the capability of the observation system in reproducing the output of coastal pressures ~~has-been~~ was evaluated comparing the model results with sea currents (WQB) and wave (WB2) data.

The performance of the hydrodynamic models (DELFT3D-FLOW and SWAN) was evaluated using the Relative Mean Absolute Error (RMAE) and the associated qualitative ranking (excellent, good, reasonable, and poor) (Van Rijn et al., 2003).

The marine currents resulting from the coupling between DELFT3D-FLOW and SWAN were compared with in-situ measurements collected by WCS from 13–18 January 2015. The velocity magnitude was reproduced with a 'good' accuracy since the RMAE value was less



1 than 0.2. The long-shore and cross-shore components of the marine currents exhibited a  
2 higher RMAE: 0.28 and 0.3, respectively. The validation of current speed, cross-shore, and  
3 along-shore components is shown in Fig. 3.

4 ~~We evaluated~~ The performance of the SWAN model was evaluated using data acquired by  
5 the WB2. We calculated the RMAE both for the entire dataset and for three wave direction  
6 intervals: 139–198°N (1st interval), 198–257°N (2nd interval), and 257–316°N (3rd interval).  
7 Considering the entire dataset, the wave height ~~has been~~was accurately simulated  
8 (RMAE<0.1), but the model error ~~changes~~changed significantly on the basis of the wave  
9 direction: the RMAE ~~is~~was higher between 139°N and 198°N (0.26; reasonable agreement)  
10 and lower in the 2nd and 3rd intervals (<0.01; excellent agreement), as reported in Fig. 4.

## 12 4 C-CEMS Applications

13 To test the capabilities of C-CEMS in defining the areas mainly affected by pollutants  
14 dispersion, we considered two case studies which concerned ed the potential effects produced by  
15 untreated wastewater discharge and dredging activities (coastal pressures) on bathing areas  
16 and SCIs (sensitivity areas), respectively. For both cases two scenarios with different weather  
17 conditions ~~are~~were considered: one ~~reproduces~~reproduced a low wind intensity and low  
18 wave height (low condition, LC), and the other ~~simulates~~simulated a strong high wind speed  
19 and high wave height (high condition, HC).

### 21 4.1 Bacterial dispersion in bathing areas

22 The presence of pathogenic bacteria in seawater may cause several illnesses including skin  
23 infections and dangerous gastrointestinal diseases (Cabelli et al., 1982; Cheung et al., 1990;  
24 Calderon et al., 1991; McBride et al., 1998; Haile et al., 1999; Colford et al., 2007).

25 The probability of human infection depends on the exposure time and the concentration of the  
26 bacterial load in bathing areas. These parameters are linked to the presence of untreated  
27 wastewater discharge in the study area and the local hydrodynamical (currents and waves) and  
28 environmental (salinity, temperature, and solar radiation) conditions. Among the bacteria that  
29 can damage the health of bathers, *Escherichia coli*, a Gram-negative enteric bacteria present  
30 in the feces of humans and warm-blooded animals, is considered to be an indicator of water



quality. Although the pathogenic bacteria are neglected by MSFD, microbes are relevant to several GES descriptors, notably Descriptor 1 (D1, Biological Diversity), Descriptor 4 (D4, Foodwebs), Descriptors 5 (D5, Eutrophication), Descriptor 8 (Contaminants) (Caruso, 2014; [Caruso et al., 2015](#)). However, controlling water quality in bathing waters is required by ~~national~~National (~~Legislative Decree~~Lgs 116/2008) and ~~community~~Community environmental directives (2006/7/~~CEC~~CEC).

~~Within the framework~~Under the umbrella of C-CEMS to ~~perform~~provide fecal pollution monitoring, in-situ water samplings were ~~performed~~carried out weekly during the summer 2012 at the discharge points indicated in Fig. 1C to analyse the abundance of *E. coli* according to standard culture methods (APAT CNR, 2003).

To define the zones mainly affected by the dispersion of pathogenic bacteria in the Civitavecchia bathing area, we used the Microbiological Potential Risk Area (MPRA), defined as the area over which the *E. coli* concentration is greater or equal to 1% of the concentration measured at a discharge point (Bonamano et al., 2015a). The dispersion of *E. coli* ~~has been~~was simulated by DELFT3D-WAQ using the mean bacterial concentration measured during the summer at the discharge points. ~~This~~ise model shows a good performance ~~of in~~ reproducing the bacterial load concentration near the discharge points (Zappalà et al., ~~in press~~2015). The LC and HC simulations that last two days were set to occur on August weekends when the beaches are characterized by a larger number of bathers. The distribution of bacterial concentration over the study area calculated by DELFT3D-WAQ ~~over the study area depends~~depended on the hydrodynamic field obtained from the coupling between DELFT3D-FLOW and SWAN and on the decay rate proposed by Thoe~~et al.~~ (2010). It was calculated using the salinity acquired by WQS1, WQS2 and WQB, the surface solar radiation measured by WS, TSM and SST obtained by the integration between satellite observations and WQS stations data.

The *E. coli* concentration calculated near the discharge points was high when low marine currents (LC) were present, as reported in Fig. 5A. In particular, the area around the PI18 point exhibited maximum values of pathogenic bacteria because of the slow dilution of contaminated waters in that area. During intense weather conditions (HC), the *E. coli* concentration near the discharge points was lower than that calculated in the LC simulation. However, the bacterial load ~~*E. coli* concentration~~ was distributed over a more extended area,

as reported in Fig. 5B. In both simulations, the dispersion of *E. coli* did not affect the bathing area located to the south of the study area.

#### 4.2 Dredged sediments dispersion on *Posidonia oceanica* meadows

As previously reported, the port of Civitavecchia ~~has been~~was subjected to extensive dredging between 1 November 2012 and 31 January 2013. During the first phase of the project, the dredging of the channel to access the port of Civitavecchia was conducted by deepening the seabed to a depth of -17 m above mean sea level over an area of approximately 31,000 m<sup>2</sup>. In the ferry dock area, the seabed ~~reaches~~reached a depth of -10 m over an area of approximately 123,650 m<sup>2</sup> and -15 m over an area of approximately 51,900 m<sup>2</sup>. The total dredging volume was approximately 918,000 m<sup>3</sup>.

Studying sediment resuspension caused by these dredging activities is critical because of its role in the dispersion of particulate matter in the adjacent marine environment in both the sediment and water (Van den Berg et al., 2001). Within MSFD, turbidity due to fine sediment dispersion is an indicator reported in Descriptor 1 (D1, Biological biodiversity), Descriptor 5 (D5, Eutrophication) and Descriptor 7 (Hydrographical condition). In this ~~work~~study, we considered two out of the four SCIs coded as IT600000005 (434.47 ha) and IT600000006 (745.86 ha) localized in the north and the south of the Civitavecchia harbor, as shown in Fig. 1B. Since *Posidonia oceanica* makes up most of the SCIs, ~~the study was~~we focused on ~~studying~~ the effects of dredging activities on the ~~seagrass~~status of the seagrass. Dredging-induced suspended sediment transport and deposition may have direct and indirect impacts on this seagrass such as reducing the underwater light penetration and producing the burial of the shoot apical meristems, respectively. The plant ~~survival of the plant~~ can be compromised if the light availability is less than 3–8% of SI (Erftemeijer and Lewis, 2006) or if low-light conditions persist for more than 24 months (Gordon et al., 1994). The survival rates of *Posidonia oceanica* can also be reduced if the sedimentation rate exceeds 5 cm per year (Manzanera et al., 1995).

The health status of *Posidonia oceanica* meadows located in the two SCIs ~~has been~~was evaluated by shoot density descriptor. This parameter was acquired by scuba-divers in the late Spring of 2013 in correspondence of 14 stations (3 in IT600000005 and 11 in IT600000006)

1 following the method reported in Buia et al. (2003). The thematic map ~~is~~was obtained  
2 spatially interpolating the data collected in the two areas.

3 The potential impacts due to dredging activities ~~have been~~was evaluated by DELFT3D-WAQ  
4 simulations assuming a continuous release of fine sediments ( $< 0.063$  mm) in the northern  
5 zone of Civitavecchia harbor. The amount of material released during dredging was calculated  
6 using a formula from Hayes and Wu (2001) ~~with~~using a resuspension factor of 0.77%, ~~which~~  
7 ~~is~~ typical of hydraulic dredges (Anchor Environmental, 2003). The percentage of fine  
8 sediment fraction ~~is~~was 8.87% and its density ~~is~~was  $2650 \text{ kg m}^{-3}$  according to  
9 sedimentological data collected in the area affected by the dredging works. Considering also  
10 that the ~~time spent on~~ dredging operations ~~lasted~~was approximately 3 months (from  
11 November 2012 until January 2013), ~~we assumed~~ a continuous release of  $0.314 \text{ kg s}^{-1}$  was  
12 assumed. TSM distribution, obtained by the integration between satellite observations and  
13 WQB data, was used as a proxy of spatial variation of fine sediment concentration in the  
14 study area to provide the initial conditions of DELFT3D-WAQ. The transport, deposition, and  
15 resuspension processes associated with the fine particles was reproduced taking into account a  
16 settling velocity of approximately  $0.25 \text{ m day}^{-1}$ , a critical shear for sedimentation of  $0.005 \text{ N}$   
17  $\text{m}^{-2}$ , and a critical shear for resuspension of  $0.6 \text{ N m}^{-2}$  (Alonso, 2010). The DELFT3D-WAQ  
18 simulations were run over the periods 26 November 2012 through 3 December 2012 (HC  
19 simulation) and 3–10 January 2013 (LC simulation). These time intervals included the  
20 dredging period.

21 ~~Analogous to~~Like the analysis of bacterial dispersion, the fate of dredged sediments within  
22 the study area was evaluated over an area in which the suspended solid concentration was  
23 greater or equal to 1% of the value estimated at the source point. This area ~~is~~was referred to  
24 as the Dredging Potential Impact Area (DPIA). The results of the LC simulation, reported in  
25 Fig. 6A, revealed that the dredged suspended materials were transported into the southern  
26 zone of the study area achieving a maximum distance of approximately 2 km from dredging  
27 point. In the HC simulation reported in Fig. 6B, the dredged sediment dispersion moved  
28 toward the north with higher concentration in the nearshore zone. Although the sediment  
29 plume ~~extends~~extended 20 km from the source, higher values of suspended solid  
30 concentration only ~~affects~~affected the *Posidonia oceanica* meadow closer to the harbor (the  
31 southern part of SCI IT 6000005) (Bonamano et al., 2015b).

## 5 Discussions

In the last two decades, the importance of integrated ocean observing systems, providing observations, numerical models and software infrastructures, has been widely recognized, not only for scientific purposes but also to support societal needs such as the management of marine resources and the mitigation of anthropic pressures through specific planning (Siddorn et al. 2007; Weisberg et al. 2009; Tintoré 2013; Sayol et al. 2014). Especially in coastal environments where unpredictable pollution phenomena often occur, the set up of multi-platform observing systems represents an important step towards the analysis and forecasting of the impacts on both environmental and socio-economical resources, overcoming the difficulties of the traditional approach (Schofield et al., 2002) which does not allow a proper identification.

In this aim, C-CEMS was implemented in 2005 along the coast of Civitavecchia, ~~which is a~~ highly populated area characterized by the coexistence of industrial and human pressures with environmental resources and values. It integrates fixed stations, in-situ survey and satellite observations which ensure the availability of a large amount of data allowing ~~the analysis of coastal conflicts by the detection of~~ to detect pollution phenomena. Moreover C-CEMS provides an ecosystem-based monitoring tool for the analysis and forecasting of the coastal conflicts thanks to the use of mathematical models. Kourafalou et al. (in press) highlighted the need to support the advancement of coastal forecasting systems integrating the observational and modelling components in order to analyse the high spatial and temporal variability of coastal processes. The results of the hydrodynamic models ~~The validation of hydrodynamic models~~ with sea currents (WCS) and wave (WB2) data, shows how C-CEMS is able to reproduce accurately the output of coastal pressures in terms of pollutants dispersion. DELFT3D-FLOW reproduces with good accuracy the velocity components of marine currents, while SWAN calculates the wave height in the nearshore area with an higher skill when the interval direction is 198-316 °N. On the contrary, when the wave direction ranges between 139 °N and 198 °N, the capacity of the model is more affected by the increase of diffraction processes due to the Civitavecchia harbor breakwater.

Two examples of C-CEMS capacity to provide information related to some of the most pressing conflicts facing our coastal zone, such as "urban discharge - bathing area" and "dredging - SCI", have been reported in this study. The application of C-CEMS to these ~~two~~ case studies ~~examples~~ allowed to define the output of human activities by the use of

'potentially-polluting zoning indicators' such as MPRA and DPIA, giving the potential impacts produced by pathogenic bacteria and dredged fine sediment on sensitivity areas~~the MPRA in bathing zones and the DPIAs on SCIs~~ under different weather conditions (HC and LC). The overlap of the model results with the thematic maps of the sensitivity areas enabled the detection of the coastal areas interested by conflicts.

In the first case, the overlap of MPRA calculated in LC and HC scenarios shows that most of the bathing areas ~~are-were~~ affected by high level of bacterial contamination (Fig. 7A). Maximum values of *E.coli* abundance were found near the PI18 and PP24 discharges because the dilution of the contaminated waters was inhibited by the presence of artificial barriers. These unfavorable conditions may cause ~~possible~~ risks to human health related to the contamination ~~offrom~~ potentially infectious microorganisms for bathers. As a result, the bathing facilities located within this zone ~~are-were~~ at risk of suffering significant economic losses. However the southern bathing area, where more bathers are found, ~~is-was~~ never affected by *E. coli* dispersion (Fig. 7A).

In the second case study, the simulation results differ among LC and HC scenarios (Fig. 7B). In the LC scenario, DPIA does not overlap the southern SCI (IT 6000006), even though the seagrass meadows ~~are-were~~ characterized by poorer health than in northern SCI. In HC, DPIA includes a restricted zone of *Posidonia oceanica* meadow (98.84 ha) in the northern SCI, closer to Civitavecchia harbor, characterized by high shoot density values (between 400 and 550 shoots m<sup>-2</sup>). A previous study (Bonamano et al. 2015b) ~~shows-showed~~ that after the dredging activities the shoot density values were slightly higher than before, highlighting how this conflicts ~~does-did~~ not produce a loss of environmental resources.

These results show how C-CEMS works to give a rapid environmental assessment enabling to analyse the impacts and potential mitigation practices when an user-environment conflict is detected. If there are no conflicts, the system still provides integrated information for the sustainable management of coastal zone as requested by IMP for the EU.

To make C-CEMS more effective, a flexible X-Band Radar System to continuously measure the sea-state (surface currents and wave field) in the near-shore zone (Serafino et al., 2012) has been recently integrated. Moreover, to improve the resolution of multi-spectral imagery in the study area, C-CEMS will be soon available to get data also from Sentinel-2 mission.

Since coastal marine ecosystems have been acknowledged to provide the most benefits among all terrestrial and marine ecosystems (Costanza et al., 1997), the assignment of an economic

1 value to these natural resources is essential for correct planning of marine coastal areas. The  
2 last step toward an adequate management and conservation of marine environmental  
3 resources concerns the implementation of C-CEMS for the quantification of economic  
4 impacts in terms of losses of ecosystem services and goods.

5 Compared to other regional operational monitoring systems currently available and reported  
6 in the literature, the practical innovation offered by the C-CEMS relies on the fact that this  
7 new system allows to detect the impacts arising from the potential conflicts between coastal  
8 pressures and sensitivity areas; in this sense C-CEMS can be considered an operational tool to  
9 meet the needs of MSFD and MSP directives.

## 11 **6 Conclusions**

12 The activities and techniques employed are in line with those used in several environmental  
13 monitoring experiences; what really is new is their integration into an operational network,  
14 the first in the Tyrrhenian sea, actually used by a professional stakeholder as the Port  
15 Authority of Civitavecchia.

16 Coastal observatories play a major role in providing the information needed to face the new  
17 European environmental challenges mainly focused on the GES achievement and MSP  
18 implementation. Thanks to the integration of different observing platforms at different scales,  
19 and to the provision of data and tools, these systems contribute to the monitoring of coastal  
20 pressures and environmental states. C-CEMS has been conceived to include all the above  
21 mentioned features to support the coastal management about the detection of the conflicts  
22 between anthropic pressure and sensitivity areas. Such information overlapped with the  
23 characteristics of coastal marine ecosystems intended to recreational uses can be considered  
24 as the first step for the establishment of marine functional zoning scheme made by different  
25 types of zones with varying levels of limited uses (Douvere, 2008).

26 ~~The main objective of C-CEMS is to provide an observation system for a rapid environmental~~  
27 ~~assessment and to forecast the coastal dynamic processes at appropriate temporal and spatial~~  
28 ~~resolutions. It can also contribute to the availability of marine observations and coastal data,~~  
29 ~~increasing the knowledge about the environmental status of marine ecosystems. To make C-~~  
30 ~~CEMS more effective, a flexible X-Band Radar System to continuously measure the sea state~~  
31 ~~(surface currents and wave field) in the near shore zone (Serafino et al., 2012) has been~~

1 ~~recently integrated. Moreover, to improve the resolution of multi-spectral imagery in the~~  
2 ~~study area, C-CEMS will be soon available to get data also from Sentinel-2 mission.~~

3 ~~The final goal of this study was to use C-CEMS to address potential conflicts among the~~  
4 ~~different human activities that persist on the coast using an ecosystem-based approach as~~  
5 ~~requested by IMP for the EU.~~

6 ~~C-CEMS allowed to define the output of human activities by the use of 'potentially polluting~~  
7 ~~zoning indicators' as MPRA and DPIA giving the potential impacts produced by pathogenic~~  
8 ~~bacteria and dredged fine sediment on sensitivity areas. Such information overlapped with the~~  
9 ~~characteristics of recreational coastal uses and marine ecosystems can be considered as the~~  
10 ~~first step for the establishment of marine functional zoning scheme made by different types of~~  
11 ~~zones with varying levels of limited uses (Douvere, 2008).~~

12 ~~The last step toward an adequate management and conservation of marine environment~~  
13 ~~resources concerns the quantification of economic impacts related to the losses of ecosystem~~  
14 ~~services and goods through the analysis of the present and future conflicts.~~

## 18 **Acknowledgements**

19 The authors thank the Environmental Office of Civitavecchia Port Authority for funding the  
20 implementation of C-CEMS. ~~The authors also thank their colleagues for continuing support~~  
21 ~~and discussion around the coffee breaks.~~ The authors are also thankful to two anonymous  
22 reviewers for providing useful comments that helped in improving a former version of this  
23 manuscript. Finally, the authors acknowledge the NOAA CoastWatch Program and NASA's  
24 Goddard Space Flight Center, OceanColor Web for data availability.

## References

- Alonso, J.: Heavy metal pollution and sediment transport in the rhinemeuse estuary, using a 2D model Delft3D: Water quality and calamities, Case study Biesbosch. Delft Cluster, Delft, the Netherland, 2010.
- Anchor Environmental, C.A. L.P : Literature review of effects of resuspended sediments due to dredging operations. Prepared for Los Angeles Contaminated Sediments Task Force, Los Angeles, CA, 2003.
- APAT-CNR-IRSA: Manuali e Linee Guida, Metodi Analitici per le Acque 29/2003, III; sezione 6000 Metodi microbiologici – parte generale; sezione 7000 Metodi per la determinazione dei microrganismi indicatori di inquinamento e di patogeni, Rome, Italy, 2003.
- Beckers, J. M., Barth, A., Alvera-Azcárate, A.: DINEOF reconstruction of clouded images including error maps — Application to the sea-surface temperature around Corsican Island. Ocean Sci., 2, 183–199, 2006.
- [Bigongiari, N., Cipriani, L. E., Pranzini, E., Renzi, M., Vitale, G.: Assessing shelf aggregate environmental compatibility and suitability for beach nourishment: A case study for Tuscany \(Italy\), Mar. Poll. Bull. 93\(1\), 183-193, 2015.](#)
- Bonamano, S., Madonia, A., Borsellino, C., Stefanì, C., Caruso, G., De Pasquale, F., Piermattei, V., Zappalà, G. and Marcelli, M.: Modeling the dispersion of viable and total Escherichia coli cells in the artificial semi-enclosed bathing area of Santa Marinella (Latium, Italy), Mar. Pollut. Bull. 95, 141–154, 2015a.
- Bonamano, S., Paladini de Mendoza, F., Piermattei, V., Martellucci, R., Madonia, A., Gnisci, V., Mancini, E., Fersini, G., Burgio, C., Marcelli, M. and Zappalà, G.: Mathematical models supporting the monitoring of Civitavecchia harbour near Rome, Computational Methods and Experimental Measurements XVII, 59, 443-453, 2015b.
- Booij, N., Ris, R.C. and Holthuijsen, L.H.: A third-generation wave model for coastal regions, Part I: Model description and validation, J. Geophys. Res., 104, 7649-7666, 1999.
- Briere, C., Giardino A. and van der Werf J.: Morphological modeling of bar dynamics with DELFT3d: the quest for optimal free parameter settings using an automatic calibration technique, Coastal Engineering Proceedings: sediment, 1(32) 60, 2011.



1 Buia M.C., Gambi M.C., Dappiano M. I sistemi a fanerogame marine. In: Gambi M.C.,  
2 Dappiano M. (Editors). Manuale di Metodologie di campionamento e studio del benthos  
3 marino mediterraneo. Biol. Mar. Med, 19 (Suppl.):145-198, 2003.

4 Cabelli, V.J., Dufour, A.P., McCabe, L.J. and Levin, M.A.: Swimming-associated  
5 gastroenteritis and water quality, Am. J. Epidemiol., 115, 606–616, 1982.

6 Calderon, R. L., Mood, E. W. and Dufour, A. P.: Health effects of swimmers and nonpoint  
7 sources of contaminated water, Int. J. Environ. Health Res., 1, 21–31, 1991.

8 Cappucci, S., Scarcella, D., Rossi, L., Taramelli, A.: Integrated coastal zone management at  
9 Marina di Carrara Harbor: sediment management and policy making, Ocean Coast. Manage.,  
10 54(4), 277-289, 2011.

11 Caruso, G. Marine Strategy Framework Directive: Current Gaps in Microbiological Issues, J  
12 Ecosys Ecograph, 4:2 [doi:10.4172/2157-7625.1000e120](https://doi.org/10.4172/2157-7625.1000e120), 2014.

13 Caruso, G., La Ferla R., Azzaro M., Zoppini A., Marino G., Petochi T., Corinaldesi C.,  
14 Leonardi M., Zacccone R., Fonda Umani S., Caroppo C., Monticelli L.S., Azzaro F.,  
15 Decembrini F., Maimone G., Cavallo R.A., Stabili L., Todorova N.H., Karamfilov V.K.,  
16 Rastelli E., Cappello S., Acquaviva M.I., Narracci M., De Angelis R., Del Negro P., Latini  
17 M., Danovaro R. Microbial assemblages for environmental quality assessment: knowledge,  
18 gaps and usefulness in the European Marine Strategy Framework Directive. Crit. Rev.  
19 Microbiol. doi ://dx.doi.org/10.3109/1040841X.2015.1087380, 2015.

20 Cheung, W., Chang, K., Hung, R. and Kleeven, J. : Health effects of beach water pollution in  
21 Hong Kong, Epidemiol. Infect., 105(1), 139–162, 1990.

22 Cheung, Y.H. and Wong, M.H.: Toxic effects of dredged sediments of Hong Kong coastal  
23 waters on clams. Environ. Technol., 14, 1047–1055, 1993.

24 Colford, J. M., Wade, T. J., Schiff, K. C., Wright, C. C., Griffith, J. F., Sandhu, S. K., Burns,  
25 S., Sobsey, M., Lovelace, G. and Weisberg, S. B.: Water quality indicators and the risk of  
26 illness at beaches with nonpoint sources of fecal contamination, Epidemiology, 18(1), 27–35,  
27 2007.

28 Costanza, R., d’Arge, R., de Groot, R.S., Farber, S., Grasso, M., Hannon, B., Limburg, K.,  
29 Naeem, S., O’Neill, R., Paruelo, J., Raskin, R., Sutton, P. and van den Belt, M.: The value of  
30 the world’s ecosystem services and natural capital, Nature 387, 253–260, 1997.

Council Directive 92/43/EEC of 21 May 1992 on the conservation of natural habitats and of wild fauna and flora, Official Journal, L 206/7, 1992.

Crise, A., Kaberi, H., Ruiz, J., Zatsepin, A., Arashkevich, E., Giani, M., Karageorgis, A.P., Prieto, L., Pantazi, M., Gonzalez-Fernandez, D., Ribera d'Alcalà, M., Tornero, V., Vassilopoulou, V., Durrieu de Madron, X., Guieu, C., Puig, P., Zenetos, A., Andral, B., Angel, D., Altukhov, D., Ayata, S.D., Aktan, Y., Balcioğlu, E., Benedetti, F., Bouchoucha, M., Buia, M.C., Cadiou, J.-F., Canals, M., Chakroun, M., Christou, E., Christidis, M.G., Civitarese, G., Coatu, V., Corsini-Foka, M., Cozzi, S., Deidun, A., Dell'Aquila, A., Dogrammatzi, A., Dumitrache, C., Edelist, D., Ettahiri, O., Fonda-Umani, S., Gana, S., Galgani, F., Gasparini, S., Giannakourou, A., Gomoiu, M.-T., Gubanova, A., Gücü, A.-C., Gürses, Ö., Hanke, G., Hatzianestis, I., Herut, B., Hone y, R., Huertas E., Irisson, J.-O., Isinibilir, M., Jimenez, J.A., Kalogirou, S., Kapisris, K., Karamfilov, V., Kavadas, S., Keskin, Ç., Kideys, A.E., Kocak, M., Kondylatos, G., Kontogiannis, C., Kosyan, R., Koubbi, P., Kušpilic, G., La Ferla, R., Langone, L., Laroche, S., Lazar, L., Lefkaditou, E., Lemeshko, I.E., Machias, A., Malej, A., Mazzocchi, M.-G., Medinets, V., Mihalopoulos, N., Miserocchi, S., Moncheva, S., Mukhanov, V., Oaie, G., Oros, A., Öztürk, A.A., Öztürk, B., Panayotova, M., Prospathopoulos, A., Radu G., Raykov V., Reglero, P., Reygondeau, G., Rougeron, N., Salihoglu, B., Sanchez-Vidal, A., Sannino, G., Santinelli, C., Secieru, D., Shapiro, G., Simboura, N., Shiganova, T., Sprovieri, M., Stefanova, K., Streftaris, N., Tirelli, V., Tom, M., Topaloglu, B., Topçu, N.E., Tsagarakis, K., Tsangaris, C., Tserpes, G., Tugrul, S., Uysal, Z., Vasile, D., Violaki, K., Xu J., Yüksek, A. And Papathanassiou E.: A MSFD complementary approach for the assessment of pressures, knowledge and data gaps in Southern European Seas: The PERSEUS experience, *Mar. Pollut. Bull.*, 95(1), 28–39, 2015.

Cristina, S., Icely, J., Goela, P. C., DelValls, T. A., Newton, A.: Using remote sensing as a support to the implementation of the European Marine Strategy Framework Directive in SW Portugal. *Cont. Shelf Res.*, [108, 169-177](#)[doi:10.1016/j.csr.2015.03.011](#), 2015

Cui, T., Zhang, J., Tang, J., Sathyendranath, S., Groom, S., Ma, Y., Zhao, W., Song, Q.: Assessment of satellite ocean color products of MERIS, MODIS and SeaWiFS along the East China Coast (in the Yellow Sea and East China Sea), *ISPRS Journal of Photogrammetry and Remote Sensing*, 87, 137-151, 2014.

1 Cutroneo, L., Massa, F., Castellano, M., Canepa, G., Costa, S., Povero, P., Tucci, S., Capello,  
2 M. : Technical and public approaches to involve dredging stakeholders and citizens in the  
3 development of a port area, Environ. Earth Sci., 72(8), 3159-3171, 2014.

4 ~~Directive 2000/60/EC of the European Parliament and of the Council of 23 October 2000~~  
5 ~~establishing a framework for Community actions in the field of water policy. Official Journal~~  
6 ~~of the European Communities L327, 1. 22.12.2000. 20~~

7 Directive 2006/7/EC of the European Parliament and of the Council of 15 February 2006  
8 concerning the management of bathing water quality and repealing Directive 76/160/EEC,  
9 Official Journal of the European Union, L 64/37, 2006.

10 ~~Directive 2007/2/EC of the European Parliament and of the Council of 14 March 2007~~  
11 ~~establishing an Infrastructure for Spatial Information in the European Community (INSPIRE),~~  
12 ~~Official Journal of the European Union, L 108/1, 2007.~~

13 Directive 2008/56/EC of the European Parliament and of the Council of 17 June 2008,  
14 establishing a framework for community action in the field of marine environmental policy  
15 (Marine Strategy Framework Directive), Official Journal of the European Union L164,  
16 Official Journal of the European Union, L 164/19, 19–40, 2008.

17 Directive 2014/89/EU of the European Parliament and of the Council of 23 July 2014  
18 establishing a framework for maritime spatial planning, Official Journal of the European  
19 Union, L 257/135, 2014.

20 Decreto Legislativo 30 maggio 2008, n. 116, Attuazione della direttiva 2006/7/CE relativa  
21 alla gestione della qualità delle acque di balneazione e abrogazione della direttiva  
22 76/160/CEE, Gazzetta Ufficiale della Repubblica italiana, n. 155, 2008.

23 Douvere, F.: The importance of marine spatial planning in advancing ecosystem-based sea  
24 use management, Mar Policy, 32, 762– 771, 2008.

25 Drusch, M., Del Bello, U., Carlier, S., Colin, O., Fernandez, V., Gascon, F., Hoersch, B.,  
26 Isola, C., Laberinti, P., Martimort, P., Meygret, A., Spoto, F., Sy, O., Marchese, F. Sentinel-2:  
27 ESA's optical high-resolution mission for GMES operational services-2, Remote Sens.  
28 Environ., 120, 25-36, 2012.

29 Erftemeijer, P.L.A. and Lewis, R.R.R.: Environmental impacts of dredging on seagrasses: A  
30 review, Mar. Pollut. Bull., 52, 1553–1572, 2006.

- 1 [Filipponi, F., Taramelli, A., Zucca, F., Valentini, E., El Serafy, G. Y.: Ten-years sediment](#)
- 2 [dynamics in Northern Adriatic sea investigated through optical remote sensing observations,](#)
- 3 [In Geoscience and Remote Sensing Symposium \(IGARSS\), 2015 IEEE International \(pp.](#)
- 4 [2265-2268\). IEEE.](#)
- 5 Glasgow, H. B., Burkholder, J. M., Reed, R. E., Lewitus, A. J., and Kleinman, J. E.: Real-
- 6 time remote monitoring of water quality: a review of current applications, and advancements
- 7 in sensor, telemetry, and computing technologies, J. Exp. Mar. Bio. Ecol., 300(1), 409-448,
- 8 2004.
- 9 [Glenn, S.M., Dickey, T.D., Parker, B., Boicourt, W.: Long term real-time coastal ocean](#)
- 10 [observation networks, Oceanography. 13, 24-34, 2000.](#)
- 11 Gordon, D.M., Grey, K.A., Chase, S.C. and Simpson, C.J.: Changes to the structure and
- 12 productivity of a Posidonia sinuosa meadow during and after imposed shading, Aquat. Bot.,
- 13 47, 265–275, 1994.
- 14 [Haidvogel, D.B., Blanton, J., Kindle, J.C., Lynch, D.R.: Coastal ocean modeling: Processes](#)
- 15 [and real-time systems, Oceanography, 13\(1\), 35-46, 2000.](#)
- 16 Haile, R.W., White, J.S., Gold, M.R., Cressey, C., McGee, R.C., Millikan, A., Glasser, N.,
- 17 Harawa, C., Ervin, P., Harmon, J., Harper, J., Dermand, J., Alamillo, K., Barrett, M., Nides,
- 18 G. and Wang, Y.: The health effects of swimming in ocean water contaminated by storm
- 19 drain runoff, Epidemiology, 10, 355–363, 1999.
- 20 Hart, J. K. and Martinez, K.: Environmental Sensor Networks: A revolution in the earth
- 21 system science? Earth-Sci. Rev., 78(3), 177-191, 2006.
- 22 Hasselmann, D. E., Dunckel, M. and Ewing, J. A.: Directional wave spectra observed during
- 23 JONSWAP 1973, ~~J.ournal of p~~Physical Oceanography. 10(8), 1264-1280,1980.
- 24 Hayes, D. and Wu, P. Y.: Simple approach to TSS source strength estimates, in: Proceedings
- 25 of the WEDA XXI Conference, Houston, TX, USA, 25–27 June 2001.
- 26 Hopkins, T. S.: Recent observation on the intermediate and deep water circulation in the
- 27 southern Tyrrhenian Sea, Oceanol. Acta, 9, special issue, ~~pp. 41–50~~, 1988.
- 28 ISO/TS 19139: 2007 Geographic information – Metadata – XML schema implementation,
- 29 International Organization for Standardization, Geneva, Switzerland, 2007.

ISO 19115-1:2014 Geographic information – Metadata – Part 1: Fundamentals, International Organization for Standardization, Geneva, Switzerland, 2014.

Jayasinghe, R. P. K., Amarasinghe, U. S., Newton, A.: Evaluation of marine subareas of Europe using life history parameters and trophic levels of selected fish populations, *Mar. Environ. Res.*, 112 Part B, 81-90~~doi:10.1016/j.marenvres.2015.08.002~~, 2015.

Juza, M., Mourre, B., Renault, L., Gómara, S., Sebastián, K., Lora, S., Beltran, J.P., Frontera, B., Garau, B., Troupin, C., Torner, M., Heslop, E., Casas, B., Vizoso, G., Tintoré, J.: Operational SOCIB forecasting system and multi-platform validation in the western Mediterranean Sea, *J. Oper. Oceanogr.*, in press.

Korres, G. and Lascaratos, A.: An eddy resolving model of the Aegean and Levantine basins for the Mediterranean Forecasting System Pilot Project (MFSPP): implementation and climatological runs, *Ann. Geophys.* 21, 205–220, 2003.

Kourafalou, V.H., De Mey, P., Staneva, J., Ayoub, N., Barth, A., Chao, Y., Cirano, M., Fiechter, J., Herzfeld, M., Kurapov, A., Moore, A.M., Oddo, P., Pullen, J., Van Der Westhuysen, A., Weisberg, R.: Coastal Ocean Forecasting: Science foundation and user benefits, *J. Oper. Oceanogr.* 8(S1):s147–s167, in press.

Kröger, S., Parker, E. R., Metcalfe, J. D., Greenwood, N., Forster, R. M., Sivy, D. B., and Pearce, D. J.: Sensors for observing ecosystem status, *Ocean Sci.*, 5(4), 523-535, 2009.

Lauder B.E. and Spalding D.B.: The numerical computation of turbulent flows. *Comput. Meth., Appl. Mech. Engin.*, 3, 269–289, 1974.

Lesser, G.R., Roelvink, J.A., van Kester, J.A.T.M. and Stelling, G.S.: Development and validation of a three dimensional morphological model, *Coastal Eng.*, 51, 883-915, 2004.

Li, M., Zhong, L., and Boicourt, B.: Simulation of Chesapeake Bay Estuary: sensitivity to turbulence mixing parameterizations and comparison with hydrographic observations, *J. Geophys. Res.*, 110, C12004, doi:10.1029/2004JC002585, 2005.

Lohrer, A.M., and Wetz, J.J.: Dredging–induced nutrient release from sediments to the water column in a southeastern saltmarsh tidal creek. *Mar. Pollut. Bull.*, 46, 1156–1163, ~~1993~~2003.

Los, F. J., Tatman, S., and Minns, A. W.: Flyland – a future airport in the North Sea? An integrated modelling approach for marine ecology, 6th International Conference on

Hydroinformatics, edited by: Liong, S. Y., Phoon, K. K., and Babovic, V., World Scientific, Publishing Co.Pte. Ltd. Singapore, ISBN 981-238-787-0, 21–24 June 2004.

Malone, T.C., DiGiacomo, P.M., Gonçalves, E., Knap, A.H., Talaue-McManus, L., de Mora, S., Muelbert, J.: Enhancing the Global Ocean Observing System to meet evidence based needs for the ecosystem-based management of coastal ecosystem services, Nat. Res. Forum, 38, 168–181, 2014.

Manzanera, M., Pérez, M. and Romero, J.: Seagrass mortality due to oversedimentation: an experimental approach, ~~J\_ournal-of~~ Coast.al Conserv\_ation, 4. 67-70, 1995.

Manzo, C., Valentini, E., Taramelli, A., Filipponi, F., Disperati, L.: Spectral characterization of coastal sediments using Field Spectral Libraries, Airborne Hyperspectral Images and Topographic LiDAR Data (FHyL). Int. J. Appl. Earth Obs., 36, 54-68, 2015.

McBride, G., Salmond, C., Bandaranayake, D., Turner, S., Lewis, G. and Till, D.: Health effects of marine bathing in New Zealand, Int. J. Environ. Health Res., 8, 173–18, 1998.

Nayar, S., Miller, D. J., Hunt, A., Goh, B. P. L., and Chou, L. M.: Environmental effects of dredging on sediment nutrients, carbon and granulometry in a tropical estuary, Environ. Monit. Assess., 127(1-3), 1-13, 2007.

Oddo, P., Pinardi, N., Zavatarelli,M.: A numerical study of the interannual variability of the Adriatic Sea, Sci. Total Environ., 353, 39-56, 2005.

Oddo, P., Adani, M., Pinardi, N., Fratianni, C., Tonani, M., Pettenuzzo, D.: A nested atlantic-Mediterranean sea general circulation model for operational forecasting, Ocean Sci. 5:461-473, 2009.

Olita, A., Dobricic, S., Ribotti, A., Fazioli, L., Cucco, A., Dufau, C., Sorgente, R.: Impact of SLA assimilation in the Sicily Channel Regional Model: model skills and mesoscale features, Ocean Sci., 8, 485-496, 2012.

Ondrusek, M., Stengel, E., Kinkade, C. S., Vogel, R. L., Keegstra, P., Hunter, C., Kim, C.: The development of a new optical total suspended matter algorithm for the Chesapeake Bay, Remote Sens.~~-of~~ Environ., 119, 243-254, 2012.

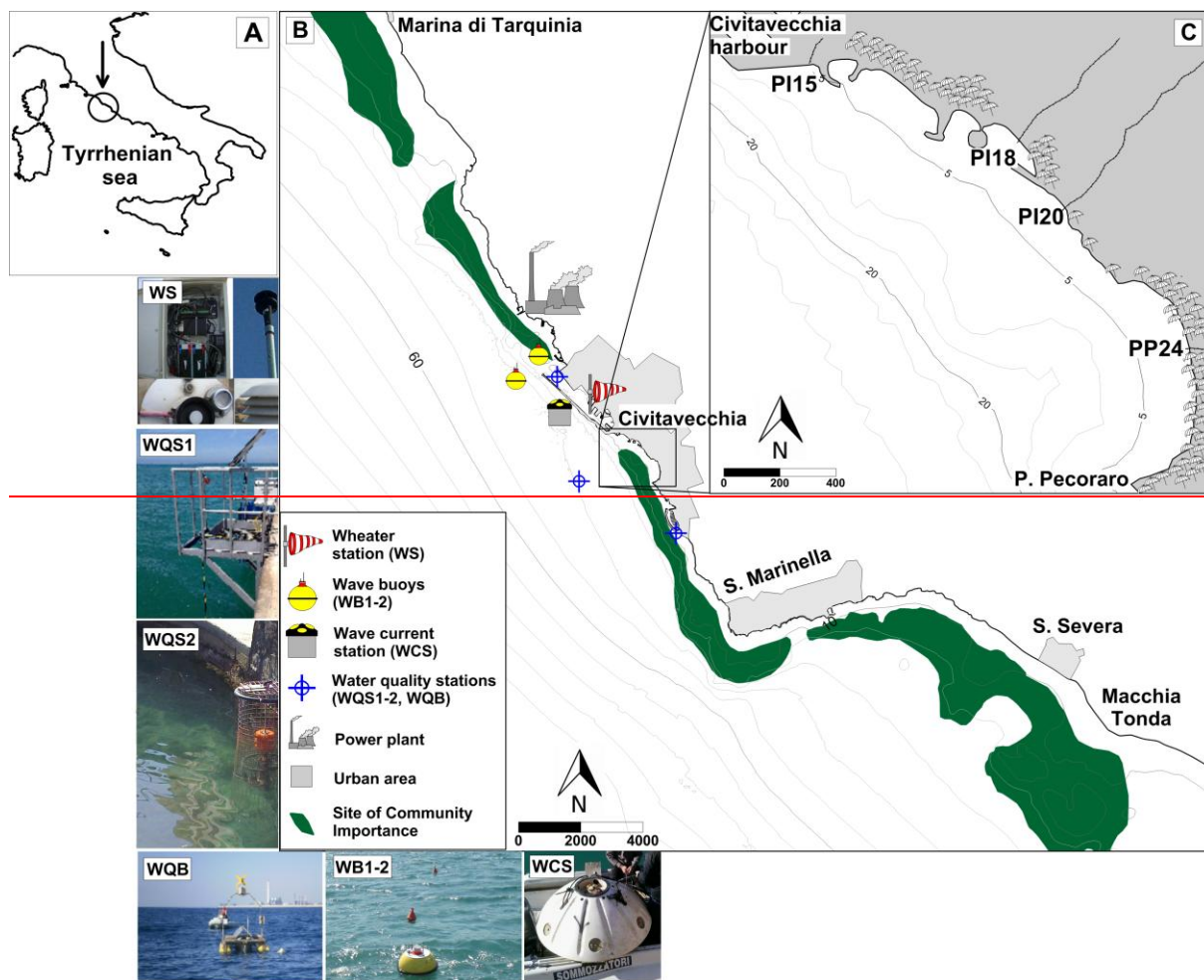
~~Pichel, W., Maturi, E., Clemente-Colón, P., Sapper, J.: Deriving the operational nonlinear multichannel sea surface temperature algorithm coefficients for NOAA-15 AVHRR/3. Int. J. of Remote Sens., 22(4), 699-704, 2001.~~

- 1 Pieralice, F., Proietti, R., La Valle, P., Giorgi, G., Mazzolena, M., Taramelli, A., Nicoletti, L.:  
2 An innovative methodological approach in the frame of Marine Strategy Framework  
3 Directive: A statistical model based on ship detection SAR data for monitoring programmes.  
4 Mar. Environ. Res., 102, 18-35, 2014.
- 5 Pierini S. and Siemioli A.: Wind-driven circulation model of the Tyrrhenian Sea area, J.  
6 Marine Syst., Vol 18, pp 161–178, 1998.
- 7 Pinardi, N. and Navarra, A.: Baroclinic wind adjustment processes in the Mediterranean Sea,  
8 Deep-Sea Res. Part 2, Vol. 40, No. (6), pp. 1299-1326, 1993.
- 9 Qin, Y., Brando, V. E., Dekker, A. G., Blondeau-Patissier, D.: Validity of SeaDAS water  
10 constituents retrieval algorithms in Australian tropical coastal waters, Geophys. Res. Lett.,  
11 34(21), 2007.
- 12 Ruddick, K. G., De Cauwer, V., Park, Y. J., Moore, G.: Seaborne measurements of near  
13 infrared water-leaving reflectance: The similarity spectrum for turbid waters, Limnol. and  
14 Oceanogr., 51(2), 1167-1179, 2006.
- 15 Santoleri, R., Volpe, G., Marullo, S., Nardelli, B. B.: Open waters optical remote sensing of  
16 the Mediterranean Sea, In Remote sensing of the European seas (pp. 103-116), Springer  
17 Netherlands, 2008.
- 18 Sayol, J.M., Orfila, A., Simarro, G., Conti, D., Renault, L., Molcard, A.: A Lagrangian model  
19 for tracking surface spills and SaR operations in the ocean, Environ. Model. Softw., 52,74-82,  
20 2014.
- 21 Schofield, O., Bergmann, T., Bissett, P., Grassle, J. F., Haidvogel, D. B., Kohut, J., Moline,  
22 M., and Glenn, S. M.: The long-term ecosystem observatory: an integrated coastal  
23 observatory, IEEE J. Oceanic Eng., 27, 146–154, 2002.
- 24 Serafino, F., Lugni, C., Ludeno, G., Arturi, D., Uttieri, M., Buonocore, Zambianchi, E.,  
25 Budillon, G., and Soldovieri.: F. REMOCEAN: A flexible X-band radar system for sea-state  
26 monitoring and surface current estimation. Geoscience and Remote Sensing Letters, IEEE,  
27 9(5), 822-826, 2012.
- 28 Siddorn, J., Allen, J., Blackford, J.: Modelling the hydrodynamics and ecosystem of the  
29 North-West European continental shelf for operational oceanography, J. Mar. Sys., 65, 417-  
30 429, 2007.

- 1 [Smith, R.S, Brown, O.B., Hoge, F.E., Baker, K.S., Evans, R.H., Swift, R.N., Esaias, W.E.:](#)
- 2 [Multiplatform sampling \(ship, aircraft and satellite\) of a Gulf stream warm core ring, Appl.](#)
- 3 [Opt., 26\(14\), 2068-2081, 1987.](#)
- 4 Thoe, W.: A daily forecasting system of marine beach water quality in Hong Kong. Ph.D.
- 5 Thesis, The University of Hong Kong, 2010.
- 6 [Tintoré J., Vizoso, G., Casas, B., Ruiz, S., Heslop, E., Renault, L., Iguz, T., Garau, B.,](#)
- 7 [Pascual, A., Martínez-Ledesma, M., Gómez-Pujol, L., Alvarez-Ellacuría, A., Orfila, A.,](#)
- 8 [Alemany, F., Alvarez-Berastegui, D., Reglero, P., Massuti, E., Vélez-Belchi, P., Ruiz, J.,](#)
- 9 [Gómez, M., Alvarez, E., Manriquez, M.: SOCIB: The Balearic Islands Coastal Ocean](#)
- 10 [observing and forecasting system responding to science, technology and society needs, Mar](#)
- 11 [Technol Soc J. 47, 101-117, 2013.](#)
- 12 [Tonani, M., Pinardi, N., Dobricic, S., Pujol, I., Fratianni, C.: A high resolution free-surface](#)
- 13 [model on the Mediterranean sea, Ocean Sci., 4, 1-14. 2008.](#)
- 14 [Tonani, M., Balmaseda, M., Bertino, L., Blockley, E., Brassington, G., Davidson, F., Drillet,](#)
- 15 [Y., Hogan, P., Kuragano, T., Lee, T., Mehra, A., Paranathara, F., Tanajura C.A.S., Wang, H.;](#)
- 16 [Status and future of global and regional ocean prediction systems, J. Oper. Oceanogr., 8:sup2,](#)
- 17 [s201-s220, 2015.](#)
- 18 Tornero, V., and [Ribera](#) d'Alcalà, M. ~~R.~~: Contamination by hazardous substances in the Gulf
- 19 of Naples and nearby coastal areas: A review of sources, environmental levels and potential
- 20 impacts in the MSFD perspective, Sci. ~~of the~~ [Tot.al](#) Environ., 466, 820-840, 2014.
- 21 Van den Berg, G. A., Meijers, G. G., van der Heijdt, L. M., and Zwolsman, J. J.: Dredging-
- 22 related mobilisation of trace metals: a case study in the Netherlands, Water Res., 35(8), 1979-
- 23 1986, 2001.
- 24 Van Gils, J.A.G., Ouboter, M.R.L. and De Rooij, M.N.: Modelling of water and sediment
- 25 quality in the Scheldt Estuary, Netherland J. Aquat. Ecol., 27(2-4), 257-265, 1993.
- 26 Van Rijn, L. C., Walstra, D. J. R., Grasmeijer, B., Sutherland, J., Pan, S., and Sierra, J. P.:
- 27 The predictability of cross-shore bed evolution of sandy beaches at the time scale of storms
- 28 and seasons using process-based profile models, Coast. Eng., 47(3), 295-327, 2003.



- 1 Vetrano A., Napolitano E., Iacono R., Schroeder K., Gasparini G.P.: Tyrrhenian Sea  
2 Circulation and water mass fluxes in spring 2004: observations and model results. J.  
3 Geophys. Res., Vol. 115 Issue C6, 2010.
- 4 Vidal-Vijande, E., Pascual, A., Barnier, B., Molines, J.-M., Tintoré, J.: Analysis of a 44-year  
5 hindcast for the Mediterranean Sea: comparison with altimetry and in situ observations, Sci.  
6 Mar., 75 (1), 71-86, 2011.
- 7 Volpe, G., Nardelli, B. B., Cipollini, P., Santoleri, R., Robinson, I. S.: Seasonal to interannual  
8 phytoplankton response to physical processes in the Mediterranean Sea from satellite  
9 observations, Remote Sens. Environ., 117, 223-235, 2012.
- 10 Weisberg, R.H., Barth, A., Alvera-Azcarate, A., Zeng, L.: A coordinated coastal ocean  
11 observing and modeling system for the West Florida continental shelf, Harmful Algae, 8:585-  
12 597, 2009.
- 13 Windom, H.L.: Environmental aspects of dredging in the coastal zone. Crit. Rev. Env.  
14 Contr., 6, 91–109, 1976.
- 15 Zappalà, G., Caruso, G., Bonamano, S., Madonia, A., Piermattei, V., Martellucci, R., Di  
16 Cicco, A., Pannocchi, A., Stefani, C., Borsellino, C. and Marcelli, M. A multi-platform  
17 approach to marine environment assessment in Civitavecchia (Rome) area. ~~J.ournal of~~  
18 ~~Oper.ational Oceanography~~, 2015. ~~(In pressreview).~~
- 19 Zimmerman, L. E., Jutte, P. C. and Van Dolah, R. F.: An environmental assessment of the  
20 Charleston Ocean Dredged Material Disposal Site and surrounding areas after partial  
21 completion of the Charleston Harbor Deepening Project, Mar. Pollut. Bull., 46(11), 1408-  
22 1419, 2003.



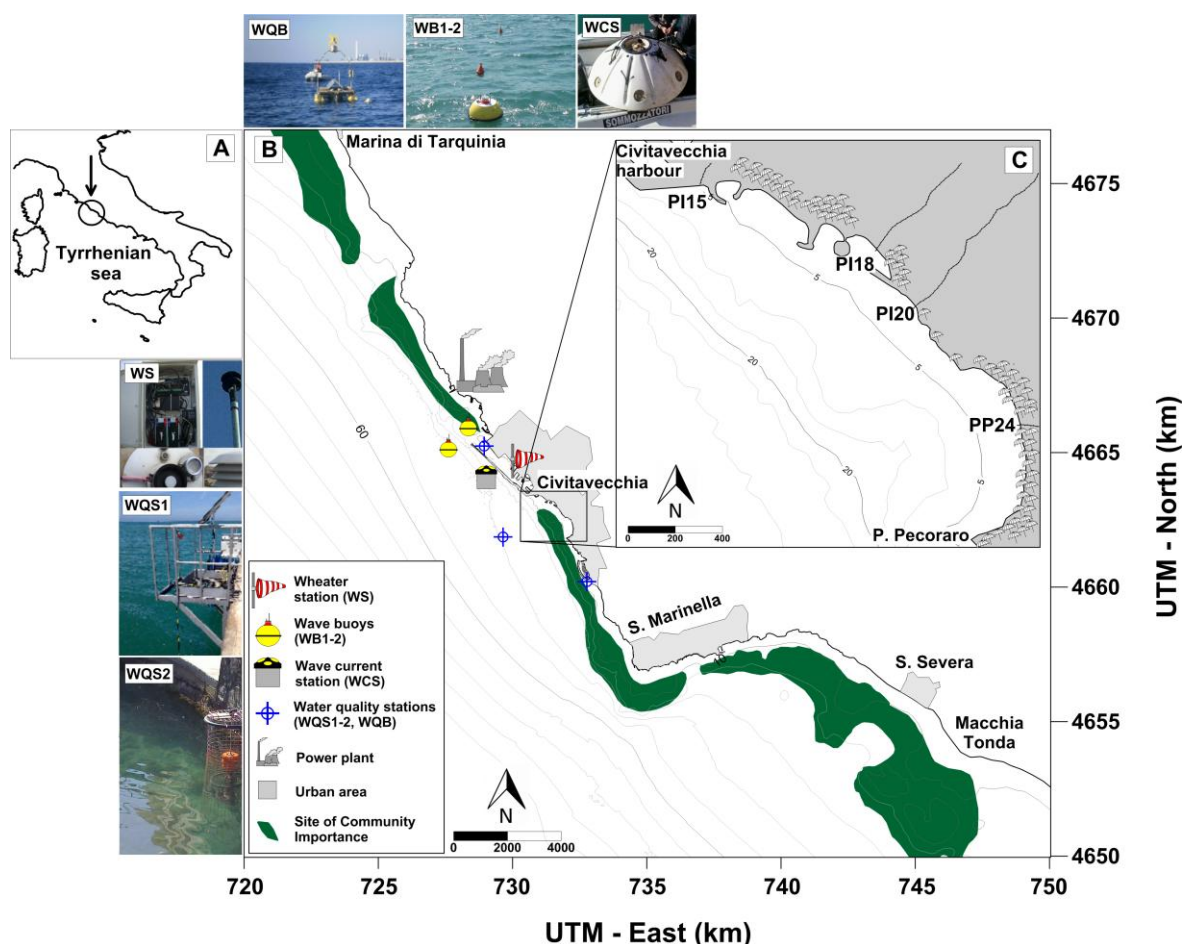
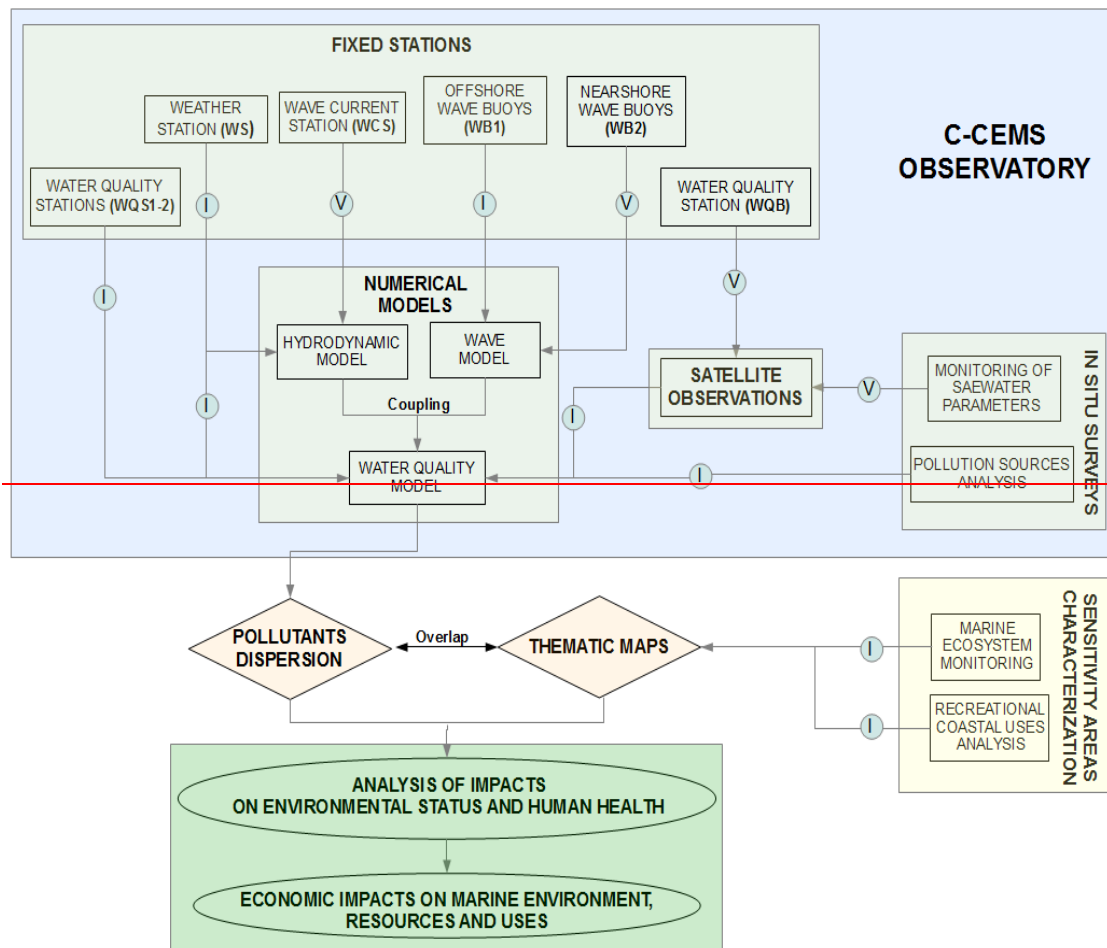


Figure 1. Location of the study area along the north-east Tyrrhenian coast of Italy (Western Mediterranean sea) (A). Zoom-in on the area of C-CEMS applications: the location of coastal uses, SCIs, and measurement stations indicated (B) and the Civitavecchia bathing areas with discharge points and bather density indicated (1 umbrella corresponds to 5 bathers) (C). The fixed station pictures are reported in the bottom-top-left corner of the figure. The coordinate system is expressed in UTM 32 (WGS84).



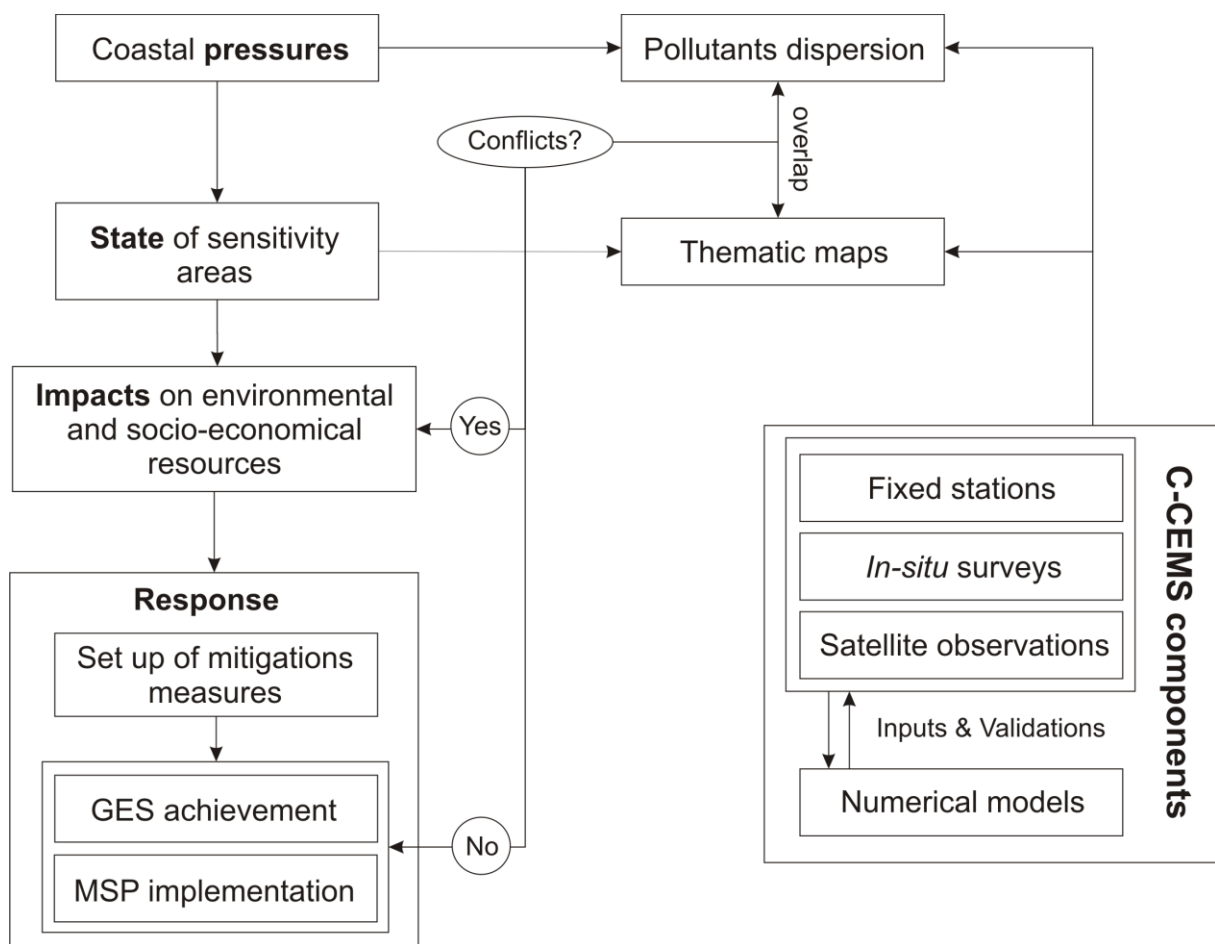
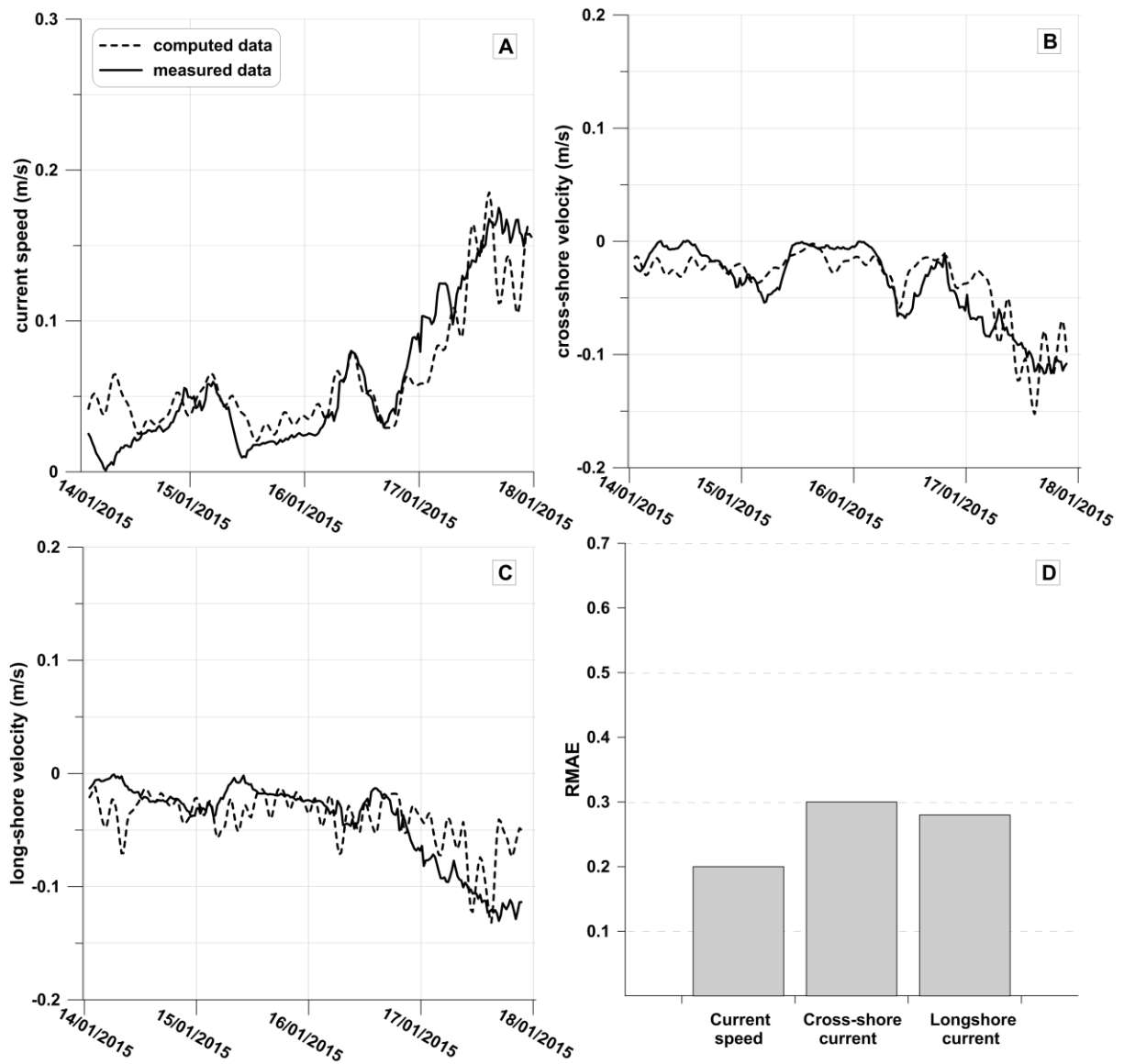


Figure 2. The functioning role of C-CEMS for in the analysis of the conflicts between coastal pressures, in terms of pollutant dispersion, and sensitivity areas, represented by thematic maps. This observing system includes different components such as fixed stations, in-situ surveys, satellite observations and numerical models. The ~~C-CEMS~~ components interact between them to transfer data (by input (I) and validation (V)) from the in-situ and satellite observations to numerical models in order to reach enougha temporal and spatial resolution ~~enough~~ to analyse the pollutants dispersion in coastal waters. ~~The conflicts are evaluated overlapping the model results with the thematic maps of the sensitivity areas. The economic impact of the conflicts on the marine environment and human health is reported, even though it is not analysed in this work.~~ Only if conflicts between anthropic activity and sensitivity areas occur, the potential impacts on environment and socio-economical resources are analysed (Impacts) and suitable mitigation measures are applied (Response) in order to achieve Good Environmental Status (GES) and implement Marine Spatial Planning (MSP).

1



2

3

4 Figure 3. Validation of current speed (A), cross-shore (B), and along-shore (C) components.

5 The solid and dotted lines represent the measured and computed time series, respectively.

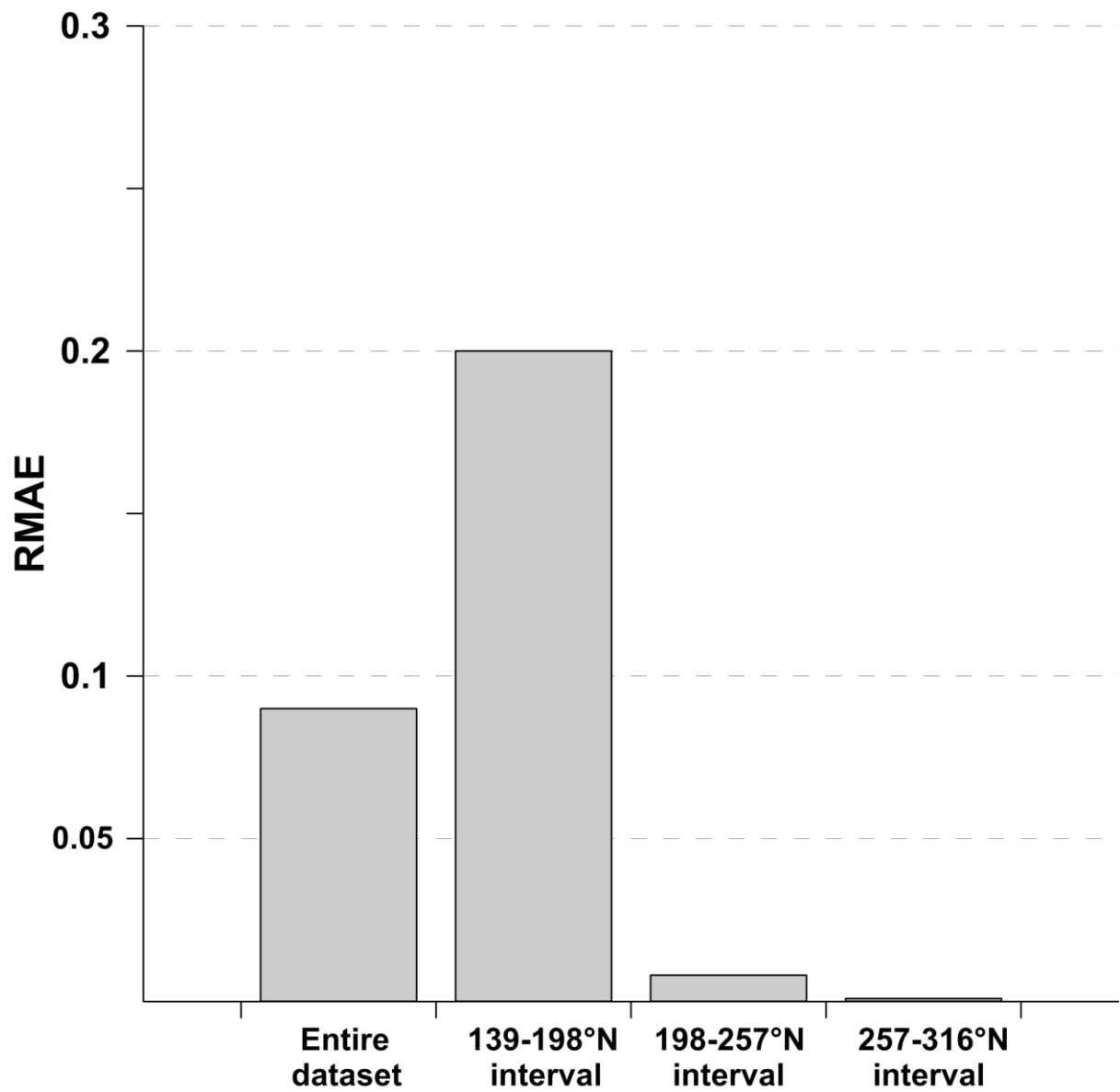
6 Statistics (RMAE) for current speed, cross-shore, and along-shore components are reported in

7 panel D.

8

9

1



2

3

4 Figure 4. Validation of the SWAN model using RMAE values calculated both for the entire  
5 dataset and for three wave direction intervals.

6

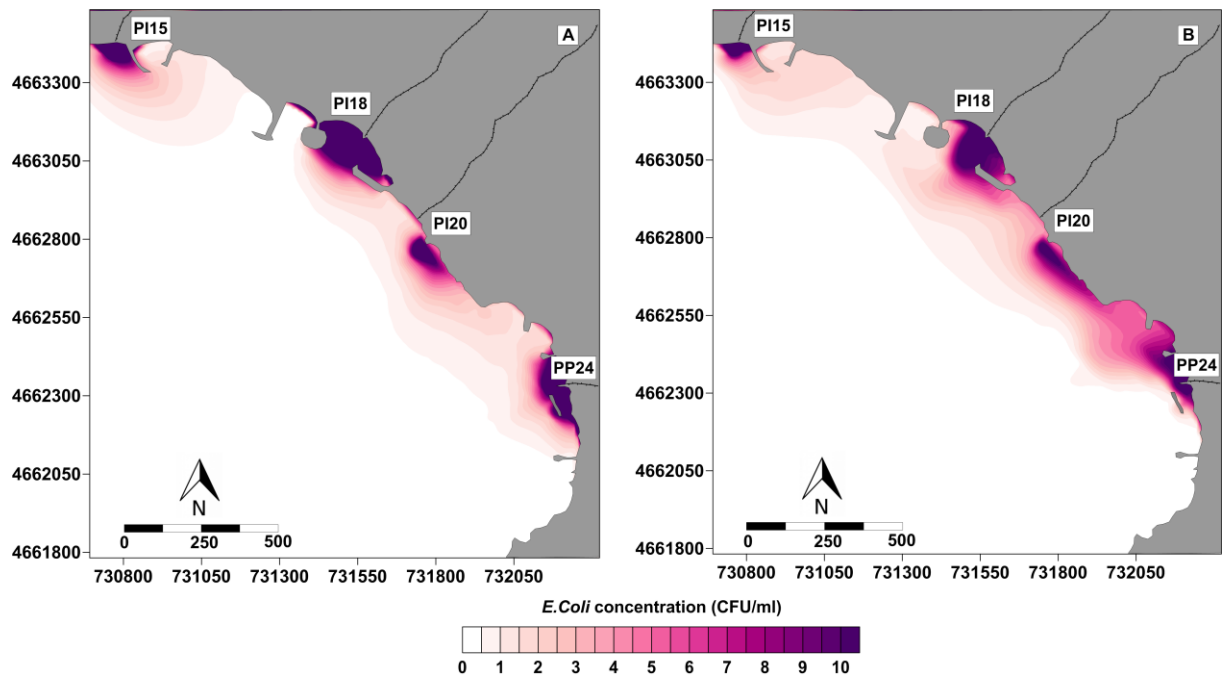


Figure 5. LC (A) and HC (B) simulations results of the bacterial dispersion in the Civitavecchia bathing areas. The distribution of *E. coli* concentration refers to the end of the simulation period.



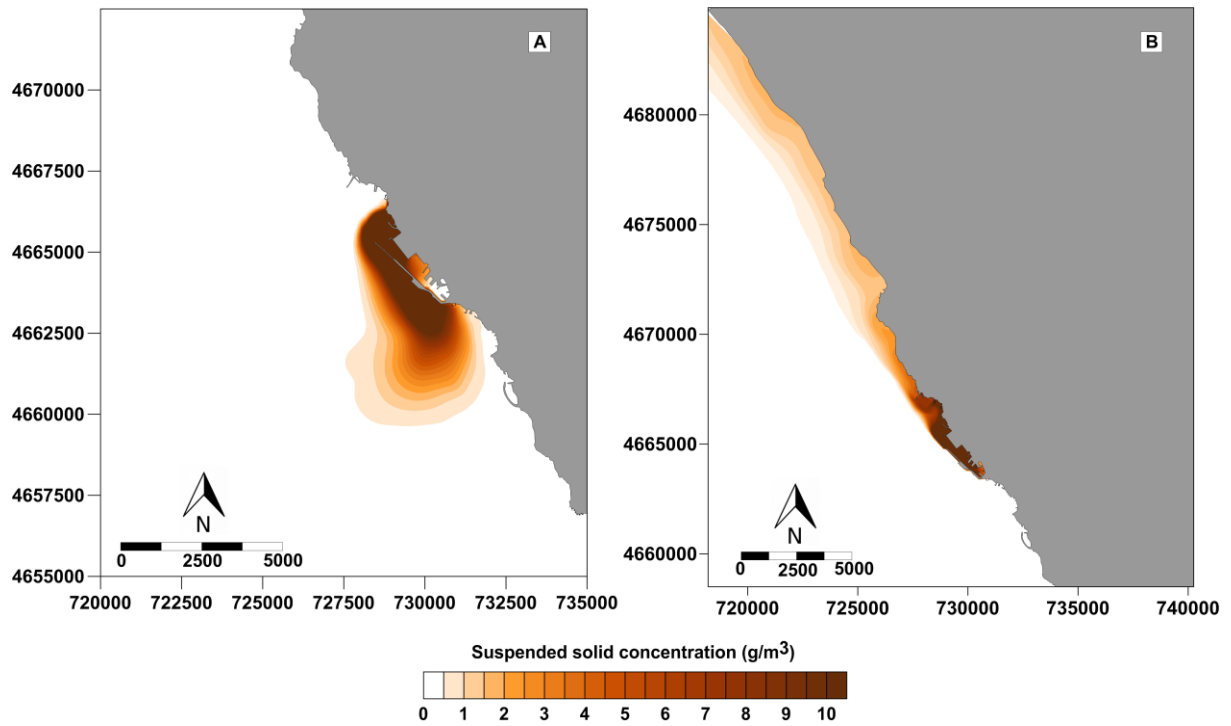
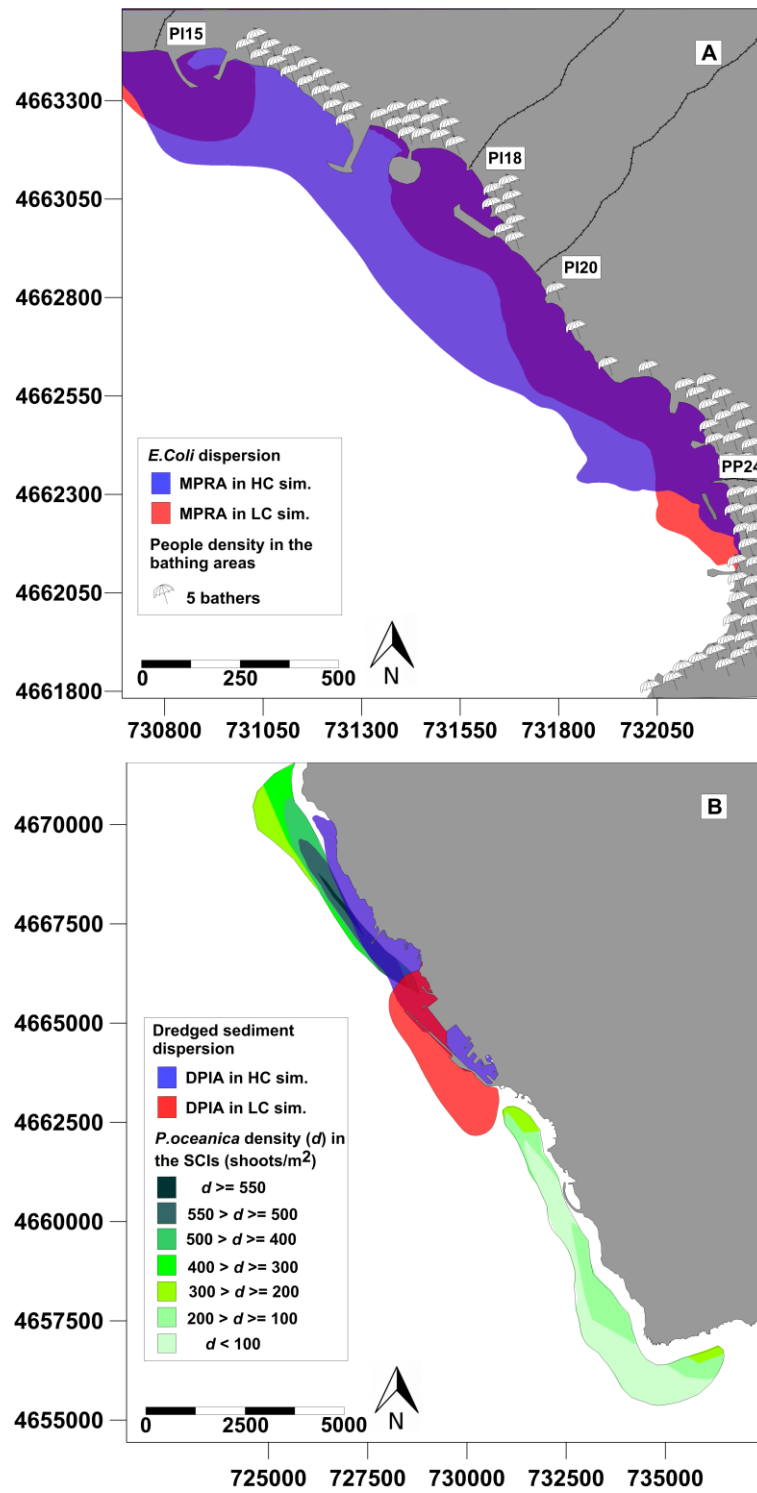


Figure 6. LC (A) and HC (B) simulations results of the dispersion of dredged materials in the study area. The distribution of fine sediment concentration refers to the end of the simulation period.



2

3 Figure 7. Overlap between anthropic pressures indicated by the 'potentially-polluting zoning  
 4 indicators' (MPRA and DPIA) and sensitivity areas represented as thematic maps to analyse  
 5 'urban discharge bathing area' (A) and 'dredging SCI' (B) conflicts.