

Interactive
Comment

Interactive comment on “Possible signals of poleward surface ocean heat transport, of Arctic basal ice melt, and of the twentieth century solar maximum in the 1904–2012 Isle of Man daily timeseries” by J. B. Matthews and J. B. R. Matthews

J. B. Matthews and J. B. R. Matthews

dr.matthews@manx.net

Received and published: 11 March 2014

A formatted version can be found in os-2013-57-supplement

Please also note the supplement to this comment:

<http://www.ocean-sci-discuss.net/11/C54/2014/osd-11-C54-2014-supplement.pdf>

Full Screen / Esc

Printer-friendly Version

Interactive Discussion

Discussion Paper



Interactive
Comment

Full Screen / Esc

Printer-friendly Version

Interactive Discussion

Discussion Paper



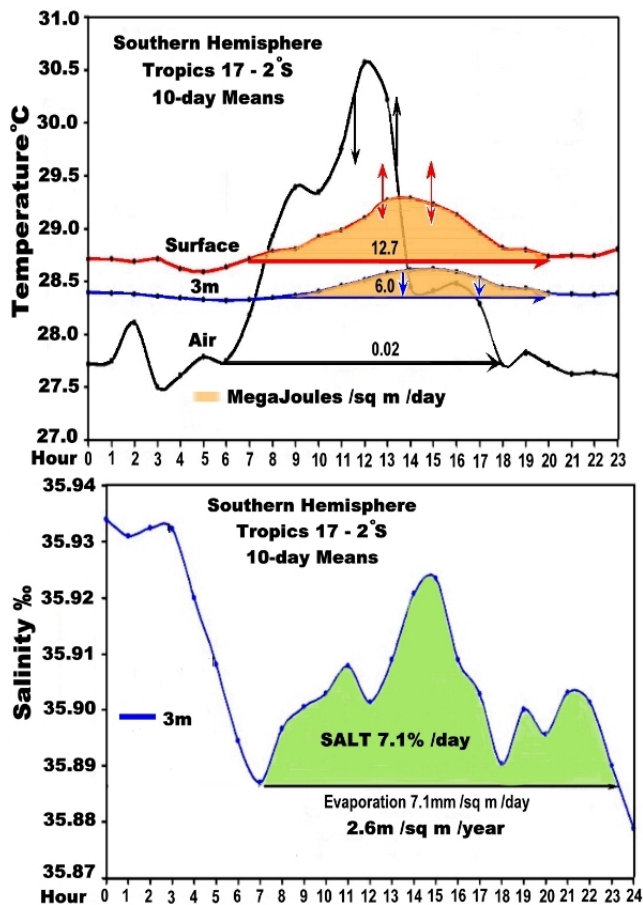


Fig. 1. Fig 1. Southern Hemisphere mean equatorial evaporation and heat sequestration from Nino 3.4 area $\sim 140^\circ\text{W}$ from hourly ground truth data. Salinity decreases from south to the north outside the diurnal ev

Full Screen / Esc

Printer-friendly Version

Interactive Discussion

Discussion Paper



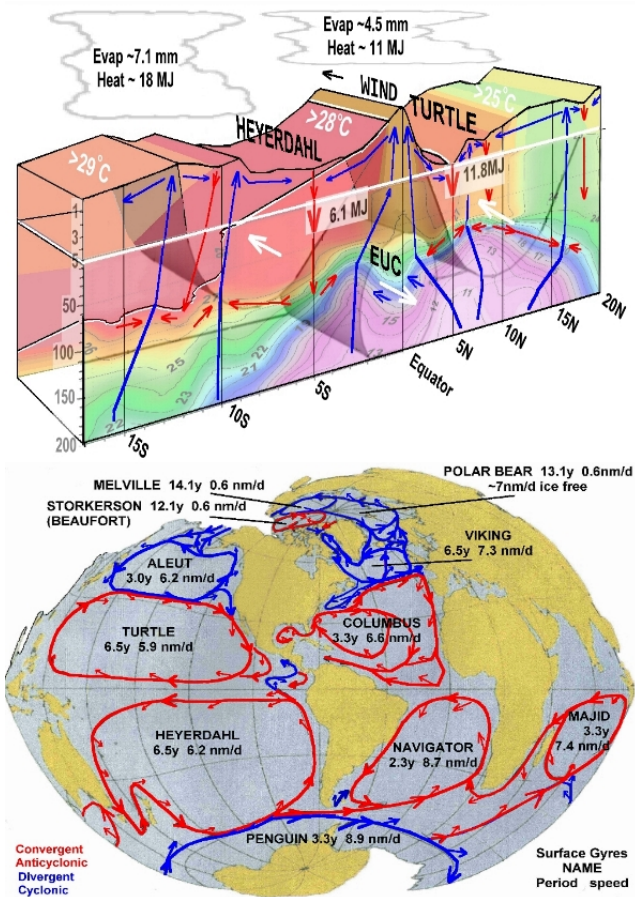


Fig. 2. Figure 2 a) Schematic of meridional vertical tropical cells, evaporation and heat sequestration in mid-Pacific at ~140°W. Arrows show upwelling (blue) and downwelling (red) cells, eastbound Equatorial

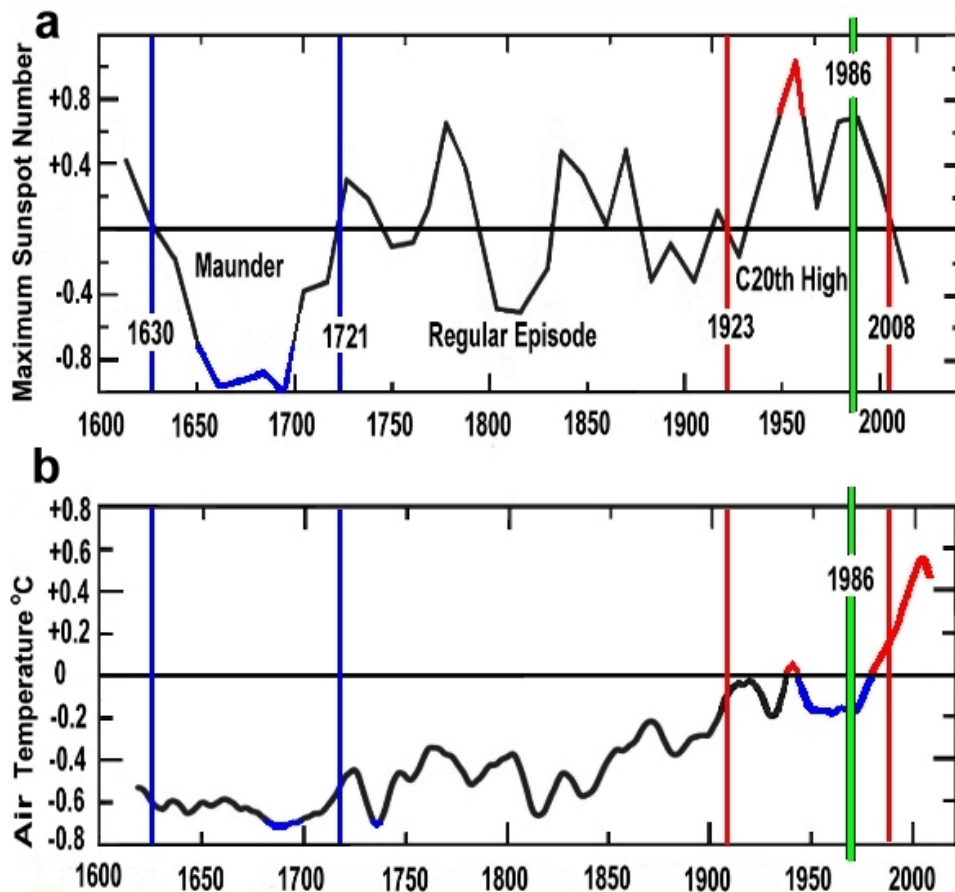


Fig. 3. Figure 3. From 1600-2008 a) Maximum sunspot from Maunder Minimum 1630-1721 to modern 20th century high 1923-2008 (red boundaries), b) Land air temperature. 1986 (green) marks transition to rapid solar

Full Screen / Esc

Printer-friendly Version

Interactive Discussion

Discussion Paper

