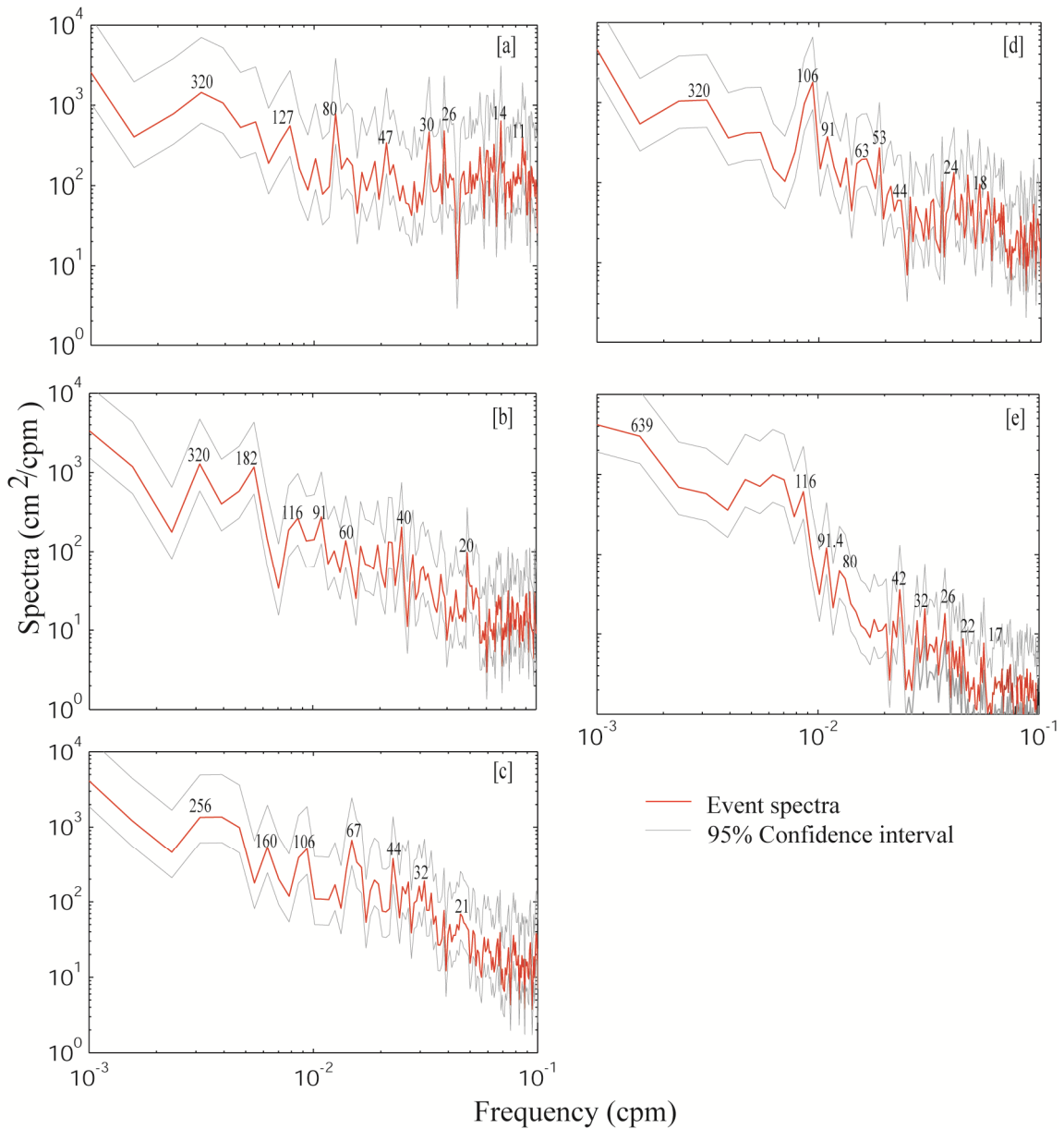


## Supplementary figure



3

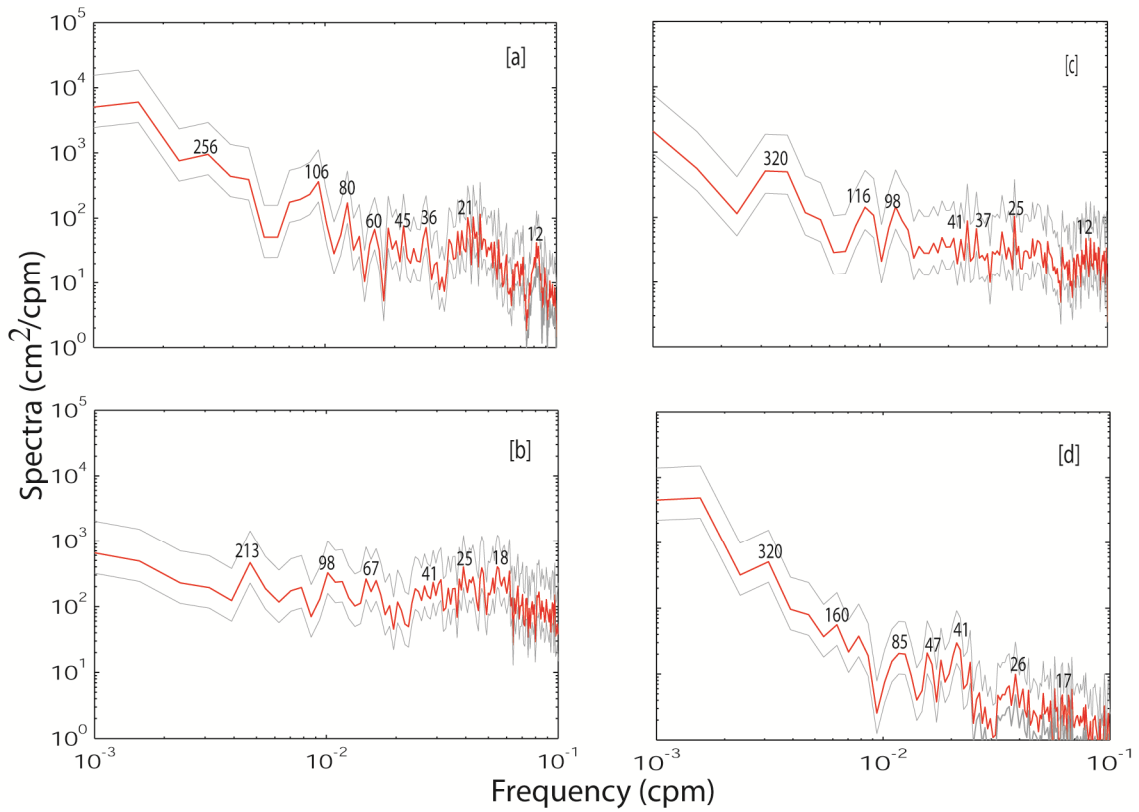
4

5 Supplementary Fig. 1 Event spectrum of sea level residual (SLR) during E1 at [a]  
 6 Ratnagiri, [b] Verem, [c] Karwar, [d] Tuticorin and [e] Mandapam. The data duration  
 7 for estimating the spectrum of the SLR during E1 is from 26 November - 1 December  
 8 2011. Grey line show the upper and lower bound of the spectrum at 95% confidence  
 9 level.

10

11

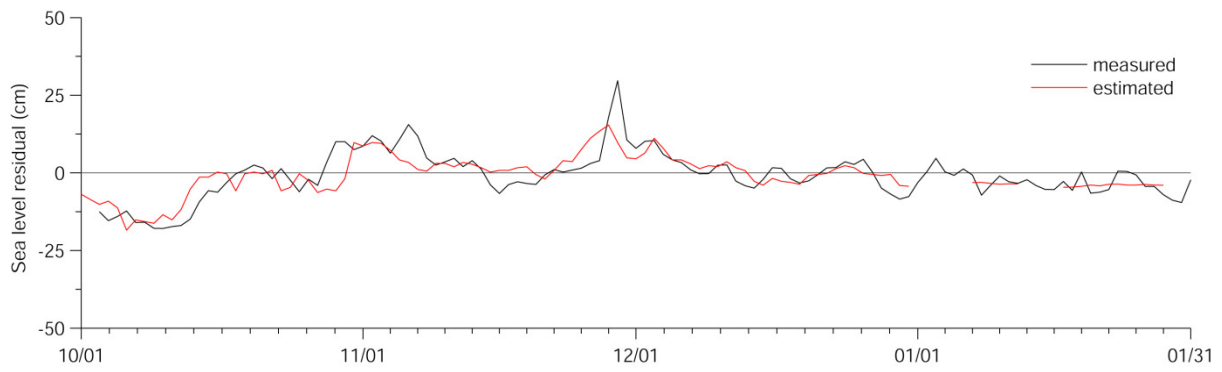
12  
13  
14  
15



16  
17  
18  
19  
20  
21  
22  
23  
24  
25  
26  
27  
28

Supplementary Fig. 1 Event spectrum of sea level residual (SLR) during E2 at [a] Gopalpur, [b] Gangavaram, [c] Kakinada and [d] Port Blair. The data duration for estimating the spectrum of the SLR during E2 is 25-31 December 2011. Grey line show the upper and lower bound of the spectrum at 95% confidence level.

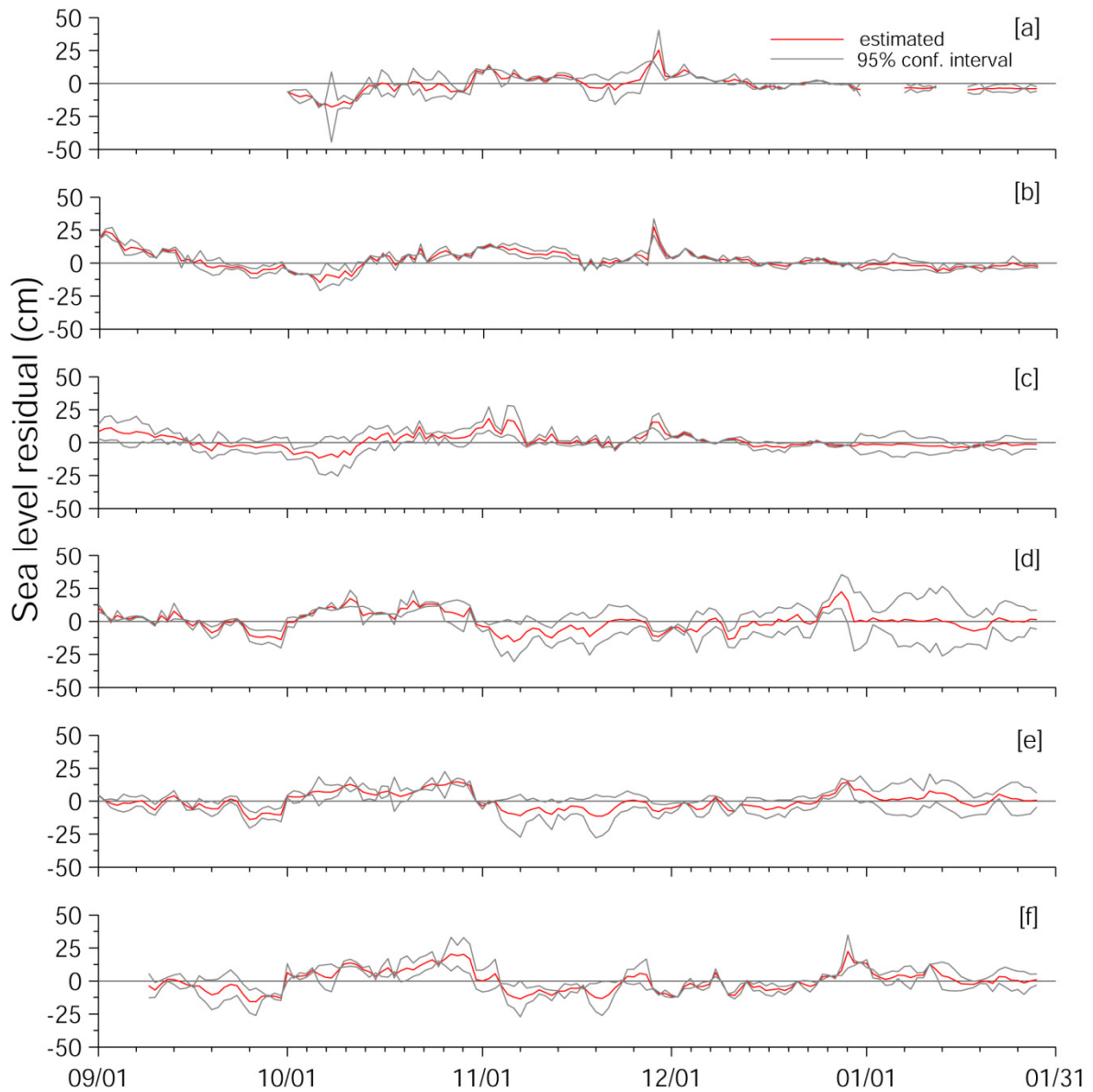
29



30

31

32 Supplementary Fig. 3 Daily-mean measured sea level residual (black) and estimated  
33 residual (sea-level residual) from September 2011 to January, 2012 at Ratnagiri. The  
34 estimated SLR is obtained using linear regression with atmospheric pressure (AP)  
35 alone as independent variable.



36

37

38 Supplementary Fig. 4 Estimated daily-mean sea level residual (SLR) during E1 at [a]  
 39 Ratnagiri, [b] Verem, [c] Karwar and during E2 at [d] Gopalpur, [e] Gangavaram and  
 40 [f] Kakinada. Grey line show the upper and lower bound at 95% confidence level.

41

42